

Data Path : Z:\SVOASRV\HPCHEM1\BNA G\DATA\BG012420\
 Data File : BG044192.D
 Acq On : 24 Jan 2020 21:42
 Operator : CG/JU
 Sample : L1246-01
 Misc :
 ALS Vial : 18 Sample Multiplier: 1

Instrument :
 BNA_G
 ClientSampleId :
 SP-1

Quant Time: Jan 27 04:51:17 2020
 Quant Method : Z:\SVOASRV\HPCHEM1\BNA G\METHODS\8270-BG123019.M
 Quant Title : ASP BNA STANDARDS FOR 5 POINT CALIBRATION
 QLast Update : Tue Dec 31 13:32:23 2019
 Response via : Initial Calibration

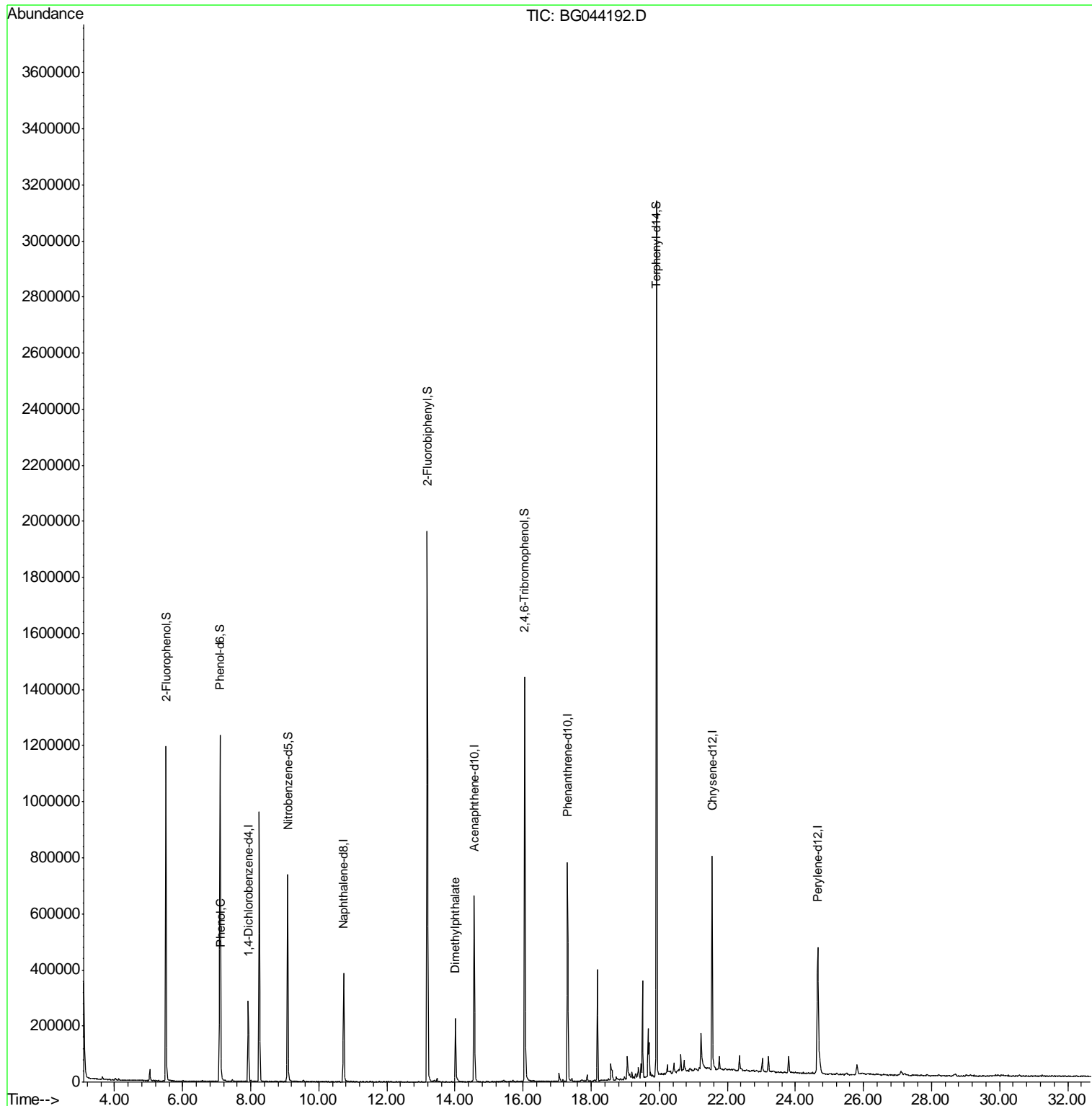
Internal Standards	R.T.	QIon	Response	Conc	Units	Dev(Min)
1) 1,4-Dichlorobenzene-d4	7.93	152	82962	20.00	ng	-0.04
21) Naphthalene-d8	10.73	136	371490	20.00	ng	-0.04
39) Acenaphthene-d10	14.56	164	254722	20.00	ng	-0.04
64) Phenanthrene-d10	17.31	188	509205	20.00	ng	-0.03
76) Chrysene-d12	21.55	240	433506	20.00	ng	-0.04
87) Perylene-d12	24.66	264	486064	20.00	ng	-0.07
System Monitoring Compounds						
5) 2-Fluorophenol	5.51	112	572029	126.60	ng	-0.03
7) Phenol-d6	7.10	99	789174	124.95	ng	-0.02
23) Nitrobenzene-d5	9.09	82	485697	69.94	ng	-0.04
42) 2,4,6-Tribromophenol	16.05	330	286554	107.50	ng	-0.03
45) 2-Fluorobiphenyl	13.19	172	1095497	77.92	ng	-0.04
79) Terphenyl-d14	19.92	244	1467626	80.47	ng	-0.04
Target Compounds						
10) Phenol	7.12	94	20091	3.087	ng	88
50) Dimethylphthalate	14.02	163	181316	10.025	ng	97

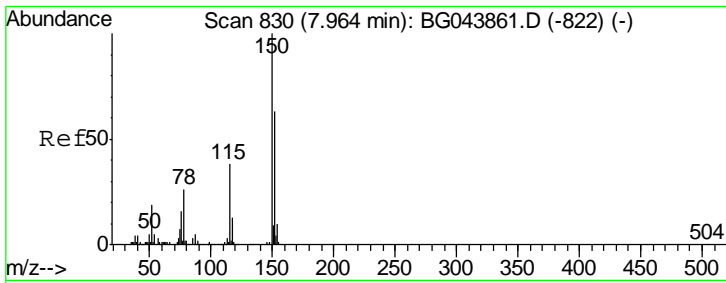
(#) = qualifier out of range (m) = manual integration (+) = signals summed

Data Path : Z:\SVOASRV\HPCHEM1\BNA G\DATA\BG012420\
 Data File : BG044192.D
 Acq On : 24 Jan 2020 21:42
 Operator : CG/JU
 Sample : L1246-01
 Misc :
 ALS Vial : 18 Sample Multiplier: 1

Instrument :
 BNA_G
 ClientSampled :
 SP-1

Quant Time: Jan 27 04:51:17 2020
 Quant Method : Z:\SVOASRV\HPCHEM1\BNA G\METHODS\8270-BG123019.M
 Quant Title : ASP BNA STANDARDS FOR 5 POINT CALIBRATION
 QLast Update : Tue Dec 31 13:32:23 2019
 Response via : Initial Calibration

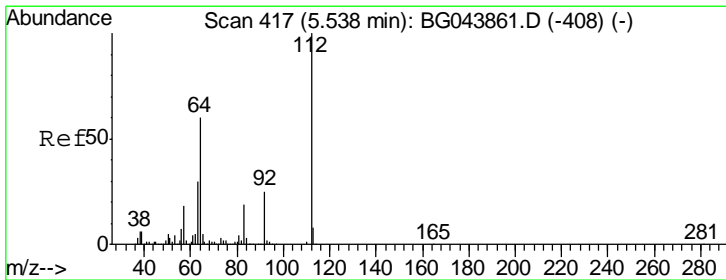
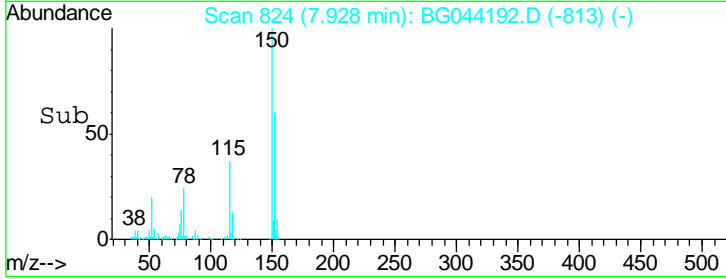
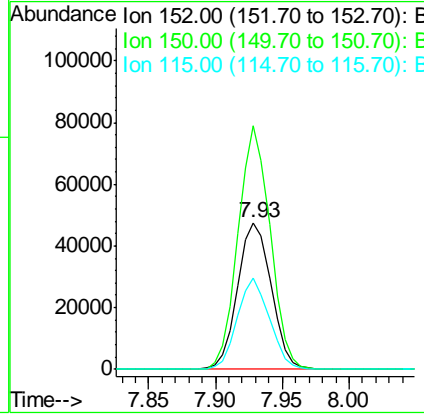
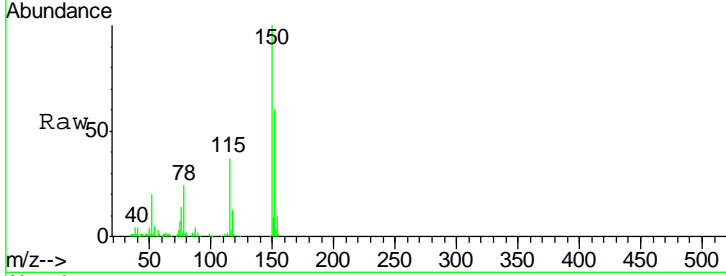




#1
 1,4-Dichlorobenzene-d4
 Concen: 20.000 ng
 RT: 7.93 min Scan# 824
 Delta R.T. -0.04 min
 Lab File: BG044192.D
 Acq: 24 Jan 2020 21:42

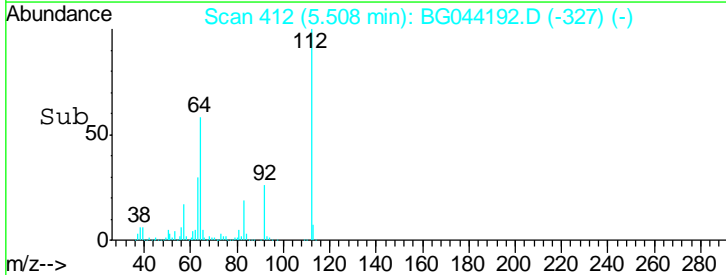
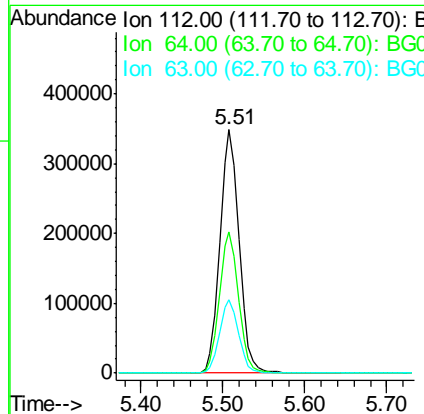
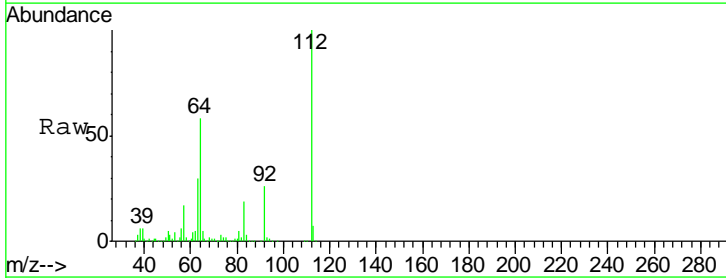
Instrument :
 BNA_G
 ClientSampled :
 SP-1

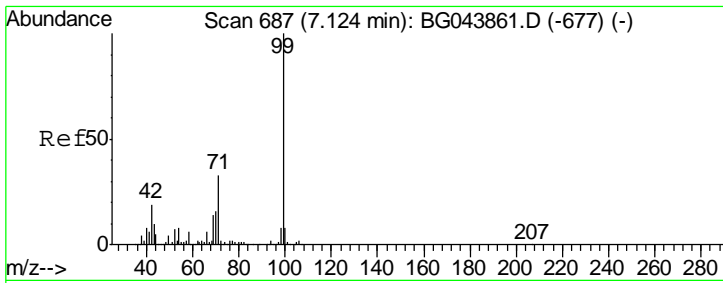
Tgt Ion	Resp	Lower	Upper
152	82962		
150	165.8	127.0	190.4
115	61.9	47.8	71.8



#5
 2-Fluorophenol
 Concen: 126.602 ng
 RT: 5.51 min Scan# 412
 Delta R.T. -0.03 min
 Lab File: BG044192.D
 Acq: 24 Jan 2020 21:42

Tgt Ion	Resp	Lower	Upper
112	572029		
64	57.7	47.8	71.6
63	30.0	24.3	36.5

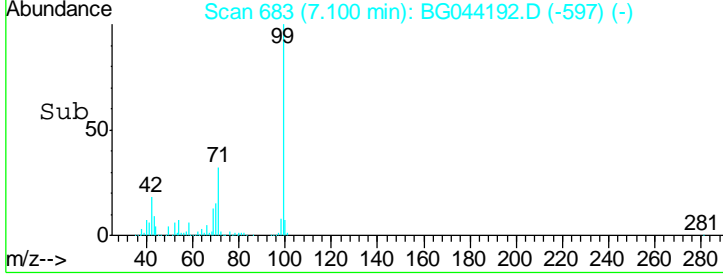
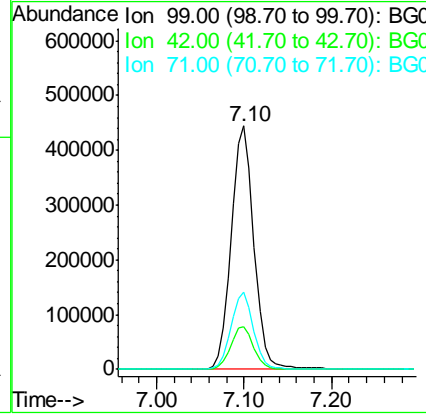
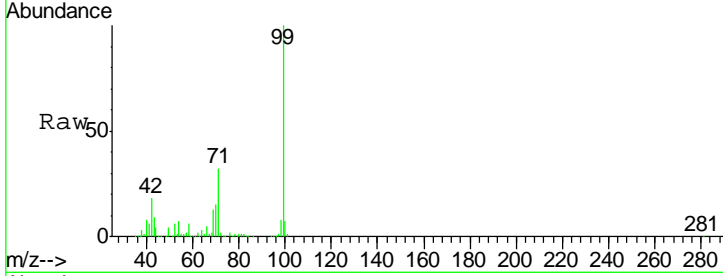




#7
 Phenol-d6
 Concen: 124.952 ng
 RT: 7.10 min Scan# 683
 Delta R.T. -0.02 min
 Lab File: BG044192.D
 Acq: 24 Jan 2020 21:42

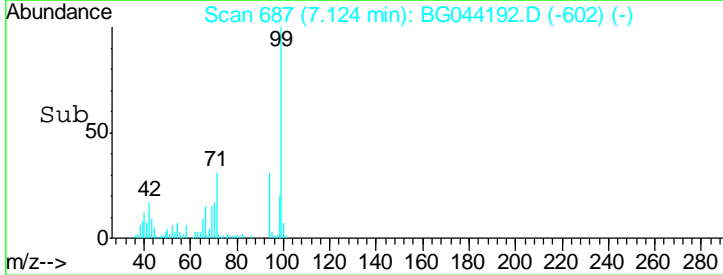
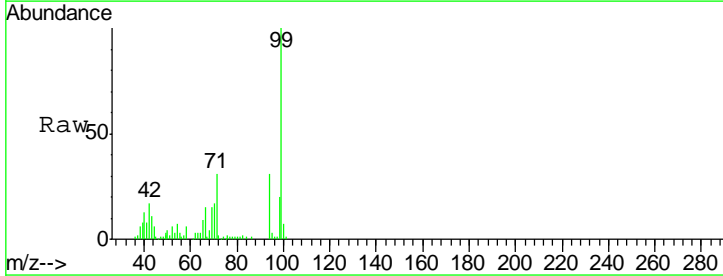
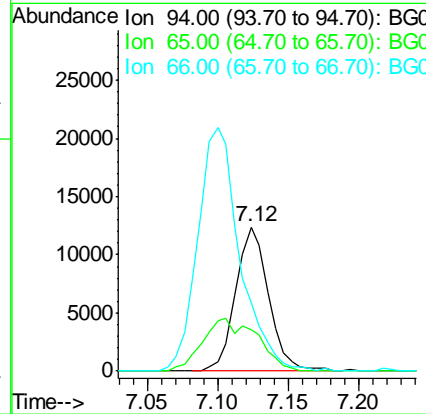
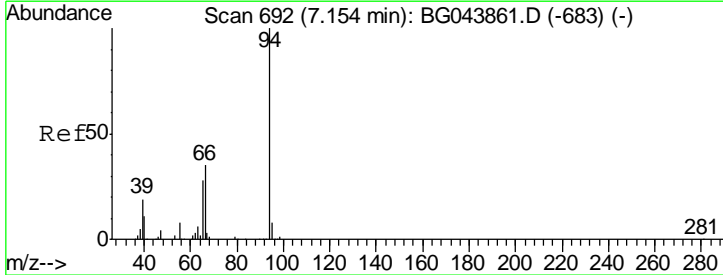
Instrument :
 BNA_G
ClientSampled :
 SP-1

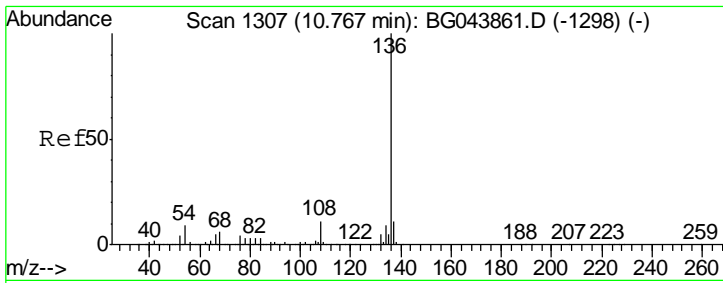
Tgt Ion	Resp	Lower	Upper
99	100		
42	17.7	14.9	22.3
71	31.8	26.4	39.6



#10
 Phenol
 Concen: 3.087 ng
 RT: 7.12 min Scan# 687
 Delta R.T. -0.03 min
 Lab File: BG044192.D
 Acq: 24 Jan 2020 21:42

Tgt Ion	Resp	Lower	Upper
94	100		
65	28.9	8.1	48.1
66	47.4	15.6	55.6

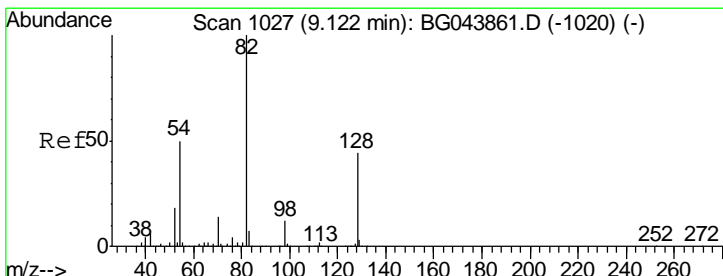
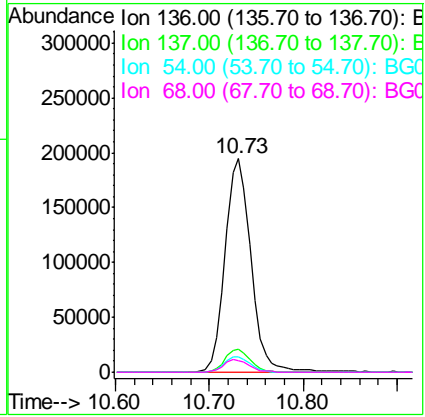
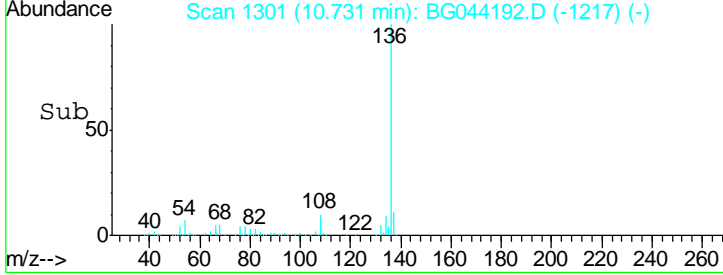
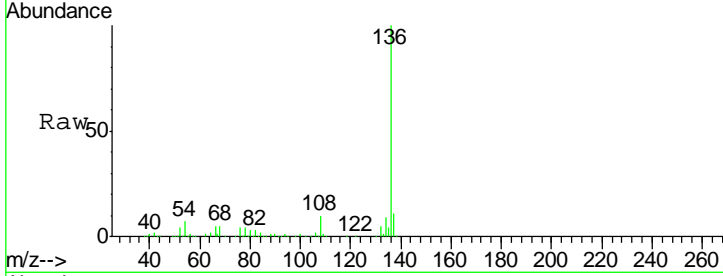




#21
 Naphthalene-d8
 Concen: 20.000 ng
 RT: 10.73 min Scan# 1301
 Delta R.T. -0.04 min
 Lab File: BG044192.D
 Acq: 24 Jan 2020 21:42

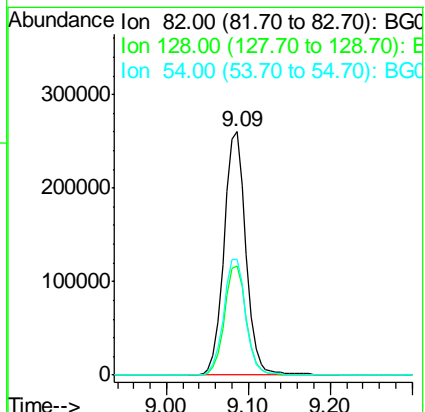
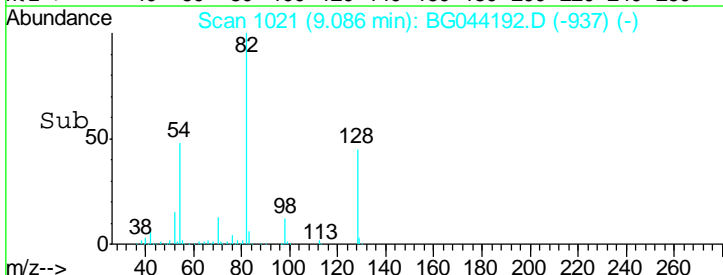
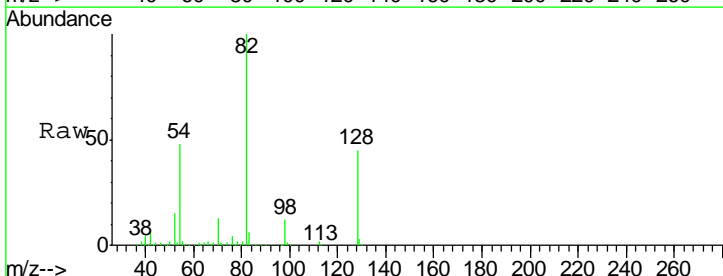
Instrument :
 BNA_G
 ClientSampled :
 SP-1

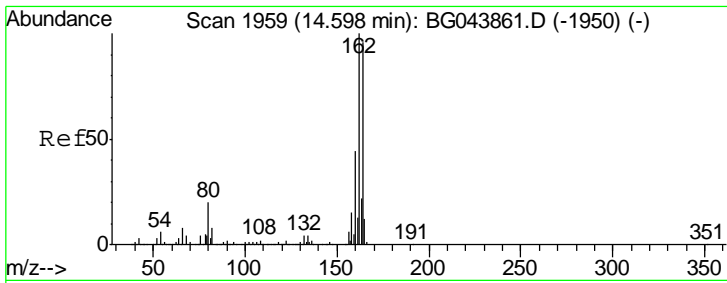
Tgt Ion	Resp	Lower	Upper
136	371490		
137	11.1	8.8	13.2
54	7.4	7.0	10.4
68	5.5	4.9	7.3



#23
 Nitrobenzene-d5
 Concen: 69.942 ng
 RT: 9.09 min Scan# 1021
 Delta R.T. -0.04 min
 Lab File: BG044192.D
 Acq: 24 Jan 2020 21:42

Tgt Ion	Resp	Lower	Upper
82	485697		
128	45.0	35.1	52.7
54	47.6	40.1	60.1

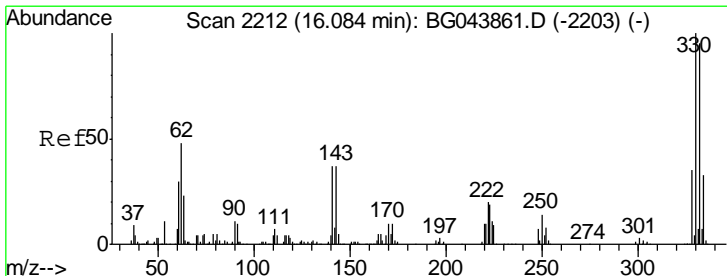
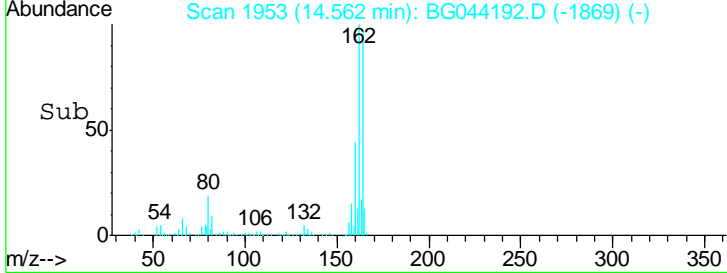
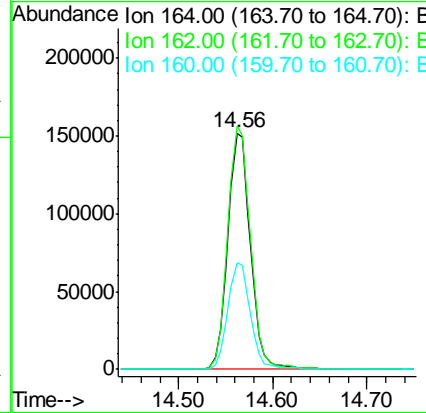
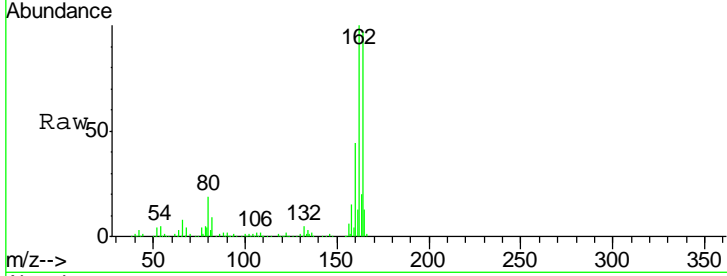




#39
 Acenaphthene-d10
 Concen: 20.000 ng
 RT: 14.56 min Scan# 1953
 Delta R.T. -0.04 min
 Lab File: BG044192.D
 Acq: 24 Jan 2020 21:42

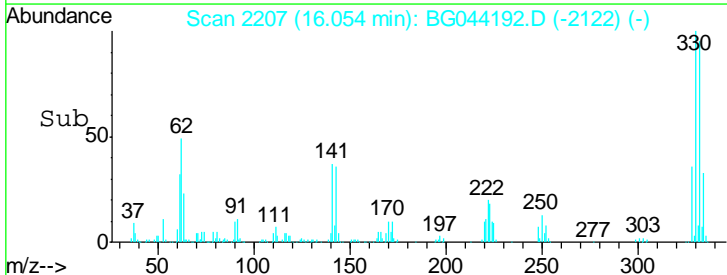
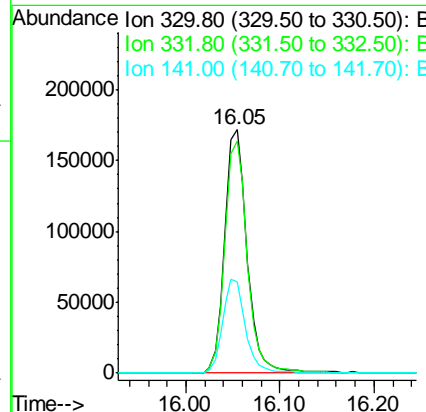
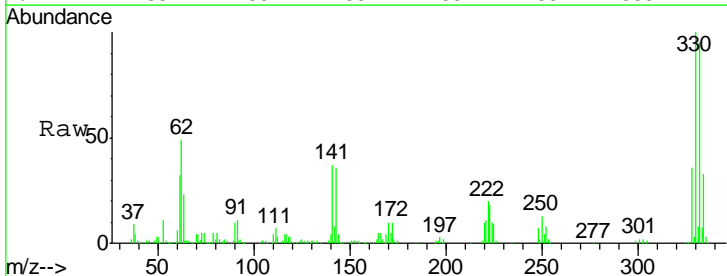
Instrument :
 BNA_G
 ClientSampled :
 SP-1

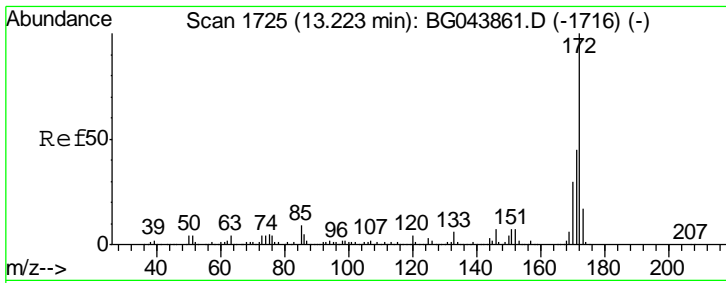
Tgt Ion	Resp	Lower	Upper
164	100		
162	103.1	83.0	124.4
160	45.3	36.1	54.1



#42
 2,4,6-Tribromophenol
 Concen: 107.500 ng
 RT: 16.05 min Scan# 2207
 Delta R.T. -0.03 min
 Lab File: BG044192.D
 Acq: 24 Jan 2020 21:42

Tgt Ion	Resp	Lower	Upper
330	100		
332	96.7	77.2	115.8
141	39.5	33.1	49.7

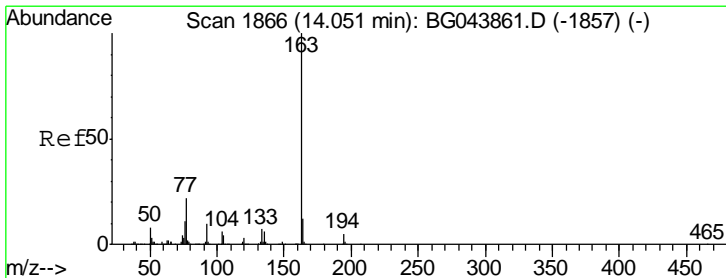
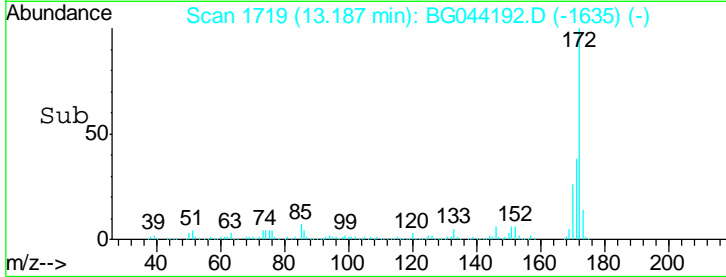
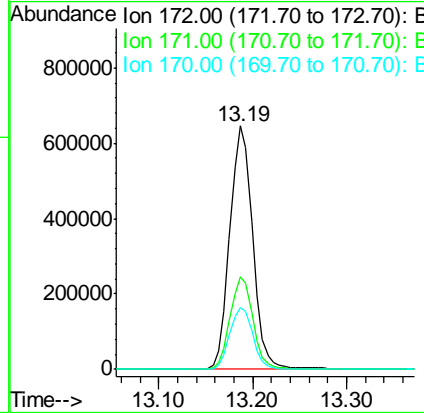
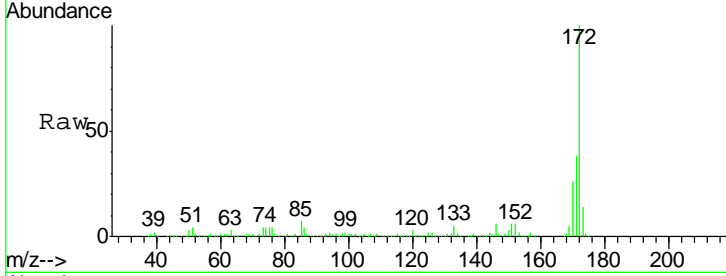




#45
 2-Fluorobiphenyl
 Concen: 77.920 ng
 RT: 13.19 min Scan# 1719
 Delta R.T. -0.04 min
 Lab File: BG044192.D
 Acq: 24 Jan 2020 21:42

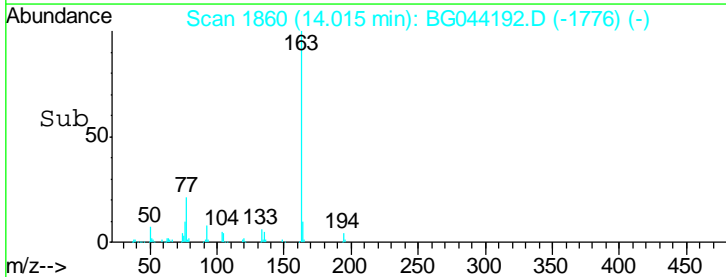
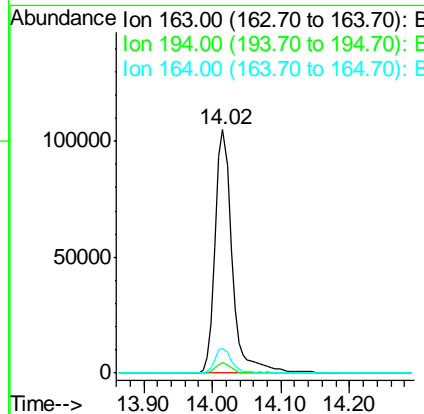
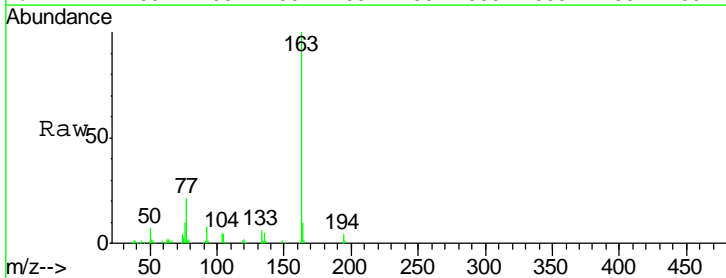
Instrument :
 BNA_G
 ClientSampled :
 SP-1

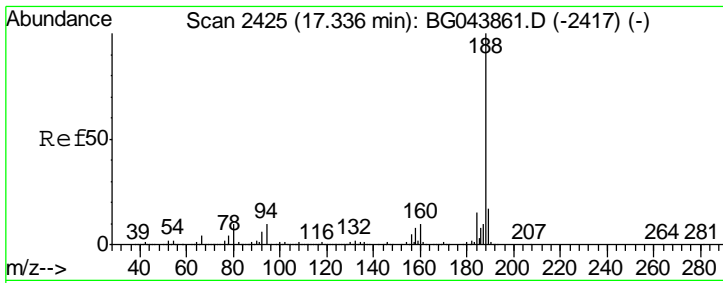
Tgt Ion	Resp	Lower	Upper
172	1095497		
171	38.2	35.8	53.8
170	25.7	24.2	36.4



#50
 Dimethylphthalate
 Concen: 10.025 ng
 RT: 14.02 min Scan# 1860
 Delta R.T. -0.04 min
 Lab File: BG044192.D
 Acq: 24 Jan 2020 21:42

Tgt Ion	Resp	Lower	Upper
163	181316		
194	4.2	3.7	5.5
164	9.9	9.3	13.9

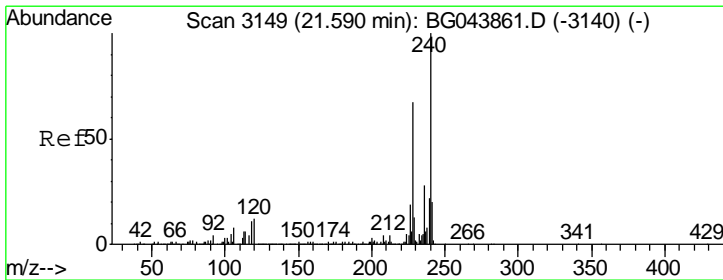
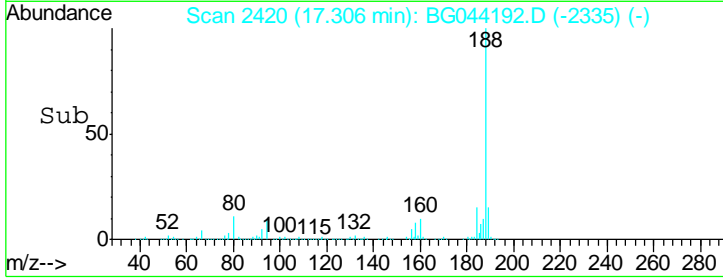
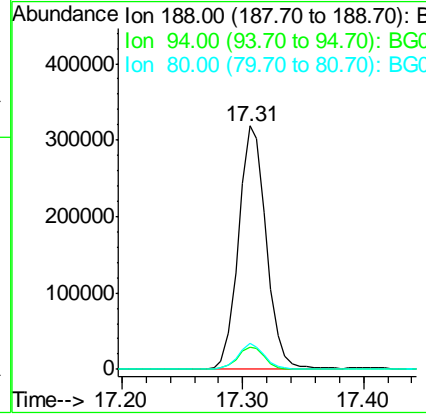
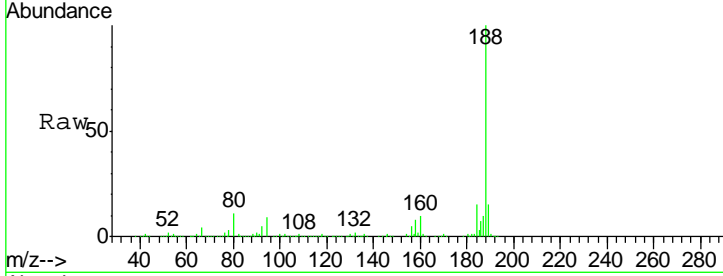




#64
 Phenanthrene-d10
 Concen: 20.000 ng
 RT: 17.31 min Scan# 2420
 Delta R.T. -0.03 min
 Lab File: BG044192.D
 Acq: 24 Jan 2020 21:42

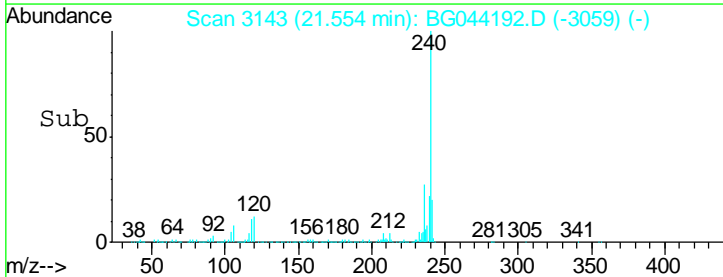
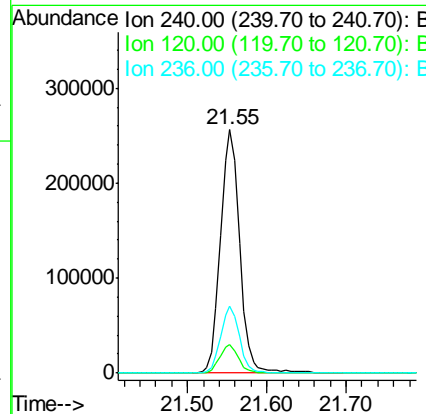
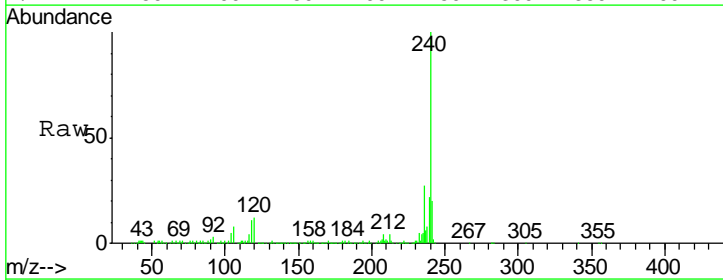
Instrument :
 BNA_G
 ClientSampled :
 SP-1

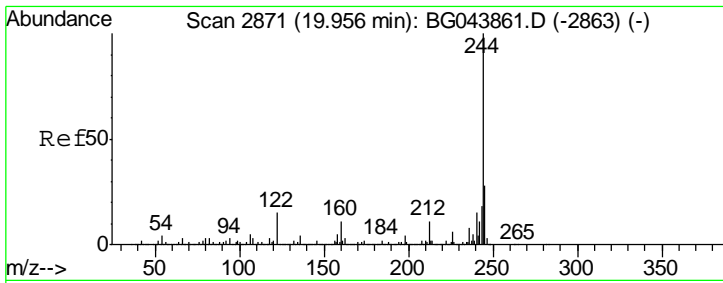
Tgt Ion	Resp	Lower	Upper
188	509205		
94	100	7.9	11.9
80	10.6	8.2	12.4



#76
 Chrysene-d12
 Concen: 20.000 ng
 RT: 21.55 min Scan# 3143
 Delta R.T. -0.04 min
 Lab File: BG044192.D
 Acq: 24 Jan 2020 21:42

Tgt Ion	Resp	Lower	Upper
240	433506		
120	100	9.6	14.4
236	27.3	22.2	33.2



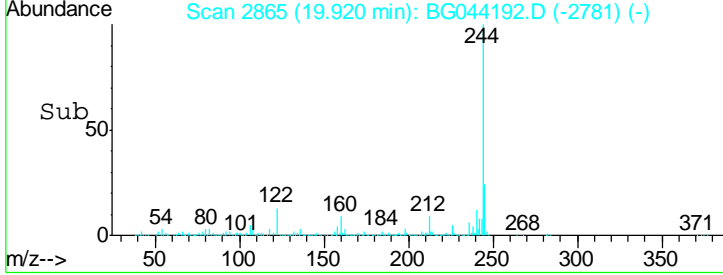
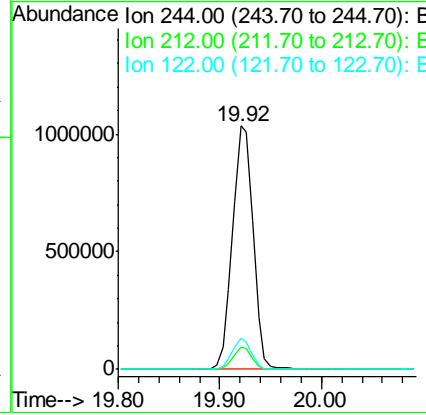
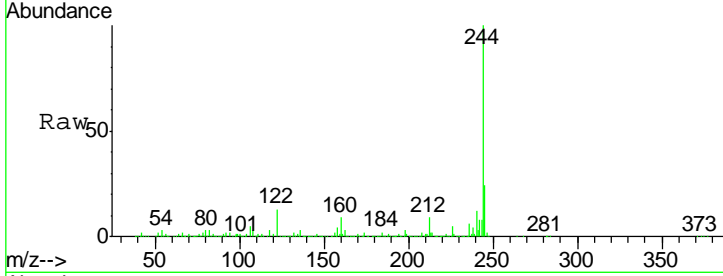


#79
 Terphenyl-d14
 Concen: 80.467 ng
 RT: 19.92 min Scan# 2865
 Delta R.T. -0.04 min
 Lab File: BG044192.D
 Acq: 24 Jan 2020 21:42

Instrument :
 BNA_G
ClientSampled :
 SP-1

Tgt Ion: 244 Resp: 1467626

Ion	Ratio	Lower	Upper
244	100		
212	8.9	8.6	13.0
122	12.9	11.9	17.9



#87
 Perylene-d12
 Concen: 20.000 ng
 RT: 24.66 min Scan# 3671
 Delta R.T. -0.07 min
 Lab File: BG044192.D
 Acq: 24 Jan 2020 21:42

Tgt Ion: 264 Resp: 486064

Ion	Ratio	Lower	Upper
264	100		
260	24.4	20.4	30.6
265	21.6	17.4	26.2

