

Data Path : Z:\SVOASRV\HPCHEM1\BNA G\DATA\BG012420\
 Data File : BG044202.D
 Acq On : 25 Jan 2020 5:05
 Operator : CG/JU
 Sample : L1242-07
 Misc :
 ALS Vial : 26 Sample Multiplier: 1

Instrument :
 BNA_G
 ClientSampleId :
 20200060-COMP-B6

Quant Time: Jan 27 04:33:22 2020
 Quant Method : Z:\SVOASRV\HPCHEM1\BNA G\METHODS\8270-BG123019.M
 Quant Title : ASP BNA STANDARDS FOR 5 POINT CALIBRATION
 QLast Update : Tue Dec 31 13:32:23 2019
 Response via : Initial Calibration

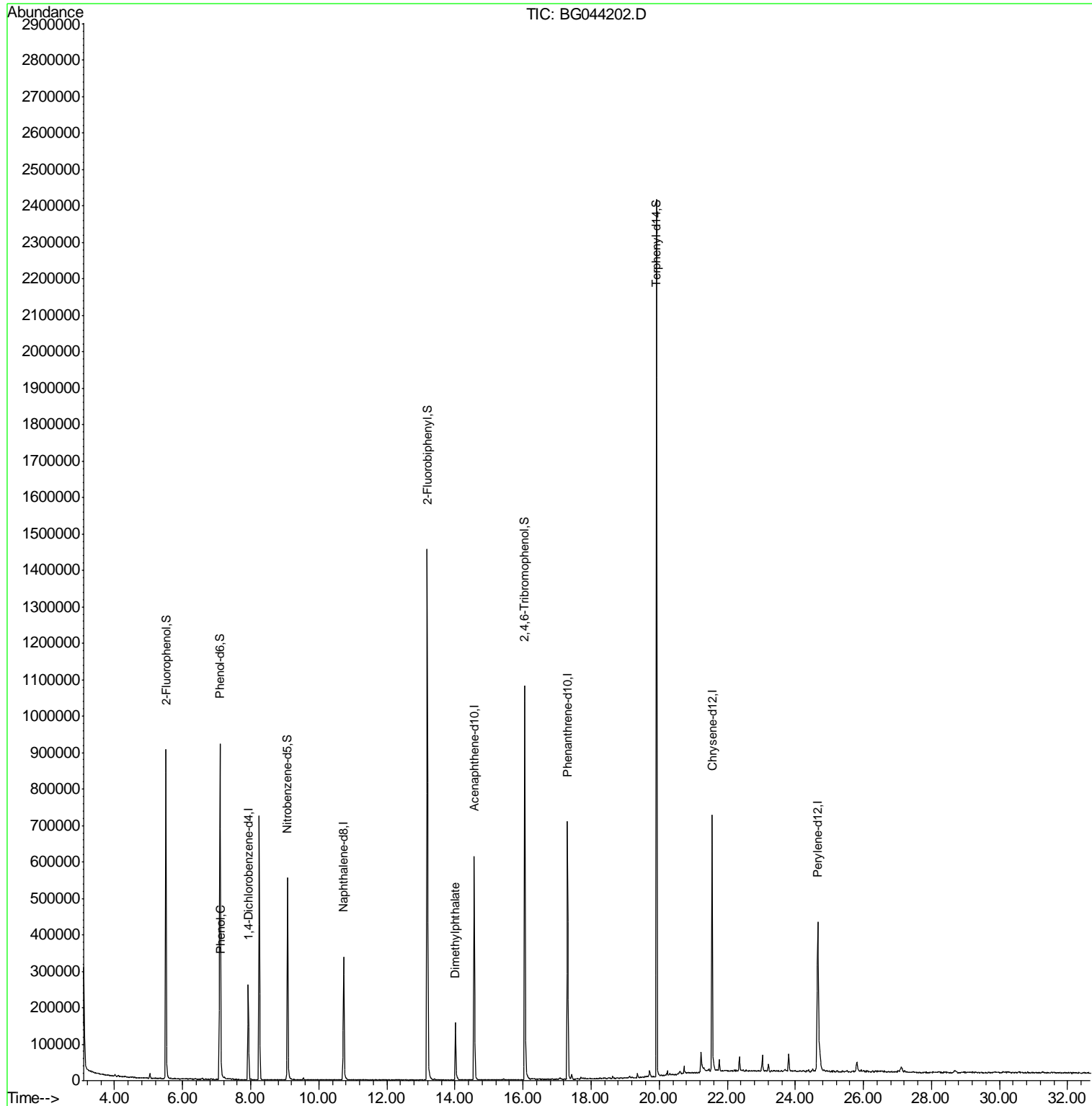
Internal Standards	R.T.	QIon	Response	Conc	Units	Dev(Min)
1) 1,4-Dichlorobenzene-d4	7.93	152	74833	20.00	ng	-0.04
21) Naphthalene-d8	10.73	136	334399	20.00	ng	-0.04
39) Acenaphthene-d10	14.56	164	229369	20.00	ng	-0.04
64) Phenanthrene-d10	17.31	188	459166	20.00	ng	-0.03
76) Chrysene-d12	21.55	240	395445	20.00	ng	-0.04
87) Perylene-d12	24.66	264	440262	20.00	ng	-0.06
System Monitoring Compounds						
5) 2-Fluorophenol	5.51	112	439983	107.96	ng	-0.03
7) Phenol-d6	7.09	99	605608	106.30	ng	-0.03
23) Nitrobenzene-d5	9.08	82	369233	59.07	ng	-0.04
42) 2,4,6-Tribromophenol	16.05	330	217685	90.69	ng	-0.03
45) 2-Fluorobiphenyl	13.19	172	843678	66.64	ng	-0.04
79) Terphenyl-d14	19.92	244	1103365	62.26	ng	-0.03
Target Compounds						
10) Phenol	7.12	94	27034	4.606	ng	93
50) Dimethylphthalate	14.02	163	133466	8.195	ng	# 96

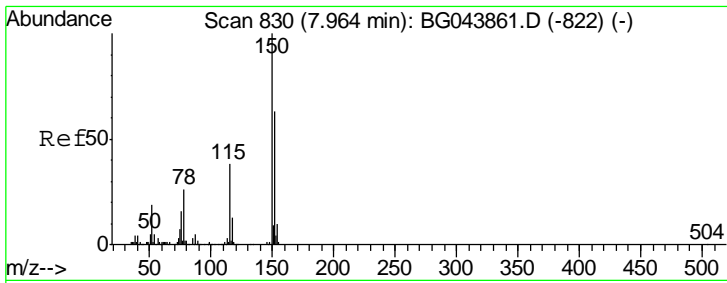
(#) = qualifier out of range (m) = manual integration (+) = signals summed

Data Path : Z:\SVOASRV\HPCHEM1\BNA G\DATA\BG012420\
 Data File : BG044202.D
 Acq On : 25 Jan 2020 5:05
 Operator : CG/JU
 Sample : L1242-07
 Misc :
 ALS Vial : 26 Sample Multiplier: 1

Instrument :
 BNA_G
 ClientSampleId :
 20200060-COMP-B6

Quant Time: Jan 27 04:33:22 2020
 Quant Method : Z:\SVOASRV\HPCHEM1\BNA G\METHODS\8270-BG123019.M
 Quant Title : ASP BNA STANDARDS FOR 5 POINT CALIBRATION
 QLast Update : Tue Dec 31 13:32:23 2019
 Response via : Initial Calibration

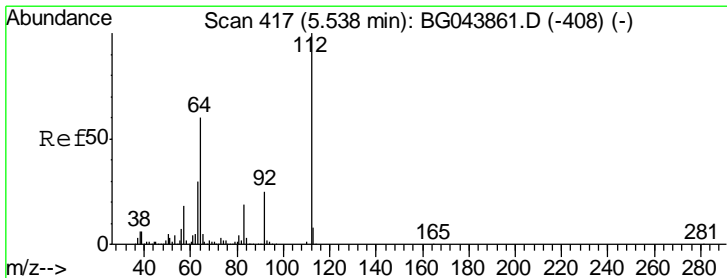
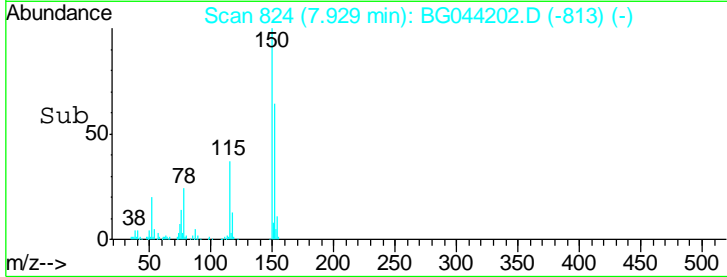
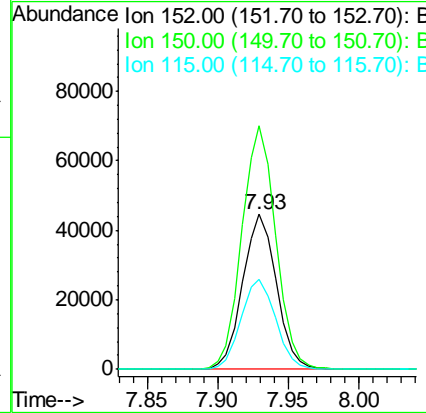
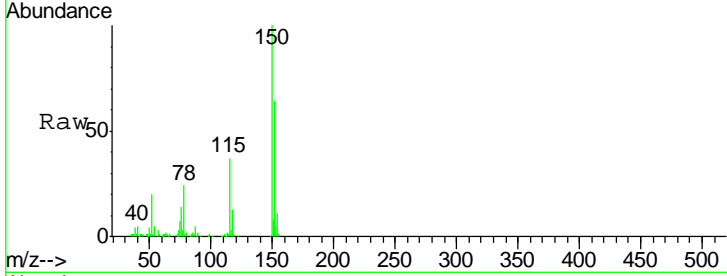




#1
 1,4-Dichlorobenzene-d4
 Concen: 20.000 ng
 RT: 7.93 min Scan# 824
 Delta R.T. -0.04 min
 Lab File: BG044202.D
 Acq: 25 Jan 2020 5:05

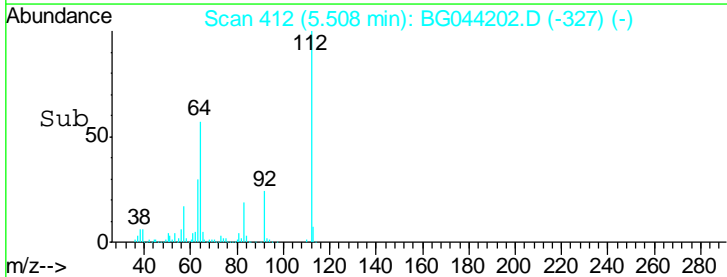
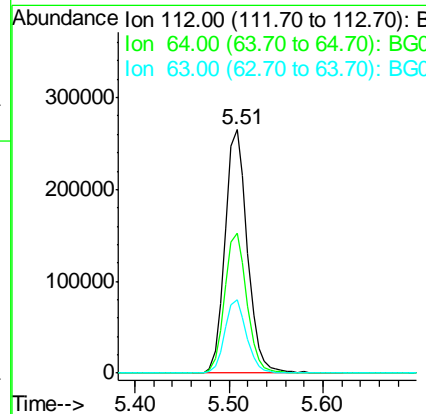
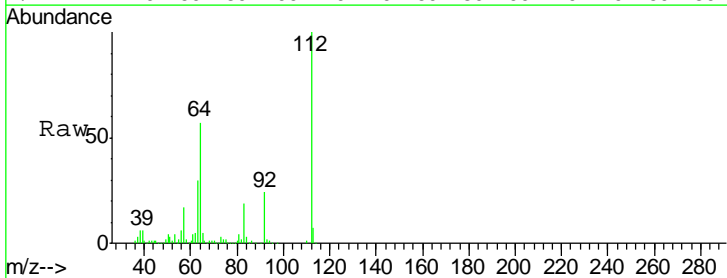
Instrument :
 BNA_G
ClientSampleId :
 20200060-COMP-B6

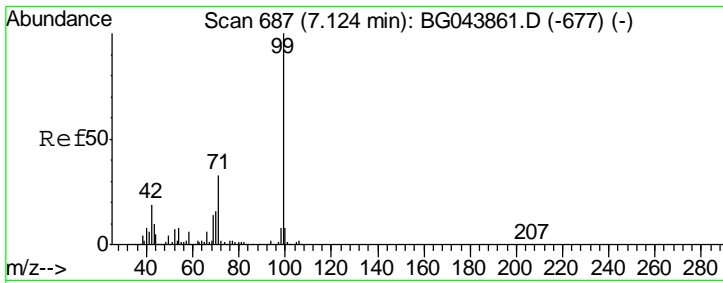
Tgt Ion	Resp	Lower	Upper
152	74833		
152	100		
150	157.0	127.0	190.4
115	57.9	47.8	71.8



#5
 2-Fluorophenol
 Concen: 107.955 ng
 RT: 5.51 min Scan# 412
 Delta R.T. -0.03 min
 Lab File: BG044202.D
 Acq: 25 Jan 2020 5:05

Tgt Ion	Resp	Lower	Upper
112	439983		
112	100		
64	57.4	47.8	71.6
63	30.1	24.3	36.5

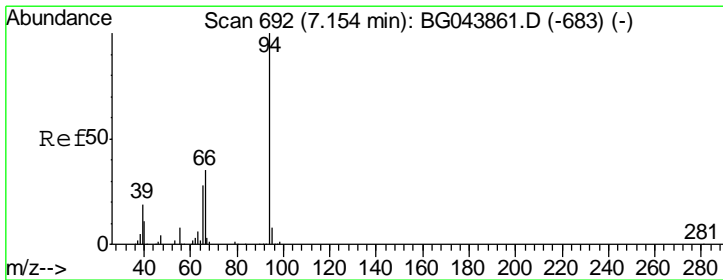
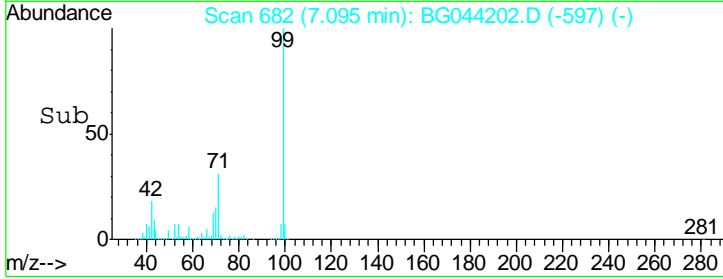
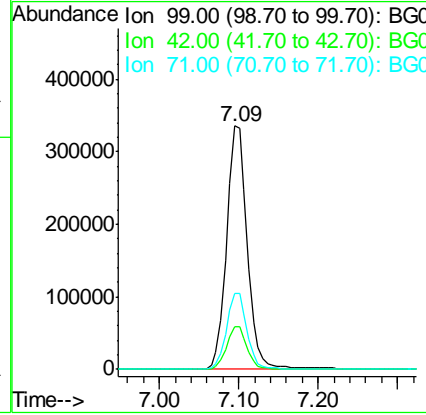
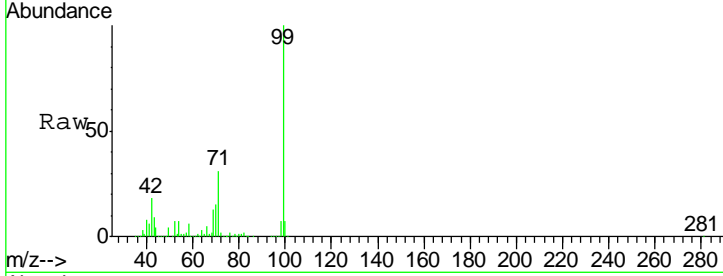




#7
 Phenol-d6
 Concen: 106.304 ng
 RT: 7.09 min Scan# 682
 Delta R.T. -0.03 min
 Lab File: BG044202.D
 Acq: 25 Jan 2020 5:05

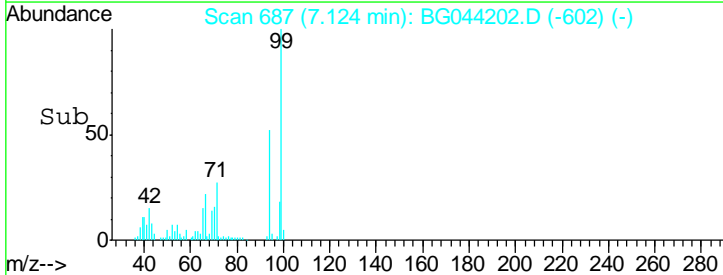
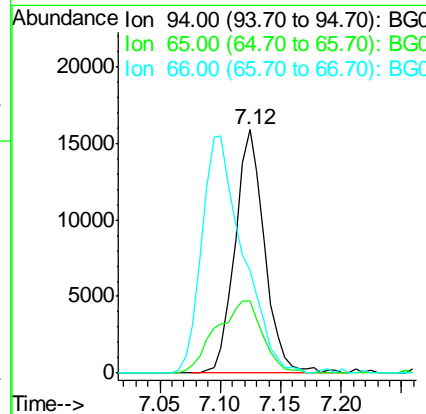
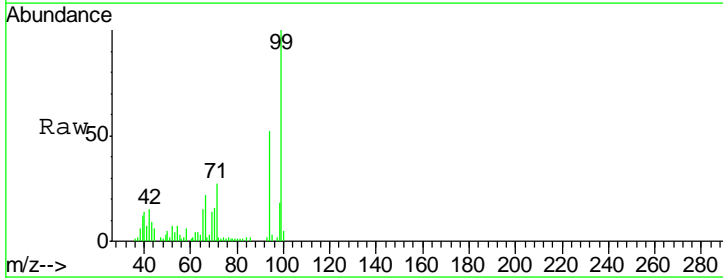
Instrument :
 BNA_G
 ClientSampleId :
 20200060-COMP-B6

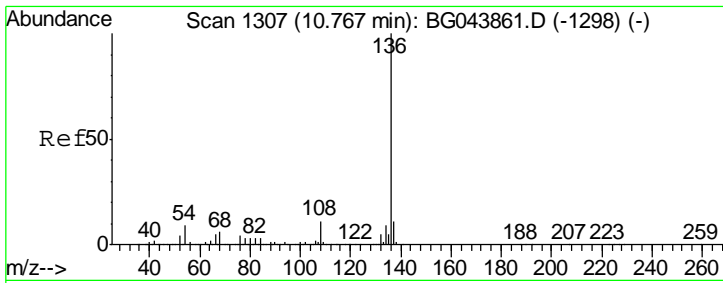
Tgt Ion	Resp	Lower	Upper
99	605608		
42	17.6	14.9	22.3
71	31.4	26.4	39.6



#10
 Phenol
 Concen: 4.606 ng
 RT: 7.12 min Scan# 687
 Delta R.T. -0.03 min
 Lab File: BG044202.D
 Acq: 25 Jan 2020 5:05

Tgt Ion	Resp	Lower	Upper
94	27034		
65	29.6	8.1	48.1
66	42.0	15.6	55.6

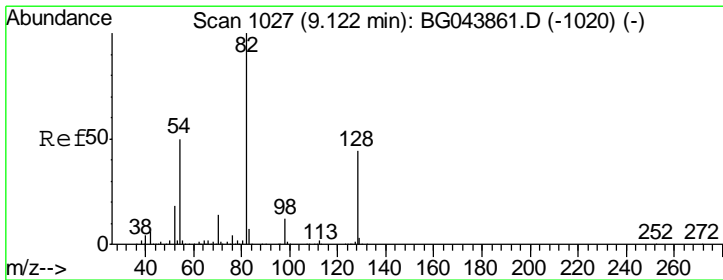
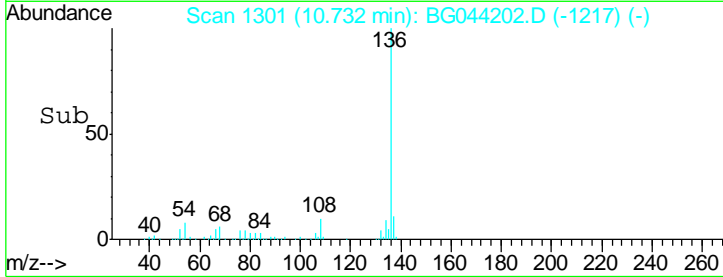
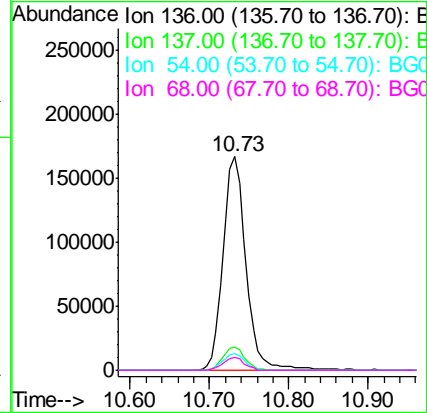
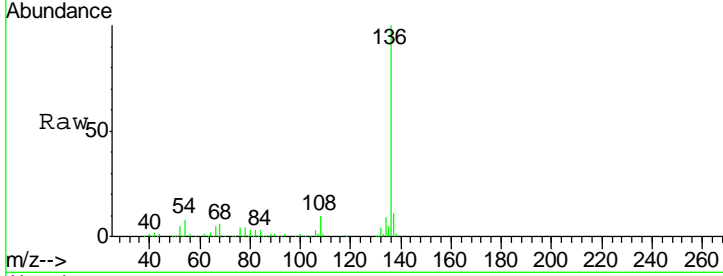




#21
 Naphthalene-d8
 Concen: 20.000 ng
 RT: 10.73 min Scan# 1301
 Delta R.T. -0.04 min
 Lab File: BG044202.D
 Acq: 25 Jan 2020 5:05

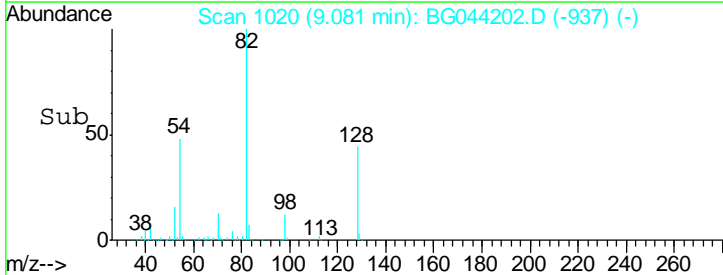
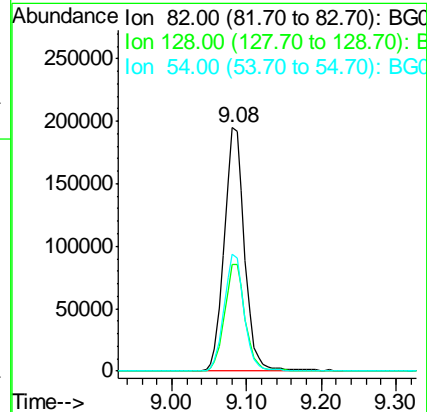
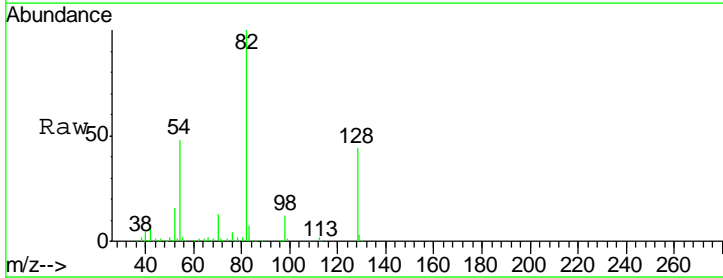
Instrument :
 BNA_G
 ClientSampled :
 20200060-COMP-B6

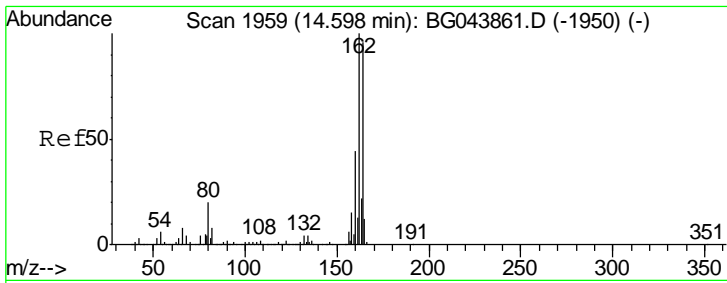
Tgt Ion	Resp	Lower	Upper
136	100		
137	11.0	8.8	13.2
54	7.5	7.0	10.4
68	5.8	4.9	7.3



#23
 Nitrobenzene-d5
 Concen: 59.068 ng
 RT: 9.08 min Scan# 1020
 Delta R.T. -0.04 min
 Lab File: BG044202.D
 Acq: 25 Jan 2020 5:05

Tgt Ion	Resp	Lower	Upper
82	100		
128	43.6	35.1	52.7
54	48.2	40.1	60.1

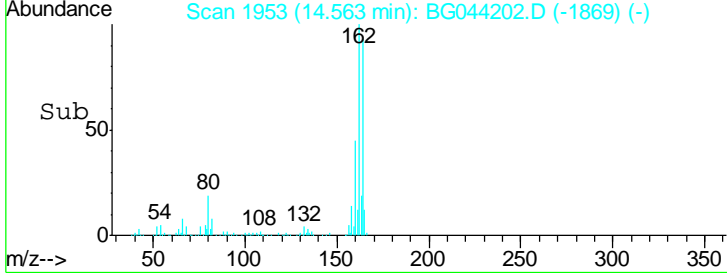
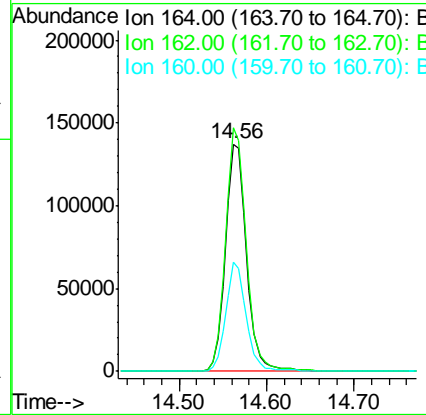
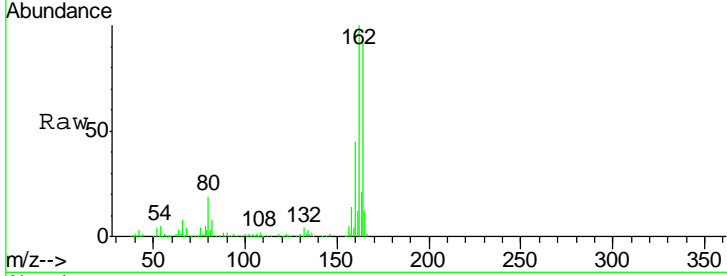




#39
 Acenaphthene-d10
 Concen: 20.000 ng
 RT: 14.56 min Scan# 1953
 Delta R.T. -0.04 min
 Lab File: BG044202.D
 Acq: 25 Jan 2020 5:05

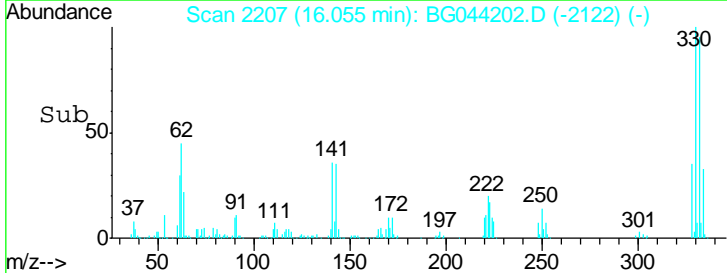
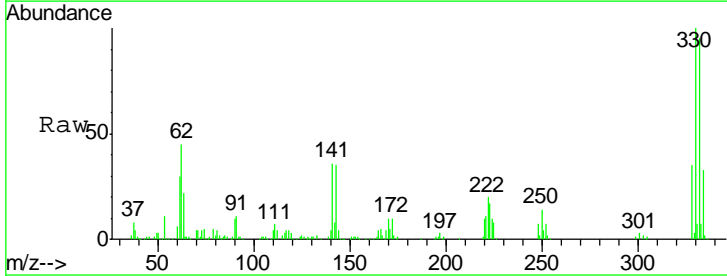
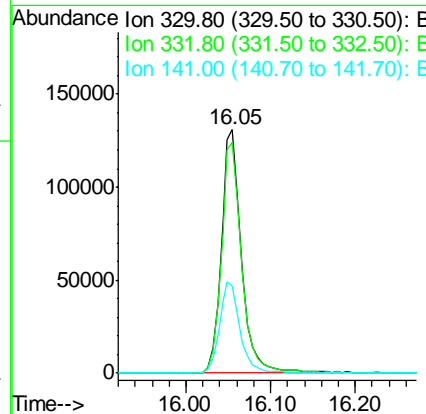
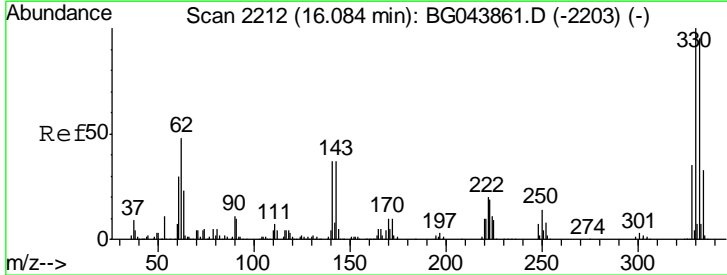
Instrument :
 BNA_G
 ClientSampleId :
 20200060-COMP-B6

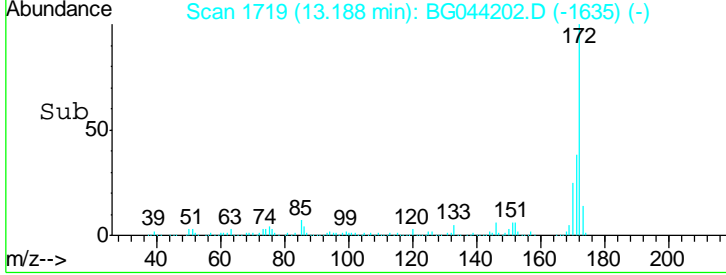
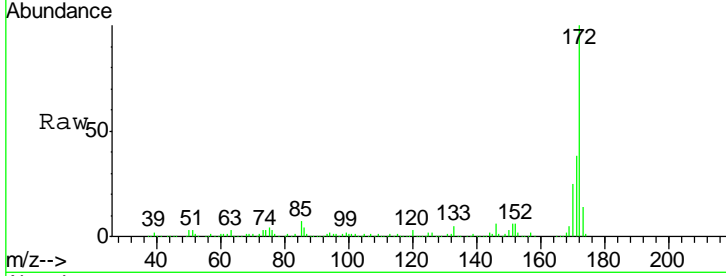
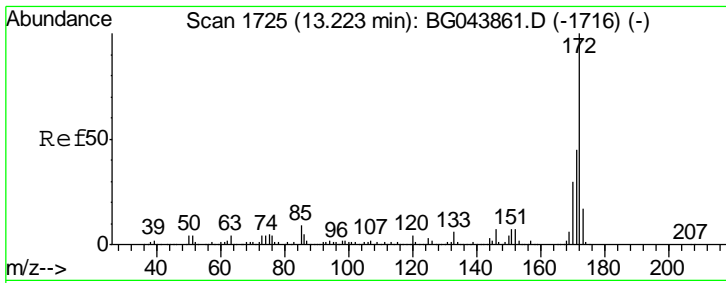
Tgt Ion	Resp	Lower	Upper
164	100		
162	107.2	83.0	124.4
160	48.0	36.1	54.1



#42
 2,4,6-Tribromophenol
 Concen: 90.691 ng
 RT: 16.05 min Scan# 2207
 Delta R.T. -0.03 min
 Lab File: BG044202.D
 Acq: 25 Jan 2020 5:05

Tgt Ion	Resp	Lower	Upper
330	100		
332	95.8	77.2	115.8
141	38.4	33.1	49.7

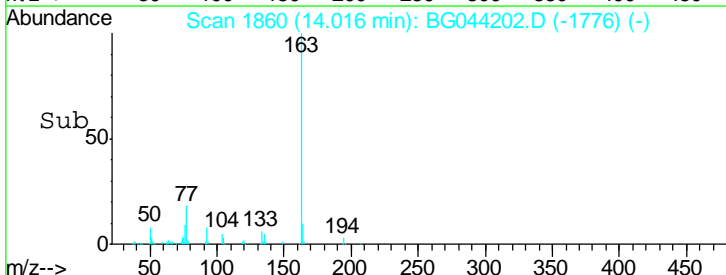
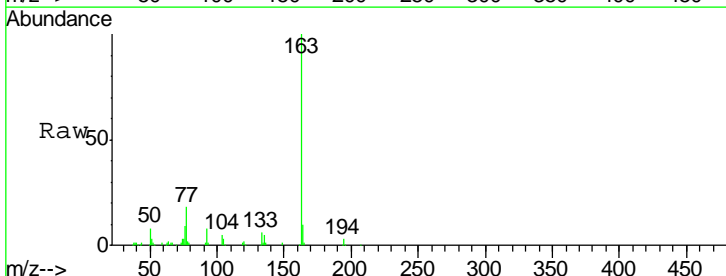
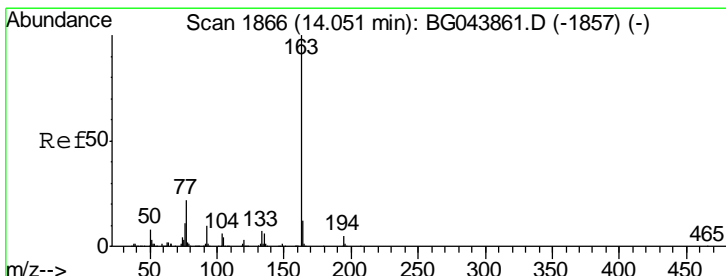
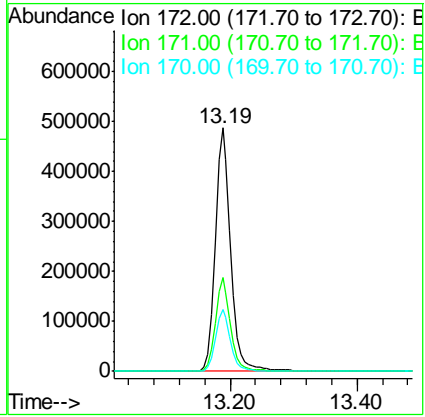




#45
 2-Fluorobiphenyl
 Concen: 66.642 ng
 RT: 13.19 min Scan# 1719
 Delta R.T. -0.04 min
 Lab File: BG044202.D
 Acq: 25 Jan 2020 5:05

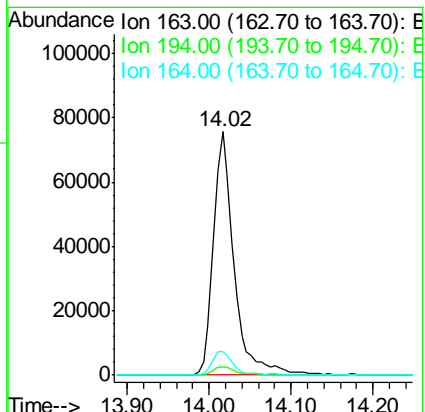
Instrument :
 BNA_G
 ClientSampleId :
 20200060-COMP-B6

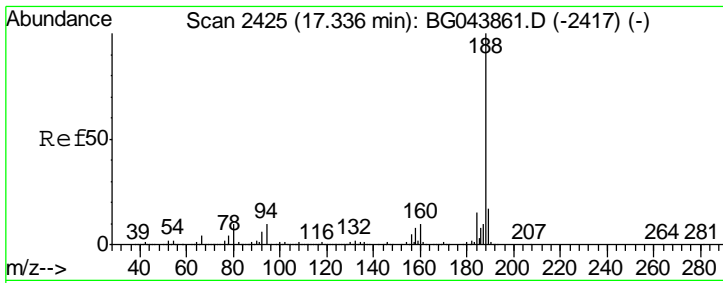
Tgt Ion	Resp	Lower	Upper
172	100		
171	38.3	35.8	53.8
170	25.3	24.2	36.4



#50
 Dimethylphthalate
 Concen: 8.195 ng
 RT: 14.02 min Scan# 1860
 Delta R.T. -0.04 min
 Lab File: BG044202.D
 Acq: 25 Jan 2020 5:05

Tgt Ion	Resp	Lower	Upper
163	100		
194	3.4	3.7	5.5#
164	9.8	9.3	13.9

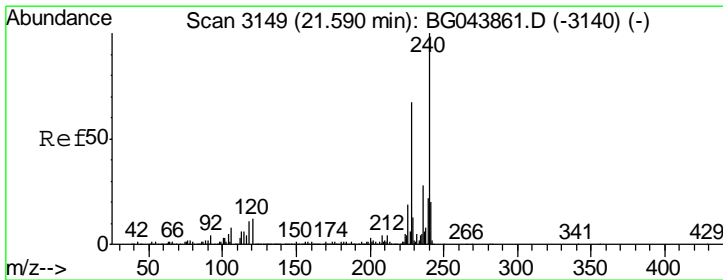
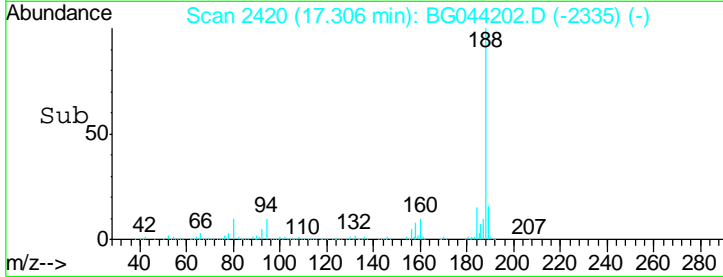
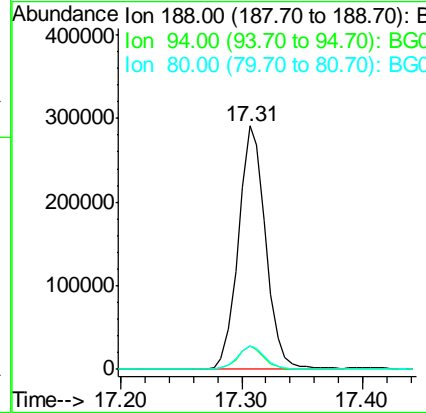
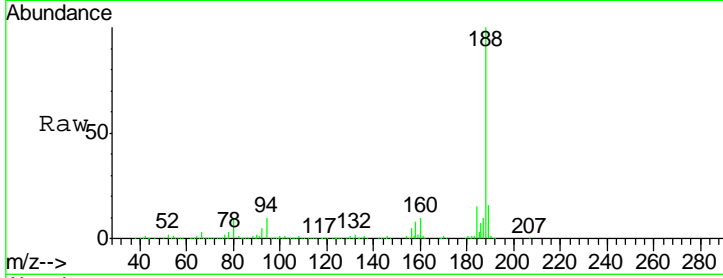




#64
 Phenanthrene-d10
 Concen: 20.000 ng
 RT: 17.31 min Scan# 2420
 Delta R.T. -0.03 min
 Lab File: BG044202.D
 Acq: 25 Jan 2020 5:05

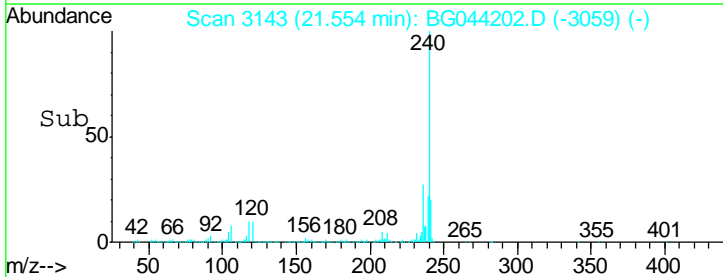
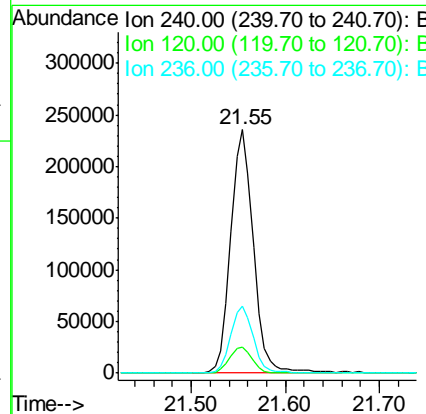
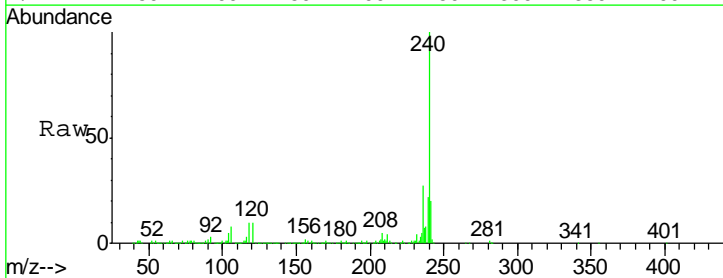
Instrument :
 BNA_G
 ClientSampleId :
 20200060-COMP-B6

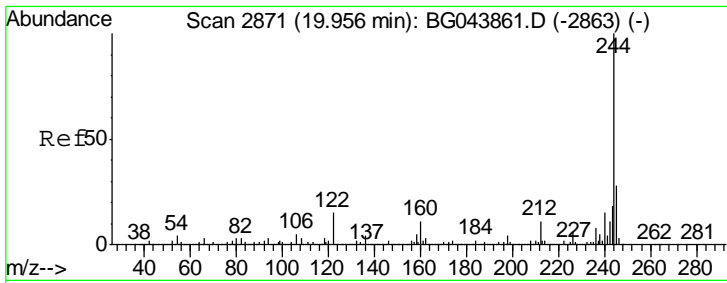
Tgt Ion	Resp	Lower	Upper
188	100		
94	9.6	7.9	11.9
80	9.5	8.2	12.4



#76
 Chrysene-d12
 Concen: 20.000 ng
 RT: 21.55 min Scan# 3143
 Delta R.T. -0.04 min
 Lab File: BG044202.D
 Acq: 25 Jan 2020 5:05

Tgt Ion	Resp	Lower	Upper
240	100		
120	10.5	9.6	14.4
236	27.3	22.2	33.2



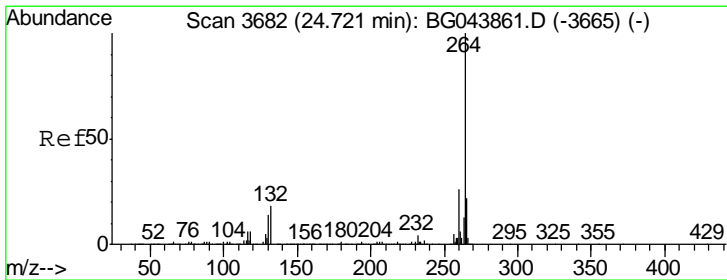
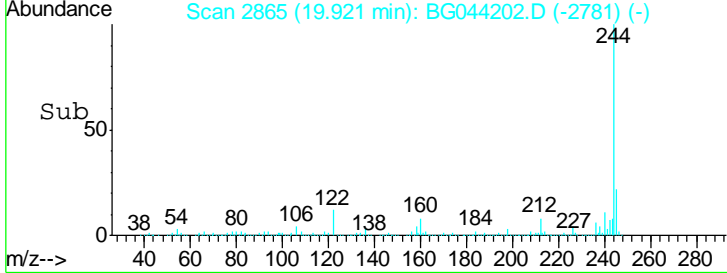
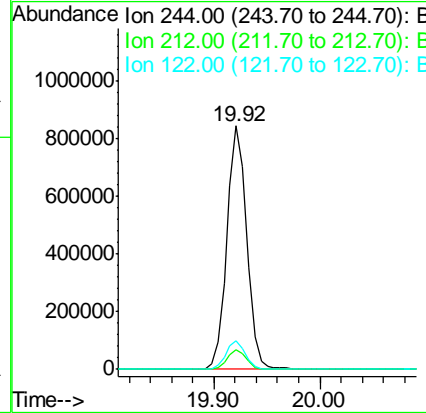
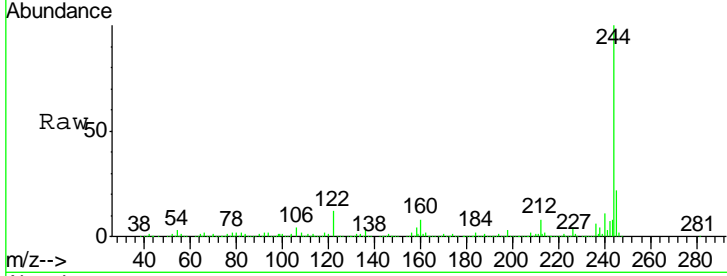


#79
 Terphenyl-d14
 Concen: 62.261 ng
 RT: 19.92 min Scan# 2865
 Delta R.T. -0.03 min
 Lab File: BG044202.D
 Acq: 25 Jan 2020 5:05

Instrument :
 BNA_G
 ClientSampleId :
 20200060-COMP-B6

Tgt Ion: 244 Resp: 1103365

Ion	Ratio	Lower	Upper
244	100		
212	8.1	8.6	13.0#
122	11.6	11.9	17.9#



#87
 Perylene-d12
 Concen: 20.000 ng
 RT: 24.66 min Scan# 3671
 Delta R.T. -0.06 min
 Lab File: BG044202.D
 Acq: 25 Jan 2020 5:05

Tgt Ion: 264 Resp: 440262

Ion	Ratio	Lower	Upper
264	100		
260	24.1	20.4	30.6
265	22.6	17.4	26.2

