

Data Path : Z:\SVOASRV\HPCHEM1\BNA G\DATA\BG012420\  
 Data File : BG044208.D  
 Acq On : 25 Jan 2020 8:59  
 Operator : CG/JU  
 Sample : L1247-21  
 Misc :  
 ALS Vial : 32 Sample Multiplier: 1

Instrument :  
 BNA\_G  
 ClientSampleId :  
 TP-10-9-COMP

Quant Time: Jan 27 05:35:48 2020  
 Quant Method : Z:\SVOASRV\HPCHEM1\BNA G\METHODS\8270-BG123019.M  
 Quant Title : ASP BNA STANDARDS FOR 5 POINT CALIBRATION  
 QLast Update : Tue Dec 31 13:32:23 2019  
 Response via : Initial Calibration

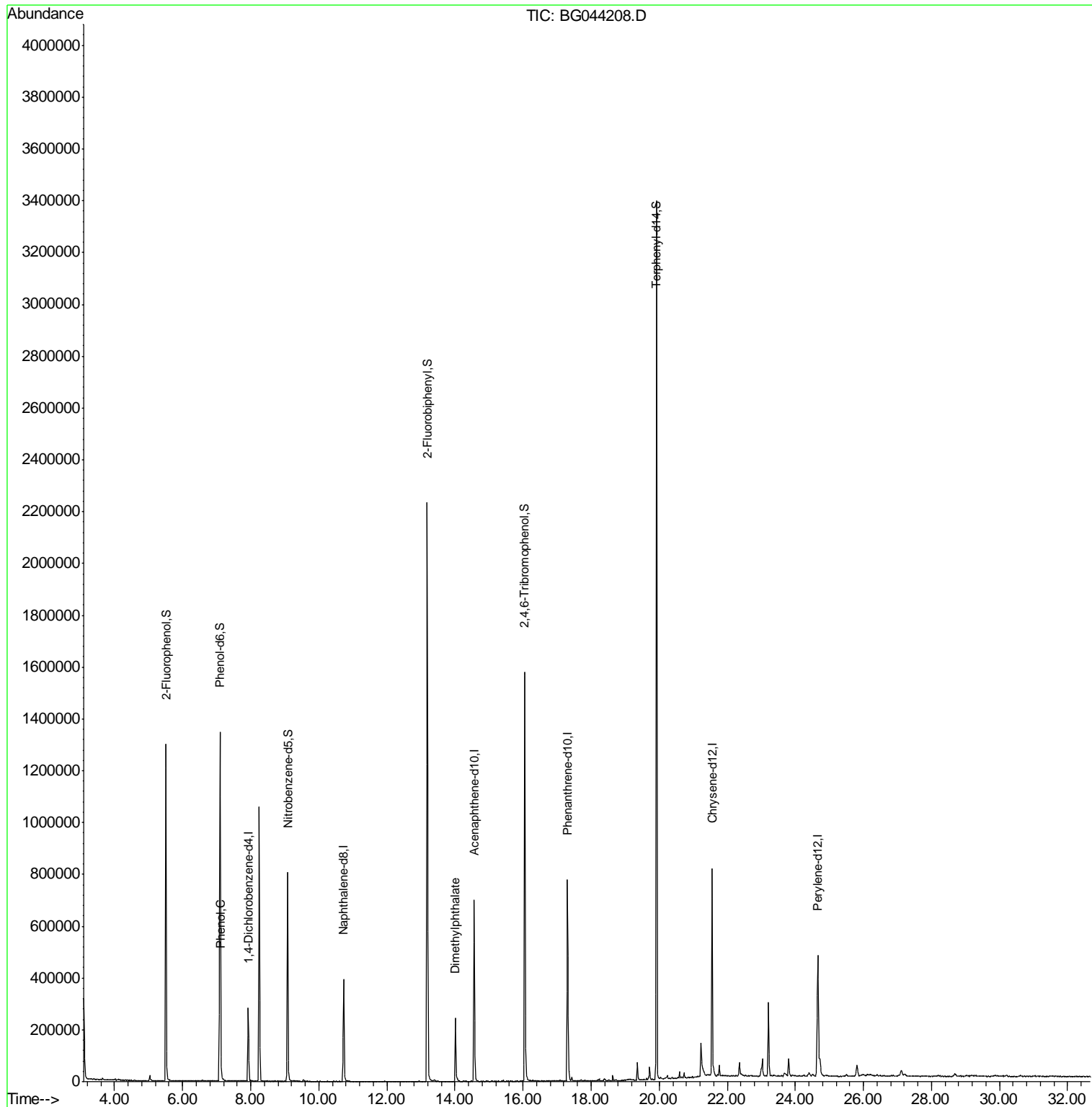
Internal Standards	R.T.	QIon	Response	Conc	Units	Dev(Min)
1) 1,4-Dichlorobenzene-d4	7.93	152	83936	20.00	ng	-0.03
21) Naphthalene-d8	10.73	136	375257	20.00	ng	-0.03
39) Acenaphthene-d10	14.56	164	256760	20.00	ng	-0.03
64) Phenanthrene-d10	17.31	188	505246	20.00	ng	-0.03
76) Chrysene-d12	21.55	240	431815	20.00	ng	-0.03
87) Perylene-d12	24.66	264	481889	20.00	ng	-0.06
System Monitoring Compounds						
5) 2-Fluorophenol	5.51	112	627685	137.31	ng	-0.03
7) Phenol-d6	7.10	99	861779	134.86	ng	-0.02
23) Nitrobenzene-d5	9.09	82	532388	75.90	ng	-0.03
42) 2,4,6-Tribromophenol	16.06	330	317277	118.08	ng	-0.03
45) 2-Fluorobiphenyl	13.19	172	1218915	86.01	ng	-0.03
79) Terphenyl-d14	19.92	244	1608981	91.70	ng	-0.03
Target Compounds						
10) Phenol	7.12	94	33394	5.072	ng	95
50) Dimethylphthalate	14.02	163	201946	11.077	ng	97

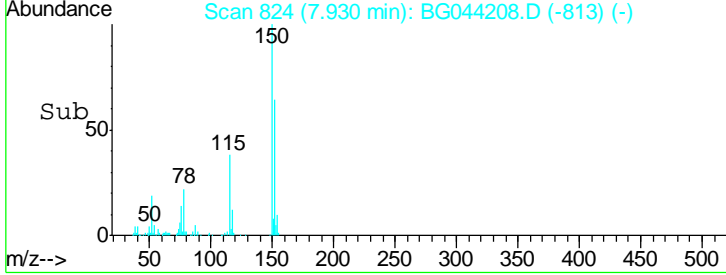
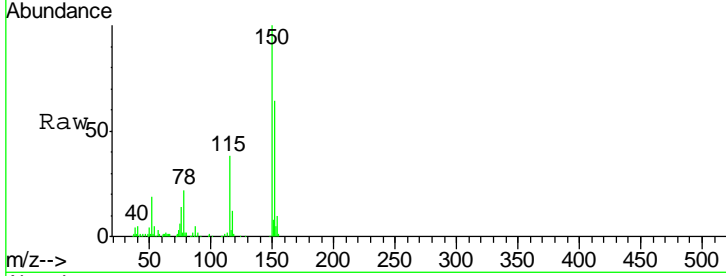
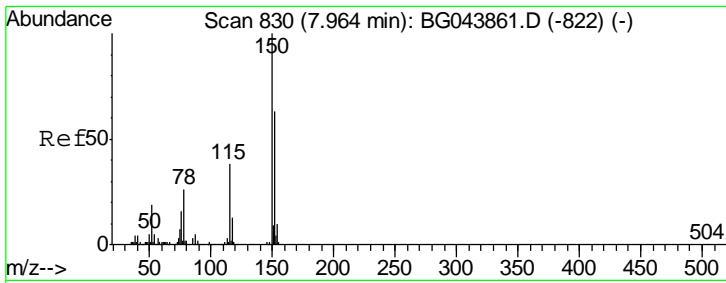
(#) = qualifier out of range (m) = manual integration (+) = signals summed

Data Path : Z:\SVOASRV\HPCHEM1\BNA G\DATA\BG012420\  
 Data File : BG044208.D  
 Acq On : 25 Jan 2020 8:59  
 Operator : CG/JU  
 Sample : L1247-21  
 Misc :  
 ALS Vial : 32 Sample Multiplier: 1

Instrument :  
 BNA\_G  
 ClientSampleId :  
 TP-10-9-COMP

Quant Time: Jan 27 05:35:48 2020  
 Quant Method : Z:\SVOASRV\HPCHEM1\BNA G\METHODS\8270-BG123019.M  
 Quant Title : ASP BNA STANDARDS FOR 5 POINT CALIBRATION  
 QLast Update : Tue Dec 31 13:32:23 2019  
 Response via : Initial Calibration

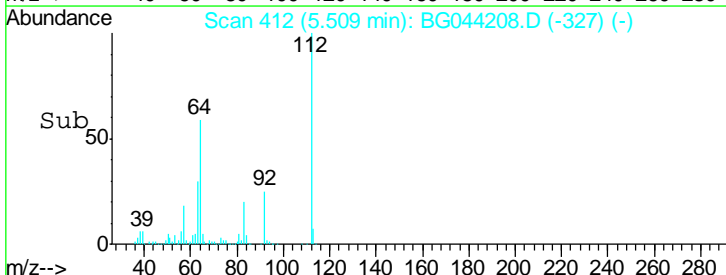
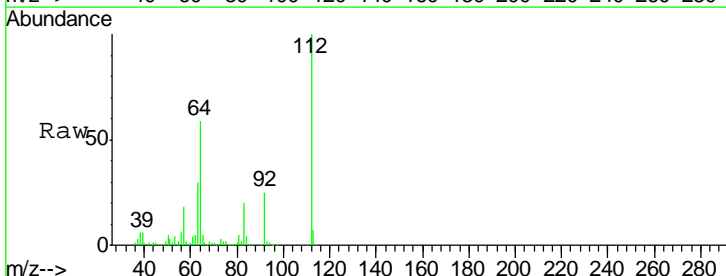
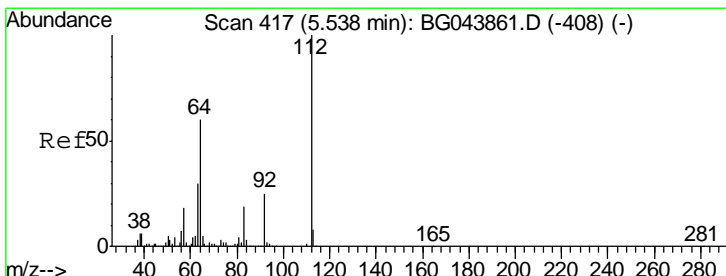
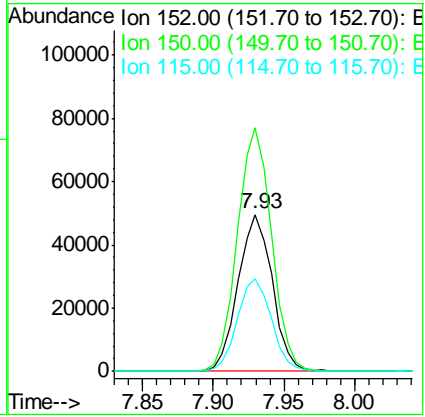




#1  
 1,4-Dichlorobenzene-d4  
 Concen: 20.000 ng  
 RT: 7.93 min Scan# 824  
 Delta R.T. -0.03 min  
 Lab File: BG044208.D  
 Acq: 25 Jan 2020 8:59

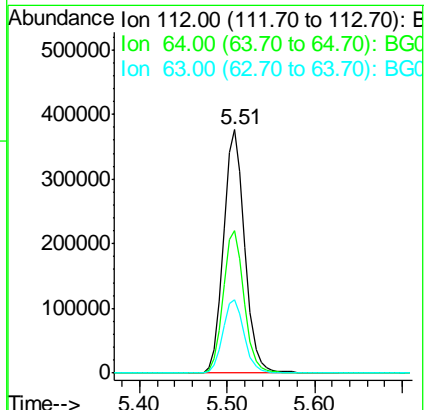
**Instrument :**  
 BNA\_G  
**ClientSampleId :**  
 TP-10-9-COMP

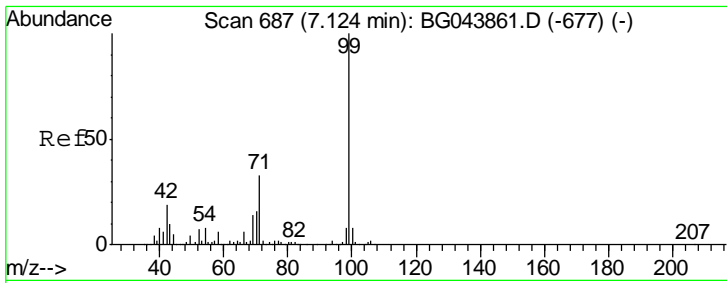
Tgt Ion	Resp	Lower	Upper
152	83936		
152	100		
150	155.2	127.0	190.4
115	59.2	47.8	71.8



#5  
 2-Fluorophenol  
 Concen: 137.308 ng  
 RT: 5.51 min Scan# 412  
 Delta R.T. -0.03 min  
 Lab File: BG044208.D  
 Acq: 25 Jan 2020 8:59

Tgt Ion	Resp	Lower	Upper
112	627685		
112	100		
64	58.7	47.8	71.6
63	30.2	24.3	36.5

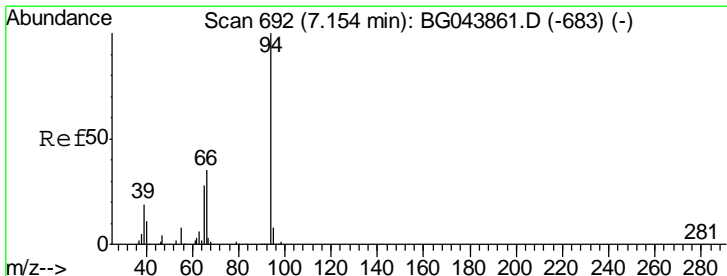
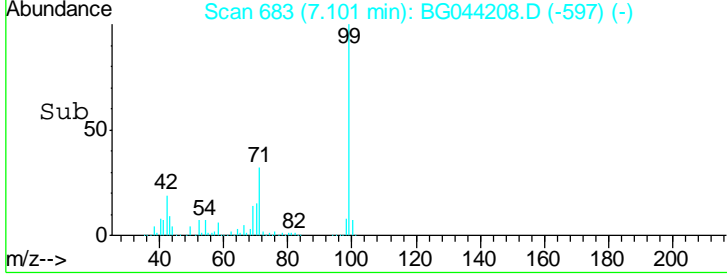
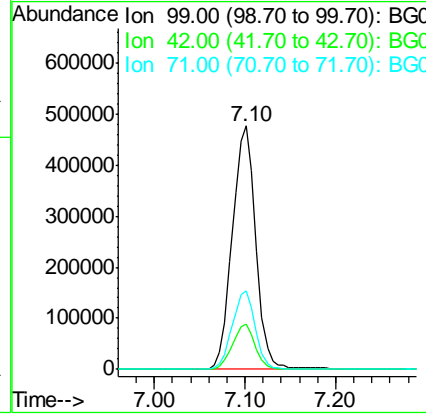
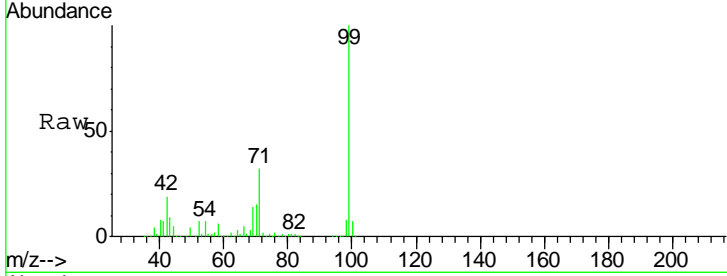




#7  
 Phenol-d6  
 Concen: 134.865 ng  
 RT: 7.10 min Scan# 683  
 Delta R.T. -0.02 min  
 Lab File: BG044208.D  
 Acq: 25 Jan 2020 8:59

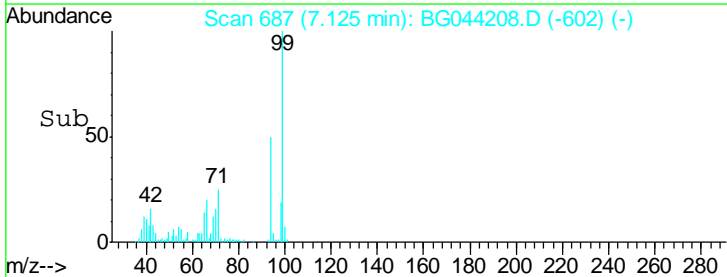
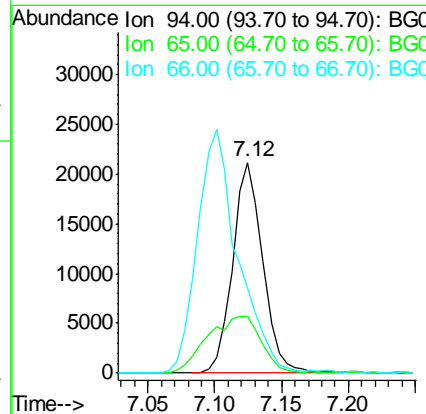
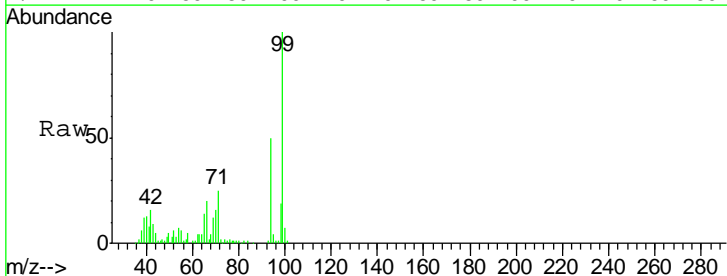
**Instrument :**  
 BNA\_G  
**ClientSampled :**  
 TP-10-9-COMP

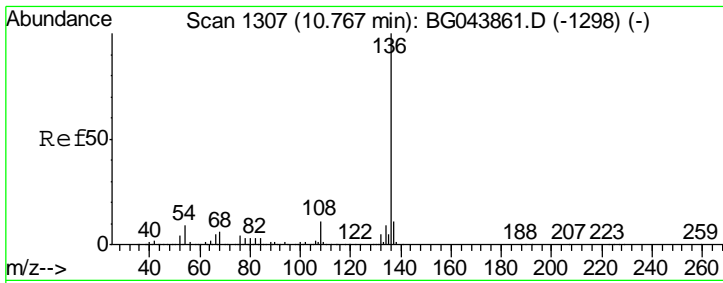
Tgt Ion	Resp	Lower	Upper
99	100		
42	18.7	14.9	22.3
71	32.3	26.4	39.6



#10  
 Phenol  
 Concen: 5.072 ng  
 RT: 7.12 min Scan# 687  
 Delta R.T. -0.03 min  
 Lab File: BG044208.D  
 Acq: 25 Jan 2020 8:59

Tgt Ion	Resp	Lower	Upper
94	100		
65	27.2	8.1	48.1
66	40.5	15.6	55.6

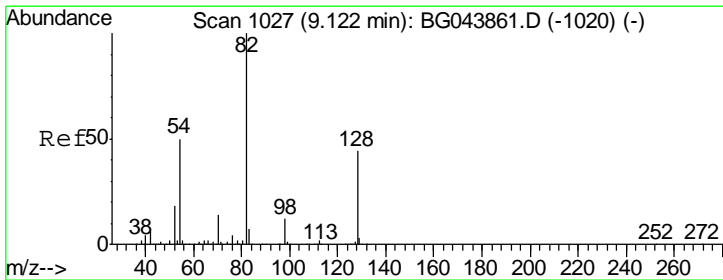
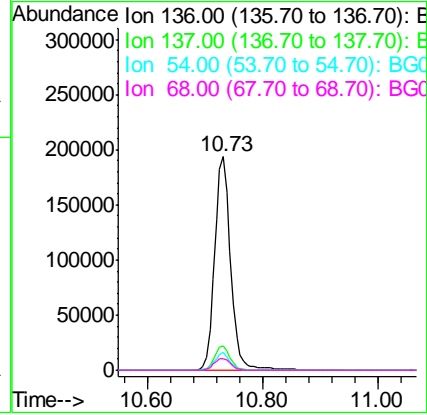
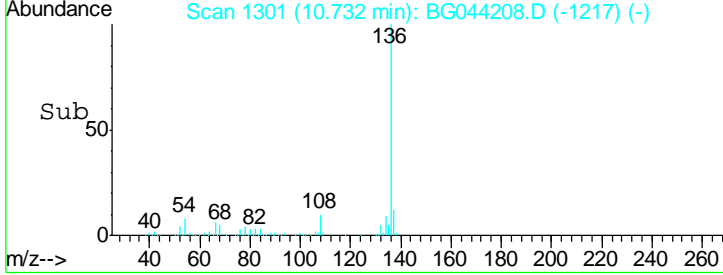
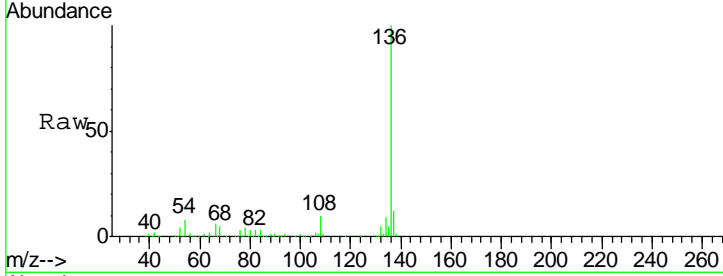




#21  
 Naphthalene-d8  
 Concen: 20.000 ng  
 RT: 10.73 min Scan# 1301  
 Delta R.T. -0.03 min  
 Lab File: BG044208.D  
 Acq: 25 Jan 2020 8:59

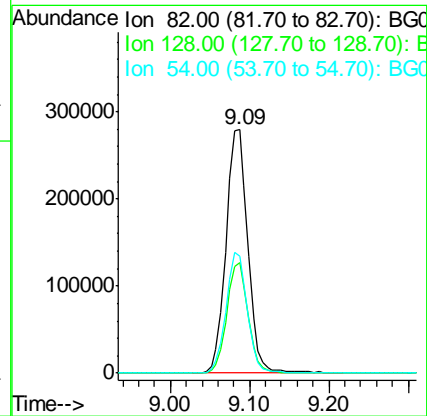
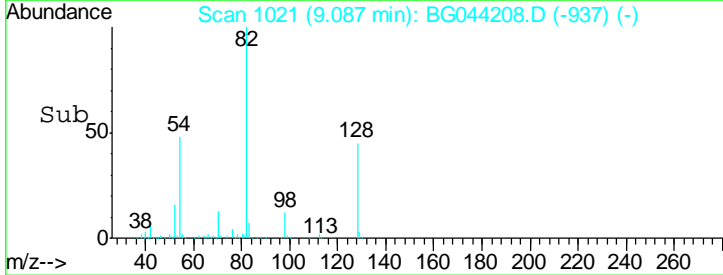
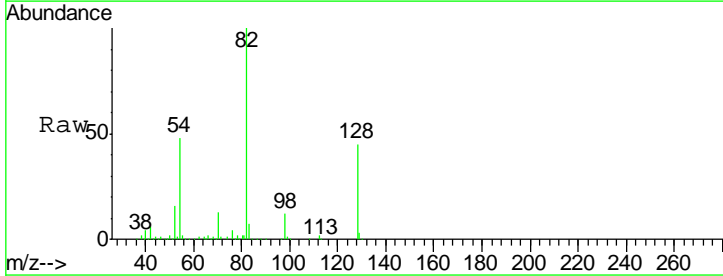
Instrument :  
 BNA\_G  
 ClientSampleId :  
 TP-10-9-COMP

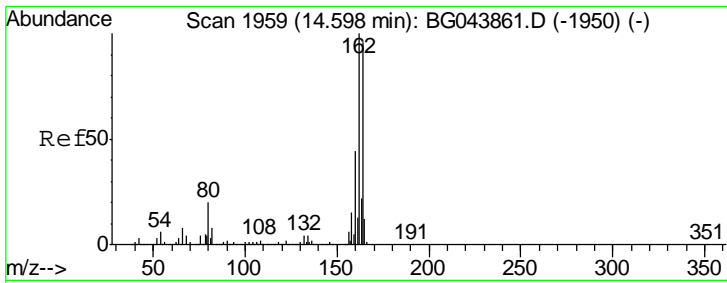
Tgt Ion	Resp	Lower	Upper
136	375257		
137	11.6	8.8	13.2
54	8.2	7.0	10.4
68	5.4	4.9	7.3



#23  
 Nitrobenzene-d5  
 Concen: 75.896 ng  
 RT: 9.09 min Scan# 1021  
 Delta R.T. -0.03 min  
 Lab File: BG044208.D  
 Acq: 25 Jan 2020 8:59

Tgt Ion	Resp	Lower	Upper
82	532388		
128	45.3	35.1	52.7
54	48.1	40.1	60.1

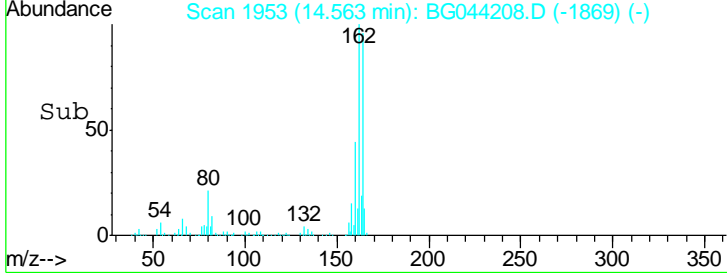
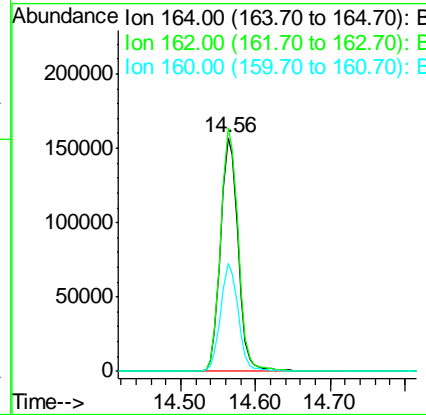
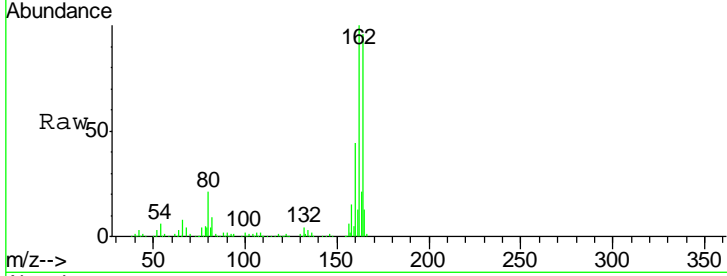




#39  
 Acenaphthene-d10  
 Concen: 20.000 ng  
 RT: 14.56 min Scan# 1953  
 Delta R.T. -0.03 min  
 Lab File: BG044208.D  
 Acq: 25 Jan 2020 8:59

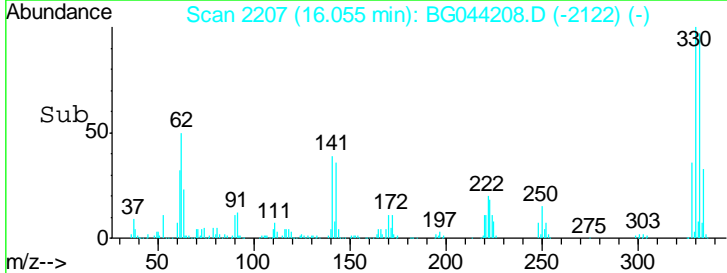
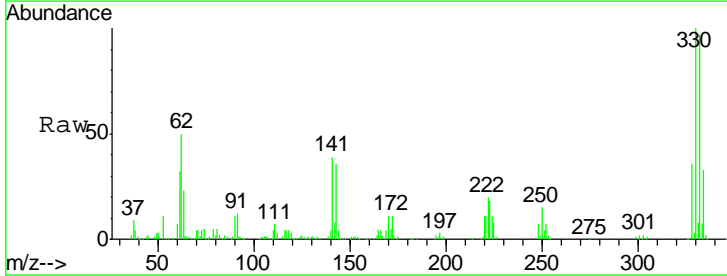
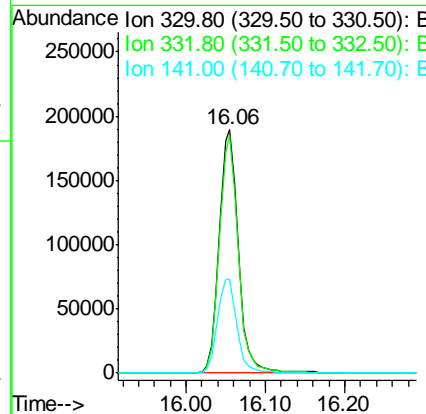
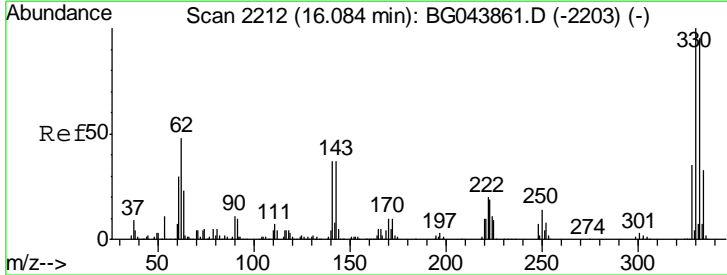
Instrument :  
 BNA\_G  
 ClientSampled :  
 TP-10-9-COMP

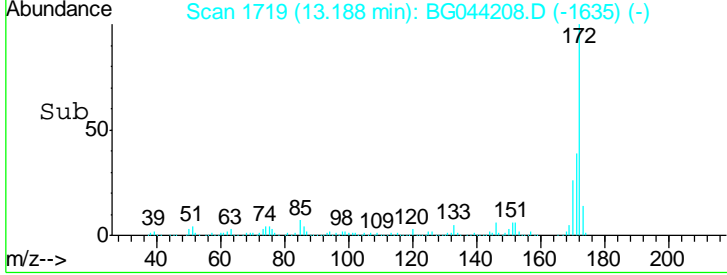
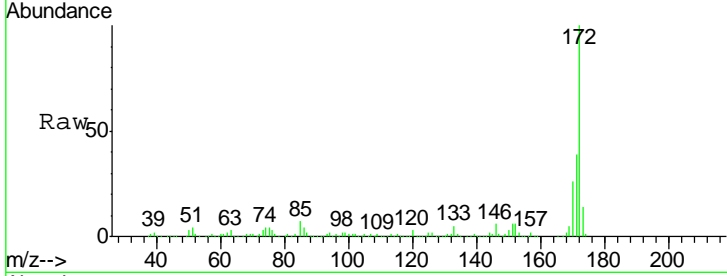
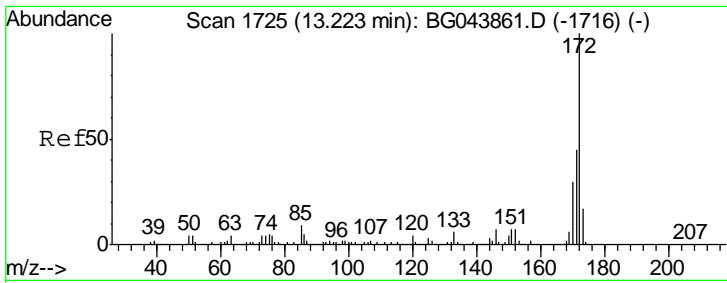
Tgt Ion	Resp	Lower	Upper
164	100		
162	104.2	83.0	124.4
160	46.0	36.1	54.1



#42  
 2,4,6-Tribromophenol  
 Concen: 118.081 ng  
 RT: 16.06 min Scan# 2207  
 Delta R.T. -0.03 min  
 Lab File: BG044208.D  
 Acq: 25 Jan 2020 8:59

Tgt Ion	Resp	Lower	Upper
330	100		
332	95.8	77.2	115.8
141	39.3	33.1	49.7



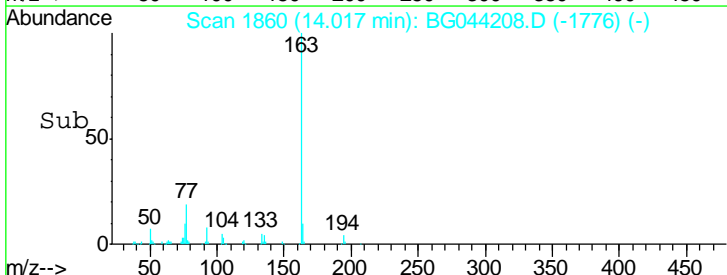
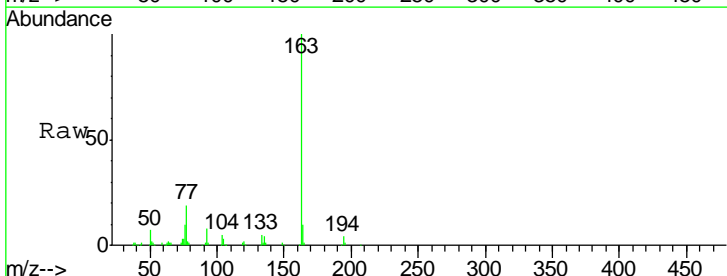
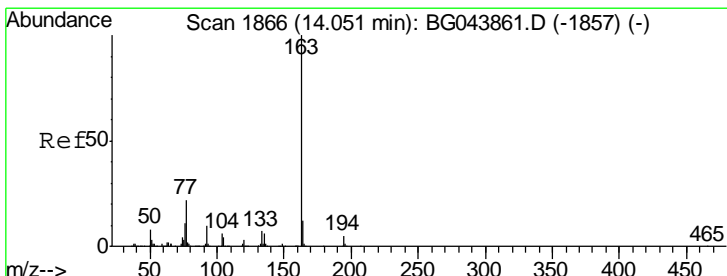
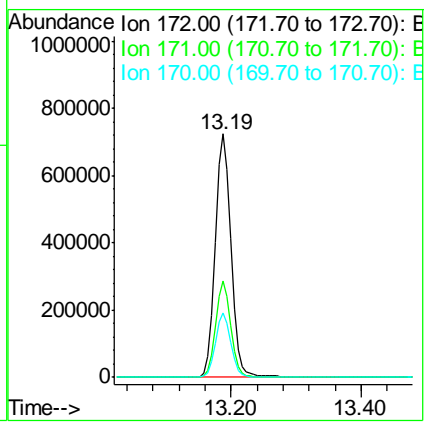


#45  
 2-Fluorobiphenyl  
 Concen: 86.010 ng  
 RT: 13.19 min Scan# 1719  
 Delta R.T. -0.03 min  
 Lab File: BG044208.D  
 Acq: 25 Jan 2020 8:59

Instrument :  
 BNA\_G  
 ClientSampleId :  
 TP-10-9-COMP

Tgt Ion:172 Resp: 1218915

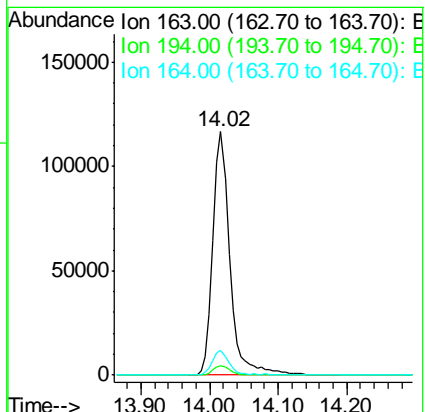
Ion	Ratio	Lower	Upper
172	100		
171	39.5	35.8	53.8
170	26.5	24.2	36.4

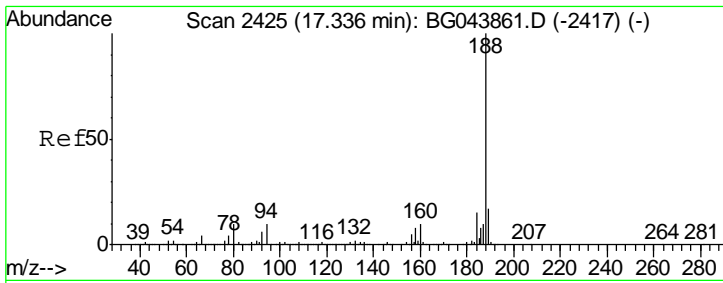


#50  
 Dimethylphthalate  
 Concen: 11.077 ng  
 RT: 14.02 min Scan# 1860  
 Delta R.T. -0.03 min  
 Lab File: BG044208.D  
 Acq: 25 Jan 2020 8:59

Tgt Ion:163 Resp: 201946

Ion	Ratio	Lower	Upper
163	100		
194	4.0	3.7	5.5
164	10.0	9.3	13.9

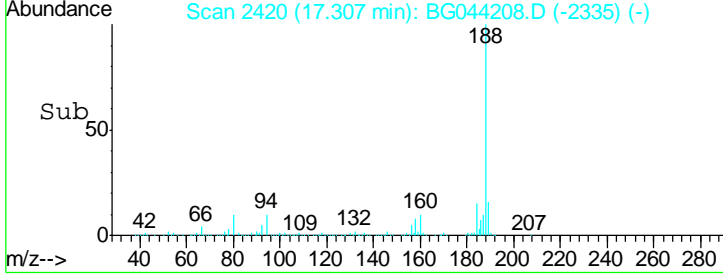
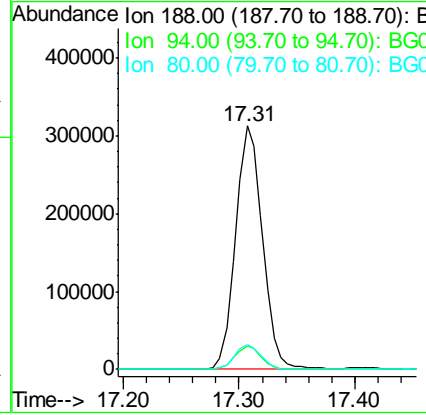
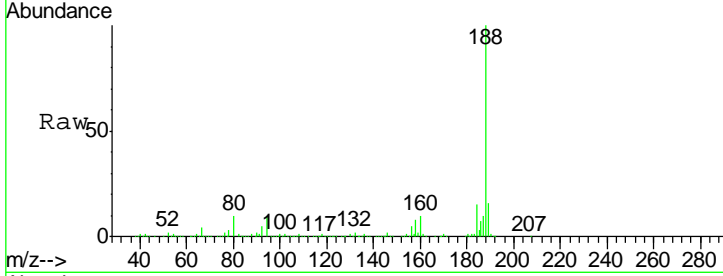




#64  
 Phenanthrene-d10  
 Concen: 20.000 ng  
 RT: 17.31 min Scan# 2420  
 Delta R.T. -0.03 min  
 Lab File: BG044208.D  
 Acq: 25 Jan 2020 8:59

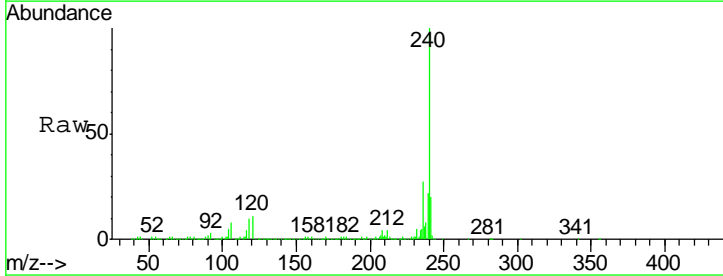
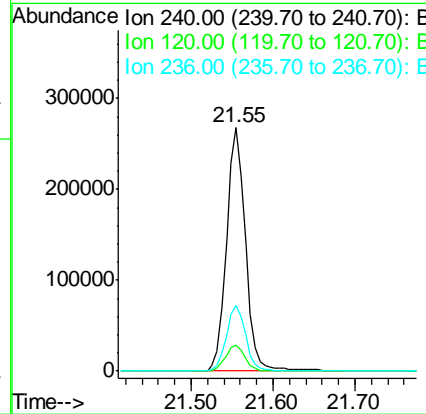
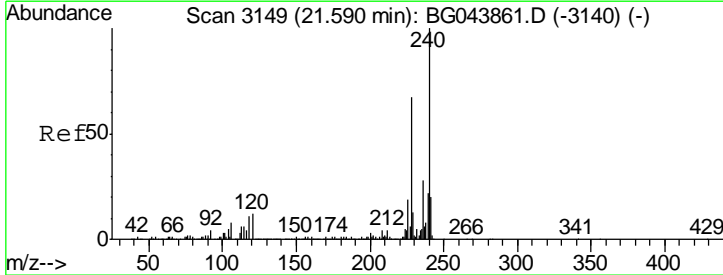
Instrument :  
 BNA\_G  
 ClientSampled :  
 TP-10-9-COMP

Tgt Ion	Resp	Lower	Upper
188	100		
94	9.6	7.9	11.9
80	10.0	8.2	12.4

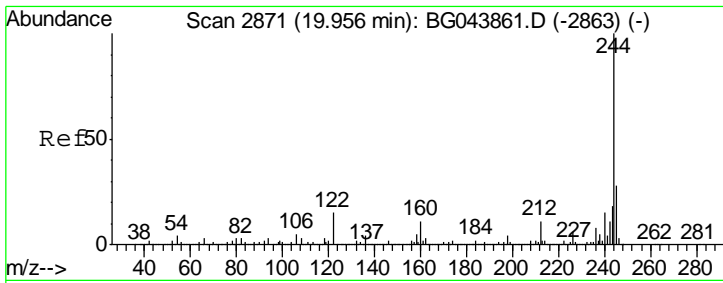


#76  
 Chrysene-d12  
 Concen: 20.000 ng  
 RT: 21.55 min Scan# 3143  
 Delta R.T. -0.03 min  
 Lab File: BG044208.D  
 Acq: 25 Jan 2020 8:59

Tgt Ion	Resp	Lower	Upper
240	100		
120	10.9	9.6	14.4
236	27.0	22.2	33.2





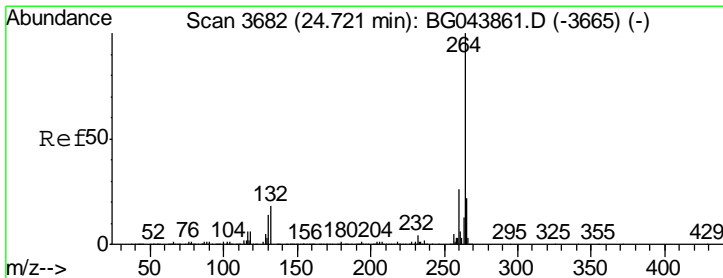
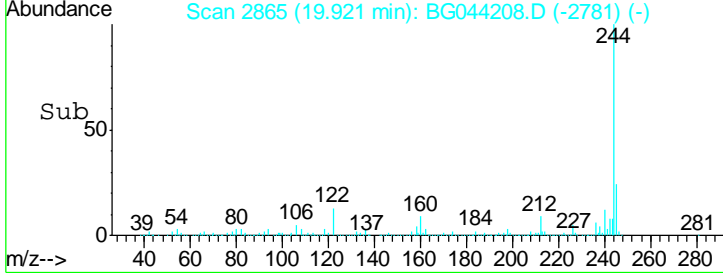
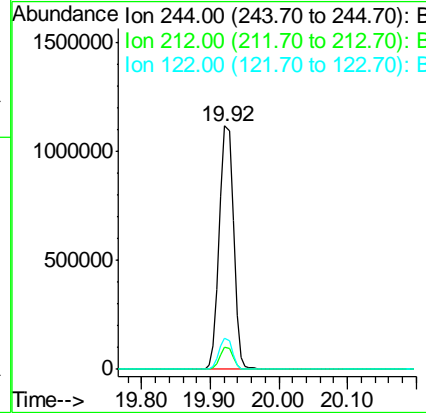
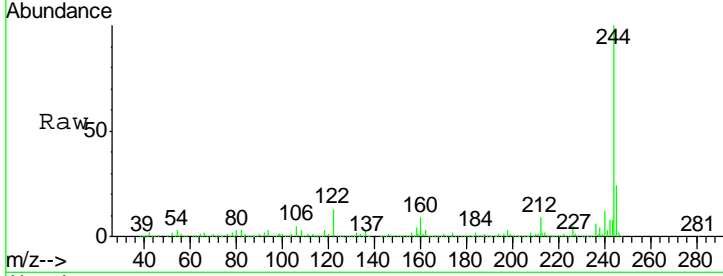


#79  
 Terphenyl-d14  
 Concen: 91.697 ng  
 RT: 19.92 min Scan# 2865  
 Delta R.T. -0.03 min  
 Lab File: BG044208.D  
 Acq: 25 Jan 2020 8:59

Instrument :  
 BNA\_G  
 ClientSampled :  
 TP-10-9-COMP

Tgt Ion: 244 Resp: 1608981

Ion	Ratio	Lower	Upper
244	100		
212	8.9	8.6	13.0
122	12.9	11.9	17.9



#87  
 Perylene-d12  
 Concen: 20.000 ng  
 RT: 24.66 min Scan# 3672  
 Delta R.T. -0.06 min  
 Lab File: BG044208.D  
 Acq: 25 Jan 2020 8:59

Tgt Ion: 264 Resp: 481889

Ion	Ratio	Lower	Upper
264	100		
260	24.8	20.4	30.6
265	22.2	17.4	26.2

