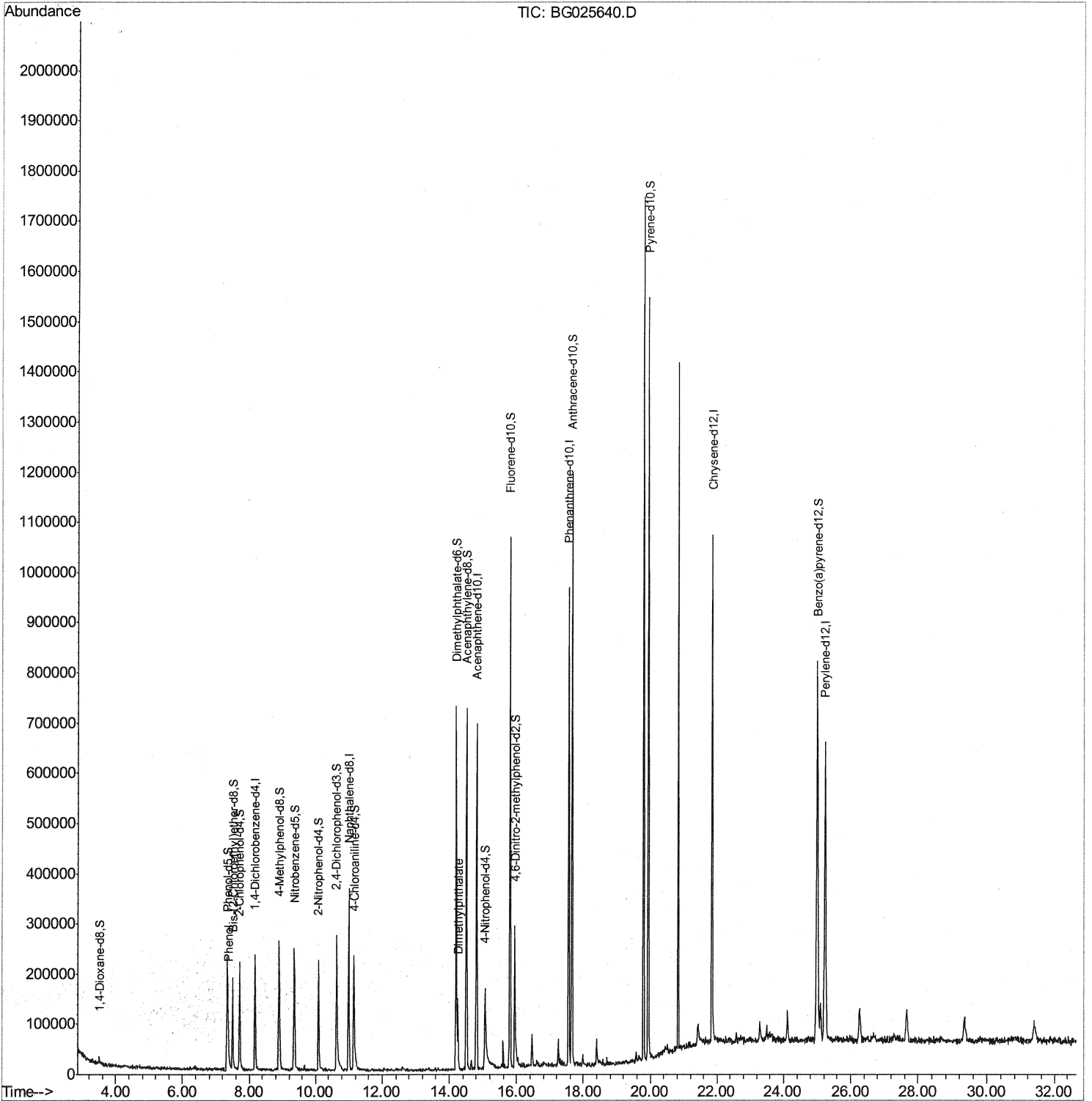


Data Path : Z:\HPCHEM1\BNA_G\Data\BG012517\
 Data File : BG025640.D
 Acq On : 25 Jan 2017 19:00
 Operator : SJ/MA
 Sample : I1362-08
 Misc :
 ALS Vial : 9 Sample Multiplier: 1

Instrument :
 BNA_G
 ClientSampleId :
 BDN01

Manual Integrations
 APPROVED
 mohammad
 1/26/2017 5:11:19 PM

Quant Time: Jan 25 19:39:35 2017
 Quant Method : Z:\HPCHEM1\BNA_G\METHODS\SOM02.2-EPA-BG011817.M
 Quant Title : SVOA CALIBRATION
 QLast Update : Wed Jan 25 18:08:33 2017
 Response via : Initial Calibration



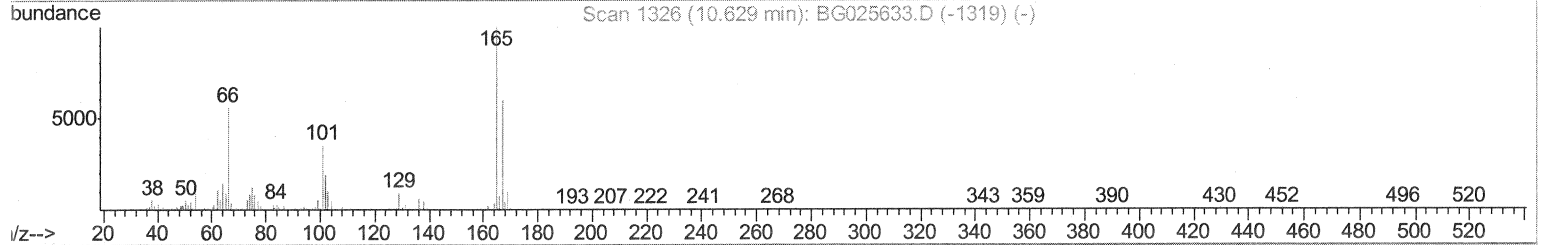
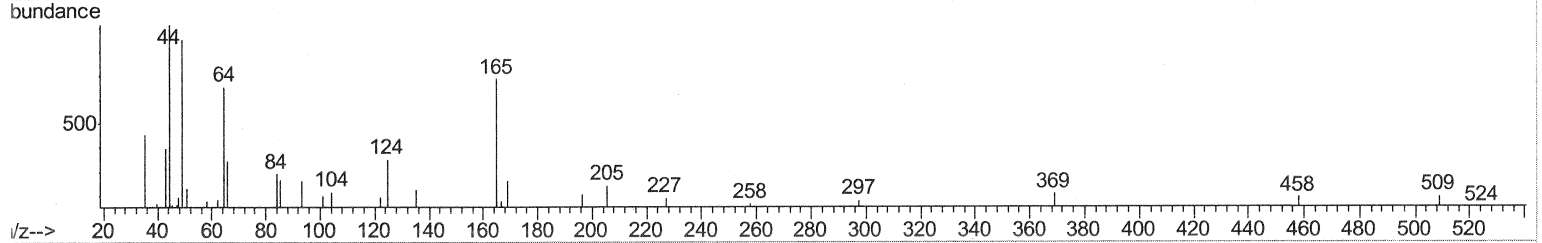
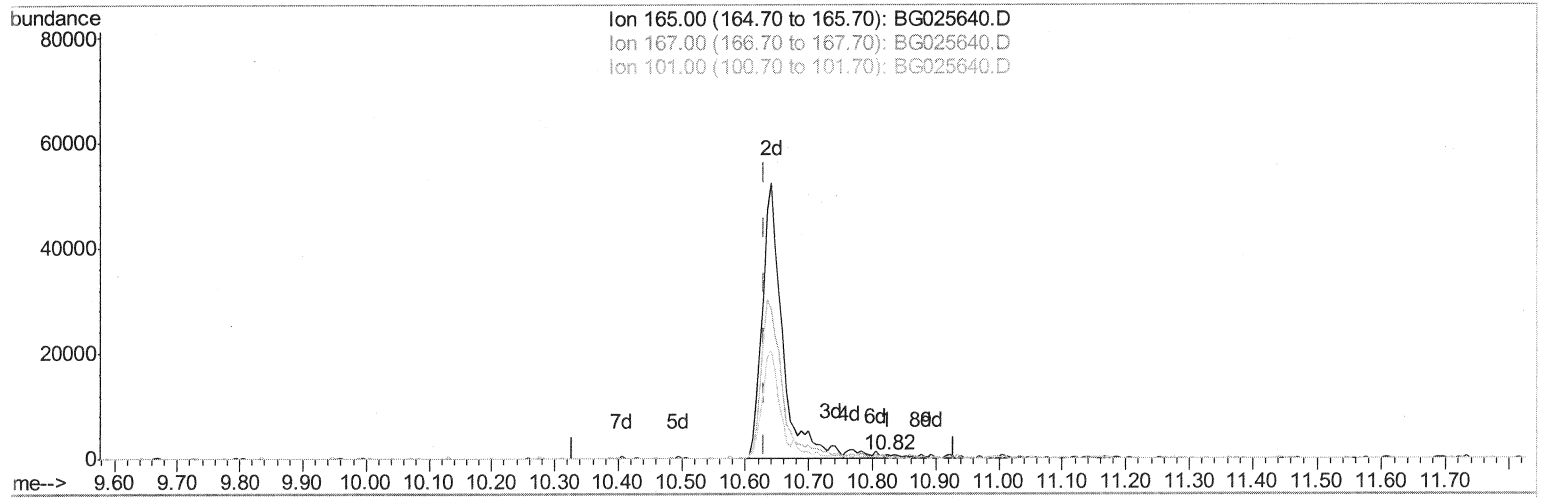
Data Path : Z:\HPCHEM1\BNA_G\Data\BG012517\
 Data File : BG025640.D
 Acq On : 25 Jan 2017 19:00
 Operator : SJ/MA
 Sample : I1362-08
 Misc :
 ALS Vial : 9 Sample Multiplier: 1

Instrument :
 BNA_G
 ClientSampleId :
 BDN01

Manual Integrations
 APPROVED

mohammad
 1/26/2017 5:11:19 PM

Quant Time: Jan 25 19:37:43 2017
 Quant Method : Z:\HPCHEM1\BNA_G\METHODS\SOM02.2-EPA-BG011817.M
 Quant Title : SVOA CALIBRATION
 QLast Update : Wed Jan 25 18:08:33 2017
 Response via : Initial Calibration



TIC: BG025640.D

(26) 2,4-Dichlorophenol-d3 (S)

10.823min (+0.194) 0.03ng/ul

response 119

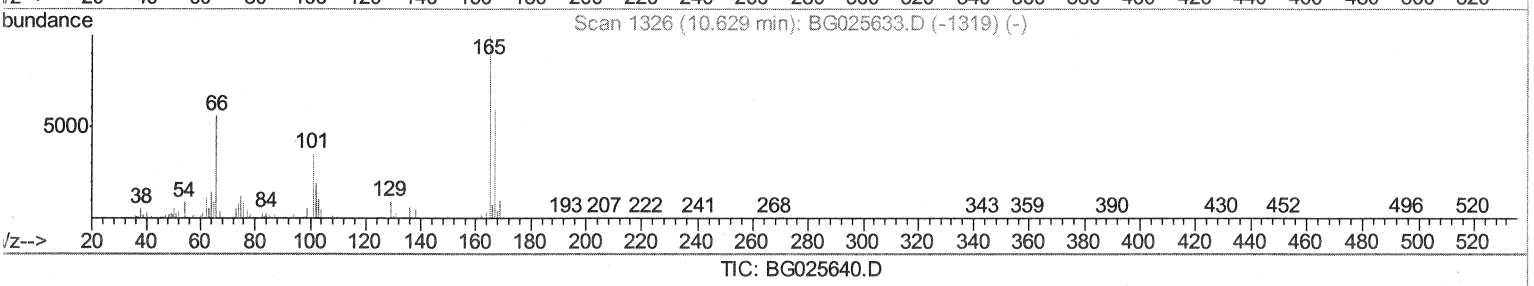
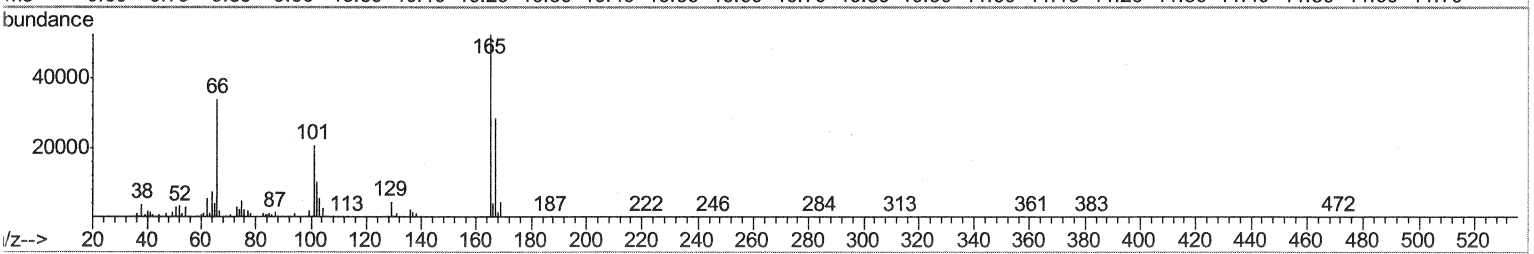
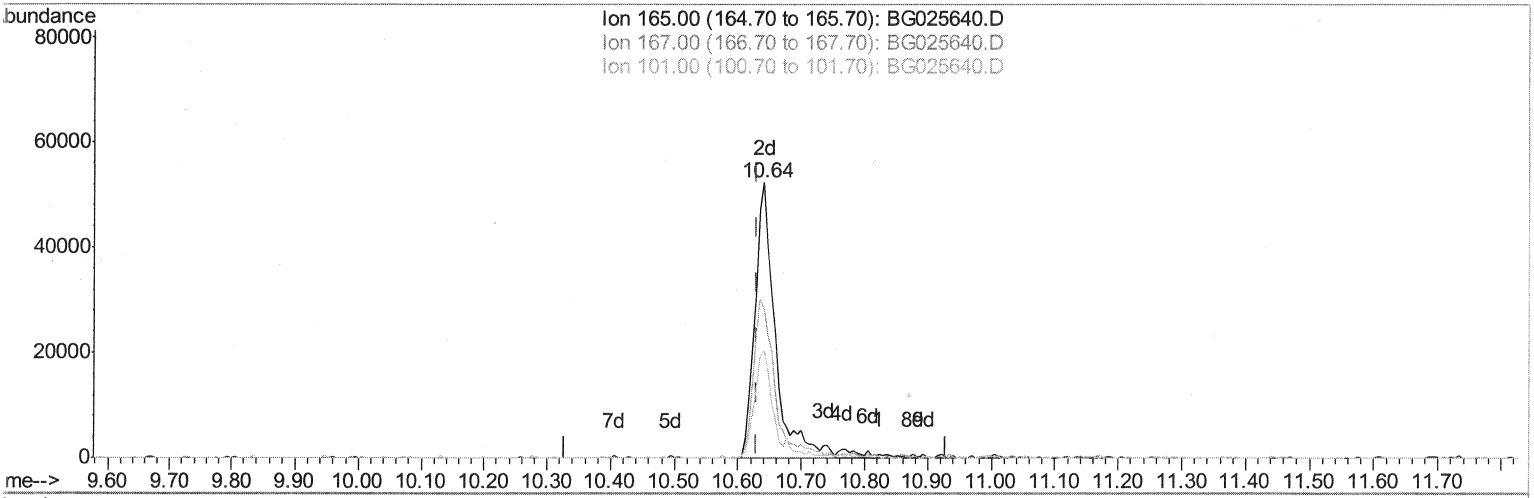
Ion	Exp%	Act%
165.00	100	100
167.00	58.70	48.62
101.00	29.80	29.11
0.00	0.00	0.00

Data Path : Z:\HPCHEM1\BNA_G\Data\BG012517\
 Data File : BG025640.D
 Acq On : 25 Jan 2017 19:00
 Operator : SJ/MA
 Sample : I1362-08
 Misc :
 ALS Vial : 9 Sample Multiplier: 1

Instrument :
 BNA_G
 ClientSampled :
 BDN01

Manual Integrations
 APPROVED
 mohammad
 1/26/2017 5:11:19 PM

Quant Time: Jan 25 19:37:43 2017
 Quant Method : Z:\HPCHEM1\BNA_G\METHODS\SOM02.2-EPA-BG011817.M
 Quant Title : SVOA CALIBRATION
 QLast Update : Wed Jan 25 18:08:33 2017
 Response via : Initial Calibration



(26) 2,4-Dichlorophenol-d3 (S)

10.641min (+0.012) 24.60ng/ul m

SJ 1/27/17

response 115549

Ion	Exp%	Act%
165.00	100	100
167.00	58.70	54.31
101.00	29.80	39.27#
0.00	0.00	0.00

Data Path : Z:\HPCHEM1\BNA_G\Data\BG012517\
 Data File : BG025640.D
 Acq On : 25 Jan 2017 19:00
 Operator : SJ/MA
 Sample : I1362-08
 Misc :
 ALS Vial : 9 Sample Multiplier: 1

Instrument :
 BNA_G
 ClientSampleId :
 BDN01

Manual Integrations
 APPROVED

mohammad
 1/26/2017 5:11:19 PM

Quant Time: Jan 25 19:39:35 2017
 Quant Method : Z:\HPCHEM1\BNA_G\METHODS\SOM02.2-EPA-BG011817.M
 Quant Title : SVOA CALIBRATION
 QLast Update : Wed Jan 25 18:08:33 2017
 Response via : Initial Calibration

Internal Standards	R.T.	QIon	Response	Conc	Units	Dev(Min)
1) 1,4-Dichlorobenzene-d4	8.17	152	60240	20.00	ng/ul	0.00
18) Naphthalene-d8	11.00	136	281454	20.00	ng/ul	0.00
35) Acenaphthene-d10	14.81	164	250296	20.00	ng/ul	0.00
61) Phenanthrene-d10	17.55	188	581003	20.00	ng/ul	0.00
75) Chrysene-d12	21.85	240	724908	20.00	ng/ul	0.00
83) Perylene-d12	25.23	264	739602	20.00	ng/ul	0.00

System Monitoring Compounds

3) 1,4-Dioxane-d8	3.51	96	5847	4.86	ng/uL	0.00
5) Phenol-d5	7.34	99	129484	25.08	ng/ul	0.00
7) Bis-(2-Chloroethyl)ether-d	7.49	67	94074	28.21	ng/ul	0.00
9) 2-Chlorophenol-d4	7.70	132	97296	26.72	ng/ul	0.00
13) 4-Methylphenol-d8	8.89	113	110528	25.18	ng/ul	0.00
19) Nitrobenzene-d5	9.36	128	52670	26.40	ng/ul	0.00
22) 2-Nitrophenol-d4	10.09	143	64034	26.90	ng/ul	0.00
26) 2,4-Dichlorophenol-d3	10.64	165	115549m	24.60	ng/ul	0.01
29) 4-Chloroaniline-d4	11.15	131	132606	25.26	ng/ul	0.00
43) Dimethylphthalate-d6	14.20	166	463025	26.20	ng/ul	0.00
46) Acenaphthylene-d8	14.51	160	523298	27.41	ng/ul	0.00
51) 4-Nitrophenol-d4	15.05	143	54767	22.61	ng/ul	0.01
57) Fluorene-d10	15.79	176	436145	26.18	ng/ul	0.00
62) 4,6-Dinitro-2-methylphenol	15.94	200	72285	20.17	ng/ul	0.00
70) Anthracene-d10	17.66	188	703860	28.45	ng/ul	0.00
76) Pyrene-d10	19.93	212	871082	28.88	ng/ul	0.00
87) Benzo(a)pyrene-d12	24.99	264	835467	26.88	ng/ul	0.00

SJ 1/25/17

Target Compounds

Target Compounds	R.T.	QIon	Response	Conc	Units	Qvalue
6) Phenol	7.36	94	26068	4.81	ng/ul#	88
44) Dimethylphthalate	14.25	163	89034	5.12	ng/ul#	94

(#) = qualifier out of range (m) = manual integration (+) = signals summed