

Data Path : Z:\HPCHEM1\BNA G\DATA\BG012517\  
 Data File : BG025642.D  
 Acq On : 25 Jan 2017 20:19  
 Operator : SJ/MA  
 Sample : I1362-12  
 Misc :  
 ALS Vial : 11 Sample Multiplier: 1

Instrument :  
 BNA\_G  
 ClientSampled :  
 BDN03

## Integration Parameters: LSCINT.P

Integrator: RTE  
 Smoothing : ON  
 Sampling : 1  
 Start Thrs: 0.1  
 Stop Thrs : 0

Filtering: 5  
 Min Area: 0.1 % of largest Peak  
 Max Peaks: 100  
 Peak Location: TOP

If leading or trailing edge < 100 prefer < Baseline drop else tangent >  
 Peak separation: 1

Method : Z:\HPCHEM1\BNA G\METHODS\SOM02.2-EPA-BG011817.M  
 Title : SVOA CALIBRATION

Signal : TIC

peak #	R.T. min	first scan	max scan	last scan	PK TY	peak height	corr. area	corr. % max.	% of total
1	3.073	39	40	46	rVB4	11038	17340	0.22%	0.039%
2	3.273	70	74	78	rBV5	8513	15581	0.20%	0.035%
3	3.508	109	114	118	rVB6	13284	20937	0.27%	0.047%
4	4.037	199	204	209	rBV4	5856	13689	0.17%	0.031%
5	7.339	758	766	785	rBV3	267608	656150	8.31%	1.462%
6	7.491	785	792	803	rVV	207305	389471	4.93%	0.868%
7	7.703	821	828	841	rBV	269547	521029	6.60%	1.161%
8	8.179	896	909	924	rBV	239437	492505	6.24%	1.097%
9	8.896	1023	1031	1052	rVB3	312982	708612	8.98%	1.579%
10	9.360	1102	1110	1121	rBV	304201	615591	7.80%	1.372%
11	9.665	1157	1162	1169	rBV6	11499	21355	0.27%	0.048%
12	10.088	1223	1234	1244	rBV2	287515	559756	7.09%	1.247%
13	10.635	1319	1327	1348	rBV	340807	767381	9.72%	1.710%
14	11.005	1379	1390	1398	rBV	385812	720996	9.13%	1.607%
15	11.158	1407	1416	1432	rBV2	268304	654804	8.29%	1.459%
16	13.179	1749	1760	1763	rBV6	7569	22471	0.28%	0.050%
17	13.666	1837	1843	1850	rVB5	9563	19066	0.24%	0.042%
18	13.995	1891	1899	1910	rBV3	30889	73515	0.93%	0.164%
19	14.201	1923	1934	1939	rBV	895887	1409220	17.85%	3.140%
20	14.248	1939	1942	1952	rVB	215056	320748	4.06%	0.715%
21	14.507	1976	1986	2000	rVV	904930	1526270	19.33%	3.401%
22	14.648	2004	2010	2014	rBV3	20332	23509	0.30%	0.052%
23	14.806	2028	2037	2050	rBV	754298	1184407	15.00%	2.639%
24	15.053	2072	2079	2108	rBV3	220821	740970	9.39%	1.651%
25	15.594	2166	2171	2178	rVV2	51162	75513	0.96%	0.168%
26	15.793	2198	2205	2217	rBV	1288796	2068290	26.20%	4.609%
27	15.940	2224	2230	2243	rVV	360632	737233	9.34%	1.643%
28	16.040	2243	2247	2252	rVV7	27272	48178	0.61%	0.107%
29	16.081	2252	2254	2260	rVB7	7973	13573	0.17%	0.030%
30	16.152	2262	2266	2270	rVB7	9112	13104	0.17%	0.029%
31	16.216	2273	2277	2282	rBV7	12578	22509	0.29%	0.050%
32	16.451	2312	2317	2324	rBV3	67328	123228	1.56%	0.275%
33	16.598	2336	2342	2349	rVB3	15086	28280	0.36%	0.063%
34	16.851	2382	2385	2391	rVB6	9605	14208	0.18%	0.032%

Data Path : Z:\HPCHEM1\BNA G\DATA\BG012517\  
 Data File : BG025642.D  
 Acq On : 25 Jan 2017 20:19  
 Operator : SJ/MA  
 Sample : I1362-12  
 Misc :  
 ALS Vial : 11 Sample Multiplier: 1

Instrument :  
 BNA\_G  
 ClientSampleId :  
 BDN03

## Integration Parameters: LSCINT.P

Integrator: RTE  
 Smoothing : ON Filtering: 5  
 Sampling : 1 Min Area: 0.1 % of largest Peak  
 Start Thrs: 0.1 Max Peaks: 100  
 Stop Thrs : 0 Peak Location: TOP

If leading or trailing edge < 100 prefer < Baseline drop else tangent >  
 Peak separation: 1

Method : Z:\HPCHEM1\BNA G\METHODS\SOM02.2-EPA-BG011817.M  
 Title : SVOA CALIBRATION

35	16.951	2400	2402	2408	rVB7	9116	15379	0.19%	0.034%
36	17.027	2411	2415	2418	rBV5	6614	12839	0.16%	0.029%
37	17.074	2419	2423	2428	rVB6	10220	13231	0.17%	0.029%
38	17.245	2443	2452	2457	rBV2	61964	82615	1.05%	0.184%
39	17.292	2457	2460	2464	rVB5	17440	22116	0.28%	0.049%
40	17.356	2465	2471	2474	rVB7	7316	13295	0.17%	0.030%
41	17.550	2496	2504	2513	rVV	992158	1569023	19.87%	3.496%
42	17.656	2513	2522	2539	rVV	1461785	2389962	30.27%	5.325%
43	17.791	2539	2545	2549	rVB9	8058	15567	0.20%	0.035%
44	17.979	2573	2577	2585	rBV2	31527	48636	0.62%	0.108%
45	18.396	2638	2648	2659	rBV5	49275	127444	1.61%	0.284%
46	18.578	2673	2679	2687	rVB6	41166	70254	0.89%	0.157%
47	18.708	2699	2701	2706	rVV5	9345	12977	0.16%	0.029%
48	19.295	2798	2801	2808	rBV7	10700	22364	0.28%	0.050%
49	19.495	2831	2835	2842	rBV9	8268	18597	0.24%	0.041%
50	19.577	2844	2849	2857	rVB7	20926	42189	0.53%	0.094%
51	19.659	2857	2863	2869	rBV10	17192	31795	0.40%	0.071%
52	19.795	2878	2886	2896	rBV	6540974	7894899	100.00%	17.592%
53	19.930	2901	2909	2919	rBV	1844406	2741192	34.72%	6.108%
54	20.329	2971	2977	2979	rBV7	25445	34467	0.44%	0.077%
55	20.400	2985	2989	2991	rBV4	13664	20449	0.26%	0.046%
56	20.458	2991	2999	3002	rVV10	17636	48241	0.61%	0.107%
57	20.494	3002	3005	3010	rVB7	15478	35442	0.45%	0.079%
58	20.705	3033	3041	3042	rVV8	7276	17061	0.22%	0.038%
59	20.829	3054	3062	3072	rBV	5589313	6452951	81.74%	14.379%
60	21.058	3098	3101	3103	rBV4	12401	13723	0.17%	0.031%
61	21.416	3154	3162	3177	rBV4	46111	195539	2.48%	0.436%
62	21.845	3226	3235	3249	rVB	1015802	1947807	24.67%	4.340%
63	22.115	3276	3281	3285	rVB8	12480	22115	0.28%	0.049%
64	22.321	3311	3316	3320	rBV8	26542	43104	0.55%	0.096%
65	22.574	3357	3359	3365	rVB7	22403	26150	0.33%	0.058%
66	22.785	3392	3395	3397	rBV4	13565	15136	0.19%	0.034%
67	23.290	3475	3481	3489	rVB9	45704	103872	1.32%	0.231%
68	23.467	3508	3511	3513	rBV4	10876	13649	0.17%	0.030%
69	23.496	3513	3516	3521	rVB7	20559	28934	0.37%	0.064%
70	23.578	3522	3530	3535	rVV7	15199	38659	0.49%	0.086%
71	24.119	3613	3622	3629	rBV6	54744	131511	1.67%	0.293%

Data Path : Z:\HPCHEM1\BNA G\DATA\BG012517\  
 Data File : BG025642.D  
 Acq On : 25 Jan 2017 20:19  
 Operator : SJ/MA  
 Sample : I1362-12  
 Misc :  
 ALS Vial : 11 Sample Multiplier: 1

Instrument :  
 BNA\_G  
 ClientSampleId :  
 BDN03

## Integration Parameters: LSCINT.P

Integrator: RTE  
 Smoothing : ON Filtering: 5  
 Sampling : 1 Min Area: 0.1 % of largest Peak  
 Start Thrs: 0.1 Max Peaks: 100  
 Stop Thrs : 0 Peak Location: TOP

If leading or trailing edge < 100 prefer < Baseline drop else tangent >  
 Peak separation: 1

Method : Z:\HPCHEM1\BNA G\METHODS\SOM02.2-EPA-BG011817.M  
 Title : SVOA CALIBRATION

72	24.518	3687	3690	3693	rBV5	11409	18035	0.23%	0.040%
73	24.612	3703	3706	3709	rBV5	11953	15030	0.19%	0.033%
74	24.730	3724	3726	3730	rBV4	11257	13743	0.17%	0.031%
75	24.994	3759	3771	3782	rBV2	908150	2682514	33.98%	5.977%
76	25.094	3782	3788	3798	rVB6	74753	193542	2.45%	0.431%
77	25.229	3798	3811	3829	rVB	560110	1874692	23.75%	4.177%
78	25.670	3881	3886	3890	rBV8	14727	24901	0.32%	0.055%
79	25.817	3905	3911	3912	rBV6	9188	14065	0.18%	0.031%
80	26.263	3977	3987	3999	rVB4	65006	213141	2.70%	0.475%
81	26.639	4049	4051	4054	rBV4	12776	17274	0.22%	0.038%
82	26.675	4054	4057	4060	rVV5	17201	18999	0.24%	0.042%
83	26.769	4070	4073	4075	rVB4	14123	15592	0.20%	0.035%
84	27.286	4154	4161	4163	rBV7	13622	28301	0.36%	0.063%
85	27.456	4188	4190	4193	rVB4	12530	13720	0.17%	0.031%
86	27.662	4216	4225	4237	rVB8	73673	246086	3.12%	0.548%
87	27.809	4243	4250	4253	rBV9	13604	29125	0.37%	0.065%
88	28.402	4346	4351	4353	rVB6	9530	15132	0.19%	0.034%
89	29.084	4465	4467	4472	rVB5	15334	24437	0.31%	0.054%
90	29.360	4503	4514	4524	rVB9	42701	177465	2.25%	0.395%
91	29.959	4614	4616	4619	rBV4	13607	17195	0.22%	0.038%
92	30.270	4666	4669	4672	rBV5	13227	13384	0.17%	0.030%
93	30.558	4716	4718	4722	rBV5	12002	17658	0.22%	0.039%
94	31.352	4848	4853	4854	rBV6	23124	32761	0.41%	0.073%
95	31.404	4855	4862	4870	rVB6	28409	96462	1.22%	0.215%
96	31.822	4930	4933	4937	rBV6	13342	23018	0.29%	0.051%
97	31.921	4949	4950	4953	rBV3	18702	22650	0.29%	0.050%
98	32.016	4963	4966	4969	rBV4	16032	16703	0.21%	0.037%
99	32.045	4969	4971	4974	rBV4	12142	16097	0.20%	0.036%
100	32.456	5038	5041	5044	rBV5	9929	14500	0.18%	0.032%

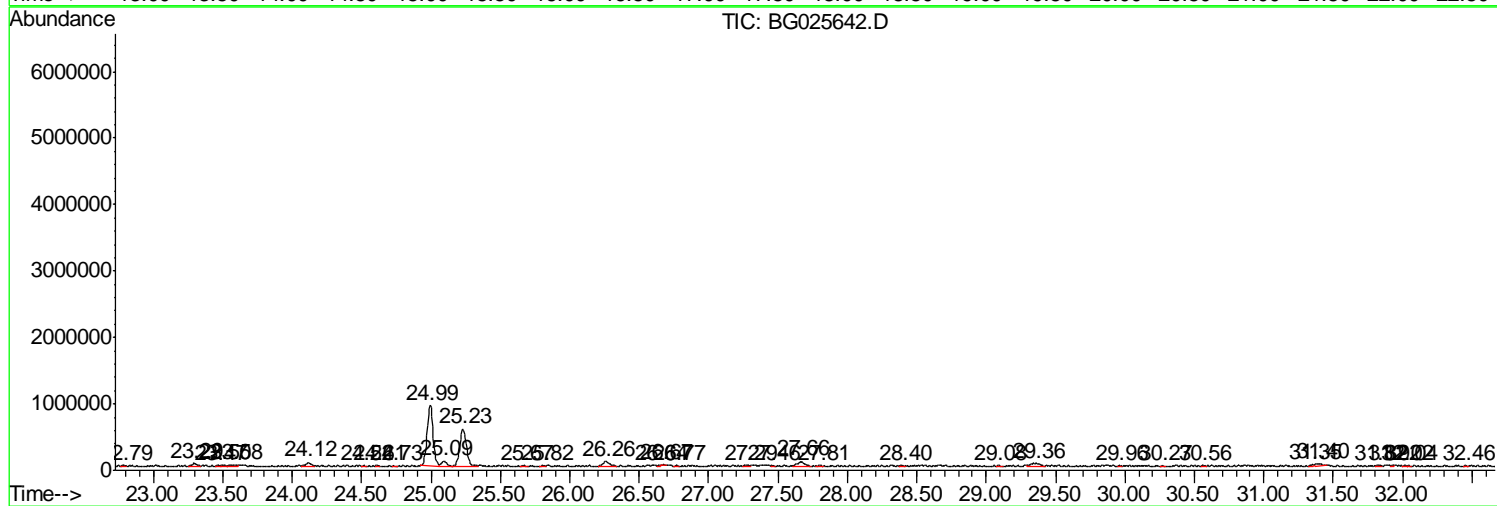
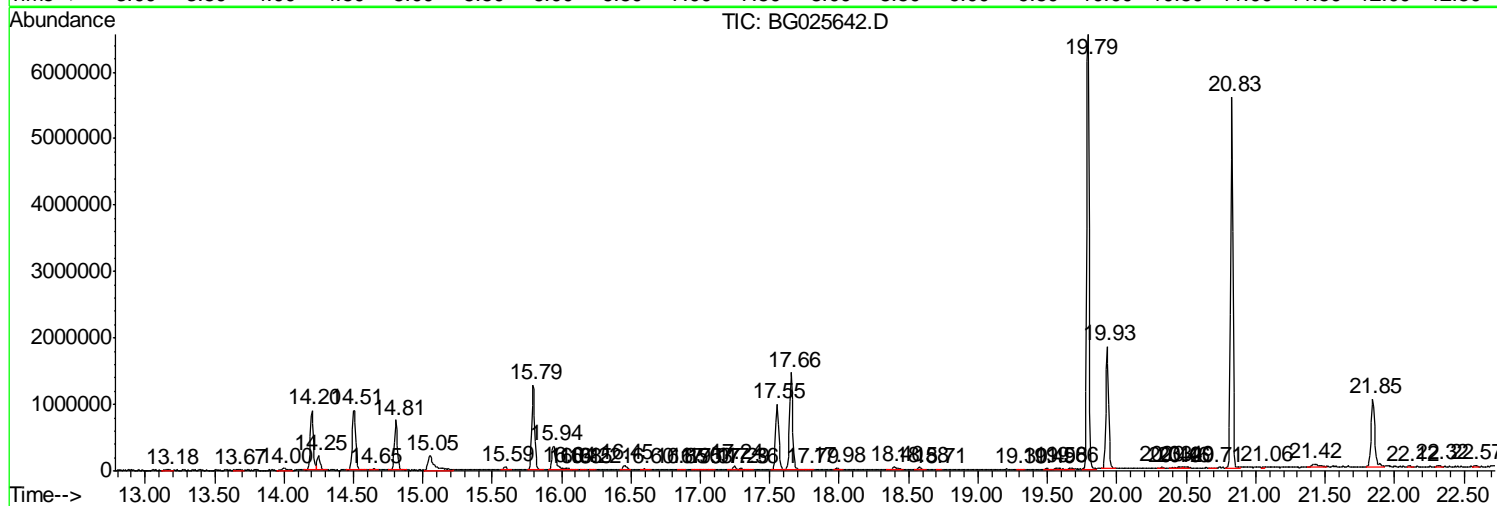
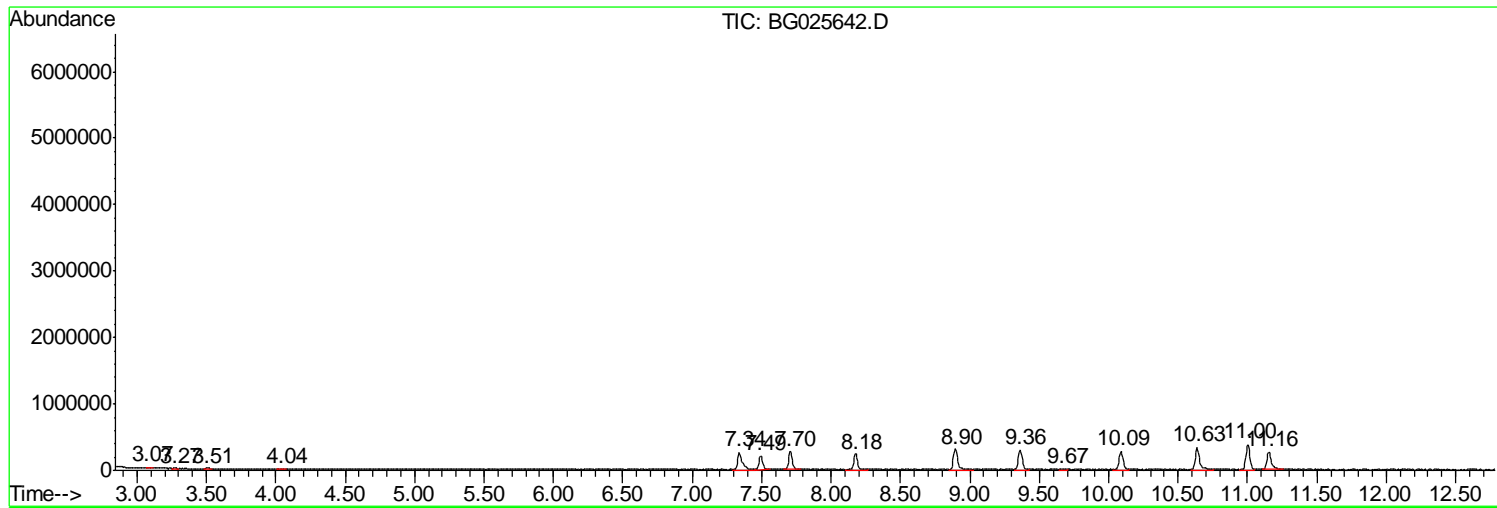
Sum of corrected areas: 44878895

Data Path : Z:\HPCHEM1\BNA G\DATA\BG012517\  
 Data File : BG025642.D  
 Acq On : 25 Jan 2017 20:19  
 Operator : SJ/MA  
 Sample : I1362-12  
 Misc :  
 ALS Vial : 11 Sample Multiplier: 1

Instrument :  
 BNA\_G  
 ClientSampleId :  
 BDN03

Quant Method : Z:\HPCHEM1\BNA G\METHODS\SOM02.2-EPA-BG011817.M  
 Quant Title : SVOA CALIBRATION

TIC Library : C:\DATABASE\NIST11.L  
 TIC Integration Parameters: LSCINT.P



Data Path : Z:\HPCHEM1\BNA G\DATA\BG012517\  
 Data File : BG025642.D  
 Acq On : 25 Jan 2017 20:19  
 Operator : SJ/MA  
 Sample : I1362-12  
 Misc :  
 ALS Vial : 11 Sample Multiplier: 1

Instrument :  
 BNA\_G  
 ClientSampled :  
 BDN03

Quant Method : Z:\HPCHEM1\BNA G\METHODS\SOM02.2-EPA-BG011817.M  
 Quant Title : SVOA CALIBRATION

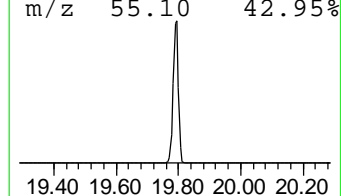
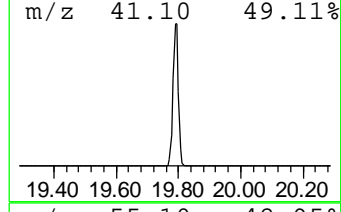
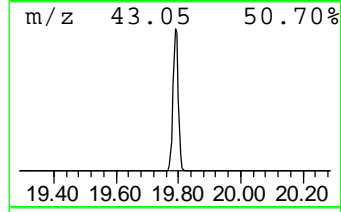
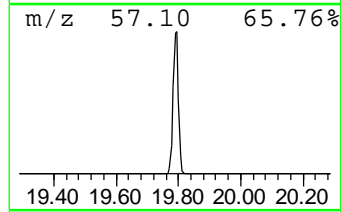
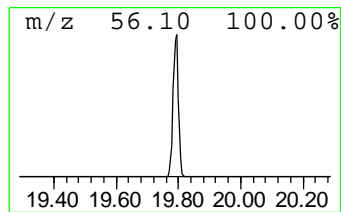
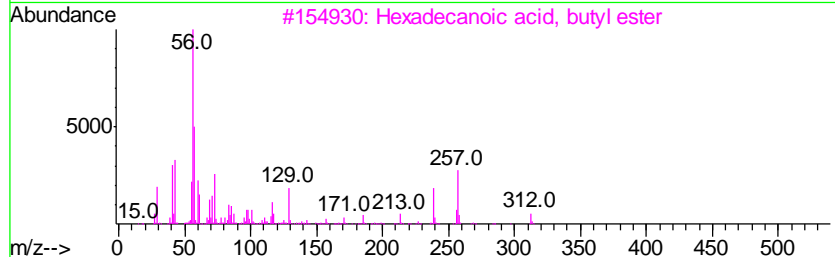
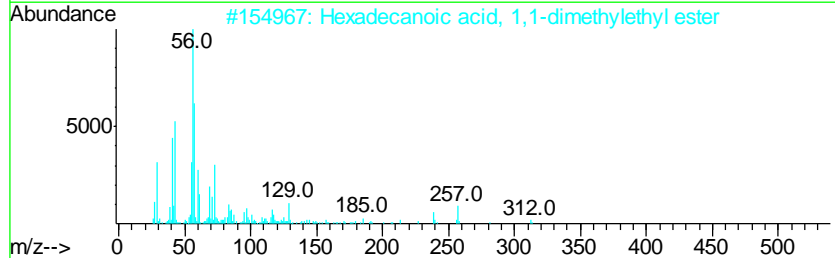
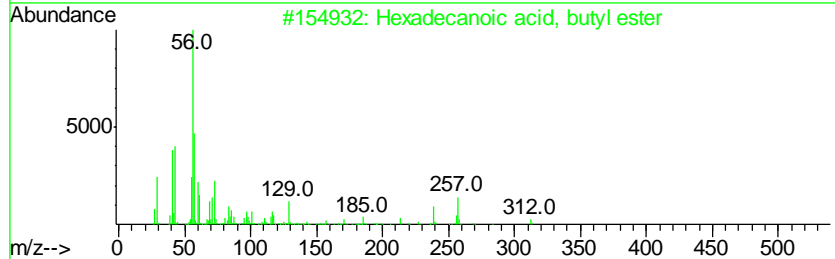
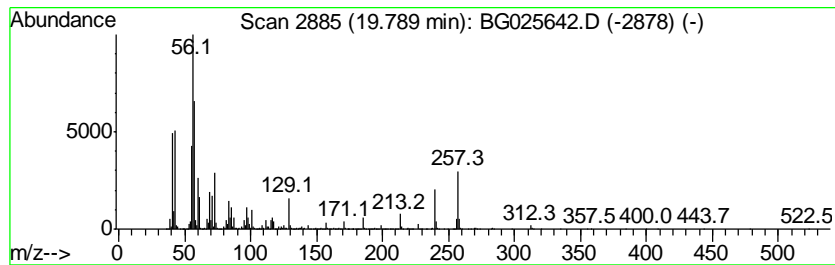
TIC Library : C:\DATABASE\NIST11.L  
 TIC Integration Parameters: LSCINT.P

\*\*\*\*\*  
 Peak Number 1 Hexadecanoic acid, butyl ester Concentration Rank 1

R.T.	EstConc	Area	Relative to ISTD	R.T.
19.79	81.06 ng/ul	7894900	Chrysene-d12	21.85

Hit#	of	Tentative ID	MW	MolForm	CAS#	Qual
1	5	Hexadecanoic acid, butyl ester	312	C20H40O2	000111-06-8	98
2		Hexadecanoic acid, 1,1-dimethyle...	312	C20H40O2	031158-91-5	96
3		Hexadecanoic acid, butyl ester	312	C20H40O2	000111-06-8	91
4		Hexadecanoic acid, 2-methylpropy...	312	C20H40O2	000110-34-9	50
5		Cyclobutane, 1,1-dimethyl-2-octyl-	196	C14H28	062338-30-1	35



Data Path : Z:\HPCHEM1\BNA G\DATA\BG012517\  
 Data File : BG025642.D  
 Acq On : 25 Jan 2017 20:19  
 Operator : SJ/MA  
 Sample : I1362-12  
 Misc :  
 ALS Vial : 11 Sample Multiplier: 1

Instrument :  
 BNA\_G  
 ClientSampled :  
 BDN03

Quant Method : Z:\HPCHEM1\BNA G\METHODS\SOM02.2-EPA-BG011817.M  
 Quant Title : SVOA CALIBRATION

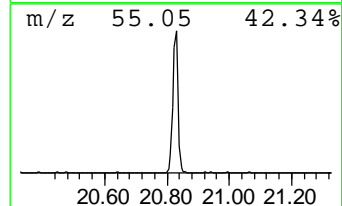
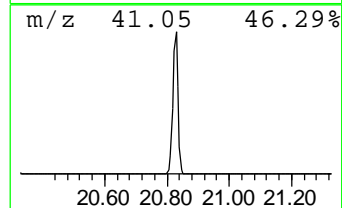
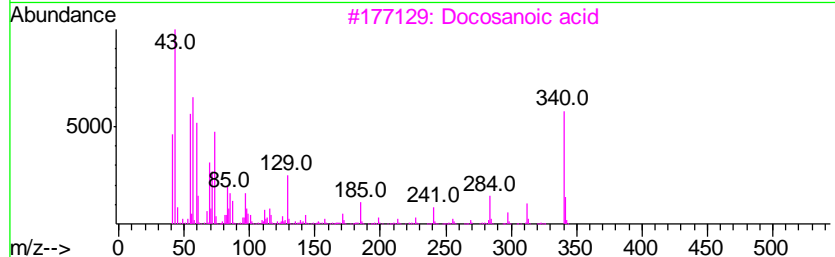
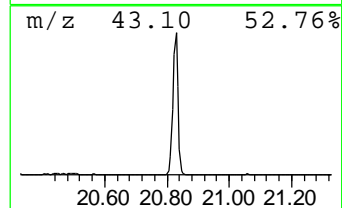
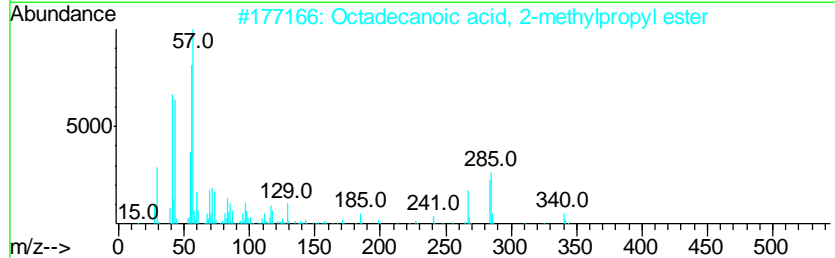
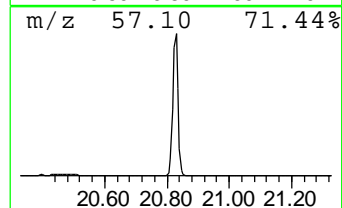
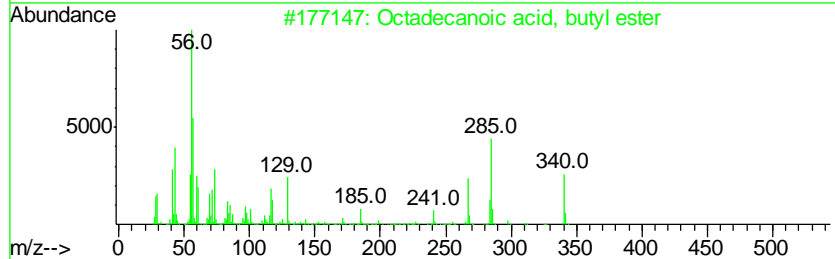
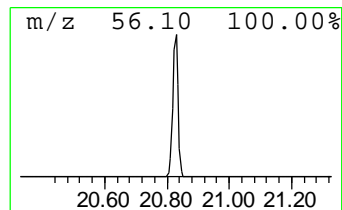
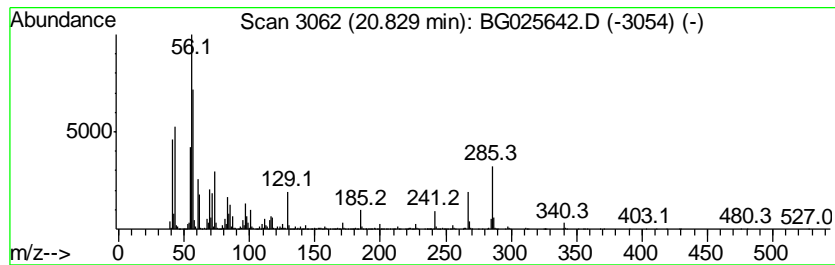
TIC Library : C:\DATABASE\NIST11.L  
 TIC Integration Parameters: LSCINT.P

\*\*\*\*\*  
 Peak Number 2 Octadecanoic acid, butyl ester Concentration Rank 2

R.T.	EstConc	Area	Relative to ISTD	R.T.
20.83	66.26 ng/ul	6452950	Chrysene-d12	21.85

Hit#	of	Tentative ID	MW	MolForm	CAS#	Qual
1	5	Octadecanoic acid, butyl ester	340	C22H44O2	000123-95-5	83
2		Octadecanoic acid, 2-methylpropy...	340	C22H44O2	000646-13-9	72
3		Docosanoic acid	340	C22H44O2	000112-85-6	53
4		Octadecanoic acid, butyl ester	340	C22H44O2	000123-95-5	53
5		Butyl myristate	284	C18H36O2	000110-36-1	50



Data Path : Z:\HPCHEM1\BNA G\DATA\BG012517\  
 Data File : BG025642.D  
 Acq On : 25 Jan 2017 20:19  
 Operator : SJ/MA  
 Sample : I1362-12  
 Misc :  
 ALS Vial : 11 Sample Multiplier: 1

Instrument :  
 BNA\_G  
 ClientSampled :  
 BDN03

Quant Method : Z:\HPCHEM1\BNA G\METHODS\SOM02.2-EPA-BG011817.M  
 Quant Title : SVOA CALIBRATION

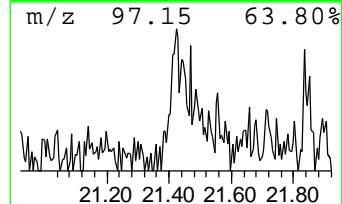
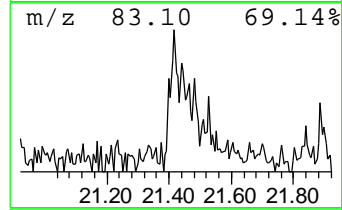
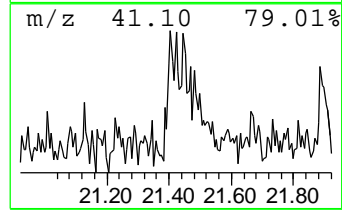
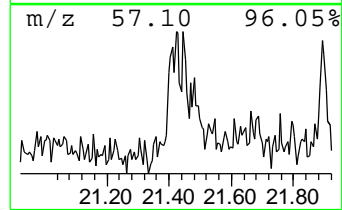
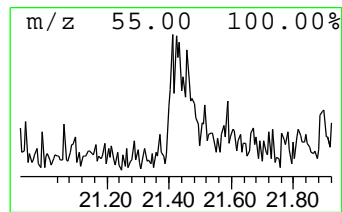
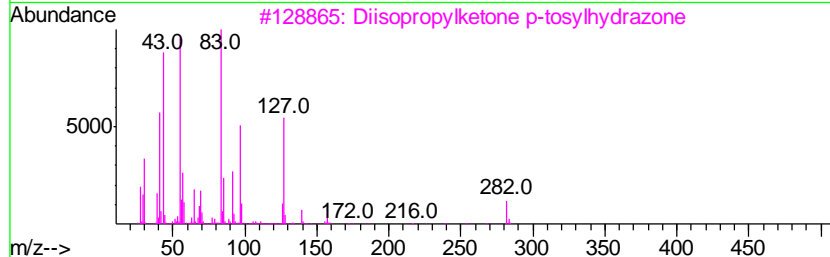
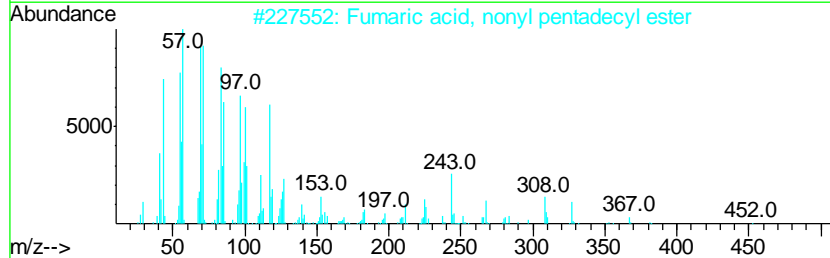
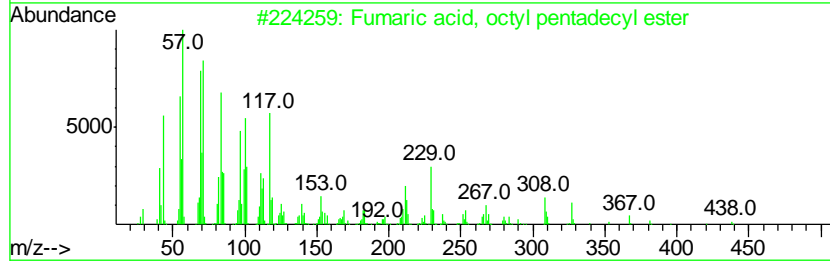
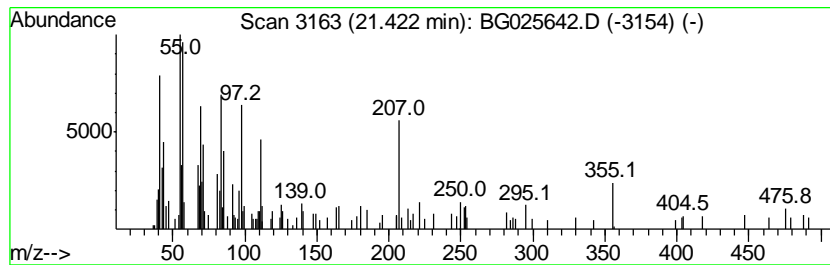
TIC Library : C:\DATABASE\NIST11.L  
 TIC Integration Parameters: LSCINT.P

\*\*\*\*\*  
 Peak Number 3 unknown-01 Concentration Rank 6

R.T.	EstConc	Area	Relative to ISTD	R.T.
21.42	2.01 ng/ul	195539	Chrysene-d12	21.85

Hit#	of	Tentative ID	MW	MolForm	CAS#	Qual
1	5	Fumaric acid, octyl pentadecyl e...	438	C27H50O4	1000339-13-2	38
2		Fumaric acid, nonyl pentadecyl e...	452	C28H52O4	1000339-28-8	37
3		Diisopropylketone p-tosylhydrazone	282	C14H22N2O2S	017530-00-6	12
4		1,2,4-Triazol-3-amine, 5-(1,3,5-...	207	C8H13N7	1000264-16-7	10
5		N-Methyl-1-adamantaneacetamide	207	C13H21NO	031897-93-5	10



Data Path : Z:\HPCHEM1\BNA G\DATA\BG012517\  
 Data File : BG025642.D  
 Acq On : 25 Jan 2017 20:19  
 Operator : SJ/MA  
 Sample : I1362-12  
 Misc :  
 ALS Vial : 11 Sample Multiplier: 1

Instrument :  
 BNA\_G  
 ClientSampleId :  
 BDN03

Quant Method : Z:\HPCHEM1\BNA G\METHODS\SOM02.2-EPA-BG011817.M  
 Quant Title : SVOA CALIBRATION

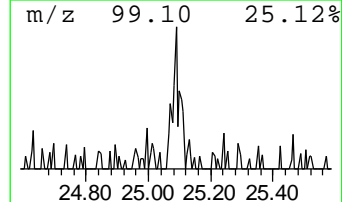
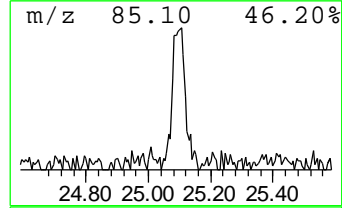
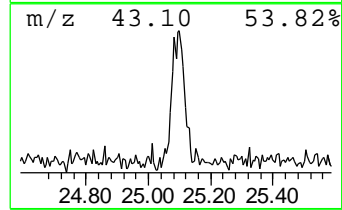
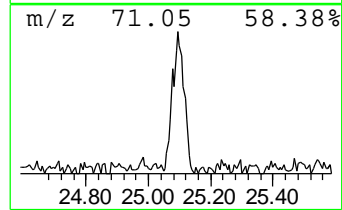
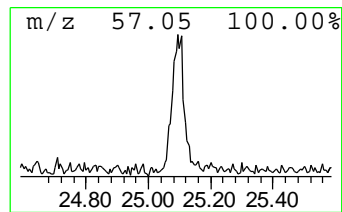
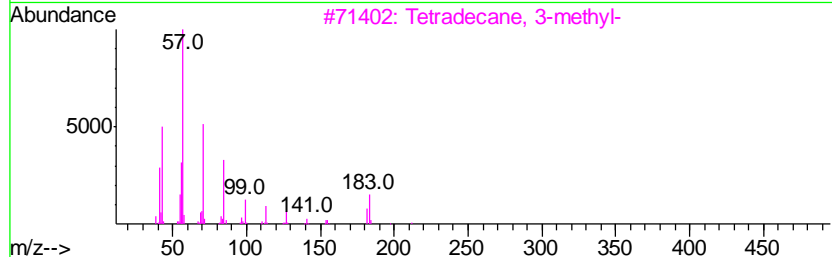
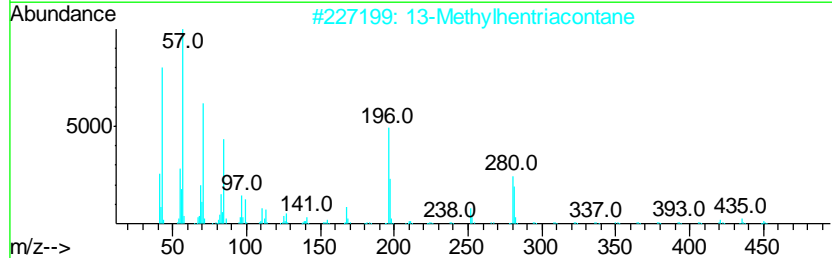
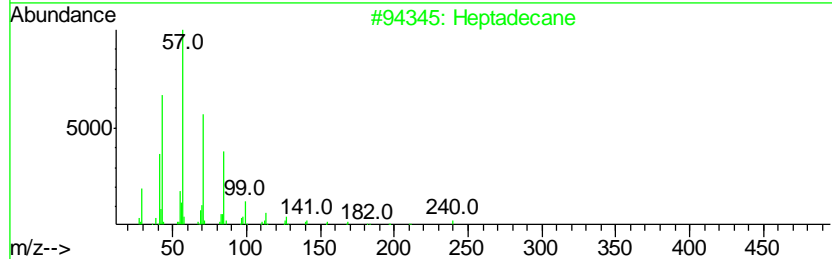
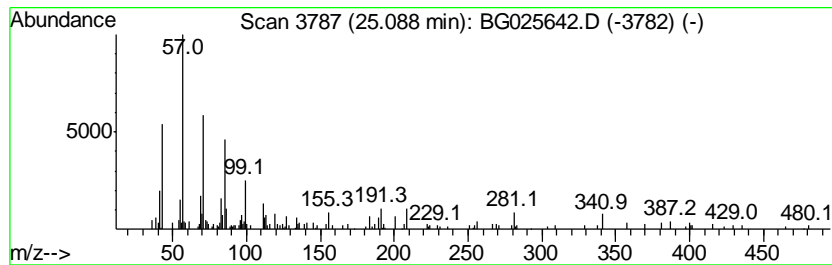
TIC Library : C:\DATABASE\NIST11.L  
 TIC Integration Parameters: LSCINT.P

\*\*\*\*\*  
 Peak Number 4 (DEL) Alkane: Straight-Chai... Concentration Rank 5

R.T.	EstConc	Area	Relative to ISTD	R.T.
25.09	2.06 ng/ul	193542	Perylene-d12	25.22

Hit#	of	Tentative ID	MW	MolForm	CAS#	Qual
1	5	Heptadecane	240	C17H36	000629-78-7	76
2		13-Methylhentriacontane	451	C32H66	1000131-19-4	64
3		Tetradecane, 3-methyl-	212	C15H32	018435-22-8	64
4		Hexacosane	366	C26H54	000630-01-3	64
5		Tetradecane, 3-methyl-	212	C15H32	018435-22-8	64





Data Path : Z:\HPCHEM1\BNA G\DATA\BG012517\  
 Data File : BG025642.D  
 Acq On : 25 Jan 2017 20:19  
 Operator : SJ/MA  
 Sample : I1362-12  
 Misc :  
 ALS Vial : 11 Sample Multiplier: 1

Instrument :  
 BNA\_G  
 ClientSampleID :  
 BDN03

Quant Method : Z:\HPCHEM1\BNA G\METHODS\SOM02.2-EPA-BG011817.M  
 Quant Title : SVOA CALIBRATION

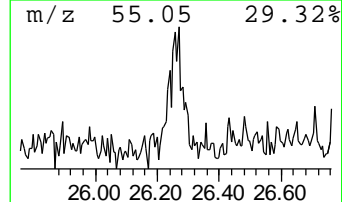
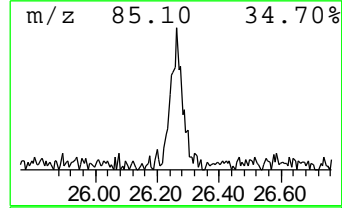
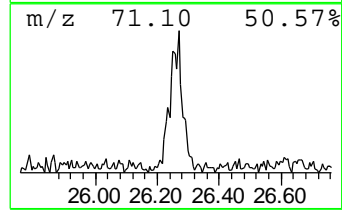
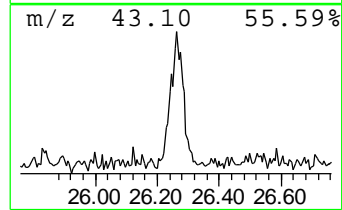
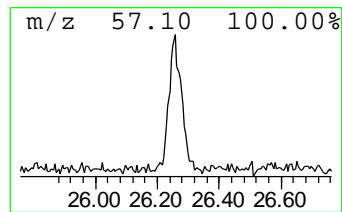
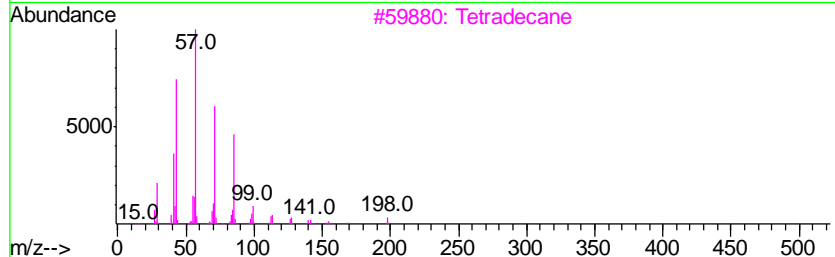
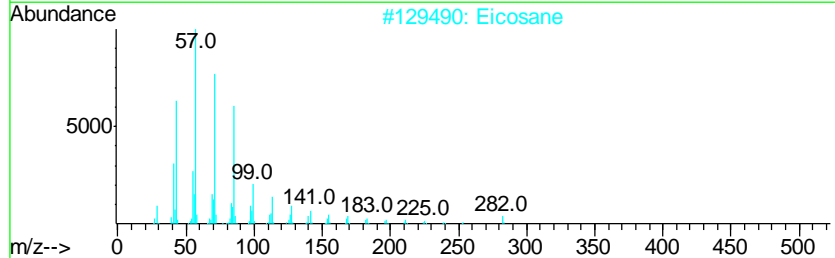
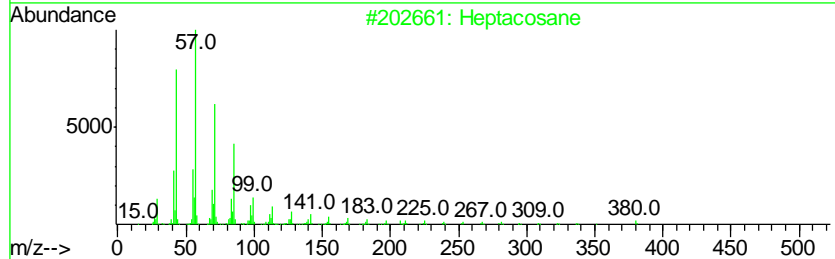
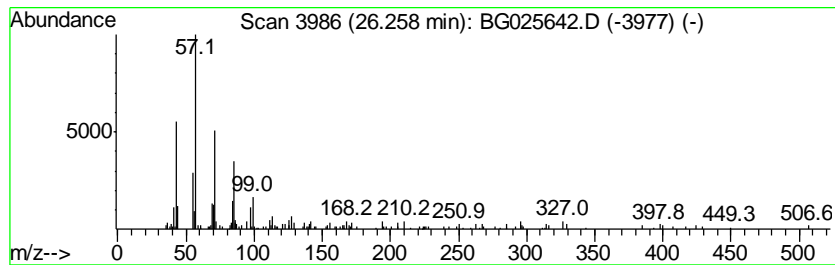
TIC Library : C:\DATABASE\NIST11.L  
 TIC Integration Parameters: LSCINT.P

\*\*\*\*\*  
 Peak Number 5 (DEL) Alkane: Straight-Chai... Concentration Rank 4

R.T.	EstConc	Area	Relative to ISTD	R.T.
26.26	2.27 ng/ul	213141	Perylene-d12	25.22

Hit#	of	Tentative ID	MW	MolForm	CAS#	Qual
1	5	Heptacosane	380	C27H56	000593-49-7	70
2		Eicosane	282	C20H42	000112-95-8	68
3		Tetradecane	198	C14H30	000629-59-4	68
4		Tetracosane	338	C24H50	000646-31-1	64
5		Nonadecane	268	C19H40	000629-92-5	47



Data Path : Z:\HPCHEM1\BNA G\DATA\BG012517\  
 Data File : BG025642.D  
 Acq On : 25 Jan 2017 20:19  
 Operator : SJ/MA  
 Sample : I1362-12  
 Misc :  
 ALS Vial : 11 Sample Multiplier: 1

Instrument :  
 BNA\_G  
 ClientSampleId :  
 BDN03

Quant Method : Z:\HPCHEM1\BNA G\METHODS\SOM02.2-EPA-BG011817.M  
 Quant Title : SVOA CALIBRATION

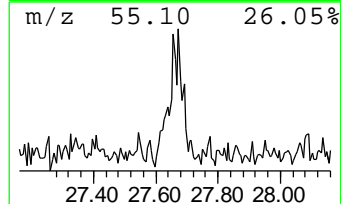
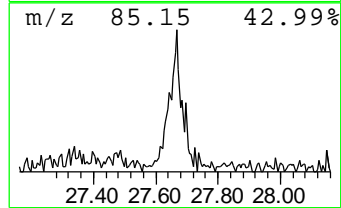
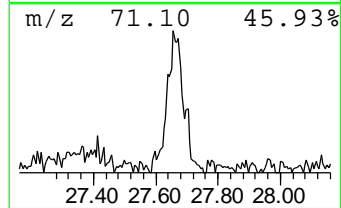
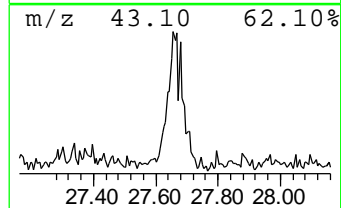
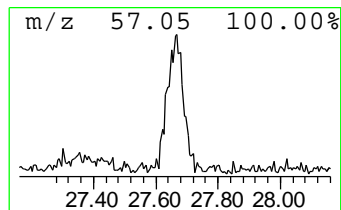
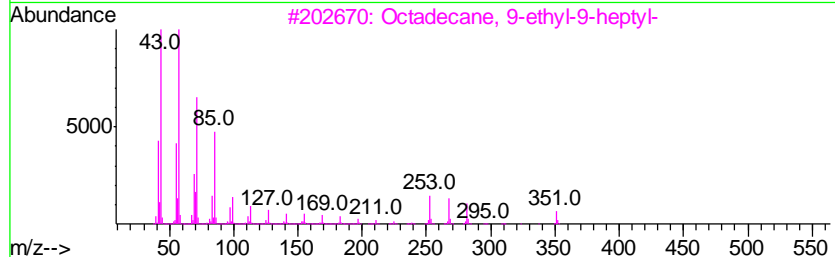
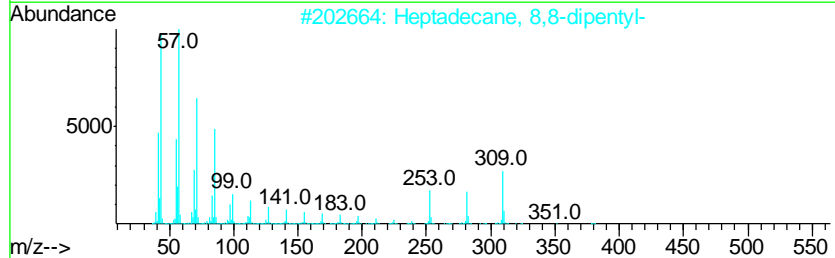
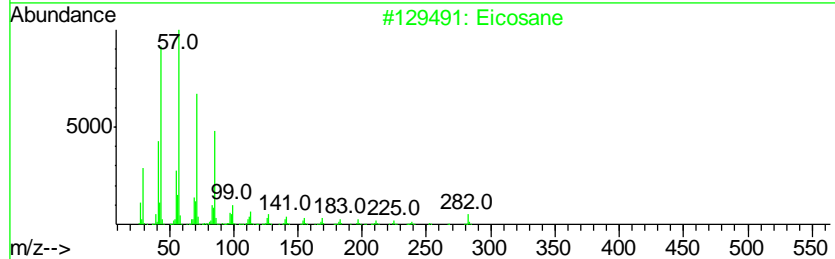
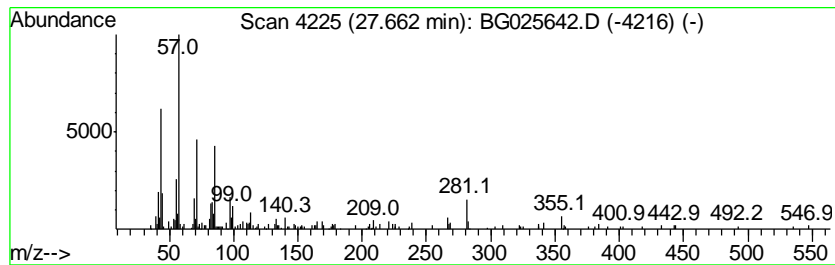
TIC Library : C:\DATABASE\NIST11.L  
 TIC Integration Parameters: LSCINT.P

\*\*\*\*\*  
 Peak Number 6 (DEL) Alkane: Straight-Chai... Concentration Rank 3

R.T.	EstConc	Area	Relative to ISTD	R.T.
27.66	2.63 ng/ul	246086	Perylene-d12	25.22

Hit#	of	Tentative ID	MW	MolForm	CAS#	Qual
1	5	Eicosane	282	C20H42	000112-95-8	64
2		Heptadecane, 8,8-dipentyl-	380	C27H56	055282-28-5	64
3		Octadecane, 9-ethyl-9-heptyl-	380	C27H56	055282-27-4	64
4		Sulfurous acid, butyl dodecyl ester	306	C16H34O3S	1000309-17-9	64
5		Eicosane	282	C20H42	000112-95-8	64



Data Path : Z:\HPCHEM1\BNA\_G\DATA\BG012517\  
Data File : BG025642.D  
Acq On : 25 Jan 2017 20:19  
Operator : SJ/MA  
Sample : I1362-12  
Misc :  
ALS Vial : 11 Sample Multiplier: 1

Instrument :  
BNA\_G  
ClientSampleId :  
BDN03

Quant Method : Z:\HPCHEM1\BNA\_G\METHODS\SOM02.2-EPA-BG011817.M  
Quant Title : SVOA CALIBRATION

TIC Library : C:\DATABASE\NIST11.L  
TIC Integration Parameters: LSCINT.P

TIC Top Hit name	RT	EstConc	Units	Response	--Internal Standard--			
					#	RT	Resp	Conc
Hexadecanoic acid...	19.79	81.1	ng/ul	7894900	5	21.85	1947810	20.0
Octadecanoic acid...	20.83	66.3	ng/ul	6452950	5	21.85	1947810	20.0
unknown-01	21.42	2.0	ng/ul	195539	5	21.85	1947810	20.0
(DEL) Alkane: Str...	25.09	2.1	ng/ul	193542	6	25.22	1874690	20.0
(DEL) Alkane: Str...	26.26	2.3	ng/ul	213141	6	25.22	1874690	20.0
(DEL) Alkane: Str...	27.66	2.6	ng/ul	246086	6	25.22	1874690	20.0