

Data Path : Z:\HPCHEM1\BNA_G\DATA\BG012615\
 Data File : BG015924.D
 Acq On : 26 Jan 2015 22:38
 Operator : TP/IZ
 Sample : G1167-02
 Misc : S
 ALS Vial : 10 Sample Multiplier: 1

Instrument :
 BNA_G
 ClientSampleId :
 SB-02-COMP

Integration Parameters: rteint.p
 Integrator: RTE
 Smoothing : ON Filtering: 5
 Sampling : 1 Min Area: 3 % of largest Peak
 Start Thrs: 0.2 Max Peaks: 100
 Stop Thrs : 0 Peak Location: TOP

If leading or trailing edge < 100 prefer < Baseline drop else tangent >
 Peak separation: 5

Method : Z:\HPCHEM1\BNA_G\METHODS\8270-BG012015.M
 Title : ASP BNA STANDARDS FOR 5 POINT CALIBRATION

Signal : TIC

peak #	R.T. min	first scan	max scan	last scan	PK TY	peak height	corr. area	corr. % max.	% of total
1	2.828	19	24	32	rVB3	151126	253383	2.17%	0.490%
2	2.904	33	37	42	rBV	206979	220172	1.89%	0.426%
3	4.814	356	362	370	rBV	328131	464518	3.98%	0.899%
4	5.284	435	442	451	rVB	2257597	3289961	28.22%	6.364%
5	6.870	705	712	722	rBV	2455726	3964237	34.00%	7.669%
6	7.223	765	772	780	rBV	2398132	3624497	31.09%	7.012%
7	7.687	843	851	858	rBV	375366	588117	5.04%	1.138%
8	8.004	897	905	911	rBV	1627952	2588497	22.20%	5.007%
9	8.844	1039	1048	1059	rBV	1492174	2473426	21.21%	4.785%
10	10.472	1318	1325	1332	rBV	485257	827224	7.09%	1.600%
11	12.951	1740	1747	1753	rBV	3765318	5560561	47.69%	10.757%
12	13.791	1885	1890	1898	rBV	169066	247688	2.12%	0.479%
13	14.332	1973	1982	1991	rVB2	887036	1333376	11.44%	2.579%
14	15.695	2209	2214	2220	rBV	342543	477375	4.09%	0.923%
15	15.824	2228	2236	2248	rBV	4146363	6098020	52.30%	11.797%
16	17.076	2442	2449	2458	rBV	1289821	1947237	16.70%	3.767%
17	17.986	2599	2604	2611	rBV4	149098	259797	2.23%	0.503%
18	19.267	2818	2822	2830	rBV8	86212	143853	1.23%	0.278%
19	19.714	2892	2898	2903	rBV	9884663	11659933	100.00%	22.556%
20	20.977	3109	3113	3125	rBV2	513493	855702	7.34%	1.655%
21	21.265	3157	3162	3170	rBV	2045217	2575784	22.09%	4.983%
22	23.521	3539	3546	3554	rBV	1163170	2239448	19.21%	4.332%

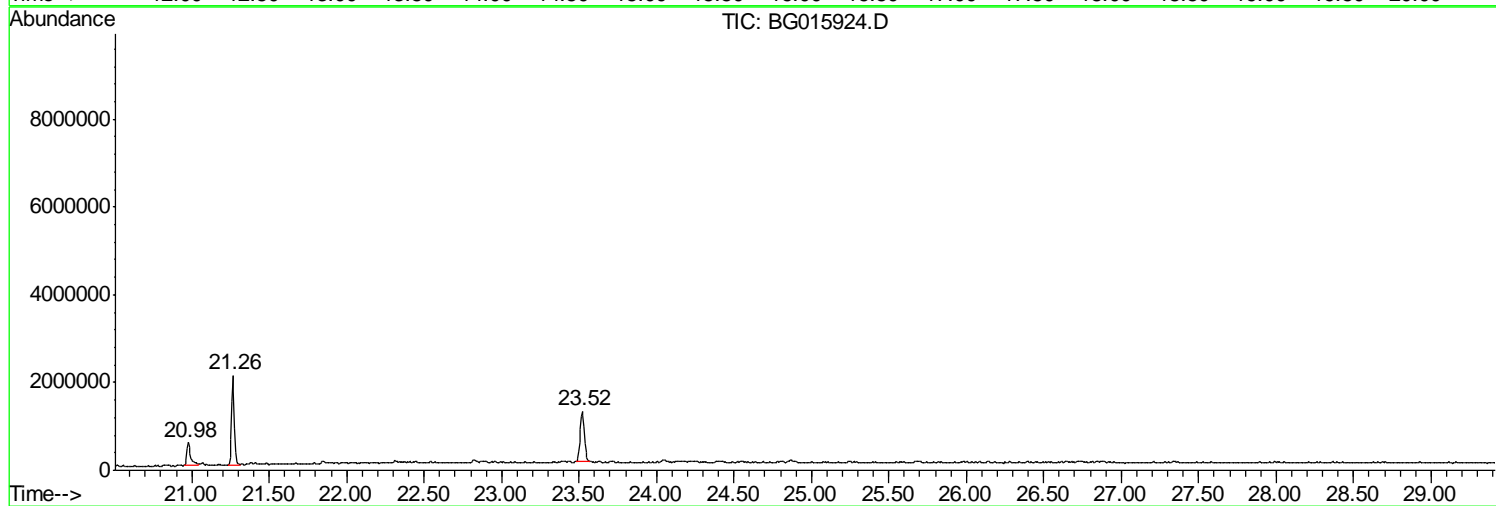
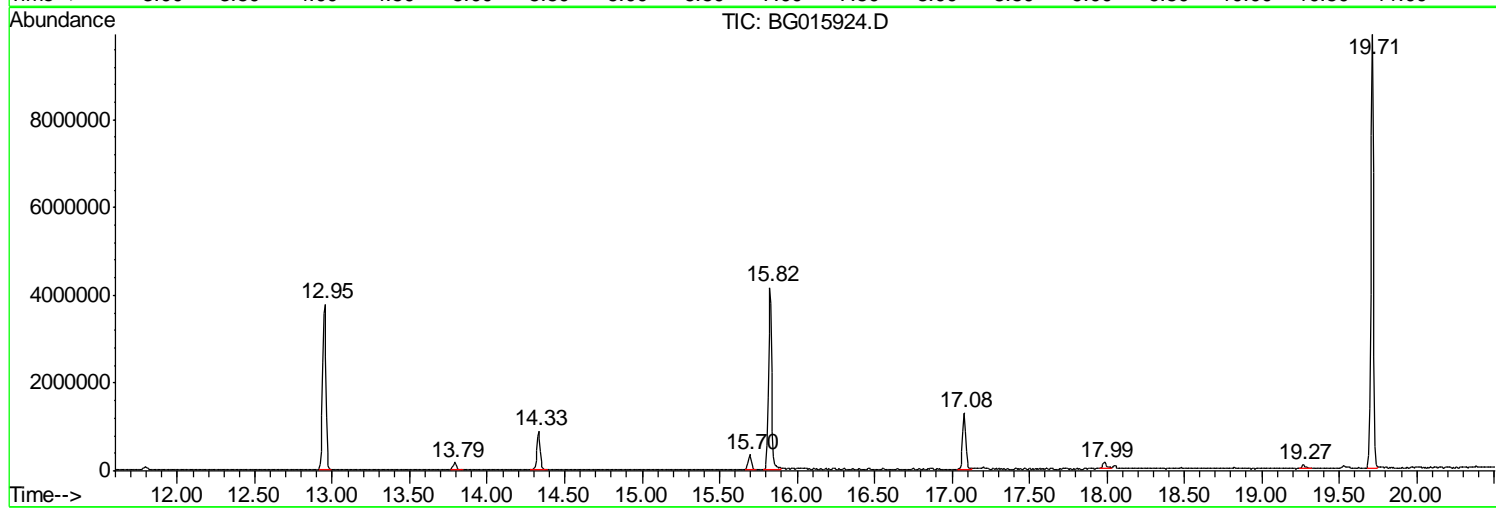
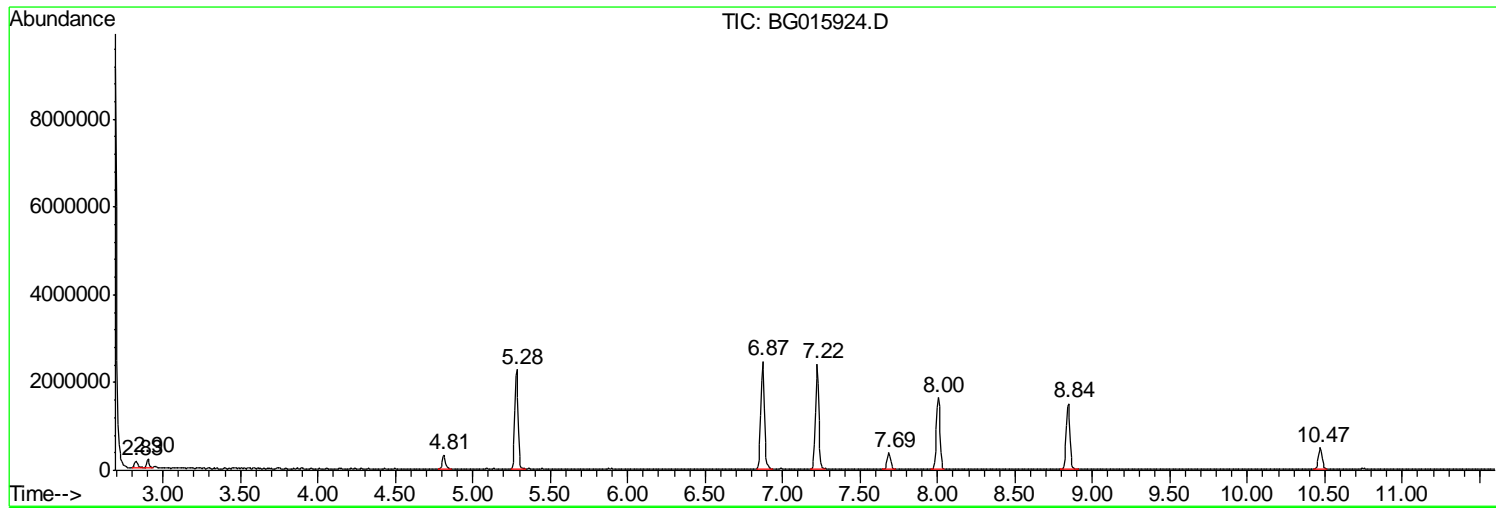
Sum of corrected areas: 51692806

Data Path : Z:\HPCHEM1\BNA_G\DATA\BG012615\
Data File : BG015924.D
Acq On : 26 Jan 2015 22:38
Operator : TP/IZ
Sample : G1167-02
Misc : S
ALS Vial : 10 Sample Multiplier: 1

Instrument :
BNA_G
ClientSampled :
SB-02-COMP

Quant Method : Z:\HPCHEM1\BNA_G\METHODS\8270-BG012015.M
Quant Title : ASP BNA STANDARDS FOR 5 POINT CALIBRATION

TIC Library : C:\DATABASE\NIST02.L
TIC Integration Parameters: LSCINT.P



Data Path : Z:\HPCHEM1\BNA_G\DATA\BG012615\
 Data File : BG015924.D
 Acq On : 26 Jan 2015 22:38
 Operator : TP/IZ
 Sample : G1167-02
 Misc : S
 ALS Vial : 10 Sample Multiplier: 1

Instrument :
 BNA_G
 ClientSampleID :
 SB-02-COMP

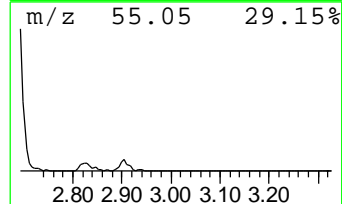
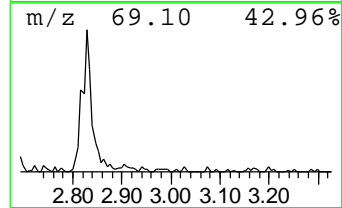
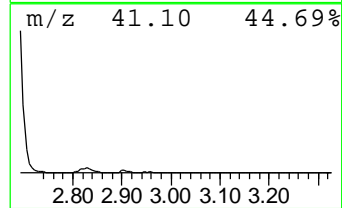
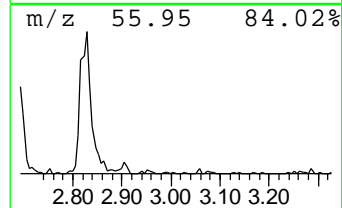
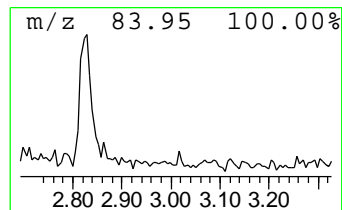
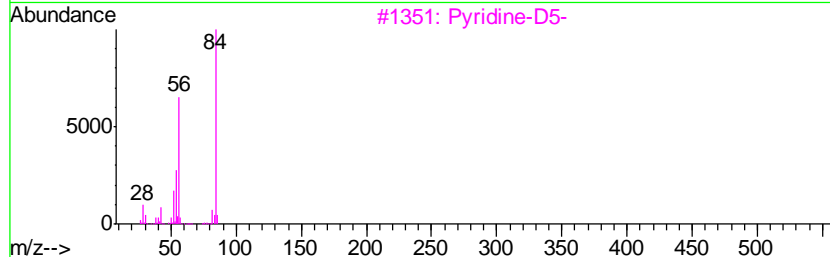
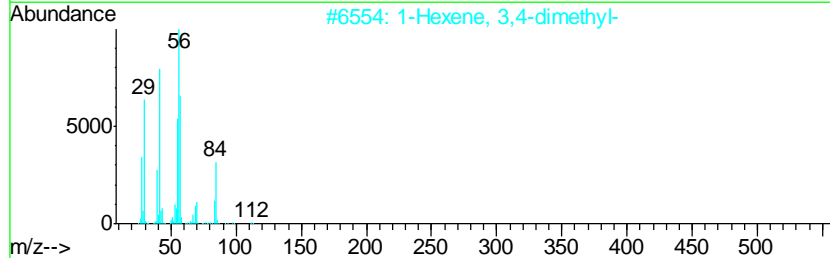
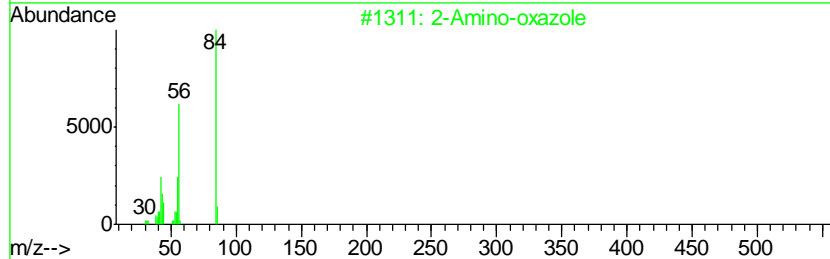
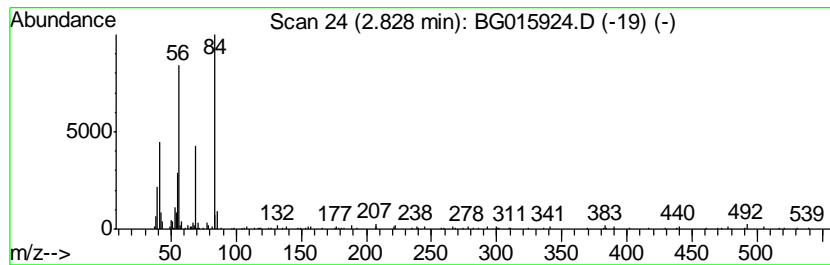
Quant Method : Z:\HPCHEM1\BNA_G\METHODS\8270-BG012015.M
 Quant Title : ASP BNA STANDARDS FOR 5 POINT CALIBRATION

TIC Library : C:\DATABASE\NIST02.L
 TIC Integration Parameters: LSCINT.P

 Peak Number 1 2-Amino-oxazole Concentration Rank 4

R.T.	EstConc	Area	Relative to ISTD	R.T.
2.83	8.62 ng	253383	1,4-Dichlorobenzene-d4	7.69

Hit#	of	Tentative ID	MW	MolForm	CAS#	Qual
1	5	2-Amino-oxazole	84	C3H4N2O	004570-45-0	80
2		1-Hexene, 3,4-dimethyl-	112	C8H16	016745-94-1	72
3		Pyridine-D5-	84	C5D5N	007291-22-7	72
4		1-Pentene, 2-methyl-	84	C6H12	000763-29-1	56
5		Cyclohexane	84	C6H12	000110-82-7	56



Data Path : Z:\HPCHEM1\BNA_G\DATA\BG012615\
 Data File : BG015924.D
 Acq On : 26 Jan 2015 22:38
 Operator : TP/IZ
 Sample : G1167-02
 Misc : S
 ALS Vial : 10 Sample Multiplier: 1

Instrument :
 BNA_G
 ClientSampleID :
 SB-02-COMP

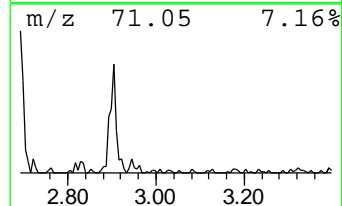
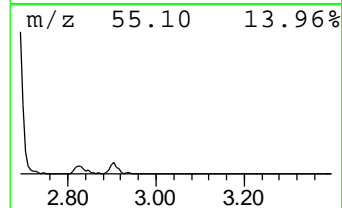
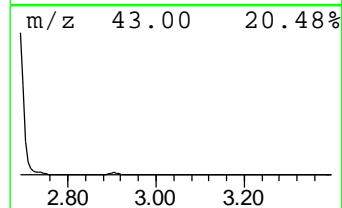
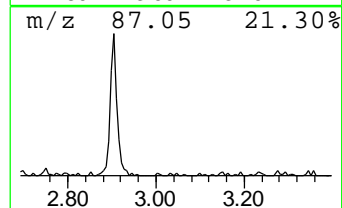
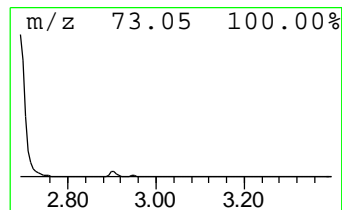
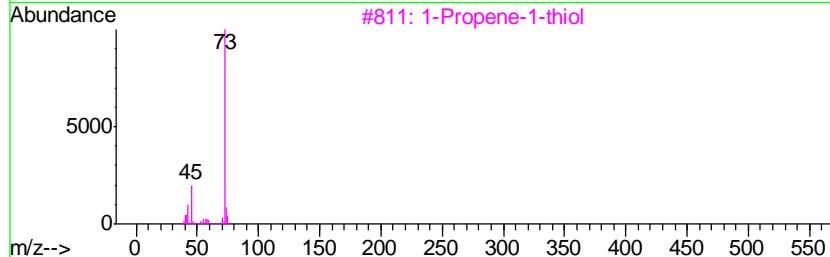
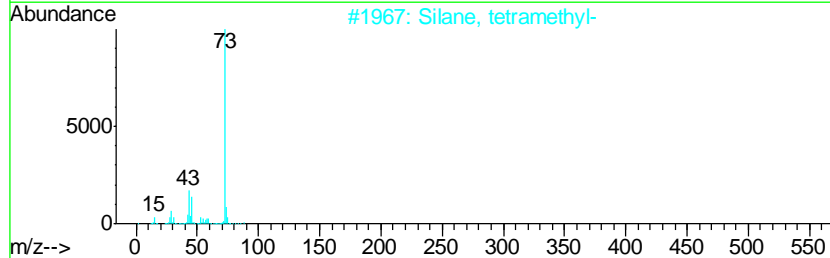
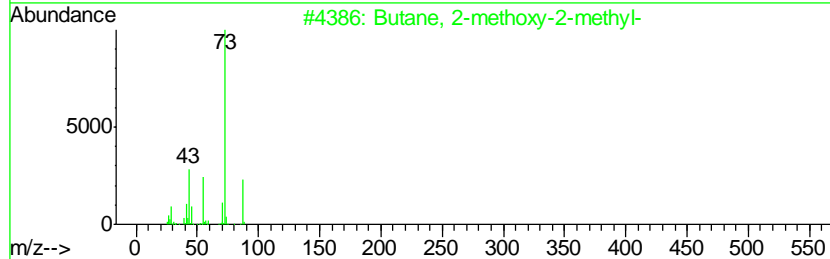
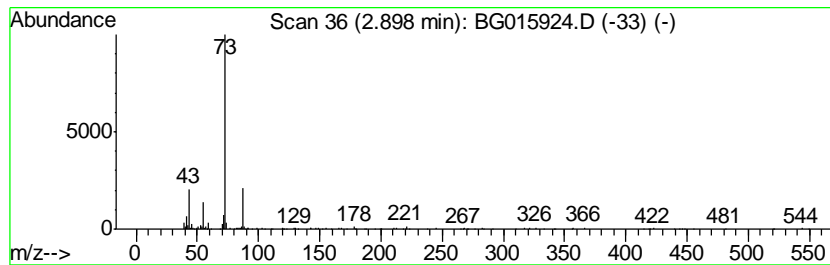
Quant Method : Z:\HPCHEM1\BNA_G\METHODS\8270-BG012015.M
 Quant Title : ASP BNA STANDARDS FOR 5 POINT CALIBRATION

TIC Library : C:\DATABASE\NIST02.L
 TIC Integration Parameters: LSCINT.P

 Peak Number 2 Butane, 2-methoxy-2-methyl- Concentration Rank 5

R.T.	EstConc	Area	Relative to ISTD	R.T.
2.90	7.49 ng	220172	1,4-Dichlorobenzene-d4	7.69

Hit#	of	Tentative ID	MW	MolForm	CAS#	Qual
1	5	Butane, 2-methoxy-2-methyl-	102	C6H14O	000994-05-8	59
2		Silane, tetramethyl-	88	C4H12Si	000075-76-3	9
3		1-Propene-1-thiol	74	C3H6S	000925-89-3	9
4		1,3-Dioxolane, 2-(dichloromethyl)-	156	C4H6Cl2O2	002612-35-3	9
5		Acetic acid, 3-[1,3]dioxolan-2-y...	174	C8H14O4	1000186-02-3	9



Data Path : Z:\HPCHEM1\BNA_G\DATA\BG012615\
 Data File : BG015924.D
 Acq On : 26 Jan 2015 22:38
 Operator : TP/IZ
 Sample : G1167-02
 Misc : S
 ALS Vial : 10 Sample Multiplier: 1

Instrument :
 BNA_G
 ClientSampleID :
 SB-02-COMP

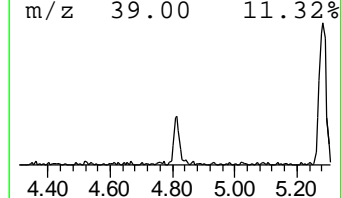
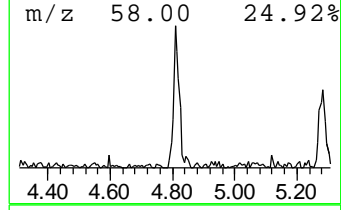
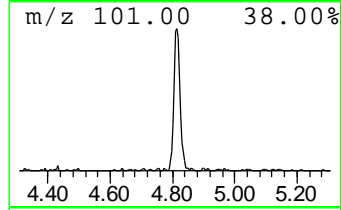
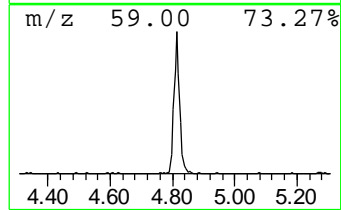
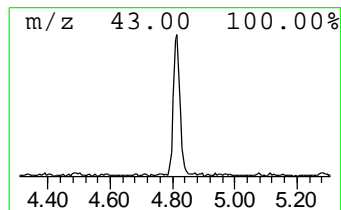
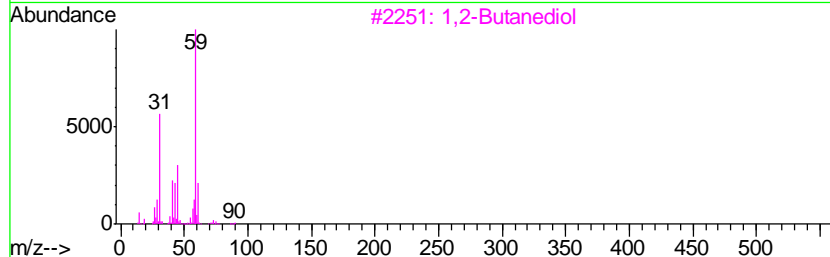
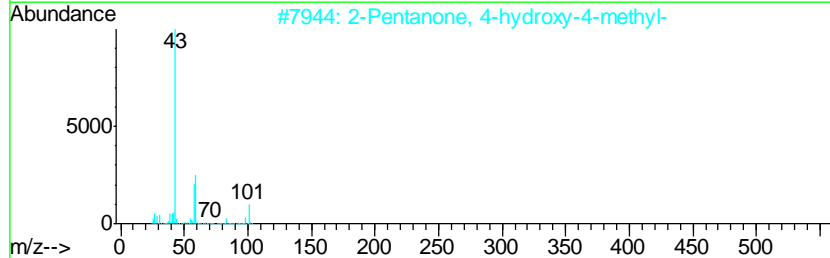
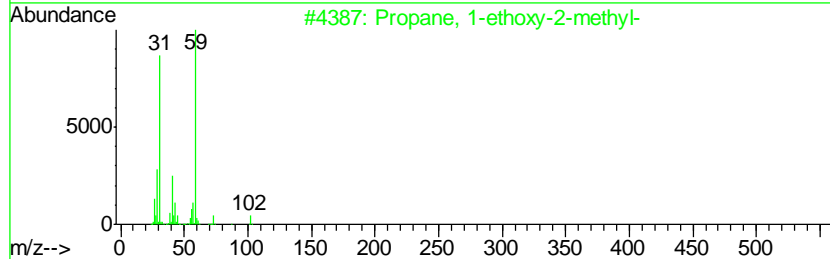
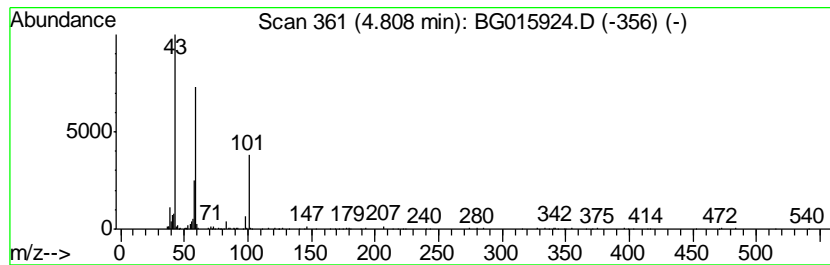
Quant Method : Z:\HPCHEM1\BNA_G\METHODS\8270-BG012015.M
 Quant Title : ASP BNA STANDARDS FOR 5 POINT CALIBRATION

TIC Library : C:\DATABASE\NIST02.L
 TIC Integration Parameters: LSCINT.P

 Peak Number 3 Propane, 1-ethoxy-2-methyl- Concentration Rank 3

R.T.	EstConc	Area	Relative to ISTD	R.T.
4.81	15.80 ng	464518	1,4-Dichlorobenzene-d4	7.69

Hit#	of	Tentative ID	MW	MolForm	CAS#	Qual
1	5	Propane, 1-ethoxy-2-methyl-	102	C6H14O	000627-02-1	43
2		2-Pentanone, 4-hydroxy-4-methyl-	116	C6H12O2	000123-42-2	42
3		1,2-Butanediol	90	C4H10O2	000584-03-2	40
4		4-Hydroxy-3-hexanone	116	C6H12O2	004984-85-4	36
5		2,5,8,11,14-Pentaoxapentadecane	222	C10H22O5	000143-24-8	36



Data Path : Z:\HPCHEM1\BNA_G\DATA\BG012615\
 Data File : BG015924.D
 Acq On : 26 Jan 2015 22:38
 Operator : TP/IZ
 Sample : G1167-02
 Misc : S
 ALS Vial : 10 Sample Multiplier: 1

Instrument :
 BNA_G
 ClientSampleID :
 SB-02-COMP

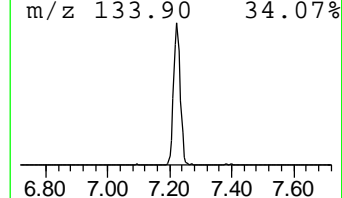
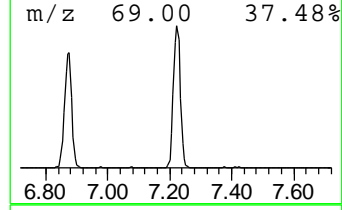
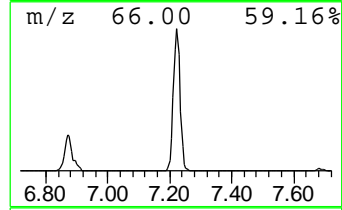
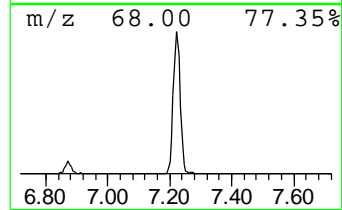
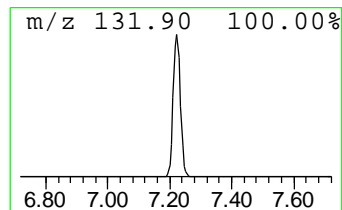
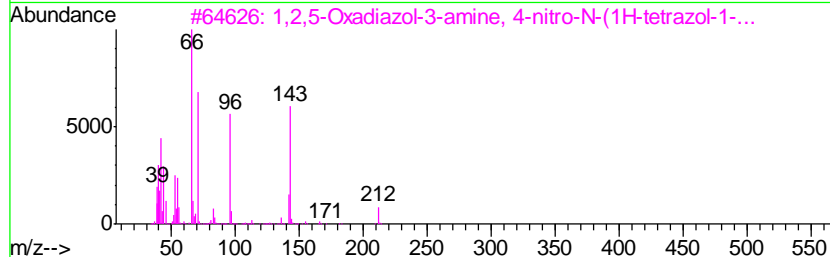
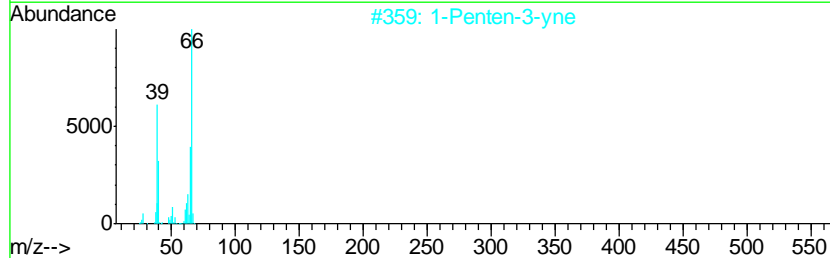
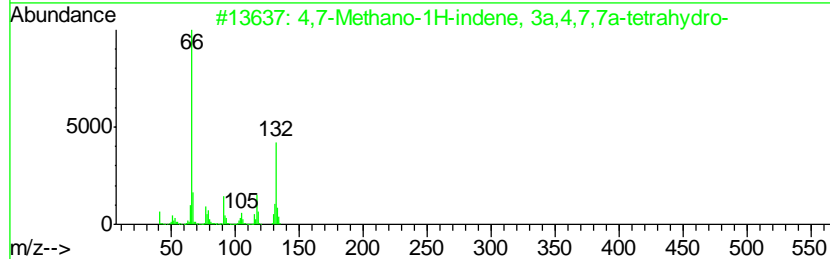
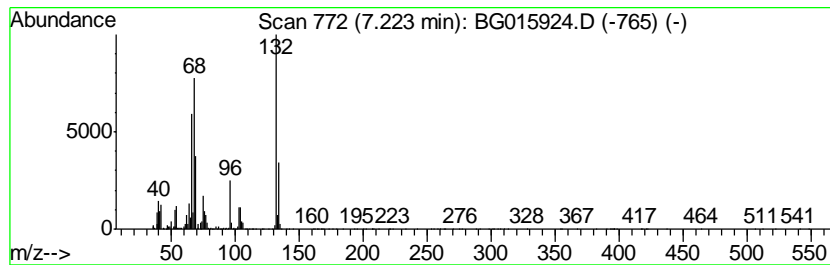
Quant Method : Z:\HPCHEM1\BNA_G\METHODS\8270-BG012015.M
 Quant Title : ASP BNA STANDARDS FOR 5 POINT CALIBRATION

TIC Library : C:\DATABASE\NIST02.L
 TIC Integration Parameters: LSCINT.P

 Peak Number 4 unknown7.22 Concentration Rank 1

R.T.	EstConc	Area	Relative to ISTD	R.T.
7.22	123.26 ng	3624500	1,4-Dichlorobenzene-d4	7.69

Hit#	of	Tentative ID	MW	MolForm	CAS#	Qual
1	4,7-Methano-1H-indene, 3a,4,7,7a...	132	C10H12	000077-73-6	38	
2	1-Penten-3-yne	66	C5H6	000646-05-9	30	
3	1,2,5-Oxadiazol-3-amine, 4-nitro...	212	C4H4N8O3	1000277-41-1	25	
4	5-Norbornene-2-methanol	124	C8H12O	000095-12-5	16	
5	1,3-Cyclopentadiene	66	C5H6	000542-92-7	16	



Data Path : Z:\HPCHEM1\BNA_G\DATA\BG012615\
 Data File : BG015924.D
 Acq On : 26 Jan 2015 22:38
 Operator : TP/IZ
 Sample : G1167-02
 Misc : S
 ALS Vial : 10 Sample Multiplier: 1

Instrument :
 BNA_G
 ClientSampleID :
 SB-02-COMP

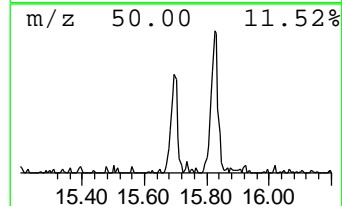
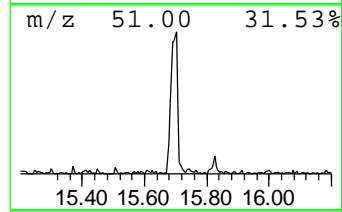
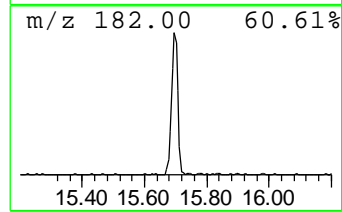
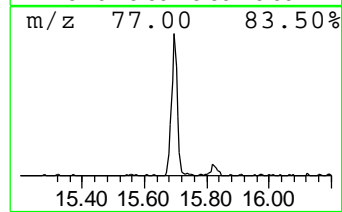
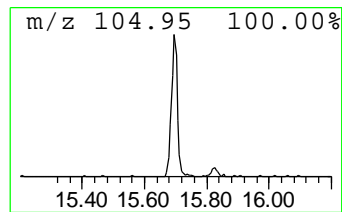
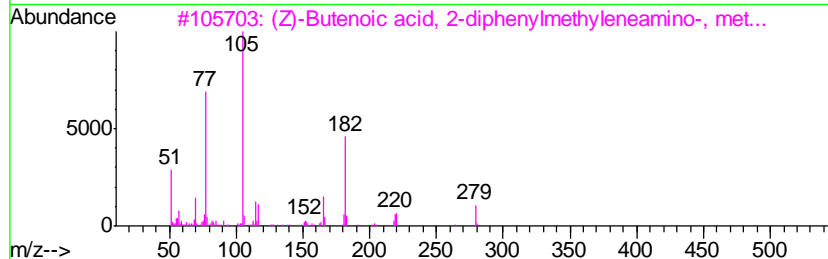
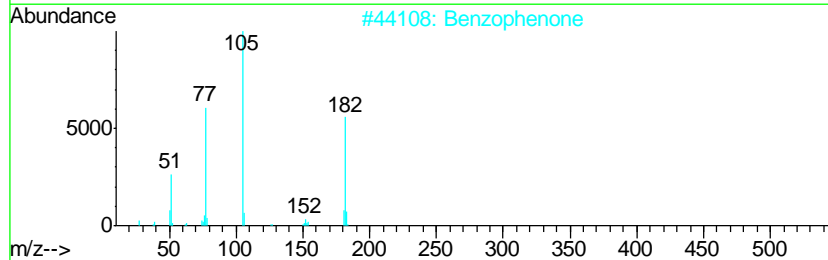
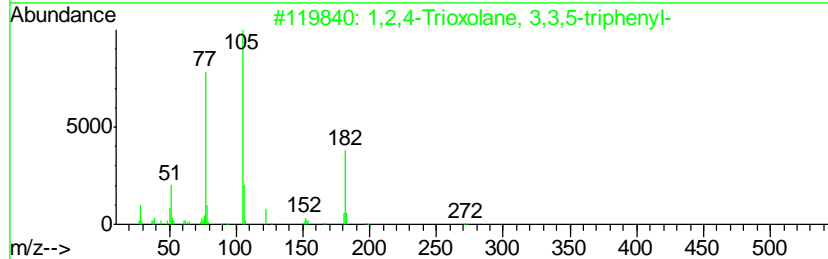
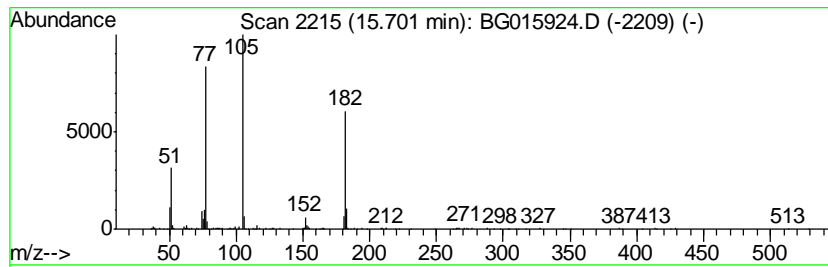
Quant Method : Z:\HPCHEM1\BNA_G\METHODS\8270-BG012015.M
 Quant Title : ASP BNA STANDARDS FOR 5 POINT CALIBRATION

TIC Library : C:\DATABASE\NIST02.L
 TIC Integration Parameters: LSCINT.P

 Peak Number 6 1,2,4-Trioxolane, 3,3,5-tri... Concentration Rank 6

R.T.	EstConc	Area	Relative to ISTD	R.T.
15.70	7.16 ng	477375	Acenaphthene-d10	14.33

Hit#	of	Tentative ID	MW	MolForm	CAS#	Qual
1	5	1,2,4-Trioxolane, 3,3,5-triphenyl-	304	C20H16O3	023246-12-0	78
2		Benzophenone	182	C13H10O	000119-61-9	70
3		(Z)-Butenoic acid, 2-diphenylmet...	279	C18H17NO2	120238-59-7	53
4		Benzoyl isothiocyanate	163	C8H5NOS	000532-55-8	50
5		Ethanone, 2,2,2-trifluoro-1-phenyl-	174	C8H5F3O	000434-45-7	50



Data Path : Z:\HPCHEM1\BNA_G\DATA\BG012615\
 Data File : BG015924.D
 Acq On : 26 Jan 2015 22:38
 Operator : TP/IZ
 Sample : G1167-02
 Misc : S
 ALS Vial : 10 Sample Multiplier: 1

Instrument :
 BNA_G
 ClientSampleID :
 SB-02-COMP

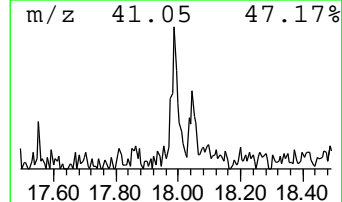
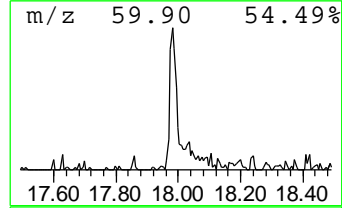
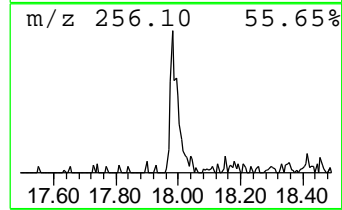
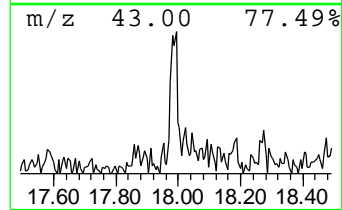
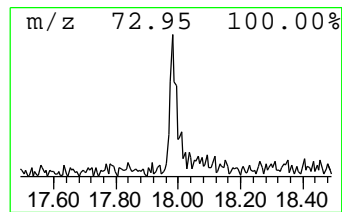
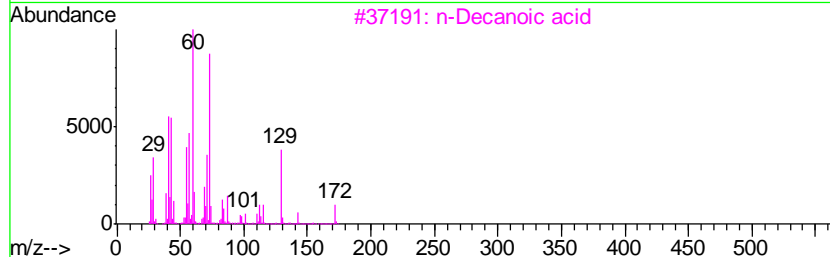
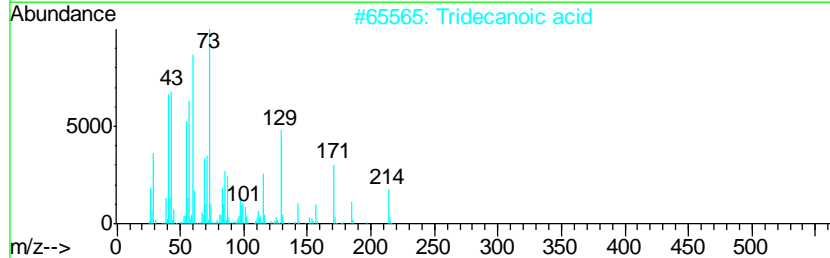
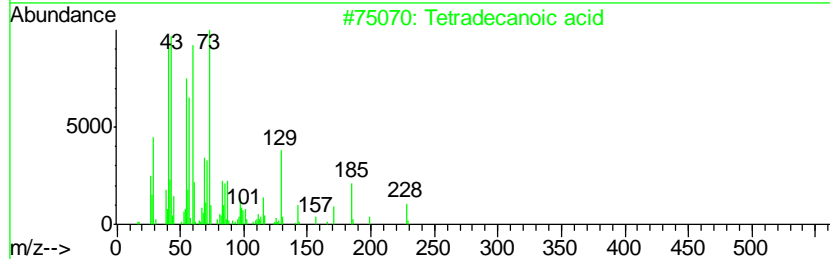
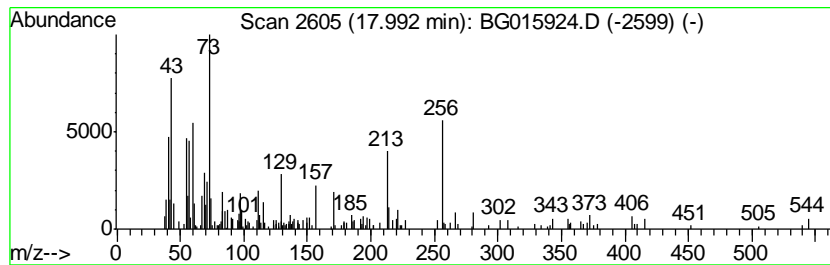
Quant Method : Z:\HPCHEM1\BNA_G\METHODS\8270-BG012015.M
 Quant Title : ASP BNA STANDARDS FOR 5 POINT CALIBRATION

TIC Library : C:\DATABASE\NIST02.L
 TIC Integration Parameters: LSCINT.P

 Peak Number 7 unknown17.99 Concentration Rank 8

R.T.	EstConc	Area	Relative to ISTD	R.T.
17.99	2.67 ng	259797	Phenanthrene-d10	17.08

Hit#	of	Tentative ID	MW	MolForm	CAS#	Qual
1	5	Tetradecanoic acid	228	C14H28O2	000544-63-8	46
2		Tridecanoic acid	214	C13H26O2	000638-53-9	38
3		n-Decanoic acid	172	C10H20O2	000334-48-5	38
4		n-Hexadecanoic acid	256	C16H32O2	000057-10-3	35
5		3,5-Difluorobenzaldehyde carbamo...	199	C8H7F2N3O	163893-49-0	22



Data Path : Z:\HPCHEM1\BNA_G\DATA\BG012615\
 Data File : BG015924.D
 Acq On : 26 Jan 2015 22:38
 Operator : TP/IZ
 Sample : G1167-02
 Misc : S
 ALS Vial : 10 Sample Multiplier: 1

Instrument :
 BNA_G
 ClientSampleID :
 SB-02-COMP

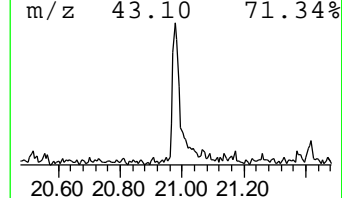
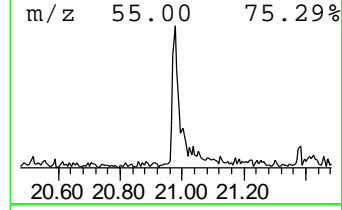
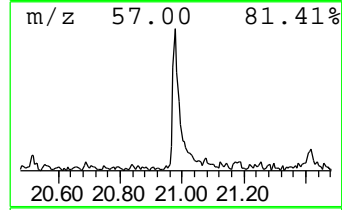
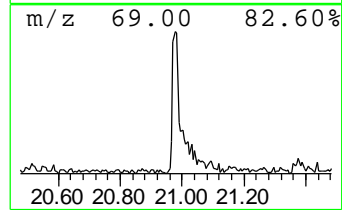
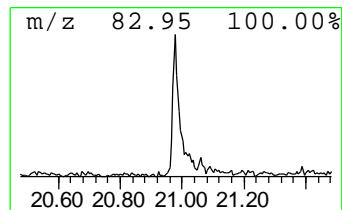
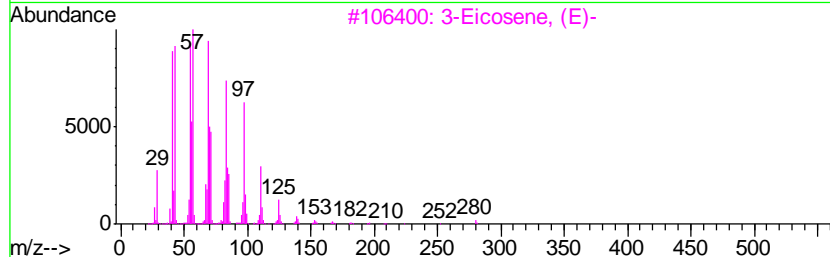
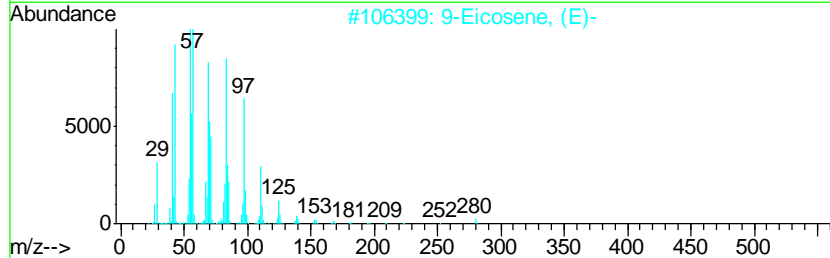
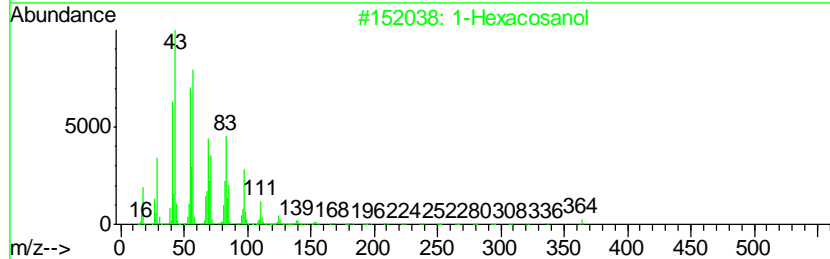
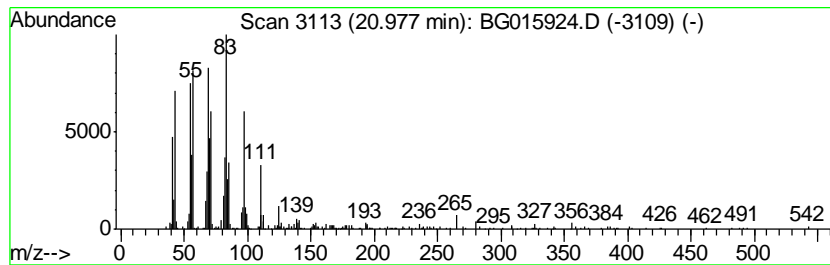
Quant Method : Z:\HPCHEM1\BNA_G\METHODS\8270-BG012015.M
 Quant Title : ASP BNA STANDARDS FOR 5 POINT CALIBRATION

TIC Library : C:\DATABASE\NIST02.L
 TIC Integration Parameters: LSCINT.P

 Peak Number 8 1-Hexacosanol Concentration Rank 7

R.T.	EstConc	Area	Relative to ISTD	R.T.
20.98	6.64 ng	855702	Chrysene-d12	21.27

Hit#	of	Tentative ID	MW	MolForm	CAS#	Qual
1	5	1-Hexacosanol	382	C26H54O	000506-52-5	91
2		9-Eicosene, (E)-	280	C20H40	074685-29-3	87
3		3-Eicosene, (E)-	280	C20H40	074685-33-9	87
4		17-Pentatriacontene	491	C35H70	006971-40-0	86
5		1-Tetracosanol	354	C24H50O	000506-51-4	80



Data Path : Z:\HPCHEM1\BNA_G\DATA\BG012615\
Data File : BG015924.D
Acq On : 26 Jan 2015 22:38
Operator : TP/IZ
Sample : G1167-02
Misc : S
ALS Vial : 10 Sample Multiplier: 1

Instrument :
BNA_G
ClientSampleId :
SB-02-COMP

Quant Method : Z:\HPCHEM1\BNA_G\METHODS\8270-BG012015.M
Quant Title : ASP BNA STANDARDS FOR 5 POINT CALIBRATION

TIC Library : C:\DATABASE\NIST02.L
TIC Integration Parameters: LSCINT.P

TIC Top Hit name	RT	EstConc	Units	Response	--Internal Standard--			
					#	RT	Resp	Conc
2-Amino-oxazole	2.83	8.6	ng	253383	1	7.69	588117	20.0
Butane, 2-methoxy...	2.90	7.5	ng	220172	1	7.69	588117	20.0
Propane, 1-ethoxy...	4.81	15.8	ng	464518	1	7.69	588117	20.0
unknown7.22	7.22	123.3	ng	3624500	1	7.69	588117	20.0
1,2,4-Trioxolane,...	15.70	7.2	ng	477375	3	14.33	1333380	20.0
unknown17.99	17.99	2.7	ng	259797	4	17.08	1947240	20.0
1-Hexacosanol	20.98	6.6	ng	855702	5	21.27	2575780	20.0