

Data Path : Z:\HPCHEM1\BNA_G\DATA\BG012615\
 Data File : BG015944.D
 Acq On : 27 Jan 2015 12:37
 Operator : TP/IZ
 Sample : G1167-11
 Misc : W
 ALS Vial : 28 Sample Multiplier: 1

Instrument :
 BNA_G
 ClientSampleId :
 WC-01

Integration Parameters: rteint.p
 Integrator: RTE
 Smoothing : ON Filtering: 5
 Sampling : 1 Min Area: 3 % of largest Peak
 Start Thrs: 0.2 Max Peaks: 100
 Stop Thrs : 0 Peak Location: TOP

If leading or trailing edge < 100 prefer < Baseline drop else tangent >
 Peak separation: 5

Method : Z:\HPCHEM1\BNA_G\METHODS\8270-BG012015.M
 Title : ASP BNA STANDARDS FOR 5 POINT CALIBRATION

Signal : TIC

peak #	R.T. min	first scan	max scan	last scan	PK TY	peak height	corr. area	corr. % max.	% of total
1	2.819	17	22	33	rVB	282370	516774	4.41%	1.043%
2	2.919	34	39	46	rVB	535387	685749	5.85%	1.384%
3	3.624	154	159	164	rVB	183263	228210	1.95%	0.460%
4	4.218	255	260	267	rBV	1175220	1544931	13.18%	3.117%
5	4.817	352	362	369	rVB	286883	440283	3.76%	0.888%
6	5.281	435	441	450	rBV	2031649	2866408	24.45%	5.784%
7	6.832	700	705	707	rBV2	209119	325170	2.77%	0.656%
8	6.867	707	711	719	rVB	1831991	2932945	25.02%	5.918%
9	7.220	765	771	782	rBV	2043448	3294163	28.10%	6.647%
10	7.684	844	850	859	rBV2	391934	631568	5.39%	1.274%
11	8.001	897	904	910	rBV	1585676	2495087	21.29%	5.034%
12	8.842	1041	1047	1055	rVB	1392621	2289720	19.53%	4.620%
13	9.265	1113	1119	1124	rBV4	74632	166804	1.42%	0.337%
14	10.469	1312	1324	1333	rBV2	488007	863671	7.37%	1.743%
15	11.750	1536	1542	1546	rBV4	78827	159240	1.36%	0.321%
16	12.949	1739	1746	1753	rVB	3784541	5399650	46.07%	10.895%
17	13.313	1800	1808	1817	rBV8	145120	483706	4.13%	0.976%
18	14.329	1972	1981	1988	rBV2	767142	1212000	10.34%	2.445%
19	15.828	2228	2236	2249	rBV	3585138	5690724	48.55%	11.482%
20	17.079	2443	2449	2454	rBV2	1300099	1872469	15.97%	3.778%
21	19.711	2891	2897	2904	rBV	9068689	11721738	100.00%	23.651%
22	21.268	3156	3162	3172	rBV	1864132	2563290	21.87%	5.172%
23	23.524	3539	3546	3558	rBV2	542406	1176126	10.03%	2.373%

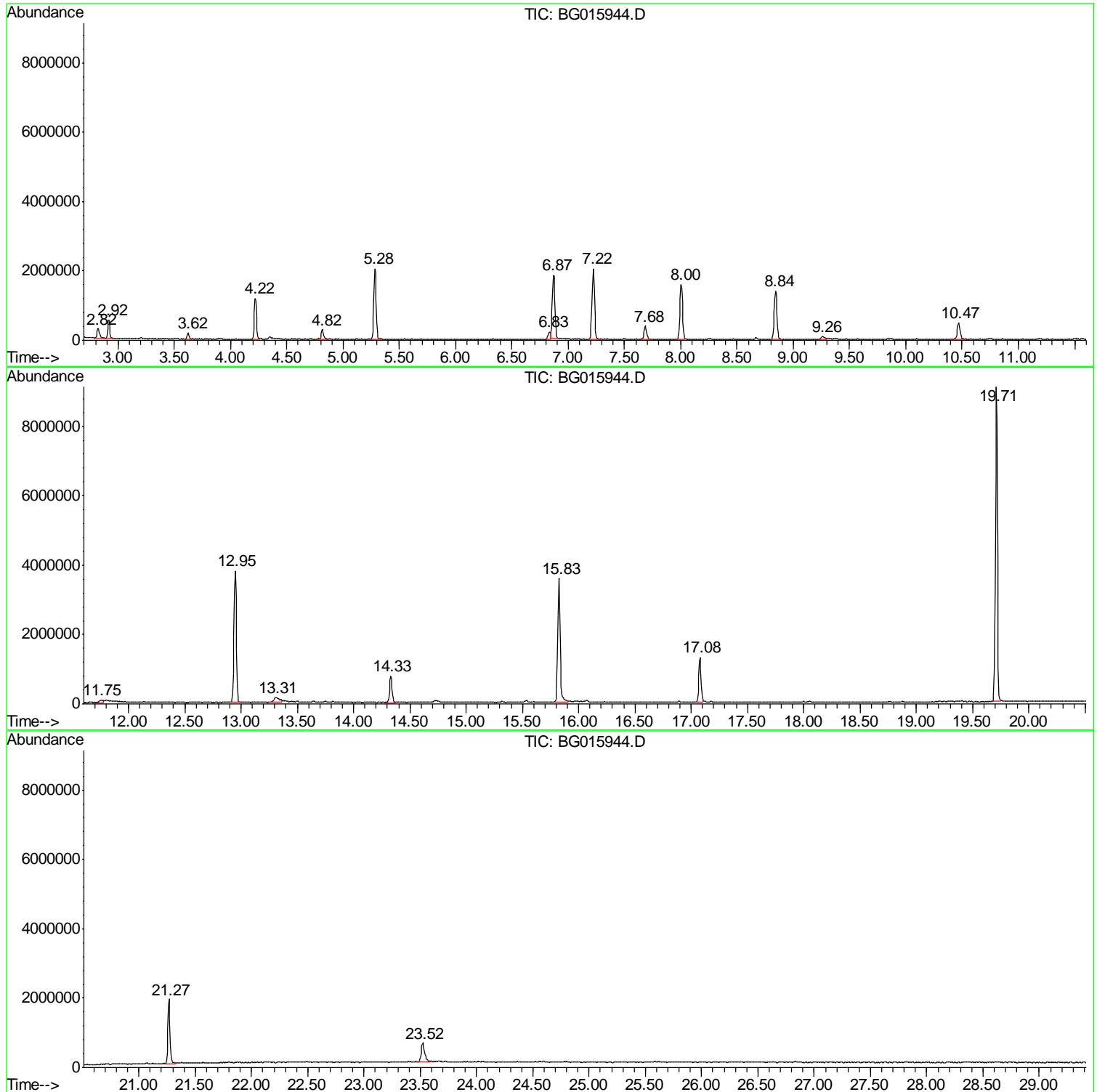
Sum of corrected areas: 49560426

Data Path : Z:\HPCHEM1\BNA_G\DATA\BG012615\
Data File : BG015944.D
Acq On : 27 Jan 2015 12:37
Operator : TP/IZ
Sample : G1167-11
Misc : W
ALS Vial : 28 Sample Multiplier: 1

Instrument :
BNA_G
ClientSampled :
WC-01

Quant Method : Z:\HPCHEM1\BNA_G\METHODS\8270-BG012015.M
Quant Title : ASP BNA STANDARDS FOR 5 POINT CALIBRATION

TIC Library : C:\DATABASE\NIST02.L
TIC Integration Parameters: LSCINT.P



Data Path : Z:\HPCHEM1\BNA_G\DATA\BG012615\
 Data File : BG015944.D
 Acq On : 27 Jan 2015 12:37
 Operator : TP/IZ
 Sample : G1167-11
 Misc : W
 ALS Vial : 28 Sample Multiplier: 1

Instrument :
 BNA_G
 ClientSampled :
 WC-01

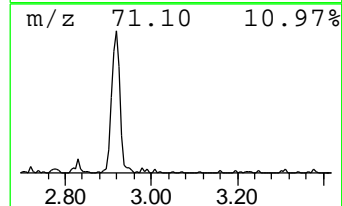
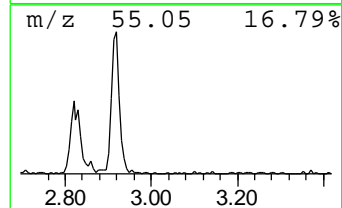
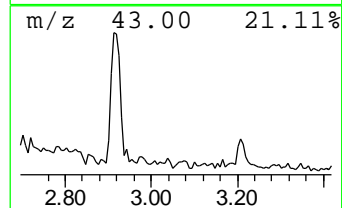
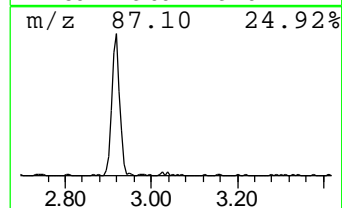
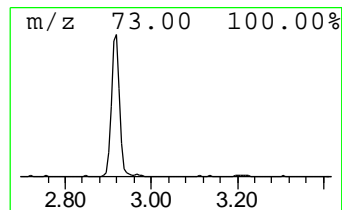
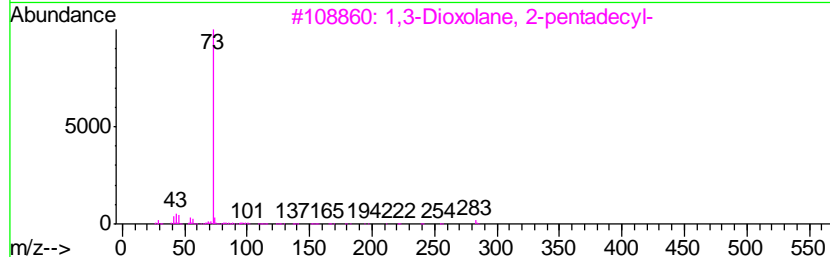
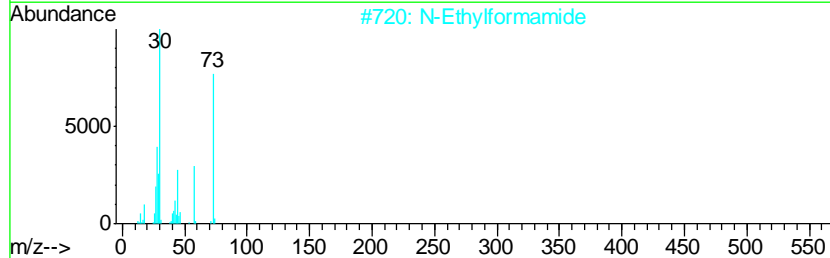
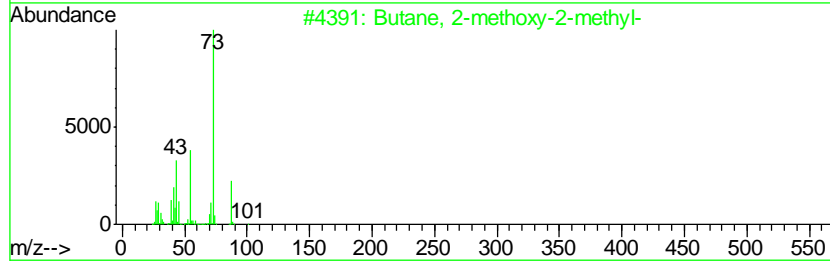
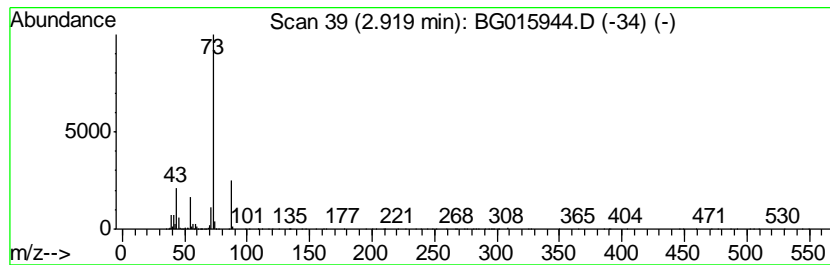
Quant Method : Z:\HPCHEM1\BNA_G\METHODS\8270-BG012015.M
 Quant Title : ASP BNA STANDARDS FOR 5 POINT CALIBRATION

TIC Library : C:\DATABASE\NIST02.L
 TIC Integration Parameters: LSCINT.P

 Peak Number 2 unknown2.92 Concentration Rank 4

R.T.	EstConc	Area	Relative to ISTD	R.T.
2.92	21.72 ng	685749	1,4-Dichlorobenzene-d4	7.69

Hit#	of	Tentative ID	MW	MolForm	CAS#	Qual
1	5	Butane, 2-methoxy-2-methyl-	102	C6H14O	000994-05-8	39
2		N-Ethylformamide	73	C3H7NO	000627-45-2	9
3		1,3-Dioxolane, 2-pentadecyl-	284	C18H36O2	004360-57-0	9
4		2,2,4-Trimethyl-3-pentanol	130	C8H18O	005162-48-1	9
5		3-Pentanol, 2,4-dimethyl-	116	C7H16O	000600-36-2	9



Data Path : Z:\HPCHEM1\BNA_G\DATA\BG012615\
 Data File : BG015944.D
 Acq On : 27 Jan 2015 12:37
 Operator : TP/IZ
 Sample : G1167-11
 Misc : W
 ALS Vial : 28 Sample Multiplier: 1

Instrument :
 BNA_G
 ClientSampleID :
 WC-01

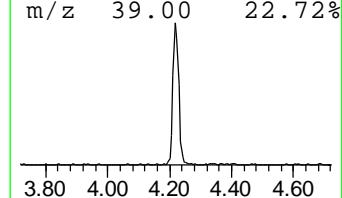
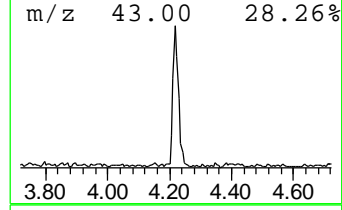
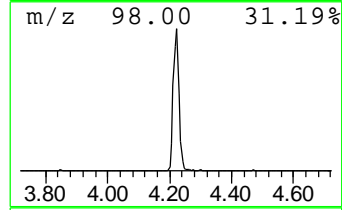
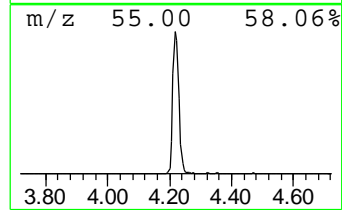
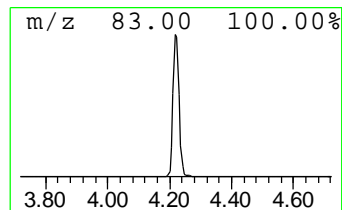
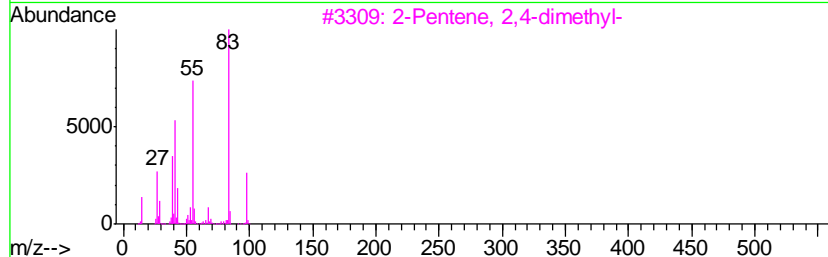
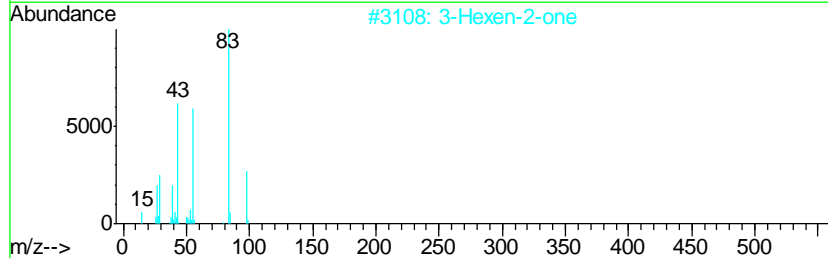
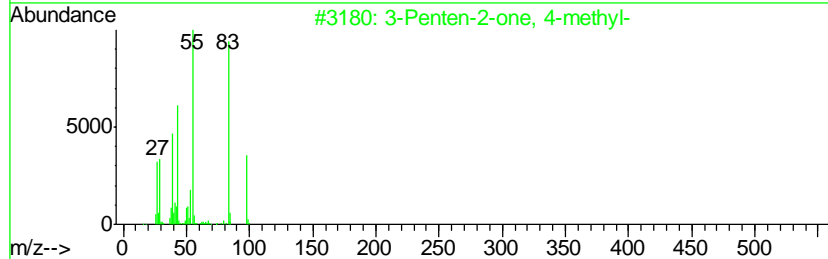
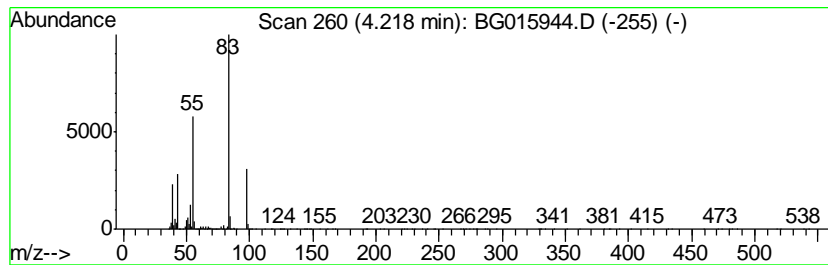
Quant Method : Z:\HPCHEM1\BNA_G\METHODS\8270-BG012015.M
 Quant Title : ASP BNA STANDARDS FOR 5 POINT CALIBRATION

TIC Library : C:\DATABASE\NIST02.L
 TIC Integration Parameters: LSCINT.P

 Peak Number 4 3-Penten-2-one, 4-methyl- Concentration Rank 3

R.T.	EstConc	Area	Relative to ISTD	R.T.
4.22	48.92 ng	1544930	1,4-Dichlorobenzene-d4	7.69

Hit#	of	Tentative ID	MW	MolForm	CAS#	Qual
1	5	3-Penten-2-one, 4-methyl-	98	C6H10O	000141-79-7	91
2		3-Hexen-2-one	98	C6H10O	000763-93-9	91
3		2-Pentene, 2,4-dimethyl-	98	C7H14	000625-65-0	80
4		2-Pentene, 4,4-dimethyl-, (E)-	98	C7H14	000690-08-4	80
5		2-Pentene, 3,4-dimethyl-, (Z)-	98	C7H14	004914-91-4	72



Data Path : Z:\HPCHEM1\BNA_G\DATA\BG012615\
 Data File : BG015944.D
 Acq On : 27 Jan 2015 12:37
 Operator : TP/IZ
 Sample : G1167-11
 Misc : W
 ALS Vial : 28 Sample Multiplier: 1

Instrument :
 BNA_G
 ClientSampleID :
 WC-01

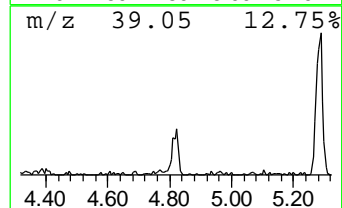
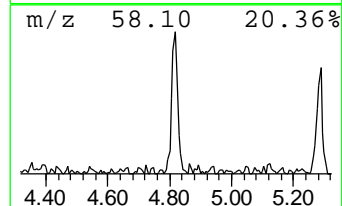
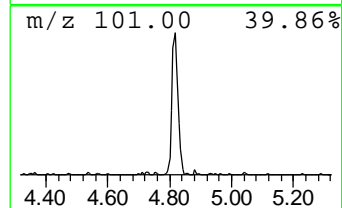
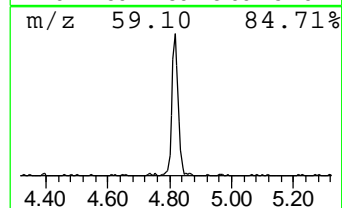
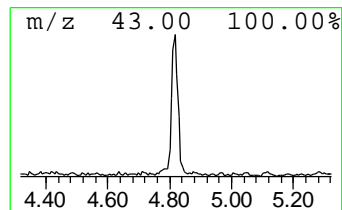
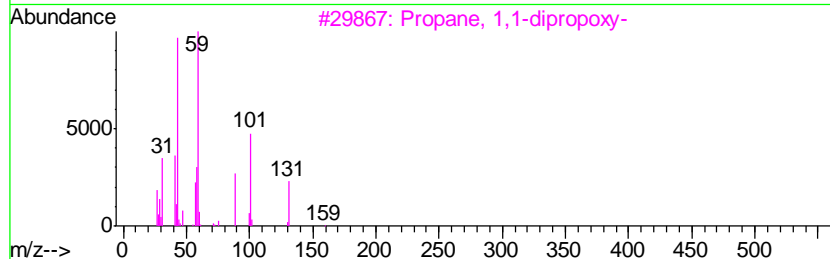
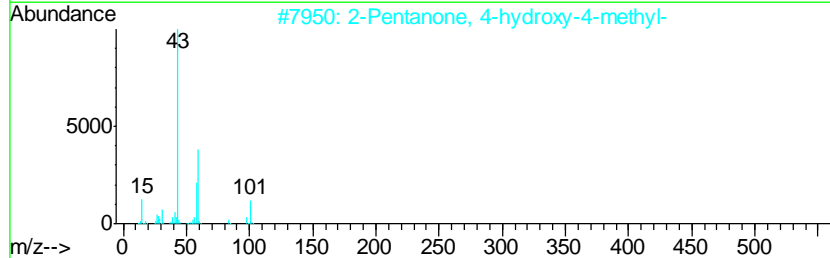
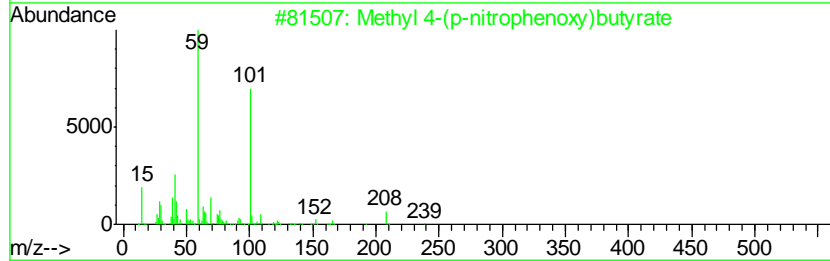
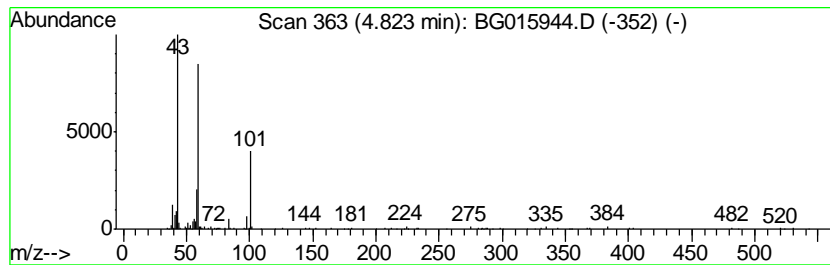
Quant Method : Z:\HPCHEM1\BNA_G\METHODS\8270-BG012015.M
 Quant Title : ASP BNA STANDARDS FOR 5 POINT CALIBRATION

TIC Library : C:\DATABASE\NIST02.L
 TIC Integration Parameters: LSCINT.P

 Peak Number 5 Methyl 4-(p-nitrophenoxy)bu... Concentration Rank 6

R.T.	EstConc	Area	Relative to ISTD	R.T.
4.82	13.94 ng	440283	1,4-Dichlorobenzene-d4	7.69

Hit#	of	Tentative ID	MW	MolForm	CAS#	Qual
1	5	Methyl 4-(p-nitrophenoxy)butyrate	239	C11H13NO5	028341-53-9	64
2		2-Pentanone, 4-hydroxy-4-methyl-	116	C6H12O2	000123-42-2	39
3		Propane, 1,1-dipropoxy-	160	C9H20O2	004744-11-0	39
4		(+)-4-Amino-4,5-dihydro-2(3H)-f...	101	C4H7NO2	016504-58-8	10
5		Guanidine	59	CH5N3	000113-00-8	9



Data Path : Z:\HPCHEM1\BNA_G\DATA\BG012615\
 Data File : BG015944.D
 Acq On : 27 Jan 2015 12:37
 Operator : TP/IZ
 Sample : G1167-11
 Misc : W
 ALS Vial : 28 Sample Multiplier: 1

Instrument :
 BNA_G
 ClientSampleID :
 WC-01

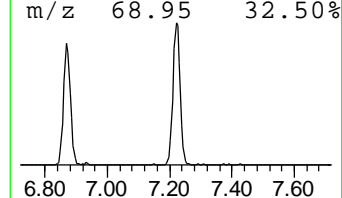
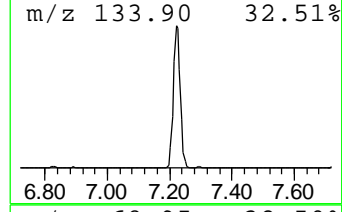
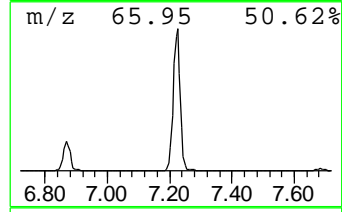
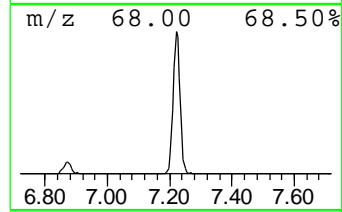
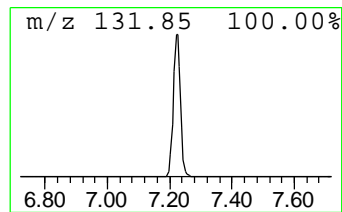
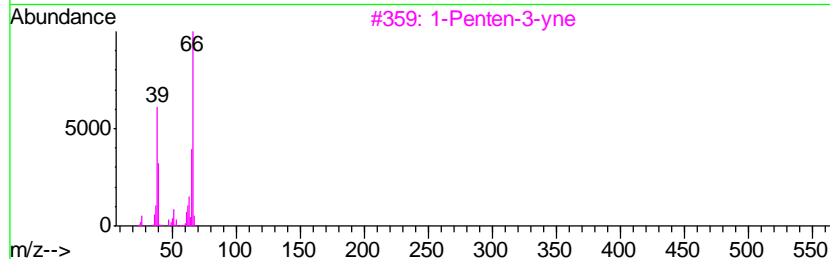
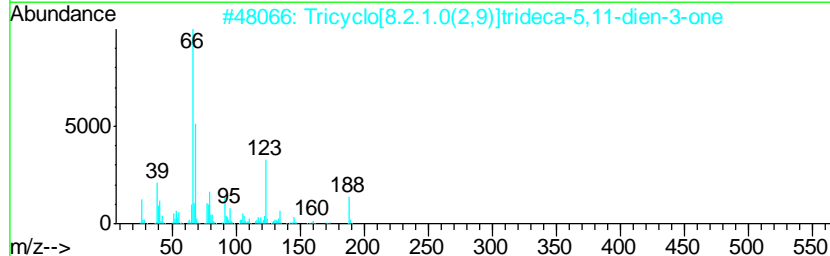
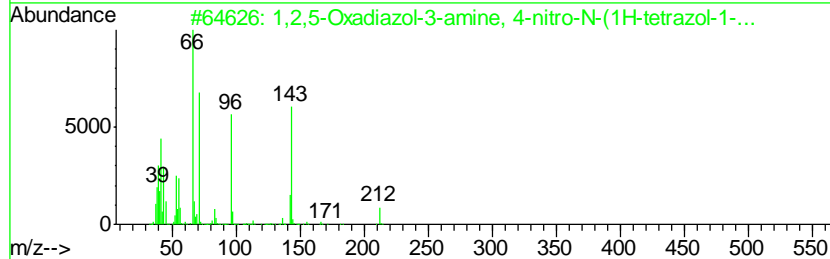
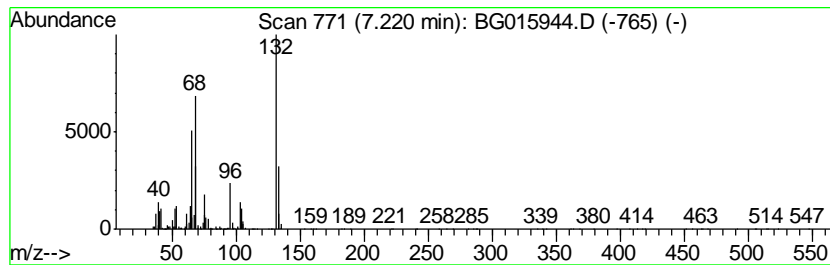
Quant Method : Z:\HPCHEM1\BNA_G\METHODS\8270-BG012015.M
 Quant Title : ASP BNA STANDARDS FOR 5 POINT CALIBRATION

TIC Library : C:\DATABASE\NIST02.L
 TIC Integration Parameters: LSCINT.P

 Peak Number 6 unknown7.22 Concentration Rank 1

R.T.	EstConc	Area	Relative to ISTD	R.T.
7.22	104.32 ng	3294160	1,4-Dichlorobenzene-d4	7.69

Hit#	of	Tentative ID	MW	MolForm	CAS#	Qual
1	5	1,2,5-Oxadiazol-3-amine, 4-nitro...	212	C4H4N8O3	1000277-41-1	32
2		Tricyclo[8.2.1.0(2,9)]trideca-5,...	188	C13H16O	1000163-11-3	32
3		1-Penten-3-yne	66	C5H6	000646-05-9	25
4		1H-Benzimidazole, 2-methyl-	132	C8H8N2	000615-15-6	18
5		3-Penten-1-yne, (E)-	66	C5H6	002004-69-5	17



Data Path : Z:\HPCHEM1\BNA_G\DATA\BG012615\
 Data File : BG015944.D
 Acq On : 27 Jan 2015 12:37
 Operator : TP/IZ
 Sample : G1167-11
 Misc : W
 ALS Vial : 28 Sample Multiplier: 1

Instrument :
 BNA_G
 ClientSampled :
 WC-01

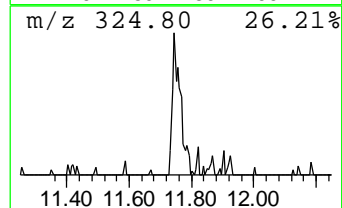
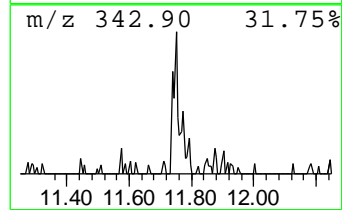
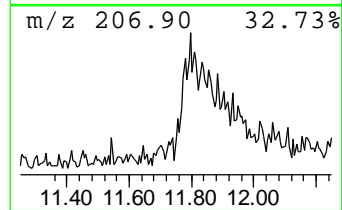
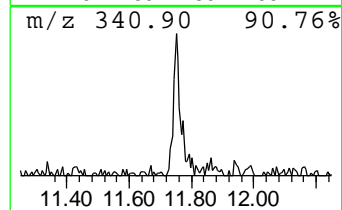
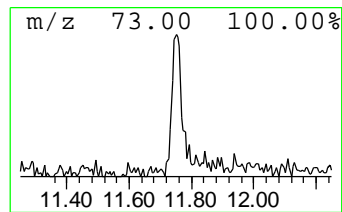
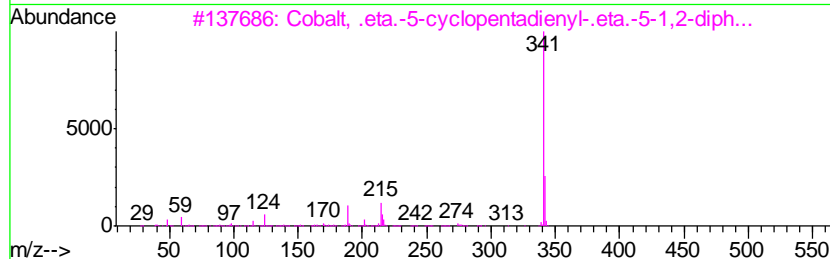
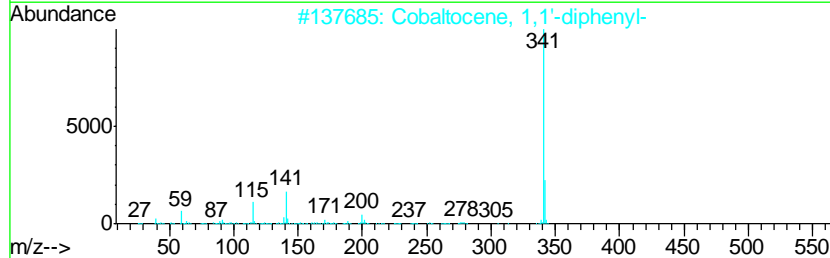
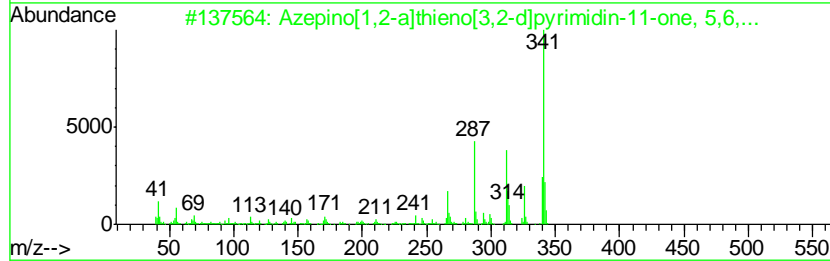
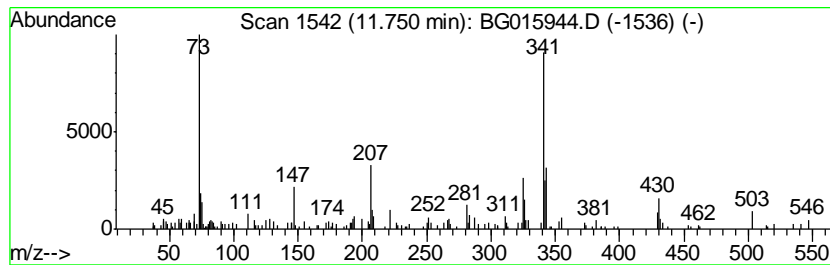
Quant Method : Z:\HPCHEM1\BNA_G\METHODS\8270-BG012015.M
 Quant Title : ASP BNA STANDARDS FOR 5 POINT CALIBRATION

TIC Library : C:\DATABASE\NIST02.L
 TIC Integration Parameters: LSCINT.P

 Peak Number 9 unknown11.75 Concentration Rank 10

R.T.	EstConc	Area	Relative to ISTD	R.T.
11.75	3.69 ng	159240	Naphthalene-d8	10.47

Hit#	of	Tentative ID	MW	MolForm	CAS#	Qual
1	5	Azepino[1,2-a]thieno[3,2-d]pyrim...	341	C17H15N3O3S	312529-71-8	49
2		Cobaltocene, 1,1'-diphenyl-	341	C22H18Co	093083-44-4	49
3		Cobalt, .eta.-5-cyclopentadienyl...	341	C22H18Co	1000161-22-8	47
4		1H-Indole, 1,3-dimethyl-5,6-dime...	341	C20H23NO4	156785-76-1	47
5		5-Amino-7-(4-methoxy-phenyl)-2-p...	341	C20H15N5O	1000294-65-4	47



Data Path : Z:\HPCHEM1\BNA_G\DATA\BG012615\
Data File : BG015944.D
Acq On : 27 Jan 2015 12:37
Operator : TP/IZ
Sample : G1167-11
Misc : W
ALS Vial : 28 Sample Multiplier: 1

Instrument :
BNA_G
ClientSampleId :
WC-01

Quant Method : Z:\HPCHEM1\BNA_G\METHODS\8270-BG012015.M
Quant Title : ASP BNA STANDARDS FOR 5 POINT CALIBRATION

TIC Library : C:\DATABASE\NIST02.L
TIC Integration Parameters: LSCINT.P

TIC Top Hit name	RT	EstConc	Units	Response	--Internal Standard--			
					#	RT	Resp	Conc
unknown2.92	2.92	21.7	ng	685749	1	7.69	631568	20.0
3-Penten-2-one, 4...	4.22	48.9	ng	1544930	1	7.69	631568	20.0
Methyl 4-(p-nitro...	4.82	13.9	ng	440283	1	7.69	631568	20.0
unknown7.22	7.22	104.3	ng	3294160	1	7.69	631568	20.0
unknown11.75	11.75	3.7	ng	159240	2	10.47	863671	20.0