

Data Path : Z:\HPCHEM1\BNA_G\DATA\BG012615\
 Data File : BG015945.D
 Acq On : 27 Jan 2015 13:11
 Operator : TP/IZ
 Sample : G1167-12
 Misc : W
 ALS Vial : 29 Sample Multiplier: 1

Instrument :
 BNA_G
 ClientSampleId :
 WC-02

Integration Parameters: rteint.p
 Integrator: RTE
 Smoothing : ON Filtering: 5
 Sampling : 1 Min Area: 3 % of largest Peak
 Start Thrs: 0.2 Max Peaks: 100
 Stop Thrs : 0 Peak Location: TOP

If leading or trailing edge < 100 prefer < Baseline drop else tangent >
 Peak separation: 5

Method : Z:\HPCHEM1\BNA_G\METHODS\8270-BG012015.M
 Title : ASP BNA STANDARDS FOR 5 POINT CALIBRATION

Signal : TIC

peak #	R.T. min	first scan	max scan	last scan	PK TY	peak height	corr. area	corr. % max.	% of total
1	2.823	18	23	31	rBV2	277736	453103	3.91%	0.954%
2	2.917	34	39	45	rVB	568824	711253	6.13%	1.498%
3	4.221	256	261	270	rVB	506941	603933	5.21%	1.272%
4	4.815	356	362	368	rVB	379425	529323	4.57%	1.115%
5	5.285	435	442	451	rBV	1855696	2732601	23.57%	5.755%
6	6.871	701	712	723	rBV	1833903	2943120	25.39%	6.198%
7	7.224	765	772	779	rBV	2063423	3177118	27.40%	6.691%
8	7.688	842	851	858	rBV	376089	629425	5.43%	1.326%
9	8.005	897	905	912	rVB	1558192	2434568	21.00%	5.127%
10	8.845	1040	1048	1056	rBV	1334564	2240609	19.33%	4.719%
11	10.473	1315	1325	1330	rBV	488923	828610	7.15%	1.745%
12	12.947	1739	1746	1753	rBV	3754001	5348370	46.13%	11.263%
13	13.328	1805	1811	1816	rBV8	67903	174701	1.51%	0.368%
14	14.327	1974	1981	1987	rBV2	819325	1283557	11.07%	2.703%
15	15.532	2181	2186	2191	rBV6	80582	140823	1.21%	0.297%
16	15.826	2229	2236	2252	rBV	3631592	5521619	47.63%	11.628%
17	17.077	2442	2449	2457	rBV2	1390441	1956724	16.88%	4.121%
18	19.715	2892	2898	2908	rBV	8872332	11593615	100.00%	24.416%
19	21.266	3156	3162	3172	rBV	1984853	2614578	22.55%	5.506%
20	23.522	3539	3546	3557	rBV2	733767	1566934	13.52%	3.300%

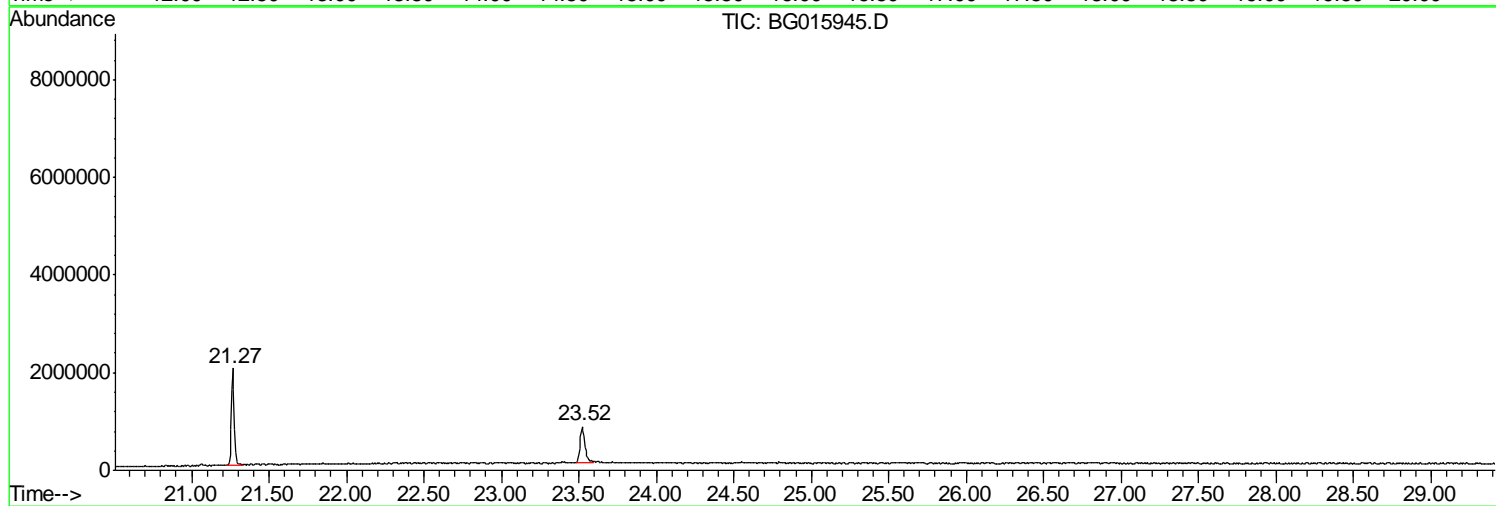
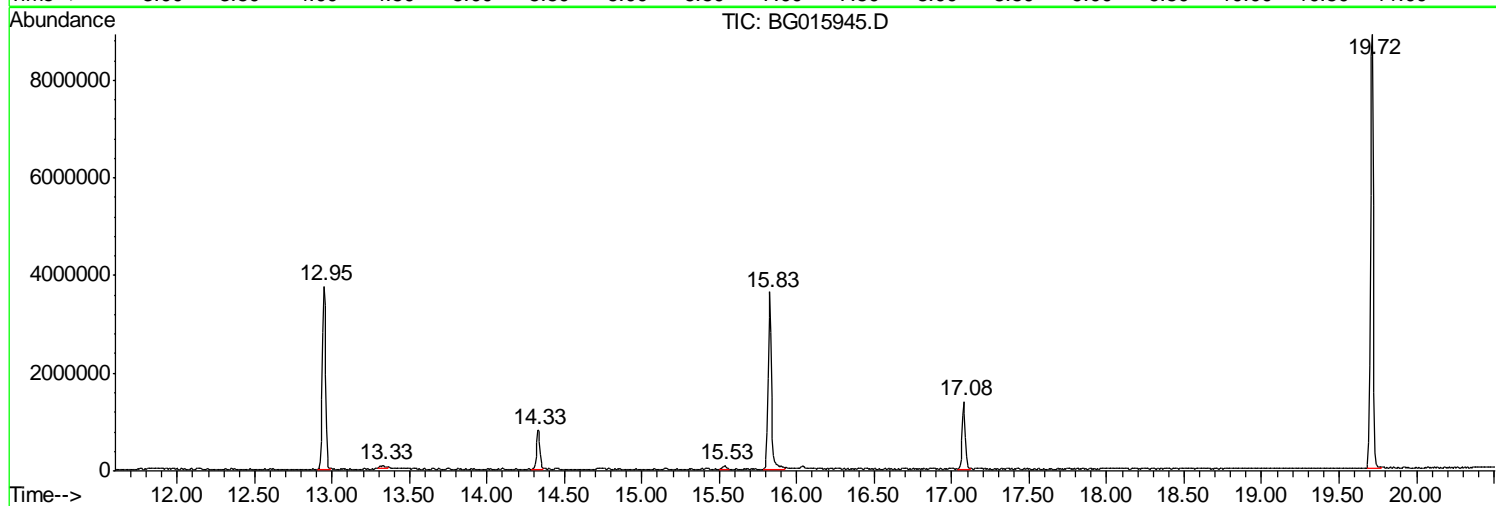
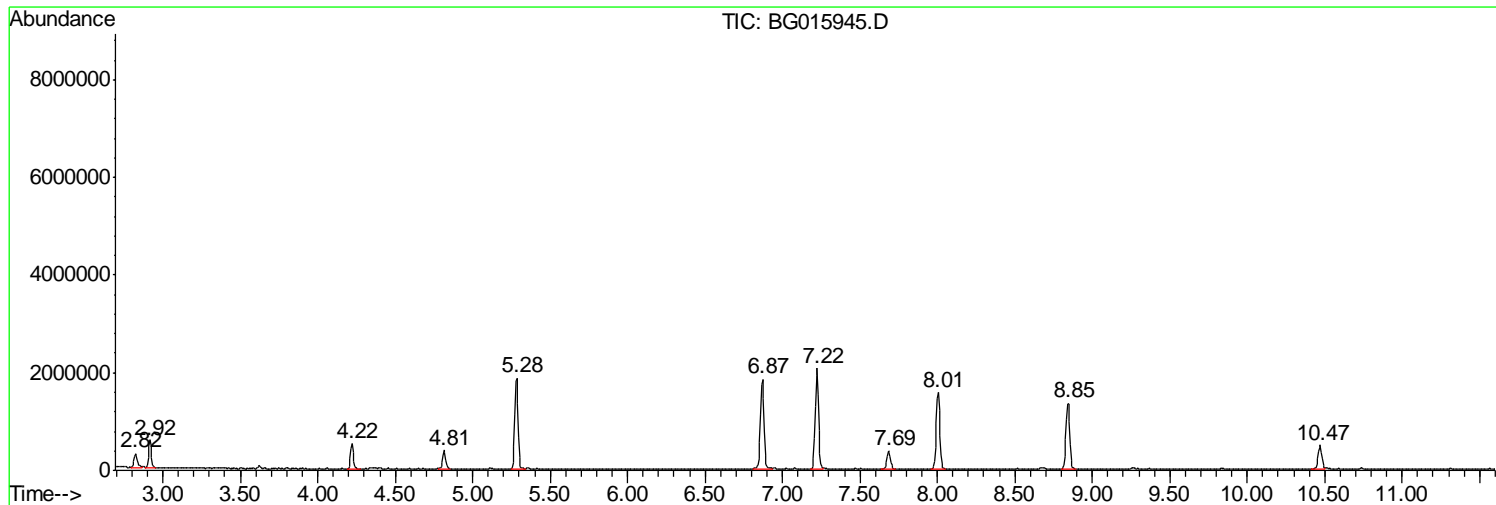
Sum of corrected areas: 47484584

Data Path : Z:\HPCHEM1\BNA_G\DATA\BG012615\
Data File : BG015945.D
Acq On : 27 Jan 2015 13:11
Operator : TP/IZ
Sample : G1167-12
Misc : W
ALS Vial : 29 Sample Multiplier: 1

Instrument :
BNA_G
ClientSampled :
WC-02

Quant Method : Z:\HPCHEM1\BNA_G\METHODS\8270-BG012015.M
Quant Title : ASP BNA STANDARDS FOR 5 POINT CALIBRATION

TIC Library : C:\DATABASE\NIST02.L
TIC Integration Parameters: LSCINT.P



Data Path : Z:\HPCHEM1\BNA_G\DATA\BG012615\
 Data File : BG015945.D
 Acq On : 27 Jan 2015 13:11
 Operator : TP/IZ
 Sample : G1167-12
 Misc : W
 ALS Vial : 29 Sample Multiplier: 1

Instrument :
 BNA_G
 ClientSampled :
 WC-02

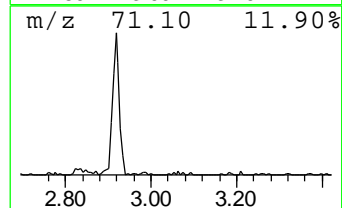
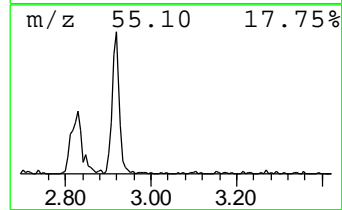
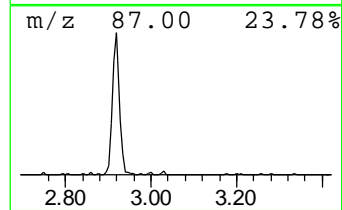
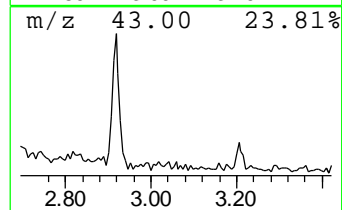
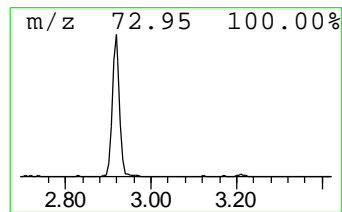
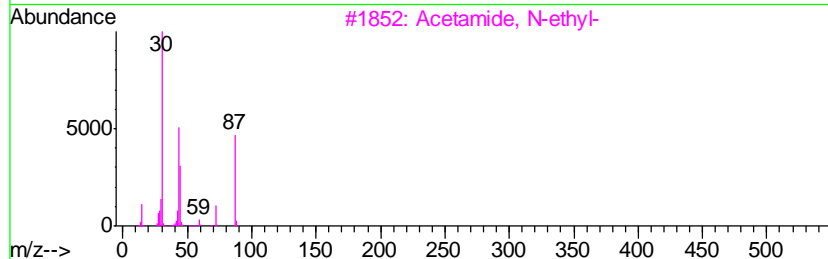
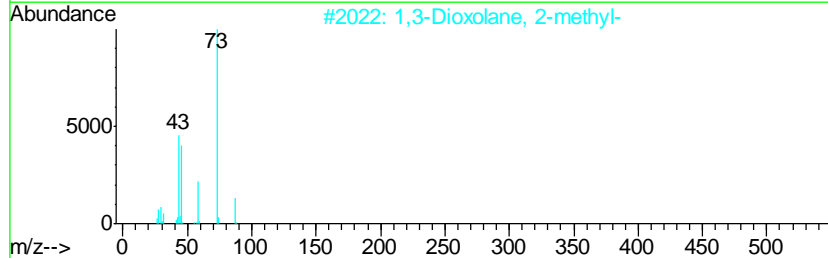
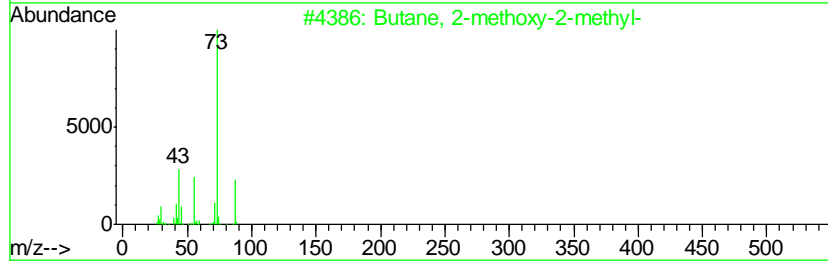
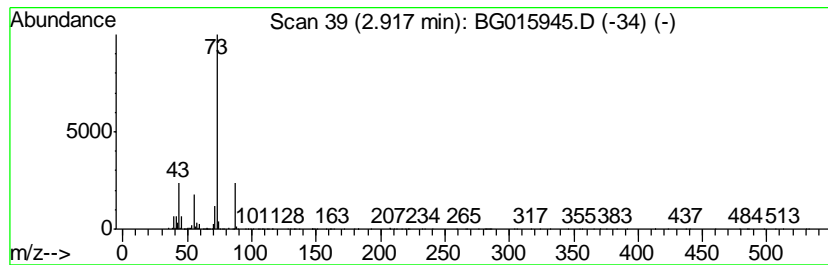
Quant Method : Z:\HPCHEM1\BNA_G\METHODS\8270-BG012015.M
 Quant Title : ASP BNA STANDARDS FOR 5 POINT CALIBRATION

TIC Library : C:\DATABASE\NIST02.L
 TIC Integration Parameters: LSCINT.P

 Peak Number 2 Butane, 2-methoxy-2-methyl- Concentration Rank 3

R.T.	EstConc	Area	Relative to ISTD	R.T.
2.92	22.60 ng	711253	1,4-Dichlorobenzene-d4	7.69

Hit#	of	Tentative ID	MW	MolForm	CAS#	Qual
1	5	Butane, 2-methoxy-2-methyl-	102	C6H14O	000994-05-8	72
2		1,3-Dioxolane, 2-methyl-	88	C4H8O2	000497-26-7	9
3		Acetamide, N-ethyl-	87	C4H9NO	000625-50-3	9
4		N-Ethylformamide	73	C3H7NO	000627-45-2	9
5		1,3-Dioxolane, 2-pentadecyl-	284	C18H36O2	004360-57-0	9



Data Path : Z:\HPCHEM1\BNA_G\DATA\BG012615\
 Data File : BG015945.D
 Acq On : 27 Jan 2015 13:11
 Operator : TP/IZ
 Sample : G1167-12
 Misc : W
 ALS Vial : 29 Sample Multiplier: 1

Instrument :
 BNA_G
 ClientSampleID :
 WC-02

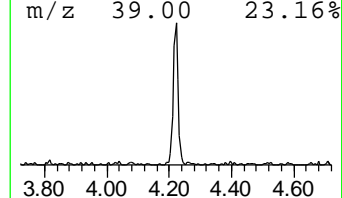
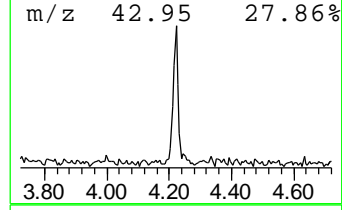
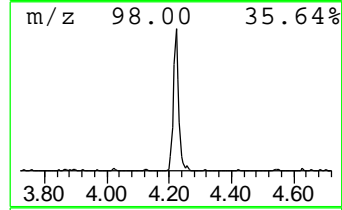
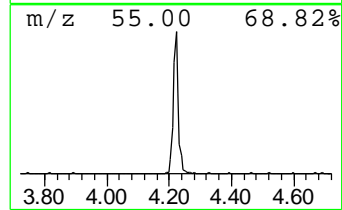
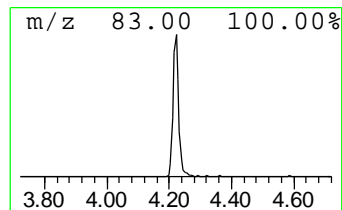
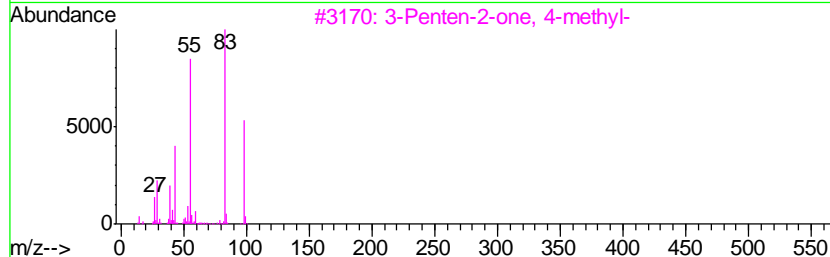
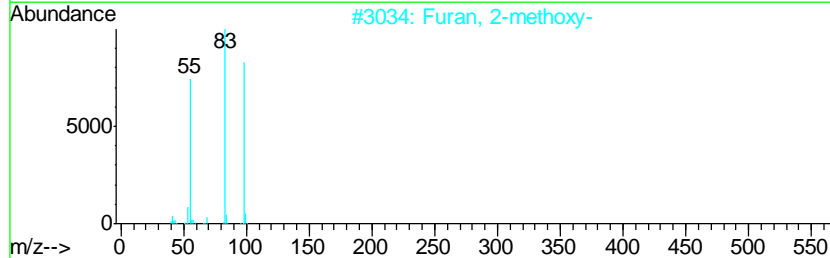
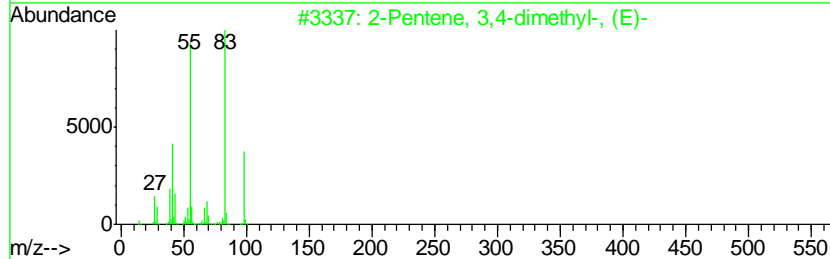
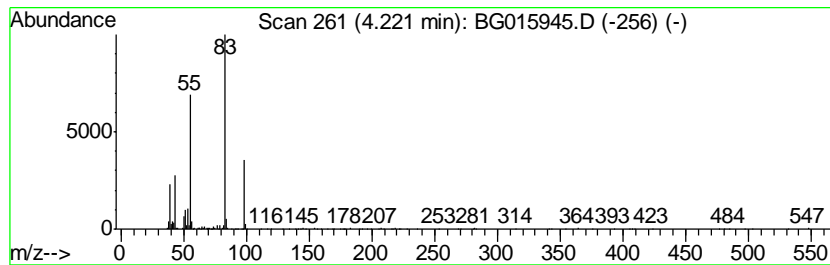
Quant Method : Z:\HPCHEM1\BNA_G\METHODS\8270-BG012015.M
 Quant Title : ASP BNA STANDARDS FOR 5 POINT CALIBRATION

TIC Library : C:\DATABASE\NIST02.L
 TIC Integration Parameters: LSCINT.P

 Peak Number 3 2-Pentene, 3,4-dimethyl-, (E)- Concentration Rank 4

R.T.	EstConc	Area	Relative to ISTD	R.T.
4.22	19.19 ng	603933	1,4-Dichlorobenzene-d4	7.69

Hit#	of	Tentative ID	MW	MolForm	CAS#	Qual
1	5	2-Pentene, 3,4-dimethyl-, (E)-	98	C7H14	004914-92-5	80
2		Furan, 2-methoxy-	98	C5H6O2	025414-22-6	80
3		3-Penten-2-one, 4-methyl-	98	C6H10O	000141-79-7	80
4		2-Pentene, 3,4-dimethyl-, (Z)-	98	C7H14	004914-91-4	78
5		Furan, 2,5-dihydro-2,5-dimethyl-	98	C6H10O	059242-27-2	72



Data Path : Z:\HPCHEM1\BNA_G\DATA\BG012615\
 Data File : BG015945.D
 Acq On : 27 Jan 2015 13:11
 Operator : TP/IZ
 Sample : G1167-12
 Misc : W
 ALS Vial : 29 Sample Multiplier: 1

Instrument :
 BNA_G
 ClientSampleID :
 WC-02

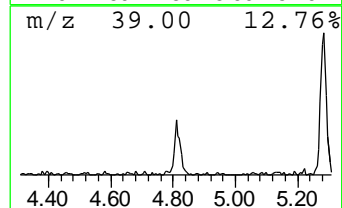
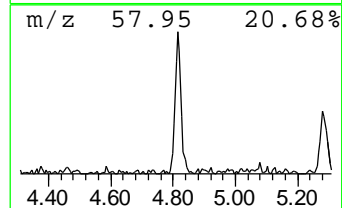
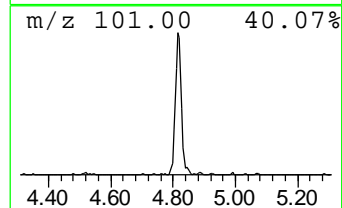
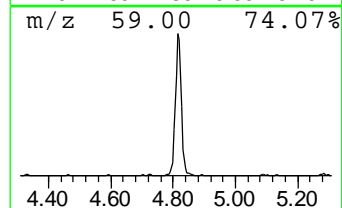
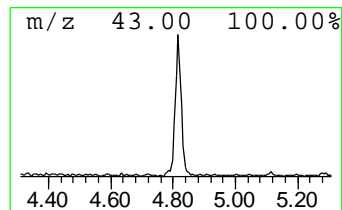
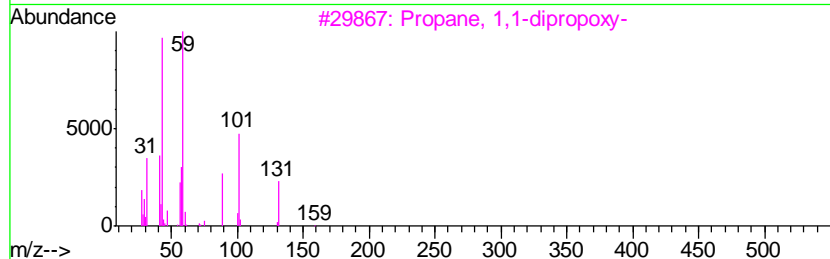
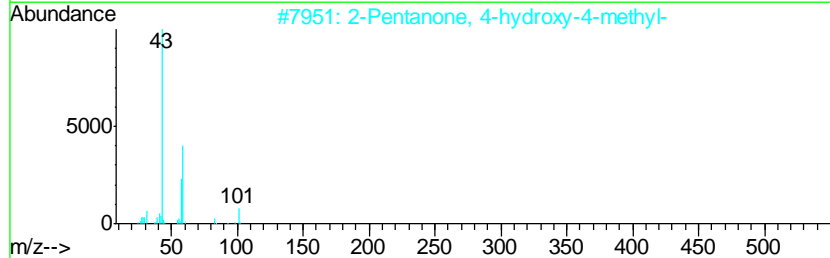
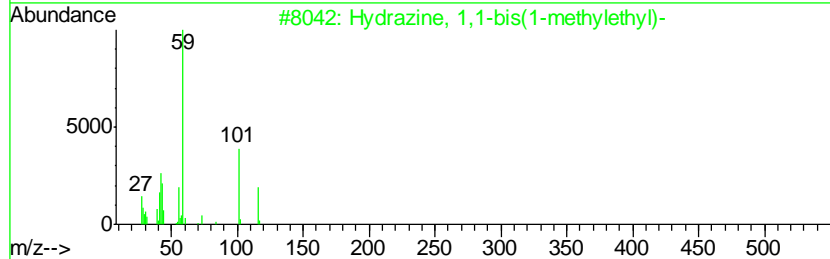
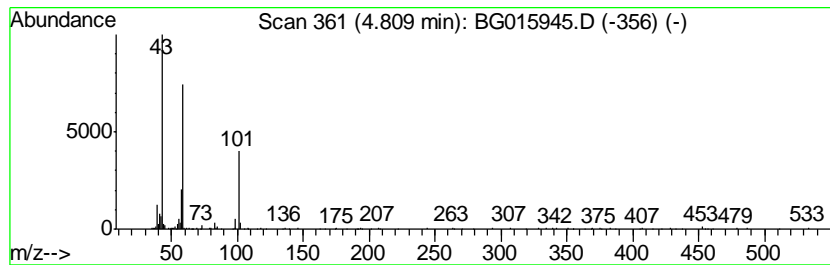
Quant Method : Z:\HPCHEM1\BNA_G\METHODS\8270-BG012015.M
 Quant Title : ASP BNA STANDARDS FOR 5 POINT CALIBRATION

TIC Library : C:\DATABASE\NIST02.L
 TIC Integration Parameters: LSCINT.P

 Peak Number 4 Hydrazine, 1,1-bis(1-methyl... Concentration Rank 5

R.T.	EstConc	Area	Relative to ISTD	R.T.
4.81	16.82 ng	529323	1,4-Dichlorobenzene-d4	7.69

Hit#	of	Tentative ID	MW	MolForm	CAS#	Qual
1	5	Hydrazine, 1,1-bis(1-methylethyl)-	116	C6H16N2	000921-14-2	53
2		2-Pentanone, 4-hydroxy-4-methyl-	116	C6H12O2	000123-42-2	40
3		Propane, 1,1-dipropoxy-	160	C9H20O2	004744-11-0	39
4		3-Hydroxy-3-methyl-2-butanone	102	C5H10O2	000115-22-0	37
5		4-Ethyl-3-octanol	158	C10H22O	019781-26-1	33



Data Path : Z:\HPCHEM1\BNA_G\DATA\BG012615\
 Data File : BG015945.D
 Acq On : 27 Jan 2015 13:11
 Operator : TP/IZ
 Sample : G1167-12
 Misc : W
 ALS Vial : 29 Sample Multiplier: 1

Instrument :
 BNA_G
 ClientSampleID :
 WC-02

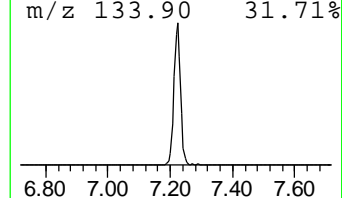
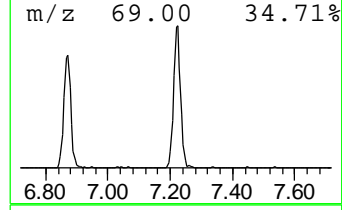
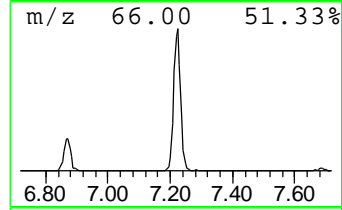
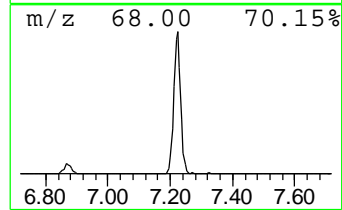
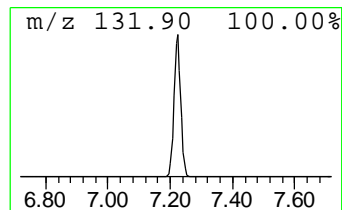
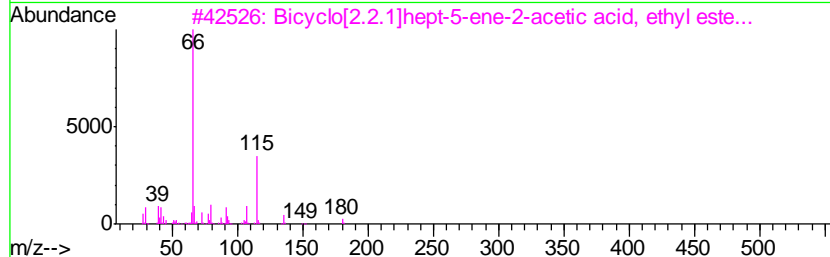
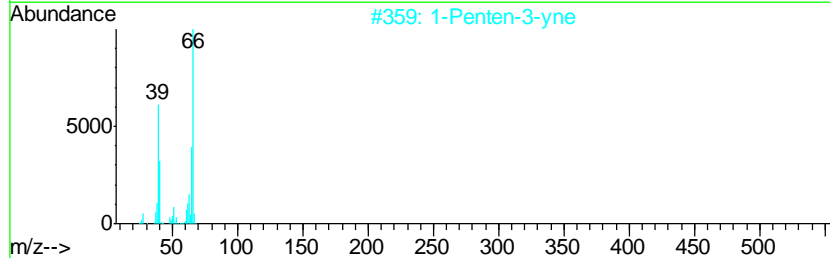
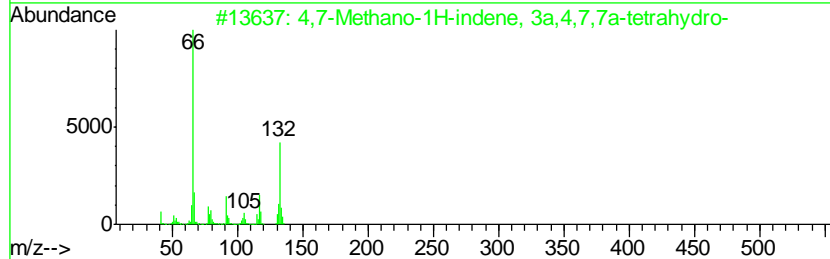
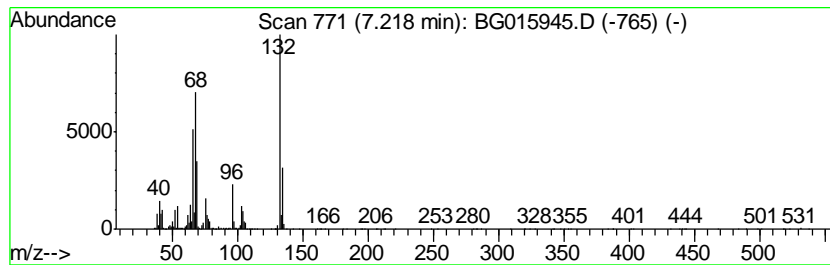
Quant Method : Z:\HPCHEM1\BNA_G\METHODS\8270-BG012015.M
 Quant Title : ASP BNA STANDARDS FOR 5 POINT CALIBRATION

TIC Library : C:\DATABASE\NIST02.L
 TIC Integration Parameters: LSCINT.P

 Peak Number 5 unknown7.22 Concentration Rank 1

R.T.	EstConc	Area	Relative to ISTD	R.T.
7.22	100.95 ng	3177120	1,4-Dichlorobenzene-d4	7.69

Hit#	of	Tentative ID	MW	MolForm	CAS#	Qual
1	4,7-Methano-1H-indene, 3a,4,7,7a...	132	C10H12	000077-73-6	40	
2	1-Penten-3-yne	66	C5H6	000646-05-9	35	
3	Bicyclo[2.2.1]hept-5-ene-2-aceti...	180	C11H16O2	074876-17-8	35	
4	3-Penten-1-yne, (Z)-	66	C5H6	001574-40-9	25	
5	1H-Benzimidazole, 2-methyl-	132	C8H8N2	000615-15-6	18	



Data Path : Z:\HPCHEM1\BNA_G\DATA\BG012615\
 Data File : BG015945.D
 Acq On : 27 Jan 2015 13:11
 Operator : TP/IZ
 Sample : G1167-12
 Misc : W
 ALS Vial : 29 Sample Multiplier: 1

Instrument :
 BNA_G
 ClientSampleId :
 WC-02

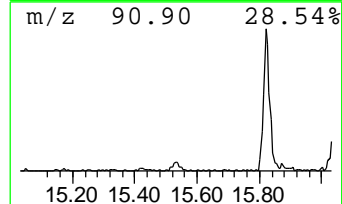
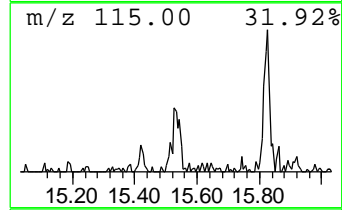
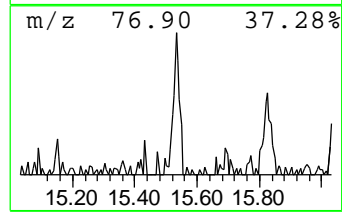
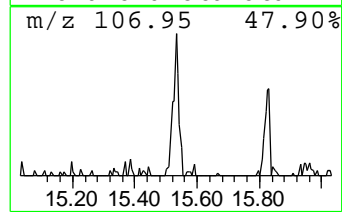
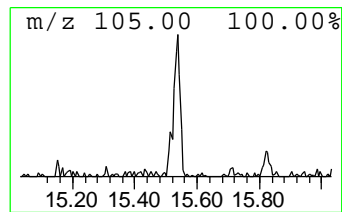
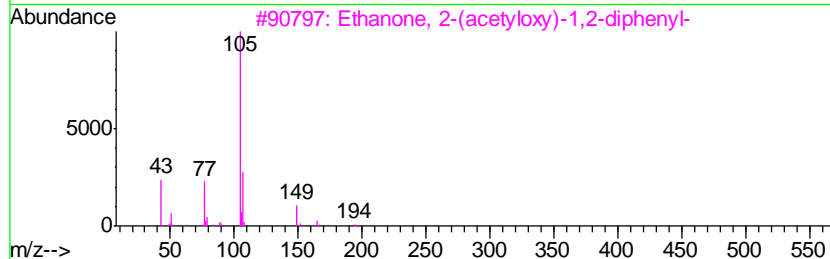
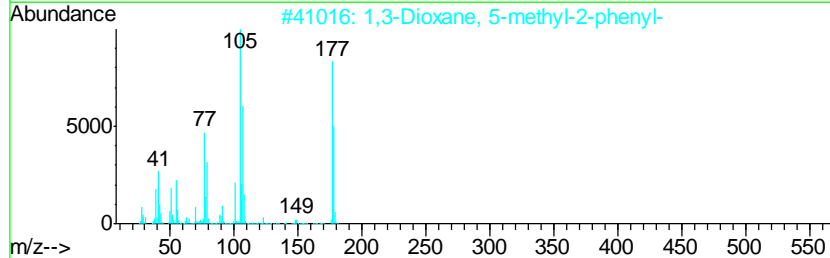
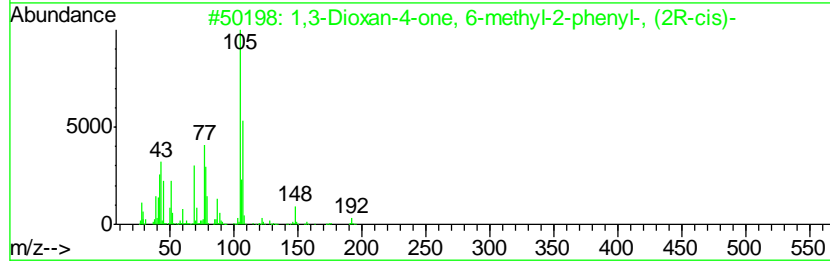
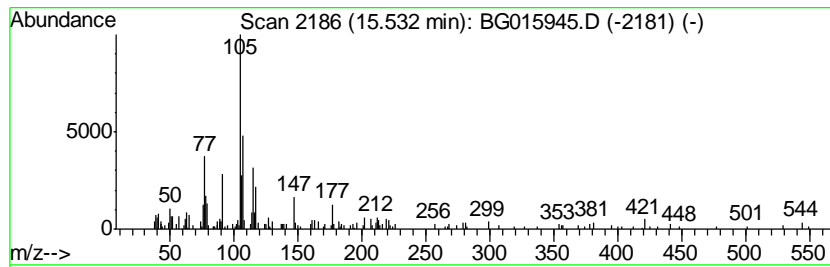
Quant Method : Z:\HPCHEM1\BNA_G\METHODS\8270-BG012015.M
 Quant Title : ASP BNA STANDARDS FOR 5 POINT CALIBRATION

TIC Library : C:\DATABASE\NIST02.L
 TIC Integration Parameters: LSCINT.P

 Peak Number 8 unknown15.53 Concentration Rank 8

R.T.	EstConc	Area	Relative to ISTD	R.T.
15.53	2.19 ng	140823	Acenaphthene-d10	14.33

Hit#	of	Tentative ID	MW	MolForm	CAS#	Qual
1	5	1,3-Dioxan-4-one, 6-methyl-2-phe...	192	C11H12O3	112463-28-2	38
2		1,3-Dioxane, 5-methyl-2-phenyl-	178	C11H14O2	027942-89-8	32
3		Ethanone, 2-(acetyloxy)-1,2-diph...	254	C16H14O3	000574-06-1	32
4		N-Benzoyltyrosine	285	C16H15NO4	1000130-44-9	32
5		4-Heptanone, 1,7-dichloro-	182	C7H12Cl2O	040624-07-5	25



Data Path : Z:\HPCHEM1\BNA_G\DATA\BG012615\
Data File : BG015945.D
Acq On : 27 Jan 2015 13:11
Operator : TP/IZ
Sample : G1167-12
Misc : W
ALS Vial : 29 Sample Multiplier: 1

Instrument :
BNA_G
ClientSampleId :
WC-02

Quant Method : Z:\HPCHEM1\BNA_G\METHODS\8270-BG012015.M
Quant Title : ASP BNA STANDARDS FOR 5 POINT CALIBRATION

TIC Library : C:\DATABASE\NIST02.L
TIC Integration Parameters: LSCINT.P

TIC Top Hit name	RT	EstConc	Units	Response	--Internal Standard--			
					#	RT	Resp	Conc
Butane, 2-methoxy...	2.92	22.6	ng	711253	1	7.69	629425	20.0
2-Pentene, 3,4-di...	4.22	19.2	ng	603933	1	7.69	629425	20.0
Hydrazine, 1,1-bi...	4.81	16.8	ng	529323	1	7.69	629425	20.0
unknown7.22	7.22	101.0	ng	3177120	1	7.69	629425	20.0
unknown15.53	15.53	2.2	ng	140823	3	14.33	1283560	20.0