

Data Path : Z:\HPCHEM1\BNA\_G\DATA\BG012617\  
 Data File : BG025675.D  
 Acq On : 26 Jan 2017 20:32  
 Operator : SJ/MA  
 Sample : I1425-04  
 Misc :  
 ALS Vial : 15 Sample Multiplier: 1

Instrument :  
 BNA\_G  
 ClientSampleId :  
 BDP91

Integration Parameters: LSCINT.P

Integrator: RTE  
 Smoothing : ON  
 Sampling : 1  
 Start Thrs: 0.1  
 Stop Thrs : 0

Filtering: 5  
 Min Area: 0.1 % of largest Peak  
 Max Peaks: 100  
 Peak Location: TOP

If leading or trailing edge < 100 prefer < Baseline drop else tangent >  
 Peak separation: 1

Method : Z:\HPCHEM1\BNA\_G\METHODS\SOM02.2-EPA-BG011817.M  
 Title : SVOA CALIBRATION

Signal : TIC

peak #	R.T. min	first scan	max scan	last scan	PK TY	peak height	corr. area	corr. % max.	% of total
1	3.337	82	85	93	rVB5	10293	19624	0.67%	0.057%
2	3.519	111	116	122	rVB4	19341	42145	1.44%	0.122%
3	3.842	169	171	176	rBV4	6836	8587	0.29%	0.025%
4	4.383	260	263	268	rVB5	6546	11826	0.41%	0.034%
5	4.424	268	270	274	rBV4	6861	7702	0.26%	0.022%
6	4.500	279	283	289	rBV7	4462	8234	0.28%	0.024%
7	5.094	382	384	389	rVB5	5541	7464	0.26%	0.022%
8	5.252	407	411	414	rVB4	8868	11777	0.40%	0.034%
9	5.299	414	419	422	rBV6	4933	10936	0.37%	0.032%
10	6.357	596	599	603	rVV6	4870	8373	0.29%	0.024%
11	7.215	740	745	748	rBV5	4116	8523	0.29%	0.025%
12	7.256	748	752	757	rVB5	8851	14132	0.48%	0.041%
13	7.338	757	766	782	rBV2	308956	803065	27.52%	2.331%
14	7.491	786	792	806	rVB	245482	441679	15.14%	1.282%
15	7.614	811	813	819	rVB6	7289	11668	0.40%	0.034%
16	7.708	819	829	844	rBV2	323840	643911	22.07%	1.869%
17	8.061	884	889	891	rBV3	5722	9090	0.31%	0.026%
18	8.178	899	909	927	rVB	244292	493105	16.90%	1.431%
19	8.813	1015	1017	1023	rVB2	5524	9807	0.34%	0.028%
20	8.895	1023	1031	1050	rBV2	400774	833707	28.57%	2.420%
21	9.018	1050	1052	1058	rVV6	6687	10267	0.35%	0.030%
22	9.265	1090	1094	1097	rVB3	7588	10630	0.36%	0.031%
23	9.359	1100	1110	1121	rBV	357111	715762	24.53%	2.078%
24	9.676	1159	1164	1170	rBV6	11152	19778	0.68%	0.057%
25	9.864	1195	1196	1204	rVB4	5001	7855	0.27%	0.023%
26	9.929	1204	1207	1213	rBV5	5495	7876	0.27%	0.023%
27	10.088	1227	1234	1245	rBV2	344311	660877	22.65%	1.918%
28	10.464	1294	1298	1300	rBV4	7102	7447	0.26%	0.022%
29	10.640	1319	1328	1358	rBV2	382932	908884	31.15%	2.638%
30	11.004	1381	1390	1398	rBV2	367589	686619	23.53%	1.993%
31	11.151	1405	1415	1434	rBV3	330381	787109	26.98%	2.285%
32	11.474	1467	1470	1476	rVB5	6341	11066	0.38%	0.032%
33	11.545	1476	1482	1484	rBV4	6705	11150	0.38%	0.032%
34	12.344	1612	1618	1622	rBV2	4925	8186	0.28%	0.024%

Data Path : Z:\HPCHEM1\BNA\_G\DATA\BG012617\  
 Data File : BG025675.D  
 Acq On : 26 Jan 2017 20:32  
 Operator : SJ/MA  
 Sample : I1425-04  
 Misc :  
 ALS Vial : 15 Sample Multiplier: 1

Instrument :  
 BNA\_G  
 ClientSampleId :  
 BDP91

## Integration Parameters: LSCINT.P

Integrator: RTE  
 Smoothing : ON  
 Sampling : 1  
 Start Thrs: 0.1  
 Stop Thrs : 0

Filtering: 5  
 Min Area: 0.1 % of largest Peak  
 Max Peaks: 100  
 Peak Location: TOP

If leading or trailing edge < 100 prefer < Baseline drop else tangent >  
 Peak separation: 1

Method : Z:\HPCHEM1\BNA\_G\METHODS\SOM02.2-EPA-BG011817.M  
 Title : SVOA CALIBRATION

35	12.467	1637	1639	1644	rVB3	5562	8482	0.29%	0.025%
36	12.608	1656	1663	1670	rBV6	9273	17729	0.61%	0.051%
37	12.796	1690	1695	1699	rVB5	6562	12873	0.44%	0.037%
38	12.843	1699	1703	1708	rBV4	4932	10899	0.37%	0.032%
39	13.131	1749	1752	1760	rBV7	6165	14297	0.49%	0.042%
40	13.319	1779	1784	1788	rVB5	5686	10135	0.35%	0.029%
41	13.390	1792	1796	1802	rBV7	7979	14441	0.49%	0.042%
42	13.666	1835	1843	1849	rVB5	12427	26979	0.92%	0.078%
43	13.830	1869	1871	1877	rVB3	5012	7490	0.26%	0.022%
44	13.995	1893	1899	1906	rBV5	21563	40997	1.41%	0.119%
45	14.201	1926	1934	1939	rBV	943907	1441710	49.41%	4.185%
46	14.248	1939	1942	1956	rVB	136510	220157	7.55%	0.639%
47	14.424	1967	1972	1977	rBV5	7846	12856	0.44%	0.037%
48	14.506	1979	1986	1998	rBV	968788	1600528	54.85%	4.646%
49	14.653	2006	2011	2020	rBV4	18897	35369	1.21%	0.103%
50	14.806	2028	2037	2048	rBV	654829	1042442	35.73%	3.026%
51	14.911	2052	2055	2060	rBV4	4351	8510	0.29%	0.025%
52	15.052	2073	2079	2101	rBV3	216776	669940	22.96%	1.945%
53	15.193	2101	2103	2108	rVB4	10279	15096	0.52%	0.044%
54	15.558	2158	2165	2167	rBV6	12831	24241	0.83%	0.070%
55	15.593	2167	2171	2176	rVB3	48649	66071	2.26%	0.192%
56	15.658	2179	2182	2186	rBV5	6235	9416	0.32%	0.027%
57	15.710	2186	2191	2197	rVB7	6069	9331	0.32%	0.027%
58	15.799	2197	2206	2219	rBV	1298257	2134832	73.16%	6.197%
59	15.945	2224	2231	2243	rBV2	366849	730909	25.05%	2.122%
60	16.040	2244	2247	2252	rVB6	22527	37594	1.29%	0.109%
61	16.087	2253	2255	2259	rVB4	12043	14176	0.49%	0.041%
62	16.139	2259	2264	2269	rBV9	11514	21467	0.74%	0.062%
63	16.210	2273	2276	2282	rVB7	12295	19465	0.67%	0.057%
64	16.269	2282	2286	2291	rBV5	7512	16429	0.56%	0.048%
65	16.404	2302	2309	2311	rBV7	8859	17849	0.61%	0.052%
66	16.451	2311	2317	2330	rVV2	69624	137228	4.70%	0.398%
67	16.780	2371	2373	2375	rBV3	10673	9051	0.31%	0.026%
68	17.021	2413	2414	2419	rVB5	8775	8516	0.29%	0.025%
69	17.068	2419	2422	2427	rBV6	6744	10255	0.35%	0.030%
70	17.156	2435	2437	2442	rBV6	6702	10569	0.36%	0.031%
71	17.244	2444	2452	2457	rBV2	45068	68888	2.36%	0.200%

Data Path : Z:\HPCHEM1\BNA\_G\DATA\BG012617\  
 Data File : BG025675.D  
 Acq On : 26 Jan 2017 20:32  
 Operator : SJ/MA  
 Sample : I1425-04  
 Misc :  
 ALS Vial : 15 Sample Multiplier: 1

Instrument :  
 BNA\_G  
 ClientSampleId :  
 BDP91

## Integration Parameters: LSCINT.P

Integrator: RTE  
 Smoothing : ON Filtering: 5  
 Sampling : 1 Min Area: 0.1 % of largest Peak  
 Start Thrs: 0.1 Max Peaks: 100  
 Stop Thrs : 0 Peak Location: TOP

If leading or trailing edge < 100 prefer < Baseline drop else tangent >  
 Peak separation: 1

Method : Z:\HPCHEM1\BNA\_G\METHODS\SOM02.2-EPA-BG011817.M  
 Title : SVOA CALIBRATION

72	17.285	2457	2459	2465	rVB5	13661	20118	0.69%	0.058%
73	17.344	2466	2469	2474	rVV7	9483	15209	0.52%	0.044%
74	17.403	2474	2479	2485	rVB7	7250	20057	0.69%	0.058%
75	17.555	2498	2505	2515	rBV2	815616	1304319	44.70%	3.786%
76	17.655	2515	2522	2531	rVV2	1445761	2321175	79.55%	6.738%
77	17.802	2542	2547	2554	rVB9	8681	16621	0.57%	0.048%
78	17.984	2573	2578	2581	rBV6	19370	28147	0.96%	0.082%
79	18.178	2606	2611	2616	rBV9	9504	22696	0.78%	0.066%
80	18.396	2641	2648	2660	rBV5	78200	160006	5.48%	0.464%
81	18.578	2675	2679	2684	rVB8	15748	22684	0.78%	0.066%
82	18.666	2690	2694	2696	rBV4	9311	14200	0.49%	0.041%
83	18.795	2714	2716	2722	rBV7	10399	19344	0.66%	0.056%
84	19.324	2805	2806	2810	rBV4	8306	8006	0.27%	0.023%
85	19.571	2843	2848	2856	rVB3	28323	52822	1.81%	0.153%
86	19.653	2859	2862	2870	rBV8	23703	39199	1.34%	0.114%
87	19.794	2878	2886	2895	rBV	2368134	2917895	100.00%	8.470%
88	19.935	2903	2910	2917	rBV	1749046	2673375	91.62%	7.761%
89	20.334	2974	2978	2980	rBV5	13912	19360	0.66%	0.056%
90	20.387	2983	2987	2990	rVB6	12108	18442	0.63%	0.054%
91	20.828	3057	3062	3069	rVB	2126299	2438999	83.59%	7.080%
92	21.416	3157	3162	3172	rVB9	53766	116118	3.98%	0.337%
93	21.844	3228	3235	3248	rBV	850337	1574294	53.95%	4.570%
94	22.320	3313	3316	3323	rVB9	30353	52188	1.79%	0.151%
95	23.296	3479	3482	3490	rVB7	48988	84931	2.91%	0.247%
96	24.124	3619	3623	3628	rVB4	50627	92868	3.18%	0.270%
97	25.005	3761	3773	3784	rBV2	898740	2743443	94.02%	7.964%
98	25.241	3803	3813	3829	rVB2	480493	1471542	50.43%	4.272%
99	26.269	3983	3988	3996	rVB7	57015	145525	4.99%	0.422%
100	27.667	4217	4226	4235	rBV10	57425	218273	7.48%	0.634%

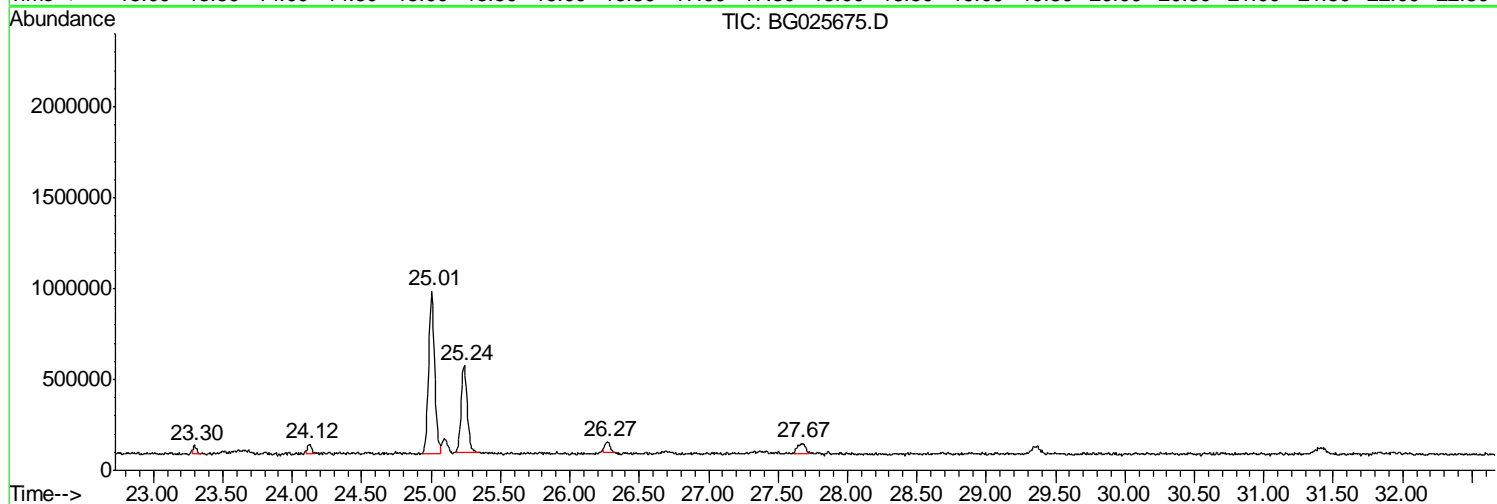
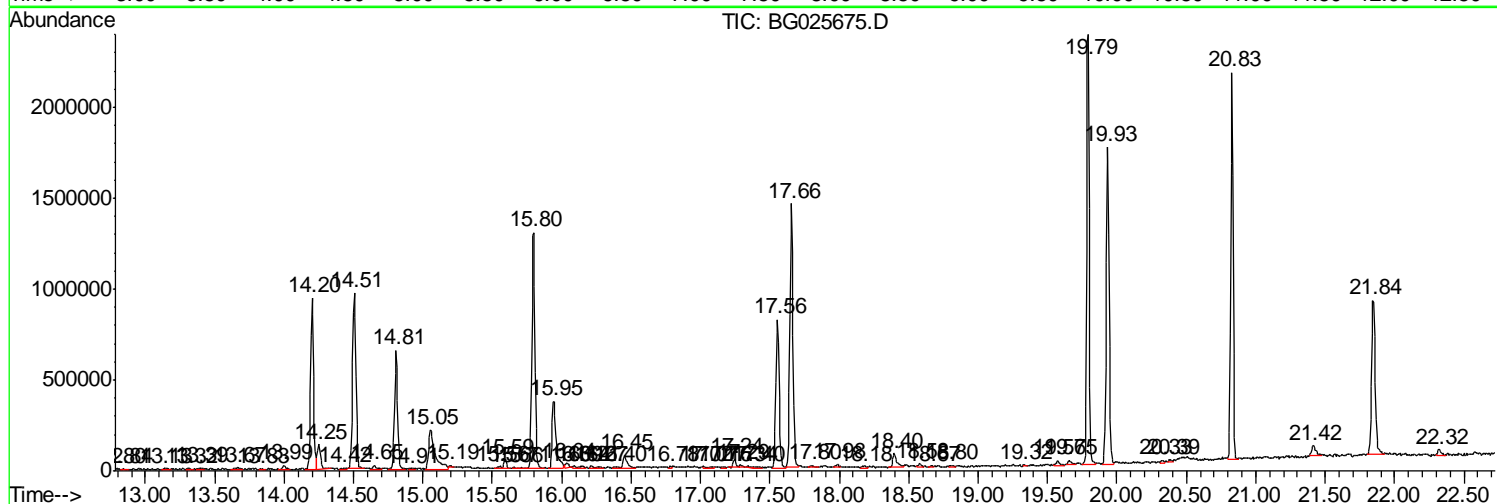
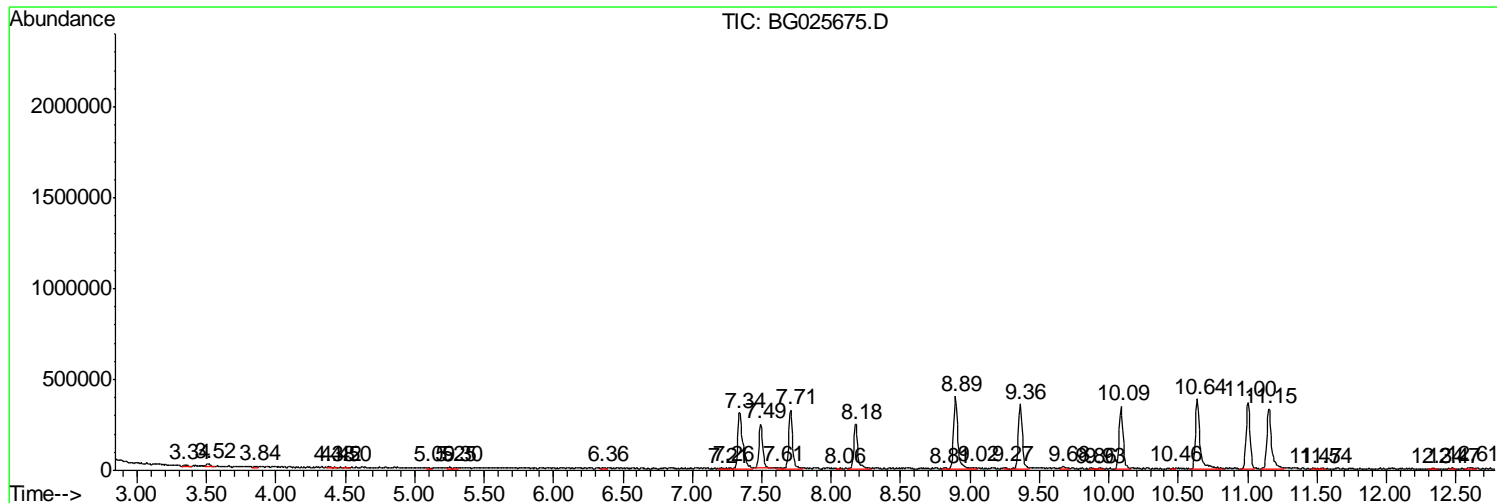
Sum of corrected areas: 34447934

Data Path : Z:\HPCHEM1\BNA\_G\DATA\BG012617\  
 Data File : BG025675.D  
 Acq On : 26 Jan 2017 20:32  
 Operator : SJ/MA  
 Sample : I1425-04  
 Misc :  
 ALS Vial : 15 Sample Multiplier: 1

Instrument :  
 BNA\_G  
 ClientSampleId :  
 BDP91

Quant Method : Z:\HPCHEM1\BNA\_G\METHODS\SOM02.2-EPA-BG011817.M  
 Quant Title : SVOA CALIBRATION

TIC Library : C:\DATABASE\NIST11.L  
 TIC Integration Parameters: LSCINT.P



Data Path : Z:\HPCHEM1\BNA\_G\DATA\BG012617\  
 Data File : BG025675.D  
 Acq On : 26 Jan 2017 20:32  
 Operator : SJ/MA  
 Sample : I1425-04  
 Misc :  
 ALS Vial : 15 Sample Multiplier: 1

Instrument :  
 BNA\_G  
 ClientSampleID :  
 BDP91

Quant Method : Z:\HPCHEM1\BNA\_G\METHODS\SOM02.2-EPA-BG011817.M  
 Quant Title : SVOA CALIBRATION

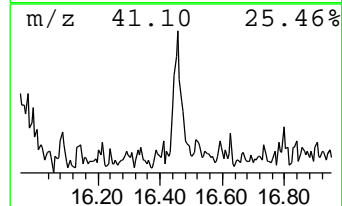
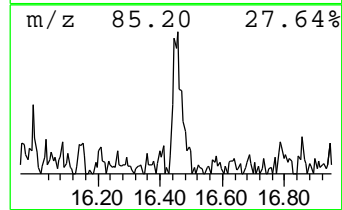
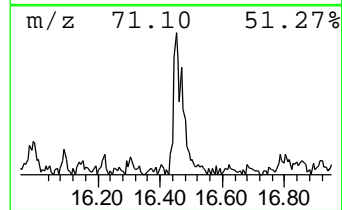
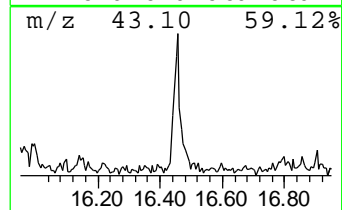
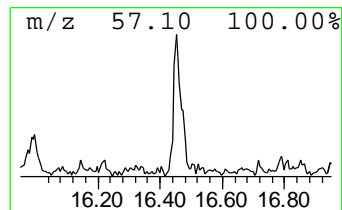
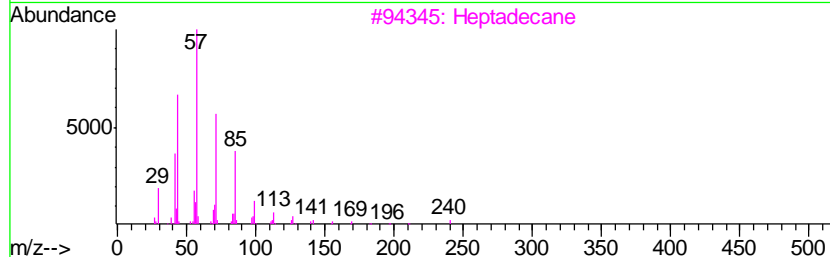
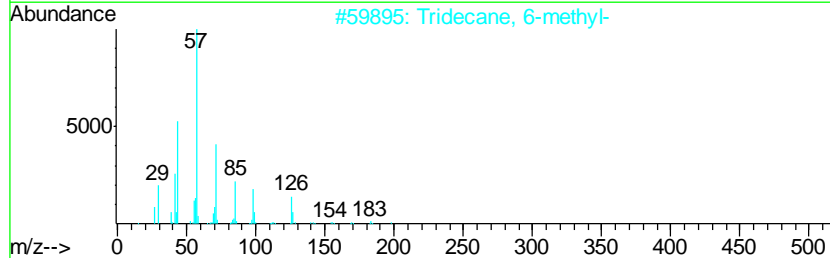
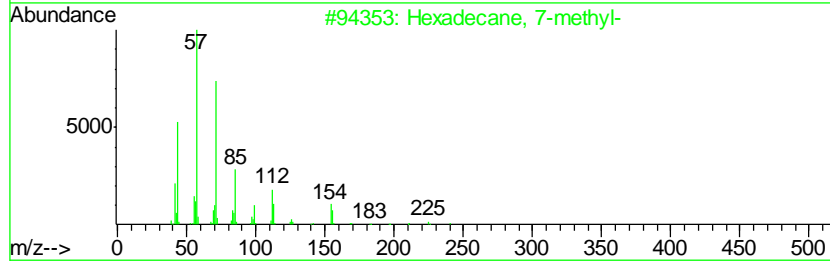
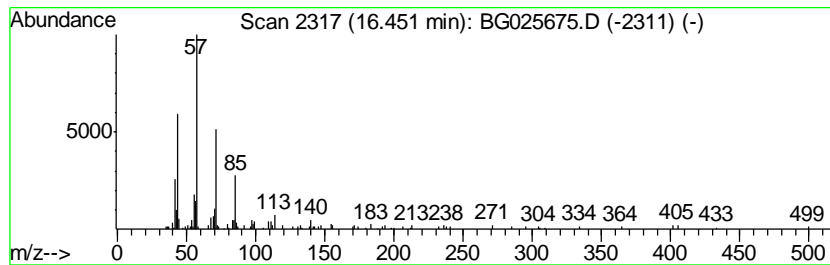
TIC Library : C:\DATABASE\NIST11.L  
 TIC Integration Parameters: LSCINT.P

\*\*\*\*\*  
 Peak Number 1 (DEL) Alkane: Straight-Chai... Concentration Rank 5

R.T.	EstConc	Area	Relative to ISTD	R.T.
16.45	2.10 ng/ul	137228	Phenanthrene-d10	17.56

Hit#	of	Tentative ID	MW	MolForm	CAS#	Qual
1	5	Hexadecane, 7-methyl-	240	C17H36	026730-20-1	87
2		Tridecane, 6-methyl-	198	C14H30	013287-21-3	81
3		Heptadecane	240	C17H36	000629-78-7	81
4		Tridecane	184	C13H28	000629-50-5	72
5		Undecane, 5-methyl-	170	C12H26	001632-70-8	72



Data Path : Z:\HPCHEM1\BNA\_G\DATA\BG012617\  
 Data File : BG025675.D  
 Acq On : 26 Jan 2017 20:32  
 Operator : SJ/MA  
 Sample : I1425-04  
 Misc :  
 ALS Vial : 15 Sample Multiplier: 1

Instrument :  
 BNA\_G  
 ClientSampleID :  
 BDP91

Quant Method : Z:\HPCHEM1\BNA\_G\METHODS\SOM02.2-EPA-BG011817.M  
 Quant Title : SVOA CALIBRATION

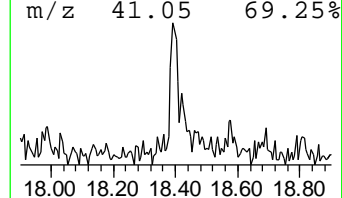
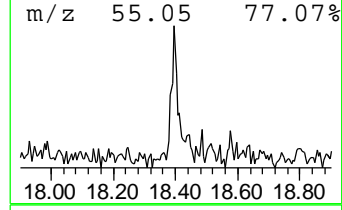
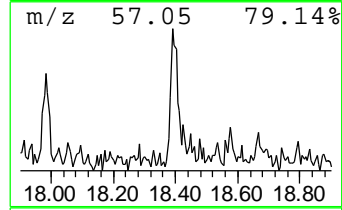
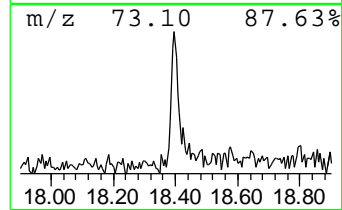
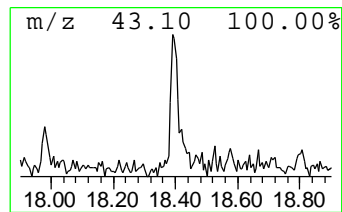
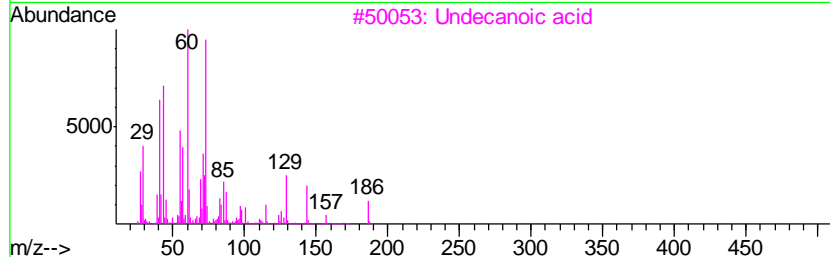
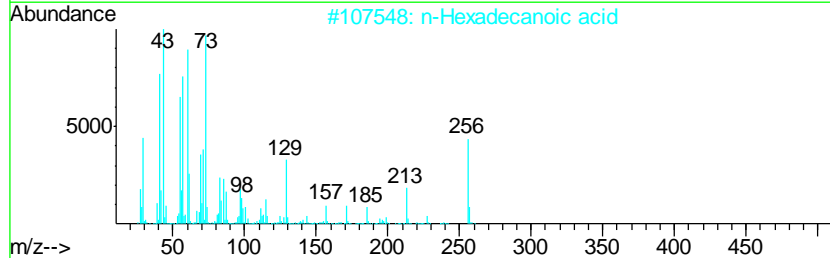
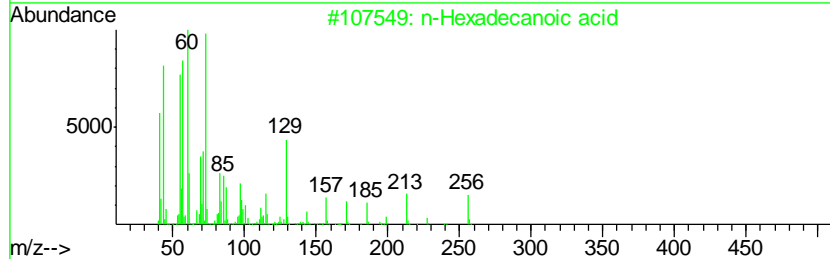
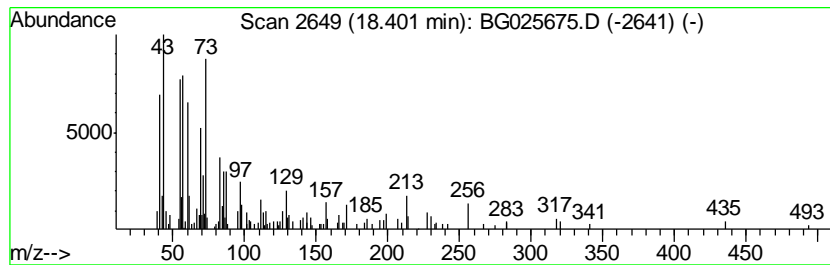
TIC Library : C:\DATABASE\NIST11.L  
 TIC Integration Parameters: LSCINT.P

\*\*\*\*\*  
 Peak Number 2 n-Hexadecanoic acid Concentration Rank 4

R.T.	EstConc	Area	Relative to ISTD	R.T.
18.40	2.45 ng/ul	160006	Phenanthrene-d10	17.56

Hit#	of	Tentative ID	MW	MolForm	CAS#	Qual
1	5	n-Hexadecanoic acid	256	C16H32O2	000057-10-3	93
2		n-Hexadecanoic acid	256	C16H32O2	000057-10-3	90
3		Undecanoic acid	186	C11H22O2	000112-37-8	74
4		Tetradecanoic acid	228	C14H28O2	000544-63-8	74
5		Dodecanoic acid	200	C12H24O2	000143-07-7	72



Data Path : Z:\HPCHEM1\BNA\_G\DATA\BG012617\  
 Data File : BG025675.D  
 Acq On : 26 Jan 2017 20:32  
 Operator : SJ/MA  
 Sample : I1425-04  
 Misc :  
 ALS Vial : 15 Sample Multiplier: 1

Instrument :  
 BNA\_G  
 ClientSampleID :  
 BDP91

Quant Method : Z:\HPCHEM1\BNA\_G\METHODS\SOM02.2-EPA-BG011817.M  
 Quant Title : SVOA CALIBRATION

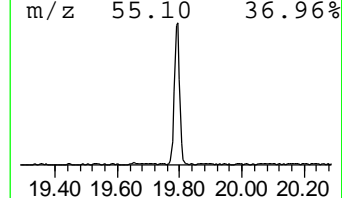
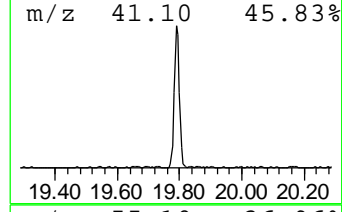
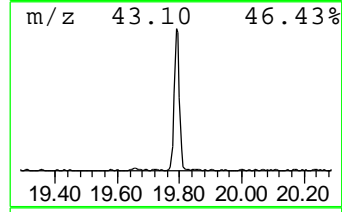
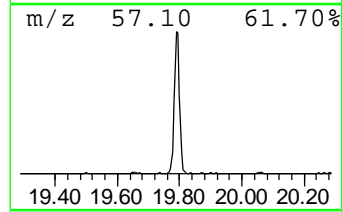
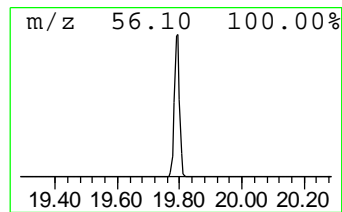
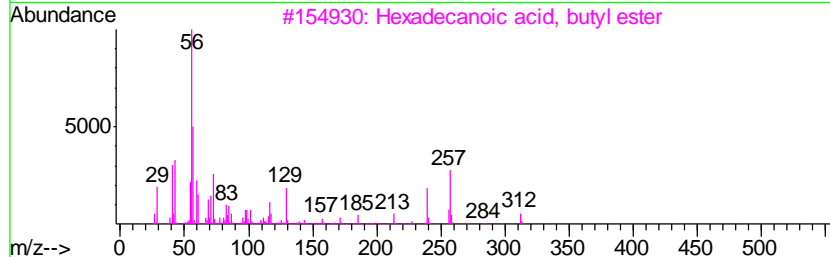
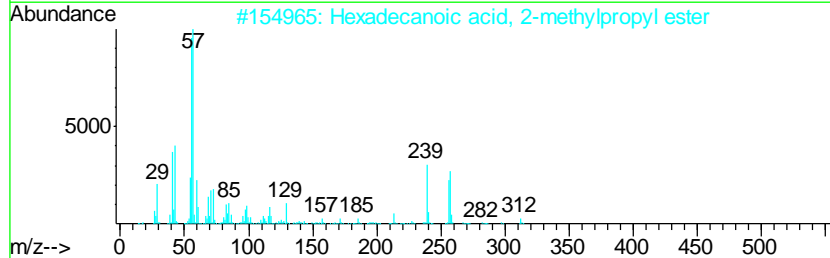
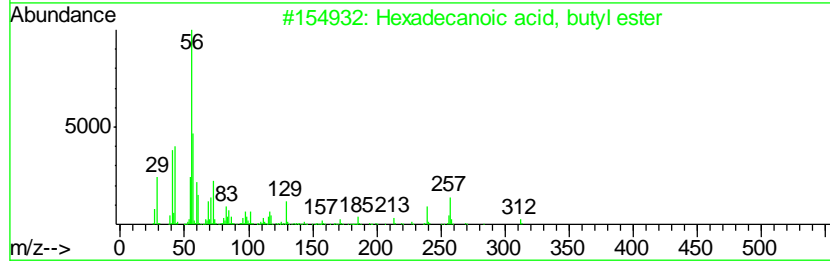
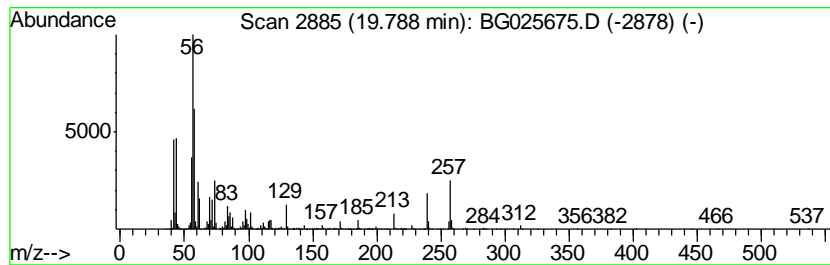
TIC Library : C:\DATABASE\NIST11.L  
 TIC Integration Parameters: LSCINT.P

\*\*\*\*\*  
 Peak Number 3 Hexadecanoic acid, butyl ester Concentration Rank 1

R.T.	EstConc	Area	Relative to ISTD	R.T.
19.79	37.07 ng/ul	2917900	Chrysene-d12	21.84

Hit#	of	Tentative ID	MW	MolForm	CAS#	Qual
1	5	Hexadecanoic acid, butyl ester	312	C20H40O2	000111-06-8	96
2		Hexadecanoic acid, 2-methylpropy...	312	C20H40O2	000110-34-9	93
3		Hexadecanoic acid, butyl ester	312	C20H40O2	000111-06-8	90
4		Hexadecanoic acid, 1,1-dimethyle...	312	C20H40O2	031158-91-5	60
5		Butyl 4,8,12-trimethyl-tridecanoate	312	C20H40O2	1000336-63-2	40



Data Path : Z:\HPCHEM1\BNA\_G\DATA\BG012617\  
 Data File : BG025675.D  
 Acq On : 26 Jan 2017 20:32  
 Operator : SJ/MA  
 Sample : I1425-04  
 Misc :  
 ALS Vial : 15 Sample Multiplier: 1

Instrument :  
 BNA\_G  
 ClientSampled :  
 BDP91

Quant Method : Z:\HPCHEM1\BNA\_G\METHODS\SOM02.2-EPA-BG011817.M  
 Quant Title : SVOA CALIBRATION

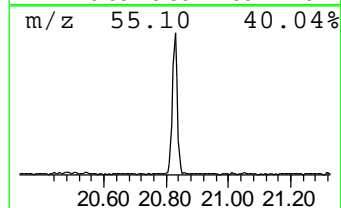
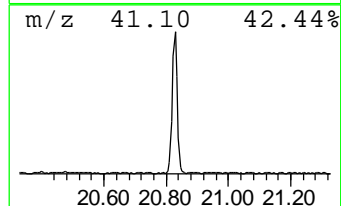
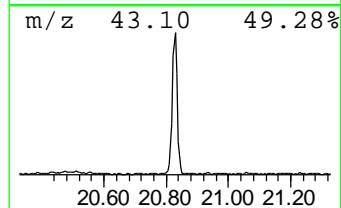
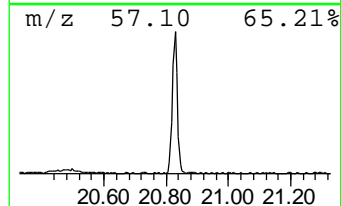
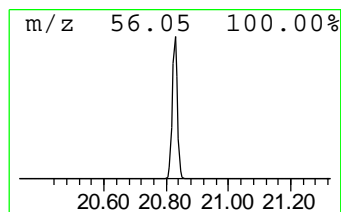
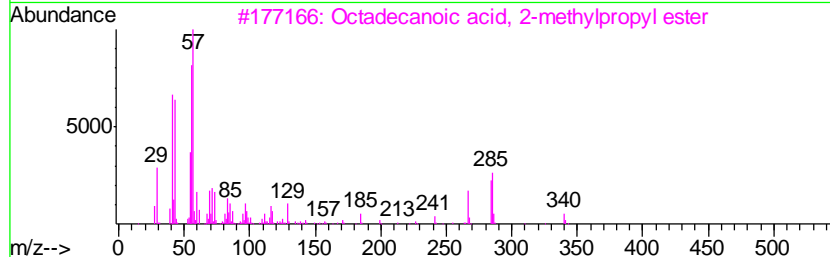
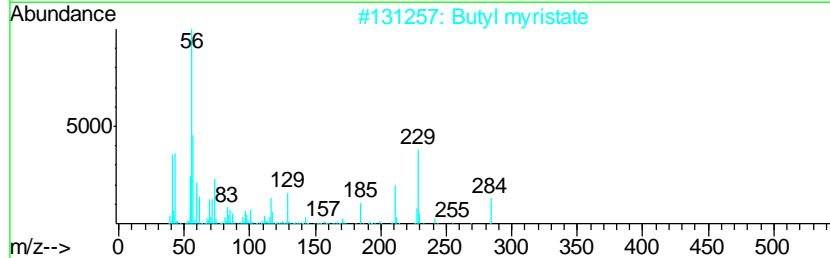
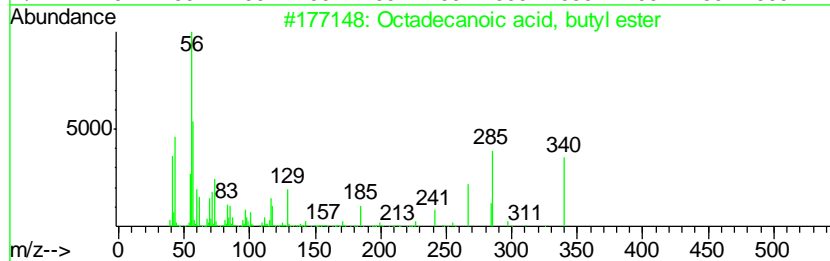
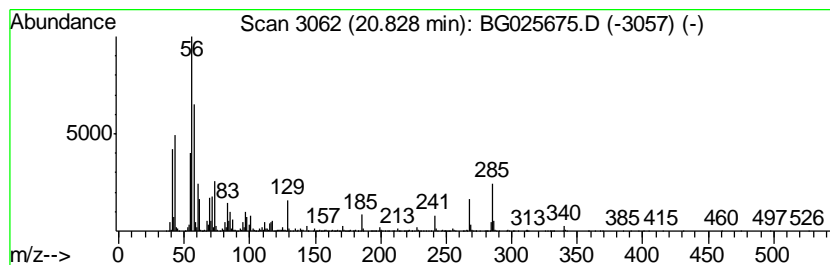
TIC Library : C:\DATABASE\NIST11.L  
 TIC Integration Parameters: LSCINT.P

\*\*\*\*\*  
 Peak Number 4 Octadecanoic acid, butyl ester Concentration Rank 2

R.T.	EstConc	Area	Relative to ISTD	R.T.
20.83	30.99 ng/ul	2439000	Chrysene-d12	21.84

Hit#	of	Tentative ID	MW	MolForm	CAS#	Qual
1	5	Octadecanoic acid, butyl ester	340	C22H44O2	000123-95-5	64
2		Butyl myristate	284	C18H36O2	000110-36-1	64
3		Octadecanoic acid, 2-methylpropy...	340	C22H44O2	000646-13-9	50
4		2-Methyl-n-1-tridecene	196	C14H28	018094-01-4	35
5		Urea, N,N'-di-2-propenyl-	140	C7H12N2O	001801-72-5	35





Data Path : Z:\HPCHEM1\BNA\_G\DATA\BG012617\  
 Data File : BG025675.D  
 Acq On : 26 Jan 2017 20:32  
 Operator : SJ/MA  
 Sample : I1425-04  
 Misc :  
 ALS Vial : 15 Sample Multiplier: 1

Instrument :  
 BNA\_G  
 ClientSampleId :  
 BDP91

Quant Method : Z:\HPCHEM1\BNA\_G\METHODS\SOM02.2-EPA-BG011817.M  
 Quant Title : SVOA CALIBRATION

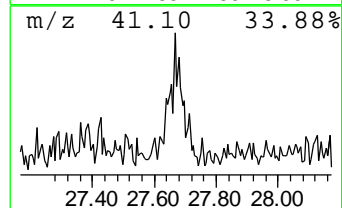
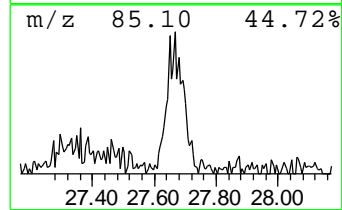
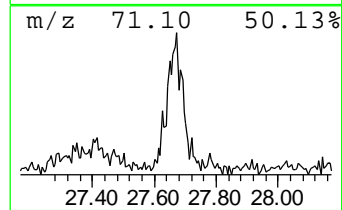
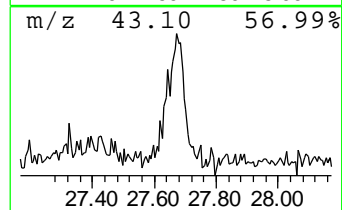
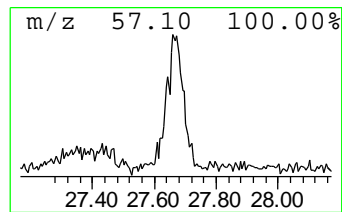
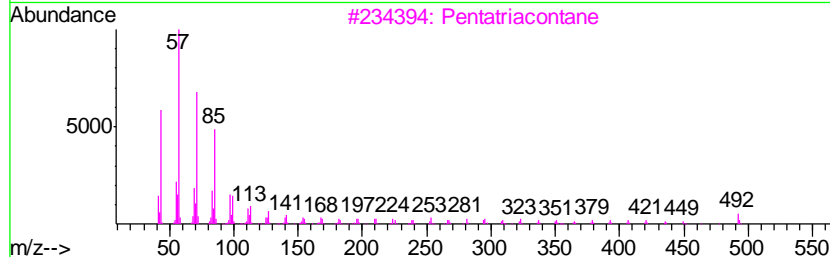
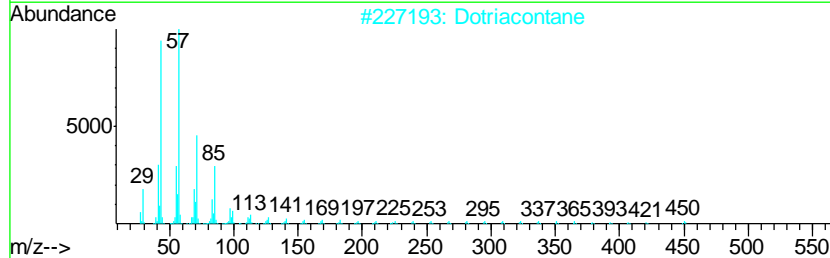
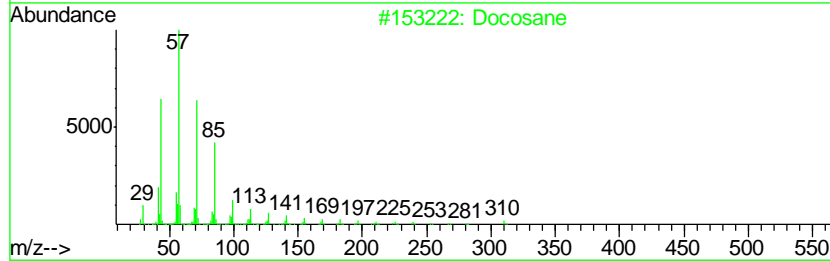
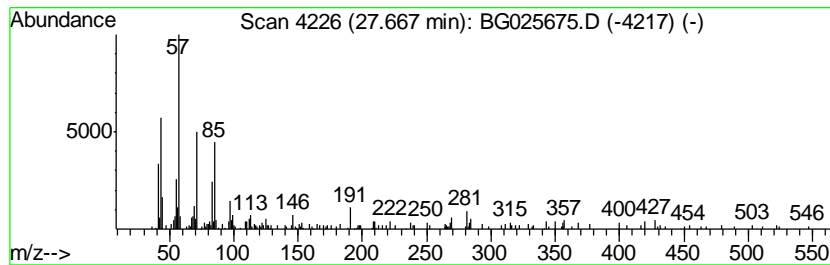
TIC Library : C:\DATABASE\NIST11.L  
 TIC Integration Parameters: LSCINT.P

\*\*\*\*\*  
 Peak Number 5 (DEL) Alkane: Straight-Chai... Concentration Rank 3

R.T.	EstConc	Area	Relative to ISTD	R.T.
27.67	2.97 ng/ul	218273	Perylene-d12	25.24

Hit#	of	Tentative ID	MW	MolForm	CAS#	Qual
1	5	Docosane	310	C22H46	000629-97-0	62
2		Dotriacontane	451	C32H66	000544-85-4	58
3		Pentatriacontane	493	C35H72	000630-07-9	53
4		Sulfurous acid, 2-ethylhexyl iso...	278	C14H30O3S	1000309-19-0	53
5		Sulfurous acid, hexyl pentyl ester	236	C11H24O3S	1000309-14-1	53



Data Path : Z:\HPCHEM1\BNA\_G\DATA\BG012617\  
Data File : BG025675.D  
Acq On : 26 Jan 2017 20:32  
Operator : SJ/MA  
Sample : I1425-04  
Misc :  
ALS Vial : 15 Sample Multiplier: 1

Instrument :  
BNA\_G  
ClientSampleId :  
BDP91

Quant Method : Z:\HPCHEM1\BNA\_G\METHODS\SOM02.2-EPA-BG011817.M  
Quant Title : SVOA CALIBRATION

TIC Library : C:\DATABASE\NIST11.L  
TIC Integration Parameters: LSCINT.P

TIC Top Hit name	RT	EstConc	Units	Response	--Internal Standard--			
					#	RT	Resp	Conc
(DEL) Alkane: Str...	16.45	2.1	ng/ul	137228	4	17.56	1304320	20.0
n-Hexadecanoic acid	18.40	2.5	ng/ul	160006	4	17.56	1304320	20.0
Hexadecanoic acid...	19.79	37.1	ng/ul	2917900	5	21.84	1574290	20.0
Octadecanoic acid...	20.83	31.0	ng/ul	2439000	5	21.84	1574290	20.0
(DEL) Alkane: Str...	27.67	3.0	ng/ul	218273	6	25.24	1471540	20.0