

Data Path : Z:\svoasrv\HPCHEM1\BNA_G\Data\BG012621\
 Data File : BG048010.D
 Acq On : 26 Jan 2021 17:09
 Operator : CG/JU
 Sample : PB134351BL
 Misc :
 ALS Vial : 3 Sample Multiplier: 1

Instrument :
 BNA_G
 ClientSampleId :
 PB134351BL

Quant Time: Jan 26 17:47:59 2021
 Quant Method : Z:\SVOASRV\HPCHEM1\BNA_G\METHODS\8270-BG012521.M
 Quant Title : ASP BNA STANDARDS FOR 5 POINT CALIBRATION
 QLast Update : Mon Jan 25 19:39:42 2021
 Response via : Initial Calibration

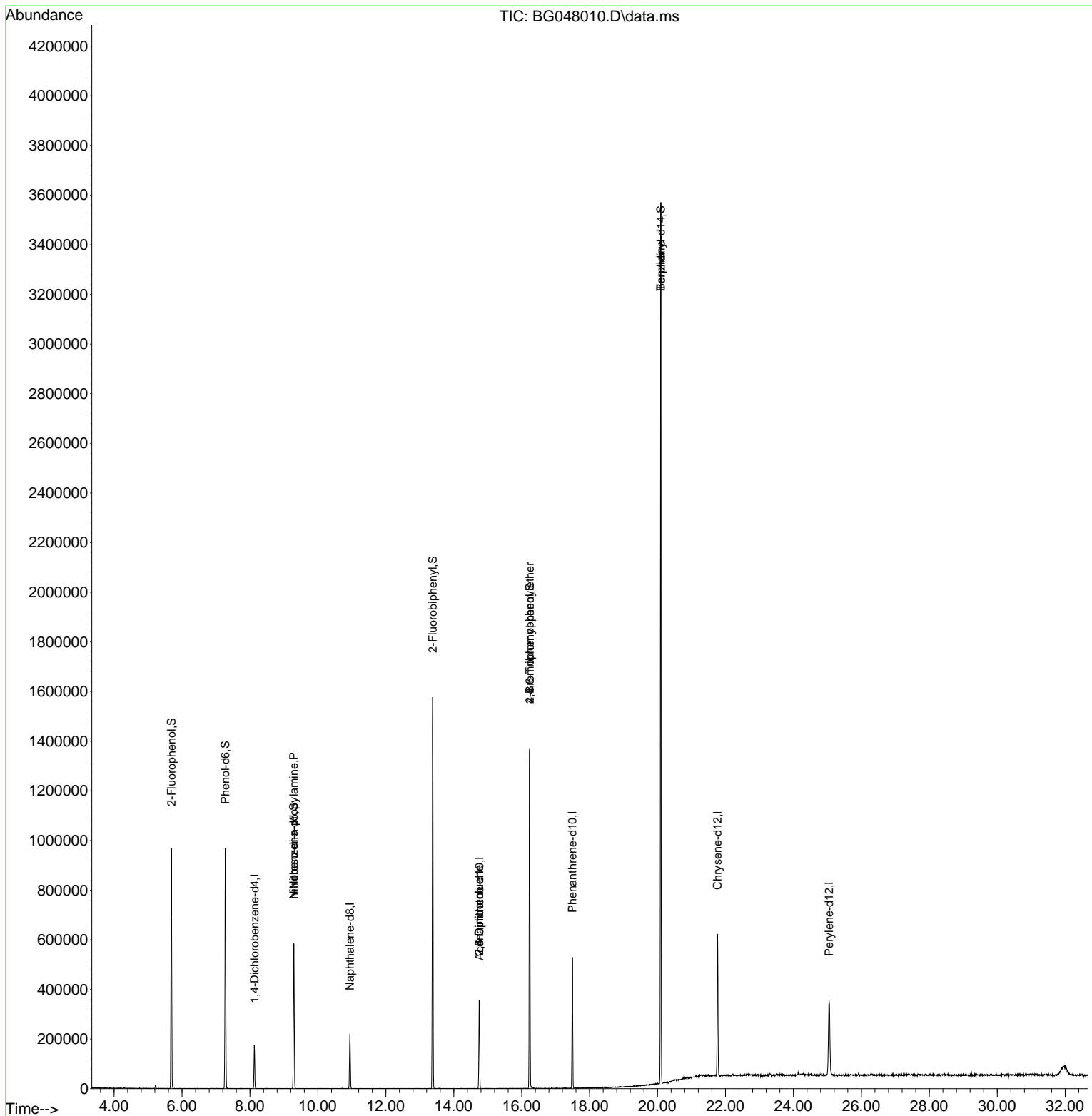
Compound	R.T.	QIon	Response	Conc	Units	Dev(Min)
Internal Standards						
1) 1,4-Dichlorobenzene-d4	8.133	152	47467	20.00	ng	0.00
21) Naphthalene-d8	10.942	136	180912	20.00	ng	0.00
39) Acenaphthene-d10	14.755	164	125978	20.00	ng	0.00
64) Phenanthrene-d10	17.493	188	329710	20.00	ng	0.00
76) Chrysene-d12	21.764	240	366556	20.00	ng	#-0.01
86) Perylene-d12	25.049	264	348834	20.00	ng	-0.01
System Monitoring Compounds						
5) 2-Fluorophenol	5.689	112	393549	127.42	ng	0.00
7) Phenol-d6	7.276	99	530843	113.04	ng	0.00
23) Nitrobenzene-d5	9.291	82	363358	79.47	ng	0.00
42) 2,4,6-Tribromophenol	16.236	330	275268	131.19	ng	0.00
45) 2-Fluorobiphenyl	13.380	172	811966	83.33	ng	0.00
79) Terphenyl-d14	20.096	244	1533005	72.51	ng	0.00
Target Compounds						
19) n-Nitroso-di-n-propyla...	9.291	70	52582	15.34	ng	# 74
51) 2,6-Dinitrotoluene	14.749	165	16521	6.97	ng	# 34
57) 2,4-Dinitrotoluene	14.749	165	16521	4.83	ng	# 32
67) 4-Bromophenyl-phenylether	16.236	248	18641	4.23	ng	# 1
77) Benzidine	20.096	184	25994	2.46	ng	# 91

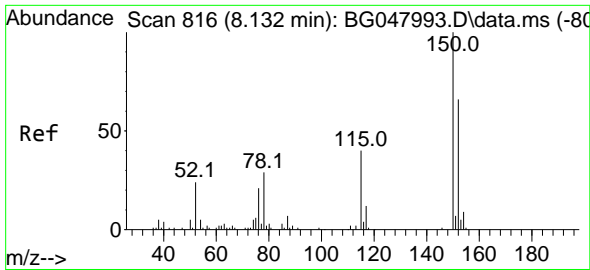
(#) = qualifier out of range (m) = manual integration (+) = signals summed

Data Path : Z:\svoasrv\HPCHEM1\BNA_G\Data\BG012621\
 Data File : BG048010.D
 Acq On : 26 Jan 2021 17:09
 Operator : CG/JU
 Sample : PB134351BL
 Misc :
 ALS Vial : 3 Sample Multiplier: 1

Instrument :
 BNA_G
 ClientSampleId :
 PB134351BL

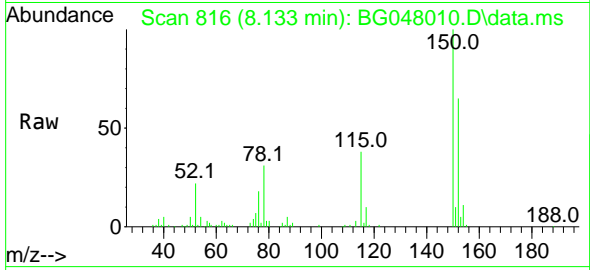
Quant Time: Jan 26 17:47:59 2021
 Quant Method : Z:\SVOASRV\HPCHEM1\BNA_G\METHODS\8270-BG012521.M
 Quant Title : ASP BNA STANDARDS FOR 5 POINT CALIBRATION
 QLast Update : Mon Jan 25 19:39:42 2021
 Response via : Initial Calibration



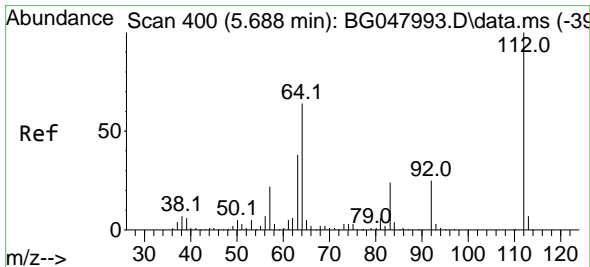
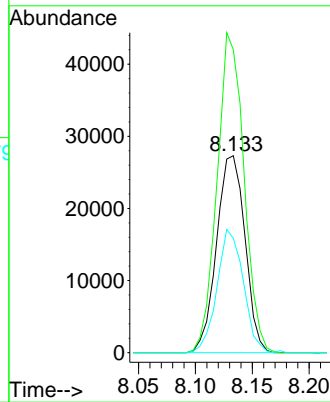
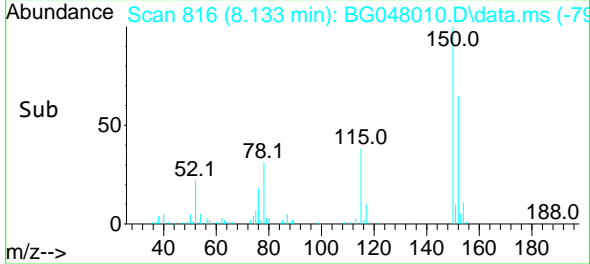


#1
 1,4-Dichlorobenzene-d4
 Concen: 20.00 ng
 RT: 8.133 min Scan# 816
 Delta R.T. 0.001 min
 Lab File: BG048010.D
 Acq: 26 Jan 2021 17:09

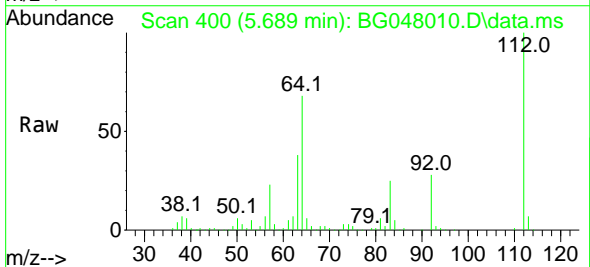
Instrument :
 BNA_G
 ClientSampled :
 PB134351BL



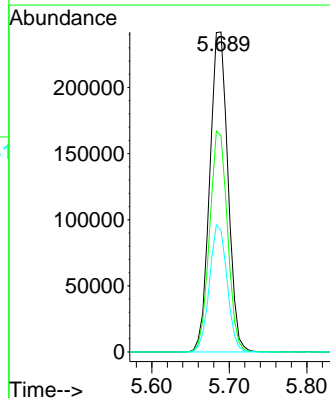
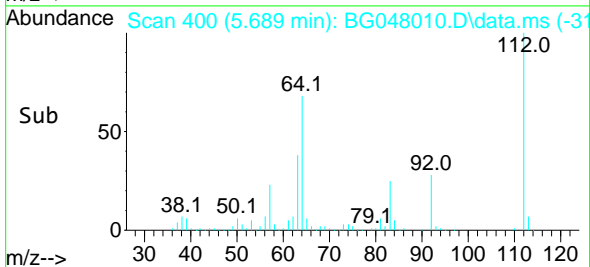
Tgt Ion:152 Resp: 47467
 Ion Ratio Lower Upper
 152 100
 150 153.8 125.0 187.6
 115 58.1 41.8 62.6

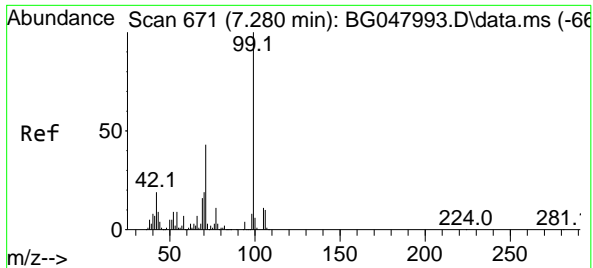


#5
 2-Fluorophenol
 Concen: 127.42 ng
 RT: 5.689 min Scan# 400
 Delta R.T. 0.001 min
 Lab File: BG048010.D
 Acq: 26 Jan 2021 17:09



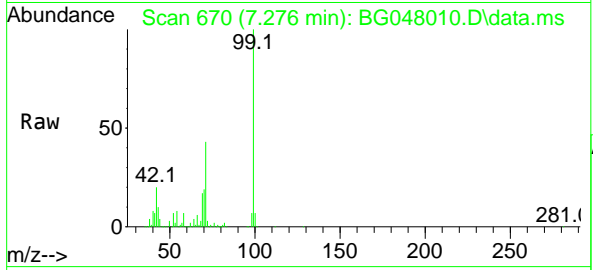
Tgt Ion:112 Resp: 393549
 Ion Ratio Lower Upper
 112 100
 64 67.6 46.7 70.1
 63 38.0 22.8 34.2#



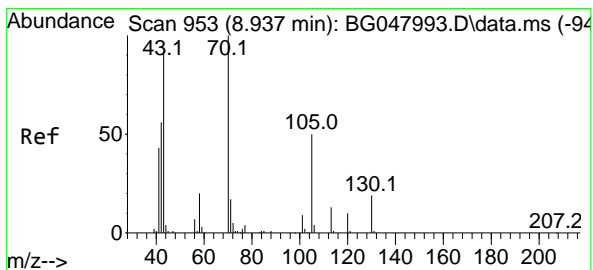
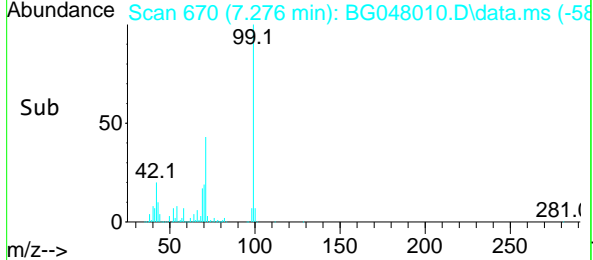
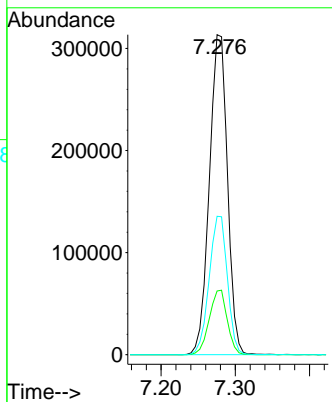


#7
 Phenol-d6
 Concen: 113.04 ng
 RT: 7.276 min Scan# 670
 Delta R.T. -0.005 min
 Lab File: BG048010.D
 Acq: 26 Jan 2021 17:09

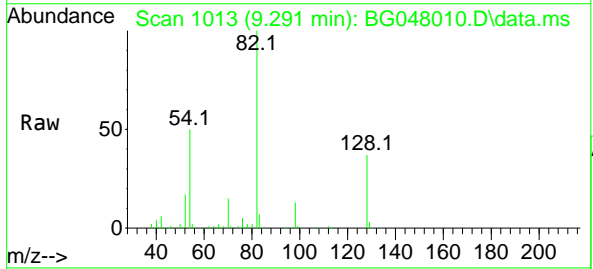
Instrument :
 BNA_G
ClientSampled :
 PB134351BL



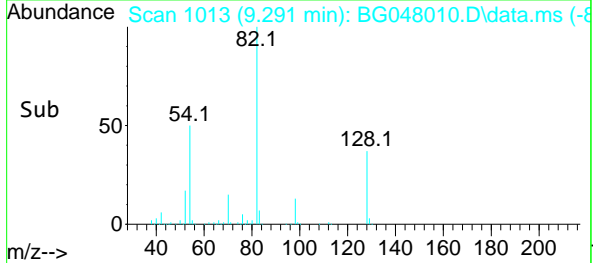
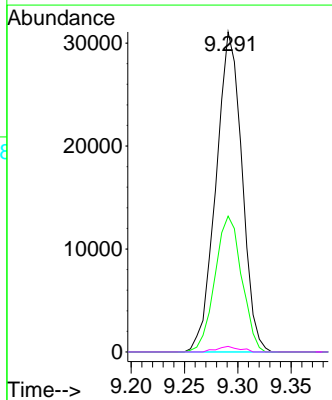
Tgt Ion	Resp	Lower	Upper
99	530843		
99	100		
42	19.9	12.8	19.2#
71	43.2	24.6	36.8#

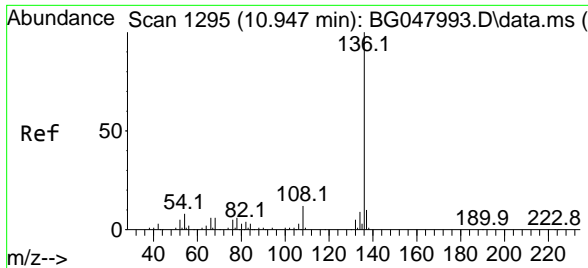


#19
 n-Nitroso-di-n-propylamine
 Concen: 15.34 ng
 RT: 9.291 min Scan# 1013
 Delta R.T. 0.353 min
 Lab File: BG048010.D
 Acq: 26 Jan 2021 17:09



Tgt Ion	Resp	Lower	Upper
70	52582		
70	100		
42	42.5	45.6	68.4#
101	0.0	8.4	12.6#
130	1.8	17.8	26.8#

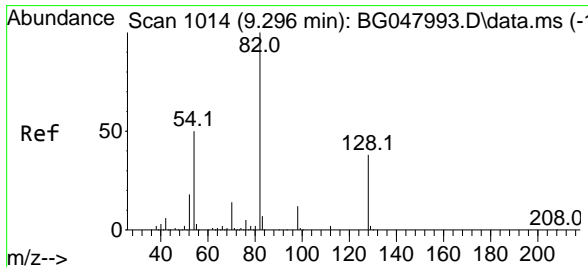
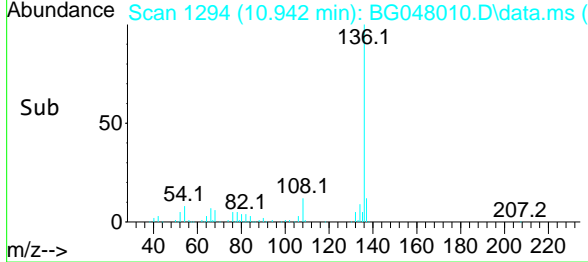
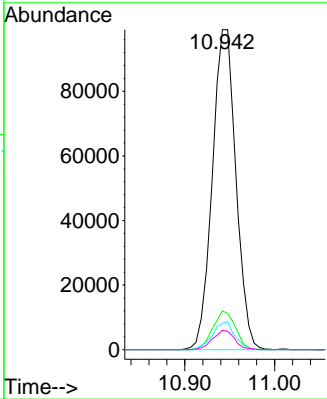
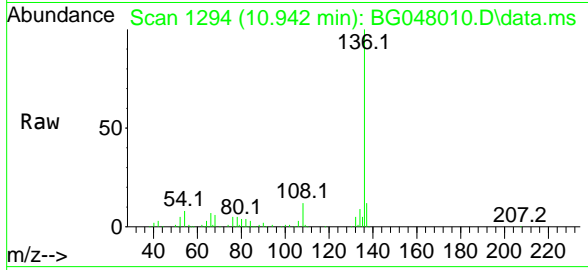




#21
 Naphthalene-d8
 Concen: 20.00 ng
 RT: 10.942 min Scan# 1294
 Delta R.T. -0.005 min
 Lab File: BG048010.D
 Acq: 26 Jan 2021 17:09

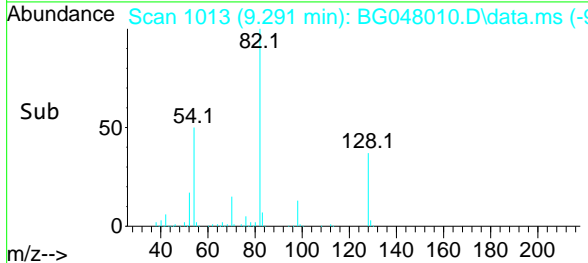
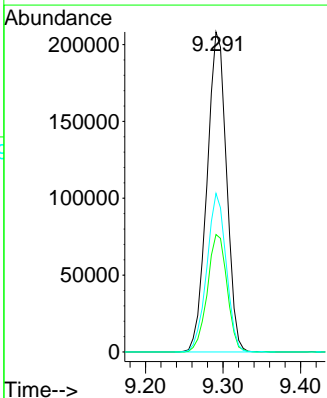
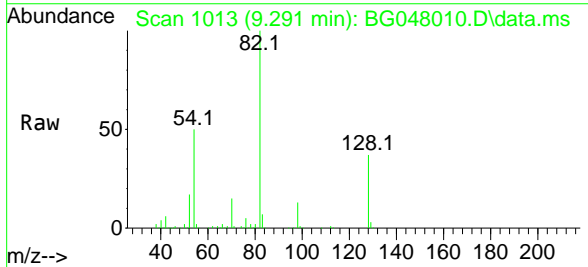
Instrument :
 BNA_G
 ClientSampleId :
 PB134351BL

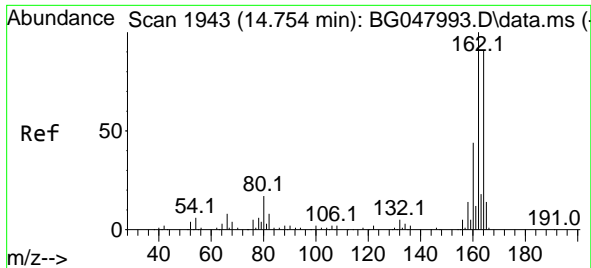
Tgt Ion	Resp	Lower	Upper
136	180912		
137	12.1	9.1	13.7
54	8.2	6.2	9.4
68	6.1	5.0	7.4



#23
 Nitrobenzene-d5
 Concen: 79.47 ng
 RT: 9.291 min Scan# 1013
 Delta R.T. -0.005 min
 Lab File: BG048010.D
 Acq: 26 Jan 2021 17:09

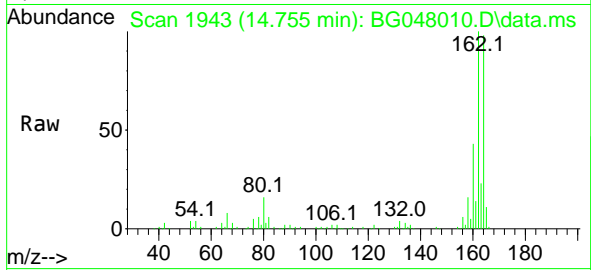
Tgt Ion	Resp	Lower	Upper
82	363358		
82	100		
128	36.7	37.0	55.6#
54	49.5	39.0	58.4





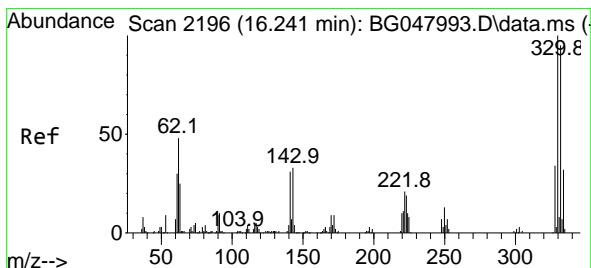
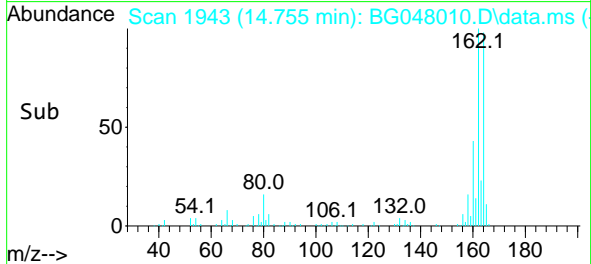
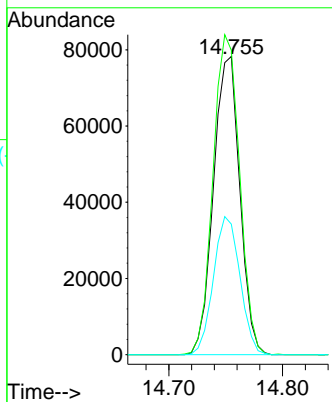
#39
 Acenaphthene-d10
 Concen: 20.00 ng
 RT: 14.755 min Scan# 1943
 Delta R.T. 0.001 min
 Lab File: BG048010.D
 Acq: 26 Jan 2021 17:09

Instrument :
 BNA_G
 ClientSampled :
 PB134351BL



Tgt Ion:164 Resp: 125978

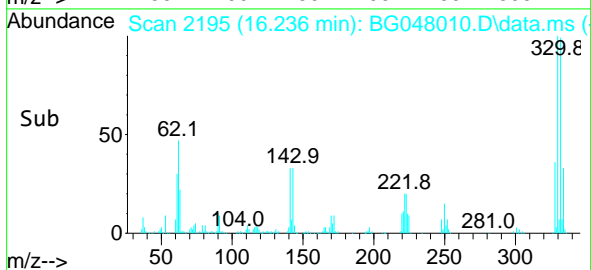
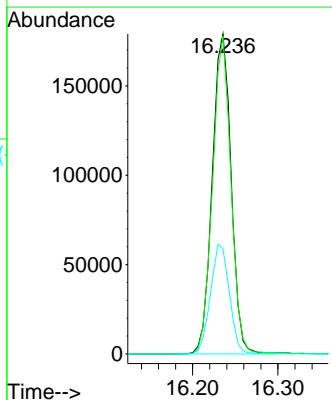
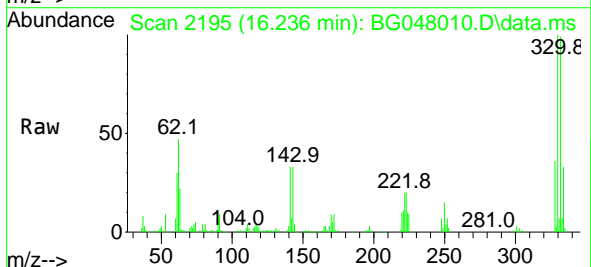
Ion	Ratio	Lower	Upper
164	100		
162	102.1	82.3	123.5
160	43.8	35.3	52.9

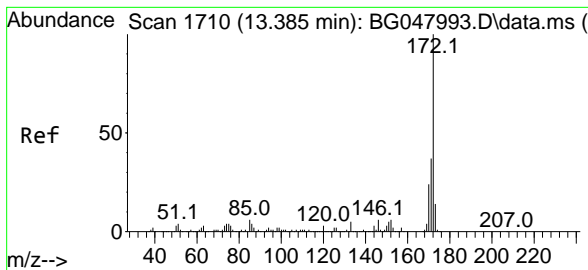


#42
 2,4,6-Tribromophenol
 Concen: 131.19 ng
 RT: 16.236 min Scan# 2195
 Delta R.T. -0.005 min
 Lab File: BG048010.D
 Acq: 26 Jan 2021 17:09

Tgt Ion:330 Resp: 275268

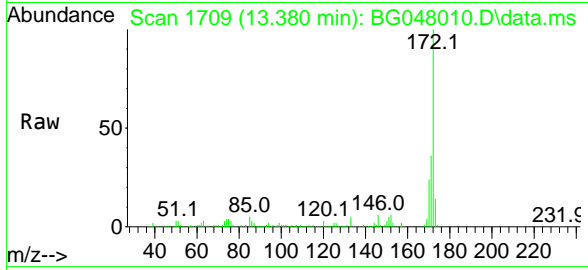
Ion	Ratio	Lower	Upper
330	100		
332	96.4	76.5	114.7
141	34.5	26.0	39.0





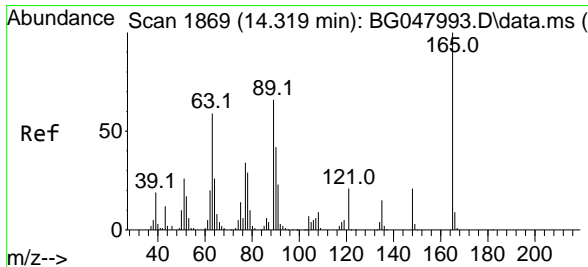
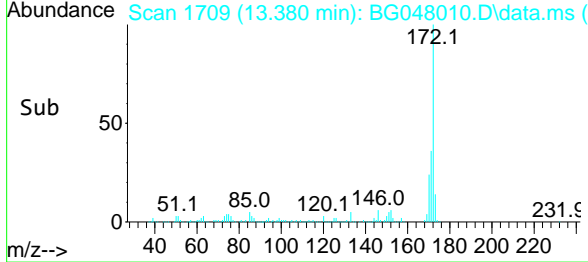
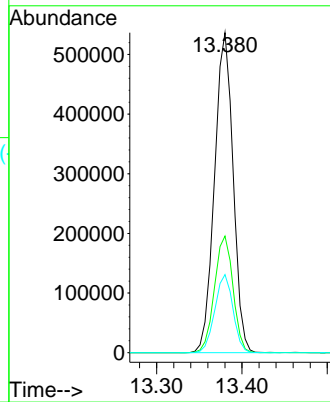
#45
 2-Fluorobiphenyl
 Concen: 83.33 ng
 RT: 13.380 min Scan# 1709
 Delta R.T. -0.005 min
 Lab File: BG048010.D
 Acq: 26 Jan 2021 17:09

Instrument :
 BNA_G
 ClientSampleID :
 PB134351BL

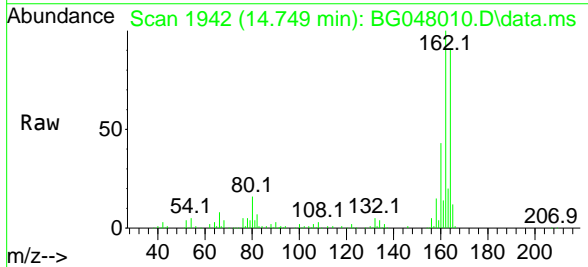


Tgt Ion:172 Resp: 811966

Ion	Ratio	Lower	Upper
172	100		
171	36.5	31.3	46.9
170	24.4	20.8	31.2

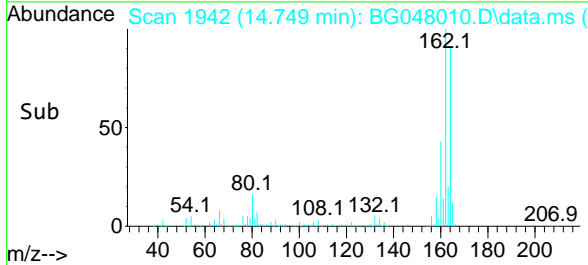
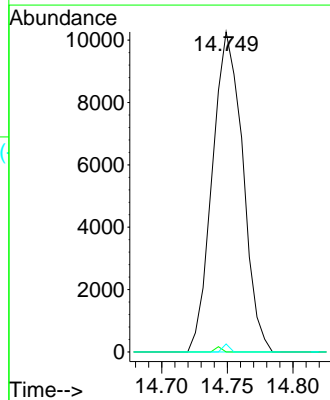


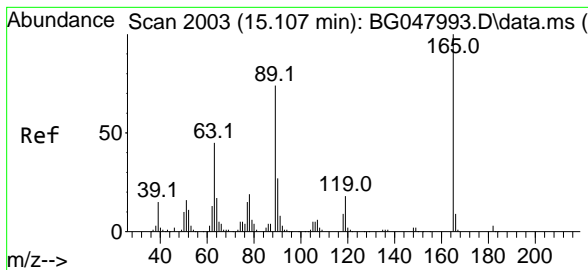
#51
 2,6-Dinitrotoluene
 Concen: 6.97 ng
 RT: 14.749 min Scan# 1942
 Delta R.T. 0.430 min
 Lab File: BG048010.D
 Acq: 26 Jan 2021 17:09



Tgt Ion:165 Resp: 16521

Ion	Ratio	Lower	Upper
165	100		
63	0.0	33.7	50.5#
89	2.5	36.6	54.8#



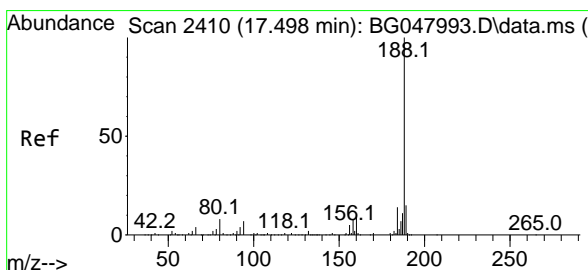
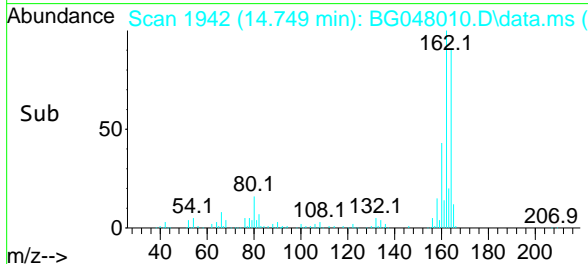
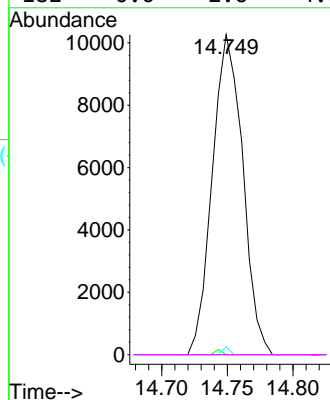
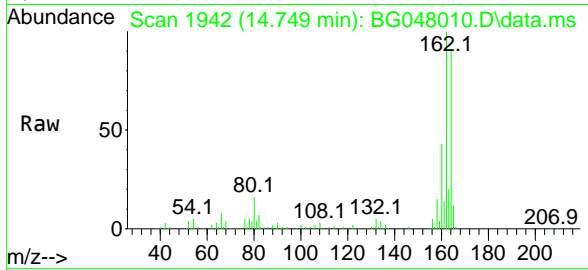


#57
 2,4-Dinitrotoluene
 Concen: 4.83 ng
 RT: 14.749 min Scan# 1942
 Delta R.T. -0.357 min
 Lab File: BG048010.D
 Acq: 26 Jan 2021 17:09

Instrument :
 BNA_G
 ClientSampled :
 PB134351BL

Tgt Ion:165 Resp: 16521

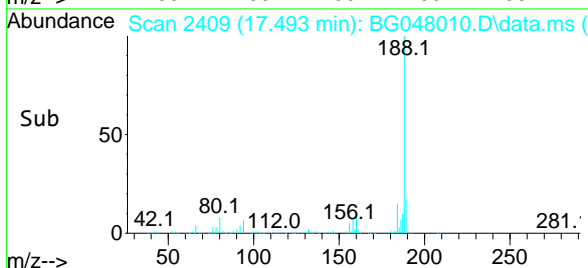
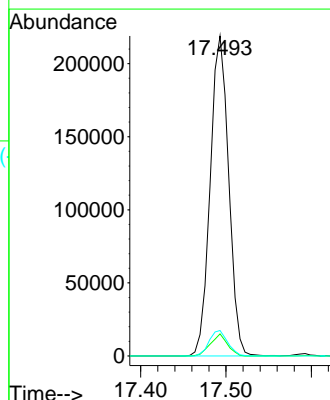
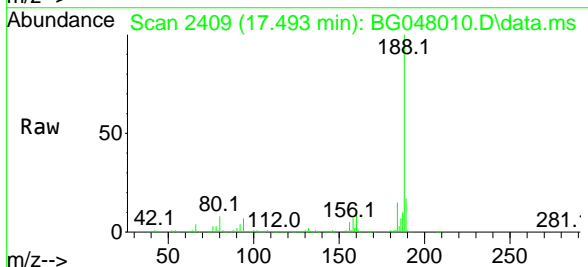
Ion	Ratio	Lower	Upper
165	100		
63	0.0	26.4	39.6#
89	2.5	47.8	71.8#
182	0.0	2.6	4.0#

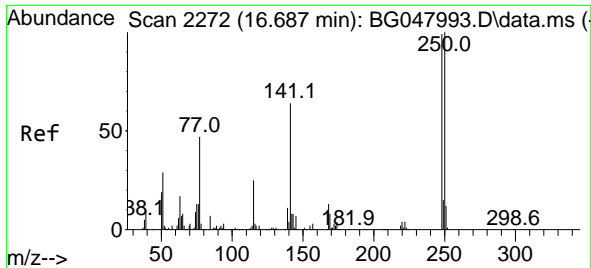


#64
 Phenanthrene-d10
 Concen: 20.00 ng
 RT: 17.493 min Scan# 2409
 Delta R.T. -0.005 min
 Lab File: BG048010.D
 Acq: 26 Jan 2021 17:09

Tgt Ion:188 Resp: 329710

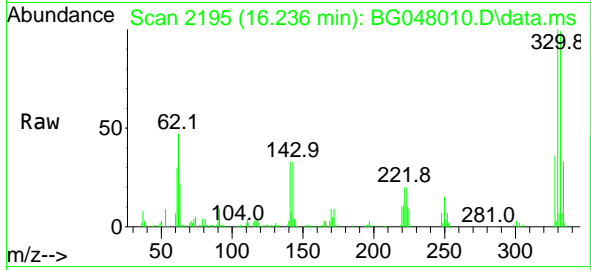
Ion	Ratio	Lower	Upper
188	100		
94	6.9	6.3	9.5
80	7.9	7.0	10.6



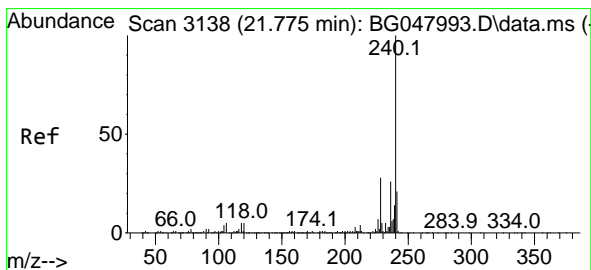
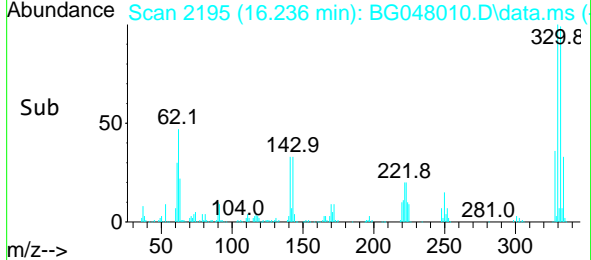
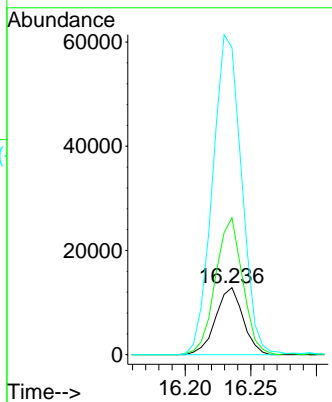


#67
 4-Bromophenyl-phenylether
 Concen: 4.23 ng
 RT: 16.236 min Scan# 2195
 Delta R.T. -0.451 min
 Lab File: BG048010.D
 Acq: 26 Jan 2021 17:09

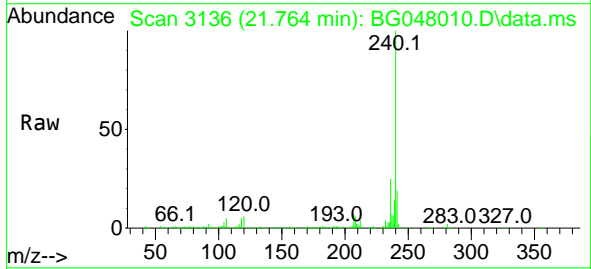
Instrument :
 BNA_G
 ClientSampled :
 PB134351BL



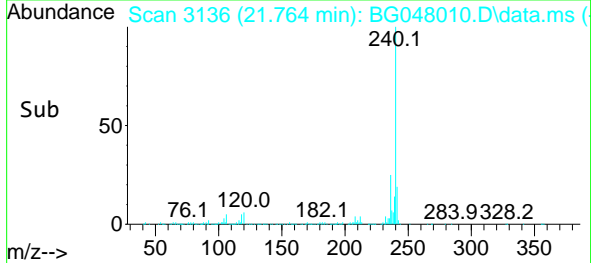
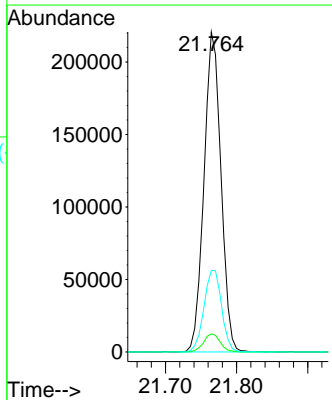
Tgt Ion	Resp	Lower	Upper
248	100		
250	204.5	78.9	118.3#
141	458.4	46.2	69.4#

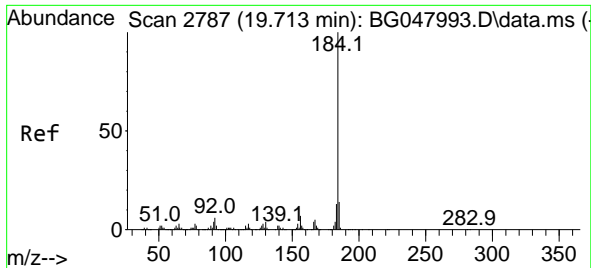


#76
 Chrysene-d12
 Concen: 20.00 ng
 RT: 21.764 min Scan# 3136
 Delta R.T. -0.011 min
 Lab File: BG048010.D
 Acq: 26 Jan 2021 17:09



Tgt Ion	Resp	Lower	Upper
240	100		
120	5.6	6.2	9.4#
236	25.5	20.5	30.7

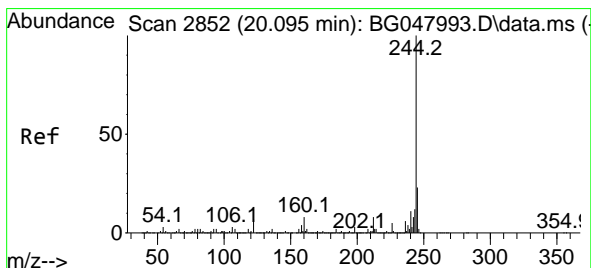
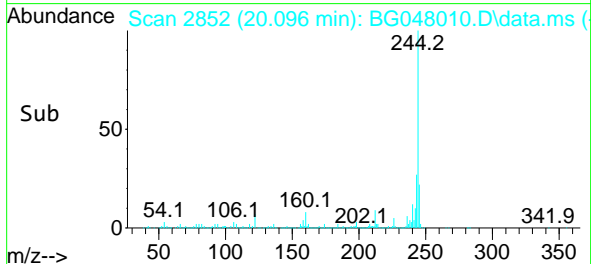
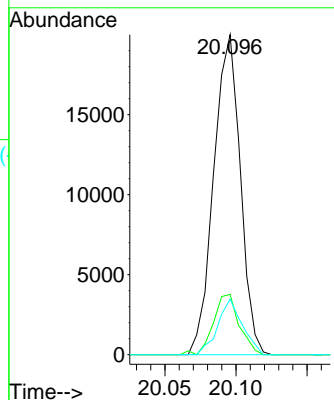
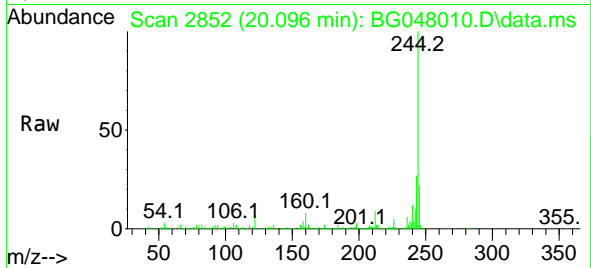




#77
Benzidine
Concen: 2.46 ng
RT: 20.096 min Scan# 2852
Delta R.T. 0.383 min
Lab File: BG048010.D
Acq: 26 Jan 2021 17:09

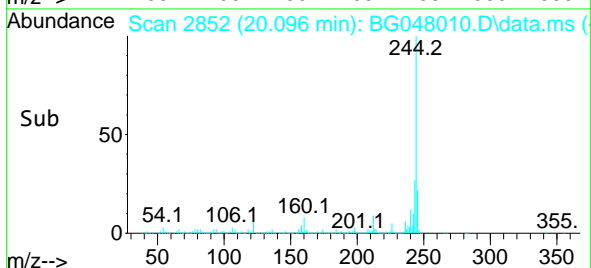
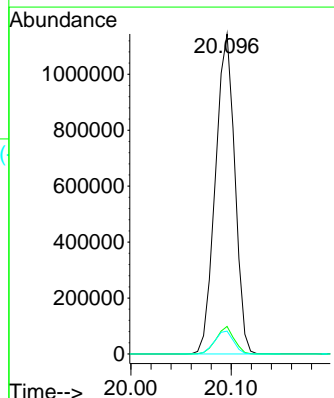
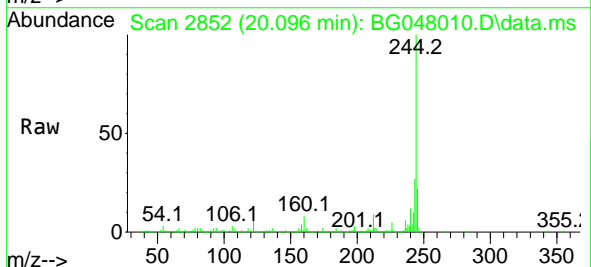
Instrument :
BNA_G
ClientSampleId :
PB134351BL

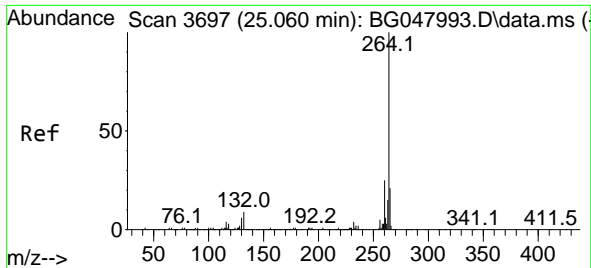
Tgt Ion:184 Resp: 25994
Ion Ratio Lower Upper
184 100
185 18.9 12.4 18.6#
183 17.4 10.6 15.8#



#79
Terphenyl-d14
Concen: 72.51 ng
RT: 20.096 min Scan# 2852
Delta R.T. 0.001 min
Lab File: BG048010.D
Acq: 26 Jan 2021 17:09

Tgt Ion:244 Resp: 1533005
Ion Ratio Lower Upper
244 100
212 8.6 6.7 10.1
122 7.2 7.8 11.6#





#86
 Perylene-d12
 Concen: 20.00 ng
 RT: 25.049 min Scan# 3695
 Delta R.T. -0.011 min
 Lab File: BG048010.D
 Acq: 26 Jan 2021 17:09

Instrument :
 BNA_G
 ClientSampled :
 PB134351BL

Tgt Ion:264 Resp: 348834

Ion	Ratio	Lower	Upper
264	100		
260	25.3	18.8	28.2
265	20.8	17.8	26.8

