

Data Path : Z:\svoasrv\HPCHEM1\BNA_G\Data\BG012623\
 Data File : BG056450.D
 Acq On : 26 Jan 2023 19:54
 Operator : CG/JU
 Sample : 01283-04
 Misc :
 ALS Vial : 16 Sample Multiplier: 1

Instrument :
 BNA_G
 ClientSampleId :
 MH-10

Quant Time: Jan 27 01:02:02 2023
 Quant Method : Z:\svoasrv\HPCHEM1\BNA_G\Methods\8270-BG122722.M
 Quant Title : ASP BNA STANDARDS FOR 5 POINT CALIBRATION
 QLast Update : Wed Jan 25 04:54:56 2023
 Response via : Initial Calibration

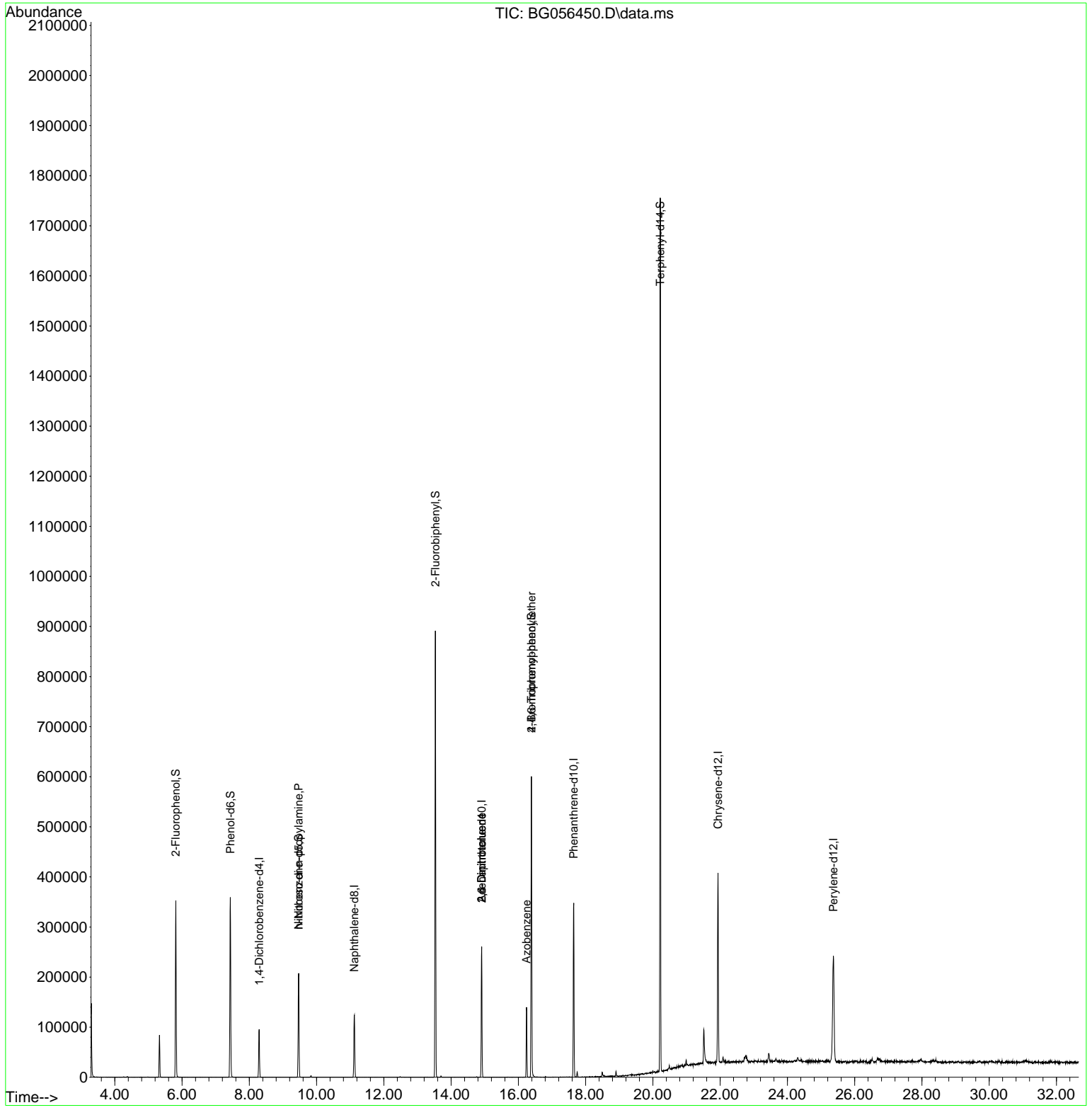
Compound	R.T.	QIon	Response	Conc	Units	Dev(Min)
Internal Standards						
1) 1,4-Dichlorobenzene-d4	8.294	152	32720	20.000	ng	0.00
21) Naphthalene-d8	11.120	136	123087	20.000	ng	-0.01
39) Acenaphthene-d10	14.910	164	99987	20.000	ng	0.00
64) Phenanthrene-d10	17.647	188	254311	20.000	ng	0.00
76) Chrysene-d12	21.937	240	248553	20.000	ng	# 0.00
86) Perylene-d12	25.368	264	267656	20.000	ng	0.00
System Monitoring Compounds						
5) 2-Fluorophenol	5.814	112	199015	108.600	ng	0.00
7) Phenol-d6	7.436	99	280888	99.809	ng	0.00
23) Nitrobenzene-d5	9.469	82	146059	60.698	ng	0.00
42) 2,4,6-Tribromophenol	16.390	330	137832	108.845	ng	0.00
45) 2-Fluorobiphenyl	13.535	172	504083	69.618	ng	0.00
79) Terphenyl-d14	20.221	244	968415	69.783	ng	0.00
Target Compounds						
19) n-Nitroso-di-n-propyla...	9.469	70	18373	10.736	ng	# 73
51) 2,6-Dinitrotoluene	14.910	165	13158	7.650	ng	# 31
57) 2,4-Dinitrotoluene	14.910	165	13158	5.470	ng	# 28
63) Azobenzene	16.243	77	35049	6.000	ng	# 1
67) 4-Bromophenyl-phenylether	16.390	248	10911	3.369	ng	# 1

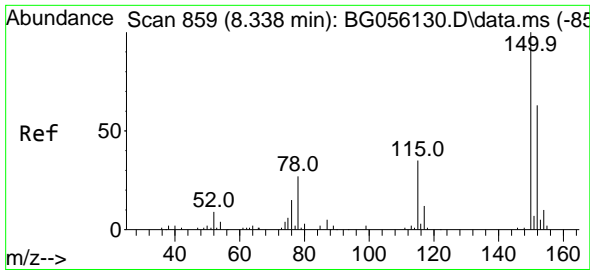
(#) = qualifier out of range (m) = manual integration (+) = signals summed

Data Path : Z:\svoasrv\HPCHEM1\BNA_G\Data\BG012623\
 Data File : BG056450.D
 Acq On : 26 Jan 2023 19:54
 Operator : CG/JU
 Sample : 01283-04
 Misc :
 ALS Vial : 16 Sample Multiplier: 1

Instrument :
 BNA_G
 ClientSampleId :
 MH-10

Quant Time: Jan 27 01:02:02 2023
 Quant Method : Z:\svoasrv\HPCHEM1\BNA_G\Methods\8270-BG122722.M
 Quant Title : ASP BNA STANDARDS FOR 5 POINT CALIBRATION
 QLast Update : Wed Jan 25 04:54:56 2023
 Response via : Initial Calibration

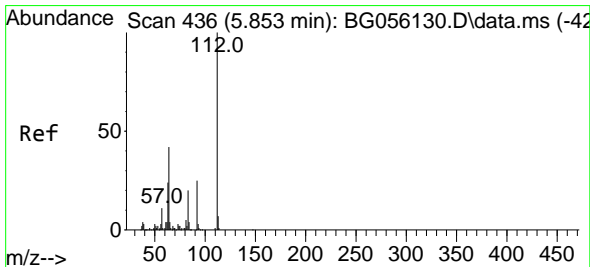
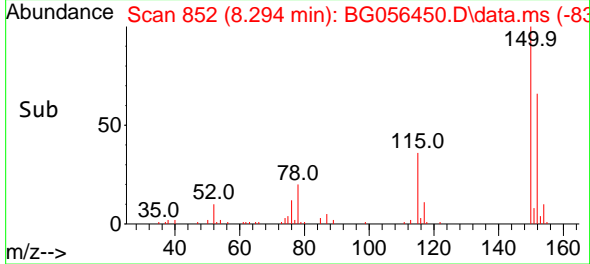
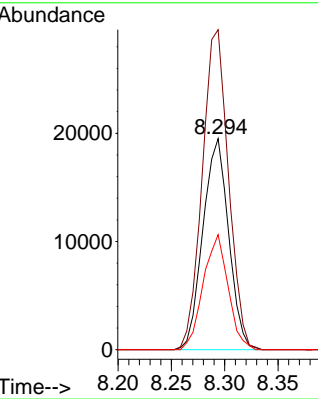
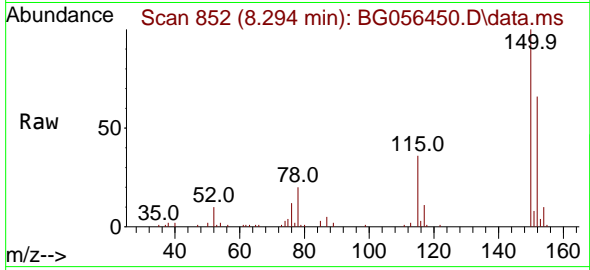




#1
 1,4-Dichlorobenzene-d4
 Concen: 20.000 ng
 RT: 8.294 min Scan# 81
 Delta R.T. 0.001 min
 Lab File: BG056450.D
 Acq: 26 Jan 2023 19:54

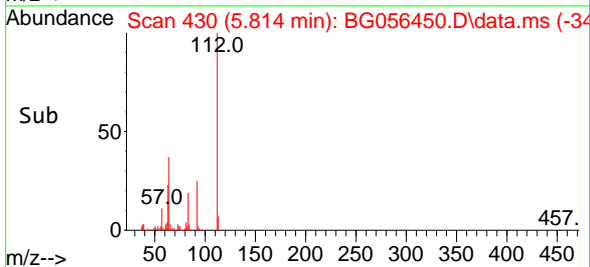
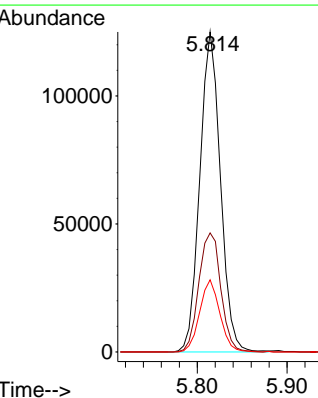
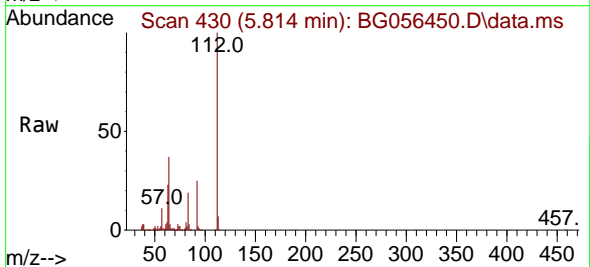
Instrument :
 BNA_G
 ClientSampleId :
 MH-10

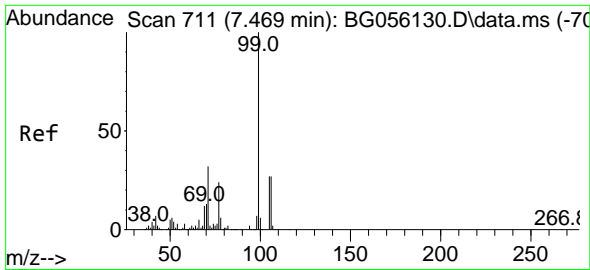
Tgt Ion:152 Resp: 32720
 Ion Ratio Lower Upper
 152 100
 150 151.6 127.9 191.9
 115 54.5 44.2 66.2



#5
 2-Fluorophenol
 Concen: 108.600 ng
 RT: 5.814 min Scan# 430
 Delta R.T. 0.001 min
 Lab File: BG056450.D
 Acq: 26 Jan 2023 19:54

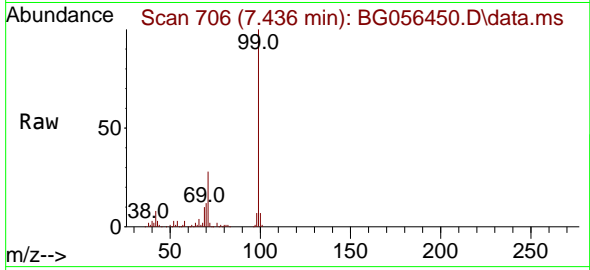
Tgt Ion:112 Resp: 199015
 Ion Ratio Lower Upper
 112 100
 64 37.2 33.3 49.9
 63 22.5 19.0 28.4



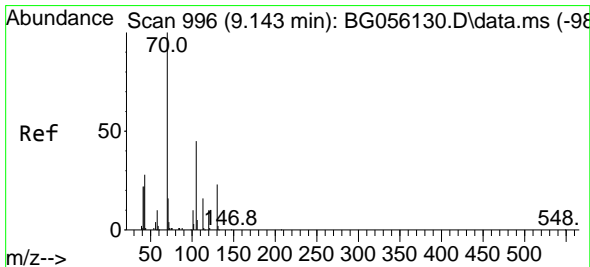
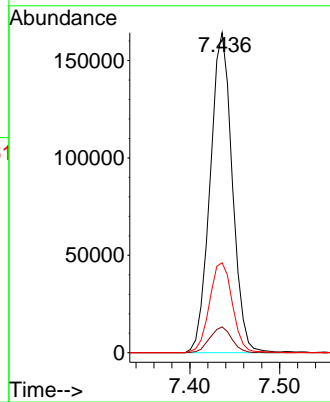
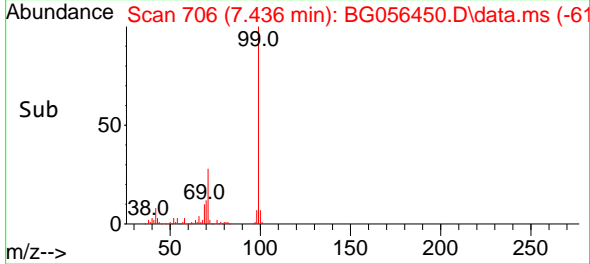


#7
 Phenol-d6
 Concen: 99.809 ng
 RT: 7.436 min Scan# 706
 Delta R.T. 0.001 min
 Lab File: BG056450.D
 Acq: 26 Jan 2023 19:54

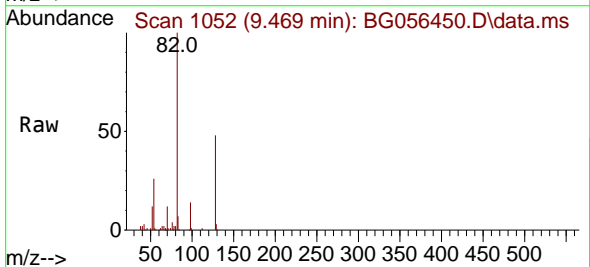
Instrument :
 BNA_G
 ClientSampleId :
 MH-10



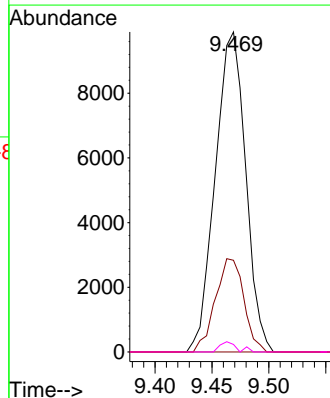
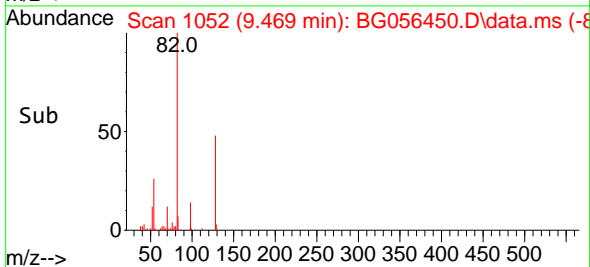
Tgt Ion: 99 Resp: 280888
 Ion Ratio Lower Upper
 99 100
 42 8.1 5.9 8.9
 71 28.1 25.4 38.2

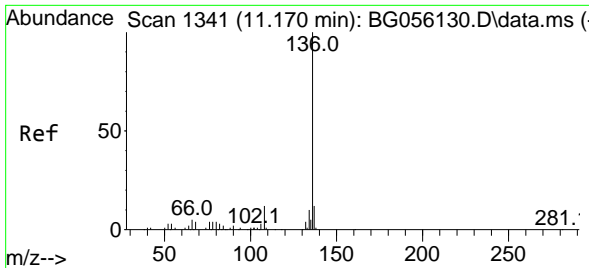


#19
 n-Nitroso-di-n-propylamine
 Concen: 10.736 ng
 RT: 9.469 min Scan# 1052
 Delta R.T. 0.371 min
 Lab File: BG056450.D
 Acq: 26 Jan 2023 19:54



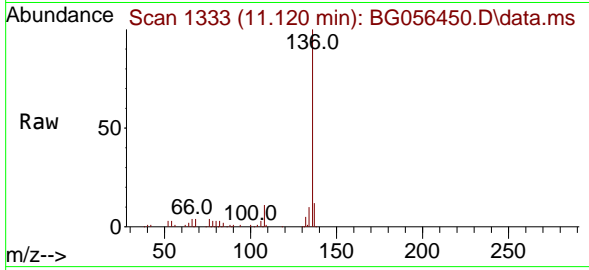
Tgt Ion: 70 Resp: 18373
 Ion Ratio Lower Upper
 70 100
 42 28.7 18.2 27.2#
 101 0.0 8.3 12.5#
 130 2.4 18.2 27.4#





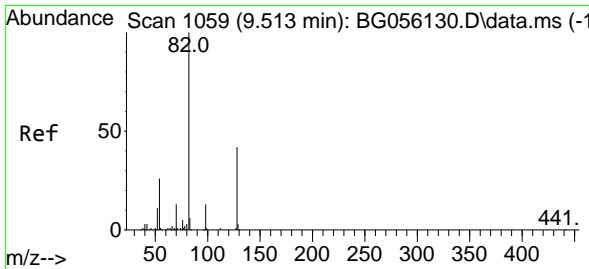
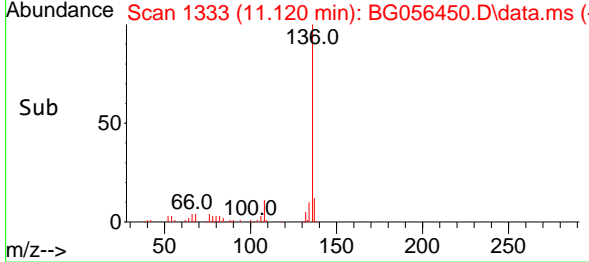
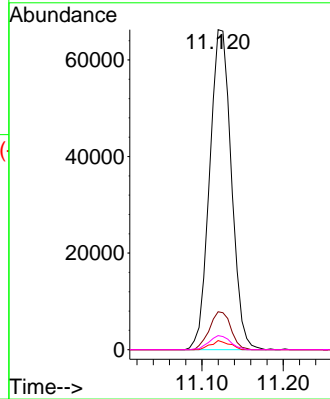
#21
 Naphthalene-d8
 Concen: 20.000 ng
 RT: 11.120 min Scan# 111
 Delta R.T. -0.011 min
 Lab File: BG056450.D
 Acq: 26 Jan 2023 19:54

Instrument : BNA_G
 ClientSampleId : MH-10



Tgt Ion: 136 Resp: 123087

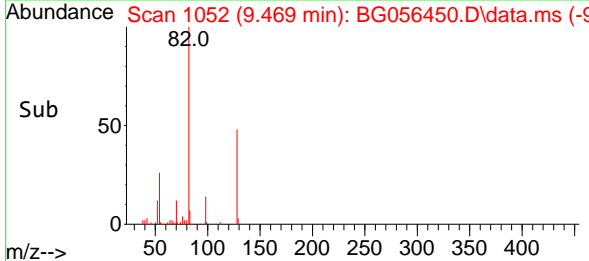
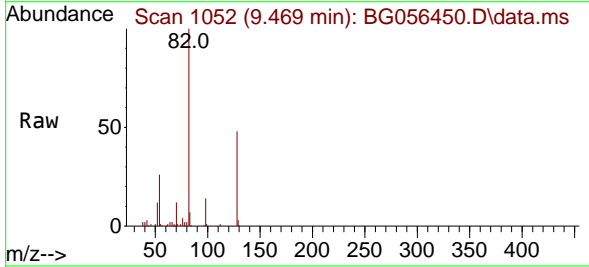
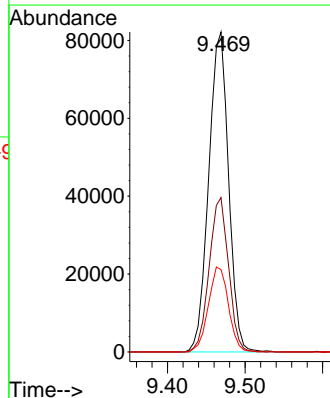
Ion	Ratio	Lower	Upper
136	100		
137	11.9	9.4	14.0
54	2.8	2.2	3.2
68	4.4	3.4	5.0

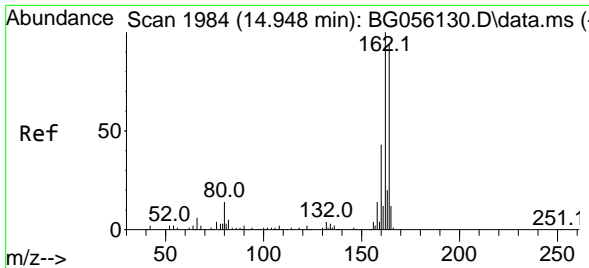


#23
 Nitrobenzene-d5
 Concen: 60.698 ng
 RT: 9.469 min Scan# 1052
 Delta R.T. -0.005 min
 Lab File: BG056450.D
 Acq: 26 Jan 2023 19:54

Tgt Ion: 82 Resp: 146059

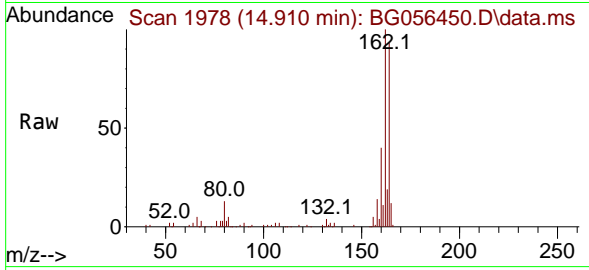
Ion	Ratio	Lower	Upper
82	100		
128	48.2	33.4	50.2
54	25.8	20.3	30.5



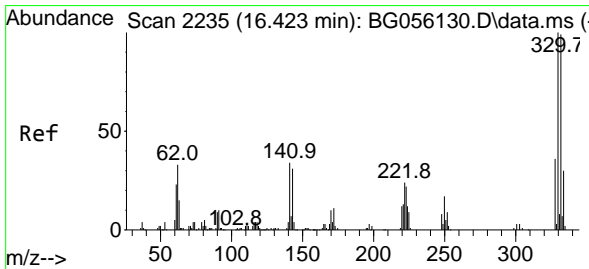
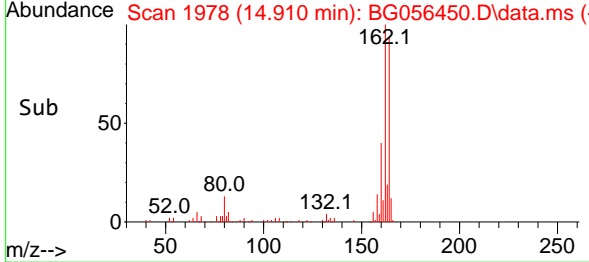
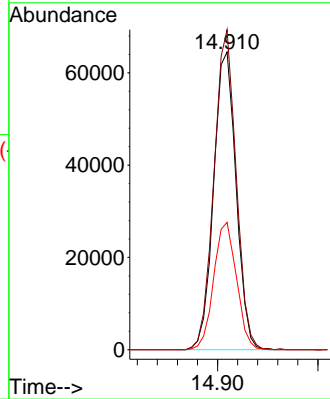


#39
 Acenaphthene-d10
 Concen: 20.000 ng
 RT: 14.910 min Scan# 14
 Delta R.T. -0.005 min
 Lab File: BG056450.D
 Acq: 26 Jan 2023 19:54

Instrument :
 BNA_G
 ClientSampleId :
 MH-10

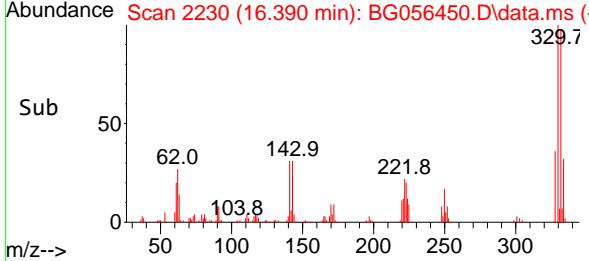
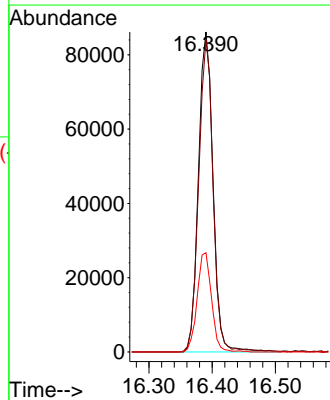
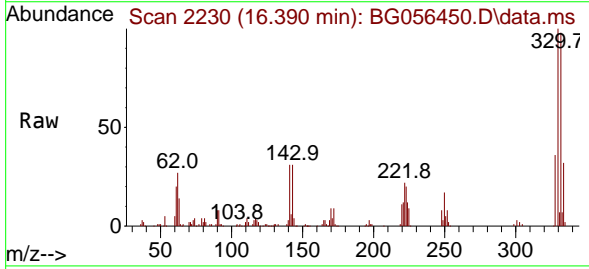


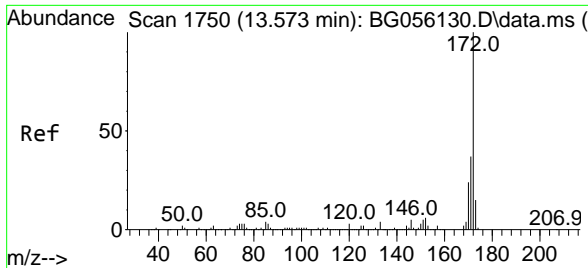
Tgt Ion:164 Resp: 99987
 Ion Ratio Lower Upper
 164 100
 162 107.5 84.7 127.1
 160 42.8 36.3 54.5



#42
 2,4,6-Tribromophenol
 Concen: 108.845 ng
 RT: 16.390 min Scan# 2230
 Delta R.T. -0.005 min
 Lab File: BG056450.D
 Acq: 26 Jan 2023 19:54

Tgt Ion:330 Resp: 137832
 Ion Ratio Lower Upper
 330 100
 332 96.5 77.3 115.9
 141 30.6 27.9 41.9

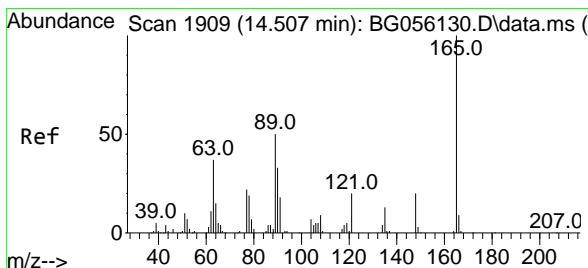
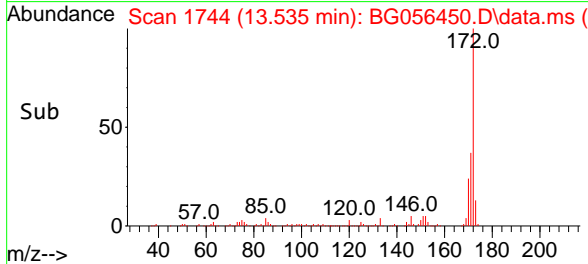
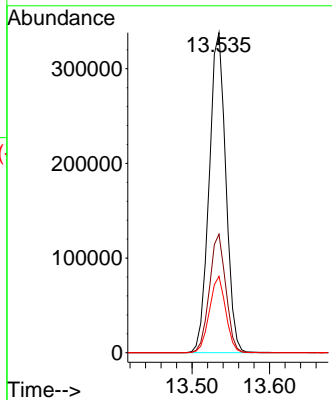
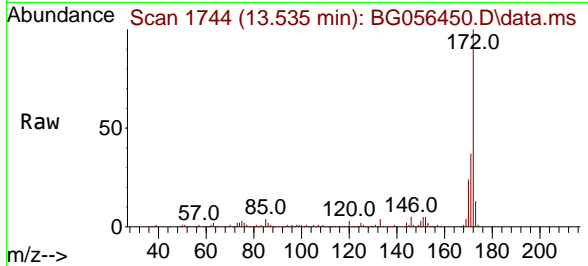




#45
 2-Fluorobiphenyl
 Concen: 69.618 ng
 RT: 13.535 min Scan# 11
 Delta R.T. -0.005 min
 Lab File: BG056450.D
 Acq: 26 Jan 2023 19:54

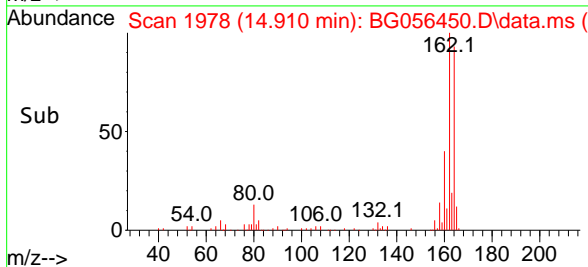
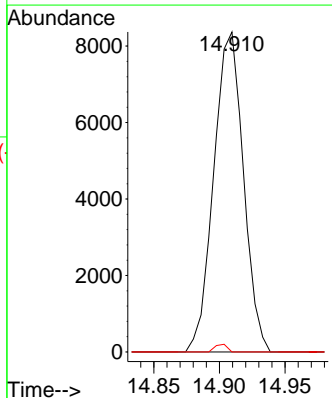
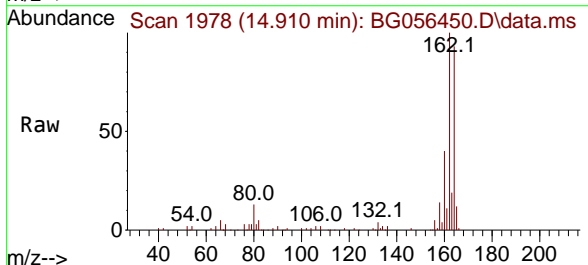
Instrument : BNA_G
 ClientSampleId : MH-10

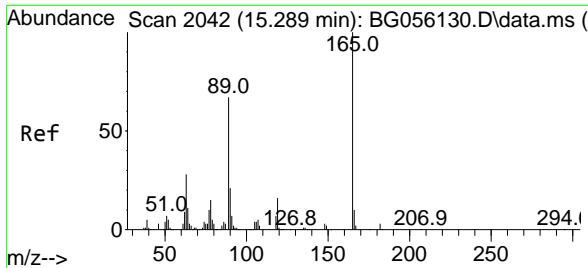
Tgt Ion	Resp	Lower	Upper
172	100		
171	37.0	29.6	44.4
170	23.9	19.4	29.2



#51
 2,6-Dinitrotoluene
 Concen: 7.650 ng
 RT: 14.910 min Scan# 1978
 Delta R.T. 0.429 min
 Lab File: BG056450.D
 Acq: 26 Jan 2023 19:54

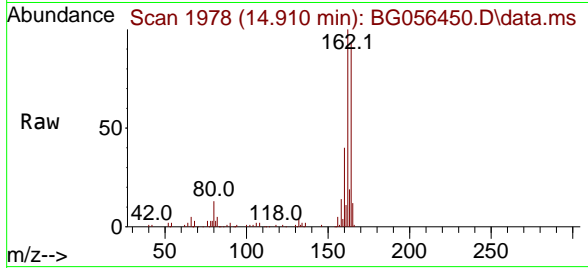
Tgt Ion	Resp	Lower	Upper
165	100		
63	0.0	32.2	48.2#
89	0.0	39.8	59.8#





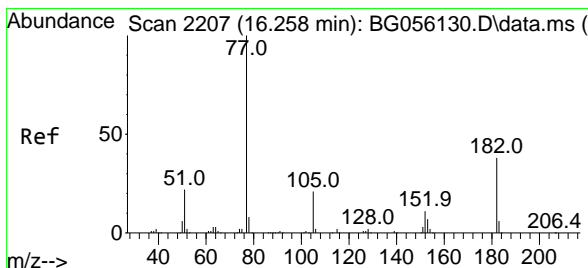
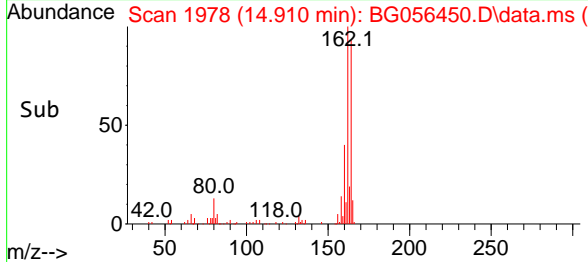
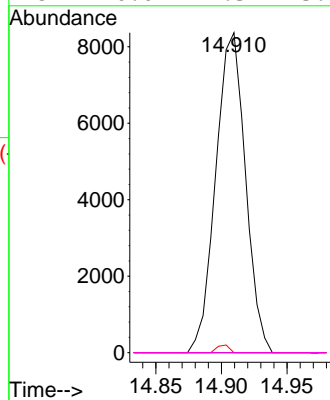
#57
 2,4-Dinitrotoluene
 Concen: 5.470 ng
 RT: 14.910 min Scan# 14
 Delta R.T. -0.358 min
 Lab File: BG056450.D
 Acq: 26 Jan 2023 19:54

Instrument :
 BNA_G
 ClientSampleId :
 MH-10



Tgt Ion: 165 Resp: 13158

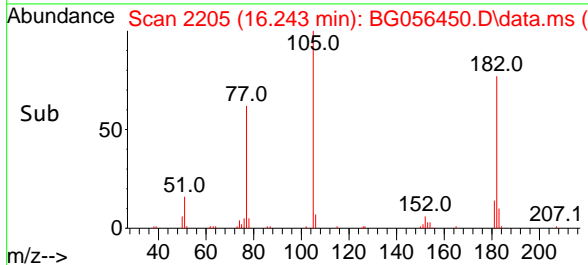
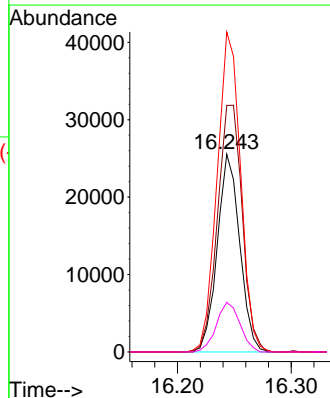
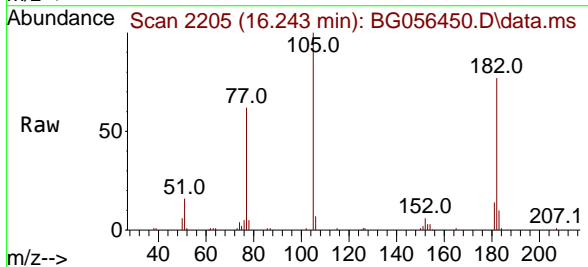
Ion	Ratio	Lower	Upper
165	100		
63	0.0	22.6	34.0#
89	0.0	53.2	79.8#
182	0.0	2.3	3.5#

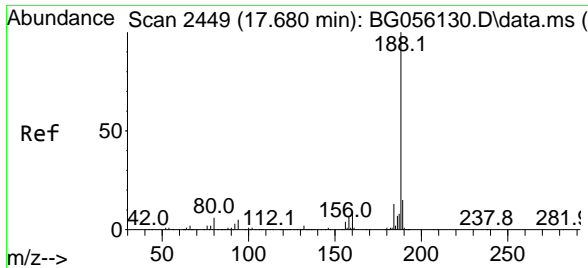


#63
 Azobenzene
 Concen: 6.000 ng
 RT: 16.243 min Scan# 2205
 Delta R.T. 0.012 min
 Lab File: BG056450.D
 Acq: 26 Jan 2023 19:54

Tgt Ion: 77 Resp: 35049

Ion	Ratio	Lower	Upper
77	100		
182	124.7	18.5	58.5#
105	161.9	1.4	41.4#
51	25.1	1.5	41.5



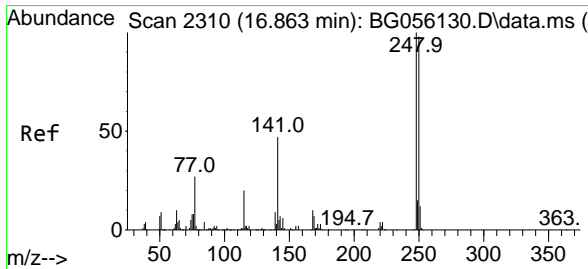
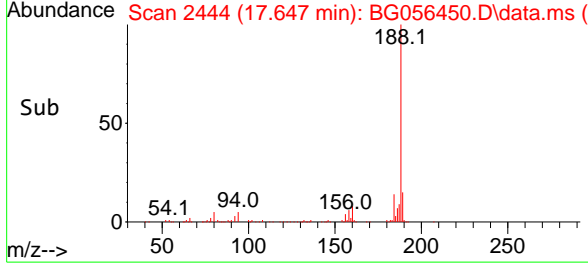
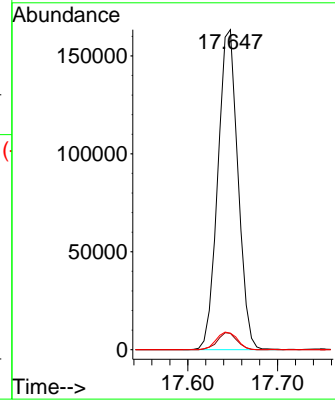
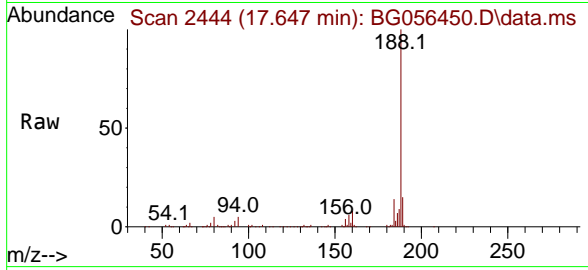


#64
 Phenanthrene-d10
 Concen: 20.000 ng
 RT: 17.647 min Scan# 24
 Delta R.T. -0.005 min
 Lab File: BG056450.D
 Acq: 26 Jan 2023 19:54

Instrument :
 BNA_G
 ClientSampleId :
 MH-10

Tgt Ion:188 Resp: 254311

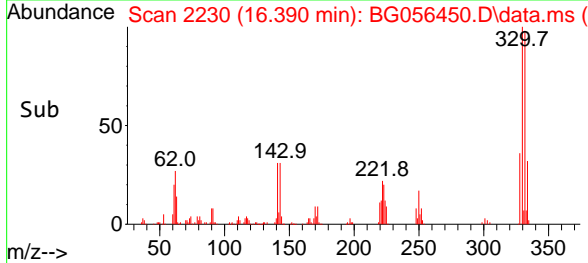
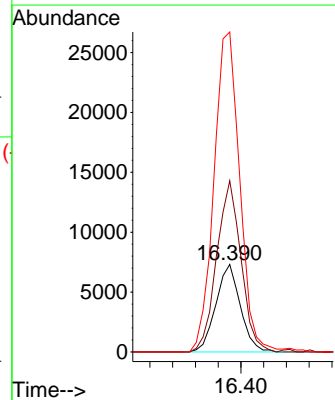
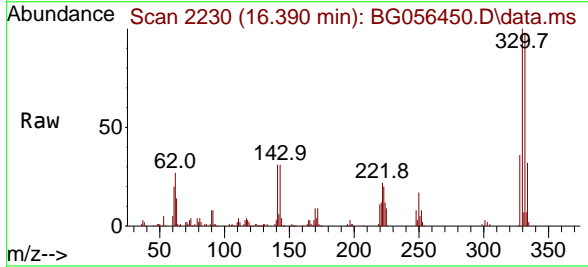
Ion	Ratio	Lower	Upper
188	100		
94	5.1	4.2	6.2
80	5.1	5.0	7.4

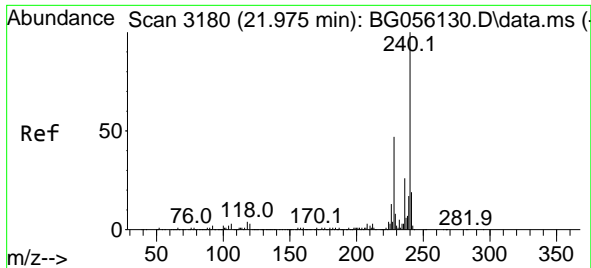


#67
 4-Bromophenyl-phenylether
 Concen: 3.369 ng
 RT: 16.390 min Scan# 2230
 Delta R.T. -0.440 min
 Lab File: BG056450.D
 Acq: 26 Jan 2023 19:54

Tgt Ion:248 Resp: 10911

Ion	Ratio	Lower	Upper
248	100		
250	248.9	78.2	117.4#
141	365.7	37.6	56.4#

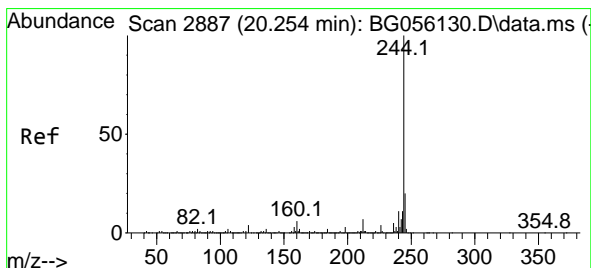
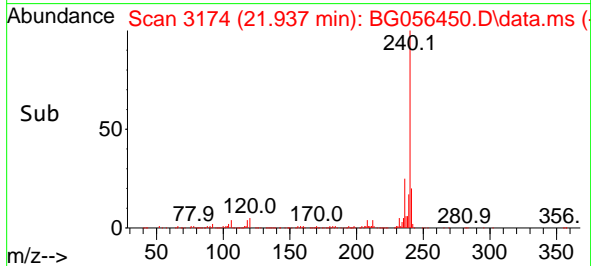
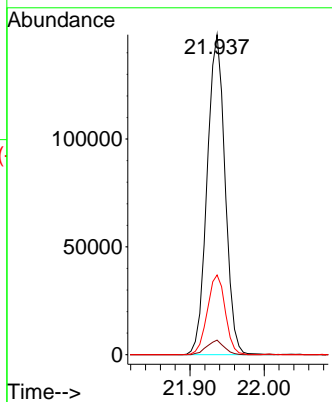
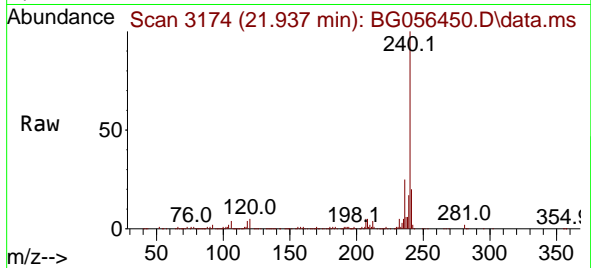




#76
 Chrysene-d12
 Concen: 20.000 ng
 RT: 21.937 min Scan# 31
 Delta R.T. -0.005 min
 Lab File: BG056450.D
 Acq: 26 Jan 2023 19:54

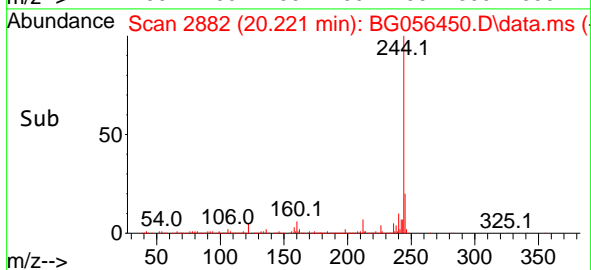
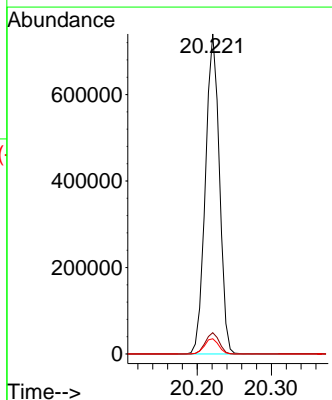
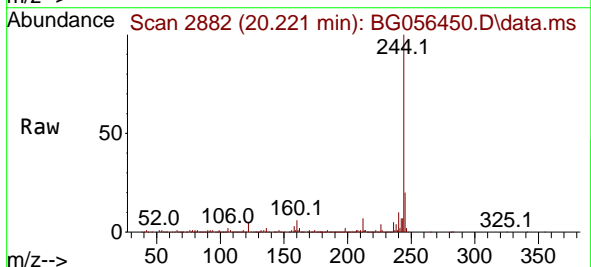
Instrument :
 BNA_G
 ClientSampleId :
 MH-10

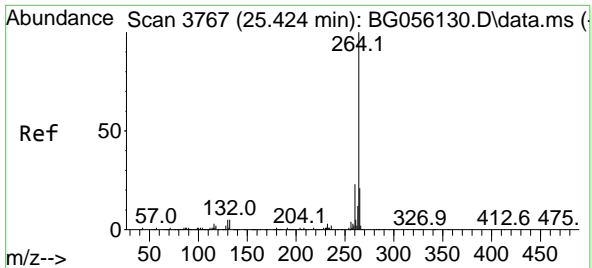
Tgt Ion:240 Resp: 248553
 Ion Ratio Lower Upper
 240 100
 120 4.5 2.6 4.0#
 236 24.9 20.8 31.2



#79
 Terphenyl-d14
 Concen: 69.783 ng
 RT: 20.221 min Scan# 2882
 Delta R.T. -0.005 min
 Lab File: BG056450.D
 Acq: 26 Jan 2023 19:54

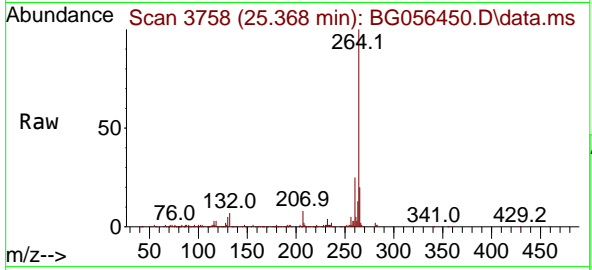
Tgt Ion:244 Resp: 968415
 Ion Ratio Lower Upper
 244 100
 212 6.7 5.7 8.5
 122 4.8 3.5 5.3





#86
 Perylene-d12
 Concen: 20.000 ng
 RT: 25.368 min Scan# 31
 Delta R.T. -0.005 min
 Lab File: BG056450.D
 Acq: 26 Jan 2023 19:54

Instrument :
 BNA_G
 ClientSampleId :
 MH-10



Tgt Ion:264 Resp: 267656

Ion	Ratio	Lower	Upper
264	100		
260	24.7	18.6	28.0
265	20.4	16.7	25.1

