

Data Path : Z:\svoasrv\HPCHEM1\BNA_G\Data\BG012624\
 Data File : BG060449.D
 Acq On : 26 Jan 2024 20:20
 Operator : MA/JU
 Sample : PB158632BS
 Misc :
 ALS Vial : 15 Sample Multiplier: 1

Instrument :
 BNA_G
 ClientSampleId :
 SLCS632

Quant Time: Jan 26 22:05:43 2024
 Quant Method : Z:\svoasrv\HPCHEM1\BNA_G\Methods\SFAM-EPA-BG012624.MA.M
 Quant Title : SVOA CALIBRATION
 QLast Update : Fri Jan 26 06:06:34 2024
 Response via : Initial Calibration

Compound	R.T.	QIon	Response	Conc	Units	Dev(Min)
Internal Standards						
1) 1,4-Dichlorobenzene-d4	7.924	152	196251	20.000	ng/ul	0.00
20) Naphthalene-d8	10.726	136	896485	20.000	ng/ul	0.00
38) Acenaphthene-d10	14.563	164	691338	20.000	ng/ul	0.00
64) Phenanthrene-d10	17.313	188	1637514	20.000	ng/ul	0.00
79) Chrysene-d12	21.572	240	1519218	20.000	ng/ul	0.00
88) Perylene-d12	24.733	264	1686924	20.000	ng/ul	0.00
System Monitoring Compounds						
3) 1,4-Dioxane-d8	3.364	96	20737	5.295	ng/uL	0.00
4) Pyridine-d5	3.770	84	321181	25.925	ng/ul	0.00
7) Phenol-d5	7.089	99	503360	27.006	ng/ul	0.00
9) Bis-(2-Chloroethyl)eth...	7.254	67	282423	24.113	ng/ul	0.00
11) 2-Chlorophenol-d4	7.460	132	316498	25.429	ng/ul	0.00
15) 4-Methylphenol-d8	8.635	113	400727	26.101	ng/ul	0.00
21) Nitrobenzene-d5	9.087	128	183759	27.787	ng/ul	0.00
24) 2-Nitrophenol-d4	9.810	143	215983	27.954	ng/ul	0.00
28) 2,4-Dichlorophenol-d3	10.350	165	455063	28.320	ng/ul	0.00
31) 4-Chloroaniline-d4	10.861	131	504478	23.933	ng/ul	0.00
46) Dimethylphthalate-d6	13.970	166	1513252	26.750	ng/ul	0.00
49) Acenaphthylene-d8	14.257	160	1726407	27.206	ng/ul	0.00
54) 4-Nitrophenol-d4	14.769	143	227275	28.050	ng/ul	0.00
60) Fluorene-d10	15.556	176	1336543	26.964	ng/ul	0.00
65) 4,6-Dinitro-2-methylph...	15.673	200	296187	29.211	ng/ul	0.00
73) Anthracene-d10	17.407	188	2174196	28.009	ng/ul	0.00
81) Pyrene-d10	19.704	212	2582257	28.360	ng/ul	0.00
92) Benzo(a)pyrene-d12	24.516	264	2575437	29.103	ng/ul	0.00
Target Compounds						
2) 1,4-Dioxane	3.400	88	43360	10.006	ng/uL	98
5) Pyridine	3.787	79	312322	24.797	ng/ul	99
6) Benzaldehyde	7.066	77	233613	32.974	ng/ul	91
8) Phenol	7.113	94	517968	26.586	ng/ul	100
10) Bis(2-Chloroethyl)ether	7.342	93	400365	25.800	ng/ul	97
12) 2-Chlorophenol	7.489	128	338880	26.395	ng/ul	89
13) 2-Methylphenol	8.364	108	390314	25.924	ng/ul	99
14) 2,2'-oxybis(1-Chloropr...	8.447	45	521246	25.452	ng/ul	97
16) Acetophenone	8.746	105	637938	26.074	ng/ul	96
17) N-Nitroso-di-n-propyla...	8.729	70	344293	26.096	ng/ul	97
18) 4-Methylphenol	8.693	108	428801	26.488	ng/ul	97
19) Hexachloroethane	9.005	117	145118	25.565	ng/ul	95
22) Nitrobenzene	9.128	77	503305	27.822	ng/ul	96
23) Isophorone	9.651	82	1018704	25.974	ng/ul	100
25) 2-Nitrophenol	9.839	139	224157	28.540	ng/ul	96
26) 2,4-Dimethylphenol	9.898	107	406790	25.099	ng/ul	98
27) Bis(2-Chloroethoxy)met...	10.133	93	618471	27.701	ng/ul	99
29) 2,4-Dichlorophenol	10.374	162	442662	28.660	ng/ul	97
30) Naphthalene	10.779	128	1276217	26.383	ng/ul	99
32) 4-Chloroaniline	10.885	127	422834	20.445	ng/ul	95
33) Hexachlorobutadiene	11.061	225	327746	25.555	ng/ul	93
34) Caprolactam	11.643	113	75172	14.619	ng/ul	94
35) 4-Chloro-3-methylphenol	12.013	107	442626	28.583	ng/ul	99
36) 2-Methylnaphthalene	12.383	142	968218	28.472	ng/ul	99

Data Path : Z:\svoasrv\HPCHEM1\BNA_G\Data\BG012624\
 Data File : BG060449.D
 Acq On : 26 Jan 2024 20:20
 Operator : MA/JU
 Sample : PB158632BS
 Misc :
 ALS Vial : 15 Sample Multiplier: 1

Instrument :
 BNA_G
 ClientSampleId :
 SLCS632

Quant Time: Jan 26 22:05:43 2024
 Quant Method : Z:\svoasrv\HPCHEM1\BNA_G\Methods\SFAM-EPA-BG012624.MA.M
 Quant Title : SVOA CALIBRATION
 QLast Update : Fri Jan 26 06:06:34 2024
 Response via : Initial Calibration

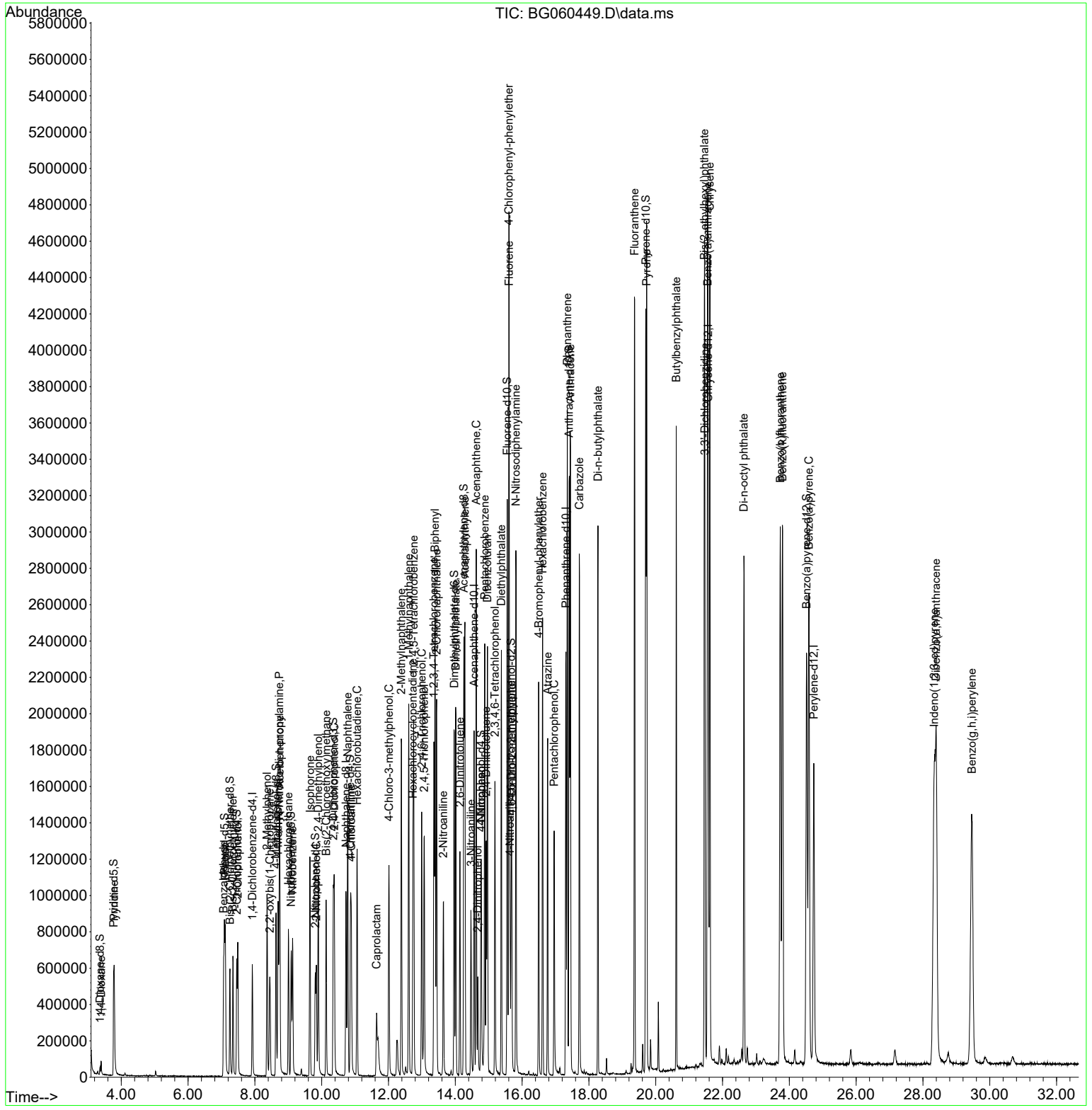
Compound	R.T.	QIon	Response	Conc	Units	Dev(Min)
37) 1-Methylnaphthalene	12.606	142	975231	28.375	ng/ul	99
39) 1,2,4,5-Tetrachloroben...	12.753	216	692742	27.532	ng/ul	99
40) Hexachlorocyclopentadiene	12.730	237	370048	24.321	ng/ul	97
41) 2,4,6-Trichlorophenol	12.994	196	435683	28.406	ng/ul	98
42) 2,4,5-Trichlorophenol	13.071	196	446134	27.527	ng/ul	95
43) 1,1'-Biphenyl	13.394	154	1408191	27.497	ng/ul	99
44) 2-Chloronaphthalene	13.441	162	1180188	27.295	ng/ul	98
45) 2-Nitroaniline	13.640	65	313460	28.803	ng/ul	93
47) Dimethylphthalate	14.017	163	1533679	27.160	ng/ul	99
48) 2,6-Dinitrotoluene	14.140	165	309158	29.031	ng/ul	95
50) Acenaphthylene	14.287	152	1908300	27.258	ng/ul	98
51) 3-Nitroaniline	14.469	138	261013	29.157	ng/ul	99
52) Acenaphthene	14.628	153	1251416	26.798	ng/ul	99
53) 2,4-Dinitrophenol	14.675	184	160193	27.560	ng/ul	96
55) 4-Nitrophenol	14.780	109	151131	27.396	ng/ul	93
56) Dibenzofuran	14.962	168	1799408	27.294	ng/ul	98
57) 2,4-Dinitrotoluene	14.927	165	451579	28.937	ng/ul	94
58) 2,3,4,6-Tetrachlorophenol	15.186	232	415286	27.571	ng/ul#	97
59) Diethylphthalate	15.380	149	1420045	26.154	ng/ul	98
61) Fluorene	15.609	166	1449047	26.791	ng/ul	98
62) 4-Chlorophenyl-phenyle...	15.603	204	809907	27.128	ng/ul	97
63) 4-Nitroaniline	15.638	138	274142	31.259	ng/ul	97
66) 4,6-Dinitro-2-methylph...	15.691	198	300437	28.327	ng/ul#	96
67) N-Nitrosodiphenylamine	15.814	169	1267316	28.534	ng/ul	97
68) 4-Bromophenyl-phenylether	16.496	248	542497	28.517	ng/ul	100
69) Hexachlorobenzene	16.613	284	617259	27.972	ng/ul	98
70) Atrazine	16.766	200	401177	21.972	ng/ul	96
71) Pentachlorophenol	16.960	266	314956	25.914	ng/ul	92
72) Phenanthrene	17.354	178	2426274	28.181	ng/ul	99
74) Anthracene	17.448	178	2443477	27.851	ng/ul	98
75) 1,2,3,4-Tetrachloroben...	13.358	216	695740	29.296	ng/uL	97
76) Pentachlorobenzene	14.880	250	715751	28.690	ng/uL	96
77) Carbazole	17.712	167	2097641	28.949	ng/ul	99
78) Di-n-butylphthalate	18.270	149	2342716	27.425	ng/ul	100
80) Fluoranthene	19.369	202	2872986	28.275	ng/ul	98
82) Pyrene	19.727	202	2925354	27.663	ng/ul	97
83) Butylbenzylphthalate	20.615	149	1055306	27.997	ng/ul	99
84) 3,3'-Dichlorobenzidine	21.473	252	1012860	28.897	ng/ul	99
85) Benzo(a)anthracene	21.555	228	2953536	28.194	ng/ul	96
86) Bis(2-ethylhexyl)phtha...	21.455	149	1551539	27.577	ng/ul	99
87) Chrysene	21.619	228	2790677	28.359	ng/ul	97
89) Di-n-octyl phthalate	22.642	149	2663178	29.583	ng/ul	100
90) Benzo(b)fluoranthene	23.729	252	3093363	29.551	ng/ul	98
91) Benzo(k)fluoranthene	23.793	252	3047671	28.510	ng/ul	99
93) Benzo(a)pyrene	24.587	252	2853707	28.338	ng/ul	100
94) Indeno(1,2,3-cd)pyrene	28.335	276	3539597	28.673	ng/ul	100
95) Dibenzo(a,h)anthracene	28.394	278	2897104	28.765	ng/ul	99
96) Benzo(g,h,i)perylene	29.463	276	1753317	17.542	ng/ul	98

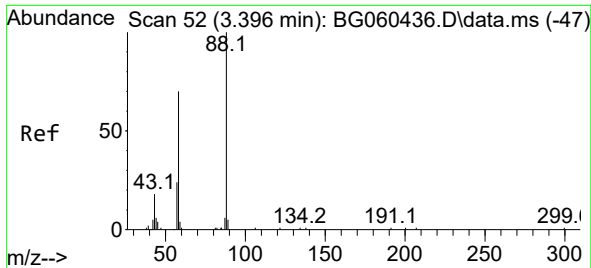
(#) = qualifier out of range (m) = manual integration (+) = signals summed

Data Path : Z:\svoasrv\HPCHEM1\BNA_G\Data\BG012624\
 Data File : BG060449.D
 Acq On : 26 Jan 2024 20:20
 Operator : MA/JU
 Sample : PB158632BS
 Misc :
 ALS Vial : 15 Sample Multiplier: 1

Instrument :
 BNA_G
 ClientSampleId :
 SLCS632

Quant Time: Jan 26 22:05:43 2024
 Quant Method : Z:\svoasrv\HPCHEM1\BNA_G\Methods\SFAM-EPA-BG012624.MA.M
 Quant Title : SVOA CALIBRATION
 QLast Update : Fri Jan 26 06:06:34 2024
 Response via : Initial Calibration

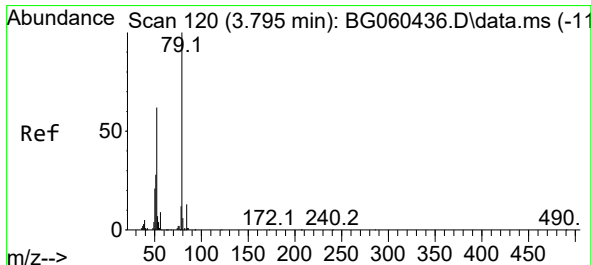
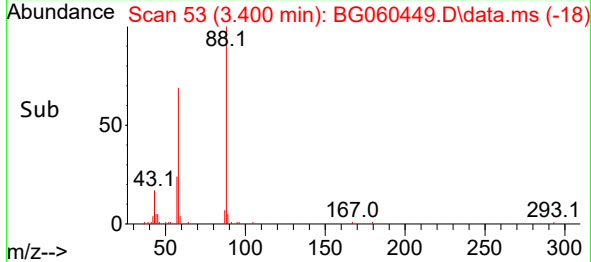
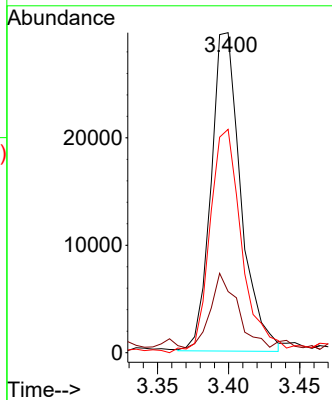
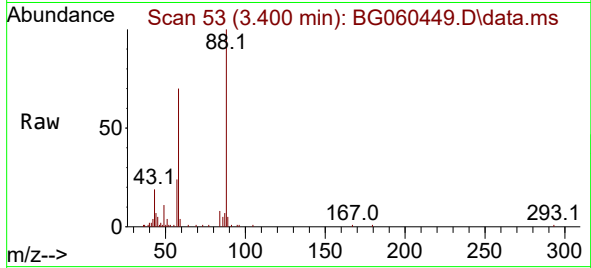




#2
 1,4-Dioxane
 Concen: 10.006 ng/uL
 RT: 3.400 min Scan# 51
 Delta R.T. 0.004 min
 Lab File: BG060449.D
 Acq: 26 Jan 2024 20:20

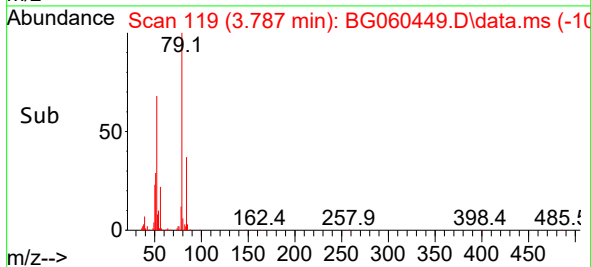
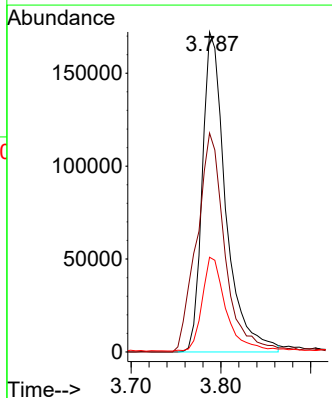
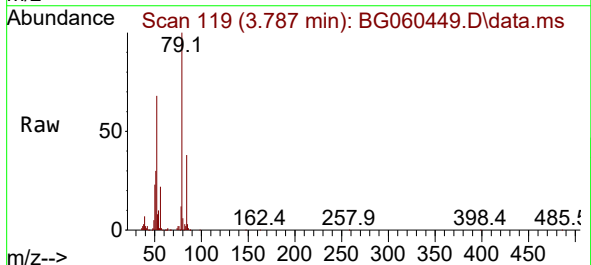
Instrument :
 BNA_G
 ClientSampleId :
 SLCS632

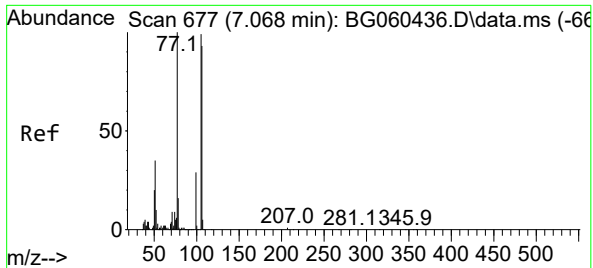
Tgt Ion: 88 Resp: 43360
 Ion Ratio Lower Upper
 88 100
 43 19.1 15.4 23.0
 58 69.8 57.8 86.8



#5
 Pyridine
 Concen: 24.797 ng/uL
 RT: 3.787 min Scan# 119
 Delta R.T. -0.002 min
 Lab File: BG060449.D
 Acq: 26 Jan 2024 20:20

Tgt Ion: 79 Resp: 312322
 Ion Ratio Lower Upper
 79 100
 52 68.4 55.8 83.6
 51 29.6 23.1 34.7



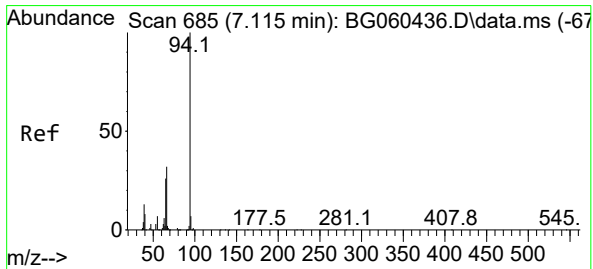
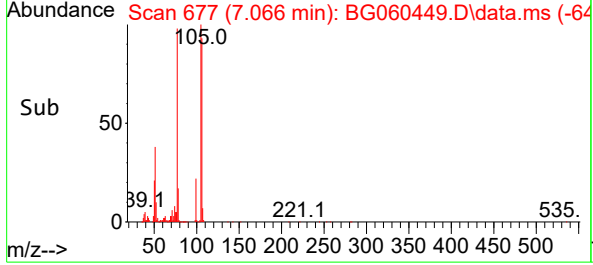
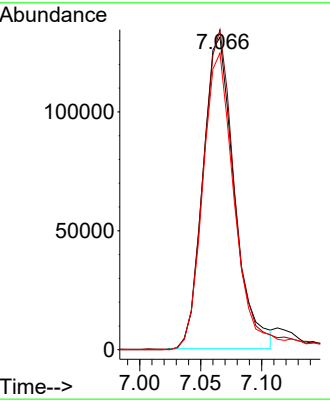
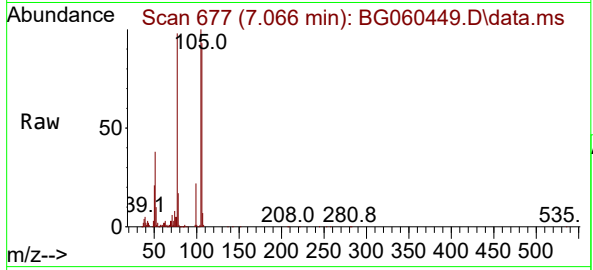


#6
Benzaldehyde
Concen: 32.974 ng/uI
RT: 7.066 min Scan# 611
Delta R.T. 0.004 min
Lab File: BG060449.D
Acq: 26 Jan 2024 20:20

Instrument : BNA_G
ClientSampleId : SLCS632

Tgt Ion: 77 Resp: 233613

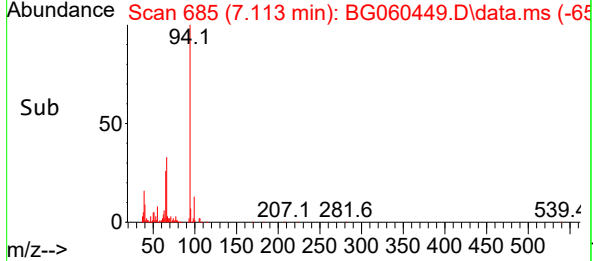
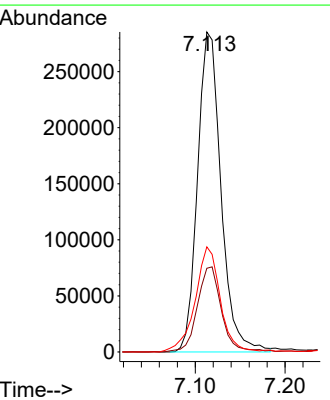
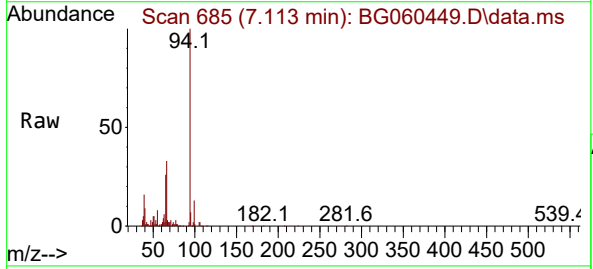
Ion	Ratio	Lower	Upper
77	100		
105	102.3	73.1	109.7
106	94.9	71.1	106.7

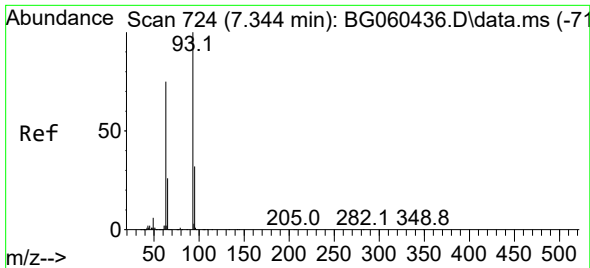


#8
Phenol
Concen: 26.586 ng/uI
RT: 7.113 min Scan# 685
Delta R.T. -0.002 min
Lab File: BG060449.D
Acq: 26 Jan 2024 20:20

Tgt Ion: 94 Resp: 517968

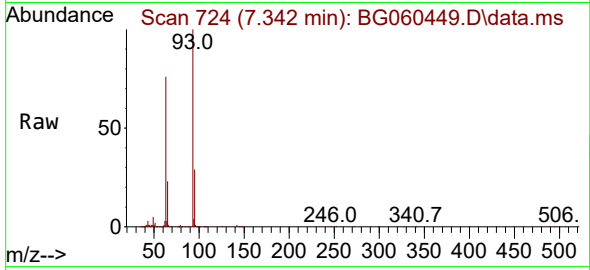
Ion	Ratio	Lower	Upper
94	100		
65	26.2	20.8	31.2
66	32.9	26.3	39.5



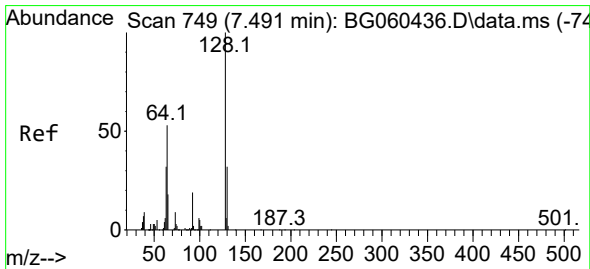
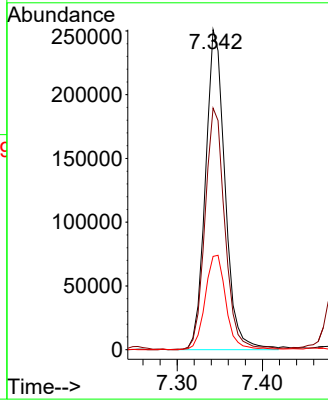
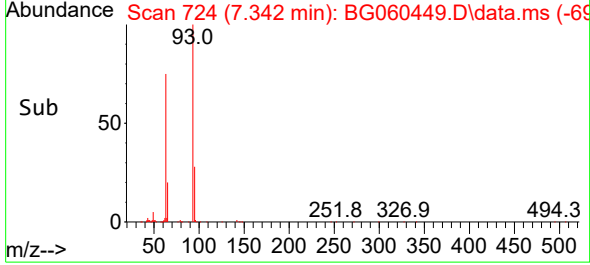


#10
 Bis(2-Chloroethyl)ether
 Concen: 25.800 ng/ul
 RT: 7.342 min Scan# 71
 Delta R.T. -0.002 min
 Lab File: BG060449.D
 Acq: 26 Jan 2024 20:20

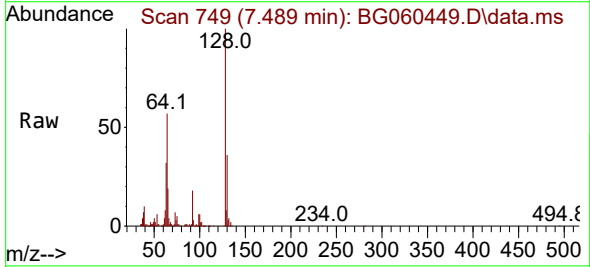
Instrument :
 BNA_G
 ClientSampleId :
 SLCS632



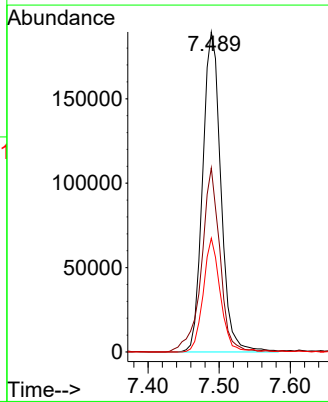
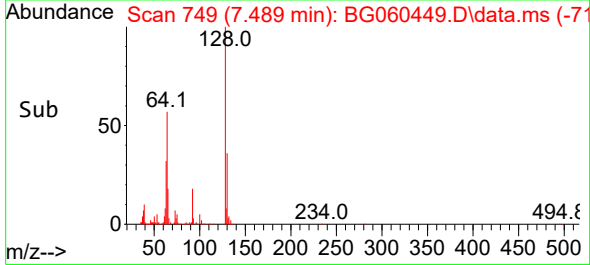
Tgt Ion: 93 Resp: 400365
 Ion Ratio Lower Upper
 93 100
 63 75.5 61.4 92.0
 95 29.1 26.2 39.2

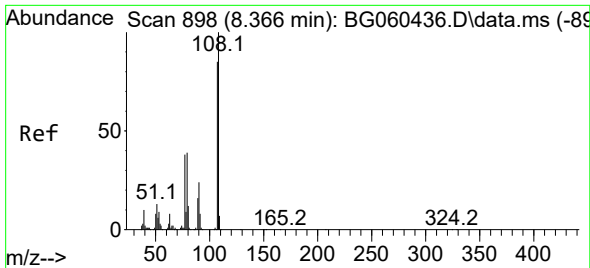


#12
 2-Chlorophenol
 Concen: 26.395 ng/ul
 RT: 7.489 min Scan# 749
 Delta R.T. 0.004 min
 Lab File: BG060449.D
 Acq: 26 Jan 2024 20:20



Tgt Ion:128 Resp: 338880
 Ion Ratio Lower Upper
 128 100
 64 57.5 39.6 59.4
 130 35.6 23.8 35.8

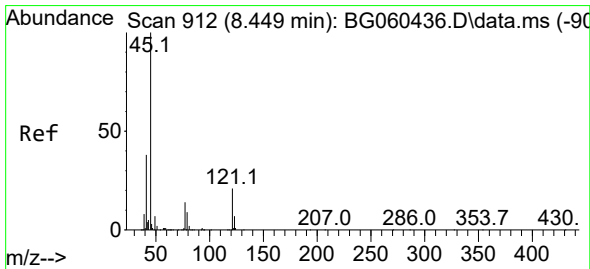
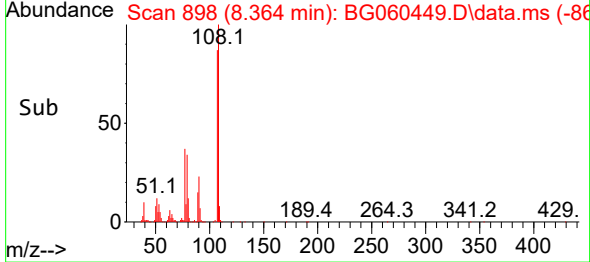
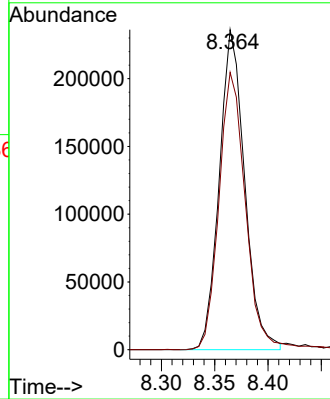
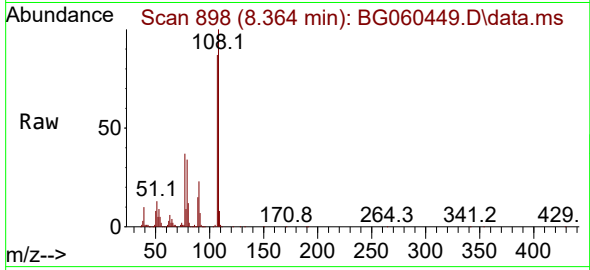




#13
 2-Methylphenol
 Concen: 25.924 ng/ul
 RT: 8.364 min Scan# 898
 Delta R.T. -0.002 min
 Lab File: BG060449.D
 Acq: 26 Jan 2024 20:20

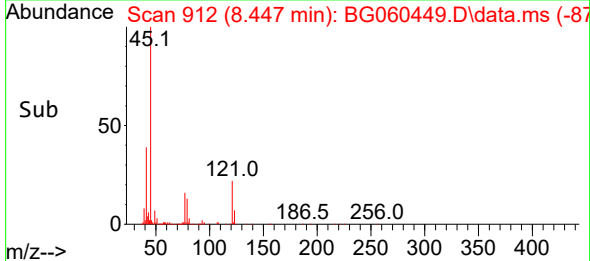
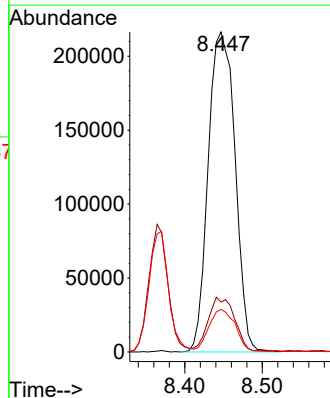
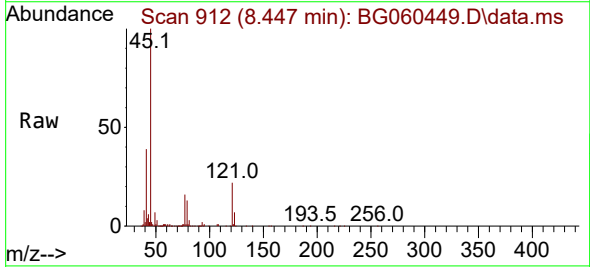
Instrument :
 BNA_G
 ClientSampleId :
 SLCS632

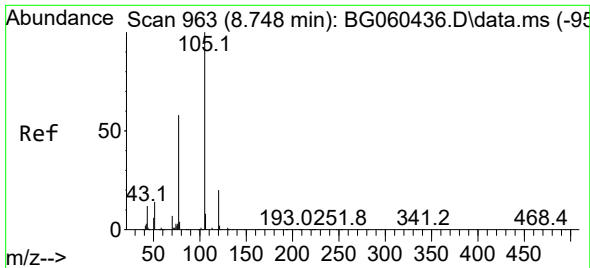
Tgt Ion: 108 Resp: 390314
 Ion Ratio Lower Upper
 108 100
 107 86.6 68.9 103.3



#14
 2,2'-oxybis(1-Chloropropane)
 Concen: 25.452 ng/ul
 RT: 8.447 min Scan# 912
 Delta R.T. 0.004 min
 Lab File: BG060449.D
 Acq: 26 Jan 2024 20:20

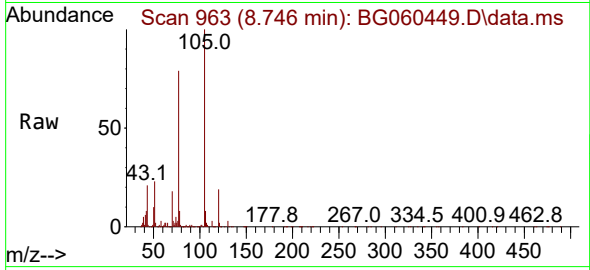
Tgt Ion: 45 Resp: 521246
 Ion Ratio Lower Upper
 45 100
 77 15.6 14.2 21.4
 79 13.3 10.9 16.3





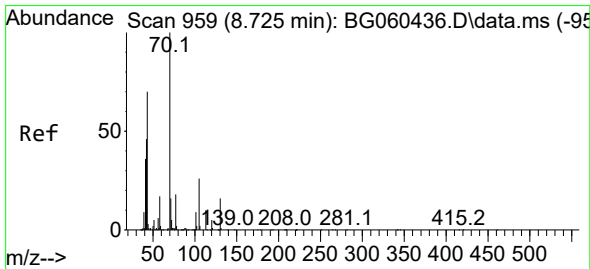
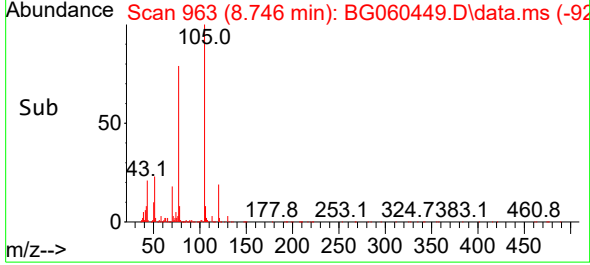
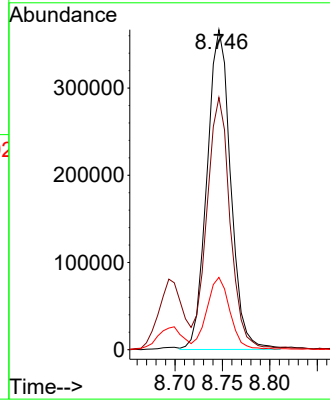
#16
 Acetophenone
 Concen: 26.074 ng/ul
 RT: 8.746 min Scan# 90
 Delta R.T. -0.002 min
 Lab File: BG060449.D
 Acq: 26 Jan 2024 20:20

Instrument :
 BNA_G
 ClientSampleId :
 SLCS632



Tgt Ion: 105 Resp: 637938

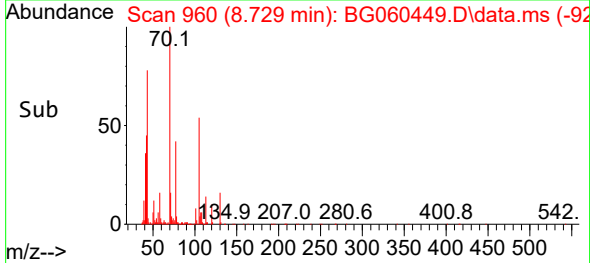
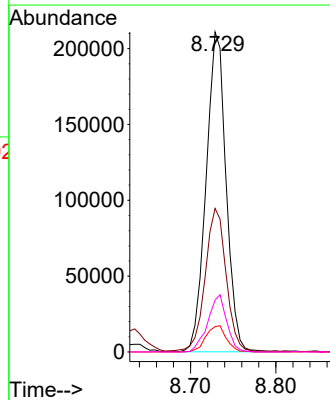
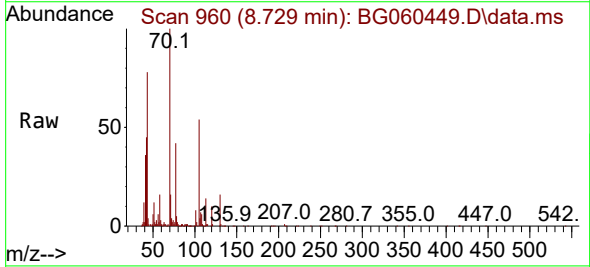
Ion	Ratio	Lower	Upper
105	100		
77	78.8	59.1	88.7
51	22.6	18.2	27.2

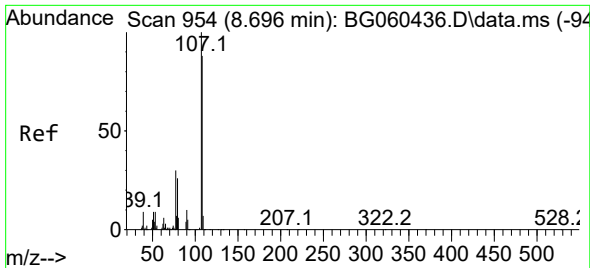


#17
 N-Nitroso-di-n-propylamine
 Concen: 26.096 ng/ul
 RT: 8.729 min Scan# 960
 Delta R.T. 0.004 min
 Lab File: BG060449.D
 Acq: 26 Jan 2024 20:20

Tgt Ion: 70 Resp: 344293

Ion	Ratio	Lower	Upper
70	100		
42	44.8	33.8	50.8
101	7.9	6.9	10.3
130	16.2	12.6	18.8

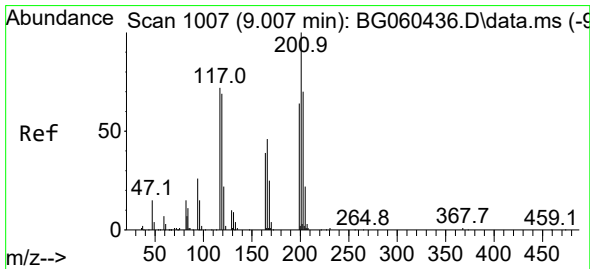
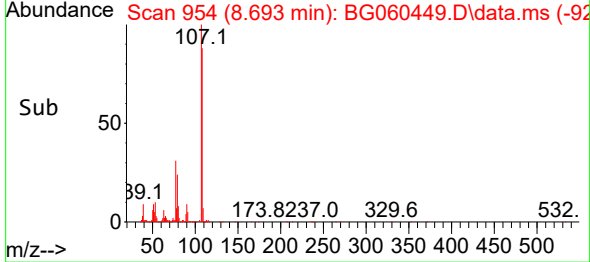
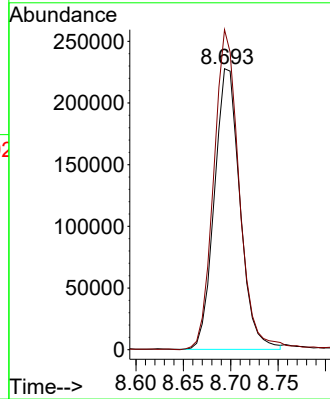
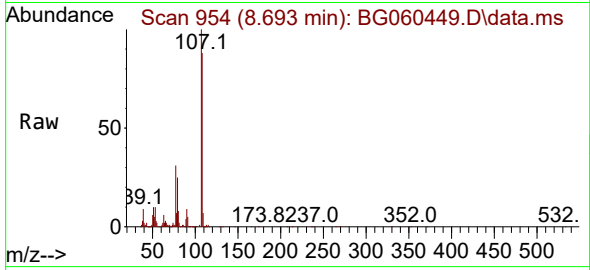




#18
 4-Methylphenol
 Concen: 26.488 ng/ul
 RT: 8.693 min Scan# 91
 Delta R.T. -0.002 min
 Lab File: BG060449.D
 Acq: 26 Jan 2024 20:20

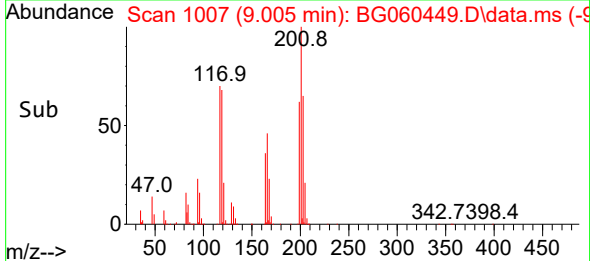
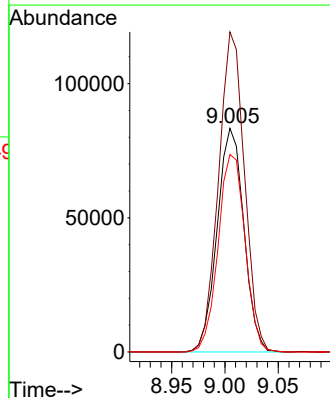
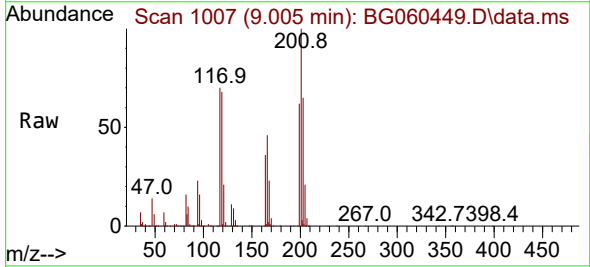
Instrument :
 BNA_G
 ClientSampleId :
 SLCS632

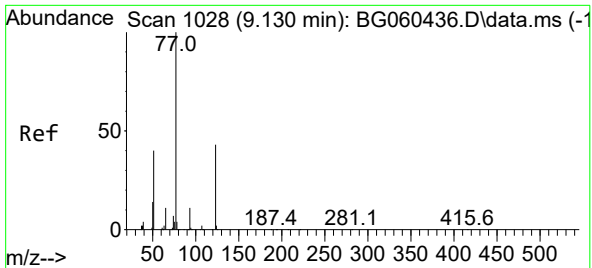
Tgt Ion:108 Resp: 428801
 Ion Ratio Lower Upper
 108 100
 107 113.9 88.2 132.4



#19
 Hexachloroethane
 Concen: 25.565 ng/ul
 RT: 9.005 min Scan# 1007
 Delta R.T. -0.002 min
 Lab File: BG060449.D
 Acq: 26 Jan 2024 20:20

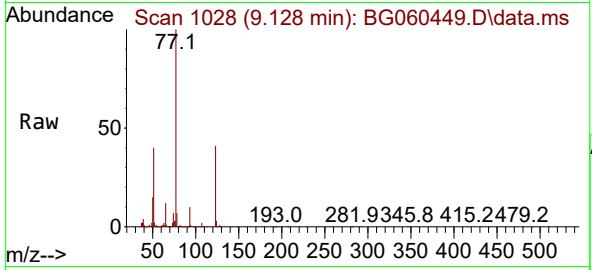
Tgt Ion:117 Resp: 145118
 Ion Ratio Lower Upper
 117 100
 201 143.1 110.8 166.2
 199 88.2 75.7 113.5





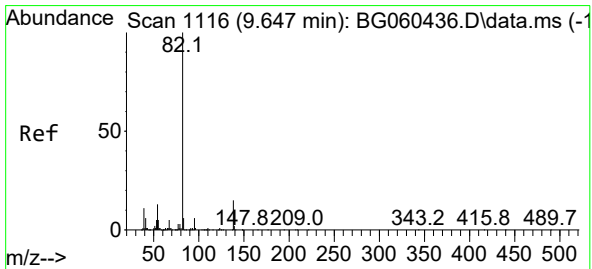
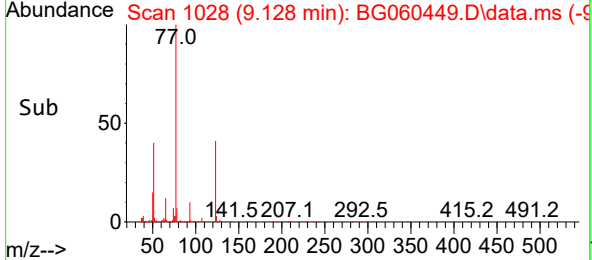
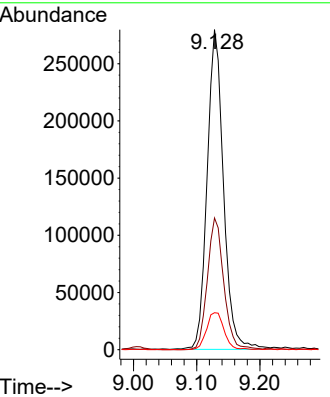
#22
 Nitrobenzene
 Concen: 27.822 ng/ul
 RT: 9.128 min Scan# 10
 Delta R.T. -0.002 min
 Lab File: BG060449.D
 Acq: 26 Jan 2024 20:20

Instrument : BNA_G
 ClientSampleId : SLCS632

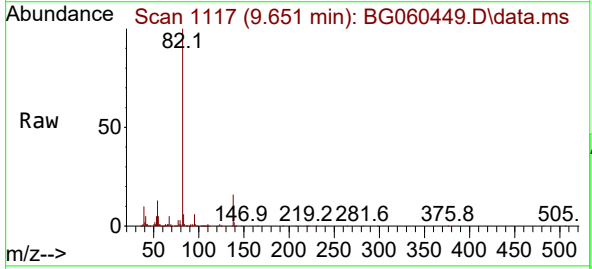


Tgt Ion: 77 Resp: 503305

Ion	Ratio	Lower	Upper
77	100		
123	41.2	35.0	52.6
65	11.6	10.5	15.7

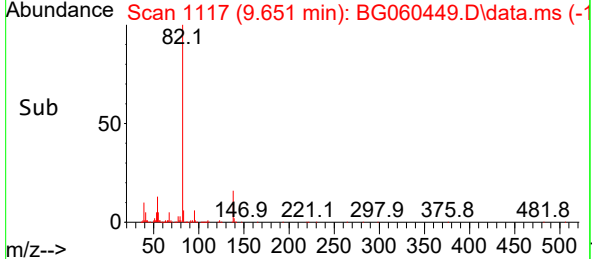
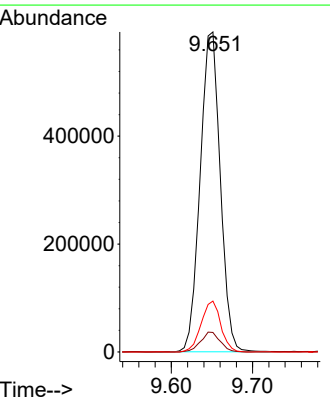


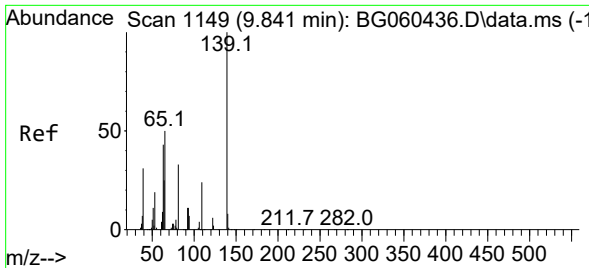
#23
 Isophorone
 Concen: 25.974 ng/ul
 RT: 9.651 min Scan# 1117
 Delta R.T. 0.004 min
 Lab File: BG060449.D
 Acq: 26 Jan 2024 20:20



Tgt Ion: 82 Resp: 1018704

Ion	Ratio	Lower	Upper
82	100		
95	6.1	4.9	7.3
138	15.9	12.5	18.7



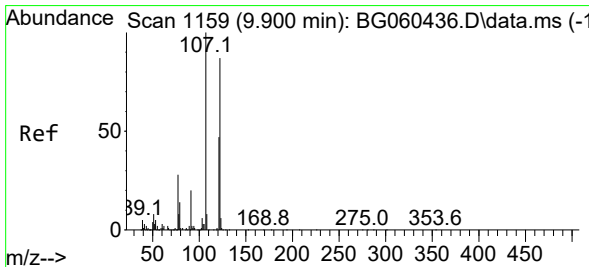
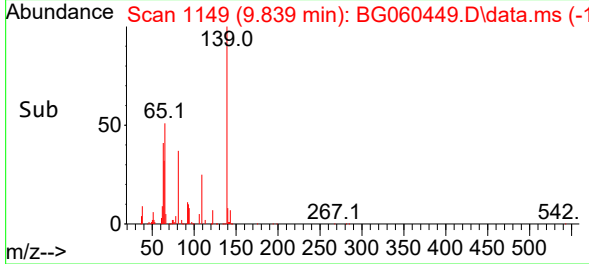
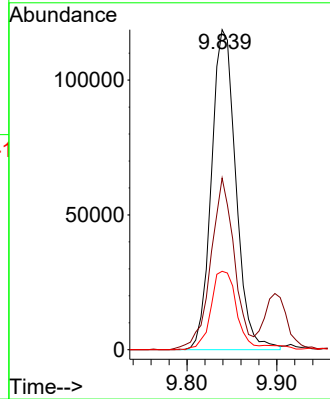
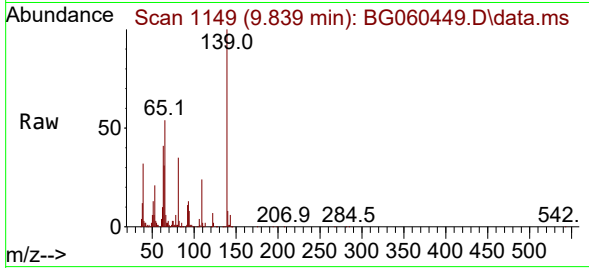


#25
 2-Nitrophenol
 Concen: 28.540 ng/ul
 RT: 9.839 min Scan# 1149
 Delta R.T. -0.002 min
 Lab File: BG060449.D
 Acq: 26 Jan 2024 20:20

Instrument :
 BNA_G
 ClientSampleId :
 SLCS632

Tgt Ion:139 Resp: 224157

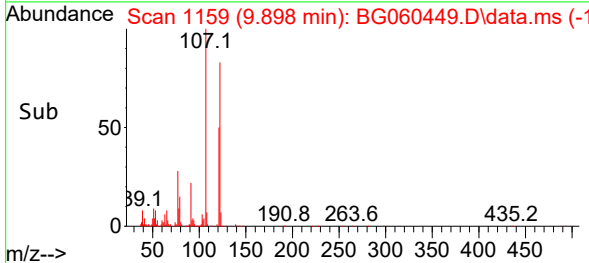
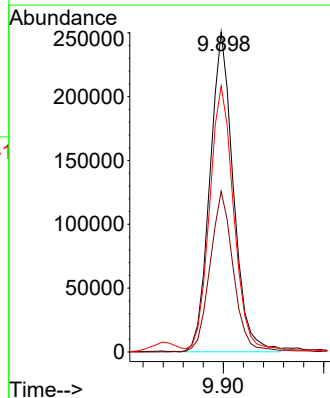
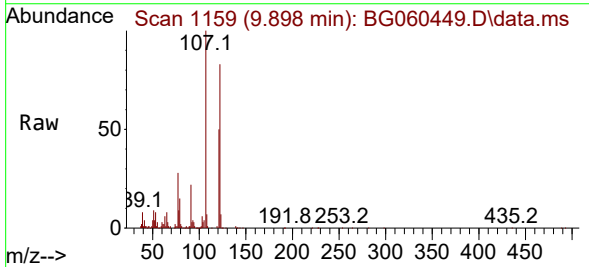
Ion	Ratio	Lower	Upper
139	100		
65	53.7	41.0	61.4
109	24.5	21.4	32.0

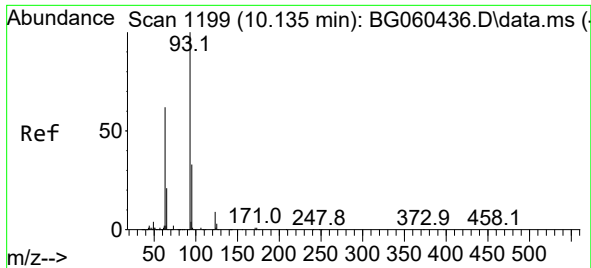


#26
 2,4-Dimethylphenol
 Concen: 25.099 ng/ul
 RT: 9.898 min Scan# 1159
 Delta R.T. 0.004 min
 Lab File: BG060449.D
 Acq: 26 Jan 2024 20:20

Tgt Ion:107 Resp: 406790

Ion	Ratio	Lower	Upper
107	100		
121	50.1	39.2	58.8
122	83.1	68.6	102.8



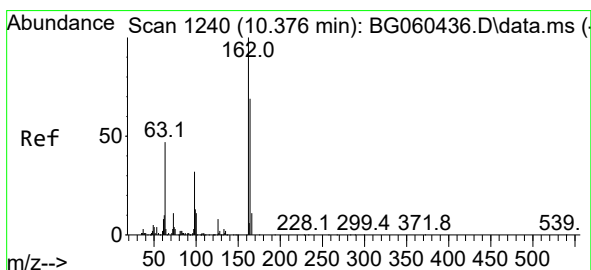
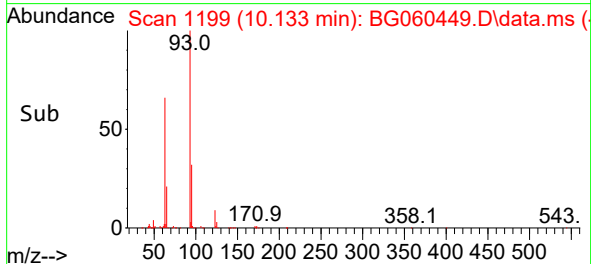
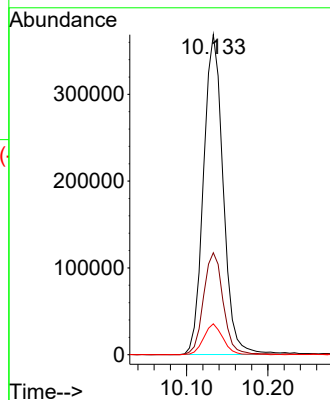
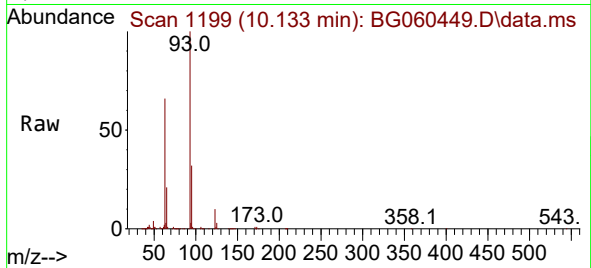


#27
 Bis(2-Chloroethoxy)methane
 Concen: 27.701 ng/ul
 RT: 10.133 min Scan# 1199
 Delta R.T. 0.004 min
 Lab File: BG060449.D
 Acq: 26 Jan 2024 20:20

Instrument :
 BNA_G
 ClientSampleId :
 SLCS632

Tgt Ion: 93 Resp: 618471

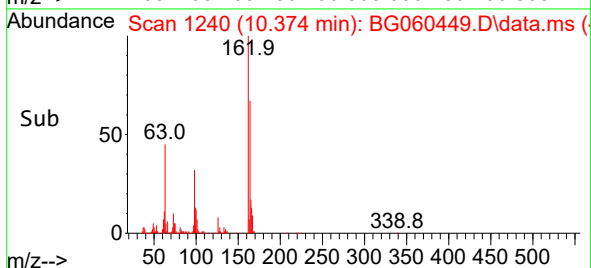
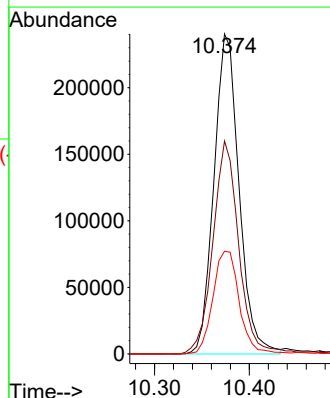
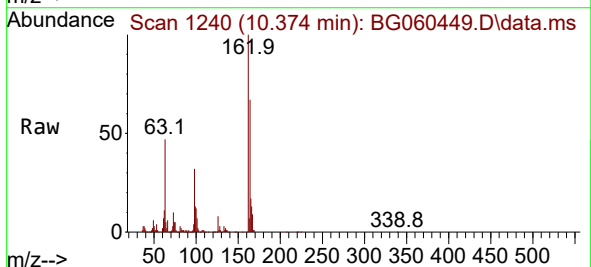
Ion	Ratio	Lower	Upper
93	100		
95	31.9	25.5	38.3
123	9.6	7.0	10.6

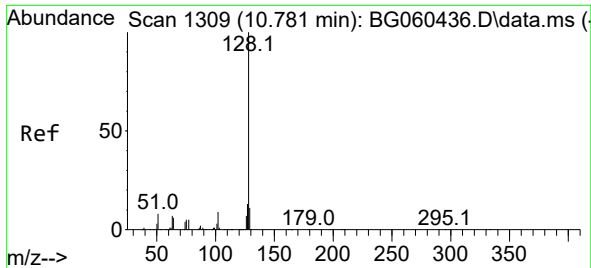


#29
 2,4-Dichlorophenol
 Concen: 28.660 ng/ul
 RT: 10.374 min Scan# 1240
 Delta R.T. -0.002 min
 Lab File: BG060449.D
 Acq: 26 Jan 2024 20:20

Tgt Ion: 162 Resp: 442662

Ion	Ratio	Lower	Upper
162	100		
164	66.6	55.2	82.8
98	32.1	27.0	40.6

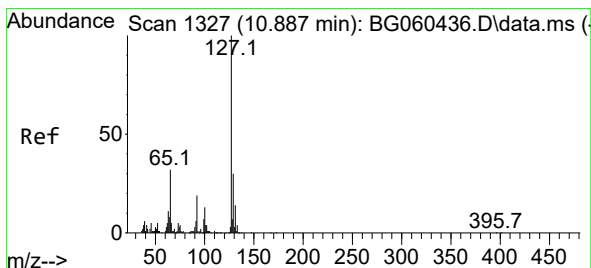
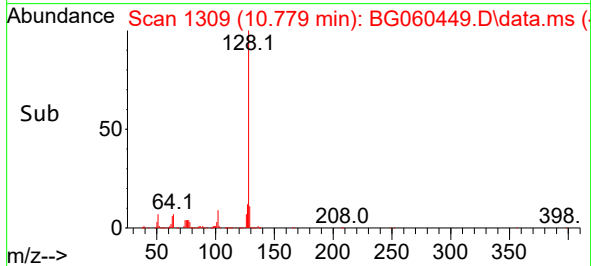
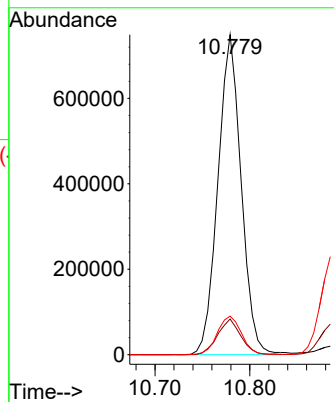
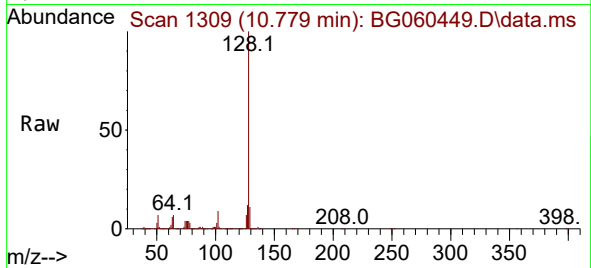




#30
 Naphthalene
 Concen: 26.383 ng/uI
 RT: 10.779 min Scan# 11
 Delta R.T. 0.004 min
 Lab File: BG060449.D
 Acq: 26 Jan 2024 20:20

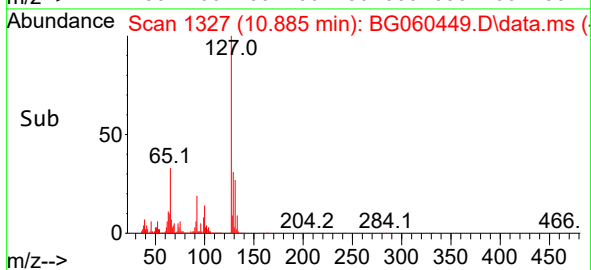
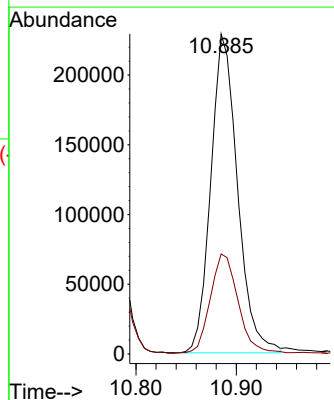
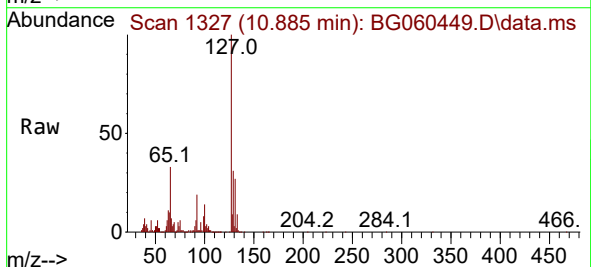
Instrument :
 BNA_G
 ClientSampleId :
 SLCS632

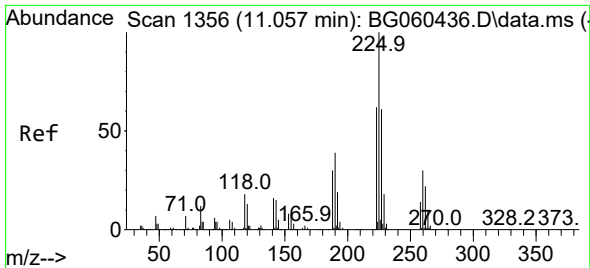
Tgt Ion:128 Resp: 1276217
 Ion Ratio Lower Upper
 128 100
 129 11.1 8.5 12.7
 127 12.0 9.5 14.3



#32
 4-Chloroaniline
 Concen: 20.445 ng/uI
 RT: 10.885 min Scan# 1327
 Delta R.T. -0.002 min
 Lab File: BG060449.D
 Acq: 26 Jan 2024 20:20

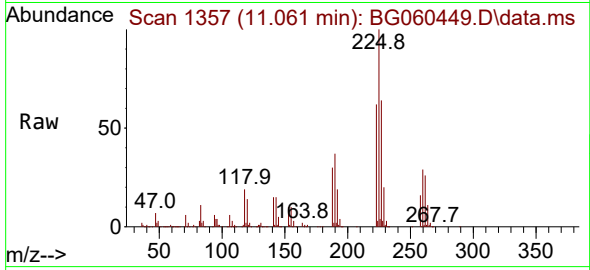
Tgt Ion:127 Resp: 422834
 Ion Ratio Lower Upper
 127 100
 129 31.3 27.2 40.8



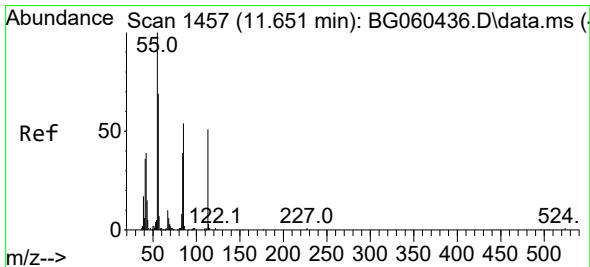
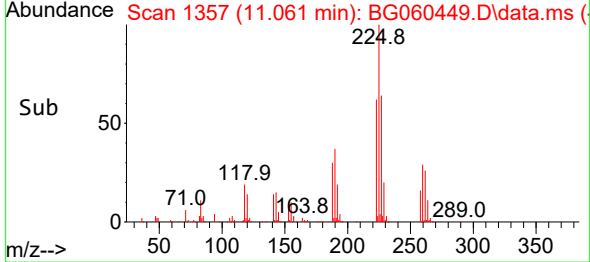
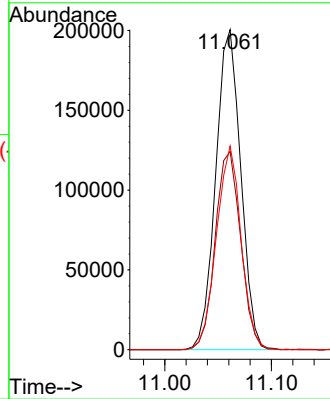


#33
 Hexachlorobutadiene
 Concen: 25.555 ng/ul
 RT: 11.061 min Scan# 11
 Delta R.T. 0.004 min
 Lab File: BG060449.D
 Acq: 26 Jan 2024 20:20

Instrument :
 BNA_G
 ClientSampleId :
 SLCS632

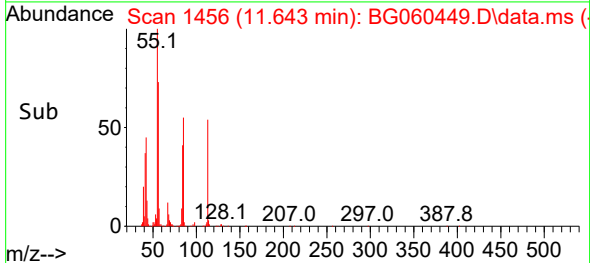
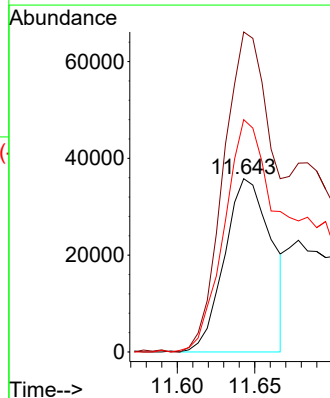
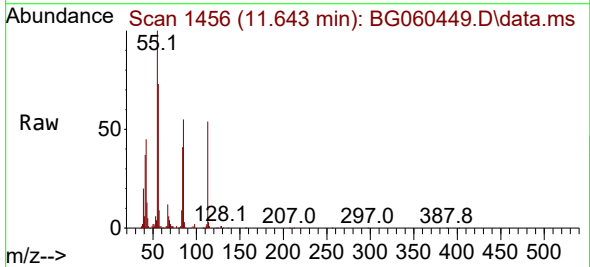


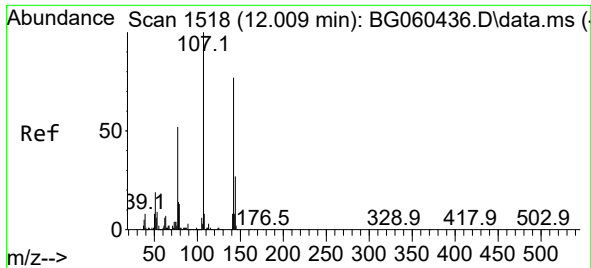
Tgt Ion:225 Resp: 327746
 Ion Ratio Lower Upper
 225 100
 223 59.5 52.0 78.0
 227 61.1 52.8 79.2



#34
 Caprolactam
 Concen: 14.619 ng/ul
 RT: 11.643 min Scan# 1456
 Delta R.T. -0.014 min
 Lab File: BG060449.D
 Acq: 26 Jan 2024 20:20

Tgt Ion:113 Resp: 75172
 Ion Ratio Lower Upper
 113 100
 55 184.7 154.2 231.4
 56 134.1 100.6 150.8

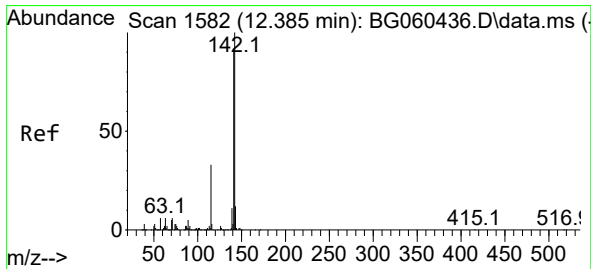
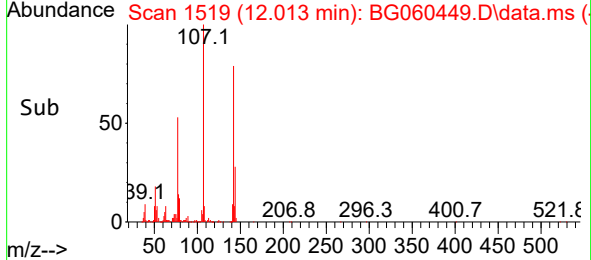
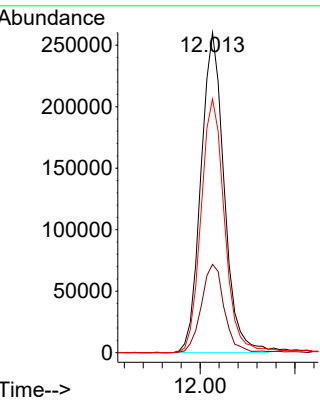
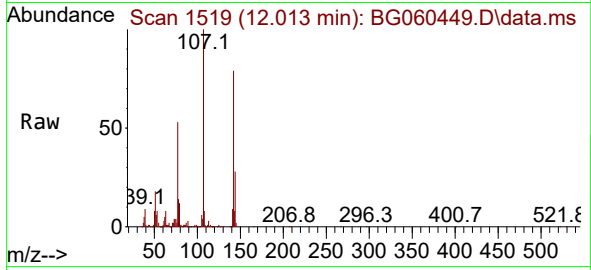




#35
 4-Chloro-3-methylphenol
 Concen: 28.583 ng/ul
 RT: 12.013 min Scan# 1519
 Delta R.T. 0.004 min
 Lab File: BG060449.D
 Acq: 26 Jan 2024 20:20

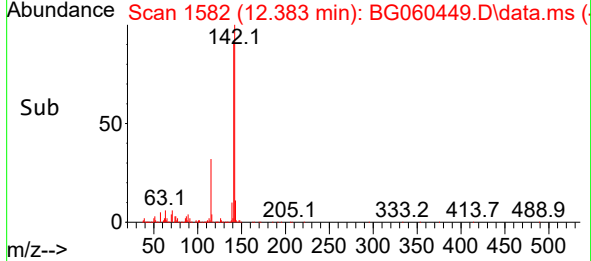
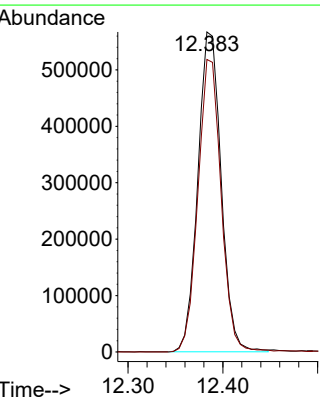
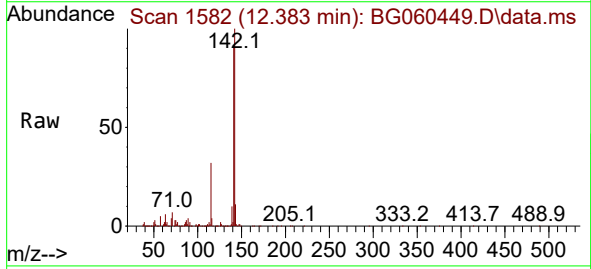
Instrument : BNA_G
 ClientSampleId : SLCS632

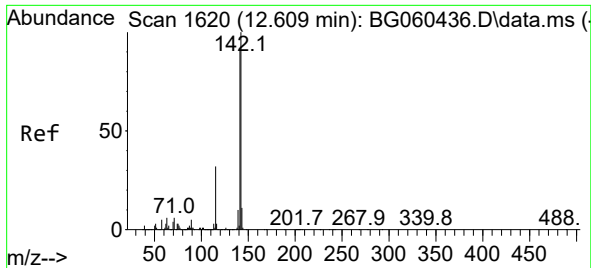
Tgt Ion	Resp	Lower	Upper
107	100		
144	27.6	21.4	32.2
142	79.3	64.1	96.1



#36
 2-Methylnaphthalene
 Concen: 28.472 ng/ul
 RT: 12.383 min Scan# 1582
 Delta R.T. -0.002 min
 Lab File: BG060449.D
 Acq: 26 Jan 2024 20:20

Tgt Ion	Resp	Lower	Upper
142	100		
141	91.4	72.6	108.8



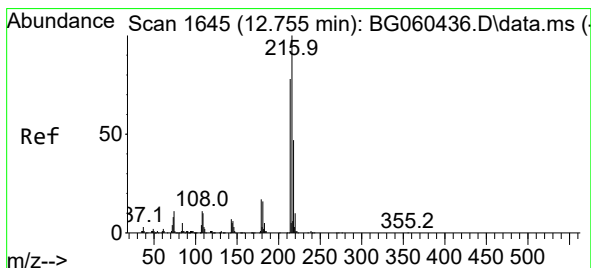
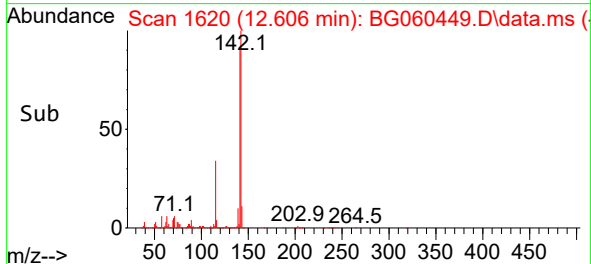
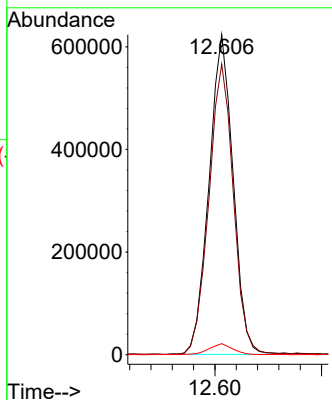
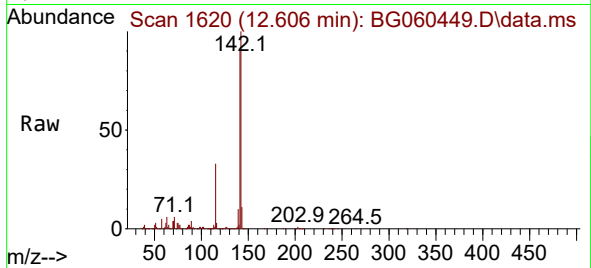


#37
 1-Methylnaphthalene
 Concen: 28.375 ng/ul
 RT: 12.606 min Scan# 1620
 Delta R.T. -0.002 min
 Lab File: BG060449.D
 Acq: 26 Jan 2024 20:20

Instrument : BNA_G
 ClientSampleId : SLCS632

Tgt Ion:142 Resp: 975231

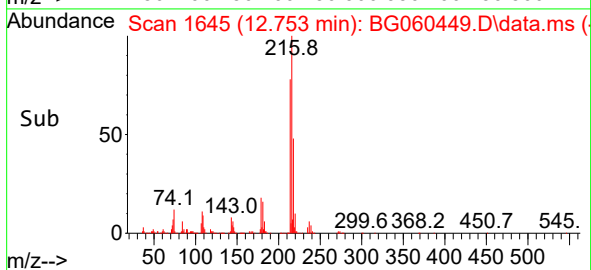
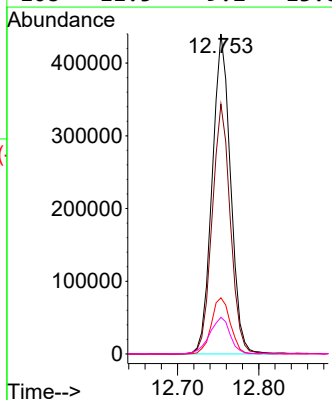
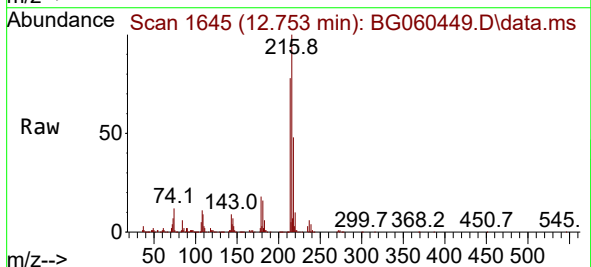
Ion	Ratio	Lower	Upper
142	100		
141	90.8	73.6	110.4
116	3.4	2.3	3.5

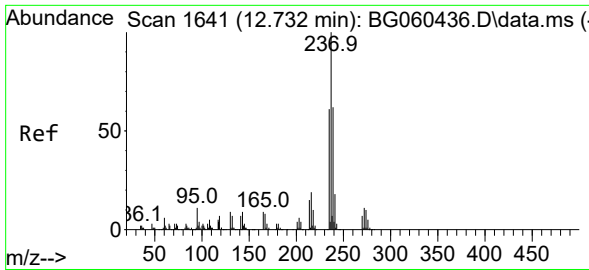


#39
 1,2,4,5-Tetrachlorobenzene
 Concen: 27.532 ng/ul
 RT: 12.753 min Scan# 1645
 Delta R.T. -0.002 min
 Lab File: BG060449.D
 Acq: 26 Jan 2024 20:20

Tgt Ion:216 Resp: 692742

Ion	Ratio	Lower	Upper
216	100		
214	78.0	63.0	94.4
179	17.6	15.2	22.8
108	11.5	9.2	13.8



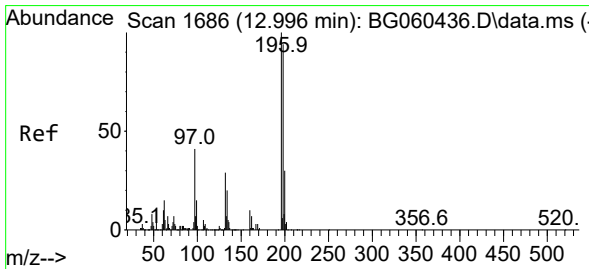
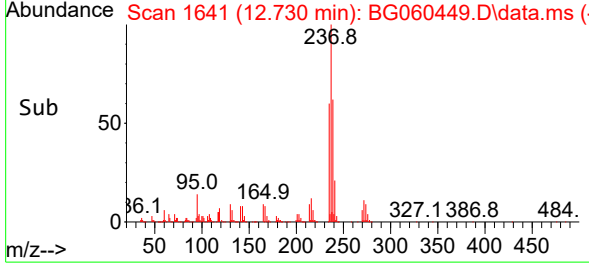
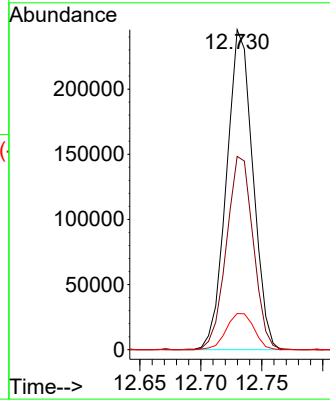
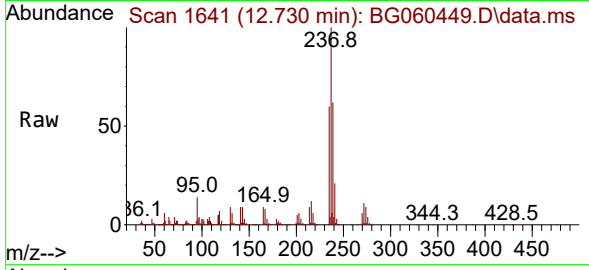


#40
 Hexachlorocyclopentadiene
 Concen: 24.321 ng/ul
 RT: 12.730 min Scan# 1
 Delta R.T. -0.002 min
 Lab File: BG060449.D
 Acq: 26 Jan 2024 20:20

Instrument :
 BNA_G
 ClientSampleId :
 SLCS632

Tgt Ion:237 Resp: 370048

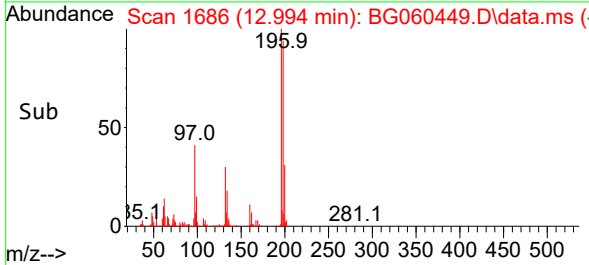
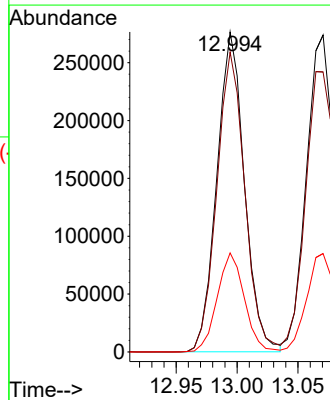
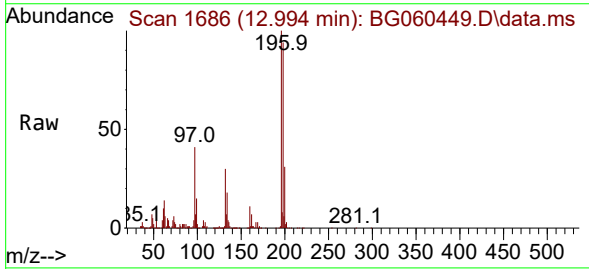
Ion	Ratio	Lower	Upper
237	100		
235	64.4	49.4	74.0
272	11.3	10.0	15.0

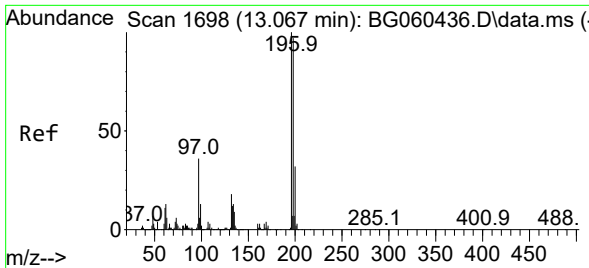


#41
 2,4,6-Trichlorophenol
 Concen: 28.406 ng/ul
 RT: 12.994 min Scan# 1686
 Delta R.T. -0.002 min
 Lab File: BG060449.D
 Acq: 26 Jan 2024 20:20

Tgt Ion:196 Resp: 435683

Ion	Ratio	Lower	Upper
196	100		
198	93.7	76.3	114.5
200	30.9	24.4	36.6



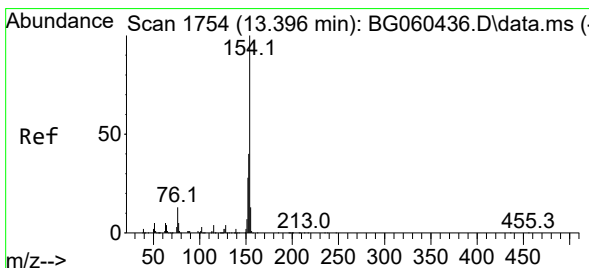
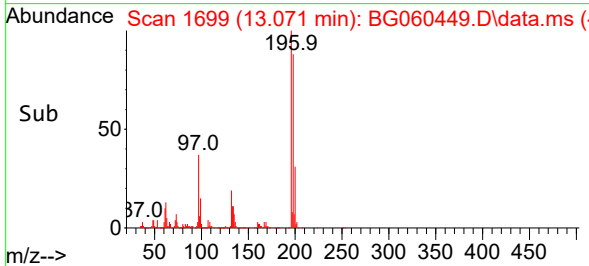
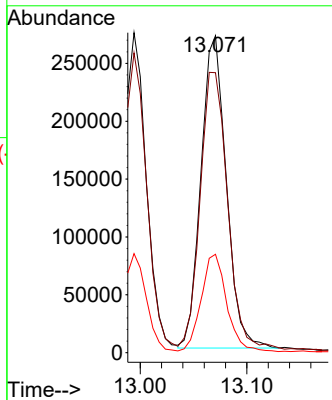
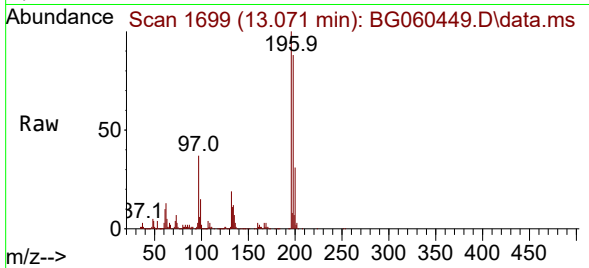


#42
 2,4,5-Trichlorophenol
 Concen: 27.527 ng/ul
 RT: 13.071 min Scan# 1698
 Delta R.T. 0.004 min
 Lab File: BG060449.D
 Acq: 26 Jan 2024 20:20

Instrument : BNA_G
 ClientSampleId : SLCS632

Tgt Ion:196 Resp: 446134

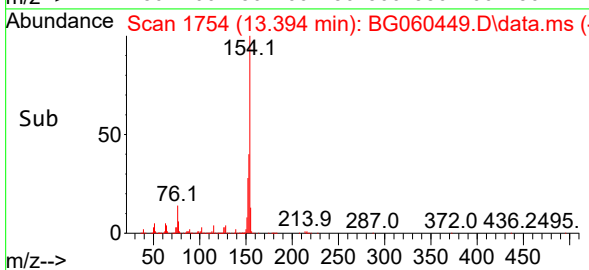
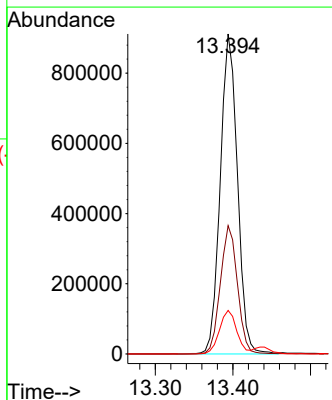
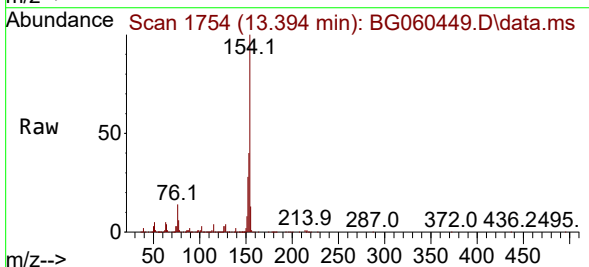
Ion	Ratio	Lower	Upper
196	100		
198	88.4	75.7	113.5
200	31.0	24.9	37.3

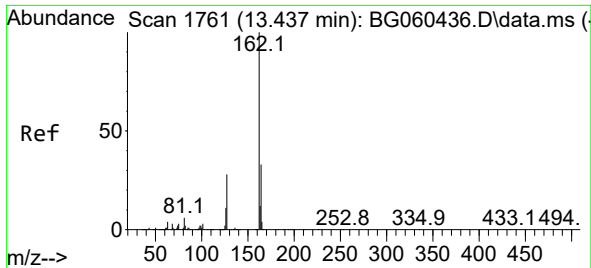


#43
 1,1'-Biphenyl
 Concen: 27.497 ng/ul
 RT: 13.394 min Scan# 1754
 Delta R.T. -0.002 min
 Lab File: BG060449.D
 Acq: 26 Jan 2024 20:20

Tgt Ion:154 Resp: 1408191

Ion	Ratio	Lower	Upper
154	100		
153	40.1	31.8	47.8
76	13.6	10.4	15.6



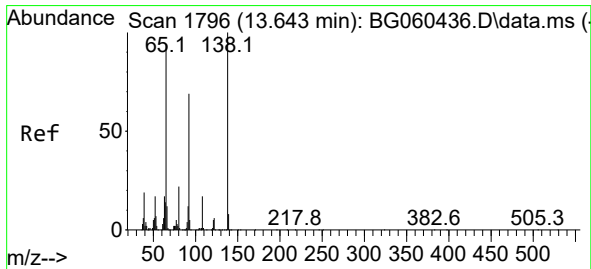
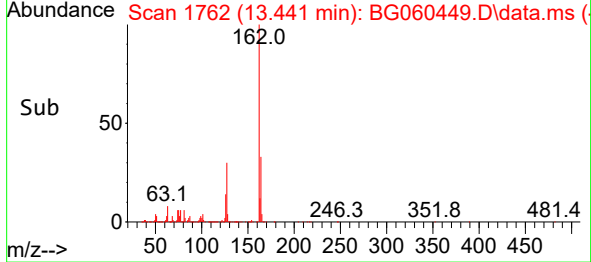
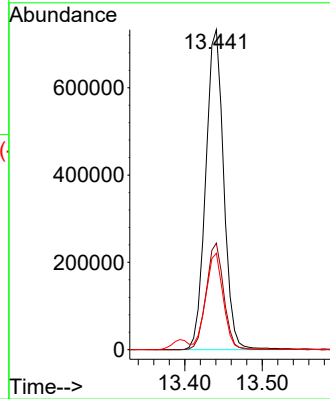
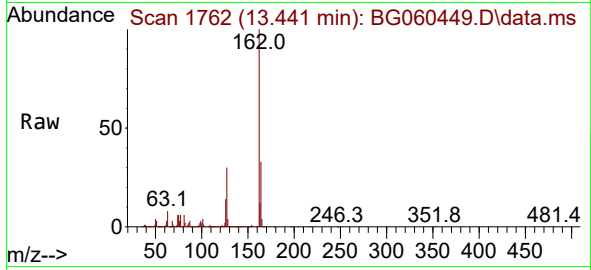


#44
 2-Chloronaphthalene
 Concen: 27.295 ng/ul
 RT: 13.441 min Scan# 1762
 Delta R.T. 0.004 min
 Lab File: BG060449.D
 Acq: 26 Jan 2024 20:20

Instrument : BNA_G
 ClientSampleId : SLCS632

Tgt Ion:162 Resp: 1180188

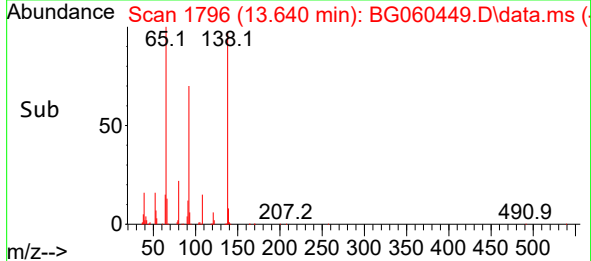
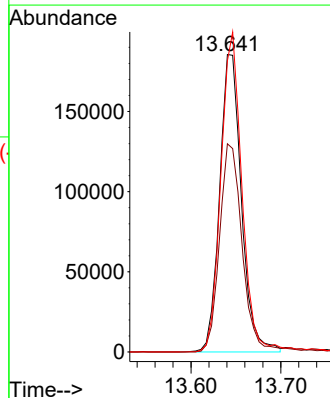
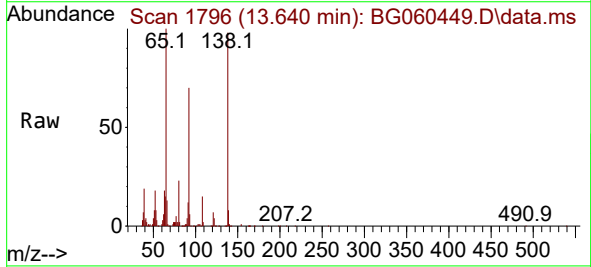
Ion	Ratio	Lower	Upper
162	100		
164	33.3	27.7	41.5
127	30.1	24.5	36.7

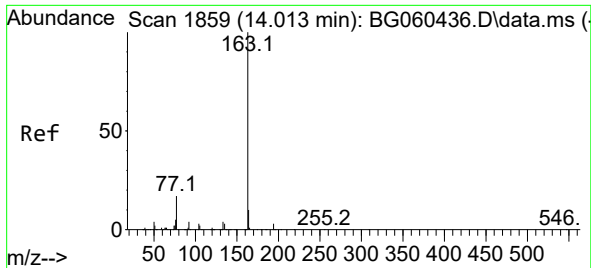


#45
 2-Nitroaniline
 Concen: 28.803 ng/ul
 RT: 13.640 min Scan# 1796
 Delta R.T. -0.002 min
 Lab File: BG060449.D
 Acq: 26 Jan 2024 20:20

Tgt Ion: 65 Resp: 313460

Ion	Ratio	Lower	Upper
65	100		
92	70.0	57.7	86.5
138	97.9	87.0	130.6

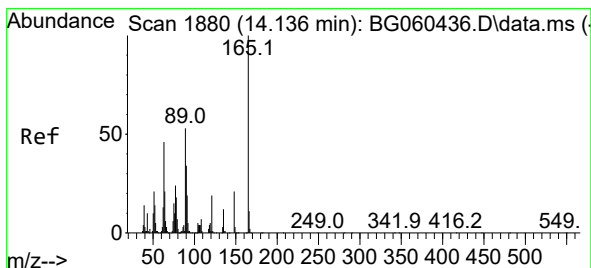
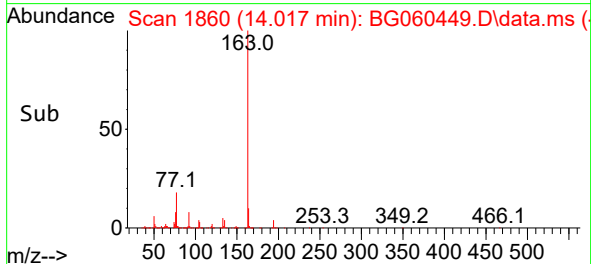
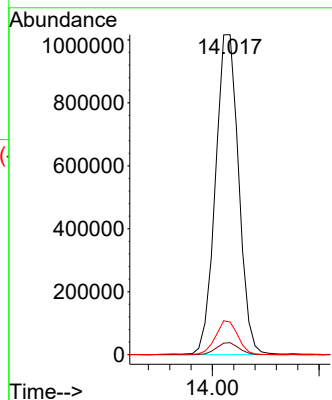
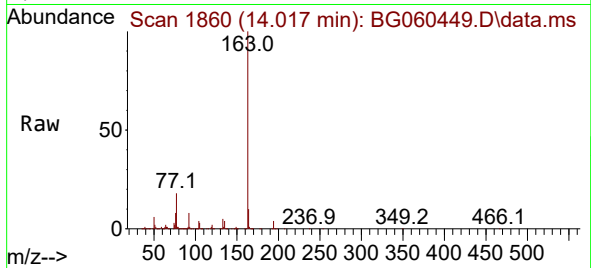




#47
Dimethylphthalate
Concen: 27.160 ng/ul
RT: 14.017 min Scan# 1860
Delta R.T. 0.004 min
Lab File: BG060449.D
Acq: 26 Jan 2024 20:20

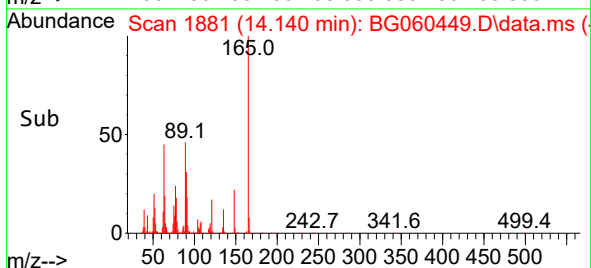
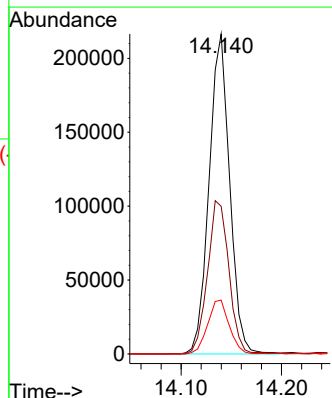
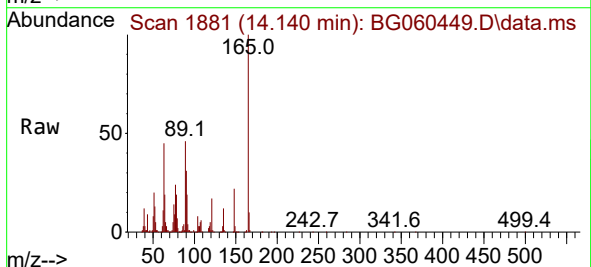
Instrument :
BNA_G
ClientSampleId :
SLCS632

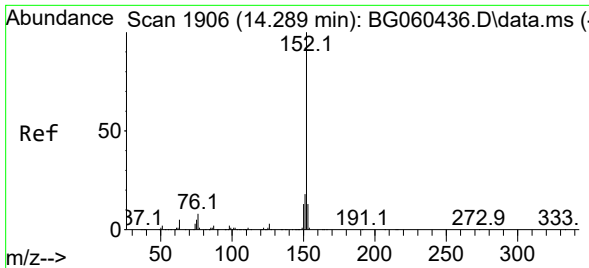
Tgt Ion:163 Resp: 1533679
Ion Ratio Lower Upper
163 100
194 3.7 2.6 3.8
164 10.2 8.4 12.6



#48
2,6-Dinitrotoluene
Concen: 29.031 ng/ul
RT: 14.140 min Scan# 1881
Delta R.T. 0.004 min
Lab File: BG060449.D
Acq: 26 Jan 2024 20:20

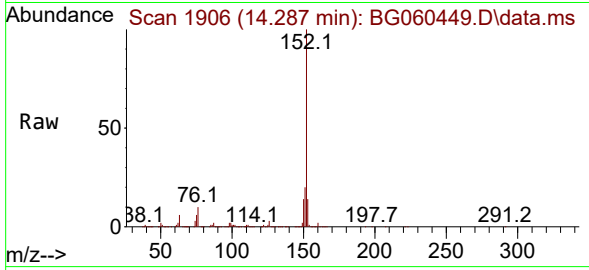
Tgt Ion:165 Resp: 309158
Ion Ratio Lower Upper
165 100
89 46.2 40.2 60.2
121 16.8 15.0 22.6



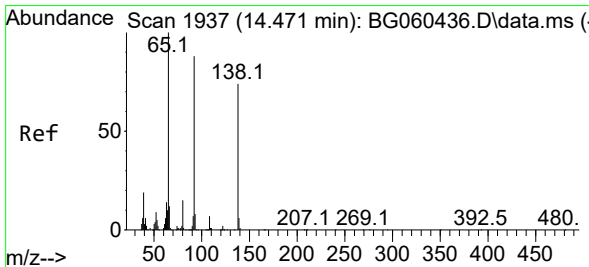
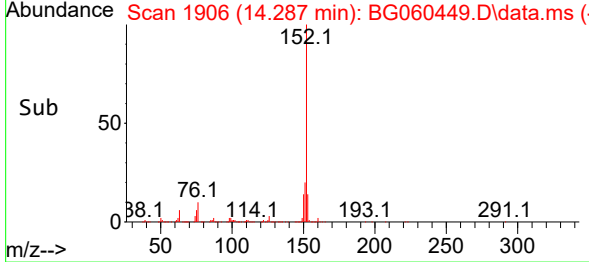
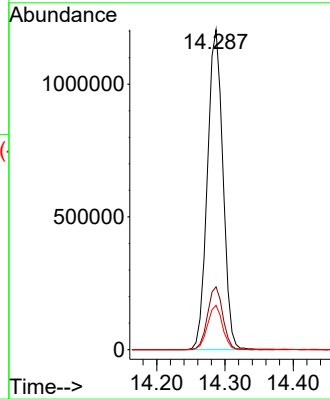


#50
 Acenaphthylene
 Concen: 27.258 ng/ul
 RT: 14.287 min Scan# 1906
 Delta R.T. 0.004 min
 Lab File: BG060449.D
 Acq: 26 Jan 2024 20:20

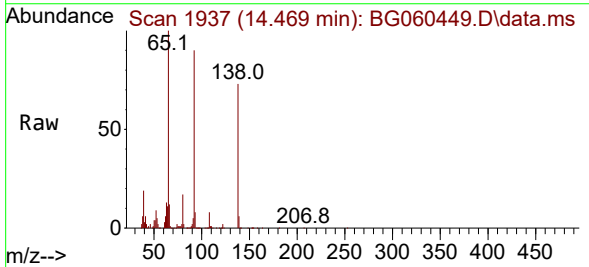
Instrument :
 BNA_G
 ClientSampleId :
 SLCS632



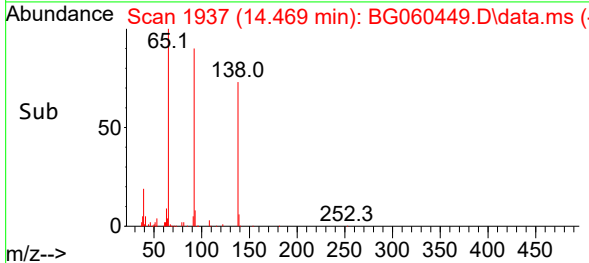
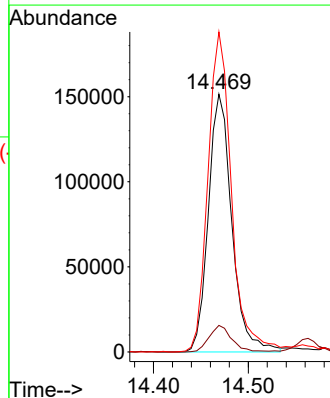
Tgt Ion:152 Resp: 1908300
 Ion Ratio Lower Upper
 152 100
 151 19.7 16.3 24.5
 153 13.8 10.4 15.6

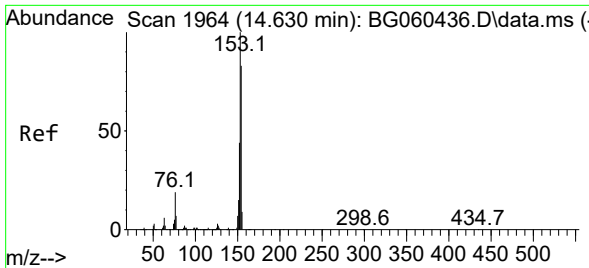


#51
 3-Nitroaniline
 Concen: 29.157 ng/ul
 RT: 14.469 min Scan# 1937
 Delta R.T. 0.004 min
 Lab File: BG060449.D
 Acq: 26 Jan 2024 20:20



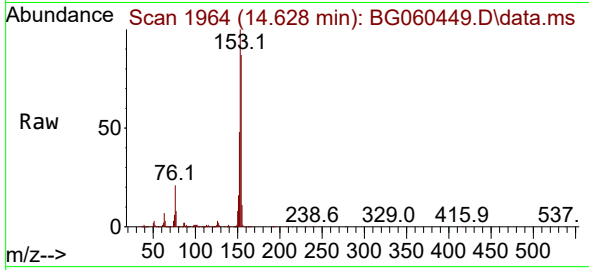
Tgt Ion:138 Resp: 261013
 Ion Ratio Lower Upper
 138 100
 108 10.3 9.5 14.3
 92 124.1 98.9 148.3



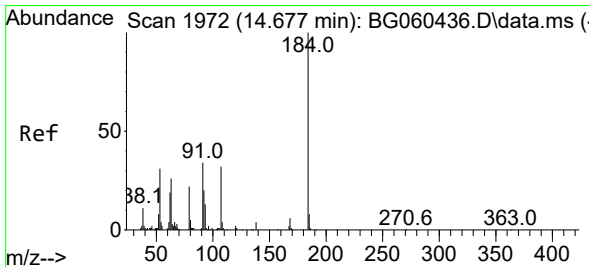
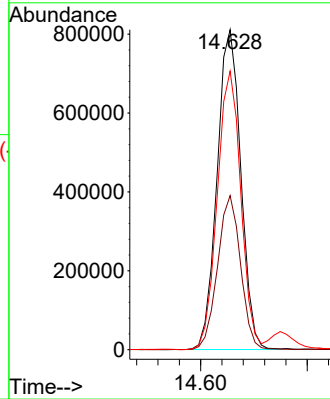
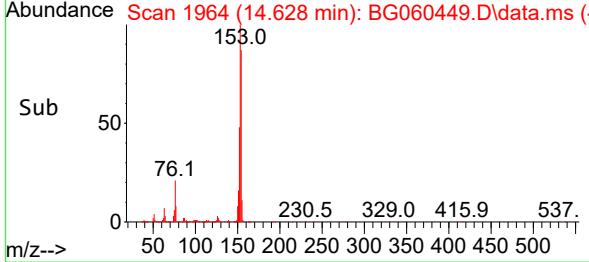


#52
 Acenaphthene
 Concen: 26.798 ng/uI
 RT: 14.628 min Scan# 1964
 Delta R.T. 0.004 min
 Lab File: BG060449.D
 Acq: 26 Jan 2024 20:20

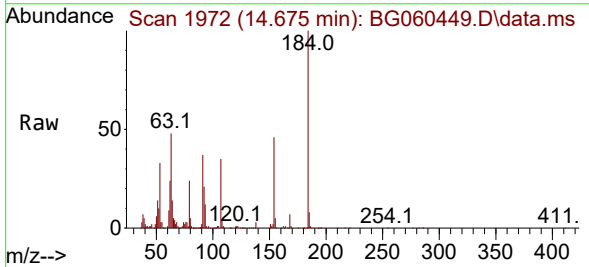
Instrument :
 BNA_G
 ClientSampleId :
 SLCS632



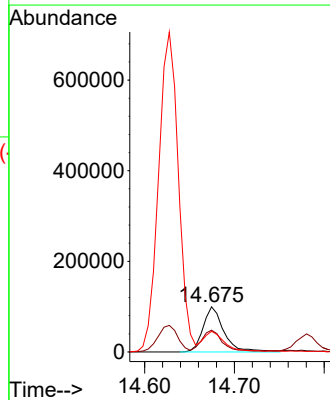
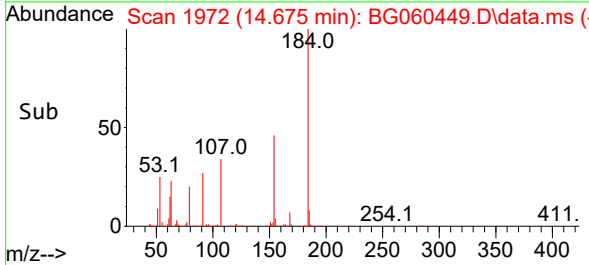
Tgt Ion:153 Resp: 1251416
 Ion Ratio Lower Upper
 153 100
 152 48.1 37.0 55.6
 154 87.0 70.0 105.0

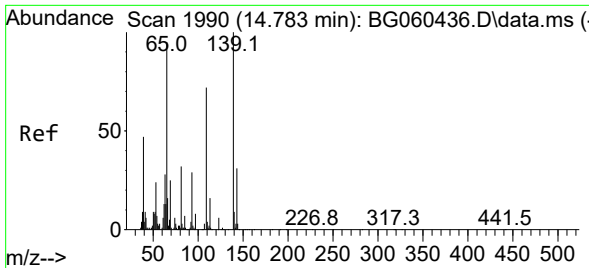


#53
 2,4-Dinitrophenol
 Concen: 27.560 ng/uI
 RT: 14.675 min Scan# 1972
 Delta R.T. -0.002 min
 Lab File: BG060449.D
 Acq: 26 Jan 2024 20:20



Tgt Ion:184 Resp: 160193
 Ion Ratio Lower Upper
 184 100
 63 48.3 39.2 58.8
 154 46.0 40.3 60.5

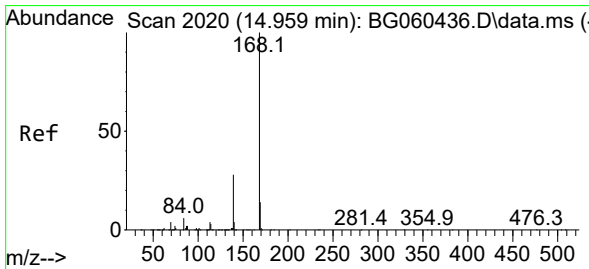
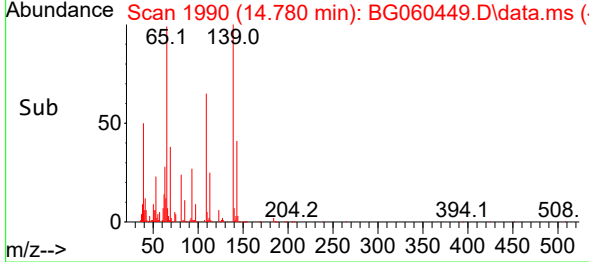
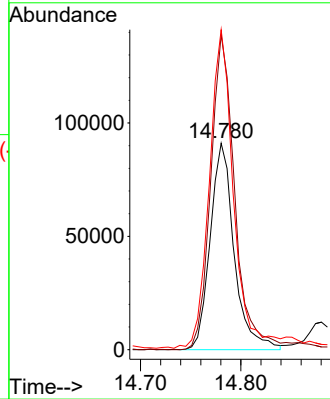
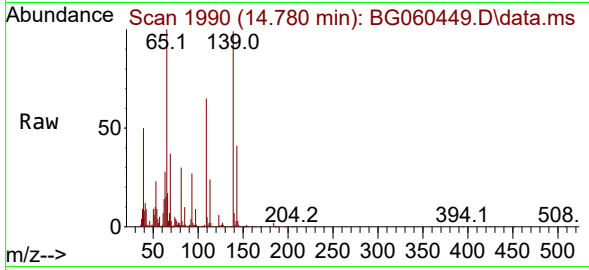




#55
 4-Nitrophenol
 Concen: 27.396 ng/ul
 RT: 14.780 min Scan# 1990
 Delta R.T. 0.004 min
 Lab File: BG060449.D
 Acq: 26 Jan 2024 20:20

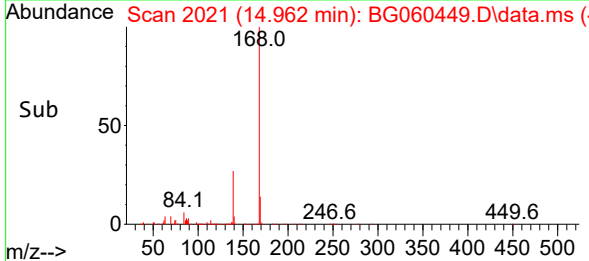
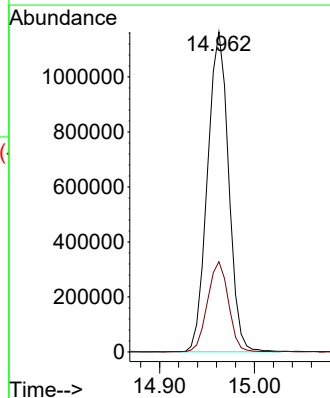
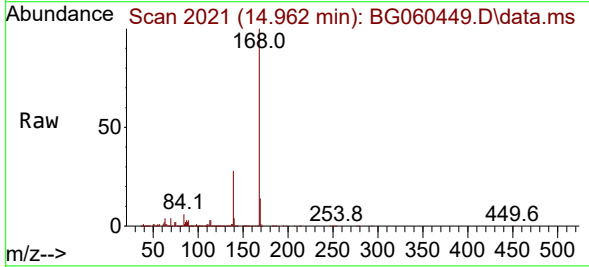
Instrument :
 BNA_G
 ClientSampleId :
 SLCS632

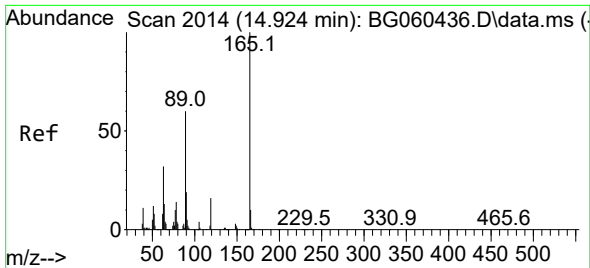
Tgt Ion:109 Resp: 151131
 Ion Ratio Lower Upper
 109 100
 139 152.7 124.5 186.7
 65 155.0 112.4 168.6



#56
 Dibenzofuran
 Concen: 27.294 ng/ul
 RT: 14.962 min Scan# 2021
 Delta R.T. 0.004 min
 Lab File: BG060449.D
 Acq: 26 Jan 2024 20:20

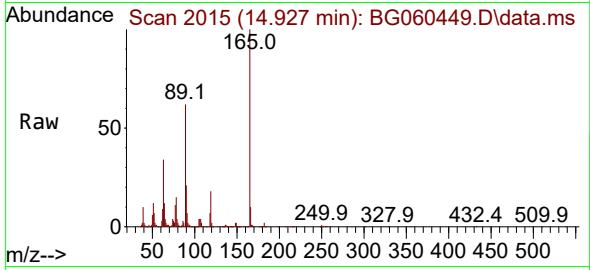
Tgt Ion:168 Resp: 1799408
 Ion Ratio Lower Upper
 168 100
 139 28.2 21.6 32.4



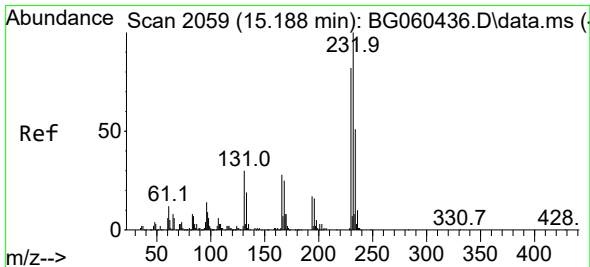
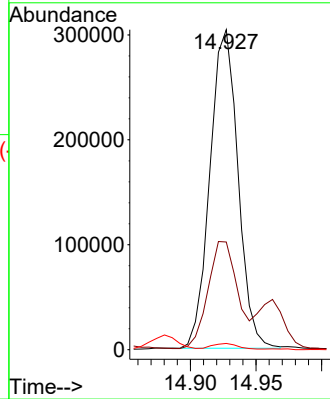
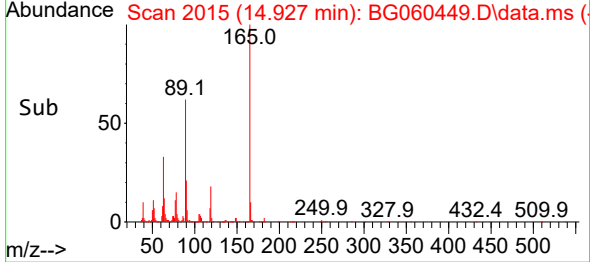


#57
 2,4-Dinitrotoluene
 Concen: 28.937 ng/ul
 RT: 14.927 min Scan# 2014
 Delta R.T. 0.004 min
 Lab File: BG060449.D
 Acq: 26 Jan 2024 20:20

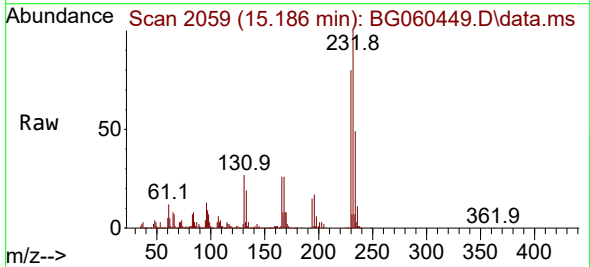
Instrument : BNA_G
 ClientSampleId : SLCS632



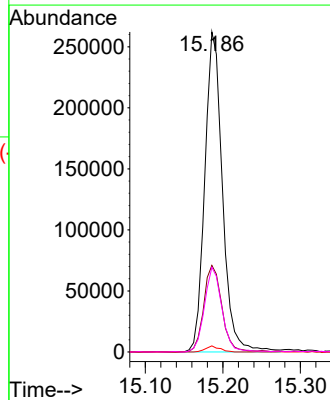
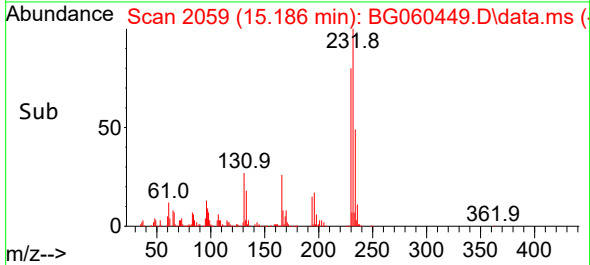
Tgt Ion:165 Resp: 451579
 Ion Ratio Lower Upper
 165 100
 63 33.6 29.9 44.9
 182 1.9 1.8 2.6

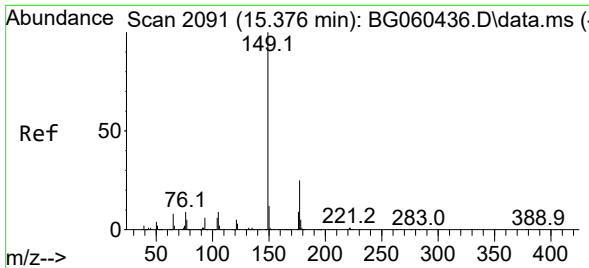


#58
 2,3,4,6-Tetrachlorophenol
 Concen: 27.571 ng/ul
 RT: 15.186 min Scan# 2059
 Delta R.T. -0.002 min
 Lab File: BG060449.D
 Acq: 26 Jan 2024 20:20



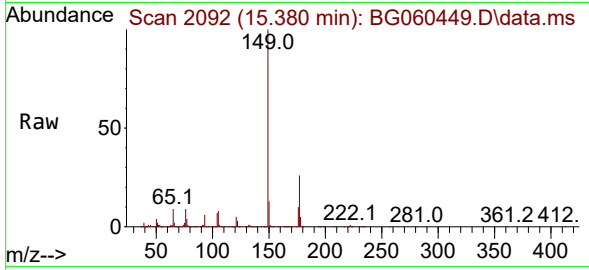
Tgt Ion:232 Resp: 415286
 Ion Ratio Lower Upper
 232 100
 131 27.0 23.4 35.0
 130 1.9 0.8 1.2#
 166 26.5 20.0 30.0



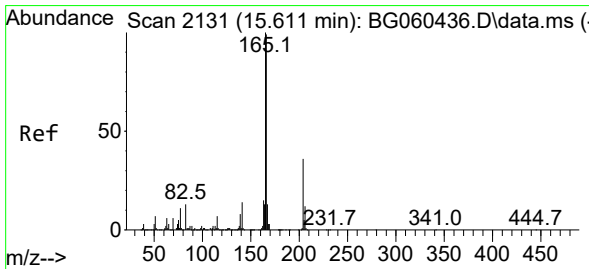
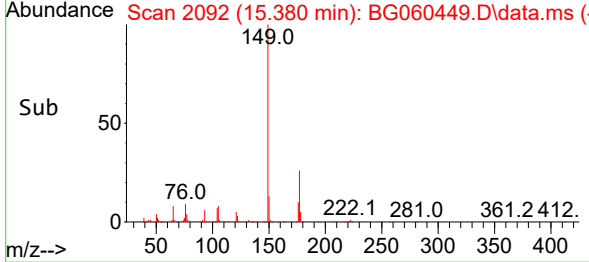
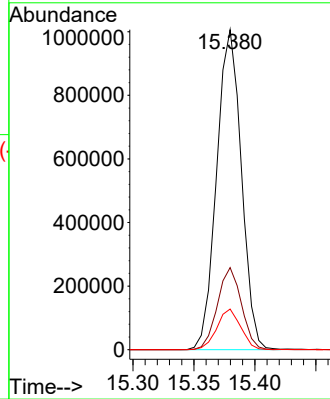


#59
 Diethylphthalate
 Concen: 26.154 ng/ul
 RT: 15.380 min Scan# 2092
 Delta R.T. 0.004 min
 Lab File: BG060449.D
 Acq: 26 Jan 2024 20:20

Instrument :
 BNA_G
 ClientSampleId :
 SLCS632

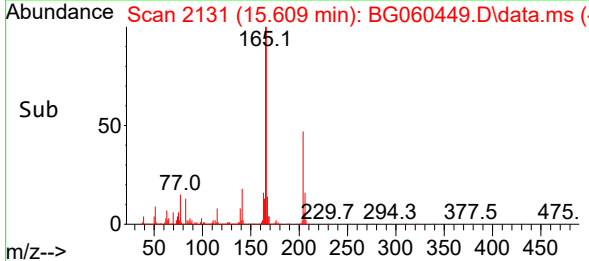
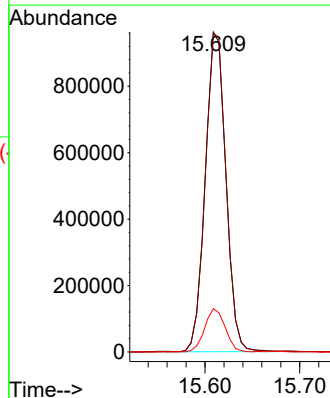
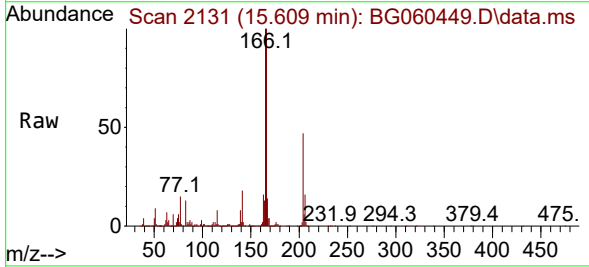


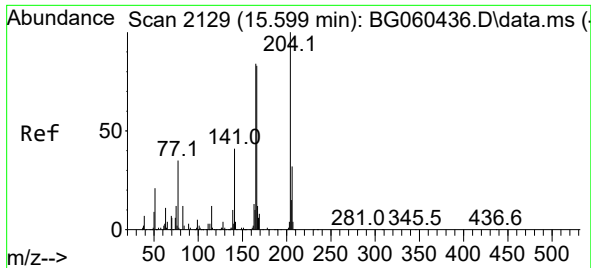
Tgt Ion:149 Resp: 1420045
 Ion Ratio Lower Upper
 149 100
 177 25.7 19.4 29.0
 150 12.7 9.8 14.8



#61
 Fluorene
 Concen: 26.791 ng/ul
 RT: 15.609 min Scan# 2131
 Delta R.T. -0.002 min
 Lab File: BG060449.D
 Acq: 26 Jan 2024 20:20

Tgt Ion:166 Resp: 1449047
 Ion Ratio Lower Upper
 166 100
 165 99.6 81.0 121.6
 167 13.5 11.3 16.9

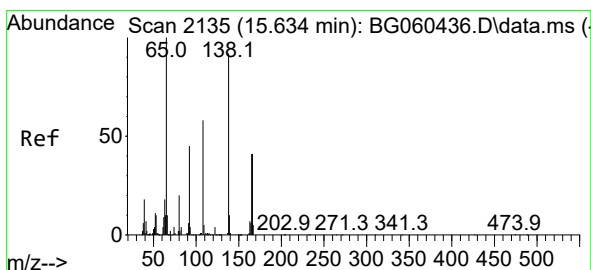
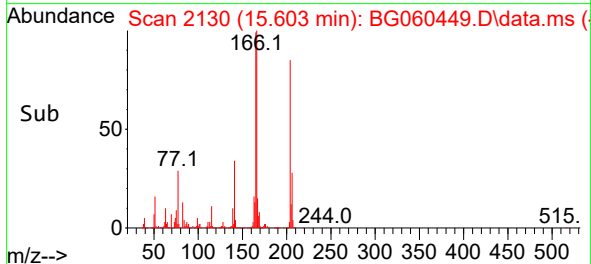
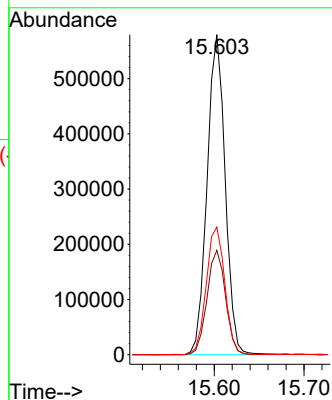
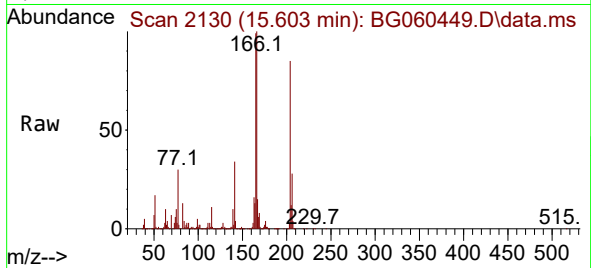




#62
4-Chlorophenyl-phenylether
Concen: 27.128 ng/ul
RT: 15.603 min Scan# 2129
Delta R.T. 0.004 min
Lab File: BG060449.D
Acq: 26 Jan 2024 20:20

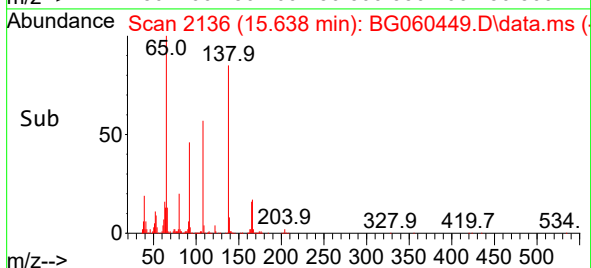
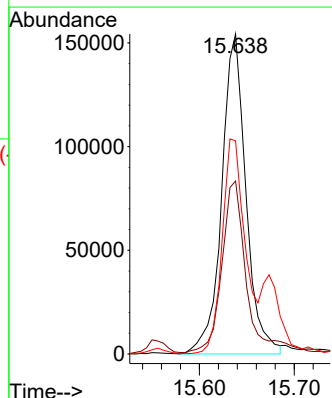
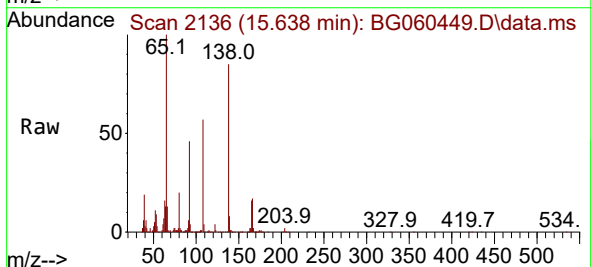
Instrument :
BNA_G
ClientSampleId :
SLCS632

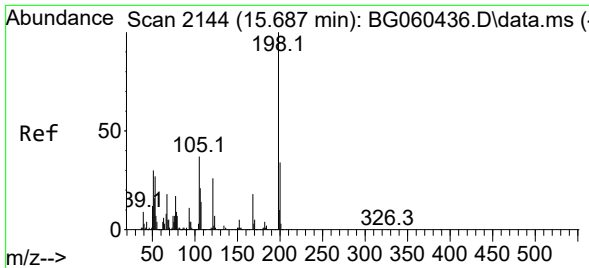
Tgt Ion:204 Resp: 809907
Ion Ratio Lower Upper
204 100
206 32.6 27.5 41.3
141 39.9 33.4 50.0



#63
4-Nitroaniline
Concen: 31.259 ng/ul
RT: 15.638 min Scan# 2136
Delta R.T. 0.010 min
Lab File: BG060449.D
Acq: 26 Jan 2024 20:20

Tgt Ion:138 Resp: 274142
Ion Ratio Lower Upper
138 100
92 54.0 45.5 68.3
108 66.6 51.8 77.6



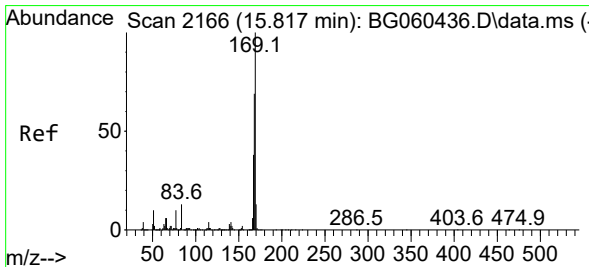
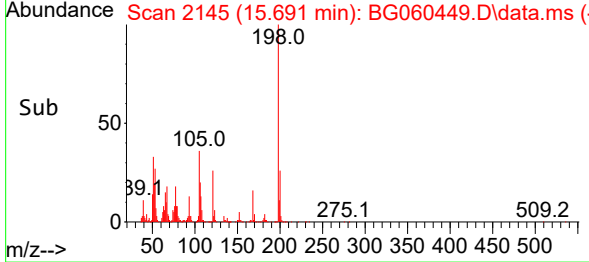
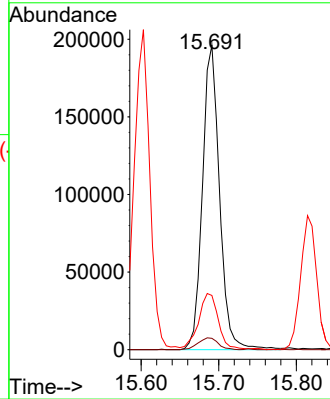
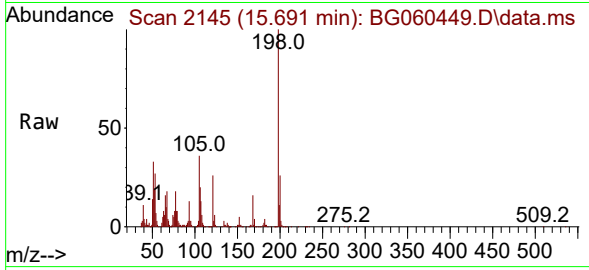


#66
 4,6-Dinitro-2-methylphenol
 Concen: 28.327 ng/ul
 RT: 15.691 min Scan# 2145
 Delta R.T. 0.004 min
 Lab File: BG060449.D
 Acq: 26 Jan 2024 20:20

Instrument : BNA_G
 ClientSampleId : SLCS632

Tgt Ion:198 Resp: 300437

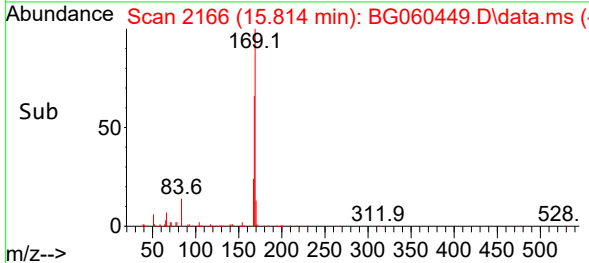
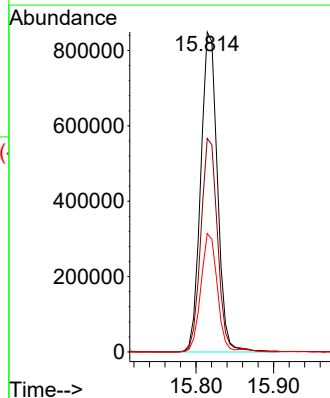
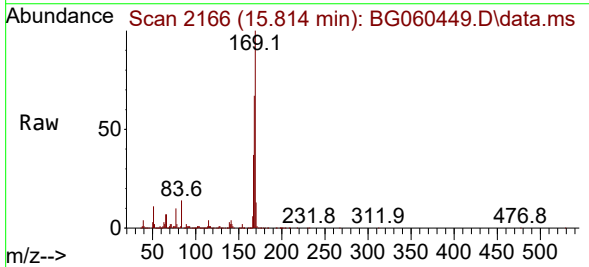
Ion	Ratio	Lower	Upper
198	100		
182	3.7	4.1	6.1#
77	17.8	13.0	19.6

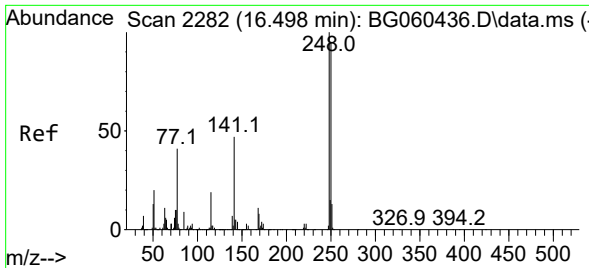


#67
 N-Nitrosodiphenylamine
 Concen: 28.534 ng/ul
 RT: 15.814 min Scan# 2166
 Delta R.T. -0.002 min
 Lab File: BG060449.D
 Acq: 26 Jan 2024 20:20

Tgt Ion:169 Resp: 1267316

Ion	Ratio	Lower	Upper
169	100		
168	66.7	55.4	83.0
167	37.0	31.0	46.4

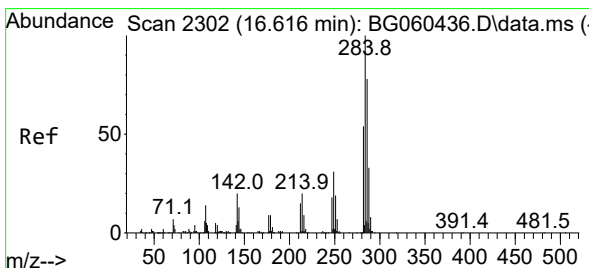
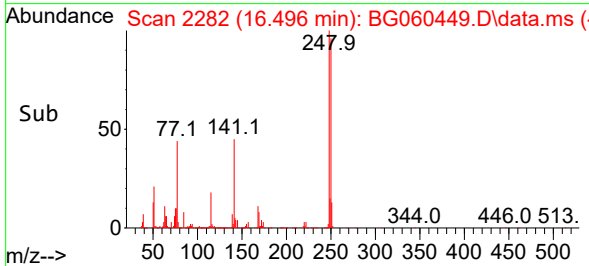
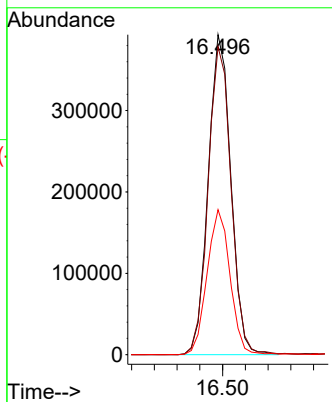
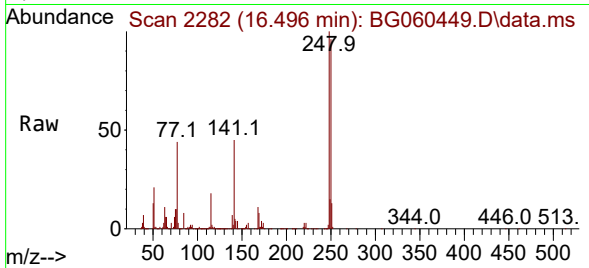




#68
 4-Bromophenyl-phenylether
 Concen: 28.517 ng/ul
 RT: 16.496 min Scan# 21
 Delta R.T. -0.002 min
 Lab File: BG060449.D
 Acq: 26 Jan 2024 20:20

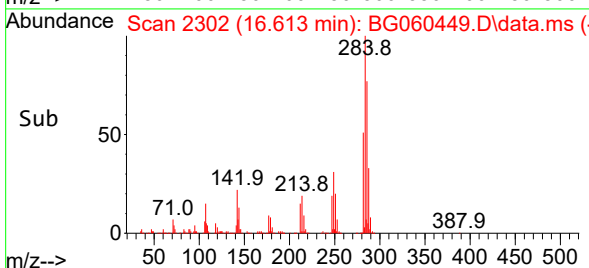
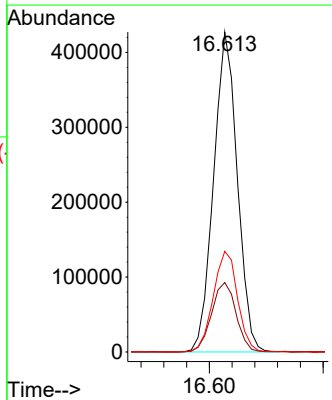
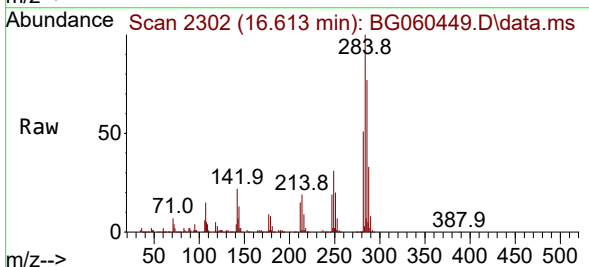
Instrument :
 BNA_G
 ClientSampleId :
 SLCS632

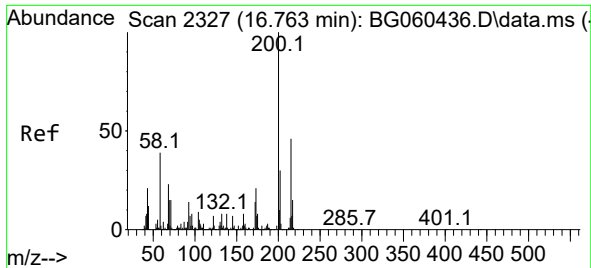
Tgt Ion	Resp	Lower	Upper
248	100		
250	96.2	77.3	115.9
141	45.3	36.5	54.7



#69
 Hexachlorobenzene
 Concen: 27.972 ng/ul
 RT: 16.613 min Scan# 2302
 Delta R.T. -0.002 min
 Lab File: BG060449.D
 Acq: 26 Jan 2024 20:20

Tgt Ion	Resp	Lower	Upper
284	100		
142	21.7	17.1	25.7
249	31.5	24.1	36.1

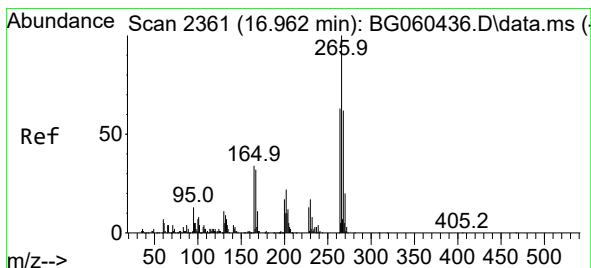
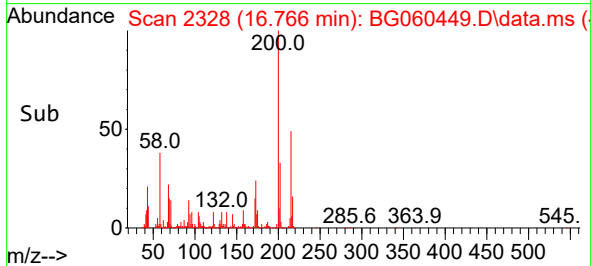
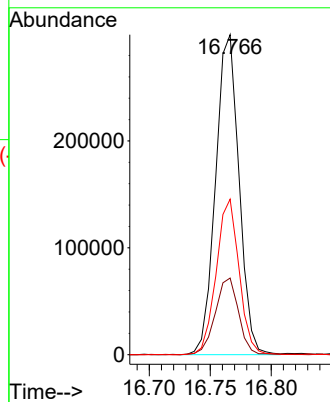
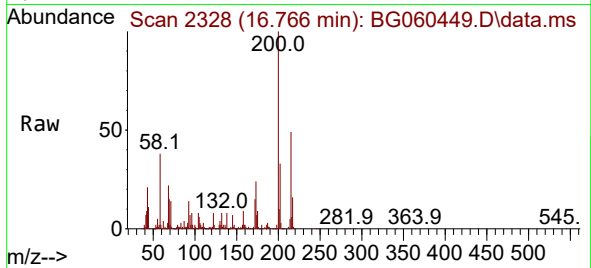




#70
Atrazine
Concen: 21.972 ng/ul
RT: 16.766 min Scan# 21
Delta R.T. 0.004 min
Lab File: BG060449.D
Acq: 26 Jan 2024 20:20

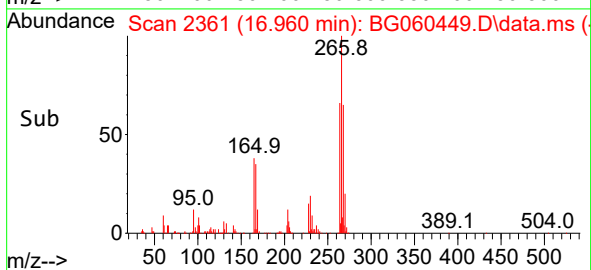
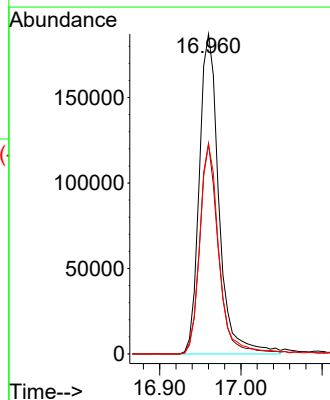
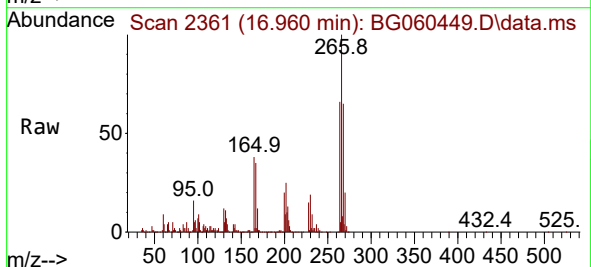
Instrument :
BNA_G
ClientSampleId :
SLCS632

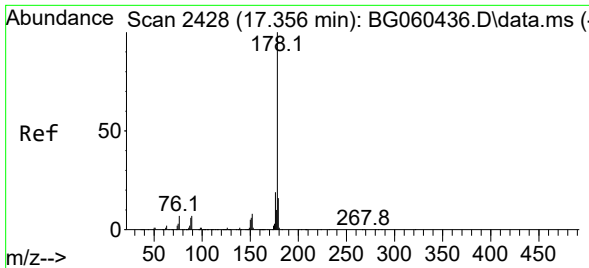
Tgt Ion:200 Resp: 401177
Ion Ratio Lower Upper
200 100
173 23.9 20.3 30.5
215 48.6 36.3 54.5



#71
Pentachlorophenol
Concen: 25.914 ng/ul
RT: 16.960 min Scan# 2361
Delta R.T. -0.002 min
Lab File: BG060449.D
Acq: 26 Jan 2024 20:20

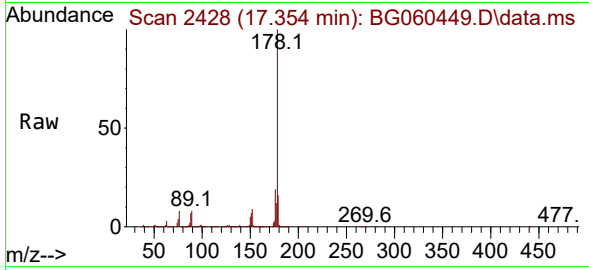
Tgt Ion:266 Resp: 314956
Ion Ratio Lower Upper
266 100
264 65.8 47.0 70.6
268 65.4 48.2 72.2



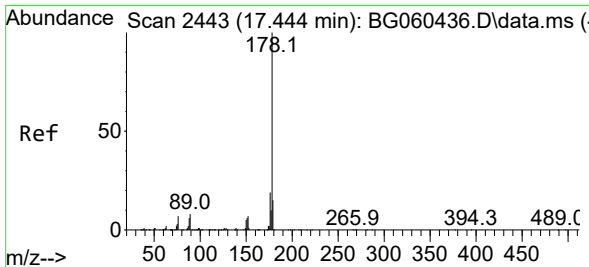
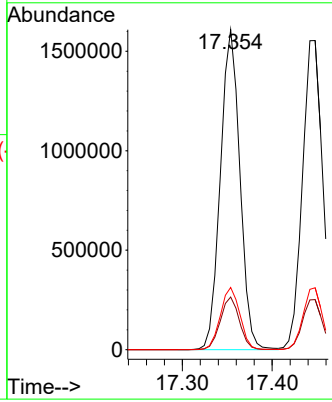
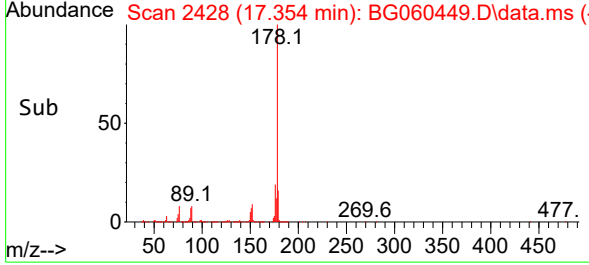


#72
 Phenanthrene
 Concen: 28.181 ng/uI
 RT: 17.354 min Scan# 2428
 Delta R.T. 0.004 min
 Lab File: BG060449.D
 Acq: 26 Jan 2024 20:20

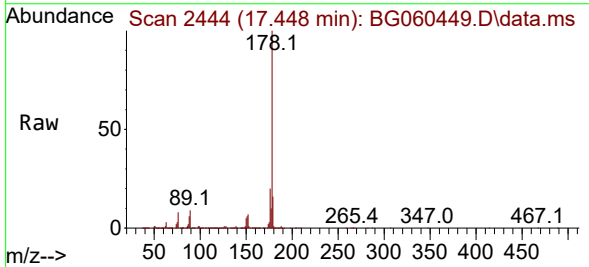
Instrument :
 BNA_G
 ClientSampleId :
 SLCS632



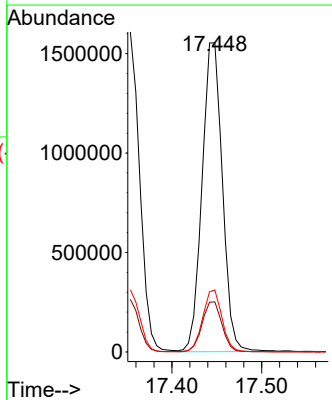
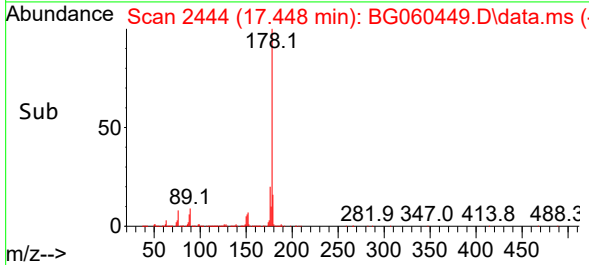
Tgt Ion:178 Resp: 2426274
 Ion Ratio Lower Upper
 178 100
 179 16.4 12.7 19.1
 176 19.5 15.7 23.5

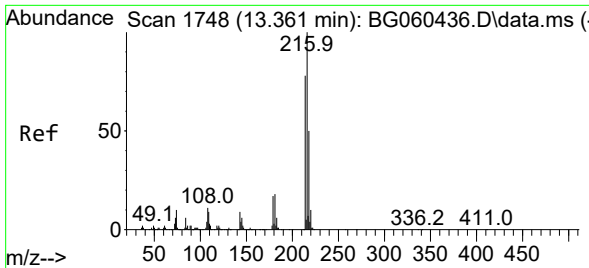


#74
 Anthracene
 Concen: 27.851 ng/uI
 RT: 17.448 min Scan# 2444
 Delta R.T. 0.004 min
 Lab File: BG060449.D
 Acq: 26 Jan 2024 20:20



Tgt Ion:178 Resp: 2443477
 Ion Ratio Lower Upper
 178 100
 179 16.2 12.2 18.2
 176 20.0 15.5 23.3

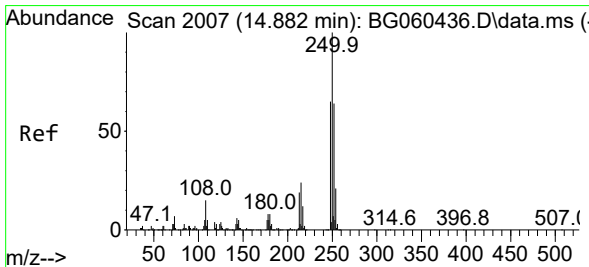
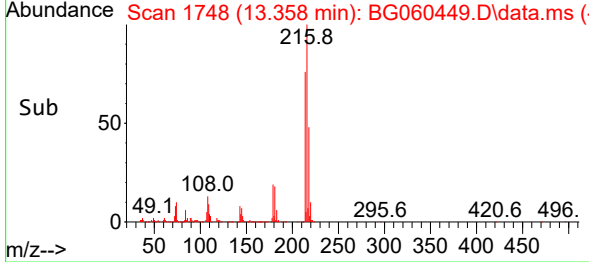
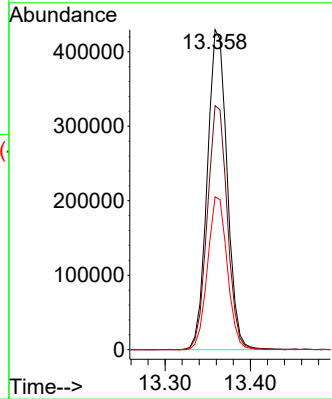
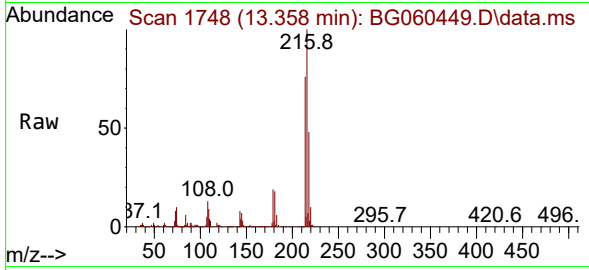




#75
 1,2,3,4-Tetrachlorobenzene
 Concen: 29.296 ng/uL
 RT: 13.358 min Scan# 1748
 Delta R.T. -0.002 min
 Lab File: BG060449.D
 Acq: 26 Jan 2024 20:20

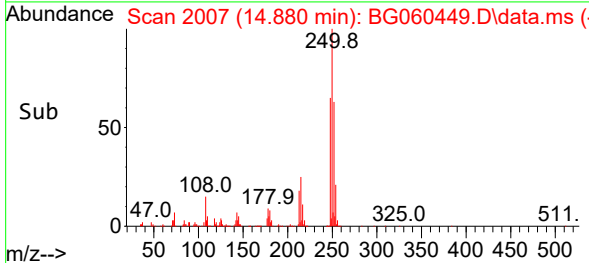
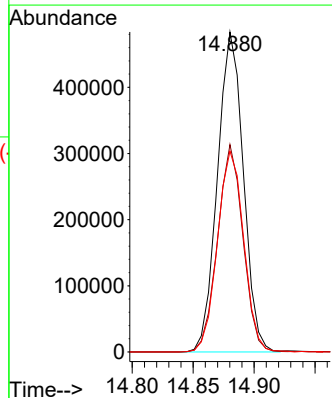
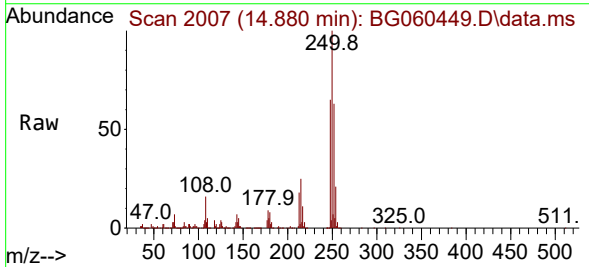
Instrument :
 BNA_G
 ClientSampleId :
 SLCS632

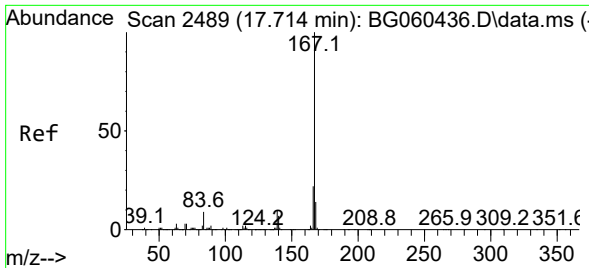
Tgt Ion	Resp	Lower	Upper
216	695740		
216	100		
214	76.3	63.0	94.4
218	47.8	39.8	59.6



#76
 Pentachlorobenzene
 Concen: 28.690 ng/uL
 RT: 14.880 min Scan# 2007
 Delta R.T. 0.004 min
 Lab File: BG060449.D
 Acq: 26 Jan 2024 20:20

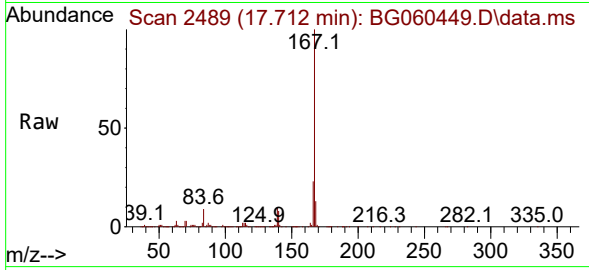
Tgt Ion	Resp	Lower	Upper
250	715751		
250	100		
248	64.8	49.8	74.6
252	62.7	52.6	79.0



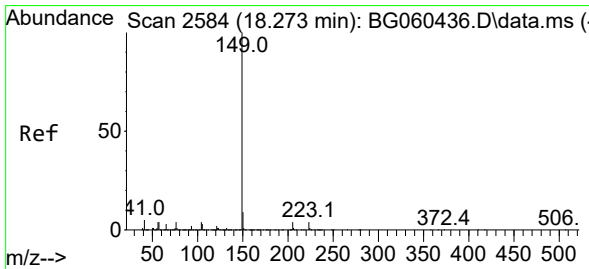
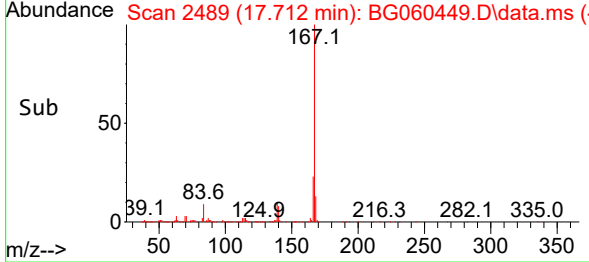
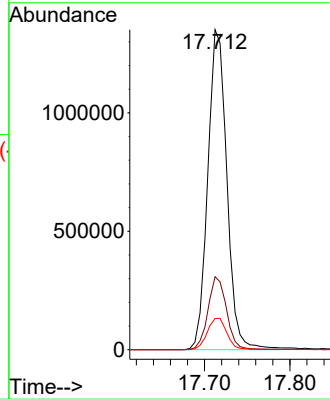


#77
 Carbazole
 Concen: 28.949 ng/ul
 RT: 17.712 min Scan# 2489
 Delta R.T. -0.002 min
 Lab File: BG060449.D
 Acq: 26 Jan 2024 20:20

Instrument : BNA_G
 ClientSampleId : SLCS632

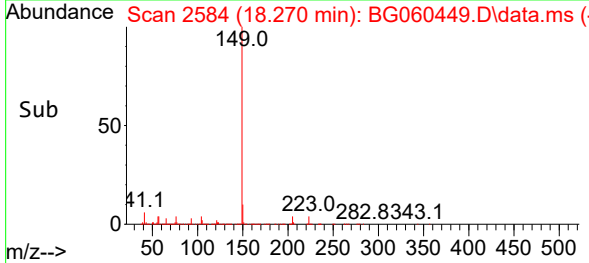
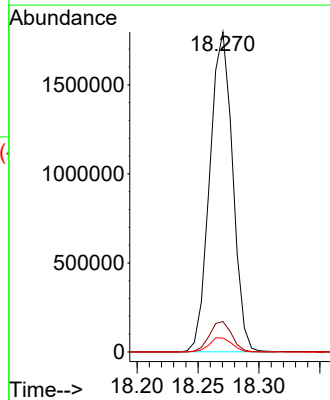
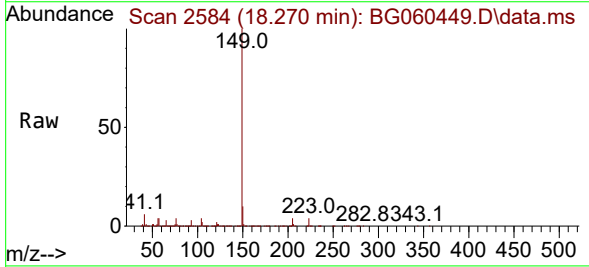


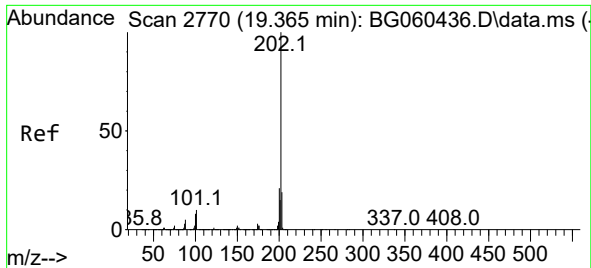
Tgt Ion:167 Resp: 2097641
 Ion Ratio Lower Upper
 167 100
 166 22.8 17.6 26.4
 139 9.8 8.0 12.0



#78
 Di-n-butylphthalate
 Concen: 27.425 ng/ul
 RT: 18.270 min Scan# 2584
 Delta R.T. 0.004 min
 Lab File: BG060449.D
 Acq: 26 Jan 2024 20:20

Tgt Ion:149 Resp: 2342716
 Ion Ratio Lower Upper
 149 100
 150 9.5 7.7 11.5
 104 4.4 3.4 5.0

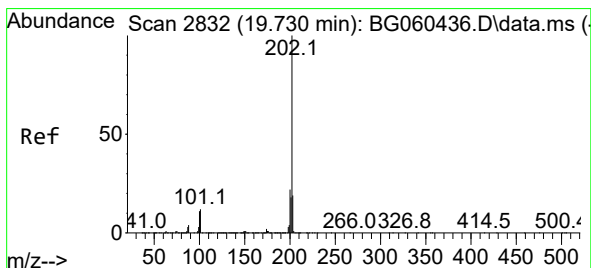
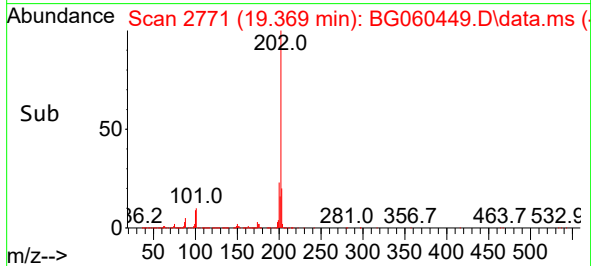
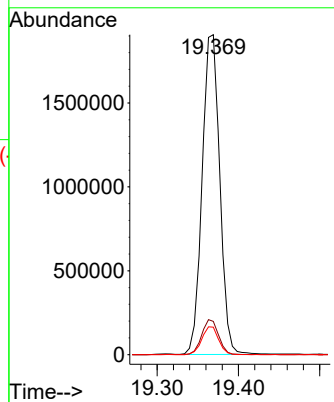
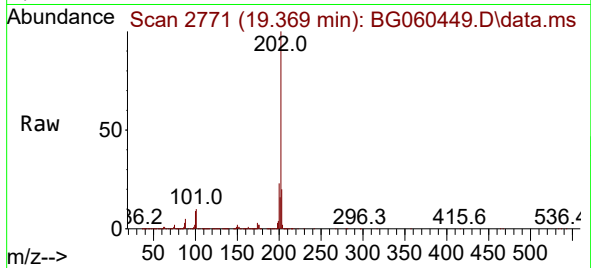




#80
 Fluoranthene
 Concen: 28.275 ng/u1
 RT: 19.369 min Scan# 21
 Delta R.T. 0.004 min
 Lab File: BG060449.D
 Acq: 26 Jan 2024 20:20

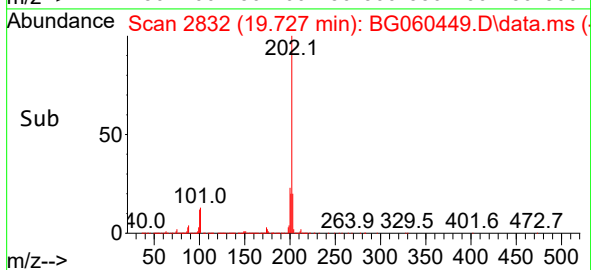
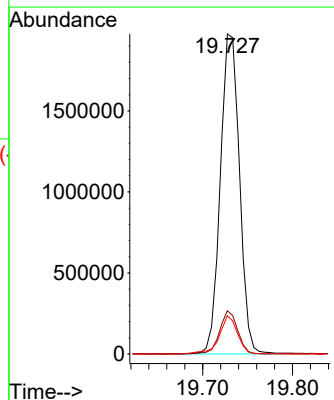
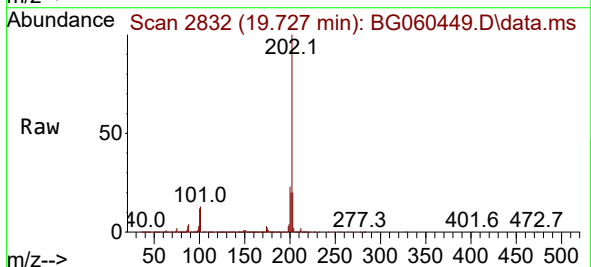
Instrument :
 BNA_G
 ClientSampleId :
 SLCS632

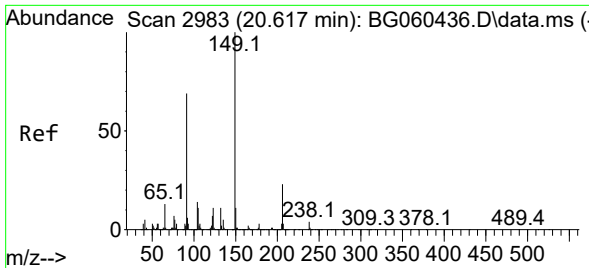
Tgt Ion:202 Resp: 2872986
 Ion Ratio Lower Upper
 202 100
 101 10.4 7.9 11.9
 100 8.6 6.4 9.6



#82
 Pyrene
 Concen: 27.663 ng/u1
 RT: 19.727 min Scan# 2832
 Delta R.T. -0.002 min
 Lab File: BG060449.D
 Acq: 26 Jan 2024 20:20

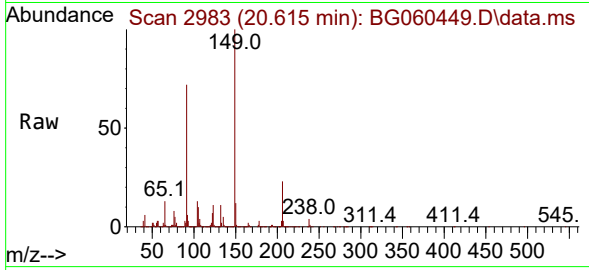
Tgt Ion:202 Resp: 2925354
 Ion Ratio Lower Upper
 202 100
 101 13.5 10.0 15.0
 100 11.9 8.4 12.6





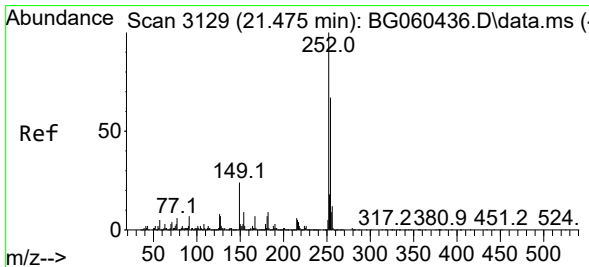
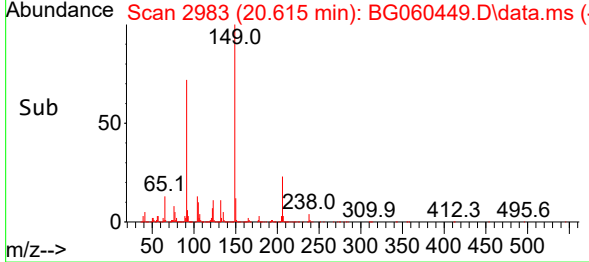
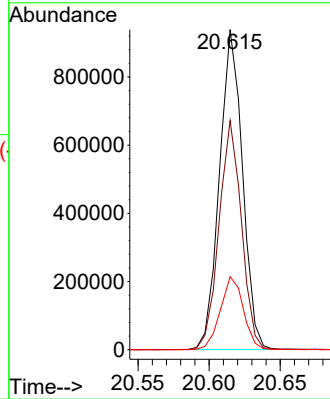
#83
 Butylbenzylphthalate
 Concen: 27.997 ng/ul
 RT: 20.615 min Scan# 2983
 Delta R.T. -0.002 min
 Lab File: BG060449.D
 Acq: 26 Jan 2024 20:20

Instrument :
 BNA_G
 ClientSampleId :
 SLCS632

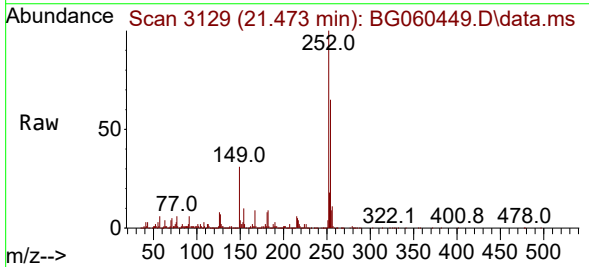


Tgt Ion:149 Resp: 1055306

Ion	Ratio	Lower	Upper
149	100		
91	71.6	56.3	84.5
206	22.8	18.1	27.1

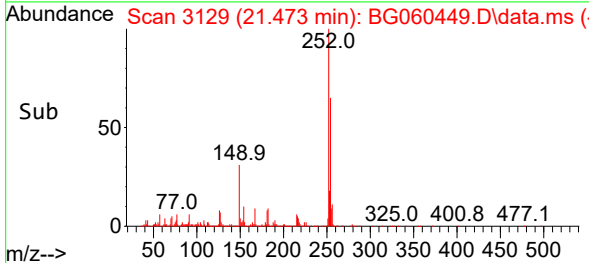
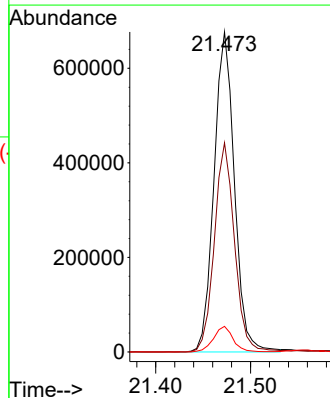


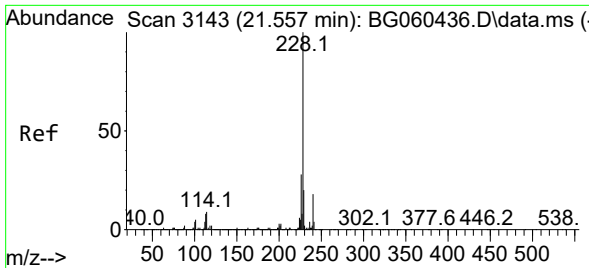
#84
 3,3'-Dichlorobenzidine
 Concen: 28.897 ng/ul
 RT: 21.473 min Scan# 3129
 Delta R.T. 0.004 min
 Lab File: BG060449.D
 Acq: 26 Jan 2024 20:20



Tgt Ion:252 Resp: 1012860

Ion	Ratio	Lower	Upper
252	100		
254	65.4	52.8	79.2
126	8.0	6.2	9.4



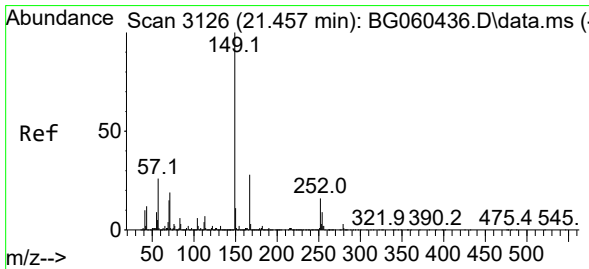
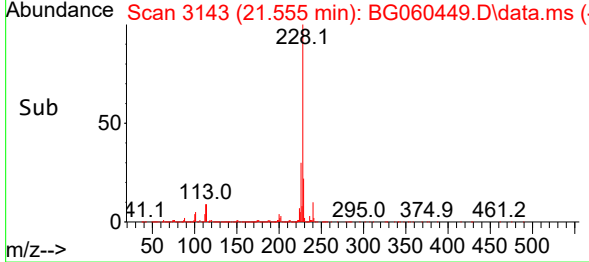
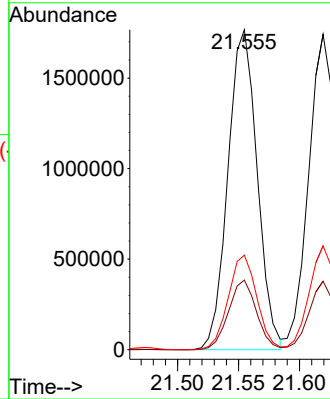
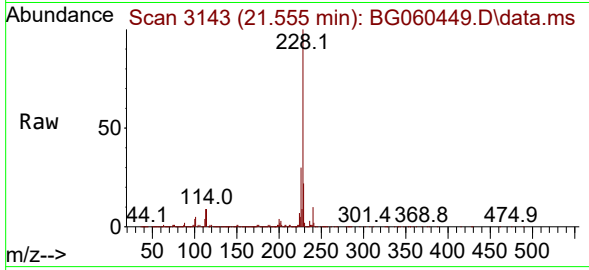


#85
 Benzo(a)anthracene
 Concen: 28.194 ng/uI
 RT: 21.555 min Scan# 3143
 Delta R.T. 0.004 min
 Lab File: BG060449.D
 Acq: 26 Jan 2024 20:20

Instrument : BNA_G
 ClientSampleId : SLCS632

Tgt Ion:228 Resp: 2953536

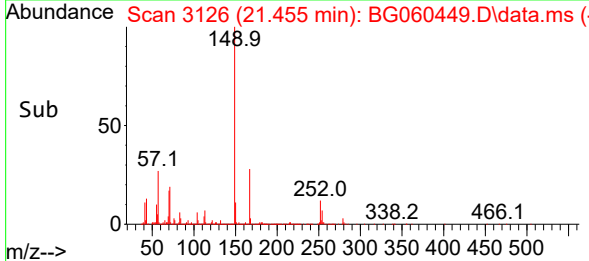
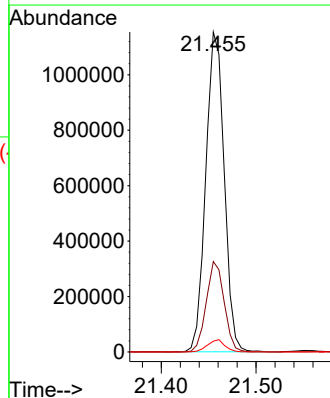
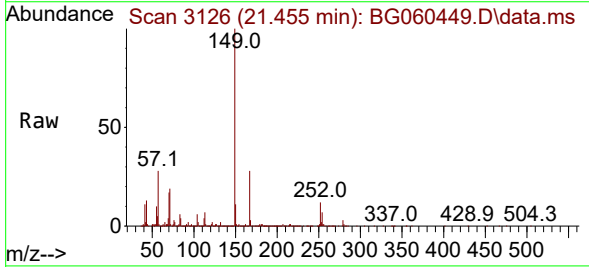
Ion	Ratio	Lower	Upper
228	100		
229	21.8	16.2	24.2
226	29.5	22.1	33.1

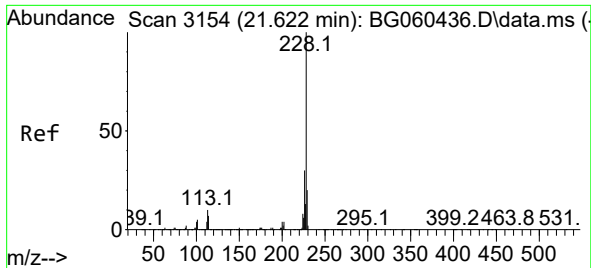


#86
 Bis(2-ethylhexyl)phthalate
 Concen: 27.577 ng/uI
 RT: 21.455 min Scan# 3126
 Delta R.T. -0.002 min
 Lab File: BG060449.D
 Acq: 26 Jan 2024 20:20

Tgt Ion:149 Resp: 1551539

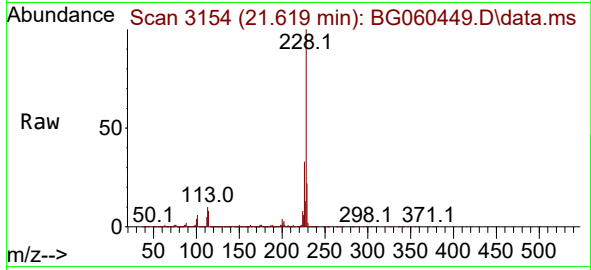
Ion	Ratio	Lower	Upper
149	100		
167	28.3	22.2	33.4
279	3.3	3.0	4.4



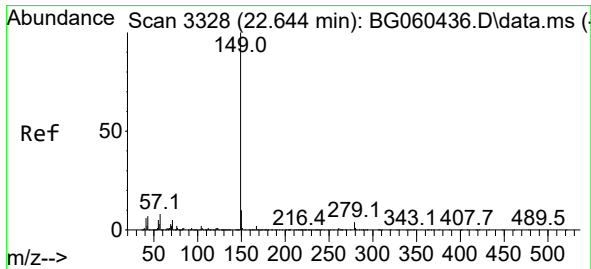
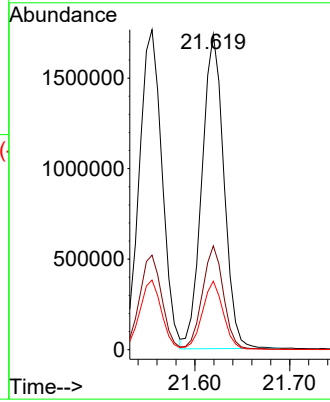
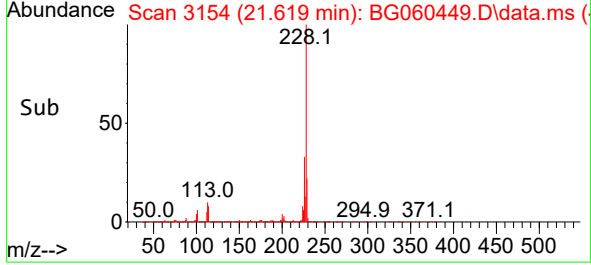


#87
 Chrysene
 Concen: 28.359 ng/ul
 RT: 21.619 min Scan# 3154
 Delta R.T. 0.004 min
 Lab File: BG060449.D
 Acq: 26 Jan 2024 20:20

Instrument :
 BNA_G
 ClientSampleId :
 SLCS632

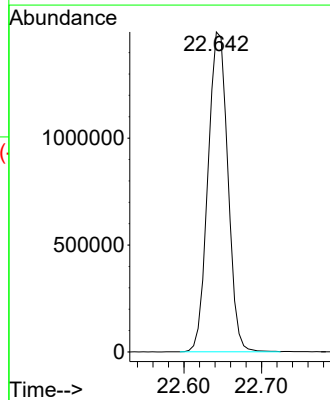
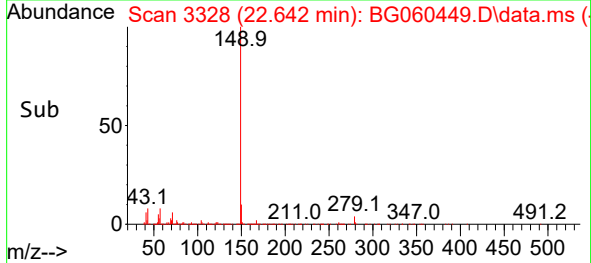
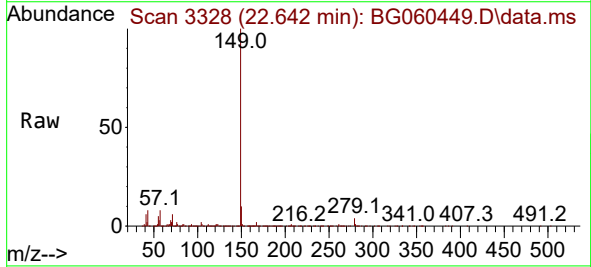


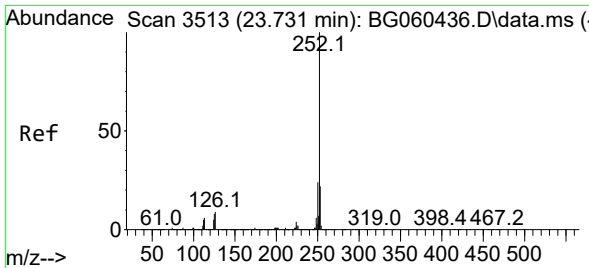
Tgt Ion:228 Resp: 2790677
 Ion Ratio Lower Upper
 228 100
 226 32.9 25.0 37.6
 229 21.7 16.2 24.4



#89
 Di-n-octyl phthalate
 Concen: 29.583 ng/ul
 RT: 22.642 min Scan# 3328
 Delta R.T. -0.002 min
 Lab File: BG060449.D
 Acq: 26 Jan 2024 20:20

Tgt Ion:149 Resp: 2663178



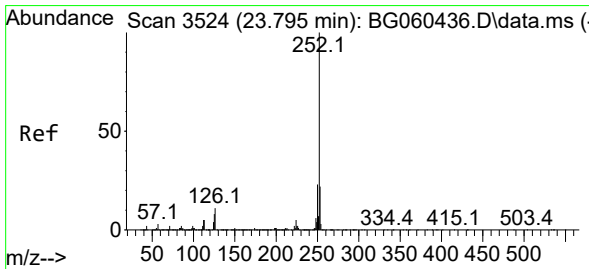
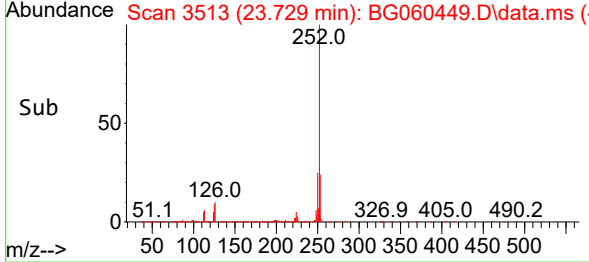
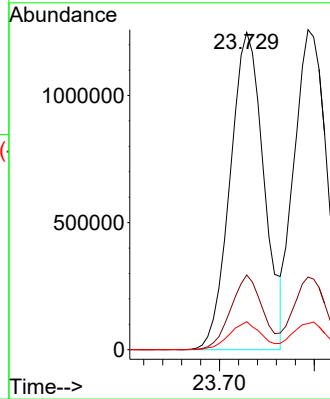
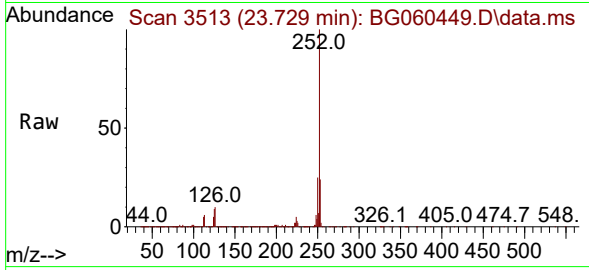


#90
 Benzo(b)fluoranthene
 Concen: 29.551 ng/ul
 RT: 23.729 min Scan# 3513
 Delta R.T. 0.004 min
 Lab File: BG060449.D
 Acq: 26 Jan 2024 20:20

Instrument : BNA_G
 ClientSampleId : SLCS632

Tgt Ion:252 Resp: 3093363

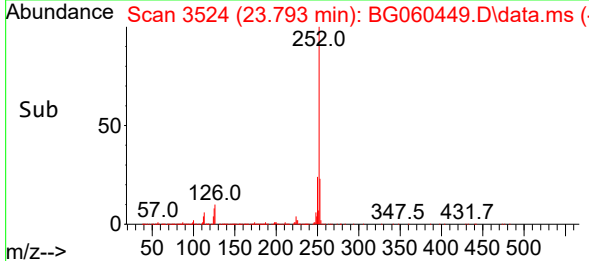
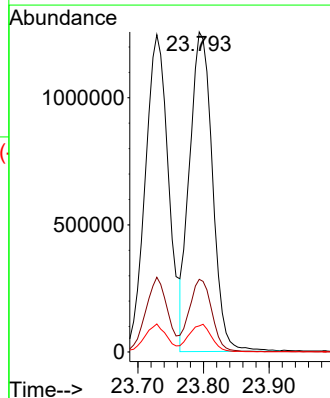
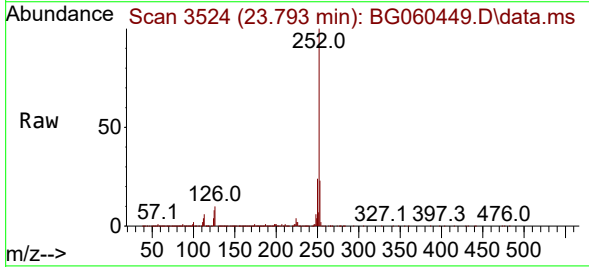
Ion	Ratio	Lower	Upper
252	100		
253	23.6	18.0	27.0
125	8.8	6.2	9.4

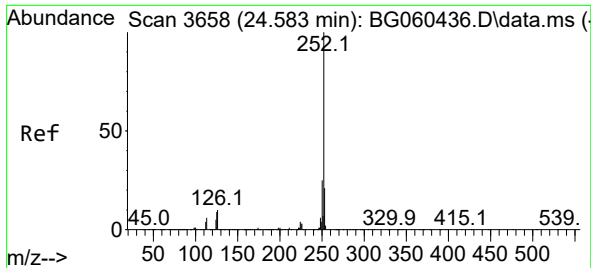


#91
 Benzo(k)fluoranthene
 Concen: 28.510 ng/ul
 RT: 23.793 min Scan# 3524
 Delta R.T. 0.004 min
 Lab File: BG060449.D
 Acq: 26 Jan 2024 20:20

Tgt Ion:252 Resp: 3047671

Ion	Ratio	Lower	Upper
252	100		
253	22.7	17.8	26.8
125	8.2	6.8	10.2



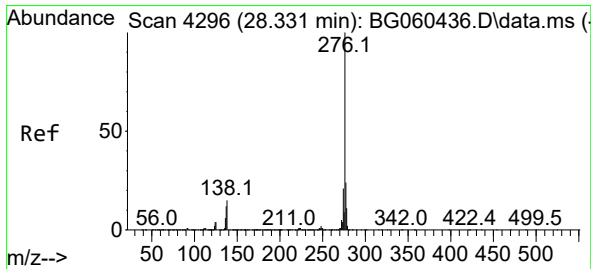
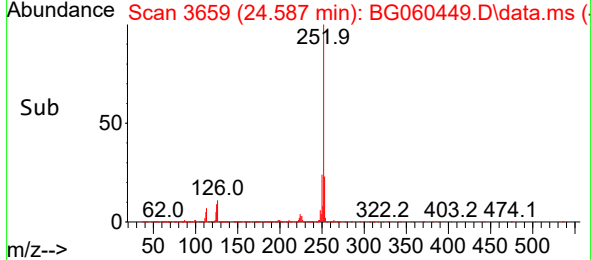
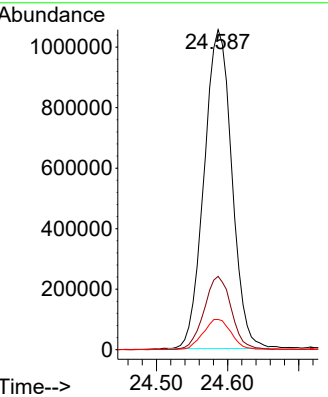
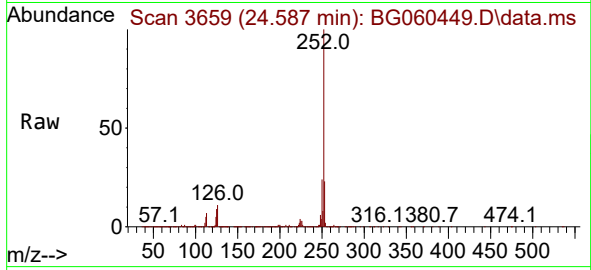


#93
 Benzo(a)pyrene
 Concen: 28.338 ng/ul
 RT: 24.587 min Scan# 30
 Delta R.T. 0.004 min
 Lab File: BG060449.D
 Acq: 26 Jan 2024 20:20

Instrument :
 BNA_G
 ClientSampleId :
 SLCS632

Tgt Ion: 252 Resp: 2853707

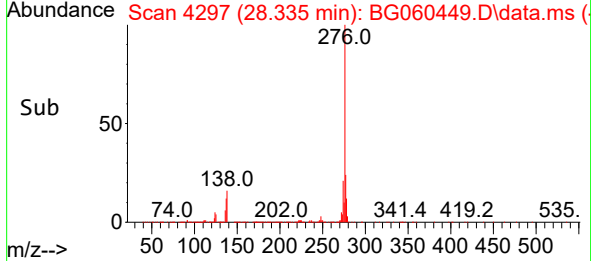
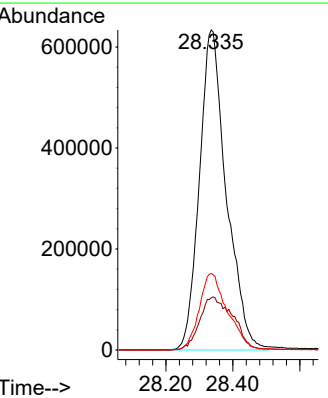
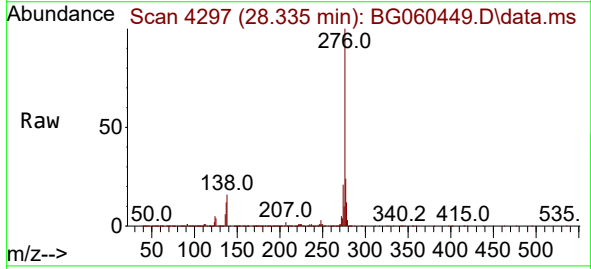
Ion	Ratio	Lower	Upper
252	100		
253	22.9	18.3	27.5
125	9.4	7.4	11.0

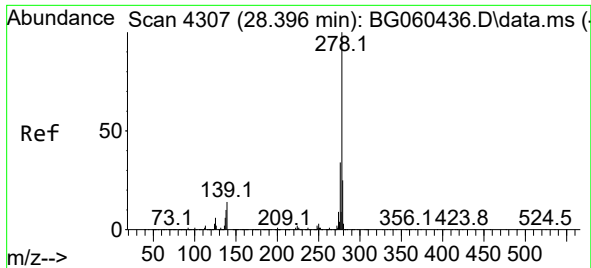


#94
 Indeno(1,2,3-cd)pyrene
 Concen: 28.673 ng/ul
 RT: 28.335 min Scan# 4297
 Delta R.T. -0.002 min
 Lab File: BG060449.D
 Acq: 26 Jan 2024 20:20

Tgt Ion: 276 Resp: 3539597

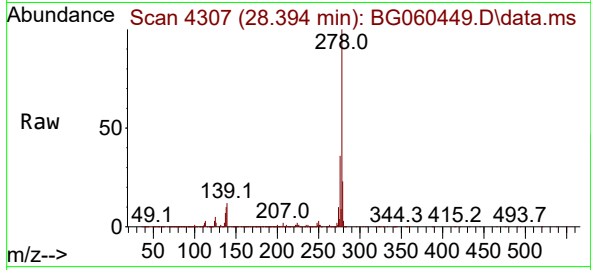
Ion	Ratio	Lower	Upper
276	100		
138	16.3	13.0	19.4
277	23.9	18.9	28.3



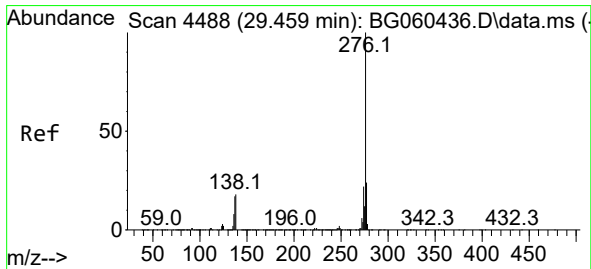
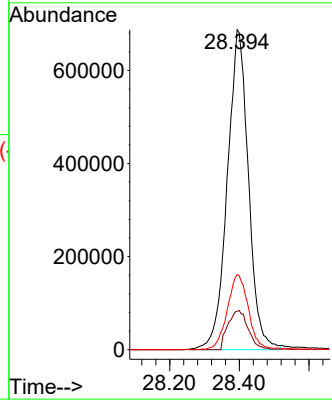
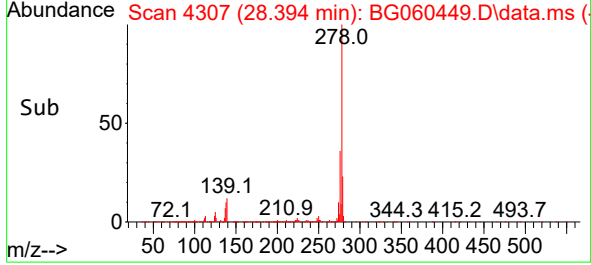


#95
 Dibenzo(a,h)anthracene
 Concen: 28.765 ng/ul
 RT: 28.394 min Scan# 41
 Delta R.T. 0.004 min
 Lab File: BG060449.D
 Acq: 26 Jan 2024 20:20

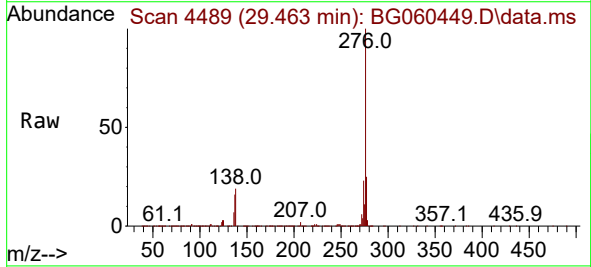
Instrument :
 BNA_G
 ClientSampleId :
 SLCS632



Tgt Ion:278 Resp: 2897104
 Ion Ratio Lower Upper
 278 100
 139 12.0 9.9 14.9
 279 23.5 18.9 28.3



#96
 Benzo(g,h,i)perylene
 Concen: 17.542 ng/ul
 RT: 29.463 min Scan# 4489
 Delta R.T. 0.016 min
 Lab File: BG060449.D
 Acq: 26 Jan 2024 20:20



Tgt Ion:276 Resp: 1753317
 Ion Ratio Lower Upper
 276 100
 138 18.7 14.6 22.0
 277 24.7 18.3 27.5

