

Data Path : Z:\svoasrv\HPCHEM1\BNA_G\Data\BG012721\
 Data File : BG048031.D
 Acq On : 27 Jan 2021 15:55
 Operator : CG/JU
 Sample : M1244-02
 Misc :
 ALS Vial : 7 Sample Multiplier: 1

Instrument :
 BNA_G
 ClientSampleId :
 FB-BP24

Quant Time: Jan 27 16:32:21 2021
 Quant Method : Z:\SVOASRV\HPCHEM1\BNA_G\METHODS\8270-BG012521.M
 Quant Title : ASP BNA STANDARDS FOR 5 POINT CALIBRATION
 QLast Update : Mon Jan 25 19:39:42 2021
 Response via : Initial Calibration

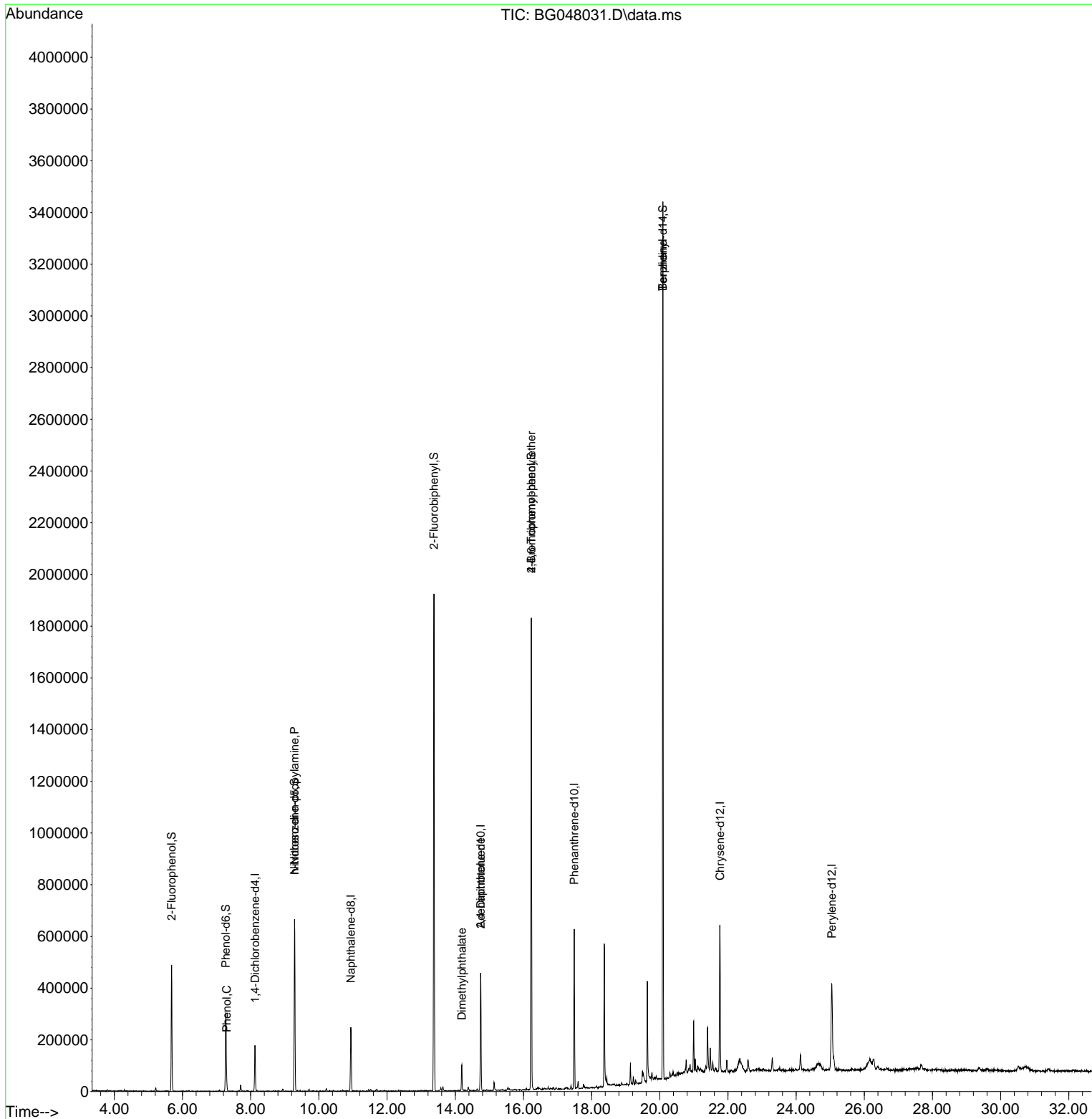
Compound	R.T.	QIon	Response	Conc	Units	Dev(Min)
Internal Standards						
1) 1,4-Dichlorobenzene-d4	8.129	152	50465	20.00	ng	0.00
21) Naphthalene-d8	10.937	136	196683	20.00	ng	0.00
39) Acenaphthene-d10	14.745	164	158209	20.00	ng	0.00
64) Phenanthrene-d10	17.489	188	382782	20.00	ng	# 0.00
76) Chrysene-d12	21.766	240	363013	20.00	ng	# 0.00
86) Perylene-d12	25.044	264	365657	20.00	ng	-0.02
System Monitoring Compounds						
5) 2-Fluorophenol	5.679	112	197920	60.27	ng	0.00
7) Phenol-d6	7.271	99	170338	34.12	ng	0.00
23) Nitrobenzene-d5	9.286	82	408420	82.16	ng	0.00
42) 2,4,6-Tribromophenol	16.231	330	350684	133.08	ng	0.00
45) 2-Fluorobiphenyl	13.376	172	982635	80.30	ng	0.00
79) Terphenyl-d14	20.091	244	1452682	69.38	ng	0.00
Target Compounds						
10) Phenol	7.295	94	17312	3.62	ng	# 66
19) n-Nitroso-di-n-propyla...	9.286	70	57326	15.73	ng	# 79
50) Dimethylphthalate	14.192	163	62531	4.37	ng	99
57) 2,4-Dinitrotoluene	14.745	165	20963	4.88	ng	# 33
67) 4-Bromophenyl-phenylether	16.231	248	23511	4.60	ng	# 1
77) Benzidine	20.091	184	25565	2.44	ng	98

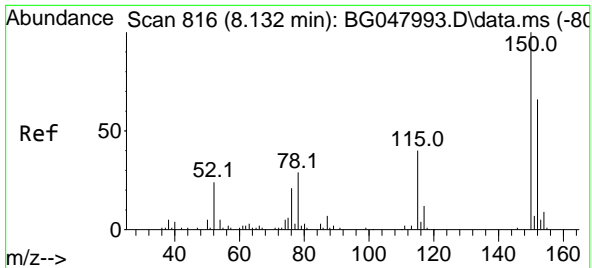
(#) = qualifier out of range (m) = manual integration (+) = signals summed

Data Path : Z:\svoasrv\HPCHEM1\BNA_G\Data\BG012721\
 Data File : BG048031.D
 Acq On : 27 Jan 2021 15:55
 Operator : CG/JU
 Sample : M1244-02
 Misc :
 ALS Vial : 7 Sample Multiplier: 1

Instrument :
 BNA_G
 ClientSampleId :
 FB-BP24

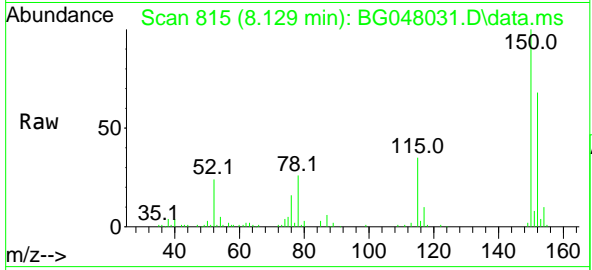
Quant Time: Jan 27 16:32:21 2021
 Quant Method : Z:\SVOASRV\HPCHEM1\BNA_G\METHODS\8270-BG012521.M
 Quant Title : ASP BNA STANDARDS FOR 5 POINT CALIBRATION
 QLast Update : Mon Jan 25 19:39:42 2021
 Response via : Initial Calibration



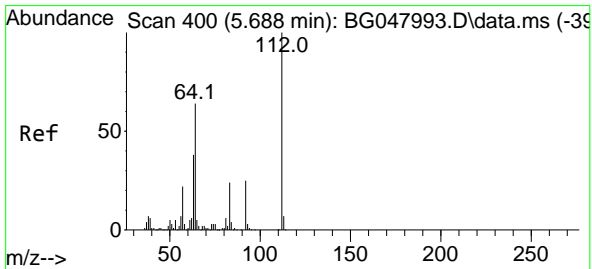
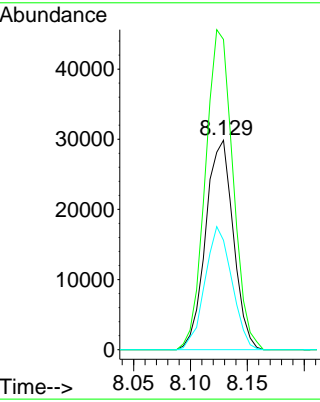
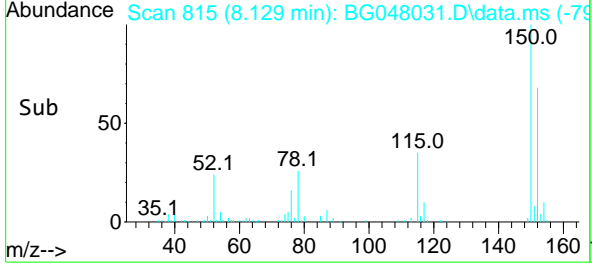


#1
 1,4-Dichlorobenzene-d4
 Concen: 20.00 ng
 RT: 8.129 min Scan# 815
 Delta R.T. -0.003 min
 Lab File: BG048031.D
 Acq: 27 Jan 2021 15:55

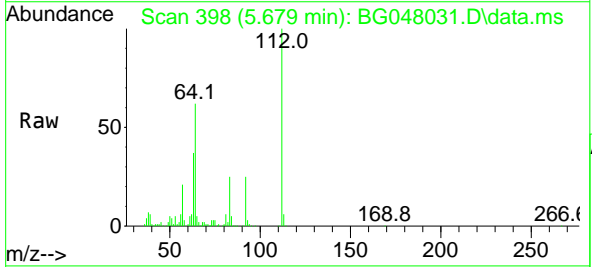
Instrument :
 BNA_G
 ClientSampled :
 FB-BP24



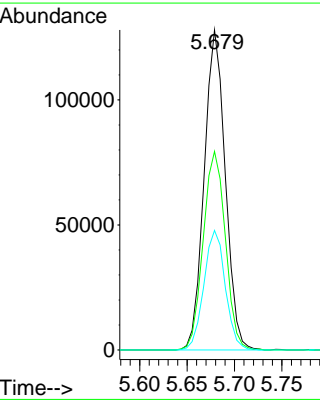
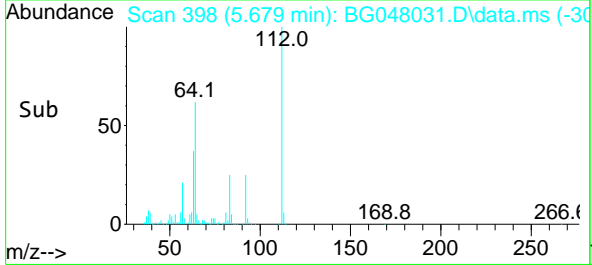
Tgt Ion:152 Resp: 50465
 Ion Ratio Lower Upper
 152 100
 150 148.1 125.0 187.6
 115 52.2 41.8 62.6

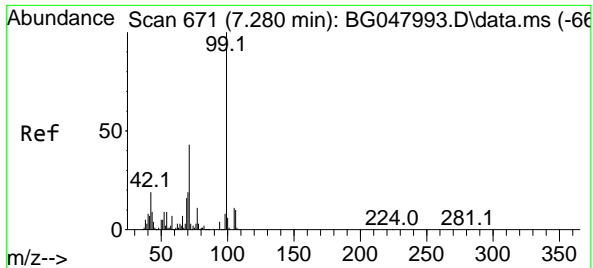


#5
 2-Fluorophenol
 Concen: 60.27 ng
 RT: 5.679 min Scan# 398
 Delta R.T. -0.009 min
 Lab File: BG048031.D
 Acq: 27 Jan 2021 15:55



Tgt Ion:112 Resp: 197920
 Ion Ratio Lower Upper
 112 100
 64 62.0 46.7 70.1
 63 37.4 22.8 34.2#

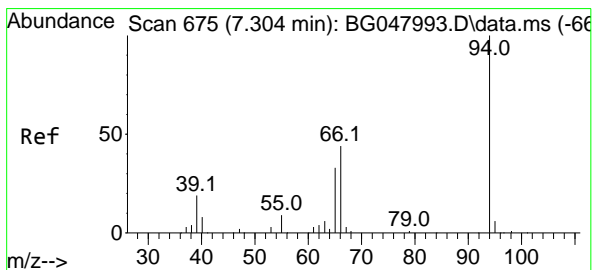
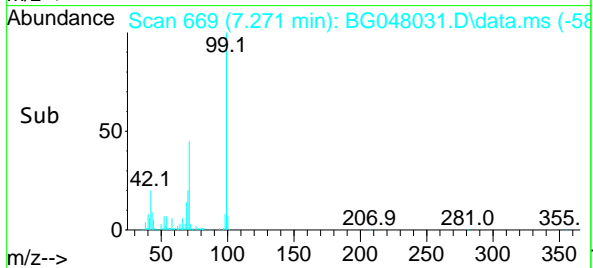
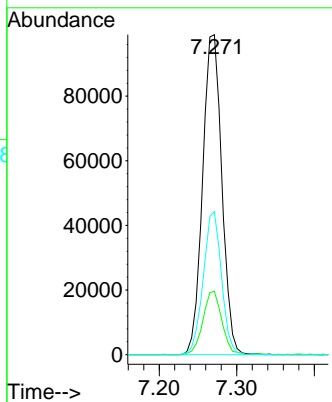
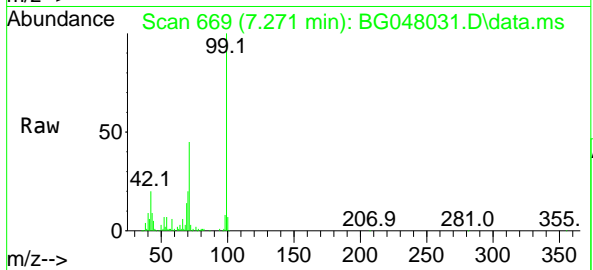




#7
 Phenol-d6
 Concen: 34.12 ng
 RT: 7.271 min Scan# 669
 Delta R.T. -0.009 min
 Lab File: BG048031.D
 Acq: 27 Jan 2021 15:55

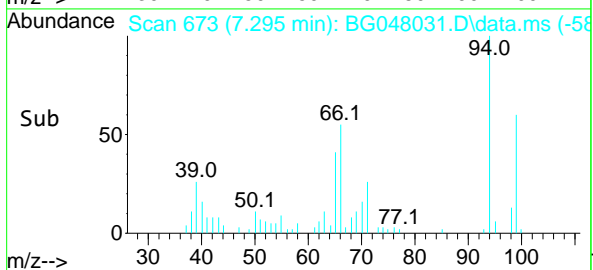
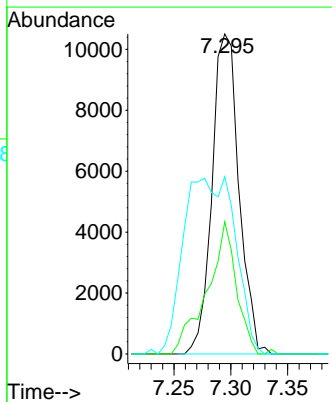
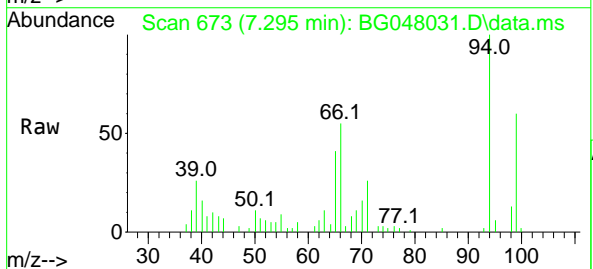
Instrument :
 BNA_G
ClientSampled :
 FB-BP24

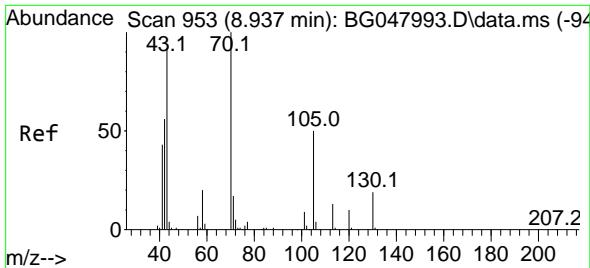
Tgt Ion	Resp	Lower	Upper
99	170338		
42	19.8	12.8	19.2#
71	44.7	24.6	36.8#



#10
 Phenol
 Concen: 3.62 ng
 RT: 7.295 min Scan# 673
 Delta R.T. -0.009 min
 Lab File: BG048031.D
 Acq: 27 Jan 2021 15:55

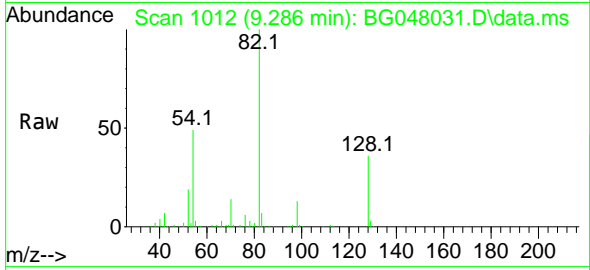
Tgt Ion	Resp	Lower	Upper
94	17312		
65	41.3	6.6	46.6
66	55.4	13.9	53.9#





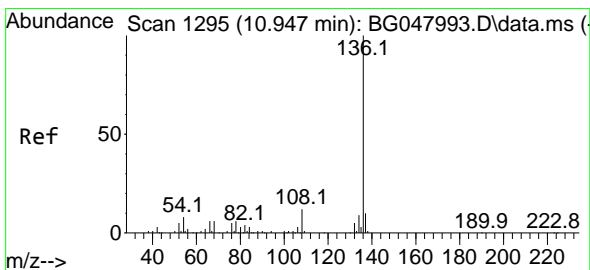
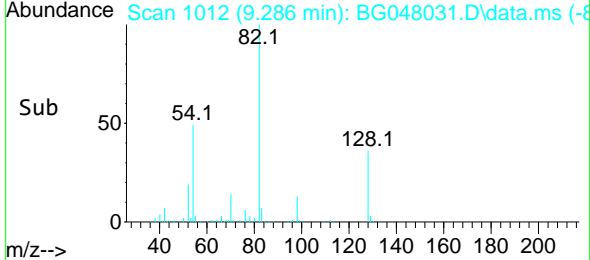
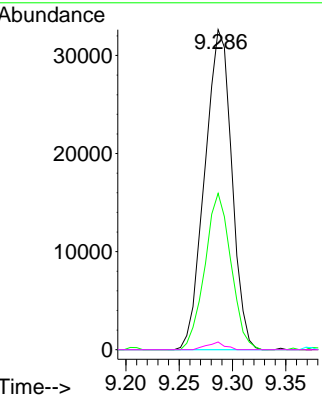
#19
 n-Nitroso-di-n-propylamine
 Concen: 15.73 ng
 RT: 9.286 min Scan# 1012
 Delta R.T. 0.349 min
 Lab File: BG048031.D
 Acq: 27 Jan 2021 15:55

Instrument :
 BNA_G
ClientSampled :
 FB-BP24



Tgt Ion: 70 Resp: 57326

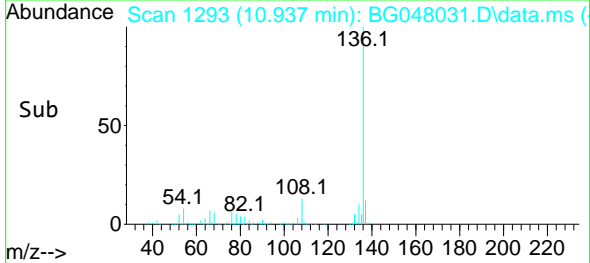
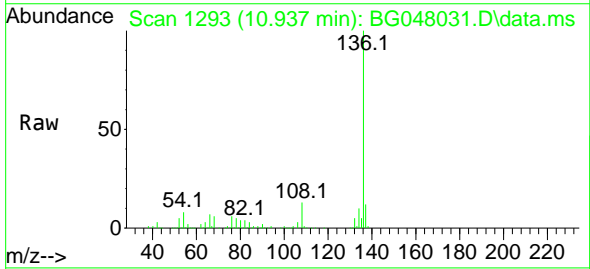
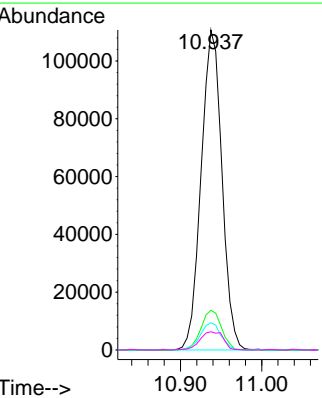
Ion	Ratio	Lower	Upper
70	100		
42	48.8	45.6	68.4
101	0.0	8.4	12.6#
130	2.4	17.8	26.8#

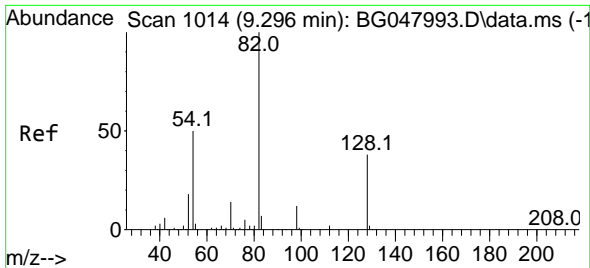


#21
 Naphthalene-d8
 Concen: 20.00 ng
 RT: 10.937 min Scan# 1293
 Delta R.T. -0.009 min
 Lab File: BG048031.D
 Acq: 27 Jan 2021 15:55

Tgt Ion: 136 Resp: 196683

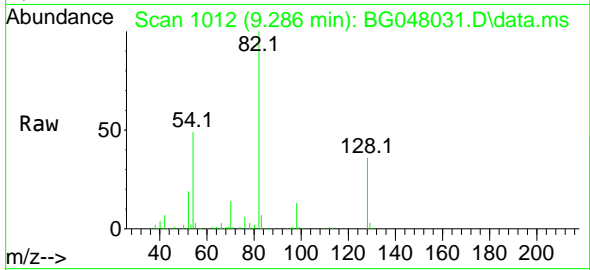
Ion	Ratio	Lower	Upper
136	100		
137	12.4	9.1	13.7
54	8.5	6.2	9.4
68	5.7	5.0	7.4





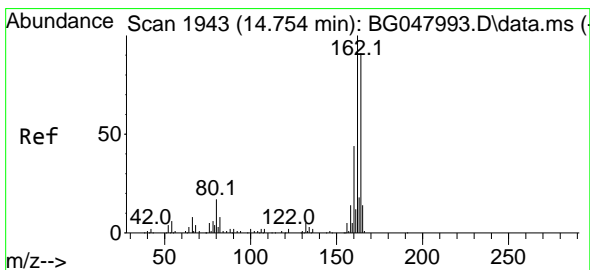
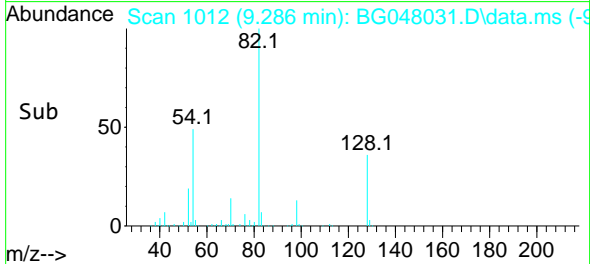
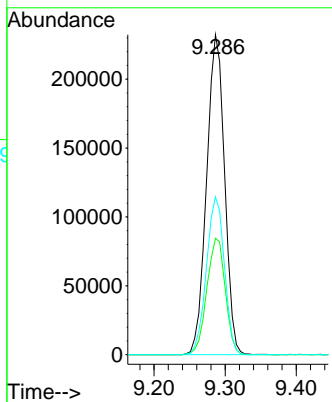
#23
 Nitrobenzene-d5
 Concen: 82.16 ng
 RT: 9.286 min Scan# 1012
 Delta R.T. -0.009 min
 Lab File: BG048031.D
 Acq: 27 Jan 2021 15:55

Instrument :
 BNA_G
 ClientSampled :
 FB-BP24

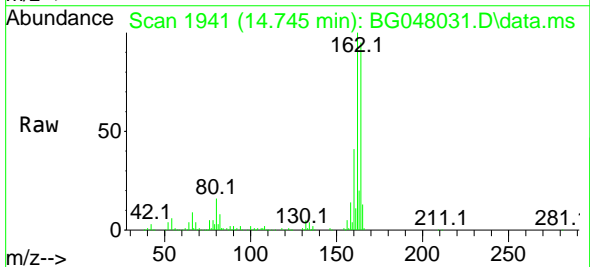


Tgt Ion: 82 Resp: 408420

Ion	Ratio	Lower	Upper
82	100		
128	36.4	37.0	55.6#
54	49.3	39.0	58.4

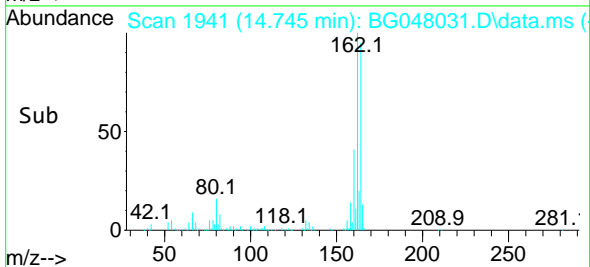
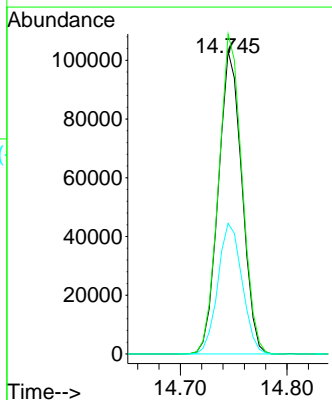


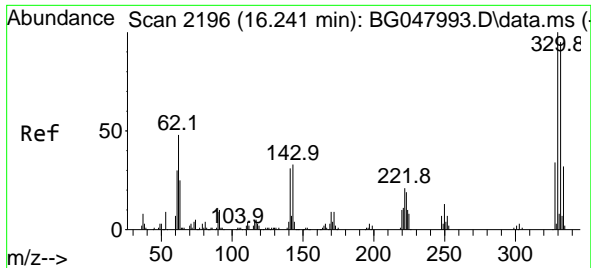
#39
 Acenaphthene-d10
 Concen: 20.00 ng
 RT: 14.745 min Scan# 1941
 Delta R.T. -0.009 min
 Lab File: BG048031.D
 Acq: 27 Jan 2021 15:55



Tgt Ion: 164 Resp: 158209

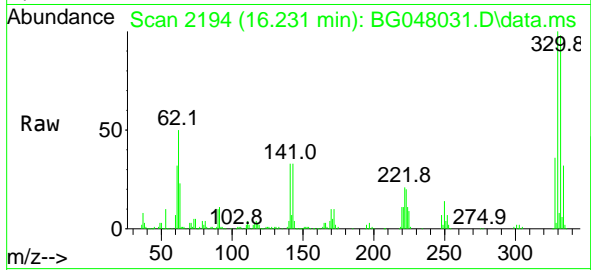
Ion	Ratio	Lower	Upper
164	100		
162	105.7	82.3	123.5
160	43.1	35.3	52.9



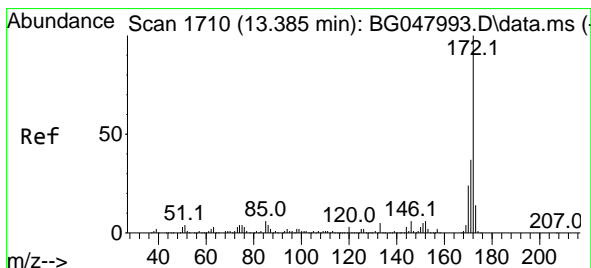
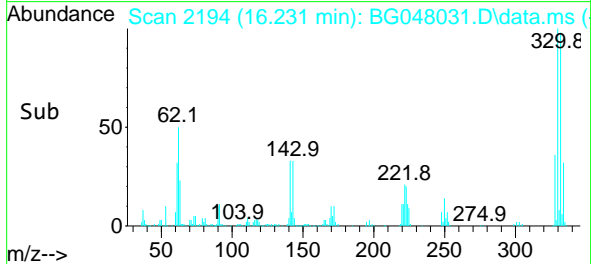
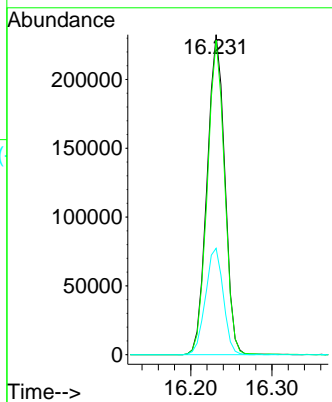


#42
 2,4,6-Tribromophenol
 Concen: 133.08 ng
 RT: 16.231 min Scan# 2194
 Delta R.T. -0.009 min
 Lab File: BG048031.D
 Acq: 27 Jan 2021 15:55

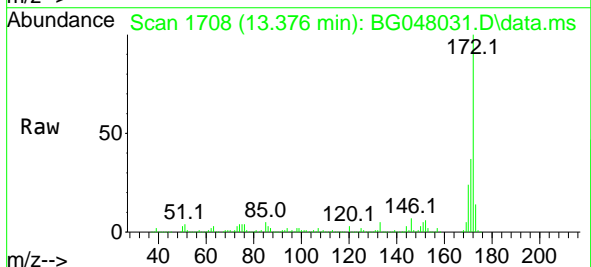
Instrument :
 BNA_G
 ClientSampled :
 FB-BP24



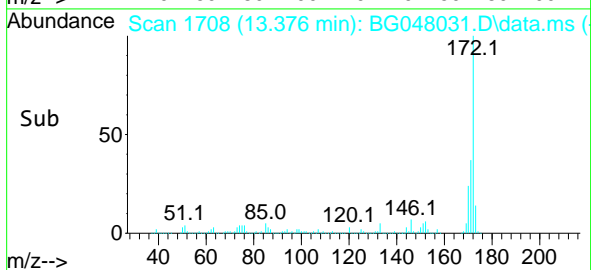
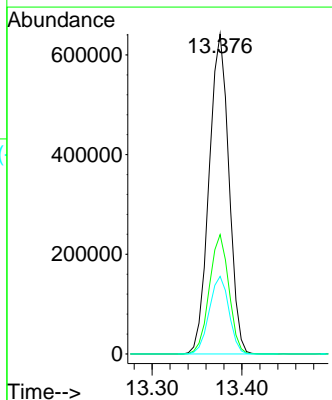
Tgt Ion:330 Resp: 350684
 Ion Ratio Lower Upper
 330 100
 332 95.8 76.5 114.7
 141 33.4 26.0 39.0

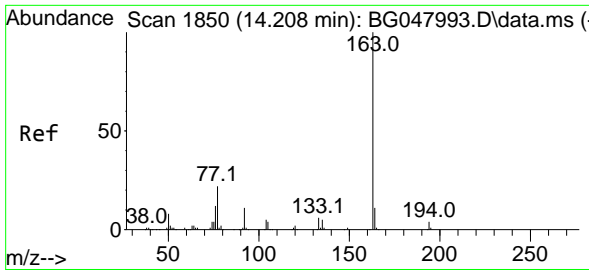


#45
 2-Fluorobiphenyl
 Concen: 80.30 ng
 RT: 13.376 min Scan# 1708
 Delta R.T. -0.009 min
 Lab File: BG048031.D
 Acq: 27 Jan 2021 15:55



Tgt Ion:172 Resp: 982635
 Ion Ratio Lower Upper
 172 100
 171 37.3 31.3 46.9
 170 24.3 20.8 31.2



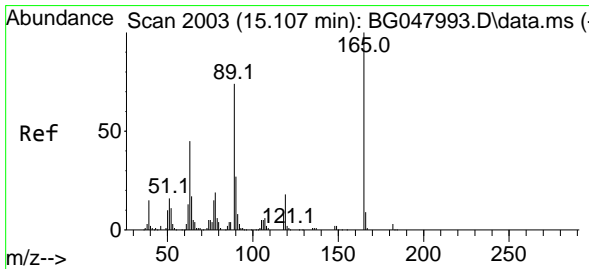
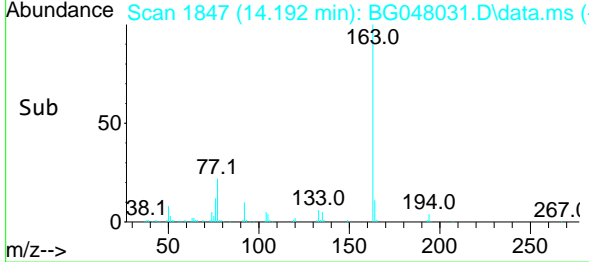
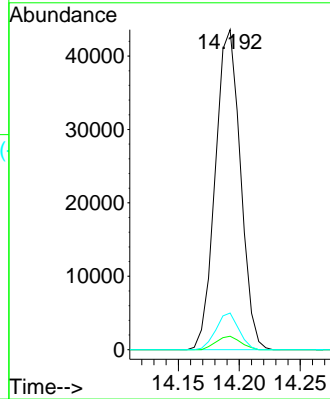
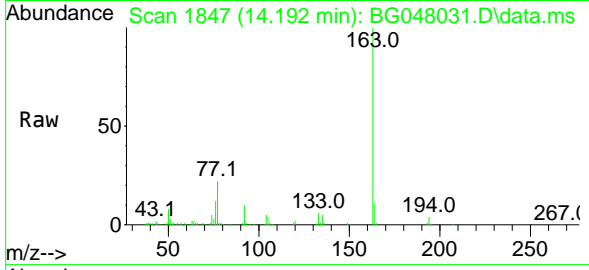


#50
 Dimethylphthalate
 Concen: 4.37 ng
 RT: 14.192 min Scan# 1847
 Delta R.T. -0.015 min
 Lab File: BG048031.D
 Acq: 27 Jan 2021 15:55

Instrument :
 BNA_G
 ClientSampled :
 FB-BP24

Tgt Ion:163 Resp: 62531

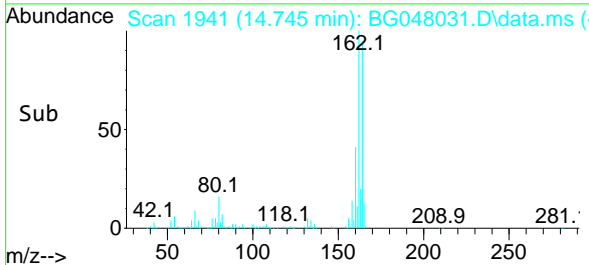
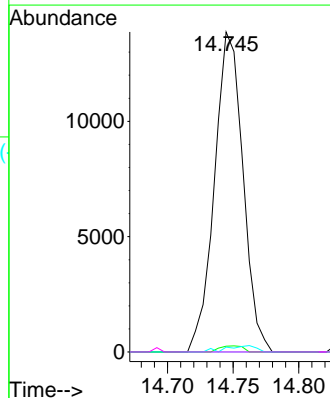
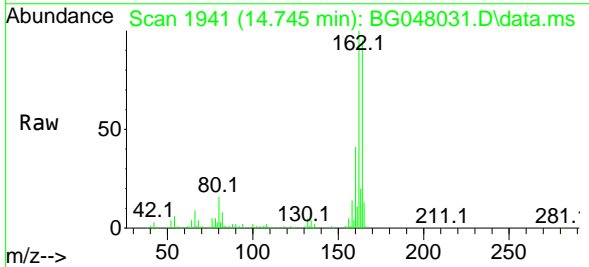
Ion	Ratio	Lower	Upper
163	100		
194	4.2	3.8	5.8
164	11.4	8.8	13.2

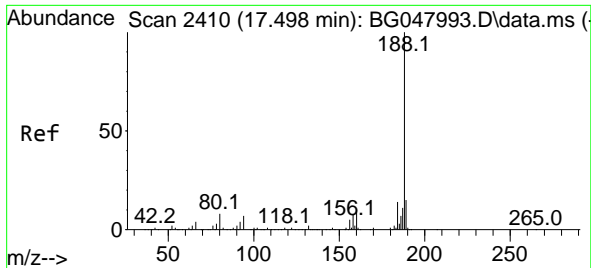


#57
 2,4-Dinitrotoluene
 Concen: 4.88 ng
 RT: 14.745 min Scan# 1941
 Delta R.T. -0.362 min
 Lab File: BG048031.D
 Acq: 27 Jan 2021 15:55

Tgt Ion:165 Resp: 20963

Ion	Ratio	Lower	Upper
165	100		
63	1.8	26.4	39.6#
89	1.5	47.8	71.8#
182	0.0	2.6	4.0#

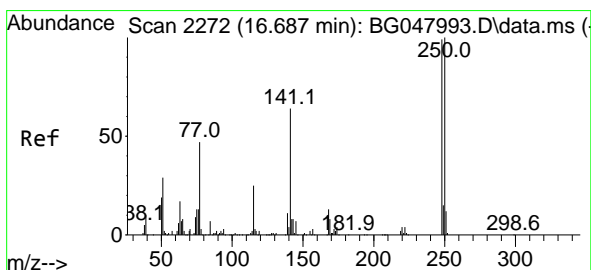
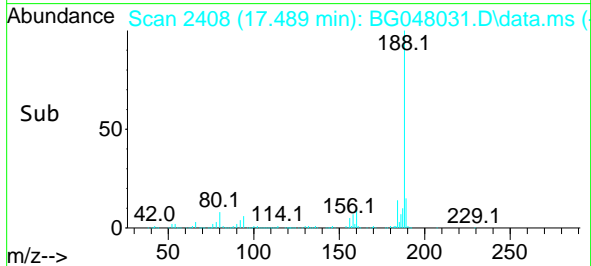
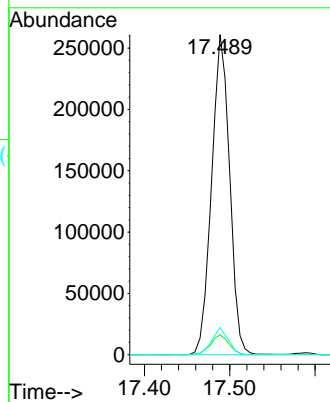
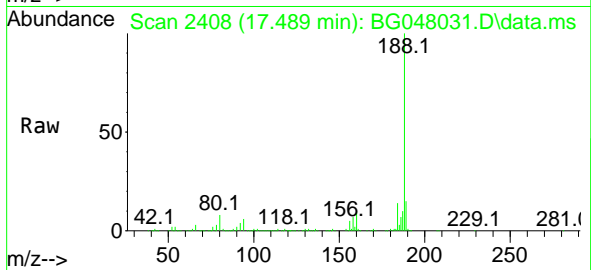




#64
 Phenanthrene-d10
 Concen: 20.00 ng
 RT: 17.489 min Scan# 2408
 Delta R.T. -0.009 min
 Lab File: BG048031.D
 Acq: 27 Jan 2021 15:55

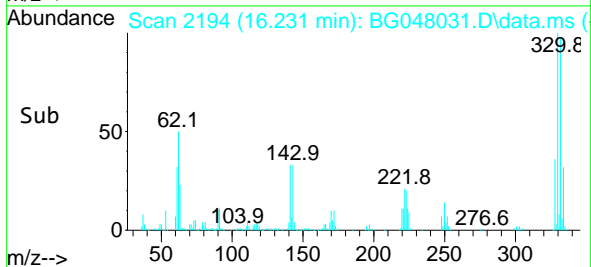
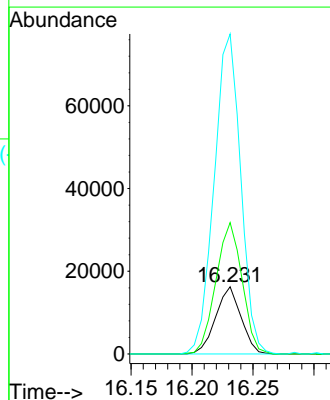
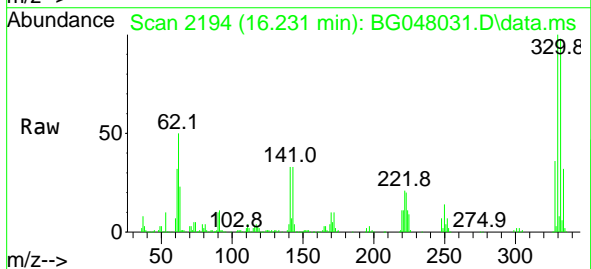
Instrument :
 BNA_G
 ClientSampled :
 FB-BP24

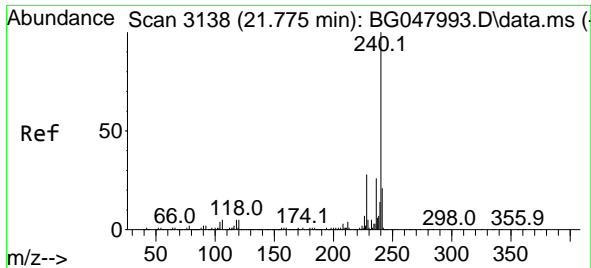
Tgt Ion:188 Resp: 382782
 Ion Ratio Lower Upper
 188 100
 94 6.2 6.3 9.5#
 80 8.5 7.0 10.6



#67
 4-Bromophenyl-phenylether
 Concen: 4.60 ng
 RT: 16.231 min Scan# 2194
 Delta R.T. -0.456 min
 Lab File: BG048031.D
 Acq: 27 Jan 2021 15:55

Tgt Ion:248 Resp: 23511
 Ion Ratio Lower Upper
 248 100
 250 195.3 78.9 118.3#
 141 475.9 46.2 69.4#

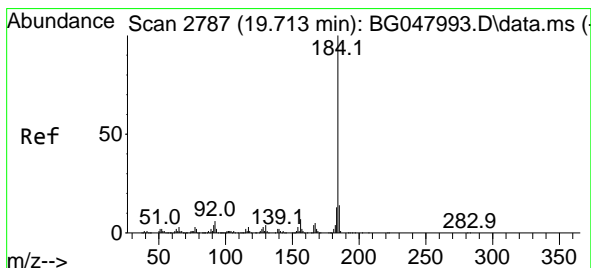
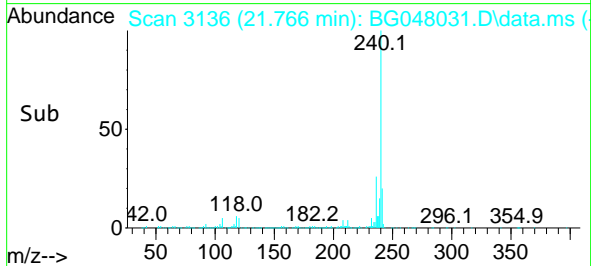
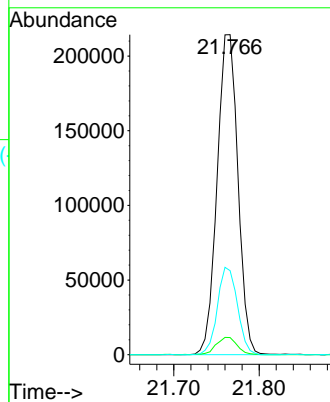
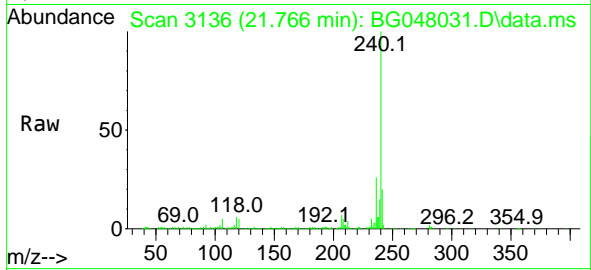




#76
 Chrysene-d12
 Concen: 20.00 ng
 RT: 21.766 min Scan# 3136
 Delta R.T. -0.009 min
 Lab File: BG048031.D
 Acq: 27 Jan 2021 15:55

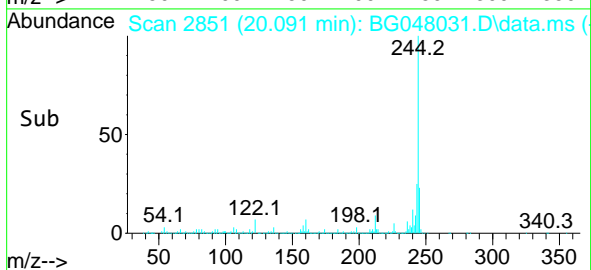
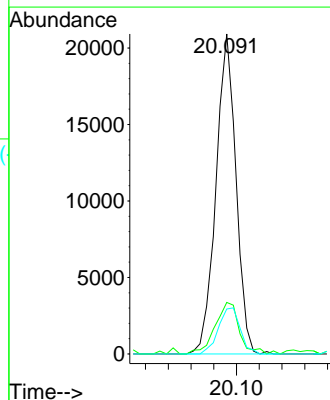
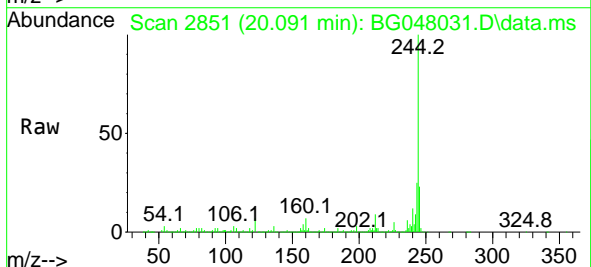
Instrument :
 BNA_G
 ClientSampled :
 FB-BP24

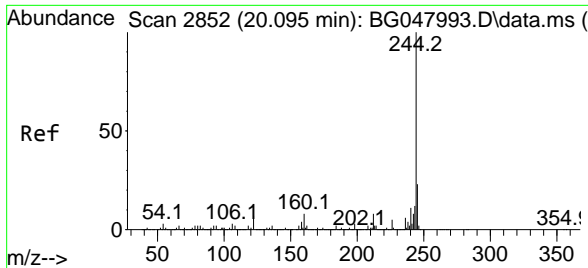
Tgt Ion:240 Resp: 363013
 Ion Ratio Lower Upper
 240 100
 120 5.4 6.2 9.4#
 236 26.3 20.5 30.7



#77
 Benzidine
 Concen: 2.44 ng
 RT: 20.091 min Scan# 2851
 Delta R.T. 0.378 min
 Lab File: BG048031.D
 Acq: 27 Jan 2021 15:55

Tgt Ion:184 Resp: 25565
 Ion Ratio Lower Upper
 184 100
 185 16.1 12.4 18.6
 183 14.0 10.6 15.8



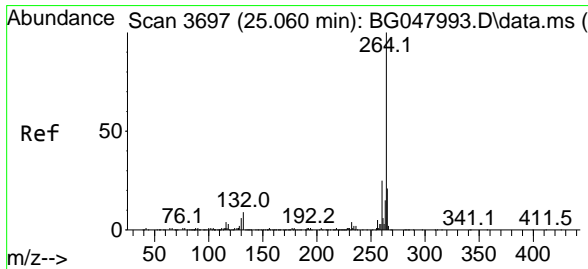
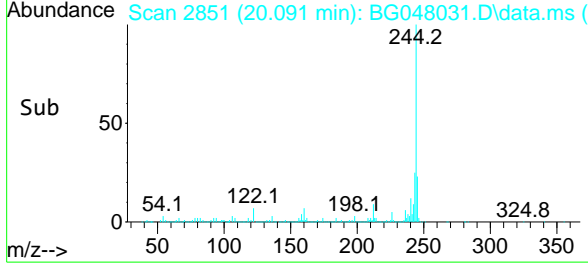
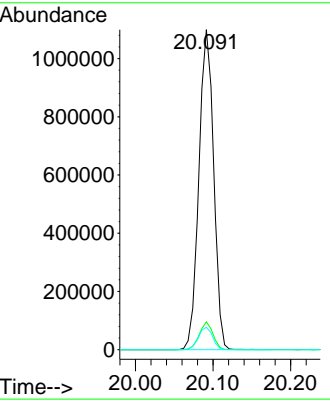
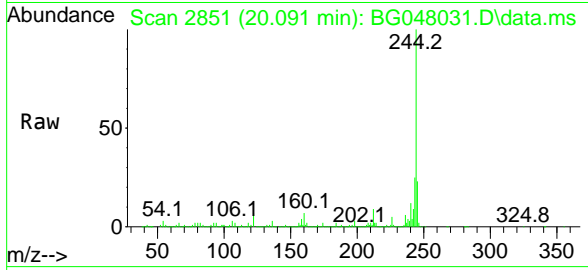


#79
 Terphenyl-d14
 Concen: 69.38 ng
 RT: 20.091 min Scan# 2851
 Delta R.T. -0.004 min
 Lab File: BG048031.D
 Acq: 27 Jan 2021 15:55

Instrument :
 BNA_G
ClientSampled :
 FB-BP24

Tgt Ion:244 Resp: 1452682

Ion	Ratio	Lower	Upper
244	100		
212	8.7	6.7	10.1
122	7.0	7.8	11.6#



#86
 Perylene-d12
 Concen: 20.00 ng
 RT: 25.044 min Scan# 3694
 Delta R.T. -0.015 min
 Lab File: BG048031.D
 Acq: 27 Jan 2021 15:55

Tgt Ion:264 Resp: 365657

Ion	Ratio	Lower	Upper
264	100		
260	24.9	18.8	28.2
265	23.1	17.8	26.8

