

Data Path : \\74.0.250.170\SVOASRV\HPCHEM1\BNA_G\DATA\BG013018\
 Data File : BG032456.D
 Acq On : 31 Jan 2018 00:08
 Operator : SJ/JU
 Sample : J1364-05
 Misc :
 ALS Vial : 16 Sample Multiplier: 1

Instrument :
 BNA_G
 ClientSampleId :
 MW-05-DUP

Quant Time: Jan 31 03:47:46 2018
 Quant Method : Z:\HPCHEM1\BNA_G\METHODS\8270-BG012918.M
 Quant Title : ASP BNA STANDARDS FOR 5 POINT CALIBRATION
 QLast Update : Mon Jan 29 15:32:55 2018
 Response via : Initial Calibration

| Internal Standards | R.T. | QIon | Response | Conc | Units | Dev(Min) |
|-----------------------------|-------|------|----------|--------|-------|----------|
| 1) 1,4-Dichlorobenzene-d4 | 8.71 | 152 | 30437 | 20.00 | ng | -0.01 |
| 21) Naphthalene-d8 | 11.59 | 136 | 115687 | 20.00 | ng | -0.01 |
| 38) Acenaphthene-d10 | 15.34 | 164 | 83564 | 20.00 | ng | -0.01 |
| 63) Phenanthrene-d10 | 18.08 | 188 | 217408 | 20.00 | ng | -0.01 |
| 75) Chrysene-d12 | 22.41 | 240 | 268925 | 20.00 | ng | -0.01 |
| 86) Perylene-d12 | 26.08 | 264 | 290673 | 20.00 | ng | 0.00 |
| System Monitoring Compounds | | | | | | |
| 5) 2-Fluorophenol | 6.16 | 112 | 106165 | 70.06 | ng | 0.00 |
| 7) Phenol-d6 | 7.84 | 99 | 80054 | 39.59 | ng | 0.00 |
| 23) Nitrobenzene-d5 | 9.91 | 82 | 186396 | 100.64 | ng | -0.01 |
| 41) 2,4,6-Tribromophenol | 16.83 | 330 | 252090 | 158.48 | ng | -0.01 |
| 44) 2-Fluorobiphenyl | 13.98 | 172 | 687384 | 97.77 | ng | -0.01 |
| 78) Terphenyl-d14 | 20.62 | 244 | 1229114 | 97.90 | ng | 0.00 |

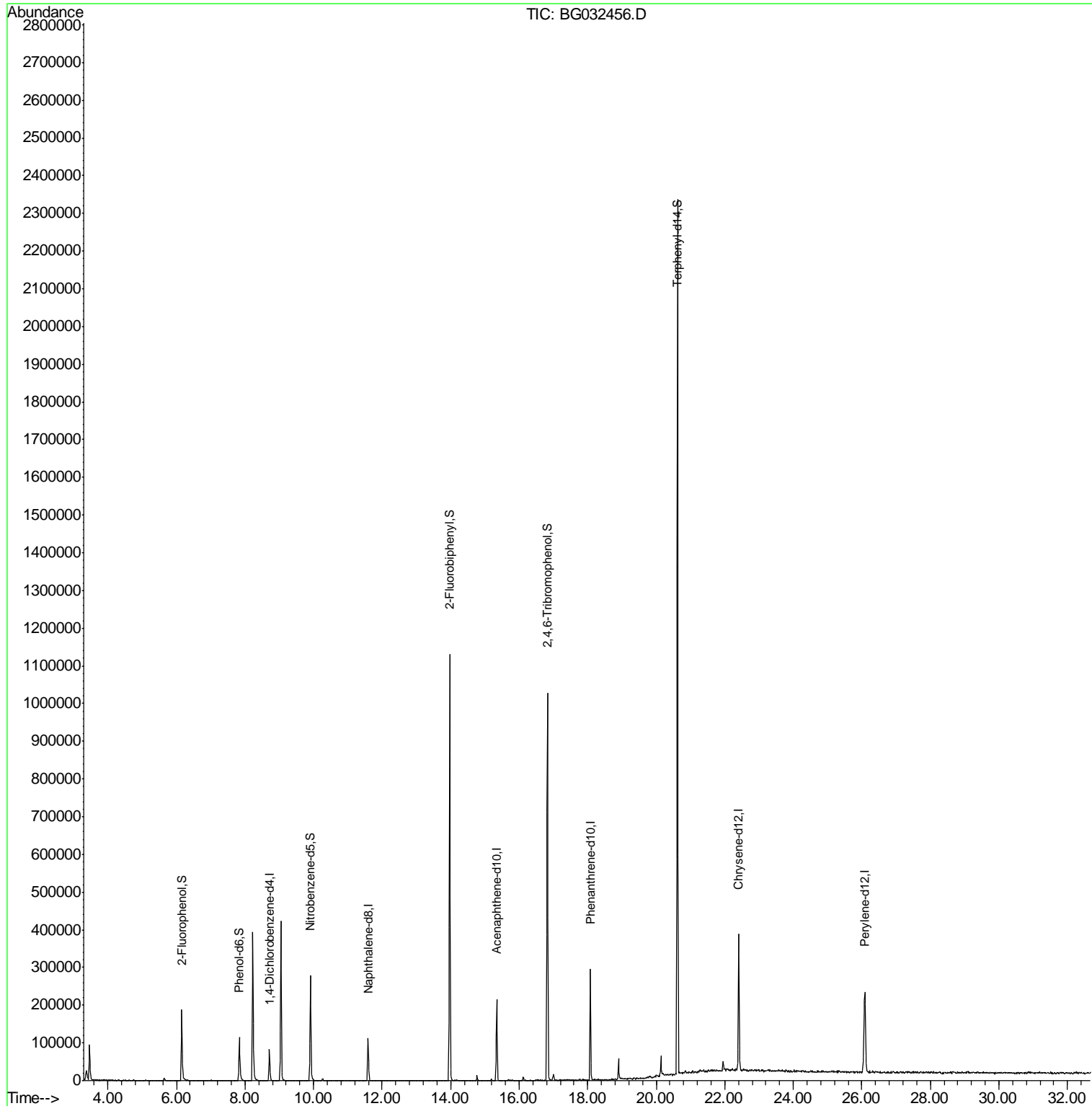
Target Compounds Qvalue

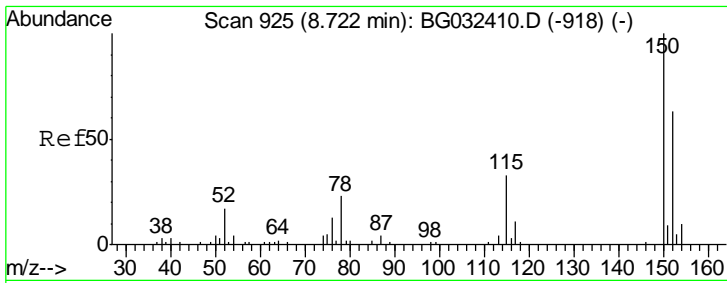
(#) = qualifier out of range (m) = manual integration (+) = signals summed

Data Path : \\74.0.250.170\SVOASRV\HPCHEM1\BNA_G\DATA\BG013018\
 Data File : BG032456.D
 Acq On : 31 Jan 2018 00:08
 Operator : SJ/JU
 Sample : J1364-05
 Misc :
 ALS Vial : 16 Sample Multiplier: 1

Instrument :
 BNA_G
 ClientSampleId :
 MW-05-DUP

Quant Time: Jan 31 03:47:46 2018
 Quant Method : Z:\HPCHEM1\BNA_G\METHODS\8270-BG012918.M
 Quant Title : ASP BNA STANDARDS FOR 5 POINT CALIBRATION
 QLast Update : Mon Jan 29 15:32:55 2018
 Response via : Initial Calibration

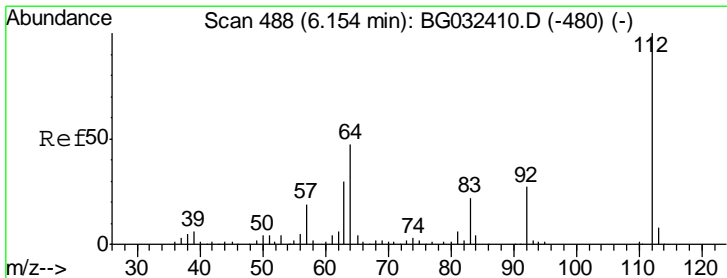
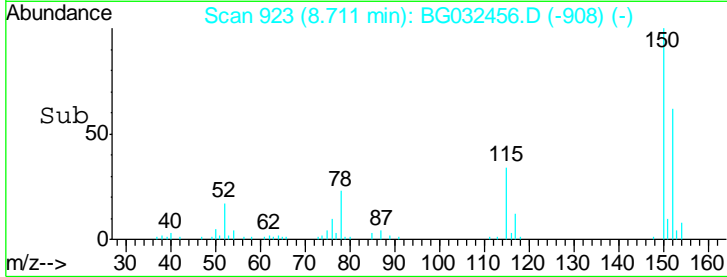
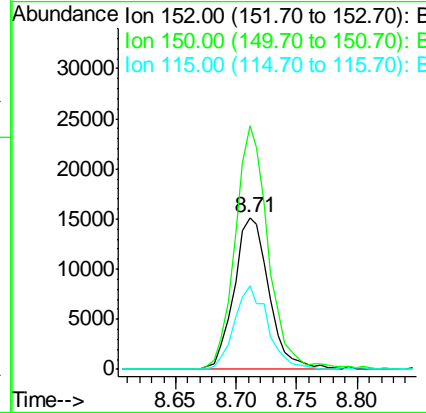
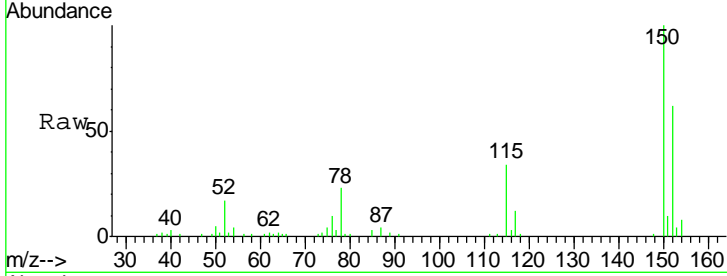




#1
 1,4-Dichlorobenzene-d4
 Concen: 20.000 ng
 RT: 8.71 min Scan# 923
 Delta R.T. -0.01 min
 Lab File: BG032456.D
 Acq: 31 Jan 2018 00:08

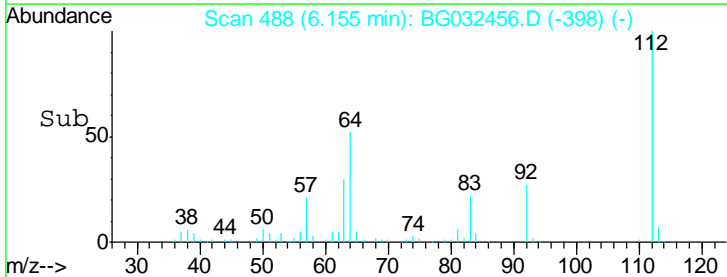
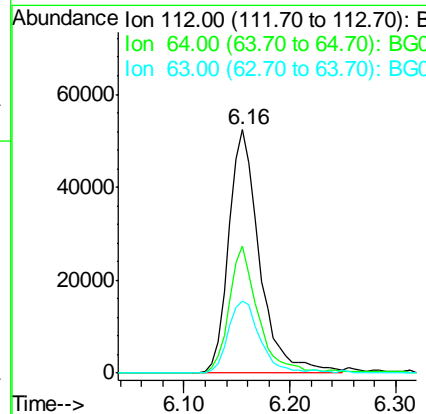
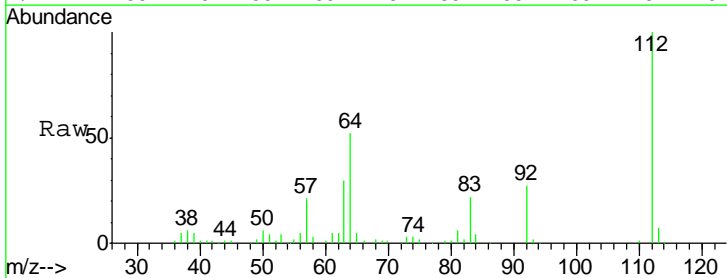
Instrument :
 BNA_G
 ClientSampleId :
 MW-05-DUP

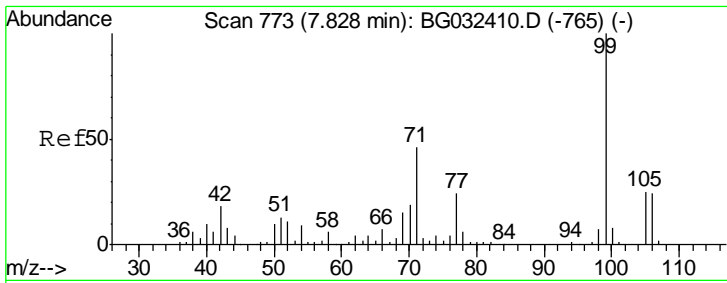
| Tgt Ion | Resp | Lower | Upper |
|---------|-------|-------|-------|
| 152 | 100 | | |
| 150 | 160.4 | 126.6 | 189.8 |
| 115 | 54.8 | 53.0 | 79.4 |



#5
 2-Fluorophenol
 Concen: 70.059 ng
 RT: 6.16 min Scan# 488
 Delta R.T. 0.00 min
 Lab File: BG032456.D
 Acq: 31 Jan 2018 00:08

| Tgt Ion | Resp | Lower | Upper |
|---------|------|-------|-------|
| 112 | 100 | | |
| 64 | 52.2 | 56.3 | 84.5# |
| 63 | 29.7 | 30.1 | 45.1# |

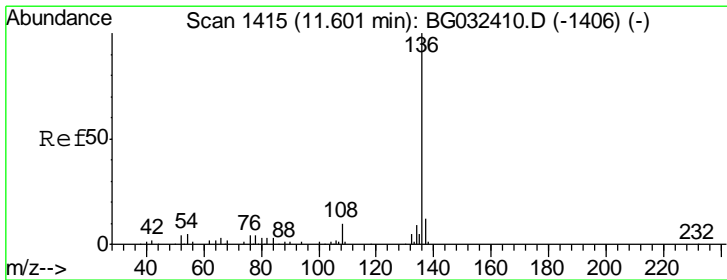
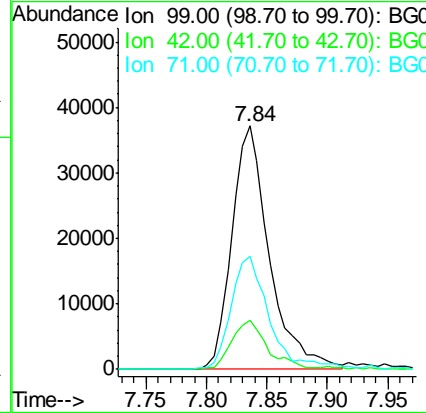
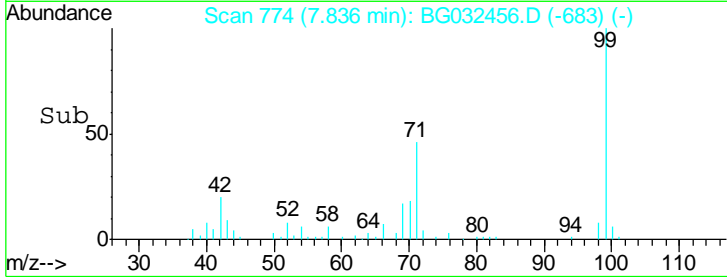
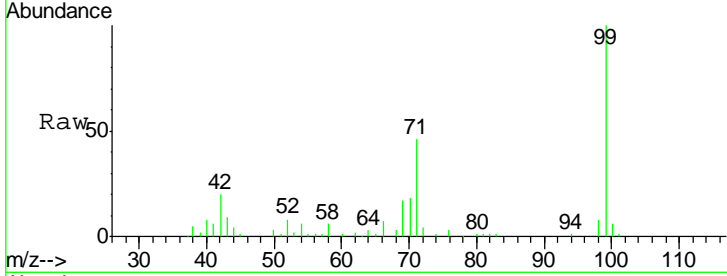




#7
 Phenol-d6
 Concen: 39.589 ng
 RT: 7.84 min Scan# 774
 Delta R.T. 0.01 min
 Lab File: BG032456.D
 Acq: 31 Jan 2018 00:08

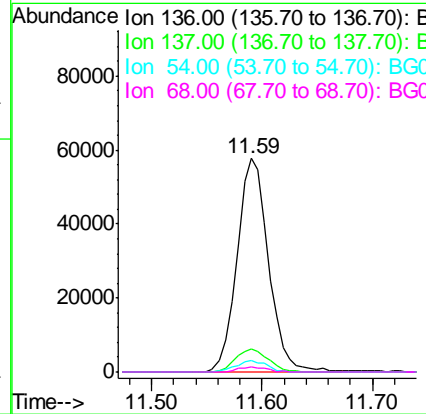
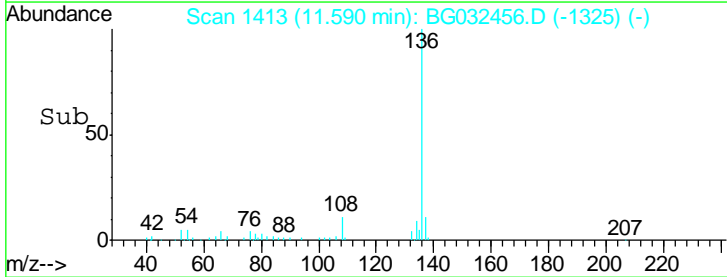
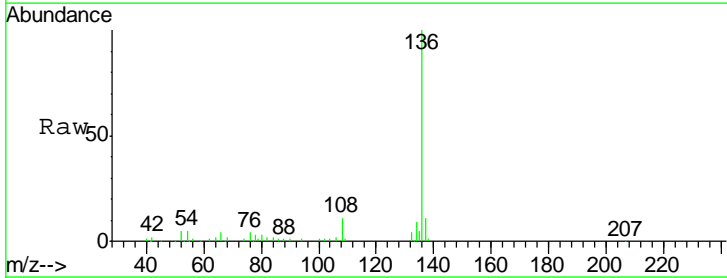
Instrument :
 BNA_G
 ClientSampled :
 MW-05-DUP

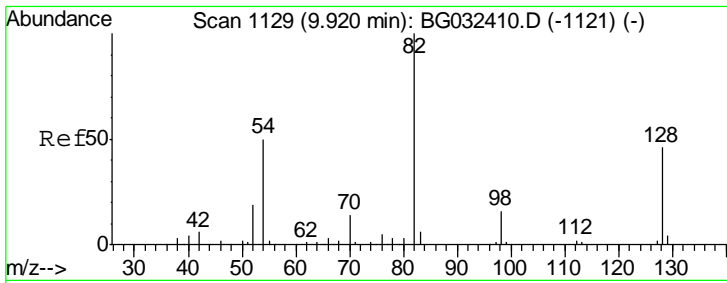
| Tgt Ion | Resp | Lower | Upper |
|---------|------|-------|-------|
| 99 | 100 | | |
| 42 | 20.1 | 14.1 | 21.1 |
| 71 | 46.5 | 26.1 | 39.1# |



#21
 Naphthalene-d8
 Concen: 20.000 ng
 RT: 11.59 min Scan# 1413
 Delta R.T. -0.01 min
 Lab File: BG032456.D
 Acq: 31 Jan 2018 00:08

| Tgt Ion | Resp | Lower | Upper |
|---------|------|-------|-------|
| 136 | 100 | | |
| 137 | 10.6 | 9.2 | 13.8 |
| 54 | 5.3 | 10.3 | 15.5# |
| 68 | 2.4 | 4.5 | 6.7# |

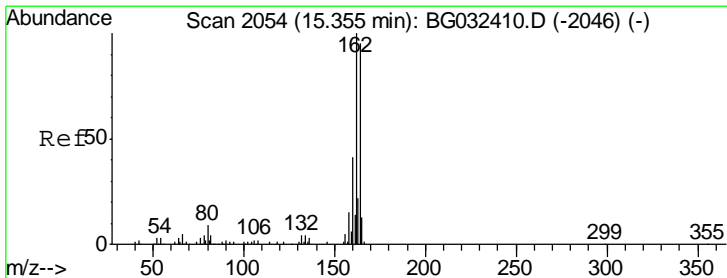
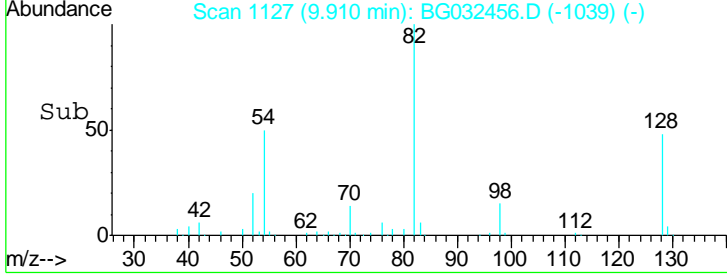
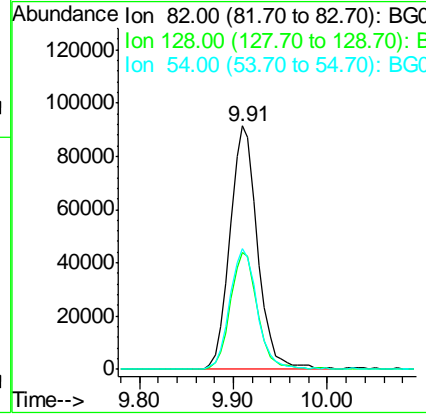
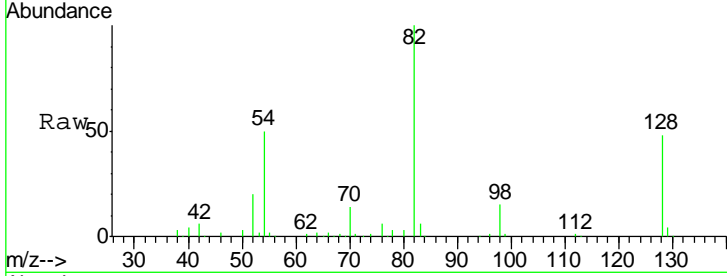




#23
 Nitrobenzene-d5
 Concen: 100.637 ng
 RT: 9.91 min Scan# 1127
 Delta R.T. -0.01 min
 Lab File: BG032456.D
 Acq: 31 Jan 2018 00:08

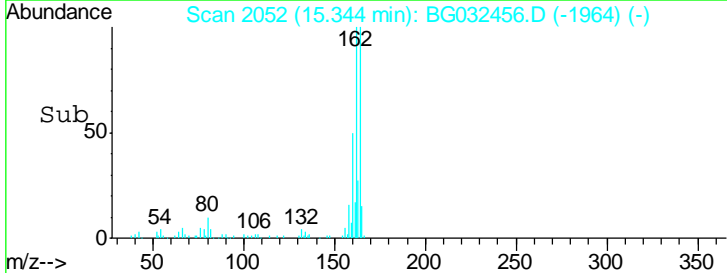
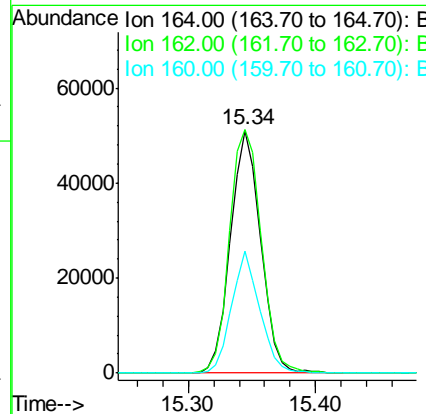
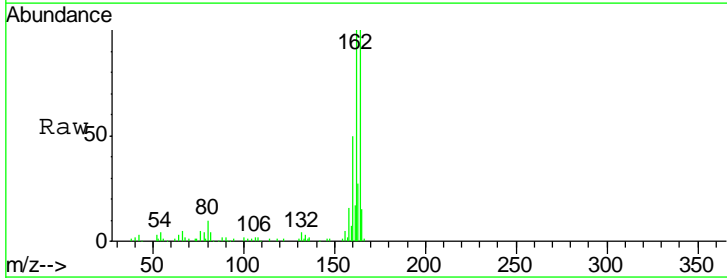
Instrument :
 BNA_G
 ClientSampleID :
 MW-05-DUP

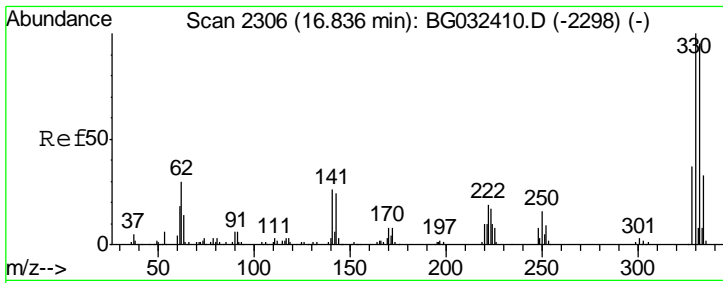
| Tgt Ion | Resp | Lower | Upper |
|---------|--------|-------|-------|
| 82 | 186396 | | |
| 128 | 47.8 | 29.7 | 44.5# |
| 54 | 49.5 | 43.1 | 64.7 |



#38
 Acenaphthene-d10
 Concen: 20.000 ng
 RT: 15.34 min Scan# 2052
 Delta R.T. -0.01 min
 Lab File: BG032456.D
 Acq: 31 Jan 2018 00:08

| Tgt Ion | Resp | Lower | Upper |
|---------|-------|-------|-------|
| 164 | 83564 | | |
| 162 | 100.3 | 78.8 | 118.2 |
| 160 | 50.1 | 35.4 | 53.0 |

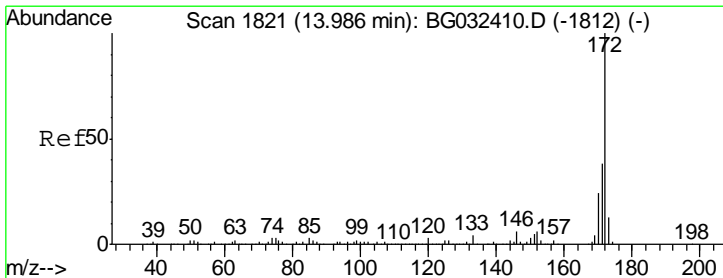
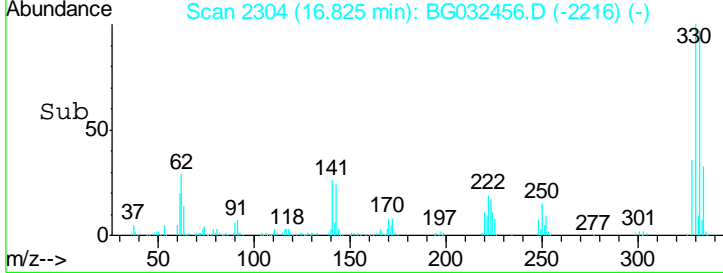
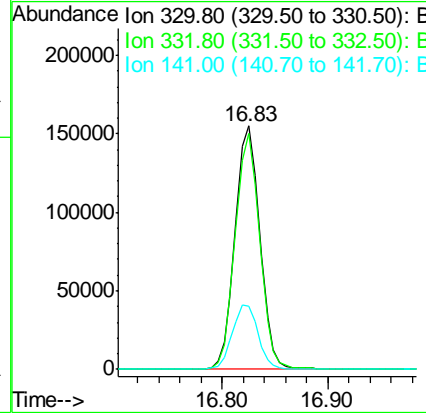
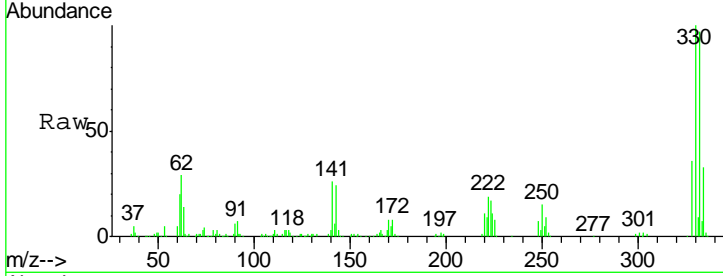




#41
 2,4,6-Tribromophenol
 Concen: 158.483 ng
 RT: 16.83 min Scan# 2304
 Delta R.T. -0.01 min
 Lab File: BG032456.D
 Acq: 31 Jan 2018 00:08

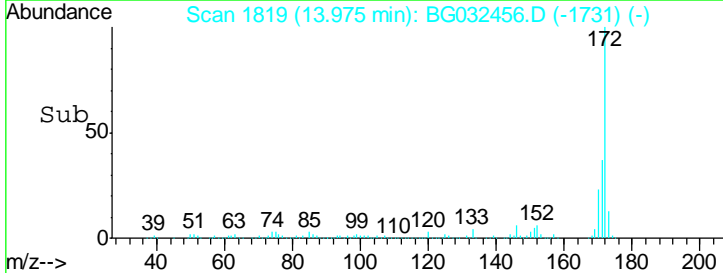
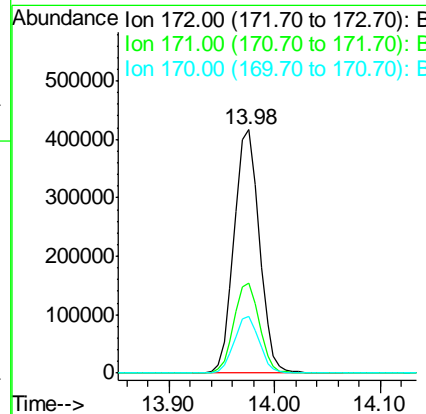
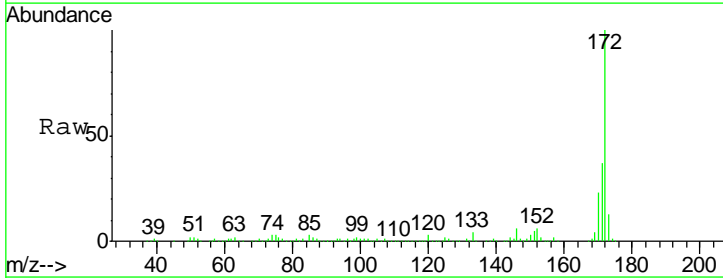
Instrument :
 BNA_G
 ClientSampleID :
 MW-05-DUP

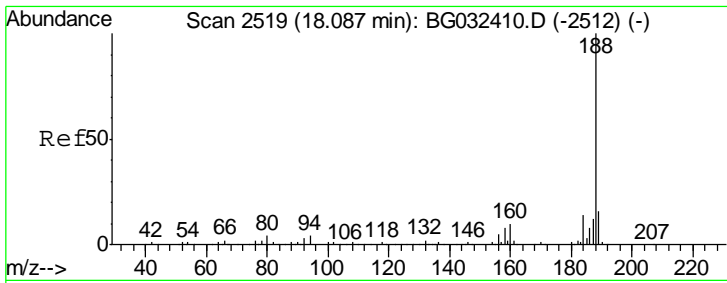
| Tgt Ion | Resp | Lower | Upper |
|---------|------|-------|-------|
| 330 | 100 | | |
| 332 | 96.0 | 77.0 | 115.6 |
| 141 | 27.6 | 25.2 | 37.8 |



#44
 2-Fluorobiphenyl
 Concen: 97.770 ng
 RT: 13.98 min Scan# 1819
 Delta R.T. -0.01 min
 Lab File: BG032456.D
 Acq: 31 Jan 2018 00:08

| Tgt Ion | Resp | Lower | Upper |
|---------|------|-------|-------|
| 172 | 100 | | |
| 171 | 36.8 | 30.0 | 45.0 |
| 170 | 23.2 | 19.5 | 29.3 |

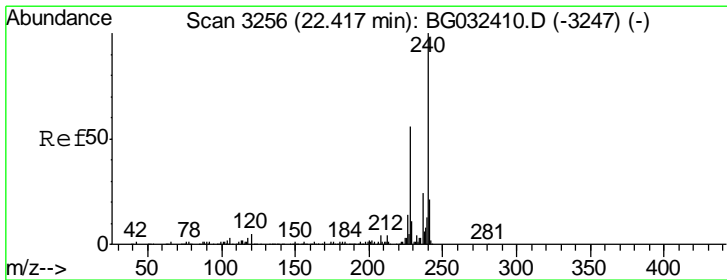
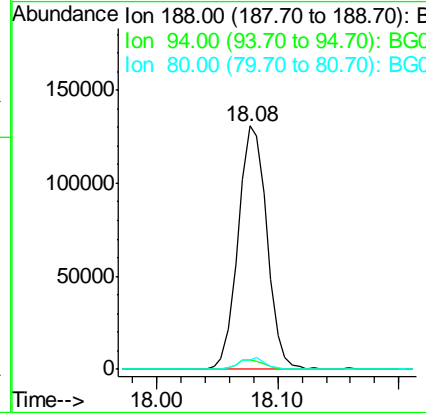
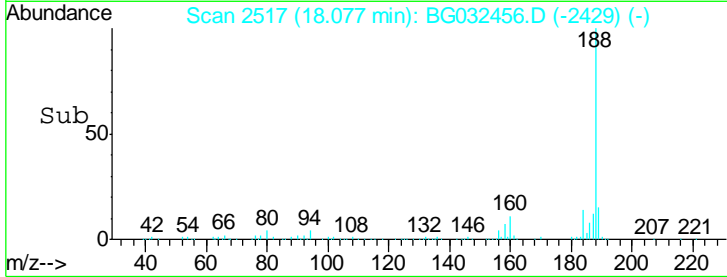
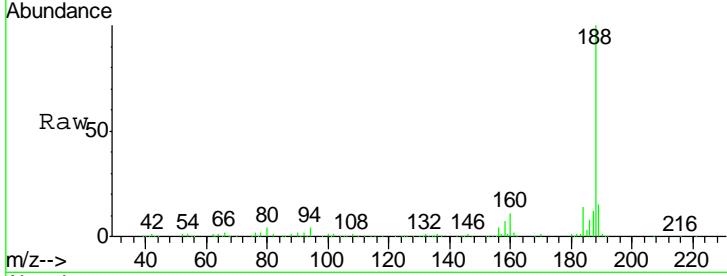




#63
 Phenanthrene-d10
 Concen: 20.000 ng
 RT: 18.08 min Scan# 2517
 Delta R.T. -0.01 min
 Lab File: BG032456.D
 Acq: 31 Jan 2018 00:08

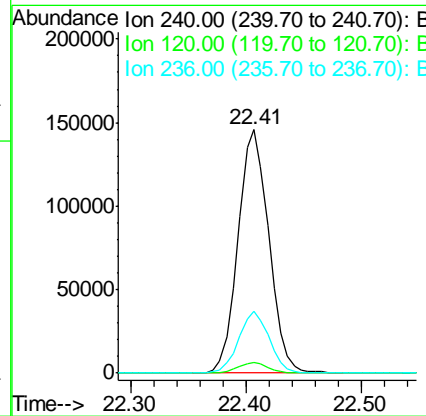
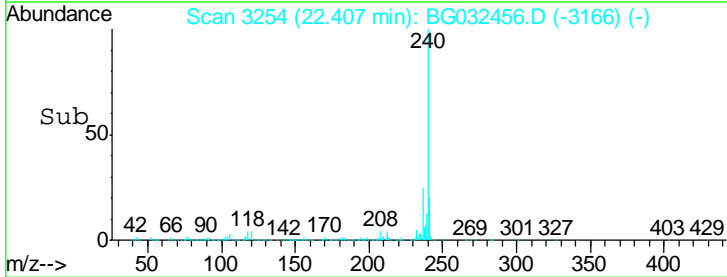
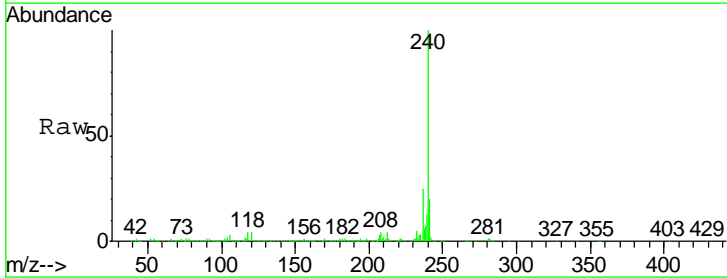
Instrument :
 BNA_G
 ClientSampleId :
 MW-05-DUP

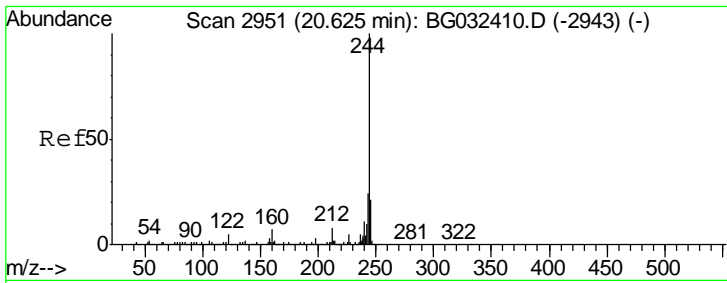
| Tgt Ion | Resp | Lower | Upper |
|---------|------|-------|-------|
| 188 | 100 | | |
| 94 | 3.9 | 6.9 | 10.3# |
| 80 | 3.7 | 7.7 | 11.5# |



#75
 Chrysene-d12
 Concen: 20.000 ng
 RT: 22.41 min Scan# 3254
 Delta R.T. -0.01 min
 Lab File: BG032456.D
 Acq: 31 Jan 2018 00:08

| Tgt Ion | Resp | Lower | Upper |
|---------|------|-------|-------|
| 240 | 100 | | |
| 120 | 4.2 | 6.8 | 10.2# |
| 236 | 25.2 | 20.9 | 31.3 |

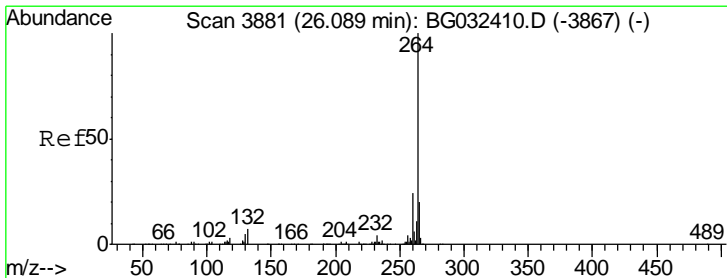
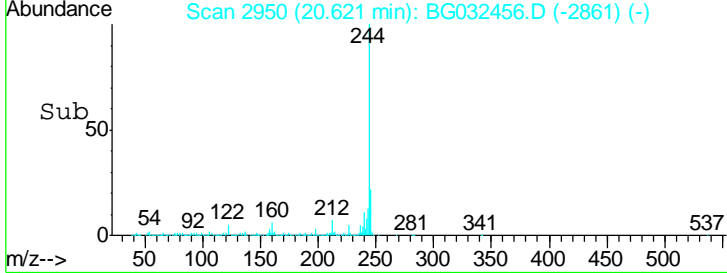
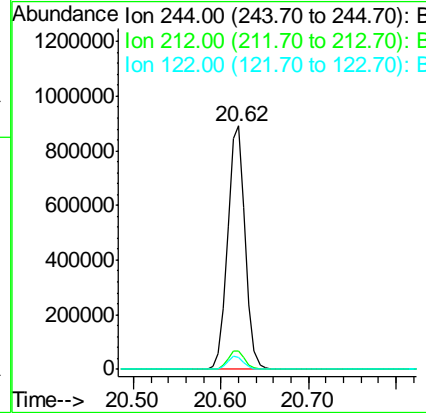
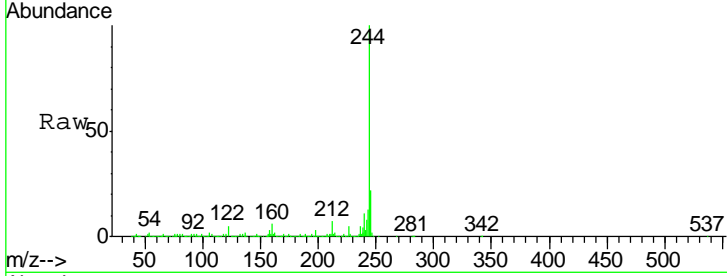




#78
 Terphenyl-d14
 Concen: 97.903 ng
 RT: 20.62 min Scan# 2950
 Delta R.T. -0.00 min
 Lab File: BG032456.D
 Acq: 31 Jan 2018 00:08

Instrument :
 BNA_G
ClientSampled :
 MW-05-DUP

| Tgt Ion | Resp | Lower | Upper |
|---------|------|-------|-------|
| 244 | 100 | | |
| 212 | 7.3 | 5.8 | 8.8 |
| 122 | 5.1 | 7.0 | 10.4# |



#86
 Perylene-d12
 Concen: 20.000 ng
 RT: 26.08 min Scan# 3880
 Delta R.T. -0.00 min
 Lab File: BG032456.D
 Acq: 31 Jan 2018 00:08

| Tgt Ion | Resp | Lower | Upper |
|---------|------|-------|-------|
| 264 | 100 | | |
| 260 | 22.6 | 17.4 | 26.0 |
| 265 | 19.6 | 17.7 | 26.5 |

