

Data Path : Z:\HPCHEM1\BNA\_G\Data\BG020116\  
 Data File : BG020772.D  
 Acq On : 1 Feb 2016 14:08  
 Operator : SJ/IZ  
 Sample : SSTDCCC020  
 Misc :  
 ALS Vial : 2 Sample Multiplier: 1

Instrument :  
 BNA\_G  
 ClientSampleId :  
 SSTD02009

Quant Time: Feb 02 02:24:09 2016  
 Quant Method : Z:\HPCHEM1\BNA\_G\METHODS\SOM02.2-EPA-BG012716.M  
 Quant Title : SVOA CALIBRATION  
 QLast Update : Mon Feb 01 16:04:47 2016  
 Response via : Initial Calibration

Internal Standards	R.T.	QIon	Response	Conc	Units	Dev(Min)
1) 1,4-Dichlorobenzene-d4	8.28	152	16532	20.00	ng/ul	0.00
18) Naphthalene-d8	11.10	136	84602	20.00	ng/ul	0.00
36) Acenaphthene-d10	14.89	164	50345	20.00	ng/ul	0.00
62) Phenanthrene-d10	17.62	188	109432	20.00	ng/ul	0.00
78) Chrysene-d12	21.90	240	100188	20.00	ng/ul	0.00
86) Perylene-d12	25.29	264	91941	20.00	ng/ul	0.00

## System Monitoring Compounds

3) 1,4-Dioxane-d8	3.62	96	2805	8.13	ng/uL	0.00
5) Phenol-d5	7.41	99	30237	17.87	ng/ul	0.00
7) Bis-(2-Chloroethyl)ether-d	7.59	67	18040	20.46	ng/ul	0.00
9) 2-Chlorophenol-d4	7.80	132	23867	18.78	ng/ul	0.00
13) 4-Methylphenol-d8	8.97	113	26565	18.20	ng/ul	0.00
19) Nitrobenzene-d5	9.44	128	11462	22.20	ng/ul	0.00
22) 2-Nitrophenol-d4	10.17	143	8814	19.47	ng/ul	0.00
26) 2,4-Dichlorophenol-d3	10.71	165	22702	18.37	ng/ul	0.00
29) 4-Chloroaniline-d4	11.23	131	35579	20.48	ng/ul	0.00
44) Dimethylphthalate-d6	14.28	166	83198	19.35	ng/ul	0.00
47) Acenaphthylene-d8	14.58	160	103662	19.78	ng/ul	0.00
52) 4-Nitrophenol-d4	15.05	143	14249	18.73	ng/ul	0.00
58) Fluorene-d10	15.87	176	70793	18.83	ng/ul	0.00
63) 4,6-Dinitro-2-methylphenol	15.97	200	6536	18.09	ng/ul	0.00
71) Anthracene-d10	17.72	188	105623	19.63	ng/ul	0.00
79) Pyrene-d10	19.99	212	101540	18.67	ng/ul	0.00
90) Benzo(a)pyrene-d12	25.05	264	97676	19.82	ng/ul	0.00

## Target Compounds

Target Compounds	R.T.	QIon	Response	Conc	Units	Qvalue
2) 1,4-Dioxane	3.65	88	3211	6.81	ng/uL#	90
4) Benzaldehyde	7.40	77	21113	22.23	ng/ul	82
6) Phenol	7.44	94	33338	18.58	ng/ul#	85
8) Bis(2-Chloroethyl)ether	7.69	93	27591	20.53	ng/ul	94
10) 2-Chlorophenol	7.83	128	25353	19.20	ng/ul#	89
11) 2-Methylphenol	8.70	108	25727	18.07	ng/ul	100
12) 2,2'-oxybis(1-Chloropropan	8.81	45	30142	20.29	ng/ul	97
14) Acetophenone	9.10	105	43474	19.26	ng/ul#	91
15) N-Nitroso-di-n-propylamine	9.08	70	22566	19.78	ng/ul	92
16) 4-Methylphenol	9.03	108	28686	18.00	ng/ul	98
17) Hexachloroethane	9.38	117	9652	20.84	ng/ul#	68
20) Nitrobenzene	9.49	77	27320	22.81	ng/ul#	89
21) Isophorone	10.01	82	63593	20.12	ng/ul#	98
23) 2-Nitrophenol	10.21	139	11137	20.24	ng/ul#	77
24) 2,4-Dimethylphenol	10.25	107	30580	20.05	ng/ul	88
25) Bis(2-Chloroethoxy)methane	10.49	93	40402	20.27	ng/ul#	96
27) 2,4-Dichlorophenol	10.74	162	24574	18.79	ng/ul	98
28) Naphthalene	11.15	128	93596	19.83	ng/ul	98
30) 4-Chloroaniline	11.25	127	38137	20.65	ng/ul	98
31) Hexachlorobutadiene	11.43	225	12926	19.95	ng/ul	98
32) Caprolactam	12.00	113	4541	8.51	ng/ul#	74
33) 4-Chloro-3-methylphenol	12.34	107	28513	18.30	ng/ul	94
34) 2-Methylnaphthalene	12.74	142	69558	19.16	ng/ul	96

Data Path : Z:\HPCHEM1\BNA\_G\Data\BG020116\  
 Data File : BG020772.D  
 Acq On : 1 Feb 2016 14:08  
 Operator : SJ/IZ  
 Sample : SSTDCCC020  
 Misc :  
 ALS Vial : 2 Sample Multiplier: 1

Instrument :  
 BNA\_G  
 ClientSampleId :  
 SSTD02009

Quant Time: Feb 02 02:24:09 2016  
 Quant Method : Z:\HPCHEM1\BNA\_G\METHODS\SOM02.2-EPA-BG012716.M  
 Quant Title : SVOA CALIBRATION  
 QLast Update : Mon Feb 01 16:04:47 2016  
 Response via : Initial Calibration

Internal Standards	R.T.	QIon	Response	Conc	Units	Dev(Min)
35) 1-Methylnaphthalene	12.96	142	65860	18.99	ng/ul#	99
37) 1,2,4,5-Tetrachlorobenzene	13.10	216	28060	19.75	ng/ul#	97
38) Hexachlorocyclopentadiene	13.08	237	14239	18.85	ng/ul#	94
39) 2,4,6-Trichlorophenol	13.33	196	18159	19.31	ng/ul	98
40) 2,4,5-Trichlorophenol	13.40	196	19381	18.54	ng/ul	95
41) 1,1'-Biphenyl	13.73	154	89725	20.45	ng/ul#	96
42) 2-Chloronaphthalene	13.77	162	64377	19.90	ng/ul	99
43) 2-Nitroaniline	13.97	65	13782	22.49	ng/ul#	75
45) Dimethylphthalate	14.33	163	87152	19.42	ng/ul#	98
46) 2,6-Dinitrotoluene	14.45	165	12562	21.05	ng/ul#	91
48) Acenaphthylene	14.61	152	115147	19.89	ng/ul	98
49) 3-Nitroaniline	14.78	138	17059	21.09	ng/ul	87
50) Acenaphthene	14.95	153	80705	20.02	ng/ul	97
51) 2,4-Dinitrophenol	14.98	184	4594	17.37	ng/ul#	55
53) 4-Nitrophenol	15.06	109	8889	20.95	ng/ul#	59
54) Dibenzofuran	15.28	168	103702	19.68	ng/ul	97
55) 2,4-Dinitrotoluene	15.23	165	18513	22.03	ng/ul#	100
56) 2,3,4,6-Tetrachlorophenol	15.50	232	16523	18.31	ng/ul#	79
57) Diethylphthalate	15.69	149	91901	19.37	ng/ul	96
59) Fluorene	15.93	166	90202	19.59	ng/ul	97
60) 4-Chlorophenyl-phenylether	15.92	204	37541	18.81	ng/ul#	91
61) 4-Nitroaniline	15.93	138	20809	21.25	ng/ul#	76
64) 4,6-Dinitro-2-methylphenol	15.99	198	7698	18.01	ng/ul	96
65) N-Nitrosodiphenylamine	16.13	169	74066	20.30	ng/ul	94
66) 4-Bromophenyl-phenylether	16.81	248	22248	19.06	ng/ul	93
67) Hexachlorobenzene	16.93	284	24825	19.13	ng/ul#	85
68) Atrazine	17.06	200	23297	19.32	ng/ul	94
69) Pentachlorophenol	17.26	266	12593	16.89	ng/ul	97
70) Phenanthrene	17.67	178	137261	19.97	ng/ul	99
72) Anthracene	17.75	178	137397	19.99	ng/ul	99
73) 1,2,3,4-Tetrachlorobenzene	13.70	216	27356	21.06	ng/uL	96
74) Pentachlorobenzene	15.20	250	26351	19.71	ng/uL	95
75) Carbazole	18.02	167	123419	20.24	ng/ul	95
76) Di-n-butylphthalate	18.57	149	147425	20.19	ng/ul	99
77) Fluoranthene	19.65	202	138131	19.56	ng/ul#	77
80) Pyrene	20.02	202	144829	19.12	ng/ul#	76
81) Butylbenzylphthalate	20.89	149	60029	20.18	ng/ul#	94
82) 3,3'-Dichlorobenzidine	21.79	252	42435	19.80	ng/ul#	98
83) Benzo(a)anthracene	21.88	228	126551	19.61	ng/ul	98
84) Bis(2-ethylhexyl)phthalate	21.78	149	92600	20.11	ng/ul#	94
85) Chrysene	21.95	228	118293	19.74	ng/ul	98
87) Di-n-octyl phthalate	23.05	149	148175	19.97	ng/ul	100
88) Benzo(b)fluoranthene	24.20	252	120204	19.96	ng/ul#	92
89) Benzo(k)fluoranthene	24.28	252	119073	20.18	ng/ul#	93
91) Benzo(a)pyrene	25.13	252	115789	20.09	ng/ul#	91
92) Indeno(1,2,3-cd)pyrene	29.16	276	131248	19.48	ng/ul#	87
93) Dibenzo(a,h)anthracene	29.23	278	109015	19.59	ng/ul#	86
94) Benzo(g,h,i)perylene	30.37	276	107368	19.42	ng/ul#	83

Data Path : Z:\HPCHEM1\BNA\_G\Data\BG020116\  
 Data File : BG020772.D  
 Acq On : 1 Feb 2016 14:08  
 Operator : SJ/IZ  
 Sample : SSTDCCC020  
 Misc :  
 ALS Vial : 2 Sample Multiplier: 1

**Instrument :**  
 BNA\_G  
**ClientSampleId :**  
 SSTD02009

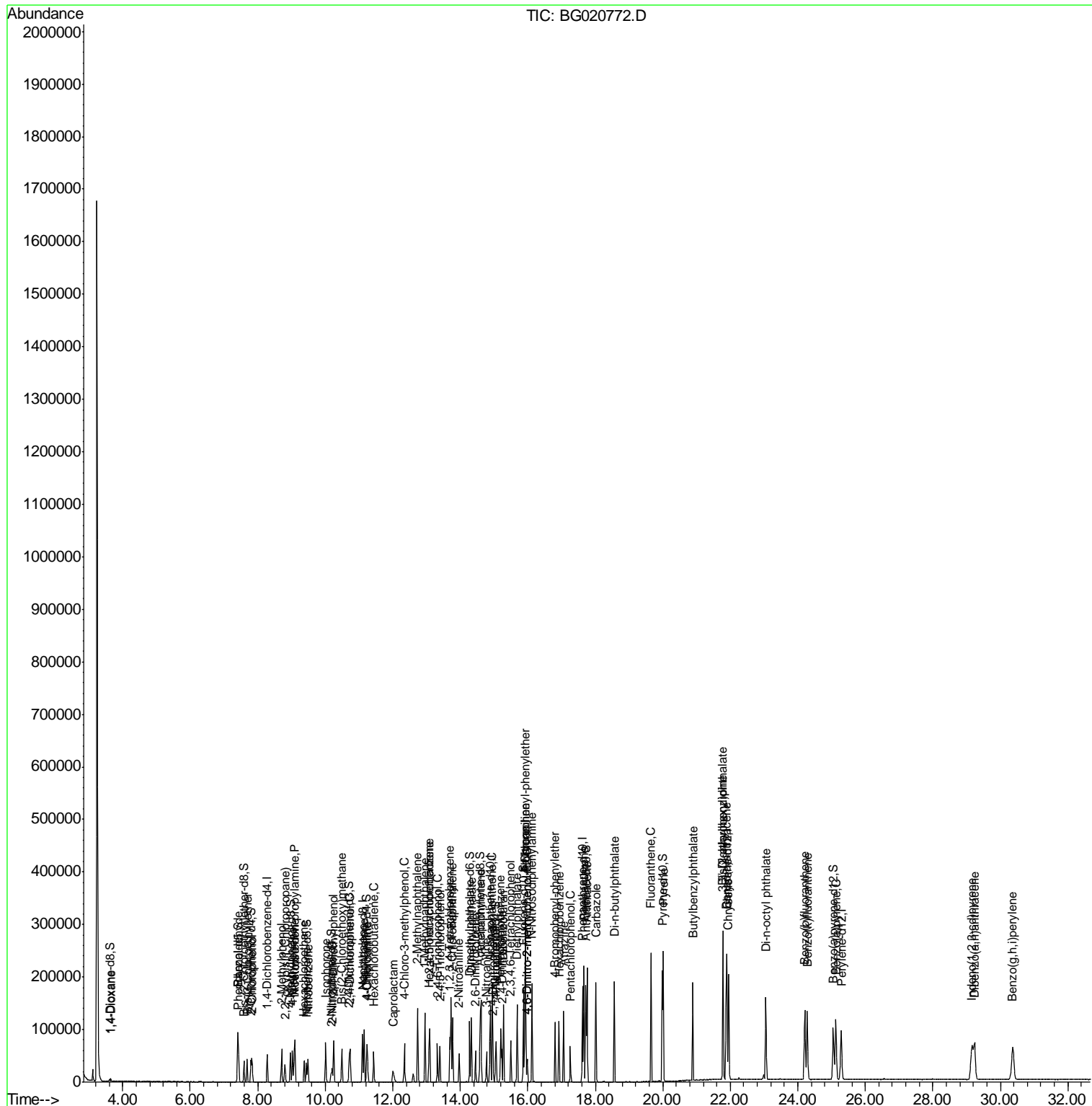
Quant Time: Feb 02 02:24:09 2016  
 Quant Method : Z:\HPCHEM1\BNA\_G\METHODS\SOM02.2-EPA-BG012716.M  
 Quant Title : SVOA CALIBRATION  
 QLast Update : Mon Feb 01 16:04:47 2016  
 Response via : Initial Calibration

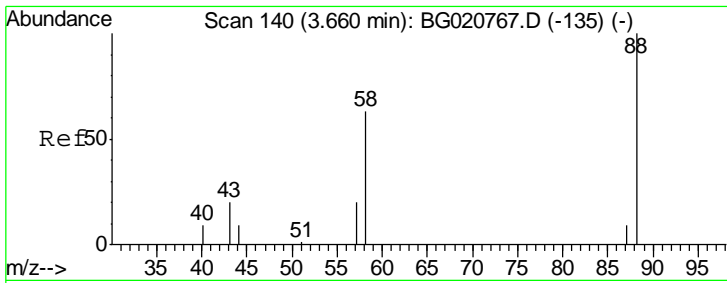
Internal Standards	R.T.	QIon	Response	Conc	Units	Dev(Min)
-----						
(#) = qualifier out of range (m) = manual integration (+) = signals summed						

Data Path : Z:\HPCHEM1\BNA\_G\Data\BG020116\  
 Data File : BG020772.D  
 Acq On : 1 Feb 2016 14:08  
 Operator : SJ/IZ  
 Sample : SSTDCCC020  
 Misc :  
 ALS Vial : 2 Sample Multiplier: 1

Instrument :  
 BNA\_G  
 ClientSampleID :  
 SSTD02009

Quant Time: Feb 02 02:24:09 2016  
 Quant Method : Z:\HPCHEM1\BNA\_G\METHODS\SOM02.2-EPA-BG012716.M  
 Quant Title : SVOA CALIBRATION  
 QLast Update : Mon Feb 01 16:04:47 2016  
 Response via : Initial Calibration

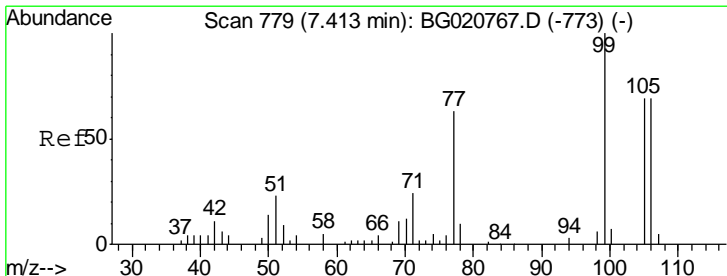
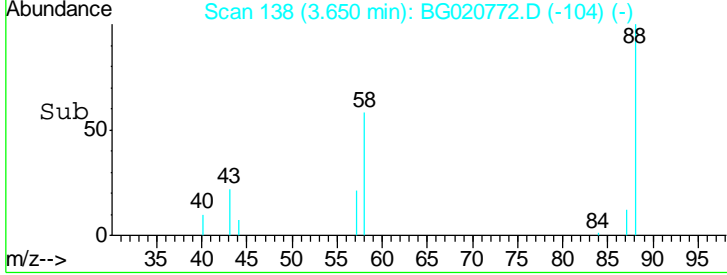
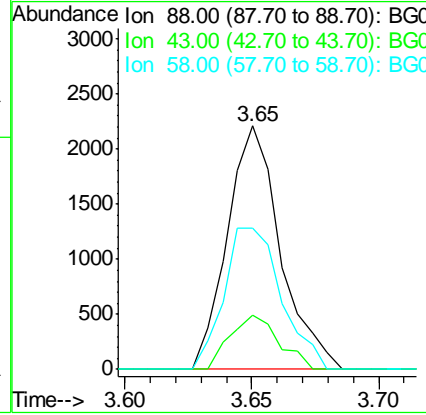
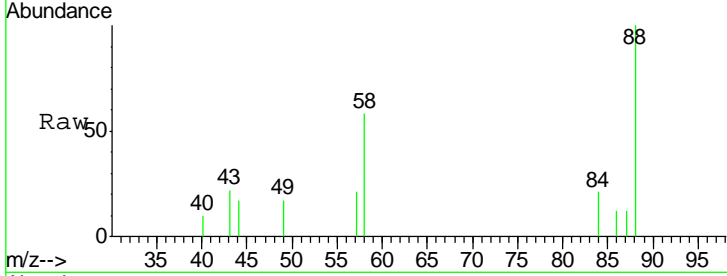




#2  
 1,4-Dioxane  
 Concen: 6.81 ng/uL  
 RT: 3.65 min Scan# 138  
 Delta R.T. 0.00 min  
 Lab File: BG020772.D  
 Acq: 1 Feb 2016 14:08

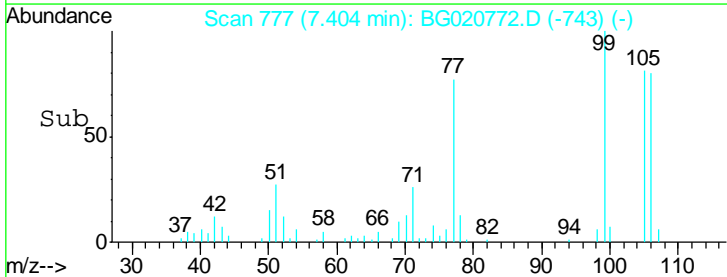
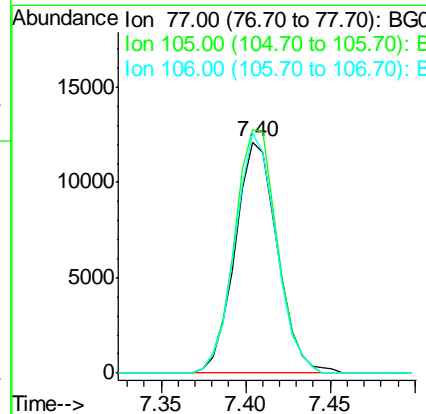
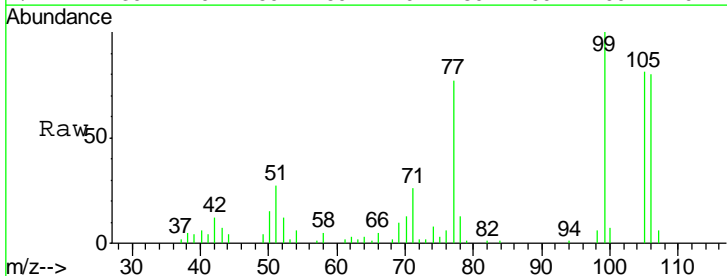
Instrument :  
 BNA\_G  
 ClientSampleID :  
 SSTD02009

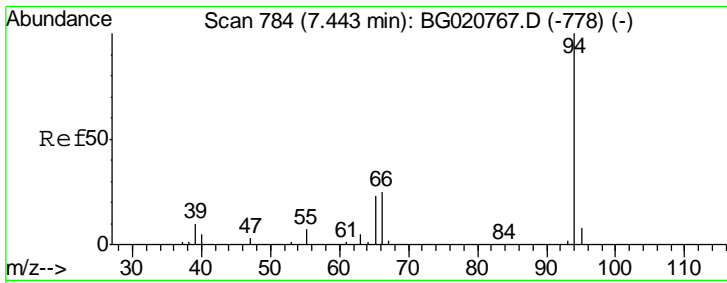
Tgt Ion	Resp	Lower	Upper
88	3211		
43	22.4	29.0	43.4#
58	58.2	45.9	68.9



#4  
 Benzaldehyde  
 Concen: 22.23 ng/uL  
 RT: 7.40 min Scan# 777  
 Delta R.T. 0.00 min  
 Lab File: BG020772.D  
 Acq: 1 Feb 2016 14:08

Tgt Ion	Resp	Lower	Upper
77	21113		
105	105.3	71.0	106.6
106	103.9	69.5	104.3

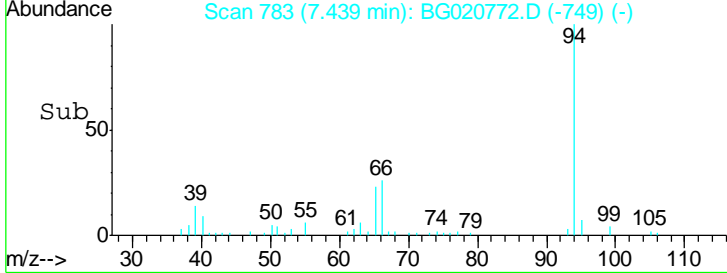
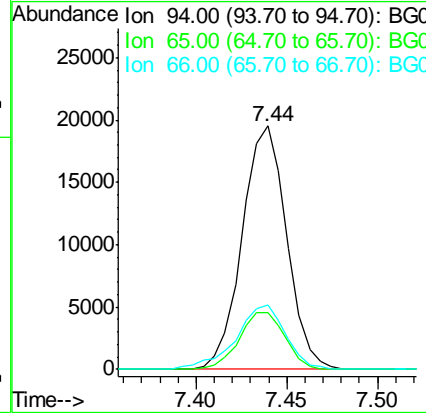
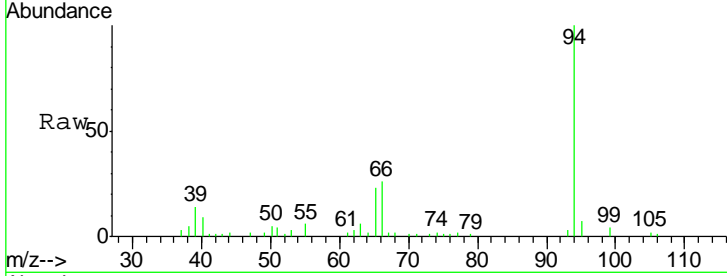




#6  
 Phenol  
 Concen: 18.58 ng/ul  
 RT: 7.44 min Scan# 783  
 Delta R.T. 0.00 min  
 Lab File: BG020772.D  
 Acq: 1 Feb 2016 14:08

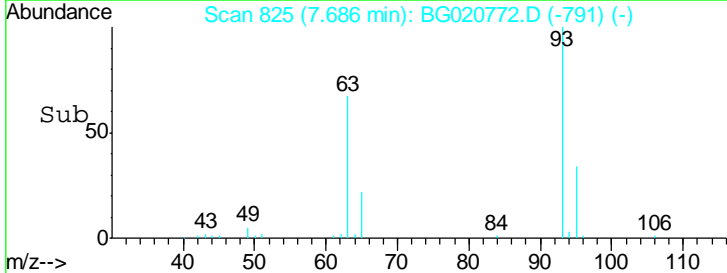
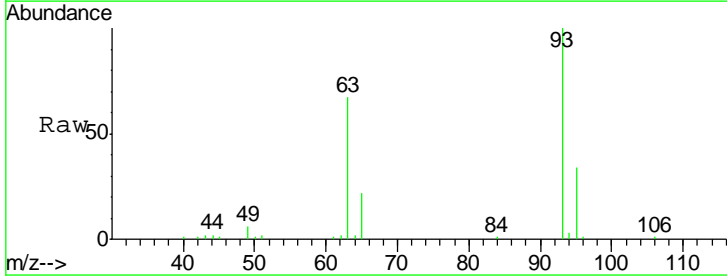
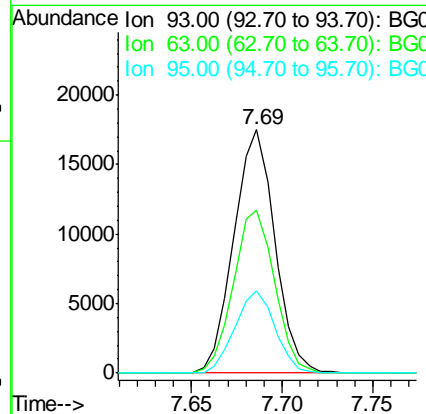
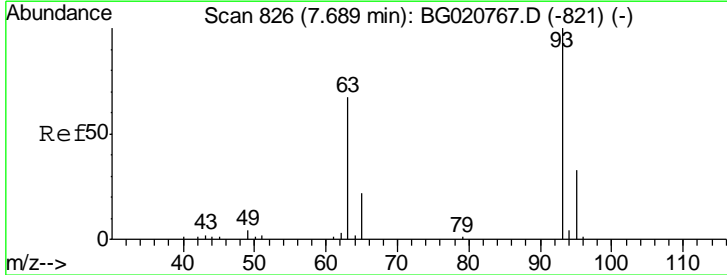
Instrument :  
 BNA\_G  
 ClientSampleID :  
 SSTD02009

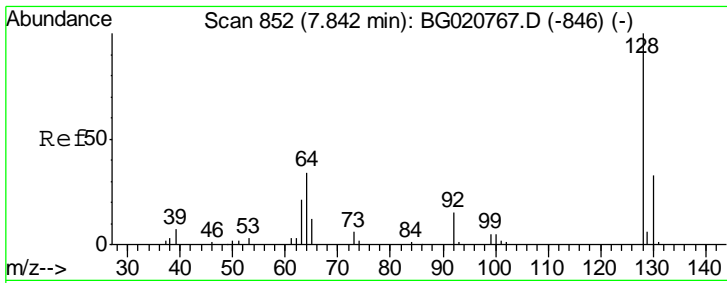
Tgt Ion	Resp	Lower	Upper
94	33338		
65	23.1	23.0	34.6
66	26.4	30.4	45.6#



#8  
 Bis(2-Chloroethyl)ether  
 Concen: 20.53 ng/ul  
 RT: 7.69 min Scan# 825  
 Delta R.T. 0.00 min  
 Lab File: BG020772.D  
 Acq: 1 Feb 2016 14:08

Tgt Ion	Resp	Lower	Upper
93	27591		
63	67.1	59.4	89.2
95	34.0	26.4	39.6

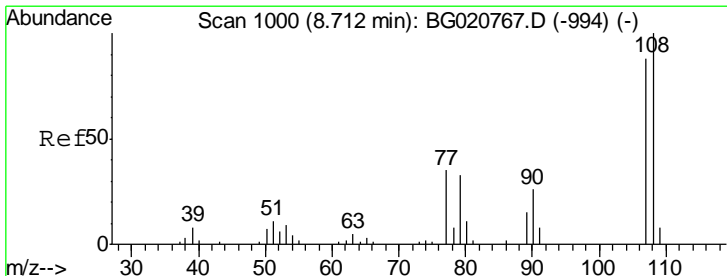
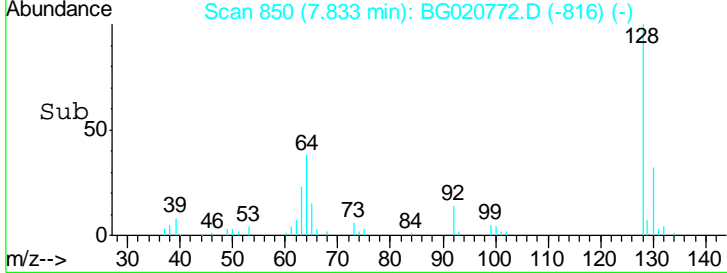
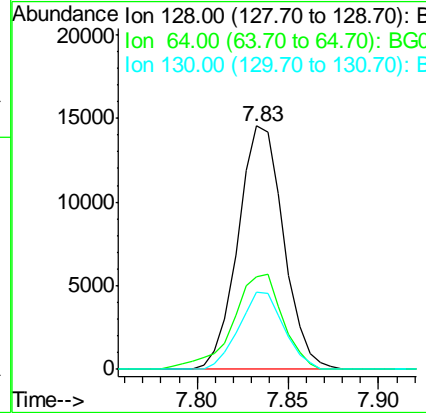
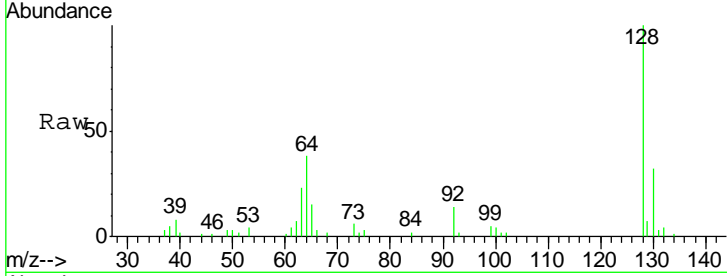




#10  
 2-Chlorophenol  
 Concen: 19.20 ng/ul  
 RT: 7.83 min Scan# 850  
 Delta R.T. 0.00 min  
 Lab File: BG020772.D  
 Acq: 1 Feb 2016 14:08

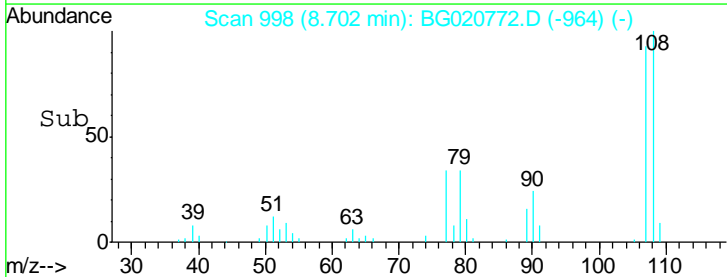
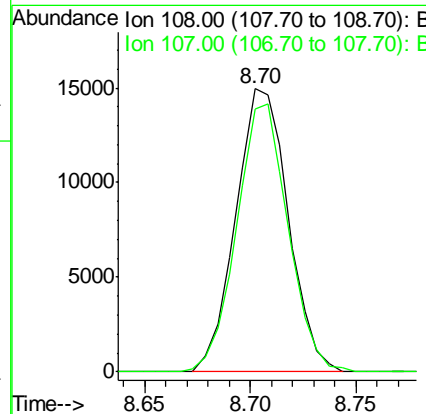
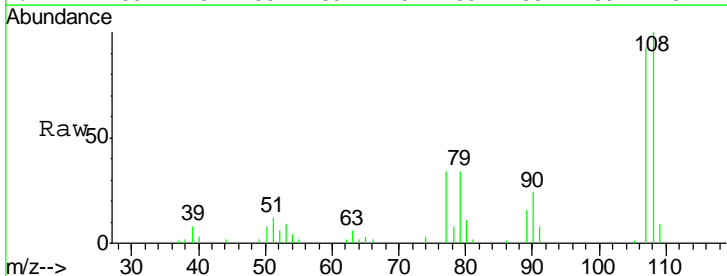
**Instrument :**  
 BNA\_G  
**ClientSampled :**  
 SSTD02009

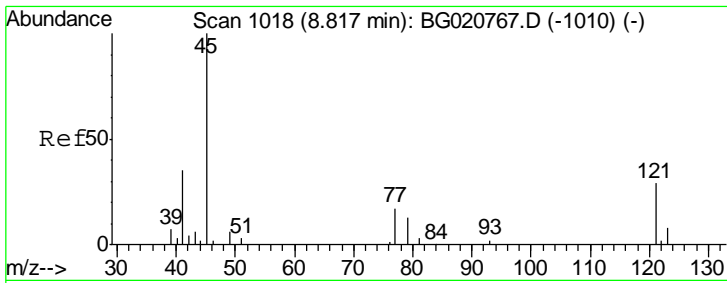
Tgt Ion	Resp	Lower	Upper
128	100		
64	37.8	39.8	59.6#
130	31.6	25.8	38.8



#11  
 2-Methylphenol  
 Concen: 18.07 ng/ul  
 RT: 8.70 min Scan# 998  
 Delta R.T. 0.00 min  
 Lab File: BG020772.D  
 Acq: 1 Feb 2016 14:08

Tgt Ion	Resp	Lower	Upper
108	100		
107	92.7	74.1	111.1

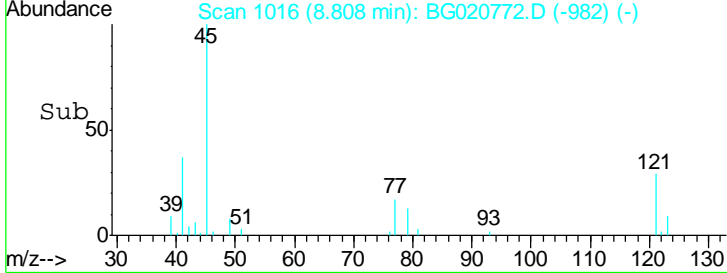
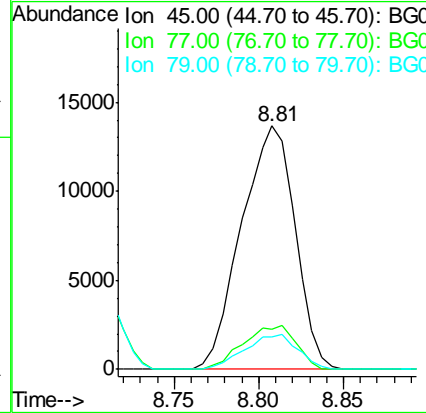
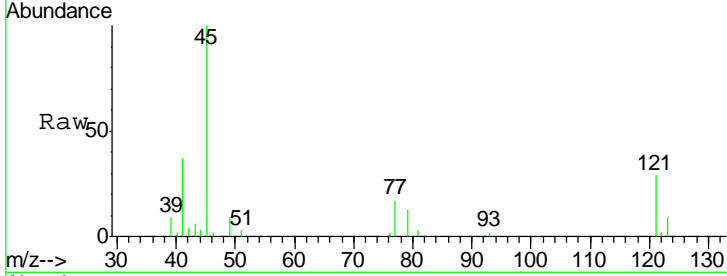




#12  
 2,2'-oxybis(1-Chloropropane)  
 Concen: 20.29 ng/ul  
 RT: 8.81 min Scan# 1016  
 Delta R.T. 0.00 min  
 Lab File: BG020772.D  
 Acq: 1 Feb 2016 14:08

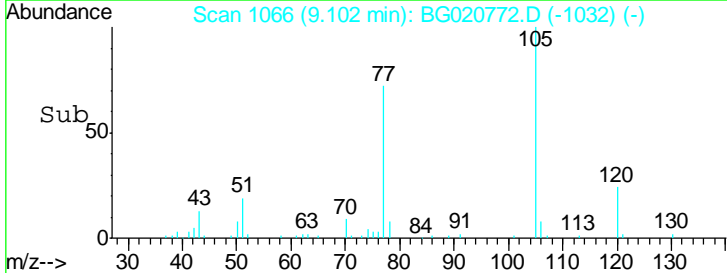
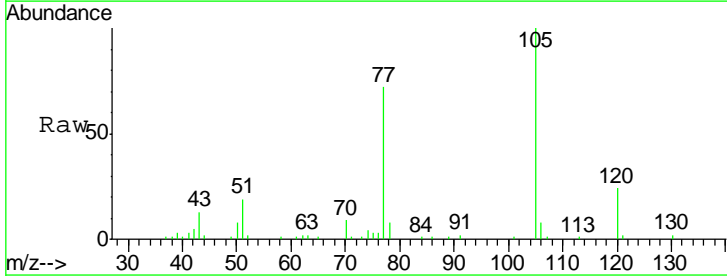
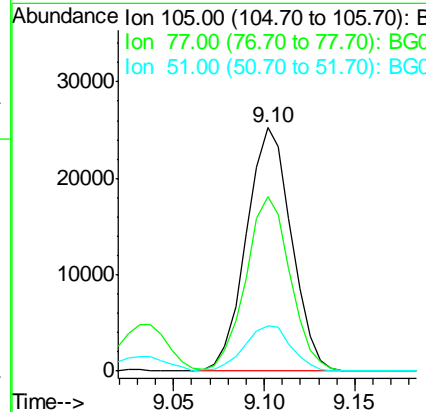
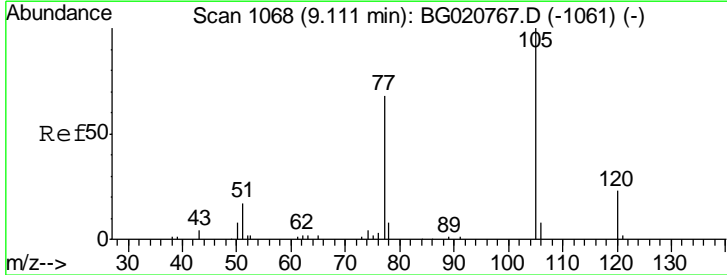
Instrument :  
 BNA\_G  
 ClientSampleId :  
 SSTD02009

Tgt Ion	Resp	Lower	Upper
45	30142		
77	16.6	12.5	18.7
79	13.3	9.4	14.2

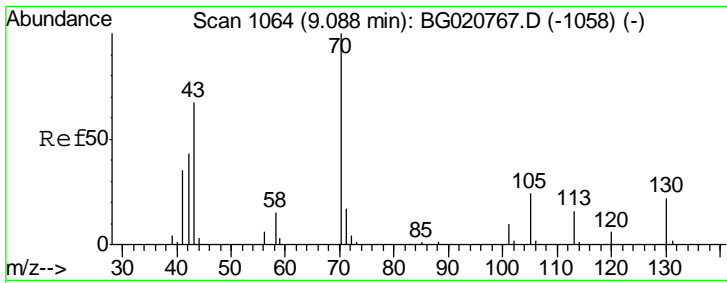


#14  
 Acetophenone  
 Concen: 19.26 ng/ul  
 RT: 9.10 min Scan# 1066  
 Delta R.T. 0.00 min  
 Lab File: BG020772.D  
 Acq: 1 Feb 2016 14:08

Tgt Ion	Resp	Lower	Upper
105	43474		
77	71.6	63.2	94.8
51	18.8	19.8	29.8#



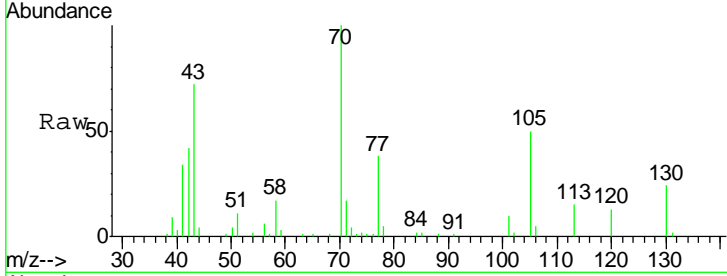




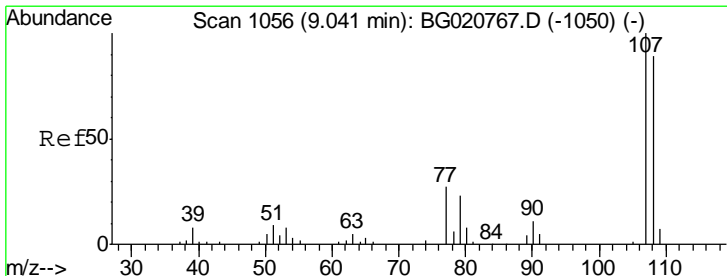
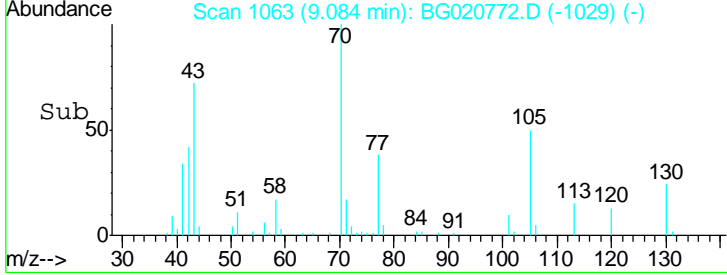
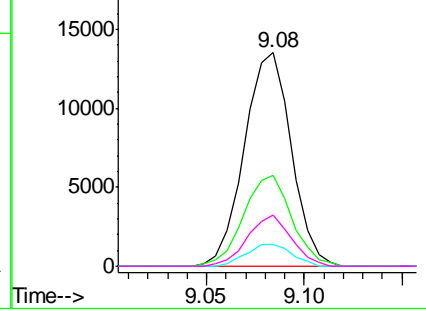
#15  
 N-Nitroso-di-n-propylamine  
 Concen: 19.78 ng/ul  
 RT: 9.08 min Scan# 1063  
 Delta R.T. 0.00 min  
 Lab File: BG020772.D  
 Acq: 1 Feb 2016 14:08

**Instrument :**  
 BNA\_G  
**ClientSampleId :**  
 SSTD02009

Tgt Ion	Resp	Lower	Upper
70	100		
42	42.3	40.2	60.4
101	10.4	7.7	11.5
130	23.9	17.8	26.6

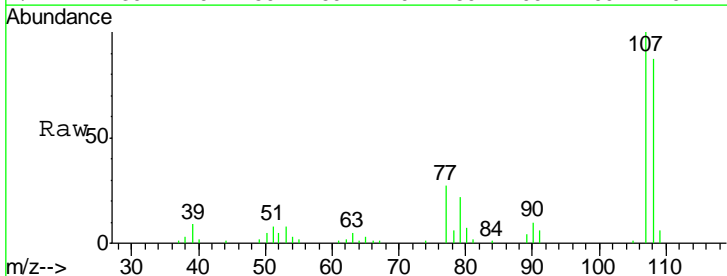


Abundance Ion 70.00 (69.70 to 70.70): BGC  
 Ion 42.00 (41.70 to 42.70): BGC  
 Ion 101.00 (100.70 to 101.70): BGC  
 Ion 130.00 (129.70 to 130.70): BGC

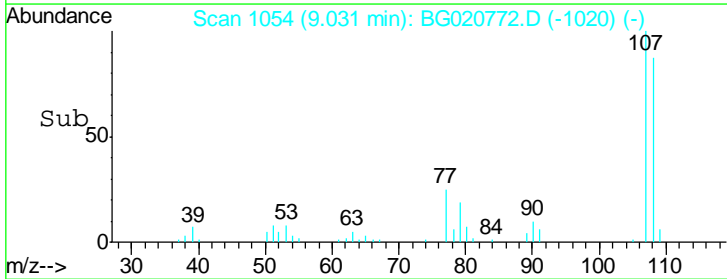
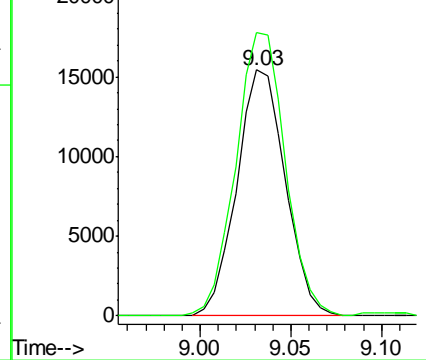


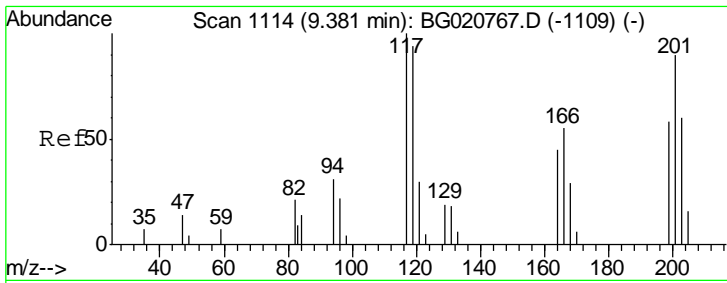
#16  
 4-Methylphenol  
 Concen: 18.00 ng/ul  
 RT: 9.03 min Scan# 1054  
 Delta R.T. 0.00 min  
 Lab File: BG020772.D  
 Acq: 1 Feb 2016 14:08

Tgt Ion	Resp	Lower	Upper
108	100		
107	115.1	93.6	140.4



Abundance Ion 108.00 (107.70 to 108.70): BGC  
 Ion 107.00 (106.70 to 107.70): BGC

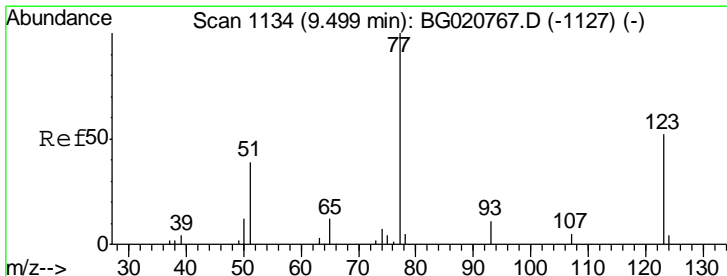
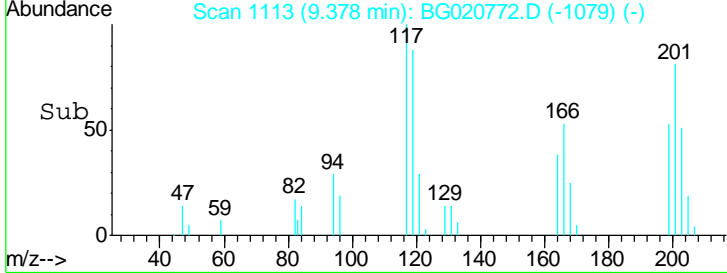
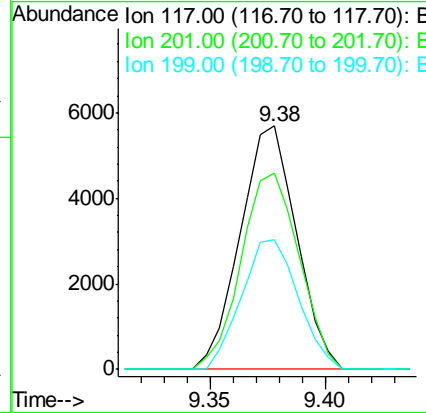
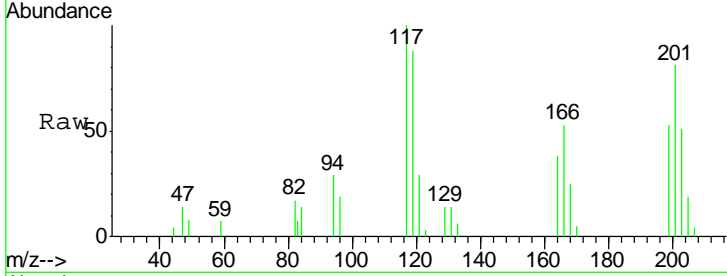




#17  
 Hexachloroethane  
 Concen: 20.84 ng/ul  
 RT: 9.38 min Scan# 1113  
 Delta R.T. 0.00 min  
 Lab File: BG020772.D  
 Acq: 1 Feb 2016 14:08

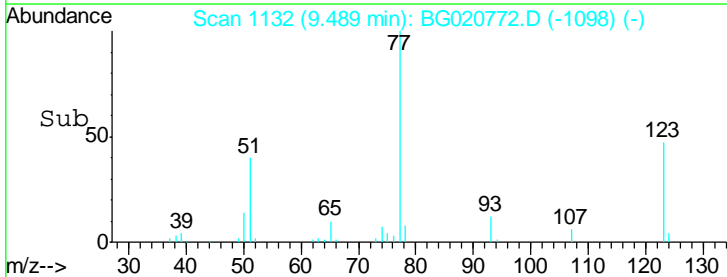
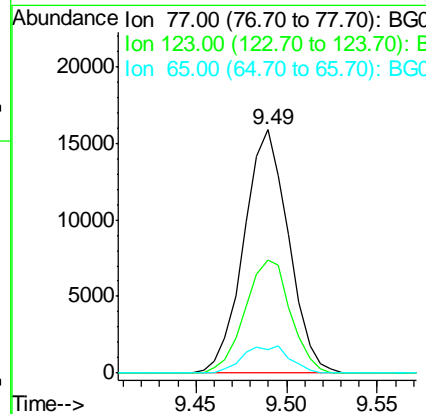
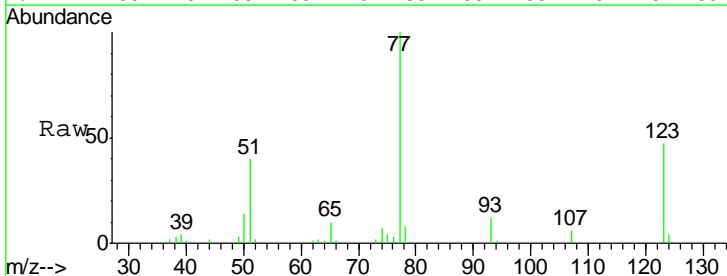
Instrument :  
 BNA\_G  
 ClientSampled :  
 SSTD02009

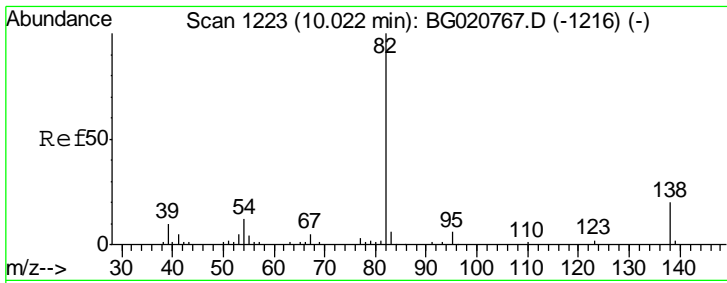
Tgt Ion	Resp	Lower	Upper
117	100		
201	80.6	96.1	144.1#
199	53.4	59.7	89.5#



#20  
 Nitrobenzene  
 Concen: 22.81 ng/ul  
 RT: 9.49 min Scan# 1132  
 Delta R.T. 0.00 min  
 Lab File: BG020772.D  
 Acq: 1 Feb 2016 14:08

Tgt Ion	Resp	Lower	Upper
77	100		
123	46.7	31.8	47.8
65	9.7	10.6	16.0#

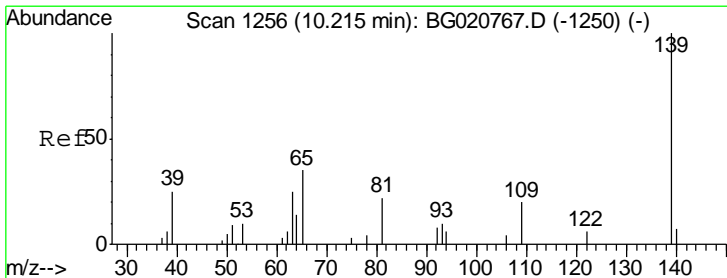
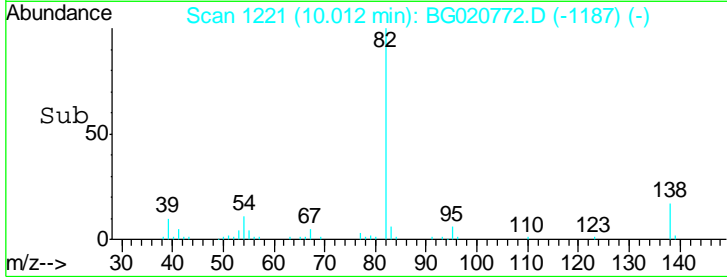
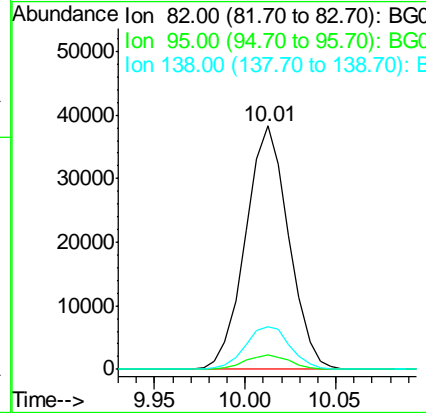
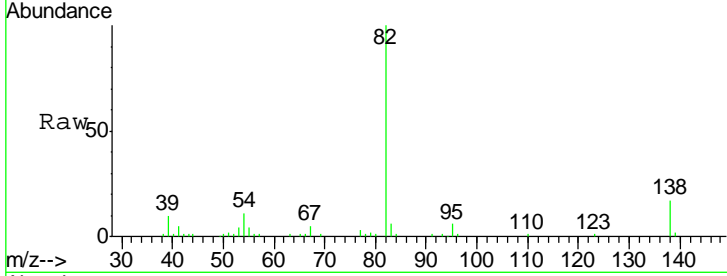




#21  
 Isophorone  
 Concen: 20.12 ng/ul  
 RT: 10.01 min Scan# 1221  
 Delta R.T. 0.00 min  
 Lab File: BG020772.D  
 Acq: 1 Feb 2016 14:08

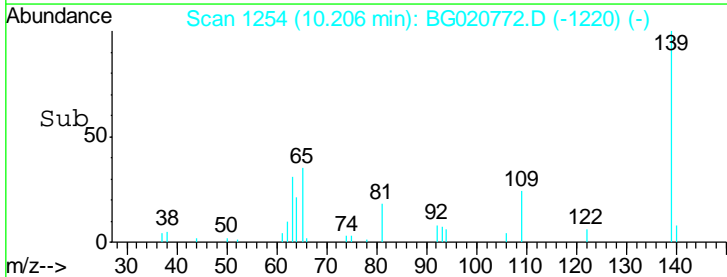
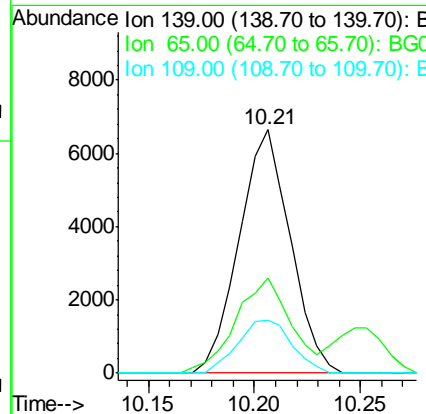
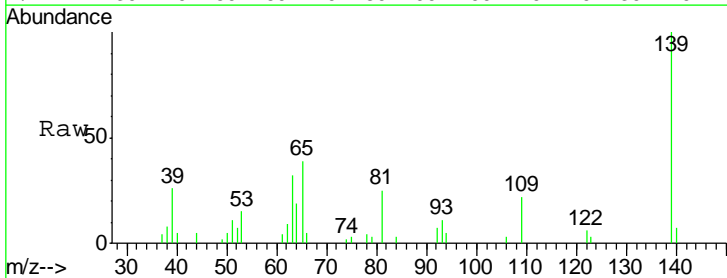
Instrument :  
 BNA\_G  
 ClientSampled :  
 SSTD02009

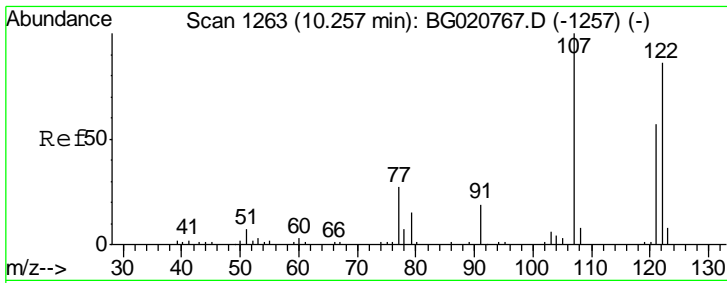
Tgt Ion	Resp	Lower	Upper
82	100		
95	5.9	6.1	9.1#
138	17.5	13.5	20.3



#23  
 2-Nitrophenol  
 Concen: 20.24 ng/ul  
 RT: 10.21 min Scan# 1254  
 Delta R.T. 0.00 min  
 Lab File: BG020772.D  
 Acq: 1 Feb 2016 14:08

Tgt Ion	Resp	Lower	Upper
139	100		
65	39.2	45.3	67.9#
109	21.7	27.7	41.5#

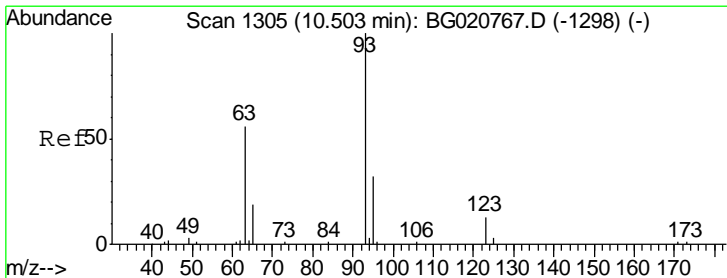
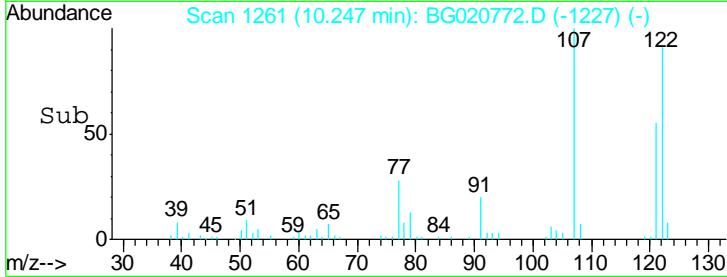
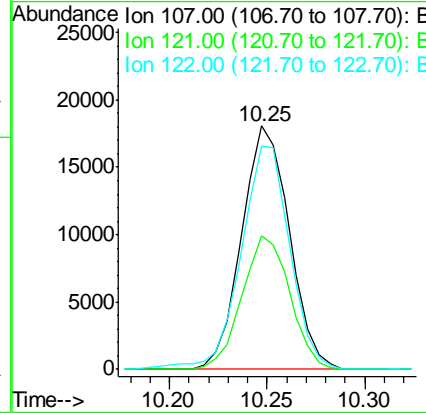
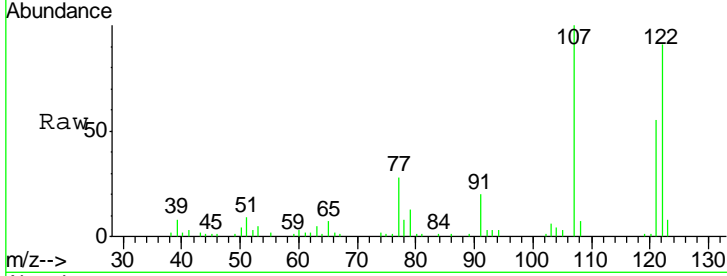




#24  
 2,4-Dimethylphenol  
 Concen: 20.05 ng/ul  
 RT: 10.25 min Scan# 1261  
 Delta R.T. 0.00 min  
 Lab File: BG020772.D  
 Acq: 1 Feb 2016 14:08

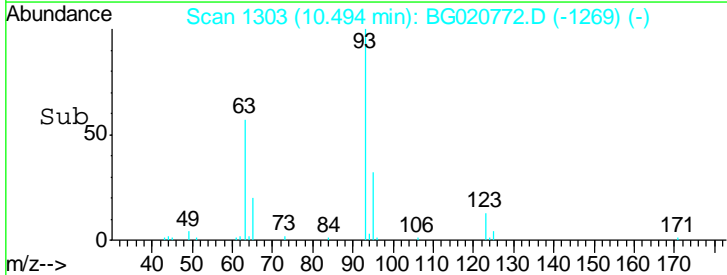
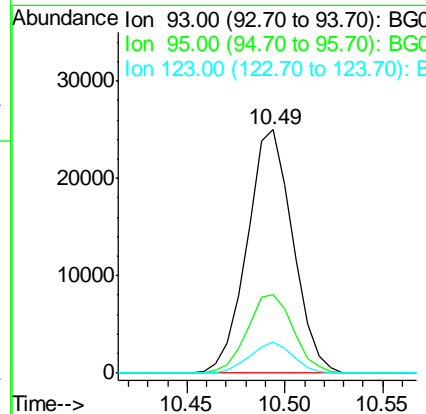
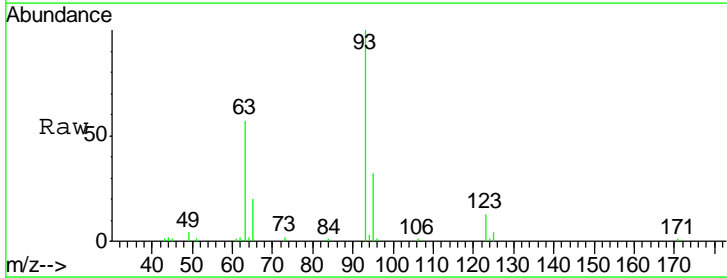
Instrument :  
 BNA\_G  
 ClientSampleID :  
 SSTD02009

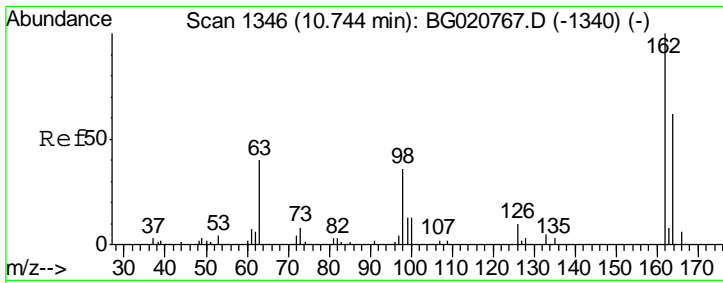
Tgt Ion	Resp	Lower	Upper
107	30580		
121	54.9	38.1	57.1
122	91.5	63.8	95.8



#25  
 Bis(2-Chloroethoxy)methane  
 Concen: 20.27 ng/ul  
 RT: 10.49 min Scan# 1303  
 Delta R.T. 0.00 min  
 Lab File: BG020772.D  
 Acq: 1 Feb 2016 14:08

Tgt Ion	Resp	Lower	Upper
93	40402		
95	32.5	24.7	37.1
123	13.0	8.2	12.2#

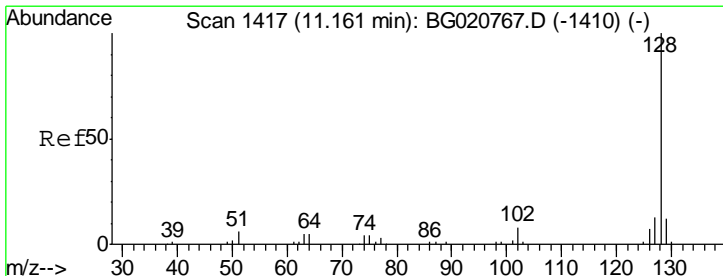
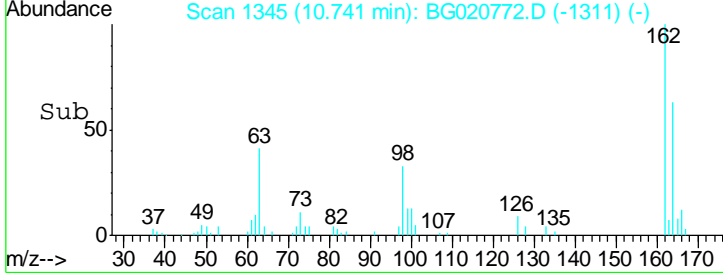
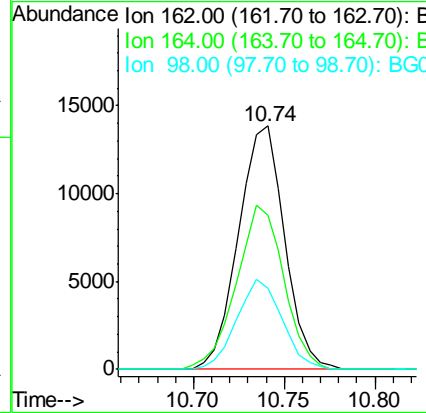
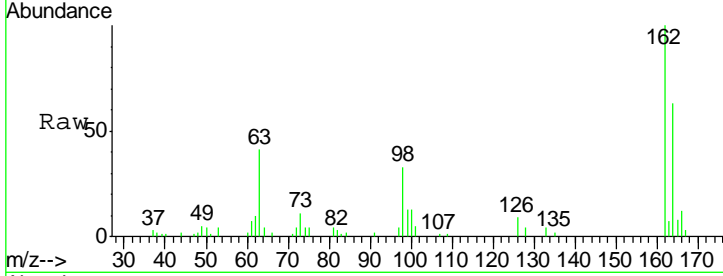




#27  
 2,4-Dichlorophenol  
 Concen: 18.79 ng/ul  
 RT: 10.74 min Scan# 1345  
 Delta R.T. 0.00 min  
 Lab File: BG020772.D  
 Acq: 1 Feb 2016 14:08

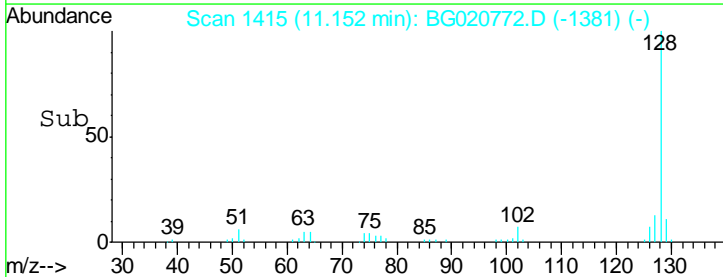
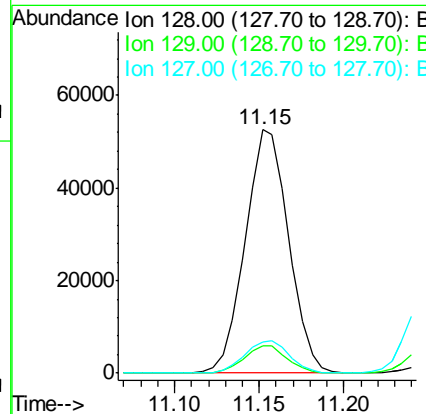
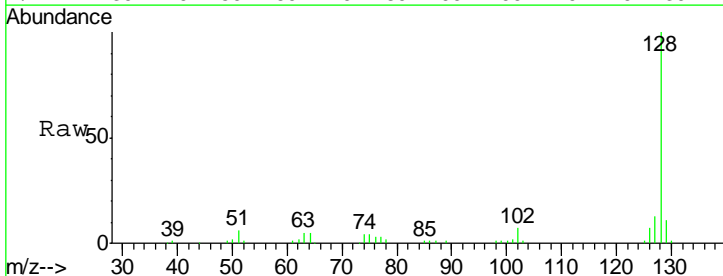
Instrument :  
 BNA\_G  
 ClientSampleId :  
 SSTD02009

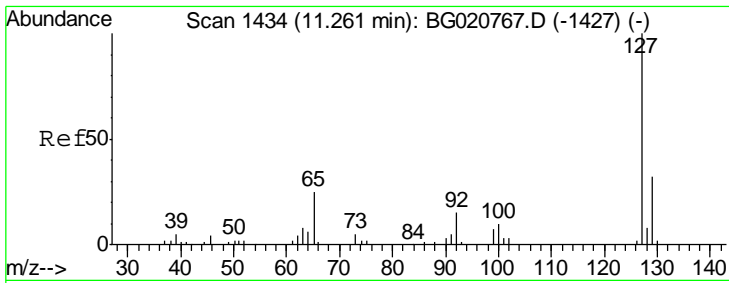
Tgt Ion	Resp	Lower	Upper
162	100		
164	63.2	52.0	78.0
98	33.2	26.6	39.8



#28  
 Naphthalene  
 Concen: 19.83 ng/ul  
 RT: 11.15 min Scan# 1415  
 Delta R.T. 0.00 min  
 Lab File: BG020772.D  
 Acq: 1 Feb 2016 14:08

Tgt Ion	Resp	Lower	Upper
128	100		
129	11.0	8.3	12.5
127	12.9	10.8	16.2

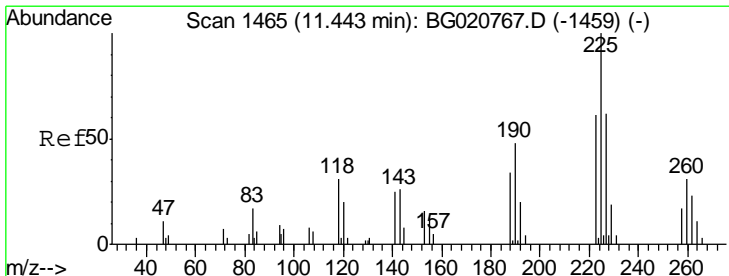
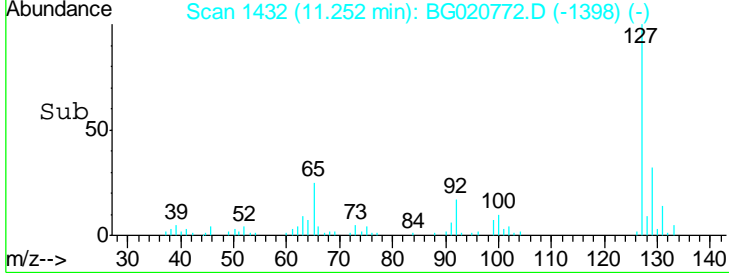
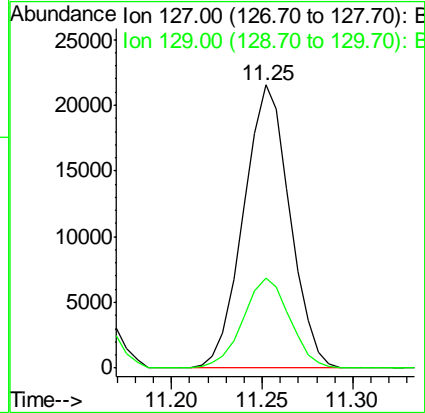
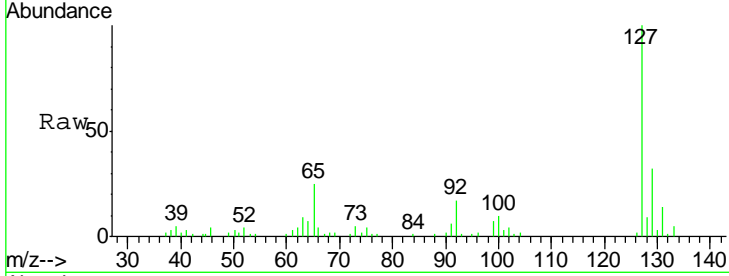




#30  
 4-Chloroaniline  
 Concen: 20.65 ng/ul  
 RT: 11.25 min Scan# 1432  
 Delta R.T. 0.00 min  
 Lab File: BG020772.D  
 Acq: 1 Feb 2016 14:08

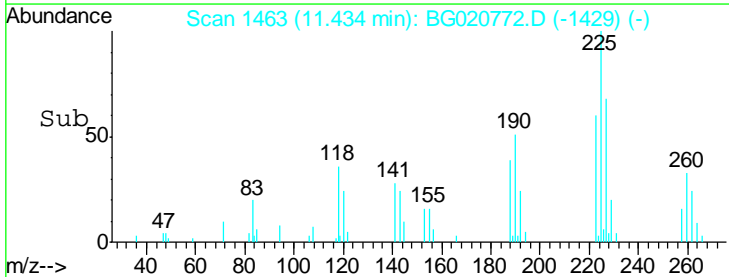
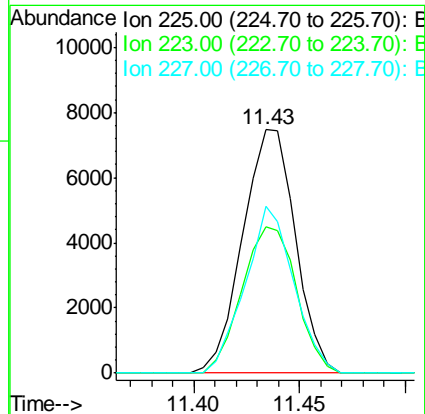
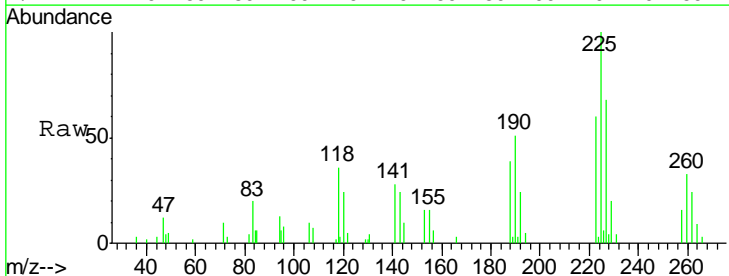
Instrument :  
 BNA\_G  
 ClientSampled :  
 SSTD02009

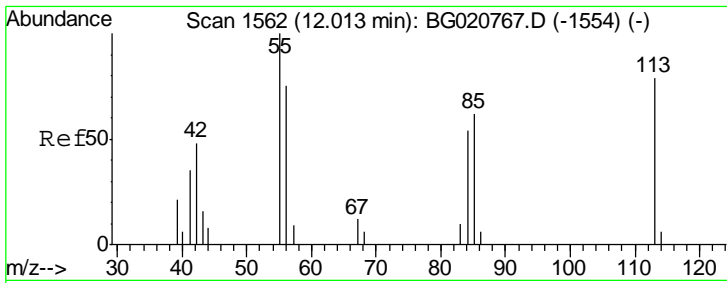
Tgt Ion:127 Resp: 38137  
 Ion Ratio Lower Upper  
 127 100  
 129 31.9 24.6 37.0



#31  
 Hexachlorobutadiene  
 Concen: 19.95 ng/ul  
 RT: 11.43 min Scan# 1463  
 Delta R.T. 0.00 min  
 Lab File: BG020772.D  
 Acq: 1 Feb 2016 14:08

Tgt Ion:225 Resp: 12926  
 Ion Ratio Lower Upper  
 225 100  
 223 60.3 48.1 72.1  
 227 68.4 52.1 78.1



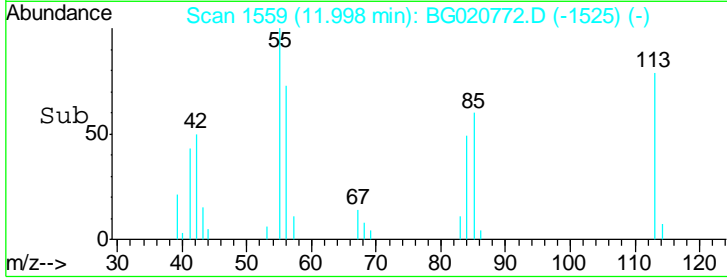
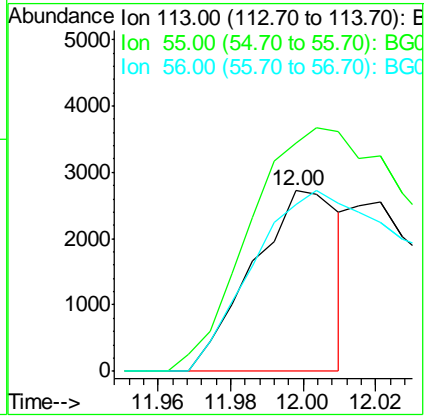
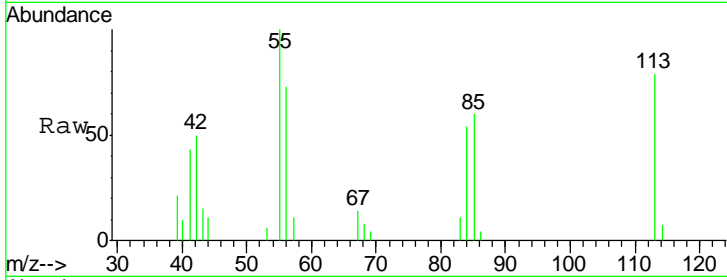


#32  
 Caprolactam  
 Concen: 8.51 ng/ul  
 RT: 12.00 min Scan# 1559  
 Delta R.T. 0.00 min  
 Lab File: BG020772.D  
 Acq: 1 Feb 2016 14:08

Instrument :  
 BNA\_G  
 ClientSampled :  
 SSTD02009

Tgt Ion: 113 Resp: 4541

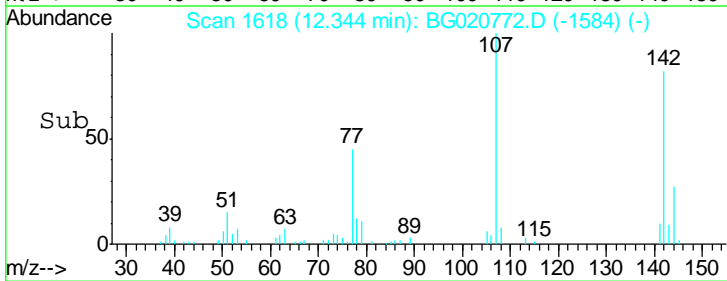
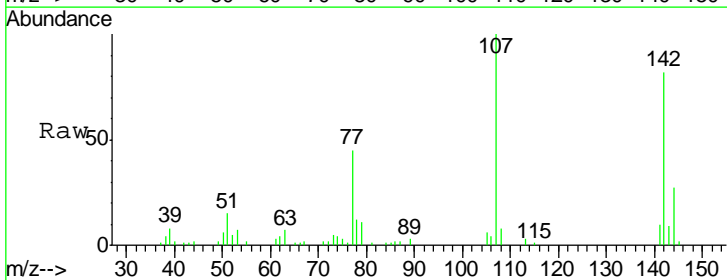
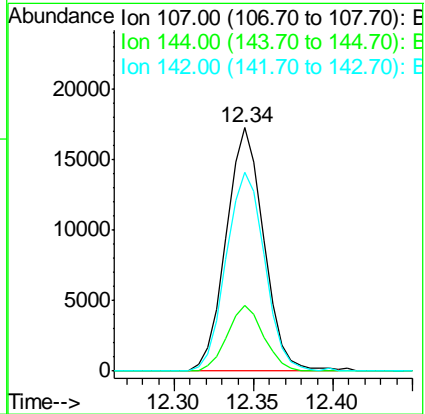
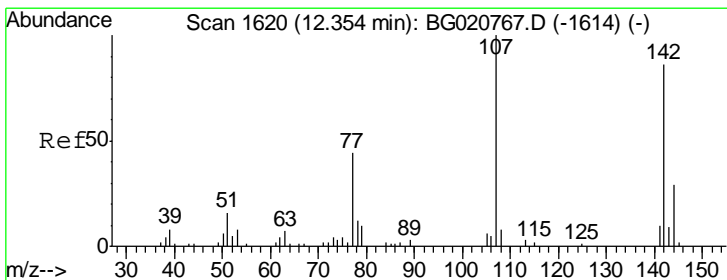
Ion	Ratio	Lower	Upper
113	100		
55	126.2	131.7	197.5#
56	92.4	92.7	139.1#

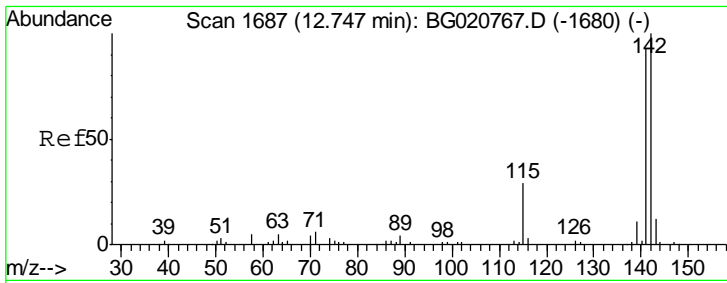


#33  
 4-Chloro-3-methylphenol  
 Concen: 18.30 ng/ul  
 RT: 12.34 min Scan# 1618  
 Delta R.T. 0.00 min  
 Lab File: BG020772.D  
 Acq: 1 Feb 2016 14:08

Tgt Ion: 107 Resp: 28513

Ion	Ratio	Lower	Upper
107	100		
144	27.2	21.1	31.7
142	81.9	60.1	90.1

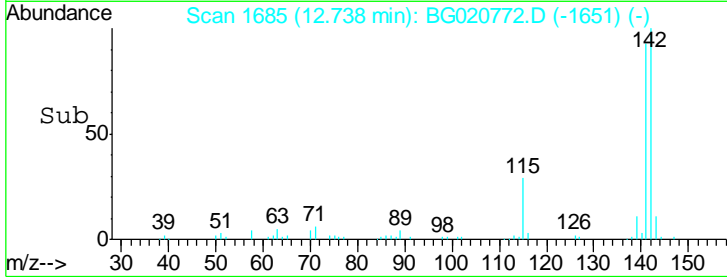
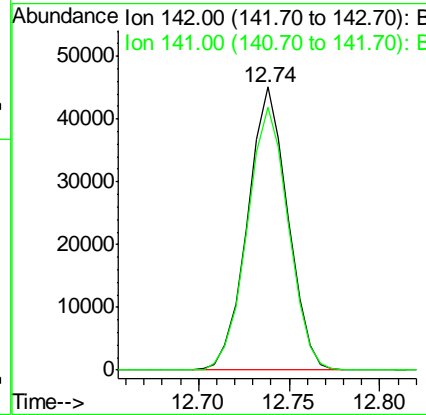
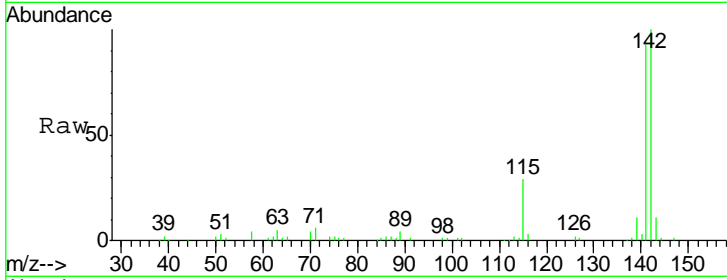




#34  
 2-Methylnaphthalene  
 Concen: 19.16 ng/ul  
 RT: 12.74 min Scan# 1685  
 Delta R.T. 0.00 min  
 Lab File: BG020772.D  
 Acq: 1 Feb 2016 14:08

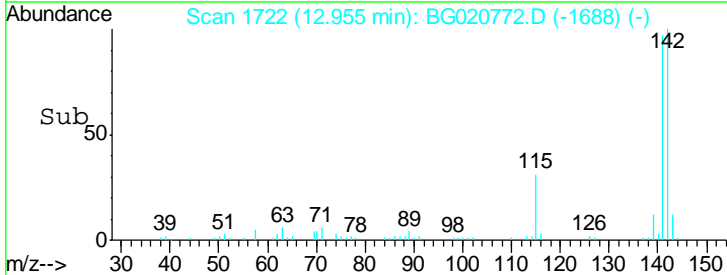
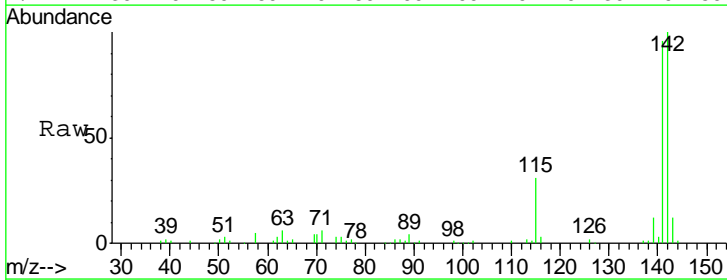
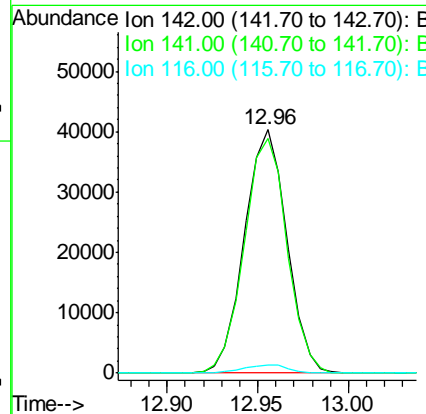
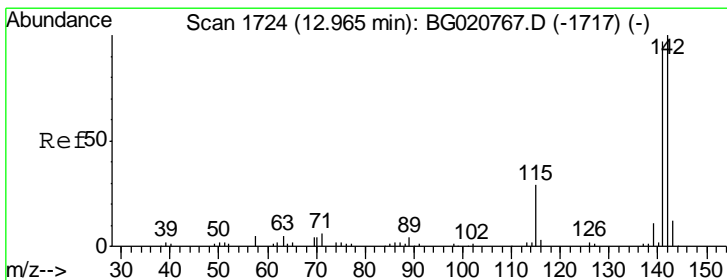
Instrument :  
 BNA\_G  
 ClientSampled :  
 SST02009

Tgt Ion:142 Resp: 69558  
 Ion Ratio Lower Upper  
 142 100  
 141 93.0 71.4 107.2

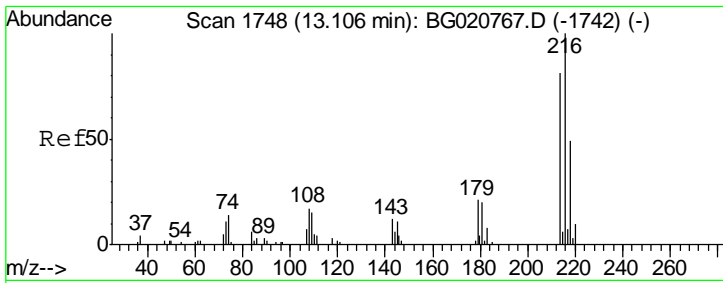


#35  
 1-Methylnaphthalene  
 Concen: 18.99 ng/ul  
 RT: 12.96 min Scan# 1722  
 Delta R.T. 0.00 min  
 Lab File: BG020772.D  
 Acq: 1 Feb 2016 14:08

Tgt Ion:142 Resp: 65860  
 Ion Ratio Lower Upper  
 142 100  
 141 96.3 76.6 115.0  
 116 3.3 3.6 5.4#



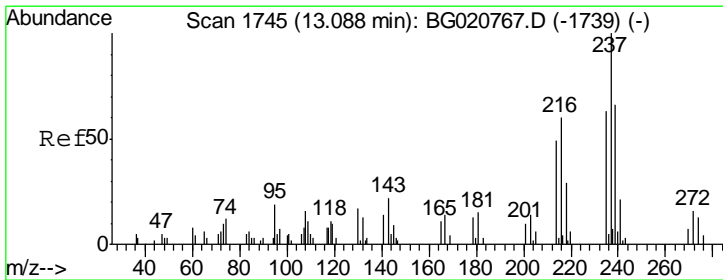
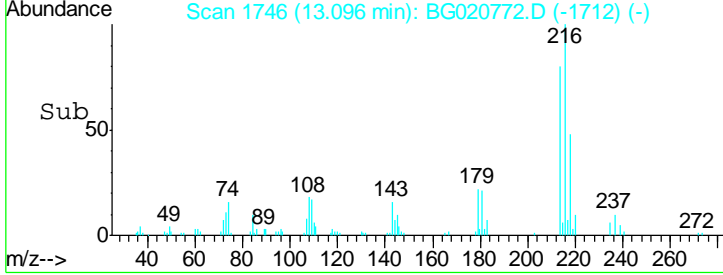
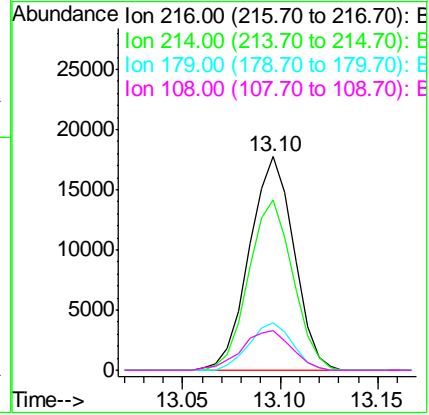
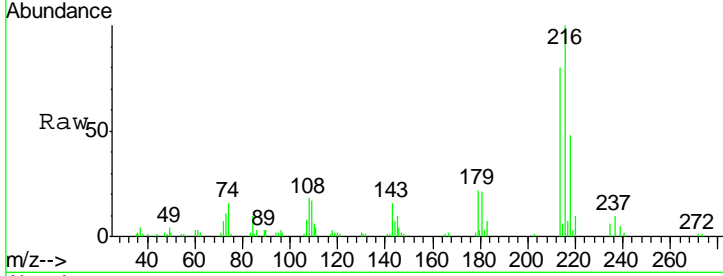




#37  
 1,2,4,5-Tetrachlorobenzene  
 Concen: 19.75 ng/ul  
 RT: 13.10 min Scan# 1746  
 Delta R.T. 0.00 min  
 Lab File: BG020772.D  
 Acq: 1 Feb 2016 14:08

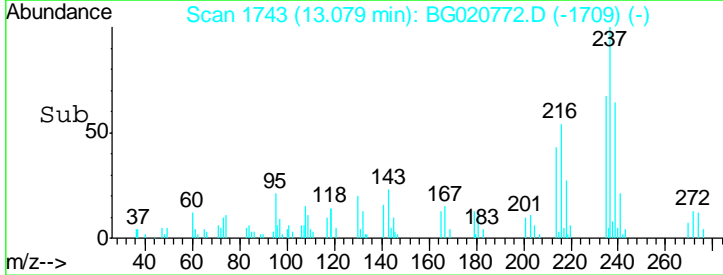
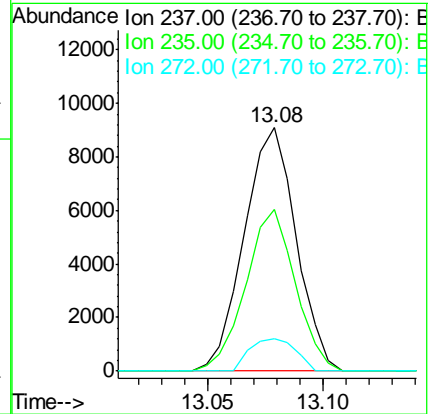
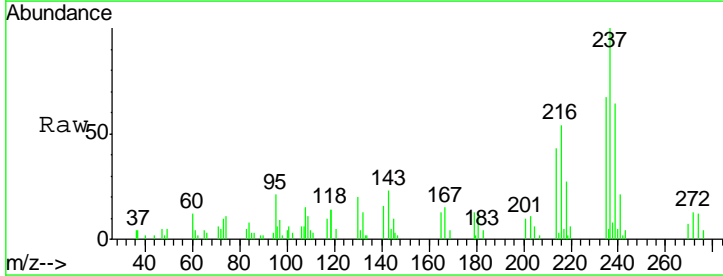
Instrument :  
 BNA\_G  
 ClientSampleID :  
 SSTD02009

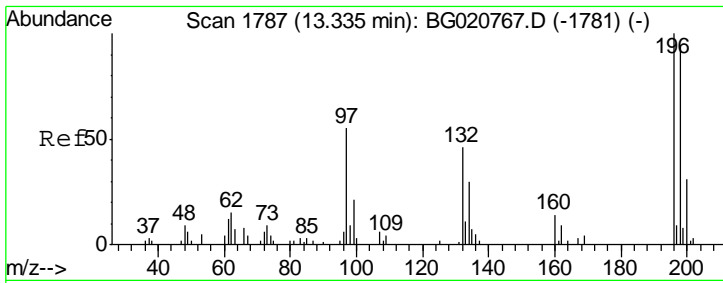
Tgt Ion	Resp	Lower	Upper
216	100		
214	79.8	64.1	96.1
179	22.2	14.5	21.7#
108	18.5	10.4	15.6#



#38  
 Hexachlorocyclopentadiene  
 Concen: 18.85 ng/ul  
 RT: 13.08 min Scan# 1743  
 Delta R.T. 0.00 min  
 Lab File: BG020772.D  
 Acq: 1 Feb 2016 14:08

Tgt Ion	Resp	Lower	Upper
237	100		
235	66.6	49.5	74.3
272	13.5	8.6	12.8#

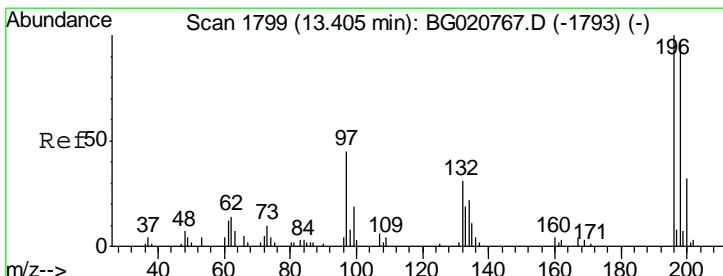
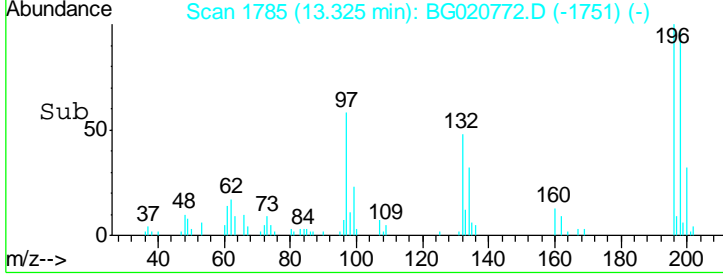
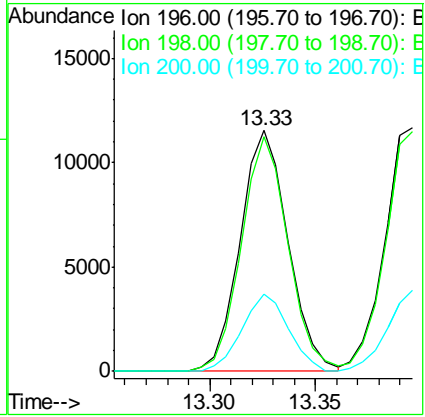
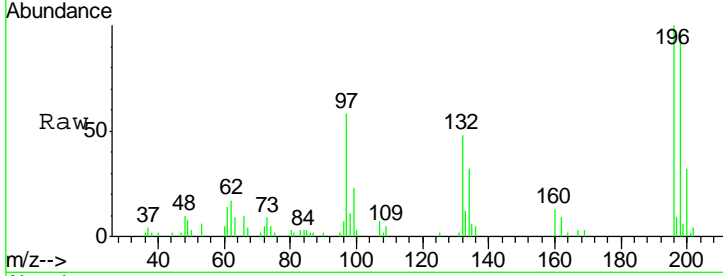




#39  
 2,4,6-Trichlorophenol  
 Concen: 19.31 ng/ul  
 RT: 13.33 min Scan# 1785  
 Delta R.T. 0.00 min  
 Lab File: BG020772.D  
 Acq: 1 Feb 2016 14:08

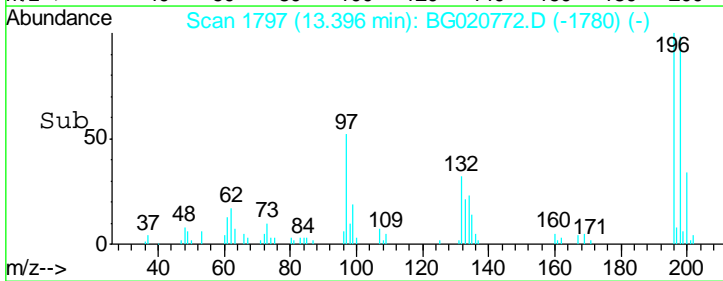
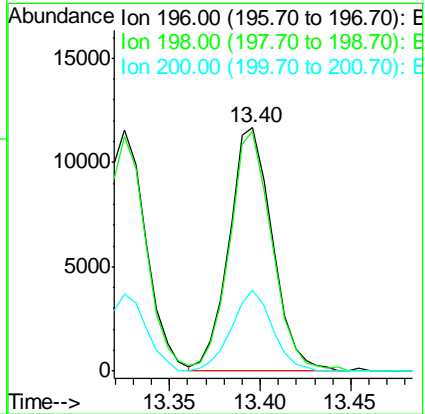
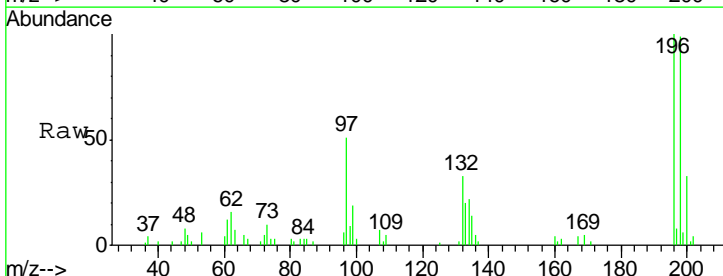
Instrument :  
 BNA\_G  
 ClientSampled :  
 SSTD02009

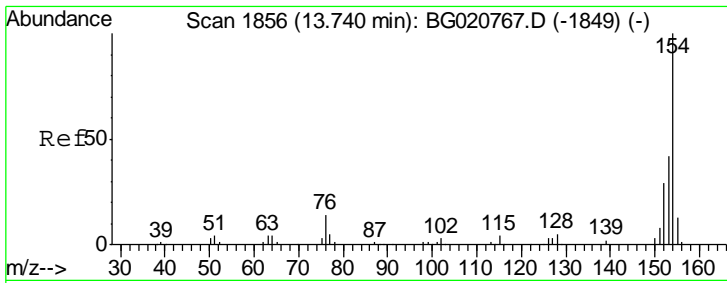
Tgt Ion	Resp	Lower	Upper
196	18159		
198	97.3	75.9	113.9
200	32.1	25.8	38.6



#40  
 2,4,5-Trichlorophenol  
 Concen: 18.54 ng/ul  
 RT: 13.40 min Scan# 1797  
 Delta R.T. 0.00 min  
 Lab File: BG020772.D  
 Acq: 1 Feb 2016 14:08

Tgt Ion	Resp	Lower	Upper
196	19381		
198	98.6	74.7	112.1
200	33.4	25.4	38.0

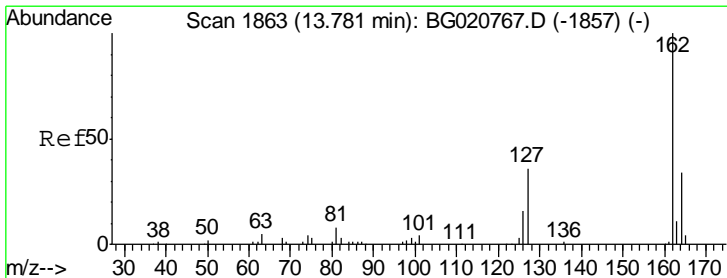
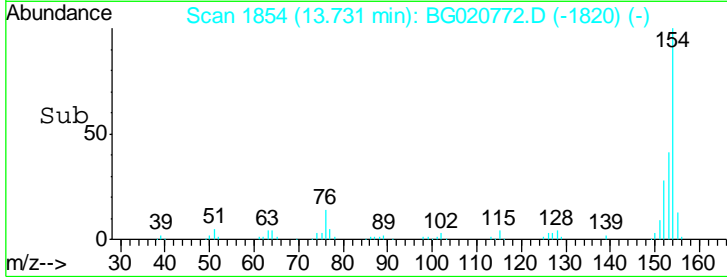
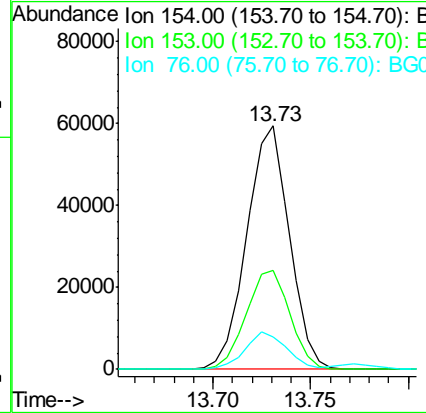
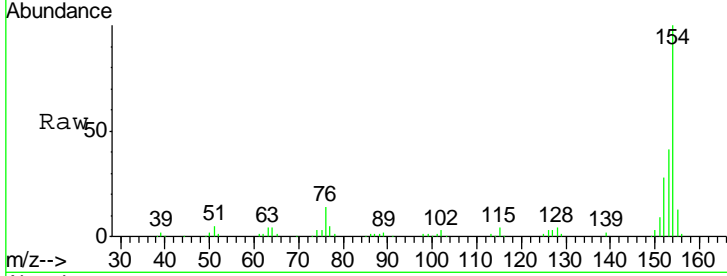




#41  
 1,1'-Biphenyl  
 Concen: 20.45 ng/ul  
 RT: 13.73 min Scan# 1854  
 Delta R.T. 0.00 min  
 Lab File: BG020772.D  
 Acq: 1 Feb 2016 14:08

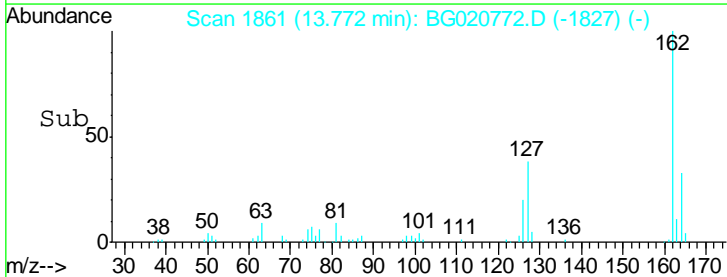
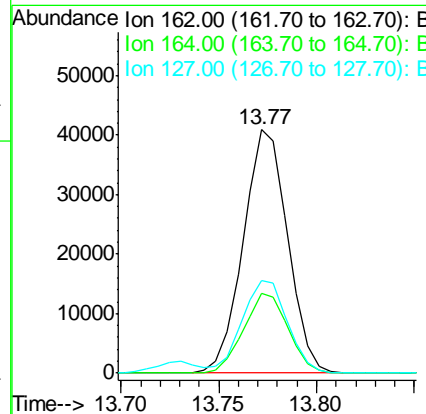
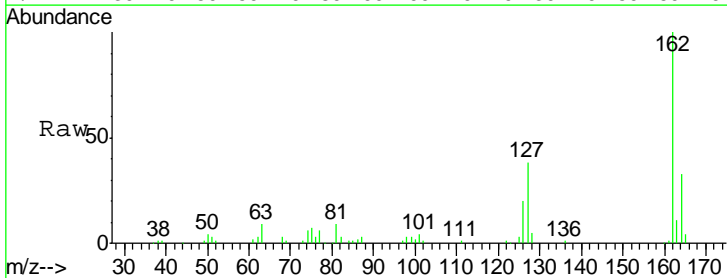
Instrument :  
 BNA\_G  
 ClientSampled :  
 SSTD02009

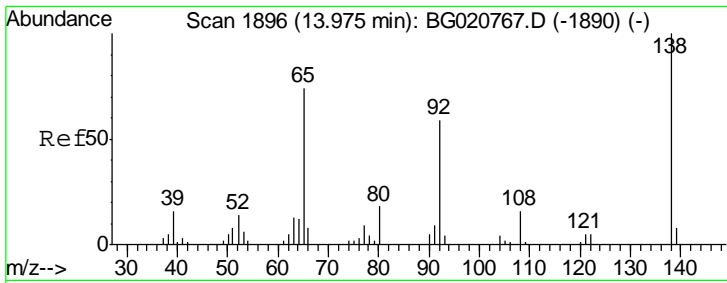
Tgt Ion	Resp	Lower	Upper
154	100		
153	40.9	34.0	51.0
76	13.5	8.4	12.6#



#42  
 2-Chloronaphthalene  
 Concen: 19.90 ng/ul  
 RT: 13.77 min Scan# 1861  
 Delta R.T. 0.00 min  
 Lab File: BG020772.D  
 Acq: 1 Feb 2016 14:08

Tgt Ion	Resp	Lower	Upper
162	100		
164	33.0	26.2	39.4
127	38.2	29.5	44.3

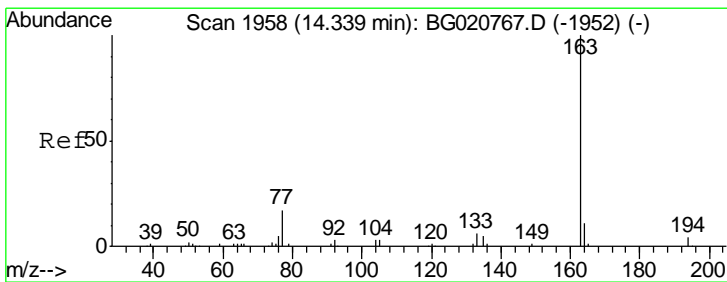
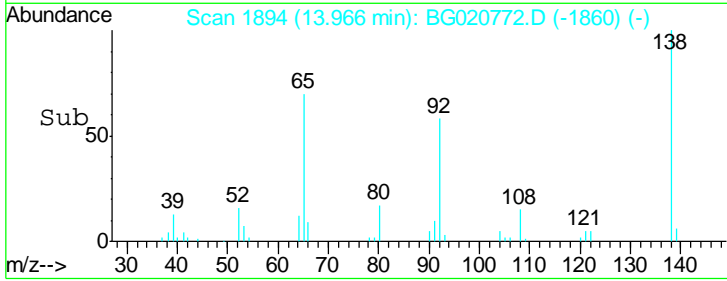
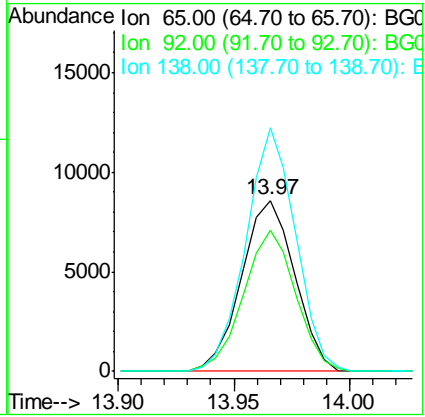
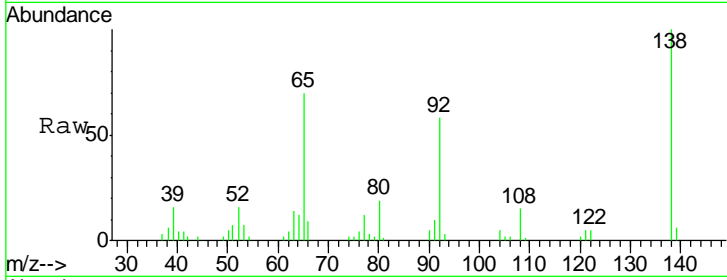




#43  
 2-Nitroaniline  
 Concen: 22.49 ng/ul  
 RT: 13.97 min Scan# 1894  
 Delta R.T. 0.00 min  
 Lab File: BG020772.D  
 Acq: 1 Feb 2016 14:08

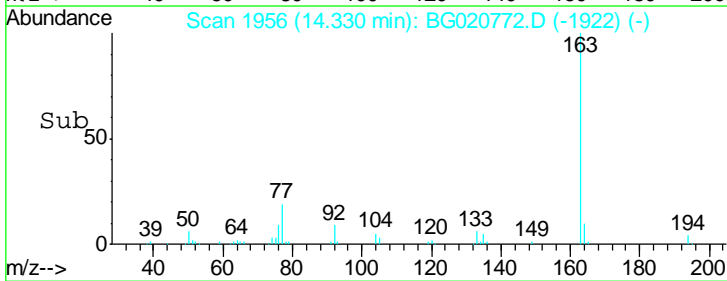
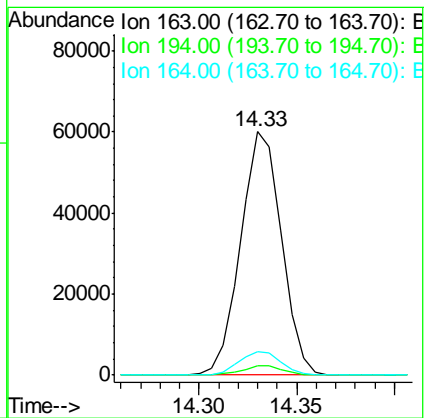
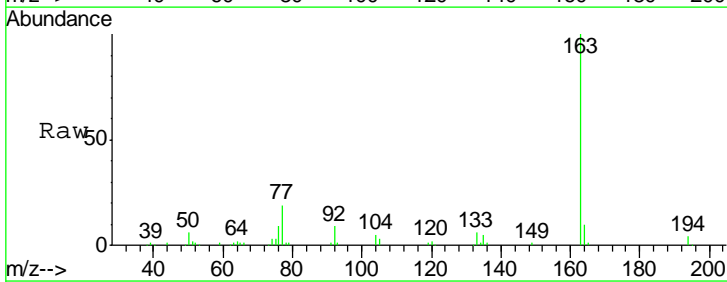
Instrument :  
 BNA\_G  
 ClientSampled :  
 SSTD02009

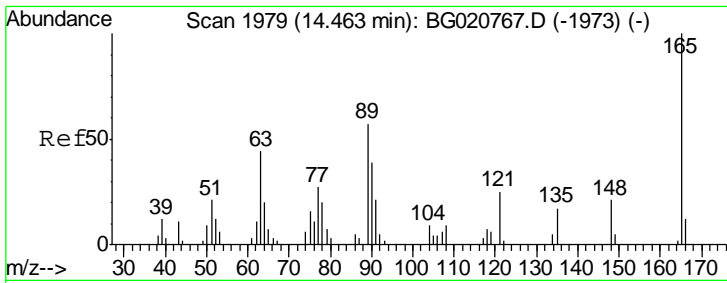
Tgt Ion	Resp	Lower	Upper
65	100		
92	82.6	57.0	85.4
138	142.1	87.2	130.8#



#45  
 Dimethylphthalate  
 Concen: 19.42 ng/ul  
 RT: 14.33 min Scan# 1956  
 Delta R.T. 0.00 min  
 Lab File: BG020772.D  
 Acq: 1 Feb 2016 14:08

Tgt Ion	Resp	Lower	Upper
163	100		
194	3.7	4.0	6.0#
164	9.8	8.4	12.6

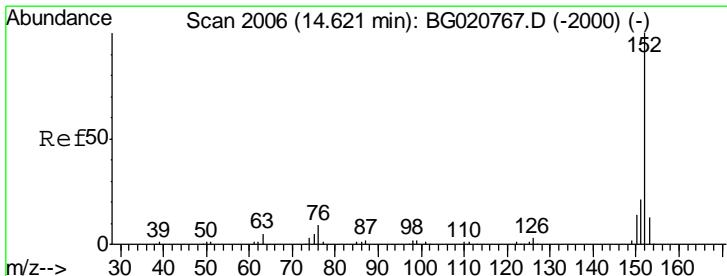
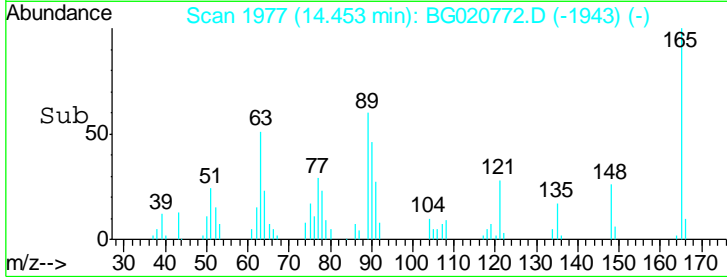
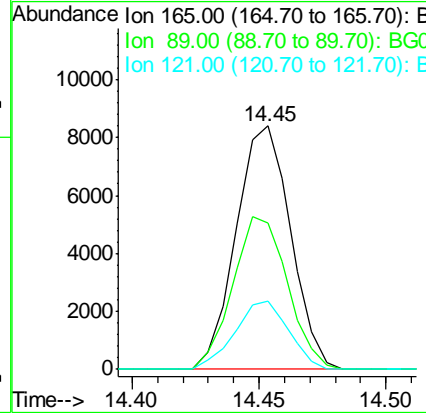
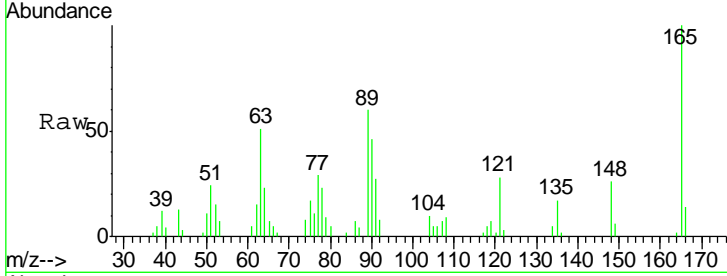




#46  
 2,6-Dinitrotoluene  
 Concen: 21.05 ng/ul  
 RT: 14.45 min Scan# 1977  
 Delta R.T. 0.00 min  
 Lab File: BG020772.D  
 Acq: 1 Feb 2016 14:08

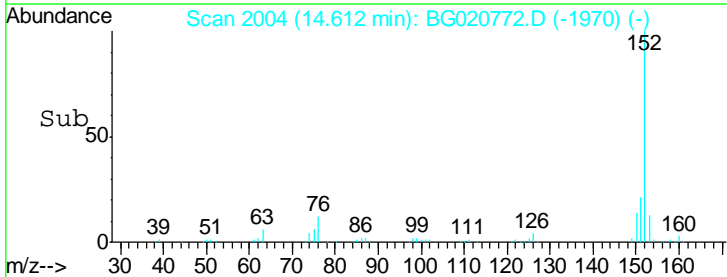
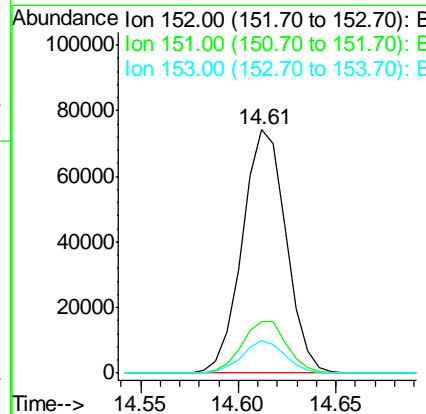
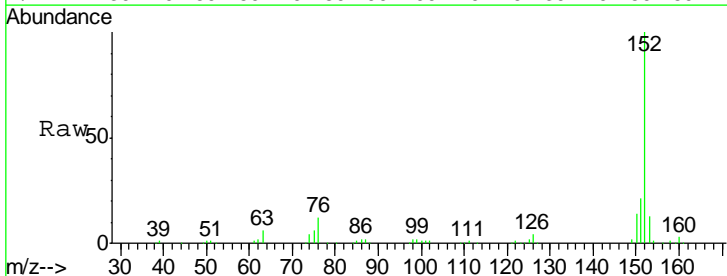
Instrument :  
 BNA\_G  
 ClientSampled :  
 SSTD02009

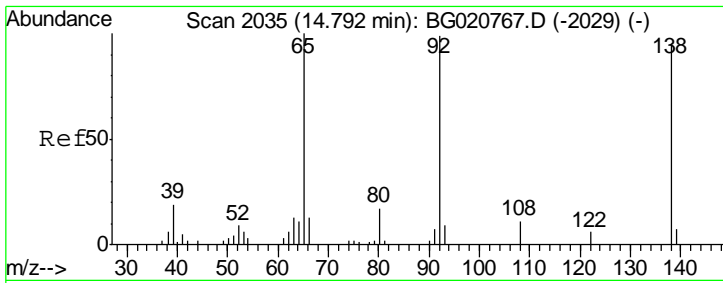
Tgt Ion	Resp	Lower	Upper
165	12562		
89	60.2	43.8	65.8
121	28.0	17.8	26.6



#48  
 Acenaphthylene  
 Concen: 19.89 ng/ul  
 RT: 14.61 min Scan# 2004  
 Delta R.T. 0.00 min  
 Lab File: BG020772.D  
 Acq: 1 Feb 2016 14:08

Tgt Ion	Resp	Lower	Upper
152	115147		
151	21.3	16.1	24.1
153	13.1	10.8	16.2



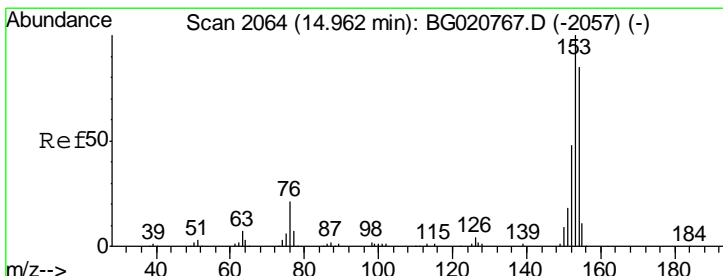
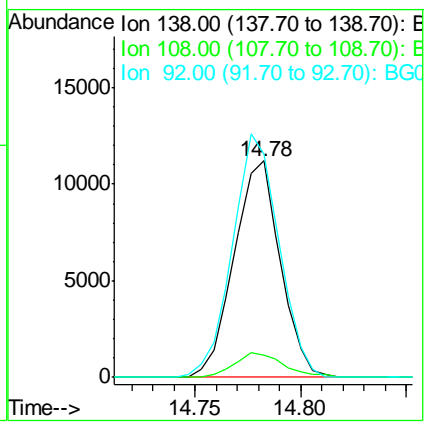
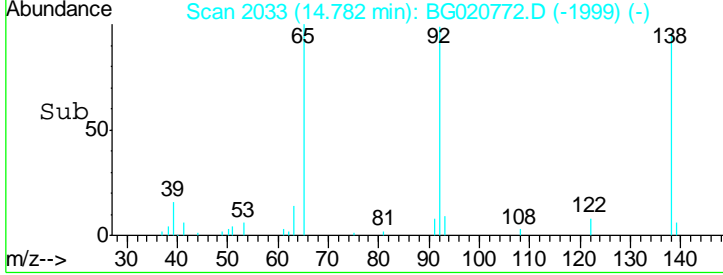
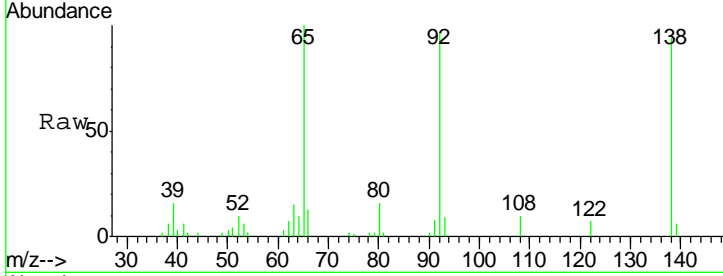


#49  
 3-Nitroaniline  
 Concen: 21.09 ng/ul  
 RT: 14.78 min Scan# 2033  
 Delta R.T. 0.00 min  
 Lab File: BG020772.D  
 Acq: 1 Feb 2016 14:08

Instrument :  
 BNA\_G  
 ClientSampleID :  
 SST02009

Tgt Ion:138 Resp: 17059

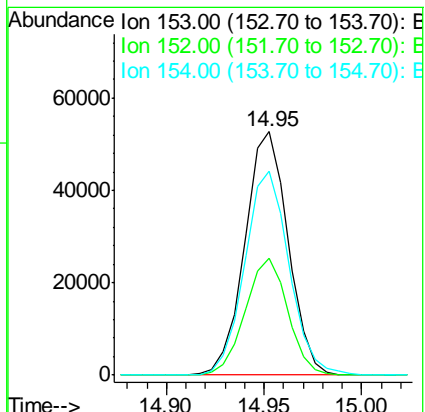
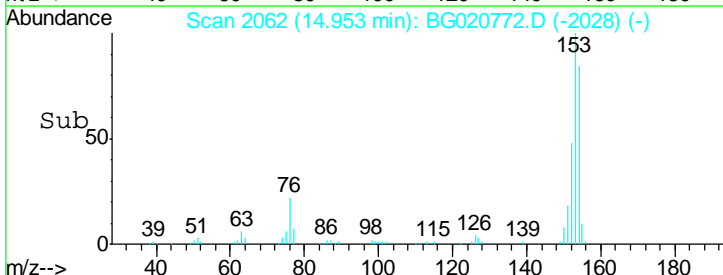
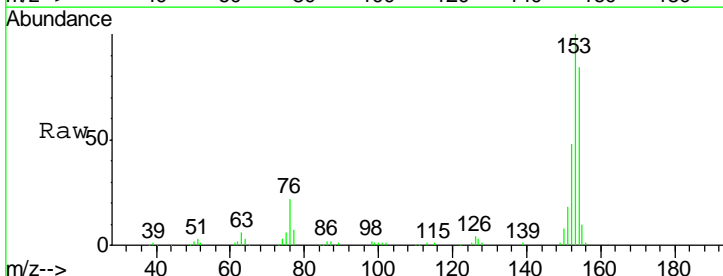
Ion	Ratio	Lower	Upper
138	100		
108	10.5	7.6	11.4
92	103.0	94.2	141.2

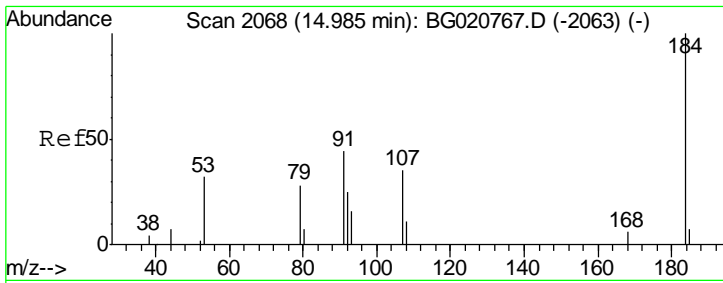


#50  
 Acenaphthene  
 Concen: 20.02 ng/ul  
 RT: 14.95 min Scan# 2062  
 Delta R.T. 0.00 min  
 Lab File: BG020772.D  
 Acq: 1 Feb 2016 14:08

Tgt Ion:153 Resp: 80705

Ion	Ratio	Lower	Upper
153	100		
152	48.2	37.9	56.9
154	83.6	69.8	104.6

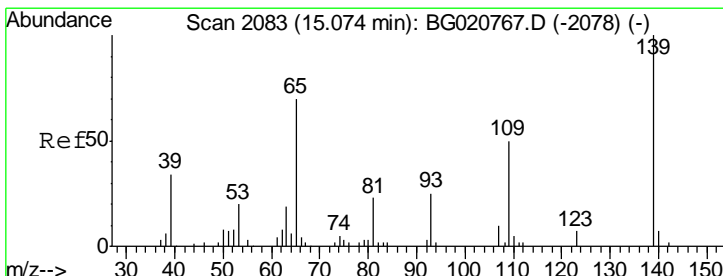
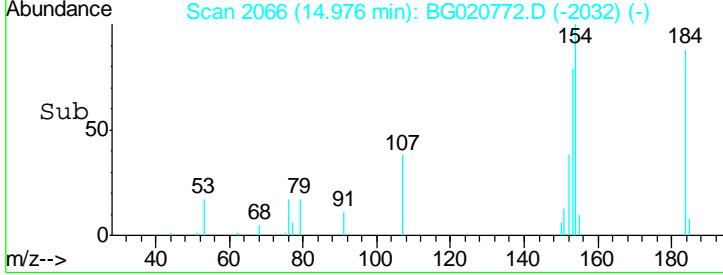
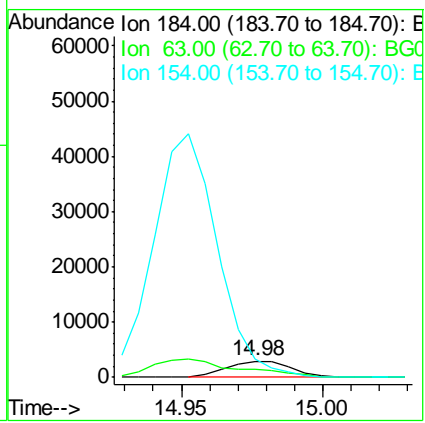
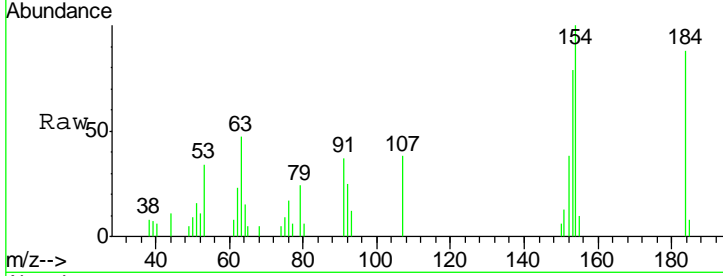




#51  
 2,4-Dinitrophenol  
 Concen: 17.37 ng/ul  
 RT: 14.98 min Scan# 2066  
 Delta R.T. 0.00 min  
 Lab File: BG020772.D  
 Acq: 1 Feb 2016 14:08

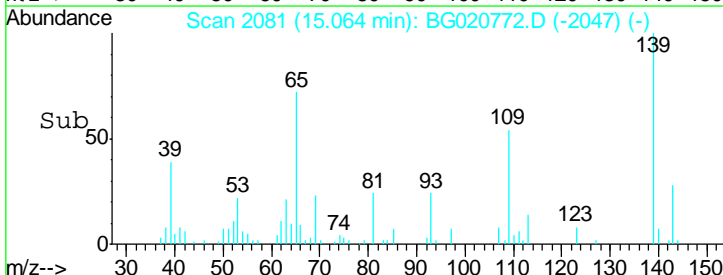
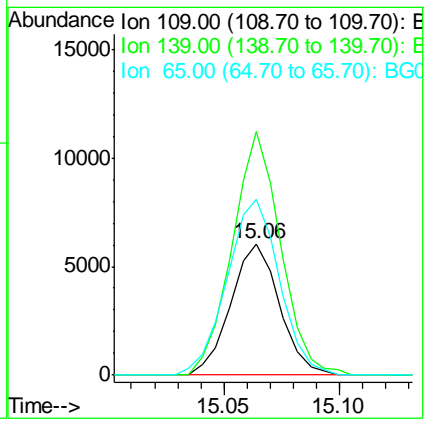
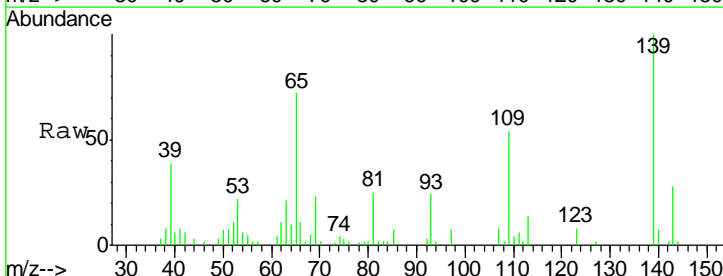
**Instrument :**  
 BNA\_G  
**ClientSampled :**  
 SSTD02009

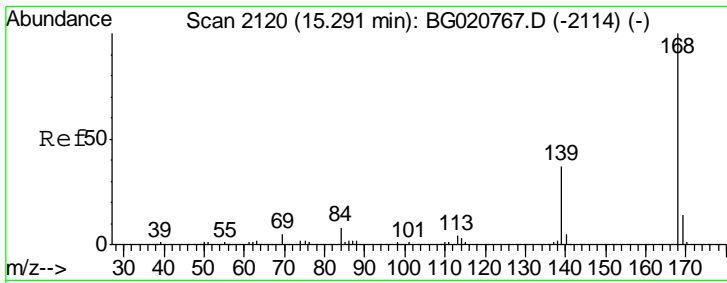
Tgt Ion	Resp	Lower	Upper
184	100		
63	53.7	39.7	59.5
154	113.9	45.0	67.6#



#53  
 4-Nitrophenol  
 Concen: 20.95 ng/ul  
 RT: 15.06 min Scan# 2081  
 Delta R.T. 0.00 min  
 Lab File: BG020772.D  
 Acq: 1 Feb 2016 14:08

Tgt Ion	Resp	Lower	Upper
109	100		
139	185.3	91.2	136.8#
65	134.2	92.6	139.0

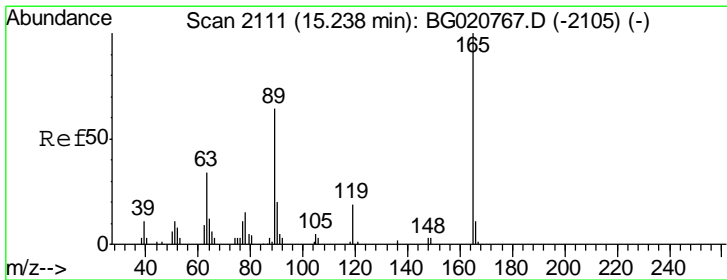
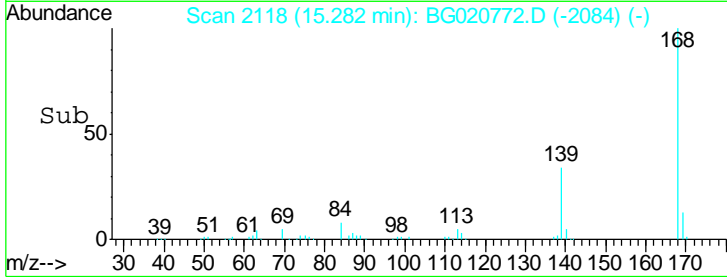
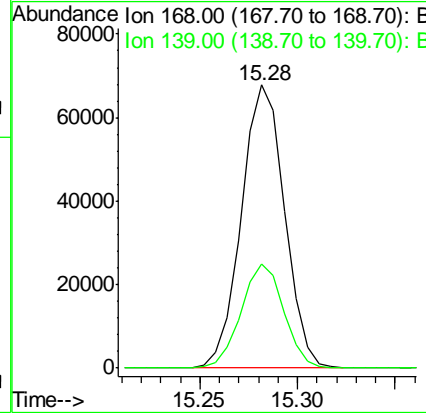
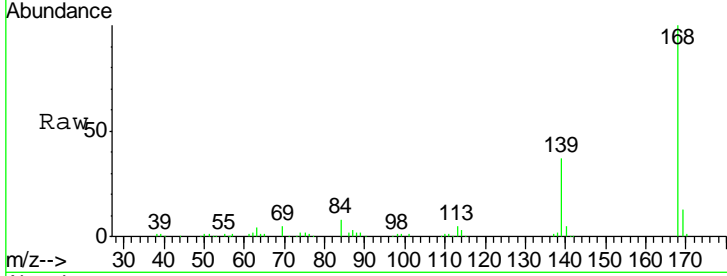




#54  
 Dibenzofuran  
 Concen: 19.68 ng/ul  
 RT: 15.28 min Scan# 2118  
 Delta R.T. 0.00 min  
 Lab File: BG020772.D  
 Acq: 1 Feb 2016 14:08

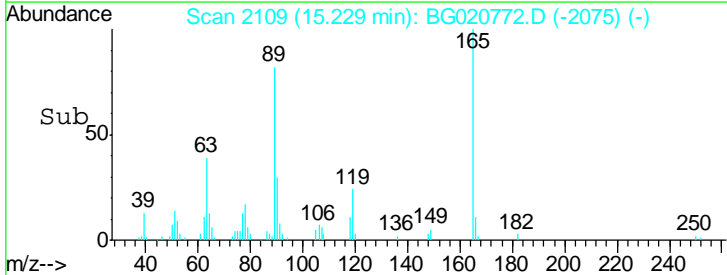
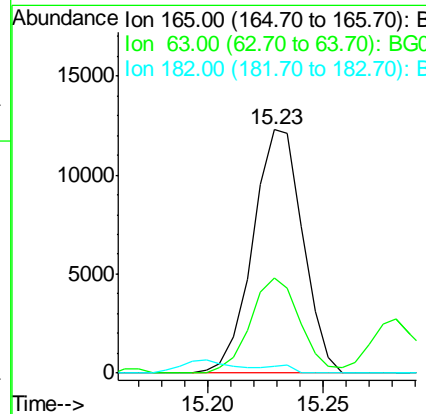
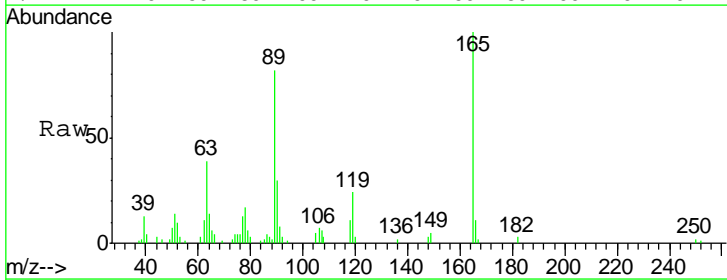
Instrument :  
 BNA\_G  
 ClientSampled :  
 SSTD02009

Tgt Ion:168 Resp: 103702  
 Ion Ratio Lower Upper  
 168 100  
 139 36.8 31.0 46.4

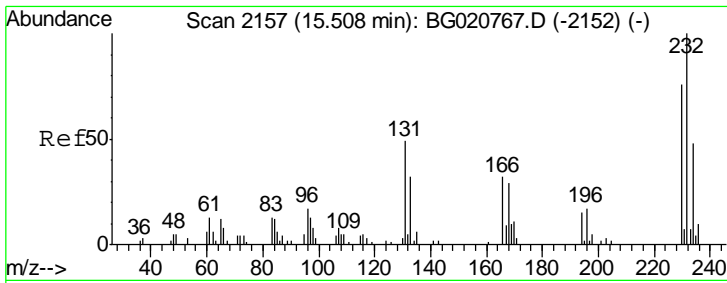


#55  
 2,4-Dinitrotoluene  
 Concen: 22.03 ng/ul  
 RT: 15.23 min Scan# 2109  
 Delta R.T. 0.00 min  
 Lab File: BG020772.D  
 Acq: 1 Feb 2016 14:08

Tgt Ion:165 Resp: 18513  
 Ion Ratio Lower Upper  
 165 100  
 63 39.1 31.4 47.0  
 182 2.6 2.7 4.1#



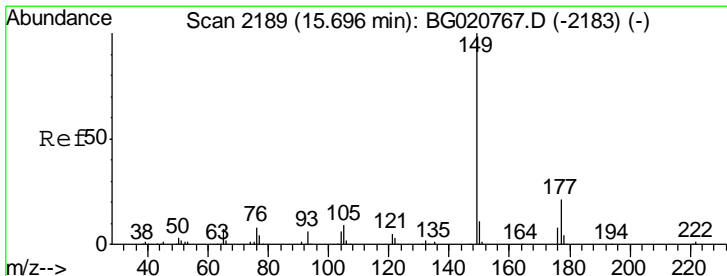
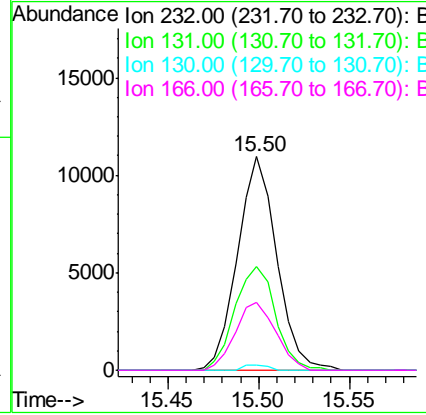
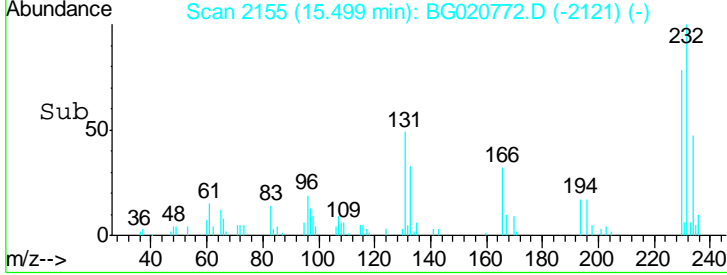
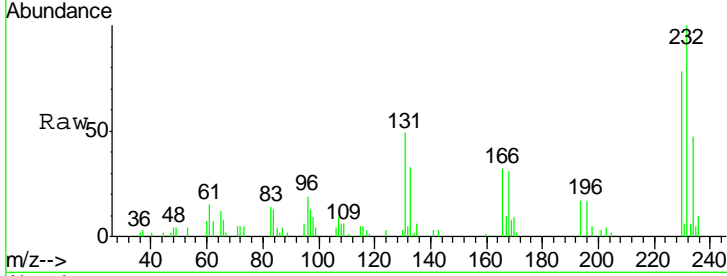




#56  
 2,3,4,6-Tetrachlorophenol  
 Concen: 18.31 ng/ul  
 RT: 15.50 min Scan# 2155  
 Delta R.T. 0.00 min  
 Lab File: BG020772.D  
 Acq: 1 Feb 2016 14:08

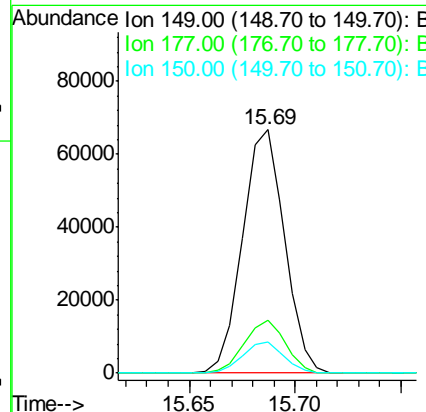
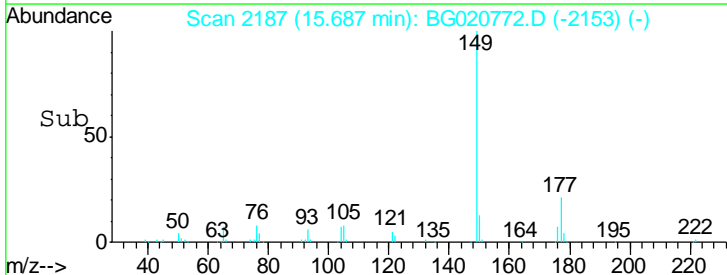
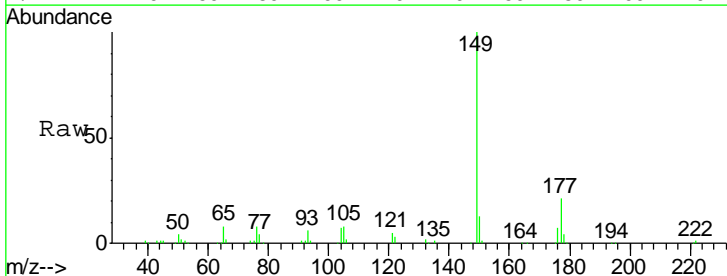
Instrument :  
 BNA\_G  
 ClientSampleID :  
 SSTD02009

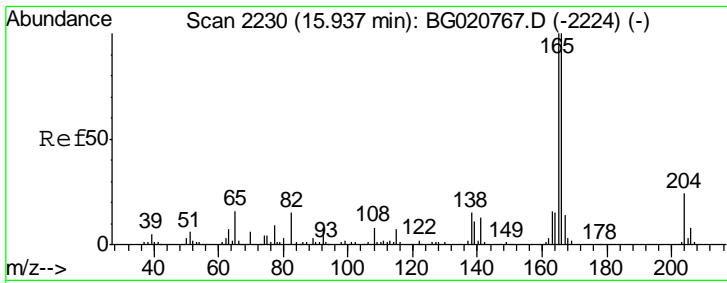
Tgt Ion	Resp	Lower	Upper
232	16523		
131	48.7	27.1	40.7#
130	2.6	0.0	0.0#
166	31.9	20.0	30.0#



#57  
 Diethylphthalate  
 Concen: 19.37 ng/ul  
 RT: 15.69 min Scan# 2187  
 Delta R.T. 0.00 min  
 Lab File: BG020772.D  
 Acq: 1 Feb 2016 14:08

Tgt Ion	Resp	Lower	Upper
149	91901		
177	21.5	19.3	28.9
150	12.8	10.6	15.8

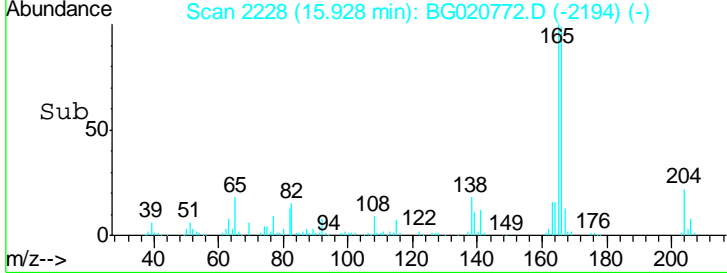
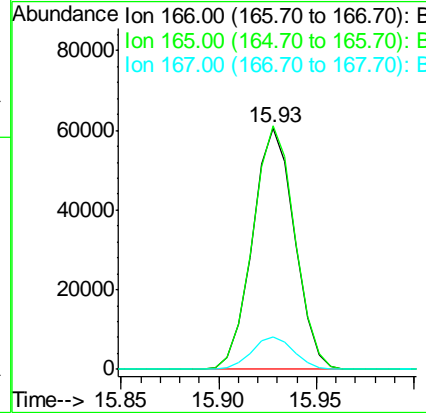
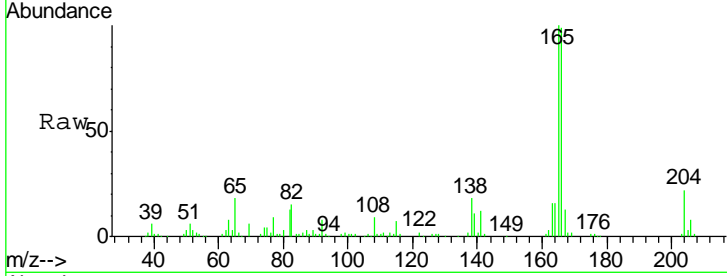




#59  
 Fluorene  
 Concen: 19.59 ng/ul  
 RT: 15.93 min Scan# 2228  
 Delta R.T. 0.00 min  
 Lab File: BG020772.D  
 Acq: 1 Feb 2016 14:08

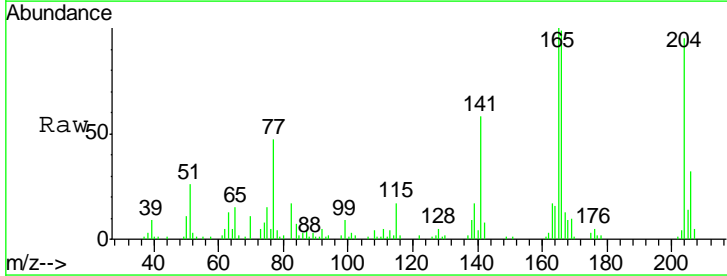
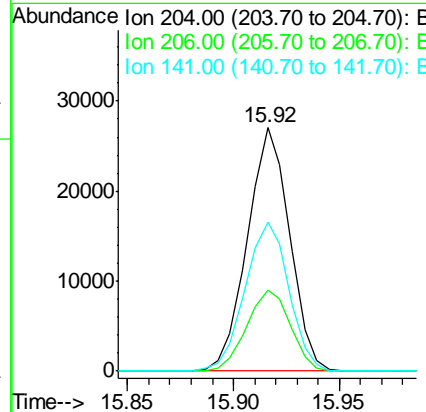
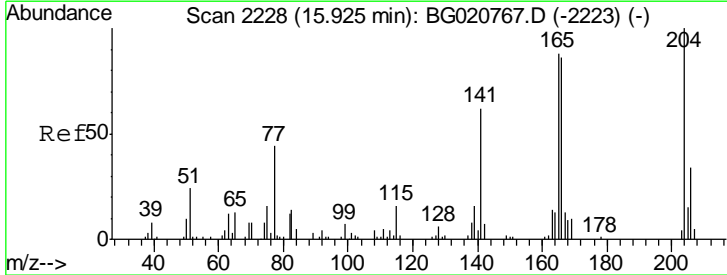
Instrument :  
 BNA\_G  
 ClientSampleId :  
 SSTD02009

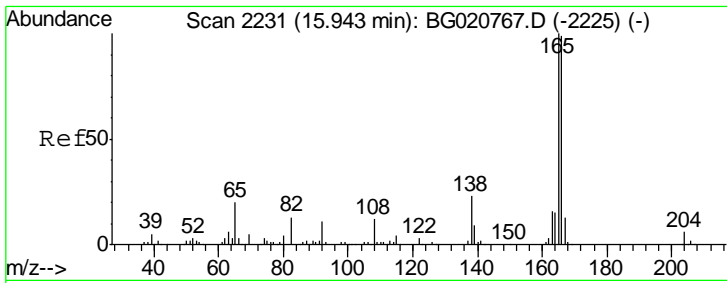
Tgt Ion	Resp	Lower	Upper
166	100		
165	101.0	78.4	117.6
167	13.4	11.1	16.7



#60  
 4-Chlorophenyl-phenylether  
 Concen: 18.81 ng/ul  
 RT: 15.92 min Scan# 2226  
 Delta R.T. 0.00 min  
 Lab File: BG020772.D  
 Acq: 1 Feb 2016 14:08

Tgt Ion	Resp	Lower	Upper
204	100		
206	33.1	26.6	40.0
141	61.3	40.7	61.1#



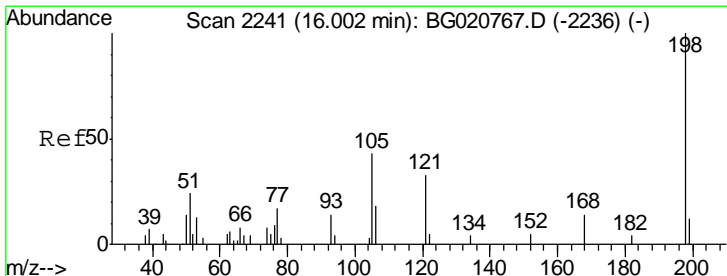
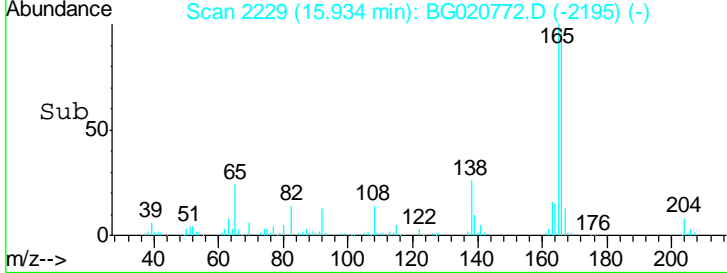
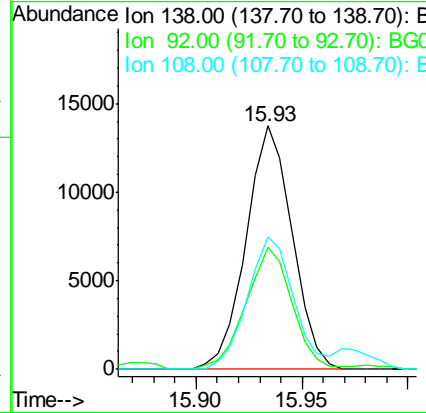
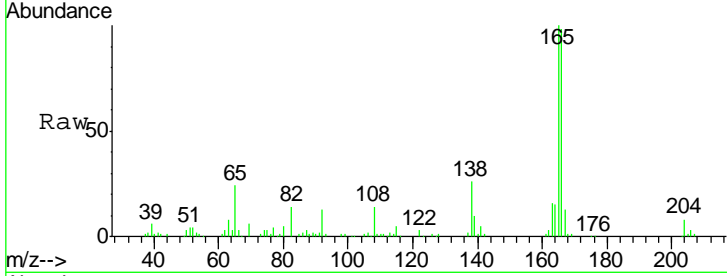


#61  
 4-Nitroaniline  
 Concen: 21.25 ng/ul  
 RT: 15.93 min Scan# 2229  
 Delta R.T. 0.00 min  
 Lab File: BG020772.D  
 Acq: 1 Feb 2016 14:08

Instrument :  
 BNA\_G  
 ClientSampled :  
 SSTD02009

Tgt Ion:138 Resp: 20809

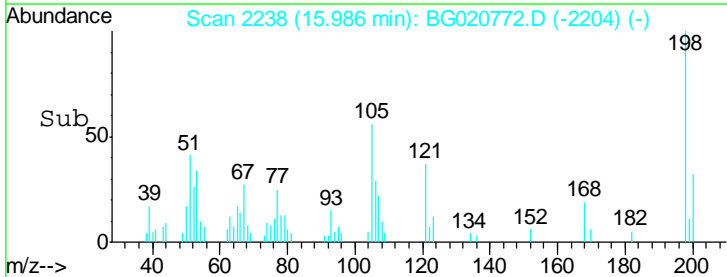
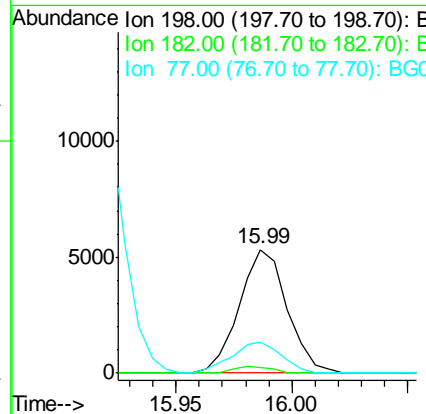
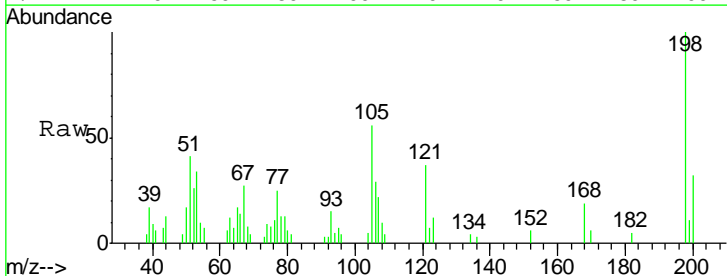
Ion	Ratio	Lower	Upper
138	100		
92	49.9	38.2	57.4
108	54.1	70.0	105.0#

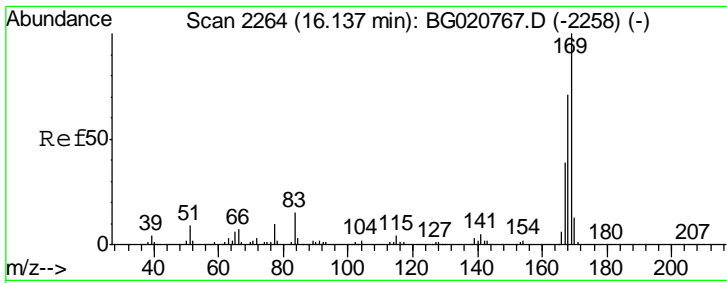


#64  
 4,6-Dinitro-2-methylphenol  
 Concen: 18.01 ng/ul  
 RT: 15.99 min Scan# 2238  
 Delta R.T. 0.00 min  
 Lab File: BG020772.D  
 Acq: 1 Feb 2016 14:08

Tgt Ion:198 Resp: 7698

Ion	Ratio	Lower	Upper
198	100		
182	4.6	3.5	5.3
77	25.2	18.2	27.4

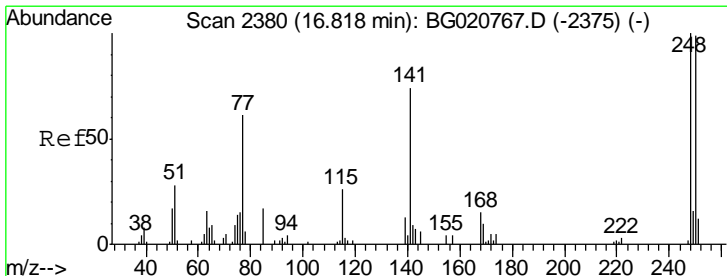
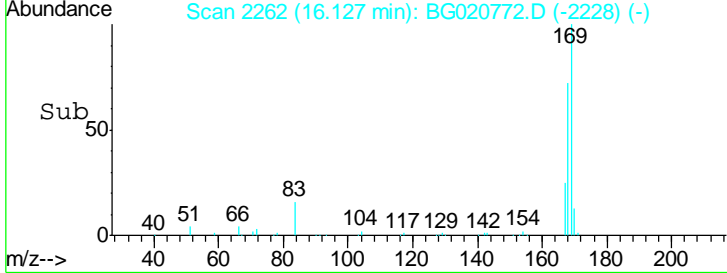
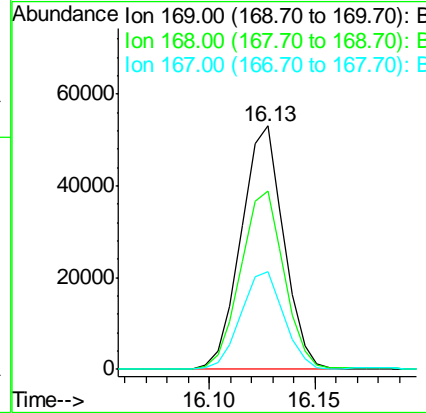
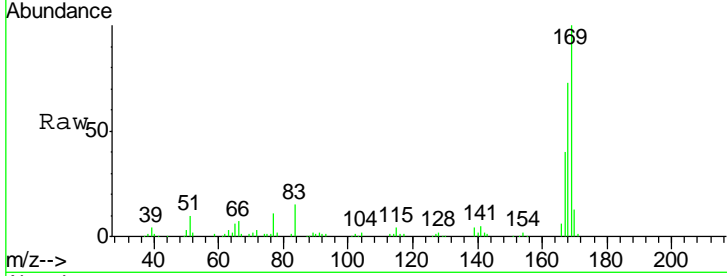




#65  
 N-Nitrosodiphenylamine  
 Concen: 20.30 ng/ul  
 RT: 16.13 min Scan# 2262  
 Delta R.T. 0.00 min  
 Lab File: BG020772.D  
 Acq: 1 Feb 2016 14:08

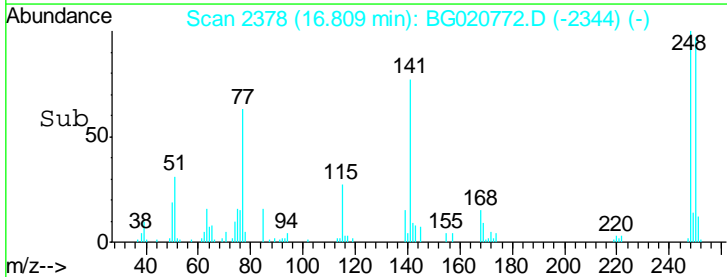
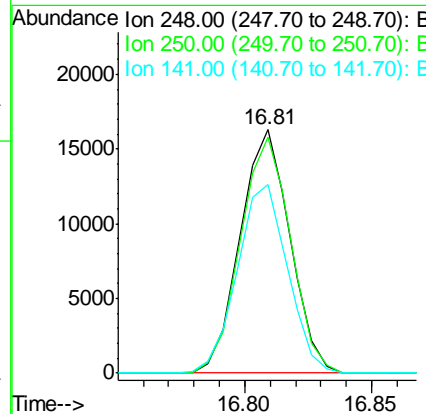
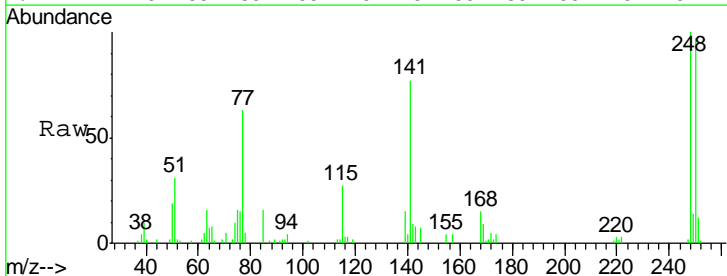
Instrument :  
 BNA\_G  
 ClientSampled :  
 SSTD02009

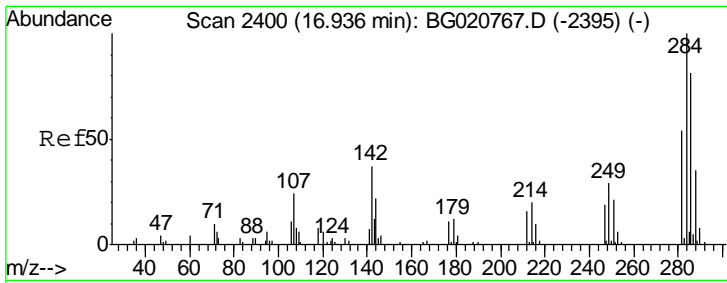
Tgt Ion	Resp	Lower	Upper
169	100		
168	73.1	53.8	80.8
167	40.0	29.5	44.3



#66  
 4-Bromophenyl-phenylether  
 Concen: 19.06 ng/ul  
 RT: 16.81 min Scan# 2378  
 Delta R.T. 0.00 min  
 Lab File: BG020772.D  
 Acq: 1 Feb 2016 14:08

Tgt Ion	Resp	Lower	Upper
248	100		
250	97.0	79.0	118.4
141	77.4	51.9	77.9

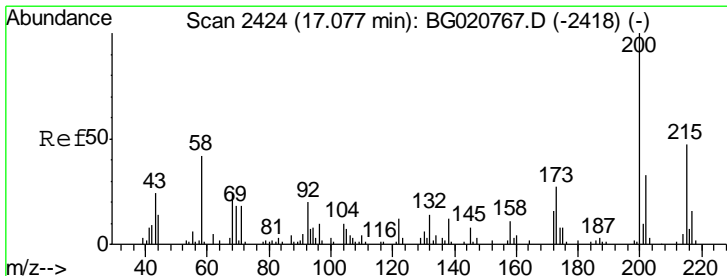
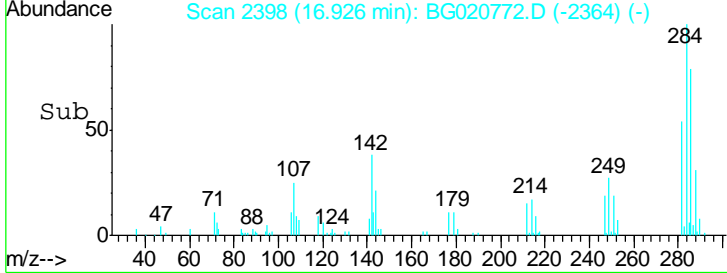
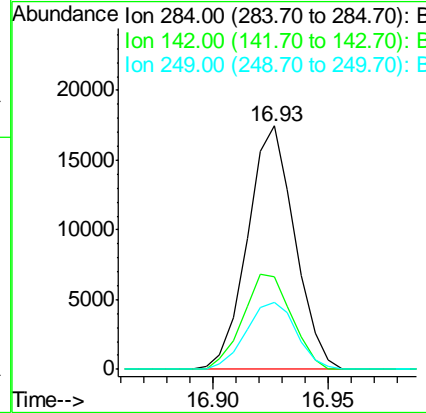
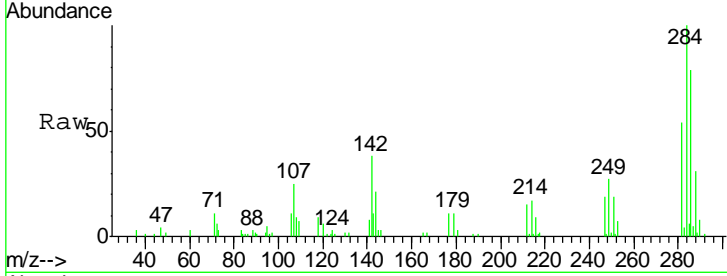




#67  
 Hexachlorobenzene  
 Concen: 19.13 ng/ul  
 RT: 16.93 min Scan# 2398  
 Delta R.T. 0.00 min  
 Lab File: BG020772.D  
 Acq: 1 Feb 2016 14:08

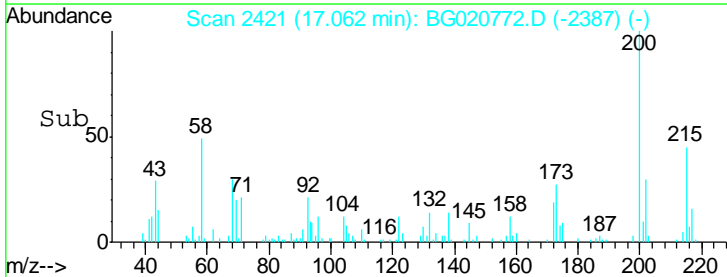
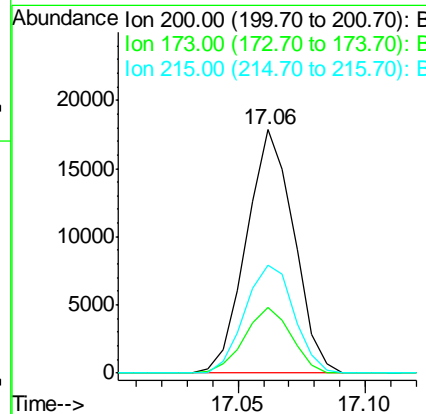
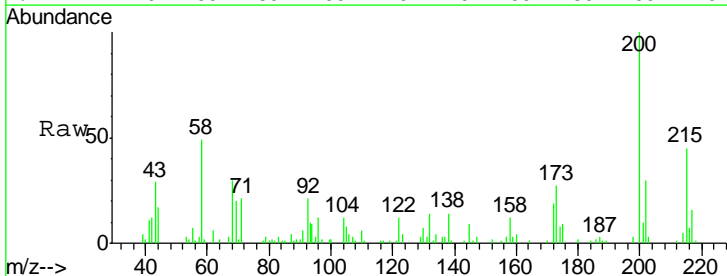
Instrument :  
 BNA\_G  
 ClientSampleID :  
 SSTD02009

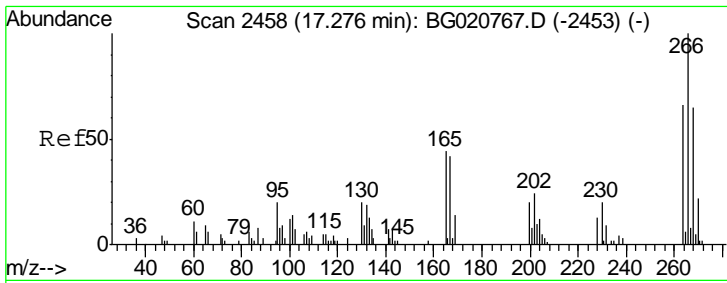
Tgt Ion	Resp	Lower	Upper
284	24825		
142	37.8	21.3	31.9#
249	27.3	26.3	39.5



#68  
 Atrazine  
 Concen: 19.32 ng/ul  
 RT: 17.06 min Scan# 2421  
 Delta R.T. 0.00 min  
 Lab File: BG020772.D  
 Acq: 1 Feb 2016 14:08

Tgt Ion	Resp	Lower	Upper
200	23297		
173	26.9	20.6	31.0
215	44.6	39.8	59.6

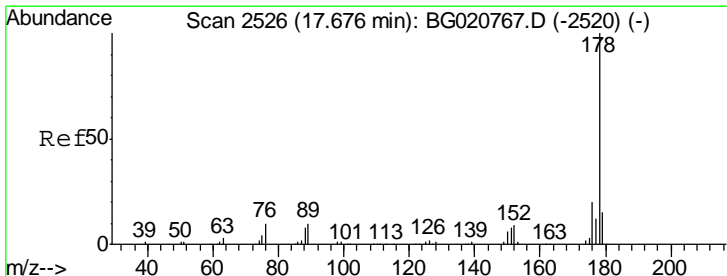
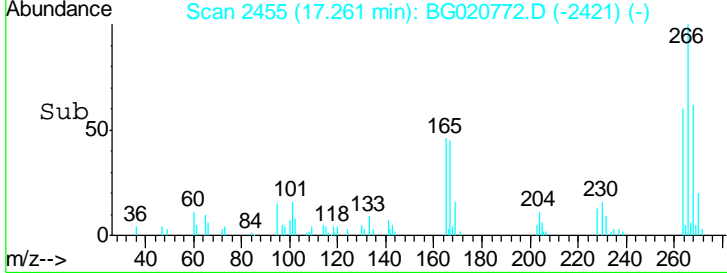
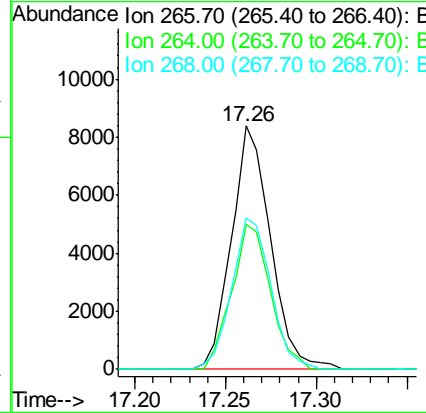
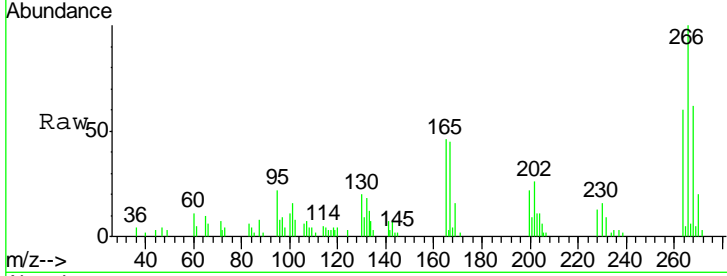




#69  
 Pentachlorophenol  
 Concen: 16.89 ng/ul  
 RT: 17.26 min Scan# 2455  
 Delta R.T. 0.00 min  
 Lab File: BG020772.D  
 Acq: 1 Feb 2016 14:08

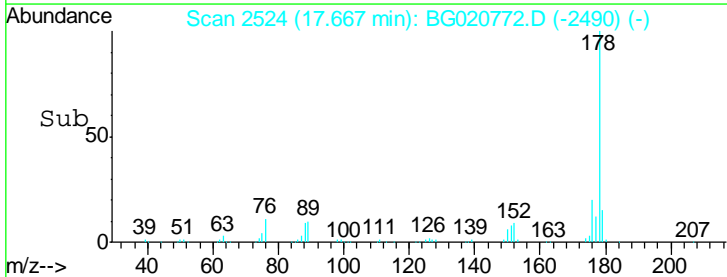
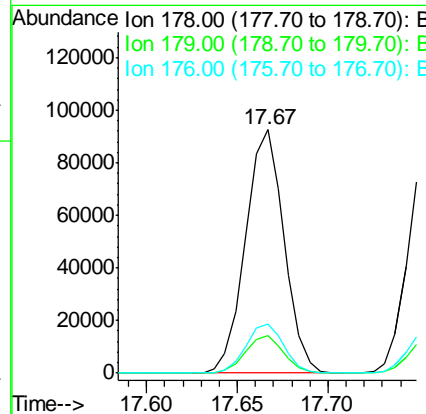
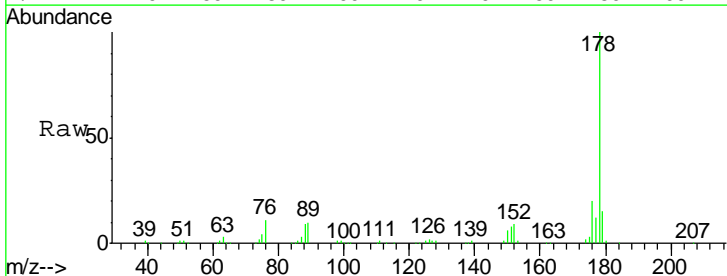
Instrument :  
 BNA\_G  
 ClientSampleID :  
 SSTD02009

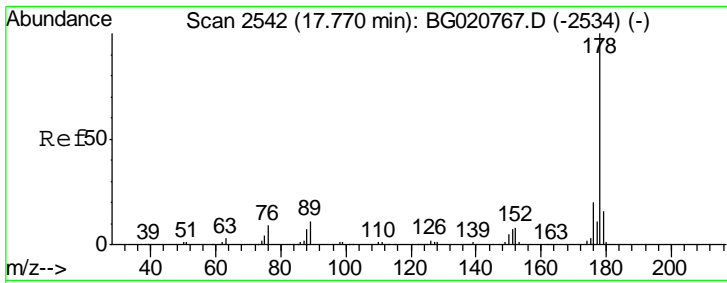
Tgt Ion	Resp	Lower	Upper
266	12593		
264	59.7	48.2	72.4
268	61.9	52.3	78.5



#70  
 Phenanthrene  
 Concen: 19.97 ng/ul  
 RT: 17.67 min Scan# 2524  
 Delta R.T. 0.00 min  
 Lab File: BG020772.D  
 Acq: 1 Feb 2016 14:08

Tgt Ion	Resp	Lower	Upper
178	137261		
179	15.2	12.3	18.5
176	20.0	15.4	23.0

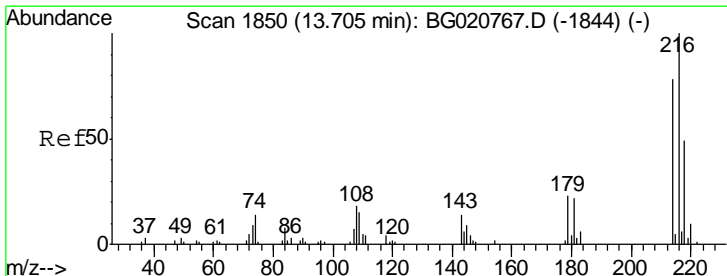
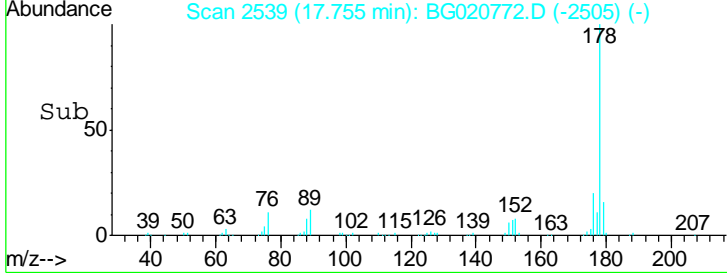
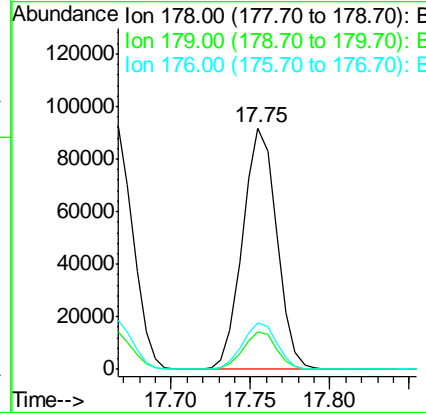
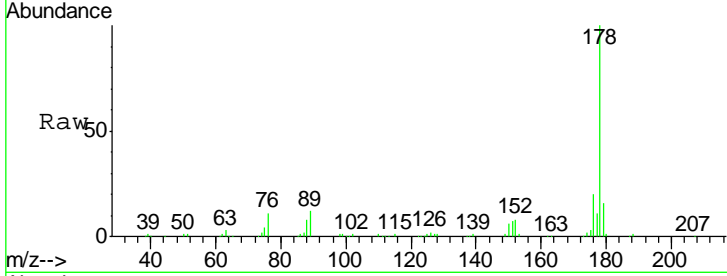




#72  
 Anthracene  
 Concen: 19.99 ng/uL  
 RT: 17.75 min Scan# 2539  
 Delta R.T. 0.00 min  
 Lab File: BG020772.D  
 Acq: 1 Feb 2016 14:08

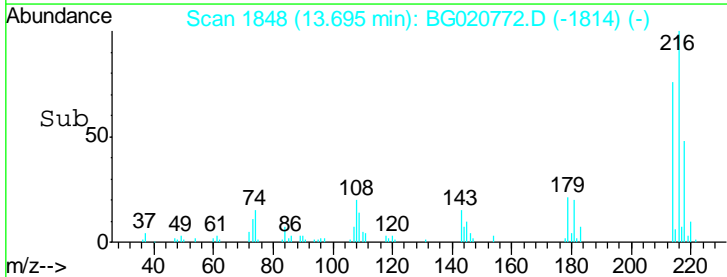
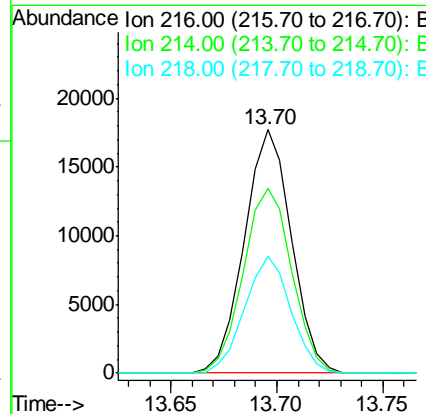
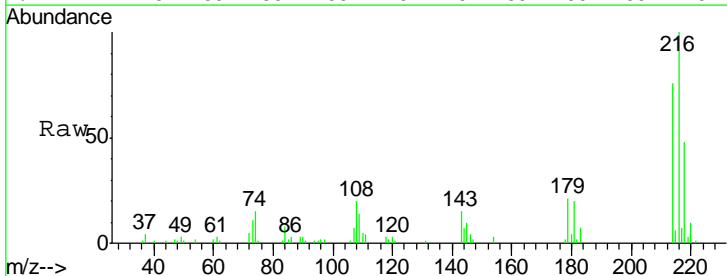
Instrument :  
 BNA\_G  
 ClientSampleID :  
 SSTD02009

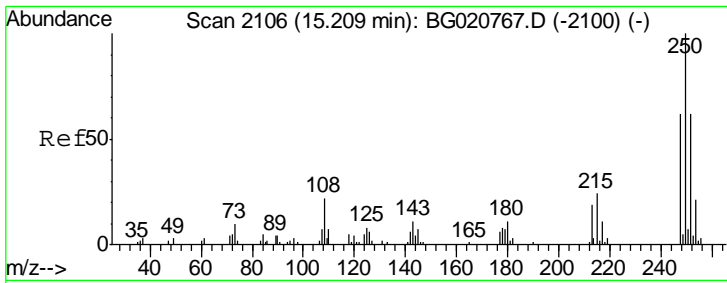
Tgt Ion	Resp	Lower	Upper
178	137397		
179	15.8	13.4	20.2
176	19.5	15.4	23.0



#73  
 1,2,3,4-Tetrachlorobenzene  
 Concen: 21.06 ng/uL  
 RT: 13.70 min Scan# 1848  
 Delta R.T. 0.00 min  
 Lab File: BG020772.D  
 Acq: 1 Feb 2016 14:08

Tgt Ion	Resp	Lower	Upper
216	27356		
214	76.1	64.1	96.1
218	47.8	39.4	59.0

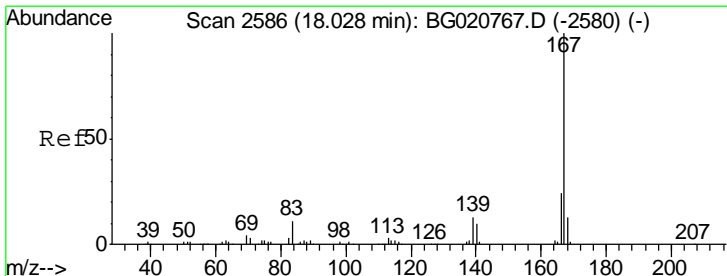
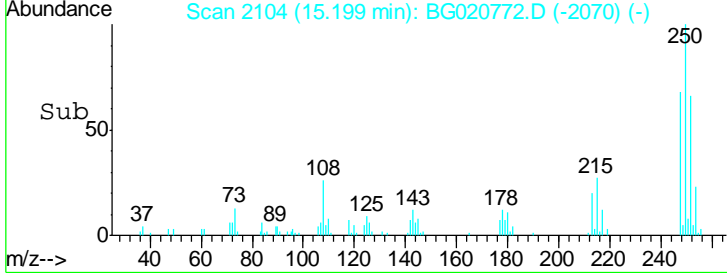
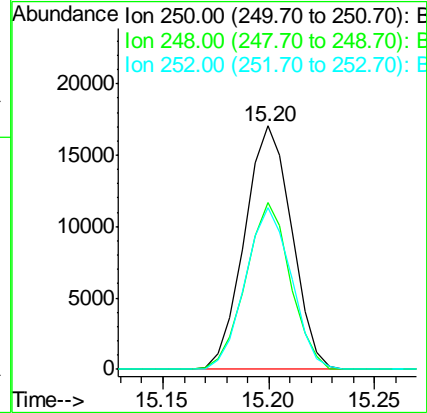
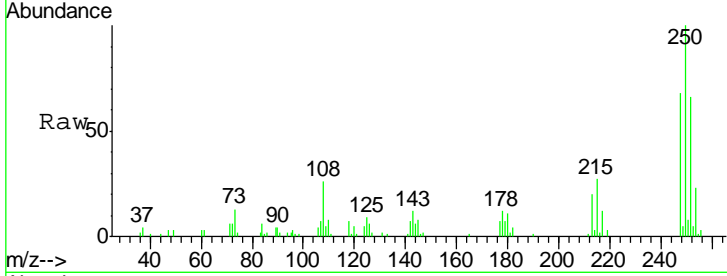




#74  
 Pentachlorobenzene  
 Concen: 19.71 ng/uL  
 RT: 15.20 min Scan# 2104  
 Delta R.T. 0.00 min  
 Lab File: BG020772.D  
 Acq: 1 Feb 2016 14:08

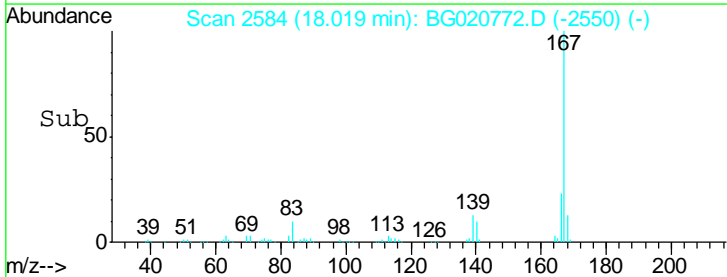
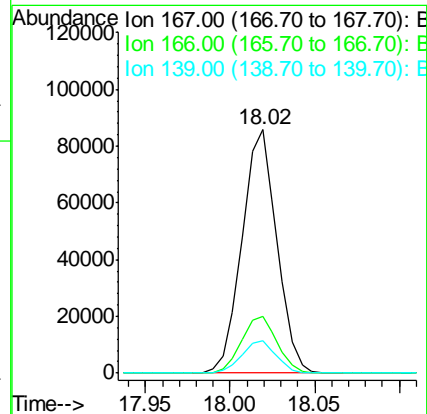
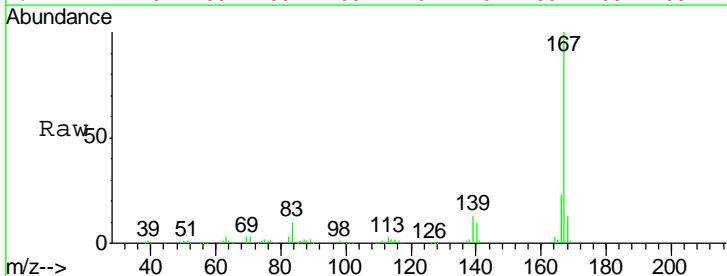
Instrument :  
 BNA\_G  
 ClientSampled :  
 SST02009

Tgt Ion	Resp	Lower	Upper
250	100		
248	68.3	51.4	77.2
252	66.2	49.8	74.6

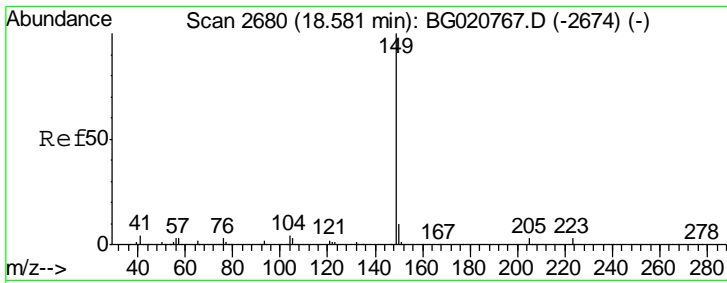


#75  
 Carbazole  
 Concen: 20.24 ng/uL  
 RT: 18.02 min Scan# 2584  
 Delta R.T. 0.00 min  
 Lab File: BG020772.D  
 Acq: 1 Feb 2016 14:08

Tgt Ion	Resp	Lower	Upper
167	100		
166	23.3	17.0	25.4
139	13.3	9.1	13.7



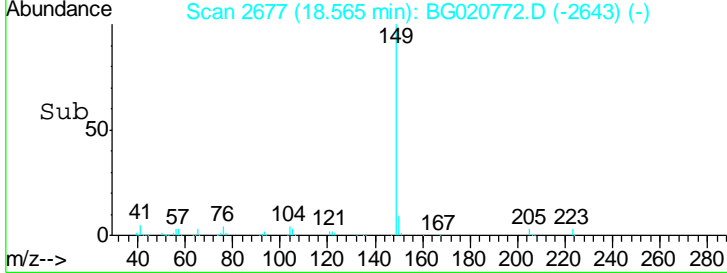
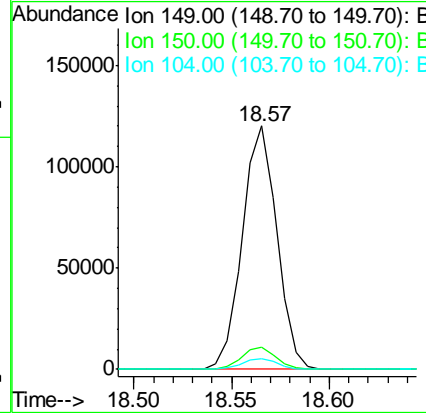
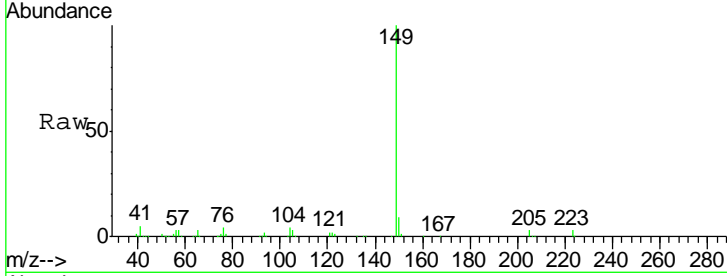




#76  
 Di-n-butylphthalate  
 Concen: 20.19 ng/ul  
 RT: 18.57 min Scan# 2677  
 Delta R.T. 0.00 min  
 Lab File: BG020772.D  
 Acq: 1 Feb 2016 14:08

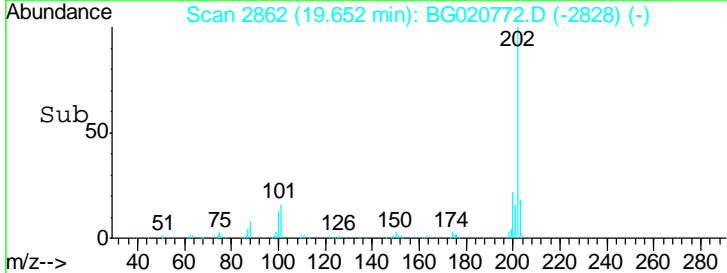
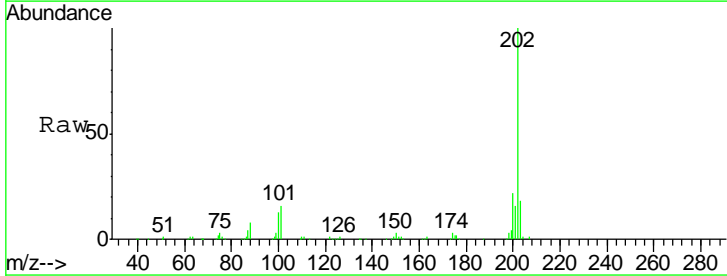
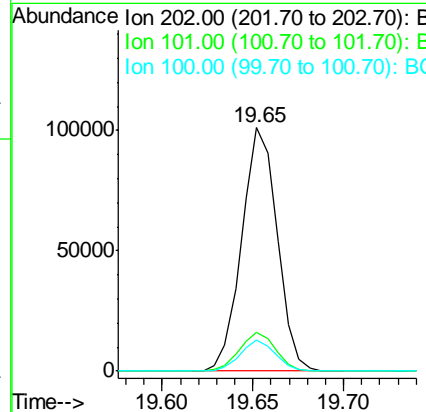
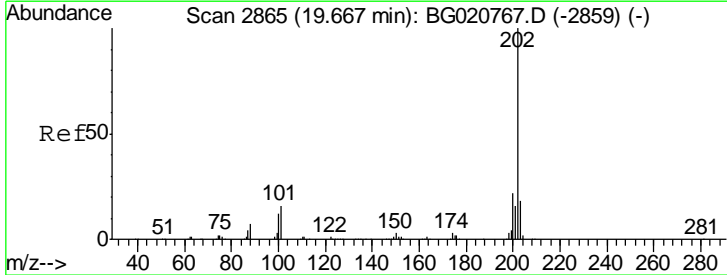
Instrument :  
 BNA\_G  
 ClientSampled :  
 SST02009

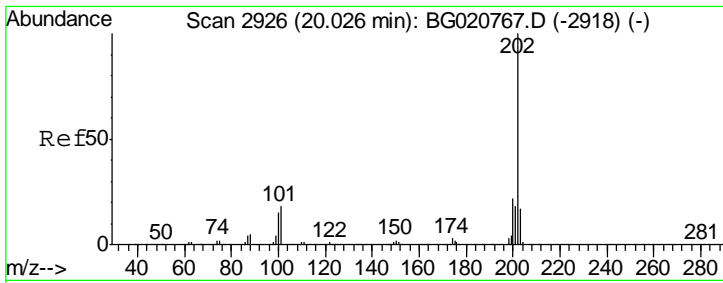
Tgt Ion	Resp	Lower	Upper
149	147425		
150	9.1	7.5	11.3
104	4.4	4.1	6.1



#77  
 Fluoranthene  
 Concen: 19.56 ng/ul  
 RT: 19.65 min Scan# 2862  
 Delta R.T. 0.00 min  
 Lab File: BG020772.D  
 Acq: 1 Feb 2016 14:08

Tgt Ion	Resp	Lower	Upper
202	138131		
101	16.2	6.1	9.1#
100	12.7	4.6	7.0#

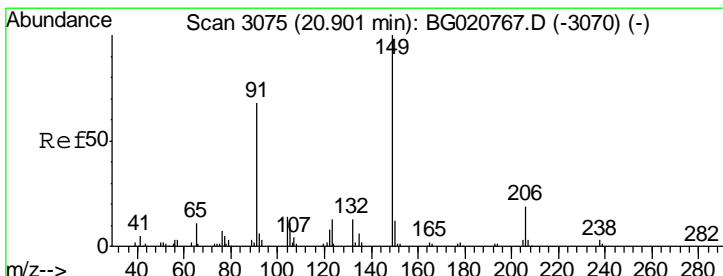
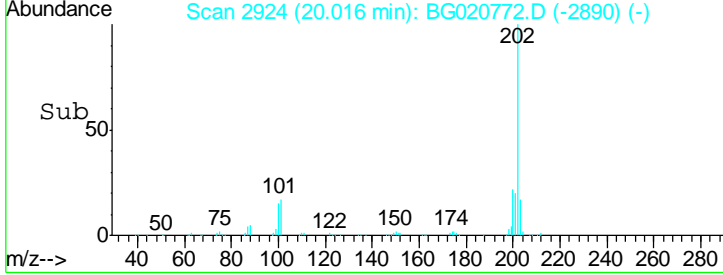
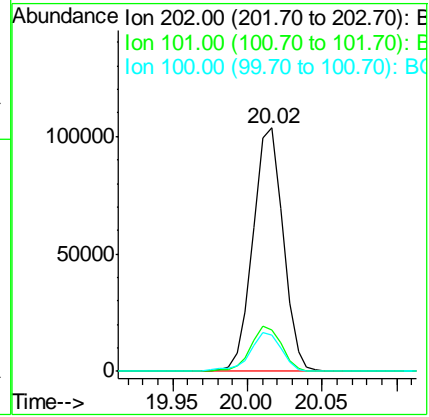
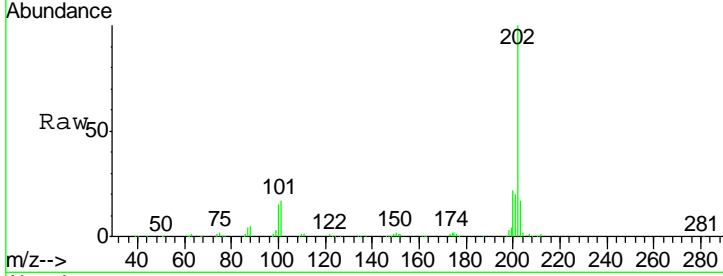




#80  
 Pyrene  
 Concen: 19.12 ng/ul  
 RT: 20.02 min Scan# 2924  
 Delta R.T. 0.00 min  
 Lab File: BG020772.D  
 Acq: 1 Feb 2016 14:08

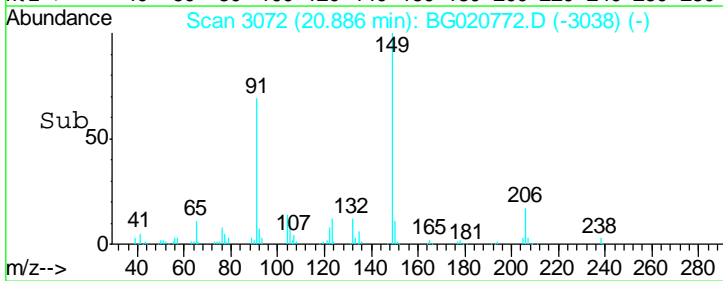
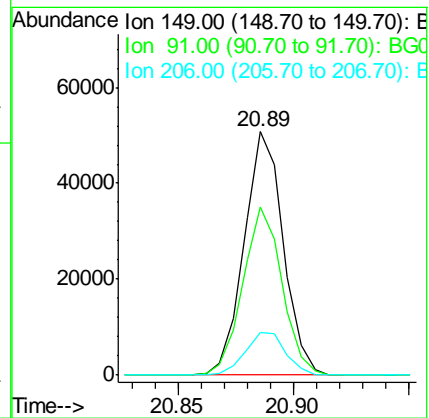
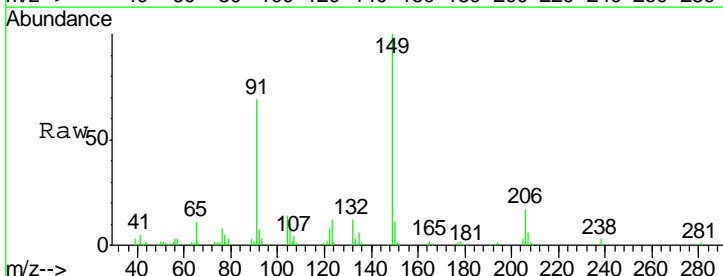
Instrument :  
 BNA\_G  
 ClientSampled :  
 SSTD02009

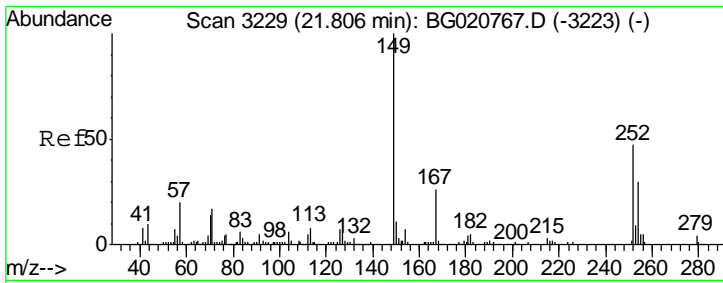
Tgt Ion	Resp	Lower	Upper
202	144829		
101	17.2	6.9	10.3#
100	15.0	5.6	8.4#



#81  
 Butylbenzylphthalate  
 Concen: 20.18 ng/ul  
 RT: 20.89 min Scan# 3072  
 Delta R.T. 0.00 min  
 Lab File: BG020772.D  
 Acq: 1 Feb 2016 14:08

Tgt Ion	Resp	Lower	Upper
149	60029		
91	69.3	53.4	80.0
206	17.4	19.3	28.9#

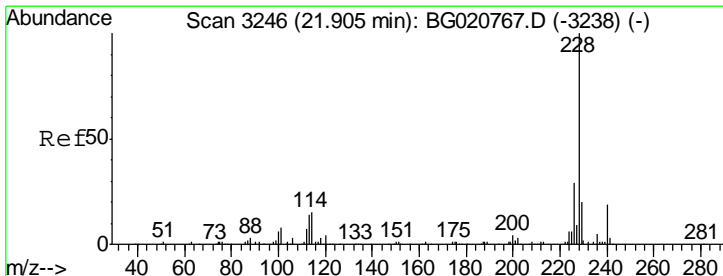
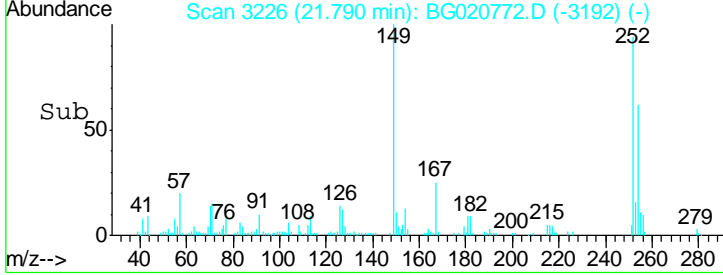
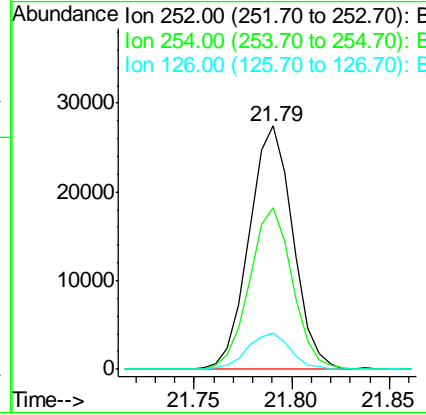
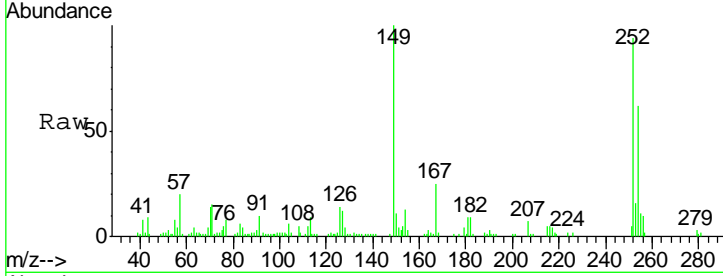




#82  
 3,3'-Dichlorobenzidine  
 Concen: 19.80 ng/ul  
 RT: 21.79 min Scan# 3226  
 Delta R.T. 0.00 min  
 Lab File: BG020772.D  
 Acq: 1 Feb 2016 14:08

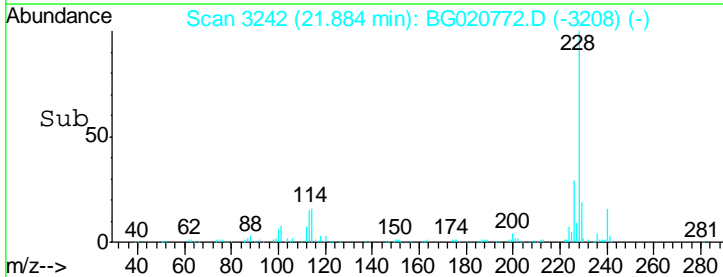
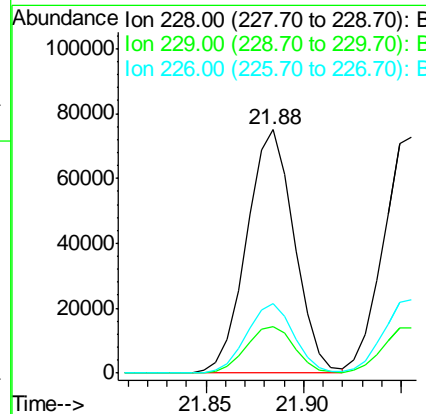
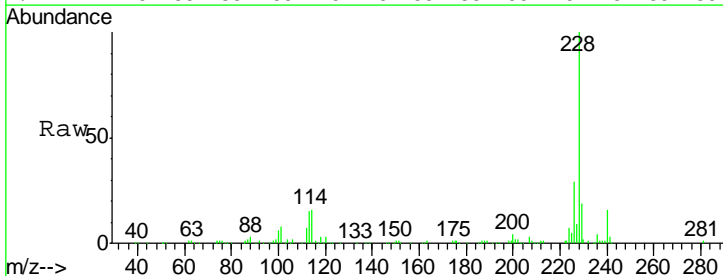
Instrument :  
 BNA\_G  
 ClientSampled :  
 SST02009

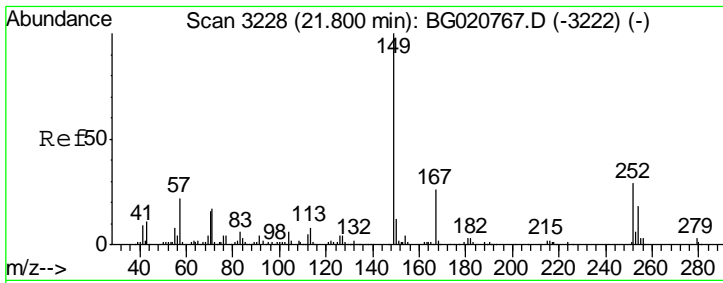
Tgt Ion	Resp	Lower	Upper
252	42435		
252	100		
254	66.4	52.8	79.2
126	14.9	6.9	10.3#



#83  
 Benzo(a)anthracene  
 Concen: 19.61 ng/ul  
 RT: 21.88 min Scan# 3242  
 Delta R.T. 0.00 min  
 Lab File: BG020772.D  
 Acq: 1 Feb 2016 14:08

Tgt Ion	Resp	Lower	Upper
228	126551		
228	100		
229	19.1	16.0	24.0
226	28.7	21.8	32.8

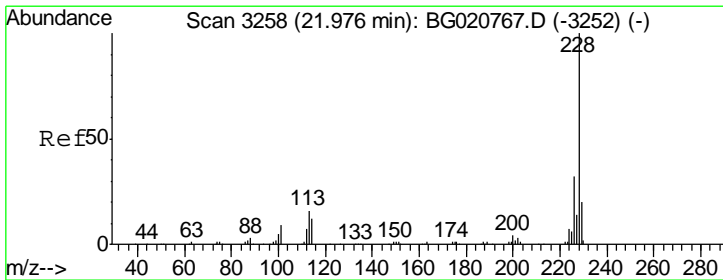
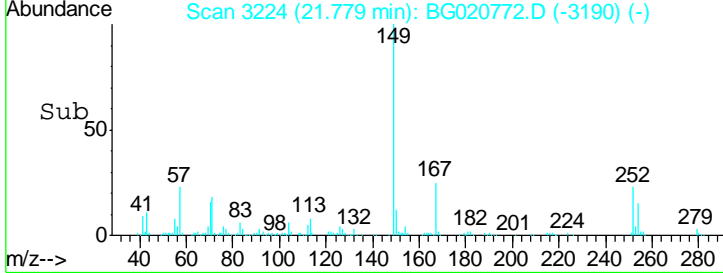
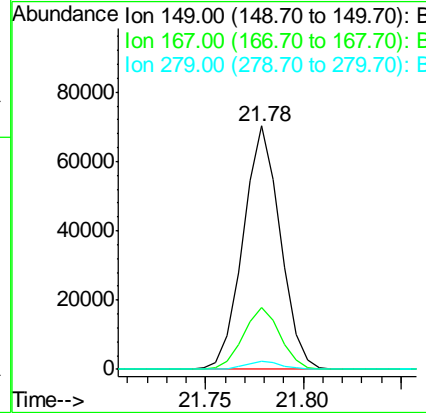
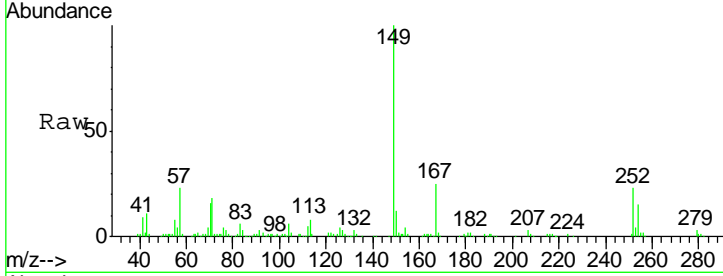




#84  
 Bis(2-ethylhexyl)phthalate  
 Concen: 20.11 ng/ul  
 RT: 21.78 min Scan# 3224  
 Delta R.T. 0.00 min  
 Lab File: BG020772.D  
 Acq: 1 Feb 2016 14:08

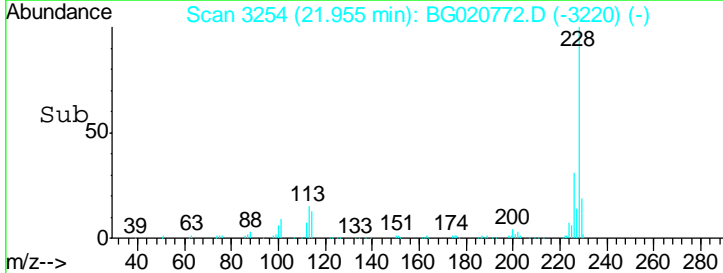
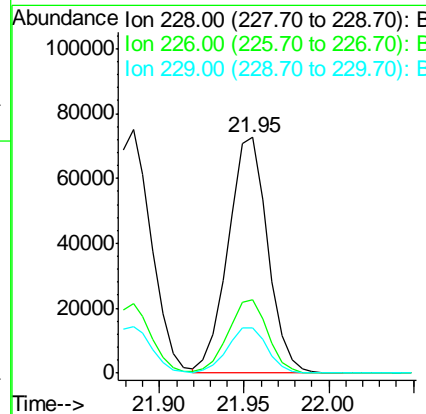
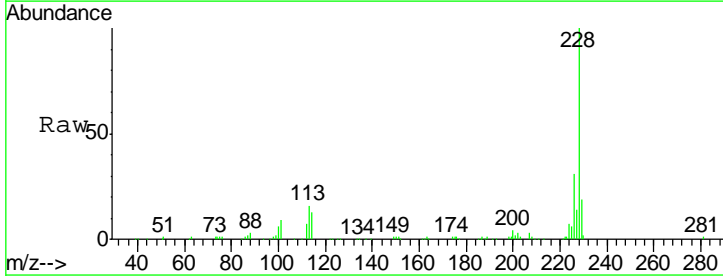
Instrument :  
 BNA\_G  
 ClientSampleID :  
 SSTD02009

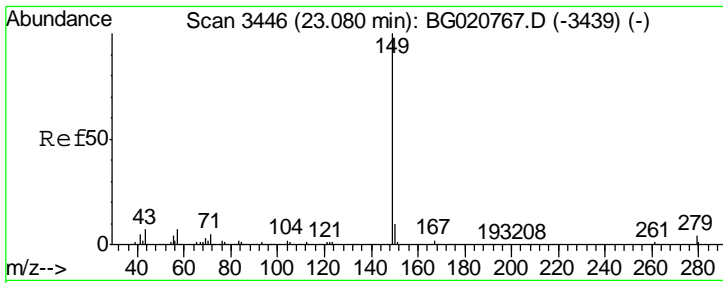
Tgt Ion	Resp	Lower	Upper
149	100		
167	25.4	23.0	34.6
279	3.2	4.3	6.5#



#85  
 Chrysene  
 Concen: 19.74 ng/ul  
 RT: 21.95 min Scan# 3254  
 Delta R.T. 0.00 min  
 Lab File: BG020772.D  
 Acq: 1 Feb 2016 14:08

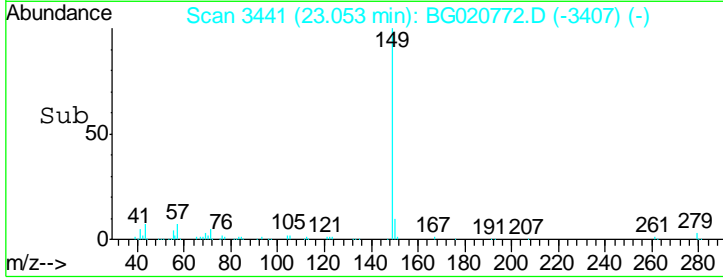
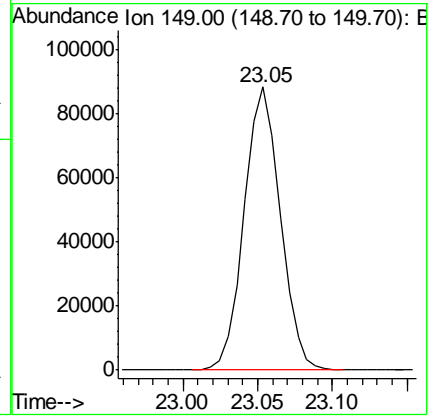
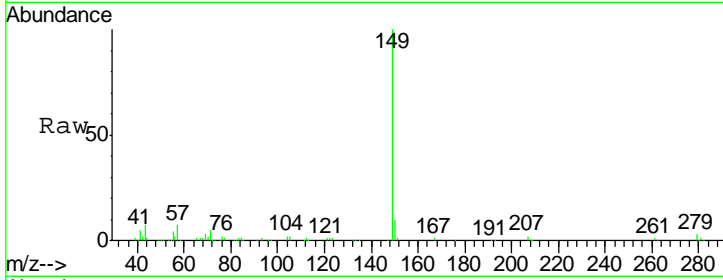
Tgt Ion	Resp	Lower	Upper
228	100		
226	31.1	24.1	36.1
229	19.3	16.0	24.0





#87  
 Di-n-octyl phthalate  
 Concen: 19.97 ng/ul  
 RT: 23.05 min Scan# 3441  
 Delta R.T. 0.00 min  
 Lab File: BG020772.D  
 Acq: 1 Feb 2016 14:08  
 Tgt Ion:149 Resp: 148175

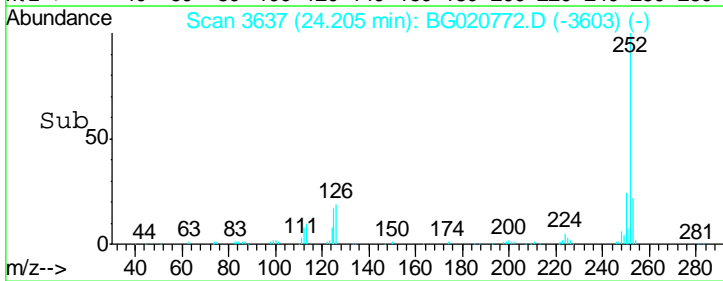
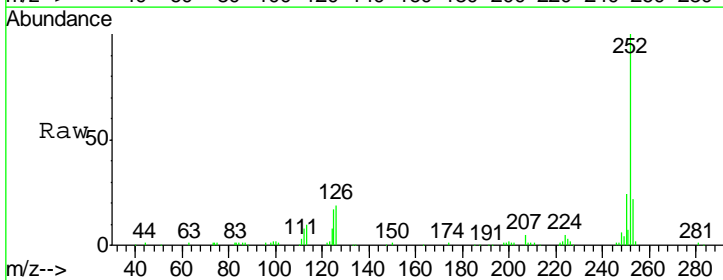
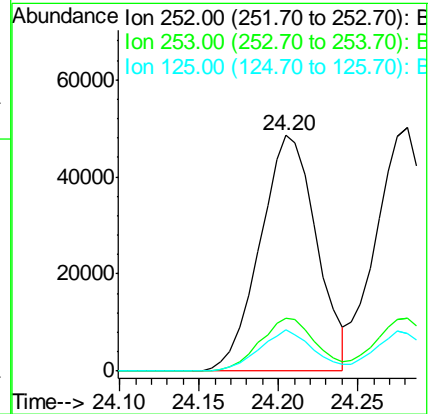
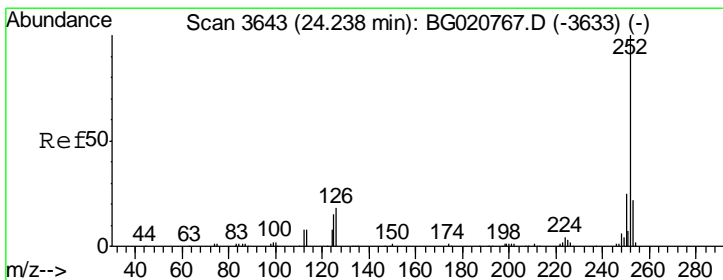
Instrument :  
 BNA\_G  
 ClientSampleId :  
 SSTD02009

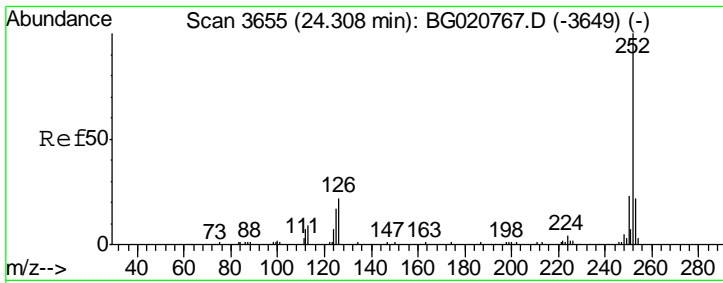


#88  
 Benzo(b)fluoranthene  
 Concen: 19.96 ng/ul  
 RT: 24.20 min Scan# 3637  
 Delta R.T. 0.00 min  
 Lab File: BG020772.D  
 Acq: 1 Feb 2016 14:08

Tgt Ion:252 Resp: 120204

Ion	Ratio	Lower	Upper
252	100		
253	22.3	17.4	26.0
125	17.5	4.9	7.3#

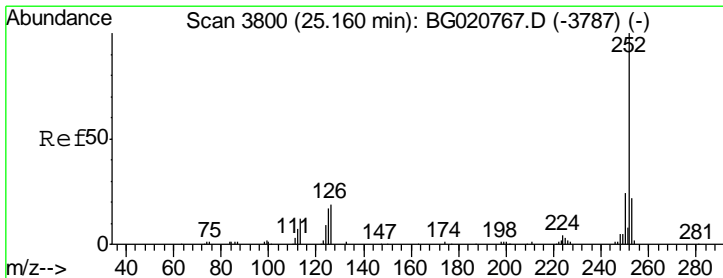
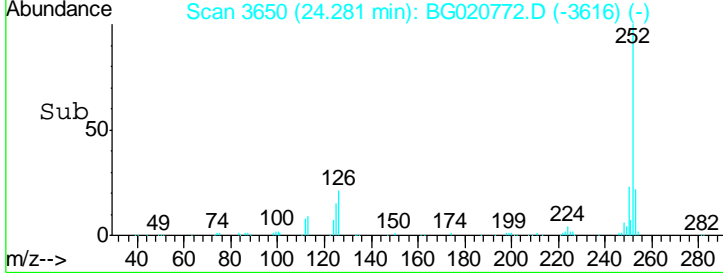
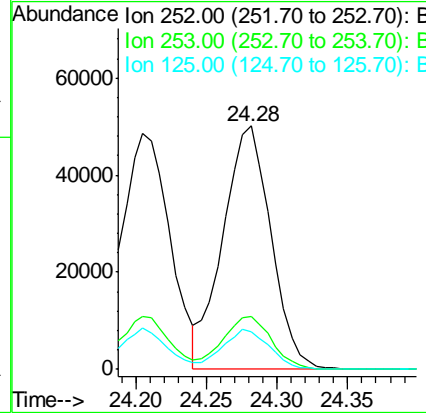
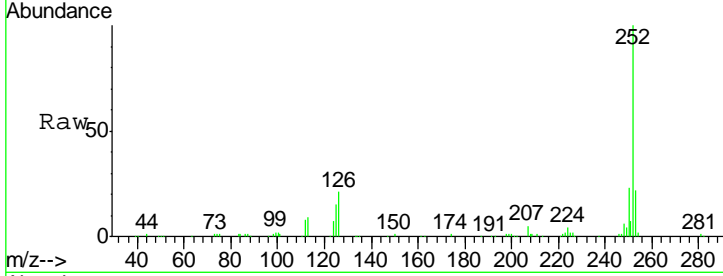




#89  
 Benzo(k)fluoranthene  
 Concen: 20.18 ng/ul  
 RT: 24.28 min Scan# 3650  
 Delta R.T. 0.00 min  
 Lab File: BG020772.D  
 Acq: 1 Feb 2016 14:08

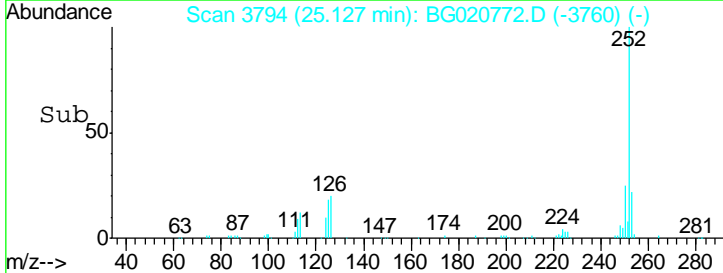
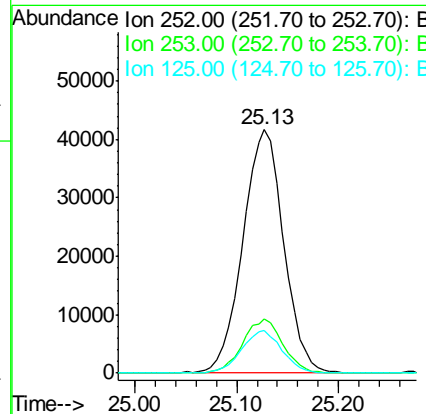
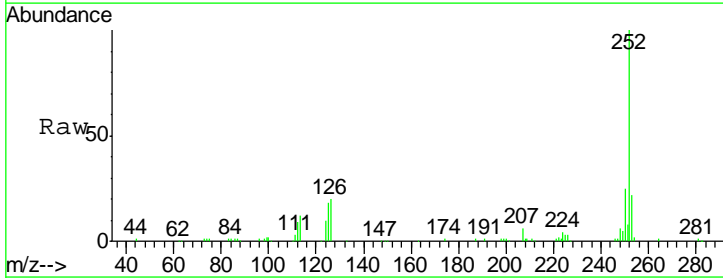
Instrument :  
 BNA\_G  
 ClientSampled :  
 SSTD02009

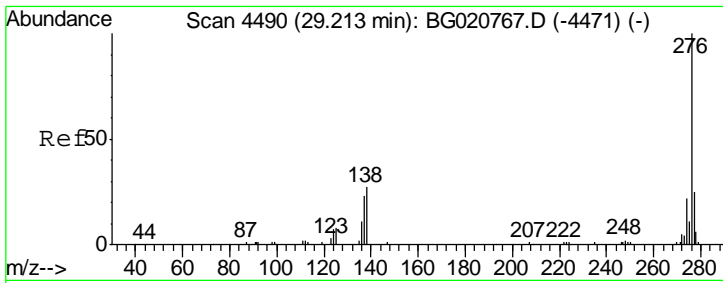
Tgt Ion	Resp	Lower	Upper
252	119073		
253	21.8	17.1	25.7
125	15.4	5.4	8.0#



#91  
 Benzo(a)pyrene  
 Concen: 20.09 ng/ul  
 RT: 25.13 min Scan# 3794  
 Delta R.T. 0.00 min  
 Lab File: BG020772.D  
 Acq: 1 Feb 2016 14:08

Tgt Ion	Resp	Lower	Upper
252	115789		
253	22.1	17.2	25.8
125	17.7	5.8	8.6#

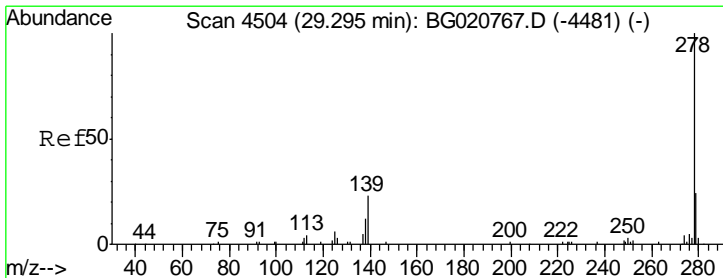
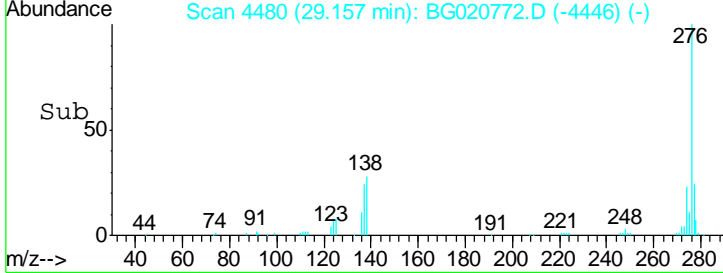
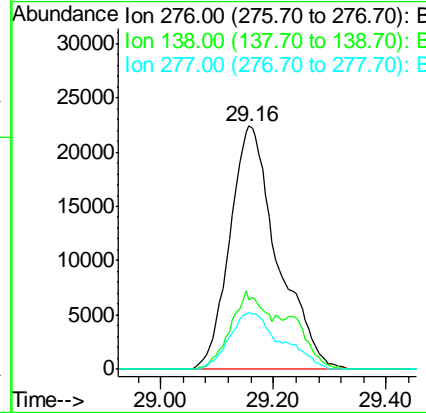
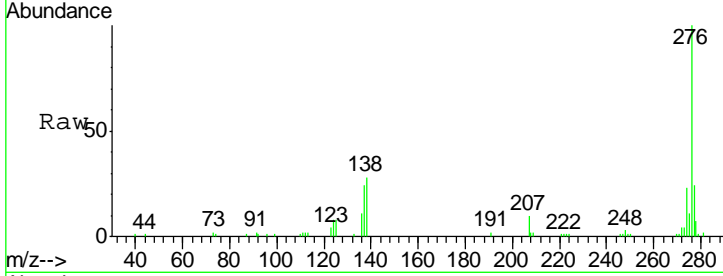




#92  
 Indeno(1,2,3-cd)pyrene  
 Concen: 19.48 ng/ul  
 RT: 29.16 min Scan# 4480  
 Delta R.T. 0.00 min  
 Lab File: BG020772.D  
 Acq: 1 Feb 2016 14:08

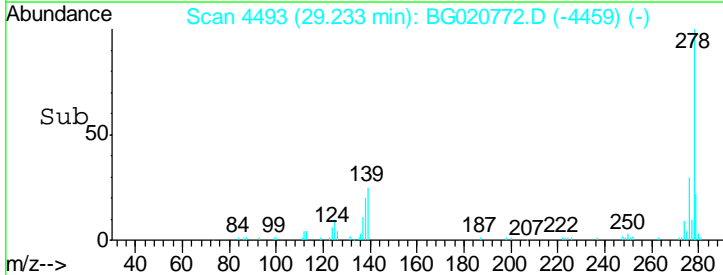
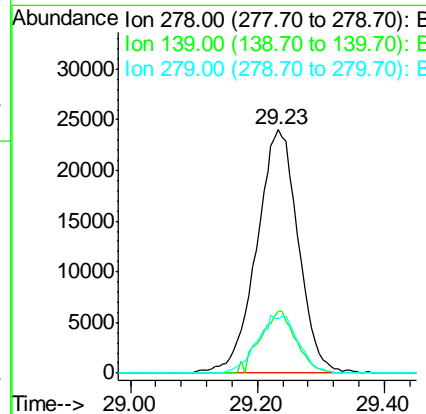
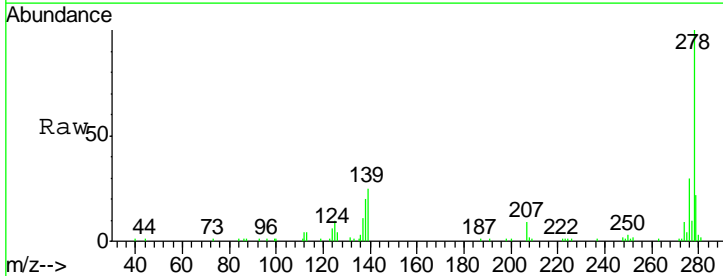
Instrument :  
 BNA\_G  
 ClientSampleID :  
 SST02009

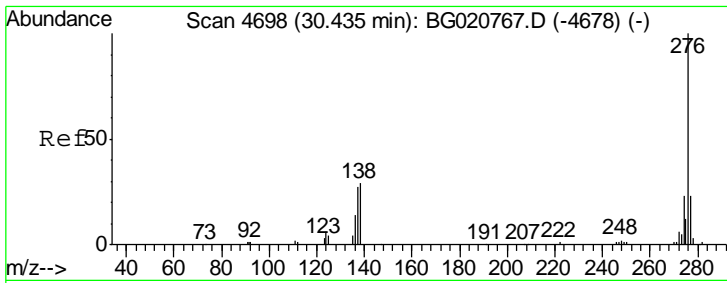
Tgt Ion	Resp	Lower	Upper
276	131248		
138	28.3	10.9	16.3#
277	23.5	18.9	28.3



#93  
 Dibenzo(a,h)anthracene  
 Concen: 19.59 ng/ul  
 RT: 29.23 min Scan# 4493  
 Delta R.T. 0.00 min  
 Lab File: BG020772.D  
 Acq: 1 Feb 2016 14:08

Tgt Ion	Resp	Lower	Upper
278	109015		
139	25.3	9.0	13.4#
279	22.4	19.1	28.7





#94  
 Benzo(g,h,i)perylene  
 Concen: 19.42 ng/ul  
 RT: 30.37 min Scan# 4686  
 Delta R.T. 0.00 min  
 Lab File: BG020772.D  
 Acq: 1 Feb 2016 14:08

Instrument :  
 BNA\_G  
 ClientSampleId :  
 SSTD02009

Tgt Ion	Resp	Lower	Upper
276	107368		
138	32.1	11.2	16.8#
277	23.6	19.0	28.6

