

Data Path : Z:\HPCHEM1\BNA\_G\DATA\BG020116\  
 Data File : BG020780.D  
 Acq On : 1 Feb 2016 21:13  
 Operator : SJ/IZ  
 Sample : SSTDCCC020EC  
 Misc :  
 ALS Vial : 2 Sample Multiplier: 1

Instrument :  
 BNA\_G  
 ClientSampleId :  
 SSTD02011

Quant Time: Feb 02 02:46:02 2016  
 Quant Method : Z:\HPCHEM1\BNA\_G\METHODS\SOM02.2-EPA-BG012716.M  
 Quant Title : SVOA CALIBRATION  
 QLast Update : Tue Feb 02 02:40:28 2016  
 Response via : Initial Calibration

Internal Standards	R.T.	QIon	Response	Conc	Units	Dev(Min)
1) 1,4-Dichlorobenzene-d4	8.28	152	14880	20.00	ng/ul	0.00
18) Naphthalene-d8	11.10	136	75314	20.00	ng/ul	0.00
36) Acenaphthene-d10	14.89	164	45629	20.00	ng/ul	0.00
62) Phenanthrene-d10	17.62	188	102507	20.00	ng/ul	0.00
78) Chrysene-d12	21.90	240	98051	20.00	ng/ul	0.00
86) Perylene-d12	25.28	264	91939	20.00	ng/ul	0.00

## System Monitoring Compounds

3) 1,4-Dioxane-d8	3.62	96	2619	8.44	ng/uL	0.00
5) Phenol-d5	7.41	99	26440	17.36	ng/ul	0.00
7) Bis-(2-Chloroethyl)ether-d	7.59	67	16352	20.61	ng/ul	0.00
9) 2-Chlorophenol-d4	7.80	132	20893	18.27	ng/ul	0.00
13) 4-Methylphenol-d8	8.97	113	22398	17.05	ng/ul	0.00
19) Nitrobenzene-d5	9.44	128	9397	20.45	ng/ul	0.00
22) 2-Nitrophenol-d4	10.17	143	7439	18.46	ng/ul	0.00
26) 2,4-Dichlorophenol-d3	10.71	165	19996	18.18	ng/ul	0.00
29) 4-Chloroaniline-d4	11.23	131	31014	20.05	ng/ul	0.00
44) Dimethylphthalate-d6	14.28	166	74998	19.24	ng/ul	0.00
47) Acenaphthylene-d8	14.59	160	93990	19.79	ng/ul	0.00
52) 4-Nitrophenol-d4	15.05	143	12813	18.58	ng/ul	0.00
58) Fluorene-d10	15.87	176	64632	18.97	ng/ul	0.00
63) 4,6-Dinitro-2-methylphenol	15.97	200	5686	16.80	ng/ul	0.00
71) Anthracene-d10	17.72	188	99908	19.82	ng/ul	0.00
79) Pyrene-d10	19.98	212	98594	18.53	ng/ul	0.00
90) Benzo(a)pyrene-d12	25.05	264	97361	19.76	ng/ul	0.00

## Target Compounds

Target Compounds	R.T.	QIon	Response	Conc	Units	Qvalue
2) 1,4-Dioxane	3.65	88	3058	7.21	ng/uL#	77
4) Benzaldehyde	7.40	77	18735	21.92	ng/ul#	81
6) Phenol	7.44	94	28862	17.87	ng/ul#	87
8) Bis(2-Chloroethyl)ether	7.68	93	24452	20.21	ng/ul	93
10) 2-Chlorophenol	7.84	128	22470	18.90	ng/ul#	89
11) 2-Methylphenol	8.71	108	22628	17.65	ng/ul	94
12) 2,2'-oxybis(1-Chloropropan	8.81	45	27482	20.56	ng/ul#	95
14) Acetophenone	9.10	105	38862	19.13	ng/ul#	91
15) N-Nitroso-di-n-propylamine	9.08	70	19432	18.92	ng/ul	95
16) 4-Methylphenol	9.03	108	25093	17.49	ng/ul	99
17) Hexachloroethane	9.38	117	8868	21.28	ng/ul#	72
20) Nitrobenzene	9.49	77	23788	22.31	ng/ul#	85
21) Isophorone	10.01	82	54842	19.49	ng/ul#	96
23) 2-Nitrophenol	10.20	139	9023	18.42	ng/ul#	78
24) 2,4-Dimethylphenol	10.24	107	26700	19.66	ng/ul	89
25) Bis(2-Chloroethoxy)methane	10.49	93	36293	20.45	ng/ul	97
27) 2,4-Dichlorophenol	10.73	162	21419	18.40	ng/ul	97
28) Naphthalene	11.16	128	83265	19.82	ng/ul	99
30) 4-Chloroaniline	11.25	127	33489	20.37	ng/ul	96
31) Hexachlorobutadiene	11.44	225	11725	20.32	ng/ul	97
32) Caprolactam	12.01	113	8244	17.36	ng/ul#	67
33) 4-Chloro-3-methylphenol	12.34	107	24736	17.83	ng/ul	95
34) 2-Methylnaphthalene	12.74	142	62558	19.35	ng/ul	98

Data Path : Z:\HPCHEM1\BNA\_G\DATA\BG020116\  
 Data File : BG020780.D  
 Acq On : 1 Feb 2016 21:13  
 Operator : SJ/IZ  
 Sample : SSTDCCC020EC  
 Misc :  
 ALS Vial : 2 Sample Multiplier: 1

Instrument :  
 BNA\_G  
 ClientSampleId :  
 SSTD02011

Quant Time: Feb 02 02:46:02 2016  
 Quant Method : Z:\HPCHEM1\BNA\_G\METHODS\SOM02.2-EPA-BG012716.M  
 Quant Title : SVOA CALIBRATION  
 QLast Update : Tue Feb 02 02:40:28 2016  
 Response via : Initial Calibration

Internal Standards	R.T.	QIon	Response	Conc	Units	Dev(Min)
35) 1-Methylnaphthalene	12.95	142	58980	19.10	ng/ul#	99
37) 1,2,4,5-Tetrachlorobenzene	13.09	216	25441	19.75	ng/ul#	94
38) Hexachlorocyclopentadiene	13.08	237	12437	18.16	ng/ul	95
39) 2,4,6-Trichlorophenol	13.33	196	15446	18.12	ng/ul	97
40) 2,4,5-Trichlorophenol	13.39	196	17790	18.78	ng/ul	99
41) 1,1'-Biphenyl	13.73	154	79797	20.07	ng/ul#	97
42) 2-Chloronaphthalene	13.78	162	57710	19.69	ng/ul	99
43) 2-Nitroaniline	13.96	65	12246	22.04	ng/ul#	80
45) Dimethylphthalate	14.33	163	77459	19.04	ng/ul#	99
46) 2,6-Dinitrotoluene	14.45	165	11698	21.63	ng/ul	97
48) Acenaphthylene	14.62	152	104216	19.86	ng/ul	97
49) 3-Nitroaniline	14.78	138	14965	20.41	ng/ul	94
50) Acenaphthene	14.95	153	73380	20.08	ng/ul	98
51) 2,4-Dinitrophenol	14.98	184	3791	15.81	ng/ul#	89
53) 4-Nitrophenol	15.06	109	8056	20.95	ng/ul#	61
54) Dibenzofuran	15.28	168	93555	19.59	ng/ul	95
55) 2,4-Dinitrotoluene	15.23	165	16938	22.24	ng/ul#	95
56) 2,3,4,6-Tetrachlorophenol	15.50	232	14070	17.20	ng/ul#	76
57) Diethylphthalate	15.68	149	84826	19.73	ng/ul	94
59) Fluorene	15.93	166	81902	19.63	ng/ul	98
60) 4-Chlorophenyl-phenylether	15.91	204	35186	19.45	ng/ul	93
61) 4-Nitroaniline	15.93	138	18904	21.30	ng/ul#	75
64) 4,6-Dinitro-2-methylphenol	15.98	198	6800	16.99	ng/ul	96
65) N-Nitrosodiphenylamine	16.13	169	68296	19.98	ng/ul	94
66) 4-Bromophenyl-phenylether	16.81	248	21126	19.33	ng/ul#	90
67) Hexachlorobenzene	16.92	284	22901	18.83	ng/ul#	85
68) Atrazine	17.06	200	21345	18.89	ng/ul	98
69) Pentachlorophenol	17.26	266	11251	16.11	ng/ul	95
70) Phenanthrene	17.66	178	129608	20.14	ng/ul	99
72) Anthracene	17.75	178	130857	20.33	ng/ul	98
73) 1,2,3,4-Tetrachlorobenzene	13.69	216	23888	19.63	ng/uL	98
74) Pentachlorobenzene	15.20	250	24256	19.37	ng/uL	98
75) Carbazole	18.02	167	116814	20.45	ng/ul	96
76) Di-n-butylphthalate	18.56	149	138009	20.18	ng/ul	99
77) Fluoranthene	19.65	202	134026	20.27	ng/ul#	78
80) Pyrene	20.01	202	139905	18.87	ng/ul#	73
81) Butylbenzylphthalate	20.88	149	55648	19.12	ng/ul#	93
82) 3,3'-Dichlorobenzidine	21.79	252	39792	18.97	ng/ul#	97
83) Benzo(a)anthracene	21.88	228	124316	19.68	ng/ul	98
84) Bis(2-ethylhexyl)phthalate	21.78	149	86890	19.28	ng/ul#	94
85) Chrysene	21.95	228	115633	19.71	ng/ul	98
87) Di-n-octyl phthalate	23.05	149	140212	18.89	ng/ul	100
88) Benzo(b)fluoranthene	24.20	252	120439	20.00	ng/ul#	91
89) Benzo(k)fluoranthene	24.27	252	116046	19.67	ng/ul#	94
91) Benzo(a)pyrene	25.12	252	115511	20.05	ng/ul#	92
92) Indeno(1,2,3-cd)pyrene	29.15	276	133019	19.75	ng/ul#	87
93) Dibenzo(a,h)anthracene	29.22	278	108907	19.57	ng/ul#	89
94) Benzo(g,h,i)perylene	30.36	276	109790	19.86	ng/ul#	82

Data Path : Z:\HPCHEM1\BNA\_G\DATA\BG020116\  
 Data File : BG020780.D  
 Acq On : 1 Feb 2016 21:13  
 Operator : SJ/IZ  
 Sample : SSTDCCC020EC  
 Misc :  
 ALS Vial : 2 Sample Multiplier: 1

**Instrument :**  
 BNA\_G  
**ClientSampleId :**  
 SSTD02011

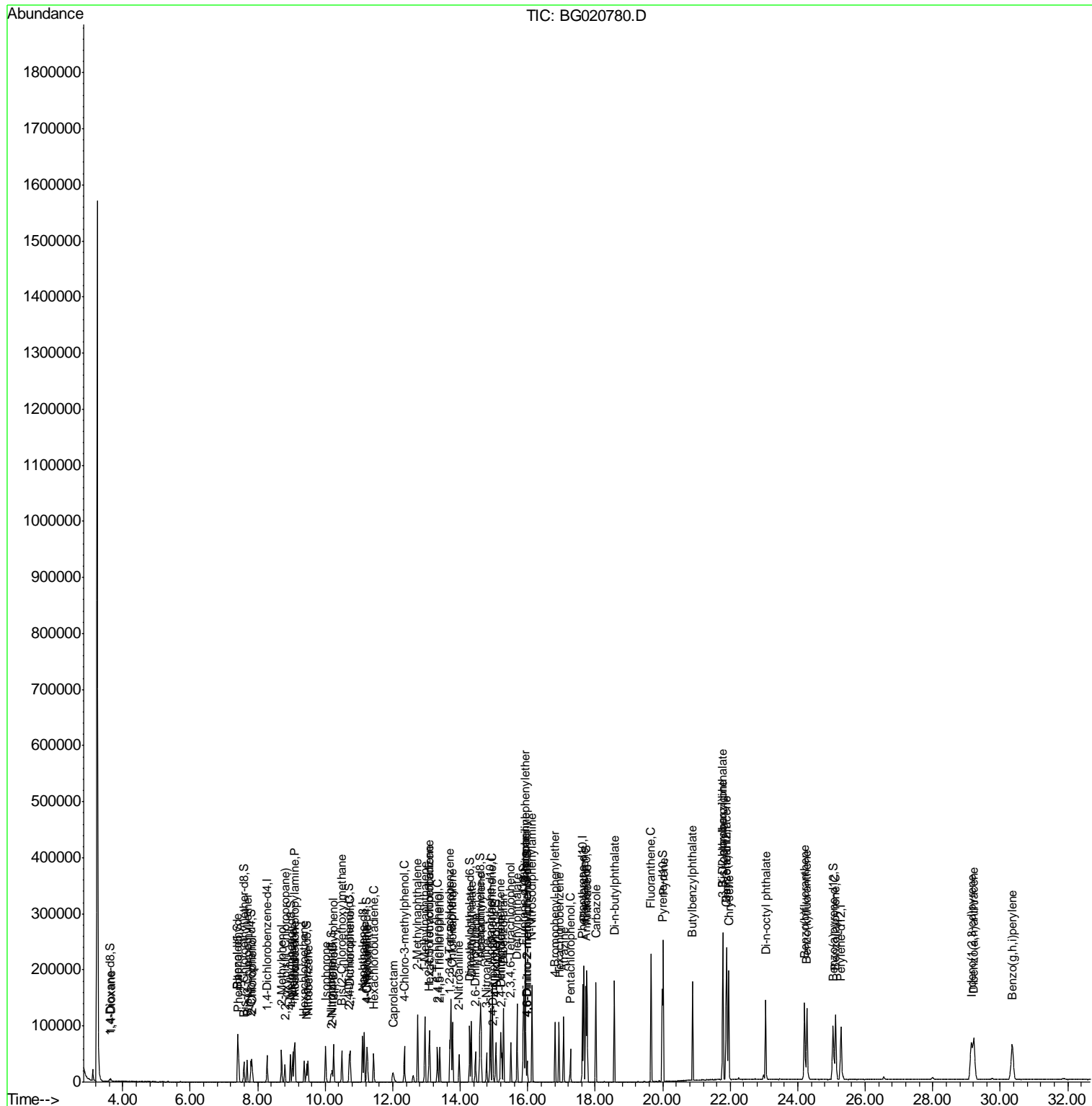
Quant Time: Feb 02 02:46:02 2016  
 Quant Method : Z:\HPCHEM1\BNA\_G\METHODS\SOM02.2-EPA-BG012716.M  
 Quant Title : SVOA CALIBRATION  
 QLast Update : Tue Feb 02 02:40:28 2016  
 Response via : Initial Calibration

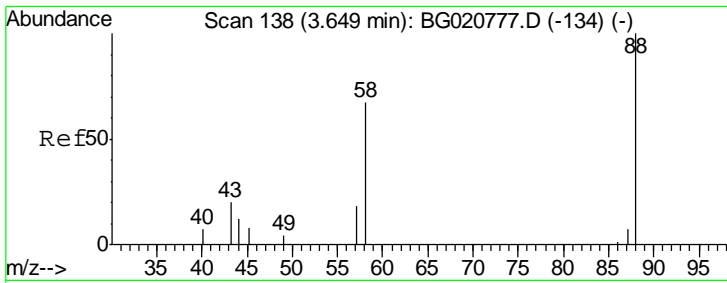
Internal Standards	R.T.	QIon	Response	Conc	Units	Dev(Min)
-----						
(#) = qualifier out of range (m) = manual integration (+) = signals summed						

Data Path : Z:\HPCHEM1\BNA\_G\DATA\BG020116\  
 Data File : BG020780.D  
 Acq On : 1 Feb 2016 21:13  
 Operator : SJ/IZ  
 Sample : SSTDCCC020EC  
 Misc :  
 ALS Vial : 2 Sample Multiplier: 1

Instrument :  
 BNA\_G  
 Client Sampled :  
 SSTD02011

Quant Time: Feb 02 02:46:02 2016  
 Quant Method : Z:\HPCHEM1\BNA\_G\METHODS\SOM02.2-EPA-BG012716.M  
 Quant Title : SVOA CALIBRATION  
 QLast Update : Tue Feb 02 02:40:28 2016  
 Response via : Initial Calibration

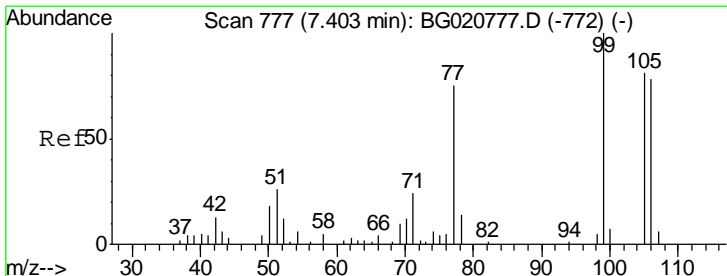
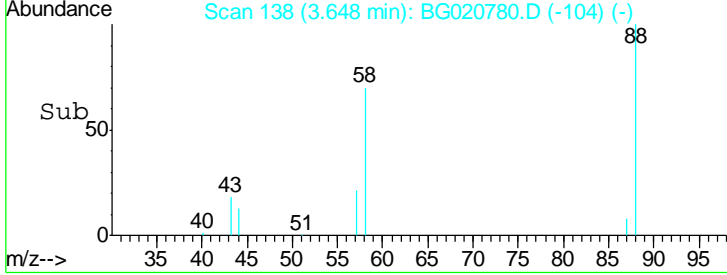
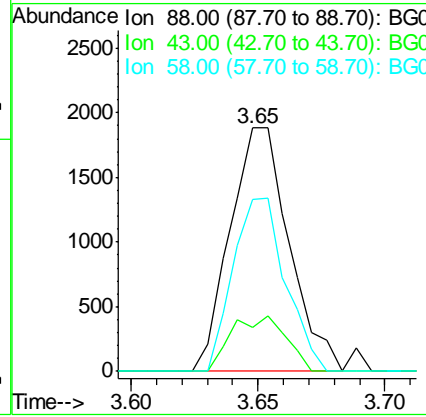
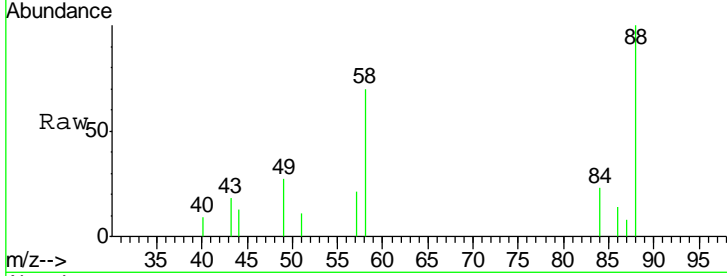




#2  
 1,4-Dioxane  
 Concen: 7.21 ng/uL  
 RT: 3.65 min Scan# 138  
 Delta R.T. -0.00 min  
 Lab File: BG020780.D  
 Acq: 1 Feb 2016 21:13

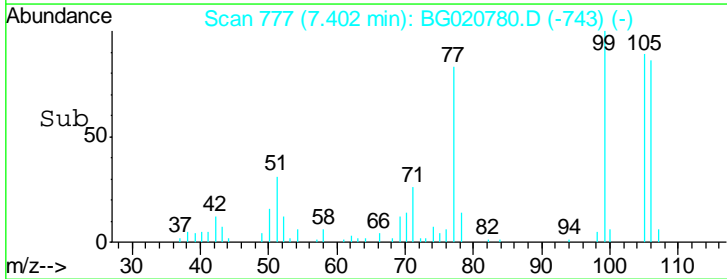
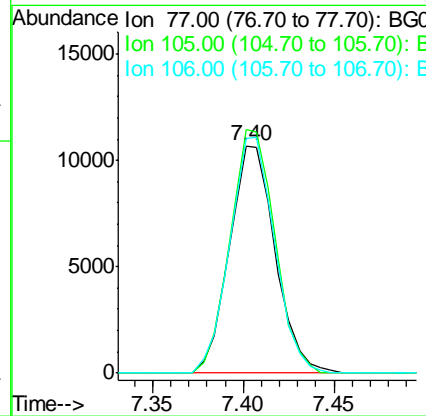
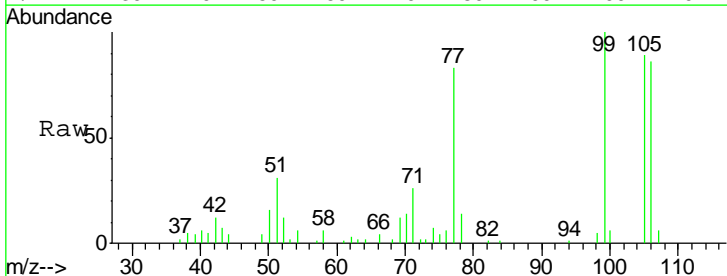
Instrument :  
 BNA\_G  
 ClientSampled :  
 SSTD02011

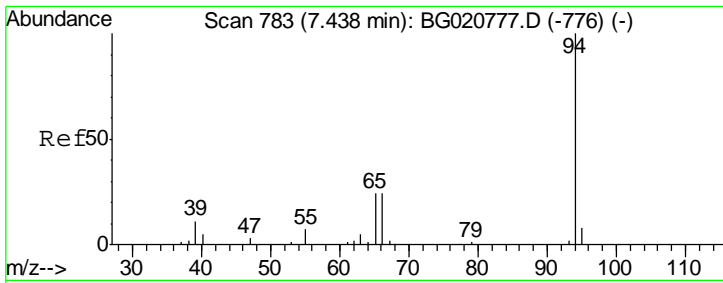
Tgt Ion	Resp	Lower	Upper
88	3058		
43	18.3	29.0	43.4#
58	70.4	45.9	68.9#



#4  
 Benzaldehyde  
 Concen: 21.92 ng/uL  
 RT: 7.40 min Scan# 777  
 Delta R.T. -0.00 min  
 Lab File: BG020780.D  
 Acq: 1 Feb 2016 21:13

Tgt Ion	Resp	Lower	Upper
77	18735		
105	107.2	71.0	106.6#
106	103.3	69.5	104.3

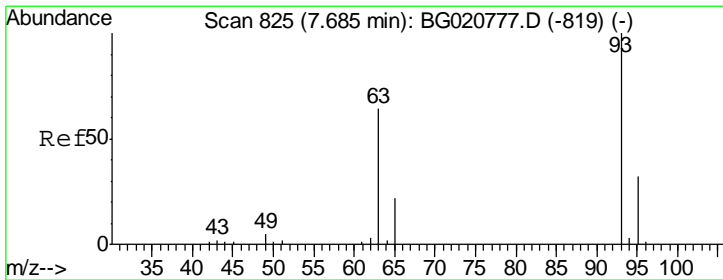
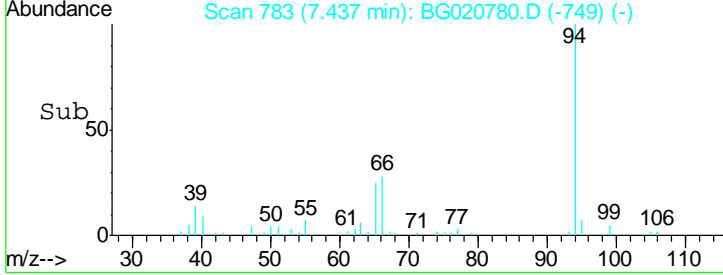
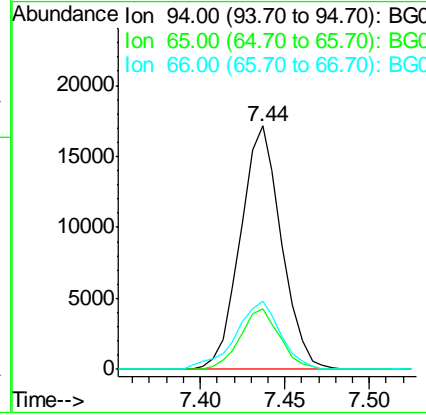
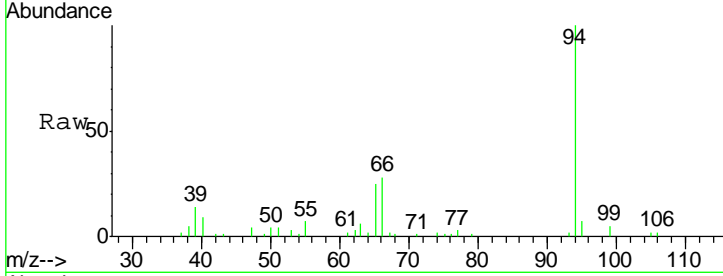




#6  
 Phenol  
 Concen: 17.87 ng/ul  
 RT: 7.44 min Scan# 783  
 Delta R.T. -0.00 min  
 Lab File: BG020780.D  
 Acq: 1 Feb 2016 21:13

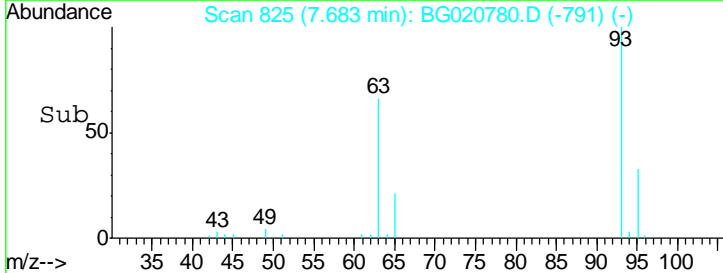
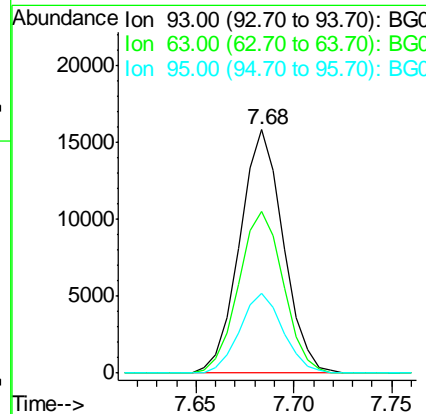
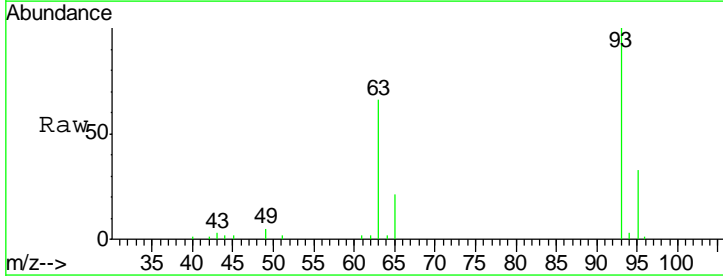
Instrument :  
 BNA\_G  
 ClientSampled :  
 SST02011

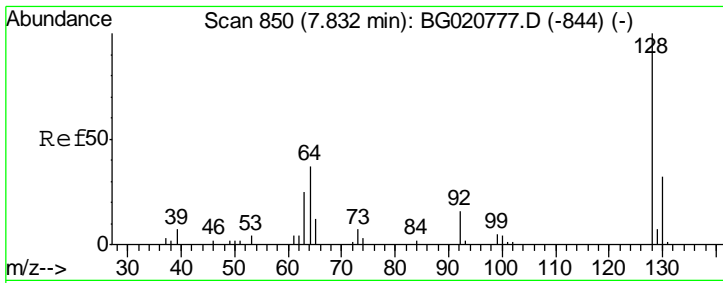
Tgt Ion	Resp	Lower	Upper
94	28862		
65	24.8	23.0	34.6
66	28.0	30.4	45.6#



#8  
 Bis(2-Chloroethyl)ether  
 Concen: 20.21 ng/ul  
 RT: 7.68 min Scan# 825  
 Delta R.T. -0.00 min  
 Lab File: BG020780.D  
 Acq: 1 Feb 2016 21:13

Tgt Ion	Resp	Lower	Upper
93	24452		
63	66.2	59.4	89.2
95	32.9	26.4	39.6

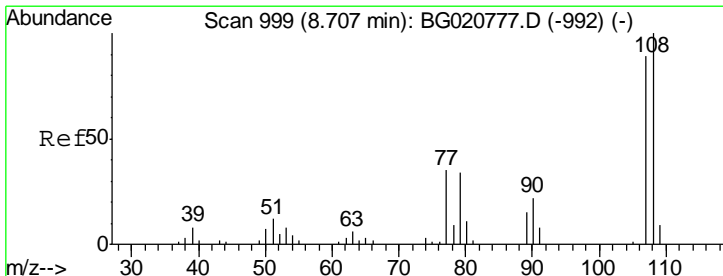
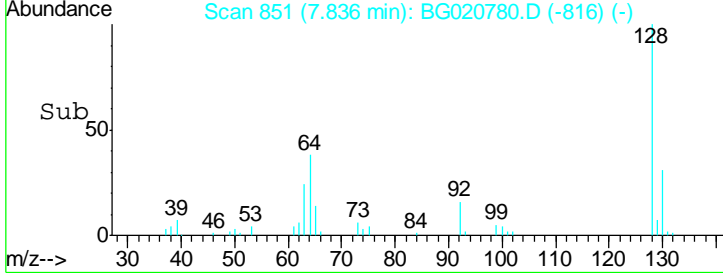
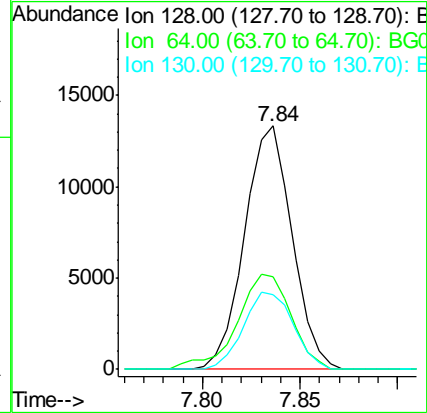
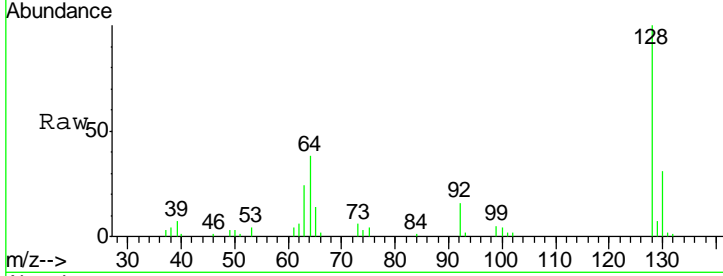




#10  
 2-Chlorophenol  
 Concen: 18.90 ng/ul  
 RT: 7.84 min Scan# 851  
 Delta R.T. 0.00 min  
 Lab File: BG020780.D  
 Acq: 1 Feb 2016 21:13

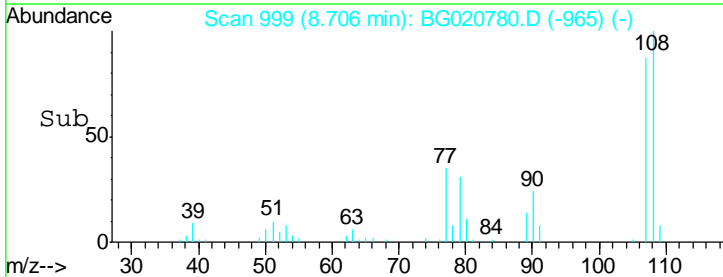
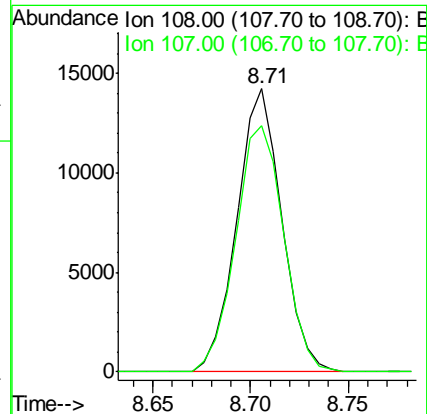
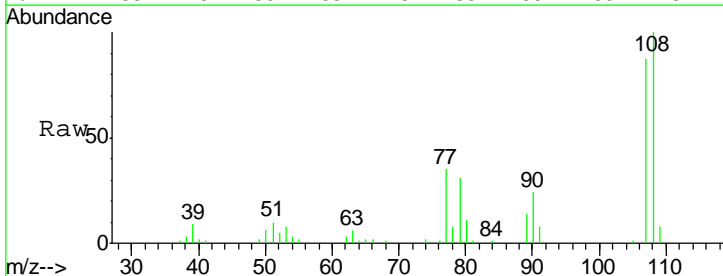
Instrument :  
 BNA\_G  
 ClientSampled :  
 SSTD02011

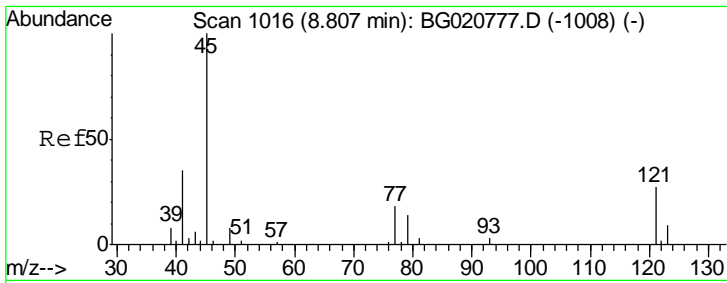
Tgt Ion	Resp	Lower	Upper
128	100		
64	38.0	39.8	59.6#
130	30.7	25.8	38.8



#11  
 2-Methylphenol  
 Concen: 17.65 ng/ul  
 RT: 8.71 min Scan# 999  
 Delta R.T. -0.00 min  
 Lab File: BG020780.D  
 Acq: 1 Feb 2016 21:13

Tgt Ion	Resp	Lower	Upper
108	100		
107	87.1	74.1	111.1

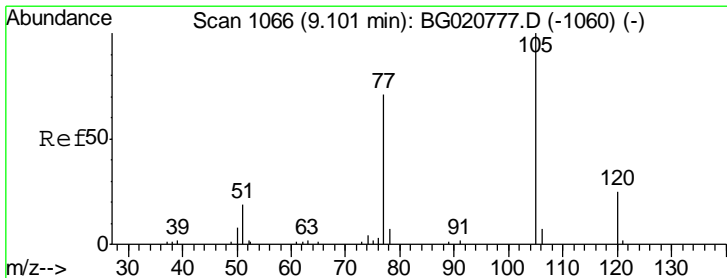
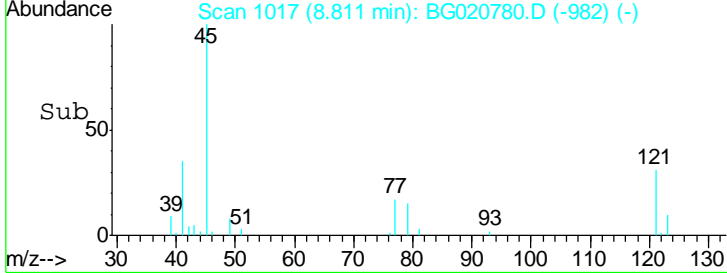
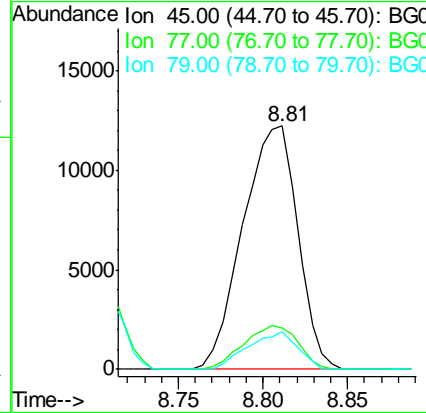
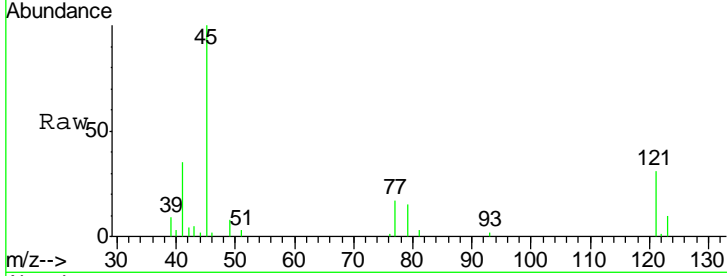




#12  
 2,2'-oxybis(1-Chloropropane)  
 Concen: 20.56 ng/ul  
 RT: 8.81 min Scan# 1017  
 Delta R.T. 0.00 min  
 Lab File: BG020780.D  
 Acq: 1 Feb 2016 21:13

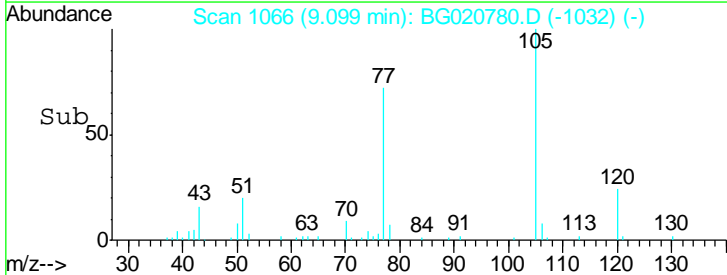
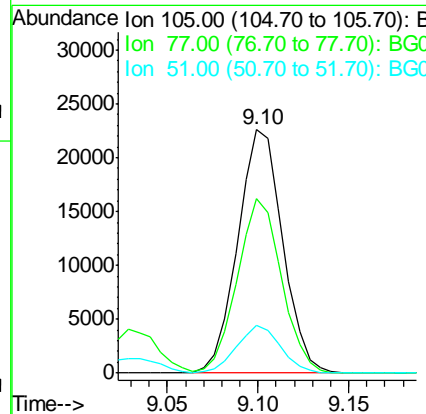
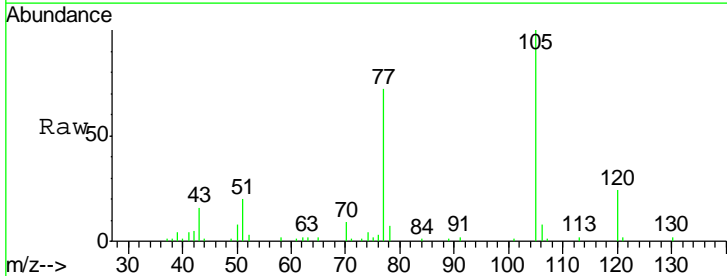
Instrument :  
 BNA\_G  
 ClientSampled :  
 SST02011

Tgt Ion	Resp	Lower	Upper
45	100		
77	16.7	12.5	18.7
79	15.2	9.4	14.2#

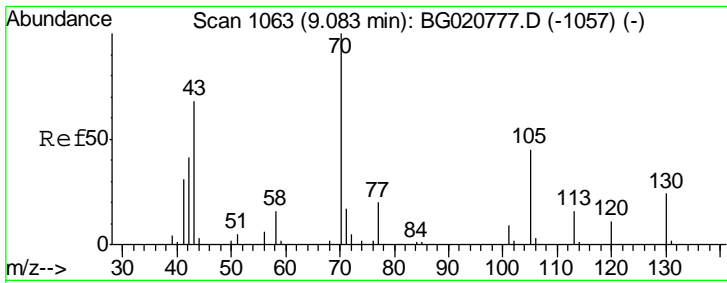


#14  
 Acetophenone  
 Concen: 19.13 ng/ul  
 RT: 9.10 min Scan# 1066  
 Delta R.T. -0.00 min  
 Lab File: BG020780.D  
 Acq: 1 Feb 2016 21:13

Tgt Ion	Resp	Lower	Upper
105	100		
77	71.5	63.2	94.8
51	19.7	19.8	29.8#





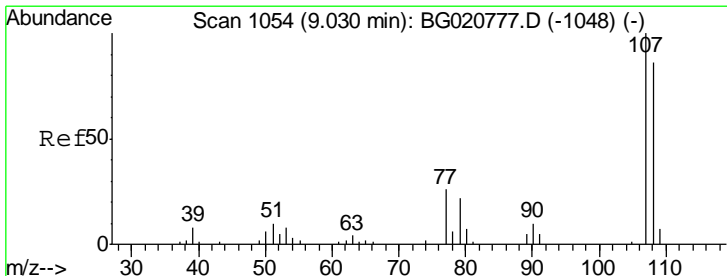
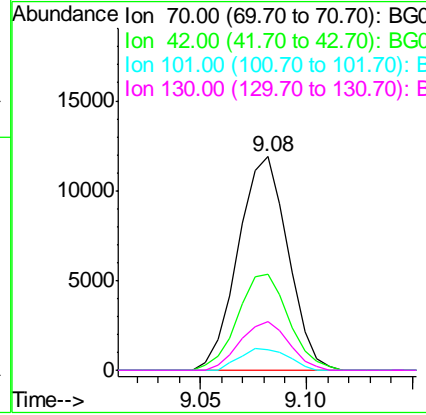
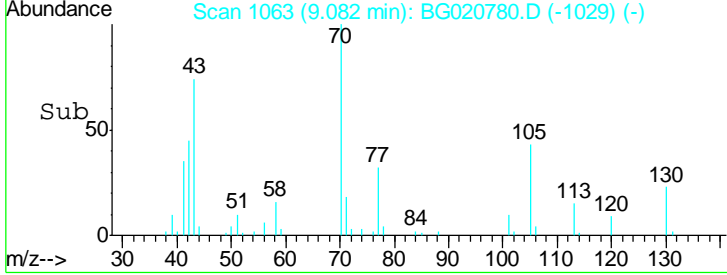
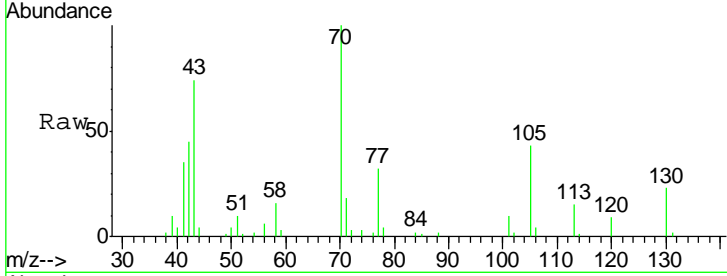


#15  
 N-Nitroso-di-n-propylamine  
 Concen: 18.92 ng/ul  
 RT: 9.08 min Scan# 1063  
 Delta R.T. -0.00 min  
 Lab File: BG020780.D  
 Acq: 1 Feb 2016 21:13

**Instrument :**  
 BNA\_G  
**ClientSampled :**  
 SSTD02011

Tgt Ion: 70 Resp: 19432

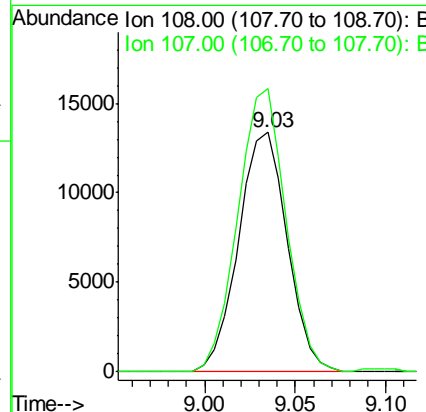
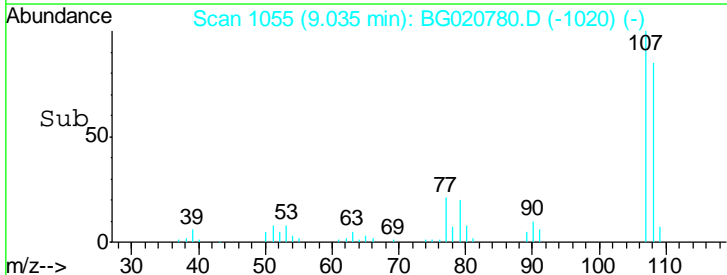
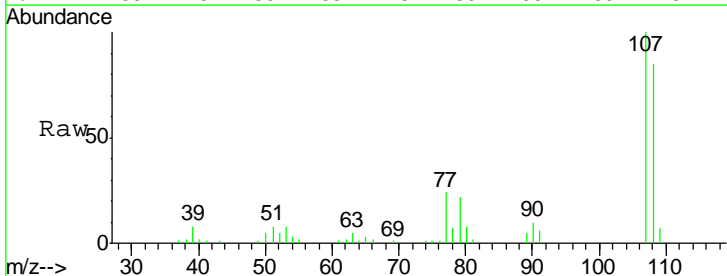
Ion	Ratio	Lower	Upper
70	100		
42	45.0	40.2	60.4
101	9.8	7.7	11.5
130	22.6	17.8	26.6

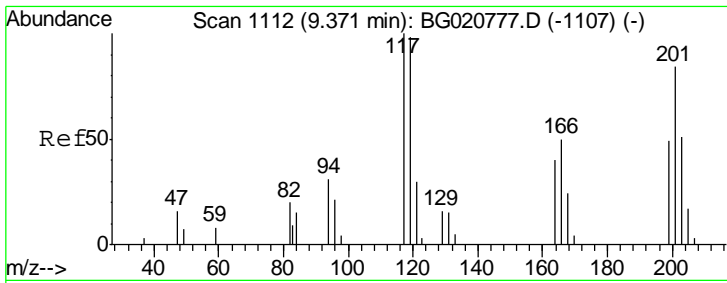


#16  
 4-Methylphenol  
 Concen: 17.49 ng/ul  
 RT: 9.03 min Scan# 1055  
 Delta R.T. 0.00 min  
 Lab File: BG020780.D  
 Acq: 1 Feb 2016 21:13

Tgt Ion: 108 Resp: 25093

Ion	Ratio	Lower	Upper
108	100		
107	118.1	93.6	140.4

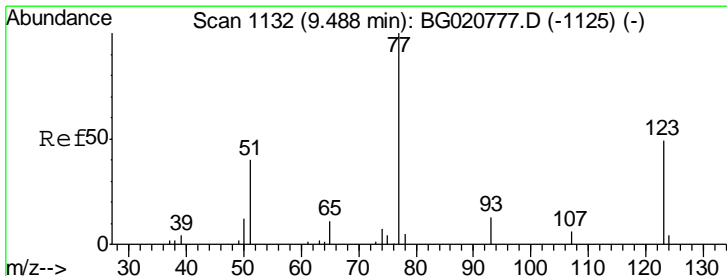
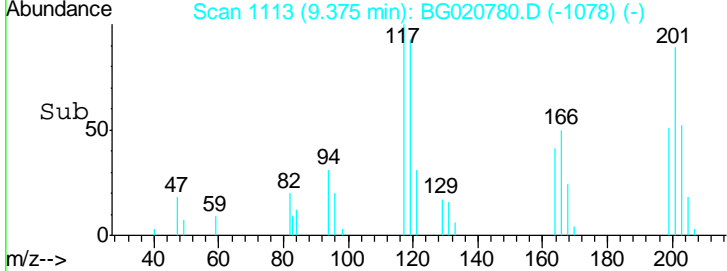
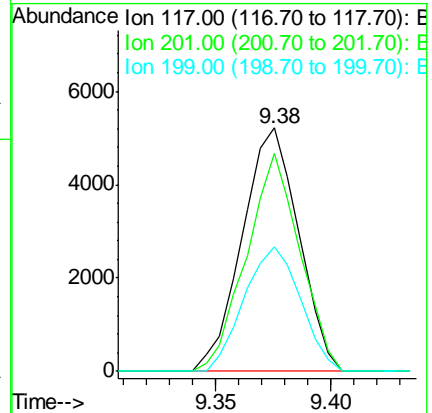
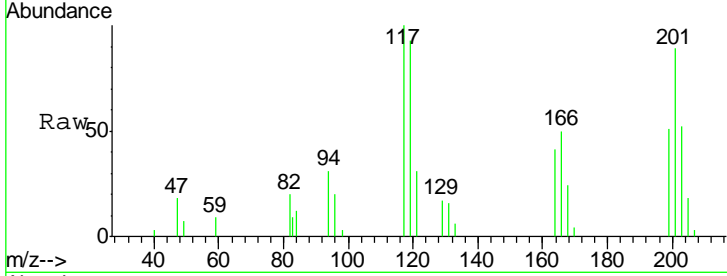




#17  
 Hexachloroethane  
 Concen: 21.28 ng/ul  
 RT: 9.38 min Scan# 1113  
 Delta R.T. 0.00 min  
 Lab File: BG020780.D  
 Acq: 1 Feb 2016 21:13

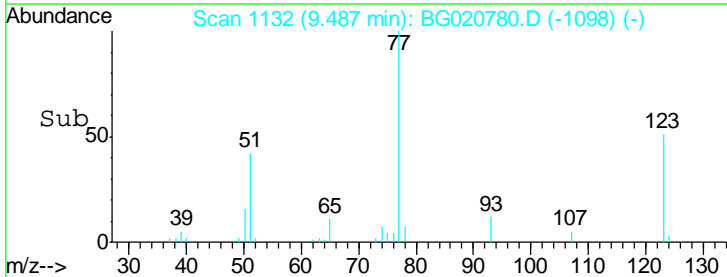
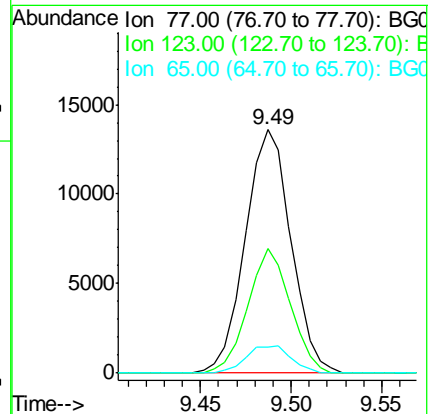
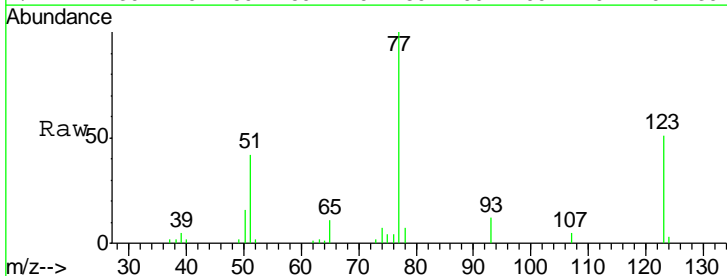
Instrument :  
 BNA\_G  
 ClientSampled :  
 SSTD02011

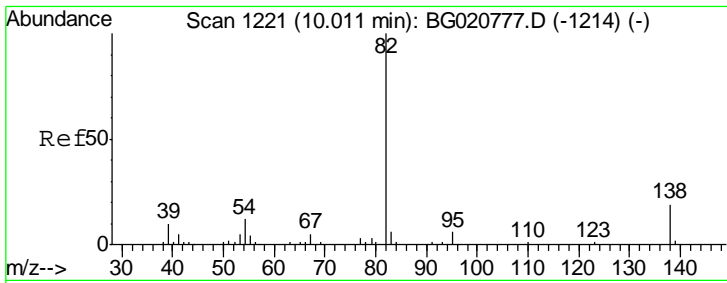
Tgt Ion	Resp	Lower	Upper
117	100		
201	89.3	96.1	144.1#
199	51.3	59.7	89.5#



#20  
 Nitrobenzene  
 Concen: 22.31 ng/ul  
 RT: 9.49 min Scan# 1132  
 Delta R.T. -0.00 min  
 Lab File: BG020780.D  
 Acq: 1 Feb 2016 21:13

Tgt Ion	Resp	Lower	Upper
77	100		
123	51.2	31.8	47.8#
65	10.9	10.6	16.0

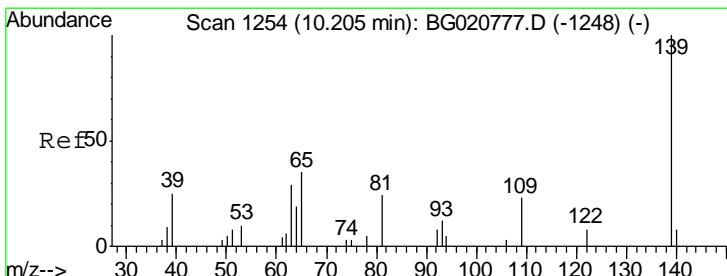
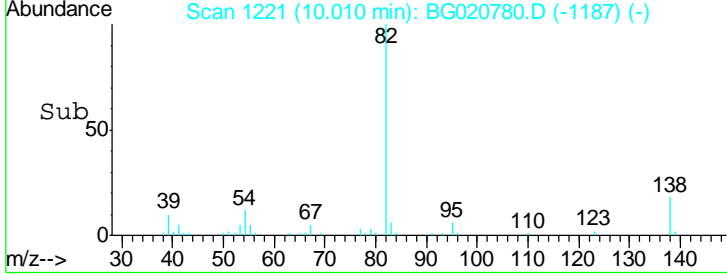
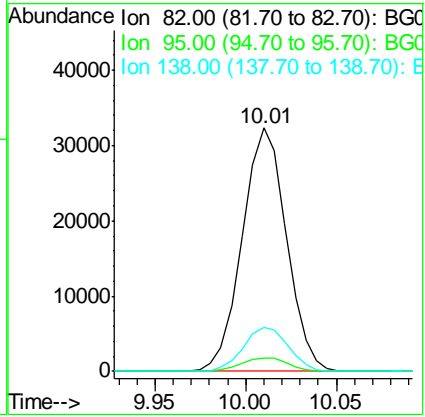
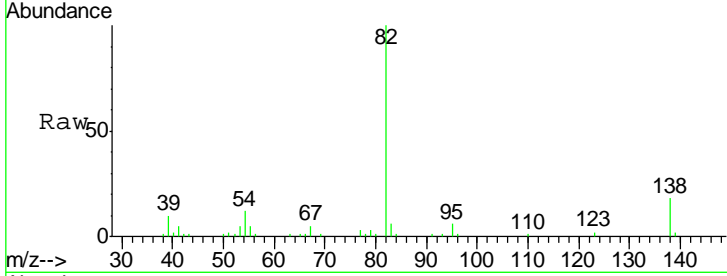




#21  
 Isophorone  
 Concen: 19.49 ng/ul  
 RT: 10.01 min Scan# 1221  
 Delta R.T. -0.00 min  
 Lab File: BG020780.D  
 Acq: 1 Feb 2016 21:13

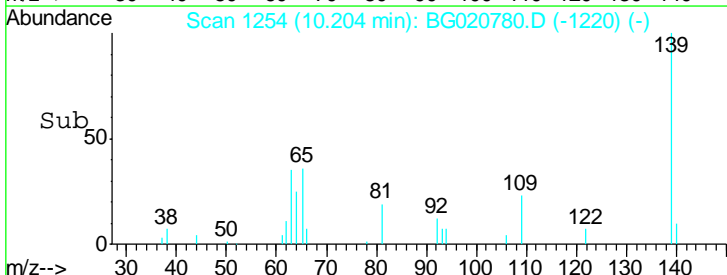
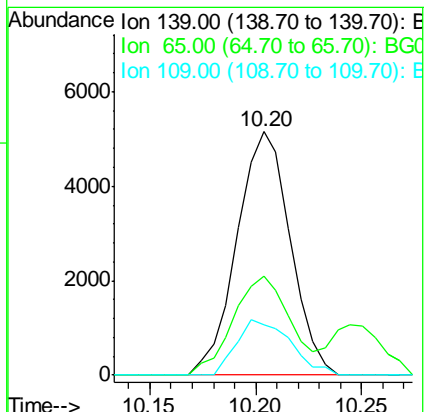
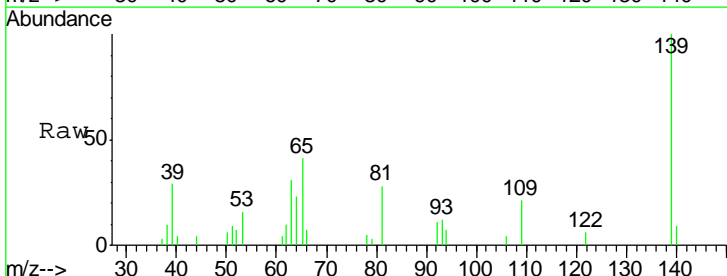
Instrument :  
 BNA\_G  
 ClientSampleID :  
 SSTD02011

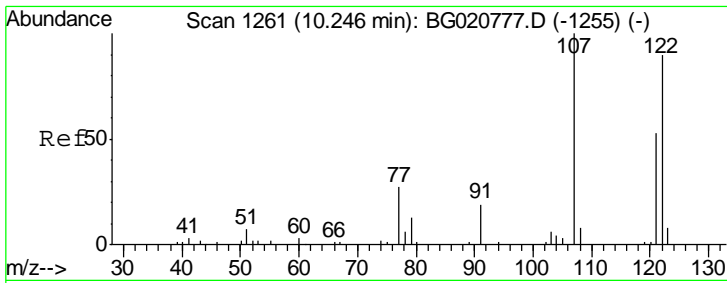
Tgt Ion	Resp	Lower	Upper
82	100		
95	5.5	6.1	9.1#
138	18.0	13.5	20.3



#23  
 2-Nitrophenol  
 Concen: 18.42 ng/ul  
 RT: 10.20 min Scan# 1254  
 Delta R.T. -0.00 min  
 Lab File: BG020780.D  
 Acq: 1 Feb 2016 21:13

Tgt Ion	Resp	Lower	Upper
139	100		
65	40.9	45.3	67.9#
109	20.9	27.7	41.5#

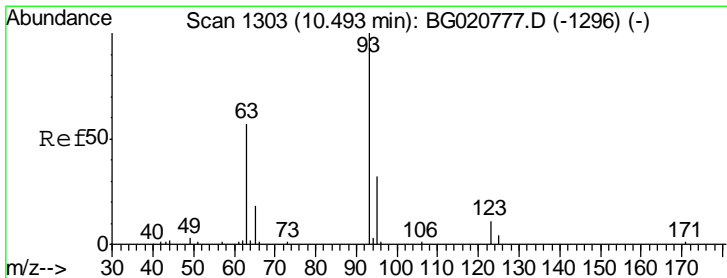
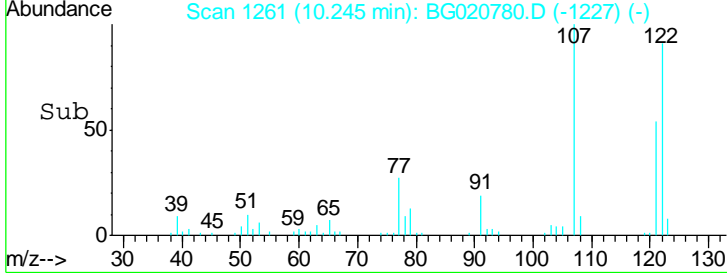
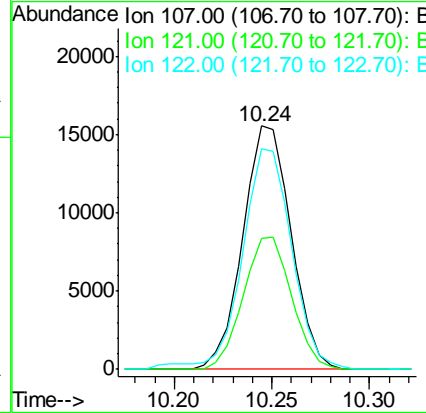
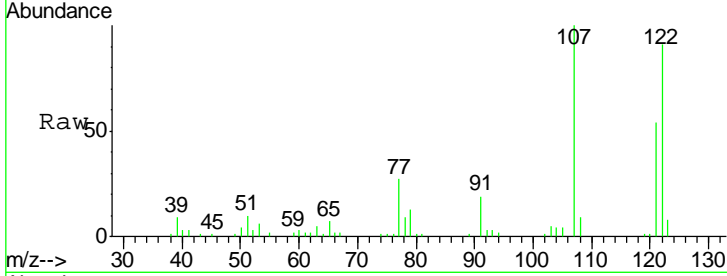




#24  
 2,4-Dimethylphenol  
 Concen: 19.66 ng/ul  
 RT: 10.24 min Scan# 1261  
 Delta R.T. -0.00 min  
 Lab File: BG020780.D  
 Acq: 1 Feb 2016 21:13

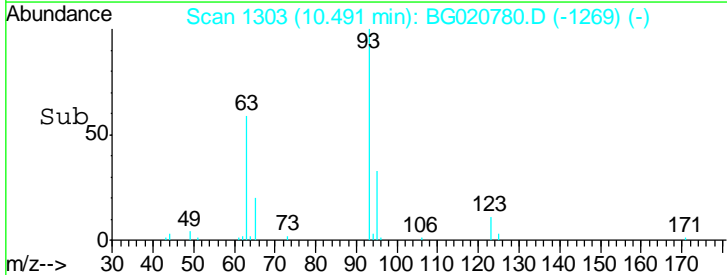
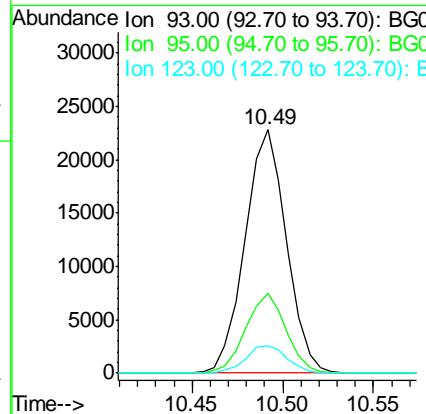
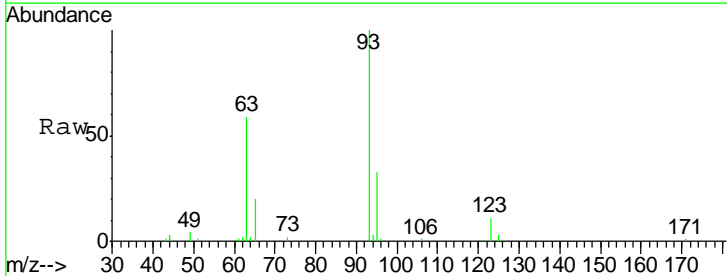
Instrument :  
 BNA\_G  
 ClientSampleID :  
 SSTD02011

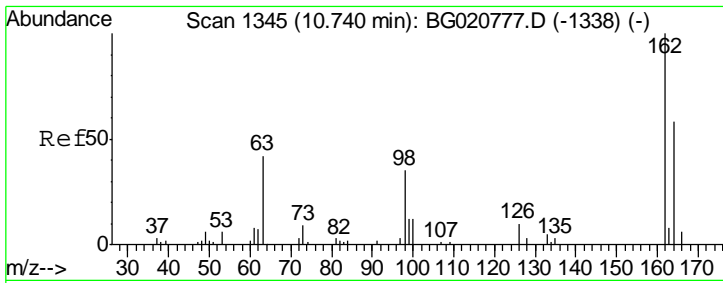
Tgt Ion	Resp	Lower	Upper
107	26700		
107	100		
121	53.9	38.1	57.1
122	90.8	63.8	95.8



#25  
 Bis(2-Chloroethoxy)methane  
 Concen: 20.45 ng/ul  
 RT: 10.49 min Scan# 1303  
 Delta R.T. -0.00 min  
 Lab File: BG020780.D  
 Acq: 1 Feb 2016 21:13

Tgt Ion	Resp	Lower	Upper
93	36293		
93	100		
95	32.9	24.7	37.1
123	11.0	8.2	12.2

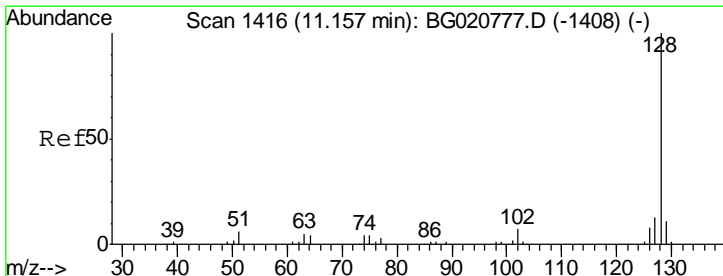
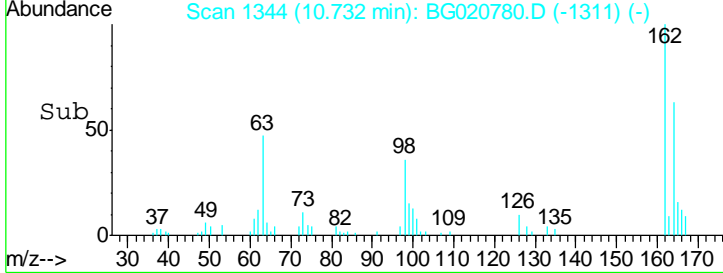
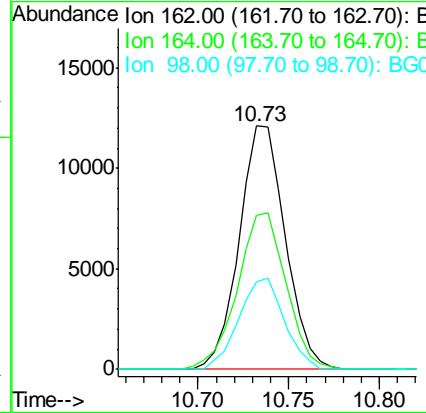
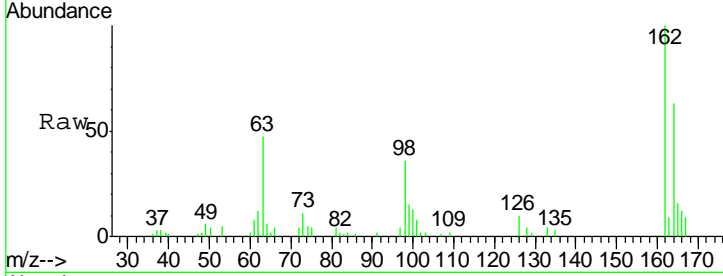




#27  
 2,4-Dichlorophenol  
 Concen: 18.40 ng/ul  
 RT: 10.73 min Scan# 1344  
 Delta R.T. -0.01 min  
 Lab File: BG020780.D  
 Acq: 1 Feb 2016 21:13

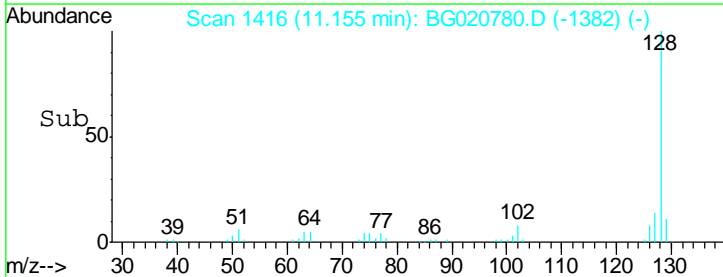
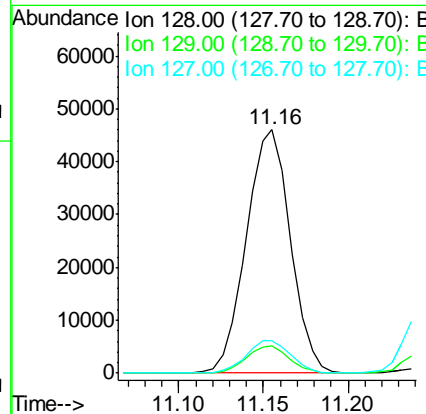
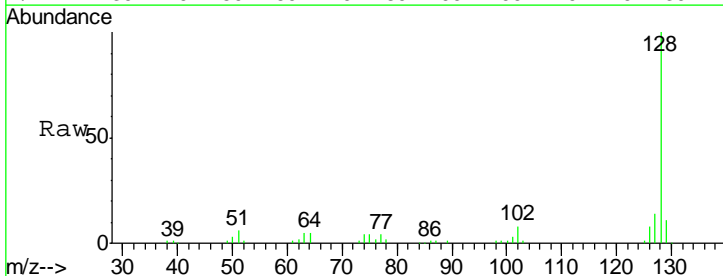
Instrument :  
 BNA\_G  
 ClientSampled :  
 SSTD02011

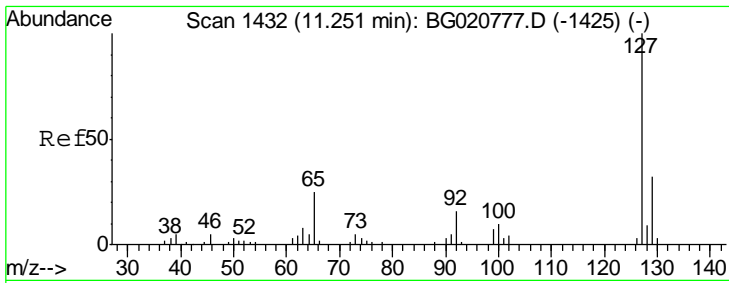
Tgt Ion	Resp	Lower	Upper
162	21419		
164	63.3	52.0	78.0
98	35.9	26.6	39.8



#28  
 Naphthalene  
 Concen: 19.82 ng/ul  
 RT: 11.16 min Scan# 1416  
 Delta R.T. -0.00 min  
 Lab File: BG020780.D  
 Acq: 1 Feb 2016 21:13

Tgt Ion	Resp	Lower	Upper
128	83265		
129	11.1	8.3	12.5
127	13.6	10.8	16.2

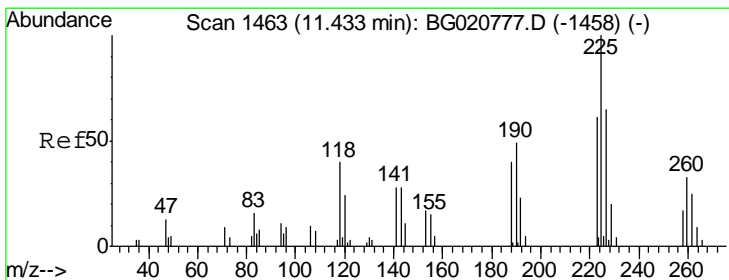
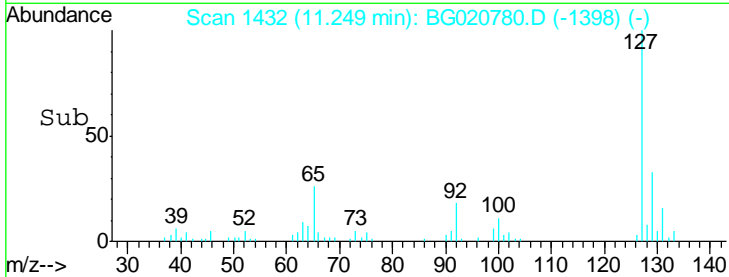
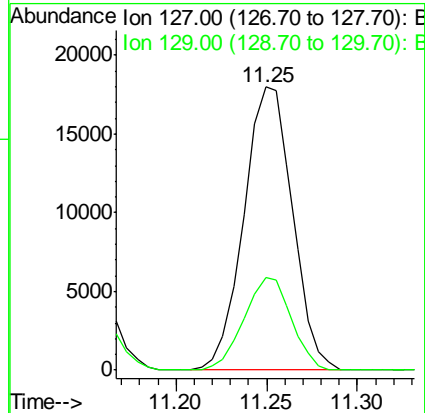
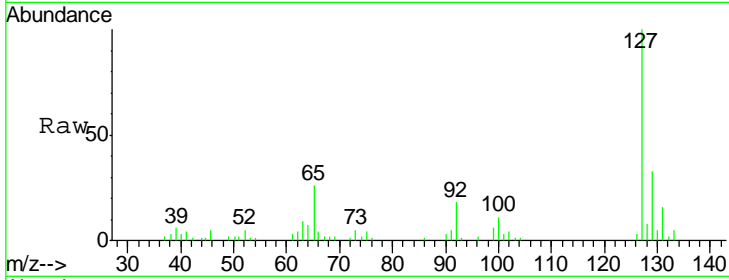




#30  
 4-Chloroaniline  
 Concen: 20.37 ng/ul  
 RT: 11.25 min Scan# 1432  
 Delta R.T. -0.00 min  
 Lab File: BG020780.D  
 Acq: 1 Feb 2016 21:13

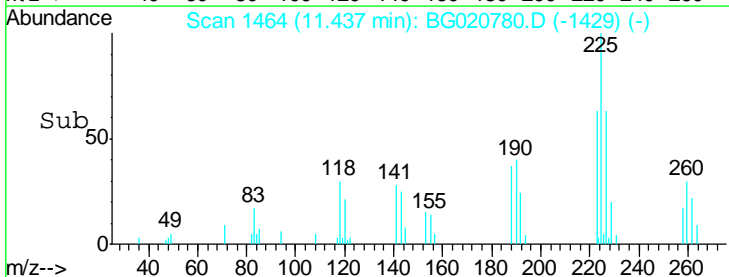
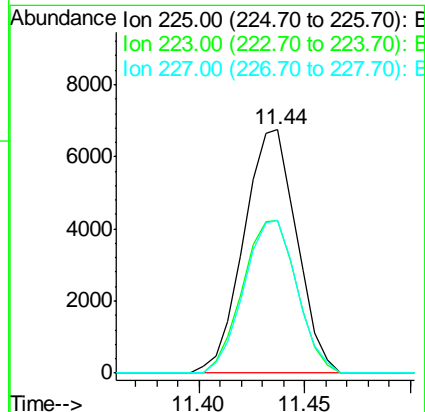
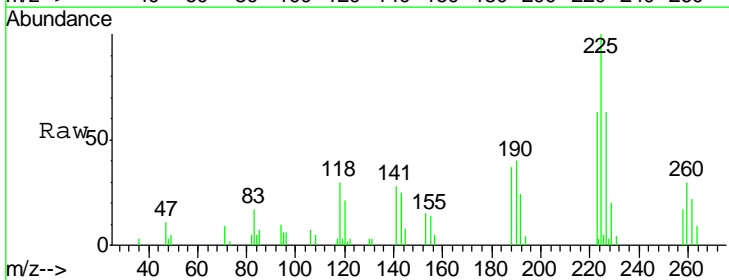
Instrument :  
 BNA\_G  
 ClientSampleID :  
 SSTD02011

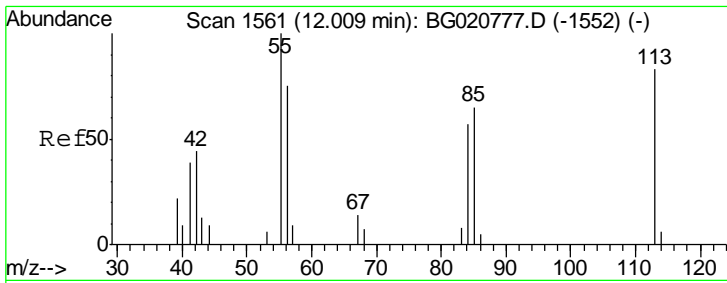
Tgt Ion:127 Resp: 33489  
 Ion Ratio Lower Upper  
 127 100  
 129 32.8 24.6 37.0



#31  
 Hexachlorobutadiene  
 Concen: 20.32 ng/ul  
 RT: 11.44 min Scan# 1464  
 Delta R.T. 0.00 min  
 Lab File: BG020780.D  
 Acq: 1 Feb 2016 21:13

Tgt Ion:225 Resp: 11725  
 Ion Ratio Lower Upper  
 225 100  
 223 62.7 48.1 72.1  
 227 62.7 52.1 78.1

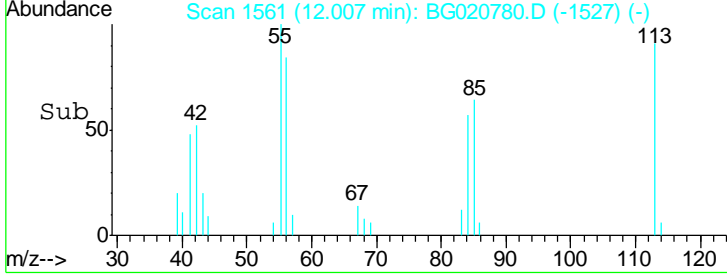
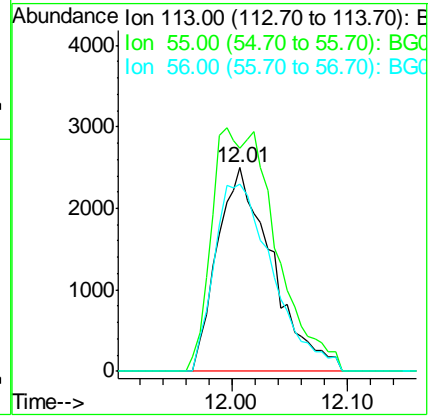
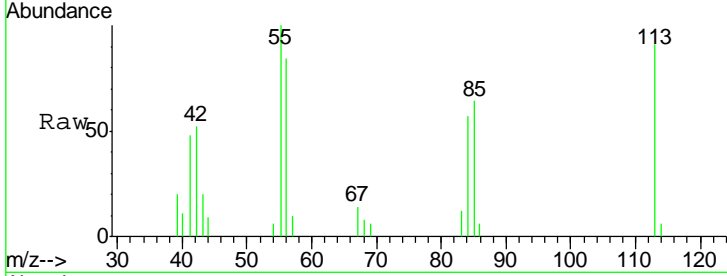




#32  
 Caprolactam  
 Concen: 17.36 ng/ul  
 RT: 12.01 min Scan# 1561  
 Delta R.T. -0.00 min  
 Lab File: BG020780.D  
 Acq: 1 Feb 2016 21:13

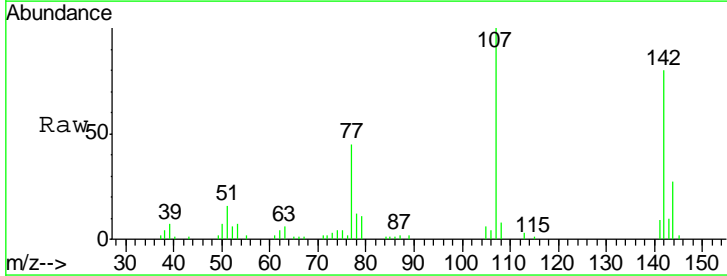
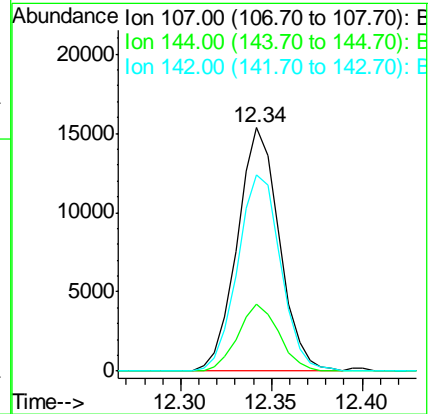
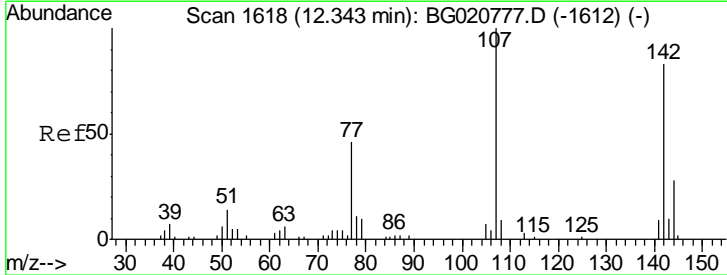
Instrument :  
 BNA\_G  
 ClientSampled :  
 SSTD02011

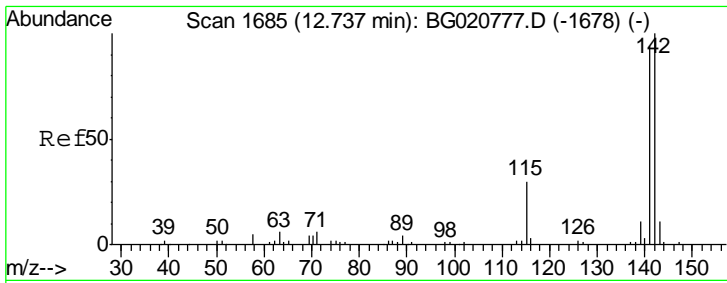
Tgt Ion	Resp	Lower	Upper
113	100		
55	109.4	131.7	197.5#
56	91.9	92.7	139.1#



#33  
 4-Chloro-3-methylphenol  
 Concen: 17.83 ng/ul  
 RT: 12.34 min Scan# 1618  
 Delta R.T. -0.00 min  
 Lab File: BG020780.D  
 Acq: 1 Feb 2016 21:13

Tgt Ion	Resp	Lower	Upper
107	100		
144	27.4	21.1	31.7
142	80.4	60.1	90.1

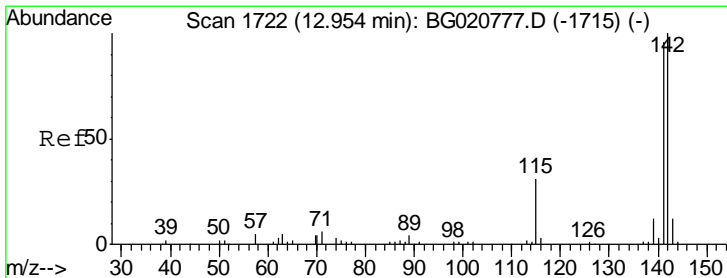
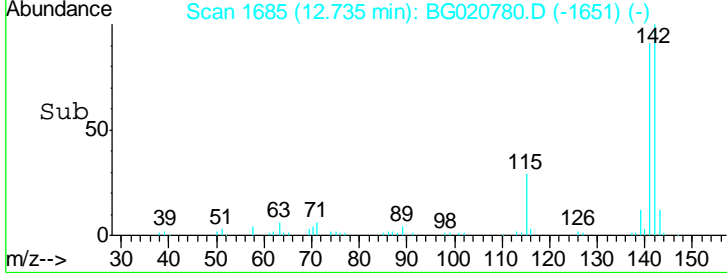
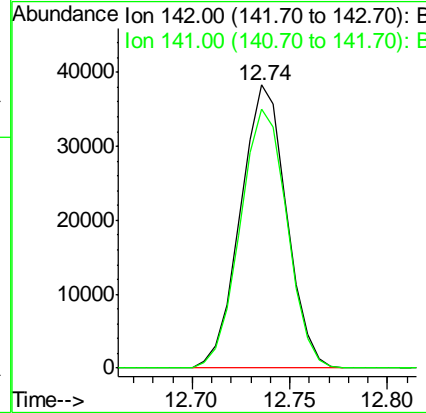
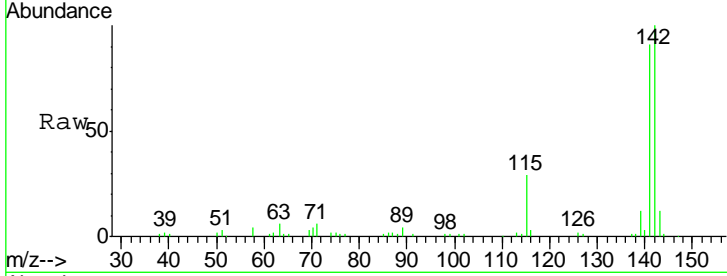




#34  
 2-Methylnaphthalene  
 Concen: 19.35 ng/ul  
 RT: 12.74 min Scan# 1685  
 Delta R.T. -0.00 min  
 Lab File: BG020780.D  
 Acq: 1 Feb 2016 21:13

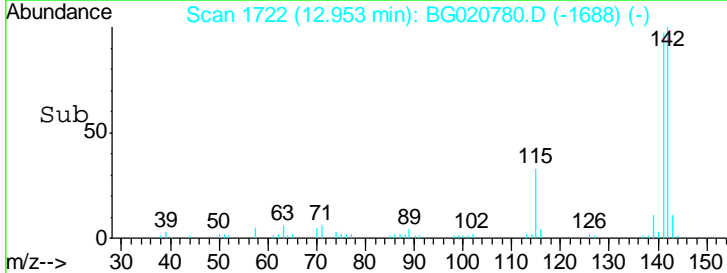
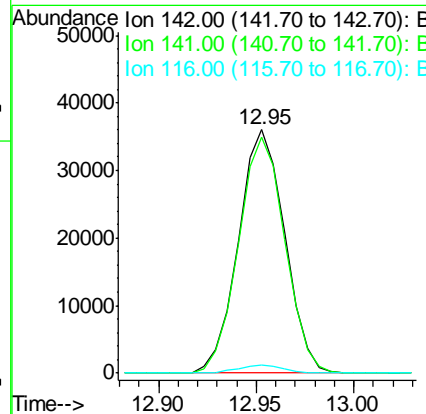
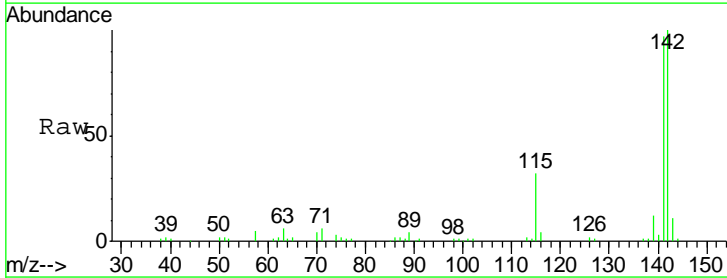
Instrument :  
 BNA\_G  
 ClientSampled :  
 SSTD02011

Tgt Ion:142 Resp: 62558  
 Ion Ratio Lower Upper  
 142 100  
 141 91.5 71.4 107.2

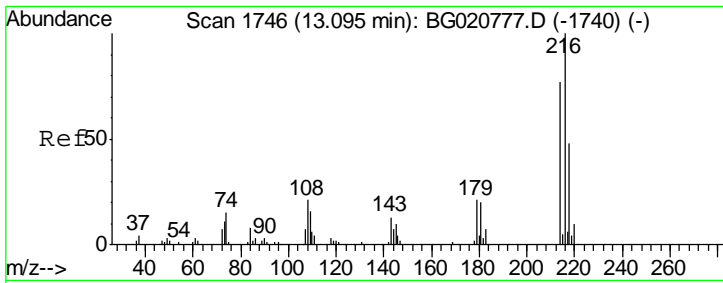


#35  
 1-Methylnaphthalene  
 Concen: 19.10 ng/ul  
 RT: 12.95 min Scan# 1722  
 Delta R.T. -0.00 min  
 Lab File: BG020780.D  
 Acq: 1 Feb 2016 21:13

Tgt Ion:142 Resp: 58980  
 Ion Ratio Lower Upper  
 142 100  
 141 96.8 76.6 115.0  
 116 3.6 3.6 5.4#



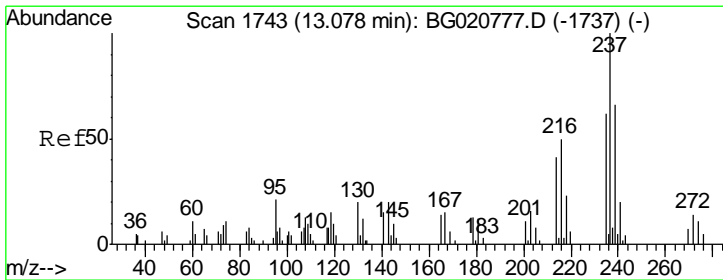
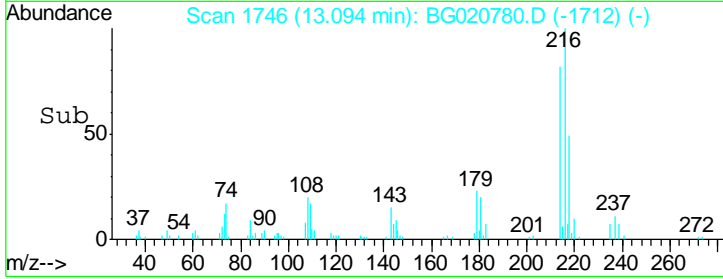
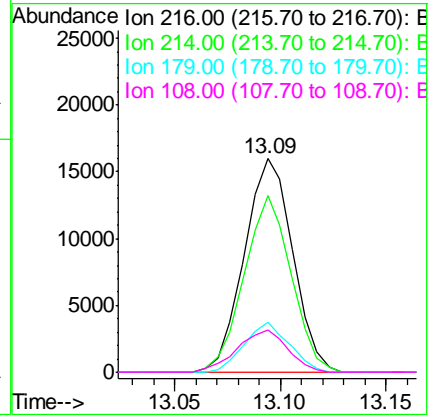
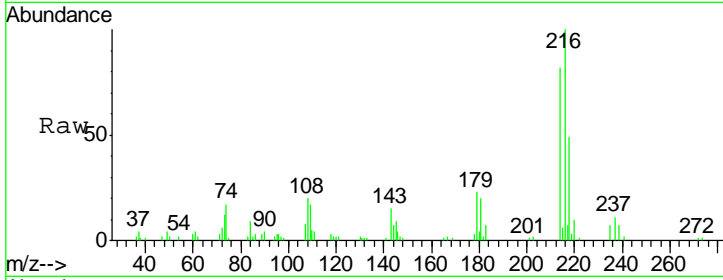




#37  
 1,2,4,5-Tetrachlorobenzene  
 Concen: 19.75 ng/ul  
 RT: 13.09 min Scan# 1746  
 Delta R.T. -0.00 min  
 Lab File: BG020780.D  
 Acq: 1 Feb 2016 21:13

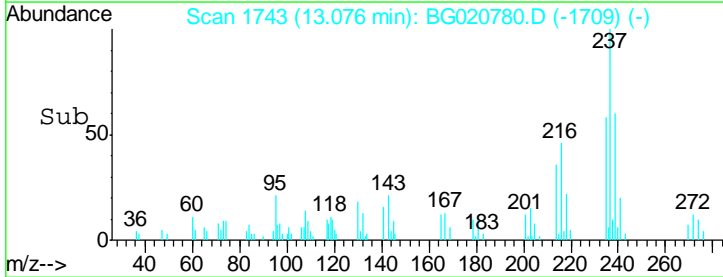
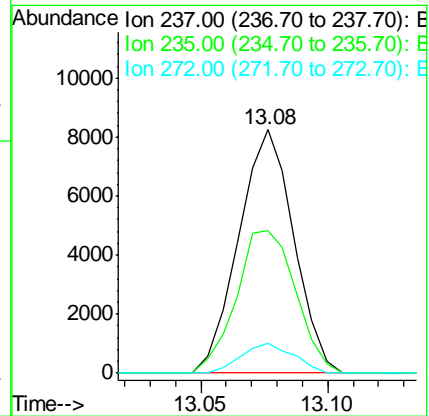
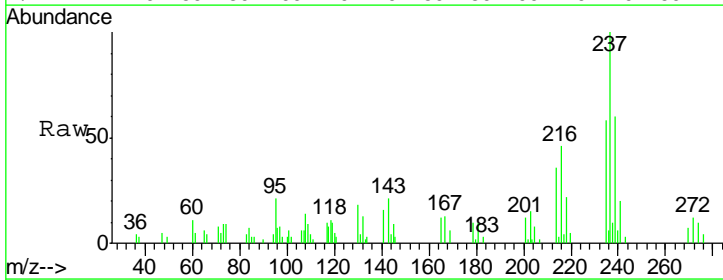
Instrument :  
 BNA\_G  
 ClientSampled :  
 SSTD02011

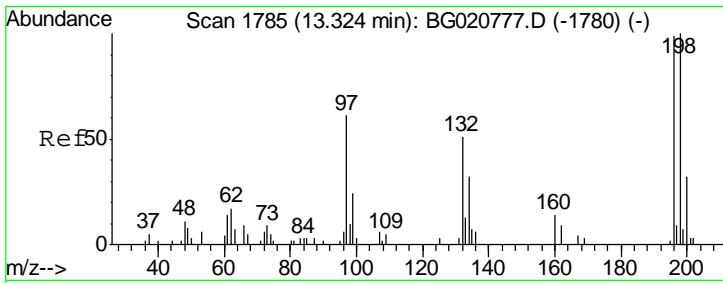
Tgt Ion	Resp	Lower	Upper
216	100		
214	82.5	64.1	96.1
179	23.4	14.5	21.7#
108	19.5	10.4	15.6#



#38  
 Hexachlorocyclopentadiene  
 Concen: 18.16 ng/ul  
 RT: 13.08 min Scan# 1743  
 Delta R.T. -0.00 min  
 Lab File: BG020780.D  
 Acq: 1 Feb 2016 21:13

Tgt Ion	Resp	Lower	Upper
237	100		
235	58.4	49.5	74.3
272	12.4	8.6	12.8

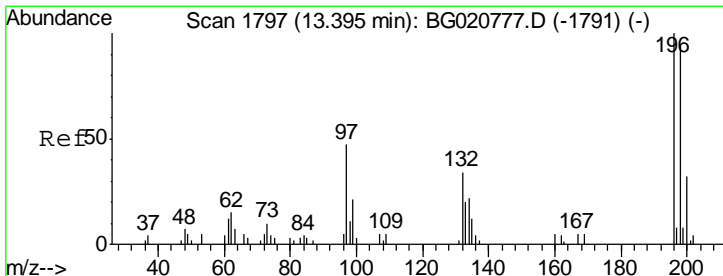
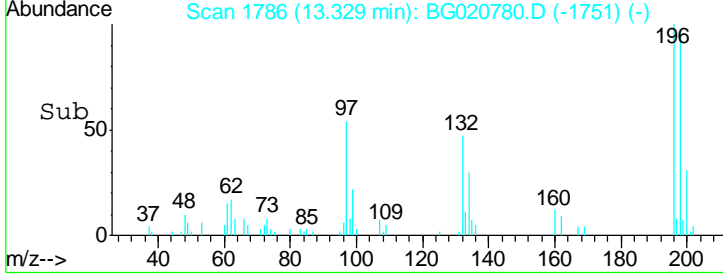
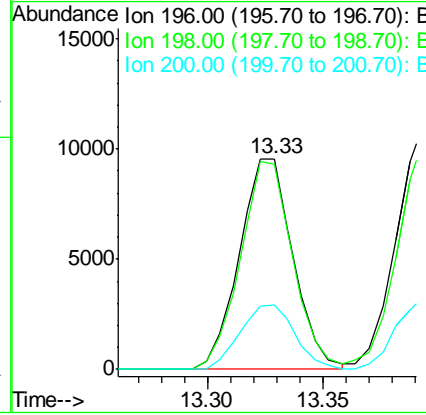
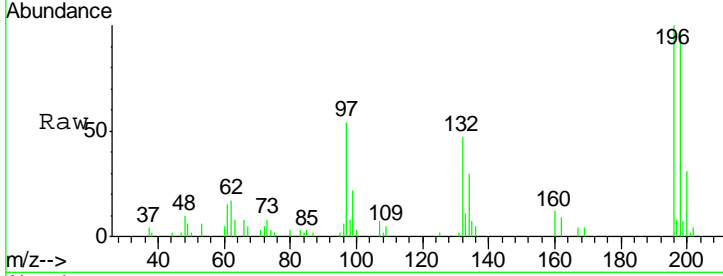




#39  
 2,4,6-Trichlorophenol  
 Concen: 18.12 ng/ul  
 RT: 13.33 min Scan# 1786  
 Delta R.T. 0.00 min  
 Lab File: BG020780.D  
 Acq: 1 Feb 2016 21:13

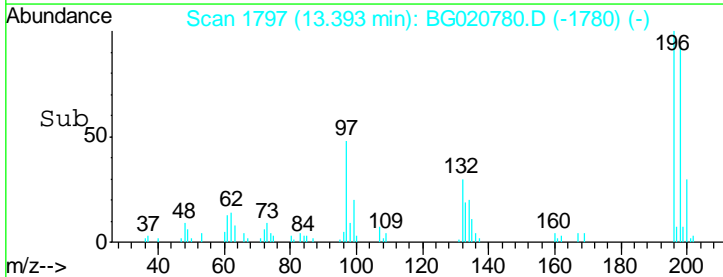
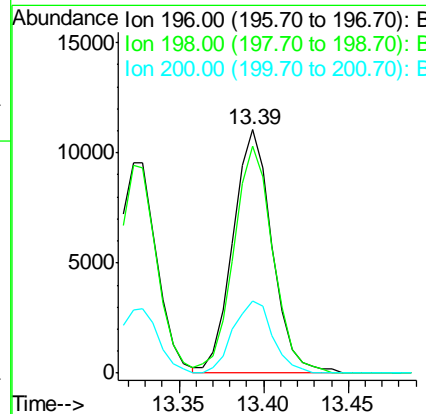
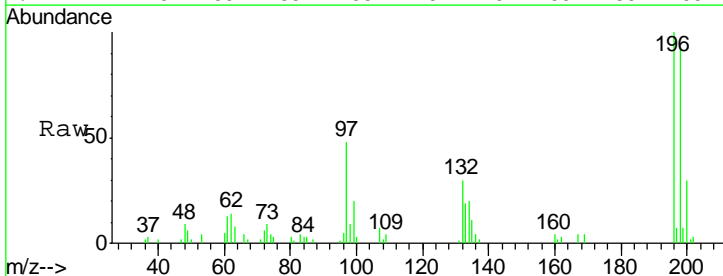
Instrument :  
 BNA\_G  
 ClientSampled :  
 SSTD02011

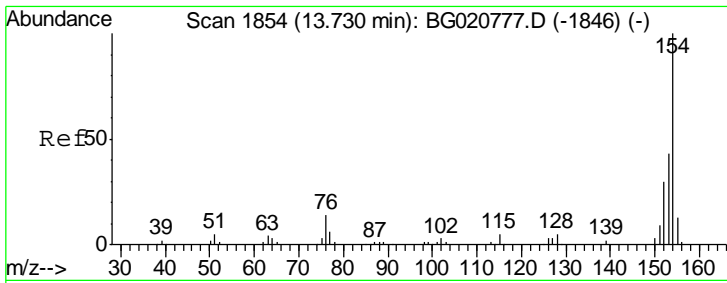
Tgt Ion	Resp	Lower	Upper
196	15446		
196	100		
198	97.4	75.9	113.9
200	30.5	25.8	38.6



#40  
 2,4,5-Trichlorophenol  
 Concen: 18.78 ng/ul  
 RT: 13.39 min Scan# 1797  
 Delta R.T. -0.00 min  
 Lab File: BG020780.D  
 Acq: 1 Feb 2016 21:13

Tgt Ion	Resp	Lower	Upper
196	17790		
196	100		
198	93.3	74.7	112.1
200	29.9	25.4	38.0

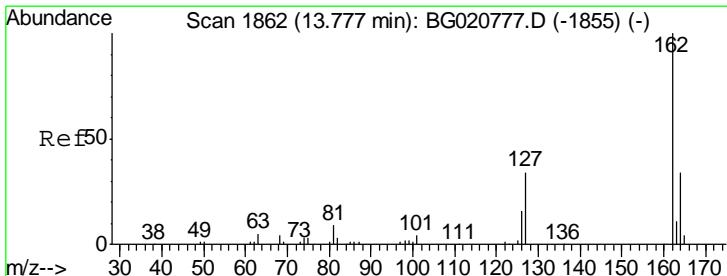
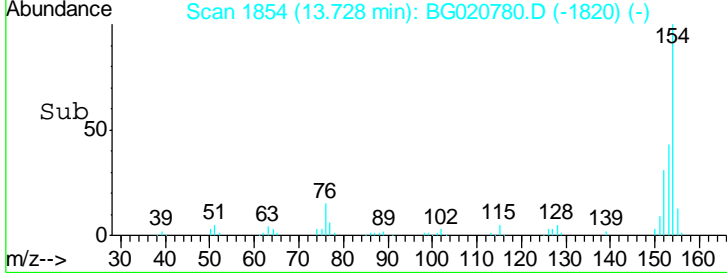
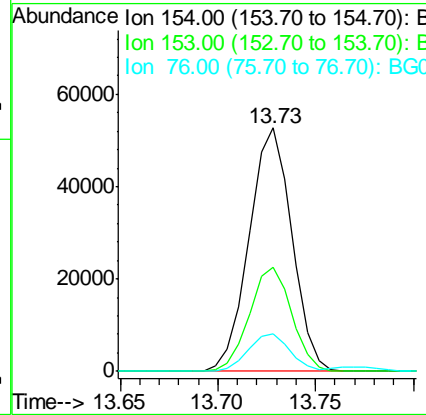
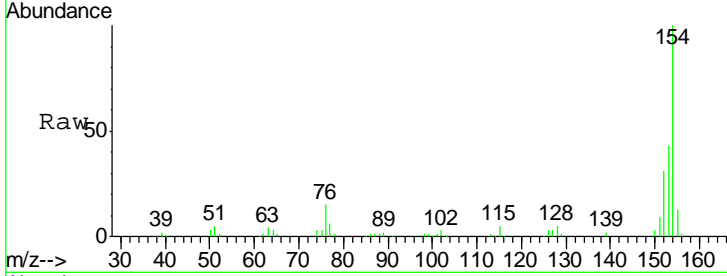




#41  
 1,1'-Biphenyl  
 Concen: 20.07 ng/ul  
 RT: 13.73 min Scan# 1854  
 Delta R.T. -0.00 min  
 Lab File: BG020780.D  
 Acq: 1 Feb 2016 21:13

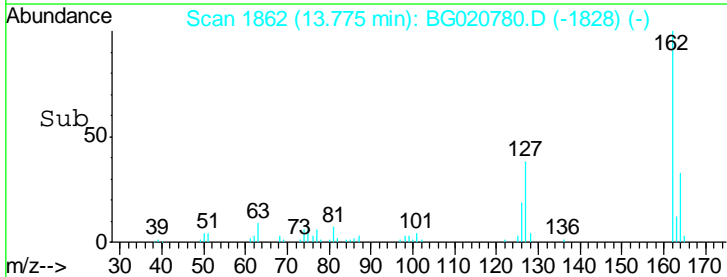
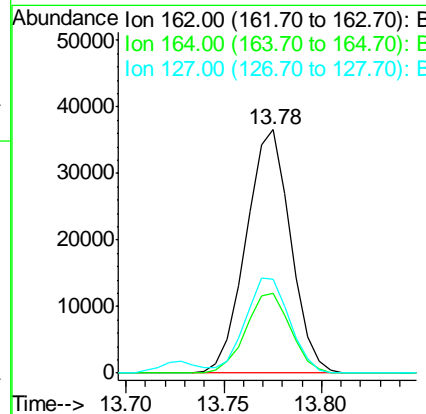
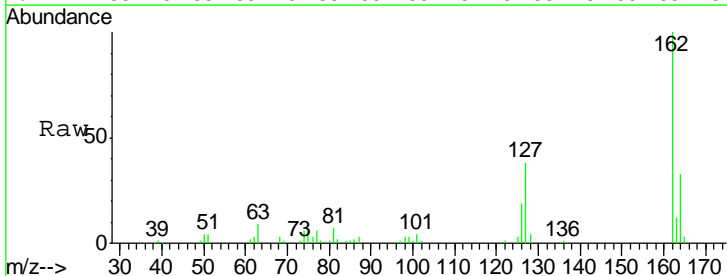
Instrument :  
 BNA\_G  
 ClientSampled :  
 SSTD02011

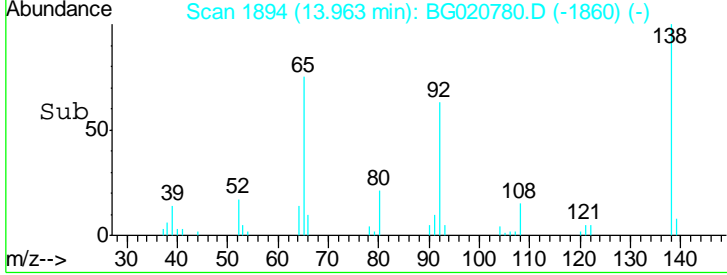
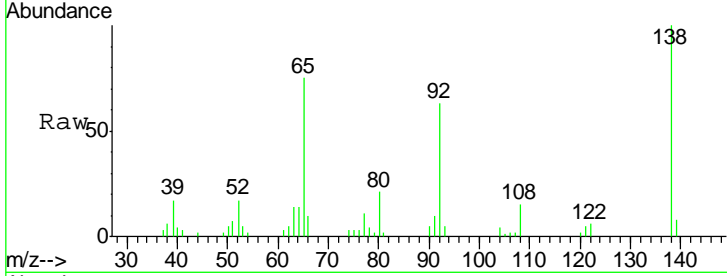
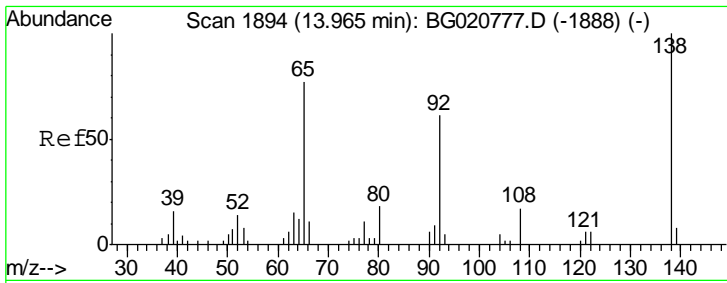
Tgt Ion	Resp	Lower	Upper
154	100		
153	42.6	34.0	51.0
76	15.3	8.4	12.6



#42  
 2-Chloronaphthalene  
 Concen: 19.69 ng/ul  
 RT: 13.78 min Scan# 1862  
 Delta R.T. -0.00 min  
 Lab File: BG020780.D  
 Acq: 1 Feb 2016 21:13

Tgt Ion	Resp	Lower	Upper
162	100		
164	33.0	26.2	39.4
127	38.3	29.5	44.3

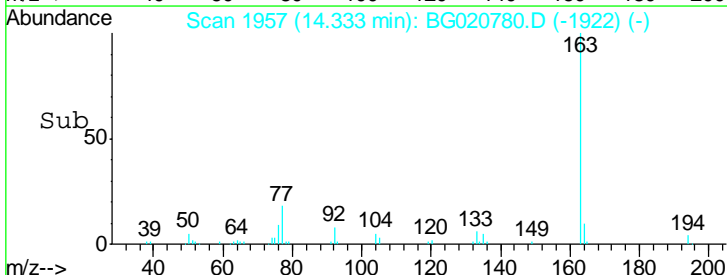
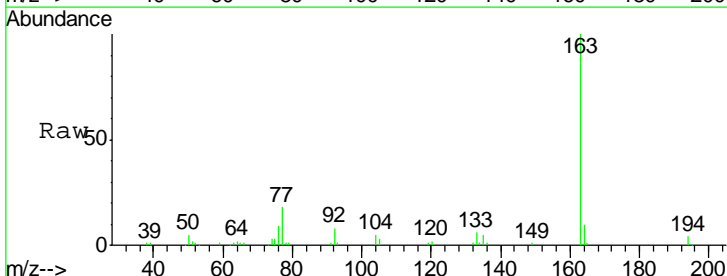
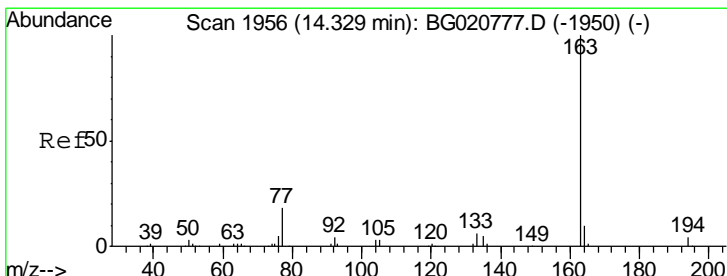
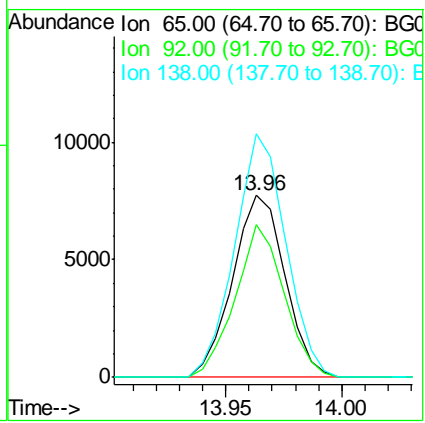




#43  
 2-Nitroaniline  
 Concen: 22.04 ng/ul  
 RT: 13.96 min Scan# 1894  
 Delta R.T. -0.00 min  
 Lab File: BG020780.D  
 Acq: 1 Feb 2016 21:13

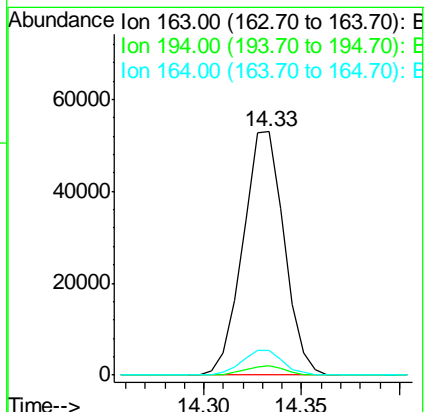
Instrument :  
 BNA\_G  
 ClientSampleID :  
 SST02011

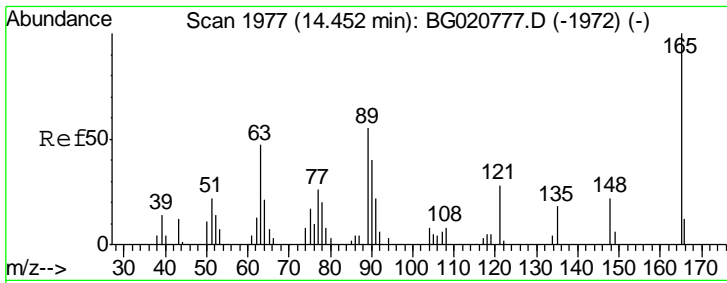
Tgt Ion	Resp	Lower	Upper
65	12246		
92	84.2	57.0	85.4
138	133.7	87.2	130.8#



#45  
 Dimethylphthalate  
 Concen: 19.04 ng/ul  
 RT: 14.33 min Scan# 1957  
 Delta R.T. 0.00 min  
 Lab File: BG020780.D  
 Acq: 1 Feb 2016 21:13

Tgt Ion	Resp	Lower	Upper
163	77459		
194	3.9	4.0	6.0#
164	10.4	8.4	12.6

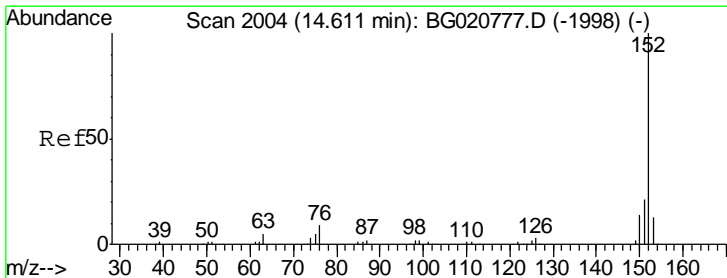
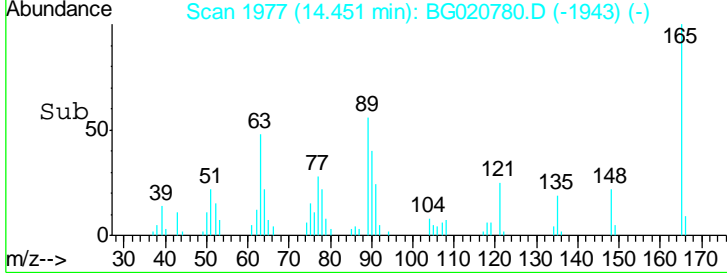
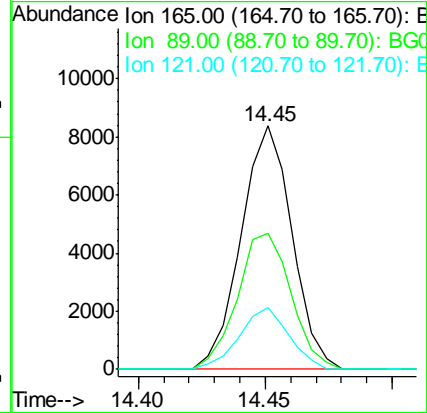
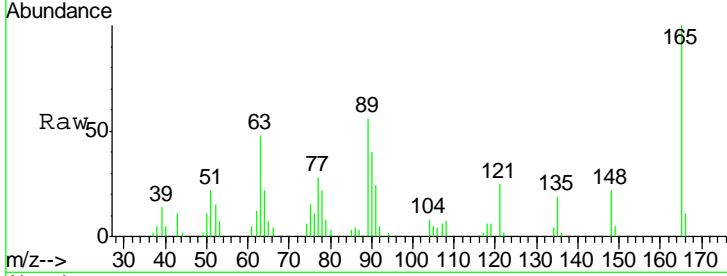




#46  
 2,6-Dinitrotoluene  
 Concen: 21.63 ng/ul  
 RT: 14.45 min Scan# 1977  
 Delta R.T. -0.00 min  
 Lab File: BG020780.D  
 Acq: 1 Feb 2016 21:13

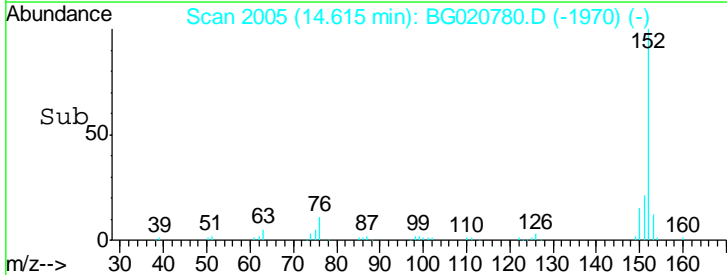
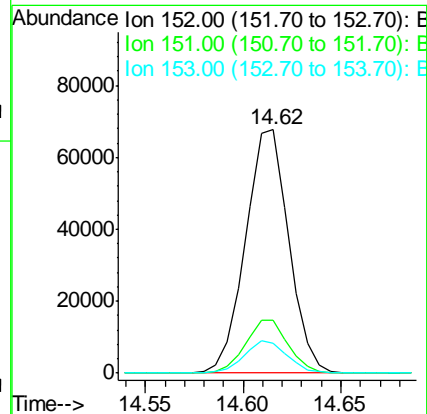
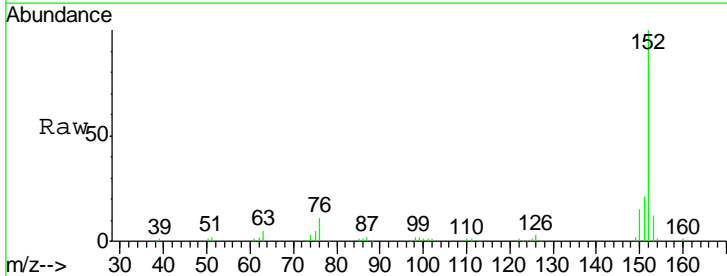
Instrument :  
 BNA\_G  
 ClientSampled :  
 SSTD02011

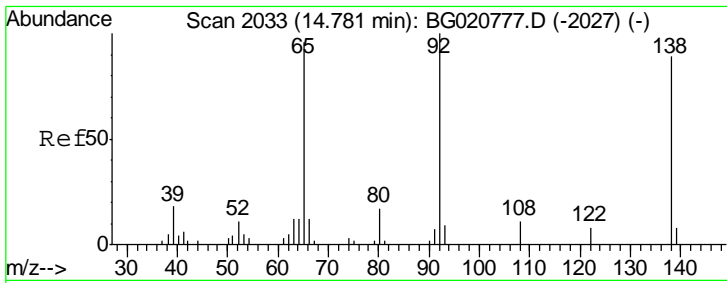
Tgt Ion	Resp	Lower	Upper
165	11698		
89	56.0	43.8	65.8
121	25.5	17.8	26.6



#48  
 Acenaphthylene  
 Concen: 19.86 ng/ul  
 RT: 14.62 min Scan# 2005  
 Delta R.T. 0.00 min  
 Lab File: BG020780.D  
 Acq: 1 Feb 2016 21:13

Tgt Ion	Resp	Lower	Upper
152	104216		
151	21.5	16.1	24.1
153	12.3	10.8	16.2

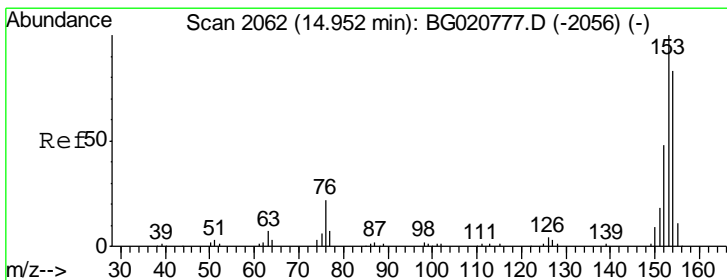
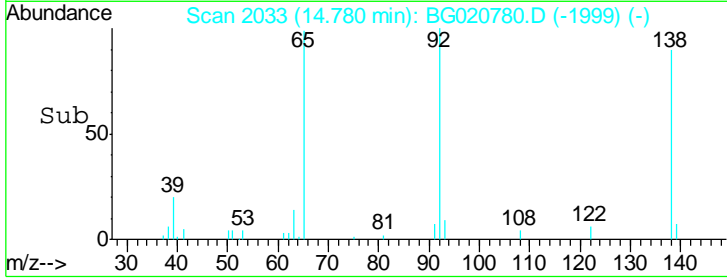
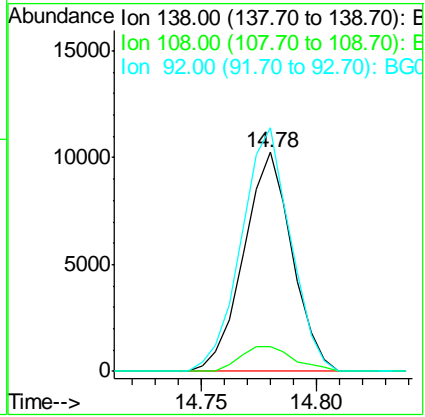
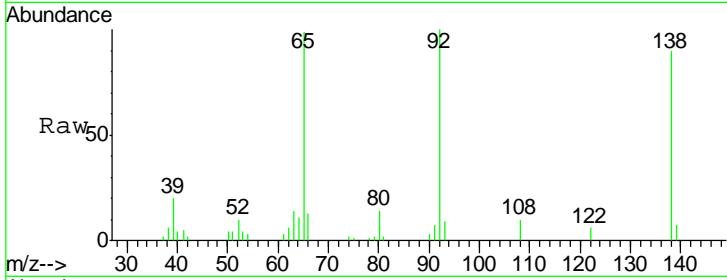




#49  
 3-Nitroaniline  
 Concen: 20.41 ng/ul  
 RT: 14.78 min Scan# 2033  
 Delta R.T. -0.00 min  
 Lab File: BG020780.D  
 Acq: 1 Feb 2016 21:13

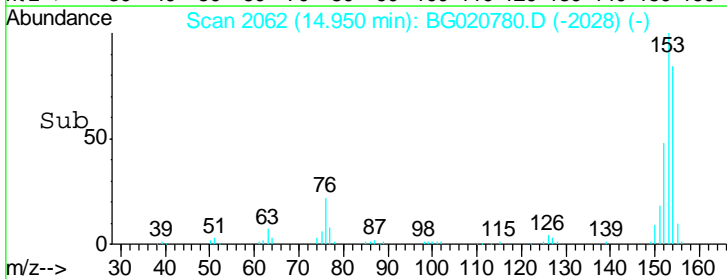
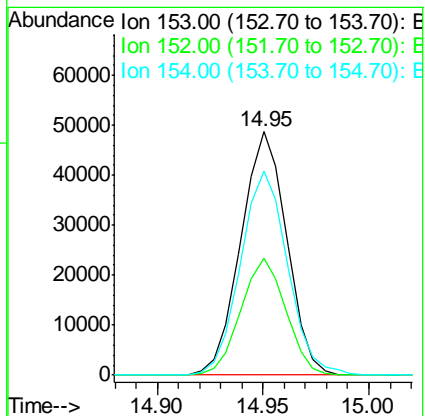
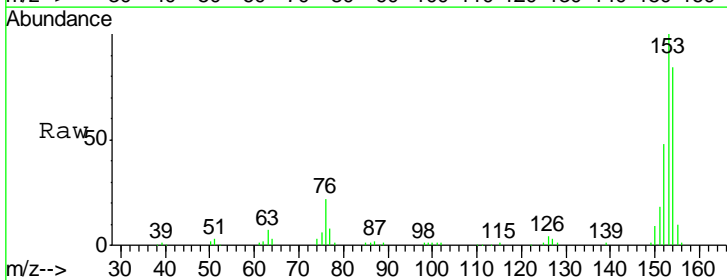
Instrument :  
 BNA\_G  
 ClientSampleID :  
 SST02011

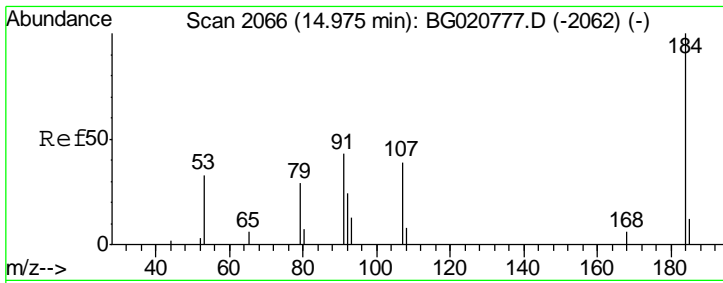
Tgt Ion	Resp	Lower	Upper
138	14965		
108	11.2	7.6	11.4
92	111.2	94.2	141.2



#50  
 Acenaphthene  
 Concen: 20.08 ng/ul  
 RT: 14.95 min Scan# 2062  
 Delta R.T. -0.00 min  
 Lab File: BG020780.D  
 Acq: 1 Feb 2016 21:13

Tgt Ion	Resp	Lower	Upper
153	73380		
152	47.9	37.9	56.9
154	84.0	69.8	104.6



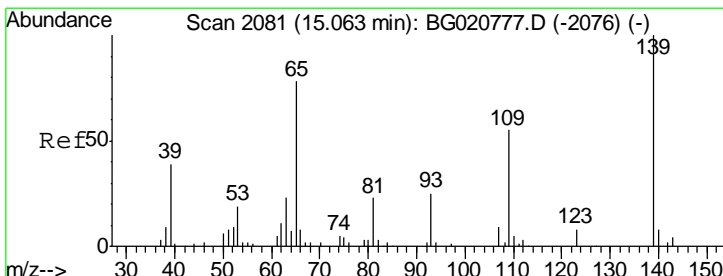
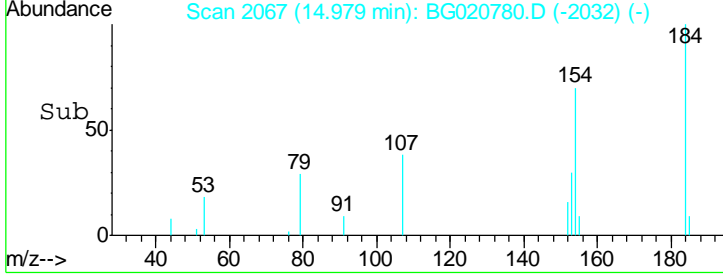
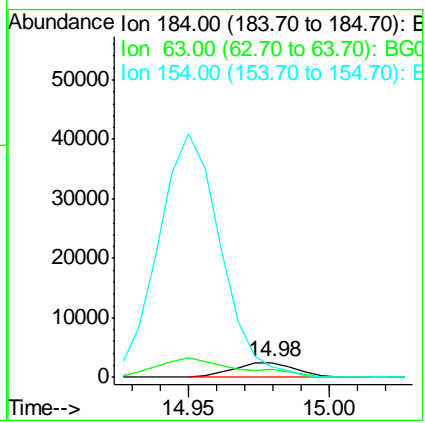
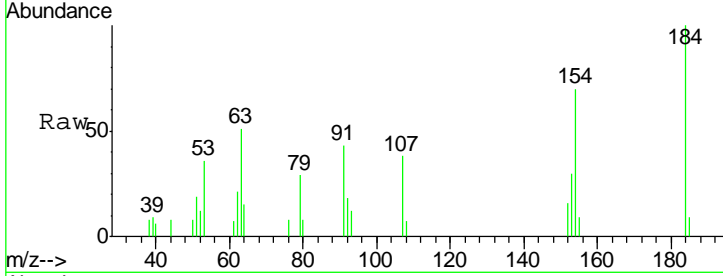


#51  
 2,4-Dinitrophenol  
 Concen: 15.81 ng/ul  
 RT: 14.98 min Scan# 2067  
 Delta R.T. 0.00 min  
 Lab File: BG020780.D  
 Acq: 1 Feb 2016 21:13

Instrument :  
 BNA\_G  
 ClientSampled :  
 SSTD02011

Tgt Ion:184 Resp: 3791

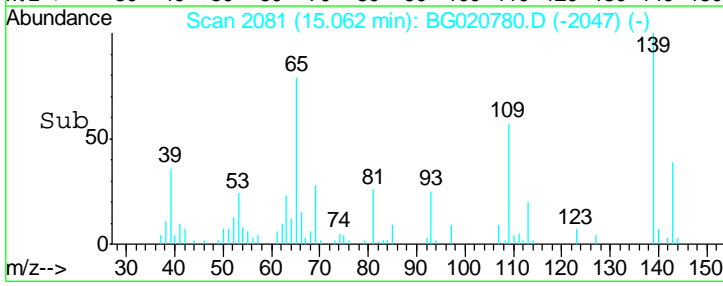
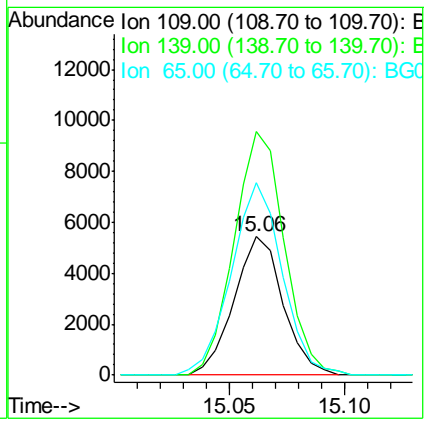
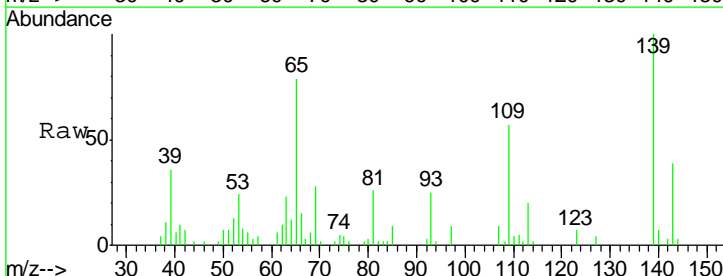
Ion	Ratio	Lower	Upper
184	100		
63	50.9	39.7	59.5
154	69.7	45.0	67.6#

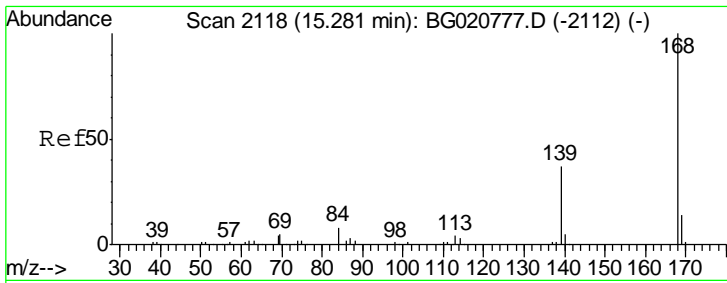


#53  
 4-Nitrophenol  
 Concen: 20.95 ng/ul  
 RT: 15.06 min Scan# 2081  
 Delta R.T. -0.00 min  
 Lab File: BG020780.D  
 Acq: 1 Feb 2016 21:13

Tgt Ion:109 Resp: 8056

Ion	Ratio	Lower	Upper
109	100		
139	175.7	91.2	136.8#
65	138.8	92.6	139.0

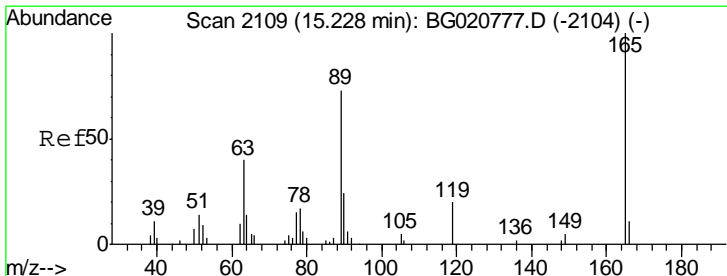
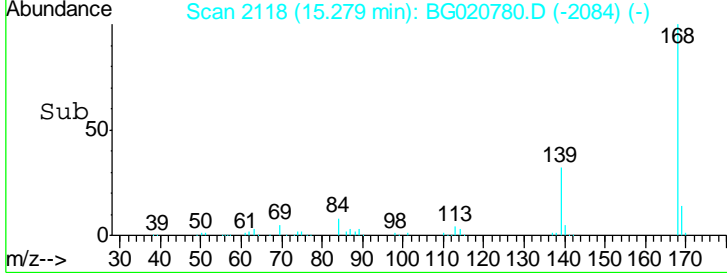
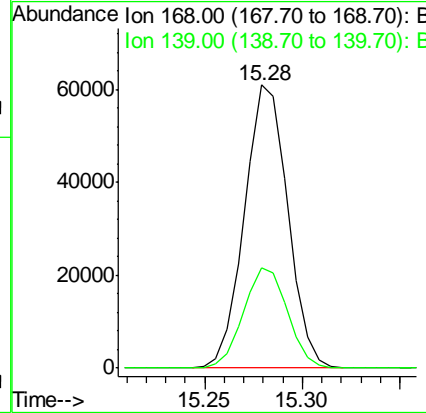
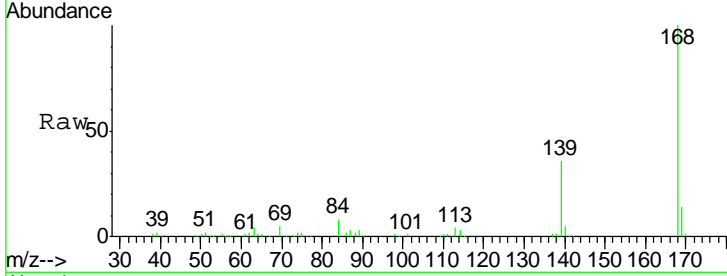




#54  
 Dibenzofuran  
 Concen: 19.59 ng/ul  
 RT: 15.28 min Scan# 2118  
 Delta R.T. -0.00 min  
 Lab File: BG020780.D  
 Acq: 1 Feb 2016 21:13

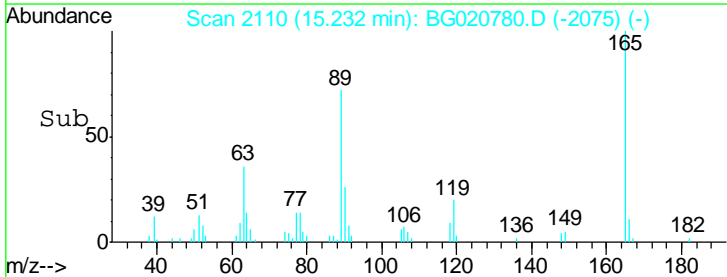
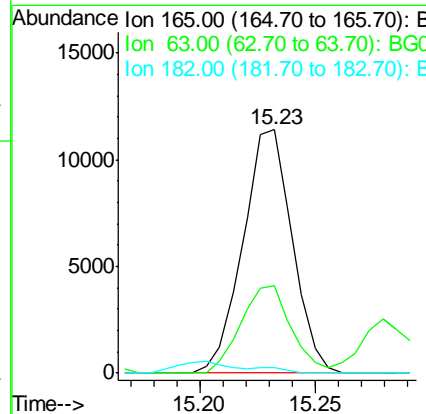
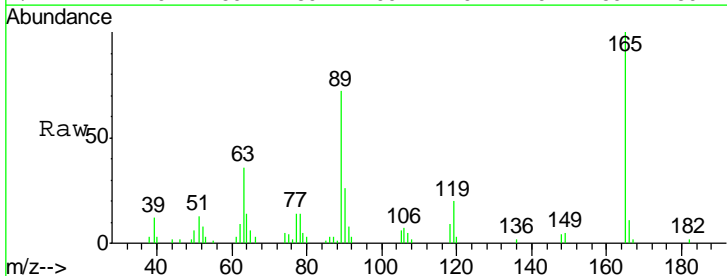
Instrument :  
 BNA\_G  
 ClientSampled :  
 SSTD02011

Tgt Ion:168 Resp: 93555  
 Ion Ratio Lower Upper  
 168 100  
 139 35.6 31.0 46.4

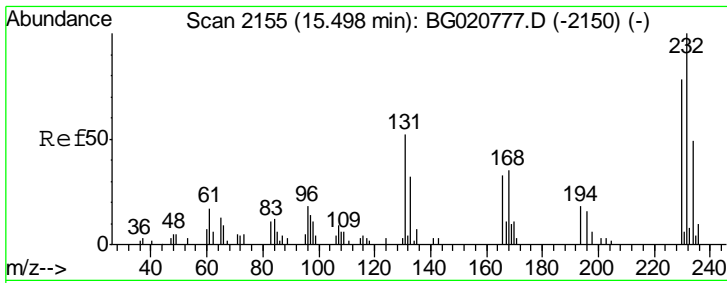


#55  
 2,4-Dinitrotoluene  
 Concen: 22.24 ng/ul  
 RT: 15.23 min Scan# 2110  
 Delta R.T. 0.00 min  
 Lab File: BG020780.D  
 Acq: 1 Feb 2016 21:13

Tgt Ion:165 Resp: 16938  
 Ion Ratio Lower Upper  
 165 100  
 63 35.9 31.4 47.0  
 182 2.4 2.7 4.1#



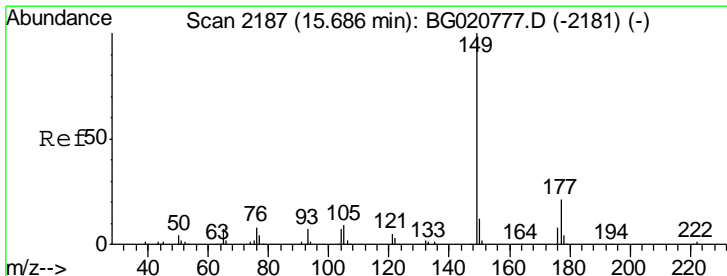
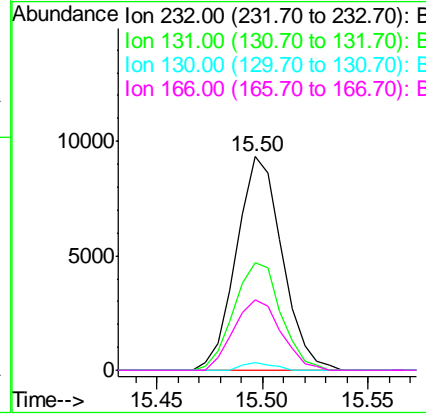
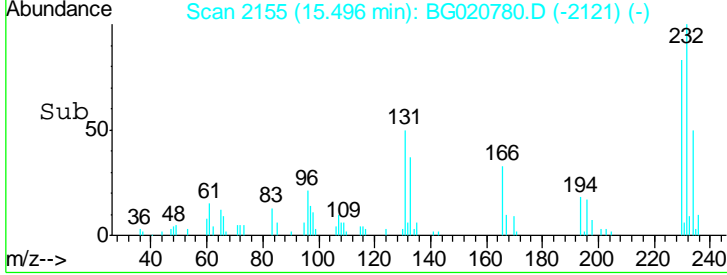
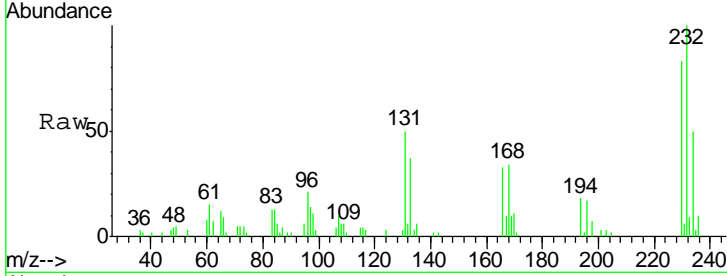




#56  
 2,3,4,6-Tetrachlorophenol  
 Concen: 17.20 ng/ul  
 RT: 15.50 min Scan# 2155  
 Delta R.T. -0.00 min  
 Lab File: BG020780.D  
 Acq: 1 Feb 2016 21:13

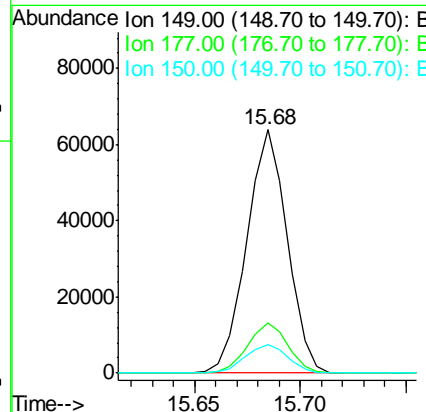
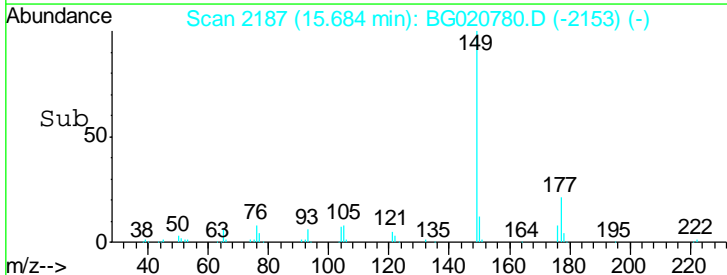
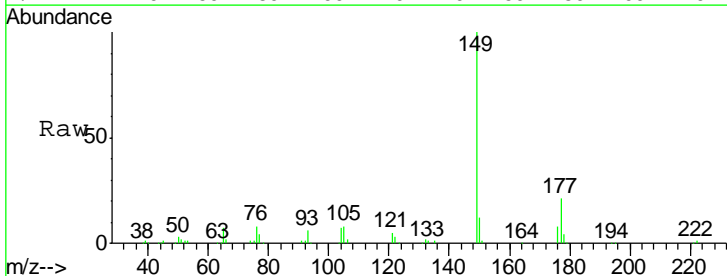
Instrument :  
 BNA\_G  
 ClientSampled :  
 SSTD02011

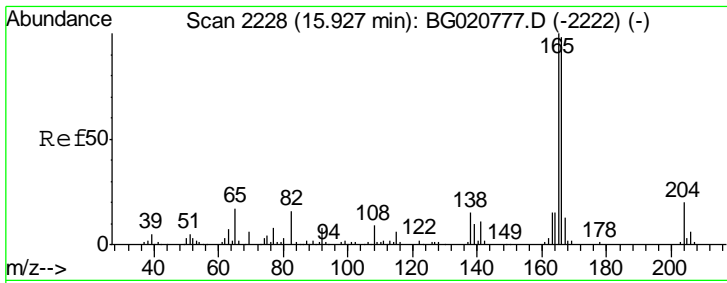
Tgt Ion	Resp	Lower	Upper
232	14070		
131	50.3	27.1	40.7#
130	3.4	0.0	0.0#
166	33.3	20.0	30.0#



#57  
 Diethylphthalate  
 Concen: 19.73 ng/ul  
 RT: 15.68 min Scan# 2187  
 Delta R.T. -0.00 min  
 Lab File: BG020780.D  
 Acq: 1 Feb 2016 21:13

Tgt Ion	Resp	Lower	Upper
149	84826		
177	20.6	19.3	28.9
150	11.8	10.6	15.8

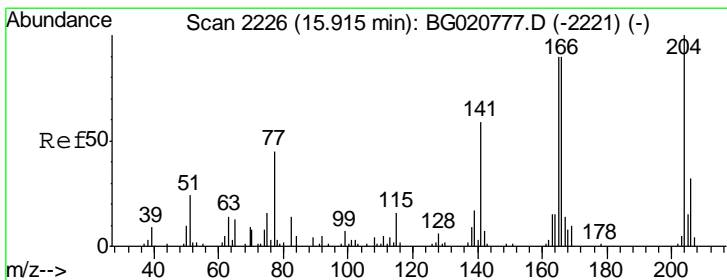
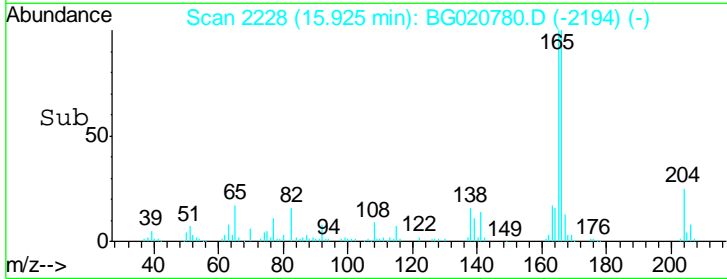
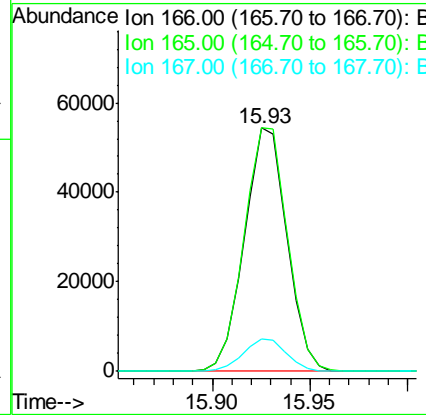
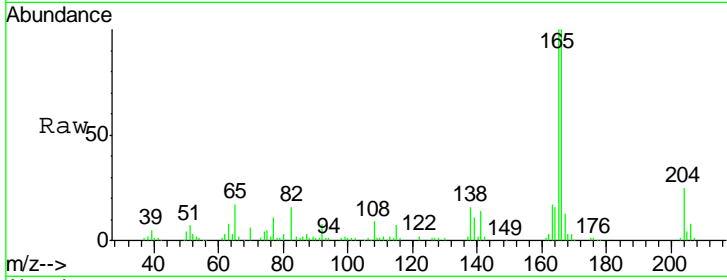




#59  
 Fluorene  
 Concen: 19.63 ng/ul  
 RT: 15.93 min Scan# 2228  
 Delta R.T. -0.00 min  
 Lab File: BG020780.D  
 Acq: 1 Feb 2016 21:13

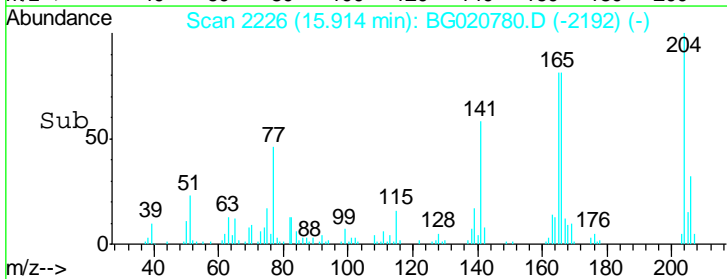
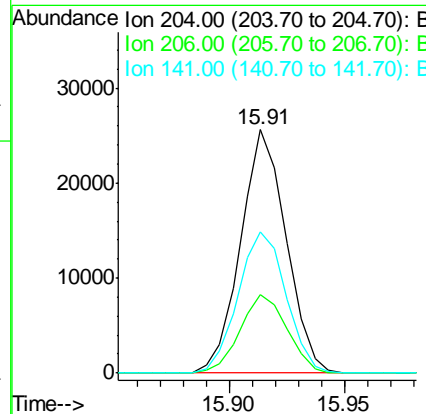
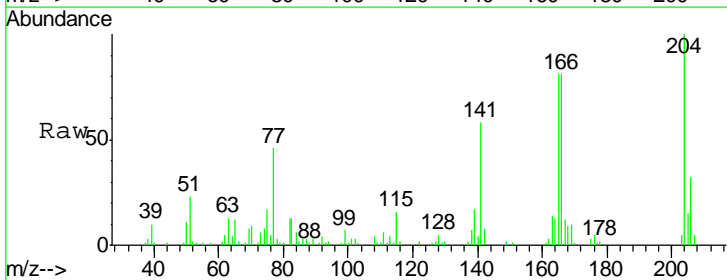
Instrument :  
 BNA\_G  
 ClientSampled :  
 SSTD02011

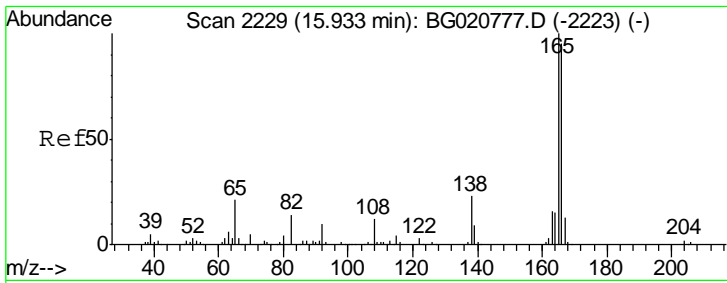
Tgt Ion	Resp	Lower	Upper
166	100		
165	99.9	78.4	117.6
167	13.2	11.1	16.7



#60  
 4-Chlorophenyl-phenylether  
 Concen: 19.45 ng/ul  
 RT: 15.91 min Scan# 2226  
 Delta R.T. -0.00 min  
 Lab File: BG020780.D  
 Acq: 1 Feb 2016 21:13

Tgt Ion	Resp	Lower	Upper
204	100		
206	32.1	26.6	40.0
141	58.0	40.7	61.1

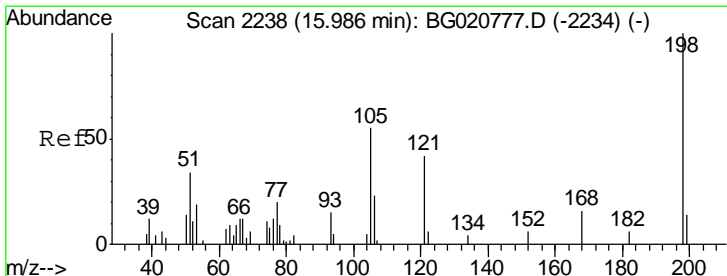
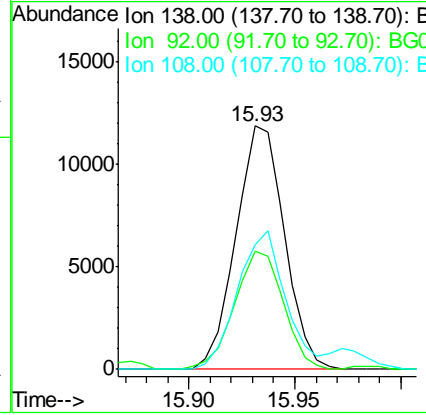
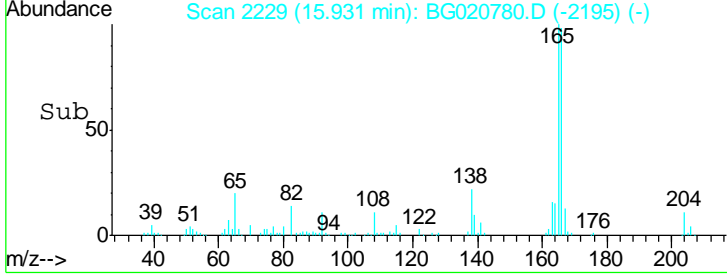
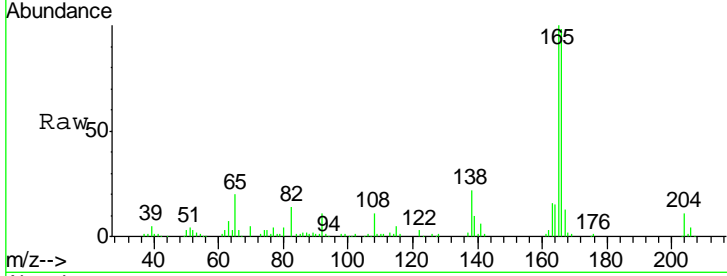




#61  
 4-Nitroaniline  
 Concen: 21.30 ng/ul  
 RT: 15.93 min Scan# 2229  
 Delta R.T. -0.00 min  
 Lab File: BG020780.D  
 Acq: 1 Feb 2016 21:13

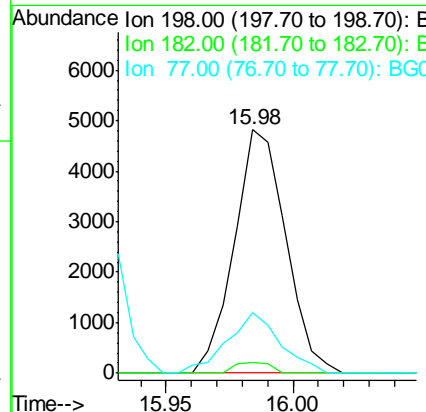
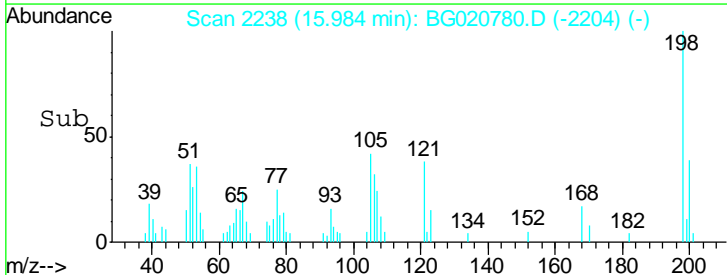
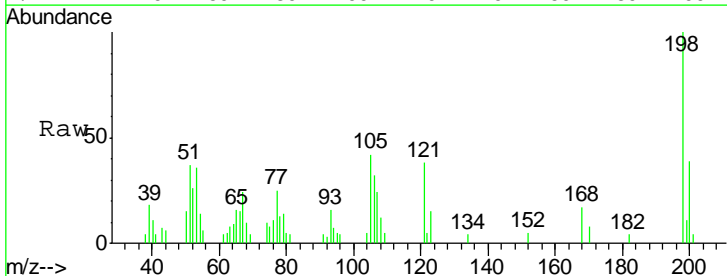
Instrument :  
 BNA\_G  
 ClientSampled :  
 SSTD02011

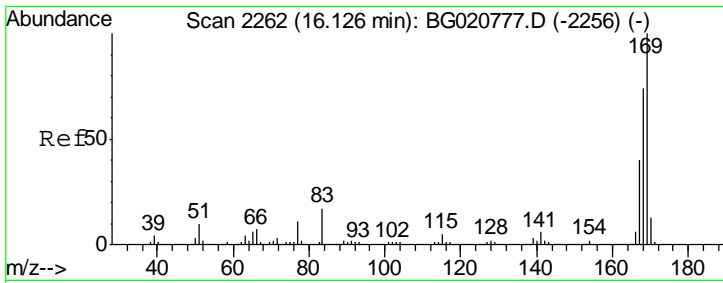
Tgt Ion	Resp	Lower	Upper
138	100		
92	48.4	38.2	57.4
108	51.4	70.0	105.0#



#64  
 4,6-Dinitro-2-methylphenol  
 Concen: 16.99 ng/ul  
 RT: 15.98 min Scan# 2238  
 Delta R.T. -0.00 min  
 Lab File: BG020780.D  
 Acq: 1 Feb 2016 21:13

Tgt Ion	Resp	Lower	Upper
198	100		
182	4.3	3.5	5.3
77	25.1	18.2	27.4

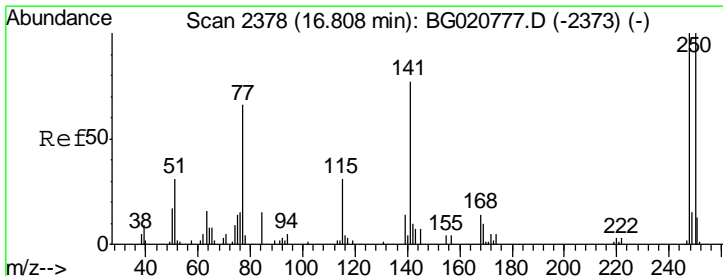
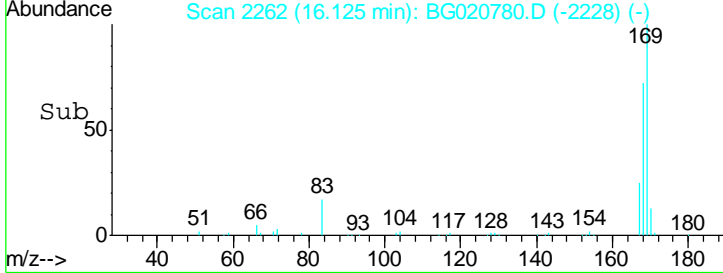
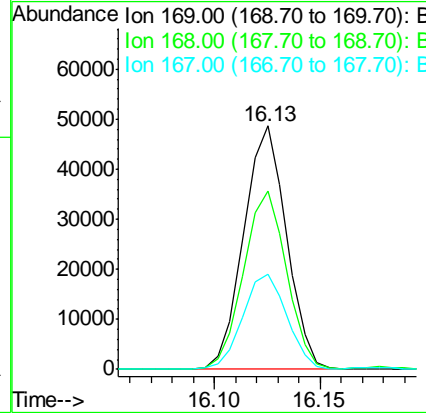
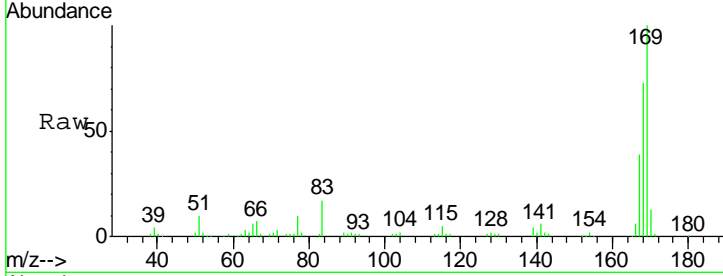




#65  
 N-Nitrosodiphenylamine  
 Concen: 19.98 ng/ul  
 RT: 16.13 min Scan# 2262  
 Delta R.T. -0.00 min  
 Lab File: BG020780.D  
 Acq: 1 Feb 2016 21:13

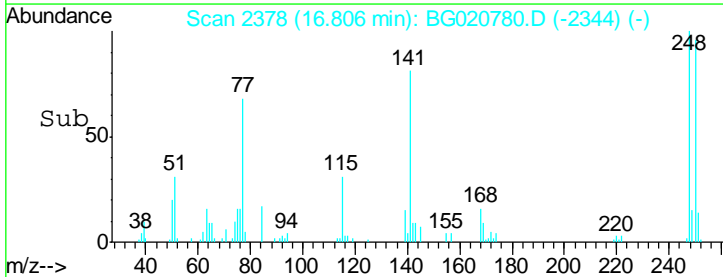
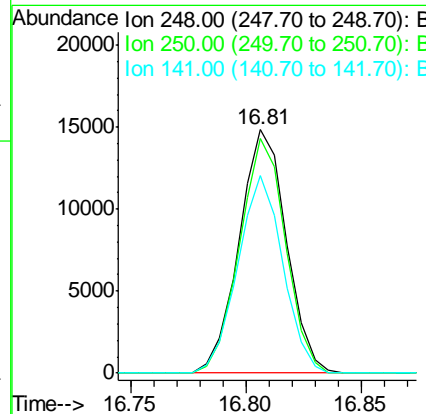
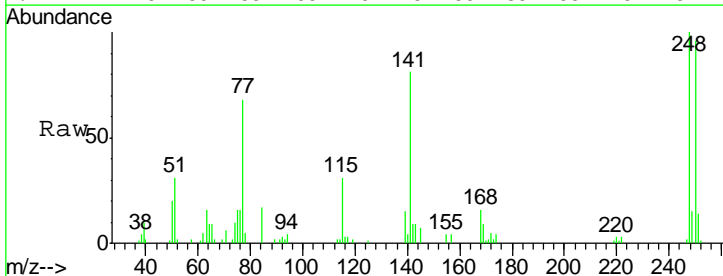
Instrument :  
 BNA\_G  
 ClientSampled :  
 SSTD02011

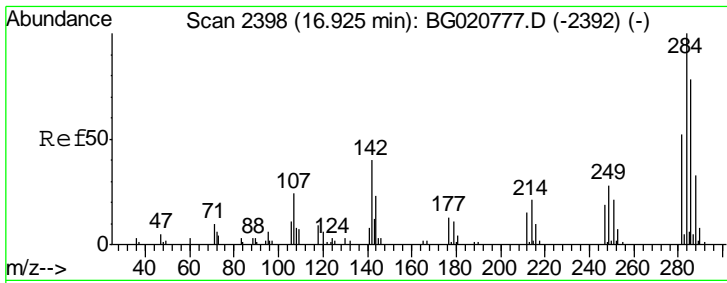
Tgt Ion	Resp	Lower	Upper
169	100		
168	73.2	53.8	80.8
167	38.8	29.5	44.3



#66  
 4-Bromophenyl-phenylether  
 Concen: 19.33 ng/ul  
 RT: 16.81 min Scan# 2378  
 Delta R.T. -0.00 min  
 Lab File: BG020780.D  
 Acq: 1 Feb 2016 21:13

Tgt Ion	Resp	Lower	Upper
248	100		
250	96.3	79.0	118.4
141	81.1	51.9	77.9#

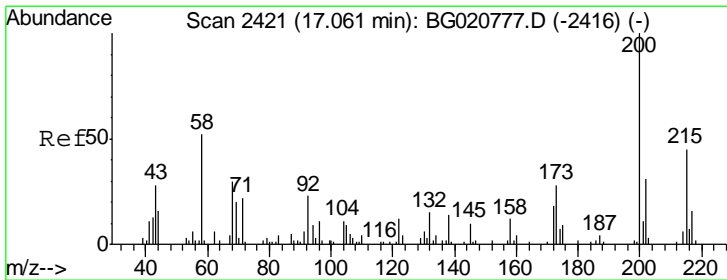
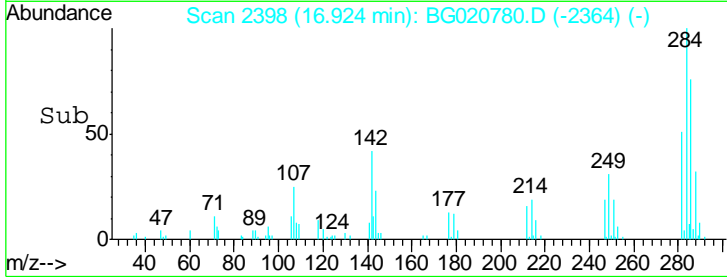
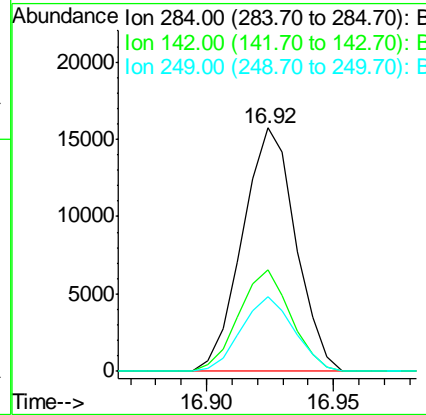
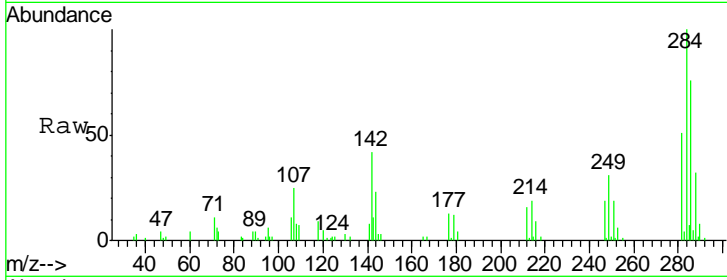




#67  
 Hexachlorobenzene  
 Concen: 18.83 ng/ul  
 RT: 16.92 min Scan# 2398  
 Delta R.T. -0.00 min  
 Lab File: BG020780.D  
 Acq: 1 Feb 2016 21:13

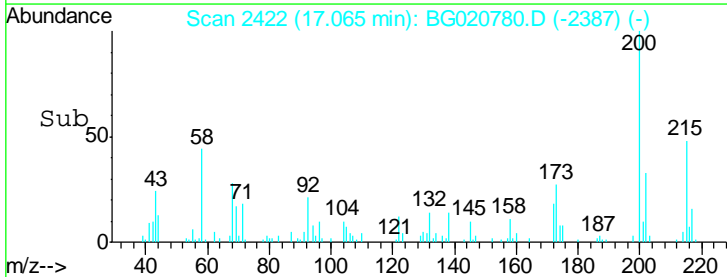
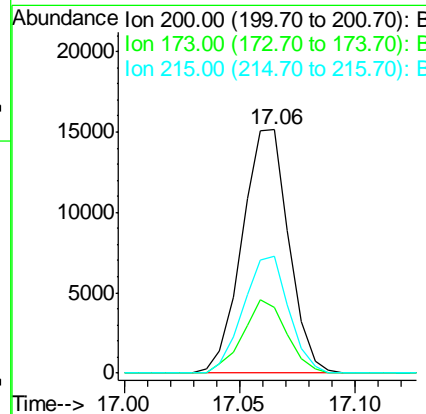
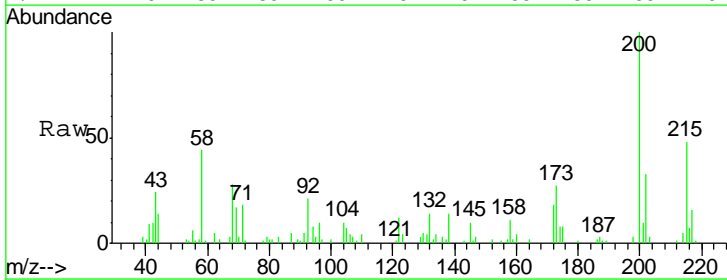
Instrument :  
 BNA\_G  
 ClientSampled :  
 SSTD02011

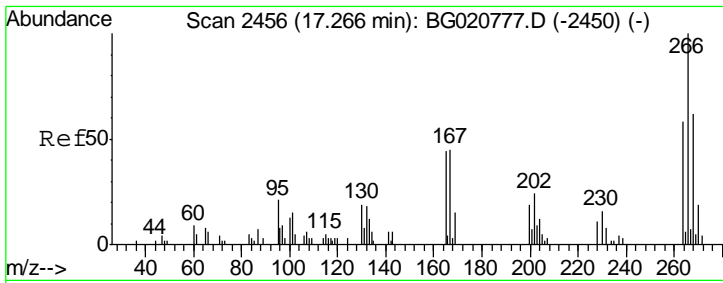
Tgt Ion	Resp	Lower	Upper
284	100		
142	41.6	21.3	31.9#
249	30.7	26.3	39.5



#68  
 Atrazine  
 Concen: 18.89 ng/ul  
 RT: 17.06 min Scan# 2422  
 Delta R.T. 0.00 min  
 Lab File: BG020780.D  
 Acq: 1 Feb 2016 21:13

Tgt Ion	Resp	Lower	Upper
200	100		
173	27.0	20.6	31.0
215	48.1	39.8	59.6



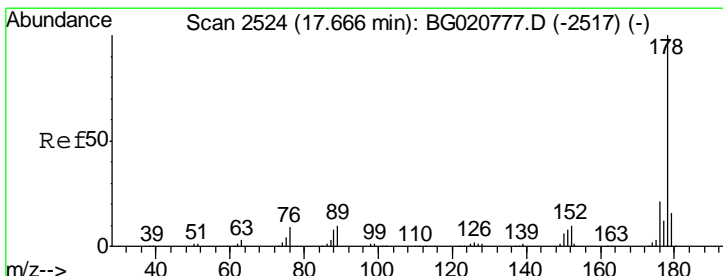
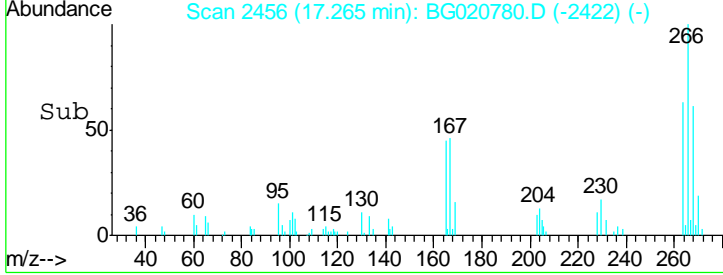
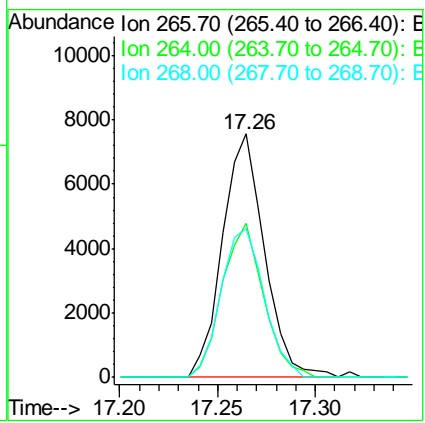
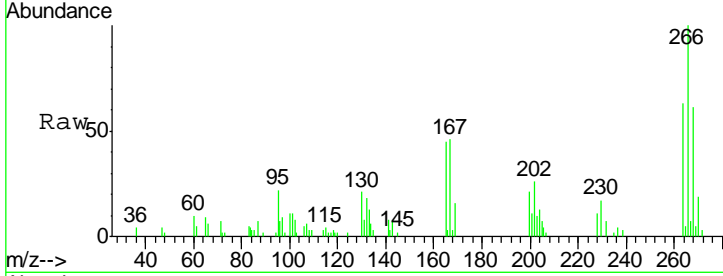


#69  
 Pentachlorophenol  
 Concen: 16.11 ng/ul  
 RT: 17.26 min Scan# 2456  
 Delta R.T. -0.00 min  
 Lab File: BG020780.D  
 Acq: 1 Feb 2016 21:13

Instrument :  
 BNA\_G  
 ClientSampled :  
 SSTD02011

Tgt Ion: 266 Resp: 11251

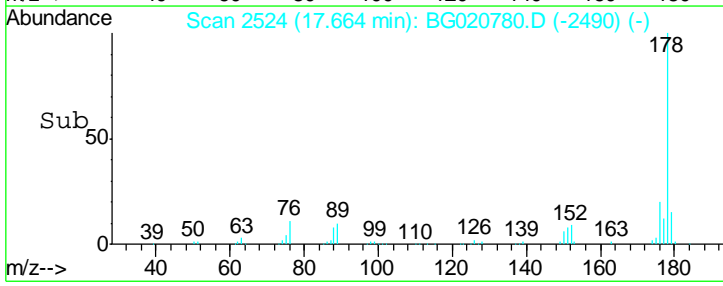
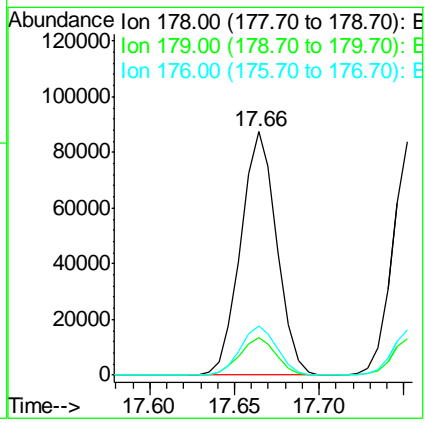
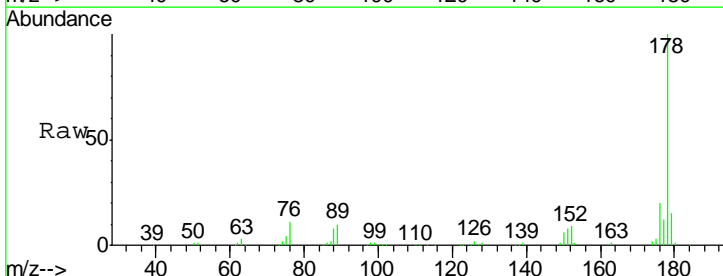
Ion	Ratio	Lower	Upper
266	100		
264	63.3	48.2	72.4
268	61.3	52.3	78.5

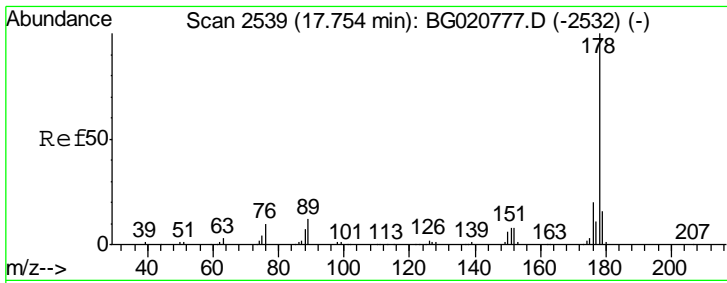


#70  
 Phenanthrene  
 Concen: 20.14 ng/ul  
 RT: 17.66 min Scan# 2524  
 Delta R.T. -0.00 min  
 Lab File: BG020780.D  
 Acq: 1 Feb 2016 21:13

Tgt Ion: 178 Resp: 129608

Ion	Ratio	Lower	Upper
178	100		
179	15.4	12.3	18.5
176	20.3	15.4	23.0

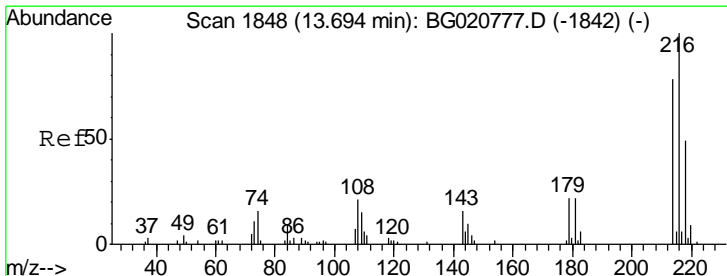
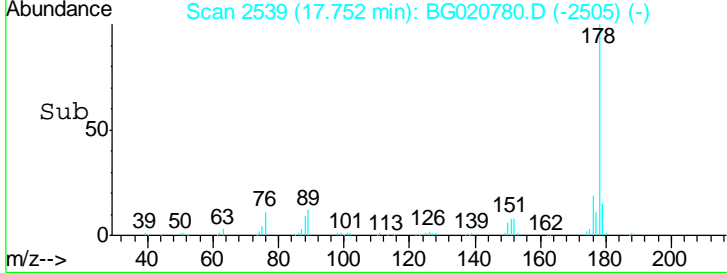
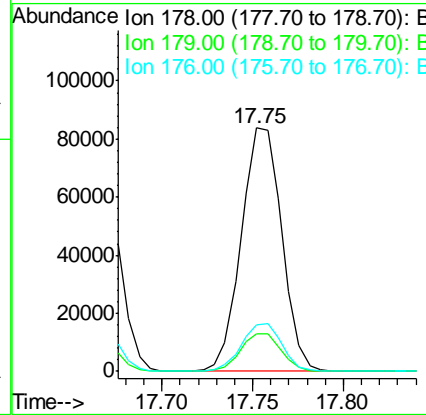
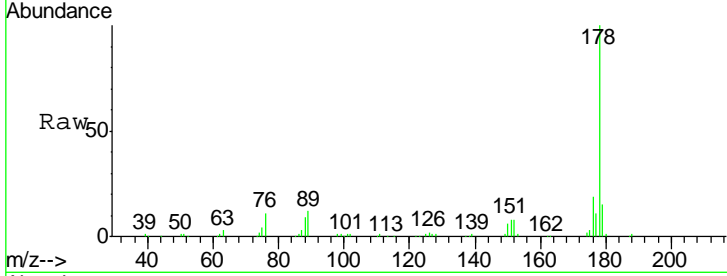




#72  
 Anthracene  
 Concen: 20.33 ng/uL  
 RT: 17.75 min Scan# 2539  
 Delta R.T. -0.00 min  
 Lab File: BG020780.D  
 Acq: 1 Feb 2016 21:13

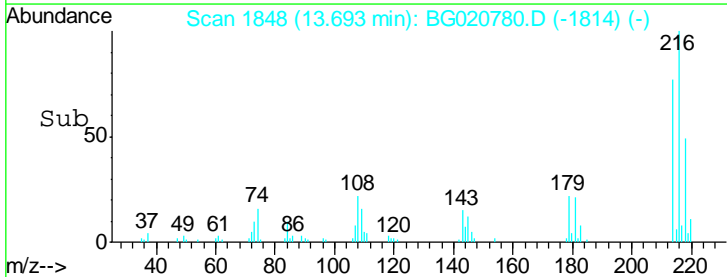
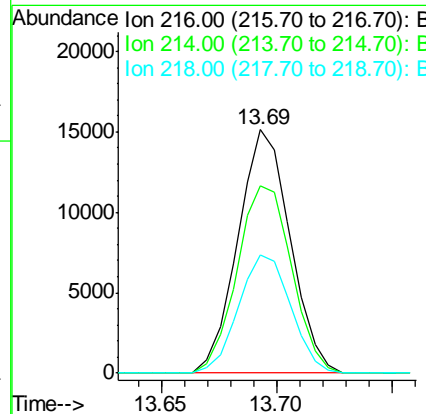
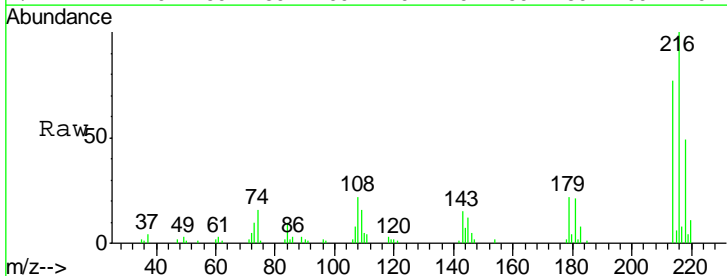
Instrument :  
 BNA\_G  
 ClientSampled :  
 SSTD02011

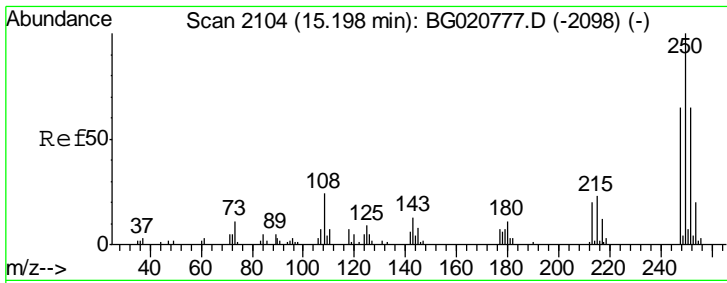
Tgt Ion	Resp	Lower	Upper
178	130857		
179	15.3	13.4	20.2
176	19.2	15.4	23.0



#73  
 1,2,3,4-Tetrachlorobenzene  
 Concen: 19.63 ng/uL  
 RT: 13.69 min Scan# 1848  
 Delta R.T. -0.00 min  
 Lab File: BG020780.D  
 Acq: 1 Feb 2016 21:13

Tgt Ion	Resp	Lower	Upper
216	23888		
214	77.1	64.1	96.1
218	48.7	39.4	59.0

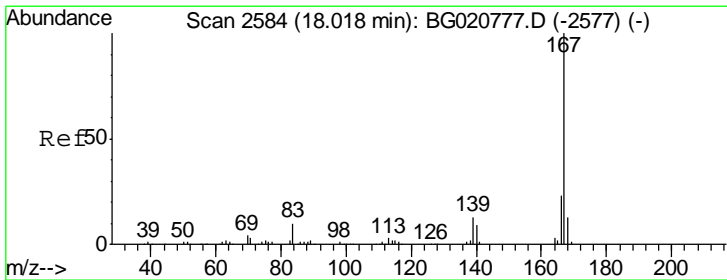
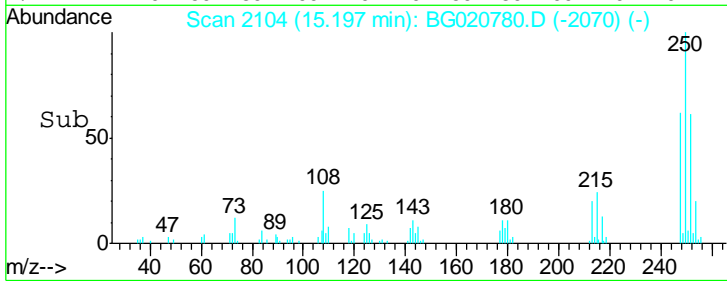
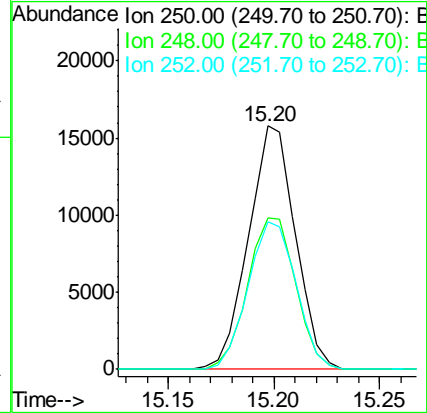
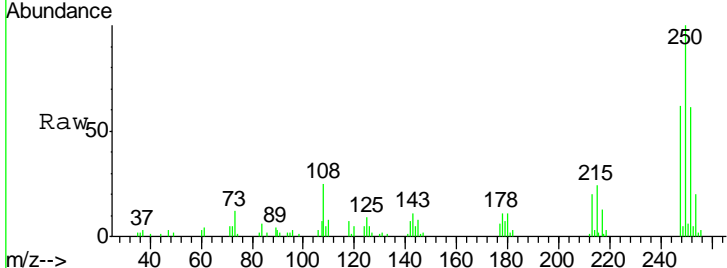




#74  
 Pentachlorobenzene  
 Concen: 19.37 ng/uL  
 RT: 15.20 min Scan# 2104  
 Delta R.T. -0.00 min  
 Lab File: BG020780.D  
 Acq: 1 Feb 2016 21:13

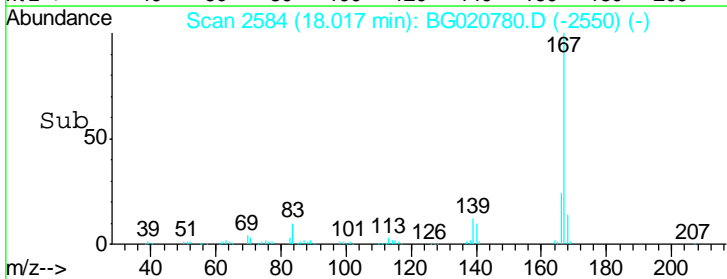
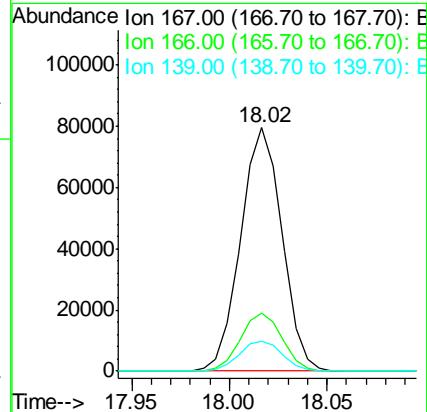
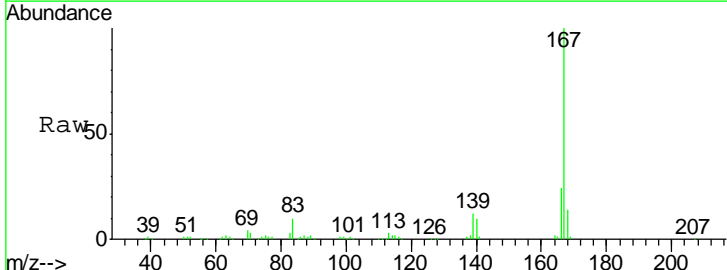
Instrument :  
 BNA\_G  
 ClientSampled :  
 SST02011

Tgt Ion	Resp	Lower	Upper
250	100		
248	62.3	51.4	77.2
252	60.7	49.8	74.6

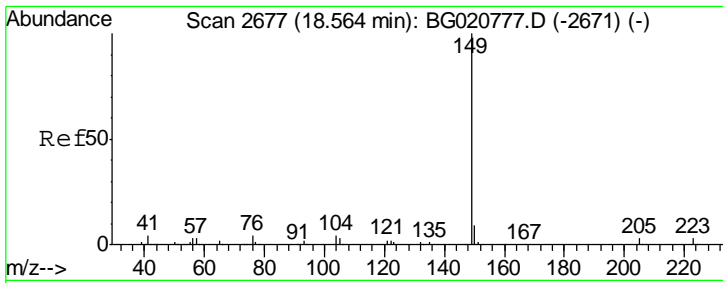


#75  
 Carbazole  
 Concen: 20.45 ng/uL  
 RT: 18.02 min Scan# 2584  
 Delta R.T. -0.00 min  
 Lab File: BG020780.D  
 Acq: 1 Feb 2016 21:13

Tgt Ion	Resp	Lower	Upper
167	100		
166	23.6	17.0	25.4
139	12.4	9.1	13.7



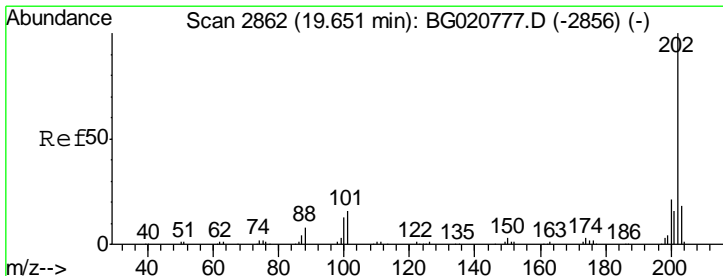
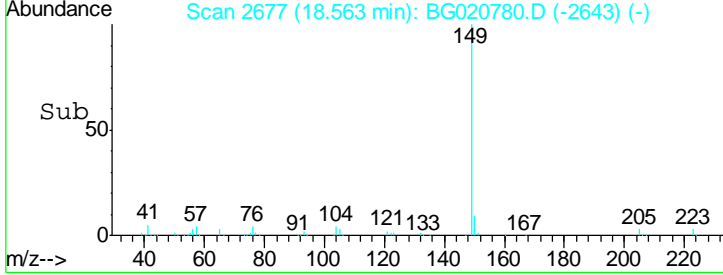
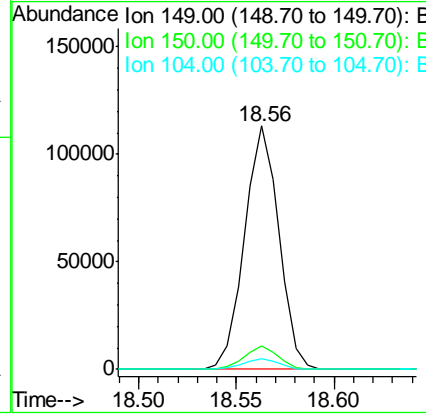
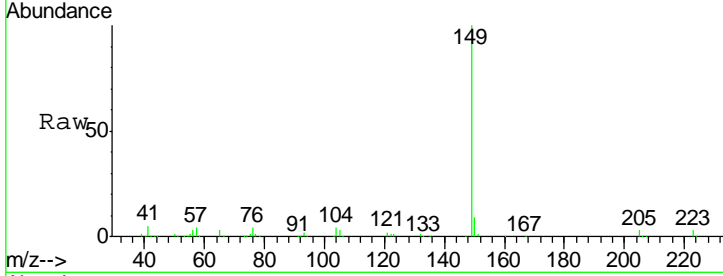




#76  
 Di-n-butylphthalate  
 Concen: 20.18 ng/ul  
 RT: 18.56 min Scan# 2677  
 Delta R.T. -0.00 min  
 Lab File: BG020780.D  
 Acq: 1 Feb 2016 21:13

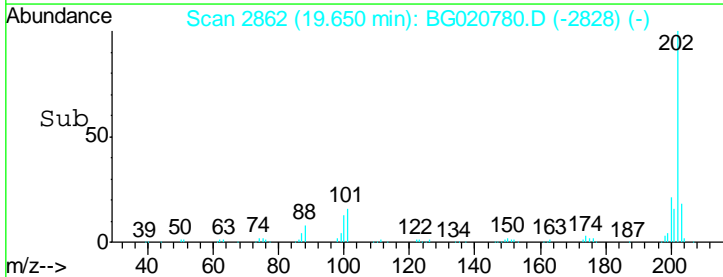
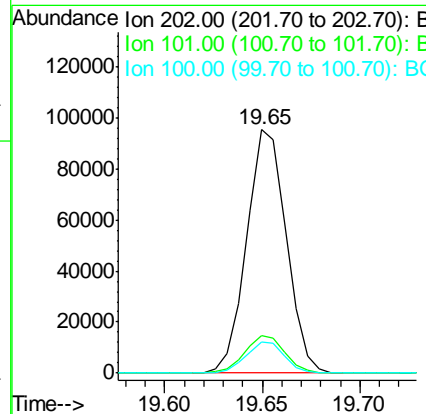
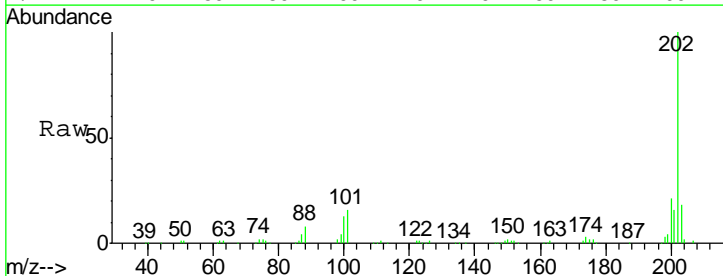
Instrument :  
 BNA\_G  
 ClientSampled :  
 SSTD02011

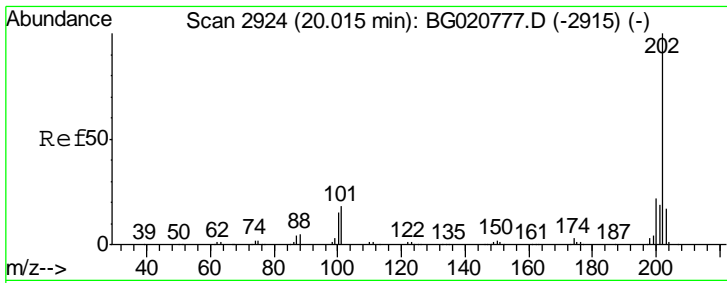
Tgt Ion	Resp	Lower	Upper
149	138009		
150	9.4	7.5	11.3
104	4.3	4.1	6.1



#77  
 Fluoranthene  
 Concen: 20.27 ng/ul  
 RT: 19.65 min Scan# 2862  
 Delta R.T. -0.00 min  
 Lab File: BG020780.D  
 Acq: 1 Feb 2016 21:13

Tgt Ion	Resp	Lower	Upper
202	134026		
101	15.5	6.1	9.1#
100	12.5	4.6	7.0#

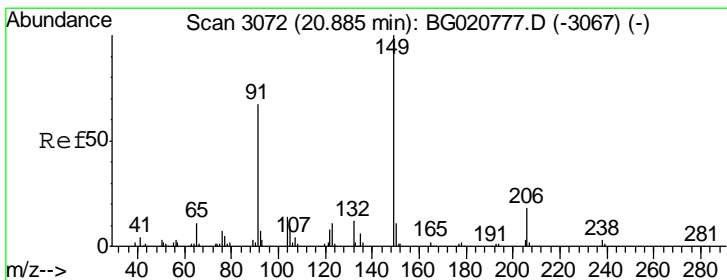
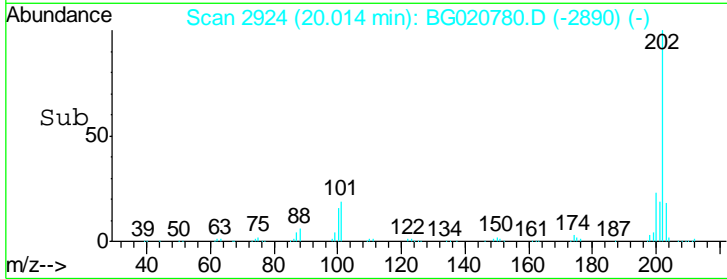
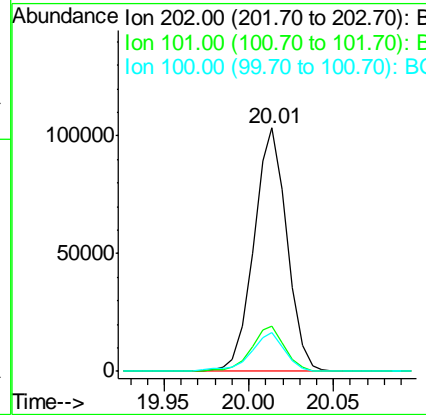
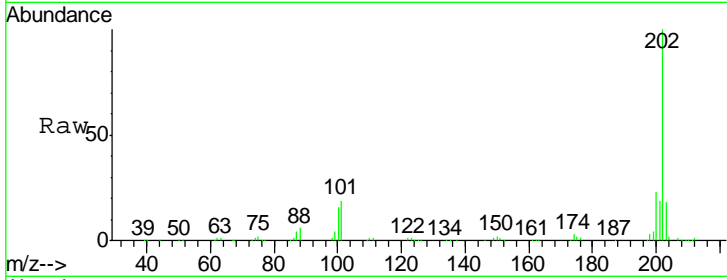




#80  
 Pyrene  
 Concen: 18.87 ng/ul  
 RT: 20.01 min Scan# 2924  
 Delta R.T. -0.00 min  
 Lab File: BG020780.D  
 Acq: 1 Feb 2016 21:13

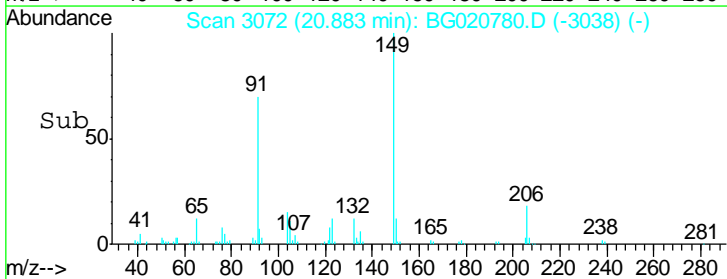
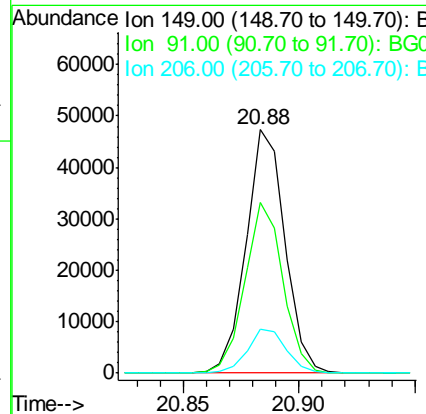
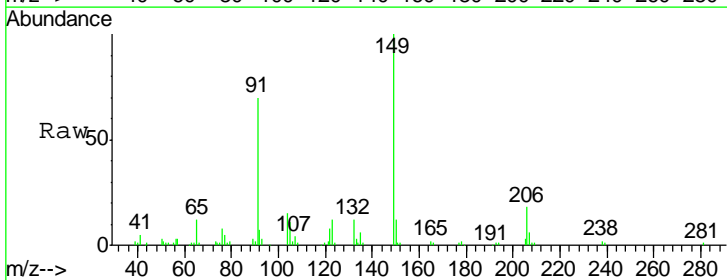
Instrument :  
 BNA\_G  
 ClientSampled :  
 SSTD02011

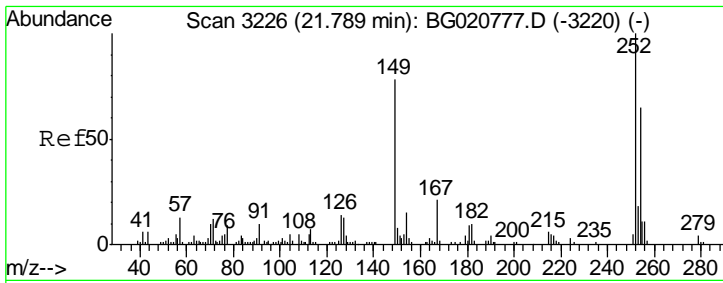
Tgt Ion	Resp	Lower	Upper
202	139905		
101	18.6	6.9	10.3#
100	15.9	5.6	8.4#



#81  
 Butylbenzylphthalate  
 Concen: 19.12 ng/ul  
 RT: 20.88 min Scan# 3072  
 Delta R.T. -0.00 min  
 Lab File: BG020780.D  
 Acq: 1 Feb 2016 21:13

Tgt Ion	Resp	Lower	Upper
149	55648		
91	70.3	53.4	80.0
206	18.0	19.3	28.9#

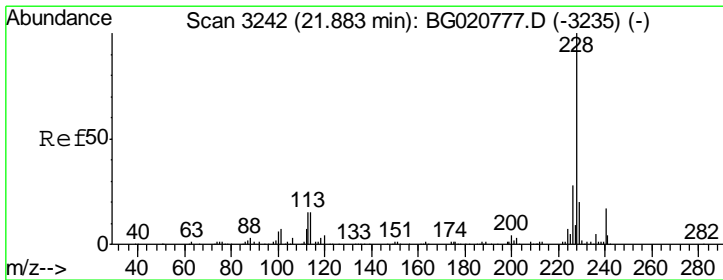
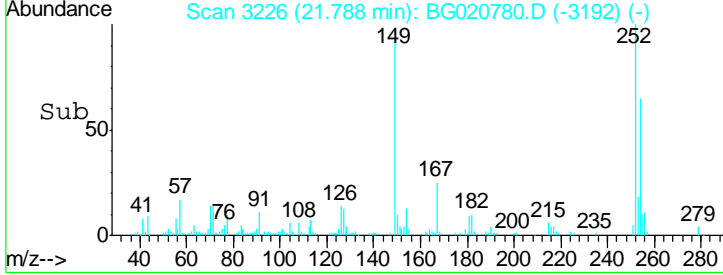
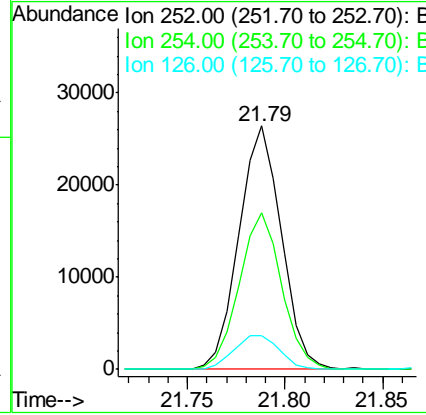
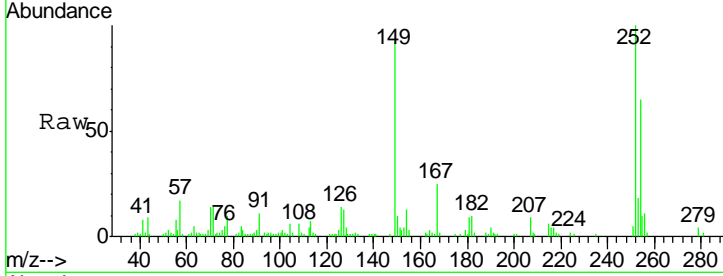




#82  
 3,3'-Dichlorobenzidine  
 Concen: 18.97 ng/ul  
 RT: 21.79 min Scan# 3226  
 Delta R.T. -0.00 min  
 Lab File: BG020780.D  
 Acq: 1 Feb 2016 21:13

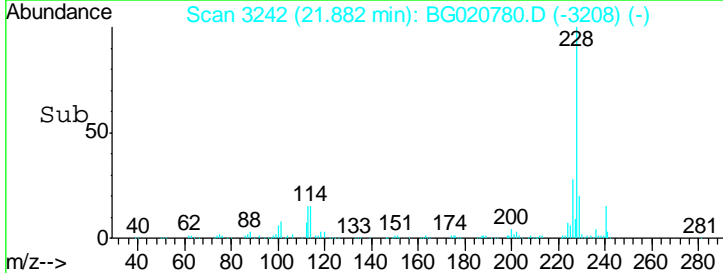
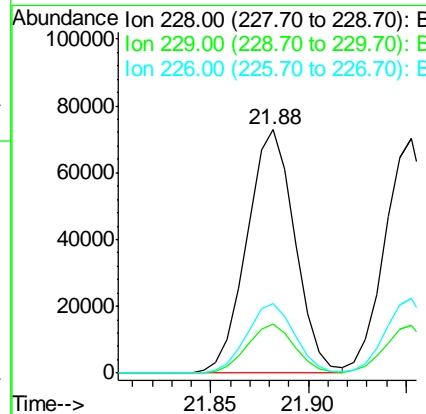
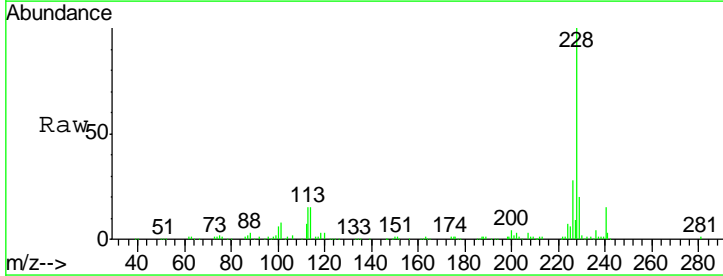
Instrument :  
 BNA\_G  
 ClientSampled :  
 SSTD02011

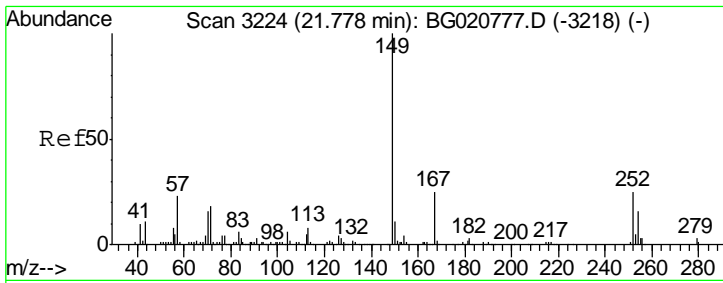
Tgt Ion	Resp	Lower	Upper
252	39792		
252	100		
254	64.5	52.8	79.2
126	13.8	6.9	10.3#



#83  
 Benzo(a)anthracene  
 Concen: 19.68 ng/ul  
 RT: 21.88 min Scan# 3242  
 Delta R.T. -0.00 min  
 Lab File: BG020780.D  
 Acq: 1 Feb 2016 21:13

Tgt Ion	Resp	Lower	Upper
228	124316		
228	100		
229	20.4	16.0	24.0
226	28.5	21.8	32.8

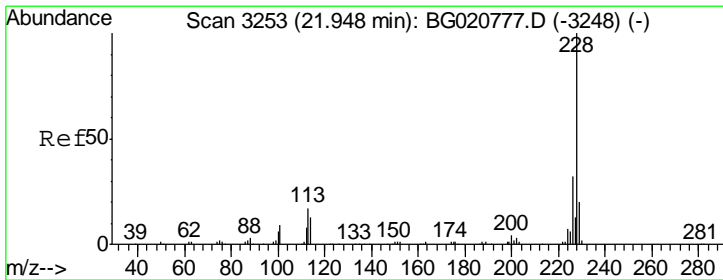
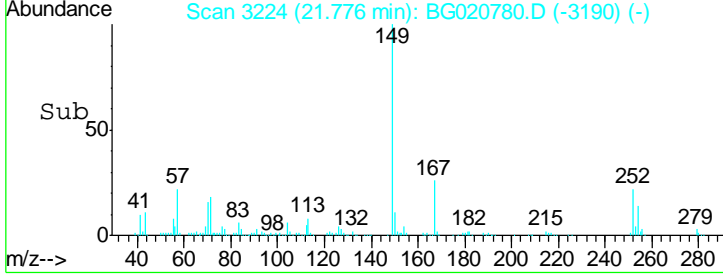
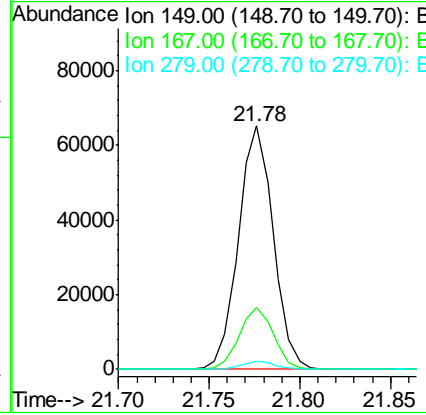
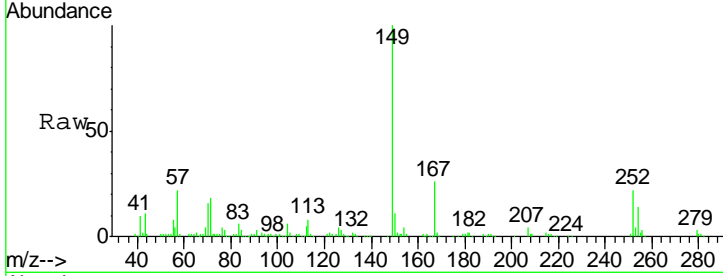




#84  
 Bis(2-ethylhexyl)phthalate  
 Concen: 19.28 ng/ul  
 RT: 21.78 min Scan# 3224  
 Delta R.T. -0.00 min  
 Lab File: BG020780.D  
 Acq: 1 Feb 2016 21:13

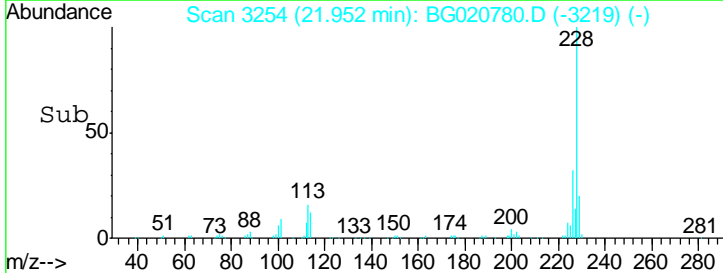
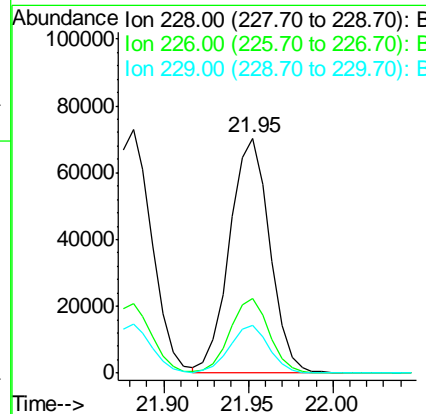
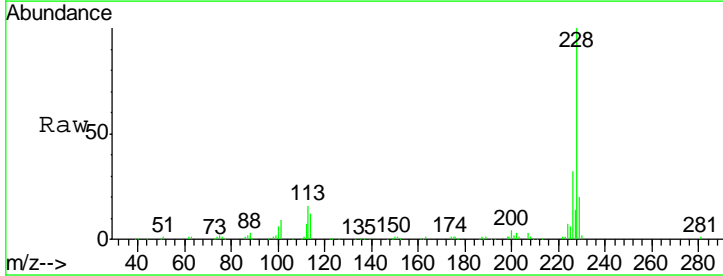
Instrument :  
 BNA\_G  
 ClientSampleID :  
 SSTD02011

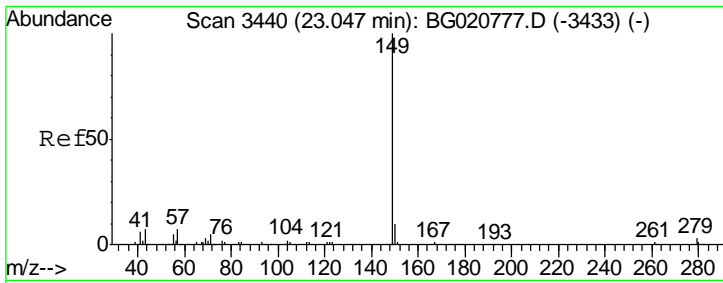
Tgt Ion	Resp	Lower	Upper
149	100		
167	25.5	23.0	34.6
279	3.2	4.3	6.5#



#85  
 Chrysene  
 Concen: 19.71 ng/ul  
 RT: 21.95 min Scan# 3254  
 Delta R.T. 0.00 min  
 Lab File: BG020780.D  
 Acq: 1 Feb 2016 21:13

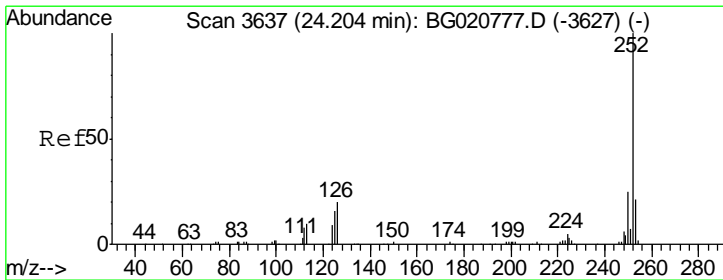
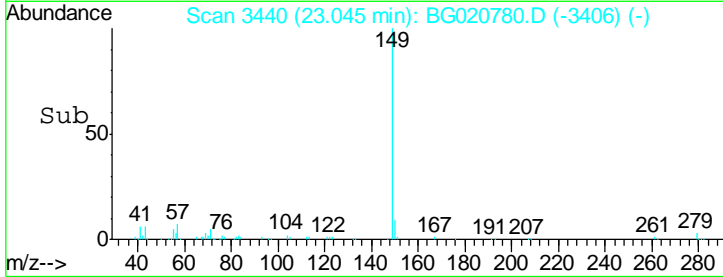
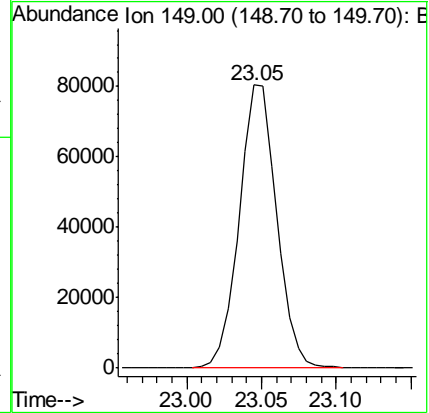
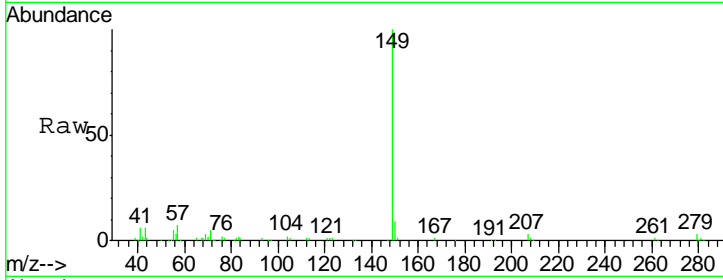
Tgt Ion	Resp	Lower	Upper
228	100		
226	31.8	24.1	36.1
229	20.2	16.0	24.0





#87  
 Di-n-octyl phthalate  
 Concen: 18.89 ng/ul  
 RT: 23.05 min Scan# 3440  
 Delta R.T. -0.00 min  
 Lab File: BG020780.D  
 Acq: 1 Feb 2016 21:13  
 Tgt Ion:149 Resp: 140212

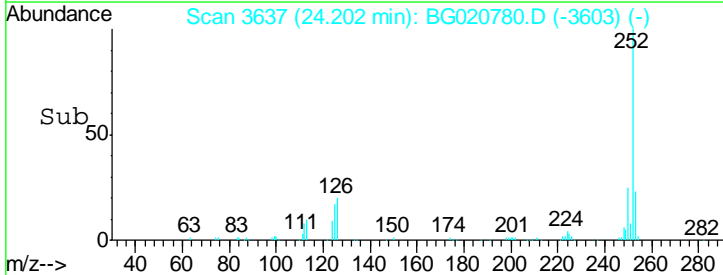
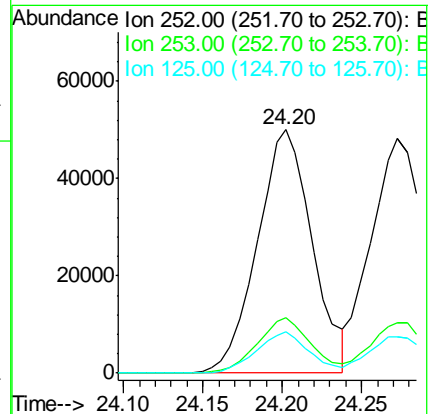
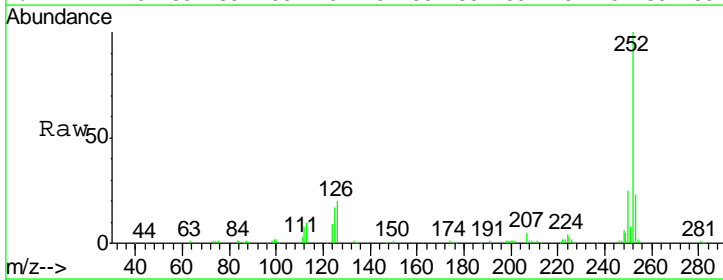
Instrument :  
 BNA\_G  
 ClientSampled :  
 SST02011

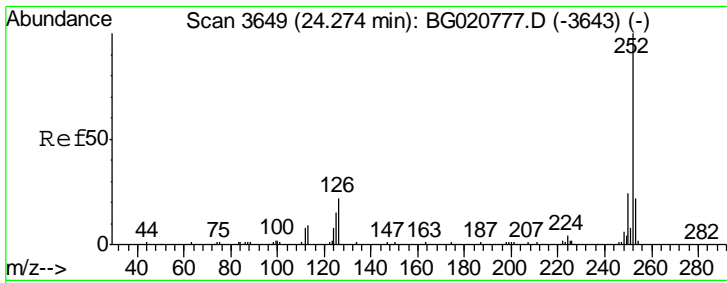


#88  
 Benzo(b)fluoranthene  
 Concen: 20.00 ng/ul  
 RT: 24.20 min Scan# 3637  
 Delta R.T. -0.00 min  
 Lab File: BG020780.D  
 Acq: 1 Feb 2016 21:13

Tgt Ion:252 Resp: 120439

Ion	Ratio	Lower	Upper
252	100		
253	22.6	17.4	26.0
125	17.0	4.9	7.3#

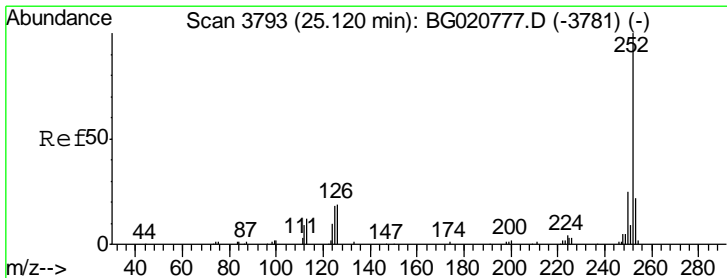
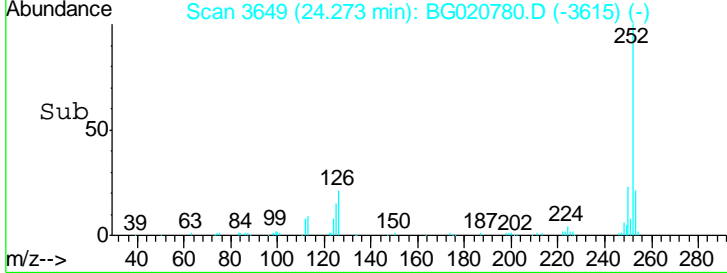
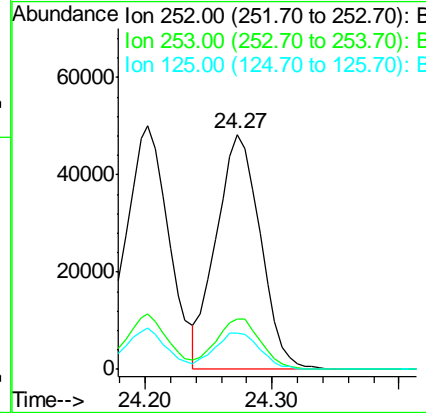
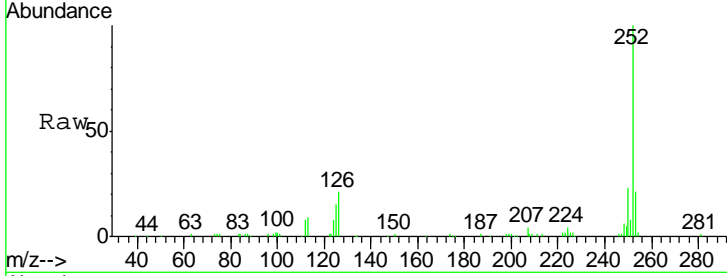




#89  
 Benzo(k)fluoranthene  
 Concen: 19.67 ng/ul  
 RT: 24.27 min Scan# 3649  
 Delta R.T. -0.00 min  
 Lab File: BG020780.D  
 Acq: 1 Feb 2016 21:13

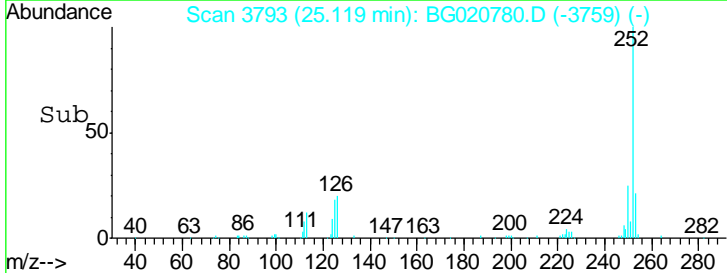
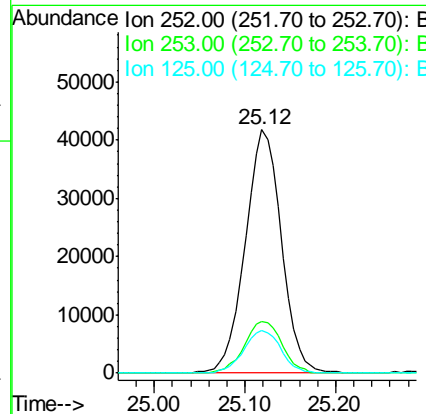
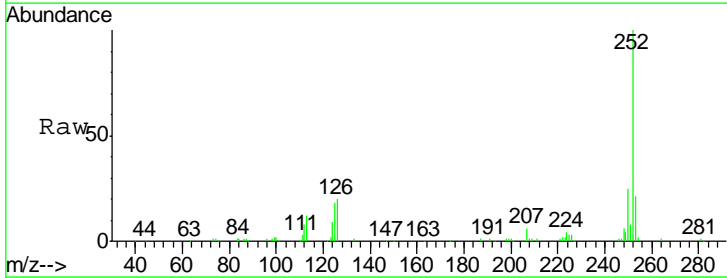
Instrument :  
 BNA\_G  
 ClientSampled :  
 SSTD02011

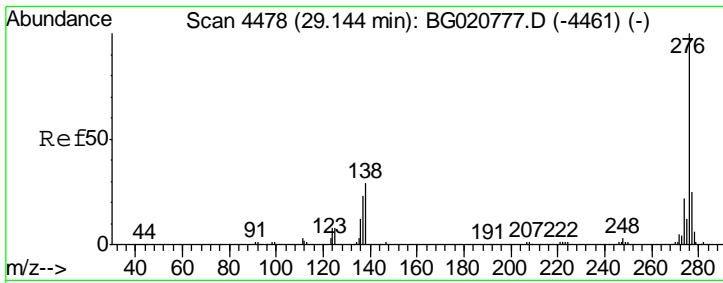
Tgt Ion	Resp	Lower	Upper
252	116046		
253	21.4	17.1	25.7
125	15.3	5.4	8.0#



#91  
 Benzo(a)pyrene  
 Concen: 20.05 ng/ul  
 RT: 25.12 min Scan# 3793  
 Delta R.T. -0.00 min  
 Lab File: BG020780.D  
 Acq: 1 Feb 2016 21:13

Tgt Ion	Resp	Lower	Upper
252	115511		
253	21.4	17.2	25.8
125	17.7	5.8	8.6#

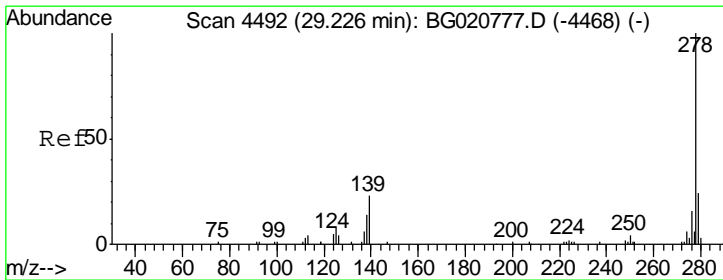
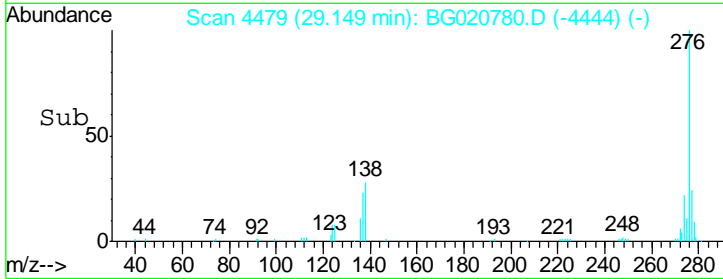
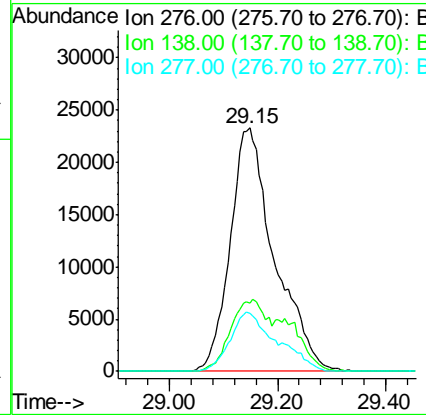
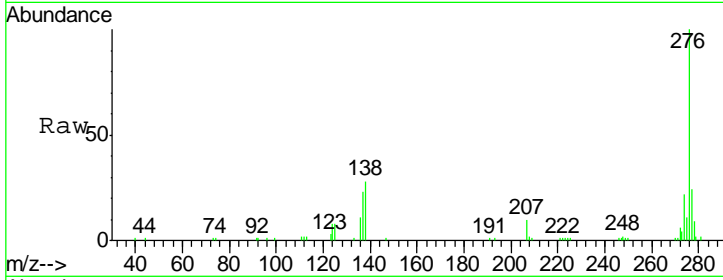




#92  
 Indeno(1,2,3-cd)pyrene  
 Concen: 19.75 ng/ul  
 RT: 29.15 min Scan# 4479  
 Delta R.T. 0.00 min  
 Lab File: BG020780.D  
 Acq: 1 Feb 2016 21:13

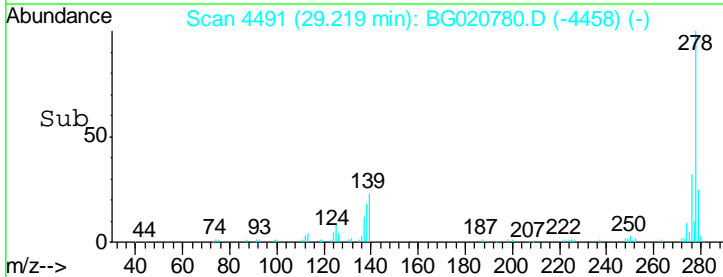
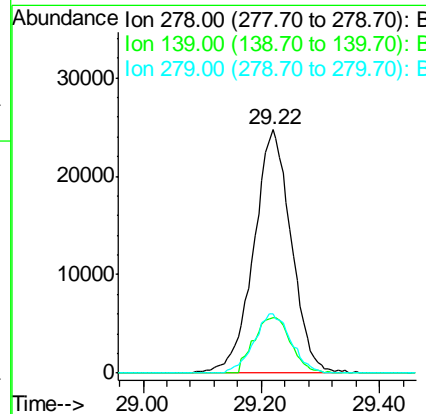
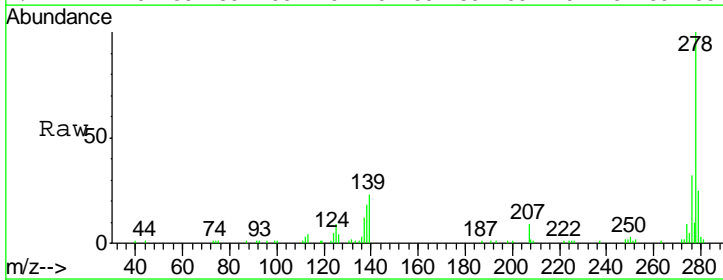
Instrument :  
 BNA\_G  
 ClientSampled :  
 SST02011

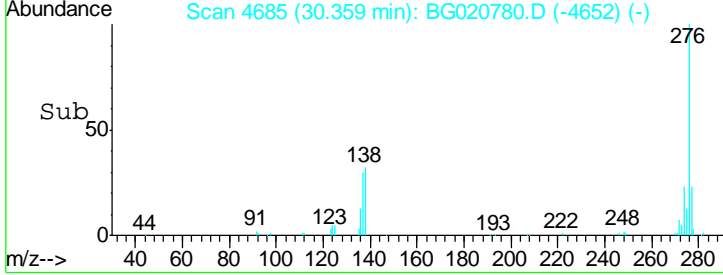
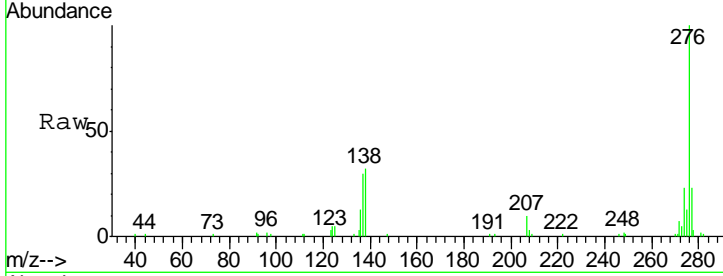
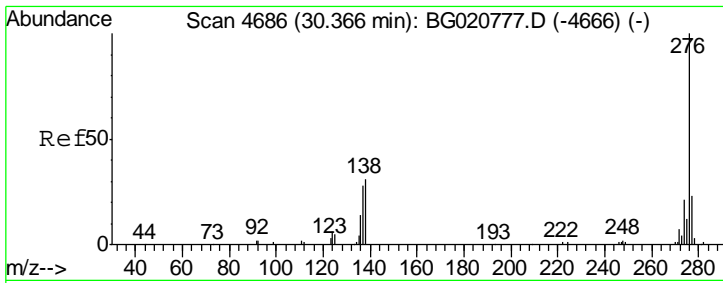
Tgt Ion	Resp	Lower	Upper
276	133019		
138	28.3	10.9	16.3#
277	23.7	18.9	28.3



#93  
 Dibenzo(a,h)anthracene  
 Concen: 19.57 ng/ul  
 RT: 29.22 min Scan# 4491  
 Delta R.T. -0.01 min  
 Lab File: BG020780.D  
 Acq: 1 Feb 2016 21:13

Tgt Ion	Resp	Lower	Upper
278	108907		
139	23.0	9.0	13.4#
279	24.6	19.1	28.7





#94  
 Benzo(g,h,i)perylene  
 Concen: 19.86 ng/ul  
 RT: 30.36 min Scan# 4685  
 Delta R.T. -0.01 min  
 Lab File: BG020780.D  
 Acq: 1 Feb 2016 21:13

Instrument :  
 BNA\_G  
 ClientSampled :  
 SSTD02011

Tgt Ion	Resp	Lower	Upper
276	109790		
138	32.3	11.2	16.8#
277	23.1	19.0	28.6

