

Data Path : Z:\svoasrv\HPCHEM1\BNA_G\Data\BG020321\
 Data File : BG048094.D
 Acq On : 3 Feb 2021 16:47
 Operator : CG/JU
 Sample : SSTDCCC040
 Misc :
 ALS Vial : 2 Sample Multiplier: 1

Instrument :
 BNA_G
 ClientSampleId :
 SSTDCCC040

Quant Time: Feb 03 17:37:12 2021
 Quant Method : Z:\SVOASRV\HPCHEM1\BNA_G\METHODS\8270-BG012521.M
 Quant Title : ASP BNA STANDARDS FOR 5 POINT CALIBRATION
 QLast Update : Tue Feb 02 15:30:13 2021
 Response via : Initial Calibration

Compound	R.T.	QIon	Response	Conc	Units	Dev(Min)	
Internal Standards							
1) 1,4-Dichlorobenzene-d4	8.118	152	47956	20.00	ng	0.00	
21) Naphthalene-d8	10.932	136	182380	20.00	ng	0.00	
39) Acenaphthene-d10	14.739	164	132021	20.00	ng	0.00	
64) Phenanthrene-d10	17.483	188	316692	20.00	ng	0.00	
76) Chrysene-d12	21.761	240	313481	20.00	ng	# 0.00	
86) Perylene-d12	25.033	264	327126	20.00	ng	0.00	
System Monitoring Compounds							
5) 2-Fluorophenol	5.668	112	255064	81.74	ng	0.00	
7) Phenol-d6	7.266	99	376231	79.30	ng	0.00	
23) Nitrobenzene-d5	9.281	82	387438	84.06	ng	0.00	
42) 2,4,6-Tribromophenol	16.226	330	187955	85.48	ng	0.00	
45) 2-Fluorobiphenyl	13.365	172	862057	84.42	ng	0.00	
79) Terphenyl-d14	20.080	244	1466314	81.10	ng	0.00	
Target Compounds							
2) 1,4-Dioxane	3.564	88	56792	40.83	ng	# 94	Qvalue
3) Pyridine	3.964	79	173738	41.61	ng	92	
4) n-Nitrosodimethylamine	3.870	42	81685	42.34	ng	# 74	
6) Aniline	7.436	93	219766	38.35	ng	93	
8) 2-Chlorophenol	7.677	128	131093	40.13	ng	91	
9) Benzaldehyde	7.248	77	96046	39.47	ng	86	
10) Phenol	7.289	94	180971	39.79	ng	77	
11) bis(2-Chloroethyl)ether	7.530	93	142501	40.01	ng	97	
12) 1,3-Dichlorobenzene	8.006	146	161323	40.92	ng	# 92	
13) 1,4-Dichlorobenzene	8.153	146	162060	41.01	ng	95	
14) 1,2-Dichlorobenzene	8.476	146	154023	40.83	ng	94	
15) Benzyl Alcohol	8.347	79	158137	39.40	ng	# 84	
16) 2,2'-oxybis(1-Chloropr...	8.635	45	190774	38.17	ng	94	
17) 2-Methylphenol	8.547	107	118809	38.65	ng	# 85	
18) Hexachloroethane	9.211	117	65075	42.20	ng	92	
19) n-Nitroso-di-n-propyla...	8.923	70	132676	38.31	ng	96	
20) 3+4-Methylphenols	8.876	107	164194	38.61	ng	87	
22) Acetophenone	8.935	105	231192	41.13	ng	94	
24) Nitrobenzene	9.322	77	194586	42.15	ng	# 83	
25) Isophorone	9.845	82	327559	39.60	ng	# 94	
26) 2-Nitrophenol	10.033	139	80480	42.37	ng	# 69	
27) 2,4-Dimethylphenol	10.086	122	109733	39.76	ng	# 82	
28) bis(2-Chloroethoxy)met...	10.327	93	203069	40.80	ng	97	
29) 2,4-Dichlorophenol	10.568	162	150104	42.27	ng	96	
30) 1,2,4-Trichlorobenzene	10.791	180	181585	42.30	ng	99	
31) Naphthalene	10.979	128	428810	40.66	ng	98	
32) Benzoic acid	10.221	122	98321	39.78	ng	# 64	
33) 4-Chloroaniline	11.079	127	191204	39.67	ng	# 91	
34) Hexachlorobutadiene	11.267	225	137147	44.98	ng	100	
35) Caprolactam	11.855	113	49606	36.70	ng	94	
36) 4-Chloro-3-methylphenol	12.190	107	155317	38.98	ng	91	
37) 2-Methylnaphthalene	12.577	142	326338	40.97	ng	# 92	
38) 1-Methylnaphthalene	12.577	142	326338	42.95	ng	98	
40) 1,2,4,5-Tetrachloroben...	12.942	216	217366	43.19	ng	# 95	
41) Hexachlorocyclopentadiene	12.924	237	136680	47.94	ng	94	
43) 2,4,6-Trichlorophenol	13.177	196	153303	43.67	ng	99	

Data Path : Z:\svoasrv\HPCHEM1\BNA_G\Data\BG020321\
 Data File : BG048094.D
 Acq On : 3 Feb 2021 16:47
 Operator : CG/JU
 Sample : SSTDCCC040
 Misc :
 ALS Vial : 2 Sample Multiplier: 1

Instrument :
 BNA_G
 ClientSampleId :
 SSTDCCC040

Quant Time: Feb 03 17:37:12 2021
 Quant Method : Z:\SVOASRV\HPCHEM1\BNA_G\METHODS\8270-BG012521.M
 Quant Title : ASP BNA STANDARDS FOR 5 POINT CALIBRATION
 QLast Update : Tue Feb 02 15:30:13 2021
 Response via : Initial Calibration

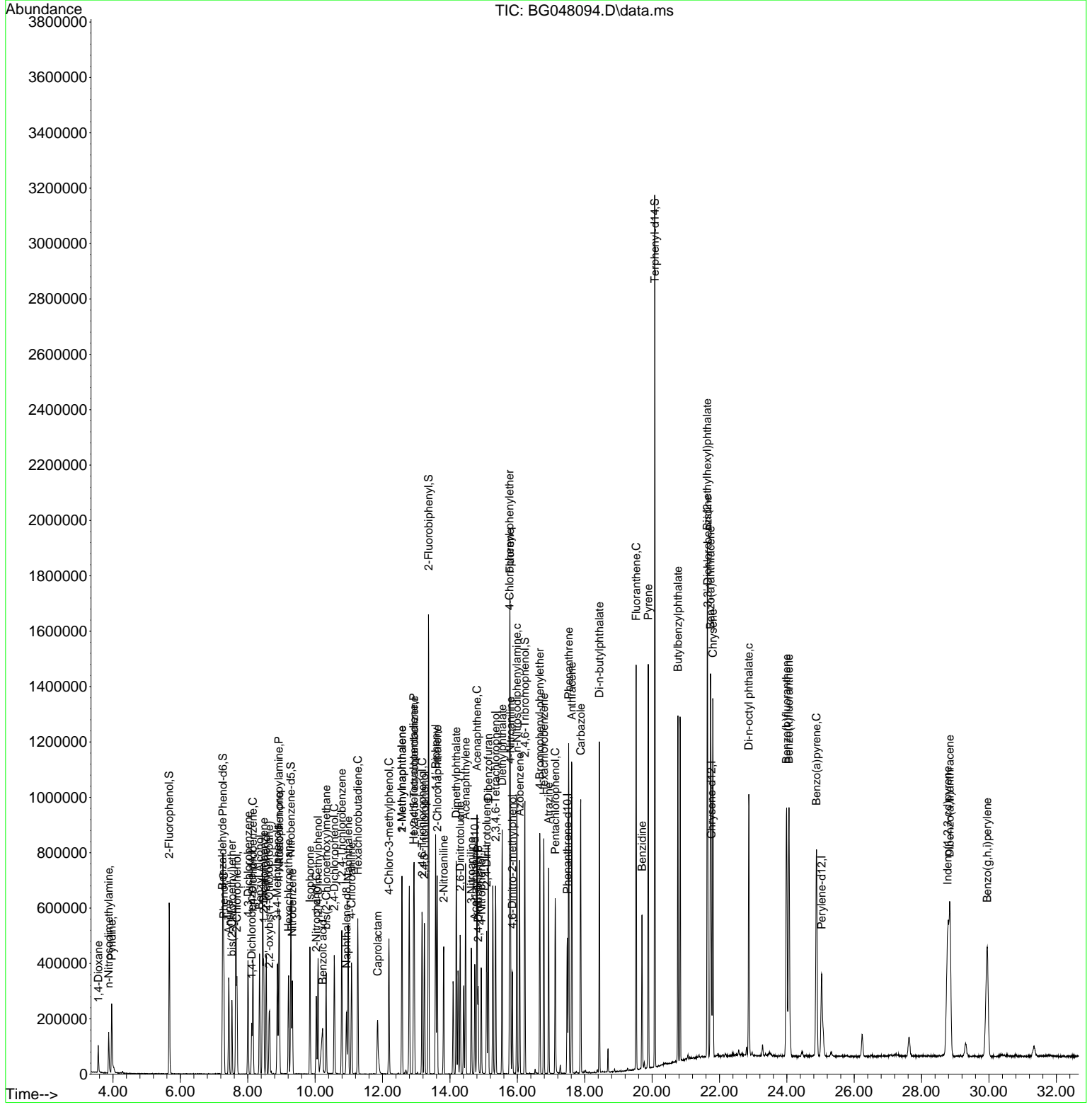
Compound	R.T.	QIon	Response	Conc	Units	Dev(Min)
44) 2,4,5-Trichlorophenol	13.241	196	156124	42.92	ng	# 91
46) 1,1'-Biphenyl	13.576	154	424980	41.64	ng	99
47) 2-Chloronaphthalene	13.623	162	368725	41.51	ng	96
48) 2-Nitroaniline	13.817	65	131500	40.79	ng	# 82
49) Acenaphthylene	14.463	152	528195	40.29	ng	99
50) Dimethylphthalate	14.187	163	485854	40.66	ng	98
51) 2,6-Dinitrotoluene	14.305	165	101185	40.73	ng	# 68
52) Acenaphthene	14.804	154	367825	41.45	ng	95
53) 3-Nitroaniline	14.634	138	105890	38.86	ng	# 79
54) 2,4-Dinitrophenol	14.839	184	71806	46.23	ng	# 73
55) Dibenzofuran	15.139	168	545445	40.52	ng	98
56) 4-Nitrophenol	14.933	139	83936	39.48	ng	# 56
57) 2,4-Dinitrotoluene	15.092	165	145143	40.46	ng	# 76
58) Fluorene	15.785	166	440050	40.66	ng	98
59) 2,3,4,6-Tetrachlorophenol	15.356	232	148928	40.94	ng	# 95
60) Diethylphthalate	15.550	149	484902	39.47	ng	96
61) 4-Chlorophenyl-phenyle...	15.774	204	277143	41.82	ng	99
62) 4-Nitroaniline	15.797	138	114007	38.41	ng	# 62
63) Azobenzene	16.067	77	448406	38.78	ng	90
65) 4,6-Dinitro-2-methylph...	15.856	198	89248	43.67	ng	87
66) n-Nitrosodiphenylamine	15.985	169	394521	41.45	ng	97
67) 4-Bromophenyl-phenylether	16.667	248	184283	43.55	ng	96
68) Hexachlorobenzene	16.790	284	198238	43.08	ng	97
69) Atrazine	16.931	200	148314	41.03	ng	98
70) Pentachlorophenol	17.125	266	121374	43.43	ng	99
71) Phenanthrene	17.524	178	741860	40.60	ng	97
72) Anthracene	17.618	178	731012	40.68	ng	97
73) Carbazole	17.883	167	655468	39.09	ng	99
74) Di-n-butylphthalate	18.435	149	791149	38.63	ng	# 98
75) Fluoranthene	19.528	202	947174	39.54	ng	97
77) Benzidine	19.704	184	337722	37.35	ng	97
78) Pyrene	19.886	202	947946	41.29	ng	98
80) Butylbenzylphthalate	20.768	149	351433	40.08	ng	91
81) Benzo(a)anthracene	21.737	228	938837	41.21	ng	98
82) 3,3'-Dichlorobenzidine	21.649	252	325169	42.36	ng	# 95
83) Chrysene	21.808	228	895489	41.37	ng	99
84) Bis(2-ethylhexyl)phtha...	21.637	149	486275	40.49	ng	96
85) Di-n-octyl phthalate	22.871	149	834982	41.57	ng	97
87) Indeno(1,2,3-cd)pyrene	28.776	276	1095022	41.62	ng	# 90
88) Benzo(b)fluoranthene	23.993	252	965897	41.54	ng	# 96
89) Benzo(k)fluoranthene	24.064	252	915374	40.52	ng	# 97
90) Benzo(a)pyrene	24.881	252	902448	41.33	ng	# 97
91) Dibenzo(a,h)anthracene	28.835	278	891937	41.07	ng	# 96
92) Benzo(g,h,i)perylene	29.951	276	873213	41.75	ng	# 94

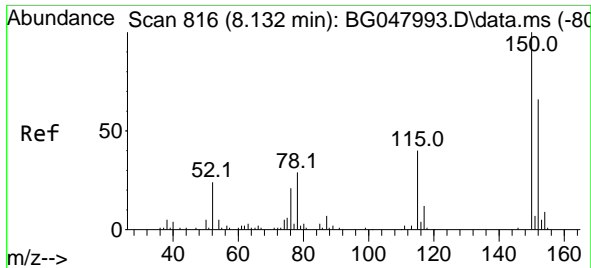
(#) = qualifier out of range (m) = manual integration (+) = signals summed

Data Path : Z:\svoasrv\HPCHEM1\BNA_G\Data\BG020321\
 Data File : BG048094.D
 Acq On : 3 Feb 2021 16:47
 Operator : CG/JU
 Sample : SSTDCCC040
 Misc :
 ALS Vial : 2 Sample Multiplier: 1

Instrument :
 BNA_G
 Client Sampled :
 SSTDCCC040

Quant Time: Feb 03 17:37:12 2021
 Quant Method : Z:\SVOASRV\HPCHEM1\BNA_G\METHODS\8270-BG012521.M
 Quant Title : ASP BNA STANDARDS FOR 5 POINT CALIBRATION
 QLast Update : Tue Feb 02 15:30:13 2021
 Response via : Initial Calibration

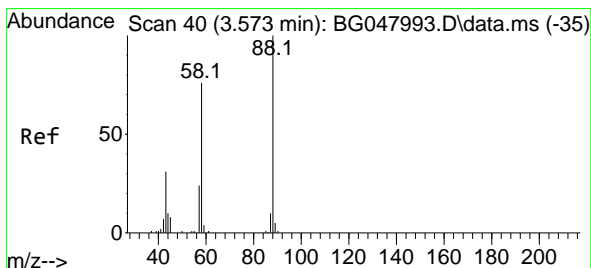
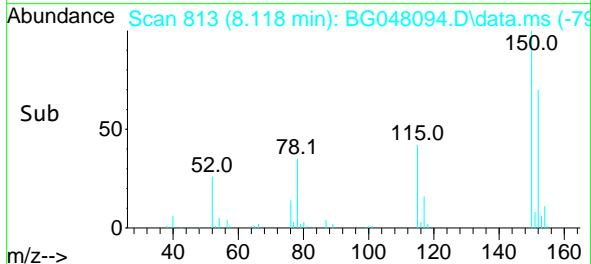
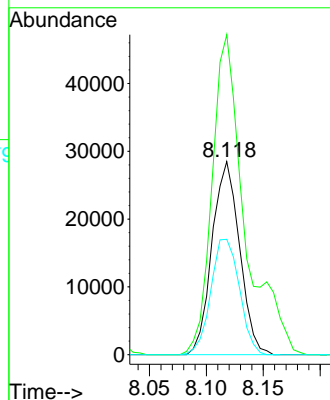
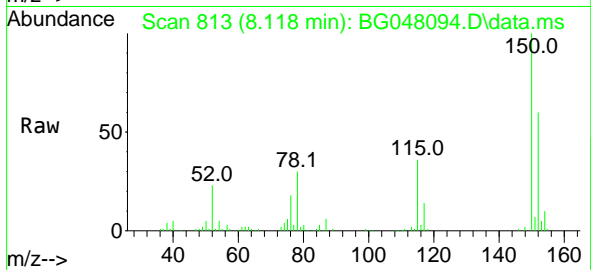




#1
 1,4-Dichlorobenzene-d4
 Concen: 20.00 ng
 RT: 8.118 min Scan# 813
 Delta R.T. -0.002 min
 Lab File: BG048094.D
 Acq: 3 Feb 2021 16:47

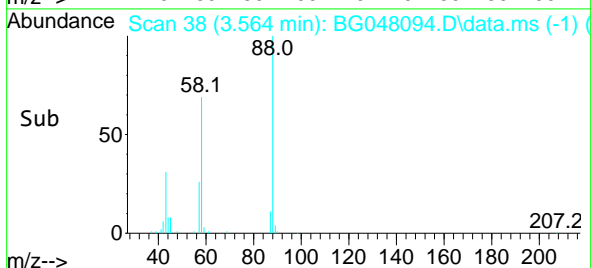
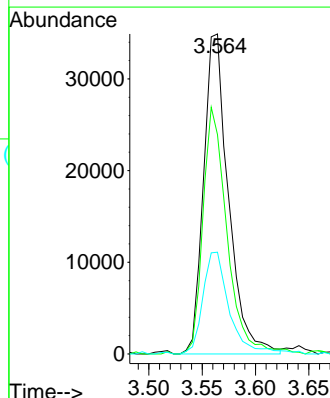
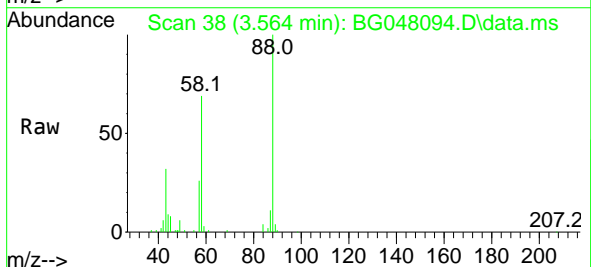
Instrument :
 BNA_G
 ClientSampled :
 SSTDCCC040

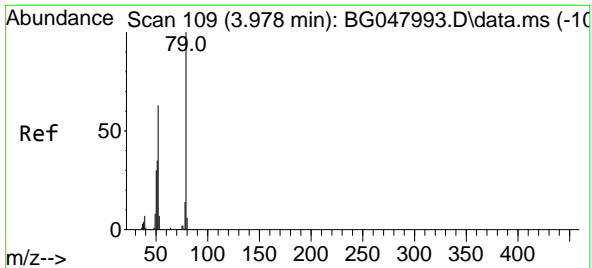
Tgt Ion:152 Resp: 47956
 Ion Ratio Lower Upper
 152 100
 150 165.7 125.0 187.6
 115 59.7 41.8 62.6



#2
 1,4-Dioxane
 Concen: 40.83 ng
 RT: 3.564 min Scan# 38
 Delta R.T. -0.002 min
 Lab File: BG048094.D
 Acq: 3 Feb 2021 16:47

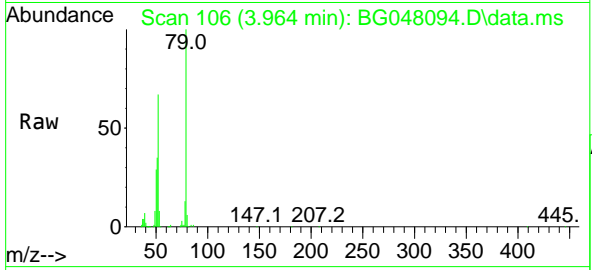
Tgt Ion: 88 Resp: 56792
 Ion Ratio Lower Upper
 88 100
 58 74.5 61.6 92.4
 43 33.8 21.3 31.9#





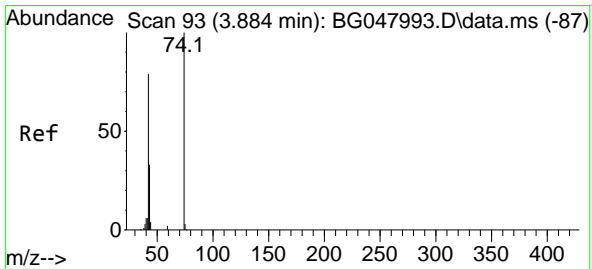
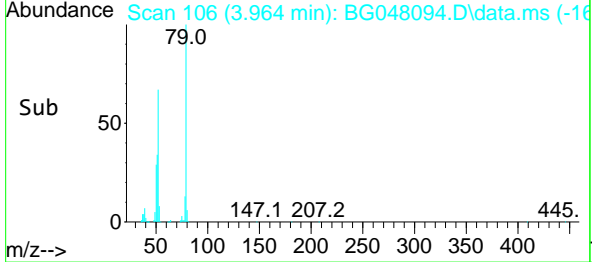
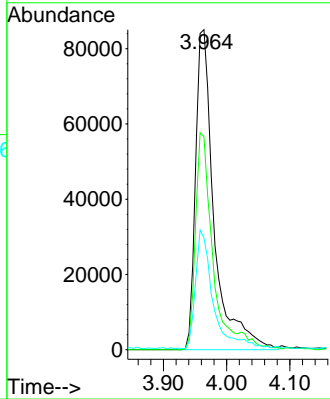
#3
 Pyridine
 Concen: 41.61 ng
 RT: 3.964 min Scan# 106
 Delta R.T. -0.002 min
 Lab File: BG048094.D
 Acq: 3 Feb 2021 16:47

Instrument :
 BNA_G
ClientSampled :
 SSTDCCC040

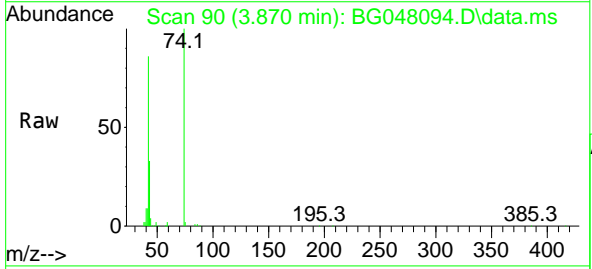


Tgt Ion: 79 Resp: 173738

Ion	Ratio	Lower	Upper
79	100		
52	66.5	61.3	91.9
51	34.9	28.4	42.6

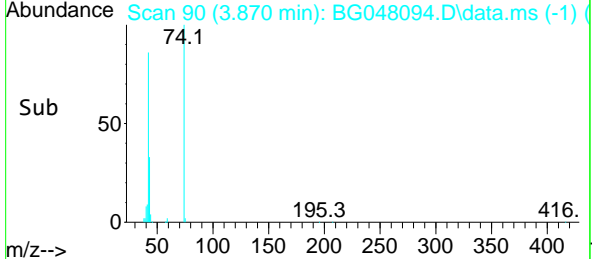
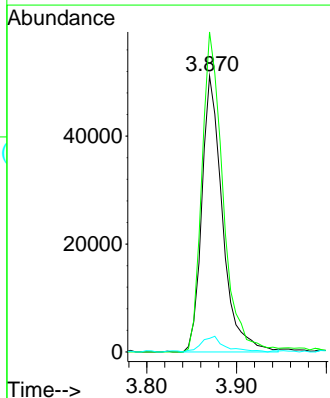


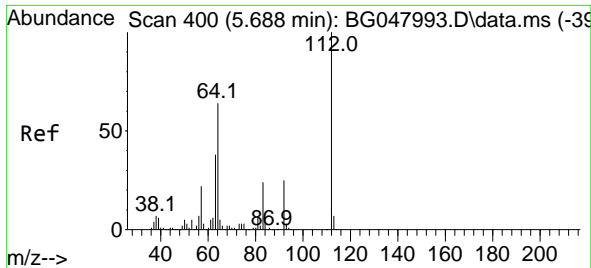
#4
 n-Nitrosodimethylamine
 Concen: 42.34 ng
 RT: 3.870 min Scan# 90
 Delta R.T. -0.002 min
 Lab File: BG048094.D
 Acq: 3 Feb 2021 16:47



Tgt Ion: 42 Resp: 81685

Ion	Ratio	Lower	Upper
42	100		
74	116.0	120.4	180.6#
44	5.0	6.2	9.2#

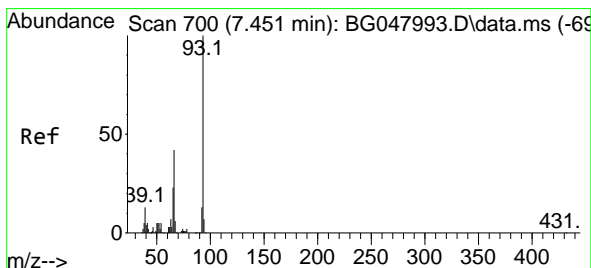
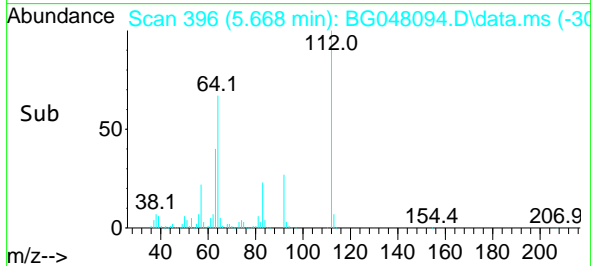
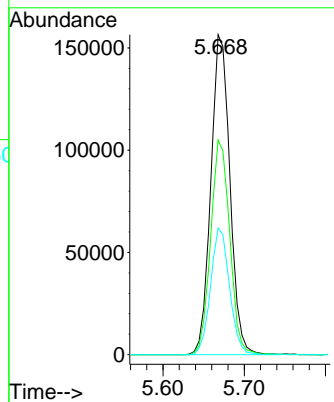
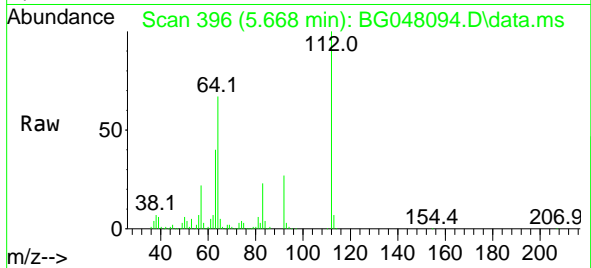




#5
 2-Fluorophenol
 Concen: 81.74 ng
 RT: 5.668 min Scan# 396
 Delta R.T. -0.008 min
 Lab File: BG048094.D
 Acq: 3 Feb 2021 16:47

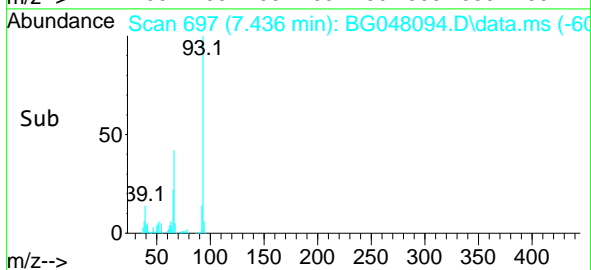
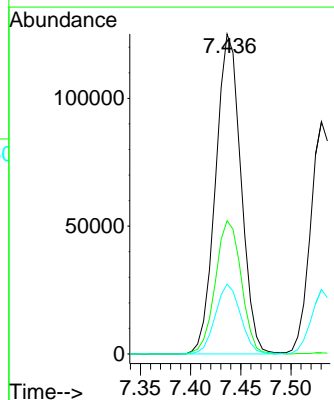
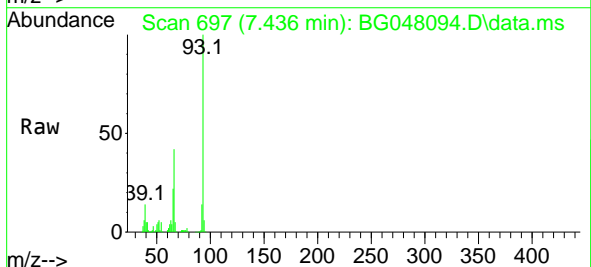
Instrument :
 BNA_G
 ClientSampled :
 SSTDCCC040

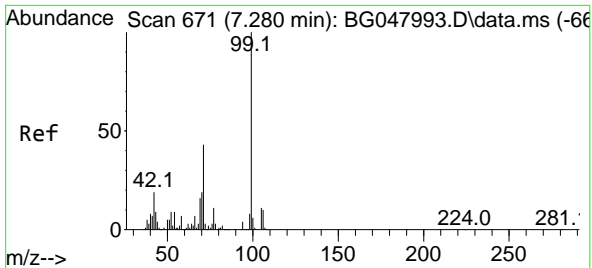
Tgt Ion	Resp	Lower	Upper
112	100		
64	67.1	46.7	70.1
63	39.6	22.8	34.2#



#6
 Aniline
 Concen: 38.35 ng
 RT: 7.436 min Scan# 697
 Delta R.T. -0.002 min
 Lab File: BG048094.D
 Acq: 3 Feb 2021 16:47

Tgt Ion	Resp	Lower	Upper
93	100		
66	41.7	29.5	44.3
65	21.8	15.5	23.3



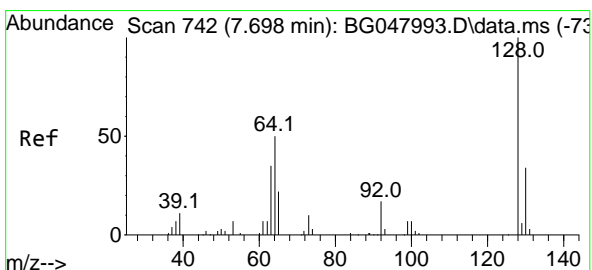
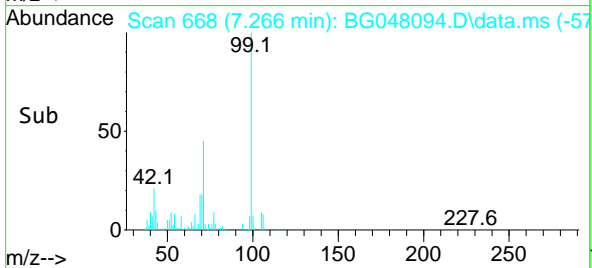
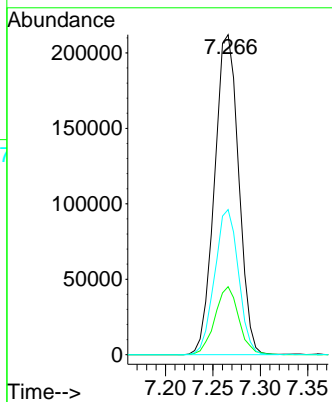
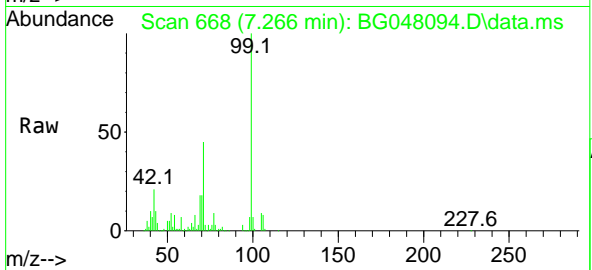


#7
 Phenol-d6
 Concen: 79.30 ng
 RT: 7.266 min Scan# 668
 Delta R.T. -0.002 min
 Lab File: BG048094.D
 Acq: 3 Feb 2021 16:47

Instrument :
 BNA_G
ClientSampled :
 SSTDCCC040

Tgt Ion: 99 Resp: 376231

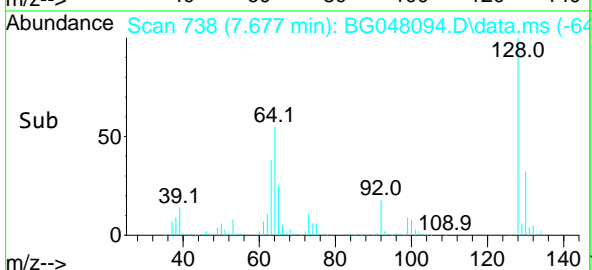
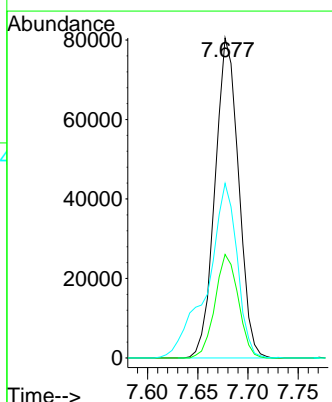
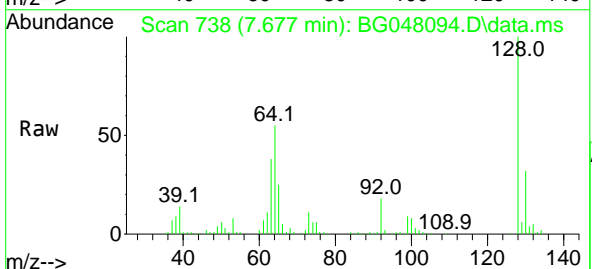
Ion	Ratio	Lower	Upper
99	100		
42	21.3	12.8	19.2#
71	45.3	24.6	36.8#

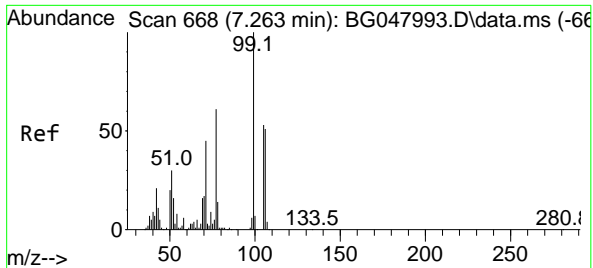


#8
 2-Chlorophenol
 Concen: 40.13 ng
 RT: 7.677 min Scan# 738
 Delta R.T. -0.002 min
 Lab File: BG048094.D
 Acq: 3 Feb 2021 16:47

Tgt Ion: 128 Resp: 131093

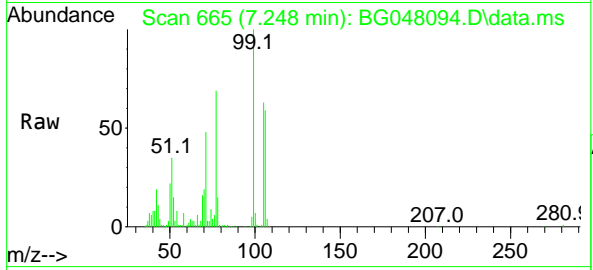
Ion	Ratio	Lower	Upper
128	100		
130	32.3	12.6	52.6
64	54.6	24.8	64.8





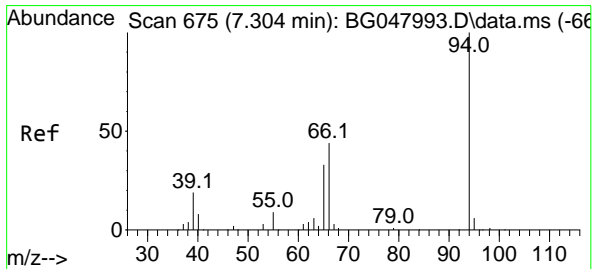
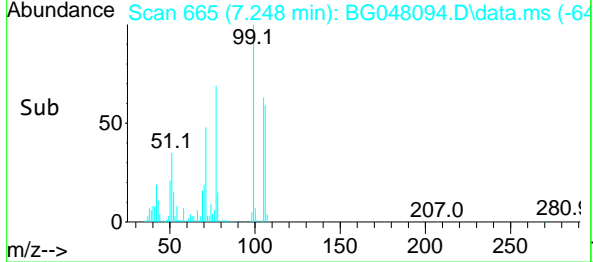
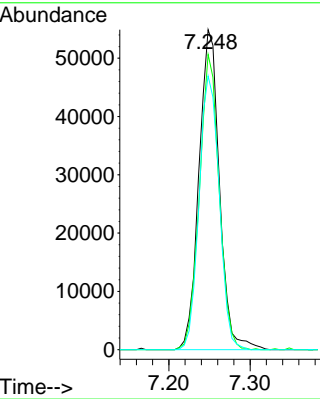
#9
 Benzaldehyde
 Concen: 39.47 ng
 RT: 7.248 min Scan# 665
 Delta R.T. -0.002 min
 Lab File: BG048094.D
 Acq: 3 Feb 2021 16:47

Instrument :
 BNA_G
ClientSampled :
 SSTDCCC040

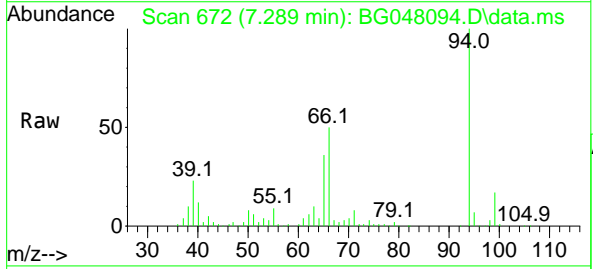


Tgt Ion: 77 Resp: 96046

Ion	Ratio	Lower	Upper
77	100		
105	92.2	85.9	125.9
106	85.5	80.9	120.9

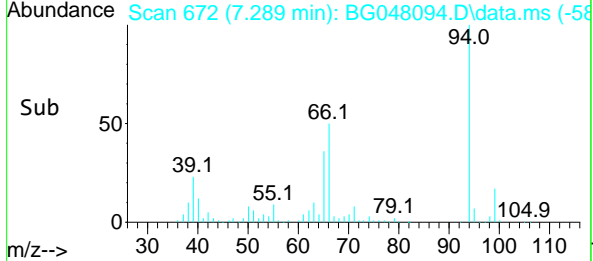
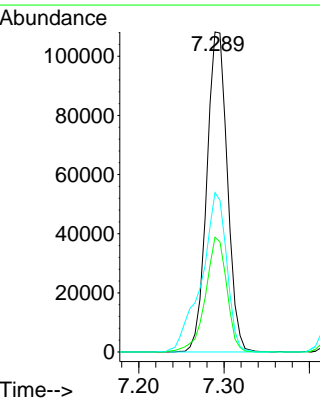


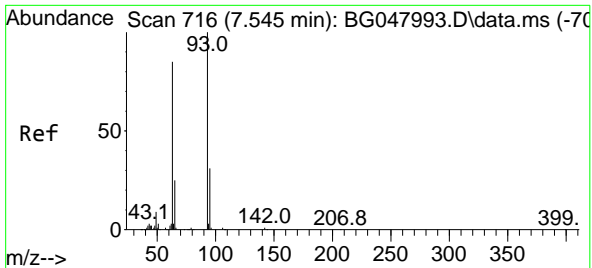
#10
 Phenol
 Concen: 39.79 ng
 RT: 7.289 min Scan# 672
 Delta R.T. -0.008 min
 Lab File: BG048094.D
 Acq: 3 Feb 2021 16:47



Tgt Ion: 94 Resp: 180971

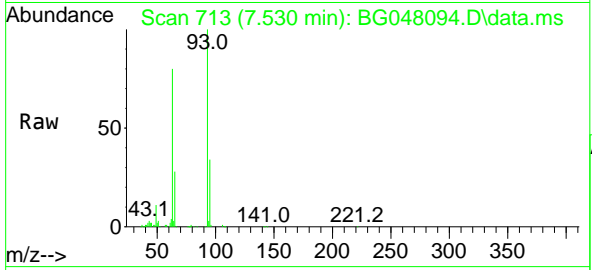
Ion	Ratio	Lower	Upper
94	100		
65	35.9	6.6	46.6
66	49.8	13.9	53.9



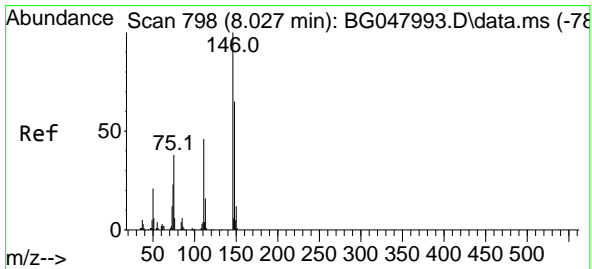
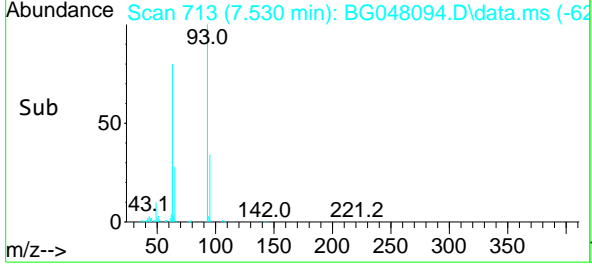
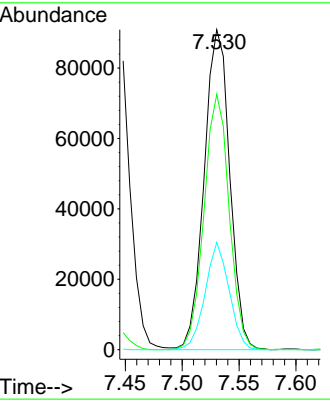


#11
 bis(2-Chloroethyl)ether
 Concen: 40.01 ng
 RT: 7.530 min Scan# 713
 Delta R.T. -0.002 min
 Lab File: BG048094.D
 Acq: 3 Feb 2021 16:47

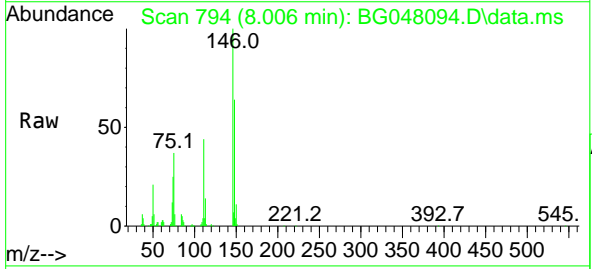
Instrument :
 BNA_G
 ClientSampled :
 SSTDCCC040



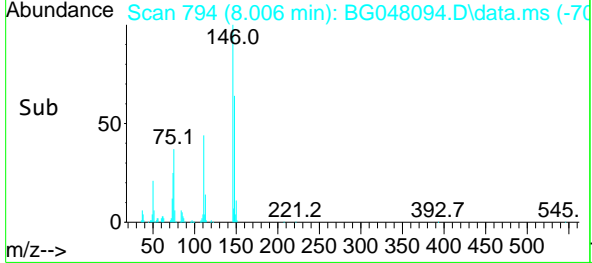
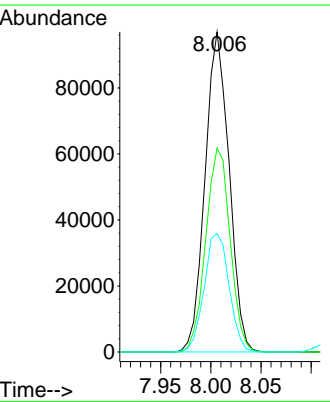
Tgt Ion: 93 Resp: 142501
 Ion Ratio Lower Upper
 93 100
 63 79.8 56.4 96.4
 95 33.5 13.8 53.8

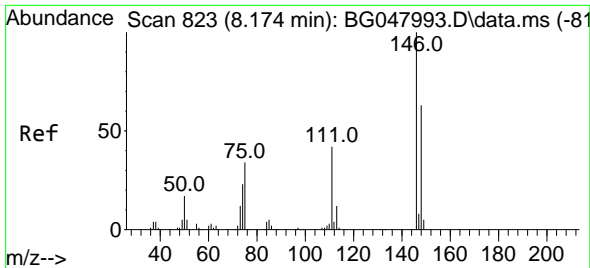


#12
 1,3-Dichlorobenzene
 Concen: 40.92 ng
 RT: 8.006 min Scan# 794
 Delta R.T. -0.002 min
 Lab File: BG048094.D
 Acq: 3 Feb 2021 16:47



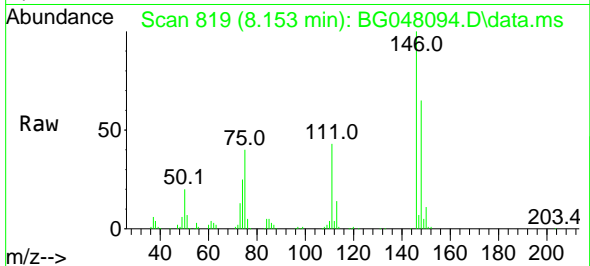
Tgt Ion:146 Resp: 161323
 Ion Ratio Lower Upper
 146 100
 148 63.7 50.1 75.1
 75 37.0 20.1 30.1#



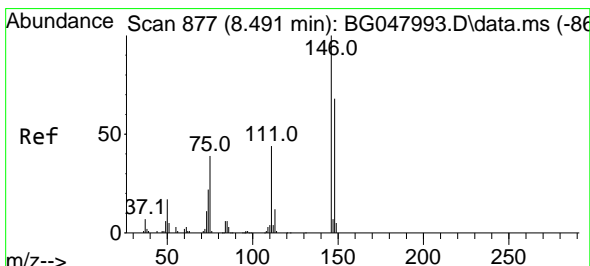
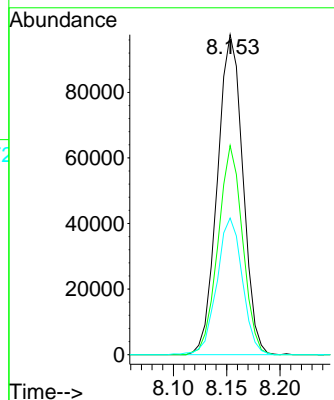
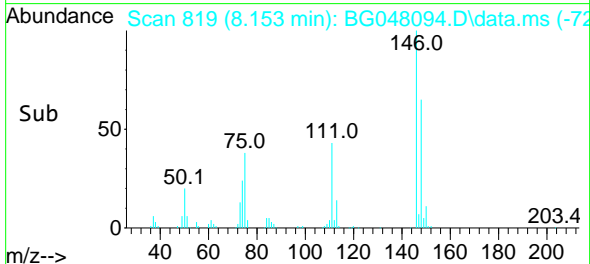


#13
 1,4-Dichlorobenzene
 Concen: 41.01 ng
 RT: 8.153 min Scan# 819
 Delta R.T. -0.002 min
 Lab File: BG048094.D
 Acq: 3 Feb 2021 16:47

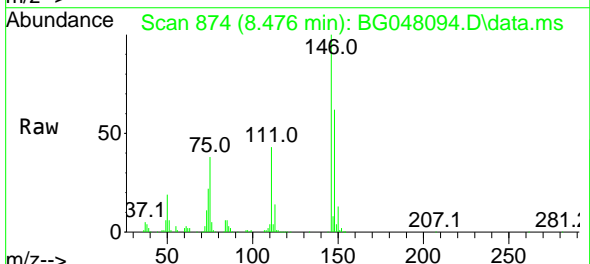
Instrument :
 BNA_G
 ClientSampled :
 SSTDCCC040



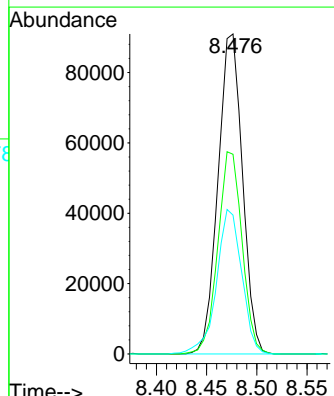
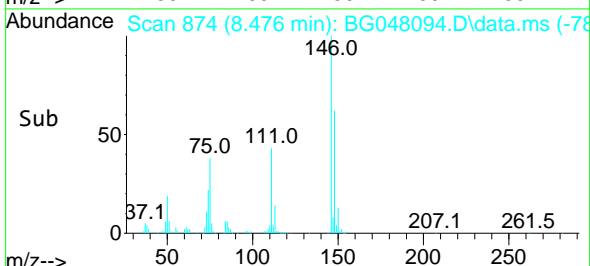
Tgt Ion:146 Resp: 162060
 Ion Ratio Lower Upper
 146 100
 148 65.4 51.1 76.7
 111 42.7 29.7 44.5

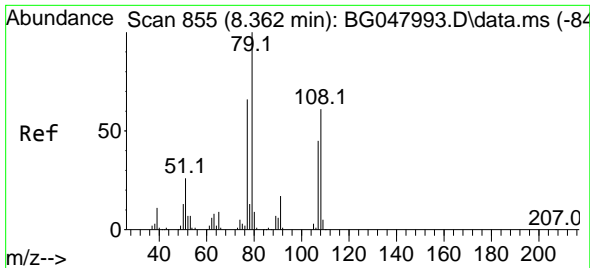


#14
 1,2-Dichlorobenzene
 Concen: 40.83 ng
 RT: 8.476 min Scan# 874
 Delta R.T. -0.002 min
 Lab File: BG048094.D
 Acq: 3 Feb 2021 16:47



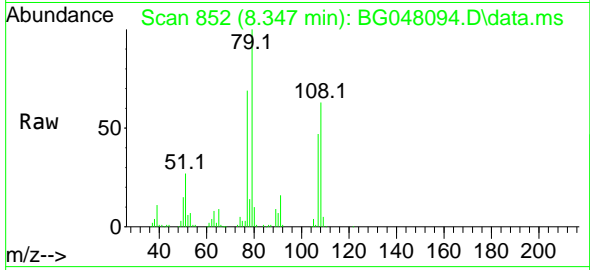
Tgt Ion:146 Resp: 154023
 Ion Ratio Lower Upper
 146 100
 148 62.4 53.0 79.6
 111 43.4 30.7 46.1



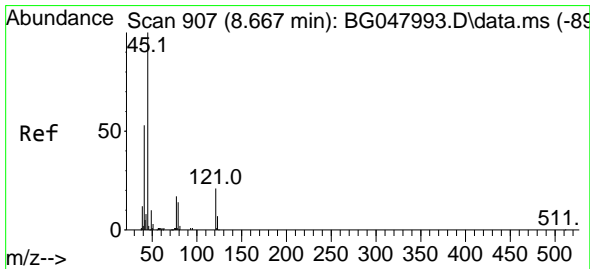
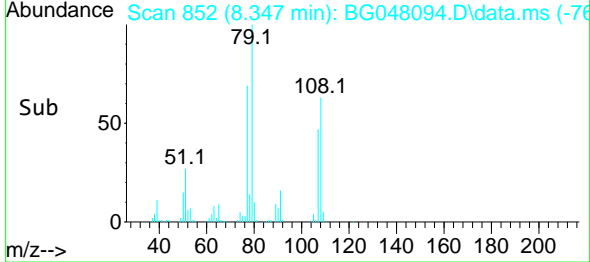
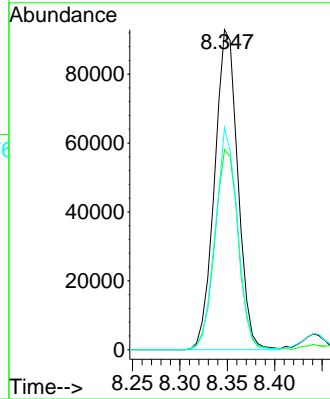


#15
 Benzyl Alcohol
 Concen: 39.40 ng
 RT: 8.347 min Scan# 852
 Delta R.T. -0.002 min
 Lab File: BG048094.D
 Acq: 3 Feb 2021 16:47

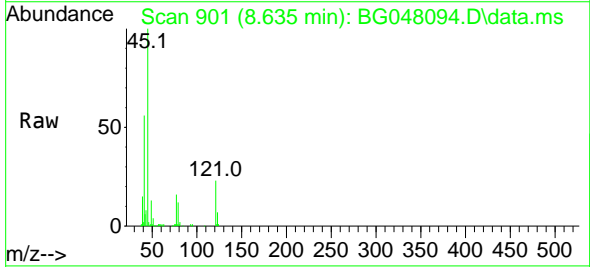
Instrument :
 BNA_G
 ClientSampled :
 SSTDCCC040



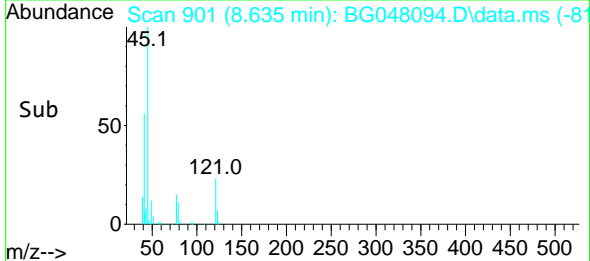
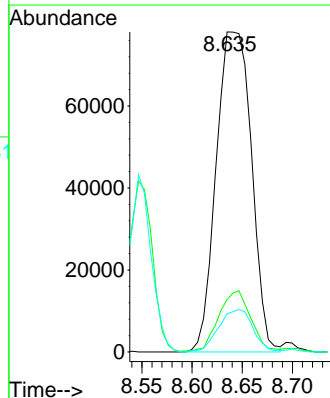
Tgt Ion: 79 Resp: 158137
 Ion Ratio Lower Upper
 79 100
 108 62.6 65.5 98.3#
 77 69.4 50.1 75.1

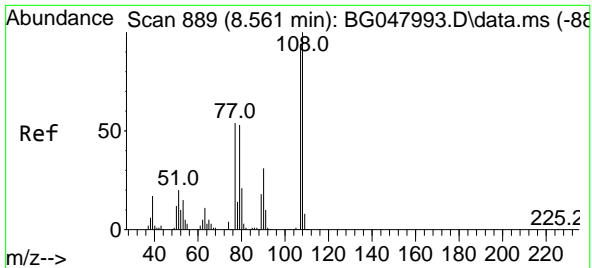


#16
 2,2'-oxybis(1-Chloropropane)
 Concen: 38.17 ng
 RT: 8.635 min Scan# 901
 Delta R.T. -0.014 min
 Lab File: BG048094.D
 Acq: 3 Feb 2021 16:47



Tgt Ion: 45 Resp: 190774
 Ion Ratio Lower Upper
 45 100
 77 16.4 0.0 33.4
 79 12.0 0.0 30.8

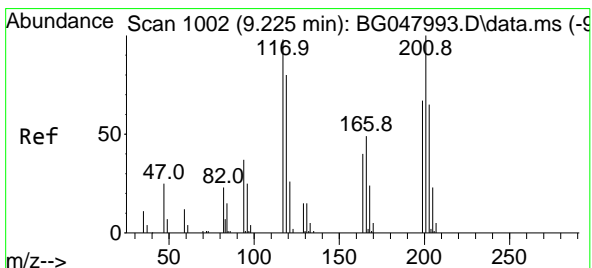
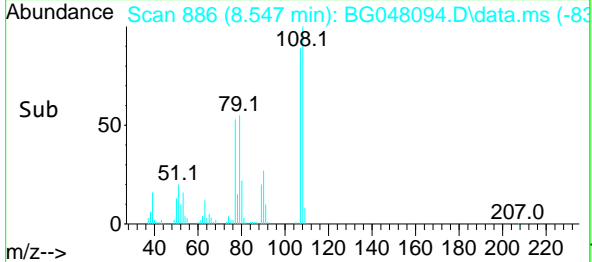
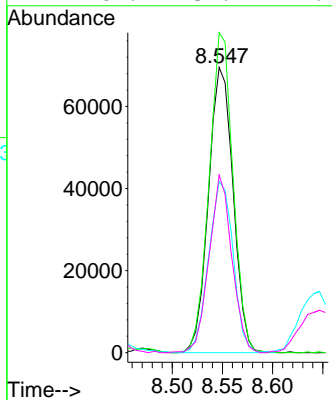
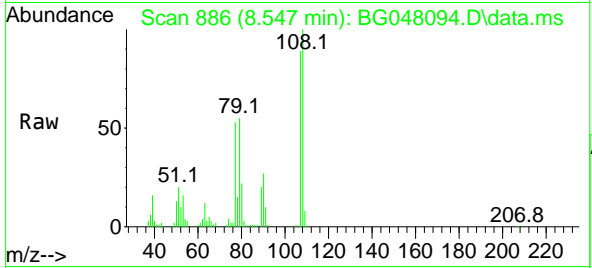




#17
 2-Methylphenol
 Concen: 38.65 ng
 RT: 8.547 min Scan# 886
 Delta R.T. -0.008 min
 Lab File: BG048094.D
 Acq: 3 Feb 2021 16:47

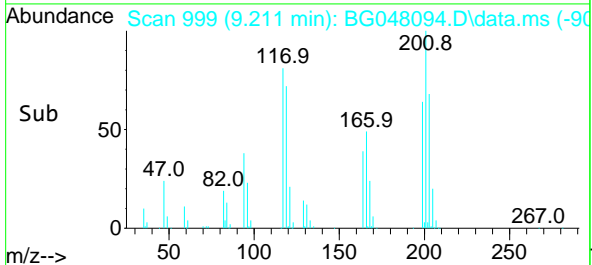
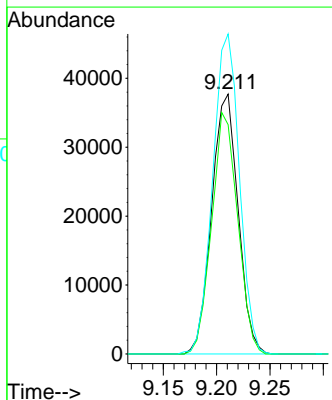
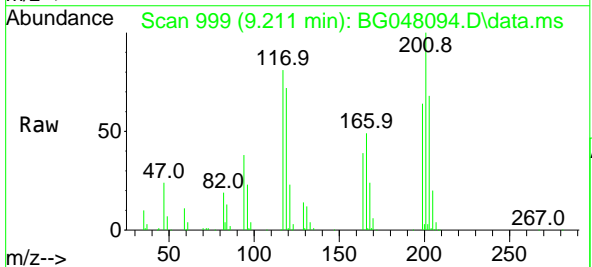
Instrument :
 BNA_G
 ClientSampleId :
 SSTDCCC040

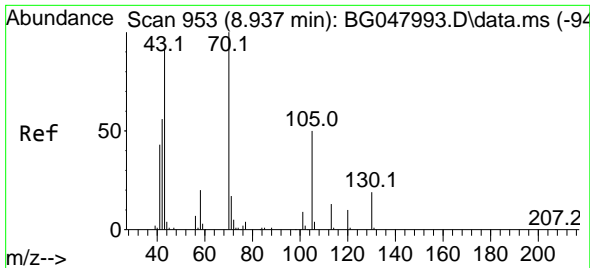
Tgt Ion	Resp	Lower	Upper
107	118809		
108	112.2	87.2	130.8
77	60.0	33.8	50.8#
79	62.2	32.7	49.1#



#18
 Hexachloroethane
 Concen: 42.20 ng
 RT: 9.211 min Scan# 999
 Delta R.T. -0.002 min
 Lab File: BG048094.D
 Acq: 3 Feb 2021 16:47

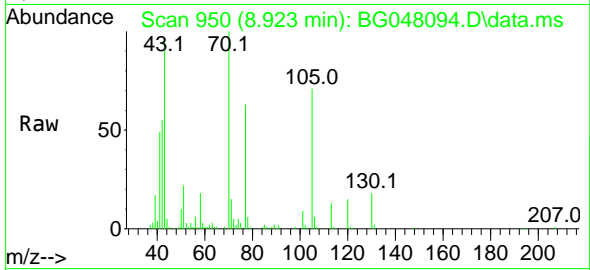
Tgt Ion	Resp	Lower	Upper
117	65075		
119	88.2	77.5	116.3
201	123.1	104.9	157.3





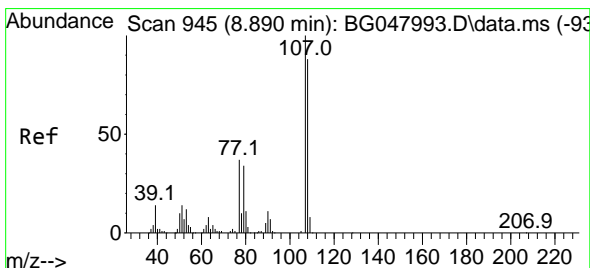
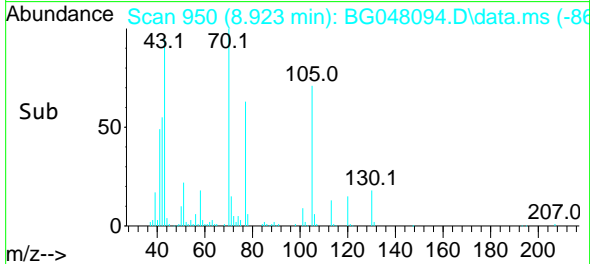
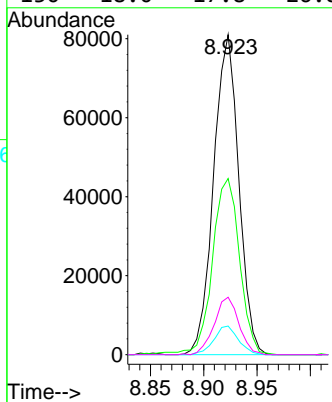
#19
 n-Nitroso-di-n-propylamine
 Concen: 38.31 ng
 RT: 8.923 min Scan# 950
 Delta R.T. -0.002 min
 Lab File: BG048094.D
 Acq: 3 Feb 2021 16:47

Instrument :
 BNA_G
 ClientSampled :
 SSTDCCC040

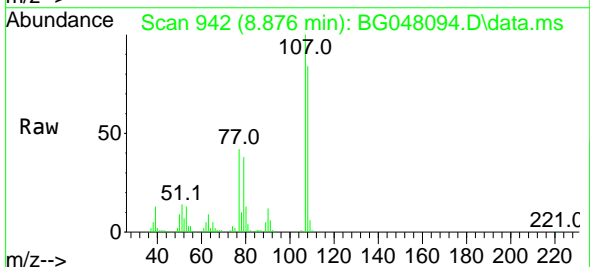


Tgt Ion: 70 Resp: 132676

Ion	Ratio	Lower	Upper
70	100		
42	55.1	45.6	68.4
101	9.0	8.4	12.6
130	18.0	17.8	26.8

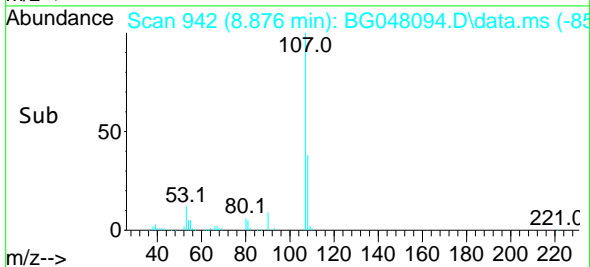
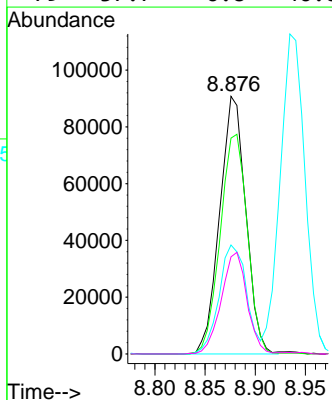


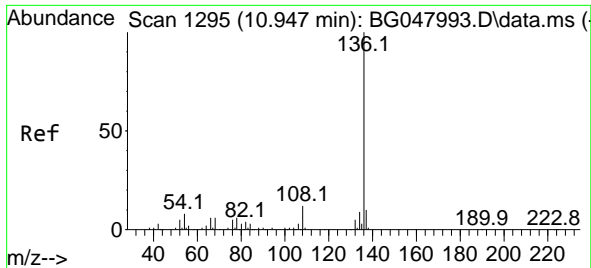
#20
 3+4-Methylphenols
 Concen: 38.61 ng
 RT: 8.876 min Scan# 942
 Delta R.T. -0.002 min
 Lab File: BG048094.D
 Acq: 3 Feb 2021 16:47



Tgt Ion: 107 Resp: 164194

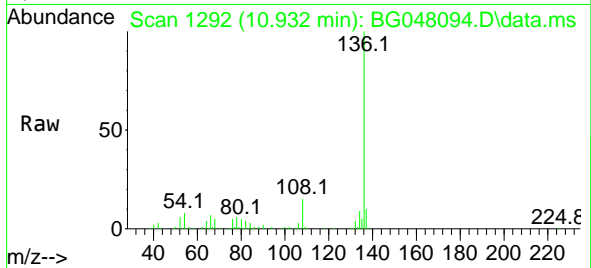
Ion	Ratio	Lower	Upper
107	100		
108	83.8	70.6	110.6
77	42.3	10.2	50.2
79	37.7	6.8	46.8





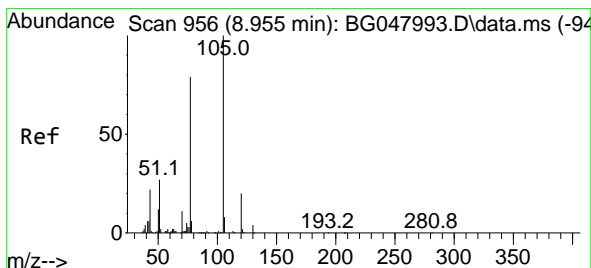
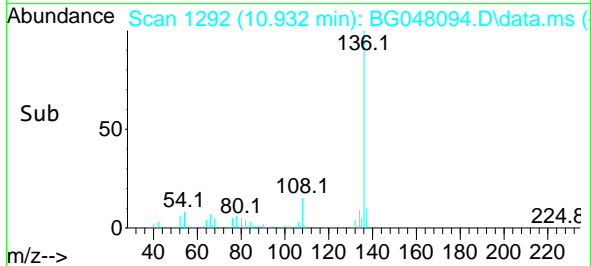
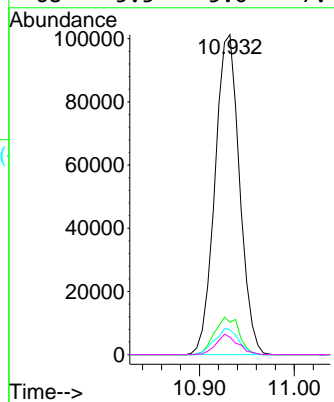
#21
 Naphthalene-d8
 Concen: 20.00 ng
 RT: 10.932 min Scan# 1292
 Delta R.T. -0.002 min
 Lab File: BG048094.D
 Acq: 3 Feb 2021 16:47

Instrument :
 BNA_G
 ClientSampled :
 SSTDCCC040



Tgt Ion:136 Resp: 182380

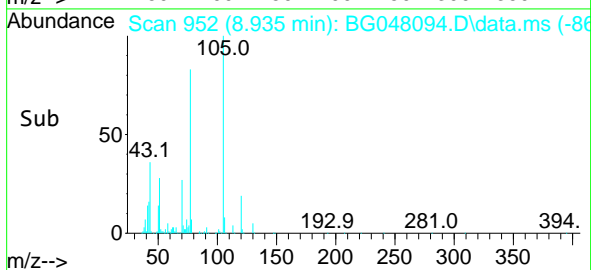
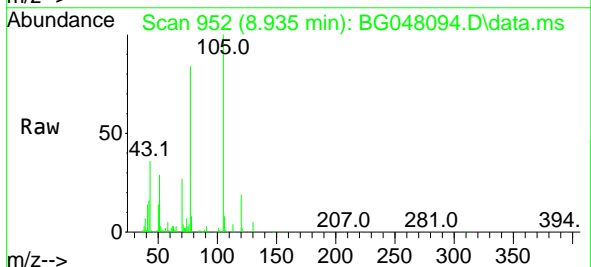
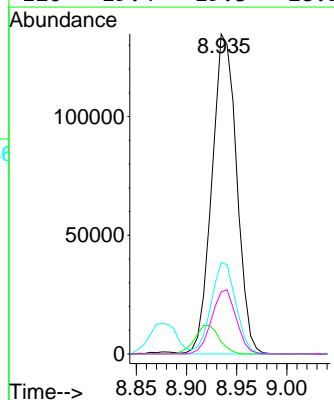
Ion	Ratio	Lower	Upper
136	100		
137	10.1	9.1	13.7
54	7.7	6.2	9.4
68	5.5	5.0	7.4

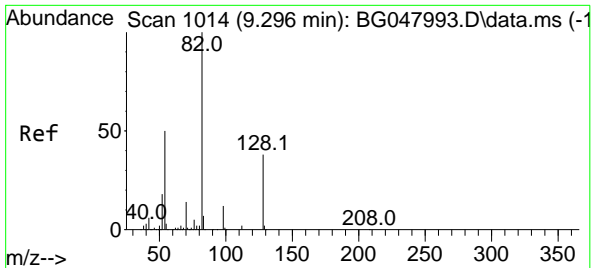


#22
 Acetophenone
 Concen: 41.13 ng
 RT: 8.935 min Scan# 952
 Delta R.T. -0.008 min
 Lab File: BG048094.D
 Acq: 3 Feb 2021 16:47

Tgt Ion:105 Resp: 231192

Ion	Ratio	Lower	Upper
105	100		
71	3.8	2.7	4.1
51	28.5	21.0	31.6
120	19.4	19.3	28.9

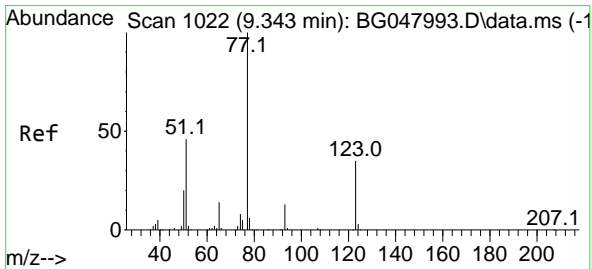
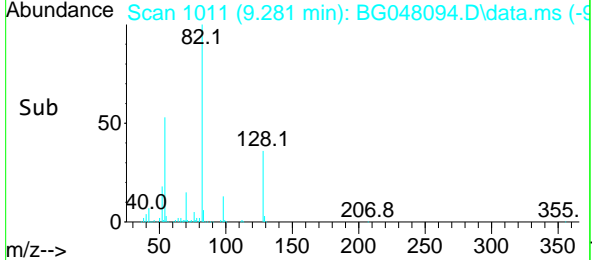
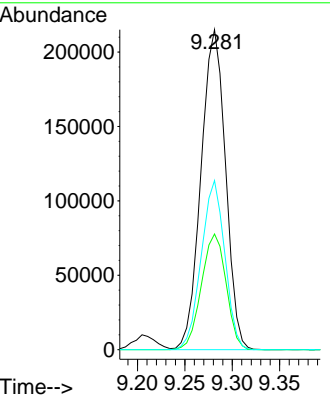
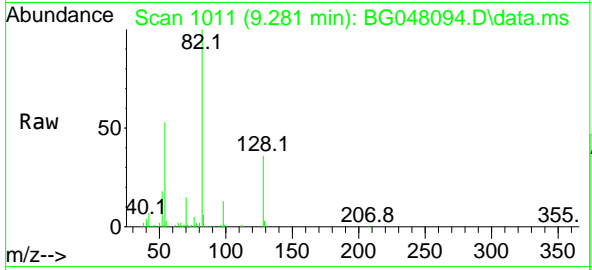




#23
 Nitrobenzene-d5
 Concen: 84.06 ng
 RT: 9.281 min Scan# 1011
 Delta R.T. -0.002 min
 Lab File: BG048094.D
 Acq: 3 Feb 2021 16:47

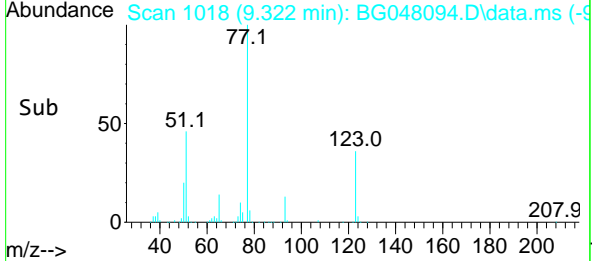
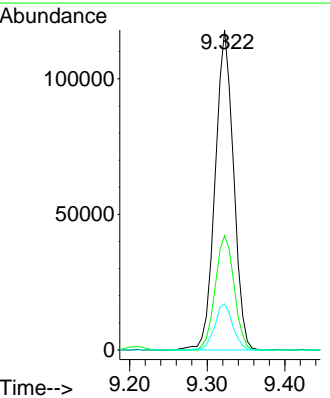
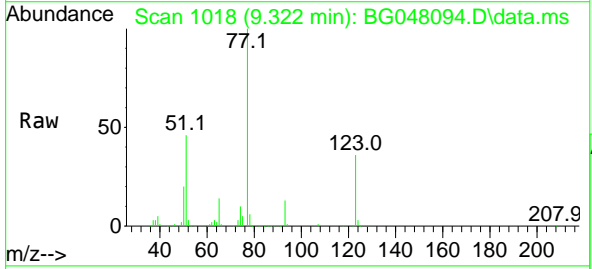
Instrument :
 BNA_G
ClientSampled :
 SSTDCCC040

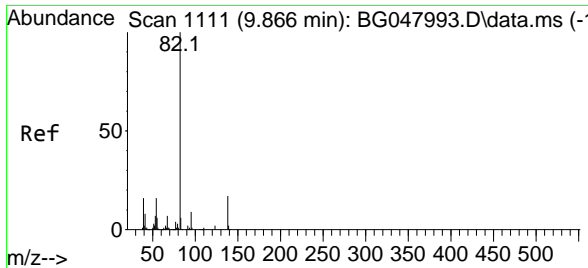
Tgt Ion	Resp	Lower	Upper
82	387438		
128	36.2	37.0	55.6#
54	52.8	39.0	58.4



#24
 Nitrobenzene
 Concen: 42.15 ng
 RT: 9.322 min Scan# 1018
 Delta R.T. -0.002 min
 Lab File: BG048094.D
 Acq: 3 Feb 2021 16:47

Tgt Ion	Resp	Lower	Upper
77	194586		
123	35.7	39.7	59.5#
65	14.4	10.4	15.6

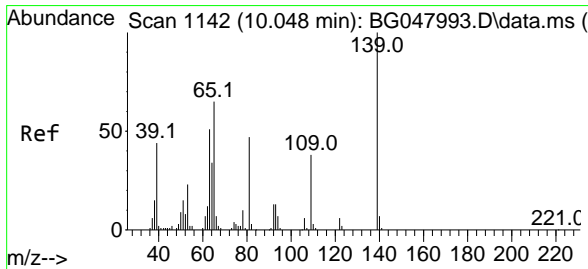
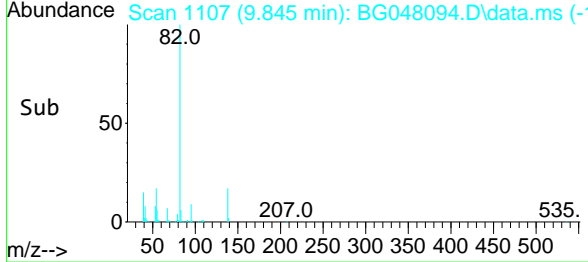
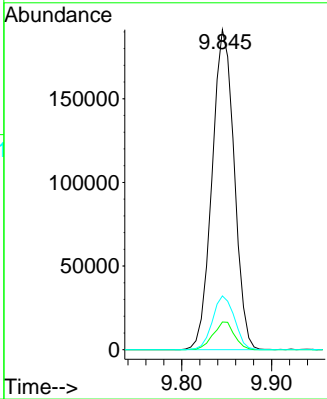
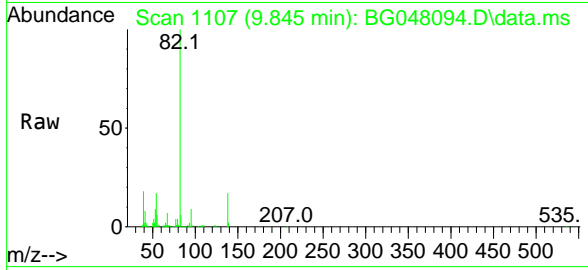




#25
 Isophorone
 Concen: 39.60 ng
 RT: 9.845 min Scan# 1107
 Delta R.T. -0.008 min
 Lab File: BG048094.D
 Acq: 3 Feb 2021 16:47

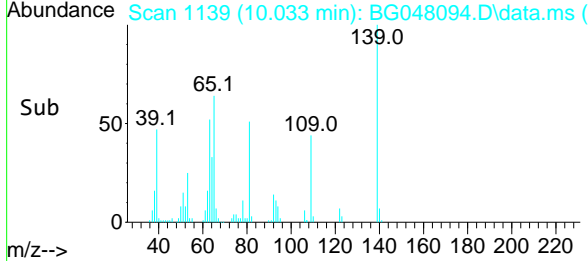
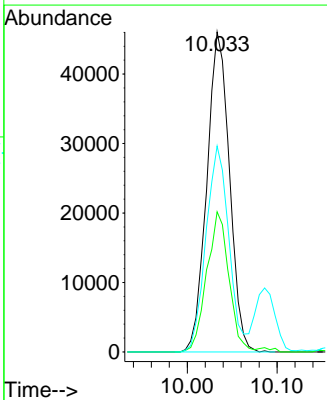
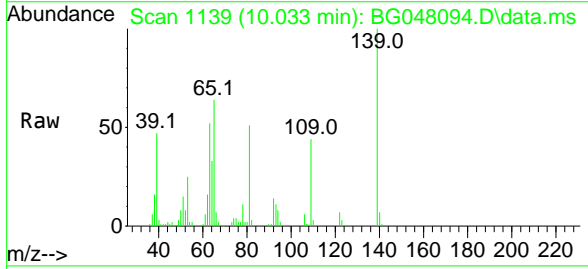
Instrument :
 BNA_G
 ClientSampleId :
 SSTDCCC040

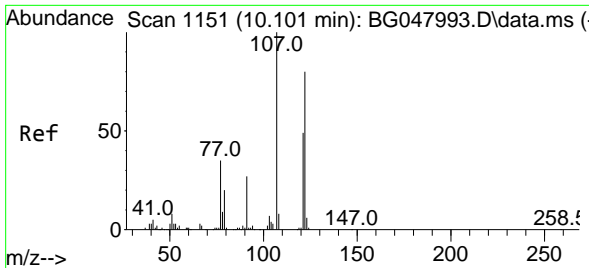
Tgt Ion	Resp	Lower	Upper
82	100		
95	8.7	5.6	8.4#
138	16.8	15.8	23.6



#26
 2-Nitrophenol
 Concen: 42.37 ng
 RT: 10.033 min Scan# 1139
 Delta R.T. -0.002 min
 Lab File: BG048094.D
 Acq: 3 Feb 2021 16:47

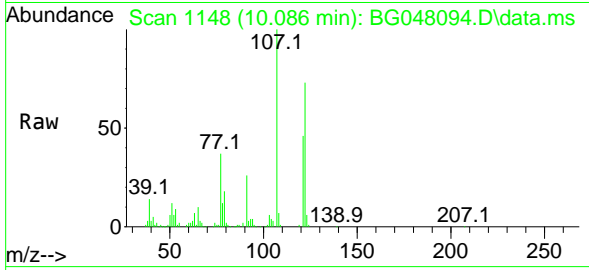
Tgt Ion	Resp	Lower	Upper
139	100		
109	43.8	20.7	31.1#
65	64.3	36.1	54.1#



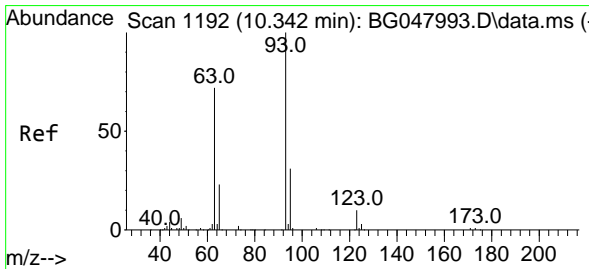
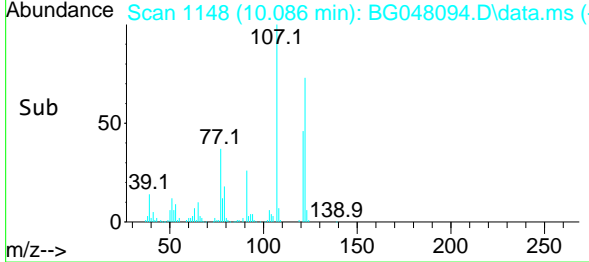
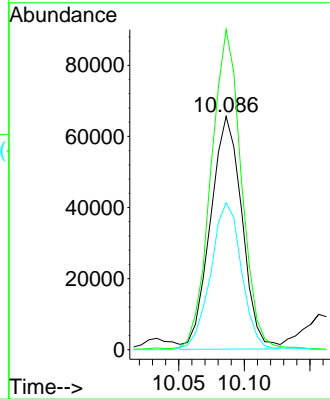


#27
 2,4-Dimethylphenol
 Concen: 39.76 ng
 RT: 10.086 min Scan# 1148
 Delta R.T. -0.002 min
 Lab File: BG048094.D
 Acq: 3 Feb 2021 16:47

Instrument :
 BNA_G
 ClientSampled :
 SSTDCCC040

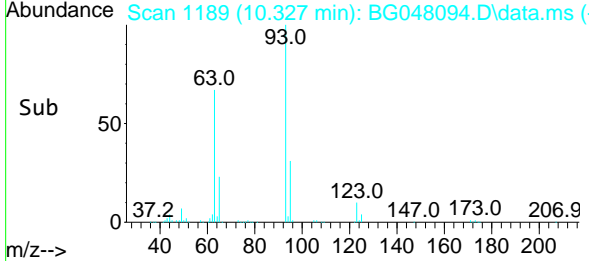
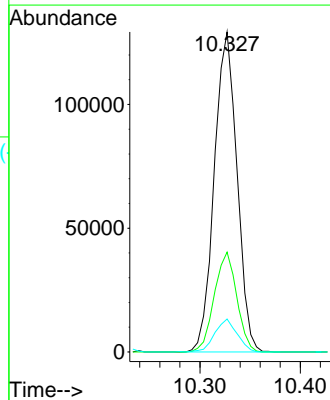
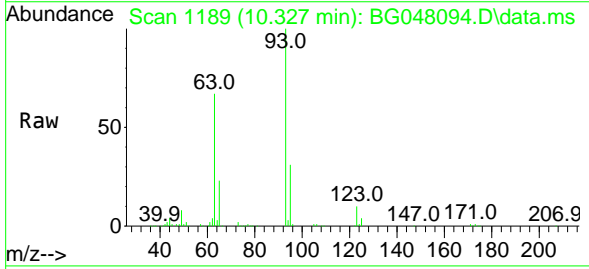


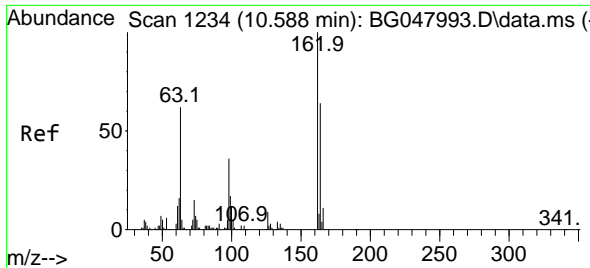
Tgt Ion:122 Resp: 109733
 Ion Ratio Lower Upper
 122 100
 107 137.2 89.2 133.8#
 121 63.0 46.9 70.3



#28
 bis(2-Chloroethoxy)methane
 Concen: 40.80 ng
 RT: 10.327 min Scan# 1189
 Delta R.T. -0.002 min
 Lab File: BG048094.D
 Acq: 3 Feb 2021 16:47

Tgt Ion: 93 Resp: 203069
 Ion Ratio Lower Upper
 93 100
 95 31.2 26.5 39.7
 123 10.3 9.4 14.0

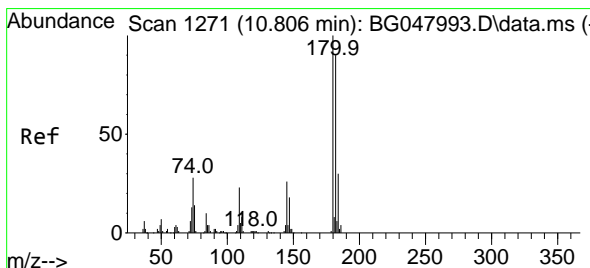
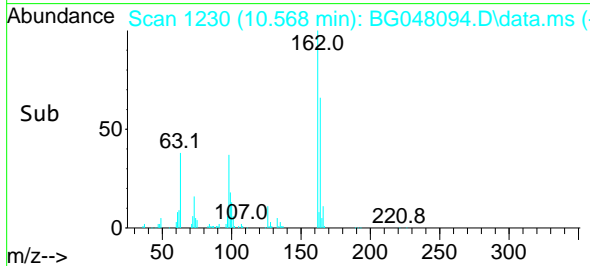
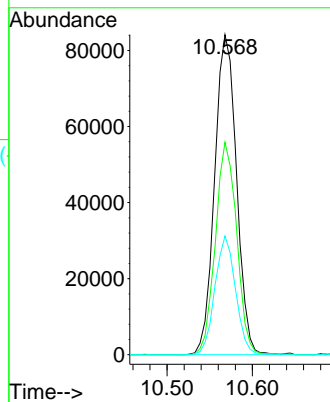
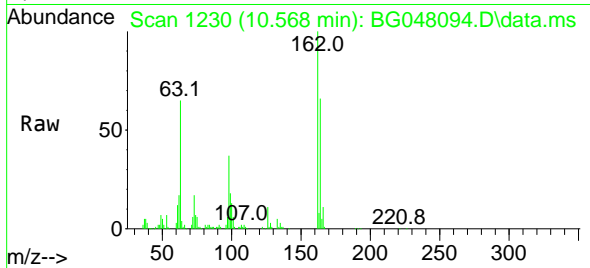




#29
 2,4-Dichlorophenol
 Concen: 42.27 ng
 RT: 10.568 min Scan# 1230
 Delta R.T. -0.002 min
 Lab File: BG048094.D
 Acq: 3 Feb 2021 16:47

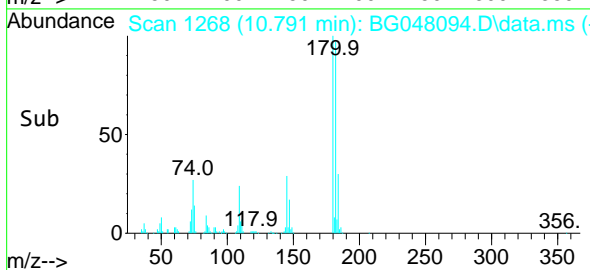
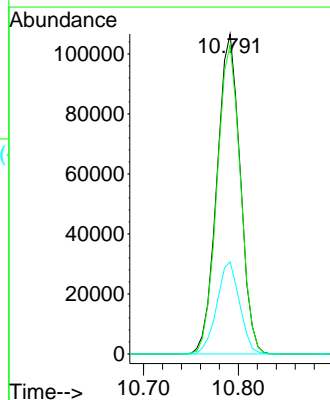
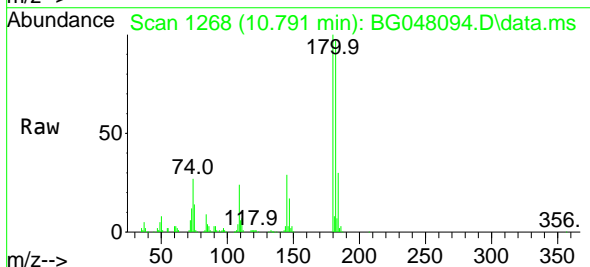
Instrument :
 BNA_G
 ClientSampled :
 SSTDCCC040

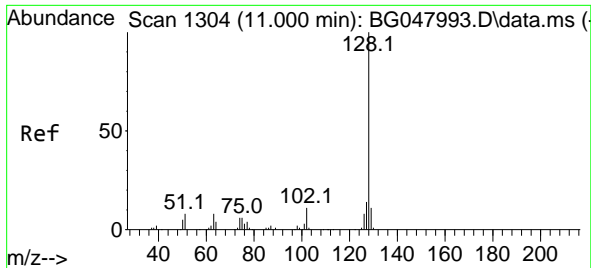
Tgt Ion	Resp	Lower	Upper
162	150104		
162	100		
164	66.4	45.6	85.6
98	37.1	11.0	51.0



#30
 1,2,4-Trichlorobenzene
 Concen: 42.30 ng
 RT: 10.791 min Scan# 1268
 Delta R.T. -0.002 min
 Lab File: BG048094.D
 Acq: 3 Feb 2021 16:47

Tgt Ion	Resp	Lower	Upper
180	181585		
180	100		
182	96.6	76.9	115.3
145	28.8	21.4	32.0

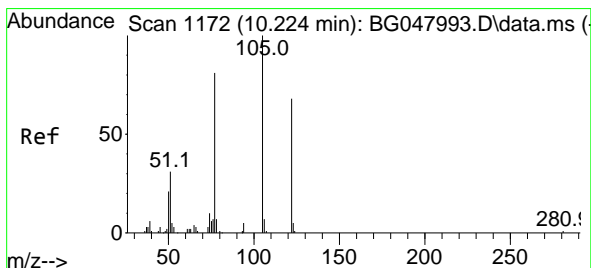
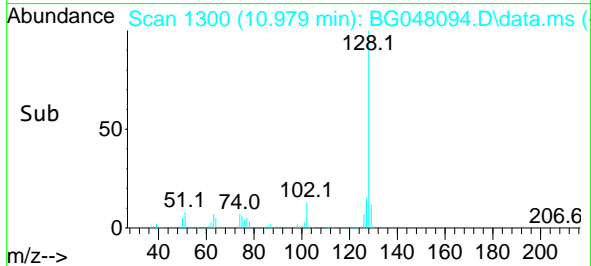
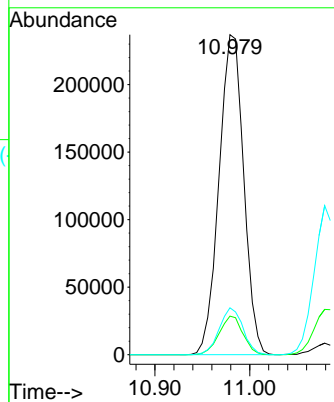
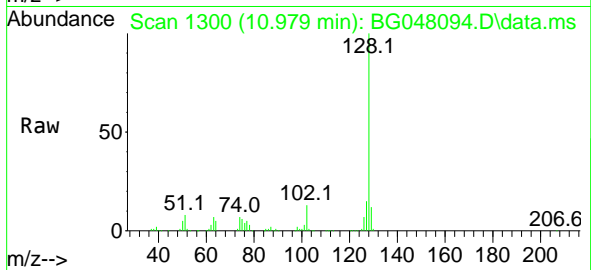




#31
 Naphthalene
 Concen: 40.66 ng
 RT: 10.979 min Scan# 1300
 Delta R.T. -0.008 min
 Lab File: BG048094.D
 Acq: 3 Feb 2021 16:47

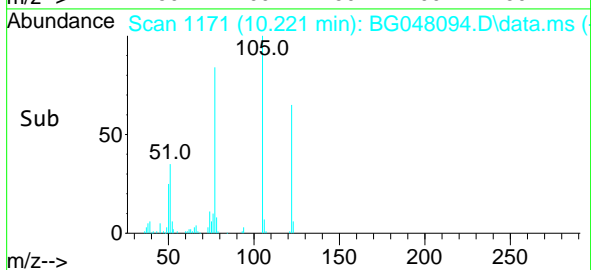
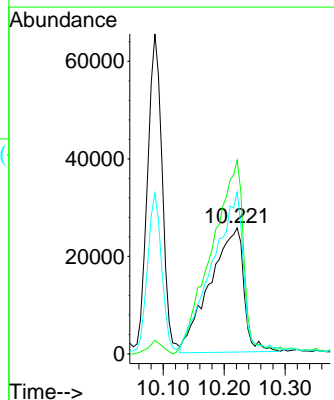
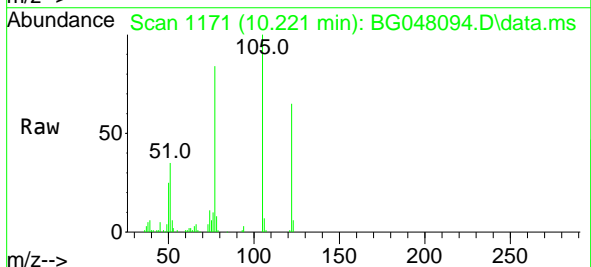
Instrument :
 BNA_G
 ClientSampled :
 SSTDCCC040

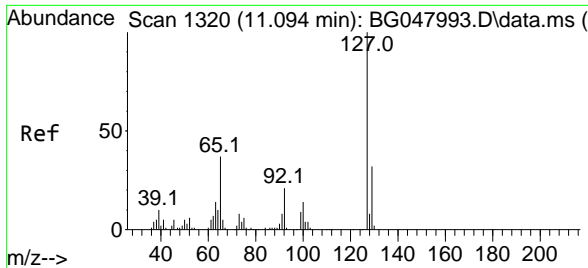
Tgt Ion:128 Resp: 428810
 Ion Ratio Lower Upper
 128 100
 129 12.1 9.0 13.6
 127 14.7 11.0 16.4



#32
 Benzoic acid
 Concen: 39.78 ng
 RT: 10.221 min Scan# 1171
 Delta R.T. 0.045 min
 Lab File: BG048094.D
 Acq: 3 Feb 2021 16:47

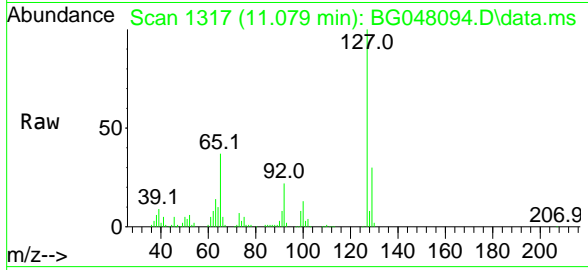
Tgt Ion:122 Resp: 98321
 Ion Ratio Lower Upper
 122 100
 105 154.0 103.7 143.7#
 77 128.7 63.0 103.0#





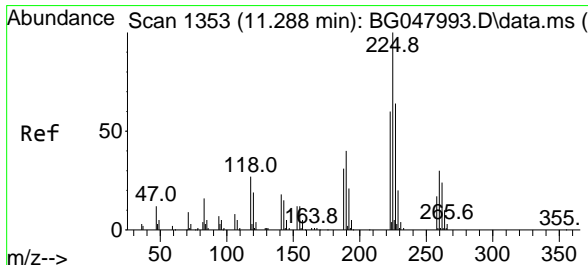
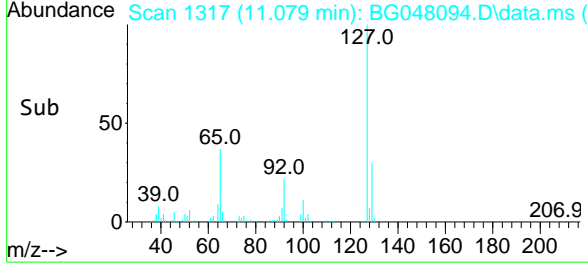
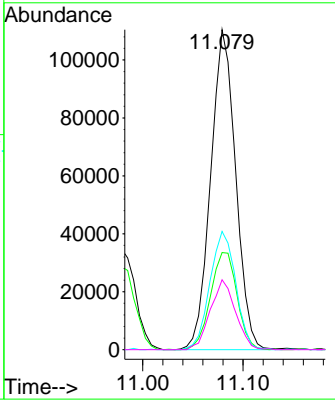
#33
 4-Chloroaniline
 Concen: 39.67 ng
 RT: 11.079 min Scan# 1317
 Delta R.T. -0.002 min
 Lab File: BG048094.D
 Acq: 3 Feb 2021 16:47

Instrument :
 BNA_G
ClientSampleId :
 SSTDCCC040

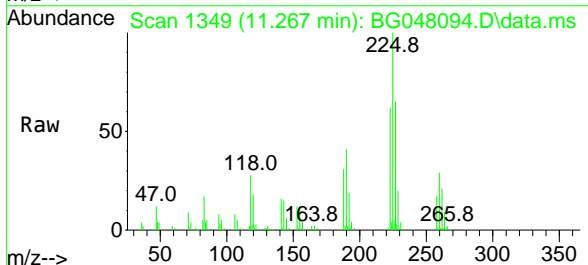


Tgt Ion:127 Resp: 191204

Ion	Ratio	Lower	Upper
127	100		
129	30.4	26.8	40.2
65	37.0	23.8	35.6#
92	21.8	14.5	21.7#

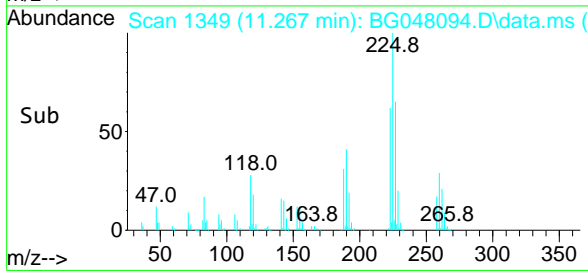
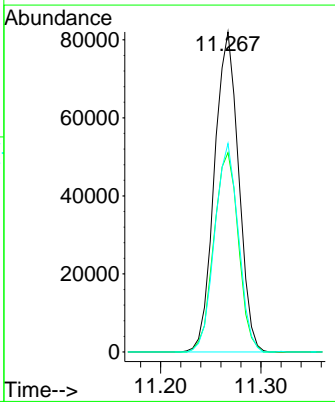


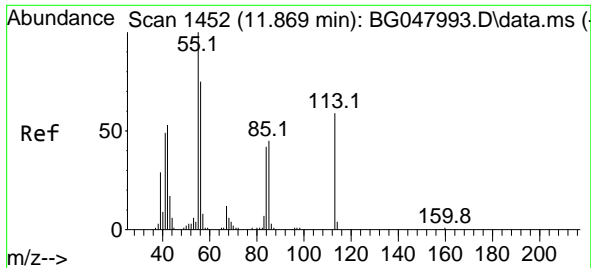
#34
 Hexachlorobutadiene
 Concen: 44.98 ng
 RT: 11.267 min Scan# 1349
 Delta R.T. -0.002 min
 Lab File: BG048094.D
 Acq: 3 Feb 2021 16:47



Tgt Ion:225 Resp: 137147

Ion	Ratio	Lower	Upper
225	100		
223	62.3	49.5	74.3
227	65.2	52.0	78.0

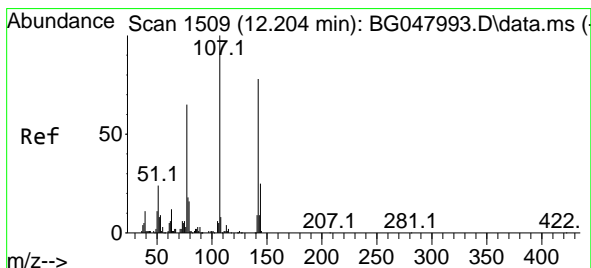
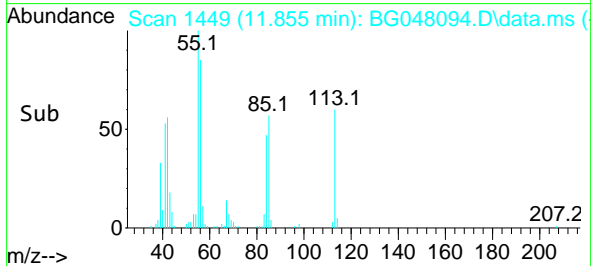
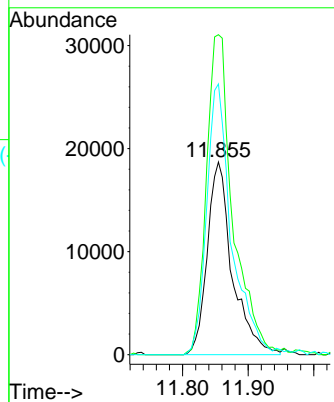
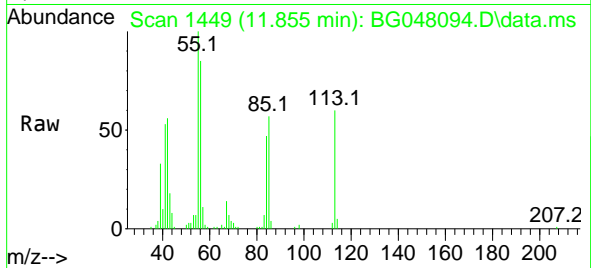




#35
 Caprolactam
 Concen: 36.70 ng
 RT: 11.855 min Scan# 1449
 Delta R.T. -0.008 min
 Lab File: BG048094.D
 Acq: 3 Feb 2021 16:47

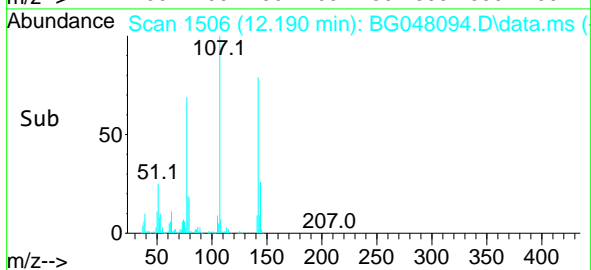
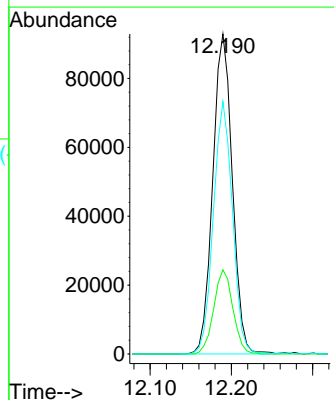
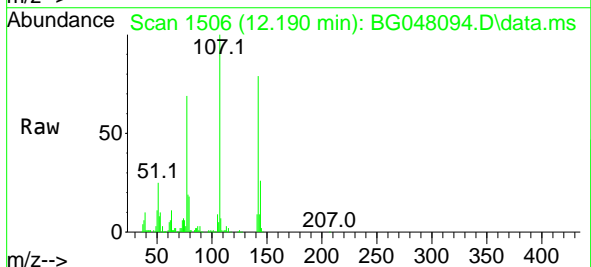
Instrument :
 BNA_G
 ClientSampleId :
 SSTDCCC040

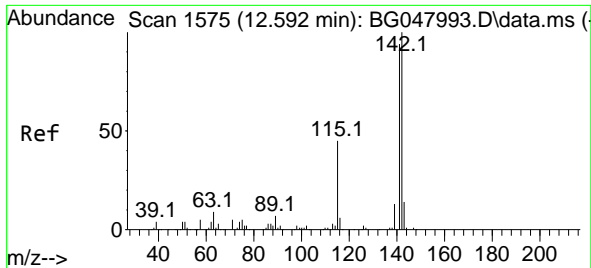
Tgt Ion:113 Resp: 49606
 Ion Ratio Lower Upper
 113 100
 55 166.1 149.2 189.2
 56 140.5 107.2 147.2



#36
 4-Chloro-3-methylphenol
 Concen: 38.98 ng
 RT: 12.190 min Scan# 1506
 Delta R.T. -0.002 min
 Lab File: BG048094.D
 Acq: 3 Feb 2021 16:47

Tgt Ion:107 Resp: 155317
 Ion Ratio Lower Upper
 107 100
 144 26.3 22.5 33.7
 142 78.9 70.8 106.2

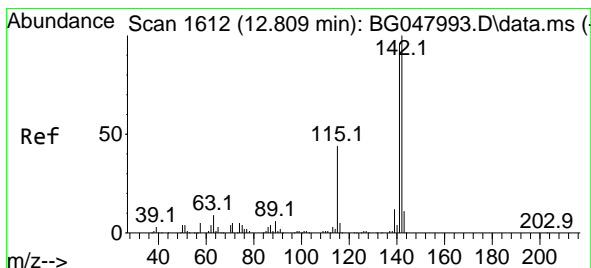
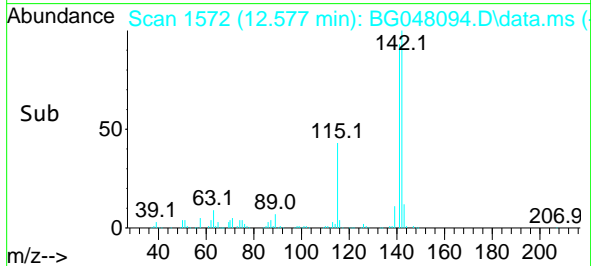
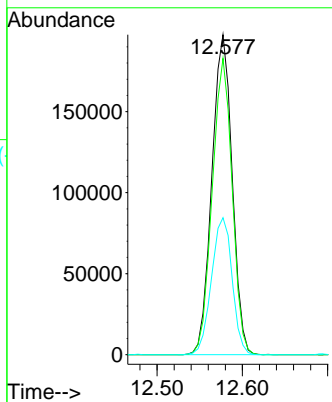
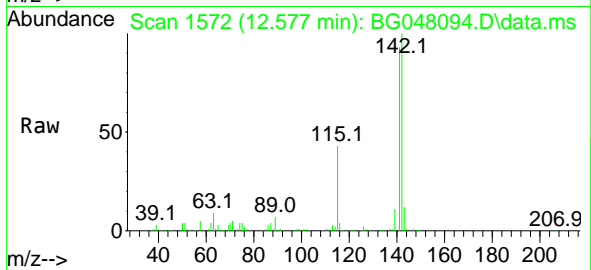




#37
 2-Methylnaphthalene
 Concen: 40.97 ng
 RT: 12.577 min Scan# 1572
 Delta R.T. -0.002 min
 Lab File: BG048094.D
 Acq: 3 Feb 2021 16:47

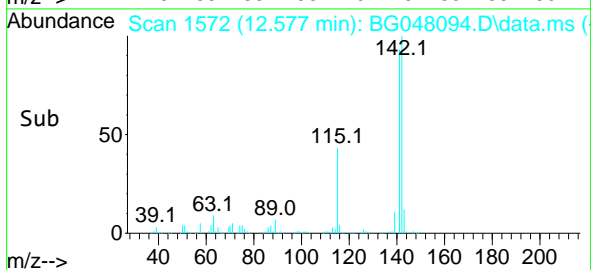
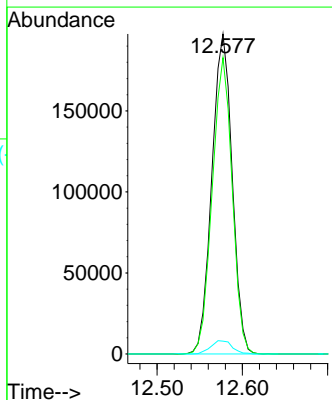
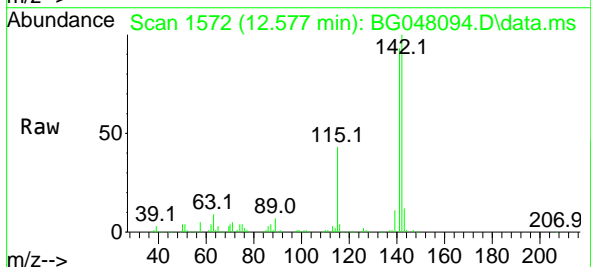
Instrument :
 BNA_G
 ClientSampled :
 SSTDCCC040

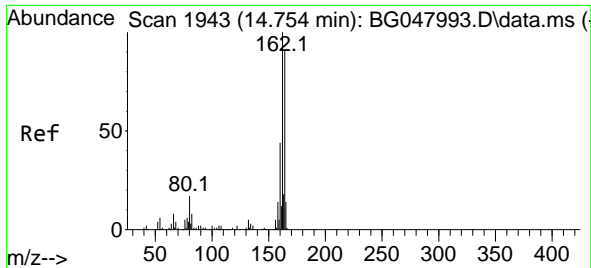
Tgt Ion:142 Resp: 326338
 Ion Ratio Lower Upper
 142 100
 141 92.6 71.6 107.4
 115 42.8 25.4 38.2#



#38
 1-Methylnaphthalene
 Concen: 42.95 ng
 RT: 12.577 min Scan# 1572
 Delta R.T. -0.219 min
 Lab File: BG048094.D
 Acq: 3 Feb 2021 16:47

Tgt Ion:142 Resp: 326338
 Ion Ratio Lower Upper
 142 100
 141 92.6 75.4 113.2
 116 4.0 2.9 4.3

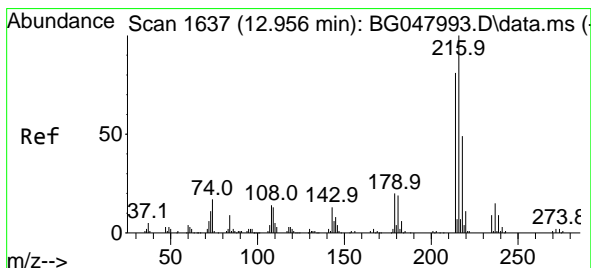
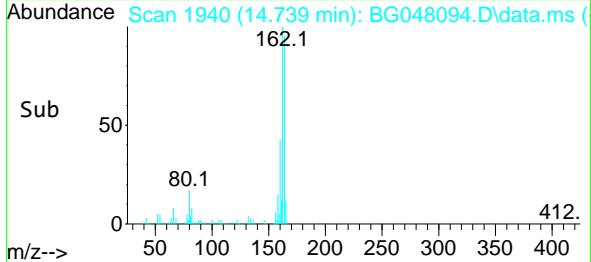
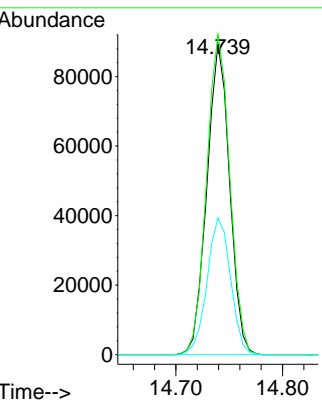
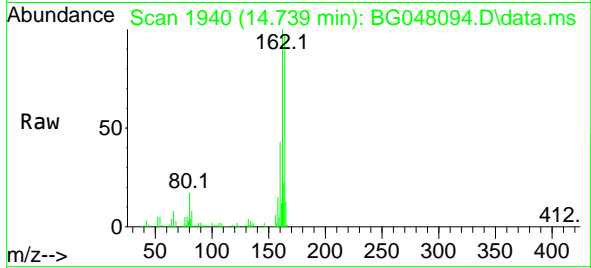




#39
 Acenaphthene-d10
 Concen: 20.00 ng
 RT: 14.739 min Scan# 1940
 Delta R.T. -0.002 min
 Lab File: BG048094.D
 Acq: 3 Feb 2021 16:47

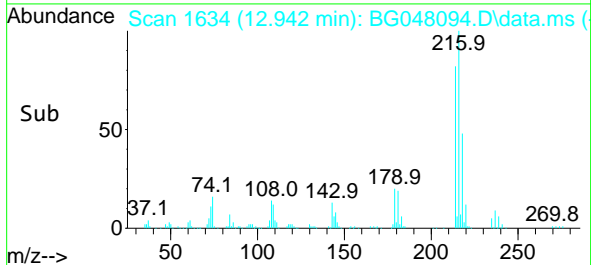
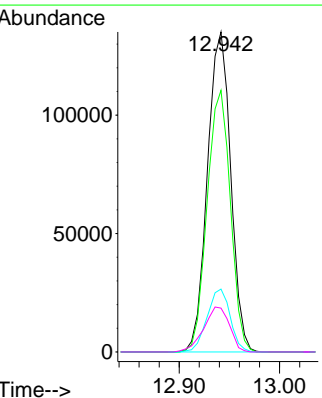
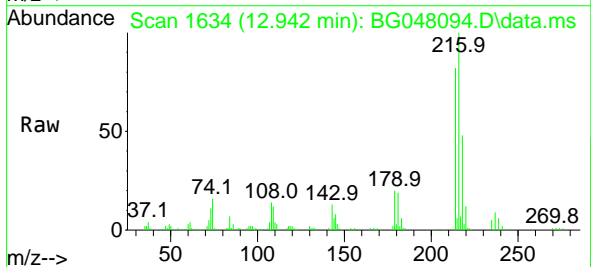
Instrument :
 BNA_G
 ClientSampleId :
 SSTDCCC040

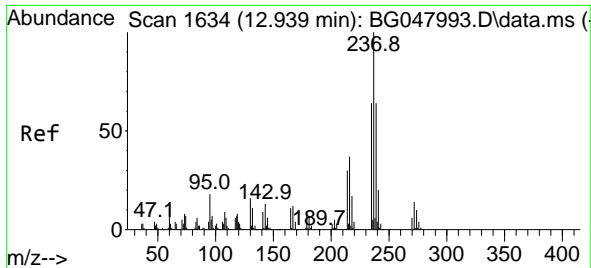
Tgt Ion	Resp	Lower	Upper
164	132021		
162	102.9	82.3	123.5
160	43.9	35.3	52.9



#40
 1,2,4,5-Tetrachlorobenzene
 Concen: 43.19 ng
 RT: 12.942 min Scan# 1634
 Delta R.T. -0.002 min
 Lab File: BG048094.D
 Acq: 3 Feb 2021 16:47

Tgt Ion	Resp	Lower	Upper
216	217366		
214	81.7	61.9	92.9
179	19.5	14.8	22.2
108	15.6	10.2	15.4



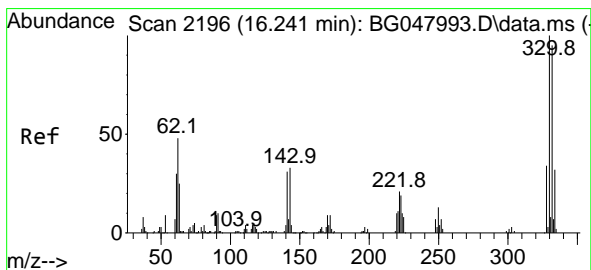
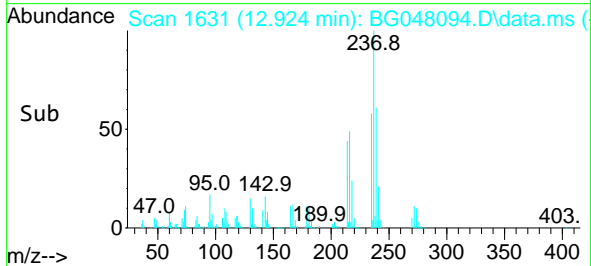
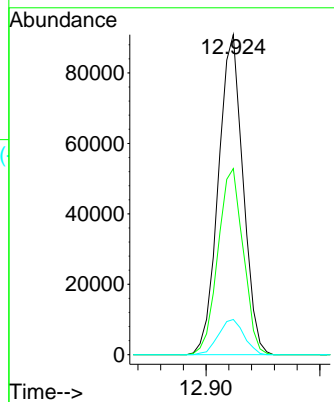
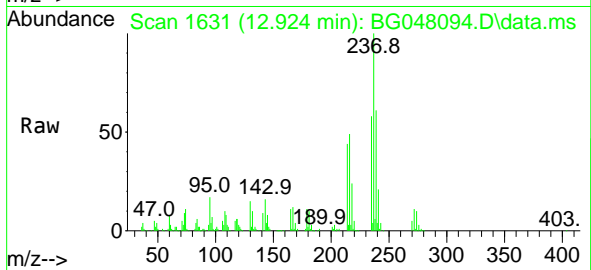


#41
 Hexachlorocyclopentadiene
 Concen: 47.94 ng
 RT: 12.924 min Scan# 1631
 Delta R.T. -0.002 min
 Lab File: BG048094.D
 Acq: 3 Feb 2021 16:47

Instrument :
 BNA_G
 ClientSampled :
 SSTDCCC040

Tgt Ion:237 Resp: 136680

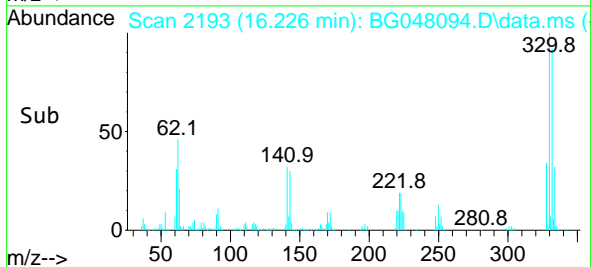
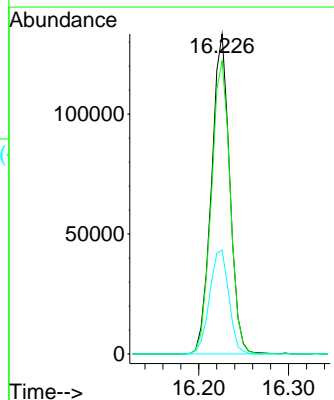
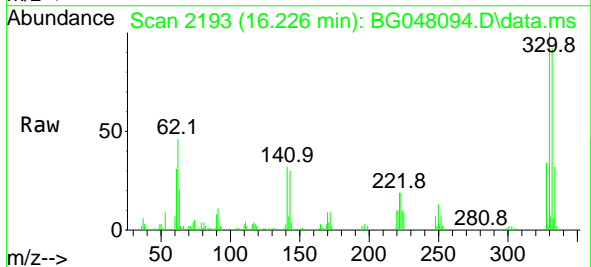
Ion	Ratio	Lower	Upper
237	100		
235	58.2	43.1	83.1
272	11.0	0.0	33.1

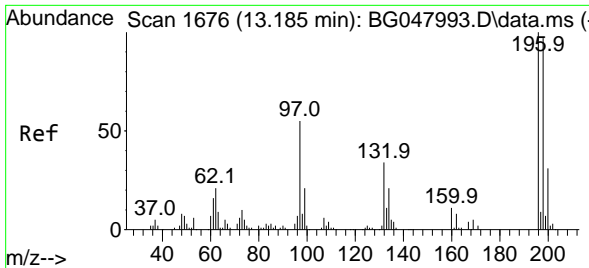


#42
 2,4,6-Tribromophenol
 Concen: 85.48 ng
 RT: 16.226 min Scan# 2193
 Delta R.T. -0.002 min
 Lab File: BG048094.D
 Acq: 3 Feb 2021 16:47

Tgt Ion:330 Resp: 187955

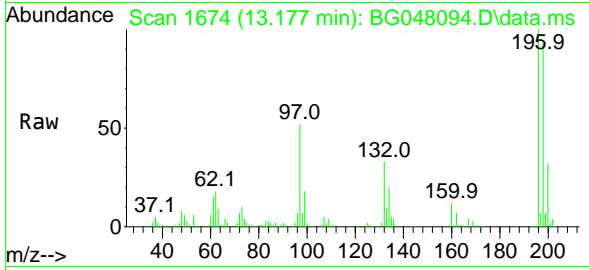
Ion	Ratio	Lower	Upper
330	100		
332	94.3	76.5	114.7
141	34.3	26.0	39.0



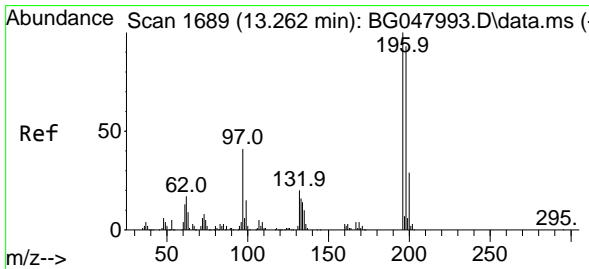
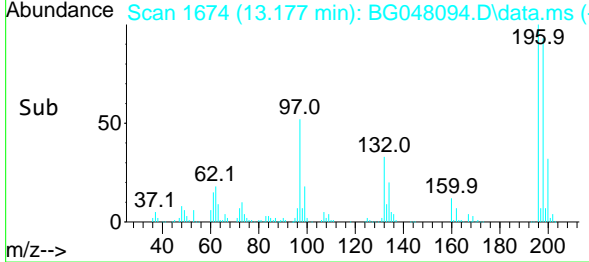
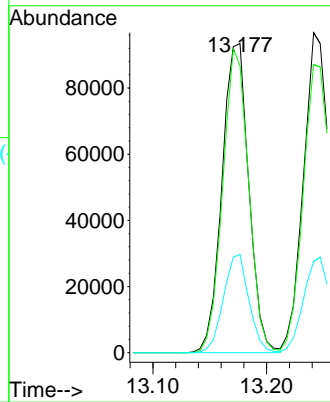


#43
 2,4,6-Trichlorophenol
 Concen: 43.67 ng
 RT: 13.177 min Scan# 1674
 Delta R.T. -0.002 min
 Lab File: BG048094.D
 Acq: 3 Feb 2021 16:47

Instrument :
 BNA_G
 ClientSampled :
 SSTDCCC040

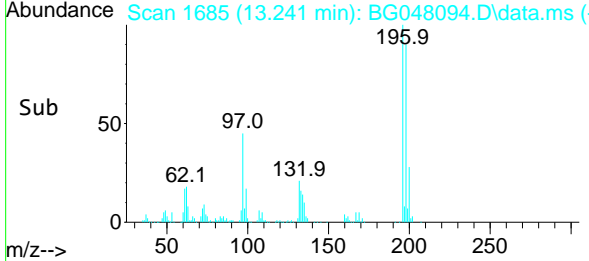
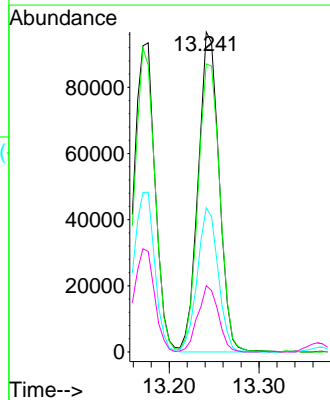
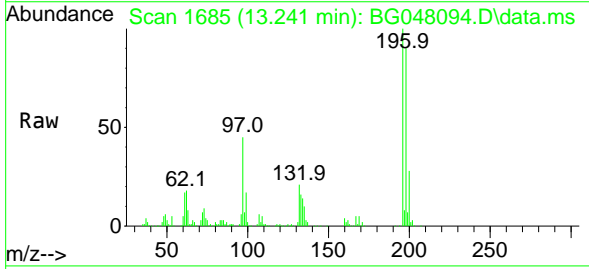


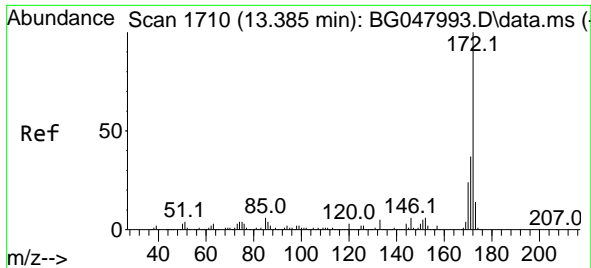
Tgt Ion:196 Resp: 153303
 Ion Ratio Lower Upper
 196 100
 198 92.7 74.9 112.3
 200 31.8 25.3 37.9



#44
 2,4,5-Trichlorophenol
 Concen: 42.92 ng
 RT: 13.241 min Scan# 1685
 Delta R.T. -0.008 min
 Lab File: BG048094.D
 Acq: 3 Feb 2021 16:47

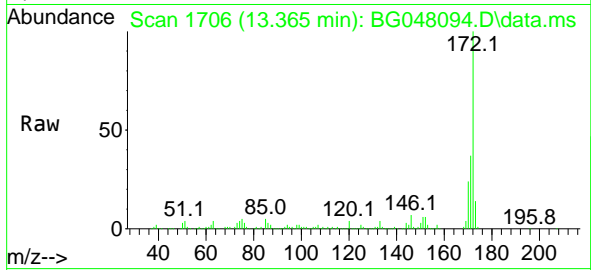
Tgt Ion:196 Resp: 156124
 Ion Ratio Lower Upper
 196 100
 198 90.1 77.6 116.4
 97 45.1 28.6 43.0#
 132 20.7 17.8 26.8



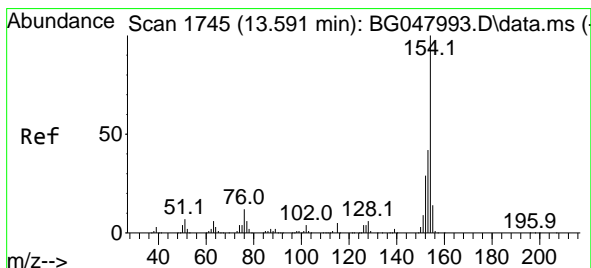
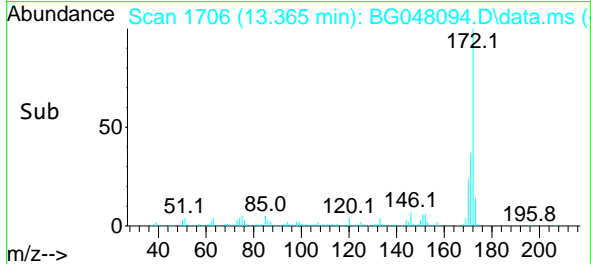
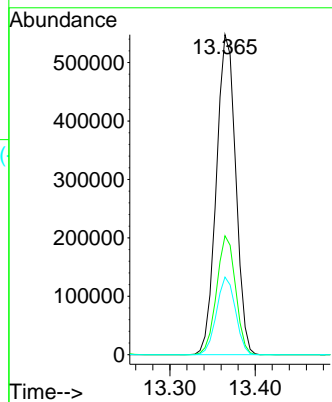


#45
 2-Fluorobiphenyl
 Concen: 84.42 ng
 RT: 13.365 min Scan# 1706
 Delta R.T. -0.002 min
 Lab File: BG048094.D
 Acq: 3 Feb 2021 16:47

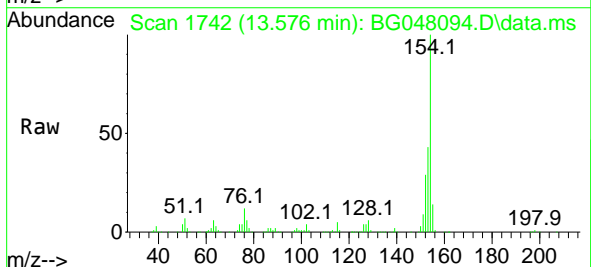
Instrument :
 BNA_G
 ClientSampled :
 SSTDCCC040



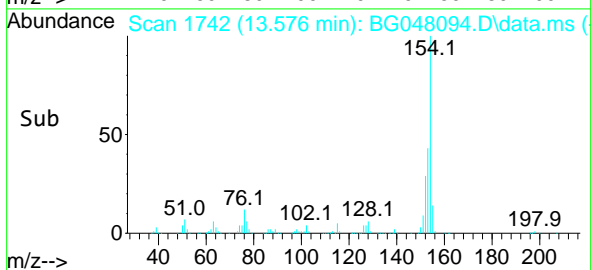
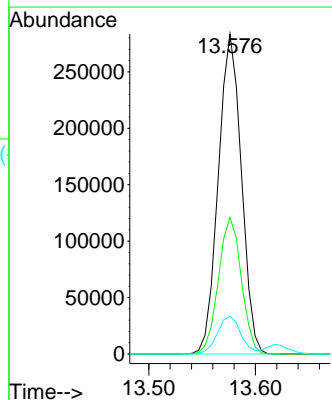
Tgt Ion:172 Resp: 862057
 Ion Ratio Lower Upper
 172 100
 171 37.1 31.3 46.9
 170 24.3 20.8 31.2

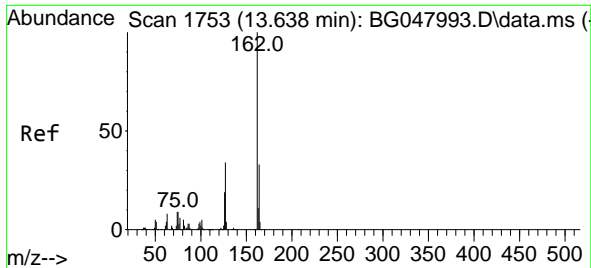


#46
 1,1'-Biphenyl
 Concen: 41.64 ng
 RT: 13.576 min Scan# 1742
 Delta R.T. -0.002 min
 Lab File: BG048094.D
 Acq: 3 Feb 2021 16:47



Tgt Ion:154 Resp: 424980
 Ion Ratio Lower Upper
 154 100
 153 42.7 22.6 62.6
 76 11.8 0.0 32.6



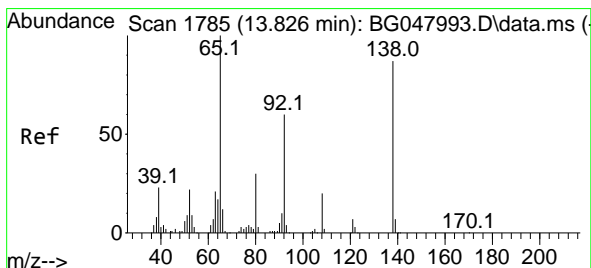
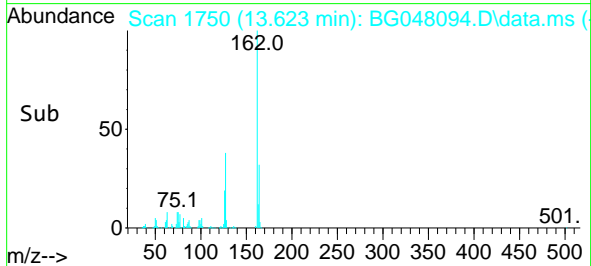
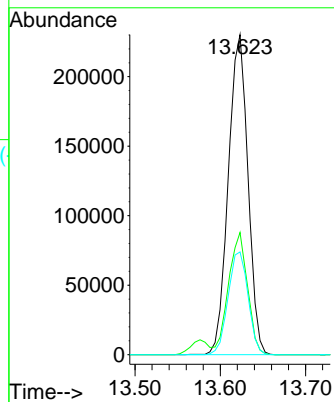
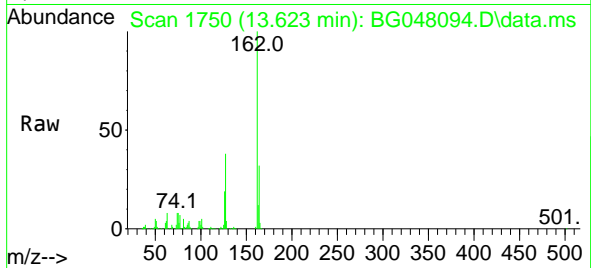


#47
 2-Chloronaphthalene
 Concen: 41.51 ng
 RT: 13.623 min Scan# 1750
 Delta R.T. -0.002 min
 Lab File: BG048094.D
 Acq: 3 Feb 2021 16:47

Instrument :
 BNA_G
 ClientSampled :
 SSTDCCC040

Tgt Ion:162 Resp: 368725

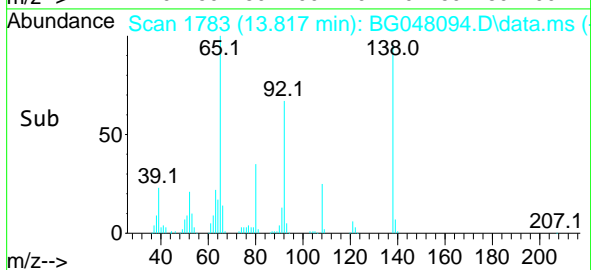
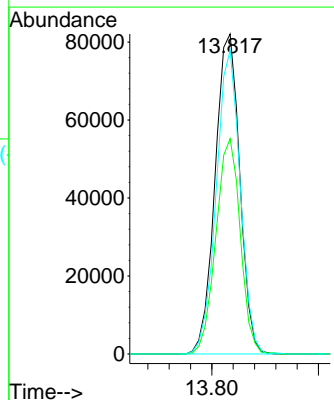
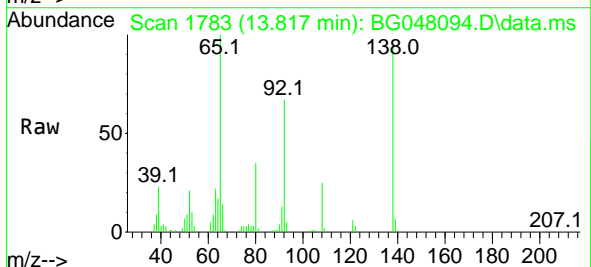
Ion	Ratio	Lower	Upper
162	100		
127	38.2	27.8	41.6
164	32.1	27.0	40.4

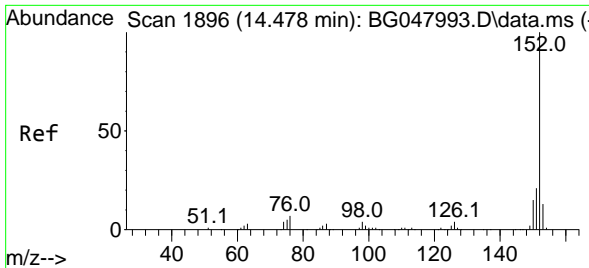


#48
 2-Nitroaniline
 Concen: 40.79 ng
 RT: 13.817 min Scan# 1783
 Delta R.T. -0.002 min
 Lab File: BG048094.D
 Acq: 3 Feb 2021 16:47

Tgt Ion: 65 Resp: 131500

Ion	Ratio	Lower	Upper
65	100		
92	67.3	58.6	88.0
138	94.9	98.2	147.4#

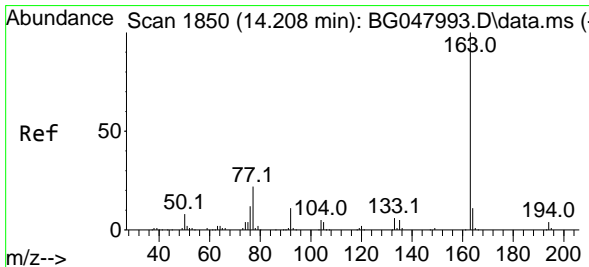
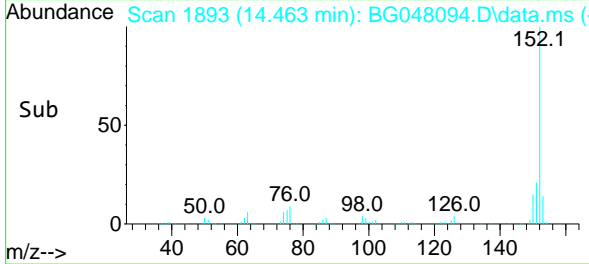
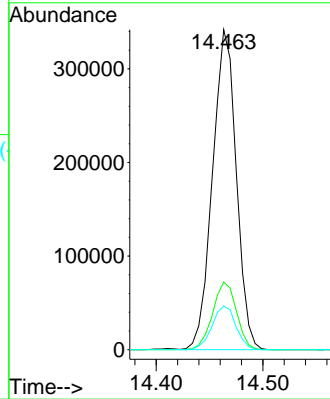
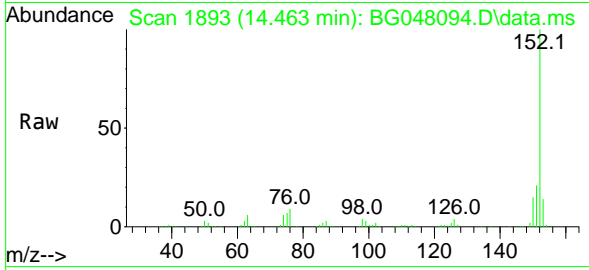




#49
 Acenaphthylene
 Concen: 40.29 ng
 RT: 14.463 min Scan# 1893
 Delta R.T. -0.002 min
 Lab File: BG048094.D
 Acq: 3 Feb 2021 16:47

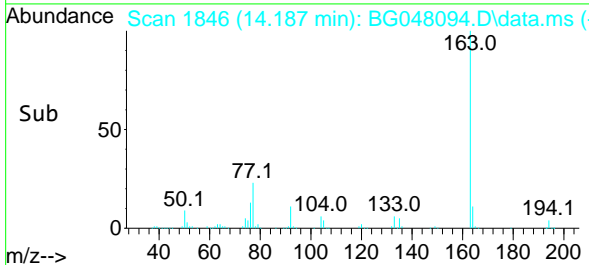
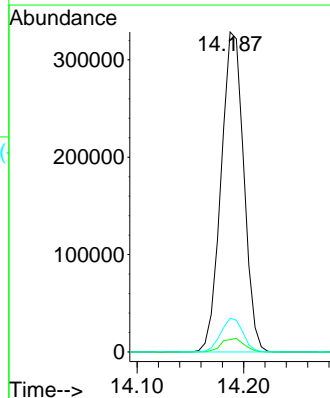
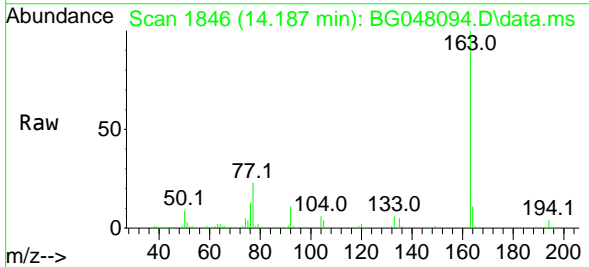
Instrument :
 BNA_G
 ClientSampled :
 SSTDCCC040

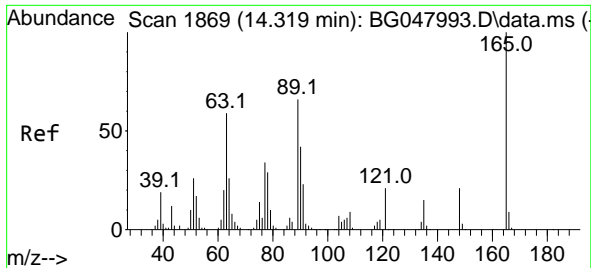
Tgt Ion:152 Resp: 528195
 Ion Ratio Lower Upper
 152 100
 151 21.2 17.4 26.0
 153 13.7 11.5 17.3



#50
 Dimethylphthalate
 Concen: 40.66 ng
 RT: 14.187 min Scan# 1846
 Delta R.T. -0.008 min
 Lab File: BG048094.D
 Acq: 3 Feb 2021 16:47

Tgt Ion:163 Resp: 485854
 Ion Ratio Lower Upper
 163 100
 194 3.9 3.8 5.8
 164 10.5 8.8 13.2

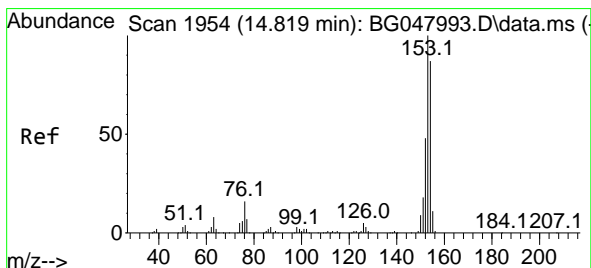
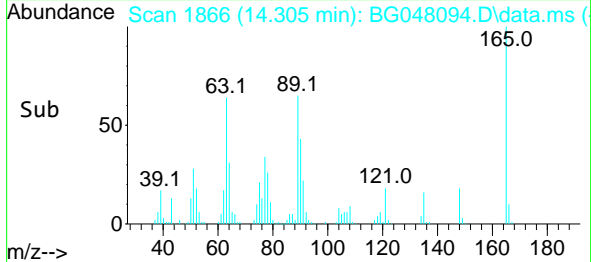
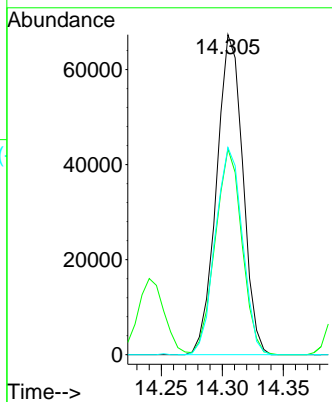
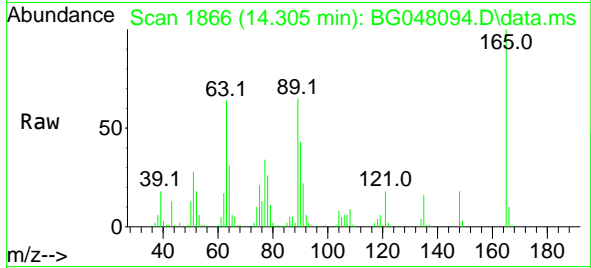




#51
 2,6-Dinitrotoluene
 Concen: 40.73 ng
 RT: 14.305 min Scan# 1866
 Delta R.T. -0.002 min
 Lab File: BG048094.D
 Acq: 3 Feb 2021 16:47

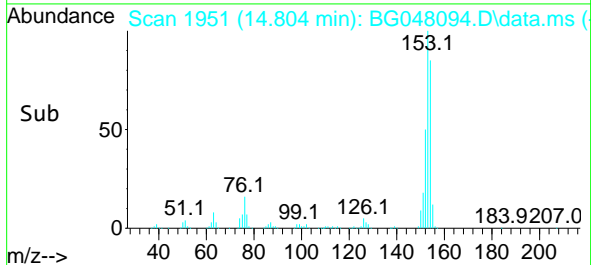
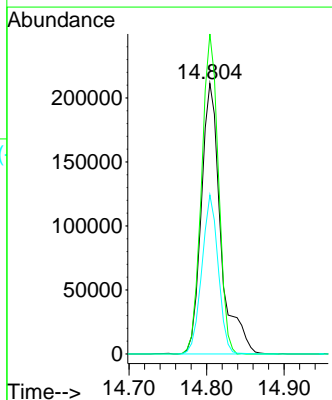
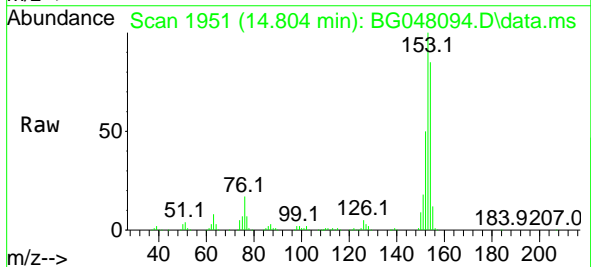
Instrument :
 BNA_G
ClientSampled :
 SSTDCCC040

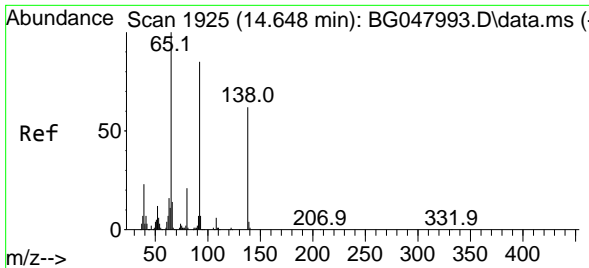
Tgt Ion	Resp	Lower	Upper
165	100		
63	64.3	33.7	50.5#
89	64.7	36.6	54.8#



#52
 Acenaphthene
 Concen: 41.45 ng
 RT: 14.804 min Scan# 1951
 Delta R.T. -0.002 min
 Lab File: BG048094.D
 Acq: 3 Feb 2021 16:47

Tgt Ion	Resp	Lower	Upper
154	100		
153	118.3	90.3	135.5
152	58.8	43.8	65.8

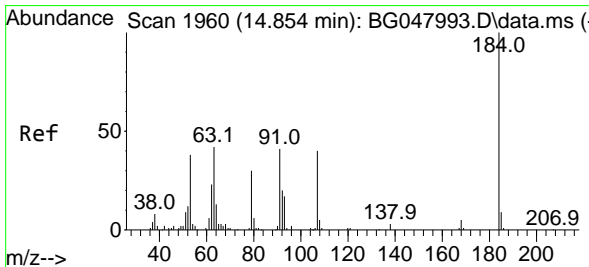
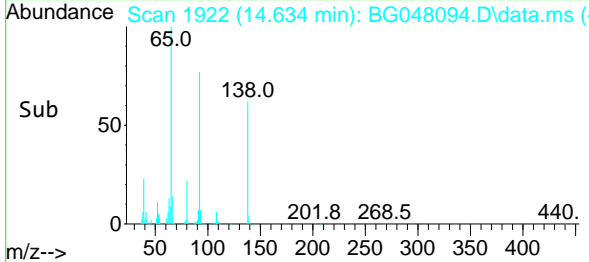
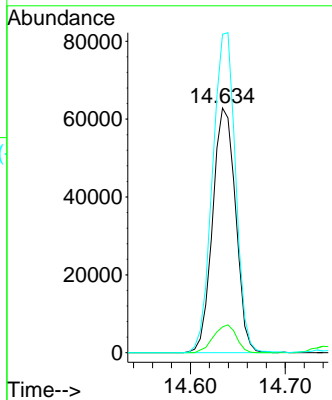
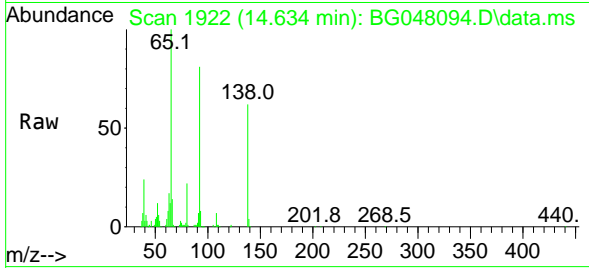




#53
 3-Nitroaniline
 Concen: 38.86 ng
 RT: 14.634 min Scan# 1922
 Delta R.T. -0.008 min
 Lab File: BG048094.D
 Acq: 3 Feb 2021 16:47

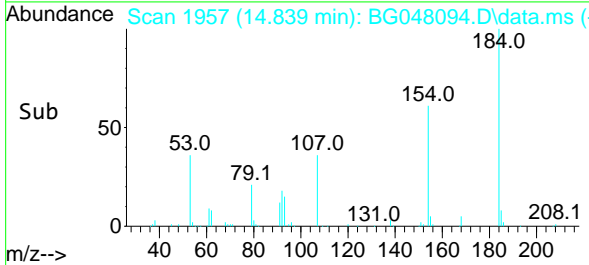
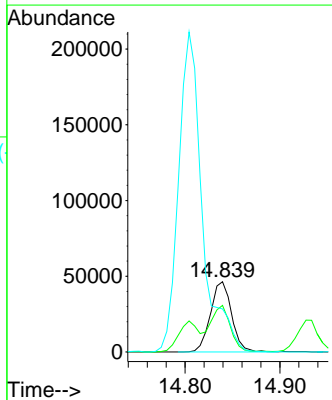
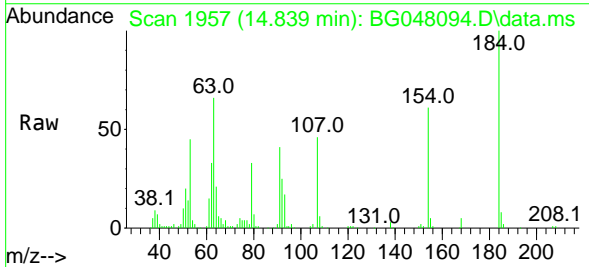
Instrument :
 BNA_G
 ClientSampled :
 SSTDCCC040

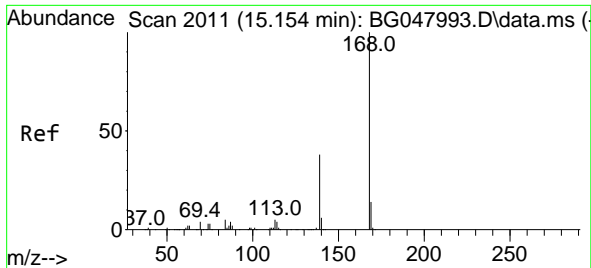
Tgt Ion	Resp	Lower	Upper
138	105890		
108	10.5	7.4	11.0
92	130.1	85.2	127.8#



#54
 2,4-Dinitrophenol
 Concen: 46.23 ng
 RT: 14.839 min Scan# 1957
 Delta R.T. -0.002 min
 Lab File: BG048094.D
 Acq: 3 Feb 2021 16:47

Tgt Ion	Resp	Lower	Upper
184	71806		
63	66.4	32.3	48.5#
154	61.2	40.4	60.6#

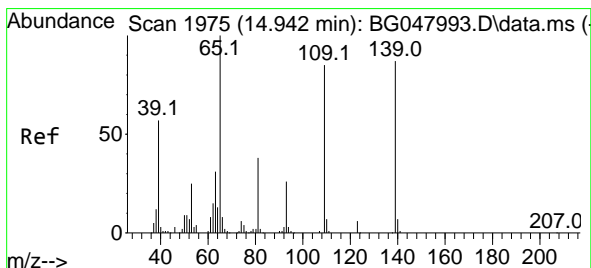
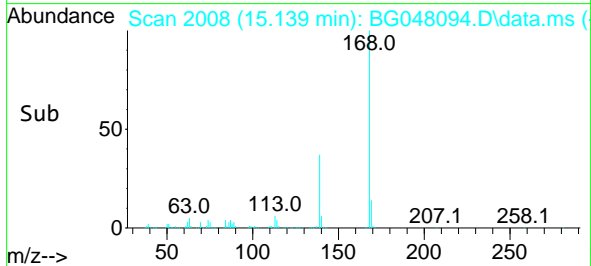
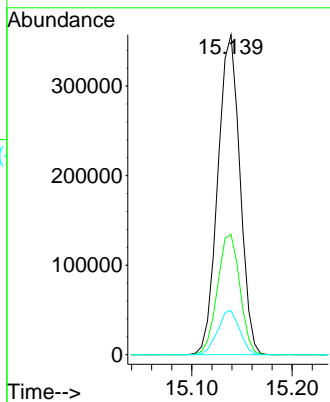
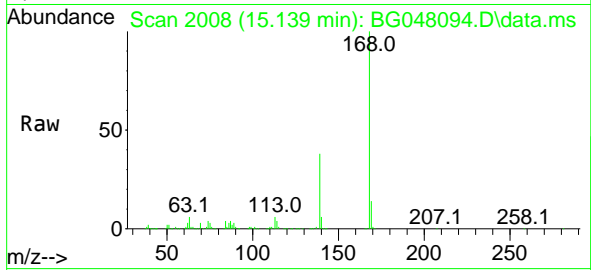




#55
 Dibenzofuran
 Concen: 40.52 ng
 RT: 15.139 min Scan# 2008
 Delta R.T. -0.002 min
 Lab File: BG048094.D
 Acq: 3 Feb 2021 16:47

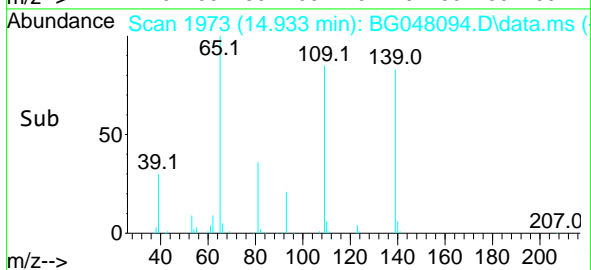
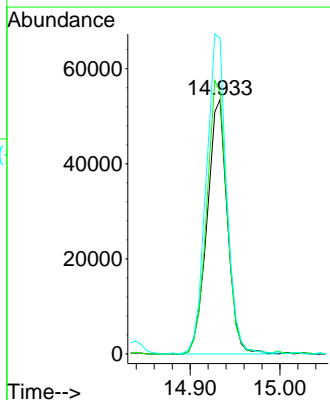
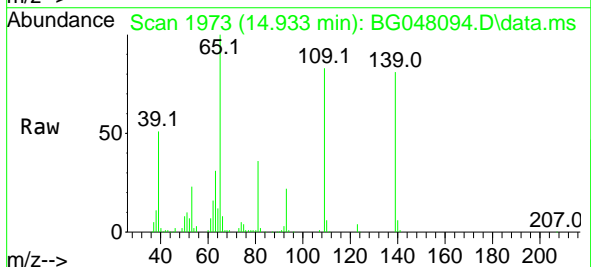
Instrument :
 BNA_G
 ClientSampled :
 SSTDCCC040

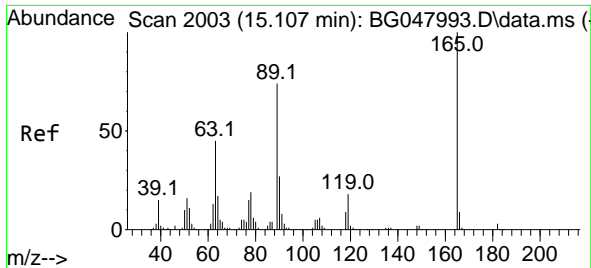
Tgt Ion	Resp	Lower	Upper
168	545445		
139	37.6	28.6	43.0
169	13.8	11.0	16.6



#56
 4-Nitrophenol
 Concen: 39.48 ng
 RT: 14.933 min Scan# 1973
 Delta R.T. -0.002 min
 Lab File: BG048094.D
 Acq: 3 Feb 2021 16:47

Tgt Ion	Resp	Lower	Upper
139	83936		
109	103.0	45.9	85.9#
65	124.1	65.4	105.4#



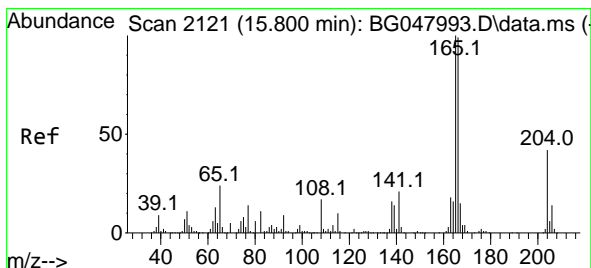
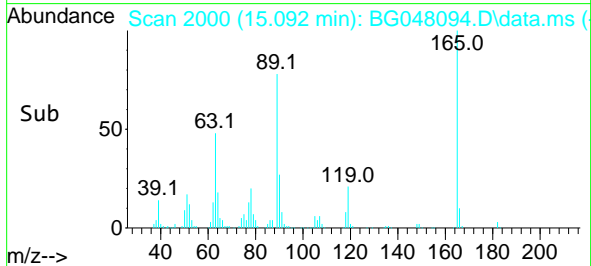
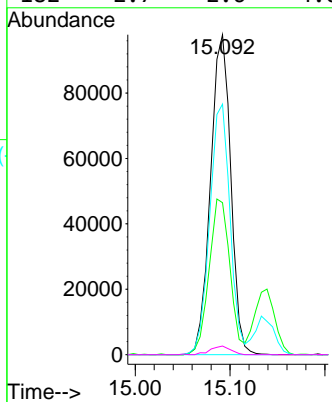
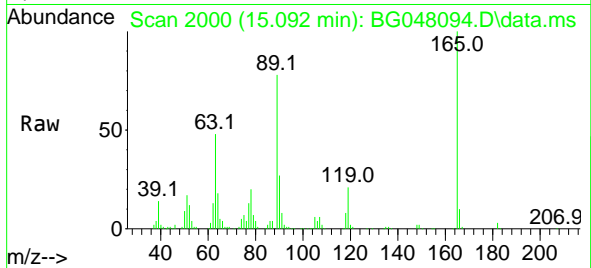


#57
 2,4-Dinitrotoluene
 Concen: 40.46 ng
 RT: 15.092 min Scan# 2000
 Delta R.T. -0.002 min
 Lab File: BG048094.D
 Acq: 3 Feb 2021 16:47

Instrument :
 BNA_G
 ClientSampled :
 SSTDCCC040

Tgt Ion:165 Resp: 145143

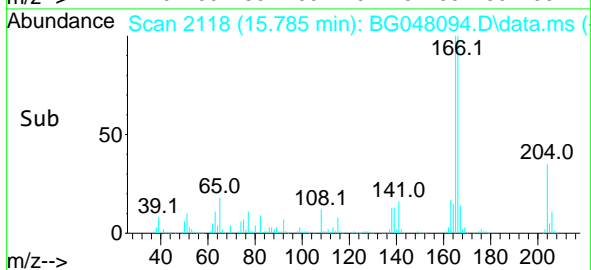
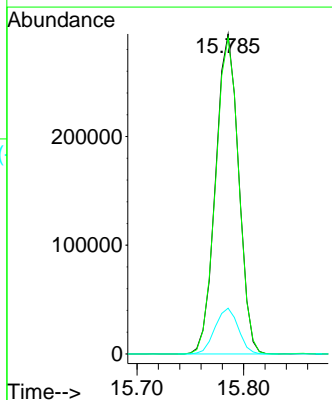
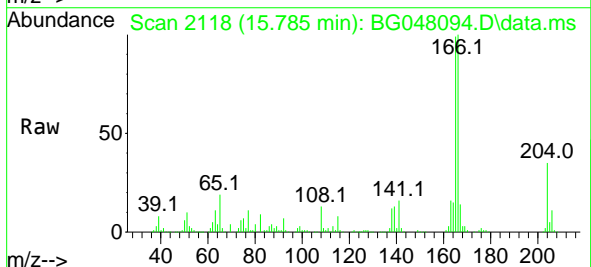
Ion	Ratio	Lower	Upper
165	100		
63	47.5	26.4	39.6#
89	78.3	47.8	71.8#
182	2.7	2.6	4.0

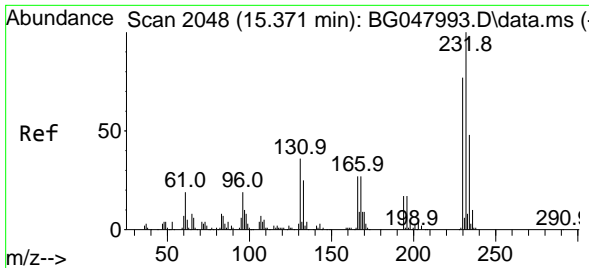


#58
 Fluorene
 Concen: 40.66 ng
 RT: 15.785 min Scan# 2118
 Delta R.T. -0.002 min
 Lab File: BG048094.D
 Acq: 3 Feb 2021 16:47

Tgt Ion:166 Resp: 440050

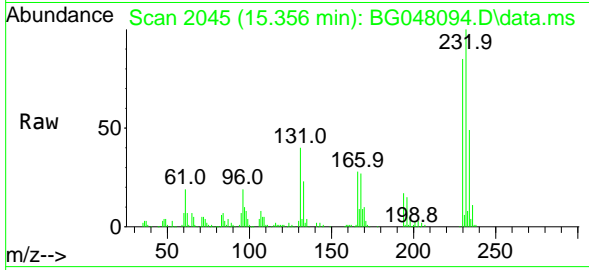
Ion	Ratio	Lower	Upper
166	100		
165	98.9	77.2	115.8
167	14.3	11.4	17.2



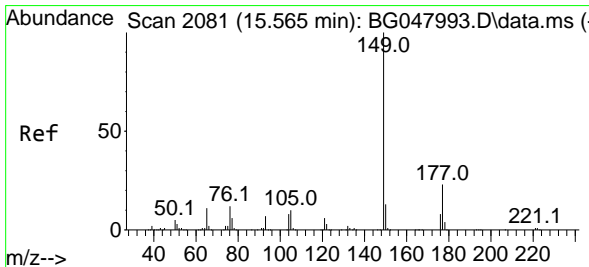
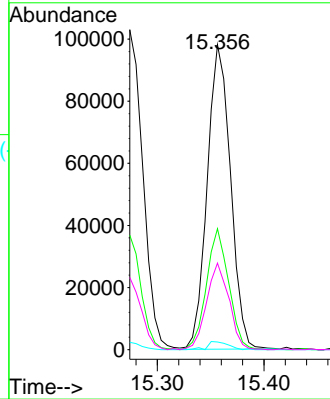
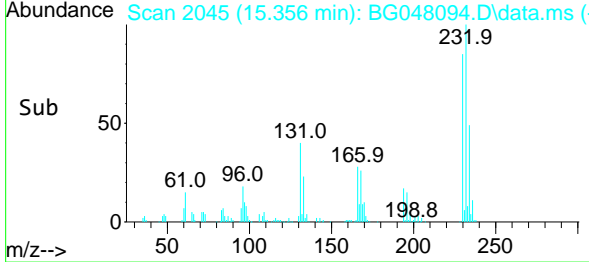


#59
 2,3,4,6-Tetrachlorophenol
 Concen: 40.94 ng
 RT: 15.356 min Scan# 2045
 Delta R.T. -0.002 min
 Lab File: BG048094.D
 Acq: 3 Feb 2021 16:47

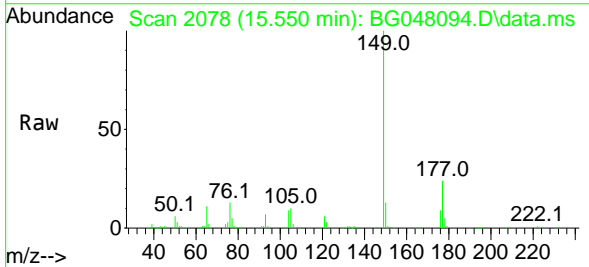
Instrument :
 BNA_G
 ClientSampled :
 SSTDCCC040



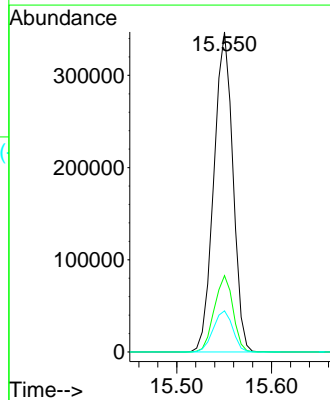
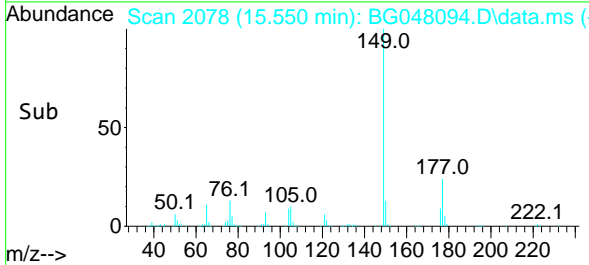
Tgt Ion:232 Resp: 148928
 Ion Ratio Lower Upper
 232 100
 131 38.0 26.6 40.0
 130 2.4 1.4 2.0#
 166 27.4 21.0 31.6

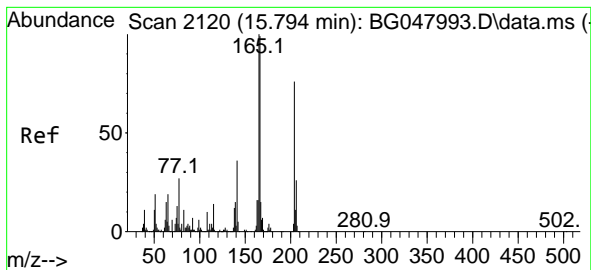


#60
 Diethylphthalate
 Concen: 39.47 ng
 RT: 15.550 min Scan# 2078
 Delta R.T. -0.002 min
 Lab File: BG048094.D
 Acq: 3 Feb 2021 16:47



Tgt Ion:149 Resp: 484902
 Ion Ratio Lower Upper
 149 100
 177 23.9 21.4 32.2
 150 12.8 10.7 16.1



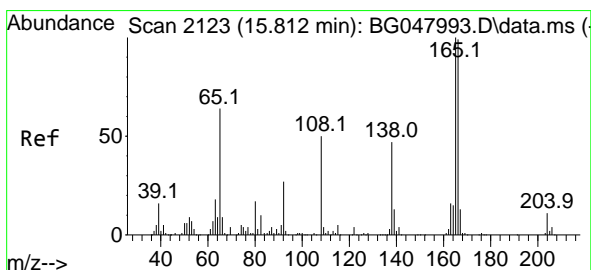
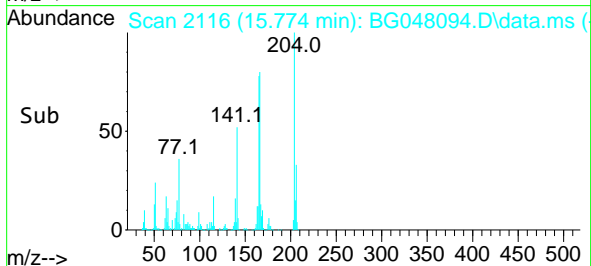
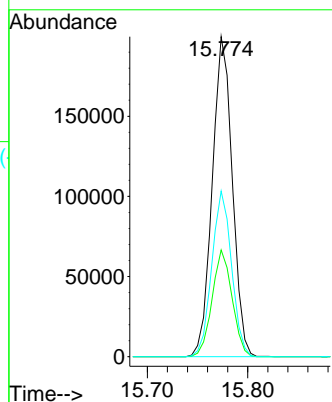
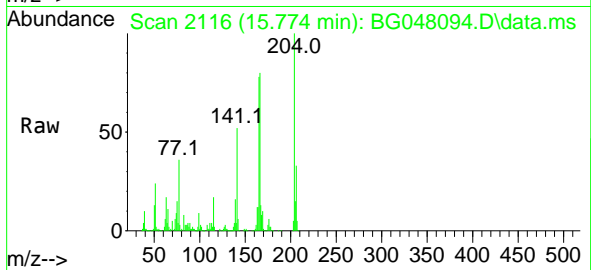


#61
 4-Chlorophenyl-phenylether
 Concen: 41.82 ng
 RT: 15.774 min Scan# 2116
 Delta R.T. -0.008 min
 Lab File: BG048094.D
 Acq: 3 Feb 2021 16:47

Instrument :
 BNA_G
 ClientSampled :
 SSTDCCC040

Tgt Ion:204 Resp: 277143

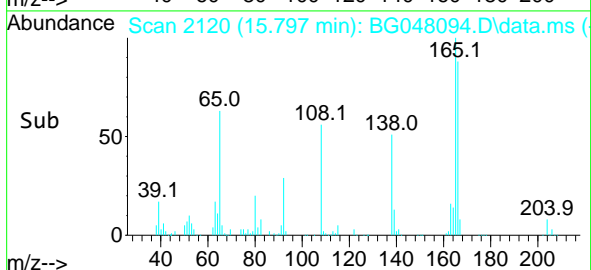
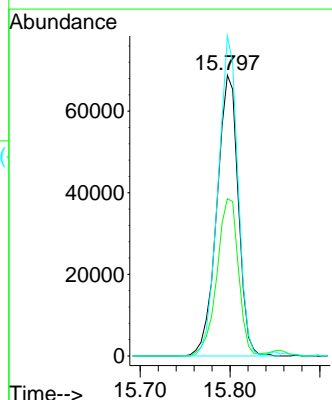
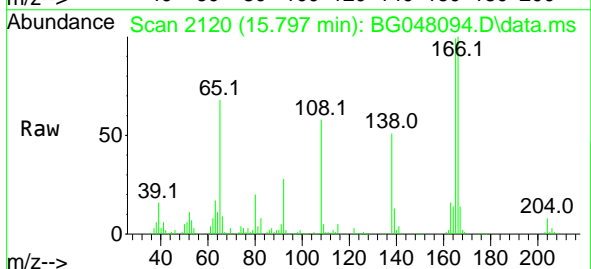
Ion	Ratio	Lower	Upper
204	100		
206	33.3	27.8	41.8
141	51.8	41.5	62.3

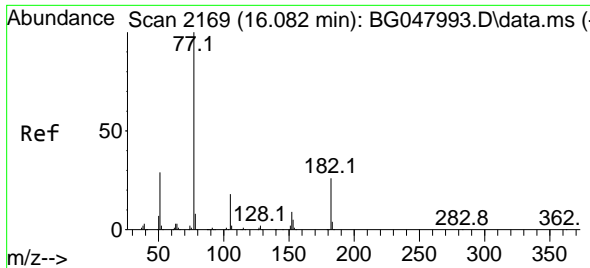


#62
 4-Nitroaniline
 Concen: 38.41 ng
 RT: 15.797 min Scan# 2120
 Delta R.T. -0.002 min
 Lab File: BG048094.D
 Acq: 3 Feb 2021 16:47

Tgt Ion:138 Resp: 114007

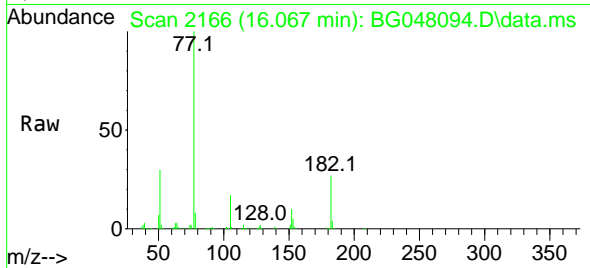
Ion	Ratio	Lower	Upper
138	100		
92	56.0	26.9	66.9
108	114.0	49.4	89.4#





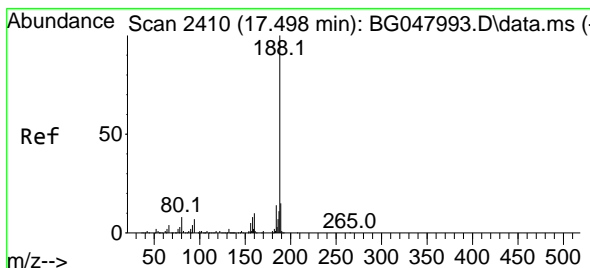
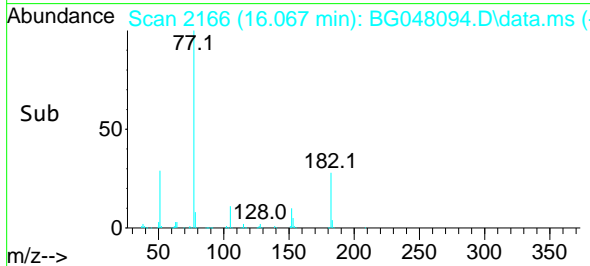
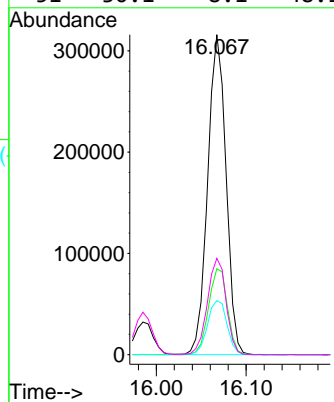
#63
 Azobenzene
 Concen: 38.78 ng
 RT: 16.067 min Scan# 2166
 Delta R.T. -0.002 min
 Lab File: BG048094.D
 Acq: 3 Feb 2021 16:47

Instrument :
 BNA_G
ClientSampled :
 SSTDCCC040



Tgt Ion: 77 Resp: 448406

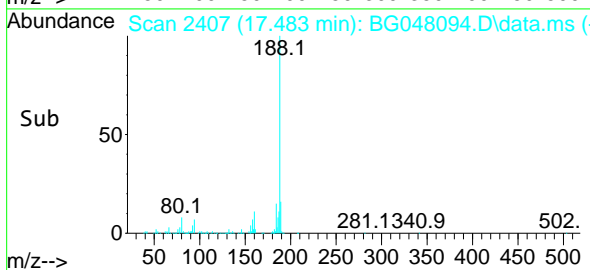
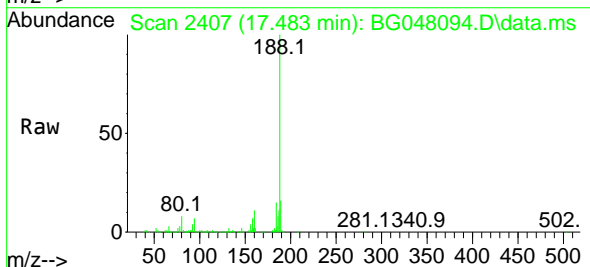
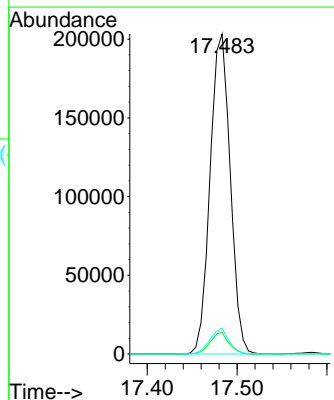
Ion	Ratio	Lower	Upper
77	100		
182	26.9	14.0	54.0
105	16.9	3.0	43.0
51	30.1	8.1	48.1

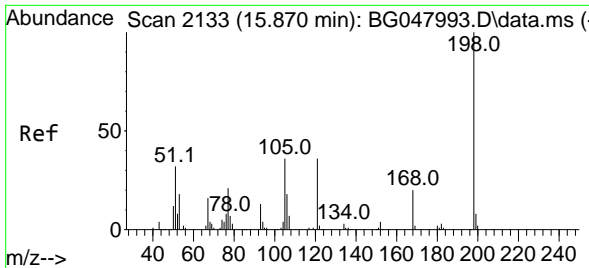


#64
 Phenanthrene-d10
 Concen: 20.00 ng
 RT: 17.483 min Scan# 2407
 Delta R.T. -0.002 min
 Lab File: BG048094.D
 Acq: 3 Feb 2021 16:47

Tgt Ion: 188 Resp: 316692

Ion	Ratio	Lower	Upper
188	100		
94	6.7	6.3	9.5
80	8.1	7.0	10.6

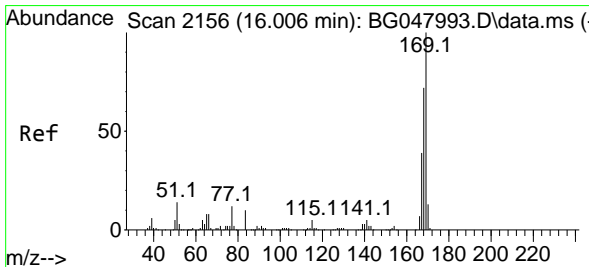
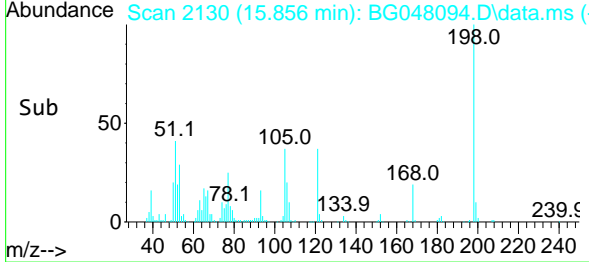
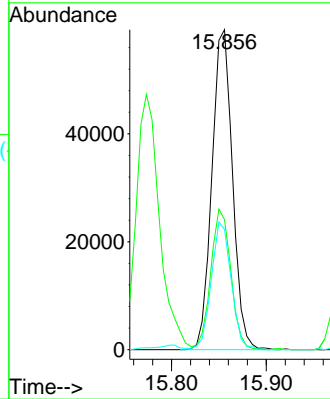
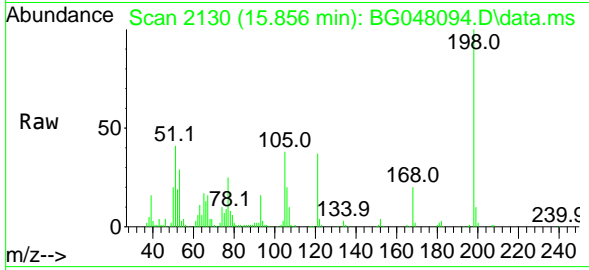




#65
 4,6-Dinitro-2-methylphenol
 Concen: 43.67 ng
 RT: 15.856 min Scan# 2130
 Delta R.T. 0.004 min
 Lab File: BG048094.D
 Acq: 3 Feb 2021 16:47

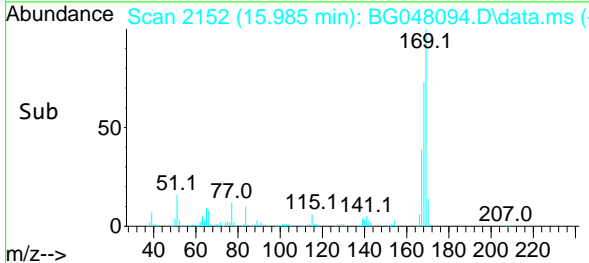
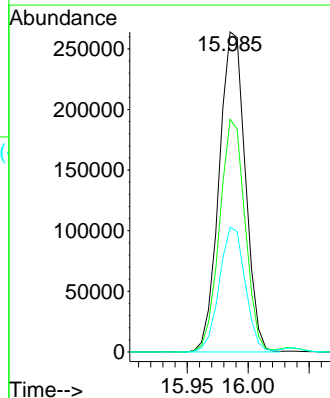
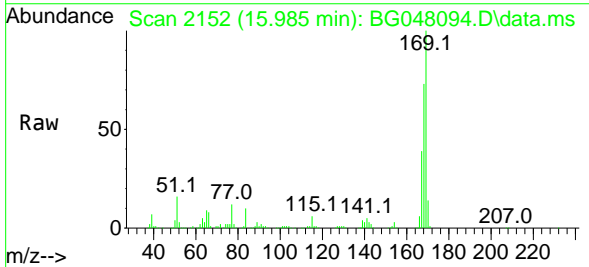
Instrument :
 BNA_G
 ClientSampled :
 SSTDCCC040

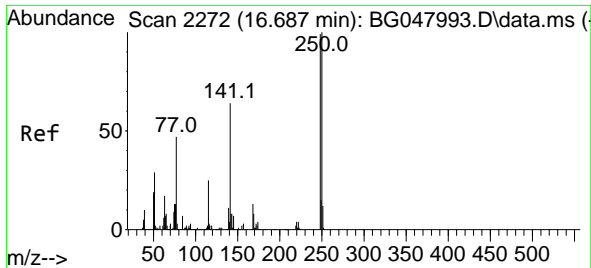
Tgt Ion	Resp	Lower	Upper
198	89248		
198	100		
51	40.7	10.4	50.4
105	37.6	12.9	52.9



#66
 n-Nitrosodiphenylamine
 Concen: 41.45 ng
 RT: 15.985 min Scan# 2152
 Delta R.T. -0.008 min
 Lab File: BG048094.D
 Acq: 3 Feb 2021 16:47

Tgt Ion	Resp	Lower	Upper
169	394521		
169	100		
168	72.7	55.5	83.3
167	39.0	30.5	45.7

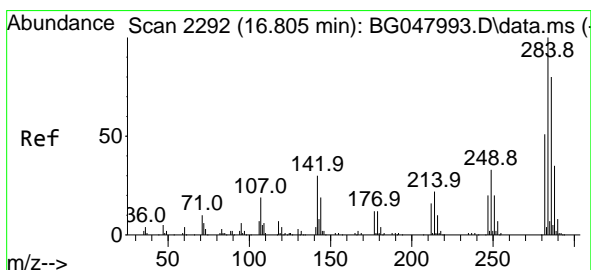
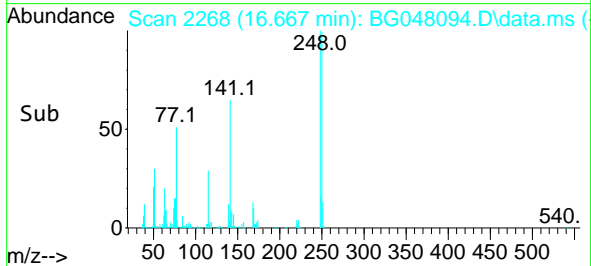
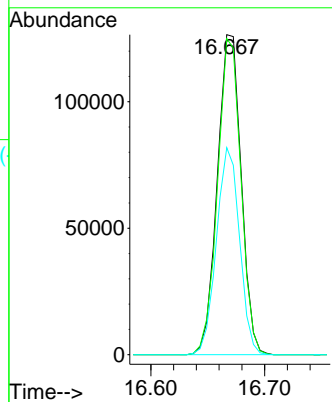
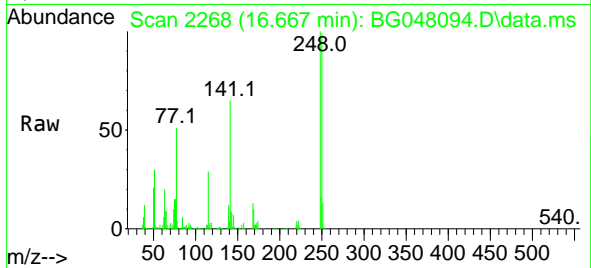




#67
 4-Bromophenyl-phenylether
 Concen: 43.55 ng
 RT: 16.667 min Scan# 2268
 Delta R.T. -0.008 min
 Lab File: BG048094.D
 Acq: 3 Feb 2021 16:47

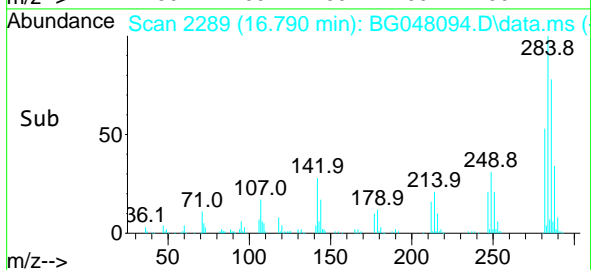
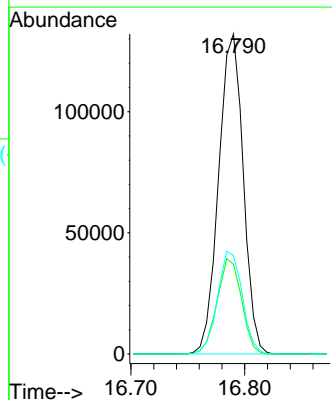
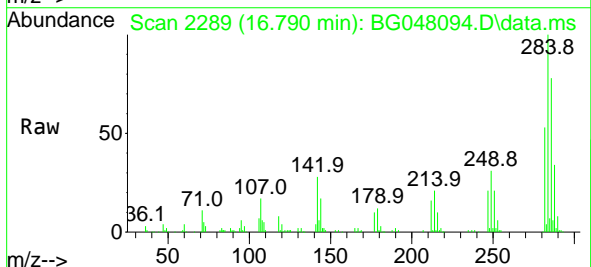
Instrument :
 BNA_G
 ClientSampleId :
 SSTDCCC040

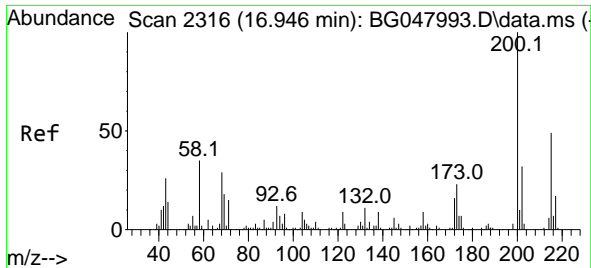
Tgt Ion:248 Resp: 184283
 Ion Ratio Lower Upper
 248 100
 250 98.8 78.9 118.3
 141 64.7 46.2 69.4



#68
 Hexachlorobenzene
 Concen: 43.08 ng
 RT: 16.790 min Scan# 2289
 Delta R.T. -0.002 min
 Lab File: BG048094.D
 Acq: 3 Feb 2021 16:47

Tgt Ion:284 Resp: 198238
 Ion Ratio Lower Upper
 284 100
 142 28.0 21.1 31.7
 249 30.8 25.9 38.9

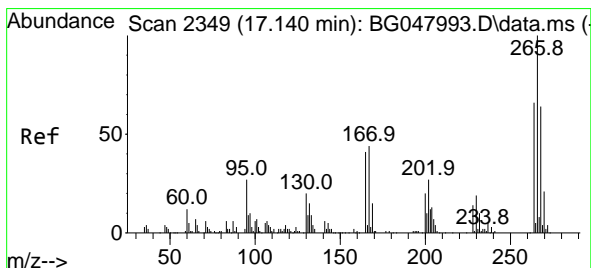
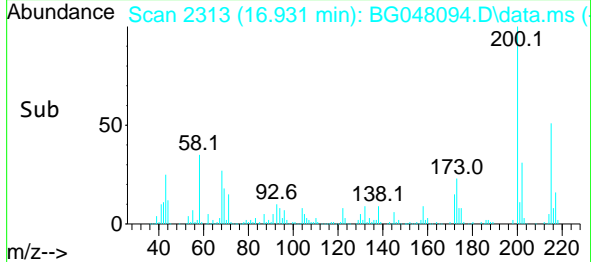
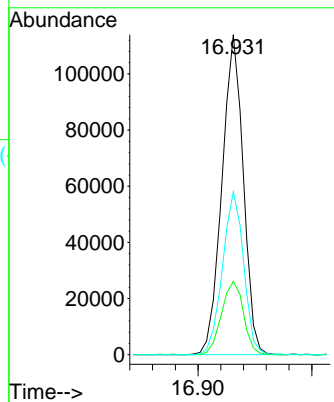
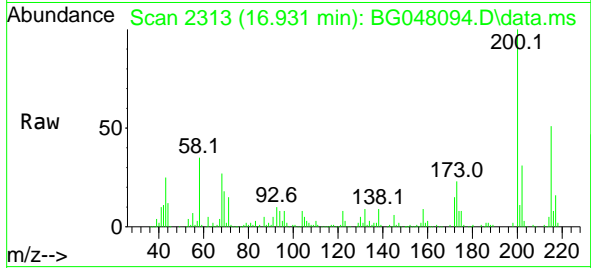




#69
 Atrazine
 Concen: 41.03 ng
 RT: 16.931 min Scan# 2313
 Delta R.T. -0.002 min
 Lab File: BG048094.D
 Acq: 3 Feb 2021 16:47

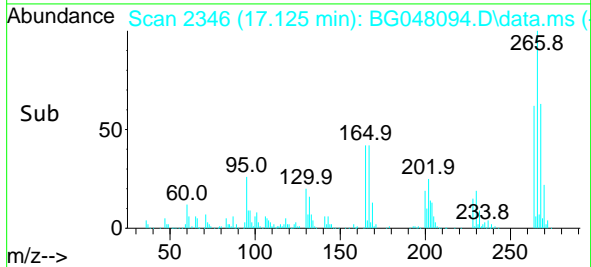
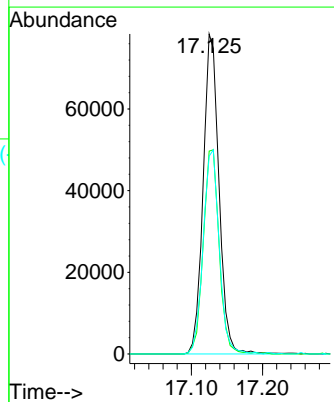
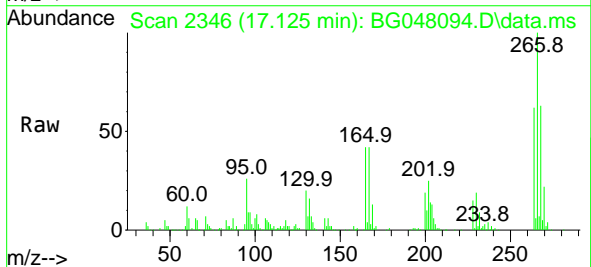
Instrument :
 BNA_G
 ClientSampled :
 SSTDCCC040

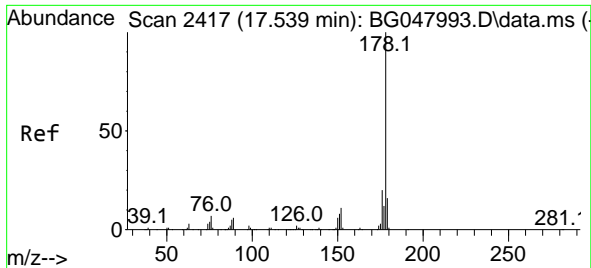
Tgt Ion:200 Resp: 148314
 Ion Ratio Lower Upper
 200 100
 173 23.0 4.2 44.2
 215 50.9 30.0 70.0



#70
 Pentachlorophenol
 Concen: 43.43 ng
 RT: 17.125 min Scan# 2346
 Delta R.T. -0.008 min
 Lab File: BG048094.D
 Acq: 3 Feb 2021 16:47

Tgt Ion:266 Resp: 121374
 Ion Ratio Lower Upper
 266 100
 268 63.4 49.8 74.6
 264 61.8 49.3 73.9



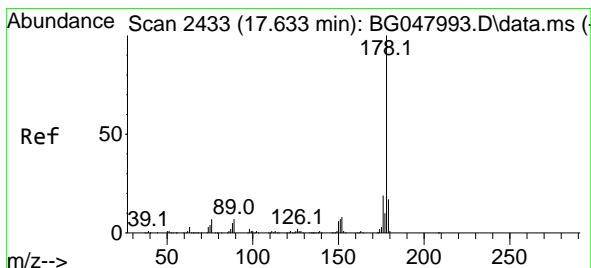
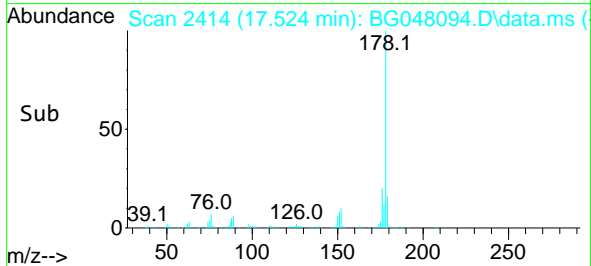
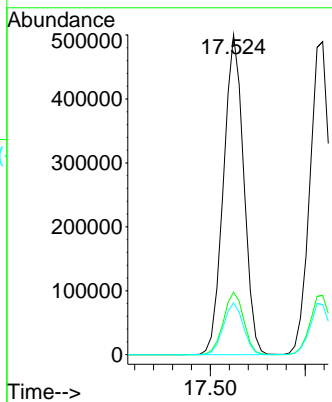
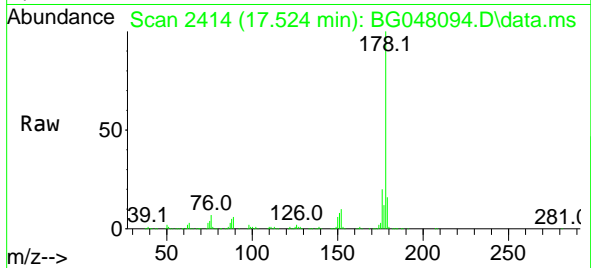


#71
 Phenanthrene
 Concen: 40.60 ng
 RT: 17.524 min Scan# 2414
 Delta R.T. -0.002 min
 Lab File: BG048094.D
 Acq: 3 Feb 2021 16:47

Instrument :
 BNA_G
 ClientSampled :
 SSTDCCC040

Tgt Ion:178 Resp: 741860

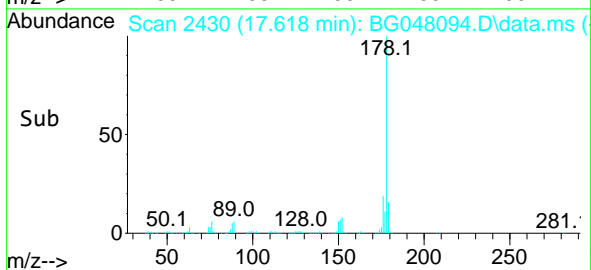
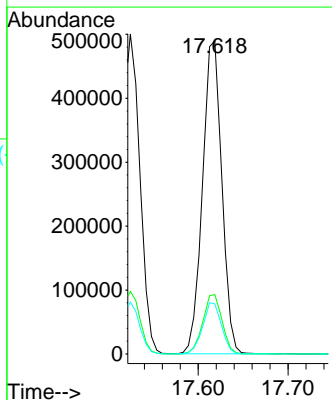
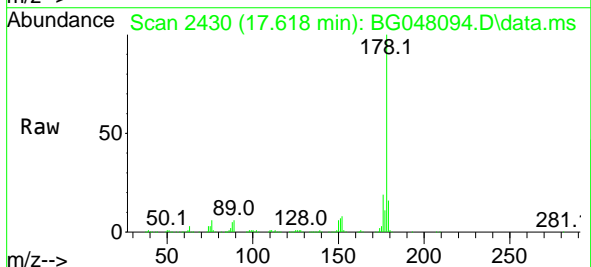
Ion	Ratio	Lower	Upper
178	100		
176	19.5	16.7	25.1
179	16.2	14.0	21.0

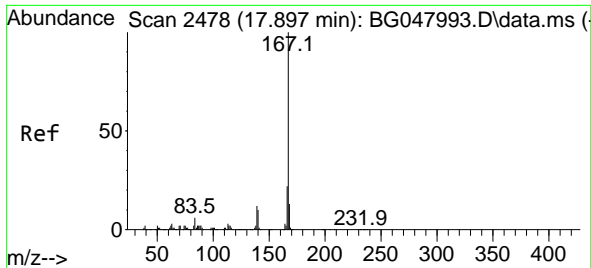


#72
 Anthracene
 Concen: 40.68 ng
 RT: 17.618 min Scan# 2430
 Delta R.T. -0.002 min
 Lab File: BG048094.D
 Acq: 3 Feb 2021 16:47

Tgt Ion:178 Resp: 731012

Ion	Ratio	Lower	Upper
178	100		
176	19.0	16.4	24.6
179	16.0	13.8	20.6

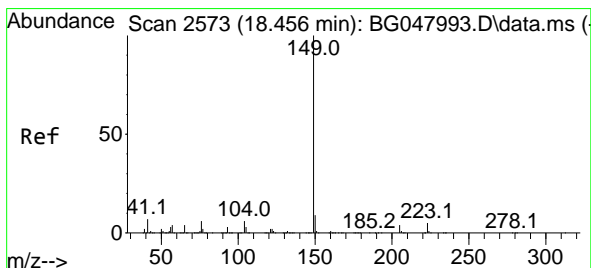
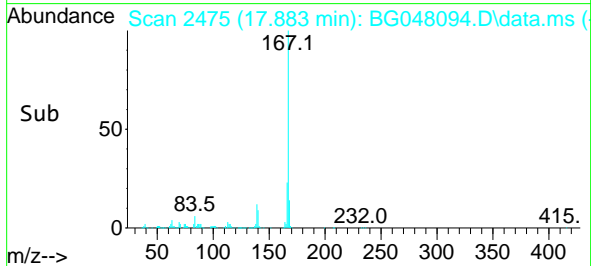
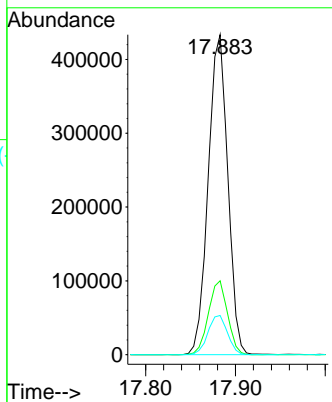
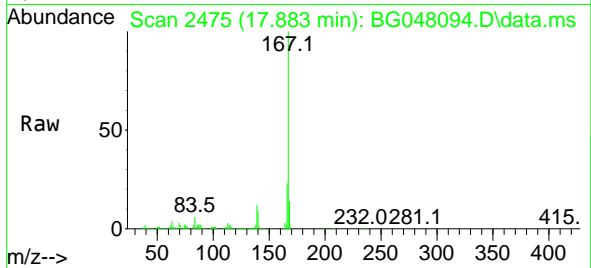




#73
 Carbazole
 Concen: 39.09 ng
 RT: 17.883 min Scan# 2475
 Delta R.T. -0.002 min
 Lab File: BG048094.D
 Acq: 3 Feb 2021 16:47

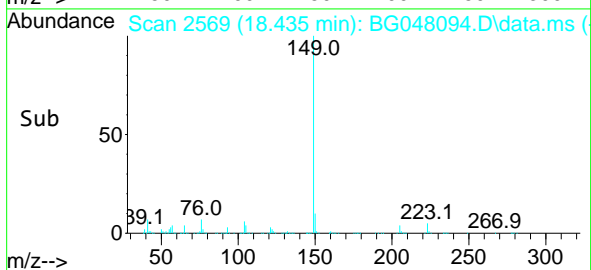
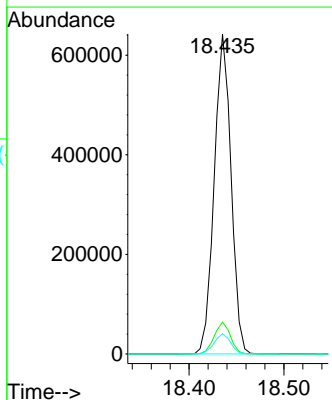
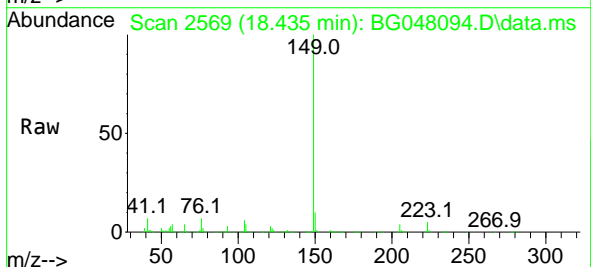
Instrument :
 BNA_G
ClientSampleId :
 SSTDCCC040

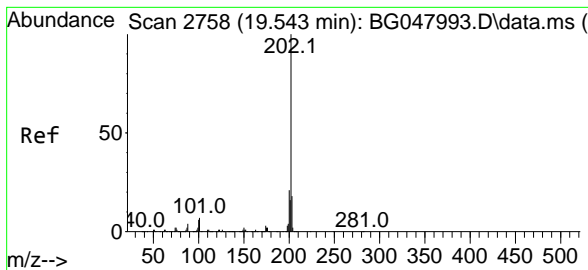
Tgt Ion	Resp	Lower	Upper
167	100		
166	23.1	18.7	28.1
139	12.3	9.6	14.4



#74
 Di-n-butylphthalate
 Concen: 38.63 ng
 RT: 18.435 min Scan# 2569
 Delta R.T. -0.002 min
 Lab File: BG048094.D
 Acq: 3 Feb 2021 16:47

Tgt Ion	Resp	Lower	Upper
149	100		
150	9.9	8.2	12.4
104	6.3	3.8	5.8

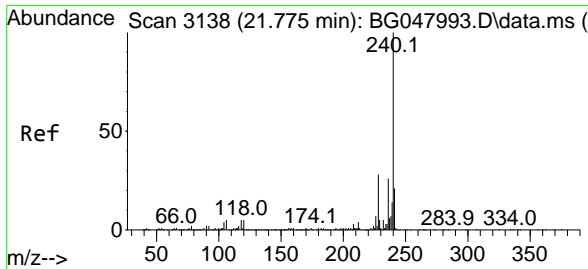
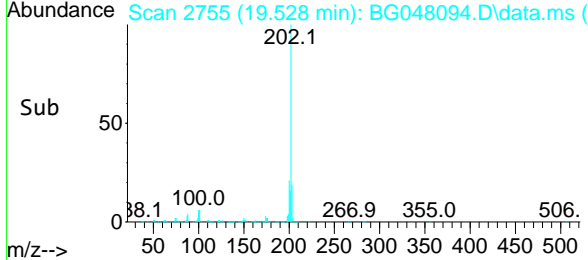
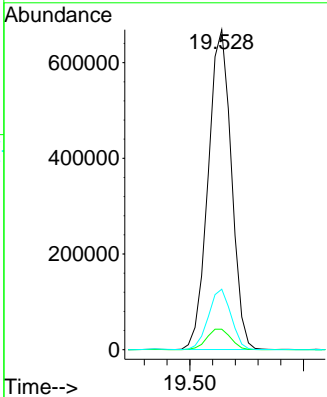
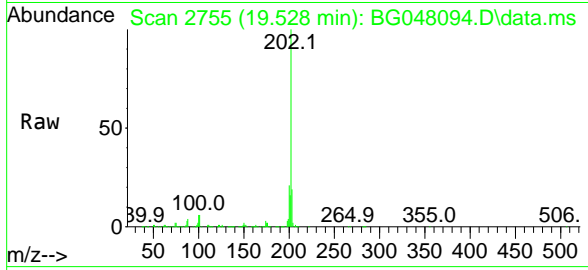




#75
 Fluoranthene
 Concen: 39.54 ng
 RT: 19.528 min Scan# 2755
 Delta R.T. -0.002 min
 Lab File: BG048094.D
 Acq: 3 Feb 2021 16:47

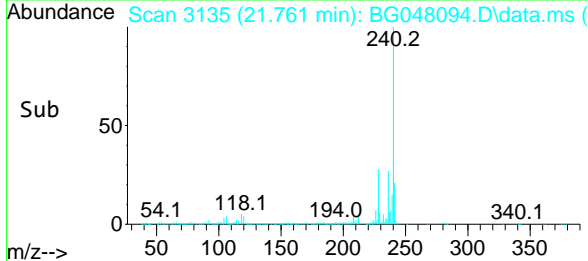
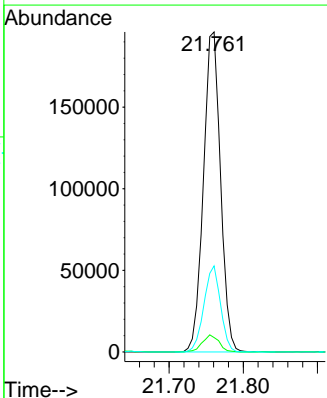
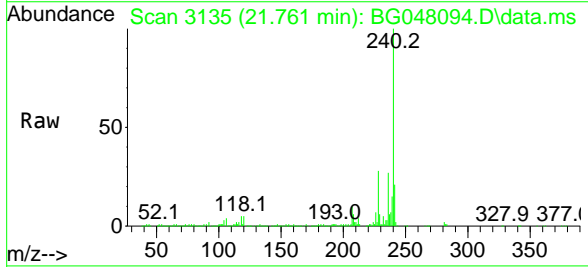
Instrument :
 BNA_G
 ClientSampleId :
 SSTDCCC040

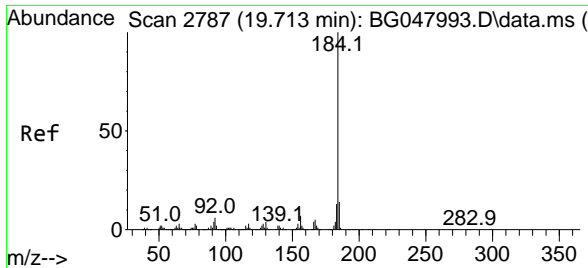
Tgt Ion	Resp	Lower	Upper
202	100		
101	6.4	0.0	29.7
203	18.9	0.0	39.2



#76
 Chrysene-d12
 Concen: 20.00 ng
 RT: 21.761 min Scan# 3135
 Delta R.T. -0.002 min
 Lab File: BG048094.D
 Acq: 3 Feb 2021 16:47

Tgt Ion	Resp	Lower	Upper
240	100		
120	4.5	6.2	9.4#
236	26.9	20.5	30.7

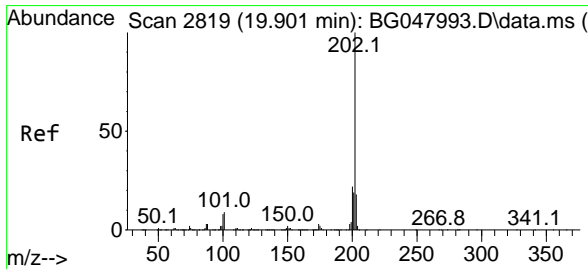
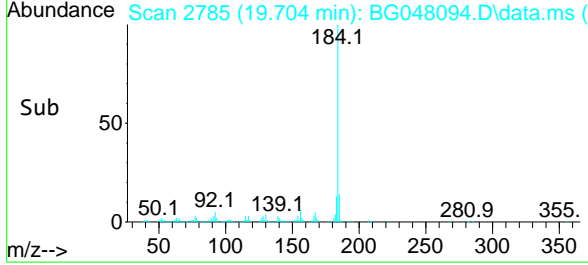
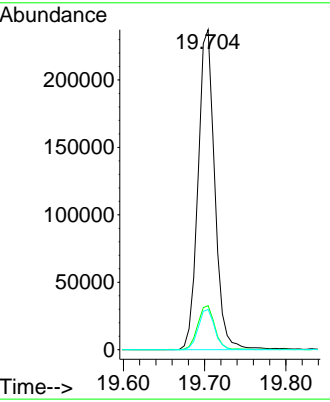
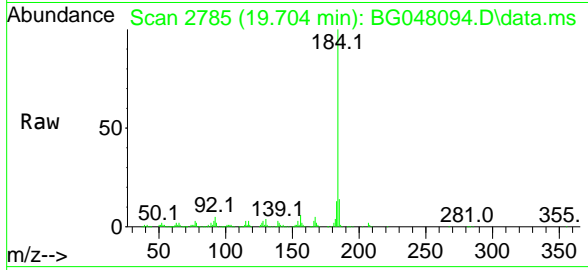




#77
 Benzidine
 Concen: 37.35 ng
 RT: 19.704 min Scan# 2785
 Delta R.T. 0.004 min
 Lab File: BG048094.D
 Acq: 3 Feb 2021 16:47

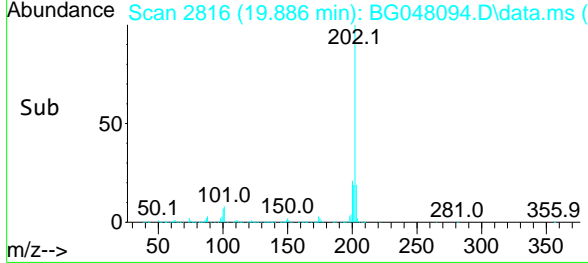
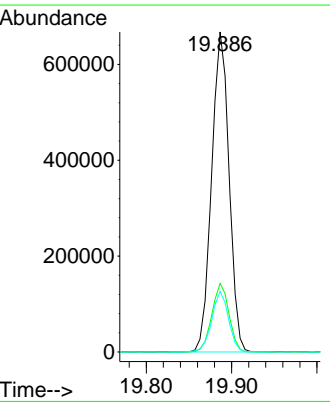
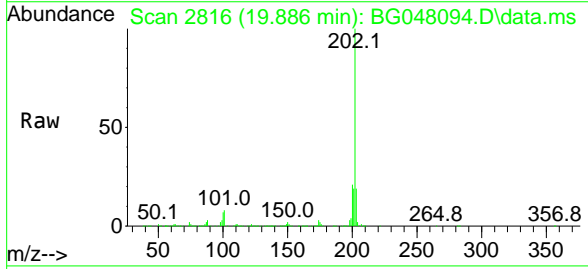
Instrument :
 BNA_G
 ClientSampled :
 SSTDCCC040

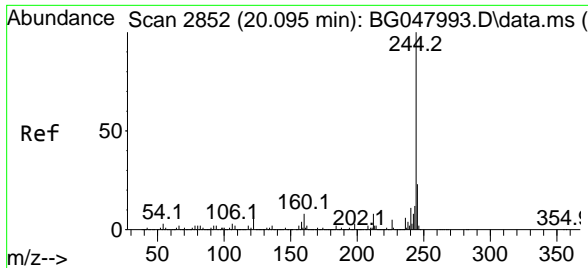
Tgt Ion	Resp	Lower	Upper
184	337722		
185	13.8	12.4	18.6
183	12.6	10.6	15.8



#78
 Pyrene
 Concen: 41.29 ng
 RT: 19.886 min Scan# 2816
 Delta R.T. -0.002 min
 Lab File: BG048094.D
 Acq: 3 Feb 2021 16:47

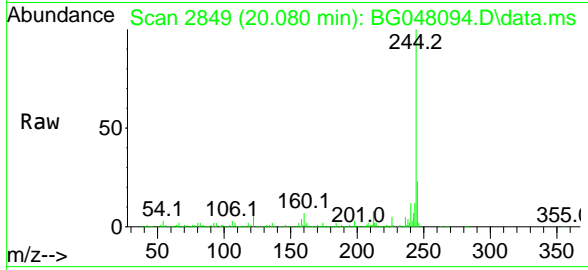
Tgt Ion	Resp	Lower	Upper
202	947946		
200	21.4	18.6	27.8
203	18.9	15.3	22.9



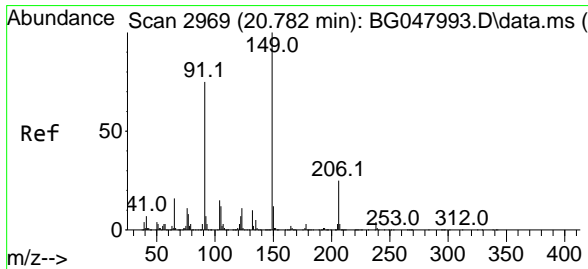
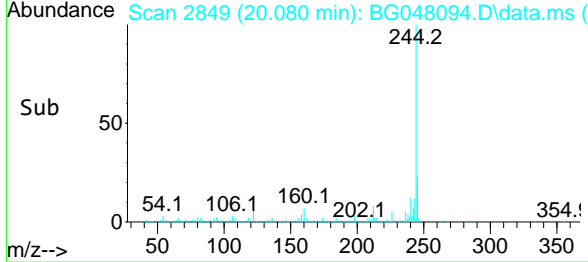
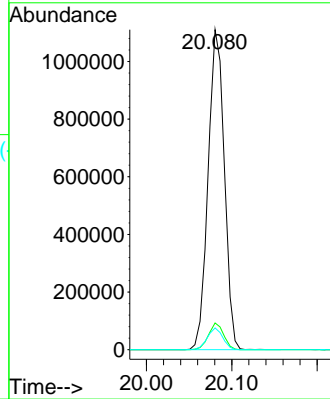


#79
 Terphenyl-d14
 Concen: 81.10 ng
 RT: 20.080 min Scan# 2849
 Delta R.T. -0.008 min
 Lab File: BG048094.D
 Acq: 3 Feb 2021 16:47

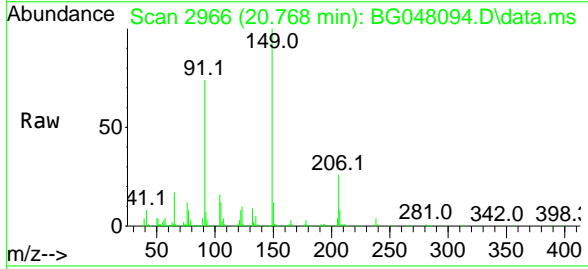
Instrument :
 BNA_G
 ClientSampled :
 SSTDCCC040



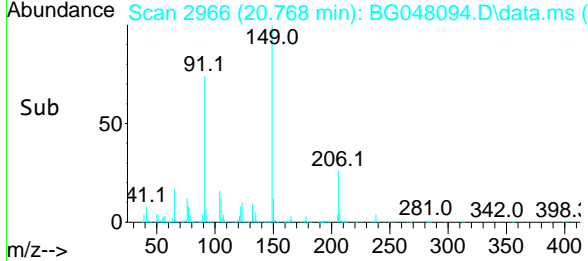
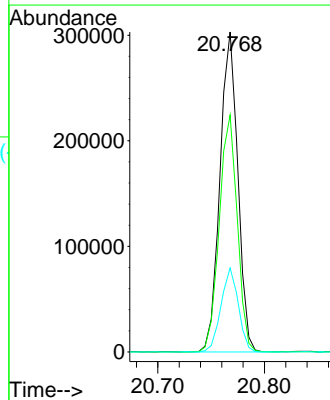
Tgt Ion:244 Resp: 1466314
 Ion Ratio Lower Upper
 244 100
 212 8.4 6.7 10.1
 122 6.8 7.8 11.6#

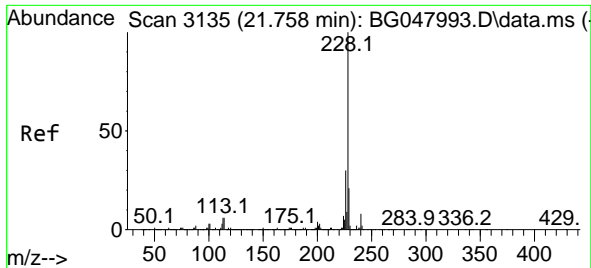


#80
 Butylbenzylphthalate
 Concen: 40.08 ng
 RT: 20.768 min Scan# 2966
 Delta R.T. -0.002 min
 Lab File: BG048094.D
 Acq: 3 Feb 2021 16:47



Tgt Ion:149 Resp: 351433
 Ion Ratio Lower Upper
 149 100
 91 74.1 51.5 77.3
 206 26.2 21.2 31.8

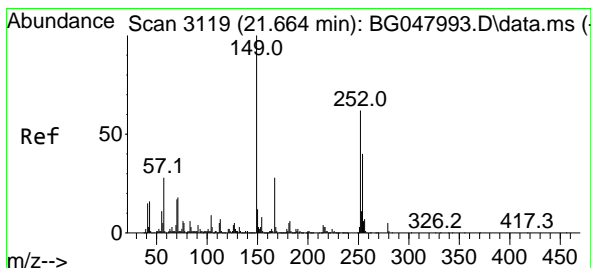
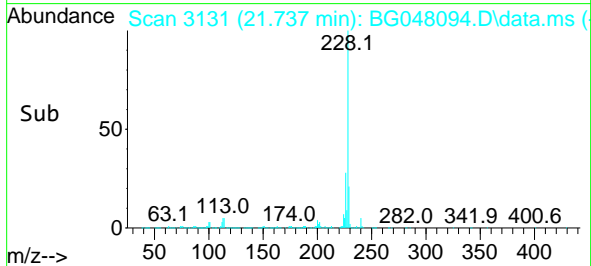
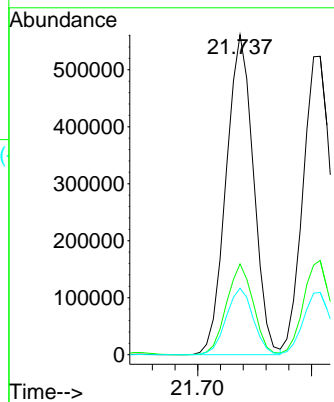
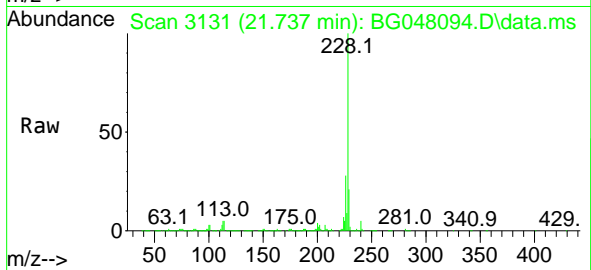




#81
 Benzo(a)anthracene
 Concen: 41.21 ng
 RT: 21.737 min Scan# 3131
 Delta R.T. -0.002 min
 Lab File: BG048094.D
 Acq: 3 Feb 2021 16:47

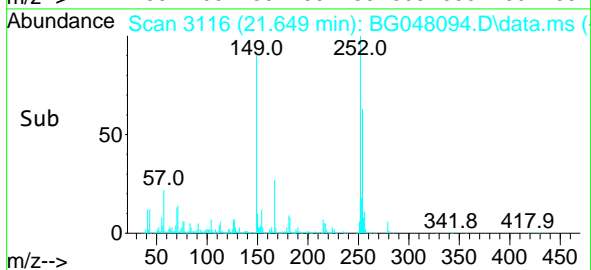
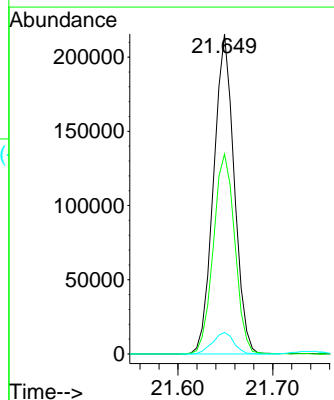
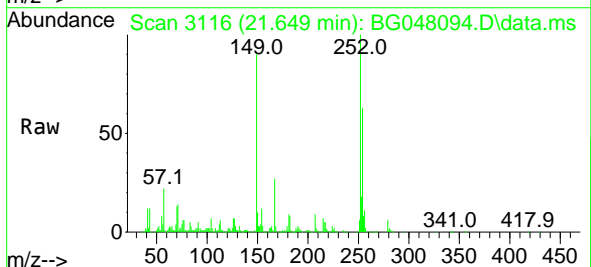
Instrument :
 BNA_G
 ClientSampled :
 SSTDCCC040

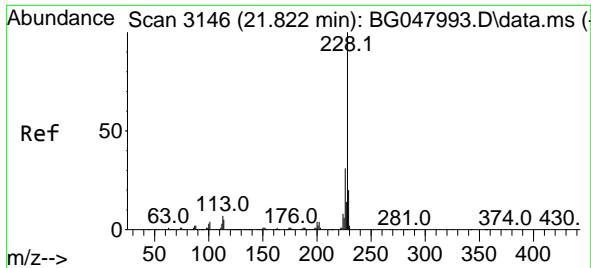
Tgt Ion:228 Resp: 938837
 Ion Ratio Lower Upper
 228 100
 226 28.3 23.3 34.9
 229 20.8 17.4 26.0



#82
 3,3'-Dichlorobenzidine
 Concen: 42.36 ng
 RT: 21.649 min Scan# 3116
 Delta R.T. -0.002 min
 Lab File: BG048094.D
 Acq: 3 Feb 2021 16:47

Tgt Ion:252 Resp: 325169
 Ion Ratio Lower Upper
 252 100
 254 62.5 53.2 79.8
 126 6.7 6.8 10.2#

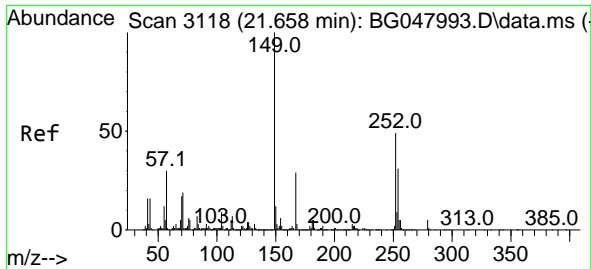
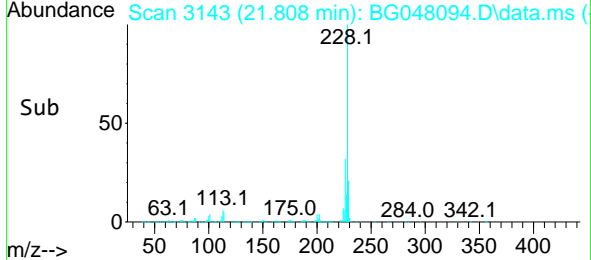
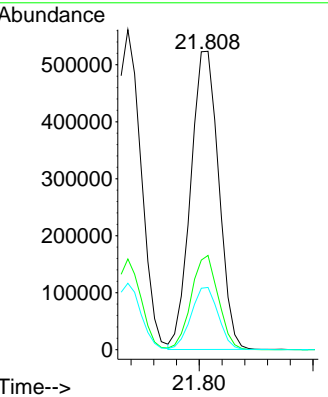
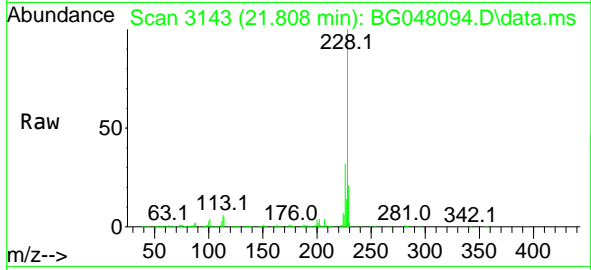




#83
 Chrysene
 Concen: 41.37 ng
 RT: 21.808 min Scan# 3143
 Delta R.T. -0.002 min
 Lab File: BG048094.D
 Acq: 3 Feb 2021 16:47

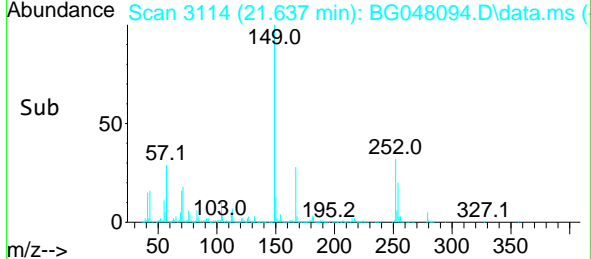
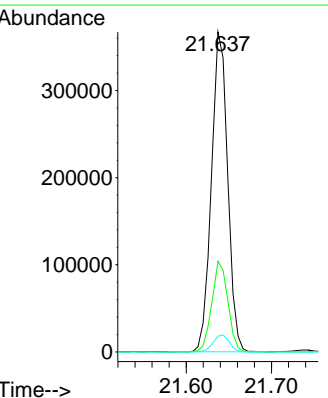
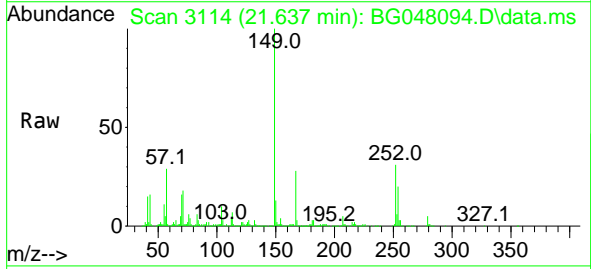
Instrument :
 BNA_G
ClientSampled :
 SSTDCCC040

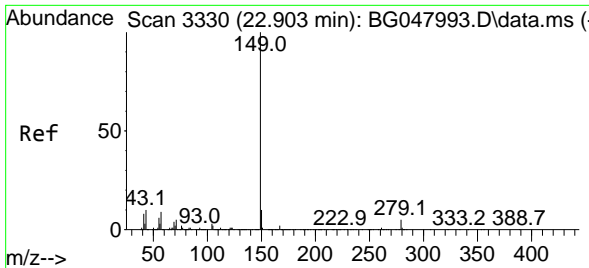
Tgt Ion	Resp	Lower	Upper
228	100		
226	31.6	25.0	37.4
229	20.9	17.3	25.9



#84
 Bis(2-ethylhexyl)phthalate
 Concen: 40.49 ng
 RT: 21.637 min Scan# 3114
 Delta R.T. -0.008 min
 Lab File: BG048094.D
 Acq: 3 Feb 2021 16:47

Tgt Ion	Resp	Lower	Upper
149	100		
167	28.4	24.8	37.2
279	5.0	4.6	7.0



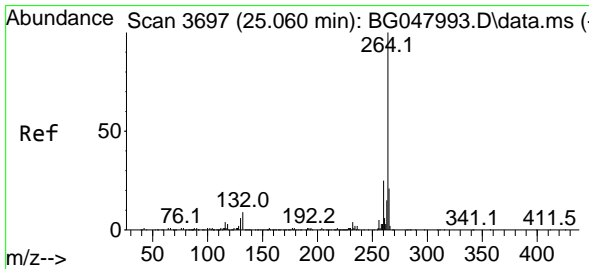
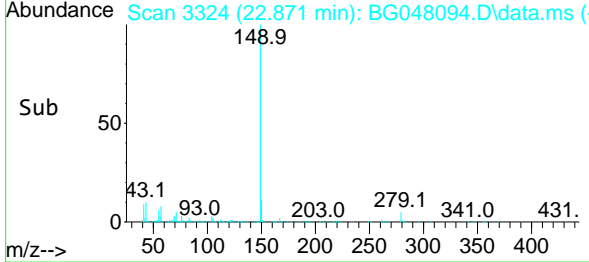
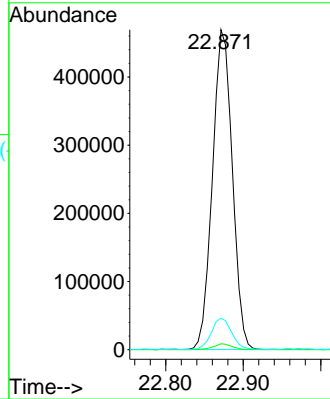
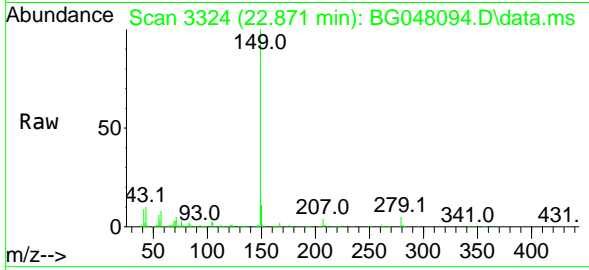


#85
 Di-n-octyl phthalate
 Concen: 41.57 ng
 RT: 22.871 min Scan# 3324
 Delta R.T. -0.008 min
 Lab File: BG048094.D
 Acq: 3 Feb 2021 16:47

Instrument :
 BNA_G
 ClientSampled :
 SSTDCCC040

Tgt Ion:149 Resp: 834982

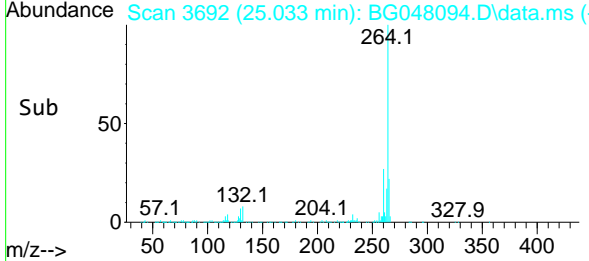
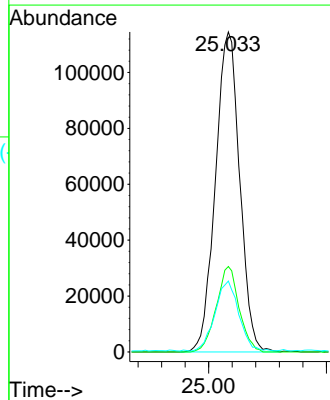
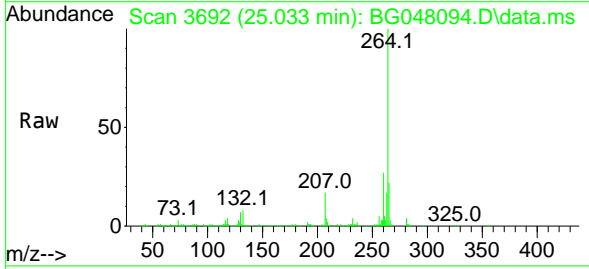
Ion	Ratio	Lower	Upper
149	100		
167	1.7	1.4	2.2
43	10.0	6.8	10.2

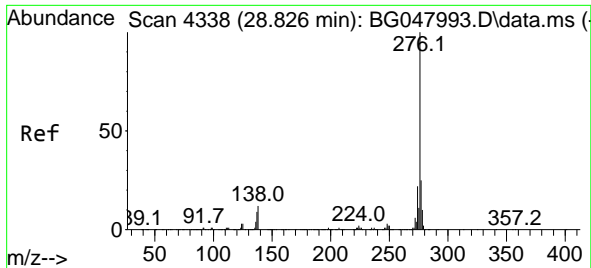


#86
 Perylene-d12
 Concen: 20.00 ng
 RT: 25.033 min Scan# 3692
 Delta R.T. -0.008 min
 Lab File: BG048094.D
 Acq: 3 Feb 2021 16:47

Tgt Ion:264 Resp: 327126

Ion	Ratio	Lower	Upper
264	100		
260	26.7	18.8	28.2
265	22.2	17.8	26.8

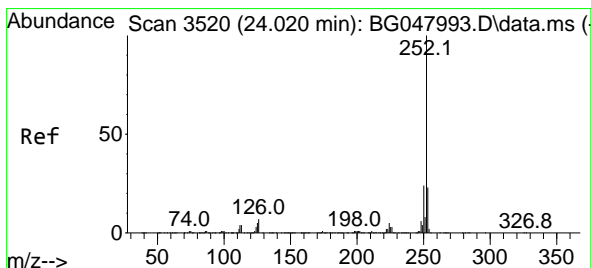
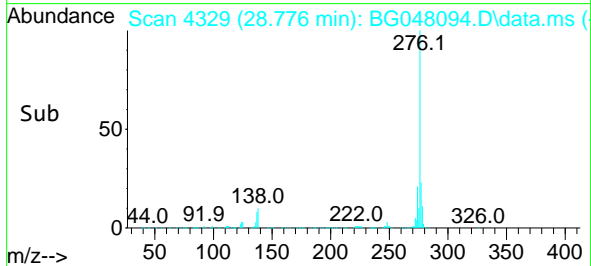
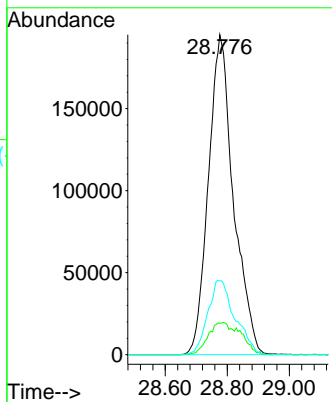
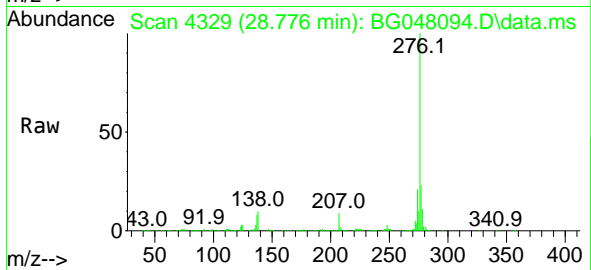




#87
 Indeno(1,2,3-cd)pyrene
 Concen: 41.62 ng
 RT: 28.776 min Scan# 4329
 Delta R.T. -0.019 min
 Lab File: BG048094.D
 Acq: 3 Feb 2021 16:47

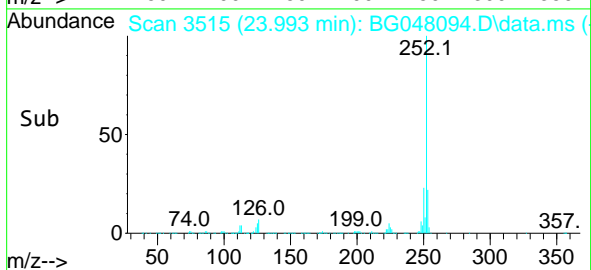
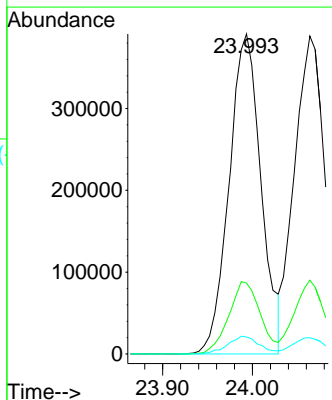
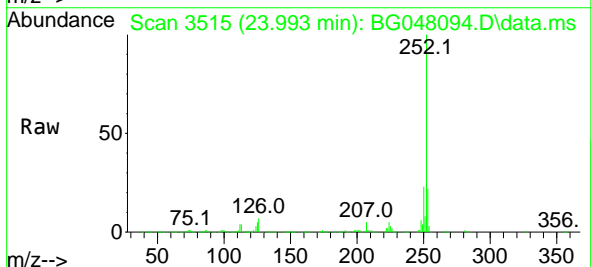
Instrument :
 BNA_G
 ClientSampled :
 SSTDCCC040

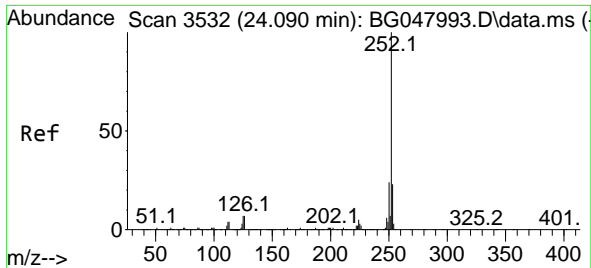
Tgt Ion:276 Resp: 1095022
 Ion Ratio Lower Upper
 276 100
 138 9.5 16.2 24.2#
 277 25.2 20.3 30.5



#88
 Benzo(b)fluoranthene
 Concen: 41.54 ng
 RT: 23.993 min Scan# 3515
 Delta R.T. -0.008 min
 Lab File: BG048094.D
 Acq: 3 Feb 2021 16:47

Tgt Ion:252 Resp: 965897
 Ion Ratio Lower Upper
 252 100
 253 22.2 18.7 28.1
 125 5.3 6.5 9.7#

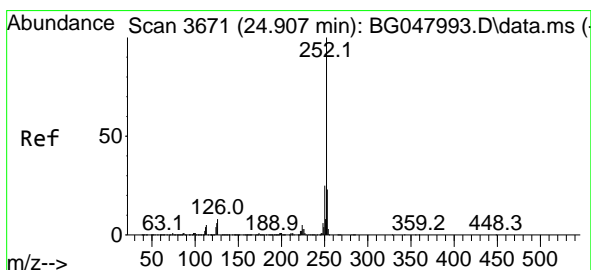
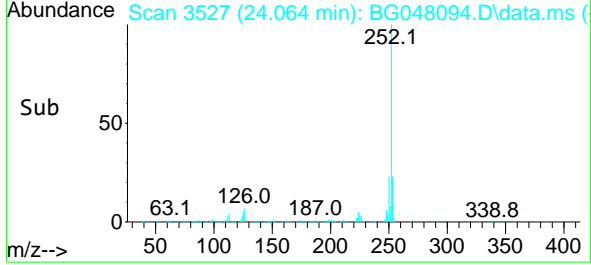
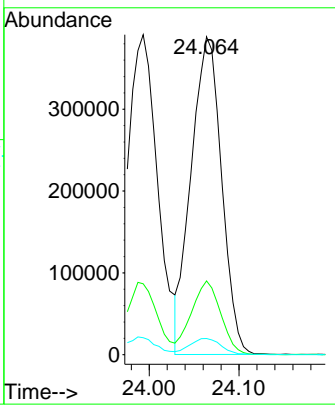
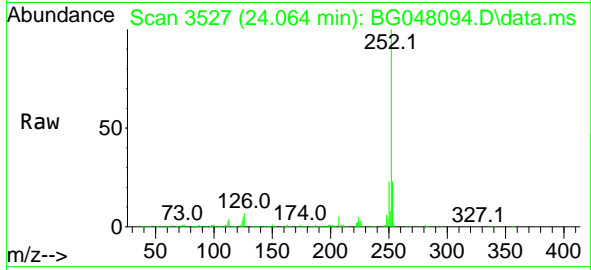




#89
 Benzo(k)fluoranthene
 Concen: 40.52 ng
 RT: 24.064 min Scan# 3527
 Delta R.T. -0.008 min
 Lab File: BG048094.D
 Acq: 3 Feb 2021 16:47

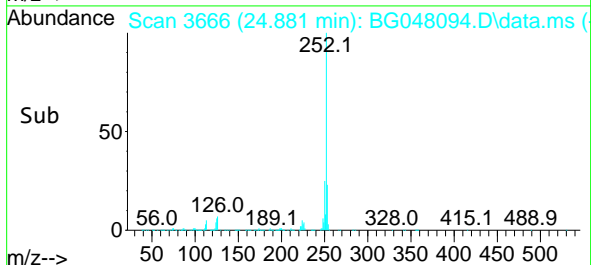
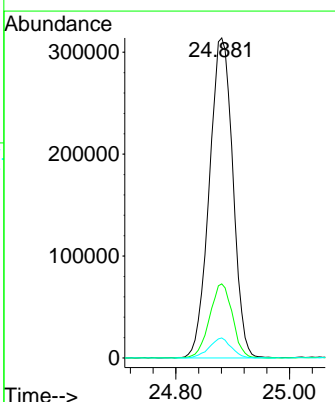
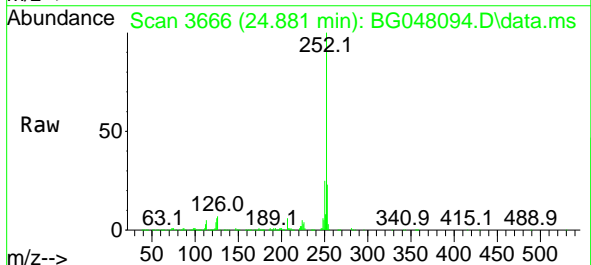
Instrument :
 BNA_G
ClientSampled :
 SSTDCCC040

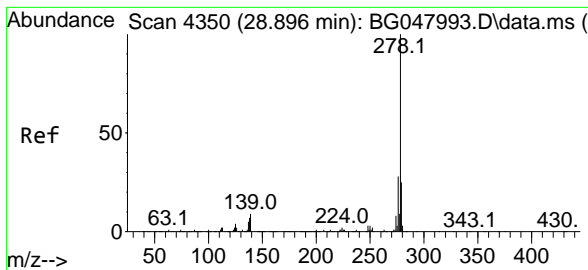
Tgt Ion	Resp	Lower	Upper
252	100		
253	23.2	18.6	27.8
125	5.1	6.8	10.2#



#90
 Benzo(a)pyrene
 Concen: 41.33 ng
 RT: 24.881 min Scan# 3666
 Delta R.T. -0.008 min
 Lab File: BG048094.D
 Acq: 3 Feb 2021 16:47

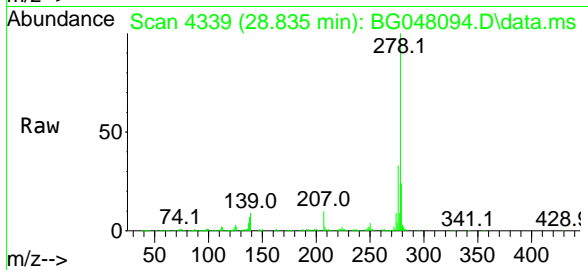
Tgt Ion	Resp	Lower	Upper
252	100		
253	23.1	17.9	26.9
125	6.3	7.0	10.4#



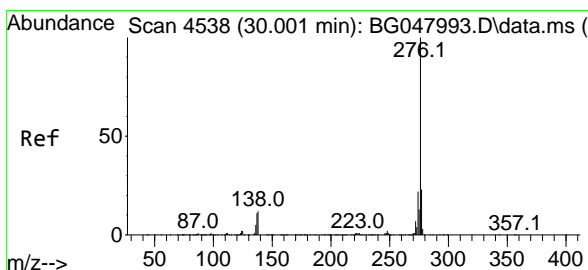
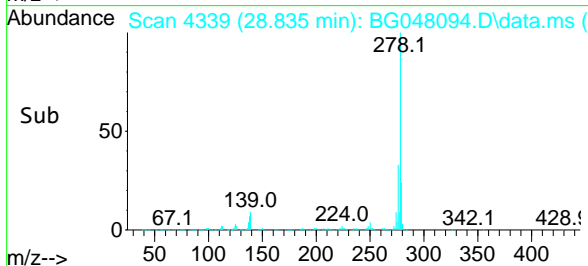
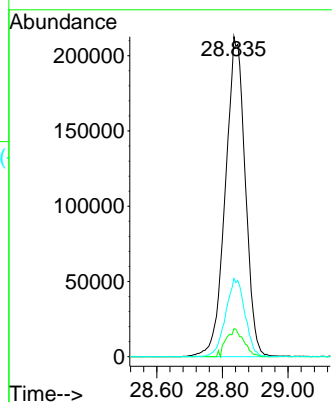


#91
 Dibenzo(a,h)anthracene
 Concen: 41.07 ng
 RT: 28.835 min Scan# 4339
 Delta R.T. -0.019 min
 Lab File: BG048094.D
 Acq: 3 Feb 2021 16:47

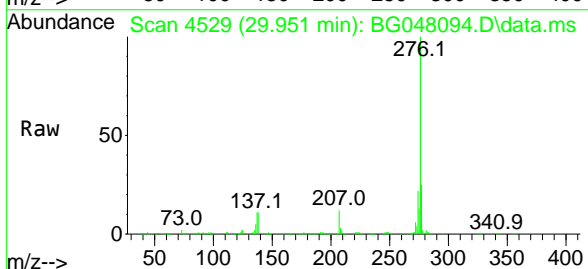
Instrument :
 BNA_G
 ClientSampleId :
 SSTDCCC040



Tgt Ion:278 Resp: 891937
 Ion Ratio Lower Upper
 278 100
 139 8.8 10.5 15.7#
 279 24.5 19.4 29.0



#92
 Benzo(g,h,i)perylene
 Concen: 41.75 ng
 RT: 29.951 min Scan# 4529
 Delta R.T. -0.014 min
 Lab File: BG048094.D
 Acq: 3 Feb 2021 16:47



Tgt Ion:276 Resp: 873213
 Ion Ratio Lower Upper
 276 100
 277 24.9 19.6 29.4
 138 11.0 13.4 20.2#

