

Data Path : Z:\HPCHEM1\BNA_G\DATA\BG020416\
 Data File : BG020798.D
 Acq On : 4 Feb 2016 23:04
 Operator : SJ/IZ
 Sample : H1334-18
 Misc :
 ALS Vial : 17 Sample Multiplier: 1

Instrument :
 BNA_G
 ClientSampleId :
 BBG15

Quant Time: Feb 05 07:39:05 2016
 Quant Method : Z:\HPCHEM1\BNA_G\METHODS\SOM02.2-EPA-BG012716.M
 Quant Title : SVOA CALIBRATION
 QLast Update : Fri Feb 05 07:34:32 2016
 Response via : Initial Calibration

Internal Standards	R.T.	QIon	Response	Conc	Units	Dev(Min)
1) 1,4-Dichlorobenzene-d4	8.28	152	19539	20.00	ng/ul	0.00
18) Naphthalene-d8	11.10	136	100936	20.00	ng/ul	0.00
36) Acenaphthene-d10	14.89	164	57227	20.00	ng/ul	0.00
62) Phenanthrene-d10	17.62	188	110382	20.00	ng/ul	0.00
78) Chrysene-d12	21.90	240	96019	20.00	ng/ul	0.00
86) Perylene-d12	25.28	264	88299	20.00	ng/ul	0.00

System Monitoring Compounds

3) 1,4-Dioxane-d8	3.61	96	899	2.21	ng/uL	0.00
5) Phenol-d5	7.41	99	24672	12.34	ng/ul	0.00
7) Bis-(2-Chloroethyl)ether-d	7.59	67	14351	13.77	ng/ul	0.00
9) 2-Chlorophenol-d4	7.80	132	20594	13.71	ng/ul	0.00
13) 4-Methylphenol-d8	8.97	113	20348	11.79	ng/ul	0.00
19) Nitrobenzene-d5	9.44	128	10456	16.98	ng/ul	0.00
22) 2-Nitrophenol-d4	10.18	143	9594	17.77	ng/ul	0.00
26) 2,4-Dichlorophenol-d3	10.71	165	19776	13.42	ng/ul	0.00
29) 4-Chloroaniline-d4	11.23	131	30981	14.95	ng/ul	0.00
44) Dimethylphthalate-d6	14.28	166	67681	13.85	ng/ul	0.00
47) Acenaphthylene-d8	14.58	160	87338	14.66	ng/ul	0.00
52) 4-Nitrophenol-d4	15.05	143	9074	10.49	ng/ul	0.00
58) Fluorene-d10	15.87	176	57888	13.55	ng/ul	0.00
63) 4,6-Dinitro-2-methylphenol	15.97	200	3475	9.53	ng/ul	0.00
71) Anthracene-d10	17.72	188	82133	15.13	ng/ul	0.00
79) Pyrene-d10	19.99	212	79521	15.26	ng/ul	0.00
90) Benzo(a)pyrene-d12	25.05	264	74864	15.82	ng/ul	0.00

Target Compounds

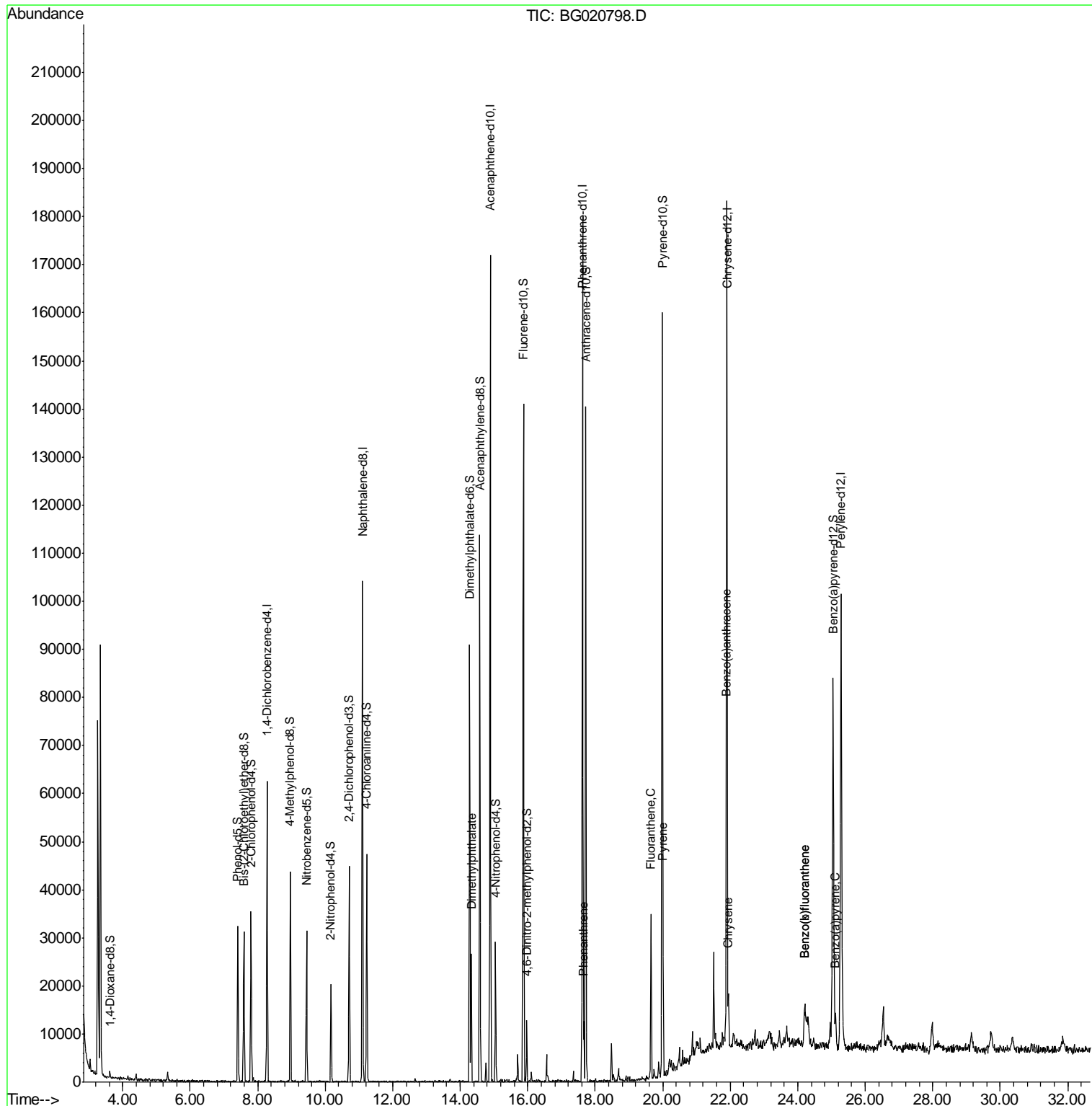
					Qvalue
45) Dimethylphthalate	14.33	163	19018	3.73 ng/ul#	97
70) Phenanthrene	17.67	178	8959	1.29 ng/ul	97
77) Fluoranthene	19.65	202	20405	2.87 ng/ul#	79
80) Pyrene	20.01	202	15920	2.19 ng/ul#	70
83) Benzo(a)anthracene	21.88	228	8943	1.45 ng/ul	98
85) Chrysene	21.95	228	6778	1.18 ng/ul	99
88) Benzo(b)fluoranthene	24.20	252	10764	1.86 ng/ul#	90
89) Benzo(k)fluoranthene	24.20	252	10764	1.90 ng/ul#	89
91) Benzo(a)pyrene	25.12	252	7474	1.35 ng/ul#	89

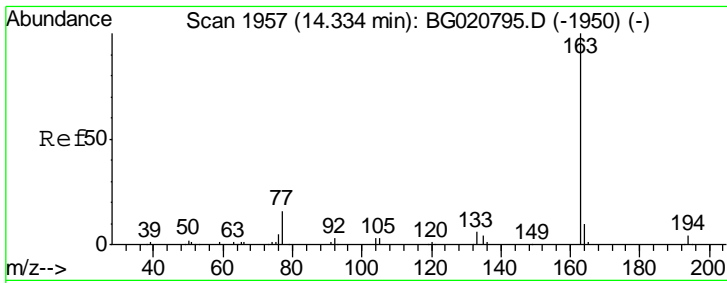
(#) = qualifier out of range (m) = manual integration (+) = signals summed

Data Path : Z:\HPCHEM1\BNA_G\DATA\BG020416\
 Data File : BG020798.D
 Acq On : 4 Feb 2016 23:04
 Operator : SJ/IZ
 Sample : H1334-18
 Misc :
 ALS Vial : 17 Sample Multiplier: 1

Instrument :
 BNA_G
 ClientSampleId :
 BBG15

Quant Time: Feb 05 07:39:05 2016
 Quant Method : Z:\HPCHEM1\BNA_G\METHODS\SOM02.2-EPA-BG012716.M
 Quant Title : SVOA CALIBRATION
 QLast Update : Fri Feb 05 07:34:32 2016
 Response via : Initial Calibration

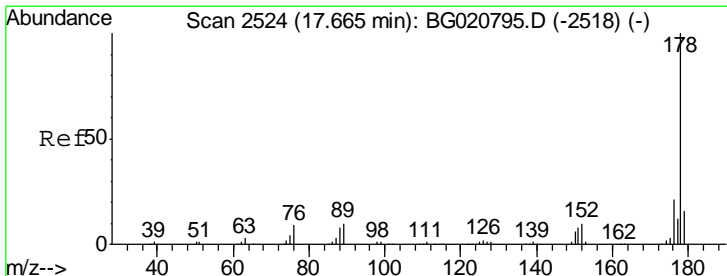
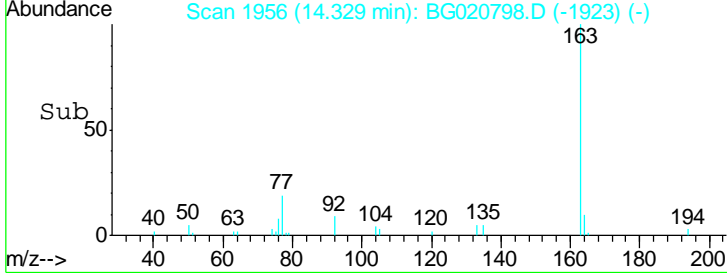
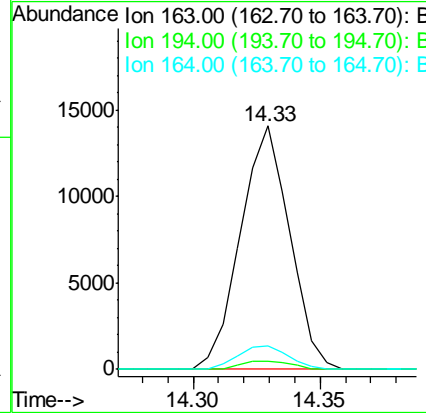
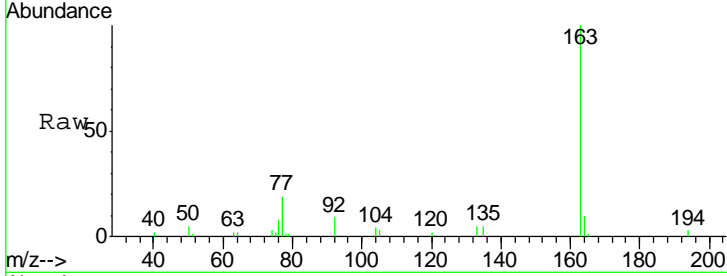




#45
 Dimethylphthalate
 Concen: 3.73 ng/ul
 RT: 14.33 min Scan# 1956
 Delta R.T. -0.00 min
 Lab File: BG020798.D
 Acq: 4 Feb 2016 23:04

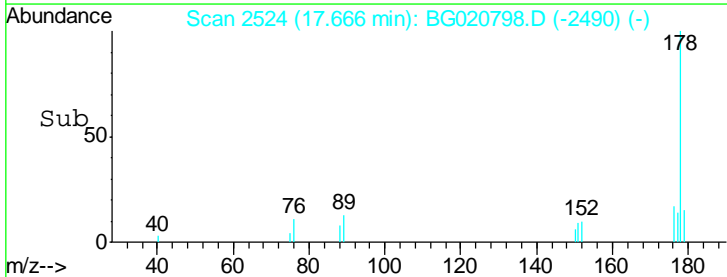
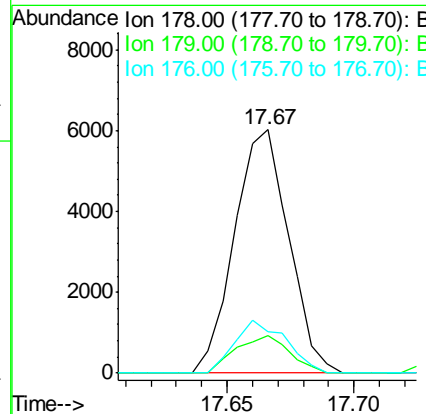
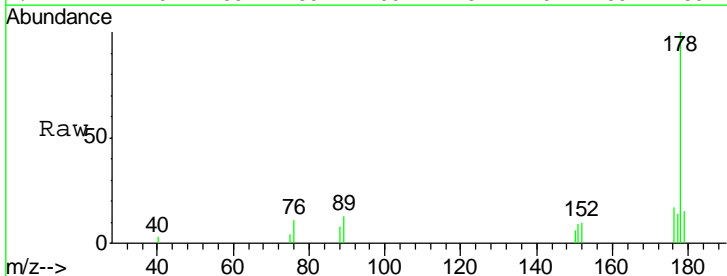
Instrument :
 BNA_G
 ClientSampled :
 BBG15

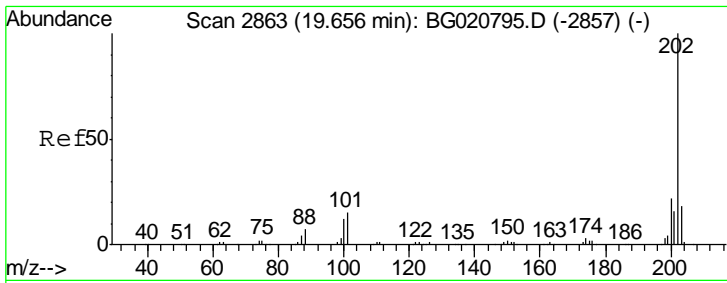
Tgt Ion	Resp	Lower	Upper
163	19018		
194	3.1	4.0	6.0#
164	9.6	8.4	12.6



#70
 Phenanthrene
 Concen: 1.29 ng/ul
 RT: 17.67 min Scan# 2524
 Delta R.T. 0.00 min
 Lab File: BG020798.D
 Acq: 4 Feb 2016 23:04

Tgt Ion	Resp	Lower	Upper
178	8959		
179	15.5	12.3	18.5
176	17.2	15.4	23.0

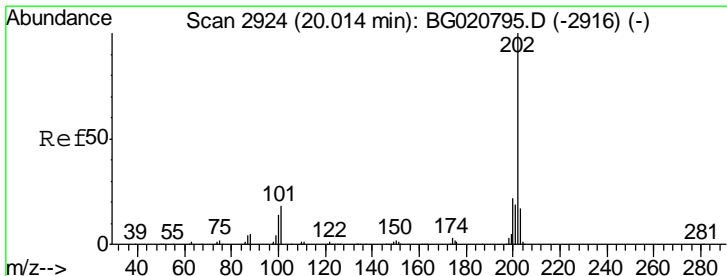
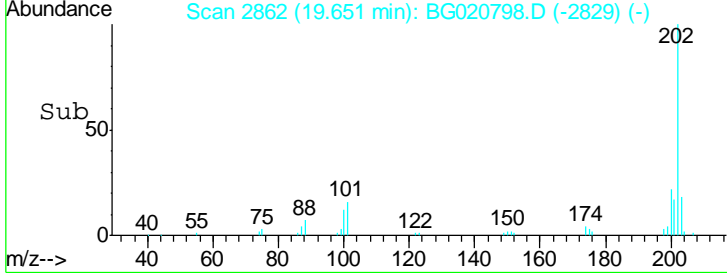
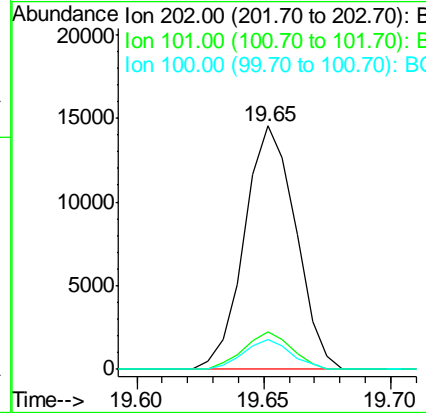
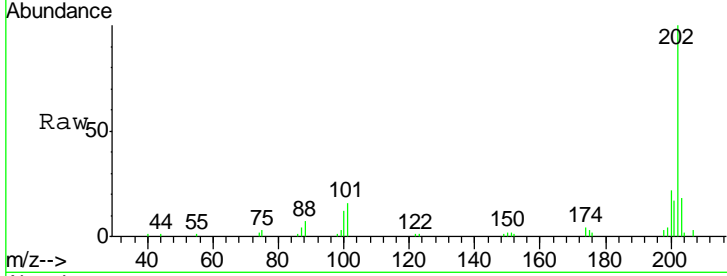




#77
 Fluoranthene
 Concen: 2.87 ng/ul
 RT: 19.65 min Scan# 2862
 Delta R.T. -0.00 min
 Lab File: BG020798.D
 Acq: 4 Feb 2016 23:04

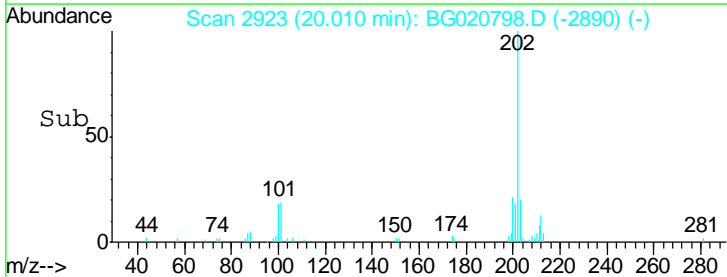
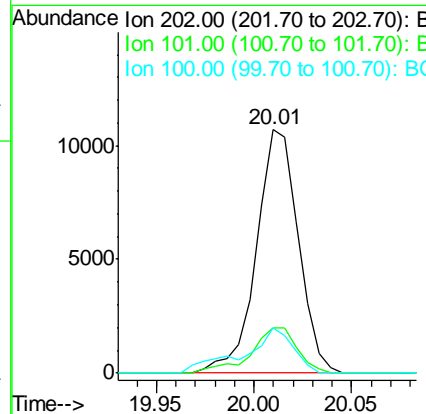
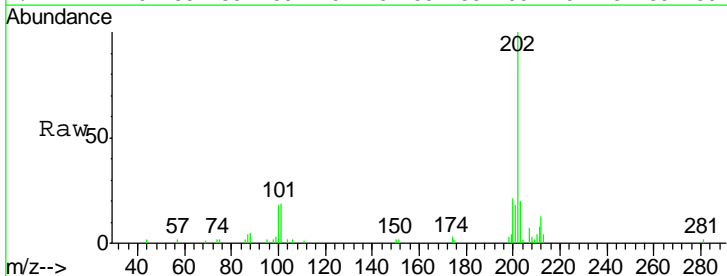
Instrument :
 BNA_G
 ClientSampled :
 BBG15

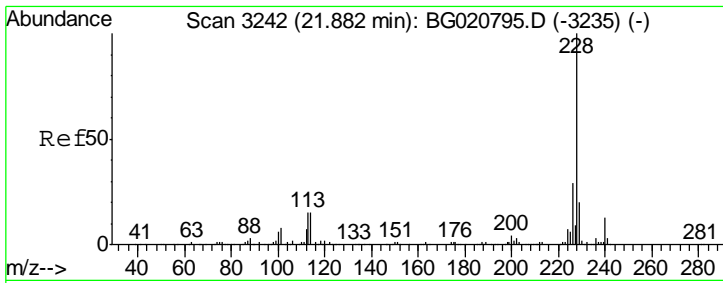
Tgt Ion	Resp	Lower	Upper
202	100		
101	15.6	6.1	9.1#
100	12.4	4.6	7.0#



#80
 Pyrene
 Concen: 2.19 ng/ul
 RT: 20.01 min Scan# 2923
 Delta R.T. -0.00 min
 Lab File: BG020798.D
 Acq: 4 Feb 2016 23:04

Tgt Ion	Resp	Lower	Upper
202	100		
101	18.6	6.9	10.3#
100	18.3	5.6	8.4#

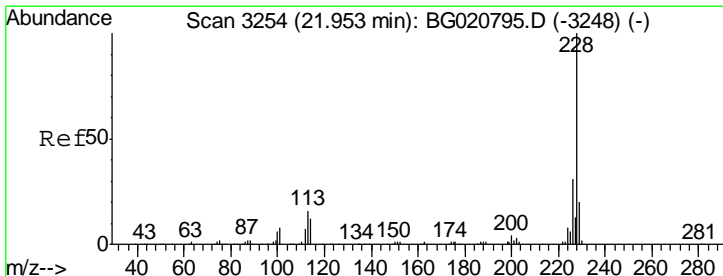
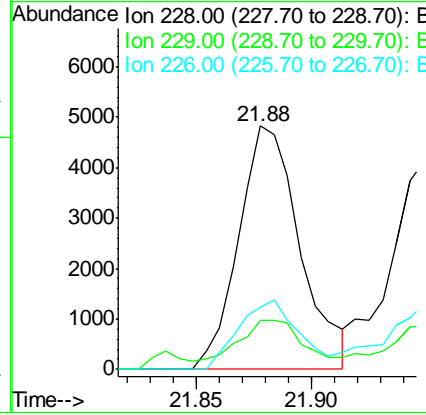
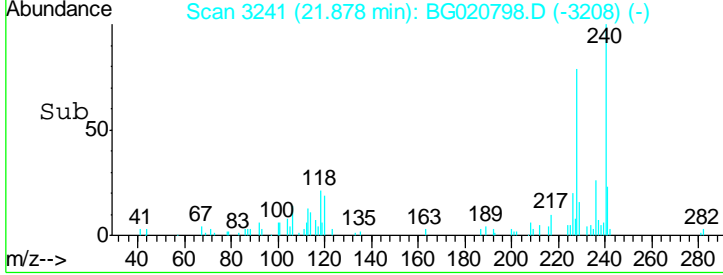
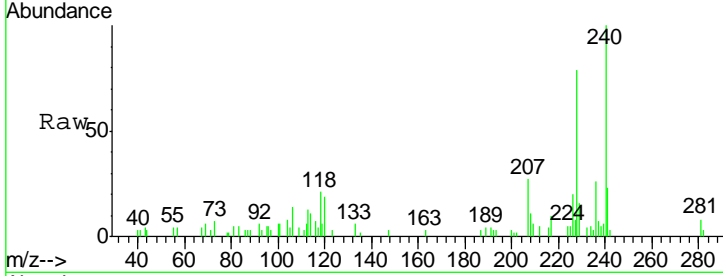




#83
 Benzo(a)anthracene
 Concen: 1.45 ng/ul
 RT: 21.88 min Scan# 3241
 Delta R.T. -0.00 min
 Lab File: BG020798.D
 Acq: 4 Feb 2016 23:04

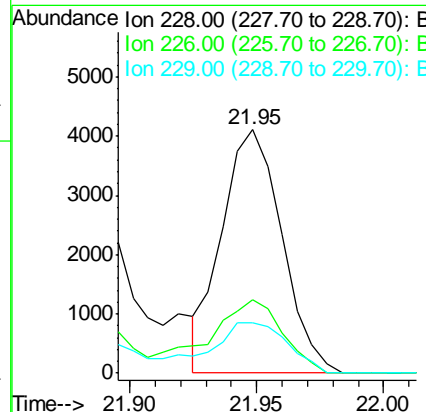
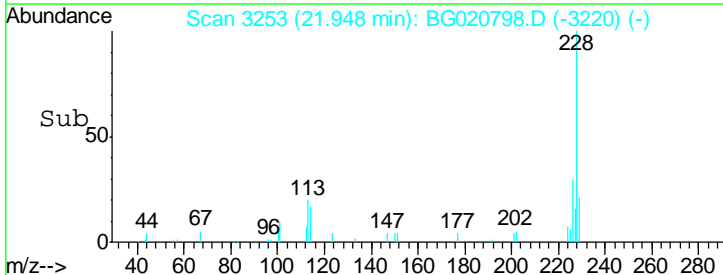
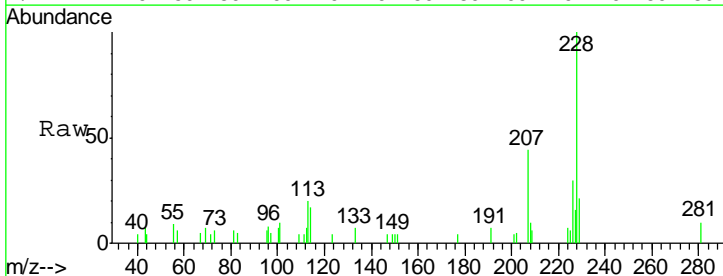
Instrument :
 BNA_G
 ClientSampled :
 BBG15

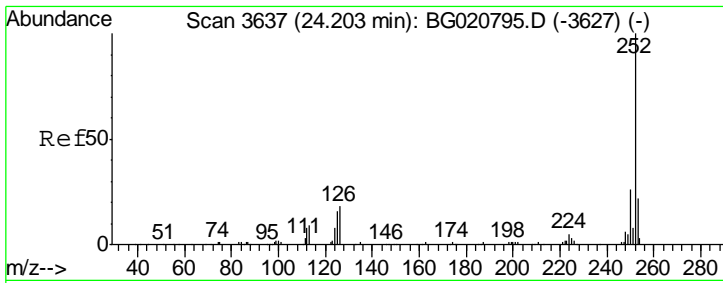
Tgt Ion	Resp	Lower	Upper
228	100		
229	20.2	16.0	24.0
226	25.4	21.8	32.8



#85
 Chrysene
 Concen: 1.18 ng/ul
 RT: 21.95 min Scan# 3253
 Delta R.T. -0.00 min
 Lab File: BG020798.D
 Acq: 4 Feb 2016 23:04

Tgt Ion	Resp	Lower	Upper
228	100		
226	30.4	24.1	36.1
229	20.6	16.0	24.0

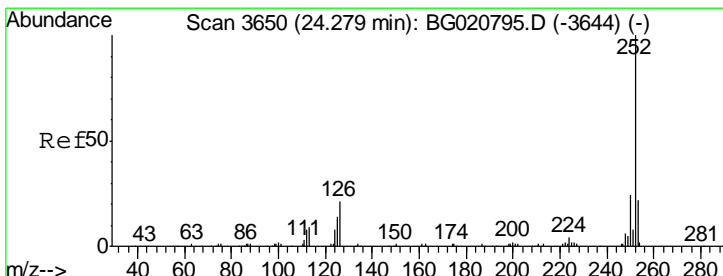
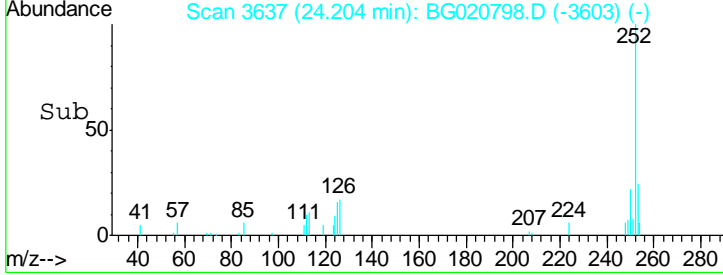
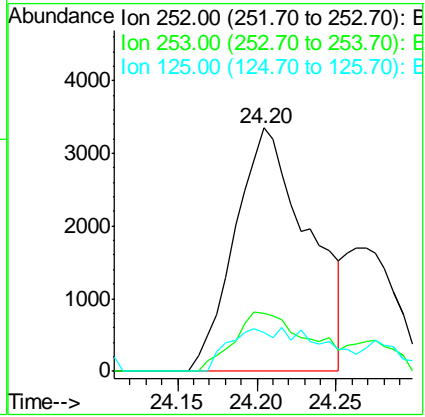
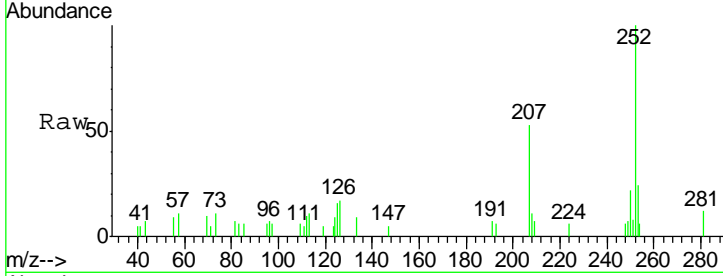




#88
 Benzo(b)fluoranthene
 Concen: 1.86 ng/ul
 RT: 24.20 min Scan# 3637
 Delta R.T. 0.00 min
 Lab File: BG020798.D
 Acq: 4 Feb 2016 23:04

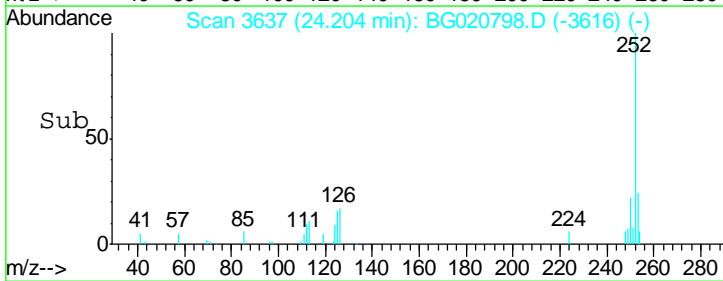
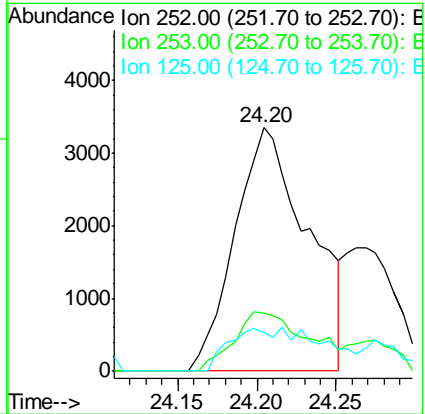
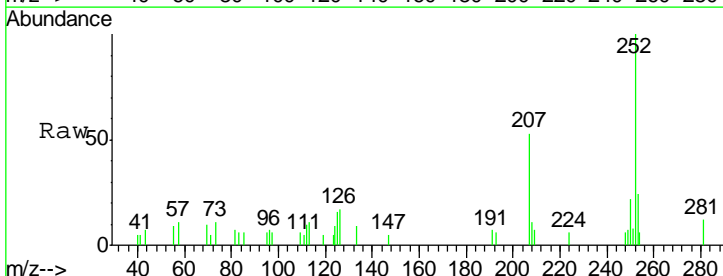
Instrument :
 BNA_G
 ClientSampled :
 BBG15

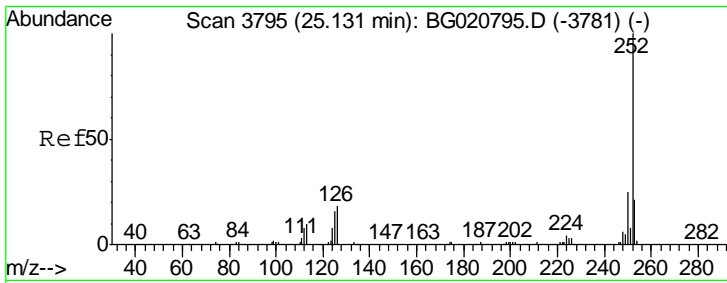
Tgt Ion	Resp	Lower	Upper
252	10764		
253	24.1	17.4	26.0
125	15.9	4.9	7.3#



#89
 Benzo(k)fluoranthene
 Concen: 1.90 ng/ul
 RT: 24.20 min Scan# 3637
 Delta R.T. -0.08 min
 Lab File: BG020798.D
 Acq: 4 Feb 2016 23:04

Tgt Ion	Resp	Lower	Upper
252	10764		
253	24.1	17.1	25.7
125	15.9	5.4	8.0#





#91
 Benzo(a)pyrene
 Concen: 1.35 ng/ul
 RT: 25.12 min Scan# 3793
 Delta R.T. -0.01 min
 Lab File: BG020798.D
 Acq: 4 Feb 2016 23:04

Instrument :
 BNA_G
ClientSampled :
 BBG15

Tgt Ion	Resp	Lower	Upper
252	100		
253	21.4	17.2	25.8
125	21.6	5.8	8.6#

