

Data Path : Z:\HPCHEM1\BNA G\DATA\BG020618\  
 Data File : BG032589.D  
 Acq On : 7 Feb 2018 8:04  
 Operator : SJ/JU  
 Sample : J1455-09  
 Misc : MDL-W-8 ppm  
 ALS Vial : 23 Sample Multiplier: 1

Instrument :  
 BNA\_G  
 ClientSampleId :

Quant Time: Feb 07 09:56:32 2018  
 Quant Method : Z:\HPCHEM1\BNA G\METHODS\8270-BG012918.M  
 Quant Title : ASP BNA STANDARDS FOR 5 POINT CALIBRATION  
 QLast Update : Tue Feb 06 18:57:08 2018  
 Response via : Initial Calibration

Internal Standards	R.T.	QIon	Response	Conc	Units	Dev(Min)
1) 1,4-Dichlorobenzene-d4	8.70	152	19306	20.00	ng	0.00
21) Naphthalene-d8	11.59	136	77012	20.00	ng	0.00
38) Acenaphthene-d10	15.34	164	66577	20.00	ng	0.00
63) Phenanthrene-d10	18.07	188	165456	20.00	ng	0.00
75) Chrysene-d12	22.40	240	204444	20.00	ng	0.00
86) Perylene-d12	26.07	264	221102	20.00	ng	0.00

## System Monitoring Compounds

5) 2-Fluorophenol	6.15	112	61955	64.46	ng	0.00
7) Phenol-d6	7.83	99	43342	33.79	ng	0.00
23) Nitrobenzene-d5	9.91	82	126510	102.61	ng	0.00
41) 2,4,6-Tribromophenol	16.82	330	184078	145.25	ng	0.00
44) 2-Fluorobiphenyl	13.97	172	478600	85.44	ng	0.00
78) Terphenyl-d14	20.61	244	878163	92.01	ng	0.00

## Target Compounds

						Qvalue
2) 1,4-Dioxane	3.96	88	54	0.167	ng	# 11
4) n-Nitrosodimethylamine	3.80	42	57	0.125	ng	# 1
6) Aniline	8.20	93	68	0.043	ng	# 1
8) 2-Chlorophenol	8.17	128	60	0.053	ng	# 29
10) Phenol	7.86	94	302	0.248	ng	# 37
11) bis(2-Chloroethyl)ether	8.20	93	68	0.073	ng	# 55
12) 1,3-Dichlorobenzene	8.13	146	56	0.036	ng	# 26
15) Benzyl Alcohol	9.04	79	1758	1.663	ng	# 7
18) Hexachloroethane	9.85	117	1477	2.857	ng	# 23
19) n-Nitroso-di-n-propylamine	9.91	70	17307	20.351	ng	# 71
22) Acetophenone	9.52	105	804	0.445	ng	# 50
24) Nitrobenzene	9.92	77	350	0.294	ng	# 20
25) Isophorone	10.46	82	177	0.084	ng	# 69
26) 2-Nitrophenol	11.14	139	62	0.086	ng	# 29
31) Naphthalene	11.65	128	57	0.015	ng	# 68
35) Caprolactam	12.57	113	56	0.142	ng	# 48
36) 4-Chloro-3-methylphenol	12.83	107	164	0.126	ng	# 22
37) 2-Methylnaphthalene	13.42	142	640	0.203	ng	# 75
45) 1,1'-Biphenyl	14.18	154	769	0.137	ng	# 87
46) 2-Chloronaphthalene	14.38	162	150	0.034	ng	# 39
47) 2-Nitroaniline	14.45	65	66	0.068	ng	# 9
48) Acenaphthylene	14.95	152	60	0.009	ng	# 1
49) Dimethylphthalate	14.77	163	2760	0.450	ng	# 80
50) 2,6-Dinitrotoluene	15.34	165	8270	6.419	ng	# 23
51) Acenaphthene	15.40	154	585	0.127	ng	# 76
52) 3-Nitroaniline	15.21	138	60	0.053	ng	# 1
53) 2,4-Dinitrophenol	15.62	184	122	4.248	ng	# 1
54) Dibenzofuran	15.74	168	618	0.090	ng	# 57
55) 4-Nitrophenol	15.69	139	72	0.085	ng	# 94
56) 2,4-Dinitrotoluene	15.49	165	341	0.186	ng	# 59
57) Fluorene	16.38	166	407	0.072	ng	# 91
59) Diethylphthalate	16.10	149	2503	0.419	ng	# 1
60) 4-Chlorophenyl-phenylether	16.38	204	124	0.035	ng	# 20
61) 4-Nitroaniline	16.40	138	111	0.092	ng	# 56

Data Path : Z:\HPCHEM1\BNA G\DATA\BG020618\  
 Data File : BG032589.D  
 Acq On : 7 Feb 2018 8:04  
 Operator : SJ/JU  
 Sample : J1455-09  
 Misc : MDL-W-8 ppm  
 ALS Vial : 23 Sample Multiplier: 1

Instrument :  
 BNA\_G  
 ClientSampleId :

Quant Time: Feb 07 09:56:32 2018  
 Quant Method : Z:\HPCHEM1\BNA G\METHODS\8270-BG012918.M  
 Quant Title : ASP BNA STANDARDS FOR 5 POINT CALIBRATION  
 QLast Update : Tue Feb 06 18:57:08 2018  
 Response via : Initial Calibration

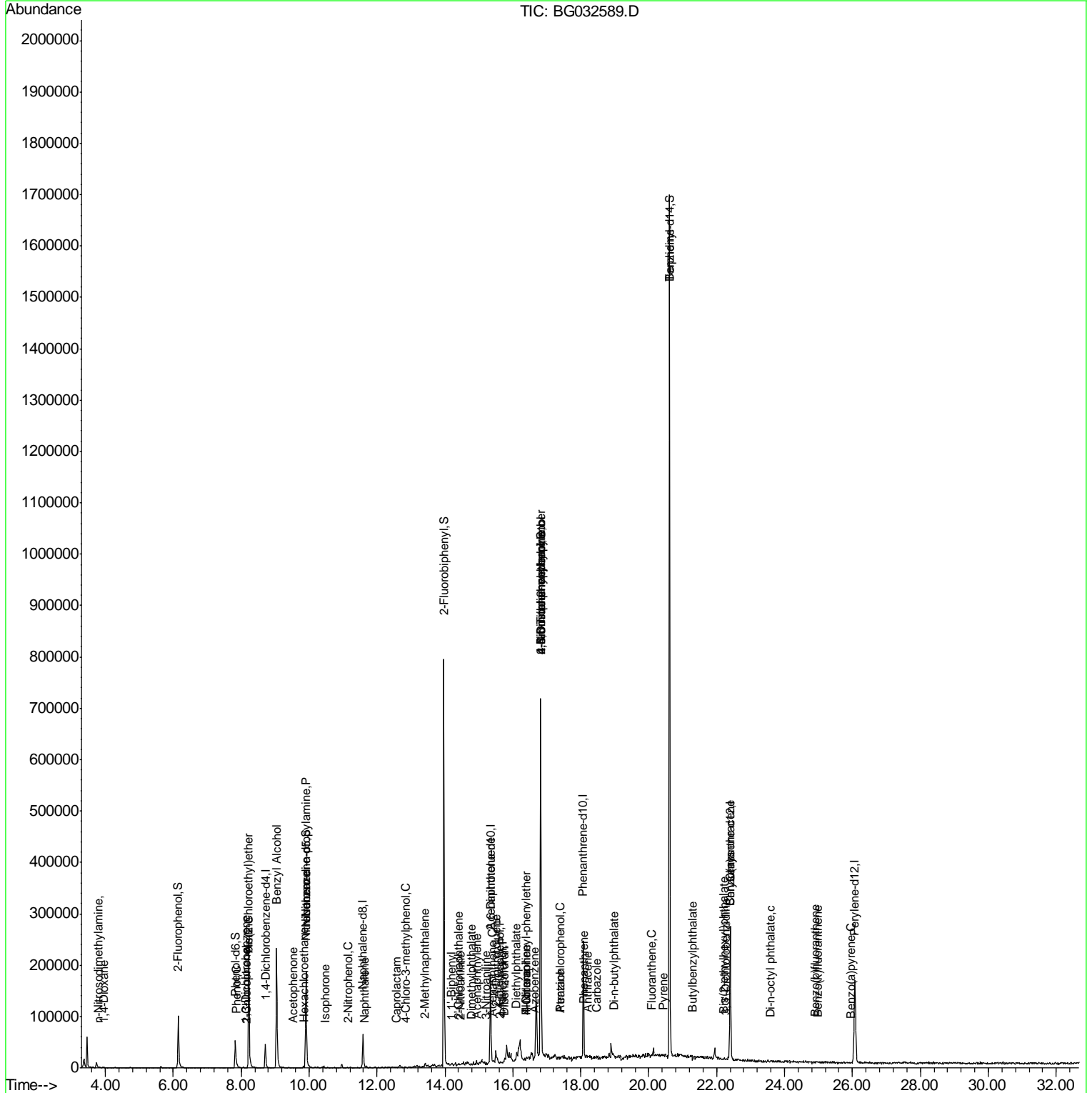
Internal Standards	R.T.	QIon	Response	Conc	Units	Dev(Min)
62) Azobenzene	16.63	77	375	0.105	ng	# 46
64) 4,6-Dinitro-2-methylphenol	16.81	198	316	0.256	ng	# 1
65) n-Nitrosodiphenylamine	16.82	169	5518	1.118	ng	# 41
66) 4-Bromophenyl-phenylether	16.82	248	14672	5.986	ng	# 1
68) Atrazine	17.39	200	61	0.029	ng	# 1
69) Pentachlorophenol	17.37	266	61	0.036	ng	# 19
70) Phenanthrene	18.11	178	154	0.017	ng	# 13
71) Anthracene	18.20	178	275	0.030	ng	# 59
72) Carbazole	18.48	167	886	0.109	ng	# 75
73) Di-n-butylphthalate	18.97	149	1994	0.222	ng	# 77
74) Fluoranthene	20.09	202	206	0.017	ng	# 65
76) Benzidine	20.61	184	12394	3.087	ng	# 92
77) Pyrene	20.44	202	127	0.010	ng	# 57
79) Butylbenzylphthalate	21.29	149	258	0.065	ng	# 73
80) Benzo(a)anthracene	22.39	228	824	0.065	ng	# 34
81) 3,3'-Dichlorobenzidine	22.25	252	58	0.012	ng	# 26
82) Chrysene	22.39	228	824	0.067	ng	# 32
83) Bis(2-ethylhexyl)phthalate	22.22	149	1770	0.316	ng	# 92
84) Di-n-octyl phthalate	23.57	149	66	0.007	ng	# 1
87) Benzo(b)fluoranthene	24.90	252	57	0.004	ng	# 59
88) Benzo(k)fluoranthene	24.98	252	68	0.005	ng	# 60
89) Benzo(a)pyrene	25.95	252	56	0.004	ng	# 59

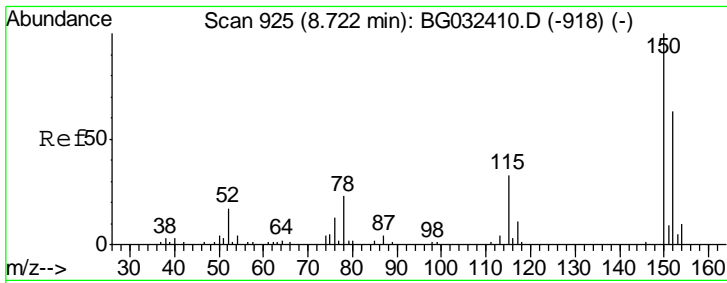
(#) = qualifier out of range (m) = manual integration (+) = signals summed

Data Path : Z:\HPCHEM1\BNA G\DATA\BG020618\  
 Data File : BG032589.D  
 Acq On : 7 Feb 2018 8:04  
 Operator : SJ/JU  
 Sample : J1455-09  
 Misc : MDL-W-8 ppm  
 ALS Vial : 23 Sample Multiplier: 1

Instrument :  
 BNA\_G  
 ClientSampled :

Quant Time: Feb 07 09:56:32 2018  
 Quant Method : Z:\HPCHEM1\BNA G\METHODS\8270-BG012918.M  
 Quant Title : ASP BNA STANDARDS FOR 5 POINT CALIBRATION  
 QLast Update : Tue Feb 06 18:57:08 2018  
 Response via : Initial Calibration

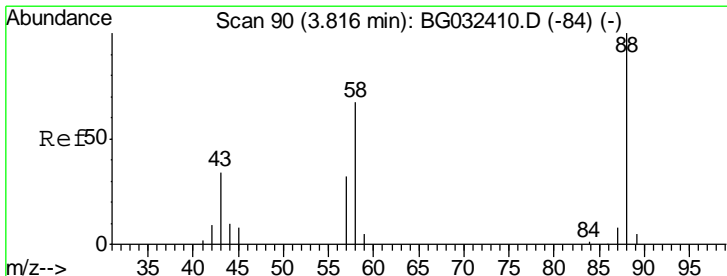
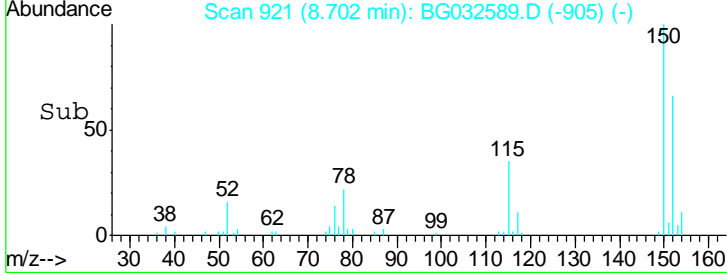
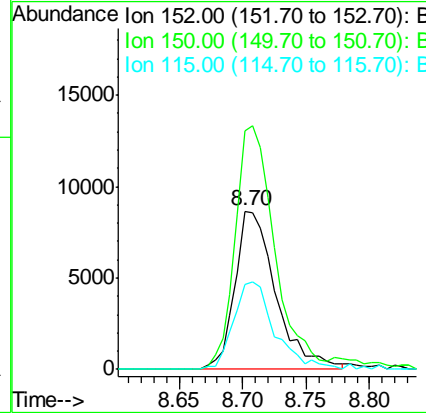
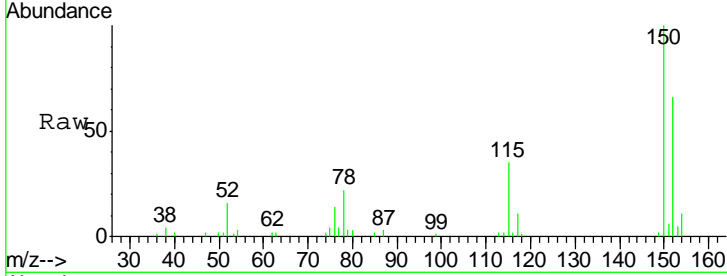




#1  
 1,4-Dichlorobenzene-d4  
 Concen: 20.000 ng  
 RT: 8.70 min Scan# 921  
 Delta R.T. -0.01 min  
 Lab File: BG032589.D  
 Acq: 7 Feb 2018 8:04

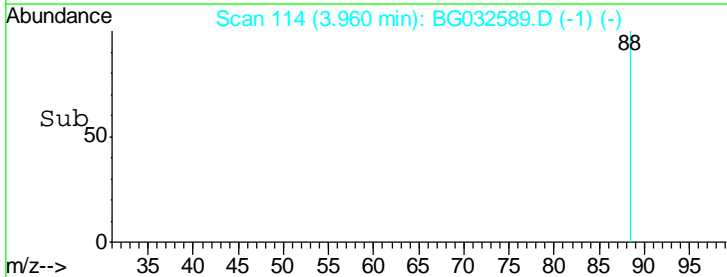
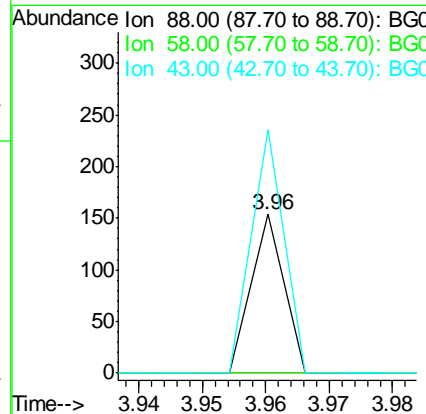
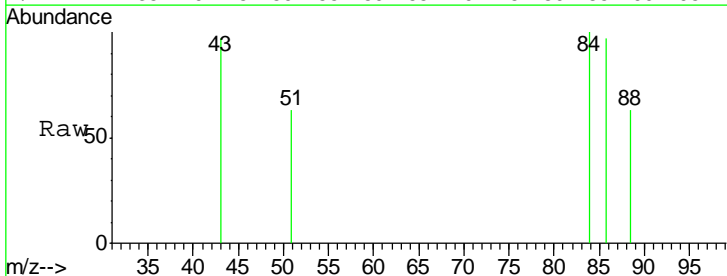
Instrument :  
 BNA\_G  
 ClientSampled :

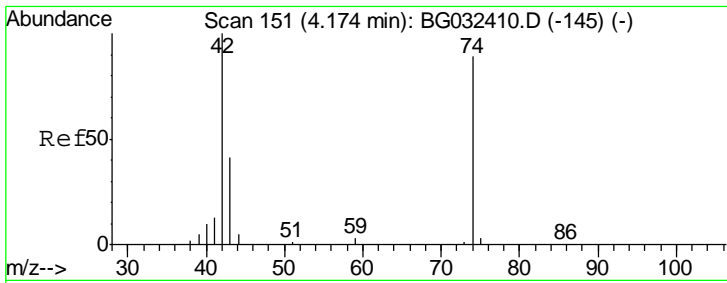
Tgt Ion	Resp	Lower	Upper
152	19306		
150	151.1	126.6	189.8
115	53.3	53.0	79.4



#2  
 1,4-Dioxane  
 Concen: 0.167 ng  
 RT: 3.96 min Scan# 114  
 Delta R.T. 0.15 min  
 Lab File: BG032589.D  
 Acq: 7 Feb 2018 8:04

Tgt Ion	Resp	Lower	Upper
88	54		
88	100		
58	0.0	79.6	119.4#
43	0.0	27.4	41.0#

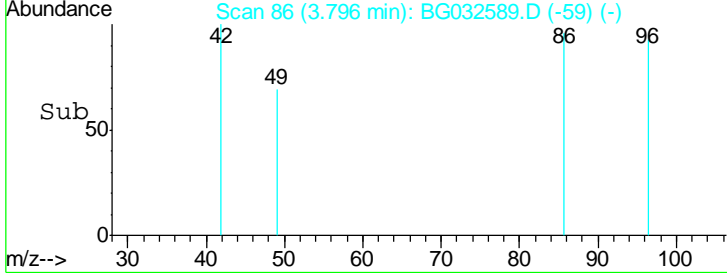
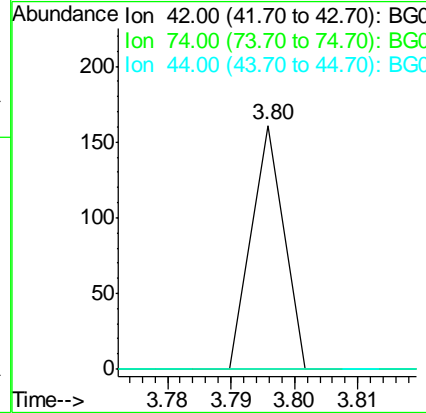
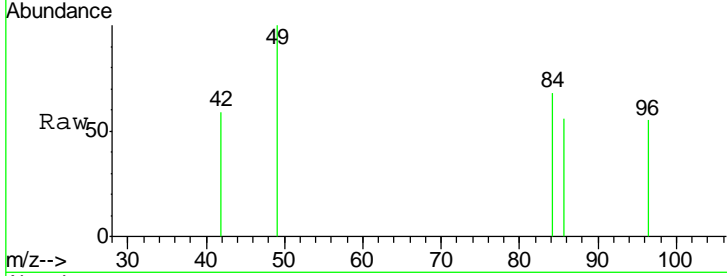




#4  
 n-Nitrosodimethylamine  
 Concen: 0.125 ng  
 RT: 3.80 min Scan# 86  
 Delta R.T. -0.37 min  
 Lab File: BG032589.D  
 Acq: 7 Feb 2018 8:04

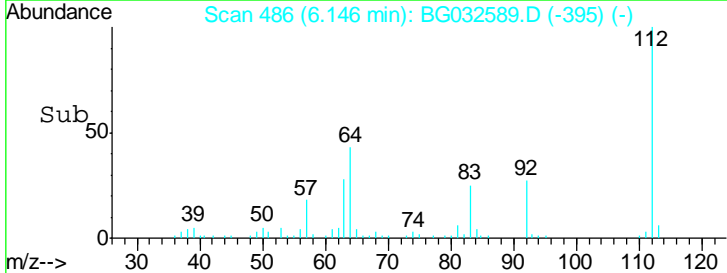
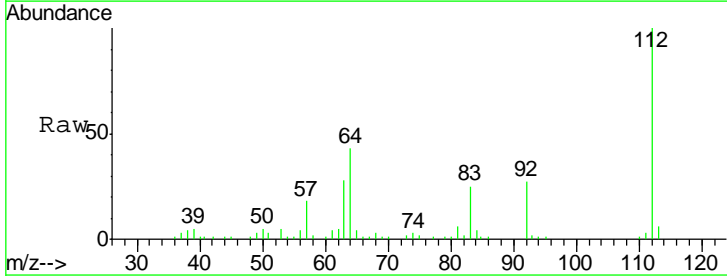
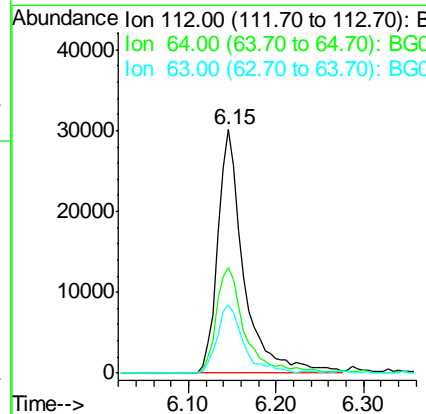
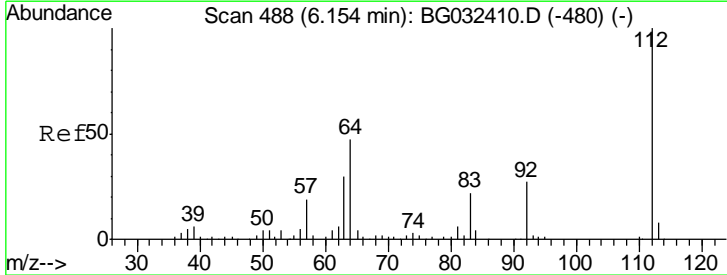
**Instrument :**  
 BNA\_G  
**ClientSampled :**

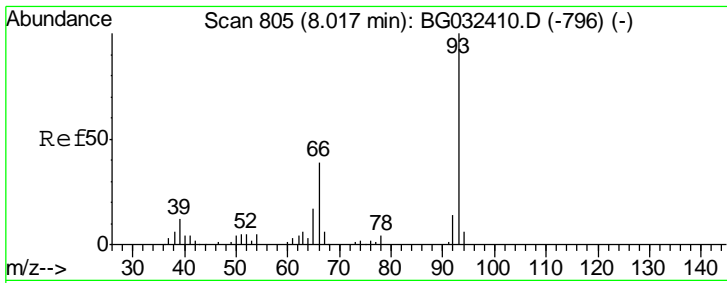
Tgt Ion	Resp	Lower	Upper
42	100		
74	0.0	102.5	153.7#
44	0.0	18.9	28.3#



#5  
 2-Fluorophenol  
 Concen: 64.457 ng  
 RT: 6.15 min Scan# 486  
 Delta R.T. 0.00 min  
 Lab File: BG032589.D  
 Acq: 7 Feb 2018 8:04

Tgt Ion	Resp	Lower	Upper
112	100		
64	43.3	56.3	84.5#
63	28.1	30.1	45.1#

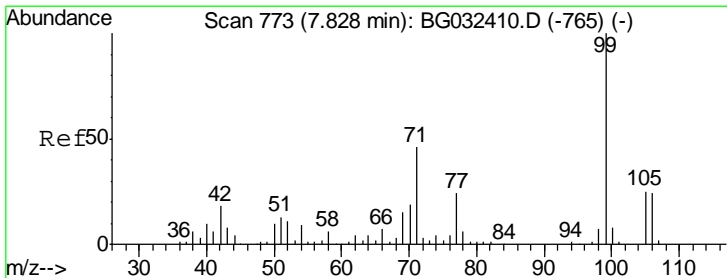
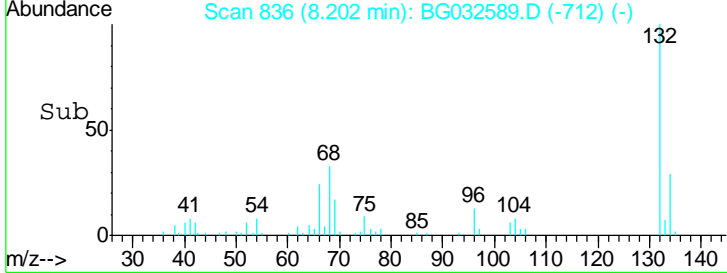
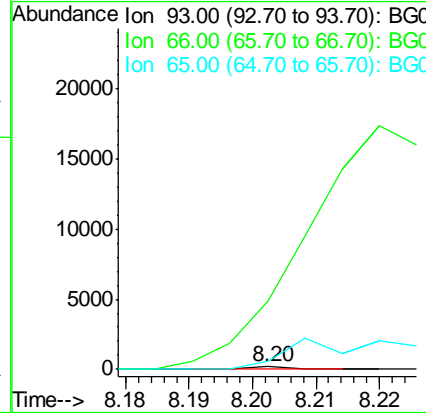
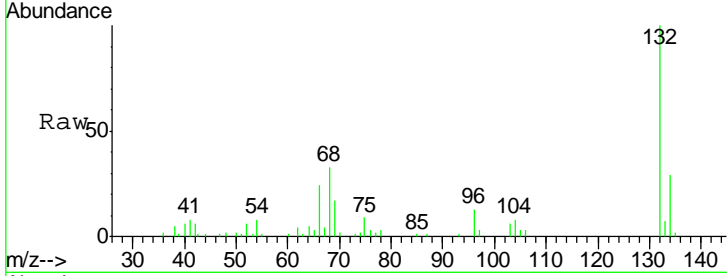




#6  
 Aniline  
 Concen: 0.043 ng  
 RT: 8.20 min Scan# 836  
 Delta R.T. 0.20 min  
 Lab File: BG032589.D  
 Acq: 7 Feb 2018 8:04

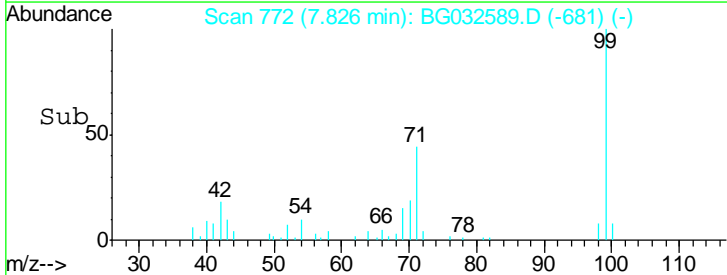
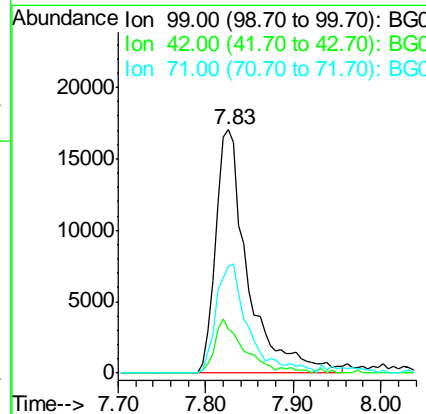
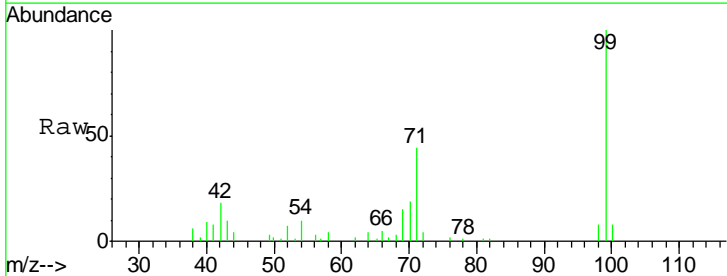
Instrument :  
 BNA\_G  
 ClientSampled :

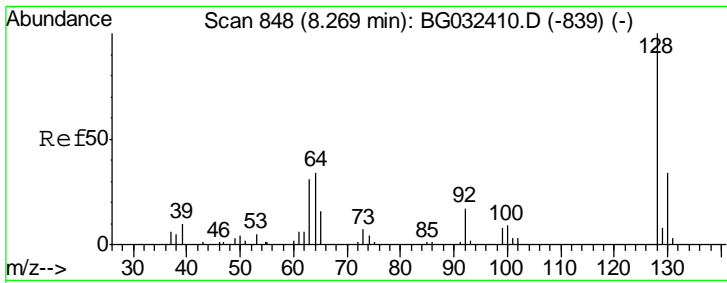
Tgt Ion	Resp	Lower	Upper
93	100		
66	2520.8	33.7	50.5#
65	287.5	16.1	24.1#



#7  
 Phenol-d6  
 Concen: 33.792 ng  
 RT: 7.83 min Scan# 772  
 Delta R.T. 0.00 min  
 Lab File: BG032589.D  
 Acq: 7 Feb 2018 8:04

Tgt Ion	Resp	Lower	Upper
99	100		
42	18.1	14.1	21.1
71	43.6	26.1	39.1#

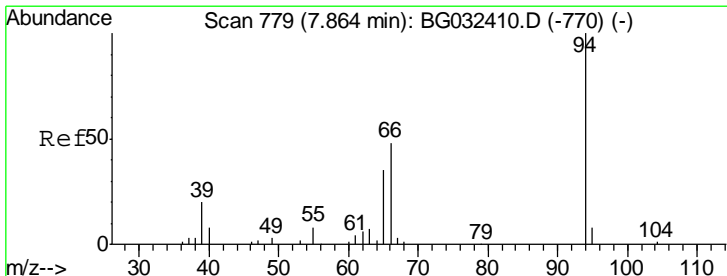
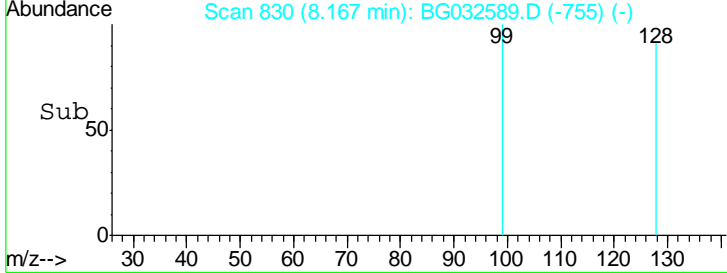
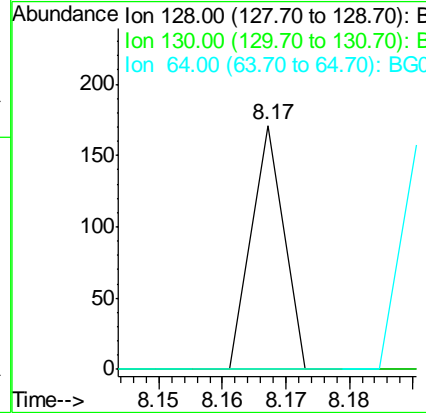
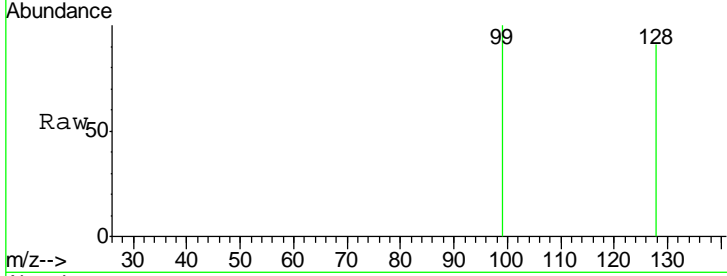




#8  
 2-Chlorophenol  
 Concen: 0.053 ng  
 RT: 8.17 min Scan# 830  
 Delta R.T. -0.09 min  
 Lab File: BG032589.D  
 Acq: 7 Feb 2018 8:04

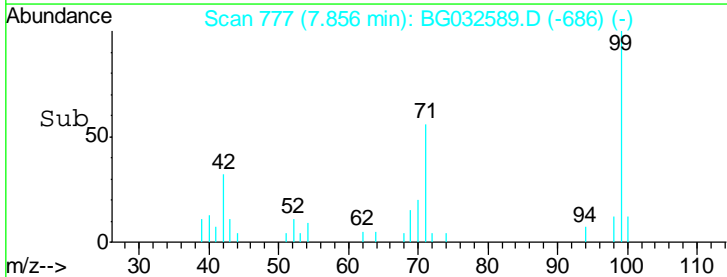
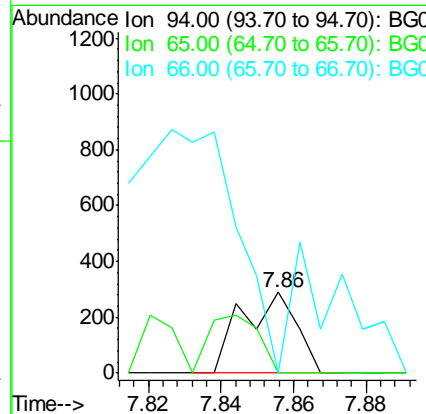
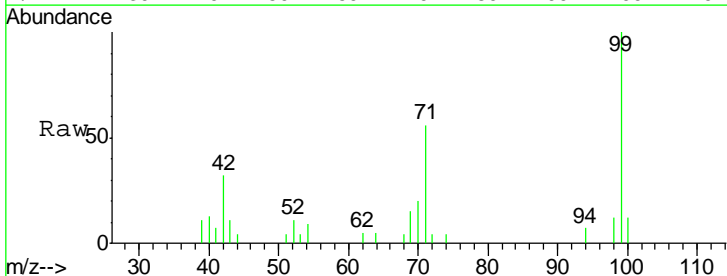
Instrument :  
 BNA\_G  
 ClientSampleId :

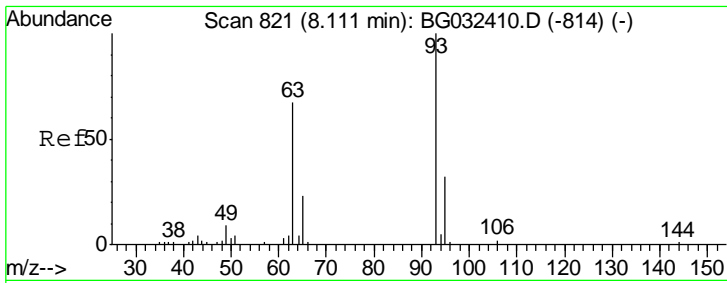
Tgt Ion	Resp	Lower	Upper
128	100		
130	0.0	14.0	54.0#
64	0.0	37.7	77.7#



#10  
 Phenol  
 Concen: 0.248 ng  
 RT: 7.86 min Scan# 777  
 Delta R.T. 0.00 min  
 Lab File: BG032589.D  
 Acq: 7 Feb 2018 8:04

Tgt Ion	Resp	Lower	Upper
94	100		
65	0.0	11.9	51.9#
66	0.0	22.2	62.2#

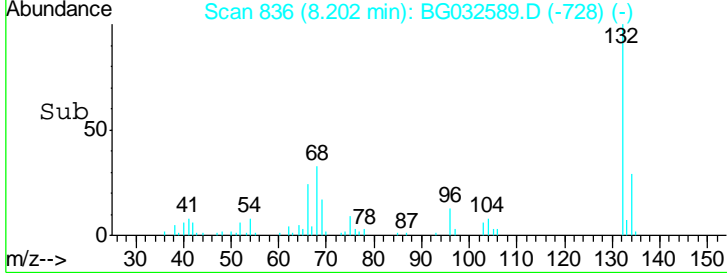
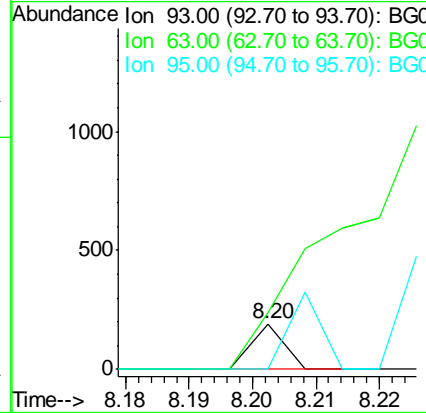
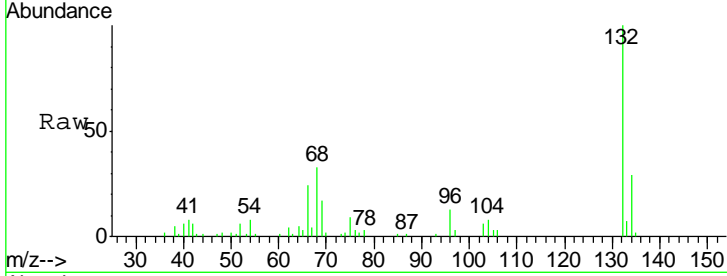




#11  
 bis(2-Chloroethyl)ether  
 Concen: 0.073 ng  
 RT: 8.20 min Scan# 836  
 Delta R.T. 0.10 min  
 Lab File: BG032589.D  
 Acq: 7 Feb 2018 8:04

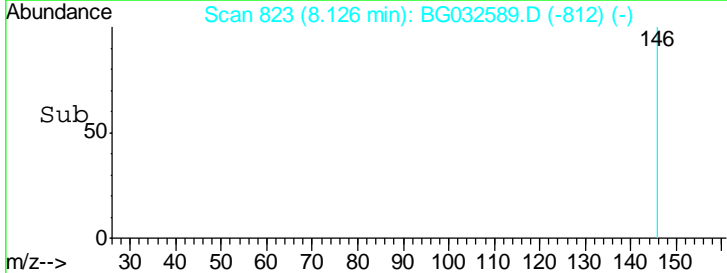
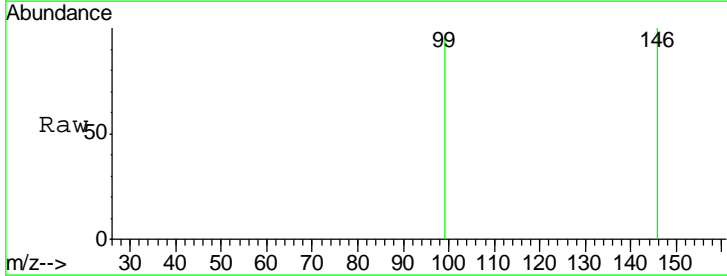
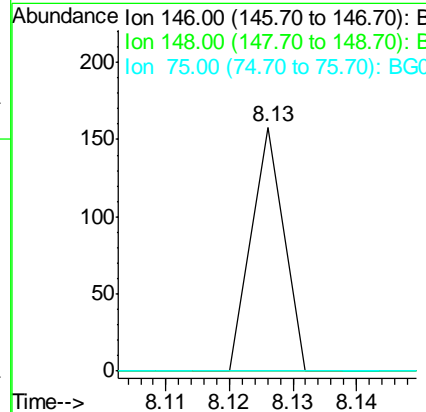
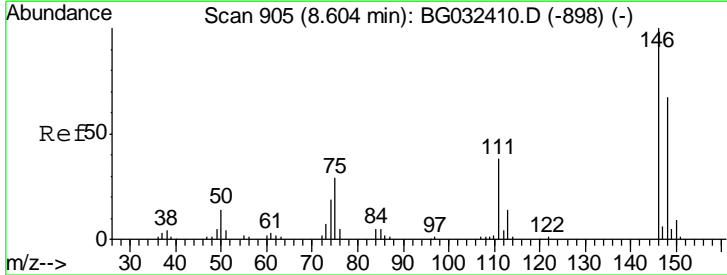
Instrument :  
 BNA\_G  
 ClientSampled :

Tgt Ion	Resp	Lower	Upper
93	100		
63	124.5	67.1	107.1#
95	0.0	11.5	51.5#

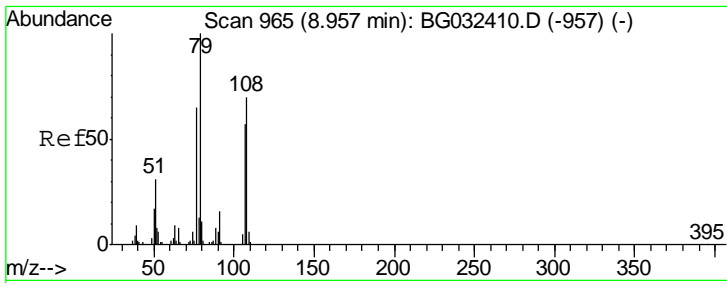


#12  
 1,3-Dichlorobenzene  
 Concen: 0.036 ng  
 RT: 8.13 min Scan# 823  
 Delta R.T. -0.47 min  
 Lab File: BG032589.D  
 Acq: 7 Feb 2018 8:04

Tgt Ion	Resp	Lower	Upper
146	100		
148	0.0	51.4	77.2#
75	0.0	26.6	39.8#



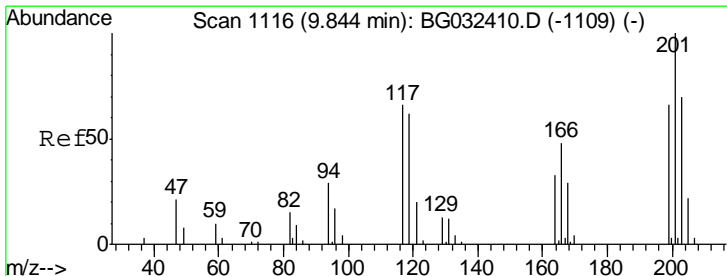
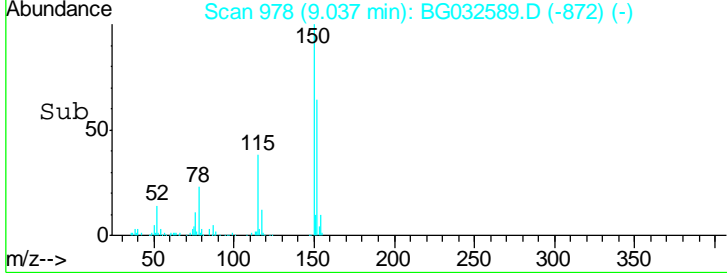
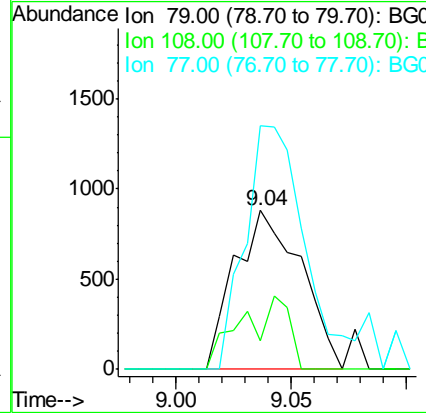
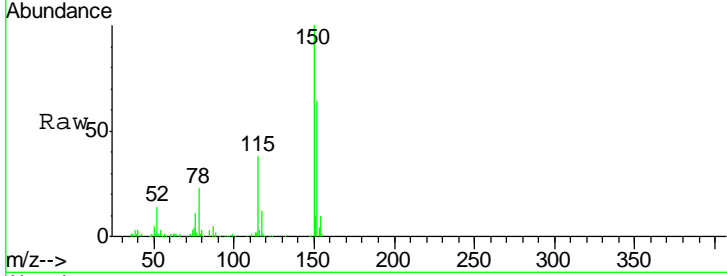




#15  
 Benzyl Alcohol  
 Concen: 1.663 ng  
 RT: 9.04 min Scan# 978  
 Delta R.T. 0.09 min  
 Lab File: BG032589.D  
 Acq: 7 Feb 2018 8:04

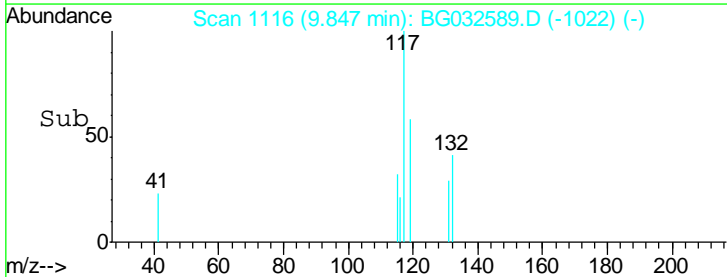
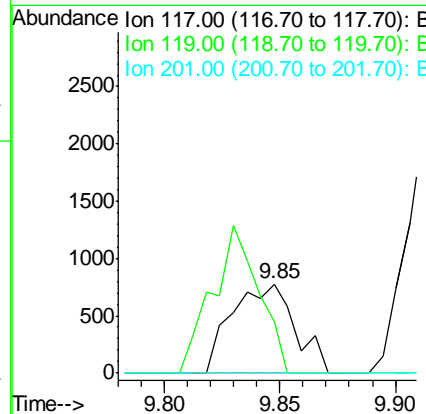
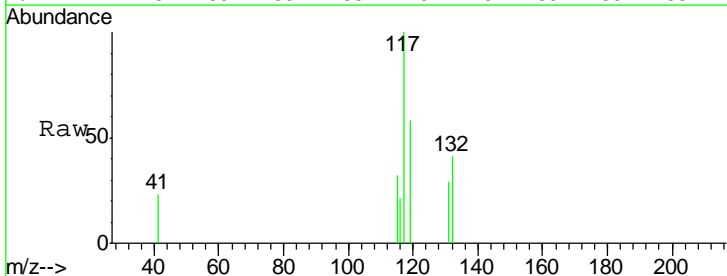
Instrument :  
 BNA\_G  
 ClientSampled :

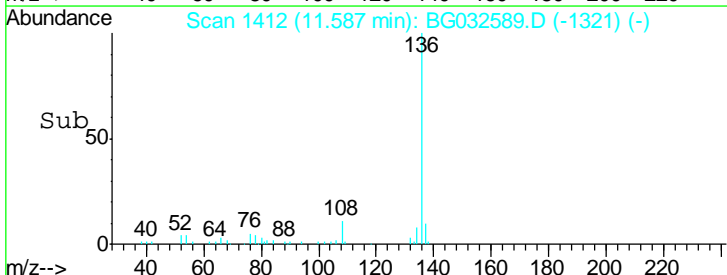
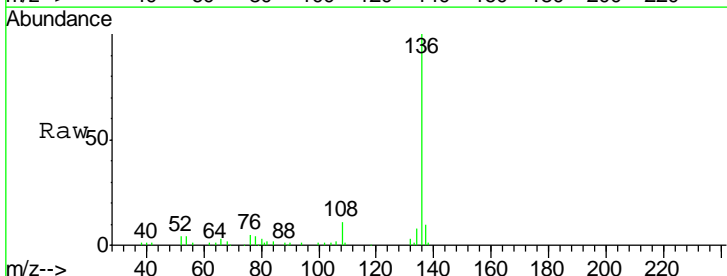
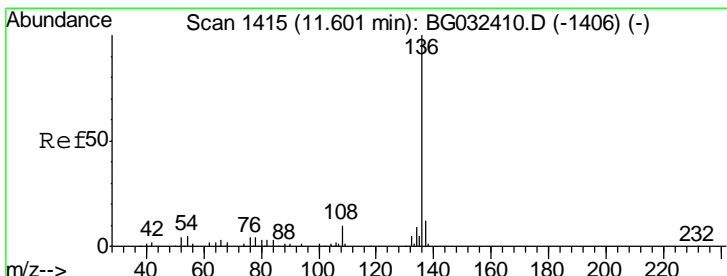
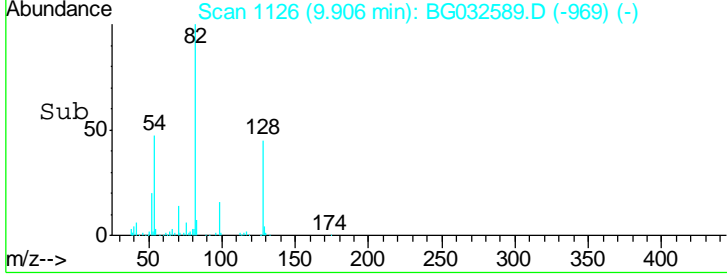
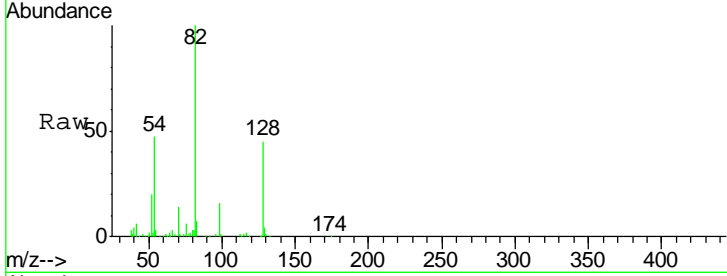
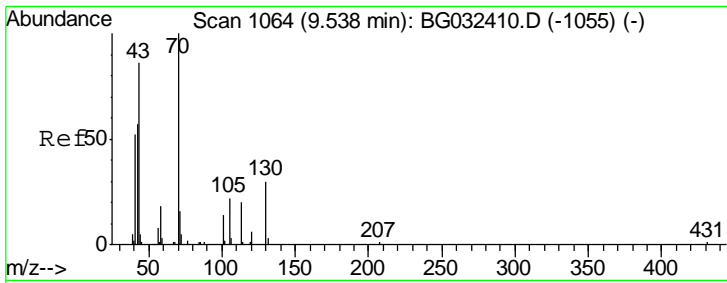
Tgt Ion	Resp	Lower	Upper
79	1758		
108	18.0	57.2	85.8#
77	153.2	46.1	69.1#



#18  
 Hexachloroethane  
 Concen: 2.857 ng  
 RT: 9.85 min Scan# 1116  
 Delta R.T. 0.02 min  
 Lab File: BG032589.D  
 Acq: 7 Feb 2018 8:04

Tgt Ion	Resp	Lower	Upper
117	1477		
119	58.1	76.7	115.1#
201	0.0	95.7	143.5#

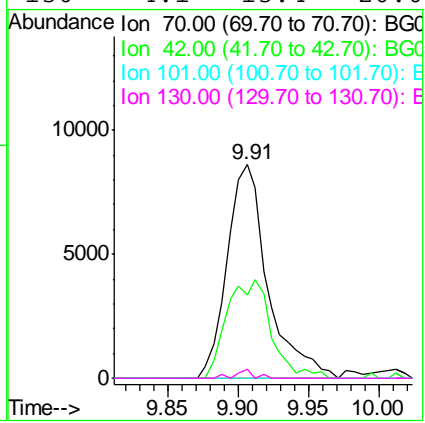




#19  
 n-Nitroso-di-n-propylamine  
 Concen: 20.351 ng  
 RT: 9.91 min Scan# 1126  
 Delta R.T. 0.39 min  
 Lab File: BG032589.D  
 Acq: 7 Feb 2018 8:04

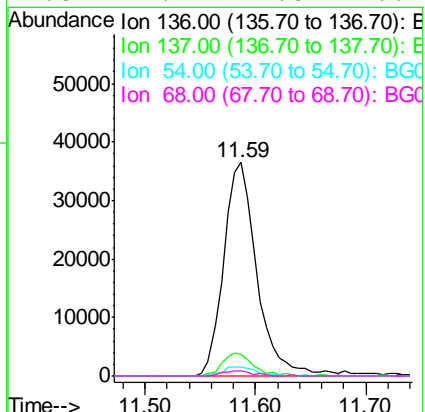
Instrument :  
 BNA\_G  
 ClientSampled :

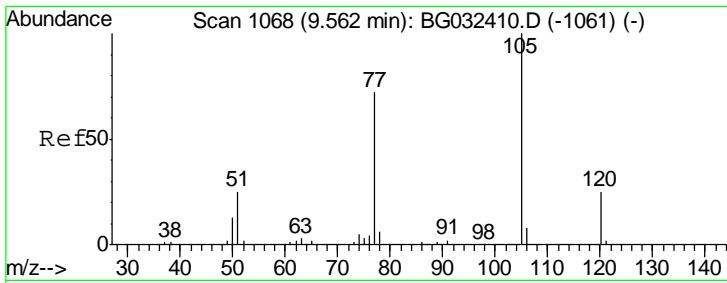
Tgt Ion	Resp	Lower	Upper
70	17307		
70	100		
42	38.8	49.1	73.7#
101	0.0	8.5	12.7#
130	4.1	13.4	20.0#



#21  
 Naphthalene-d8  
 Concen: 20.000 ng  
 RT: 11.59 min Scan# 1412  
 Delta R.T. 0.00 min  
 Lab File: BG032589.D  
 Acq: 7 Feb 2018 8:04

Tgt Ion	Resp	Lower	Upper
136	77012		
136	100		
137	10.5	9.2	13.8
54	4.0	10.3	15.5#
68	2.4	4.5	6.7#

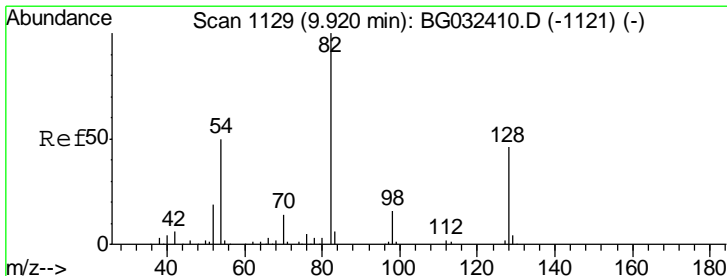
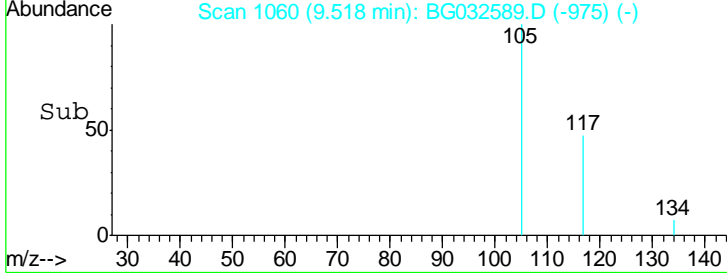
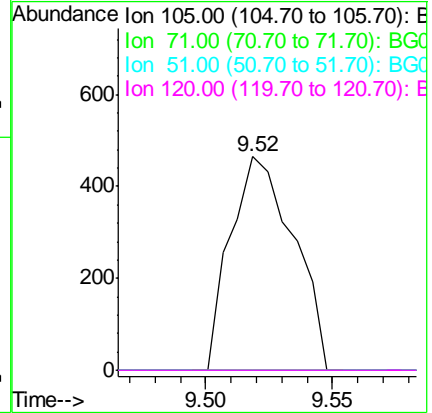
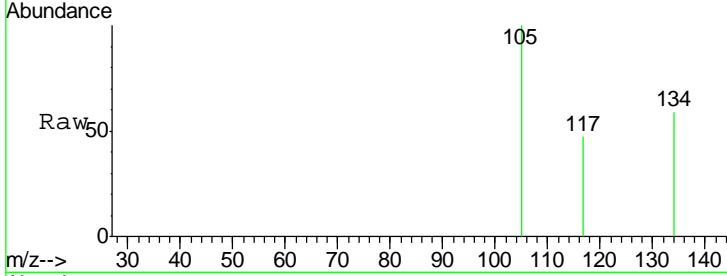




#22  
 Acetophenone  
 Concen: 0.445 ng  
 RT: 9.52 min Scan# 1060  
 Delta R.T. -0.03 min  
 Lab File: BG032589.D  
 Acq: 7 Feb 2018 8:04

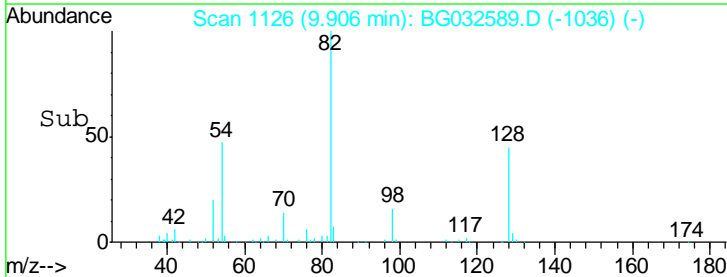
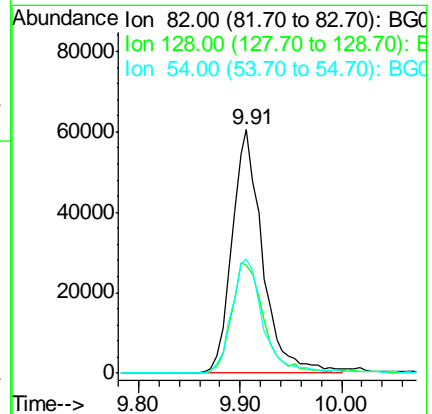
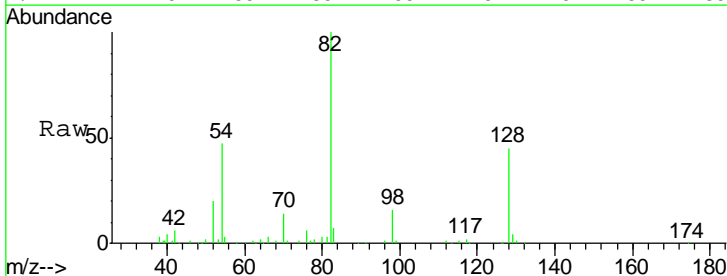
Instrument :  
 BNA\_G  
 ClientSampled :

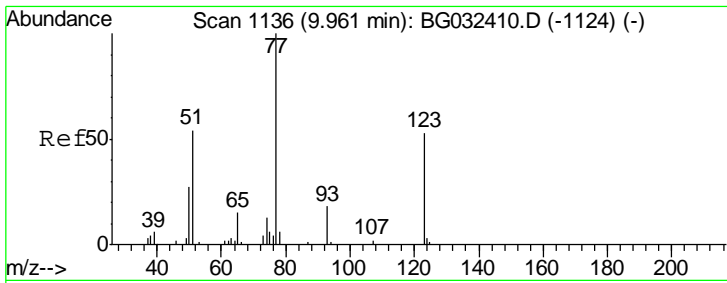
Tgt Ion	Resp	Lower	Upper
105	100		
71	0.0	3.0	4.4#
51	0.0	26.1	39.1#
120	0.0	17.4	26.2#



#23  
 Nitrobenzene-d5  
 Concen: 102.606 ng  
 RT: 9.91 min Scan# 1126  
 Delta R.T. -0.00 min  
 Lab File: BG032589.D  
 Acq: 7 Feb 2018 8:04

Tgt Ion	Resp	Lower	Upper
82	100		
128	44.6	29.7	44.5#
54	47.2	43.1	64.7

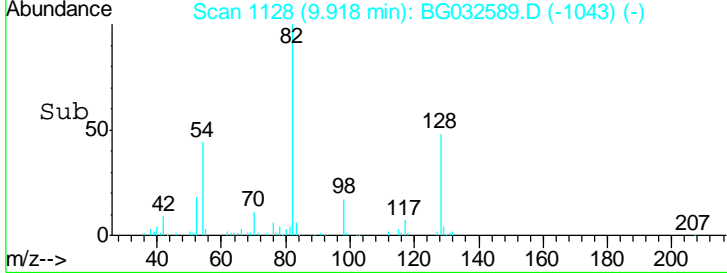
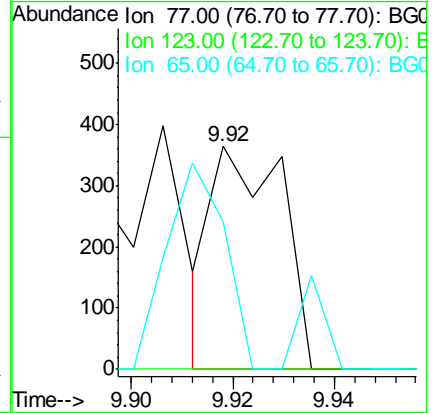
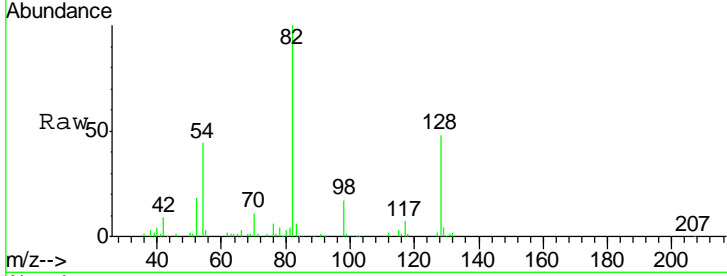




#24  
 Nitrobenzene  
 Concen: 0.294 ng  
 RT: 9.92 min Scan# 1128  
 Delta R.T. -0.03 min  
 Lab File: BG032589.D  
 Acq: 7 Feb 2018 8:04

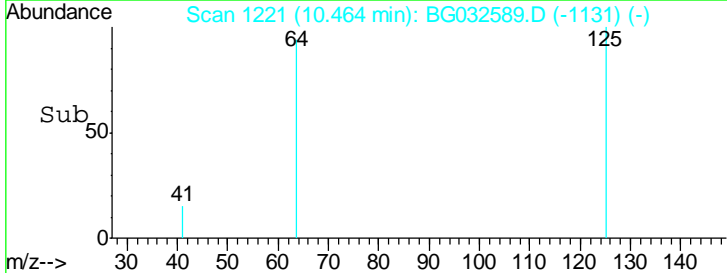
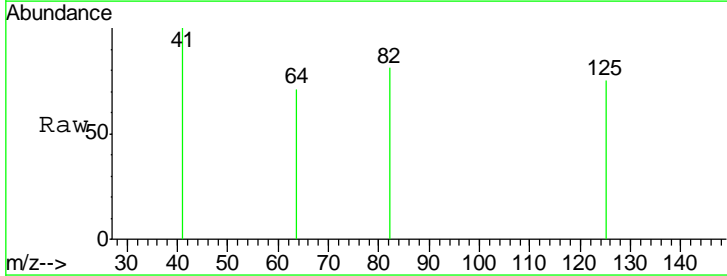
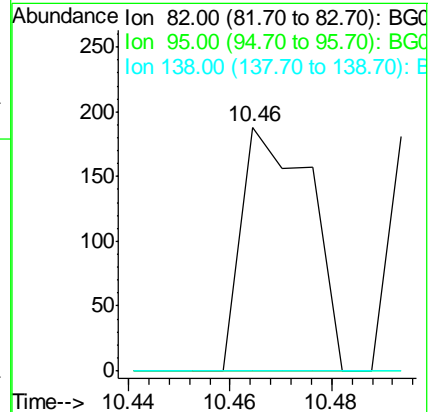
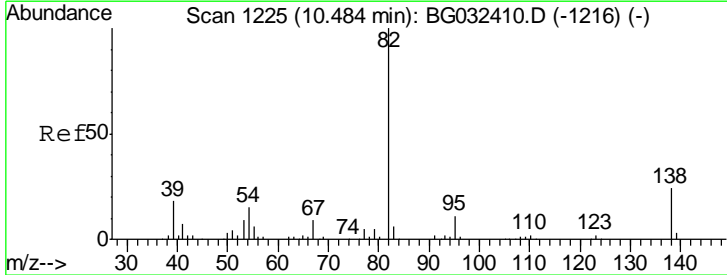
Instrument :  
 BNA\_G  
 ClientSampled :

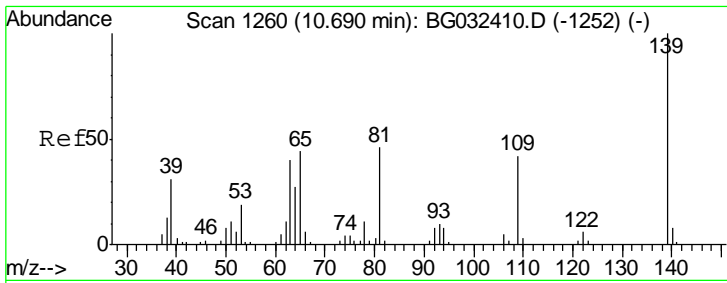
Tgt Ion	Resp	Lower	Upper
77	100		
123	0.0	33.0	49.6#
65	66.5	13.0	19.6#



#25  
 Isophorone  
 Concen: 0.084 ng  
 RT: 10.46 min Scan# 1221  
 Delta R.T. -0.00 min  
 Lab File: BG032589.D  
 Acq: 7 Feb 2018 8:04

Tgt Ion	Resp	Lower	Upper
82	100		
95	0.0	6.2	9.2#
138	0.0	12.1	18.1#

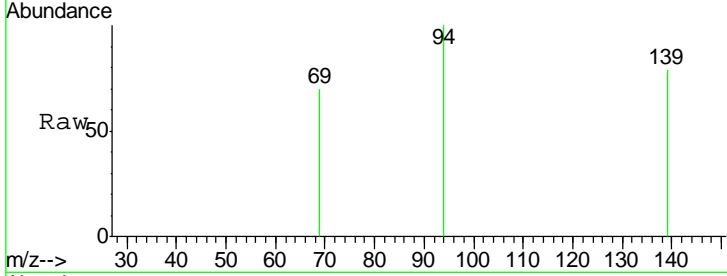




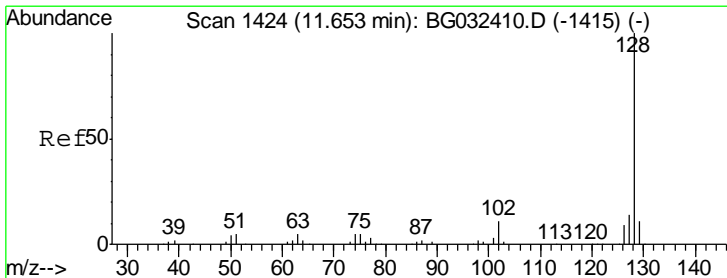
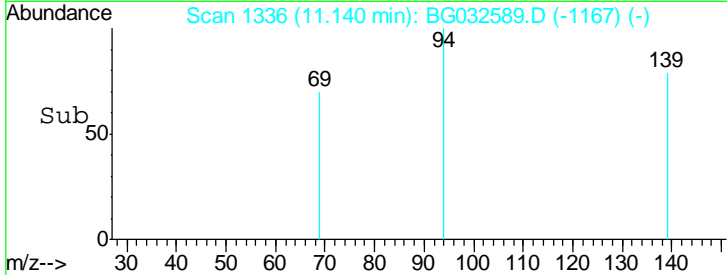
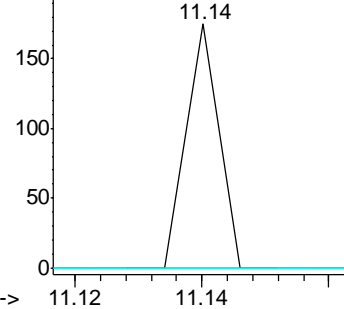
#26  
 2-Nitrophenol  
 Concen: 0.086 ng  
 RT: 11.14 min Scan# 1336  
 Delta R.T. 0.46 min  
 Lab File: BG032589.D  
 Acq: 7 Feb 2018 8:04

Instrument :  
 BNA\_G  
 ClientSampled :

Tgt Ion	Resp	Lower	Upper
139	100		
109	0.0	24.2	36.2#
65	0.0	47.4	71.0#

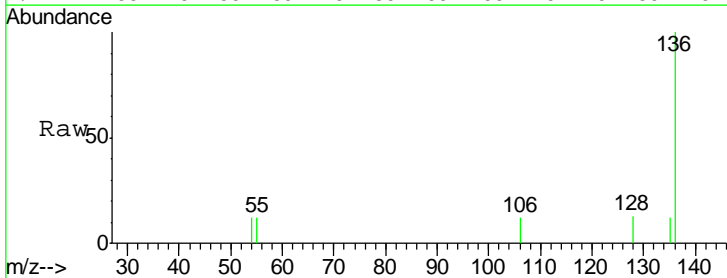


Abundance Ion 139.00 (138.70 to 139.70): E  
 Ion 109.00 (108.70 to 109.70): E  
 Ion 65.00 (64.70 to 65.70): B

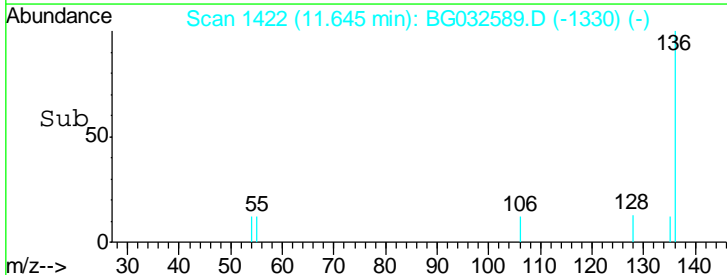
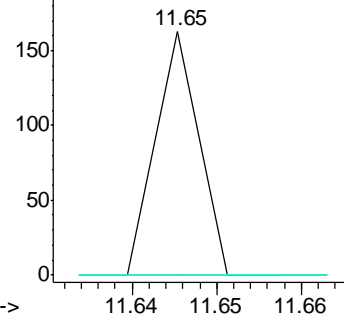


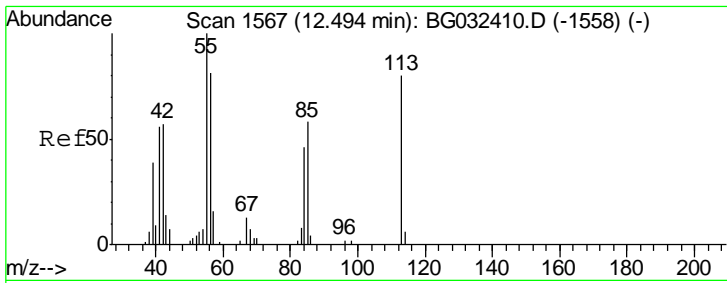
#31  
 Naphthalene  
 Concen: 0.015 ng  
 RT: 11.65 min Scan# 1422  
 Delta R.T. 0.01 min  
 Lab File: BG032589.D  
 Acq: 7 Feb 2018 8:04

Tgt Ion	Resp	Lower	Upper
128	100		
129	0.0	8.6	12.8#
127	0.0	11.6	17.4#



Abundance Ion 128.00 (127.70 to 128.70): E  
 Ion 129.00 (128.70 to 129.70): E  
 Ion 127.00 (126.70 to 127.70): E

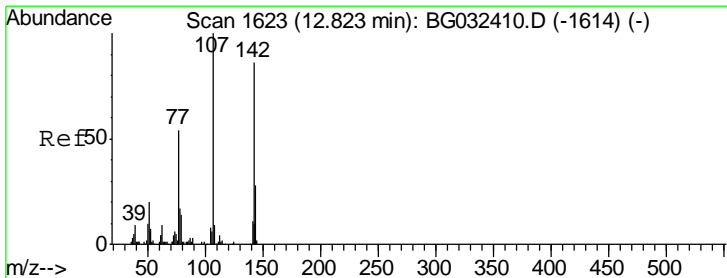
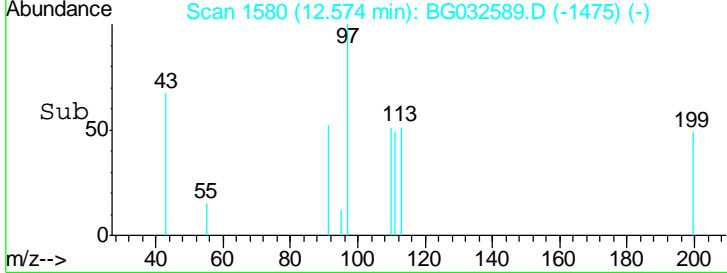
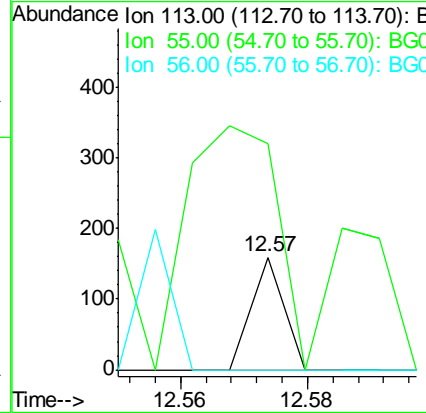
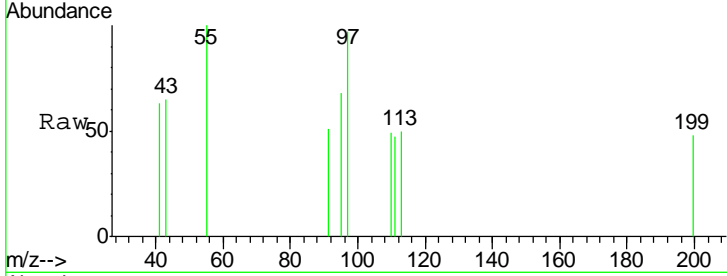




#35  
 Caprolactam  
 Concen: 0.142 ng  
 RT: 12.57 min Scan# 1580  
 Delta R.T. 0.09 min  
 Lab File: BG032589.D  
 Acq: 7 Feb 2018 8:04

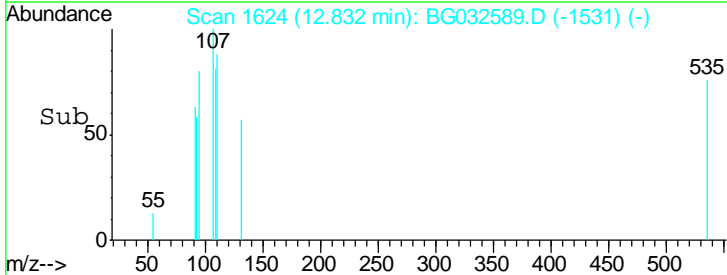
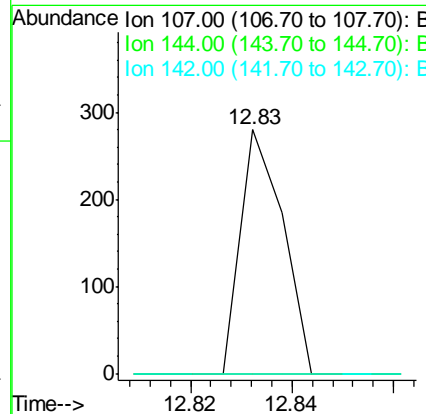
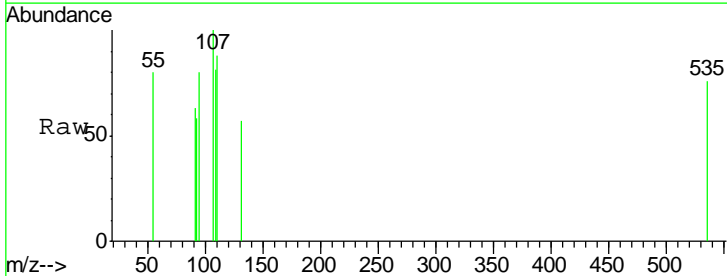
Instrument :  
 BNA\_G  
 ClientSampled :

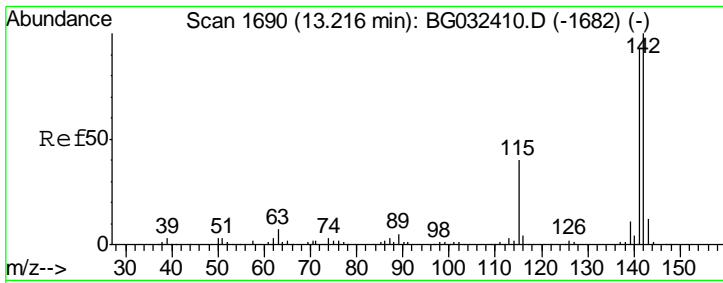
Tgt Ion	Resp	Lower	Upper
113	100		
55	201.3	186.9	226.9
56	0.0	130.9	170.9#



#36  
 4-Chloro-3-methylphenol  
 Concen: 0.126 ng  
 RT: 12.83 min Scan# 1624  
 Delta R.T. 0.02 min  
 Lab File: BG032589.D  
 Acq: 7 Feb 2018 8:04

Tgt Ion	Resp	Lower	Upper
107	100		
144	0.0	18.2	27.4#
142	0.0	59.0	88.4#

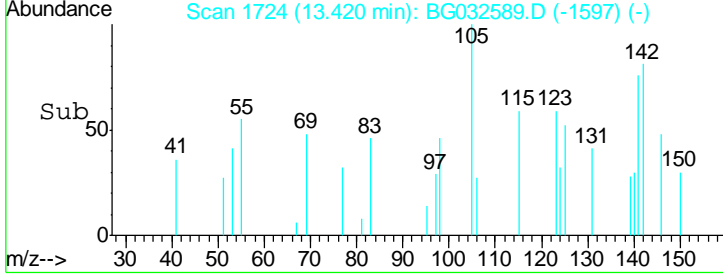
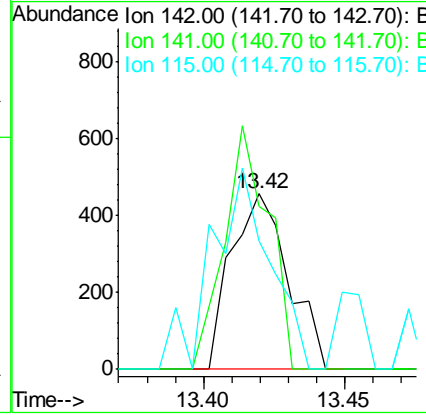
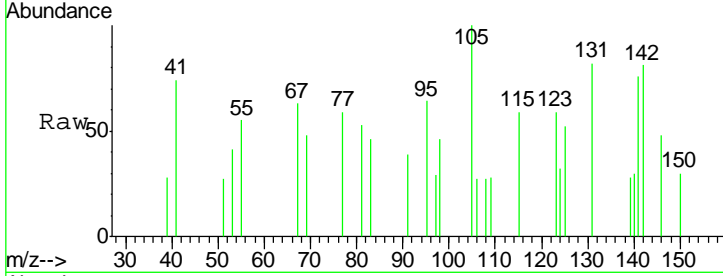




#37  
 2-Methylnaphthalene  
 Concen: 0.203 ng  
 RT: 13.42 min Scan# 1724  
 Delta R.T. 0.21 min  
 Lab File: BG032589.D  
 Acq: 7 Feb 2018 8:04

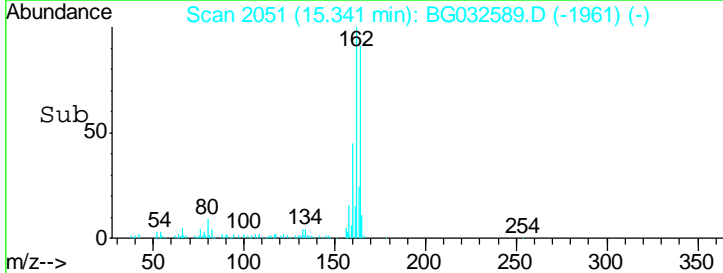
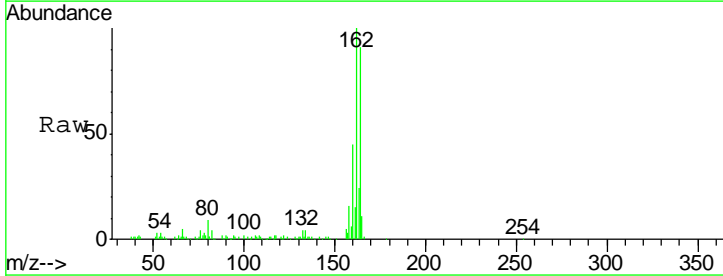
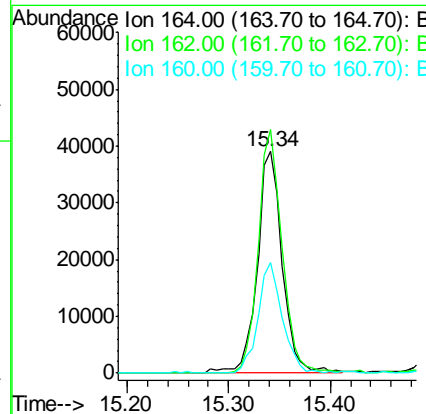
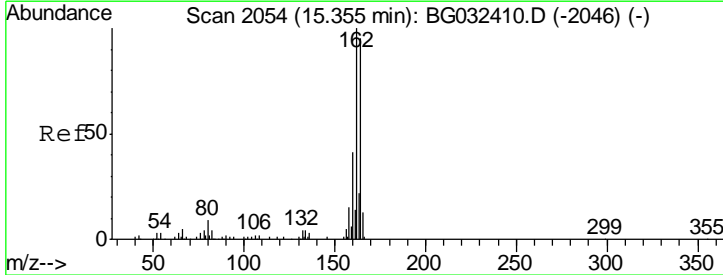
Instrument :  
 BNA\_G  
 ClientSampled :

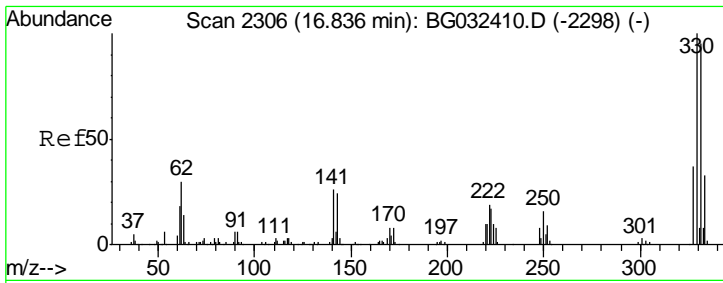
Tgt Ion	Resp	Lower	Upper
142	100		
141	93.2	67.1	100.7
115	73.0	30.7	46.1



#38  
 Acenaphthene-d10  
 Concen: 20.000 ng  
 RT: 15.34 min Scan# 2051  
 Delta R.T. -0.00 min  
 Lab File: BG032589.D  
 Acq: 7 Feb 2018 8:04

Tgt Ion	Resp	Lower	Upper
164	100		
162	109.8	78.8	118.2
160	49.7	35.4	53.0

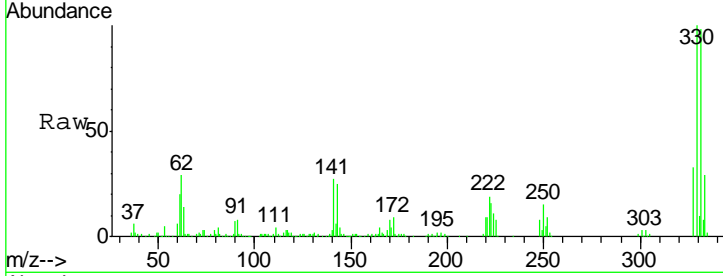




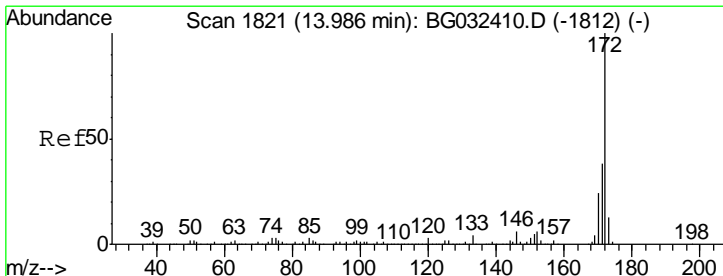
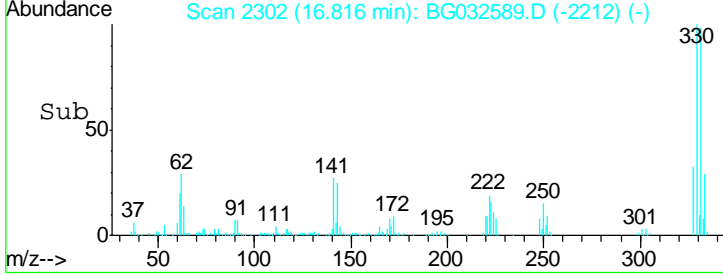
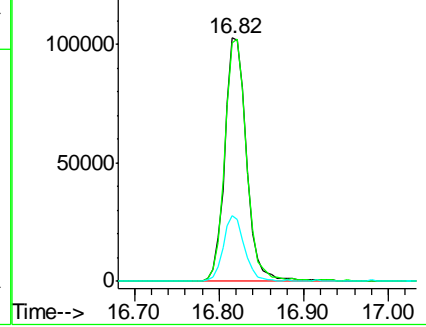
#41  
 2,4,6-Tribromophenol  
 Concen: 145.253 ng  
 RT: 16.82 min Scan# 2302  
 Delta R.T. -0.00 min  
 Lab File: BG032589.D  
 Acq: 7 Feb 2018 8:04

Instrument :  
 BNA\_G  
 ClientSampled :

Tgt Ion	Resp	Lower	Upper
330	184078		
332	99.2	77.0	115.6
141	26.7	25.2	37.8

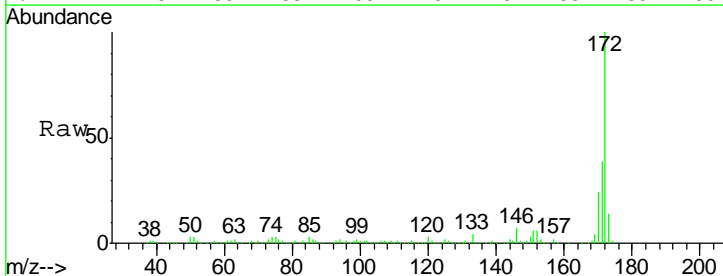


Abundance Ion 329.80 (329.50 to 330.50): E  
 Ion 331.80 (331.50 to 332.50): E  
 Ion 141.00 (140.70 to 141.70): E

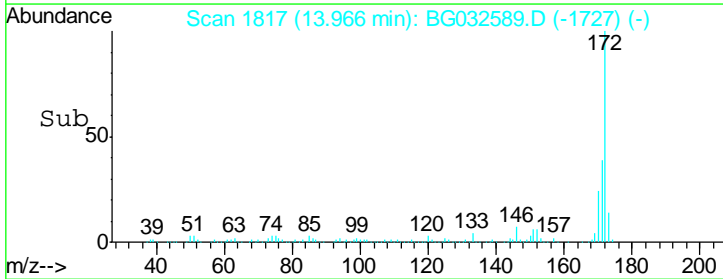
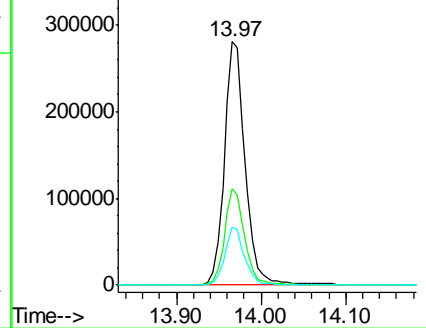


#44  
 2-Fluorobiphenyl  
 Concen: 85.442 ng  
 RT: 13.97 min Scan# 1817  
 Delta R.T. -0.00 min  
 Lab File: BG032589.D  
 Acq: 7 Feb 2018 8:04

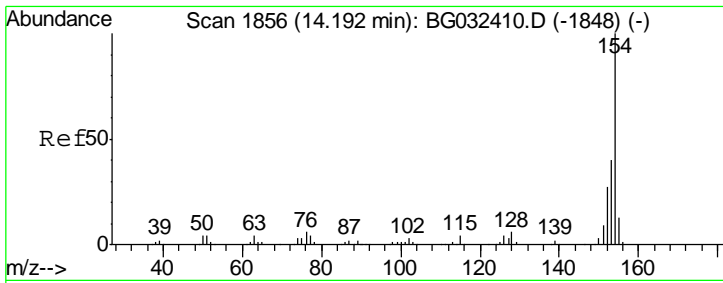
Tgt Ion	Resp	Lower	Upper
172	478600		
171	39.4	30.0	45.0
170	23.8	19.5	29.3



Abundance Ion 172.00 (171.70 to 172.70): E  
 Ion 171.00 (170.70 to 171.70): E  
 Ion 170.00 (169.70 to 170.70): E



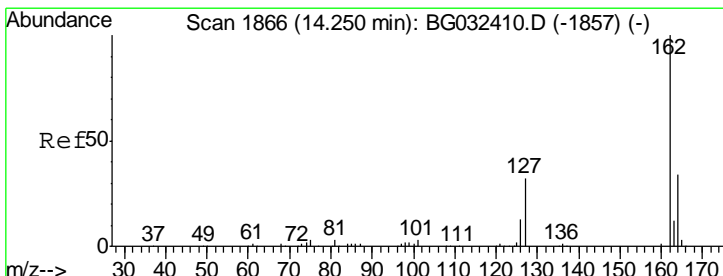
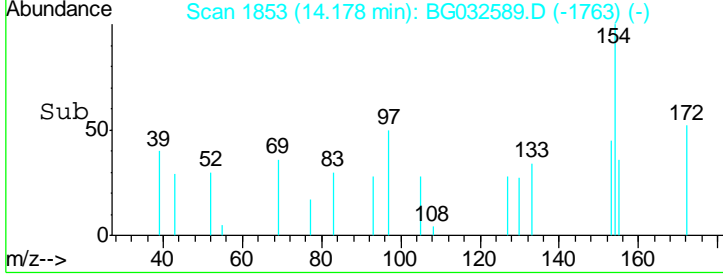
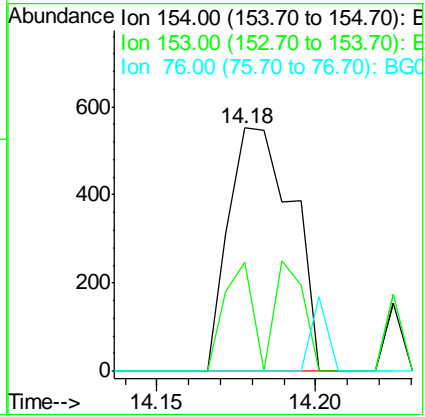
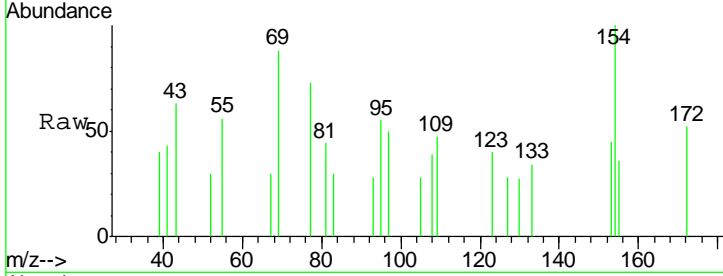




#45  
 1,1'-Biphenyl  
 Concen: 0.137 ng  
 RT: 14.18 min Scan# 1853  
 Delta R.T. -0.00 min  
 Lab File: BG032589.D  
 Acq: 7 Feb 2018 8:04

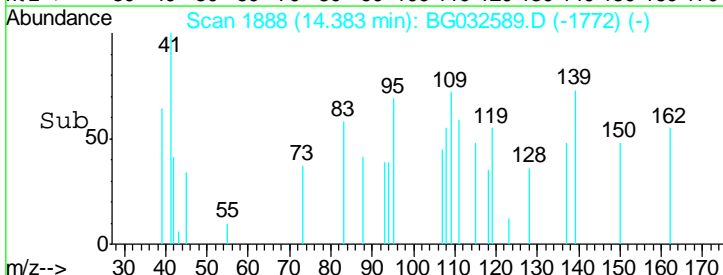
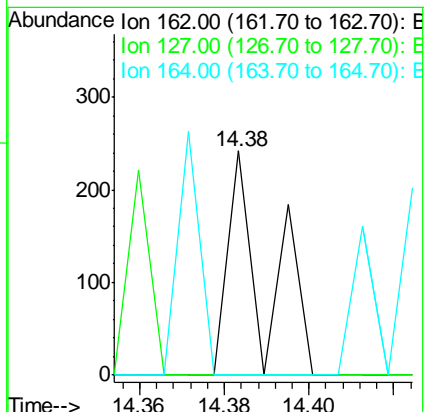
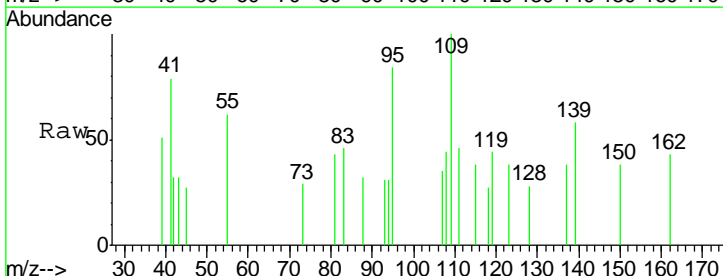
Instrument :  
 BNA\_G  
 ClientSampled :

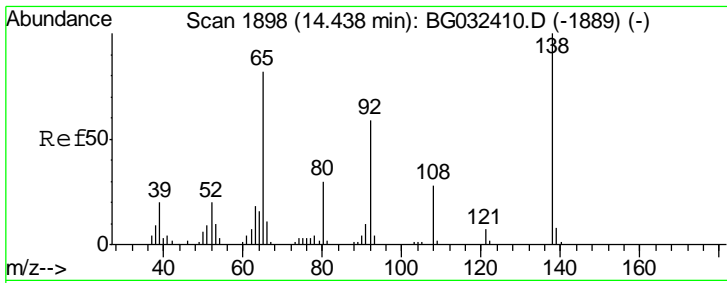
Tgt Ion	Resp	Lower	Upper
154	100		
153	44.7	19.8	59.8
76	0.0	0.0	31.9



#46  
 2-Chloronaphthalene  
 Concen: 0.034 ng  
 RT: 14.38 min Scan# 1888  
 Delta R.T. 0.15 min  
 Lab File: BG032589.D  
 Acq: 7 Feb 2018 8:04

Tgt Ion	Resp	Lower	Upper
162	100		
127	0.0	30.7	46.1#
164	0.0	26.0	39.0#

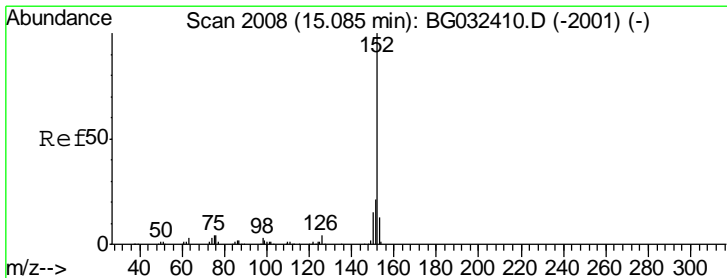
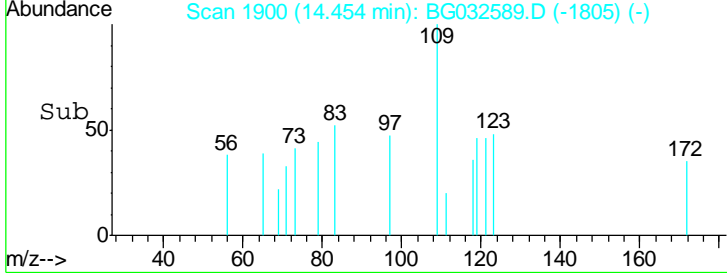
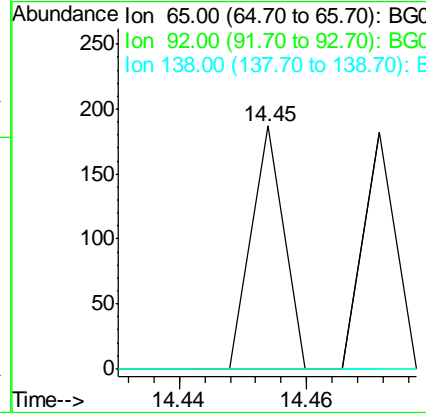
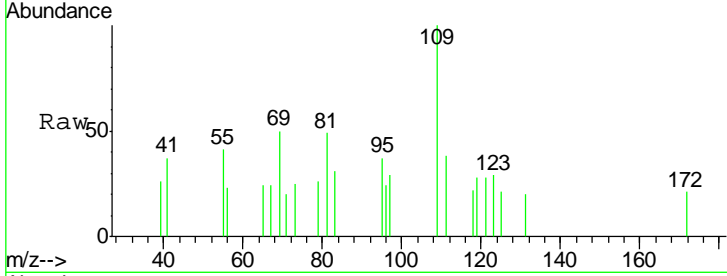




#47  
 2-Nitroaniline  
 Concen: 0.068 ng  
 RT: 14.45 min Scan# 1900  
 Delta R.T. 0.03 min  
 Lab File: BG032589.D  
 Acq: 7 Feb 2018 8:04

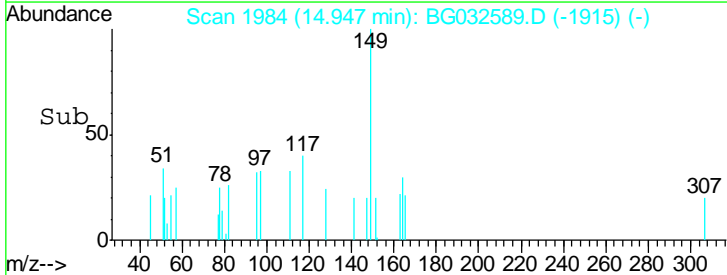
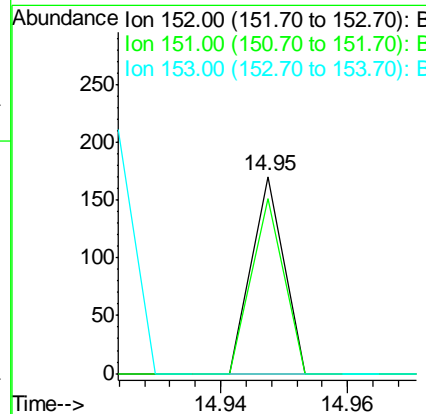
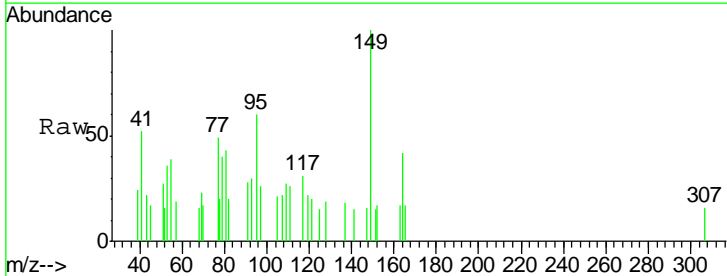
Instrument :  
 BNA\_G  
 ClientSampled :

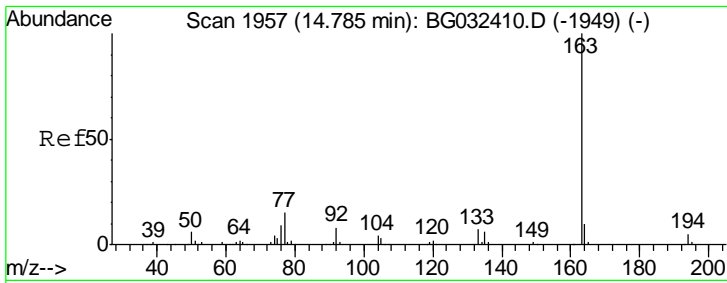
Tgt Ion	Resp	Lower	Upper
65	100		
92	0.0	54.6	82.0#
138	0.0	72.9	109.3#



#48  
 Acenaphthylene  
 Concen: 0.009 ng  
 RT: 14.95 min Scan# 1984  
 Delta R.T. -0.13 min  
 Lab File: BG032589.D  
 Acq: 7 Feb 2018 8:04

Tgt Ion	Resp	Lower	Upper
152	100		
151	88.8	17.2	25.8#
153	0.0	10.2	15.4#

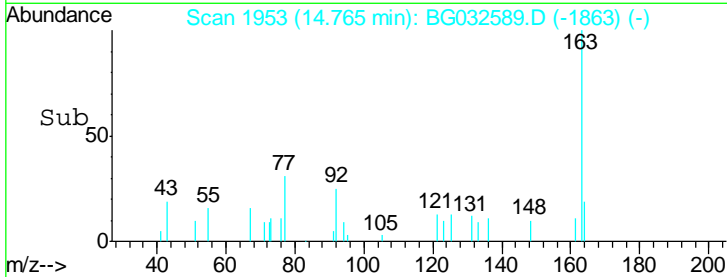
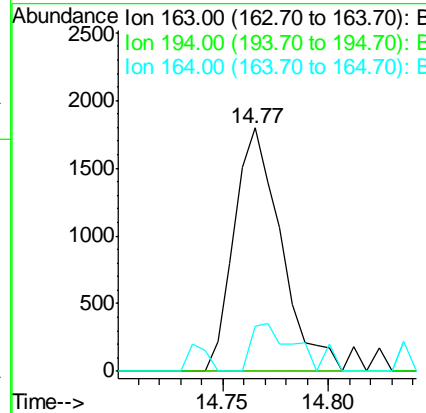
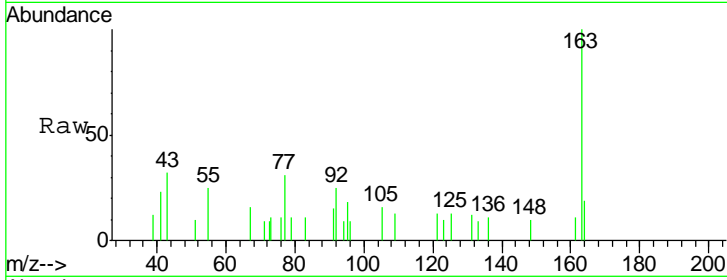




#49  
 Dimethylphthalate  
 Concen: 0.450 ng  
 RT: 14.77 min Scan# 1953  
 Delta R.T. -0.00 min  
 Lab File: BG032589.D  
 Acq: 7 Feb 2018 8:04

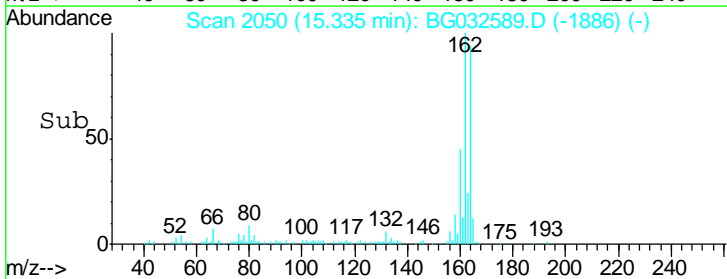
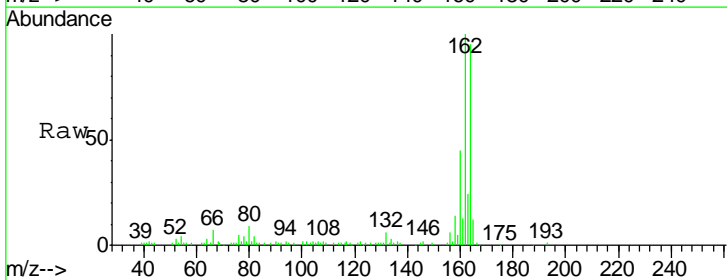
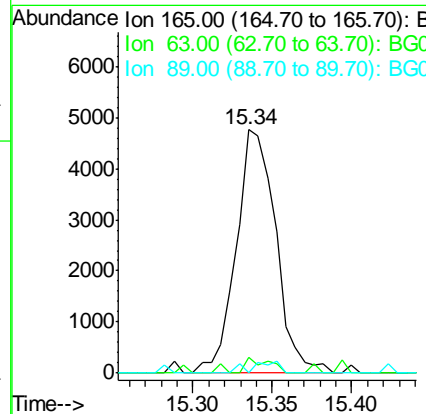
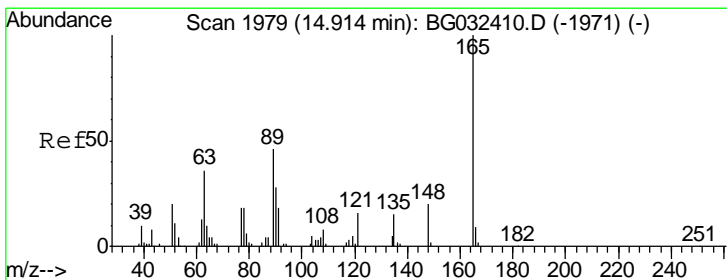
Instrument :  
 BNA\_G  
 ClientSampled :

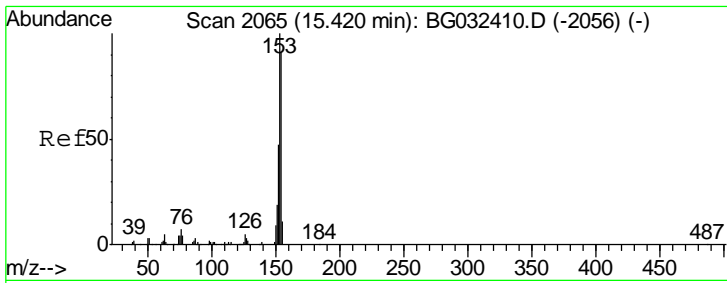
Tgt Ion	Resp	Lower	Upper
163	100		
194	0.0	3.4	5.2#
164	18.6	8.2	12.4#



#50  
 2,6-Dinitrotoluene  
 Concen: 6.419 ng  
 RT: 15.34 min Scan# 2050  
 Delta R.T. 0.43 min  
 Lab File: BG032589.D  
 Acq: 7 Feb 2018 8:04

Tgt Ion	Resp	Lower	Upper
165	100		
63	6.7	52.7	79.1#
89	0.0	49.2	73.8#

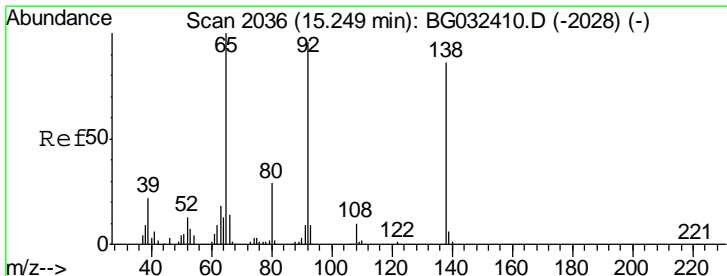
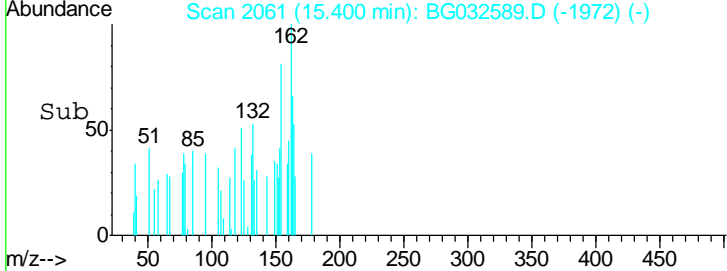
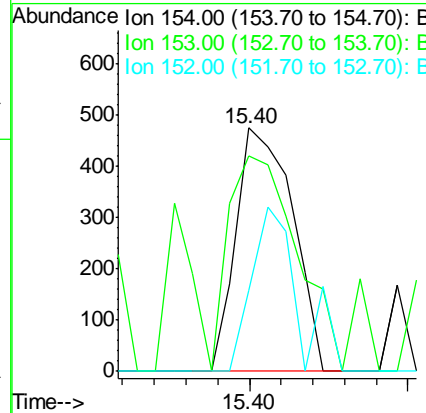
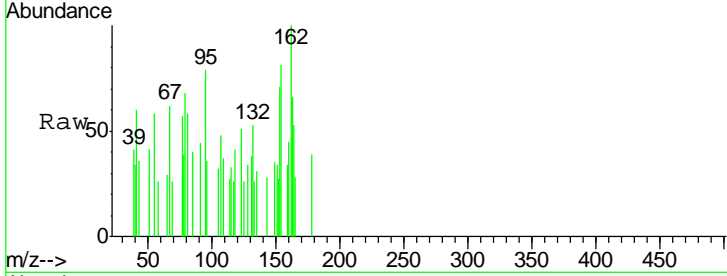




#51  
 Acenaphthene  
 Concen: 0.127 ng  
 RT: 15.40 min Scan# 2061  
 Delta R.T. -0.01 min  
 Lab File: BG032589.D  
 Acq: 7 Feb 2018 8:04

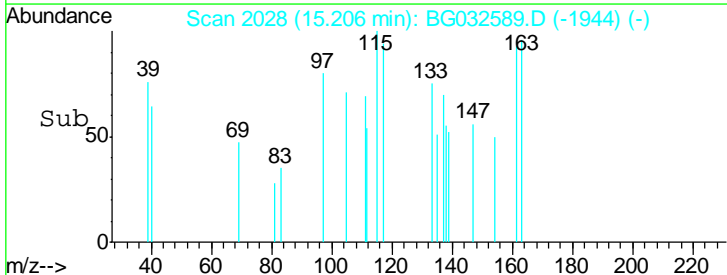
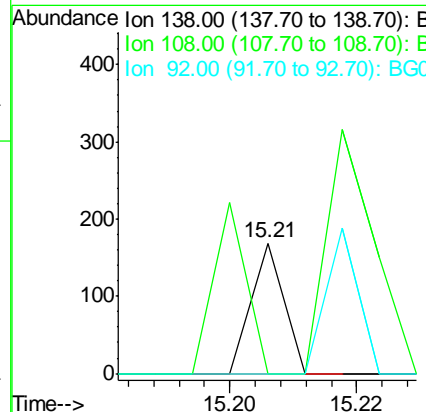
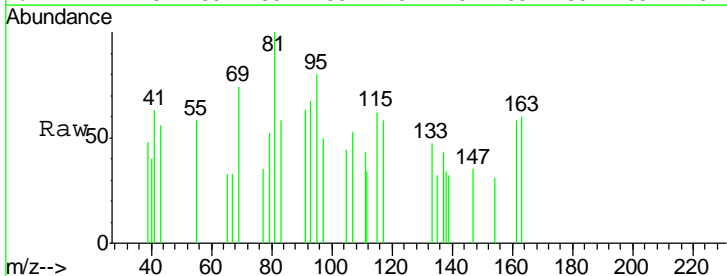
Instrument :  
 BNA\_G  
 ClientSampled :

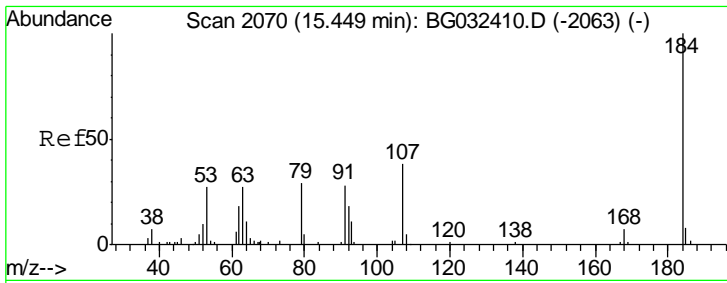
Tgt Ion	Resp	Lower	Upper
154	100		
153	88.4	90.4	135.6#
152	33.3	41.6	62.4#



#52  
 3-Nitroaniline  
 Concen: 0.053 ng  
 RT: 15.21 min Scan# 2028  
 Delta R.T. -0.04 min  
 Lab File: BG032589.D  
 Acq: 7 Feb 2018 8:04

Tgt Ion	Resp	Lower	Upper
138	100		
108	0.0	17.5	26.3#
92	0.0	105.8	158.8#

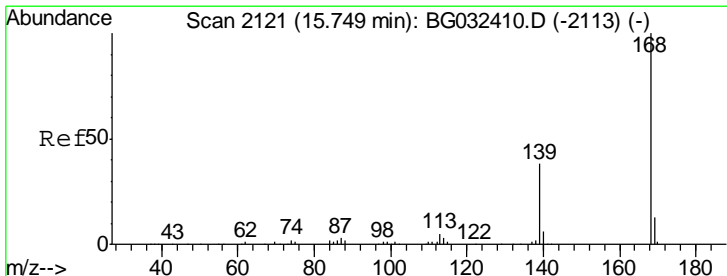
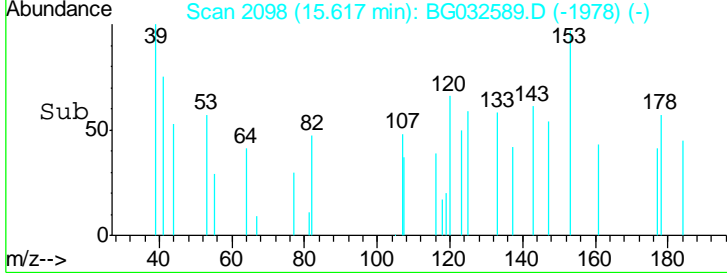
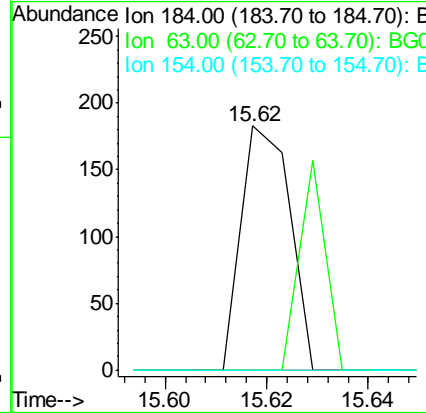
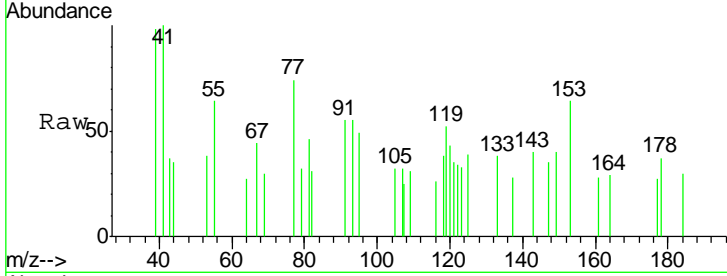




#53  
 2,4-Dinitrophenol  
 Concen: 4.248 ng  
 RT: 15.62 min Scan# 2098  
 Delta R.T. 0.17 min  
 Lab File: BG032589.D  
 Acq: 7 Feb 2018 8:04

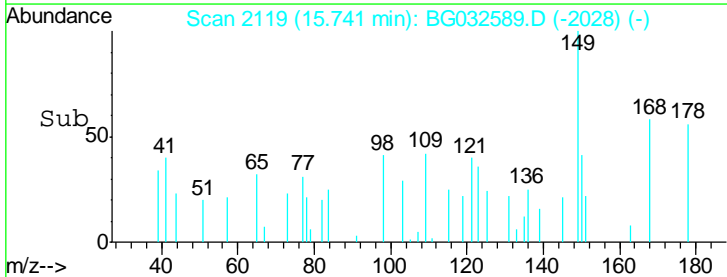
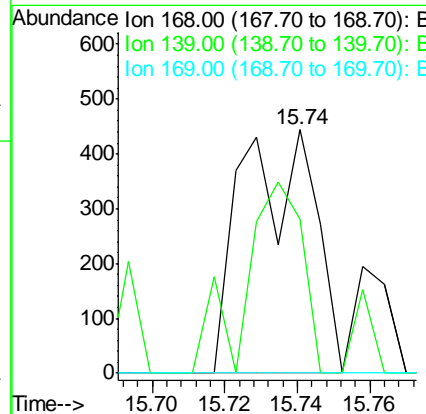
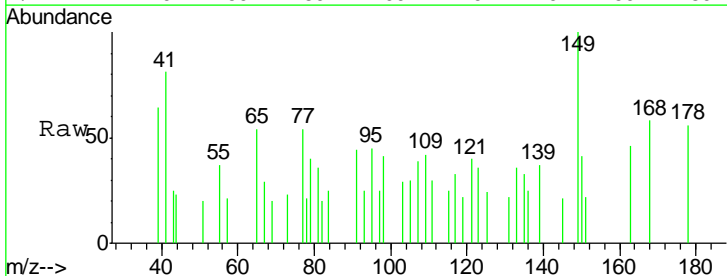
Instrument :  
 BNA\_G  
 ClientSampled :

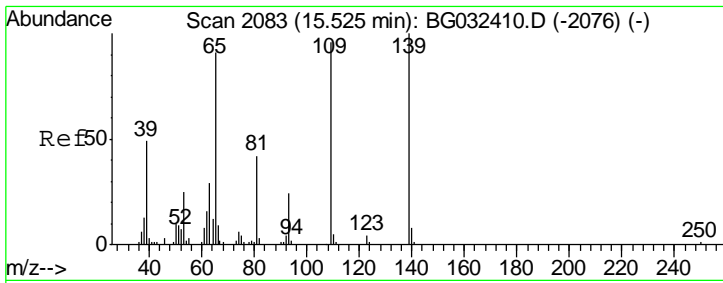
Tgt Ion	Resp	Lower	Upper
184	100		
63	0.0	59.8	89.8#
154	0.0	101.8	152.8#



#54  
 Dibenzofuran  
 Concen: 0.090 ng  
 RT: 15.74 min Scan# 2119  
 Delta R.T. 0.00 min  
 Lab File: BG032589.D  
 Acq: 7 Feb 2018 8:04

Tgt Ion	Resp	Lower	Upper
168	100		
139	63.3	28.6	43.0#
169	0.0	11.2	16.8#

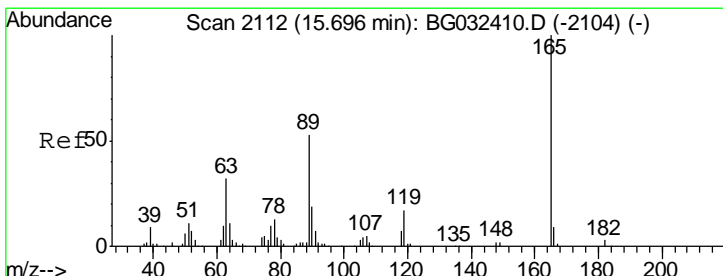
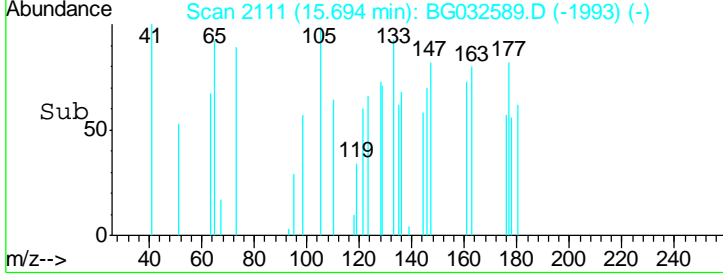
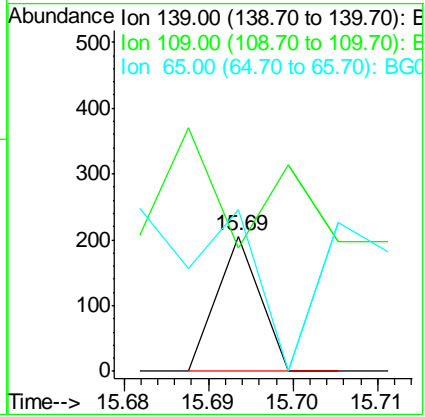
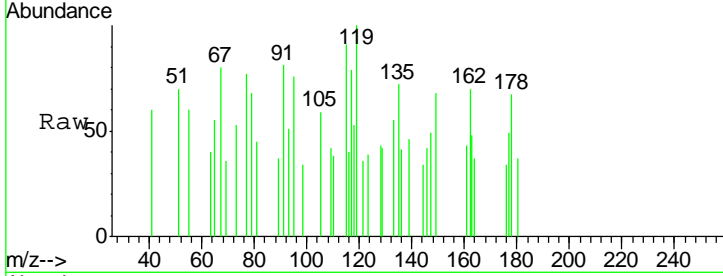




#55  
 4-Nitrophenol  
 Concen: 0.085 ng  
 RT: 15.69 min Scan# 2111  
 Delta R.T. 0.16 min  
 Lab File: BG032589.D  
 Acq: 7 Feb 2018 8:04

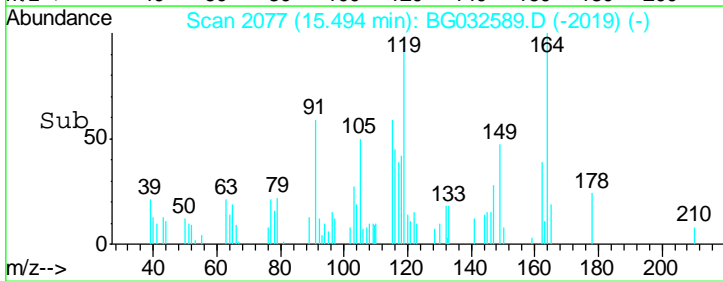
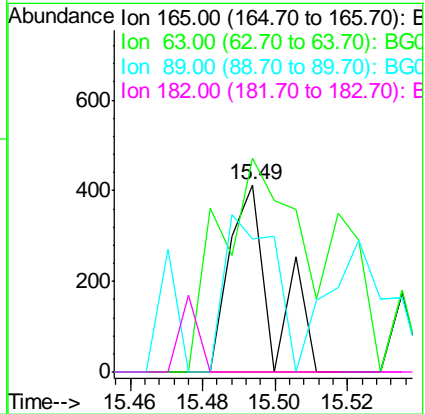
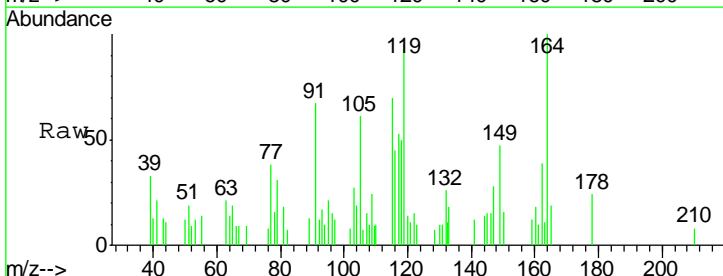
Instrument :  
 BNA\_G  
 ClientSampled :

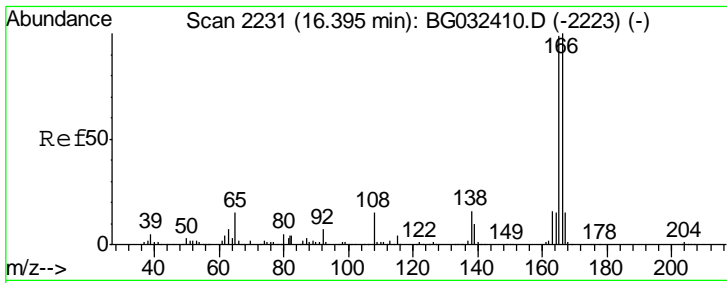
Tgt Ion	Resp	Lower	Upper
139	100		
109	91.7	62.2	102.2
65	120.0	97.2	137.2



#56  
 2,4-Dinitrotoluene  
 Concen: 0.186 ng  
 RT: 15.49 min Scan# 2077  
 Delta R.T. -0.19 min  
 Lab File: BG032589.D  
 Acq: 7 Feb 2018 8:04

Tgt Ion	Resp	Lower	Upper
165	100		
63	114.0	42.0	63.0#
89	71.2	66.9	100.3
182	0.0	2.6	3.8#

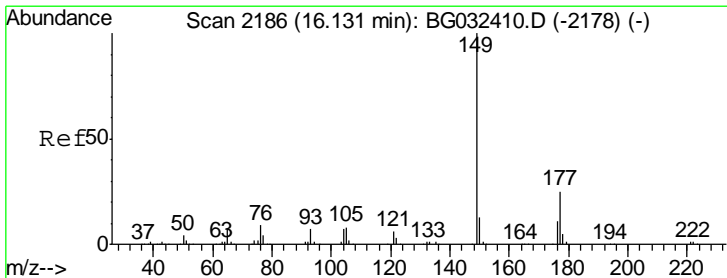
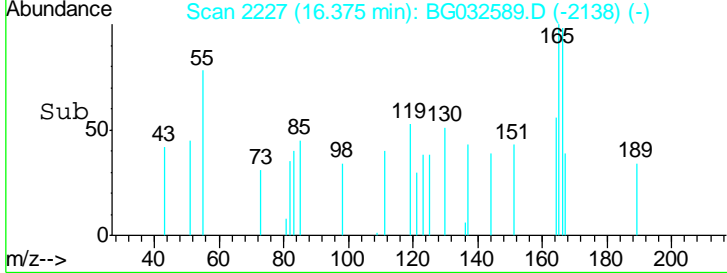
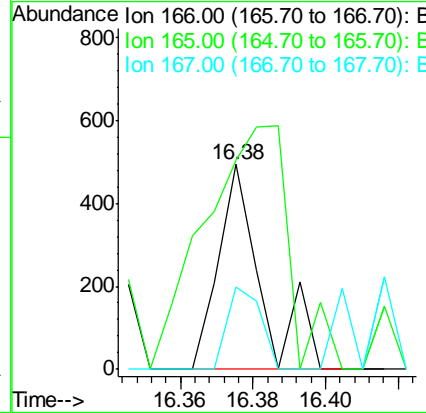
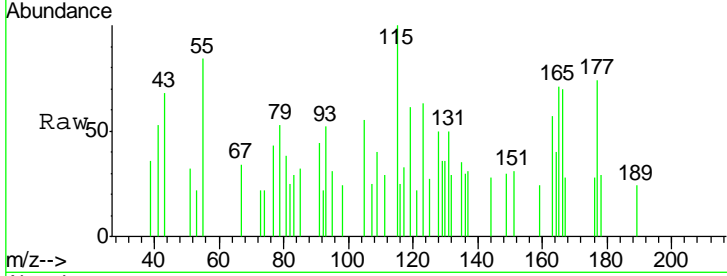




#57  
 Fluorene  
 Concen: 0.072 ng  
 RT: 16.38 min Scan# 2227  
 Delta R.T. -0.01 min  
 Lab File: BG032589.D  
 Acq: 7 Feb 2018 8:04

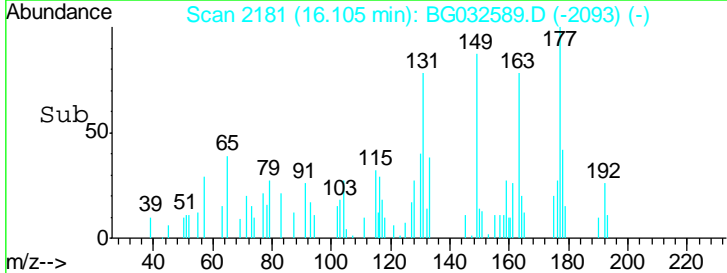
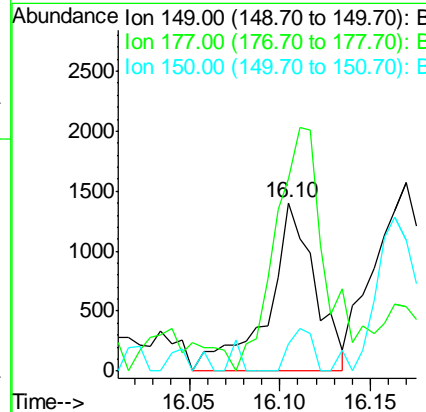
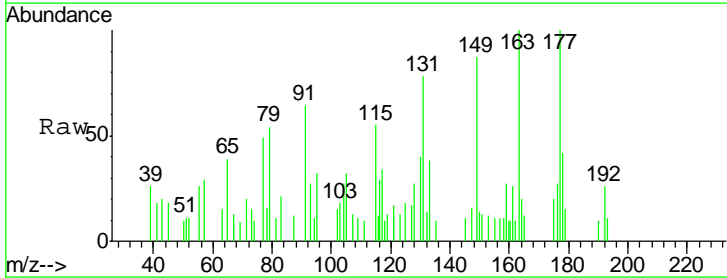
Instrument :  
 BNA\_G  
 ClientSampled :

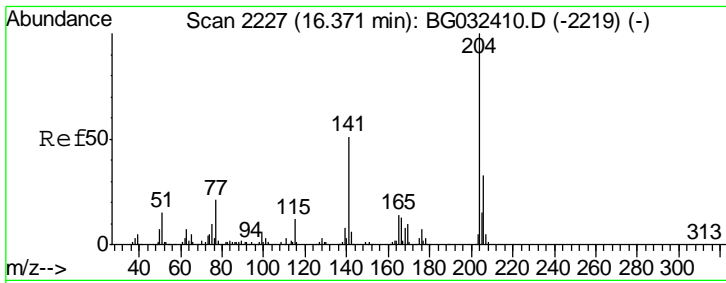
Tgt Ion	Resp	Lower	Upper
166	407		
165	102.0	80.6	121.0
167	40.3	10.4	15.6#



#59  
 Diethylphthalate  
 Concen: 0.419 ng  
 RT: 16.10 min Scan# 2181  
 Delta R.T. -0.01 min  
 Lab File: BG032589.D  
 Acq: 7 Feb 2018 8:04

Tgt Ion	Resp	Lower	Upper
149	2503		
177	114.5	18.5	27.7#
150	16.5	10.2	15.2#

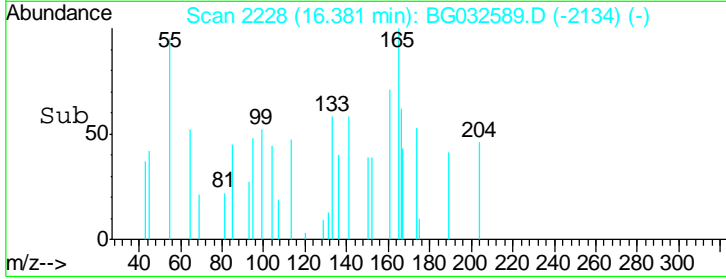
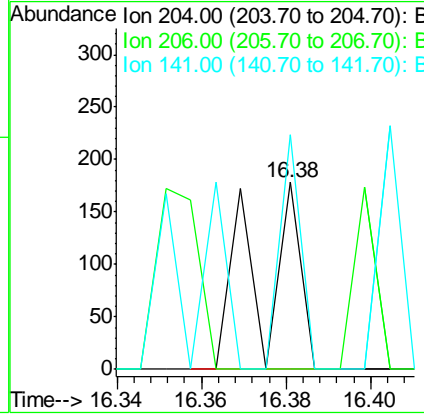
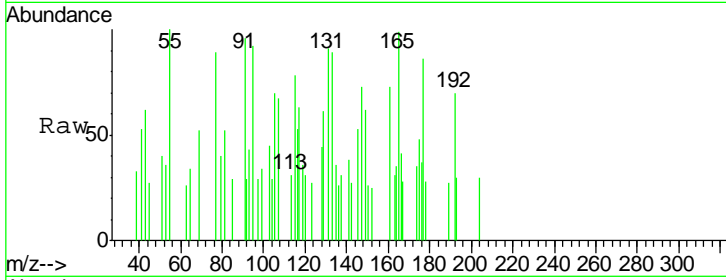




#60  
 4-Chlorophenyl-phenylether  
 Concen: 0.035 ng  
 RT: 16.38 min Scan# 2228  
 Delta R.T. 0.02 min  
 Lab File: BG032589.D  
 Acq: 7 Feb 2018 8:04

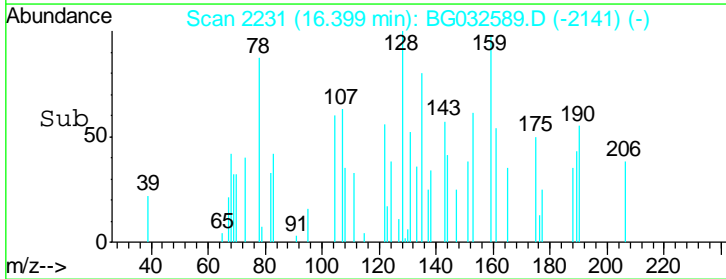
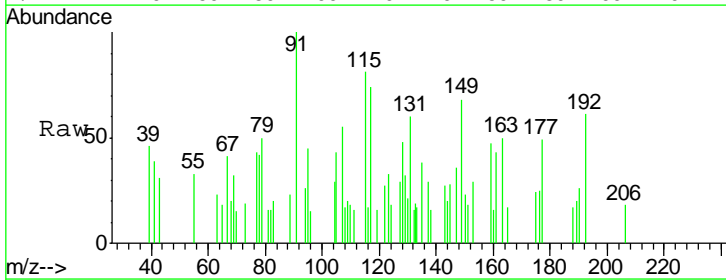
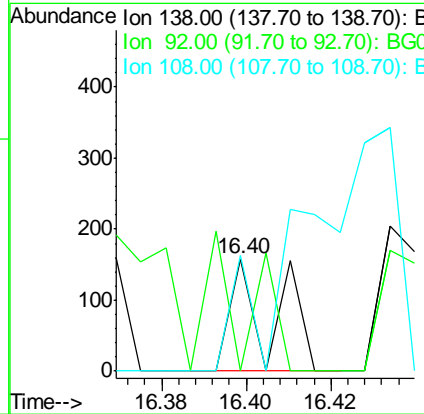
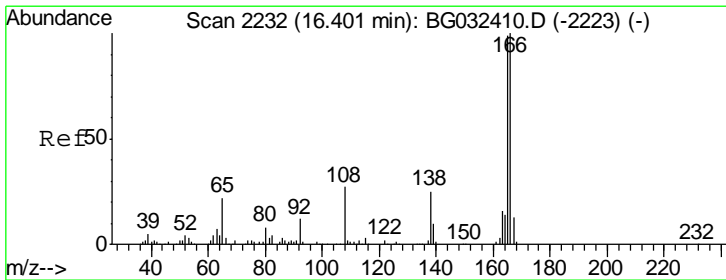
Instrument :  
 BNA\_G  
 ClientSampled :

Tgt Ion	Resp	Lower	Upper
204	124		
206	0.0	26.2	39.2#
141	125.8	45.8	68.6#

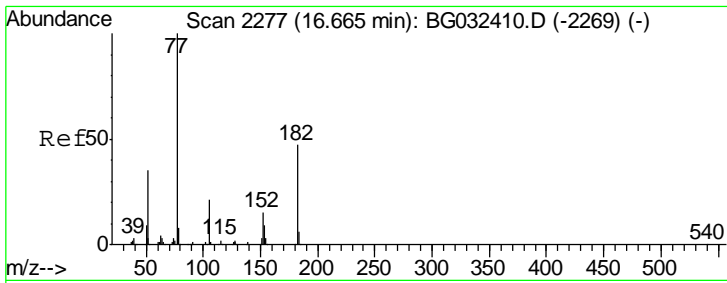


#61  
 4-Nitroaniline  
 Concen: 0.092 ng  
 RT: 16.40 min Scan# 2231  
 Delta R.T. -0.00 min  
 Lab File: BG032589.D  
 Acq: 7 Feb 2018 8:04

Tgt Ion	Resp	Lower	Upper
138	111		
138	100		
92	0.0	40.1	80.1#
108	103.2	65.4	105.4



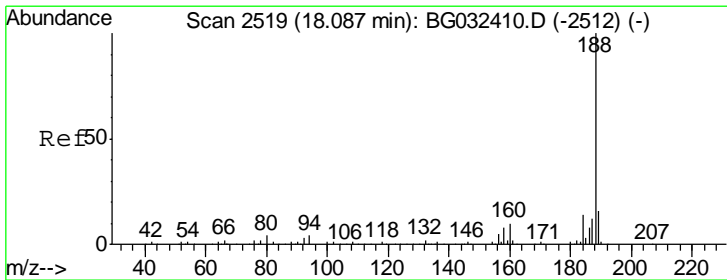
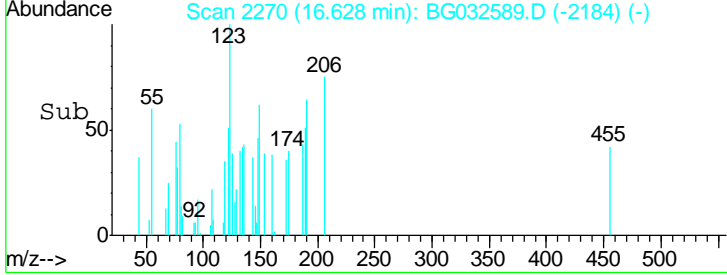
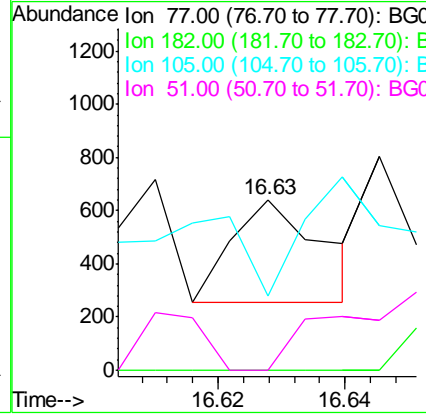
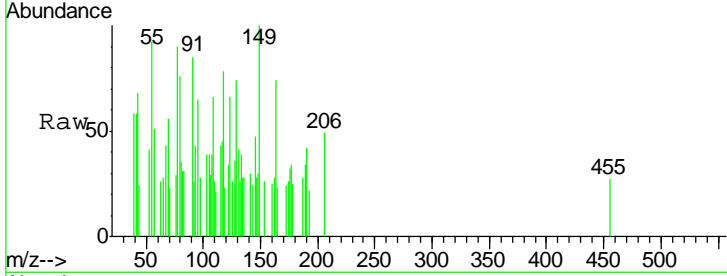




#62  
 Azobenzene  
 Concen: 0.105 ng  
 RT: 16.63 min Scan# 2270  
 Delta R.T. -0.03 min  
 Lab File: BG032589.D  
 Acq: 7 Feb 2018 8:04

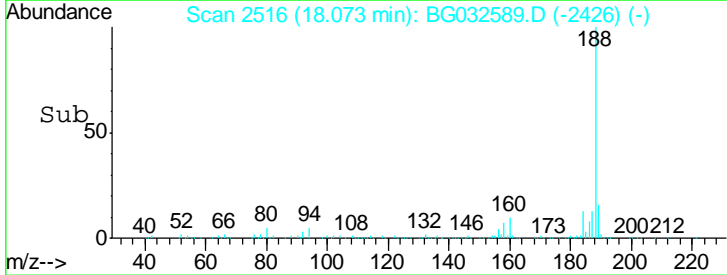
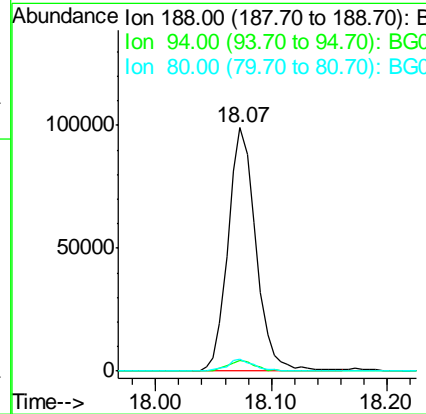
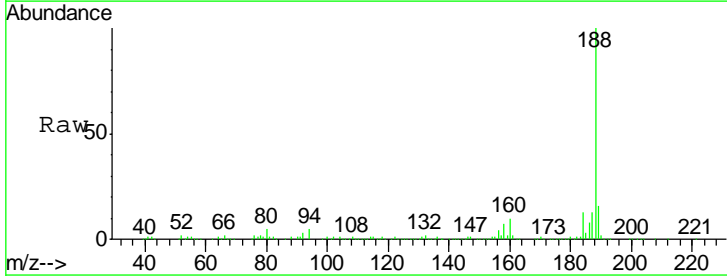
Instrument :  
 BNA\_G  
 ClientSampled :

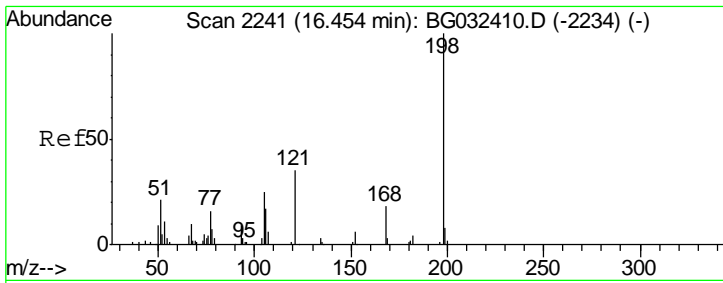
Tgt Ion	Resp	Lower	Upper
77	100		
182	0.0	7.4	47.4#
105	43.6	0.3	40.3#
51	0.0	11.6	51.6#



#63  
 Phenanthrene-d10  
 Concen: 20.000 ng  
 RT: 18.07 min Scan# 2516  
 Delta R.T. -0.00 min  
 Lab File: BG032589.D  
 Acq: 7 Feb 2018 8:04

Tgt Ion	Resp	Lower	Upper
188	100		
94	4.6	6.9	10.3#
80	5.1	7.7	11.5#

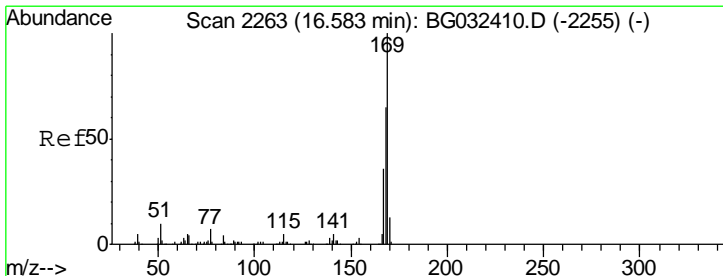
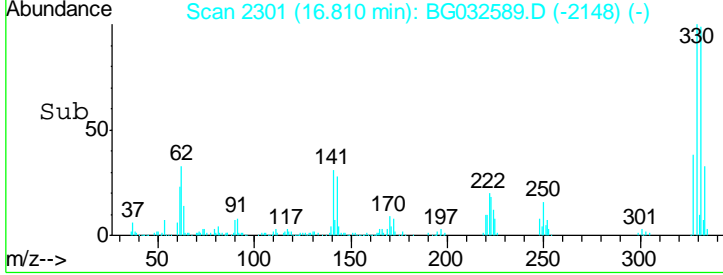
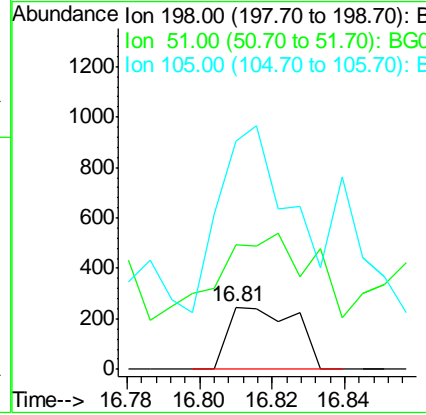
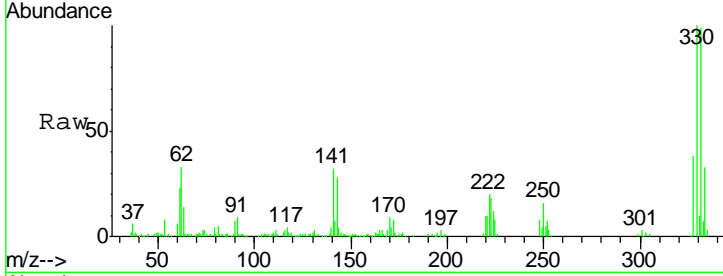




#64  
 4,6-Dinitro-2-methylphenol  
 Concen: 0.256 ng  
 RT: 16.81 min Scan# 2301  
 Delta R.T. 0.37 min  
 Lab File: BG032589.D  
 Acq: 7 Feb 2018 8:04

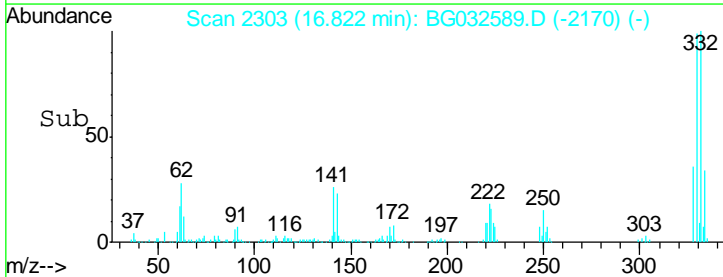
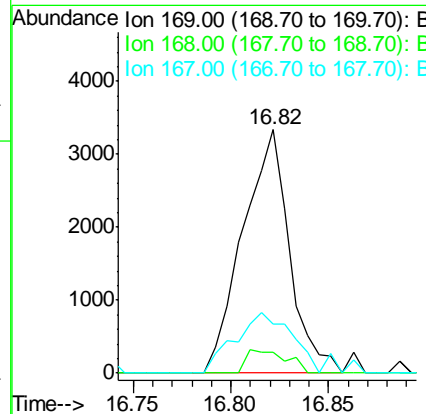
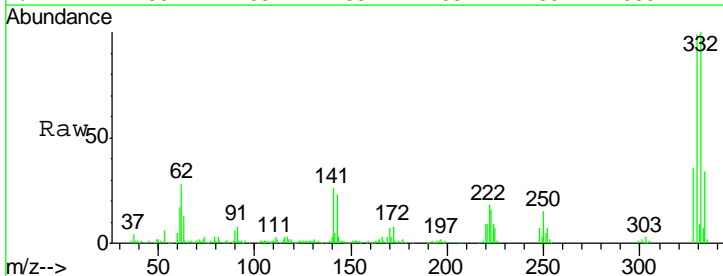
Instrument :  
 BNA\_G  
 ClientSampled :

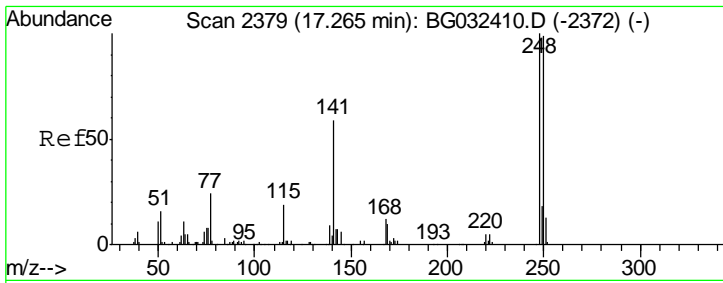
Tgt Ion	Resp	Lower	Upper
198	100		
51	201.2	30.6	70.6#
105	369.0	23.8	63.8#



#65  
 n-Nitrosodiphenylamine  
 Concen: 1.118 ng  
 RT: 16.82 min Scan# 2303  
 Delta R.T. 0.25 min  
 Lab File: BG032589.D  
 Acq: 7 Feb 2018 8:04

Tgt Ion	Resp	Lower	Upper
169	100		
168	8.7	55.7	83.5#
167	20.0	30.1	45.1#

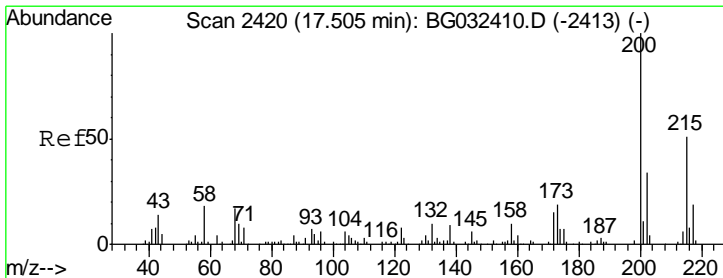
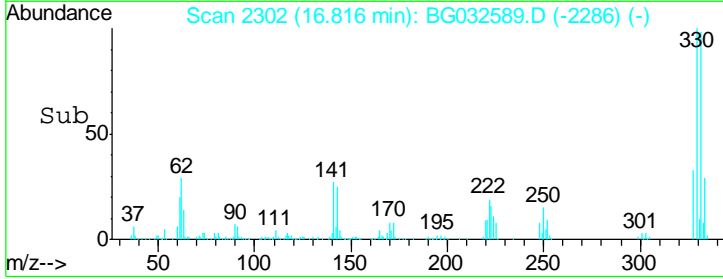
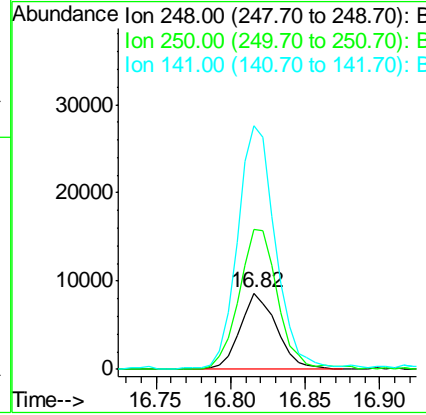
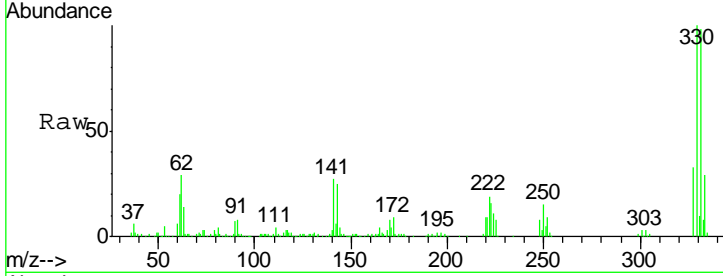




#66  
 4-Bromophenyl-phenylether  
 Concen: 5.986 ng  
 RT: 16.82 min Scan# 2302  
 Delta R.T. -0.44 min  
 Lab File: BG032589.D  
 Acq: 7 Feb 2018 8:04

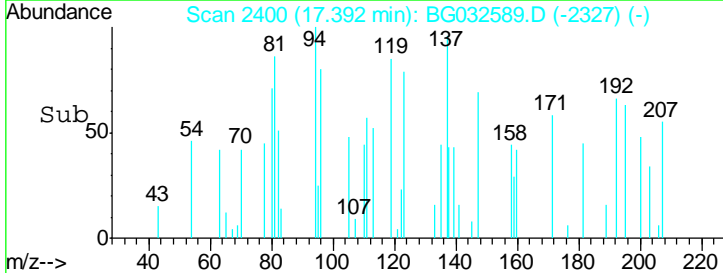
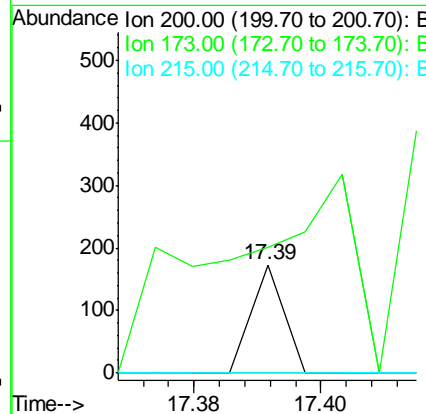
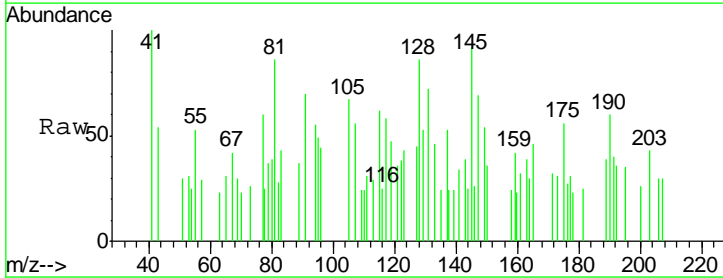
Instrument :  
 BNA\_G  
 ClientSampled :

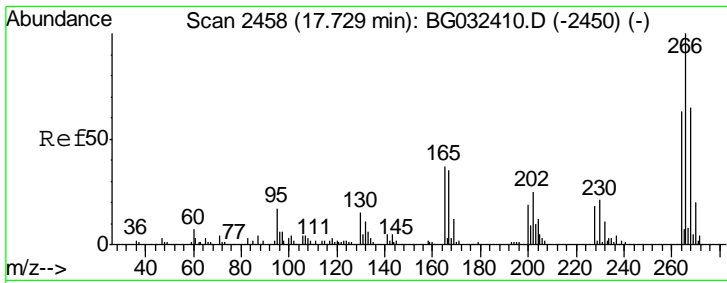
Tgt Ion	Resp	Lower	Upper
248	14672		
250	184.4	77.1	115.7#
141	320.7	50.8	76.2#



#68  
 Atrazine  
 Concen: 0.029 ng  
 RT: 17.39 min Scan# 2400  
 Delta R.T. -0.10 min  
 Lab File: BG032589.D  
 Acq: 7 Feb 2018 8:04

Tgt Ion	Resp	Lower	Upper
200	61		
173	116.2	5.2	45.2#
215	0.0	30.4	70.4#

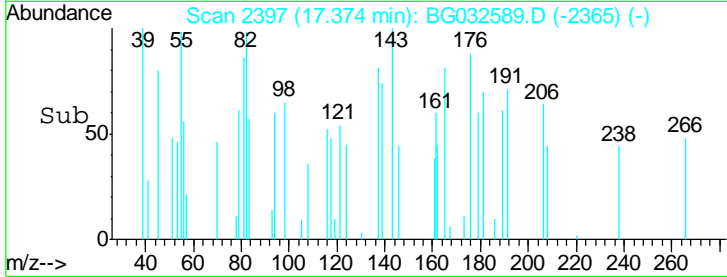
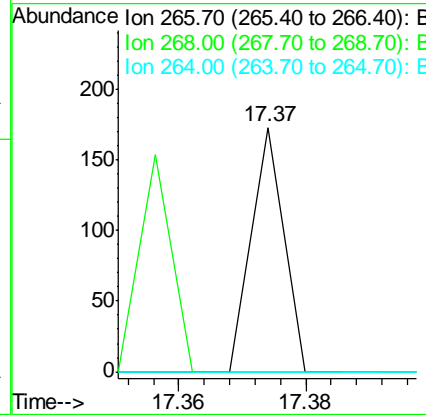
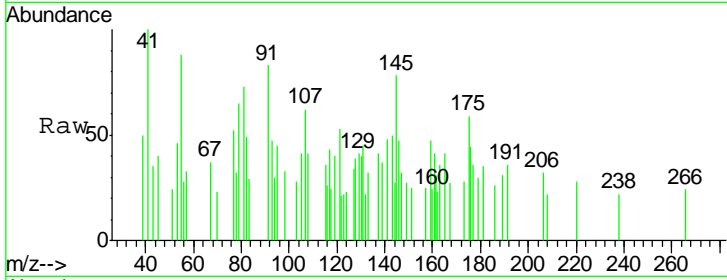




#69  
 Pentachlorophenol  
 Concen: 0.036 ng  
 RT: 17.37 min Scan# 2397  
 Delta R.T. -0.34 min  
 Lab File: BG032589.D  
 Acq: 7 Feb 2018 8:04

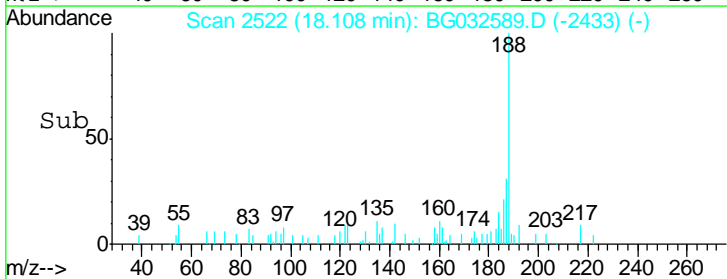
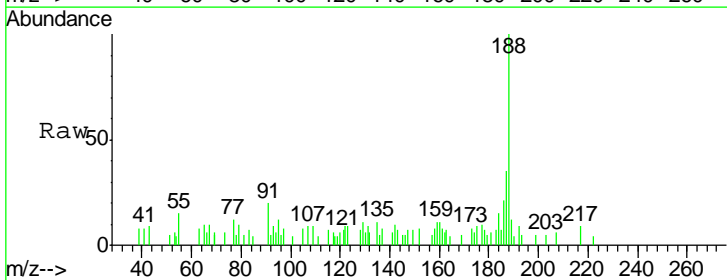
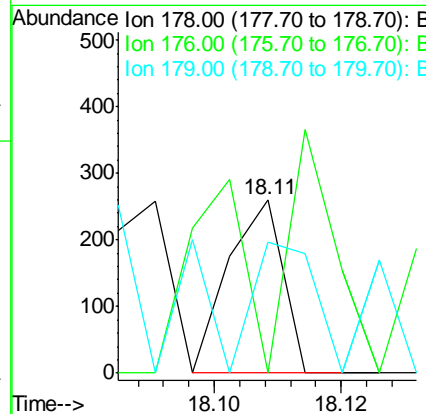
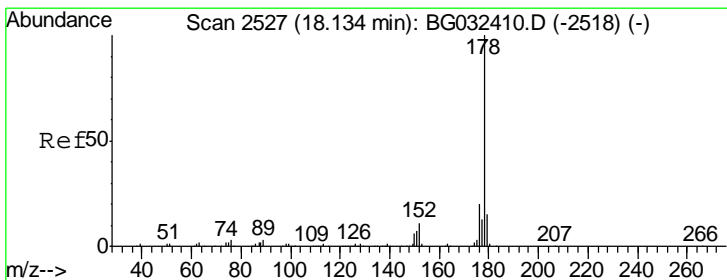
Instrument :  
 BNA\_G  
 ClientSampled :

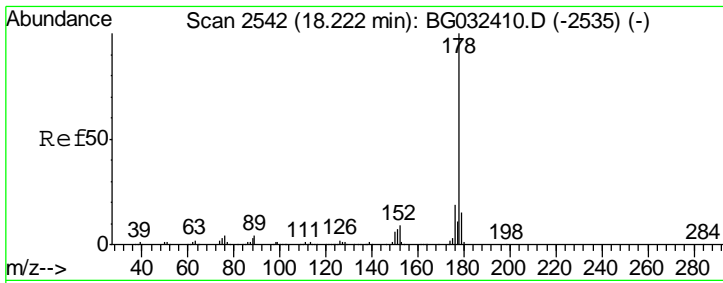
Tgt Ion	Resp	Lower	Upper
266	100		
268	0.0	51.1	76.7#
264	0.0	49.6	74.4#



#70  
 Phenanthrene  
 Concen: 0.017 ng  
 RT: 18.11 min Scan# 2522  
 Delta R.T. -0.01 min  
 Lab File: BG032589.D  
 Acq: 7 Feb 2018 8:04

Tgt Ion	Resp	Lower	Upper
178	100		
176	0.0	15.7	23.5#
179	75.1	12.5	18.7#

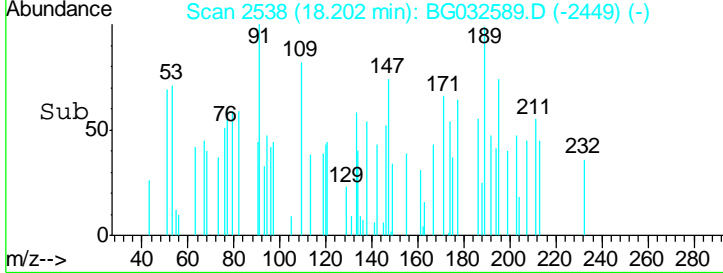
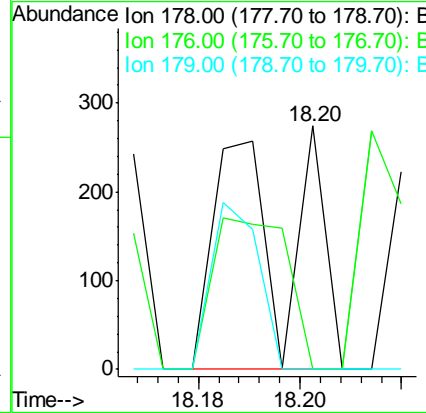
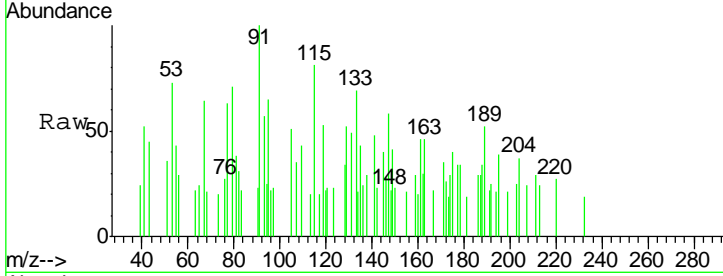




#71  
 Anthracene  
 Concen: 0.030 ng  
 RT: 18.20 min Scan# 2538  
 Delta R.T. -0.01 min  
 Lab File: BG032589.D  
 Acq: 7 Feb 2018 8:04

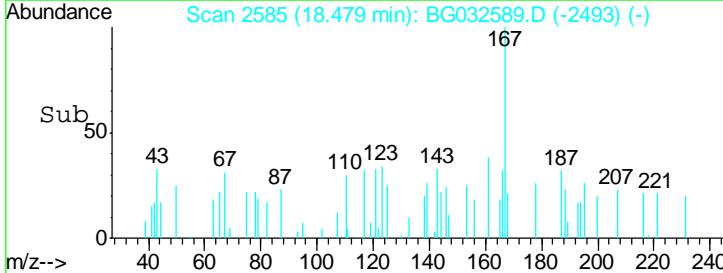
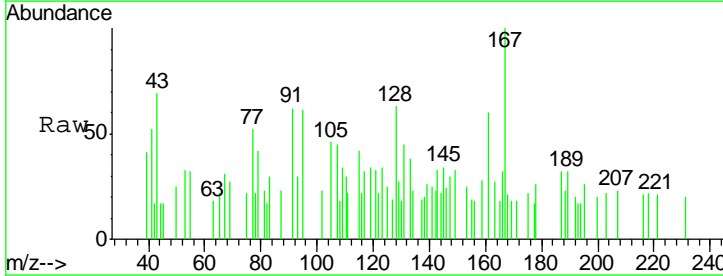
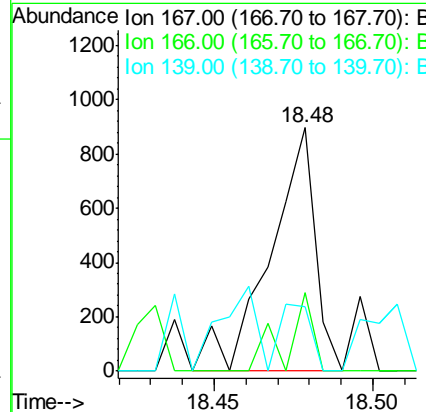
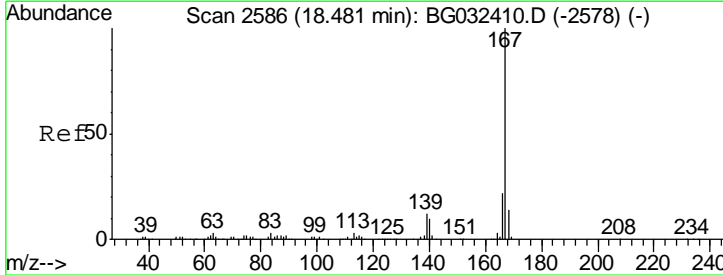
Instrument :  
 BNA\_G  
 ClientSampled :

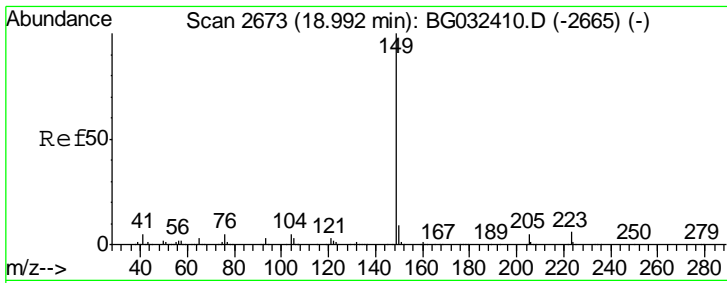
Tgt Ion	Resp	Lower	Upper
178	100		
176	0.0	16.0	24.0#
179	0.0	12.5	18.7#



#72  
 Carbazole  
 Concen: 0.109 ng  
 RT: 18.48 min Scan# 2585  
 Delta R.T. 0.01 min  
 Lab File: BG032589.D  
 Acq: 7 Feb 2018 8:04

Tgt Ion	Resp	Lower	Upper
167	100		
166	32.1	18.2	27.4#
139	26.2	9.4	14.2#

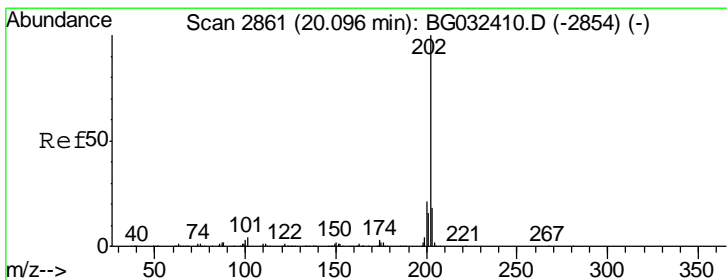
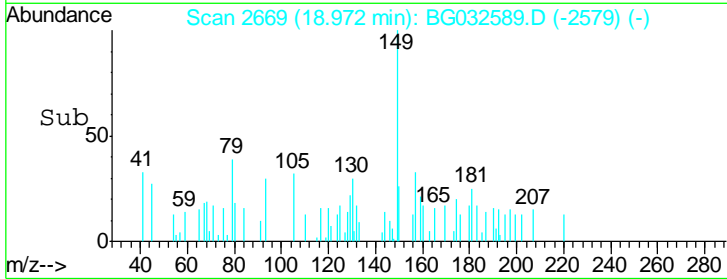
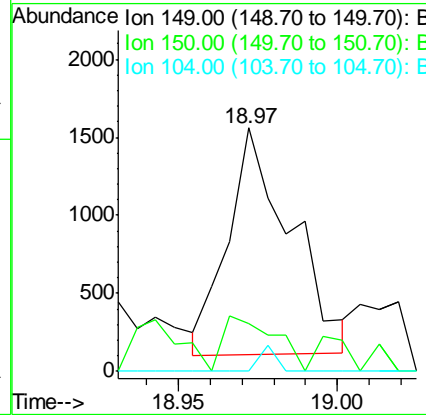
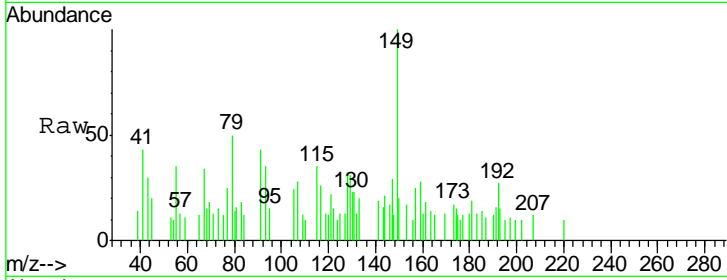




#73  
 Di-n-butylphthalate  
 Concen: 0.222 ng  
 RT: 18.97 min Scan# 2669  
 Delta R.T. -0.00 min  
 Lab File: BG032589.D  
 Acq: 7 Feb 2018 8:04

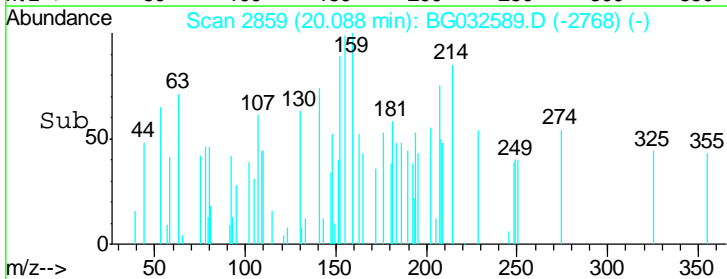
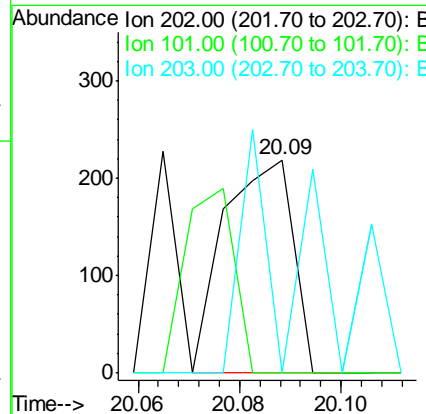
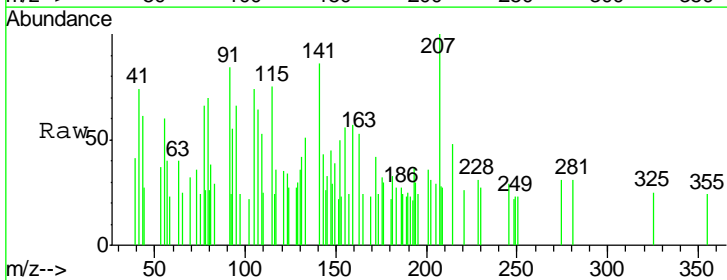
Instrument :  
 BNA\_G  
 ClientSampled :

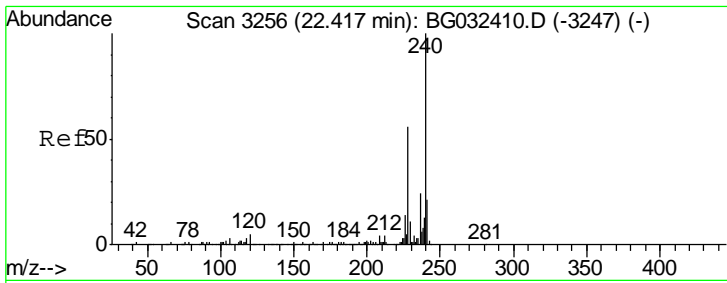
Tgt Ion	Resp	Lower	Upper
149	100		
150	19.7	7.8	11.6#
104	0.0	3.9	5.9#



#74  
 Fluoranthene  
 Concen: 0.017 ng  
 RT: 20.09 min Scan# 2859  
 Delta R.T. 0.00 min  
 Lab File: BG032589.D  
 Acq: 7 Feb 2018 8:04

Tgt Ion	Resp	Lower	Upper
202	100		
101	0.0	0.0	28.9
203	0.0	0.0	37.5

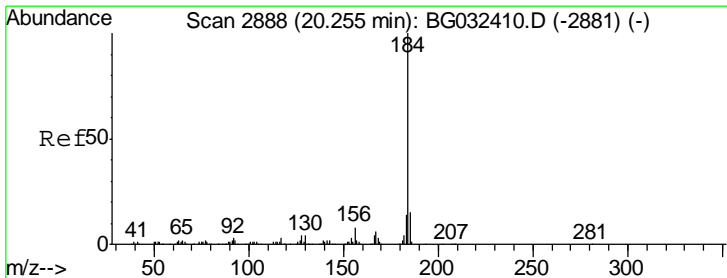
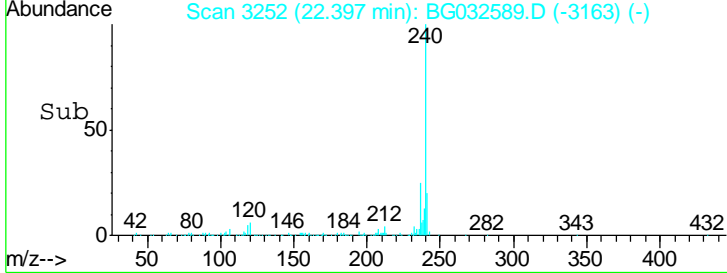
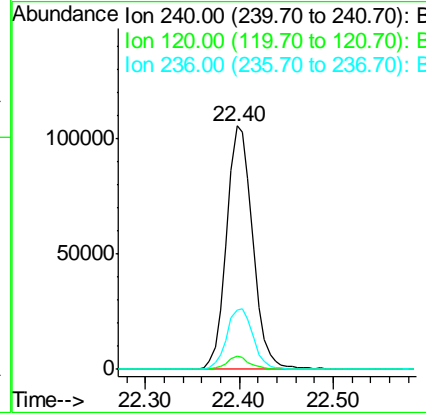
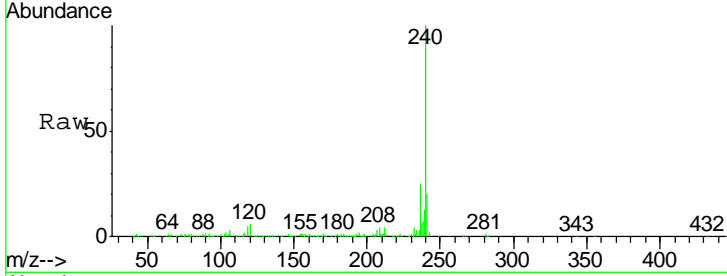




#75  
 Chrysene-d12  
 Concen: 20.000 ng  
 RT: 22.40 min Scan# 3252  
 Delta R.T. -0.01 min  
 Lab File: BG032589.D  
 Acq: 7 Feb 2018 8:04

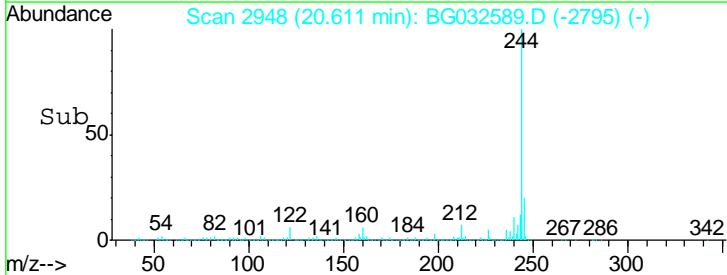
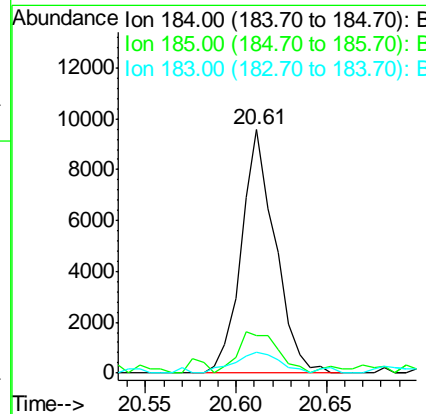
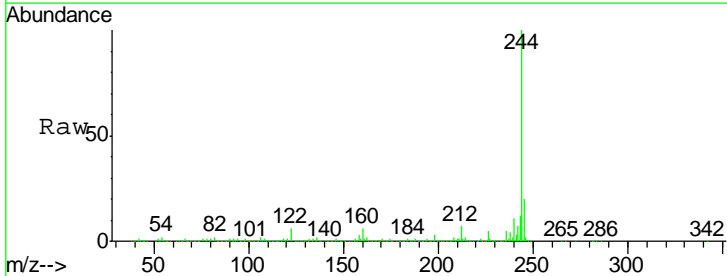
Instrument :  
 BNA\_G  
 ClientSampled :

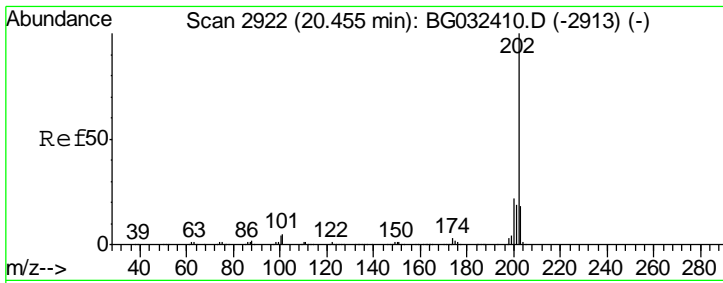
Tgt Ion	Resp	Lower	Upper
240	100		
120	5.6	6.8	10.2#
236	24.6	20.9	31.3



#76  
 Benzidine  
 Concen: 3.087 ng  
 RT: 20.61 min Scan# 2948  
 Delta R.T. 0.37 min  
 Lab File: BG032589.D  
 Acq: 7 Feb 2018 8:04

Tgt Ion	Resp	Lower	Upper
184	100		
185	15.4	11.1	16.7
183	8.6	10.6	16.0#

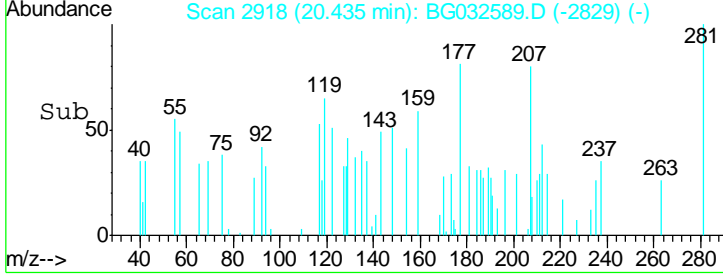
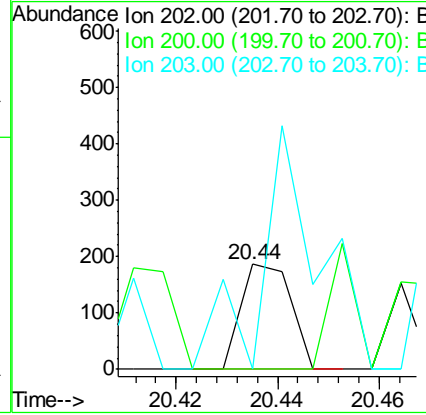
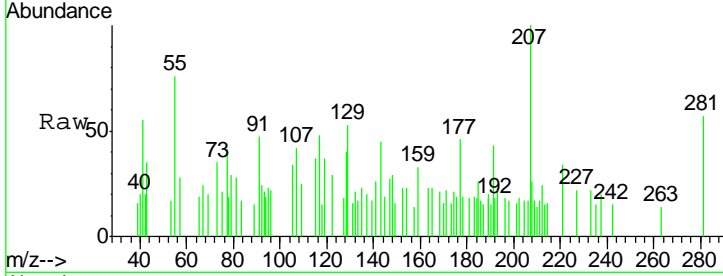




#77  
 Pyrene  
 Concen: 0.010 ng  
 RT: 20.44 min Scan# 2918  
 Delta R.T. -0.01 min  
 Lab File: BG032589.D  
 Acq: 7 Feb 2018 8:04

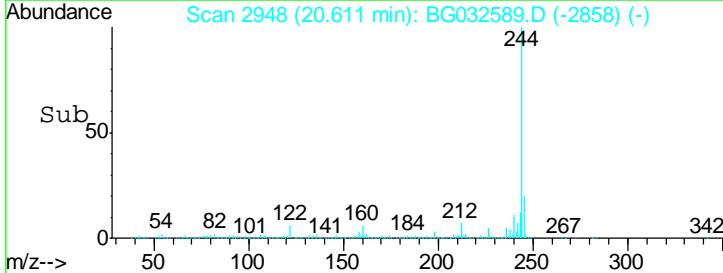
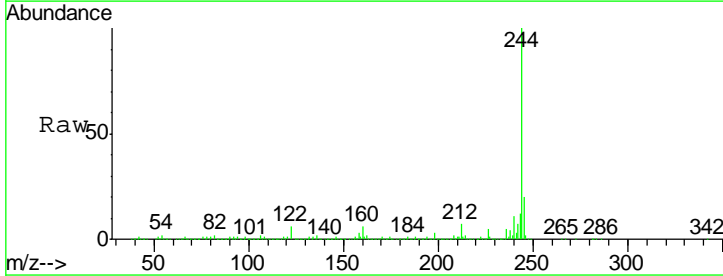
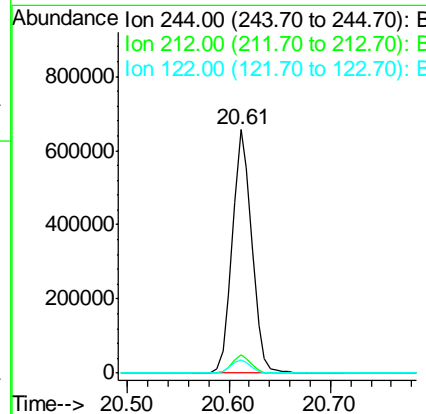
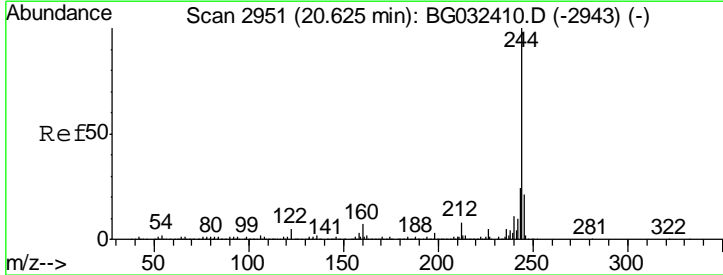
Instrument :  
 BNA\_G  
 ClientSampled :

Tgt Ion	Resp	Lower	Upper
202	100		
200	0.0	16.9	25.3#
203	0.0	13.9	20.9#

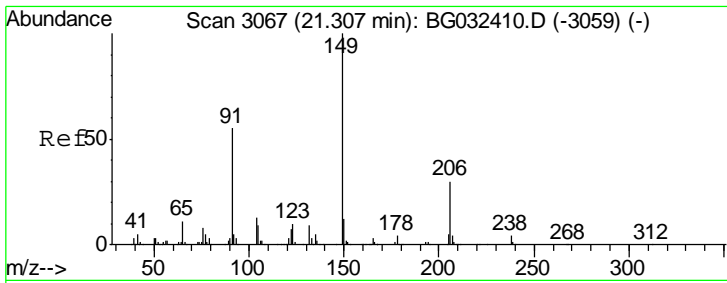


#78  
 Terphenyl-d14  
 Concen: 92.010 ng  
 RT: 20.61 min Scan# 2948  
 Delta R.T. -0.00 min  
 Lab File: BG032589.D  
 Acq: 7 Feb 2018 8:04

Tgt Ion	Resp	Lower	Upper
244	100		
212	7.3	5.8	8.8
122	5.6	7.0	10.4#



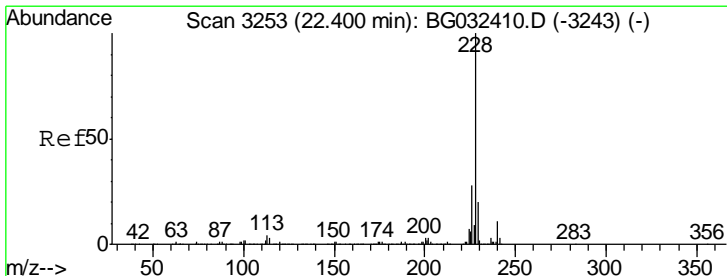
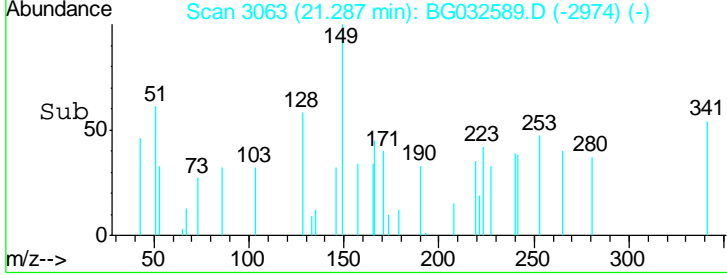
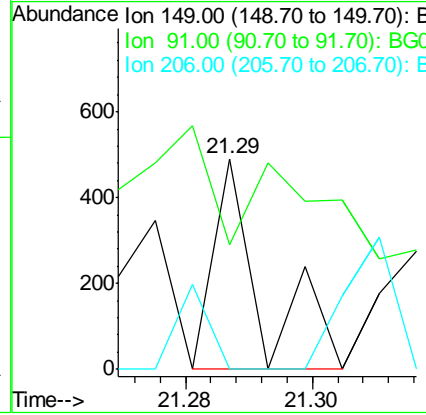
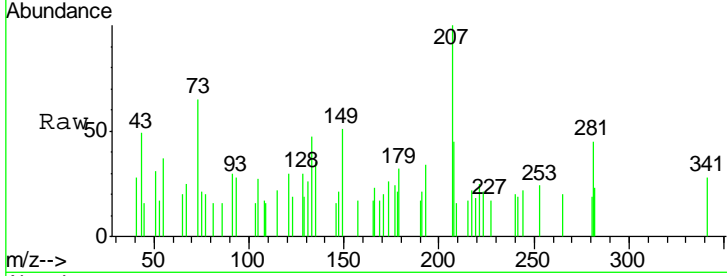




#79  
 Butylbenzylphthalate  
 Concen: 0.065 ng  
 RT: 21.29 min Scan# 3063  
 Delta R.T. -0.01 min  
 Lab File: BG032589.D  
 Acq: 7 Feb 2018 8:04

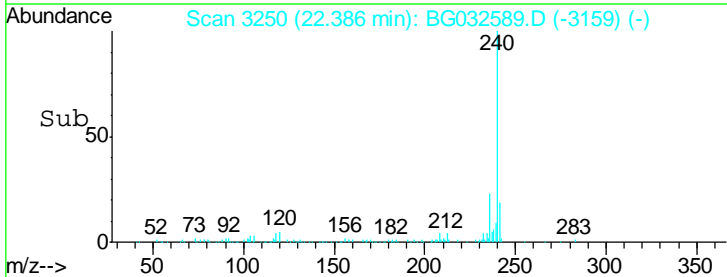
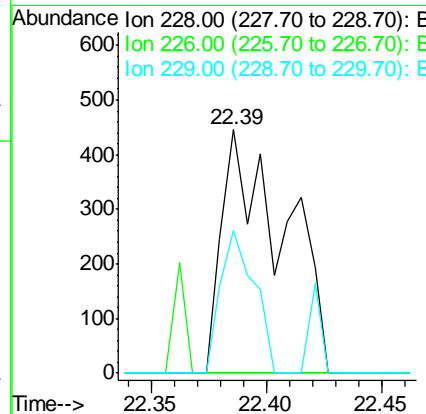
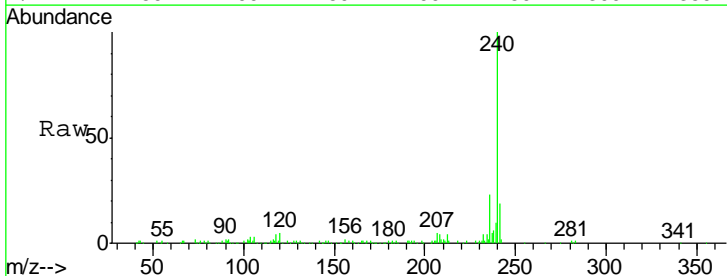
Instrument :  
 BNA\_G  
 ClientSampled :

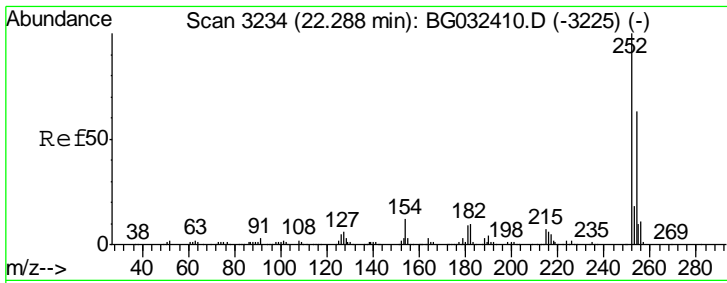
Tgt Ion	Resp	Lower	Upper
149	100		
91	59.1	62.2	93.2#
206	0.0	18.6	27.8#



#80  
 Benzo(a)anthracene  
 Concen: 0.065 ng  
 RT: 22.39 min Scan# 3250  
 Delta R.T. 0.00 min  
 Lab File: BG032589.D  
 Acq: 7 Feb 2018 8:04

Tgt Ion	Resp	Lower	Upper
228	100		
226	0.0	22.7	34.1#
229	58.3	16.2	24.2#

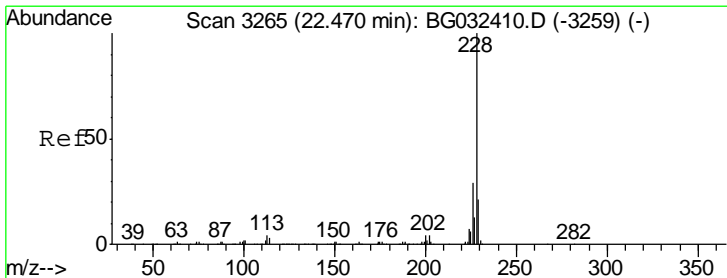
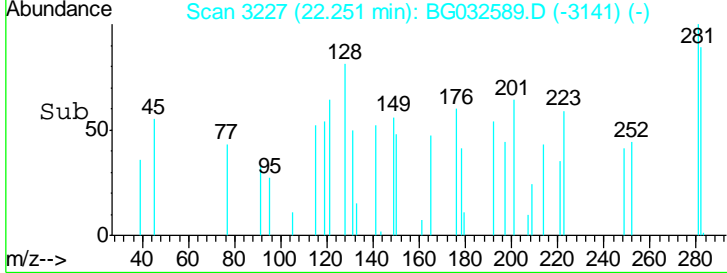
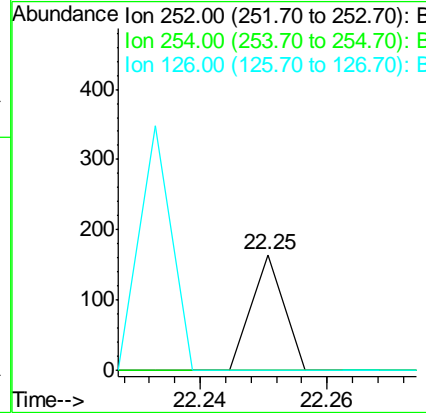
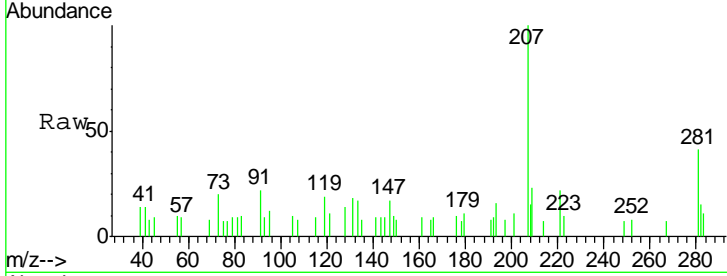




#81  
 3,3'-Dichlorobenzidine  
 Concen: 0.012 ng  
 RT: 22.25 min Scan# 3227  
 Delta R.T. -0.03 min  
 Lab File: BG032589.D  
 Acq: 7 Feb 2018 8:04

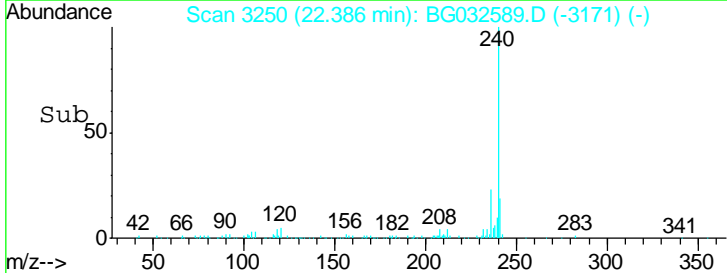
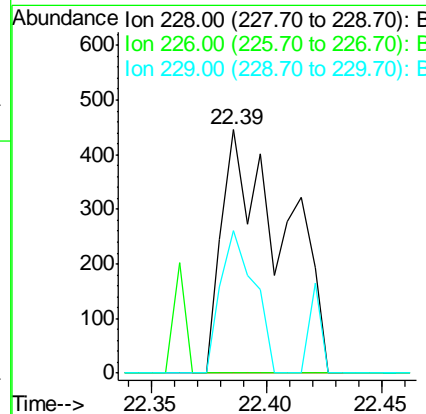
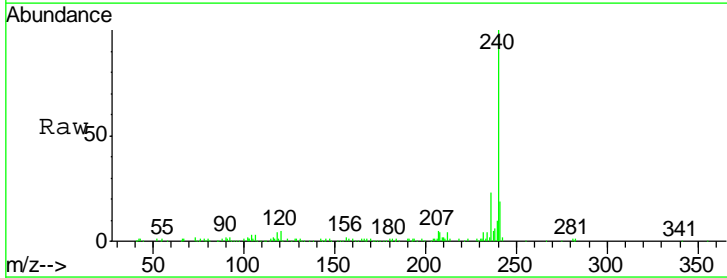
Instrument :  
 BNA\_G  
 ClientSampled :

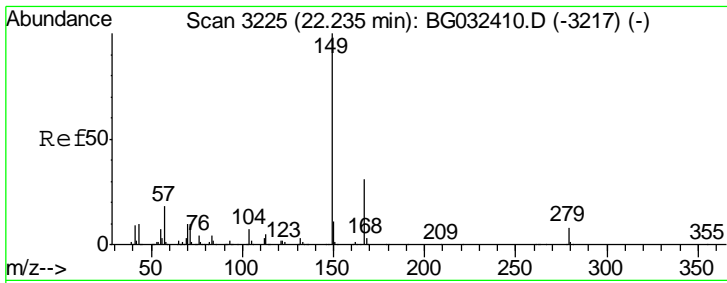
Tgt Ion	Resp	Lower	Upper
252	100		
254	0.0	50.8	76.2#
126	0.0	7.4	11.2#



#82  
 Chrysene  
 Concen: 0.067 ng  
 RT: 22.39 min Scan# 3250  
 Delta R.T. -0.07 min  
 Lab File: BG032589.D  
 Acq: 7 Feb 2018 8:04

Tgt Ion	Resp	Lower	Upper
228	100		
226	0.0	24.9	37.3#
229	58.3	15.0	22.4#

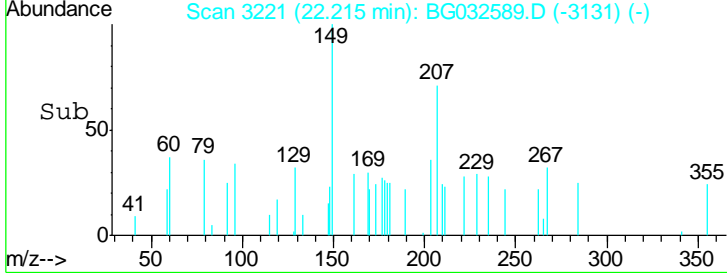
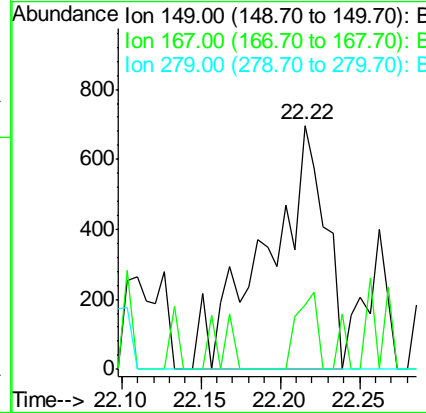
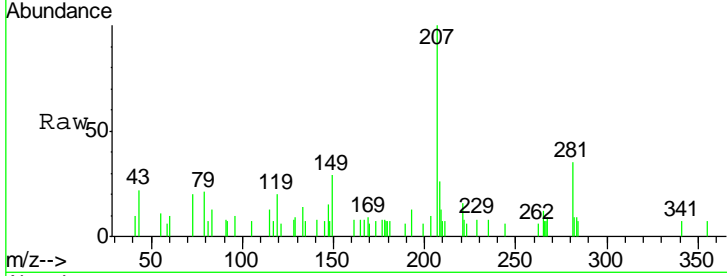




#83  
 Bis(2-ethylhexyl)phthalate  
 Concen: 0.316 ng  
 RT: 22.22 min Scan# 3221  
 Delta R.T. -0.00 min  
 Lab File: BG032589.D  
 Acq: 7 Feb 2018 8:04

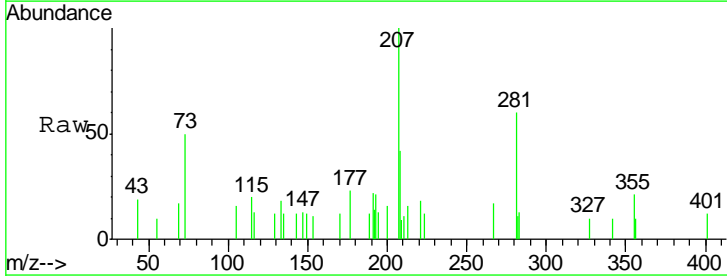
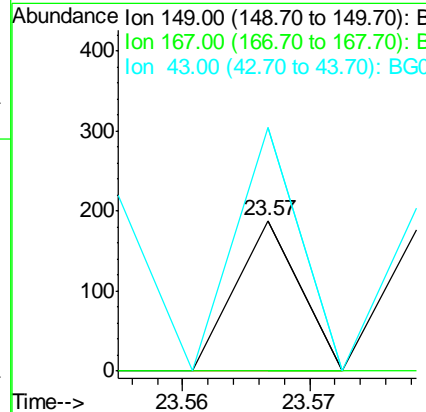
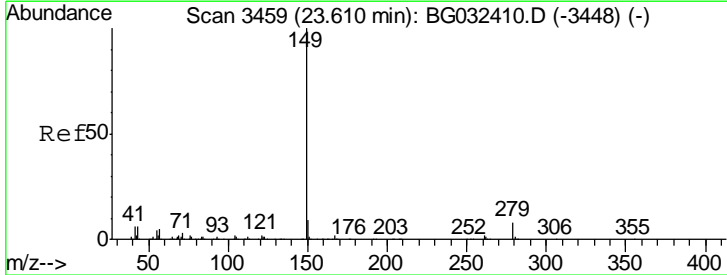
Instrument :  
 BNA\_G  
 ClientSampled :

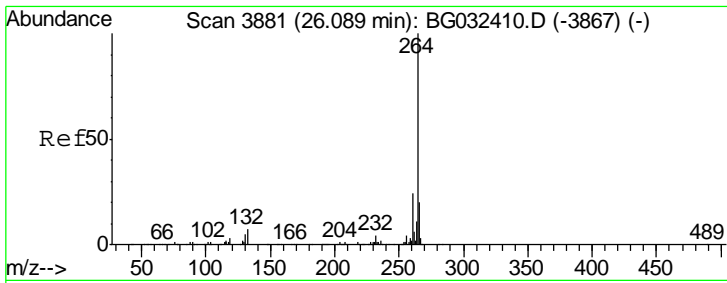
Tgt Ion	Resp	Lower	Upper
149	1770		
167	26.6	24.3	36.5
279	0.0	4.0	6.0#



#84  
 Di-n-octyl phthalate  
 Concen: 0.007 ng  
 RT: 23.57 min Scan# 3451  
 Delta R.T. -0.01 min  
 Lab File: BG032589.D  
 Acq: 7 Feb 2018 8:04

Tgt Ion	Resp	Lower	Upper
149	66		
167	0.0	1.4	2.0#
43	271.2	8.9	13.3#

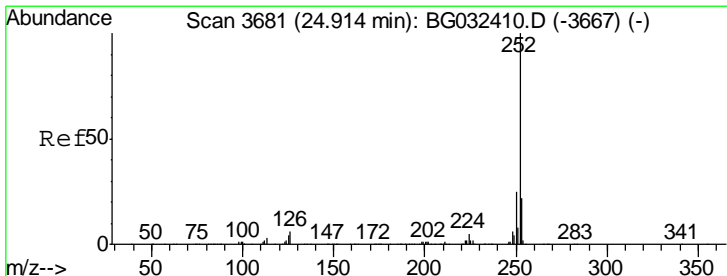
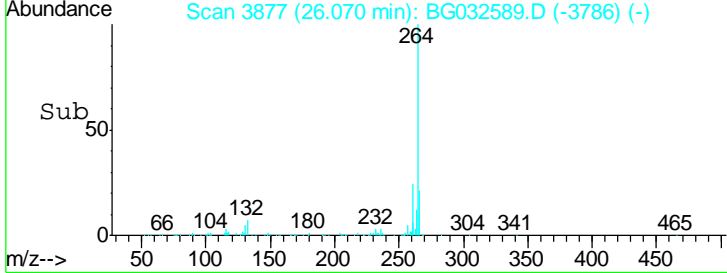
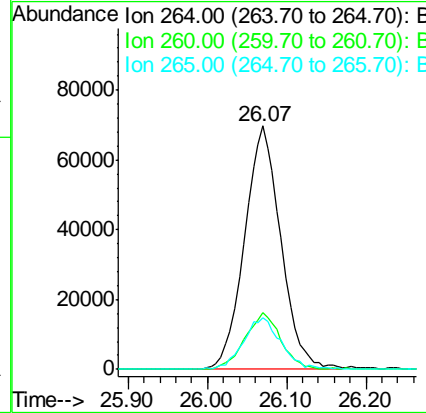
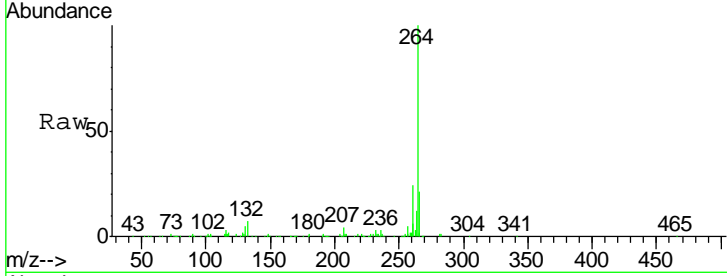




#86  
 Perylene-d12  
 Concen: 20.000 ng  
 RT: 26.07 min Scan# 3877  
 Delta R.T. 0.00 min  
 Lab File: BG032589.D  
 Acq: 7 Feb 2018 8:04

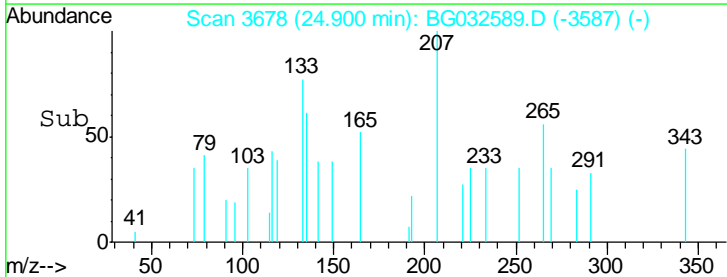
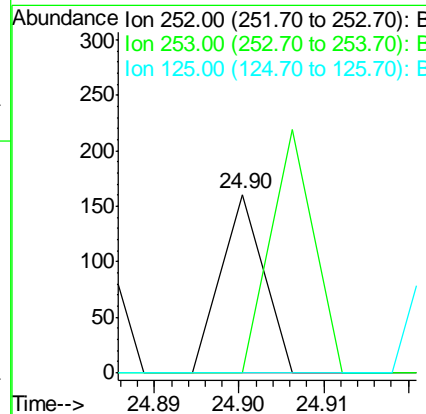
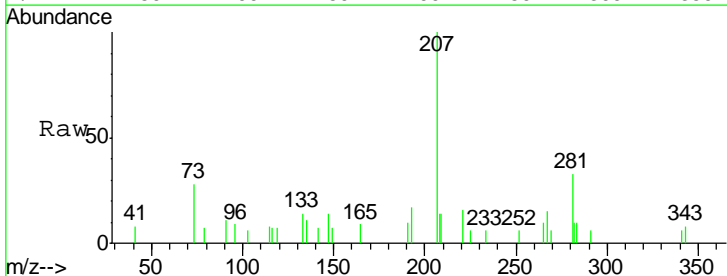
Instrument :  
 BNA\_G  
 ClientSampled :

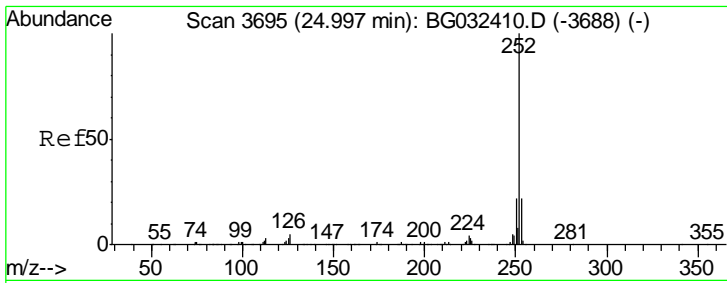
Tgt Ion	Resp	Lower	Upper
264	100		
260	23.5	17.4	26.0
265	21.2	17.7	26.5



#87  
 Benzo(b)fluoranthene  
 Concen: 0.004 ng  
 RT: 24.90 min Scan# 3678  
 Delta R.T. 0.00 min  
 Lab File: BG032589.D  
 Acq: 7 Feb 2018 8:04

Tgt Ion	Resp	Lower	Upper
252	100		
253	0.0	18.2	27.4#
125	0.0	7.2	10.8#

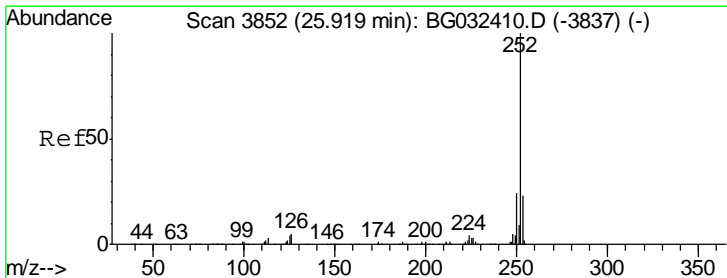
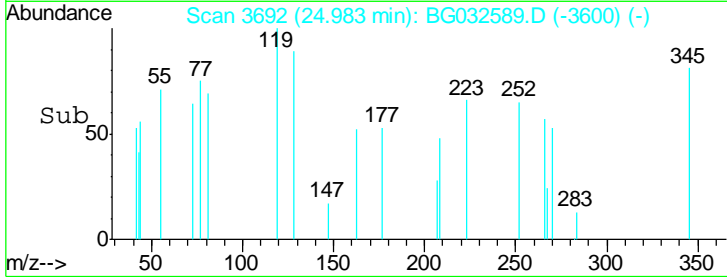
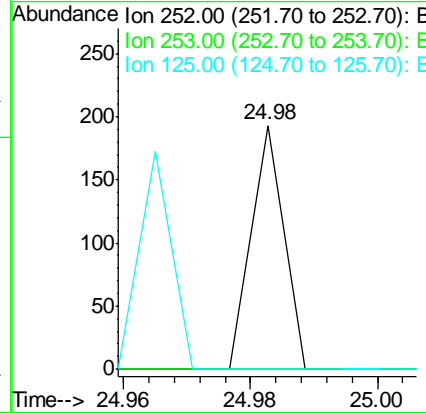
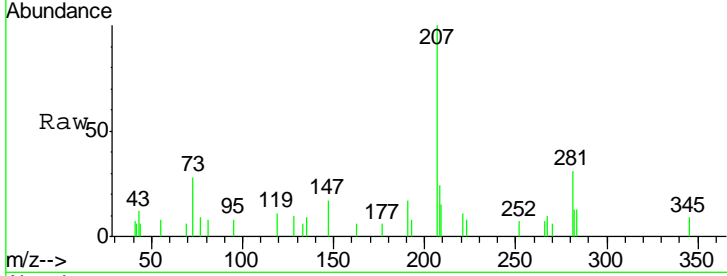




#88  
 Benzo(k)fluoranthene  
 Concen: 0.005 ng  
 RT: 24.98 min Scan# 3692  
 Delta R.T. 0.01 min  
 Lab File: BG032589.D  
 Acq: 7 Feb 2018 8:04

Instrument :  
 BNA\_G  
 ClientSampled :

Tgt Ion	Resp	Lower	Upper
252	100		
253	0.0	17.4	26.2#
125	0.0	6.6	9.8#



#89  
 Benzo(a)pyrene  
 Concen: 0.004 ng  
 RT: 25.95 min Scan# 3857  
 Delta R.T. 0.05 min  
 Lab File: BG032589.D  
 Acq: 7 Feb 2018 8:04

Tgt Ion	Resp	Lower	Upper
252	100		
253	0.0	18.3	27.5#
125	0.0	7.3	10.9#

