

Data Path : Z:\svoasrv\HPCHEM1\BNA\_G\Data\BG021022\  
 Data File : BG052356.D  
 Acq On : 10 Feb 2022 16:22  
 Operator : CG/JU  
 Sample : N1432-16  
 Misc :  
 ALS Vial : 10 Sample Multiplier: 1

Instrument :  
 BNA\_G  
 ClientSampleId :  
 SP-6

Integration Parameters: rteint.p  
 Integrator: RTE  
 Smoothing : ON Filtering: 5  
 Sampling : 1 Min Area: 3 % of largest Peak  
 Start Thrs: 0.2 Max Peaks: 100  
 Stop Thrs : 0 Peak Location: TOP

If leading or trailing edge < 100 prefer < Baseline drop else tangent >  
 Peak separation: 5

Method : Z:\svoasrv\HPCHEM1\BNA\_G\Methods\8270-BG020722.M  
 Title : ASP BNA STANDARDS FOR 5 POINT CALIBRATION

Signal : TIC: BG052356.D\data.ms

peak #	R.T. min	first scan	max scan	last scan	PK TY	peak height	corr. area	corr. % max.	% of total
1	3.823	51	57	64	rBV	12118	18145	1.10%	0.235%
2	5.755	379	386	397	rVB	385614	603864	36.57%	7.830%
3	7.371	654	661	673	rBV	393480	669642	40.55%	8.683%
4	7.741	719	724	729	rBV	17943	28557	1.73%	0.370%
5	7.794	729	733	741	rVB	19382	28501	1.73%	0.370%
6	7.988	758	766	773	rBV2	16402	27557	1.67%	0.357%
7	8.228	798	807	813	rBV	96319	164755	9.98%	2.136%
8	9.397	998	1006	1014	rBV	240715	432747	26.21%	5.611%
9	11.066	1283	1290	1296	rBV	127503	230018	13.93%	2.983%
10	13.492	1696	1703	1711	rBV	610887	953556	57.74%	12.364%
11	13.750	1742	1747	1756	rVB	11887	18458	1.12%	0.239%
12	14.872	1931	1938	1946	rBV	223639	339887	20.58%	4.407%
13	16.359	2182	2191	2203	rBV	585156	877644	53.15%	11.380%
14	17.622	2398	2406	2412	rBV	312887	475786	28.81%	6.169%
15	19.425	2709	2713	2717	rVB2	37208	39998	2.42%	0.519%
16	20.212	2841	2847	2853	rBV	1237372	1651344	100.00%	21.412%
17	21.534	3067	3072	3082	rVB7	33402	63812	3.86%	0.827%
18	21.939	3134	3141	3148	rBV	310331	533139	32.29%	6.913%
19	25.411	3721	3732	3742	rBV2	172166	554775	33.60%	7.193%

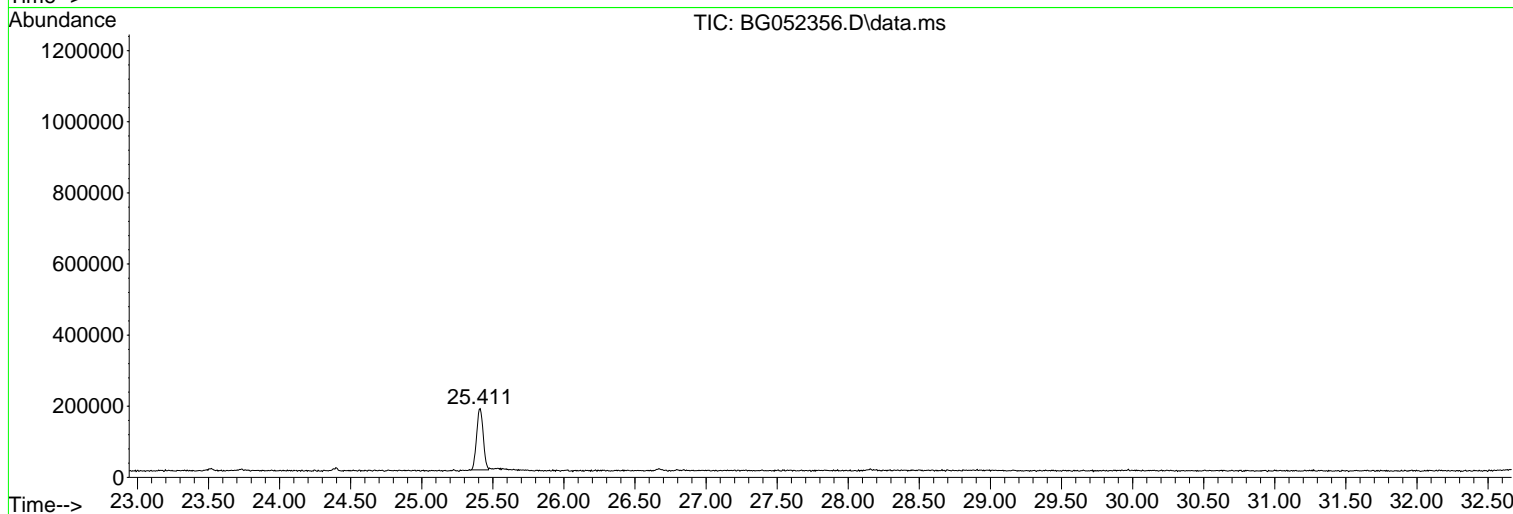
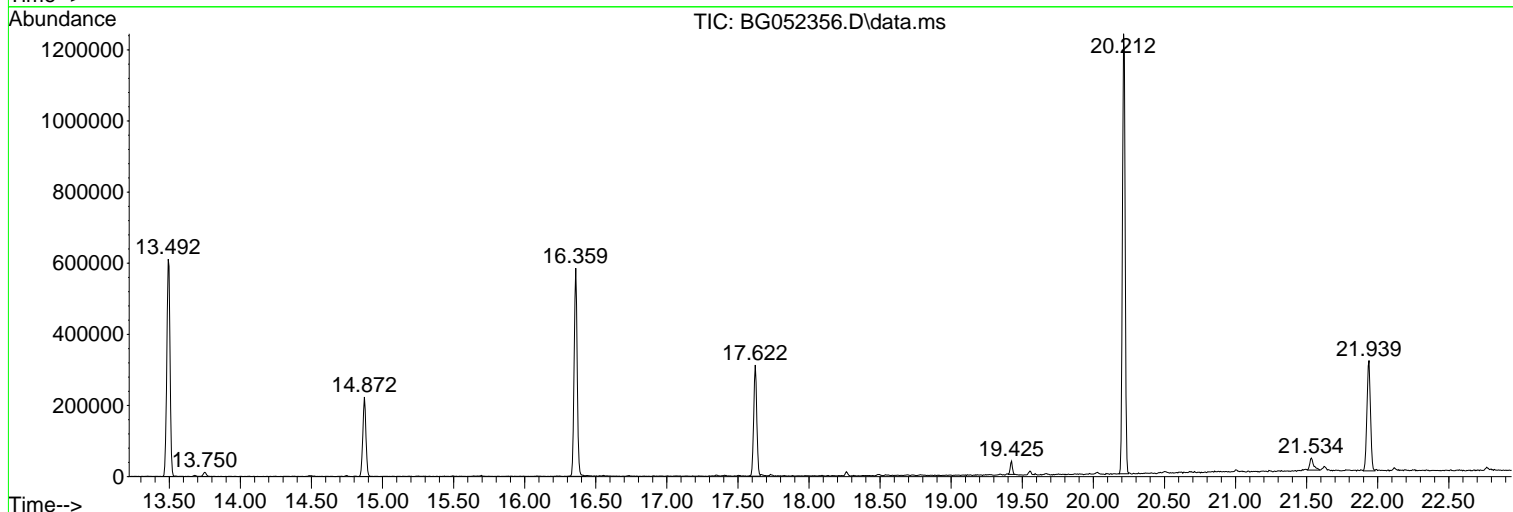
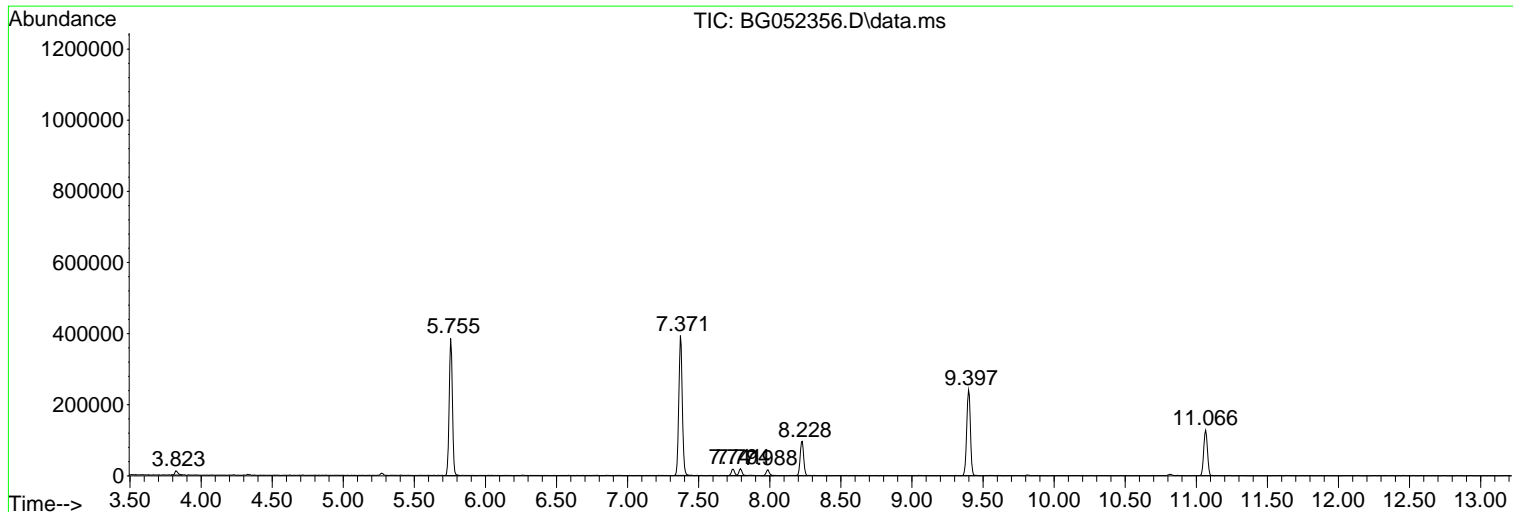
Sum of corrected areas: 7712185

Data Path : Z:\svoasrv\HPCHEM1\BNA\_G\Data\BG021022\  
 Data File : BG052356.D  
 Acq On : 10 Feb 2022 16:22  
 Operator : CG/JU  
 Sample : N1432-16  
 Misc :  
 ALS Vial : 10 Sample Multiplier: 1

Instrument :  
 BNA\_G  
 ClientSampleId :  
 SP-6

Quant Method : Z:\svoasrv\HPCHEM1\BNA\_G\Methods\8270-BG020722.M  
 Quant Title : ASP BNA STANDARDS FOR 5 POINT CALIBRATION

TIC Library : C:\Database\NIST20.L  
 TIC Integration Parameters: LSCINT.P



Data Path : Z:\svoasrv\HPCHEM1\BNA\_G\Data\BG021022\  
 Data File : BG052356.D  
 Acq On : 10 Feb 2022 16:22  
 Operator : CG/JU  
 Sample : N1432-16  
 Misc :  
 ALS Vial : 10 Sample Multiplier: 1

Instrument :  
 BNA\_G  
 ClientSampleId :  
 SP-6

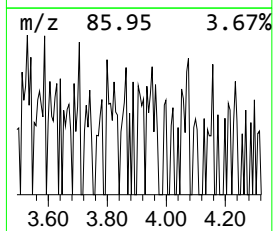
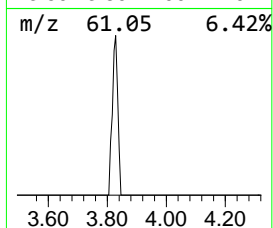
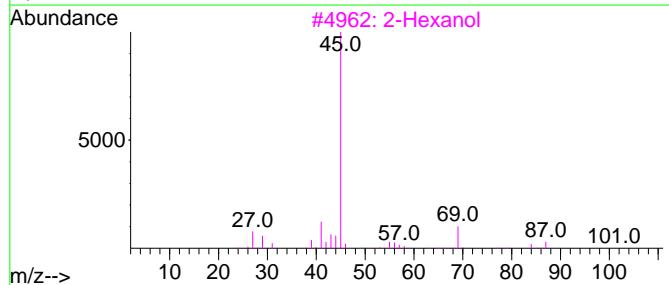
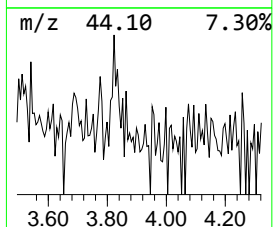
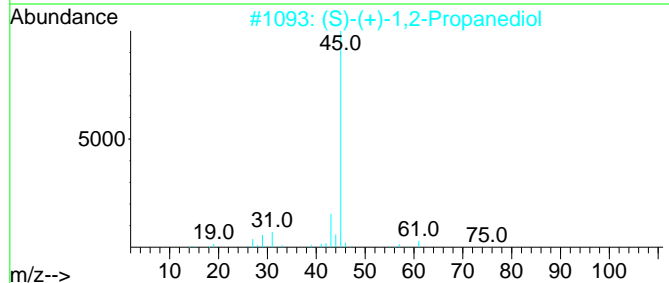
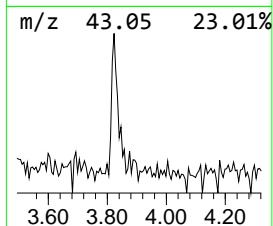
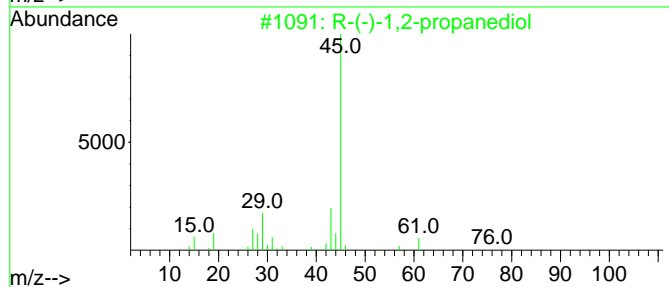
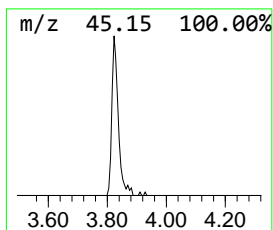
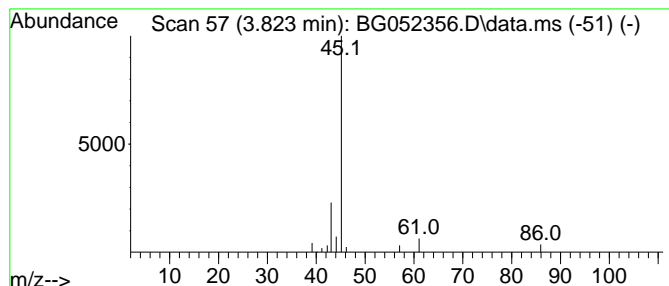
Quant Method : Z:\svoasrv\HPCHEM1\BNA\_G\Methods\8270-BG020722.M  
 Quant Title : ASP BNA STANDARDS FOR 5 POINT CALIBRATION

TIC Library : C:\Database\NIST20.L  
 TIC Integration Parameters: LSCINT.P

\*\*\*\*\*  
 Peak Number 1 R-(-)-1,2-propanediol Concentration Rank 5

R.T.	EstConc	Area	Relative to ISTD	R.T.
3.823	2.20 ng	18145	1,4-Dichlorobenzene-d4	8.228

Hit#	of	Tentative ID	MW	MolForm	CAS#	Qual
1	5	R-(-)-1,2-propanediol	76	C3H8O2	004254-14-2	64
2		(S)-(+)-1,2-Propanediol	76	C3H8O2	004254-15-3	43
3		2-Hexanol	102	C6H14O	000626-93-7	9
4		2-Heptanol, (S)-	116	C7H16O	006033-23-4	9
5		Butanenitrile, 2-(methoxymethoxy)	129	C6H11NO2	1000196-86-5	9



Data Path : Z:\svoasrv\HPCHEM1\BNA\_G\Data\BG021022\  
 Data File : BG052356.D  
 Acq On : 10 Feb 2022 16:22  
 Operator : CG/JU  
 Sample : N1432-16  
 Misc :  
 ALS Vial : 10 Sample Multiplier: 1

Instrument :  
 BNA\_G  
 ClientSampleId :  
 SP-6

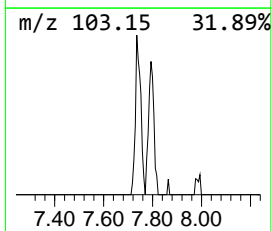
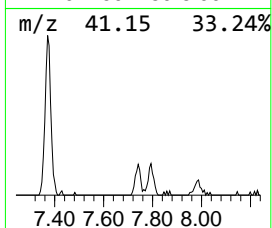
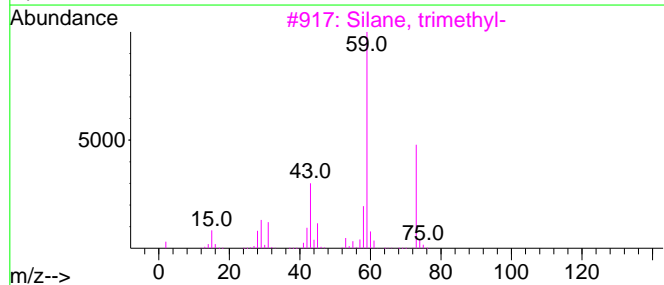
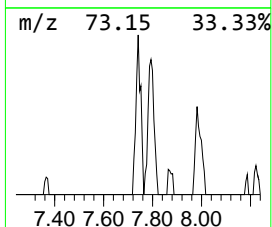
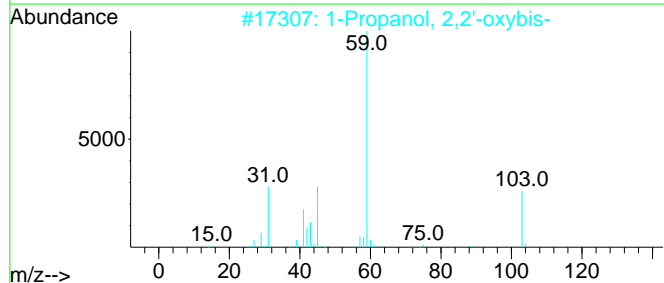
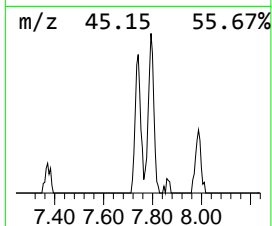
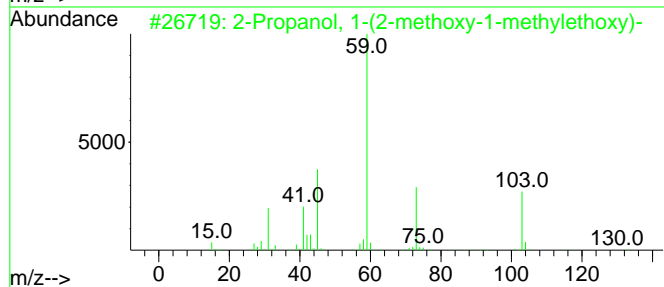
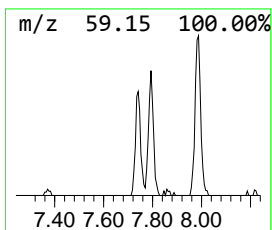
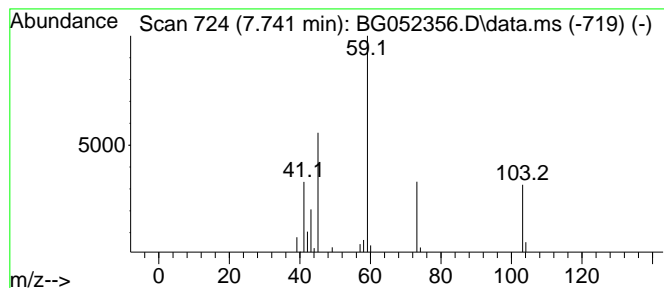
Quant Method : Z:\svoasrv\HPCHEM1\BNA\_G\Methods\8270-BG020722.M  
 Quant Title : ASP BNA STANDARDS FOR 5 POINT CALIBRATION

TIC Library : C:\Database\NIST20.L  
 TIC Integration Parameters: LSCINT.P

\*\*\*\*\*  
 Peak Number 2 2-Propanol, 1-(2-methoxy-1-... Concentration Rank 1

R.T.	EstConc	Area	Relative to ISTD	R.T.
7.741	3.47 ng	28557	1,4-Dichlorobenzene-d4	8.228

Hit#	of 5	Tentative ID	MW	MolForm	CAS#	Qual
1		2-Propanol, 1-(2-methoxy-1-methy...	148	C7H16O3	020324-32-7	83
2		1-Propanol, 2,2'-oxybis-	134	C6H14O3	000108-61-2	59
3		Silane, trimethyl-	74	C3H10Si	000993-07-7	47
4		1-Propanol, 2-(2-hydroxypropoxy)-	134	C6H14O3	000106-62-7	45
5		Ethane, 1-ethoxy-1-methoxy-	104	C5H12O2	010471-14-4	45



Data Path : Z:\svoasrv\HPCHEM1\BNA\_G\Data\BG021022\  
 Data File : BG052356.D  
 Acq On : 10 Feb 2022 16:22  
 Operator : CG/JU  
 Sample : N1432-16  
 Misc :  
 ALS Vial : 10 Sample Multiplier: 1

Instrument :  
 BNA\_G  
 ClientSampleId :  
 SP-6

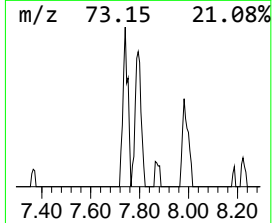
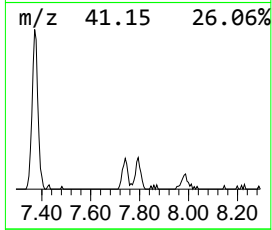
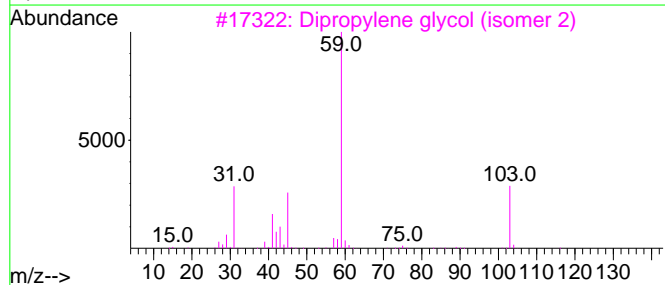
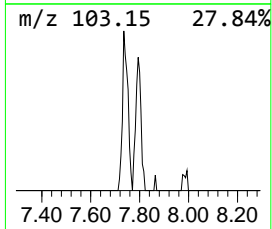
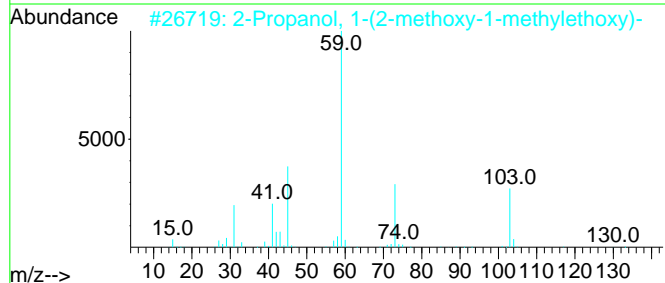
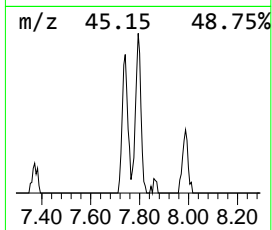
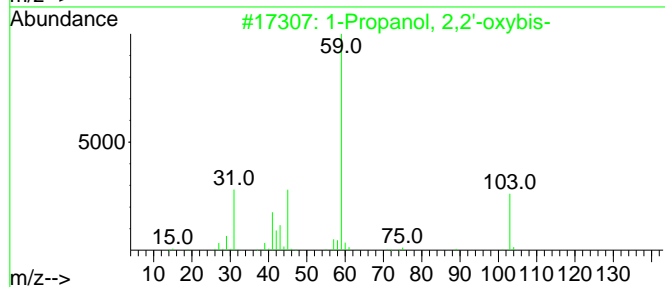
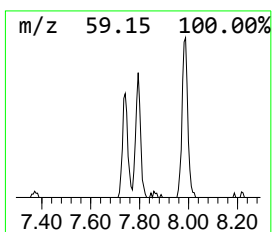
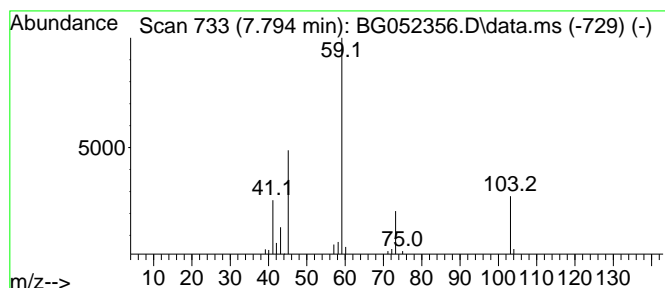
Quant Method : Z:\svoasrv\HPCHEM1\BNA\_G\Methods\8270-BG020722.M  
 Quant Title : ASP BNA STANDARDS FOR 5 POINT CALIBRATION

TIC Library : C:\Database\NIST0.L  
 TIC Integration Parameters: LSCINT.P

\*\*\*\*\*  
 Peak Number 3 1-Propanol, 2,2'-oxybis- Concentration Rank 2

R.T.	EstConc	Area	Relative to ISTD	R.T.
7.794	3.46 ng	28501	1,4-Dichlorobenzene-d4	8.228

Hit#	of	5	Tentative ID	MW	MolForm	CAS#	Qual
1			1-Propanol, 2,2'-oxybis-	134	C6H14O3	000108-61-2	59
2			2-Propanol, 1-(2-methoxy-1-methy...	148	C7H16O3	020324-32-7	56
3			Dipropylene glycol (isomer 2)	134	C6H14O3	1000506-25-4	53
4			1-Propanol, 2-(2-hydroxypropoxy)-	134	C6H14O3	000106-62-7	53
5			Dipropylene glycol (isomer 3)	134	C6H14O3	1000506-25-5	53



Data Path : Z:\svoasrv\HPCHEM1\BNA\_G\Data\BG021022\  
 Data File : BG052356.D  
 Acq On : 10 Feb 2022 16:22  
 Operator : CG/JU  
 Sample : N1432-16  
 Misc :  
 ALS Vial : 10 Sample Multiplier: 1

Instrument :  
 BNA\_G  
 ClientSampleId :  
 SP-6

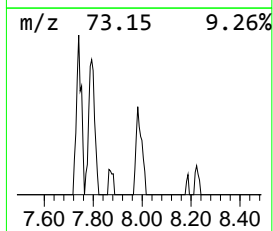
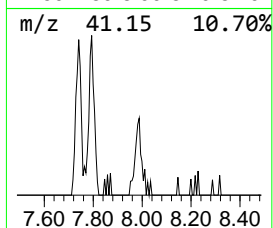
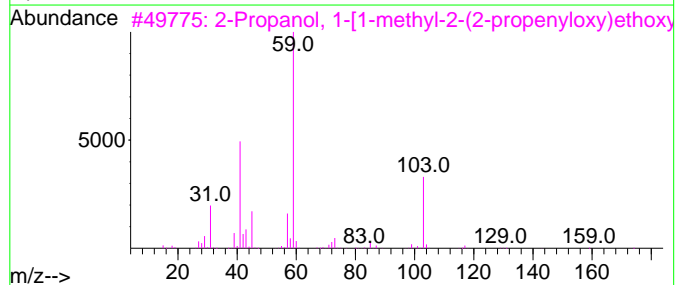
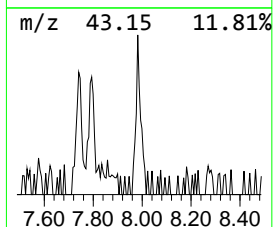
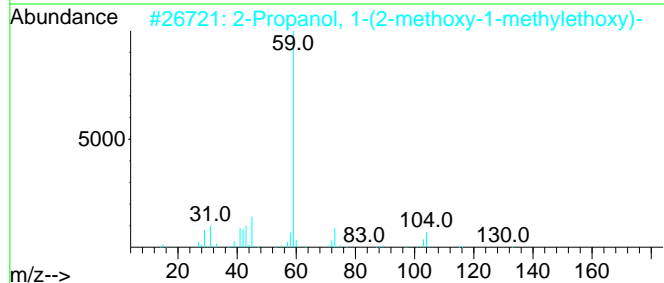
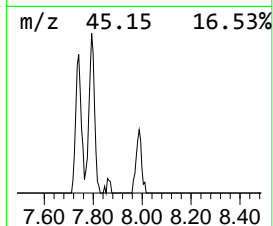
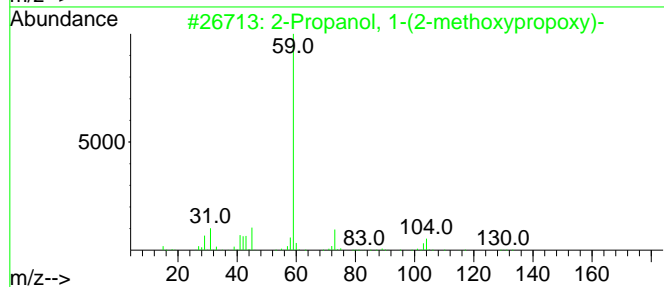
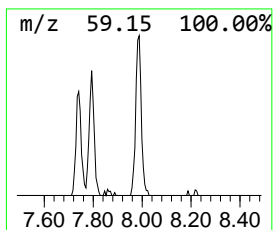
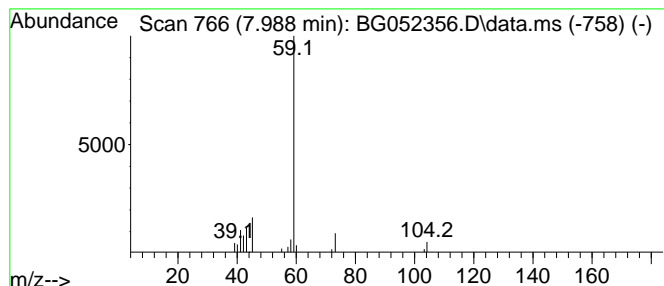
Quant Method : Z:\svoasrv\HPCHEM1\BNA\_G\Methods\8270-BG020722.M  
 Quant Title : ASP BNA STANDARDS FOR 5 POINT CALIBRATION

TIC Library : C:\Database\NIST20.L  
 TIC Integration Parameters: LSCINT.P

\*\*\*\*\*  
 Peak Number 4 2-Propanol, 1-(2-methoxypro... Concentration Rank 3

R.T.	EstConc	Area	Relative to ISTD	R.T.
7.988	3.35 ng	27557	1,4-Dichlorobenzene-d4	8.228

Hit#	of	5	Tentative ID	MW	MolForm	CAS#	Qual
1			2-Propanol, 1-(2-methoxypropoxy)-	148	C7H16O3	013429-07-7	83
2			2-Propanol, 1-(2-methoxy-1-methy...	148	C7H16O3	020324-32-7	83
3			2-Propanol, 1-[1-methyl-2-(2-pro...	174	C9H18O3	055956-25-7	43
4			1-Propanol, 2-(2-hydroxypropoxy)-	134	C6H14O3	000106-62-7	40
5			Butanoic acid, 2-hydroxy-	104	C4H8O3	000565-70-8	9



Data Path : Z:\svoasrv\HPCHEM1\BNA\_G\Data\BG021022\  
 Data File : BG052356.D  
 Acq On : 10 Feb 2022 16:22  
 Operator : CG/JU  
 Sample : N1432-16  
 Misc :  
 ALS Vial : 10 Sample Multiplier: 1

Instrument :  
 BNA\_G  
 ClientSampleId :  
 SP-6

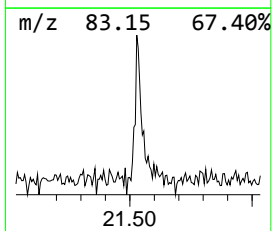
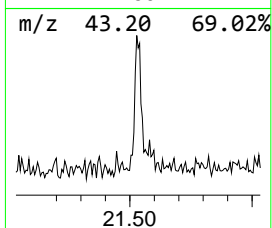
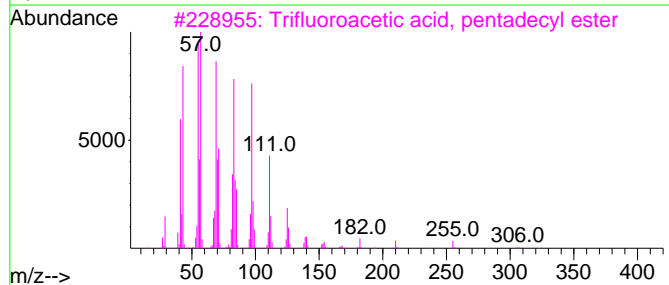
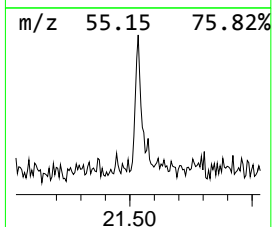
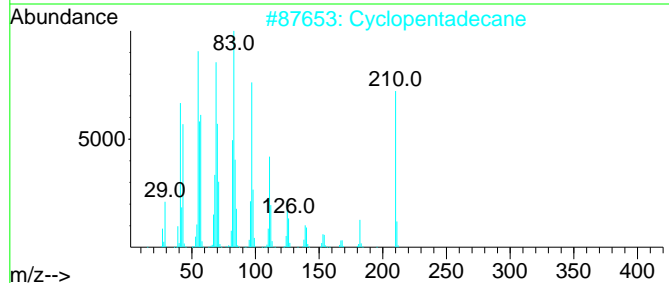
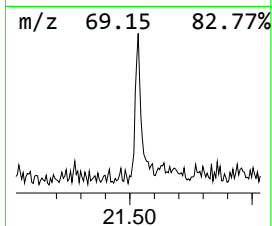
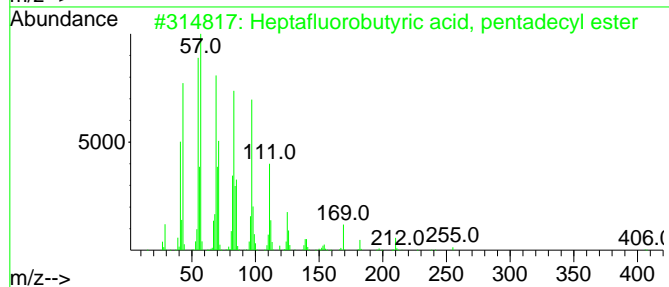
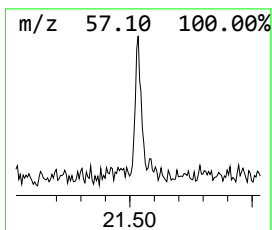
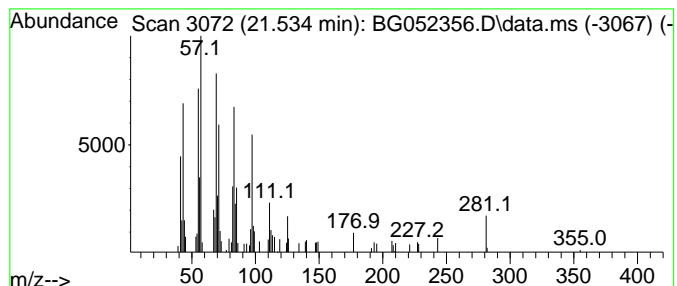
Quant Method : Z:\svoasrv\HPCHEM1\BNA\_G\Methods\8270-BG020722.M  
 Quant Title : ASP BNA STANDARDS FOR 5 POINT CALIBRATION

TIC Library : C:\Database\NIST20.L  
 TIC Integration Parameters: LSCINT.P

\*\*\*\*\*  
 Peak Number 5 Heptafluorobutyric acid, pe... Concentration Rank 4

R.T.	EstConc	Area	Relative to ISTD	R.T.
21.534	2.39 ng	63812	Chrysene-d12	21.939

Hit#	of	5	Tentative ID	MW	MolForm	CAS#	Qual
1			Heptafluorobutyric acid, pentade...	424	C19H31F7O2	959261-23-5	87
2			Cyclopentadecane	210	C15H30	000295-48-7	83
3			Trifluoroacetic acid, pentadecyl...	324	C17H31F3O2	959010-23-2	81
4			Heptadecyl heptafluorobutyrate	452	C21H35F7O2	959085-66-6	70
5			Pentadecafluorooctanoic acid, pe...	624	C23H31F15O2	1000406-04-5	64



Data Path : Z:\svoasrv\HPCHEM1\BNA\_G\Data\BG021022\  
 Data File : BG052356.D  
 Acq On : 10 Feb 2022 16:22  
 Operator : CG/JU  
 Sample : N1432-16  
 Misc :  
 ALS Vial : 10 Sample Multiplier: 1

Instrument :  
 BNA\_G  
 ClientSampleId :  
 SP-6

Quant Method : Z:\svoasrv\HPCHEM1\BNA\_G\Methods\8270-BG020722.M  
 Quant Title : ASP BNA STANDARDS FOR 5 POINT CALIBRATION

TIC Library : C:\Database\NIST0.L  
 TIC Integration Parameters: LSCINT.P

TIC Top Hit name	RT	EstConc	Units	Response	--Internal Standard--			
					#	RT	Resp	Conc
R-(-)-1,2-propa...	3.823	2.2	ng	18145	1	8.228	164755	20.0
2-Propanol, 1-(...	7.741	3.5	ng	28557	1	8.228	164755	20.0
1-Propanol, 2,2...	7.794	3.5	ng	28501	1	8.228	164755	20.0
2-Propanol, 1-(...	7.988	3.4	ng	27557	1	8.228	164755	20.0
Heptafluorobuty...	21.534	2.4	ng	63812	5	21.939	533139	20.0