

Data Path : Z:\HPCHEM1\BNA_G\DATA\BG021115\
 Data File : BG015983.D
 Acq On : 11 Feb 2015 13:55
 Operator : TP/IZ
 Sample : G1227-07
 Misc :
 ALS Vial : 8 Sample Multiplier: 1

Instrument :
 BNA_G
 ClientSampled :
 X1H38

Manual Integrations
 APPROVED

apatel
 2/12/2015 4:16:42 PM

Quant Time: Feb 13 09:37:58 2015
 Quant Method : Z:\HPCHEM1\BNA_G\METHODS\SOM01.2-EPA-BG021015.M
 Quant Title : SVOA CALIBRATION
 QLast Update : Wed Feb 11 22:42:45 2015
 Response via : Initial Calibration

Internal Standards	R.T.	QIon	Response	Conc	Units	Dev(Min)
1) 1,4-Dichlorobenzene-d4	7.81	152	52435	20.00	ng/ul	0.00
18) Naphthalene-d8	10.60	136	246758	20.00	ng/ul	0.00
35) Acenaphthene-d10	14.44	164	155040	20.00	ng/ul	0.00
61) Phenanthrene-d10	17.19	188	337727	20.00	ng/ul	0.00
75) Chrysene-d12	21.36	240	364725	20.00	ng/ul	0.00
83) Perylene-d12	23.66	264	336736	20.00	ng/ul	0.00

System Monitoring Compounds

3) 1,4-Dioxane-d8	0.00	96	0	0.00	ng/uL	
5) Phenol-d5	6.97	99	156628	30.24	ng/ul	0.00
7) Bis-(2-Chloroethyl)ether-d	7.14	67	90395	29.95	ng/ul	0.00
9) 2-Chlorophenol-d4	7.34	132	115741	30.01	ng/ul	0.00
13) 4-Methylphenol-d8	8.50	113	119008	29.77	ng/ul	0.00
19) Nitrobenzene-d5	8.97	128	61131	29.75	ng/ul	0.00
22) 2-Nitrophenol-d4	9.69	143	59563	28.37	ng/ul	0.00
26) 2,4-Dichlorophenol-d3	10.22	165	112653	30.39	ng/ul	0.00
29) 4-Chloroaniline-d4	10.74	131	153757	34.82	ng/ul	0.00
43) Dimethylphthalate-d6	13.86	166	351599	33.77	ng/ul	0.00
46) Acenaphthylene-d8	14.13	160	446160	31.43	ng/ul	0.00
51) 4-Nitrophenol-d4	14.63	143	80069	30.92	ng/ul	0.00
57) Fluorene-d10	15.44	176	330146	32.52	ng/ul	0.00
62) 4,6-Dinitro-2-methylphenol	15.55	200	45630	24.04	ng/ul	0.00
70) Anthracene-d10	17.28	188	542076	34.95	ng/ul	0.00
76) Pyrene-d10	19.57	212	631716	38.92	ng/ul	0.00
87) Benzo(a)pyrene-d12	23.51	264	589485	39.53	ng/ul	0.00

Target Compounds

Target Compounds	R.T.	QIon	Response	Conc	Units	Qvalue
4) Benzaldehyde	6.95	77	225604	130.55	ng/ul	98
10) 2-Chlorophenol	7.37	128	226297	57.99	ng/ul	96
14) Acetophenone	8.63	105	269547	45.94	ng/ul	99
16) 4-Methylphenol	8.56	108	194455	43.76	ng/ul	89
17) Hexachloroethane	8.89	117	65477	43.20	ng/ul	95
27) 2,4-Dichlorophenol	10.24	162	225747	62.70	ng/ul	98
28) Naphthalene	10.65	128	674810	52.56	ng/ul	99
32) Caprolactam	11.49	113	17116m	9.01	ng/ul	
34) 2-Methylnaphthalene	12.26	142	500660	54.27	ng/ul	96
41) 2-Chloronaphthalene	13.32	162	503405	57.76	ng/ul	98
49) Acenaphthene	14.51	153	316864	31.38	ng/ul	97
58) Fluorene	15.49	166	412131	34.74	ng/ul	100
63) 4,6-Dinitro-2-methylphenol	15.56	198	126826	60.71	ng/ul#	99
67) Atrazine	16.65	200	216537	59.93	ng/ul	98
69) Phenanthrene	17.23	178	781540	42.85	ng/ul	99
72) Carbazole	17.59	167	1208879	66.59	ng/ul	97
77) Pyrene	19.61	202	1196646	56.37	ng/ul	98
78) Butylbenzylphthalate	20.51	149	559562	58.22	ng/ul	97
81) Bis(2-ethylhexyl)phthalate	21.28	149	684955	53.84	ng/ul	98
89) Indeno(1,2,3-cd)pyrene	26.04	276	1363118	62.03	ng/ul	96
90) Dibenzo(a,h)anthracene	26.05	278	917087	49.58	ng/ul	99
91) Benzo(g,h,i)perylene	26.76	276	858584	46.82	ng/ul	97

Data Path : Z:\HPCHEM1\BNA_G\DATA\BG021115\
Data File : BG015983.D
Acq On : 11 Feb 2015 13:55
Operator : TP/IZ
Sample : G1227-07
Misc :
ALS Vial : 8 Sample Multiplier: 1

Instrument :
BNA_G
ClientSampleId :
X1H38

Manual Integrations
APPROVED
apatel
2/12/2015 4:16:42 PM

Quant Time: Feb 13 09:37:58 2015
Quant Method : Z:\HPCHEM1\BNA_G\METHODS\SOM01.2-EPA-BG021015.M
Quant Title : SVOA CALIBRATION
QLast Update : Wed Feb 11 22:42:45 2015
Response via : Initial Calibration

Internal Standards R.T. QIon Response Conc Units Dev(Min)

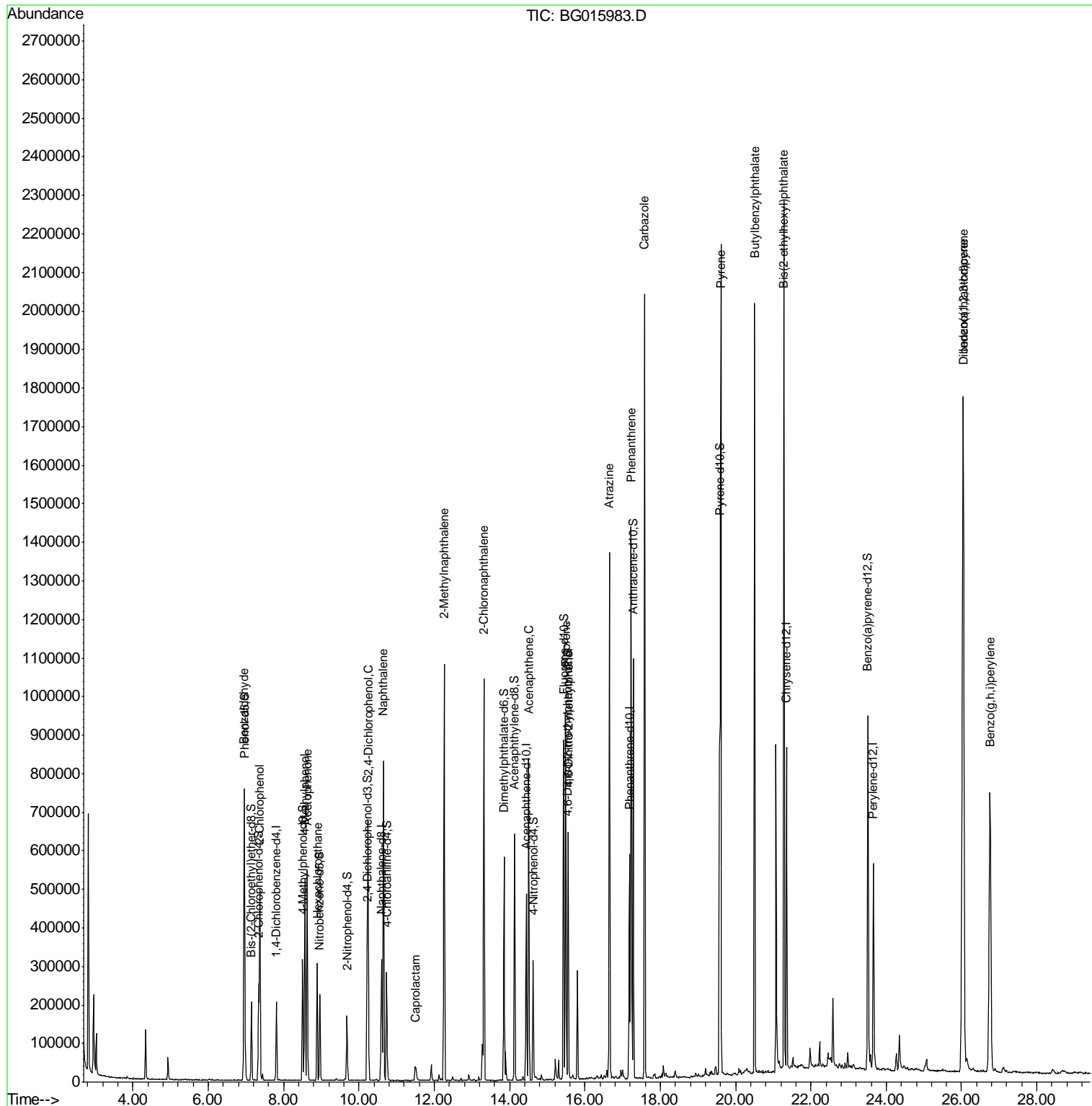
(#) = qualifier out of range (m) = manual integration (+) = signals summed

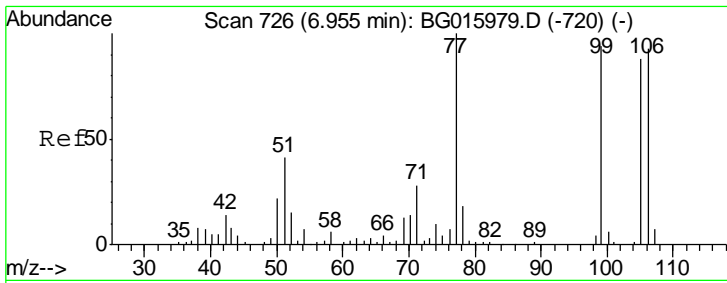
Data Path : Z:\HPCHEM1\BNA_G\DATA\BG021115\
 Data File : BG015983.D
 Acq On : 11 Feb 2015 13:55
 Operator : TP/IZ
 Sample : G1227-07
 Misc :
 ALS Vial : 8 Sample Multiplier: 1

Instrument :
 BNA_G
 Client Sampled :
 X1H38

Manual Integrations
 APPROVED
 apatel
 2/12/2015 4:16:42 PM

Quant Time: Feb 13 09:37:58 2015
 Quant Method : Z:\HPCHEM1\BNA_G\METHODS\SOM01.2-EPA-BG021015.M
 Quant Title : SVOA CALIBRATION
 QLast Update : Wed Feb 11 22:42:45 2015
 Response via : Initial Calibration



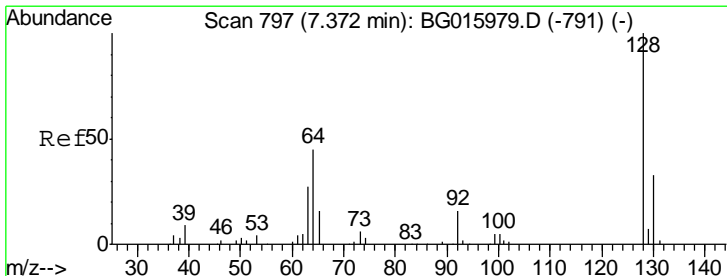
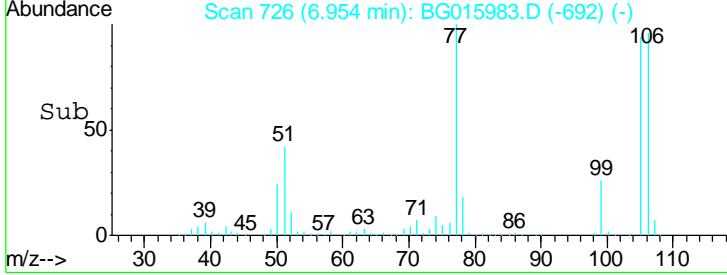
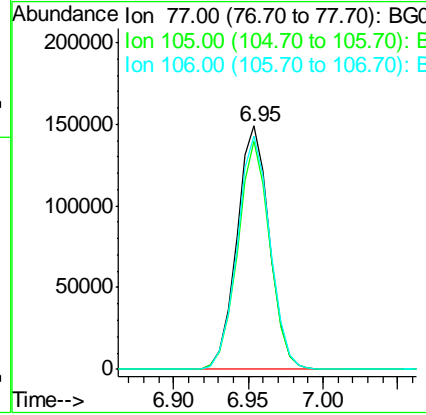
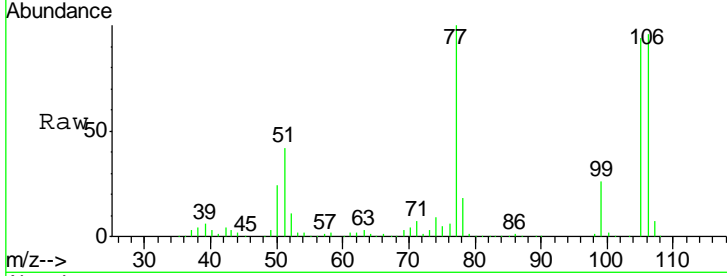


#4
Benzaldehyde
Concen: 130.55 ng/ul
RT: 6.95 min Scan# 726
Delta R.T. -0.00 min
Lab File: BG015983.D
Acq: 11 Feb 2015 13:55

Instrument :
BNA_G
ClientSampled :
X1H38

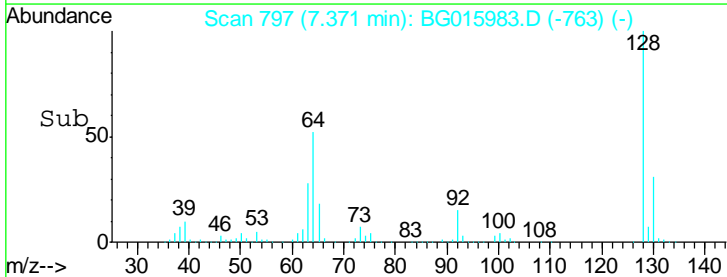
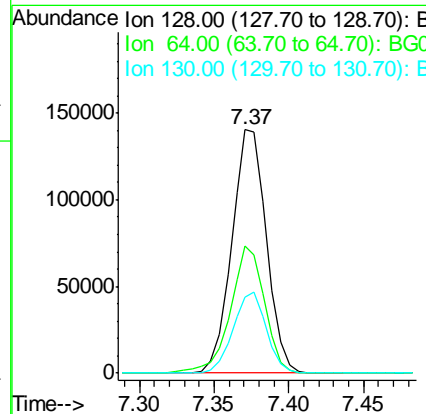
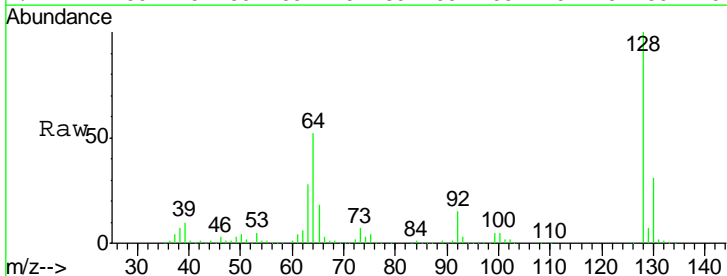
Tgt Ion	Resp	Lower	Upper
77	100		
105	93.9	76.6	115.0
106	96.0	74.8	112.2

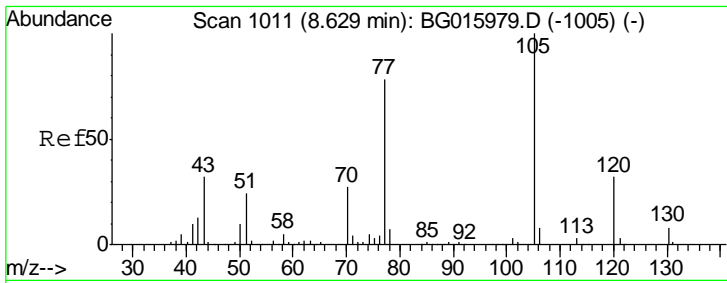
Manual Integrations
APPROVED
apatel
2/12/2015 4:16:42 PM



#10
2-Chlorophenol
Concen: 57.99 ng/ul
RT: 7.37 min Scan# 797
Delta R.T. -0.00 min
Lab File: BG015983.D
Acq: 11 Feb 2015 13:55

Tgt Ion	Resp	Lower	Upper
128	100		
64	52.1	38.9	58.3
130	31.4	26.3	39.5



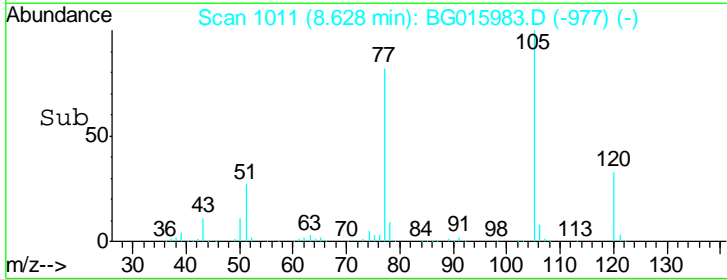
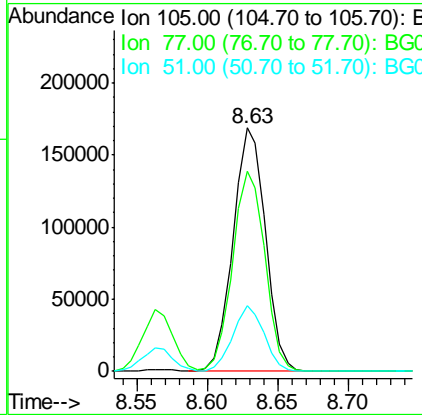
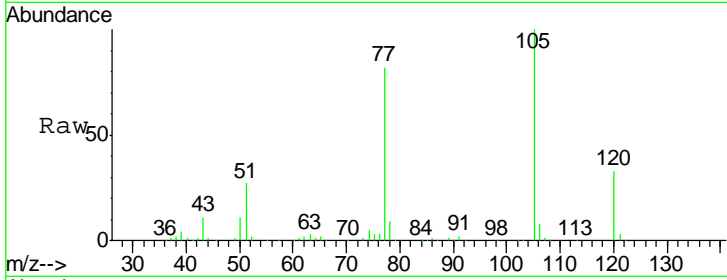


#14
 Acetophenone
 Concen: 45.94 ng/ul
 RT: 8.63 min Scan# 1011
 Delta R.T. -0.00 min
 Lab File: BG015983.D
 Acq: 11 Feb 2015 13:55

Instrument :
 BNA_G
 ClientSampled :
 X1H38

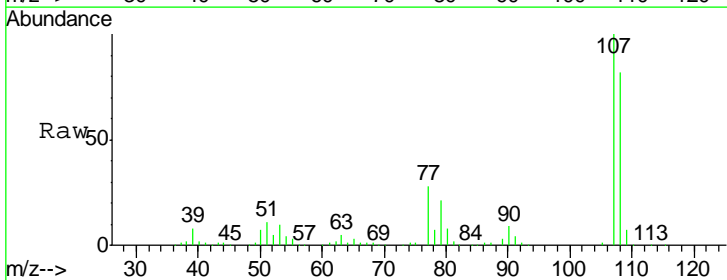
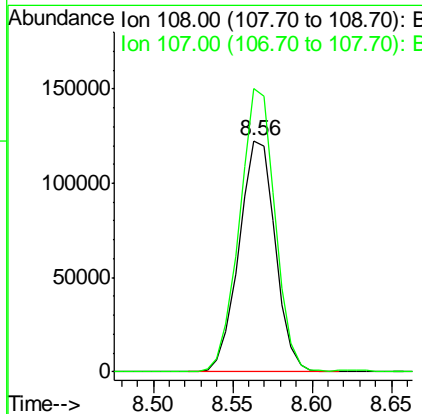
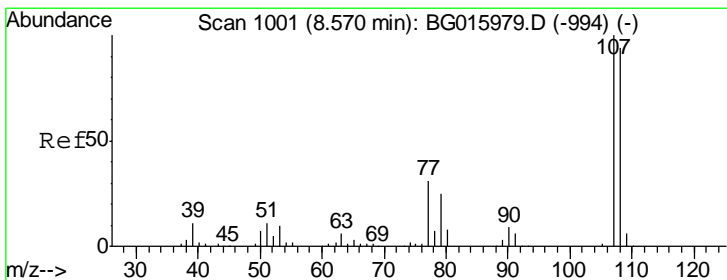
Tgt Ion	Resp	Lower	Upper
105	269547		
77	82.3	65.4	98.0
51	26.9	20.8	31.2

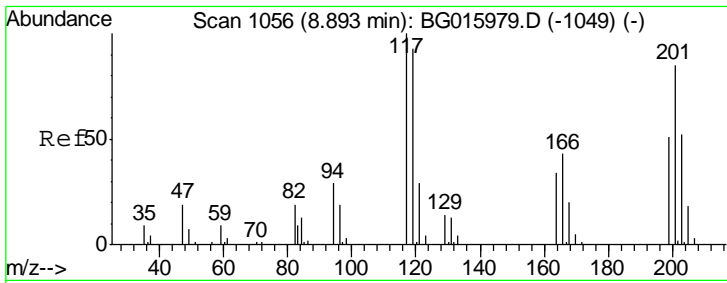
Manual Integrations
APPROVED
 apatel
 2/12/2015 4:16:42 PM



#16
 4-Methylphenol
 Concen: 43.76 ng/ul
 RT: 8.56 min Scan# 1000
 Delta R.T. -0.01 min
 Lab File: BG015983.D
 Acq: 11 Feb 2015 13:55

Tgt Ion	Resp	Lower	Upper
108	194455		
107	122.5	88.4	132.6



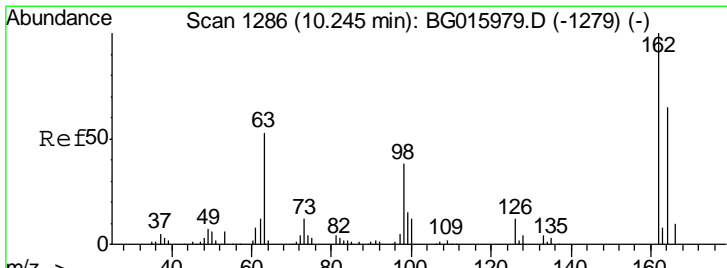
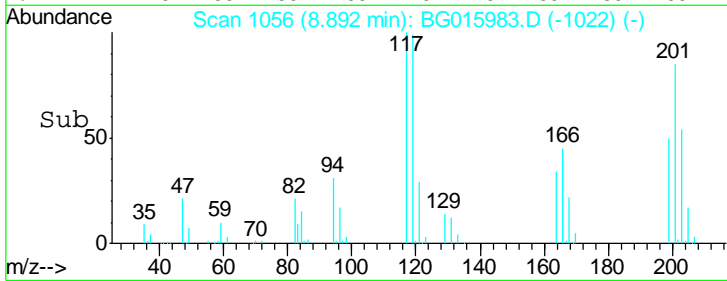
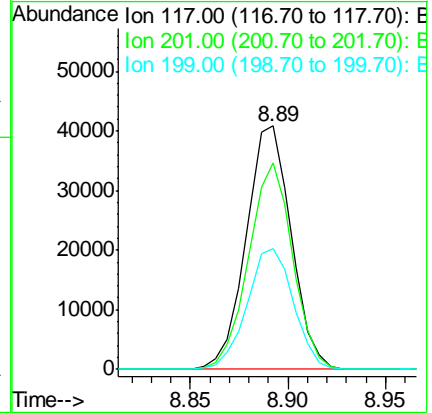
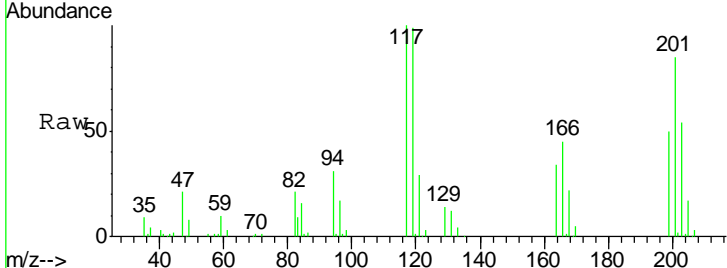


#17
 Hexachloroethane
 Concen: 43.20 ng/ul
 RT: 8.89 min Scan# 1056
 Delta R.T. -0.00 min
 Lab File: BG015983.D
 Acq: 11 Feb 2015 13:55

Instrument :
 BNA_G
 ClientSampled :
 X1H38

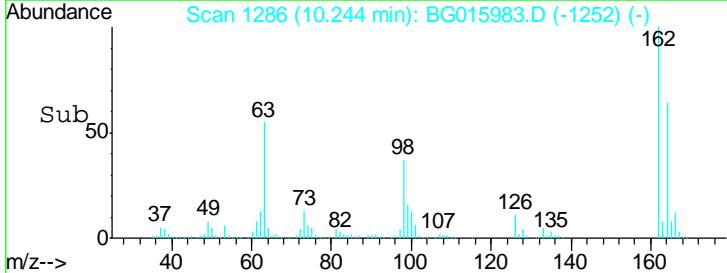
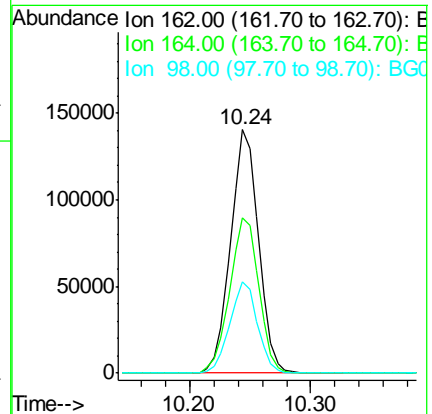
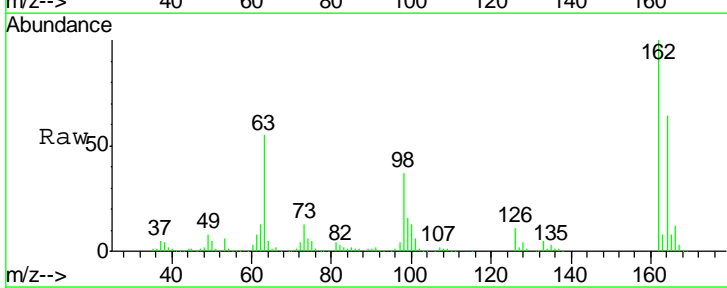
Tgt Ion	Resp	Lower	Upper
117	100		
201	84.9	64.0	96.0
199	49.7	38.0	57.0

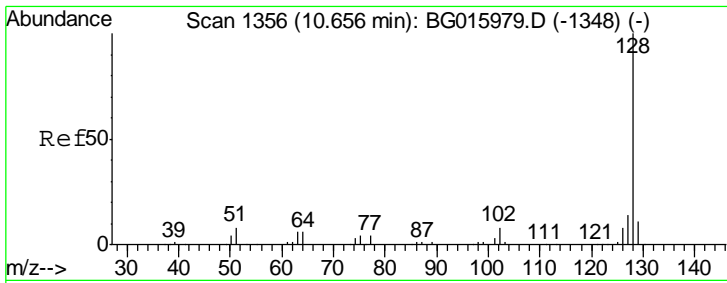
Manual Integrations
 APPROVED
 apatel
 2/12/2015 4:16:42 PM



#27
 2,4-Dichlorophenol
 Concen: 62.70 ng/ul
 RT: 10.24 min Scan# 1286
 Delta R.T. -0.00 min
 Lab File: BG015983.D
 Acq: 11 Feb 2015 13:55

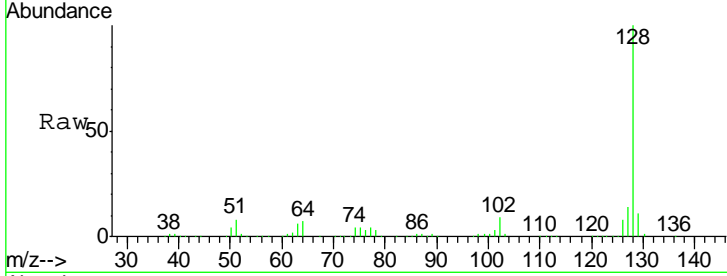
Tgt Ion	Resp	Lower	Upper
162	100		
164	63.6	52.2	78.4
98	37.4	28.5	42.7





#28
 Naphthalene
 Concen: 52.56 ng/ul
 RT: 10.65 min Scan# 1356
 Delta R.T. -0.00 min
 Lab File: BG015983.D
 Acq: 11 Feb 2015 13:55

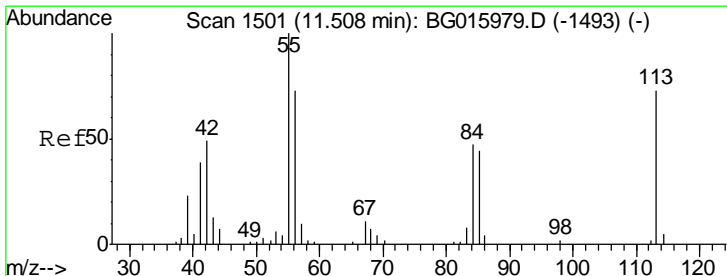
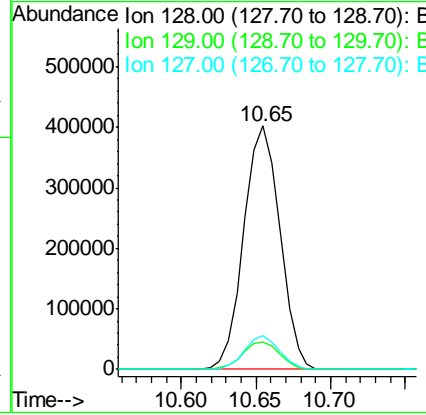
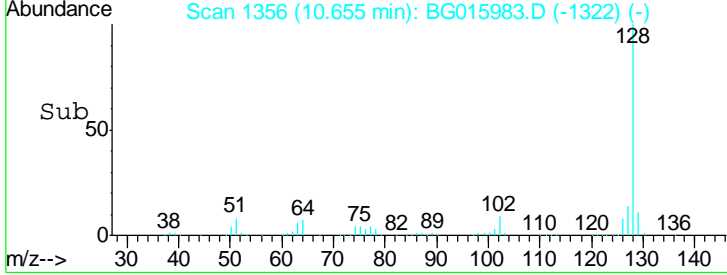
Instrument :
 BNA_G
 ClientSampled :
 X1H38



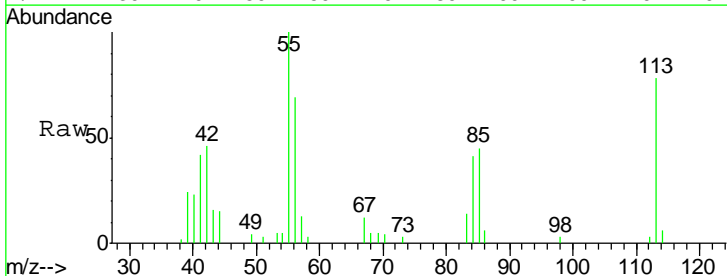
Tgt Ion:128 Resp: 674810

Ion	Ratio	Lower	Upper
128	100		
129	11.2	9.0	13.6
127	14.0	10.7	16.1

Manual Integrations
 APPROVED
 apatel
 2/12/2015 4:16:42 PM

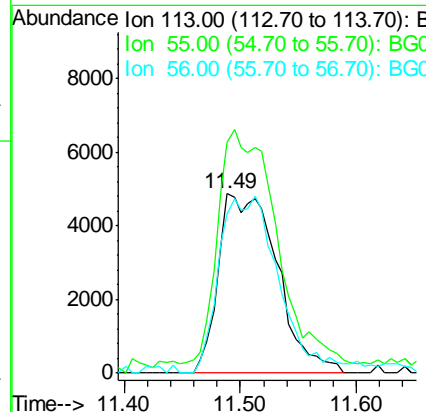
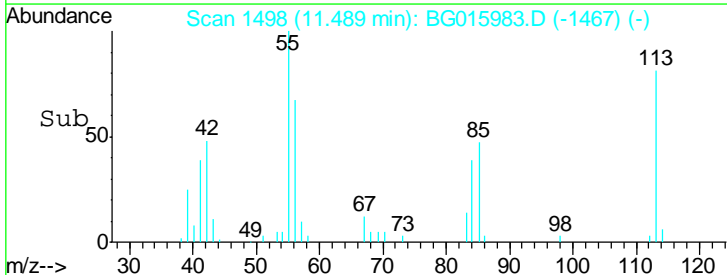


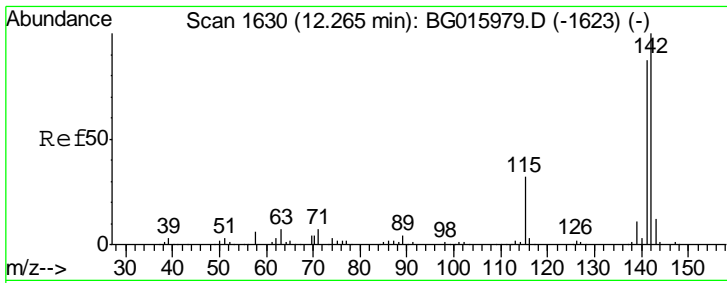
#32
 Caprolactam
 Concen: 9.01 ng/ul m
 RT: 11.49 min Scan# 1498
 Delta R.T. -0.02 min
 Lab File: BG015983.D
 Acq: 11 Feb 2015 13:55



Tgt Ion:113 Resp: 17116

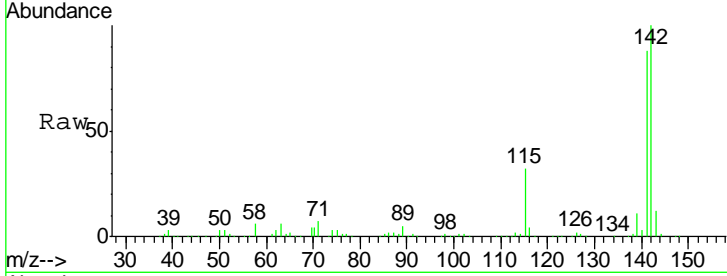
Ion	Ratio	Lower	Upper
113	100		
55	128.8	103.5	155.3
56	88.6	75.1	112.7





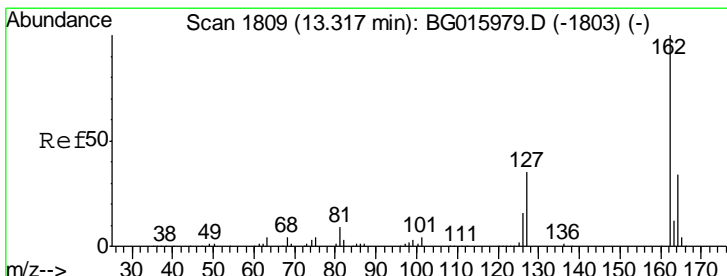
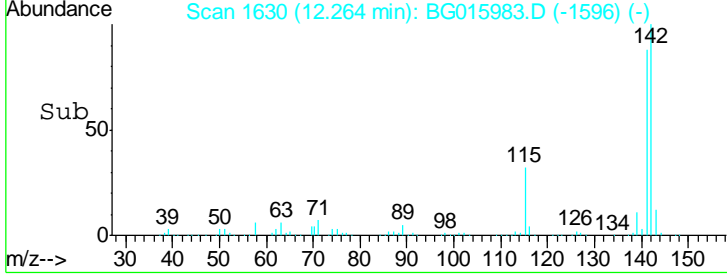
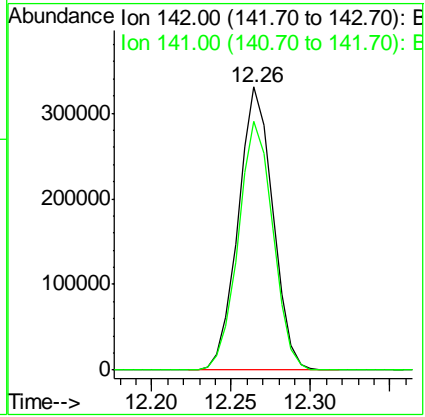
#34
 2-Methylnaphthalene
 Concen: 54.27 ng/ul
 RT: 12.26 min Scan# 1630
 Delta R.T. -0.00 min
 Lab File: BG015983.D
 Acq: 11 Feb 2015 13:55

Instrument :
 BNA_G
 ClientSampled :
 X1H38



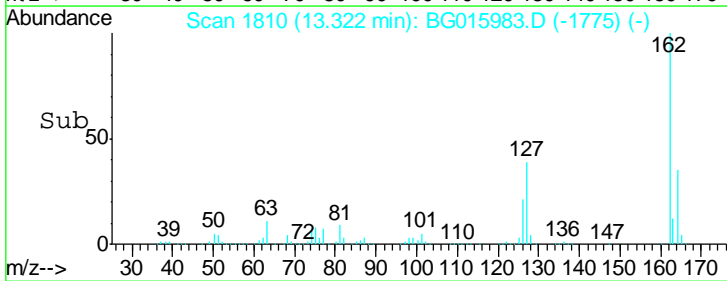
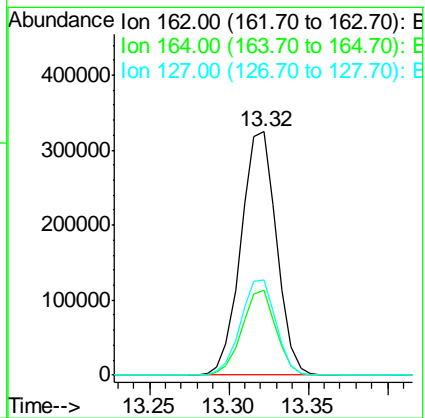
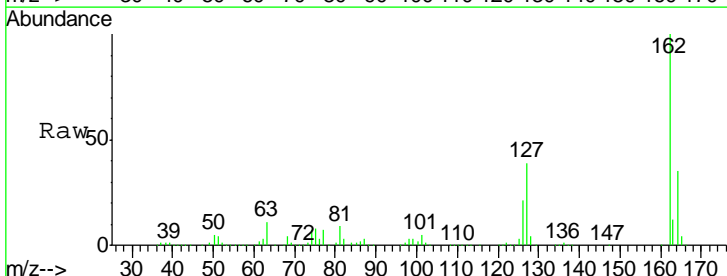
Tgt Ion:142 Resp: 500660
 Ion Ratio Lower Upper
 142 100
 141 88.0 67.7 101.5

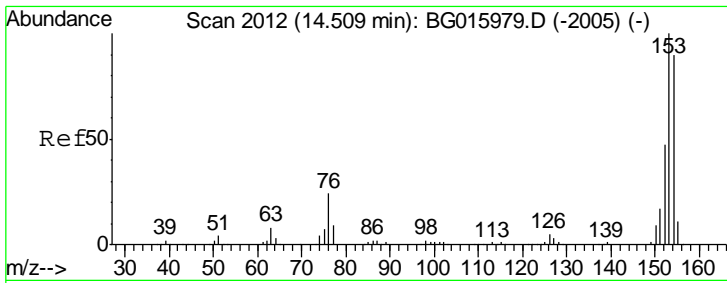
Manual Integrations
 APPROVED
 apatel
 2/12/2015 4:16:42 PM



#41
 2-Chloronaphthalene
 Concen: 57.76 ng/ul
 RT: 13.32 min Scan# 1810
 Delta R.T. 0.00 min
 Lab File: BG015983.D
 Acq: 11 Feb 2015 13:55

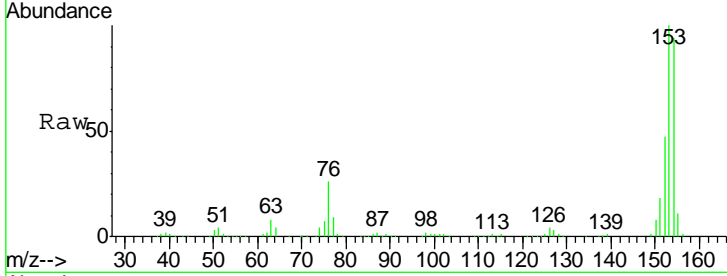
Tgt Ion:162 Resp: 503405
 Ion Ratio Lower Upper
 162 100
 164 34.9 26.2 39.4
 127 39.2 31.0 46.6





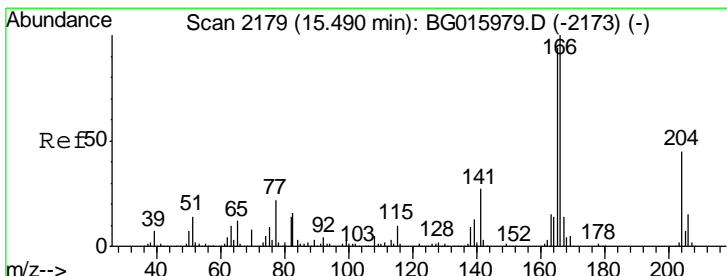
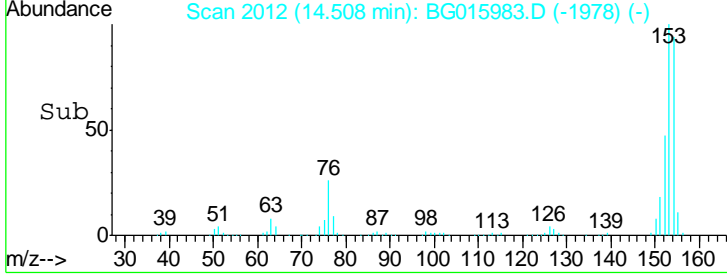
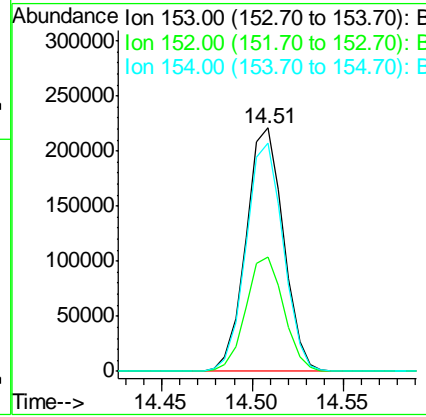
#49
 Acenaphthene
 Concen: 31.38 ng/ul
 RT: 14.51 min Scan# 2012
 Delta R.T. -0.00 min
 Lab File: BG015983.D
 Acq: 11 Feb 2015 13:55

Instrument :
 BNA_G
 ClientSampled :
 X1H38



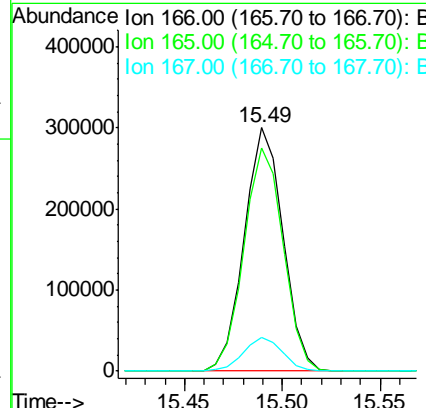
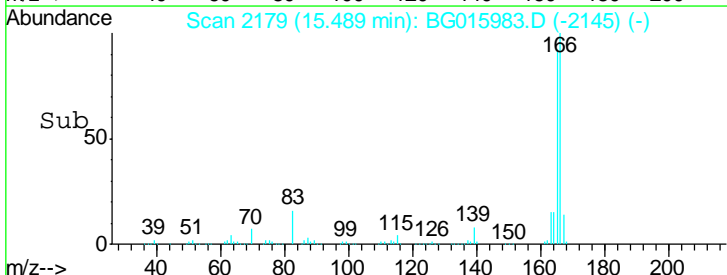
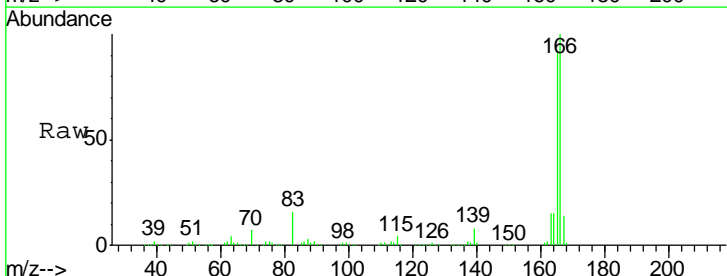
Tgt Ion	Resp	Lower	Upper
153	100		
152	47.2	38.6	58.0
154	93.8	71.8	107.6

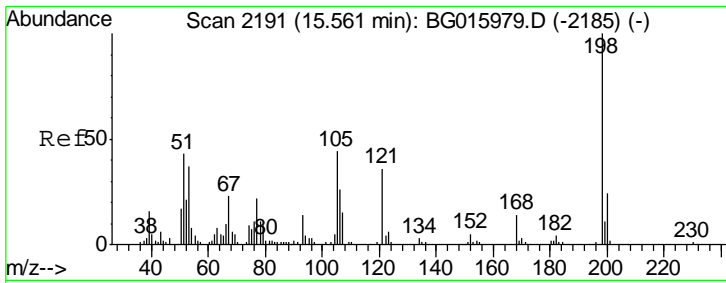
Manual Integrations
 APPROVED
 apatel
 2/12/2015 4:16:42 PM



#58
 Fluorene
 Concen: 34.74 ng/ul
 RT: 15.49 min Scan# 2179
 Delta R.T. -0.00 min
 Lab File: BG015983.D
 Acq: 11 Feb 2015 13:55

Tgt Ion	Resp	Lower	Upper
166	100		
165	91.8	73.3	109.9
167	13.9	11.1	16.7





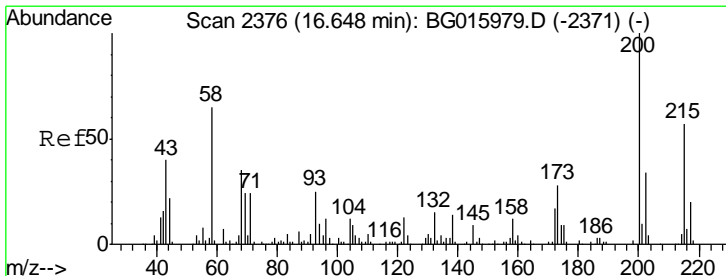
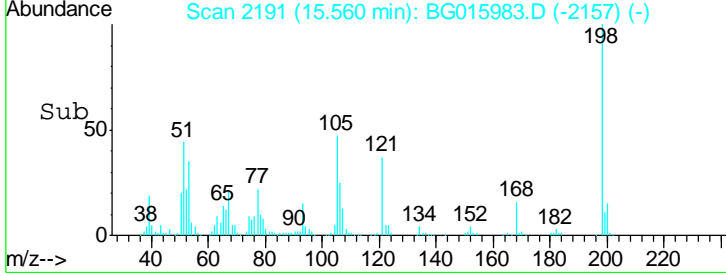
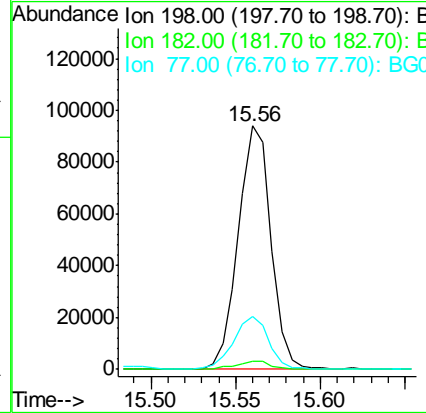
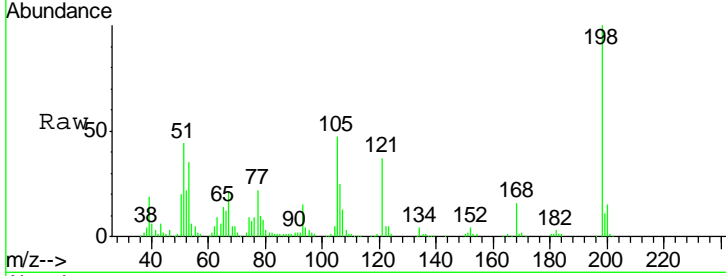
#63
 4,6-Dinitro-2-methylphenol
 Concen: 60.71 ng/ul
 RT: 15.56 min Scan# 2191
 Delta R.T. -0.00 min
 Lab File: BG015983.D
 Acq: 11 Feb 2015 13:55

Instrument :
 BNA_G
 ClientSampled :
 X1H38

Tgt Ion	Resp	Lower	Upper
198	126826		
198	100		
182	3.5	2.2	3.4#
77	21.6	17.1	25.7

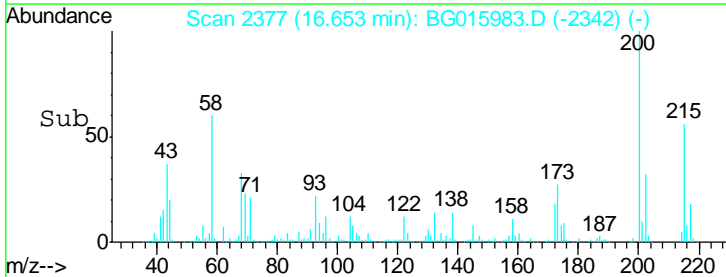
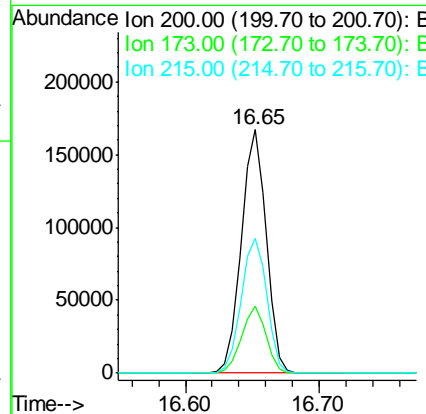
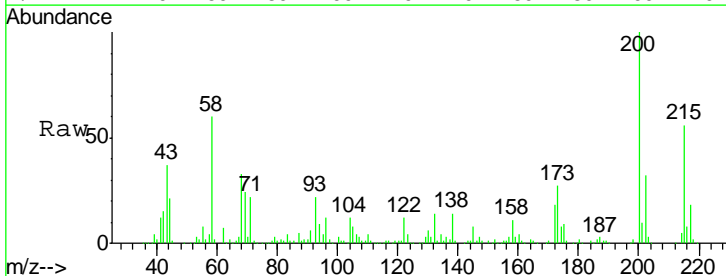
Manual Integrations
 APPROVED

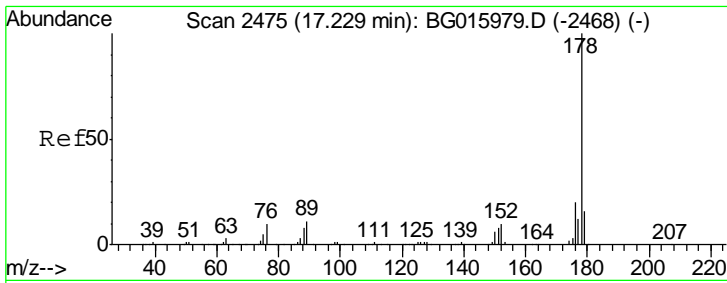
apatel
 2/12/2015 4:16:42 PM



#67
 Atrazine
 Concen: 59.93 ng/ul
 RT: 16.65 min Scan# 2377
 Delta R.T. 0.00 min
 Lab File: BG015983.D
 Acq: 11 Feb 2015 13:55

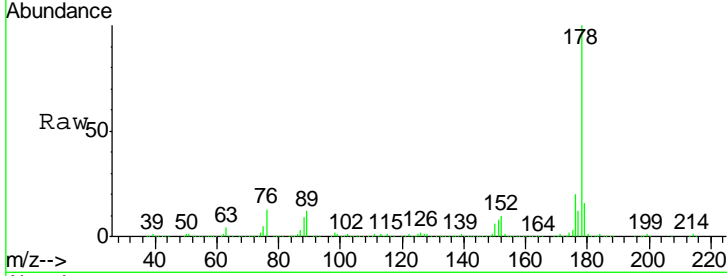
Tgt Ion	Resp	Lower	Upper
200	216537		
200	100		
173	27.4	20.9	31.3
215	55.5	43.4	65.2





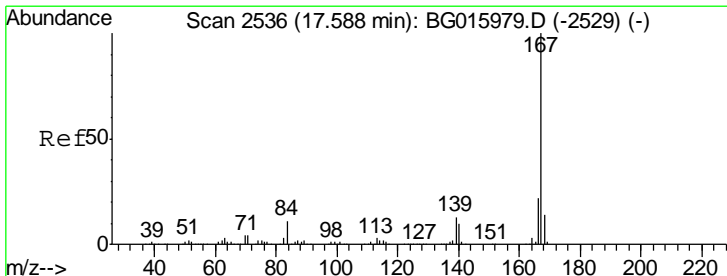
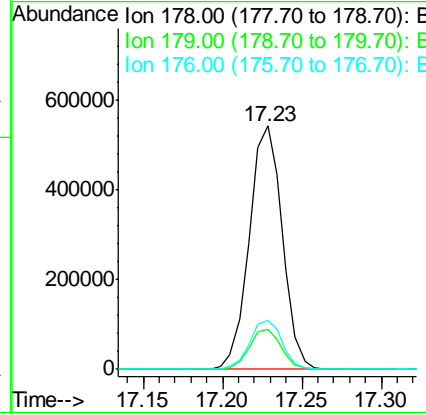
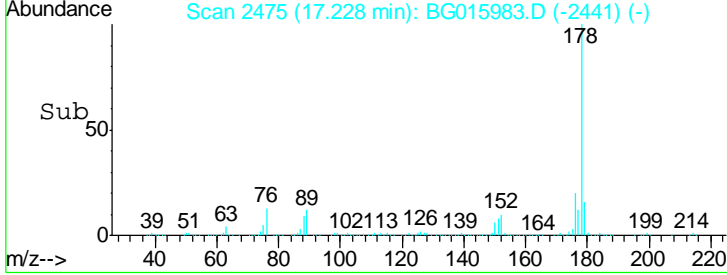
#69
 Phenanthrene
 Concen: 42.85 ng/ul
 RT: 17.23 min Scan# 2475
 Delta R.T. -0.00 min
 Lab File: BG015983.D
 Acq: 11 Feb 2015 13:55

Instrument :
 BNA_G
 ClientSampled :
 X1H38

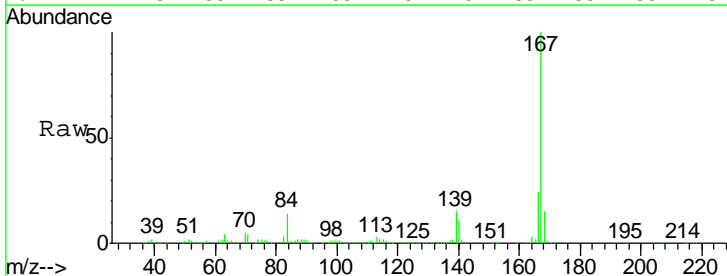


Tgt Ion	Resp	Lower	Upper
178	100		
179	16.5	13.0	19.6
176	20.2	15.4	23.2

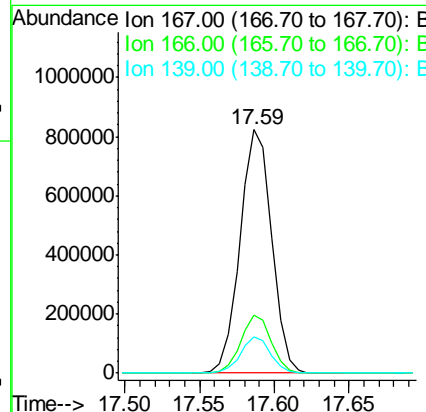
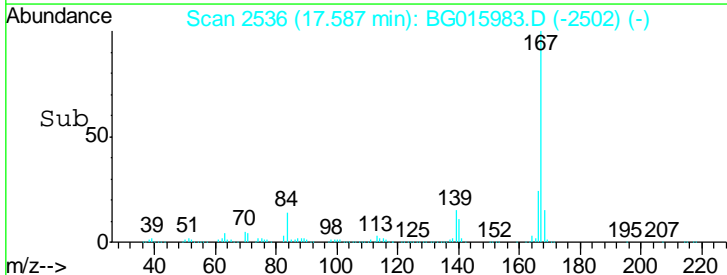
Manual Integrations
 APPROVED
 apatel
 2/12/2015 4:16:42 PM

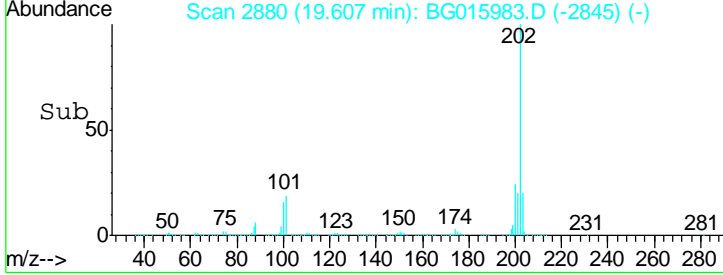
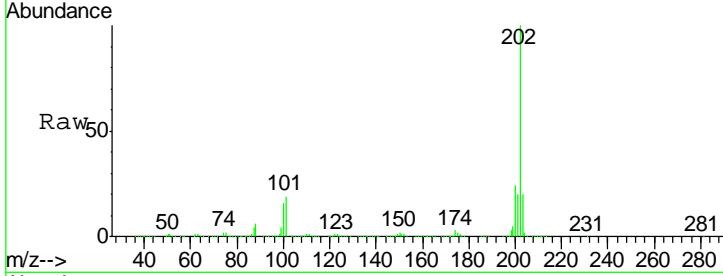
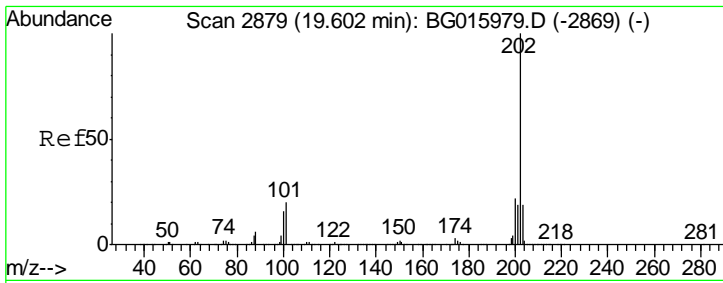


#72
 Carbazole
 Concen: 66.59 ng/ul
 RT: 17.59 min Scan# 2536
 Delta R.T. -0.00 min
 Lab File: BG015983.D
 Acq: 11 Feb 2015 13:55



Tgt Ion	Resp	Lower	Upper
167	100		
166	23.6	18.0	27.0
139	14.9	10.9	16.3



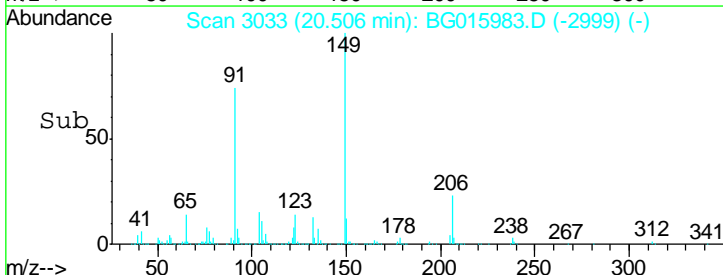
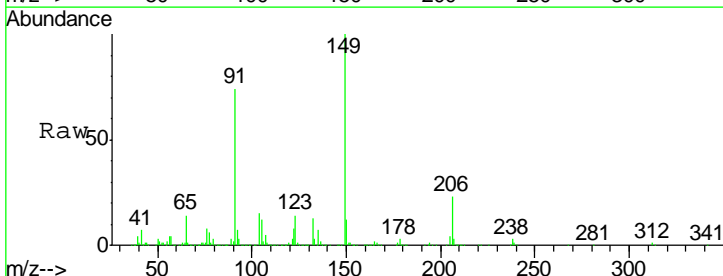
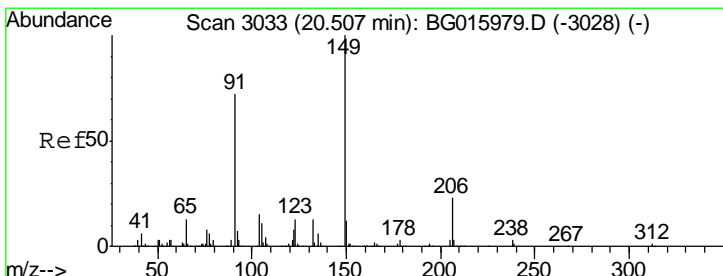
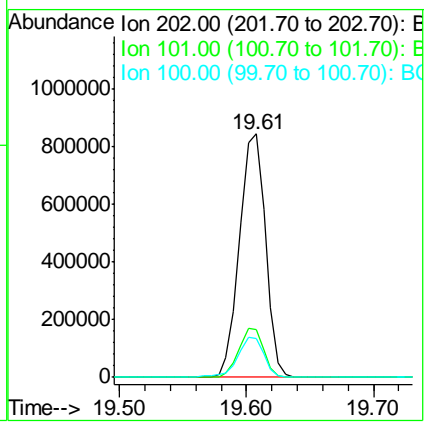


#77
 Pyrene
 Concen: 56.37 ng/ul
 RT: 19.61 min Scan# 2880
 Delta R.T. 0.00 min
 Lab File: BG015983.D
 Acq: 11 Feb 2015 13:55

Tgt Ion	Resp	Lower	Upper
202	1196646		
101	19.5	14.9	22.3
100	15.9	12.2	18.4

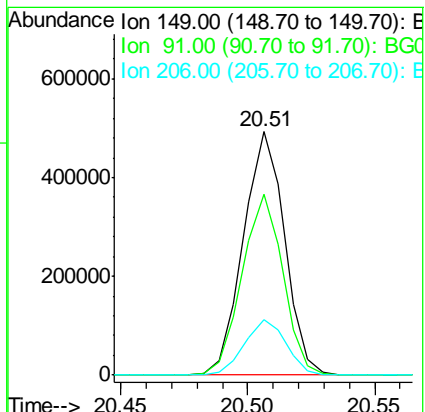
Instrument :
 BNA_G
 ClientSampled :
 X1H38

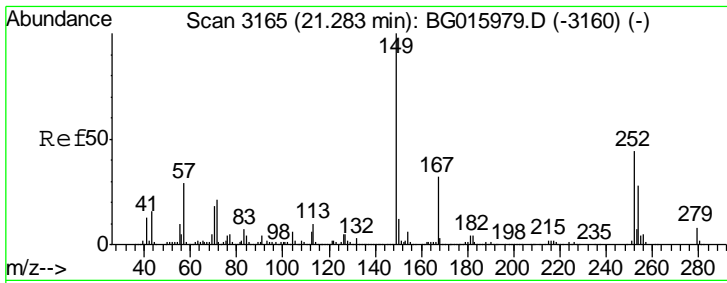
Manual Integrations
 APPROVED
 apatel
 2/12/2015 4:16:42 PM



#78
 Butylbenzylphthalate
 Concen: 58.22 ng/ul
 RT: 20.51 min Scan# 3033
 Delta R.T. -0.00 min
 Lab File: BG015983.D
 Acq: 11 Feb 2015 13:55

Tgt Ion	Resp	Lower	Upper
149	559562		
91	74.4	57.2	85.8
206	23.0	18.4	27.6





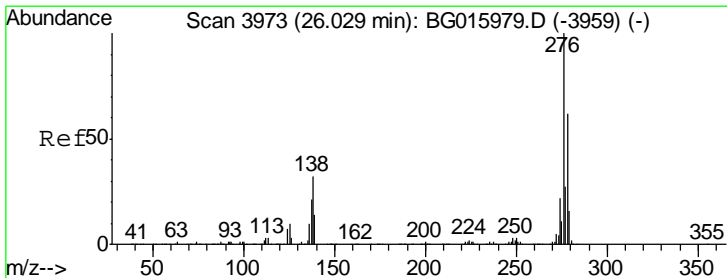
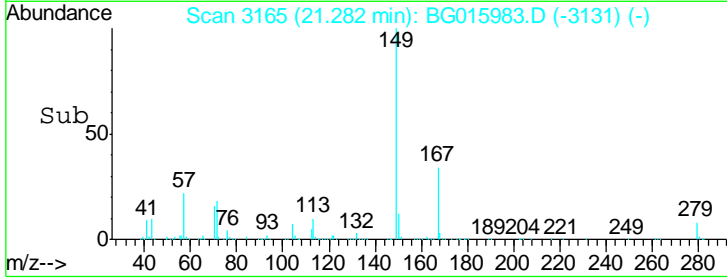
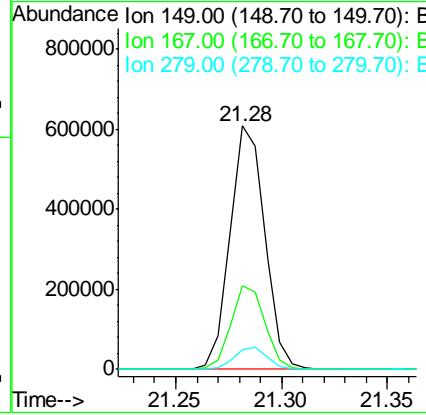
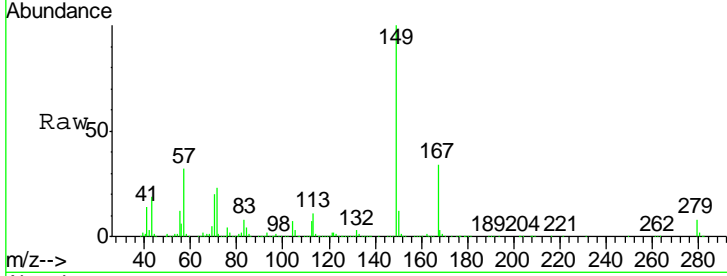
#81
 Bis(2-ethylhexyl)phthalate
 Concen: 53.84 ng/ul
 RT: 21.28 min Scan# 3165
 Delta R.T. -0.00 min
 Lab File: BG015983.D
 Acq: 11 Feb 2015 13:55

Instrument :
 BNA_G
 ClientSampled :
 X1H38

Tgt Ion	Resp	Lower	Upper
149	100		
167	34.2	26.6	39.8
279	8.3	6.7	10.1

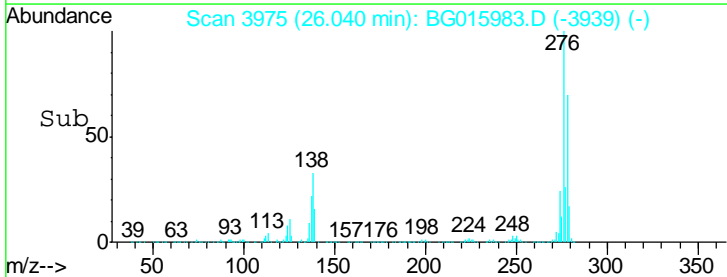
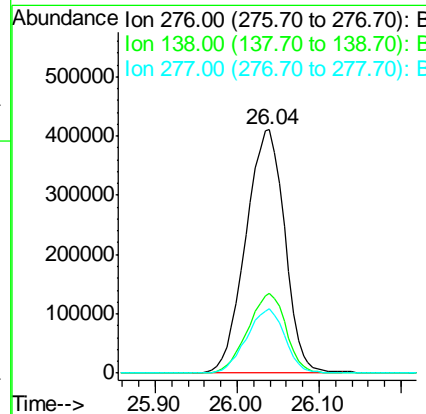
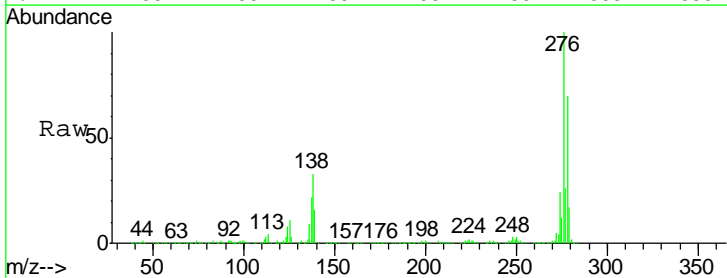
Manual Integrations
 APPROVED

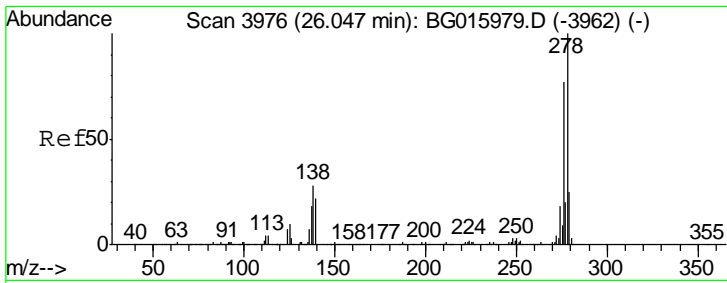
apatel
 2/12/2015 4:16:42 PM



#89
 Indeno(1,2,3-cd)pyrene
 Concen: 62.03 ng/ul
 RT: 26.04 min Scan# 3975
 Delta R.T. 0.01 min
 Lab File: BG015983.D
 Acq: 11 Feb 2015 13:55

Tgt Ion	Resp	Lower	Upper
276	100		
138	32.9	24.6	36.8
277	26.4	19.8	29.8



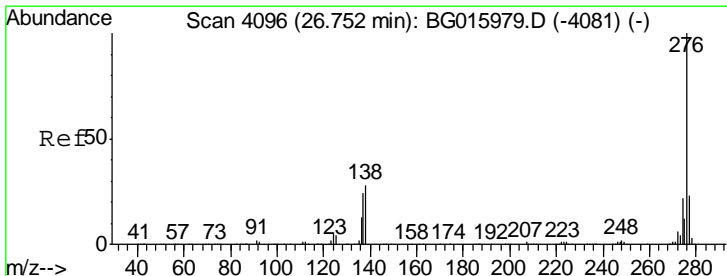
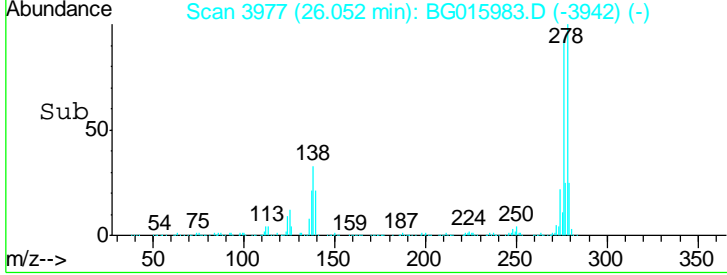
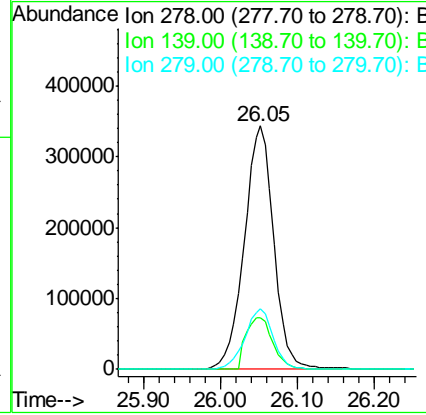
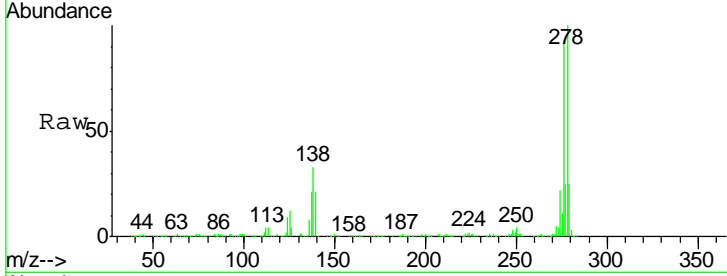


#90
 Dibenzo(a,h)anthracene
 Concen: 49.58 ng/ul
 RT: 26.05 min Scan# 3977
 Delta R.T. 0.00 min
 Lab File: BG015983.D
 Acq: 11 Feb 2015 13:55

Instrument :
 BNA_G
 ClientSampled :
 X1H38

Tgt Ion	Resp	Lower	Upper
278	100		
139	21.2	15.9	23.9
279	24.6	19.8	29.6

Manual Integrations
APPROVED
 apatel
 2/12/2015 4:16:42 PM



#91
 Benzo(g,h,i)perylene
 Concen: 46.82 ng/ul
 RT: 26.76 min Scan# 4097
 Delta R.T. 0.00 min
 Lab File: BG015983.D
 Acq: 11 Feb 2015 13:55

Tgt Ion	Resp	Lower	Upper
276	100		
138	28.6	21.5	32.3
277	24.7	18.9	28.3

