

Data Path : Z:\SVOASRV\HPCHEM1\BNA G\DATA\BG021220\  
 Data File : BG044415.D  
 Acq On : 12 Feb 2020 19:08  
 Operator : CG/JU  
 Sample : L1491-08  
 Misc :  
 ALS Vial : 12 Sample Multiplier: 1

Instrument :  
 BNA\_G  
 ClientSampleId :

Quant Time: Feb 13 01:06:25 2020  
 Quant Method : Z:\SVOASRV\HPCHEM1\BNA G\METHODS\8270-BG013020.M  
 Quant Title : ASP BNA STANDARDS FOR 5 POINT CALIBRATION  
 QLast Update : Mon Feb 10 16:11:50 2020  
 Response via : Initial Calibration

Internal Standards	R.T.	QIon	Response	Conc	Units	Dev(Min)
1) 1,4-Dichlorobenzene-d4	7.90	152	86591	20.00	ng	0.00
21) Naphthalene-d8	10.70	136	348048	20.00	ng	0.00
39) Acenaphthene-d10	14.54	164	216515	20.00	ng	0.00
64) Phenanthrene-d10	17.28	188	480061	20.00	ng	0.00
76) Chrysene-d12	21.53	240	465720	20.00	ng	-0.01
87) Perylene-d12	24.61	264	476191	20.00	ng	-0.01

## System Monitoring Compounds

5) 2-Fluorophenol	5.49	112	733589	149.52	ng	0.00
7) Phenol-d6	7.08	99	962572	146.10	ng	0.00
23) Nitrobenzene-d5	9.06	82	597179	96.87	ng	0.00
42) 2,4,6-Tribromophenol	16.03	330	359072	141.27	ng	0.00
45) 2-Fluorobiphenyl	13.16	172	1261698	97.58	ng	0.00
79) Terphenyl-d14	19.90	244	1773004	78.31	ng	0.00

## Target Compounds

						Qvalue
2) 1,4-Dioxane	3.38	88	395	0.179	ng	# 61
3) Pyridine	3.85	79	70	0.012	ng	# 1
4) n-Nitrosodimethylamine	3.67	42	134	0.055	ng	# 1
6) Aniline	7.11	93	57	0.007	ng	# 1
9) Benzaldehyde	7.07	77	1641	0.437	ng	# 1
10) Phenol	7.10	94	8420	1.291	ng	# 55
11) bis(2-Chloroethyl)ether	7.11	93	57	0.010	ng	# 1
12) 1,3-Dichlorobenzene	8.23	146	65	0.010	ng	# 1
13) 1,4-Dichlorobenzene	8.23	146	65	0.010	ng	# 1
14) 1,2-Dichlorobenzene	8.23	146	65	0.011	ng	# 1
15) Benzyl Alcohol	8.22	79	9433	2.022	ng	# 48
19) n-Nitroso-di-n-propylamine	9.06	70	77014	17.539	ng	# 74
24) Nitrobenzene	9.05	77	1889	0.314	ng	# 30
25) Isophorone	9.57	82	128	0.011	ng	# 64
46) 1,1'-Biphenyl	13.38	154	3236	0.207	ng	# 96
48) 2-Nitroaniline	13.43	65	58	0.016	ng	# 1
50) Dimethylphthalate	13.99	163	53564	3.442	ng	# 99
51) 2,6-Dinitrotoluene	14.54	165	27846	8.024	ng	# 30
52) Acenaphthene	14.60	154	64	0.005	ng	# 5
57) 2,4-Dinitrotoluene	14.54	165	27846	5.725	ng	# 28
58) Fluorene	16.03	166	15656	1.111	ng	# 89
60) Diethylphthalate	15.36	149	84	0.005	ng	# 57
63) Azobenzene	16.03	77	1770	0.130	ng	# 19
65) 4,6-Dinitro-2-methylphenol	16.03	198	1096	0.414	ng	# 1
66) n-Nitrosodiphenylamine	16.03	169	12771	0.949	ng	# 46
67) 4-Bromophenyl-phenylether	16.03	248	24892	4.759	ng	# 1
71) Phenanthrene	17.33	178	624	0.027	ng	# 57
72) Anthracene	17.42	178	200	0.009	ng	# 57
73) Carbazole	17.70	167	201	0.009	ng	# 56
74) Di-n-butylphthalate	18.25	149	1354	0.052	ng	# 82
75) Fluoranthene	19.34	202	2565	0.095	ng	# 90
77) Benzidine	19.90	184	29562	2.288	ng	# 92
78) Pyrene	19.70	202	2801	0.094	ng	# 92
80) Butylbenzylphthalate	20.59	149	338	0.025	ng	# 50

Data Path : Z:\SVOASRV\HPCHEM1\BNA G\DATA\BG021220\  
 Data File : BG044415.D  
 Acq On : 12 Feb 2020 19:08  
 Operator : CG/JU  
 Sample : L1491-08  
 Misc :  
 ALS Vial : 12 Sample Multiplier: 1

Instrument :  
 BNA\_G  
 ClientSampleId :

Quant Time: Feb 13 01:06:25 2020  
 Quant Method : Z:\SVOASRV\HPCHEM1\BNA G\METHODS\8270-BG013020.M  
 Quant Title : ASP BNA STANDARDS FOR 5 POINT CALIBRATION  
 QLast Update : Mon Feb 10 16:11:50 2020  
 Response via : Initial Calibration

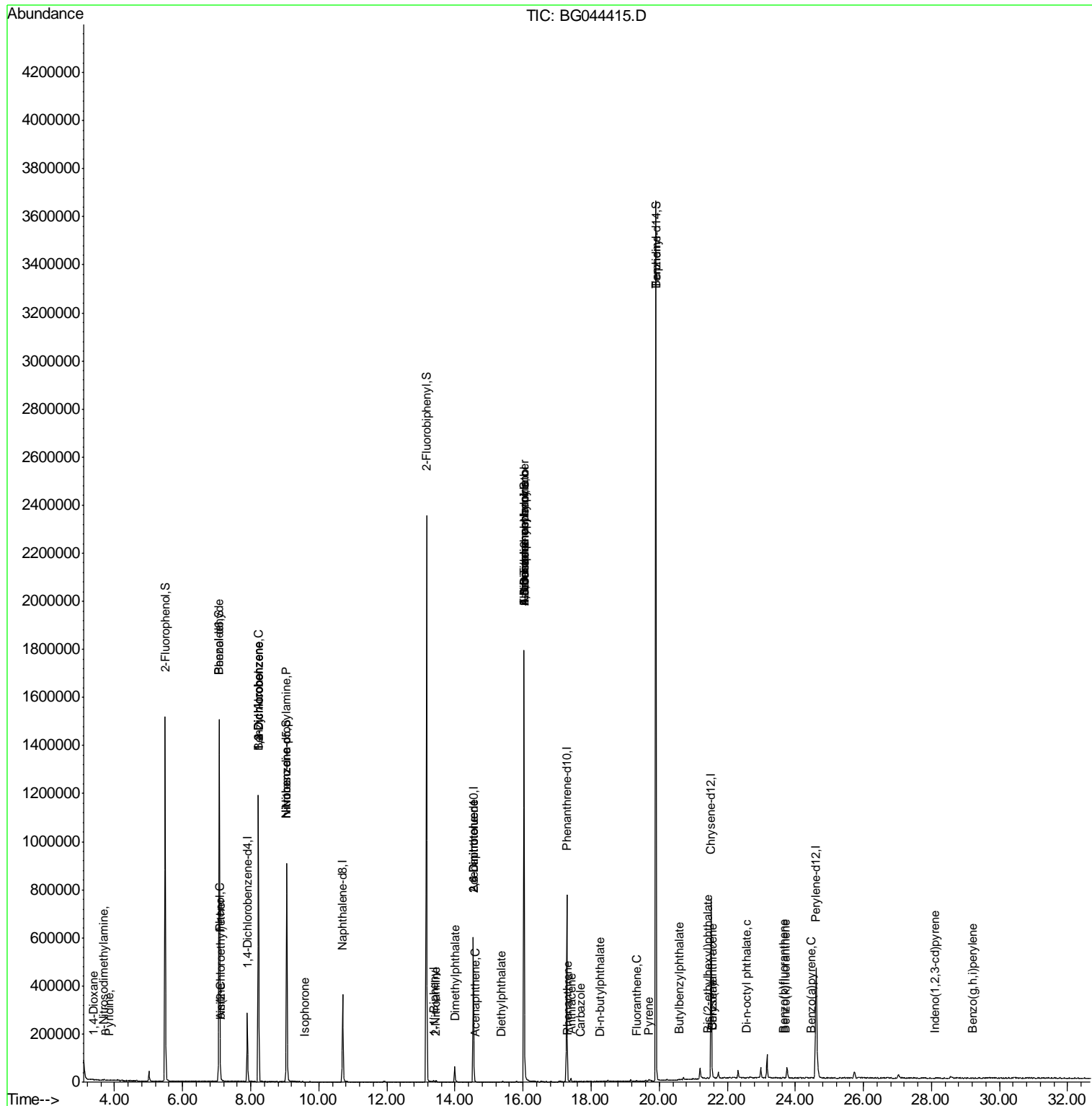
Internal Standards	R.T.	QIon	Response	Conc	Units	Dev(Min)
81) Benzo(a)anthracene	21.57	228	1330	0.046	ng	95
83) Chrysene	21.57	228	1330	0.048	ng	92
84) Bis(2-ethylhexyl)phthalate	21.43	149	2204	0.117	ng	# 94
85) Di-n-octyl phthalate	22.59	149	756	0.023	ng	# 78
86) Indeno(1,2,3-cd)pyrene	28.10	276	174	0.005	ng	# 50
88) Benzo(b)fluoranthene	23.64	252	841	0.031	ng	# 45
89) Benzo(k)fluoranthene	23.71	252	1326	0.050	ng	# 81
90) Benzo(a)pyrene	24.47	252	1397	0.054	ng	# 47
92) Benzo(a,h,i)perylene	29.20	276	291	0.011	ng	# 54

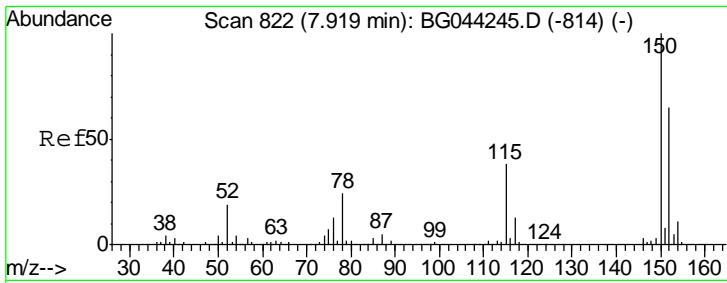
(#) = qualifier out of range (m) = manual integration (+) = signals summed

Data Path : Z:\SVOASRV\HPCHEM1\BNA G\DATA\BG021220\  
 Data File : BG044415.D  
 Acq On : 12 Feb 2020 19:08  
 Operator : CG/JU  
 Sample : L1491-08  
 Misc :  
 ALS Vial : 12 Sample Multiplier: 1

Instrument :  
 BNA\_G  
 Client Sampled :

Quant Time: Feb 13 01:06:25 2020  
 Quant Method : Z:\SVOASRV\HPCHEM1\BNA G\METHODS\8270-BG013020.M  
 Quant Title : ASP BNA STANDARDS FOR 5 POINT CALIBRATION  
 QLast Update : Mon Feb 10 16:11:50 2020  
 Response via : Initial Calibration

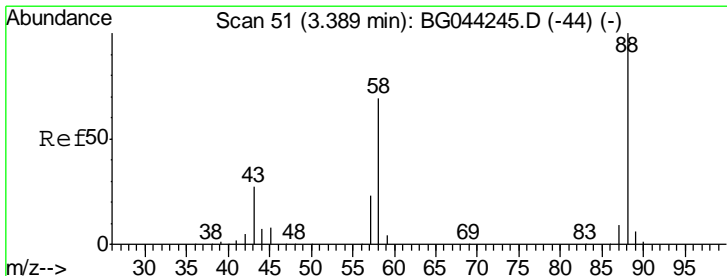
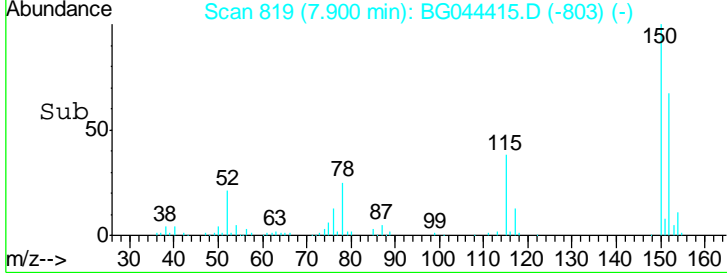
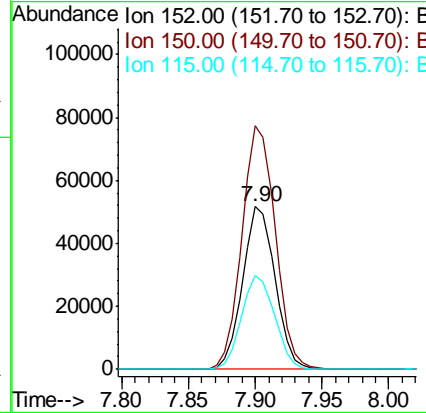
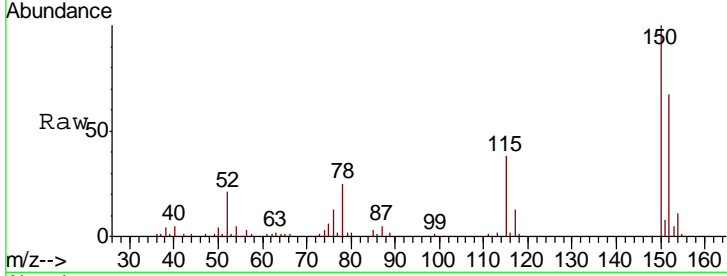




#1  
 1,4-Dichlorobenzene-d4  
 Concen: 20.000 ng  
 RT: 7.90 min Scan# 819  
 Delta R.T. -0.01 min  
 Lab File: BG044415.D  
 Acq: 12 Feb 2020 19:08

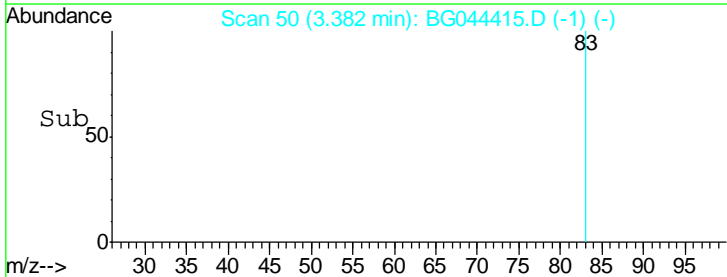
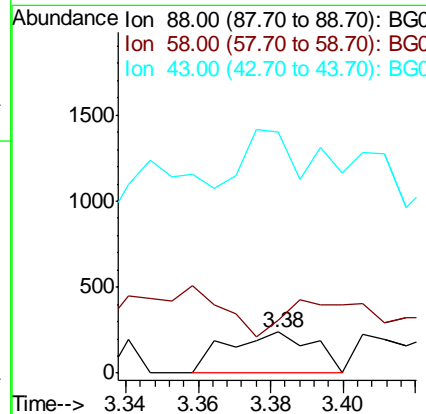
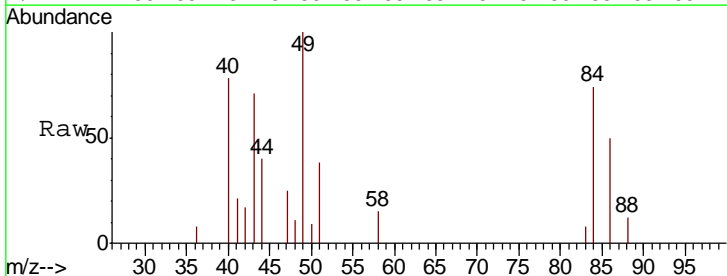
Instrument :  
 BNA\_G  
 ClientSampled :

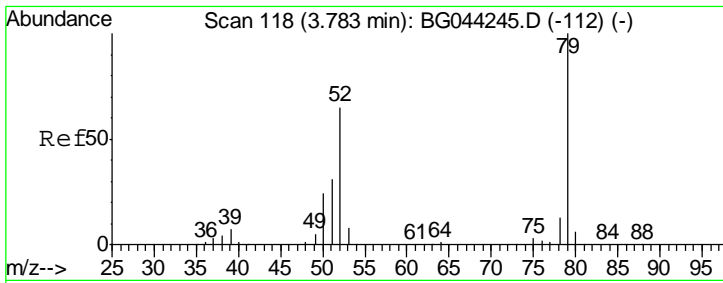
Tgt Ion	Resp	Lower	Upper
152	100		
150	149.7	122.6	183.8
115	57.4	46.0	69.0



#2  
 1,4-Dioxane  
 Concen: 0.179 ng  
 RT: 3.38 min Scan# 50  
 Delta R.T. 0.02 min  
 Lab File: BG044415.D  
 Acq: 12 Feb 2020 19:08

Tgt Ion	Resp	Lower	Upper
88	100		
58	97.0	55.8	83.6#
43	0.0	21.6	32.4#

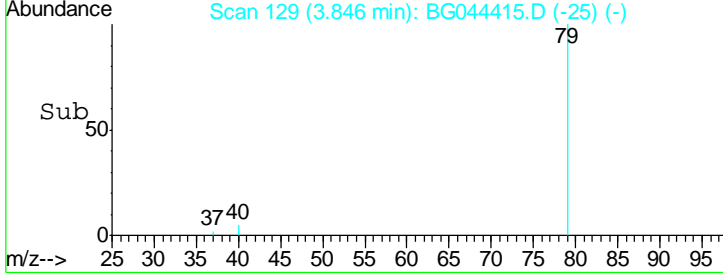
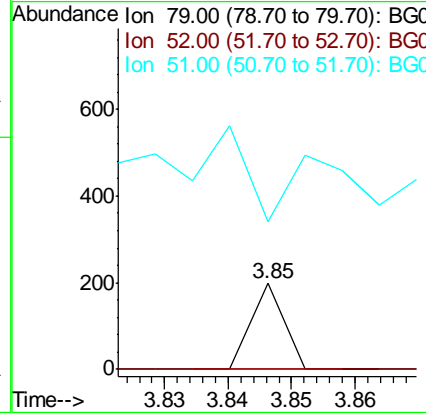
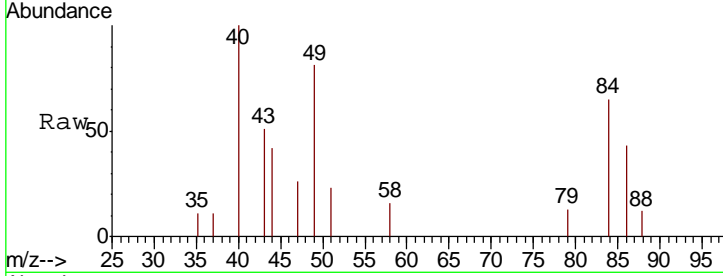




#3  
 Pyridine  
 Concen: 0.012 ng  
 RT: 3.85 min Scan# 129  
 Delta R.T. 0.08 min  
 Lab File: BG044415.D  
 Acq: 12 Feb 2020 19:08

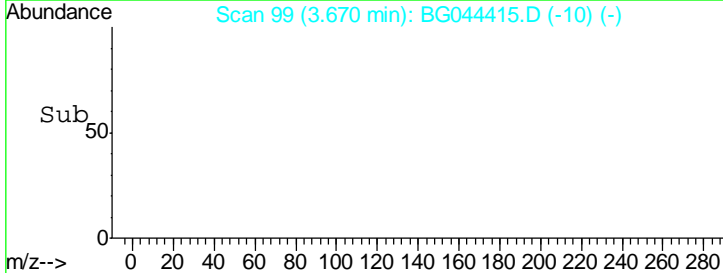
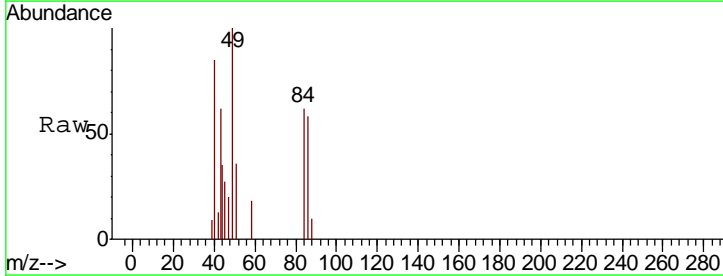
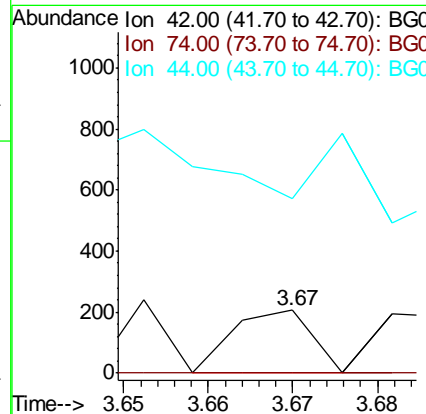
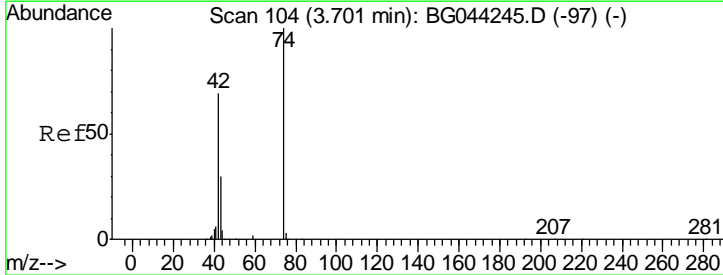
Instrument :  
 BNA\_G  
 ClientSampled :

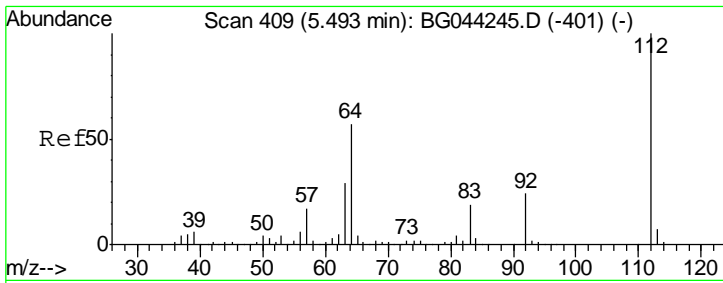
Tgt Ion	Resp	Lower	Upper
79	100		
52	0.0	51.9	77.9#
51	172.2	25.3	37.9#



#4  
 n-Nitrosodimethylamine  
 Concen: 0.055 ng  
 RT: 3.67 min Scan# 99  
 Delta R.T. -0.01 min  
 Lab File: BG044415.D  
 Acq: 12 Feb 2020 19:08

Tgt Ion	Resp	Lower	Upper
42	100		
74	0.0	115.1	172.7#
44	277.7	5.6	8.4#

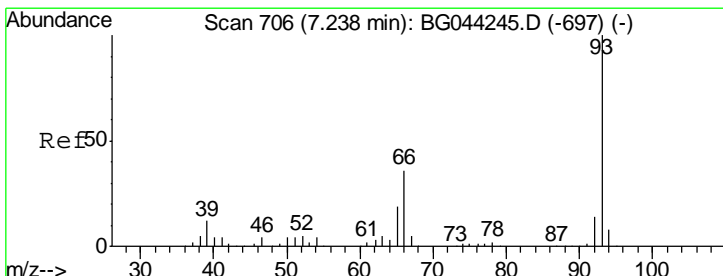
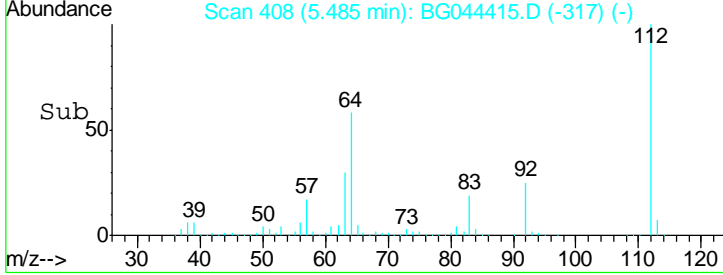
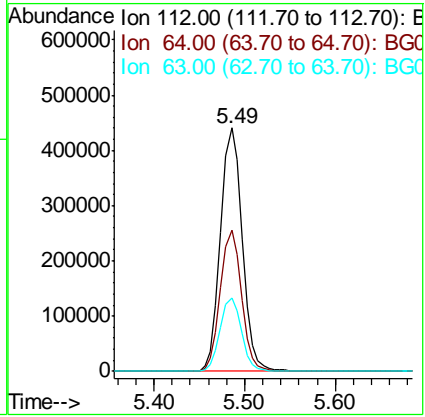
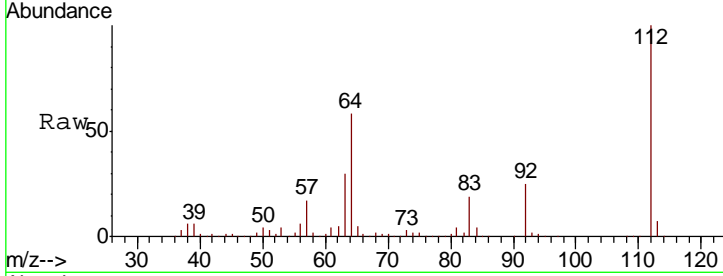




#5  
 2-Fluorophenol  
 Concen: 149.515 ng  
 RT: 5.49 min Scan# 408  
 Delta R.T. 0.01 min  
 Lab File: BG044415.D  
 Acq: 12 Feb 2020 19:08

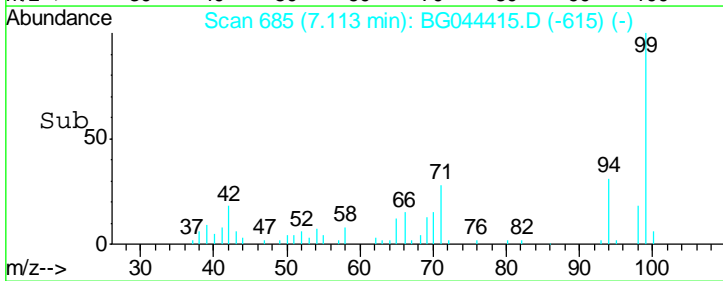
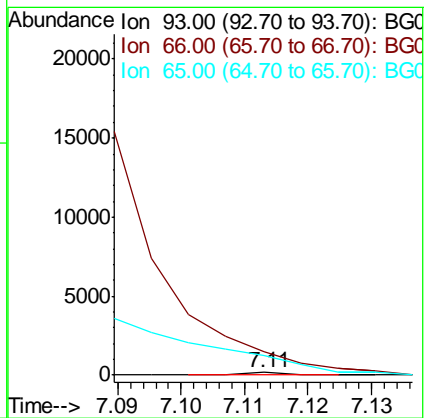
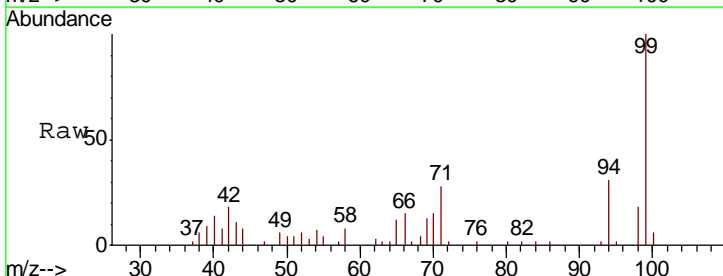
Instrument :  
 BNA\_G  
 ClientSampled :

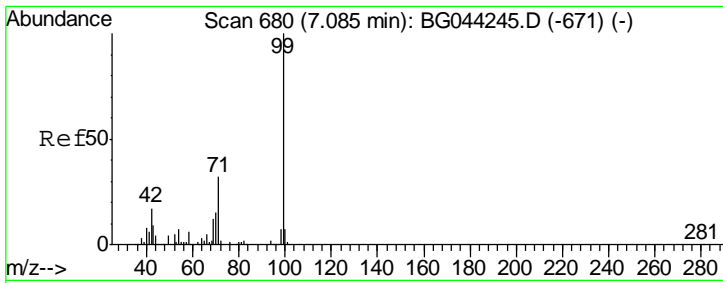
Tgt Ion	Resp	Lower	Upper
112	733589		
64	58.2	45.4	68.2
63	30.4	22.9	34.3



#6  
 Aniline  
 Concen: 0.007 ng  
 RT: 7.11 min Scan# 685  
 Delta R.T. -0.12 min  
 Lab File: BG044415.D  
 Acq: 12 Feb 2020 19:08

Tgt Ion	Resp	Lower	Upper
93	57		
93	100		
66	930.7	28.7	43.1#
65	741.1	15.4	23.0#

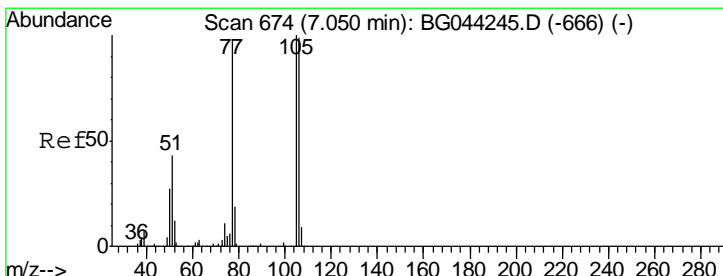
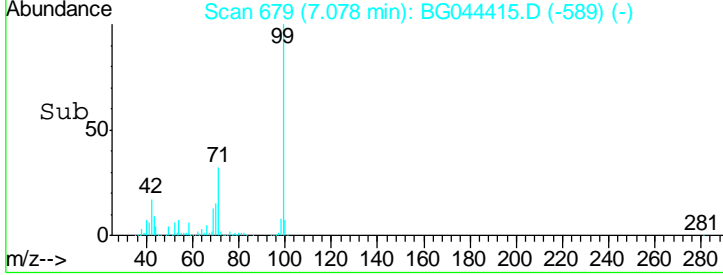
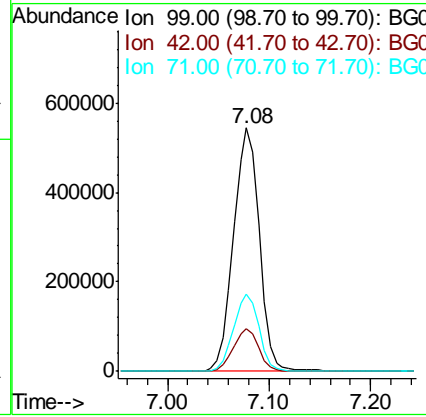
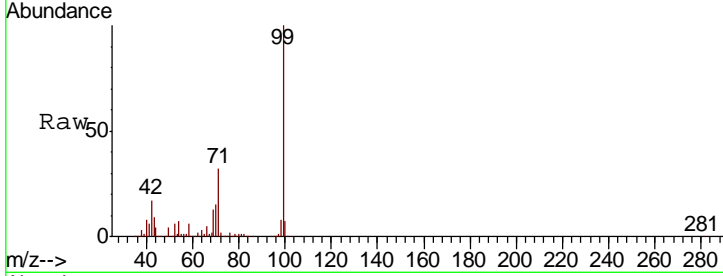




#7  
 Phenol-d6  
 Concen: 146.096 ng  
 RT: 7.08 min Scan# 679  
 Delta R.T. 0.00 min  
 Lab File: BG044415.D  
 Acq: 12 Feb 2020 19:08

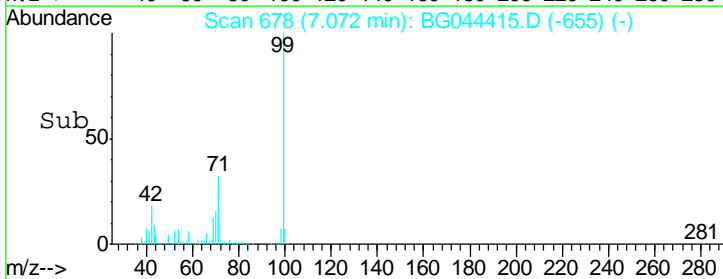
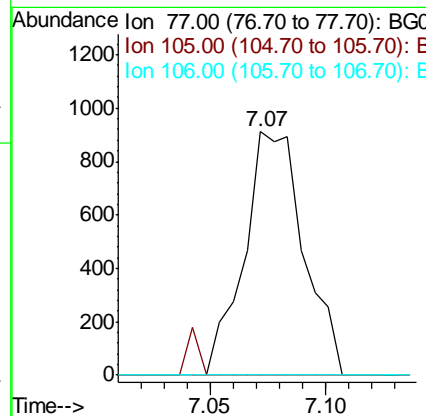
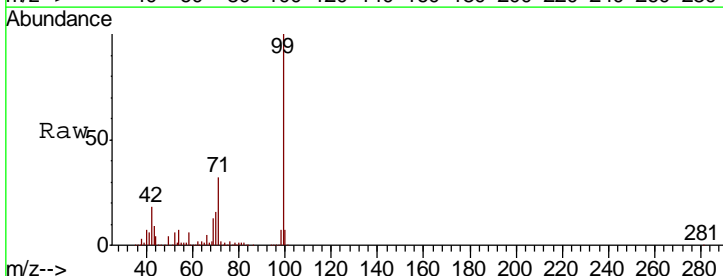
Instrument :  
 BNA\_G  
 ClientSampled :

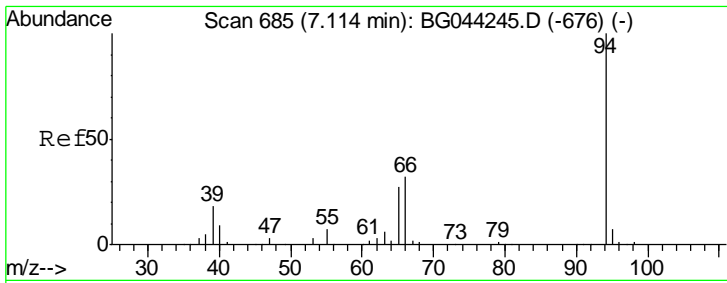
Tgt Ion	Resp	Lower	Upper
99	100		
42	17.4	13.8	20.6
71	31.9	25.5	38.3



#9  
 Benzaldehyde  
 Concen: 0.437 ng  
 RT: 7.07 min Scan# 678  
 Delta R.T. 0.04 min  
 Lab File: BG044415.D  
 Acq: 12 Feb 2020 19:08

Tgt Ion	Resp	Lower	Upper
77	100		
105	0.0	82.0	122.0#
106	0.0	80.7	120.7#

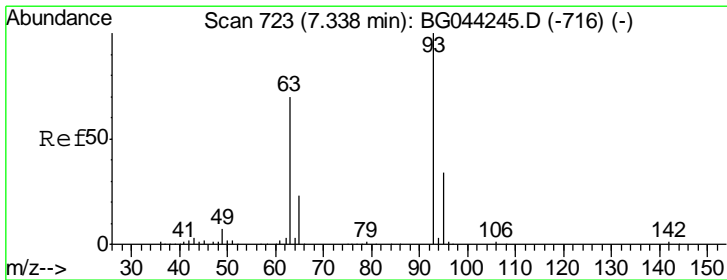
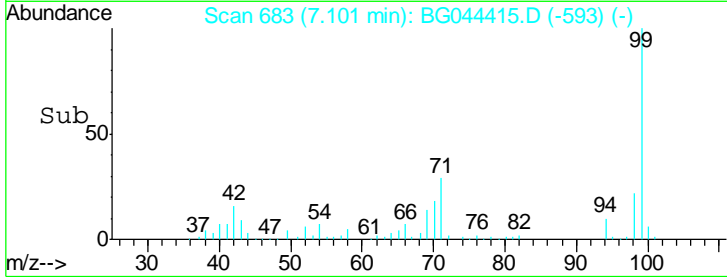
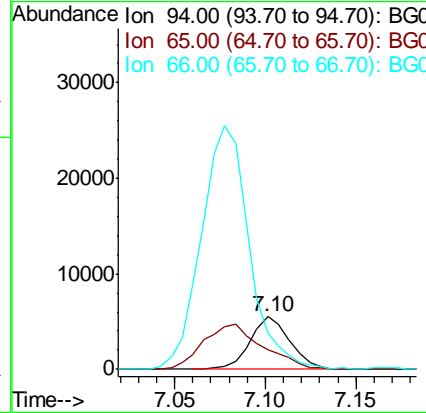
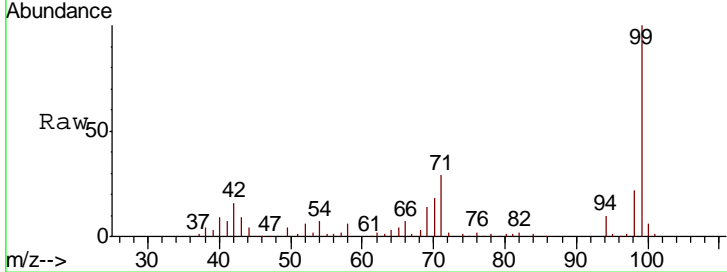




#10  
 Phenol  
 Concen: 1.291 ng  
 RT: 7.10 min Scan# 683  
 Delta R.T. 0.00 min  
 Lab File: BG044415.D  
 Acq: 12 Feb 2020 19:08

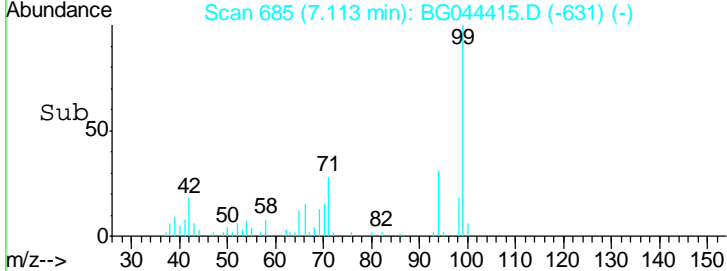
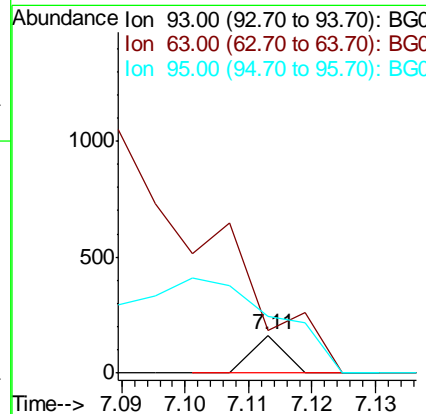
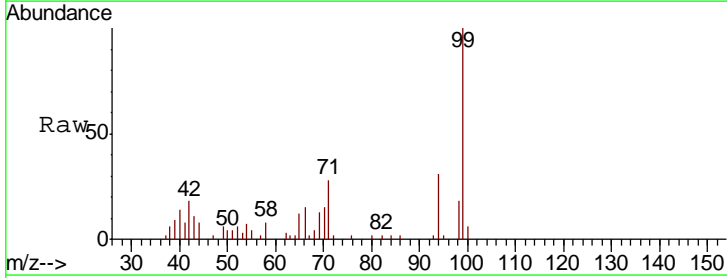
Instrument :  
 BNA\_G  
 ClientSampled :

Tgt Ion	Resp	Lower	Upper
94	100		
65	37.1	7.0	47.0
66	69.6	12.7	52.7#

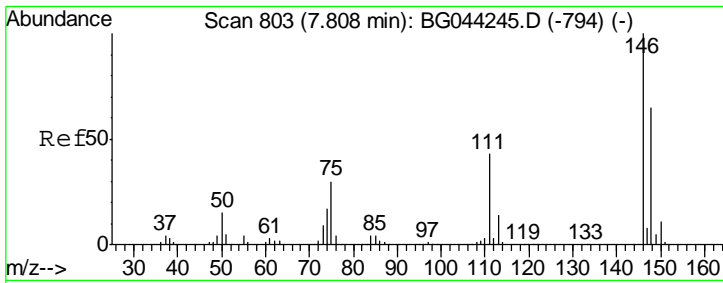


#11  
 bis(2-Chloroethyl)ether  
 Concen: 0.010 ng  
 RT: 7.11 min Scan# 685  
 Delta R.T. -0.21 min  
 Lab File: BG044415.D  
 Acq: 12 Feb 2020 19:08

Tgt Ion	Resp	Lower	Upper
93	100		
63	112.9	49.2	89.2#
95	150.9	13.6	53.6#



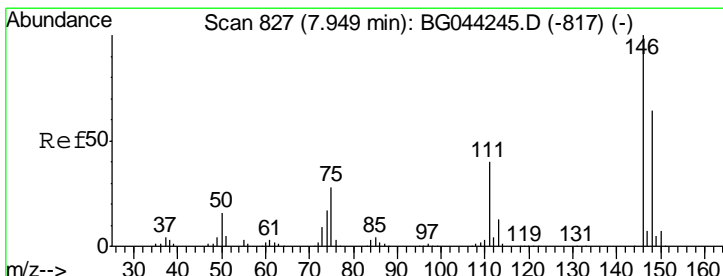
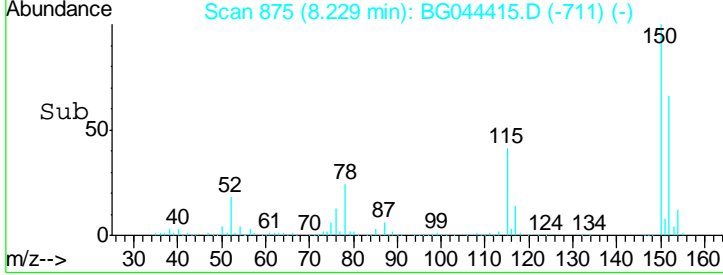
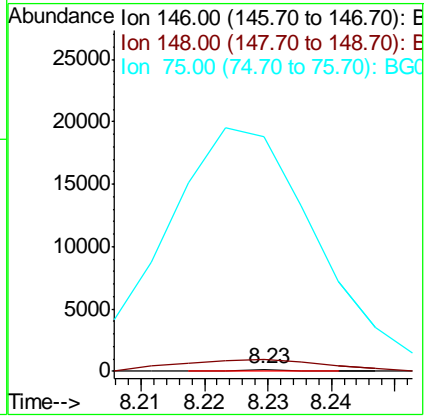
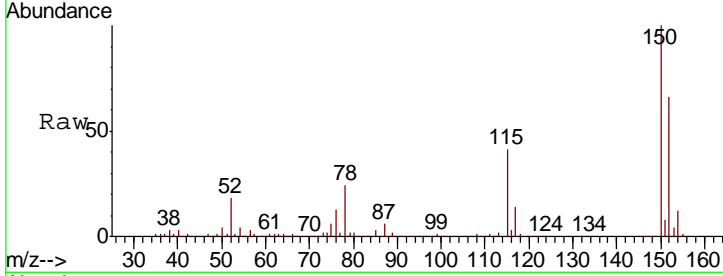




#12  
 1,3-Dichlorobenzene  
 Concen: 0.010 ng  
 RT: 8.23 min Scan# 875  
 Delta R.T. 0.44 min  
 Lab File: BG044415.D  
 Acq: 12 Feb 2020 19:08

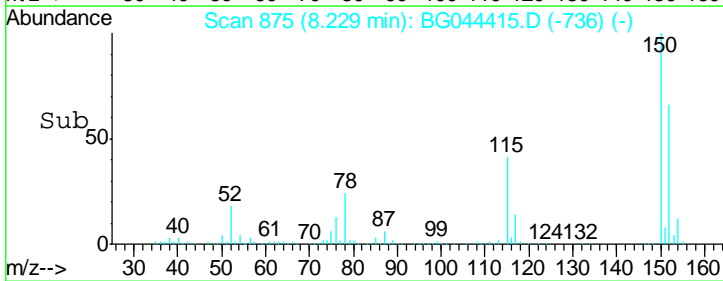
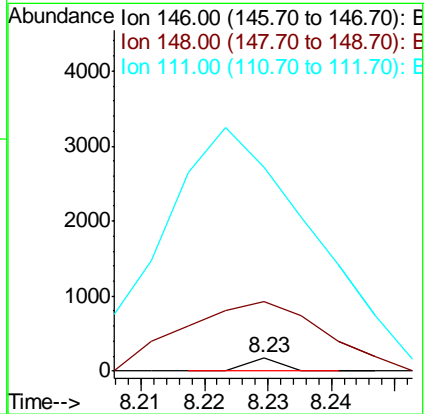
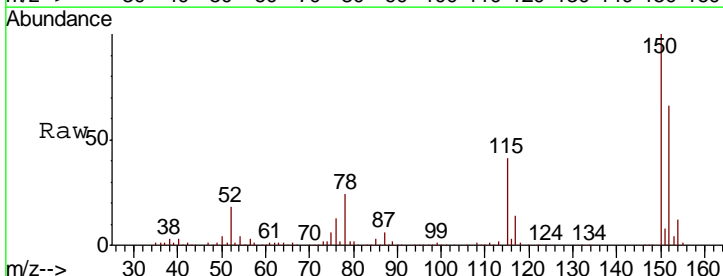
Instrument :  
 BNA\_G  
 ClientSampled :

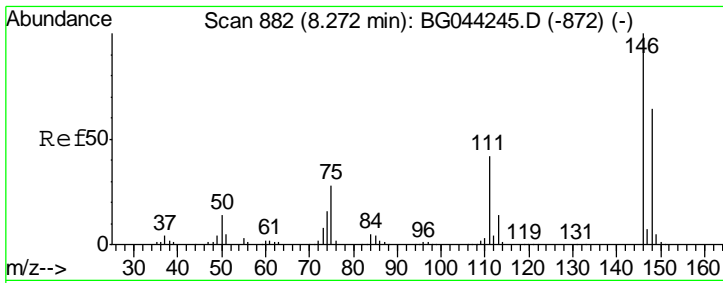
Tgt Ion	Resp	Lower	Upper
146	100		
148	497.8	51.8	77.8#
75	10179.5	23.7	35.5#



#13  
 1,4-Dichlorobenzene  
 Concen: 0.010 ng  
 RT: 8.23 min Scan# 875  
 Delta R.T. 0.29 min  
 Lab File: BG044415.D  
 Acq: 12 Feb 2020 19:08

Tgt Ion	Resp	Lower	Upper
146	100		
148	497.8	51.4	77.0#
111	1470.3	31.8	47.8#

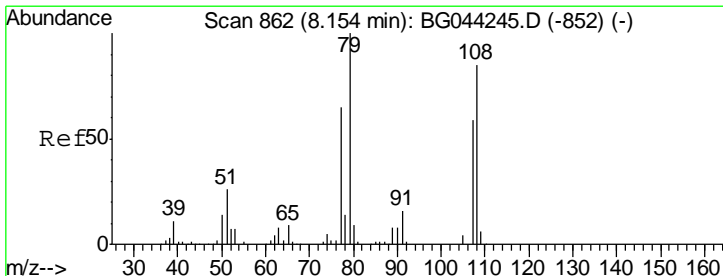
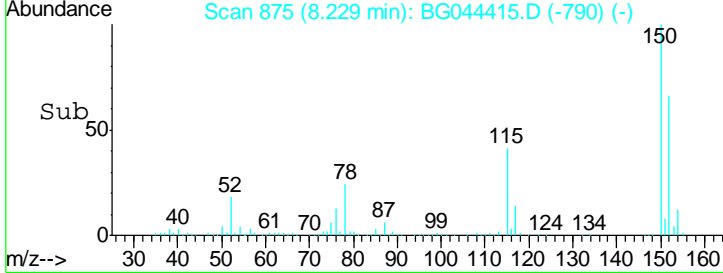
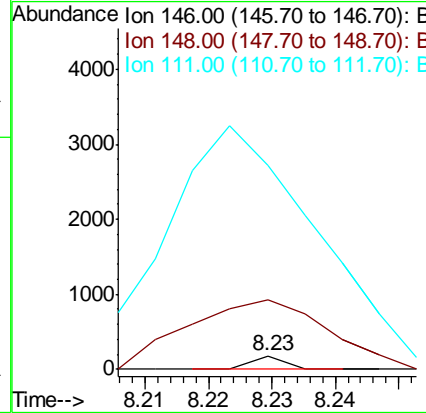
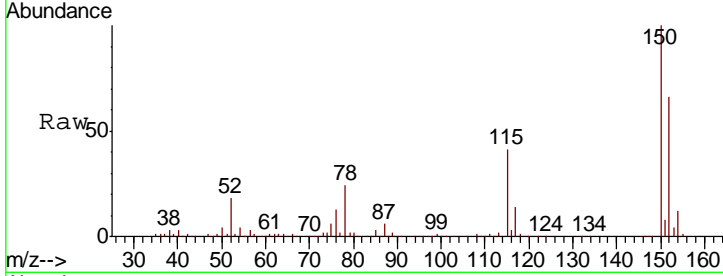




#14  
 1,2-Dichlorobenzene  
 Concen: 0.011 ng  
 RT: 8.23 min Scan# 875  
 Delta R.T. -0.03 min  
 Lab File: BG044415.D  
 Acq: 12 Feb 2020 19:08

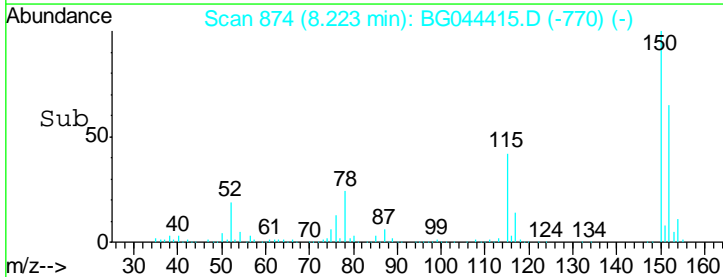
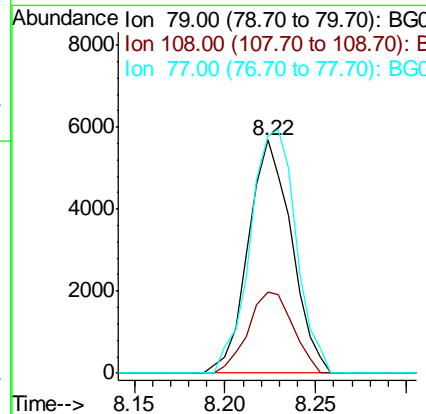
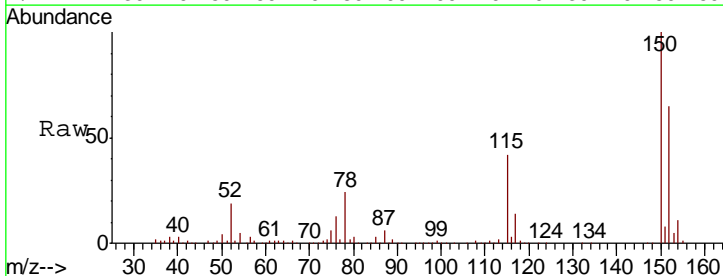
Instrument :  
 BNA\_G  
 ClientSampled :

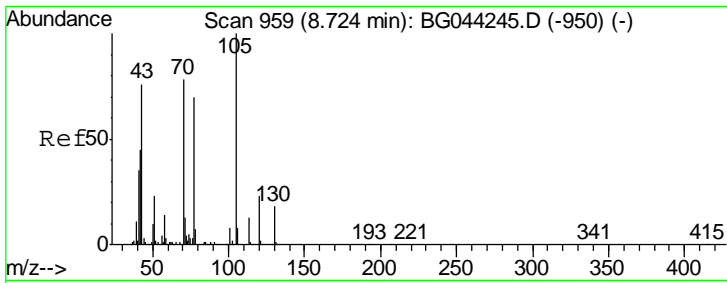
Tgt Ion	Resp	Lower	Upper
146	100		
148	497.8	51.2	76.8#
111	1470.3	34.0	51.0#



#15  
 Benzyl Alcohol  
 Concen: 2.022 ng  
 RT: 8.22 min Scan# 874  
 Delta R.T. 0.08 min  
 Lab File: BG044415.D  
 Acq: 12 Feb 2020 19:08

Tgt Ion	Resp	Lower	Upper
79	100		
108	35.1	68.3	102.5#
77	101.8	51.8	77.8#

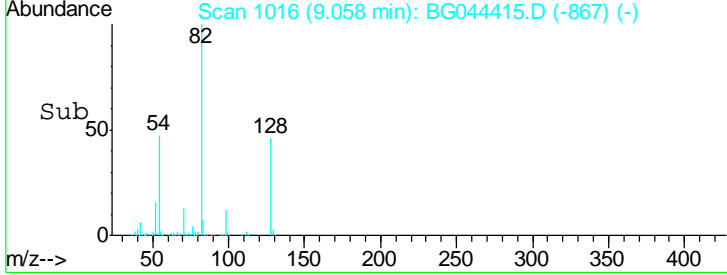
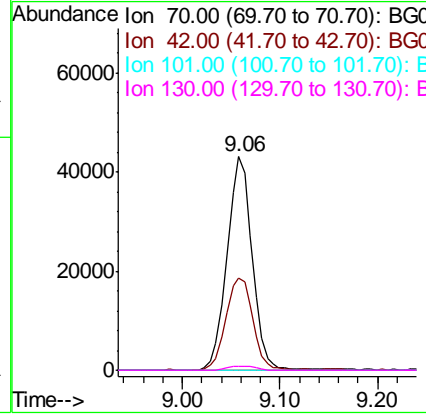
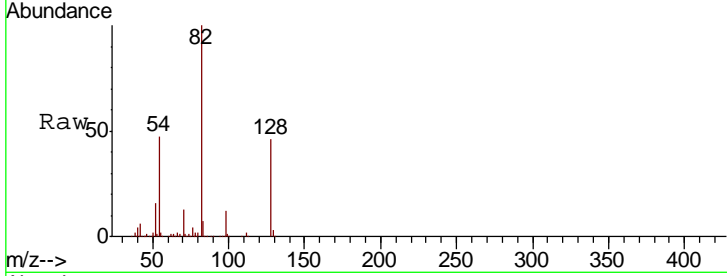




#19  
 n-Nitroso-di-n-propylamine  
 Concen: 17.539 ng  
 RT: 9.06 min Scan# 1016  
 Delta R.T. 0.35 min  
 Lab File: BG044415.D  
 Acq: 12 Feb 2020 19:08

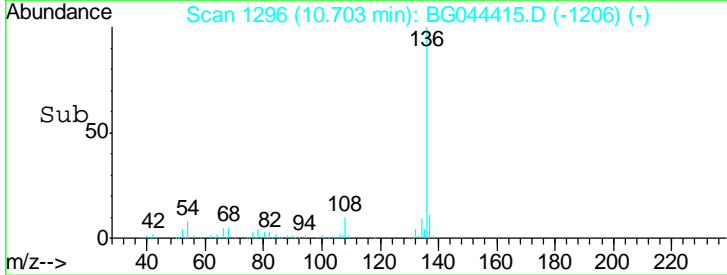
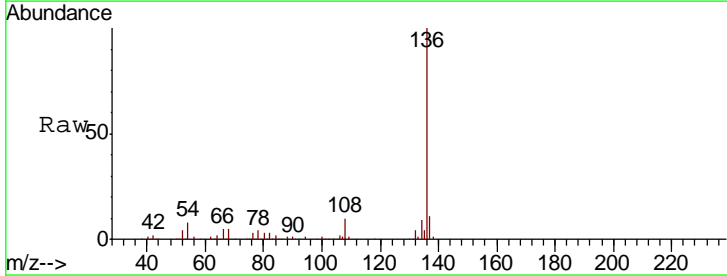
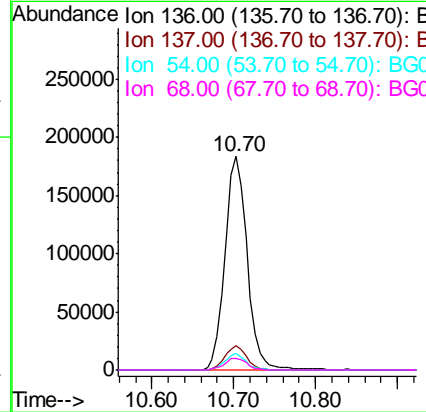
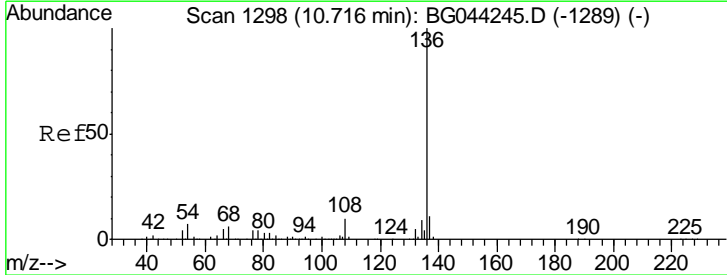
Instrument :  
 BNA\_G  
 ClientSampled :

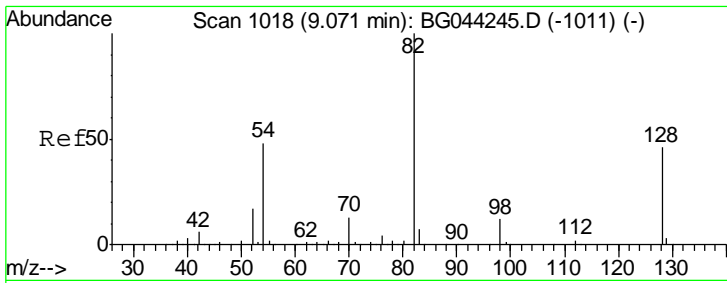
Tgt Ion	Resp	Lower	Upper
70	100		
42	42.9	46.2	69.2#
101	0.0	8.4	12.6#
130	2.1	17.8	26.8#



#21  
 Naphthalene-d8  
 Concen: 20.000 ng  
 RT: 10.70 min Scan# 1296  
 Delta R.T. 0.00 min  
 Lab File: BG044415.D  
 Acq: 12 Feb 2020 19:08

Tgt Ion	Resp	Lower	Upper
136	100		
137	11.3	8.8	13.2
54	7.7	5.8	8.8
68	5.5	4.6	6.8

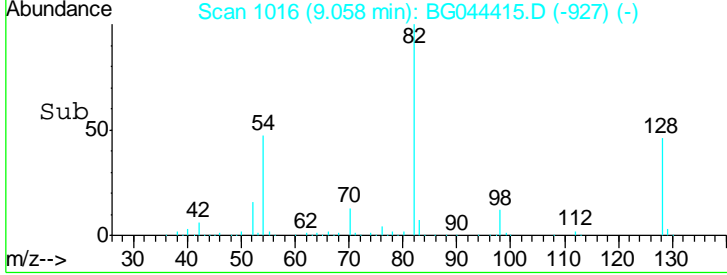
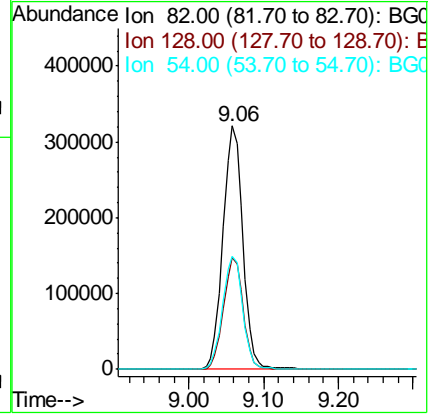
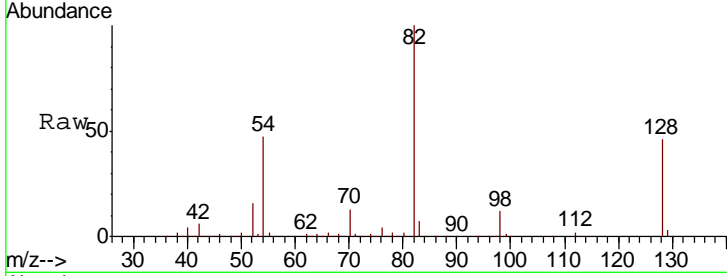




#23  
 Nitrobenzene-d5  
 Concen: 96.867 ng  
 RT: 9.06 min Scan# 1016  
 Delta R.T. -0.01 min  
 Lab File: BG044415.D  
 Acq: 12 Feb 2020 19:08

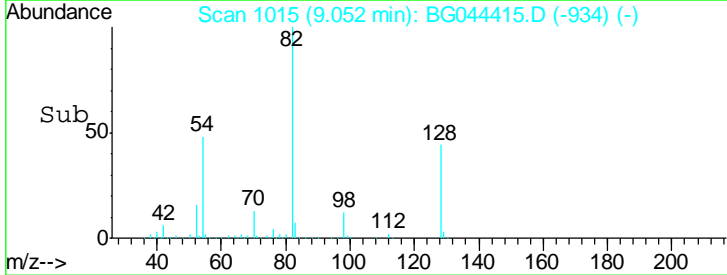
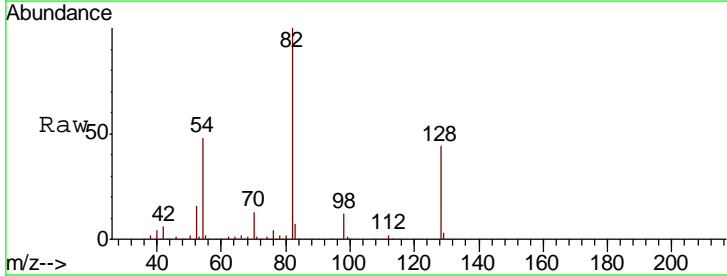
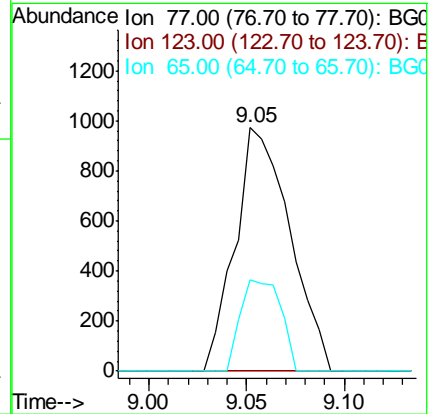
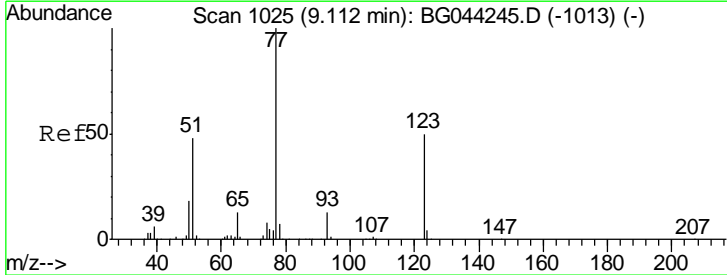
Instrument :  
 BNA\_G  
 ClientSampled :

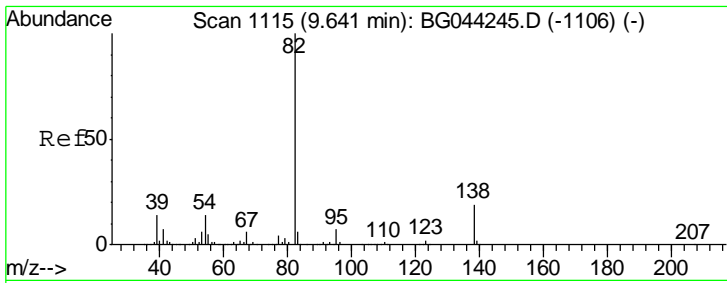
Tgt Ion	Resp	Lower	Upper
82	597179		
128	45.7	36.5	54.7
54	46.7	38.6	58.0



#24  
 Nitrobenzene  
 Concen: 0.314 ng  
 RT: 9.05 min Scan# 1015  
 Delta R.T. -0.05 min  
 Lab File: BG044415.D  
 Acq: 12 Feb 2020 19:08

Tgt Ion	Resp	Lower	Upper
77	1889		
123	0.0	39.9	59.9#
65	37.3	10.4	15.6#

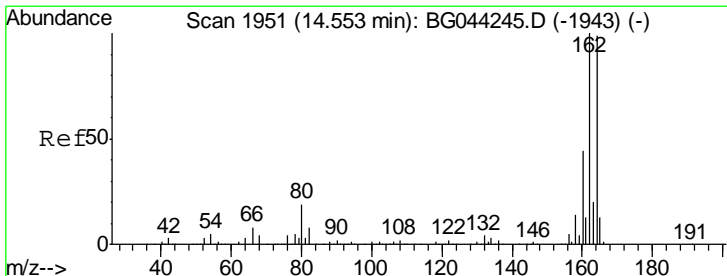
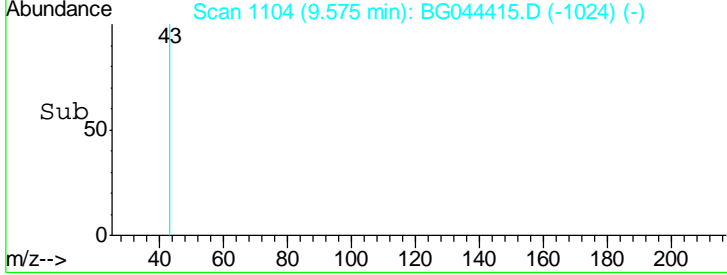
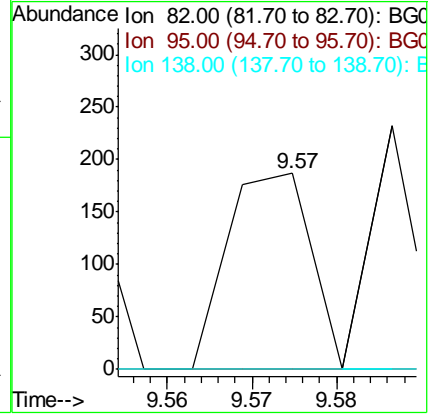
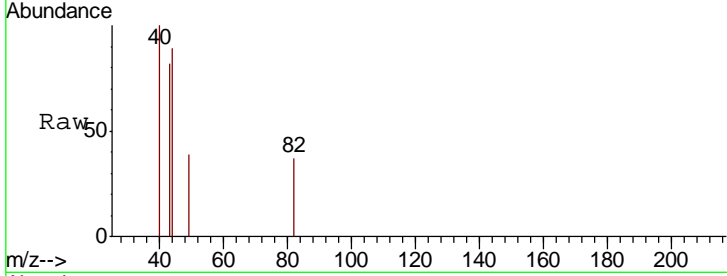




#25  
 Isophorone  
 Concen: 0.011 ng  
 RT: 9.57 min Scan# 1104  
 Delta R.T. -0.06 min  
 Lab File: BG044415.D  
 Acq: 12 Feb 2020 19:08

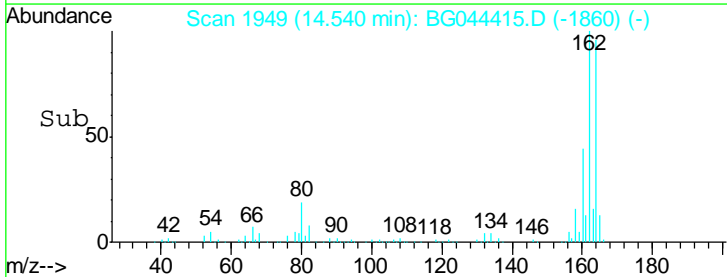
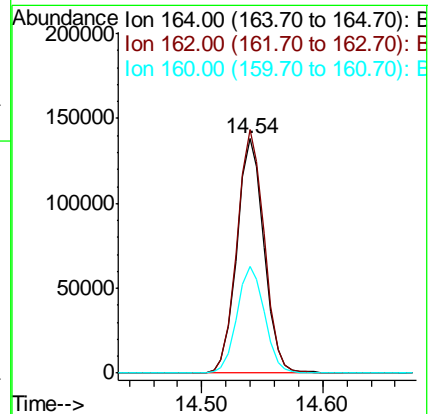
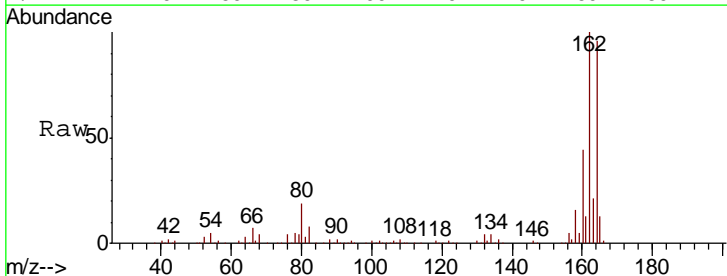
Instrument :  
 BNA\_G  
 ClientSampled :

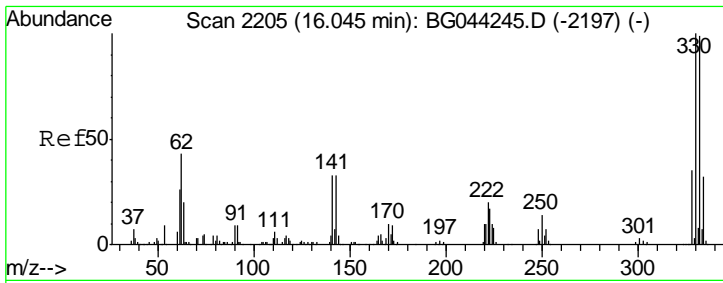
Tgt Ion	Resp	Lower	Upper
82	128		
95	0.0	5.7	8.5#
138	0.0	15.0	22.4#



#39  
 Acenaphthene-d10  
 Concen: 20.000 ng  
 RT: 14.54 min Scan# 1949  
 Delta R.T. -0.01 min  
 Lab File: BG044415.D  
 Acq: 12 Feb 2020 19:08

Tgt Ion	Resp	Lower	Upper
164	216515		
162	103.8	80.7	121.1
160	45.4	35.3	52.9

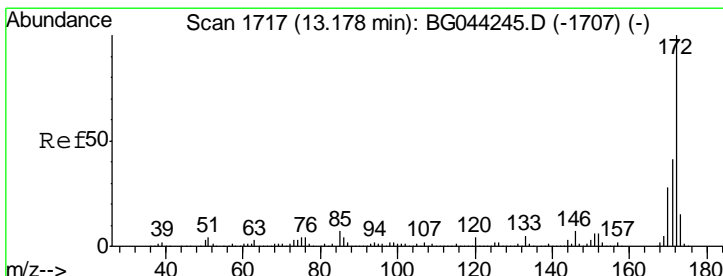
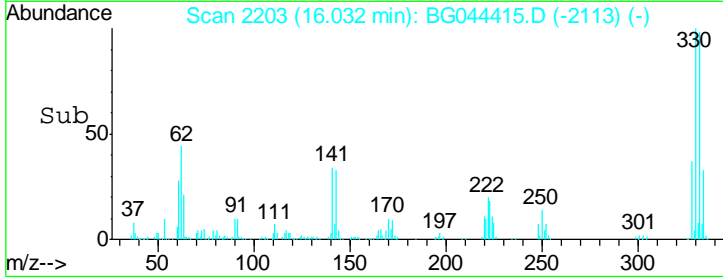
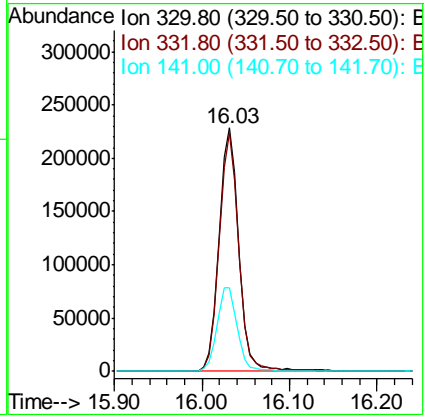
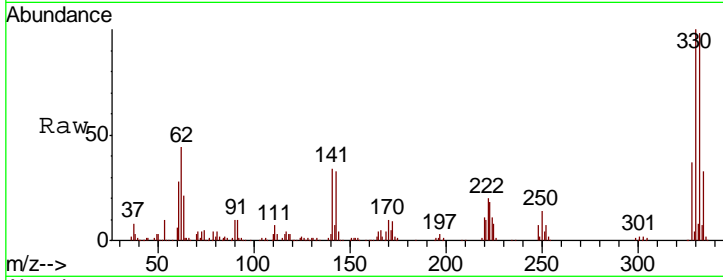




#42  
 2,4,6-Tribromophenol  
 Concen: 141.269 ng  
 RT: 16.03 min Scan# 2203  
 Delta R.T. 0.00 min  
 Lab File: BG044415.D  
 Acq: 12 Feb 2020 19:08

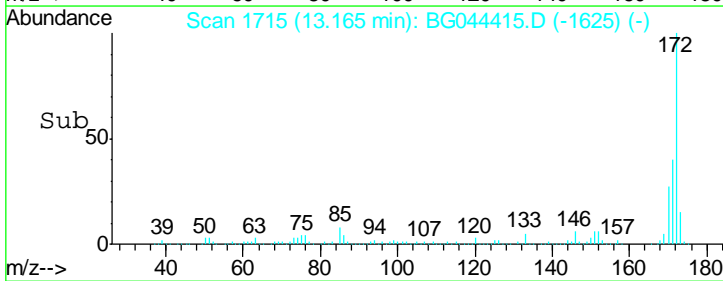
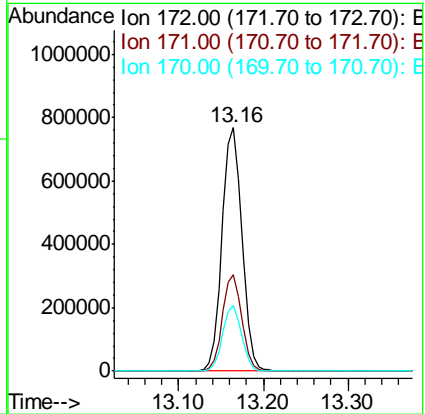
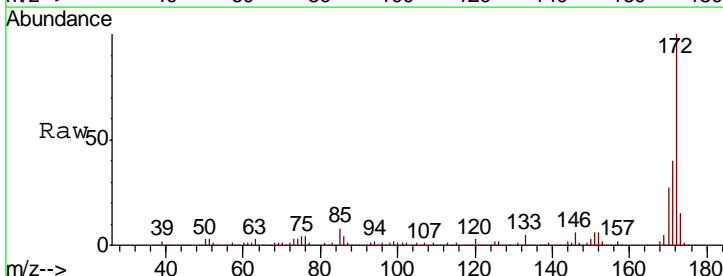
Instrument :  
 BNA\_G  
 ClientSampled :

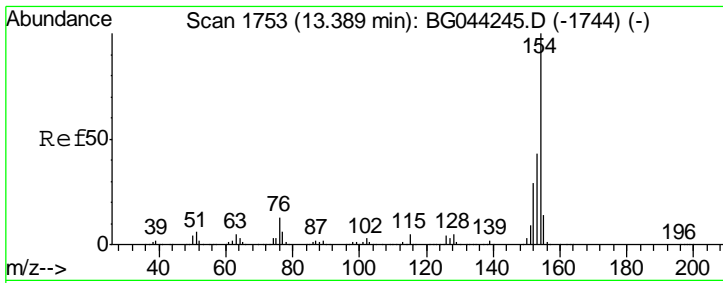
Tgt Ion	Resp	Lower	Upper
330	100		
332	97.5	77.2	115.8
141	35.6	28.3	42.5



#45  
 2-Fluorobiphenyl  
 Concen: 97.581 ng  
 RT: 13.16 min Scan# 1715  
 Delta R.T. 0.00 min  
 Lab File: BG044415.D  
 Acq: 12 Feb 2020 19:08

Tgt Ion	Resp	Lower	Upper
172	100		
171	39.7	32.9	49.3
170	26.9	22.0	33.0

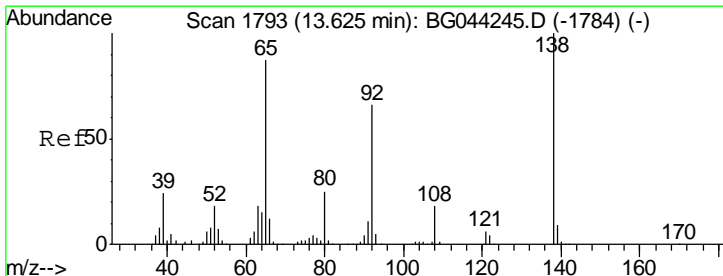
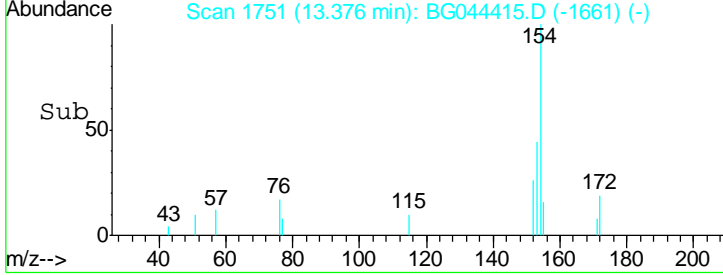
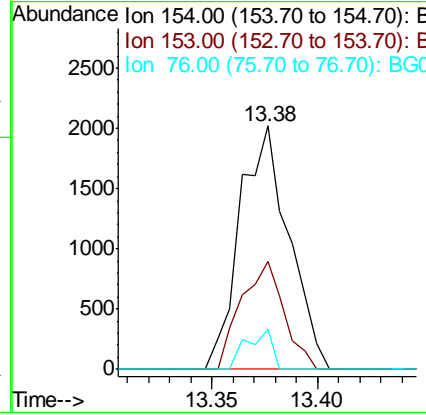
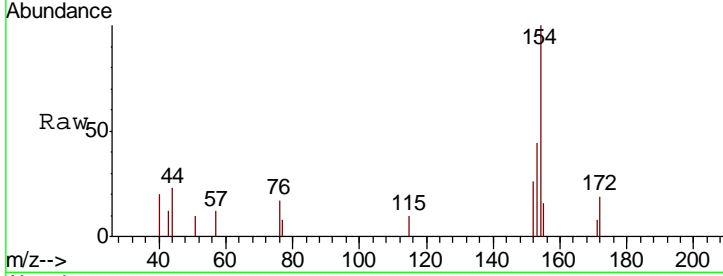




#46  
 1,1'-Biphenyl  
 Concen: 0.207 ng  
 RT: 13.38 min Scan# 1751  
 Delta R.T. 0.00 min  
 Lab File: BG044415.D  
 Acq: 12 Feb 2020 19:08

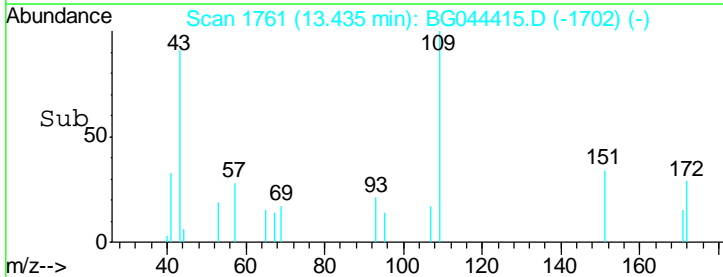
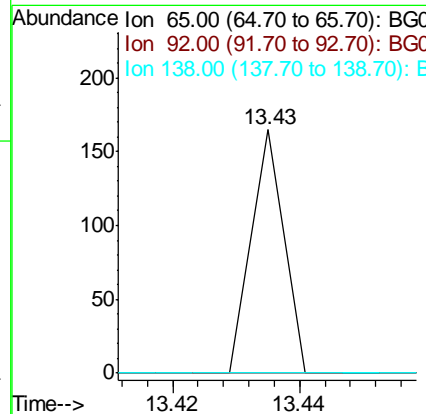
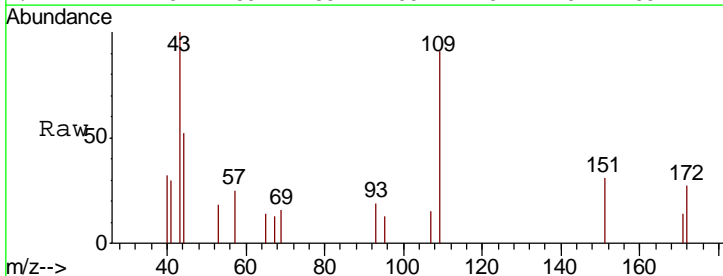
Instrument :  
 BNA\_G  
 ClientSampled :

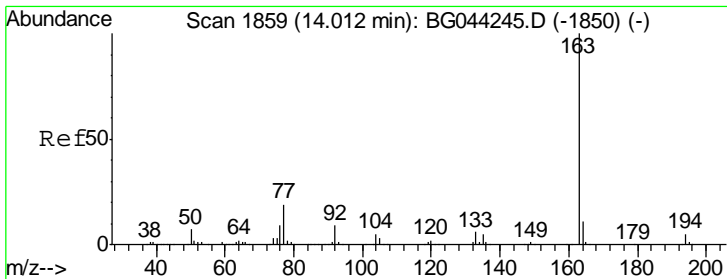
Tgt Ion	Resp	Lower	Upper
154	100		
153	44.1	22.7	62.7
76	16.6	0.0	32.9



#48  
 2-Nitroaniline  
 Concen: 0.016 ng  
 RT: 13.43 min Scan# 1761  
 Delta R.T. -0.18 min  
 Lab File: BG044415.D  
 Acq: 12 Feb 2020 19:08

Tgt Ion	Resp	Lower	Upper
65	100		
92	0.0	60.3	90.5#
138	0.0	91.9	137.9#

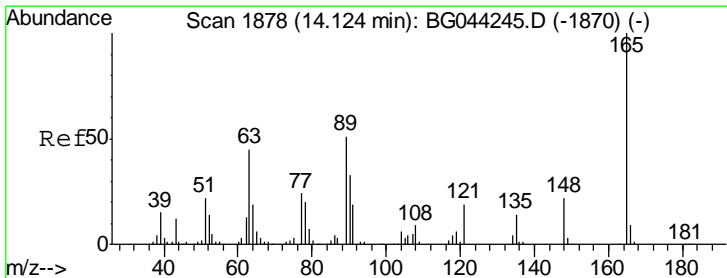
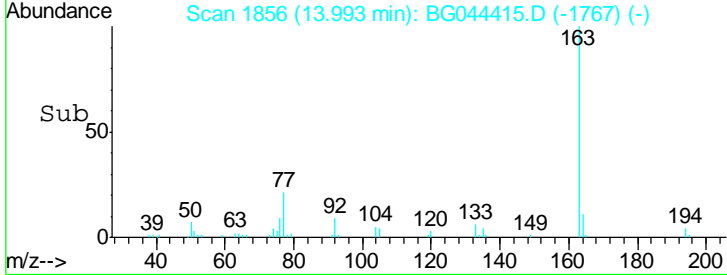
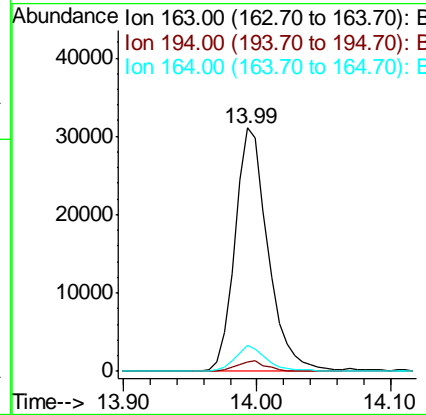
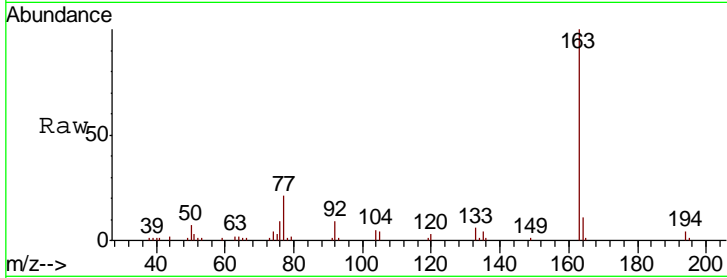




#50  
 Dimethylphthalate  
 Concen: 3.442 ng  
 RT: 13.99 min Scan# 1856  
 Delta R.T. -0.01 min  
 Lab File: BG044415.D  
 Acq: 12 Feb 2020 19:08

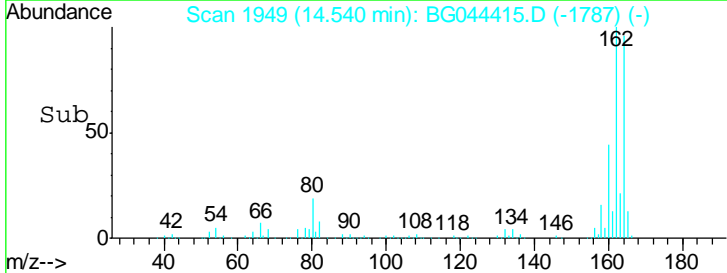
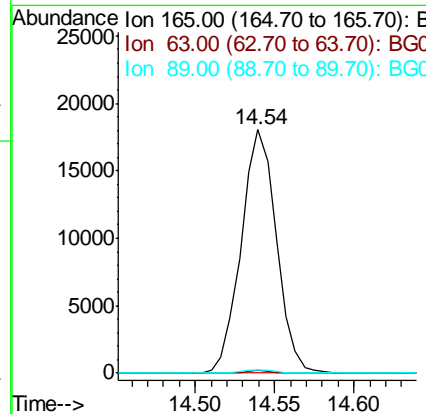
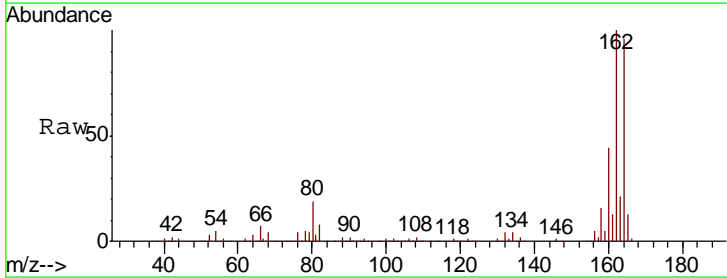
Instrument :  
 BNA\_G  
 ClientSampled :

Tgt Ion	Resp	Lower	Upper
163	100		
194	3.8	3.6	5.4
164	10.7	8.7	13.1

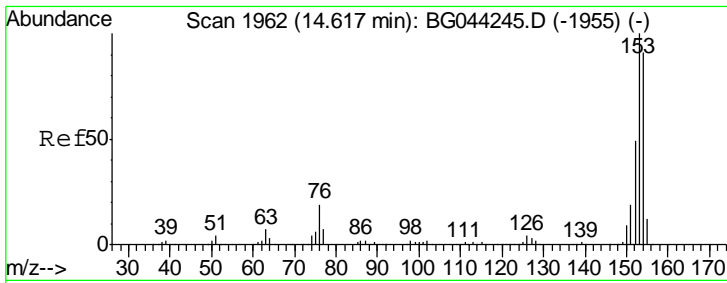


#51  
 2,6-Dinitrotoluene  
 Concen: 8.024 ng  
 RT: 14.54 min Scan# 1949  
 Delta R.T. 0.42 min  
 Lab File: BG044415.D  
 Acq: 12 Feb 2020 19:08

Tgt Ion	Resp	Lower	Upper
165	100		
63	1.4	38.7	58.1#
89	1.4	40.4	60.6#



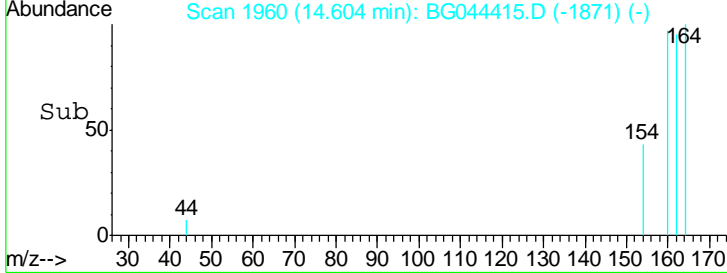
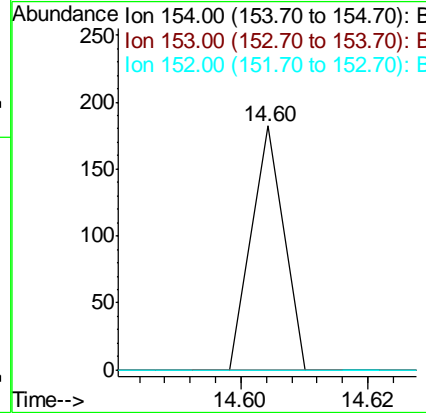
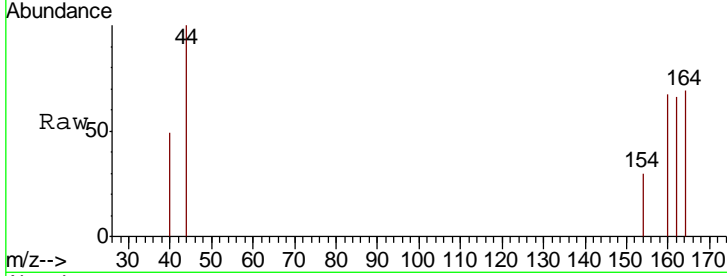




#52  
 Acenaphthene  
 Concen: 0.005 ng  
 RT: 14.60 min Scan# 1960  
 Delta R.T. -0.01 min  
 Lab File: BG044415.D  
 Acq: 12 Feb 2020 19:08

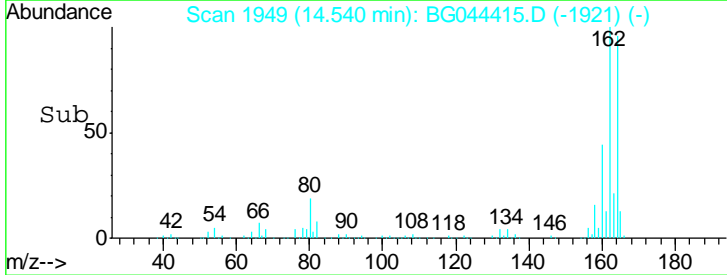
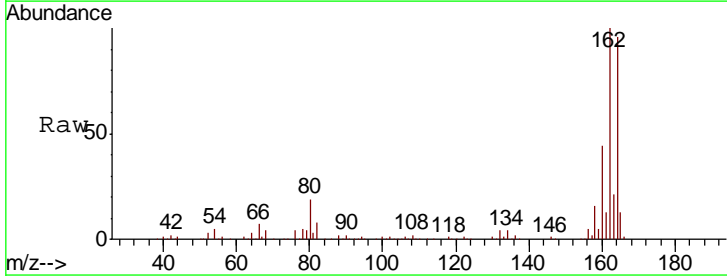
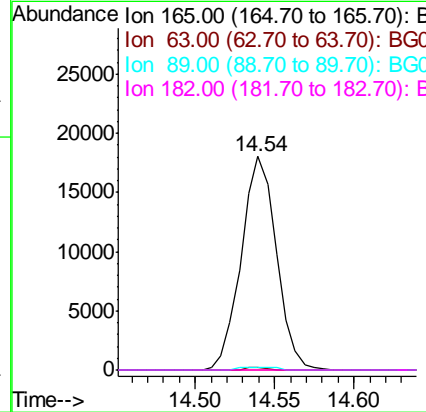
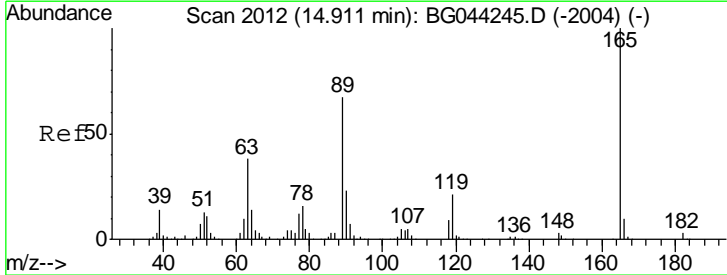
Instrument :  
 BNA\_G  
 ClientSampled :

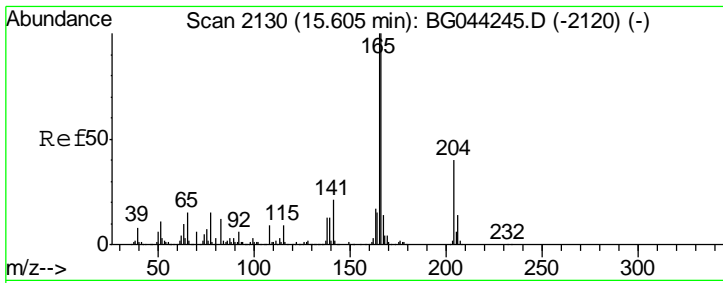
Tgt Ion	Ratio	Lower	Upper
154	100		
153	0.0	87.9	131.9#
152	0.0	43.1	64.7#



#57  
 2,4-Dinitrotoluene  
 Concen: 5.725 ng  
 RT: 14.54 min Scan# 1949  
 Delta R.T. -0.36 min  
 Lab File: BG044415.D  
 Acq: 12 Feb 2020 19:08

Tgt Ion	Ratio	Lower	Upper
165	100		
63	1.4	30.3	45.5#
89	1.4	53.4	80.2#
182	0.0	2.1	3.1#

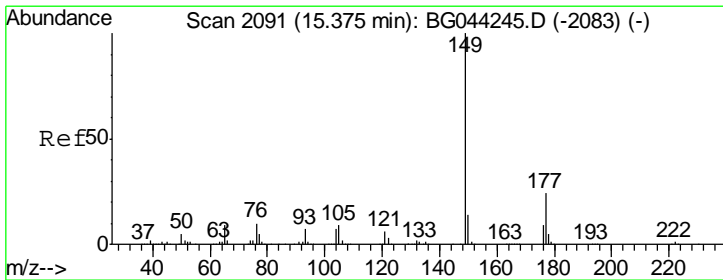
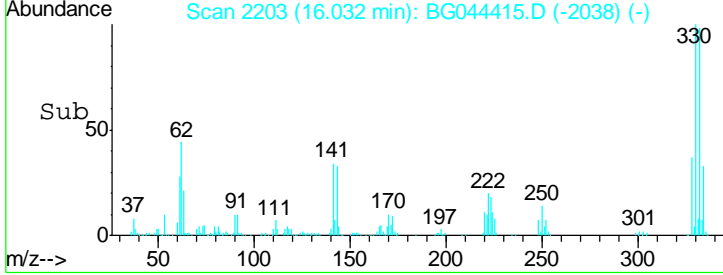
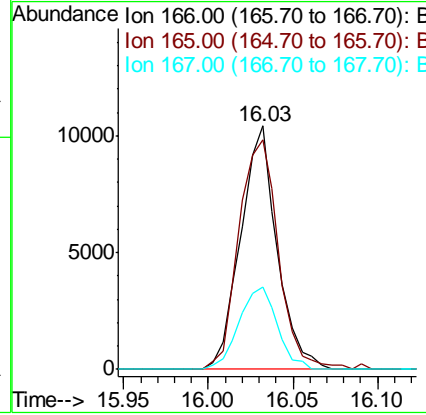
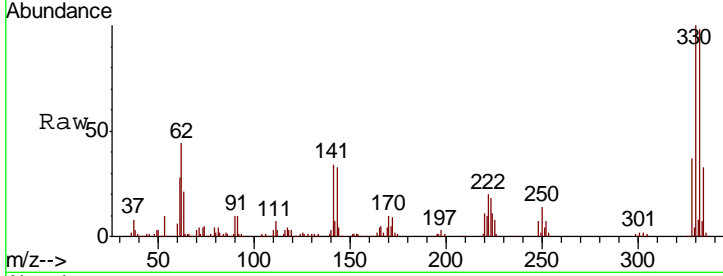




#58  
 Fluorene  
 Concen: 1.111 ng  
 RT: 16.03 min Scan# 2203  
 Delta R.T. 0.44 min  
 Lab File: BG044415.D  
 Acq: 12 Feb 2020 19:08

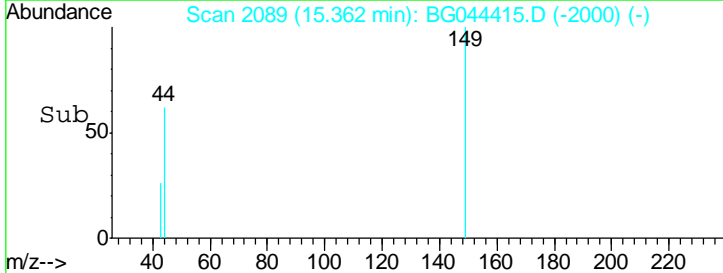
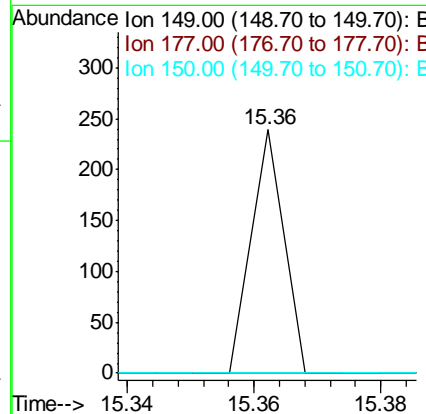
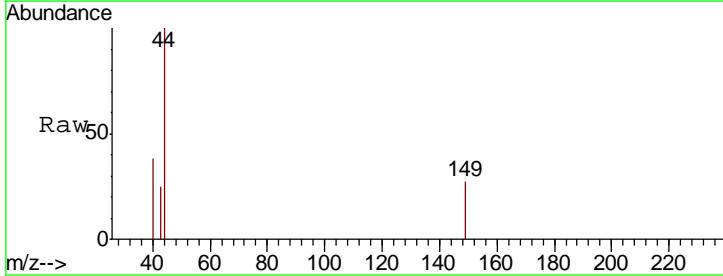
Instrument :  
 BNA\_G  
 ClientSampled :

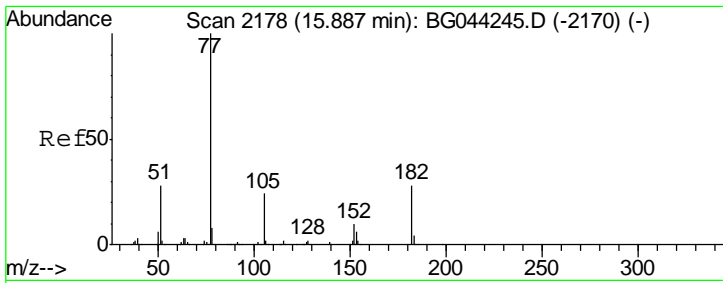
Tgt Ion	Resp	Lower	Upper
166	100		
165	94.5	79.9	119.9
167	33.6	11.4	17.0#



#60  
 Diethylphthalate  
 Concen: 0.005 ng  
 RT: 15.36 min Scan# 2089  
 Delta R.T. -0.01 min  
 Lab File: BG044415.D  
 Acq: 12 Feb 2020 19:08

Tgt Ion	Resp	Lower	Upper
149	100		
177	0.0	19.4	29.0#
150	0.0	10.9	16.3#

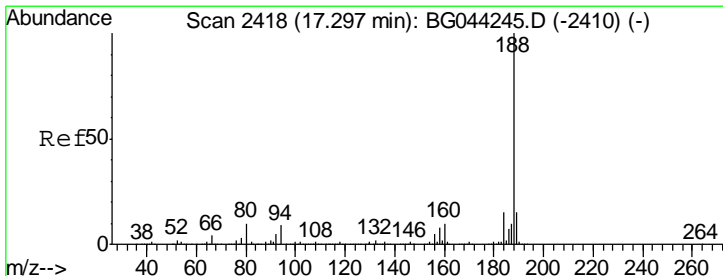
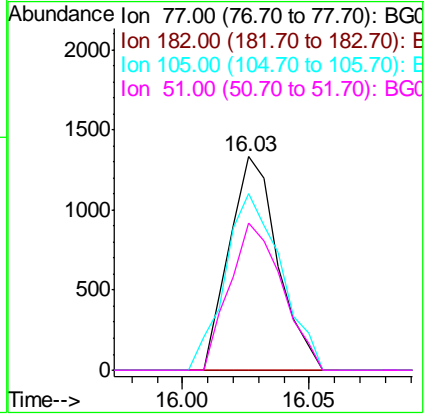
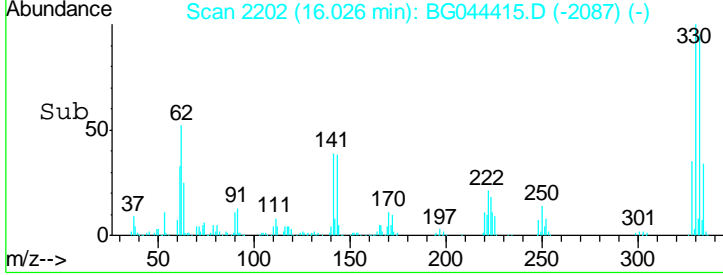
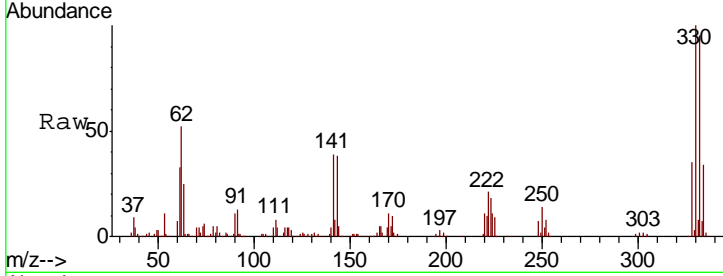




#63  
 Azobenzene  
 Concen: 0.130 ng  
 RT: 16.03 min Scan# 2202  
 Delta R.T. 0.15 min  
 Lab File: BG044415.D  
 Acq: 12 Feb 2020 19:08

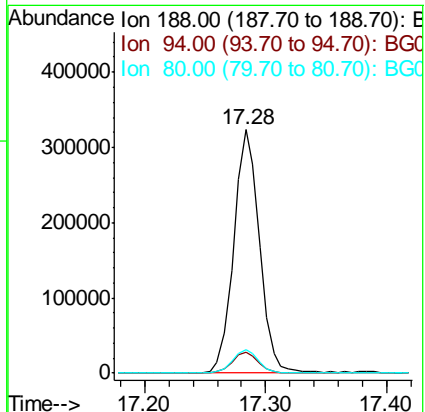
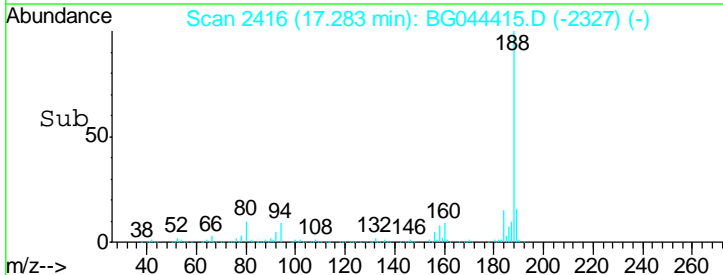
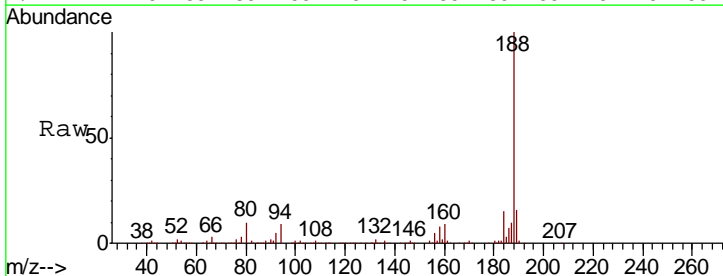
Instrument :  
 BNA\_G  
 ClientSampled :

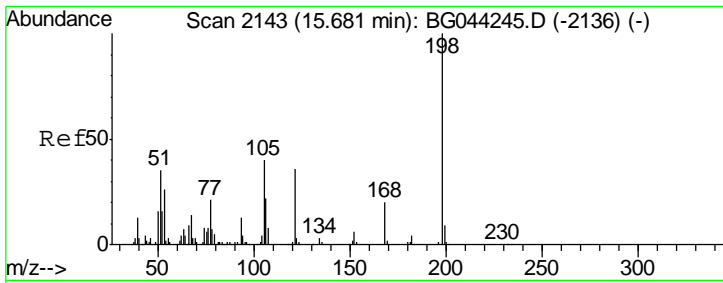
Tgt Ion	Resp	Lower	Upper
77	1770		
182	0.0	8.2	48.2#
105	82.7	3.6	43.6#
51	68.7	8.3	48.3#



#64  
 Phenanthrene-d10  
 Concen: 20.000 ng  
 RT: 17.28 min Scan# 2416  
 Delta R.T. -0.01 min  
 Lab File: BG044415.D  
 Acq: 12 Feb 2020 19:08

Tgt Ion	Resp	Lower	Upper
188	480061		
94	8.7	7.4	11.2
80	9.8	7.7	11.5

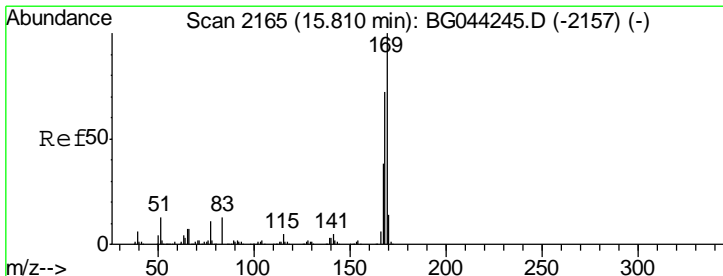
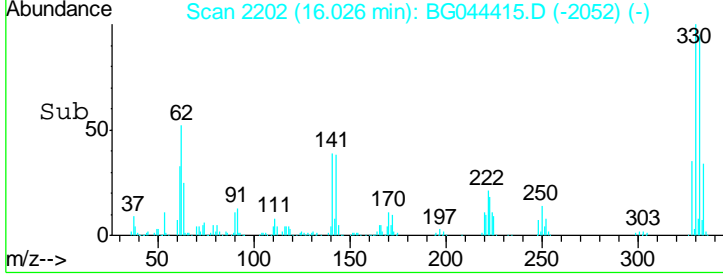
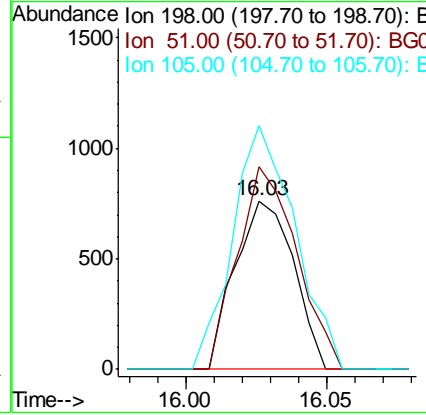
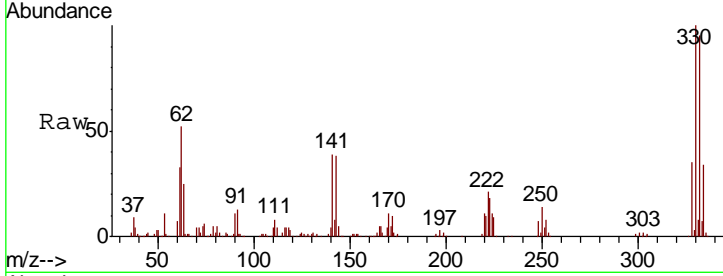




#65  
 4,6-Dinitro-2-methylphenol  
 Concen: 0.414 ng  
 RT: 16.03 min Scan# 2202  
 Delta R.T. 0.35 min  
 Lab File: BG044415.D  
 Acq: 12 Feb 2020 19:08

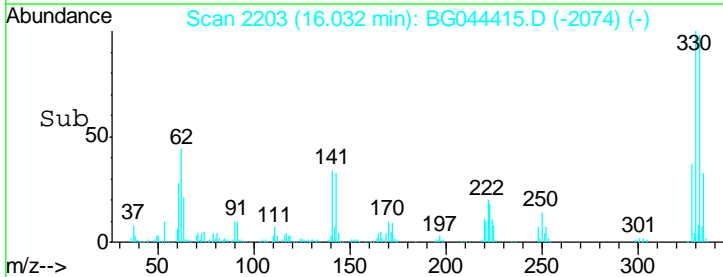
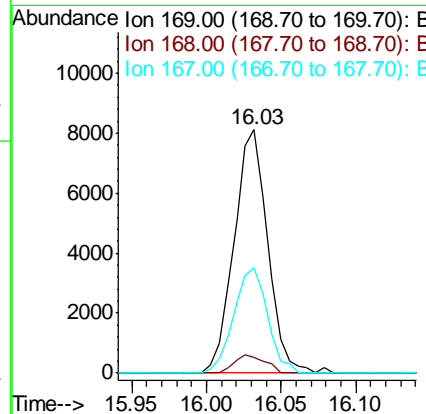
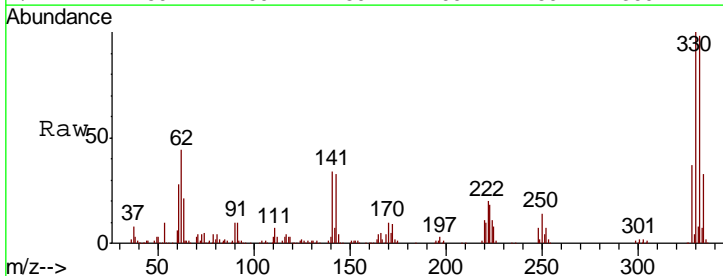
Instrument :  
 BNA\_G  
 ClientSampled :

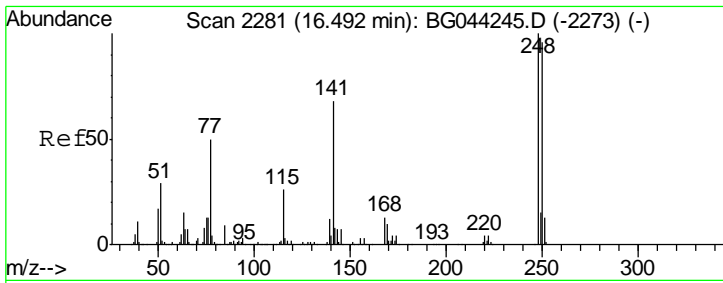
Tgt Ion	Resp	Lower	Upper
198	1096		
51	120.2	16.6	56.6#
105	144.6	20.6	60.6#



#66  
 n-Nitrosodiphenylamine  
 Concen: 0.949 ng  
 RT: 16.03 min Scan# 2203  
 Delta R.T. 0.23 min  
 Lab File: BG044415.D  
 Acq: 12 Feb 2020 19:08

Tgt Ion	Resp	Lower	Upper
169	12771		
168	6.3	57.9	86.9#
167	43.2	30.7	46.1

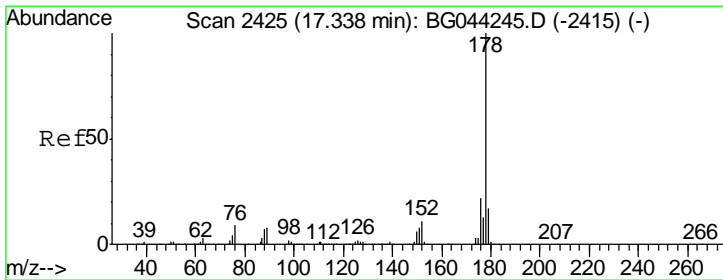
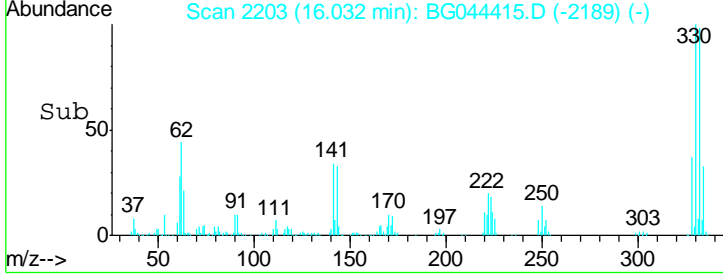
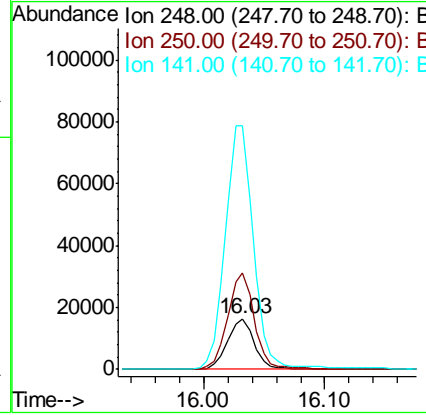
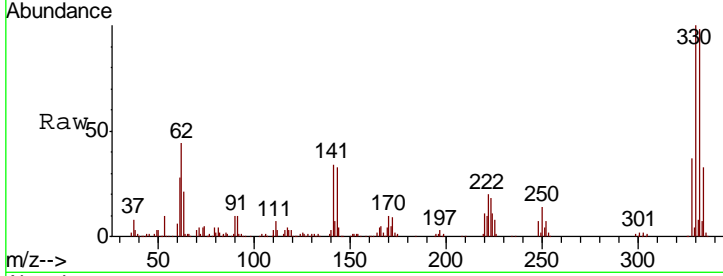




#67  
 4-Bromophenyl-phenylether  
 Concen: 4.759 ng  
 RT: 16.03 min Scan# 2203  
 Delta R.T. -0.45 min  
 Lab File: BG044415.D  
 Acq: 12 Feb 2020 19:08

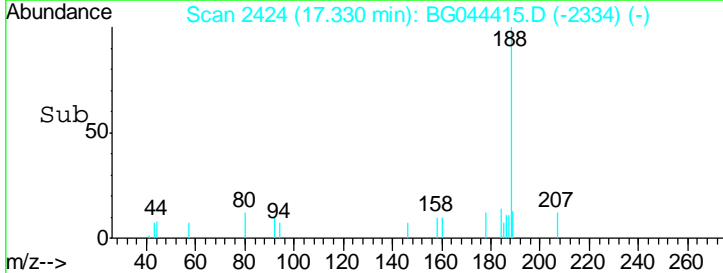
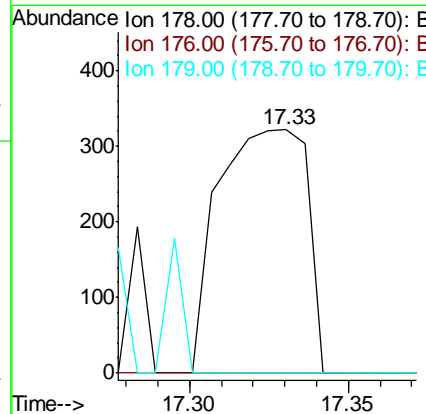
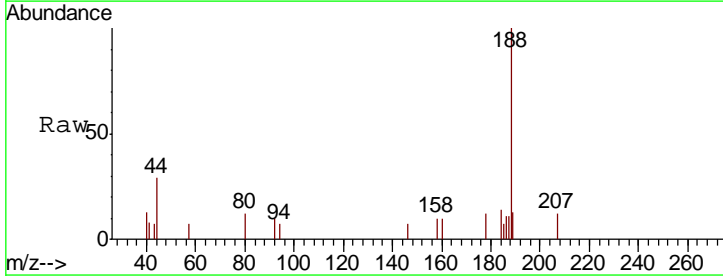
Instrument :  
 BNA\_G  
 ClientSampled :

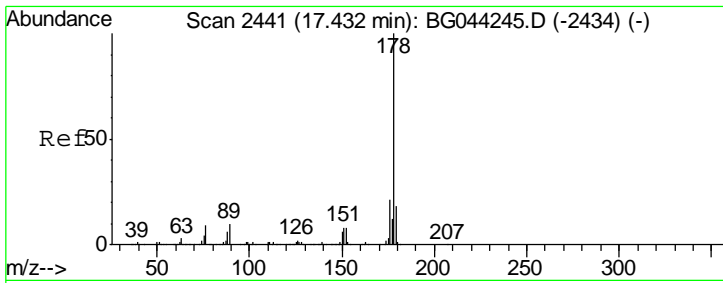
Tgt Ion	Resp	Lower	Upper
248	24892		
250	191.5	76.6	114.8#
141	481.3	54.7	82.1#



#71  
 Phenanthrene  
 Concen: 0.027 ng  
 RT: 17.33 min Scan# 2424  
 Delta R.T. 0.00 min  
 Lab File: BG044415.D  
 Acq: 12 Feb 2020 19:08

Tgt Ion	Resp	Lower	Upper
178	624		
176	0.0	17.7	26.5#
179	0.0	13.7	20.5#

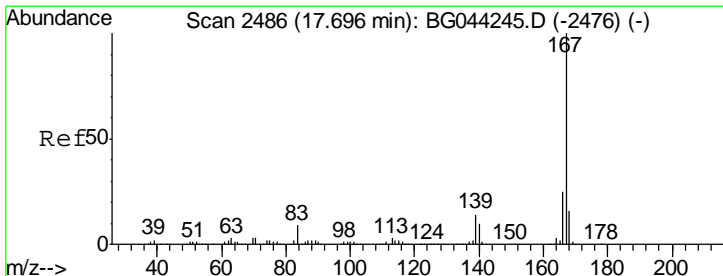
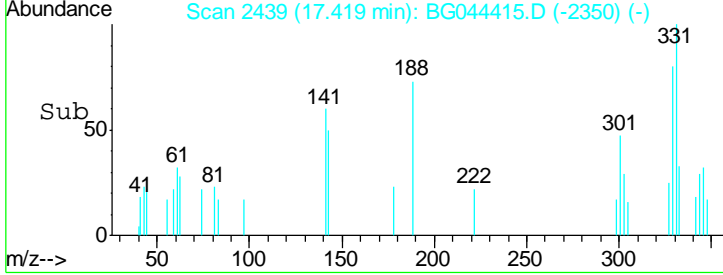
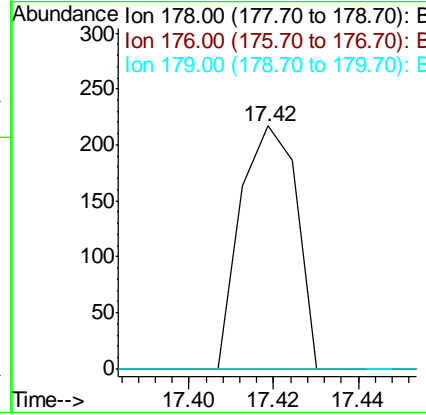
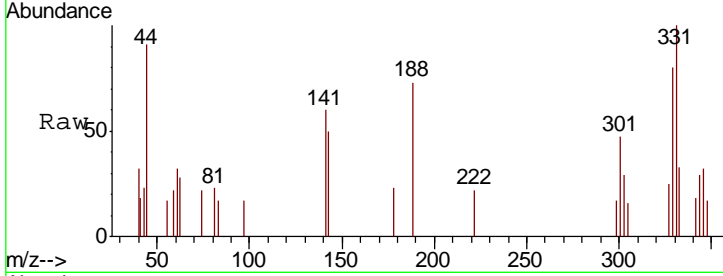




#72  
 Anthracene  
 Concen: 0.009 ng  
 RT: 17.42 min Scan# 2439  
 Delta R.T. -0.01 min  
 Lab File: BG044415.D  
 Acq: 12 Feb 2020 19:08

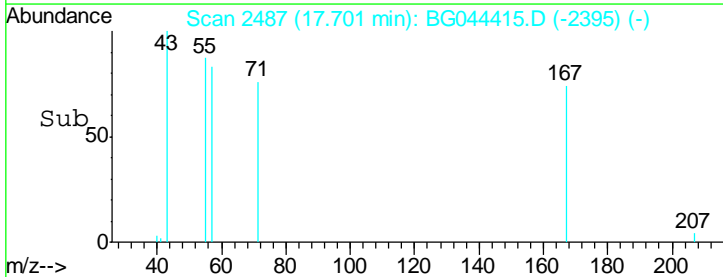
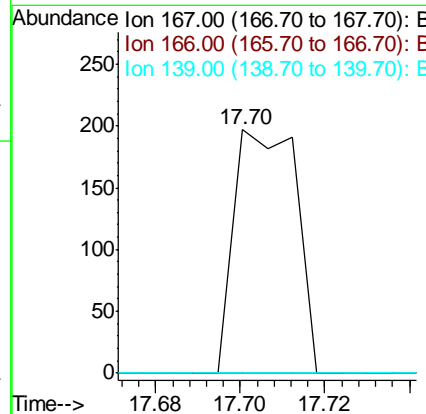
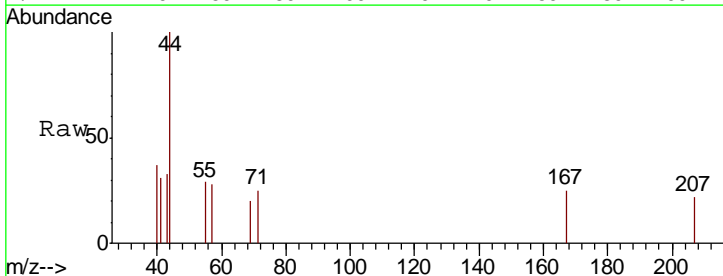
Instrument :  
 BNA\_G  
 ClientSampled :

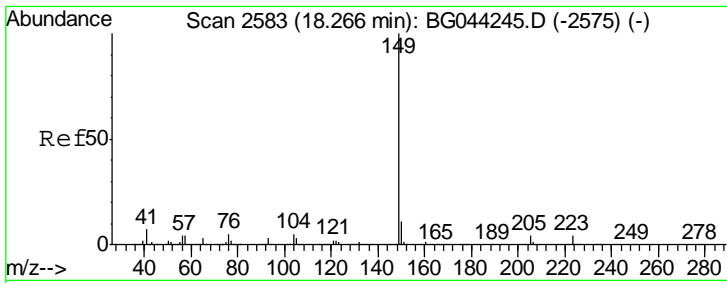
Tgt Ion	Resp	Lower	Upper
178	100		
176	0.0	17.0	25.4#
179	0.0	14.4	21.6#



#73  
 Carbazole  
 Concen: 0.009 ng  
 RT: 17.70 min Scan# 2487  
 Delta R.T. 0.01 min  
 Lab File: BG044415.D  
 Acq: 12 Feb 2020 19:08

Tgt Ion	Resp	Lower	Upper
167	100		
166	0.0	19.8	29.6#
139	0.0	11.1	16.7#

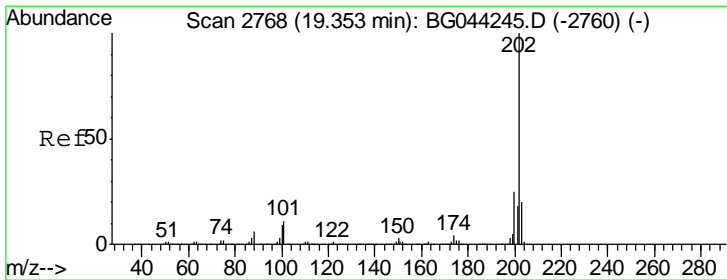
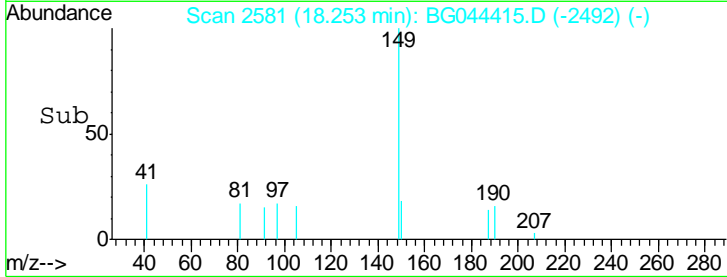
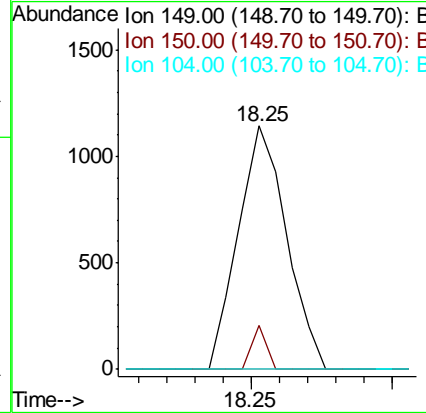
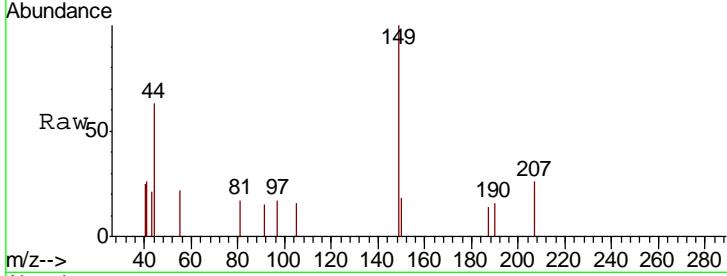




#74  
 Di-n-butylphthalate  
 Concen: 0.052 ng  
 RT: 18.25 min Scan# 2581  
 Delta R.T. -0.01 min  
 Lab File: BG044415.D  
 Acq: 12 Feb 2020 19:08

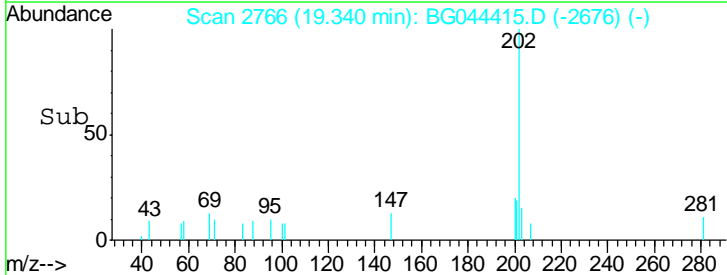
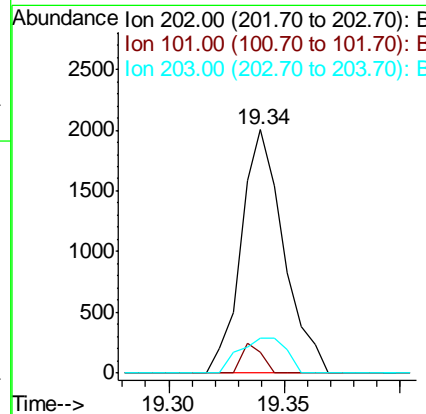
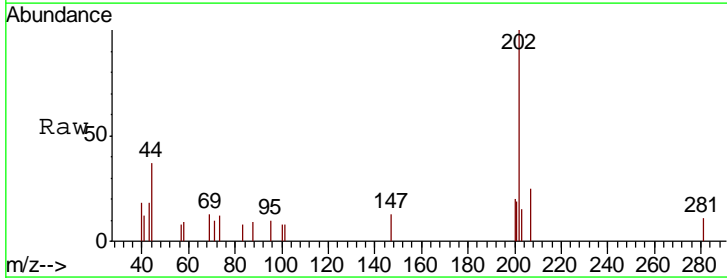
Instrument :  
 BNA\_G  
 ClientSampled :

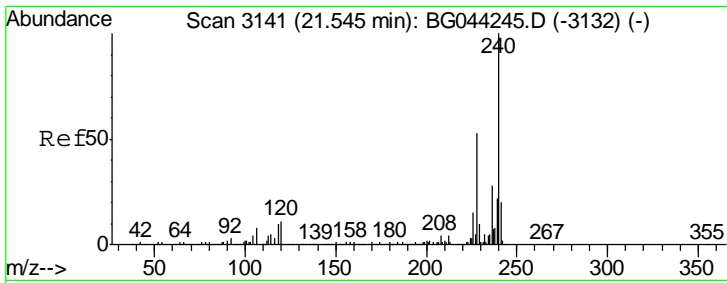
Tgt Ion	Resp	Lower	Upper
149	1354		
150	18.2	8.7	13.1#
104	0.0	4.3	6.5#



#75  
 Fluoranthene  
 Concen: 0.095 ng  
 RT: 19.34 min Scan# 2766  
 Delta R.T. 0.00 min  
 Lab File: BG044415.D  
 Acq: 12 Feb 2020 19:08

Tgt Ion	Resp	Lower	Upper
202	2565		
101	8.4	0.0	31.3
203	14.6	0.0	39.9

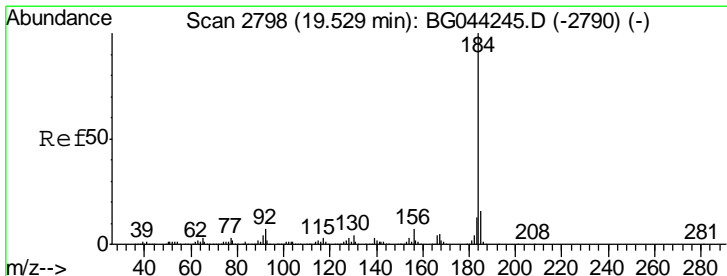
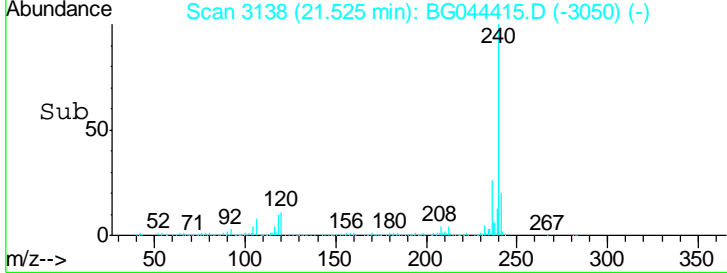
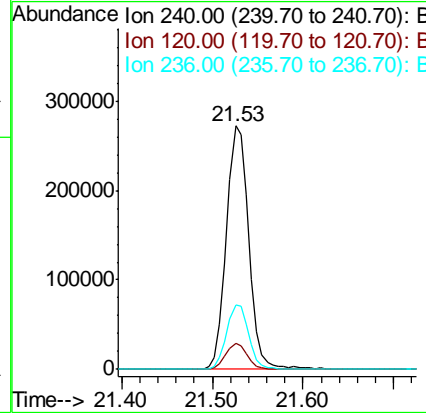
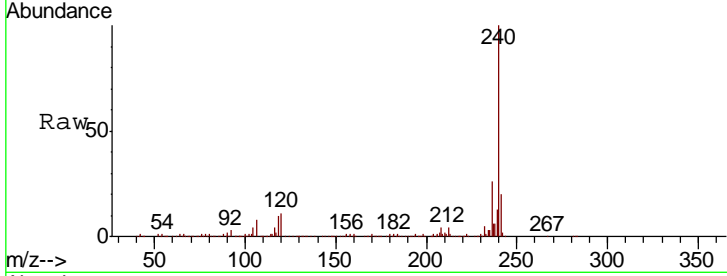




#76  
 Chrysene-d12  
 Concen: 20.000 ng  
 RT: 21.53 min Scan# 3138  
 Delta R.T. -0.01 min  
 Lab File: BG044415.D  
 Acq: 12 Feb 2020 19:08

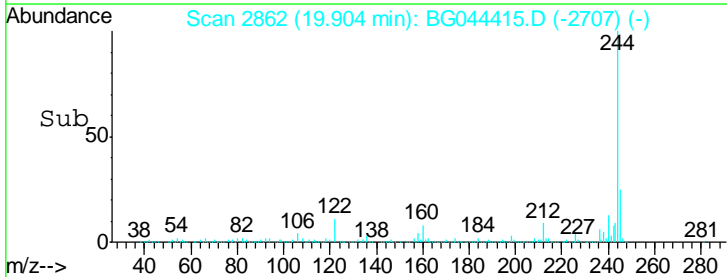
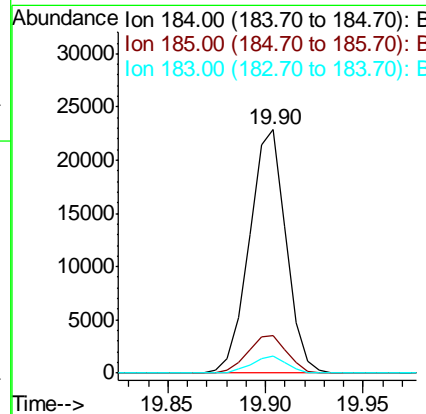
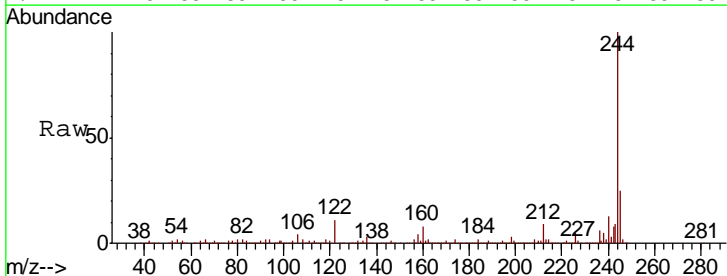
Instrument :  
 BNA\_G  
 ClientSampled :

Tgt Ion	Resp	Lower	Upper
240	465720		
120	10.7	8.4	12.6
236	26.3	22.1	33.1

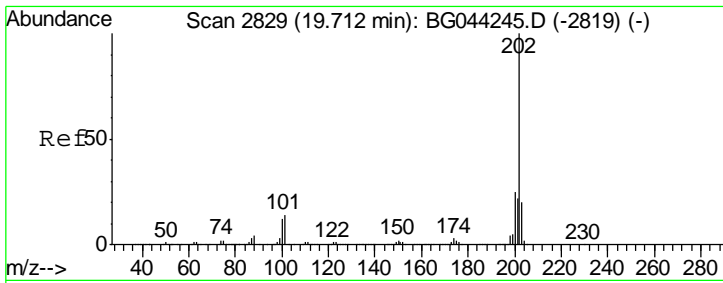


#77  
 Benzidine  
 Concen: 2.288 ng  
 RT: 19.90 min Scan# 2862  
 Delta R.T. 0.38 min  
 Lab File: BG044415.D  
 Acq: 12 Feb 2020 19:08

Tgt Ion	Resp	Lower	Upper
184	29562		
185	15.6	12.9	19.3
183	7.1	10.8	16.2#



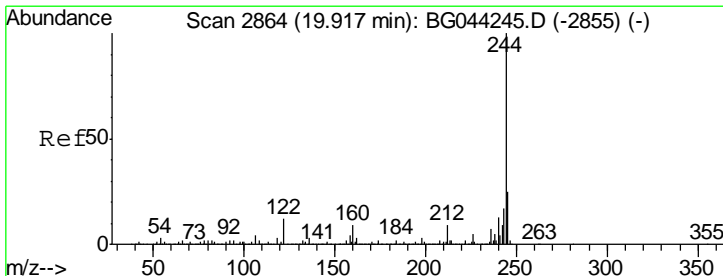
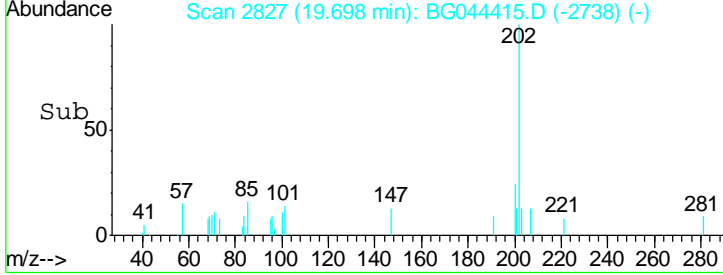
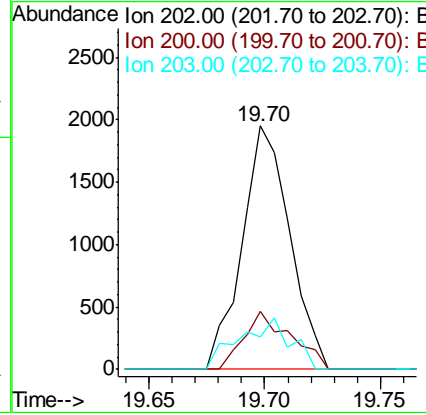
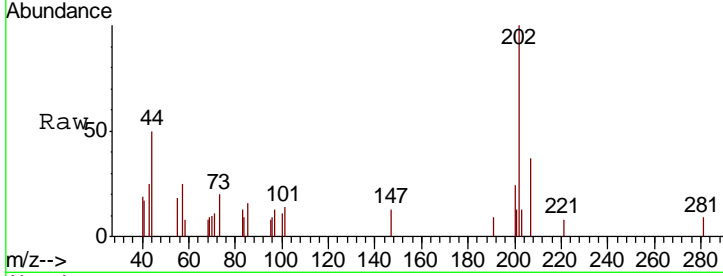




#78  
 Pyrene  
 Concen: 0.094 ng  
 RT: 19.70 min Scan# 2827  
 Delta R.T. -0.01 min  
 Lab File: BG044415.D  
 Acq: 12 Feb 2020 19:08

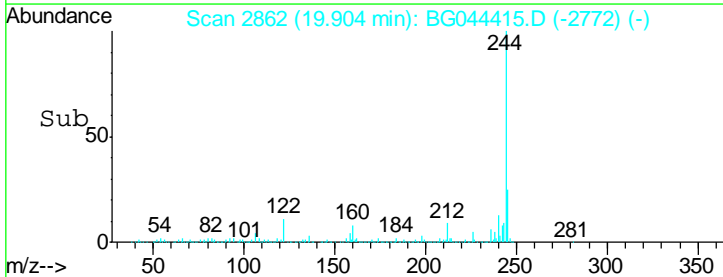
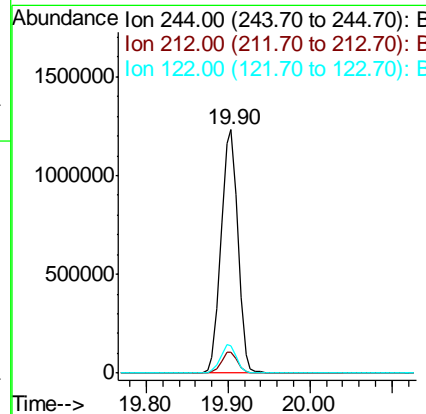
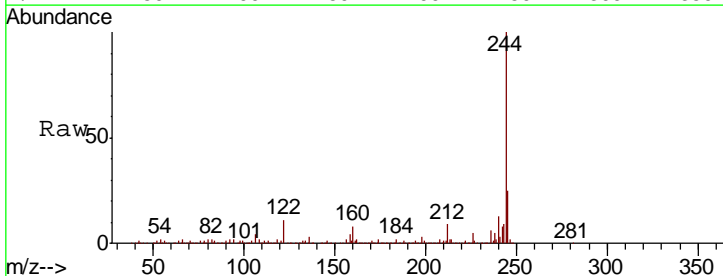
Instrument :  
 BNA\_G  
 ClientSampled :

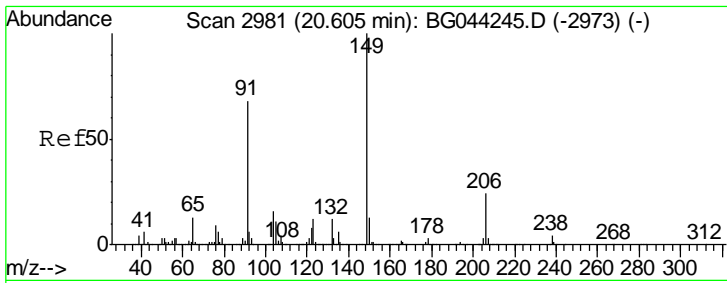
Tgt Ion	Resp	Lower	Upper
202	100		
200	23.9	20.0	30.0
203	13.4	16.2	24.2#



#79  
 Terphenyl-d14  
 Concen: 78.305 ng  
 RT: 19.90 min Scan# 2862  
 Delta R.T. 0.00 min  
 Lab File: BG044415.D  
 Acq: 12 Feb 2020 19:08

Tgt Ion	Resp	Lower	Upper
244	100		
212	8.8	7.4	11.2
122	11.4	9.8	14.6

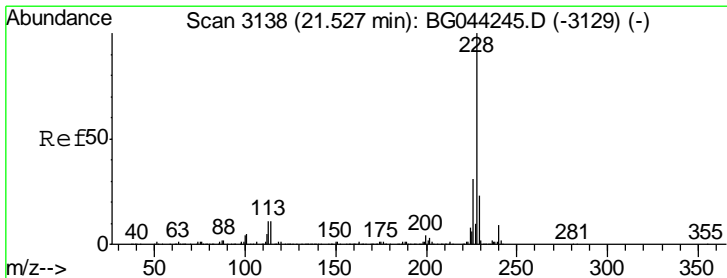
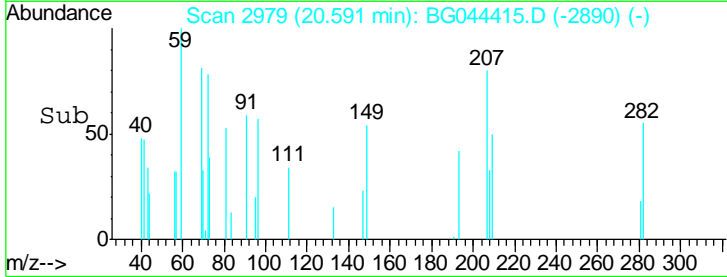
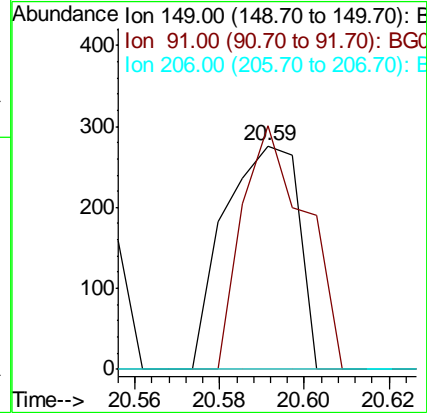
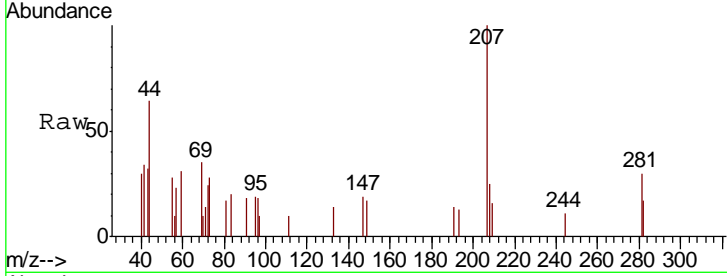




#80  
 Butylbenzylphthalate  
 Concen: 0.025 ng  
 RT: 20.59 min Scan# 2979  
 Delta R.T. -0.01 min  
 Lab File: BG044415.D  
 Acq: 12 Feb 2020 19:08

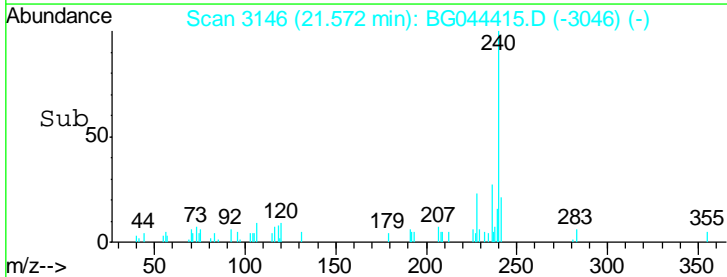
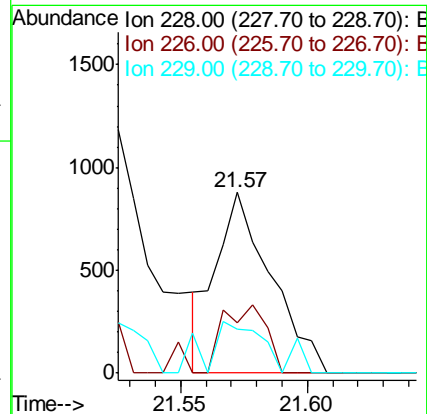
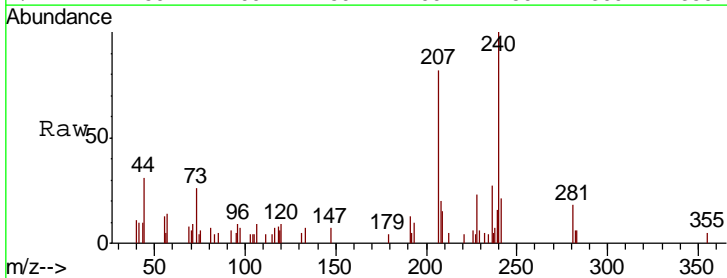
Instrument :  
 BNA\_G  
 ClientSampled :

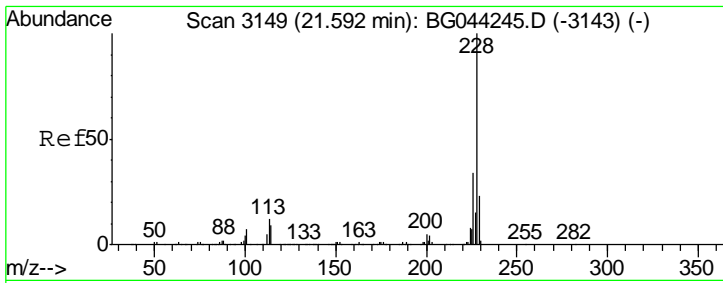
Tgt Ion	Resp	Lower	Upper
149	100		
91	109.1	54.5	81.7#
206	0.0	19.1	28.7#



#81  
 Benzo(a)anthracene  
 Concen: 0.046 ng  
 RT: 21.57 min Scan# 3146  
 Delta R.T. 0.06 min  
 Lab File: BG044415.D  
 Acq: 12 Feb 2020 19:08

Tgt Ion	Resp	Lower	Upper
228	100		
226	28.0	24.7	37.1
229	24.5	18.2	27.4

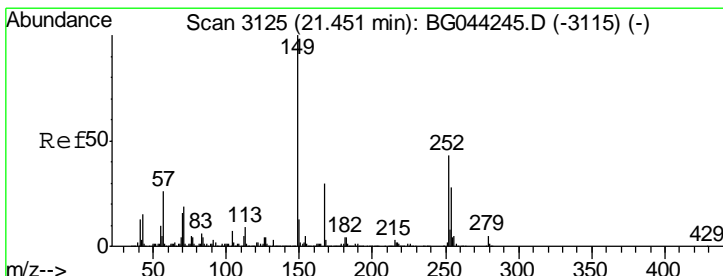
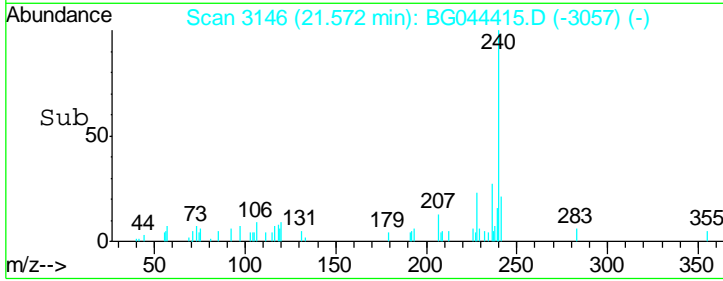
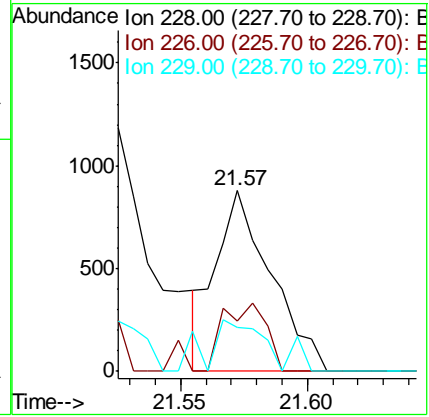
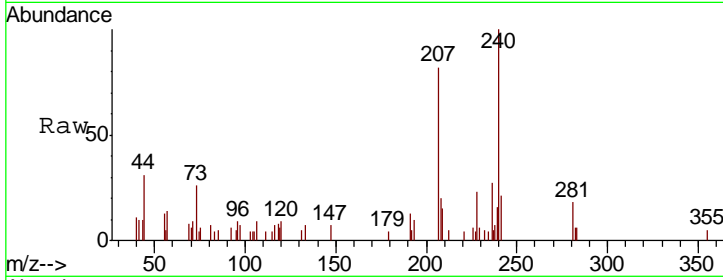




#83  
 Chrysene  
 Concen: 0.048 ng  
 RT: 21.57 min Scan# 3146  
 Delta R.T. -0.01 min  
 Lab File: BG044415.D  
 Acq: 12 Feb 2020 19:08

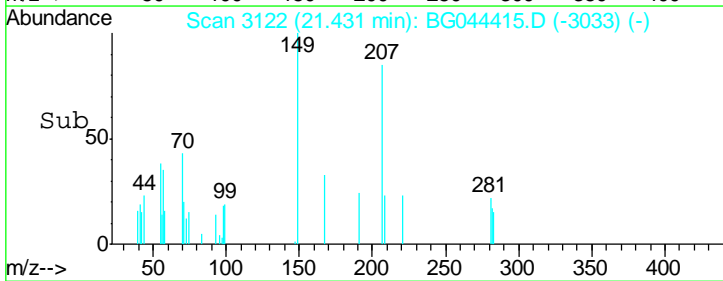
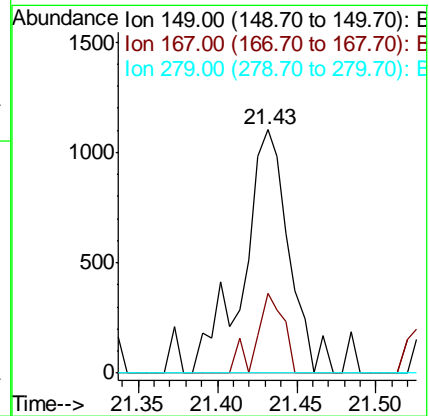
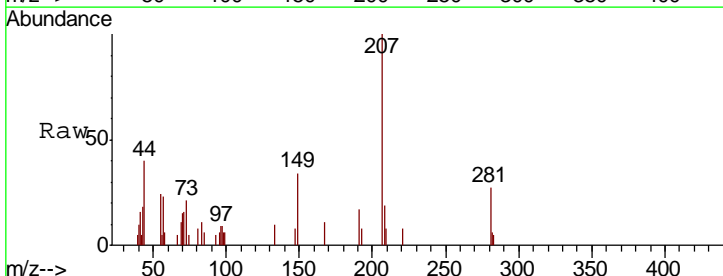
Instrument :  
 BNA\_G  
 ClientSampled :

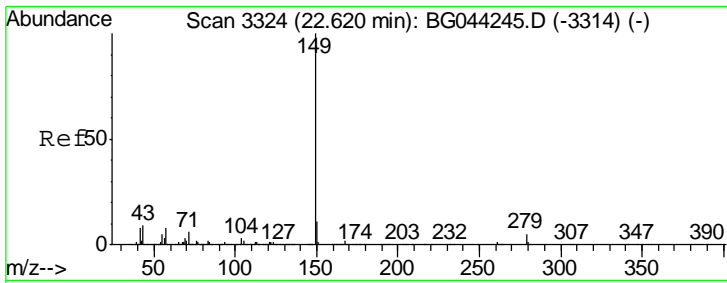
Tgt Ion	Resp	Lower	Upper
228	100		
226	28.0	27.1	40.7
229	24.5	17.9	26.9



#84  
 Bis(2-ethylhexyl)phthalate  
 Concen: 0.117 ng  
 RT: 21.43 min Scan# 3122  
 Delta R.T. -0.01 min  
 Lab File: BG044415.D  
 Acq: 12 Feb 2020 19:08

Tgt Ion	Resp	Lower	Upper
149	100		
167	32.6	24.0	36.0
279	0.0	3.8	5.8#

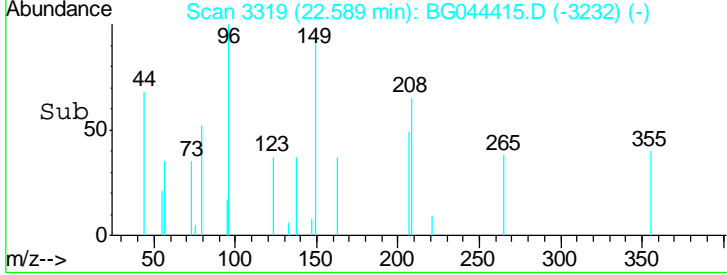
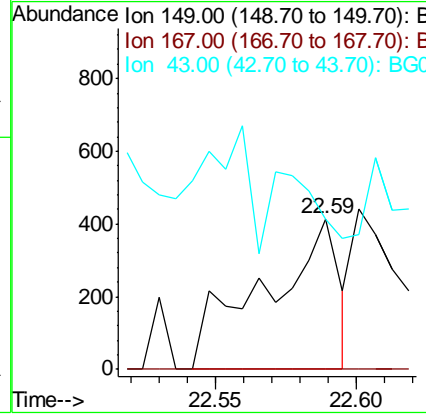
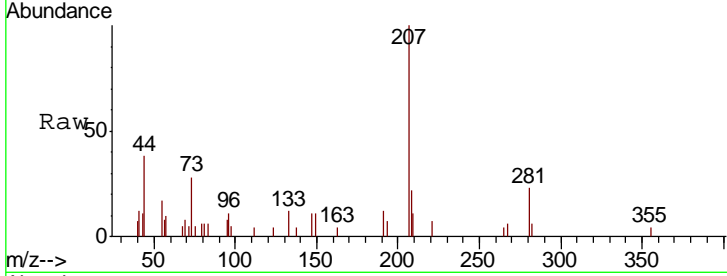




#85  
 Di-n-octyl phthalate  
 Concen: 0.023 ng  
 RT: 22.59 min Scan# 3319  
 Delta R.T. -0.02 min  
 Lab File: BG044415.D  
 Acq: 12 Feb 2020 19:08

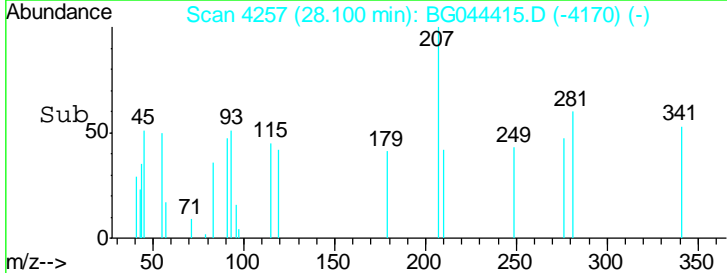
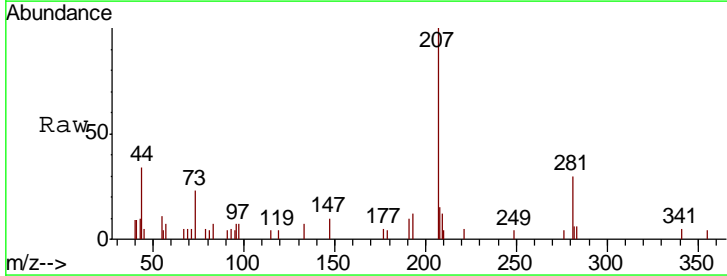
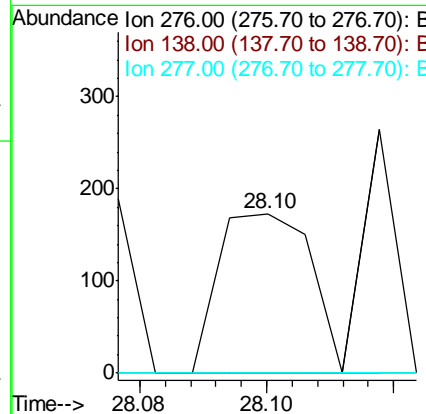
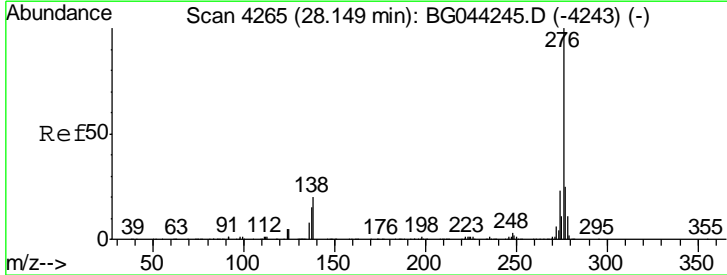
Instrument :  
 BNA\_G  
 ClientSampled :

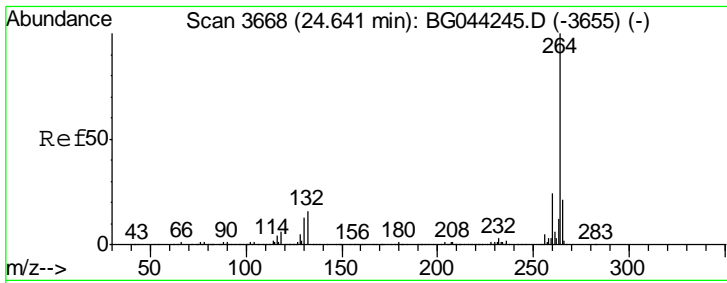
Tgt Ion	Resp	Lower	Upper
149	100		
167	0.0	1.3	1.9#
43	0.0	7.4	11.0#



#86  
 Indeno(1,2,3-cd)pyrene  
 Concen: 0.005 ng  
 RT: 28.10 min Scan# 4257  
 Delta R.T. -0.02 min  
 Lab File: BG044415.D  
 Acq: 12 Feb 2020 19:08

Tgt Ion	Resp	Lower	Upper
276	100		
138	0.0	19.4	29.0#
277	0.0	21.0	31.6#

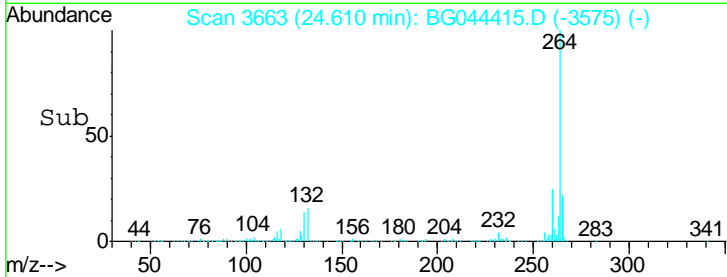
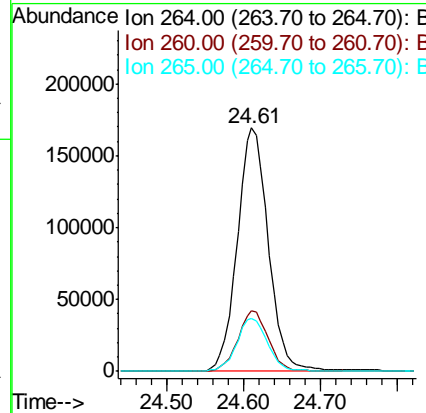
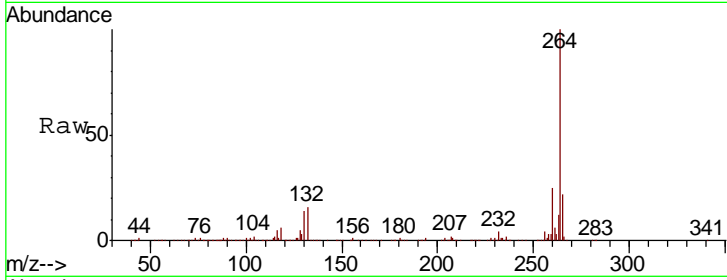




#87  
 Perylene-d12  
 Concen: 20.000 ng  
 RT: 24.61 min Scan# 3663  
 Delta R.T. -0.01 min  
 Lab File: BG044415.D  
 Acq: 12 Feb 2020 19:08

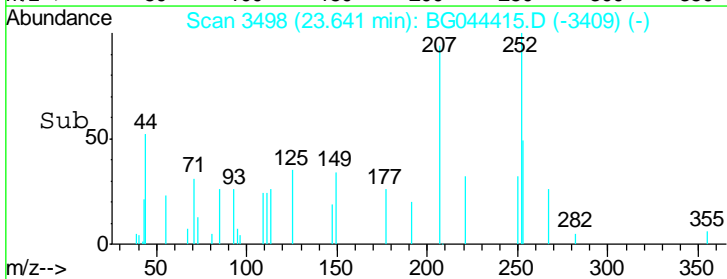
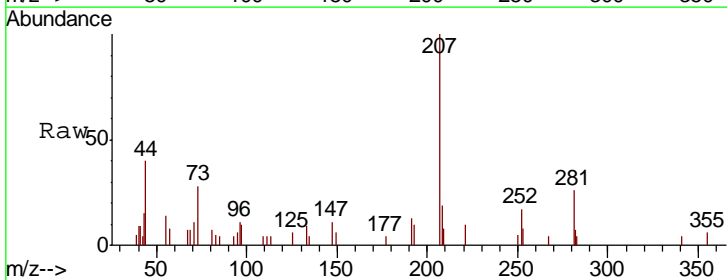
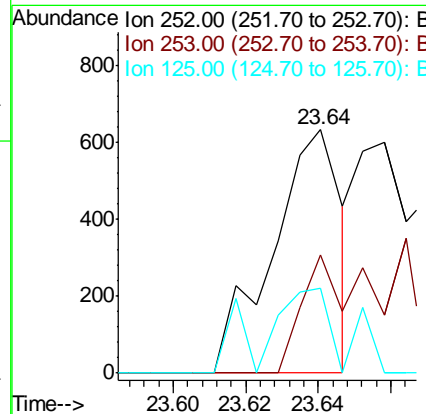
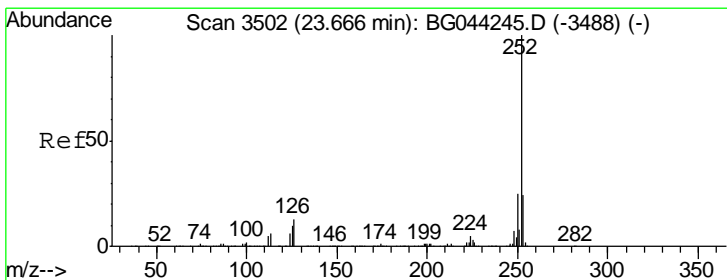
Instrument :  
 BNA\_G  
 ClientSampled :

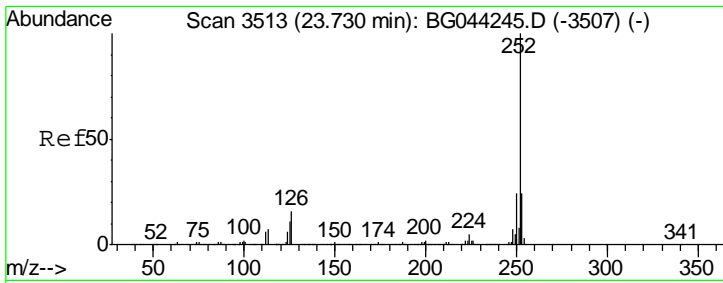
Tgt Ion	Resp	Lower	Upper
264	100		
260	24.9	19.4	29.2
265	21.8	16.7	25.1



#88  
 Benzo(b)fluoranthene  
 Concen: 0.031 ng  
 RT: 23.64 min Scan# 3498  
 Delta R.T. -0.01 min  
 Lab File: BG044415.D  
 Acq: 12 Feb 2020 19:08

Tgt Ion	Resp	Lower	Upper
252	100		
253	48.7	19.2	28.8#
125	34.7	8.4	12.6#

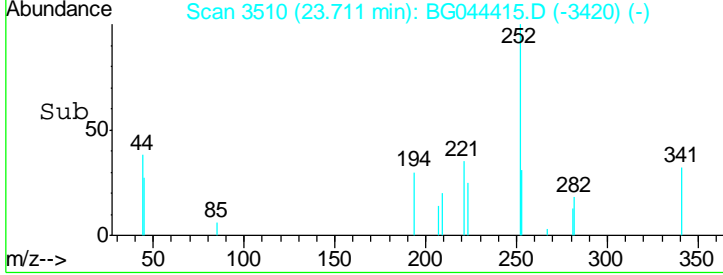
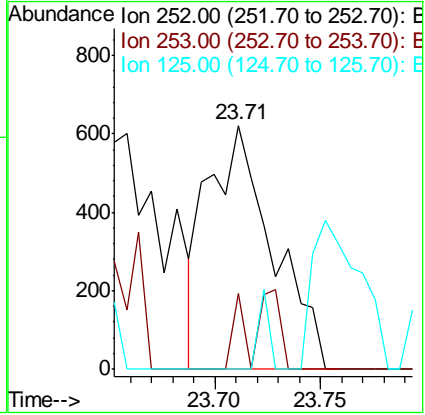
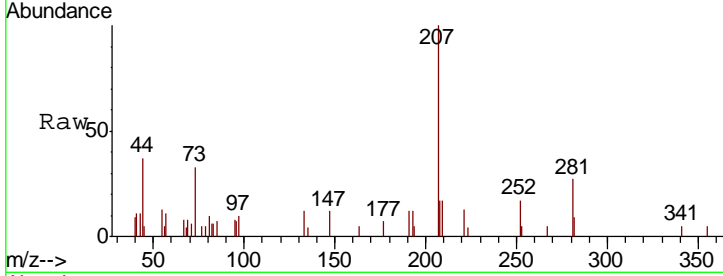




#89  
 Benzo(k)fluoranthene  
 Concen: 0.050 ng  
 RT: 23.71 min Scan# 3510  
 Delta R.T. 0.00 min  
 Lab File: BG044415.D  
 Acq: 12 Feb 2020 19:08

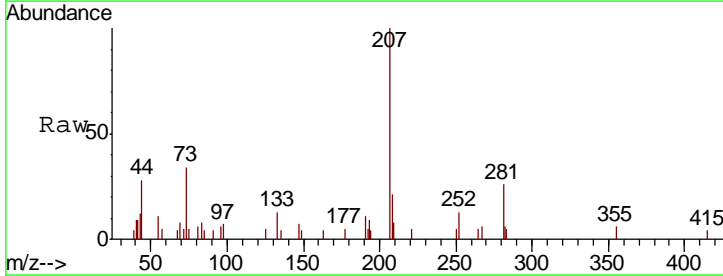
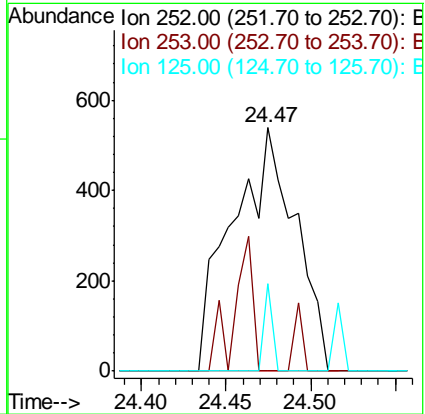
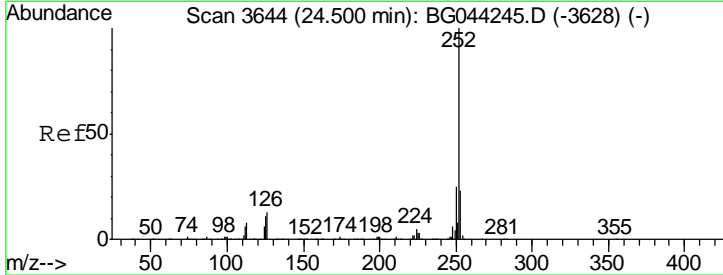
Instrument :  
 BNA\_G  
 ClientSampled :

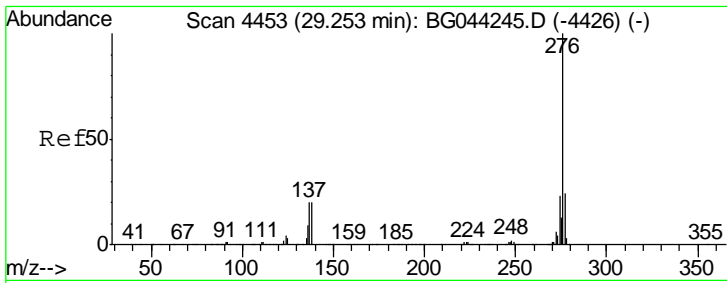
Tgt Ion	Resp	Lower	Upper
252	1326		
253	30.9	19.1	28.7#
125	0.0	8.6	12.8#



#90  
 Benzo(a)pyrene  
 Concen: 0.054 ng  
 RT: 24.47 min Scan# 3640  
 Delta R.T. 0.00 min  
 Lab File: BG044415.D  
 Acq: 12 Feb 2020 19:08

Tgt Ion	Resp	Lower	Upper
252	1397		
253	0.0	18.1	27.1#
125	36.2	8.6	13.0#





#92  
 Benzo(a,h,i)perylene  
 Concen: 0.011 ng  
 RT: 29.20 min Scan# 4444  
 Delta R.T. -0.01 min  
 Lab File: BG044415.D  
 Acq: 12 Feb 2020 19:08

Instrument :  
 BNA\_G  
 ClientSampled :

Tot Ion	Resp	Lower	Upper
276	100		
277	0.0	18.8	28.2#
138	0.0	16.2	24.2#

