

Data Path : Z:\HPCHEM1\BNA G\DATA\BG021317\
 Data File : BG025840.D
 Acq On : 13 Feb 2017 10:34
 Operator : SJ/MA
 Sample : PB96869BL
 Misc :
 ALS Vial : 3 Sample Multiplier: 1

Instrument :
 BNA_G
 ClientSampleId :
 SBLK69

Integration Parameters: LSCINT.P
 Integrator: RTE
 Smoothing : OFF
 Sampling : 1
 Start Thrs: 0.2
 Stop Thrs : 0

Filtering: 5
 Min Area: 1 % of largest Peak
 Max Peaks: 100
 Peak Location: TOP

If leading or trailing edge < 100 prefer < Baseline drop else tangent >
 Peak separation: 5

Method : Z:\HPCHEM1\BNA G\METHODS\SOM02.2-EPA-BG021017MA.M
 Title : SVOA CALIBRATION

Signal : TIC

peak #	R.T. min	first scan	max scan	last scan	PK TY	peak height	corr. area	corr. % max.	% of total
1	3.520	112	116	122	rBV	30589	40511	1.12%	0.129%
2	7.233	740	748	758	rBV	412227	685320	18.92%	2.180%
3	7.409	769	778	790	rBB	379267	605152	16.70%	1.925%
4	7.615	806	813	823	rVB	401409	699689	19.31%	2.226%
5	8.091	884	894	903	rVB	270693	461207	12.73%	1.467%
6	8.778	1001	1011	1020	rBV	527386	905344	24.99%	2.880%
7	9.243	1081	1090	1100	rBV	388383	680003	18.77%	2.163%
8	9.965	1202	1213	1221	rBV	299518	523759	14.46%	1.666%
9	10.500	1296	1304	1319	rVB	529059	896010	24.73%	2.851%
10	10.888	1362	1370	1381	rBV	433527	772705	21.33%	2.458%
11	11.011	1383	1391	1401	rBV2	607771	1061306	29.30%	3.377%
12	14.090	1908	1915	1922	rBV	1222454	1757355	48.51%	5.591%
13	14.384	1958	1965	1976	rBV	1273889	1980336	54.67%	6.301%
14	14.689	2010	2017	2025	rBV	768168	1172839	32.38%	3.731%
15	14.854	2037	2045	2052	rBV	562349	833201	23.00%	2.651%
16	15.676	2177	2185	2192	rBV	1777352	2666776	73.61%	8.484%
17	15.776	2196	2202	2210	rBV	460107	673746	18.60%	2.144%
18	17.421	2475	2482	2489	rBV2	1042407	1545495	42.66%	4.917%
19	17.521	2492	2499	2507	rBV	2073119	3105137	85.71%	9.879%
20	19.431	2820	2824	2833	rBV	25033	39619	1.09%	0.126%
21	19.795	2879	2886	2894	rBV2	2447305	3622648	100.00%	11.526%
22	21.675	3200	3206	3214	rVB	1101281	1759901	48.58%	5.599%
23	24.672	3706	3716	3727	rVB2	1210067	3271813	90.32%	10.409%
24	24.889	3744	3753	3762	rBV2	640825	1671364	46.14%	5.318%

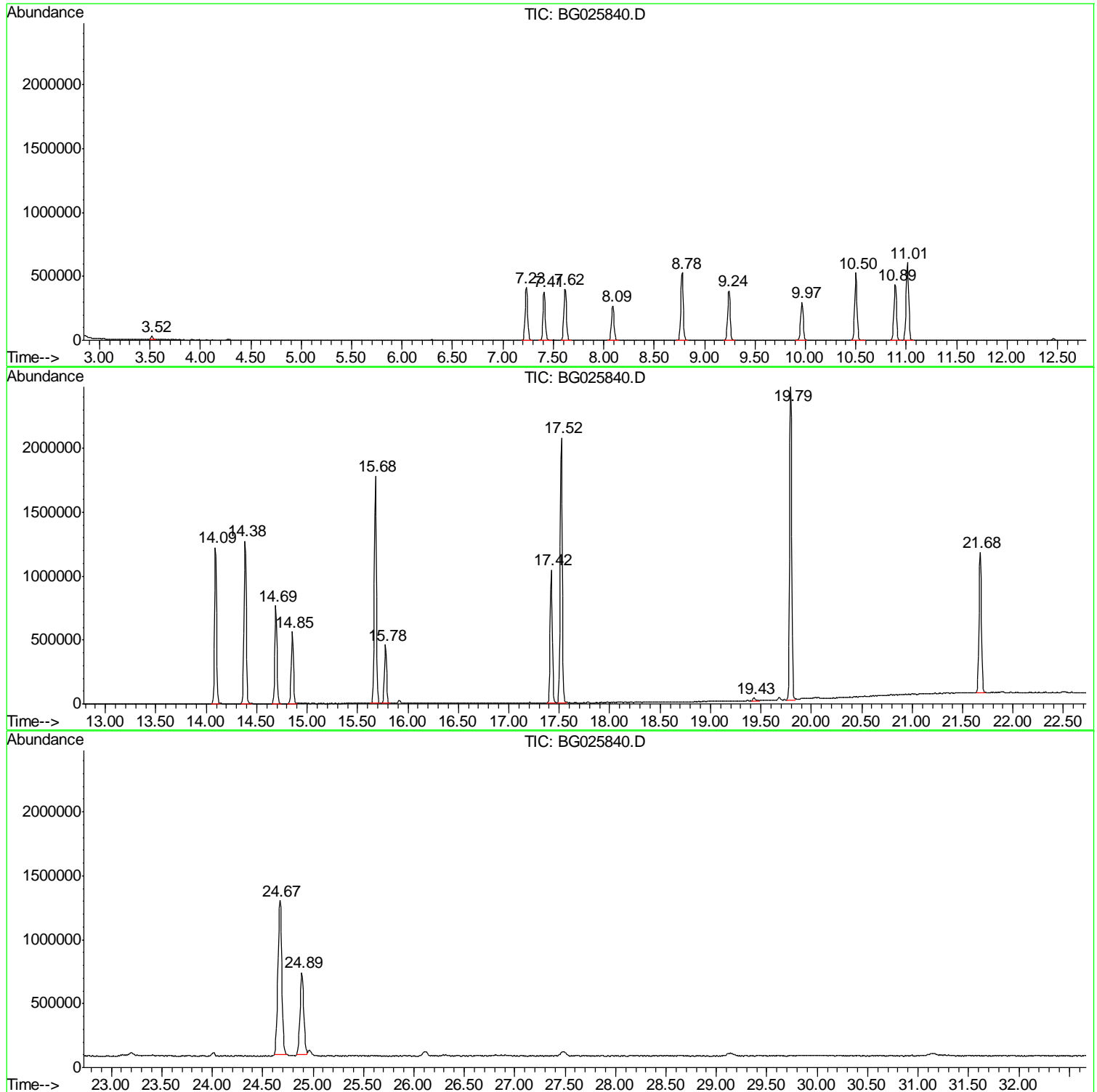
Sum of corrected areas: 31431236

Data Path : Z:\HPCHEM1\BNA G\DATA\BG021317\
Data File : BG025840.D
Acq On : 13 Feb 2017 10:34
Operator : SJ/MA
Sample : PB96869BL
Misc :
ALS Vial : 3 Sample Multiplier: 1

Instrument :
BNA_G
ClientSampled :
SBLK69

Quant Method : Z:\HPCHEM1\BNA G\METHODS\SOM02.2-EPA-BG021017MA.M
Quant Title : SVOA CALIBRATION

TIC Library : C:\DATABASE\NIST02.L
TIC Integration Parameters: LSCINT.P



Data Path : Z:\HPCHEM1\BNA_G\DATA\BG021317\
Data File : BG025840.D
Acq On : 13 Feb 2017 10:34
Operator : SJ/MA
Sample : PB96869BL
Misc :
ALS Vial : 3 Sample Multiplier: 1

Instrument :
BNA_G
ClientSampleId :
SBLK69

Quant Method : Z:\HPCHEM1\BNA_G\METHODS\SOM02.2-EPA-BG021017MA.M
Quant Title : SVOA CALIBRATION

TIC Library : C:\DATABASE\NIST02.L
TIC Integration Parameters: LSCINT.P

No Library Search Compounds Detected

Data Path : Z:\HPCHEM1\BNA_G\DATA\BG021317\
Data File : BG025840.D
Acq On : 13 Feb 2017 10:34
Operator : SJ/MA
Sample : PB96869BL
Misc :
ALS Vial : 3 Sample Multiplier: 1

Instrument :
BNA_G
ClientSampleId :
SBLK69

Quant Method : Z:\HPCHEM1\BNA_G\METHODS\SOM02.2-EPA-BG021017MA.M
Quant Title : SVOA CALIBRATION

TIC Library : C:\DATABASE\NIST02.L
TIC Integration Parameters: LSCINT.P

TIC Top Hit name	RT	EstConc	Units	Response	--Internal Standard--			
					#	RT	Resp	Conc
