

Data Path : Z:\SVOASRV\HPCHEM1\BNA G\DATA\BG021321\
 Data File : BG048156.D
 Acq On : 12 Feb 2021 20:08
 Operator : CG/JU
 Sample : SSTD16025
 Misc :
 ALS Vial : 7 Sample Multiplier: 1

Instrument :
 BNA_G
 ClientSampleId :

Quant Time: Feb 12 22:51:59 2021
 Quant Method : Z:\SVOASRV\HPCHEM1\BNA_G\METHODS\SOM-EPA-BG021321MA.M
 Quant Title : SVOA CALIBRATION
 QLast Update : Fri Feb 12 22:47:29 2021
 Response via : Initial Calibration

Internal Standards	R.T.	QIon	Response	Conc	Units	Dev(Min)
1) 1,4-Dichlorobenzene-d4	8.11	152	47499	20.00	ng/ul	0.00
18) Naphthalene-d8	10.92	136	205569	20.00	ng/ul	0.00
36) Acenaphthene-d10	14.73	164	149549	20.00	ng/ul	0.00
62) Phenanthrene-d10	17.47	188	363940	20.00	ng/ul	0.00
78) Chrysene-d12	21.75	240	377449	20.00	ng/ul	0.01
86) Perylene-d12	25.02	264	382090	20.00	ng/ul	0.02

System Monitoring Compounds

3) 1,4-Dioxane-d8	3.50	96	76325	85.57	ng/uL	-0.01
5) Phenol-d5	7.26	99	684887	168.48	ng/ul	0.02
7) Bis-(2-Chloroethyl)ether-d	7.43	67	382435	183.00	ng/ul	0.00
9) 2-Chlorophenol-d4	7.64	132	479708	155.59	ng/ul	0.00
13) 4-Methylphenol-d8	8.81	113	530077	164.28	ng/ul	0.02
19) Nitrobenzene-d5	9.27	128	237934	141.95	ng/ul	0.01
22) 2-Nitrophenol-d4	10.00	143	292392	144.72	ng/ul	0.01
26) 2,4-Dichlorophenol-d3	10.54	165	568041	129.49	ng/ul	0.01
29) 4-Chloroaniline-d4	11.05	131	415466	103.13	ng/ul	0.00
44) Dimethylphthalate-d6	14.14	166	1560595	120.14	ng/ul	0.02
47) Acenaphthylene-d8	14.43	160	1904588	128.38	ng/ul	0.00
52) 4-Nitrophenol-d4	14.93	143	305489	158.57	ng/ul	0.04
58) Fluorene-d10	15.73	176	1421208	118.85	ng/ul	0.01
63) 4,6-Dinitro-2-methylphenol	15.85	200	387768	157.40	ng/ul	0.03
71) Anthracene-d10	17.58	188	2127582	117.20	ng/ul	0.01
79) Pyrene-d10	19.85	212	2468524	110.65	ng/ul	0.00
90) Benzo(a)pyrene-d12	24.80	264	2883834	129.22	ng/ul	0.04

Target Compounds

Target Compounds	R.T.	QIon	Response	Conc	Units	Ovalue
2) 1,4-Dioxane	3.55	88	80363	87.362	ng/uL	89
4) Benzaldehyde	7.24	77	193913	89.890	ng/ul	94
6) Phenol	7.29	94	682957	177.825	ng/ul	92
8) Bis(2-Chloroethyl)ether	7.52	93	501200	187.554	ng/ul	93
10) 2-Chlorophenol	7.67	128	483710	159.363	ng/ul	93
11) 2-Methylphenol	8.54	108	513566	168.224	ng/ul	97
12) 2,2'-oxybis(1-Chloropropan	8.63	45	645951	258.091	ng/ul	95
14) Acetophenone	8.93	105	830596	163.167	ng/ul#	85
15) N-Nitroso-di-n-propylamine	8.94	70	469982	167.063	ng/ul#	93
16) 4-Methylphenol	8.89	108	537369	164.782	ng/ul	94
17) Hexachloroethane	9.19	117	212790	143.397	ng/ul	96
20) Nitrobenzene	9.32	77	690832	130.248	ng/ul	98
21) Isophorone	9.85	82	1223575	134.253	ng/ul	99
23) 2-Nitrophenol	10.03	139	295800	143.168	ng/ul	98
24) 2,4-Dimethylphenol	10.09	107	634475	128.219	ng/ul	98
25) Bis(2-Chloroethoxy)methane	10.32	93	690190	165.328	ng/ul	99
27) 2,4-Dichlorophenol	10.57	162	541261	145.892	ng/ul	97
28) Naphthalene	10.97	128	1488146	129.818	ng/ul	97
30) 4-Chloroaniline	11.07	127	422884	113.594	ng/ul	95
31) Hexachlorobutadiene	11.25	225	448710	110.756	ng/ul	97
32) Caprolactam	11.88	113	111281	89.036	ng/ul	94
33) 4-Chloro-3-methylphenol	12.19	107	589645	130.543	ng/ul	96
34) 2-Methylnaphthalene	12.57	142	1112150	125.928	ng/ul	94

Data Path : Z:\SVOASRV\HPCHEM1\BNA G\DATA\BG021321\
 Data File : BG048156.D
 Acq On : 12 Feb 2021 20:08
 Operator : CG/JU
 Sample : SSTD16025
 Misc :
 ALS Vial : 7 Sample Multiplier: 1

Instrument :
 BNA_G
 ClientSampled :

Quant Time: Feb 12 22:51:59 2021
 Quant Method : Z:\SVOASRV\HPCHEM1\BNA_G\METHODS\SOM-EPA-BG021321MA.M
 Quant Title : SVOA CALIBRATION
 QLast Update : Fri Feb 12 22:47:29 2021
 Response via : Initial Calibration

Internal Standards	R.T.	QIon	Response	Conc	Units	Dev(Min)
35) 1-Methylnaphthalene	12.79	142	1093180	106.763	ng/uL	99
37) 1,2,4,5-Tetrachlorobenzene	12.94	216	811100	136.477	ng/ul	94
38) Hexachlorocyclopentadiene	12.91	237	580217	139.821	ng/ul#	95
39) 2,4,6-Trichlorophenol	13.16	196	554309	142.837	ng/ul	99
40) 2,4,5-Trichlorophenol	13.24	196	576913	143.727	ng/ul	96
41) 1,1'-Biphenyl	13.57	154	1448232	128.646	ng/ul	90
42) 2-Chloronaphthalene	13.62	162	1238870	135.918	ng/ul	95
43) 2-Nitroaniline	13.82	65	478111	146.789	ng/ul	93
45) Dimethylphthalate	14.19	163	1580820	120.135	ng/ul#	95
46) 2,6-Dinitrotoluene	14.31	165	383249	136.148	ng/ul	98
48) Acenaphthylene	14.46	152	1687601	122.622	ng/ul	96
49) 3-Nitroaniline	14.64	138	285170	148.479	ng/ul	86
50) Acenaphthene	14.80	153	1311402	134.815	ng/ul	93
51) 2,4-Dinitrophenol	14.84	184	286625	176.367	ng/ul#	85
53) 4-Nitrophenol	14.95	109	342486	108.013	ng/ul	93
54) Dibenzofuran	15.13	168	1790513	126.155	ng/ul	92
55) 2,4-Dinitrotoluene	15.10	165	531491	133.813	ng/ul#	99
56) 2,3,4,6-Tetrachlorophenol	15.36	232	575256	153.196	ng/ul#	97
57) Diethylphthalate	15.55	149	1639713	127.669	ng/ul	95
59) Fluorene	15.78	166	1488002	122.616	ng/ul#	97
60) 4-Chlorophenyl-phenylether	15.77	204	931557	122.829	ng/ul	97
61) 4-Nitroaniline	15.81	138	350506	163.578	ng/ul	94
64) 4,6-Dinitro-2-methylphenol	15.86	198	384449	154.776	ng/ul#	97
65) N-Nitrosodiphenylamine	15.98	169	1387718	138.332	ng/ul	100
66) 4-Bromophenyl-phenylether	16.66	248	660672	140.767	ng/ul	98
67) Hexachlorobenzene	16.78	284	697765	136.320	ng/ul	95
68) Atrazine	16.93	200	642476	138.231	ng/ul	93
69) Pentachlorophenol	17.12	266	462454	208.960	ng/ul#	88
70) Phenanthrene	17.52	178	2434975	123.443	ng/ul#	89
72) Anthracene	17.61	178	2393459	121.729	ng/ul#	88
73) 1,2,3,4-Tetrachlorobenzene	13.53	216	856229	150.142	ng/uL	92
74) Pentachlorobenzene	15.05	250	827430	145.547	ng/uL	95
75) Carbazole	17.88	167	2182725	139.203	ng/ul#	88
76) Di-n-butylphthalate	18.42	149	2412882	120.460	ng/ul#	95
77) Fluoranthene	19.52	202	2902601	115.647	ng/ul#	94
80) Pyrene	19.89	202	2763661	100.673	ng/ul#	90
81) Butylbenzylphthalate	20.76	149	1222461	133.838	ng/ul#	93
82) 3,3'-Dichlorobenzidine	21.64	252	986120	114.322	ng/ul#	95
83) Benzo(a)anthracene	21.73	228	3066973	113.734	ng/ul#	83
84) Bis(2-ethylhexyl)phthalate	21.62	149	1714729	133.763	ng/ul#	89
85) Chrysene	21.80	228	2925536	114.948	ng/ul#	83
87) Di-n-octyl phthalate	22.85	149	2801132	139.106	ng/ul	100
88) Benzo(b)fluoranthene	23.99	252	3358434	125.913	ng/ul#	88
89) Benzo(k)fluoranthene	24.06	252	3243137	122.691	ng/ul#	91
91) Benzo(a)pyrene	24.89	252	3011512	125.205	ng/ul#	94
92) Indeno(1,2,3-cd)pyrene	28.78	276	3736585	127.388	ng/ul	98
93) Dibenzo(a,h)anthracene	28.85	278	3347095	136.136	ng/ul	98
94) Benzo(a,h,i)perylene	29.97	276	3402516	141.290	ng/ul	97

Data Path : Z:\SVOASRV\HPCHEM1\BNA G\DATA\BG021321\
 Data File : BG048156.D
 Acq On : 12 Feb 2021 20:08
 Operator : CG/JU
 Sample : SSTD16025
 Misc :
 ALS Vial : 7 Sample Multiplier: 1

Instrument :
 BNA_G
 ClientSampleId :

Quant Time: Feb 12 22:51:59 2021
 Quant Method : Z:\SVOASRV\HPCHEM1\BNA_G\METHODS\SOM-EPA-BG021321MA.M
 Quant Title : SVOA CALIBRATION
 QLast Update : Fri Feb 12 22:47:29 2021
 Response via : Initial Calibration

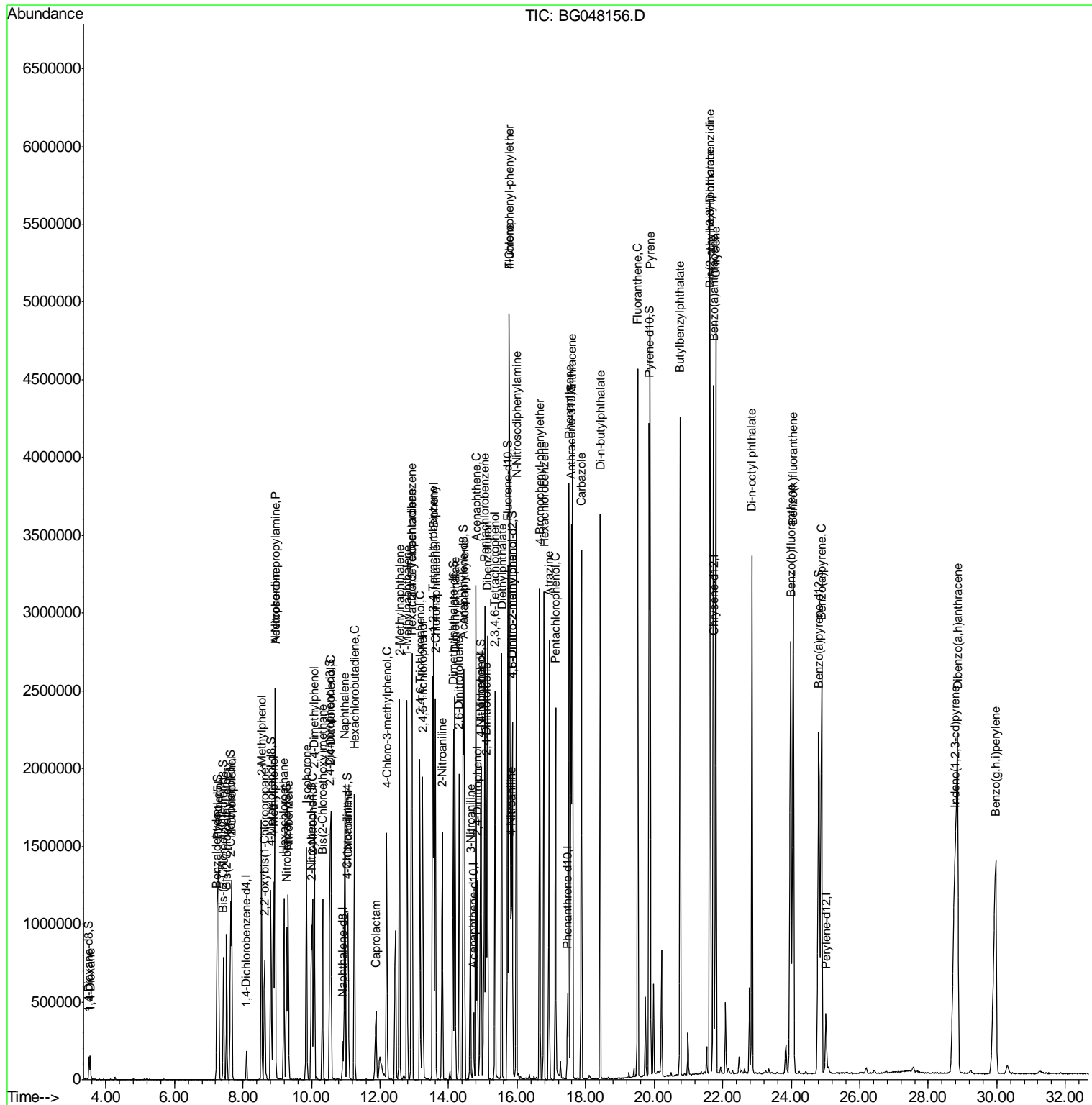
Internal Standards	R.T.	QIon	Response	Conc	Units	Dev(Min)

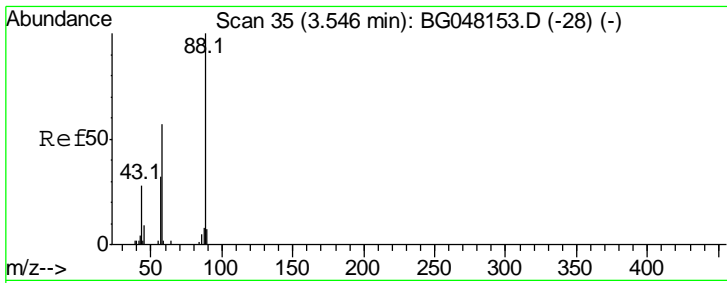
(#) = qualifier out of range (m) = manual integration (+) = signals summed						

Data Path : Z:\SVOASRV\HPCHEM1\BNA G\DATA\BG021321\
 Data File : BG048156.D
 Acq On : 12 Feb 2021 20:08
 Operator : CG/JU
 Sample : SSTD16025
 Misc :
 ALS Vial : 7 Sample Multiplier: 1

Instrument :
 BNA_G
 Client Sampled :

Quant Time: Feb 12 22:51:59 2021
 Quant Method : Z:\SVOASRV\HPCHEM1\BNA_G\METHODS\SOM-EPA-BG021321MA.M
 Quant Title : SVOA CALIBRATION
 QLast Update : Fri Feb 12 22:47:29 2021
 Response via : Initial Calibration

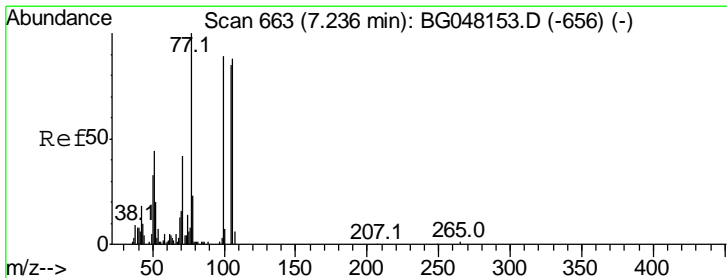
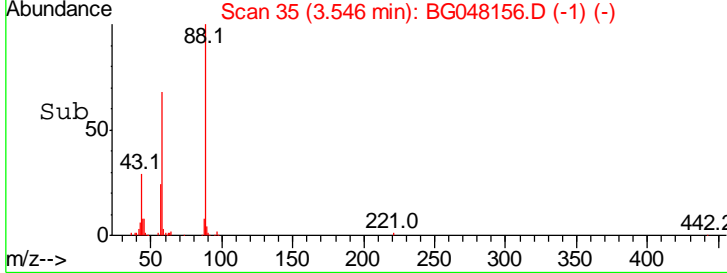
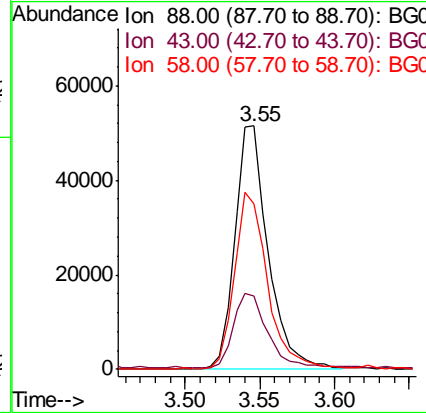
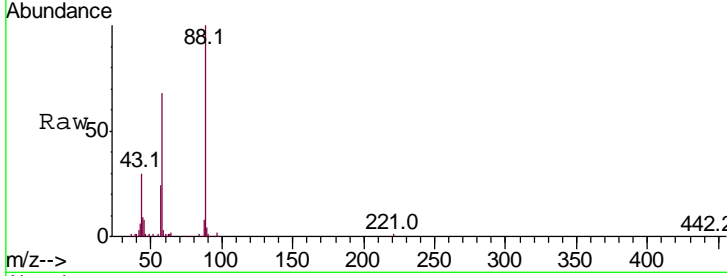




#2
 1,4-Dioxane
 Concen: 87.362 ng/uL
 RT: 3.55 min Scan# 35
 Delta R.T. 0.00 min
 Lab File: BG048156.D
 Acq: 12 Feb 2021 20:08

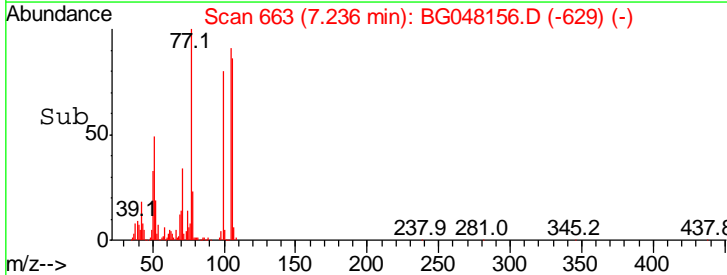
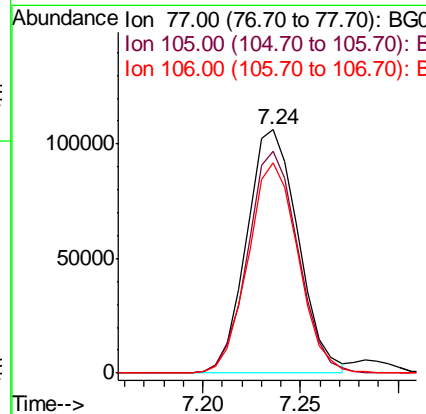
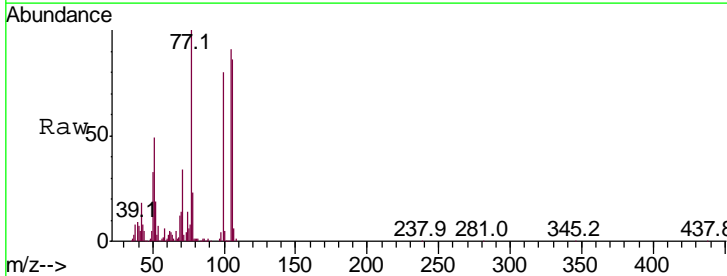
Instrument :
 BNA_G
 ClientSampled :

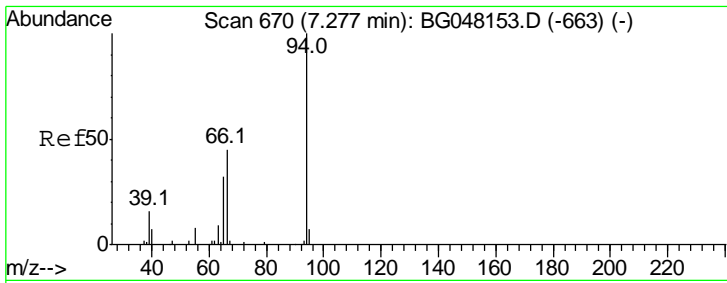
Tgt Ion	Resp	Lower	Upper
88	100		
43	30.3	26.7	40.1
58	67.8	63.6	95.4



#4
 Benzaldehyde
 Concen: 89.890 ng/uL
 RT: 7.24 min Scan# 663
 Delta R.T. 0.00 min
 Lab File: BG048156.D
 Acq: 12 Feb 2021 20:08

Tgt Ion	Resp	Lower	Upper
77	100		
105	91.2	69.3	103.9
106	86.5	64.9	97.3

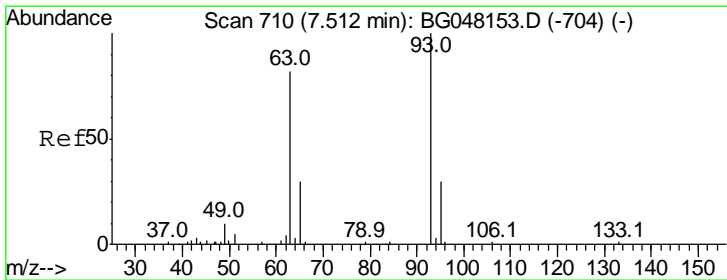
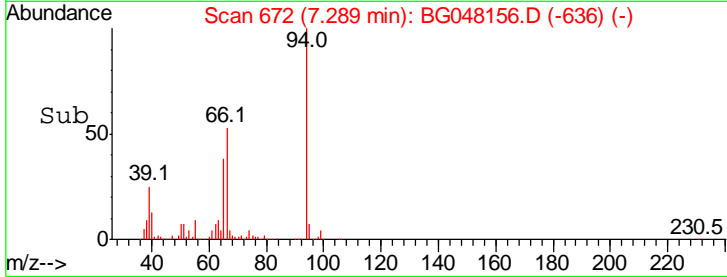
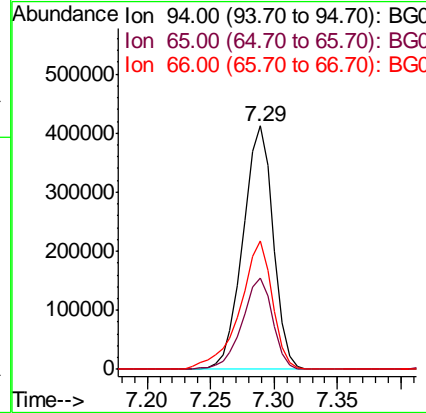
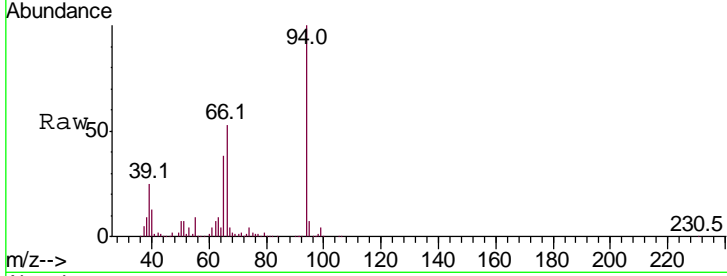




#6
 Phenol
 Concen: 177.825 ng/ul
 RT: 7.29 min Scan# 672
 Delta R.T. 0.01 min
 Lab File: BG048156.D
 Acq: 12 Feb 2021 20:08

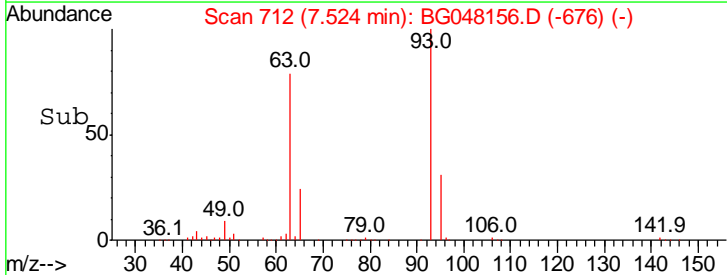
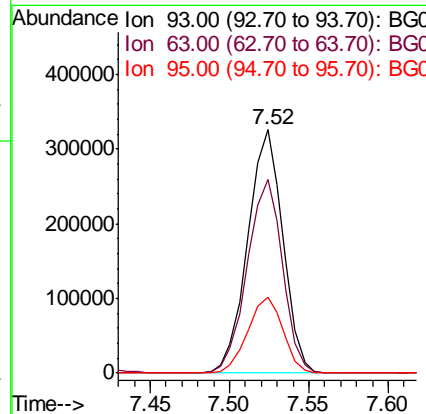
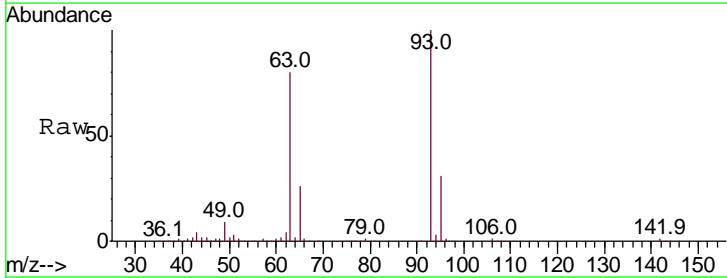
Instrument :
 BNA_G
ClientSampled :

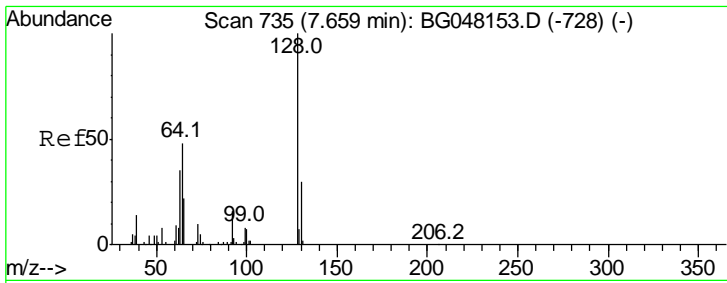
Tgt Ion	Resp	Lower	Upper
94	100		
65	37.8	27.0	40.4
66	52.6	37.1	55.7



#8
 Bis(2-Chloroethyl)ether
 Concen: 187.554 ng/ul
 RT: 7.52 min Scan# 712
 Delta R.T. 0.01 min
 Lab File: BG048156.D
 Acq: 12 Feb 2021 20:08

Tgt Ion	Resp	Lower	Upper
93	100		
63	79.5	58.6	88.0
95	31.3	22.7	34.1

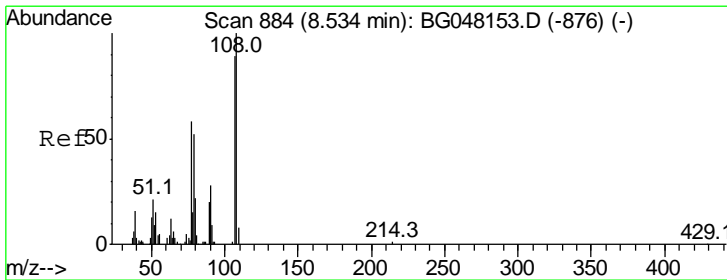
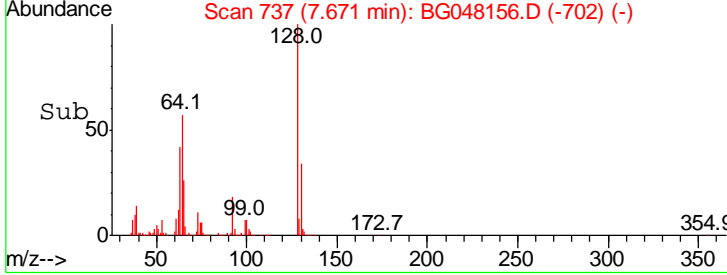
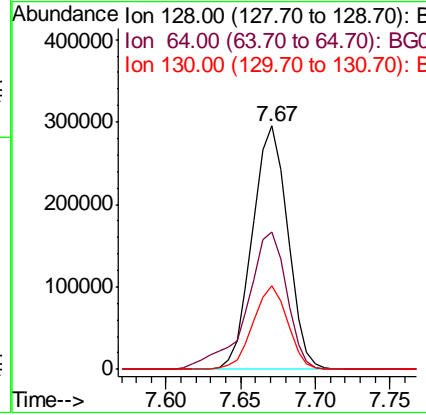
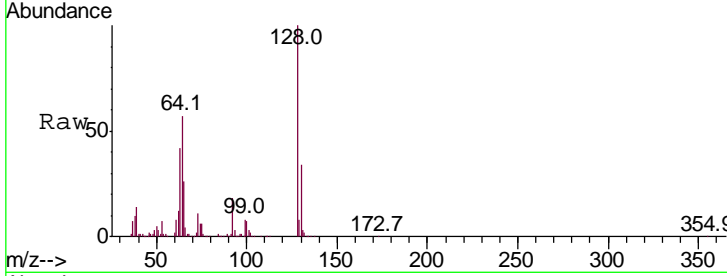




#10
 2-Chlorophenol
 Concen: 159.363 ng/ul
 RT: 7.67 min Scan# 737
 Delta R.T. 0.01 min
 Lab File: BG048156.D
 Acq: 12 Feb 2021 20:08

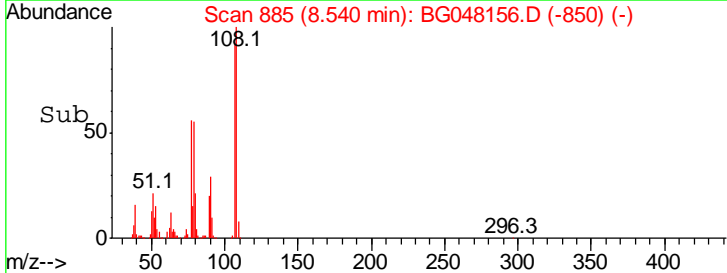
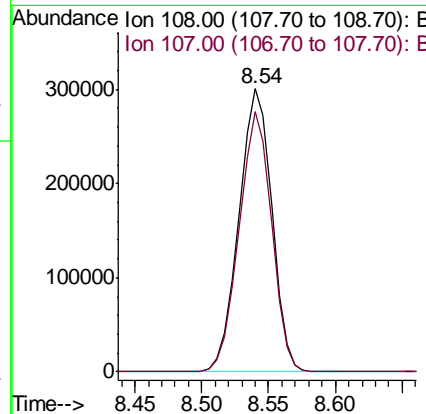
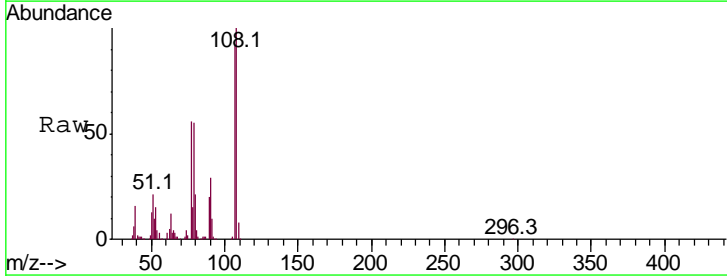
Instrument :
 BNA_G
 ClientSampled :

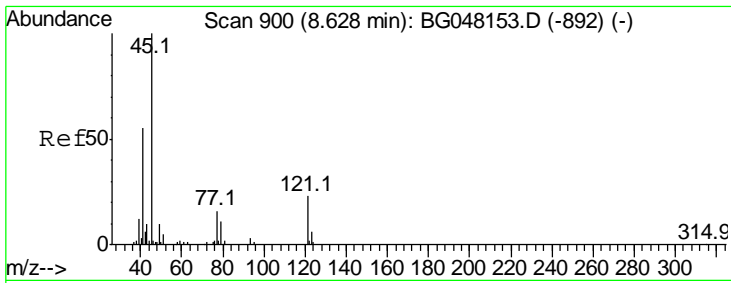
Tgt Ion	Resp	Lower	Upper
128	483710		
64	56.6	39.6	59.4
130	34.3	26.8	40.2



#11
 2-Methylphenol
 Concen: 168.224 ng/ul
 RT: 8.54 min Scan# 885
 Delta R.T. 0.01 min
 Lab File: BG048156.D
 Acq: 12 Feb 2021 20:08

Tgt Ion	Resp	Lower	Upper
108	513566		
107	91.8	71.2	106.8

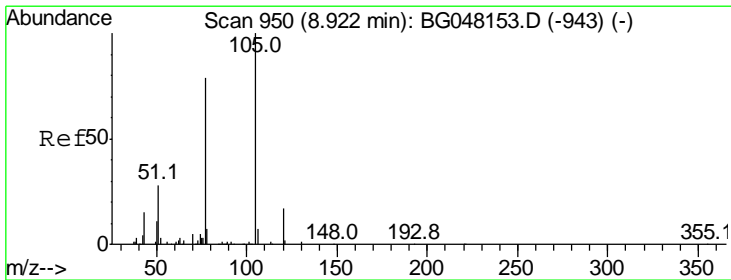
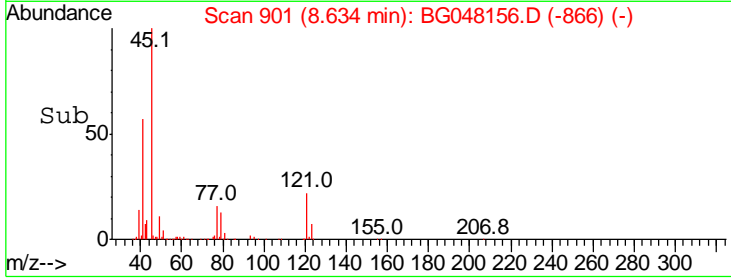
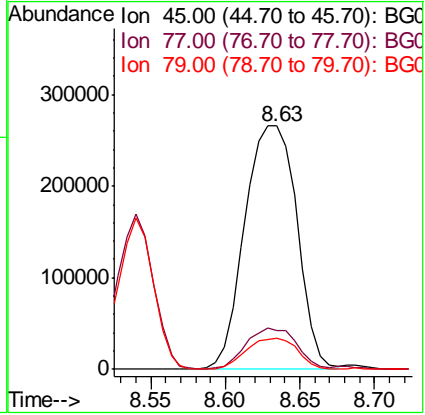
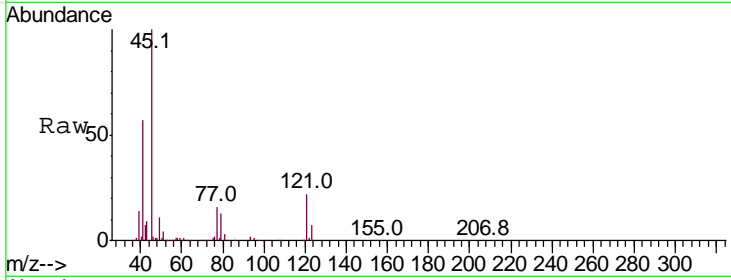




#12
 2,2'-oxybis(1-Chloropropane)
 Concen: 258.091 ng/ul
 RT: 8.63 min Scan# 901
 Delta R.T. 0.01 min
 Lab File: BG048156.D
 Acq: 12 Feb 2021 20:08

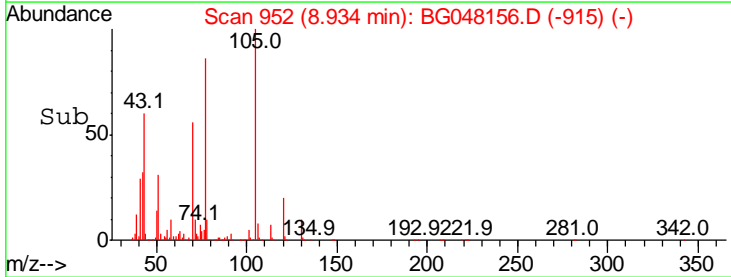
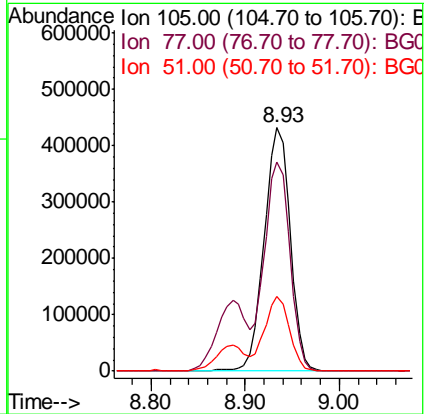
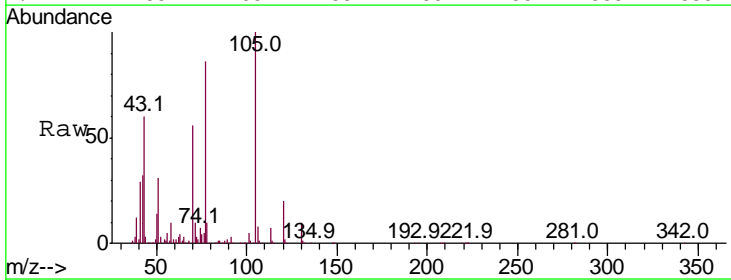
Instrument :
 BNA_G
 ClientSampled :

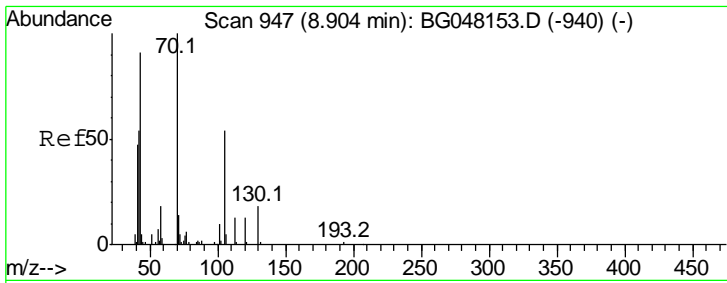
Tgt Ion	Resp	Lower	Upper
45	100		
77	16.2	16.0	24.0
79	12.7	10.3	15.5



#14
 Acetophenone
 Concen: 163.167 ng/ul
 RT: 8.93 min Scan# 952
 Delta R.T. 0.02 min
 Lab File: BG048156.D
 Acq: 12 Feb 2021 20:08

Tgt Ion	Resp	Lower	Upper
105	100		
77	86.1	58.7	88.1
51	30.8	18.9	28.3#

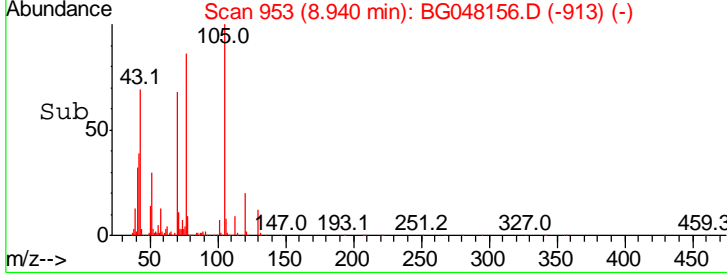
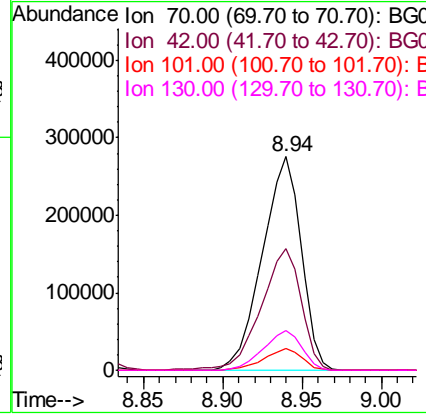
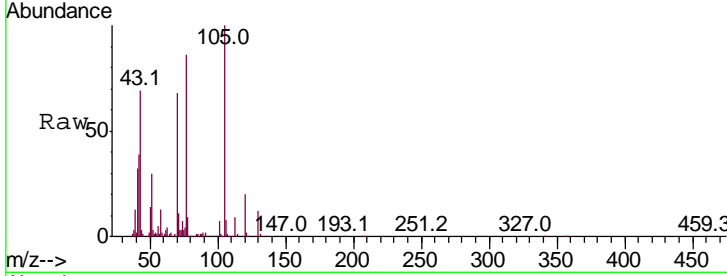




#15
 N-Nitroso-di-n-propylamine
 Concen: 167.063 ng/ul
 RT: 8.94 min Scan# 953
 Delta R.T. 0.04 min
 Lab File: BG048156.D
 Acq: 12 Feb 2021 20:08

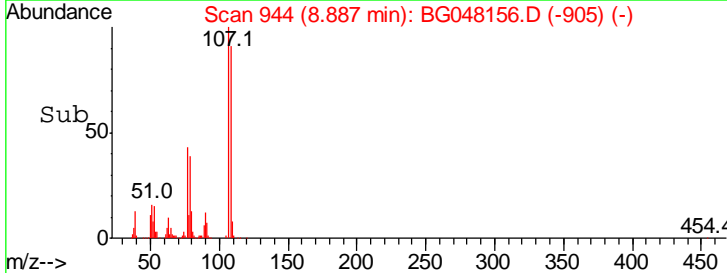
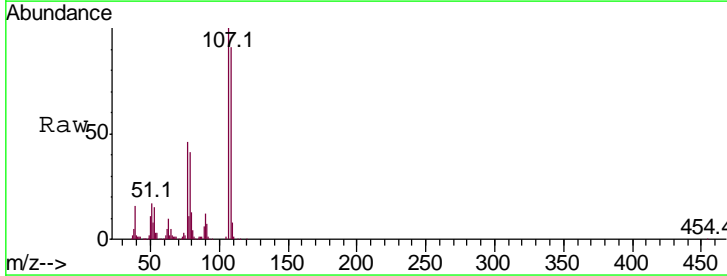
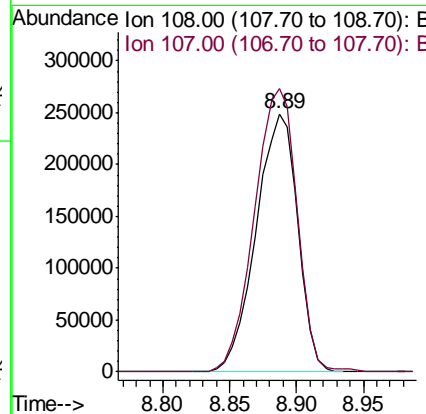
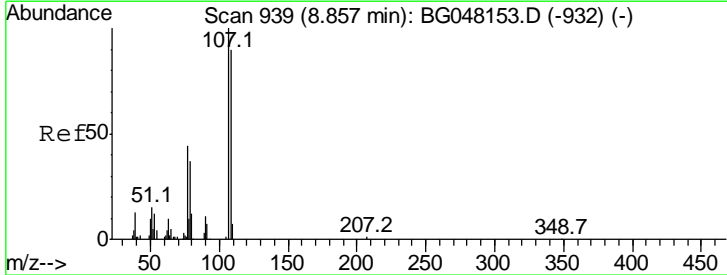
Instrument :
 BNA_G
 ClientSampled :

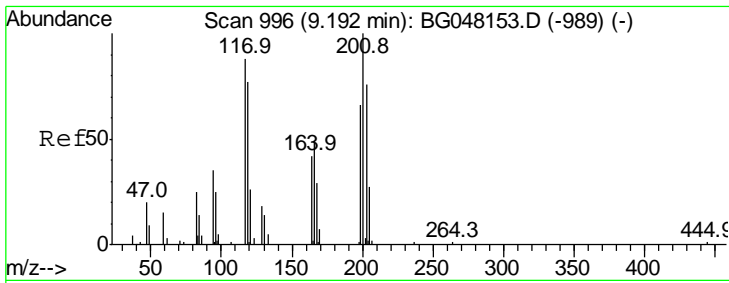
Tgt Ion	Resp	Lower	Upper
70	100		
42	57.1	41.4	62.0
101	10.0	6.6	9.8#
130	18.3	12.4	18.6



#16
 4-Methylphenol
 Concen: 164.782 ng/ul
 RT: 8.89 min Scan# 944
 Delta R.T. 0.03 min
 Lab File: BG048156.D
 Acq: 12 Feb 2021 20:08

Tgt Ion	Resp	Lower	Upper
108	100		
107	109.6	82.6	123.8

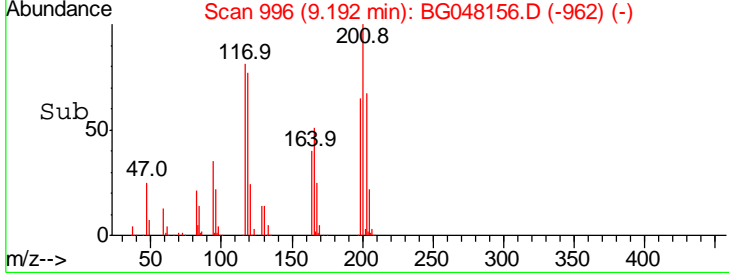
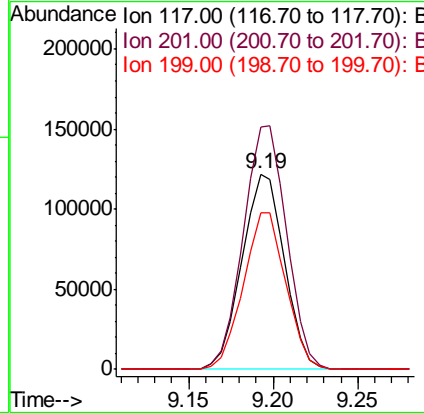
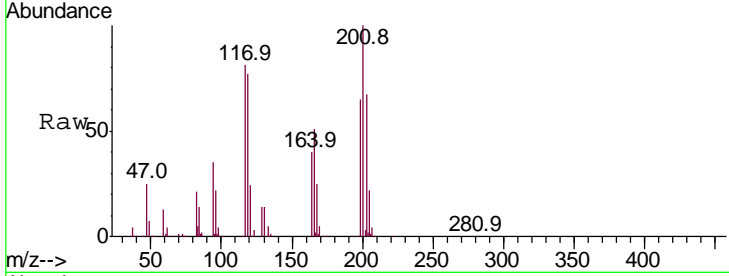




#17
 Hexachloroethane
 Concen: 143.397 ng/ul
 RT: 9.19 min Scan# 996
 Delta R.T. 0.00 min
 Lab File: BG048156.D
 Acq: 12 Feb 2021 20:08

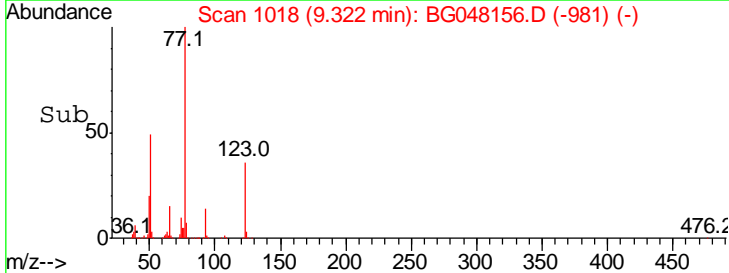
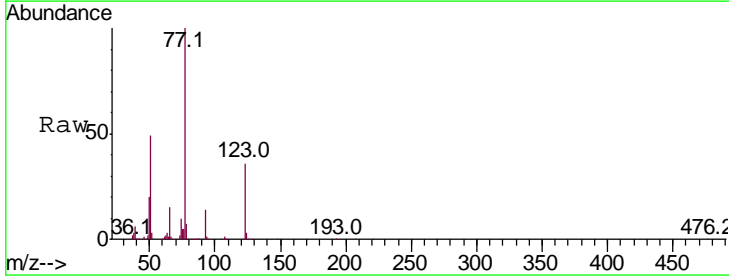
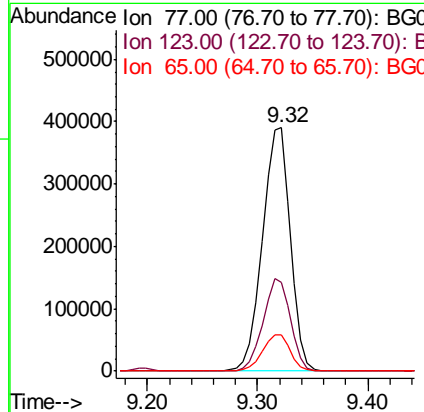
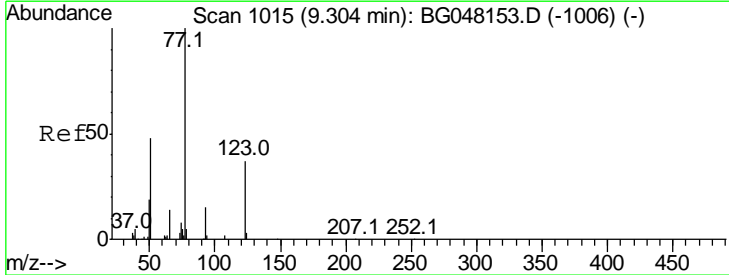
Instrument :
 BNA_G
ClientSampled :

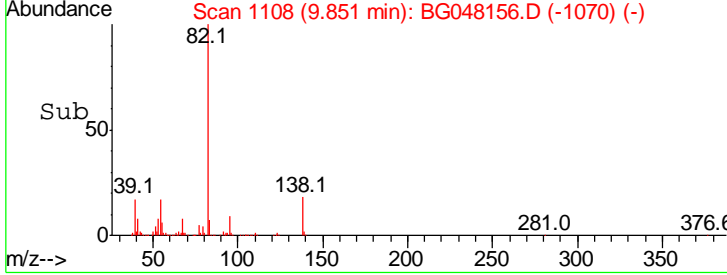
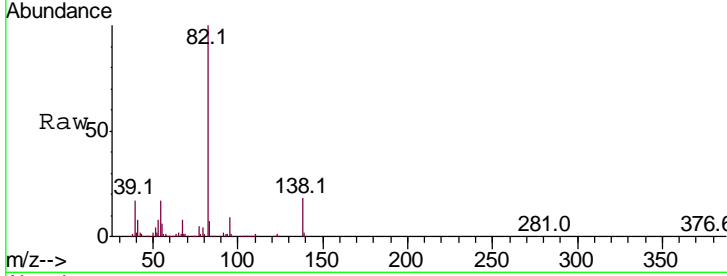
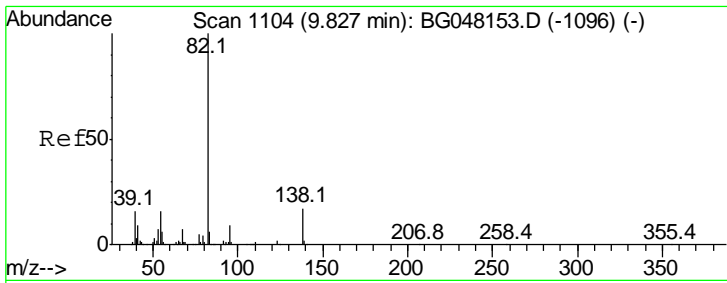
Tgt Ion	Resp	Lower	Upper
117	100		
201	124.2	98.4	147.6
199	80.3	58.6	87.8



#20
 Nitrobenzene
 Concen: 130.248 ng/ul
 RT: 9.32 min Scan# 1018
 Delta R.T. 0.02 min
 Lab File: BG048156.D
 Acq: 12 Feb 2021 20:08

Tgt Ion	Resp	Lower	Upper
77	100		
123	36.3	28.6	43.0
65	14.9	13.0	19.6

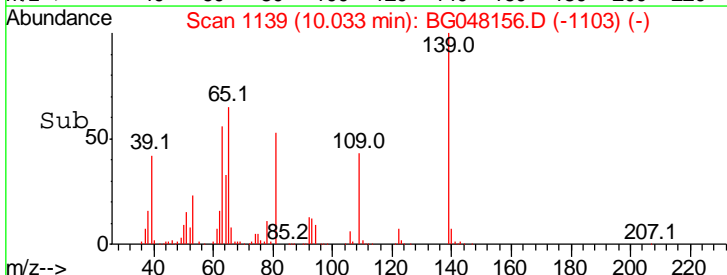
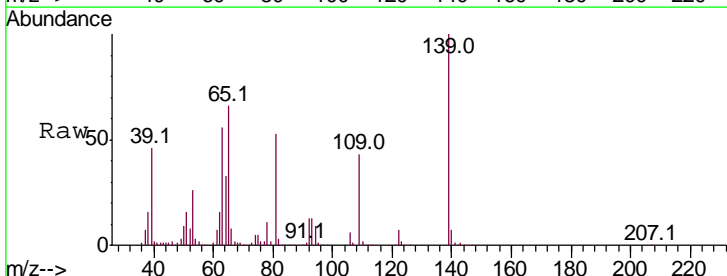
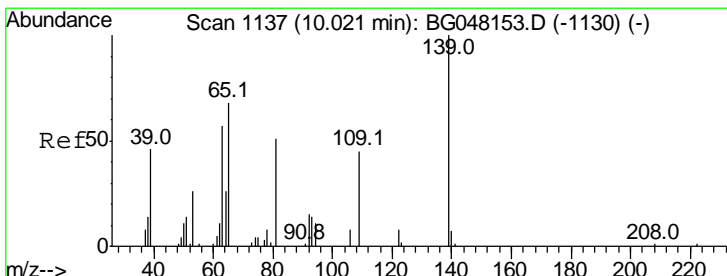
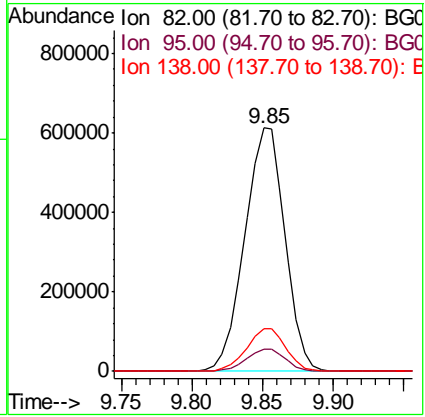




#21
 Isophorone
 Concen: 134.253 ng/ul
 RT: 9.85 min Scan# 1108
 Delta R.T. 0.02 min
 Lab File: BG048156.D
 Acq: 12 Feb 2021 20:08

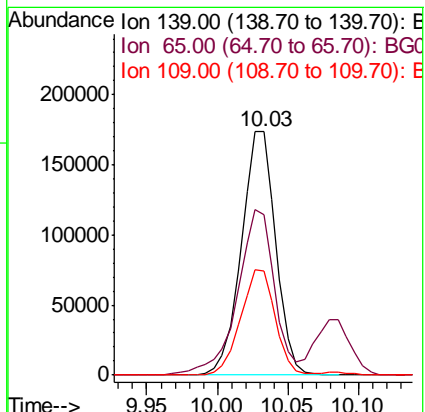
Instrument :
 BNA_G
 ClientSampled :

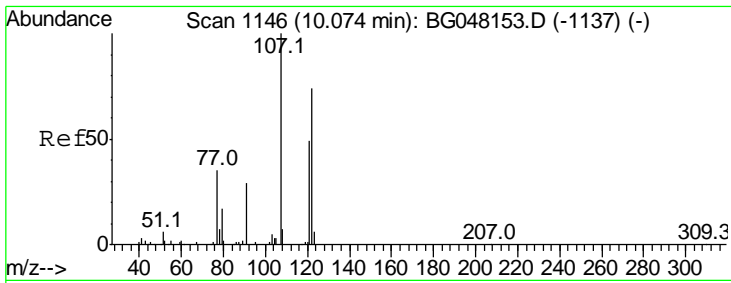
Tgt Ion	Resp	Lower	Upper
82	1223575		
Ion Ratio			
82	100		
95	9.2	7.7	11.5
138	17.7	14.5	21.7



#23
 2-Nitrophenol
 Concen: 143.168 ng/ul
 RT: 10.03 min Scan# 1139
 Delta R.T. 0.01 min
 Lab File: BG048156.D
 Acq: 12 Feb 2021 20:08

Tgt Ion	Resp	Lower	Upper
139	295800		
Ion Ratio			
139	100		
65	65.8	51.3	76.9
109	43.0	33.5	50.3

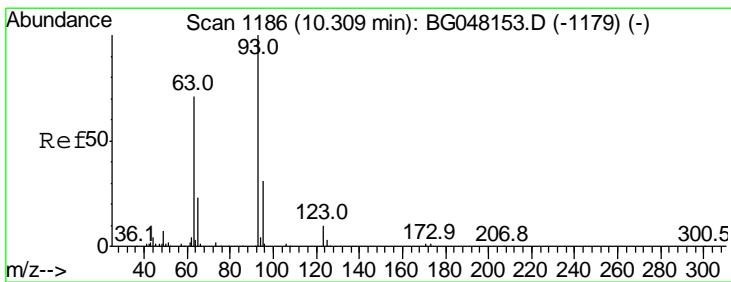
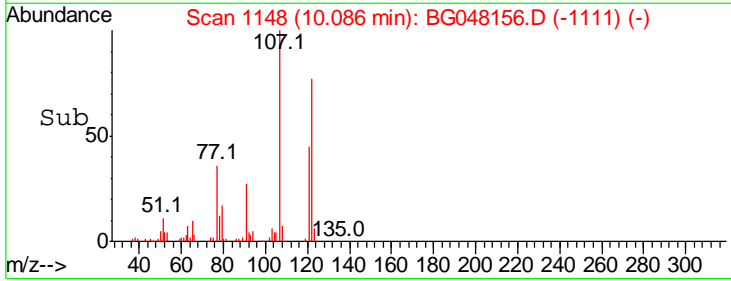
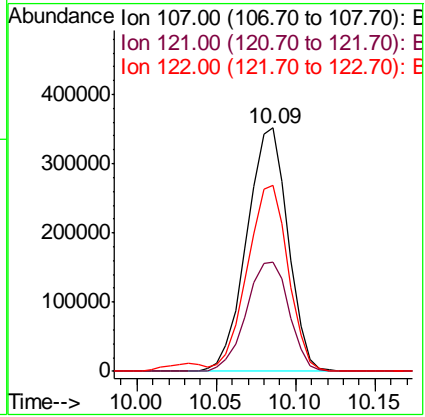
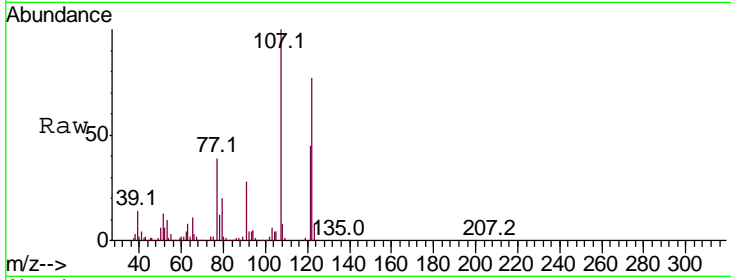




#24
 2,4-Dimethylphenol
 Concen: 128.219 ng/ul
 RT: 10.09 min Scan# 1148
 Delta R.T. 0.02 min
 Lab File: BG048156.D
 Acq: 12 Feb 2021 20:08

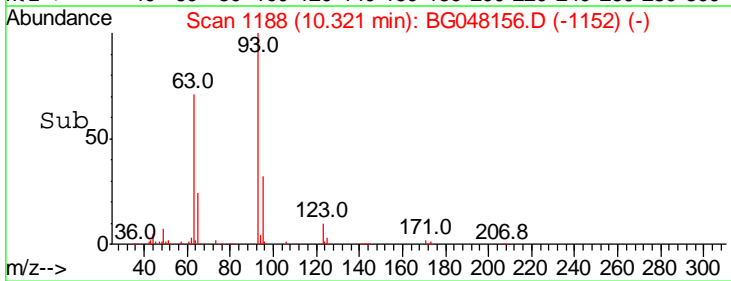
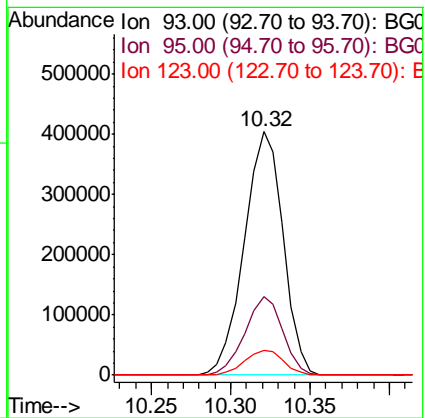
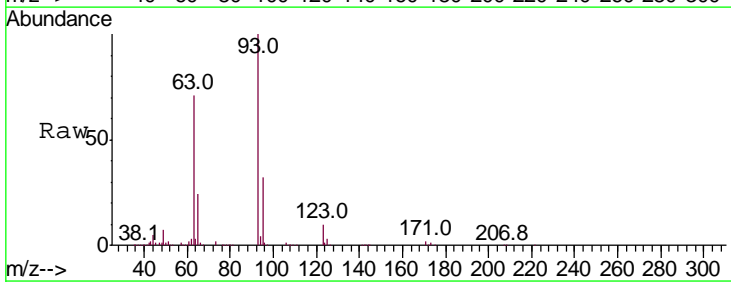
Instrument :
 BNA_G
 ClientSampled :

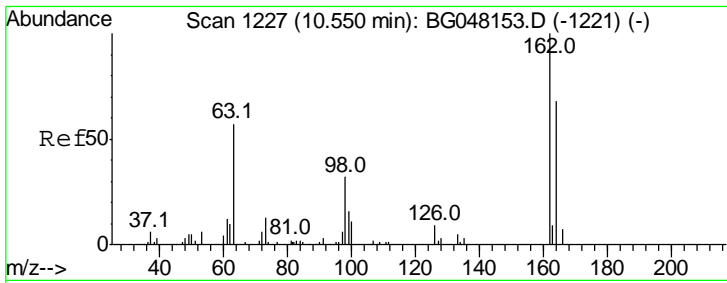
Tgt Ion	Resp	Lower	Upper
107	100		
121	45.1	37.1	55.7
122	76.6	60.2	90.2



#25
 Bis(2-Chloroethoxy)methane
 Concen: 165.328 ng/ul
 RT: 10.32 min Scan# 1188
 Delta R.T. 0.01 min
 Lab File: BG048156.D
 Acq: 12 Feb 2021 20:08

Tgt Ion	Resp	Lower	Upper
93	100		
95	32.2	25.9	38.9
123	10.3	7.8	11.8

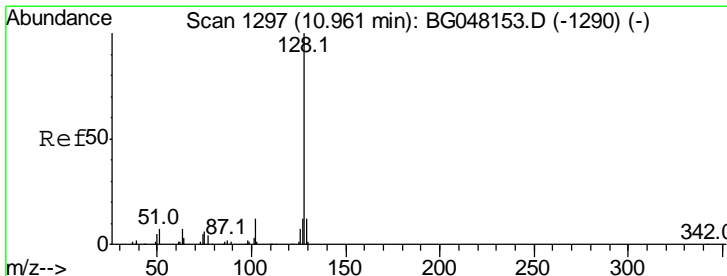
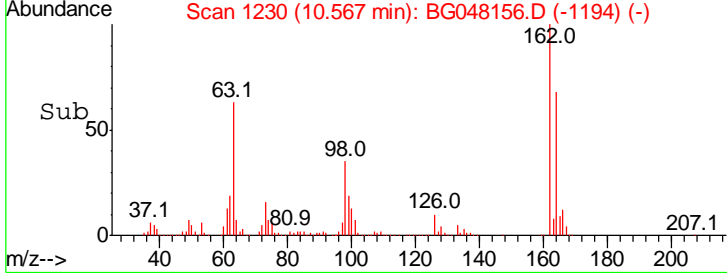
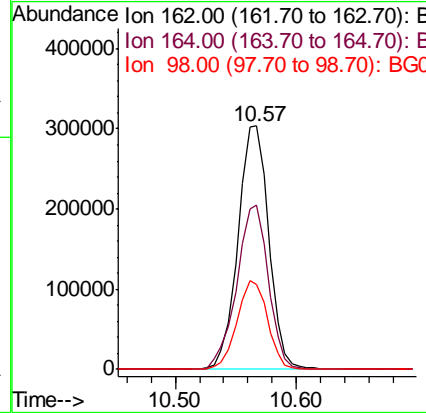
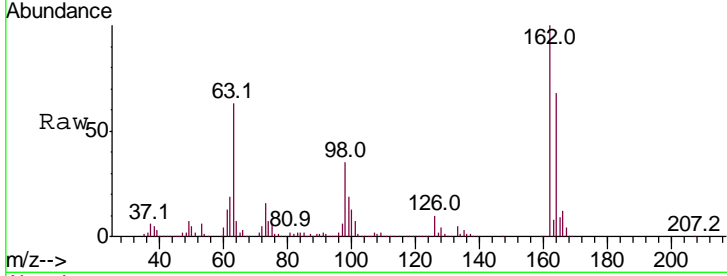




#27
 2,4-Dichlorophenol
 Concen: 145.892 ng/ul
 RT: 10.57 min Scan# 1230
 Delta R.T. 0.01 min
 Lab File: BG048156.D
 Acq: 12 Feb 2021 20:08

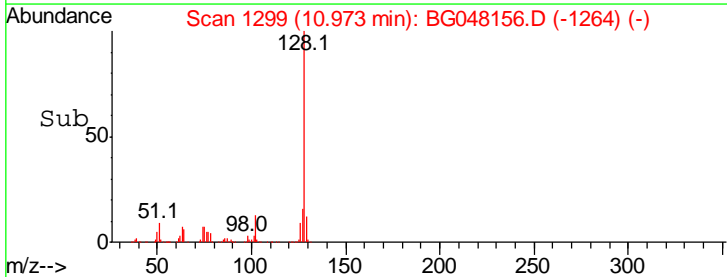
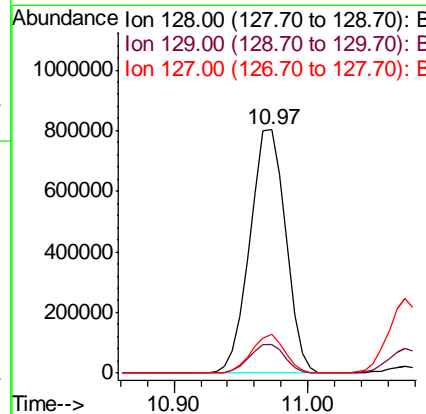
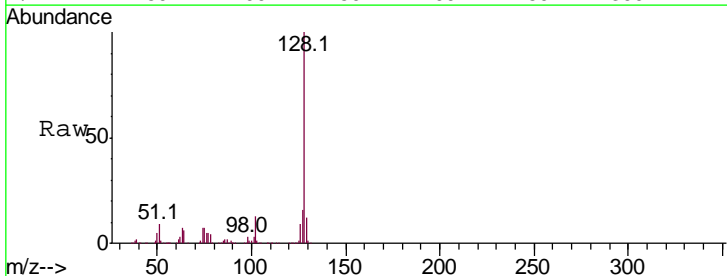
Instrument :
 BNA_G
 ClientSampled :

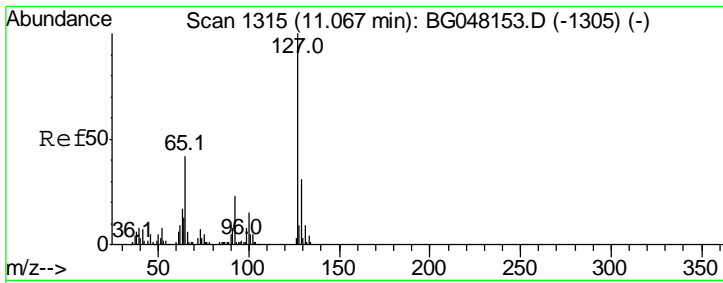
Tgt Ion	Resp	Lower	Upper
162	100		
164	67.7	54.1	81.1
98	34.6	24.1	36.1



#28
 Naphthalene
 Concen: 129.818 ng/ul
 RT: 10.97 min Scan# 1299
 Delta R.T. 0.01 min
 Lab File: BG048156.D
 Acq: 12 Feb 2021 20:08

Tgt Ion	Resp	Lower	Upper
128	100		
129	12.0	9.3	13.9
127	16.2	11.2	16.8

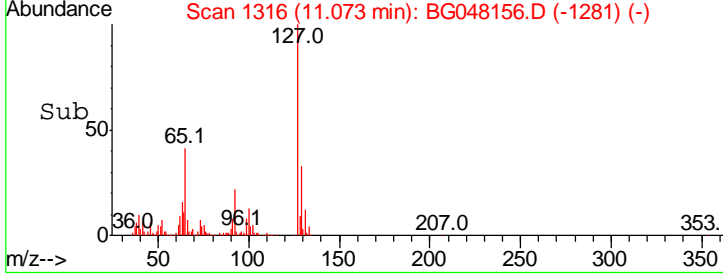
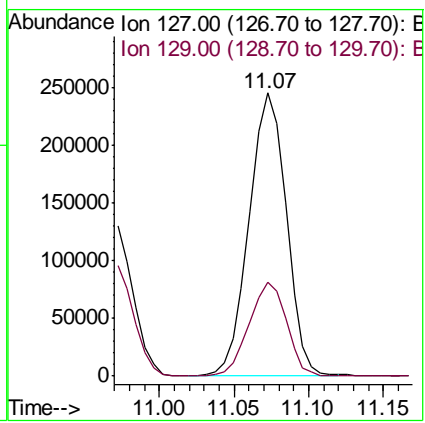
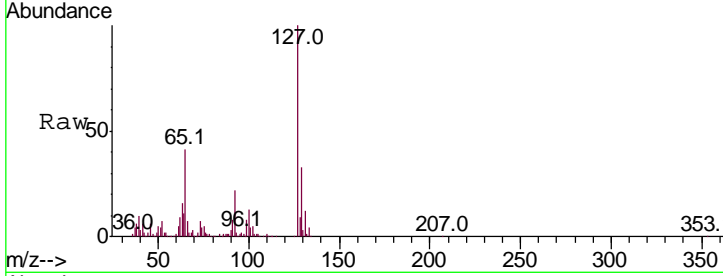




#30
 4-Chloroaniline
 Concen: 113.594 ng/ul
 RT: 11.07 min Scan# 1316
 Delta R.T. 0.01 min
 Lab File: BG048156.D
 Acq: 12 Feb 2021 20:08

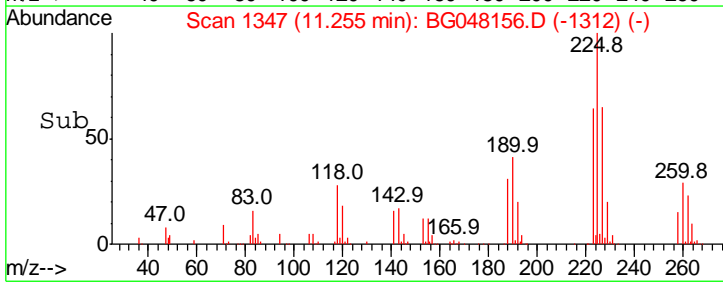
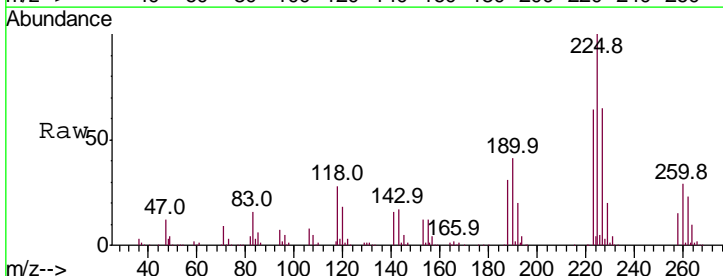
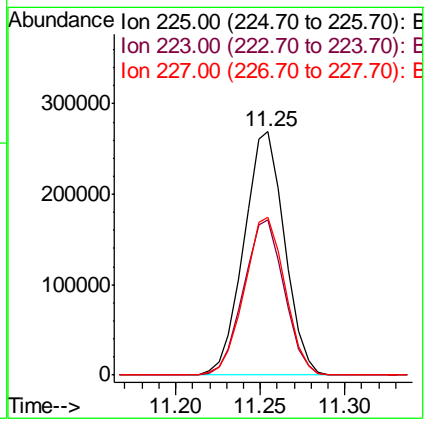
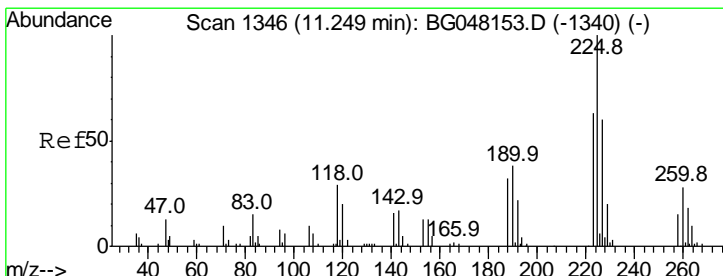
Instrument :
 BNA_G
 ClientSampled :

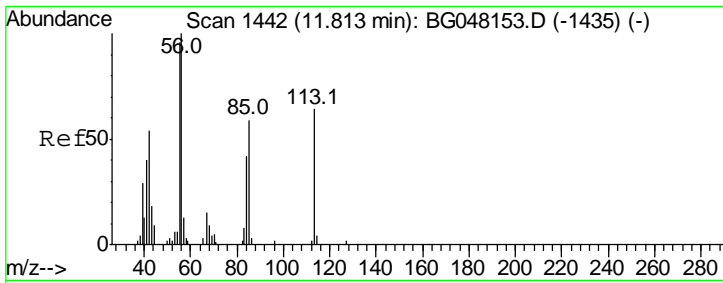
Tgt Ion	Resp	Lower	Upper
127	100		
129	33.3	29.1	43.7



#31
 Hexachlorobutadiene
 Concen: 110.756 ng/ul
 RT: 11.25 min Scan# 1347
 Delta R.T. 0.01 min
 Lab File: BG048156.D
 Acq: 12 Feb 2021 20:08

Tgt Ion	Resp	Lower	Upper
225	100		
223	64.0	50.7	76.1
227	65.0	48.8	73.2

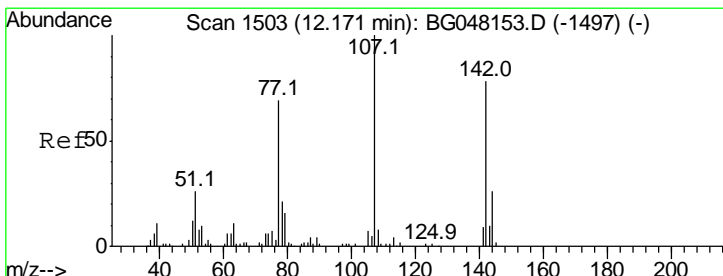
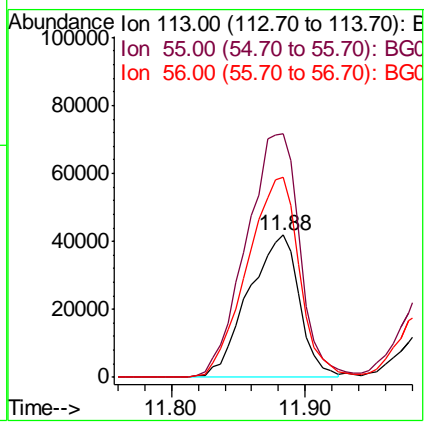
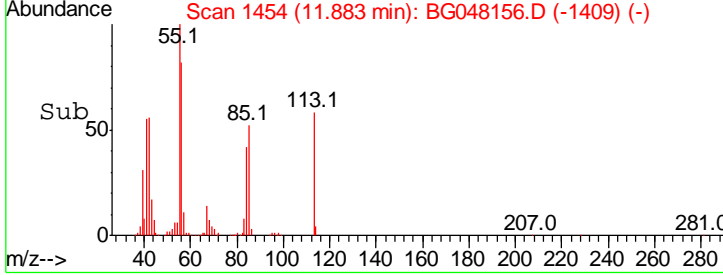
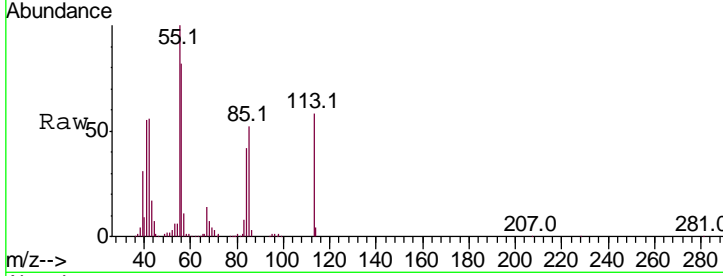




#32
 Caprolactam
 Concen: 89.036 ng/ul
 RT: 11.88 min Scan# 1454
 Delta R.T. 0.07 min
 Lab File: BG048156.D
 Acq: 12 Feb 2021 20:08

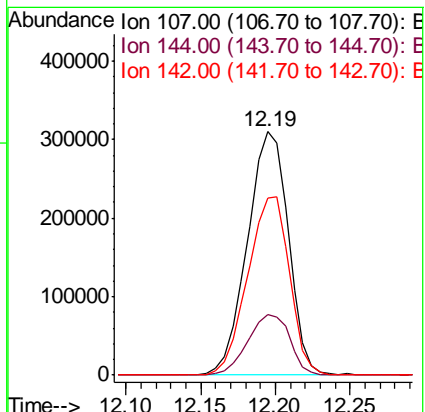
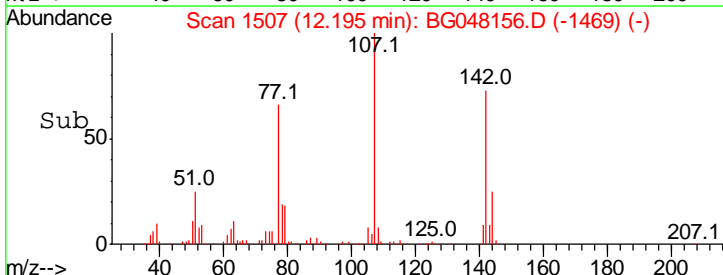
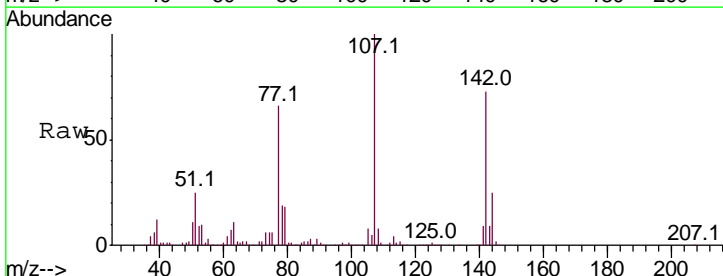
Instrument :
 BNA_G
 ClientSampled :

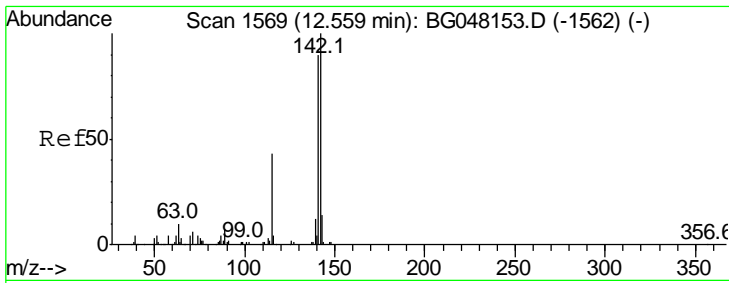
Tgt Ion	Resp	Lower	Upper
113	100		
55	171.4	132.9	199.3
56	141.2	104.6	156.8



#33
 4-Chloro-3-methylphenol
 Concen: 130.543 ng/ul
 RT: 12.19 min Scan# 1507
 Delta R.T. 0.02 min
 Lab File: BG048156.D
 Acq: 12 Feb 2021 20:08

Tgt Ion	Resp	Lower	Upper
107	100		
144	25.1	19.2	28.8
142	73.0	61.8	92.6



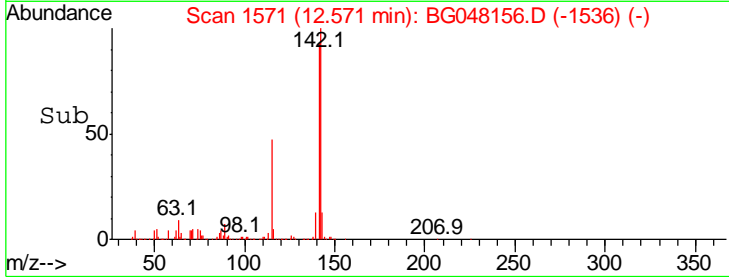
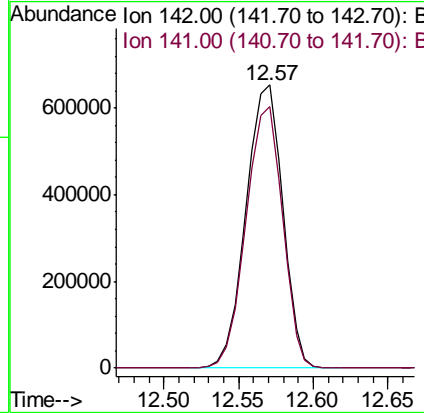
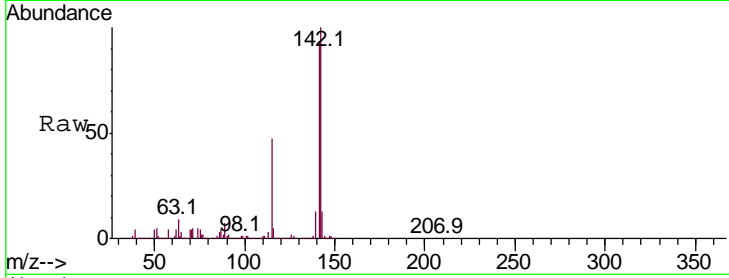


#34
 2-Methylnaphthalene
 Concen: 125.928 ng/ul
 RT: 12.57 min Scan# 1571
 Delta R.T. 0.01 min
 Lab File: BG048156.D
 Acq: 12 Feb 2021 20:08

Instrument :
 BNA_G
 ClientSampled :

Tgt Ion:142 Resp: 1112150

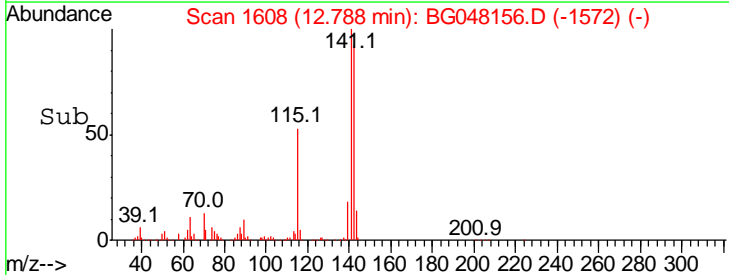
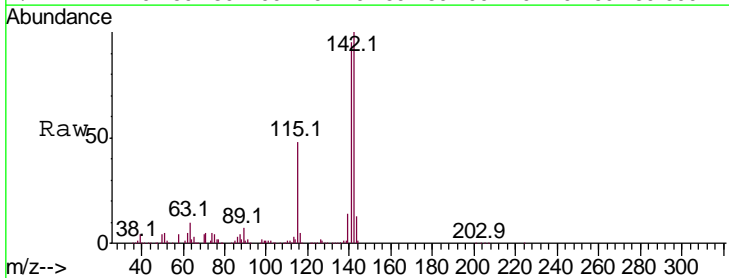
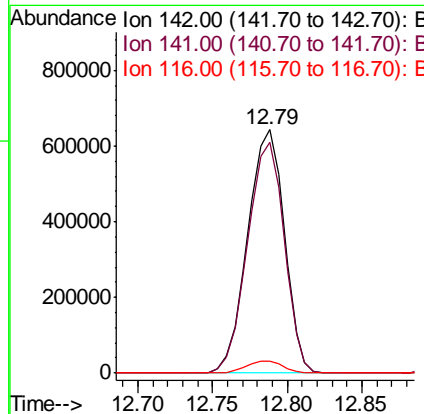
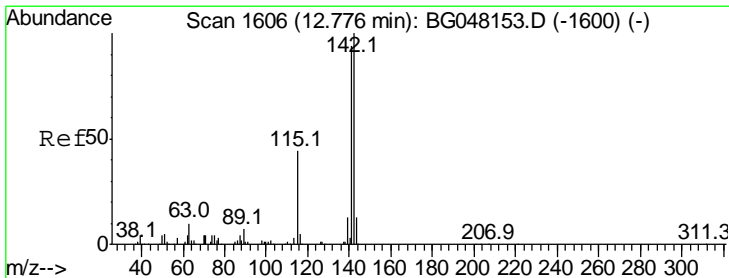
Ion	Ratio	Lower	Upper
142	100		
141	92.5	69.6	104.4

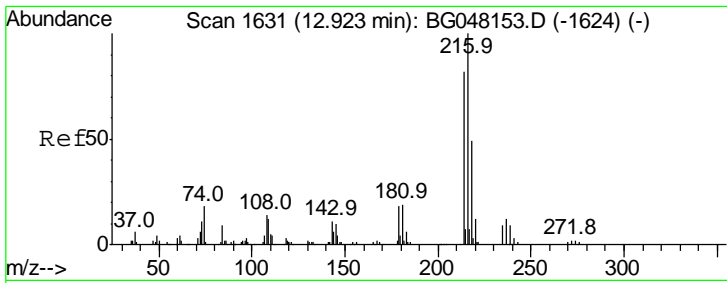


#35
 1-Methylnaphthalene
 Concen: 106.763 ng/uL
 RT: 12.79 min Scan# 1608
 Delta R.T. 0.01 min
 Lab File: BG048156.D
 Acq: 12 Feb 2021 20:08

Tgt Ion:142 Resp: 1093180

Ion	Ratio	Lower	Upper
142	100		
141	94.9	75.0	112.6
116	5.1	3.7	5.5

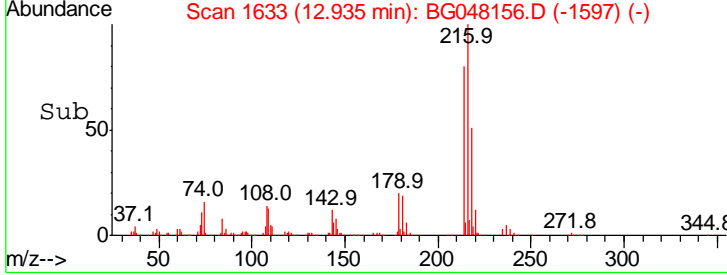
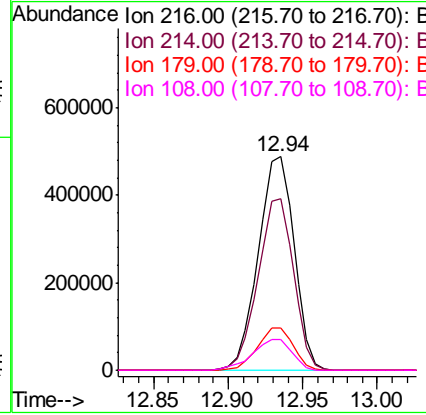
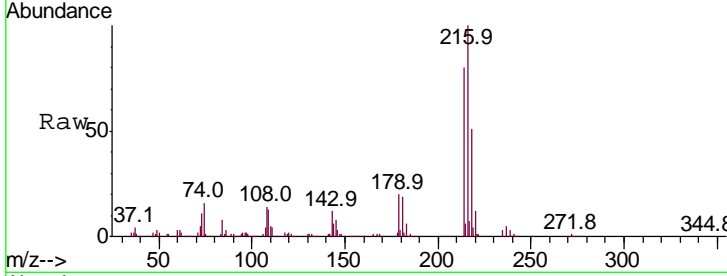




#37
 1,2,4,5-Tetrachlorobenzene
 Concen: 136.477 ng/ul
 RT: 12.94 min Scan# 1633
 Delta R.T. 0.01 min
 Lab File: BG048156.D
 Acq: 12 Feb 2021 20:08

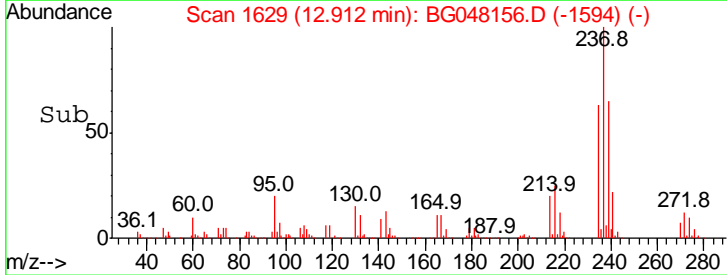
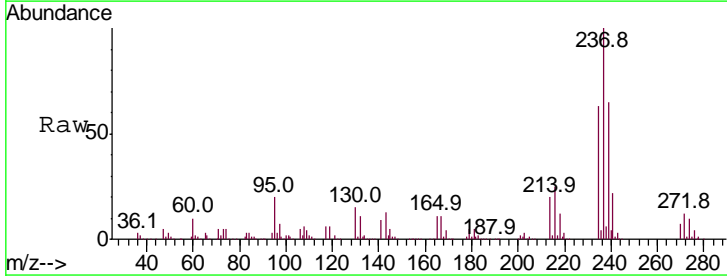
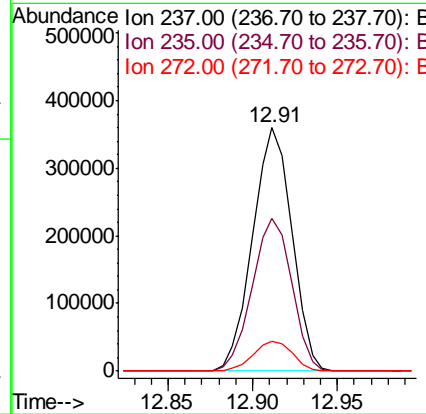
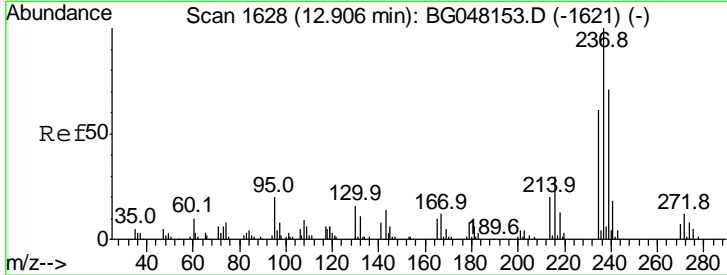
Instrument :
 BNA_G
 ClientSampled :

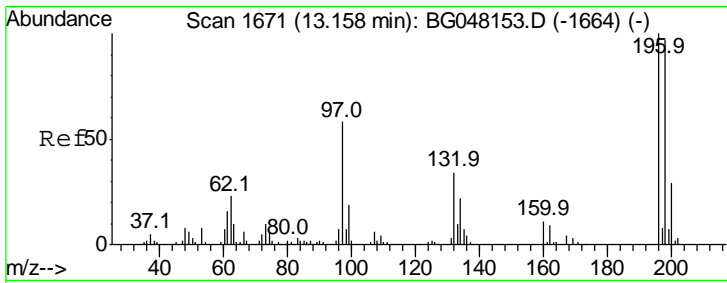
Tgt Ion	Resp	Lower	Upper
216	100		
214	80.1	58.7	88.1
179	19.8	16.0	24.0
108	14.3	10.6	15.8



#38
 Hexachlorocyclopentadiene
 Concen: 139.821 ng/ul
 RT: 12.91 min Scan# 1629
 Delta R.T. 0.01 min
 Lab File: BG048156.D
 Acq: 12 Feb 2021 20:08

Tgt Ion	Resp	Lower	Upper
237	100		
235	62.7	53.5	80.3
272	12.9	8.6	12.8#

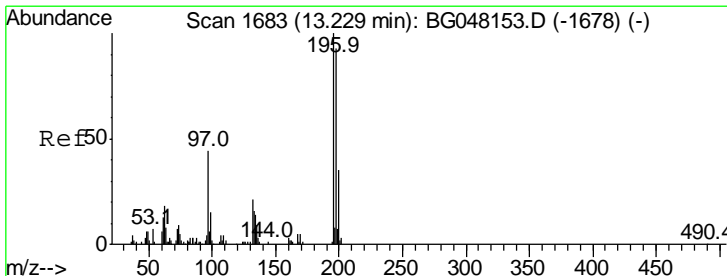
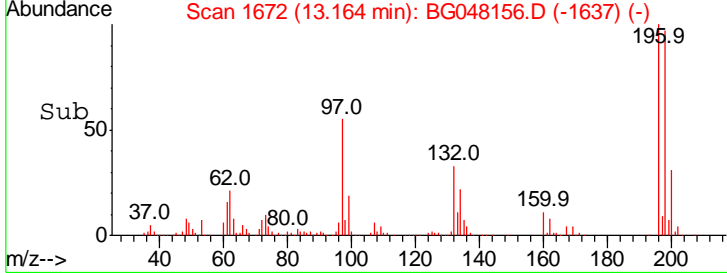
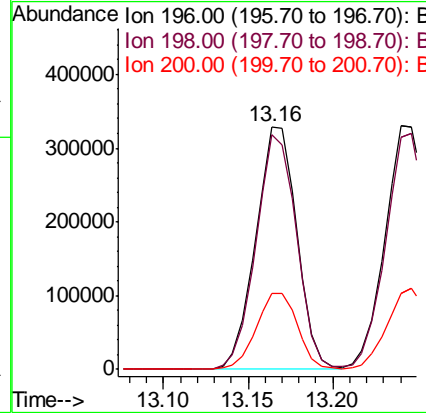
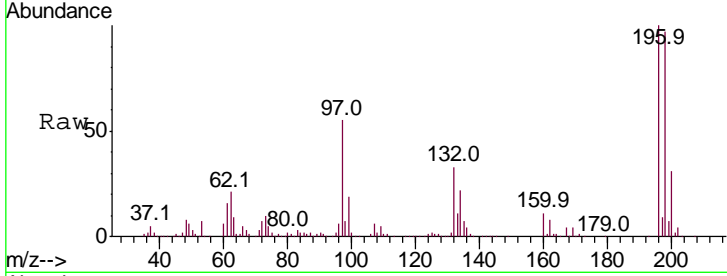




#39
 2,4,6-Trichlorophenol
 Concen: 142.837 ng/ul
 RT: 13.16 min Scan# 1672
 Delta R.T. 0.01 min
 Lab File: BG048156.D
 Acq: 12 Feb 2021 20:08

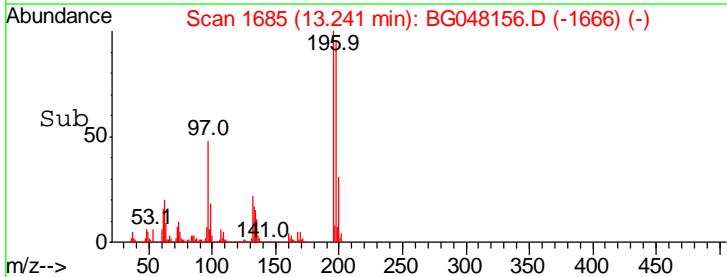
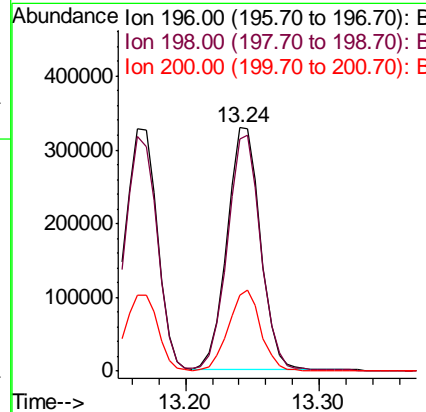
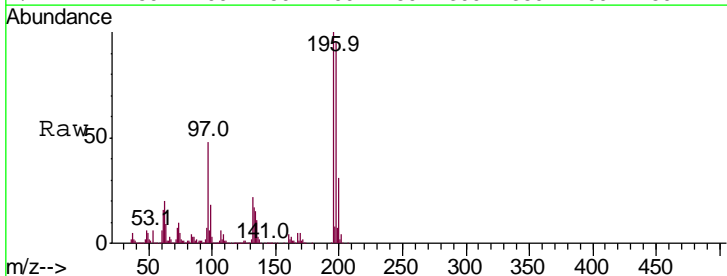
Instrument :
 BNA_G
 ClientSampled :

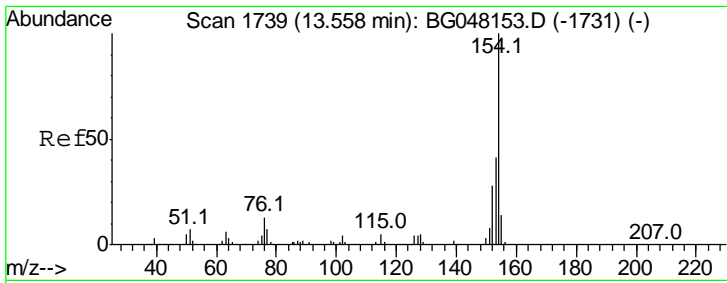
Tgt Ion	Resp	Lower	Upper
196	100		
198	97.0	77.6	116.4
200	31.2	23.8	35.8



#40
 2,4,5-Trichlorophenol
 Concen: 143.727 ng/ul
 RT: 13.24 min Scan# 1685
 Delta R.T. 0.01 min
 Lab File: BG048156.D
 Acq: 12 Feb 2021 20:08

Tgt Ion	Resp	Lower	Upper
196	100		
198	95.1	77.4	116.0
200	31.4	29.5	44.3

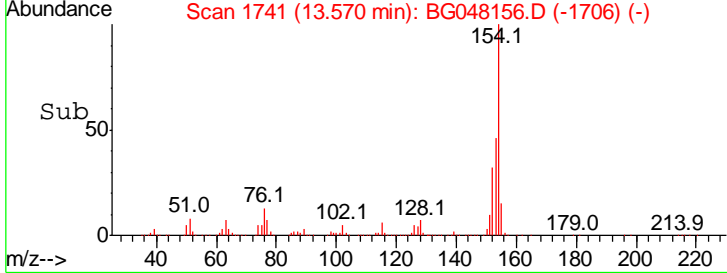
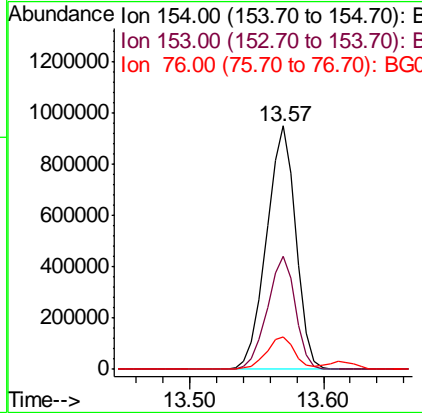
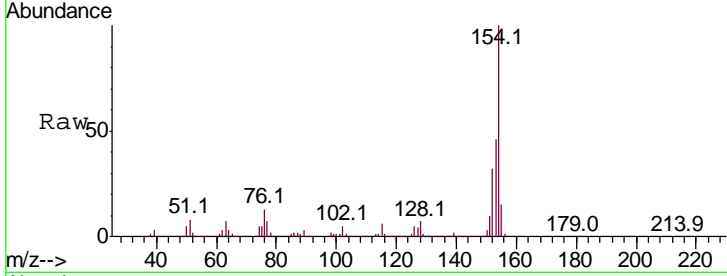




#41
 1,1'-Biphenyl
 Concen: 128.646 ng/ul
 RT: 13.57 min Scan# 1741
 Delta R.T. 0.01 min
 Lab File: BG048156.D
 Acq: 12 Feb 2021 20:08

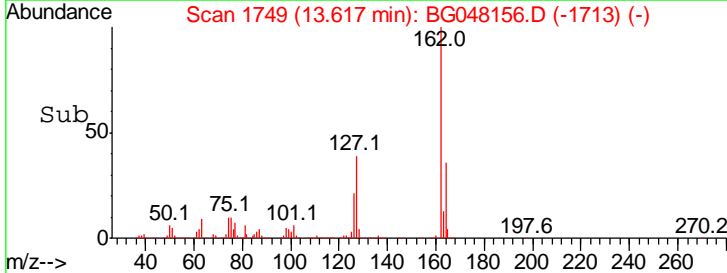
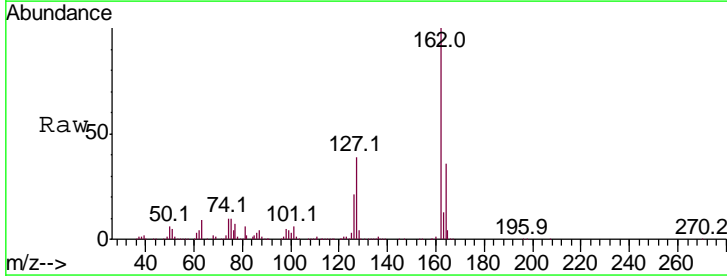
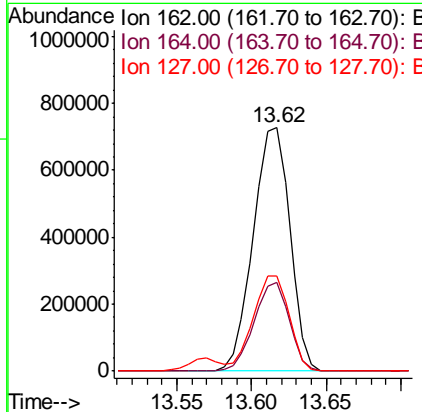
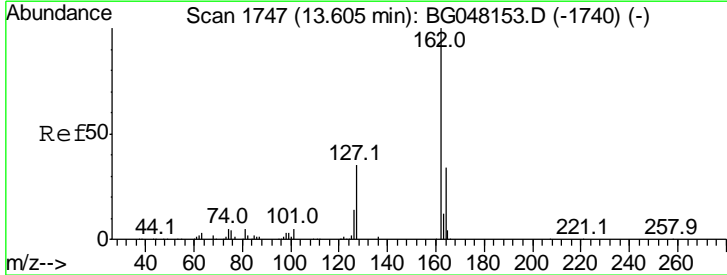
Instrument :
 BNA_G
 ClientSampled :

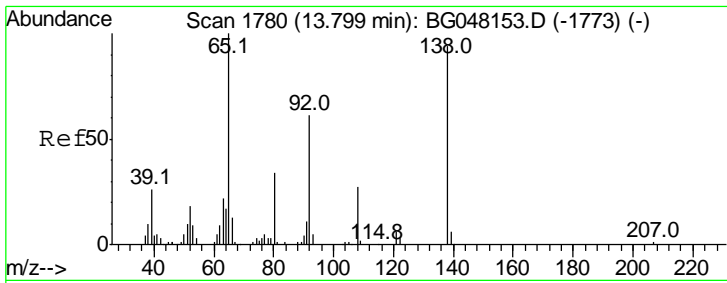
Tgt Ion	Resp	Lower	Upper
154	100		
153	46.3	31.4	47.0
76	13.4	9.6	14.4



#42
 2-Chloronaphthalene
 Concen: 135.918 ng/ul
 RT: 13.62 min Scan# 1749
 Delta R.T. 0.01 min
 Lab File: BG048156.D
 Acq: 12 Feb 2021 20:08

Tgt Ion	Resp	Lower	Upper
162	100		
164	36.3	27.0	40.4
127	39.3	28.6	43.0

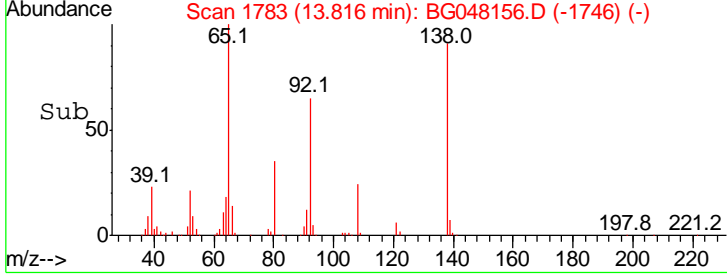
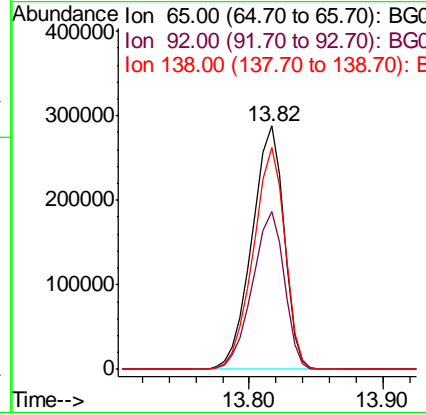
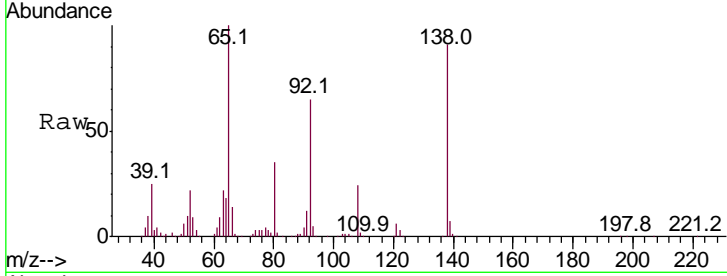




#43
 2-Nitroaniline
 Concen: 146.789 ng/ul
 RT: 13.82 min Scan# 1783
 Delta R.T. 0.02 min
 Lab File: BG048156.D
 Acq: 12 Feb 2021 20:08

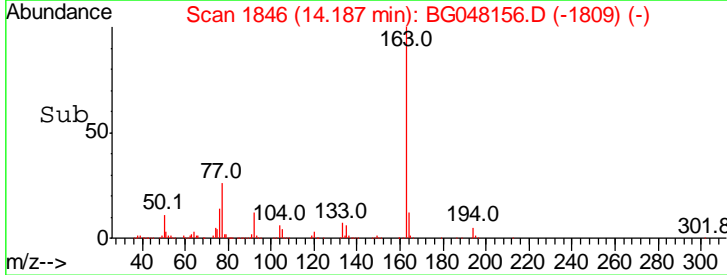
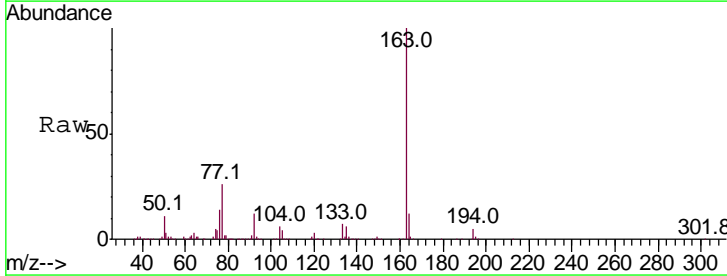
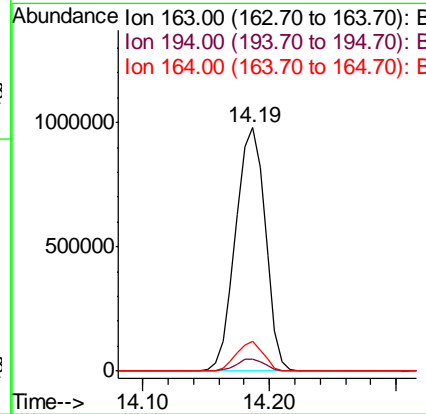
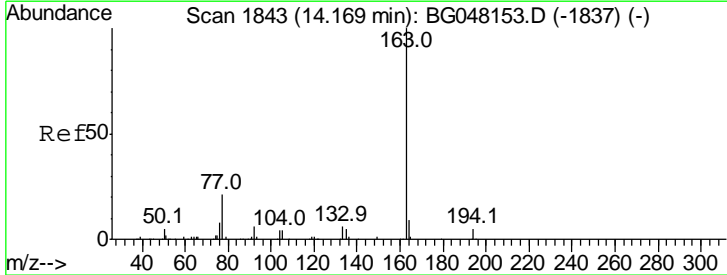
Instrument :
 BNA_G
 ClientSampled :

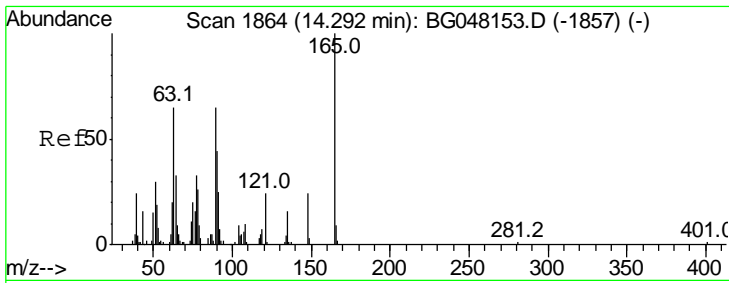
Tgt Ion	Resp	Lower	Upper
65	100		
92	64.9	50.5	75.7
138	91.3	65.3	97.9



#45
 Dimethylphthalate
 Concen: 120.135 ng/ul
 RT: 14.19 min Scan# 1846
 Delta R.T. 0.02 min
 Lab File: BG048156.D
 Acq: 12 Feb 2021 20:08

Tgt Ion	Resp	Lower	Upper
163	100		
194	5.0	3.0	4.6#
164	12.2	8.1	12.1#

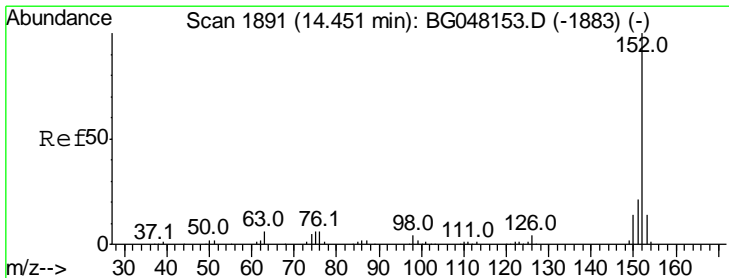
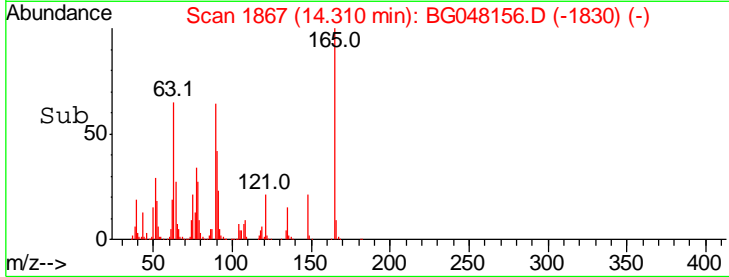
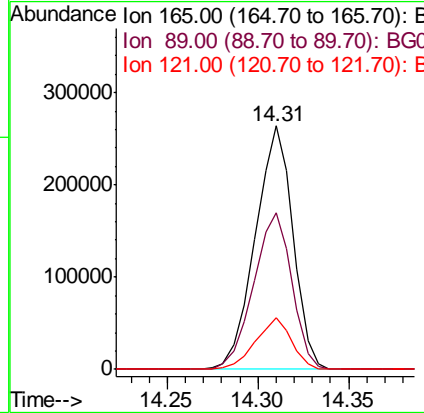
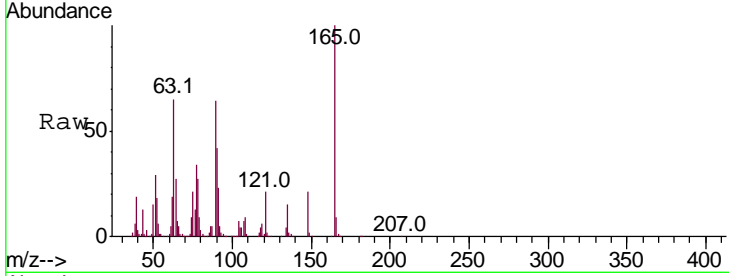




#46
 2,6-Dinitrotoluene
 Concen: 136.148 ng/ul
 RT: 14.31 min Scan# 1867
 Delta R.T. 0.02 min
 Lab File: BG048156.D
 Acq: 12 Feb 2021 20:08

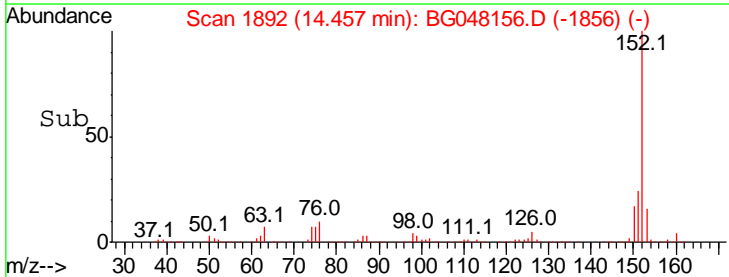
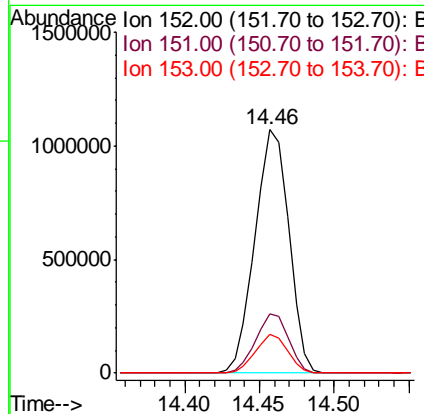
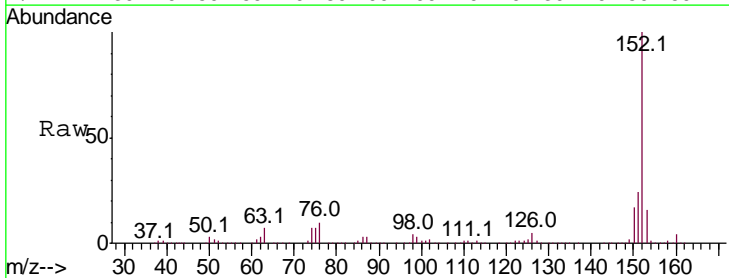
Instrument :
 BNA_G
 ClientSampled :

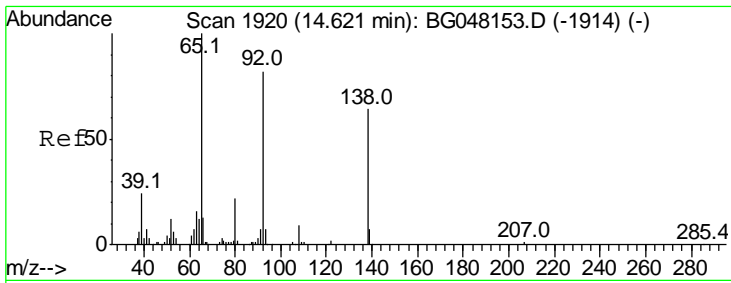
Tgt Ion	Resp	Lower	Upper
165	100		
89	64.3	51.4	77.0
121	21.3	19.6	29.4



#48
 Acenaphthylene
 Concen: 122.622 ng/ul
 RT: 14.46 min Scan# 1892
 Delta R.T. 0.01 min
 Lab File: BG048156.D
 Acq: 12 Feb 2021 20:08

Tgt Ion	Resp	Lower	Upper
152	100		
151	24.3	17.8	26.6
153	15.8	11.1	16.7

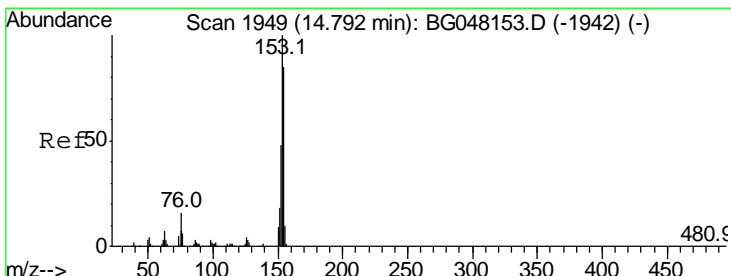
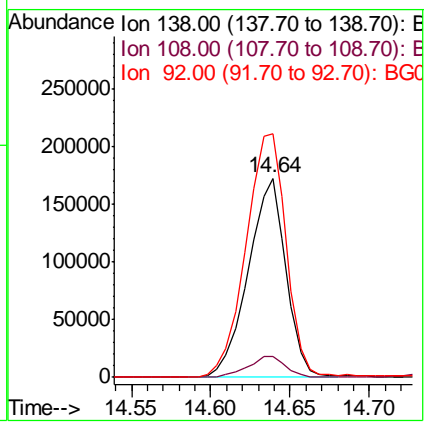
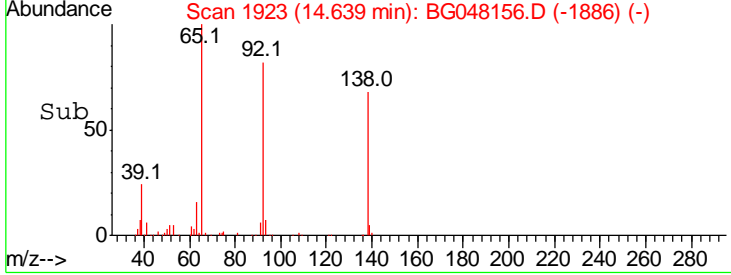
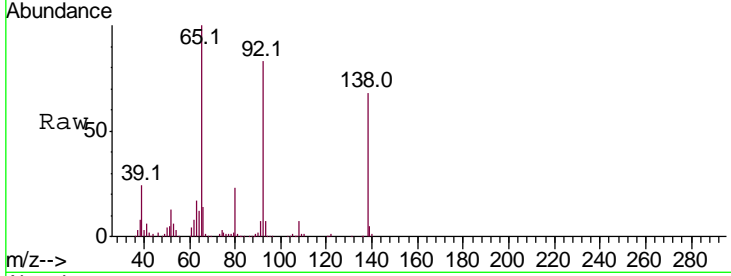




#49
 3-Nitroaniline
 Concen: 148.479 ng/ul
 RT: 14.64 min Scan# 1923
 Delta R.T. 0.02 min
 Lab File: BG048156.D
 Acq: 12 Feb 2021 20:08

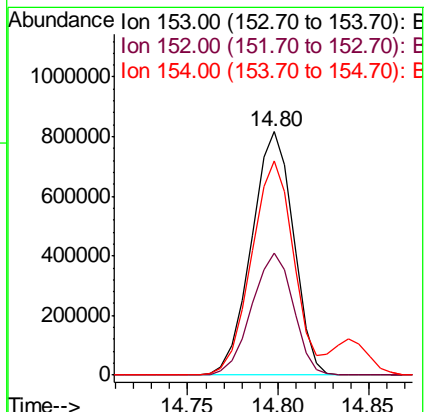
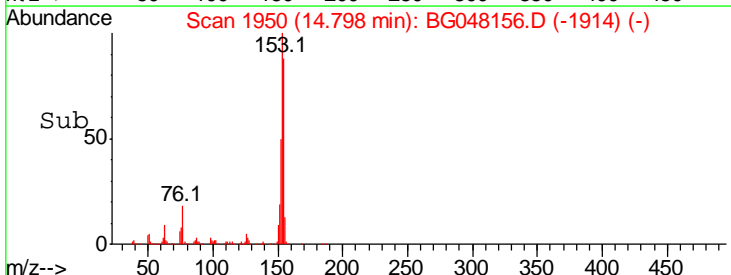
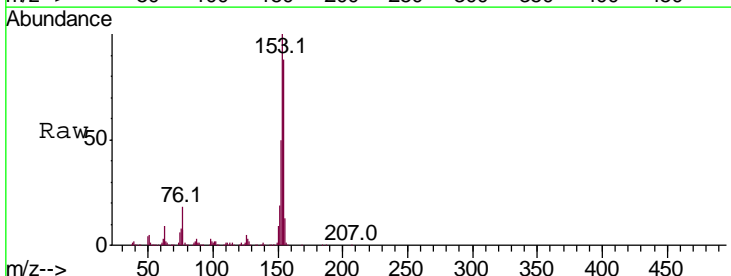
Instrument :
 BNA_G
 ClientSampled :

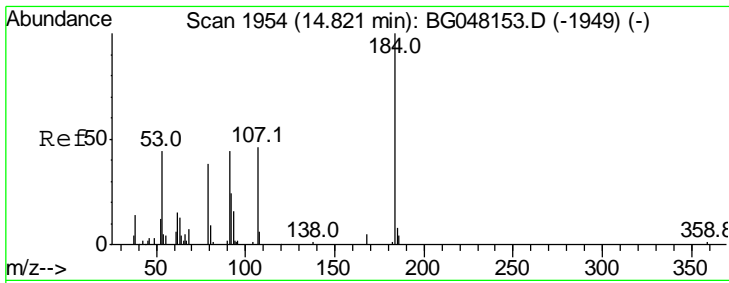
Tgt Ion	Resp	Lower	Upper
138	100		
108	10.4	8.1	12.1
92	122.4	112.7	169.1



#50
 Acenaphthene
 Concen: 134.815 ng/ul
 RT: 14.80 min Scan# 1950
 Delta R.T. 0.01 min
 Lab File: BG048156.D
 Acq: 12 Feb 2021 20:08

Tgt Ion	Resp	Lower	Upper
153	100		
152	50.1	35.7	53.5
154	88.1	66.3	99.5

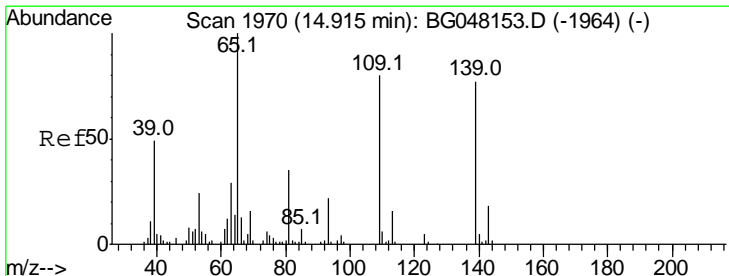
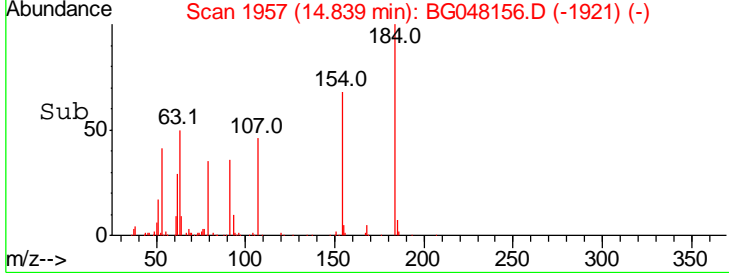
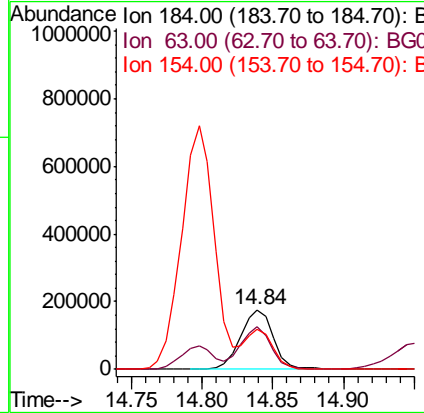
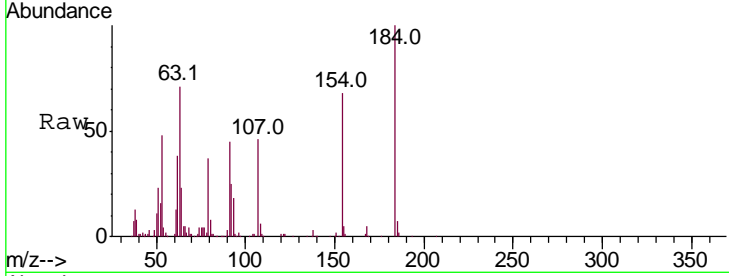




#51
 2,4-Dinitrophenol
 Concen: 176.367 ng/ul
 RT: 14.84 min Scan# 1957
 Delta R.T. 0.01 min
 Lab File: BG048156.D
 Acq: 12 Feb 2021 20:08

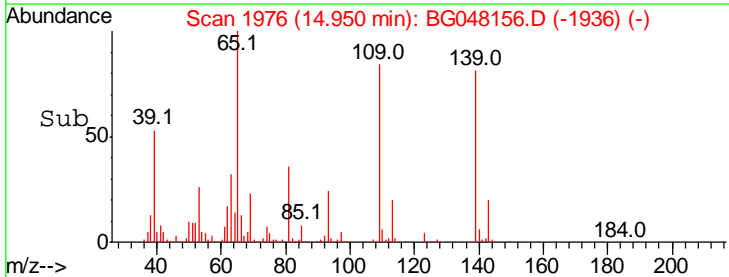
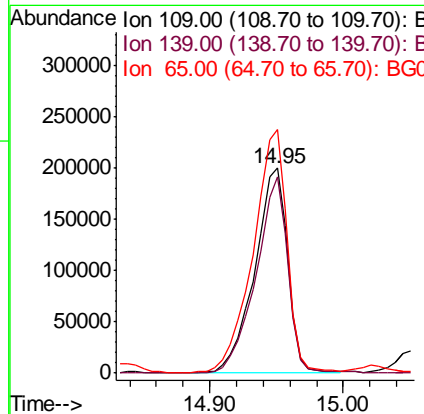
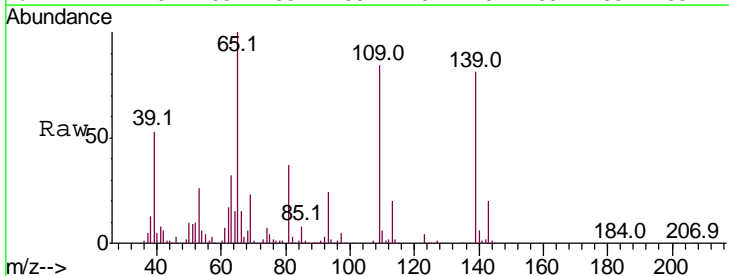
Instrument :
 BNA_G
 ClientSampled :

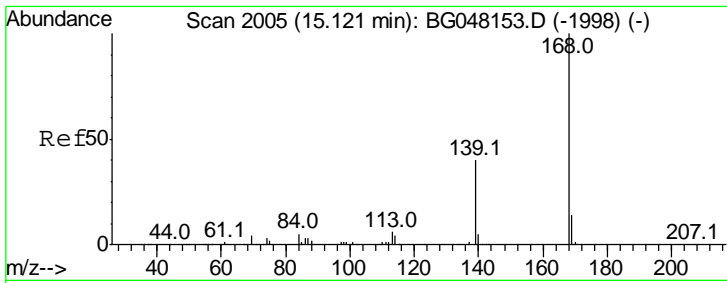
Tgt Ion	Resp	Lower	Upper
184	100		
63	71.2	41.9	62.9#
154	67.9	50.7	76.1



#53
 4-Nitrophenol
 Concen: 108.013 ng/ul
 RT: 14.95 min Scan# 1976
 Delta R.T. 0.04 min
 Lab File: BG048156.D
 Acq: 12 Feb 2021 20:08

Tgt Ion	Resp	Lower	Upper
109	100		
139	95.9	81.0	121.6
65	118.9	102.0	153.0



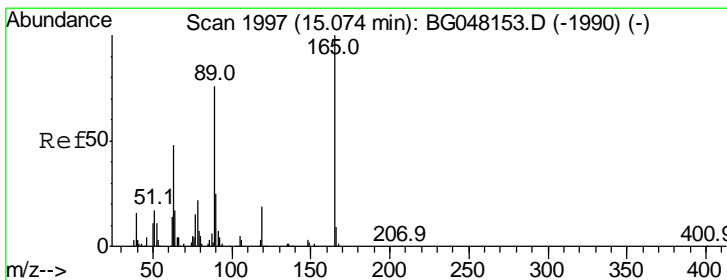
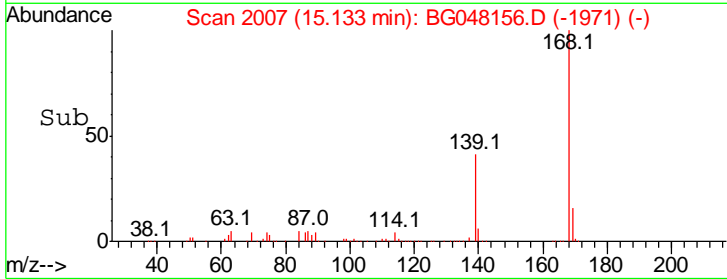
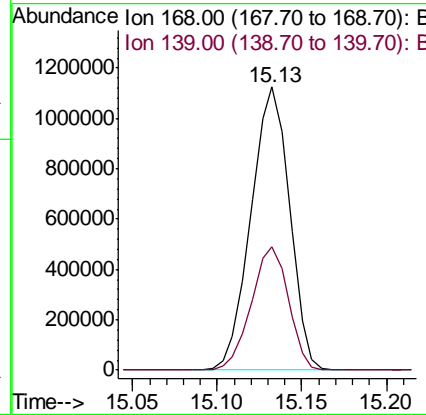
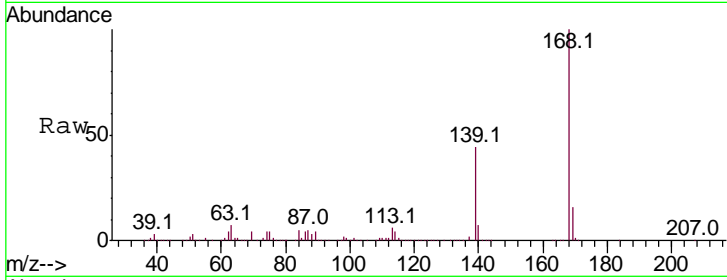


#54
 Dibenzofuran
 Concen: 126.155 ng/ul
 RT: 15.13 min Scan# 2007
 Delta R.T. 0.01 min
 Lab File: BG048156.D
 Acq: 12 Feb 2021 20:08

Instrument :
 BNA_G
 ClientSampled :

Tgt Ion:168 Resp: 1790513

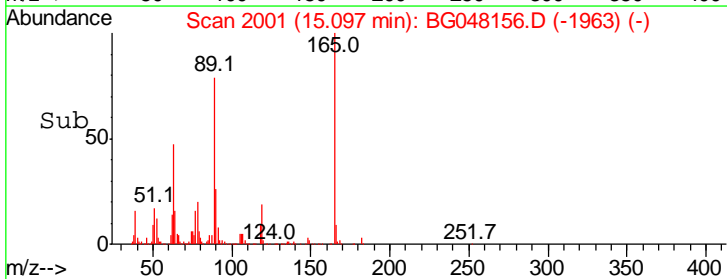
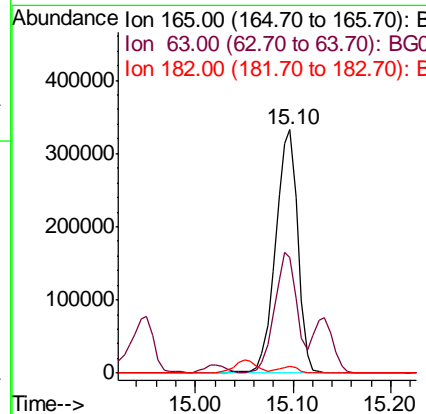
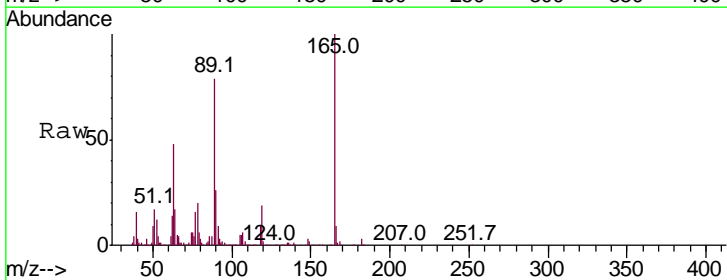
Ion	Ratio	Lower	Upper
168	100		
139	43.6	30.9	46.3

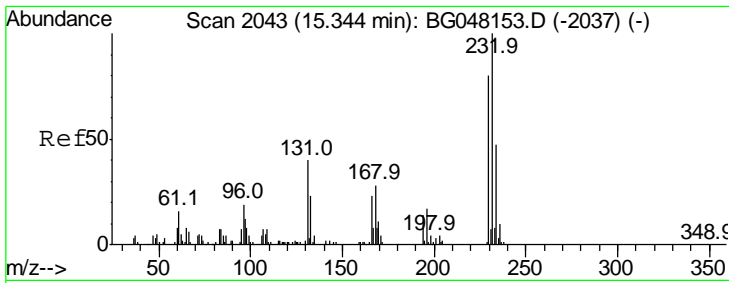


#55
 2,4-Dinitrotoluene
 Concen: 133.813 ng/ul
 RT: 15.10 min Scan# 2001
 Delta R.T. 0.02 min
 Lab File: BG048156.D
 Acq: 12 Feb 2021 20:08

Tgt Ion:165 Resp: 531491

Ion	Ratio	Lower	Upper
165	100		
63	47.7	37.9	56.9
182	2.9	1.8	2.8#

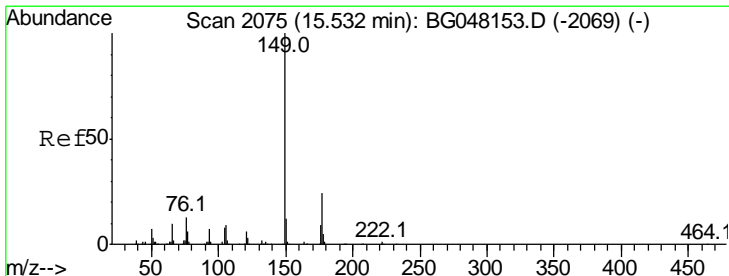
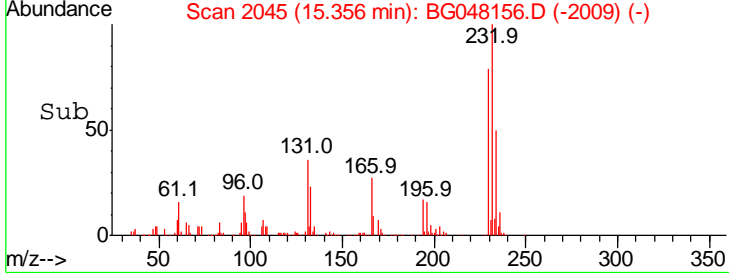
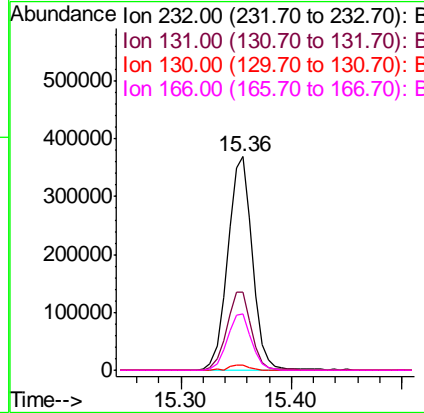
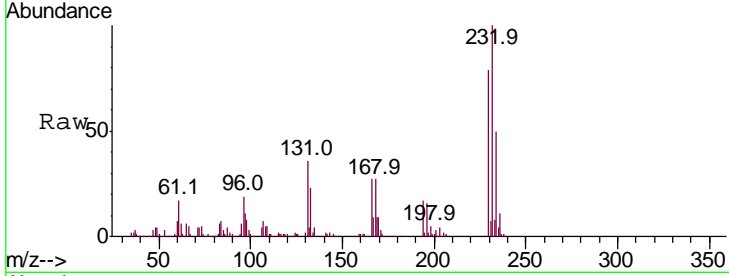




#56
 2,3,4,6-Tetrachlorophenol
 Concen: 153.196 ng/ul
 RT: 15.36 min Scan# 2045
 Delta R.T. 0.01 min
 Lab File: BG048156.D
 Acq: 12 Feb 2021 20:08

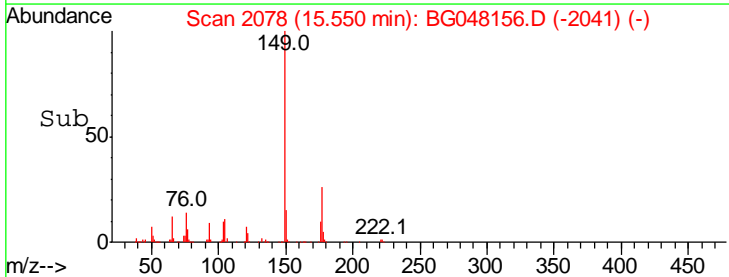
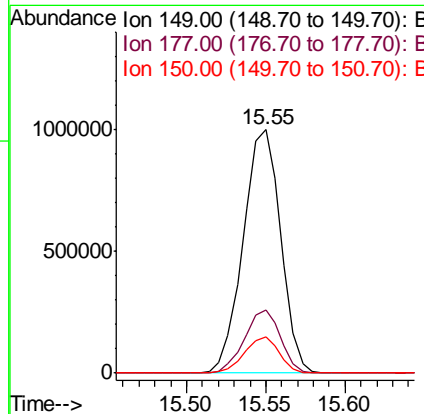
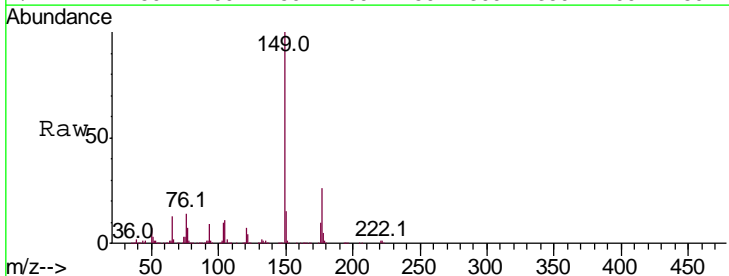
Instrument :
 BNA_G
 ClientSampled :

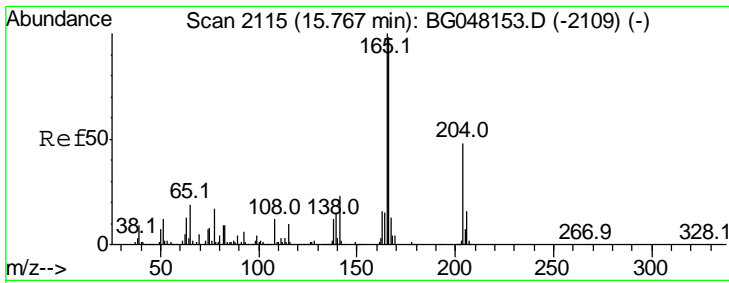
Tgt Ion	Resp	Lower	Upper
232	100		
131	36.3	31.0	46.6
130	2.3	0.0	0.0#
166	26.6	20.8	31.2



#57
 Diethylphthalate
 Concen: 127.669 ng/ul
 RT: 15.55 min Scan# 2078
 Delta R.T. 0.02 min
 Lab File: BG048156.D
 Acq: 12 Feb 2021 20:08

Tgt Ion	Resp	Lower	Upper
149	100		
177	25.8	19.0	28.4
150	14.8	9.9	14.9

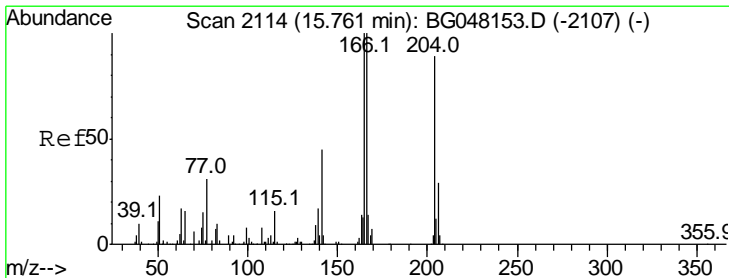
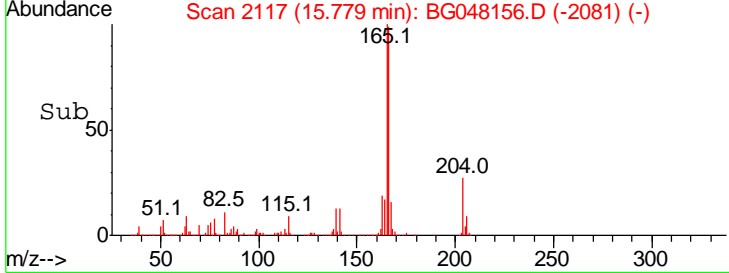
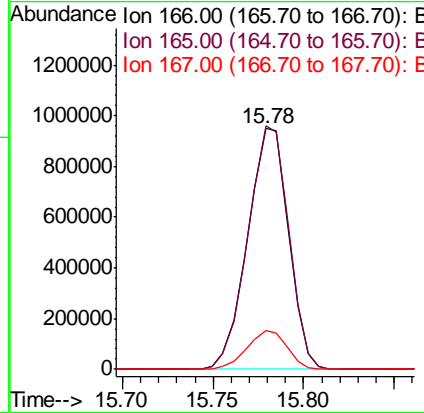
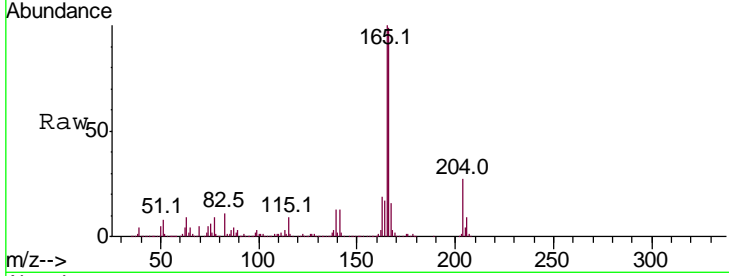




#59
 Fluorene
 Concen: 122.616 ng/ul
 RT: 15.78 min Scan# 2117
 Delta R.T. 0.01 min
 Lab File: BG048156.D
 Acq: 12 Feb 2021 20:08

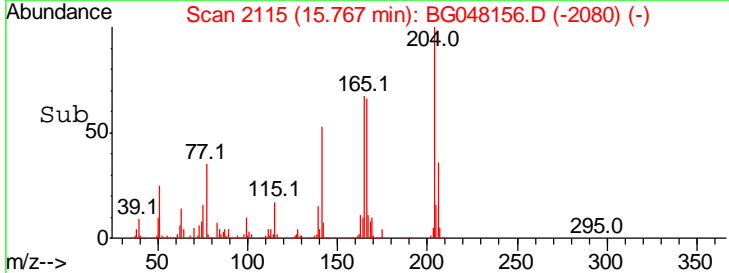
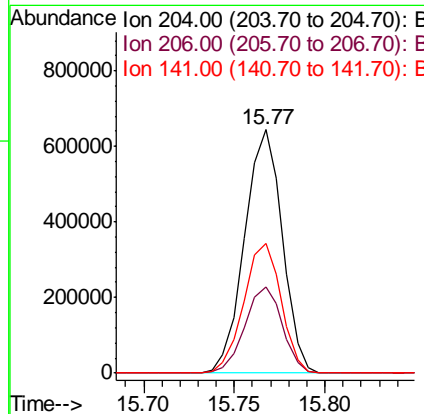
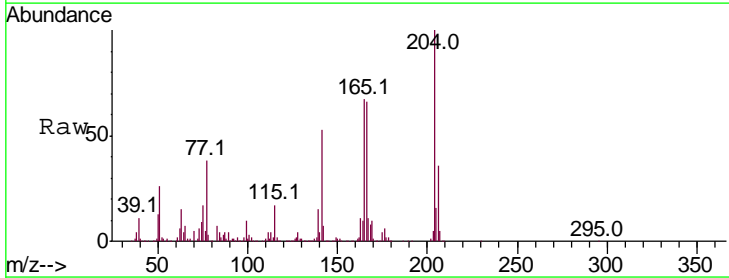
Instrument :
 BNA_G
 ClientSampled :

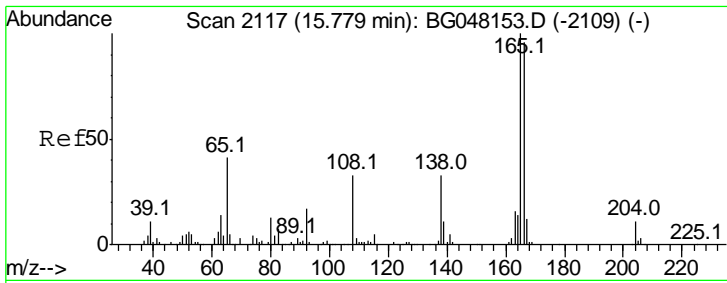
Tgt Ion	Resp	Lower	Upper
166	100		
165	101.2	79.4	119.0
167	16.3	10.6	16.0



#60
 4-Chlorophenyl-phenylether
 Concen: 122.829 ng/ul
 RT: 15.77 min Scan# 2115
 Delta R.T. 0.01 min
 Lab File: BG048156.D
 Acq: 12 Feb 2021 20:08

Tgt Ion	Resp	Lower	Upper
204	100		
206	35.5	30.6	46.0
141	53.3	43.4	65.2

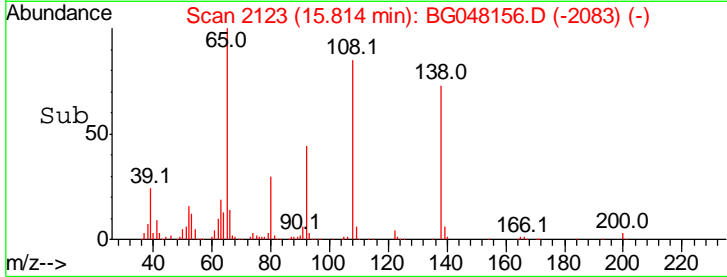
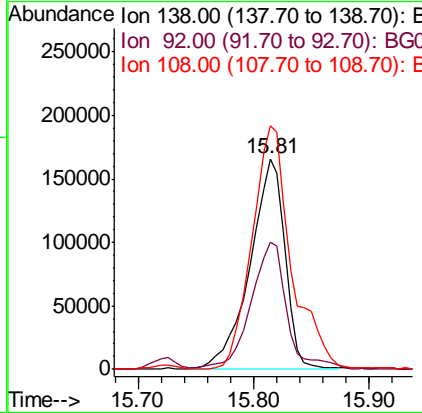
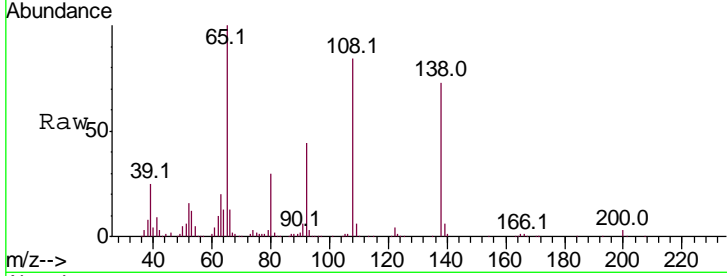




#61
 4-Nitroaniline
 Concen: 163.578 ng/ul
 RT: 15.81 min Scan# 2123
 Delta R.T. 0.04 min
 Lab File: BG048156.D
 Acq: 12 Feb 2021 20:08

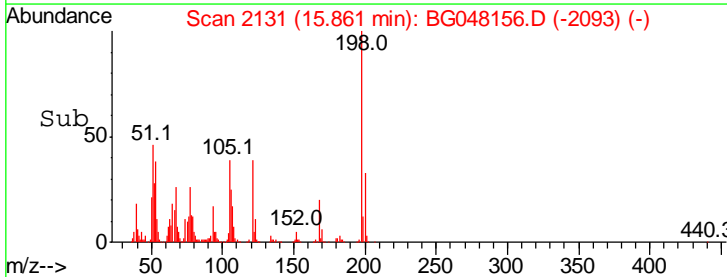
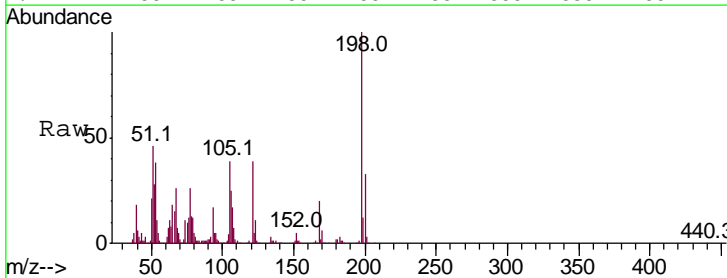
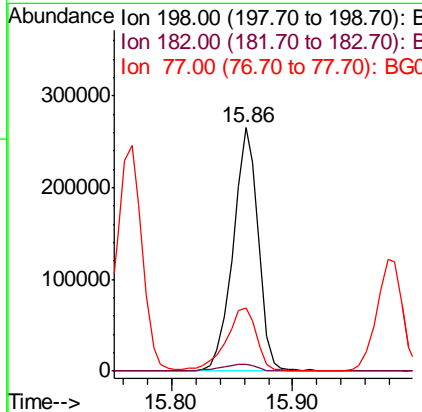
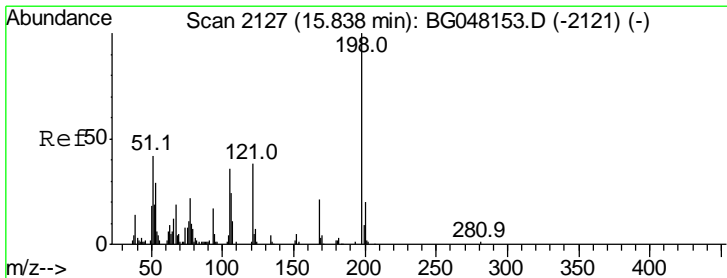
Instrument :
 BNA_G
 ClientSampled :

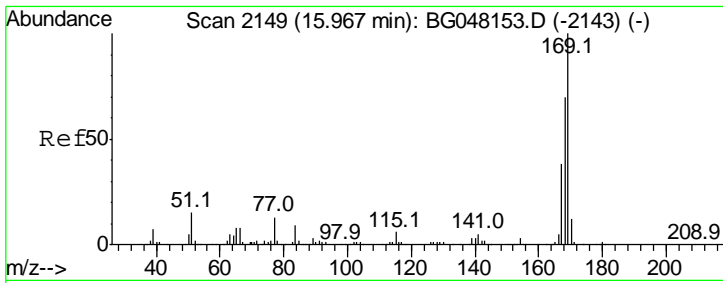
Tgt Ion	Resp	Lower	Upper
138	100		
92	60.3	45.8	68.8
108	115.5	86.5	129.7



#64
 4,6-Dinitro-2-methylphenol
 Concen: 154.776 ng/ul
 RT: 15.86 min Scan# 2131
 Delta R.T. 0.02 min
 Lab File: BG048156.D
 Acq: 12 Feb 2021 20:08

Tgt Ion	Resp	Lower	Upper
198	100		
182	2.9	3.5	5.3#
77	26.0	22.1	33.1

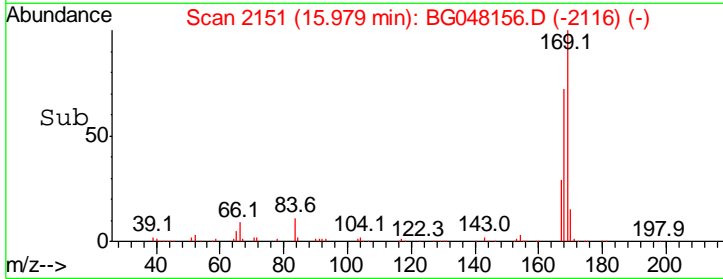
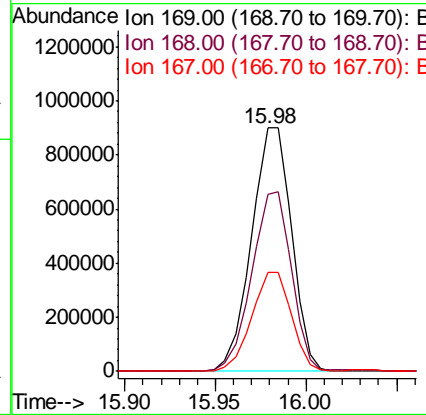
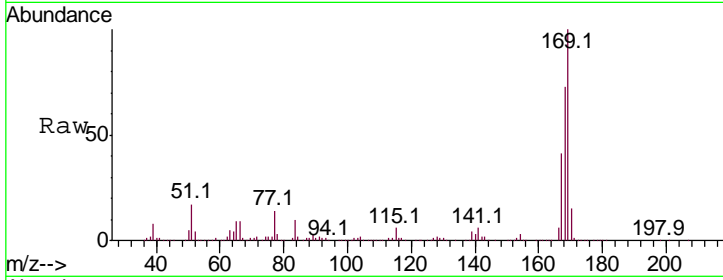




#65
 N-Nitrosodiphenylamine
 Concen: 138.332 ng/ul
 RT: 15.98 min Scan# 2151
 Delta R.T. 0.01 min
 Lab File: BG048156.D
 Acq: 12 Feb 2021 20:08

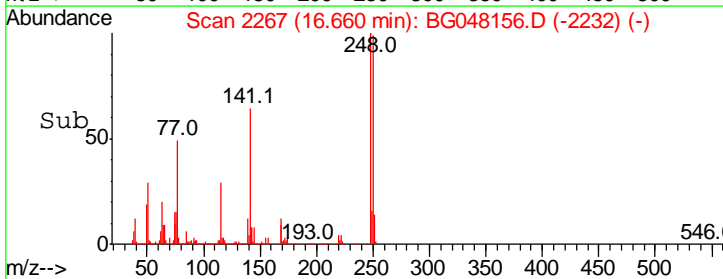
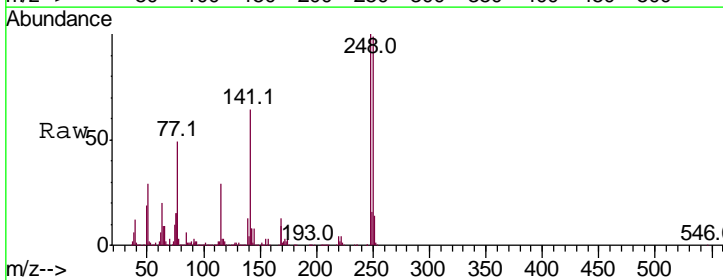
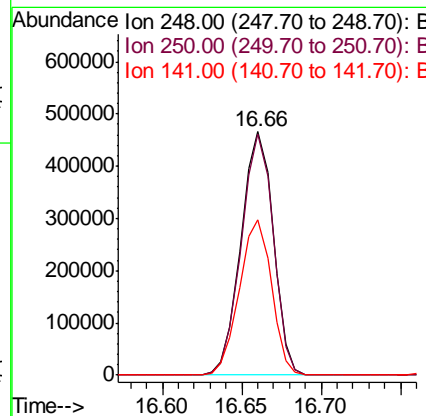
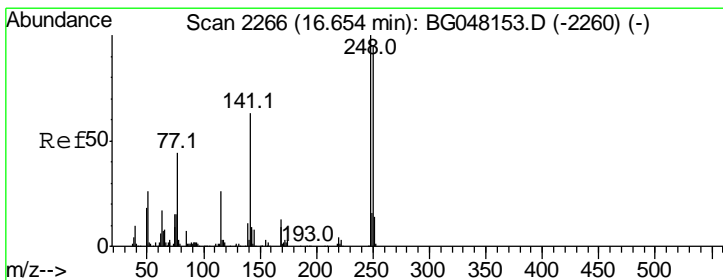
Instrument :
 BNA_G
 ClientSampled :

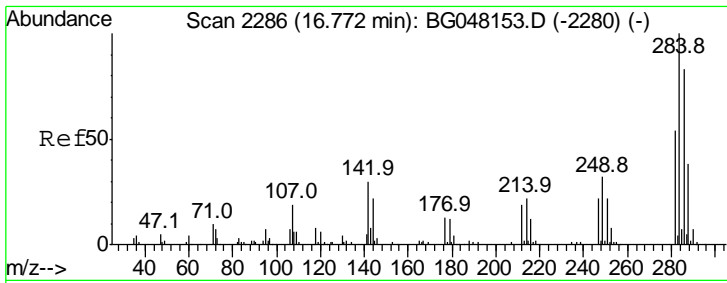
Tgt Ion	Resp	Lower	Upper
169	100		
168	72.7	58.5	87.7
167	40.6	32.4	48.6



#66
 4-Bromophenyl-phenylether
 Concen: 140.767 ng/ul
 RT: 16.66 min Scan# 2267
 Delta R.T. 0.01 min
 Lab File: BG048156.D
 Acq: 12 Feb 2021 20:08

Tgt Ion	Resp	Lower	Upper
248	100		
250	99.1	79.8	119.6
141	64.0	53.4	80.2

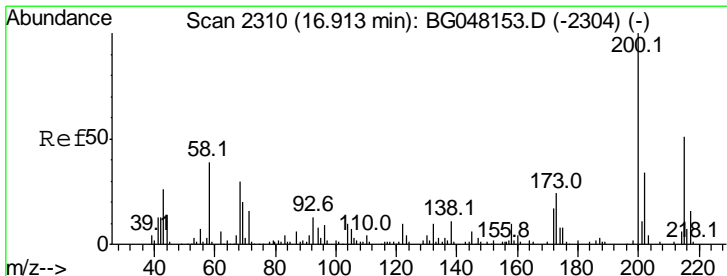
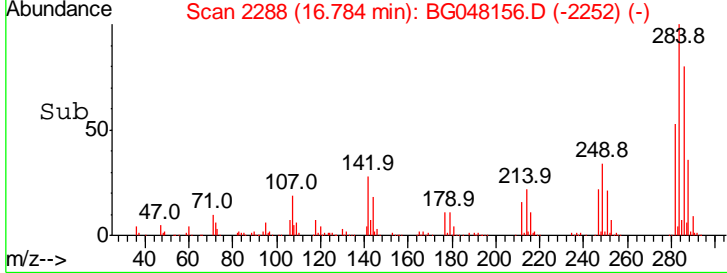
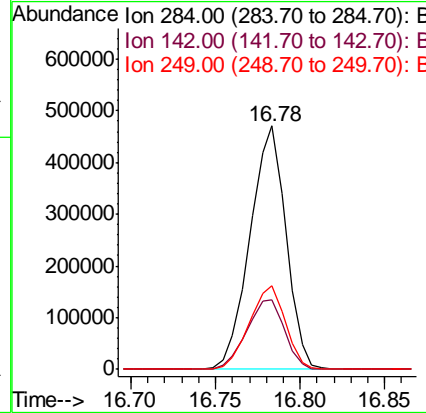
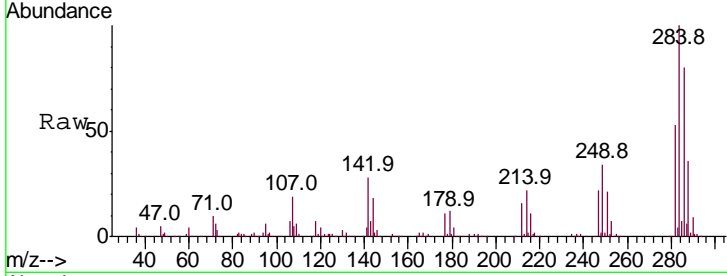




#67
 Hexachlorobenzene
 Concen: 136.320 ng/ul
 RT: 16.78 min Scan# 2288
 Delta R.T. 0.01 min
 Lab File: BG048156.D
 Acq: 12 Feb 2021 20:08

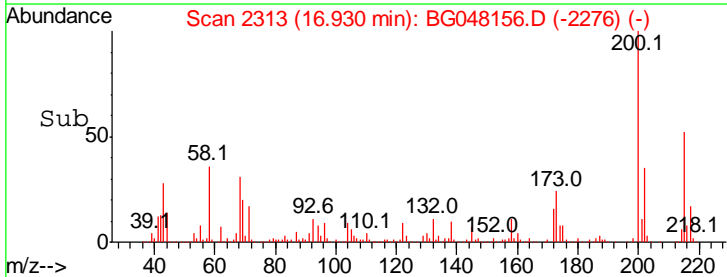
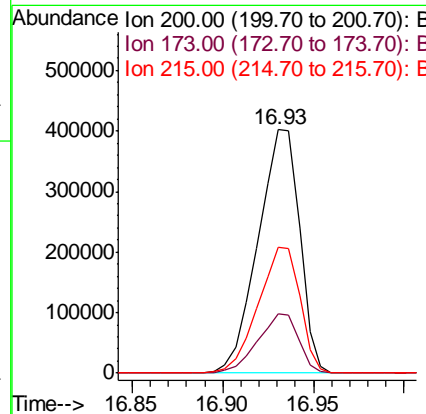
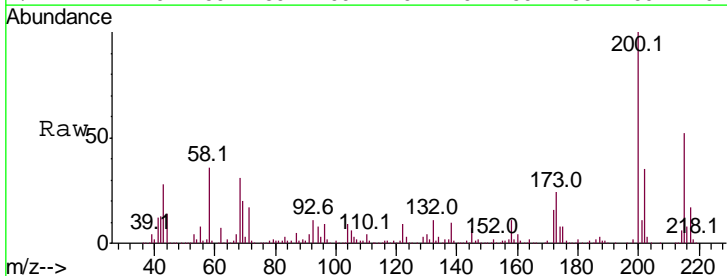
Instrument :
 BNA_G
 ClientSampled :

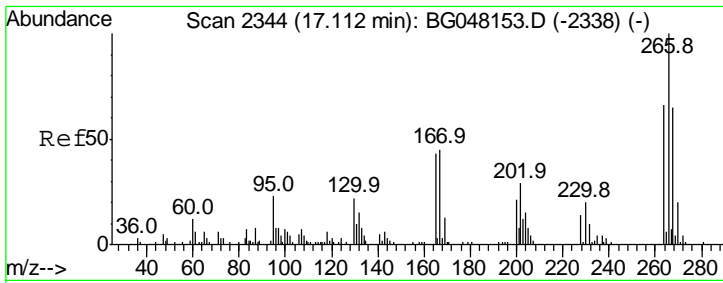
Tgt Ion	Resp	Lower	Upper
284	100		
142	28.4	21.9	32.9
249	34.3	31.2	46.8



#68
 Atrazine
 Concen: 138.231 ng/ul
 RT: 16.93 min Scan# 2313
 Delta R.T. 0.02 min
 Lab File: BG048156.D
 Acq: 12 Feb 2021 20:08

Tgt Ion	Resp	Lower	Upper
200	100		
173	24.4	21.3	31.9
215	51.7	46.0	69.0

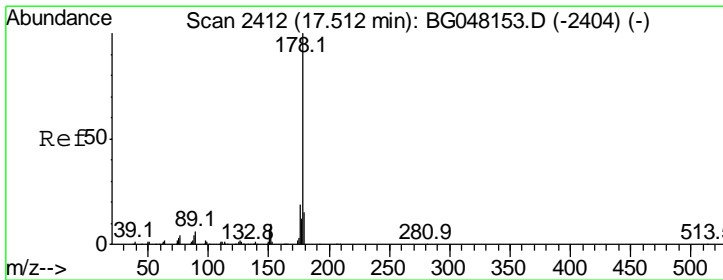
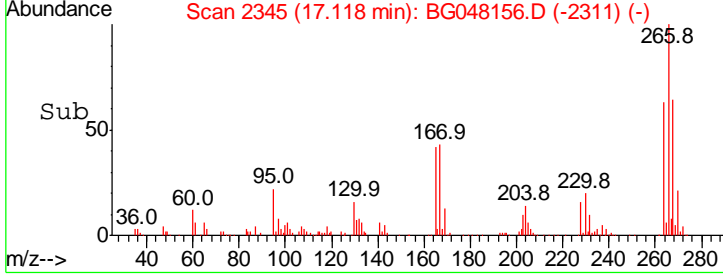
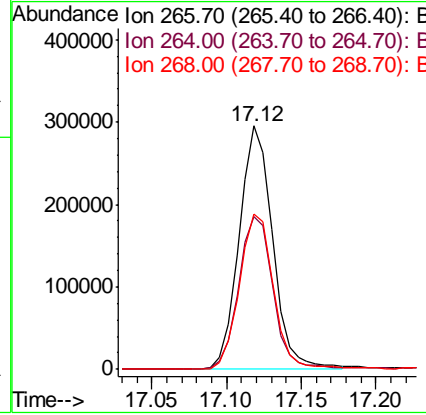
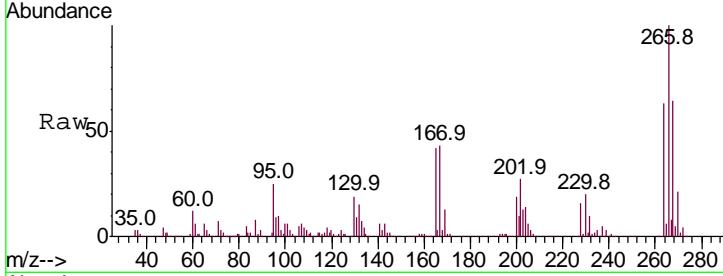




#69
 Pentachlorophenol
 Concen: 208.960 ng/ul
 RT: 17.12 min Scan# 2345
 Delta R.T. 0.00 min
 Lab File: BG048156.D
 Acq: 12 Feb 2021 20:08

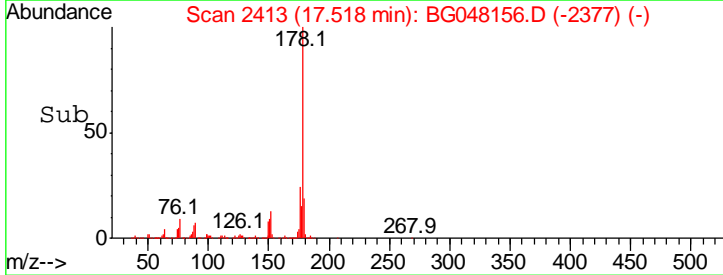
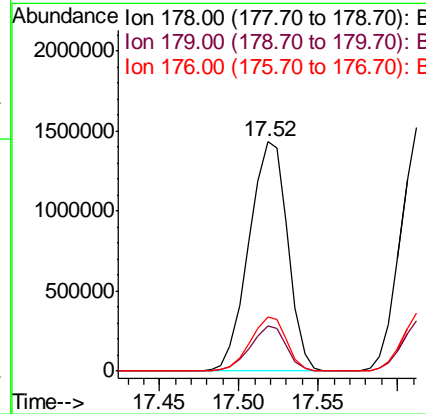
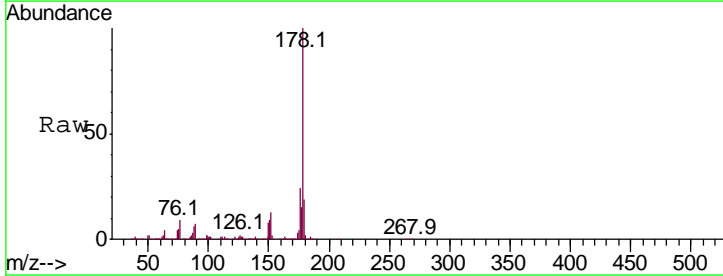
Instrument :
 BNA_G
 ClientSampled :

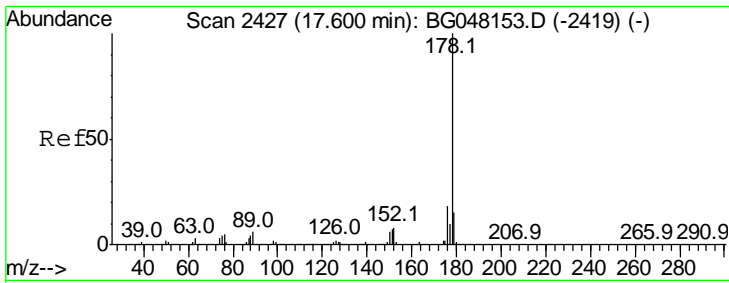
Tgt Ion	Resp	Lower	Upper
266	100		
264	62.8	55.0	82.4
268	63.9	41.0	61.4



#70
 Phenanthrene
 Concen: 123.443 ng/ul
 RT: 17.52 min Scan# 2413
 Delta R.T. 0.01 min
 Lab File: BG048156.D
 Acq: 12 Feb 2021 20:08

Tgt Ion	Resp	Lower	Upper
178	100		
179	19.5	12.0	18.0
176	23.5	14.9	22.3

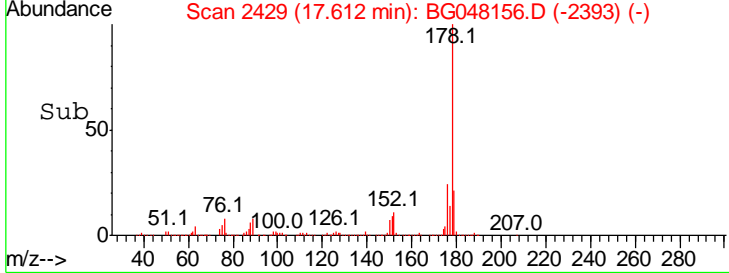
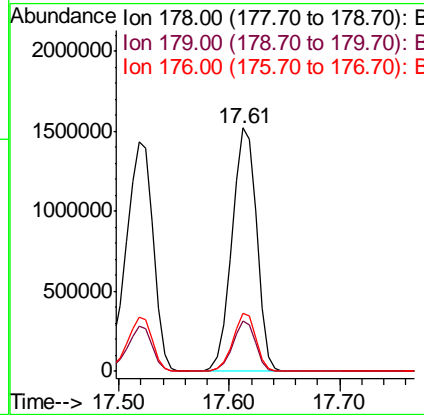
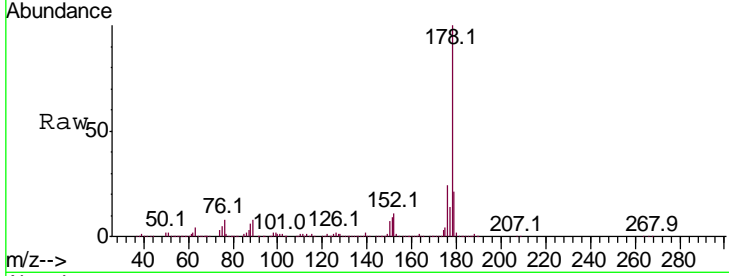




#72
 Anthracene
 Concen: 121.729 ng/ul
 RT: 17.61 min Scan# 2429
 Delta R.T. 0.01 min
 Lab File: BG048156.D
 Acq: 12 Feb 2021 20:08

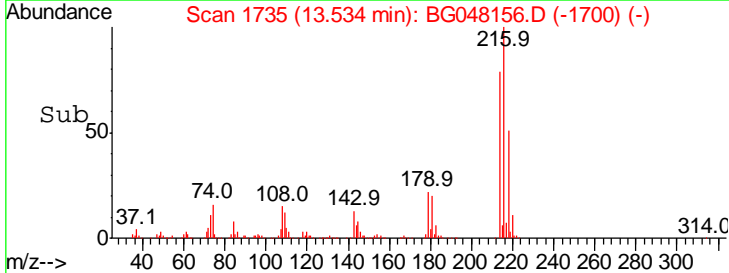
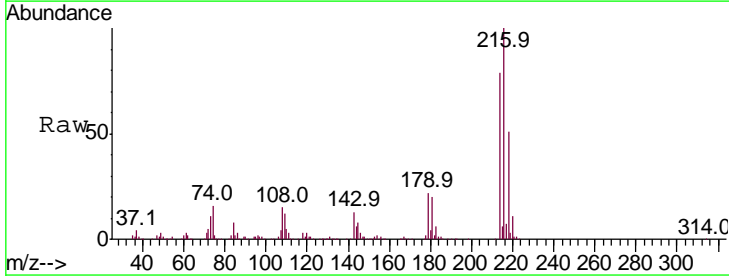
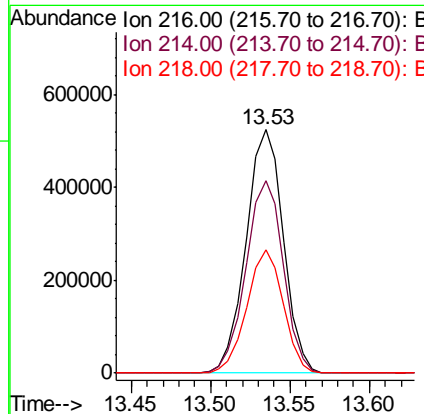
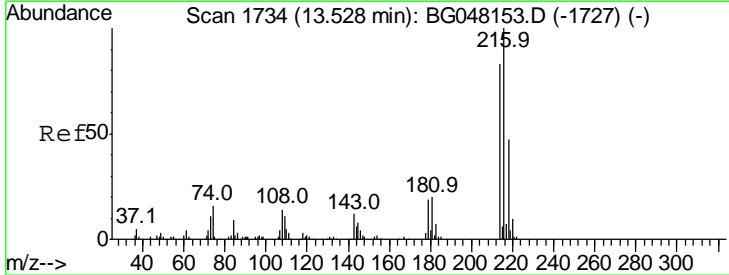
Instrument :
 BNA_G
 ClientSampled :

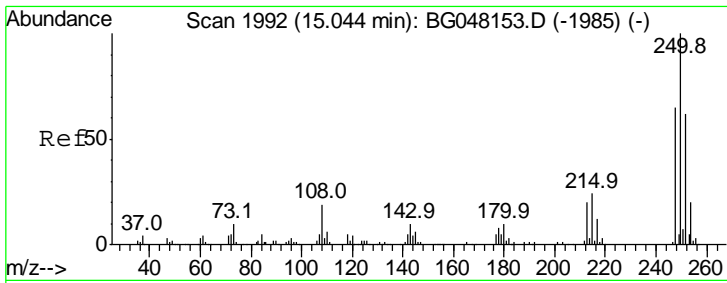
Tgt Ion	Resp	Lower	Upper
178	100		
179	20.8	12.4	18.6#
176	23.9	15.1	22.7#



#73
 1,2,3,4-Tetrachlorobenzene
 Concen: 150.142 ng/uL
 RT: 13.53 min Scan# 1735
 Delta R.T. 0.01 min
 Lab File: BG048156.D
 Acq: 12 Feb 2021 20:08

Tgt Ion	Resp	Lower	Upper
216	100		
214	78.8	69.6	104.4
218	50.8	36.9	55.3

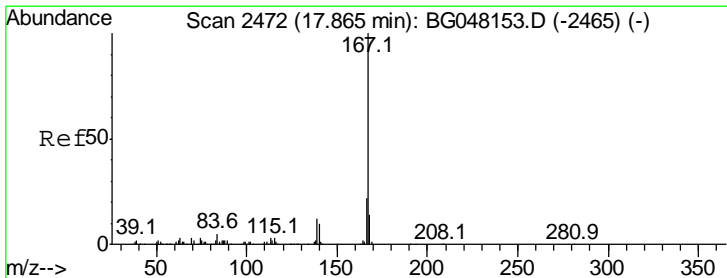
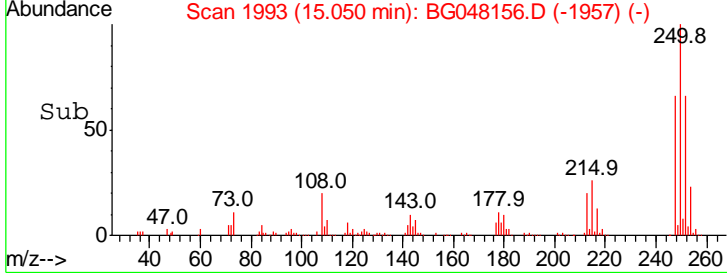
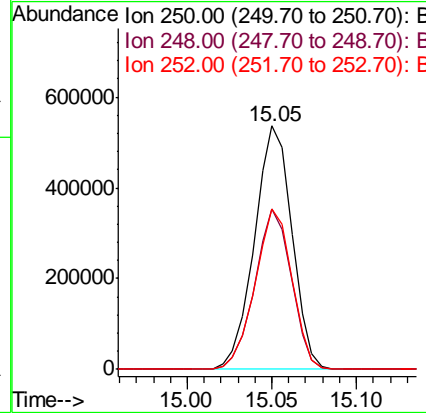
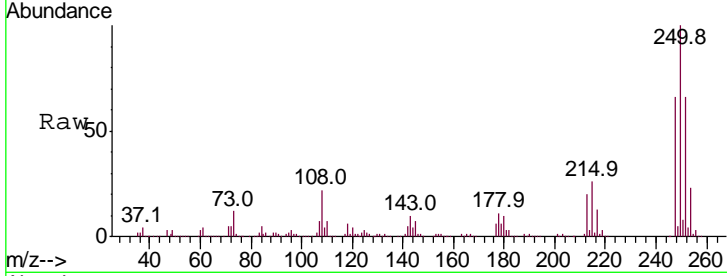




#74
 Pentachlorobenzene
 Concen: 145.547 ng/uL
 RT: 15.05 min Scan# 1993
 Delta R.T. 0.01 min
 Lab File: BG048156.D
 Acq: 12 Feb 2021 20:08

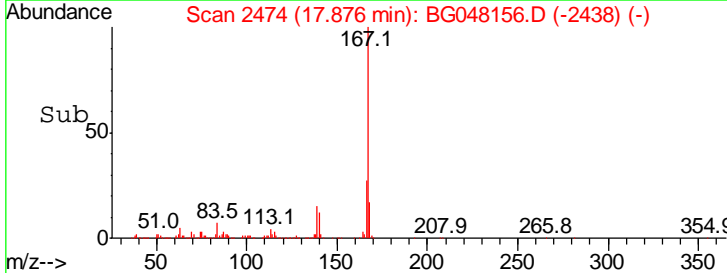
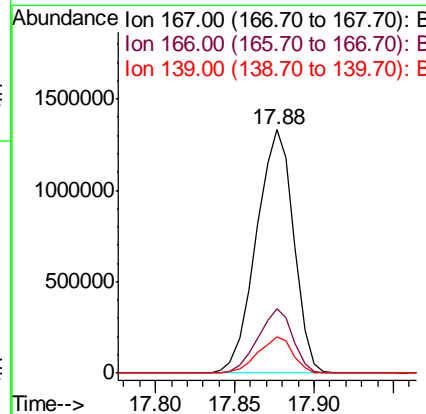
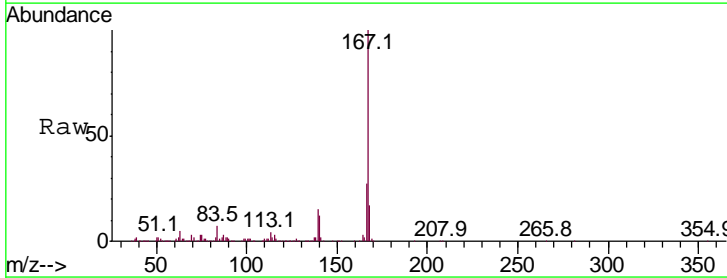
Instrument :
 BNA_G
 ClientSampled :

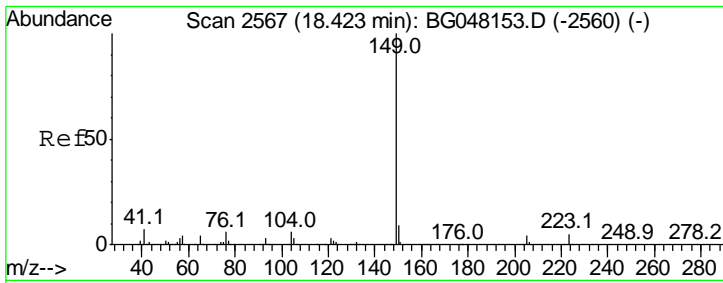
Tgt Ion	Resp	Lower	Upper
250	827430		
250	100		
248	65.9	51.3	76.9
252	65.8	47.5	71.3



#75
 Carbazole
 Concen: 139.203 ng/ul
 RT: 17.88 min Scan# 2474
 Delta R.T. 0.01 min
 Lab File: BG048156.D
 Acq: 12 Feb 2021 20:08

Tgt Ion	Resp	Lower	Upper
167	2182725		
167	100		
166	26.6	16.2	24.2#
139	15.1	9.6	14.4#



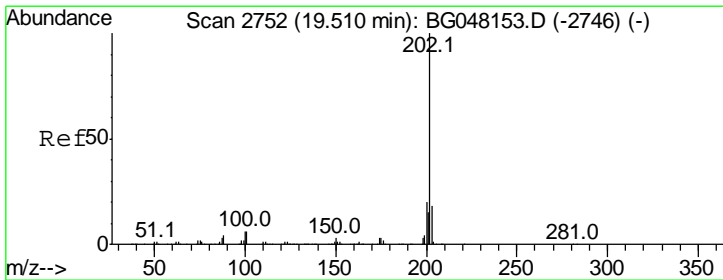
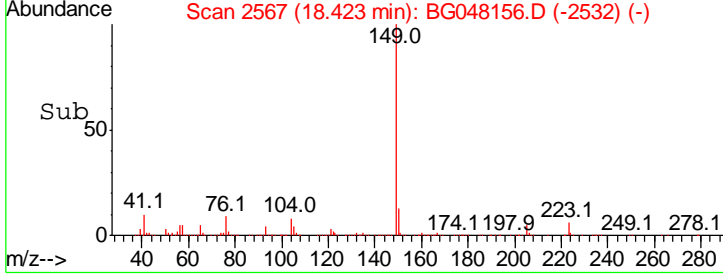
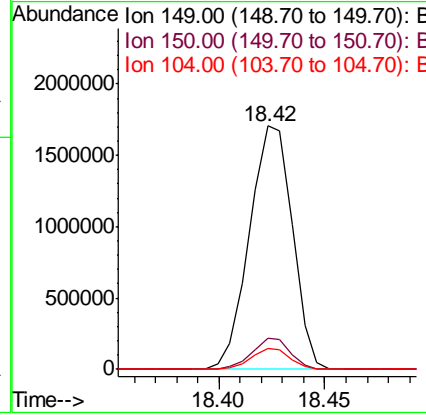
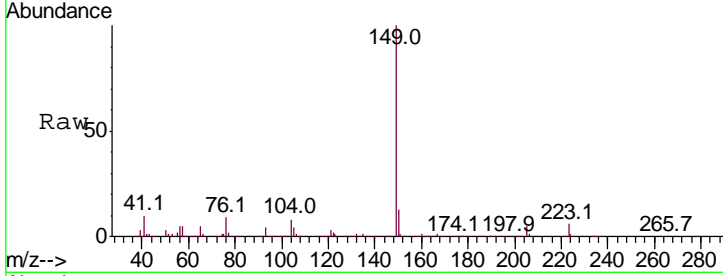


#76
 Di-n-butylphthalate
 Concen: 120.460 ng/ul
 RT: 18.42 min Scan# 2567
 Delta R.T. 0.01 min
 Lab File: BG048156.D
 Acq: 12 Feb 2021 20:08

Instrument :
 BNA_G
 ClientSampled :

Tgt Ion:149 Resp: 2412882

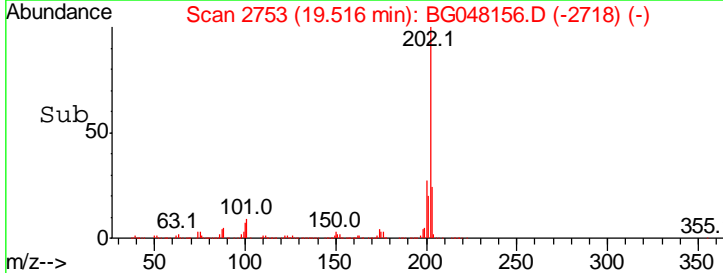
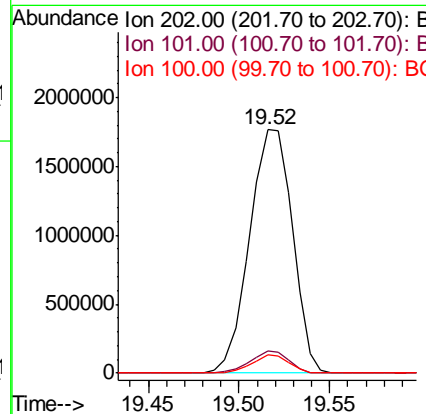
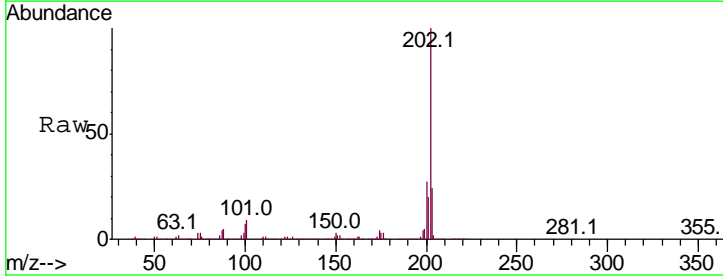
Ion	Ratio	Lower	Upper
149	100		
150	12.8	8.8	13.2
104	8.4	5.1	7.7#

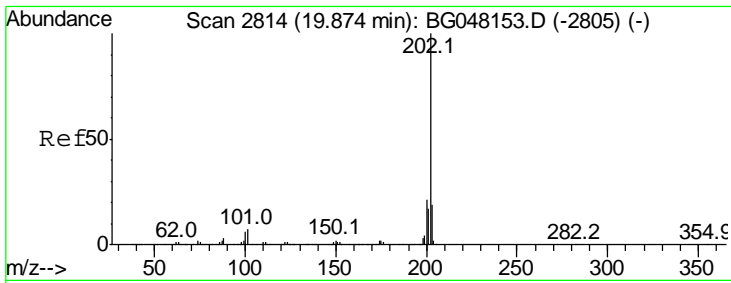


#77
 Fluoranthene
 Concen: 115.647 ng/ul
 RT: 19.52 min Scan# 2753
 Delta R.T. 0.01 min
 Lab File: BG048156.D
 Acq: 12 Feb 2021 20:08

Tgt Ion:202 Resp: 2902601

Ion	Ratio	Lower	Upper
202	100		
101	8.9	5.4	8.2#
100	7.3	4.1	6.1#



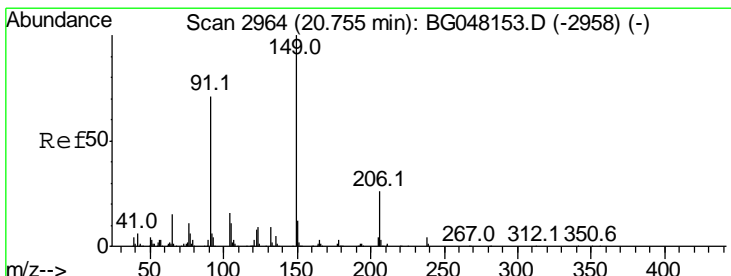
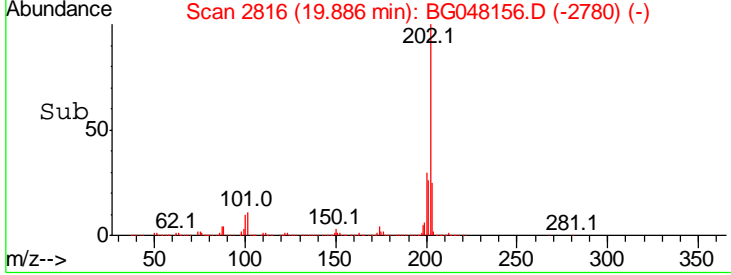
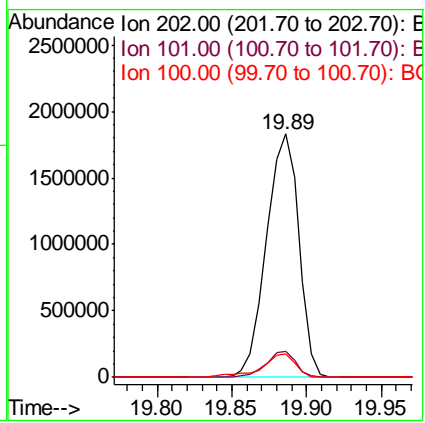
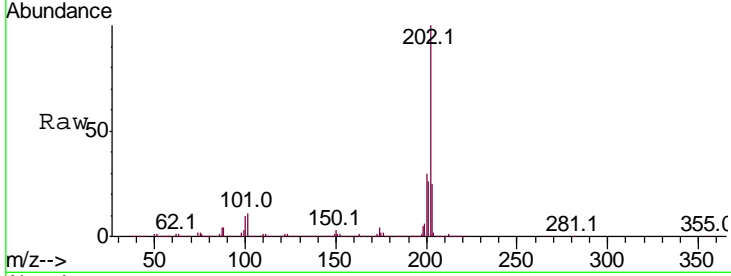


#80
 Pyrene
 Concen: 100.673 ng/ul
 RT: 19.89 min Scan# 2816
 Delta R.T. 0.01 min
 Lab File: BG048156.D
 Acq: 12 Feb 2021 20:08

Instrument :
 BNA_G
 ClientSampled :

Tgt Ion: 202 Resp: 2763661

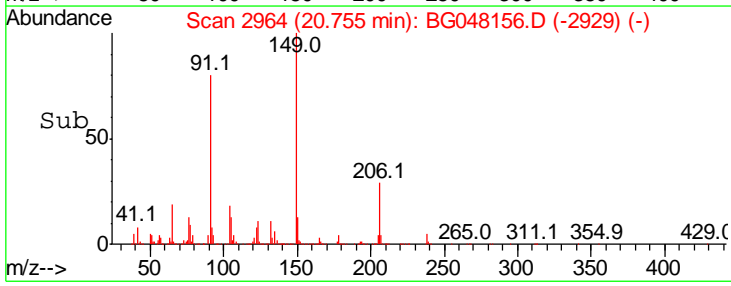
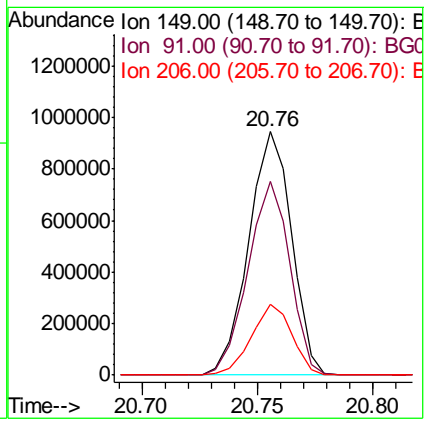
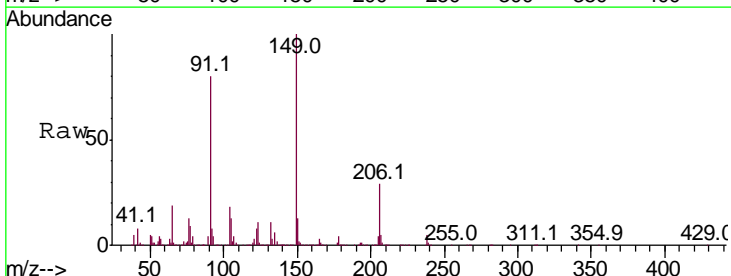
Ion	Ratio	Lower	Upper
202	100		
101	10.8	5.6	8.4#
100	9.6	5.2	7.8#

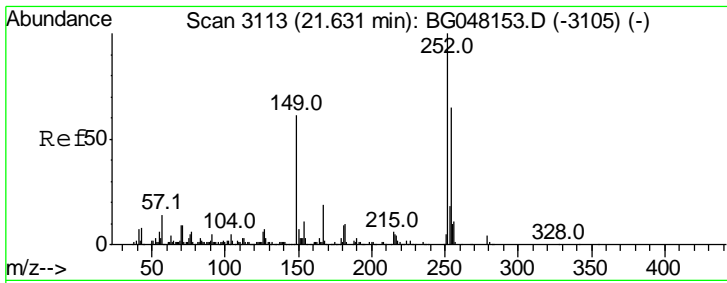


#81
 Butylbenzylphthalate
 Concen: 133.838 ng/ul
 RT: 20.76 min Scan# 2964
 Delta R.T. 0.01 min
 Lab File: BG048156.D
 Acq: 12 Feb 2021 20:08

Tgt Ion: 149 Resp: 1222461

Ion	Ratio	Lower	Upper
149	100		
91	79.8	60.3	90.5
206	29.1	18.4	27.6#

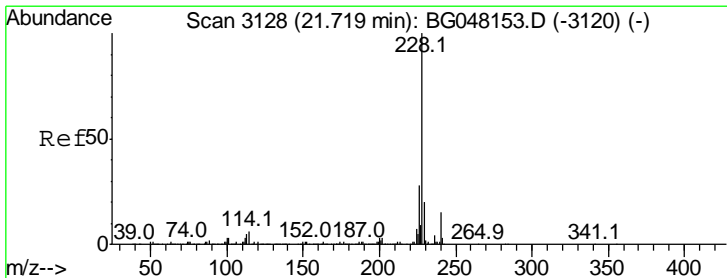
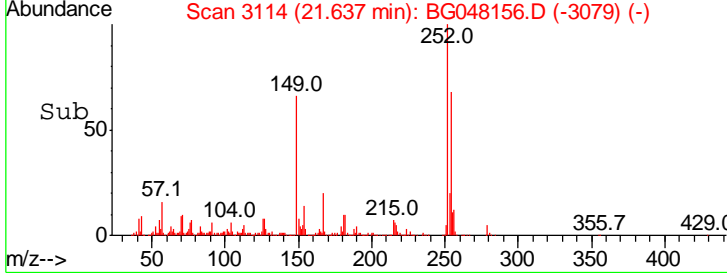
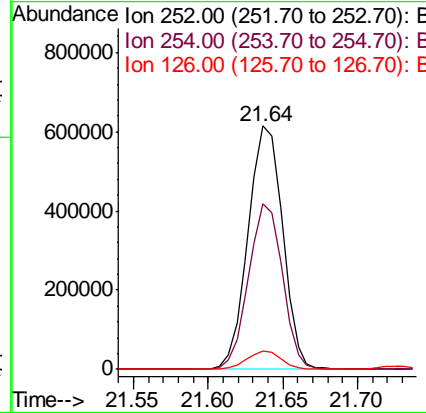
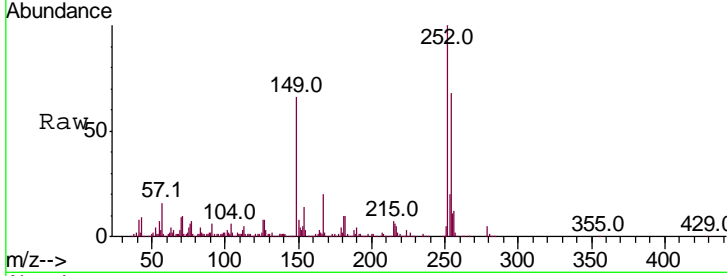




#82
 3,3'-Dichlorobenzidine
 Concen: 114.322 ng/ul
 RT: 21.64 min Scan# 3114
 Delta R.T. 0.01 min
 Lab File: BG048156.D
 Acq: 12 Feb 2021 20:08

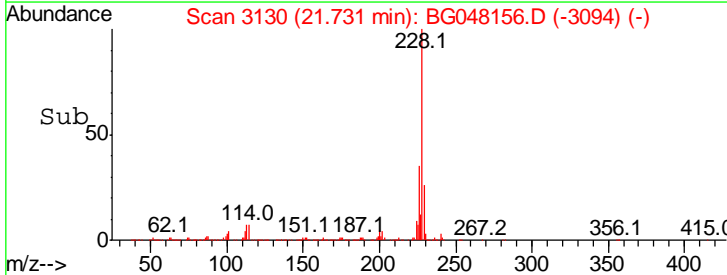
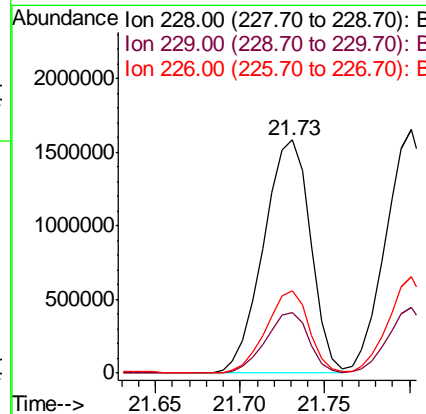
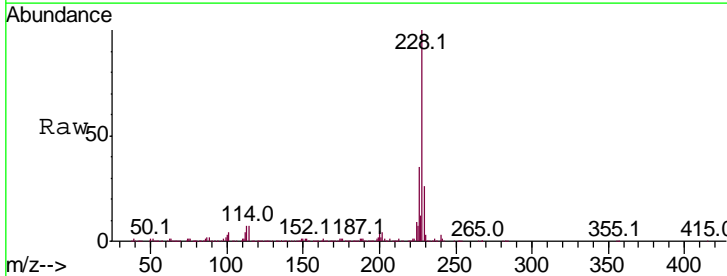
Instrument :
 BNA_G
 ClientSampled :

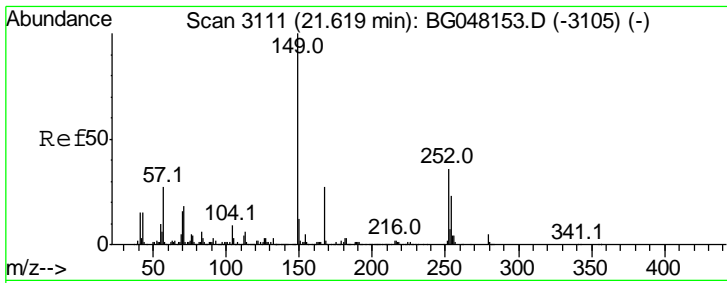
Tgt Ion	Resp	Lower	Upper
252	100		
254	68.2	51.4	77.0
126	7.6	4.5	6.7#



#83
 Benzo(a)anthracene
 Concen: 113.734 ng/ul
 RT: 21.73 min Scan# 3130
 Delta R.T. 0.01 min
 Lab File: BG048156.D
 Acq: 12 Feb 2021 20:08

Tgt Ion	Resp	Lower	Upper
228	100		
229	26.2	15.6	23.4#
226	35.3	20.5	30.7#

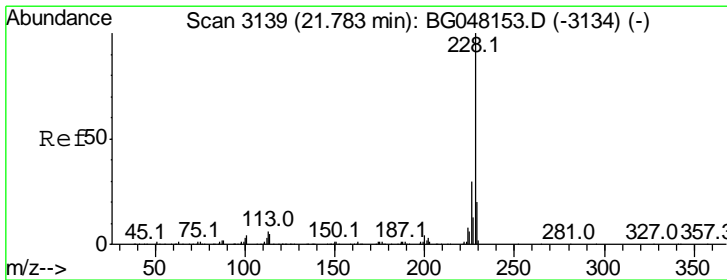
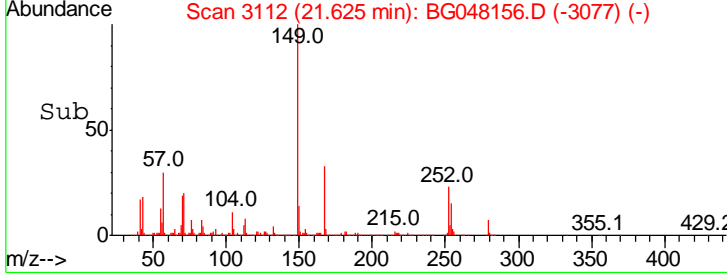
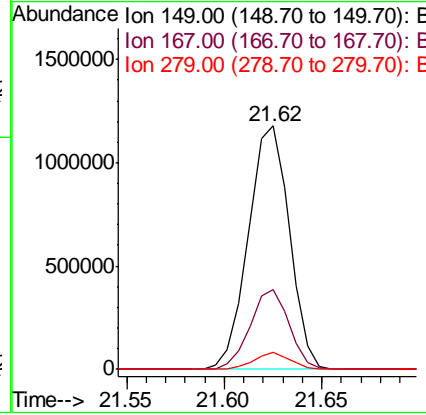
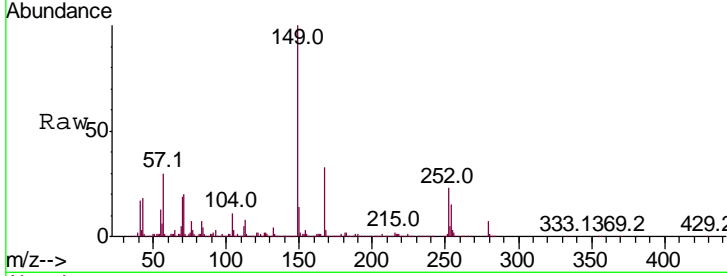




#84
 Bis(2-ethylhexyl)phthalate
 Concen: 133.763 ng/ul
 RT: 21.62 min Scan# 3112
 Delta R.T. 0.01 min
 Lab File: BG048156.D
 Acq: 12 Feb 2021 20:08

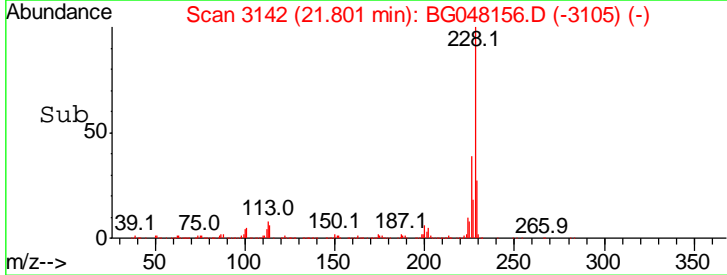
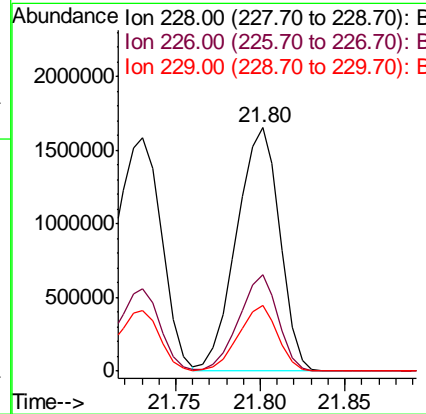
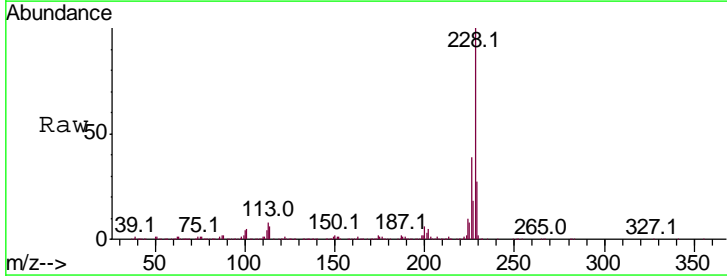
Instrument :
 BNA_G
 ClientSampled :

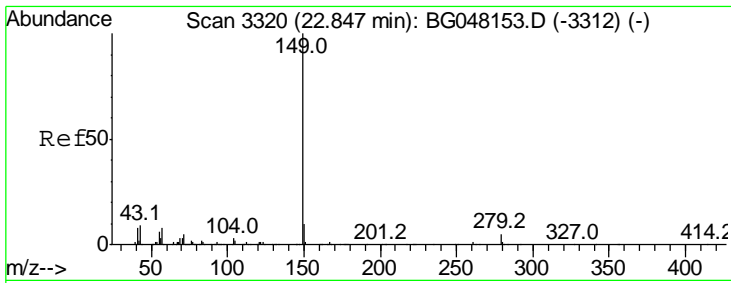
Tgt Ion	Resp	Lower	Upper
149	100		
167	33.0	20.9	31.3#
279	6.8	4.9	7.3



#85
 Chrysene
 Concen: 114.948 ng/ul
 RT: 21.80 min Scan# 3142
 Delta R.T. 0.02 min
 Lab File: BG048156.D
 Acq: 12 Feb 2021 20:08

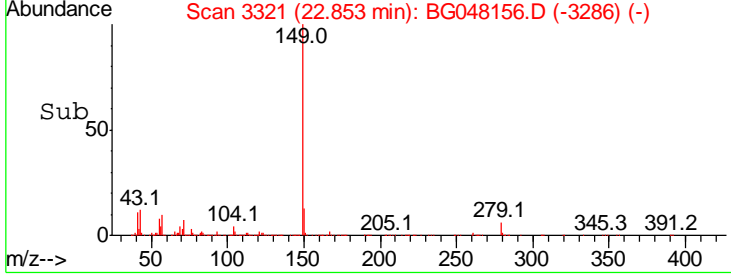
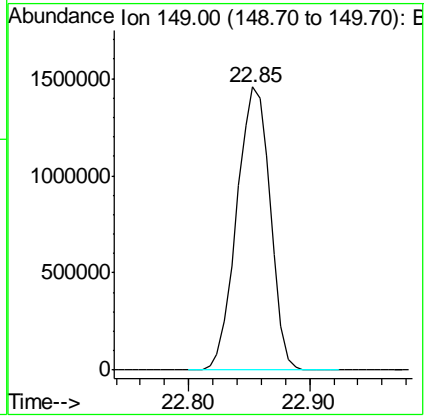
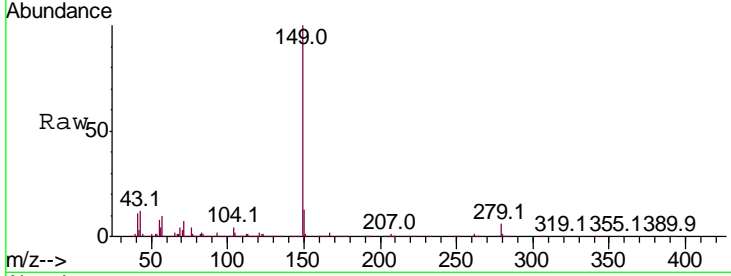
Tgt Ion	Resp	Lower	Upper
228	100		
226	39.5	24.5	36.7#
229	27.1	15.3	22.9#





#87
 Di-n-octyl phthalate
 Concen: 139.106 ng/ul
 RT: 22.85 min Scan# 3321
 Delta R.T. 0.01 min
 Lab File: BG048156.D
 Acq: 12 Feb 2021 20:08
 Tgt Ion:149 Resp: 2801132

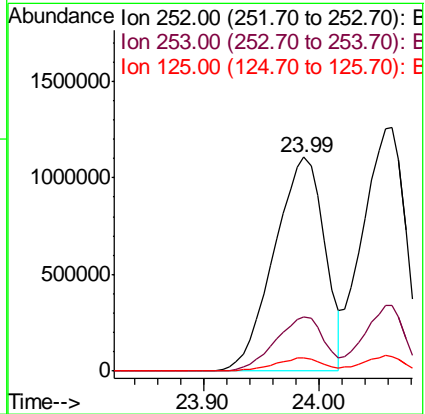
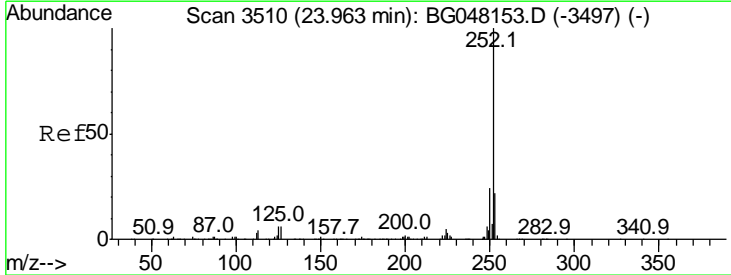
Instrument :
 BNA_G
 ClientSampled :

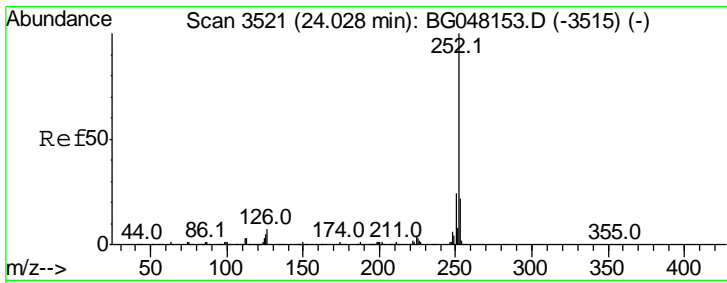


#88
 Benzo(b)fluoranthene
 Concen: 125.913 ng/ul
 RT: 23.99 min Scan# 3514
 Delta R.T. 0.03 min
 Lab File: BG048156.D
 Acq: 12 Feb 2021 20:08

Tgt Ion:252 Resp: 3358434

Ion	Ratio	Lower	Upper
252	100		
253	25.5	15.3	22.9#
125	5.9	4.0	6.0



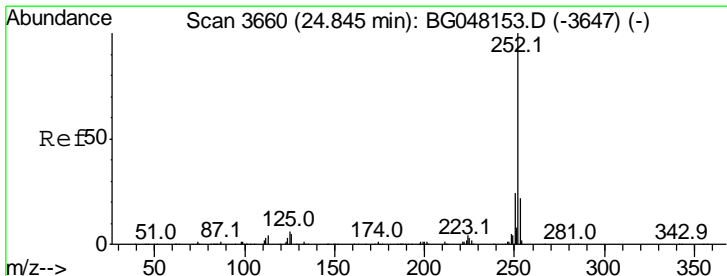
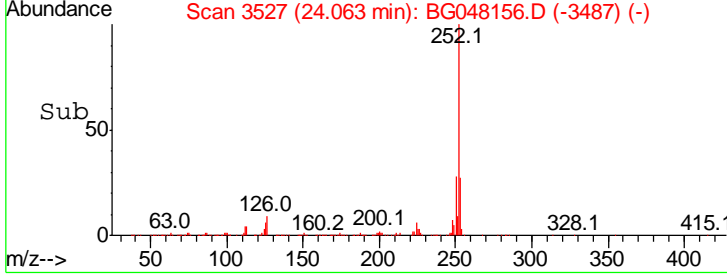
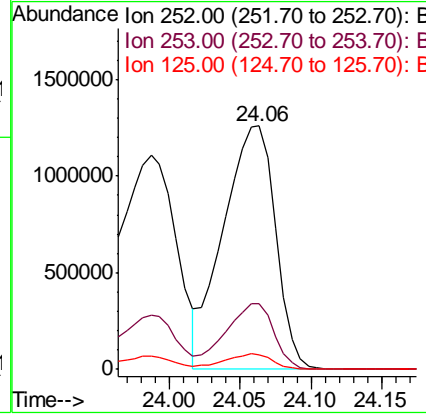
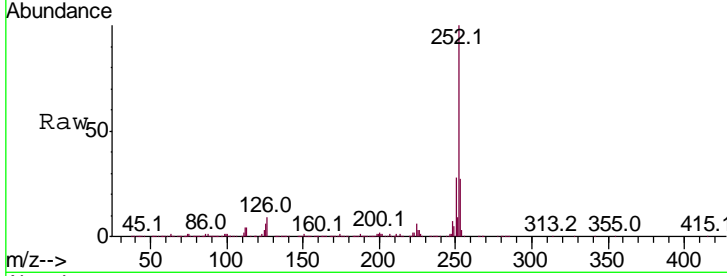


#89
 Benzo(k)fluoranthene
 Concen: 122.691 ng/ul
 RT: 24.06 min Scan# 3527
 Delta R.T. 0.04 min
 Lab File: BG048156.D
 Acq: 12 Feb 2021 20:08

Instrument :
 BNA_G
 ClientSampled :

Tgt Ion:252 Resp: 3243137

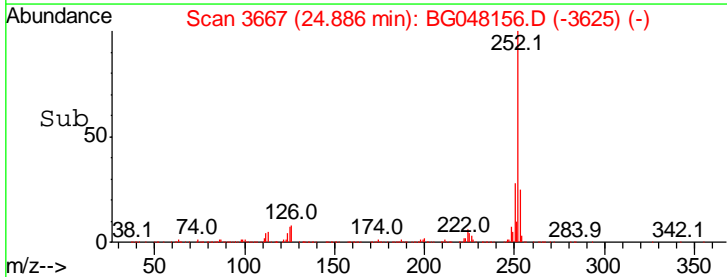
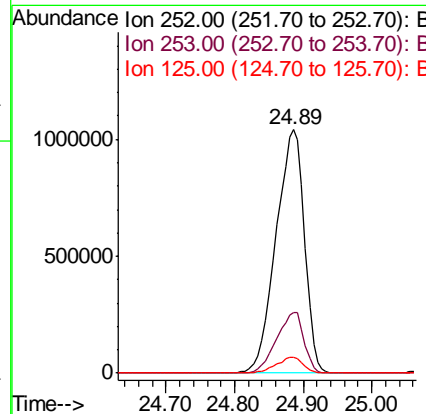
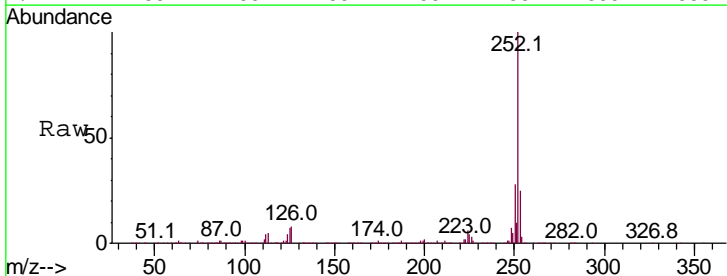
Ion	Ratio	Lower	Upper
252	100		
253	26.7	17.6	26.4#
125	6.2	3.8	5.8#

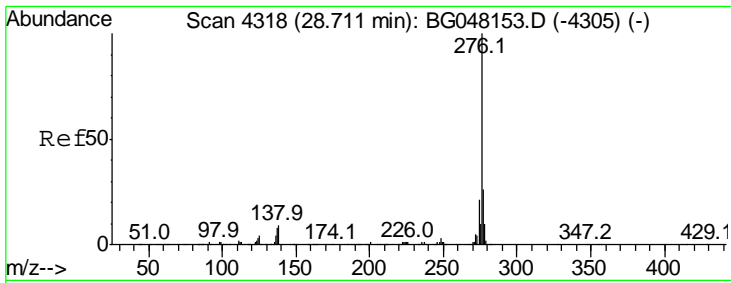


#91
 Benzo(a)pyrene
 Concen: 125.205 ng/ul
 RT: 24.89 min Scan# 3667
 Delta R.T. 0.05 min
 Lab File: BG048156.D
 Acq: 12 Feb 2021 20:08

Tgt Ion:252 Resp: 3011512

Ion	Ratio	Lower	Upper
252	100		
253	25.1	17.8	26.8
125	6.5	4.0	6.0#



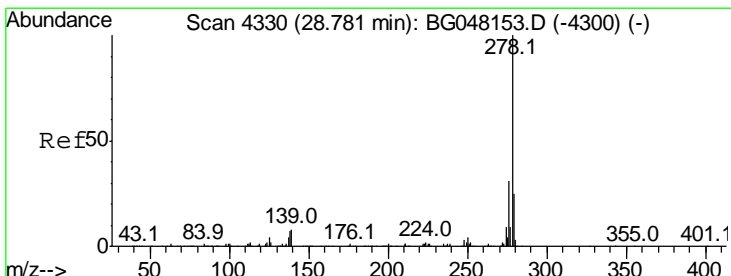
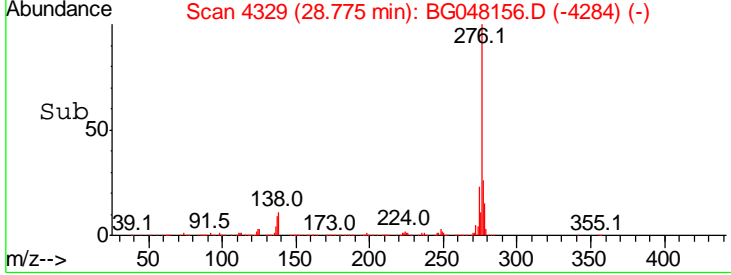
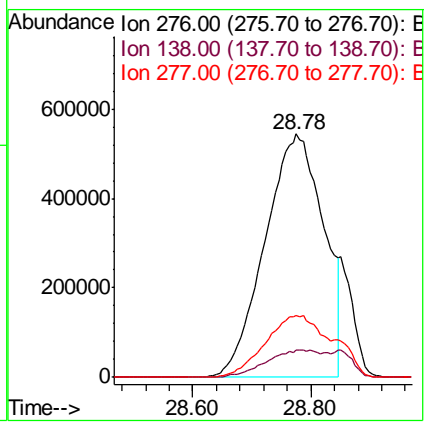
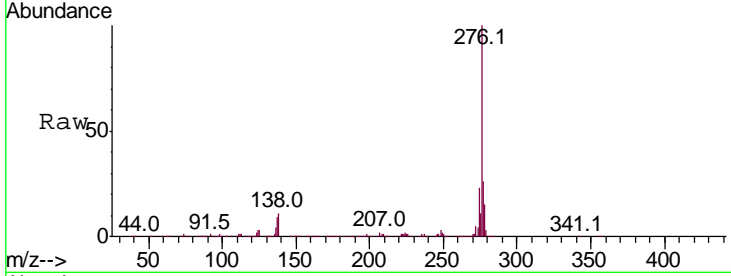


#92
 Indeno(1,2,3-cd)pyrene
 Concen: 127.388 ng/ul
 RT: 28.78 min Scan# 4329
 Delta R.T. 0.07 min
 Lab File: BG048156.D
 Acq: 12 Feb 2021 20:08

Instrument :
 BNA_G
 ClientSampled :

Tgt Ion: 276 Resp: 3736585

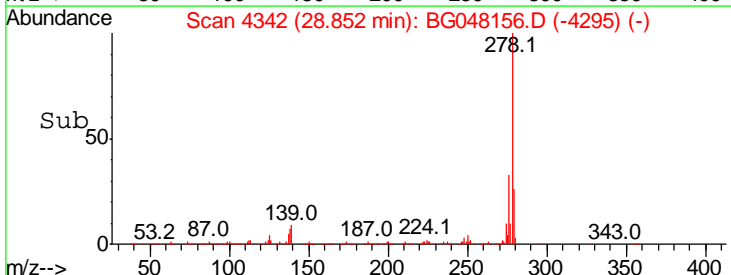
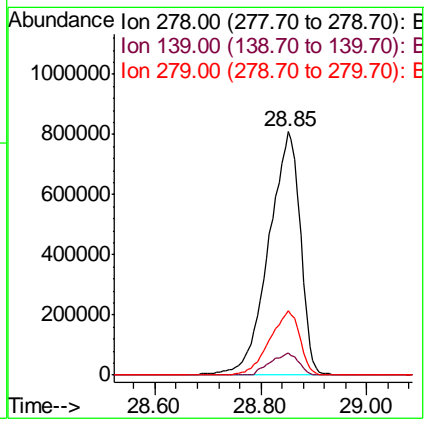
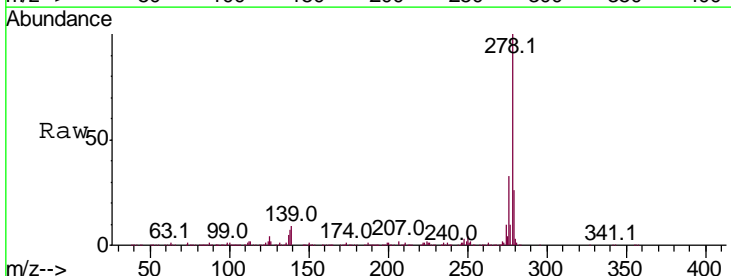
Ion	Ratio	Lower	Upper
276	100		
138	11.0	8.4	12.6
277	25.6	19.4	29.0

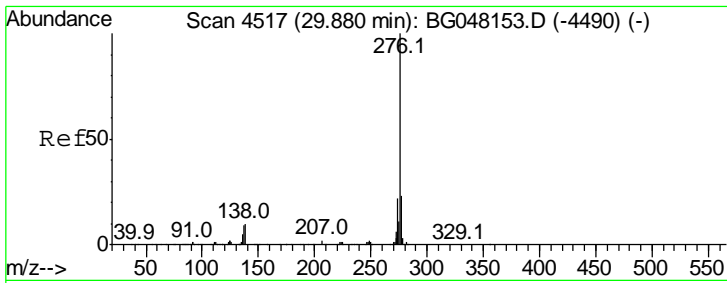


#93
 Dibenzo(a,h)anthracene
 Concen: 136.136 ng/ul
 RT: 28.85 min Scan# 4342
 Delta R.T. 0.08 min
 Lab File: BG048156.D
 Acq: 12 Feb 2021 20:08

Tgt Ion: 278 Resp: 3347095

Ion	Ratio	Lower	Upper
278	100		
139	9.1	8.6	12.8
279	26.5	20.6	31.0

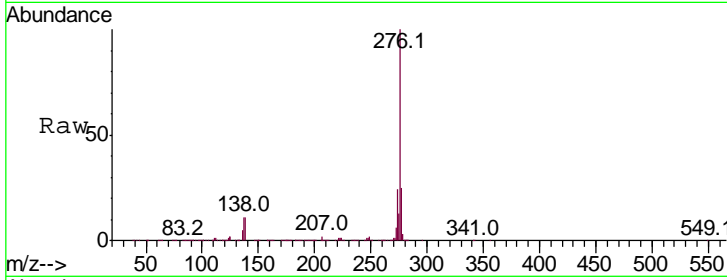




#94

Benzo(a,h,i)perylene
 Concen: 141.290 ng/ul
 RT: 29.97 min Scan# 4532
 Delta R.T. 0.10 min
 Lab File: BG048156.D
 Acq: 12 Feb 2021 20:08

Instrument :
 BNA_G
 ClientSampled :



Tot Ion: 276 Resp: 3402516
 Ion Ratio Lower Upper
 276 100
 138 11.3 9.1 13.7
 277 25.1 18.2 27.4

