

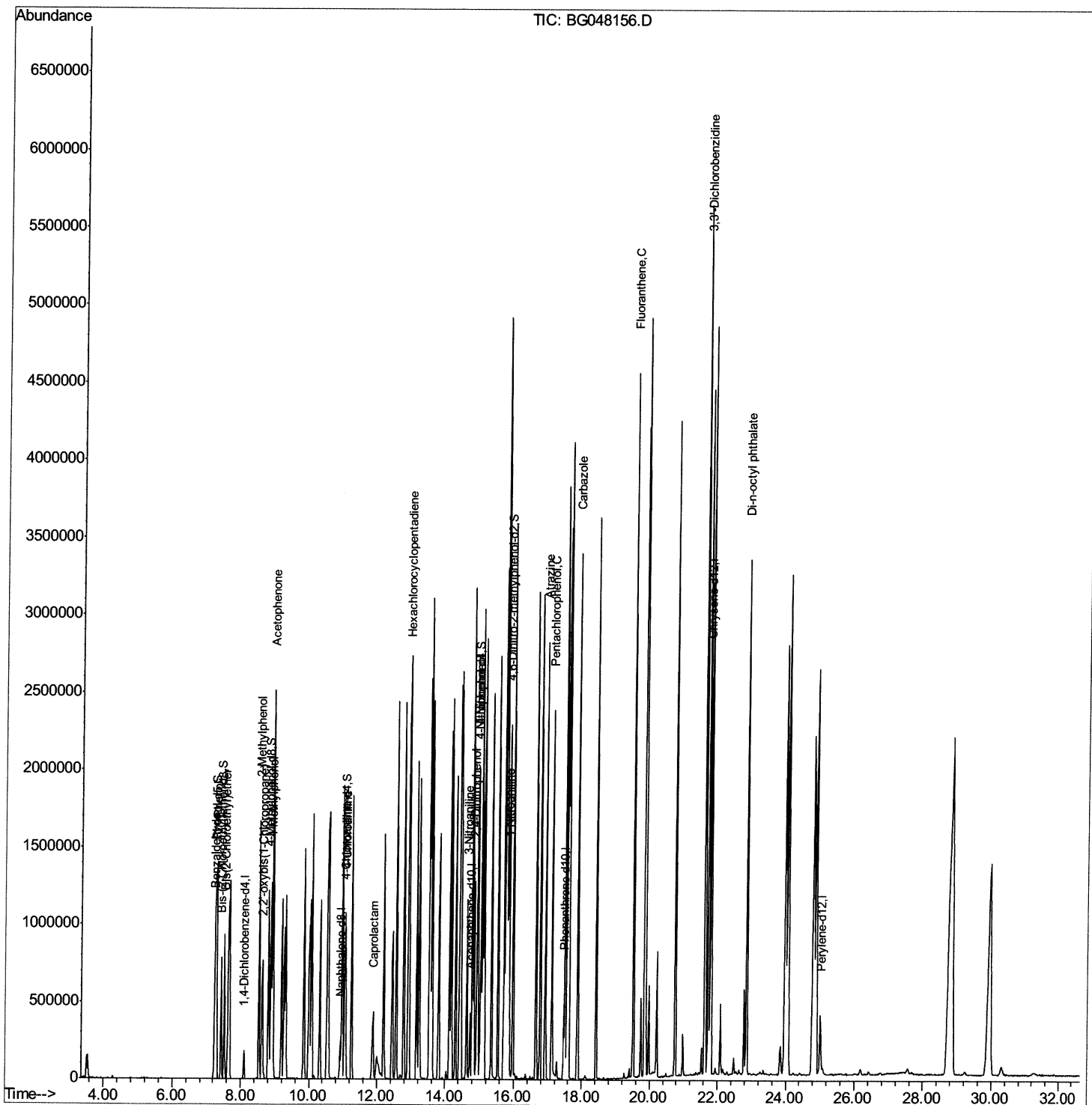
Data Path : Z:\SVOASRV\HPCHEM1\BNA G\DATA\BG021321\
 Data File : BG048156.D
 Acq On : 12 Feb 2021 20:08
 Operator : CG/JU
 Sample : SSTD16025
 Misc :
 ALS Vial : 7 Sample Multiplier: 1

Instrument :
 BNA_G
 Client Sampled :
 SSTD16025

Manual Integrations
 APPROVED

mohammad
 2/15/2021 11:32:19 AM

Quant Time: Feb 12 23:28:12 2021
 Quant Method : Z:\SVOASRV\HPCHEM1\BNA_G\METHODS\SOM-EPA-BG021321MA.M
 Quant Title : SVOA CALIBRATION
 QLast Update : Fri Feb 12 22:47:29 2021
 Response via : Initial Calibration



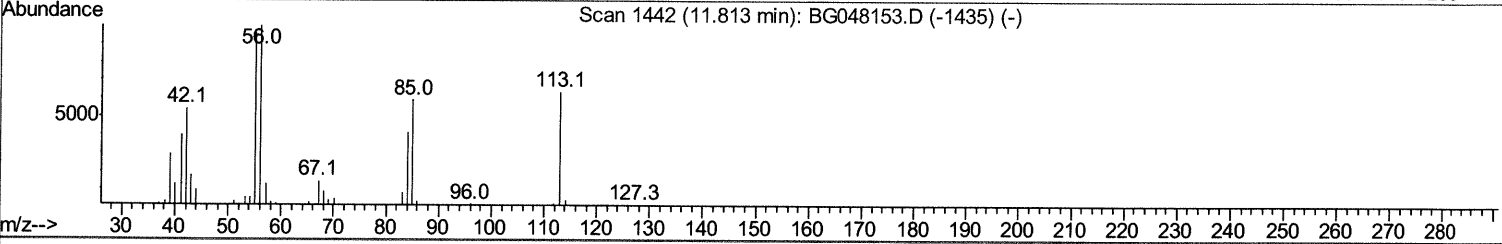
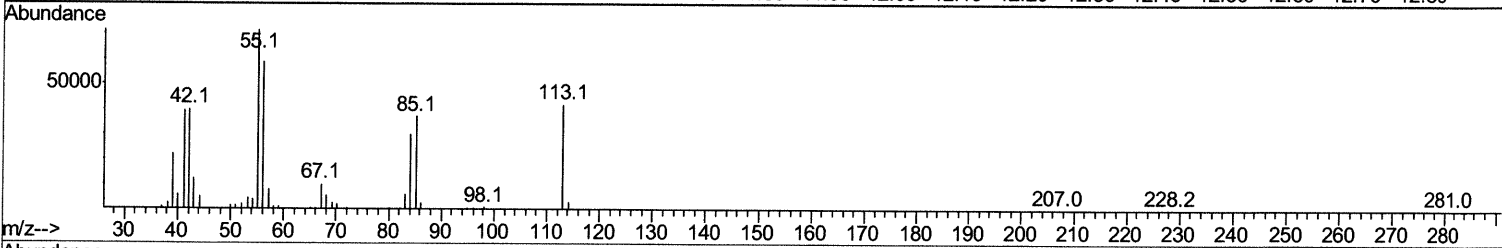
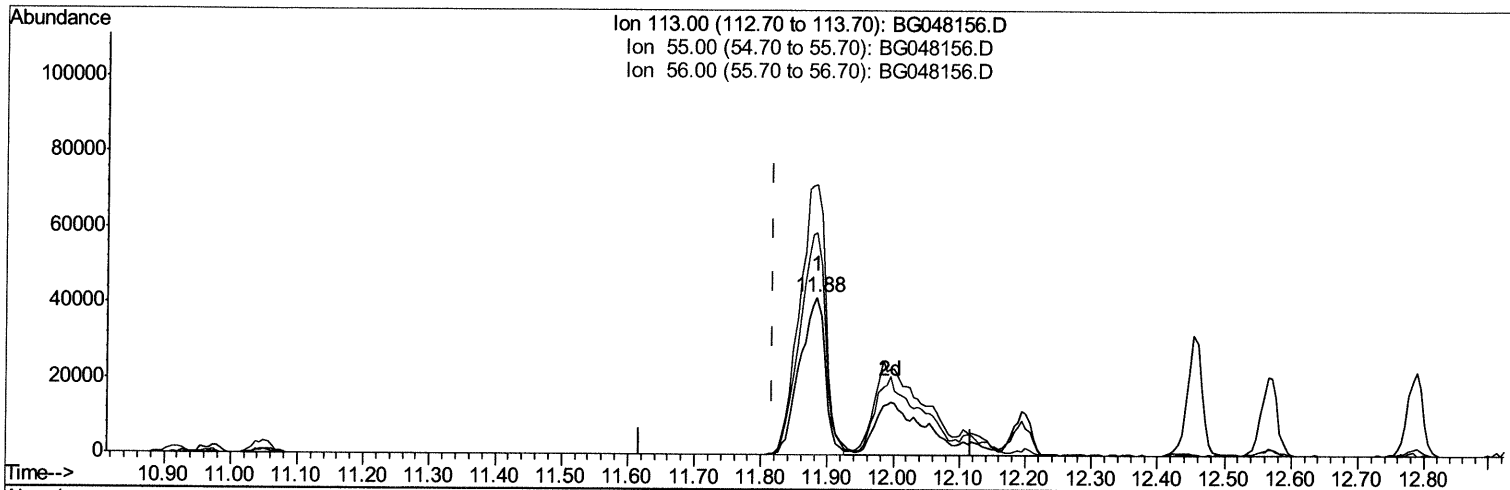
Quantitation Report (Qedit)

Data Path : Z:\SVOASRV\HPCHEM1\BNA G\DATA\BG021321\
 Data File : BG048156.D
 Acq On : 12 Feb 2021 20:08
 Operator : CG/JU
 Sample : SSTD16025
 Misc :
 ALS Vial : 7 Sample Multiplier: 1

Instrument :
 BNA_G
 ClientSampleId :
 SSTD16025

Manual Integrations
APPROVED
 mohammad
 2/15/2021 11:32:19 AM

Quant Time: Feb 12 22:51:59 2021
 Quant Method : Z:\SVOASRV\HPCHEM1\BNA_G\METHODS\SOM-EPA-BG021321MA.M
 Quant Title : SVOA CALIBRATION
 QLast Update : Fri Feb 12 22:47:29 2021
 Response via : Initial Calibration



TIC: BG048156.D

(32) Caprolactam

11.883min (+0.065) 89.04ng/ul

response 111281

Ion	Exp%	Act%
113.00	100	100
55.00	166.10	171.41
56.00	130.70	141.21
0.00	0.00	0.00

Quantitation Report (Qedit)

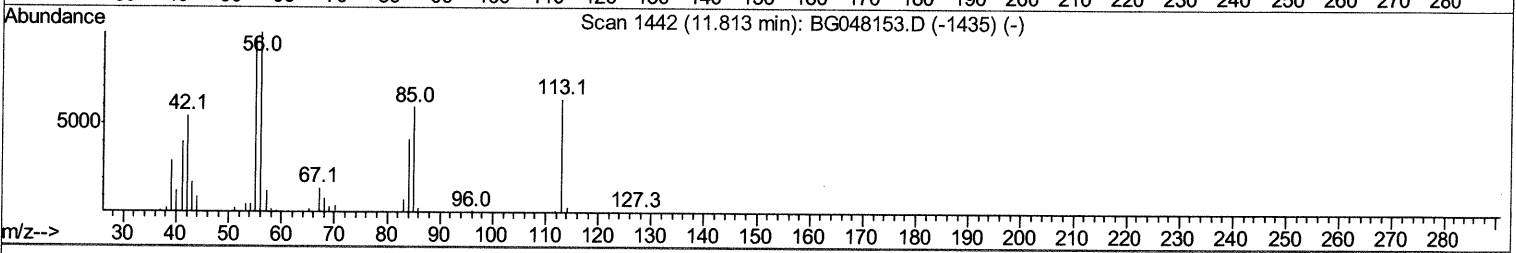
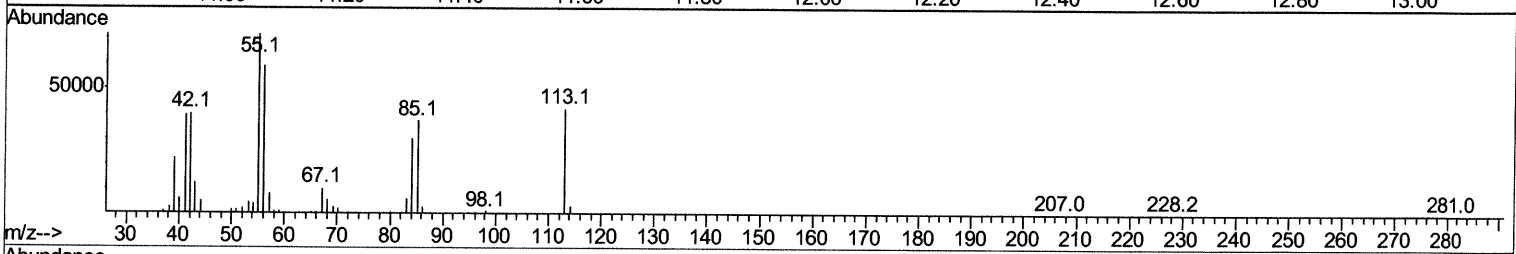
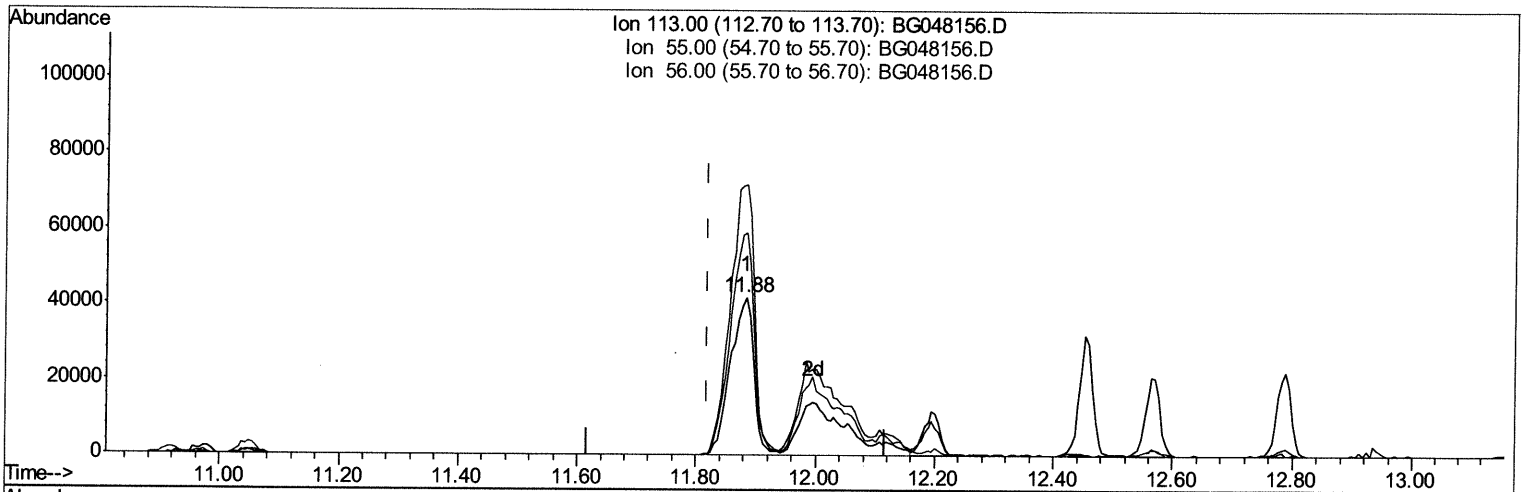
Data Path : Z:\SVOASRV\HPCHEM1\BNA G\DATA\BG021321\
 Data File : BG048156.D
 Acq On : 12 Feb 2021 20:08
 Operator : CG/JU
 Sample : SSTD16025
 Misc :
 ALS Vial : 7 Sample Multiplier: 1

Instrument :
 BNA_G
 ClientSampleId :
 SSTD16025

Manual Integrations
 APPROVED

mohammad
 2/15/2021 11:32:19 AM

Quant Time: Feb 12 22:51:59 2021
 Quant Method : Z:\SVOASRV\HPCHEM1\BNA_G\METHODS\SOM-EPA-BG021321MA.M
 Quant Title : SVOA CALIBRATION
 QLast Update : Fri Feb 12 22:47:29 2021
 Response via : Initial Calibration



TIC: BG048156.D

(32) Caprolactam

11.883min (+0.065) 154.12ng/ul m *02/15/21 JU*

response 192622

Ion	Exp%	Act%
113.00	100	100
55.00	166.10	171.41
56.00	130.70	141.21
0.00	0.00	0.00

Data Path : Z:\SVOASRV\HPCHEM1\BNA G\DATA\BG021321\
 Data File : BG048156.D
 Acq On : 12 Feb 2021 20:08
 Operator : CG/JU
 Sample : SSTD16025
 Misc :
 ALS Vial : 7 Sample Multiplier: 1

Instrument :
 BNA_G
 Client Sampled :
 SSTD16025

Manual Integrations
 APPROVED

mohammad
 2/15/2021 11:32:19 AM

Quant Time: Feb 12 23:28:12 2021
 Quant Method : Z:\SVOASRV\HPCHEM1\BNA_G\METHODS\SOM-EPA-BG021321MA.M
 Quant Title : SVOA CALIBRATION
 QLast Update : Fri Feb 12 22:47:29 2021
 Response via : Initial Calibration

Internal Standards	R.T.	QIon	Response	Conc	Units	Dev(Min)
1) 1,4-Dichlorobenzene-d4	8.11	152	47499	20.00	ng/ul	0.00
18) Naphthalene-d8	10.92	136	205569	20.00	ng/ul	0.00
36) Acenaphthene-d10	14.73	164	149549	20.00	ng/ul	0.00
62) Phenanthrene-d10	17.47	188	363940	20.00	ng/ul	0.00
78) Chrysene-d12	21.75	240	377449	20.00	ng/ul	0.01
86) Perylene-d12	25.02	264	382090	20.00	ng/ul	0.02

System Monitoring Compounds

3) 1,4-Dioxane-d8	0.00	96	0d	0.00	ng/uL	
5) Phenol-d5	7.26	99	684887	168.48	ng/ul	0.02
7) Bis-(2-Chloroethyl)ether-d	7.43	67	382435	183.00	ng/ul	0.00
9) 2-Chlorophenol-d4	0.00	132	0d	0.00	ng/ul	
13) 4-Methylphenol-d8	8.81	113	530077	164.28	ng/ul	0.02
19) Nitrobenzene-d5	0.00	128	0d	0.00	ng/ul	
22) 2-Nitrophenol-d4	0.00	143	0d	0.00	ng/ul	
26) 2,4-Dichlorophenol-d3	0.00	165	0d	0.00	ng/ul	
29) 4-Chloroaniline-d4	11.05	131	415466	103.13	ng/ul	0.00
44) Dimethylphthalate-d6	0.00	166	0d	0.00	ng/ul	
47) Acenaphthylene-d8	0.00	160	0d	0.00	ng/ul	
52) 4-Nitrophenol-d4	14.93	143	305489	158.57	ng/ul	0.04
58) Fluorene-d10	0.00	176	0d	0.00	ng/ul	
63) 4,6-Dinitro-2-methylphenol	15.85	200	387768	157.40	ng/ul	0.03
71) Anthracene-d10	0.00	188	0d	0.00	ng/ul	
79) Pyrene-d10	0.00	212	0d	0.00	ng/ul	
90) Benzo(a)pyrene-d12	0.00	264	0d	0.00	ng/ul	

Target Compounds

Target Compounds	R.T.	QIon	Response	Conc	Units	Ovalue
4) Benzaldehyde	7.24	77	193913	89.890	ng/ul	94
6) Phenol	7.29	94	682957	177.825	ng/ul	92
8) Bis-(2-Chloroethyl)ether	7.52	93	501200	187.554	ng/ul	93
11) 2-Methylphenol	8.54	108	513566	168.224	ng/ul	97
12) 2,2'-oxybis(1-Chloropropan	8.63	45	645951	258.091	ng/ul	95
14) Acetophenone	8.93	105	830596	163.167	ng/ul#	85
16) 4-Methylphenol	8.89	108	537369	164.782	ng/ul	94
30) 4-Chloroaniline	11.07	127	422884	113.594	ng/ul	95
32) Caprolactam	11.88	113	192622m>	154.117	ng/ul >	95
38) Hexachlorocyclopentadiene	12.91	237	580217	139.821	ng/ul#	95
49) 3-Nitroaniline	14.64	138	285170	148.479	ng/ul	86
51) 2,4-Dinitrophenol	14.84	184	286625	176.367	ng/ul#	85
53) 4-Nitrophenol	14.95	109	342486	108.013	ng/ul	93
61) 4-Nitroaniline	15.81	138	350506	163.578	ng/ul	94
64) 4,6-Dinitro-2-methylphenol	15.86	198	384449	154.776	ng/ul#	97
68) Atrazine	16.93	200	642476	138.231	ng/ul	93
69) Pentachlorophenol	17.12	266	462454	208.960	ng/ul#	88
75) Carbazole	17.88	167	2182725	139.203	ng/ul#	88
77) Fluoranthene	19.52	202	2902601	115.647	ng/ul#	94
82) 3,3'-Dichlorobenzidine	21.64	252	986120	114.322	ng/ul#	95
87) Di-n-octyl phthalate	22.85	149	2801132	139.106	ng/ul	100

02/15/21 JU

Data Path : Z:\SVOASRV\HPCHEM1\BNA G\DATA\BG021321\
Data File : BG048156.D
Acq On : 12 Feb 2021 20:08
Operator : CG/JU
Sample : SSTD16025
Misc :
ALS Vial : 7 Sample Multiplier: 1

Instrument :
BNA_G
ClientSampleId :
SSTD16025

Manual Integrations
APPROVED

mohammad
2/15/2021 11:32:19 AM

Quant Time: Feb 12 23:28:12 2021
Quant Method : Z:\SVOASRV\HPCHEM1\BNA_G\METHODS\SOM-EPA-BG021321MA.M
Quant Title : SVOA CALIBRATION
QLast Update : Fri Feb 12 22:47:29 2021
Response via : Initial Calibration

Internal Standards R.T. QIon Response Conc Units Dev(Min)

(#) = qualifier out of range (m) = manual integration (+) = signals summed