

Data Path : Z:\HPCHEM1\BNA G\DATA\BG021716\
 Data File : BG020923.D
 Acq On : 17 Feb 2016 12:52
 Operator : SJ/UM
 Sample : H1477-04
 Misc :
 ALS Vial : 6 Sample Multiplier: 1

Instrument :
 BNA_G
 ClientSampleId :
 0311-S02-0003

Quant Time: Feb 18 01:04:34 2016
 Quant Method : Z:\HPCHEM1\BNA G\METHODS\SOM02.2-EPA-BG020816.M
 Quant Title : SVOA CALIBRATION
 QLast Update : Thu Feb 18 00:59:48 2016
 Response via : Initial Calibration

Internal Standards	R.T.	QIon	Response	Conc	Units	Dev(Min)
1) 1,4-Dichlorobenzene-d4	8.26	152	17693	20.00	ng/ul	0.00
18) Naphthalene-d8	11.09	136	94523	20.00	ng/ul	0.00
36) Acenaphthene-d10	14.88	164	61053	20.00	ng/ul	0.00
62) Phenanthrene-d10	17.61	188	133224	20.00	ng/ul	0.00
78) Chrysene-d12	21.89	240	121816	20.00	ng/ul	0.00
86) Perylene-d12	25.26	264	113779	20.00	ng/ul	0.00

System Monitoring Compounds

3) 1,4-Dioxane-d8	3.59	96	1827	5.01	ng/uL	0.00
5) Phenol-d5	7.40	99	48500	27.06	ng/ul	0.00
7) Bis-(2-Chloroethyl)ether-d	7.58	67	27910	29.18	ng/ul	0.00
9) 2-Chlorophenol-d4	7.79	132	41677	29.72	ng/ul	0.00
13) 4-Methylphenol-d8	8.96	113	41850	26.86	ng/ul	0.00
19) Nitrobenzene-d5	9.43	128	23478	30.95	ng/ul	0.00
22) 2-Nitrophenol-d4	10.15	143	25425	33.70	ng/ul	0.00
26) 2,4-Dichlorophenol-d3	10.69	165	43875	30.22	ng/ul	0.00
29) 4-Chloroaniline-d4	11.22	131	65738	34.00	ng/ul	0.00
44) Dimethylphthalate-d6	14.27	166	163948	31.21	ng/ul	0.00
47) Acenaphthylene-d8	14.57	160	200864	31.30	ng/ul	0.00
52) 4-Nitrophenol-d4	15.05	143	29008	27.58	ng/ul	0.00
58) Fluorene-d10	15.86	176	143228	32.04	ng/ul	0.00
63) 4,6-Dinitro-2-methylphenol	15.96	200	17767	27.52	ng/ul	0.00
71) Anthracene-d10	17.71	188	212614	32.30	ng/ul	0.00
79) Pyrene-d10	19.97	212	207107	33.07	ng/ul	0.00
90) Benzo(a)pyrene-d12	25.03	264	206246	32.71	ng/ul	0.00

Target Compounds

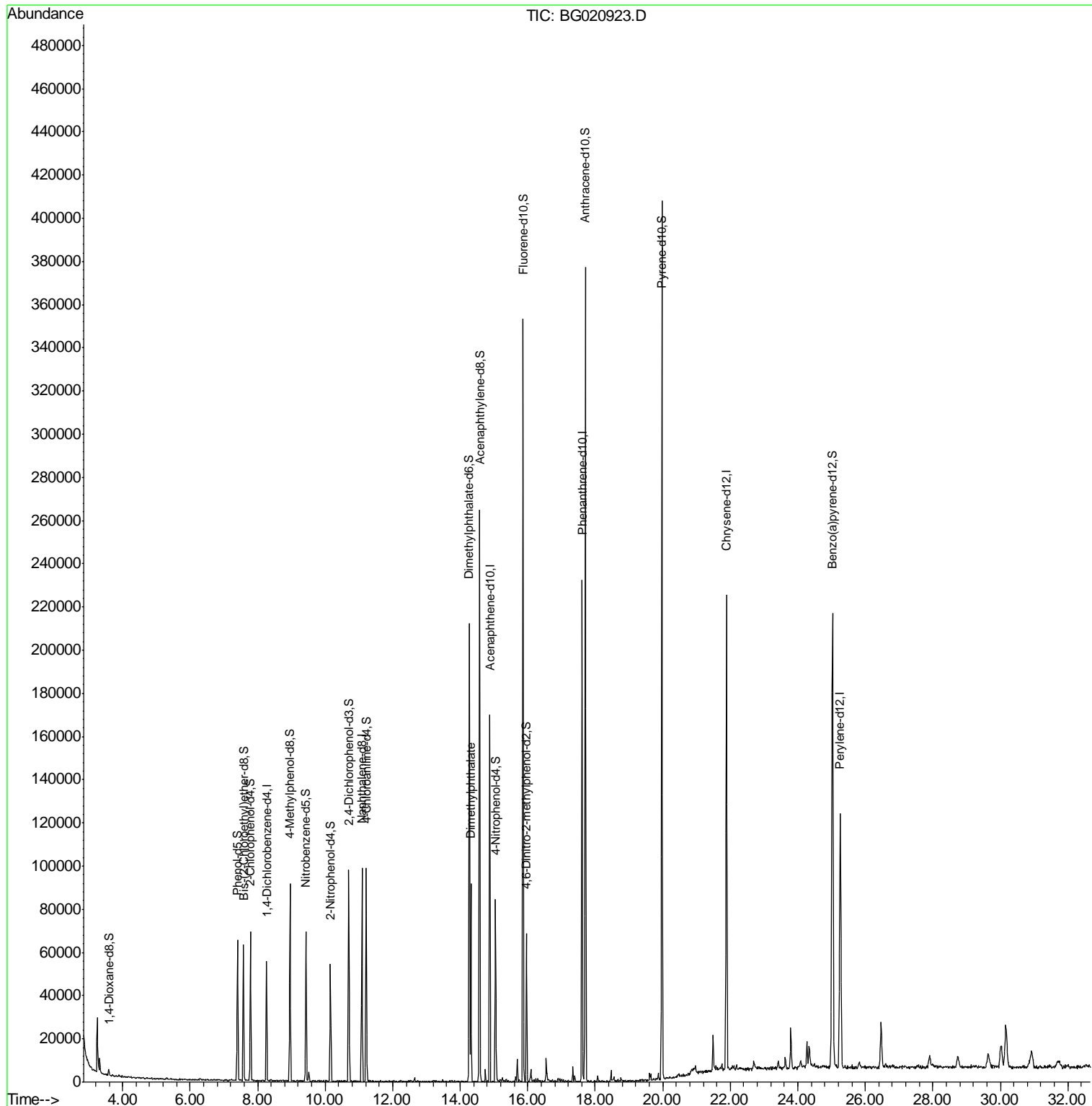
Target Compounds	R.T.	QIon	Response	Conc	Units	Ovalue
45) Dimethylphthalate	14.32	163	66001	12.07	ng/ul	100

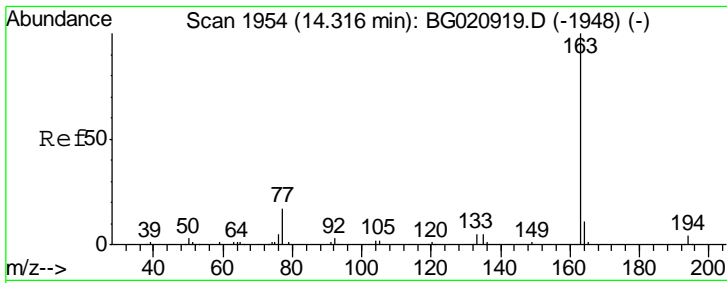
(#) = qualifier out of range (m) = manual integration (+) = signals summed

Data Path : Z:\HPCHEM1\BNA G\DATA\BG021716\
 Data File : BG020923.D
 Acq On : 17 Feb 2016 12:52
 Operator : SJ/UM
 Sample : H1477-04
 Misc :
 ALS Vial : 6 Sample Multiplier: 1

Instrument :
 BNA_G
 ClientSampleId :
 0311-S02-0003

Quant Time: Feb 18 01:04:34 2016
 Quant Method : Z:\HPCHEM1\BNA G\METHODS\SOM02.2-EPA-BG020816.M
 Quant Title : SVOA CALIBRATION
 QLast Update : Thu Feb 18 00:59:48 2016
 Response via : Initial Calibration





#45
 Dimethylphthalate
 Concen: 12.07 ng/ul
 RT: 14.32 min Scan# 1954
 Delta R.T. 0.00 min
 Lab File: BG020923.D
 Acq: 17 Feb 2016 12:52

Instrument :
 BNA_G
 ClientSampleId :
 0311-S02-0003

Tot Ion:163 Resp: 66001

Ion	Ratio	Lower	Upper
163	100		
194	3.8	3.0	4.6
164	9.7	7.7	11.5

