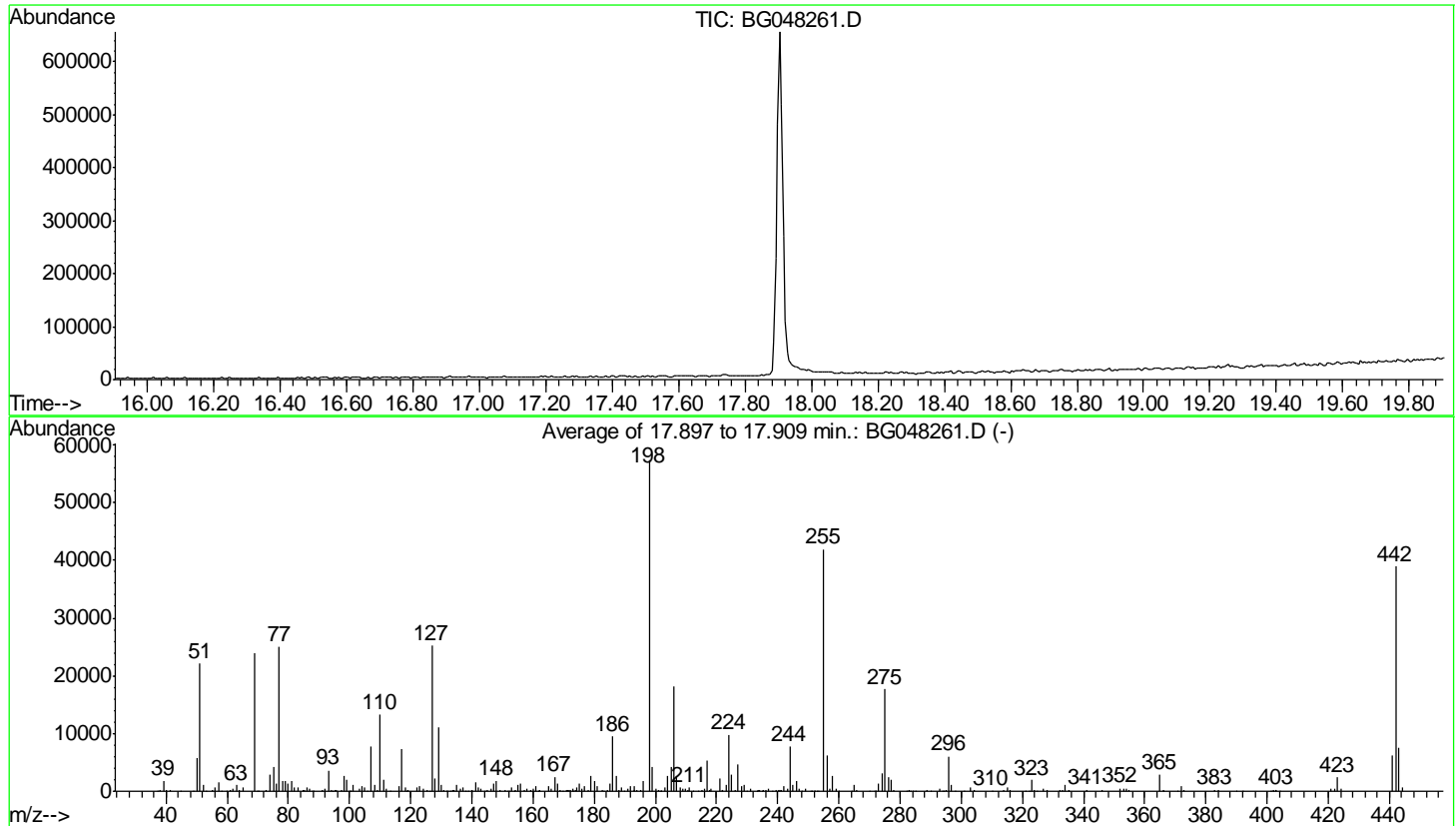


Data Path : Z:\svoasrv\HPCHEM1\BNA_G\Data\BG022221\
 Data File : BG048261.D
 Acq On : 22 Feb 2021 9:05
 Operator : CG/JU
 Sample : DFTPP86
 Misc :
 ALS Vial : 1 Sample Multiplier: 1

Instrument :
 BNA_G
 ClientSampleId :
 DFTPP86

Integration File: LSCINT.P

Method : Z:\SVOASRV\HPCHEM1\BNA_G\METHODS\SOM-EPA-BG021321MA.M
 Title : SVOA CALIBRATION
 Last Update : Tue Feb 23 15:02:00 2021



AutoFind: Scans 2478, 2479, 2480; Background Corrected with Scan 2472

Target Mass	Rel. to Mass	Lower Limit%	Upper Limit%	Rel. Abn%	Raw Abn	Result Pass/Fail
51	198	10	80	38.5	22106	PASS
68	69	0.00	2	0.0	0	PASS
69	198	0.00	100	41.8	24000	PASS
70	69	0.00	2	0.3	68	PASS
127	198	10	80	44.0	25218	PASS
197	198	0.00	2	0.0	0	PASS
198	198	100	100	100.0	57352	PASS
199	198	5	9	7.5	4301	PASS
275	198	10	60	30.8	17658	PASS
365	198	1	100	4.9	2822	PASS
441	198	0.01	100	11.0	6284	PASS
442	198	50	100	67.8	38880	PASS
443	442	15	24	19.4	7536	PASS

m/z	Abundance
42.90	215.0
44.00	761.0
67.00	205.0
69.00	426.0
73.00	426.0
79.10	236.0
81.10	242.0
91.10	434.0
105.00	209.0
107.10	193.0
115.10	341.0
116.90	204.0
121.20	209.0
129.30	206.0
132.90	200.0
141.10	229.0
148.90	182.0
163.20	436.0
167.10	175.0
197.10	188.0
207.10	807.0
211.20	152.0
221.00	309.0
226.20	170.0
234.80	150.0
239.10	399.0
252.90	169.0
254.10	256.0
281.00	217.0
283.10	157.0
285.20	306.0

Instrument :
BNA_G
ClientSampleId :
DFTPP86

m/z	Abundance
38.20	262.0
39.10	1962.0
40.00	272.0
41.20	253.0
43.10	280.0
44.00	485.0
50.10	6127.0
51.10	22128.0
52.10	920.0
53.00	280.0
55.00	246.0
56.00	619.0
57.10	1692.0
59.90	154.0
61.10	476.0
62.00	280.0
63.00	1219.0
65.00	589.0
67.10	170.0
69.00	24536.0
69.90	158.0
72.90	404.0
74.00	3059.0
75.10	4508.0
76.10	1014.0
77.10	25568.0
78.10	1573.0
79.00	2123.0
80.00	921.0
81.10	2045.0
82.00	665.0
83.00	440.0
84.90	420.0
86.00	641.0
87.10	731.0
87.90	292.0
91.10	615.0
92.10	277.0
93.00	4441.0
95.20	303.0
95.80	232.0
98.00	2276.0
99.00	1735.0
100.20	269.0
101.00	1080.0
103.00	566.0
104.00	829.0
105.00	887.0
105.90	173.0
107.00	7834.0
108.10	1478.0
109.00	452.0
110.00	12964.0
111.00	1736.0
112.00	391.0
113.10	201.0
116.20	525.0
117.00	6957.0
118.00	934.0
119.10	202.0
121.00	205.0
122.10	500.0
123.10	974.0
124.00	444.0
125.20	242.0
127.00	24184.0
128.00	1697.0
129.00	10524.0
130.00	993.0
131.00	389.0
131.80	305.0
133.00	386.0
134.20	386.0
135.00	1346.0
135.90	158.0
137.10	556.0
138.00	161.0
139.90	214.0
141.00	1683.0
142.00	793.0
143.00	339.0
145.10	212.0
146.00	250.0
147.00	1235.0
148.00	1496.0
149.20	466.0
151.10	351.0
152.00	218.0
153.00	497.0
154.00	317.0
155.00	983.0
156.10	1394.0

Instrument :
BNA_G
ClientSampleId :
DFTPP86

156.90	318.0
157.90	416.0
159.00	219.0
160.10	346.0
161.00	763.0
162.20	218.0
163.20	273.0
165.00	606.0
167.00	2482.0
168.10	1213.0
168.90	290.0
170.90	184.0
171.80	237.0
172.80	340.0
173.90	661.0
175.00	1143.0
176.20	329.0
176.90	838.0
178.20	181.0
179.00	2368.0
180.00	1798.0
180.90	770.0
182.90	189.0
184.10	270.0
185.00	1246.0
186.00	7181.0
187.00	2725.0
189.10	746.0
191.00	522.0
192.00	802.0
192.90	559.0
193.90	482.0
195.10	447.0
196.00	1573.0
198.00	48624.0
198.90	3873.0
200.10	413.0
201.40	245.0
202.00	211.0
203.10	454.0
204.00	2317.0
205.00	3823.0
206.00	16029.0
207.00	3113.0
208.00	721.0
209.00	526.0
210.00	296.0
211.10	660.0
212.10	246.0
215.00	266.0
215.90	275.0
216.90	4842.0
217.80	528.0
221.00	2026.0
221.80	831.0
222.90	1258.0
224.00	8423.0
225.00	2128.0
226.20	414.0
227.00	3514.0
228.00	1003.0
228.90	850.0
231.10	212.0
233.80	363.0
235.00	239.0
236.10	298.0
237.10	432.0
239.10	428.0
240.10	214.0
242.10	584.0
243.10	370.0
244.10	5417.0
245.00	989.0
245.90	1622.0
247.00	361.0
249.00	617.0
250.90	151.0
253.10	224.0
255.00	34744.0
256.00	4922.0
257.10	618.0
258.00	2509.0
259.00	513.0
265.10	652.0
270.00	190.0
273.00	1168.0
274.00	2500.0
275.00	13423.0
276.10	1982.0
277.00	1549.0
277.80	173.0
281.00	266.0
282.90	236.0
285.20	404.0
293.00	192.0
296.00	4693.0

Instrument :
BNA_G
ClientSampleId :
DFTPP86

296.90	1040.0
303.10	695.0
304.00	182.0
313.90	417.0
315.00	539.0
316.10	295.0
323.00	1643.0
323.90	225.0
327.00	316.0
333.10	249.0
334.00	769.0
335.00	414.0
340.80	170.0
345.80	247.0
352.00	311.0
353.10	214.0
353.90	440.0
365.00	2127.0
365.90	239.0
372.00	623.0
373.10	172.0
383.00	168.0
401.90	311.0
402.80	518.0
420.90	175.0
422.00	381.0
423.10	1560.0
424.00	371.0
441.10	3889.0
442.00	25528.0
443.00	4432.0
444.00	562.0

Instrument :
BNA_G
ClientSampleId :
DFTPP86

m/z	Abundance
37.00	220.0
38.20	306.0
39.10	2232.0
40.00	208.0
41.00	197.0
44.00	719.0
44.90	180.0
50.10	6741.0
51.10	26552.0
52.00	1412.0
55.00	324.0
56.00	771.0
57.00	1580.0
59.80	198.0
61.00	525.0
62.00	586.0
63.10	1139.0
64.10	363.0
65.10	503.0
67.00	156.0
69.00	28048.0
70.10	206.0
73.10	483.0
74.10	3433.0
75.00	5377.0
76.10	1795.0
77.10	28648.0
78.00	2695.0
79.00	2446.0
80.00	1765.0
81.00	2776.0
82.00	684.0
83.00	647.0
85.10	362.0
86.00	652.0
87.00	315.0
88.10	204.0
91.10	720.0
91.90	716.0
93.00	3603.0
94.10	339.0
94.60	177.0
95.90	350.0
97.20	267.0
98.00	3816.0
99.00	2520.0
100.90	1180.0
103.10	477.0
104.00	1011.0
105.10	967.0
107.10	10064.0
108.00	1078.0
110.00	16029.0
111.00	2465.0
112.00	472.0
116.10	1137.0
117.00	8657.0
118.00	699.0
119.00	276.0
121.00	178.0
122.10	819.0
123.00	1032.0
124.10	579.0
125.10	195.0
127.00	28920.0
128.10	2673.0
129.00	12380.0
130.10	1175.0
130.80	389.0
132.20	250.0
133.00	270.0
133.80	477.0
135.00	1082.0
136.00	686.0
137.10	769.0
140.10	234.0
141.00	2023.0
142.00	688.0
143.10	415.0
144.10	196.0
145.00	263.0
146.10	713.0
147.00	1510.0
148.00	2503.0
149.00	613.0
150.90	158.0
153.10	840.0
153.70	315.0
154.10	331.0
155.00	1124.0
156.10	1641.0
157.00	449.0

Instrument :
BNA_G
ClientSampleId :
DFTPP86

158.00	489.0
159.10	268.0
160.00	664.0
160.90	918.0
162.20	243.0
163.00	511.0
165.00	870.0
166.00	644.0
167.00	2659.0
168.00	1655.0
169.00	196.0
169.80	170.0
170.80	260.0
171.10	240.0
172.00	446.0
173.10	838.0
174.10	932.0
175.10	1646.0
176.00	328.0
177.00	927.0
178.10	500.0
179.00	3331.0
180.00	1887.0
181.00	907.0
182.70	245.0
184.00	225.0
185.10	1557.0
186.00	12822.0
187.00	3197.0
188.00	220.0
188.90	777.0
189.90	176.0
191.00	419.0
191.90	1322.0
193.10	1751.0
193.90	199.0
195.10	224.0
196.10	2395.0
198.00	67728.0
199.00	4473.0
200.10	610.0
201.10	355.0
201.70	172.0
203.10	776.0
204.00	3578.0
205.00	5121.0
206.00	22016.0
207.10	3988.0
208.00	907.0
208.90	338.0
209.90	463.0
211.10	929.0
214.10	170.0
215.00	183.0
216.00	676.0
217.00	5634.0
218.00	874.0
221.10	2733.0
222.90	1268.0
224.00	11482.0
225.00	3572.0
226.00	215.0
227.00	6716.0
228.00	777.0
229.00	1146.0
230.00	286.0
231.00	487.0
233.00	179.0
233.80	243.0
234.80	264.0
235.10	242.0
236.00	303.0
236.90	513.0
239.10	465.0
240.90	251.0
241.30	249.0
242.00	964.0
243.00	571.0
244.00	9698.0
245.00	1400.0
245.90	2122.0
247.00	350.0
248.90	440.0
251.10	344.0
252.10	297.0
253.30	269.0
255.00	49296.0
256.00	7420.0
256.90	581.0
258.00	3618.0
259.00	687.0
264.20	213.0
264.90	1596.0
266.00	270.0
271.70	151.0
272.90	1561.0

Instrument :
BNA_G
ClientSampleId :
DFTPP86

274.00	4025.0
275.00	22280.0
276.00	2859.0
277.00	2432.0
277.90	333.0
281.10	333.0
281.90	209.0
282.80	175.0
283.20	204.0
284.00	278.0
285.10	356.0
288.90	386.0
292.90	522.0
293.80	165.0
296.00	7372.0
296.90	1070.0
298.10	198.0
300.90	192.0
303.00	791.0
304.10	217.0
310.00	175.0
313.90	352.0
315.10	841.0
316.10	268.0
321.10	213.0
322.00	235.0
323.10	2081.0
323.90	262.0
324.90	177.0
326.80	463.0
328.00	196.0
332.20	206.0
334.00	1338.0
335.20	261.0
340.90	315.0
345.90	401.0
352.00	524.0
353.00	400.0
354.00	494.0
355.00	300.0
365.00	3176.0
366.10	586.0
370.80	202.0
372.00	1266.0
372.90	396.0
382.90	477.0
383.90	181.0
389.80	269.0
391.80	170.0
401.00	158.0
401.90	313.0
403.00	578.0
404.00	180.0
421.00	639.0
422.00	275.0
423.00	3053.0
424.10	487.0
441.00	7550.0
442.00	44408.0
443.00	9664.0
444.10	980.0

Instrument :
BNA_G
ClientSampleId :
DFTPP86

m/z	Abundance
38.10	274.0
39.00	1351.0
40.10	335.0
41.20	406.0
44.10	563.0
48.90	163.0
50.10	4271.0
51.10	17640.0
52.10	747.0
55.00	329.0
56.00	632.0
57.00	1285.0
57.90	299.0
62.00	305.0
63.10	928.0
65.00	618.0
67.10	235.0
69.00	20696.0
73.00	617.0
74.00	2244.0
75.00	2826.0
76.10	914.0
77.00	20824.0
78.20	1350.0
79.10	1680.0
80.00	1284.0
81.00	1510.0
81.90	364.0
83.10	700.0
85.00	262.0
86.00	518.0
87.10	409.0
91.10	763.0
92.00	592.0
93.00	2657.0
93.90	200.0
95.00	184.0
97.20	209.0
97.90	2026.0
99.00	2000.0
99.90	216.0
101.00	892.0
103.10	588.0
104.00	614.0
104.90	607.0
105.90	169.0
107.00	5901.0
108.00	948.0
109.10	372.0
110.00	10643.0
111.00	1620.0
112.00	233.0
116.00	797.0
117.00	6712.0
118.10	679.0
118.80	157.0
122.10	474.0
123.10	694.0
124.00	516.0
125.10	356.0
126.00	171.0
127.00	22552.0
128.10	1979.0
129.00	10140.0
130.00	1069.0
131.00	174.0
133.00	268.0
134.00	249.0
135.00	985.0
136.10	426.0
137.00	405.0
138.00	191.0
138.80	197.0
139.90	171.0
141.10	1501.0
142.00	636.0
143.10	383.0
145.00	206.0
146.00	199.0
147.00	1160.0
148.00	1342.0
149.10	433.0
151.00	272.0
151.50	210.0
153.00	838.0
154.00	290.0
155.00	1294.0
156.00	1148.0
158.10	247.0
158.90	215.0
160.10	480.0
161.00	768.0

Instrument :
BNA_G
ClientSampleId :
DFTPP86

161.90	184.0
163.20	254.0
165.00	945.0
165.90	686.0
167.00	2794.0
168.00	1214.0
168.90	342.0
171.20	307.0
171.80	315.0
173.10	483.0
174.00	902.0
175.10	1205.0
175.90	382.0
176.90	745.0
178.90	2311.0
180.10	1575.0
181.00	858.0
183.10	226.0
184.20	314.0
184.90	948.0
186.00	8513.0
187.10	2315.0
188.00	315.0
188.90	728.0
191.10	666.0
192.00	663.0
193.00	930.0
194.00	271.0
196.00	1523.0
198.00	55704.0
199.00	4557.0
200.10	213.0
203.00	526.0
204.00	2391.0
205.00	3564.0
206.00	16202.0
207.00	3387.0
208.00	665.0
209.00	299.0
209.80	271.0
210.40	392.0
211.00	716.0
215.00	500.0
216.10	602.0
217.00	5409.0
218.00	627.0
221.00	2537.0
222.00	579.0
223.00	1069.0
224.00	9530.0
225.00	2831.0
226.00	421.0
227.00	4028.0
228.10	782.0
229.00	1173.0
230.90	553.0
234.00	489.0
235.20	430.0
237.00	468.0
238.30	263.0
238.90	270.0
239.40	355.0
240.10	234.0
240.90	300.0
241.30	207.0
242.10	1050.0
243.10	379.0
244.00	7958.0
245.00	1141.0
246.00	1508.0
246.90	317.0
248.00	154.0
249.00	188.0
251.80	216.0
252.90	296.0
255.00	41648.0
256.00	6128.0
257.00	460.0
258.00	2093.0
259.10	346.0
260.10	198.0
265.00	1253.0
265.90	229.0
271.90	261.0
273.00	1427.0
274.00	2757.0
275.00	17272.0
276.00	2788.0
277.00	1822.0
283.00	233.0
285.00	350.0
289.90	236.0
293.00	352.0
294.00	210.0
295.10	364.0
296.00	6066.0

Instrument :
BNA_G
ClientSampleId :
DFTPP86

296.90	1036.0
303.00	725.0
304.10	331.0
313.90	240.0
314.90	528.0
316.00	346.0
323.10	2220.0
324.00	300.0
327.00	476.0
328.00	226.0
332.00	156.0
333.10	216.0
334.00	1501.0
335.00	251.0
341.00	320.0
345.80	365.0
352.00	697.0
353.00	430.0
354.00	515.0
354.90	194.0
364.90	3165.0
366.00	167.0
372.00	987.0
383.00	262.0
383.90	229.0
402.10	345.0
403.10	362.0
421.00	271.0
422.00	385.0
423.00	2629.0
424.10	586.0
441.00	7415.0
442.00	46704.0
443.00	8514.0
444.00	802.0

Instrument :
BNA_G
ClientSampleId :
DFTPP86