

Data Path : U:\HPCHEM1\BNA G\DATA\BG022416\  
 Data File : BG021058.D  
 Acq On : 24 Feb 2016 19:12  
 Operator : UM/SJ  
 Sample : H1520-13  
 Misc :  
 ALS Vial : 5 Sample Multiplier: 1

Instrument :  
 BNA\_G  
 ClientSampleId :

Quant Time: Feb 24 23:58:32 2016  
 Quant Method : Z:\HPCHEM1\BNA G\METHODS\8270-BG022316.M  
 Quant Title : ASP BNA STANDARDS FOR 5 POINT CALIBRATION  
 QLast Update : Wed Feb 24 00:35:06 2016  
 Response via : Initial Calibration

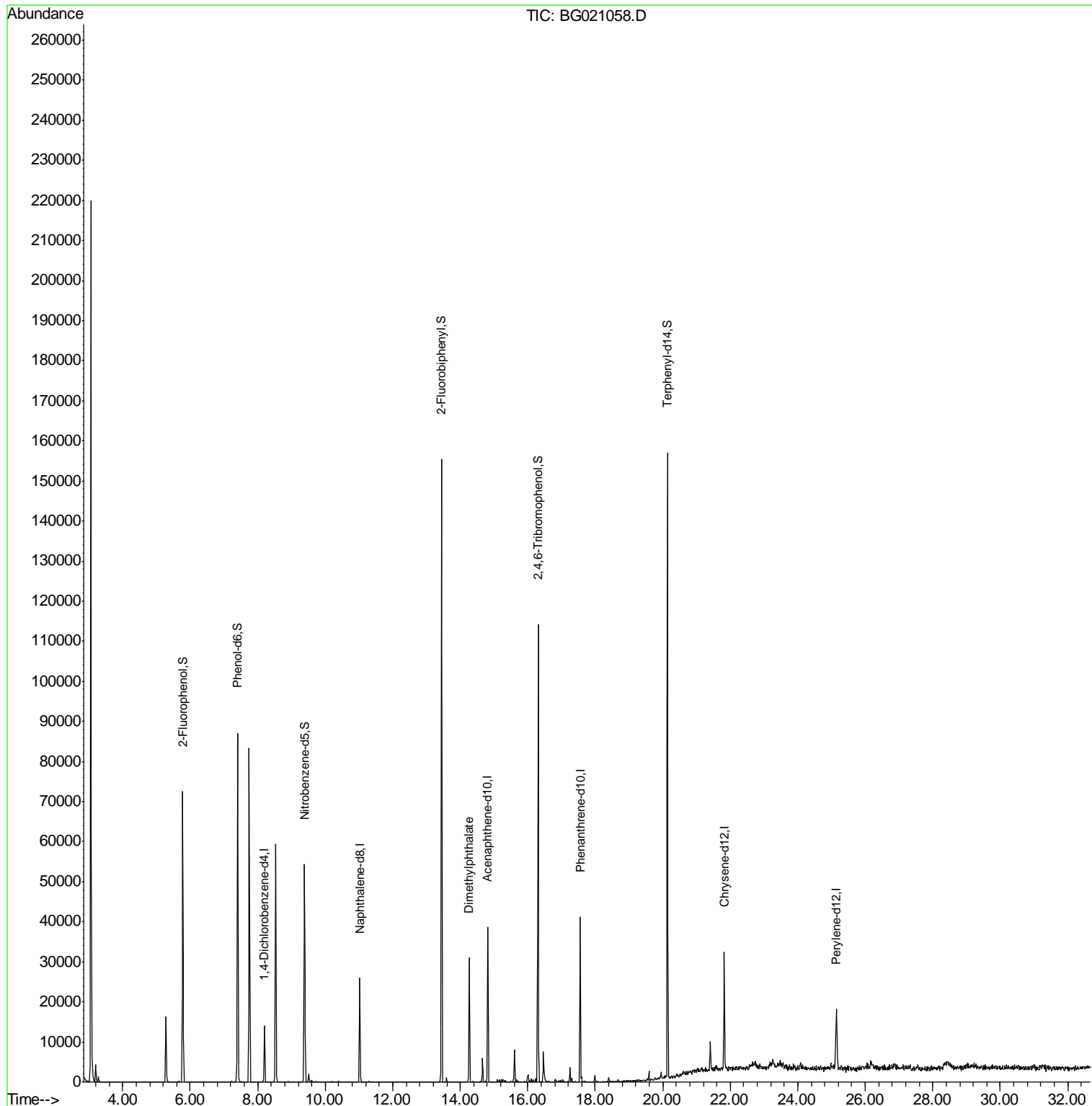
Internal Standards	R.T.	QIon	Response	Conc	Units	Dev(Min)
1) 1,4-Dichlorobenzene-d4	8.20	152	4317	20.00	ng	0.00
21) Naphthalene-d8	11.03	136	23415	20.00	ng	0.00
38) Acenaphthene-d10	14.82	164	13918	20.00	ng	0.00
63) Phenanthrene-d10	17.55	188	24905	20.00	ng	0.00
75) Chrysene-d12	21.82	240	18210	20.00	ng	0.00
86) Perylene-d12	25.15	264	17309	20.00	ng	0.00
System Monitoring Compounds						
5) 2-Fluorophenol	5.78	112	34522	140.20	ng	0.00
7) Phenol-d6	7.41	99	54775	144.44	ng	0.00
23) Nitrobenzene-d5	9.39	82	35405	88.78	ng	0.00
41) 2,4,6-Tribromophenol	16.31	330	20370	122.17	ng	0.00
44) 2-Fluorobiphenyl	13.45	172	75673	75.69	ng	0.00
78) Terphenyl-d14	20.14	244	63019	44.91	ng	0.00
Target Compounds						Qvalue
49) Dimethylphthalate	14.27	163	20096	17.71	ng	98

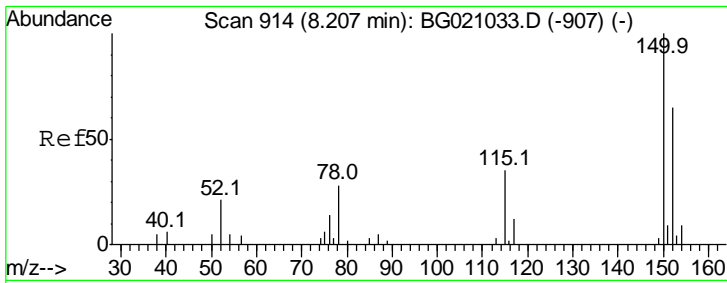
(#) = qualifier out of range (m) = manual integration (+) = signals summed

Data Path : U:\HPCHEM1\BNA G\DATA\BG022416\  
 Data File : BG021058.D  
 Acq On : 24 Feb 2016 19:12  
 Operator : UM/SJ  
 Sample : H1520-13  
 Misc :  
 ALS Vial : 5 Sample Multiplier: 1

Instrument :  
 BNA\_G  
 ClientSampleId :

Quant Time: Feb 24 23:58:32 2016  
 Quant Method : Z:\HPCHEM1\BNA G\METHODS\8270-BG022316.M  
 Quant Title : ASP BNA STANDARDS FOR 5 POINT CALIBRATION  
 QLast Update : Wed Feb 24 00:35:06 2016  
 Response via : Initial Calibration

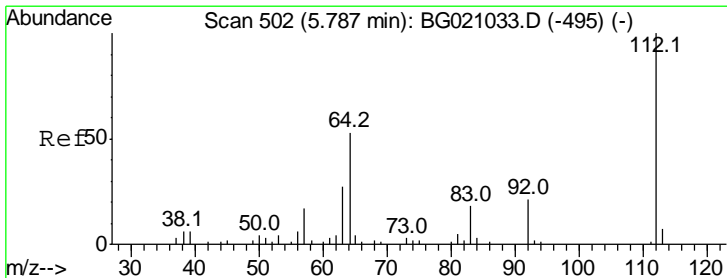
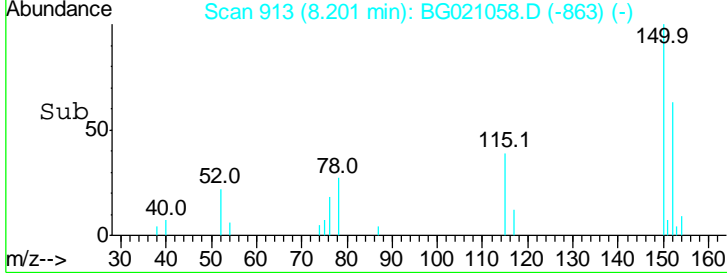
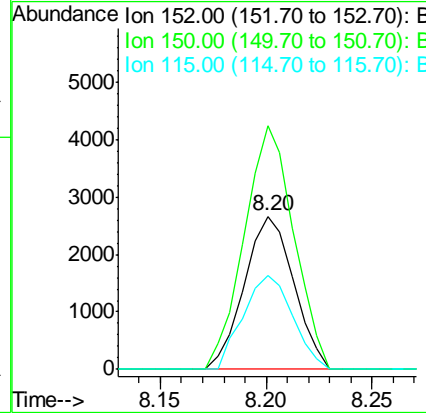
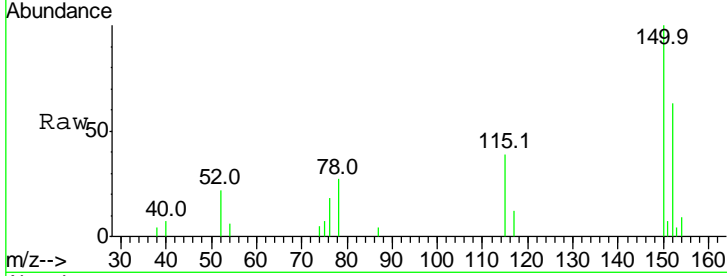




#1  
 1,4-Dichlorobenzene-d4  
 Concen: 20.00 ng  
 RT: 8.20 min Scan# 913  
 Delta R.T. -0.01 min  
 Lab File: BG021058.D  
 Acq: 24 Feb 2016 19:12

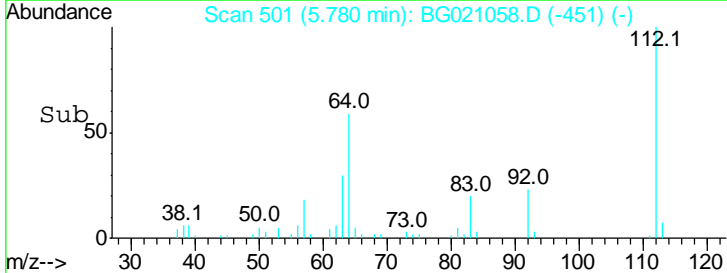
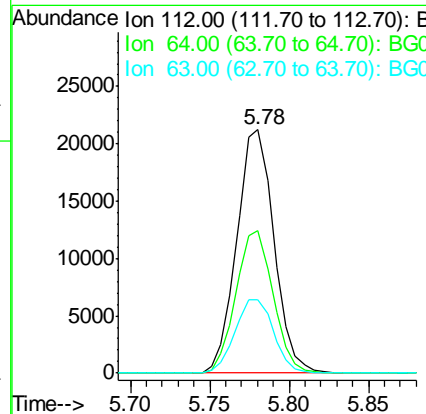
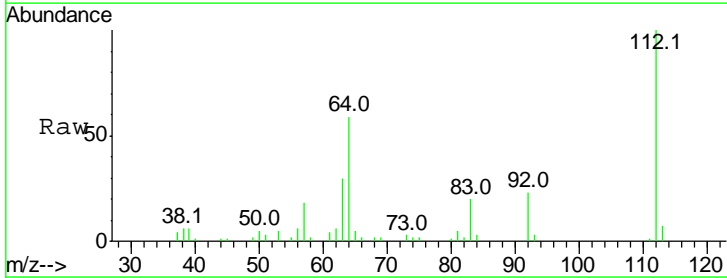
Instrument :  
 BNA\_G  
 ClientSampled :

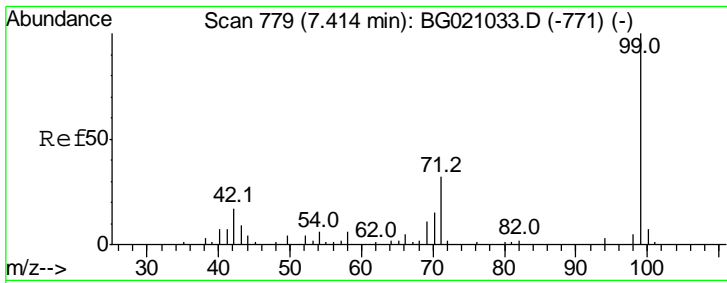
Tgt Ion	Resp	Lower	Upper
152	4317		
150	159.2	123.4	185.2
115	61.3	43.3	64.9



#5  
 2-Fluorophenol  
 Concen: 140.20 ng  
 RT: 5.78 min Scan# 501  
 Delta R.T. -0.01 min  
 Lab File: BG021058.D  
 Acq: 24 Feb 2016 19:12

Tgt Ion	Resp	Lower	Upper
112	34522		
64	58.8	42.6	63.8
63	30.3	21.7	32.5

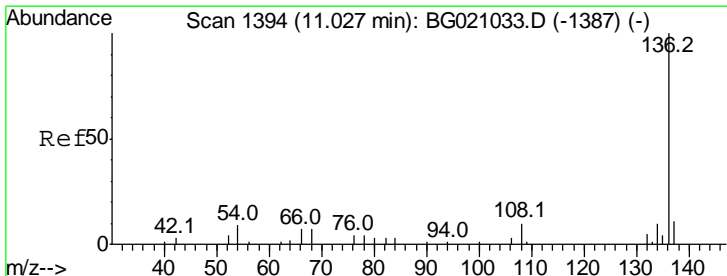
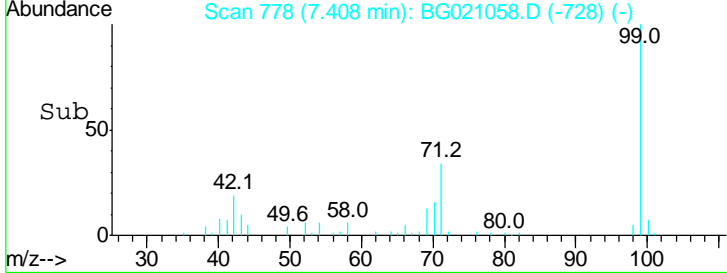
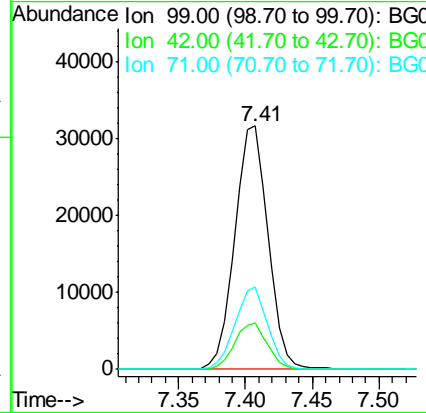
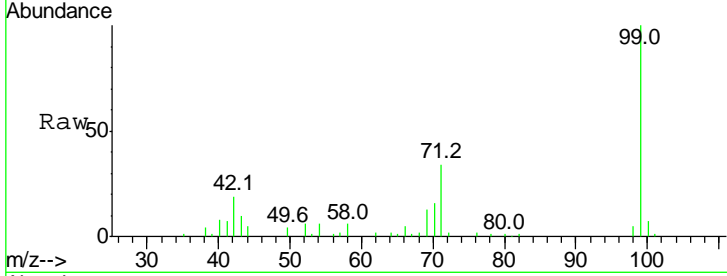




#7  
 Phenol-d6  
 Concen: 144.44 ng  
 RT: 7.41 min Scan# 778  
 Delta R.T. -0.01 min  
 Lab File: BG021058.D  
 Acq: 24 Feb 2016 19:12

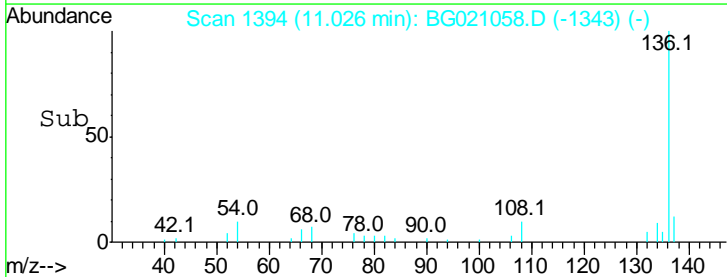
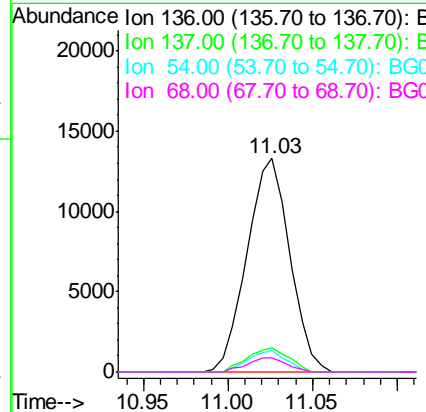
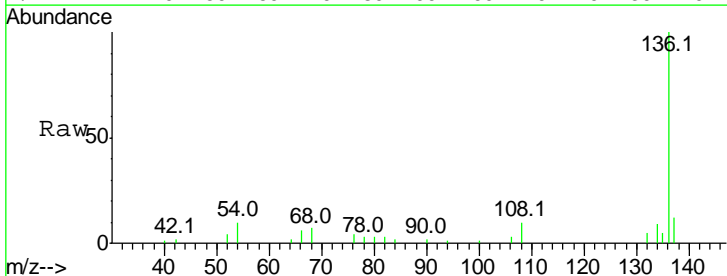
Instrument :  
 BNA\_G  
 ClientSampled :

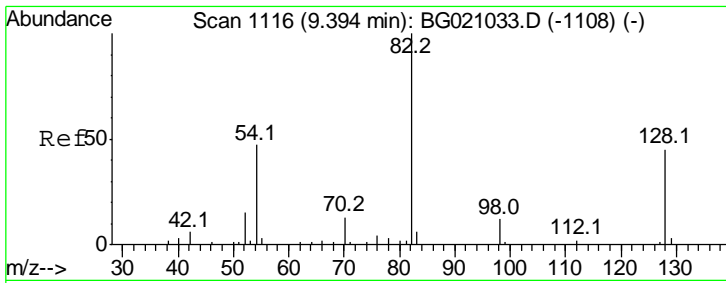
Tgt Ion	Resp	Lower	Upper
99	54775		
99	100		
42	19.2	13.2	19.8
71	33.8	25.2	37.8



#21  
 Naphthalene-d8  
 Concen: 20.00 ng  
 RT: 11.03 min Scan# 1394  
 Delta R.T. -0.00 min  
 Lab File: BG021058.D  
 Acq: 24 Feb 2016 19:12

Tgt Ion	Resp	Lower	Upper
136	23415		
136	100		
137	11.7	8.8	13.2
54	10.1	6.9	10.3
68	6.8	5.8	8.6

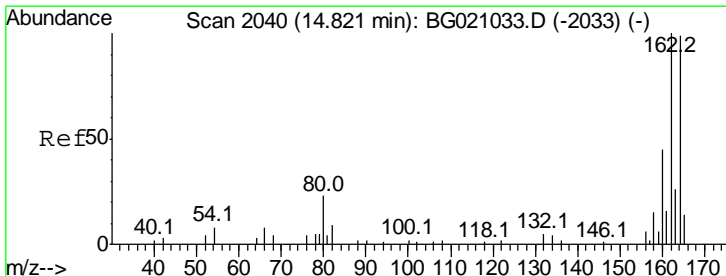
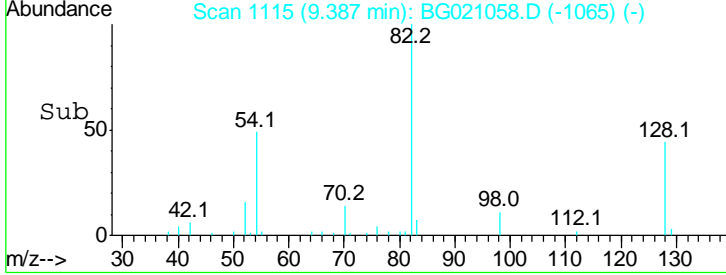
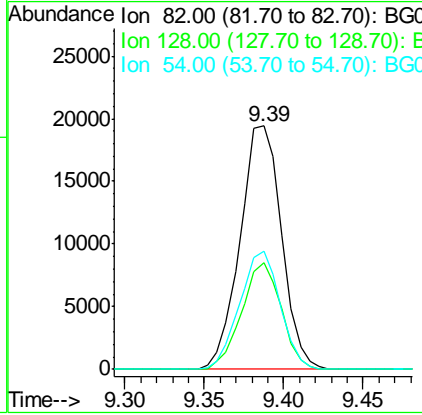
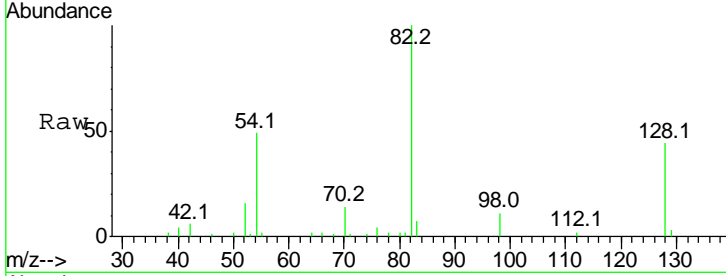




#23  
 Nitrobenzene-d5  
 Concen: 88.78 ng  
 RT: 9.39 min Scan# 1115  
 Delta R.T. -0.01 min  
 Lab File: BG021058.D  
 Acq: 24 Feb 2016 19:12

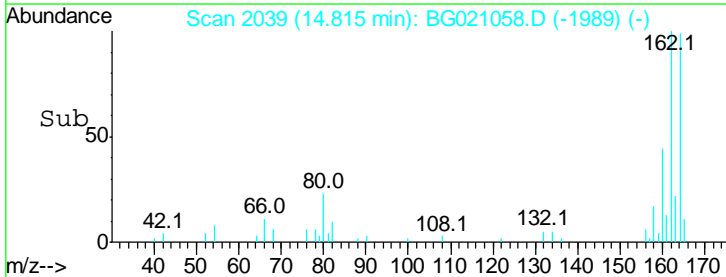
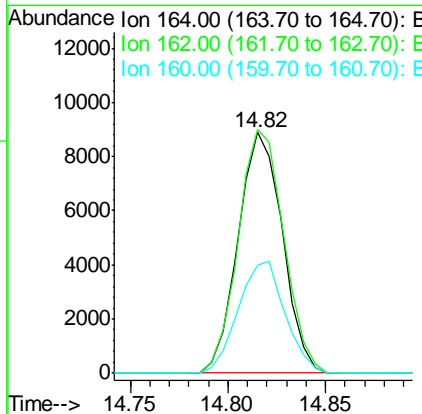
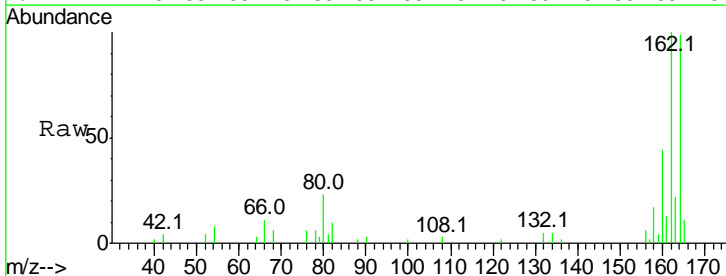
Instrument :  
 BNA\_G  
 ClientSampled :

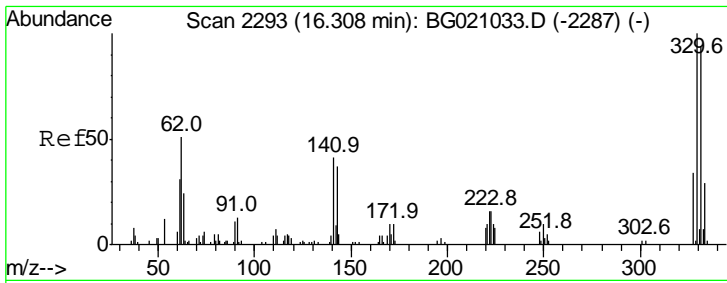
Tgt Ion	Resp	Lower	Upper
82	100		
128	43.9	36.3	54.5
54	48.5	37.6	56.4



#38  
 Acenaphthene-d10  
 Concen: 20.00 ng  
 RT: 14.82 min Scan# 2039  
 Delta R.T. -0.01 min  
 Lab File: BG021058.D  
 Acq: 24 Feb 2016 19:12

Tgt Ion	Resp	Lower	Upper
164	100		
162	101.2	80.6	120.8
160	44.6	36.5	54.7

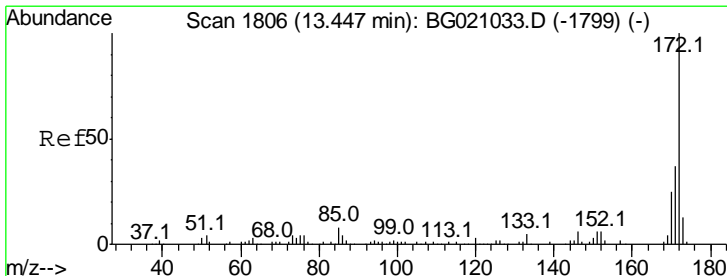
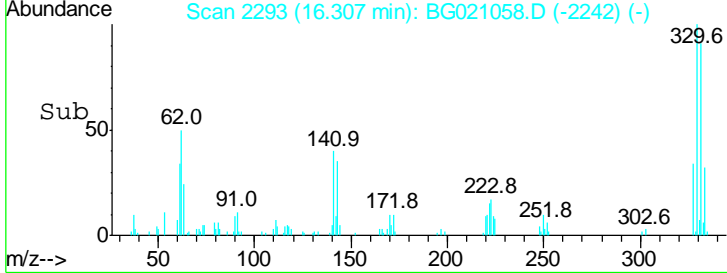
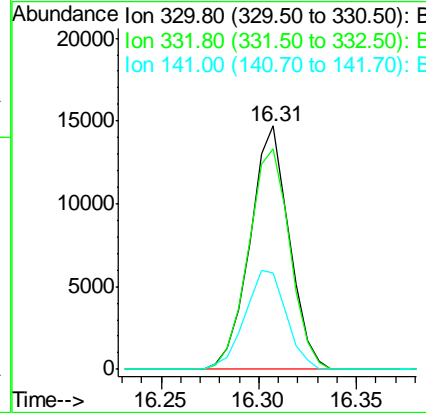
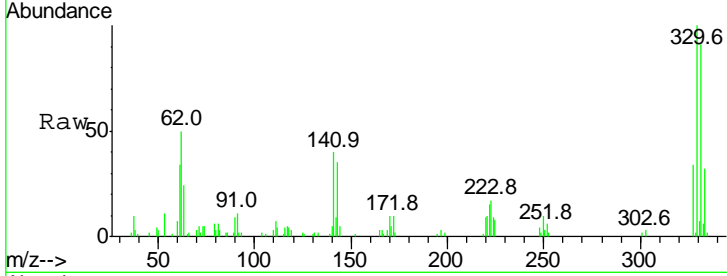




#41  
 2,4,6-Tribromophenol  
 Concen: 122.17 ng  
 RT: 16.31 min Scan# 2293  
 Delta R.T. -0.00 min  
 Lab File: BG021058.D  
 Acq: 24 Feb 2016 19:12

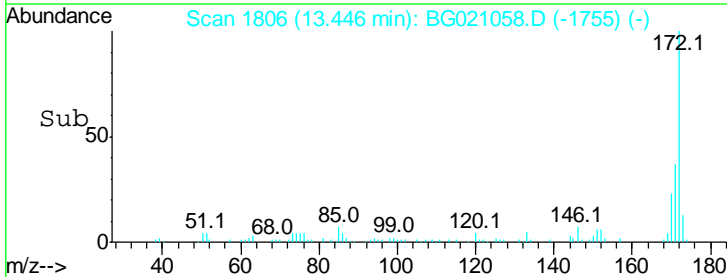
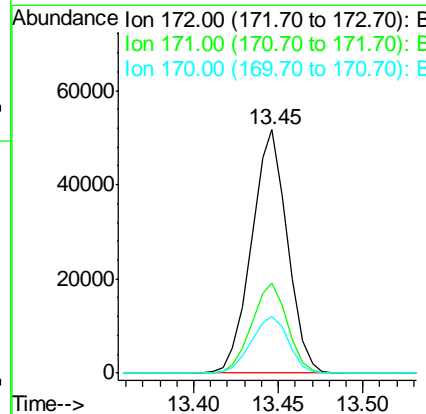
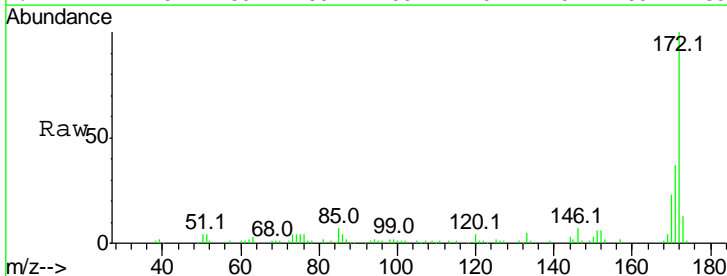
Instrument :  
 BNA\_G  
 ClientSampled :

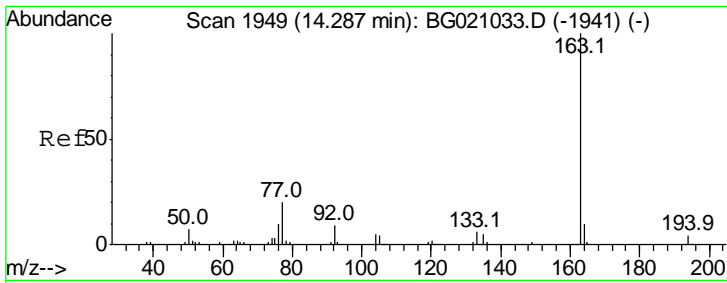
Tgt Ion	Resp	Lower	Upper
330	100		
332	95.8	77.4	116.0
141	43.0	35.3	52.9



#44  
 2-Fluorobiphenyl  
 Concen: 75.69 ng  
 RT: 13.45 min Scan# 1806  
 Delta R.T. -0.00 min  
 Lab File: BG021058.D  
 Acq: 24 Feb 2016 19:12

Tgt Ion	Resp	Lower	Upper
172	100		
171	37.2	29.4	44.0
170	23.2	19.8	29.8



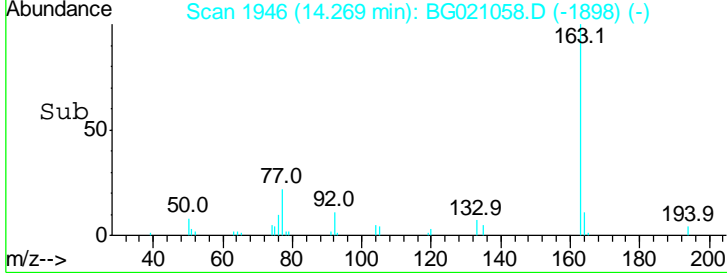
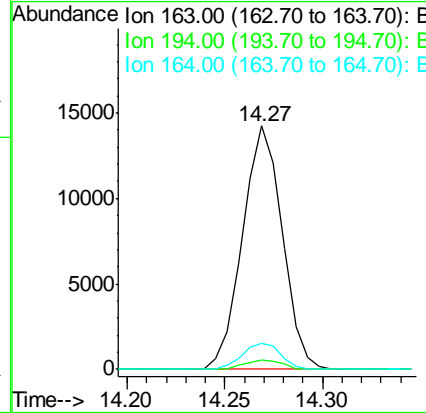
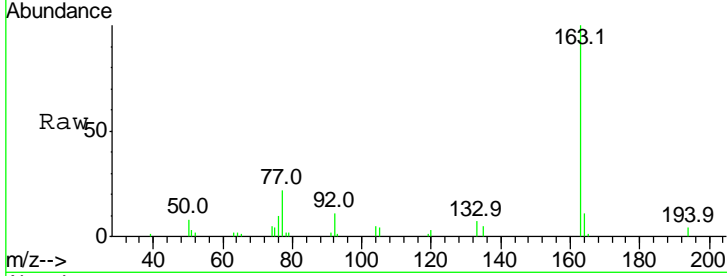


#49  
 Dimethylphthalate  
 Concen: 17.71 ng  
 RT: 14.27 min Scan# 1946  
 Delta R.T. -0.02 min  
 Lab File: BG021058.D  
 Acq: 24 Feb 2016 19:12

Instrument :  
 BNA\_G  
 ClientSampled :

Tgt Ion:163 Resp: 20096

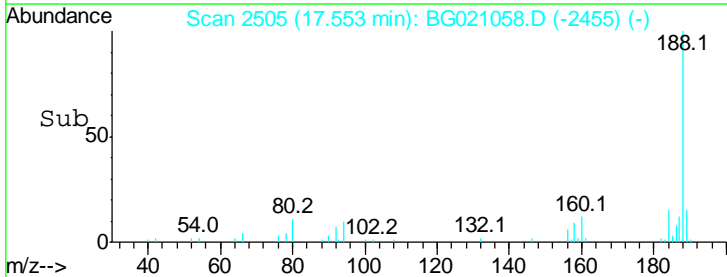
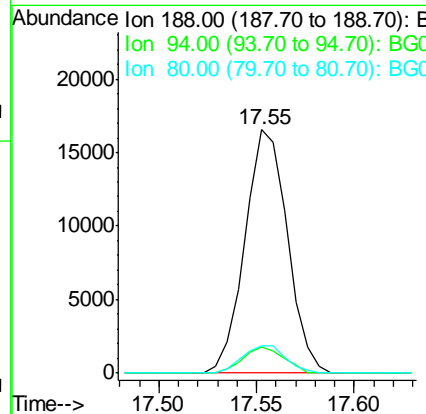
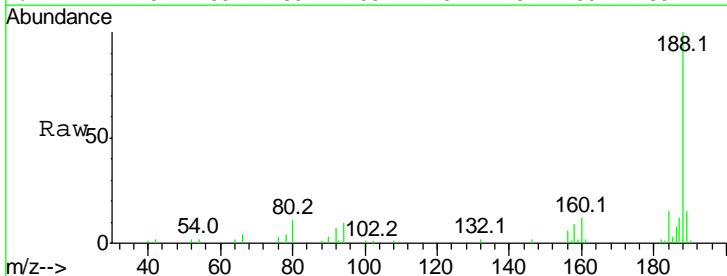
Ion	Ratio	Lower	Upper
163	100		
194	3.8	2.8	4.2
164	10.7	7.9	11.9

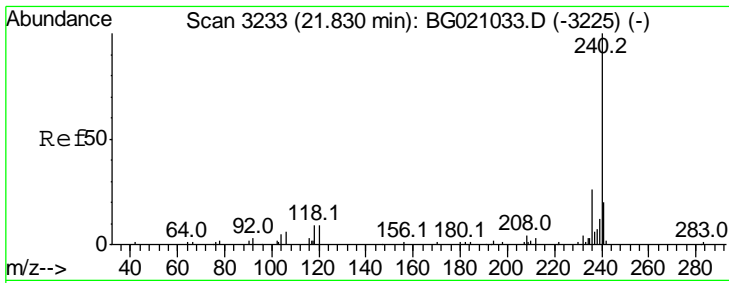


#63  
 Phenanthrene-d10  
 Concen: 20.00 ng  
 RT: 17.55 min Scan# 2505  
 Delta R.T. -0.01 min  
 Lab File: BG021058.D  
 Acq: 24 Feb 2016 19:12

Tgt Ion:188 Resp: 24905

Ion	Ratio	Lower	Upper
188	100		
94	10.5	8.2	12.4
80	11.2	9.2	13.8

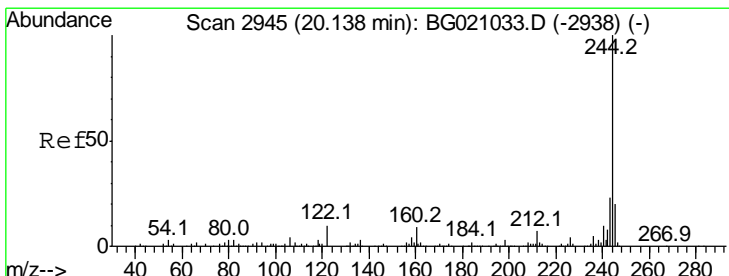
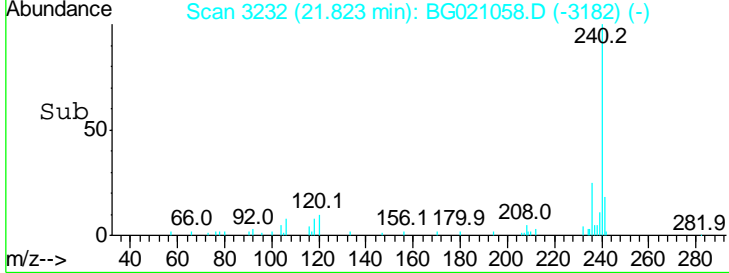
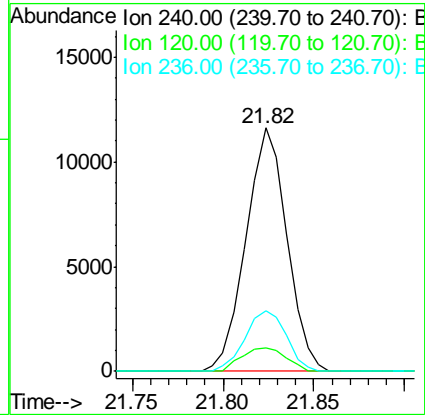
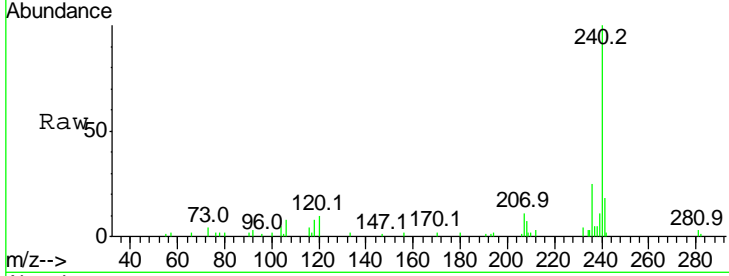




#75  
 Chrysene-d12  
 Concen: 20.00 ng  
 RT: 21.82 min Scan# 3232  
 Delta R.T. -0.01 min  
 Lab File: BG021058.D  
 Acq: 24 Feb 2016 19:12

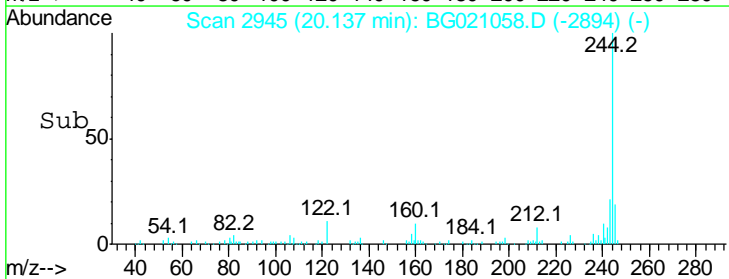
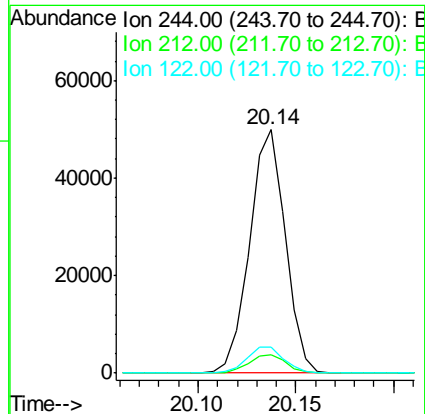
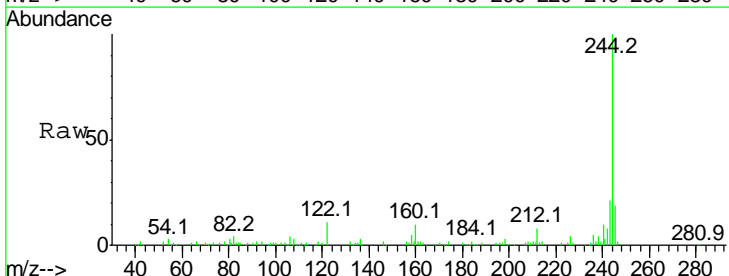
Instrument :  
 BNA\_G  
 ClientSampled :

Tgt Ion	Ratio	Lower	Upper
240	100		
120	9.6	7.5	11.3
236	25.0	20.5	30.7

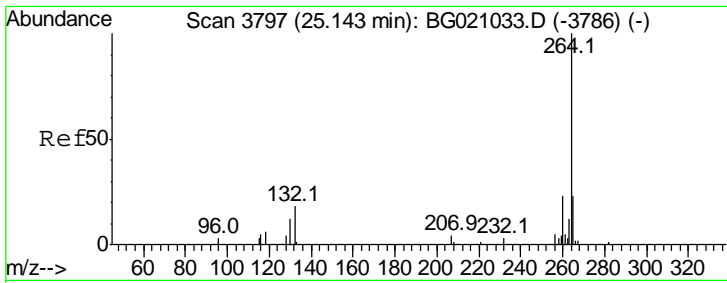


#78  
 Terphenyl-d14  
 Concen: 44.91 ng  
 RT: 20.14 min Scan# 2945  
 Delta R.T. -0.00 min  
 Lab File: BG021058.D  
 Acq: 24 Feb 2016 19:12

Tgt Ion	Ratio	Lower	Upper
244	100		
212	7.7	5.8	8.6
122	10.7	8.3	12.5







#86  
 Perylene-d12  
 Concen: 20.00 ng  
 RT: 25.15 min Scan# 3798  
 Delta R.T. 0.01 min  
 Lab File: BG021058.D  
 Acq: 24 Feb 2016 19:12

Instrument :  
 BNA\_G  
 ClientSampled :

Tot Ion	Ion	Resp	Lower	Upper
17309	264	100		
	260	25.4	18.5	27.7
	265	21.3	18.6	28.0

