

Data Path : Z:\SVOASRV\HPCHEM1\BNA G\DATA\BG022520\
 Data File : BG044587.D
 Acq On : 25 Feb 2020 21:54
 Operator : CG/JU
 Sample : L1655-01
 Misc :
 ALS Vial : 9 Sample Multiplier: 1

Instrument :
 BNA_G
 ClientSampleId :

Quant Time: Feb 26 05:02:47 2020
 Quant Method : Z:\SVOASRV\HPCHEM1\BNA G\METHODS\8270-BG022420.M
 Quant Title : ASP BNA STANDARDS FOR 5 POINT CALIBRATION
 QLast Update : Mon Feb 24 16:11:23 2020
 Response via : Initial Calibration

Internal Standards	R.T.	QIon	Response	Conc	Units	Dev(Min)
1) 1,4-Dichlorobenzene-d4	7.87	152	60743	20.00	ng	0.00
21) Naphthalene-d8	10.68	136	242832	20.00	ng	0.00
39) Acenaphthene-d10	14.52	164	162212	20.00	ng	0.00
64) Phenanthrene-d10	17.26	188	386012	20.00	ng	0.00
76) Chrysene-d12	21.50	240	376500	20.00	ng	0.00
87) Perylene-d12	24.57	264	412884	20.00	ng	0.00

System Monitoring Compounds

5) 2-Fluorophenol	5.45	112	445752	117.74	ng	0.00
7) Phenol-d6	7.05	99	570309	110.05	ng	0.00
23) Nitrobenzene-d5	9.03	82	344332	73.05	ng	0.00
42) 2,4,6-Tribromophenol	16.01	330	255471	111.07	ng	0.00
45) 2-Fluorobiphenyl	13.14	172	835615	73.77	ng	0.00
79) Terphenyl-d14	19.88	244	1521951	76.52	ng	0.00

Target Compounds

						Qvalue
2) 1,4-Dioxane	3.33	88	123	0.074	ng	# 1
4) n-Nitrosodimethylamine	3.63	42	68	0.039	ng	# 1
9) Benzaldehyde	7.05	77	835	0.274	ng	# 1
10) Phenol	7.07	94	4674	0.931	ng	# 34
15) Benzyl Alcohol	8.20	79	5849	1.674	ng	# 45
19) n-Nitroso-di-n-propylamine	9.03	70	43544	13.072	ng	# 78
24) Nitrobenzene	9.03	77	929	0.203	ng	# 34
25) Isophorone	9.57	82	367	0.042	ng	# 65
31) Naphthalene	10.73	128	55	0.004	ng	# 68
46) 1,1'-Biphenyl	13.35	154	2108	0.157	ng	# 90
48) 2-Nitroaniline	13.98	65	131	0.045	ng	# 1
50) Dimethylphthalate	13.98	163	26345	2.012	ng	# 99
51) 2,6-Dinitrotoluene	14.52	165	20835	7.216	ng	# 32
52) Acenaphthene	14.51	154	594	0.060	ng	# 5
55) Dibenzofuran	14.93	168	53	0.003	ng	# 46
57) 2,4-Dinitrotoluene	14.52	165	20835	5.132	ng	# 31
58) Fluorene	16.01	166	11006	0.914	ng	# 94
60) Diethylphthalate	15.34	149	364	0.028	ng	# 57
63) Azobenzene	16.00	77	1236	0.112	ng	# 1
65) 4,6-Dinitro-2-methylphenol	16.01	198	687	0.287	ng	# 1
66) n-Nitrosodiphenylamine	16.01	169	8183	0.680	ng	# 47
67) 4-Bromophenyl-phenylether	16.01	248	17169	3.583	ng	# 1
71) Phenanthrene	17.30	178	310	0.015	ng	# 58
72) Anthracene	17.30	178	310	0.015	ng	# 59
74) Di-n-butylphthalate	18.23	149	1647	0.069	ng	# 77
75) Fluoranthene	19.32	202	287	0.011	ng	# 62
77) Benzidine	19.88	184	23112	1.792	ng	# 92
78) Pyrene	19.68	202	303	0.011	ng	# 55
80) Butylbenzylphthalate	20.56	149	207	0.017	ng	# 26
81) Benzo(a)anthracene	21.50	228	1703	0.064	ng	# 64
82) 3,3'-Dichlorobenzidine	21.03	252	57	0.005	ng	# 25
83) Chrysene	21.55	228	463	0.018	ng	# 47
84) Bis(2-ethylhexyl)phthalate	21.40	149	2486	0.151	ng	# 96
85) Di-n-octyl phthalate	22.55	149	1128	0.039	ng	# 80

Data Path : Z:\SVOASRV\HPCHEM1\BNA G\DATA\BG022520\
Data File : BG044587.D
Acq On : 25 Feb 2020 21:54
Operator : CG/JU
Sample : L1655-01
Misc :
ALS Vial : 9 Sample Multiplier: 1

Instrument :
BNA_G
ClientSampleId :

Quant Time: Feb 26 05:02:47 2020
Quant Method : Z:\SVOASRV\HPCHEM1\BNA G\METHODS\8270-BG022420.M
Quant Title : ASP BNA STANDARDS FOR 5 POINT CALIBRATION
QLast Update : Mon Feb 24 16:11:23 2020
Response via : Initial Calibration

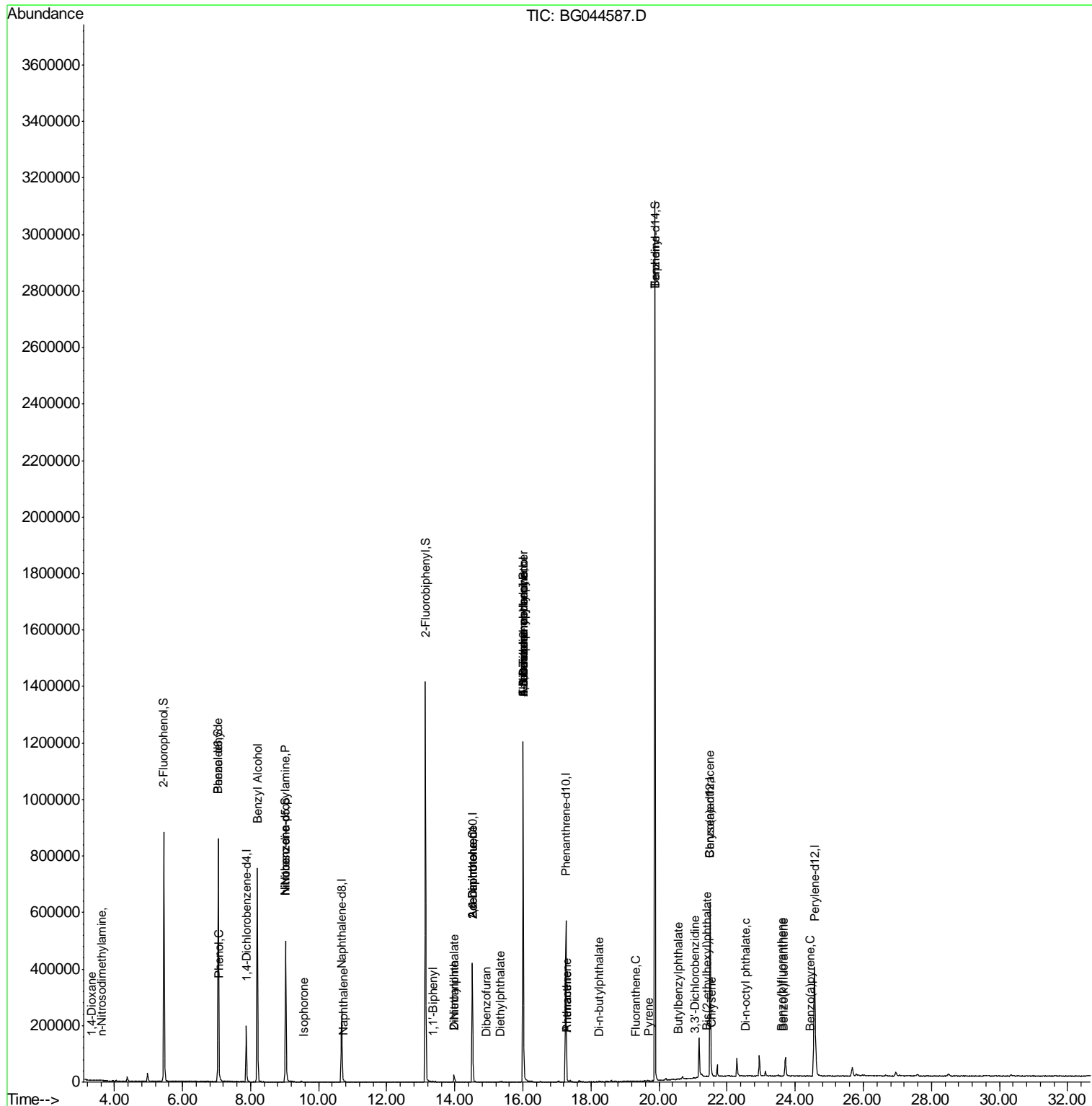
Internal Standards	R.T.	QIon	Response	Conc	Units	Dev(Min)
88) Benzo(b)fluoranthene	23.60	252	326	0.012	ng	# 59
89) Benzo(k)fluoranthene	23.66	252	153	0.006	ng	# 58
90) Benzo(a)pyrene	24.44	252	210	0.008	ng	# 58

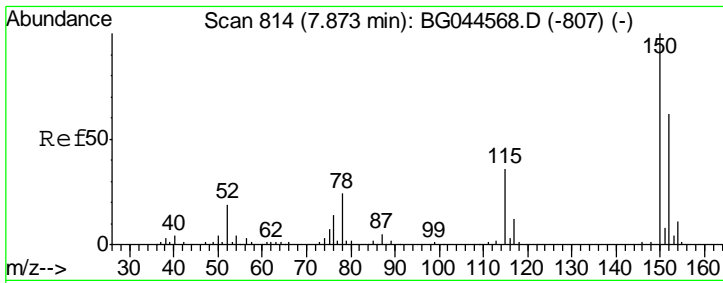
(#) = qualifier out of range (m) = manual integration (+) = signals summed

Data Path : Z:\SVOASRV\HPCHEM1\BNA G\DATA\BG022520\
 Data File : BG044587.D
 Acq On : 25 Feb 2020 21:54
 Operator : CG/JU
 Sample : L1655-01
 Misc :
 ALS Vial : 9 Sample Multiplier: 1

Instrument :
 BNA_G
 Client Sampled :

Quant Time: Feb 26 05:02:47 2020
 Quant Method : Z:\SVOASRV\HPCHEM1\BNA G\METHODS\8270-BG022420.M
 Quant Title : ASP BNA STANDARDS FOR 5 POINT CALIBRATION
 QLast Update : Mon Feb 24 16:11:23 2020
 Response via : Initial Calibration

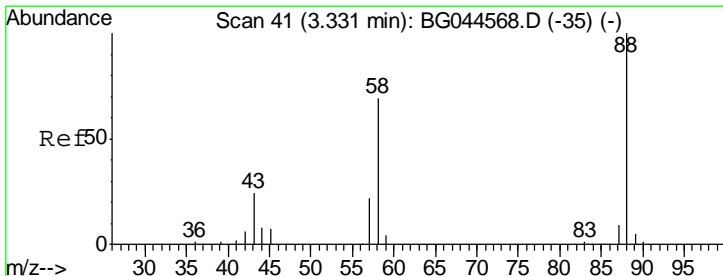
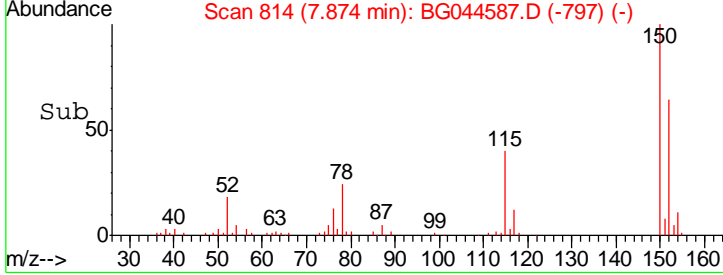
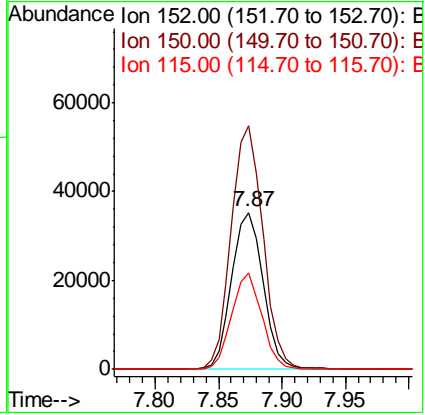
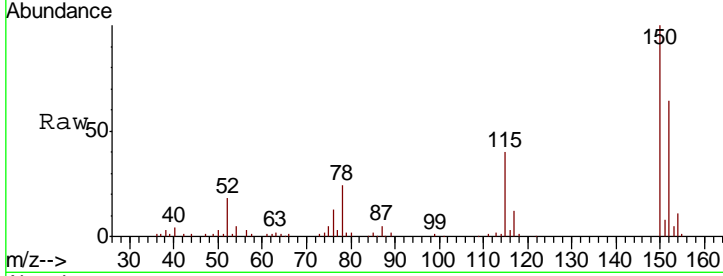




#1
 1,4-Dichlorobenzene-d4
 Concen: 20.000 ng
 RT: 7.87 min Scan# 814
 Delta R.T. 0.00 min
 Lab File: BG044587.D
 Acq: 25 Feb 2020 21:54

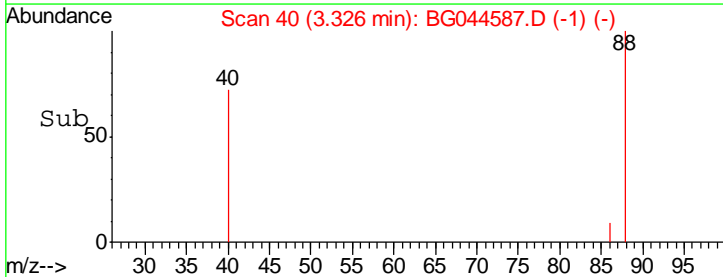
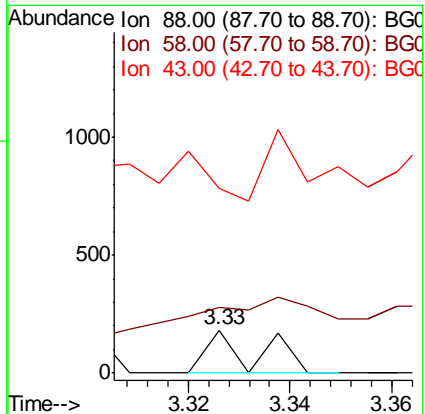
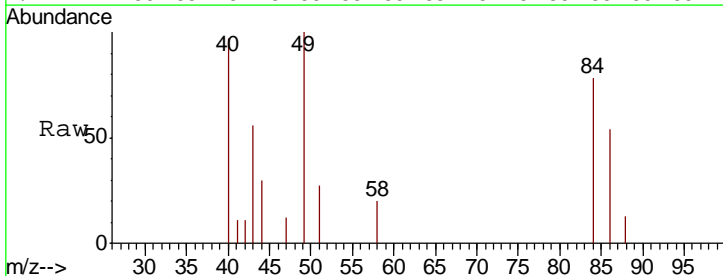
Instrument :
 BNA_G
 ClientSampled :

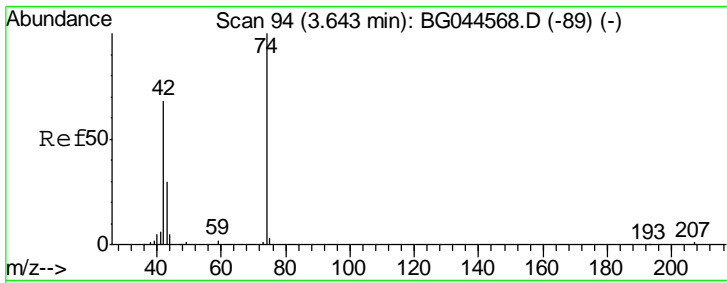
Tgt Ion	Resp	Lower	Upper
152	100		
150	155.2	128.9	193.3
115	61.5	47.0	70.4



#2
 1,4-Dioxane
 Concen: 0.074 ng
 RT: 3.33 min Scan# 40
 Delta R.T. -0.01 min
 Lab File: BG044587.D
 Acq: 25 Feb 2020 21:54

Tgt Ion	Resp	Lower	Upper
88	100		
58	0.0	55.8	83.8#
43	210.6	20.6	31.0#

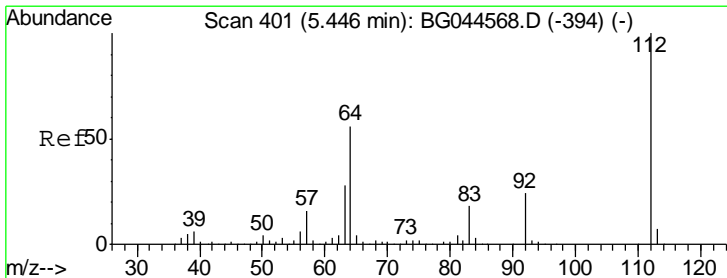
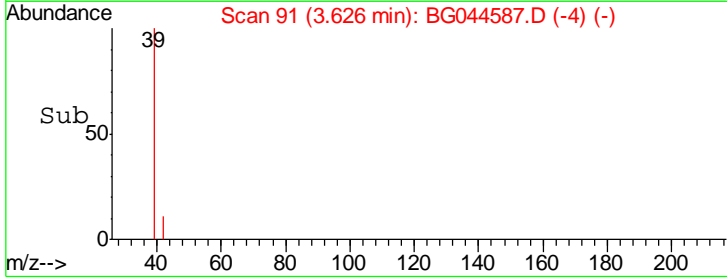
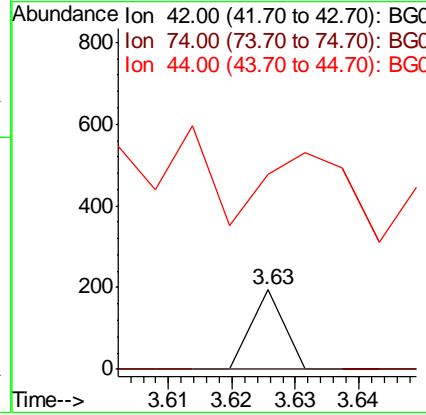
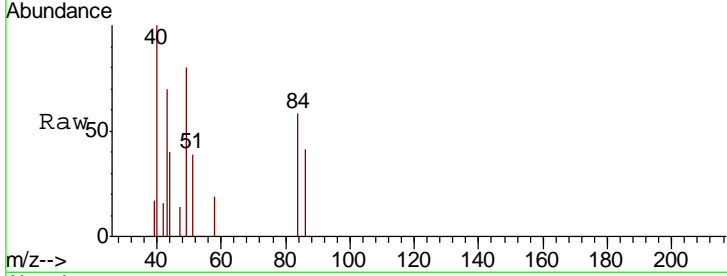




#4
 n-Nitrosodimethylamine
 Concen: 0.039 ng
 RT: 3.63 min Scan# 91
 Delta R.T. -0.02 min
 Lab File: BG044587.D
 Acq: 25 Feb 2020 21:54

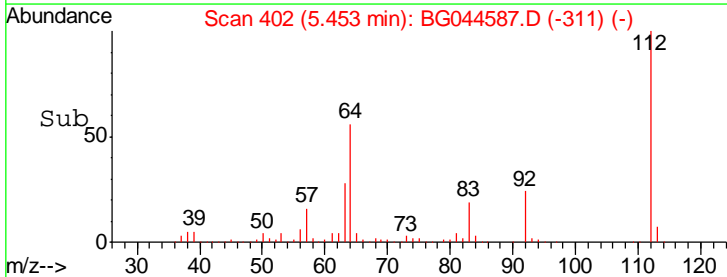
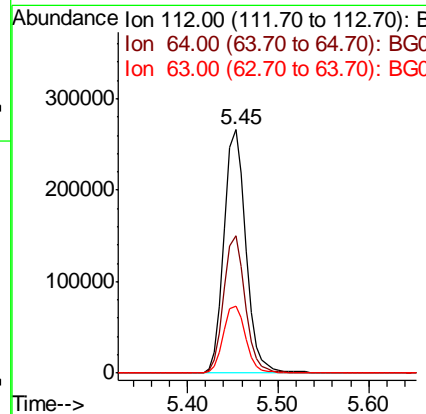
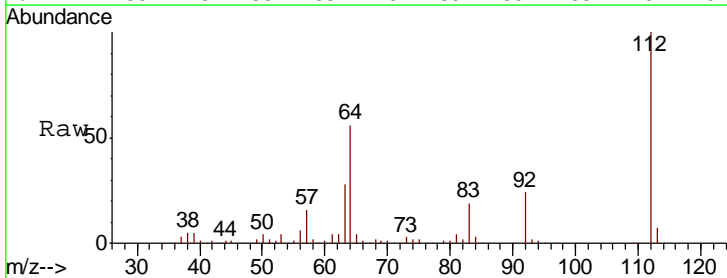
Instrument :
 BNA_G
 ClientSampled :

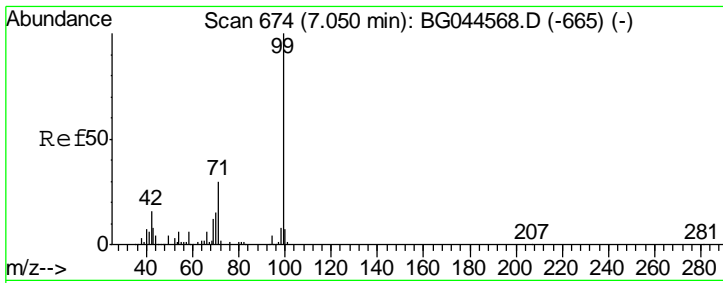
Tgt Ion	Resp	Lower	Upper
42	100		
74	0.0	117.6	176.4#
44	245.4	6.3	9.5#



#5
 2-Fluorophenol
 Concen: 117.741 ng
 RT: 5.45 min Scan# 402
 Delta R.T. 0.01 min
 Lab File: BG044587.D
 Acq: 25 Feb 2020 21:54

Tgt Ion	Resp	Lower	Upper
112	100		
64	56.3	44.8	67.2
63	27.8	22.3	33.5

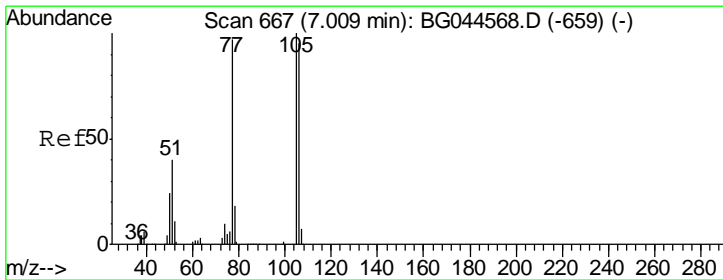
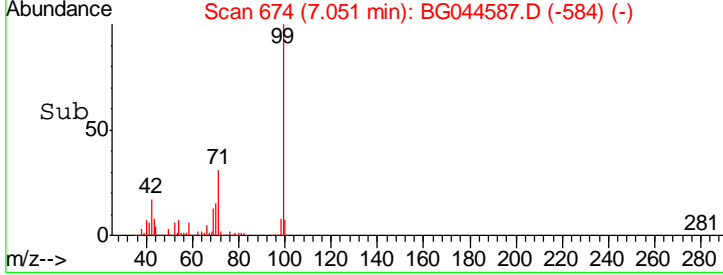
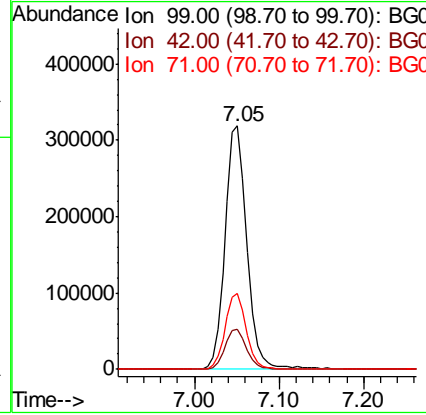
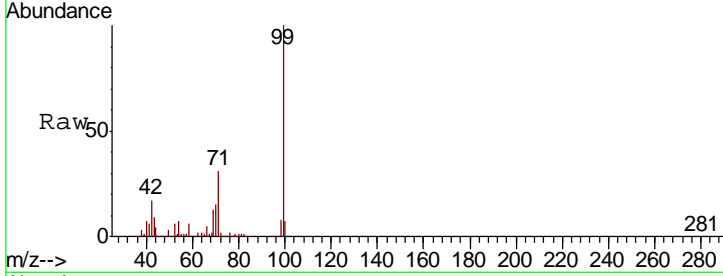




#7
 Phenol-d6
 Concen: 110.053 ng
 RT: 7.05 min Scan# 674
 Delta R.T. 0.00 min
 Lab File: BG044587.D
 Acq: 25 Feb 2020 21:54

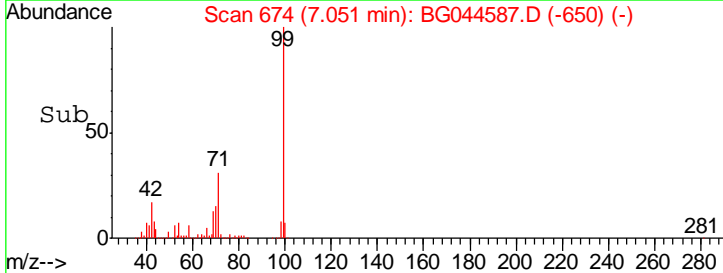
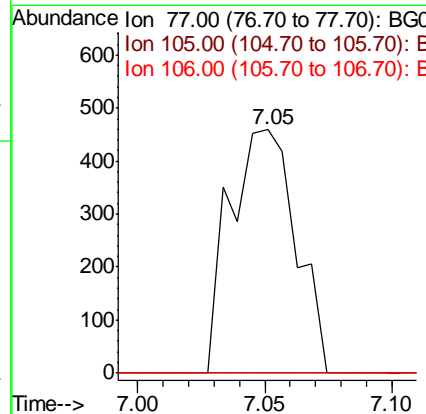
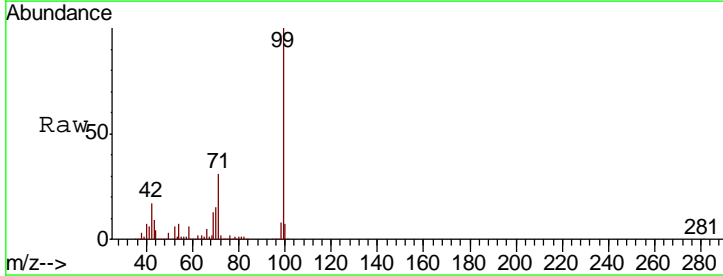
Instrument :
 BNA_G
 ClientSampled :

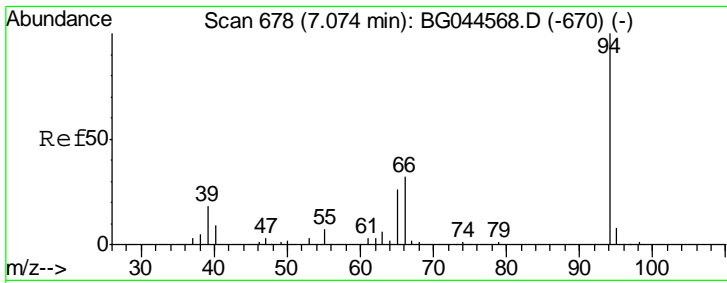
Tgt Ion	Resp	Lower	Upper
99	570309		
42	16.7	12.8	19.2
71	31.0	24.4	36.6



#9
 Benzaldehyde
 Concen: 0.274 ng
 RT: 7.05 min Scan# 674
 Delta R.T. 0.04 min
 Lab File: BG044587.D
 Acq: 25 Feb 2020 21:54

Tgt Ion	Resp	Lower	Upper
77	835		
105	0.0	83.6	123.6#
106	0.0	78.2	118.2#

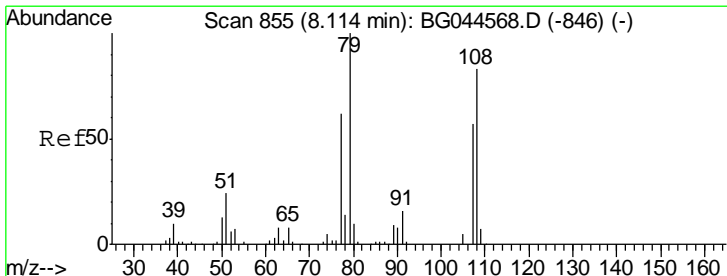
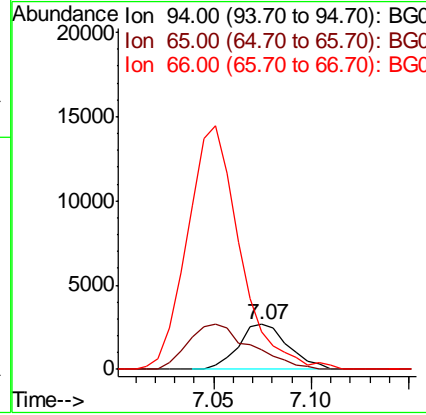
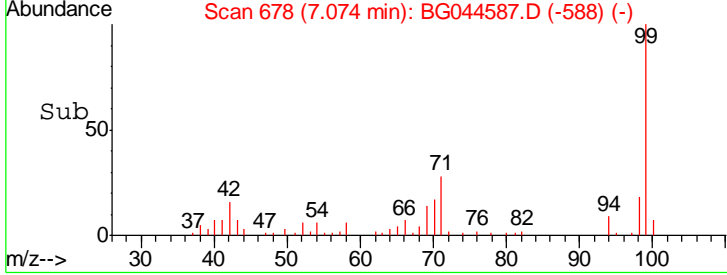
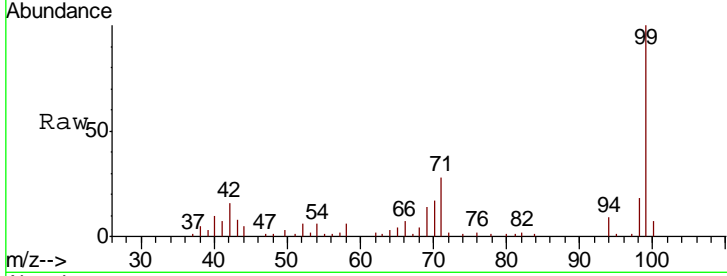




#10
 Phenol
 Concen: 0.931 ng
 RT: 7.07 min Scan# 678
 Delta R.T. 0.00 min
 Lab File: BG044587.D
 Acq: 25 Feb 2020 21:54

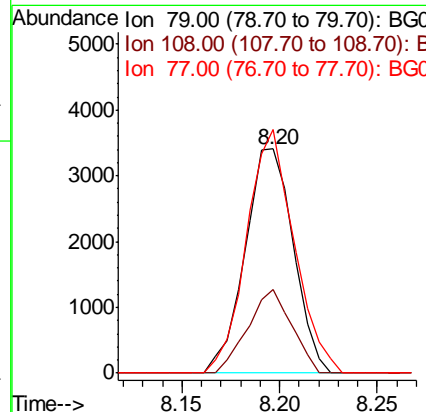
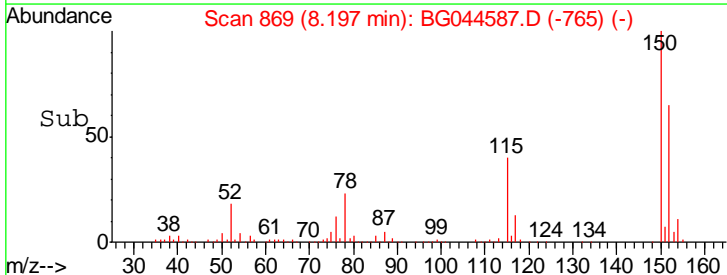
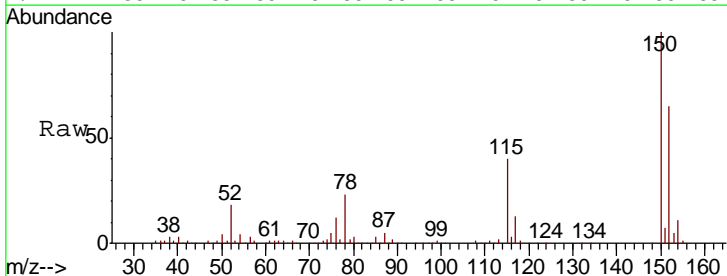
Instrument :
 BNA_G
 ClientSampled :

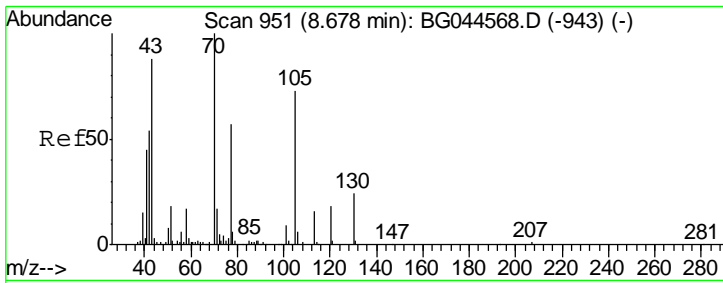
Tgt Ion	Resp	Lower	Upper
94	100		
65	45.3	6.4	46.4
66	84.3	13.9	53.9#



#15
 Benzyl Alcohol
 Concen: 1.674 ng
 RT: 8.20 min Scan# 869
 Delta R.T. 0.08 min
 Lab File: BG044587.D
 Acq: 25 Feb 2020 21:54

Tgt Ion	Resp	Lower	Upper
79	100		
108	37.2	66.0	99.0#
77	108.6	49.6	74.4#

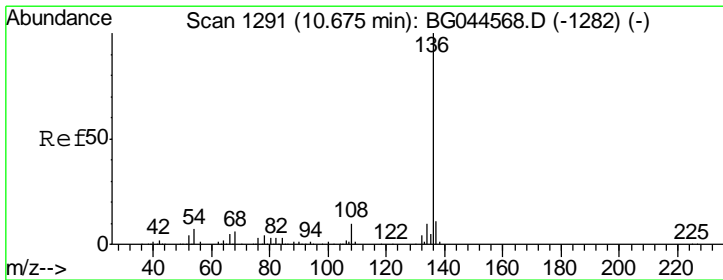
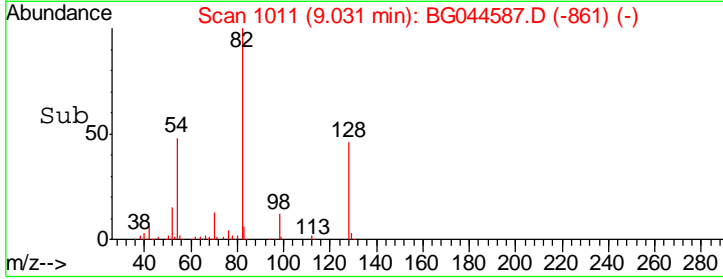
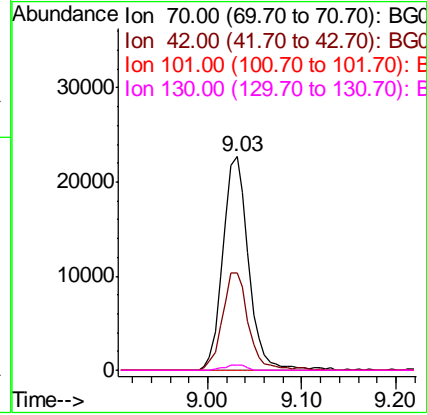
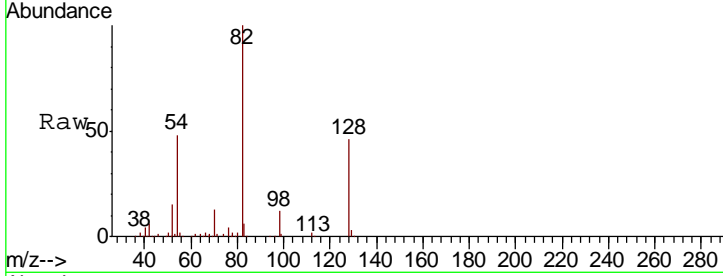




#19
 n-Nitroso-di-n-propylamine
 Concen: 13.072 ng
 RT: 9.03 min Scan# 1011
 Delta R.T. 0.35 min
 Lab File: BG044587.D
 Acq: 25 Feb 2020 21:54

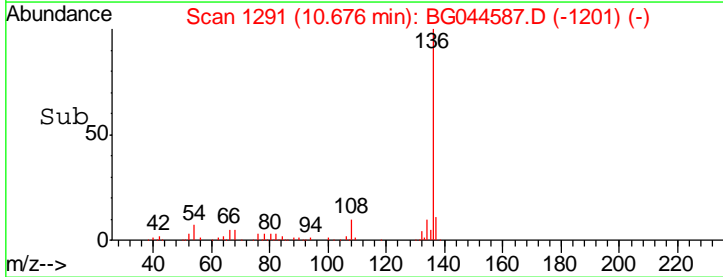
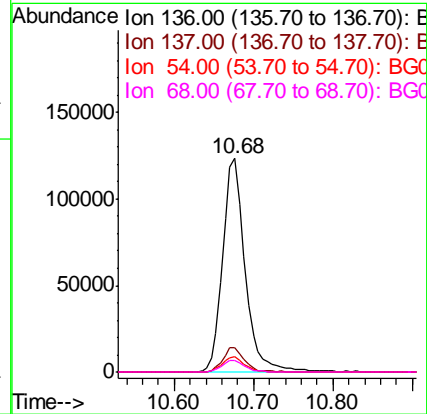
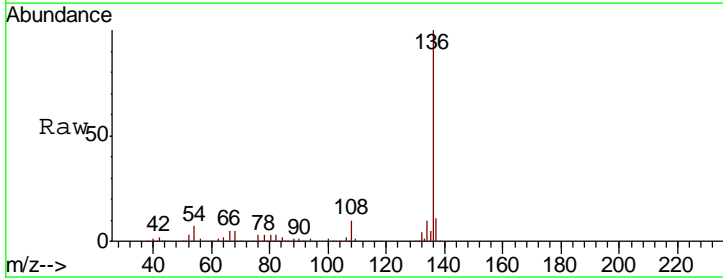
Instrument :
 BNA_G
 ClientSampled :

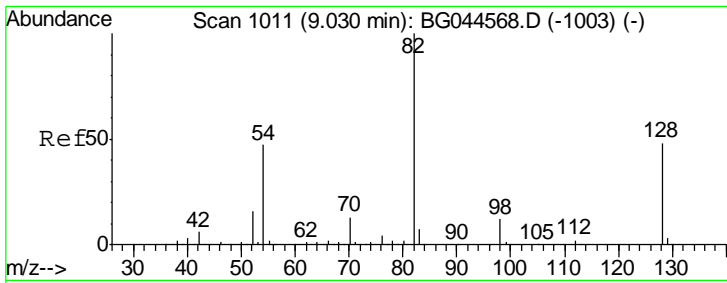
Tgt Ion	Resp	Lower	Upper
70	100		
42	45.5	43.4	65.0
101	0.0	7.5	11.3#
130	2.3	18.9	28.3#



#21
 Naphthalene-d8
 Concen: 20.000 ng
 RT: 10.68 min Scan# 1291
 Delta R.T. 0.00 min
 Lab File: BG044587.D
 Acq: 25 Feb 2020 21:54

Tgt Ion	Resp	Lower	Upper
136	100		
137	11.3	8.8	13.2
54	7.2	5.7	8.5
68	5.5	4.5	6.7

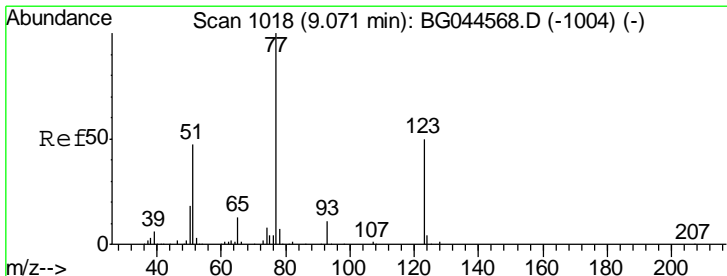
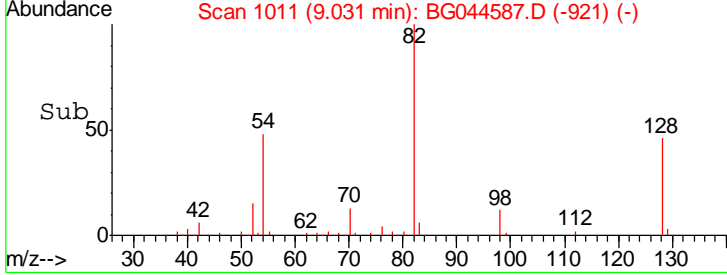
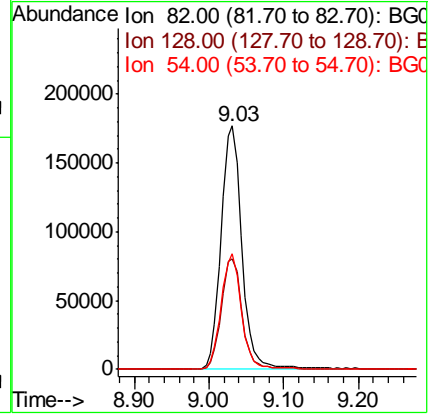
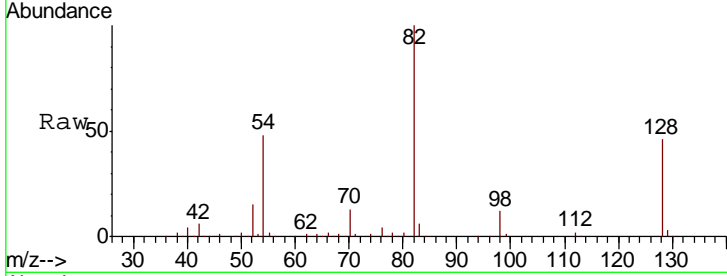




#23
 Nitrobenzene-d5
 Concen: 73.052 ng
 RT: 9.03 min Scan# 1011
 Delta R.T. 0.00 min
 Lab File: BG044587.D
 Acq: 25 Feb 2020 21:54

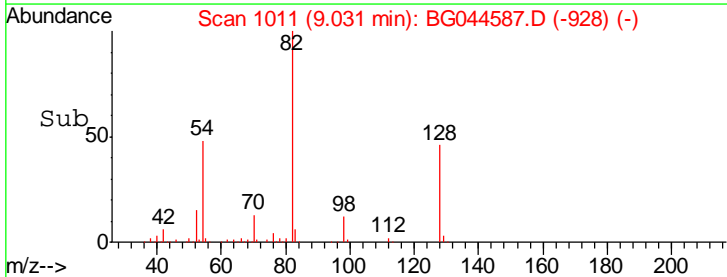
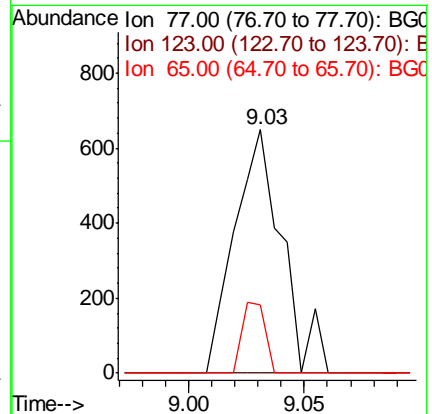
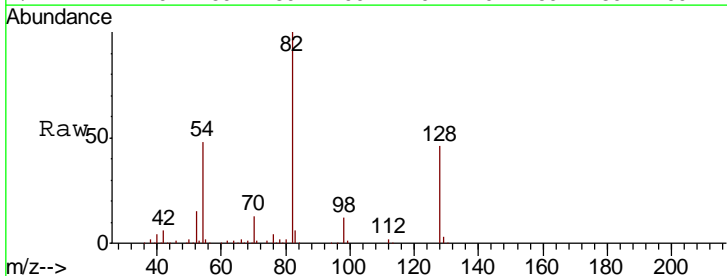
Instrument :
 BNA_G
 ClientSampled :

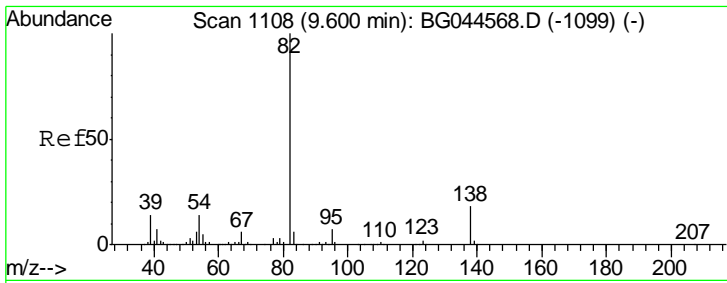
Tgt Ion	Resp	Lower	Upper
82	100		
128	45.6	38.1	57.1
54	47.6	37.5	56.3



#24
 Nitrobenzene
 Concen: 0.203 ng
 RT: 9.03 min Scan# 1011
 Delta R.T. -0.04 min
 Lab File: BG044587.D
 Acq: 25 Feb 2020 21:54

Tgt Ion	Resp	Lower	Upper
77	100		
123	0.0	40.1	60.1#
65	28.2	10.4	15.6#

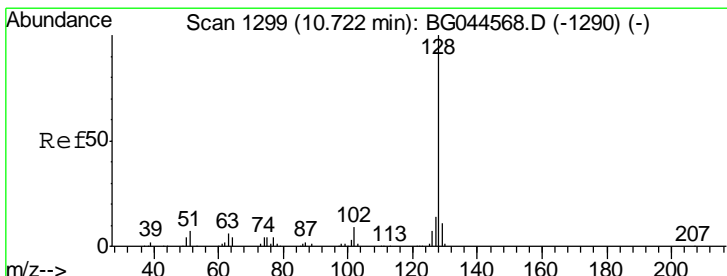
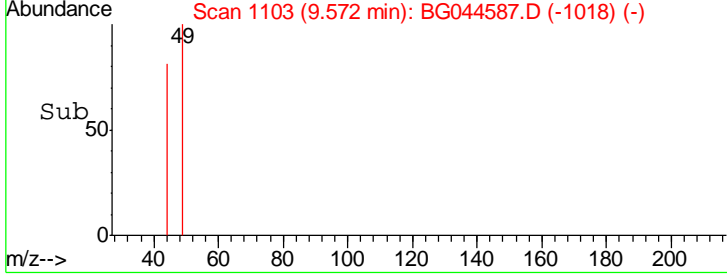
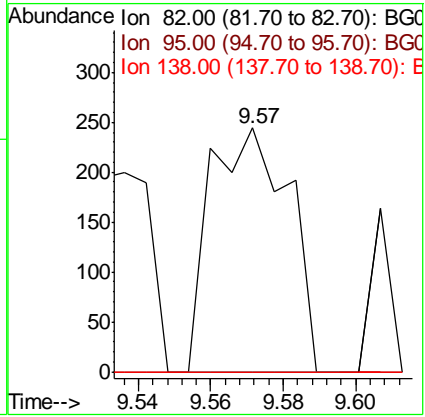
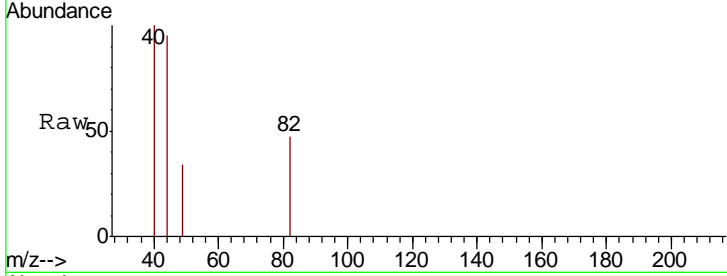




#25
 Isophorone
 Concen: 0.042 ng
 RT: 9.57 min Scan# 1103
 Delta R.T. -0.03 min
 Lab File: BG044587.D
 Acq: 25 Feb 2020 21:54

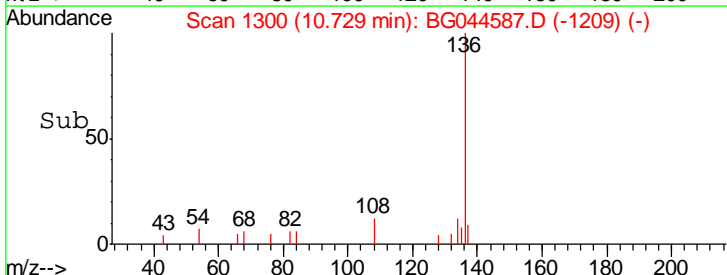
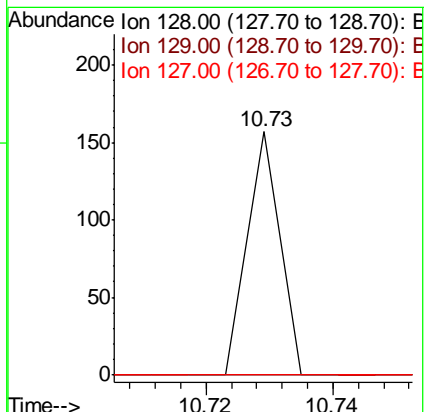
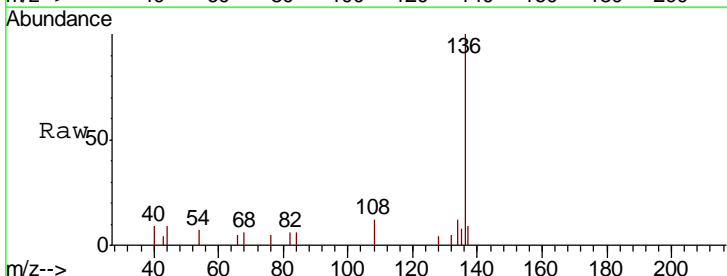
Instrument :
 BNA_G
 ClientSampled :

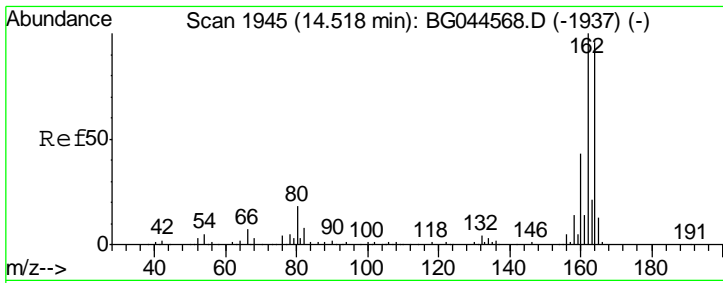
Tgt Ion	Resp	Lower	Upper
82	367		
95	0.0	5.6	8.4#
138	0.0	14.7	22.1#



#31
 Naphthalene
 Concen: 0.004 ng
 RT: 10.73 min Scan# 1300
 Delta R.T. 0.01 min
 Lab File: BG044587.D
 Acq: 25 Feb 2020 21:54

Tgt Ion	Resp	Lower	Upper
128	55		
129	0.0	9.0	13.6#
127	0.0	11.0	16.4#

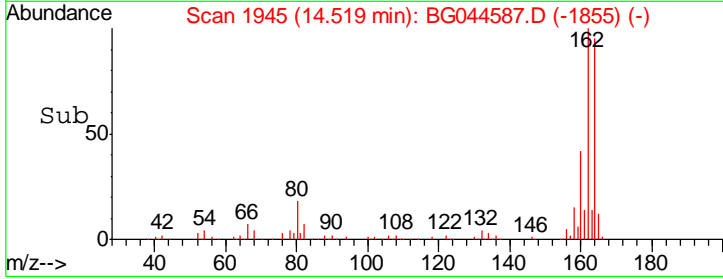
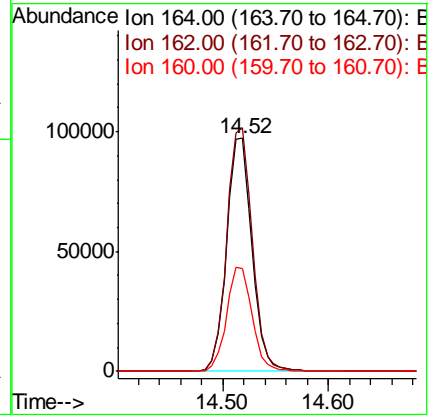
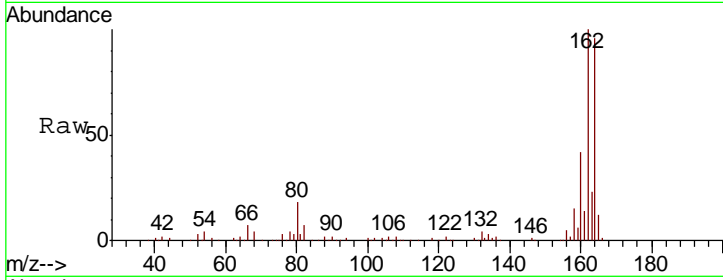




#39
 Acenaphthene-d10
 Concen: 20.000 ng
 RT: 14.52 min Scan# 1945
 Delta R.T. 0.00 min
 Lab File: BG044587.D
 Acq: 25 Feb 2020 21:54

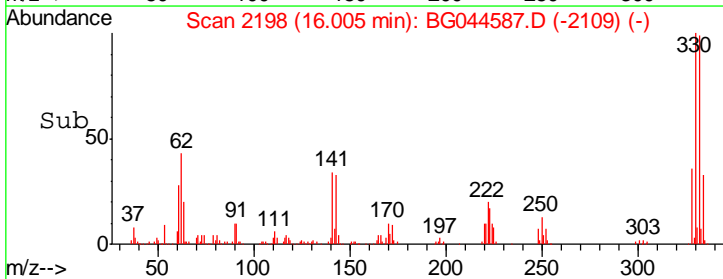
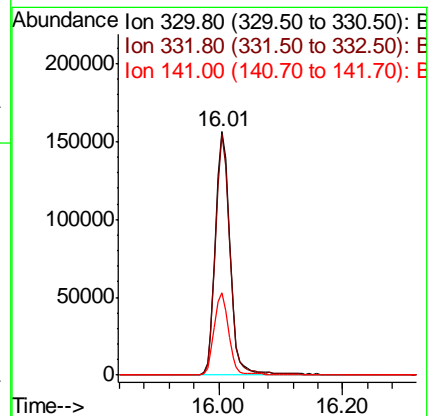
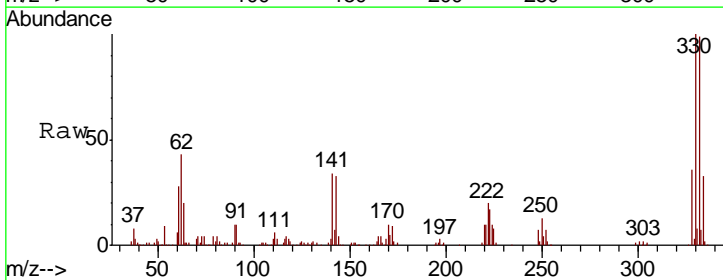
Instrument :
 BNA_G
 ClientSampled :

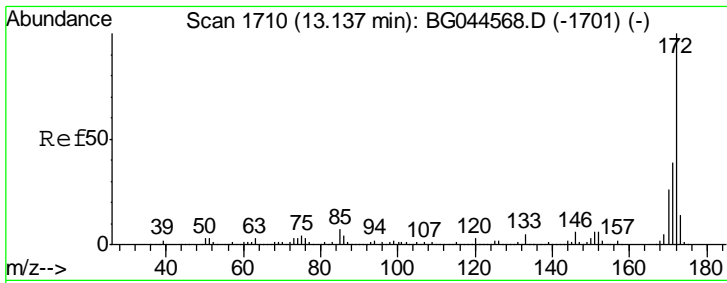
Tgt Ion	Resp	Lower	Upper
164	100		
162	104.5	83.6	125.4
160	44.4	36.2	54.4



#42
 2,4,6-Tribromophenol
 Concen: 111.073 ng
 RT: 16.01 min Scan# 2198
 Delta R.T. -0.01 min
 Lab File: BG044587.D
 Acq: 25 Feb 2020 21:54

Tgt Ion	Resp	Lower	Upper
330	100		
332	95.5	77.4	116.0
141	33.4	26.1	39.1

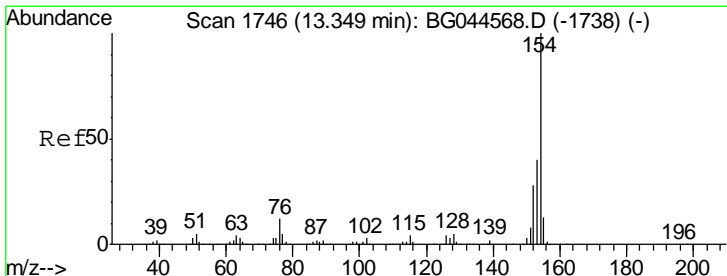
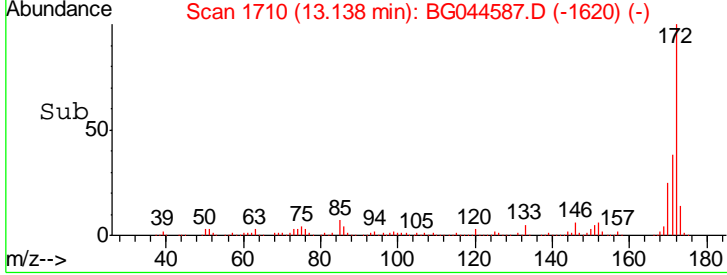
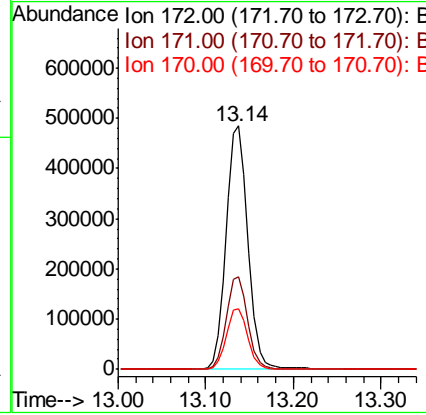
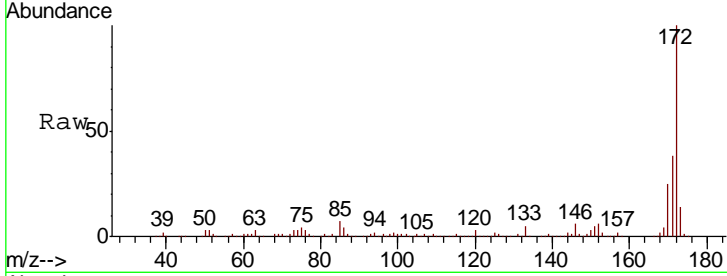




#45
 2-Fluorobiphenyl
 Concen: 73.767 ng
 RT: 13.14 min Scan# 1710
 Delta R.T. 0.00 min
 Lab File: BG044587.D
 Acq: 25 Feb 2020 21:54

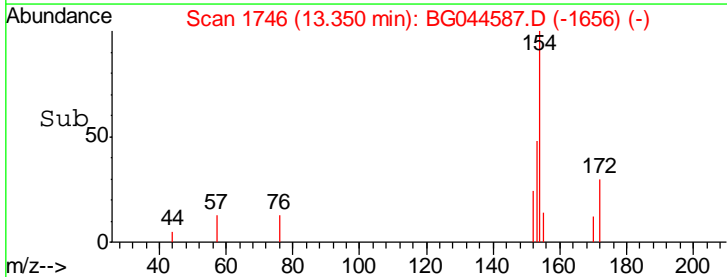
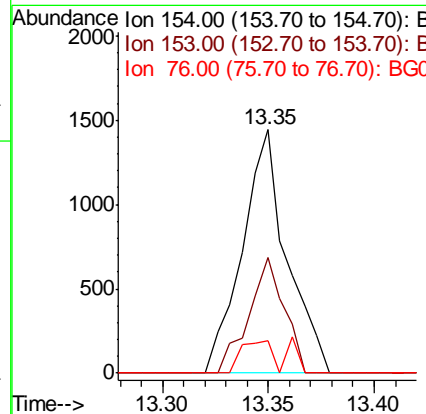
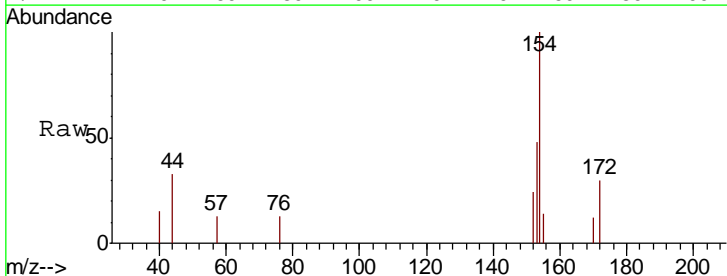
Instrument :
 BNA_G
 ClientSampled :

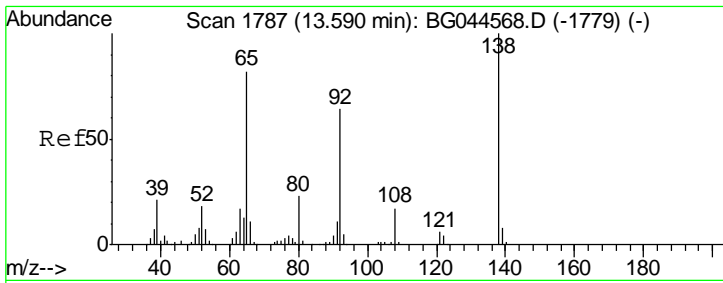
Tgt Ion	Resp	Lower	Upper
172	100		
171	38.0	31.3	46.9
170	25.0	21.0	31.4



#46
 1,1'-Biphenyl
 Concen: 0.157 ng
 RT: 13.35 min Scan# 1746
 Delta R.T. 0.00 min
 Lab File: BG044587.D
 Acq: 25 Feb 2020 21:54

Tgt Ion	Resp	Lower	Upper
154	100		
153	47.6	20.2	60.2
76	13.4	0.0	31.8

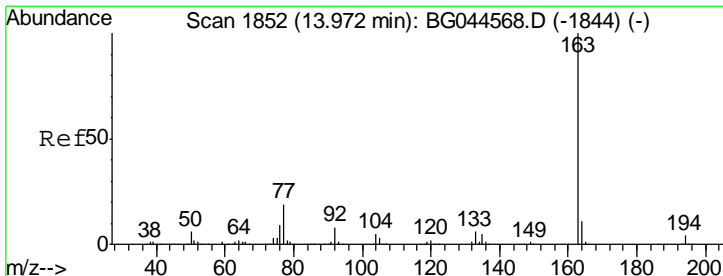
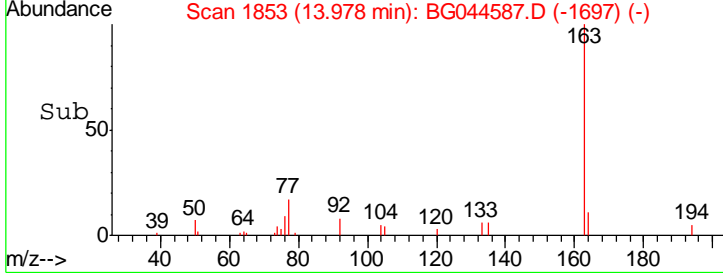
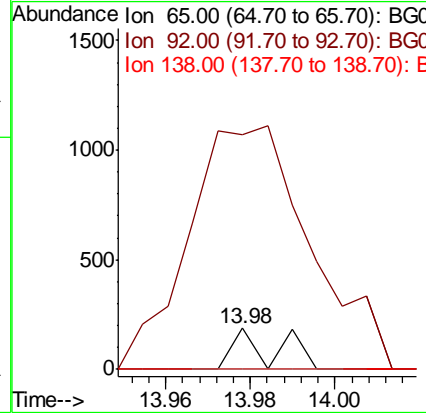
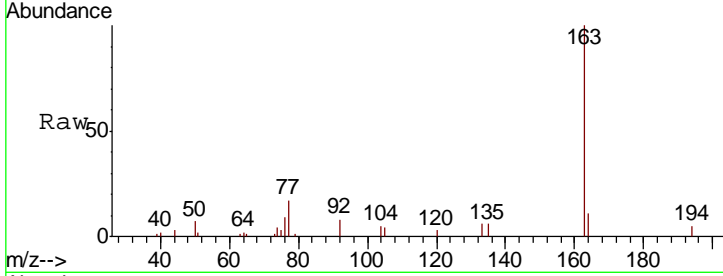




#48
 2-Nitroaniline
 Concen: 0.045 ng
 RT: 13.98 min Scan# 1853
 Delta R.T. 0.39 min
 Lab File: BG044587.D
 Acq: 25 Feb 2020 21:54

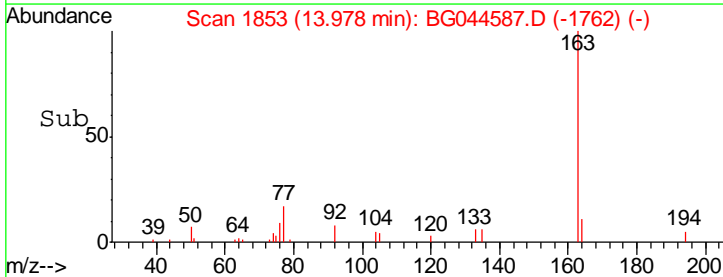
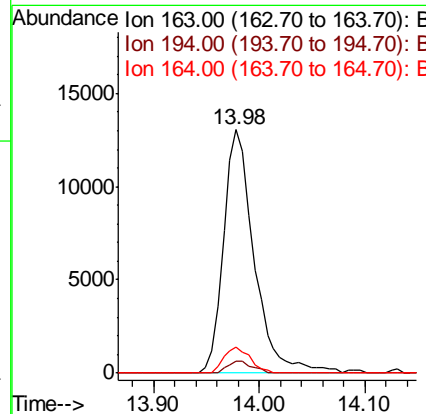
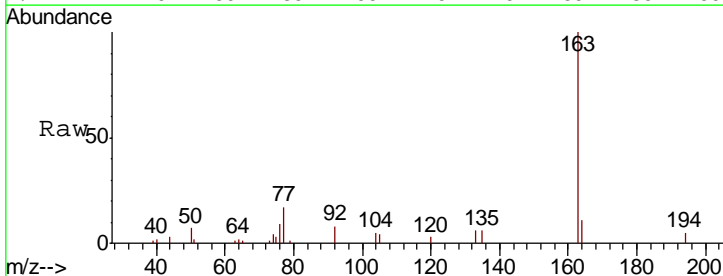
Instrument :
 BNA_G
 ClientSampled :

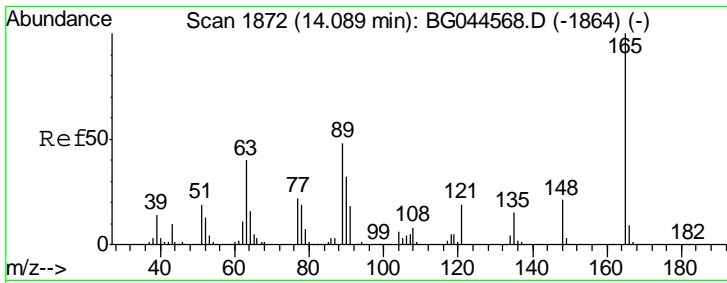
Tgt Ion	Resp	Lower	Upper
65	131		
92	572.7	62.2	93.2#
138	0.0	97.6	146.4#



#50
 Dimethylphthalate
 Concen: 2.012 ng
 RT: 13.98 min Scan# 1853
 Delta R.T. 0.01 min
 Lab File: BG044587.D
 Acq: 25 Feb 2020 21:54

Tgt Ion	Resp	Lower	Upper
163	26345		
194	4.8	3.4	5.0
164	10.7	8.7	13.1

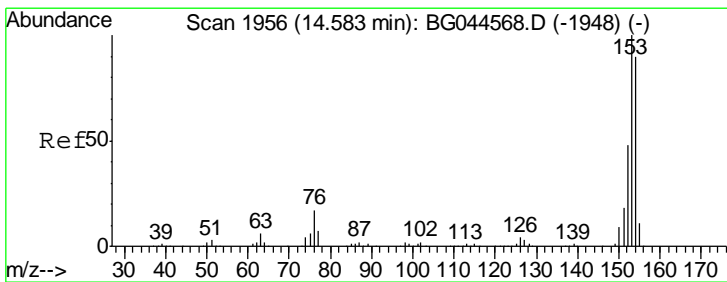
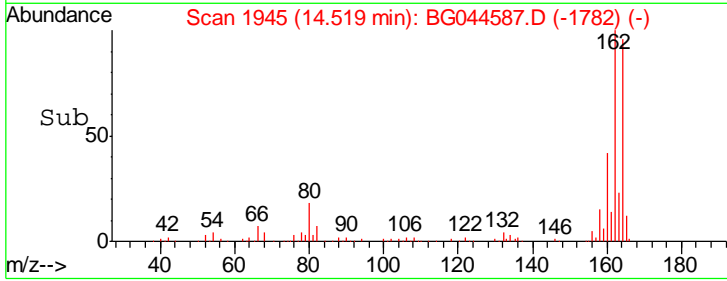
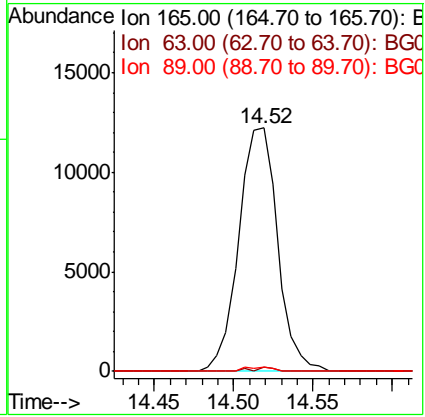
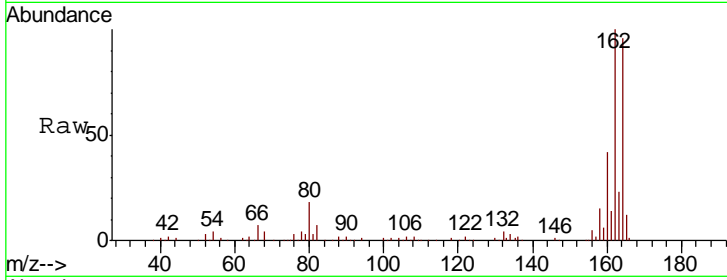




#51
 2,6-Dinitrotoluene
 Concen: 7.216 ng
 RT: 14.52 min Scan# 1945
 Delta R.T. 0.43 min
 Lab File: BG044587.D
 Acq: 25 Feb 2020 21:54

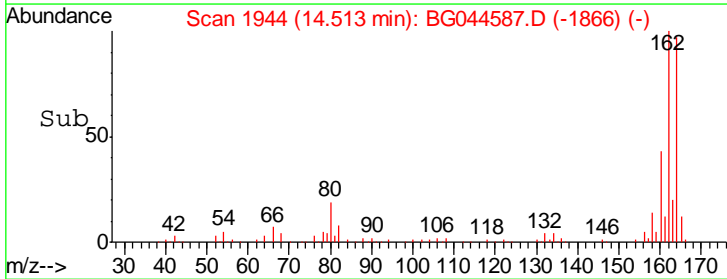
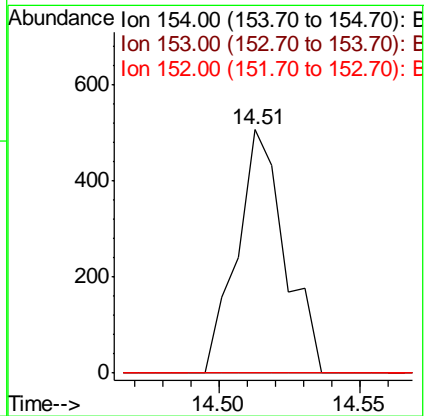
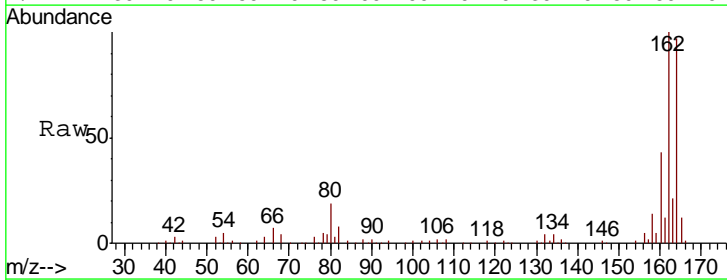
Instrument :
 BNA_G
 ClientSampled :

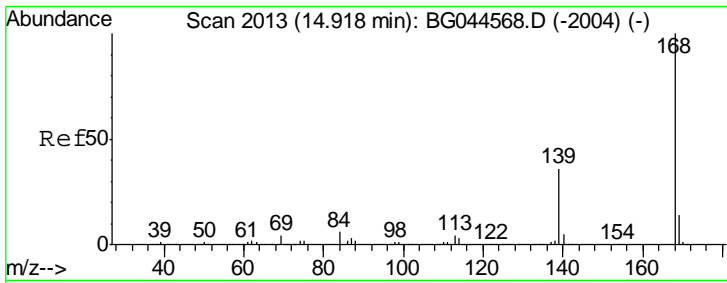
Tgt Ion	Resp	Lower	Upper
165	100		
63	1.7	35.8	53.6#
89	1.5	38.7	58.1#



#52
 Acenaphthene
 Concen: 0.060 ng
 RT: 14.51 min Scan# 1944
 Delta R.T. -0.07 min
 Lab File: BG044587.D
 Acq: 25 Feb 2020 21:54

Tgt Ion	Resp	Lower	Upper
154	100		
153	0.0	89.4	134.0#
152	0.0	43.0	64.4#

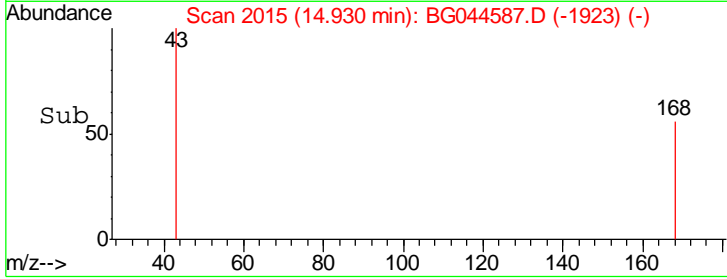
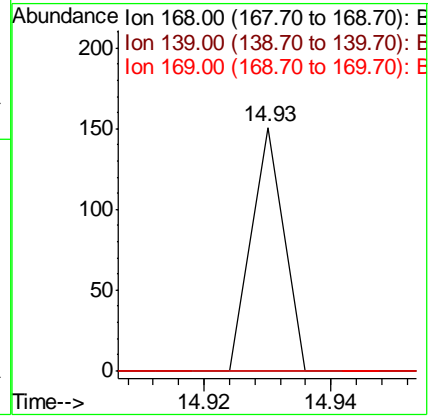
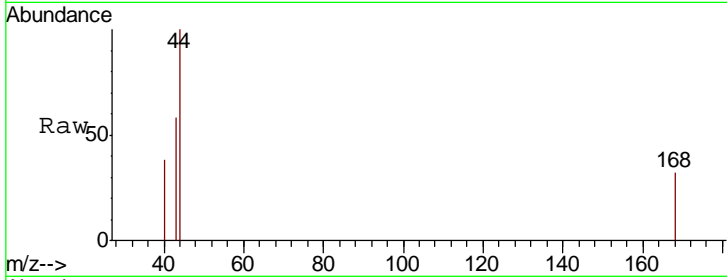




#55
 Dibenzofuran
 Concen: 0.003 ng
 RT: 14.93 min Scan# 2015
 Delta R.T. 0.01 min
 Lab File: BG044587.D
 Acq: 25 Feb 2020 21:54

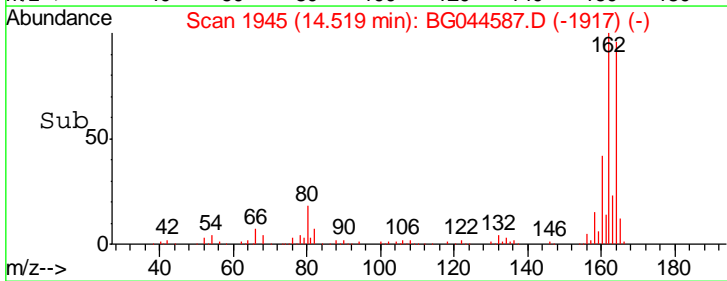
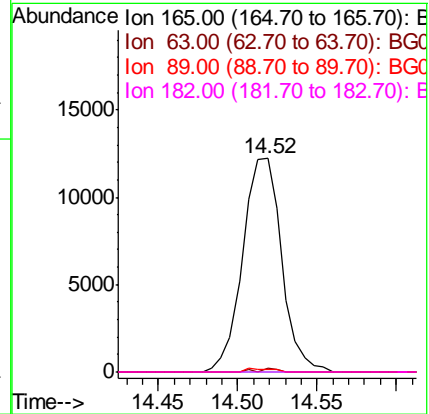
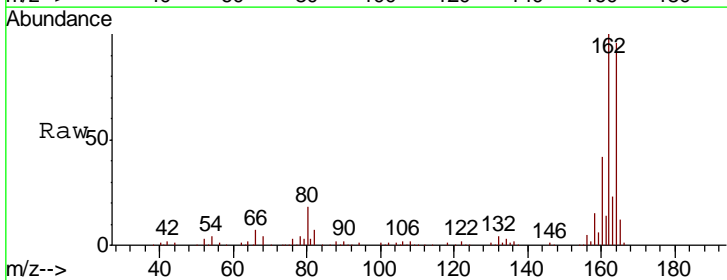
Instrument :
 BNA_G
 ClientSampled :

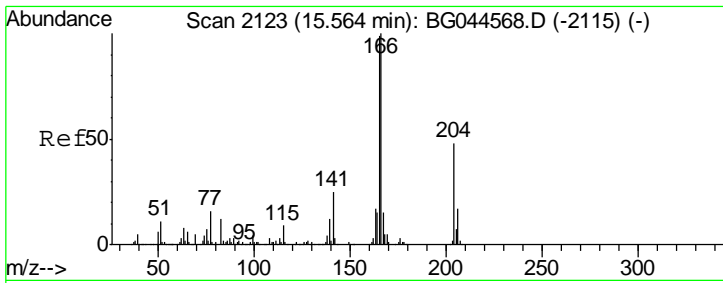
Tgt Ion	Resp	Lower	Upper
168	100		
139	0.0	29.2	43.8#
169	0.0	11.0	16.6#



#57
 2,4-Dinitrotoluene
 Concen: 5.132 ng
 RT: 14.52 min Scan# 1945
 Delta R.T. -0.36 min
 Lab File: BG044587.D
 Acq: 25 Feb 2020 21:54

Tgt Ion	Resp	Lower	Upper
165	100		
63	1.7	27.5	41.3#
89	1.5	50.0	75.0#
182	0.0	2.3	3.5#

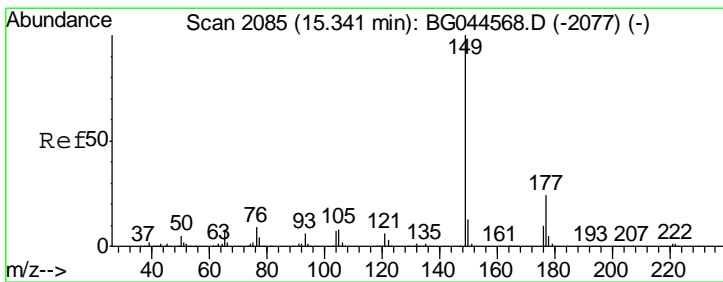
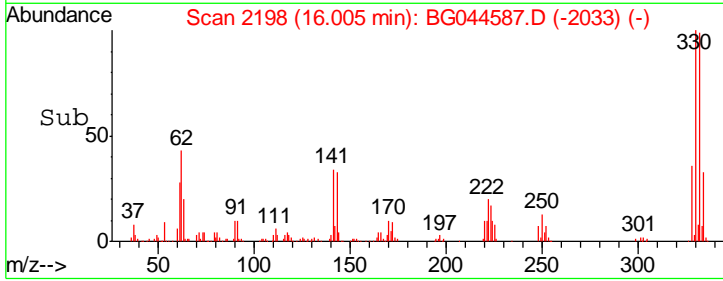
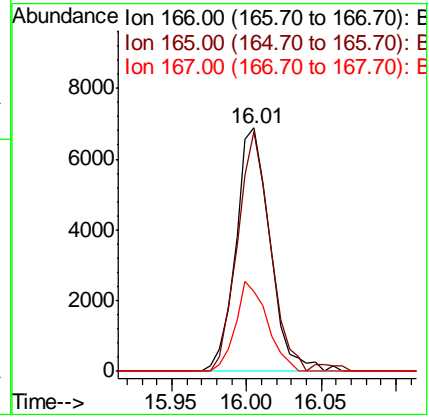
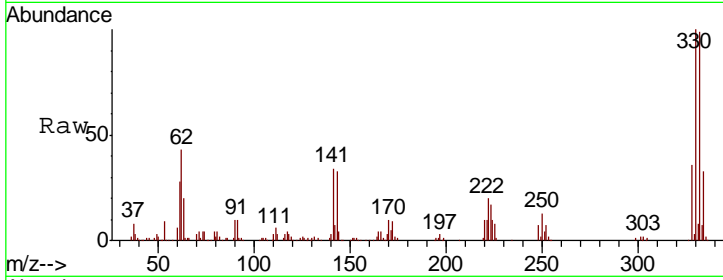




#58
 Fluorene
 Concen: 0.914 ng
 RT: 16.01 min Scan# 2198
 Delta R.T. 0.44 min
 Lab File: BG044587.D
 Acq: 25 Feb 2020 21:54

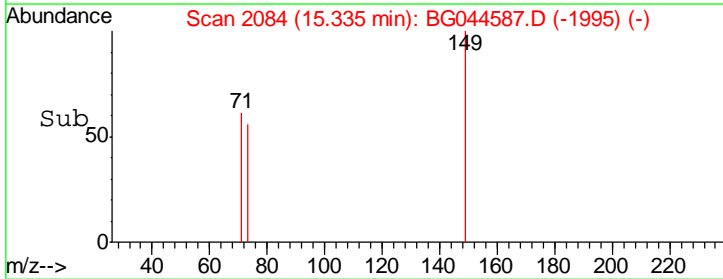
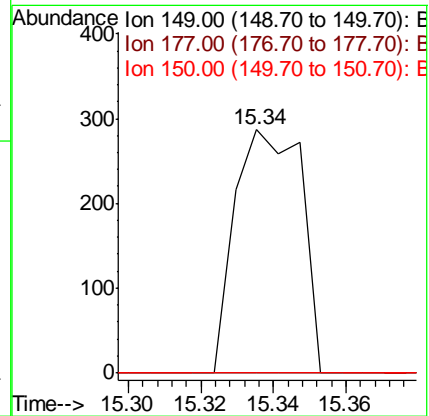
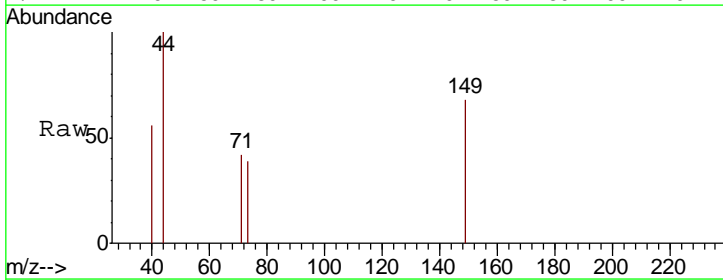
Instrument :
 BNA_G
 ClientSampled :

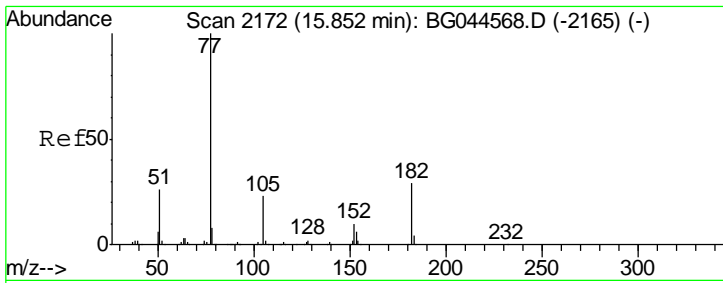
Tgt Ion	Resp	Lower	Upper
166	11006		
165	98.3	79.2	118.8
167	32.6	11.7	17.5#



#60
 Diethylphthalate
 Concen: 0.028 ng
 RT: 15.34 min Scan# 2084
 Delta R.T. -0.01 min
 Lab File: BG044587.D
 Acq: 25 Feb 2020 21:54

Tgt Ion	Resp	Lower	Upper
149	364		
177	0.0	19.2	28.8#
150	0.0	10.2	15.4#

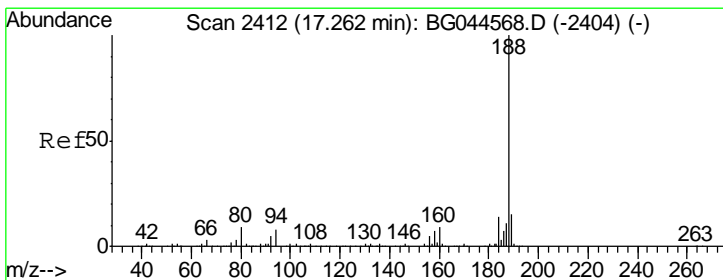
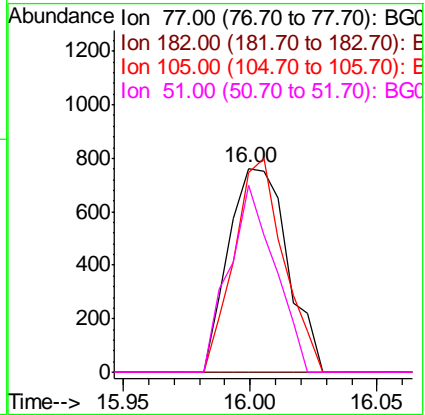
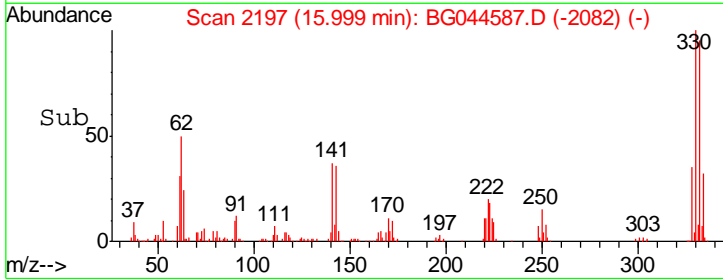
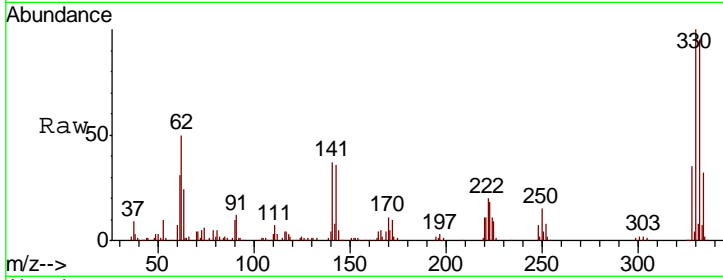




#63
 Azobenzene
 Concen: 0.112 ng
 RT: 16.00 min Scan# 2197
 Delta R.T. 0.15 min
 Lab File: BG044587.D
 Acq: 25 Feb 2020 21:54

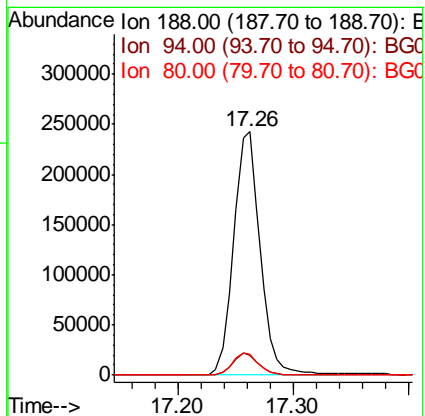
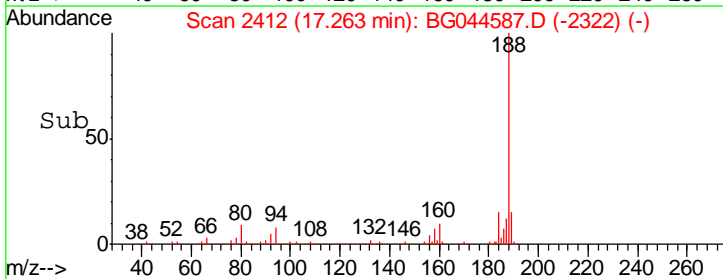
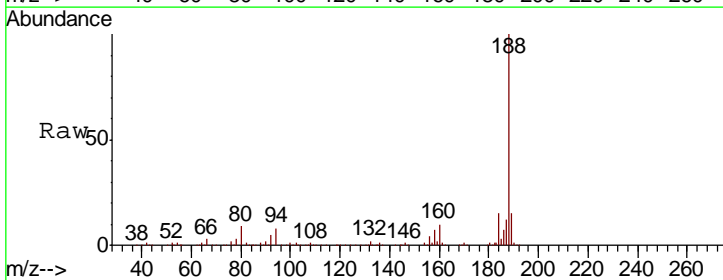
Instrument :
 BNA_G
 ClientSampled :

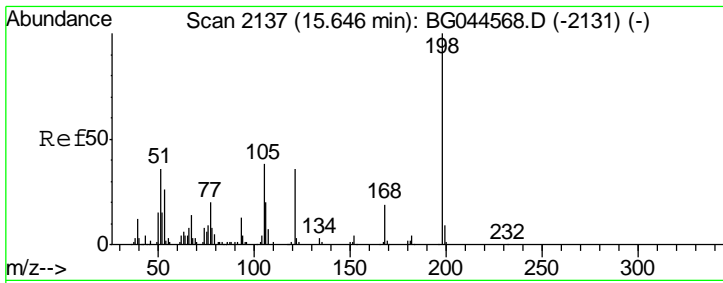
Tgt Ion	Resp	Lower	Upper
77	1236		
182	0.0	9.4	49.4#
105	98.3	3.4	43.4#
51	92.0	6.4	46.4#



#64
 Phenanthrene-d10
 Concen: 20.000 ng
 RT: 17.26 min Scan# 2412
 Delta R.T. 0.00 min
 Lab File: BG044587.D
 Acq: 25 Feb 2020 21:54

Tgt Ion	Resp	Lower	Upper
188	386012		
94	8.2	6.7	10.1
80	8.6	7.6	11.4

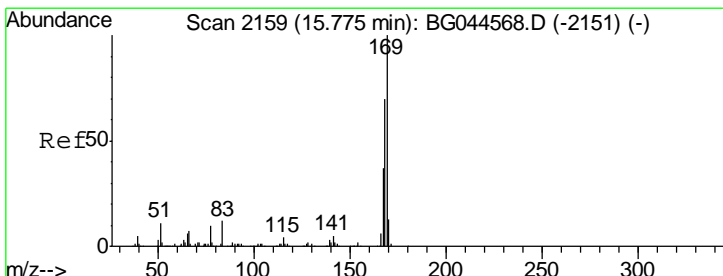
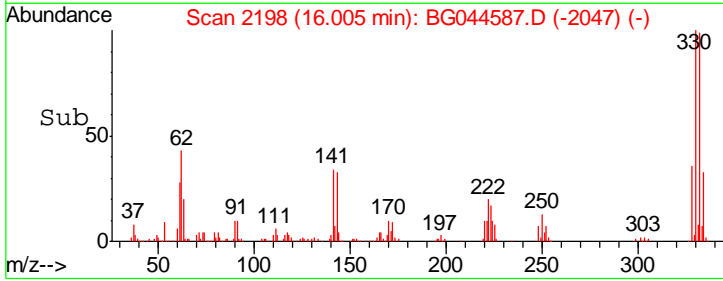
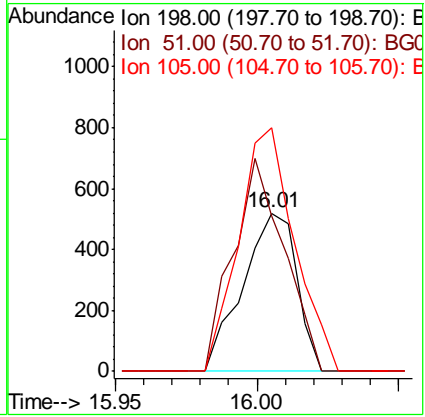
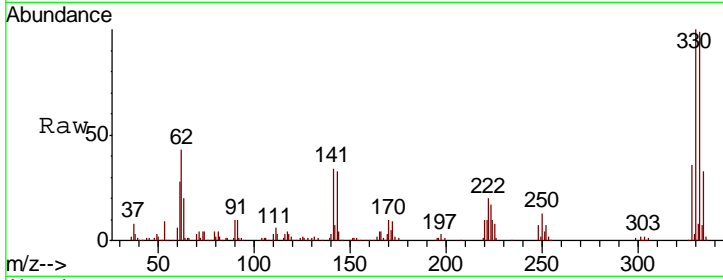




#65
 4,6-Dinitro-2-methylphenol
 Concen: 0.287 ng
 RT: 16.01 min Scan# 2198
 Delta R.T. 0.36 min
 Lab File: BG044587.D
 Acq: 25 Feb 2020 21:54

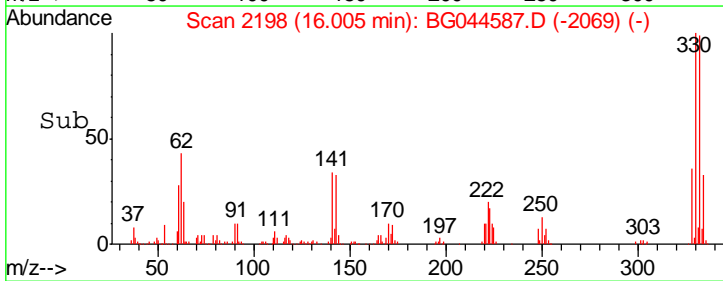
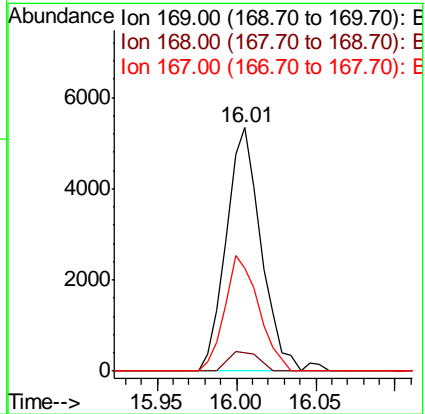
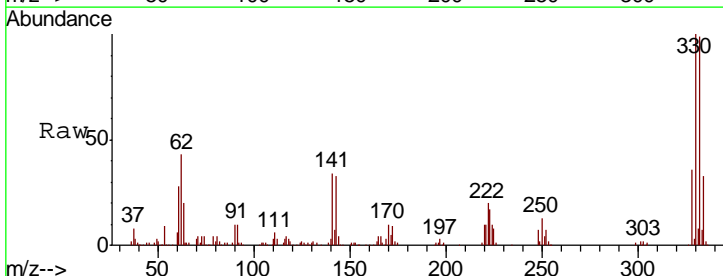
Instrument :
 BNA_G
 ClientSampled :

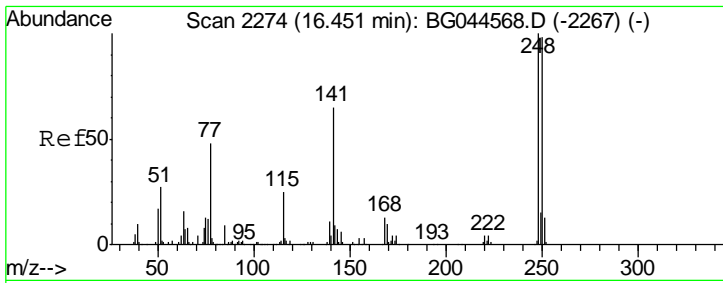
Tgt Ion	Resp	Lower	Upper
198	687		
51	98.1	17.0	57.0#
105	153.7	18.4	58.4#



#66
 n-Nitrosodiphenylamine
 Concen: 0.680 ng
 RT: 16.01 min Scan# 2198
 Delta R.T. 0.23 min
 Lab File: BG044587.D
 Acq: 25 Feb 2020 21:54

Tgt Ion	Resp	Lower	Upper
169	8183		
168	7.7	56.1	84.1#
167	42.0	29.4	44.0

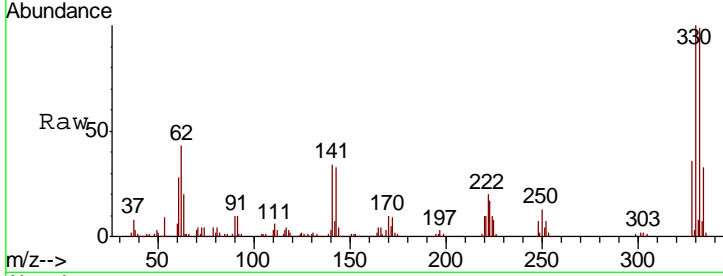




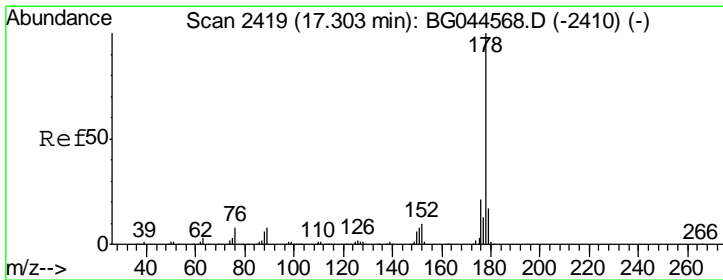
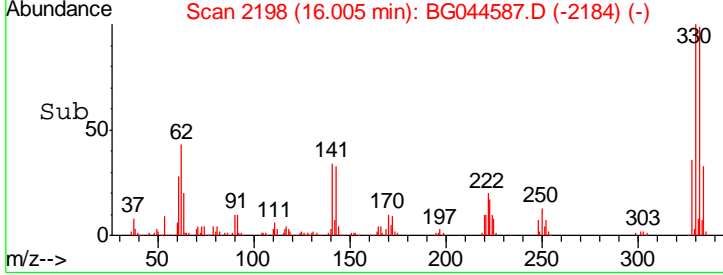
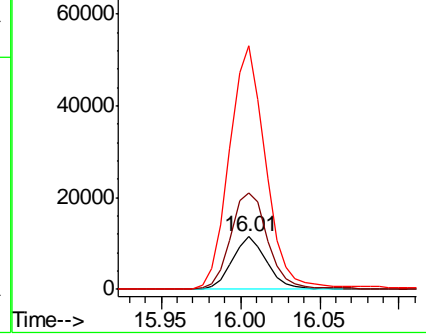
#67
 4-Bromophenyl-phenylether
 Concen: 3.583 ng
 RT: 16.01 min Scan# 2198
 Delta R.T. -0.45 min
 Lab File: BG044587.D
 Acq: 25 Feb 2020 21:54

Instrument :
 BNA_G
 ClientSampled :

Tgt Ion	Resp	Lower	Upper
248	17169		
250	182.0	78.7	118.1#
141	461.5	52.3	78.5#

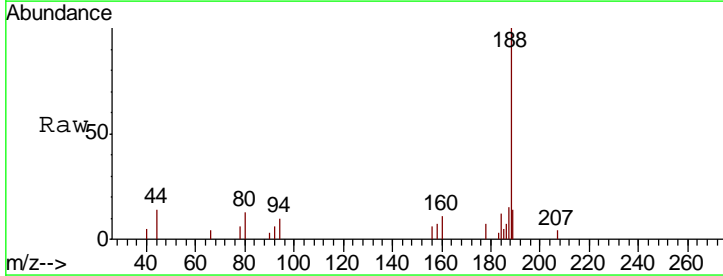


Abundance Ion 248.00 (247.70 to 248.70): E
 Ion 250.00 (249.70 to 250.70): E
 Ion 141.00 (140.70 to 141.70): E

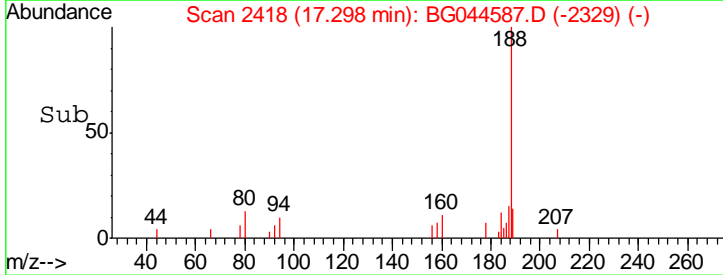
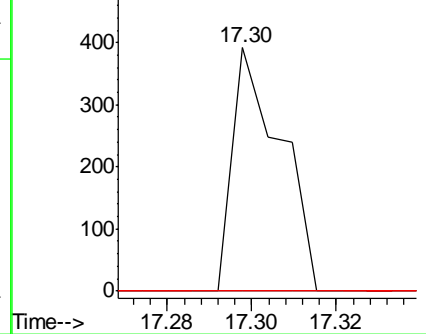


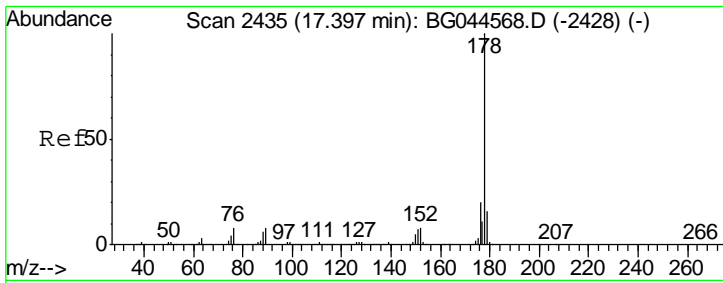
#71
 Phenanthrene
 Concen: 0.015 ng
 RT: 17.30 min Scan# 2418
 Delta R.T. -0.01 min
 Lab File: BG044587.D
 Acq: 25 Feb 2020 21:54

Tgt Ion	Resp	Lower	Upper
178	310		
176	0.0	16.6	25.0#
179	0.0	13.3	19.9#



Abundance Ion 178.00 (177.70 to 178.70): E
 Ion 176.00 (175.70 to 176.70): E
 Ion 179.00 (178.70 to 179.70): E

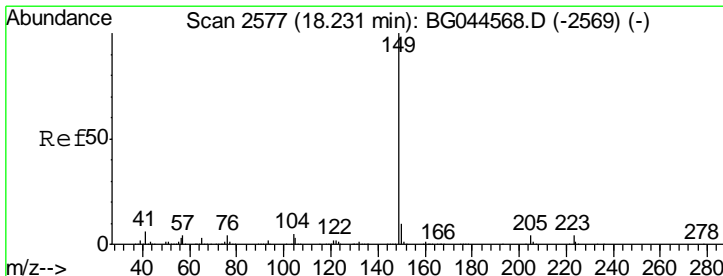
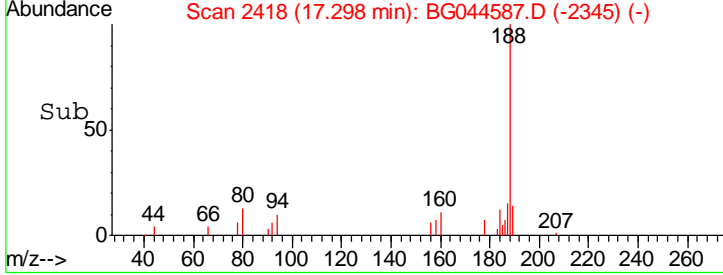
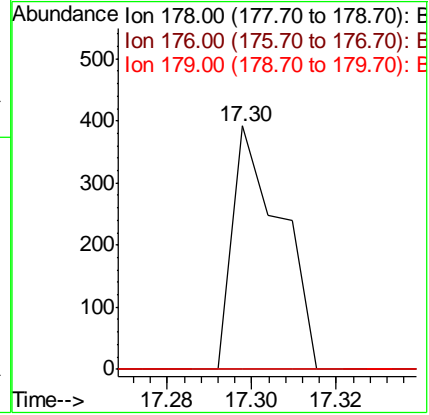
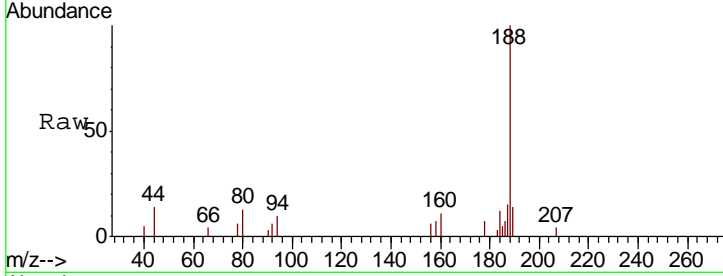




#72
 Anthracene
 Concen: 0.015 ng
 RT: 17.30 min Scan# 2418
 Delta R.T. -0.10 min
 Lab File: BG044587.D
 Acq: 25 Feb 2020 21:54

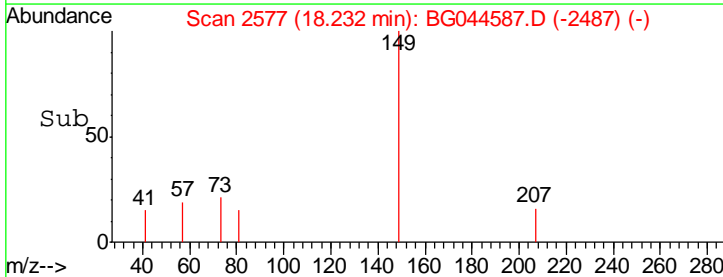
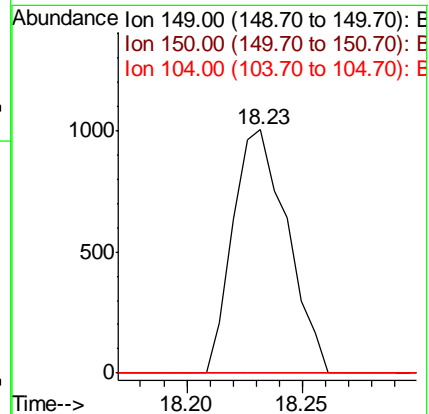
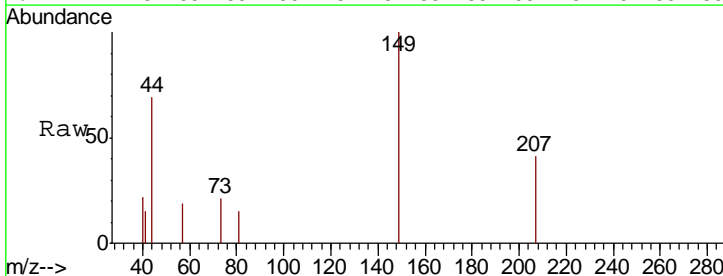
Instrument :
 BNA_G
 ClientSampled :

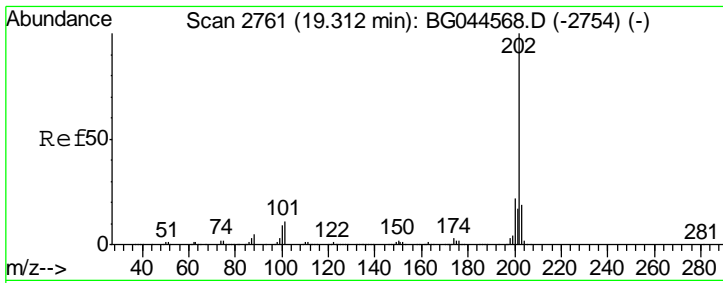
Tgt Ion	Resp	Lower	Upper
178	310		
176	0.0	15.9	23.9#
179	0.0	13.1	19.7#



#74
 Di-n-butylphthalate
 Concen: 0.069 ng
 RT: 18.23 min Scan# 2577
 Delta R.T. 0.00 min
 Lab File: BG044587.D
 Acq: 25 Feb 2020 21:54

Tgt Ion	Resp	Lower	Upper
149	1647		
150	0.0	7.8	11.8#
104	0.0	4.0	6.0#

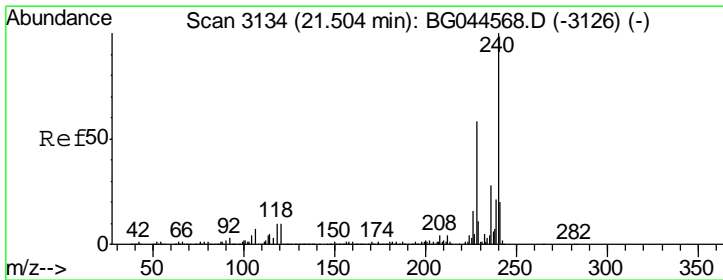
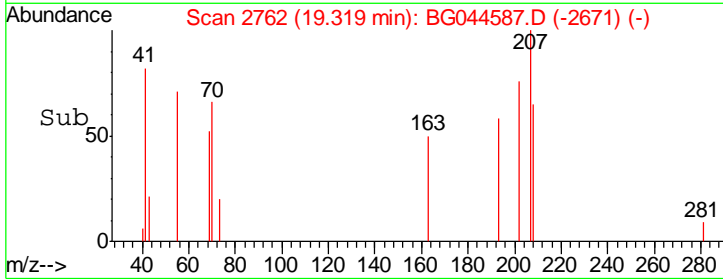
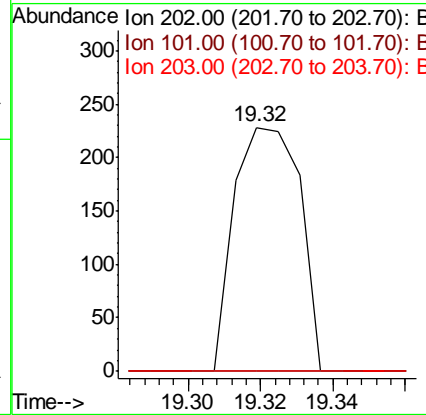
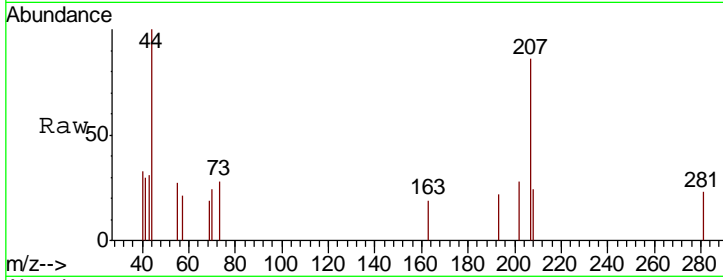




#75
 Fluoranthene
 Concen: 0.011 ng
 RT: 19.32 min Scan# 2762
 Delta R.T. 0.01 min
 Lab File: BG044587.D
 Acq: 25 Feb 2020 21:54

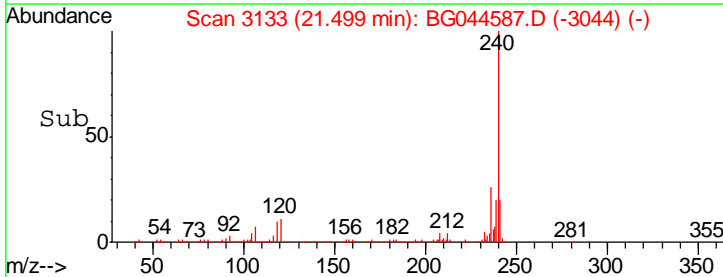
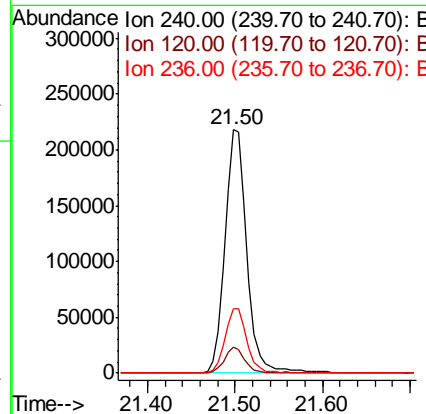
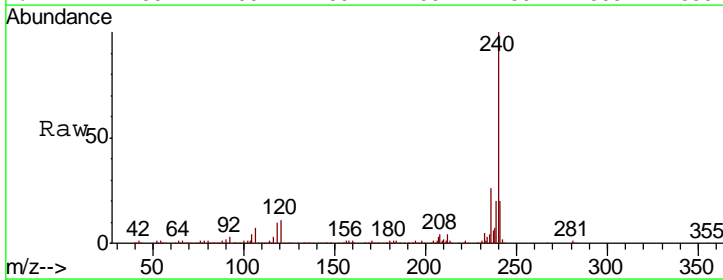
Instrument :
 BNA_G
 ClientSampled :

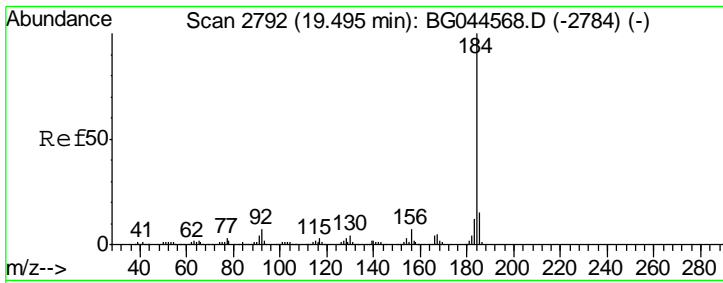
Tgt Ion	Resp	Lower	Upper
202	100		
101	0.0	0.0	31.0
203	0.0	0.0	39.2



#76
 Chrysene-d12
 Concen: 20.000 ng
 RT: 21.50 min Scan# 3133
 Delta R.T. -0.01 min
 Lab File: BG044587.D
 Acq: 25 Feb 2020 21:54

Tgt Ion	Resp	Lower	Upper
240	100		
120	10.5	8.3	12.5
236	26.4	22.3	33.5

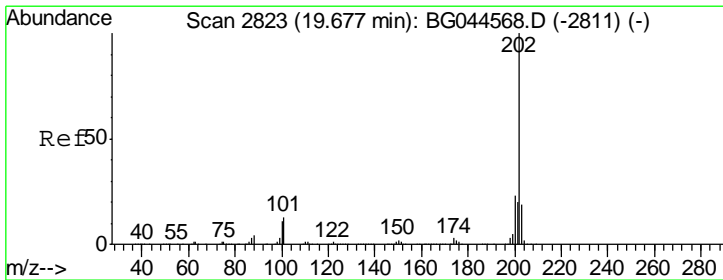
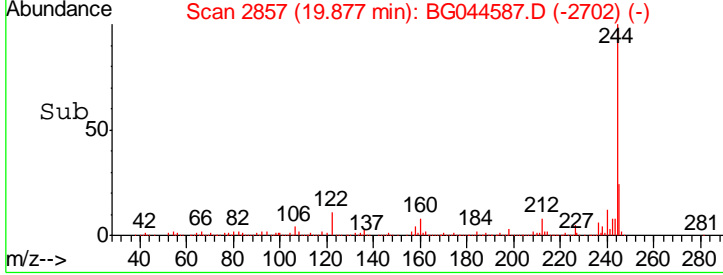
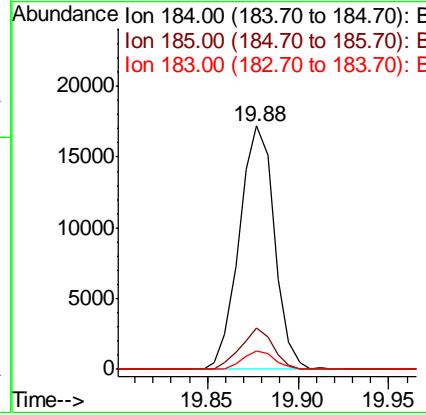
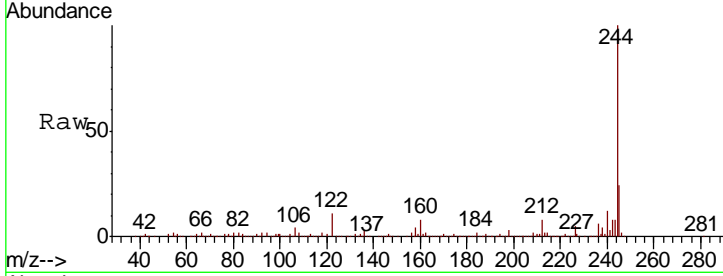




#77
Benzidine
Concen: 1.792 ng
RT: 19.88 min Scan# 2857
Delta R.T. 0.38 min
Lab File: BG044587.D
Acq: 25 Feb 2020 21:54

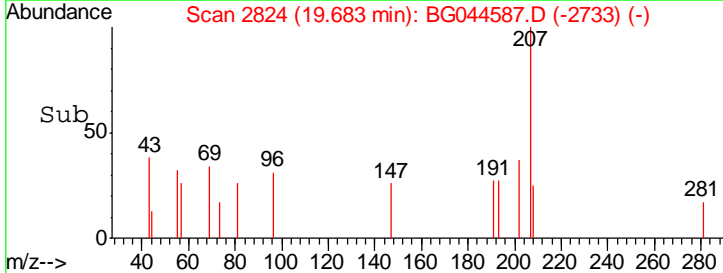
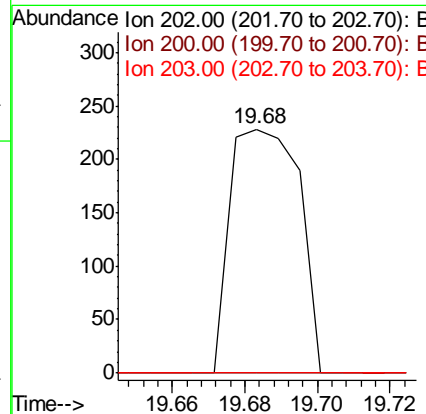
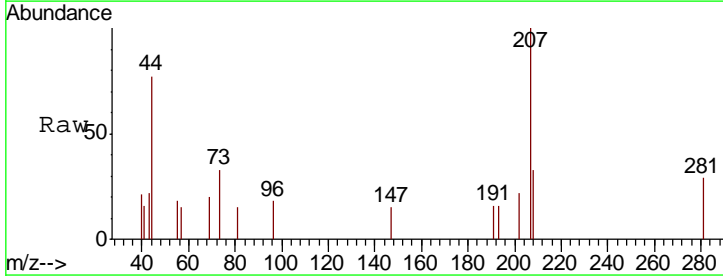
Instrument :
BNA_G
ClientSampled :

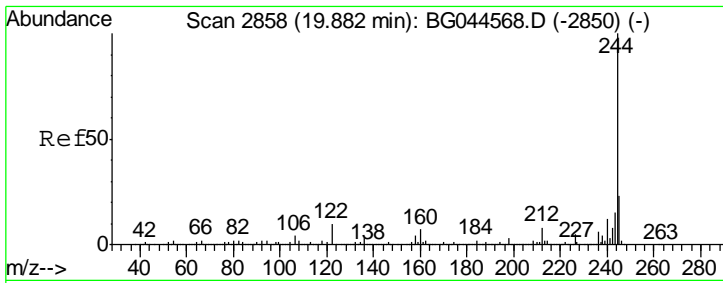
Tgt Ion	Resp	Lower	Upper
184	23112		
185	17.2	12.2	18.4
183	7.4	9.9	14.9#



#78
Pyrene
Concen: 0.011 ng
RT: 19.68 min Scan# 2824
Delta R.T. 0.01 min
Lab File: BG044587.D
Acq: 25 Feb 2020 21:54

Tgt Ion	Resp	Lower	Upper
202	303		
200	0.0	18.6	28.0#
203	0.0	15.3	22.9#



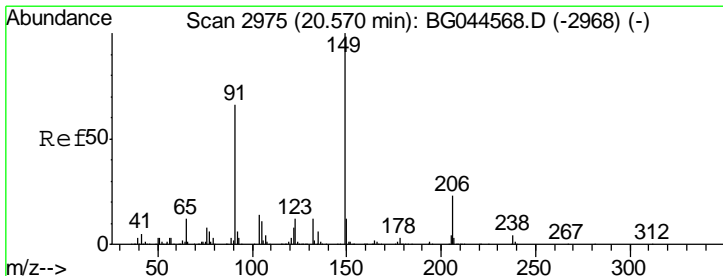
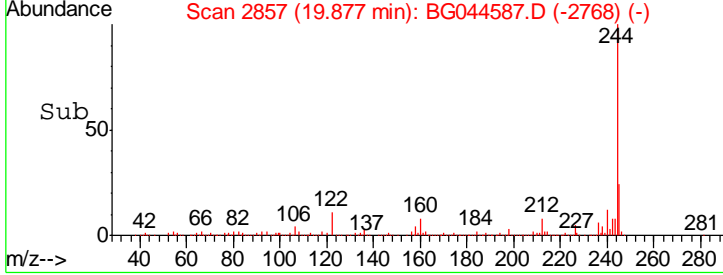
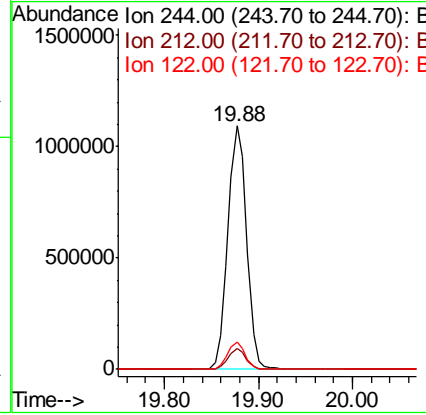
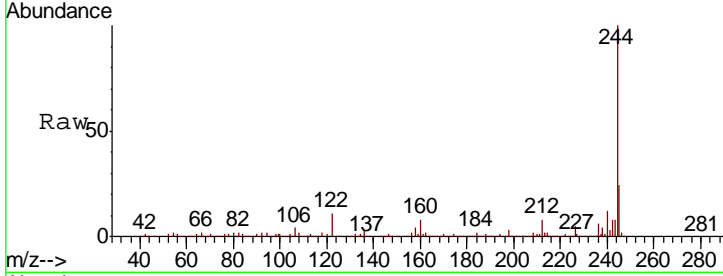


#79
 Terphenyl-d14
 Concen: 76.525 ng
 RT: 19.88 min Scan# 2857
 Delta R.T. -0.01 min
 Lab File: BG044587.D
 Acq: 25 Feb 2020 21:54

Instrument :
 BNA_G
 ClientSampled :

Tgt Ion: 244 Resp: 1521951

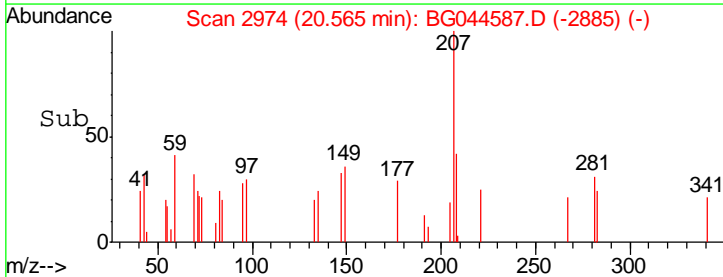
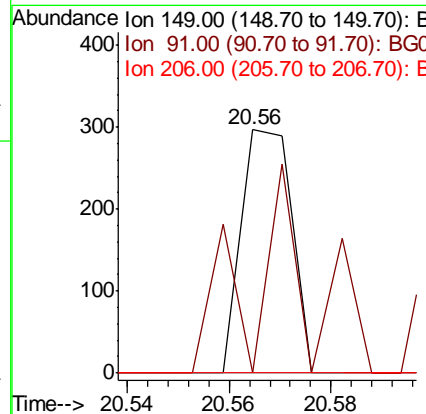
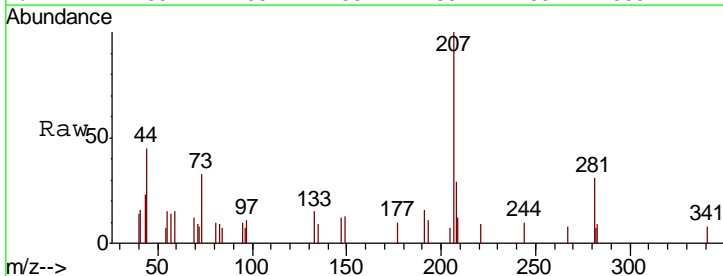
Ion	Ratio	Lower	Upper
244	100		
212	8.4	6.5	9.7
122	11.1	8.2	12.4

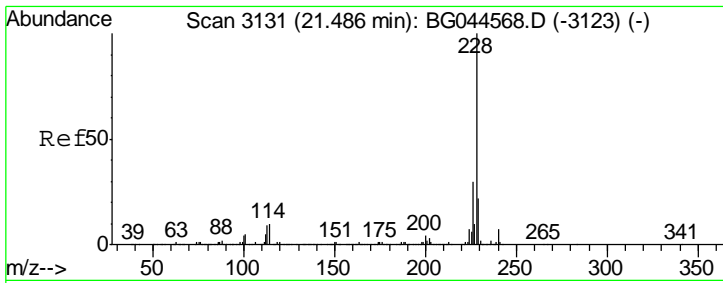


#80
 Butylbenzylphthalate
 Concen: 0.017 ng
 RT: 20.56 min Scan# 2974
 Delta R.T. -0.01 min
 Lab File: BG044587.D
 Acq: 25 Feb 2020 21:54

Tgt Ion: 149 Resp: 207

Ion	Ratio	Lower	Upper
149	100		
91	0.0	52.7	79.1#
206	0.0	18.6	28.0#

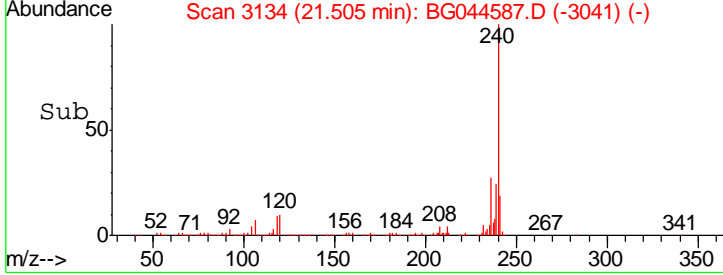
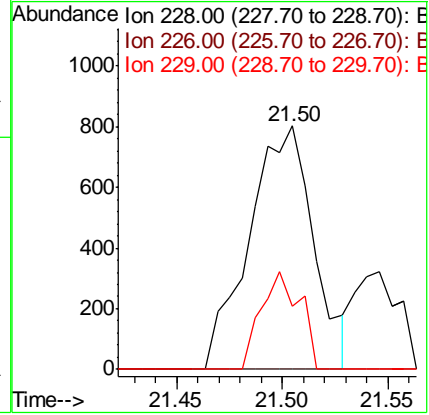
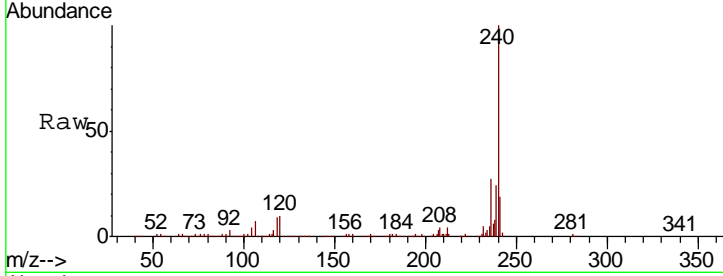




#81
 Benzo(a)anthracene
 Concen: 0.064 ng
 RT: 21.50 min Scan# 3134
 Delta R.T. 0.02 min
 Lab File: BG044587.D
 Acq: 25 Feb 2020 21:54

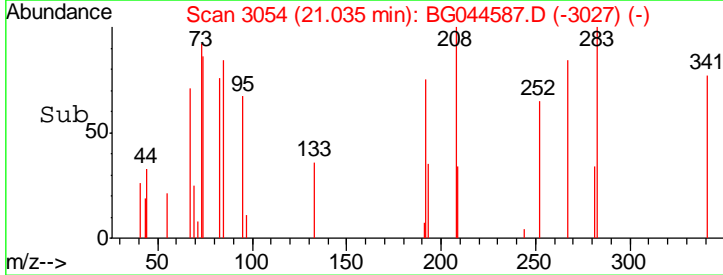
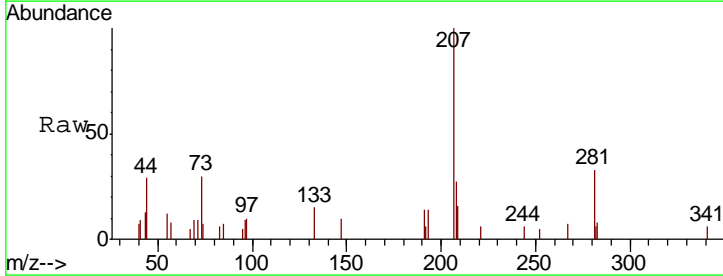
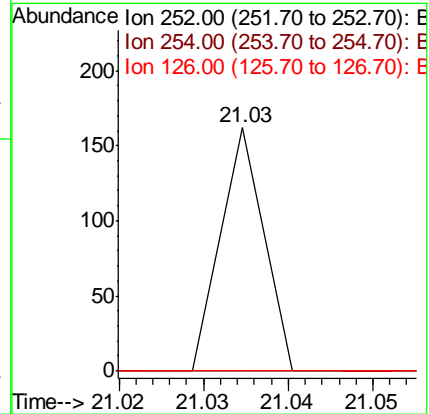
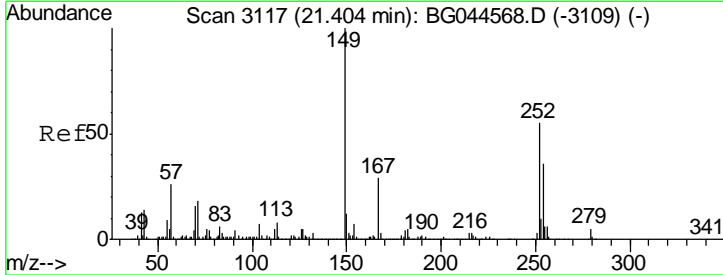
Instrument :
 BNA_G
 ClientSampled :

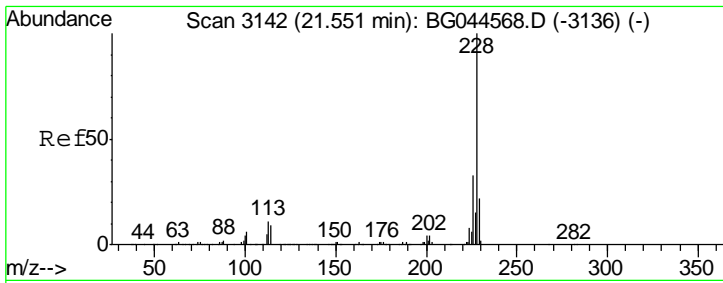
Tgt Ion	Resp	Lower	Upper
228	1703		
226	0.0	23.8	35.8#
229	25.9	17.2	25.8#



#82
 3,3'-Dichlorobenzidine
 Concen: 0.005 ng
 RT: 21.03 min Scan# 3054
 Delta R.T. -0.37 min
 Lab File: BG044587.D
 Acq: 25 Feb 2020 21:54

Tgt Ion	Resp	Lower	Upper
252	57		
254	0.0	51.5	77.3#
126	0.0	7.8	11.6#

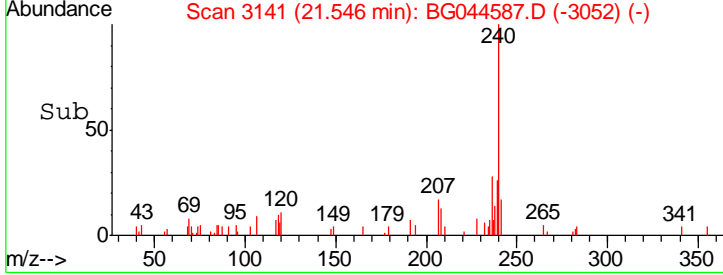
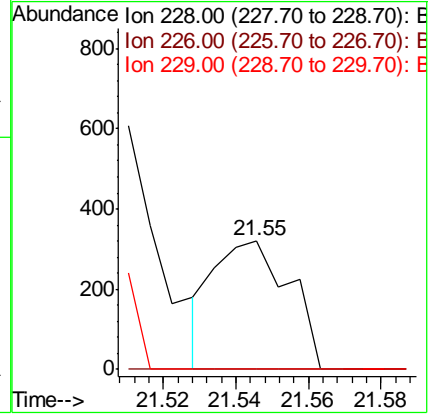
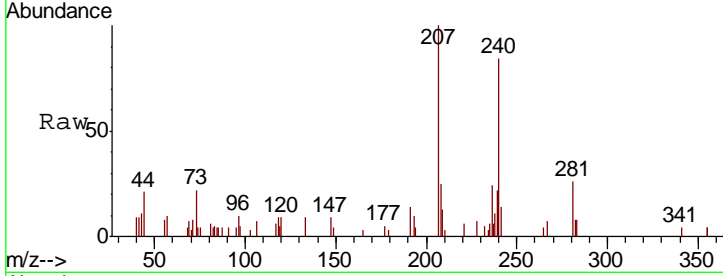




#83
 Chrysene
 Concen: 0.018 ng
 RT: 21.55 min Scan# 3141
 Delta R.T. -0.01 min
 Lab File: BG044587.D
 Acq: 25 Feb 2020 21:54

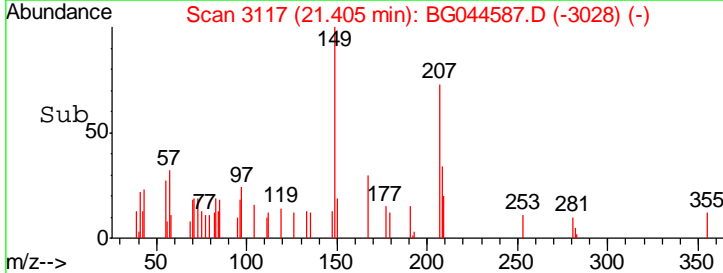
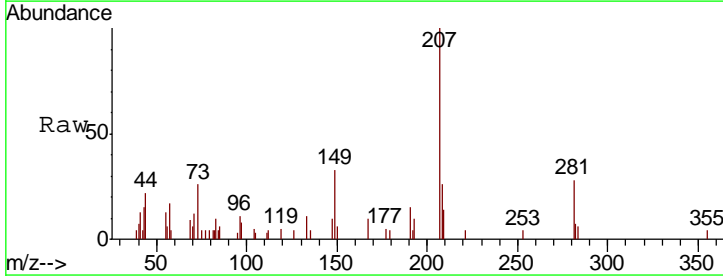
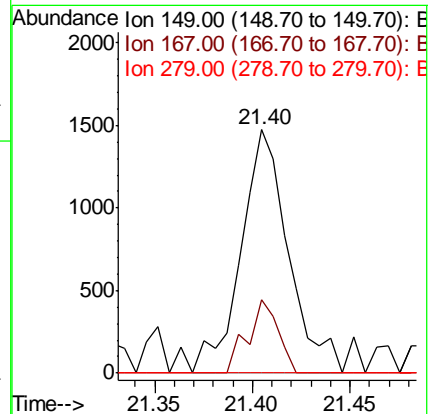
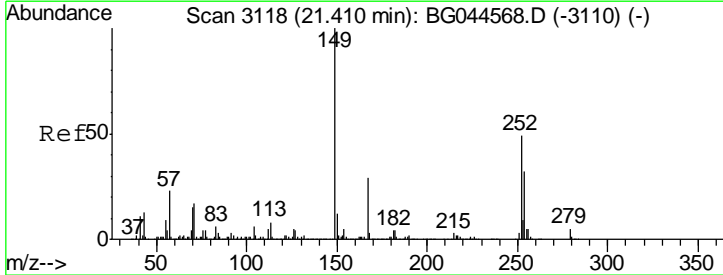
Instrument :
 BNA_G
 ClientSampleId :

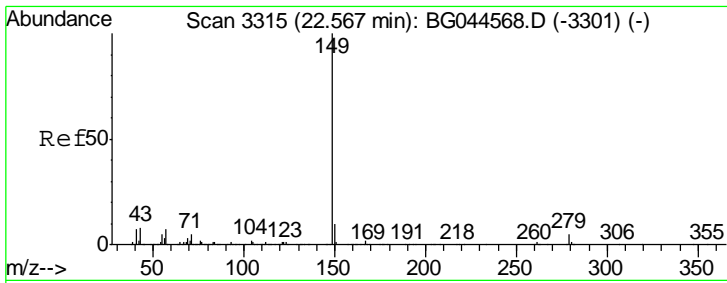
Tgt Ion	Resp	Lower	Upper
228	463		
226	0.0	26.1	39.1#
229	0.0	17.2	25.8#



#84
 Bis(2-ethylhexyl)phthalate
 Concen: 0.151 ng
 RT: 21.40 min Scan# 3117
 Delta R.T. -0.01 min
 Lab File: BG044587.D
 Acq: 25 Feb 2020 21:54

Tgt Ion	Resp	Lower	Upper
149	2486		
167	29.9	23.4	35.0
279	0.0	4.2	6.4#

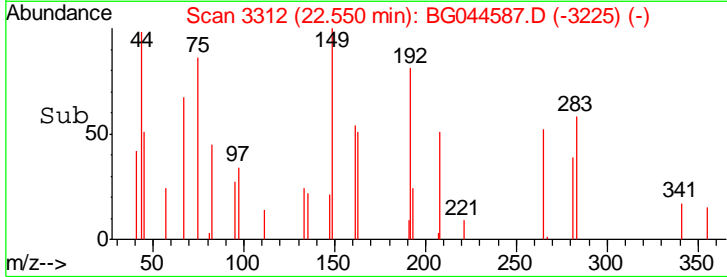
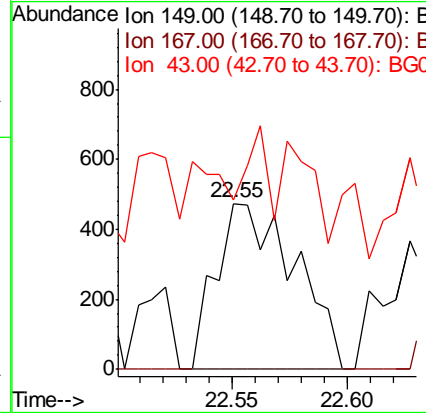
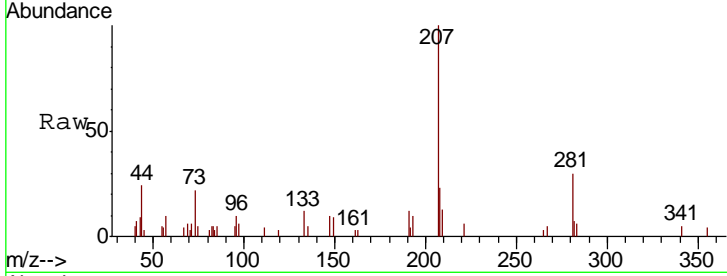




#85
 Di-n-octyl phthalate
 Concen: 0.039 ng
 RT: 22.55 min Scan# 3312
 Delta R.T. -0.02 min
 Lab File: BG044587.D
 Acq: 25 Feb 2020 21:54

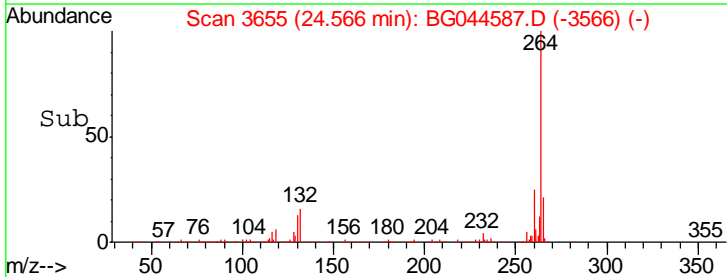
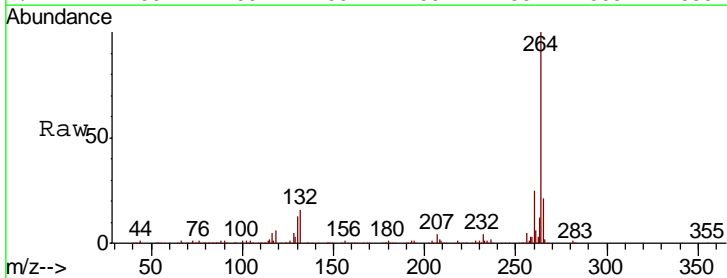
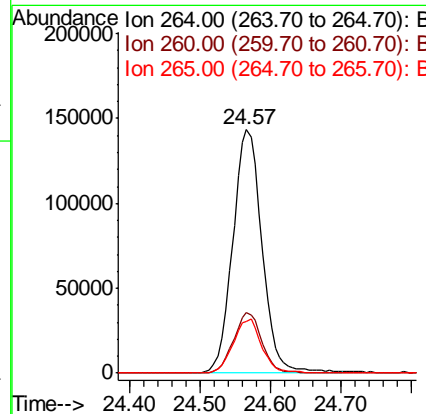
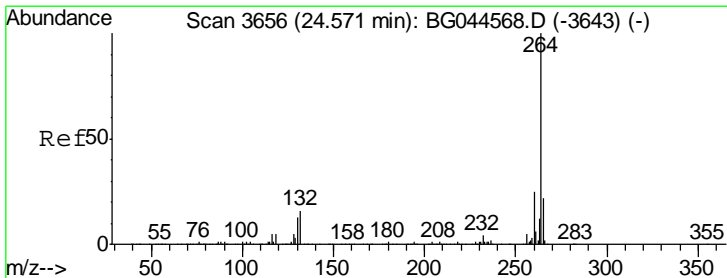
Instrument :
 BNA_G
 ClientSampled :

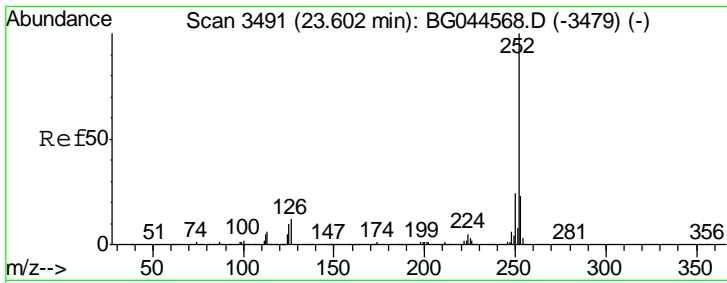
Tgt Ion	Resp	Lower	Upper
149	1128		
167	0.0	1.3	1.9#
43	0.0	6.6	10.0#



#87
 Perylene-d12
 Concen: 20.000 ng
 RT: 24.57 min Scan# 3655
 Delta R.T. -0.01 min
 Lab File: BG044587.D
 Acq: 25 Feb 2020 21:54

Tgt Ion	Resp	Lower	Upper
264	412884		
260	24.9	19.7	29.5
265	21.2	17.8	26.8

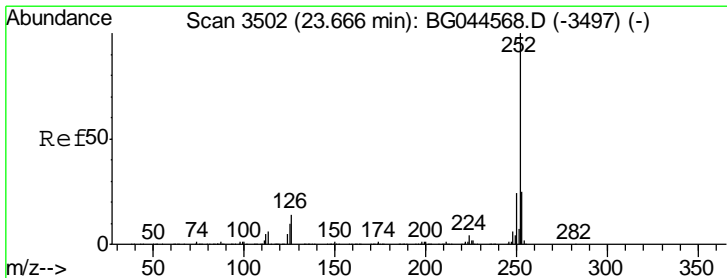
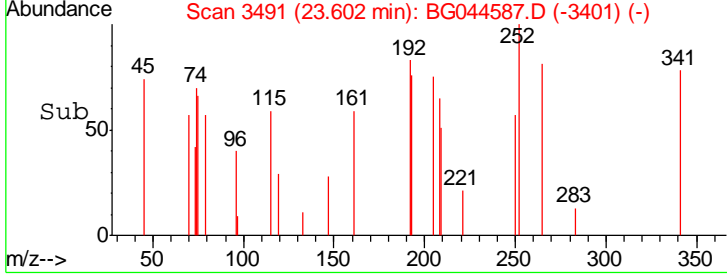
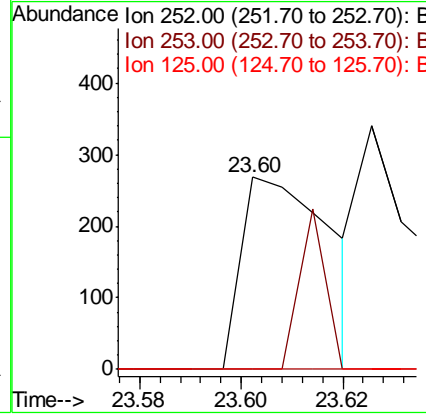
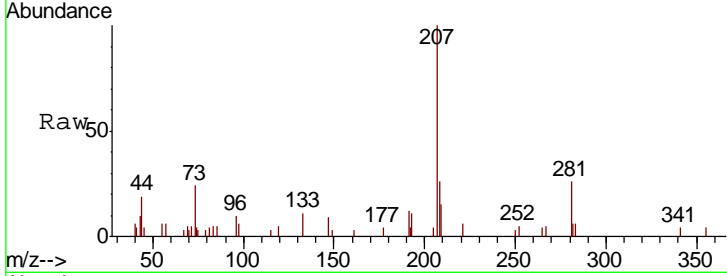




#88
 Benzo(b)fluoranthene
 Concen: 0.012 ng
 RT: 23.60 min Scan# 3491
 Delta R.T. 0.00 min
 Lab File: BG044587.D
 Acq: 25 Feb 2020 21:54

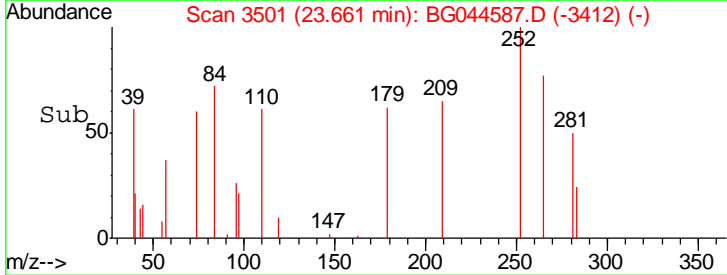
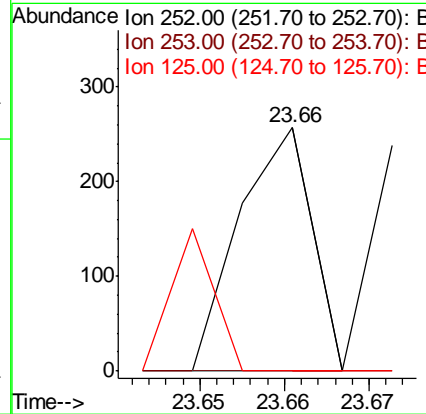
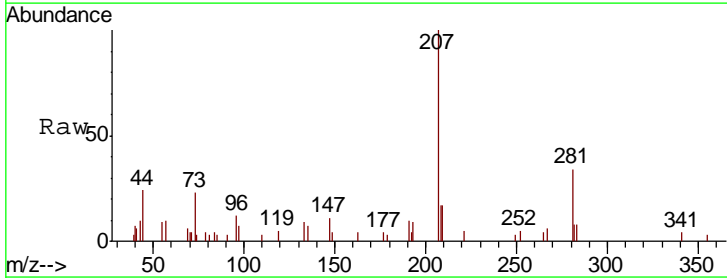
Instrument :
 BNA_G
 ClientSampled :

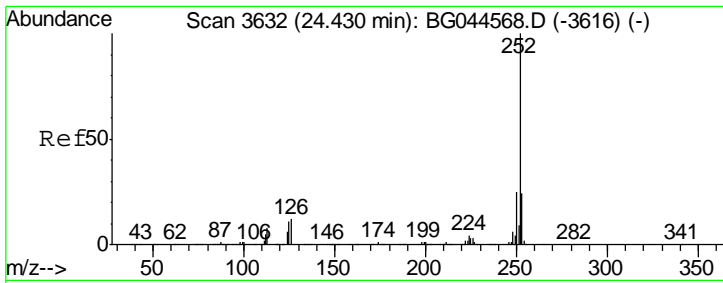
Tgt Ion	Resp	Lower	Upper
252	100		
253	0.0	18.4	27.6#
125	0.0	7.9	11.9#



#89
 Benzo(k)fluoranthene
 Concen: 0.006 ng
 RT: 23.66 min Scan# 3501
 Delta R.T. -0.01 min
 Lab File: BG044587.D
 Acq: 25 Feb 2020 21:54

Tgt Ion	Resp	Lower	Upper
252	100		
253	0.0	19.0	28.6#
125	0.0	7.8	11.8#





#90
 Benzo(a)pyrene
 Concen: 0.008 ng
 RT: 24.44 min Scan# 3633
 Delta R.T. 0.01 min
 Lab File: BG044587.D
 Acq: 25 Feb 2020 21:54

Instrument :
 BNA_G
 ClientSampled :

Tot Ion	Resp	Lower	Upper
252	210		
253	0.0	19.0	28.4#
125	0.0	8.5	12.7#

