

Data Path : Z:\svoasrv\HPCHEM1\BNA_G\Data\BG030122\
 Data File : BG052522.D
 Acq On : 1 Mar 2022 17:01
 Operator : CG/JU
 Sample : N1688-17
 Misc :
 ALS Vial : 11 Sample Multiplier: 1

Instrument :
 BNA_G
 ClientSampleId :
 MW-34

Quant Time: Mar 02 01:52:17 2022
 Quant Method : Z:\svoasrv\HPCHEM1\BNA_G\Methods\8270-BG020722.M
 Quant Title : ASP BNA STANDARDS FOR 5 POINT CALIBRATION
 QLast Update : Tue Feb 08 01:21:20 2022
 Response via : Initial Calibration

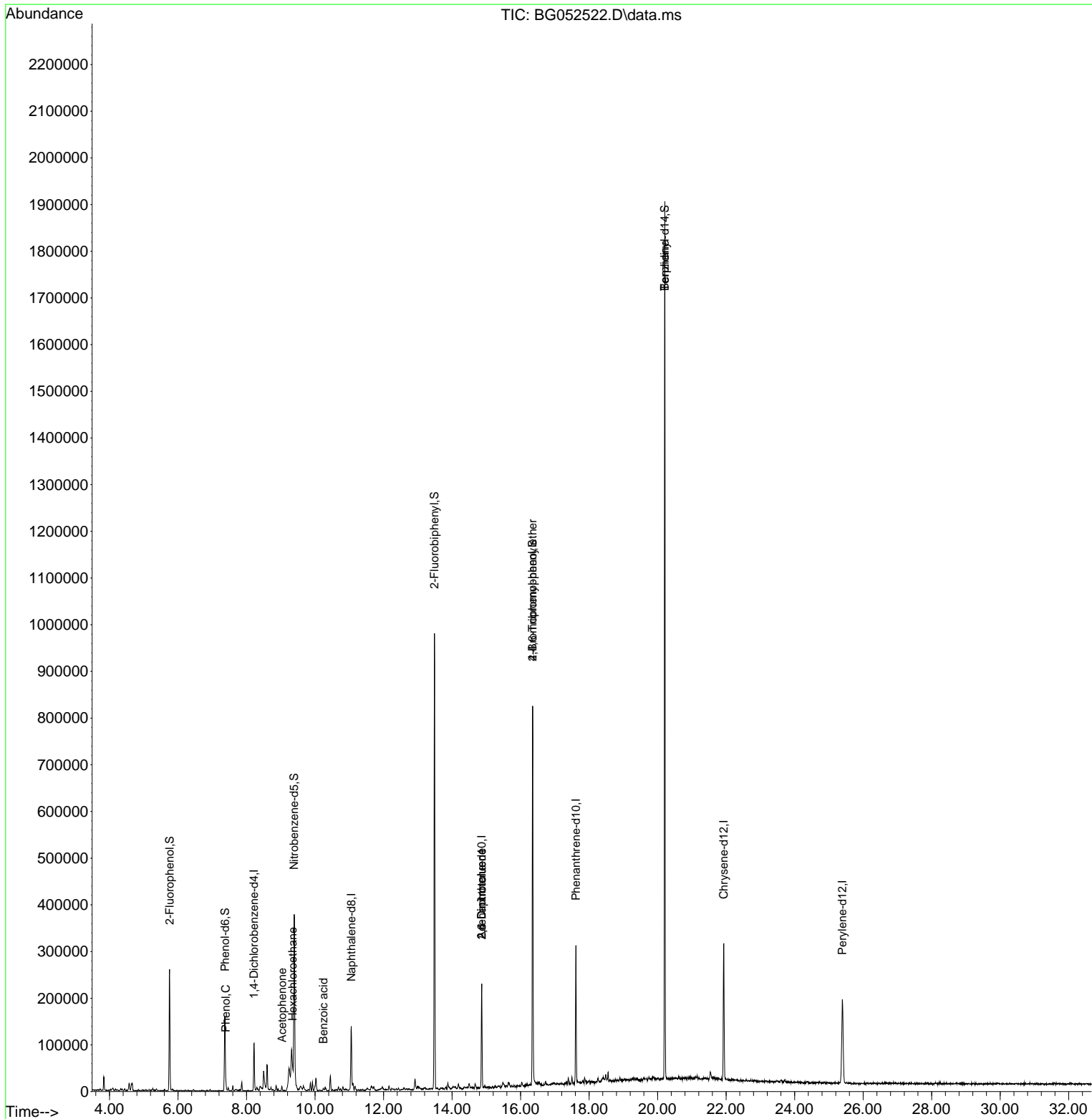
| Compound | R.T. | QIon | Response | Conc | Units | Dev(Min) |
|-------------------------------|--------|------|----------|-----------|-------|----------|
| ----- | | | | | | |
| Internal Standards | | | | | | |
| 1) 1,4-Dichlorobenzene-d4 | 8.222 | 152 | 30179 | 20.000 | ng | 0.00 |
| 21) Naphthalene-d8 | 11.059 | 136 | 115704 | 20.000 | ng | # 0.00 |
| 39) Acenaphthene-d10 | 14.866 | 164 | 78786 | 20.000 | ng | 0.00 |
| 64) Phenanthrene-d10 | 17.615 | 188 | 179868 | 20.000 | ng | 0.00 |
| 76) Chrysene-d12 | 21.933 | 240 | 198046 | 20.000 | ng | 0.00 |
| 86) Perylene-d12 | 25.393 | 264 | 205909 | 20.000 | ng | -0.01 |
| System Monitoring Compounds | | | | | | |
| 5) 2-Fluorophenol | 5.755 | 112 | 113744 | 65.688 | ng | 0.00 |
| 7) Phenol-d6 | 7.370 | 99 | 95866 | 35.882 | ng | 0.00 |
| 23) Nitrobenzene-d5 | 9.391 | 82 | 234624 | 88.130 | ng | 0.00 |
| 42) 2,4,6-Tribromophenol | 16.352 | 330 | 172399 | 152.311 | ng | 0.00 |
| 45) 2-Fluorobiphenyl | 13.485 | 172 | 525111 | 92.613 | ng | 0.00 |
| 79) Terphenyl-d14 | 20.211 | 244 | 953843 | 85.049 | ng | 0.00 |
| Target Compounds | | | | | | |
| | | | | | | Qvalue |
| 9) Benzaldehyde | 7.358 | 77 | 585 | Below Cal | | # 1 |
| 10) Phenol | 7.394 | 94 | 7974 | 3.004 | ng | 92 |
| 18) Hexachloroethane | 9.344 | 117 | 3778 | 4.911 | ng | # 33 |
| 22) Acetophenone | 9.038 | 105 | 6135 | 2.006 | ng | # 57 |
| 32) Benzoic acid | 10.243 | 122 | 259 | 6.198 | ng | # 56 |
| 51) 2,6-Dinitrotoluene | 14.866 | 165 | 10813 | 8.302 | ng | # 19 |
| 57) 2,4-Dinitrotoluene | 14.866 | 165 | 10813 | 5.833 | ng | # 18 |
| 67) 4-Bromophenyl-phenylether | 16.352 | 248 | 11099 | 5.074 | ng | # 1 |
| 77) Benzidine | 20.211 | 184 | 14069 | 3.325 | ng | # 90 |
| ----- | | | | | | |

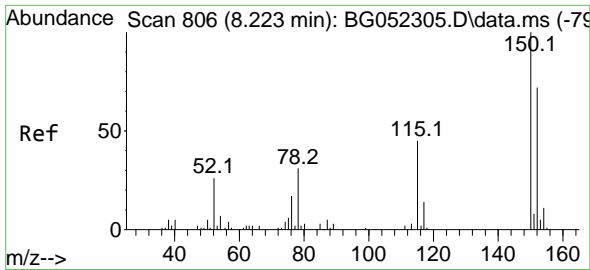
(#) = qualifier out of range (m) = manual integration (+) = signals summed

Data Path : Z:\svoasrv\HPCHEM1\BNA_G\Data\BG030122\
 Data File : BG052522.D
 Acq On : 1 Mar 2022 17:01
 Operator : CG/JU
 Sample : N1688-17
 Misc :
 ALS Vial : 11 Sample Multiplier: 1

Instrument :
 BNA_G
 ClientSampleId :
 MW-34

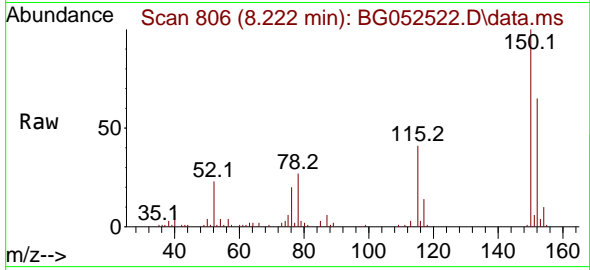
Quant Time: Mar 02 01:52:17 2022
 Quant Method : Z:\svoasrv\HPCHEM1\BNA_G\Methods\8270-BG020722.M
 Quant Title : ASP BNA STANDARDS FOR 5 POINT CALIBRATION
 QLast Update : Tue Feb 08 01:21:20 2022
 Response via : Initial Calibration



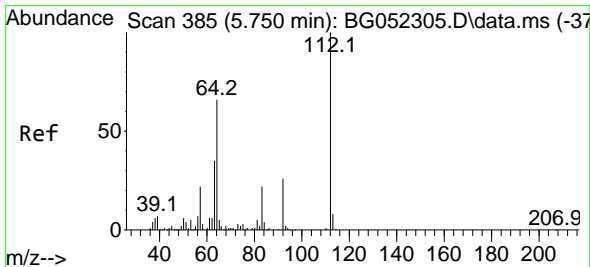
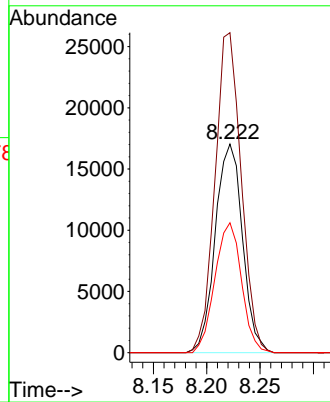
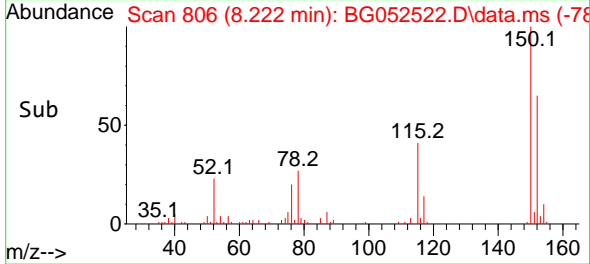


#1
 1,4-Dichlorobenzene-d4
 Concen: 20.000 ng
 RT: 8.222 min Scan# 80
 Delta R.T. -0.001 min
 Lab File: BG052522.D
 Acq: 1 Mar 2022 17:01

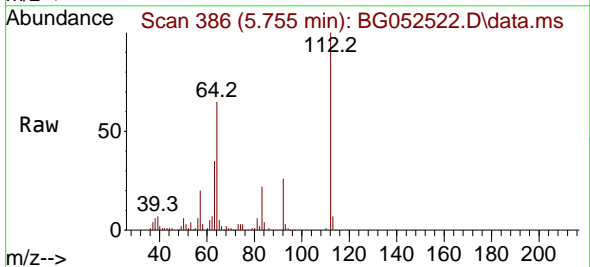
Instrument :
 BNA_G
 ClientSampleId :
 MW-34



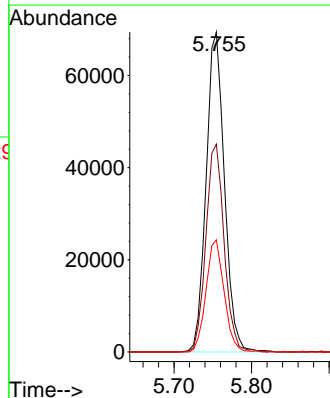
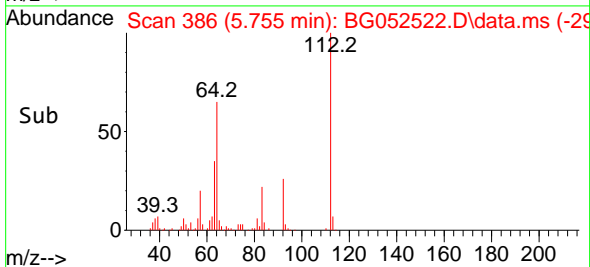
Tgt Ion:152 Resp: 30179
 Ion Ratio Lower Upper
 152 100
 150 153.4 117.8 176.8
 115 62.2 50.2 75.2

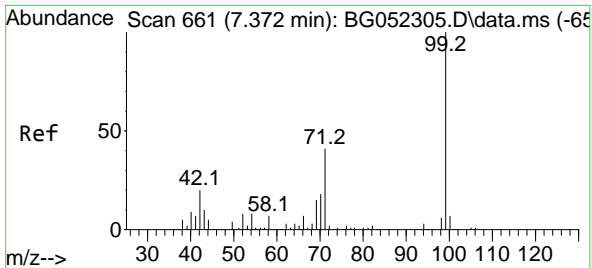


#5
 2-Fluorophenol
 Concen: 65.688 ng
 RT: 5.755 min Scan# 386
 Delta R.T. 0.004 min
 Lab File: BG052522.D
 Acq: 1 Mar 2022 17:01



Tgt Ion:112 Resp: 113744
 Ion Ratio Lower Upper
 112 100
 64 64.9 60.4 90.6
 63 35.0 33.3 49.9



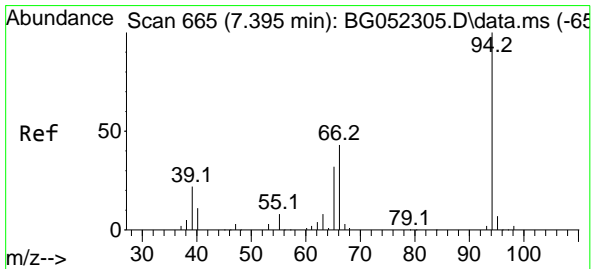
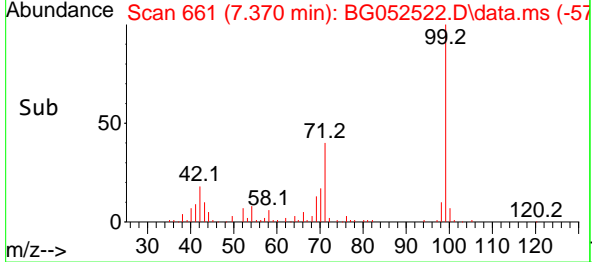
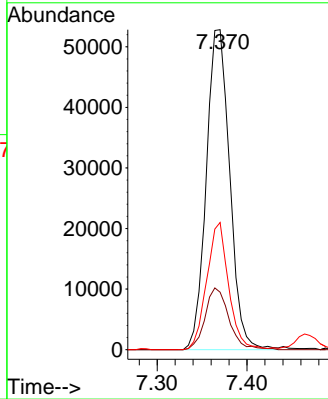
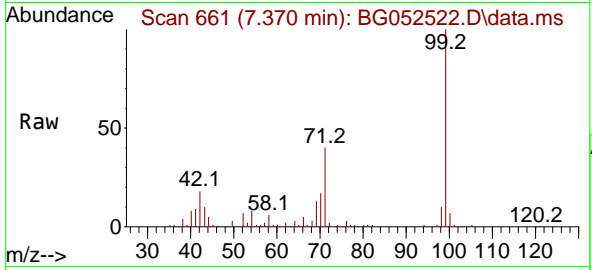


#7
 Phenol-d6
 Concen: 35.882 ng
 RT: 7.370 min Scan# 661
 Delta R.T. -0.002 min
 Lab File: BG052522.D
 Acq: 1 Mar 2022 17:01

Instrument :
 BNA_G
 ClientSampleId :
 MW-34

Tgt Ion: 99 Resp: 95866

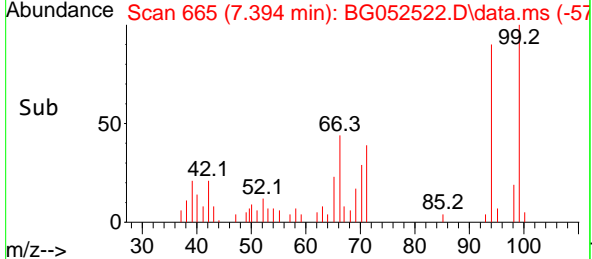
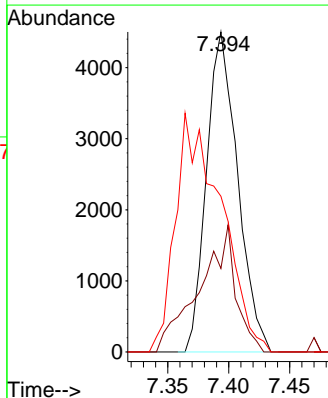
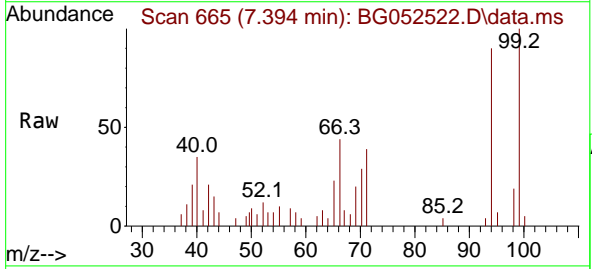
| Ion | Ratio | Lower | Upper |
|-----|-------|-------|-------|
| 99 | 100 | | |
| 42 | 18.0 | 19.1 | 28.7# |
| 71 | 39.8 | 33.4 | 50.2 |

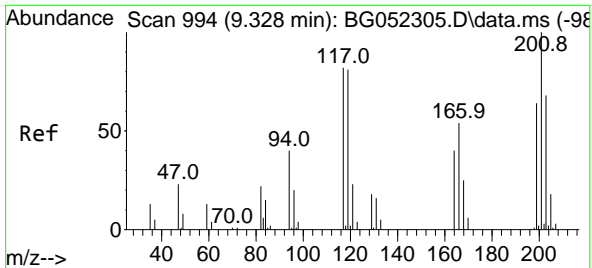


#10
 Phenol
 Concen: 3.004 ng
 RT: 7.394 min Scan# 665
 Delta R.T. -0.002 min
 Lab File: BG052522.D
 Acq: 1 Mar 2022 17:01

Tgt Ion: 94 Resp: 7974

| Ion | Ratio | Lower | Upper |
|-----|-------|-------|-------|
| 94 | 100 | | |
| 65 | 26.1 | 14.1 | 54.1 |
| 66 | 48.6 | 26.6 | 66.6 |

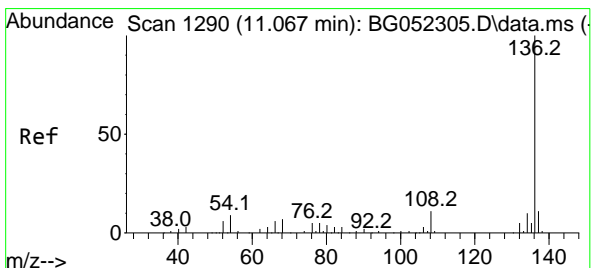
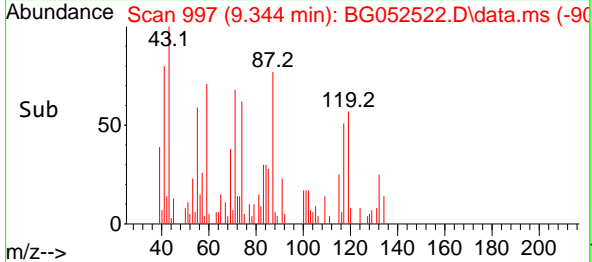
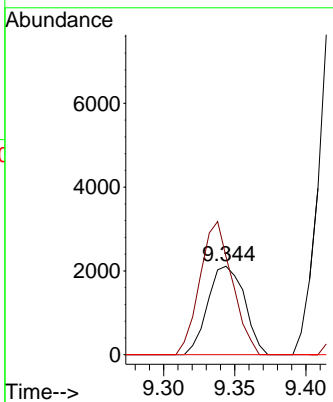
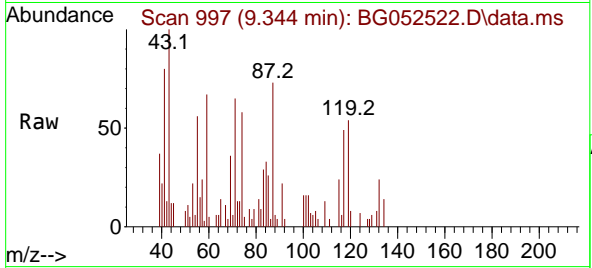




#18
 Hexachloroethane
 Concen: 4.911 ng
 RT: 9.344 min Scan# 91
 Delta R.T. 0.016 min
 Lab File: BG052522.D
 Acq: 1 Mar 2022 17:01

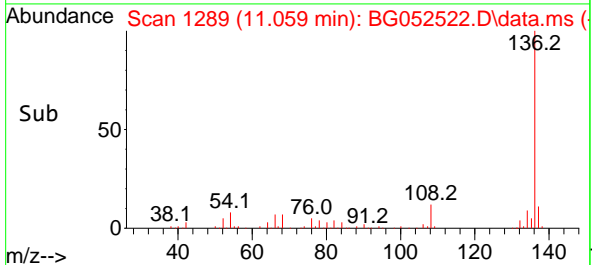
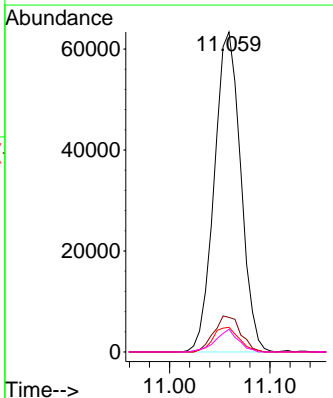
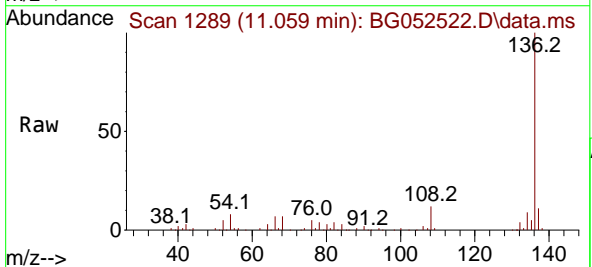
Instrument :
 BNA_G
 ClientSampleId :
 MW-34

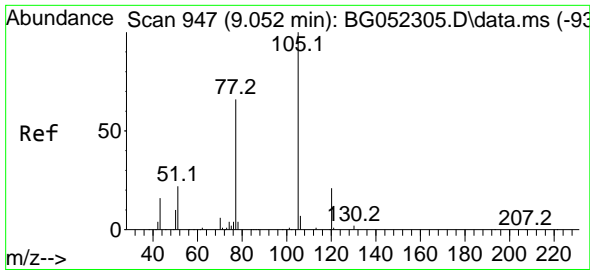
Tgt Ion:117 Resp: 3778
 Ion Ratio Lower Upper
 117 100
 119 110.8 73.5 110.3#
 201 0.0 91.0 136.6#



#21
 Naphthalene-d8
 Concen: 20.000 ng
 RT: 11.059 min Scan# 1289
 Delta R.T. -0.008 min
 Lab File: BG052522.D
 Acq: 1 Mar 2022 17:01

Tgt Ion:136 Resp: 115704
 Ion Ratio Lower Upper
 136 100
 137 10.8 9.1 13.7
 54 7.7 8.3 12.5#
 68 7.1 4.5 6.7#



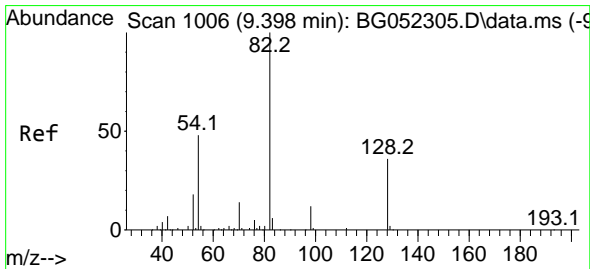
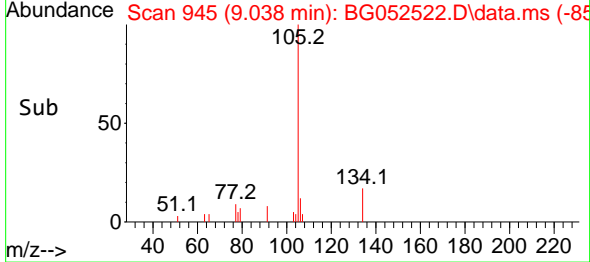
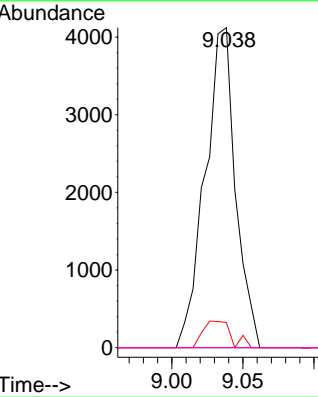
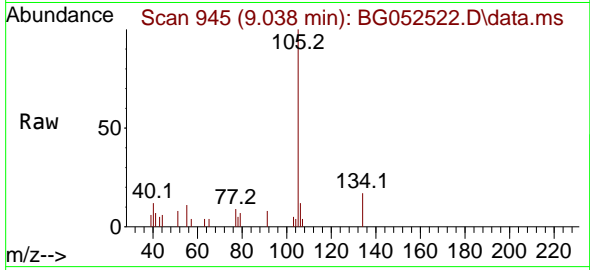


#22
 Acetophenone
 Concen: 2.006 ng
 RT: 9.038 min Scan# 94
 Delta R.T. -0.013 min
 Lab File: BG052522.D
 Acq: 1 Mar 2022 17:01

Instrument :
 BNA_G
 ClientSampleId :
 MW-34

Tgt Ion:105 Resp: 6135

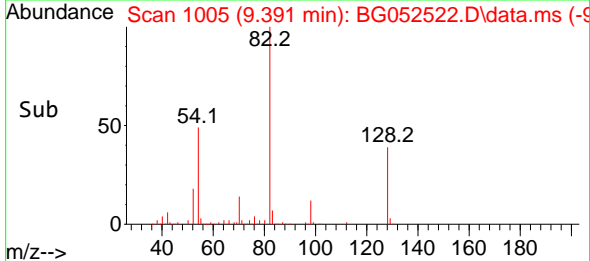
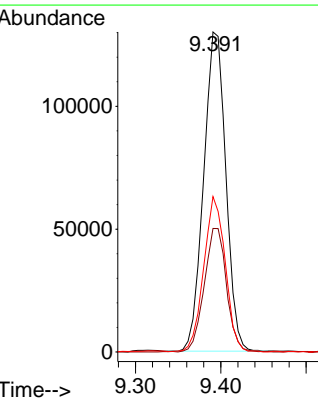
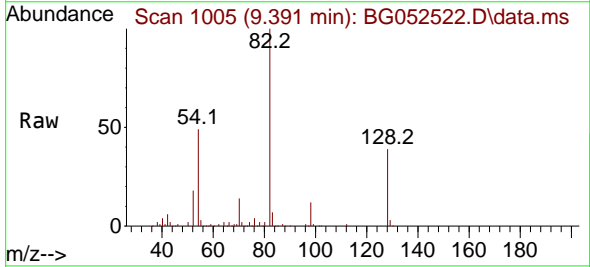
| Ion | Ratio | Lower | Upper |
|-----|-------|-------|-------|
| 105 | 100 | | |
| 71 | 0.0 | 1.8 | 2.6# |
| 51 | 7.8 | 27.0 | 40.4# |
| 120 | 0.0 | 16.2 | 24.4# |

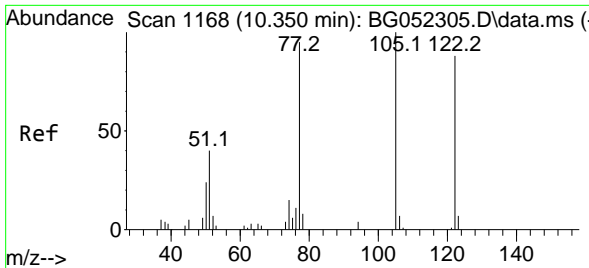


#23
 Nitrobenzene-d5
 Concen: 88.130 ng
 RT: 9.391 min Scan# 1005
 Delta R.T. -0.007 min
 Lab File: BG052522.D
 Acq: 1 Mar 2022 17:01

Tgt Ion: 82 Resp: 234624

| Ion | Ratio | Lower | Upper |
|-----|-------|-------|-------|
| 82 | 100 | | |
| 128 | 38.6 | 27.0 | 40.4 |
| 54 | 48.5 | 41.0 | 61.6 |



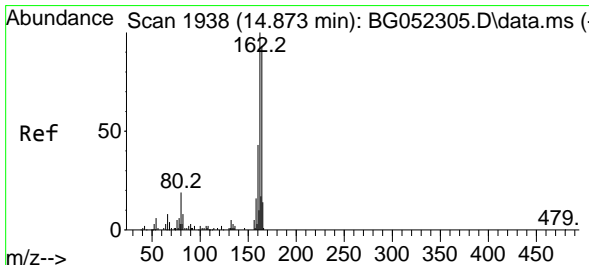
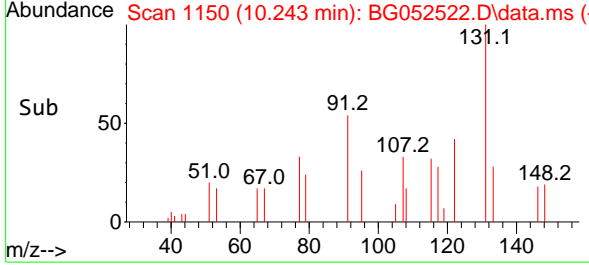
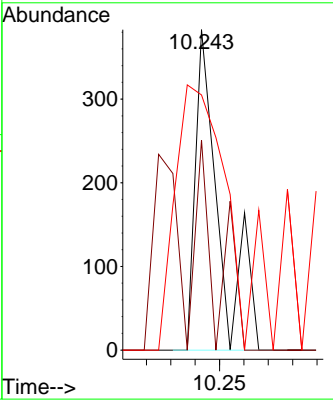
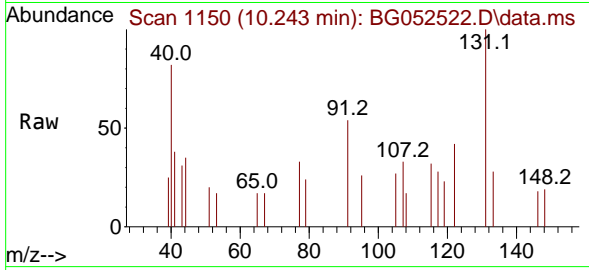


#32
 Benzoic acid
 Concen: 6.198 ng
 RT: 10.243 min Scan# 1168
 Delta R.T. -0.107 min
 Lab File: BG052522.D
 Acq: 1 Mar 2022 17:01

Instrument : BNA_G
 ClientSampleId : MW-34

Tgt Ion:122 Resp: 259

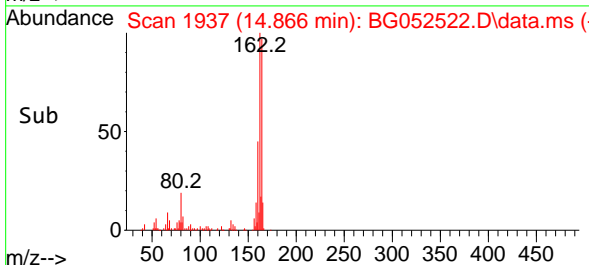
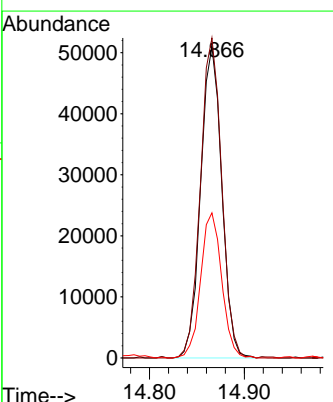
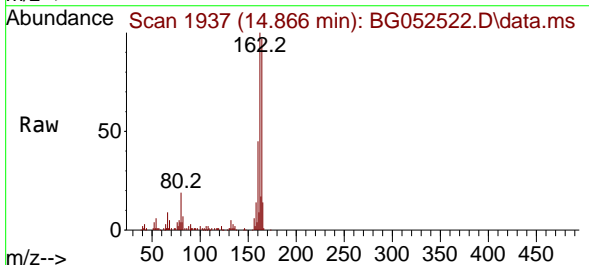
| Ion | Ratio | Lower | Upper |
|-----|-------|-------|--------|
| 122 | 100 | | |
| 105 | 65.5 | 109.2 | 149.2# |
| 77 | 79.6 | 92.8 | 132.8# |

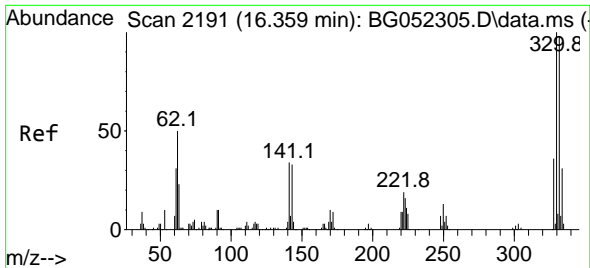


#39
 Acenaphthene-d10
 Concen: 20.000 ng
 RT: 14.866 min Scan# 1937
 Delta R.T. -0.007 min
 Lab File: BG052522.D
 Acq: 1 Mar 2022 17:01

Tgt Ion:164 Resp: 78786

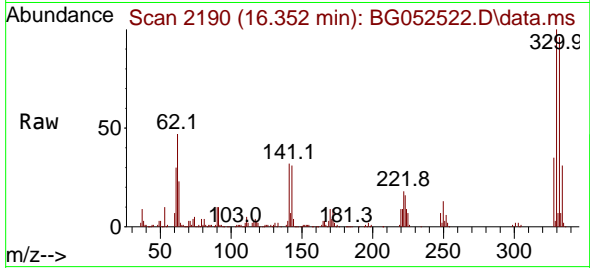
| Ion | Ratio | Lower | Upper |
|-----|-------|-------|-------|
| 164 | 100 | | |
| 162 | 102.8 | 82.2 | 123.2 |
| 160 | 46.6 | 36.2 | 54.2 |



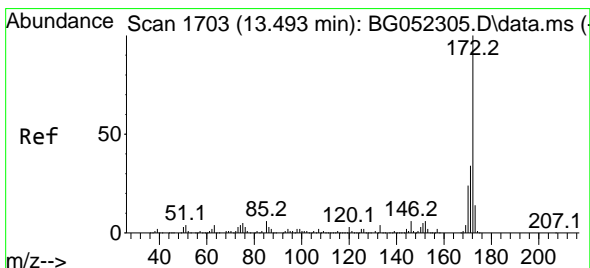
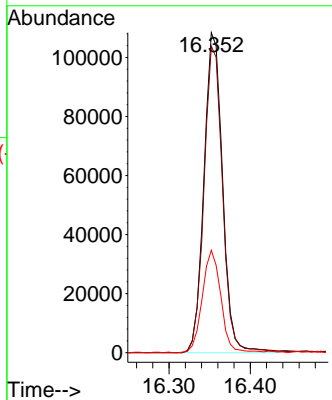
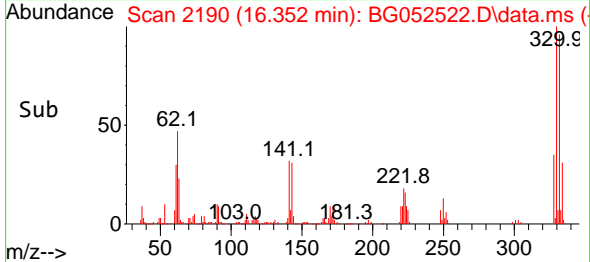


#42
 2,4,6-Tribromophenol
 Concen: 152.311 ng
 RT: 16.352 min Scan# 2190
 Delta R.T. -0.007 min
 Lab File: BG052522.D
 Acq: 1 Mar 2022 17:01

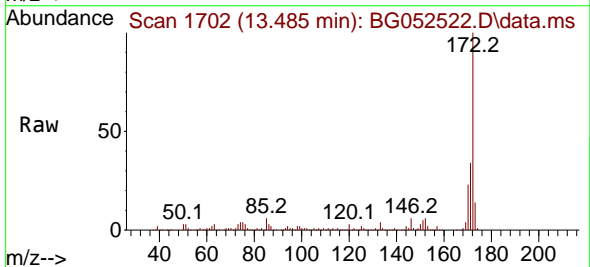
Instrument :
 BNA_G
 ClientSampleId :
 MW-34



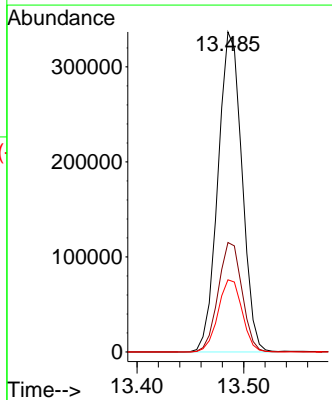
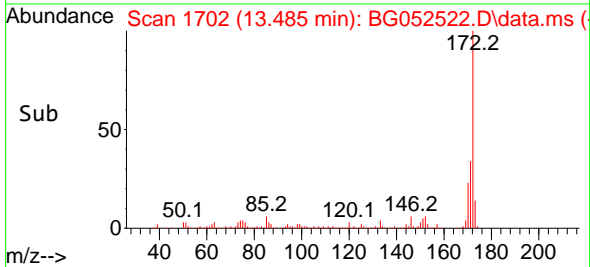
Tgt Ion:330 Resp: 172399
 Ion Ratio Lower Upper
 330 100
 332 95.7 78.6 117.8
 141 31.8 28.8 43.2

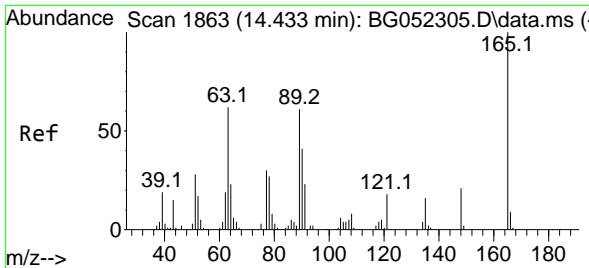


#45
 2-Fluorobiphenyl
 Concen: 92.613 ng
 RT: 13.485 min Scan# 1702
 Delta R.T. -0.007 min
 Lab File: BG052522.D
 Acq: 1 Mar 2022 17:01



Tgt Ion:172 Resp: 525111
 Ion Ratio Lower Upper
 172 100
 171 34.2 28.3 42.5
 170 22.5 18.3 27.5



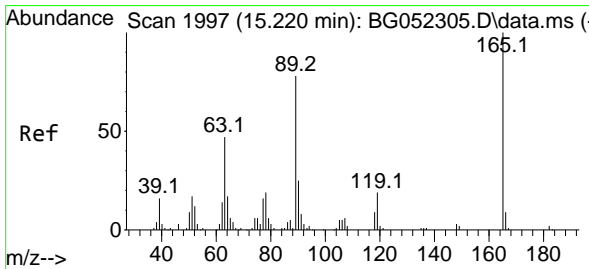
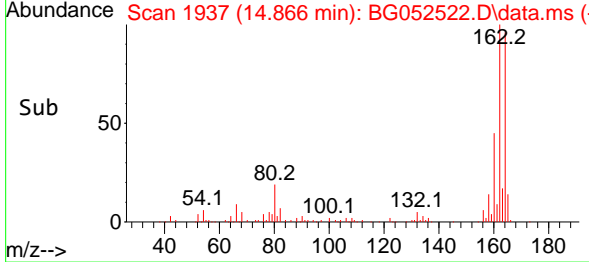
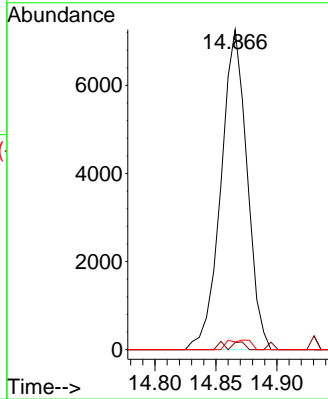
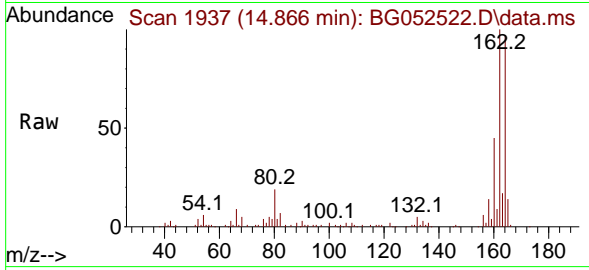


#51
 2,6-Dinitrotoluene
 Concen: 8.302 ng
 RT: 14.866 min Scan# 1937
 Delta R.T. 0.433 min
 Lab File: BG052522.D
 Acq: 1 Mar 2022 17:01

Instrument :
 BNA_G
 ClientSampleId :
 MW-34

Tgt Ion:165 Resp: 10813

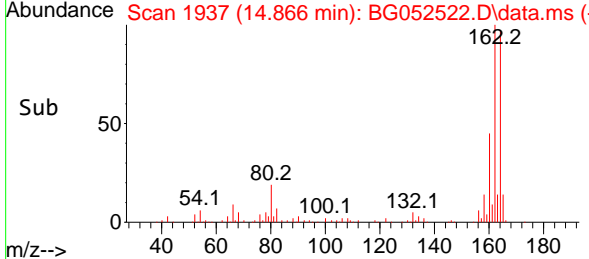
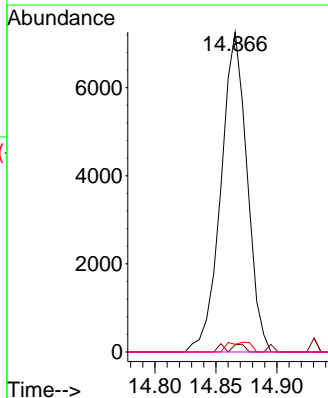
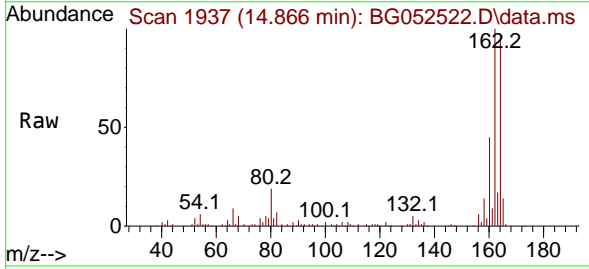
| Ion | Ratio | Lower | Upper |
|-----|-------|-------|-------|
| 165 | 100 | | |
| 63 | 2.2 | 59.0 | 88.4# |
| 89 | 2.4 | 49.4 | 74.0# |

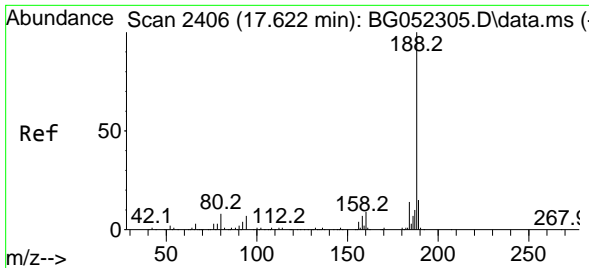


#57
 2,4-Dinitrotoluene
 Concen: 5.833 ng
 RT: 14.866 min Scan# 1937
 Delta R.T. -0.354 min
 Lab File: BG052522.D
 Acq: 1 Mar 2022 17:01

Tgt Ion:165 Resp: 10813

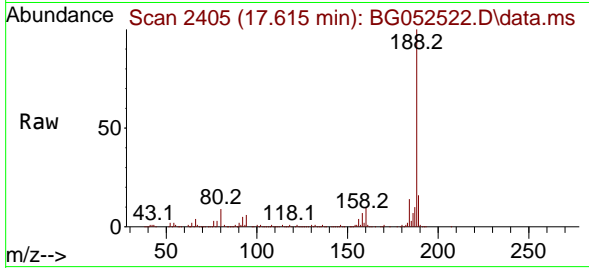
| Ion | Ratio | Lower | Upper |
|-----|-------|-------|--------|
| 165 | 100 | | |
| 63 | 2.2 | 44.6 | 66.8# |
| 89 | 2.4 | 67.4 | 101.0# |
| 182 | 0.0 | 1.6 | 2.4# |



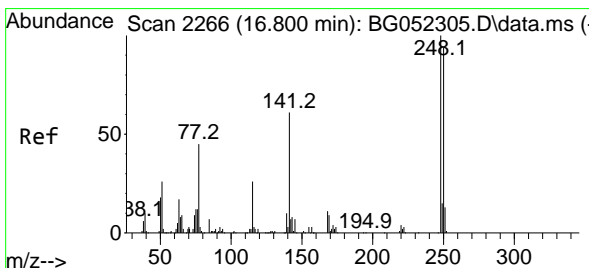
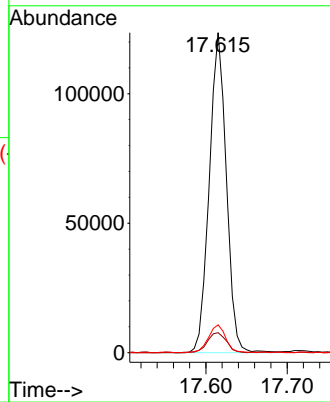
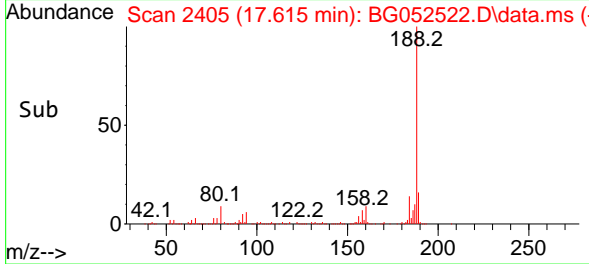


#64
 Phenanthrene-d10
 Concen: 20.000 ng
 RT: 17.615 min Scan# 24
 Delta R.T. -0.007 min
 Lab File: BG052522.D
 Acq: 1 Mar 2022 17:01

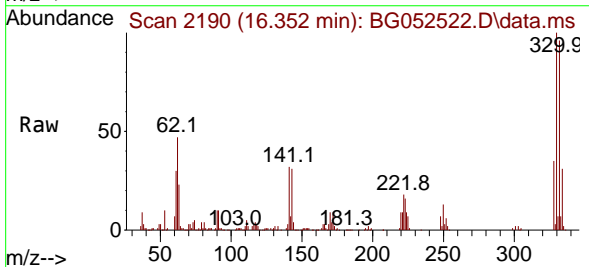
Instrument :
 BNA_G
 ClientSampleId :
 MW-34



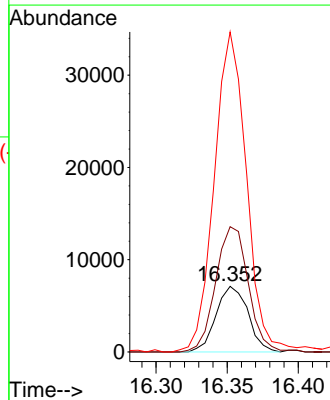
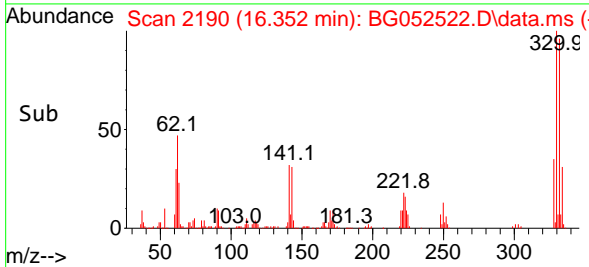
Tgt Ion:188 Resp: 179868
 Ion Ratio Lower Upper
 188 100
 94 6.2 5.9 8.9
 80 8.7 6.6 10.0

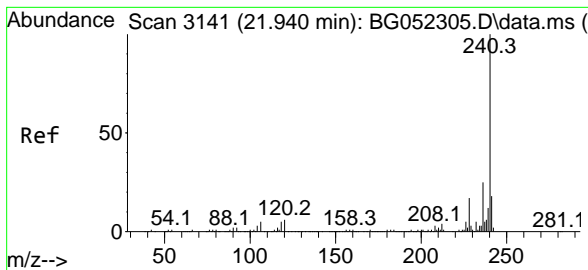


#67
 4-Bromophenyl-phenylether
 Concen: 5.074 ng
 RT: 16.352 min Scan# 2190
 Delta R.T. -0.448 min
 Lab File: BG052522.D
 Acq: 1 Mar 2022 17:01



Tgt Ion:248 Resp: 11099
 Ion Ratio Lower Upper
 248 100
 250 190.8 79.6 119.4#
 141 487.6 54.6 81.8#



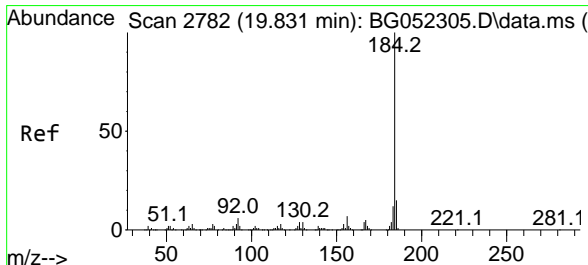
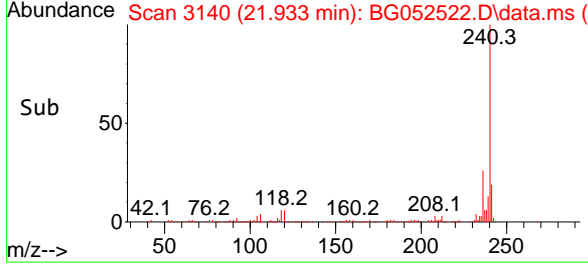
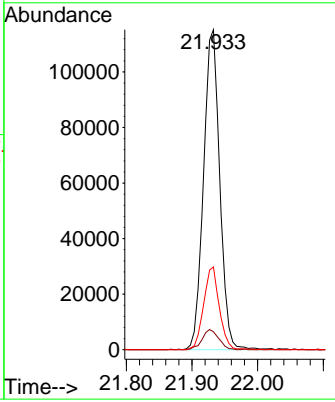
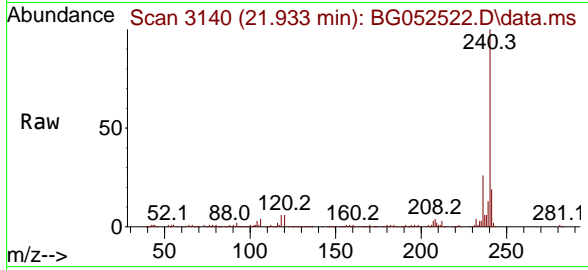


#76
 Chrysene-d12
 Concen: 20.000 ng
 RT: 21.933 min Scan# 31
 Delta R.T. -0.007 min
 Lab File: BG052522.D
 Acq: 1 Mar 2022 17:01

Instrument : BNA_G
 ClientSampleId : MW-34

Tgt Ion:240 Resp: 198046

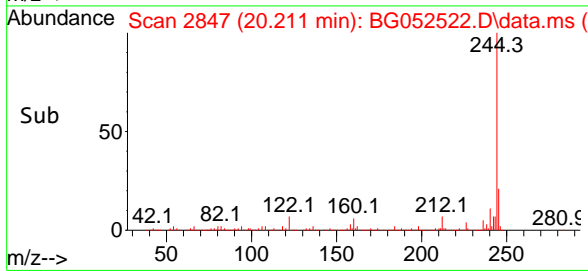
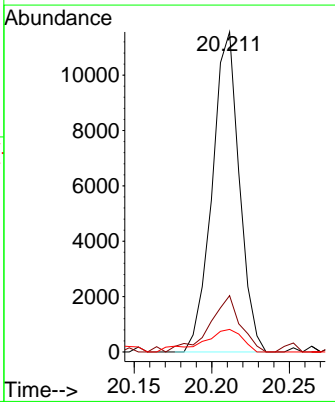
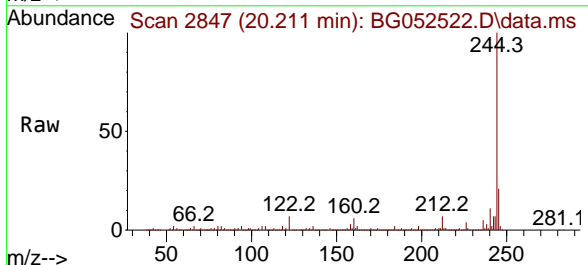
| Ion | Ratio | Lower | Upper |
|-----|-------|-------|-------|
| 240 | 100 | | |
| 120 | 5.6 | 4.4 | 6.6 |
| 236 | 25.8 | 20.8 | 31.2 |

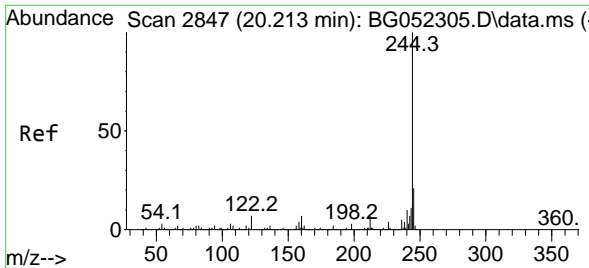


#77
 Benzdine
 Concen: 3.325 ng
 RT: 20.211 min Scan# 2847
 Delta R.T. 0.380 min
 Lab File: BG052522.D
 Acq: 1 Mar 2022 17:01

Tgt Ion:184 Resp: 14069

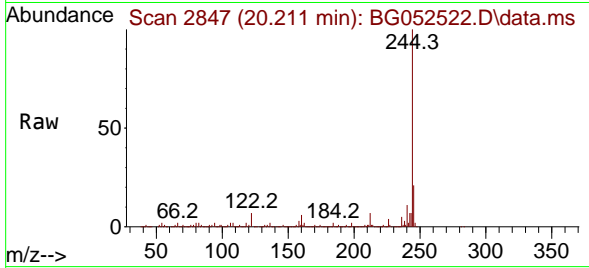
| Ion | Ratio | Lower | Upper |
|-----|-------|-------|-------|
| 184 | 100 | | |
| 185 | 17.6 | 11.8 | 17.8 |
| 183 | 7.0 | 9.8 | 14.6# |



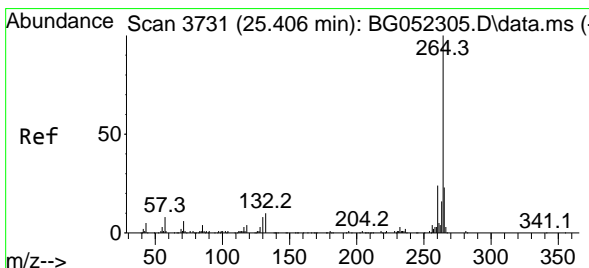
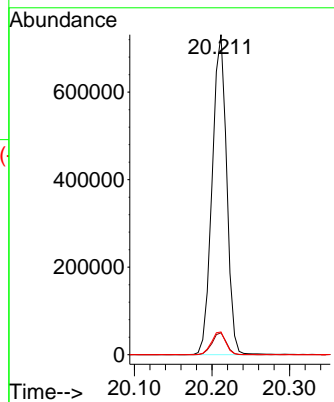
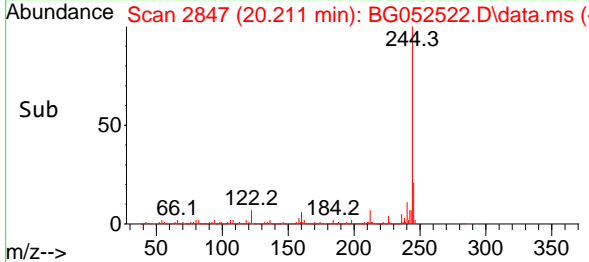


#79
 Terphenyl-d14
 Concen: 85.049 ng
 RT: 20.211 min Scan# 21
 Delta R.T. -0.002 min
 Lab File: BG052522.D
 Acq: 1 Mar 2022 17:01

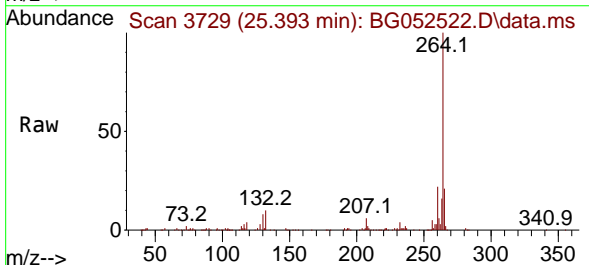
Instrument :
 BNA_G
 ClientSampleId :
 MW-34



Tgt Ion:244 Resp: 953843
 Ion Ratio Lower Upper
 244 100
 212 6.9 6.0 9.0
 122 7.1 6.2 9.4



#86
 Perylene-d12
 Concen: 20.000 ng
 RT: 25.393 min Scan# 3729
 Delta R.T. -0.013 min
 Lab File: BG052522.D
 Acq: 1 Mar 2022 17:01



Tgt Ion:264 Resp: 205909
 Ion Ratio Lower Upper
 264 100
 260 22.2 18.5 27.7
 265 21.1 17.8 26.6

