

Data Path : Z:\HPCHEM1\BNA G\DATA\BG030217\
 Data File : BG026023.D
 Acq On : 2 Mar 2017 10:42
 Operator : SJ/MA
 Sample : PB97270BL
 Misc :
 ALS Vial : 3 Sample Multiplier: 1

Instrument :
 BNA_G
 ClientSampleID :
 PB97270BL

Quant Time: Mar 02 14:58:24 2017
 Quant Method : Z:\HPCHEM1\BNA G\METHODS\8270-BG021717.M
 Quant Title : ASP BNA STANDARDS FOR 5 POINT CALIBRATION
 QLast Update : Tue Feb 28 15:36:56 2017
 Response via : Initial Calibration

| Internal Standards | R.T. | QIon | Response | Conc | Units | Dev(Min) |
|-----------------------------|-------|------|----------|--------|-------|----------|
| 1) 1,4-Dichlorobenzene-d4 | 8.08 | 152 | 114096 | 20.00 | ng | -0.01 |
| 21) Naphthalene-d8 | 10.87 | 136 | 488639 | 20.00 | ng | -0.02 |
| 38) Acenaphthene-d10 | 14.67 | 164 | 275652 | 20.00 | ng | -0.02 |
| 63) Phenanthrene-d10 | 17.41 | 188 | 646332 | 20.00 | ng | -0.01 |
| 75) Chrysene-d12 | 21.65 | 240 | 562249 | 20.00 | ng | -0.02 |
| 86) Perylene-d12 | 24.86 | 264 | 547933 | 20.00 | ng | -0.03 |
| System Monitoring Compounds | | | | | | |
| 5) 2-Fluorophenol | 5.64 | 112 | 1100866 | 167.98 | ng | -0.01 |
| 7) Phenol-d6 | 7.23 | 99 | 1396718 | 144.02 | ng | 0.00 |
| 23) Nitrobenzene-d5 | 9.23 | 82 | 757422 | 97.82 | ng | -0.02 |
| 41) 2,4,6-Tribromophenol | 16.16 | 330 | 479296 | 188.20 | ng | -0.01 |
| 44) 2-Fluorobiphenyl | 13.31 | 172 | 1939537 | 122.95 | ng | -0.02 |
| 78) Terphenyl-d14 | 20.00 | 244 | 2439853 | 105.54 | ng | -0.02 |

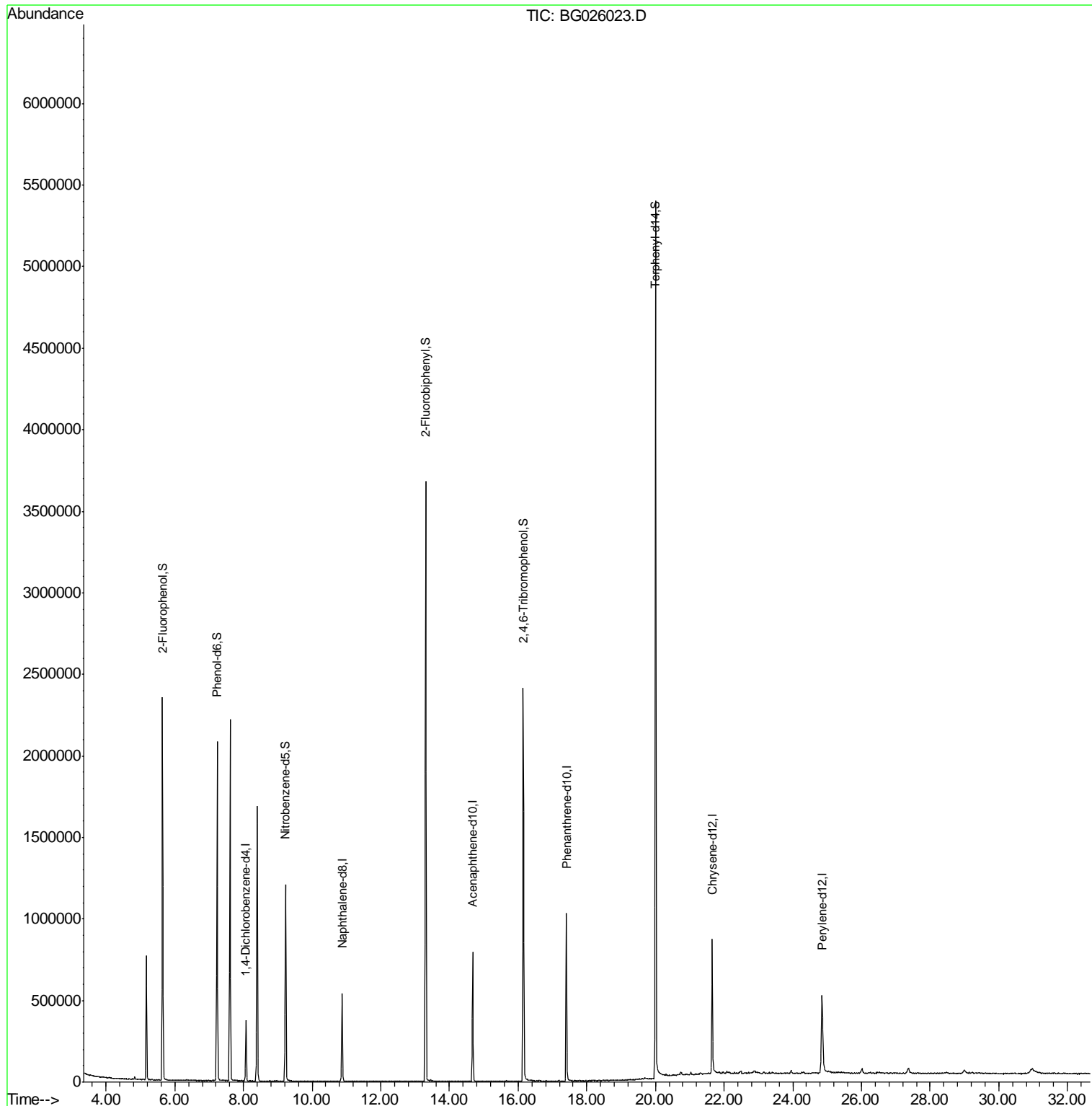
Target Compounds Qvalue

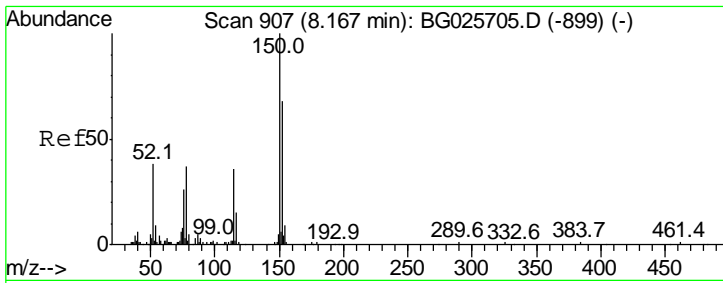
(#) = qualifier out of range (m) = manual integration (+) = signals summed

Data Path : Z:\HPCHEM1\BNA G\DATA\BG030217\
 Data File : BG026023.D
 Acq On : 2 Mar 2017 10:42
 Operator : SJ/MA
 Sample : PB97270BL
 Misc :
 ALS Vial : 3 Sample Multiplier: 1

Instrument :
 BNA_G
 ClientSampleId :
 PB97270BL

Quant Time: Mar 02 14:58:24 2017
 Quant Method : Z:\HPCHEM1\BNA G\METHODS\8270-BG021717.M
 Quant Title : ASP BNA STANDARDS FOR 5 POINT CALIBRATION
 QLast Update : Tue Feb 28 15:36:56 2017
 Response via : Initial Calibration

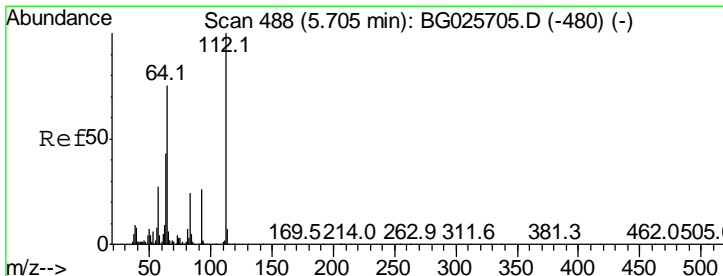
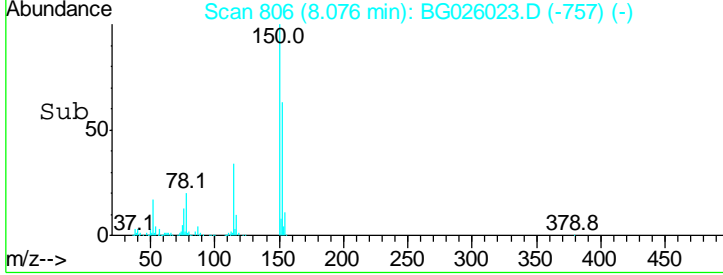
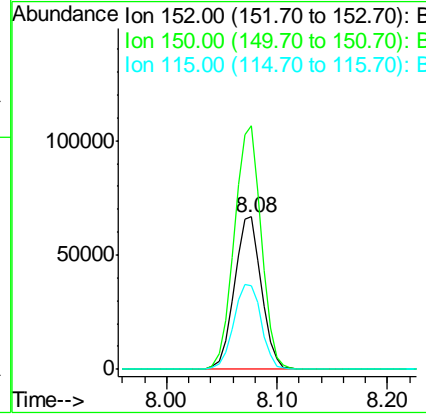
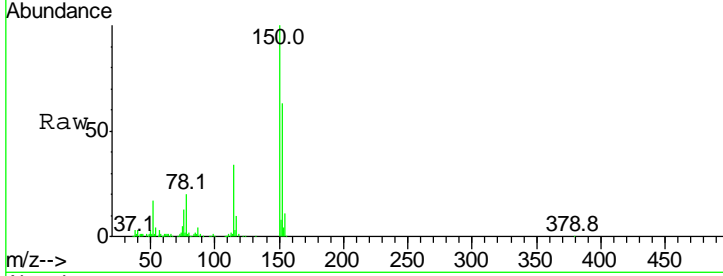




#1
 1,4-Dichlorobenzene-d4
 Concen: 20.00 ng
 RT: 8.08 min Scan# 806
 Delta R.T. -0.01 min
 Lab File: BG026023.D
 Acq: 2 Mar 2017 10:42

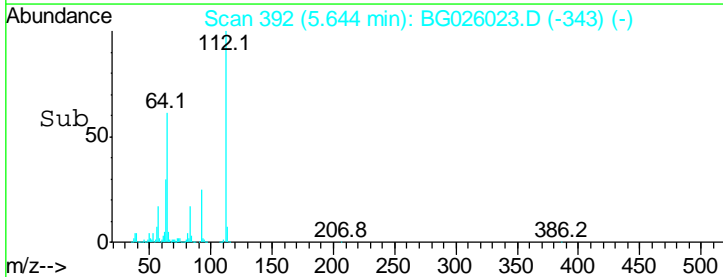
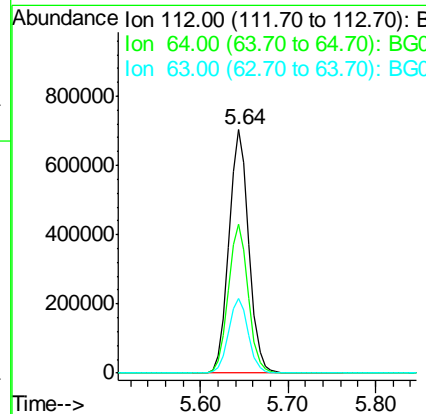
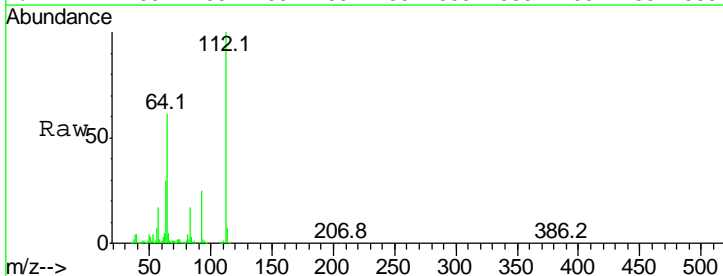
Instrument :
 BNA_G
ClientSampled :
 PB97270BL

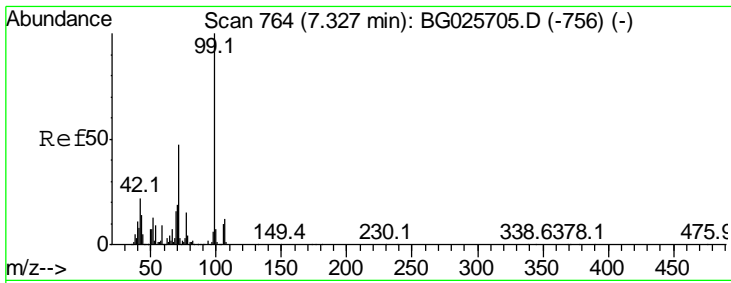
| Tgt Ion | Resp | Lower | Upper |
|---------|--------|-------|-------|
| 152 | 114096 | | |
| 150 | 159.8 | 114.0 | 171.0 |
| 115 | 54.9 | 48.1 | 72.1 |



#5
 2-Fluorophenol
 Concen: 167.98 ng
 RT: 5.64 min Scan# 392
 Delta R.T. -0.01 min
 Lab File: BG026023.D
 Acq: 2 Mar 2017 10:42

| Tgt Ion | Resp | Lower | Upper |
|---------|---------|-------|-------|
| 112 | 1100866 | | |
| 64 | 60.9 | 61.8 | 92.6# |
| 63 | 30.5 | 37.2 | 55.8# |

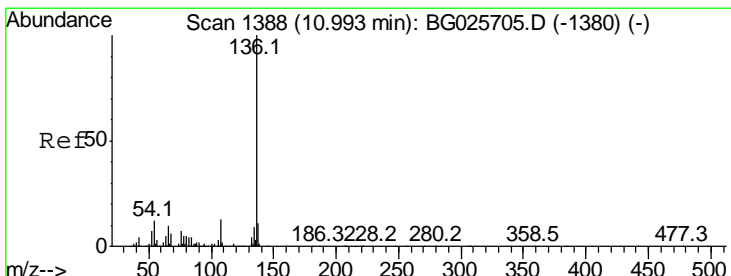
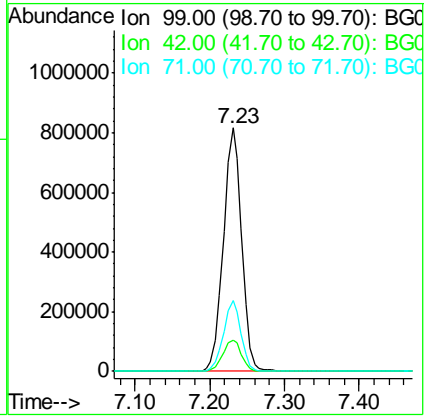
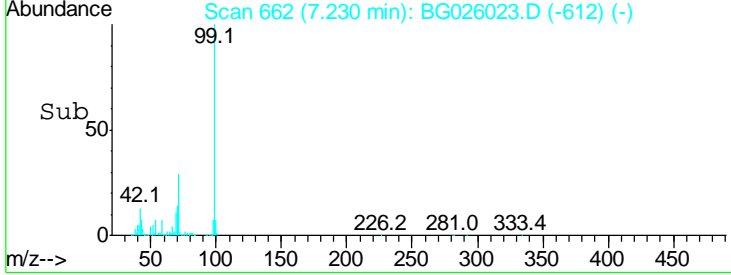
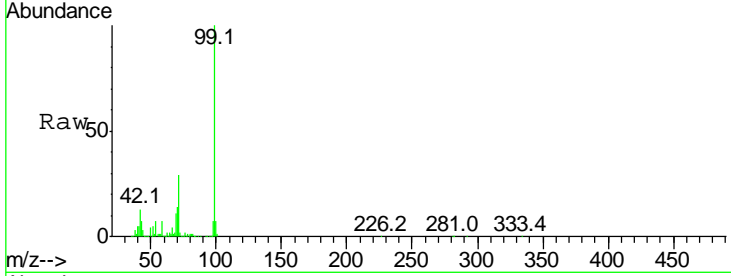




#7
 Phenol-d6
 Concen: 144.02 ng
 RT: 7.23 min Scan# 662
 Delta R.T. -0.01 min
 Lab File: BG026023.D
 Acq: 2 Mar 2017 10:42

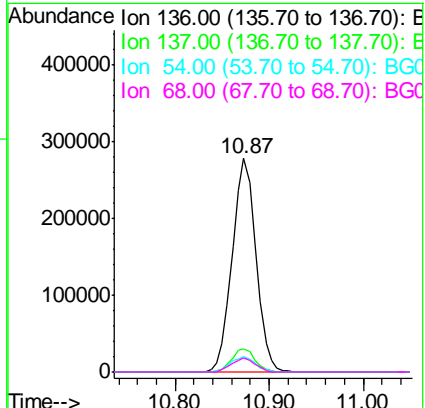
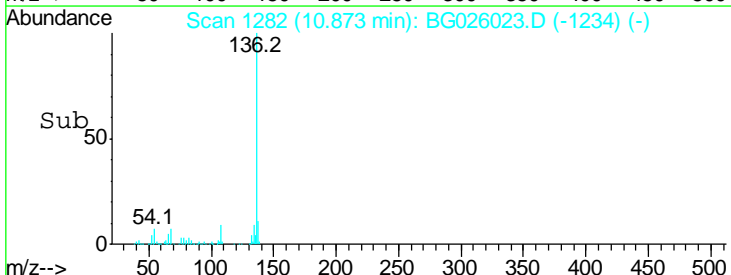
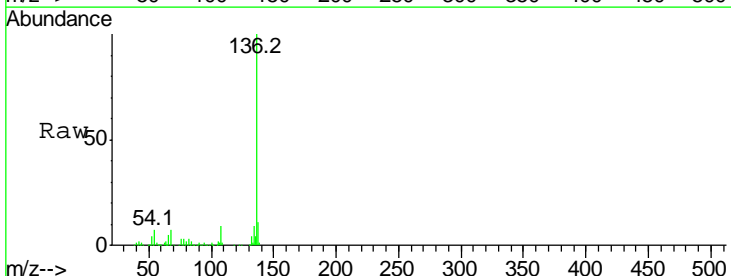
Instrument :
 BNA_G
 ClientSampled :
 PB97270BL

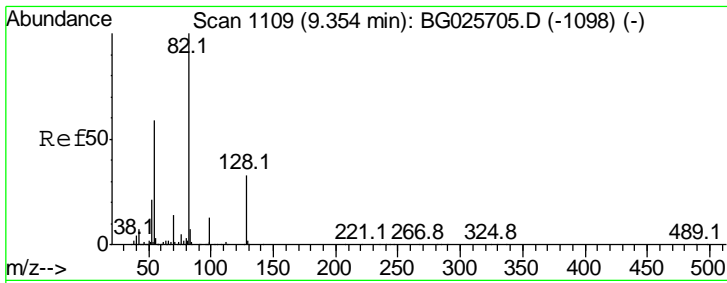
| Tgt Ion | Resp | Lower | Upper |
|---------|---------|-------|-------|
| 99 | 1396718 | | |
| 42 | 13.0 | 20.5 | 30.7# |
| 71 | 28.9 | 37.6 | 56.4# |



#21
 Naphthalene-d8
 Concen: 20.00 ng
 RT: 10.87 min Scan# 1282
 Delta R.T. -0.02 min
 Lab File: BG026023.D
 Acq: 2 Mar 2017 10:42

| Tgt Ion | Resp | Lower | Upper |
|---------|--------|-------|-------|
| 136 | 488639 | | |
| 137 | 11.1 | 8.9 | 13.3 |
| 54 | 7.2 | 9.3 | 13.9# |
| 68 | 6.7 | 5.1 | 7.7 |

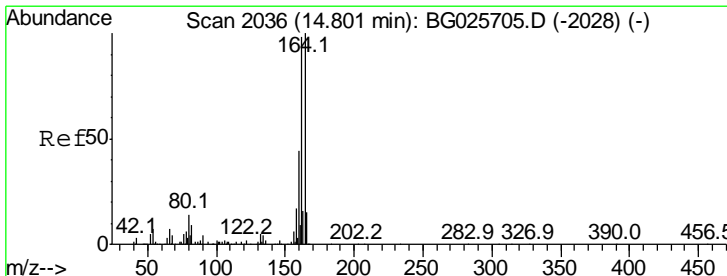
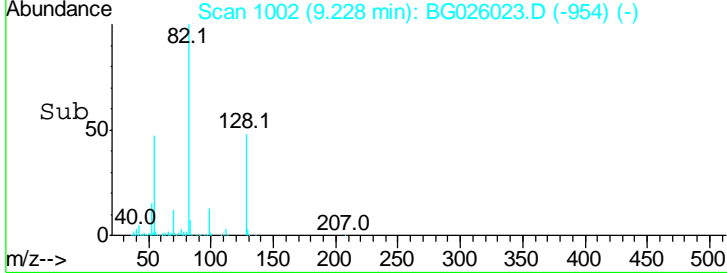
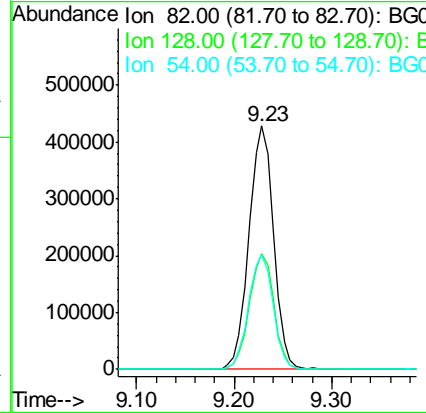
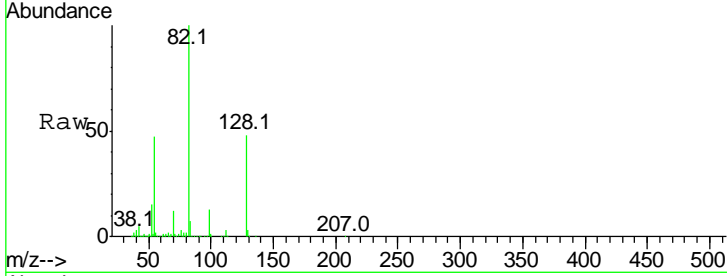




#23
 Nitrobenzene-d5
 Concen: 97.82 ng
 RT: 9.23 min Scan# 1002
 Delta R.T. -0.02 min
 Lab File: BG026023.D
 Acq: 2 Mar 2017 10:42

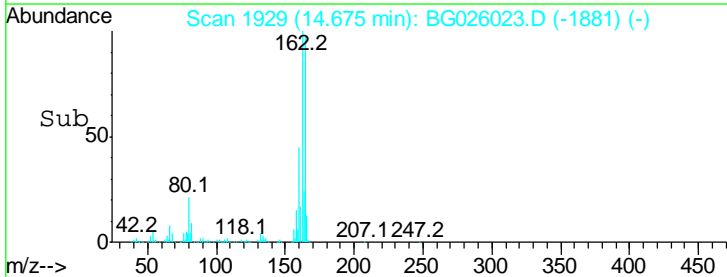
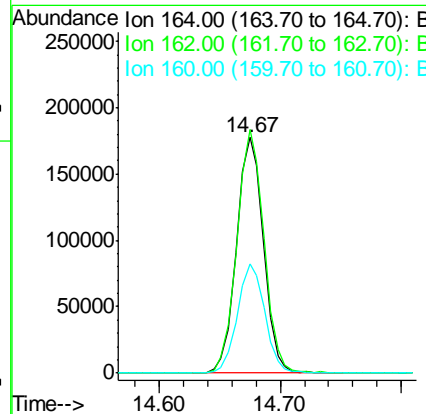
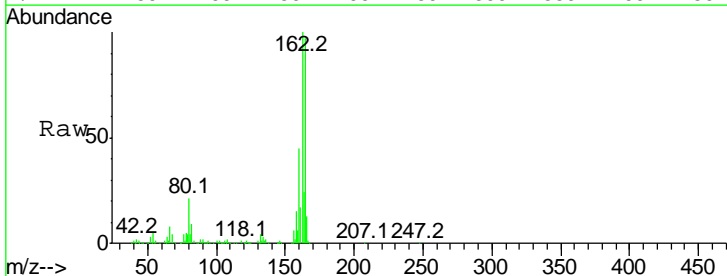
Instrument :
 BNA_G
ClientSampled :
 PB97270BL

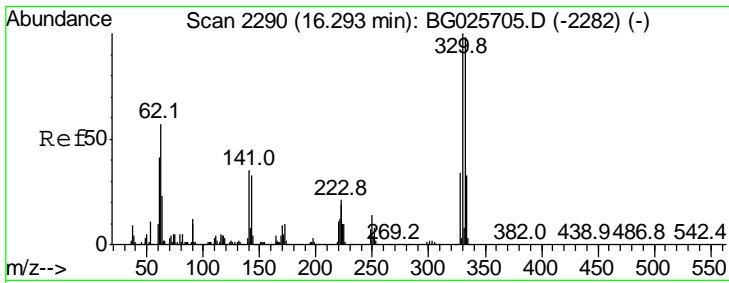
| Tgt Ion | Resp | Lower | Upper |
|---------|--------|-------|-------|
| 82 | 757422 | | |
| 82 | 100 | | |
| 128 | 47.6 | 26.4 | 39.6# |
| 54 | 47.1 | 49.4 | 74.2# |



#38
 Acenaphthene-d10
 Concen: 20.00 ng
 RT: 14.67 min Scan# 1929
 Delta R.T. -0.02 min
 Lab File: BG026023.D
 Acq: 2 Mar 2017 10:42

| Tgt Ion | Resp | Lower | Upper |
|---------|--------|-------|-------|
| 164 | 275652 | | |
| 164 | 100 | | |
| 162 | 103.2 | 85.1 | 127.7 |
| 160 | 46.4 | 34.7 | 52.1 |

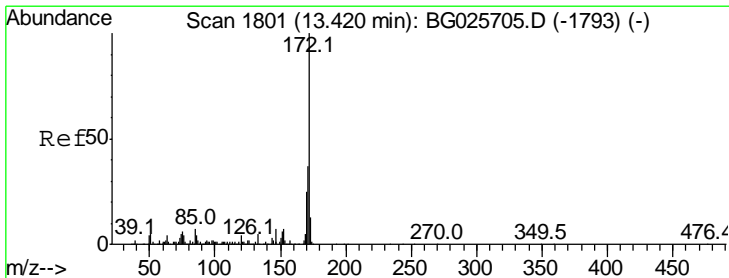
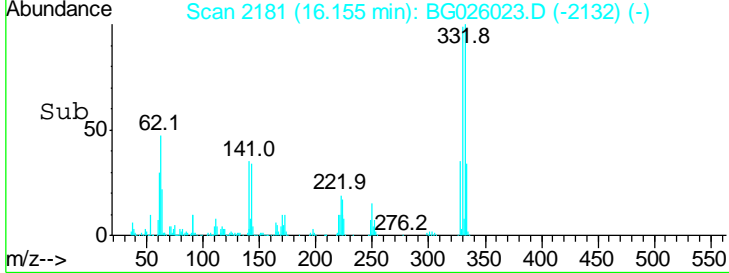
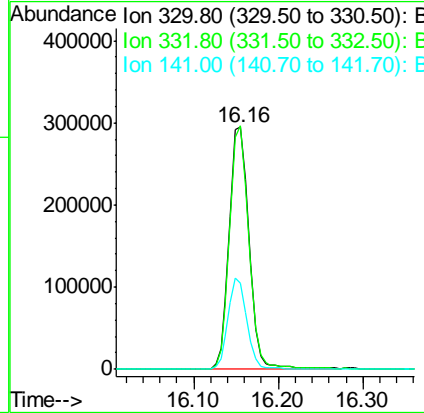
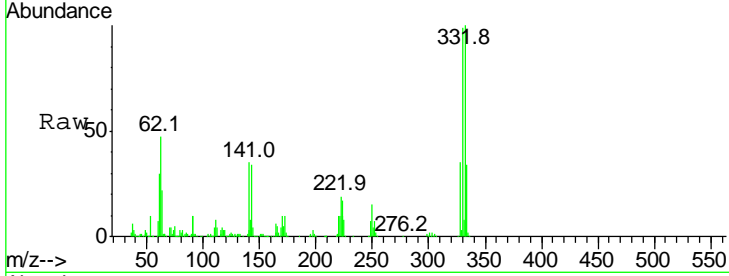




#41
 2,4,6-Tribromophenol
 Concen: 188.20 ng
 RT: 16.16 min Scan# 2181
 Delta R.T. -0.01 min
 Lab File: BG026023.D
 Acq: 2 Mar 2017 10:42

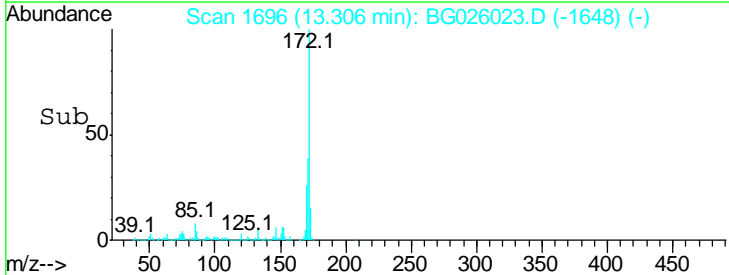
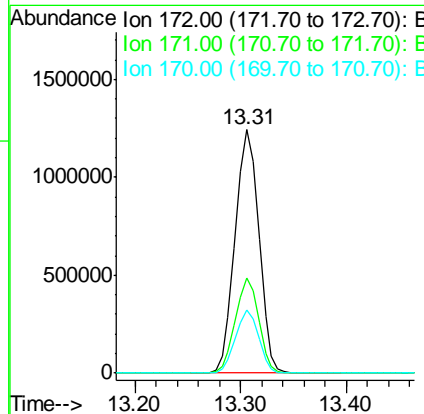
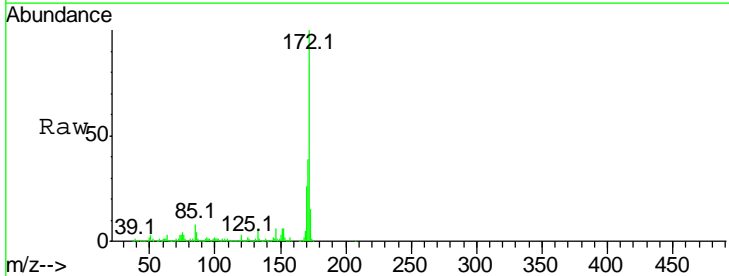
Instrument :
 BNA_G
 ClientSampled :
 PB97270BL

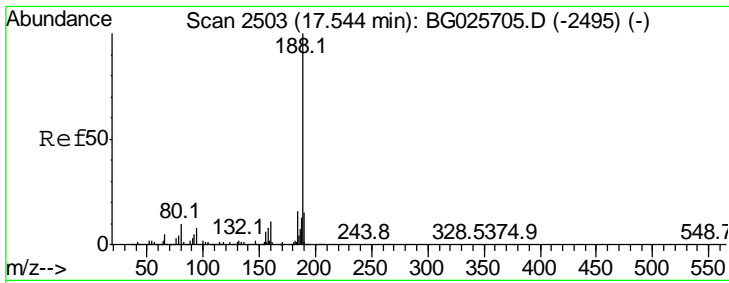
| Tgt Ion | Resp | Lower | Upper |
|---------|------|-------|-------|
| 330 | 100 | | |
| 332 | 96.9 | 77.3 | 115.9 |
| 141 | 35.4 | 32.1 | 48.1 |



#44
 2-Fluorobiphenyl
 Concen: 122.95 ng
 RT: 13.31 min Scan# 1696
 Delta R.T. -0.02 min
 Lab File: BG026023.D
 Acq: 2 Mar 2017 10:42

| Tgt Ion | Resp | Lower | Upper |
|---------|------|-------|-------|
| 172 | 100 | | |
| 171 | 39.0 | 32.2 | 48.2 |
| 170 | 25.9 | 21.8 | 32.6 |

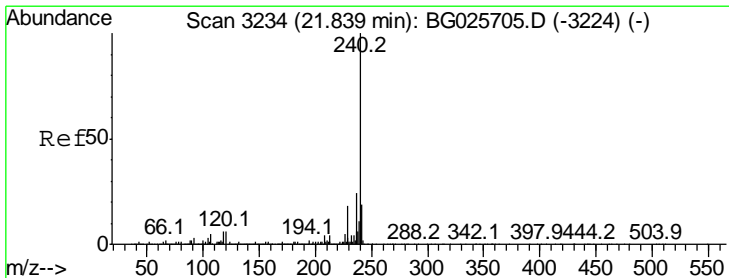
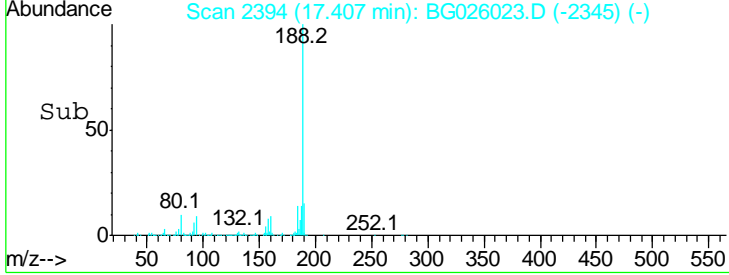
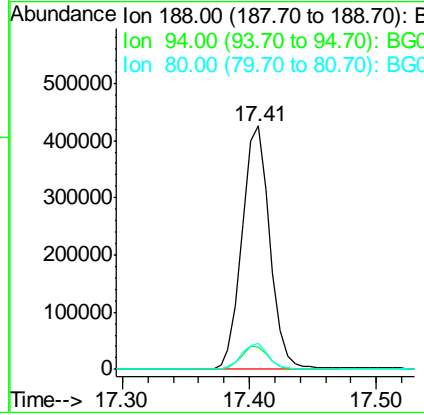
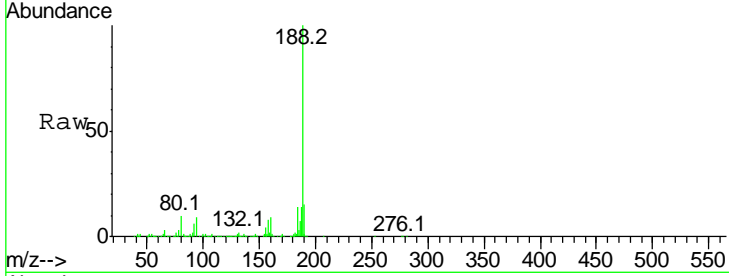




#63
 Phenanthrene-d10
 Concen: 20.00 ng
 RT: 17.41 min Scan# 2394
 Delta R.T. -0.01 min
 Lab File: BG026023.D
 Acq: 2 Mar 2017 10:42

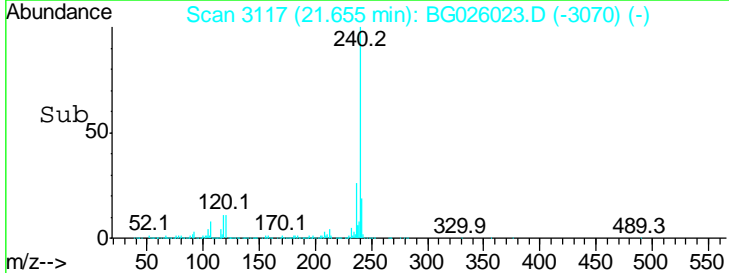
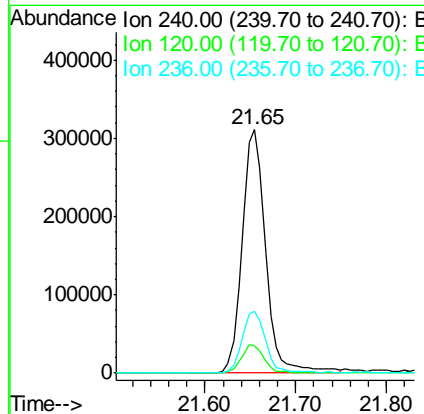
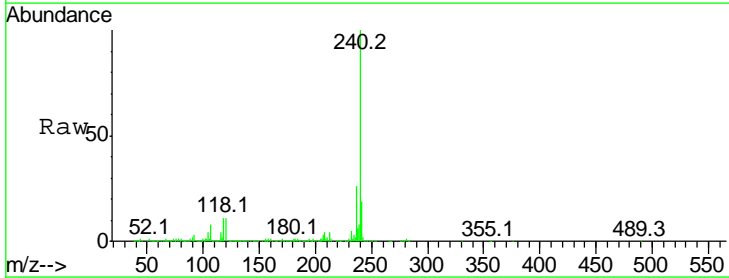
Instrument :
 BNA_G
 ClientSampled :
 PB97270BL

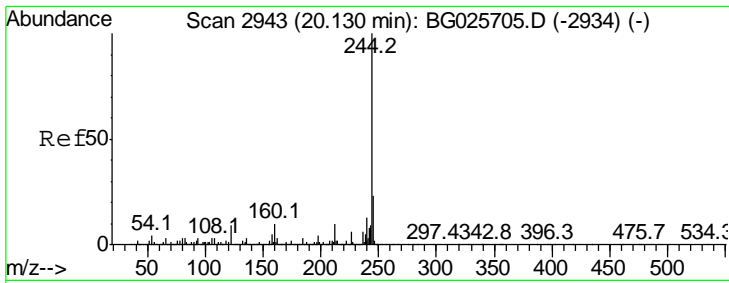
| Tgt Ion | Resp | Lower | Upper |
|---------|------|-------|-------|
| 188 | 100 | | |
| 94 | 9.0 | 5.8 | 8.8# |
| 80 | 10.5 | 7.5 | 11.3 |



#75
 Chrysene-d12
 Concen: 20.00 ng
 RT: 21.65 min Scan# 3117
 Delta R.T. -0.02 min
 Lab File: BG026023.D
 Acq: 2 Mar 2017 10:42

| Tgt Ion | Resp | Lower | Upper |
|---------|------|-------|-------|
| 240 | 100 | | |
| 120 | 11.3 | 5.7 | 8.5# |
| 236 | 25.7 | 22.2 | 33.4 |



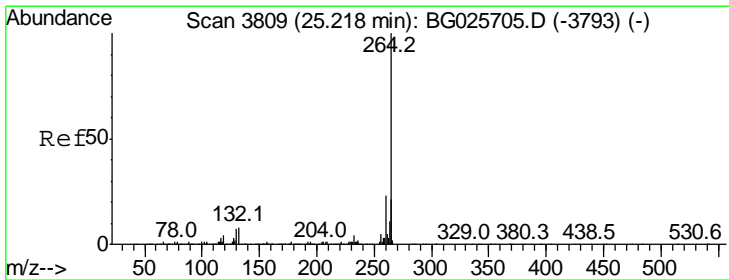
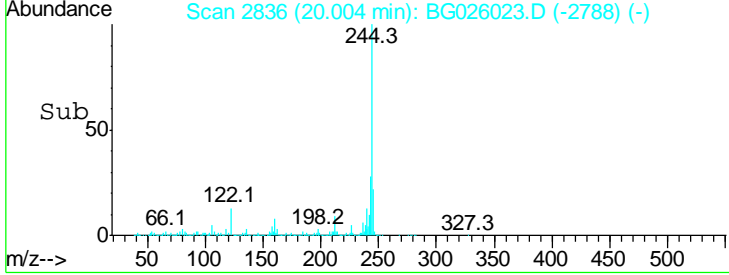
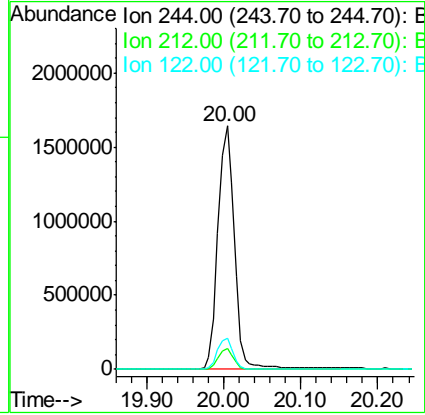
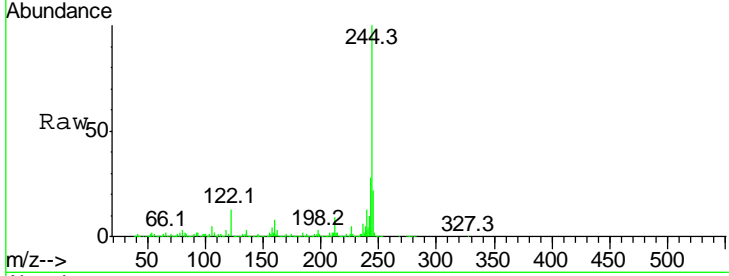


#78
 Terphenyl-d14
 Concen: 105.54 ng
 RT: 20.00 min Scan# 2836
 Delta R.T. -0.02 min
 Lab File: BG026023.D
 Acq: 2 Mar 2017 10:42

Instrument :
 BNA_G
ClientSampled :
 PB97270BL

Tgt Ion: 244 Resp: 2439853

| Ion | Ratio | Lower | Upper |
|-----|-------|-------|-------|
| 244 | 100 | | |
| 212 | 8.6 | 10.0 | 15.0# |
| 122 | 12.9 | 8.6 | 12.8# |



#86
 Perylene-d12
 Concen: 20.00 ng
 RT: 24.86 min Scan# 3662
 Delta R.T. -0.03 min
 Lab File: BG026023.D
 Acq: 2 Mar 2017 10:42

Tgt Ion: 264 Resp: 547933

| Ion | Ratio | Lower | Upper |
|-----|-------|-------|-------|
| 264 | 100 | | |
| 260 | 25.7 | 21.8 | 32.8 |
| 265 | 21.6 | 18.2 | 27.4 |

