

Data Path : Z:\HPCHEM1\BNA G\DATA\BG030316\
 Data File : BG021256.D
 Acq On : 4 Mar 2016 5:29
 Operator : UM/SJ
 Sample : H1583-01
 Misc :
 ALS Vial : 18 Sample Multiplier: 1

Instrument :
 BNA_G
 ClientSampled :
 D9R44

Integration Parameters: LSCINT.P

Integrator: RTE
 Smoothing : OFF Filtering: 5
 Sampling : 1 Min Area: 0.1 % of largest Peak
 Start Thrs: 0.2 Max Peaks: 100
 Stop Thrs : 0 Peak Location: TOP

If leading or trailing edge < 100 prefer < Baseline drop else tangent >
 Peak separation: 5

Method : Z:\HPCHEM1\BNA G\METHODS\SOM02.2-EPA-BG030316.M
 Title : SVOA CALIBRATION

Signal : TIC

peak #	R.T. min	first scan	max scan	last scan	PK TY	peak height	corr. area	corr. % max.	% of total
1	2.974	20	23	24	rVB3	1417	1076	0.32%	0.032%
2	3.021	27	31	34	rBV3	509	562	0.17%	0.017%
3	3.191	55	60	69	rBV	25809	47882	14.43%	1.443%
4	3.267	69	73	81	rVB	12961	19611	5.91%	0.591%
5	3.426	98	100	104	rVB2	513	773	0.23%	0.023%
6	3.538	116	119	121	rVB	636	633	0.19%	0.019%
7	3.620	130	133	136	rBV2	416	597	0.18%	0.018%
8	3.732	149	152	153	rBV	438	396	0.12%	0.012%
9	3.767	156	158	160	rBV2	649	457	0.14%	0.014%
10	3.949	187	189	192	rVB2	483	417	0.13%	0.013%
11	4.090	209	213	215	rBV	574	789	0.24%	0.024%
12	4.125	215	219	222	rVV	415	684	0.21%	0.021%
13	4.266	240	243	245	rBV	463	491	0.15%	0.015%
14	4.501	280	283	284	rBV	375	512	0.15%	0.015%
15	4.960	360	361	364	rBV	374	375	0.11%	0.011%
16	7.274	751	755	764	rBB2	13160	21455	6.47%	0.647%
17	7.451	779	785	793	rBB	41895	64965	19.58%	1.958%
18	7.656	814	820	827	rVB	41149	67295	20.28%	2.028%
19	8.132	895	901	908	rBB	42563	71571	21.57%	2.157%
20	8.826	1013	1019	1026	rBB	32704	54800	16.51%	1.652%
21	9.290	1091	1098	1106	rBB	51714	91986	27.72%	2.773%
22	10.012	1215	1221	1228	rVB	46562	78718	23.72%	2.373%
23	10.553	1307	1313	1319	rBV	56211	95796	28.87%	2.888%
24	10.935	1372	1378	1386	rBB	62714	112304	33.84%	3.385%
25	11.070	1396	1401	1407	rBB2	3557	5838	1.76%	0.176%
26	12.509	1641	1646	1649	rBB	595	899	0.27%	0.027%
27	13.097	1743	1746	1750	rBB	1729	2102	0.63%	0.063%
28	13.344	1784	1788	1792	rBB	2766	3374	1.02%	0.102%
29	13.626	1831	1836	1840	rBB	1619	1867	0.56%	0.056%
30	14.137	1917	1923	1930	rBB	124066	174203	52.50%	5.251%
31	14.366	1960	1962	1965	rBB	705	504	0.15%	0.015%
32	14.437	1967	1974	1980	rVV	127465	196779	59.30%	5.932%
33	14.736	2019	2025	2032	rBB2	96259	153570	46.28%	4.629%
34	14.918	2051	2056	2066	rBB2	13626	23354	7.04%	0.704%

Data Path : Z:\HPCHEM1\BNA G\DATA\BG030316\
 Data File : BG021256.D
 Acq On : 4 Mar 2016 5:29
 Operator : UM/SJ
 Sample : H1583-01
 Misc :
 ALS Vial : 18 Sample Multiplier: 1

Instrument :
 BNA_G
 ClientSampleId :
 D9R44

Integration Parameters: LSCINT.P

Integrator: RTE
 Smoothing : OFF
 Sampling : 1
 Start Thrs: 0.2
 Stop Thrs : 0

Filtering: 5
 Min Area: 0.1 % of largest Peak
 Max Peaks: 100
 Peak Location: TOP

If leading or trailing edge < 100 prefer < Baseline drop else tangent >
 Peak separation: 5

Method : Z:\HPCHEM1\BNA G\METHODS\SOM02.2-EPA-BG030316.M
 Title : SVOA CALIBRATION

35	15.512	2155	2157	2166	rBB2	664	1354	0.41%	0.041%
36	15.723	2187	2193	2200	rBB	171838	253202	76.30%	7.632%
37	15.829	2206	2211	2218	rBV	64384	94791	28.57%	2.857%
38	15.964	2230	2234	2238	rBB2	973	1379	0.42%	0.042%
39	16.605	2337	2343	2347	rBB2	1779	2189	0.66%	0.066%
40	17.128	2429	2432	2433	rBV	393	373	0.11%	0.011%
41	17.263	2452	2455	2457	rVB2	559	455	0.14%	0.014%
42	17.316	2462	2464	2467	rVB	375	387	0.12%	0.012%
43	17.474	2485	2491	2498	rVV2	131108	193722	58.38%	5.839%
44	17.574	2501	2508	2518	rVB	197550	284101	85.61%	8.564%
45	18.021	2581	2584	2586	rVV	466	434	0.13%	0.013%
46	18.056	2588	2590	2594	rVB	448	456	0.14%	0.014%
47	18.338	2633	2638	2641	rVV	1343	1607	0.48%	0.048%
48	18.420	2647	2652	2657	rVB2	1023	1560	0.47%	0.047%
49	18.455	2657	2658	2662	rBV	516	569	0.17%	0.017%
50	18.514	2665	2668	2671	rBV	383	533	0.16%	0.016%
51	18.732	2703	2705	2709	rBV2	623	687	0.21%	0.021%
52	18.843	2720	2724	2727	rBV	813	915	0.28%	0.028%
53	18.884	2727	2731	2732	rBV	915	835	0.25%	0.025%
54	18.920	2735	2737	2739	rVB	516	422	0.13%	0.013%
55	18.978	2745	2747	2749	rVB	444	383	0.12%	0.012%
56	19.020	2751	2754	2756	rVB2	748	520	0.16%	0.016%
57	19.067	2759	2762	2763	rBV2	693	673	0.20%	0.020%
58	19.160	2776	2778	2781	rBV	1026	1312	0.40%	0.040%
59	19.202	2783	2785	2786	rVV2	989	624	0.19%	0.019%
60	19.249	2790	2793	2794	rVV2	553	594	0.18%	0.018%
61	19.302	2801	2802	2805	rBV2	729	586	0.18%	0.018%
62	19.337	2805	2808	2809	rBV2	524	512	0.15%	0.015%
63	19.396	2816	2818	2823	rVB2	582	779	0.23%	0.023%
64	19.478	2830	2832	2835	rVV2	1684	2125	0.64%	0.064%
65	19.513	2837	2838	2840	rBV2	857	582	0.18%	0.018%
66	19.554	2842	2845	2847	rBV3	887	989	0.30%	0.030%
67	19.589	2847	2851	2852	rBV2	468	577	0.17%	0.017%
68	19.601	2852	2853	2856	rVV3	1427	1056	0.32%	0.032%
69	19.736	2869	2876	2880	rBV2	1469	2837	0.85%	0.086%
70	19.783	2882	2884	2887	rBV4	433	491	0.15%	0.015%
71	19.848	2887	2895	2901	rVB2	232751	331837	100.00%	10.003%

Data Path : Z:\HPCHEM1\BNA G\DATA\BG030316\
 Data File : BG021256.D
 Acq On : 4 Mar 2016 5:29
 Operator : UM/SJ
 Sample : H1583-01
 Misc :
 ALS Vial : 18 Sample Multiplier: 1

Instrument :
 BNA_G
 ClientSampleId :
 D9R44

Integration Parameters: LSCINT.P

Integrator: RTE
 Smoothing : OFF
 Sampling : 1
 Start Thrs: 0.2
 Stop Thrs : 0

Filtering: 5
 Min Area: 0.1 % of largest Peak
 Max Peaks: 100
 Peak Location: TOP

If leading or trailing edge < 100 prefer < Baseline drop else tangent >
 Peak separation: 5

Method : Z:\HPCHEM1\BNA G\METHODS\SOM02.2-EPA-BG030316.M
 Title : SVOA CALIBRATION

72	19.889	2901	2902	2905	rBV3	980	837	0.25%	0.025%
73	19.942	2910	2911	2912	rBV	633	410	0.12%	0.012%
74	20.065	2931	2932	2934	rVB2	662	448	0.14%	0.014%
75	20.089	2934	2936	2937	rBV2	772	487	0.15%	0.015%
76	20.106	2937	2939	2941	rBV2	951	1043	0.31%	0.031%
77	20.148	2945	2946	2947	rBV	916	434	0.13%	0.013%
78	20.200	2953	2955	2958	rBV4	1009	764	0.23%	0.023%
79	20.324	2972	2976	2978	rBV3	1272	1270	0.38%	0.038%
80	20.347	2978	2980	2982	rBV2	856	696	0.21%	0.021%
81	20.676	3034	3036	3039	rBV3	1239	1304	0.39%	0.039%
82	20.729	3043	3045	3046	rBV	1890	976	0.29%	0.029%
83	20.776	3051	3053	3054	rBV2	1817	1192	0.36%	0.036%
84	20.953	3081	3083	3085	rVB3	1681	1254	0.38%	0.038%
85	21.041	3096	3098	3100	rBV3	2198	2111	0.64%	0.064%
86	21.088	3104	3106	3109	rBV4	1821	2110	0.64%	0.064%
87	21.734	3209	3216	3223	rBV	152404	241903	72.90%	7.292%
88	23.215	3466	3468	3474	rVB6	5231	8153	2.46%	0.246%
89	24.031	3603	3607	3613	rVB7	5422	10662	3.21%	0.321%
90	24.766	3722	3732	3741	rVB	112174	298368	89.91%	8.994%
91	24.989	3761	3770	3779	rBV2	81598	221807	66.84%	6.686%
92	25.935	3929	3931	3933	rBV3	2207	2143	0.65%	0.065%
93	26.129	3957	3964	3975	rVB8	7731	23546	7.10%	0.710%
94	28.238	4321	4323	4324	rBV2	1796	1310	0.39%	0.039%
95	28.338	4338	4340	4341	rBV2	2443	2197	0.66%	0.066%
96	28.649	4391	4393	4394	rBV2	2359	1098	0.33%	0.033%
97	29.096	4467	4469	4470	rBV2	3598	2524	0.76%	0.076%
98	29.390	4517	4519	4522	rBV2	2242	2424	0.73%	0.073%
99	30.753	4749	4751	4752	rBV2	2109	1530	0.46%	0.046%
100	31.546	4884	4886	4888	rBV2	2139	1434	0.43%	0.043%

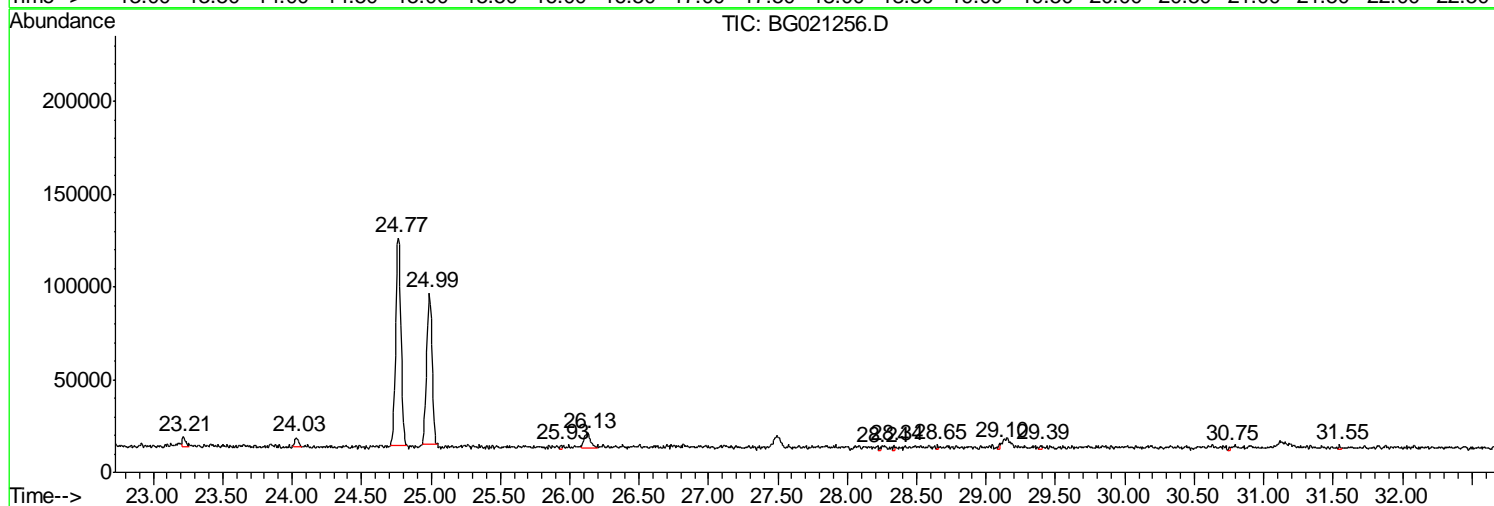
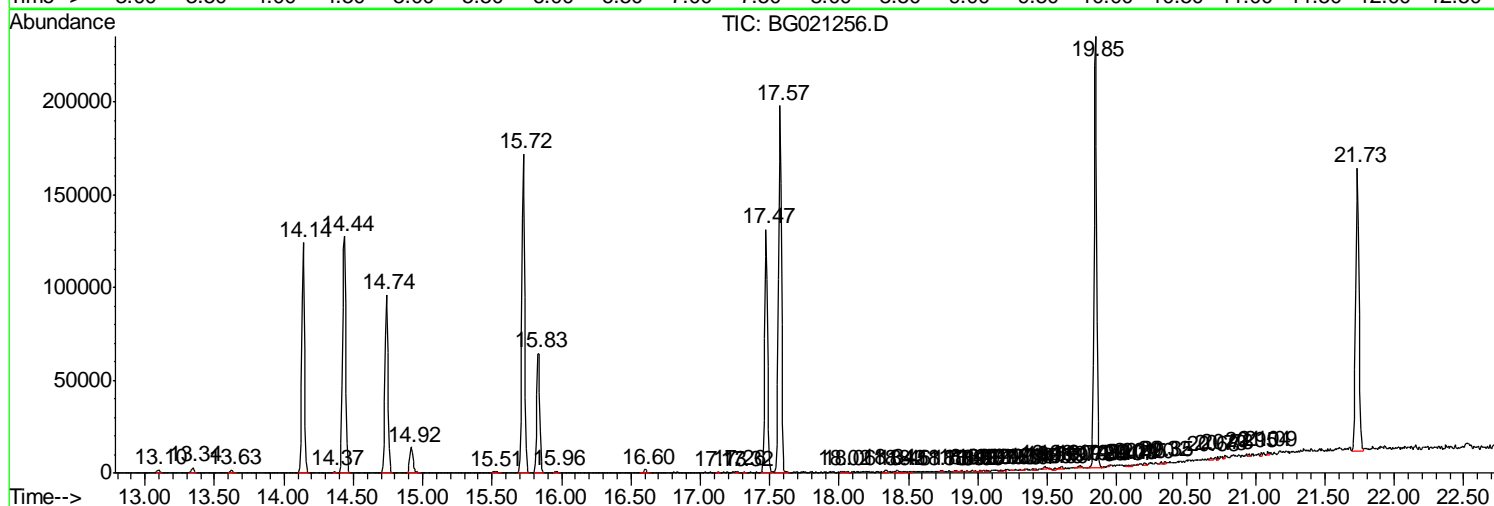
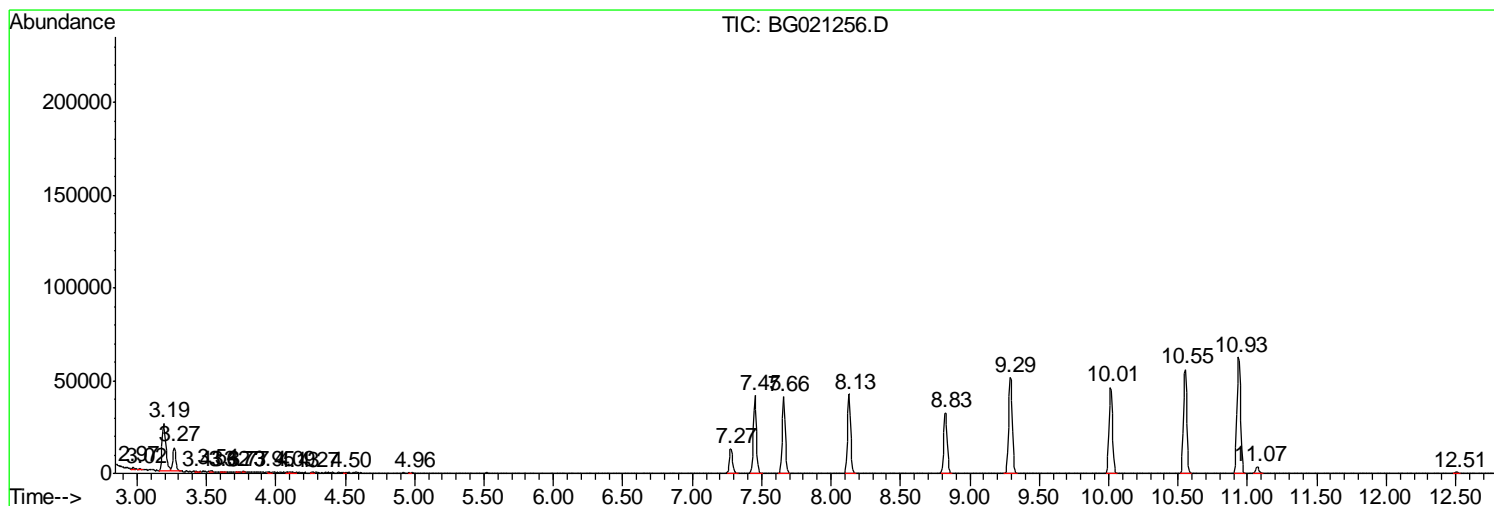
Sum of corrected areas: 3317518

Data Path : Z:\HPCHEM1\BNA G\DATA\BG030316\
 Data File : BG021256.D
 Acq On : 4 Mar 2016 5:29
 Operator : UM/SJ
 Sample : H1583-01
 Misc :
 ALS Vial : 18 Sample Multiplier: 1

Instrument :
 BNA_G
 ClientSampleId :
 D9R44

Quant Method : Z:\HPCHEM1\BNA G\METHODS\SOM02.2-EPA-BG030316.M
 Quant Title : SVOA CALIBRATION

TIC Library : C:\DATABASE\NIST02.L
 TIC Integration Parameters: LSCINT.P



Data Path : Z:\HPCHEM1\BNA G\DATA\BG030316\
 Data File : BG021256.D
 Acq On : 4 Mar 2016 5:29
 Operator : UM/SJ
 Sample : H1583-01
 Misc :
 ALS Vial : 18 Sample Multiplier: 1

Instrument :
 BNA_G
 ClientSampled :
 D9R44

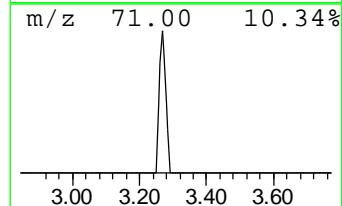
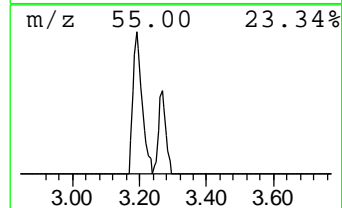
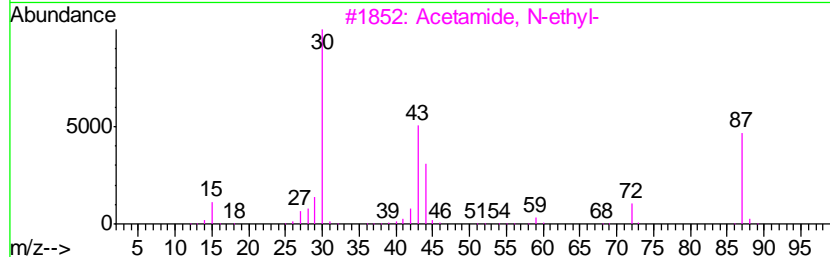
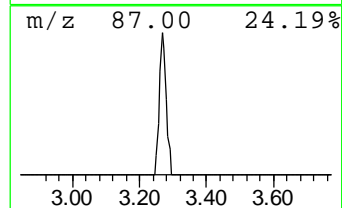
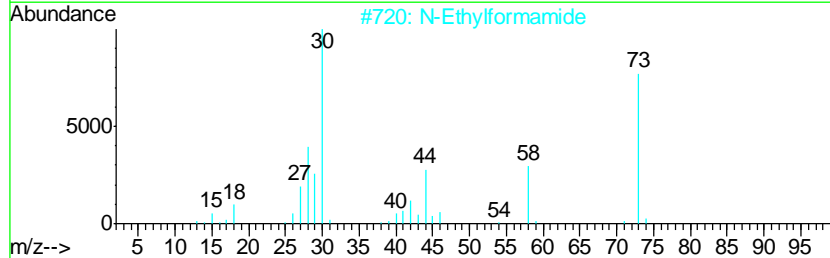
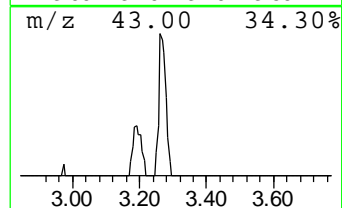
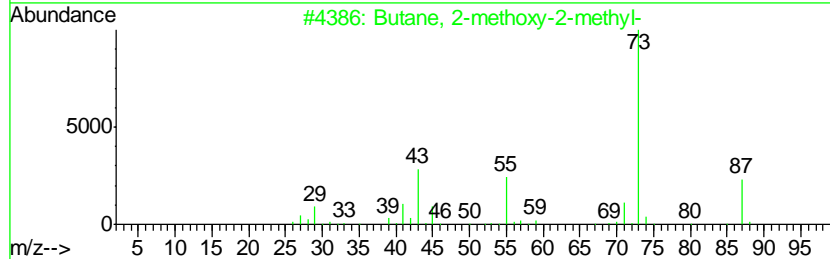
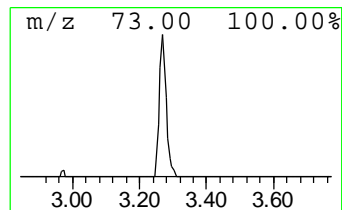
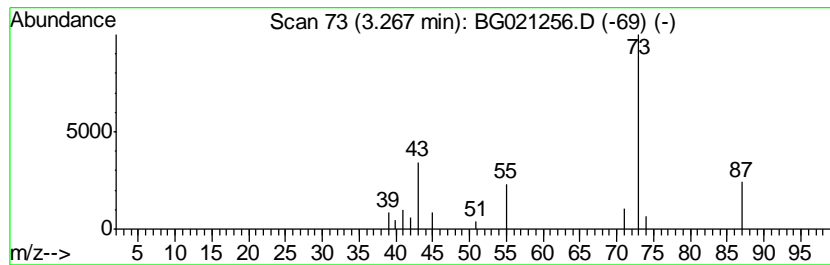
Quant Method : Z:\HPCHEM1\BNA G\METHODS\SOM02.2-EPA-BG030316.M
 Quant Title : SVOA CALIBRATION

TIC Library : C:\DATABASE\NIST02.L
 TIC Integration Parameters: LSCINT.P

 Peak Number 2 Butane, 2-methoxy-2-methyl- Concentration Rank 2

R.T.	EstConc	Area	Relative to ISTD	R.T.
3.27	5.48 ng/ul	19611	1,4-Dichlorobenzene-d4	8.13

Hit#	of	Tentative ID	MW	MolForm	CAS#	Qual
1	5	Butane, 2-methoxy-2-methyl-	102	C6H14O	000994-05-8	72
2		N-Ethylformamide	73	C3H7NO	000627-45-2	5
3		Acetamide, N-ethyl-	87	C4H9NO	000625-50-3	5
4		Acetamide, N-ethyl-	87	C4H9NO	000625-50-3	5
5		N-Ethylformamide	73	C3H7NO	000627-45-2	4



Data Path : Z:\HPCHEM1\BNA G\DATA\BG030316\
 Data File : BG021256.D
 Acq On : 4 Mar 2016 5:29
 Operator : UM/SJ
 Sample : H1583-01
 Misc :
 ALS Vial : 18 Sample Multiplier: 1

Instrument :
 BNA_G
 ClientSampleID :
 D9R44

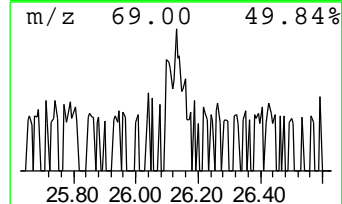
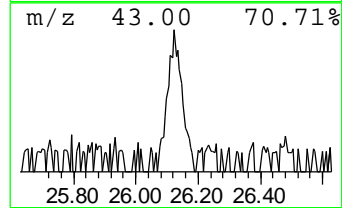
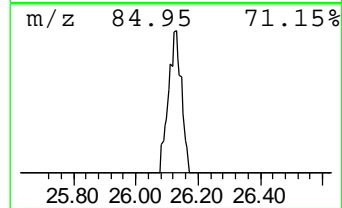
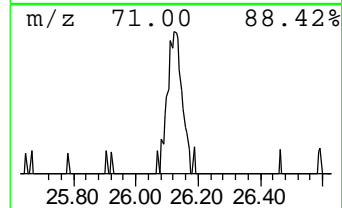
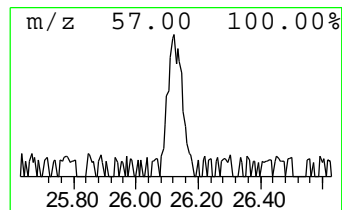
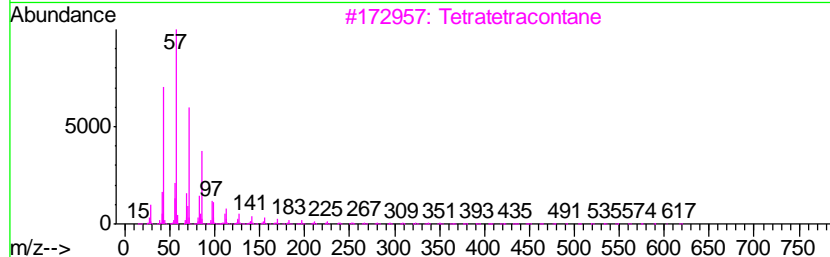
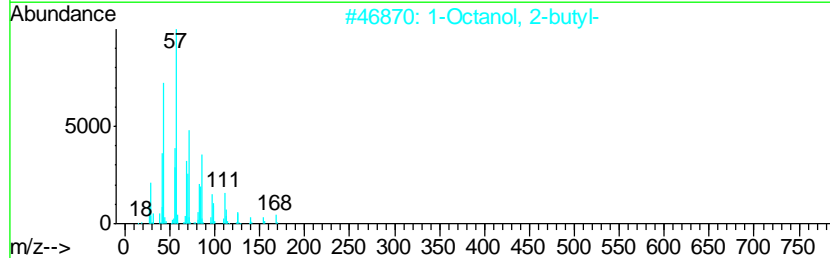
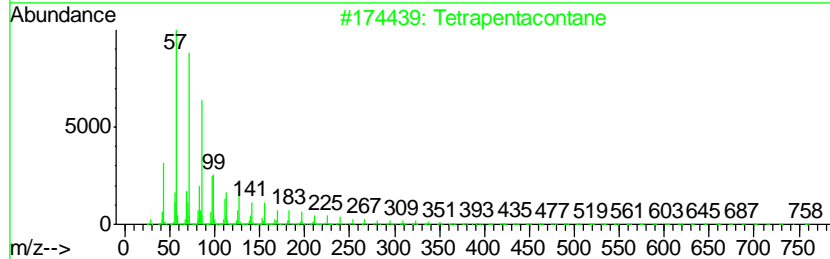
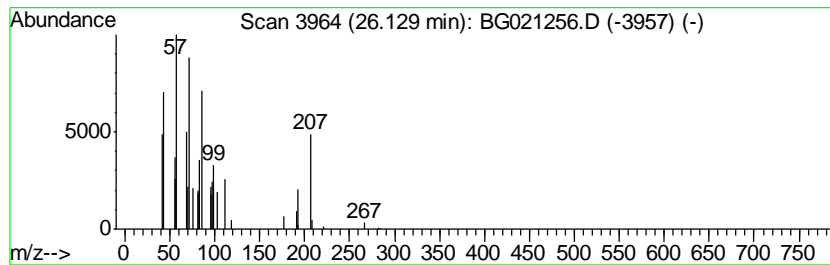
Quant Method : Z:\HPCHEM1\BNA G\METHODS\SOM02.2-EPA-BG030316.M
 Quant Title : SVOA CALIBRATION

TIC Library : C:\DATABASE\NIST02.L
 TIC Integration Parameters: LSCINT.P

 Peak Number 3 unknown-01 Concentration Rank 3

R.T.	EstConc	Area	Relative to ISTD	R.T.
26.13	2.12 ng/ul	23546	Perylene-d12	24.99

Hit#	of	Tentative ID	MW	MolForm	CAS#	Qual
1	5	Tetrapentacontane	759	C54H110	005856-66-6	47
2		1-Octanol, 2-butyl-	186	C12H26O	003913-02-8	47
3		Tetratetracontane	619	C44H90	007098-22-8	47
4		10-Methylnonadecane	282	C20H42	056862-62-5	43
5		Tetratetracontane	619	C44H90	007098-22-8	43



Data Path : Z:\HPCHEM1\BNA_G\DATA\BG030316\
Data File : BG021256.D
Acq On : 4 Mar 2016 5:29
Operator : UM/SJ
Sample : H1583-01
Misc :
ALS Vial : 18 Sample Multiplier: 1

Instrument :
BNA_G
ClientSampleId :
D9R44

Quant Method : Z:\HPCHEM1\BNA_G\METHODS\SOM02.2-EPA-BG030316.M
Quant Title : SVOA CALIBRATION

TIC Library : C:\DATABASE\NIST02.L
TIC Integration Parameters: LSCINT.P

TIC Top Hit name	RT	EstConc	Units	Response	--Internal Standard--			
					#	RT	Resp	Conc
Butane, 2-methoxy...	3.27	5.5	ng/ul	19611	1	8.13	71571	20.0
unknown-01	26.13	2.1	ng/ul	23546	6	24.99	221807	20.0