

Data Path : Z:\HPCHEM1\BNA\_G\DATA\BG030516\  
 Data File : BG021307.D  
 Acq On : 5 Mar 2016 15:57  
 Operator : UM/SJ  
 Sample : PB88659BL  
 Misc :  
 ALS Vial : 3 Sample Multiplier: 1

Instrument :  
 BNA\_G  
 ClientSampleId :  
 SBLK59

## Integration Parameters: LSCINT.P

Integrator: RTE  
 Smoothing : OFF  
 Sampling : 1  
 Start Thrs: 0.2  
 Stop Thrs : 0

Filtering: 5  
 Min Area: 0.1 % of largest Peak  
 Max Peaks: 100  
 Peak Location: TOP

If leading or trailing edge < 100 prefer < Baseline drop else tangent >  
 Peak separation: 5

Method : Z:\HPCHEM1\BNA\_G\METHODS\SOM02.2-EPA-BG030316.M  
 Title : SVOA CALIBRATION

Signal : TIC

peak #	R.T. min	first scan	max scan	last scan	PK TY	peak height	corr. area	corr. % max.	% of total
1	3.190	55	60	66	rBV	11972	21794	6.26%	0.610%
2	3.261	70	72	77	rVB4	1821	2505	0.72%	0.070%
3	3.537	115	119	123	rVB2	2522	3843	1.10%	0.108%
4	3.719	148	150	155	rVB3	610	727	0.21%	0.020%
5	3.842	168	171	172	rBV2	502	531	0.15%	0.015%
6	3.960	190	191	194	rVB3	741	466	0.13%	0.013%
7	4.007	194	199	201	rVB2	639	710	0.20%	0.020%
8	4.066	208	209	213	rVB2	517	535	0.15%	0.015%
9	4.142	219	222	224	rVB3	622	522	0.15%	0.015%
10	4.177	224	228	231	rVB3	463	826	0.24%	0.023%
11	4.459	273	276	277	rVB2	539	466	0.13%	0.013%
12	5.264	410	413	414	rVB	576	566	0.16%	0.016%
13	5.282	414	416	417	rBV	675	510	0.15%	0.014%
14	5.417	438	439	442	rVB2	663	505	0.15%	0.014%
15	5.446	442	444	448	rBV	562	642	0.18%	0.018%
16	5.828	506	509	512	rBV2	439	575	0.17%	0.016%
17	6.010	538	540	544	rVV	428	542	0.16%	0.015%
18	6.063	546	549	552	rVV2	416	687	0.20%	0.019%
19	6.598	637	640	641	rVB	619	536	0.15%	0.015%
20	6.780	669	671	674	rBV	526	614	0.18%	0.017%
21	7.039	709	715	716	rBV	398	720	0.21%	0.020%
22	7.050	716	717	725	rVV	438	717	0.21%	0.020%
23	7.121	725	729	730	rVV	402	468	0.13%	0.013%
24	7.156	733	735	738	rVV	480	515	0.15%	0.014%
25	7.274	748	755	762	rVV	58362	96616	27.76%	2.704%
26	7.444	778	784	793	rBV	43833	72222	20.75%	2.021%
27	7.656	814	820	827	rVV	55959	91247	26.22%	2.554%
28	8.126	893	900	908	rBB	38346	61809	17.76%	1.730%
29	8.613	980	983	986	rBB	359	478	0.14%	0.013%
30	8.819	1011	1018	1026	rBV2	69492	116975	33.61%	3.274%
31	9.289	1091	1098	1104	rBV	57588	98013	28.16%	2.743%
32	10.012	1215	1221	1228	rBB	50195	84794	24.37%	2.373%
33	10.546	1306	1312	1319	rBB	69766	114473	32.89%	3.204%
34	10.934	1371	1378	1385	rBB	54545	97804	28.10%	2.737%

Data Path : Z:\HPCHEM1\BNA\_G\DATA\BG030516\  
 Data File : BG021307.D  
 Acq On : 5 Mar 2016 15:57  
 Operator : UM/SJ  
 Sample : PB88659BL  
 Misc :  
 ALS Vial : 3 Sample Multiplier: 1

Instrument :  
 BNA\_G  
 ClientSampleId :  
 SBLK59

## Integration Parameters: LSCINT.P

Integrator: RTE  
 Smoothing : OFF  
 Sampling : 1  
 Start Thrs: 0.2  
 Stop Thrs : 0

Filtering: 5  
 Min Area: 0.1 % of largest Peak  
 Max Peaks: 100  
 Peak Location: TOP

If leading or trailing edge < 100 prefer < Baseline drop else tangent >  
 Peak separation: 5

Method : Z:\HPCHEM1\BNA\_G\METHODS\SOM02.2-EPA-BG030316.M  
 Title : SVOA CALIBRATION

35	11.063	1392	1400	1410	rBB	67656	121131	34.81%	3.390%
36	12.509	1643	1646	1647	rBV	420	519	0.15%	0.015%
37	13.619	1831	1835	1839	rBV2	1710	2472	0.71%	0.069%
38	14.136	1914	1923	1929	rBB	129281	186546	53.60%	5.220%
39	14.430	1966	1973	1981	rVB	136803	213677	61.40%	5.980%
40	14.736	2019	2025	2031	rVB2	83823	132354	38.03%	3.704%
41	14.912	2049	2055	2068	rBV	70235	111000	31.90%	3.106%
42	15.723	2186	2193	2200	rVB	185700	271769	78.09%	7.605%
43	15.828	2206	2211	2217	rBV	66853	94009	27.01%	2.631%
44	15.958	2230	2233	2236	rBB	780	885	0.25%	0.025%
45	17.262	2452	2455	2458	rBB	430	471	0.14%	0.013%
46	17.468	2482	2490	2499	rBV2	112957	167432	48.11%	4.686%
47	17.568	2501	2507	2517	rVV	200591	300333	86.30%	8.405%
48	19.224	2787	2789	2791	rVB	601	498	0.14%	0.014%
49	19.254	2791	2794	2796	rBV	540	606	0.17%	0.017%
50	19.301	2799	2802	2803	rVV	628	580	0.17%	0.016%
51	19.436	2822	2825	2827	rBV	542	667	0.19%	0.019%
52	19.477	2828	2832	2837	rVB3	2002	3082	0.89%	0.086%
53	19.536	2837	2842	2844	rBV	827	1302	0.37%	0.036%
54	19.553	2844	2845	2847	rVV	923	501	0.14%	0.014%
55	19.595	2850	2852	2856	rVB2	957	874	0.25%	0.024%
56	19.730	2869	2875	2879	rBV4	2069	3117	0.90%	0.087%
57	19.765	2879	2881	2883	rBV2	799	891	0.26%	0.025%
58	19.788	2883	2885	2888	rBV2	441	507	0.15%	0.014%
59	19.841	2888	2894	2903	rVB	250929	348003	100.00%	9.739%
60	19.982	2917	2918	2921	rBV2	649	554	0.16%	0.016%
61	20.059	2928	2931	2932	rVB3	1167	746	0.21%	0.021%
62	20.076	2932	2934	2935	rBV	818	571	0.16%	0.016%
63	20.094	2935	2937	2938	rBV	1025	571	0.16%	0.016%
64	20.141	2943	2945	2947	rVV	953	659	0.19%	0.018%
65	20.235	2959	2961	2962	rBV	933	642	0.18%	0.018%
66	20.294	2969	2971	2973	rBV2	689	597	0.17%	0.017%
67	20.482	3001	3003	3004	rVB	888	536	0.15%	0.015%
68	20.505	3004	3007	3008	rBV3	963	1017	0.29%	0.028%
69	20.629	3025	3028	3030	rBV4	771	963	0.28%	0.027%
70	20.693	3036	3039	3040	rBV3	1060	1103	0.32%	0.031%
71	20.723	3043	3044	3045	rBV	1215	576	0.17%	0.016%

Data Path : Z:\HPCHEM1\BNA\_G\DATA\BG030516\  
 Data File : BG021307.D  
 Acq On : 5 Mar 2016 15:57  
 Operator : UM/SJ  
 Sample : PB88659BL  
 Misc :  
 ALS Vial : 3 Sample Multiplier: 1

Instrument :  
 BNA\_G  
 ClientSampleId :  
 SBLK59

## Integration Parameters: LSCINT.P

Integrator: RTE  
 Smoothing : OFF  
 Sampling : 1  
 Start Thrs: 0.2  
 Stop Thrs : 0

Filtering: 5  
 Min Area: 0.1 % of largest Peak  
 Max Peaks: 100  
 Peak Location: TOP

If leading or trailing edge < 100 prefer < Baseline drop else tangent >  
 Peak separation: 5

Method : Z:\HPCHEM1\BNA\_G\METHODS\SOM02.2-EPA-BG030316.M  
 Title : SVOA CALIBRATION

72	20.823	3058	3061	3062	rBV3	1089	1228	0.35%	0.034%
73	20.987	3087	3089	3090	rBV2	1033	490	0.14%	0.014%
74	21.287	3138	3140	3141	rBV2	1281	761	0.22%	0.021%
75	21.404	3158	3160	3161	rBV2	1052	880	0.25%	0.025%
76	21.727	3208	3215	3221	rBV	118607	194023	55.75%	5.430%
77	22.509	3346	3348	3349	rBV2	1338	1102	0.32%	0.031%
78	23.325	3485	3487	3489	rBV3	1301	1111	0.32%	0.031%
79	24.025	3602	3606	3607	rBV4	2183	3175	0.91%	0.089%
80	24.759	3722	3731	3740	rVB2	116341	310703	89.28%	8.695%
81	24.982	3759	3769	3782	rVB3	64939	178972	51.43%	5.009%
82	26.110	3958	3961	3969	rVB7	4365	8900	2.56%	0.249%
83	26.392	4008	4009	4015	rBV3	1392	1975	0.57%	0.055%
84	26.939	4100	4102	4104	rBV2	1685	1527	0.44%	0.043%
85	26.986	4109	4110	4112	rBV2	1294	762	0.22%	0.021%
86	27.098	4127	4129	4131	rBV2	1481	1550	0.45%	0.043%
87	27.474	4188	4193	4195	rBV4	3305	5644	1.62%	0.158%
88	27.685	4227	4229	4230	rBV2	1499	860	0.25%	0.024%
89	27.949	4271	4274	4276	rBV4	1299	1652	0.47%	0.046%
90	28.666	4395	4396	4397	rBV	1944	873	0.25%	0.024%
91	29.072	4464	4465	4468	rBV3	1488	1660	0.48%	0.046%
92	29.101	4468	4470	4471	rBV2	1439	1035	0.30%	0.029%
93	29.242	4492	4494	4496	rBV2	1357	1166	0.34%	0.033%
94	29.718	4574	4575	4578	rBV3	1243	1171	0.34%	0.033%
95	29.747	4578	4580	4581	rVV2	1219	742	0.21%	0.021%
96	29.847	4595	4597	4598	rBV2	1170	630	0.18%	0.018%
97	31.439	4867	4868	4871	rBV3	1352	1129	0.32%	0.032%
98	31.786	4925	4927	4930	rBV3	1323	1343	0.39%	0.038%
99	31.915	4947	4949	4951	rBV3	1161	937	0.27%	0.026%
100	32.591	5062	5064	5065	rBV2	1320	634	0.18%	0.018%

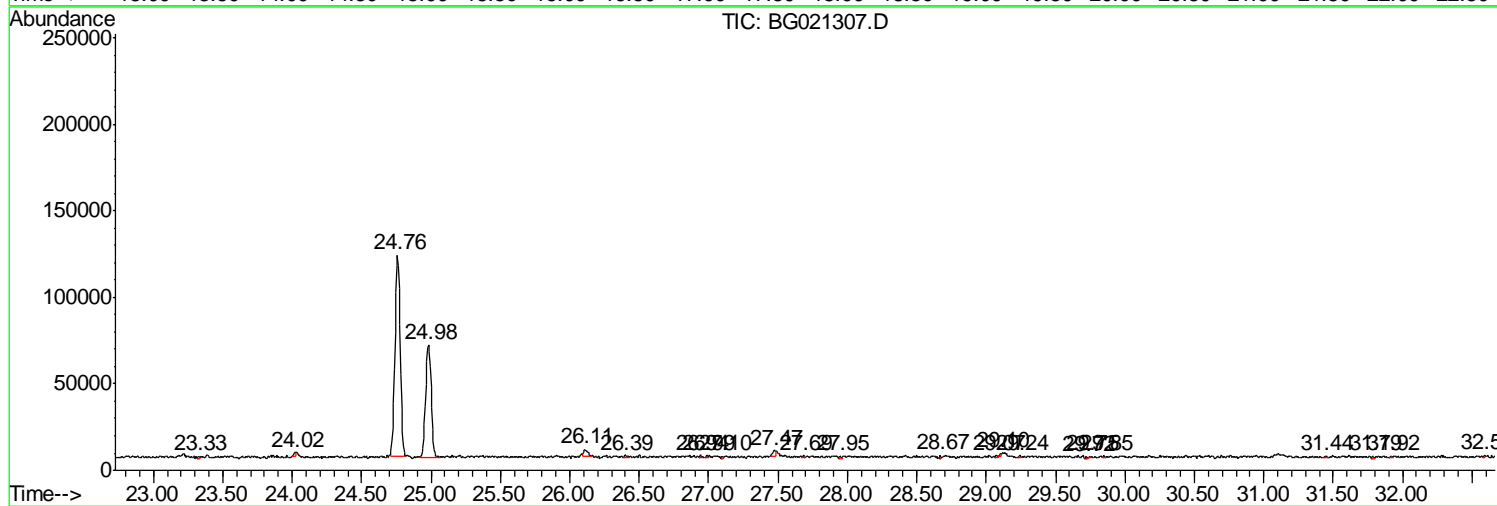
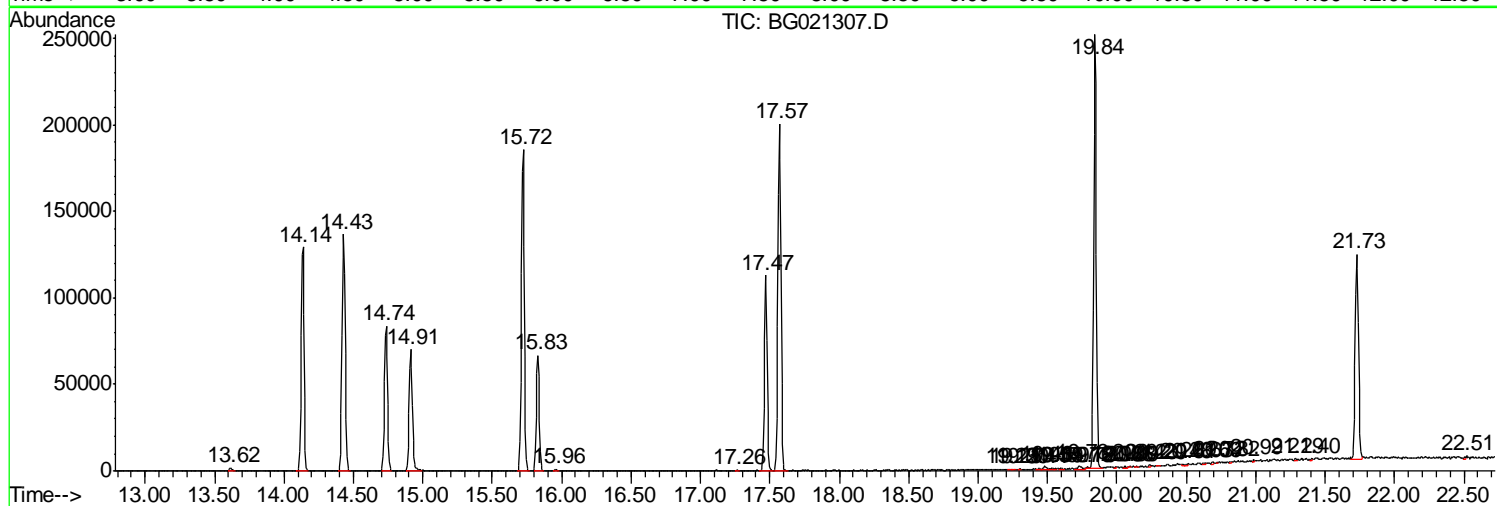
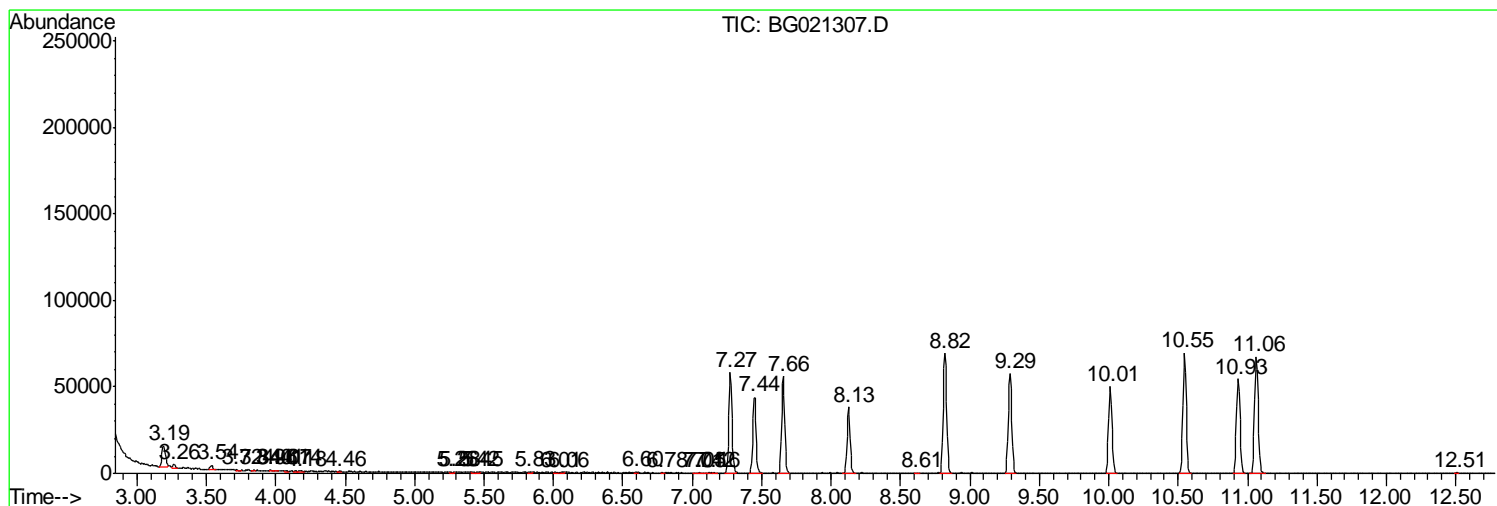
Sum of corrected areas: 3573349

Data Path : Z:\HPCHEM1\BNA\_G\DATA\BG030516\  
 Data File : BG021307.D  
 Acq On : 5 Mar 2016 15:57  
 Operator : UM/SJ  
 Sample : PB88659BL  
 Misc :  
 ALS Vial : 3 Sample Multiplier: 1

Instrument :  
 BNA\_G  
 ClientSampleId :  
 SBLK59

Quant Method : Z:\HPCHEM1\BNA\_G\METHODS\SOM02.2-EPA-BG030316.M  
 Quant Title : SVOA CALIBRATION

TIC Library : C:\DATABASE\NIST02.L  
 TIC Integration Parameters: LSCINT.P



Data Path : Z:\HPCHEM1\BNA\_G\DATA\BG030516\  
Data File : BG021307.D  
Acq On : 5 Mar 2016 15:57  
Operator : UM/SJ  
Sample : PB88659BL  
Misc :  
ALS Vial : 3 Sample Multiplier: 1

Instrument :  
BNA\_G  
ClientSampleId :  
SBLK59

Quant Method : Z:\HPCHEM1\BNA\_G\METHODS\SOM02.2-EPA-BG030316.M  
Quant Title : SVOA CALIBRATION

TIC Library : C:\DATABASE\NIST02.L  
TIC Integration Parameters: LSCINT.P

No Library Search Compounds Detected

\*\*\*\*\*

Data Path : Z:\HPCHEM1\BNA\_G\DATA\BG030516\  
Data File : BG021307.D  
Acq On : 5 Mar 2016 15:57  
Operator : UM/SJ  
Sample : PB88659BL  
Misc :  
ALS Vial : 3 Sample Multiplier: 1

Instrument :  
BNA\_G  
ClientSampleId :  
SBLK59

Quant Method : Z:\HPCHEM1\BNA\_G\METHODS\SOM02.2-EPA-BG030316.M  
Quant Title : SVOA CALIBRATION

TIC Library : C:\DATABASE\NIST02.L  
TIC Integration Parameters: LSCINT.P

TIC Top Hit name	RT	EstConc	Units	Response	--Internal Standard--			
					#	RT	Resp	Conc

---