

Data Path : Z:\svoasrv\HPCHEM1\BNA_G\Data\BG030525\
 Data File : BG064046.D
 Acq On : 5 Mar 2025 9:42
 Operator : RC/JU
 Sample : SSTDICC005
 Misc :
 ALS Vial : 3 Sample Multiplier: 1

Instrument :
 BNA_G
ClientSampleId :
 SSTDICC005

Quant Time: Mar 05 15:20:42 2025
 Quant Method : Z:\svoasrv\HPCHEM1\BNA_G\Methods\8270-BG030525.M
 Quant Title : ASP BNA STANDARDS FOR 5 POINT CALIBRATION
 QLast Update : Wed Mar 05 14:45:06 2025
 Response via : Initial Calibration

Compound	R. T.	QI on	Response	Conc	Units	Dev(Min)
Internal Standards						
1) 1,4-Dichlorobenzene-d4	7.865	152	33357	20.000	ng	0.00
21) Naphthalene-d8	10.650	136	142015	20.000	ng	0.00
39) Acenaphthene-d10	14.487	164	99722	20.000	ng	0.00
64) Phenanthrene-d10	17.225	188	234862	20.000	ng	0.00
76) Chrysene-d12	21.455	240	251570	20.000	ng	0.00
86) Perylene-d12	24.469	264	257404	20.000	ng	0.00
System Monitoring Compounds						
5) 2-Fluorophenol	5.450	112	19435	9.098	ng	0.00
7) Phenol-d6	7.025	99	26345	9.065	ng	0.00
23) Nitrobenzene-d5	9.011	82	20601	8.016	ng	0.00
42) 2,4,6-Tribromophenol	15.967	330	8299	7.487	ng	0.00
45) 2-Fluorophenyl	13.112	172	68235	10.386	ng	0.00
79) Terphenyl-d14	19.845	244	127223	10.226	ng	0.00
Target Compounds						
2) 1,4-Dioxane	3.376	88	4983	5.147	ng	88
3) Pyridine	3.764	79	12091	5.135	ng	90
4) n-Nitrosodimethylamine	3.676	42	7436	4.420	ng	# 86
6) Aniline	7.189	93	13285	4.659	ng	# 90
8) 2-Chlorophenol	7.424	128	10525	4.587	ng	93
9) Benzaldehyde	7.007	77	9269	5.456	ng	91
10) Phenol	7.048	94	13256	4.455	ng	95
11) bis(2-Chloroethyl)ether	7.289	93	11465	4.915	ng	92
12) 1,3-Dichlorobenzene	7.753	146	12701	5.041	ng	99
13) 1,4-Dichlorobenzene	7.753	146	12701	4.918	ng	94
14) 1,2-Dichlorobenzene	7.753	146	12701	5.100	ng	95
15) Benzyl Alcohol	8.094	79	9299	4.141	ng	# 91
16) 2,2'-oxybis(1-Chloropr...	8.400	45	25555	4.872	ng	94
17) 2-Methylphenol	8.300	107	8465	4.287	ng	88
18) Hexachloroethane	8.946	117	4075	4.510	ng	85
19) n-Nitroso-di-n-propyl a...	8.664	70	9131	4.477	ng	# 96
20) 3+4-Methylphenols	8.623	107	11690	4.300	ng	95
22) Acetophenone	8.676	105	18540	4.761	ng	95
24) Nitrobenzene	9.052	77	10563	3.977	ng	# 91
25) Isophorone	9.575	82	25179	4.895	ng	98
26) 2-Nitrophenol	9.769	139	2362	6.094	ng	88
27) 2,4-Dimethylphenol	9.822	122	6887	4.466	ng	# 88
28) bis(2-Chloroethoxy)met...	10.062	93	15067	4.832	ng	95
29) 2,4-Dichlorophenol	10.297	162	7898	4.056	ng	96
30) 1,2,4-Tri chlorobenzene	10.515	180	11480	4.884	ng	93
31) Naphthalene	10.703	128	38285	4.999	ng	99
32) Benzoic acid	9.968	122	336	8.859	ng	# 18
33) 4-Chloroaniline	10.809	127	12591	4.499	ng	95
34) Hexachlorobutadiene	10.997	225	7373	4.786	ng	# 91
35) Caprolactam	11.537	113	3052	4.090	ng	# 89
36) 4-Chloro-3-methylphenol	11.925	107	10408	4.078	ng	92
37) 2-Methylnaphthalene	12.313	142	27533	5.093	ng	99
38) 1-Methylnaphthalene	12.530	142	26458	4.995	ng	97
40) 1,2,4,5-Tetrachloroben...	12.677	216	13634	4.789	ng	94
41) Hexachlorocyclopentadiene	12.665	237	3078	3.841	ng	97
43) 2,4,6-Tribromophenol	12.983	196	7092	4.227	ng	93

Data Path : Z:\svoasrv\HPCHEM1\BNA_G\Data\BG030525\
 Data File : BG064046.D
 Acq On : 5 Mar 2025 9:42
 Operator : RC/JU
 Sample : SSTDICC005
 Misc :
 ALS Vial : 3 Sample Multiplier: 1

Instrument :
 BNA_G
ClientSampleId :
 SSTDICC005

Quant Time: Mar 05 15:20:42 2025
 Quant Method : Z:\svoasrv\HPCHEM1\BNA_G\Methods\8270-BG030525.M
 Quant Title : ASP BNA STANDARDS FOR 5 POINT CALIBRATION
 QLast Update : Wed Mar 05 14:45:06 2025
 Response via : Initial Calibration

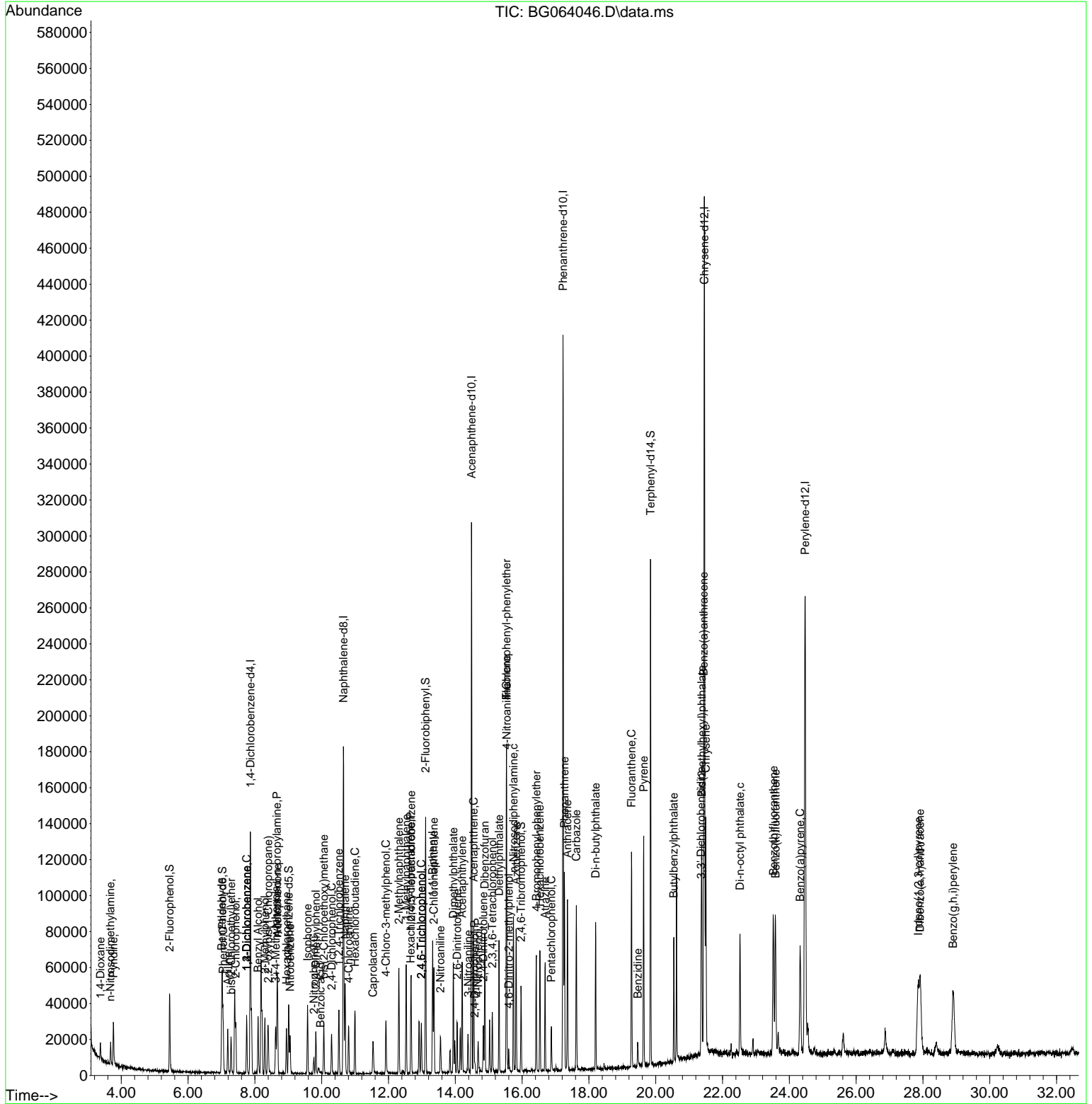
Compound	R. T.	QI on	Response	Conc	Units	Dev(Min)
44) 2, 4, 5-Tri chl orophenol	12.983	196	7092	3.804	ng	94
46) 1, 1' -Bi phenyl	13.323	154	37550	4.984	ng	98
47) 2-Chl oronaphthal ene	13.359	162	27076	4.928	ng	95
48) 2-Ni troani line	13.552	65	4908	6.075	ng	84
49) Acenaphthyl ene	14.205	152	42736	4.917	ng	96
50) Di methyl phthal ate	13.940	163	35694	4.849	ng	99
51) 2, 6-Di ni trotol uene	14.058	165	3942	5.812	ng #	81
52) Acenaphthene	14.551	154	29468	5.042	ng	99
53) 3-Ni troani line	14.387	138	4736	3.329	ng #	84
54) 2, 4-Di ni trophenol	14.581	184	1283	9.739	ng	90
55) Di benzofuran	14.880	168	48004	5.080	ng	96
56) 4-Ni trophenol	14.686	139	3146	2.637	ng	96
57) 2, 4-Di ni trotol uene	14.839	165	5618	6.165	ng #	95
58) Fl uorene	15.532	166	38777	5.269	ng	90
59) 2, 3, 4, 6-Tetrachl orophenol	15.109	232	6538	3.597	ng #	94
60) Di ethyl phthal ate	15.309	149	37289	4.666	ng	98
61) 4-Chl orophenyl -phenyl e...	15.532	204	18807	5.142	ng	89
62) 4-Ni troani line	15.538	138	5314	3.460	ng	93
63) Azobenzene	15.820	77	43236	5.070	ng	96
65) 4, 6-Di ni tro-2-methyl ph...	15.603	198	2634	10.333	ng #	73
66) n-Ni trosodi phenyl ami ne	15.744	169	32754	4.927	ng	96
67) 4-Bromophenyl -phenyl ether	16.426	248	10898	4.531	ng	93
68) Hexachl orobenzene	16.531	284	13351	4.958	ng	99
69) Atrazi ne	16.690	200	10297	5.264	ng	89
70) Pentachl orophenol	16.878	266	4740	2.835	ng	95
71) Phenanthrene	17.266	178	63629	5.079	ng	98
72) Anthracene	17.354	178	60108	4.825	ng	98
73) Carbazol e	17.624	167	55726	4.792	ng	99
74) Di -n-butyl phthal ate	18.200	149	54700	3.996	ng #	95
75) Fl uoranthene	19.275	202	74694	4.946	ng	99
77) Benzi di ne	19.463	184	12755	3.612	ng #	91
78) Pyrene	19.639	202	78707	4.853	ng	98
80) Butyl benzyl phthal ate	20.538	149	17899	6.356	ng	96
81) Benzo(a)anthracene	21.437	228	76566	4.751	ng	98
82) 3, 3' -Di chl orobenzi di ne	21.361	252	22038	4.226	ng	89
83) Chrysene	21.502	228	80580	5.014	ng	98
84) Bi s(2-ethyl hexyl)phtha...	21.379	149	31674	3.634	ng	94
85) Di -n-octyl phthal ate	22.524	149	47732	3.175	ng	96
87) I ndeno(1, 2, 3-cd)pyrene	27.865	276	78681	4.569	ng #	94
88) Benzo(b)fl uoranthene	23.523	252	74031	4.757	ng	99
89) Benzo(k)fl uoranthene	23.588	252	71522	4.582	ng	98
90) Benzo(a)pyrene	24.322	252	63881	4.610	ng #	96
91) Di benzo(a, h)anthracene	27.912	278	66224	4.638	ng	98
92) Benzo(g, h, i)peryl ene	28.905	276	67535	4.607	ng #	93

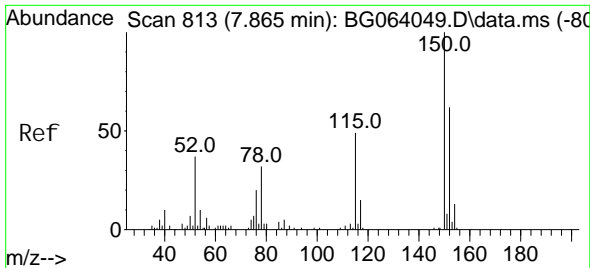
(#) = qual i fier out of range (m) = manual i ntegrati on (+) = signal s summed

Data Path : Z:\svoasrv\HPCHEM1\BNA_G\Data\BG030525\
 Data File : BG064046.D
 Acq On : 5 Mar 2025 9: 42
 Operator : RC/JU
 Sample : SSTDIC005
 Misc :
 ALS Vial : 3 Sample Multiplier: 1

Instrument :
 BNA_G
ClientSampleId :
 SSTDIC005

Quant Time: Mar 05 15: 20: 42 2025
 Quant Method : Z:\svoasrv\HPCHEM1\BNA_G\Methods\8270-BG030525.M
 Quant Title : ASP BNA STANDARDS FOR 5 POINT CALIBRATION
 QLast Update : Wed Mar 05 14: 45: 06 2025
 Response via : Initial Calibration



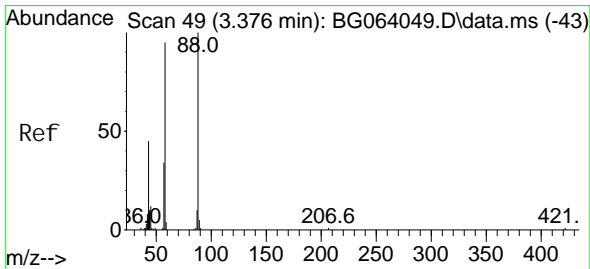
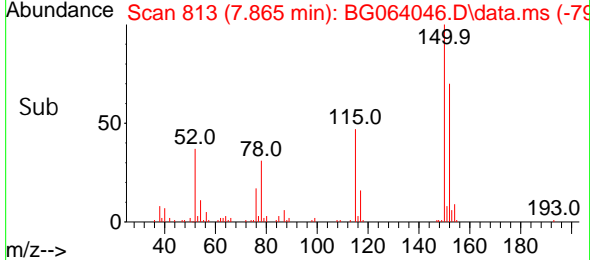
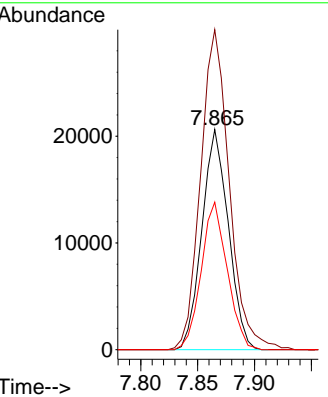
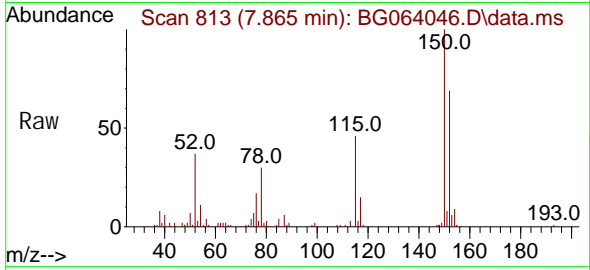


#1
 1, 4-Di chl orobenzene-d4
 Concen: 20.000 ng
 RT: 7.865 min Scan# 813
 Delta R.T. -0.000 min
 Lab File: BG064046.D
 Acq: 5 Mar 2025 9:42

Instrument : BNA_G
 ClientSampleId : SSTDICC005

Tgt Ion: 152 Resp: 33357

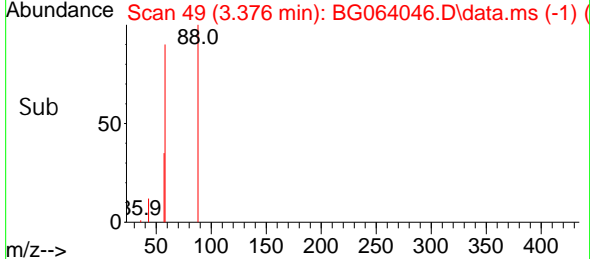
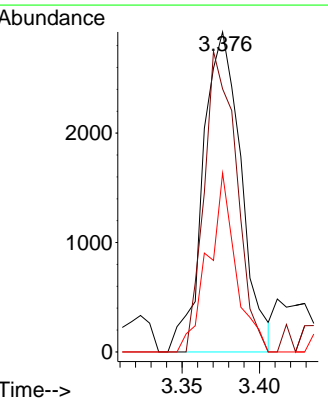
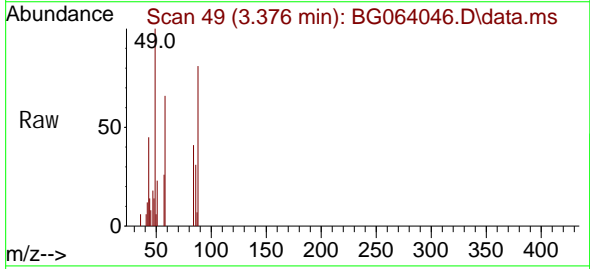
Ion	Ratio	Lower	Upper
152	100		
150	145.3	129.2	193.8
115	67.0	63.0	94.6

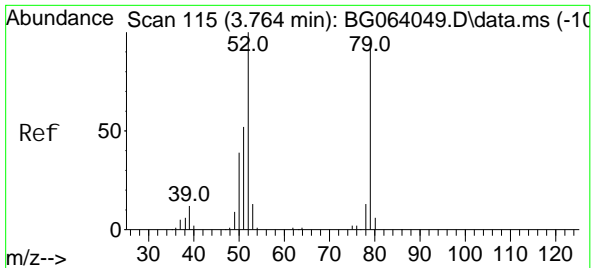


#2
 1, 4-Di oxane
 Concen: 5.147 ng
 RT: 3.376 min Scan# 49
 Delta R.T. 0.000 min
 Lab File: BG064046.D
 Acq: 5 Mar 2025 9:42

Tgt Ion: 88 Resp: 4983

Ion	Ratio	Lower	Upper
88	100		
58	79.5	74.6	111.8
43	40.5	35.5	53.3



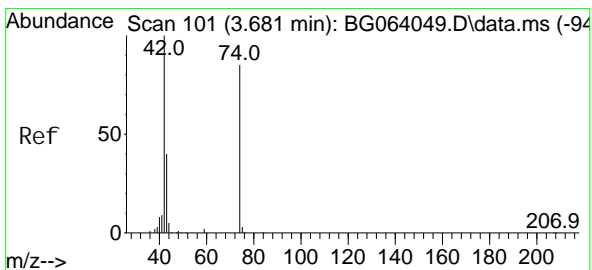
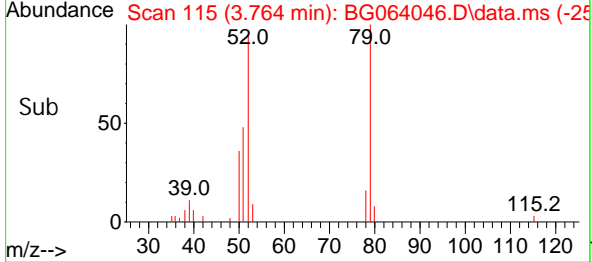
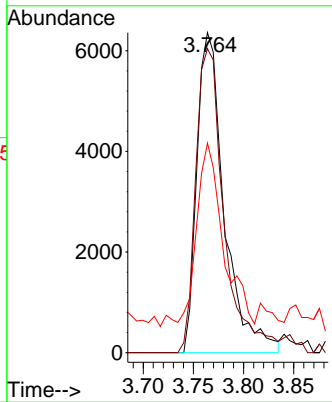
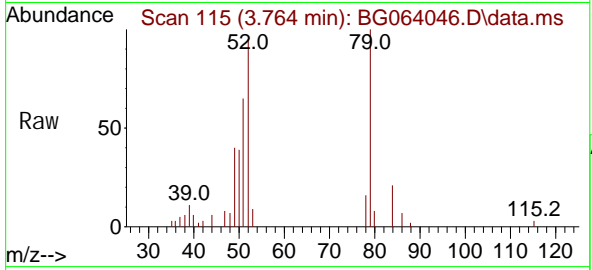


#3
 Pyridine
 Concen: 5.135 ng
 RT: 3.764 min Scan# 115
 Delta R.T. 0.000 min
 Lab File: BG064046.D
 Acq: 5 Mar 2025 9:42

Instrument : BNA_G
 ClientSampleId : SSTDICC005

Tgt Ion: 79 Resp: 12091

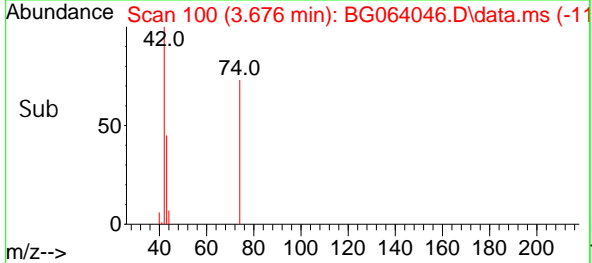
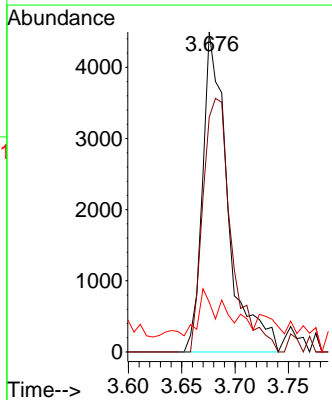
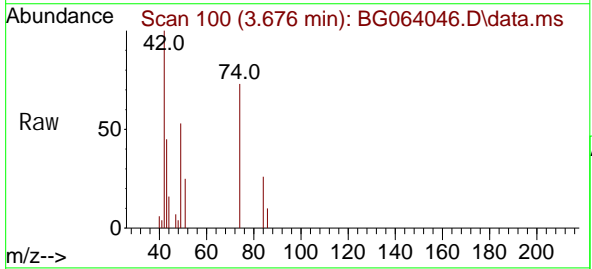
Ion	Ratio	Lower	Upper
79	100		
52	95.0	83.0	124.6
51	65.5	44.3	66.5

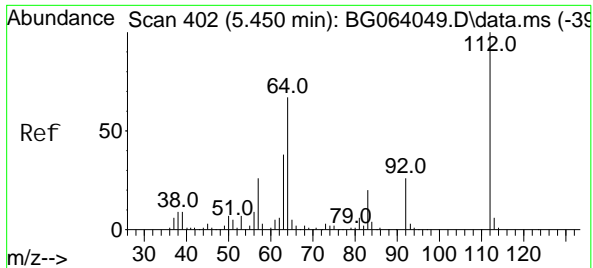


#4
 n-Nitrosodimethylamine
 Concen: 4.420 ng
 RT: 3.676 min Scan# 100
 Delta R.T. -0.006 min
 Lab File: BG064046.D
 Acq: 5 Mar 2025 9:42

Tgt Ion: 42 Resp: 7436

Ion	Ratio	Lower	Upper
42	100		
74	73.4	68.0	102.0
44	15.6	4.9	7.3

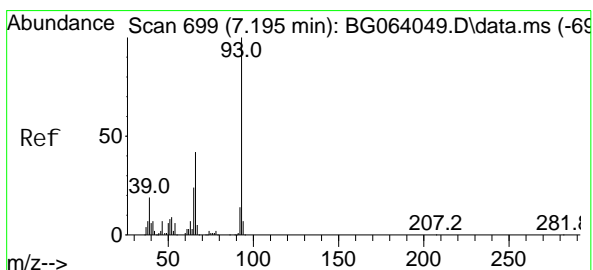
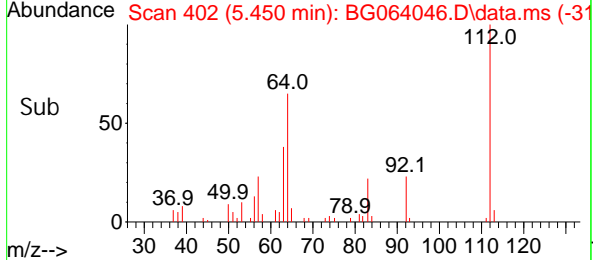
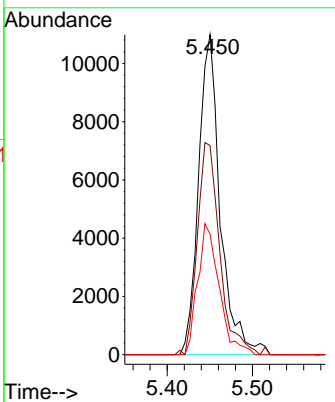
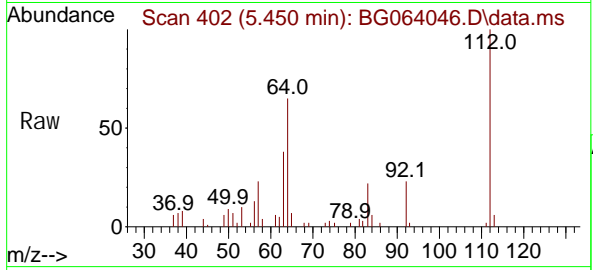




#5
 2-Fluorophenol
 Concen: 9.098 ng
 RT: 5.450 min Scan# 401
 Delta R.T. 0.000 min
 Lab File: BG064046.D
 Acq: 5 Mar 2025 9:42

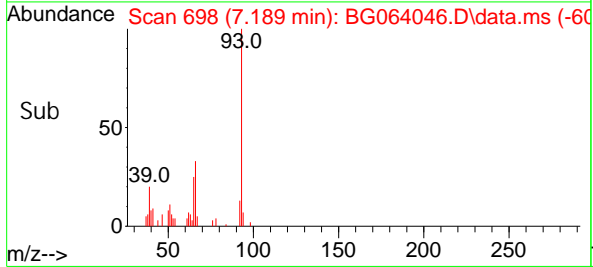
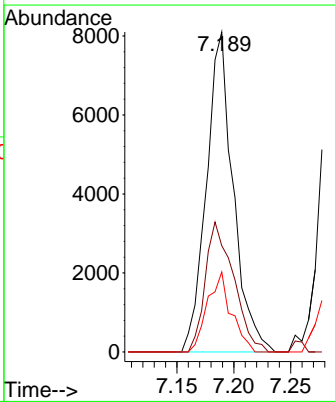
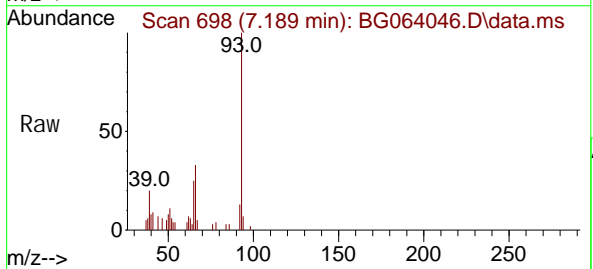
Instrument : BNA_G
 ClientSampleId : SSTDICC005

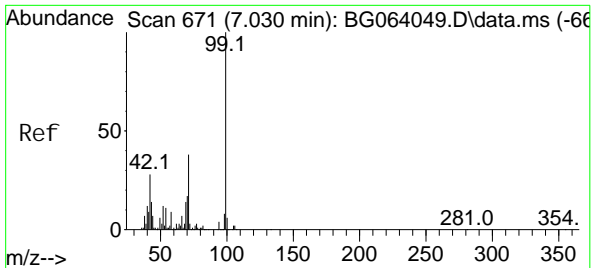
Tgt Ion	Resp	Lower	Upper
112	19435		
64	65.4	53.7	80.5
63	37.6	30.2	45.4



#6
 Aniline
 Concen: 4.659 ng
 RT: 7.189 min Scan# 698
 Delta R.T. -0.006 min
 Lab File: BG064046.D
 Acq: 5 Mar 2025 9:42

Tgt Ion	Resp	Lower	Upper
93	13285		
66	33.2	33.7	50.5#
65	25.0	19.1	28.7

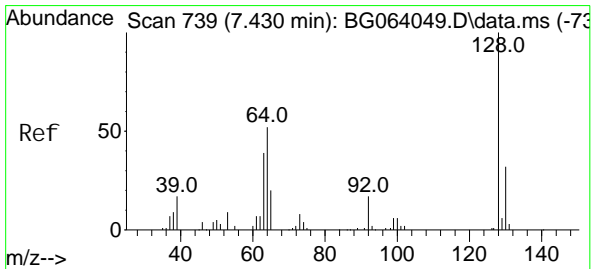
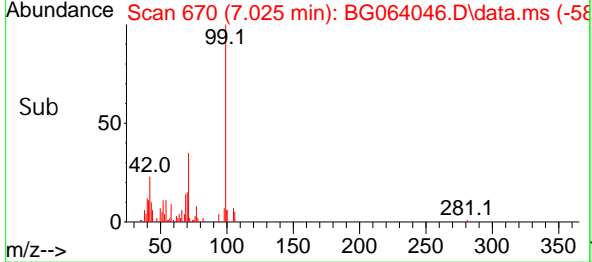
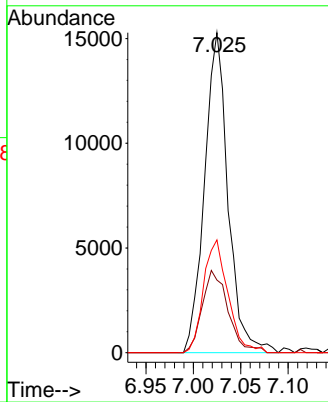
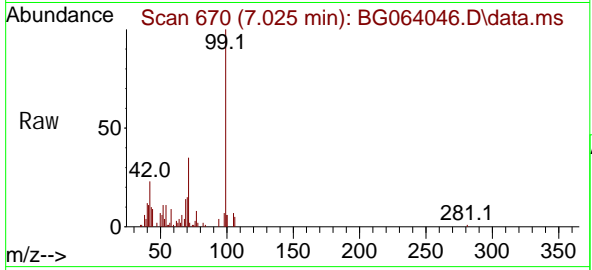




#7
 Phenol -d6
 Concen: 9.065 ng
 RT: 7.025 min Scan# 61
 Delta R.T. -0.006 min
 Lab File: BG064046.D
 Acq: 5 Mar 2025 9:42

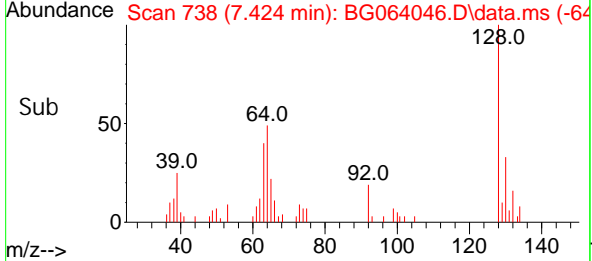
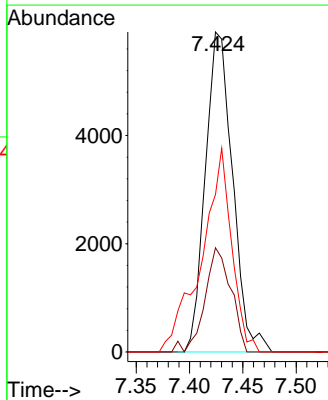
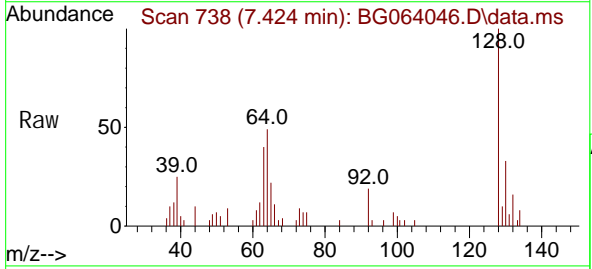
Instrument :
 BNA_G
ClientSampleId :
 SSTDICC005

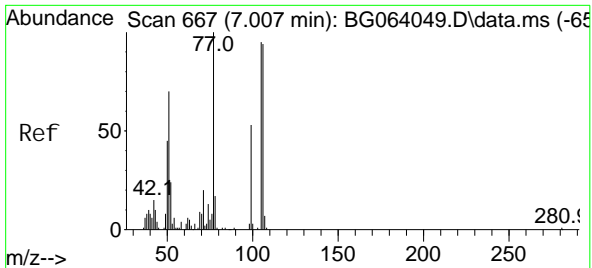
Tgt Ion	Resp	Lower	Upper
99	26345		
42	22.7	22.7	34.1#
71	35.2	30.6	46.0



#8
 2-Chl orophenol
 Concen: 4.587 ng
 RT: 7.424 min Scan# 738
 Delta R.T. -0.006 min
 Lab File: BG064046.D
 Acq: 5 Mar 2025 9:42

Tgt Ion	Resp	Lower	Upper
128	10525		
130	32.5	12.3	52.3
64	49.2	37.0	77.0



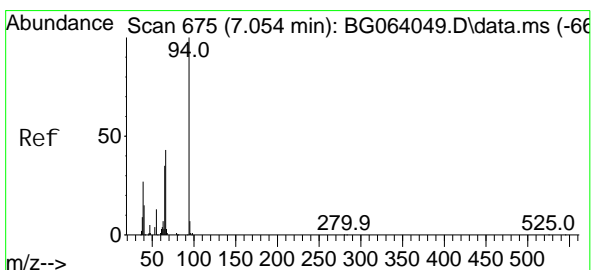
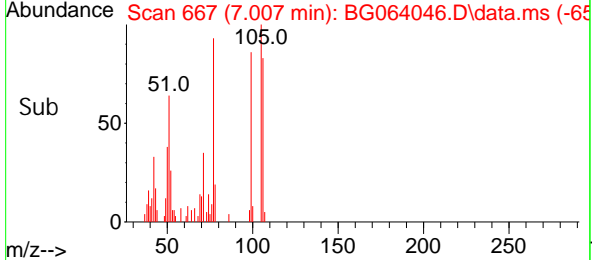
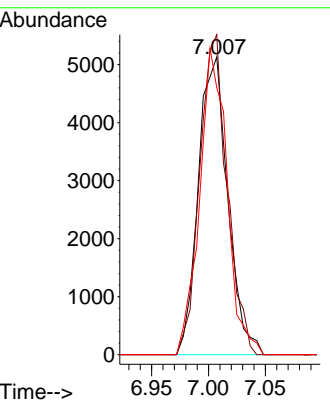
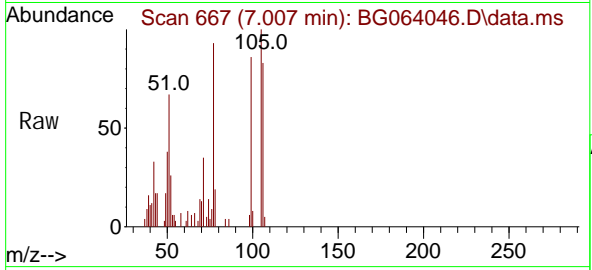


#9
Benzaldehyde
Concen: 5.456 ng
RT: 7.007 min Scan# 667
Delta R.T. 0.000 min
Lab File: BG064046.D
Acq: 5 Mar 2025 9:42

Instrument : BNA_G
ClientSampleId : SSTDICC005

Tgt Ion: 77 Resp: 9269

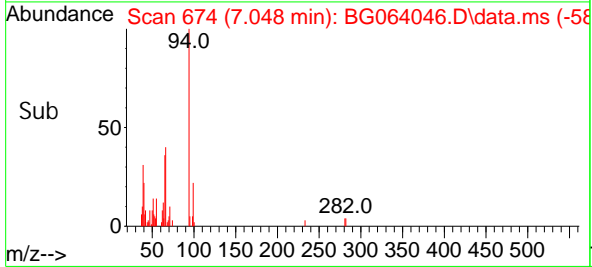
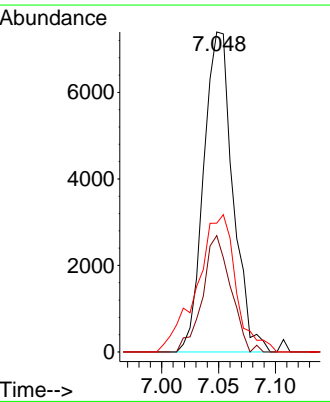
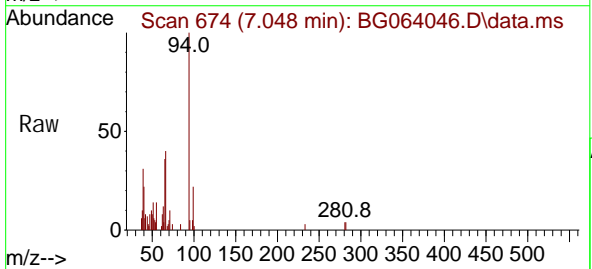
Ion	Ratio	Lower	Upper
77	100		
105	107.4	75.5	115.5
106	89.7	74.2	114.2

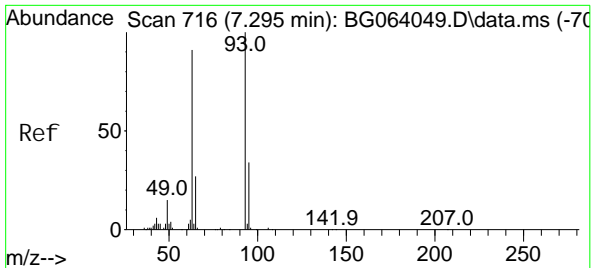


#10
Phenol
Concen: 4.455 ng
RT: 7.048 min Scan# 674
Delta R.T. -0.006 min
Lab File: BG064046.D
Acq: 5 Mar 2025 9:42

Tgt Ion: 94 Resp: 13256

Ion	Ratio	Lower	Upper
94	100		
65	36.4	15.2	55.2
66	40.2	25.1	65.1





#11
 bis(2-Chloroethyl) ether
 Concen: 4.915 ng
 RT: 7.289 min Scan# 715
 Delta R.T. -0.006 min
 Lab File: BG064046.D
 Acq: 5 Mar 2025 9:42

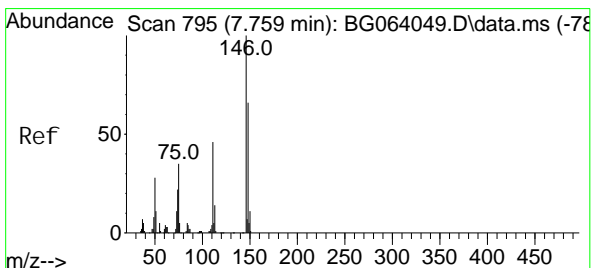
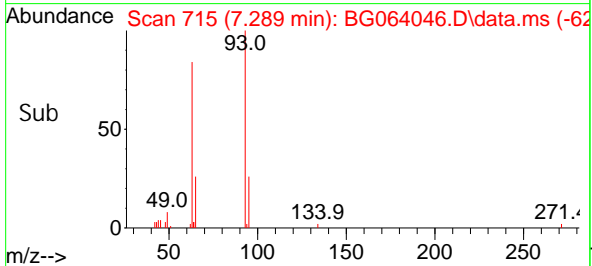
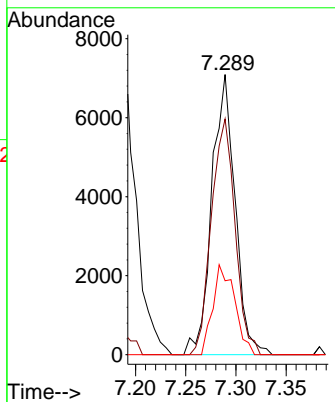
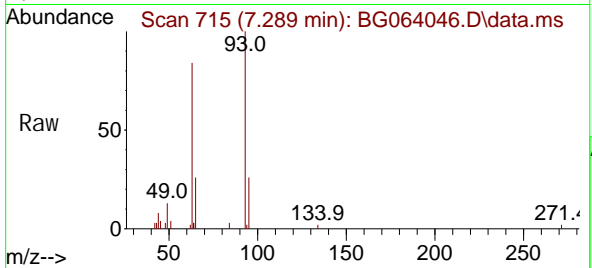
Instrument :

BNA_G

ClientSampleId :

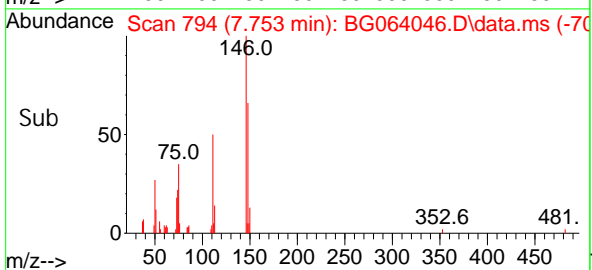
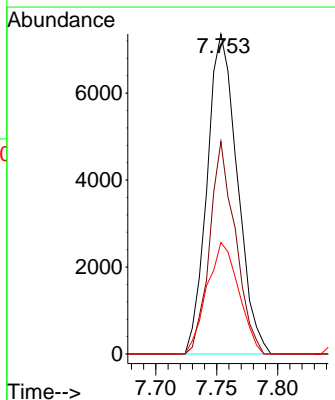
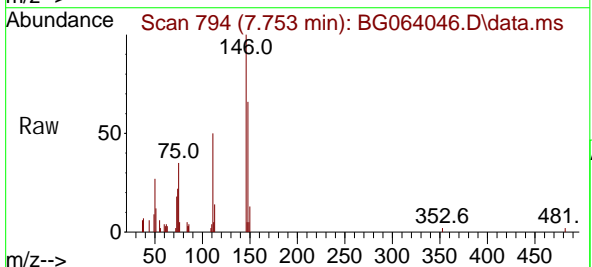
SSTDICC005

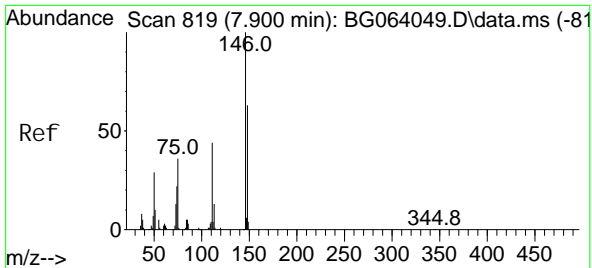
Tgt Ion	Resp	Lower	Upper
93	11465		
93	100		
63	84.1	70.0	110.0
95	26.4	13.7	53.7



#12
 1,3-Dichlorobenzene
 Concen: 5.041 ng
 RT: 7.753 min Scan# 794
 Delta R.T. -0.006 min
 Lab File: BG064046.D
 Acq: 5 Mar 2025 9:42

Tgt Ion	Resp	Lower	Upper
146	12701		
146	100		
148	66.4	52.6	78.8
75	34.9	28.1	42.1

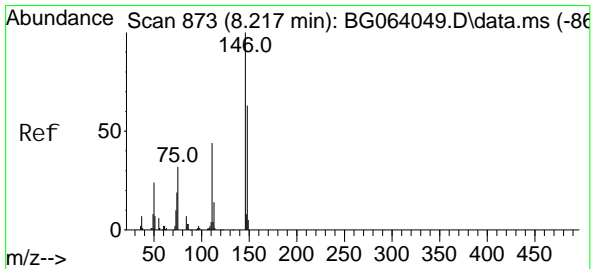
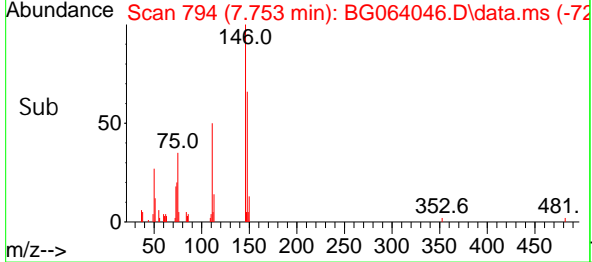
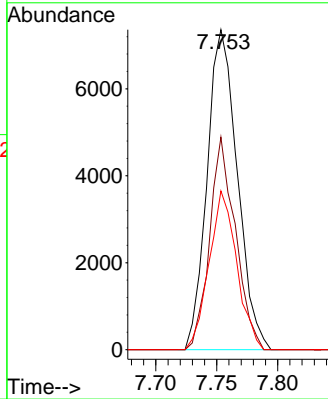
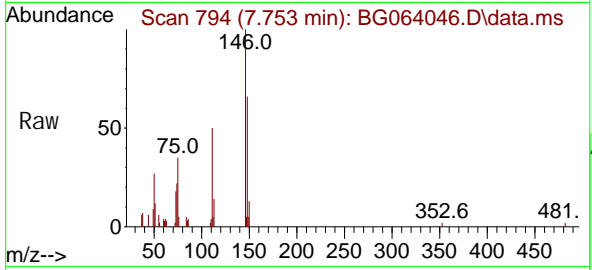




#13
 1,4-Di chl orobenzene
 Concen: 4.918 ng
 RT: 7.753 min Scan# 794
 Delta R.T. -0.147 min
 Lab File: BG064046.D
 Acq: 5 Mar 2025 9:42

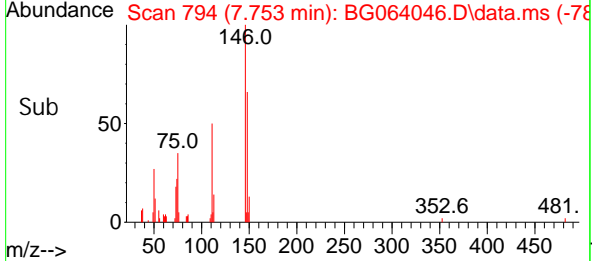
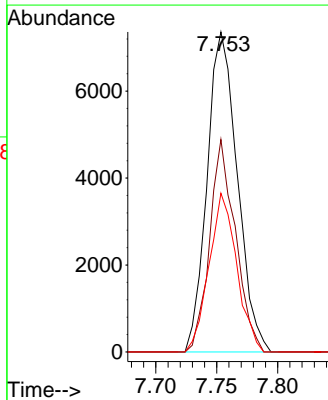
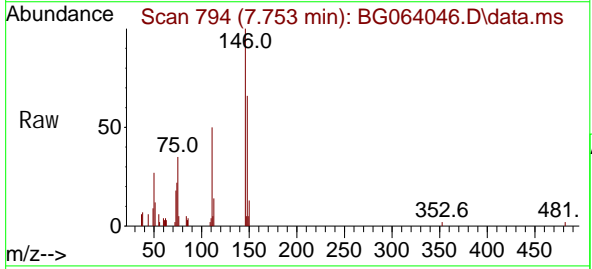
Instrument : BNA_G
 ClientSampleId : SSTDICC005

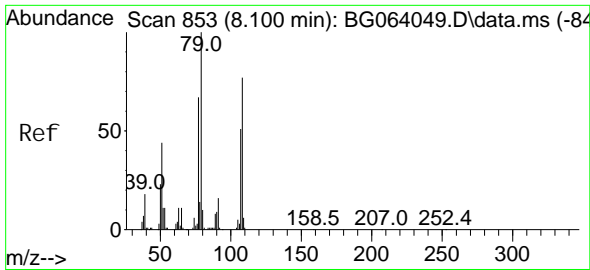
Tgt Ion	Resp	Lower	Upper
146	100		
148	66.4	50.6	75.8
111	49.6	35.1	52.7



#14
 1,2-Di chl orobenzene
 Concen: 5.100 ng
 RT: 7.753 min Scan# 794
 Delta R.T. -0.464 min
 Lab File: BG064046.D
 Acq: 5 Mar 2025 9:42

Tgt Ion	Resp	Lower	Upper
146	100		
148	66.4	50.2	75.2
111	49.6	36.4	54.6

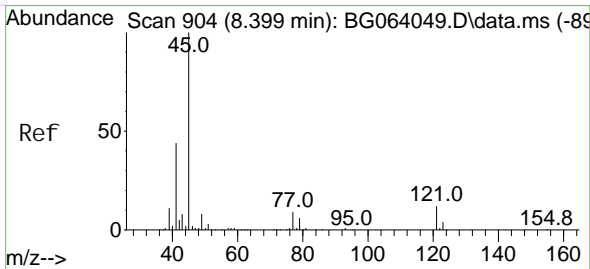
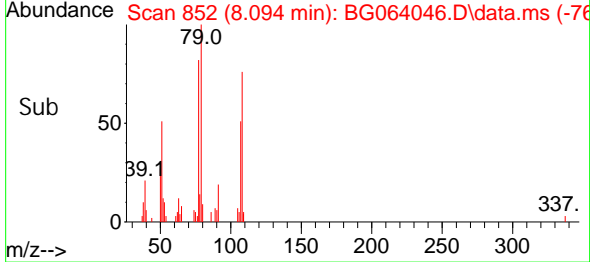
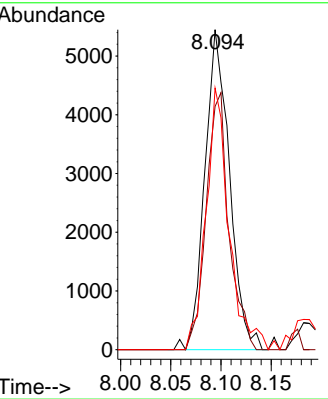
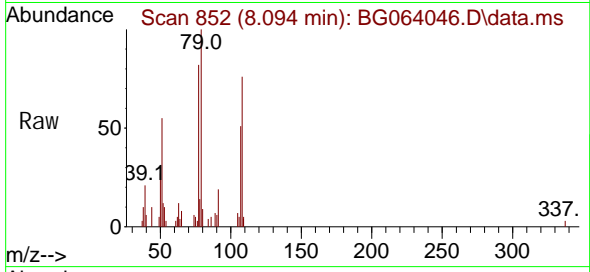




#15
 Benzyl Alcohol
 Concen: 4.141 ng
 RT: 8.094 min Scan# 801
 Delta R.T. -0.006 min
 Lab File: BG064046.D
 Acq: 5 Mar 2025 9:42

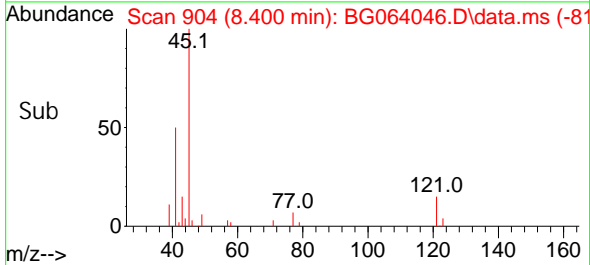
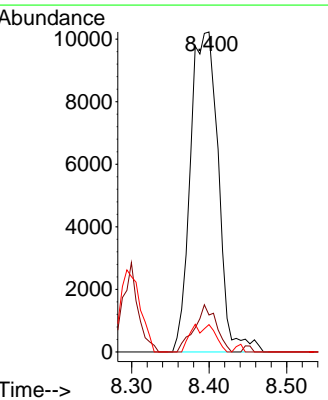
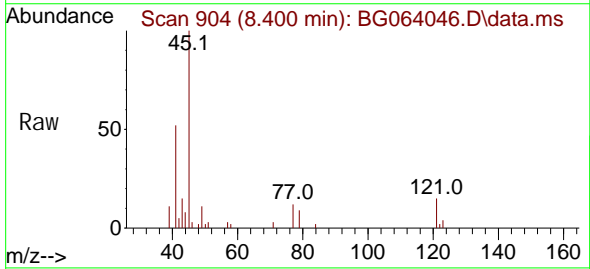
Instrument :
 BNA_G
 ClientSampleId :
 SSTDICC005

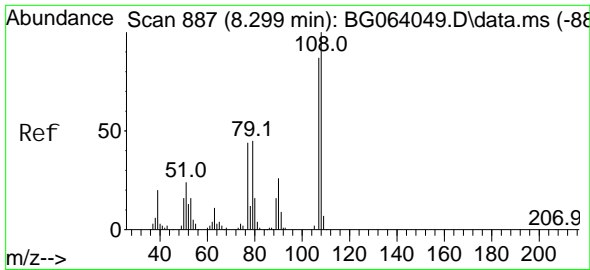
Tgt Ion	Resp	Lower	Upper
79	100		
108	76.0	61.7	92.5
77	81.7	53.9	80.9



#16
 2, 2' -oxybis(1-Chloropropane)
 Concen: 4.872 ng
 RT: 8.400 min Scan# 904
 Delta R.T. 0.000 min
 Lab File: BG064046.D
 Acq: 5 Mar 2025 9:42

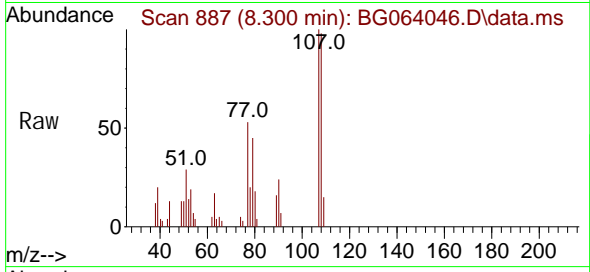
Tgt Ion	Resp	Lower	Upper
45	100		
77	11.5	0.0	29.0
79	8.5	0.0	26.6





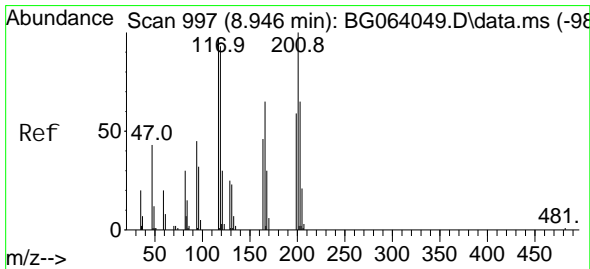
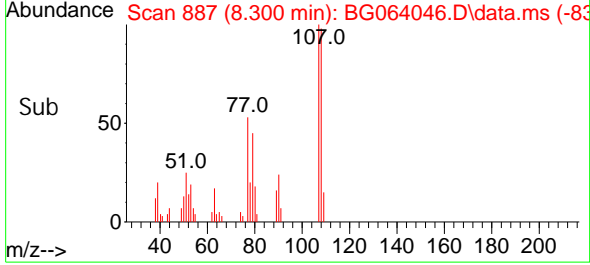
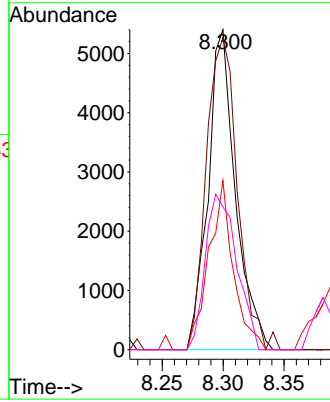
#17
 2-Methyl phenol
 Concen: 4.287 ng
 RT: 8.300 min Scan# 887
 Delta R.T. 0.000 min
 Lab File: BG064046.D
 Acq: 5 Mar 2025 9:42

Instrument : BNA_G
 ClientSampleId : SSTDICC005



Tgt Ion: 107 Resp: 8465

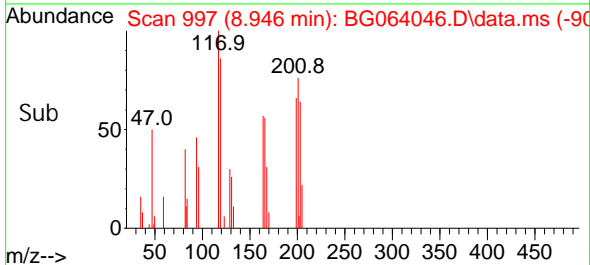
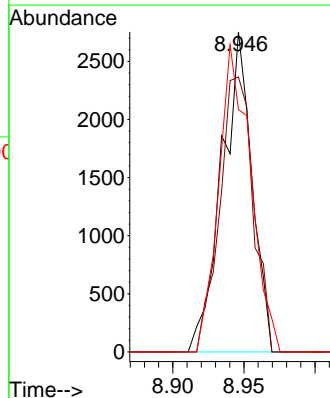
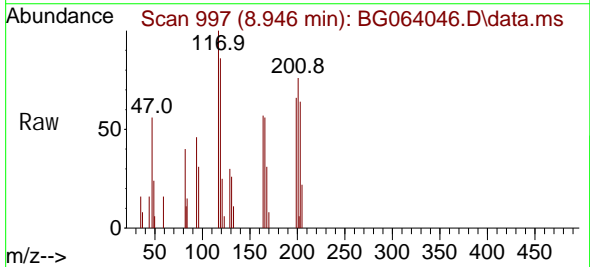
Ion	Ratio	Lower	Upper
107	100		
108	97.5	92.5	138.7
77	52.8	40.5	60.7
79	44.6	41.3	61.9

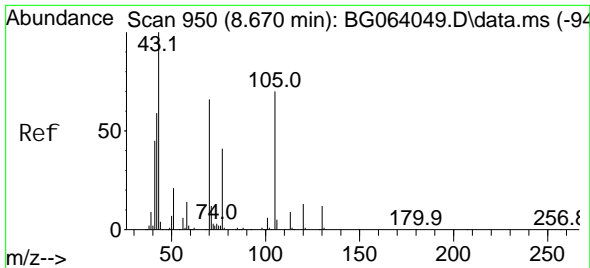


#18
 Hexachloroethane
 Concen: 4.510 ng
 RT: 8.946 min Scan# 997
 Delta R.T. 0.000 min
 Lab File: BG064046.D
 Acq: 5 Mar 2025 9:42

Tgt Ion: 117 Resp: 4075

Ion	Ratio	Lower	Upper
117	100		
119	85.9	76.2	114.2
201	81.9	81.5	122.3





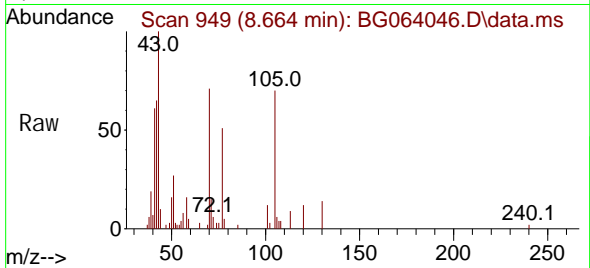
#19
 n-Nitroso-di-n-propyl amine
 Concen: 4.477 ng
 RT: 8.664 min Scan# 949
 Delta R.T. -0.006 min
 Lab File: BG064046.D
 Acq: 5 Mar 2025 9:42

Instrument :

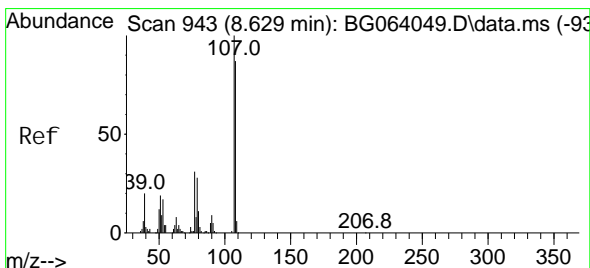
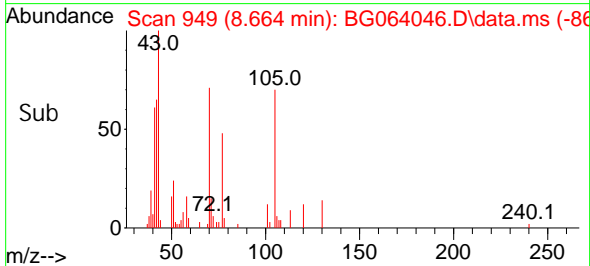
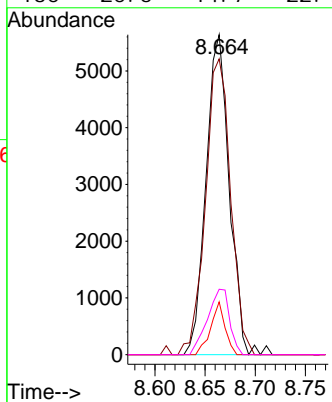
BNA_G

ClientSampleId :

SSTDICC005

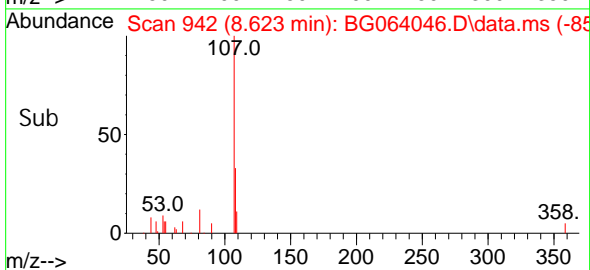
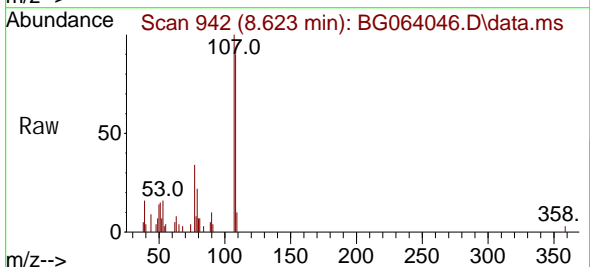
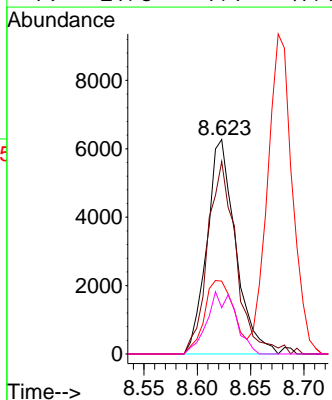


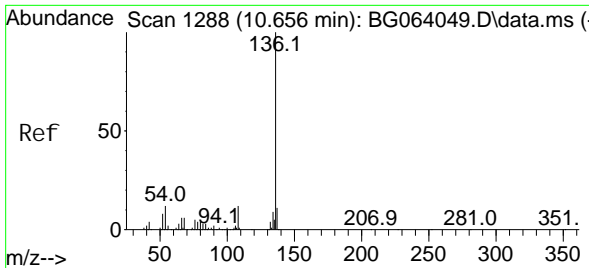
Tgt Ion: 70 Resp: 9131
 Ion Ratio Lower Upper
 70 100
 42 92.5 72.1 108.1
 101 16.5 7.2 10.8#
 130 20.5 14.7 22.1



#20
 3+4-Methyl phenols
 Concen: 4.300 ng
 RT: 8.623 min Scan# 942
 Delta R.T. -0.006 min
 Lab File: BG064046.D
 Acq: 5 Mar 2025 9:42

Tgt Ion: 107 Resp: 11690
 Ion Ratio Lower Upper
 107 100
 108 89.8 67.0 107.0
 77 33.9 11.2 51.2
 79 21.6 7.7 47.7

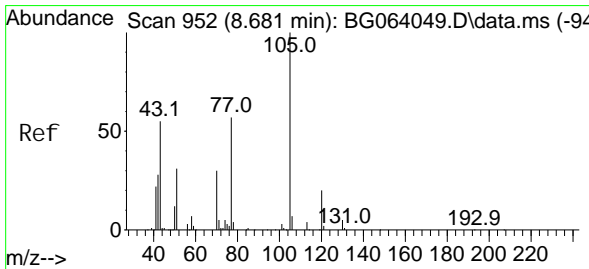
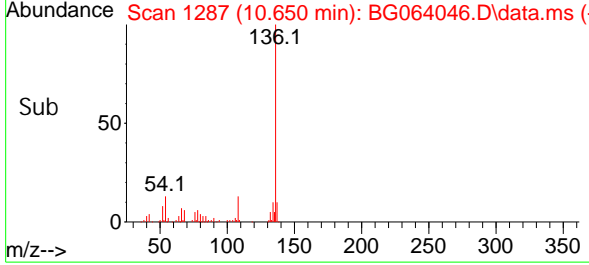
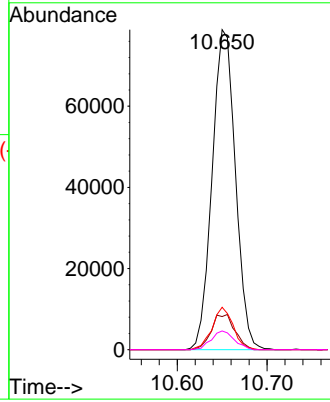
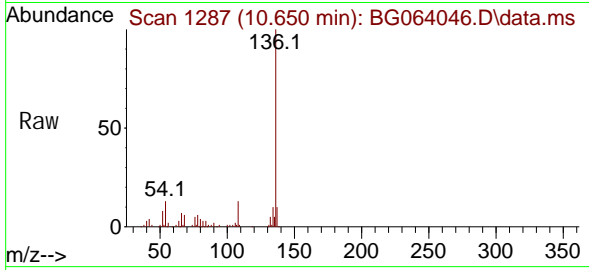




#21
 Naphthalene-d8
 Concen: 20.000 ng
 RT: 10.650 min Scan# 11
 Delta R.T. -0.006 min
 Lab File: BG064046.D
 Acq: 5 Mar 2025 9:42

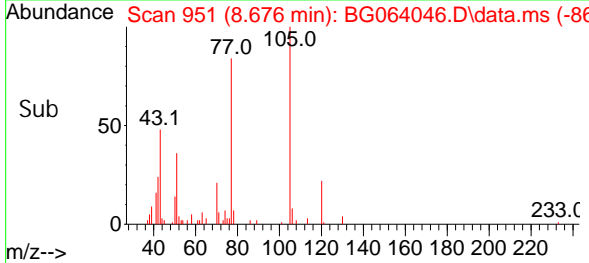
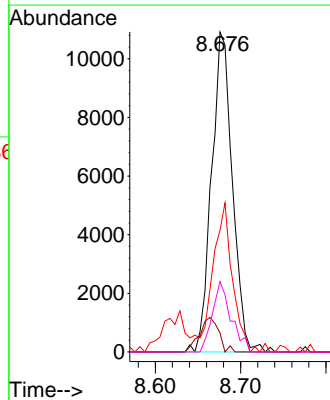
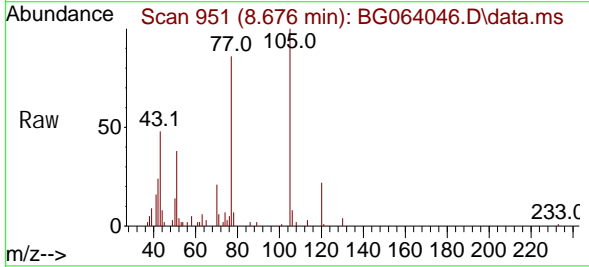
Instrument :
 BNA_G
 ClientSampleId :
 SSTDICC005

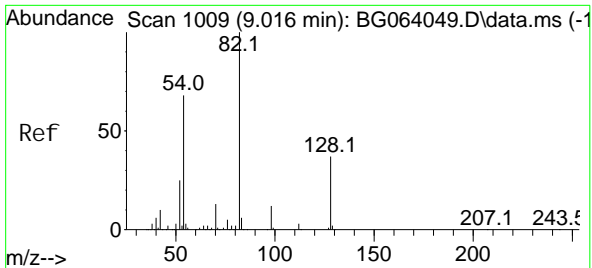
Tgt Ion	Resp	Lower	Upper
136	142015		
137	10.4	8.5	12.7
54	13.2	9.9	14.9
68	5.9	4.6	6.8



#22
 Acetophenone
 Concen: 4.761 ng
 RT: 8.676 min Scan# 951
 Delta R.T. -0.006 min
 Lab File: BG064046.D
 Acq: 5 Mar 2025 9:42

Tgt Ion	Resp	Lower	Upper
105	18540		
105	100		
71	5.9	4.2	6.4
51	38.1	33.3	49.9
120	22.0	15.9	23.9



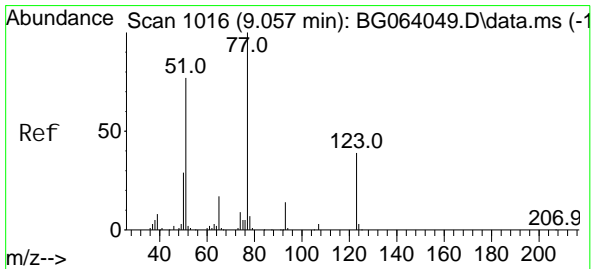
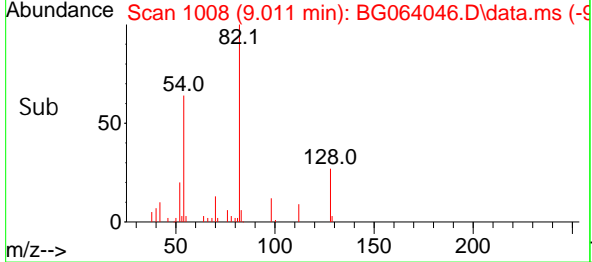
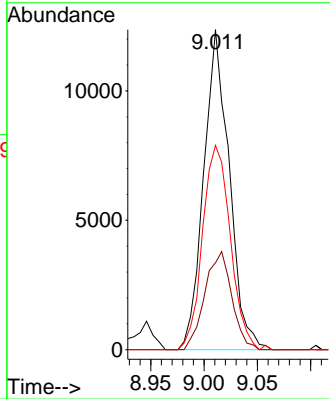
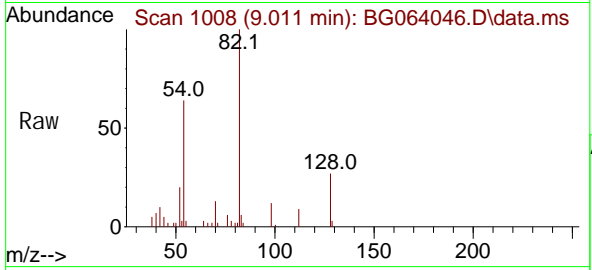


#23
 Ni trobenzene-d5
 Concen: 8.016 ng
 RT: 9.011 min Scan# 1008
 Delta R.T. -0.006 min
 Lab File: BG064046.D
 Acq: 5 Mar 2025 9:42

Instrument : BNA_G
 ClientSampleId : SSTDICC005

Tgt Ion: 82 Resp: 20601

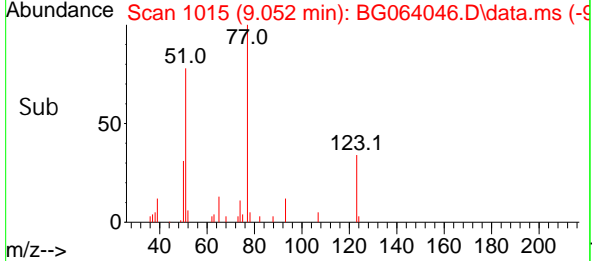
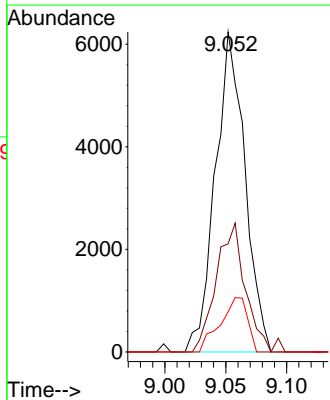
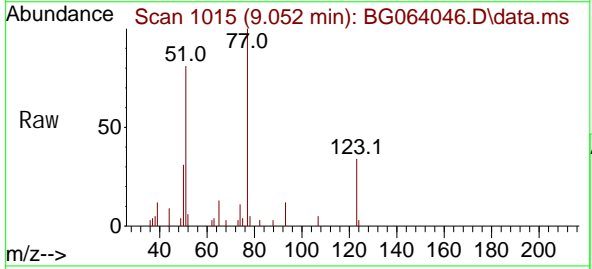
Ion	Ratio	Lower	Upper
82	100		
128	27.2	30.0	45.0#
54	63.8	54.7	82.1

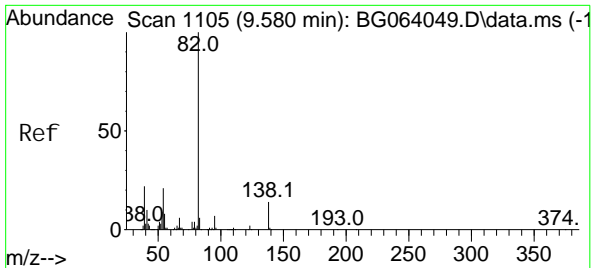


#24
 Ni trobenzene
 Concen: 3.977 ng
 RT: 9.052 min Scan# 1015
 Delta R.T. -0.006 min
 Lab File: BG064046.D
 Acq: 5 Mar 2025 9:42

Tgt Ion: 77 Resp: 10563

Ion	Ratio	Lower	Upper
77	100		
123	33.8	31.4	47.2
65	12.6	13.4	20.0#





#25
 Isophorone
 Concen: 4.895 ng
 RT: 9.575 min Scan# 1104
 Delta R.T. -0.006 min
 Lab File: BG064046.D
 Acq: 5 Mar 2025 9:42

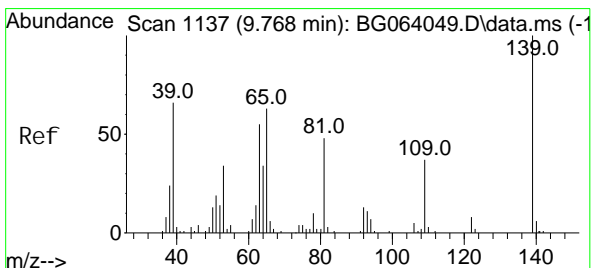
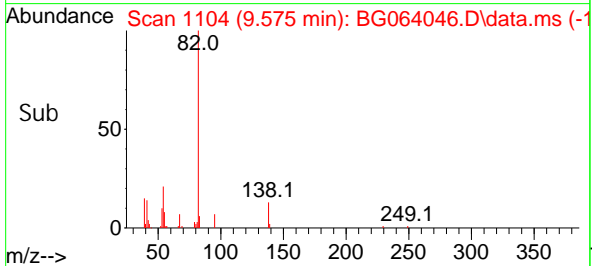
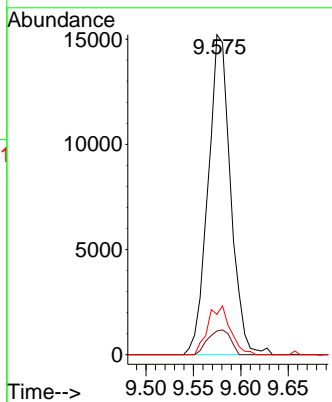
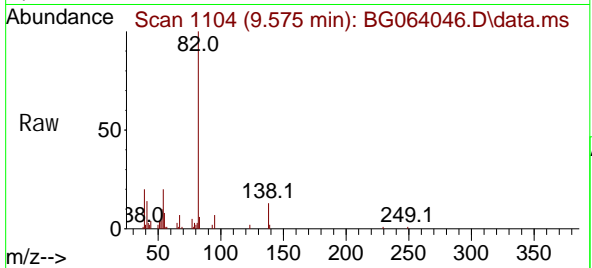
Instrument :

BNA_G

ClientSampleId :

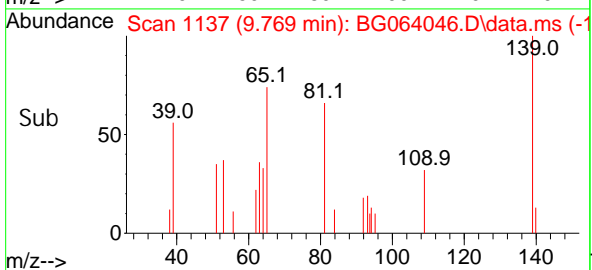
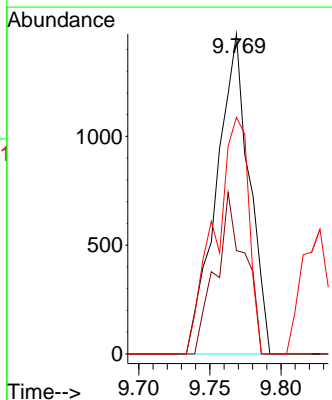
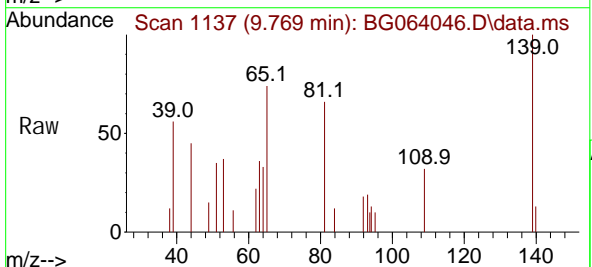
SSTDIC005

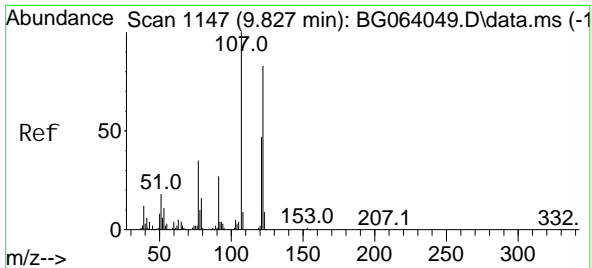
Tgt Ion: 82 Resp: 25179
 Ion Ratio Lower Upper
 82 100
 95 7.4 5.8 8.8
 138 12.6 10.9 16.3



#26
 2-Nitrophenol
 Concen: 6.094 ng
 RT: 9.769 min Scan# 1137
 Delta R.T. 0.001 min
 Lab File: BG064046.D
 Acq: 5 Mar 2025 9:42

Tgt Ion: 139 Resp: 2362
 Ion Ratio Lower Upper
 139 100
 109 32.3 29.9 44.9
 65 74.0 50.6 76.0





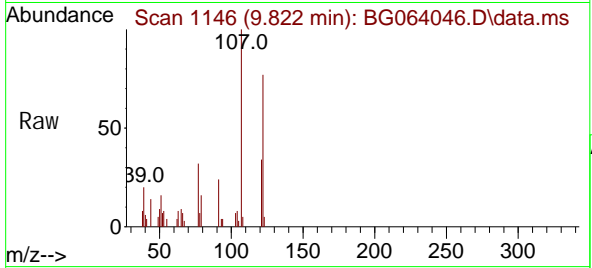
#27
 2, 4-Di methyl phenol
 Concen: 4.466 ng
 RT: 9.822 min Scan# 1146
 Delta R.T. -0.006 min
 Lab File: BG064046.D
 Acq: 5 Mar 2025 9:42

Instrument :

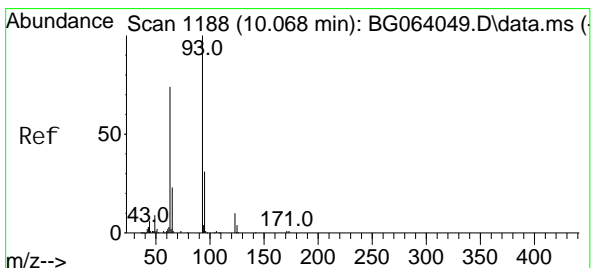
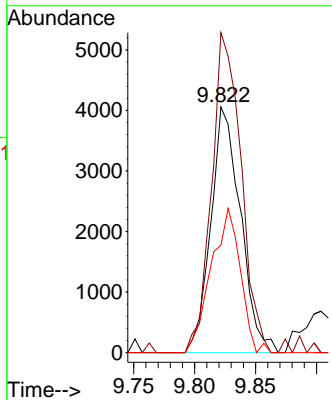
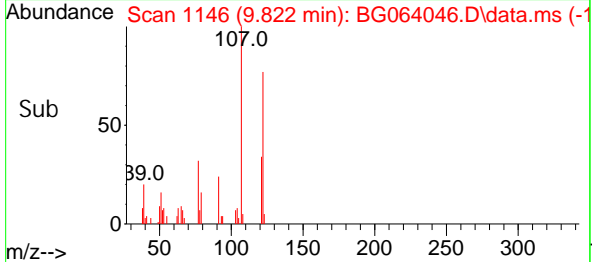
BNA_G

ClientSampleId :

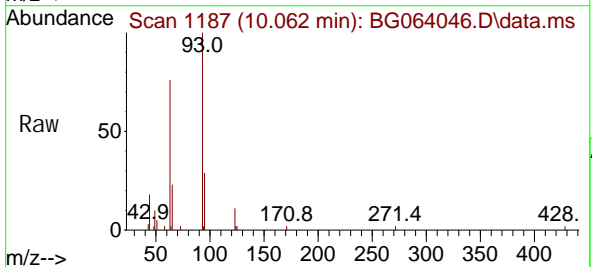
SSTDICC005



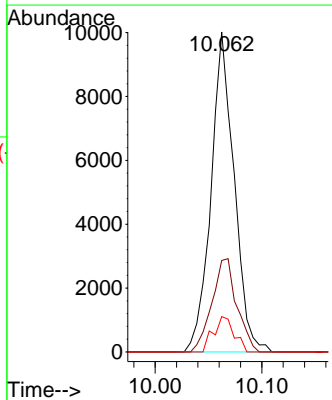
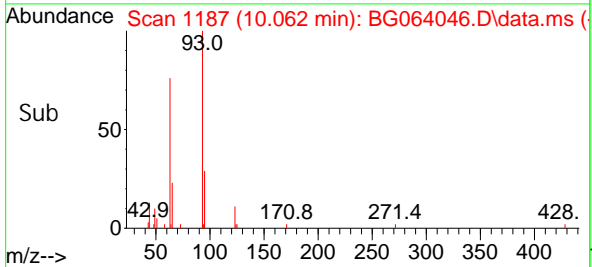
Tgt Ion: 122 Resp: 6887
 Ion Ratio Lower Upper
 122 100
 107 130.3 95.4 143.0
 121 43.7 44.9 67.3#

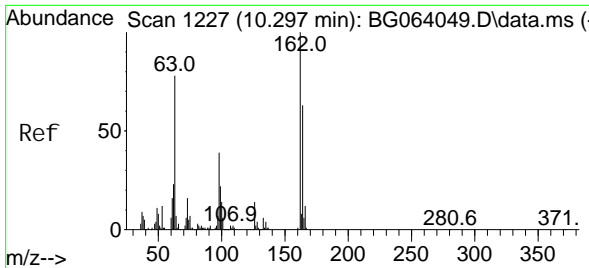


#28
 bis(2-Chloroethoxy)methane
 Concen: 4.832 ng
 RT: 10.062 min Scan# 1187
 Delta R.T. -0.006 min
 Lab File: BG064046.D
 Acq: 5 Mar 2025 9:42



Tgt Ion: 93 Resp: 15067
 Ion Ratio Lower Upper
 93 100
 95 28.6 25.0 37.4
 123 11.1 7.6 11.4





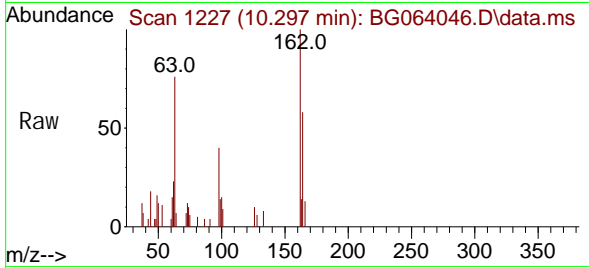
#29
 2, 4-Di chl orophenol
 Concen: 4.056 ng
 RT: 10.297 min Scan# 11
 Delta R.T. 0.000 min
 Lab File: BG064046.D
 Acq: 5 Mar 2025 9:42

Instrument :

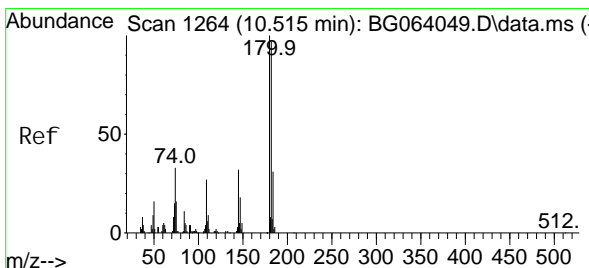
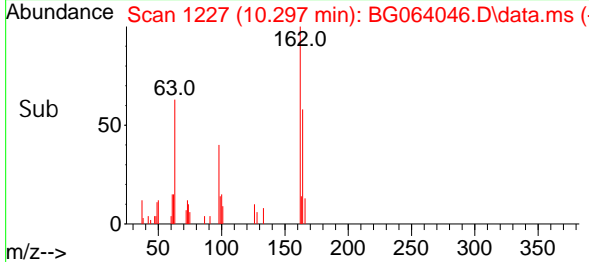
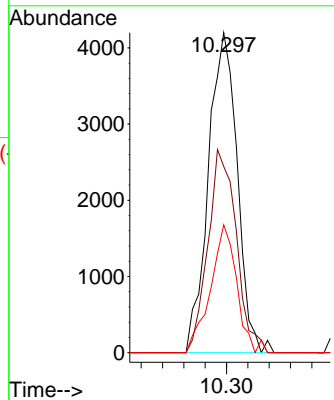
BNA_G

ClientSampleId :

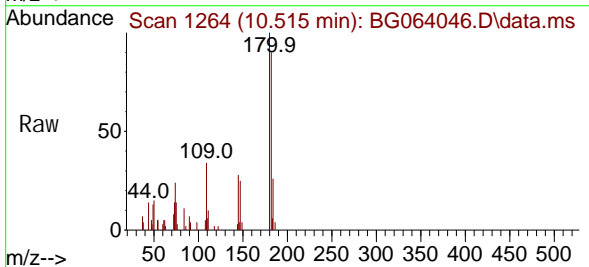
SSTDICC005



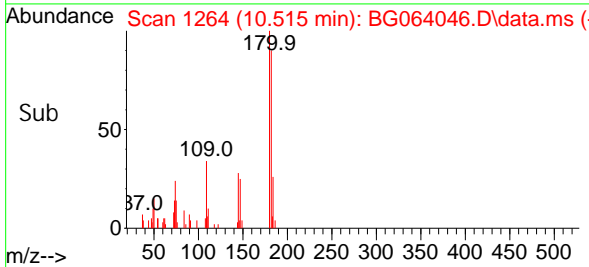
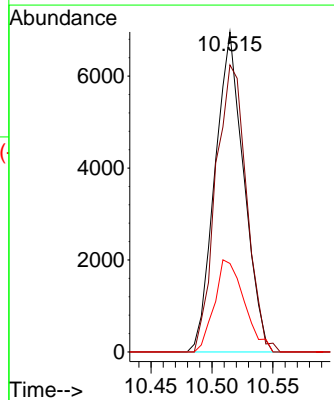
Tgt Ion	Resp	Lower	Upper
162	100		
164	58.2	42.8	82.8
98	40.0	19.1	59.1

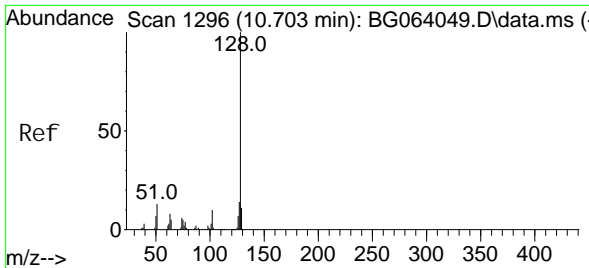


#30
 1, 2, 4-Tri chl orobenzene
 Concen: 4.884 ng
 RT: 10.515 min Scan# 1264
 Delta R.T. 0.000 min
 Lab File: BG064046.D
 Acq: 5 Mar 2025 9:42



Tgt Ion	Resp	Lower	Upper
180	100		
182	89.7	77.3	115.9
145	27.7	25.2	37.8

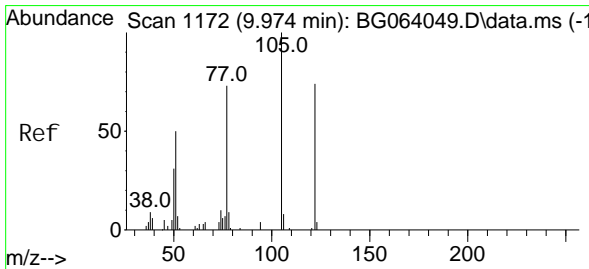
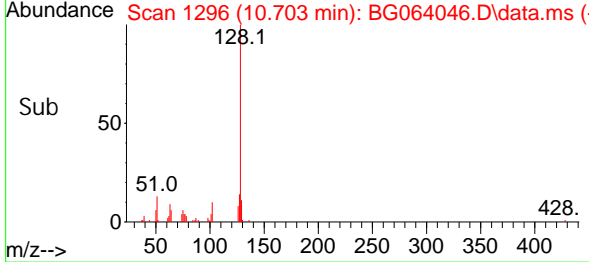
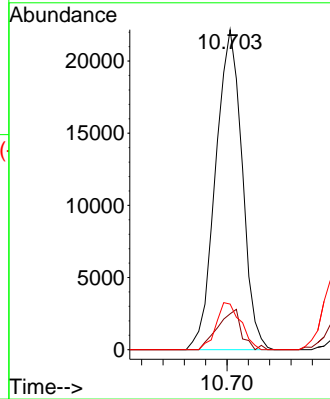
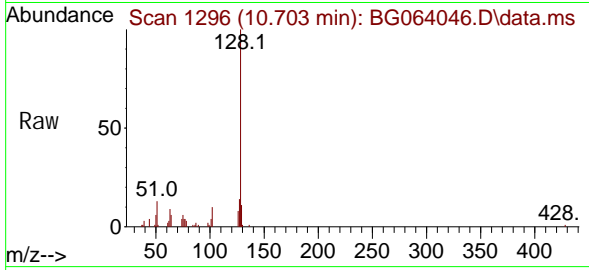




#31
 Naphthalene
 Concen: 4.999 ng
 RT: 10.703 min Scan# 1117
 Delta R.T. 0.000 min
 Lab File: BG064046.D
 Acq: 5 Mar 2025 9:42

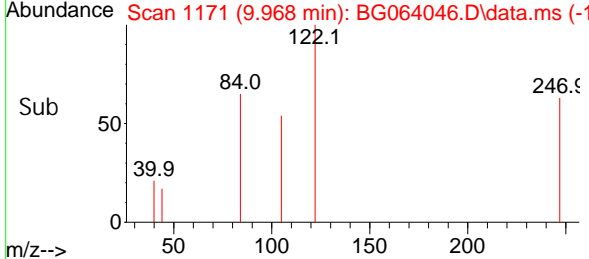
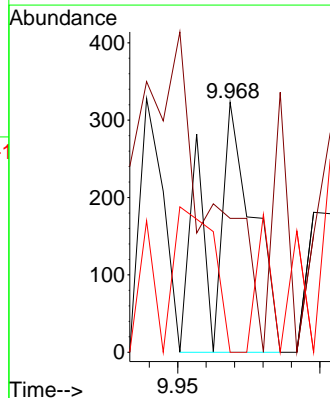
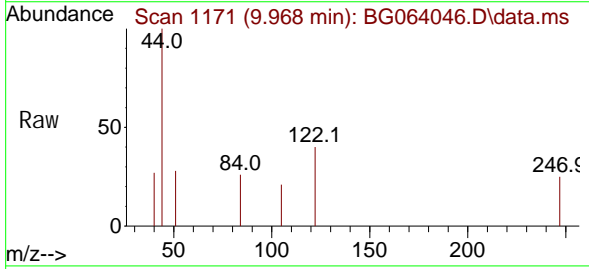
Instrument : BNA_G
 ClientSampleId : SSTDICC005

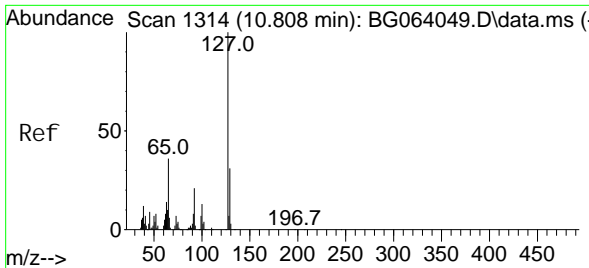
Tgt Ion	Resp	Lower	Upper
128	38285		
129	11.2	8.4	12.6
127	14.3	11.1	16.7



#32
 Benzoic acid
 Concen: 8.859 ng
 RT: 9.968 min Scan# 1171
 Delta R.T. -0.006 min
 Lab File: BG064046.D
 Acq: 5 Mar 2025 9:42

Tgt Ion	Resp	Lower	Upper
122	336		
105	53.6	115.0	155.0#
77	0.0	80.9	120.9#

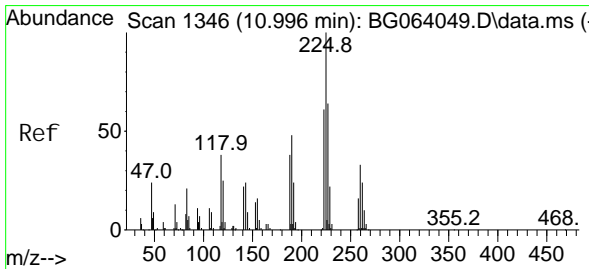
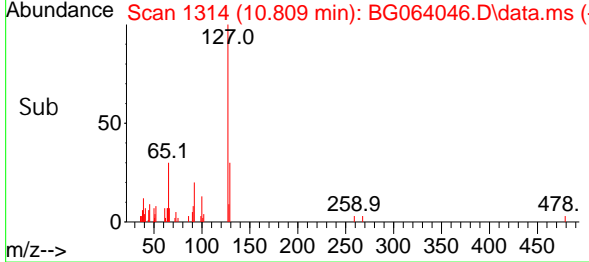
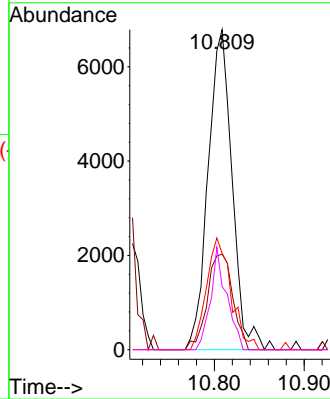
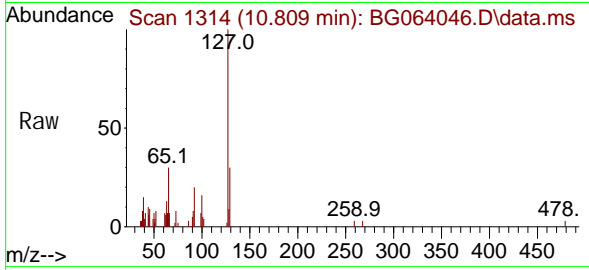




#33
 4-Chloroaniline
 Concen: 4.499 ng
 RT: 10.809 min Scan# 1314
 Delta R.T. 0.000 min
 Lab File: BG064046.D
 Acq: 5 Mar 2025 9:42

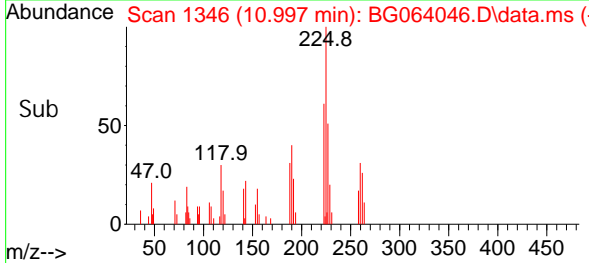
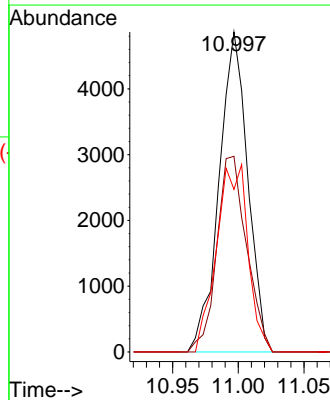
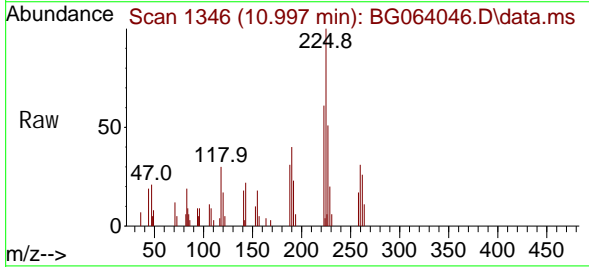
Instrument :
 BNA_G
 ClientSampleId :
 SSTDICC005

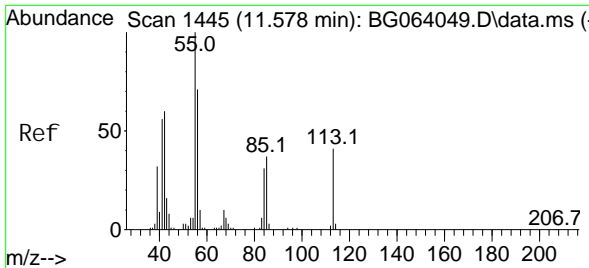
Tgt Ion	Resp	Lower	Upper
127	12591		
127	100		
129	29.8	25.0	37.4
65	30.1	28.5	42.7
92	19.7	16.5	24.7



#34
 Hexachlorobutadiene
 Concen: 4.786 ng
 RT: 10.997 min Scan# 1346
 Delta R.T. 0.000 min
 Lab File: BG064046.D
 Acq: 5 Mar 2025 9:42

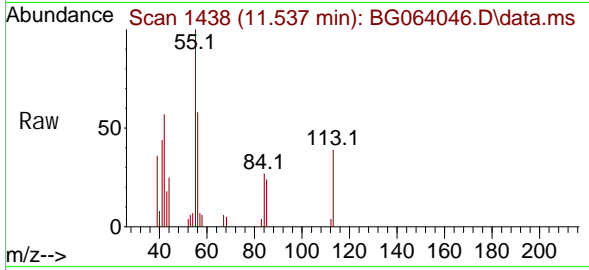
Tgt Ion	Resp	Lower	Upper
225	7373		
225	100		
223	61.2	48.5	72.7
227	50.8	51.0	76.6#



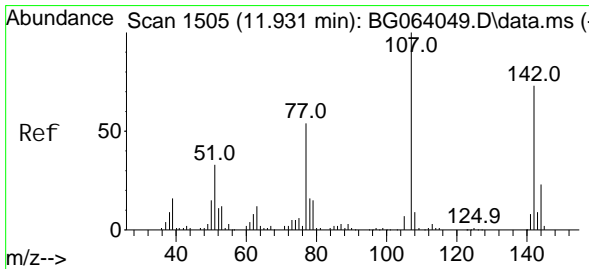
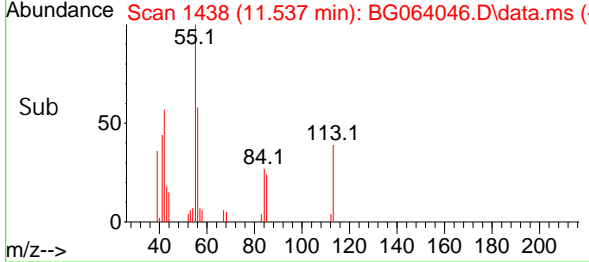
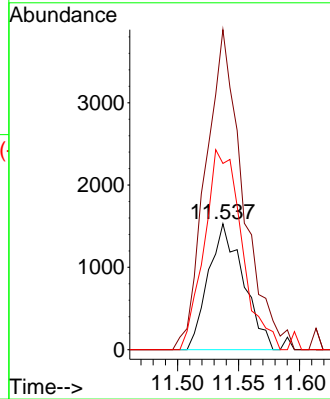


#35
 Caprolactam
 Concen: 4.090 ng
 RT: 11.537 min Scan# 1445
 Delta R.T. -0.041 min
 Lab File: BG064046.D
 Acq: 5 Mar 2025 9:42

Instrument : BNA_G
 ClientSampleId : SSTDICC005

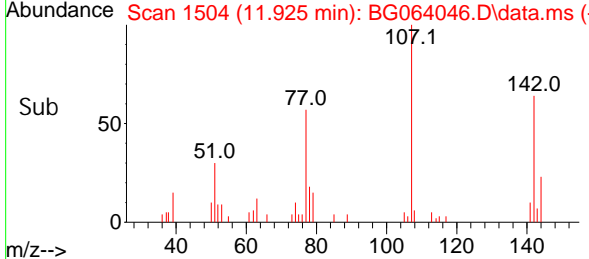
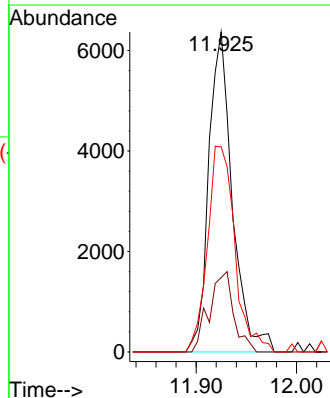
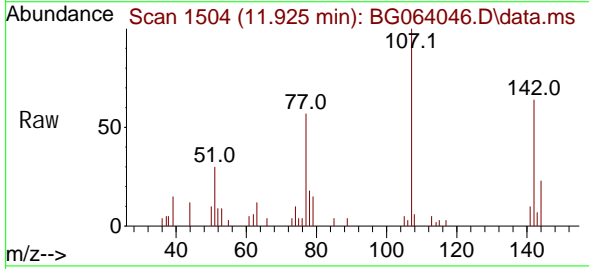


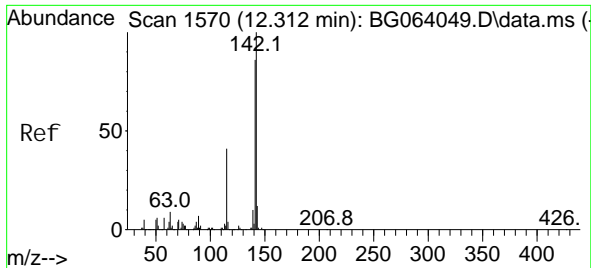
Tgt Ion: 113 Resp: 3052
 Ion Ratio Lower Upper
 113 100
 55 254.1 225.2 265.2
 56 147.8 153.4 193.4#



#36
 4-Chloro-3-methyl phenol
 Concen: 4.078 ng
 RT: 11.925 min Scan# 1504
 Delta R.T. -0.006 min
 Lab File: BG064046.D
 Acq: 5 Mar 2025 9:42

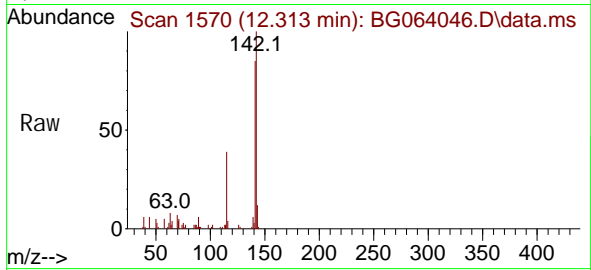
Tgt Ion: 107 Resp: 10408
 Ion Ratio Lower Upper
 107 100
 144 23.2 18.6 28.0
 142 64.1 58.0 87.0



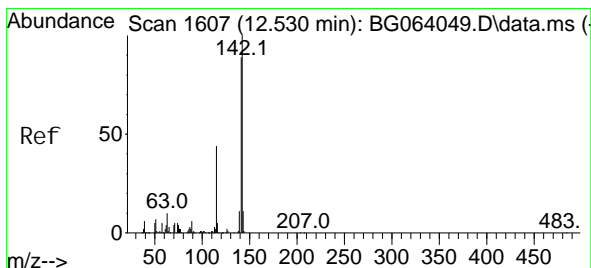
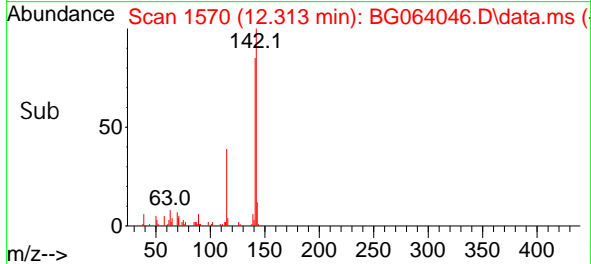
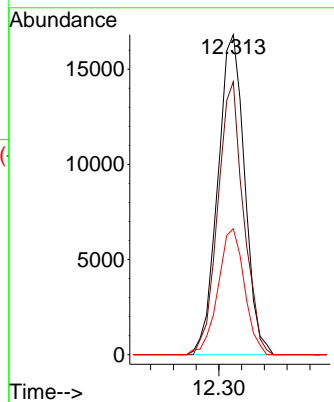


#37
 2-Methyl naphthalene
 Concen: 5.093 ng
 RT: 12.313 min Scan# 1111
 Delta R.T. 0.000 min
 Lab File: BG064046.D
 Acq: 5 Mar 2025 9:42

Instrument :
 BNA_G
 ClientSampleId :
 SSTDICC005

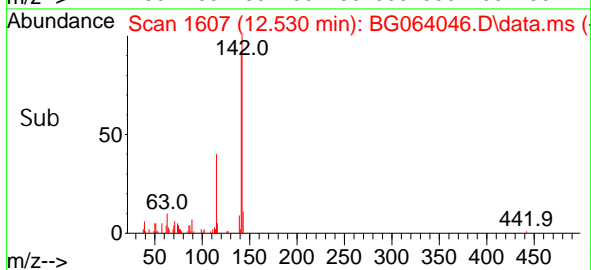
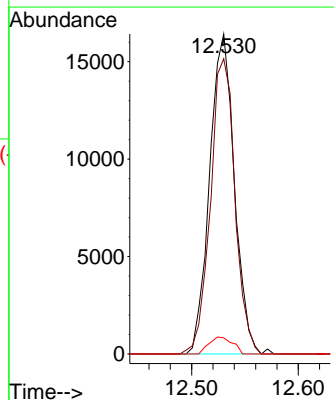
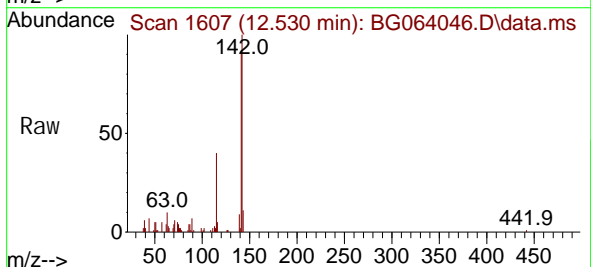


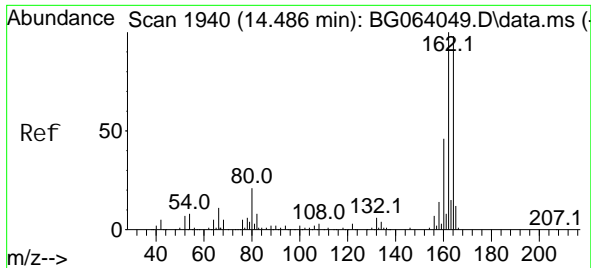
Tgt Ion: 142 Resp: 27533
 Ion Ratio Lower Upper
 142 100
 141 85.3 68.6 103.0
 115 39.4 32.8 49.2



#38
 1-Methyl naphthalene
 Concen: 4.995 ng
 RT: 12.530 min Scan# 1607
 Delta R.T. 0.000 min
 Lab File: BG064046.D
 Acq: 5 Mar 2025 9:42

Tgt Ion: 142 Resp: 26458
 Ion Ratio Lower Upper
 142 100
 141 92.2 71.2 106.8
 116 5.0 3.6 5.4





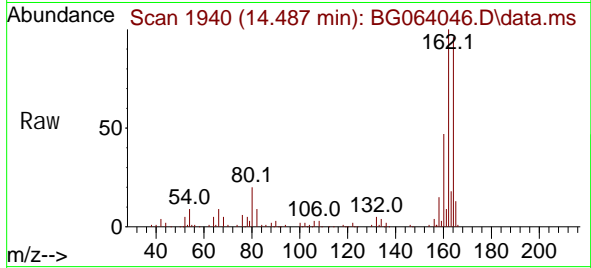
#39
 Acenaphthene-d10
 Concen: 20.000 ng
 RT: 14.487 min Scan# 1940
 Delta R.T. 0.001 min
 Lab File: BG064046.D
 Acq: 5 Mar 2025 9:42

Instrument :

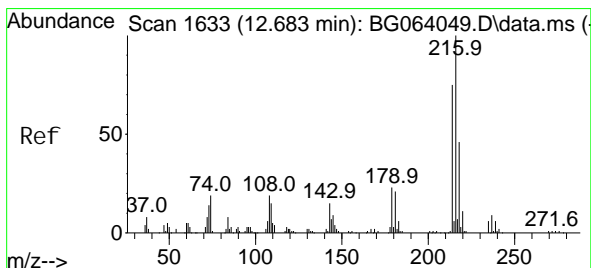
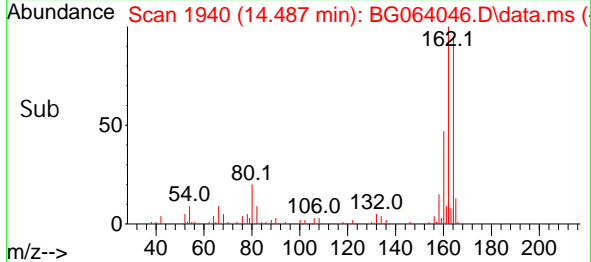
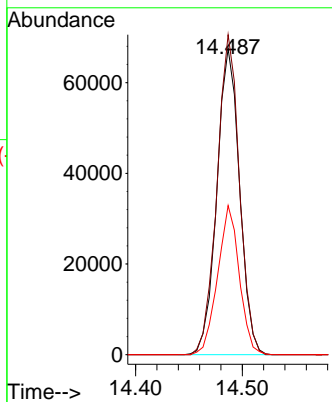
BNA_G

ClientSampleId :

SSTDIC005

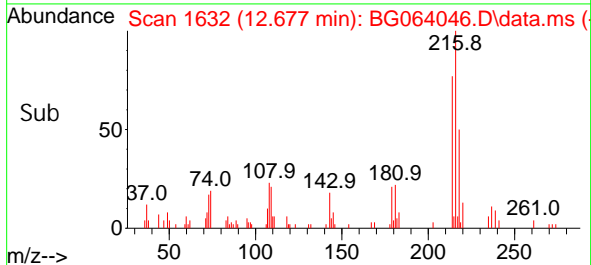
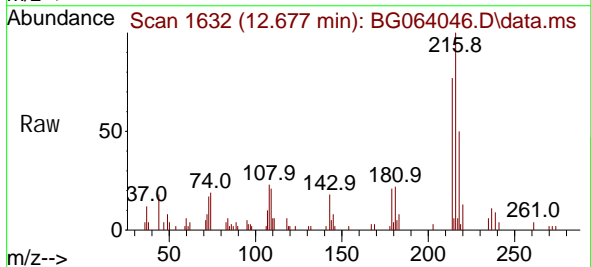
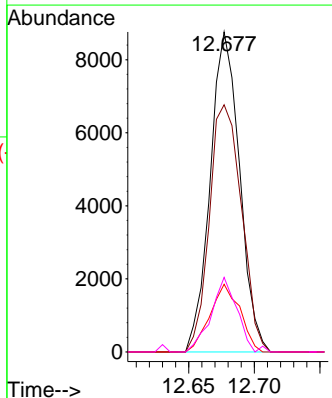


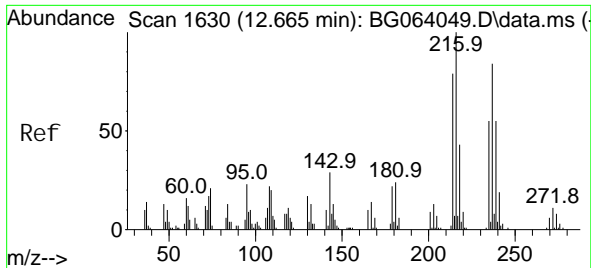
Tgt Ion: 164 Resp: 99722
 Ion Ratio Lower Upper
 164 100
 162 104.5 81.4 122.0
 160 48.7 37.0 55.6



#40
 1, 2, 4, 5-Tetrachlorobenzene
 Concen: 4.789 ng
 RT: 12.677 min Scan# 1632
 Delta R.T. -0.006 min
 Lab File: BG064046.D
 Acq: 5 Mar 2025 9:42

Tgt Ion: 216 Resp: 13634
 Ion Ratio Lower Upper
 216 100
 214 84.2 61.7 92.5
 179 21.6 17.9 26.9
 108 20.7 15.9 23.9

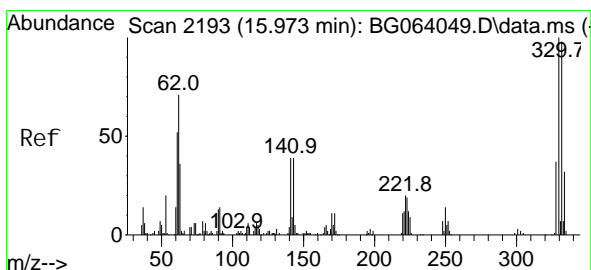
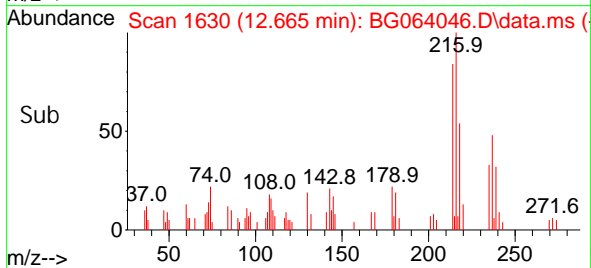
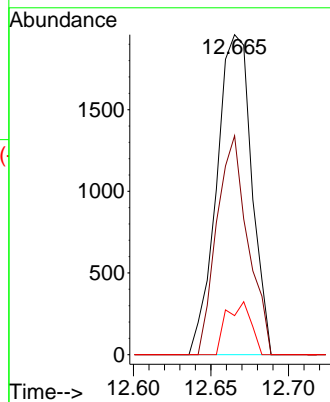
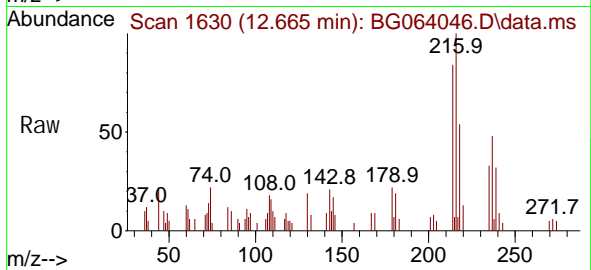




#41
 Hexachl orocycl opentadi ene
 Concen: 3.841 ng
 RT: 12.665 min Scan# 1630
 Delta R.T. 0.000 min
 Lab File: BG064046.D
 Acq: 5 Mar 2025 9:42

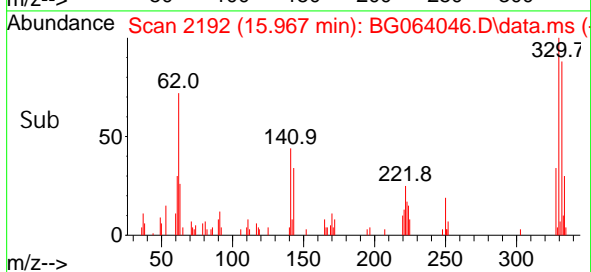
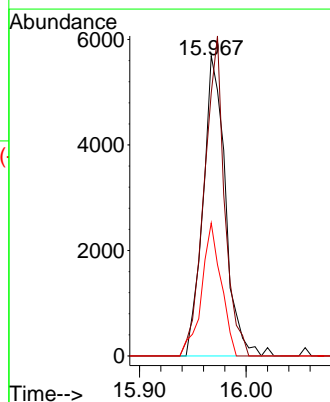
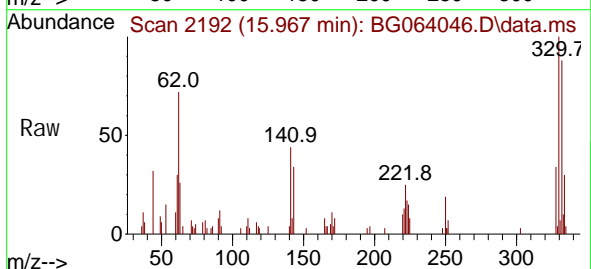
Instrument :
 BNA_G
 ClientSampleId :
 SSTDICC005

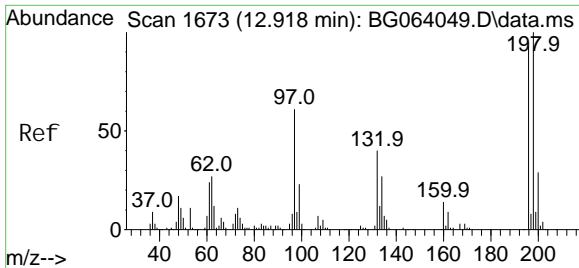
Tgt Ion: 237 Resp: 3078
 Ion Ratio Lower Upper
 237 100
 235 68.4 46.0 86.0
 272 12.2 0.0 32.8



#42
 2,4,6-Tri bromophenol
 Concen: 7.487 ng
 RT: 15.967 min Scan# 2192
 Delta R.T. -0.006 min
 Lab File: BG064046.D
 Acq: 5 Mar 2025 9:42

Tgt Ion: 330 Resp: 8299
 Ion Ratio Lower Upper
 330 100
 332 96.5 76.7 115.1
 141 38.7 29.7 44.5

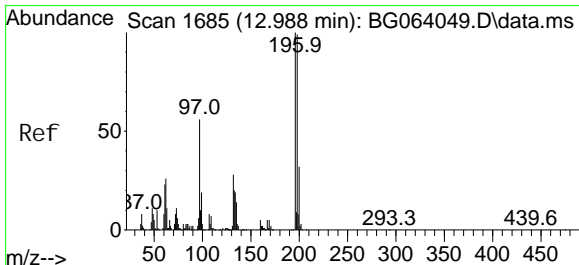
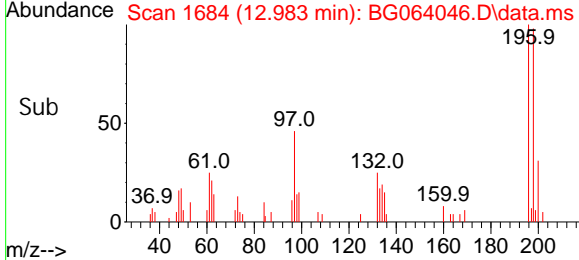
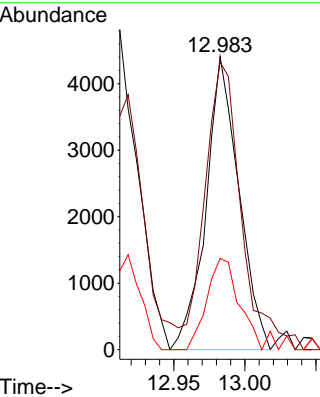
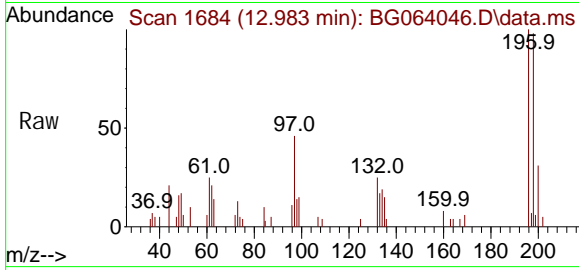




#43
 2, 4, 6-Tri chlorophenol
 Concen: 4.227 ng
 RT: 12.983 min Scan# 1684
 Delta R.T. 0.065 min
 Lab File: BG064046.D
 Acq: 5 Mar 2025 9:42

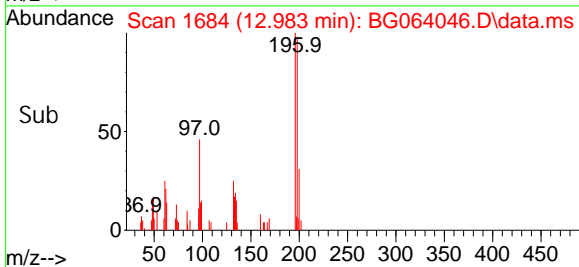
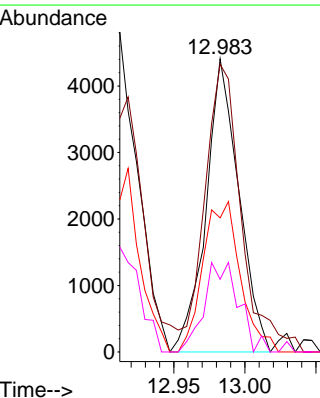
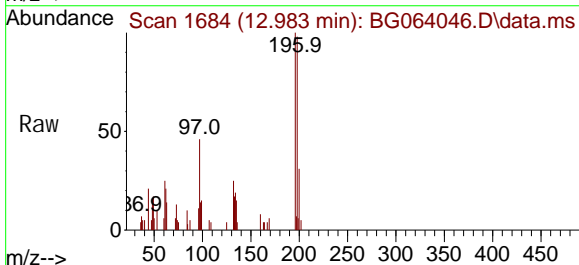
Instrument : BNA_G
 ClientSampleId : SSTDICC005

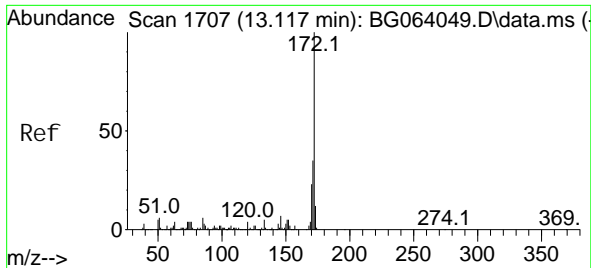
Tgt Ion	Resp	Lower	Upper
196	100		
198	98.2	85.6	128.4
200	31.1	24.6	37.0



#44
 2, 4, 5-Tri chlorophenol
 Concen: 3.804 ng
 RT: 12.983 min Scan# 1684
 Delta R.T. -0.006 min
 Lab File: BG064046.D
 Acq: 5 Mar 2025 9:42

Tgt Ion	Resp	Lower	Upper
196	100		
198	98.2	79.5	119.3
97	45.7	45.2	67.8
132	24.8	22.6	34.0



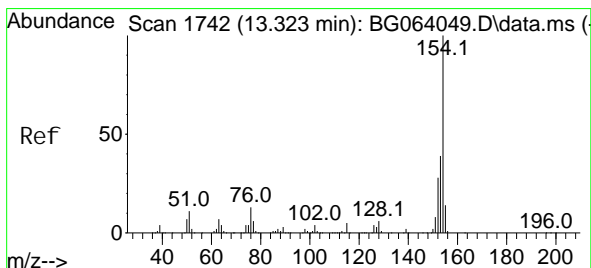
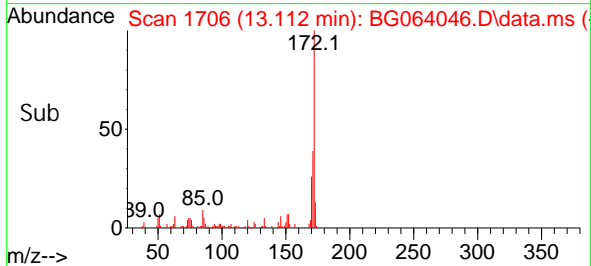
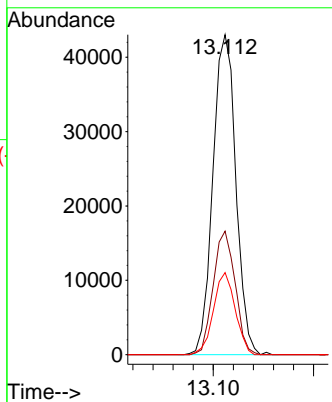
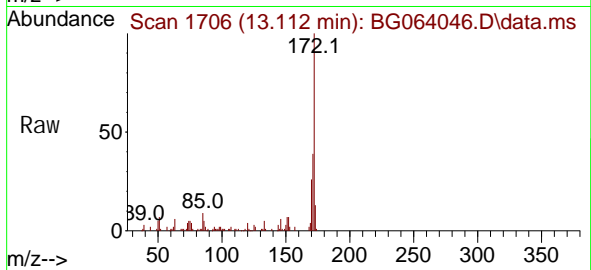


#45
 2-Fluorophenyl
 Concen: 10.386 ng
 RT: 13.112 min Scan# 1706
 Delta R.T. -0.006 min
 Lab File: BG064046.D
 Acq: 5 Mar 2025 9:42

Instrument : BNA_G
 ClientSampleId : SSTDIC005

Tgt Ion: 172 Resp: 68235

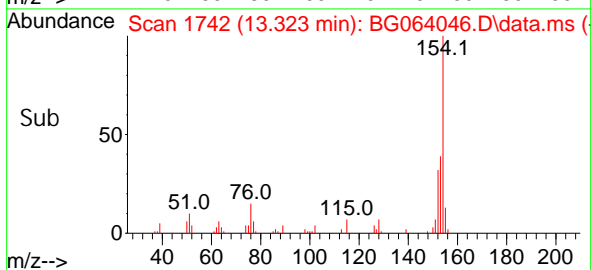
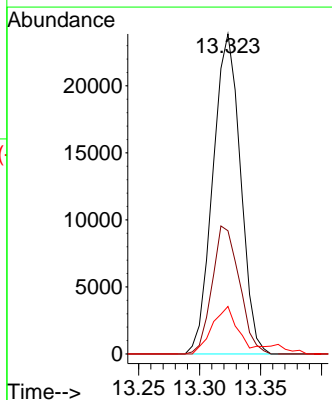
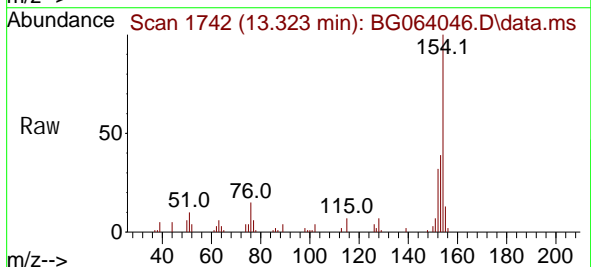
Ion	Ratio	Lower	Upper
172	100		
171	38.6	28.0	42.0
170	25.7	18.7	28.1

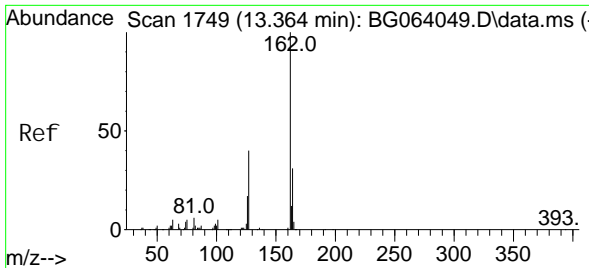


#46
 1,1'-Bi phenyl
 Concen: 4.984 ng
 RT: 13.323 min Scan# 1742
 Delta R.T. 0.000 min
 Lab File: BG064046.D
 Acq: 5 Mar 2025 9:42

Tgt Ion: 154 Resp: 37550

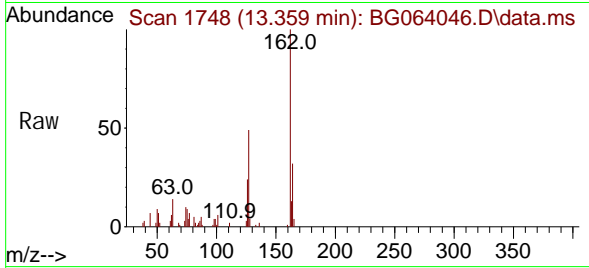
Ion	Ratio	Lower	Upper
154	100		
153	38.5	19.5	59.5
76	14.8	0.0	33.5



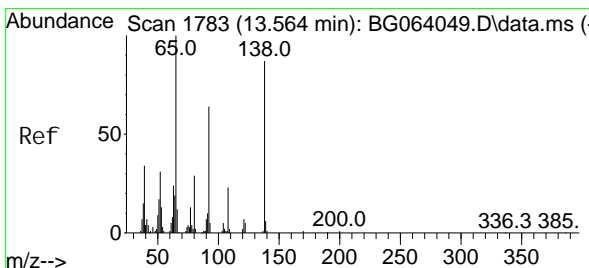
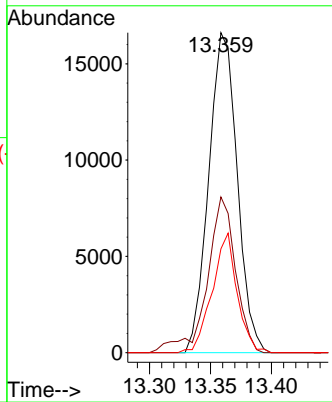
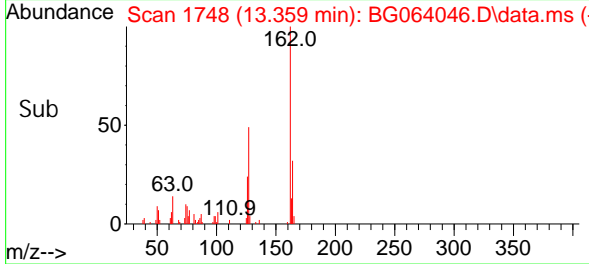


#47
 2-Chloronaphthalene
 Concen: 4.928 ng
 RT: 13.359 min Scan# 1748
 Delta R.T. -0.006 min
 Lab File: BG064046.D
 Acq: 5 Mar 2025 9:42

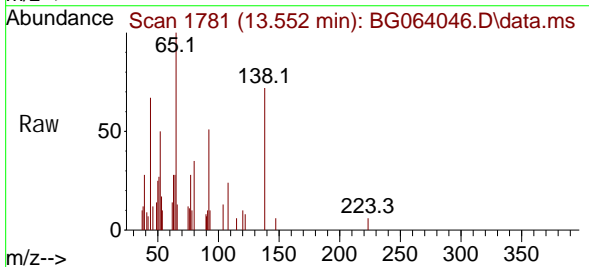
Instrument : BNA_G
 ClientSampleId : SSTDICC005



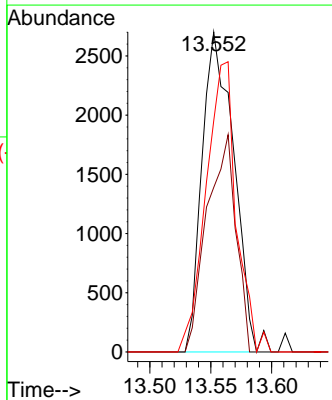
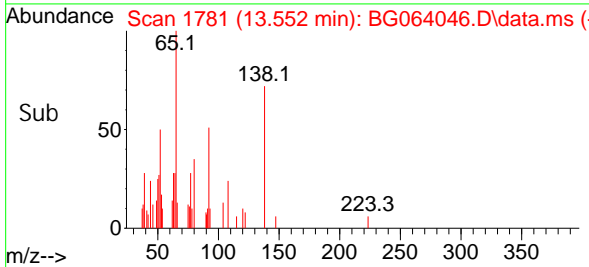
Tgt Ion: 162 Resp: 27076
 Ion Ratio Lower Upper
 162 100
 127 48.7 35.0 52.4
 164 32.4 25.0 37.6

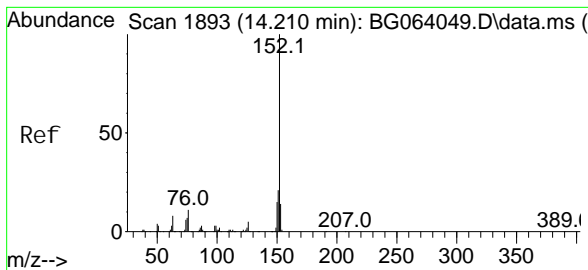


#48
 2-Nitroaniline
 Concen: 6.075 ng
 RT: 13.552 min Scan# 1781
 Delta R.T. -0.012 min
 Lab File: BG064046.D
 Acq: 5 Mar 2025 9:42



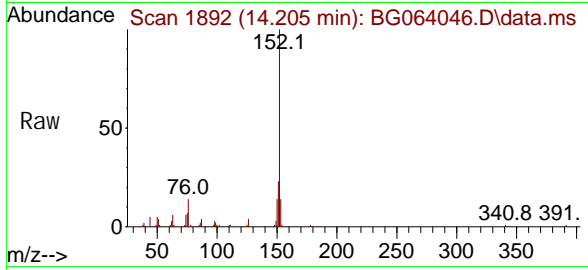
Tgt Ion: 65 Resp: 4908
 Ion Ratio Lower Upper
 65 100
 92 51.4 51.2 76.8
 138 72.2 69.4 104.2



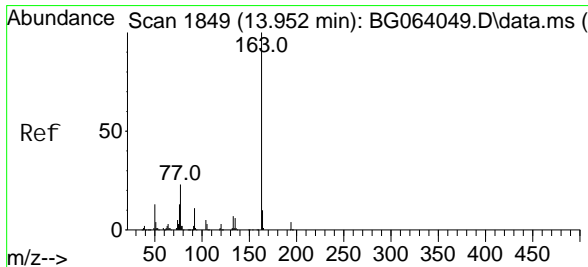
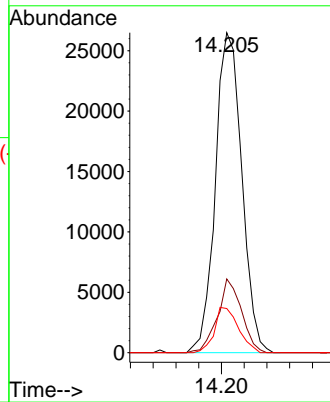
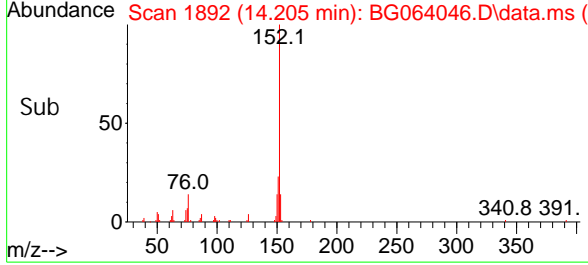


#49
 Acenaphthyl ene
 Concen: 4.917 ng
 RT: 14.205 min Scan# 1892
 Delta R.T. -0.006 min
 Lab File: BG064046.D
 Acq: 5 Mar 2025 9:42

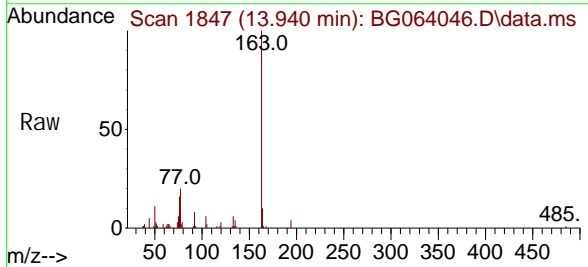
Instrument : BNA_G
 ClientSampleId : SSTDICC005



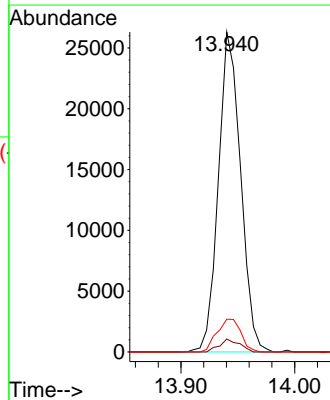
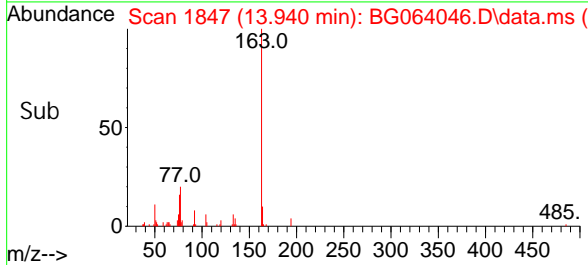
Tgt Ion: 152 Resp: 42736
 Ion Ratio Lower Upper
 152 100
 151 23.1 16.4 24.6
 153 13.8 10.9 16.3

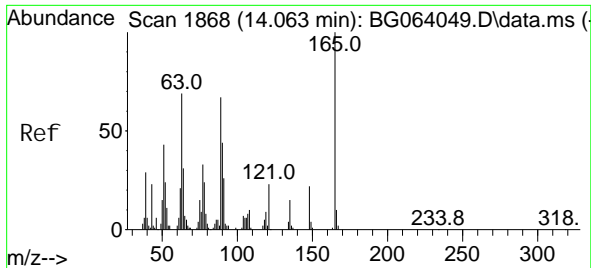


#50
 Dimethyl phthalate
 Concen: 4.849 ng
 RT: 13.940 min Scan# 1847
 Delta R.T. -0.011 min
 Lab File: BG064046.D
 Acq: 5 Mar 2025 9:42



Tgt Ion: 163 Resp: 35694
 Ion Ratio Lower Upper
 163 100
 194 4.1 2.8 4.2
 164 10.2 8.2 12.2

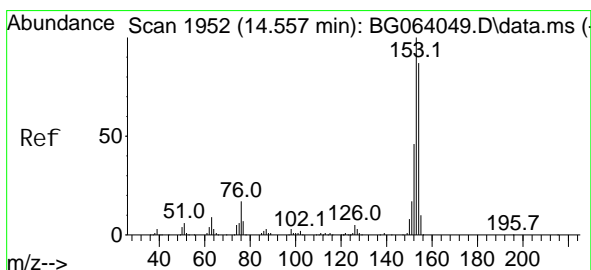
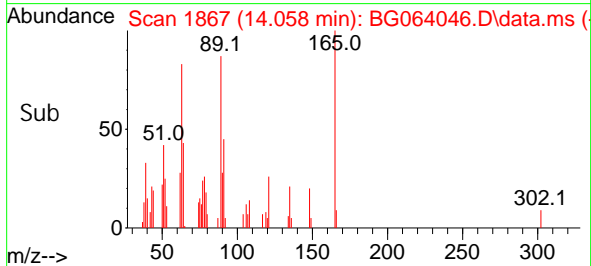
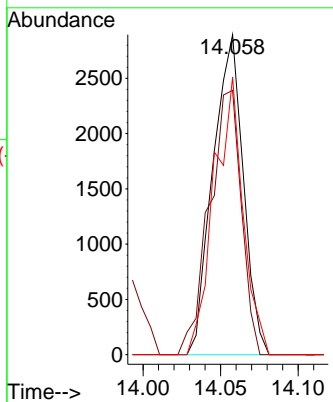
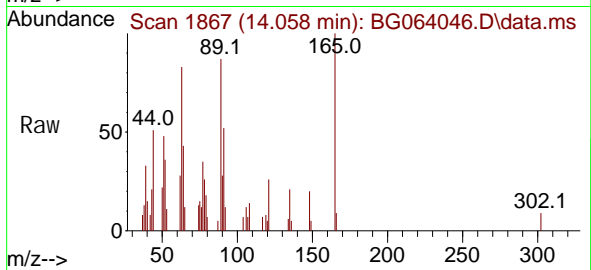




#51
 2,6-Dinitrotoluene
 Concen: 5.812 ng
 RT: 14.058 min Scan# 1867
 Delta R.T. -0.005 min
 Lab File: BG064046.D
 Acq: 5 Mar 2025 9:42

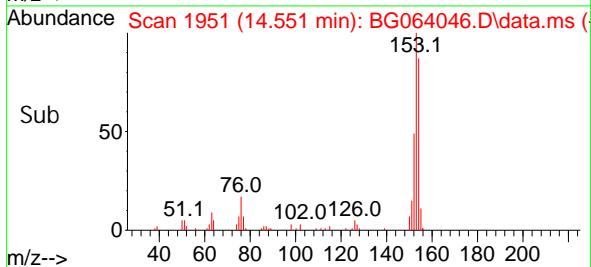
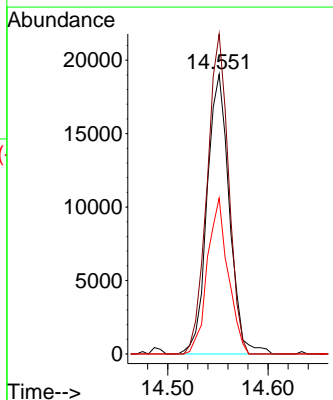
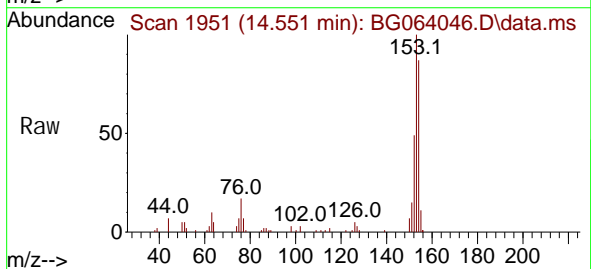
Instrument : BNA_G
 ClientSampleId : SSTDICC005

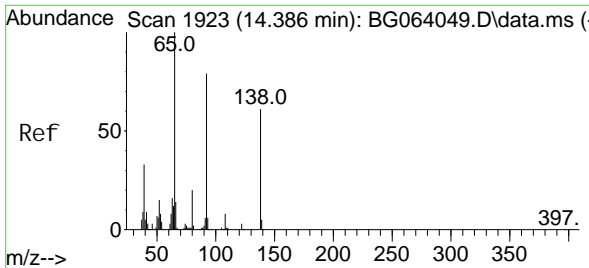
Tgt Ion	Resp	Lower	Upper
165	3942		
63	82.6	56.7	85.1
89	86.8	53.7	80.5



#52
 Acenaphthene
 Concen: 5.042 ng
 RT: 14.551 min Scan# 1951
 Delta R.T. -0.006 min
 Lab File: BG064046.D
 Acq: 5 Mar 2025 9:42

Tgt Ion	Resp	Lower	Upper
154	29468		
153	114.4	91.6	137.4
152	55.7	42.5	63.7



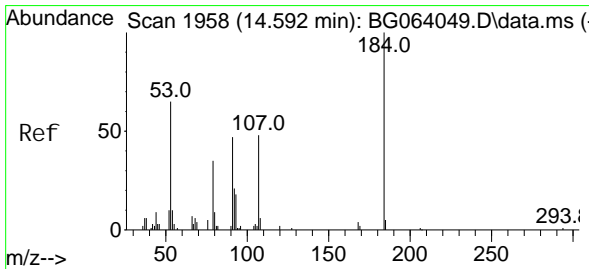
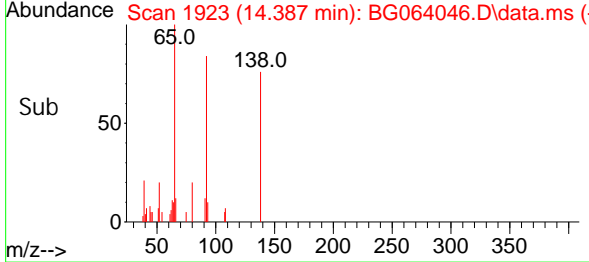
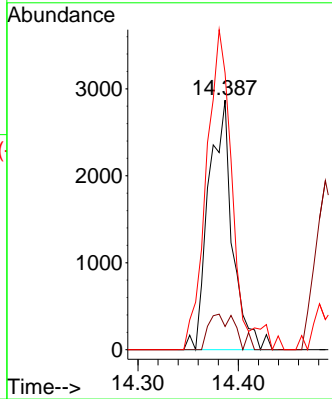
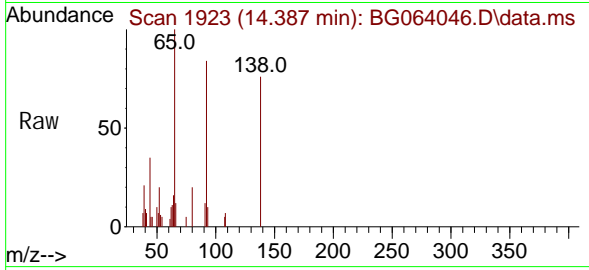


#53
 3-Nitroaniline
 Concen: 3.329 ng
 RT: 14.387 min Scan# 1923
 Delta R.T. 0.000 min
 Lab File: BG064046.D
 Acq: 5 Mar 2025 9:42

Instrument :
 BNA_G
ClientSampleId :
 SSTDICC005

Tgt Ion: 138 Resp: 4736

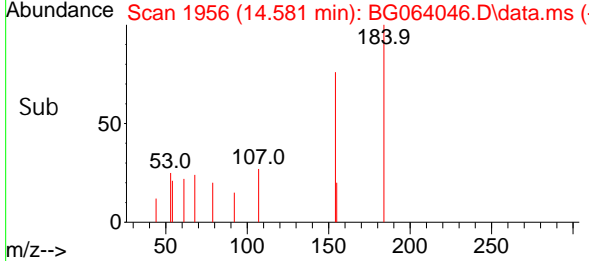
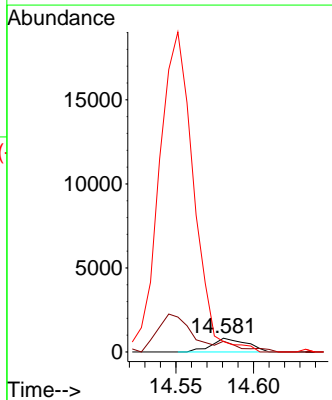
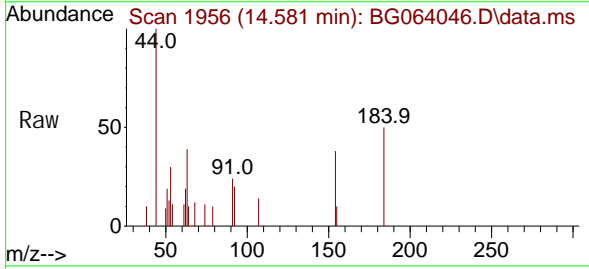
Ion	Ratio	Lower	Upper
138	100		
108	9.3	10.1	15.1#
92	110.9	104.1	156.1

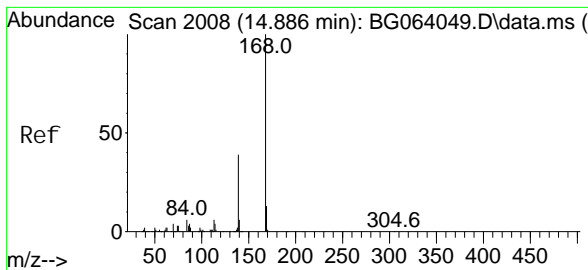


#54
 2,4-Dinitrophenol
 Concen: 9.739 ng
 RT: 14.581 min Scan# 1956
 Delta R.T. -0.011 min
 Lab File: BG064046.D
 Acq: 5 Mar 2025 9:42

Tgt Ion: 184 Resp: 1283

Ion	Ratio	Lower	Upper
184	100		
63	78.3	57.5	86.3
154	76.0	52.3	78.5

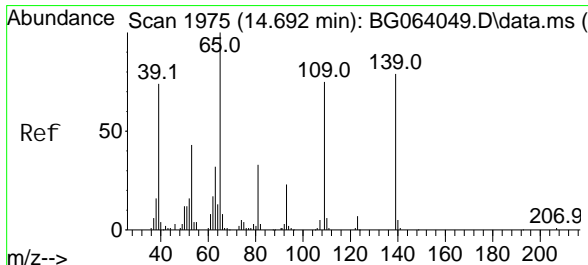
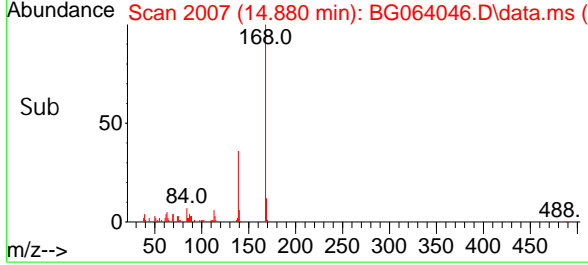
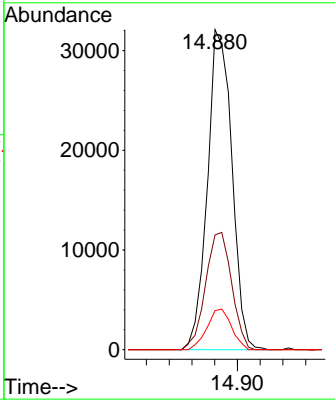
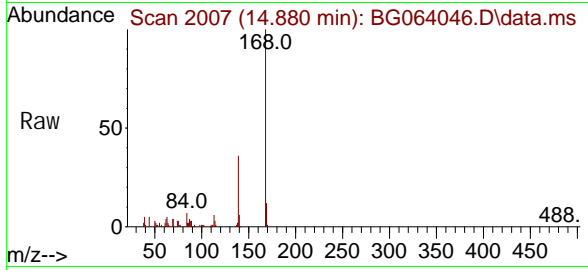




#55
 Di benzofuran
 Concen: 5.080 ng
 RT: 14.880 min Scan# 2008
 Delta R.T. -0.006 min
 Lab File: BG064046.D
 Acq: 5 Mar 2025 9:42

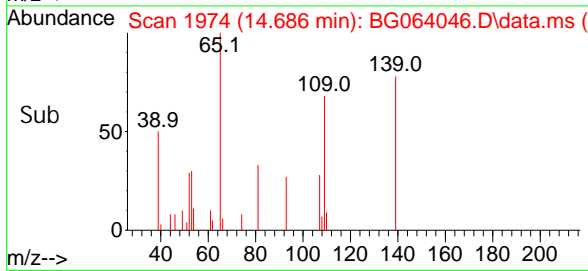
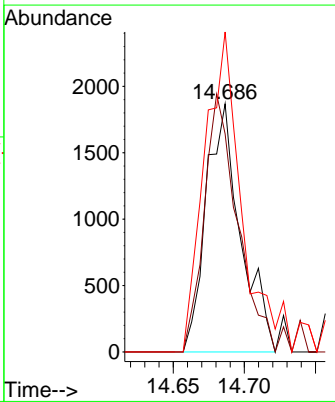
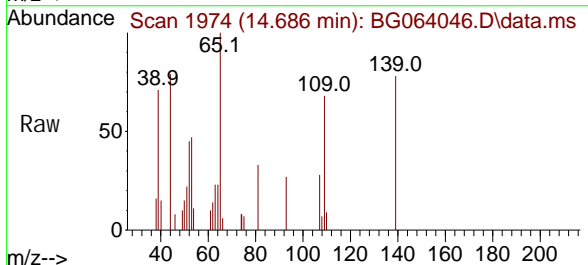
Instrument :
 BNA_G
ClientSampleId :
 SSTDICC005

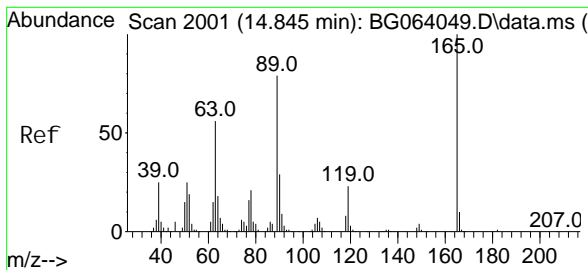
Tgt Ion	Resp	Lower	Upper
168	48004		
139	35.8	31.1	46.7
169	12.2	10.5	15.7



#56
 4-Nitrophenol
 Concen: 2.637 ng
 RT: 14.686 min Scan# 1974
 Delta R.T. -0.006 min
 Lab File: BG064046.D
 Acq: 5 Mar 2025 9:42

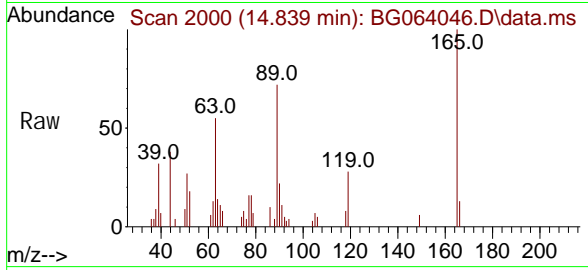
Tgt Ion	Resp	Lower	Upper
139	3146		
139	100		
109	87.9	74.9	114.9
65	128.9	106.8	146.8





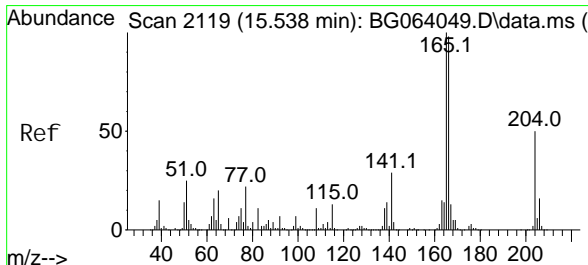
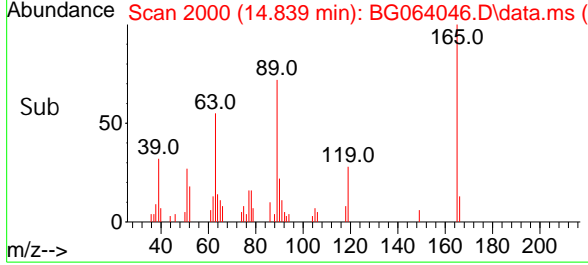
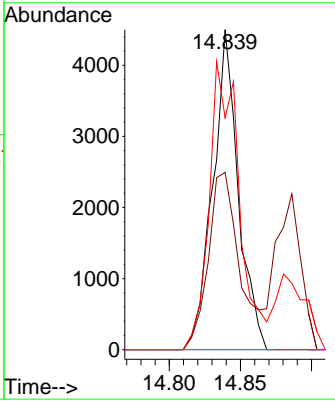
#57
 2,4-Dinitrotoluene
 Concen: 6.165 ng
 RT: 14.839 min Scan# 2001
 Delta R.T. -0.006 min
 Lab File: BG064046.D
 Acq: 5 Mar 2025 9:42

Instrument : BNA_G
 ClientSampleId : SSTDIC005

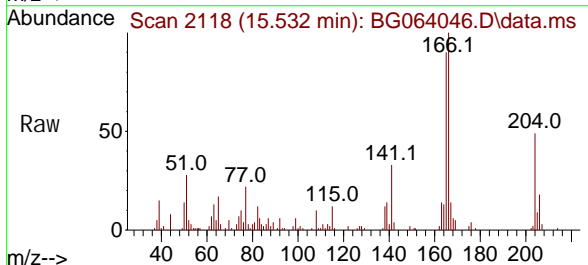


Tgt Ion: 165 Resp: 5618

Ion	Ratio	Lower	Upper
165	100		
63	55.4	45.0	67.6
89	72.5	63.1	94.7
182	0.0	1.0	1.4

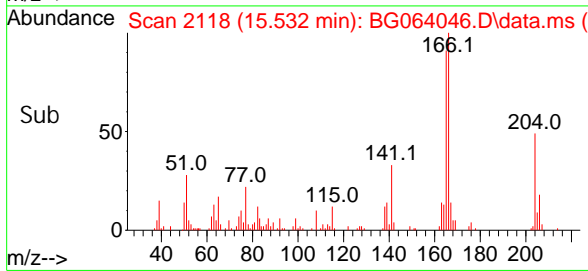
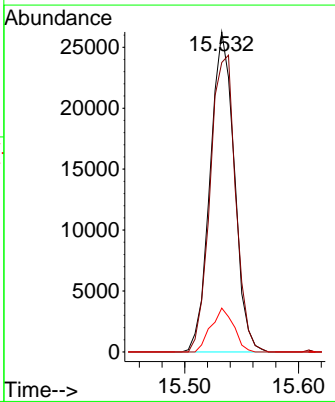


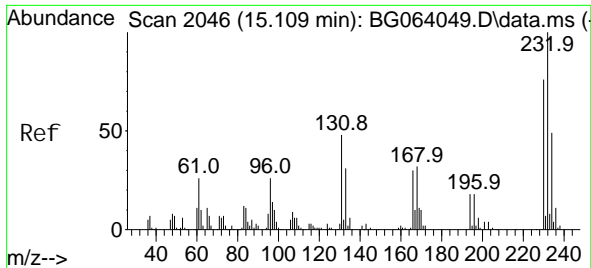
#58
 Fluorene
 Concen: 5.269 ng
 RT: 15.532 min Scan# 2118
 Delta R.T. -0.006 min
 Lab File: BG064046.D
 Acq: 5 Mar 2025 9:42



Tgt Ion: 166 Resp: 38777

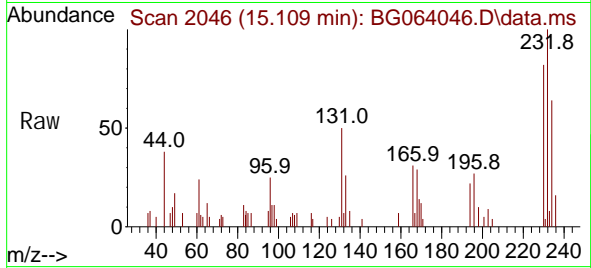
Ion	Ratio	Lower	Upper
166	100		
165	90.4	81.8	122.8
167	13.7	10.8	16.2



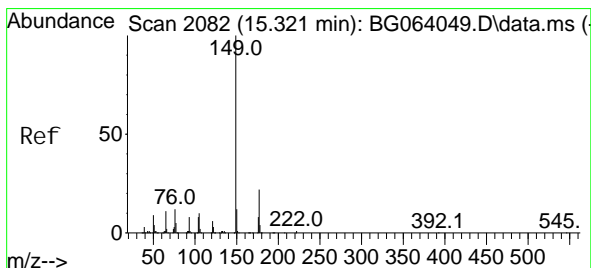
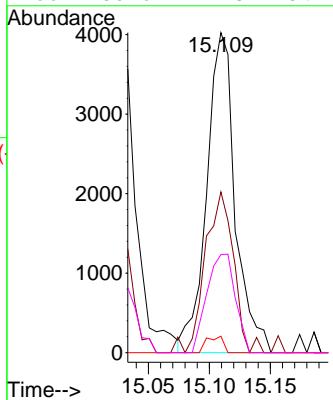
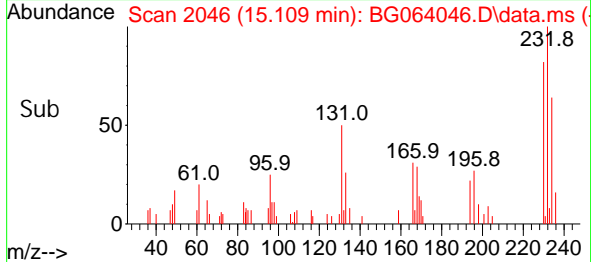


#59
 2, 3, 4, 6-Tetrachlorophenol
 Concen: 3.597 ng
 RT: 15.109 min Scan# 2046
 Delta R.T. 0.000 min
 Lab File: BG064046.D
 Acq: 5 Mar 2025 9:42

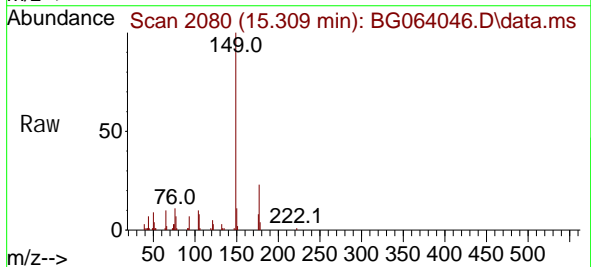
Instrument : BNA_G
 ClientSampleId : SSTDICC005



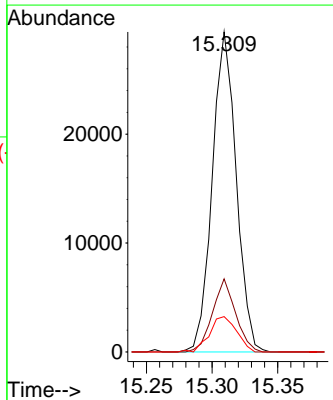
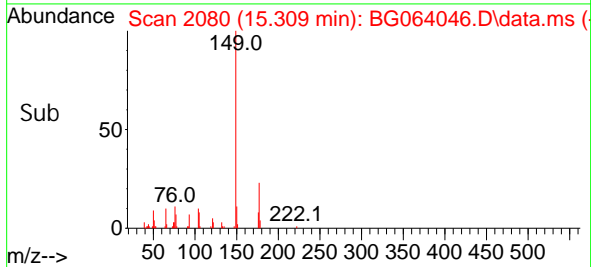
Tgt Ion: 232 Resp: 6538
 Ion Ratio Lower Upper
 232 100
 131 50.2 36.3 54.5
 130 3.0 1.9 2.9#
 166 30.6 22.8 34.2

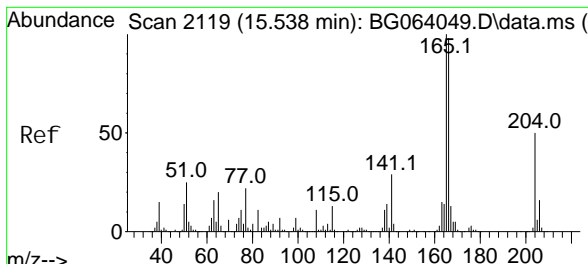


#60
 Diethyl phthalate
 Concen: 4.666 ng
 RT: 15.309 min Scan# 2080
 Delta R.T. -0.011 min
 Lab File: BG064046.D
 Acq: 5 Mar 2025 9:42



Tgt Ion: 149 Resp: 37289
 Ion Ratio Lower Upper
 149 100
 177 22.8 17.4 26.2
 150 11.0 9.4 14.2



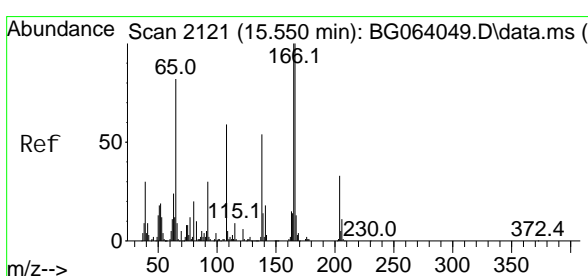
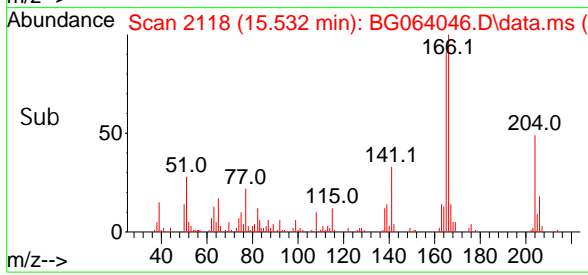
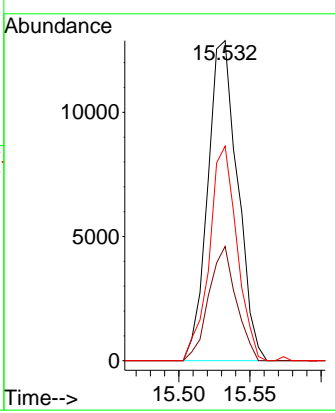
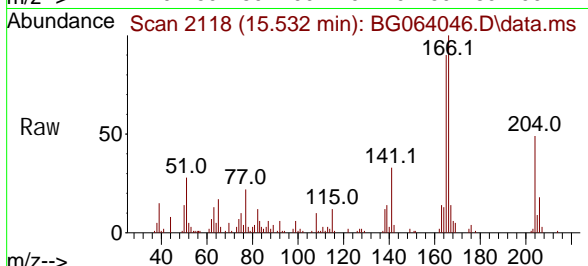


#61
 4-Chlorophenyl -phenyl ether
 Concen: 5.142 ng
 RT: 15.532 min Scan# 2119
 Delta R.T. -0.006 min
 Lab File: BG064046.D
 Acq: 5 Mar 2025 9:42

Instrument : BNA_G
 ClientSampleId : SSTDICC005

Tgt Ion: 204 Resp: 18807

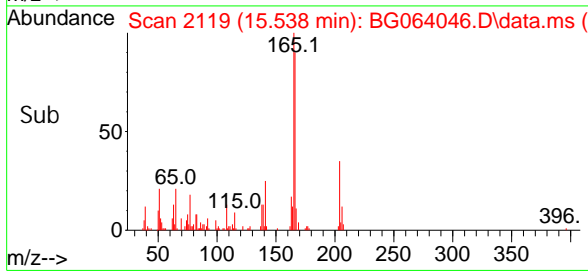
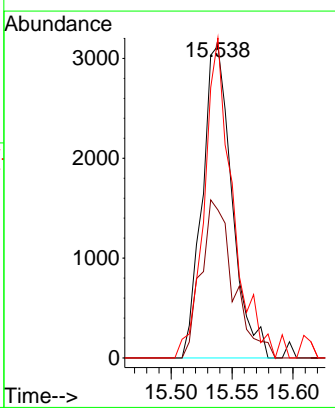
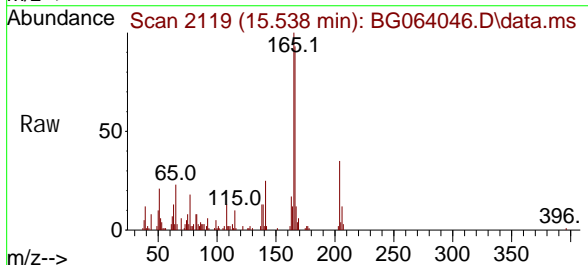
Ion	Ratio	Lower	Upper
204	100		
206	35.7	25.5	38.3
141	67.1	45.4	68.0

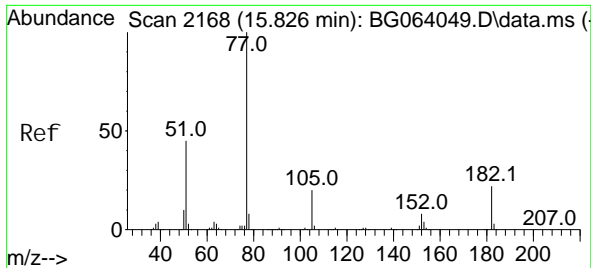


#62
 4-Nitroaniline
 Concen: 3.460 ng
 RT: 15.538 min Scan# 2119
 Delta R.T. -0.011 min
 Lab File: BG064046.D
 Acq: 5 Mar 2025 9:42

Tgt Ion: 138 Resp: 5314

Ion	Ratio	Lower	Upper
138	100		
92	47.4	36.1	76.1
108	102.5	87.9	127.9





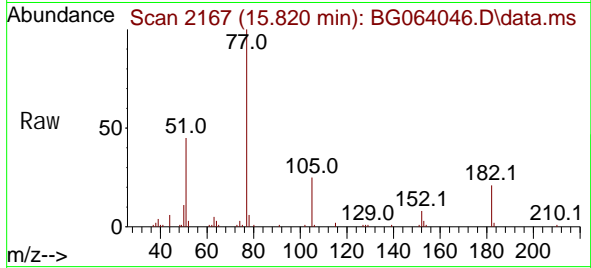
#63
 Azobenzene
 Concen: 5.070 ng
 RT: 15.820 min Scan# 2167
 Delta R.T. -0.006 min
 Lab File: BG064046.D
 Acq: 5 Mar 2025 9:42

Instrument :

BNA_G

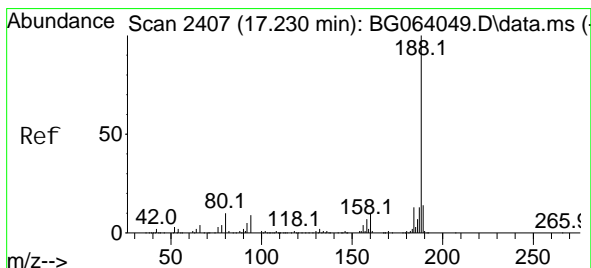
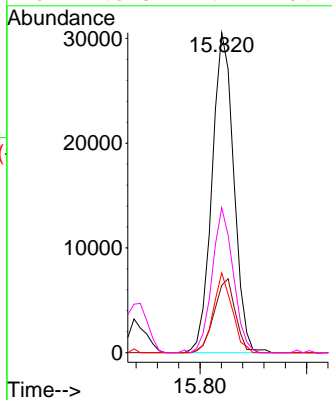
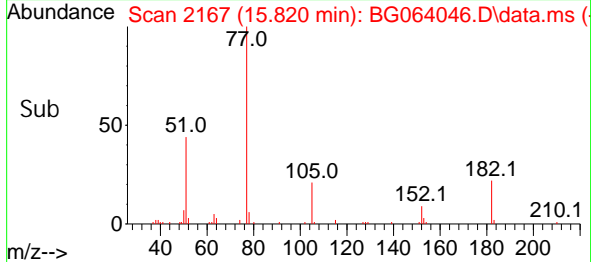
ClientSampleId :

SSTDIC005

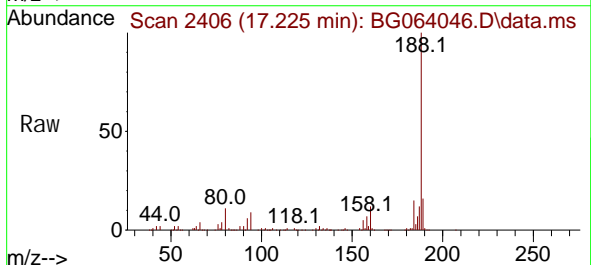


Tgt Ion: 77 Resp: 43236

Ion	Ratio	Lower	Upper
77	100		
182	21.1	2.4	42.4
105	25.0	0.0	40.0
51	45.3	24.9	64.9

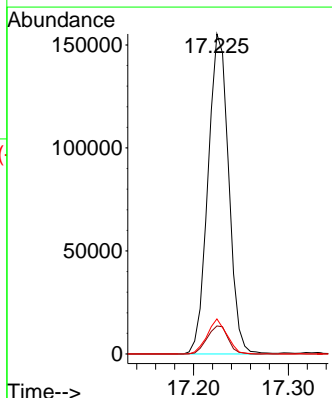
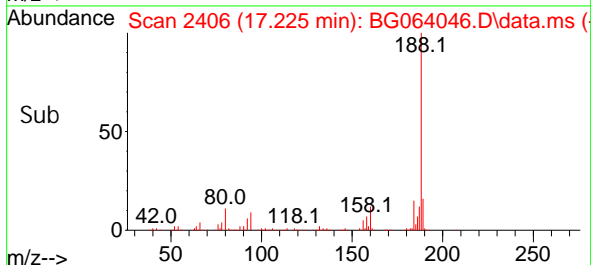


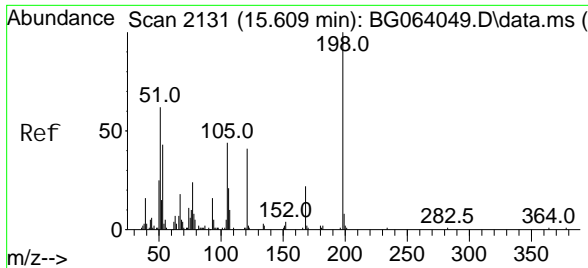
#64
 Phenanthrene-d10
 Concen: 20.000 ng
 RT: 17.225 min Scan# 2406
 Delta R.T. -0.005 min
 Lab File: BG064046.D
 Acq: 5 Mar 2025 9:42



Tgt Ion: 188 Resp: 234862

Ion	Ratio	Lower	Upper
188	100		
94	8.8	6.9	10.3
80	10.9	8.1	12.1

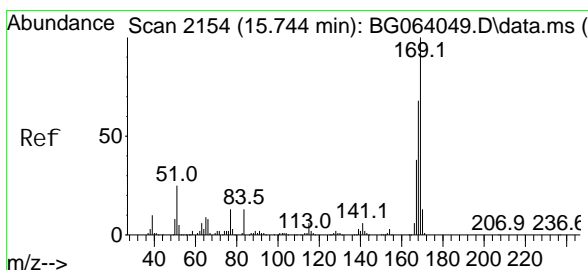
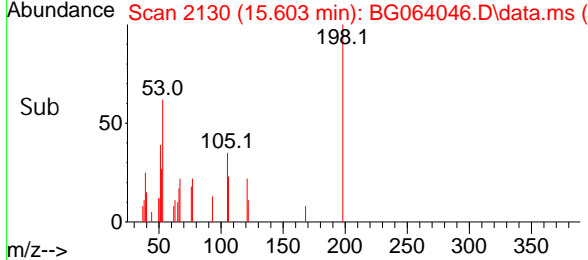
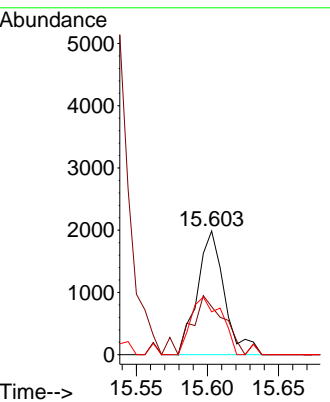
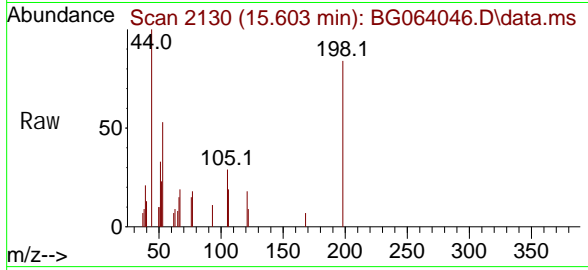




#65
 4,6-Dinitro-2-methyl phenol
 Concen: 10.333 ng
 RT: 15.603 min Scan# 2130
 Delta R.T. -0.006 min
 Lab File: BG064046.D
 Acq: 5 Mar 2025 9:42

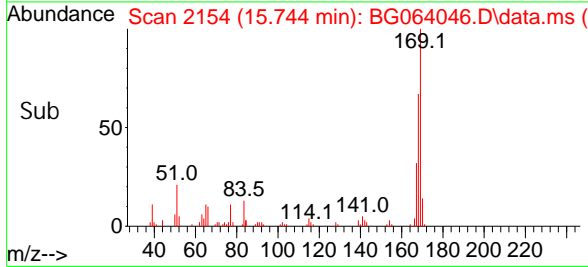
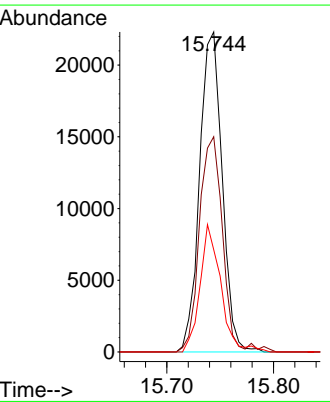
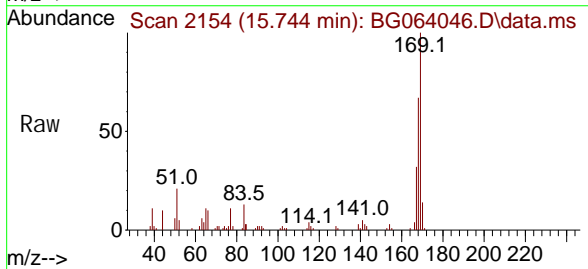
Instrument :
 BNA_G
ClientSampleId :
 SSTDICC005

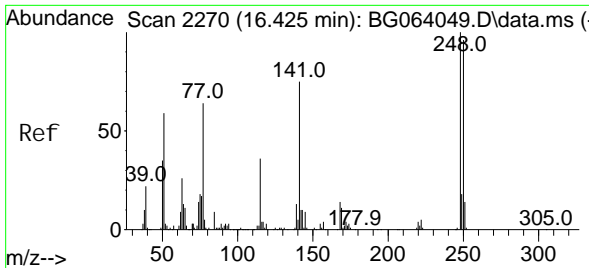
Tgt Ion	Resp	Lower	Upper
198	100		
51	38.9	45.6	85.6#
105	34.7	25.3	65.3



#66
 n-Nitrosodiphenylamine
 Concen: 4.927 ng
 RT: 15.744 min Scan# 2154
 Delta R.T. 0.000 min
 Lab File: BG064046.D
 Acq: 5 Mar 2025 9:42

Tgt Ion	Resp	Lower	Upper
169	100		
168	67.3	54.1	81.1
167	32.0	30.3	45.5

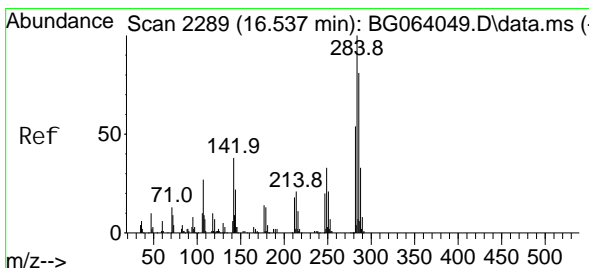
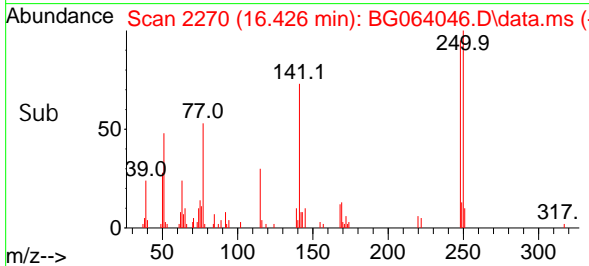
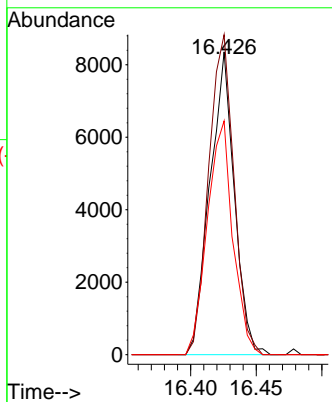
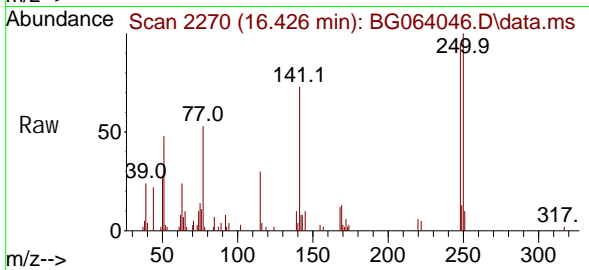




#67
 4-Bromophenyl -phenyl ether
 Concen: 4.531 ng
 RT: 16.426 min Scan# 21
 Delta R.T. 0.000 min
 Lab File: BG064046.D
 Acq: 5 Mar 2025 9:42

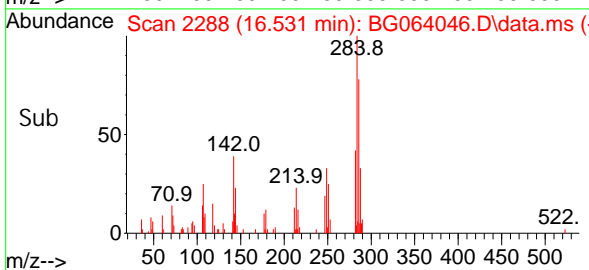
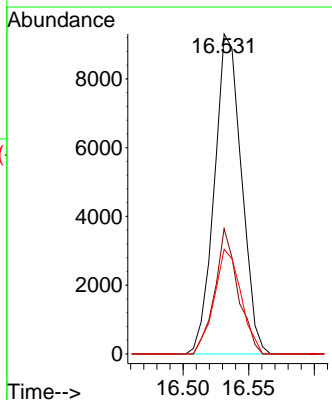
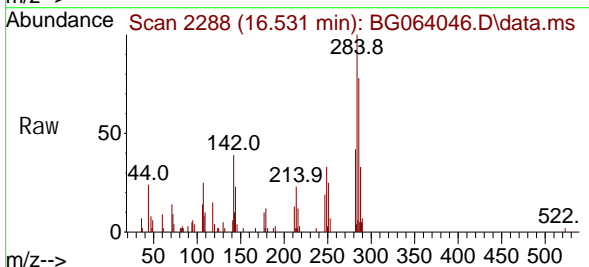
Instrument :
 BNA_G
 ClientSampleId :
 SSTDICC005

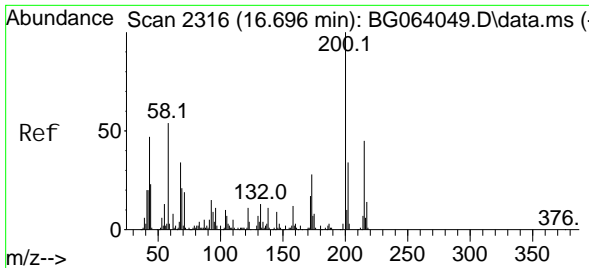
Tgt Ion	Resp	Lower	Upper
248	10898		
250	105.6	77.1	115.7
141	77.2	59.8	89.8



#68
 Hexachlorobenzene
 Concen: 4.958 ng
 RT: 16.531 min Scan# 2288
 Delta R.T. -0.006 min
 Lab File: BG064046.D
 Acq: 5 Mar 2025 9:42

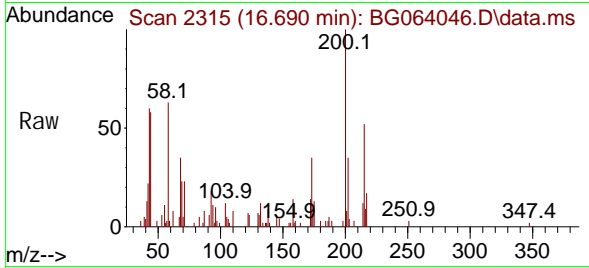
Tgt Ion	Resp	Lower	Upper
284	13351		
284	100		
142	39.1	30.6	45.8
249	32.7	26.6	39.8



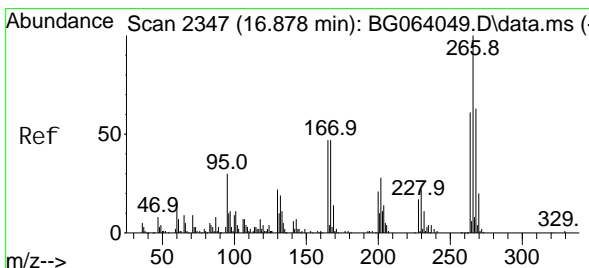
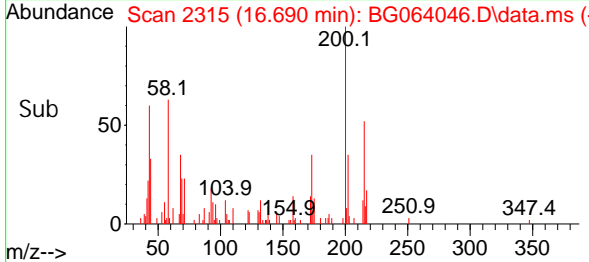
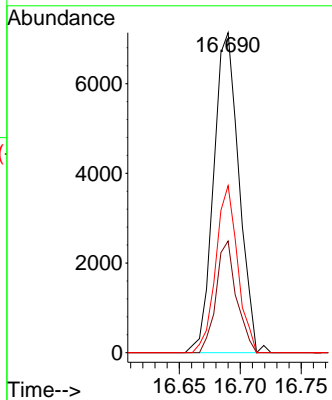


#69
 Atrazine
 Concen: 5.264 ng
 RT: 16.690 min Scan# 21
 Delta R.T. -0.006 min
 Lab File: BG064046.D
 Acq: 5 Mar 2025 9:42

Instrument :
 BNA_G
 ClientSampleId :
 SSTDICC005

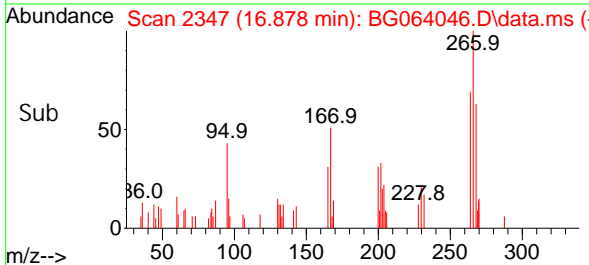
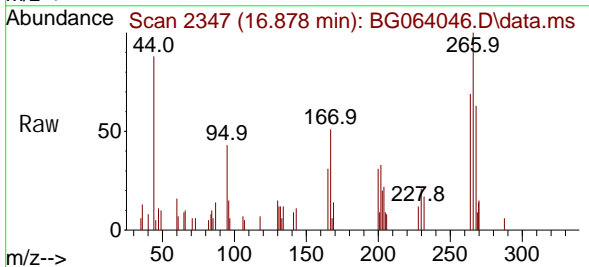
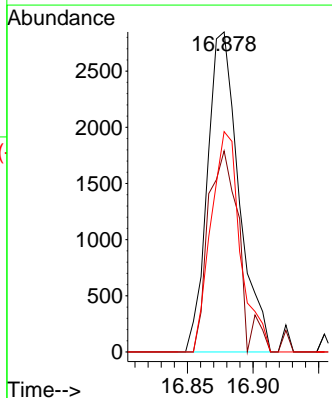


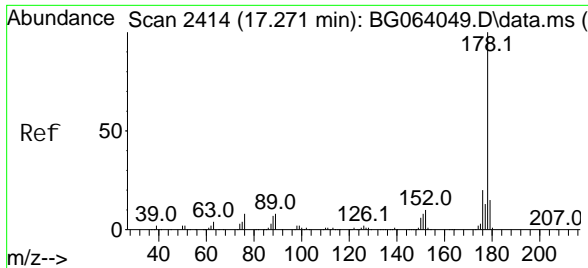
Tgt Ion: 200 Resp: 10297
 Ion Ratio Lower Upper
 200 100
 173 34.9 8.2 48.2
 215 52.2 25.5 65.5



#70
 Pentachlorophenol
 Concen: 2.835 ng
 RT: 16.878 min Scan# 2347
 Delta R.T. -0.000 min
 Lab File: BG064046.D
 Acq: 5 Mar 2025 9:42

Tgt Ion: 266 Resp: 4740
 Ion Ratio Lower Upper
 266 100
 268 62.9 50.2 75.4
 264 68.9 48.9 73.3



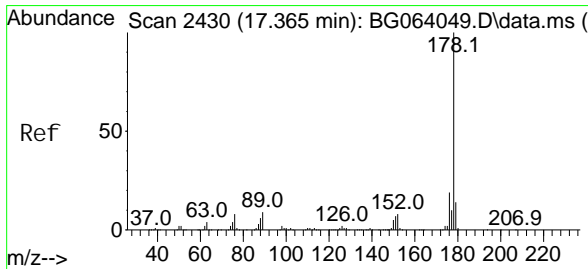
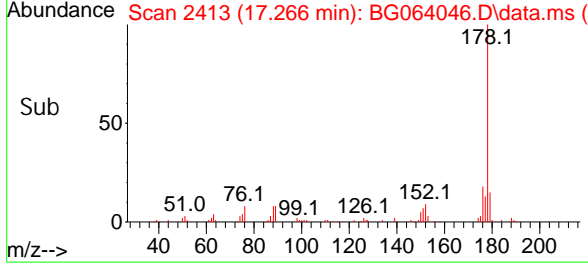
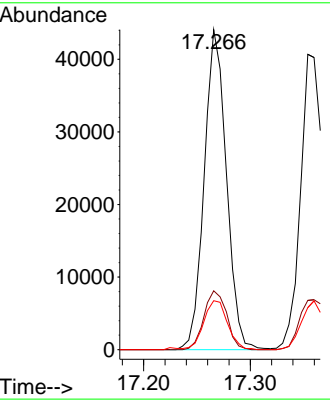
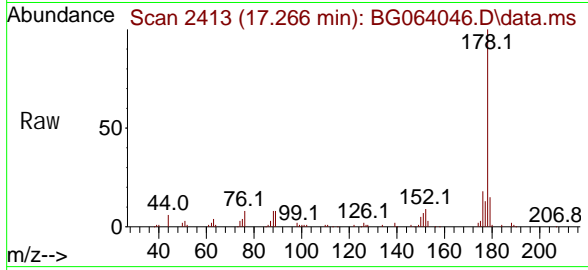


#71
 Phenanthrene
 Concen: 5.079 ng
 RT: 17.266 min Scan# 2413
 Delta R.T. -0.006 min
 Lab File: BG064046.D
 Acq: 5 Mar 2025 9:42

Instrument : BNA_G
 ClientSampleId : SSTDIC005

Tgt Ion: 178 Resp: 63629

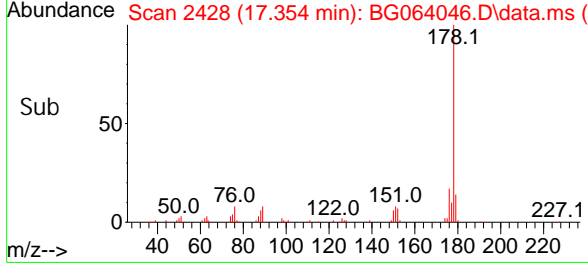
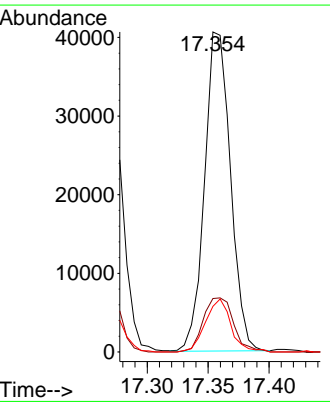
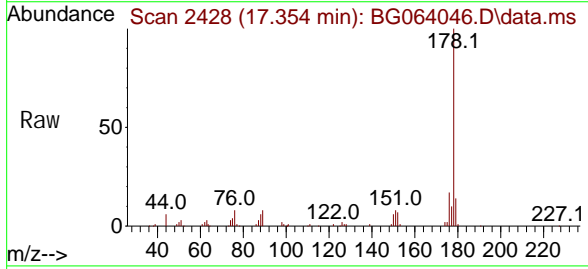
Ion	Ratio	Lower	Upper
178	100		
176	18.4	15.9	23.9
179	15.3	12.2	18.2

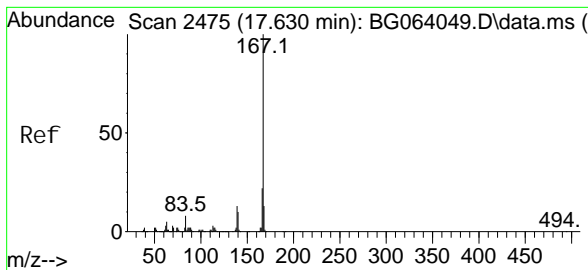


#72
 Anthracene
 Concen: 4.825 ng
 RT: 17.354 min Scan# 2428
 Delta R.T. -0.011 min
 Lab File: BG064046.D
 Acq: 5 Mar 2025 9:42

Tgt Ion: 178 Resp: 60108

Ion	Ratio	Lower	Upper
178	100		
176	16.7	14.8	22.2
179	14.2	11.5	17.3



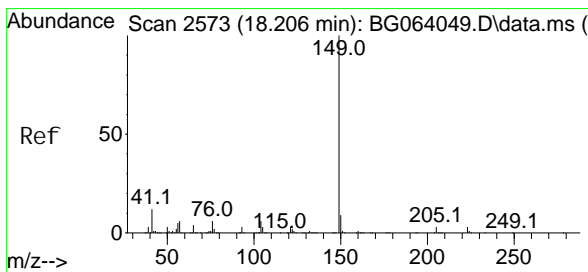
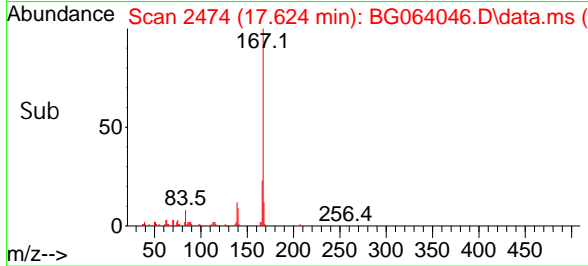
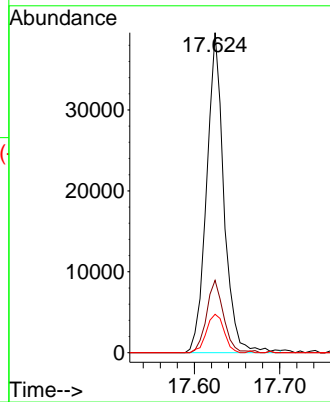
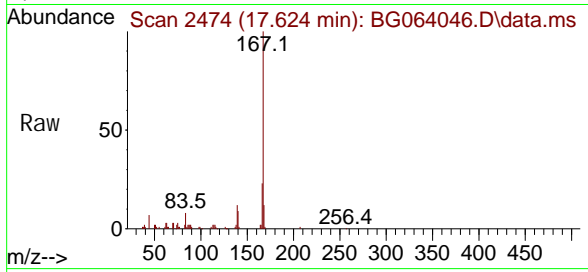


#73
 Carbazol e
 Concen: 4.792 ng
 RT: 17.624 min Scan# 2474
 Delta R.T. -0.006 min
 Lab File: BG064046.D
 Acq: 5 Mar 2025 9:42

Instrument : BNA_G
 ClientSampleId : SSTDICC005

Tgt Ion: 167 Resp: 55726

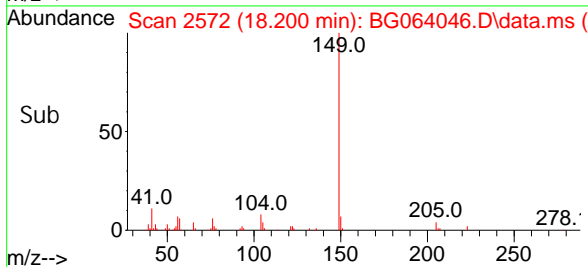
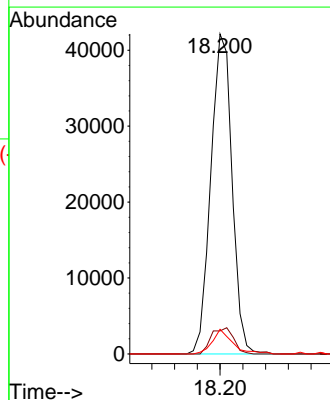
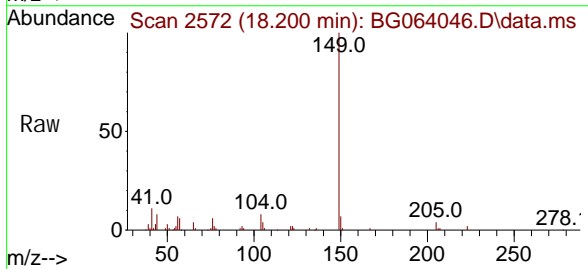
Ion	Ratio	Lower	Upper
167	100		
166	22.6	18.0	27.0
139	12.0	10.6	15.8

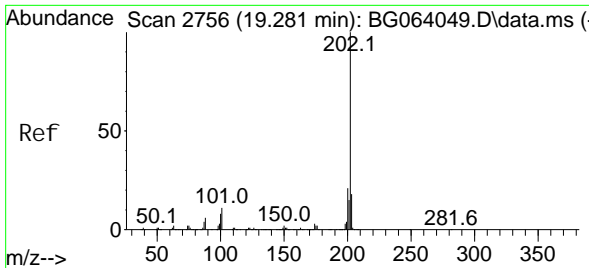


#74
 Di -n-butyl phthal ate
 Concen: 3.996 ng
 RT: 18.200 min Scan# 2572
 Delta R.T. -0.006 min
 Lab File: BG064046.D
 Acq: 5 Mar 2025 9:42

Tgt Ion: 149 Resp: 54700

Ion	Ratio	Lower	Upper
149	100		
150	7.2	7.4	11.0#
104	7.7	5.0	7.6#



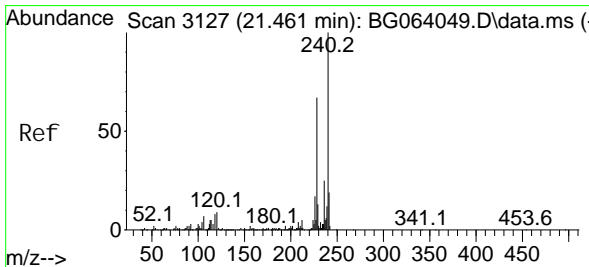
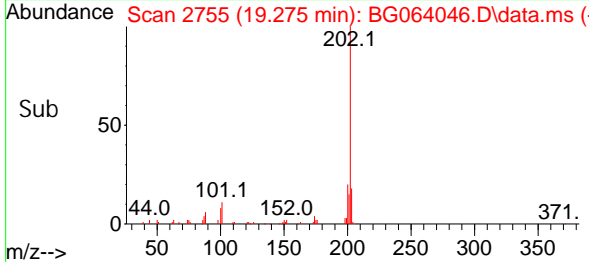
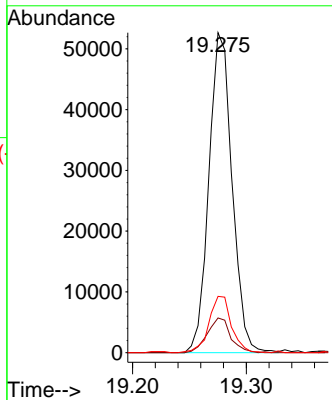
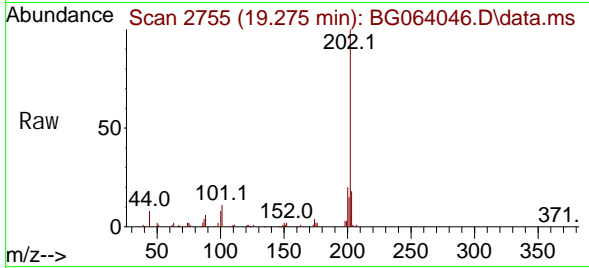


#75
 Fluoranthene
 Concen: 4.946 ng
 RT: 19.275 min Scan# 21
 Delta R.T. -0.006 min
 Lab File: BG064046.D
 Acq: 5 Mar 2025 9:42

Instrument : BNA_G
 ClientSampleId : SSTDICC005

Tgt Ion: 202 Resp: 74694

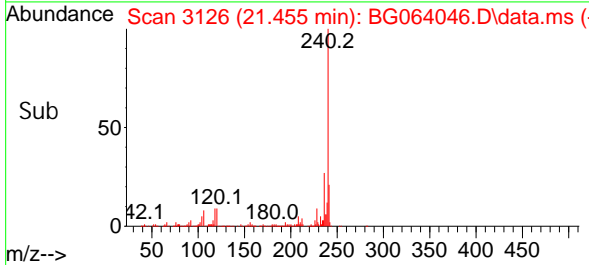
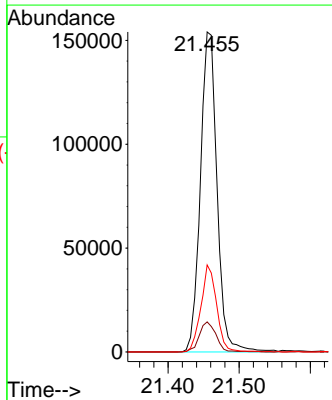
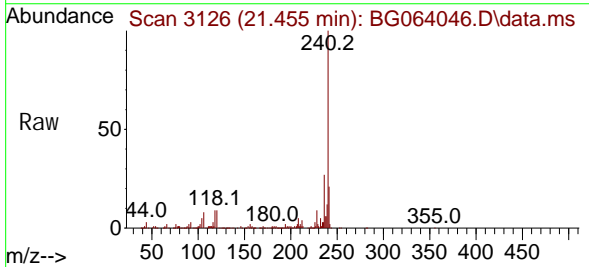
Ion	Ratio	Lower	Upper
202	100		
101	10.8	0.0	30.5
203	17.6	0.0	38.3

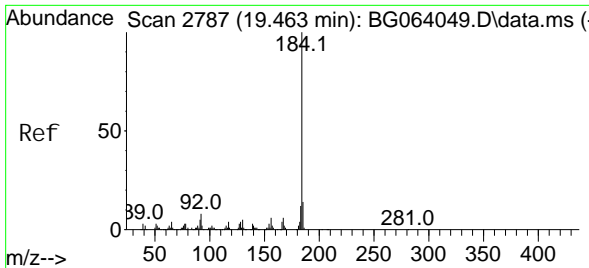


#76
 Chrysene-d12
 Concen: 20.000 ng
 RT: 21.455 min Scan# 3126
 Delta R.T. -0.006 min
 Lab File: BG064046.D
 Acq: 5 Mar 2025 9:42

Tgt Ion: 240 Resp: 251570

Ion	Ratio	Lower	Upper
240	100		
120	9.4	7.2	10.8
236	27.2	20.2	30.2

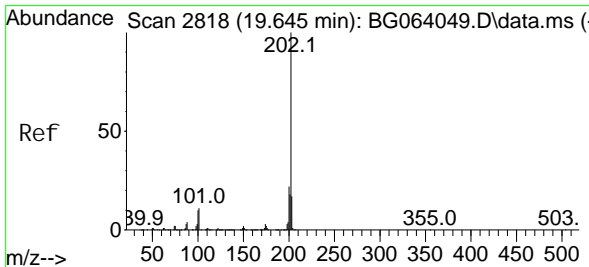
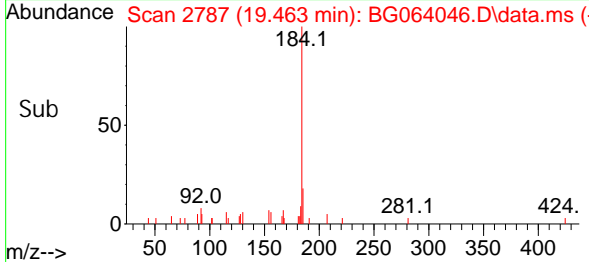
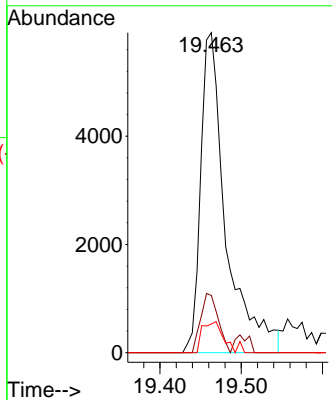
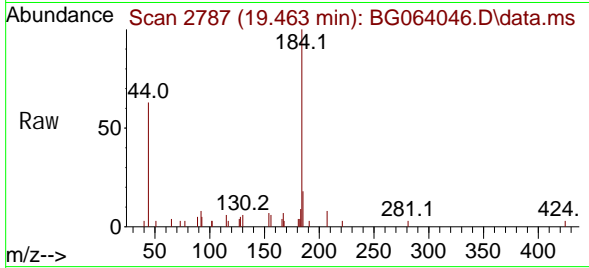




#77
 Benzi di ne
 Concen: 3.612 ng
 RT: 19.463 min Scan# 21
 Delta R.T. 0.000 min
 Lab File: BG064046.D
 Acq: 5 Mar 2025 9:42

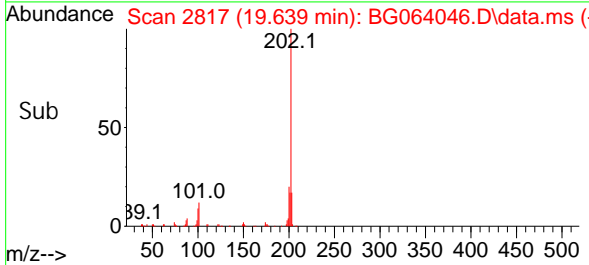
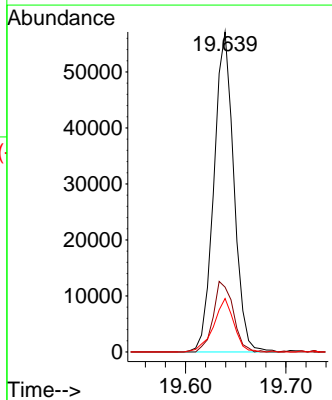
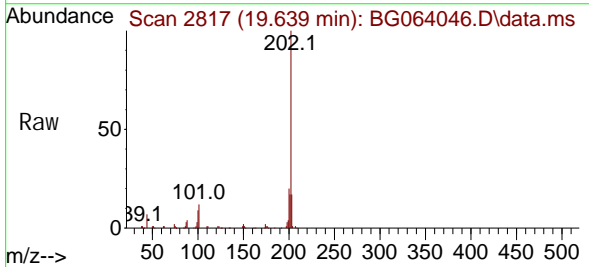
Instrument : BNA_G
 ClientSampleId : SSTDICC005

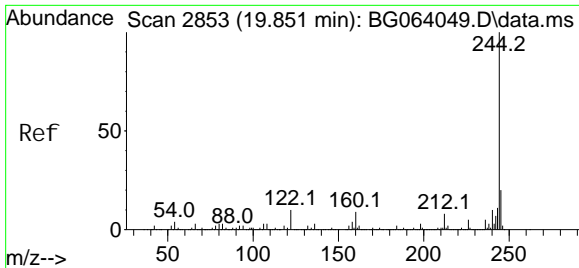
Tgt Ion	Resp	Lower	Upper
184	100		
185	17.9	11.3	16.9#
183	9.0	9.5	14.3#



#78
 Pyrene
 Concen: 4.853 ng
 RT: 19.639 min Scan# 2817
 Delta R.T. -0.006 min
 Lab File: BG064046.D
 Acq: 5 Mar 2025 9:42

Tgt Ion	Resp	Lower	Upper
202	100		
200	20.3	17.3	25.9
203	16.7	13.6	20.4



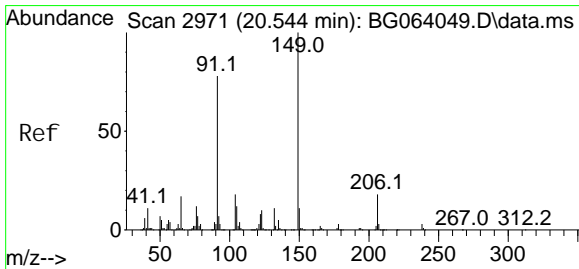
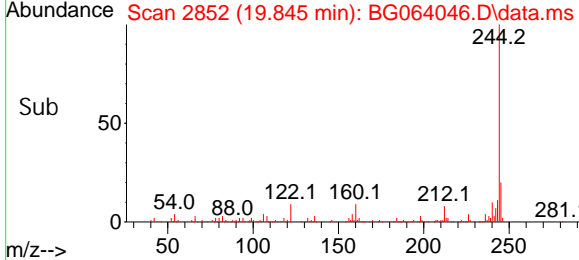
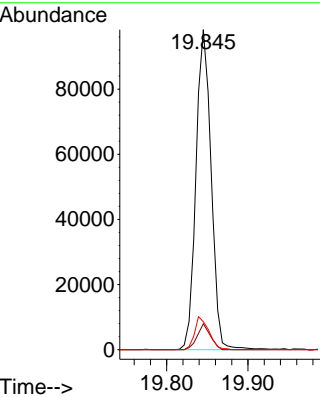
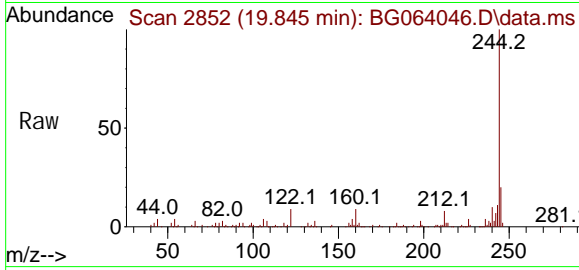


#79
 Terphenyl -d14
 Concen: 10.226 ng
 RT: 19.845 min Scan# 2852
 Delta R.T. -0.006 min
 Lab File: BG064046.D
 Acq: 5 Mar 2025 9:42

Instrument :
 BNA_G
ClientSampleId :
 SSTDICC005

Tgt Ion: 244 Resp: 127223

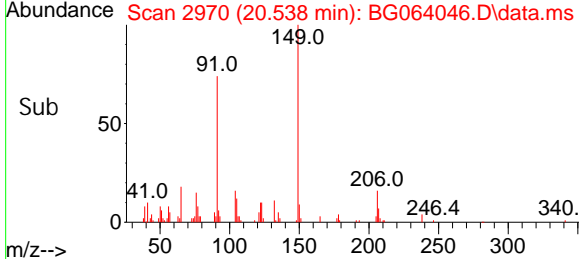
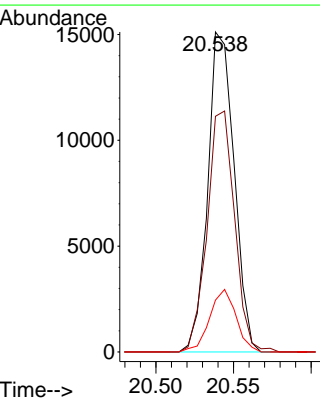
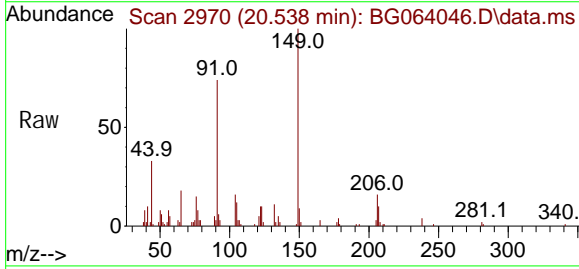
Ion	Ratio	Lower	Upper
244	100		
212	8.1	6.2	9.4
122	8.8	8.0	12.0

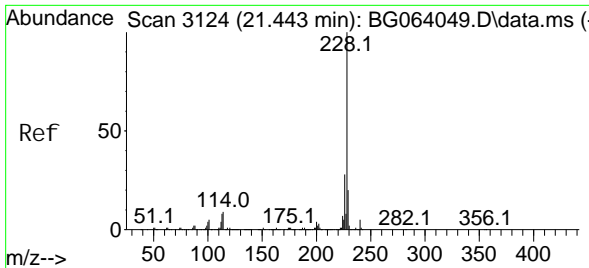


#80
 Butyl benzyl phthal ate
 Concen: 6.356 ng
 RT: 20.538 min Scan# 2970
 Delta R.T. -0.006 min
 Lab File: BG064046.D
 Acq: 5 Mar 2025 9:42

Tgt Ion: 149 Resp: 17899

Ion	Ratio	Lower	Upper
149	100		
91	73.7	62.0	93.0
206	16.2	14.6	21.8

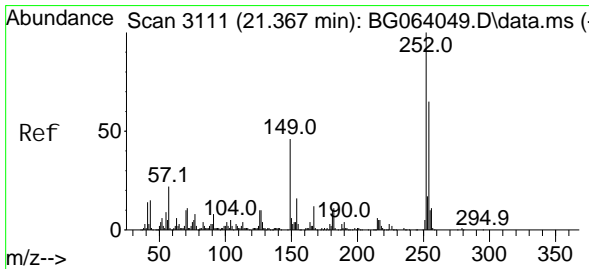
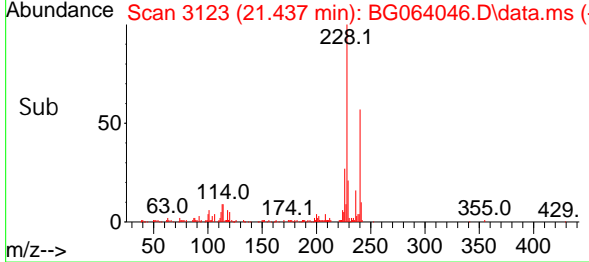
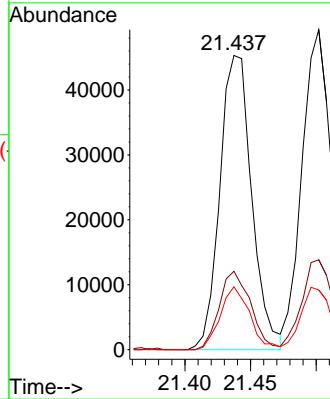
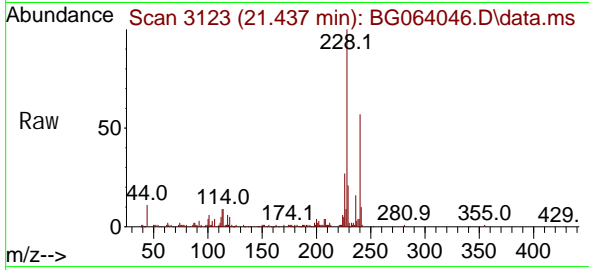




#81
 Benzo(a)anthracene
 Concen: 4.751 ng
 RT: 21.437 min Scan# 3123
 Delta R.T. -0.006 min
 Lab File: BG064046.D
 Acq: 5 Mar 2025 9:42

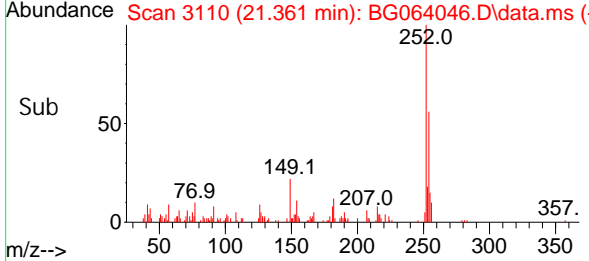
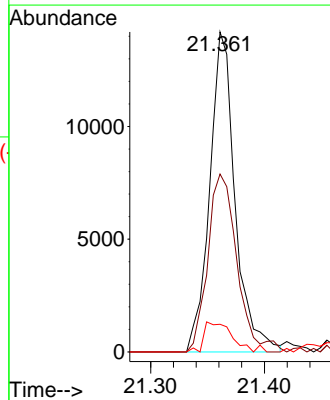
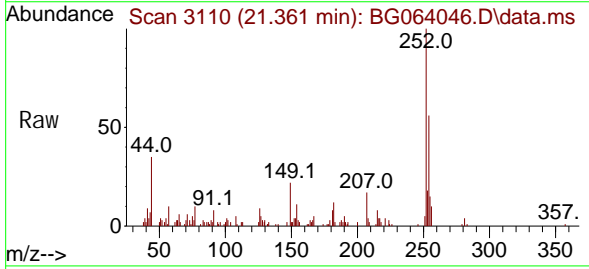
Instrument : BNA_G
 ClientSampleId : SSTDIC005

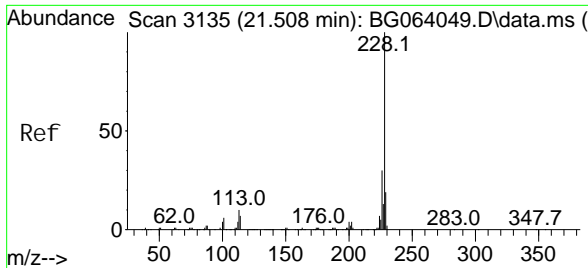
Tgt Ion	Resp	Lower	Upper
228	100		
226	26.7	22.2	33.2
229	21.4	16.4	24.6



#82
 3,3'-Dichlorobenzidine
 Concen: 4.226 ng
 RT: 21.361 min Scan# 3110
 Delta R.T. -0.006 min
 Lab File: BG064046.D
 Acq: 5 Mar 2025 9:42

Tgt Ion	Resp	Lower	Upper
252	100		
254	55.6	52.1	78.1
126	8.6	7.8	11.8



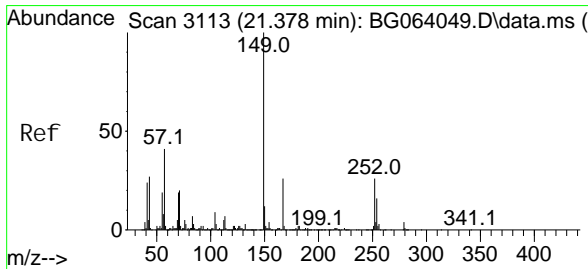
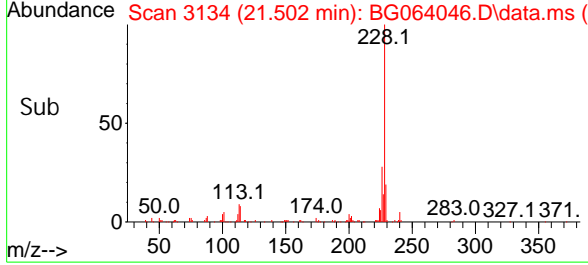
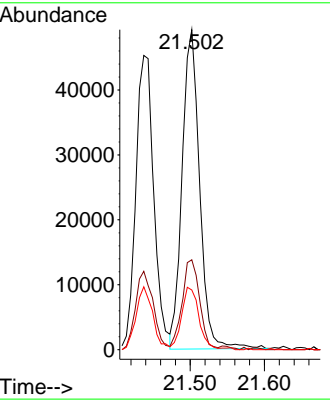
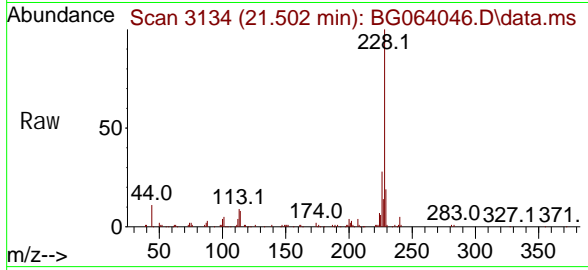


#83
 Chrysene
 Concen: 5.014 ng
 RT: 21.502 min Scan# 3135
 Delta R.T. -0.006 min
 Lab File: BG064046.D
 Acq: 5 Mar 2025 9:42

Instrument : BNA_G
 ClientSampleId : SSTDICC005

Tgt Ion: 228 Resp: 80580

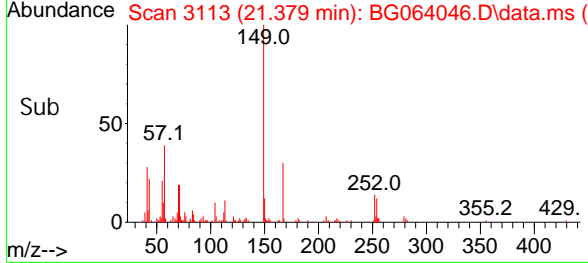
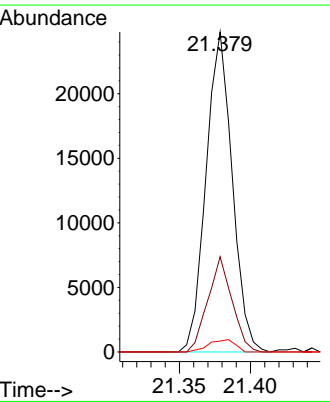
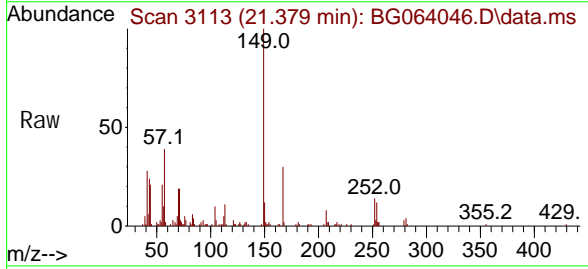
Ion	Ratio	Lower	Upper
228	100		
226	28.1	23.9	35.9
229	18.7	15.3	22.9

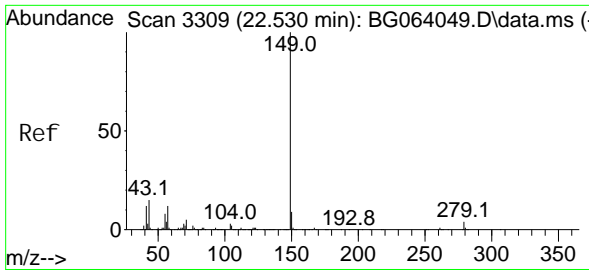


#84
 Bis(2-ethyl hexyl)phthalate
 Concen: 3.634 ng
 RT: 21.379 min Scan# 3113
 Delta R.T. 0.000 min
 Lab File: BG064046.D
 Acq: 5 Mar 2025 9:42

Tgt Ion: 149 Resp: 31674

Ion	Ratio	Lower	Upper
149	100		
167	29.7	21.0	31.6
279	3.4	2.8	4.2

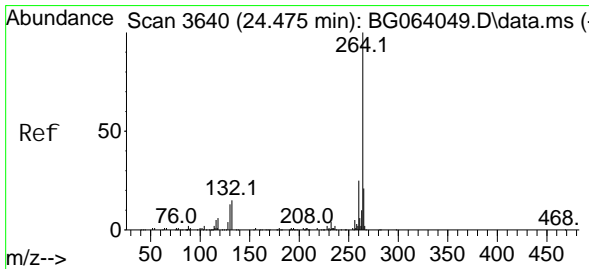
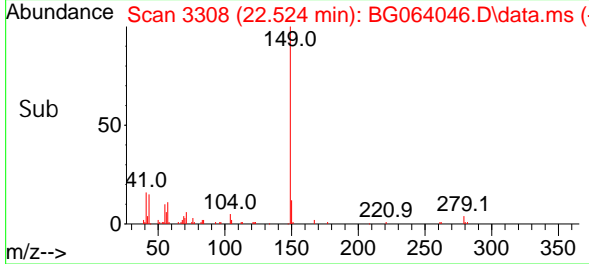
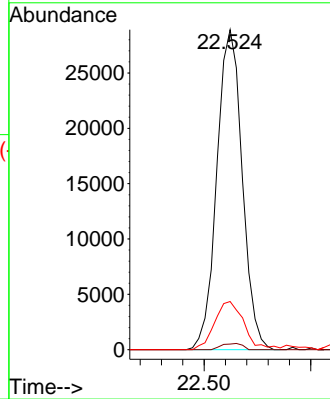
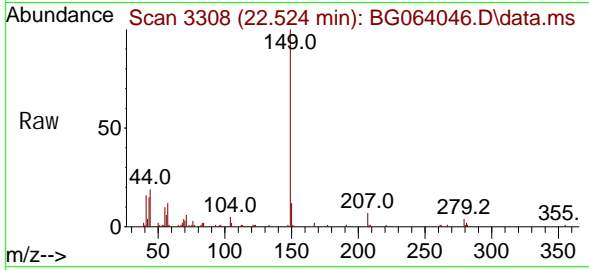




#85
 Di-n-octyl phthalate
 Concen: 3.175 ng
 RT: 22.524 min Scan# 31
 Delta R.T. -0.006 min
 Lab File: BG064046.D
 Acq: 5 Mar 2025 9:42

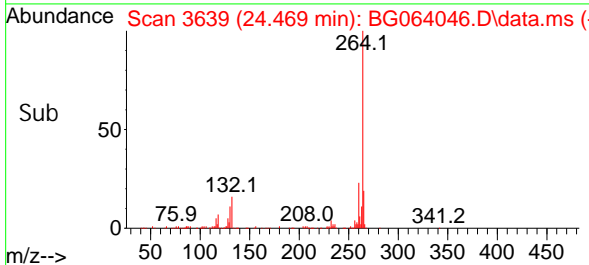
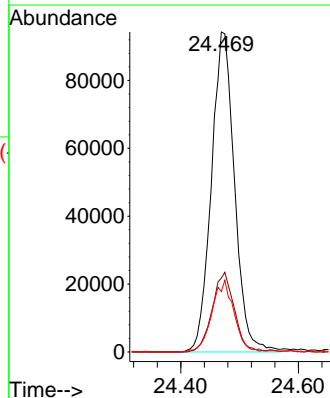
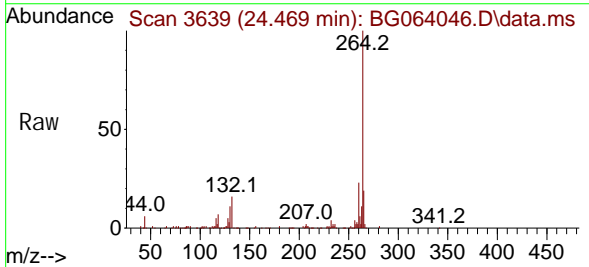
Instrument :
 BNA_G
 ClientSampleId :
 SSTDICC005

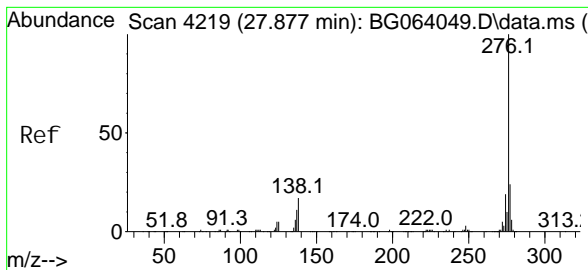
Tgt Ion: 149 Resp: 47732
 Ion Ratio Lower Upper
 149 100
 167 1.6 1.2 1.8
 43 17.5 12.6 19.0



#86
 Perylene-d12
 Concen: 20.000 ng
 RT: 24.469 min Scan# 3639
 Delta R.T. -0.006 min
 Lab File: BG064046.D
 Acq: 5 Mar 2025 9:42

Tgt Ion: 264 Resp: 257404
 Ion Ratio Lower Upper
 264 100
 260 23.1 19.6 29.4
 265 18.9 16.6 25.0

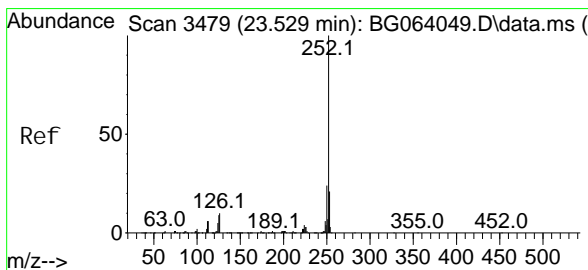
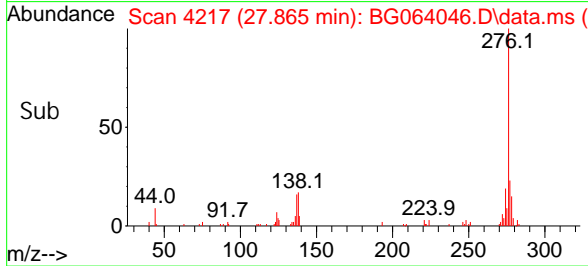
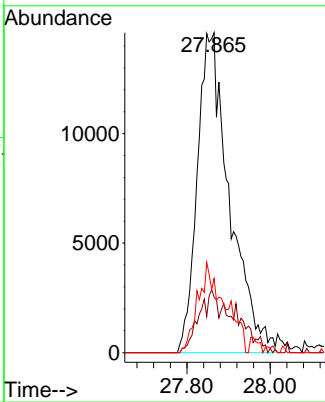
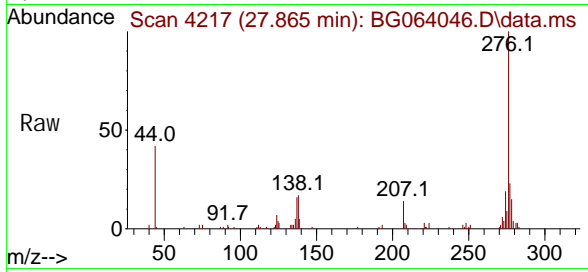




#87
 Indeno(1, 2, 3-cd)pyrene
 Concen: 4.569 ng
 RT: 27.865 min Scan# 41
 Delta R.T. -0.011 min
 Lab File: BG064046.D
 Acq: 5 Mar 2025 9:42

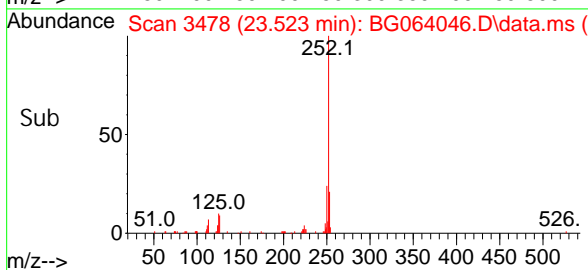
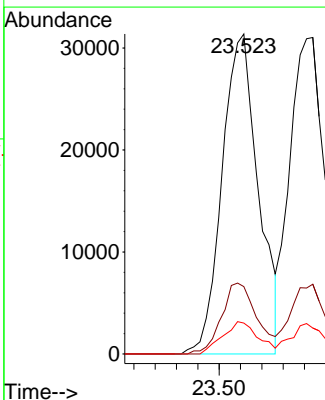
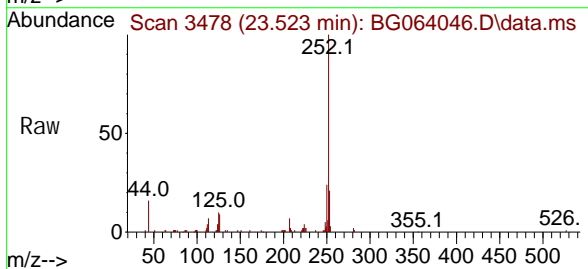
Instrument :
 BNA_G
 ClientSampleId :
 SSTDICC005

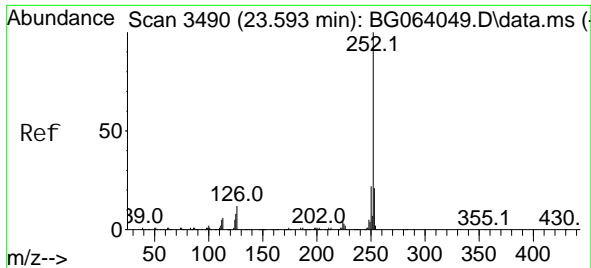
Tgt Ion: 276 Resp: 78681
 Ion Ratio Lower Upper
 276 100
 138 11.1 12.1 18.1#
 277 23.4 20.0 30.0



#88
 Benzo(b)fluoranthene
 Concen: 4.757 ng
 RT: 23.523 min Scan# 3478
 Delta R.T. -0.006 min
 Lab File: BG064046.D
 Acq: 5 Mar 2025 9:42

Tgt Ion: 252 Resp: 74031
 Ion Ratio Lower Upper
 252 100
 253 21.0 17.0 25.4
 125 9.7 7.4 11.2

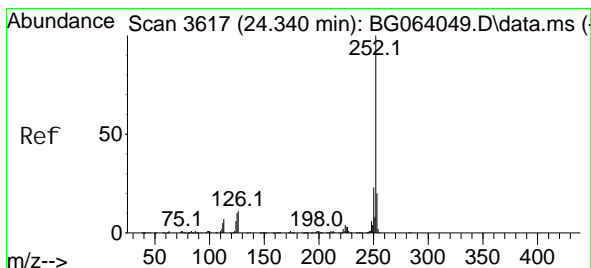
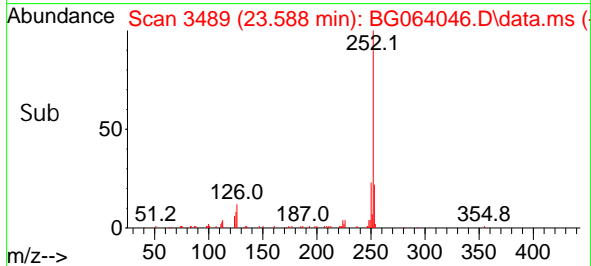
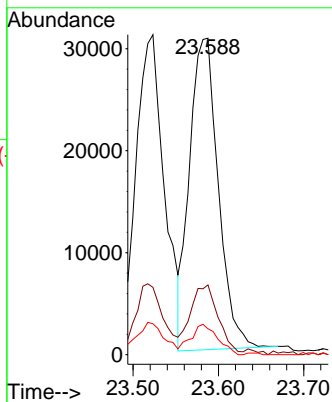
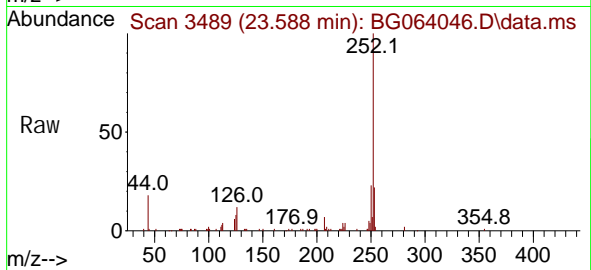




#89
 Benzo(k)fluoranthene
 Concen: 4.582 ng
 RT: 23.588 min Scan# 3490
 Delta R.T. -0.006 min
 Lab File: BG064046.D
 Acq: 5 Mar 2025 9:42

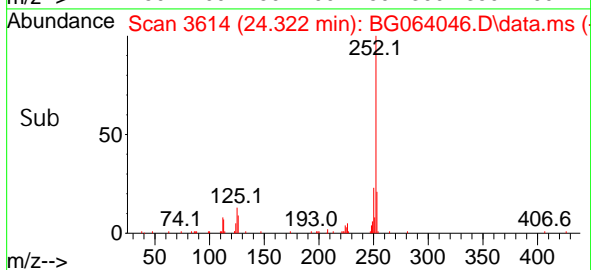
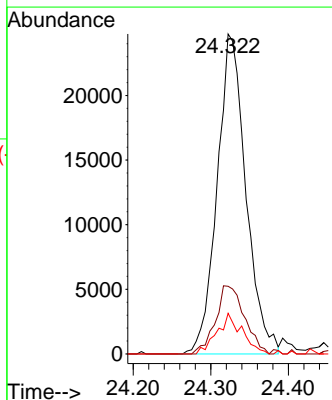
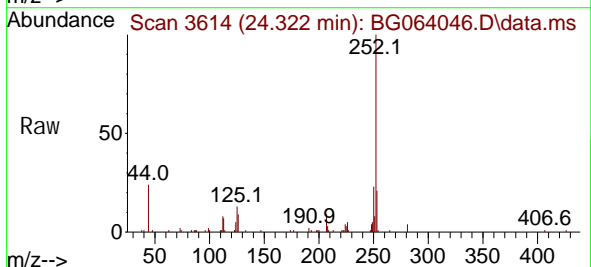
Instrument : BNA_G
 ClientSampleId : SSTDICC005

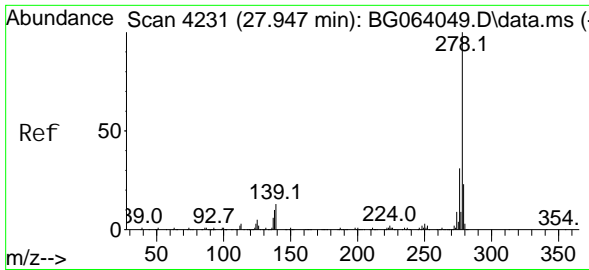
Tgt Ion	Resp	Lower	Upper
252	100		
253	22.1	16.8	25.2
125	8.2	6.9	10.3



#90
 Benzo(a)pyrene
 Concen: 4.610 ng
 RT: 24.322 min Scan# 3614
 Delta R.T. -0.017 min
 Lab File: BG064046.D
 Acq: 5 Mar 2025 9:42

Tgt Ion	Resp	Lower	Upper
252	100		
253	21.2	16.2	24.2
125	12.7	7.8	11.6





#91
 Di benzo(a, h)anthracene
 Concen: 4.638 ng
 RT: 27.912 min Scan# 4394
 Delta R.T. -0.035 min
 Lab File: BG064046.D
 Acq: 5 Mar 2025 9:42

Instrument :

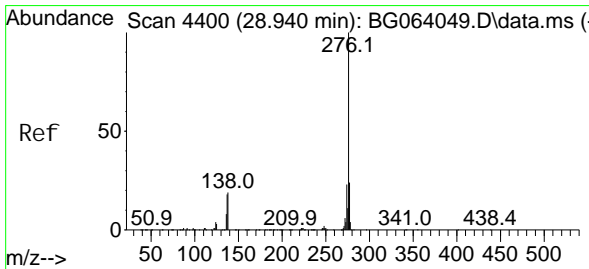
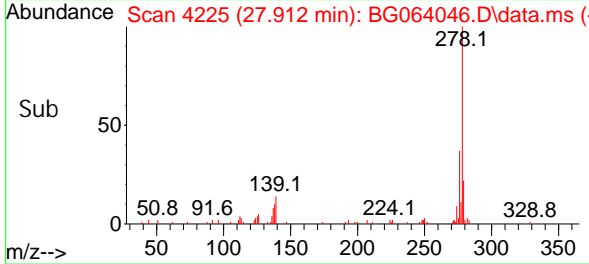
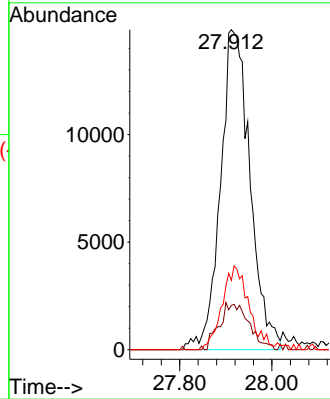
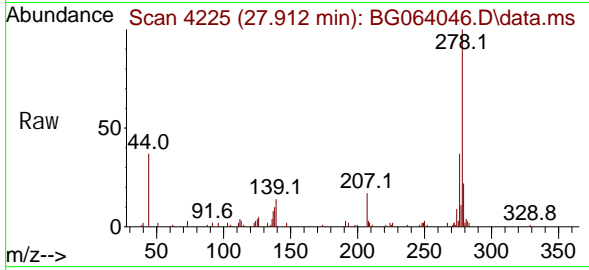
BNA_G

ClientSampleId :

SSTDICC005

Tgt Ion: 278 Resp: 66224

Ion	Ratio	Lower	Upper
278	100		
139	13.9	10.2	15.2
279	21.7	18.1	27.1



#92
 Benzo(g, h, i)perylene
 Concen: 4.607 ng
 RT: 28.905 min Scan# 4394
 Delta R.T. -0.035 min
 Lab File: BG064046.D
 Acq: 5 Mar 2025 9:42

Tgt Ion: 276 Resp: 67535

Ion	Ratio	Lower	Upper
276	100		
277	26.1	19.5	29.3
138	13.8	15.4	23.0#

