

Data Path : Z:\svoasrv\HPCHEM1\BNA_G\Data\BG030623\
 Data File : BG056835.D
 Acq On : 6 Mar 2023 10:26
 Operator : CG/JU
 Sample : SSTDCCCO20
 Misc :
 ALS Vial : 2 Sample Multiplier: 1

Instrument :
 BNA_G
ClientSampleId :
 SSTD020457

Quant Time: Mar 06 12:40:39 2023
 Quant Method : Z:\svoasrv\HPCHEM1\BNA_G\Methods\SFAM-EPA-BG022323.M
 Quant Title : SVOA CALIBRATION
 QLast Update : Thu Mar 02 00:12:28 2023
 Response via : Initial Calibration

Compound	R.T.	QI on	Response	Conc	Units	Dev(Min)
Internal Standards						
1) 1,4-Dichlorobenzene-d4	8.417	152	14002	20.000	ng/ul	0.00
20) Naphthalene-d8	11.255	136	60042	20.000	ng/ul	0.00
38) Acenaphthene-d10	15.015	164	48086	20.000	ng/ul	0.00
64) Phenanthrene-d10	17.753	188	123101	20.000	ng/ul	0.00
79) Chrysene-d12	22.054	240	119412	20.000	ng/ul	-0.01
88) Perylene-d12	25.579	264	132814	20.000	ng/ul	0.00
System Monitoring Compounds						
3) 1,4-Dioxane-d8	3.699	96	3057	12.111	ng/uL	0.00
4) Pyridine-d5	4.134	84	24853	24.393	ng/ul	0.00
7) Phenol-d5	7.536	99	26518	18.926	ng/ul	0.00
9) Bis-(2-Chloroethyl)eth...	7.718	67	18382	21.507	ng/ul	0.00
11) 2-Chlorophenol-d4	7.935	132	17927	19.266	ng/ul	0.00
15) 4-Methylphenol-d8	9.105	113	19814	18.507	ng/ul	0.00
21) Nitrobenzene-d5	9.586	128	10410	20.689	ng/ul	0.00
24) 2-Nitrophenol-d4	10.315	143	11054	18.456	ng/ul	0.00
28) 2,4-Dichlorophenol-d3	10.855	165	22433	19.881	ng/ul	0.00
31) 4-Chloroaniline-d4	11.373	131	29873	20.298	ng/ul	0.00
46) Dimethylphthalate-d6	14.404	166	73936	19.057	ng/ul	0.00
49) Acenaphthylene-d8	14.716	160	92880	21.064	ng/ul	0.00
54) 4-Nitrophenol-d4	15.174	143	12346	18.457	ng/ul	0.00
60) Fluorene-d10	15.997	176	75904	21.150	ng/ul	0.00
65) 4,6-Dinitro-2-methylph...	16.096	200	13659	16.585	ng/ul	0.00
73) Anthracene-d10	17.847	188	122842	20.569	ng/ul	0.00
81) Pyrene-d10	20.109	212	149443	18.495	ng/ul	0.00
92) Benzo(a)pyrene-d12	25.327	264	144994	20.226	ng/ul	-0.02
Target Compounds						
2) 1,4-Dioxane	3.734	88	3157	10.144	ng/uL	96
5) Pyridine	4.157	79	26808	24.846	ng/ul	90
6) Benzaldehyde	7.536	77	18581	25.312	ng/ul	94
8) Phenol	7.565	94	28238	19.758	ng/ul	94
10) Bis(2-Chloroethyl)ether	7.812	93	21169	20.846	ng/ul	94
12) 2-Chlorophenol	7.971	128	17687	19.194	ng/ul	97
13) 2-Methylphenol	8.840	108	19178	17.790	ng/ul	96
14) 2,2'-oxybis(1-Chloropr...	8.934	45	28426	20.832	ng/ul	95
16) Acetophenone	9.240	105	37493	20.450	ng/ul	97
17) N-Nitrosodimethylamine	9.210	70	21178	20.132	ng/ul #	94
18) 4-Methylphenol	9.163	108	22142	18.902	ng/ul	93
19) Hexachloroethane	9.522	117	7669	19.571	ng/ul #	89
22) Nitrobenzene	9.633	77	32947	22.580	ng/ul	96
23) Isophorone	10.150	82	57166	20.040	ng/ul	97
25) 2-Nitrophenol	10.350	139	10522	17.797	ng/ul	95
26) 2,4-Dimethylphenol	10.385	107	26084	19.755	ng/ul	100
27) Bis(2-Chloroethoxy)met...	10.626	93	29827	20.686	ng/ul	99
29) 2,4-Dichlorophenol	10.885	162	21968	20.105	ng/ul	98
30) Naphthalene	11.302	128	68540	20.739	ng/ul	97
32) 4-Chloroaniline	11.396	127	30084	20.636	ng/ul	97
33) Hexachlorobutadiene	11.578	225	18163	20.856	ng/ul	88
34) Caprolactam	12.136	113	4710	12.679	ng/ul	84
35) 4-Chloro-3-methylphenol	12.483	107	24671	19.653	ng/ul	88

Data Path : Z:\svoasrv\HPCHEM1\BNA_G\Data\BG030623\
 Data File : BG056835.D
 Acq On : 6 Mar 2023 10:26
 Operator : CG/JU
 Sample : SSTDCCCO20
 Mi sc :
 ALS Vial : 2 Sample Multi plier: 1

Instrument :
 BNA_G
ClientSampleId :
 SSTD020457

Quant Time: Mar 06 12:40:39 2023
 Quant Method : Z:\svoasrv\HPCHEM1\BNA_G\Methods\SFAM-EPA-BG022323.M
 Quant Title : SVOA CALI BRATI ON
 QLast Update : Thu Mar 02 00:12:28 2023
 Response via : Ini tial Cal i brati on

Compound	R. T.	QI on	Response	Conc	Units	Dev(Mi n)
36) 2-Methyl naphthal ene	12.877	142	49628	20.968	ng/ul	96
37) 1-Methyl naphthal ene	13.088	142	49715	21.303	ng/ul	97
39) 1, 2, 4, 5-Tetrachl oroben. . .	13.235	216	37749	22.142	ng/ul	96
40) Hexachl orocycl opentadi ene	13.212	237	19651	16.086	ng/ul	99
41) 2, 4, 6-Tri chl orophenol	13.458	196	22029	19.338	ng/ul	95
42) 2, 4, 5-Tri chl orophenol	13.529	196	24725	19.989	ng/ul	94
43) 1, 1' -Bi phenyl	13.858	154	73075	20.666	ng/ul	99
44) 2-Chl oronaphthal ene	13.905	162	61565	21.043	ng/ul #	90
45) 2-Ni troani li ne	14.093	65	20448	20.136	ng/ul	92
47) Di methyl phthal ate	14.451	163	75777	19.206	ng/ul #	97
48) 2, 6-Di ni trotol uene	14.575	165	16569	20.486	ng/ul #	77
50) Acenaphthyl ene	14.745	152	93445	20.977	ng/ul	99
51) 3-Ni troani li ne	14.904	138	14694	20.300	ng/ul #	86
52) Acenaphthene	15.080	153	63602	20.784	ng/ul	98
53) 2, 4-Di ni trophenol	15.109	184	8065	15.566	ng/ul #	78
55) 4-Ni trophenol	15.192	109	13896	17.947	ng/ul	97
56) Di benzofuran	15.409	168	97016	20.885	ng/ul	97
57) 2, 4-Di ni trotol uene	15.356	165	24425	21.065	ng/ul	91
58) 2, 3, 4, 6-Tetrachl orophenol	15.626	232	21630	18.791	ng/ul #	95
59) Di ethyl phthal ate	15.797	149	73934	18.721	ng/ul	98
61) Fl uorene	16.055	166	76800	20.647	ng/ul	96
62) 4-Chl orophenyl -phenyl e. . .	16.038	204	48119	21.841	ng/ul	99
63) 4-Ni troani li ne	16.061	138	14780	20.898	ng/ul	91
66) 4, 6-Di ni tro-2-methyl ph. . .	16.114	198	13628	17.188	ng/ul #	95
67) N-Ni trosodi phenyl ami ne	16.243	169	69812	20.394	ng/ul	96
68) 4-Bromophenyl -phenyl ether	16.925	248	32214	20.650	ng/ul	94
69) Hexachl orobenzene	17.054	284	34883	20.813	ng/ul	95
70) Atrazi ne	17.177	200	28689	19.297	ng/ul	97
71) Pentachl orophenol	17.395	266	15897	16.704	ng/ul	97
72) Phenanthrene	17.794	178	138732	20.805	ng/ul	98
74) Anthracene	17.883	178	139666	20.726	ng/ul	99
75) 1, 2, 3, 4-Tetrachl oroben. . .	13.828	216	39163	20.796	ng/uL	97
76) Pentachl orobenzene	15.327	250	39999	20.942	ng/uL	95
77) Carbazol e	18.147	167	115370	20.462	ng/ul	99
78) Di -n-butyl phthal ate	18.670	149	117008	18.006	ng/ul	98
80) Fl uoranthene	19.774	202	176297	18.044	ng/ul	99
82) Pyrene	20.133	202	177693	18.461	ng/ul	99
83) Butyl benzyl phthal ate	20.991	149	45016	14.742	ng/ul	100
84) 3, 3' -Di chl orobenzi di ne	21.931	252	62013	20.713	ng/ul	95
85) Benzo(a)anthracene	22.036	228	180946	20.820	ng/ul	96
86) Bi s(2-ethyl hexyl)phtha. . .	21.895	149	69445	16.190	ng/ul	98
87) Chrysene	22.107	228	166156	20.527	ng/ul	99
89) Di -n-octyl phthal ate	23.206	149	118971	16.477	ng/ul	100
90) Benzo(b)fl uoranthene	24.445	252	182861	20.567	ng/ul	98
91) Benzo(k)fl uoranthene	24.522	252	173698	20.057	ng/ul	97
93) Benzo(a)pyrene	25.409	252	155957	19.955	ng/ul #	99
94) I ndeno(1, 2, 3-cd)pyrene	29.633	276	206607	19.460	ng/ul #	98
95) Di benzo(a, h)anthracene	29.698	278	171549	19.325	ng/ul #	92
96) Benzo(g, h, i)peryl ene	30.903	276	170533	20.109	ng/ul	96

(#) = qual i fier out of range (m) = manual i ntegrati on (+) = signal s summed

Instrument :

BNA_G

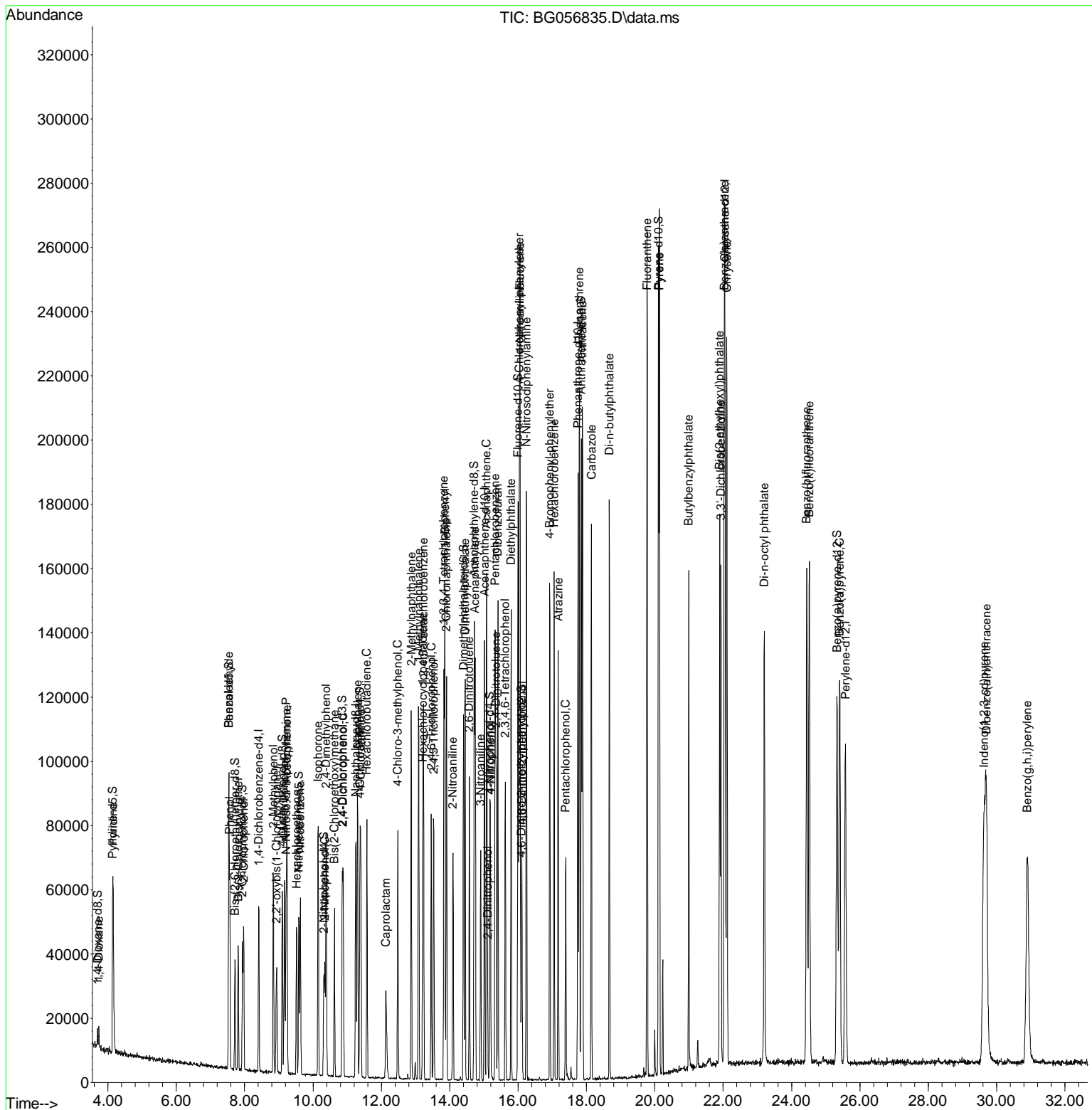
ClientSampleId :

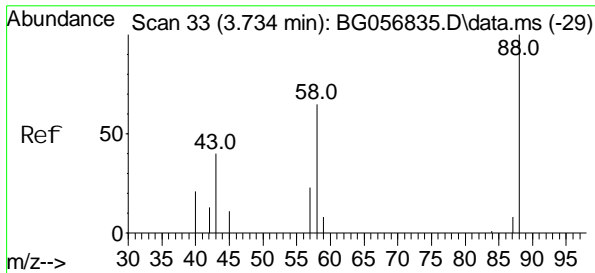
SSTD020457

Data Path : Z:\svoasrv\HPCHEM1\BNA_G\Data\BG030623\
Data File : BG056835.D
Acq On : 6 Mar 2023 10:26
Operator : CG/JU
Sample : SSTDCCC020
Misc :
ALS Vial : 2 Sample Multiplier: 1

Instrument :
BNA_G
Client Sample Id :
SSTD020457

Quant Time: Mar 06 12:40:39 2023
Quant Method : Z:\svoasrv\HPCHEM1\BNA_G\Methods\SFAM-EPA-BG022323.M
Quant Title : SVOA CALIBRATION
QLast Update : Thu Mar 02 00:12:28 2023
Response via : Initial Calibration

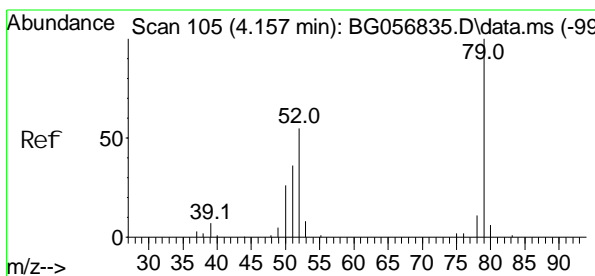
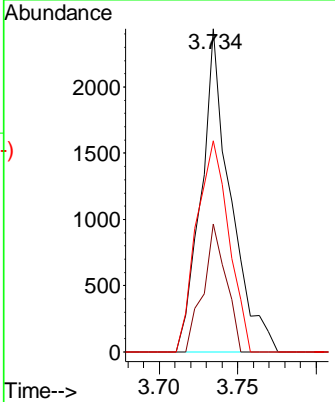
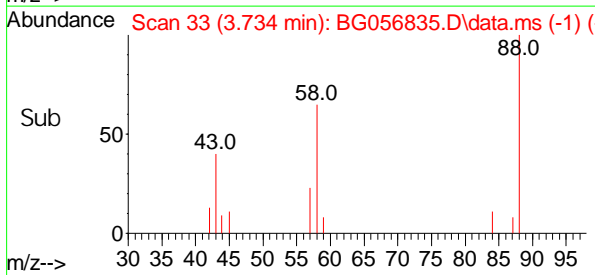
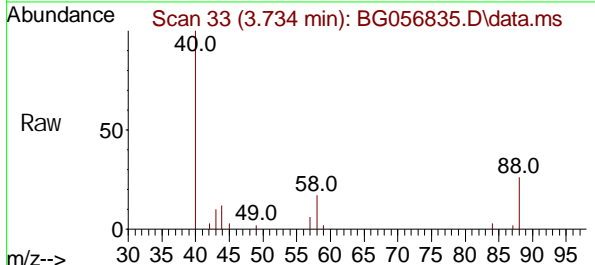




1, 4-Di oxane
 Concen: 10.144 ng/uL
 RT: 3.734 min Scan# 1
 Delta R.T. -0.006 min
 Lab File: BG056835.D
 Acq: 6 Mar 2023 10:26

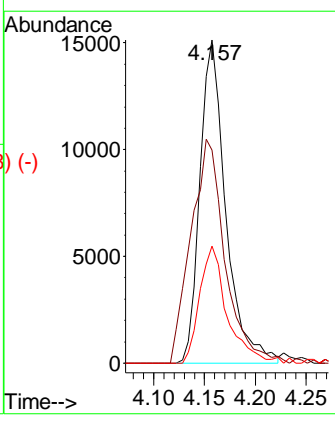
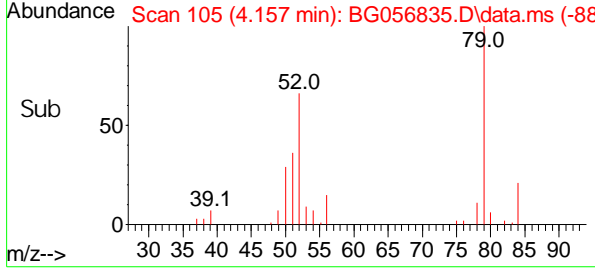
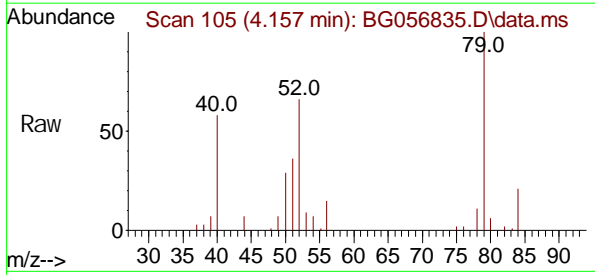
Instrument :
 BNA_G
ClientSampleId :
 SSTD020457

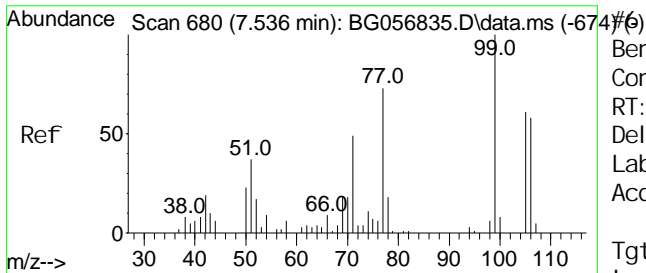
Tgt Ion	Resp	Lower	Upper
88	100		
43	39.6	28.3	42.5
58	65.4	50.6	75.8



Pyri di ne
 Concen: 24.846 ng/ul
 RT: 4.157 min Scan# 105
 Delta R.T. 0.000 min
 Lab File: BG056835.D
 Acq: 6 Mar 2023 10:26

Tgt Ion	Resp	Lower	Upper
79	100		
52	66.0	60.6	91.0
51	36.2	31.9	47.9

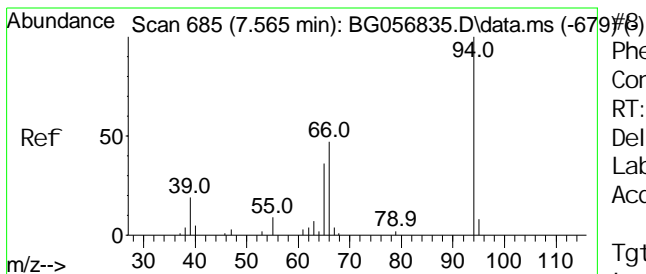
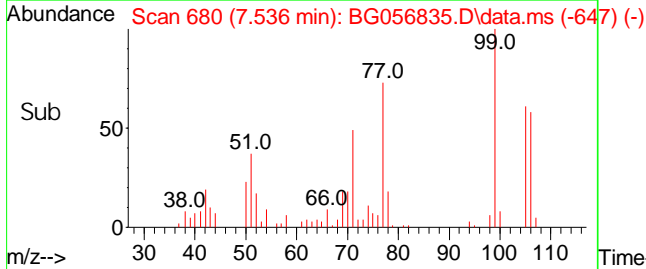
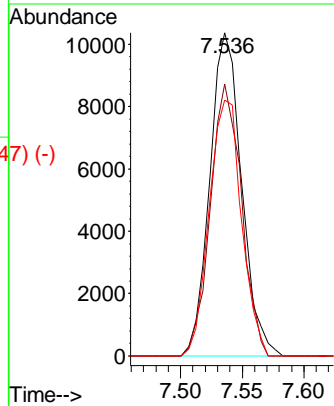
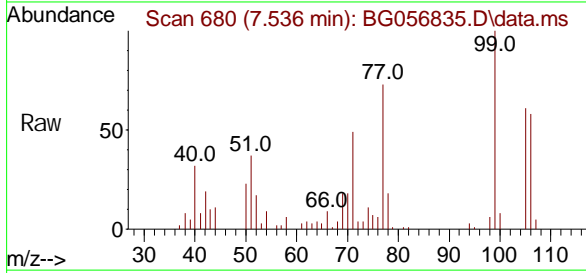




Benzaldehyde
 Concen: 25.312 ng/ul
 RT: 7.536 min Scan# 680
 Delta R.T. -0.006 min
 Lab File: BG056835.D
 Acq: 6 Mar 2023 10:26

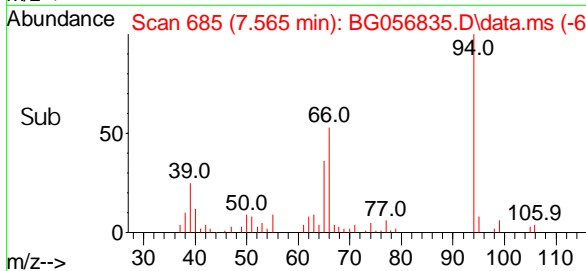
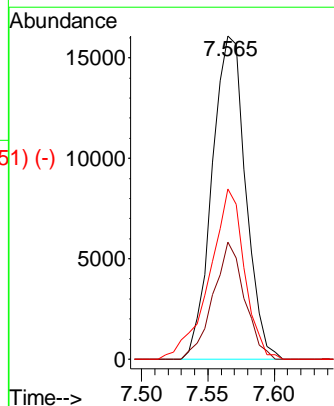
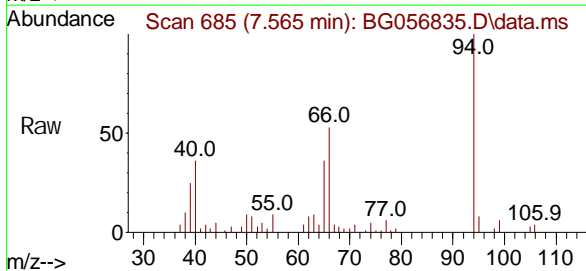
Instrument : BNA_G
 ClientSampleId : SSTD020457

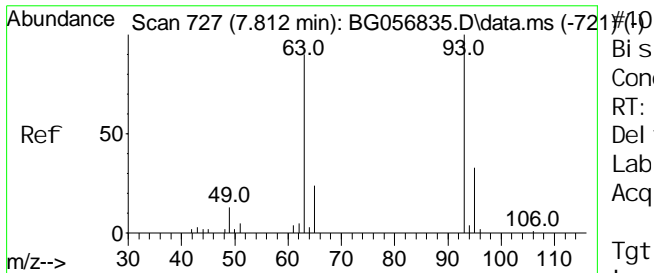
Tgt Ion	Resp	Lower	Upper
77	18581		
105	84.2	72.2	108.4
106	79.1	67.4	101.2



Phenol
 Concen: 19.758 ng/ul
 RT: 7.565 min Scan# 685
 Delta R.T. -0.000 min
 Lab File: BG056835.D
 Acq: 6 Mar 2023 10:26

Tgt Ion	Resp	Lower	Upper
94	28238		
65	36.1	25.7	38.5
66	52.6	38.9	58.3





Bis(2-Chloroethyl) ether
 Concen: 20.846 ng/ul
 RT: 7.812 min Scan# 727
 Delta R.T. -0.006 min
 Lab File: BG056835.D
 Acq: 6 Mar 2023 10:26

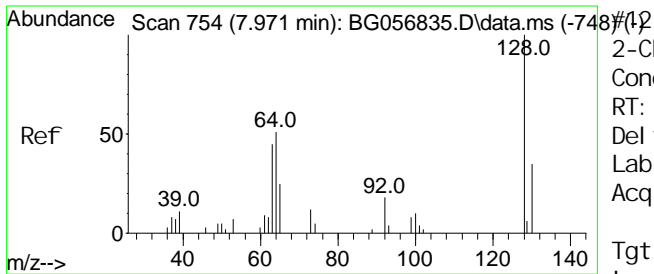
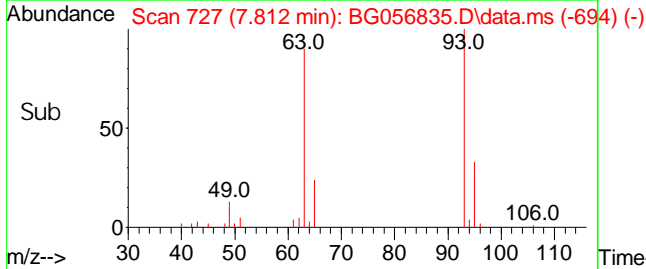
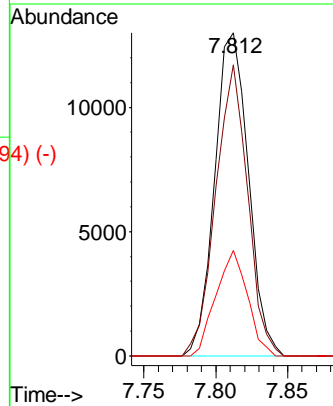
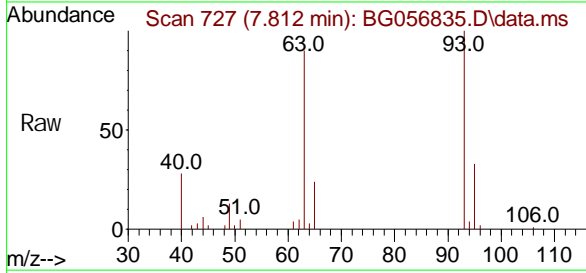
Instrument :

BNA_G

ClientSampleId :

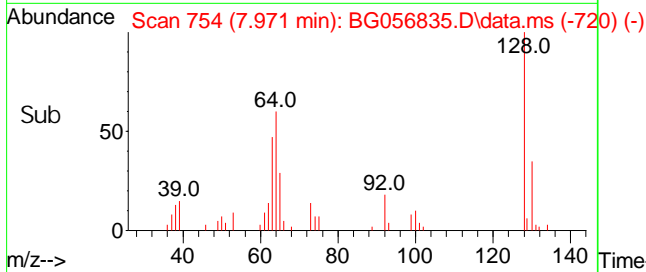
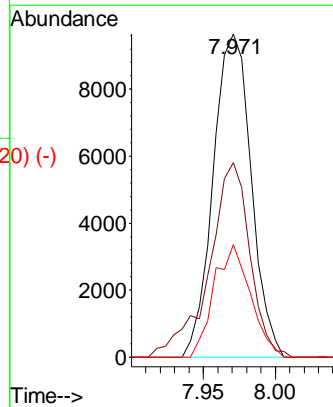
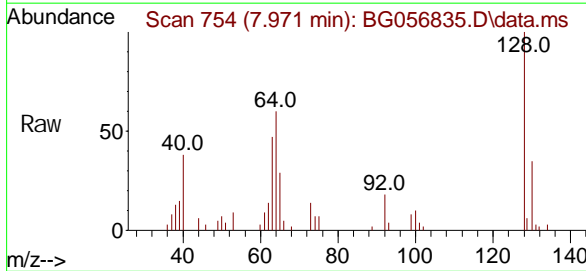
SSTD020457

Tgt Ion	Resp	Lower	Upper
93	21169		
63	90.2	66.6	100.0
95	32.7	25.0	37.4

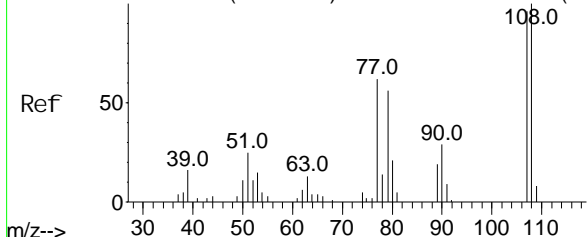


2-Chlorophenol
 Concen: 19.194 ng/ul
 RT: 7.971 min Scan# 754
 Delta R.T. -0.000 min
 Lab File: BG056835.D
 Acq: 6 Mar 2023 10:26

Tgt Ion	Resp	Lower	Upper
128	17687		
64	60.2	45.5	68.3
130	34.9	27.7	41.5



Abundance Scan 902 (8.840 min): BG056835.D\data.ms (-896) (-)



2-Methyl phenol
Concen: 17.790 ng/ul
RT: 8.840 min Scan# 913
Delta R.T. -0.000 min
Lab File: BG056835.D
Acq: 6 Mar 2023 10:26

Instrument :

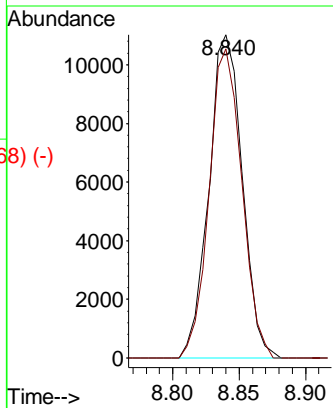
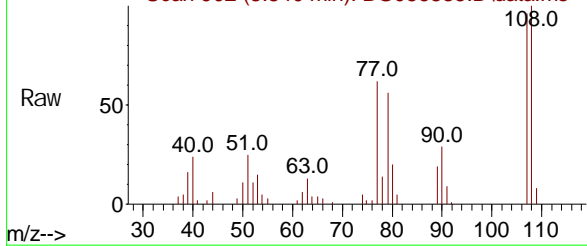
BNA_G

Client Sample Id :

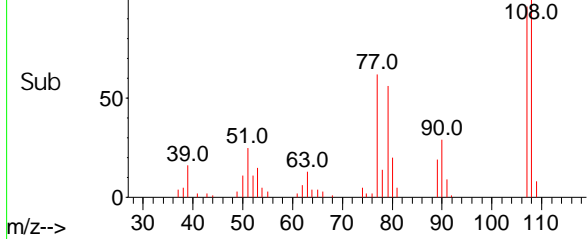
SSTD020457

Tgt Ion: 108 Resp: 19178
Ion Ratio Lower Upper
108 100
107 95.7 73.4 110.0

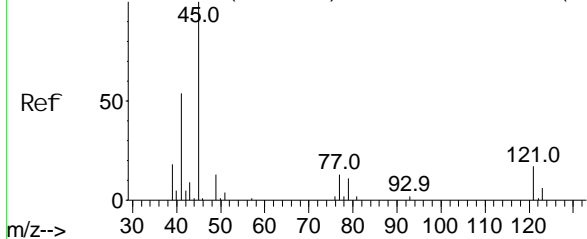
Abundance Scan 902 (8.840 min): BG056835.D\data.ms



Abundance Scan 902 (8.840 min): BG056835.D\data.ms (-868) (-)



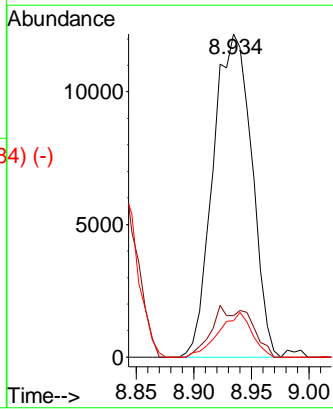
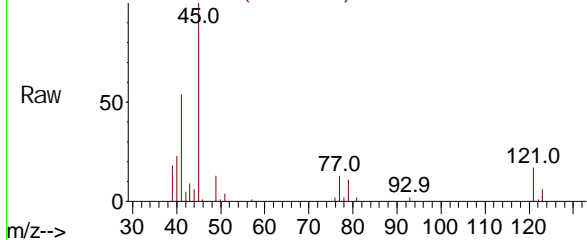
Abundance Scan 918 (8.934 min): BG056835.D\data.ms (-910) (-)



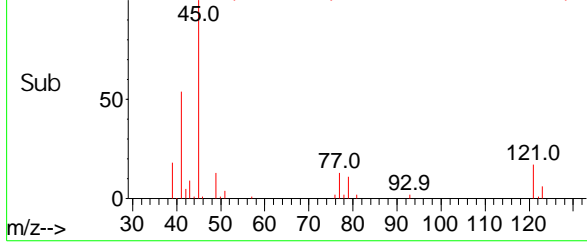
2,2'-oxybis(1-Chloropropane)
Concen: 20.832 ng/ul
RT: 8.934 min Scan# 918
Delta R.T. -0.000 min
Lab File: BG056835.D
Acq: 6 Mar 2023 10:26

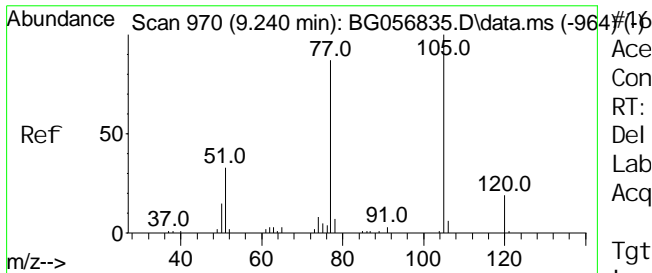
Tgt Ion: 45 Resp: 28426
Ion Ratio Lower Upper
45 100
77 12.8 12.4 18.6
79 11.2 9.8 14.6

Abundance Scan 918 (8.934 min): BG056835.D\data.ms



Abundance Scan 918 (8.934 min): BG056835.D\data.ms (-884) (-)

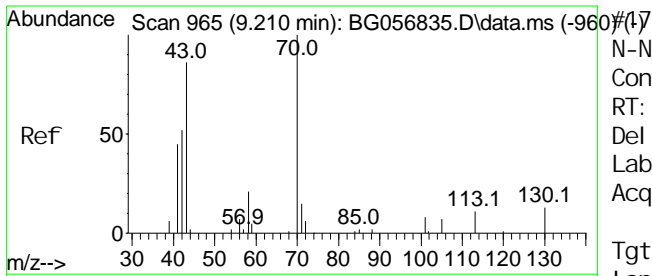
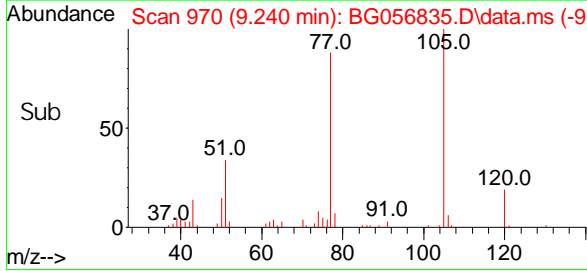
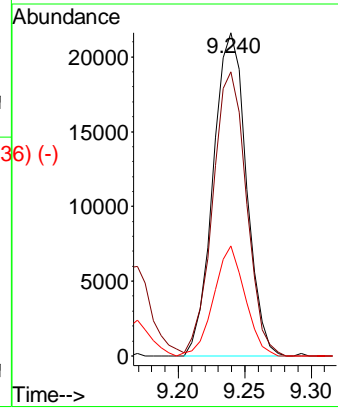
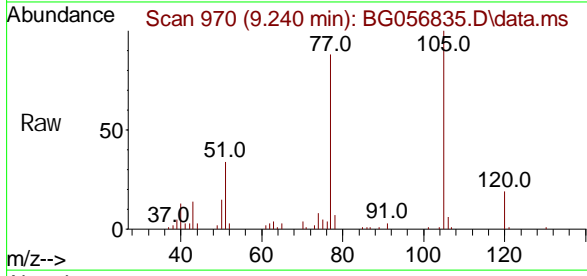




Acetophenone
 Concen: 20.450 ng/ul
 RT: 9.240 min Scan# 964
 Delta R.T. -0.000 min
 Lab File: BG056835.D
 Acq: 6 Mar 2023 10:26

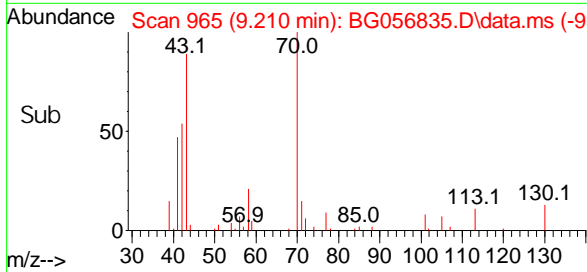
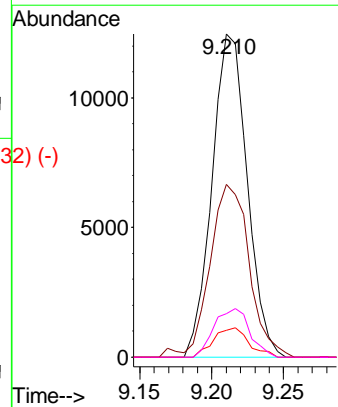
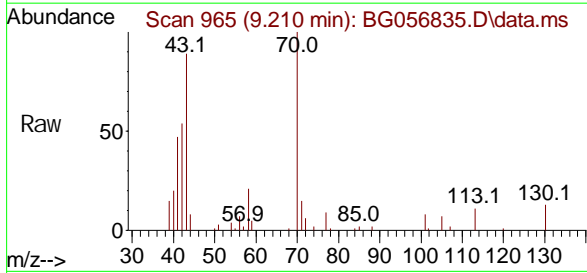
Instrument : BNA_G
 ClientSampleId : SSTD020457

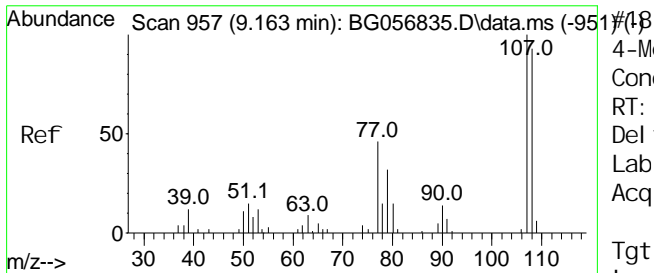
Tgt Ion	Resp	Ion Ratio	Lower	Upper
105	37493	100		
77		88.0	71.4	107.0
51		34.1	23.6	35.4



N-Nitrosodipropylamine
 Concen: 20.132 ng/ul
 RT: 9.210 min Scan# 965
 Delta R.T. -0.006 min
 Lab File: BG056835.D
 Acq: 6 Mar 2023 10:26

Tgt Ion	Resp	Ion Ratio	Lower	Upper
70	21178	100		
42		53.5	46.6	70.0
101		8.3	7.3	10.9
130		13.4	13.7	20.5#

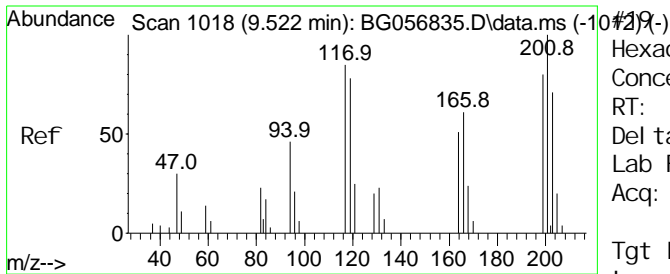
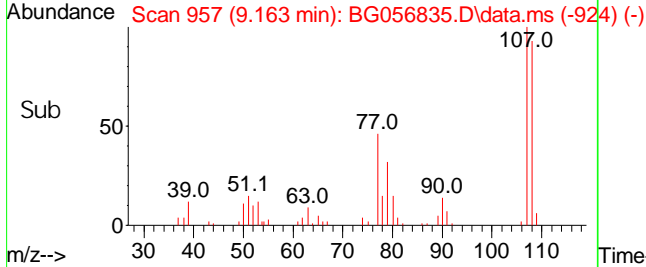
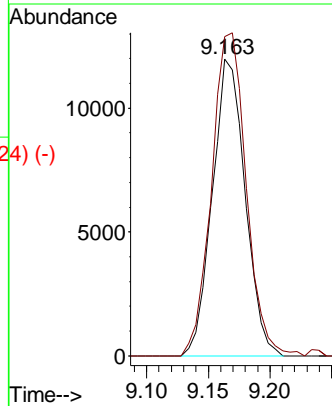
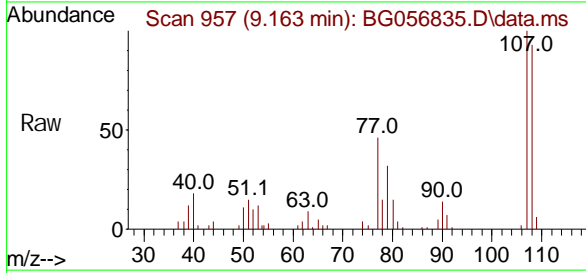




4-Methyl phenol
 Concen: 18.902 ng/ul
 RT: 9.163 min Scan# 1018
 Delta R.T. -0.006 min
 Lab File: BG056835.D
 Acq: 6 Mar 2023 10:26

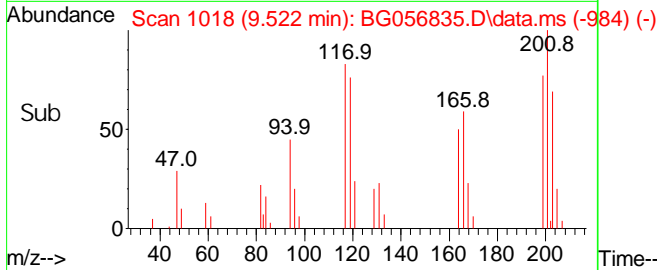
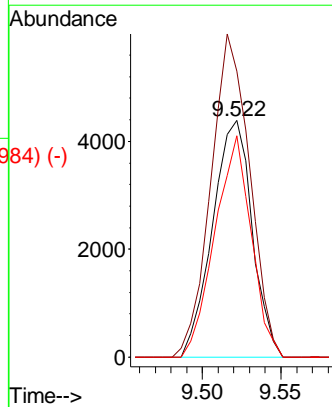
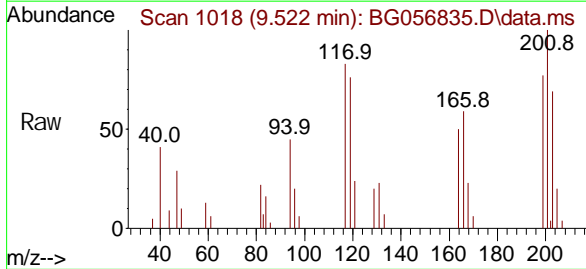
Instrument : BNA_G
 ClientSampleId : SSTD020457

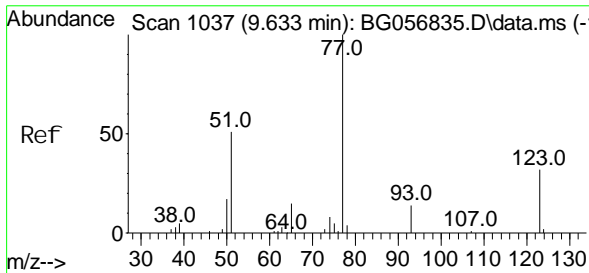
Tgt Ion: 108 Resp: 22142
 Ion Ratio Lower Upper
 108 100
 107 107.5 92.1 138.1



Hexachloroethane
 Concen: 19.571 ng/ul
 RT: 9.522 min Scan# 1018
 Delta R.T. 0.000 min
 Lab File: BG056835.D
 Acq: 6 Mar 2023 10:26

Tgt Ion: 117 Resp: 7669
 Ion Ratio Lower Upper
 117 100
 201 121.0 95.2 142.8
 199 93.7 57.9 86.9

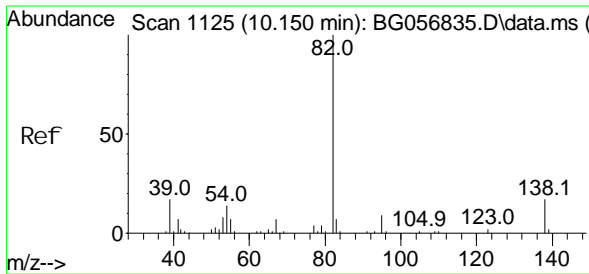
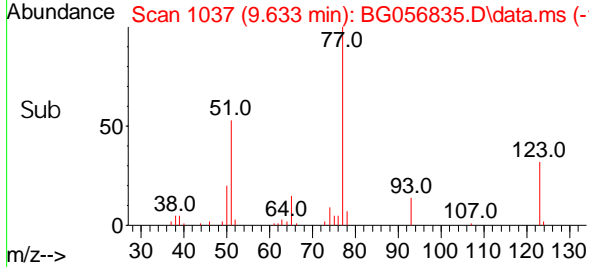
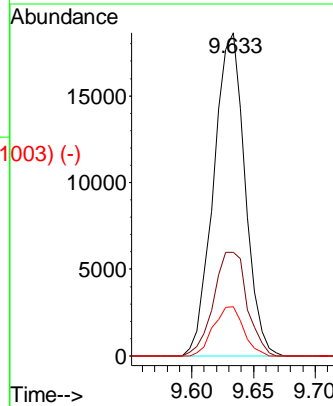
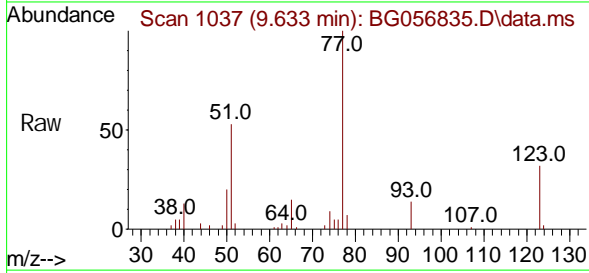




#02 (-)
 Ni trobenzene
 Concen: 22.580 ng/ul
 RT: 9.633 min Scan#
 Delta R.T. 0.000 min
 Lab File: BG056835.D
 Acq: 6 Mar 2023 10:26

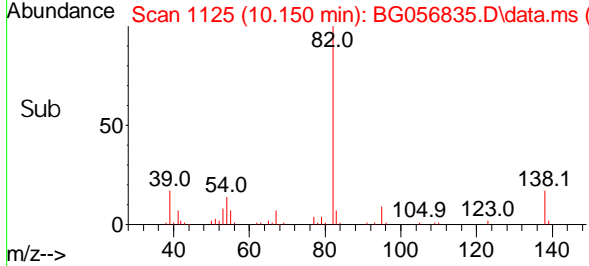
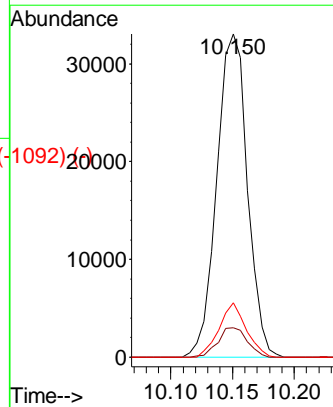
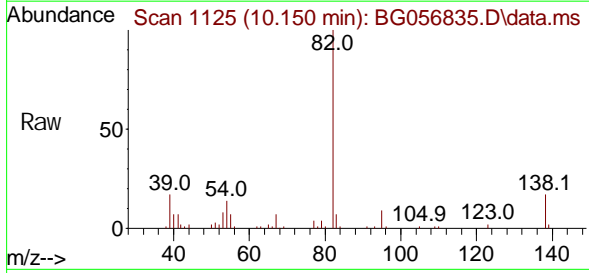
Instrument :
 BNA_G
 ClientSampleId :
 SSTD020457

Tgt Ion	Resp	Lower	Upper
77	100		
123	32.2	27.8	41.6
65	15.2	10.6	16.0

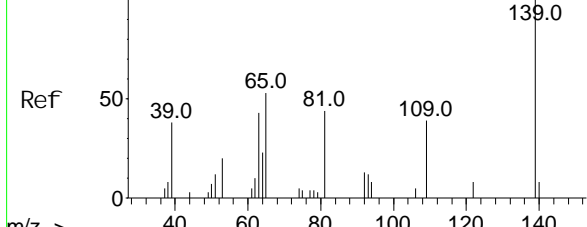


#28 (-)
 Isophorone
 Concen: 20.040 ng/ul
 RT: 10.150 min Scan# 1125
 Delta R.T. -0.006 min
 Lab File: BG056835.D
 Acq: 6 Mar 2023 10:26

Tgt Ion	Resp	Lower	Upper
82	100		
95	9.1	7.7	11.5
138	16.9	12.1	18.1



Abundance Scan 1159 (10.350 min): BG056835.D\data.ms (-1125) (-)



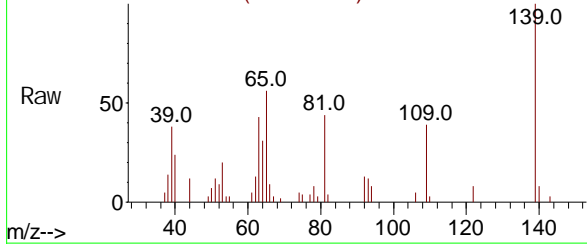
2-Nitrophenol
Concen: 17.797 ng/ul
RT: 10.350 min Scan#
Delta R.T. -0.006 min
Lab File: BG056835.D
Acq: 6 Mar 2023 10:26

Instrument :
BNA_G
ClientSampleId :
SSTD020457

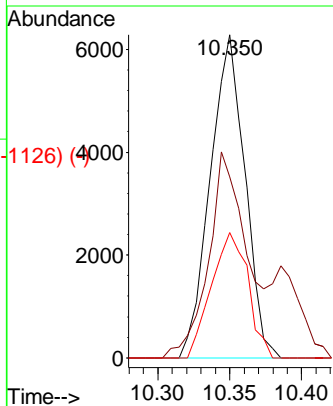
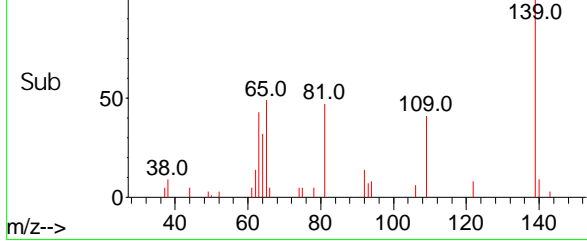
Tgt Ion: 139 Resp: 10522

Ion	Ratio	Lower	Upper
139	100		
65	56.0	49.4	74.2
109	38.9	31.6	47.4

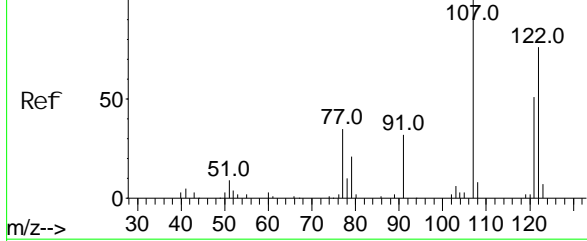
Abundance Scan 1159 (10.350 min): BG056835.D\data.ms



Abundance Scan 1159 (10.350 min): BG056835.D\data.ms (-1126) (-)



Abundance Scan 1165 (10.385 min): BG056835.D\data.ms (-1126) (-)

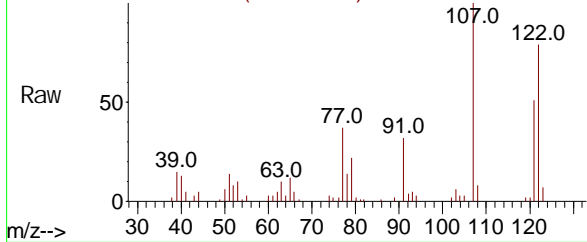


2,4-Dimethylphenol
Concen: 19.755 ng/ul
RT: 10.385 min Scan# 1165
Delta R.T. -0.006 min
Lab File: BG056835.D
Acq: 6 Mar 2023 10:26

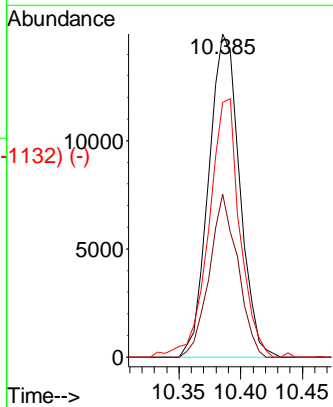
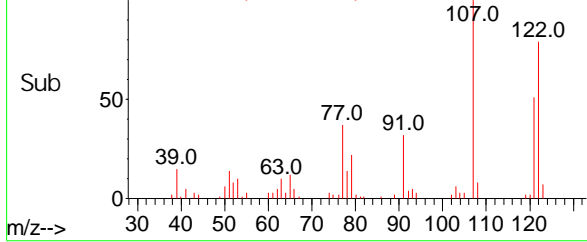
Tgt Ion: 107 Resp: 26084

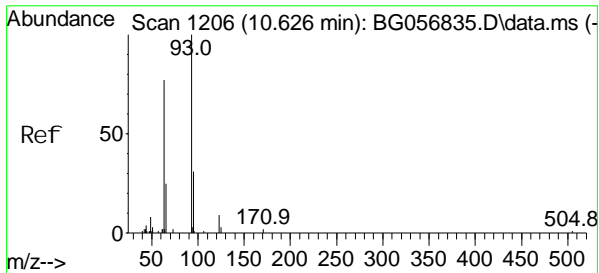
Ion	Ratio	Lower	Upper
107	100		
121	50.6	40.2	60.4
122	78.8	63.1	94.7

Abundance Scan 1165 (10.385 min): BG056835.D\data.ms



Abundance Scan 1165 (10.385 min): BG056835.D\data.ms (-1132) (-)

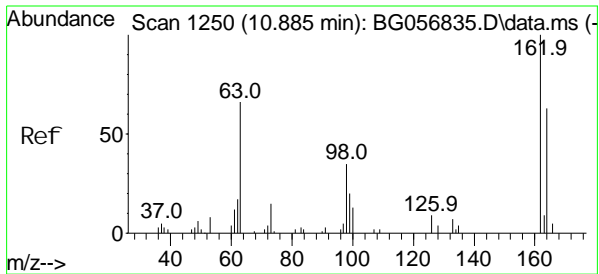
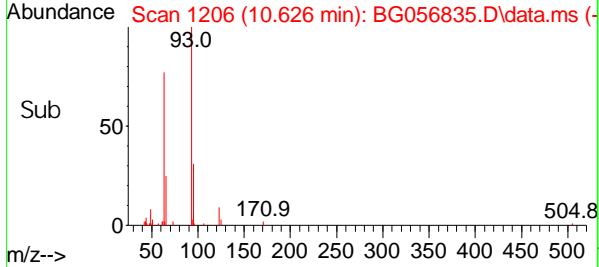
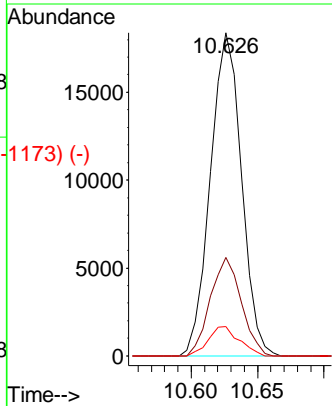
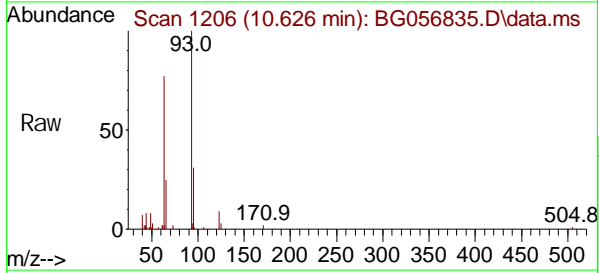




Scan 1206 (10.626 min): BG056835.D\data.ms (-1207) (-)
 Bis(2-Chloroethoxy)methane
 Concen: 20.686 ng/ul
 RT: 10.626 min Scan#
 Delta R.T. -0.006 min
 Lab File: BG056835.D
 Acq: 6 Mar 2023 10:26

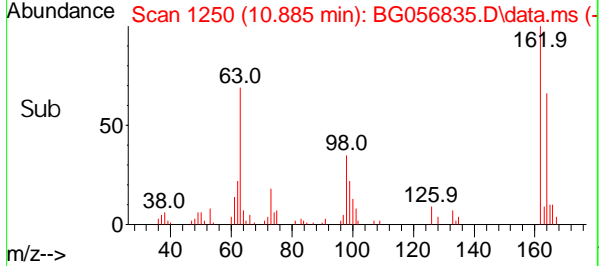
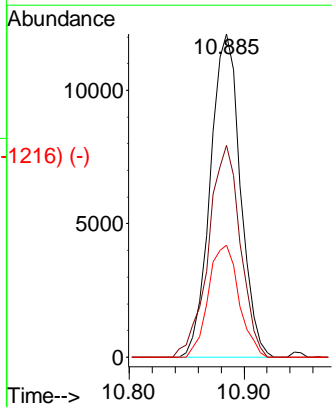
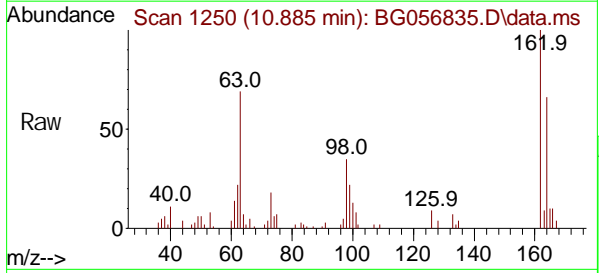
Instrument :
 BNA_G
ClientSampleId :
 SSTD020457

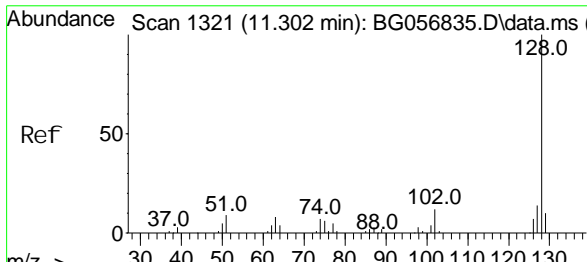
Tgt Ion	Resp	Lower	Upper
93	29827		
95	30.5	24.6	37.0
123	9.1	6.6	10.0



Scan 1250 (10.885 min): BG056835.D\data.ms (-1249) (-)
 2,4-Dichlorophenol
 Concen: 20.105 ng/ul
 RT: 10.885 min Scan# 1250
 Delta R.T. -0.000 min
 Lab File: BG056835.D
 Acq: 6 Mar 2023 10:26

Tgt Ion	Resp	Lower	Upper
162	21968		
164	65.6	53.3	79.9
98	34.7	25.5	38.3

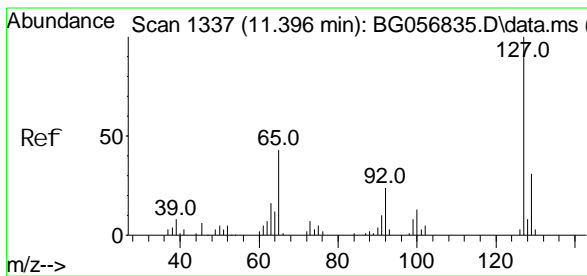
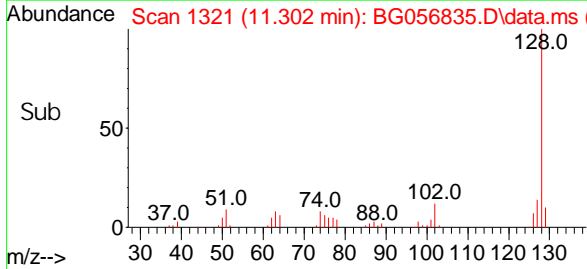
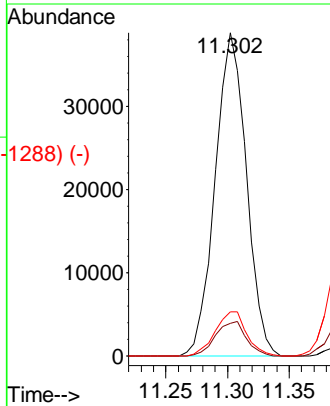
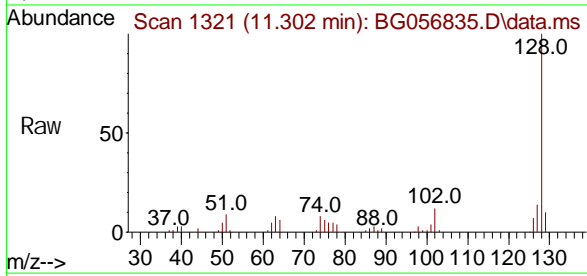




Scan 1321 (11.302 min): BG056835.D\data.ms (-1280) (-)
 Naphthalene
 Concen: 20.739 ng/ul
 RT: 11.302 min Scan#
 Delta R.T. -0.006 min
 Lab File: BG056835.D
 Acq: 6 Mar 2023 10:26

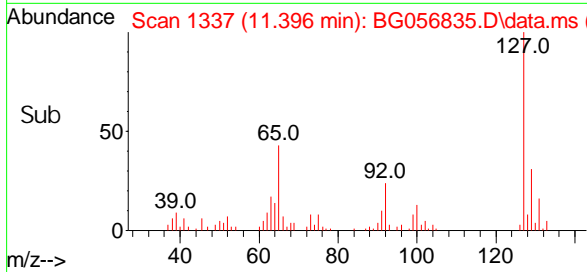
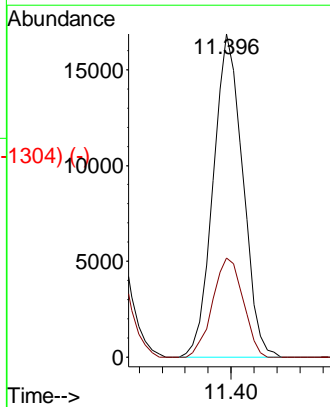
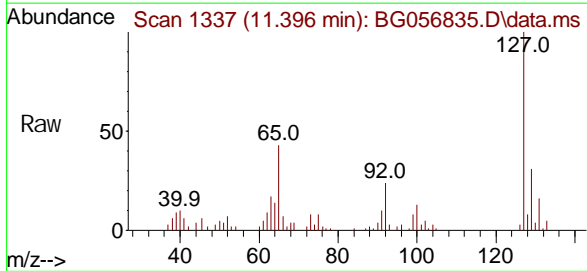
Instrument :
 BNA_G
ClientSampleId :
 SSTD020457

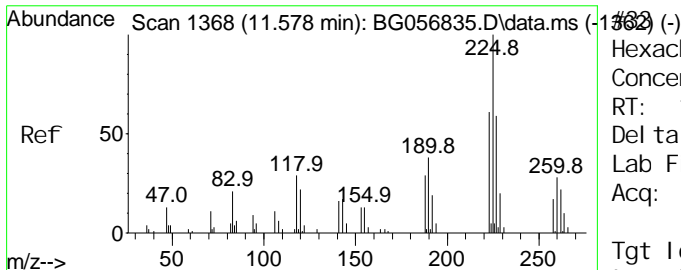
Tgt Ion	Resp	Lower	Upper
128	100		
129	10.1	8.6	12.8
127	13.7	9.8	14.8



Scan 1337 (11.396 min): BG056835.D\data.ms (-1330) (-)
 4-Chloroaniline
 Concen: 20.636 ng/ul
 RT: 11.396 min Scan# 1337
 Delta R.T. -0.006 min
 Lab File: BG056835.D
 Acq: 6 Mar 2023 10:26

Tgt Ion	Resp	Lower	Upper
127	100		
129	30.8	23.4	35.0

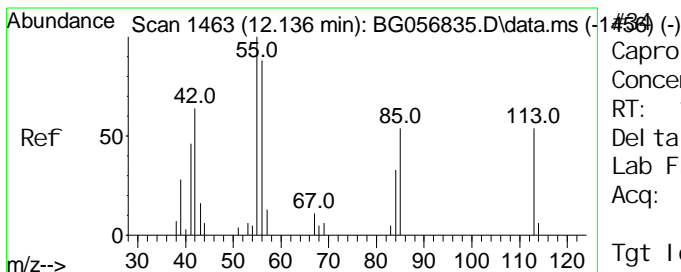
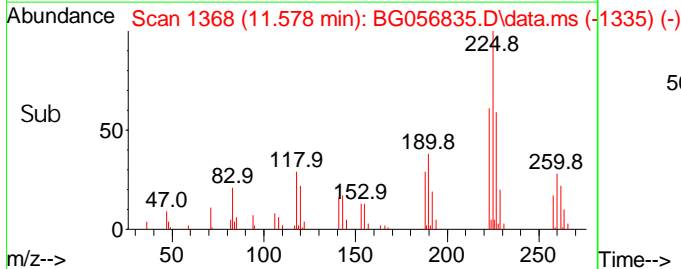
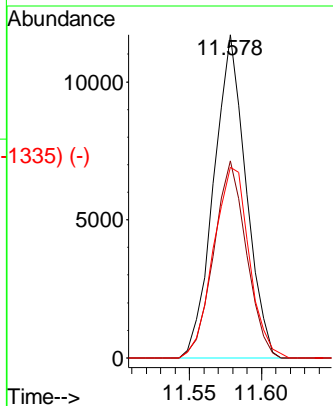
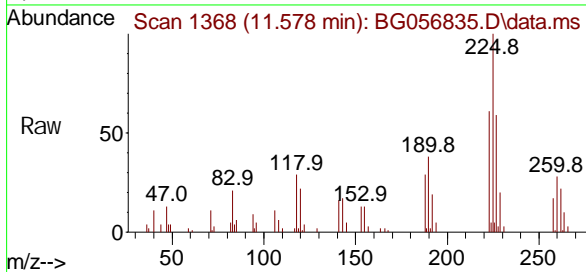




Hexachlorobutadiene
 Concn: 20.856 ng/ul
 RT: 11.578 min Scan#
 Delta R.T. -0.006 min
 Lab File: BG056835.D
 Acq: 6 Mar 2023 10:26

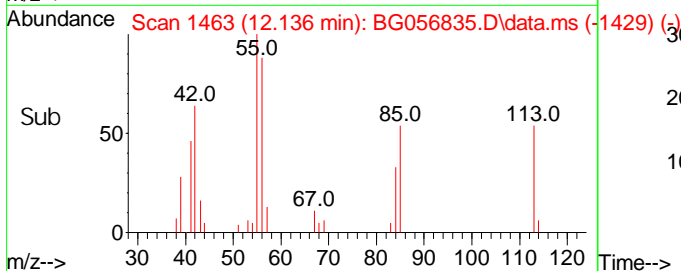
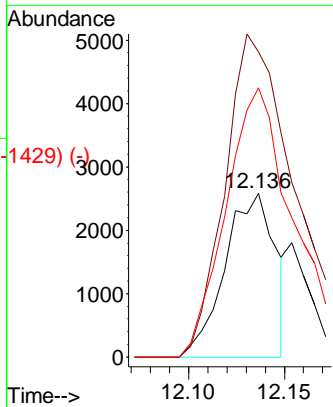
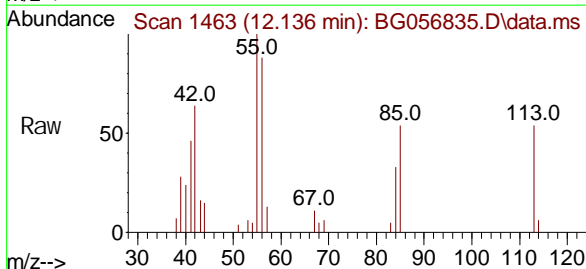
Instrument : BNA_G
 Client Sample Id : SSTD020457

Tgt Ion	Resp	Lower	Upper
225	100		
223	61.0	53.5	80.3
227	59.0	58.2	87.2

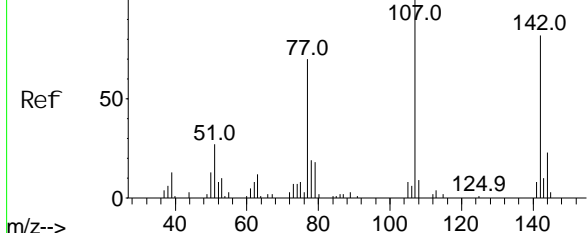


Caprolactam
 Concn: 12.679 ng/ul
 RT: 12.136 min Scan# 1463
 Delta R.T. -0.000 min
 Lab File: BG056835.D
 Acq: 6 Mar 2023 10:26

Tgt Ion	Resp	Lower	Upper
113	100		
55	186.3	167.0	250.6
56	164.3	113.5	170.3



Abundance Scan 1522 (12.483 min): BG056835.D\data.ms (-1485) (-)



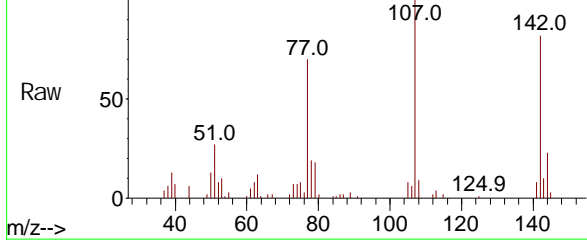
4-Chloro-3-methyl phenol
Concen: 19.653 ng/ul
RT: 12.483 min Scan#
Delta R.T. -0.000 min
Lab File: BG056835.D
Acq: 6 Mar 2023 10:26

Instrument :
BNA_G
ClientSampleId :
SSTD020457

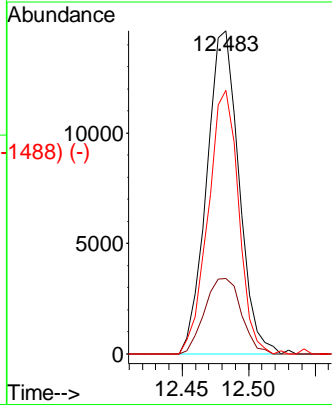
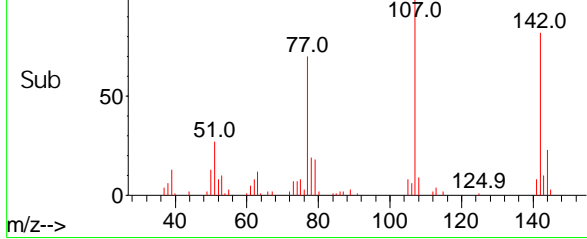
Tgt Ion: 107 Resp: 24671

Ion	Ratio	Lower	Upper
107	100		
144	23.4	20.5	30.7
142	81.6	55.8	83.6

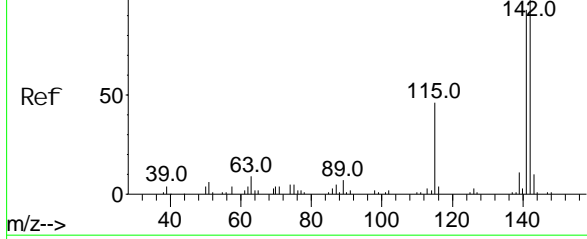
Abundance Scan 1522 (12.483 min): BG056835.D\data.ms



Abundance Scan 1522 (12.483 min): BG056835.D\data.ms (-1488) (-)



Abundance Scan 1589 (12.877 min): BG056835.D\data.ms (-1582) (-)

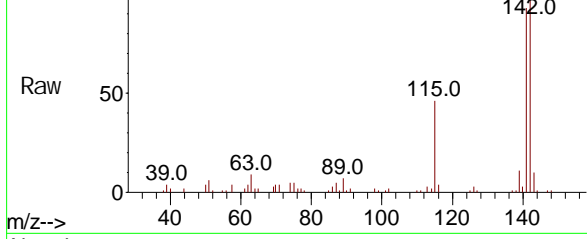


2-Methylnaphthalene
Concen: 20.968 ng/ul
RT: 12.877 min Scan# 1589
Delta R.T. -0.000 min
Lab File: BG056835.D
Acq: 6 Mar 2023 10:26

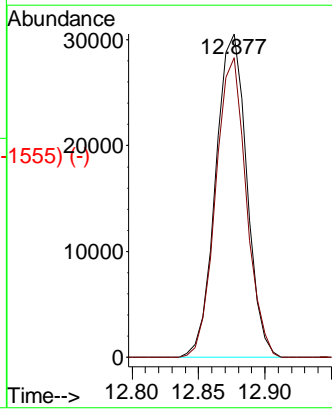
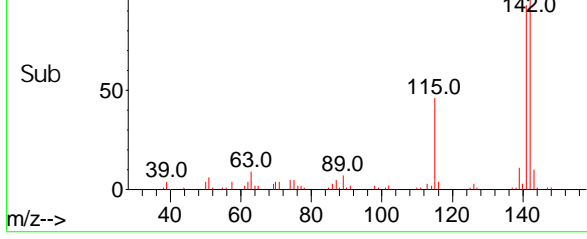
Tgt Ion: 142 Resp: 49628

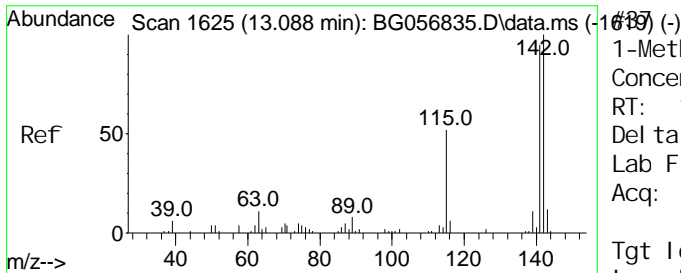
Ion	Ratio	Lower	Upper
142	100		
141	92.6	71.0	106.6

Abundance Scan 1589 (12.877 min): BG056835.D\data.ms



Abundance Scan 1589 (12.877 min): BG056835.D\data.ms (-1555) (-)

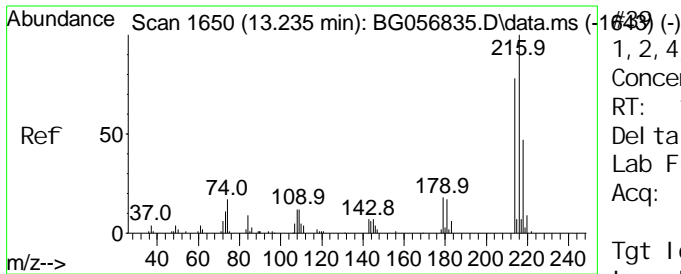
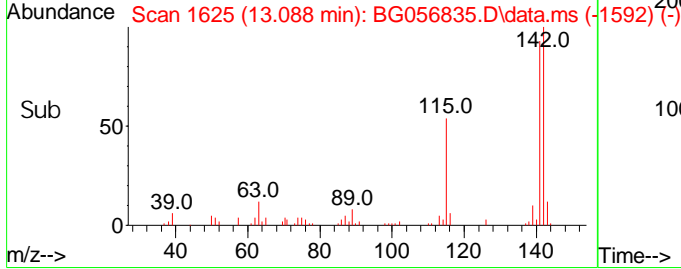
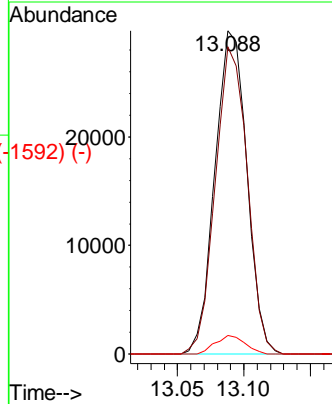
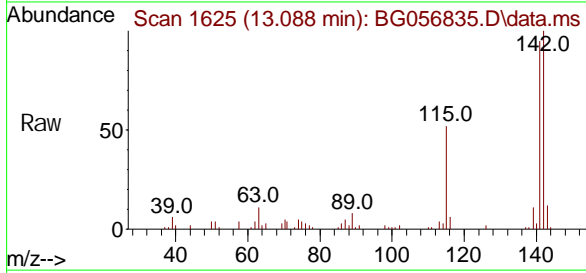




1-Methyl naphthalene
 Concen: 21.303 ng/ul
 RT: 13.088 min Scan# 1625
 Delta R.T. -0.006 min
 Lab File: BG056835.D
 Acq: 6 Mar 2023 10:26

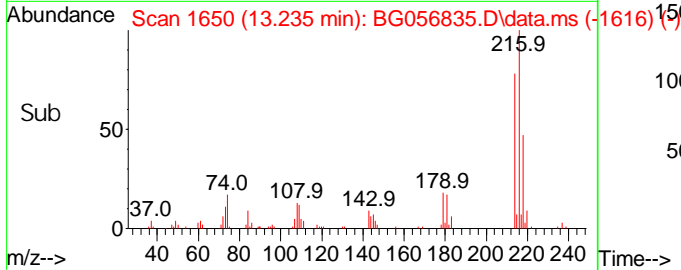
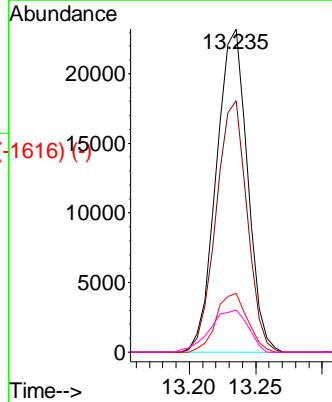
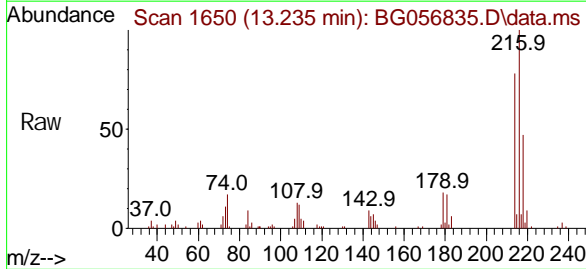
Instrument : BNA_G
 ClientSampleId : SSTD020457

Tgt Ion	Resp	Lower	Upper
142	100		
141	95.1	73.5	110.3
116	5.8	4.0	6.0

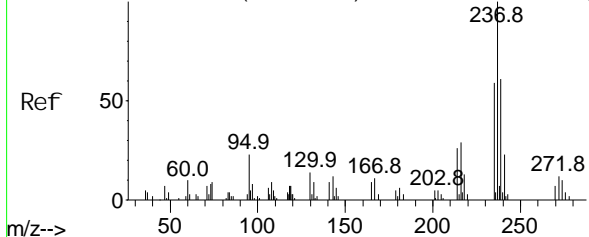


1,2,4,5-Tetrachlorobenzene
 Concen: 22.142 ng/ul
 RT: 13.235 min Scan# 1650
 Delta R.T. -0.000 min
 Lab File: BG056835.D
 Acq: 6 Mar 2023 10:26

Tgt Ion	Resp	Lower	Upper
216	100		
214	77.9	64.4	96.6
179	18.2	16.9	25.3
108	13.0	11.6	17.4



Abundance Scan 1646 (13.212 min): BG056835.D\data.ms (-1640) (-)

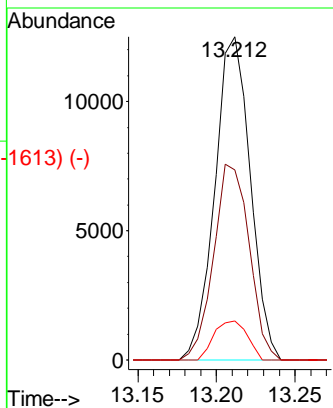
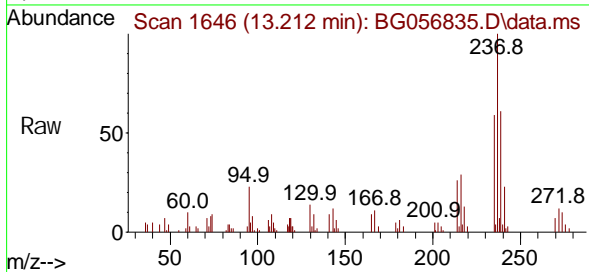


Hexachlorocyclopentadiene
Concn: 16.086 ng/ul
RT: 13.212 min Scan#
Delta R.T. -0.006 min
Lab File: BG056835.D
Acq: 6 Mar 2023 10:26

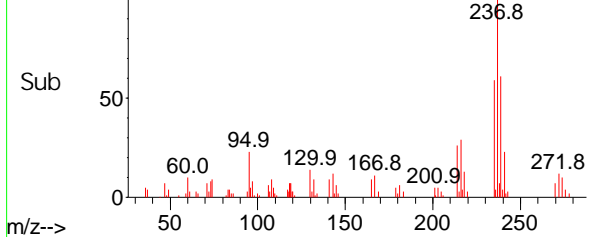
Instrument : BNA_G
ClientSampleId : SSTD020457

Tgt Ion: 237 Resp: 19651

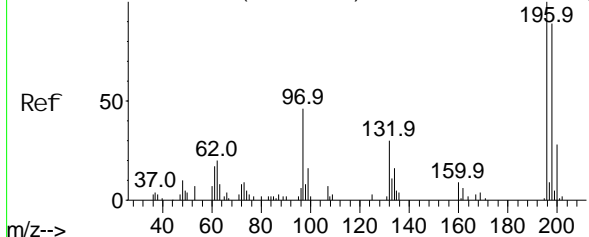
Ion	Ratio	Lower	Upper
237	100		
235	58.8	47.8	71.8
272	12.0	9.9	14.9



Abundance Scan 1646 (13.212 min): BG056835.D\data.ms (-1613) (-)



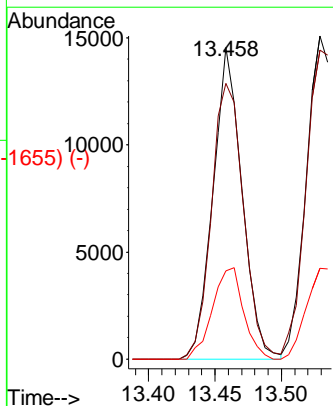
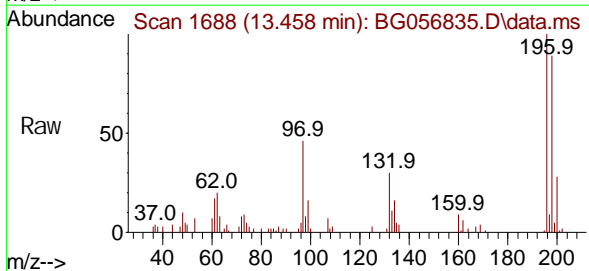
Abundance Scan 1688 (13.458 min): BG056835.D\data.ms (-1641) (-)



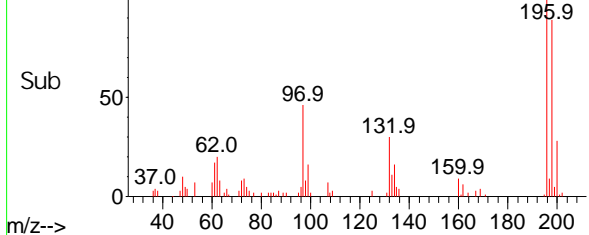
2,4,6-Trichlorophenol
Concn: 19.338 ng/ul
RT: 13.458 min Scan# 1688
Delta R.T. -0.006 min
Lab File: BG056835.D
Acq: 6 Mar 2023 10:26

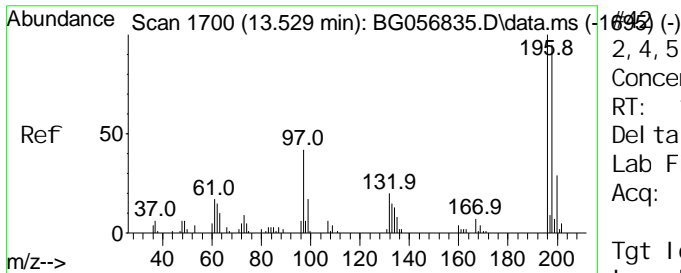
Tgt Ion: 196 Resp: 22029

Ion	Ratio	Lower	Upper
196	100		
198	88.5	75.0	112.6
200	28.4	22.1	33.1



Abundance Scan 1688 (13.458 min): BG056835.D\data.ms (-1655) (-)

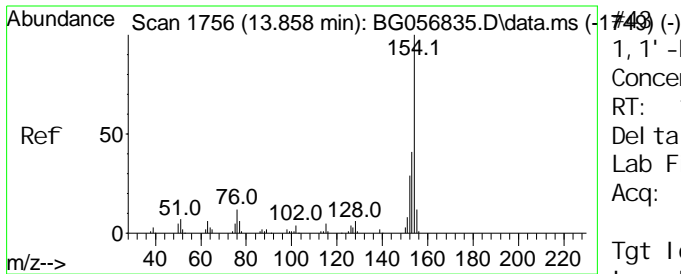
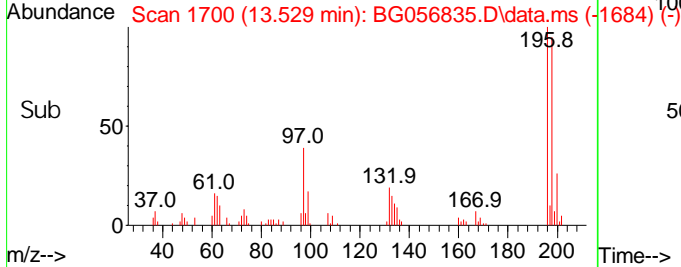
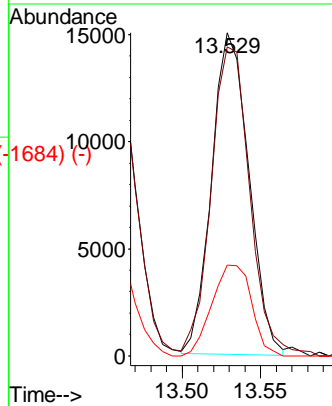
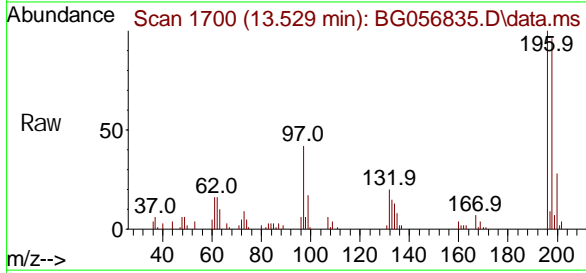




Scan 1700 (13.529 min): BG056835.D\data.ms (-1695) (-)
 2, 4, 5-Tri chl orophenol
 Concen: 19.989 ng/ul
 RT: 13.529 min Scan#
 Delta R.T. -0.006 min
 Lab File: BG056835.D
 Acq: 6 Mar 2023 10:26

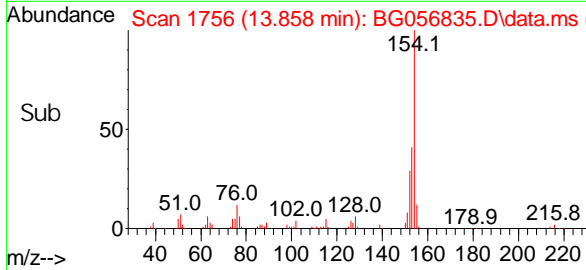
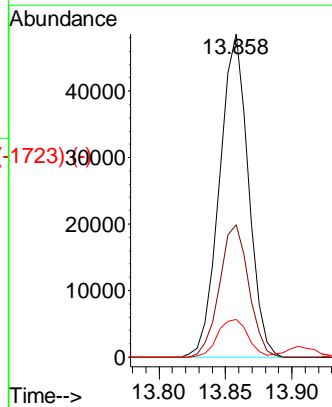
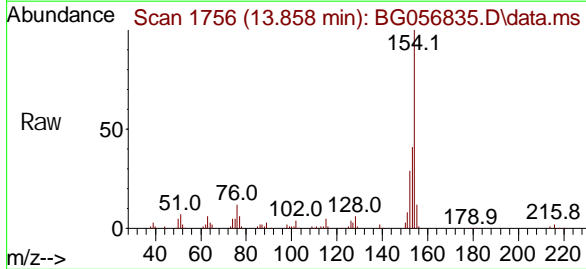
Instrument : BNA_G
 ClientSampleId : SSTD020457

Tgt Ion	Resp	Lower	Upper
196	100		
198	95.7	80.1	120.1
200	28.2	26.7	40.1

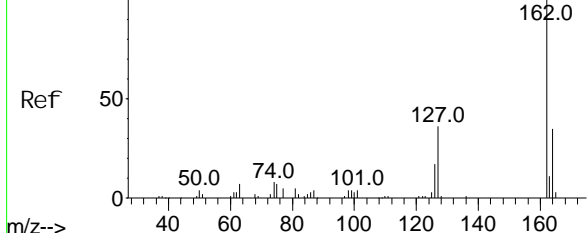


Scan 1756 (13.858 min): BG056835.D\data.ms (-1743) (-)
 1, 1' -Bi phenyl
 Concen: 20.666 ng/ul
 RT: 13.858 min Scan# 1756
 Delta R.T. -0.006 min
 Lab File: BG056835.D
 Acq: 6 Mar 2023 10:26

Tgt Ion	Resp	Lower	Upper
154	100		
153	40.9	32.0	48.0
76	11.6	9.0	13.4



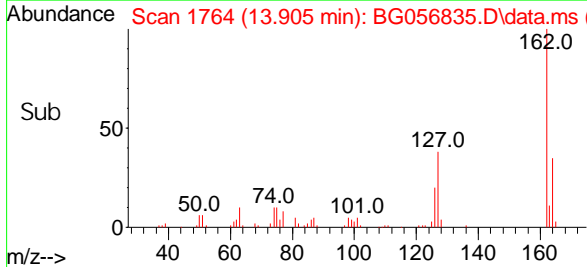
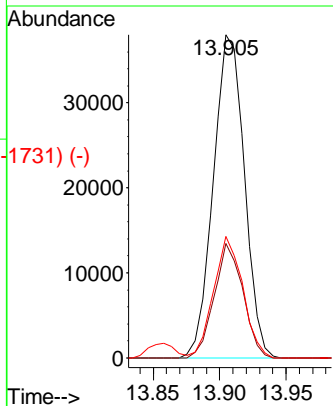
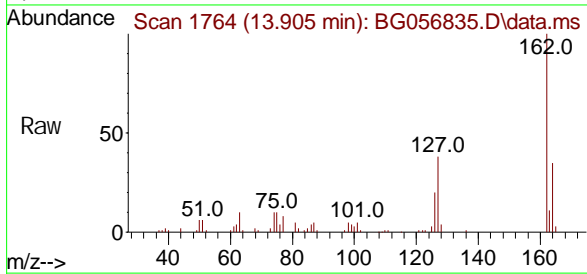
Abundance Scan 1764 (13.905 min): BG056835.D\data.ms (-1746) (-)



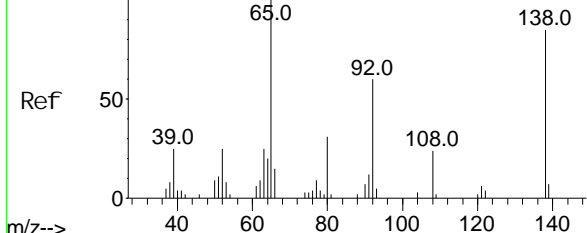
2-Chloronaphthalene
Concn: 21.043 ng/ul
RT: 13.905 min Scan#
Delta R.T. -0.006 min
Lab File: BG056835.D
Acq: 6 Mar 2023 10:26

Instrument :
BNA_G
ClientSampleId :
SSTD020457

Tgt Ion: 162 Resp: 61565
Ion Ratio Lower Upper
162 100
164 35.4 23.3 34.9#
127 37.5 25.8 38.8

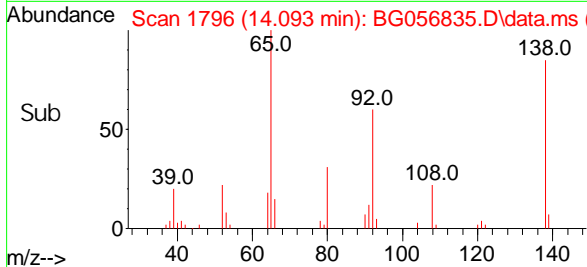
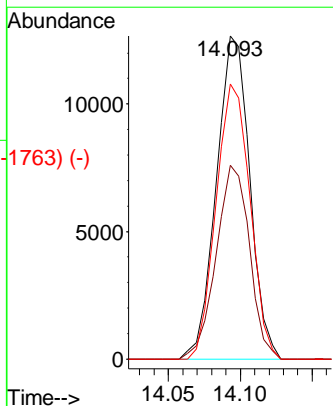
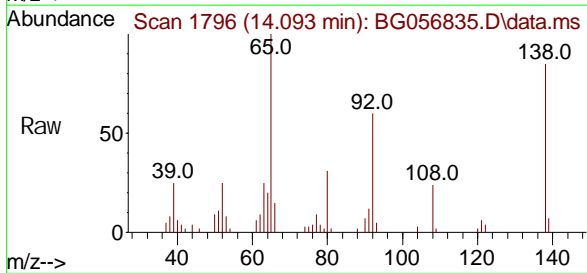


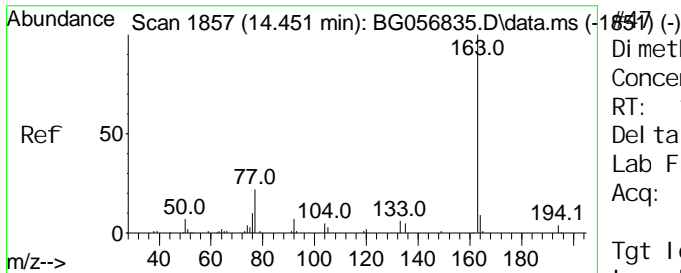
Abundance Scan 1796 (14.093 min): BG056835.D\data.ms (-1746) (-)



2-Nitroaniline
Concn: 20.136 ng/ul
RT: 14.093 min Scan# 1796
Delta R.T. -0.006 min
Lab File: BG056835.D
Acq: 6 Mar 2023 10:26

Tgt Ion: 65 Resp: 20448
Ion Ratio Lower Upper
65 100
92 59.9 53.9 80.9
138 85.1 73.8 110.6

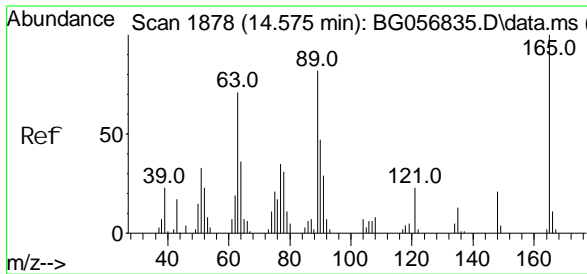
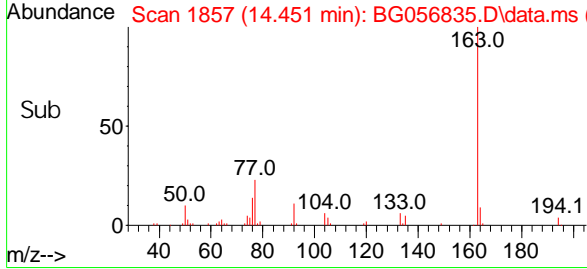
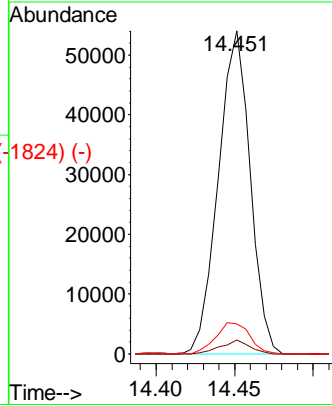
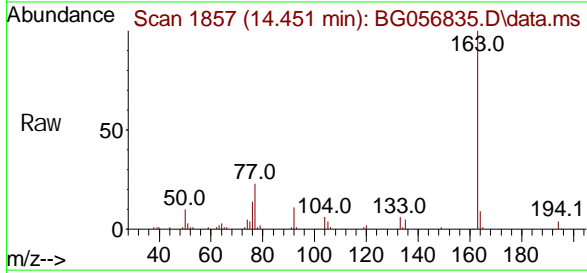




Di methyl phtal ate
 Concen: 19.206 ng/ul
 RT: 14.451 min Scan#
 Del ta R. T. -0.006 min
 Lab File: BG056835.D
 Acq: 6 Mar 2023 10:26

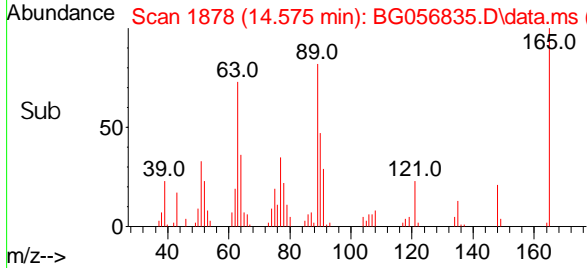
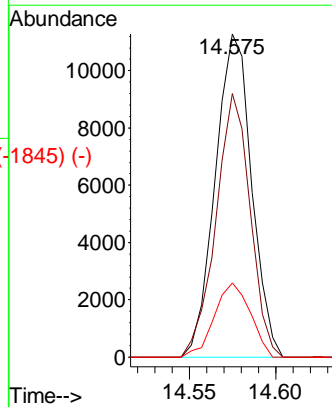
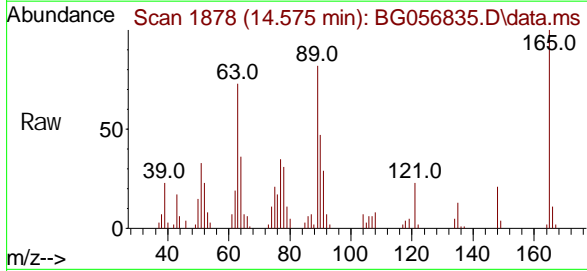
Instrument :
 BNA_G
 ClientSampleId :
 SSTD020457

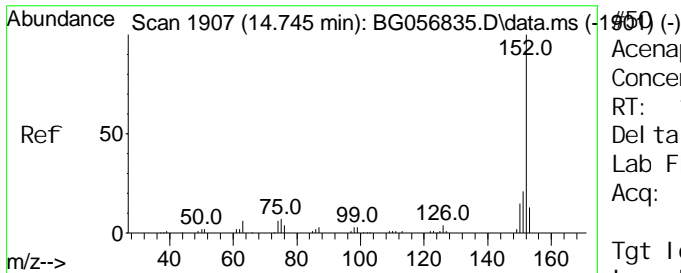
Tgt Ion	Resp	Lower	Upper
163	100		
194	4.3	2.5	3.7#
164	9.3	8.2	12.4



2,6-Di nitrotol uene
 Concen: 20.486 ng/ul
 RT: 14.575 min Scan# 1878
 Del ta R. T. -0.006 min
 Lab File: BG056835.D
 Acq: 6 Mar 2023 10:26

Tgt Ion	Resp	Lower	Upper
165	100		
89	81.6	48.4	72.6#
121	22.9	15.5	23.3



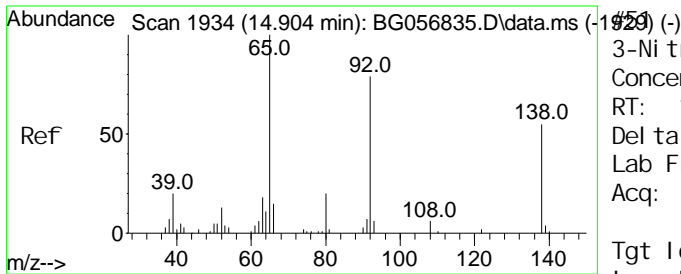
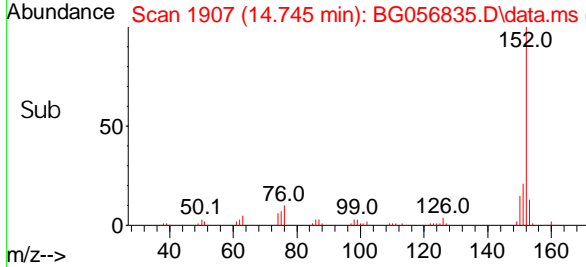
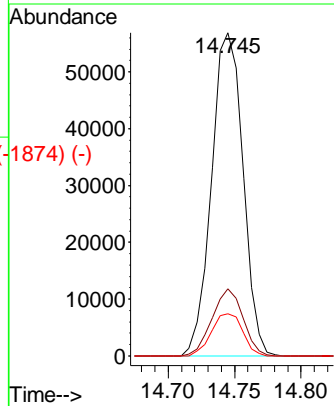
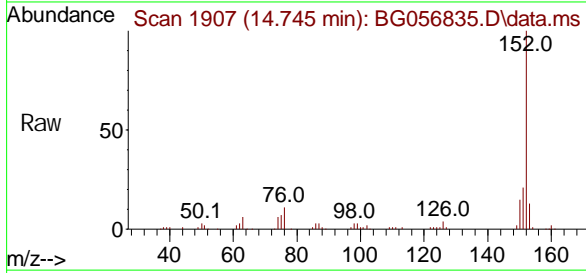


Scan 1907 (14.745 min): BG056835.D\data.ms (-1950) (-)
 Acenaphthyl ene
 Concen: 20.977 ng/ul
 RT: 14.745 min Scan#
 Delta R.T. -0.006 min
 Lab File: BG056835.D
 Acq: 6 Mar 2023 10:26

Instrument :
 BNA_G
ClientSampleId :
 SSTD020457

Tgt Ion: 152 Resp: 93445

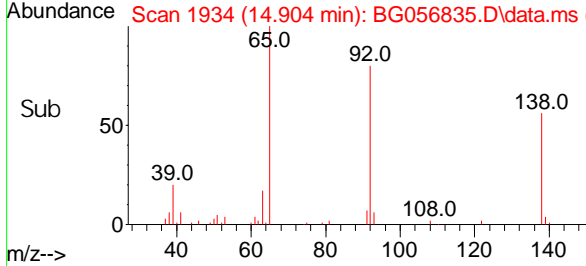
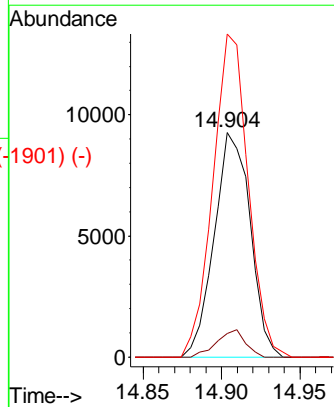
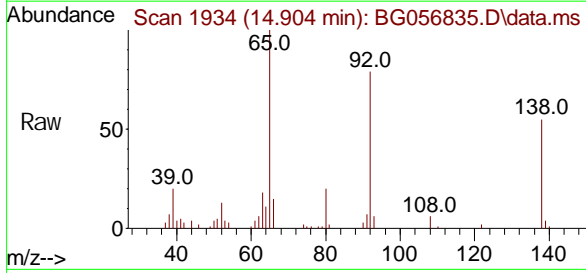
Ion	Ratio	Lower	Upper
152	100		
151	20.7	15.8	23.6
153	13.1	10.6	16.0

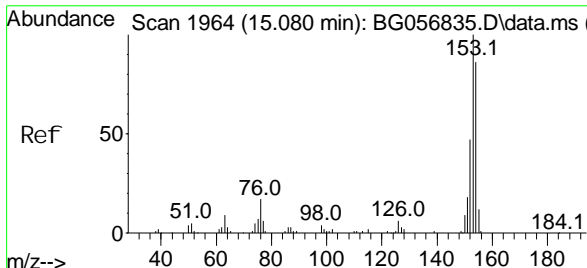


Scan 1934 (14.904 min): BG056835.D\data.ms (-1959) (-)
 3-Nitroaniline
 Concen: 20.300 ng/ul
 RT: 14.904 min Scan# 1934
 Delta R.T. -0.006 min
 Lab File: BG056835.D
 Acq: 6 Mar 2023 10:26

Tgt Ion: 138 Resp: 14694

Ion	Ratio	Lower	Upper
138	100		
108	10.4	6.5	9.7#
92	143.8	102.2	153.2

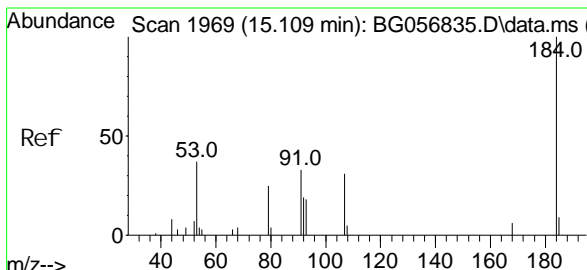
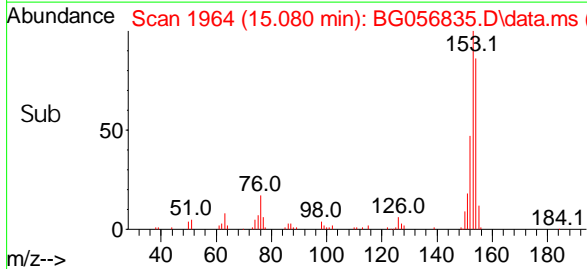
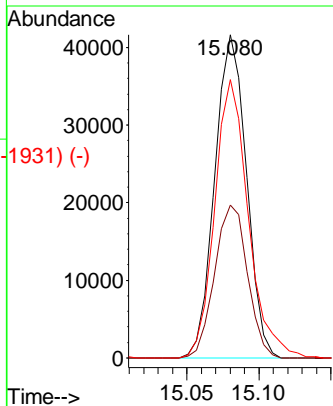
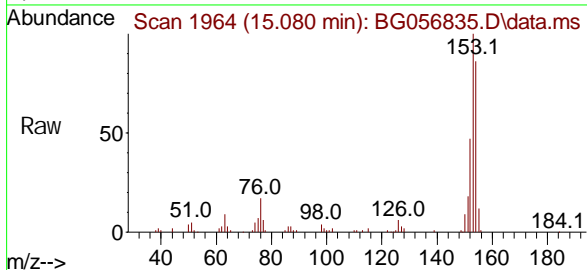




Scan 1964 (15.080 min): BG056835.D\data.ms (-1931) (-)
 Acenaphthene
 Concen: 20.784 ng/ul
 RT: 15.080 min Scan#
 Delta R.T. -0.006 min
 Lab File: BG056835.D
 Acq: 6 Mar 2023 10:26

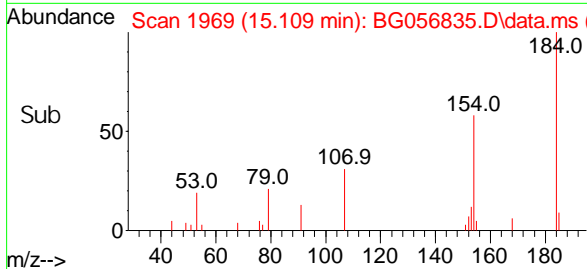
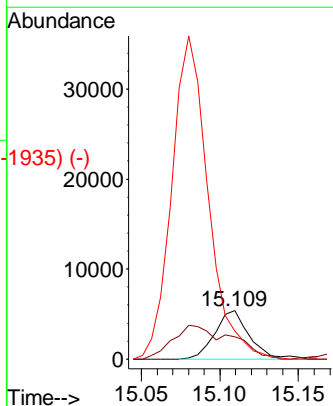
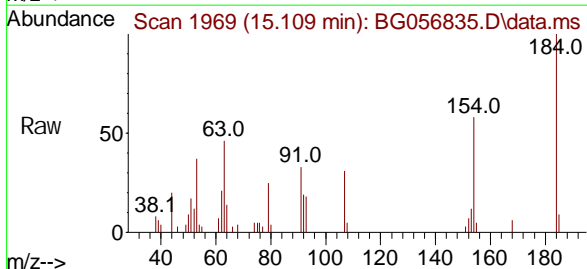
Instrument :
 BNA_G
ClientSampleId :
 SSTD020457

Tgt Ion	Resp	Lower	Upper
153	100		
152	47.3	38.6	58.0
154	86.2	70.9	106.3

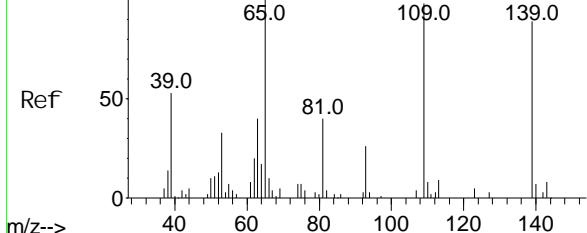


Scan 1969 (15.109 min): BG056835.D\data.ms (-1935) (-)
 2,4-Dinitrophenol
 Concen: 15.566 ng/ul
 RT: 15.109 min Scan# 1969
 Delta R.T. -0.000 min
 Lab File: BG056835.D
 Acq: 6 Mar 2023 10:26

Tgt Ion	Resp	Lower	Upper
184	100		
63	45.7	43.8	65.6
154	57.9	66.8	100.2#



Abundance Scan 1983 (15.192 min): BG056835.D\data.ms (-1955) (-)



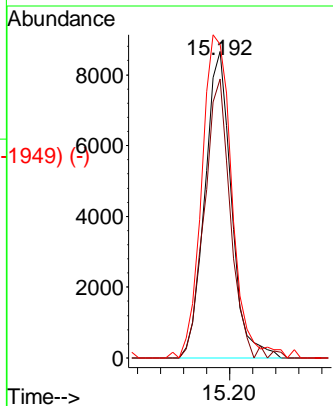
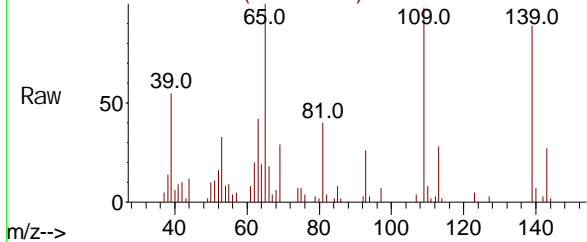
4-Nitrophenol
Concen: 17.947 ng/ul
RT: 15.192 min Scan#
Delta R.T. -0.000 min
Lab File: BG056835.D
Acq: 6 Mar 2023 10:26

Instrument :
BNA_G
ClientSampleId :
SSTD020457

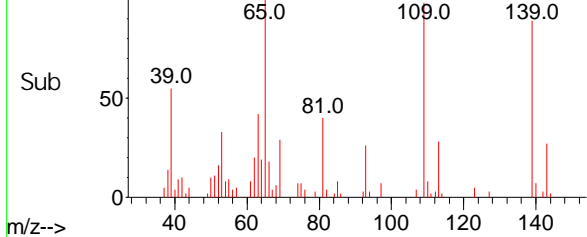
Tgt Ion: 109 Resp: 13896

Ion	Ratio	Lower	Upper
109	100		
139	91.0	71.2	106.8
65	102.2	85.1	127.7

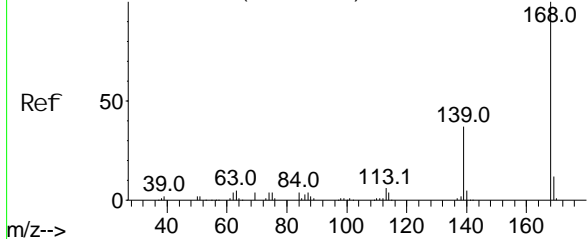
Abundance Scan 1983 (15.192 min): BG056835.D\data.ms



Abundance Scan 1983 (15.192 min): BG056835.D\data.ms (-1949) (-)



Abundance Scan 2020 (15.409 min): BG056835.D\data.ms (-2056) (-)

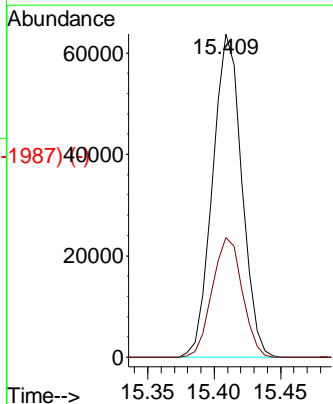
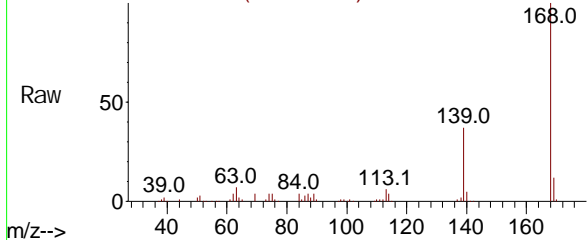


Di benzofuran
Concen: 20.885 ng/ul
RT: 15.409 min Scan# 2020
Delta R.T. -0.006 min
Lab File: BG056835.D
Acq: 6 Mar 2023 10:26

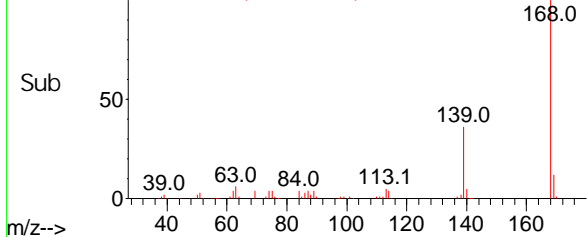
Tgt Ion: 168 Resp: 97016

Ion	Ratio	Lower	Upper
168	100		
139	37.0	28.2	42.2

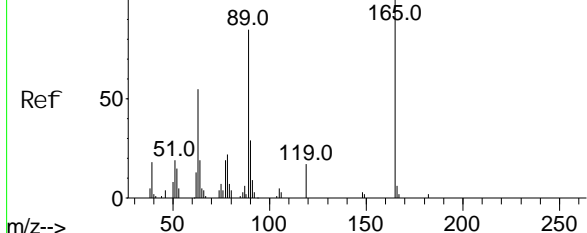
Abundance Scan 2020 (15.409 min): BG056835.D\data.ms



Abundance Scan 2020 (15.409 min): BG056835.D\data.ms (-1987) (-)



Abundance Scan 2011 (15.356 min): BG056835.D\data.ms (-2055) (-)



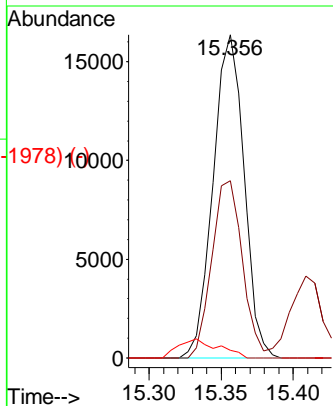
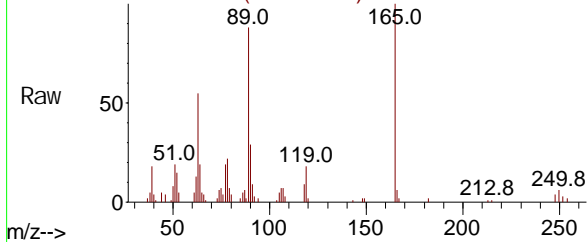
2,4-Dinitrotoluene
Concen: 21.065 ng/ul
RT: 15.356 min Scan# 2011
Delta R.T. -0.006 min
Lab File: BG056835.D
Acq: 6 Mar 2023 10:26

Instrument : BNA_G
Client Sample Id : SSTD020457

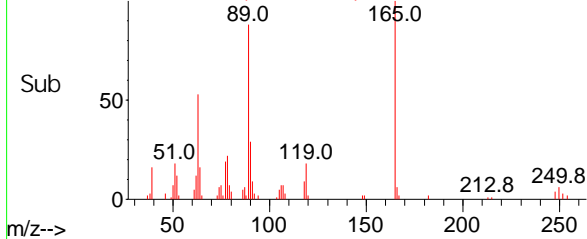
Tgt Ion: 165 Resp: 24425

Ion	Ratio	Lower	Upper
165	100		
63	54.8	38.6	58.0
182	2.4	1.8	2.8

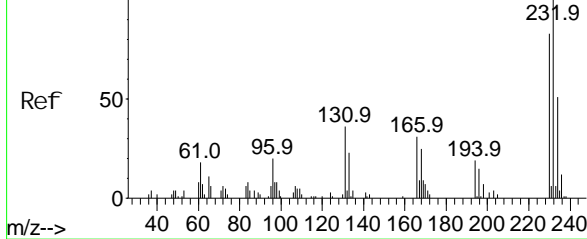
Abundance Scan 2011 (15.356 min): BG056835.D\data.ms



Abundance Scan 2011 (15.356 min): BG056835.D\data.ms (-1978) (-)



Abundance Scan 2057 (15.626 min): BG056835.D\data.ms (-2052) (-)

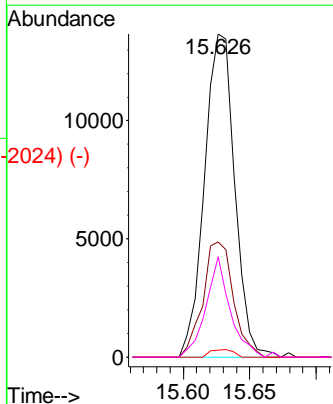
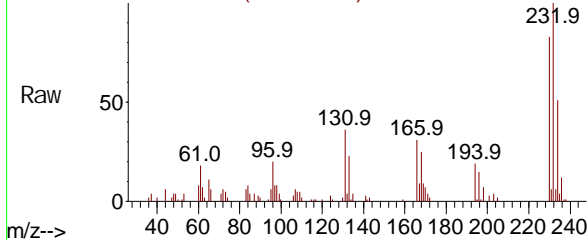


2,3,4,6-Tetrachlorophenol
Concen: 18.791 ng/ul
RT: 15.626 min Scan# 2057
Delta R.T. -0.006 min
Lab File: BG056835.D
Acq: 6 Mar 2023 10:26

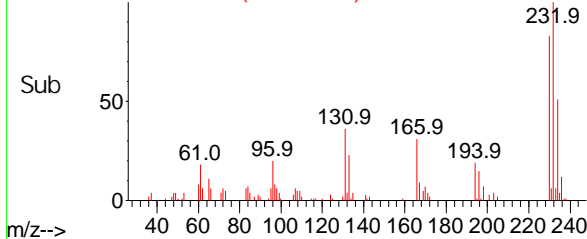
Tgt Ion: 232 Resp: 21630

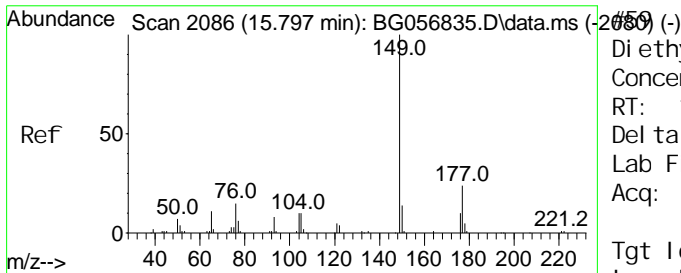
Ion	Ratio	Lower	Upper
232	100		
131	35.7	27.8	41.8
130	2.2	1.8	2.6
166	31.1	20.2	30.4

Abundance Scan 2057 (15.626 min): BG056835.D\data.ms



Abundance Scan 2057 (15.626 min): BG056835.D\data.ms (-2024) (-)



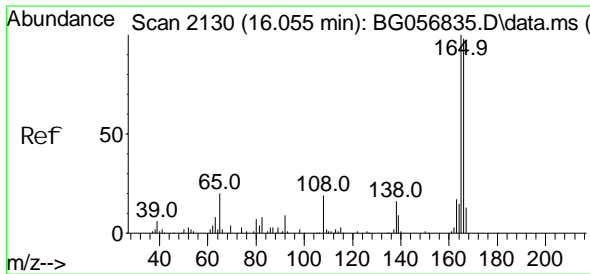
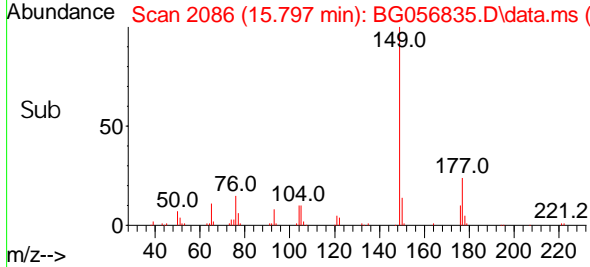
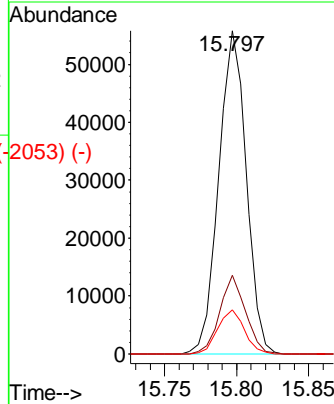
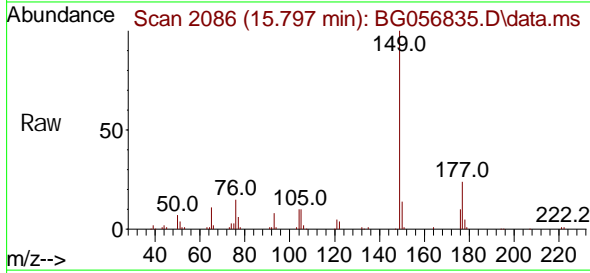


Di ethyl phthal ate
 Concen: 18.721 ng/ul
 RT: 15.797 min Scan# 2086
 Del ta R. T. -0.006 min
 Lab File: BG056835.D
 Acq: 6 Mar 2023 10:26

Instrument : BNA_G
 ClientSampleId : SSTD020457

Tgt Ion: 149 Resp: 73934

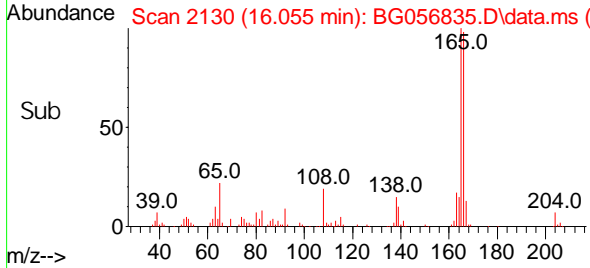
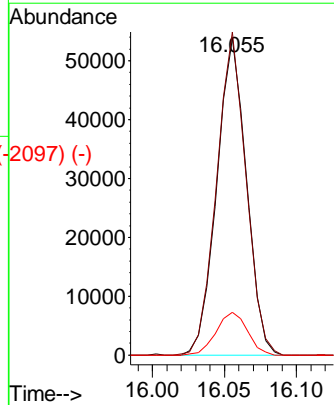
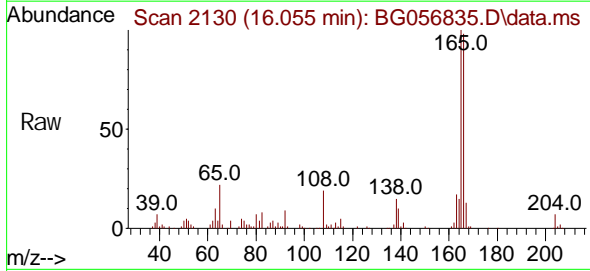
Ion	Ratio	Lower	Upper
149	100		
177	24.3	18.6	28.0
150	13.7	10.7	16.1



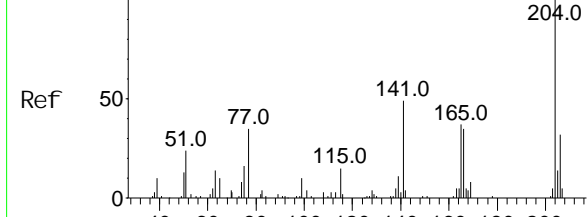
Fluorene
 Concen: 20.647 ng/ul
 RT: 16.055 min Scan# 2130
 Del ta R. T. -0.006 min
 Lab File: BG056835.D
 Acq: 6 Mar 2023 10:26

Tgt Ion: 166 Resp: 76800

Ion	Ratio	Lower	Upper
166	100		
165	101.9	78.4	117.6
167	13.6	10.5	15.7



Abundance Scan 2127 (16.038 min): BG056835.D\data.ms (-2127) (-)



4-Chlorophenyl-phenyl ether
Concn: 21.841 ng/ul
RT: 16.038 min Scan# 2127
Delta R.T. -0.006 min
Lab File: BG056835.D
Acq: 6 Mar 2023 10:26

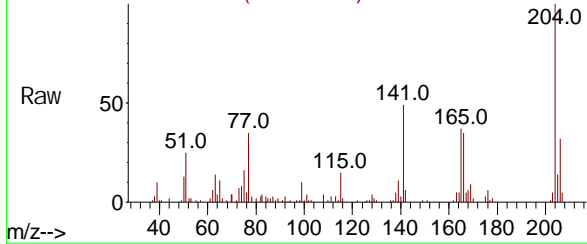
Instrument :

BNA_G

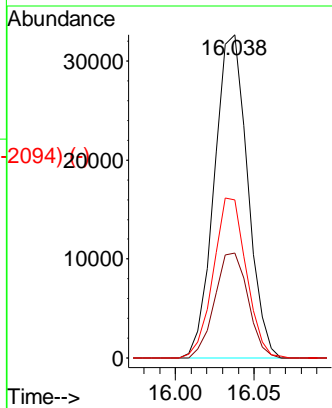
Client Sample Id :

SSTD020457

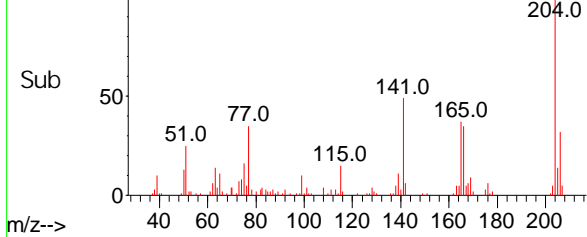
Abundance Scan 2127 (16.038 min): BG056835.D\data.ms



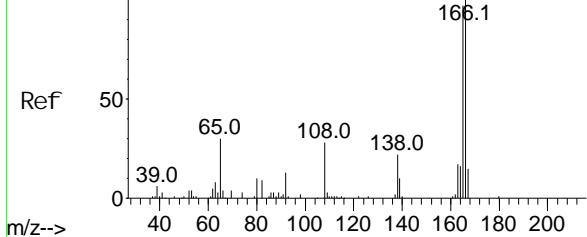
Tgt Ion	Resp	Lower	Upper
204	100		
206	32.4	26.1	39.1
141	49.0	39.7	59.5



Abundance Scan 2127 (16.038 min): BG056835.D\data.ms (-2094) (-)



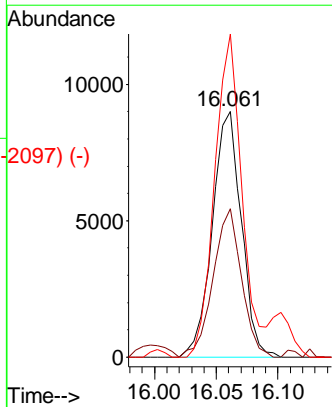
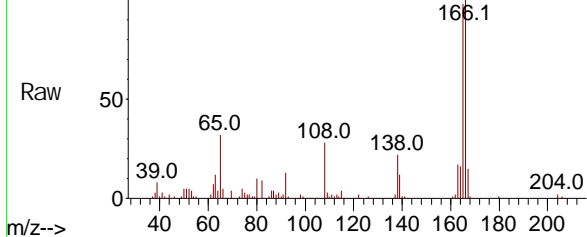
Abundance Scan 2131 (16.061 min): BG056835.D\data.ms (-2131) (-)



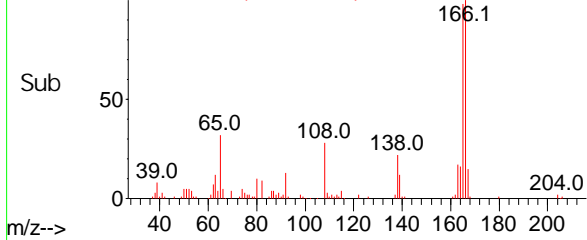
4-Nitroaniline
Concn: 20.898 ng/ul
RT: 16.061 min Scan# 2131
Delta R.T. 0.000 min
Lab File: BG056835.D
Acq: 6 Mar 2023 10:26

Tgt Ion	Resp	Lower	Upper
138	100		
92	60.3	48.6	73.0
108	131.4	93.0	139.6

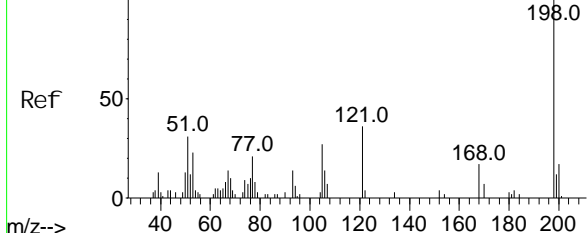
Abundance Scan 2131 (16.061 min): BG056835.D\data.ms



Abundance Scan 2131 (16.061 min): BG056835.D\data.ms (-2097) (-)



Abundance Scan 2140 (16.114 min): BG056835.D\data.ms (-2166) (-)



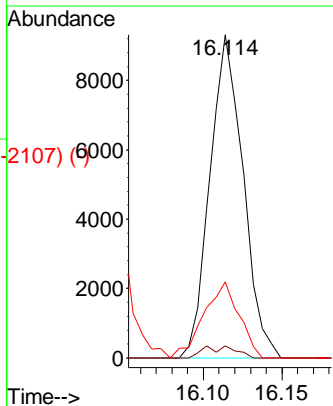
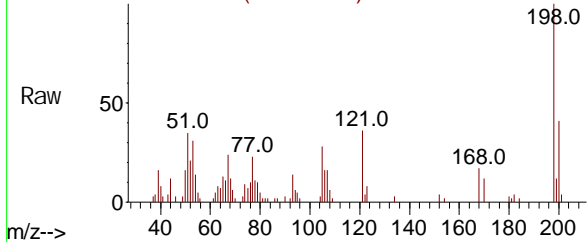
4,6-Dinitro-2-methyl phenol
Concen: 17.188 ng/ul
RT: 16.114 min Scan# 2140
Delta R.T. -0.006 min
Lab File: BG056835.D
Acq: 6 Mar 2023 10:26

Instrument : BNA_G
ClientSampleId : SSTD020457

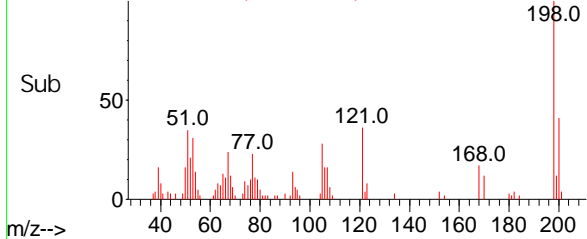
Tgt Ion: 198 Resp: 13628

Ion	Ratio	Lower	Upper
198	100		
182	3.8	2.4	3.6#
77	23.5	21.0	31.6

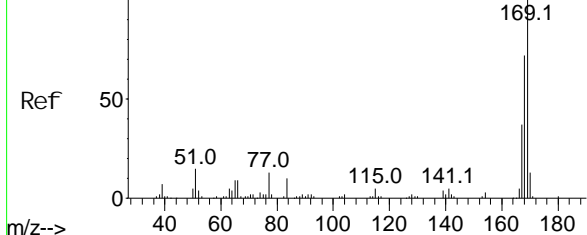
Abundance Scan 2140 (16.114 min): BG056835.D\data.ms



Abundance Scan 2140 (16.114 min): BG056835.D\data.ms (-2107) (-)



Abundance Scan 2162 (16.243 min): BG056835.D\data.ms (-2167) (-)

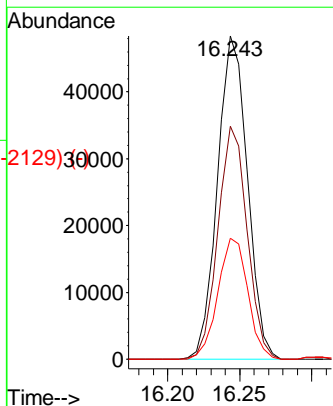
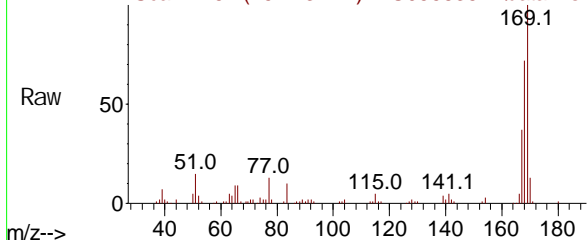


N-Nitrosodiphenylamine
Concen: 20.394 ng/ul
RT: 16.243 min Scan# 2162
Delta R.T. -0.006 min
Lab File: BG056835.D
Acq: 6 Mar 2023 10:26

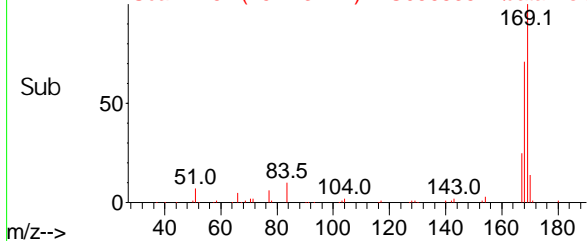
Tgt Ion: 169 Resp: 69812

Ion	Ratio	Lower	Upper
169	100		
168	72.1	55.1	82.7
167	37.4	28.3	42.5

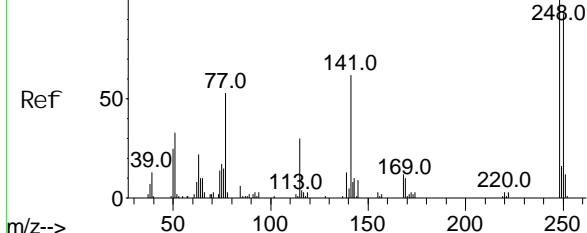
Abundance Scan 2162 (16.243 min): BG056835.D\data.ms



Abundance Scan 2162 (16.243 min): BG056835.D\data.ms (-2129) (-)



Abundance Scan 2278 (16.925 min): BG056835.D\data.ms (-2278) (-)

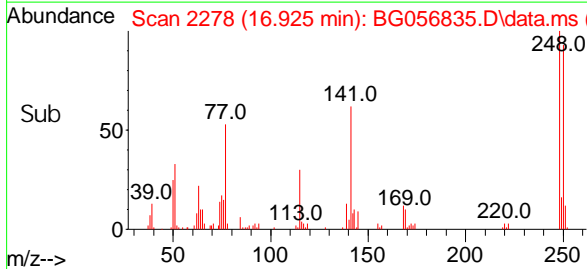
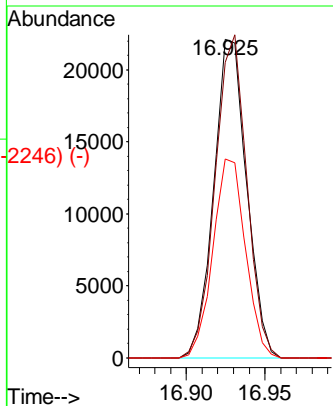
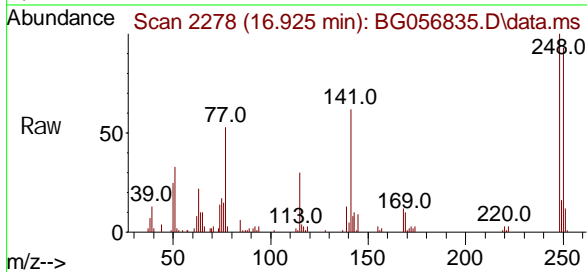


4-Bromophenyl -phenyl ether
Concen: 20.650 ng/ul
RT: 16.925 min Scan# 2278
Delta R.T. -0.012 min
Lab File: BG056835.D
Acq: 6 Mar 2023 10:26

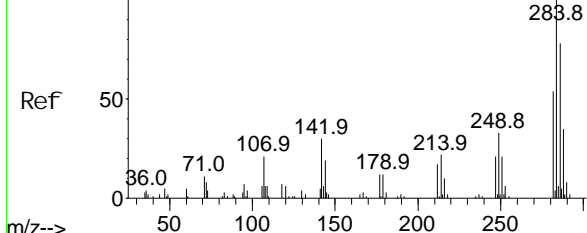
Instrument : BNA_G
ClientSampleId : BG056835.D
SSTD020457

Tgt Ion: 248 Resp: 32214

Ion	Ratio	Lower	Upper
248	100		
250	92.8	80.4	120.6
141	62.5	47.6	71.4



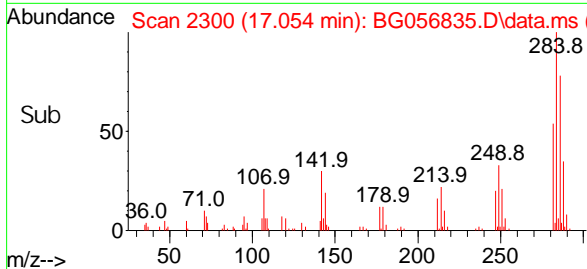
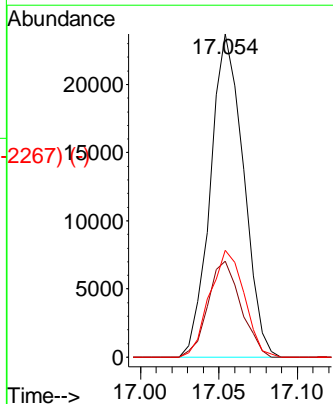
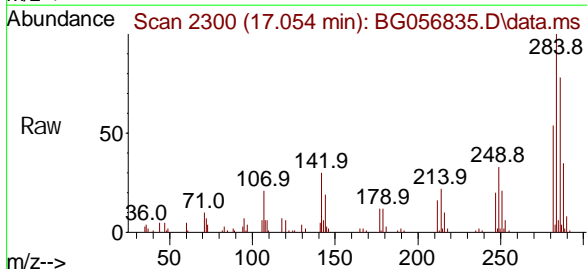
Abundance Scan 2300 (17.054 min): BG056835.D\data.ms (-2300) (-)

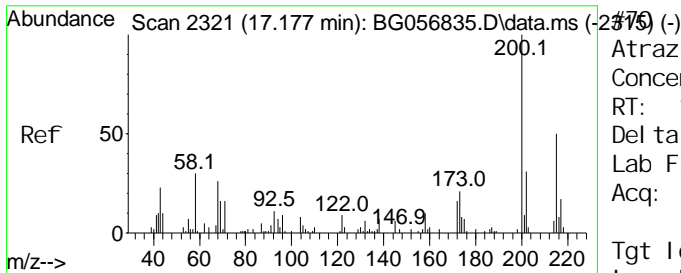


Hexachlorobenzene
Concen: 20.813 ng/ul
RT: 17.054 min Scan# 2300
Delta R.T. -0.006 min
Lab File: BG056835.D
Acq: 6 Mar 2023 10:26

Tgt Ion: 284 Resp: 34883

Ion	Ratio	Lower	Upper
284	100		
142	29.7	21.8	32.6
249	34.9	25.9	38.9

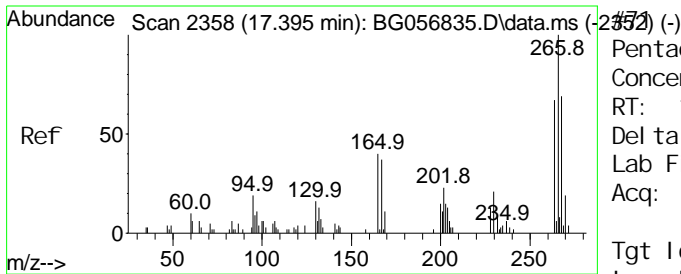
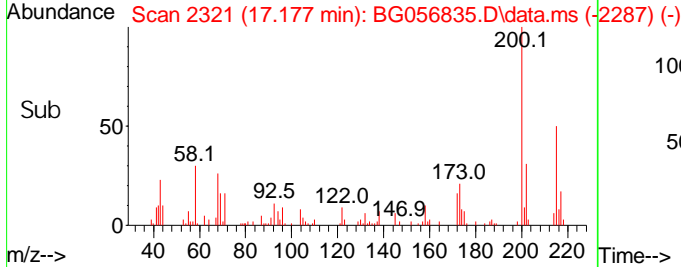
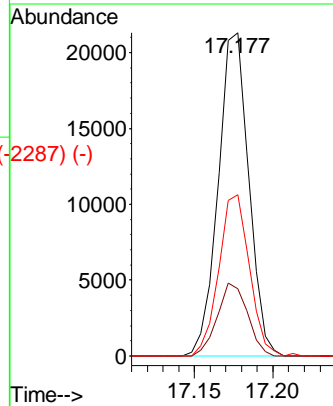
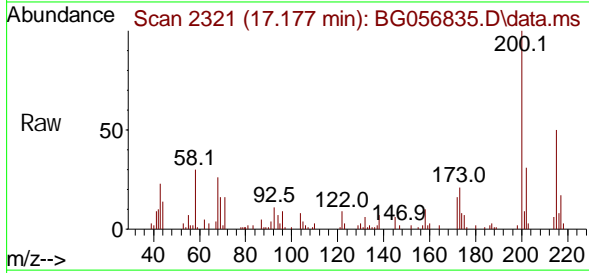




Atrazine
 Concn: 19.297 ng/ul
 RT: 17.177 min Scan# 2321
 Delta R.T. 0.000 min
 Lab File: BG056835.D
 Acq: 6 Mar 2023 10:26

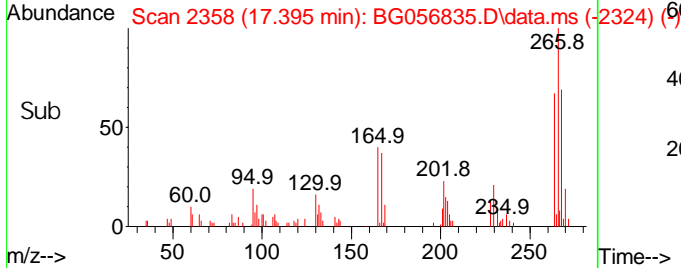
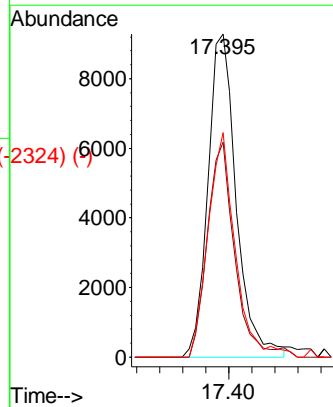
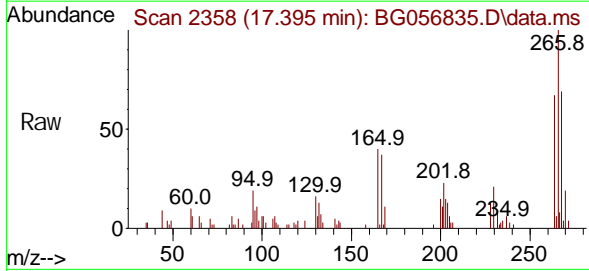
Instrument : BNA_G
 ClientSampleId : SSTD020457

Tgt Ion	Ratio	Lower	Upper
200	100		
173	20.8	17.4	26.0
215	49.8	41.7	62.5

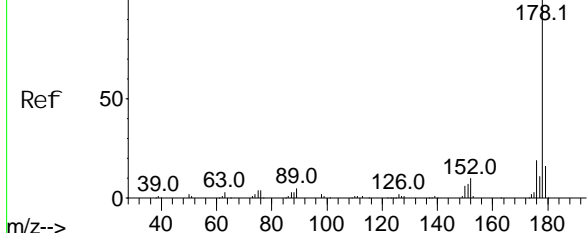


Pentachlorophenol
 Concn: 16.704 ng/ul
 RT: 17.395 min Scan# 2358
 Delta R.T. 0.000 min
 Lab File: BG056835.D
 Acq: 6 Mar 2023 10:26

Tgt Ion	Ratio	Lower	Upper
266	100		
264	66.5	49.9	74.9
268	69.4	54.5	81.7



Abundance Scan 2426 (17.794 min): BG056835.D\data.ms (-2479) (-)

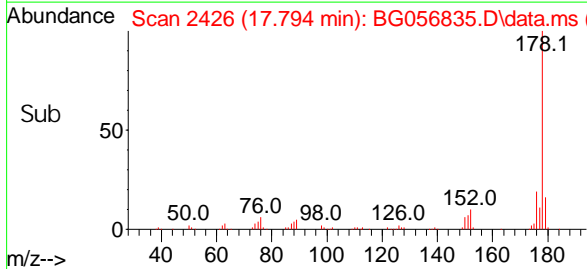
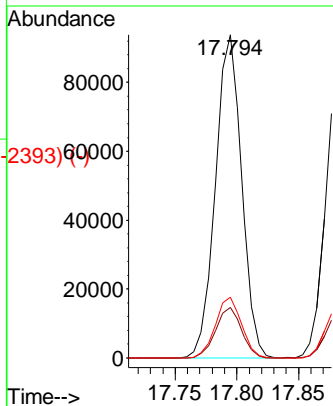
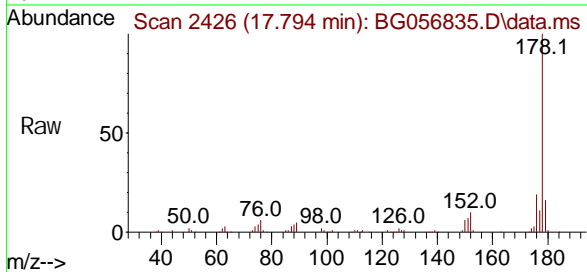


Phenanthrene
Concen: 20.805 ng/ul
RT: 17.794 min Scan# 2426
Delta R.T. -0.006 min
Lab File: BG056835.D
Acq: 6 Mar 2023 10:26

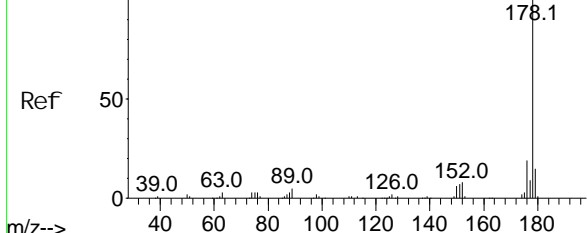
Instrument : BNA_G
ClientSampleId : SSTD020457

Tgt Ion: 178 Resp: 138732

Ion	Ratio	Lower	Upper
178	100		
179	15.6	12.1	18.1
176	18.9	14.4	21.6



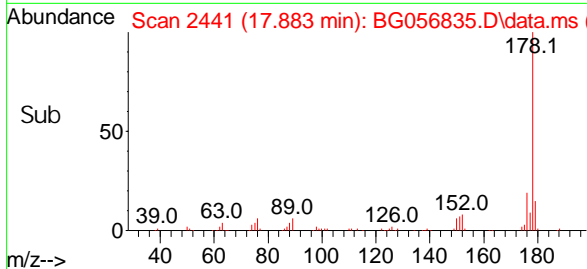
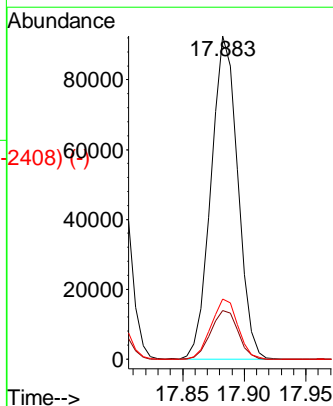
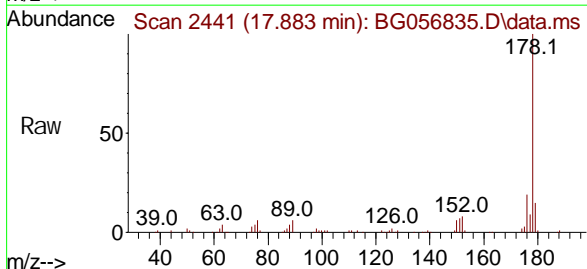
Abundance Scan 2441 (17.883 min): BG056835.D\data.ms (-2435) (-)



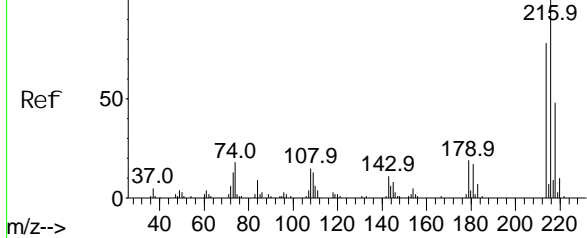
Anthracene
Concen: 20.726 ng/ul
RT: 17.883 min Scan# 2441
Delta R.T. -0.006 min
Lab File: BG056835.D
Acq: 6 Mar 2023 10:26

Tgt Ion: 178 Resp: 139666

Ion	Ratio	Lower	Upper
178	100		
179	15.0	12.1	18.1
176	18.6	14.1	21.1



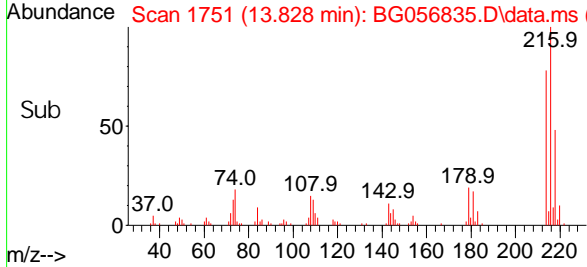
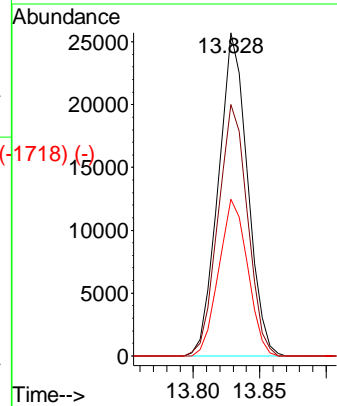
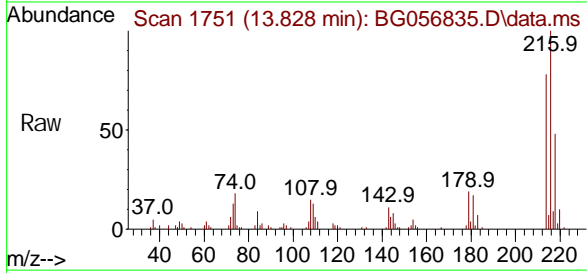
Abundance Scan 1751 (13.828 min): BG056835.D\data.ms (-1775) (-)



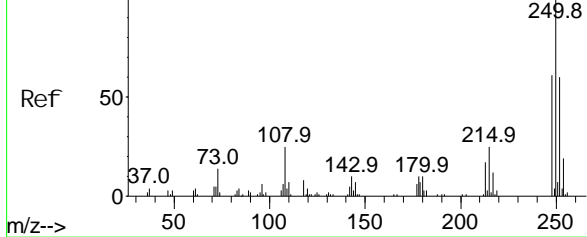
1, 2, 3, 4-Tetrachl orobenzene
Concen: 20.796 ng/uL
RT: 13.828 min Scan#
Delta R.T. -0.006 min
Lab File: BG056835.D
Acq: 6 Mar 2023 10:26

Instrument :
BNA_G
ClientSampleId :
SSTD020457

Tgt Ion	Resp	Lower	Upper
216	100		
214	77.8	64.2	96.2
218	48.5	36.6	54.8

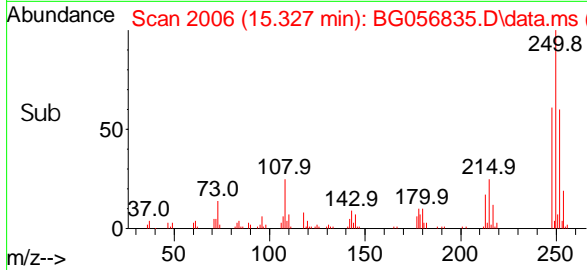
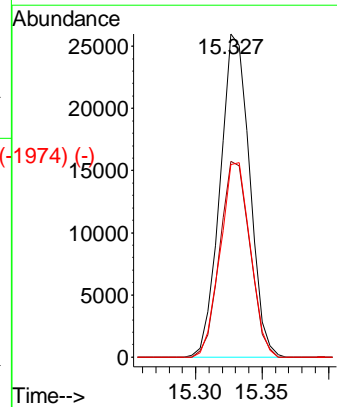
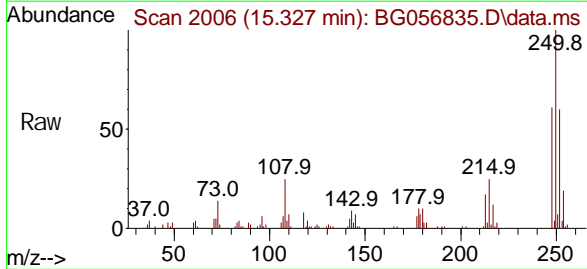


Abundance Scan 2006 (15.327 min): BG056835.D\data.ms (-2076) (-)

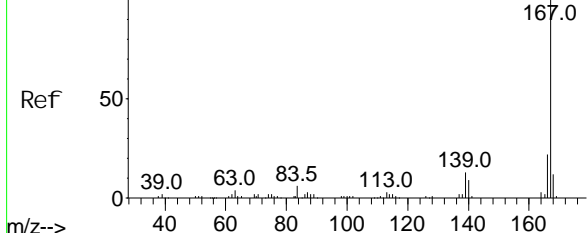


Pentachl orobenzene
Concen: 20.942 ng/uL
RT: 15.327 min Scan# 2006
Delta R.T. -0.012 min
Lab File: BG056835.D
Acq: 6 Mar 2023 10:26

Tgt Ion	Resp	Lower	Upper
250	100		
248	60.6	47.1	70.7
252	59.5	52.4	78.6



Abundance Scan 2486 (18.147 min): BG056835.D\data.ms (-2479) (-)

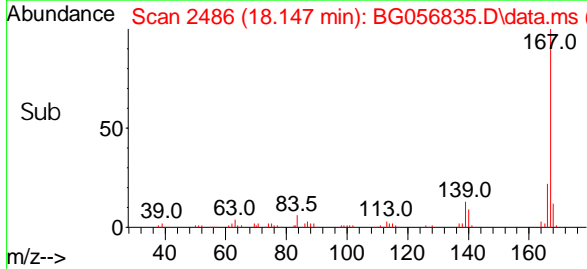
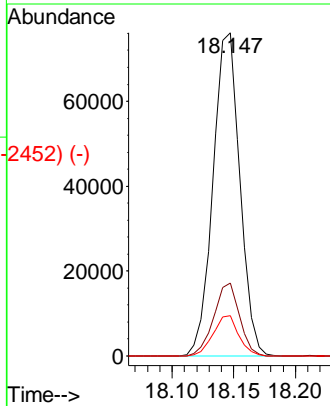
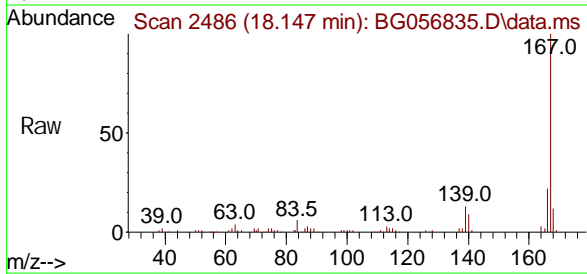


Carbazol e
Concen: 20.462 ng/ul
RT: 18.147 min Scan# 2479
Del ta R.T. -0.000 min
Lab File: BG056835.D
Acq: 6 Mar 2023 10:26

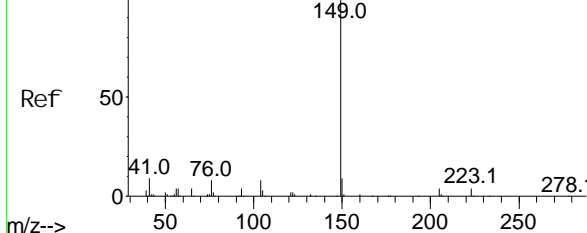
Instrument : BNA_G
ClientSampleId : SSTD020457

Tgt Ion: 167 Resp: 115370

Ion	Ratio	Lower	Upper
167	100		
166	22.5	18.2	27.2
139	12.5	9.8	14.8



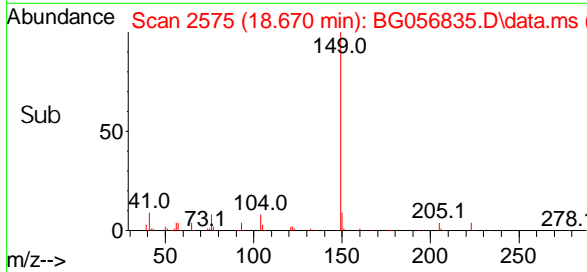
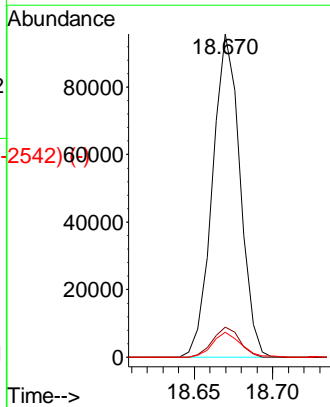
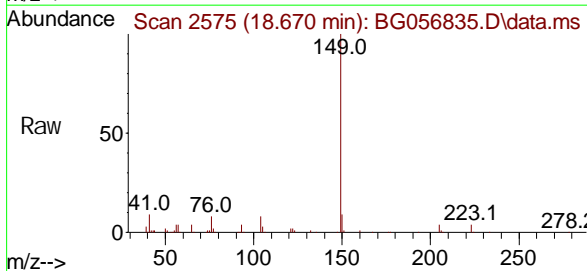
Abundance Scan 2575 (18.670 min): BG056835.D\data.ms (-2476) (-)



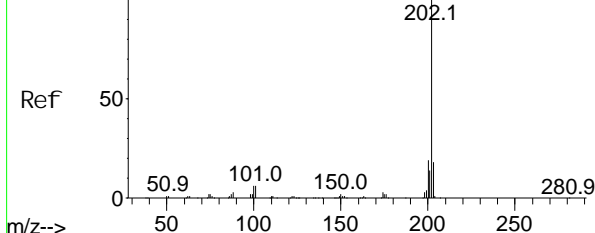
Di -n-butyl phthal ate
Concen: 18.006 ng/ul
RT: 18.670 min Scan# 2575
Del ta R.T. -0.006 min
Lab File: BG056835.D
Acq: 6 Mar 2023 10:26

Tgt Ion: 149 Resp: 117008

Ion	Ratio	Lower	Upper
149	100		
150	9.4	7.4	11.0
104	7.8	5.4	8.2



Abundance Scan 2763 (19.774 min): BG056835.D\data.ms (-2730) (-)

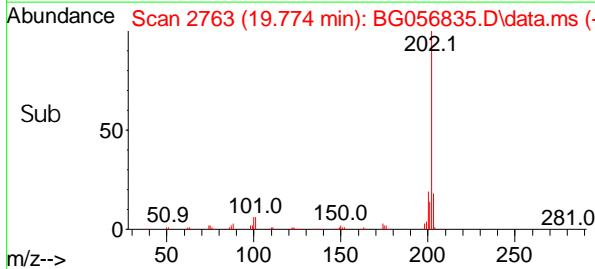
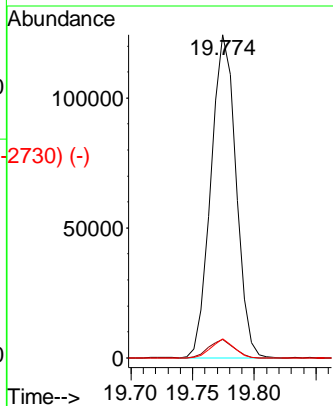
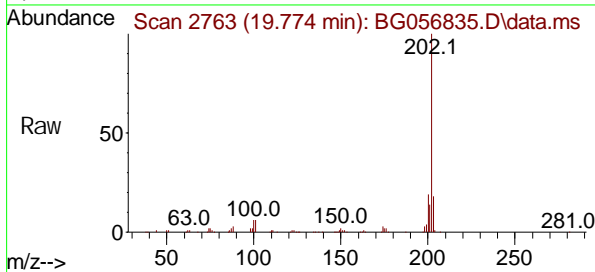


Fluoranthene
Concen: 18.044 ng/ul
RT: 19.774 min Scan# 2763
Delta R.T. -0.006 min
Lab File: BG056835.D
Acq: 6 Mar 2023 10:26

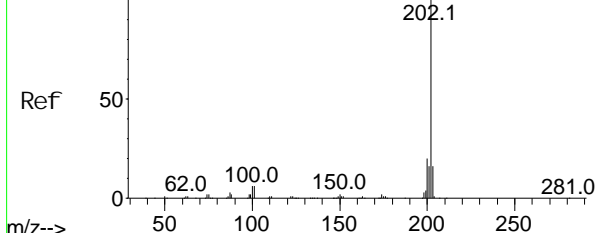
Instrument : BNA_G
Client Sample Id : SSTD020457

Tgt Ion: 202 Resp: 176297

Ion	Ratio	Lower	Upper
202	100		
101	5.7	4.7	7.1
100	5.9	4.4	6.6



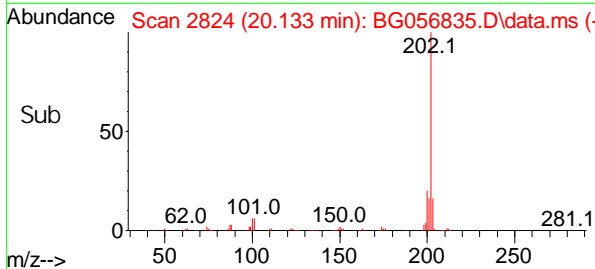
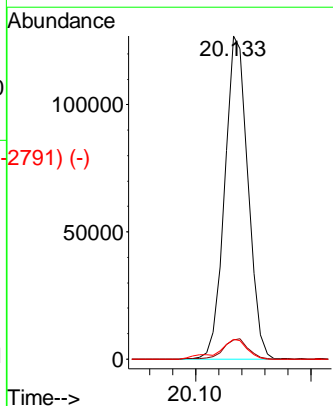
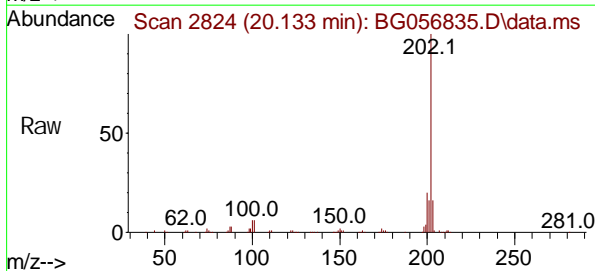
Abundance Scan 2824 (20.133 min): BG056835.D\data.ms (-2730) (-)



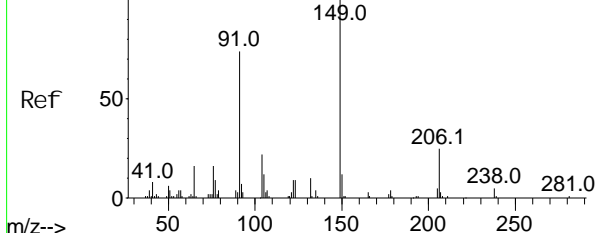
Pyrene
Concen: 18.461 ng/ul
RT: 20.133 min Scan# 2824
Delta R.T. -0.006 min
Lab File: BG056835.D
Acq: 6 Mar 2023 10:26

Tgt Ion: 202 Resp: 177693

Ion	Ratio	Lower	Upper
202	100		
101	6.0	5.3	7.9
100	6.2	4.6	7.0



Abundance Scan 2970 (20.991 min): BG056835.D\data.ms (-2965) (-)



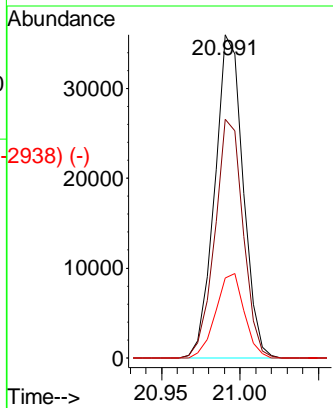
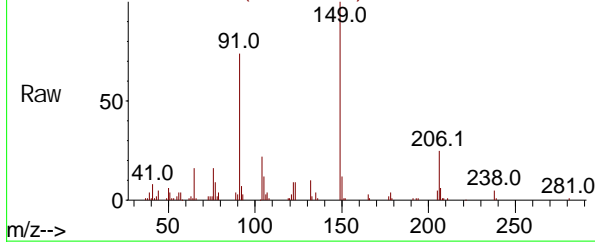
Butyl benzyl phthal ate
Concen: 14.742 ng/ul
RT: 20.991 min Scan# 1
Delta R.T. -0.012 min
Lab File: BG056835.D
Acq: 6 Mar 2023 10:26

Instrument : BNA_G
ClientSampleId : SSTD020457

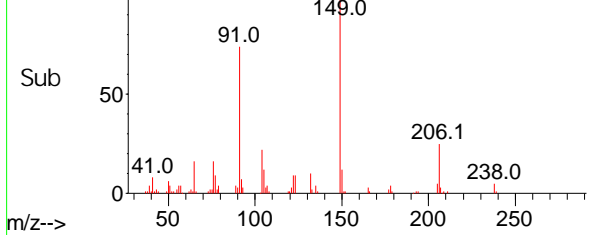
Tgt Ion: 149 Resp: 45016

Ion	Ratio	Lower	Upper
149	100		
91	73.9	59.3	88.9
206	24.7	19.7	29.5

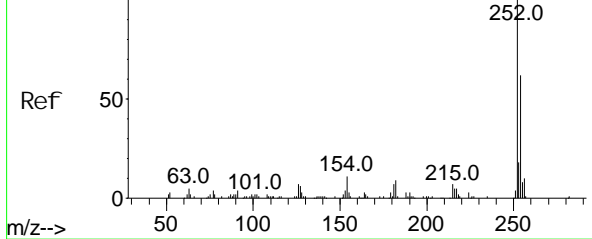
Abundance Scan 2970 (20.991 min): BG056835.D\data.ms



Abundance Scan 2970 (20.991 min): BG056835.D\data.ms (-2938) (-)



Abundance Scan 3130 (21.931 min): BG056835.D\data.ms (-3124) (-)

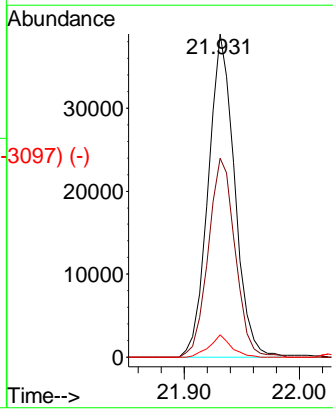
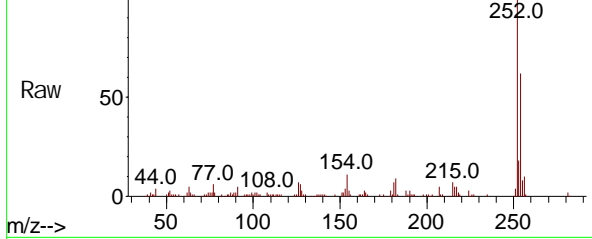


3,3'-Di chl orobenzi di ne
Concen: 20.713 ng/ul
RT: 21.931 min Scan# 3130
Delta R.T. -0.006 min
Lab File: BG056835.D
Acq: 6 Mar 2023 10:26

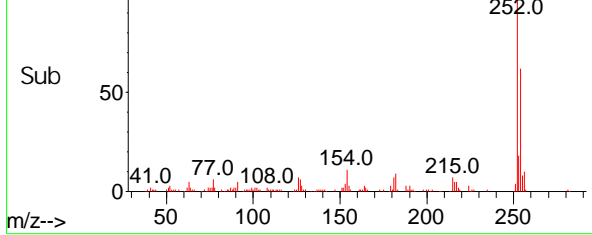
Tgt Ion: 252 Resp: 62013

Ion	Ratio	Lower	Upper
252	100		
254	61.6	52.6	78.8
126	6.8	5.0	7.6

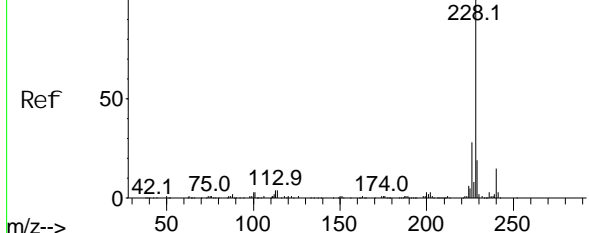
Abundance Scan 3130 (21.931 min): BG056835.D\data.ms



Abundance Scan 3130 (21.931 min): BG056835.D\data.ms (-3097) (-)



Abundance Scan 3148 (22.036 min): BG056835.D\data.ms (-3148) (-)



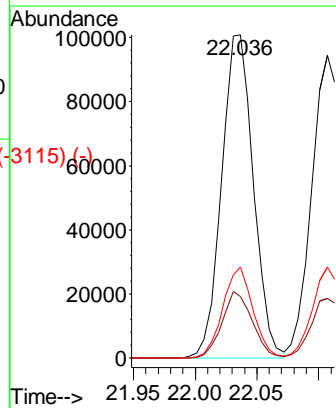
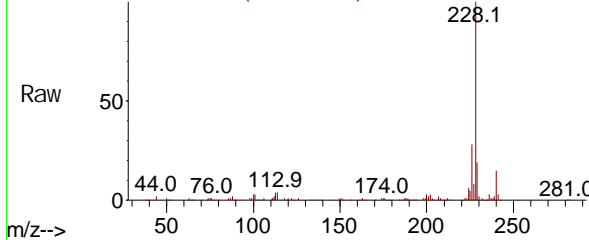
Benzo(a)anthracene
Concen: 20.820 ng/ul
RT: 22.036 min Scan# 3148
Delta R.T. -0.006 min
Lab File: BG056835.D
Acq: 6 Mar 2023 10:26

Instrument : BNA_G
ClientSampleId : SSTD020457

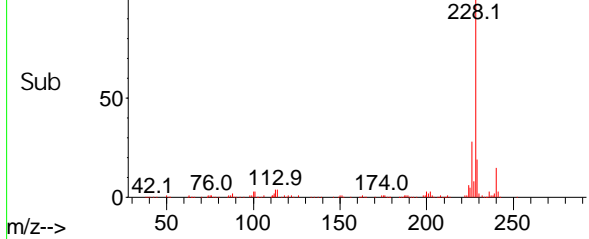
Tgt Ion: 228 Resp: 180946

Ion	Ratio	Lower	Upper
228	100		
229	19.0	16.2	24.4
226	28.1	20.6	31.0

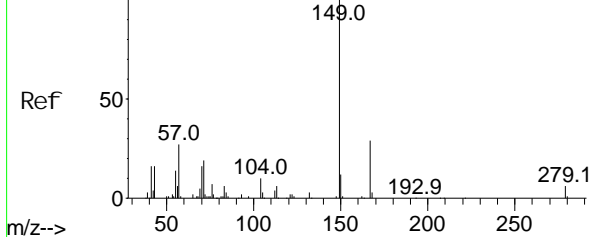
Abundance Scan 3148 (22.036 min): BG056835.D\data.ms



Abundance Scan 3148 (22.036 min): BG056835.D\data.ms (-3115) (-)



Abundance Scan 3124 (21.895 min): BG056835.D\data.ms (-3124) (-)

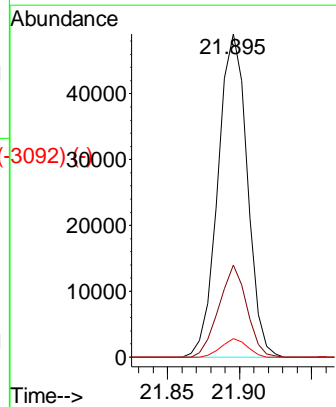
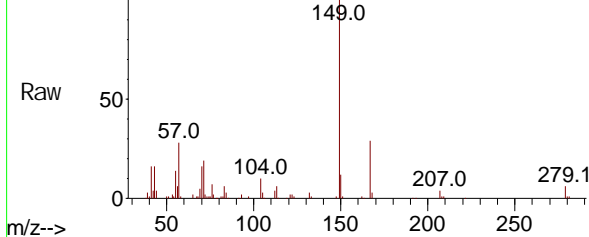


Bis(2-ethyl hexyl)phthalate
Concen: 16.190 ng/ul
RT: 21.895 min Scan# 3124
Delta R.T. -0.012 min
Lab File: BG056835.D
Acq: 6 Mar 2023 10:26

Tgt Ion: 149 Resp: 69445

Ion	Ratio	Lower	Upper
149	100		
167	28.5	21.8	32.8
279	5.8	4.2	6.2

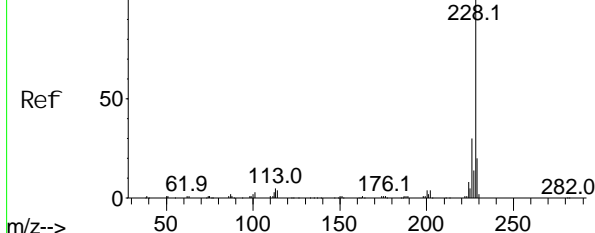
Abundance Scan 3124 (21.895 min): BG056835.D\data.ms



Abundance Scan 3124 (21.895 min): BG056835.D\data.ms (-3092) (-)



Abundance Scan 3160 (22.107 min): BG056835.D\data.ms (-3127) (-)



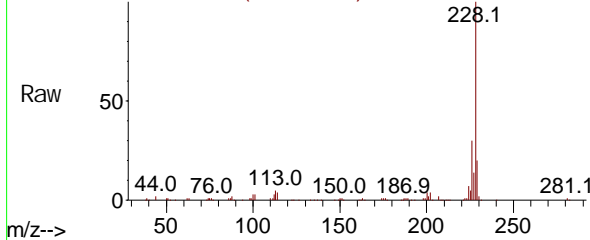
Chrysene
Concen: 20.527 ng/ul
RT: 22.107 min Scan# 3160
Delta R.T. -0.006 min
Lab File: BG056835.D
Acq: 6 Mar 2023 10:26

Instrument : BNA_G
ClientSampleId : SSTD020457

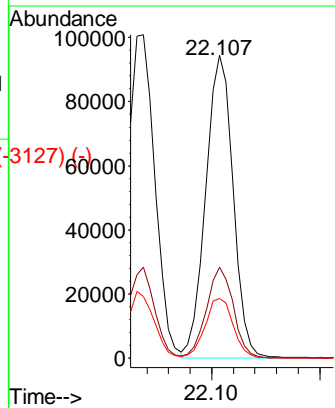
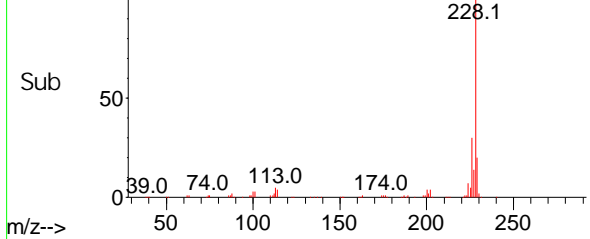
Tgt Ion: 228 Resp: 166156

Ion	Ratio	Lower	Upper
228	100		
226	30.0	23.6	35.4
229	19.5	15.4	23.0

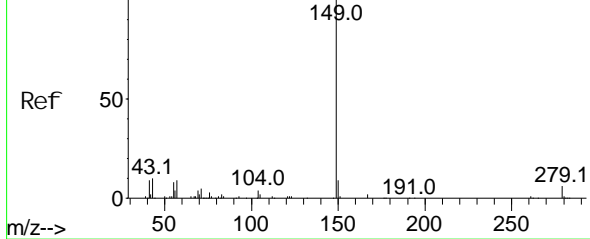
Abundance Scan 3160 (22.107 min): BG056835.D\data.ms



Abundance Scan 3160 (22.107 min): BG056835.D\data.ms (-3127) (-)



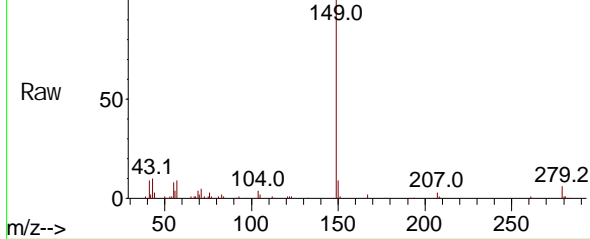
Abundance Scan 3347 (23.206 min): BG056835.D\data.ms (-3315) (-)



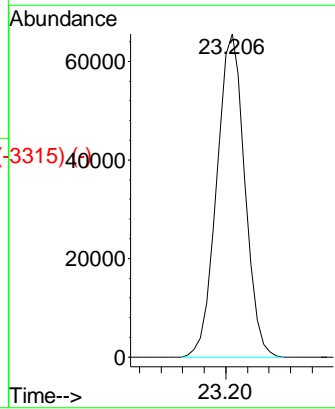
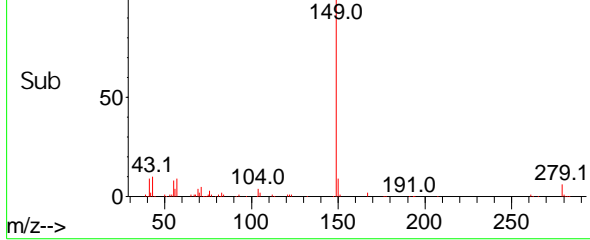
Di-n-octyl phthalate
Concen: 16.477 ng/ul
RT: 23.206 min Scan# 3347
Delta R.T. -0.012 min
Lab File: BG056835.D
Acq: 6 Mar 2023 10:26

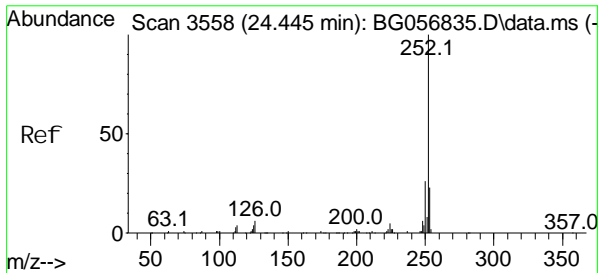
Tgt Ion: 149 Resp: 118971

Abundance Scan 3347 (23.206 min): BG056835.D\data.ms



Abundance Scan 3347 (23.206 min): BG056835.D\data.ms (-3315) (-)

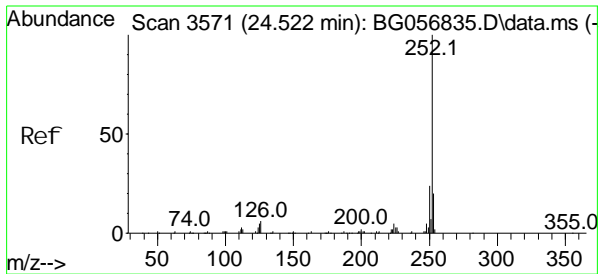
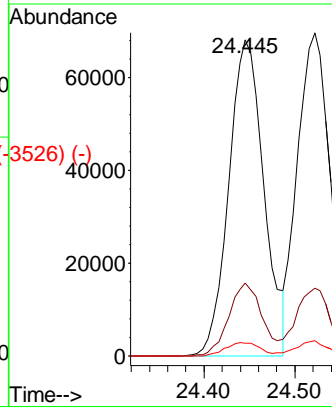
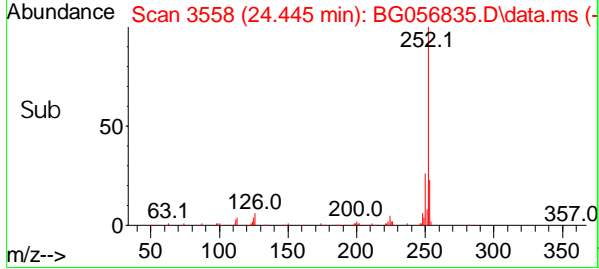
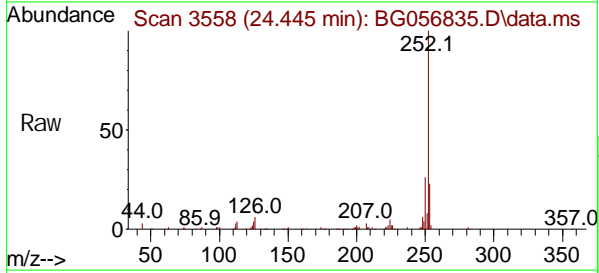




Scan 3558 (24.445 min): BG056835.D\data.ms (-3546) (-)
 Benzo(b)fluoranthene
 Concen: 20.567 ng/ul
 RT: 24.445 min Scan# 3558
 Delta R.T. -0.012 min
 Lab File: BG056835.D
 Acq: 6 Mar 2023 10:26

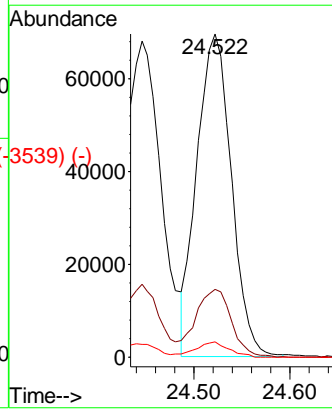
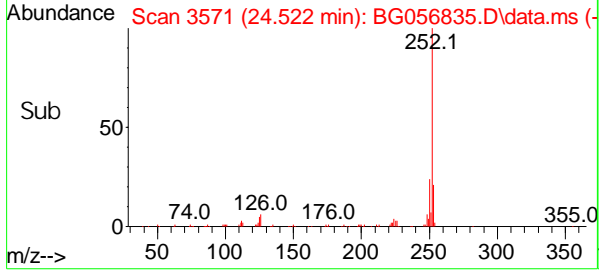
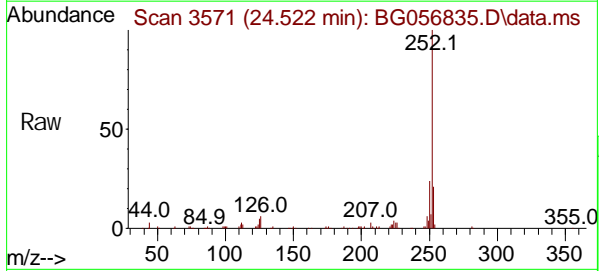
Instrument : BNA_G
 ClientSampleId : SSTD020457

Tgt Ion	Resp	Lower	Upper
252	182861		
253	23.1	17.4	26.2
125	4.1	3.0	4.6

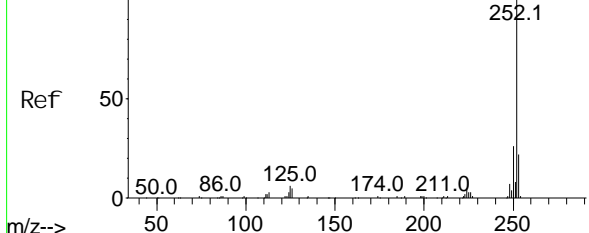


Scan 3571 (24.522 min): BG056835.D\data.ms (-3565) (-)
 Benzo(k)fluoranthene
 Concen: 20.057 ng/ul
 RT: 24.522 min Scan# 3571
 Delta R.T. -0.012 min
 Lab File: BG056835.D
 Acq: 6 Mar 2023 10:26

Tgt Ion	Resp	Lower	Upper
252	173698		
253	20.9	18.2	27.2
125	4.6	3.4	5.2



Abundance Scan 3722 (25.409 min): BG056835.D\data.ms (-3769) (-)

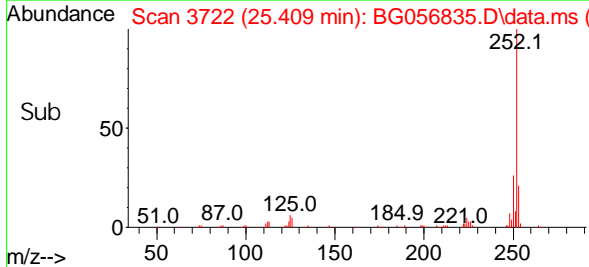
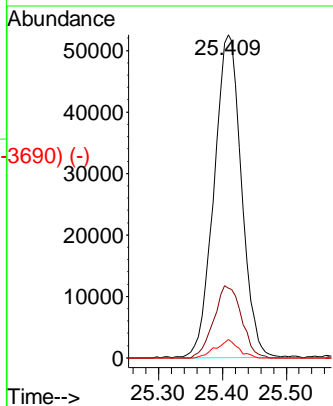
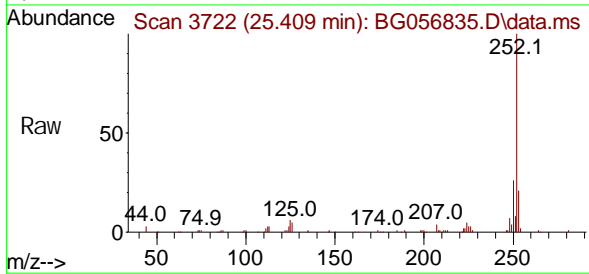


Benzo(a)pyrene
Concen: 19.955 ng/ul
RT: 25.409 min Scan# 3722
Delta R.T. -0.012 min
Lab File: BG056835.D
Acq: 6 Mar 2023 10:26

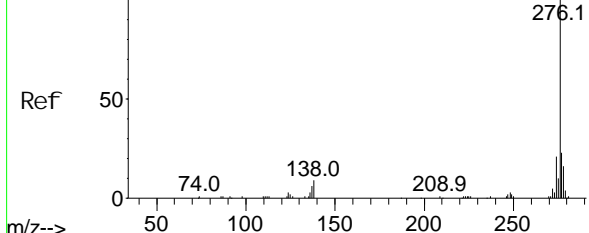
Instrument : BNA_G
ClientSampleId : SSTD020457

Tgt Ion: 252 Resp: 155957

Ion	Ratio	Lower	Upper
252	100		
253	21.5	17.4	26.0
125	5.7	3.6	5.4#



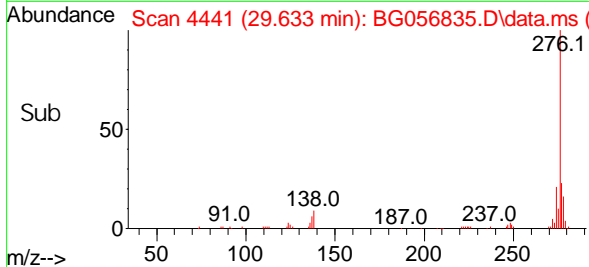
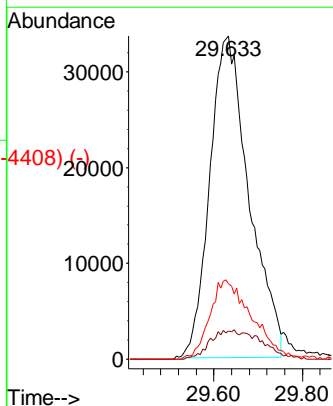
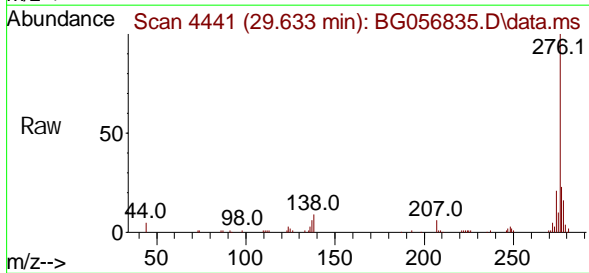
Abundance Scan 4441 (29.633 min): BG056835.D\data.ms (-4424) (-)



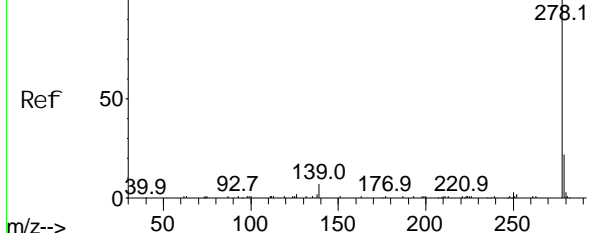
Indeno(1,2,3-cd)pyrene
Concen: 19.460 ng/ul
RT: 29.633 min Scan# 4441
Delta R.T. -0.006 min
Lab File: BG056835.D
Acq: 6 Mar 2023 10:26

Tgt Ion: 276 Resp: 206607

Ion	Ratio	Lower	Upper
276	100		
138	8.7	5.7	8.5#
277	23.3	18.1	27.1



Abundance Scan 4452 (29.698 min): BG056835.D\data.ms (-4495) (-)

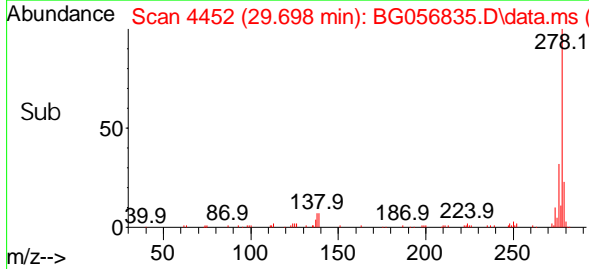
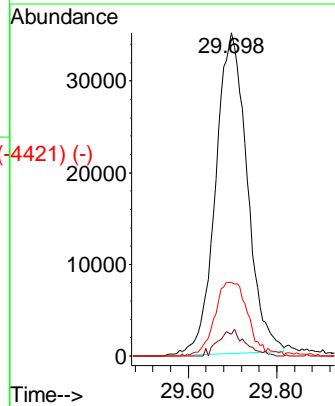
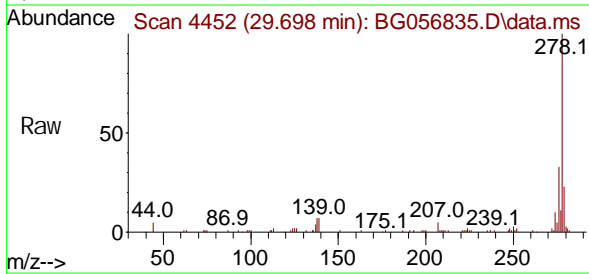


Di benzo(a, h)anthracene
Concen: 19.325 ng/ul
RT: 29.698 min Scan# 4452
Delta R.T. -0.018 min
Lab File: BG056835.D
Acq: 6 Mar 2023 10:26

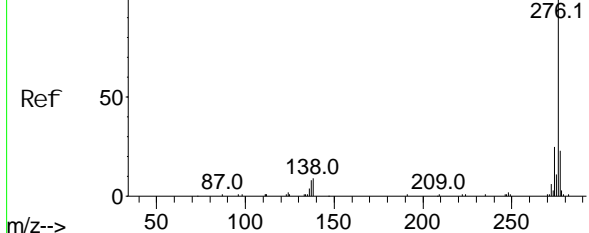
Instrument : BNA_G
ClientSampleId : SSTD020457

Tgt Ion: 278 Resp: 171549

Ion	Ratio	Lower	Upper
278	100		
139	6.7	4.3	6.5#
279	22.7	21.7	32.5



Abundance Scan 4657 (30.903 min): BG056835.D\data.ms (-4697) (-)



Benzo(g, h, i)perylene
Concen: 20.109 ng/ul
RT: 30.903 min Scan# 4657
Delta R.T. -0.024 min
Lab File: BG056835.D
Acq: 6 Mar 2023 10:26

Tgt Ion: 276 Resp: 170533

Ion	Ratio	Lower	Upper
276	100		
138	8.6	6.5	9.7
277	23.3	20.7	31.1

