

Data Path : Z:\HPCHEM1\BNA_G\DATA\BG030816\
 Data File : BG021371.D
 Acq On : 8 Mar 2016 17:51
 Operator : UM/SJ
 Sample : H1655-09
 Misc :
 ALS Vial : 15 Sample Multiplier: 1

Instrument :
 BNA_G
 ClientSampleId :
 MS-RB-02

Integration Parameters: LSCINT.P

Integrator: RTE
 Smoothing : OFF
 Sampling : 1
 Start Thrs: 0.2
 Stop Thrs : 0

Filtering: 5
 Min Area: 0.1 % of largest Peak
 Max Peaks: 100
 Peak Location: TOP

If leading or trailing edge < 100 prefer < Baseline drop else tangent >
 Peak separation: 5

Method : Z:\HPCHEM1\BNA_G\METHODS\SOM02.2-EPA-BG030316.M
 Title : SVOA CALIBRATION

Signal : TIC

peak #	R.T. min	first scan	max scan	last scan	PK TY	peak height	corr. area	corr. % max.	% of total
1	2.899	5	10	18	rVB2	7216	14238	3.68%	0.382%
2	3.040	33	34	37	rVB2	944	764	0.20%	0.020%
3	3.527	116	117	121	rVB3	838	885	0.23%	0.024%
4	3.827	165	168	172	rBV2	420	697	0.18%	0.019%
5	3.868	172	175	180	rVB2	533	766	0.20%	0.021%
6	5.196	396	401	403	rBV	413	756	0.20%	0.020%
7	6.160	562	565	570	rVB2	1597	1968	0.51%	0.053%
8	7.276	750	755	761	rBV	13131	21165	5.47%	0.567%
9	7.446	776	784	791	rBV	47915	77588	20.05%	2.080%
10	7.652	813	819	826	rBB	52352	84485	21.84%	2.265%
11	8.122	894	899	905	rVV	41756	68505	17.71%	1.836%
12	8.175	905	908	910	rVB	942	1067	0.28%	0.029%
13	8.821	1011	1018	1024	rBV	40658	68564	17.72%	1.838%
14	9.215	1083	1085	1088	rBB	781	878	0.23%	0.024%
15	9.285	1091	1097	1107	rBB	66866	117295	30.32%	3.144%
16	10.008	1213	1220	1227	rBB	61283	102503	26.49%	2.748%
17	10.549	1305	1312	1320	rVB	73557	130640	33.77%	3.502%
18	10.930	1370	1377	1386	rBV	63554	113908	29.44%	3.053%
19	12.194	1587	1592	1597	rBB2	2980	4471	1.16%	0.120%
20	12.499	1641	1644	1647	rBB2	782	1067	0.28%	0.029%
21	13.334	1783	1786	1790	rBB2	745	787	0.20%	0.021%
22	13.610	1830	1833	1838	rBB	1695	2291	0.59%	0.061%
23	14.133	1916	1922	1929	rBV	158812	217106	56.12%	5.819%
24	14.432	1966	1973	1981	rBB	170910	261522	67.60%	7.010%
25	14.732	2017	2024	2031	rBB2	99093	158424	40.95%	4.246%
26	14.802	2032	2036	2039	rBB2	3175	4017	1.04%	0.108%
27	14.914	2051	2055	2064	rBV2	11647	19658	5.08%	0.527%
28	15.396	2132	2137	2141	rBB2	3247	4504	1.16%	0.121%
29	15.719	2186	2192	2199	rBB	219024	326005	84.26%	8.738%
30	15.831	2205	2211	2218	rBB2	75696	108720	28.10%	2.914%
31	15.954	2229	2232	2236	rVB2	1319	1602	0.41%	0.043%
32	17.470	2484	2490	2496	rBV2	120047	175632	45.40%	4.708%
33	17.570	2500	2507	2513	rBV	244300	348781	90.15%	9.349%
34	17.734	2531	2535	2539	rBV2	572	920	0.24%	0.025%

Data Path : Z:\HPCHEM1\BNA_G\DATA\BG030816\
 Data File : BG021371.D
 Acq On : 8 Mar 2016 17:51
 Operator : UM/SJ
 Sample : H1655-09
 Misc :
 ALS Vial : 15 Sample Multiplier: 1

Instrument :
 BNA_G
 ClientSampleId :
 MS-RB-02

Integration Parameters: LSCINT.P

Integrator: RTE
 Smoothing : OFF
 Sampling : 1
 Start Thrs: 0.2
 Stop Thrs : 0

Filtering: 5
 Min Area: 0.1 % of largest Peak
 Max Peaks: 100
 Peak Location: TOP

If leading or trailing edge < 100 prefer < Baseline drop else tangent >
 Peak separation: 5

Method : Z:\HPCHEM1\BNA_G\METHODS\SOM02.2-EPA-BG030316.M
 Title : SVOA CALIBRATION

35	18.122	2596	2601	2605	rBV	48195	56874	14.70%	1.524%
36	18.322	2631	2635	2638	rVV	440	686	0.18%	0.018%
37	18.351	2638	2640	2645	rVB	580	852	0.22%	0.023%
38	18.416	2648	2651	2653	rVV2	876	1020	0.26%	0.027%
39	18.598	2678	2682	2683	rBV	924	740	0.19%	0.020%
40	19.291	2797	2800	2806	rBV2	407	830	0.21%	0.022%
41	19.485	2828	2833	2836	rVB	2010	3174	0.82%	0.085%
42	19.567	2842	2847	2850	rBV	567	828	0.21%	0.022%
43	19.726	2870	2874	2878	rBV4	1585	2648	0.68%	0.071%
44	19.844	2888	2894	2903	rVV	282315	386890	100.00%	10.370%
45	19.920	2905	2907	2911	rVB2	1078	1297	0.34%	0.035%
46	20.126	2938	2942	2943	rBV2	842	1055	0.27%	0.028%
47	20.437	2992	2995	2998	rBV3	1088	1811	0.47%	0.049%
48	20.513	3005	3008	3009	rBV2	928	873	0.23%	0.023%
49	20.566	3014	3017	3018	rVV2	980	996	0.26%	0.027%
50	20.701	3037	3040	3043	rBV4	1081	1507	0.39%	0.040%
51	21.013	3091	3093	3095	rBV2	775	887	0.23%	0.024%
52	21.077	3102	3104	3107	rVB4	770	815	0.21%	0.022%
53	21.260	3134	3135	3139	rVB2	1215	809	0.21%	0.022%
54	21.418	3159	3162	3165	rBV5	1334	1636	0.42%	0.044%
55	21.448	3165	3167	3172	rVB5	1047	1452	0.38%	0.039%
56	21.594	3190	3192	3195	rBV3	847	838	0.22%	0.022%
57	21.730	3209	3215	3223	rVB	129915	201861	52.18%	5.411%
58	21.935	3248	3250	3253	rBV4	1039	1208	0.31%	0.032%
59	22.511	3346	3348	3351	rVV3	1361	1115	0.29%	0.030%
60	22.740	3385	3387	3388	rBV2	1533	1143	0.30%	0.031%
61	22.928	3418	3419	3422	rVB2	1100	1069	0.28%	0.029%
62	22.963	3422	3425	3426	rBV2	1311	1288	0.33%	0.035%
63	23.057	3439	3441	3443	rBV2	1795	1373	0.35%	0.037%
64	23.522	3518	3520	3522	rVB2	1403	841	0.22%	0.023%
65	23.639	3539	3540	3543	rVB2	1291	986	0.25%	0.026%
66	23.804	3566	3568	3572	rBV4	957	1116	0.29%	0.030%
67	23.845	3572	3575	3579	rBV4	1753	3030	0.78%	0.081%
68	24.021	3601	3605	3610	rVB4	3445	6246	1.61%	0.167%
69	24.215	3636	3638	3640	rBV2	1067	1257	0.32%	0.034%
70	24.609	3703	3705	3707	rBV3	767	761	0.20%	0.020%
71	24.632	3707	3709	3710	rBV2	981	801	0.21%	0.021%

Data Path : Z:\HPCHEM1\BNA_G\DATA\BG030816\
 Data File : BG021371.D
 Acq On : 8 Mar 2016 17:51
 Operator : UM/SJ
 Sample : H1655-09
 Misc :
 ALS Vial : 15 Sample Multiplier: 1

Instrument :
 BNA_G
 ClientSampleId :
 MS-RB-02

Integration Parameters: LSCINT.P

Integrator: RTE
 Smoothing : OFF
 Sampling : 1
 Start Thrs: 0.2
 Stop Thrs : 0

Filtering: 5
 Min Area: 0.1 % of largest Peak
 Max Peaks: 100
 Peak Location: TOP

If leading or trailing edge < 100 prefer < Baseline drop else tangent >
 Peak separation: 5

Method : Z:\HPCHEM1\BNA_G\METHODS\SOM02.2-EPA-BG030316.M
 Title : SVOA CALIBRATION

72	24.761	3720	3731	3744	rVB	129414	356316	92.10%	9.551%
73	24.891	3751	3753	3756	rBV4	1014	885	0.23%	0.024%
74	24.985	3758	3769	3779	rVB	67429	188176	48.64%	5.044%
75	25.531	3860	3862	3864	rBV3	1456	1290	0.33%	0.035%
76	26.077	3952	3955	3956	rVV3	2572	2834	0.73%	0.076%
77	26.095	3956	3958	3966	rVB5	4828	10539	2.72%	0.282%
78	26.630	4047	4049	4052	rVB3	1230	911	0.24%	0.024%
79	26.671	4052	4056	4058	rBV5	2273	2645	0.68%	0.071%
80	26.735	4065	4067	4069	rBV3	1391	1148	0.30%	0.031%
81	27.070	4122	4124	4126	rBV2	933	804	0.21%	0.022%
82	27.458	4182	4190	4191	rBV5	4350	8629	2.23%	0.231%
83	28.398	4348	4350	4352	rBV2	1830	1696	0.44%	0.045%
84	28.651	4392	4393	4396	rBV3	1317	1454	0.38%	0.039%
85	29.003	4451	4453	4454	rVB2	1119	758	0.20%	0.020%
86	29.068	4460	4464	4465	rBV4	1487	2084	0.54%	0.056%
87	29.744	4577	4579	4582	rBV3	1316	1056	0.27%	0.028%
88	29.773	4582	4584	4585	rVB2	1814	1075	0.28%	0.029%
89	29.820	4591	4592	4594	rBV	1035	799	0.21%	0.021%
90	29.991	4618	4621	4622	rBV2	1397	1759	0.45%	0.047%
91	30.190	4653	4655	4657	rBV2	1145	929	0.24%	0.025%
92	30.249	4664	4665	4667	rBV2	1204	754	0.19%	0.020%
93	30.290	4670	4672	4675	rBV3	936	1325	0.34%	0.036%
94	30.437	4695	4697	4699	rVB3	1257	698	0.18%	0.019%
95	30.613	4725	4727	4729	rBV3	1004	932	0.24%	0.025%
96	30.954	4783	4785	4787	rBV3	966	813	0.21%	0.022%
97	31.853	4935	4938	4941	rBV4	1352	2327	0.60%	0.062%
98	32.029	4967	4968	4972	rBV3	1334	1675	0.43%	0.045%
99	32.446	5038	5039	5040	rBV	1455	798	0.21%	0.021%
100	32.576	5060	5061	5063	rBV2	1036	865	0.22%	0.023%

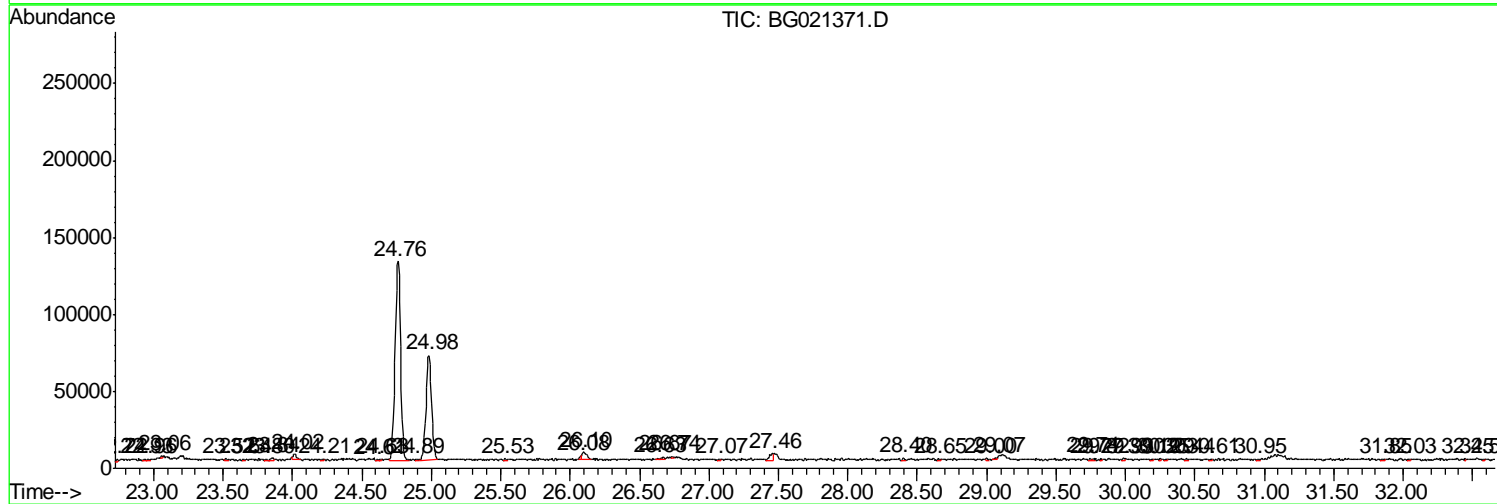
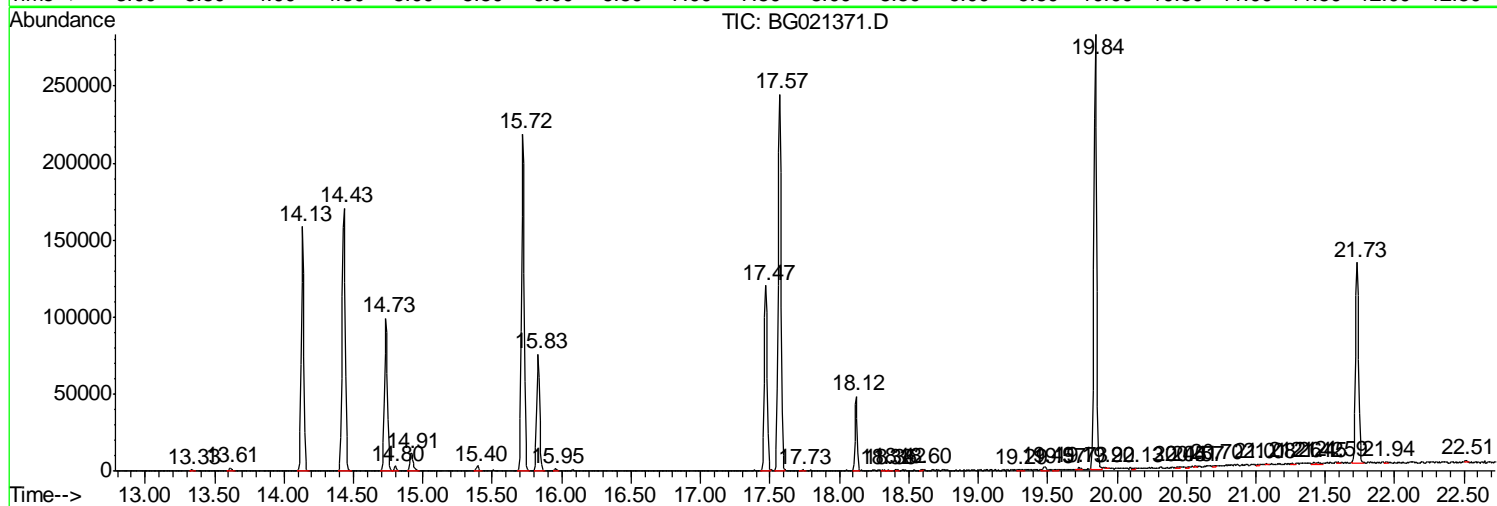
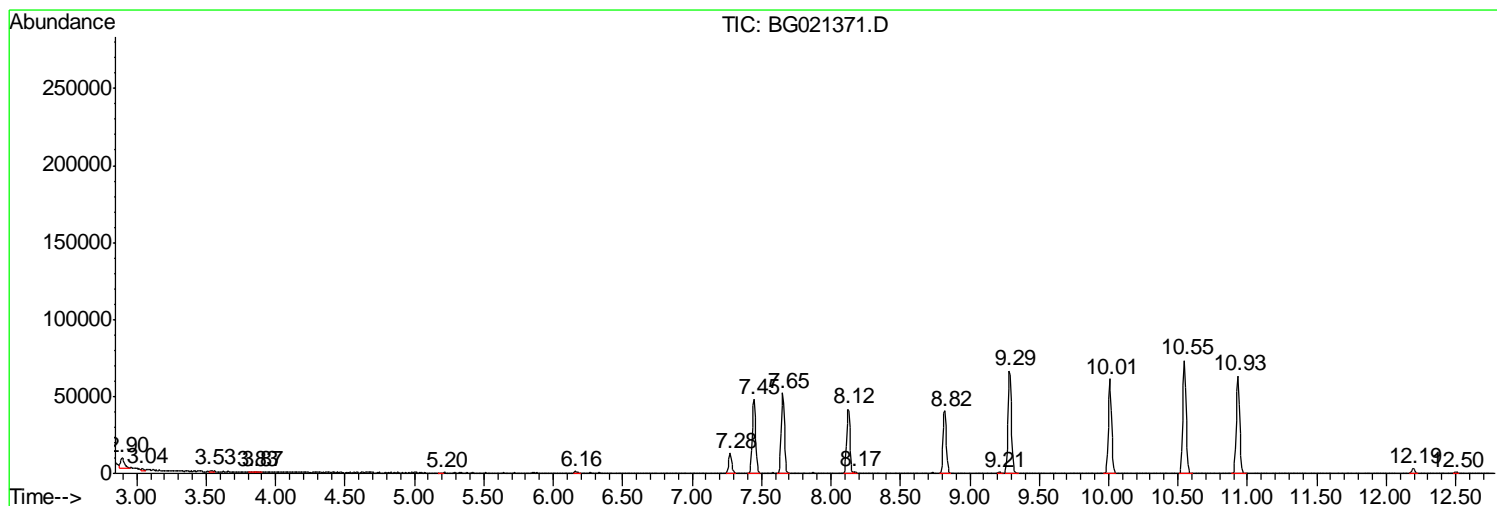
Sum of corrected areas: 3730766

Data Path : Z:\HPCHEM1\BNA_G\DATA\BG030816\
 Data File : BG021371.D
 Acq On : 8 Mar 2016 17:51
 Operator : UM/SJ
 Sample : H1655-09
 Misc :
 ALS Vial : 15 Sample Multiplier: 1

Instrument :
 BNA_G
 ClientSampleId :
 MS-RB-02

Quant Method : Z:\HPCHEM1\BNA_G\METHODS\SOM02.2-EPA-BG030316.M
 Quant Title : SVOA CALIBRATION

TIC Library : C:\DATABASE\NIST02.L
 TIC Integration Parameters: LSCINT.P



Data Path : Z:\HPCHEM1\BNA_G\DATA\BG030816\
 Data File : BG021371.D
 Acq On : 8 Mar 2016 17:51
 Operator : UM/SJ
 Sample : H1655-09
 Misc :
 ALS Vial : 15 Sample Multiplier: 1

Instrument :
 BNA_G
 ClientSampleID :
 MS-RB-02

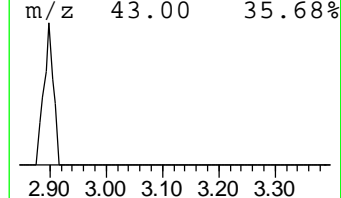
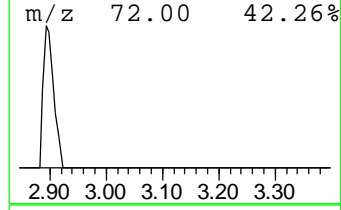
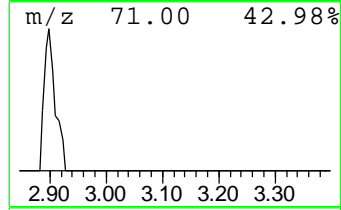
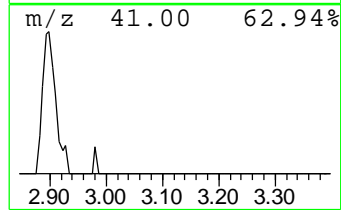
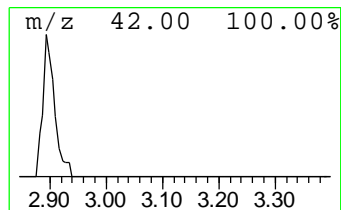
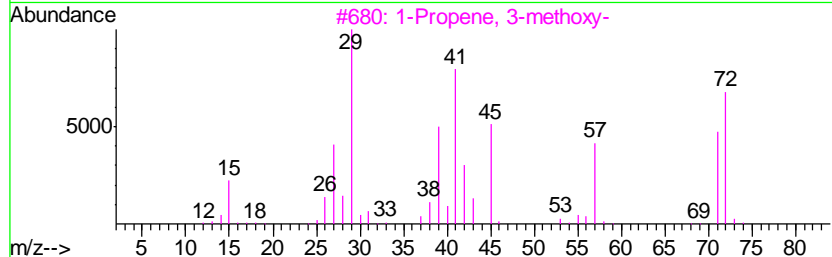
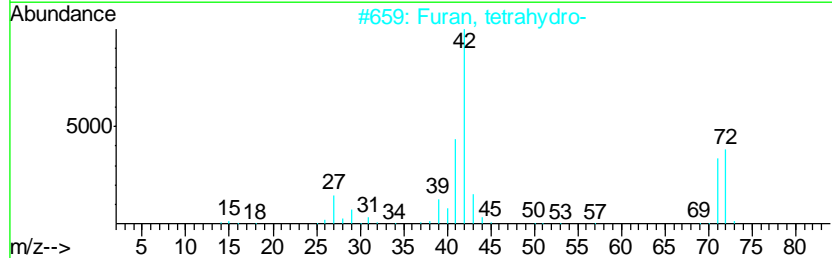
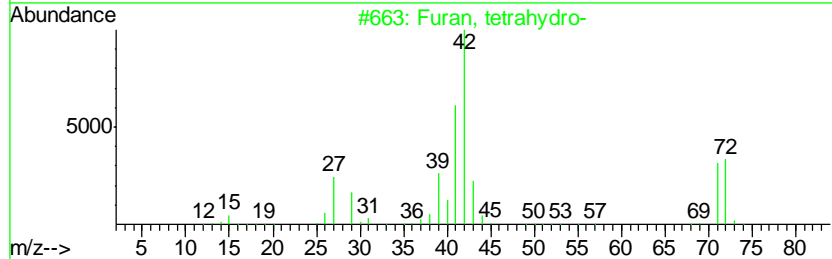
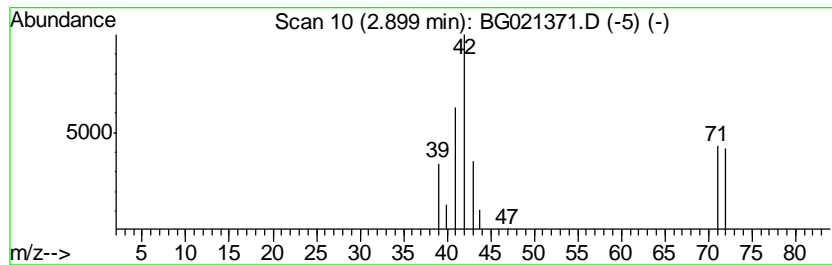
Quant Method : Z:\HPCHEM1\BNA_G\METHODS\SOM02.2-EPA-BG030316.M
 Quant Title : SVOA CALIBRATION

TIC Library : C:\DATABASE\NIST02.L
 TIC Integration Parameters: LSCINT.P

 Peak Number 1 Furan, tetrahydro- Concentration Rank 2

R.T.	EstConc	Area	Relative to ISTD	R.T.
2.90	4.16 ng/ul	14238	1,4-Dichlorobenzene-d4	8.13

Hit#	of	Tentative ID	MW	MolForm	CAS#	Qual
1	5	Furan, tetrahydro-	72	C4H8O	000109-99-9	90
2		Furan, tetrahydro-	72	C4H8O	000109-99-9	74
3		1-Propene, 3-methoxy-	72	C4H8O	000627-40-7	37
4		1-Propene, 2-methoxy-	72	C4H8O	000116-11-0	9
5		Diaziridine,3,3-dimethyl-	72	C3H8N2	004901-76-2	9



Data Path : Z:\HPCHEM1\BNA_G\DATA\BG030816\
 Data File : BG021371.D
 Acq On : 8 Mar 2016 17:51
 Operator : UM/SJ
 Sample : H1655-09
 Misc :
 ALS Vial : 15 Sample Multiplier: 1

Instrument :
 BNA_G
 ClientSampleID :
 MS-RB-02

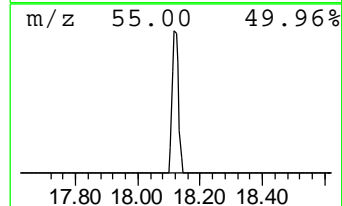
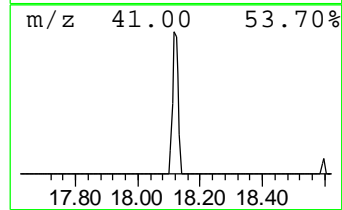
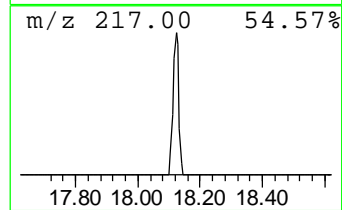
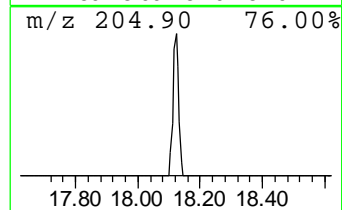
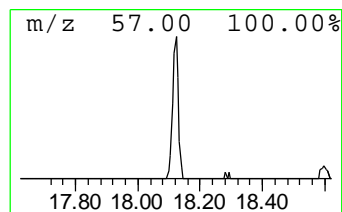
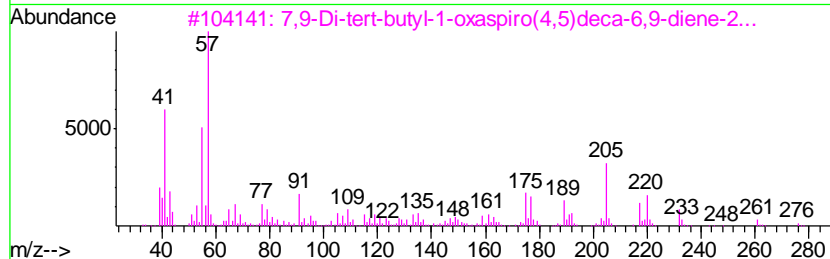
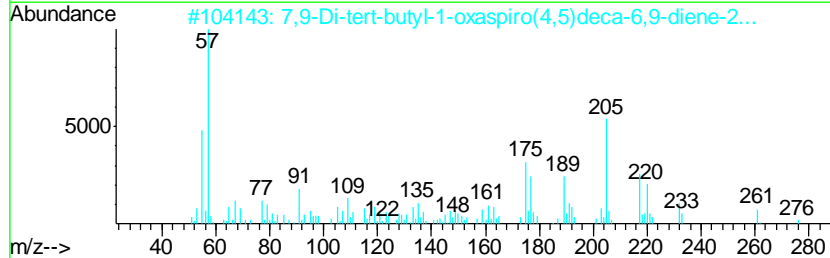
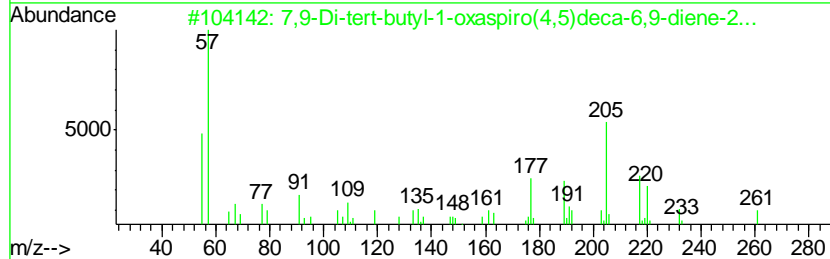
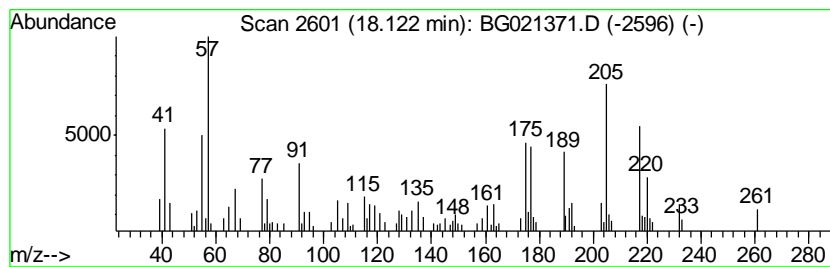
Quant Method : Z:\HPCHEM1\BNA_G\METHODS\SOM02.2-EPA-BG030316.M
 Quant Title : SVOA CALIBRATION

TIC Library : C:\DATABASE\NIST02.L
 TIC Integration Parameters: LSCINT.P

 Peak Number 2 7,9-Di-tert-butyl-1-oxaspir... Concentration Rank 1

R.T.	EstConc	Area	Relative to ISTD	R.T.
18.12	6.48 ng/ul	56874	Phenanthrene-d10	17.47

Hit#	of	Tentative ID	MW	MolForm	CAS#	Qual
1	5	7,9-Di-tert-butyl-1-oxaspiro(4,5...	276	C17H24O3	082304-66-3	90
2		7,9-Di-tert-butyl-1-oxaspiro(4,5...	276	C17H24O3	082304-66-3	90
3		7,9-Di-tert-butyl-1-oxaspiro(4,5...	276	C17H24O3	082304-66-3	87
4		1,3-Pentadiene, 1,1-diphenyl-, (Z)-	220	C17H16	015295-31-5	50
5		Ethanone, 1-(5,6,7,8-tetrahydro-...	220	C14H20O2	071596-88-8	45



Data Path : Z:\HPCHEM1\BNA_G\DATA\BG030816\
Data File : BG021371.D
Acq On : 8 Mar 2016 17:51
Operator : UM/SJ
Sample : H1655-09
Misc :
ALS Vial : 15 Sample Multiplier: 1

Instrument :
BNA_G
ClientSampleId :
MS-RB-02

Quant Method : Z:\HPCHEM1\BNA_G\METHODS\SOM02.2-EPA-BG030316.M
Quant Title : SVOA CALIBRATION

TIC Library : C:\DATABASE\NIST02.L
TIC Integration Parameters: LSCINT.P

TIC Top Hit name	RT	EstConc	Units	Response	--Internal Standard--			
					#	RT	Resp	Conc
Furan, tetrahydro-	2.90	4.2	ng/ul	14238	1	8.13	68505	20.0
7,9-Di-tert-butyl...	18.12	6.5	ng/ul	56874	4	17.47	175632	20.0