

Data Path : Z:\HPCHEM1\BNA_G\DATA\BG031017\
 Data File : BG026185.D
 Acq On : 10 Mar 2017 22:41
 Operator : SJ/MA
 Sample : PB97515BL
 Misc :
 ALS Vial : 21 Sample Multiplier: 1

Instrument :
 BNA_G
 ClientSampleId :
 SBLK15

Integration Parameters: LSCINT.P

Integrator: RTE
 Smoothing : OFF
 Sampling : 1
 Start Thrs: 0.2
 Stop Thrs : 0

Filtering: 5
 Min Area: 1 % of largest Peak
 Max Peaks: 100
 Peak Location: TOP

If leading or trailing edge < 100 prefer < Baseline drop else tangent >
 Peak separation: 5

Method : Z:\HPCHEM1\BNA_G\METHODS\SOM-EPA-BG030717MA.M
 Title : SVOA CALIBRATION

Signal : TIC

peak #	R.T. min	first scan	max scan	last scan	PK TY	peak height	corr. area	corr. % max.	% of total
1	7.213	696	702	713	rVB	311269	529032	16.65%	1.931%
2	7.383	725	731	738	rVB	313484	511817	16.11%	1.868%
3	7.595	761	767	774	rVB	337611	572316	18.02%	2.089%
4	8.065	841	847	854	rVB	344790	581440	18.30%	2.123%
5	8.758	958	965	975	rBV	408589	685411	21.58%	2.502%
6	9.217	1035	1043	1051	rBV	347628	605278	19.05%	2.210%
7	9.939	1159	1166	1173	rBV	194314	342442	10.78%	1.250%
8	10.480	1251	1258	1267	rBV	411254	715207	22.51%	2.611%
9	10.862	1316	1323	1332	rVB	495235	890252	28.02%	3.250%
10	10.991	1338	1345	1355	rBV2	145632	273208	8.60%	0.997%
11	14.064	1862	1868	1880	rBV	865698	1216560	38.30%	4.441%
12	14.363	1910	1919	1927	rBV	1086013	1685358	53.05%	6.153%
13	14.669	1962	1971	1980	rBV2	761391	1236862	38.94%	4.515%
14	14.775	1984	1989	1993	rVB	33996	43592	1.37%	0.159%
15	14.839	1993	2000	2007	rBV	260952	417089	13.13%	1.523%
16	15.650	2129	2138	2145	rBV	1468656	2276435	71.66%	8.310%
17	15.762	2150	2157	2170	rBV	245149	389390	12.26%	1.422%
18	17.395	2429	2435	2445	rBV	1077288	1601408	50.41%	5.846%
19	17.495	2445	2452	2460	rBV	1725084	2582774	81.30%	9.429%
20	19.769	2833	2839	2848	rBV	2152821	3176673	100.00%	11.597%
21	21.643	3149	3158	3170	rBV	1183629	1971781	62.07%	7.198%
22	23.911	3538	3544	3551	rBV5	18597	40684	1.28%	0.149%
23	24.616	3653	3664	3677	rBV2	1072415	2932465	92.31%	10.705%
24	24.834	3690	3701	3712	rBV	717118	2008715	63.23%	7.333%
25	25.968	3889	3894	3901	rVB5	20166	48124	1.51%	0.176%
26	28.935	4388	4399	4407	rBV5	15818	58239	1.83%	0.213%

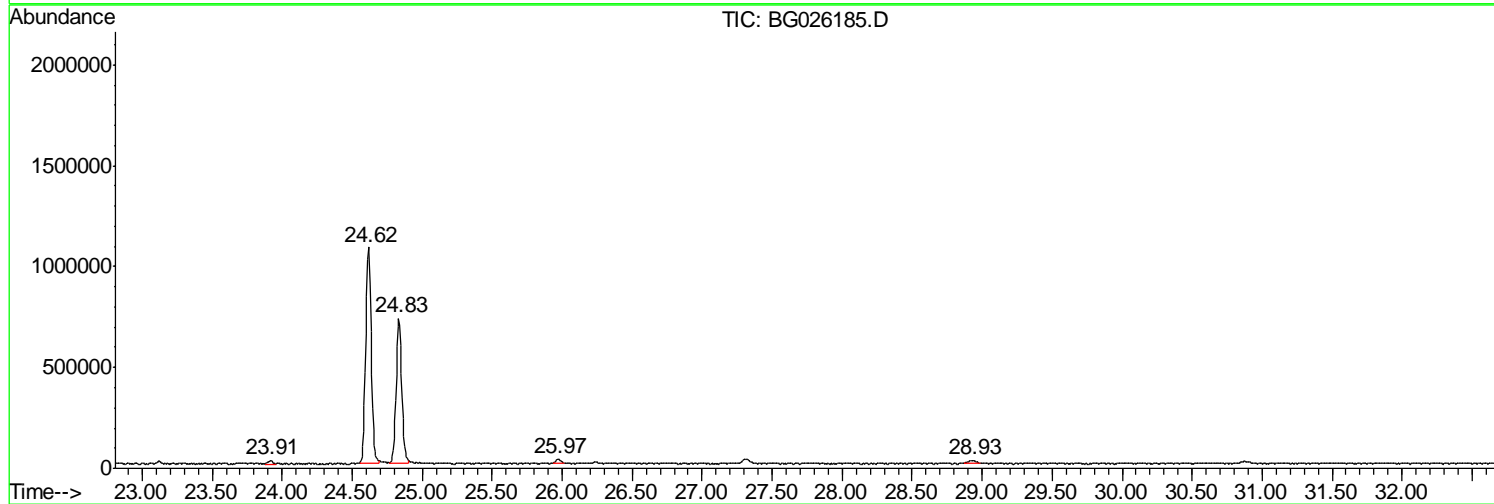
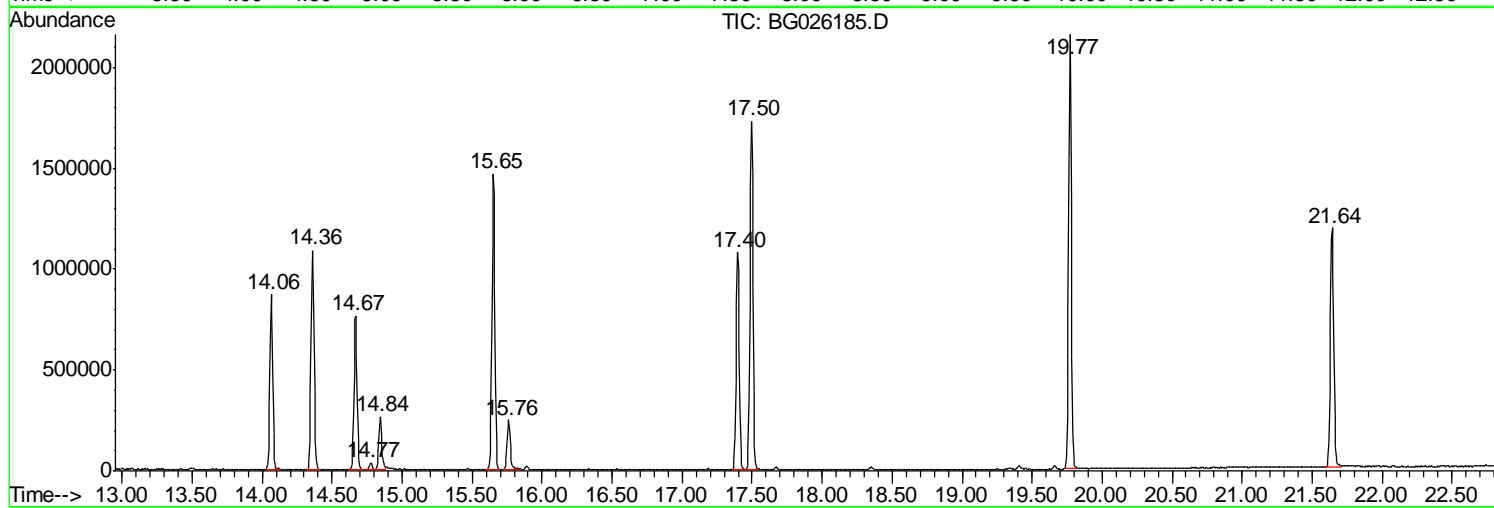
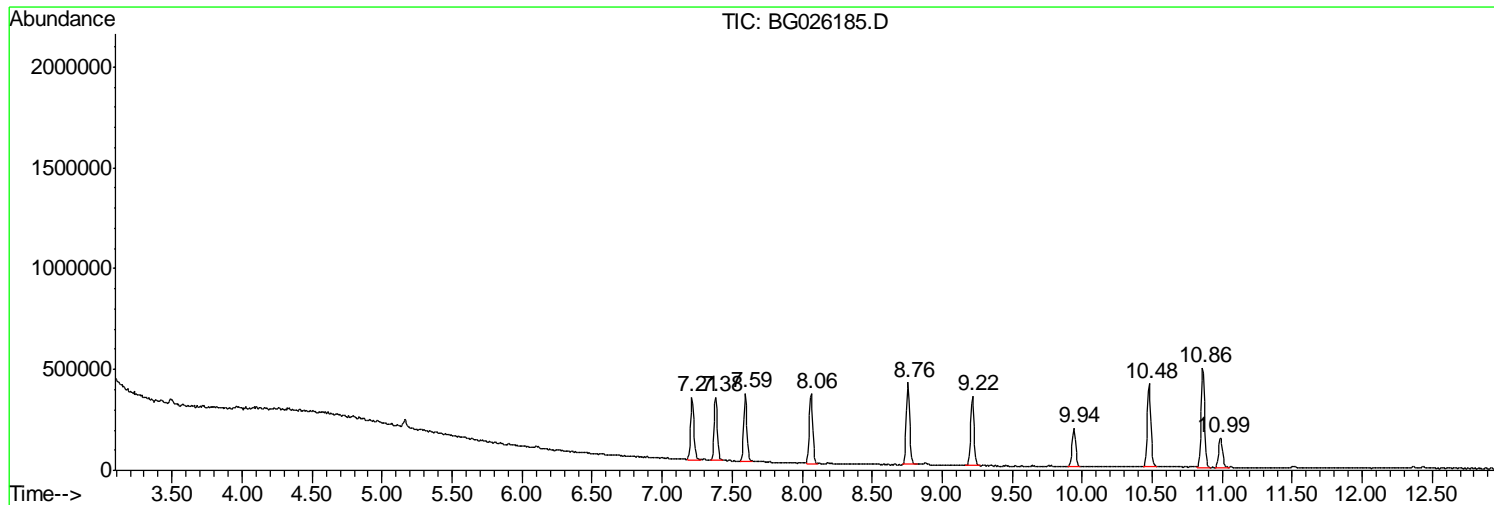
Sum of corrected areas: 27392552

Data Path : Z:\HPCHEM1\BNA_G\DATA\BG031017\
Data File : BG026185.D
Acq On : 10 Mar 2017 22:41
Operator : SJ/MA
Sample : PB97515BL
Misc :
ALS Vial : 21 Sample Multiplier: 1

Instrument :
BNA_G
ClientSampleId :
SBLK15

Quant Method : Z:\HPCHEM1\BNA_G\METHODS\SOM-EPA-BG030717MA.M
Quant Title : SVOA CALIBRATION

TIC Library : C:\DATABASE\NIST02.L
TIC Integration Parameters: LSCINT.P



Data Path : Z:\HPCHEM1\BNA_G\DATA\BG031017\
Data File : BG026185.D
Acq On : 10 Mar 2017 22:41
Operator : SJ/MA
Sample : PB97515BL
Misc :
ALS Vial : 21 Sample Multiplier: 1

Instrument :
BNA_G
ClientSampleId :
SBLK15

Quant Method : Z:\HPCHEM1\BNA_G\METHODS\SOM-EPA-BG030717MA.M
Quant Title : SVOA CALIBRATION

TIC Library : C:\DATABASE\NIST02.L
TIC Integration Parameters: LSCINT.P

No Library Search Compounds Detected

Data Path : Z:\HPCHEM1\BNA_G\DATA\BG031017\
Data File : BG026185.D
Acq On : 10 Mar 2017 22:41
Operator : SJ/MA
Sample : PB97515BL
Misc :
ALS Vial : 21 Sample Multiplier: 1

Instrument :
BNA_G
ClientSampleId :
SBLK15

Quant Method : Z:\HPCHEM1\BNA_G\METHODS\SOM-EPA-BG030717MA.M
Quant Title : SVOA CALIBRATION

TIC Library : C:\DATABASE\NIST02.L
TIC Integration Parameters: LSCINT.P

TIC Top Hit name	RT	EstConc	Units	Response	--Internal Standard--			
					#	RT	Resp	Conc
