

Data Path : Z:\HPCHEM1\BNA_G\DATA\BG031017\
 Data File : BG026187.D
 Acq On : 11 Mar 2017 00:00
 Operator : SJ/MA
 Sample : I2180-16
 Misc :
 ALS Vial : 23 Sample Multiplier: 1

Instrument :
 BNA_G
 ClientSampleId :
 C0BF4

Integration Parameters: LSCINT.P
 Integrator: RTE
 Smoothing : OFF Filtering: 5
 Sampling : 1 Min Area: 1 % of largest Peak
 Start Thrs: 0.2 Max Peaks: 100
 Stop Thrs : 0 Peak Location: TOP

If leading or trailing edge < 100 prefer < Baseline drop else tangent >
 Peak separation: 5

Method : Z:\HPCHEM1\BNA_G\METHODS\SOM-EPA-BG030717MA.M
 Title : SVOA CALIBRATION

Signal : TIC

peak #	R.T. min	first scan	max scan	last scan	PK TY	peak height	corr. area	corr. % max.	% of total
1	7.216	697	702	710	rVB2	61633	108726	3.73%	0.448%
2	7.380	724	730	742	rVB	314658	528611	18.14%	2.179%
3	7.592	760	766	777	rVB	259834	447462	15.36%	1.844%
4	8.062	840	846	853	rVB	320940	533839	18.32%	2.200%
5	8.755	958	964	975	rBV	184492	323418	11.10%	1.333%
6	9.213	1036	1042	1052	rVB	354090	620514	21.30%	2.558%
7	9.942	1159	1166	1173	rBV	189990	329983	11.33%	1.360%
8	10.476	1251	1257	1270	rBV	374102	670027	23.00%	2.762%
9	10.864	1315	1323	1331	rBV	461449	827312	28.40%	3.410%
10	14.066	1861	1868	1876	rBV	845470	1168727	40.12%	4.817%
11	14.360	1909	1918	1927	rBV	1108495	1710542	58.71%	7.051%
12	14.666	1961	1970	1980	rBV2	730844	1157682	39.74%	4.772%
13	14.842	1994	2000	2007	rBV3	30149	52648	1.81%	0.217%
14	15.653	2130	2138	2147	rBV	1440379	2185898	75.03%	9.010%
15	15.758	2151	2156	2168	rBV	215821	325839	11.18%	1.343%
16	17.398	2428	2435	2443	rBV2	968409	1458606	50.07%	6.012%
17	17.498	2445	2452	2460	rVV	1603825	2430315	83.42%	10.017%
18	19.771	2831	2839	2847	rBV	2042438	2913420	100.00%	12.009%
19	21.640	3151	3157	3170	rBV	1064082	1727723	59.30%	7.121%
20	23.920	3539	3545	3551	rVB4	22250	46406	1.59%	0.191%
21	24.613	3652	3663	3679	rBV2	938845	2671839	91.71%	11.013%
22	24.830	3690	3700	3721	rVB	616721	1799962	61.78%	7.419%
23	25.976	3886	3895	3904	rVB4	31729	90850	3.12%	0.374%
24	27.310	4115	4122	4133	rVB6	27149	90238	3.10%	0.372%
25	28.931	4389	4398	4399	rBV7	16194	40464	1.39%	0.167%

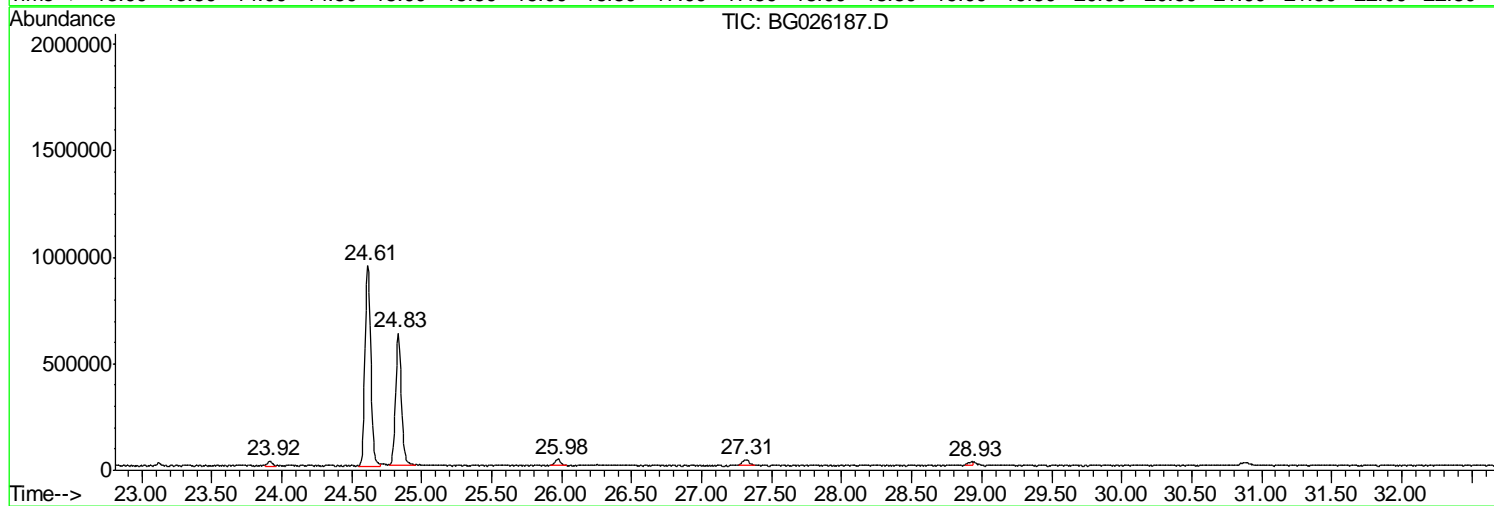
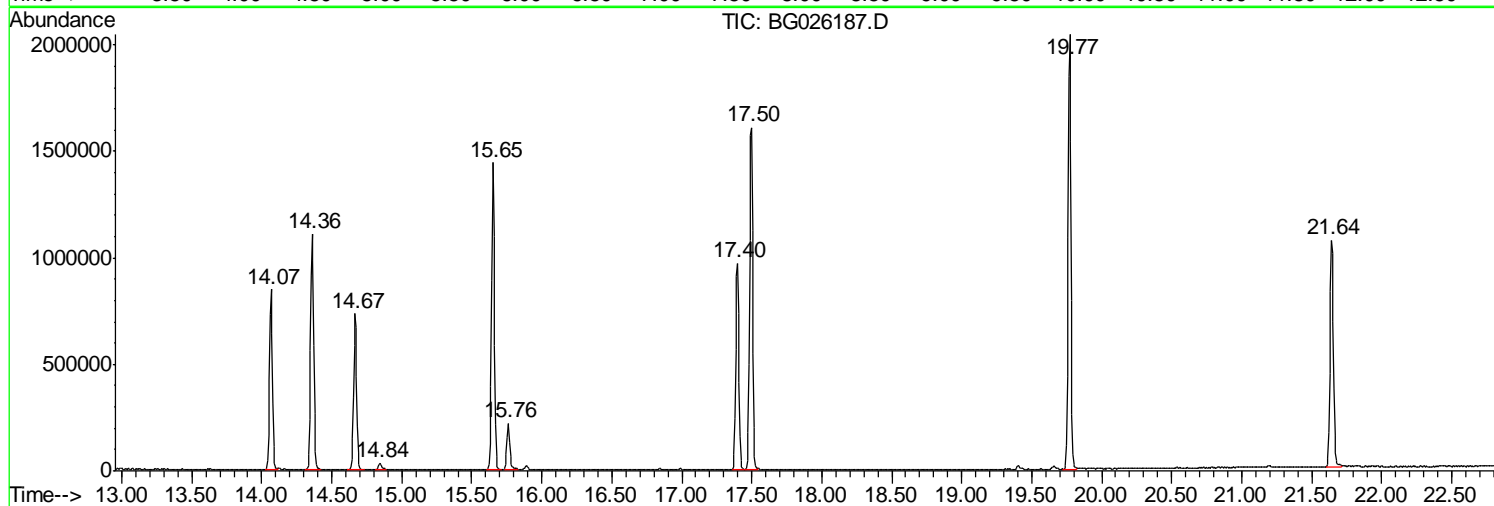
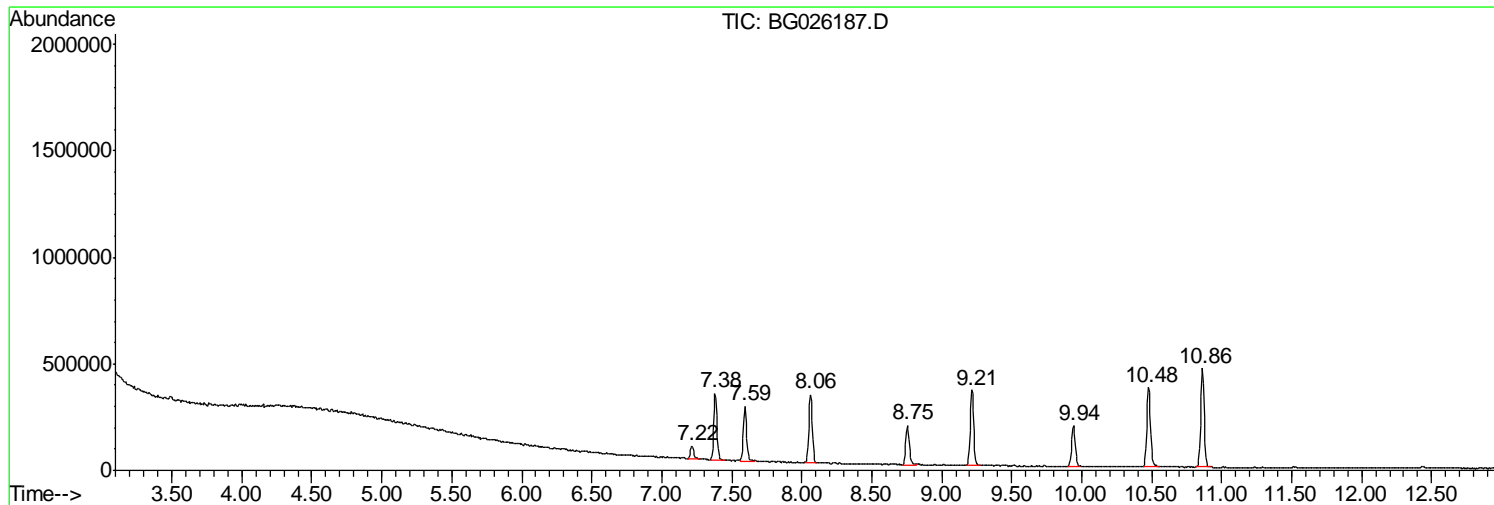
Sum of corrected areas: 24261051

Data Path : Z:\HPCHEM1\BNA_G\DATA\BG031017\
Data File : BG026187.D
Acq On : 11 Mar 2017 00:00
Operator : SJ/MA
Sample : I2180-16
Misc :
ALS Vial : 23 Sample Multiplier: 1

Instrument :
BNA_G
ClientSampled :
C0BF4

Quant Method : Z:\HPCHEM1\BNA_G\METHODS\SOM-EPA-BG030717MA.M
Quant Title : SVOA CALIBRATION

TIC Library : C:\DATABASE\NIST02.L
TIC Integration Parameters: LSCINT.P



Data Path : Z:\HPCHEM1\BNA_G\DATA\BG031017\
Data File : BG026187.D
Acq On : 11 Mar 2017 00:00
Operator : SJ/MA
Sample : I2180-16
Misc :
ALS Vial : 23 Sample Multiplier: 1

Instrument :
BNA_G
ClientSampleId :
C0BF4

Quant Method : Z:\HPCHEM1\BNA_G\METHODS\SOM-EPA-BG030717MA.M
Quant Title : SVOA CALIBRATION

TIC Library : C:\DATABASE\NIST02.L
TIC Integration Parameters: LSCINT.P

No Library Search Compounds Detected

Data Path : Z:\HPCHEM1\BNA_G\DATA\BG031017\
Data File : BG026187.D
Acq On : 11 Mar 2017 00:00
Operator : SJ/MA
Sample : I2180-16
Misc :
ALS Vial : 23 Sample Multiplier: 1

Instrument :
BNA_G
ClientSampleId :
C0BF4

Quant Method : Z:\HPCHEM1\BNA_G\METHODS\SOM-EPA-BG030717MA.M
Quant Title : SVOA CALIBRATION

TIC Library : C:\DATABASE\NIST02.L
TIC Integration Parameters: LSCINT.P

TIC Top Hit name	RT	EstConc	Units	Response	--Internal Standard--			
					#	RT	Resp	Conc
