

Data Path : Z:\svoasrv\HPCHEM1\BNA_G\Data\BG031022\
 Data File : BG052635.D
 Acq On : 10 Mar 2022 15:41
 Operator : CG/JU
 Sample : N1845-10 2X
 Misc :
 ALS Vial : 9 Sample Multiplier: 1

Instrument :
 BNA_G
 ClientSampleId :
 SAMPLE-10

Manual Integrations
 APPROVED

Reviewed By :Christian Giraldo 03/11/2022
 Supervised By :Jagrut Upadhyay 03/11/2022

Quant Time: Mar 11 03:45:00 2022
 Quant Method : Z:\svoasrv\HPCHEM1\BNA_G\Methods\8270-BG030922.M
 Quant Title : ASP BNA STANDARDS FOR 5 POINT CALIBRATION
 QLast Update : Thu Mar 10 06:37:54 2022
 Response via : Initial Calibration

Compound	R.T.	QIon	Response	Conc	Units	Dev(Min)
Internal Standards						
1) 1,4-Dichlorobenzene-d4	8.175	152	45221	20.000	ng	0.00
21) Naphthalene-d8	11.012	136	169803	20.000	ng	0.00
39) Acenaphthene-d10	14.825	164	108111	20.000	ng	0.00
64) Phenanthrene-d10	17.580	188	220702	20.000	ng	0.00
76) Chrysene-d12	21.886	240	190349	20.000	ng	0.00
86) Perylene-d12	25.316	264	186913	20.000	ng	# 0.01
System Monitoring Compounds						
5) 2-Fluorophenol	5.707	112	91316	34.885	ng	0.00
7) Phenol-d6	7.329	99	148912	39.306	ng	0.00
23) Nitrobenzene-d5	9.350	82	102020	27.236	ng	0.00
42) 2,4,6-Tribromophenol	16.317	330	42795	27.910	ng	0.00
45) 2-Fluorobiphenyl	13.450	172	229907	28.704	ng	0.00
79) Terphenyl-d14	20.170	244	312906	29.089	ng	0.00
Target Compounds						
71) Phenanthrene	17.621	178	23936	2.067	ng	98
75) Fluoranthene	19.624	202	44296	3.064	ng	100
78) Pyrene	19.988	202	41854m	3.290	ng	
83) Chrysene	21.933	228	25179	2.112	ng	# 89
88) Benzo(b)fluoranthene	24.224	252	27108	2.349	ng	# 69

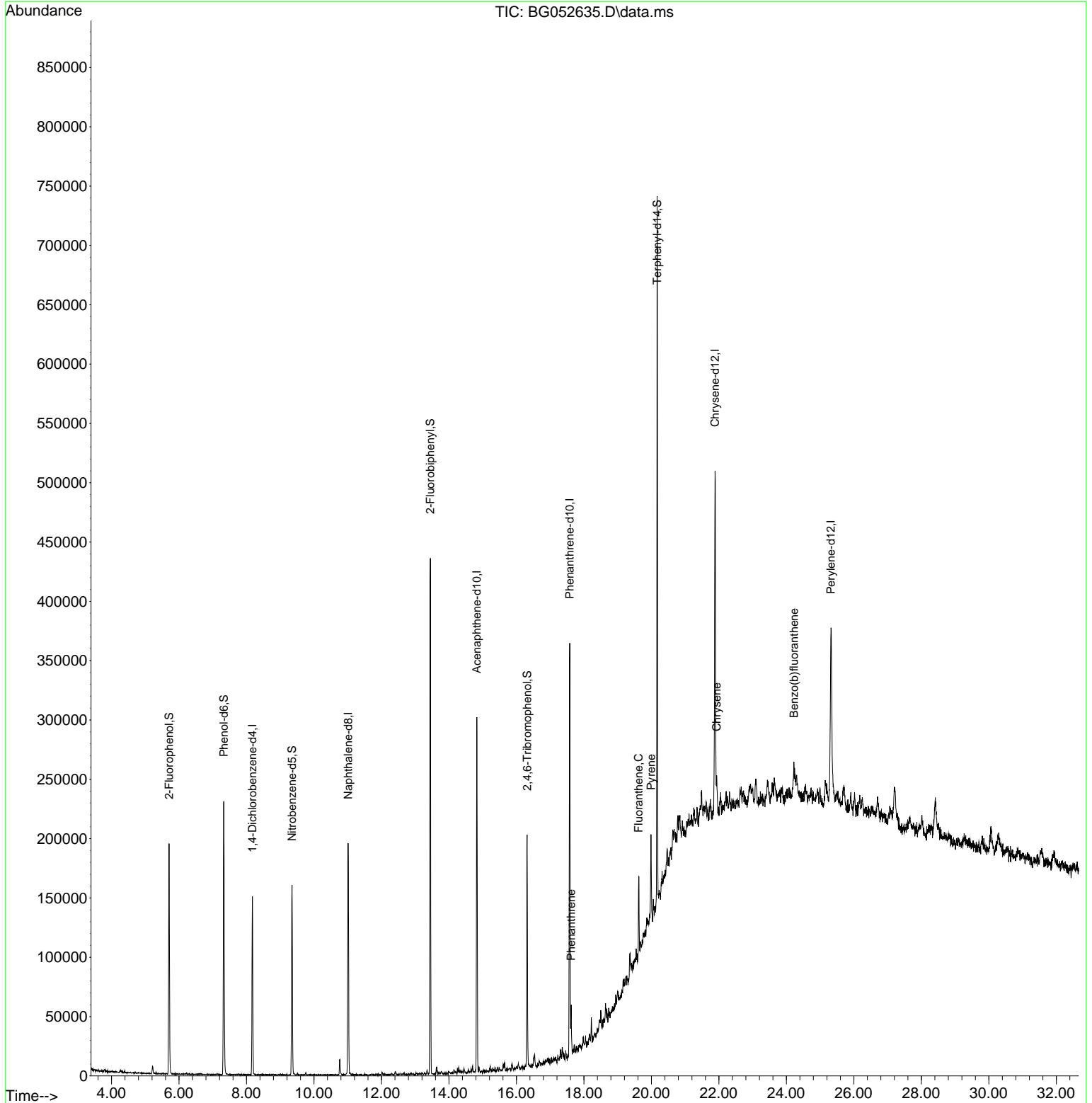
(#) = qualifier out of range (m) = manual integration (+) = signals summed

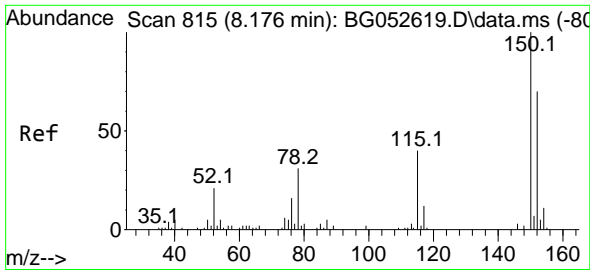
Data Path : Z:\svoasrv\HPCHEM1\BNA_G\Data\BG031022\
 Data File : BG052635.D
 Acq On : 10 Mar 2022 15:41
 Operator : CG/JU
 Sample : N1845-10 2X
 Misc :
 ALS Vial : 9 Sample Multiplier: 1

Instrument :
 BNA_G
ClientSampleId :
 SAMPLE-10

Quant Time: Mar 11 03:45:00 2022
 Quant Method : Z:\svoasrv\HPCHEM1\BNA_G\Methods\8270-BG030922.M
 Quant Title : ASP BNA STANDARDS FOR 5 POINT CALIBRATION
 QLast Update : Thu Mar 10 06:37:54 2022
 Response via : Initial Calibration

Manual Integrations
APPROVED
 Reviewed By :Christian Giraldo 03/11/2022
 Supervised By :Jagrut Upadhyay 03/11/2022





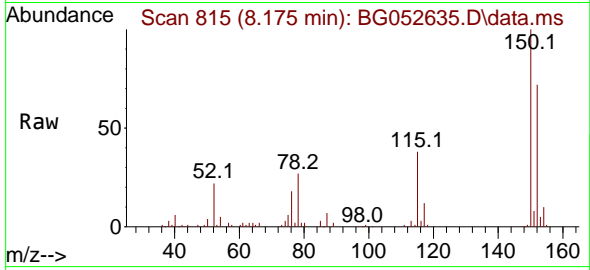
#1
 1,4-Dichlorobenzene-d4
 Concen: 20.000 ng
 RT: 8.175 min Scan# 815
 Delta R.T. -0.001 min
 Lab File: BG052635.D
 Acq: 10 Mar 2022 15:41

Instrument :

BNA_G

ClientSampleId :

SAMPLE-10

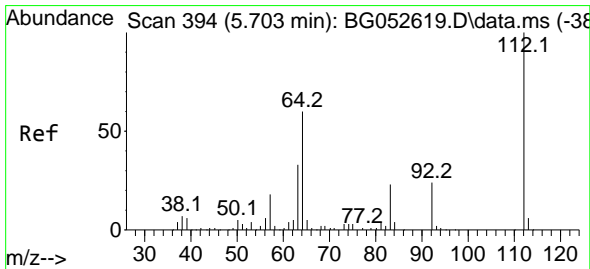
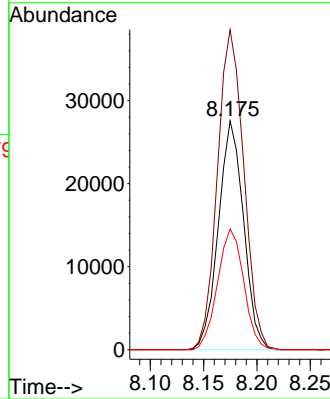
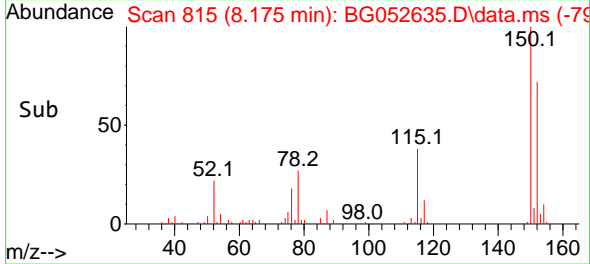


Tgt Ion:152 Resp: 4522
 Ion Ratio Lower Upper
 152 100
 150 139.9 114.6 172.0
 115 52.8 45.9 68.9

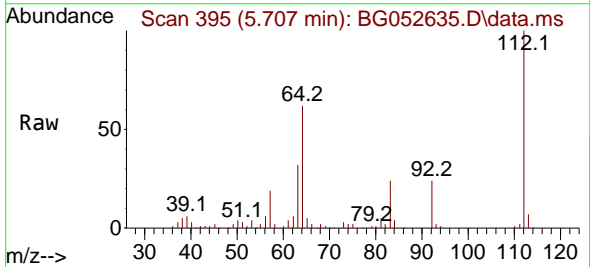
Manual Integrations

APPROVED

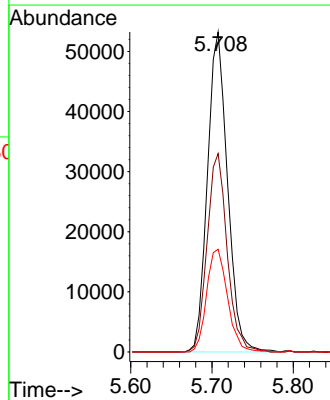
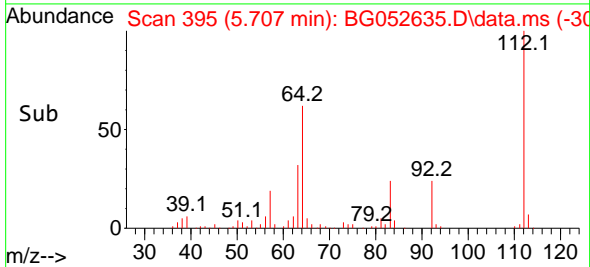
Reviewed By :Christian Giraldo 03/11/2022
 Supervised By :Jagrut Upadhyay 03/11/2022

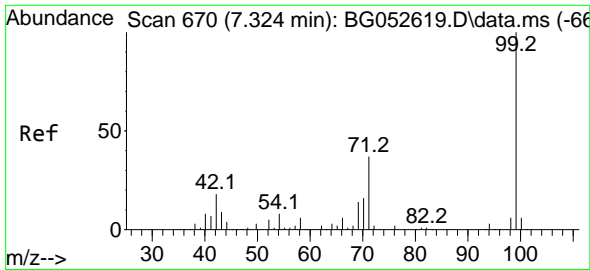


#5
 2-Fluorophenol
 Concen: 34.885 ng
 RT: 5.707 min Scan# 395
 Delta R.T. 0.005 min
 Lab File: BG052635.D
 Acq: 10 Mar 2022 15:41



Tgt Ion:112 Resp: 91316
 Ion Ratio Lower Upper
 112 100
 64 62.0 48.0 72.0
 63 32.1 26.5 39.7





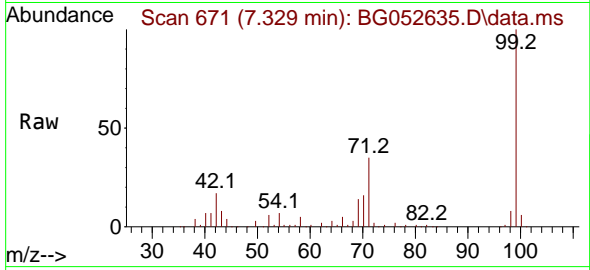
#7
 Phenol-d6
 Concen: 39.306 ng
 RT: 7.329 min Scan# 61
 Delta R.T. 0.005 min
 Lab File: BG052635.D
 Acq: 10 Mar 2022 15:41

Instrument :

BNA_G

ClientSampleId :

SAMPLE-10

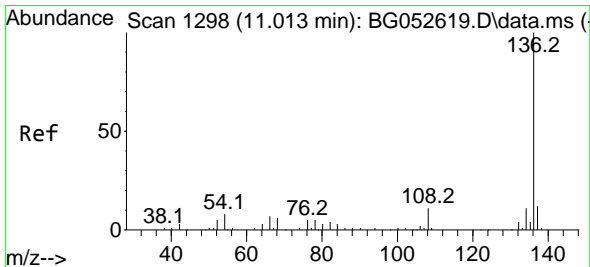
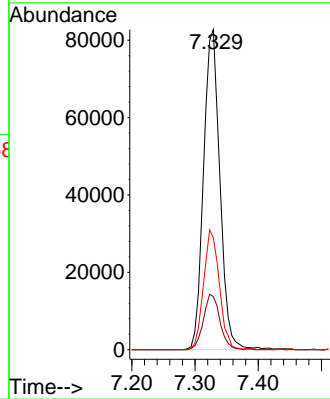
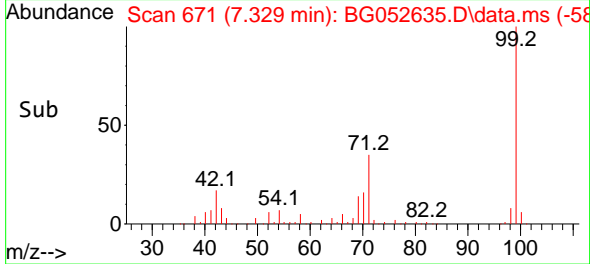


Tgt Ion: 99 Resp: 14891
 Ion Ratio Lower Upper
 99 100
 42 16.6 14.7 22.1
 71 34.9 29.2 43.8

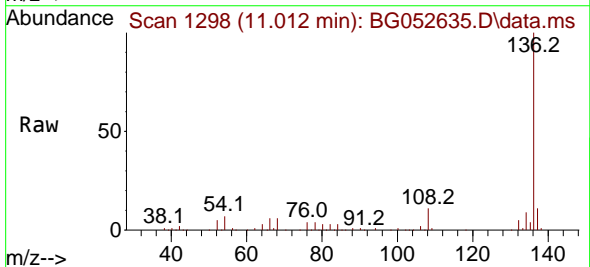
Manual Integrations

APPROVED

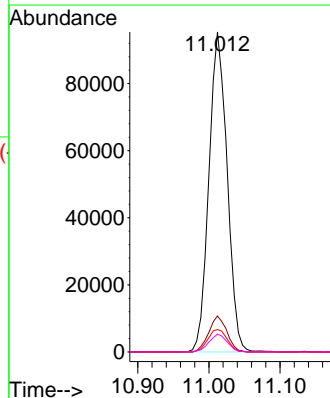
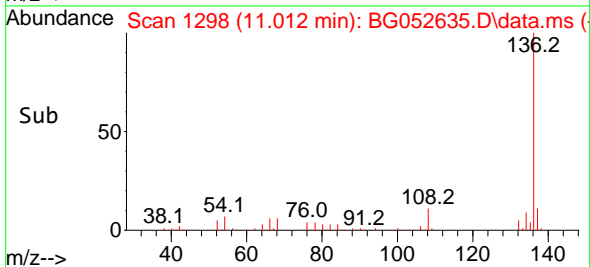
Reviewed By :Christian Giraldo 03/11/2022
 Supervised By :Jagrut Upadhyay 03/11/2022

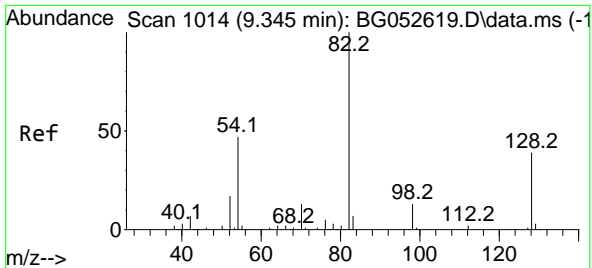


#21
 Naphthalene-d8
 Concen: 20.000 ng
 RT: 11.012 min Scan# 1298
 Delta R.T. -0.001 min
 Lab File: BG052635.D
 Acq: 10 Mar 2022 15:41



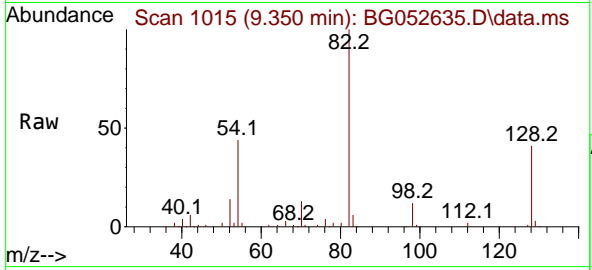
Tgt Ion:136 Resp: 169803
 Ion Ratio Lower Upper
 136 100
 137 11.2 9.4 14.2
 54 7.0 6.4 9.6
 68 5.6 5.0 7.6





#23
 Nitrobenzene-d5
 Concen: 27.236 ng
 RT: 9.350 min Scan# 1015
 Delta R.T. 0.005 min
 Lab File: BG052635.D
 Acq: 10 Mar 2022 15:41

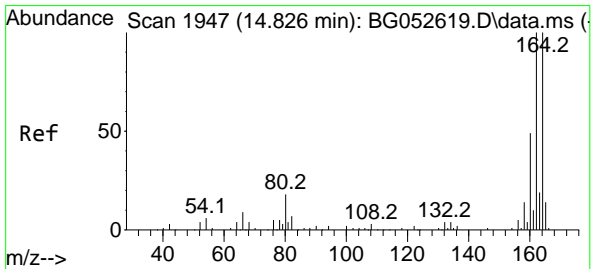
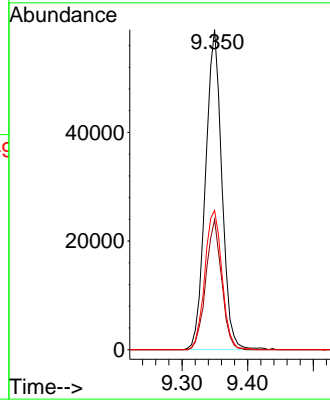
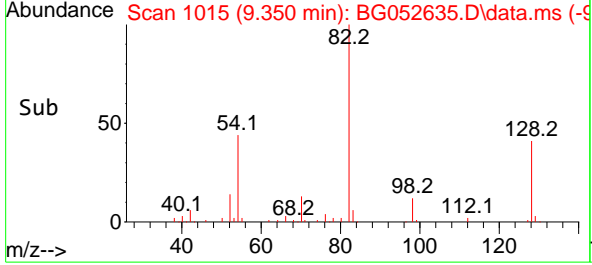
Instrument : BNA_G
 ClientSampleId : SAMPLE-10



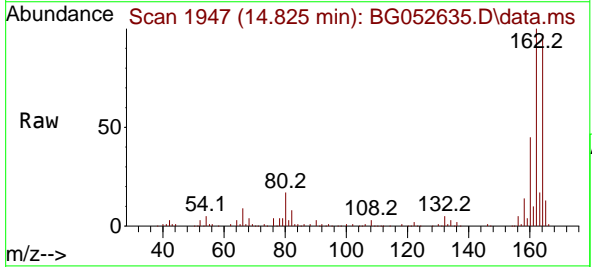
Tgt Ion: 82 Resp: 102020
 Ion Ratio Lower Upper
 82 100
 128 40.6 31.3 46.9
 54 43.5 37.8 56.8

Manual Integrations
 APPROVED

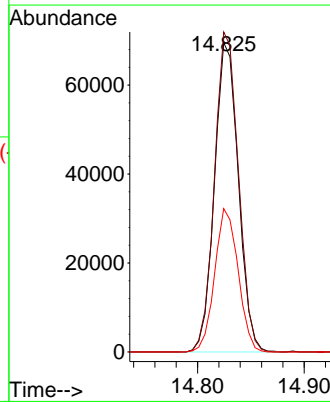
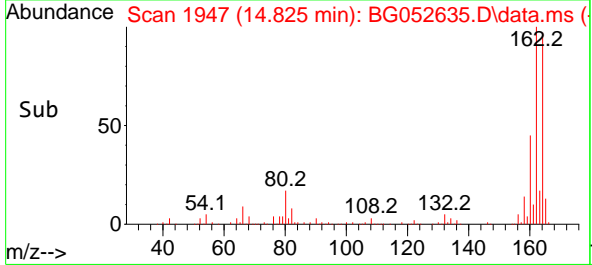
Reviewed By :Christian Giraldo 03/11/2022
 Supervised By :Jagrut Upadhyay 03/11/2022

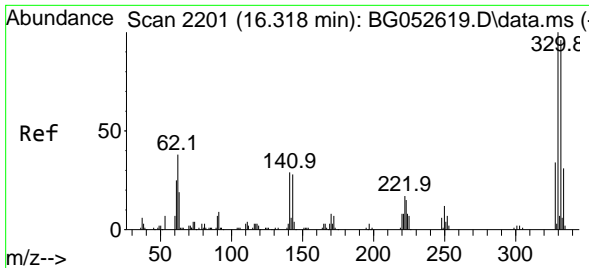


#39
 Acenaphthene-d10
 Concen: 20.000 ng
 RT: 14.825 min Scan# 1947
 Delta R.T. -0.001 min
 Lab File: BG052635.D
 Acq: 10 Mar 2022 15:41



Tgt Ion:164 Resp: 108111
 Ion Ratio Lower Upper
 164 100
 162 103.4 80.0 120.0
 160 46.3 38.8 58.2





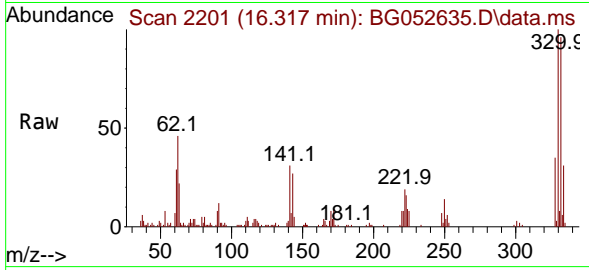
#42
 2,4,6-Tribromophenol
 Concen: 27.910 ng
 RT: 16.317 min Scan# 21
 Delta R.T. -0.001 min
 Lab File: BG052635.D
 Acq: 10 Mar 2022 15:41

Instrument :

BNA_G

ClientSampleId :

SAMPLE-10

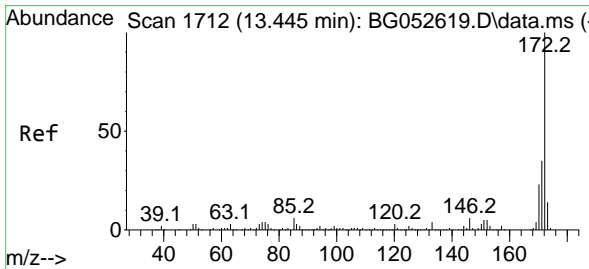
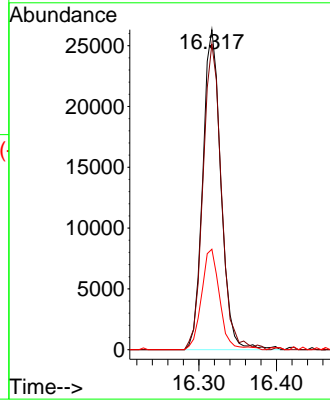
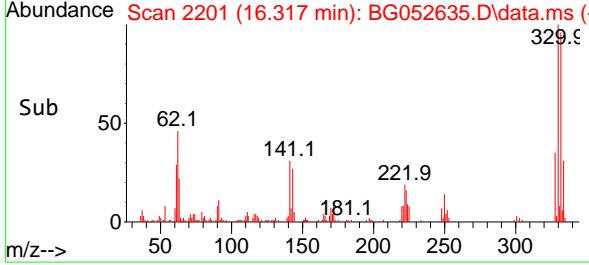


Tgt Ion:330 Resp: 4279
 Ion Ratio Lower Upper
 330 100
 332 96.7 75.8 113.6
 141 31.4 24.6 36.8

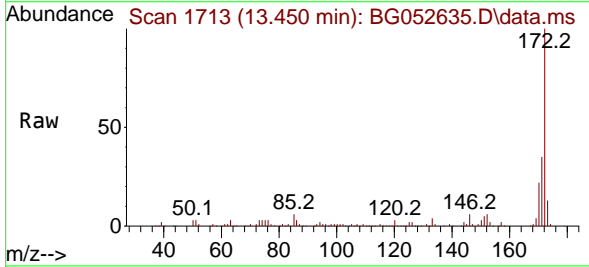
Manual Integrations

APPROVED

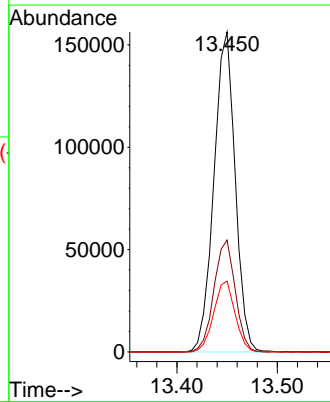
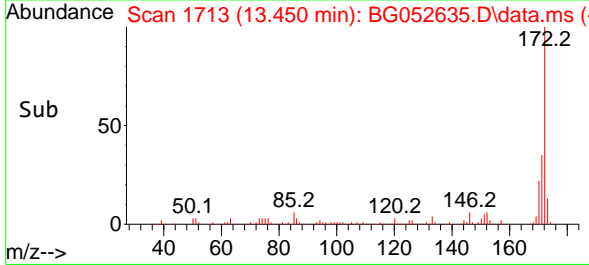
Reviewed By :Christian Giraldo 03/11/2022
 Supervised By :Jagrut Upadhyay 03/11/2022

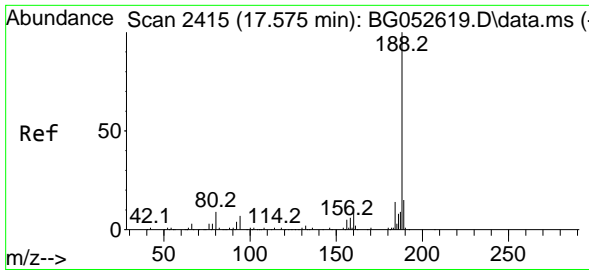


#45
 2-Fluorobiphenyl
 Concen: 28.704 ng
 RT: 13.450 min Scan# 1713
 Delta R.T. 0.005 min
 Lab File: BG052635.D
 Acq: 10 Mar 2022 15:41



Tgt Ion:172 Resp: 229907
 Ion Ratio Lower Upper
 172 100
 171 35.0 28.3 42.5
 170 22.2 18.0 27.0





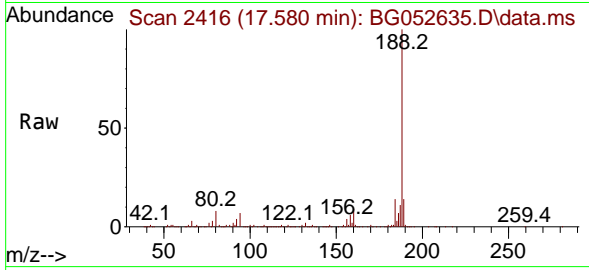
#64
 Phenanthrene-d10
 Concen: 20.000 ng
 RT: 17.580 min Scan# 2415
 Delta R.T. 0.005 min
 Lab File: BG052635.D
 Acq: 10 Mar 2022 15:41

Instrument :

BNA_G

ClientSampleId :

SAMPLE-10

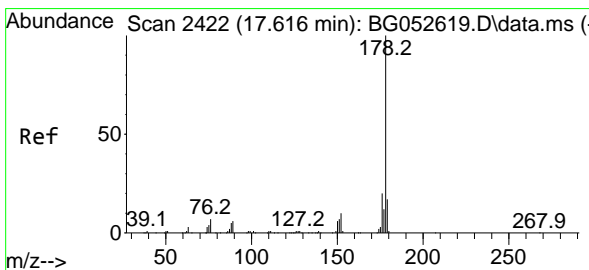
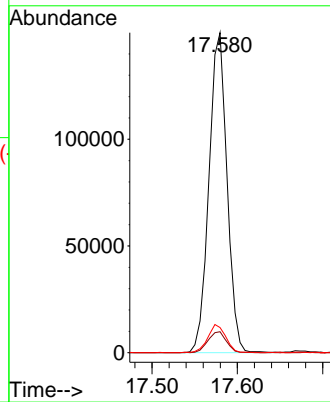
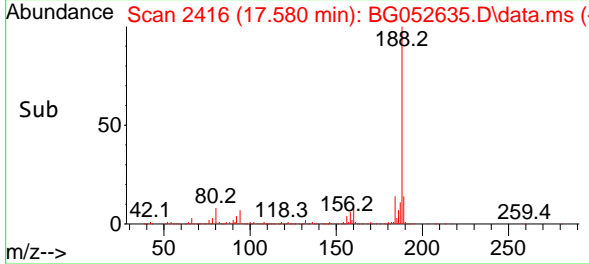


Tgt Ion:188 Resp: 22070
 Ion Ratio Lower Upper
 188 100
 94 6.6 5.7 8.5
 80 7.9 7.2 10.8

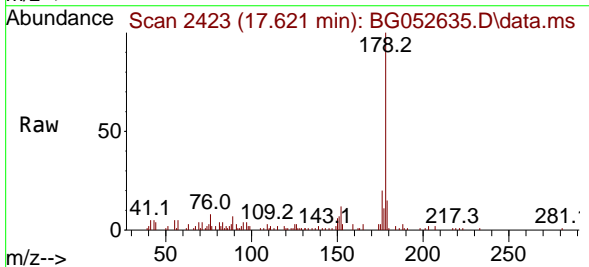
Manual Integrations

APPROVED

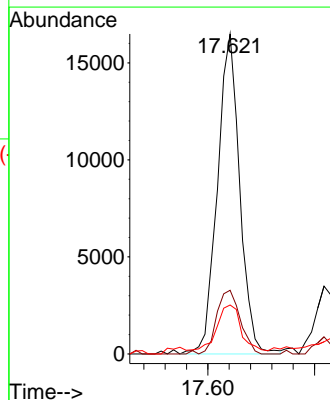
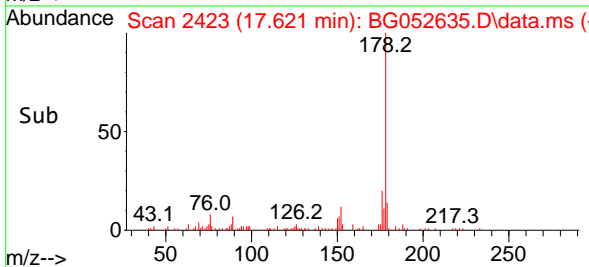
Reviewed By :Christian Giraldo 03/11/2022
 Supervised By :Jagrut Upadhyay 03/11/2022

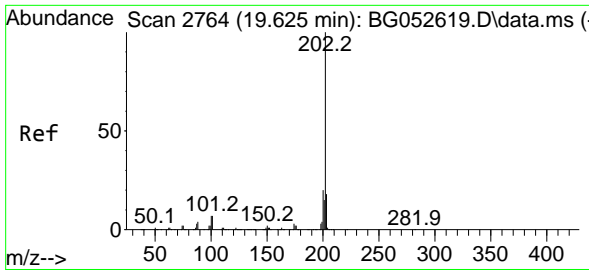


#71
 Phenanthrene
 Concen: 2.067 ng
 RT: 17.621 min Scan# 2423
 Delta R.T. 0.005 min
 Lab File: BG052635.D
 Acq: 10 Mar 2022 15:41



Tgt Ion:178 Resp: 23936
 Ion Ratio Lower Upper
 178 100
 176 19.9 15.9 23.9
 179 15.3 13.4 20.2





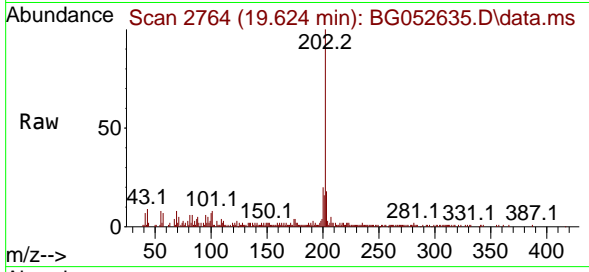
#75
 Fluoranthene
 Concen: 3.064 ng
 RT: 19.624 min Scan# 21
 Delta R.T. -0.001 min
 Lab File: BG052635.D
 Acq: 10 Mar 2022 15:41

Instrument :

BNA_G

ClientSampleId :

SAMPLE-10

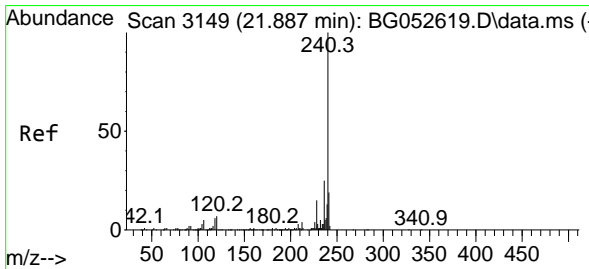
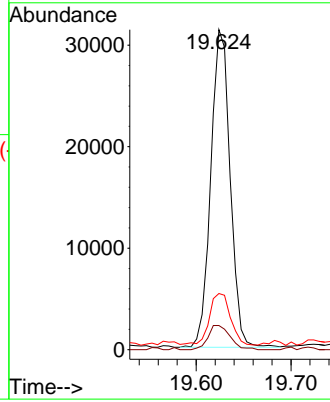
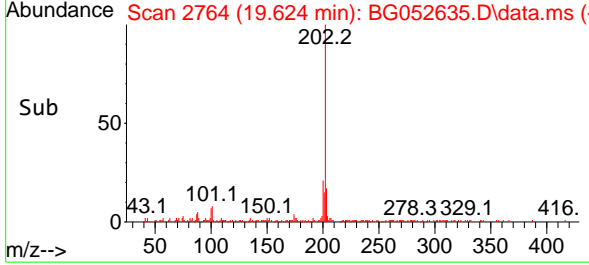


Tgt Ion: 202 Resp: 44290
 Ion Ratio Lower Upper
 202 100
 101 7.5 0.0 27.3
 203 17.6 0.0 37.7

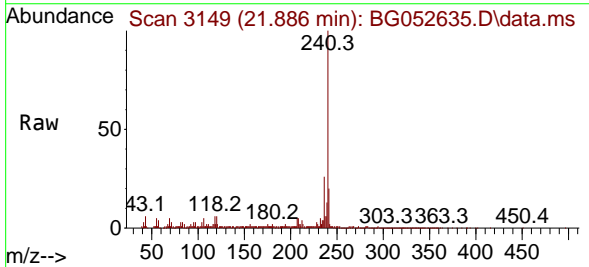
Manual Integrations

APPROVED

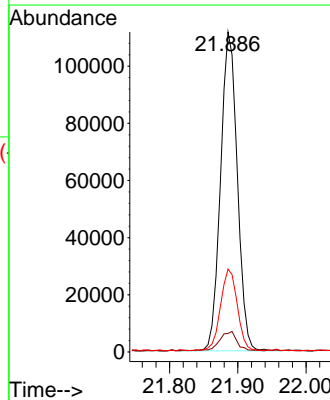
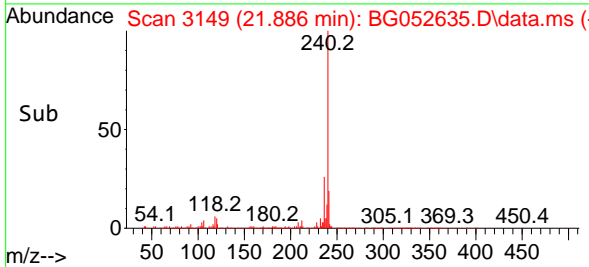
Reviewed By : Christian Giraldo 03/11/2022
 Supervised By : Jagrut Upadhyay 03/11/2022

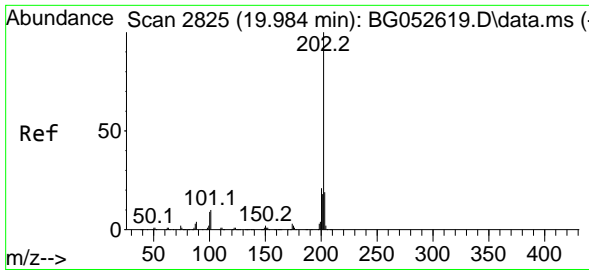


#76
 Chrysene-d12
 Concen: 20.000 ng
 RT: 21.886 min Scan# 3149
 Delta R.T. -0.001 min
 Lab File: BG052635.D
 Acq: 10 Mar 2022 15:41



Tgt Ion: 240 Resp: 190349
 Ion Ratio Lower Upper
 240 100
 120 5.8 5.4 8.0
 236 25.9 19.8 29.6





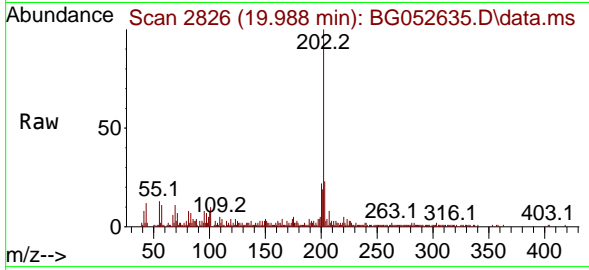
#78
 Pyrene
 Concen: 3.290 ng m
 RT: 19.988 min Scan# 2826
 Delta R.T. 0.005 min
 Lab File: BG052635.D
 Acq: 10 Mar 2022 15:41

Instrument :

BNA_G

Client Sample Id :

SAMPLE-10

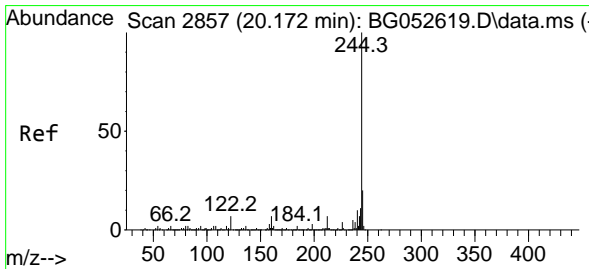
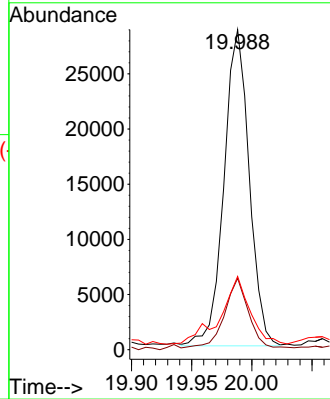
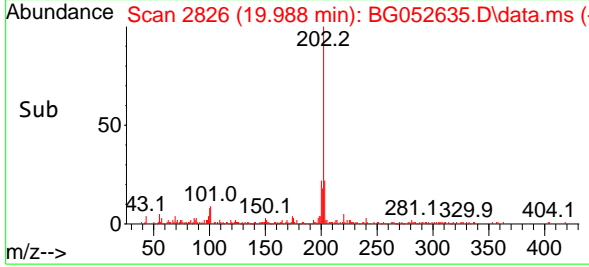


Tgt Ion: 202 Resp: 41854
 Ion Ratio Lower Upper
 202 100
 200 22.3 17.0 25.6
 203 22.9 15.0 22.6

Manual Integrations

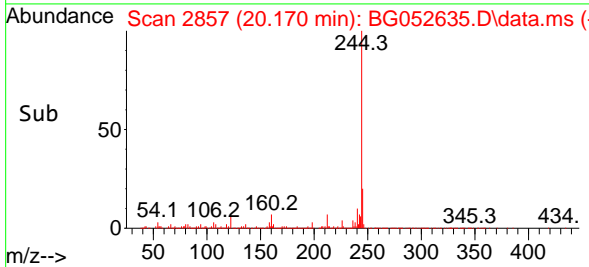
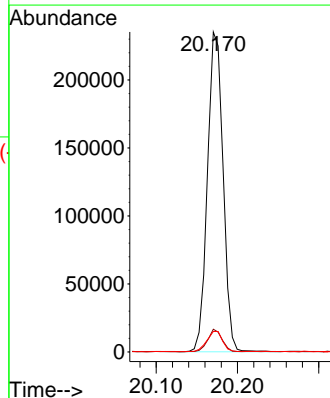
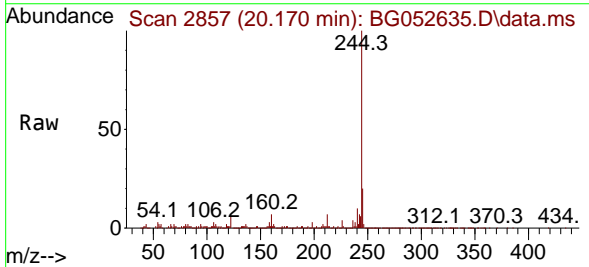
APPROVED

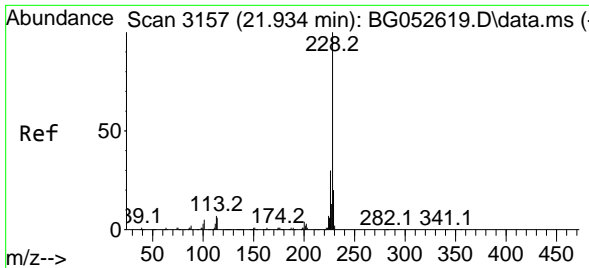
Reviewed By : Christian Giraldo 03/11/2022
 Supervised By : Jagrut Upadhyay 03/11/2022



#79
 Terphenyl-d14
 Concen: 29.089 ng
 RT: 20.170 min Scan# 2857
 Delta R.T. -0.001 min
 Lab File: BG052635.D
 Acq: 10 Mar 2022 15:41

Tgt Ion: 244 Resp: 312906
 Ion Ratio Lower Upper
 244 100
 212 7.1 5.4 8.2
 122 6.4 5.8 8.6





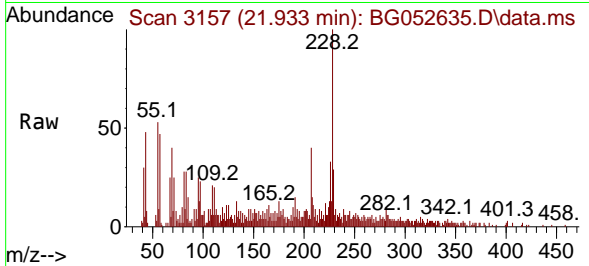
#83
 Chrysene
 Concen: 2.112 ng
 RT: 21.933 min Scan# 3157
 Delta R.T. -0.001 min
 Lab File: BG052635.D
 Acq: 10 Mar 2022 15:41

Instrument :

BNA_G

ClientSampleId :

SAMPLE-10

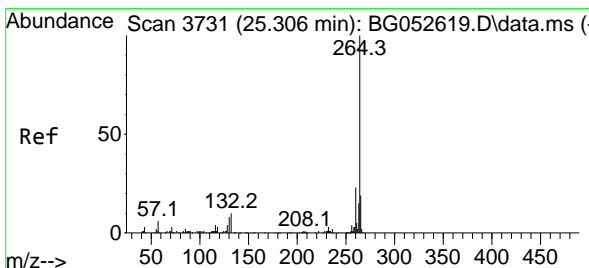
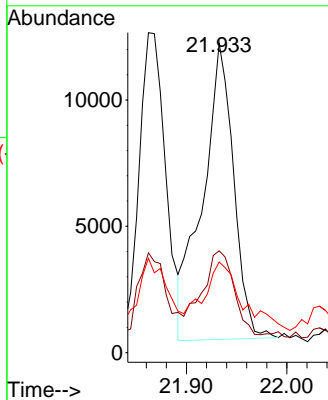
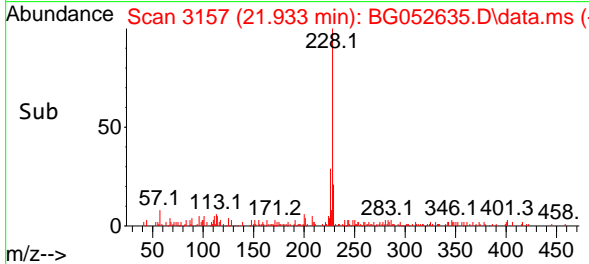


Tgt Ion:228 Resp: 25179
 Ion Ratio Lower Upper
 228 100
 226 32.9 24.2 36.4
 229 29.3 16.3 24.5

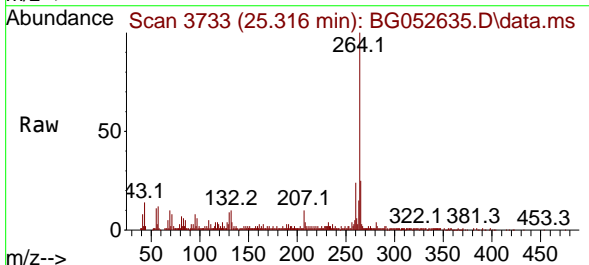
Manual Integrations

APPROVED

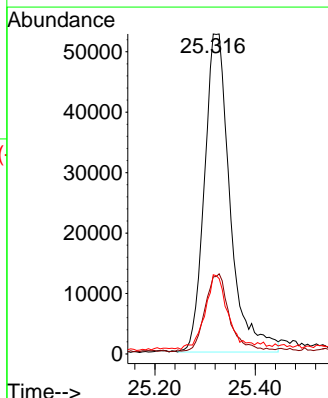
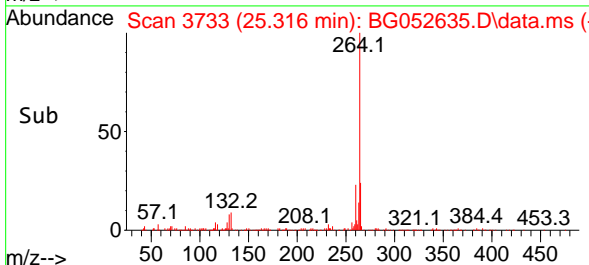
Reviewed By :Christian Giraldo 03/11/2022
 Supervised By :Jagrut Upadhyay 03/11/2022

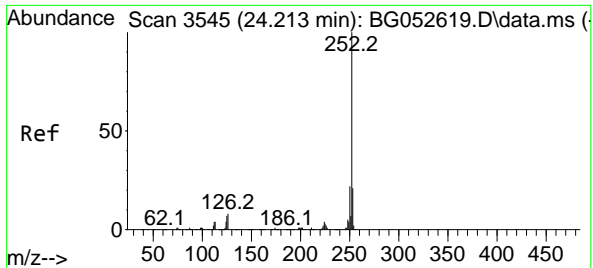


#86
 Perylene-d12
 Concen: 20.000 ng
 RT: 25.316 min Scan# 3733
 Delta R.T. 0.010 min
 Lab File: BG052635.D
 Acq: 10 Mar 2022 15:41



Tgt Ion:264 Resp: 186913
 Ion Ratio Lower Upper
 264 100
 260 24.1 18.2 27.2
 265 24.7 15.1 22.7#





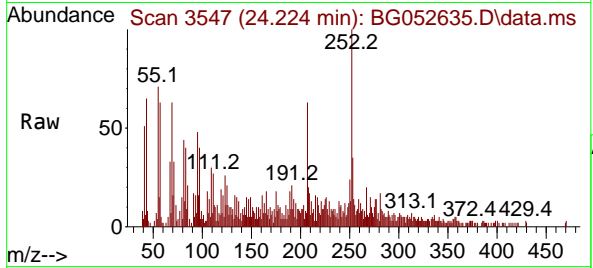
#88
 Benzo(b)fluoranthene
 Concen: 2.349 ng
 RT: 24.224 min Scan# 3
 Delta R.T. 0.010 min
 Lab File: BG052635.D
 Acq: 10 Mar 2022 15:41

Instrument :

BNA_G

ClientSampleId :

SAMPLE-10



Tgt Ion:252 Resp: 2710

Ion	Ratio	Lower	Upper
252	100		
253	34.6	17.2	25.8
125	20.7	5.2	7.8

Manual Integrations

APPROVED

Reviewed By :Christian Giraldo 03/11/2022
 Supervised By :Jagrut Upadhyay 03/11/2022

