

Data Path : Z:\SVOASRV\HPCHEM1\BNA G\DATA\BG031121\
 Data File : BG048356.D
 Acq On : 11 Mar 2021 11:41
 Operator : CG/JU
 Sample : SSTD01003
 Misc :
 ALS Vial : 3 Sample Multiplier: 1

Instrument :
 BNA_G
 ClientSampleId :

Quant Time: Mar 11 13:29:33 2021
 Quant Method : Z:\SVOASRV\HPCHEM1\BNA_G\METHODS\SFAM-EPA-BG031121.M
 Quant Title : SVOA CALIBRATION
 QLast Update : Thu Mar 11 13:21:22 2021
 Response via : Initial Calibration

Internal Standards	R.T.	QIon	Response	Conc	Units	Dev(Min)
1) 1,4-Dichlorobenzene-d4	8.13	152	42948	20.00	ng/ul	0.00
20) Naphthalene-d8	10.95	136	165527	20.00	ng/ul	0.00
38) Acenaphthene-d10	14.77	164	128109	20.00	ng/ul	0.00
64) Phenanthrene-d10	17.52	188	334726	20.00	ng/ul	0.00
79) Chrysene-d12	21.82	240	357196	20.00	ng/ul	0.00
88) Perylene-d12	25.17	264	354796	20.00	ng/ul	0.00

System Monitoring Compounds

3) 1,4-Dioxane-d8	3.51	96	4448	4.72	ng/uL	0.00
4) Pyridine-d5	3.94	84	26726	8.79	ng/ul	0.00
7) Phenol-d5	7.26	99	37795	9.72	ng/ul	0.00
9) Bis-(2-Chloroethyl)ether-d	7.44	67	25429	10.38	ng/ul	0.00
11) 2-Chlorophenol-d4	7.65	132	27194	10.06	ng/ul	0.00
15) 4-Methylphenol-d8	8.82	113	30680	10.03	ng/ul	0.00
21) Nitrobenzene-d5	9.29	128	10922	8.02	ng/ul	0.00
24) 2-Nitrophenol-d4	10.02	143	13036	7.80	ng/ul	0.01
28) 2,4-Dichlorophenol-d3	10.56	165	32543	10.48	ng/ul	0.00
31) 4-Chloroaniline-d4	11.08	131	42327	10.78	ng/ul	0.00
46) Dimethylphthalate-d6	14.17	166	115892	11.13	ng/ul	0.00
49) Acenaphthylene-d8	14.46	160	122985	10.64	ng/ul	0.00
54) 4-Nitrophenol-d4	14.93	143	14894	6.87	ng/ul	0.00
60) Fluorene-d10	15.76	176	102698	11.03	ng/ul	0.00
65) 4,6-Dinitro-2-methylphenol	15.86	200	14550	6.38	ng/ul	0.00
73) Anthracene-d10	17.61	188	167759	10.43	ng/ul	0.00
81) Pyrene-d10	19.90	212	200159	10.46	ng/ul	0.00
92) Benzo(a)pyrene-d12	24.93	264	205705	10.46	ng/ul	0.00

Target Compounds

Target Compounds	R.T.	QIon	Response	Conc	Units	Ovalue
2) 1,4-Dioxane	3.54	88	4215	3.586	ng/uL	93
5) Pyridine	3.95	79	27637	8.768	ng/ul	98
6) Benzaldehyde	7.26	77	30418	13.185	ng/ul	98
8) Phenol	7.29	94	39405	9.684	ng/ul	95
10) Bis(2-Chloroethyl)ether	7.54	93	29919	9.523	ng/ul	99
12) 2-Chlorophenol	7.69	128	28854	10.181	ng/ul	98
13) 2-Methylphenol	8.55	108	29725	9.954	ng/ul	96
14) 2,2'-oxybis(1-Chloropropan	8.65	45	24628	5.702	ng/ul	97
16) Acetophenone	8.95	105	52343	9.903	ng/ul	94
17) N-Nitroso-di-n-propylamine	8.93	70	30588	10.376	ng/ul	92
18) 4-Methylphenol	8.88	108	30790	9.798	ng/ul	82
19) Hexachloroethane	9.22	117	13401	10.054	ng/ul	91
22) Nitrobenzene	9.34	77	39030	9.112	ng/ul#	93
23) Isophorone	9.86	82	85127	11.291	ng/ul	97
25) 2-Nitrophenol	10.05	139	14291	8.083	ng/ul	88
26) 2,4-Dimethylphenol	10.10	107	39253	10.452	ng/ul	98
27) Bis(2-Chloroethoxy)methane	10.35	93	44363	10.920	ng/ul	95
29) 2,4-Dichlorophenol	10.58	162	30630	10.013	ng/ul	97
30) Naphthalene	11.00	128	94775	10.364	ng/ul	100
32) 4-Chloroaniline	11.10	127	41409	10.581	ng/ul	94
33) Hexachlorobutadiene	11.29	225	30313	11.098	ng/ul	94
34) Caprolactam	11.85	113	11730	10.699	ng/ul#	67

Data Path : Z:\SVOASRV\HPCHEM1\BNA G\DATA\BG031121\
 Data File : BG048356.D
 Acq On : 11 Mar 2021 11:41
 Operator : CG/JU
 Sample : SSTD01003
 Misc :
 ALS Vial : 3 Sample Multiplier: 1

Instrument :
 BNA_G
 ClientSampled :

Quant Time: Mar 11 13:29:33 2021
 Quant Method : Z:\SVOASRV\HPCHEM1\BNA_G\METHODS\SFAM-EPA-BG031121.M
 Quant Title : SVOA CALIBRATION
 QLast Update : Thu Mar 11 13:21:22 2021
 Response via : Initial Calibration

Internal Standards	R.T.	QIon	Response	Conc	Units	Dev(Min)
35) 4-Chloro-3-methylphenol	12.21	107	35866	10.732	ng/ul	98
36) 2-Methylnaphthalene	12.60	142	72488	10.695	ng/ul	90
37) 1-Methylnaphthalene	12.82	142	72539	10.633	ng/ul	93
39) 1,2,4,5-Tetrachlorobenzene	12.97	216	52932	10.433	ng/ul	98
40) Hexachlorocyclopentadiene	12.94	237	35134	10.753	ng/ul#	99
41) 2,4,6-Trichlorophenol	13.20	196	30673	9.760	ng/ul#	90
42) 2,4,5-Trichlorophenol	13.27	196	34227	10.678	ng/ul	95
43) 1,1'-Biphenyl	13.60	154	103244	10.762	ng/ul	99
44) 2-Chloronaphthalene	13.65	162	81524	10.062	ng/ul	98
45) 2-Nitroaniline	13.84	65	22277	7.282	ng/ul	95
47) Dimethylphthalate	14.21	163	114903	10.661	ng/ul	99
48) 2,6-Dinitrotoluene	14.33	165	17380	7.636	ng/ul	91
50) Acenaphthylene	14.49	152	120627	10.524	ng/ul	96
51) 3-Nitroaniline	14.66	138	18696	9.423	ng/ul	99
52) Acenaphthene	14.83	153	89338	10.596	ng/ul	95
53) 2,4-Dinitrophenol	14.85	184	10712	8.508	ng/ul#	62
55) 4-Nitrophenol	14.95	109	18390	8.561	ng/ul#	81
56) Dibenzofuran	15.16	168	127982	10.329	ng/ul	100
57) 2,4-Dinitrotoluene	15.11	165	24502	7.393	ng/ul#	92
58) 2,3,4,6-Tetrachlorophenol	15.38	232	30682	10.357	ng/ul#	86
59) Diethylphthalate	15.58	149	114091	10.154	ng/ul	99
61) Fluorene	15.82	166	106955	10.652	ng/ul	97
62) 4-Chlorophenyl-phenylether	15.80	204	65941	10.739	ng/ul	95
63) 4-Nitroaniline	15.82	138	20000	10.631	ng/ul	98
66) 4,6-Dinitro-2-methylphenol	15.88	198	14235	6.276	ng/ul#	99
67) N-Nitrosodiphenylamine	16.02	169	101222	10.703	ng/ul	97
68) 4-Bromophenyl-phenylether	16.70	248	45435	10.715	ng/ul	96
69) Hexachlorobenzene	16.82	284	47607	10.377	ng/ul	90
70) Atrazine	16.96	200	44204	9.875	ng/ul	97
71) Pentachlorophenol	17.16	266	26331	13.794	ng/ul	95
72) Phenanthrene	17.56	178	185239	9.890	ng/ul	95
74) Anthracene	17.65	178	190281	10.106	ng/ul	98
75) 1,2,3,4-Tetrachlorobenzene	13.57	216	56485	10.103	ng/uL	93
76) Pentachlorobenzene	15.08	250	57865	10.263	ng/uL	95
77) Carbazole	17.91	167	162409	9.882	ng/ul#	96
78) Di-n-butylphthalate	18.48	149	198801	9.846	ng/ul	98
80) Fluoranthene	19.57	202	250826	10.552	ng/ul#	97
82) Pyrene	19.93	202	250540	10.580	ng/ul	99
83) Butylbenzylphthalate	20.82	149	85460	9.685	ng/ul	92
84) 3,3'-Dichlorobenzidine	21.70	252	96956	11.354	ng/ul	97
85) Benzo(a)anthracene	21.80	228	257407	10.632	ng/ul	98
86) Bis(2-ethylhexyl)phthalate	21.70	149	124093	9.872	ng/ul	99
87) Chrysene	21.86	228	246526	10.434	ng/ul	99
89) Di-n-octyl phthalate	22.97	149	204301	9.520	ng/ul	100
90) Benzo(b)fluoranthene	24.10	252	247961	10.097	ng/ul	97
91) Benzo(k)fluoranthene	24.17	252	247676	10.411	ng/ul	98
93) Benzo(a)pyrene	25.00	252	221416	10.287	ng/ul	95
94) Indeno(1,2,3-cd)pyrene	29.00	276	246586	8.884	ng/ul	99
95) Dibenzo(a,h)anthracene	29.08	278	230861	9.929	ng/ul	97
96) Benzo(g,h,i)perylene	30.20	276	228566	10.044	ng/ul	97

Data Path : Z:\SVOASRV\HPCHEM1\BNA G\DATA\BG031121\
 Data File : BG048356.D
 Acq On : 11 Mar 2021 11:41
 Operator : CG/JU
 Sample : SSTD01003
 Misc :
 ALS Vial : 3 Sample Multiplier: 1

Instrument :
 BNA_G
 ClientSampleId :

Quant Time: Mar 11 13:29:33 2021
 Quant Method : Z:\SVOASRV\HPCHEM1\BNA_G\METHODS\SFAM-EPA-BG031121.M
 Quant Title : SVOA CALIBRATION
 QLast Update : Thu Mar 11 13:21:22 2021
 Response via : Initial Calibration

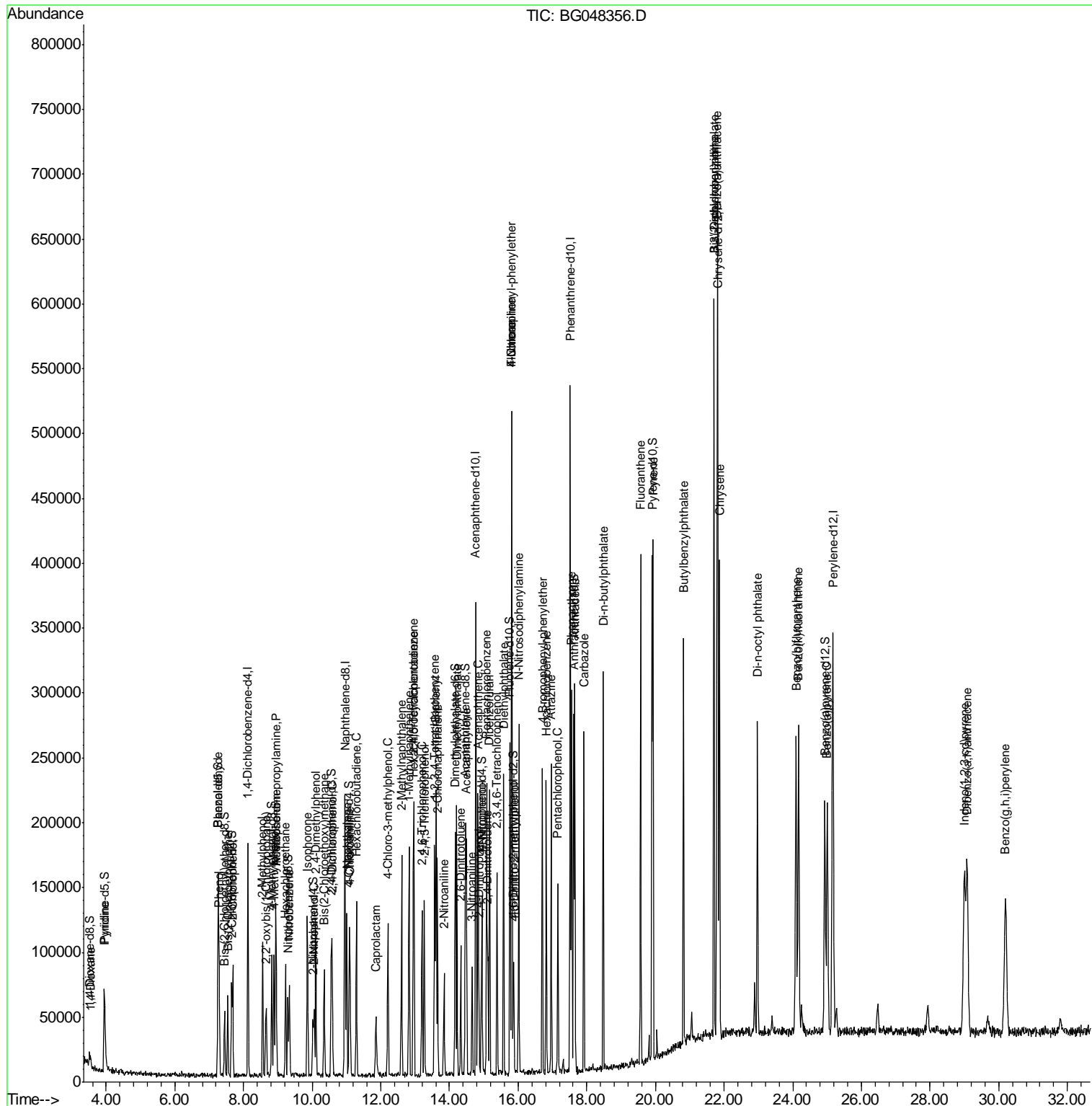
Internal Standards	R.T.	QIon	Response	Conc	Units	Dev(Min)
--------------------	------	------	----------	------	-------	----------

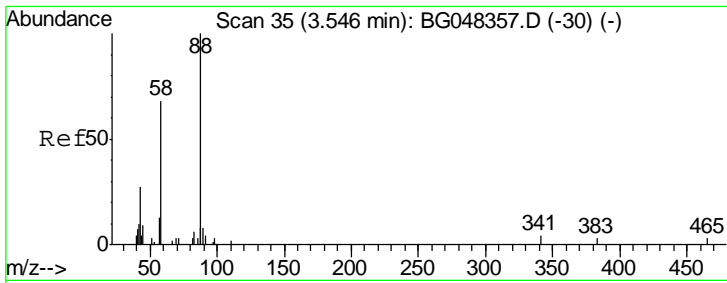
(#) = qualifier out of range (m) = manual integration (+) = signals summed

Data Path : Z:\SVOASRV\HPCHEM1\BNA G\DATA\BG031121\
 Data File : BG048356.D
 Acq On : 11 Mar 2021 11:41
 Operator : CG/JU
 Sample : SSTD01003
 Misc :
 ALS Vial : 3 Sample Multiplier: 1

Instrument :
 BNA_G
 Client Sampled :

Quant Time: Mar 11 13:29:33 2021
 Quant Method : Z:\SVOASRV\HPCHEM1\BNA_G\METHODS\SFAM-EPA-BG031121.M
 Quant Title : SVOA CALIBRATION
 QLast Update : Thu Mar 11 13:21:22 2021
 Response via : Initial Calibration

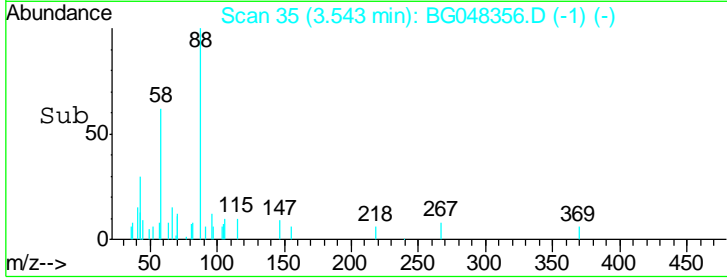
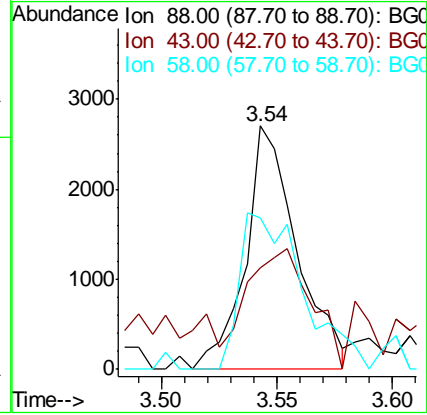
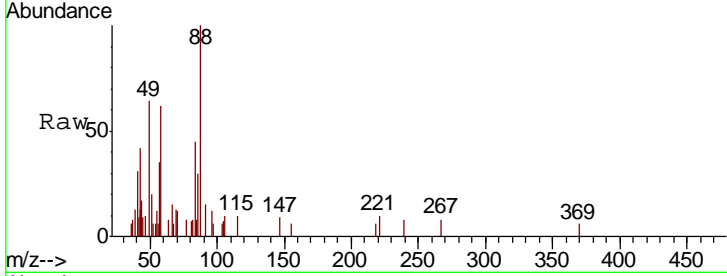




#2
 1,4-Dioxane
 Concen: 3.586 ng/uL
 RT: 3.54 min Scan# 35
 Delta R.T. -0.00 min
 Lab File: BG048356.D
 Acq: 11 Mar 2021 11:41

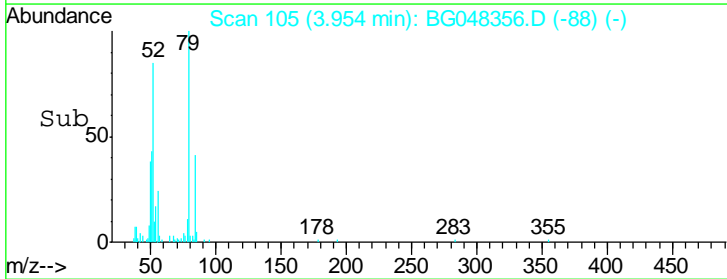
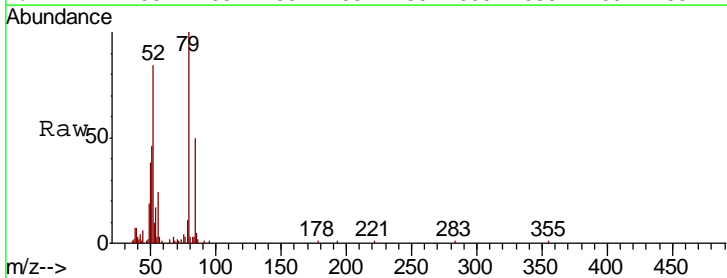
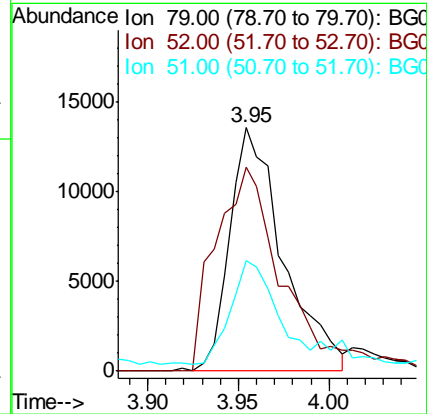
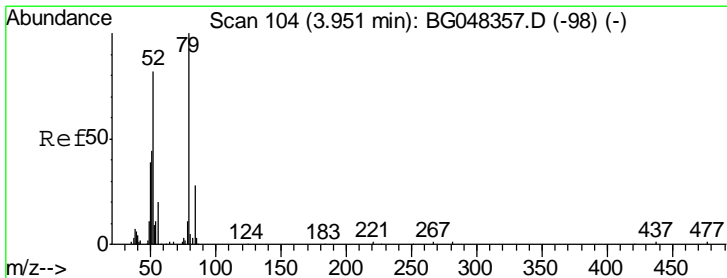
Instrument :
 BNA_G
 ClientSampled :

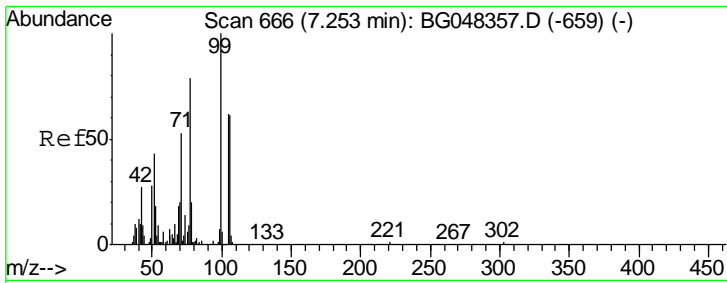
Tgt Ion	Resp	Lower	Upper
88	4215		
43	41.7	30.2	45.2
58	62.3	54.2	81.4



#5
 Pyridine
 Concen: 8.768 ng/ul
 RT: 3.95 min Scan# 105
 Delta R.T. 0.00 min
 Lab File: BG048356.D
 Acq: 11 Mar 2021 11:41

Tgt Ion	Resp	Lower	Upper
79	27637		
52	83.6	65.7	98.5
51	45.5	35.6	53.4

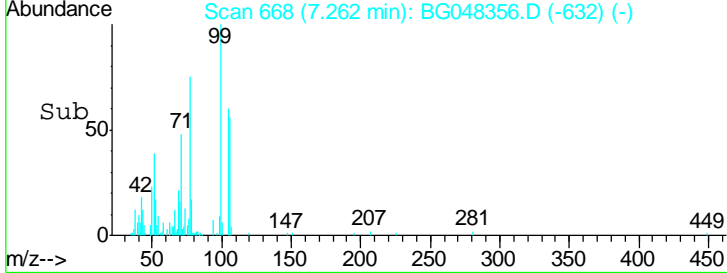
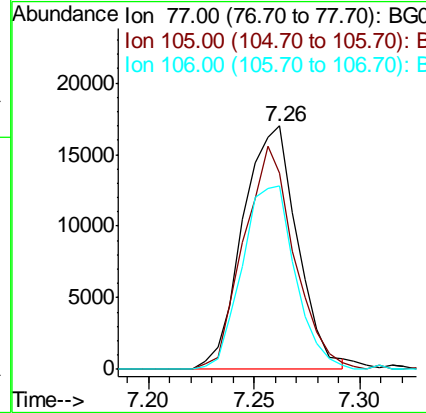
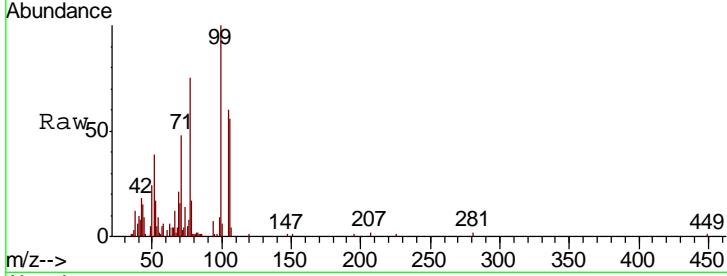




#6
Benzaldehyde
Concen: 13.185 ng/ul
RT: 7.26 min Scan# 668
Delta R.T. 0.01 min
Lab File: BG048356.D
Acq: 11 Mar 2021 11:41

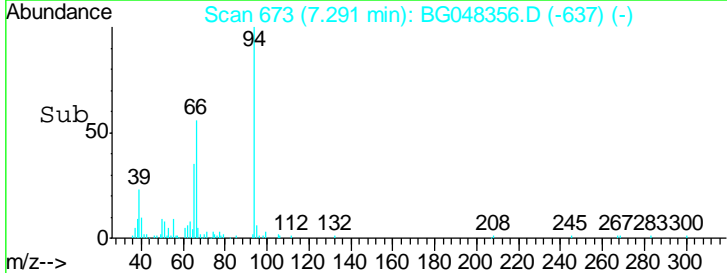
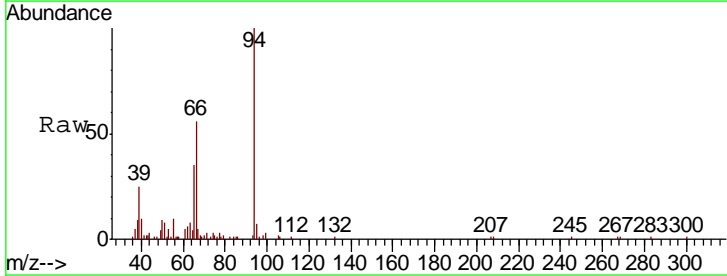
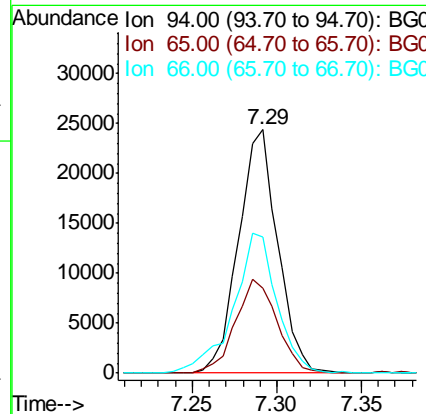
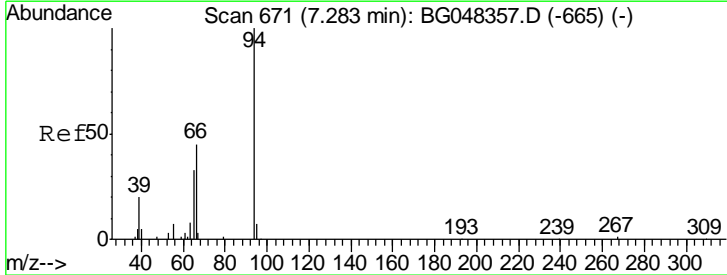
Instrument :
BNA_G
ClientSampled :

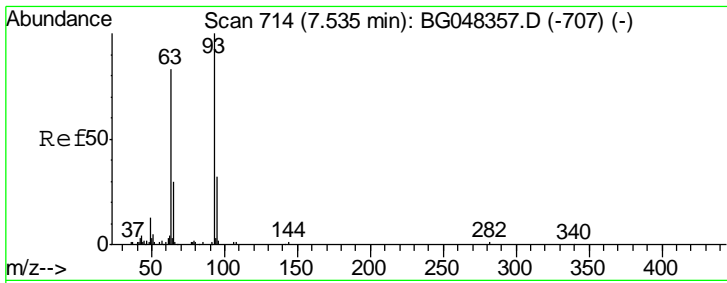
Tgt Ion	Resp	Lower	Upper
77	30418		
77	100		
105	80.6	62.7	94.1
106	75.4	61.7	92.5



#8
Phenol
Concen: 9.684 ng/ul
RT: 7.29 min Scan# 673
Delta R.T. 0.01 min
Lab File: BG048356.D
Acq: 11 Mar 2021 11:41

Tgt Ion	Resp	Lower	Upper
94	39405		
94	100		
65	35.0	27.4	41.2
66	55.9	40.8	61.2

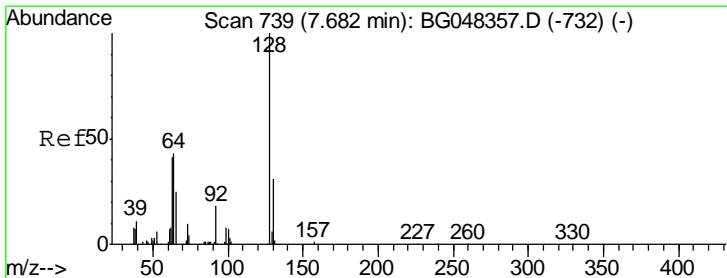
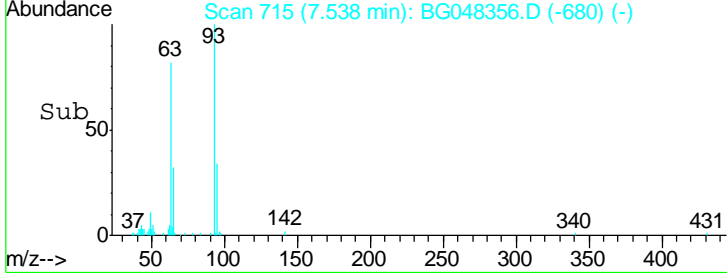
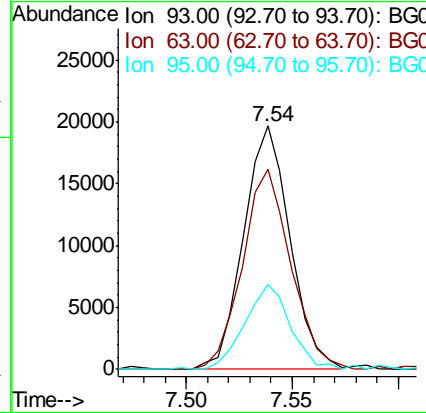
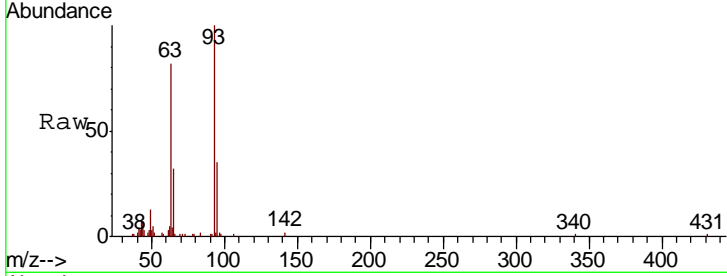




#10
 Bis(2-Chloroethyl)ether
 Concen: 9.523 ng/ul
 RT: 7.54 min Scan# 715
 Delta R.T. 0.00 min
 Lab File: BG048356.D
 Acq: 11 Mar 2021 11:41

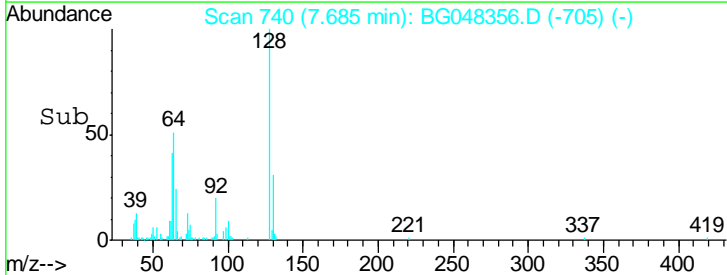
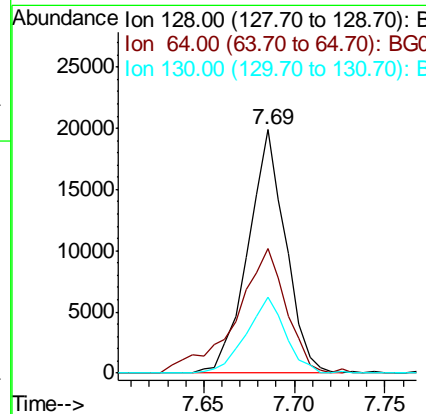
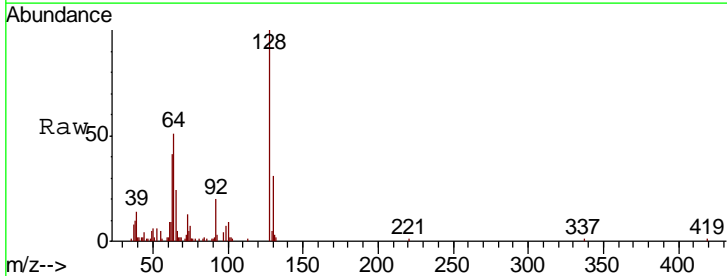
Instrument :
 BNA_G
 ClientSampled :

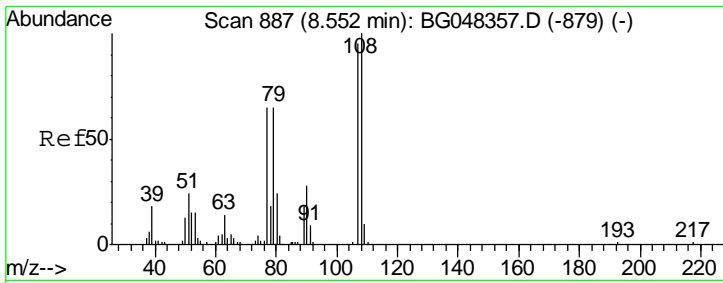
Tgt Ion	Resp	Lower	Upper
93	29919		
63	100	66.1	99.1
95	34.8	26.3	39.5



#12
 2-Chlorophenol
 Concen: 10.181 ng/ul
 RT: 7.69 min Scan# 740
 Delta R.T. 0.00 min
 Lab File: BG048356.D
 Acq: 11 Mar 2021 11:41

Tgt Ion	Resp	Lower	Upper
128	28854		
64	100	42.5	63.7
130	31.0	24.8	37.2

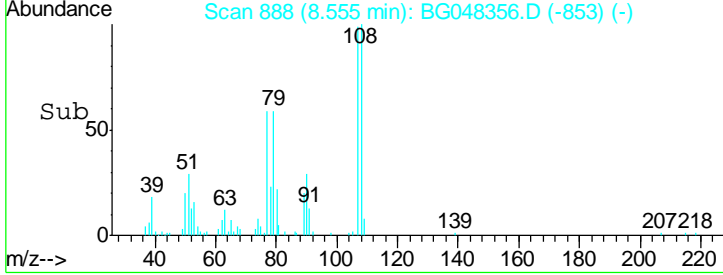
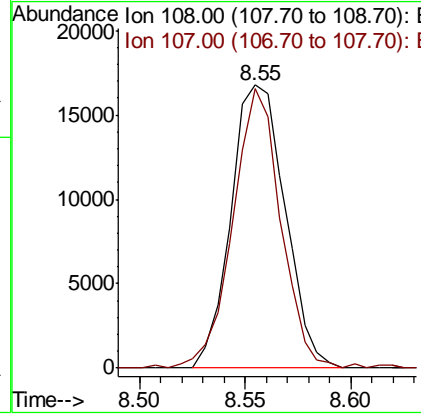
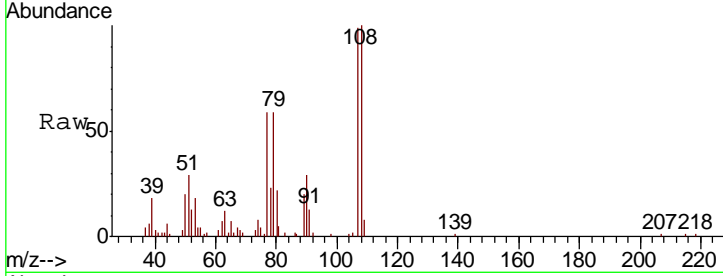




#13
 2-Methylphenol
 Concen: 9.954 ng/ul
 RT: 8.55 min Scan# 888
 Delta R.T. 0.00 min
 Lab File: BG048356.D
 Acq: 11 Mar 2021 11:41

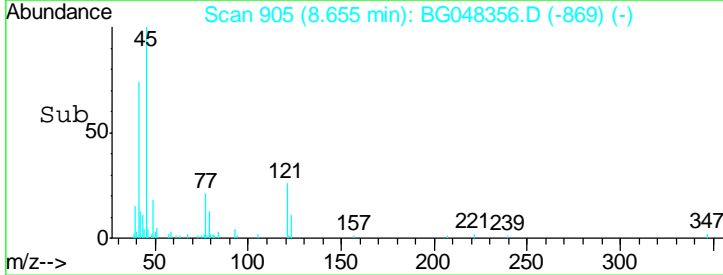
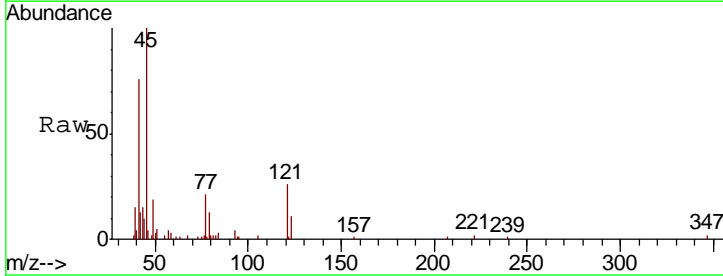
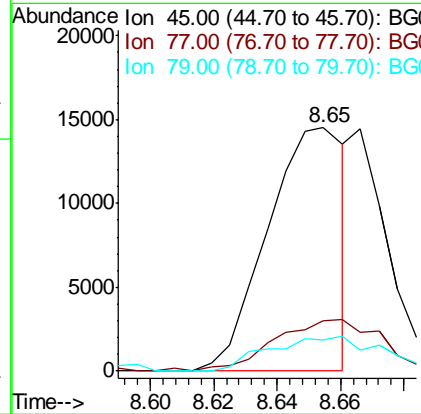
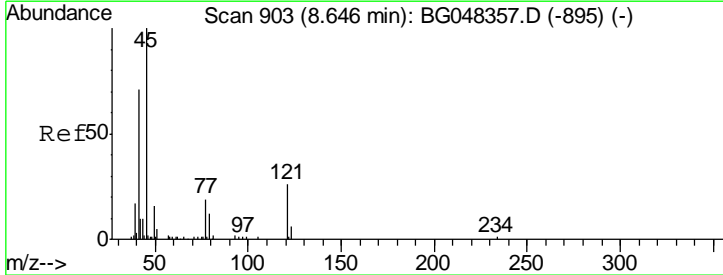
Instrument :
 BNA_G
 ClientSampled :

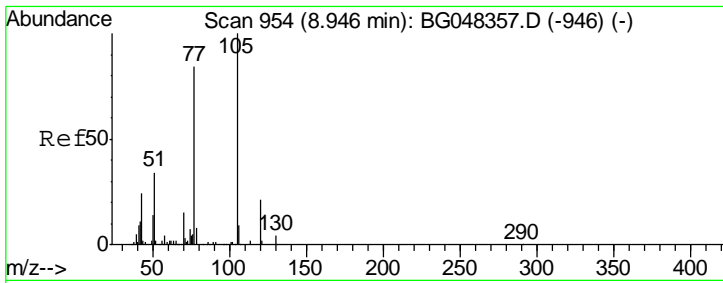
Tgt Ion:108 Resp: 29725
 Ion Ratio Lower Upper
 108 100
 107 98.8 75.8 113.6



#14
 2,2'-oxybis(1-Chloropropane)
 Concen: 5.702 ng/ul
 RT: 8.65 min Scan# 905
 Delta R.T. 0.01 min
 Lab File: BG048356.D
 Acq: 11 Mar 2021 11:41

Tgt Ion: 45 Resp: 24628
 Ion Ratio Lower Upper
 45 100
 77 20.5 15.4 23.0
 79 12.6 9.5 14.3

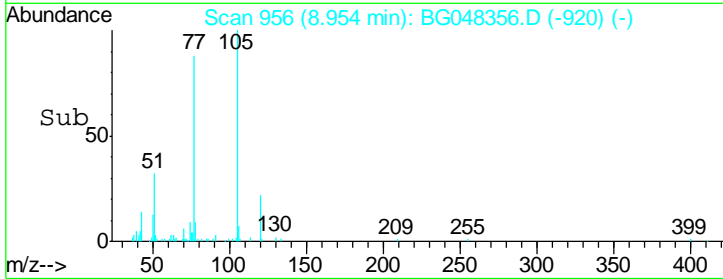
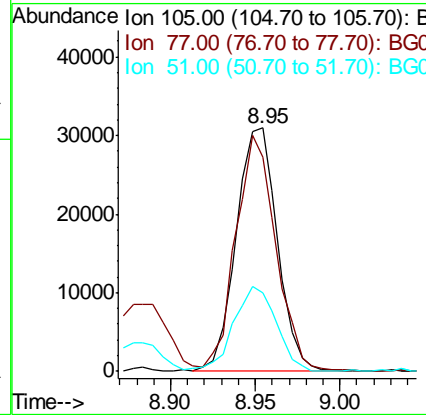
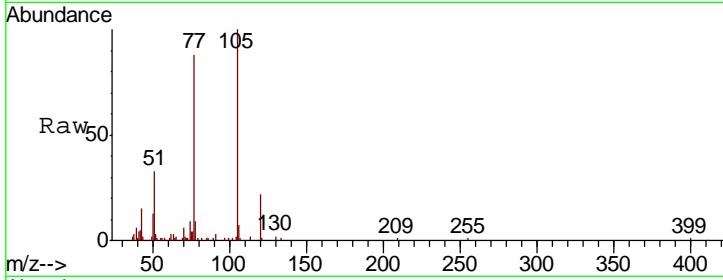




#16
 Acetophenone
 Concen: 9.903 ng/ul
 RT: 8.95 min Scan# 956
 Delta R.T. 0.01 min
 Lab File: BG048356.D
 Acq: 11 Mar 2021 11:41

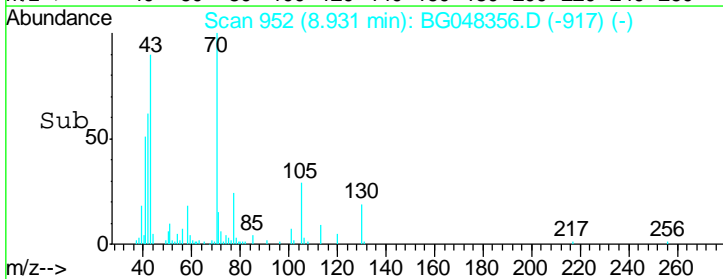
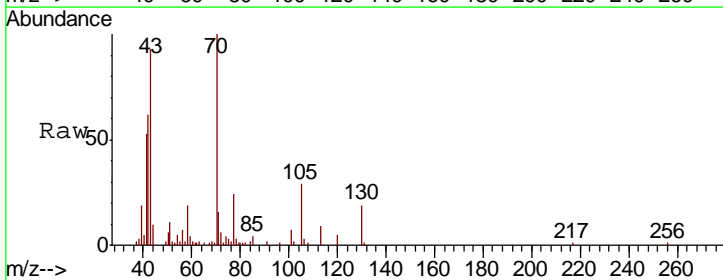
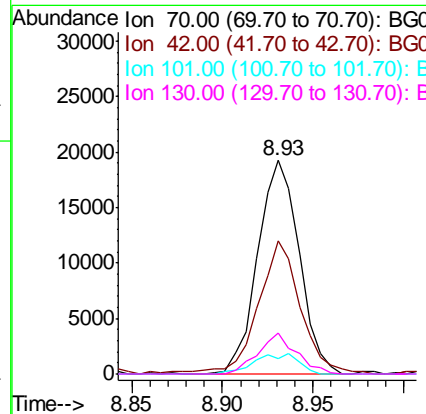
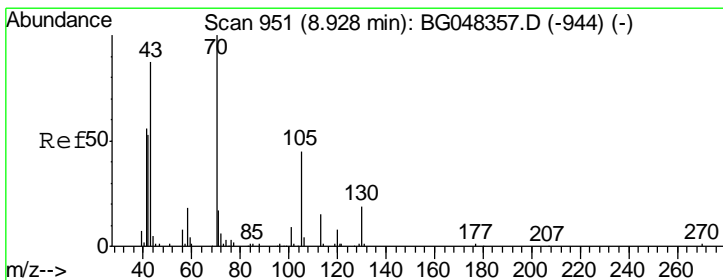
Instrument :
 BNA_G
 ClientSampled :

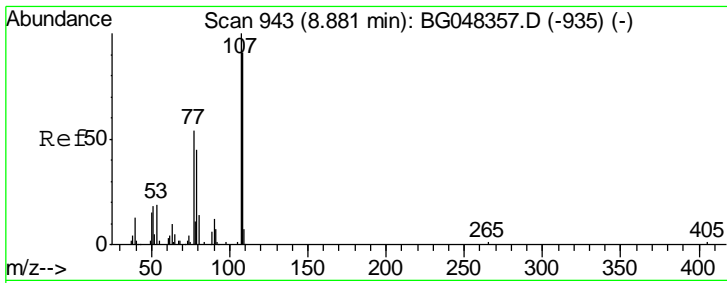
Tgt Ion	Resp	Lower	Upper
105	52343		
77	88.1	74.3	111.5
51	32.5	30.2	45.4



#17
 N-Nitroso-di-n-propylamine
 Concen: 10.376 ng/ul
 RT: 8.93 min Scan# 952
 Delta R.T. 0.00 min
 Lab File: BG048356.D
 Acq: 11 Mar 2021 11:41

Tgt Ion	Resp	Lower	Upper
70	30588		
42	62.4	43.3	64.9
101	7.5	7.0	10.4
130	19.2	14.9	22.3

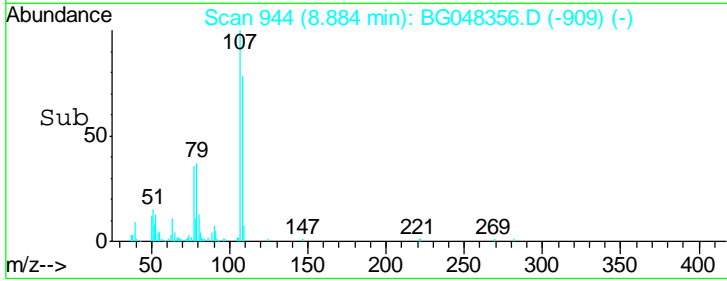
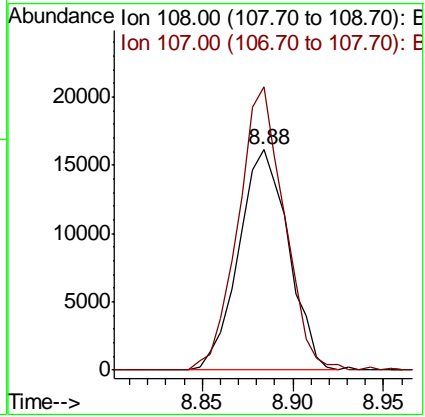
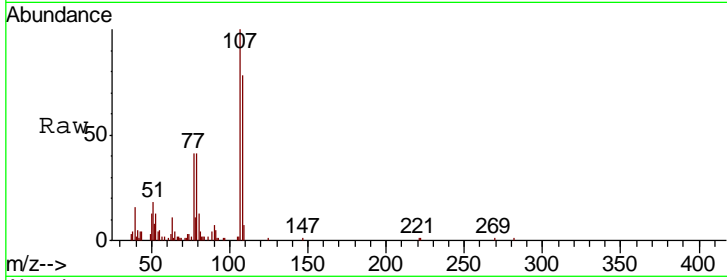




#18
 4-Methylphenol
 Concen: 9.798 ng/ul
 RT: 8.88 min Scan# 944
 Delta R.T. 0.00 min
 Lab File: BG048356.D
 Acq: 11 Mar 2021 11:41

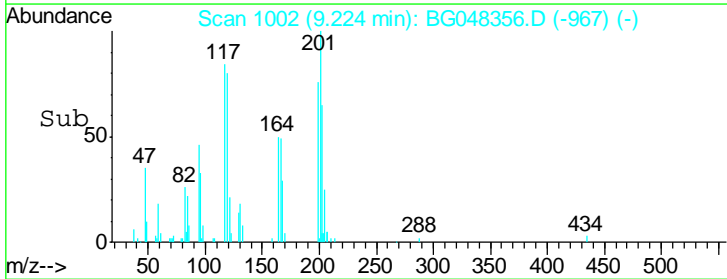
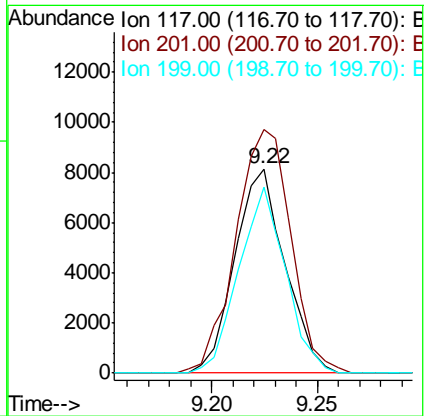
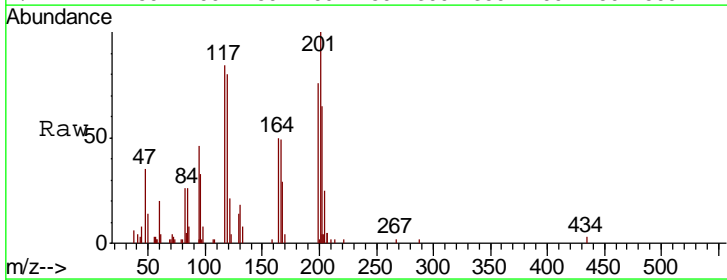
Instrument :
 BNA_G
 ClientSampled :

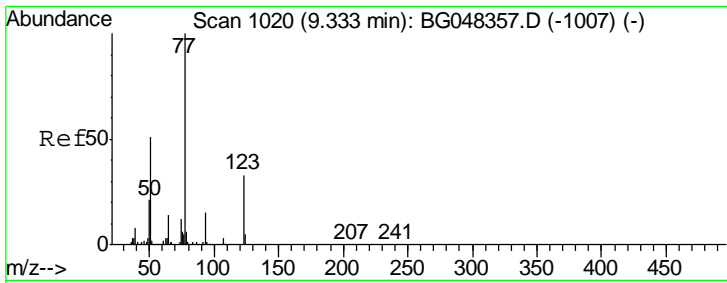
Tgt Ion	Resp	Lower	Upper
108	30790		
107	128.4	87.4	131.2



#19
 Hexachloroethane
 Concen: 10.054 ng/ul
 RT: 9.22 min Scan# 1002
 Delta R.T. 0.00 min
 Lab File: BG048356.D
 Acq: 11 Mar 2021 11:41

Tgt Ion	Resp	Lower	Upper
117	13401		
201	119.2	107.3	160.9
199	90.8	69.5	104.3

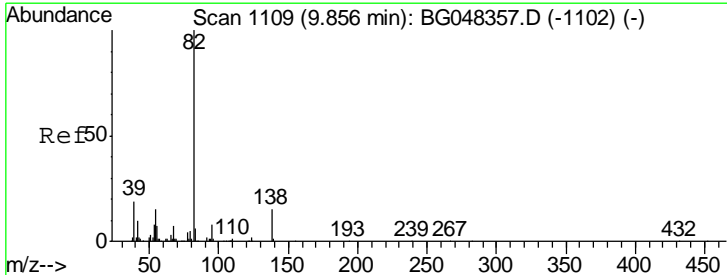
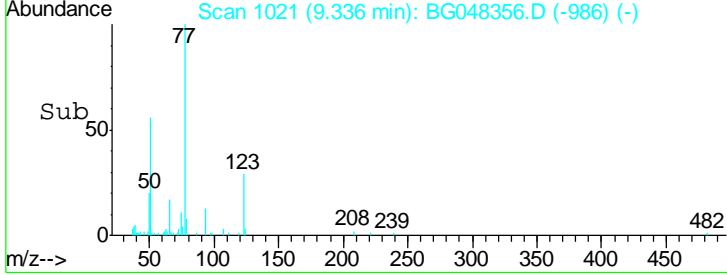
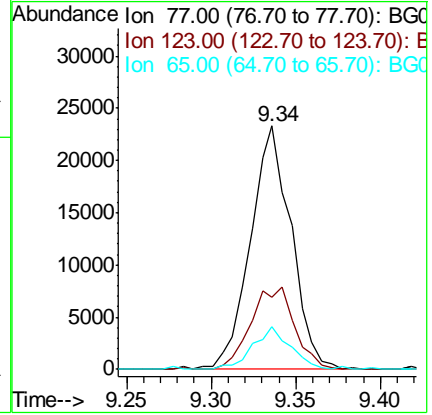
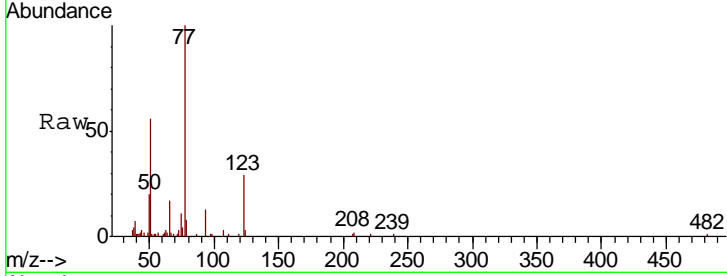




#22
 Nitrobenzene
 Concen: 9.112 ng/ul
 RT: 9.34 min Scan# 1021
 Delta R.T. 0.00 min
 Lab File: BG048356.D
 Acq: 11 Mar 2021 11:41

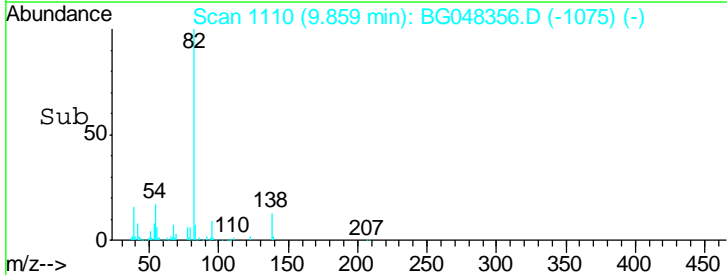
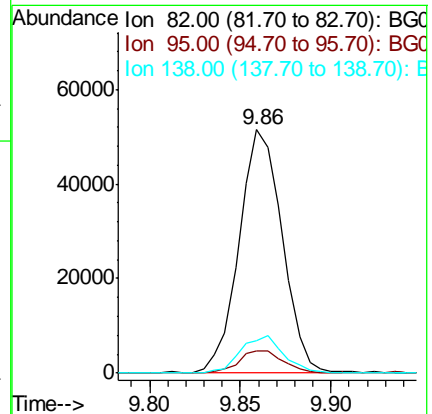
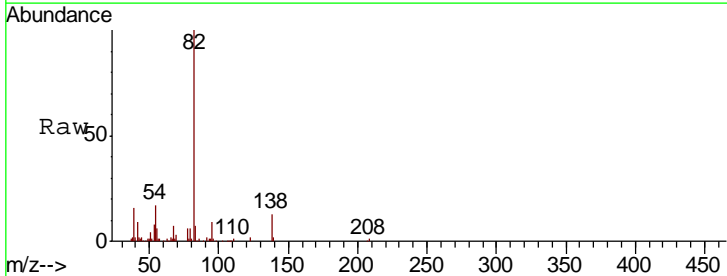
Instrument :
 BNA_G
 ClientSampled :

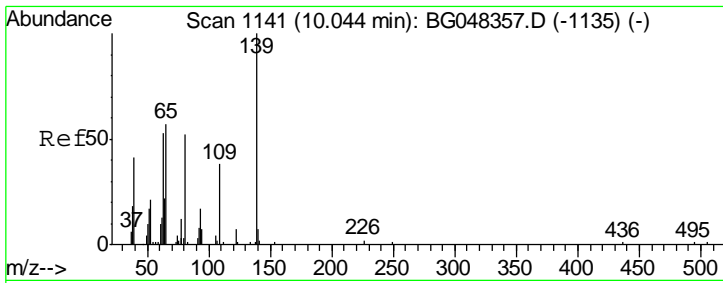
Tgt Ion	Resp	Lower	Upper
77	39030		
123	29.4	26.7	40.1
65	17.3	11.1	16.7#



#23
 Isophorone
 Concen: 11.291 ng/ul
 RT: 9.86 min Scan# 1110
 Delta R.T. 0.00 min
 Lab File: BG048356.D
 Acq: 11 Mar 2021 11:41

Tgt Ion	Resp	Lower	Upper
82	85127		
95	9.1	6.7	10.1
138	13.4	11.8	17.6

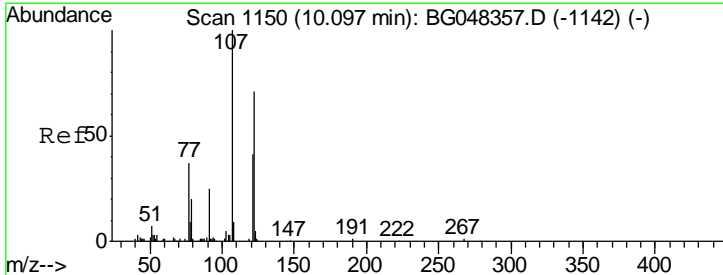
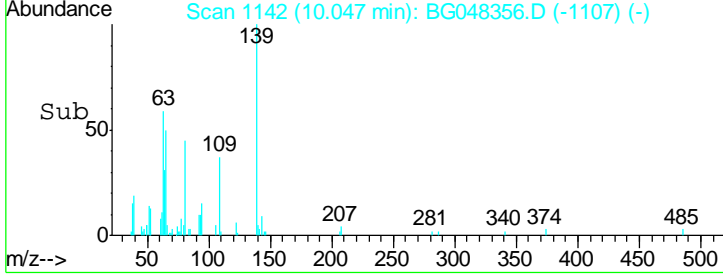
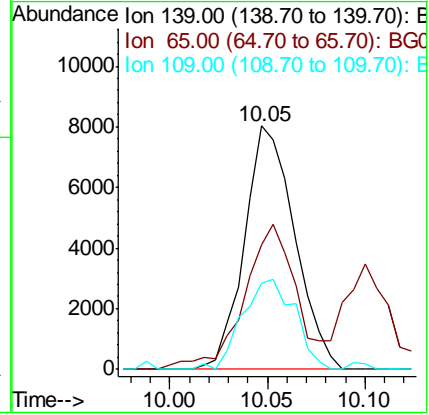
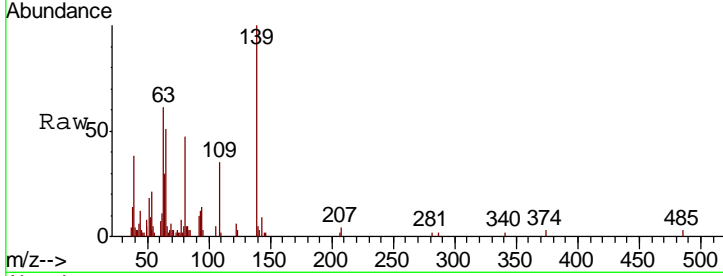




#25
 2-Nitrophenol
 Concen: 8.083 ng/ul
 RT: 10.05 min Scan# 1142
 Delta R.T. 0.00 min
 Lab File: BG048356.D
 Acq: 11 Mar 2021 11:41

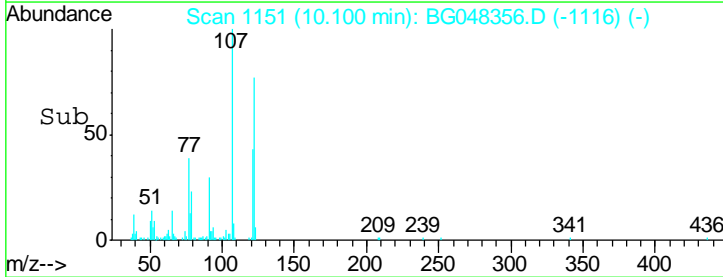
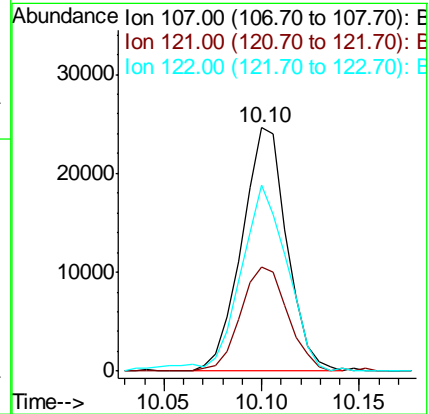
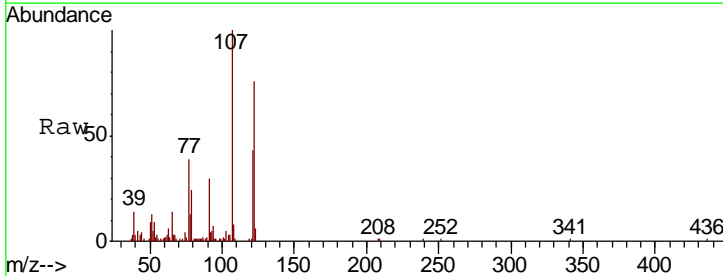
Instrument :
 BNA_G
 ClientSampled :

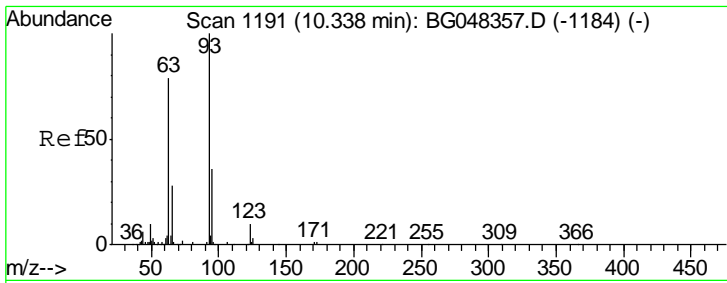
Tgt Ion	Resp	Lower	Upper
139	14291		
65	51.4	51.1	76.7
109	35.2	30.7	46.1



#26
 2,4-Dimethylphenol
 Concen: 10.452 ng/ul
 RT: 10.10 min Scan# 1151
 Delta R.T. 0.00 min
 Lab File: BG048356.D
 Acq: 11 Mar 2021 11:41

Tgt Ion	Resp	Lower	Upper
107	39253		
121	42.6	33.4	50.2
122	76.2	58.9	88.3

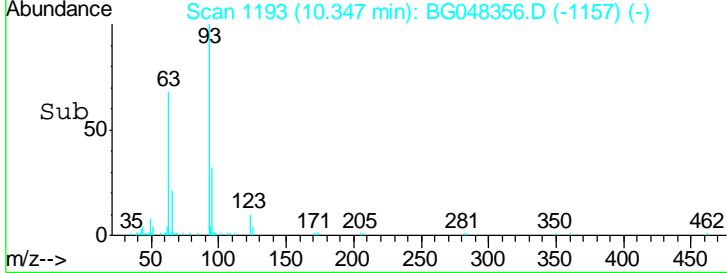
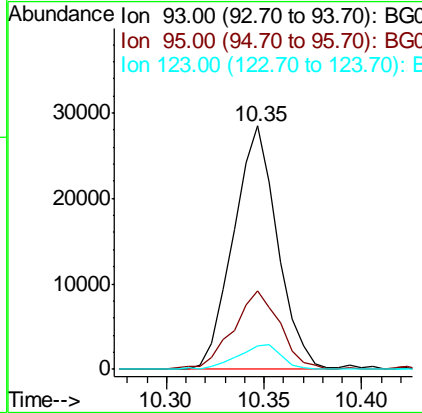
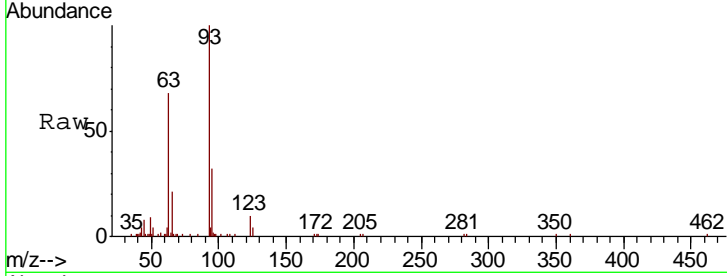




#27
 Bis(2-Chloroethoxy)methane
 Concen: 10.920 ng/ul
 RT: 10.35 min Scan# 1193
 Delta R.T. 0.01 min
 Lab File: BG048356.D
 Acq: 11 Mar 2021 11:41

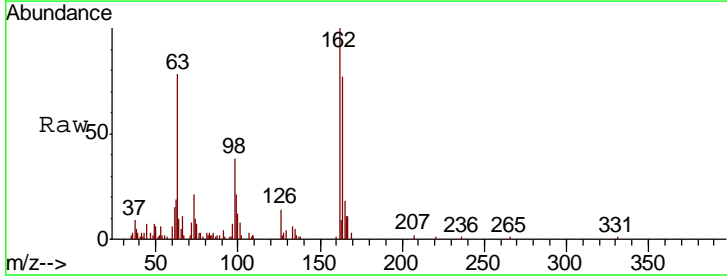
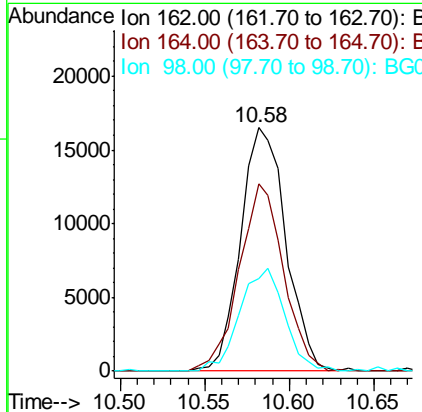
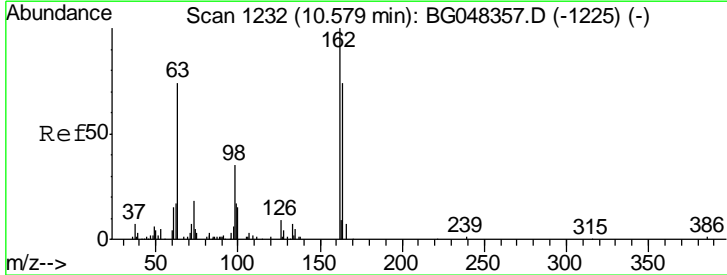
Instrument :
 BNA_G
 ClientSampled :

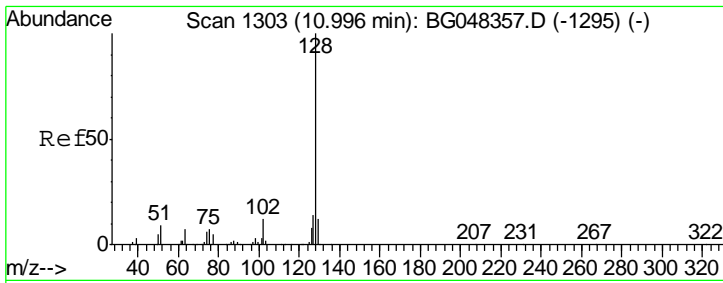
Tgt Ion	Resp	Lower	Upper
93	44363		
95	32.3	28.8	43.2
123	9.8	8.1	12.1



#29
 2,4-Dichlorophenol
 Concen: 10.013 ng/ul
 RT: 10.58 min Scan# 1233
 Delta R.T. 0.00 min
 Lab File: BG048356.D
 Acq: 11 Mar 2021 11:41

Tgt Ion	Resp	Lower	Upper
162	30630		
164	77.2	59.5	89.3
98	38.0	28.8	43.2

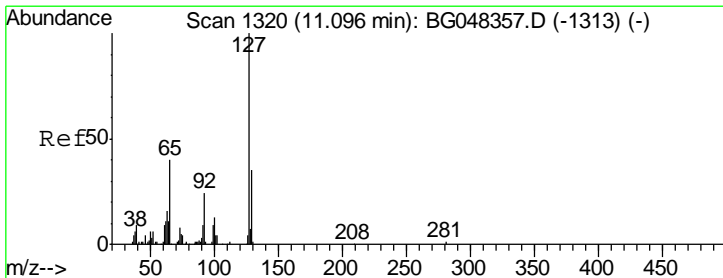
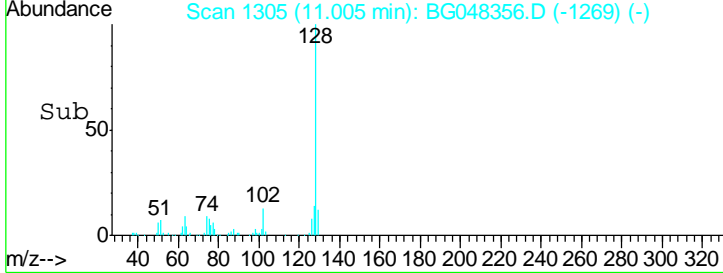
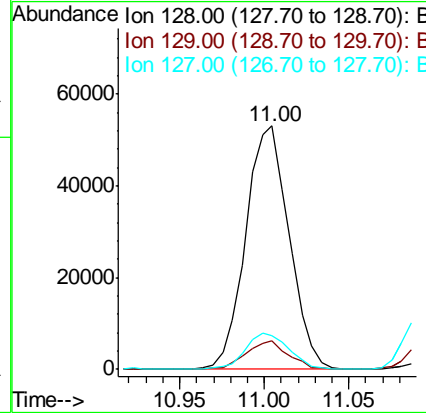
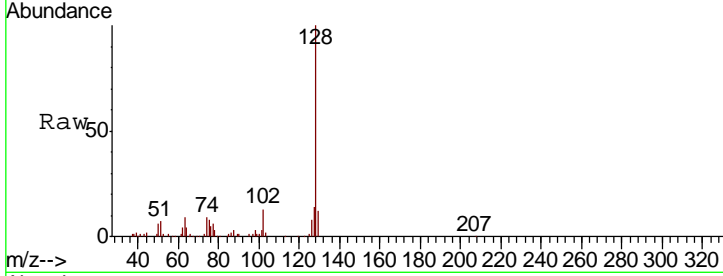




#30
 Naphthalene
 Concen: 10.364 ng/ul
 RT: 11.00 min Scan# 1305
 Delta R.T. 0.01 min
 Lab File: BG048356.D
 Acq: 11 Mar 2021 11:41

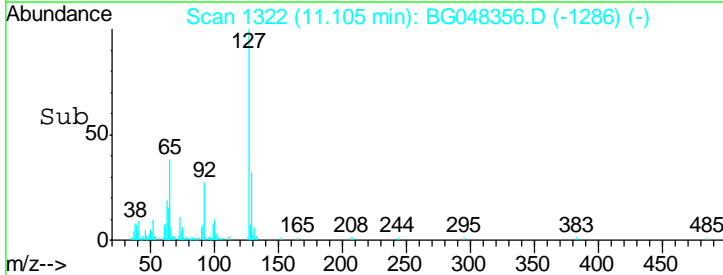
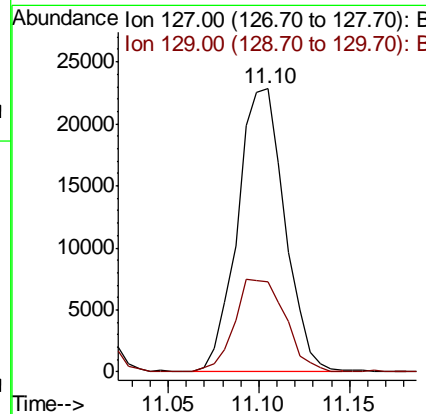
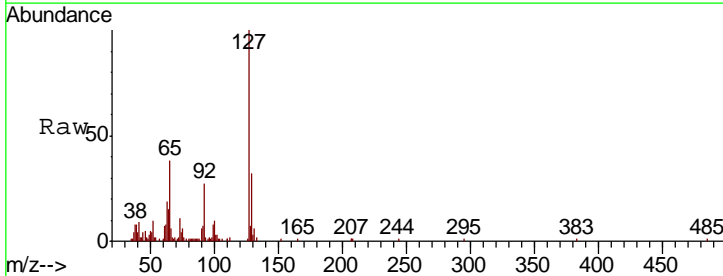
Instrument :
 BNA_G
 ClientSampled :

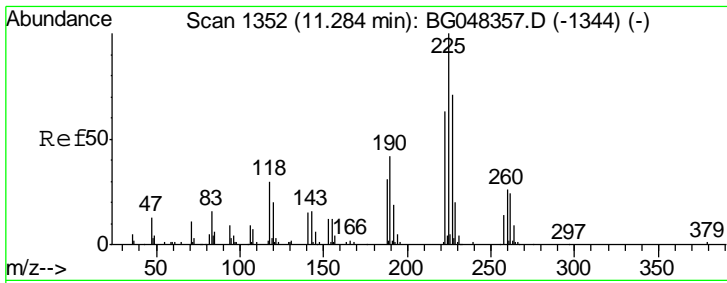
Tgt Ion	Resp	Lower	Upper
128	100		
129	11.7	9.4	14.2
127	13.8	11.0	16.6



#32
 4-Chloroaniline
 Concen: 10.581 ng/ul
 RT: 11.10 min Scan# 1322
 Delta R.T. 0.01 min
 Lab File: BG048356.D
 Acq: 11 Mar 2021 11:41

Tgt Ion	Resp	Lower	Upper
127	100		
129	31.9	28.4	42.6

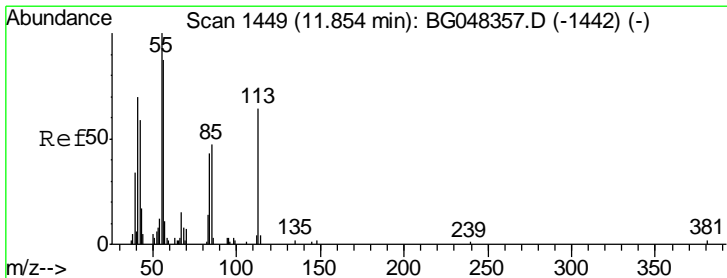
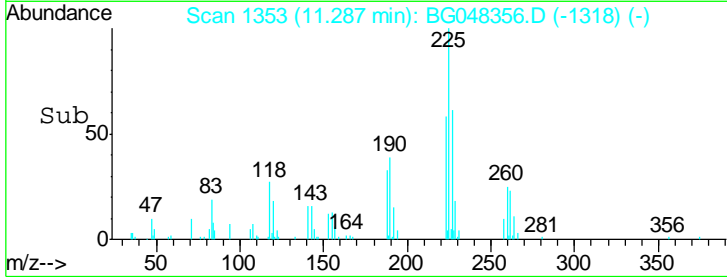
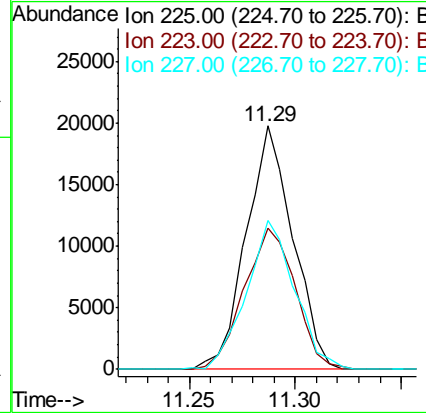
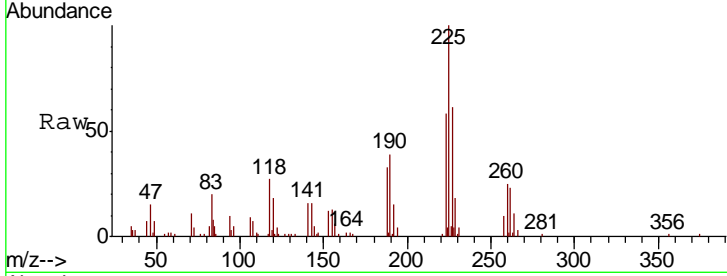




#33
 Hexachlorobutadiene
 Concen: 11.098 ng/ul
 RT: 11.29 min Scan# 1353
 Delta R.T. 0.00 min
 Lab File: BG048356.D
 Acq: 11 Mar 2021 11:41

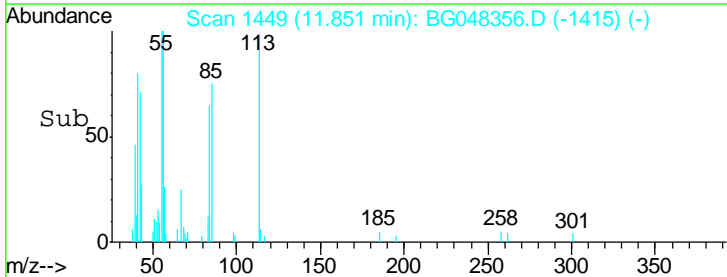
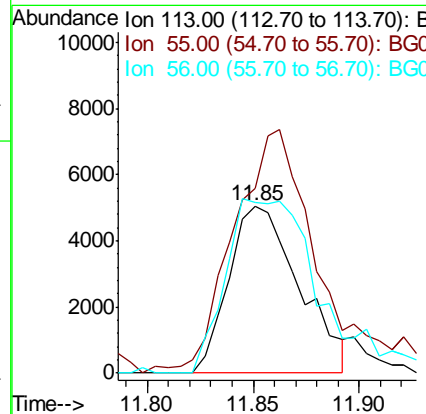
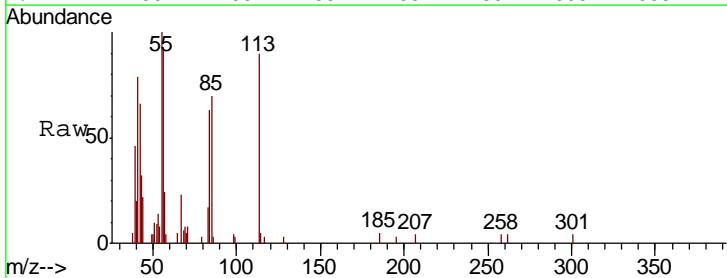
Instrument :
 BNA_G
 ClientSampled :

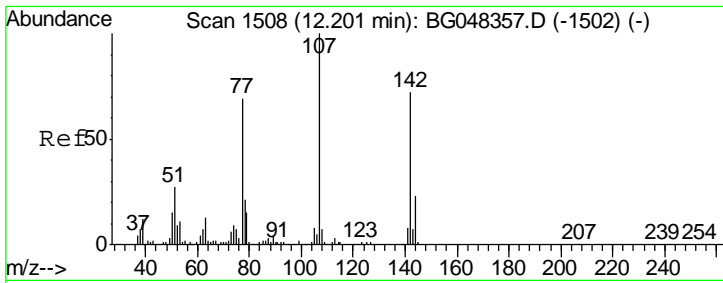
Tgt Ion	Resp	Lower	Upper
225	30313		
223	62.5	47.9	71.9
227	60.9	53.8	80.6



#34
 Caprolactam
 Concen: 10.699 ng/ul
 RT: 11.85 min Scan# 1449
 Delta R.T. -0.00 min
 Lab File: BG048356.D
 Acq: 11 Mar 2021 11:41

Tgt Ion	Resp	Lower	Upper
113	11730		
55	110.5	126.7	190.1#
56	102.3	109.0	163.4#

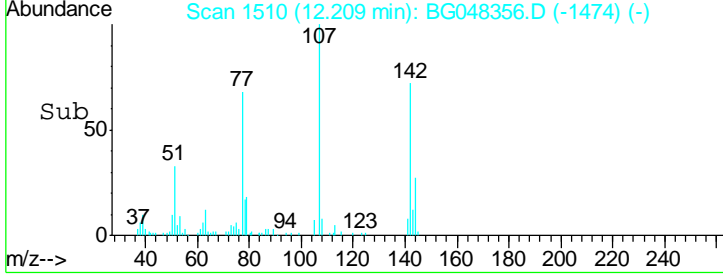
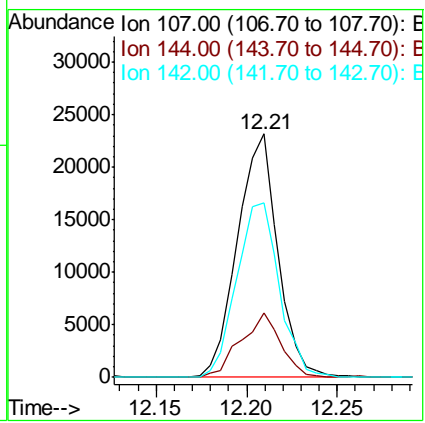
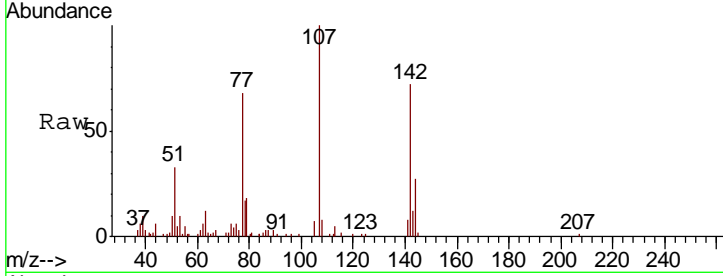




#35
 4-Chloro-3-methylphenol
 Concen: 10.732 ng/ul
 RT: 12.21 min Scan# 1510
 Delta R.T. 0.01 min
 Lab File: BG048356.D
 Acq: 11 Mar 2021 11:41

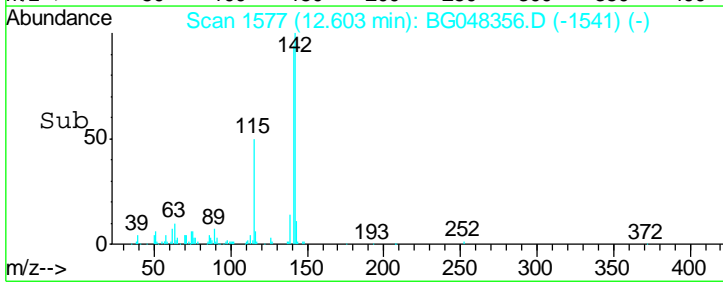
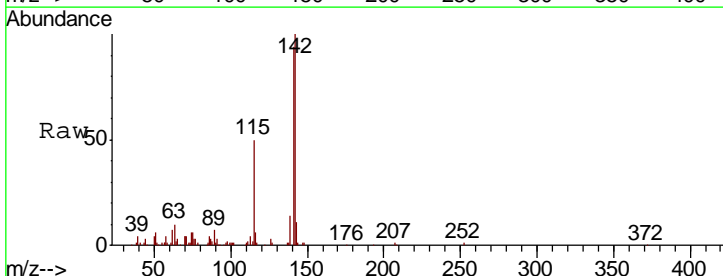
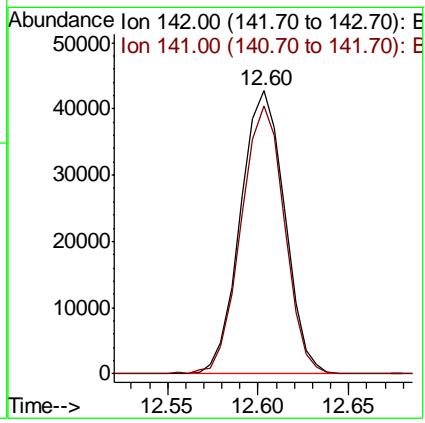
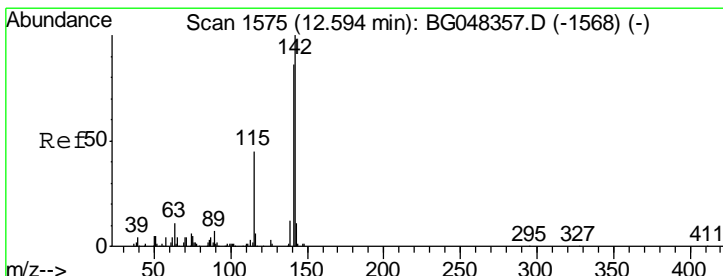
Instrument :
 BNA_G
 ClientSampled :

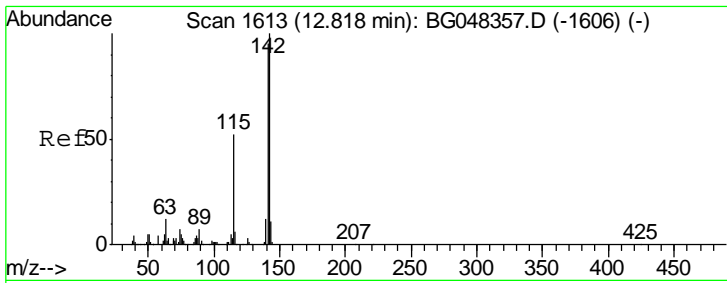
Tgt Ion	Resp	Lower	Upper
107	35866		
144	26.5	18.7	28.1
142	71.9	57.3	85.9



#36
 2-Methylnaphthalene
 Concen: 10.695 ng/ul
 RT: 12.60 min Scan# 1577
 Delta R.T. 0.01 min
 Lab File: BG048356.D
 Acq: 11 Mar 2021 11:41

Tgt Ion	Resp	Lower	Upper
142	72488		
141	94.5	68.5	102.7

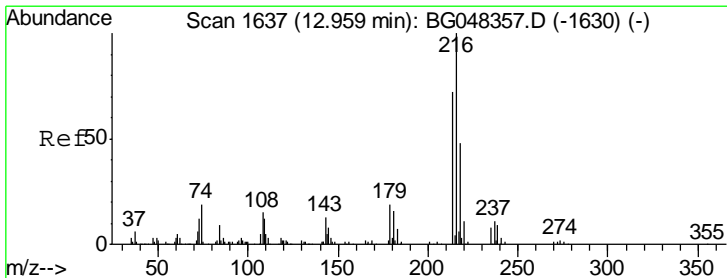
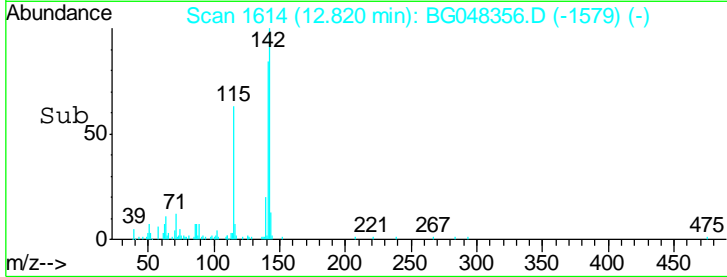
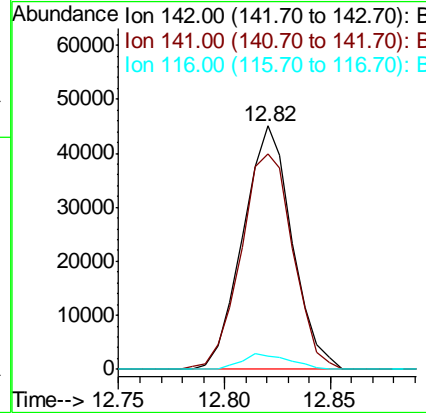
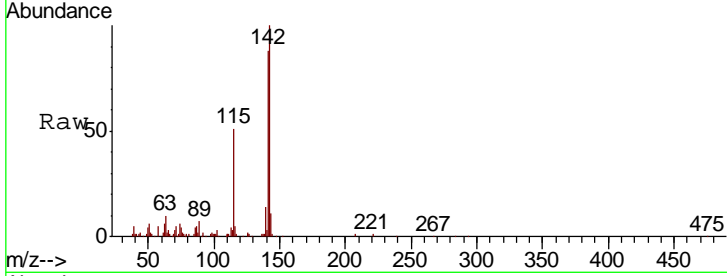




#37
 1-Methylnaphthalene
 Concen: 10.633 ng/ul
 RT: 12.82 min Scan# 1614
 Delta R.T. 0.00 min
 Lab File: BG048356.D
 Acq: 11 Mar 2021 11:41

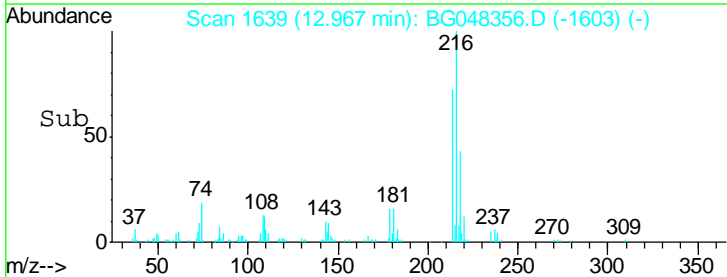
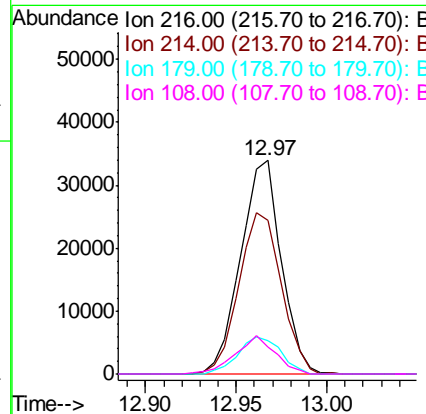
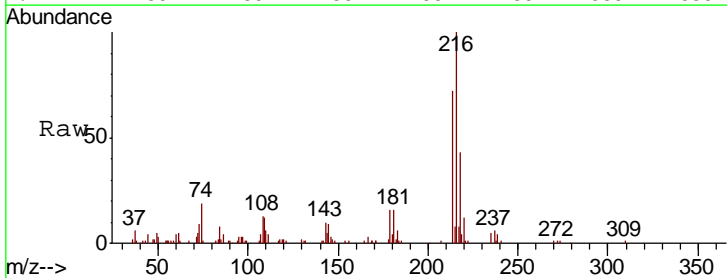
Instrument :
 BNA_G
 ClientSampled :

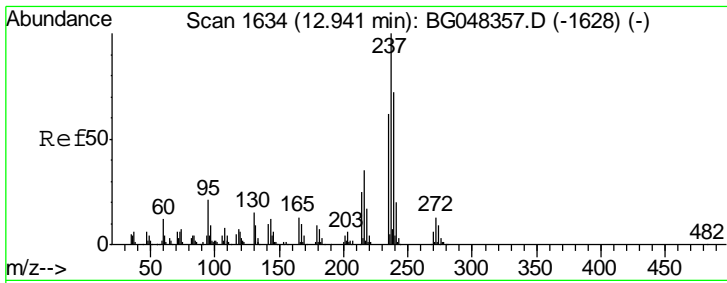
Tgt Ion	Resp	Lower	Upper
142	100		
141	88.3	76.1	114.1
116	5.3	4.4	6.6



#39
 1,2,4,5-Tetrachlorobenzene
 Concen: 10.433 ng/ul
 RT: 12.97 min Scan# 1639
 Delta R.T. 0.01 min
 Lab File: BG048356.D
 Acq: 11 Mar 2021 11:41

Tgt Ion	Resp	Lower	Upper
216	100		
214	72.2	57.9	86.9
179	15.8	15.0	22.4
108	12.7	12.1	18.1

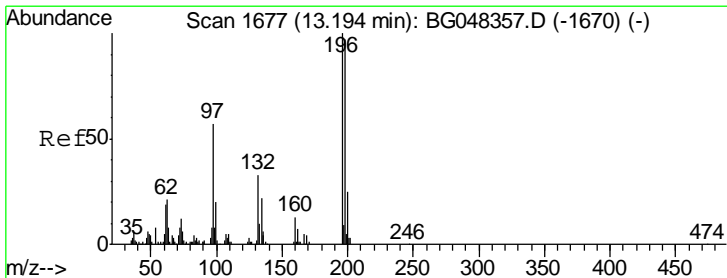
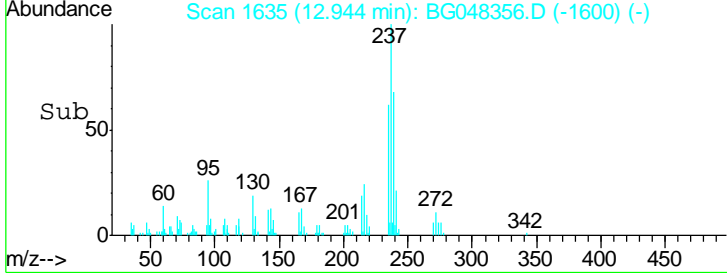
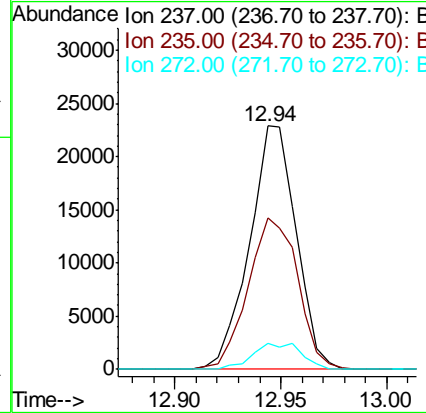
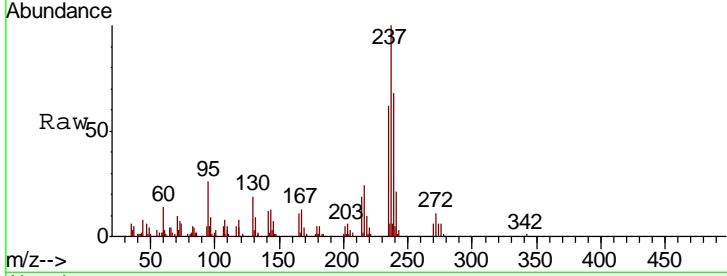




#40
 Hexachlorocyclopentadiene
 Concen: 10.753 ng/ul
 RT: 12.94 min Scan# 1635
 Delta R.T. 0.00 min
 Lab File: BG048356.D
 Acq: 11 Mar 2021 11:41

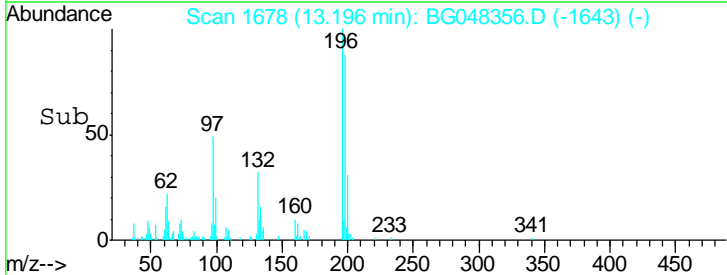
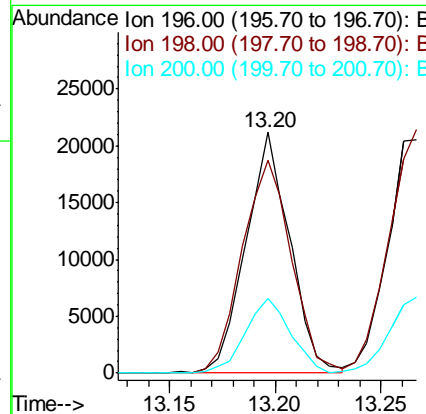
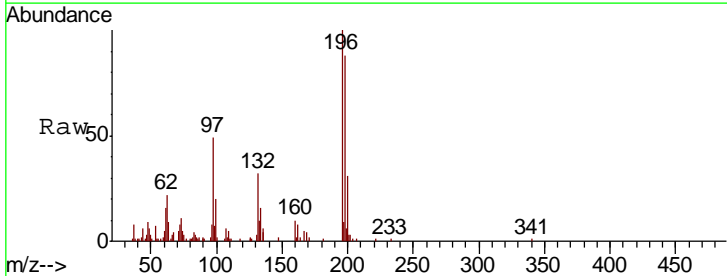
Instrument :
 BNA_G
 ClientSampled :

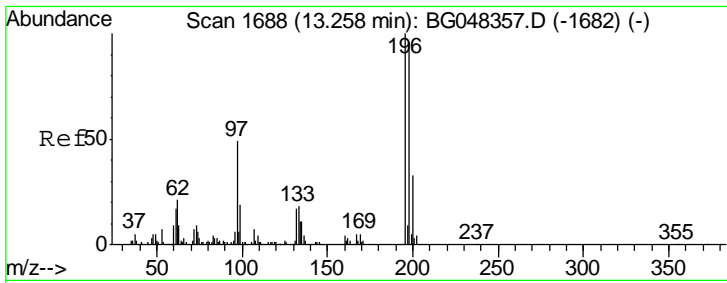
Tgt Ion	Resp	Lower	Upper
237	100		
235	62.2	49.6	74.4
272	10.6	10.6	16.0



#41
 2,4,6-Trichlorophenol
 Concen: 9.760 ng/ul
 RT: 13.20 min Scan# 1678
 Delta R.T. 0.00 min
 Lab File: BG048356.D
 Acq: 11 Mar 2021 11:41

Tgt Ion	Resp	Lower	Upper
196	100		
198	88.3	77.4	116.0
200	33.4	20.3	30.5

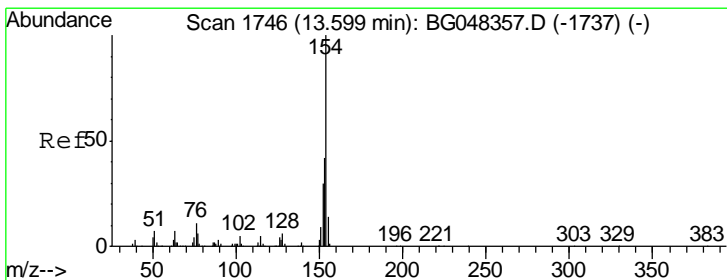
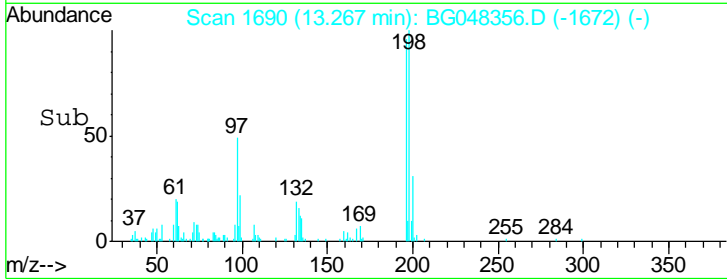
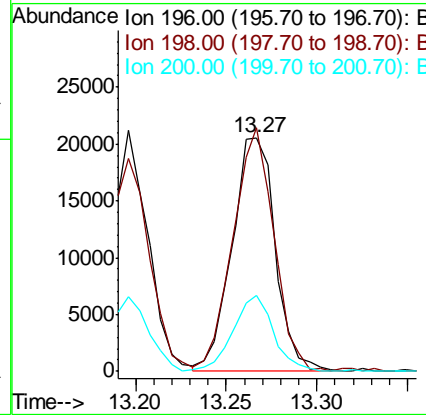
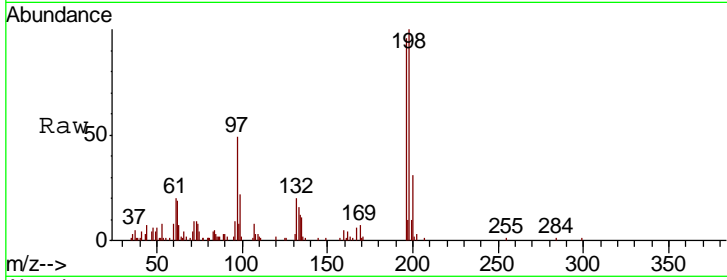




#42
 2,4,5-Trichlorophenol
 Concen: 10.678 ng/ul
 RT: 13.27 min Scan# 1690
 Delta R.T. 0.01 min
 Lab File: BG048356.D
 Acq: 11 Mar 2021 11:41

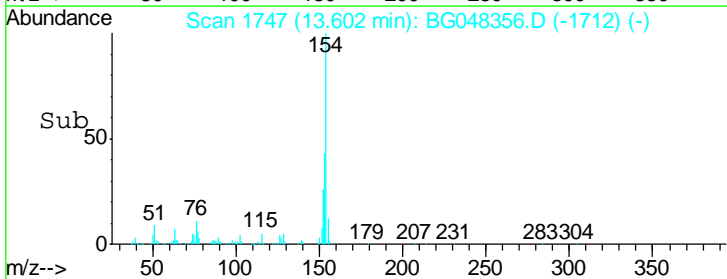
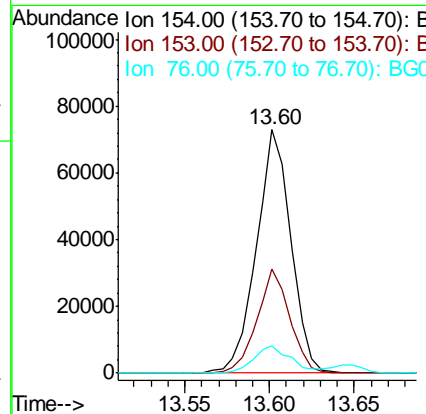
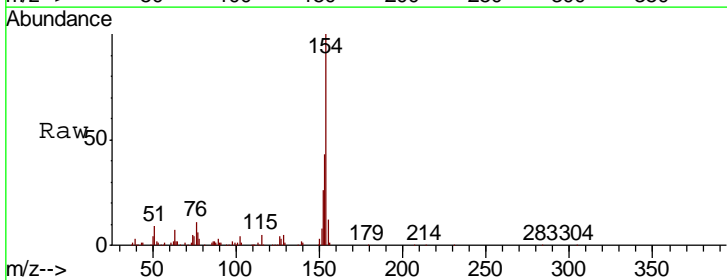
Instrument :
 BNA_G
 ClientSampled :

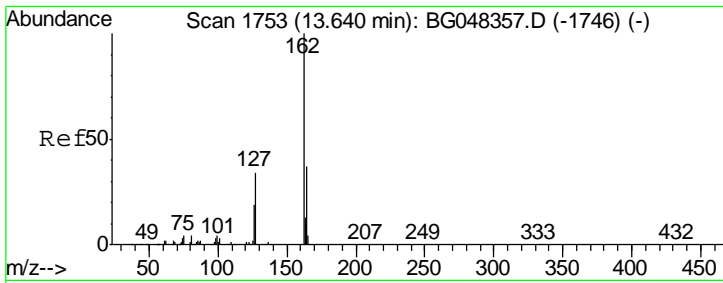
Tgt Ion	Resp	Lower	Upper
196	100		
198	104.1	78.0	117.0
200	32.5	26.6	40.0



#43
 1,1'-Biphenyl
 Concen: 10.762 ng/ul
 RT: 13.60 min Scan# 1747
 Delta R.T. 0.00 min
 Lab File: BG048356.D
 Acq: 11 Mar 2021 11:41

Tgt Ion	Resp	Lower	Upper
154	100		
153	42.8	33.6	50.4
76	11.1	8.6	13.0

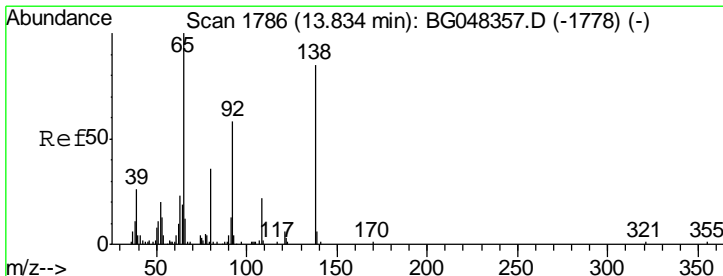
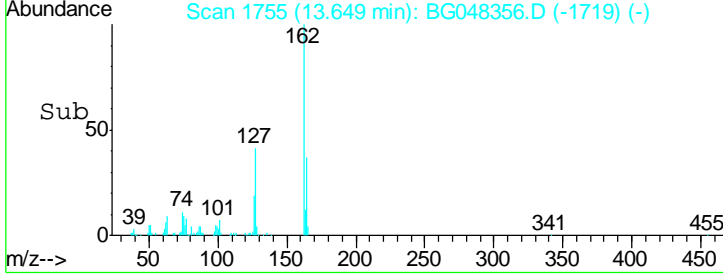
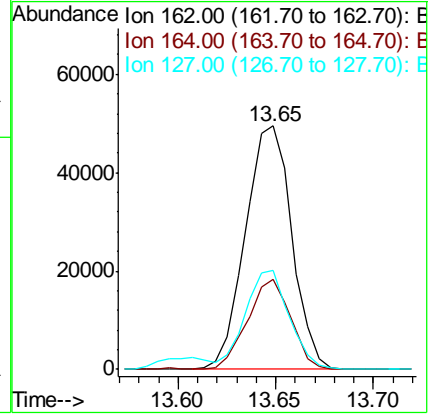
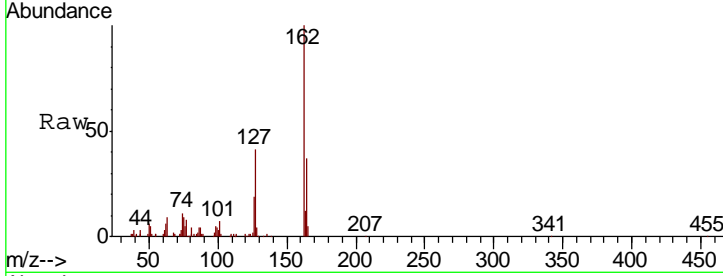




#44
 2-Chloronaphthalene
 Concen: 10.062 ng/ul
 RT: 13.65 min Scan# 1755
 Delta R.T. 0.01 min
 Lab File: BG048356.D
 Acq: 11 Mar 2021 11:41

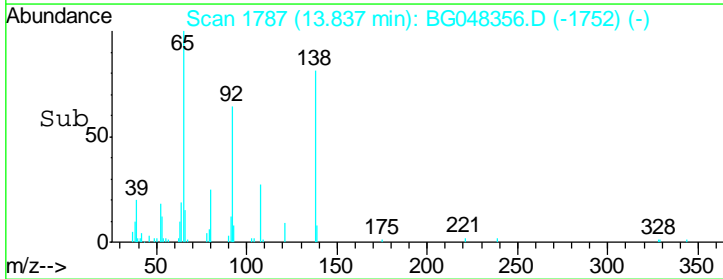
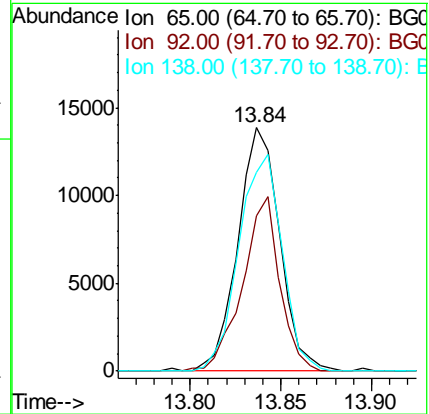
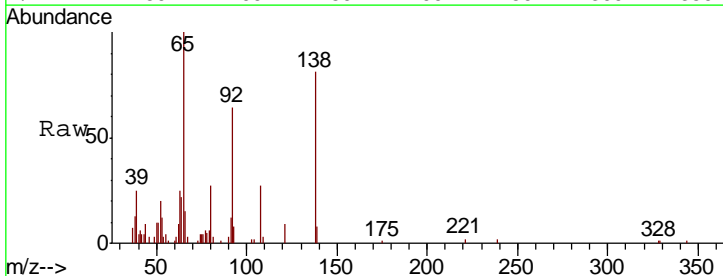
Instrument :
 BNA_G
 ClientSampled :

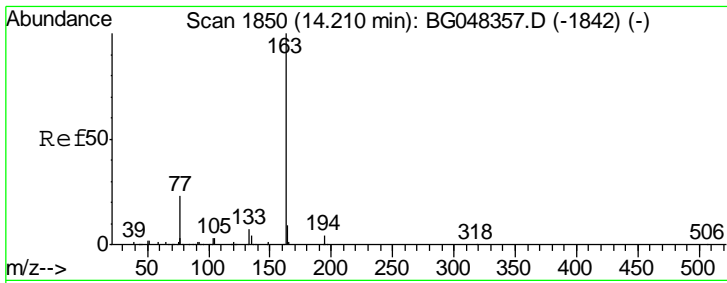
Tgt Ion	Resp	Lower	Upper
162	81524		
164	36.8	29.3	43.9
127	40.5	31.0	46.6



#45
 2-Nitroaniline
 Concen: 7.282 ng/ul
 RT: 13.84 min Scan# 1787
 Delta R.T. 0.00 min
 Lab File: BG048356.D
 Acq: 11 Mar 2021 11:41

Tgt Ion	Resp	Lower	Upper
65	22277		
92	63.5	46.1	69.1
138	81.5	67.7	101.5

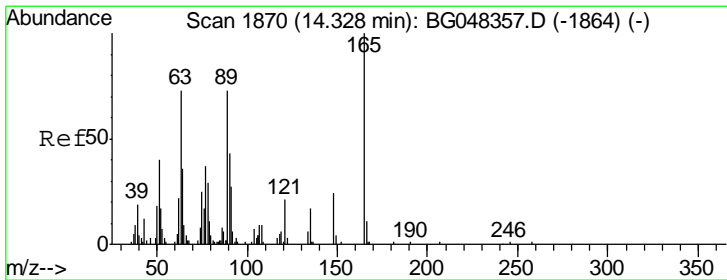
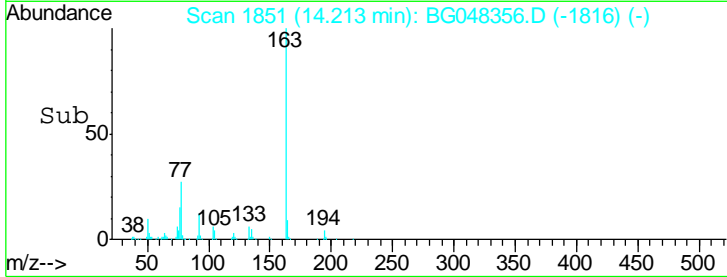
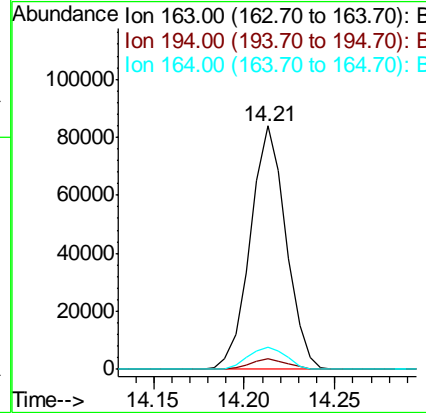
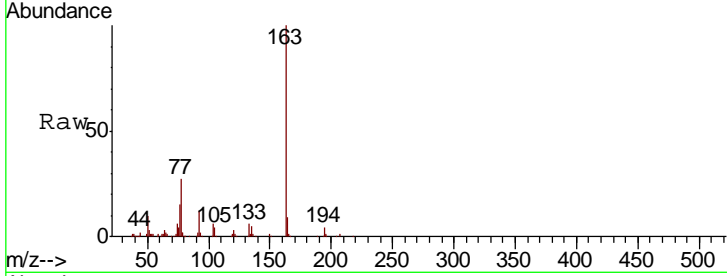




#47
 Dimethylphthalate
 Concen: 10.661 ng/ul
 RT: 14.21 min Scan# 1851
 Delta R.T. 0.00 min
 Lab File: BG048356.D
 Acq: 11 Mar 2021 11:41

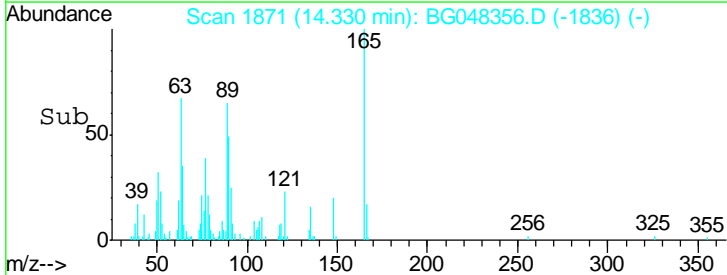
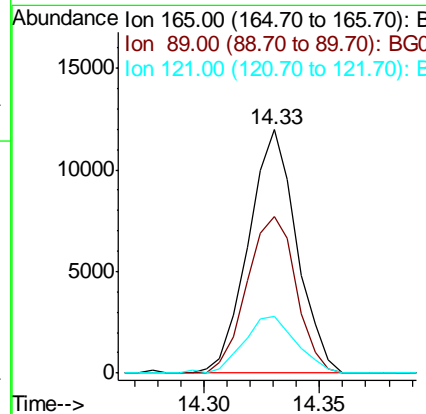
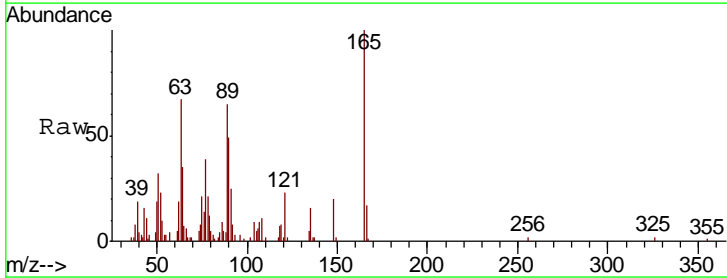
Instrument :
 BNA_G
 ClientSampled :

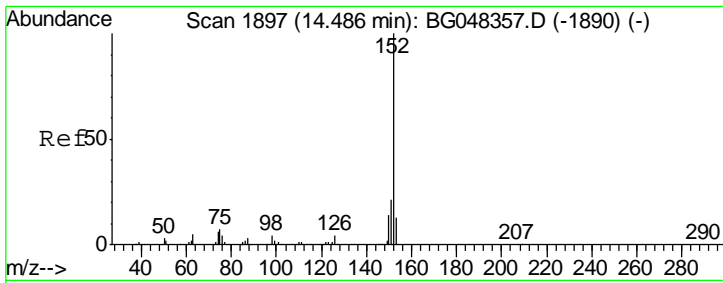
Tgt Ion	Resp	Lower	Upper
163	114903		
194	4.2	3.2	4.8
164	9.4	7.2	10.8



#48
 2,6-Dinitrotoluene
 Concen: 7.636 ng/ul
 RT: 14.33 min Scan# 1871
 Delta R.T. 0.00 min
 Lab File: BG048356.D
 Acq: 11 Mar 2021 11:41

Tgt Ion	Resp	Lower	Upper
165	17380		
89	64.5	58.2	87.2
121	23.4	17.0	25.4

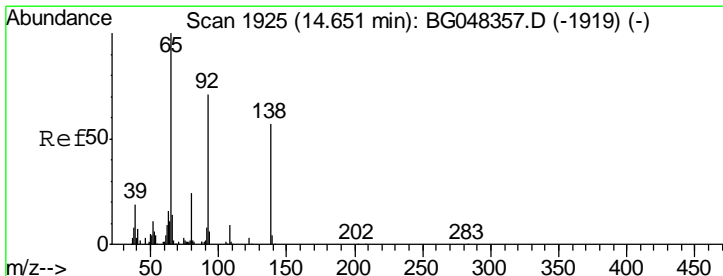
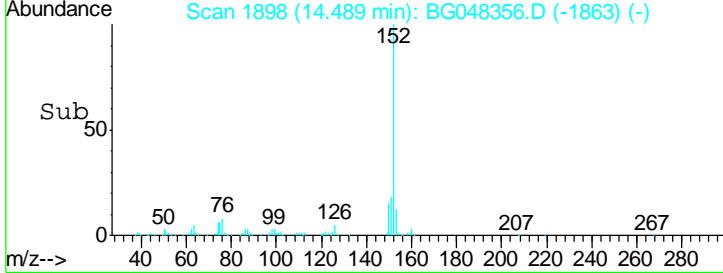
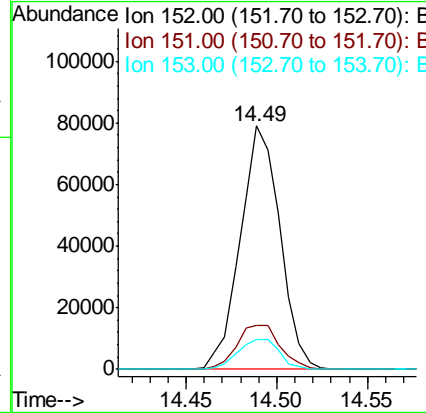
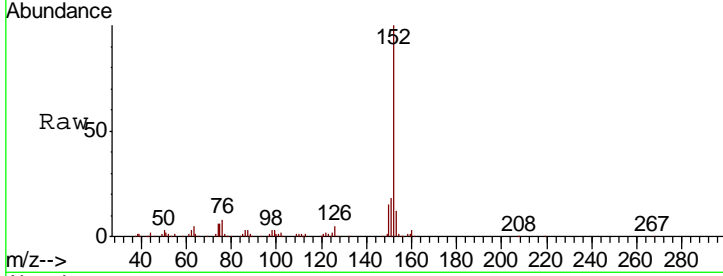




#50
 Acenaphthylene
 Concen: 10.524 ng/ul
 RT: 14.49 min Scan# 1898
 Delta R.T. 0.00 min
 Lab File: BG048356.D
 Acq: 11 Mar 2021 11:41

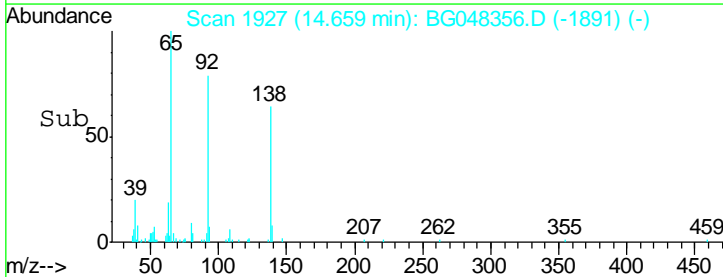
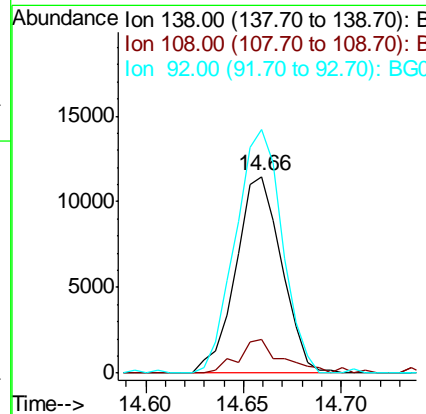
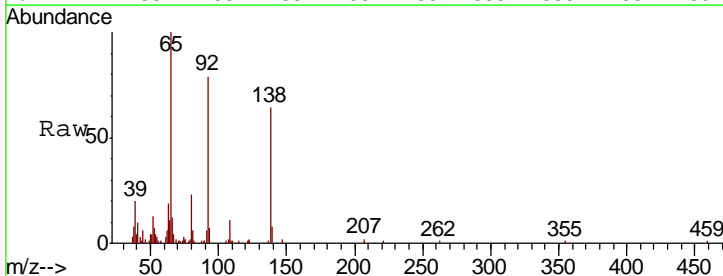
Instrument :
 BNA_G
 ClientSampled :

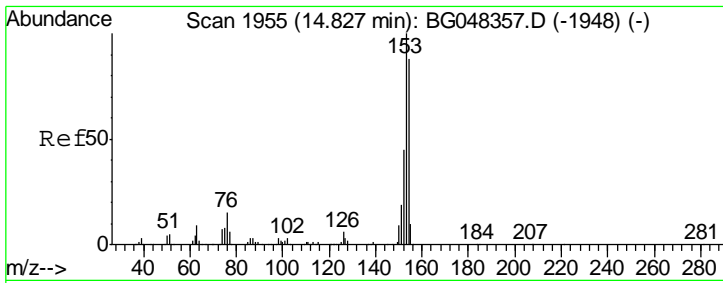
Tgt Ion	Resp	Lower	Upper
152	120627		
151	18.1	16.5	24.7
153	12.2	10.2	15.4



#51
 3-Nitroaniline
 Concen: 9.423 ng/ul
 RT: 14.66 min Scan# 1927
 Delta R.T. 0.01 min
 Lab File: BG048356.D
 Acq: 11 Mar 2021 11:41

Tgt Ion	Resp	Lower	Upper
138	18696		
138	100		
108	17.4	12.5	18.7
92	124.0	99.8	149.6

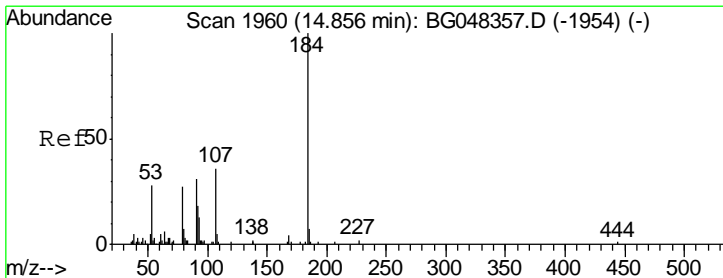
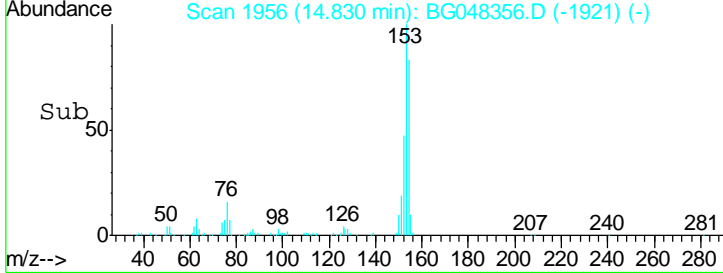
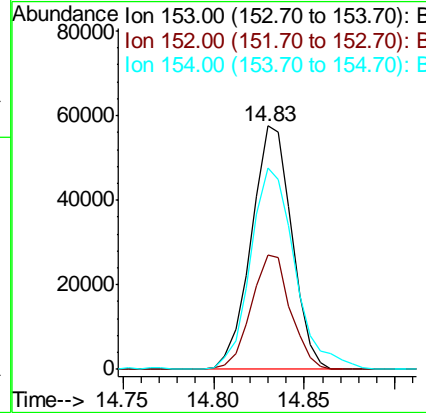
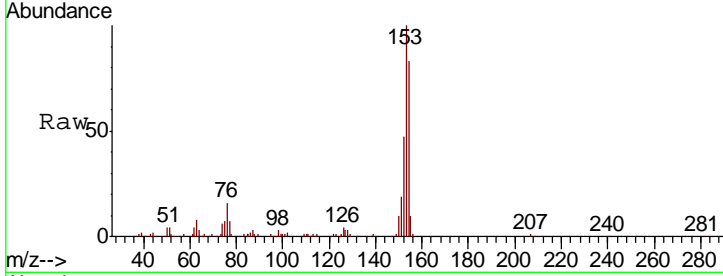




#52
 Acenaphthene
 Concen: 10.596 ng/ul
 RT: 14.83 min Scan# 1956
 Delta R.T. 0.00 min
 Lab File: BG048356.D
 Acq: 11 Mar 2021 11:41

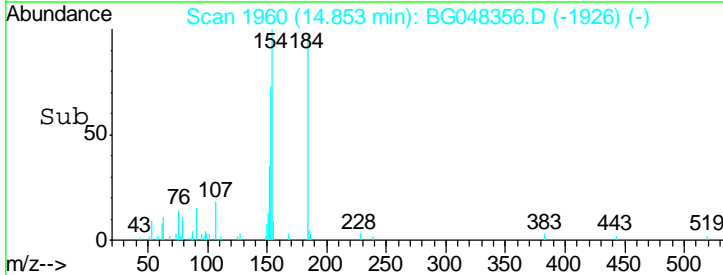
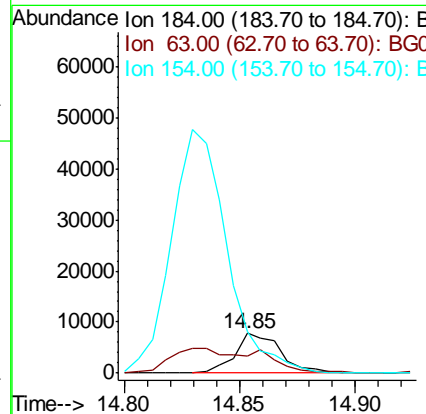
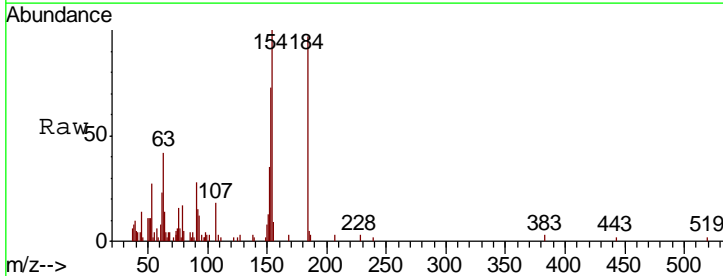
Instrument :
 BNA_G
 ClientSampled :

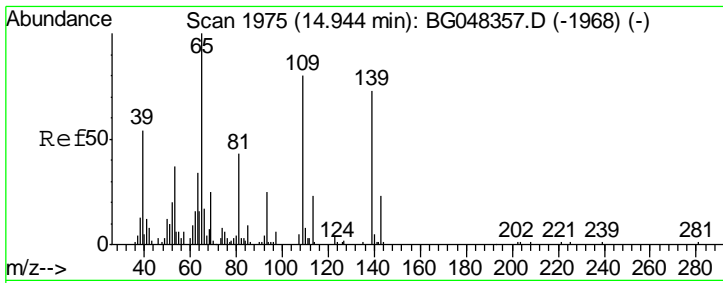
Tgt Ion	Resp	Lower	Upper
153	100		
152	46.8	36.1	54.1
154	82.8	70.4	105.6



#53
 2,4-Dinitrophenol
 Concen: 8.508 ng/ul
 RT: 14.85 min Scan# 1960
 Delta R.T. -0.00 min
 Lab File: BG048356.D
 Acq: 11 Mar 2021 11:41

Tgt Ion	Resp	Lower	Upper
184	100		
63	43.7	42.2	63.4
154	103.5	46.2	69.2#

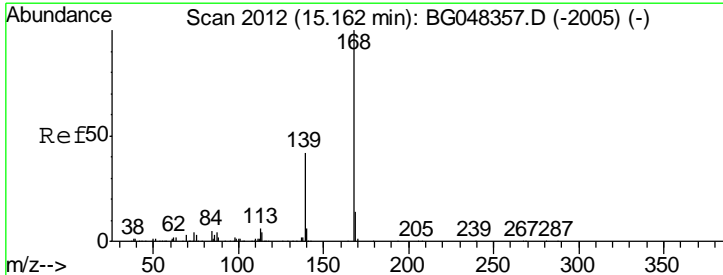
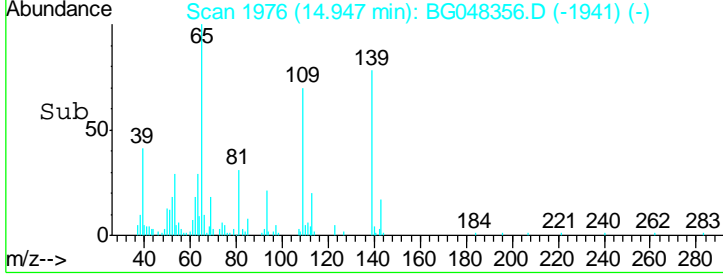
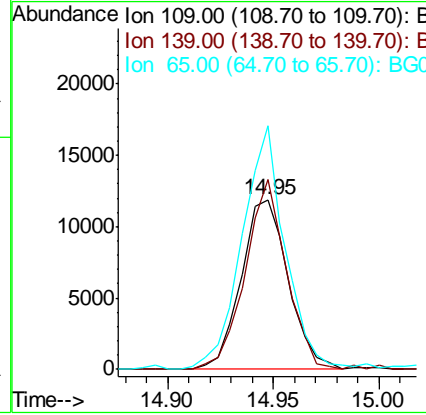
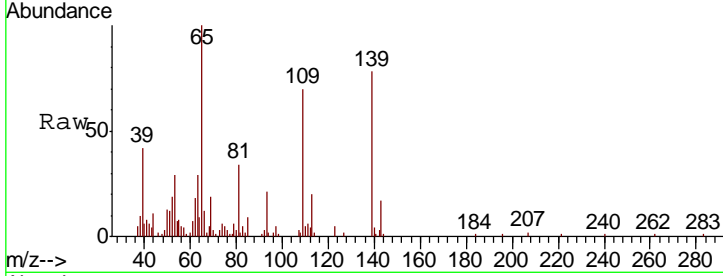




#55
 4-Nitrophenol
 Concen: 8.561 ng/ul
 RT: 14.95 min Scan# 1976
 Delta R.T. 0.00 min
 Lab File: BG048356.D
 Acq: 11 Mar 2021 11:41

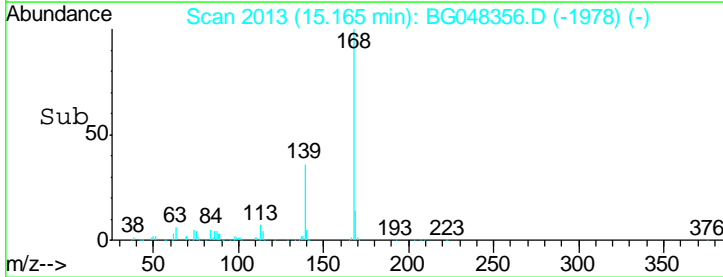
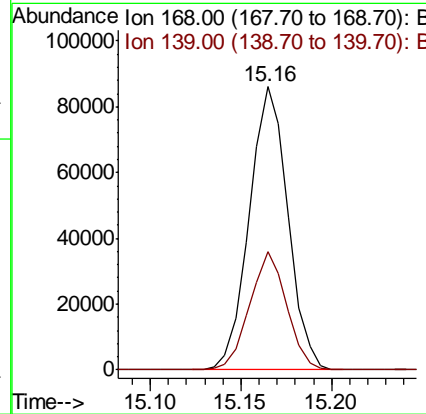
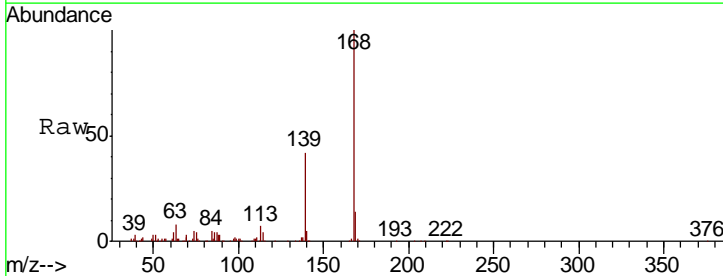
Instrument :
 BNA_G
 ClientSampled :

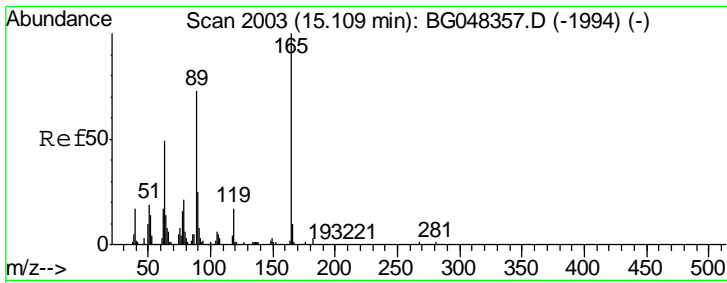
Tgt Ion	Resp	Lower	Upper
109	18390		
109	100		
139	112.3	72.7	109.1#
65	143.6	99.5	149.3



#56
 Dibenzofuran
 Concen: 10.329 ng/ul
 RT: 15.16 min Scan# 2013
 Delta R.T. 0.00 min
 Lab File: BG048356.D
 Acq: 11 Mar 2021 11:41

Tgt Ion	Resp	Lower	Upper
168	127982		
168	100		
139	41.9	33.5	50.3



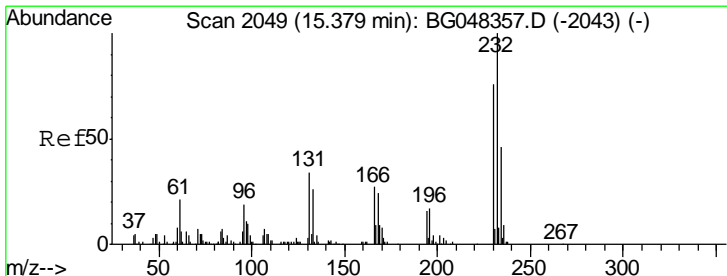
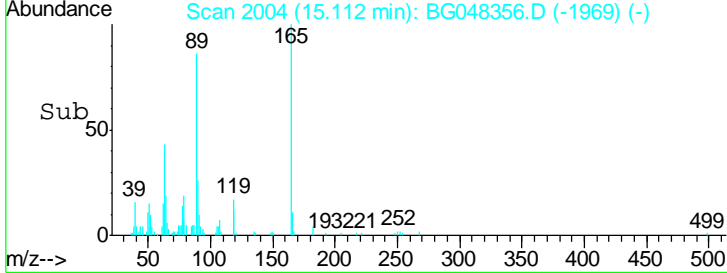
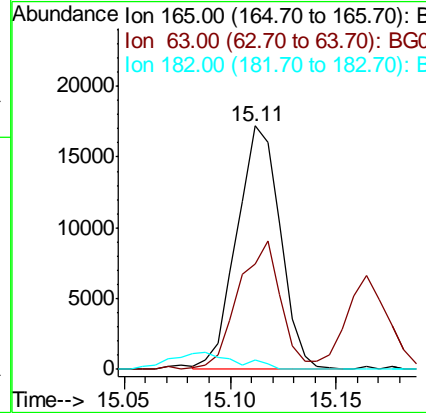
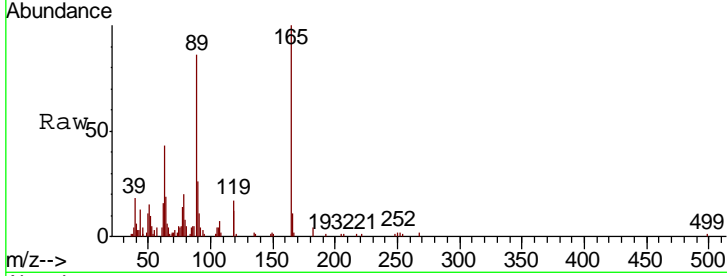


#57
 2,4-Dinitrotoluene
 Concen: 7.393 ng/ul
 RT: 15.11 min Scan# 2004
 Delta R.T. 0.00 min
 Lab File: BG048356.D
 Acq: 11 Mar 2021 11:41

Instrument :
 BNA_G
 ClientSampled :

Tgt Ion:165 Resp: 24502

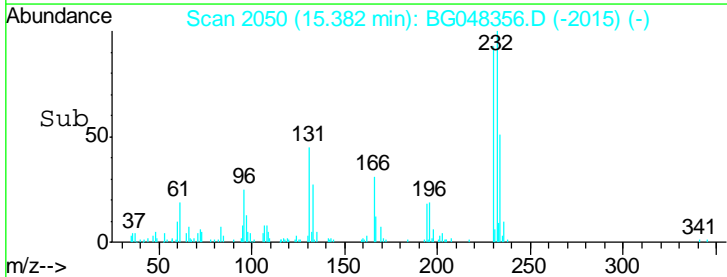
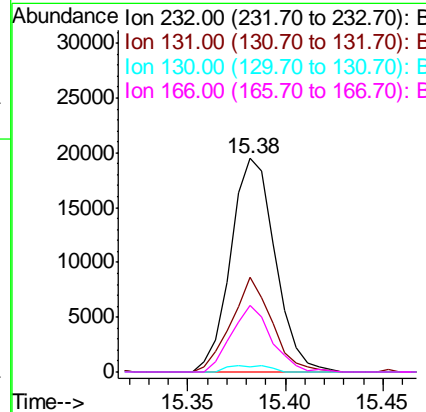
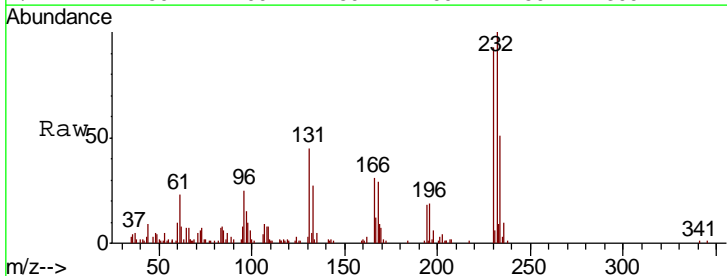
Ion	Ratio	Lower	Upper
165	100		
63	43.3	39.0	58.4
182	3.7	2.3	3.5#

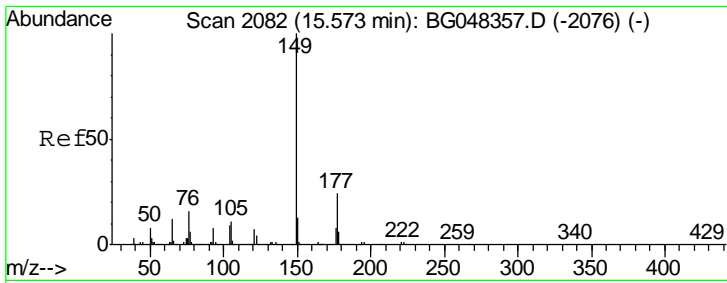


#58
 2,3,4,6-Tetrachlorophenol
 Concen: 10.357 ng/ul
 RT: 15.38 min Scan# 2050
 Delta R.T. 0.00 min
 Lab File: BG048356.D
 Acq: 11 Mar 2021 11:41

Tgt Ion:232 Resp: 30682

Ion	Ratio	Lower	Upper
232	100		
131	44.6	27.0	40.4#
130	2.7	2.3	3.5
166	31.4	21.3	31.9

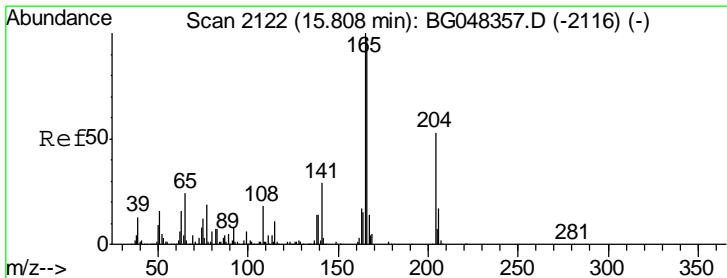
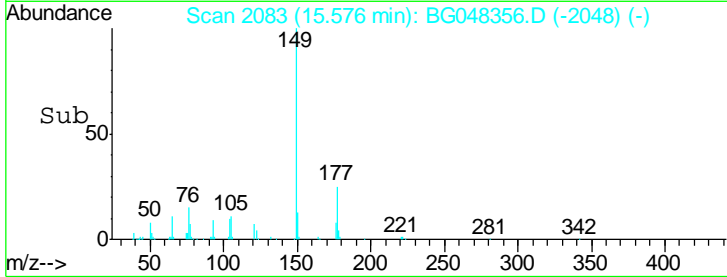
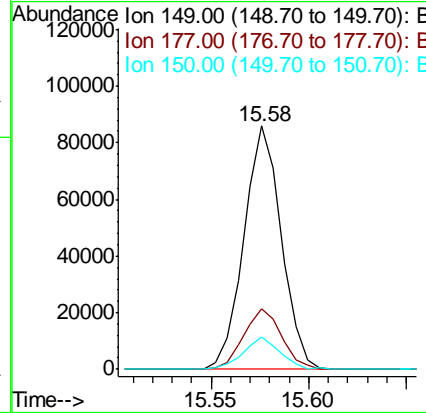
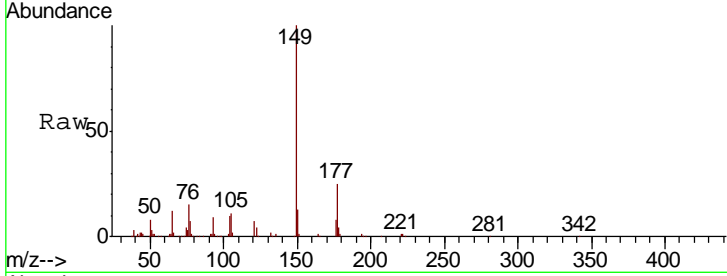




#59
 Diethylphthalate
 Concen: 10.154 ng/ul
 RT: 15.58 min Scan# 2083
 Delta R.T. 0.00 min
 Lab File: BG048356.D
 Acq: 11 Mar 2021 11:41

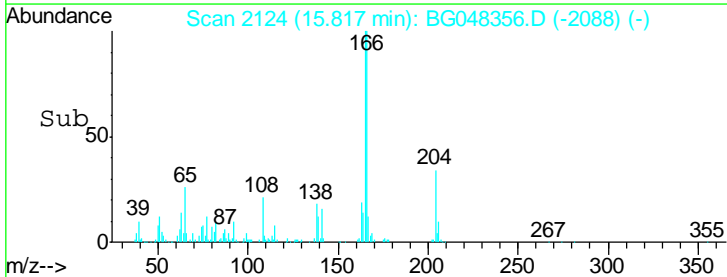
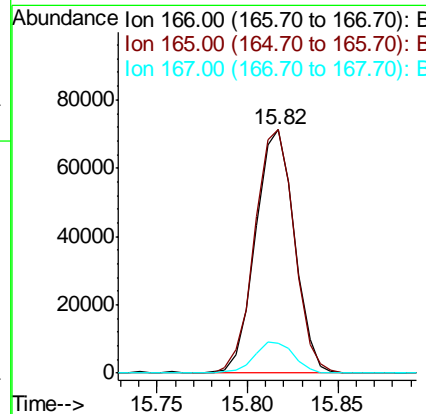
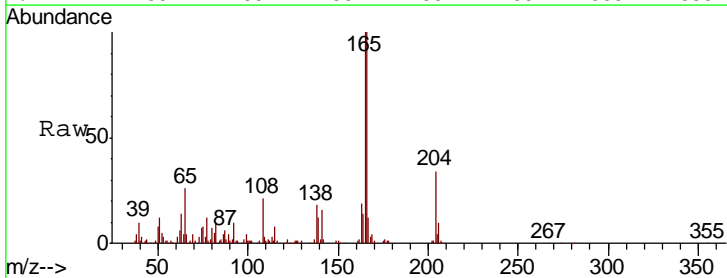
Instrument :
 BNA_G
 ClientSampled :

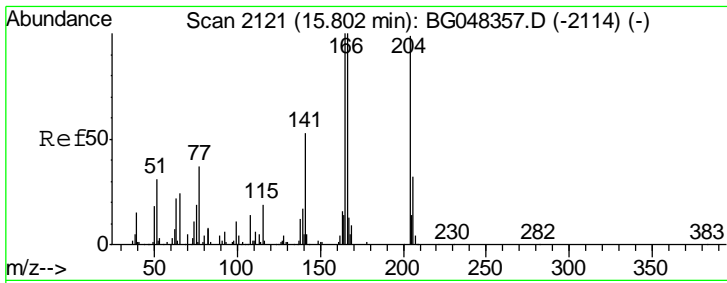
Tgt Ion	Resp	Lower	Upper
149	114091		
177	24.8	19.0	28.6
150	13.1	10.5	15.7



#61
 Fluorene
 Concen: 10.652 ng/ul
 RT: 15.82 min Scan# 2124
 Delta R.T. 0.01 min
 Lab File: BG048356.D
 Acq: 11 Mar 2021 11:41

Tgt Ion	Resp	Lower	Upper
166	106955		
165	100.0	81.7	122.5
167	12.4	11.8	17.6

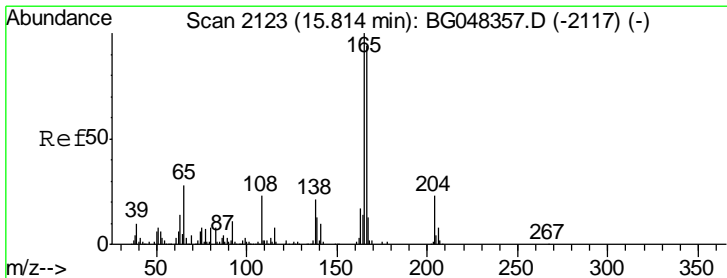
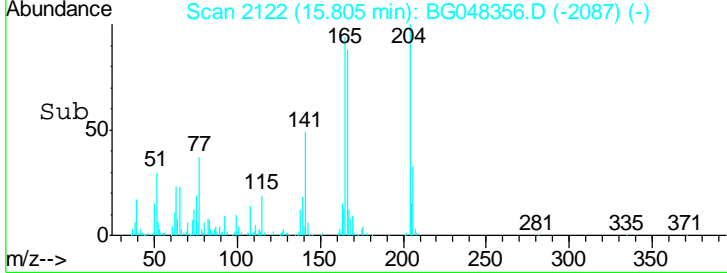
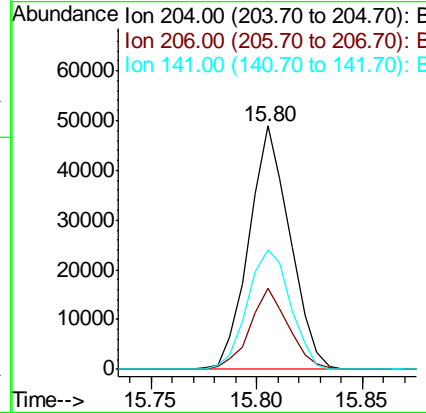
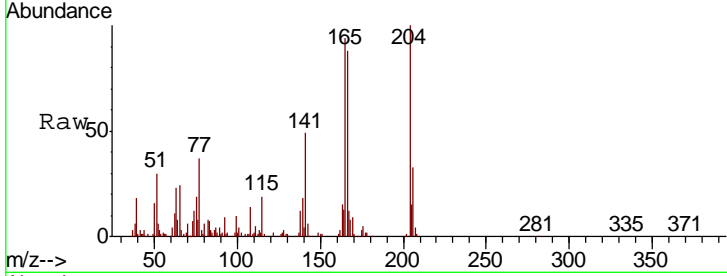




#62
 4-Chlorophenyl-phenylether
 Concen: 10.739 ng/ul
 RT: 15.80 min Scan# 2122
 Delta R.T. 0.00 min
 Lab File: BG048356.D
 Acq: 11 Mar 2021 11:41

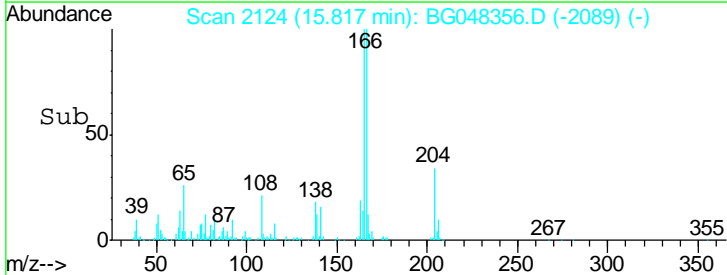
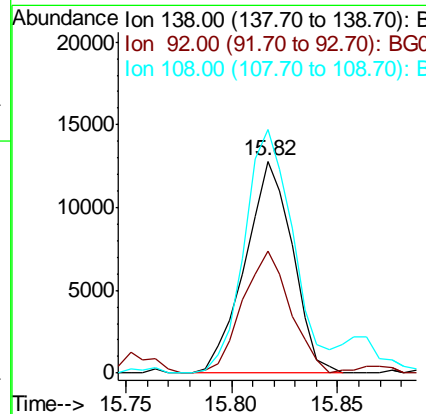
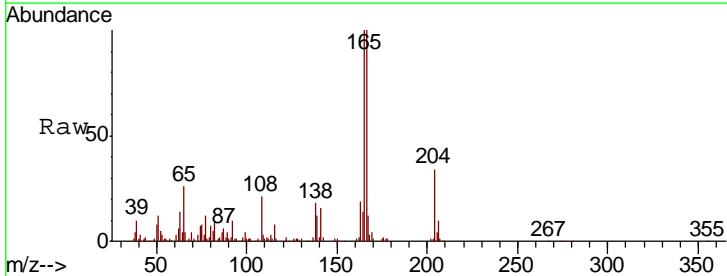
Instrument :
 BNA_G
 ClientSampled :

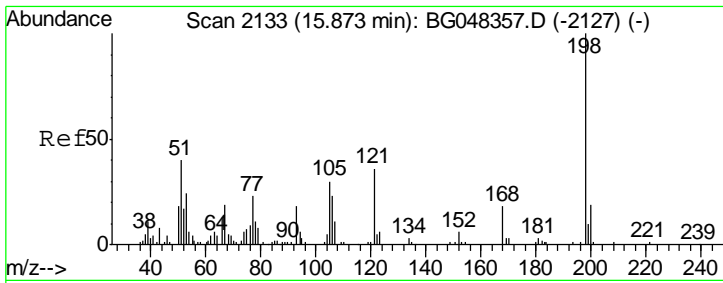
Tgt Ion	Resp	Lower	Upper
204	65941		
204	100		
206	33.1	25.4	38.2
141	48.8	43.1	64.7



#63
 4-Nitroaniline
 Concen: 10.631 ng/ul
 RT: 15.82 min Scan# 2124
 Delta R.T. 0.00 min
 Lab File: BG048356.D
 Acq: 11 Mar 2021 11:41

Tgt Ion	Resp	Lower	Upper
138	20000		
138	100		
92	57.3	43.8	65.8
108	114.9	91.2	136.8

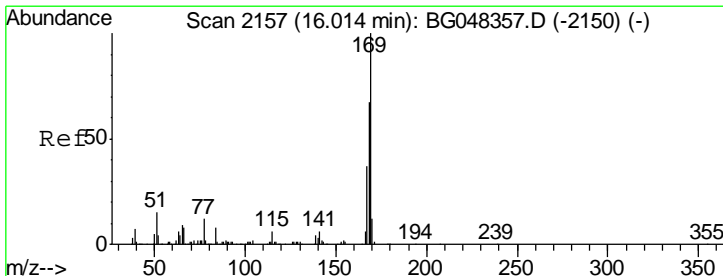
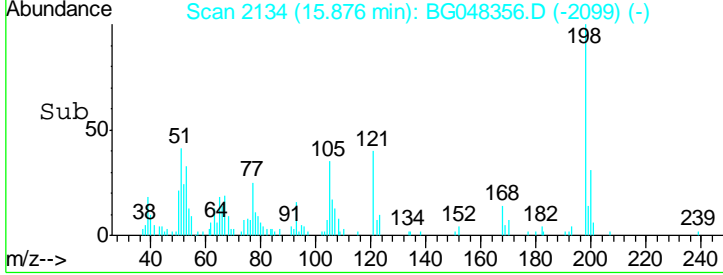
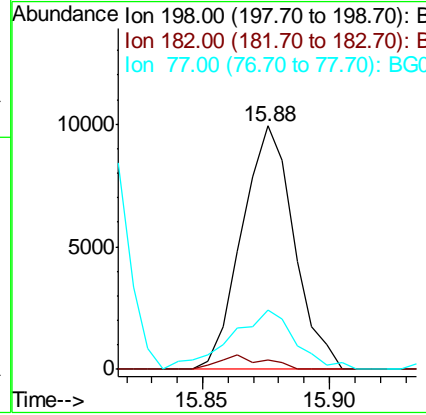
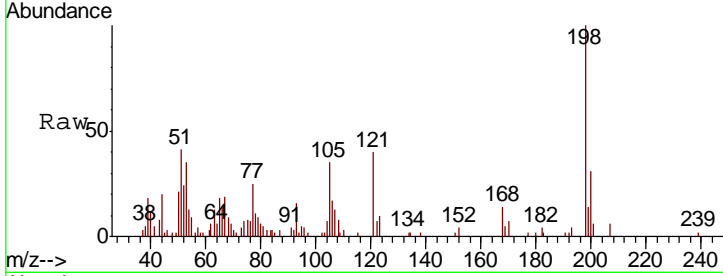




#66
 4,6-Dinitro-2-methylphenol
 Concen: 6.276 ng/ul
 RT: 15.88 min Scan# 2134
 Delta R.T. 0.00 min
 Lab File: BG048356.D
 Acq: 11 Mar 2021 11:41

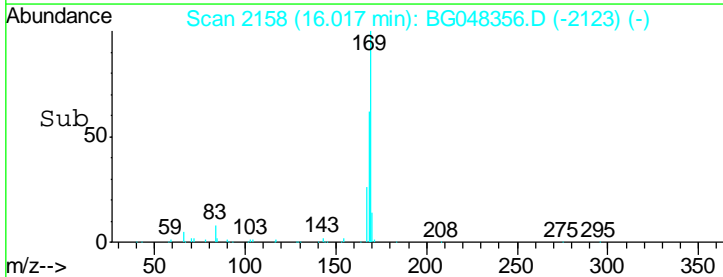
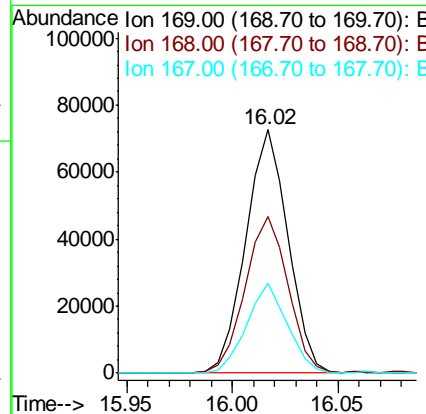
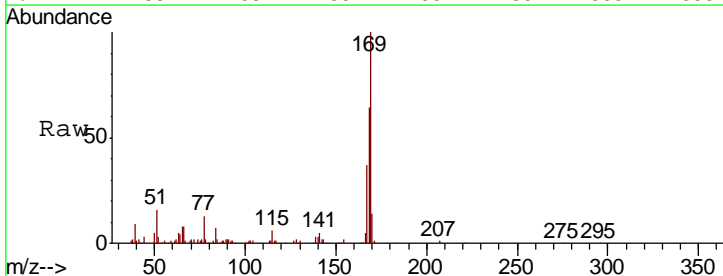
Instrument :
 BNA_G
 ClientSampled :

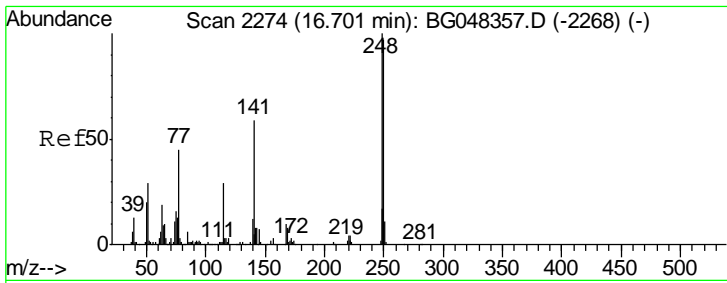
Tgt Ion	Resp	Lower	Upper
198	14235		
182	3.8	1.6	2.4#
77	24.5	19.9	29.9



#67
 N-Nitrosodiphenylamine
 Concen: 10.703 ng/ul
 RT: 16.02 min Scan# 2158
 Delta R.T. 0.00 min
 Lab File: BG048356.D
 Acq: 11 Mar 2021 11:41

Tgt Ion	Resp	Lower	Upper
169	101222		
168	64.1	53.8	80.8
167	37.0	29.8	44.8

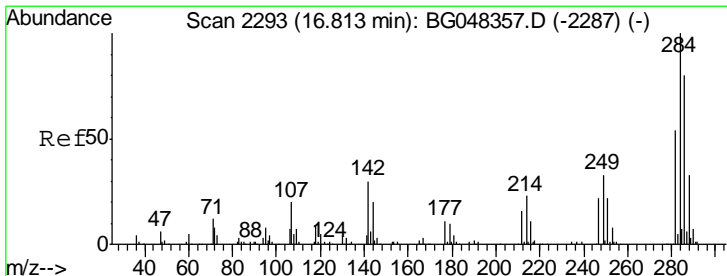
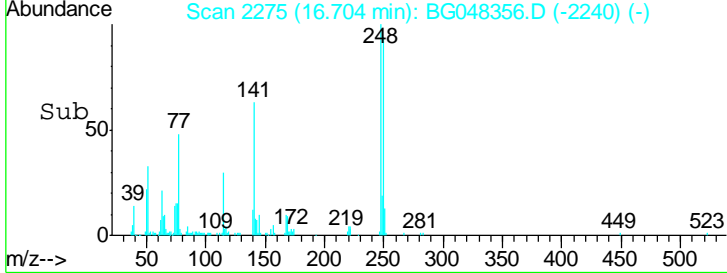
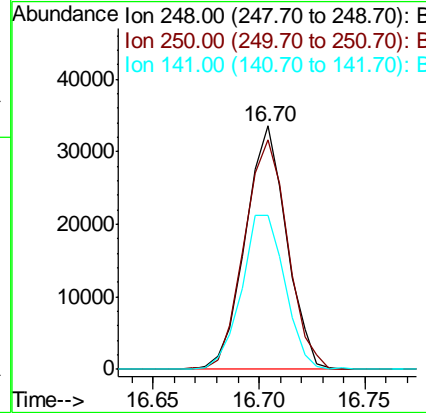
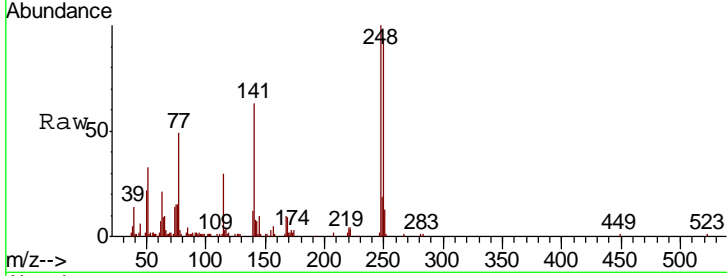




#68
 4-Bromophenyl-phenylether
 Concen: 10.715 ng/ul
 RT: 16.70 min Scan# 2275
 Delta R.T. 0.00 min
 Lab File: BG048356.D
 Acq: 11 Mar 2021 11:41

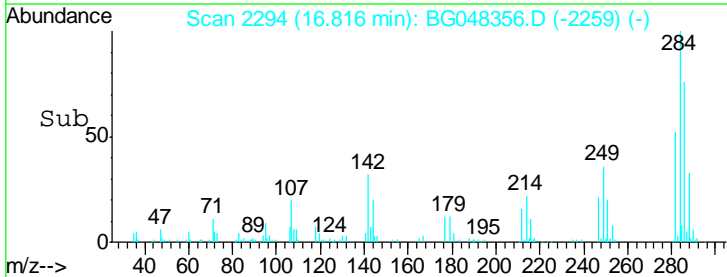
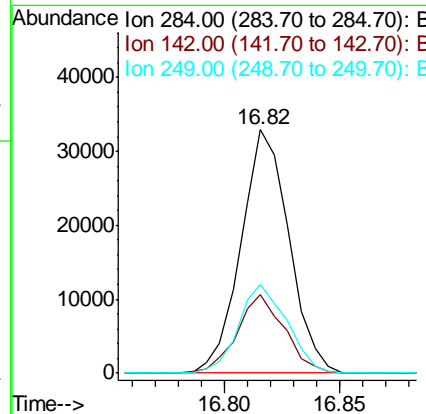
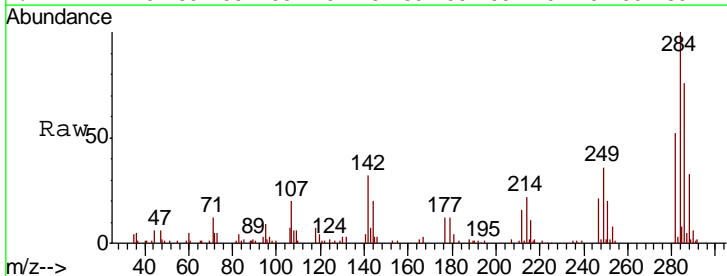
Instrument :
 BNA_G
 ClientSampled :

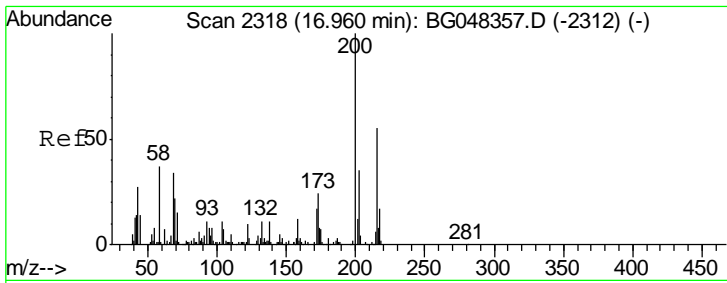
Tgt Ion	Resp	Lower	Upper
248	100		
250	94.1	77.4	116.2
141	63.4	47.4	71.2



#69
 Hexachlorobenzene
 Concen: 10.377 ng/ul
 RT: 16.82 min Scan# 2294
 Delta R.T. 0.00 min
 Lab File: BG048356.D
 Acq: 11 Mar 2021 11:41

Tgt Ion	Resp	Lower	Upper
284	100		
142	32.3	22.1	33.1
249	36.5	24.5	36.7

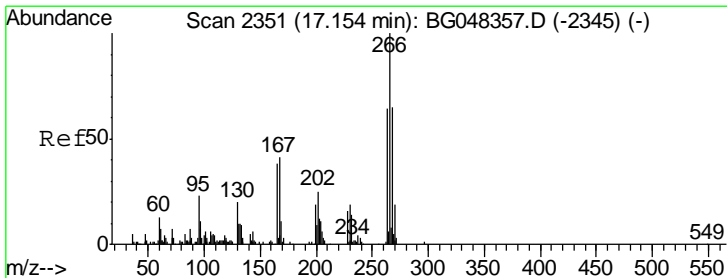
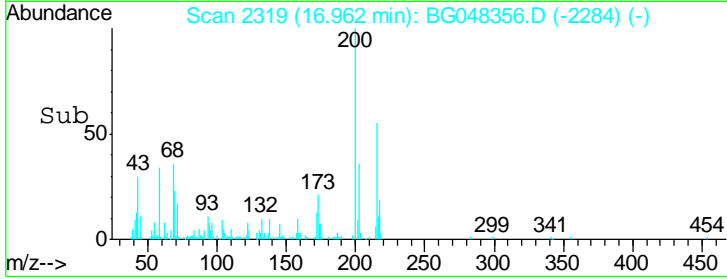
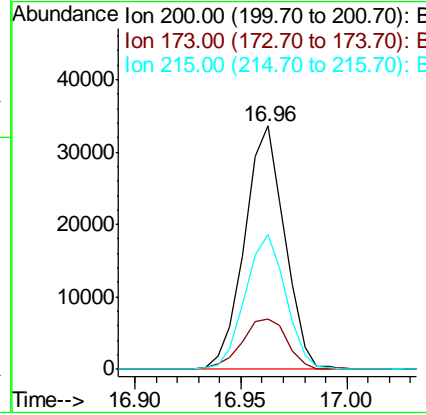
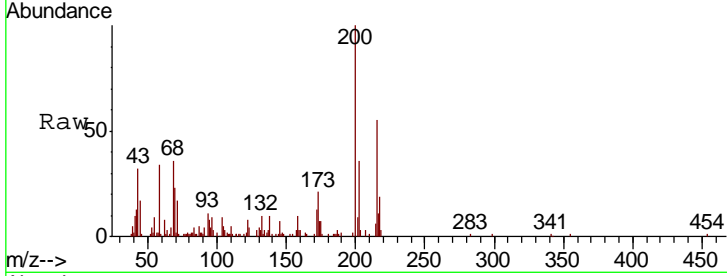




#70
 Atrazine
 Concen: 9.875 ng/ul
 RT: 16.96 min Scan# 2319
 Delta R.T. 0.00 min
 Lab File: BG048356.D
 Acq: 11 Mar 2021 11:41

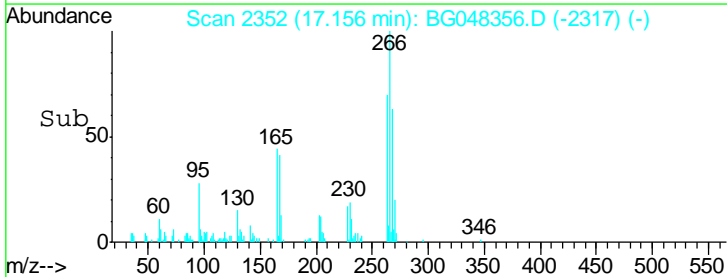
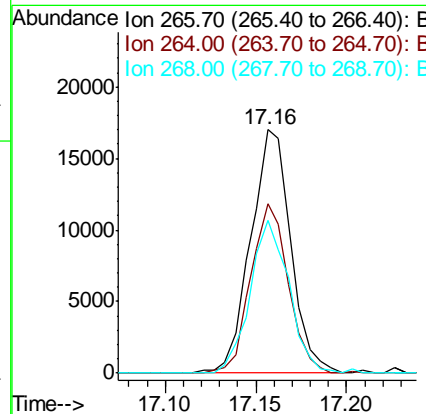
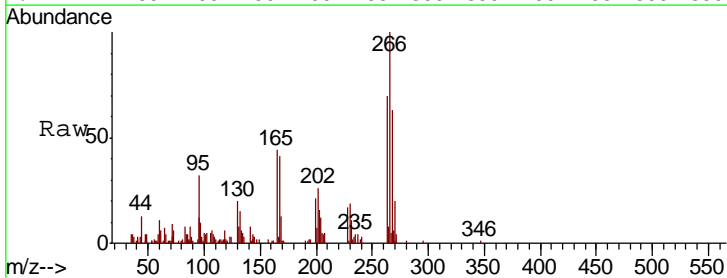
Instrument :
 BNA_G
 ClientSampled :

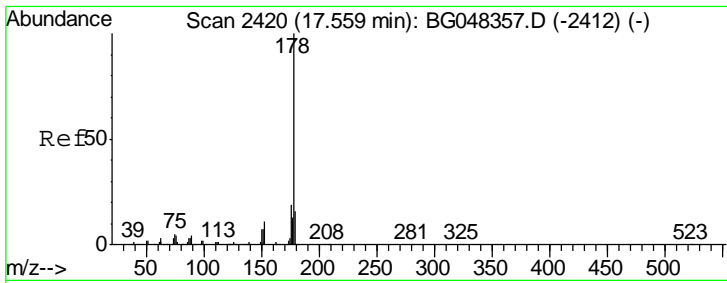
Tgt Ion	Resp	Lower	Upper
200	44204		
173	20.8	19.4	29.0
215	55.5	43.7	65.5



#71
 Pentachlorophenol
 Concen: 13.794 ng/ul
 RT: 17.16 min Scan# 2352
 Delta R.T. 0.00 min
 Lab File: BG048356.D
 Acq: 11 Mar 2021 11:41

Tgt Ion	Resp	Lower	Upper
266	26331		
264	69.7	51.3	76.9
268	62.8	51.6	77.4

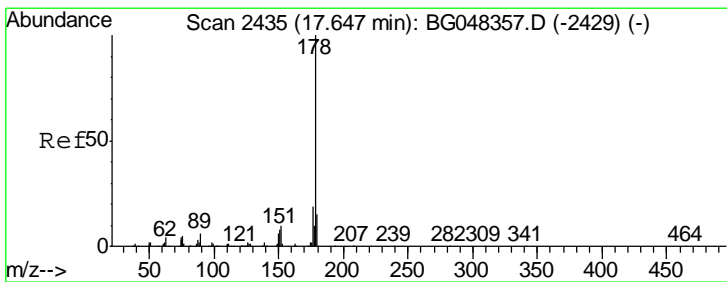
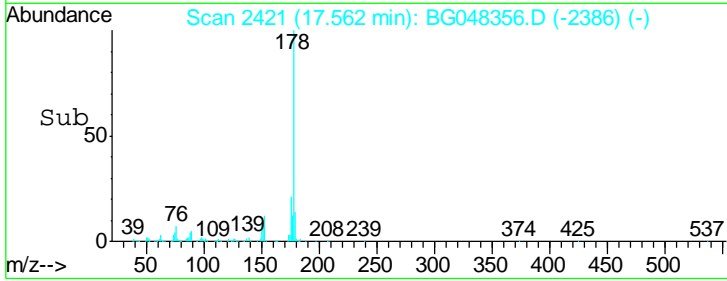
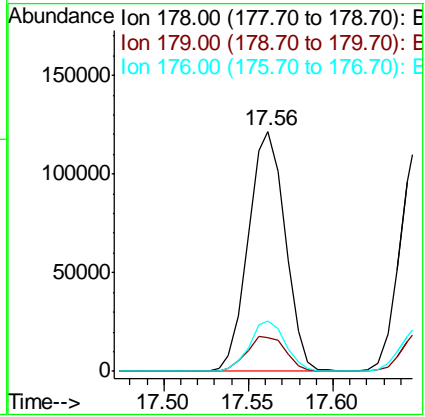
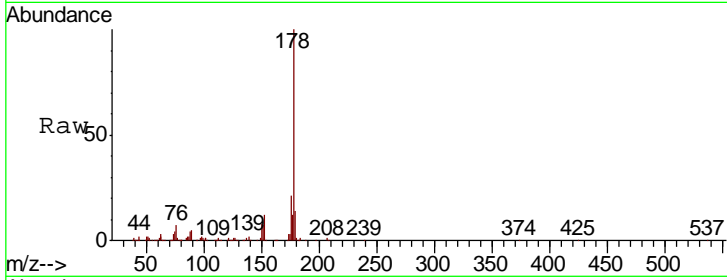




#72
 Phenanthrene
 Concen: 9.890 ng/ul
 RT: 17.56 min Scan# 2421
 Delta R.T. 0.00 min
 Lab File: BG048356.D
 Acq: 11 Mar 2021 11:41

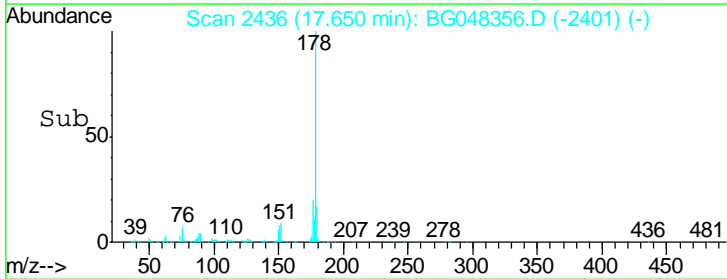
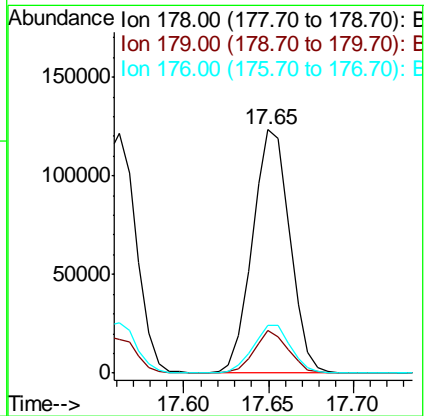
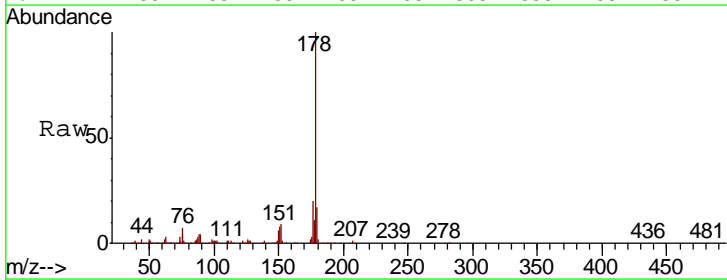
Instrument :
 BNA_G
 ClientSampled :

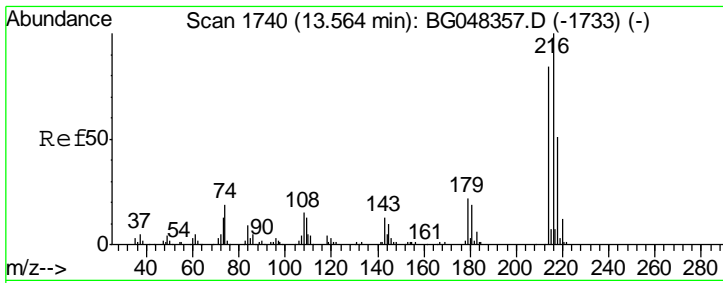
Tgt Ion	Resp	Lower	Upper
178	185239		
179	14.2	13.1	19.7
176	21.2	15.4	23.2



#74
 Anthracene
 Concen: 10.106 ng/ul
 RT: 17.65 min Scan# 2436
 Delta R.T. 0.00 min
 Lab File: BG048356.D
 Acq: 11 Mar 2021 11:41

Tgt Ion	Resp	Lower	Upper
178	190281		
179	17.4	12.3	18.5
176	19.6	15.5	23.3

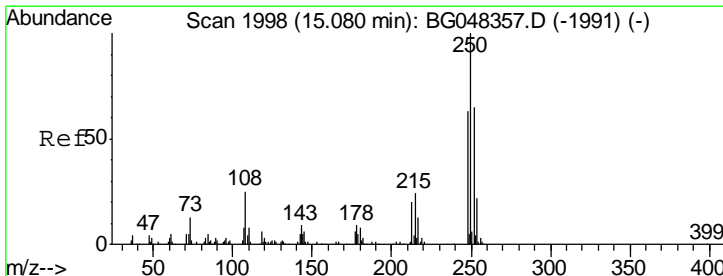
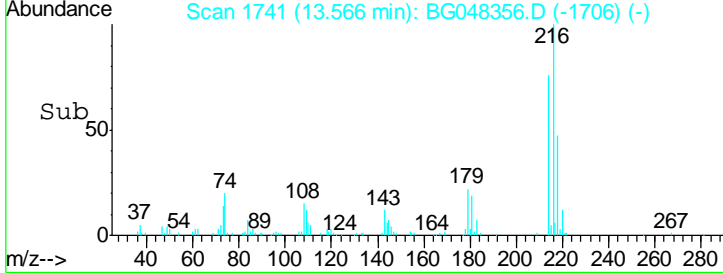
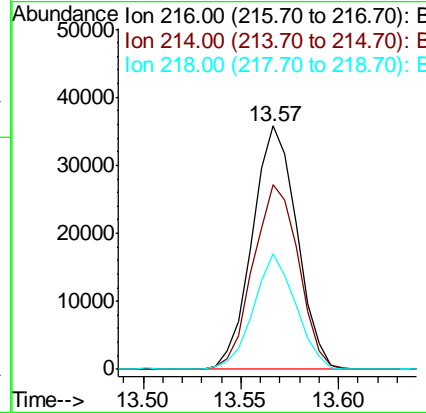
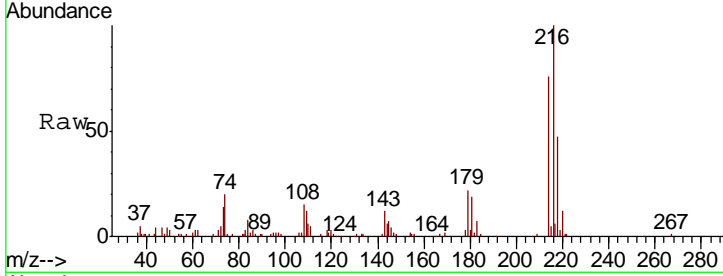




#75
 1,2,3,4-Tetrachlorobenzene
 Concen: 10.103 ng/uL
 RT: 13.57 min Scan# 1741
 Delta R.T. 0.00 min
 Lab File: BG048356.D
 Acq: 11 Mar 2021 11:41

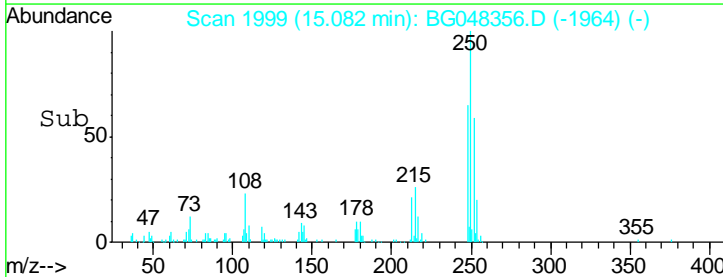
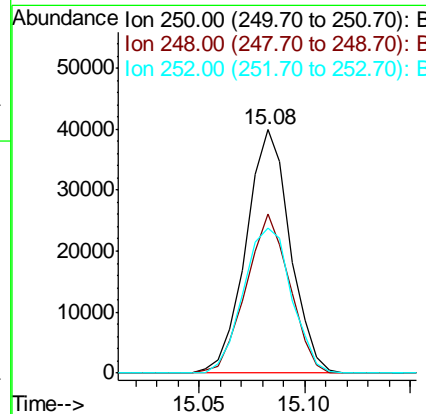
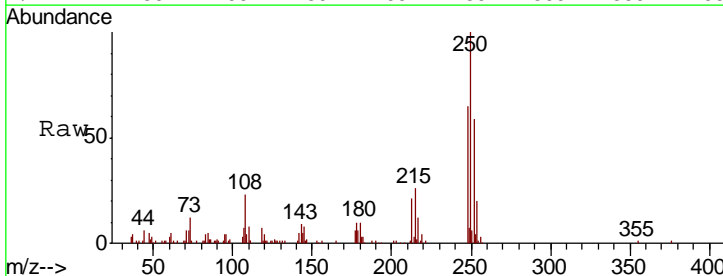
Instrument :
 BNA_G
 ClientSampled :

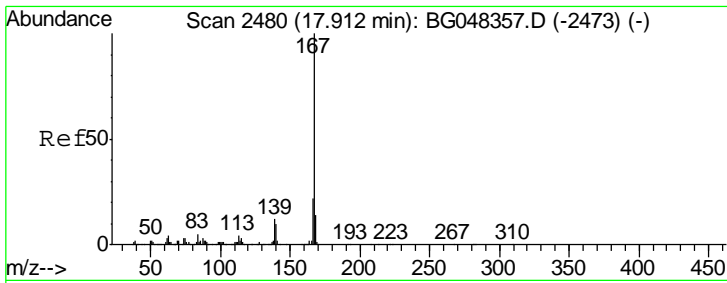
Tgt Ion	Resp	Lower	Upper
216	100		
214	76.0	67.3	100.9
218	47.4	40.4	60.6



#76
 Pentachlorobenzene
 Concen: 10.263 ng/uL
 RT: 15.08 min Scan# 1999
 Delta R.T. 0.00 min
 Lab File: BG048356.D
 Acq: 11 Mar 2021 11:41

Tgt Ion	Resp	Lower	Upper
250	100		
248	65.2	50.5	75.7
252	59.4	51.9	77.9

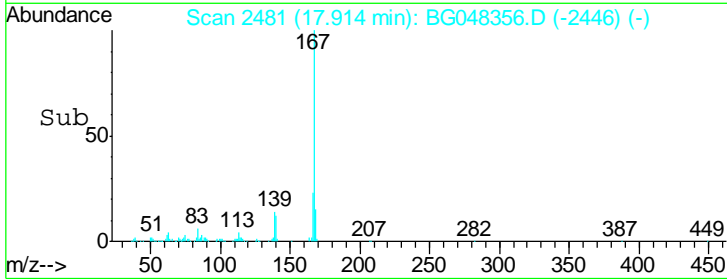
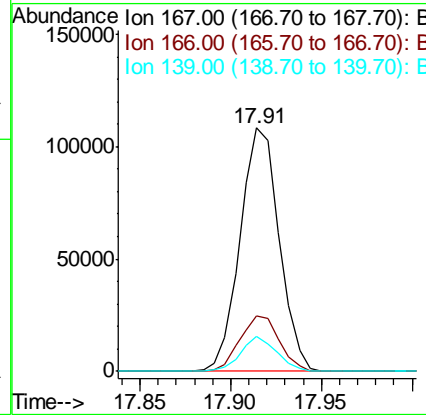
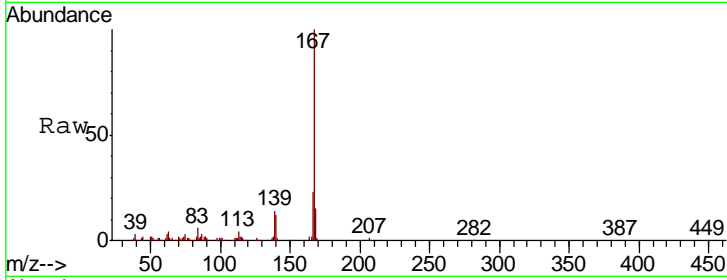




#77
 Carbazole
 Concen: 9.882 ng/ul
 RT: 17.91 min Scan# 2481
 Delta R.T. 0.00 min
 Lab File: BG048356.D
 Acq: 11 Mar 2021 11:41

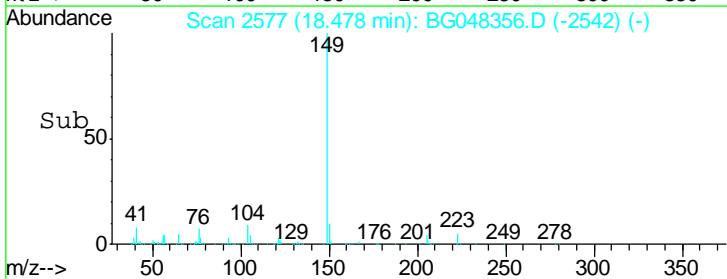
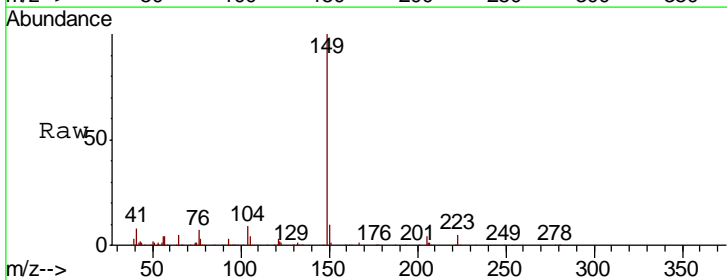
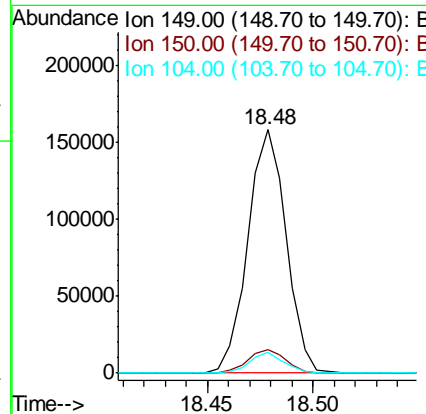
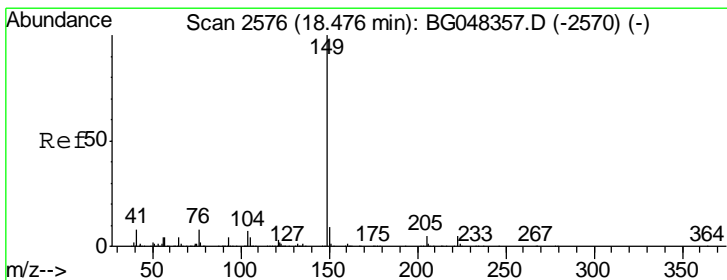
Instrument :
 BNA_G
 ClientSampled :

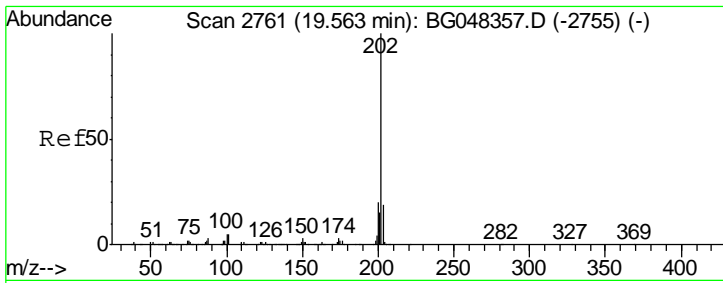
Tgt Ion	Resp	Lower	Upper
167	162409		
166	23.0	17.7	26.5
139	14.3	9.3	13.9#



#78
 Di-n-butylphthalate
 Concen: 9.846 ng/ul
 RT: 18.48 min Scan# 2577
 Delta R.T. 0.00 min
 Lab File: BG048356.D
 Acq: 11 Mar 2021 11:41

Tgt Ion	Resp	Lower	Upper
149	198801		
150	9.6	7.4	11.2
104	8.6	5.8	8.8

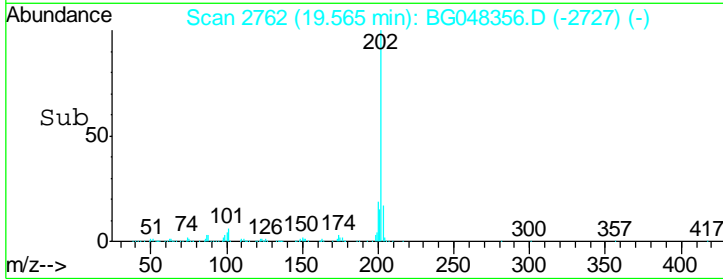
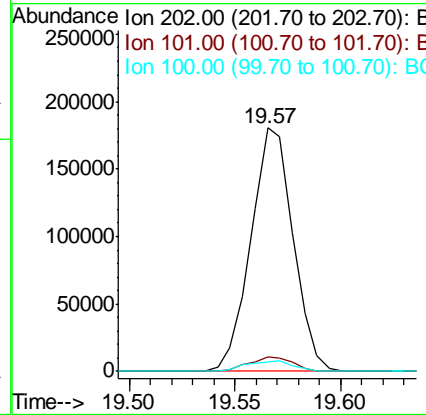
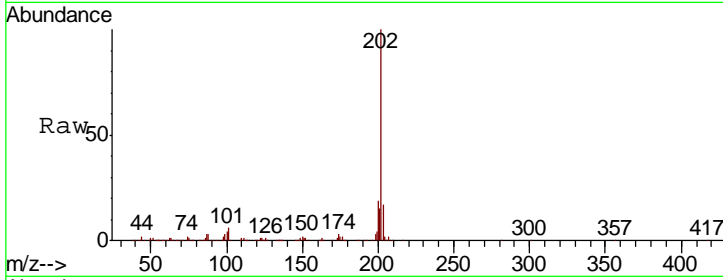




#80
 Fluoranthene
 Concen: 10.552 ng/ul
 RT: 19.57 min Scan# 2762
 Delta R.T. 0.00 min
 Lab File: BG048356.D
 Acq: 11 Mar 2021 11:41

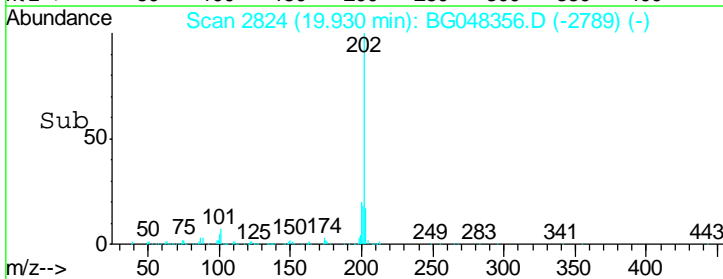
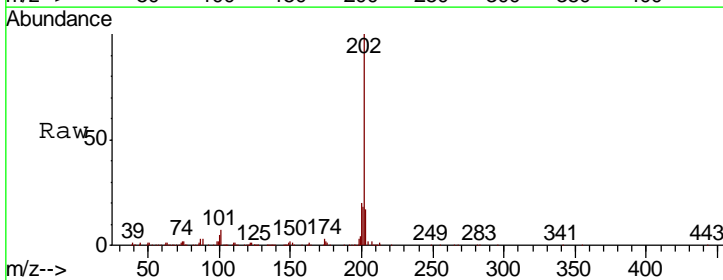
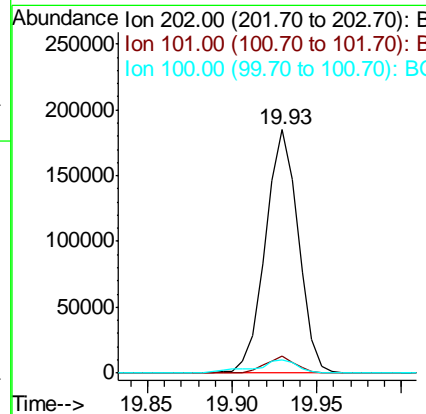
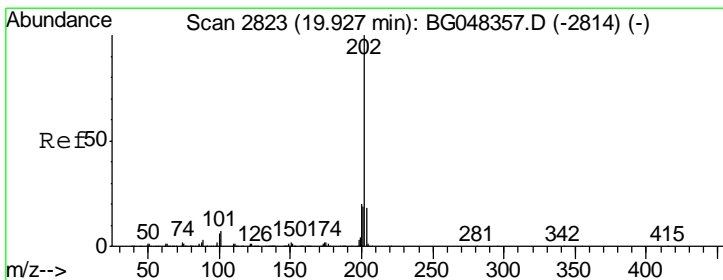
Instrument :
 BNA_G
 ClientSampled :

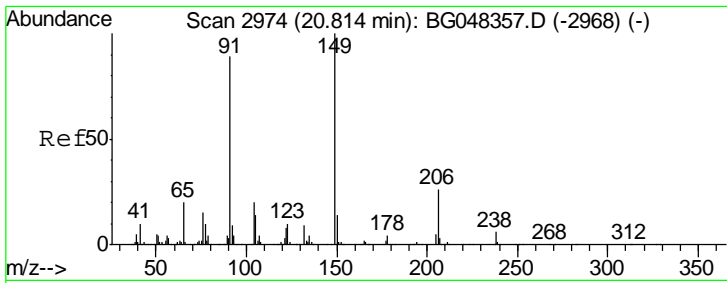
Tgt Ion	Ratio	Lower	Upper
202	100		
101	5.9	4.2	6.2
100	4.1	4.1	6.1#



#82
 Pyrene
 Concen: 10.580 ng/ul
 RT: 19.93 min Scan# 2824
 Delta R.T. 0.00 min
 Lab File: BG048356.D
 Acq: 11 Mar 2021 11:41

Tgt Ion	Ratio	Lower	Upper
202	100		
101	6.9	5.4	8.0
100	5.2	4.7	7.1

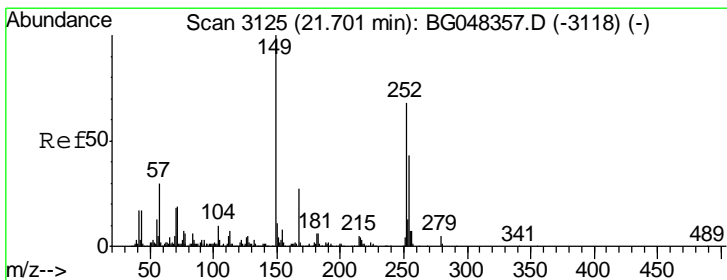
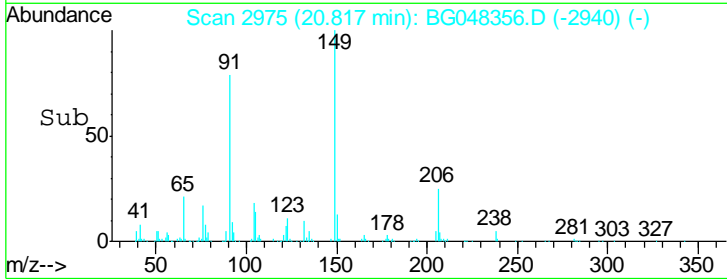
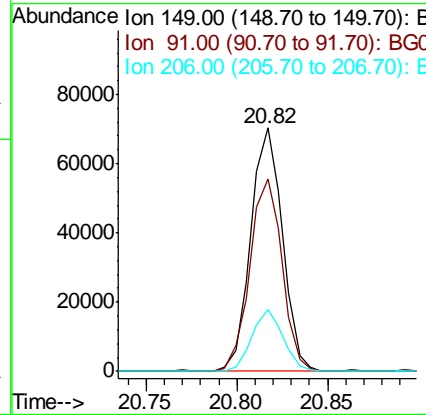
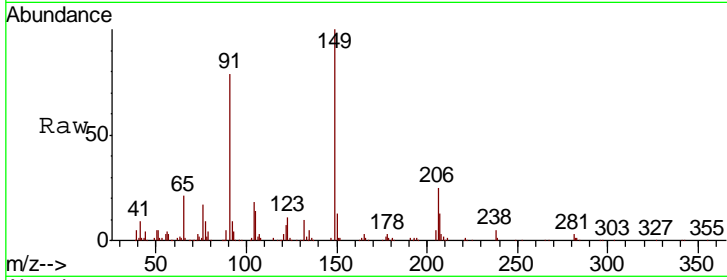




#83
 Butylbenzylphthalate
 Concen: 9.685 ng/ul
 RT: 20.82 min Scan# 2975
 Delta R.T. 0.00 min
 Lab File: BG048356.D
 Acq: 11 Mar 2021 11:41

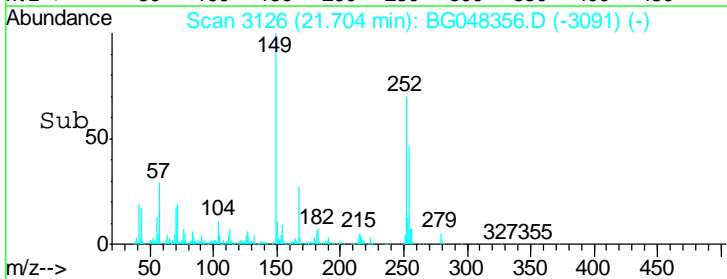
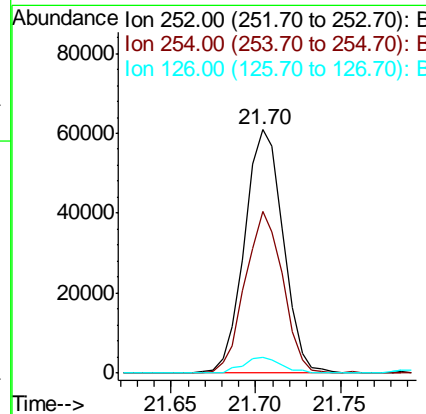
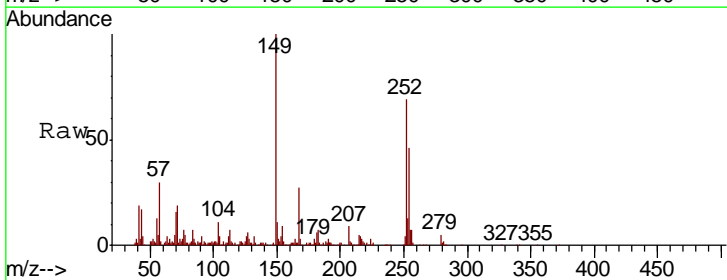
Instrument :
 BNA_G
 ClientSampled :

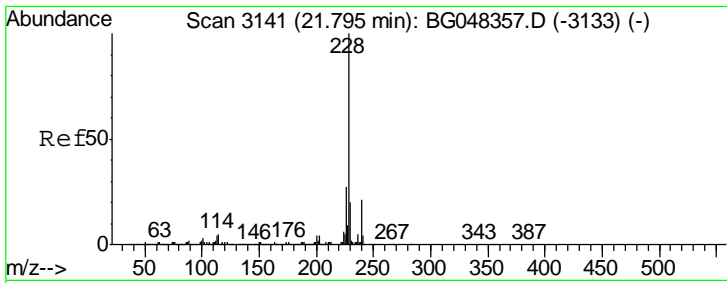
Tgt Ion	Resp	Lower	Upper
149	100		
91	79.2	70.9	106.3
206	25.2	21.0	31.6



#84
 3,3'-Dichlorobenzidine
 Concen: 11.354 ng/ul
 RT: 21.70 min Scan# 3126
 Delta R.T. 0.00 min
 Lab File: BG048356.D
 Acq: 11 Mar 2021 11:41

Tgt Ion	Resp	Lower	Upper
252	100		
254	66.3	51.0	76.6
126	6.2	5.1	7.7

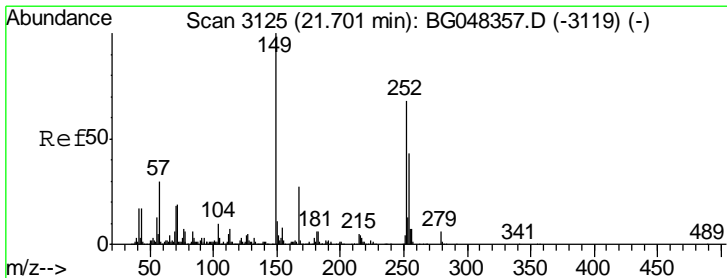
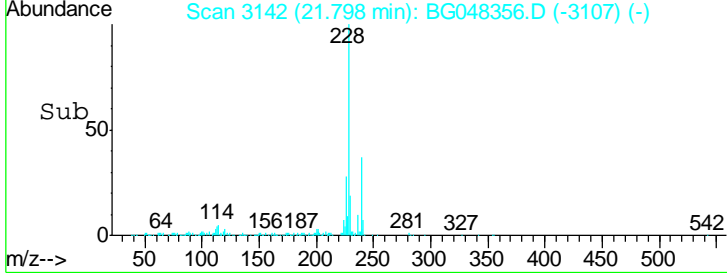
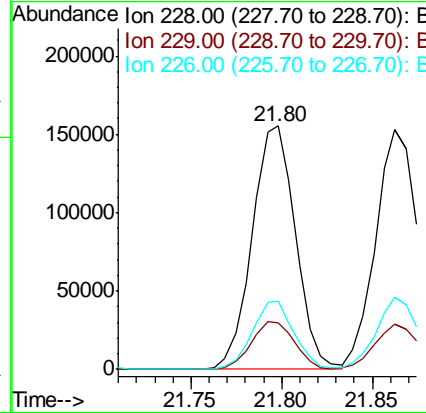
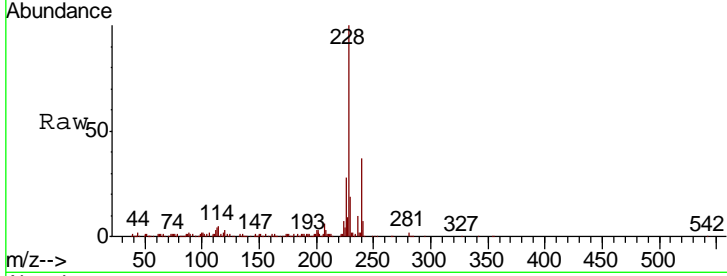




#85
 Benzo(a)anthracene
 Concen: 10.632 ng/ul
 RT: 21.80 min Scan# 3142
 Delta R.T. 0.00 min
 Lab File: BG048356.D
 Acq: 11 Mar 2021 11:41

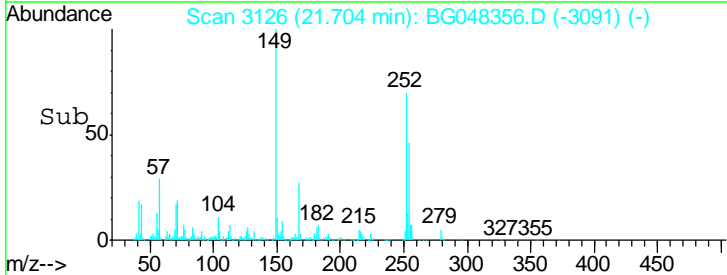
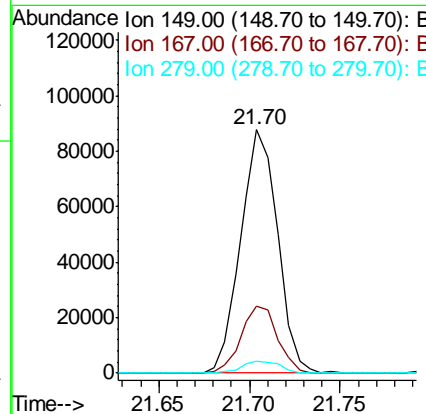
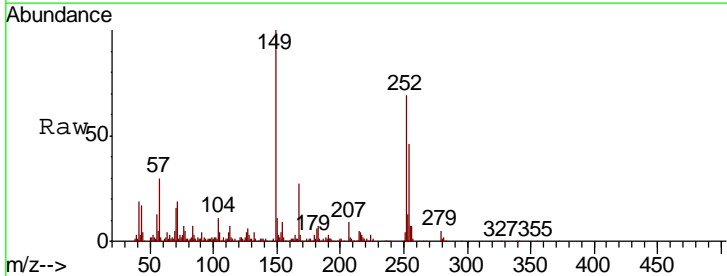
Instrument :
 BNA_G
 ClientSampled :

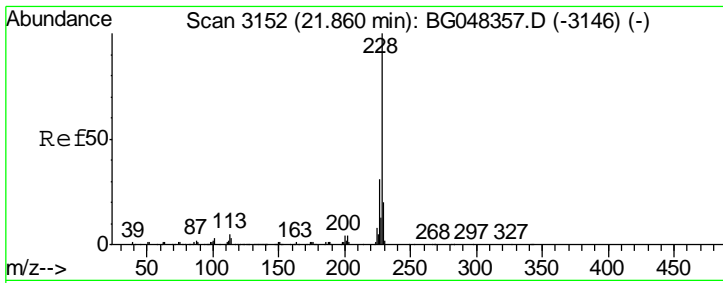
Tgt Ion	Resp	Lower	Upper
228	257407		
229	19.0	16.2	24.2
226	28.0	21.8	32.8



#86
 Bis(2-ethylhexyl)phthalate
 Concen: 9.872 ng/ul
 RT: 21.70 min Scan# 3126
 Delta R.T. 0.00 min
 Lab File: BG048356.D
 Acq: 11 Mar 2021 11:41

Tgt Ion	Resp	Lower	Upper
149	124093		
167	27.3	21.7	32.5
279	4.7	4.5	6.7

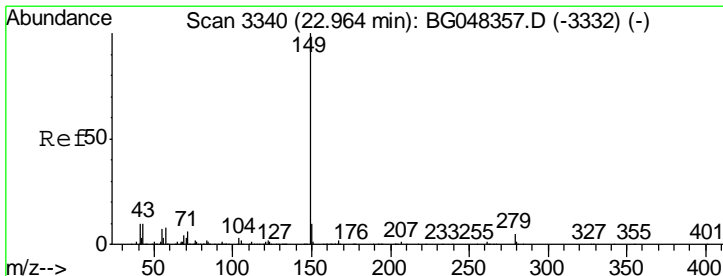
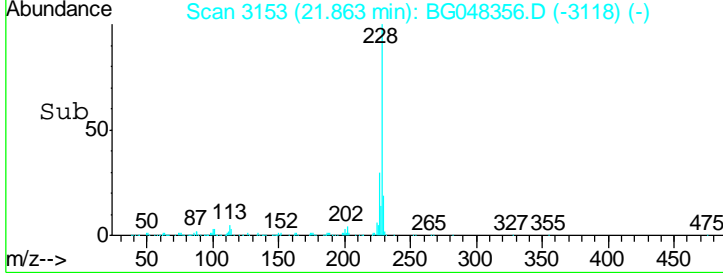
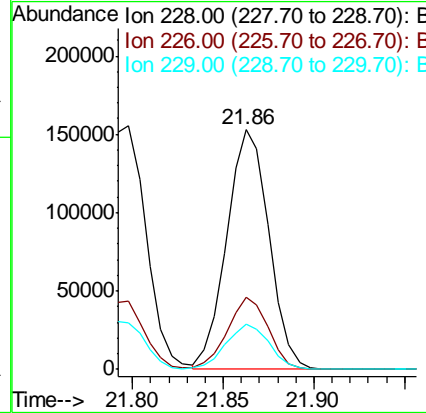
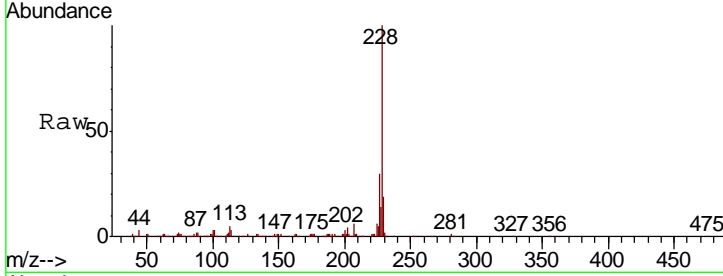




#87
 Chrysene
 Concen: 10.434 ng/ul
 RT: 21.86 min Scan# 3153
 Delta R.T. 0.00 min
 Lab File: BG048356.D
 Acq: 11 Mar 2021 11:41

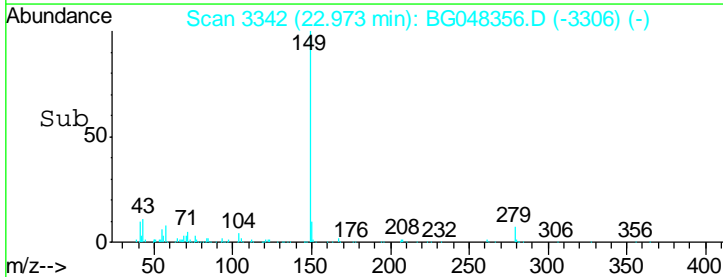
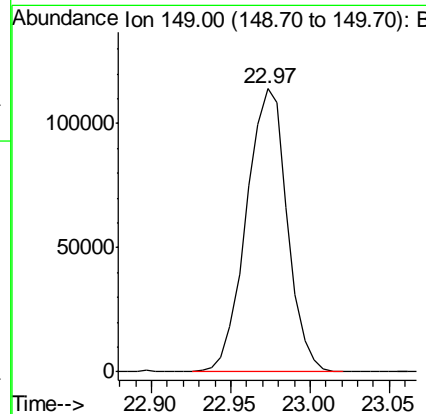
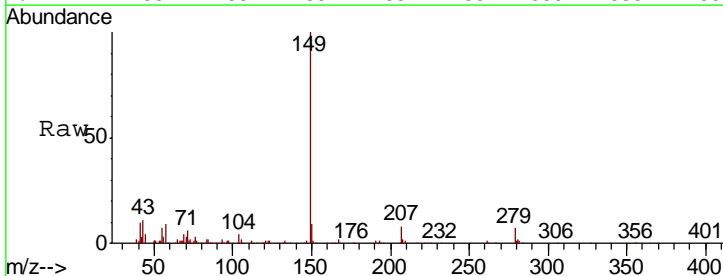
Instrument :
 BNA_G
 ClientSampled :

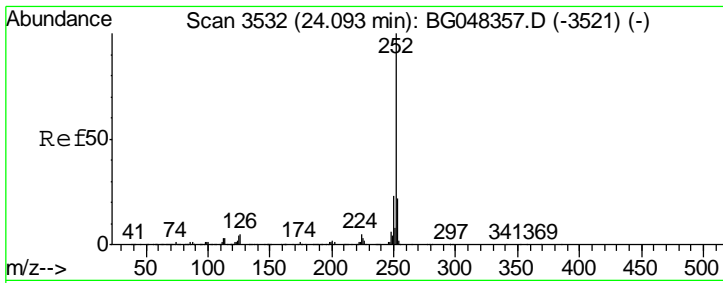
Tgt Ion	Resp	Lower	Upper
228	100		
226	30.4	24.6	37.0
229	18.9	15.9	23.9



#89
 Di-n-octyl phthalate
 Concen: 9.520 ng/ul
 RT: 22.97 min Scan# 3342
 Delta R.T. 0.01 min
 Lab File: BG048356.D
 Acq: 11 Mar 2021 11:41

Tgt Ion:149 Resp: 204301

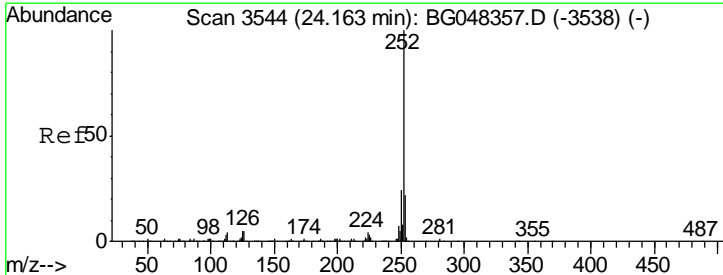
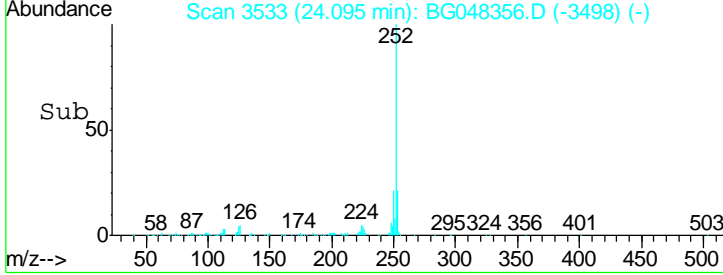
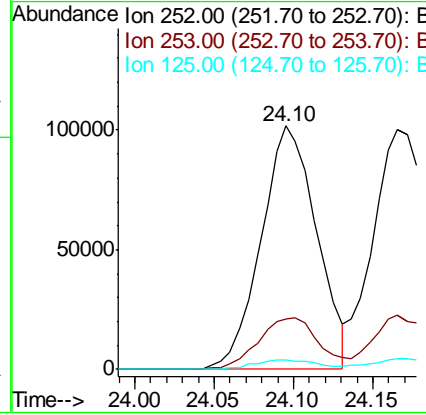
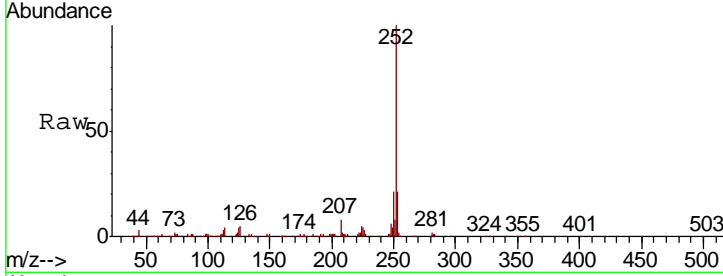




#90
 Benzo(b)fluoranthene
 Concen: 10.097 ng/ul
 RT: 24.10 min Scan# 3533
 Delta R.T. 0.00 min
 Lab File: BG048356.D
 Acq: 11 Mar 2021 11:41

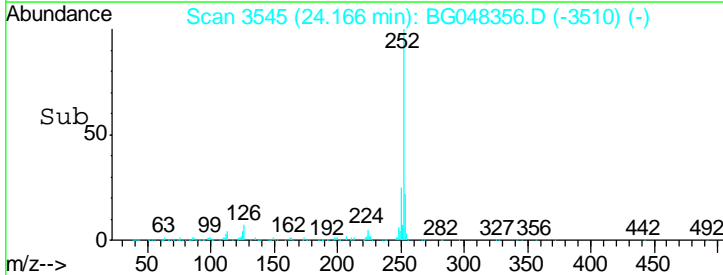
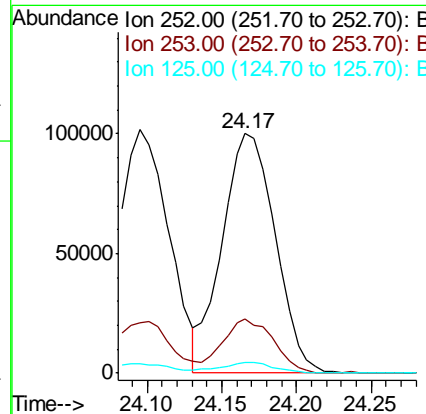
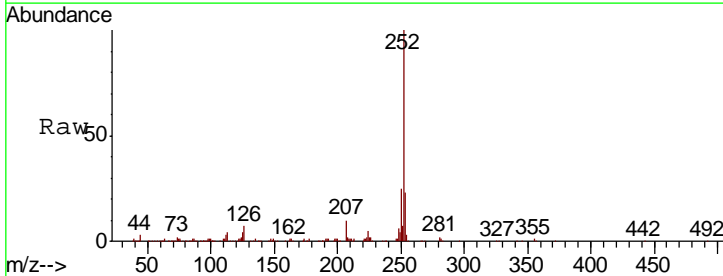
Instrument :
 BNA_G
 ClientSampled :

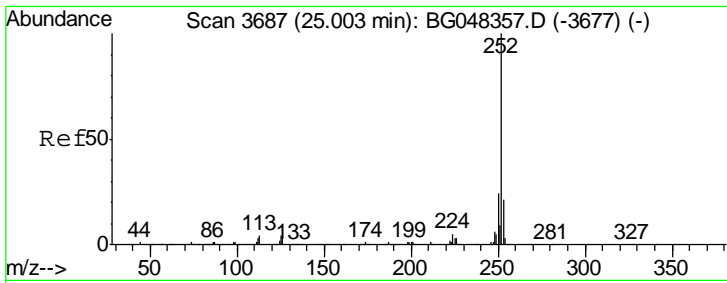
Tgt Ion	Resp	Lower	Upper
252	100		
253	20.8	17.8	26.8
125	4.0	2.9	4.3



#91
 Benzo(k)fluoranthene
 Concen: 10.411 ng/ul
 RT: 24.17 min Scan# 3545
 Delta R.T. 0.00 min
 Lab File: BG048356.D
 Acq: 11 Mar 2021 11:41

Tgt Ion	Resp	Lower	Upper
252	100		
253	22.5	17.2	25.8
125	4.5	3.6	5.4

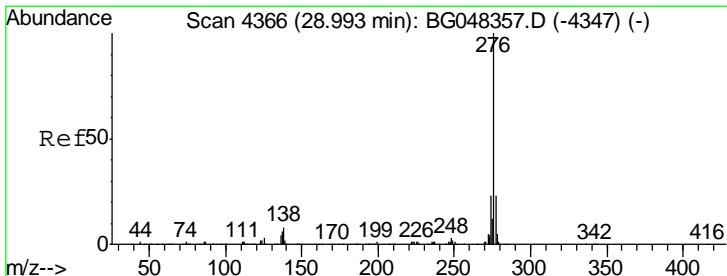
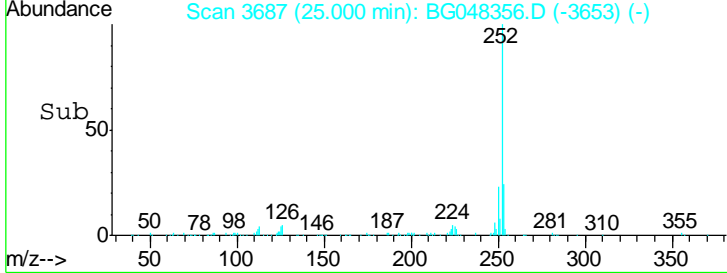
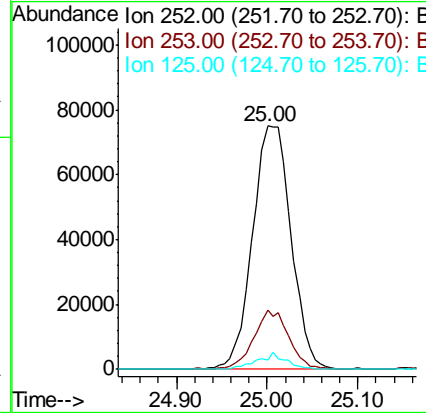
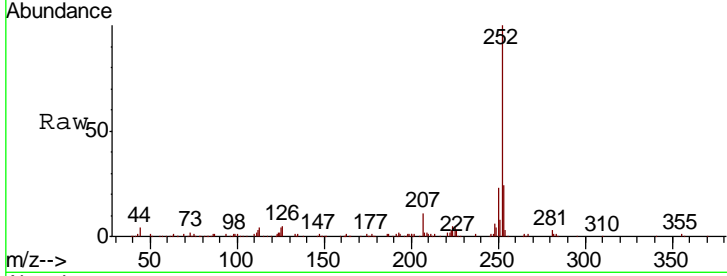




#93
 Benzo(a)pyrene
 Concen: 10.287 ng/ul
 RT: 25.00 min Scan# 3687
 Delta R.T. -0.00 min
 Lab File: BG048356.D
 Acq: 11 Mar 2021 11:41

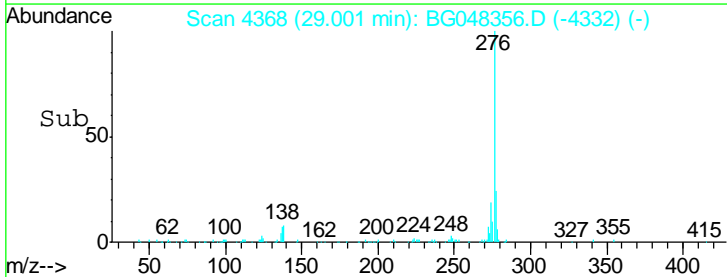
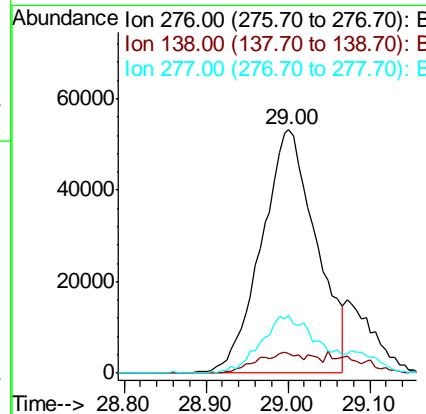
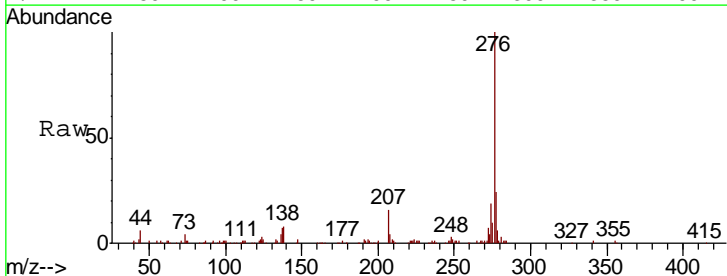
Instrument :
 BNA_G
 ClientSampled :

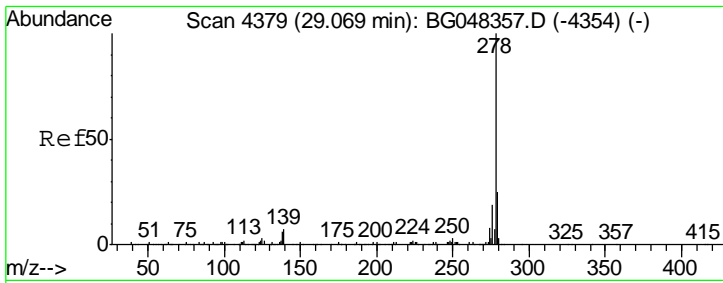
Tgt Ion	Resp	Lower	Upper
252	221416		
253	24.1	17.2	25.8
125	3.8	3.3	4.9



#94
 Indeno(1,2,3-cd)pyrene
 Concen: 8.884 ng/ul
 RT: 29.00 min Scan# 4368
 Delta R.T. 0.01 min
 Lab File: BG048356.D
 Acq: 11 Mar 2021 11:41

Tgt Ion	Resp	Lower	Upper
276	246586		
138	8.1	6.6	10.0
277	23.6	18.4	27.6

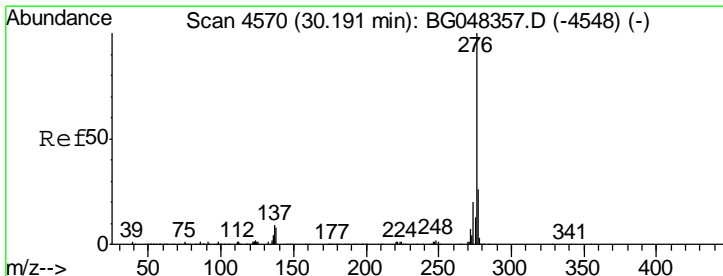
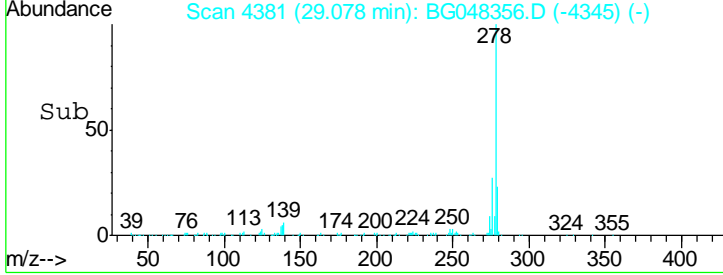
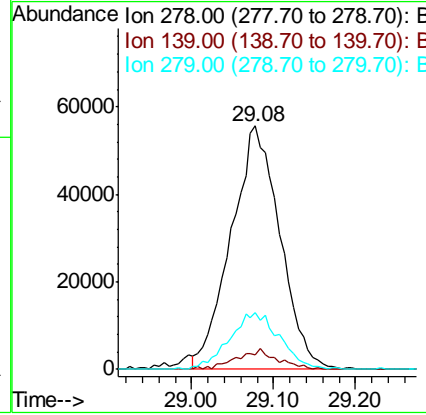
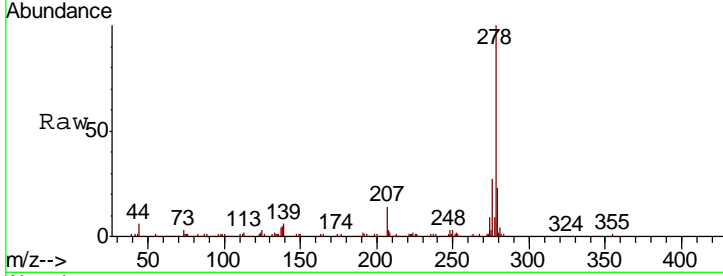




#95
 Dibenzo(a,h)anthracene
 Concen: 9.929 ng/ul
 RT: 29.08 min Scan# 4381
 Delta R.T. 0.01 min
 Lab File: BG048356.D
 Acq: 11 Mar 2021 11:41

Instrument :
 BNA_G
 ClientSampled :

Tgt Ion	Resp	Lower	Upper
278	230861		
139	6.1	5.3	7.9
279	23.5	19.9	29.9



#96
 Benzo(g,h,i)perylene
 Concen: 10.044 ng/ul
 RT: 30.20 min Scan# 4572
 Delta R.T. 0.01 min
 Lab File: BG048356.D
 Acq: 11 Mar 2021 11:41

Tgt Ion	Resp	Lower	Upper
276	228566		
138	8.5	6.2	9.4
277	23.6	20.4	30.6

