

Data Path : Z:\SVOASRV\HPCHEM1\BNA G\DATA\BG031220\
 Data File : BG044751.D
 Acq On : 13 Mar 2020 2:07
 Operator : CG/JU
 Sample : PB127459BL
 Misc :
 ALS Vial : 23 Sample Multiplier: 1

Instrument :
 BNA_G
 ClientSampleId :
 PB127459BL

Quant Time: Mar 13 07:39:04 2020
 Quant Method : Z:\SVOASRV\HPCHEM1\BNA G\METHODS\8270-BG031020.M
 Quant Title : ASP BNA STANDARDS FOR 5 POINT CALIBRATION
 QLast Update : Tue Mar 10 16:27:39 2020
 Response via : Initial Calibration

Internal Standards	R.T.	QIon	Response	Conc	Units	Dev(Min)
1) 1,4-Dichlorobenzene-d4	8.06	152	96252	20.00	ng	0.00
21) Naphthalene-d8	10.86	136	389100	20.00	ng	0.00
39) Acenaphthene-d10	14.68	164	272326	20.00	ng	0.00
64) Phenanthrene-d10	17.43	188	622246	20.00	ng	0.00
76) Chrysene-d12	21.70	240	587618	20.00	ng	-0.01
87) Perylene-d12	24.91	264	630891	20.00	ng	-0.02
System Monitoring Compounds						
5) 2-Fluorophenol	5.62	112	782920	126.62	ng	0.00
7) Phenol-d6	7.21	99	1114126	124.02	ng	0.00
23) Nitrobenzene-d5	9.21	82	720689	81.28	ng	0.00
42) 2,4,6-Tribromophenol	16.17	330	449733	126.13	ng	0.00
45) 2-Fluorobiphenyl	13.31	172	1542651	81.12	ng	0.00
79) Terphenyl-d14	20.04	244	2481114	78.98	ng	0.00

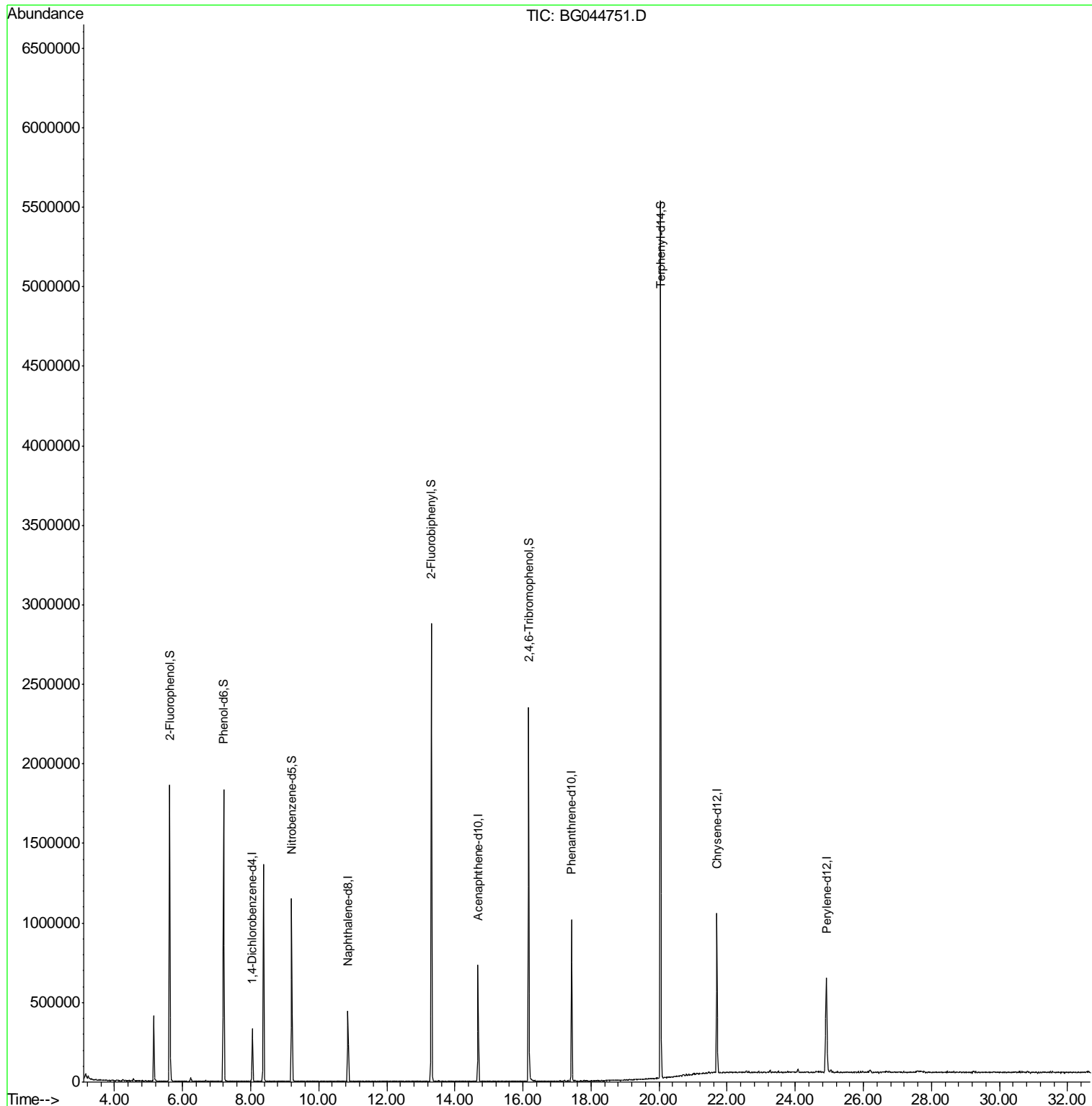
Target Compounds Qvalue

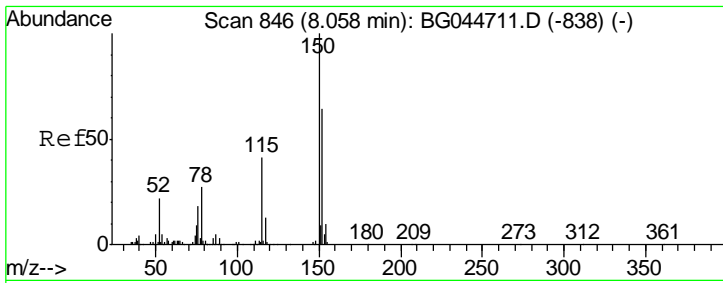
(#) = qualifier out of range (m) = manual integration (+) = signals summed

Data Path : Z:\SVOASRV\HPCHEM1\BNA G\DATA\BG031220\
 Data File : BG044751.D
 Acq On : 13 Mar 2020 2:07
 Operator : CG/JU
 Sample : PB127459BL
 Misc :
 ALS Vial : 23 Sample Multiplier: 1

Instrument :
 BNA_G
ClientSampleId :
 PB127459BL

Quant Time: Mar 13 07:39:04 2020
 Quant Method : Z:\SVOASRV\HPCHEM1\BNA G\METHODS\8270-BG031020.M
 Quant Title : ASP BNA STANDARDS FOR 5 POINT CALIBRATION
 QLast Update : Tue Mar 10 16:27:39 2020
 Response via : Initial Calibration

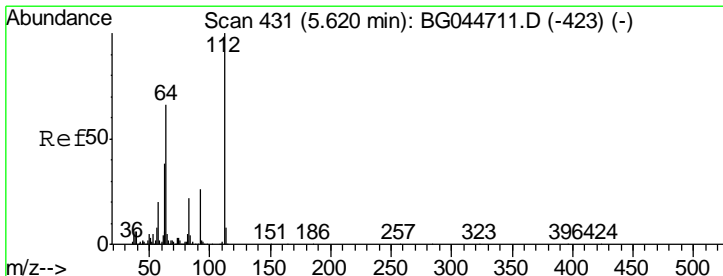
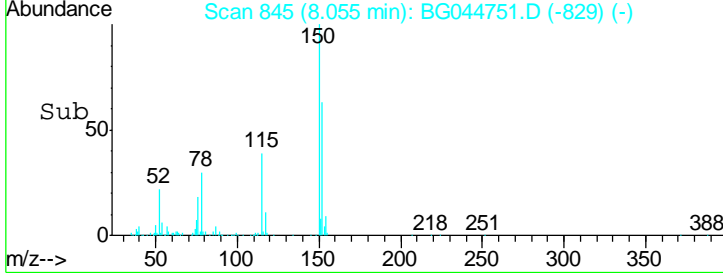
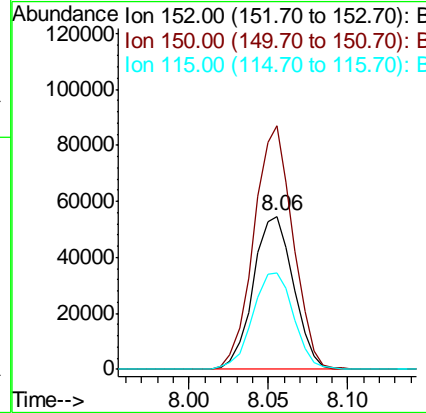
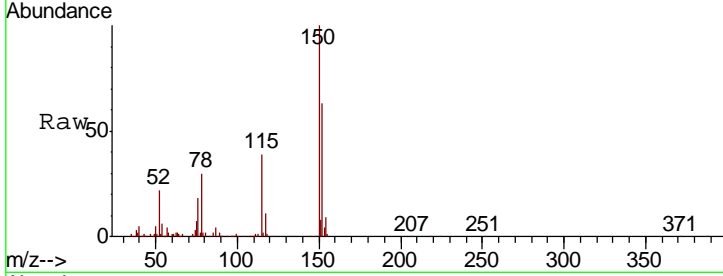




#1
 1,4-Dichlorobenzene-d4
 Concen: 20.000 ng
 RT: 8.06 min Scan# 845
 Delta R.T. -0.00 min
 Lab File: BG044751.D
 Acq: 13 Mar 2020 2:07

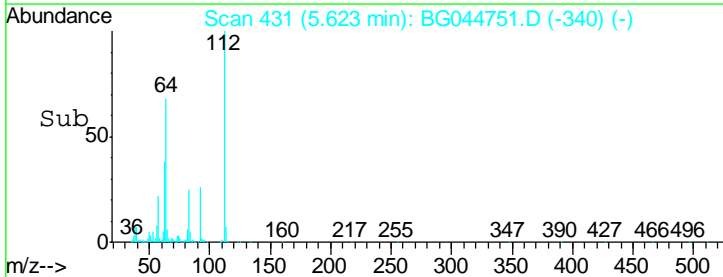
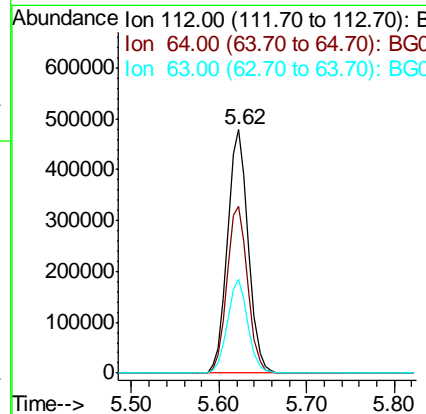
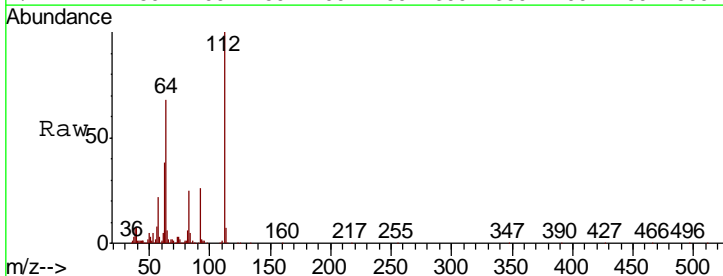
Instrument :
 BNA_G
 ClientSampleId :
 PB127459BL

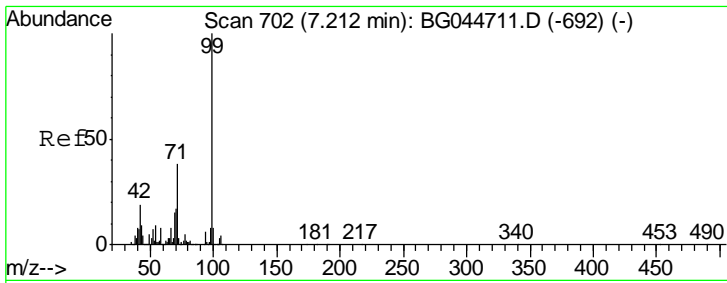
Tgt Ion	Resp	Lower	Upper
152	96252		
150	159.1	125.3	187.9
115	62.6	51.7	77.5



#5
 2-Fluorophenol
 Concen: 126.622 ng
 RT: 5.62 min Scan# 431
 Delta R.T. 0.00 min
 Lab File: BG044751.D
 Acq: 13 Mar 2020 2:07

Tgt Ion	Resp	Lower	Upper
112	782920		
64	68.3	52.6	78.8
63	38.3	30.2	45.4

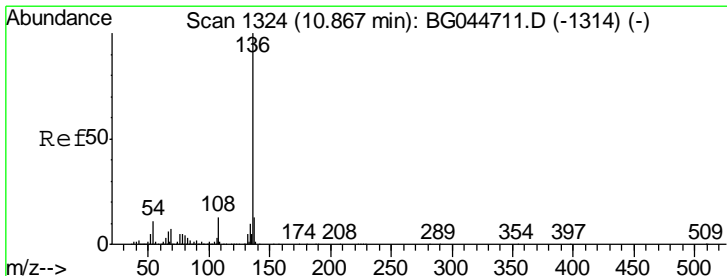
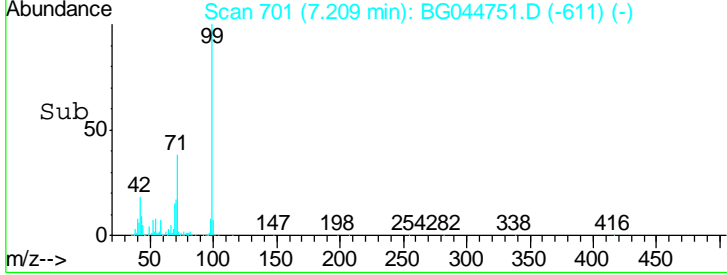
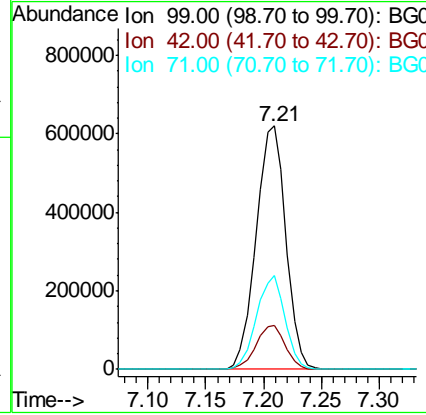
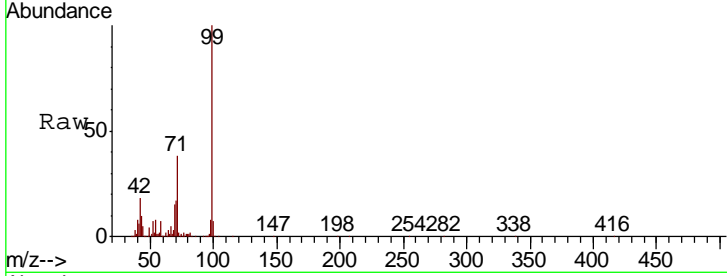




#7
 Phenol-d6
 Concen: 124.017 ng
 RT: 7.21 min Scan# 701
 Delta R.T. -0.00 min
 Lab File: BG044751.D
 Acq: 13 Mar 2020 2:07

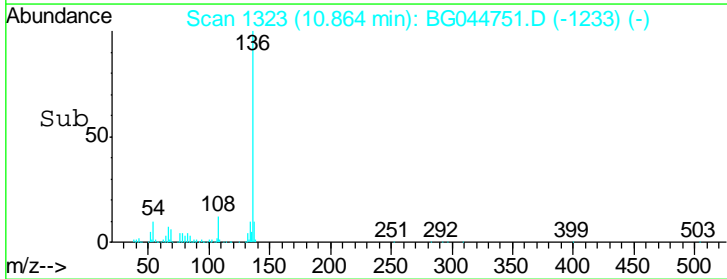
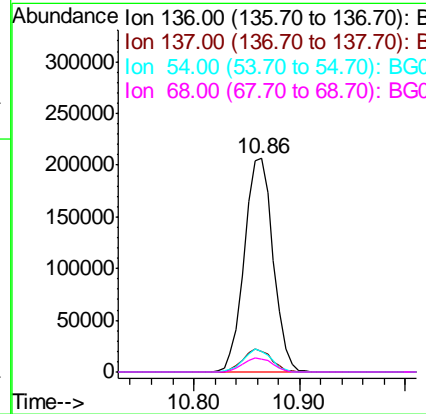
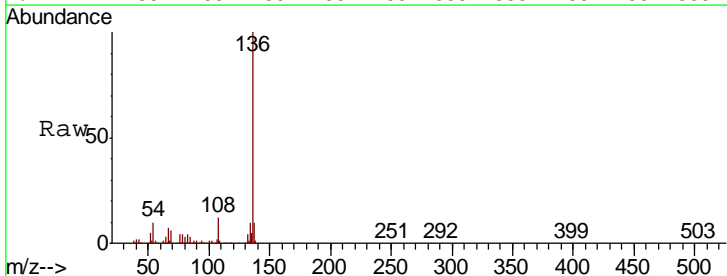
Instrument :
 BNA_G
ClientSampled :
 PB127459BL

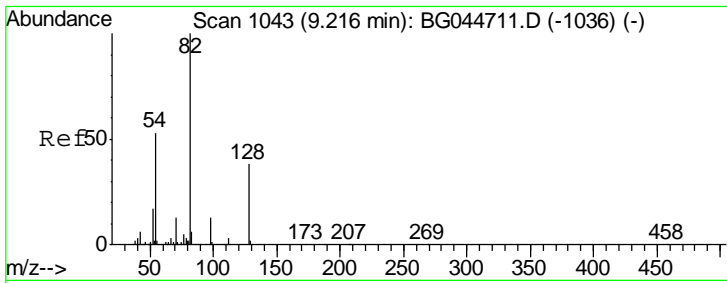
Tgt Ion	Resp	Lower	Upper
99	1114126		
42	17.9	15.4	23.0
71	38.3	30.2	45.4



#21
 Naphthalene-d8
 Concen: 20.000 ng
 RT: 10.86 min Scan# 1323
 Delta R.T. -0.00 min
 Lab File: BG044751.D
 Acq: 13 Mar 2020 2:07

Tgt Ion	Resp	Lower	Upper
136	389100		
137	9.7	10.7	16.1#
54	9.8	9.0	13.4
68	6.3	5.9	8.9

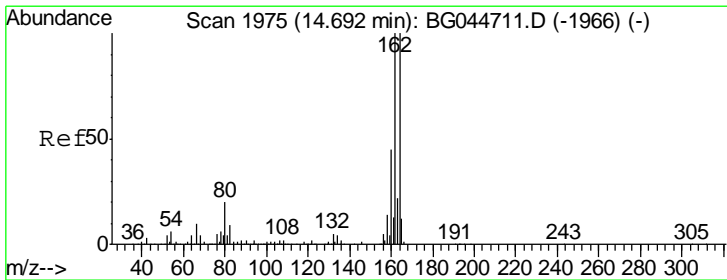
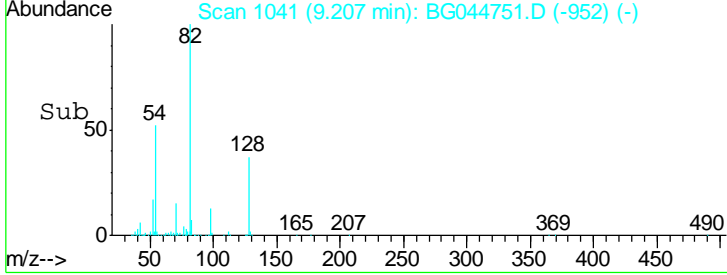
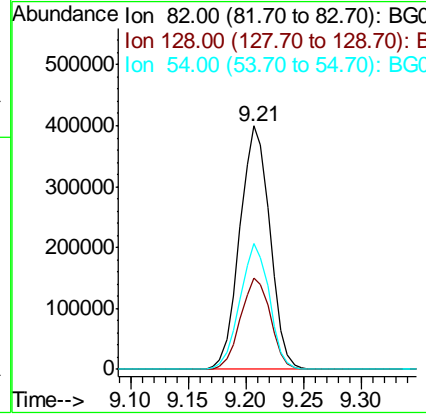
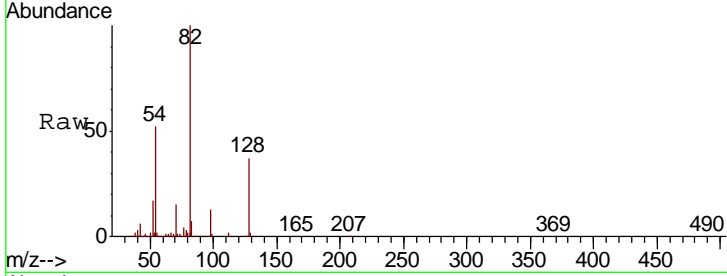




#23
 Nitrobenzene-d5
 Concen: 81.277 ng
 RT: 9.21 min Scan# 1041
 Delta R.T. -0.01 min
 Lab File: BG044751.D
 Acq: 13 Mar 2020 2:07

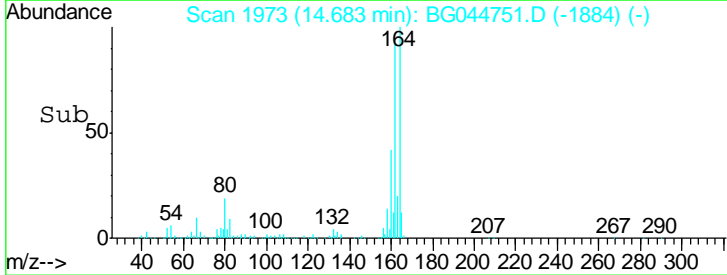
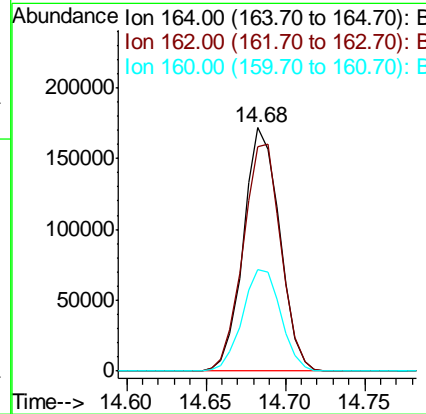
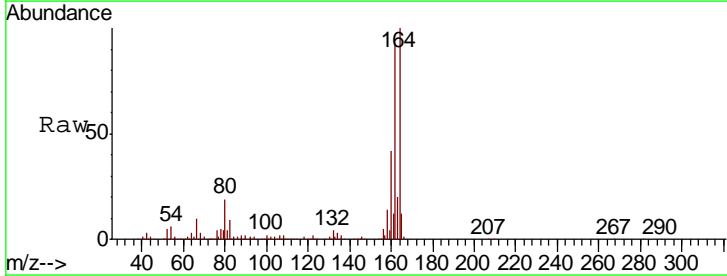
Instrument :
 BNA_G
ClientSampled :
 PB127459BL

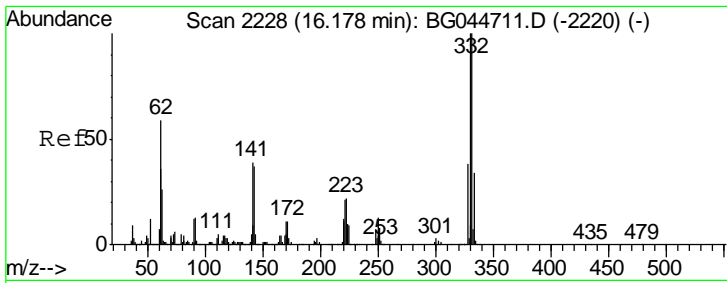
Tgt Ion	Resp	Lower	Upper
82	720689		
128	37.5	30.2	45.2
54	51.7	41.8	62.8



#39
 Acenaphthene-d10
 Concen: 20.000 ng
 RT: 14.68 min Scan# 1973
 Delta R.T. -0.01 min
 Lab File: BG044751.D
 Acq: 13 Mar 2020 2:07

Tgt Ion	Resp	Lower	Upper
164	272326		
162	91.9	80.2	120.4
160	41.6	36.2	54.2

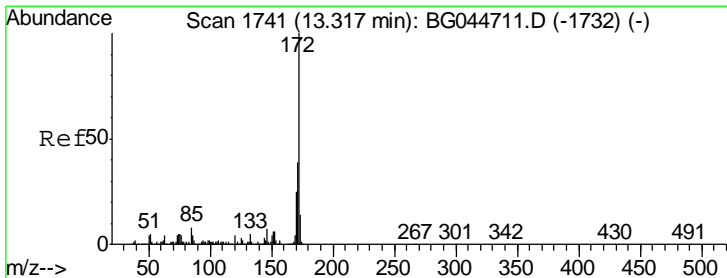
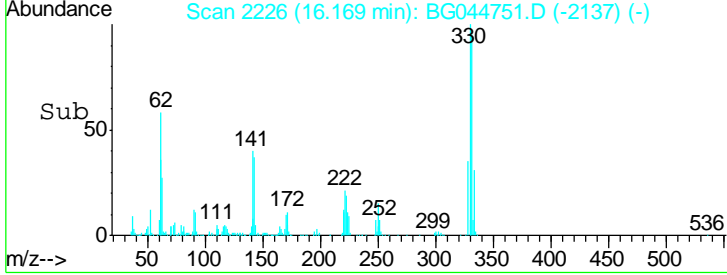
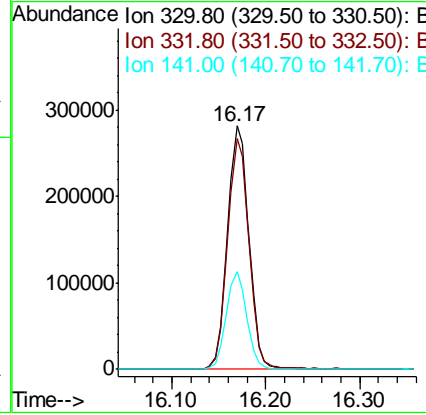
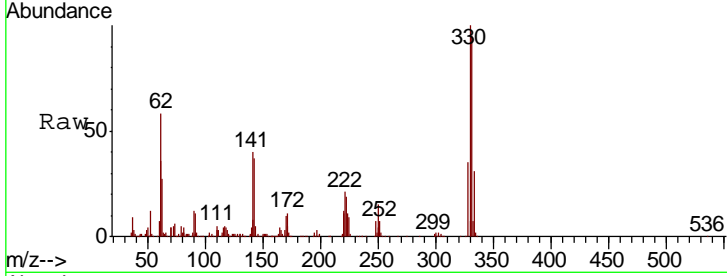




#42
 2,4,6-Tribromophenol
 Concen: 126.128 ng
 RT: 16.17 min Scan# 2226
 Delta R.T. -0.01 min
 Lab File: BG044751.D
 Acq: 13 Mar 2020 2:07

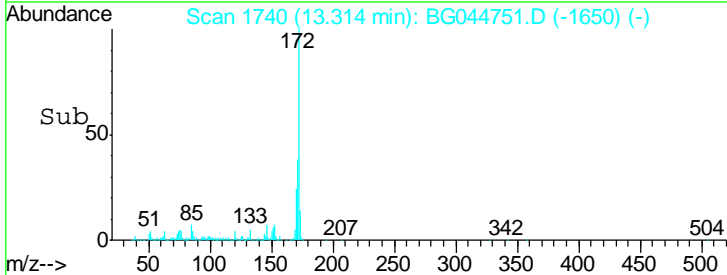
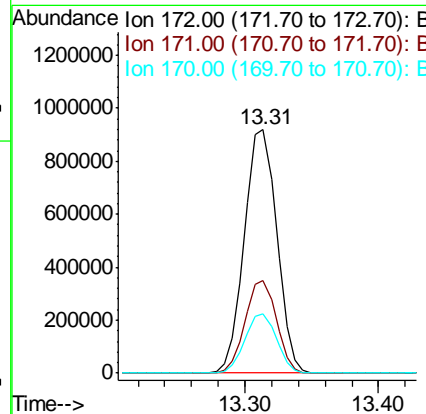
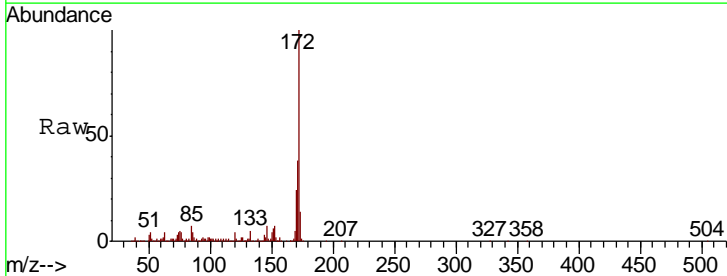
Instrument :
 BNA_G
 ClientSampled :
 PB127459BL

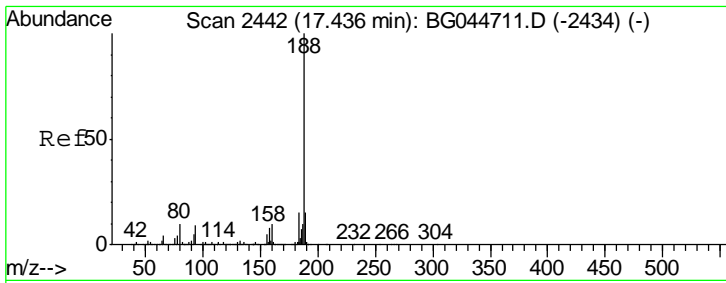
Tgt Ion	Resp	Lower	Upper
330	449733		
332	100	77.5	116.3
141	38.7	31.7	47.5



#45
 2-Fluorobiphenyl
 Concen: 81.121 ng
 RT: 13.31 min Scan# 1740
 Delta R.T. -0.00 min
 Lab File: BG044751.D
 Acq: 13 Mar 2020 2:07

Tgt Ion	Resp	Lower	Upper
172	1542651		
171	100	30.8	46.2
170	38.1	20.0	30.0

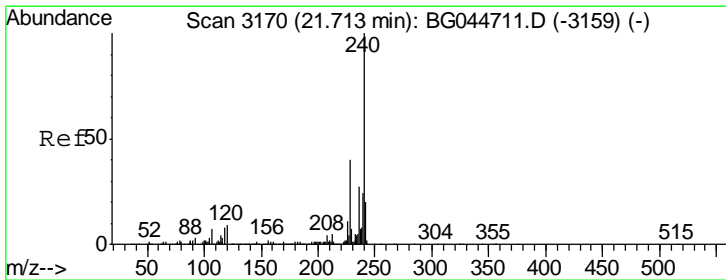
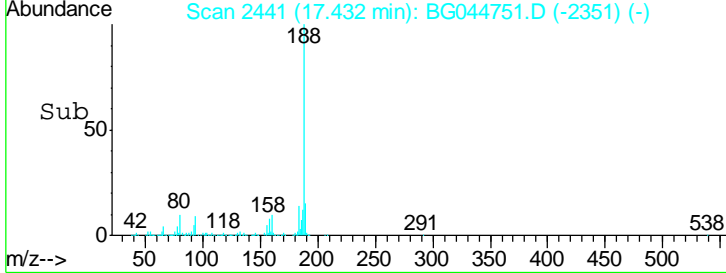
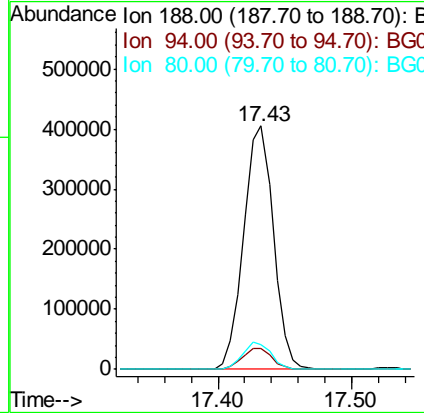
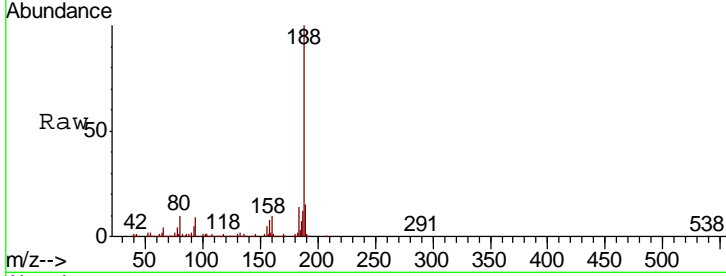




#64
 Phenanthrene-d10
 Concen: 20.000 ng
 RT: 17.43 min Scan# 2441
 Delta R.T. -0.00 min
 Lab File: BG044751.D
 Acq: 13 Mar 2020 2:07

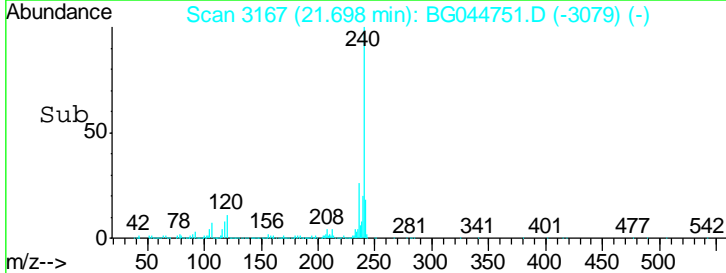
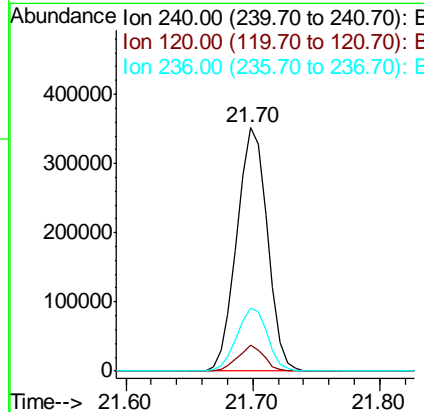
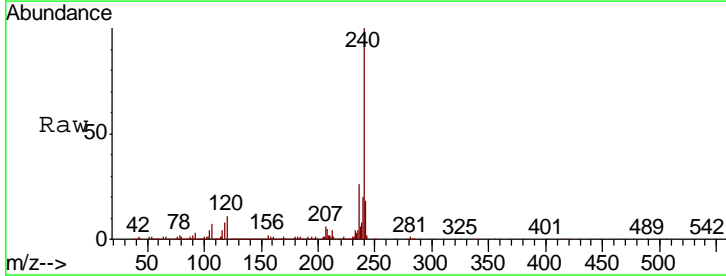
Instrument :
 BNA_G
 ClientSampled :
 PB127459BL

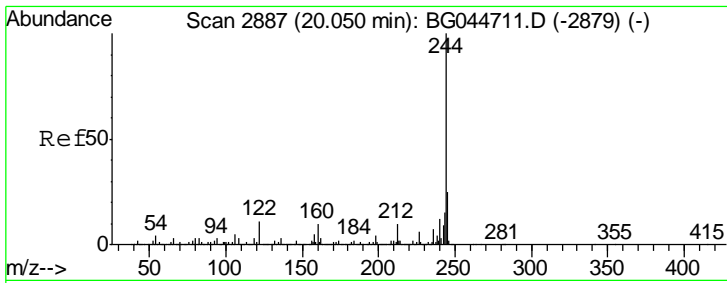
Tgt Ion	Resp	Lower	Upper
188	100		
94	8.6	7.0	10.6
80	9.9	8.4	12.6



#76
 Chrysene-d12
 Concen: 20.000 ng
 RT: 21.70 min Scan# 3167
 Delta R.T. -0.01 min
 Lab File: BG044751.D
 Acq: 13 Mar 2020 2:07

Tgt Ion	Resp	Lower	Upper
240	100		
120	10.7	6.9	10.3
236	25.7	21.9	32.9

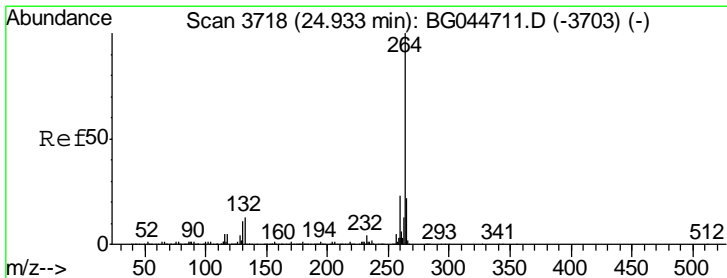
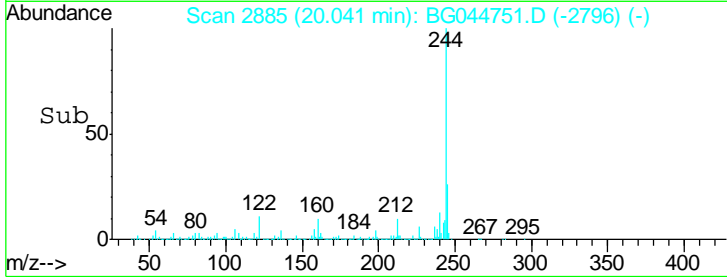
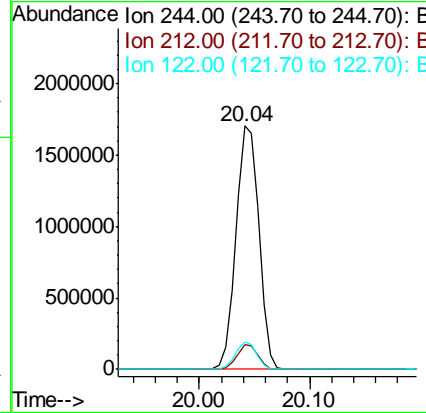
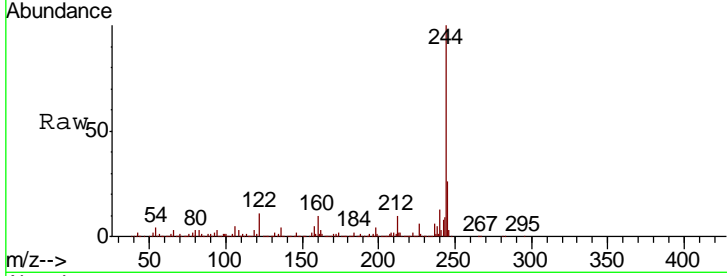




#79
 Terphenyl-d14
 Concen: 78.981 ng
 RT: 20.04 min Scan# 2885
 Delta R.T. -0.01 min
 Lab File: BG044751.D
 Acq: 13 Mar 2020 2:07

Instrument :
 BNA_G
 ClientSampleID :
 PB127459BL

Tgt Ion	Resp	Lower	Upper
244	100		
212	10.2	8.4	12.6
122	11.0	8.7	13.1



#87
 Perylene-d12
 Concen: 20.000 ng
 RT: 24.91 min Scan# 3714
 Delta R.T. -0.02 min
 Lab File: BG044751.D
 Acq: 13 Mar 2020 2:07

Tgt Ion	Resp	Lower	Upper
264	100		
260	24.6	18.4	27.6
265	21.7	17.4	26.2

