

Data Path : Z:\HPCHEM1\BNA_G\DATA\BG031317\
 Data File : BG026225.D
 Acq On : 14 Mar 2017 23:44
 Operator : SJ/MA
 Sample : I2217-05
 Misc :
 ALS Vial : 19 Sample Multiplier: 1

Instrument :
 BNA_G
 ClientSampleId :
 CB2W9

Quant Time: Mar 15 06:54:48 2017
 Quant Method : Z:\HPCHEM1\BNA_G\METHODS\SOM-EPA-BG030317-PAH.M
 Quant Title : SVOA CALIBRATION
 QLast Update : Wed Mar 15 06:53:58 2017
 Response via : Initial Calibration

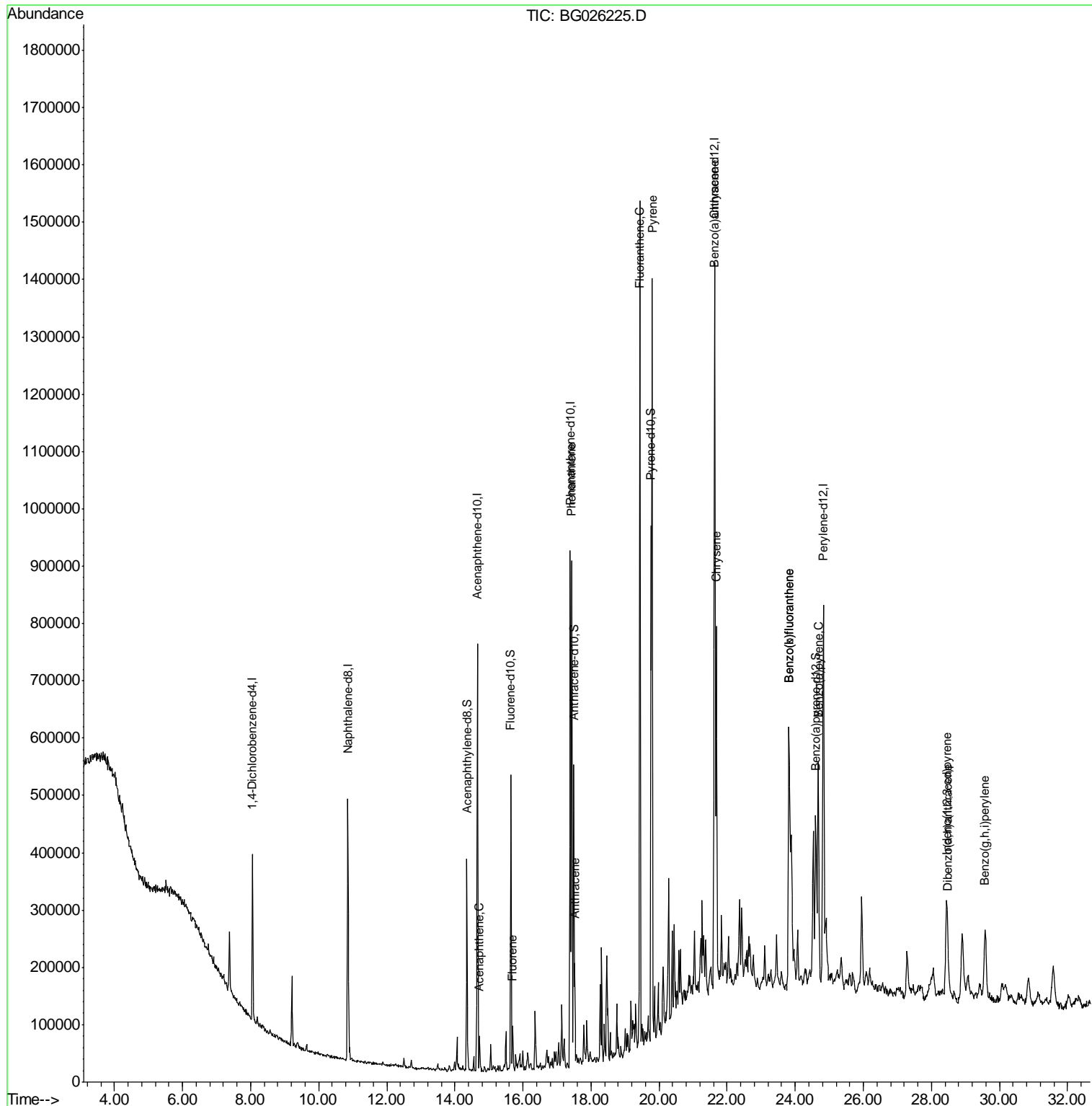
| Internal Standards | R.T. | QIon | Response | Conc | Units | Dev(Min) |
|-----------------------------|-------|------|----------|-------|--------|----------|
| 1) 1,4-Dichlorobenzene-d4 | 8.06 | 152 | 80871 | 20.00 | ng/ul | 0.00 |
| 2) Naphthalene-d8 | 10.86 | 136 | 406510 | 20.00 | ng/ul | 0.00 |
| 6) Acenaphthene-d10 | 14.66 | 164 | 244758 | 20.00 | ng/ul | 0.00 |
| 12) Phenanthrene-d10 | 17.39 | 188 | 560307 | 20.00 | ng/ul | 0.00 |
| 18) Chrysene-d12 | 21.64 | 240 | 574457 | 20.00 | ng/ul | 0.00 |
| 23) Perylene-d12 | 24.83 | 264 | 558269 | 20.00 | ng/ul | 0.00 |
| System Monitoring Compounds | | | | | | |
| 3) 2,4-Dichlorophenol-d3 | 10.49 | 165 | 421 | 0.07 | ng/uL | 0.01 |
| 7) Acenaphthylene-d8 | 14.35 | 160 | 269103 | 12.90 | ng/ul | 0.00 |
| 10) Fluorene-d10 | 15.65 | 176 | 200485 | 13.17 | ng/ul | 0.00 |
| 15) Anthracene-d10 | 17.49 | 188 | 287214 | 11.53 | ng/ul | 0.00 |
| 19) Pyrene-d10 | 19.77 | 212 | 334218 | 11.40 | ng/ul | 0.00 |
| 26) Benzo(a)pyrene-d12 | 24.60 | 264 | 298818 | 12.41 | ng/ul | 0.00 |
| Target Compounds | | | | | | |
| 9) Acenaphthene | 14.72 | 153 | 24297 | 1.61 | ng/ul | 93 |
| 11) Fluorene | 15.71 | 166 | 30850 | 1.81 | ng/ul | 96 |
| 14) Phenanthrene | 17.43 | 178 | 549380 | 18.50 | ng/ul | 100 |
| 16) Anthracene | 17.53 | 178 | 111004 | 3.70 | ng/ul | 98 |
| 17) Fluoranthene | 19.44 | 202 | 886297 | 28.75 | ng/ul | 99 |
| 20) Pyrene | 19.79 | 202 | 787314 | 21.53 | ng/ul | 100 |
| 21) Benzo(a)anthracene | 21.62 | 228 | 468308 | 14.65 | ng/ul | 98 |
| 22) Chrysene | 21.68 | 228 | 426323 | 14.29 | ng/ul | 99 |
| 24) Benzo(b)fluoranthene | 23.82 | 252 | 599306 | 18.91 | ng/ul | 97 |
| 25) Benzo(k)fluoranthene | 23.82 | 252 | 599306 | 19.80 | ng/ul# | 97 |
| 27) Benzo(a)pyrene | 24.68 | 252 | 391272 | 13.29 | ng/ul# | 97 |
| 28) Indeno(1,2,3-cd)pyrene | 28.44 | 276 | 241815 | 7.37 | ng/ul# | 94 |
| 29) Dibenzo(a,h)anthracene | 28.48 | 278 | 43076 | 1.67 | ng/ul# | 92 |
| 30) Benzo(g,h,i)perylene | 29.58 | 276 | 224564 | 8.02 | ng/ul | 96 |

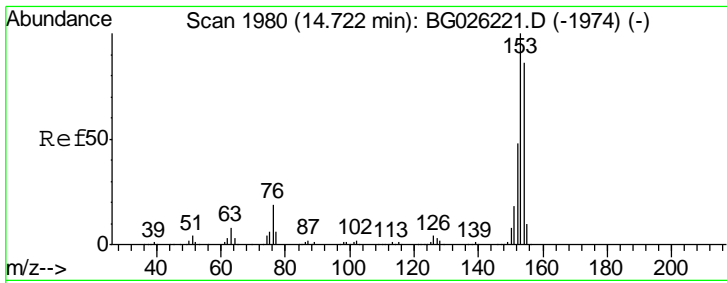
(#) = qualifier out of range (m) = manual integration (+) = signals summed

Data Path : Z:\HPCHEM1\BNA_G\DATA\BG031317\
 Data File : BG026225.D
 Acq On : 14 Mar 2017 23:44
 Operator : SJ/MA
 Sample : I2217-05
 Misc :
 ALS Vial : 19 Sample Multiplier: 1

Instrument :
 BNA_G
 Client Sampled :
 CB2W9

Quant Time: Mar 15 06:54:48 2017
 Quant Method : Z:\HPCHEM1\BNA_G\METHODS\SOM-EPA-BG030317-PAH.M
 Quant Title : SVOA CALIBRATION
 QLast Update : Wed Mar 15 06:53:58 2017
 Response via : Initial Calibration

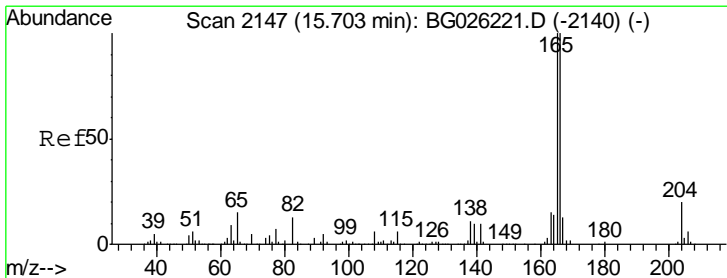
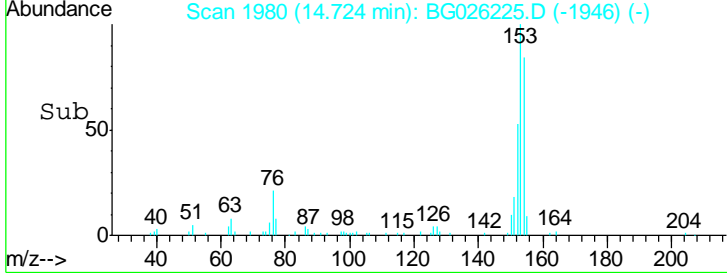
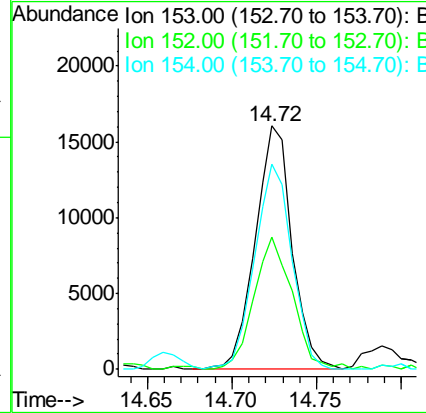
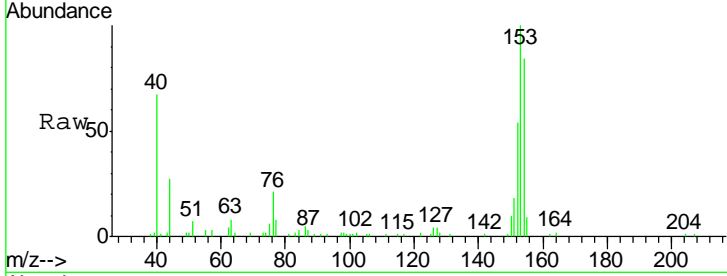




#9
 Acenaphthene
 Concen: 1.61 ng/ul
 RT: 14.72 min Scan# 1980
 Delta R.T. 0.00 min
 Lab File: BG026225.D
 Acq: 14 Mar 2017 23:44

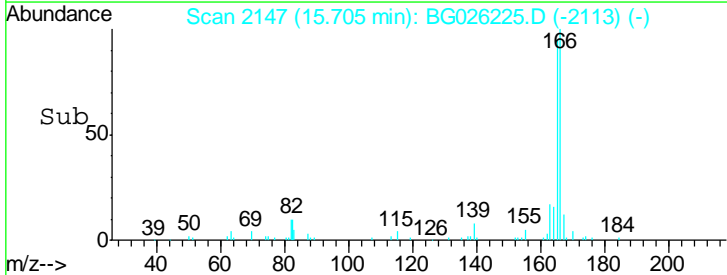
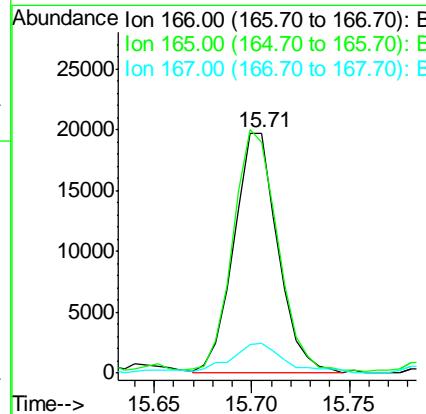
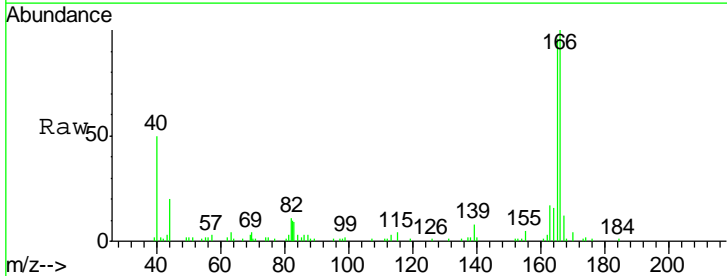
Instrument :
 BNA_G
 ClientSampled :
 CB2W9

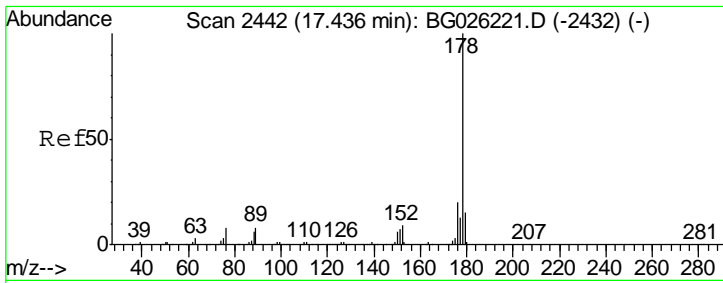
| Tgt Ion | Resp | Lower | Upper |
|---------|-------|-------|-------|
| 153 | 24297 | | |
| 152 | 54.1 | 37.9 | 56.9 |
| 154 | 84.4 | 71.6 | 107.4 |



#11
 Fluorene
 Concen: 1.81 ng/ul
 RT: 15.71 min Scan# 2147
 Delta R.T. 0.00 min
 Lab File: BG026225.D
 Acq: 14 Mar 2017 23:44

| Tgt Ion | Resp | Lower | Upper |
|---------|-------|-------|-------|
| 166 | 30850 | | |
| 165 | 96.3 | 80.0 | 120.0 |
| 167 | 12.4 | 11.6 | 17.4 |

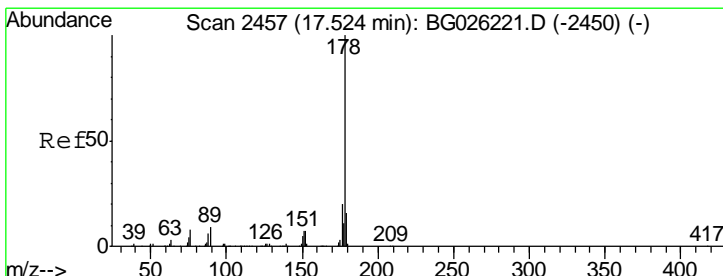
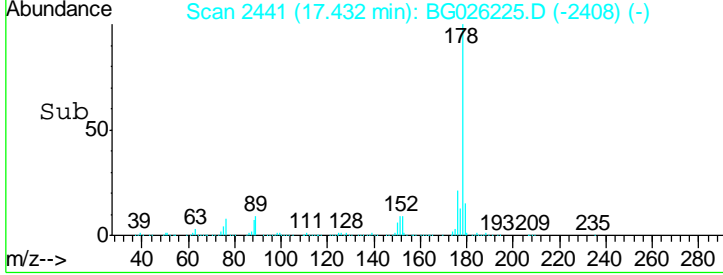
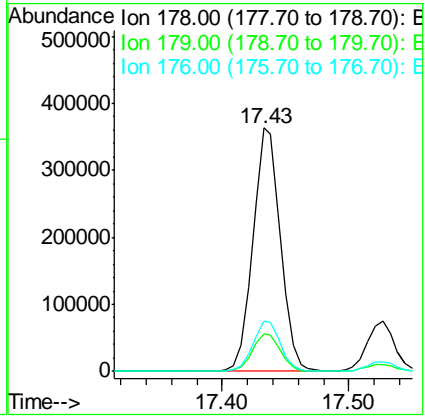
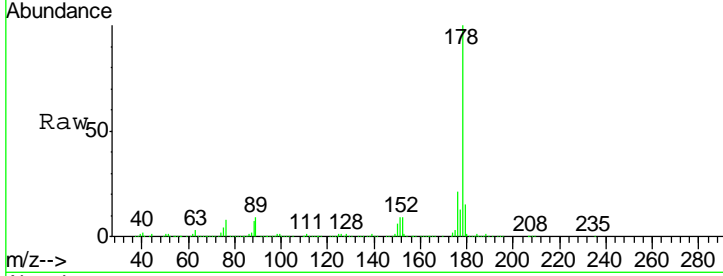




#14
 Phenanthrene
 Concen: 18.50 ng/ul
 RT: 17.43 min Scan# 2441
 Delta R.T. -0.00 min
 Lab File: BG026225.D
 Acq: 14 Mar 2017 23:44

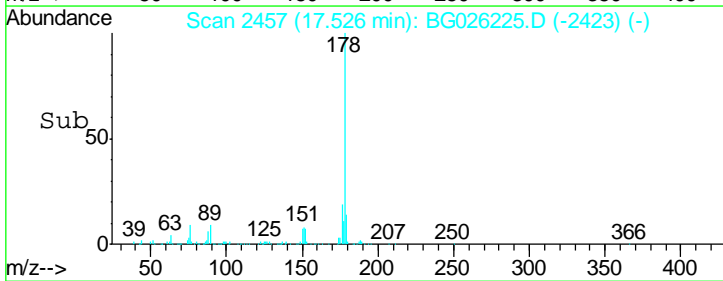
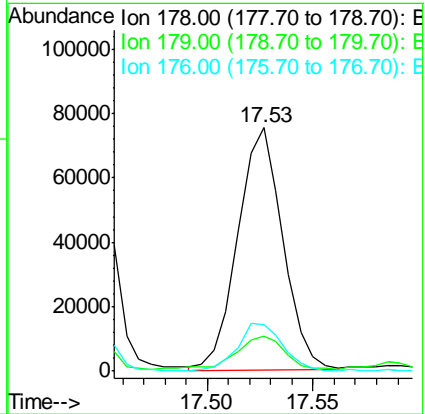
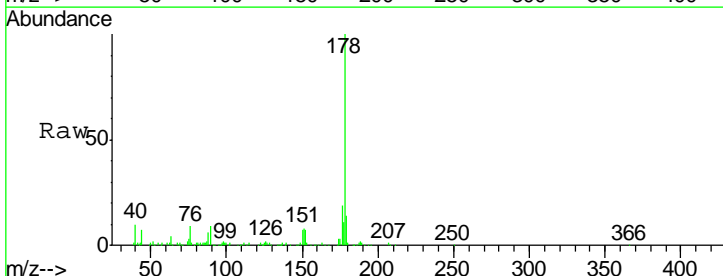
Instrument :
 BNA_G
 ClientSampled :
 CB2W9

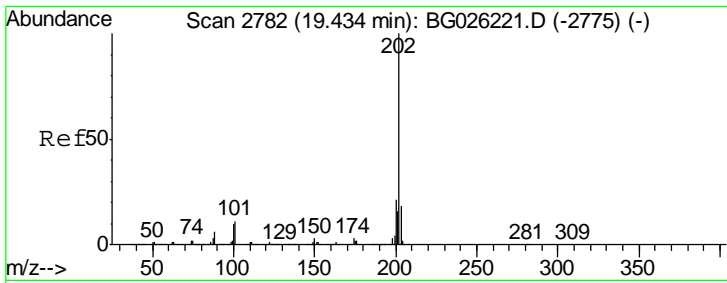
| Tgt Ion | Resp | Lower | Upper |
|---------|--------|-------|-------|
| 178 | 549380 | | |
| 179 | 15.4 | 12.2 | 18.4 |
| 176 | 20.6 | 16.4 | 24.6 |



#16
 Anthracene
 Concen: 3.70 ng/ul
 RT: 17.53 min Scan# 2457
 Delta R.T. 0.00 min
 Lab File: BG026225.D
 Acq: 14 Mar 2017 23:44

| Tgt Ion | Resp | Lower | Upper |
|---------|--------|-------|-------|
| 178 | 111004 | | |
| 179 | 14.3 | 12.7 | 19.1 |
| 176 | 19.2 | 15.8 | 23.8 |

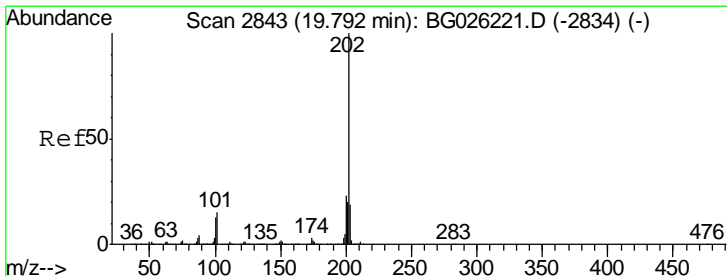
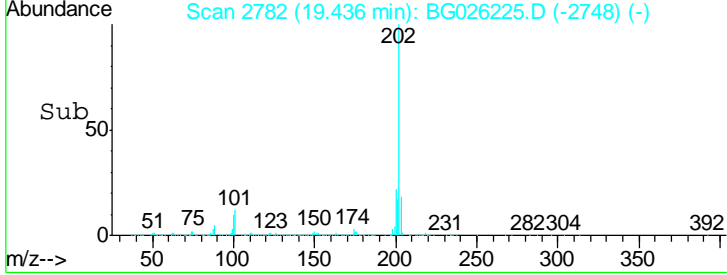
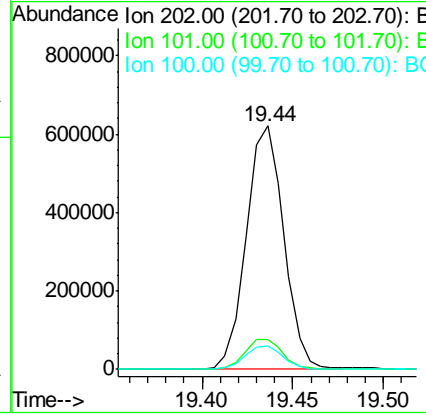
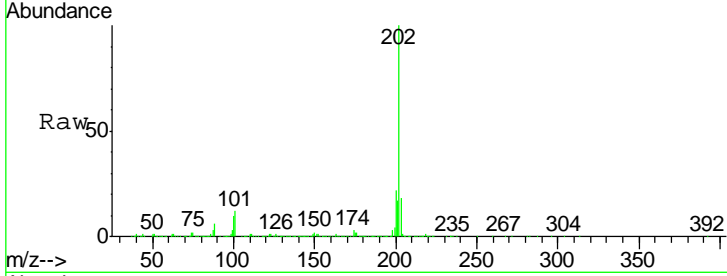




#17
 Fluoranthene
 Concen: 28.75 ng/ul
 RT: 19.44 min Scan# 2782
 Delta R.T. 0.00 min
 Lab File: BG026225.D
 Acq: 14 Mar 2017 23:44

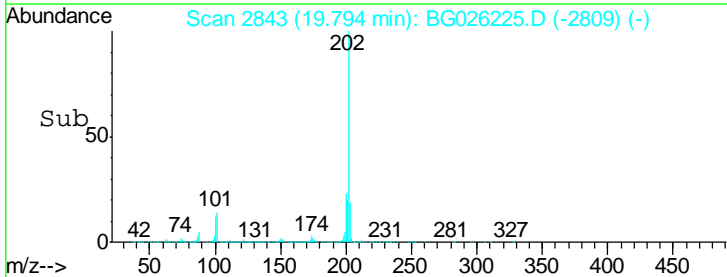
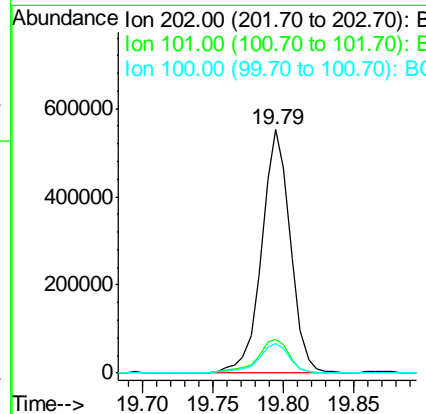
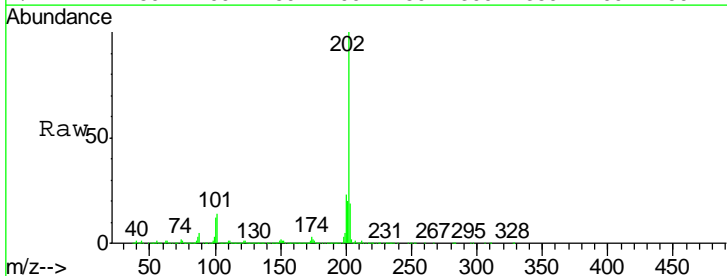
Instrument :
 BNA_G
 ClientSampled :
 CB2W9

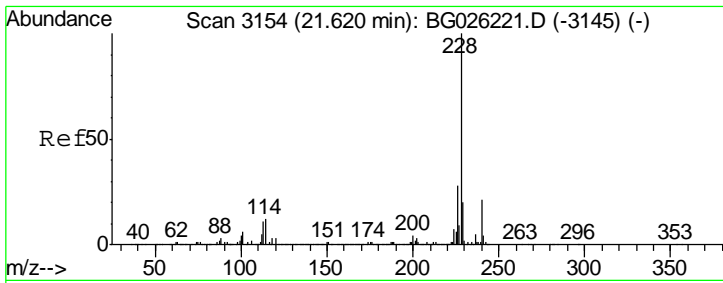
| Tgt Ion | Resp | Lower | Upper |
|---------|------|-------|-------|
| 202 | 100 | | |
| 101 | 12.2 | 9.8 | 14.8 |
| 100 | 9.8 | 7.5 | 11.3 |



#20
 Pyrene
 Concen: 21.53 ng/ul
 RT: 19.79 min Scan# 2843
 Delta R.T. 0.00 min
 Lab File: BG026225.D
 Acq: 14 Mar 2017 23:44

| Tgt Ion | Resp | Lower | Upper |
|---------|------|-------|-------|
| 202 | 100 | | |
| 101 | 13.9 | 11.2 | 16.8 |
| 100 | 12.4 | 9.8 | 14.6 |

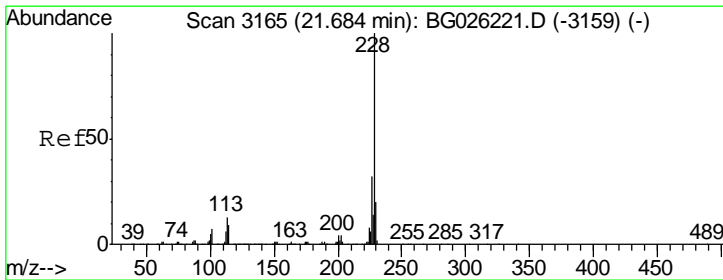
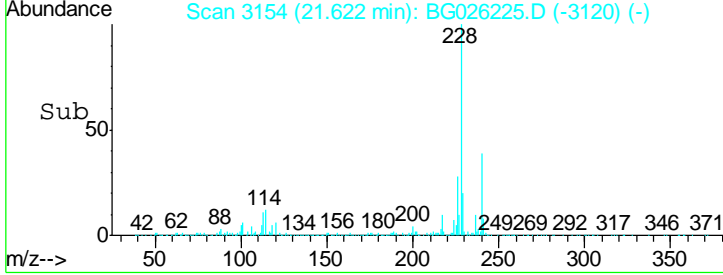
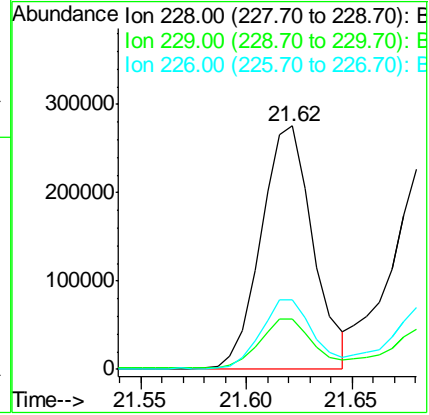
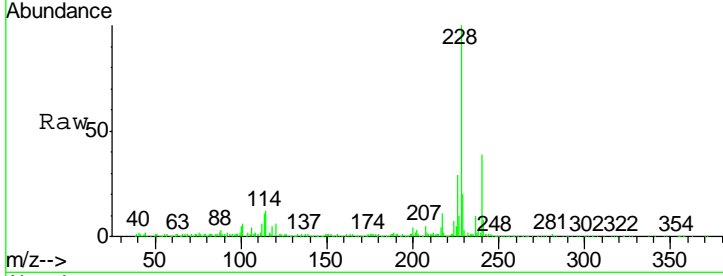




#21
 Benzo(a)anthracene
 Concen: 14.65 ng/ul
 RT: 21.62 min Scan# 3154
 Delta R.T. 0.00 min
 Lab File: BG026225.D
 Acq: 14 Mar 2017 23:44

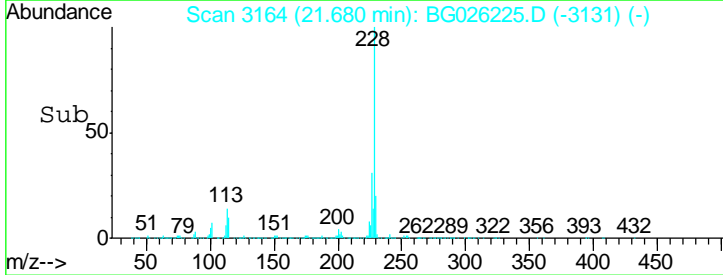
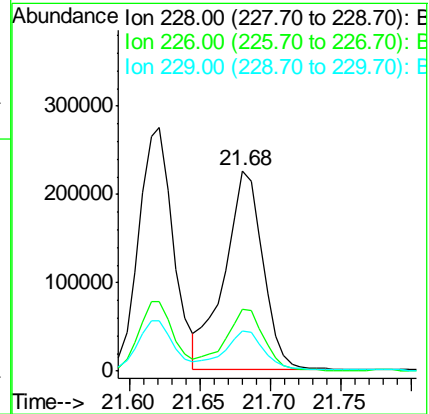
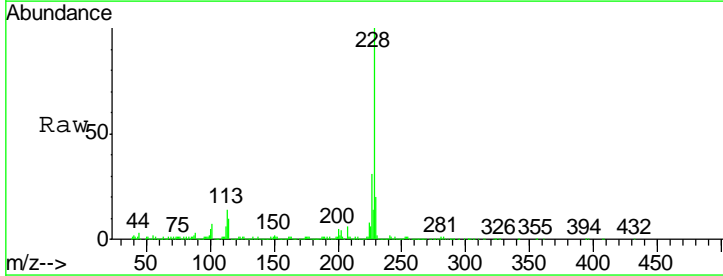
Instrument :
 BNA_G
 ClientSampled :
 CB2W9

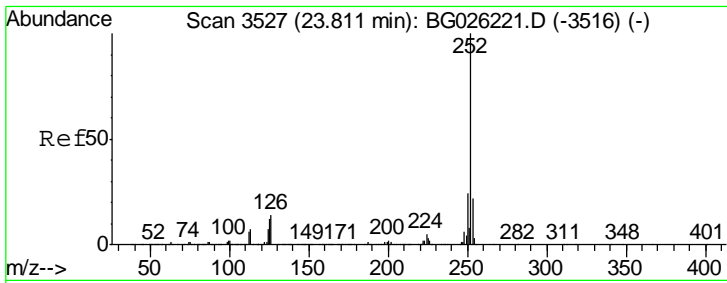
| Tgt Ion | Resp | Lower | Upper |
|---------|------|-------|-------|
| 228 | 100 | | |
| 229 | 20.5 | 15.9 | 23.9 |
| 226 | 28.5 | 22.1 | 33.1 |



#22
 Chrysene
 Concen: 14.29 ng/ul
 RT: 21.68 min Scan# 3164
 Delta R.T. -0.00 min
 Lab File: BG026225.D
 Acq: 14 Mar 2017 23:44

| Tgt Ion | Resp | Lower | Upper |
|---------|------|-------|-------|
| 228 | 100 | | |
| 226 | 30.9 | 25.0 | 37.6 |
| 229 | 19.9 | 16.6 | 25.0 |

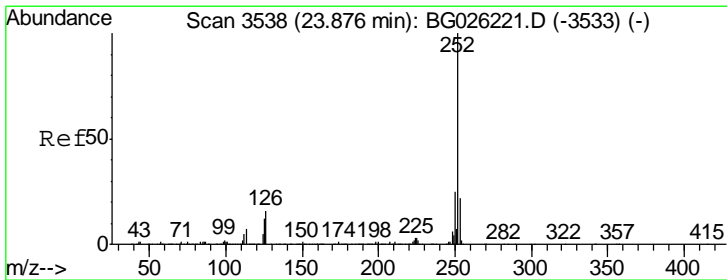
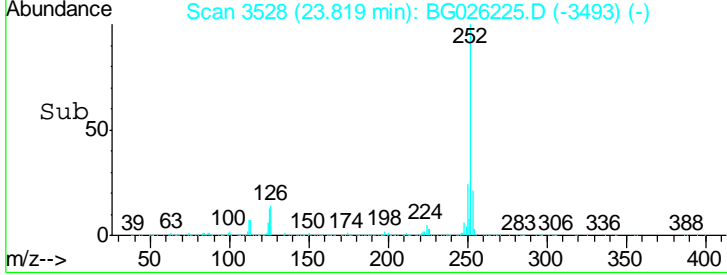
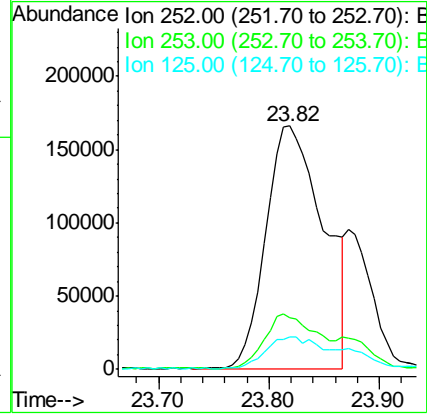
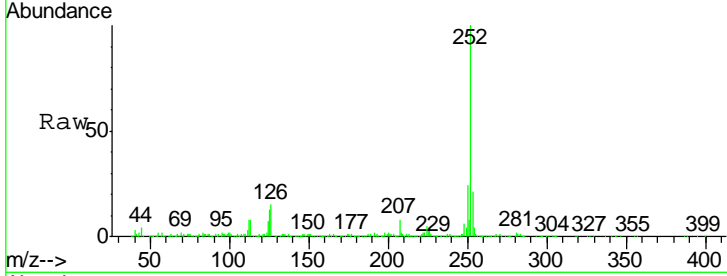




#24
 Benzo(b)fluoranthene
 Concen: 18.91 ng/ul
 RT: 23.82 min Scan# 3528
 Delta R.T. 0.01 min
 Lab File: BG026225.D
 Acq: 14 Mar 2017 23:44

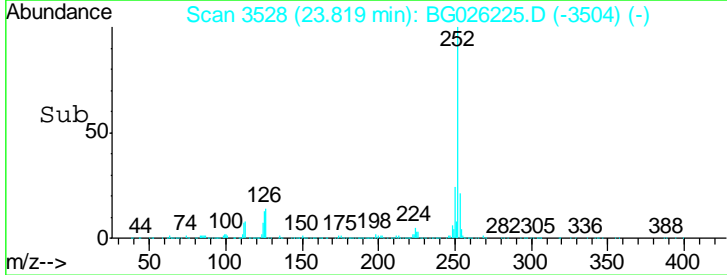
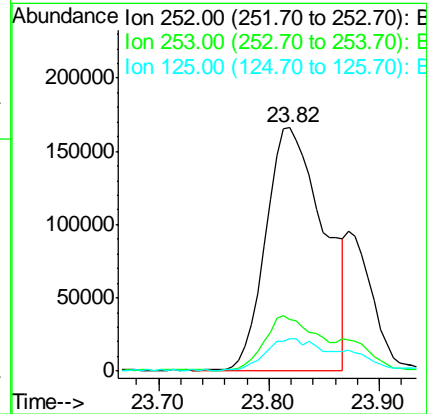
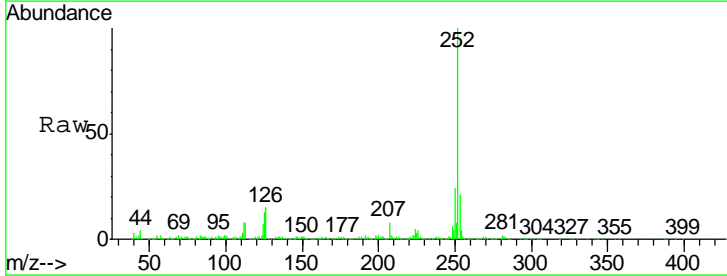
Instrument :
 BNA_G
 ClientSampled :
 CB2W9

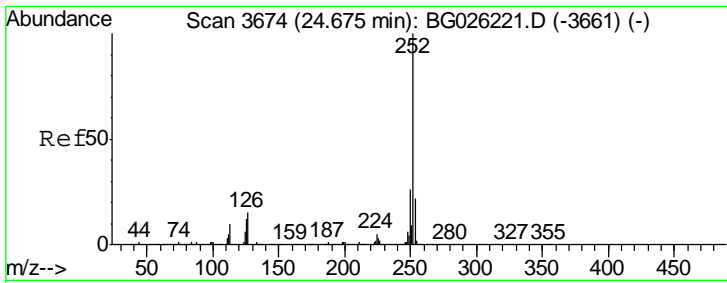
| Tgt Ion | Resp | Lower | Upper |
|---------|------|-------|-------|
| 252 | 100 | | |
| 253 | 21.0 | 17.8 | 26.6 |
| 125 | 13.4 | 9.4 | 14.0 |



#25
 Benzo(k)fluoranthene
 Concen: 19.80 ng/ul
 RT: 23.82 min Scan# 3528
 Delta R.T. -0.06 min
 Lab File: BG026225.D
 Acq: 14 Mar 2017 23:44

| Tgt Ion | Resp | Lower | Upper |
|---------|------|-------|-------|
| 252 | 100 | | |
| 253 | 21.0 | 17.4 | 26.2 |
| 125 | 13.4 | 8.8 | 13.2# |

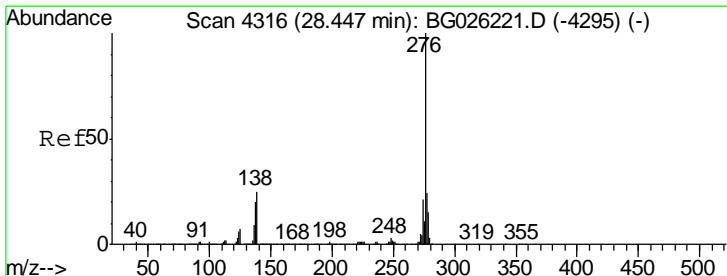
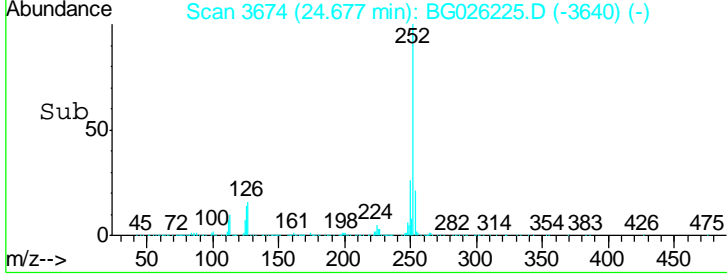
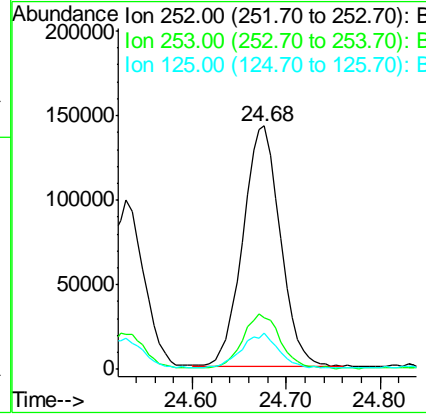
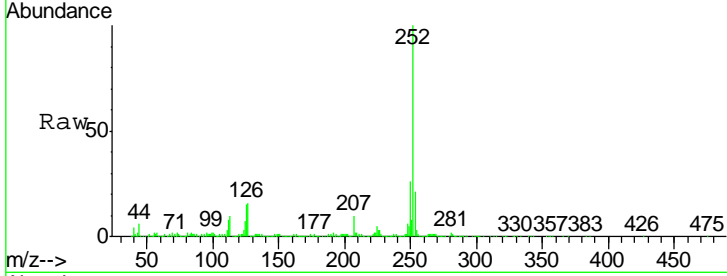




#27
 Benzo(a)pyrene
 Concen: 13.29 ng/ul
 RT: 24.68 min Scan# 3674
 Delta R.T. 0.00 min
 Lab File: BG026225.D
 Acq: 14 Mar 2017 23:44

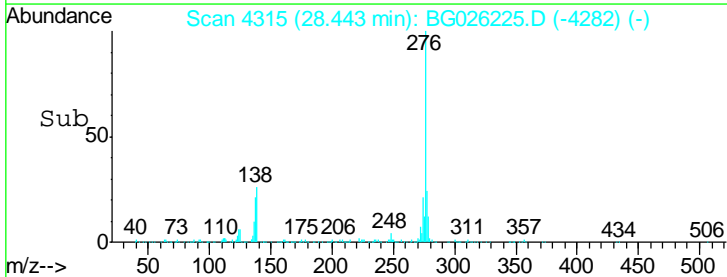
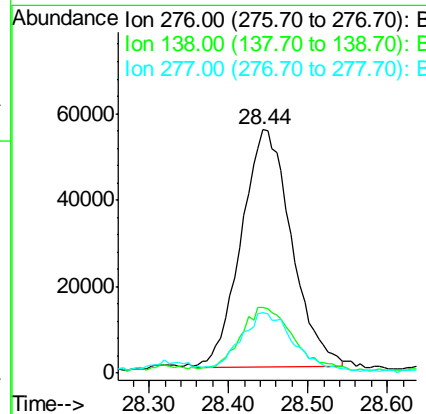
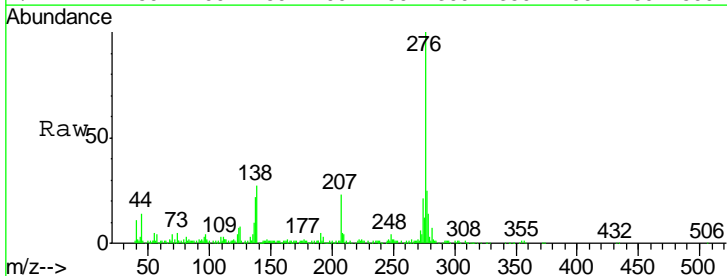
Instrument :
 BNA_G
 ClientSampled :
 CB2W9

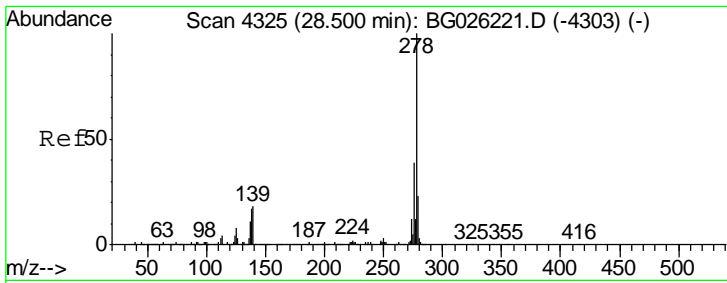
| Tgt Ion | Resp | Lower | Upper |
|---------|--------|-------|-------|
| 252 | 391272 | | |
| 253 | 100 | 17.1 | 25.7 |
| 125 | 14.7 | 9.4 | 14.2# |



#28
 Indeno(1,2,3-cd)pyrene
 Concen: 7.37 ng/ul
 RT: 28.44 min Scan# 4315
 Delta R.T. -0.00 min
 Lab File: BG026225.D
 Acq: 14 Mar 2017 23:44

| Tgt Ion | Resp | Lower | Upper |
|---------|--------|-------|-------|
| 276 | 241815 | | |
| 138 | 100 | 17.8 | 26.6# |
| 277 | 27.1 | 19.4 | 29.0 |

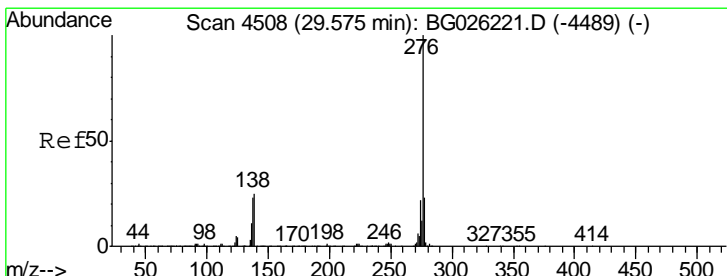
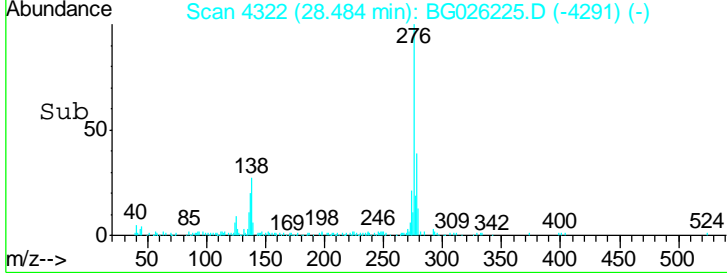
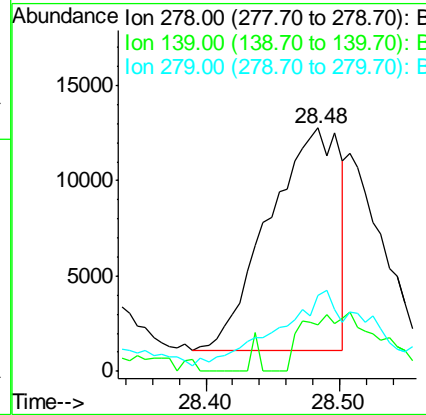
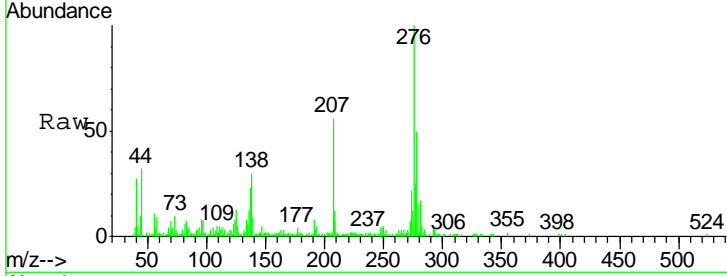




#29
 Dibenzo(a,h)anthracene
 Concen: 1.67 ng/ul
 RT: 28.48 min Scan# 4322
 Delta R.T. -0.02 min
 Lab File: BG026225.D
 Acq: 14 Mar 2017 23:44

Instrument :
 BNA_G
 ClientSampled :
 CB2W9

| Tgt Ion | Resp | Lower | Upper |
|---------|-------|-------|-------|
| 278 | 43076 | | |
| 139 | 18.9 | 14.0 | 21.0 |
| 279 | 31.2 | 20.6 | 31.0# |



#30
 Benzo(g,h,i)perylene
 Concen: 8.02 ng/ul
 RT: 29.58 min Scan# 4508
 Delta R.T. 0.00 min
 Lab File: BG026225.D
 Acq: 14 Mar 2017 23:44

| Tgt Ion | Resp | Lower | Upper |
|---------|--------|-------|-------|
| 276 | 224564 | | |
| 138 | 27.2 | 19.0 | 28.4 |
| 277 | 25.1 | 19.7 | 29.5 |

