

Data Path : Z:\SVOASRV\HPCHEM1\BNA G\DATA\BG031720\
 Data File : BG044859.D
 Acq On : 18 Mar 2020 10:20
 Operator : CG/JU
 Sample : L1933-06
 Misc :
 ALS Vial : 23 Sample Multiplier: 1

Instrument :
 BNA_G
 ClientSampleId :
 72-11976

Quant Time: Mar 18 13:04:09 2020
 Quant Method : Z:\SVOASRV\HPCHEM1\BNA G\METHODS\8270-BG031020.M
 Quant Title : ASP BNA STANDARDS FOR 5 POINT CALIBRATION
 QLast Update : Mon Mar 16 17:37:15 2020
 Response via : Initial Calibration

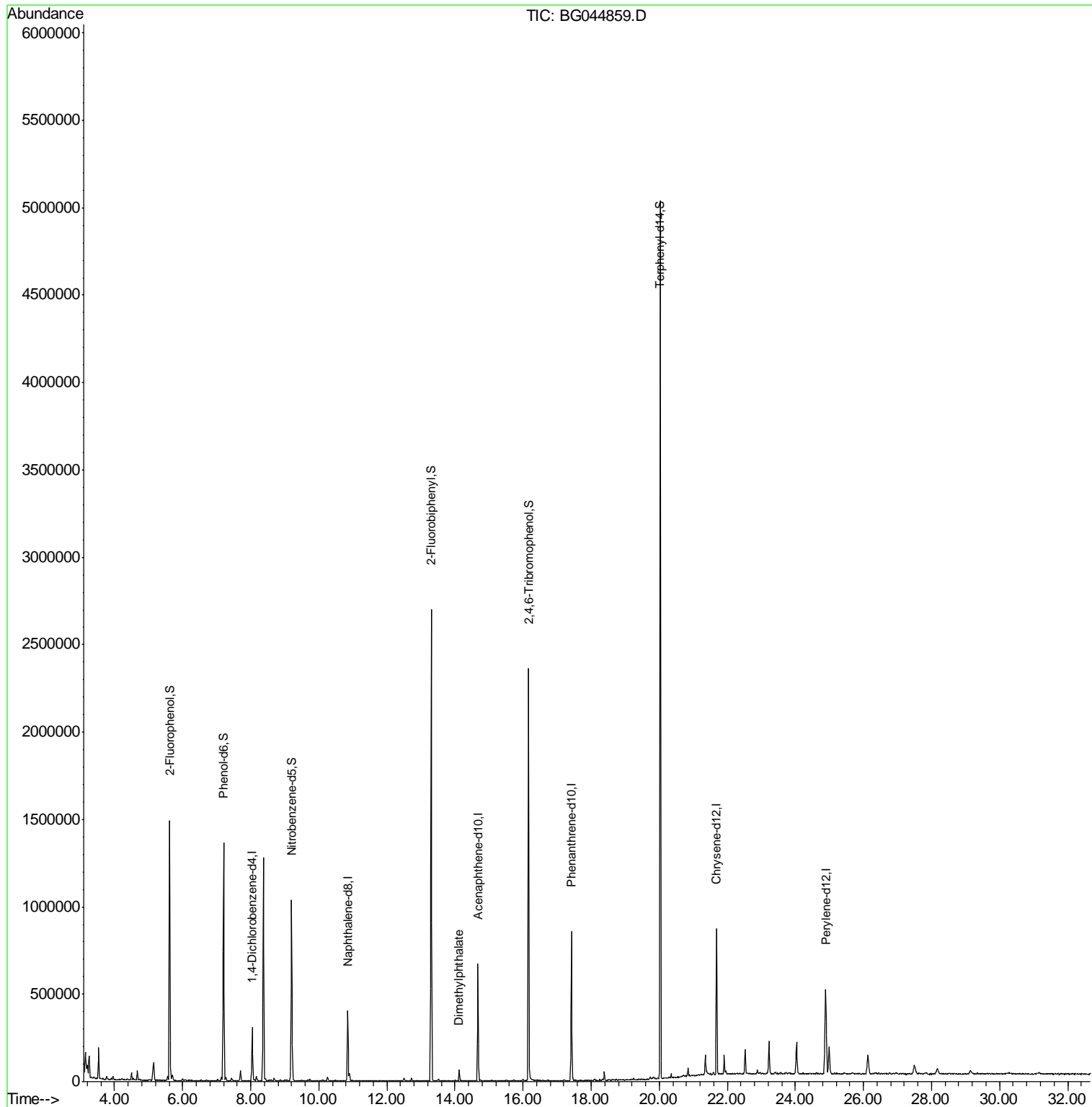
Internal Standards	R.T.	QIon	Response	Conc	Units	Dev(Min)
1) 1,4-Dichlorobenzene-d4	8.05	152	86266	20.00	ng	0.00
21) Naphthalene-d8	10.85	136	346625	20.00	ng	-0.01
39) Acenaphthene-d10	14.67	164	242869	20.00	ng	-0.01
64) Phenanthrene-d10	17.42	188	561222	20.00	ng	-0.01
76) Chrysene-d12	21.68	240	483453	20.00	ng	-0.02
87) Perylene-d12	24.89	264	541803	20.00	ng	-0.02
System Monitoring Compounds						
5) 2-Fluorophenol	5.62	112	650848	117.45	ng	0.00
7) Phenol-d6	7.20	99	828080	102.85	ng	0.00
23) Nitrobenzene-d5	9.20	82	676932	85.70	ng	0.00
42) 2,4,6-Tribromophenol	16.16	330	466147	146.59	ng	-0.01
45) 2-Fluorobiphenyl	13.30	172	1431423	84.40	ng	0.00
79) Terphenyl-d14	20.03	244	2289772	88.59	ng	0.00
Target Compounds						
50) Dimethylphthalate	14.12	163	42996	2.223	ng	Qvalue 100

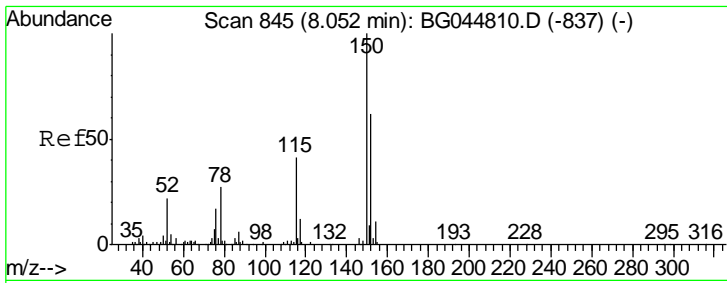
(#) = qualifier out of range (m) = manual integration (+) = signals summed

Data Path : Z:\SVOASRV\HPCHEM1\BNA G\DATA\BG031720\
 Data File : BG044859.D
 Acq On : 18 Mar 2020 10:20
 Operator : CG/JU
 Sample : L1933-06
 Misc :
 ALS Vial : 23 Sample Multiplier: 1

Instrument :
 BNA_G
 ClientSampled :
 72-11976

Quant Time: Mar 18 13:04:09 2020
 Quant Method : Z:\SVOASRV\HPCHEM1\BNA G\METHODS\8270-BG031020.M
 Quant Title : ASP BNA STANDARDS FOR 5 POINT CALIBRATION
 QLast Update : Mon Mar 16 17:37:15 2020
 Response via : Initial Calibration

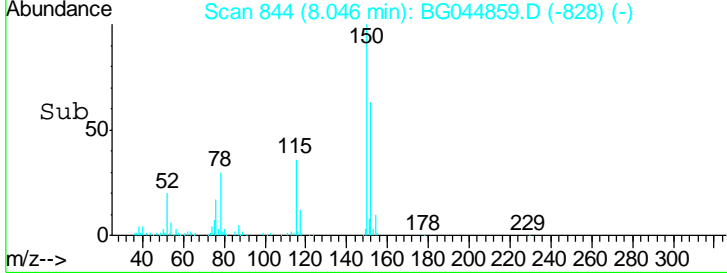
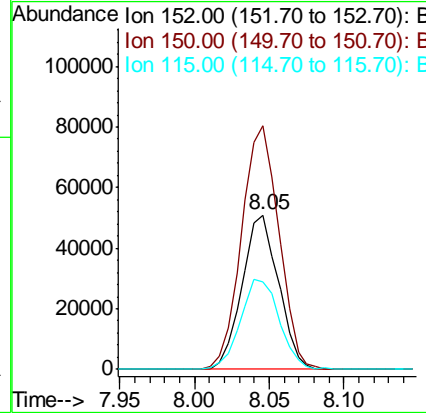
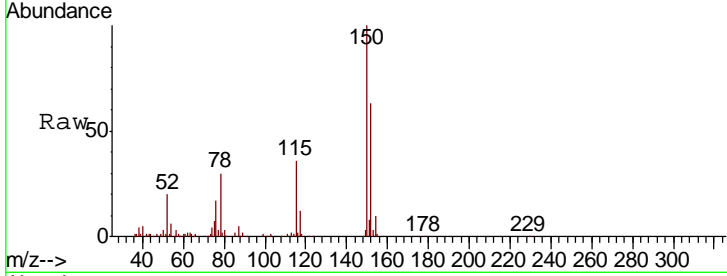




#1
 1,4-Dichlorobenzene-d4
 Concen: 20.000 ng
 RT: 8.05 min Scan# 844
 Delta R.T. -0.01 min
 Lab File: BG044859.D
 Acq: 18 Mar 2020 10:20

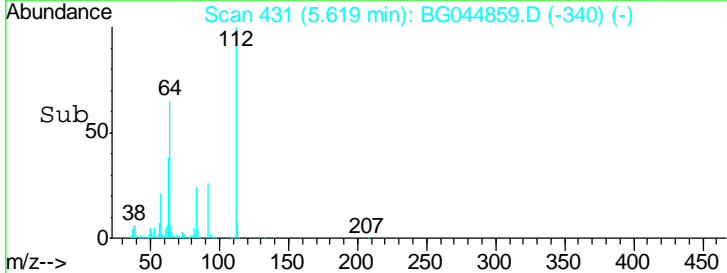
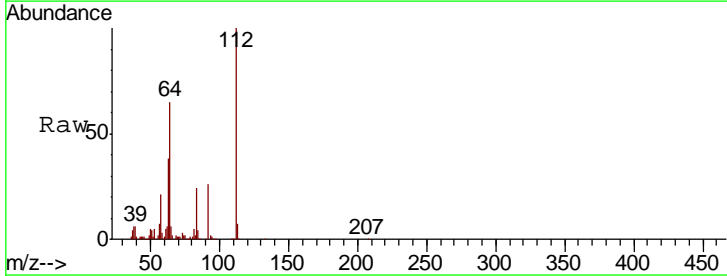
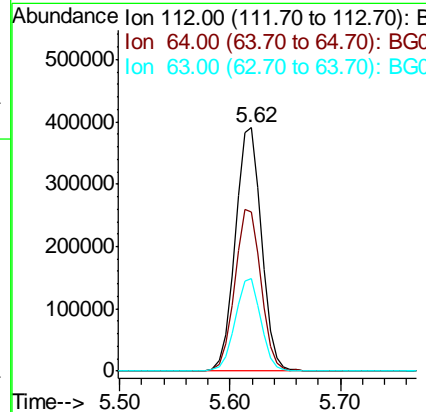
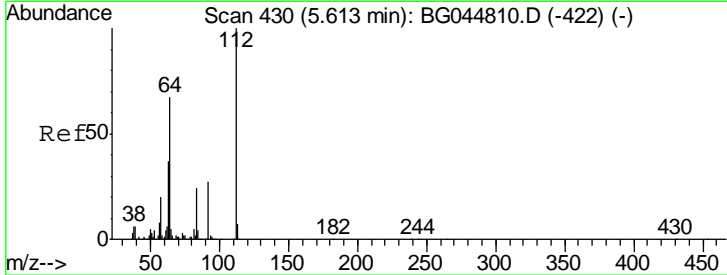
Instrument :
 BNA_G
 ClientSampled :
 72-11976

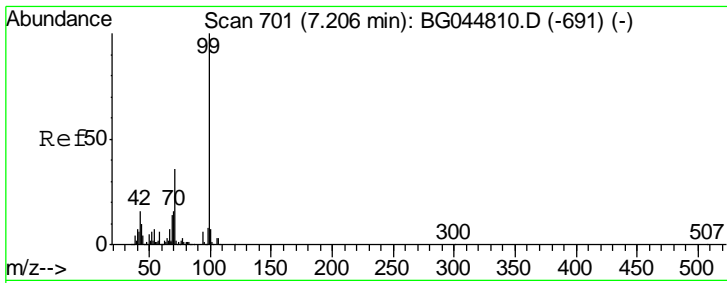
Tgt Ion	Resp	Lower	Upper
152	100		
150	157.9	128.8	193.2
115	56.7	52.6	79.0



#5
 2-Fluorophenol
 Concen: 117.447 ng
 RT: 5.62 min Scan# 431
 Delta R.T. 0.01 min
 Lab File: BG044859.D
 Acq: 18 Mar 2020 10:20

Tgt Ion	Resp	Lower	Upper
112	100		
64	65.4	53.4	80.2
63	38.2	29.4	44.2

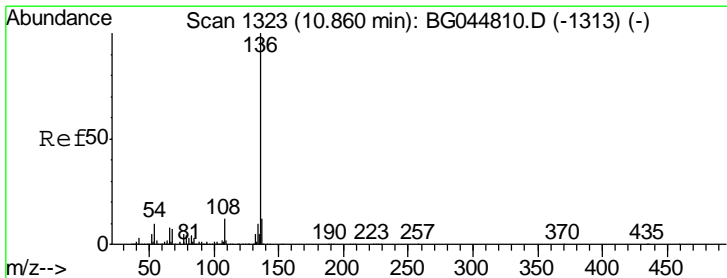
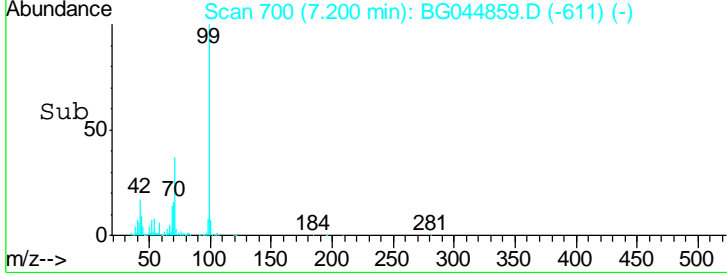
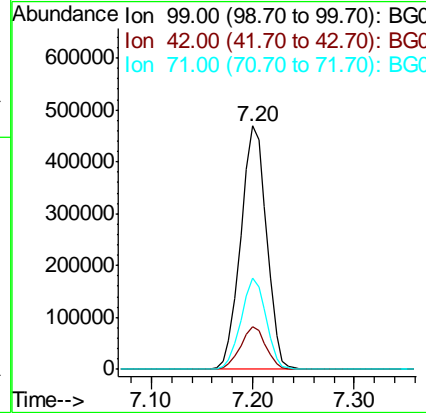
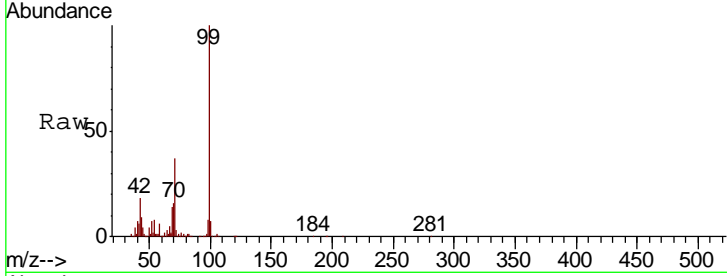




#7
 Phenol-d6
 Concen: 102.847 ng
 RT: 7.20 min Scan# 700
 Delta R.T. -0.01 min
 Lab File: BG044859.D
 Acq: 18 Mar 2020 10:20

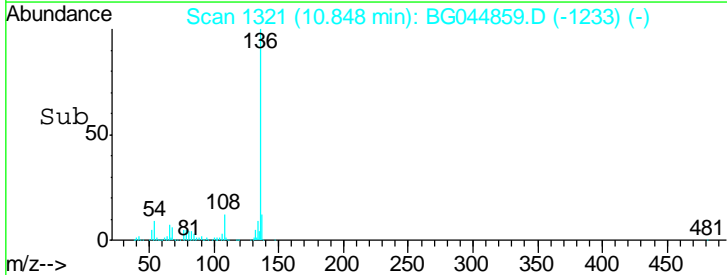
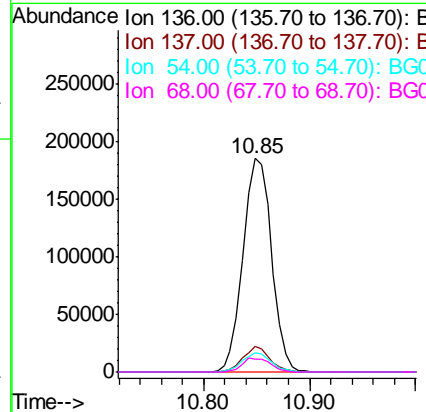
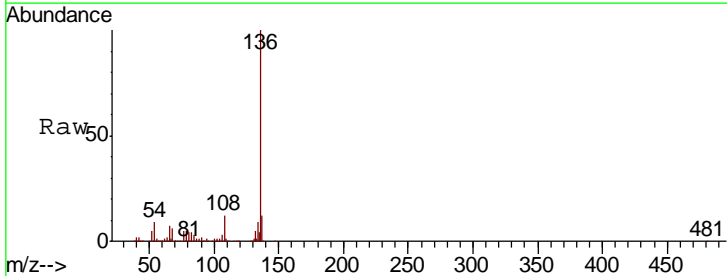
Instrument :
 BNA_G
 ClientSampleId :
 72-11976

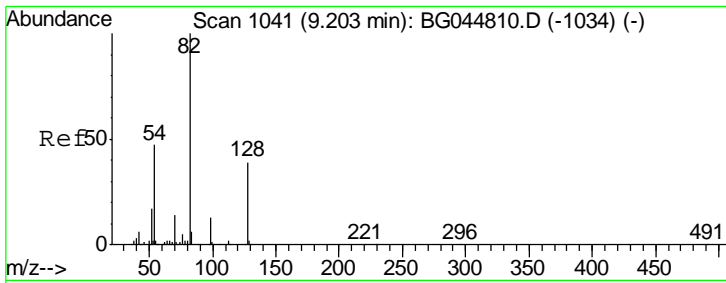
Tgt Ion	Resp	Lower	Upper
99	100		
42	17.5	12.6	19.0
71	37.5	29.0	43.4



#21
 Naphthalene-d8
 Concen: 20.000 ng
 RT: 10.85 min Scan# 1321
 Delta R.T. -0.01 min
 Lab File: BG044859.D
 Acq: 18 Mar 2020 10:20

Tgt Ion	Resp	Lower	Upper
136	100		
137	11.9	9.8	14.6
54	9.1	7.9	11.9
68	6.0	5.4	8.0

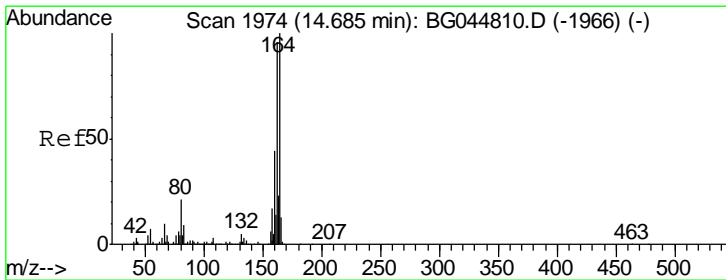
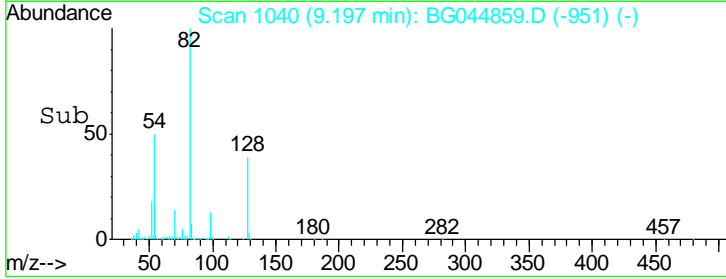
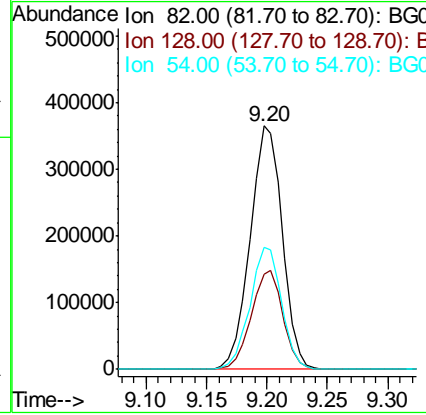
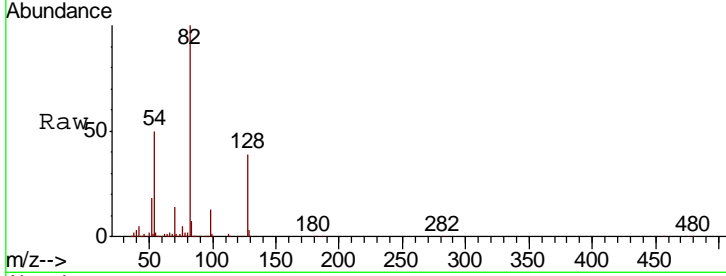




#23
 Nitrobenzene-d5
 Concen: 85.697 ng
 RT: 9.20 min Scan# 1040
 Delta R.T. -0.01 min
 Lab File: BG044859.D
 Acq: 18 Mar 2020 10:20

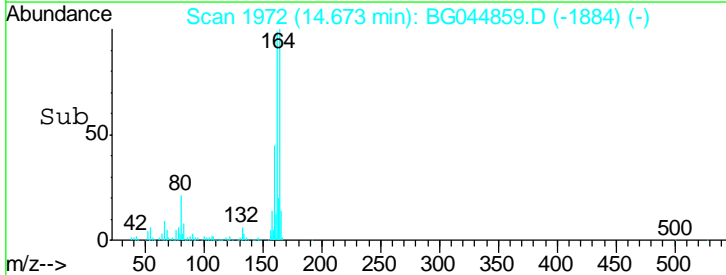
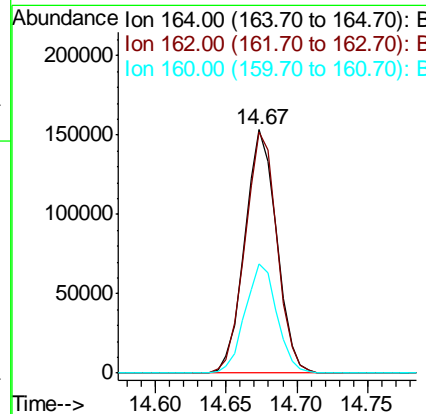
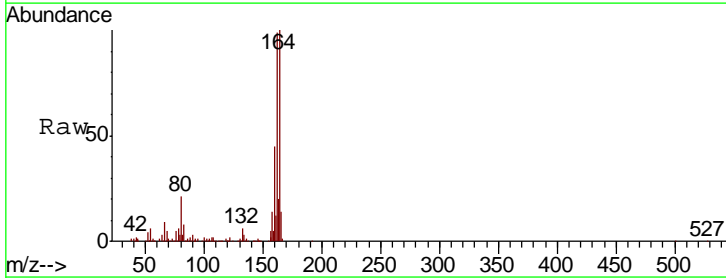
Instrument :
 BNA_G
 ClientSampled :
 72-11976

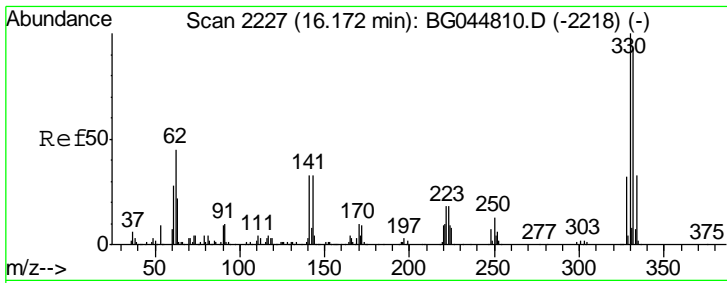
Tgt Ion	Resp	Lower	Upper
82	676932		
128	38.8	30.6	46.0
54	50.0	37.1	55.7



#39
 Acenaphthene-d10
 Concen: 20.000 ng
 RT: 14.67 min Scan# 1972
 Delta R.T. -0.01 min
 Lab File: BG044859.D
 Acq: 18 Mar 2020 10:20

Tgt Ion	Resp	Lower	Upper
164	242869		
162	99.1	76.7	115.1
160	44.7	35.0	52.4

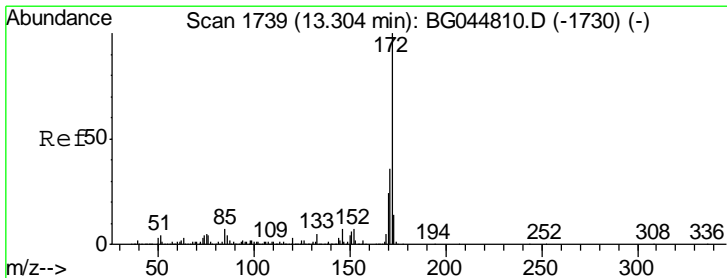
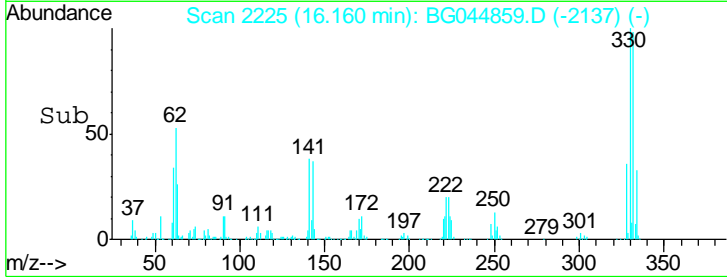
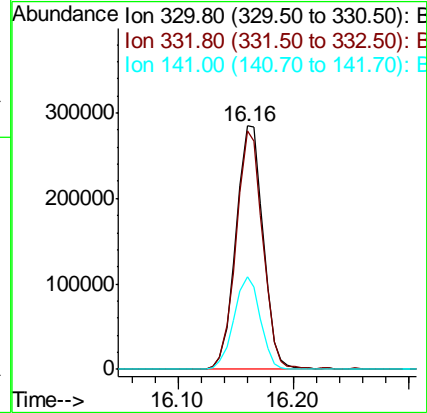
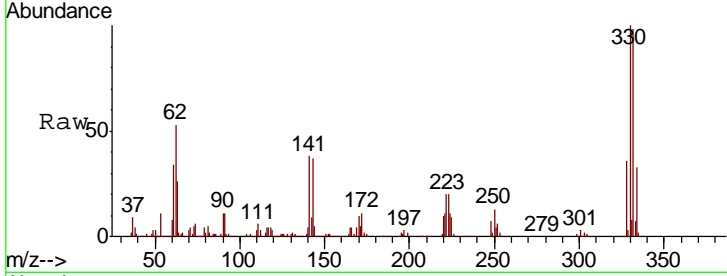




#42
 2,4,6-Tribromophenol
 Concen: 146.587 ng
 RT: 16.16 min Scan# 2225
 Delta R.T. -0.01 min
 Lab File: BG044859.D
 Acq: 18 Mar 2020 10:20

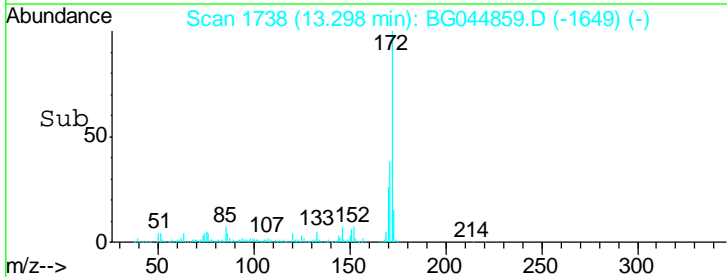
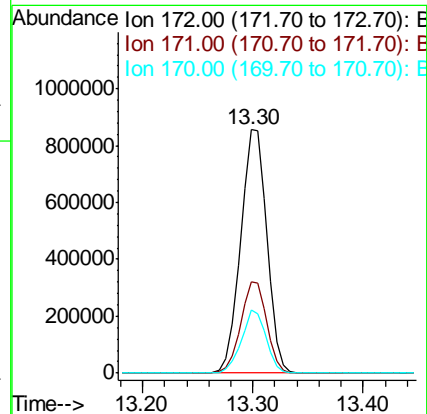
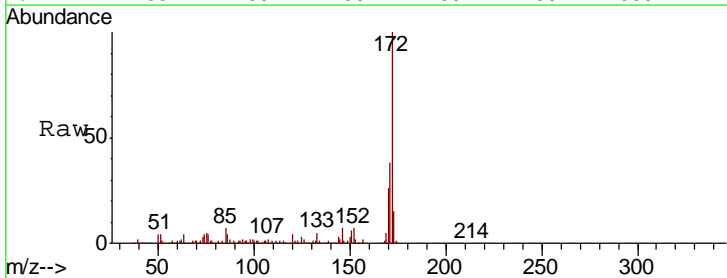
Instrument :
 BNA_G
 ClientSampled :
 72-11976

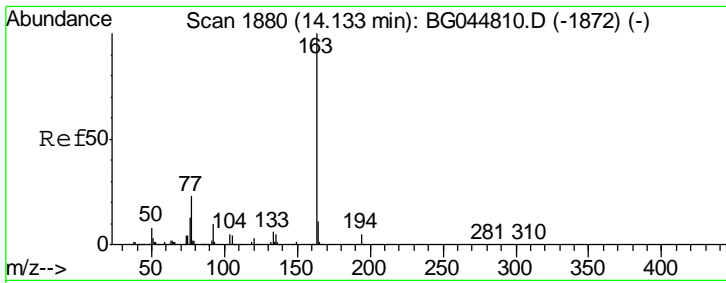
Tgt Ion	Resp	Lower	Upper
330	100		
332	95.6	77.8	116.6
141	36.9	29.5	44.3



#45
 2-Fluorobiphenyl
 Concen: 84.401 ng
 RT: 13.30 min Scan# 1738
 Delta R.T. -0.01 min
 Lab File: BG044859.D
 Acq: 18 Mar 2020 10:20

Tgt Ion	Resp	Lower	Upper
172	100		
171	37.7	28.7	43.1
170	25.9	19.0	28.6

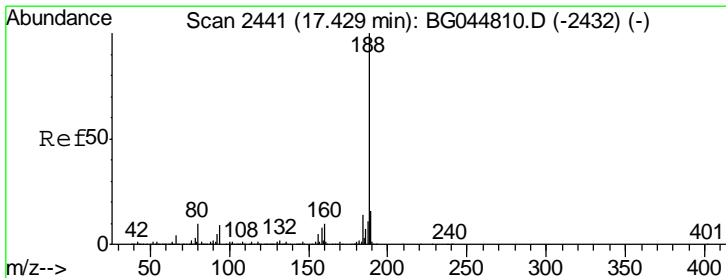
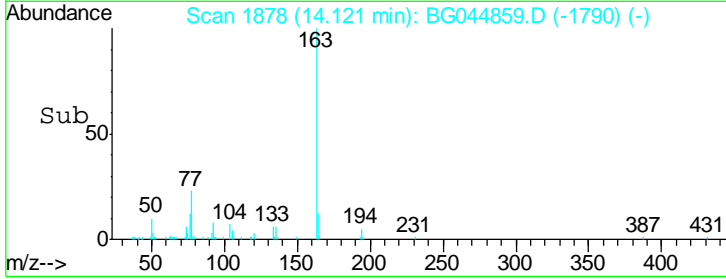
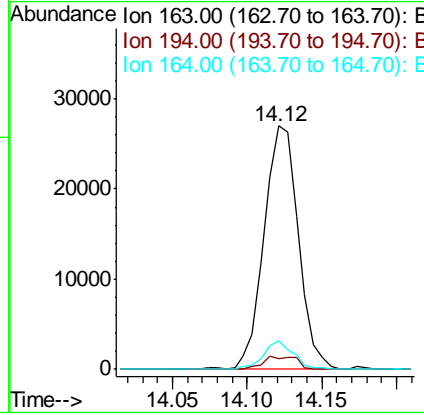
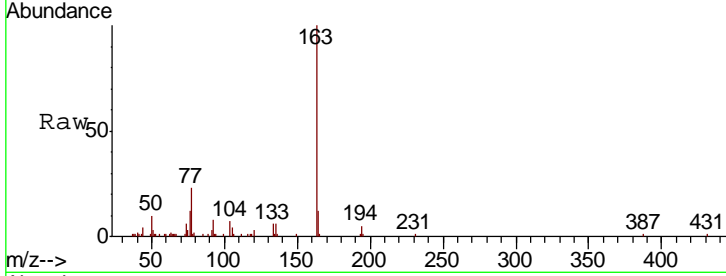




#50
 Dimethylphthalate
 Concen: 2.223 ng
 RT: 14.12 min Scan# 1878
 Delta R.T. -0.01 min
 Lab File: BG044859.D
 Acq: 18 Mar 2020 10:20

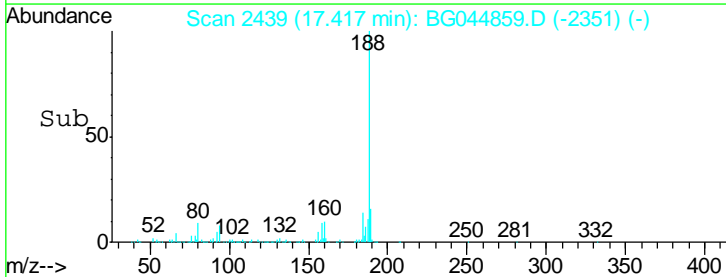
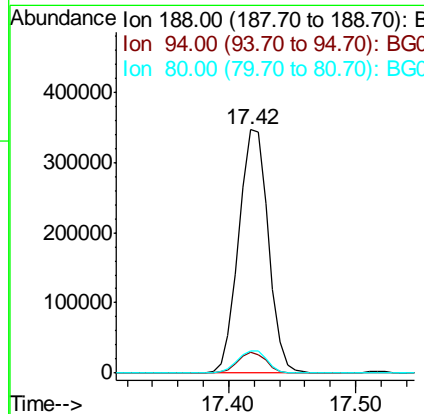
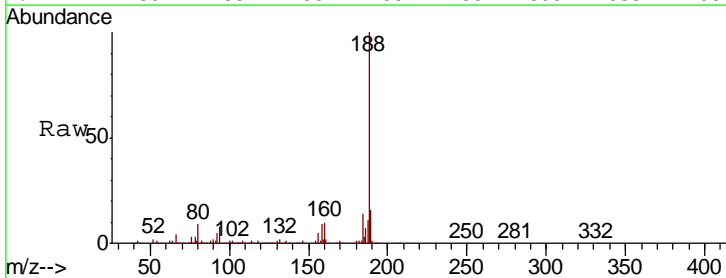
Instrument :
 BNA_G
 ClientSampled :
 72-11976

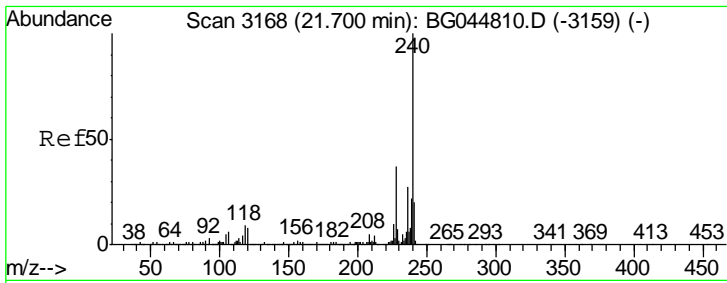
Tgt Ion	Resp	Lower	Upper
163	42996		
194	4.5	3.7	5.5
164	11.6	9.1	13.7



#64
 Phenanthrene-d10
 Concen: 20.000 ng
 RT: 17.42 min Scan# 2439
 Delta R.T. -0.01 min
 Lab File: BG044859.D
 Acq: 18 Mar 2020 10:20

Tgt Ion	Resp	Lower	Upper
188	561222		
94	8.3	7.3	10.9
80	9.0	8.0	12.0

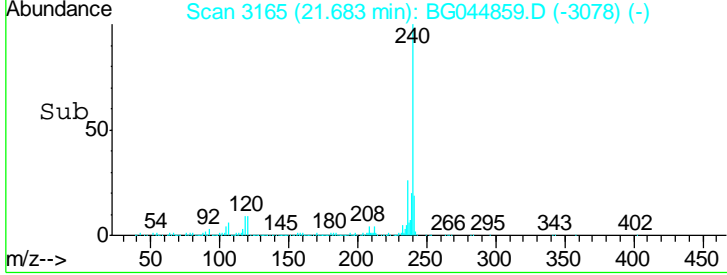
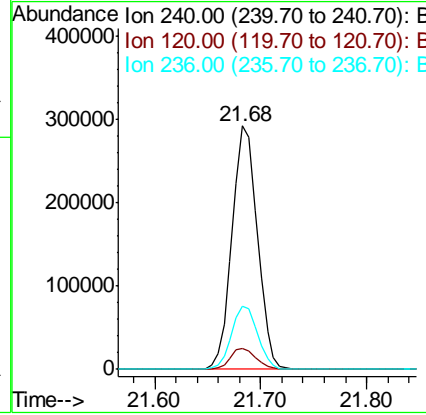
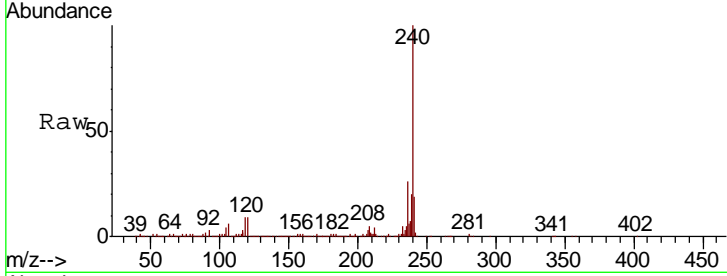




#76
 Chrysene-d12
 Concen: 20.000 ng
 RT: 21.68 min Scan# 3165
 Delta R.T. -0.02 min
 Lab File: BG044859.D
 Acq: 18 Mar 2020 10:20

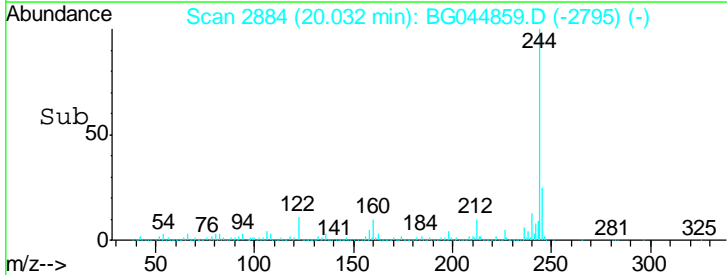
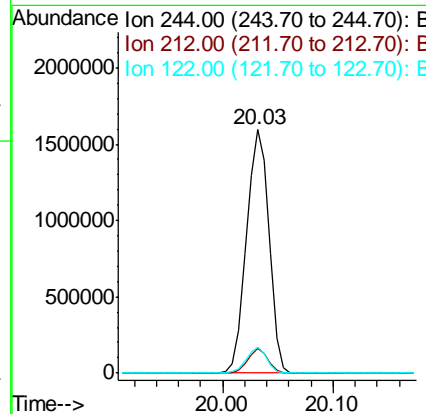
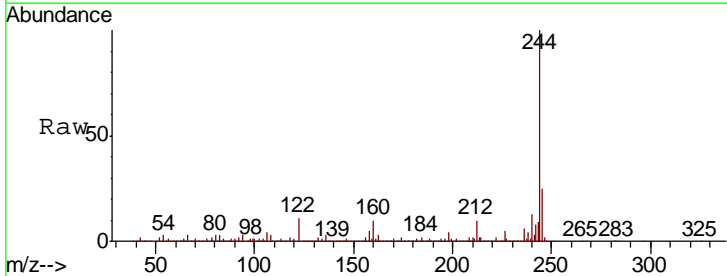
Instrument :
 BNA_G
 ClientSampled :
 72-11976

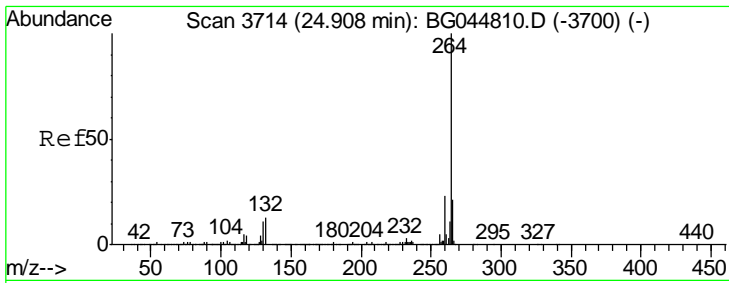
Tgt Ion	Resp	Lower	Upper
240	483453		
120	8.8	6.7	10.1
236	26.0	21.5	32.3



#79
 Terphenyl-d14
 Concen: 88.595 ng
 RT: 20.03 min Scan# 2884
 Delta R.T. -0.01 min
 Lab File: BG044859.D
 Acq: 18 Mar 2020 10:20

Tgt Ion	Resp	Lower	Upper
244	2289772		
212	10.2	7.7	11.5
122	10.7	8.6	12.8





#87
 Perylene-d12
 Concen: 20.000 ng
 RT: 24.89 min Scan# 3711
 Delta R.T. -0.02 min
 Lab File: BG044859.D
 Acq: 18 Mar 2020 10:20

Instrument :
 BNA_G
 ClientSampled :
 72-11976

Tot Ion: 264 Resp: 541803

Ion	Ratio	Lower	Upper
264	100		
260	23.9	18.1	27.1
265	22.4	17.1	25.7

