

Data Path : Z:\svoasrv\HPCHEM1\BNA_G\Data\BG032221\
 Data File : BG048462.D
 Acq On : 23 Mar 2021 4:01
 Operator : CG/JU
 Sample : M1724-01
 Misc :
 ALS Vial : 13 Sample Multiplier: 1

Instrument :
 BNA_G
 ClientSampled :
 26207

Integration Parameters: rteint.p
 Integrator: RTE
 Smoothing : ON Filtering: 5
 Sampling : 1 Min Area: 3 % of largest Peak
 Start Thrs: 0.2 Max Peaks: 100
 Stop Thrs : 0 Peak Location: TOP

If leading or trailing edge < 100 prefer < Baseline drop else tangent >
 Peak separation: 5

Method : Z:\SVOASRV\HPCHEM1\BNA_G\METHODS\8270-BG031821.M
 Title : ASP BNA STANDARDS FOR 5 POINT CALIBRATION

Signal : TIC: BG048462.D\data.ms

peak #	R.T. min	first scan	max scan	last scan	PK TY	peak height	corr. area	corr. % max.	% of total
1	5.652	387	394	402	rBV	931244	1514145	52.60%	6.832%
2	7.256	658	667	682	rBV	980506	1699032	59.02%	7.666%
3	8.102	804	811	819	rBV	255898	429815	14.93%	1.939%
4	9.271	1003	1010	1018	rVB	610102	1058740	36.78%	4.777%
5	10.112	1146	1153	1158	rBV6	22063	48149	1.67%	0.217%
6	10.922	1280	1291	1299	rBV	319508	673137	23.38%	3.037%
7	11.064	1306	1315	1319	rBV9	20214	61318	2.13%	0.277%
8	11.111	1319	1323	1332	rVB6	29033	65044	2.26%	0.293%
9	11.393	1367	1371	1379	rVB7	26517	53766	1.87%	0.243%
10	11.628	1406	1411	1417	rVB9	35583	77425	2.69%	0.349%
11	11.686	1417	1421	1427	rBV9	22502	49891	1.73%	0.225%
12	11.839	1440	1447	1453	rBV10	28765	66306	2.30%	0.299%
13	12.021	1476	1478	1484	rVB7	30555	49701	1.73%	0.224%
14	12.109	1488	1493	1499	rBV4	59765	115087	4.00%	0.519%
15	12.791	1604	1609	1611	rBV6	31536	57700	2.00%	0.260%
16	12.826	1611	1615	1620	rVV3	74977	134320	4.67%	0.606%
17	13.367	1700	1707	1714	rVB	1201912	1869014	64.92%	8.433%
18	13.449	1717	1721	1727	rBV8	74928	157731	5.48%	0.712%
19	14.025	1815	1819	1825	rBV7	143546	230246	8.00%	1.039%
20	14.095	1827	1831	1835	rVV	222113	345966	12.02%	1.561%
21	14.172	1840	1844	1849	rBV4	275626	600662	20.86%	2.710%
22	14.583	1910	1914	1919	rVB3	635419	1075906	37.37%	4.855%
23	14.718	1933	1937	1938	rBV2	430384	550365	19.12%	2.483%
24	14.765	1939	1945	1950	rVB2	1387426	2734985	95.00%	12.341%
25	15.546	2074	2078	2083	rBV2	649355	949638	32.99%	4.285%
26	16.481	2235	2237	2249	rVB	1672671	2731765	94.89%	12.326%
27	20.112	2851	2855	2864	rVB	2115693	2878848	100.00%	12.990%
28	21.792	3137	3141	3147	rVB	559238	950353	33.01%	4.288%
29	25.123	3701	3708	3720	rVB2	331461	932925	32.41%	4.210%

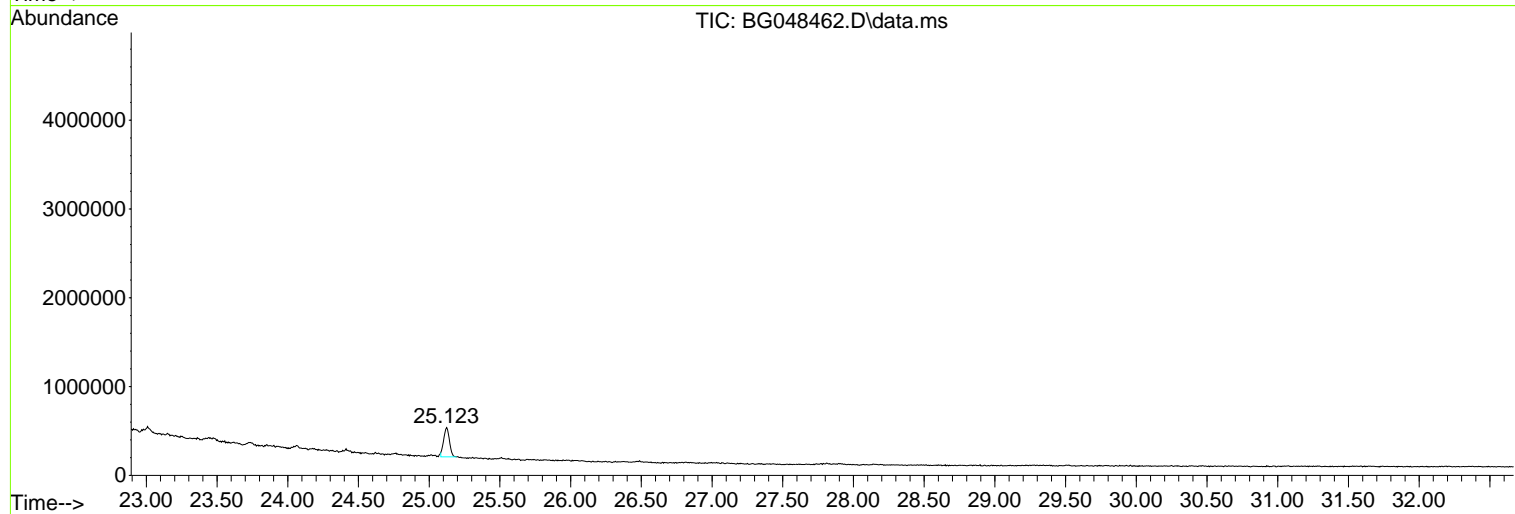
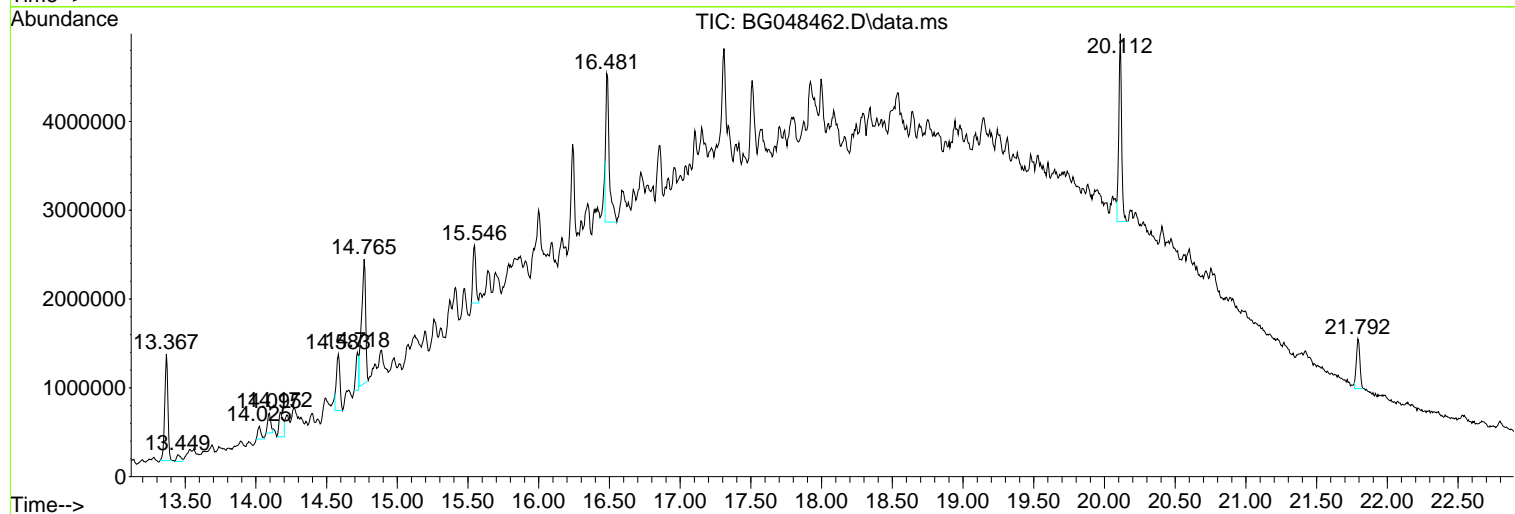
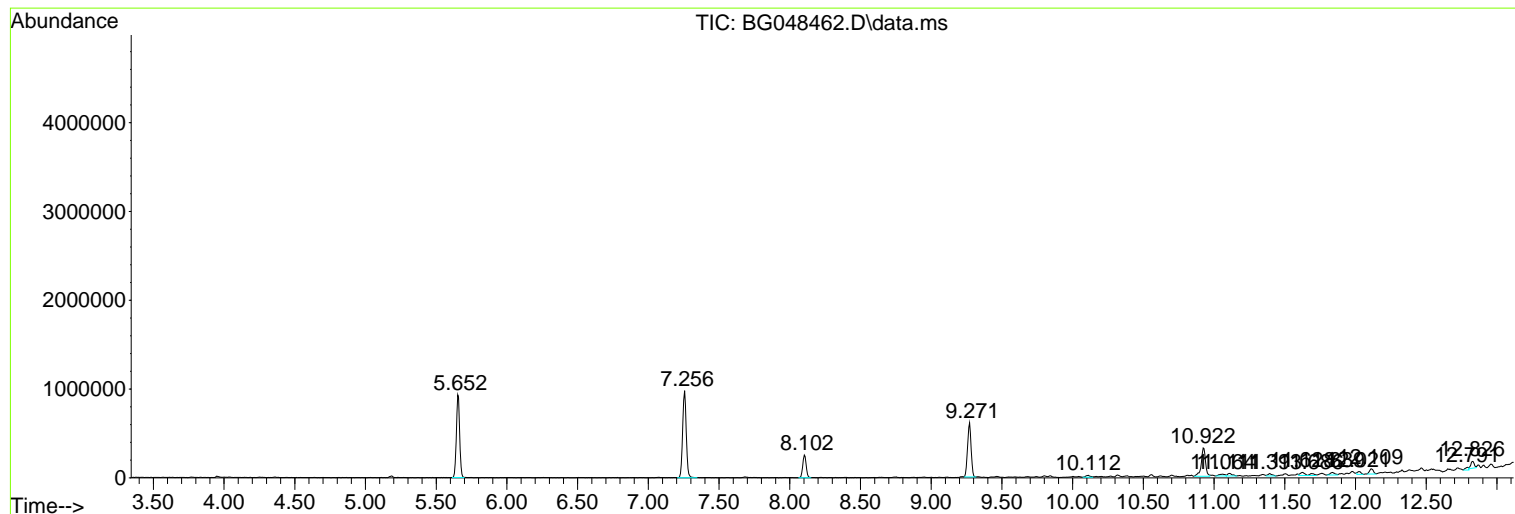
Sum of corrected areas: 22161980

Data Path : Z:\svoasrv\HPCHEM1\BNA_G\Data\BG032221\
 Data File : BG048462.D
 Acq On : 23 Mar 2021 4:01
 Operator : CG/JU
 Sample : M1724-01
 Misc :
 ALS Vial : 13 Sample Multiplier: 1

Instrument :
 BNA_G
 ClientSampleId :
 26207

Quant Method : Z:\SVOASRV\HPCHEM1\BNA_G\METHODS\8270-BG031821.M
 Quant Title : ASP BNA STANDARDS FOR 5 POINT CALIBRATION

TIC Library : C:\Database\NIST11.L
 TIC Integration Parameters: LSCINT.P



Data Path : Z:\svoasrv\HPCHEM1\BNA_G\Data\BG032221\
 Data File : BG048462.D
 Acq On : 23 Mar 2021 4:01
 Operator : CG/JU
 Sample : M1724-01
 Misc :
 ALS Vial : 13 Sample Multiplier: 1

Instrument :
 BNA_G
 ClientSampleId :
 26207

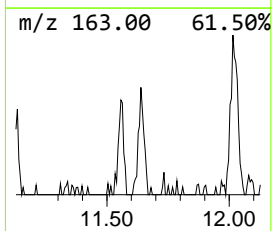
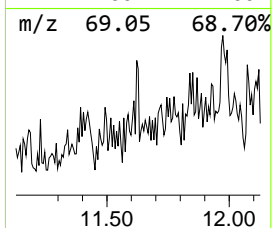
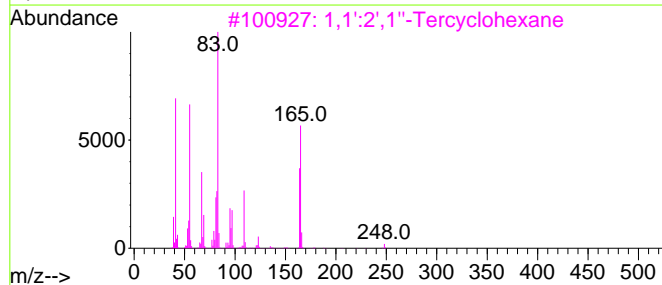
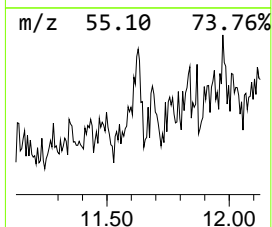
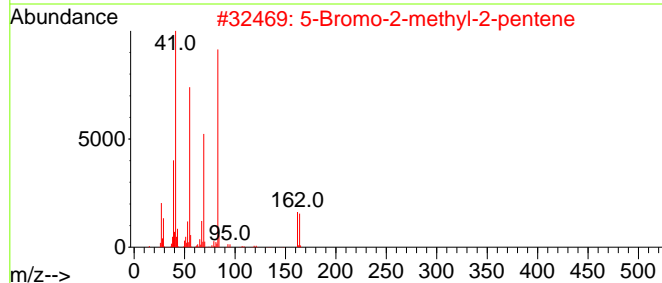
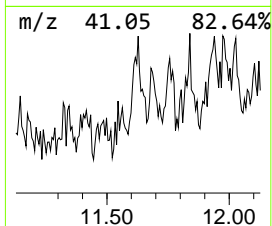
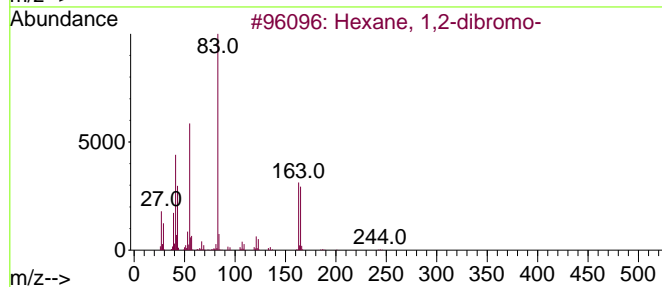
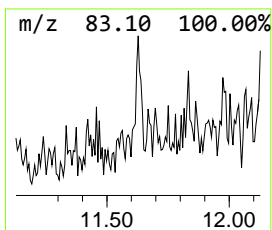
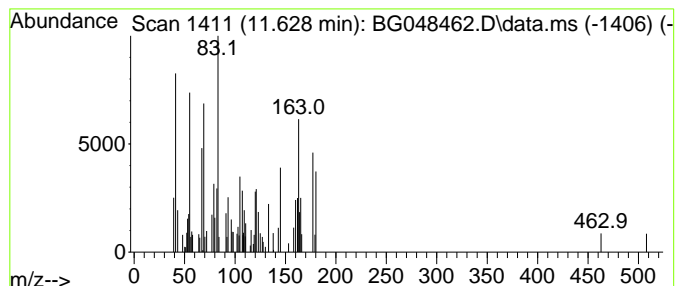
Quant Method : Z:\SVOASRV\HPCHEM1\BNA_G\METHODS\8270-BG031821.M
 Quant Title : ASP BNA STANDARDS FOR 5 POINT CALIBRATION

TIC Library : C:\Database\NIST11.L
 TIC Integration Parameters: LSCINT.P

 Peak Number 1 unknown11.628 Concentration Rank 7

R.T.	EstConc	Area	Relative to ISTD	R.T.
11.628	2.30 ng	77425	Naphthalene-d8	10.922

Hit#	of	5	Tentative ID	MW	MolForm	CAS#	Qual
1			Hexane, 1,2-dibromo-	242	C6H12Br2	000624-20-4	27
2			5-Bromo-2-methyl-2-pentene	162	C6H11Br	002270-59-9	14
3			1,1':2',1''-Tercyclohexane	248	C18H32	002456-43-1	12
4			1,1'-Bicyclohexyl, 2-butyl-	222	C16H30	054889-99-5	10
5			Cyclopentanethiol, 1-methyl-	116	C6H12S	001638-95-5	10



Data Path : Z:\svoasrv\HPCHEM1\BNA_G\Data\BG032221\
 Data File : BG048462.D
 Acq On : 23 Mar 2021 4:01
 Operator : CG/JU
 Sample : M1724-01
 Misc :
 ALS Vial : 13 Sample Multiplier: 1

Instrument :
 BNA_G
 ClientSampled :
 26207

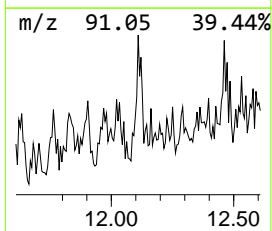
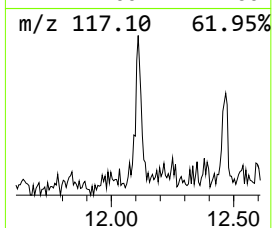
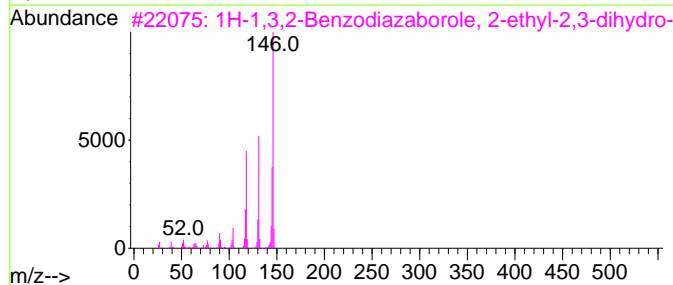
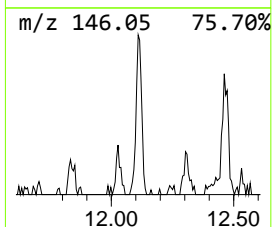
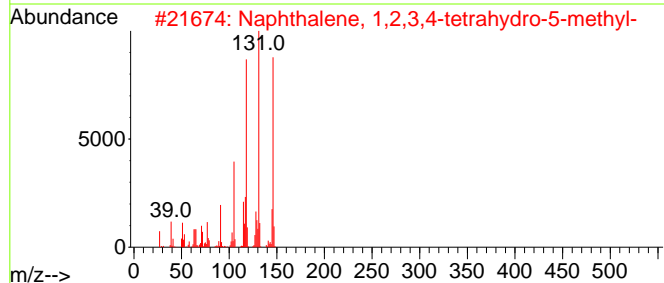
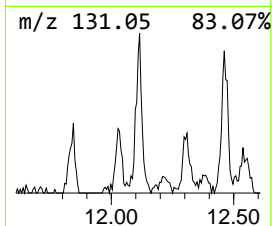
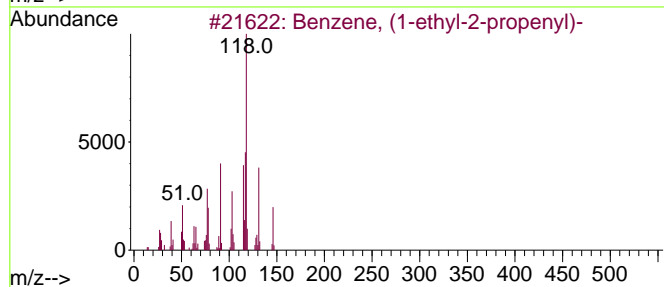
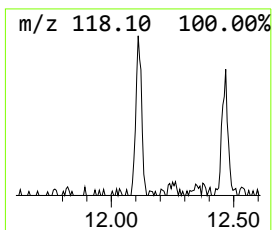
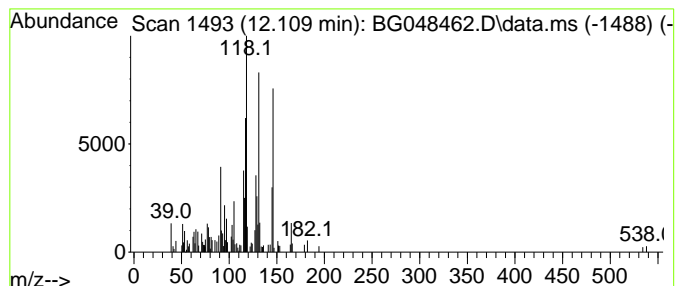
Quant Method : Z:\SVOASRV\HPCHEM1\BNA_G\METHODS\8270-BG031821.M
 Quant Title : ASP BNA STANDARDS FOR 5 POINT CALIBRATION

TIC Library : C:\Database\NIST11.L
 TIC Integration Parameters: LSCINT.P

 Peak Number 2 Benzene, (1-ethyl-2-propenyl)- Concentration Rank 5

R.T.	EstConc	Area	Relative to ISTD	R.T.
12.109	3.42 ng	115087	Naphthalene-d8	10.922

Hit#	of 5	Tentative ID	MW	MolForm	CAS#	Qual
1		Benzene, (1-ethyl-2-propenyl)-	146	C11H14	019947-22-9	81
2		Naphthalene, 1,2,3,4-tetrahydro-...	146	C11H14	002809-64-5	81
3		1H-1,3,2-Benzodiazaborole, 2-eth...	146	C8H11BN2	074663-81-3	76
4		Naphthalene, 1,2,3,4-tetrahydro-...	146	C11H14	001680-51-9	74
5		2,3,4,5,6,7-Hexahydro-1H-cyclope...	146	C11H14	1000189-31-0	72



Data Path : Z:\svoasrv\HPCHEM1\BNA_G\Data\BG032221\
 Data File : BG048462.D
 Acq On : 23 Mar 2021 4:01
 Operator : CG/JU
 Sample : M1724-01
 Misc :
 ALS Vial : 13 Sample Multiplier: 1

Instrument :
 BNA_G
 ClientSampleID :
 26207

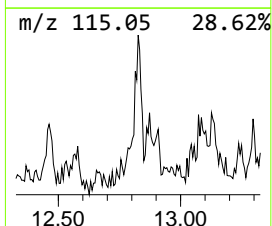
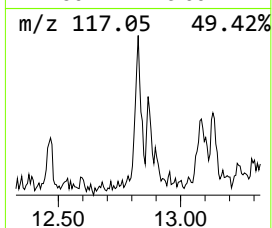
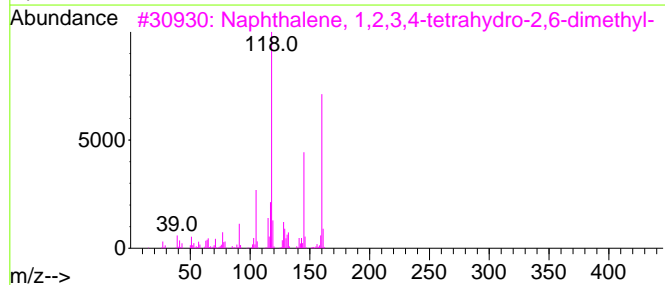
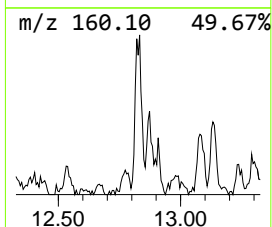
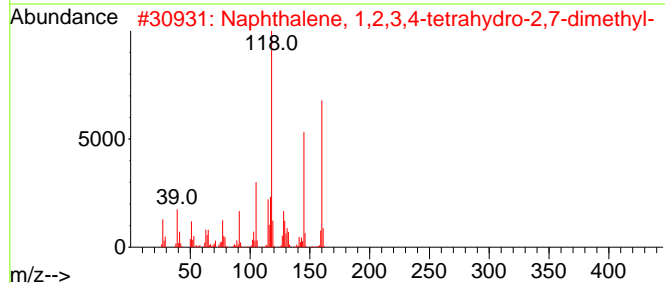
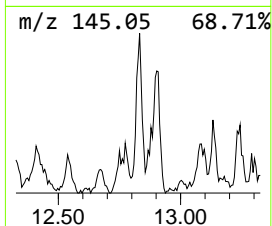
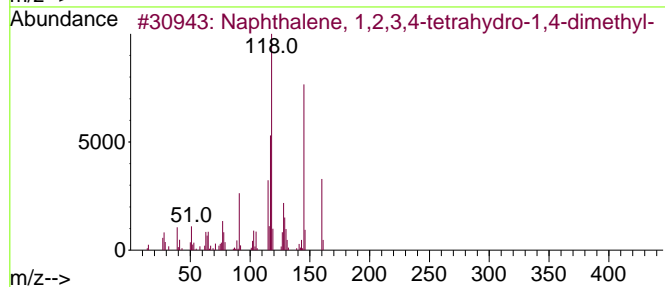
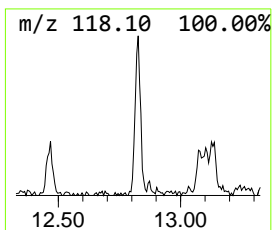
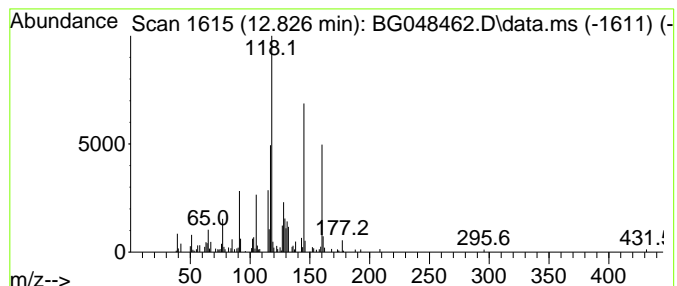
Quant Method : Z:\SVOASRV\HPCHEM1\BNA_G\METHODS\8270-BG031821.M
 Quant Title : ASP BNA STANDARDS FOR 5 POINT CALIBRATION

TIC Library : C:\Database\NIST11.L
 TIC Integration Parameters: LSCINT.P

 Peak Number 3 Naphthalene, 1,2,3,4-tetra... Concentration Rank 4

R.T.	EstConc	Area	Relative to ISTD	R.T.
12.826	3.99 ng	134320	Naphthalene-d8	10.922

Hit#	of	5	Tentative ID	MW	MolForm	CAS#	Qual
1			Naphthalene, 1,2,3,4-tetrahydro-...	160	C12H16	004175-54-6	87
2			Naphthalene, 1,2,3,4-tetrahydro-...	160	C12H16	013065-07-1	81
3			Naphthalene, 1,2,3,4-tetrahydro-...	160	C12H16	007524-63-2	72
4			1H-Indene, 2,3-dihydro-1,1,3-tri...	160	C12H16	002613-76-5	46
5			4-Trifluoromethylbenzoic acid, 3...	308	C17H15F3O2	150272-46-1	38



Data Path : Z:\svoasrv\HPCHEM1\BNA_G\Data\BG032221\
 Data File : BG048462.D
 Acq On : 23 Mar 2021 4:01
 Operator : CG/JU
 Sample : M1724-01
 Misc :
 ALS Vial : 13 Sample Multiplier: 1

Instrument :
 BNA_G
 ClientSampled :
 26207

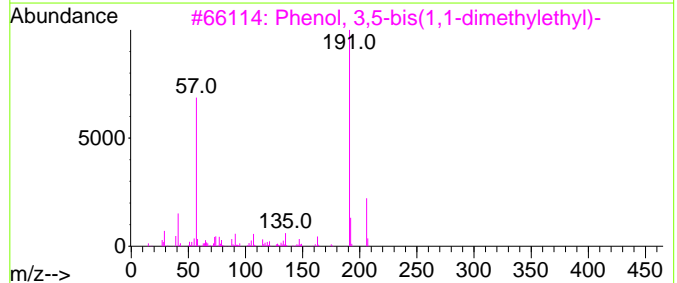
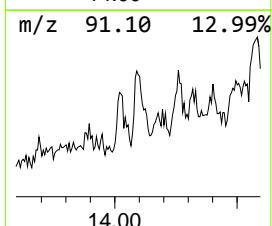
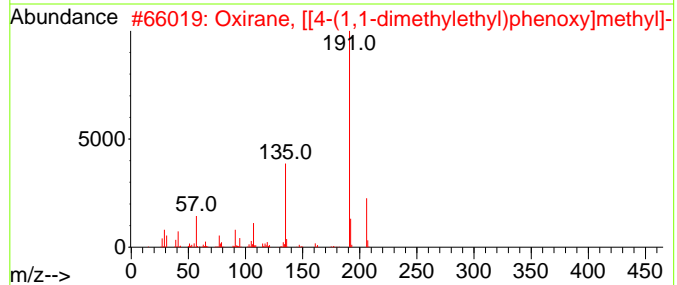
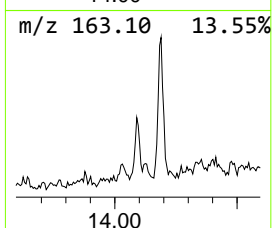
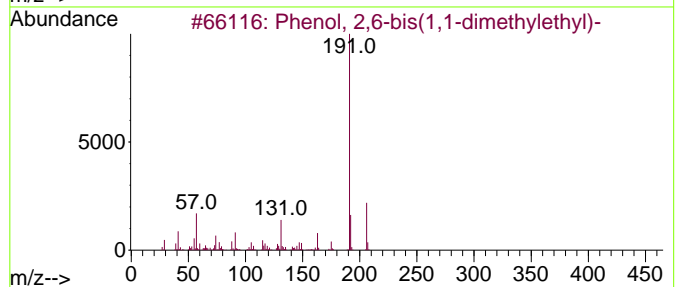
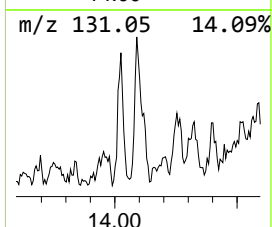
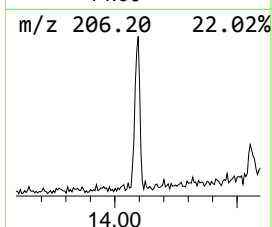
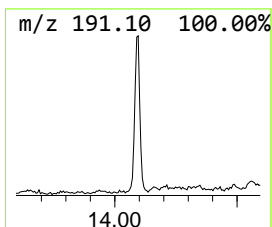
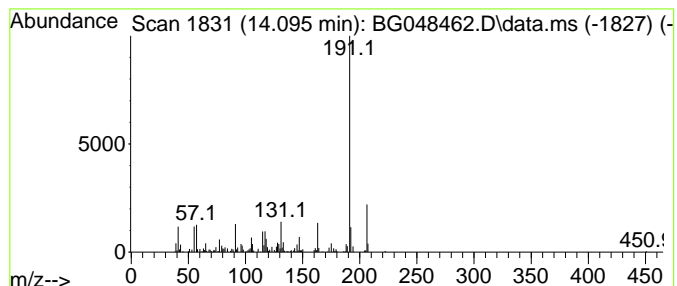
Quant Method : Z:\SVOASRV\HPCHEM1\BNA_G\METHODS\8270-BG031821.M
 Quant Title : ASP BNA STANDARDS FOR 5 POINT CALIBRATION

TIC Library : C:\Database\NIST11.L
 TIC Integration Parameters: LSCINT.P

 Peak Number 4 Phenol, 2,6-bis(1,1-dimethy... Concentration Rank 6

R.T.	EstConc	Area	Relative to ISTD	R.T.
14.095	2.53 ng	345966	Acenaphthene-d10	14.747

Hit#	of	5	Tentative ID	MW	MolForm	CAS#	Qual
1			Phenol, 2,6-bis(1,1-dimethylethyl)-	206	C14H22O	000128-39-2	81
2			Oxirane, [[4-(1,1-dimethylethyl)...	206	C13H18O2	003101-60-8	64
3			Phenol, 3,5-bis(1,1-dimethylethyl)-	206	C14H22O	001138-52-9	64
4			Phenol, 2,5-bis(1,1-dimethylethyl)-	206	C14H22O	005875-45-6	64
5			Phenol, 2,4-bis(1,1-dimethylethyl)-	206	C14H22O	000096-76-4	59



Data Path : Z:\svoasrv\HPCHEM1\BNA_G\Data\BG032221\
 Data File : BG048462.D
 Acq On : 23 Mar 2021 4:01
 Operator : CG/JU
 Sample : M1724-01
 Misc :
 ALS Vial : 13 Sample Multiplier: 1

Instrument :
 BNA_G
 ClientSampled :
 26207

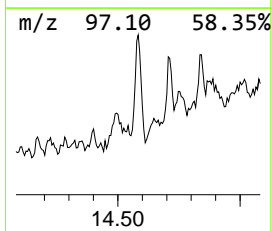
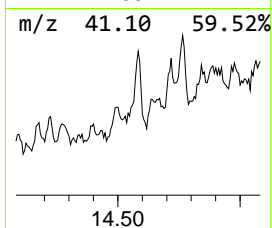
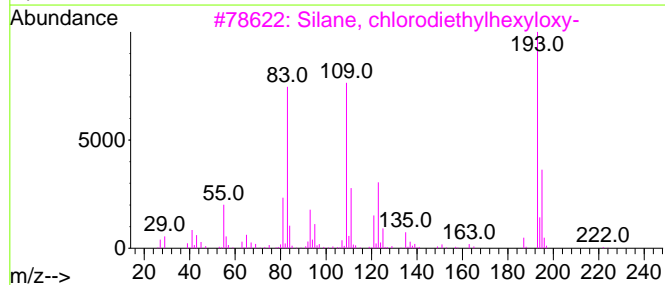
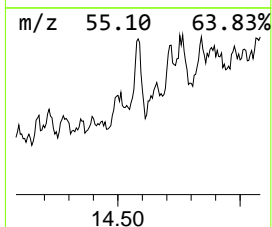
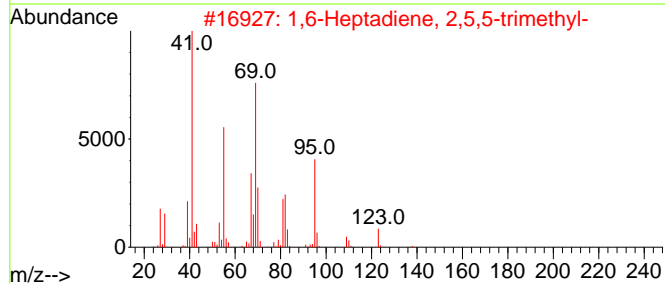
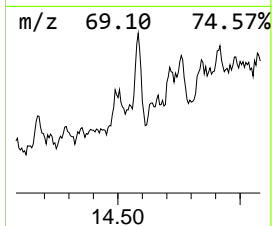
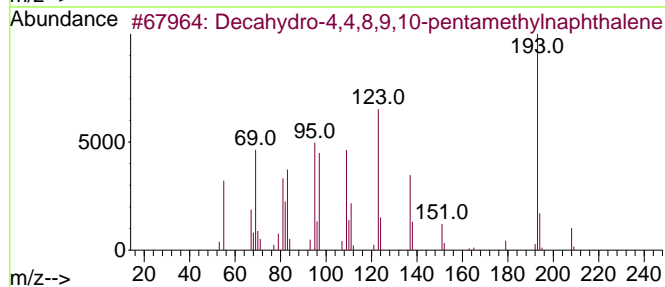
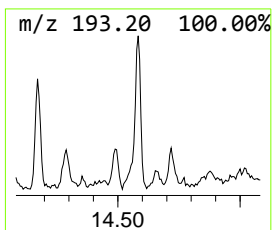
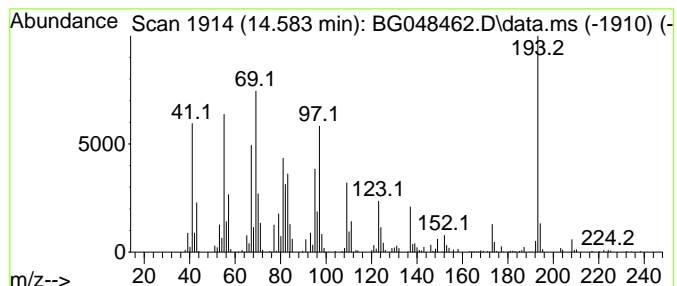
Quant Method : Z:\SVOASRV\HPCHEM1\BNA_G\METHODS\8270-BG031821.M
 Quant Title : ASP BNA STANDARDS FOR 5 POINT CALIBRATION

TIC Library : C:\Database\NIST11.L
 TIC Integration Parameters: LSCINT.P

 Peak Number 5 unknown14.583 Concentration Rank 2

R.T.	EstConc	Area	Relative to ISTD	R.T.
14.583	7.87 ng	1075910	Acenaphthene-d10	14.747

Hit#	of	5	Tentative ID	MW	MolForm	CAS#	Qual
1			Decahydro-4,4,8,9,10-pentamethyl...	208	C15H28	080655-44-3	30
2			1,6-Heptadiene, 2,5,5-trimethyl-	138	C10H18	062238-28-2	27
3			Silane, chlorodiethylhexyloxy-	222	C10H23ClOSi	1000363-74-4	25
4			2-Anthracenamine	193	C14H11N	000613-13-8	22
5			7-Tetradecanol	214	C14H30O	003981-79-1	14



Data Path : Z:\svoasrv\HPCHEM1\BNA_G\Data\BG032221\
 Data File : BG048462.D
 Acq On : 23 Mar 2021 4:01
 Operator : CG/JU
 Sample : M1724-01
 Misc :
 ALS Vial : 13 Sample Multiplier: 1

Instrument :
 BNA_G
 ClientSampled :
 26207

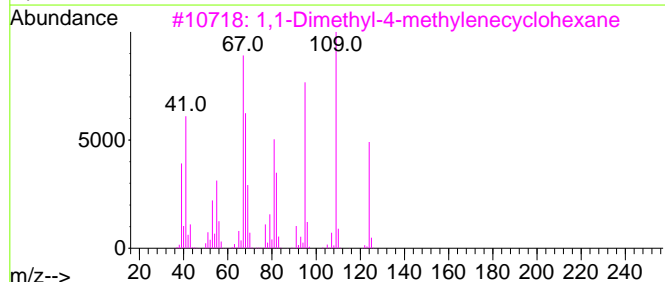
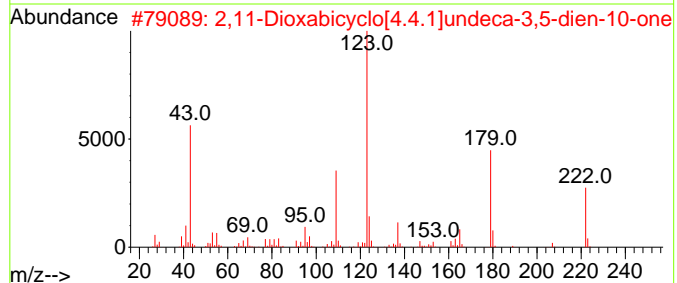
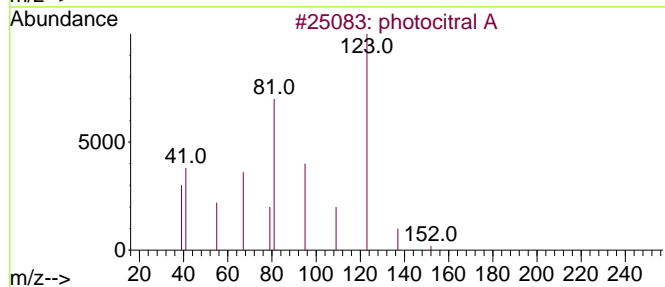
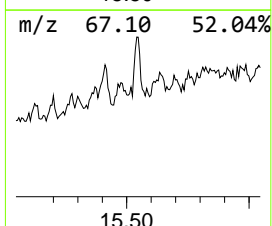
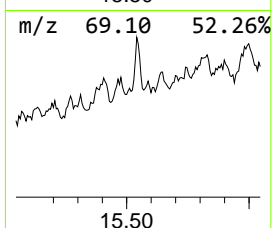
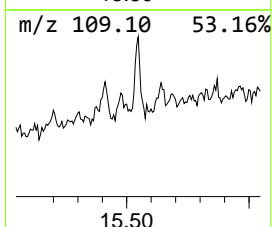
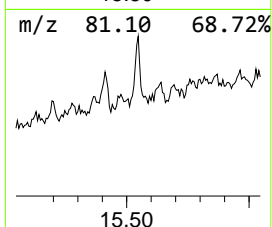
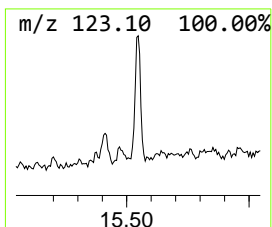
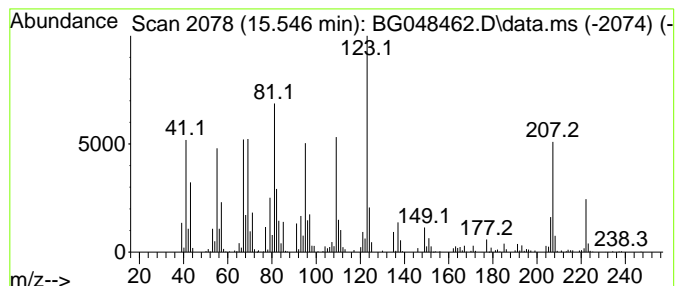
Quant Method : Z:\SVOASRV\HPCHEM1\BNA_G\METHODS\8270-BG031821.M
 Quant Title : ASP BNA STANDARDS FOR 5 POINT CALIBRATION

TIC Library : C:\Database\NIST11.L
 TIC Integration Parameters: LSCINT.P

 Peak Number 6 photocitral A Concentration Rank 3

R.T.	EstConc	Area	Relative to ISTD	R.T.
15.547	6.94 ng	949638	Acenaphthene-d10	14.747

Hit#	of 5	Tentative ID	MW	MolForm	CAS#	Qual
1		photocitral A	152	C10H16O	055253-28-6	53
2		2,11-Dioxabicyclo[4.4.1]undeca-3...	222	C13H18O3	070412-52-1	46
3		1,1-Dimethyl-4-methylenecyclohexane	124	C9H16	006007-96-1	46
4		Magnesium, bis(2,4-pentanedionat...	222	C10H14MgO4	014024-56-7	41
5		Longipinane, (E)-	206	C15H26	1000156-14-5	38



Data Path : Z:\svoasrv\HPCHEM1\BNA_G\Data\BG032221\
 Data File : BG048462.D
 Acq On : 23 Mar 2021 4:01
 Operator : CG/JU
 Sample : M1724-01
 Misc :
 ALS Vial : 13 Sample Multiplier: 1

Instrument :
 BNA_G
 ClientSampleId :
 26207

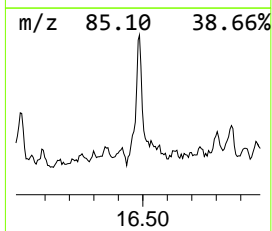
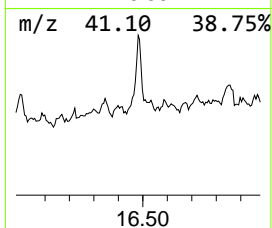
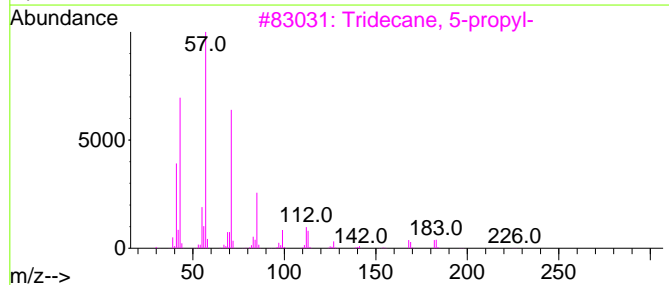
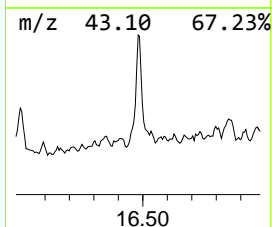
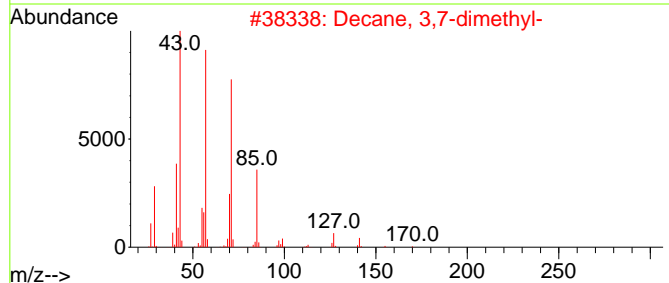
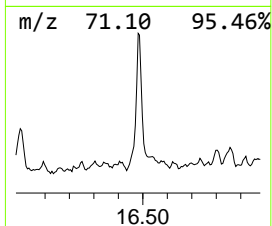
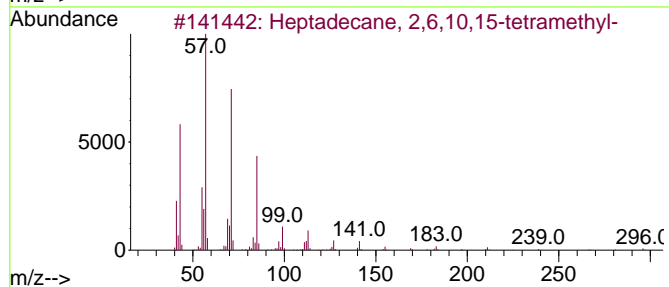
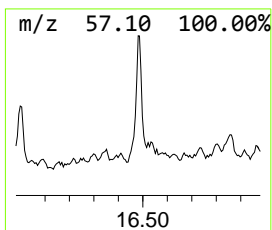
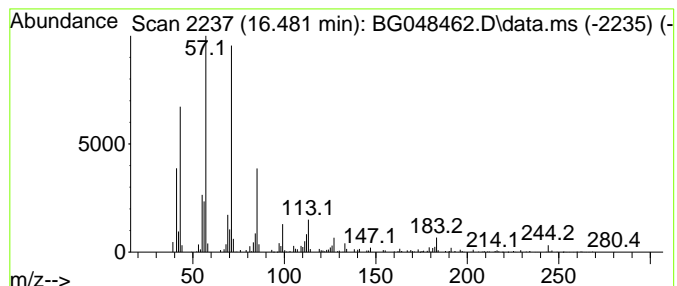
Quant Method : Z:\SVOASRV\HPCHEM1\BNA_G\METHODS\8270-BG031821.M
 Quant Title : ASP BNA STANDARDS FOR 5 POINT CALIBRATION

TIC Library : C:\Database\NIST11.L
 TIC Integration Parameters: LSCINT.P

 Peak Number 7 Heptadecane, 2,6,10,15-tetr... Concentration Rank 1

R.T.	EstConc	Area	Relative to ISTD	R.T.
16.481	20.00 ng	2731770	Phenanthrene-d10	17.509

Hit#	of 5	Tentative ID	MW	MolForm	CAS#	Qual
1		Heptadecane, 2,6,10,15-tetramethyl-	296	C21H44	054833-48-6	86
2		Decane, 3,7-dimethyl-	170	C12H26	017312-54-8	83
3		Tridecane, 5-propyl-	226	C16H34	055045-11-9	81
4		Decane, 5-propyl-	184	C13H28	017312-62-8	72
5		Dodecane, 4-methyl-	184	C13H28	006117-97-1	72



Data Path : Z:\svoasrv\HPCHEM1\BNA_G\Data\BG032221\
 Data File : BG048462.D
 Acq On : 23 Mar 2021 4:01
 Operator : CG/JU
 Sample : M1724-01
 Misc :
 ALS Vial : 13 Sample Multiplier: 1

Instrument :
 BNA_G
 ClientSampleId :
 26207

Quant Method : Z:\SVOASRV\HPCHEM1\BNA_G\METHODS\8270-BG031821.M
 Quant Title : ASP BNA STANDARDS FOR 5 POINT CALIBRATION

TIC Library : C:\Database\NIST11.L
 TIC Integration Parameters: LSCINT.P

TIC Top Hit name	RT	EstConc	Units	Response	--Internal Standard--			
					#	RT	Resp	Conc
unknown11.628	11.628	2.3	ng	77425	2	10.922	673137	20.0
Benzene, (1-eth...	12.109	3.4	ng	115087	2	10.922	673137	20.0
Naphthalene, 1,...	12.826	4.0	ng	134320	2	10.922	673137	20.0
Phenol, 2,6-bis...	14.095	2.5	ng	345966	3	14.747	2734990	20.0
unknown14.583	14.583	7.9	ng	1075910	3	14.747	2734990	20.0
photocitral A	15.547	6.9	ng	949638	3	14.747	2734990	20.0
Heptadecane, 2,...	16.481	20.0	ng	2731770	4	17.509	2731770	20.0