

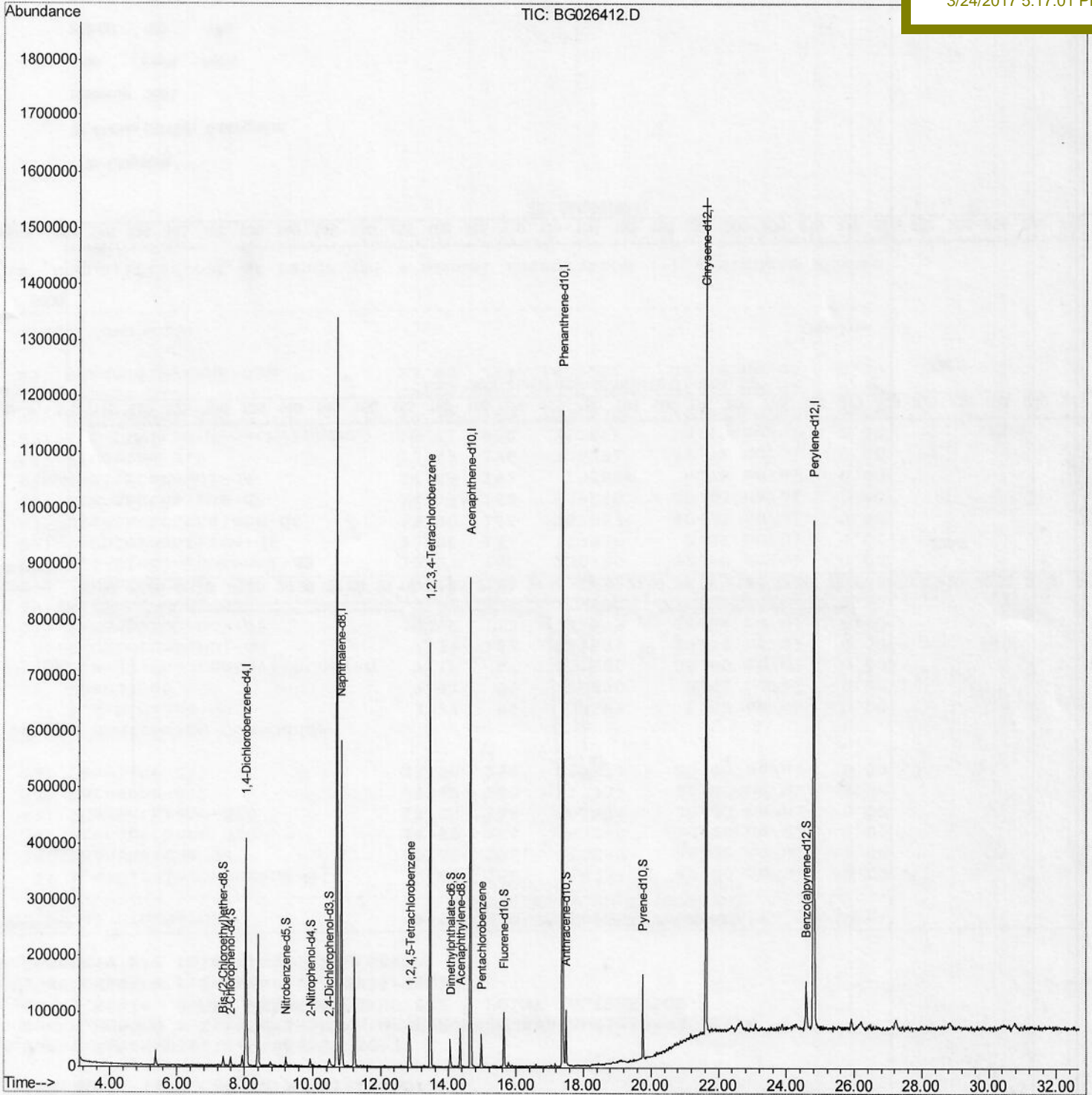
Data Path : Z:\HPCHEM1\BNA_G\Data\BG032417\
 Data File : BG026412.D
 Acq On : 24 Mar 2017 13:17
 Operator : SJ/MA
 Sample : I2180-06DL 20X
 Misc :
 ALS Vial : 3 Sample Multiplier: 1

Instrument :
 BNA_G
 Client Sampled :
 COBH0DL

Quant Time: Mar 24 15:10:17 2017
 Quant Method : Z:\HPCHEM1\BNA_G\METHODS\SOM-EPA-BG030717MA.M
 Quant Title : SVOA CALIBRATION
 QLast Update : Fri Mar 24 15:07:05 2017
 Response via : Initial Calibration

Manual Integrations
 APPROVED

mohammad
 3/24/2017 5:17:01 PM



Data Path : Z:\HPCHEM1\BNA_G\Data\BG032417\
 Data File : BG026412.D
 Acq On : 24 Mar 2017 13:17
 Operator : SJ/MA
 Sample : I2180-06DL 20X
 Misc :
 ALS Vial : 3 Sample Multiplier: 1

Instrument :
 BNA_G
 Client Sampled :
 COBH0DL

Quant Time: Mar 24 15:10:17 2017
 Quant Method : Z:\HPCHEM1\BNA_G\METHODS\SOM-EPA-BG030717MA.M
 Quant Title : SVOA CALIBRATION
 QLast Update : Fri Mar 24 15:07:05 2017
 Response via : Initial Calibration

Manual Integrations
 APPROVED

mohammad
 3/24/2017 5:17:01 PM

Internal Standards	R.T.	QIon	Response	Conc	Units	Dev (Min)
1) 1,4-Dichlorobenzene-d4	8.04	152	134806	20.00	ng/ul	0.00
18) Naphthalene-d8	10.84	136	556724	20.00	ng/ul	0.00
35) Acenaphthene-d10	14.65	164	325242	20.00	ng/ul	0.00
61) Phenanthrene-d10	17.38	188	786742	20.00	ng/ul	0.00
77) Chrysene-d12	21.63	240	969429	20.00	ng/ul	0.00
85) Perylene-d12	24.80	264	945525	20.00	ng/ul	0.00

System Monitoring Compounds

3) 1,4-Dioxane-d8	3.48	96	234	0.07	ng/uL	0.00
5) Phenol-d5	7.22	99	2579	0.26	ng/ul	0.02
7) Bis-(2-Chloroethyl)ether-d	7.37	67	8931	1.41	ng/ul	0.00
9) 2-Chlorophenol-d4	7.59	132	10905	1.35	ng/ul	0.01
13) 4-Methylphenol-d8	8.76	113	5933m	0.76	ng/ul	0.02
19) Nitrobenzene-d5	9.21	128	6114	1.52	ng/ul	0.01
22) 2-Nitrophenol-d4	9.93	143	6993	2.11	ng/ul	0.01
26) 2,4-Dichlorophenol-d3	10.49	165	12724m	1.72	ng/ul	0.02
29) 4-Chloroaniline-d4	0.00	131	0d	0.00	ng/ul	
43) Dimethylphthalate-d6	14.05	166	45178	2.14	ng/ul	0.00
46) Acenaphthylene-d8	14.35	160	58472	2.06	ng/ul	0.00
51) 4-Nitrophenol-d4	0.00	143	0d	0.00	ng/ul	
57) Fluorene-d10	15.64	176	46292	2.22	ng/ul	0.00
62) 4,6-Dinitro-2-methylphenol	15.78	200	3086	0.84	ng/ul	0.02
70) Anthracene-d10	17.48	188	79242m	2.22	ng/ul	0.00
78) Pyrene-d10	19.76	212	86551	2.17	ng/ul	0.00
89) Benzo(a)pyrene-d12	24.58	264	84077	2.02	ng/ul	0.00

SJ
 03/27/2017

SJ
 03/27/2017

Target Compounds

					Qvalue
36) 1,2,4,5-Tetrachlorobenzene	12.86	216	21987	2.39	ng/ul 93
72) 1,2,3,4-Tetrachlorobenzene	13.46	216	268740	28.55	ng/uL 96
73) Pentachlorobenzene	14.97	250	19974	2.07	ng/uL 98

(#) = qualifier out of range (m) = manual integration (+) = signals summed

Quantitation Report (Qedit)

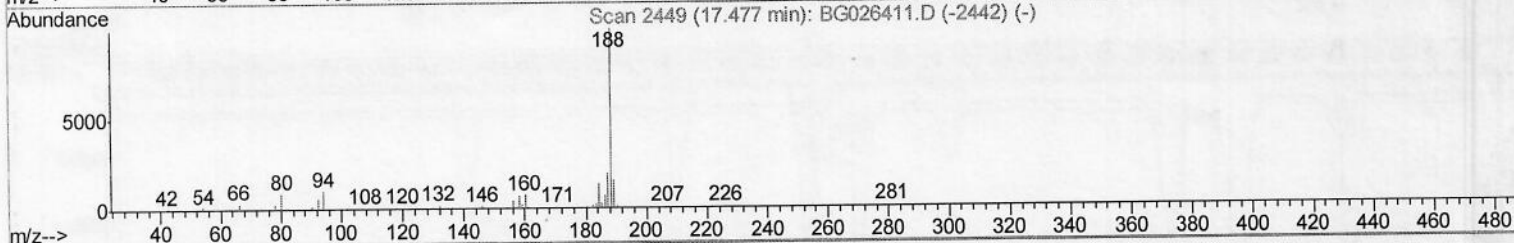
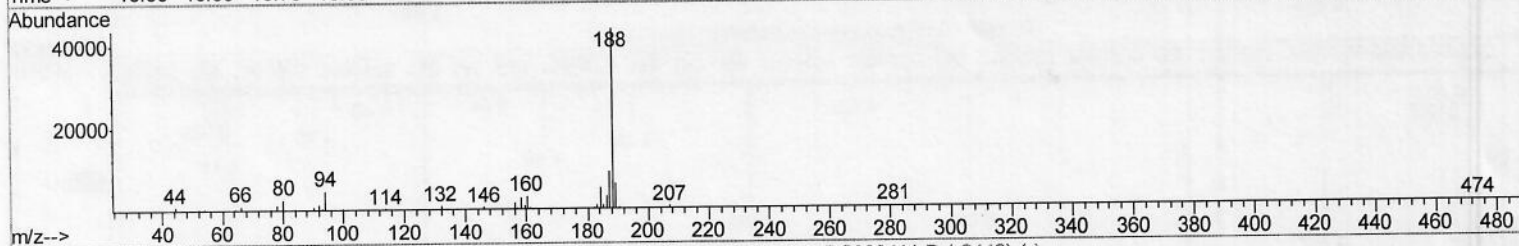
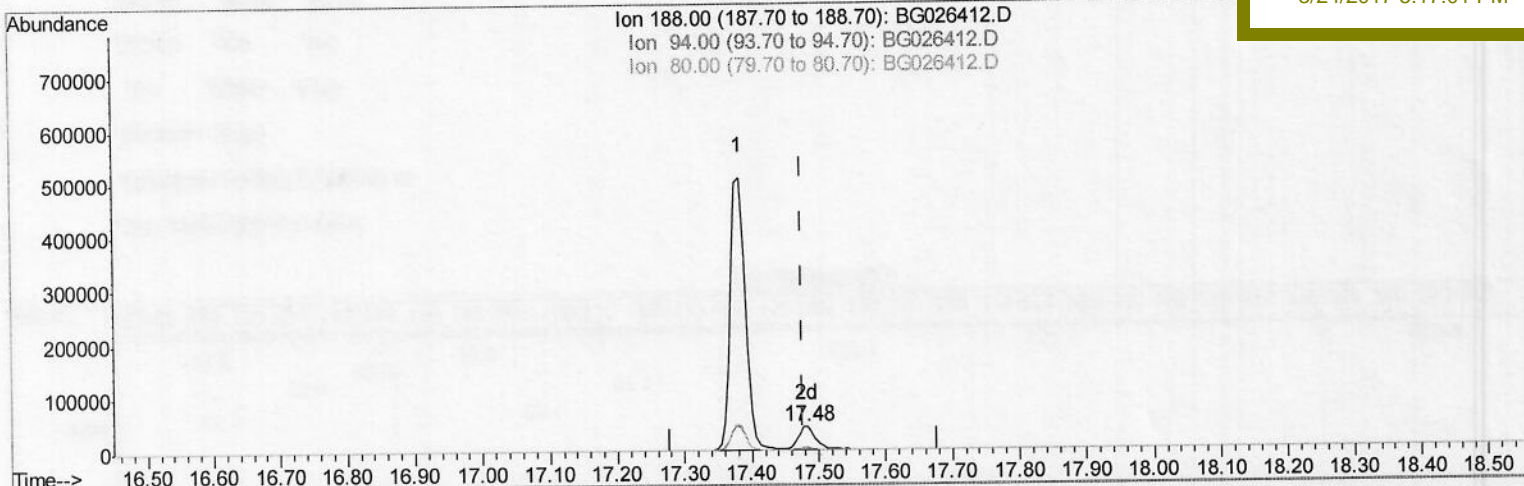
Data Path : Z:\HPCHEM1\BNA_G\Data\BG032417\
 Data File : BG026412.D
 Acq On : 24 Mar 2017 13:17
 Operator : SJ/MA
 Sample : I2180-06DL 20X
 Misc :
 ALS Vial : 3 Sample Multiplier: 1

Instrument :
 BNA_G
 Client Sampled :
 COBH0DL

Quant Time: Mar 24 15:06:57 2017
 Quant Method : Z:\HPCHEM1\BNA_G\METHODS\SOM-EPA-BG030717MA.M
 Quant Title : SVOA CALIBRATION
 QLast Update : Fri Mar 24 15:07:05 2017
 Response via : Initial Calibration

Manual Integrations
 APPROVED

mohammad
 3/24/2017 5:17:01 PM



(70) Anthracene-d10 (S)

17.483min (+0.006) 2.22ng/ul m

} 55
 03/27/2017

response 79242

Ion	Exp%	Act%
188.00	100	100
94.00	10.10	10.82
80.00	9.10	5.97#
0.00	0.00	0.00

Quantitation Report (Qedit)

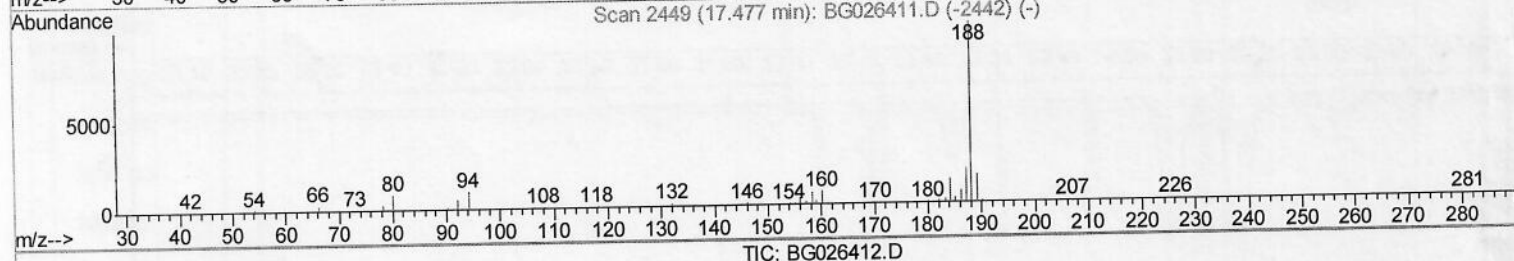
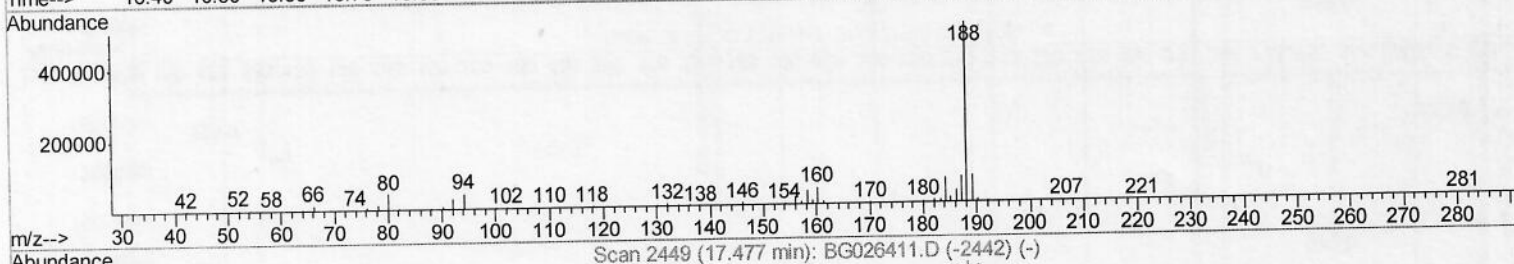
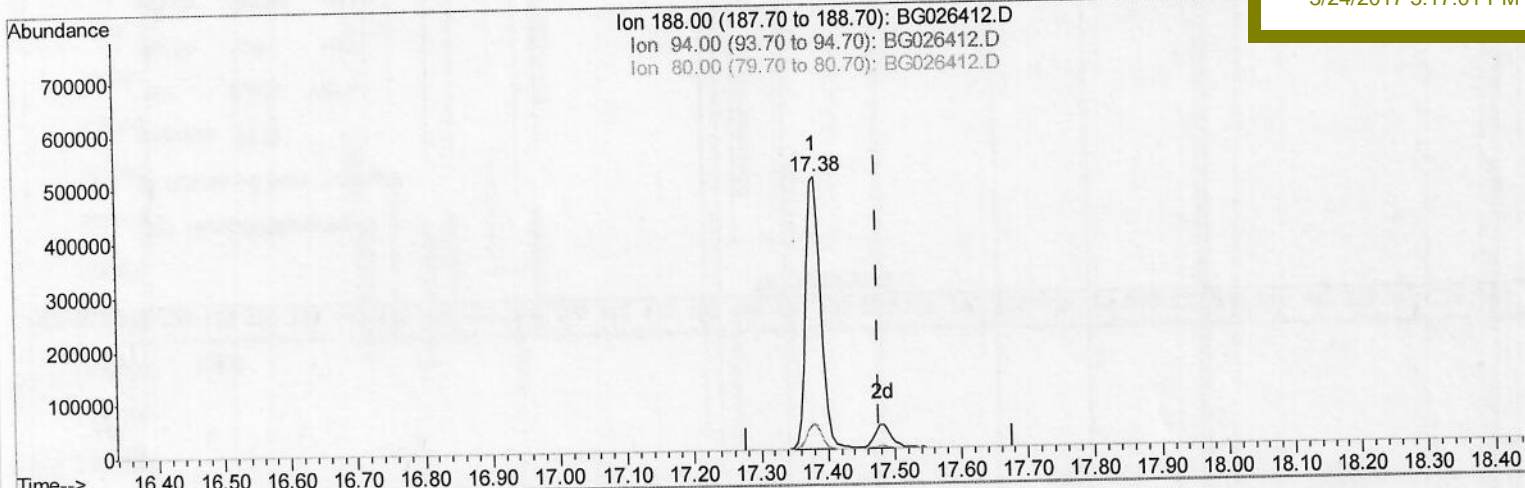
Data Path : Z:\HPCHEM1\BNA_G\Data\BG032417\
 Data File : BG026412.D
 Acq On : 24 Mar 2017 13:17
 Operator : SJ/MA
 Sample : I2180-06DL 20X
 Misc :
 ALS Vial : 3 Sample Multiplier: 1

Instrument :
 BNA_G
 ClientSampleId :
 COBH0DL

Quant Time: Mar 24 15:06:57 2017
 Quant Method : Z:\HPCHEM1\BNA_G\METHODS\SOM-EPA-BG030717MA.M
 Quant Title : SVOA CALIBRATION
 QLast Update : Fri Mar 24 15:07:05 2017
 Response via : Initial Calibration

Manual Integrations
 APPROVED

mohammad
 3/24/2017 5:17:01 PM



(70) Anthracene-d10 (S)
 17.383min (-0.094) 22.04ng/ul
 response 786742

Ion	Exp%	Act%
188.00	100	100
94.00	10.10	8.60
80.00	9.10	8.92
0.00	0.00	0.00

Quantitation Report (Qedit)

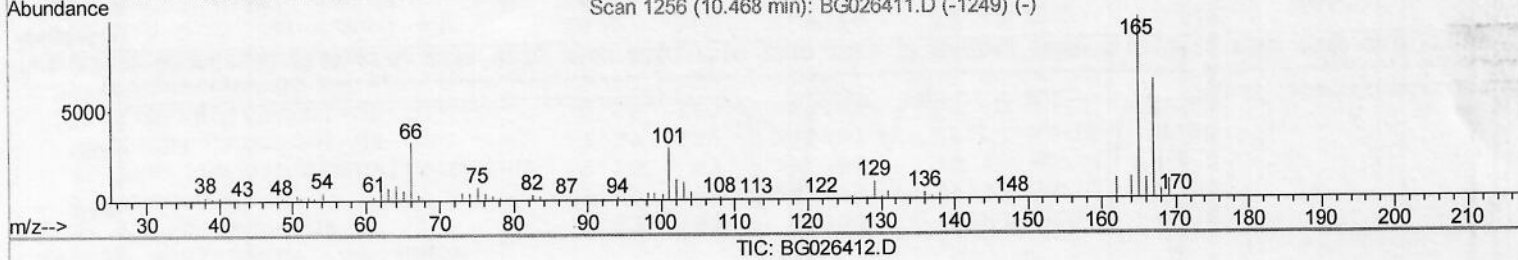
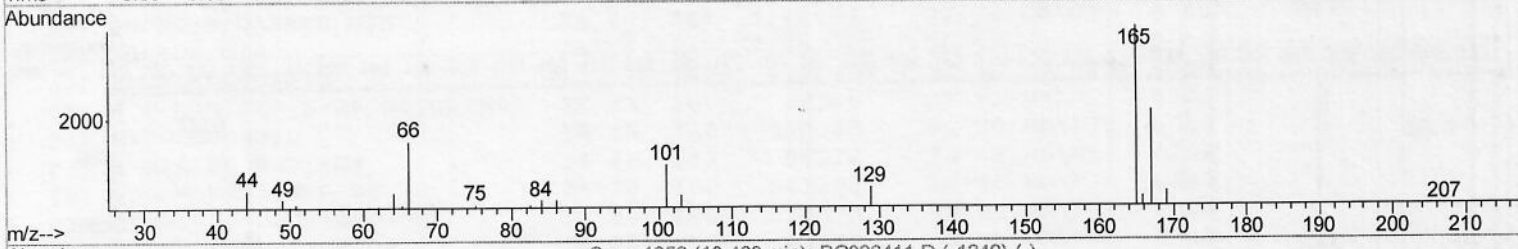
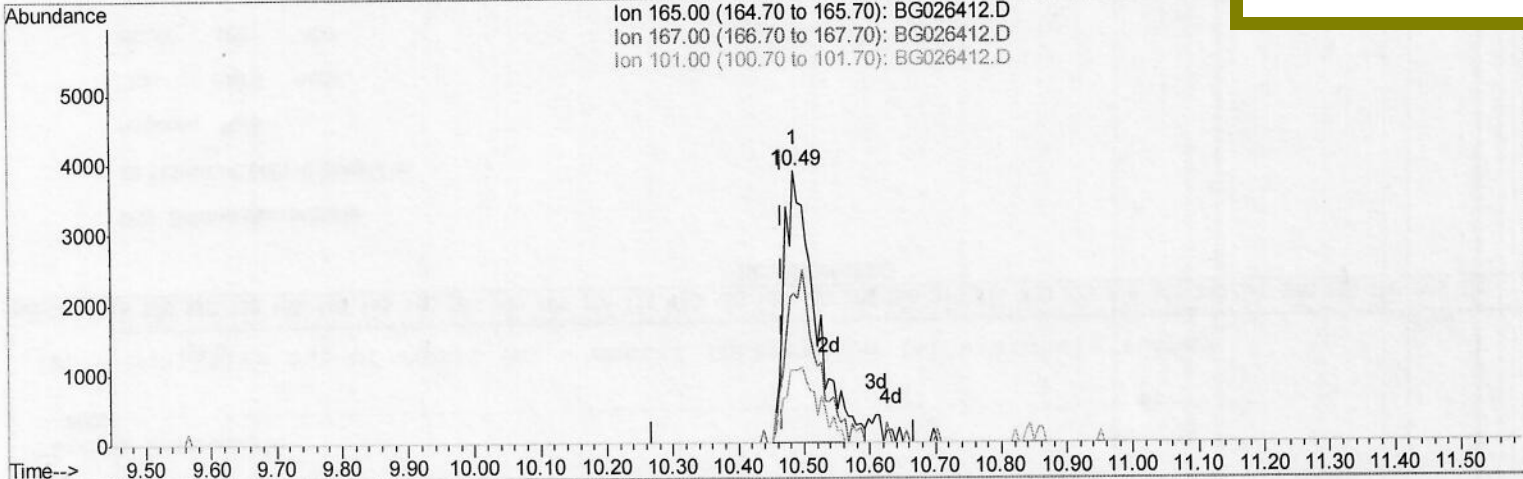
Data Path : Z:\HPCHEM1\BNA_G\Data\BG032417\
 Data File : BG026412.D
 Acq On : 24 Mar 2017 13:17
 Operator : SJ/MA
 Sample : I2180-06DL 20X
 Misc :
 ALS Vial : 3 Sample Multiplier: 1

Instrument :
 BNA_G
 Client Sample Id :
 COBH0DL

Manual Integrations
 APPROVED

mohammad
 3/24/2017 5:17:01 PM

Quant Time: Mar 24 15:06:57 2017
 Quant Method : Z:\HPCHEM1\BNA_G\METHODS\SOM-EPA-BG030717MA.M
 Quant Title : SVOA CALIBRATION
 QLast Update : Fri Mar 24 15:07:05 2017
 Response via : Initial Calibration



(26) 2,4-Dichlorophenol-d3 (S)

10.486min (+0.018) 1.72ng/ul m

response 12724

S 55
 03/27/2017

Ion	Exp%	Act%
165.00	100	100
167.00	65.30	55.05
101.00	34.20	26.89#
0.00	0.00	0.00

Quantitation Report (Qedit)

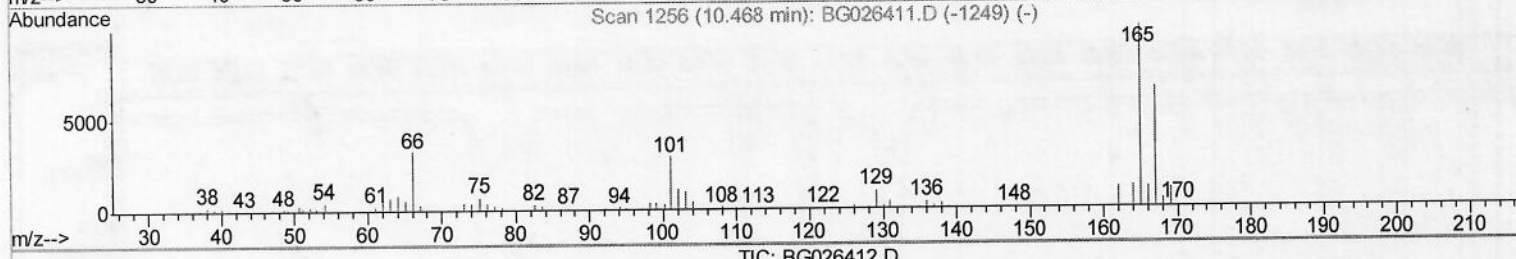
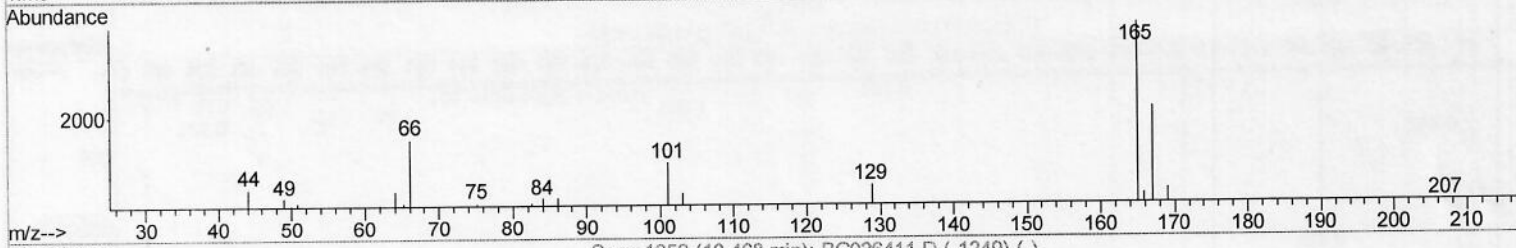
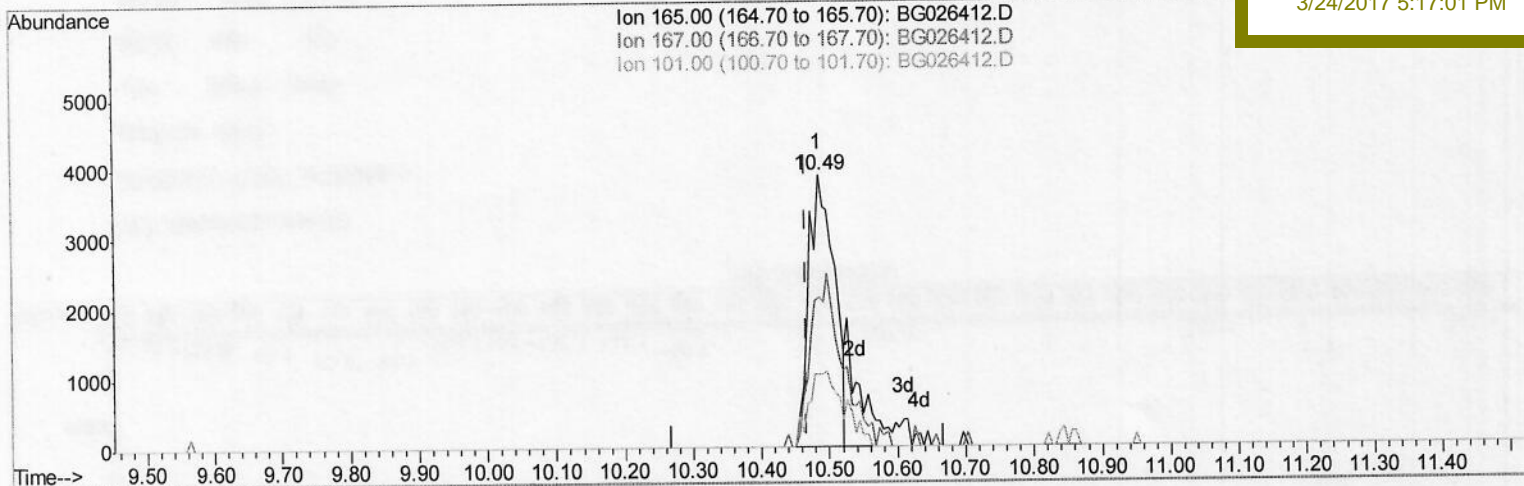
Data Path : Z:\HPCHEM1\BNA_G\Data\BG032417\
 Data File : BG026412.D
 Acq On : 24 Mar 2017 13:17
 Operator : SJ/MA
 Sample : I2180-06DL 20X
 Misc :
 ALS Vial : 3 Sample Multiplier: 1

Instrument :
 BNA_G
 Client Sampled :
 COBH0DL

Quant Time: Mar 24 15:06:57 2017
 Quant Method : Z:\HPCHEM1\BNA_G\METHODS\SOM-EPA-BG030717MA.M
 Quant Title : SVOA CALIBRATION
 QLast Update : Fri Mar 24 15:07:05 2017
 Response via : Initial Calibration

Manual Integrations
 APPROVED

mohammad
 3/24/2017 5:17:01 PM



TIC: BG026412.D

(26) 2,4-Dichlorophenol-d3 (S)
 10.486min (+0.018) 1.37ng/ul
 response 10082

Ion	Exp%	Act%
165.00	100	100
167.00	65.30	55.05
101.00	34.20	26.89#
0.00	0.00	0.00

Quantitation Report (Qedit)

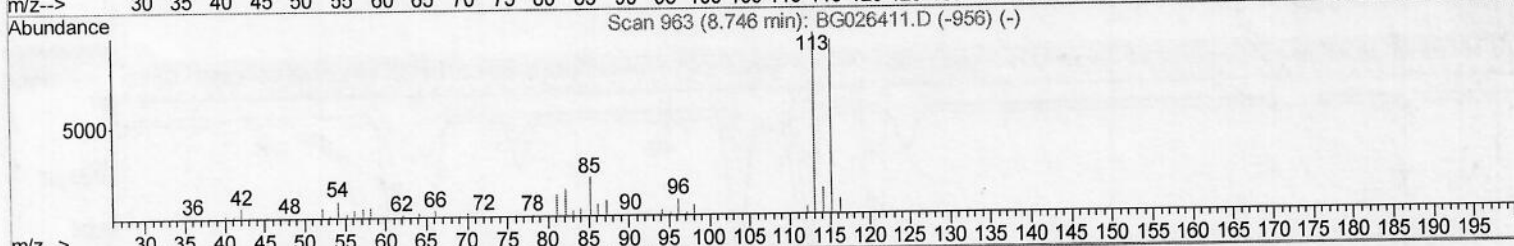
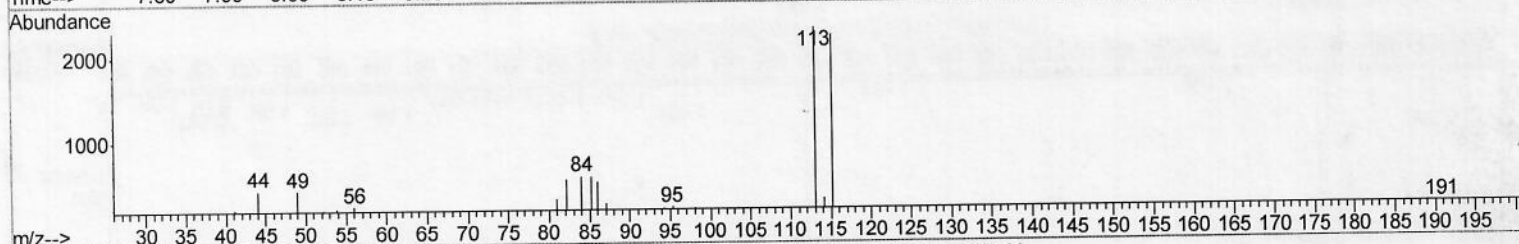
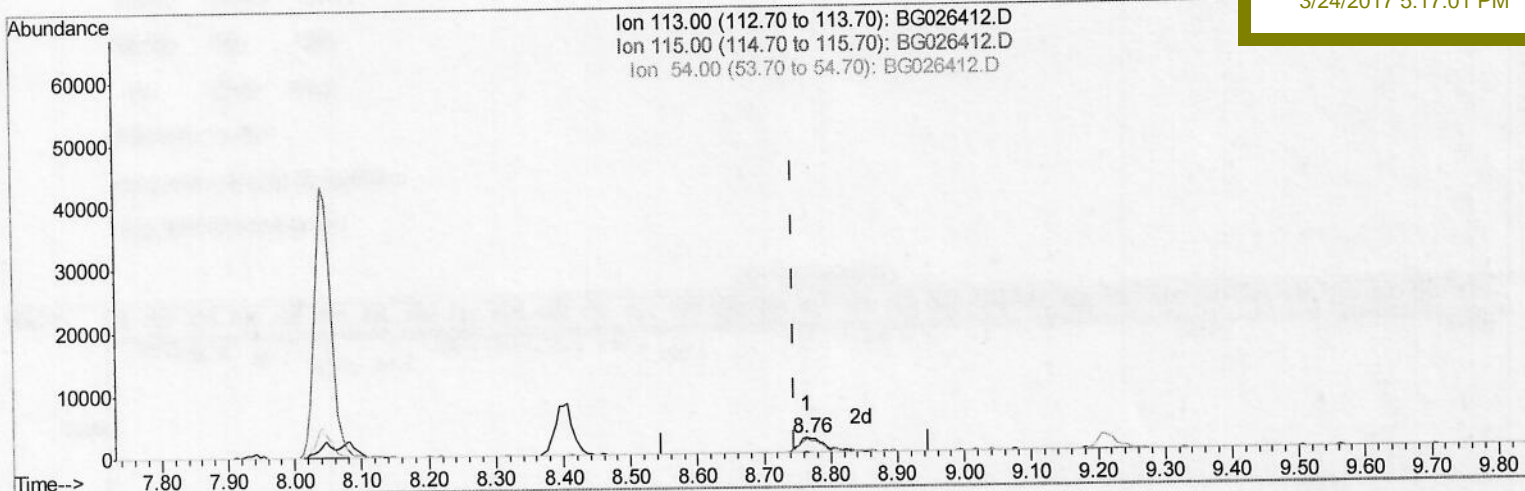
Data Path : Z:\HPCHEM1\BNA_G\Data\BG032417\
 Data File : BG026412.D
 Acq On : 24 Mar 2017 13:17
 Operator : SJ/MA
 Sample : I2180-06DL 20X
 Misc :
 ALS Vial : 3 Sample Multiplier: 1

Instrument :
 BNA_G
 Client Sampled :
 COBH0DL

Quant Time: Mar 24 15:06:57 2017
 Quant Method : Z:\HPCHEM1\BNA_G\METHODS\SOM-EPA-BG030717MA.M
 Quant Title : SVOA CALIBRATION
 QLast Update : Fri Mar 24 15:07:05 2017
 Response via : Initial Calibration

Manual Integrations
 APPROVED

mohammad
 3/24/2017 5:17:01 PM



(13) 4-Methylphenol-d8 (S)

8.764min (+0.018) 0.76ng/ul m

response 5933

Ion Exp% Act%

113.00 100 100

115.00 93.70 96.32

54.00 10.40 8.04#

0.00 0.00 0.00

55
 03/27/2017

Quantitation Report (Qedit)

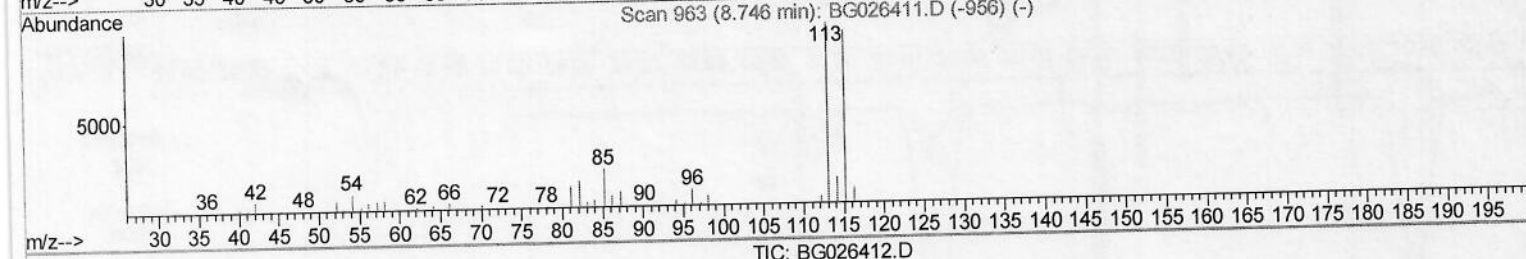
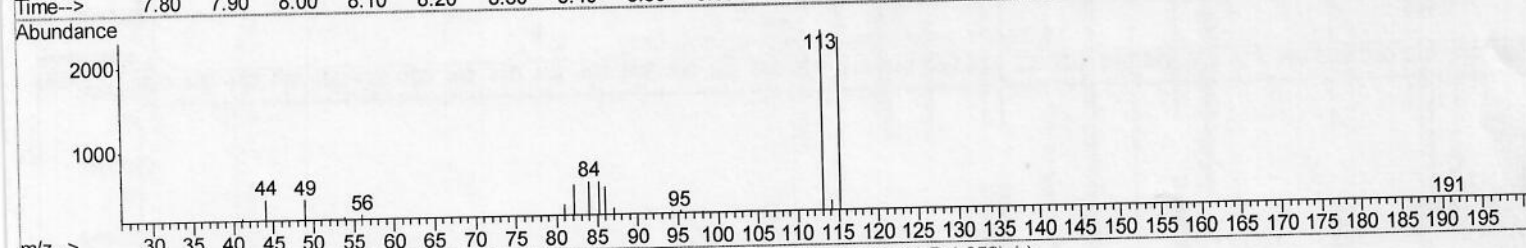
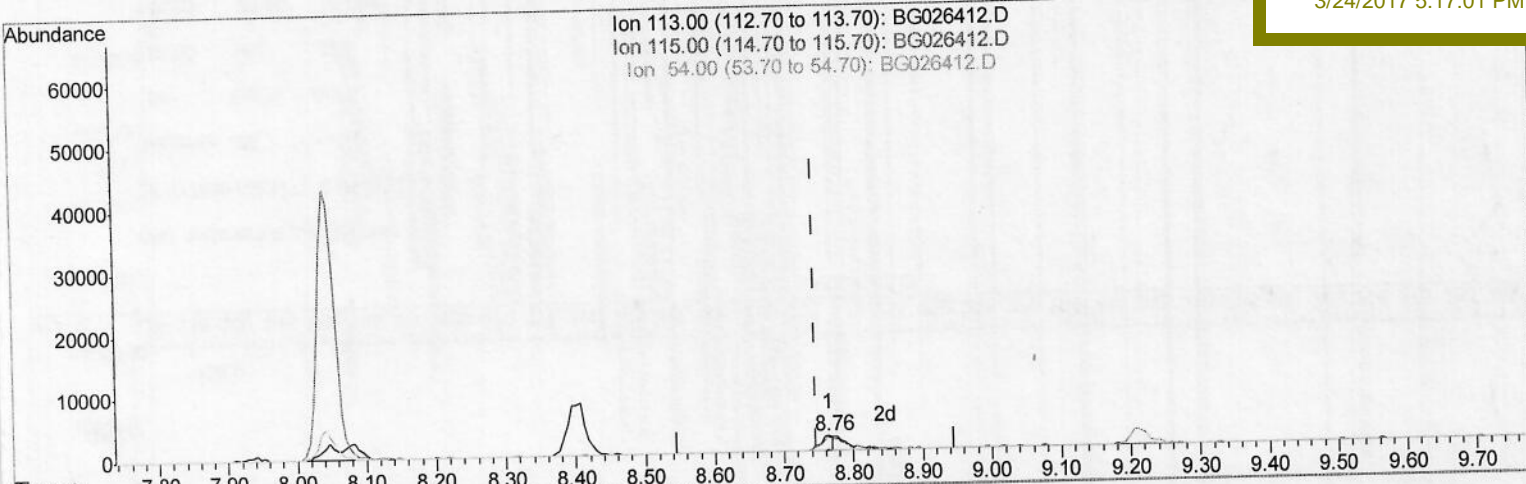
Data Path : Z:\HPCHEM1\BNA_G\Data\BG032417\
 Data File : BG026412.D
 Acq On : 24 Mar 2017 13:17
 Operator : SJ/MA
 Sample : I2180-06DL 20X
 Misc :
 ALS Vial : 3 Sample Multiplier: 1

Instrument :
 BNA_G
 Client Sample Id :
 COBH0DL

Manual Integrations
 APPROVED

mohammad
 3/24/2017 5:17:01 PM

Quant Time: Mar 24 15:06:57 2017
 Quant Method : Z:\HPCHEM1\BNA_G\METHODS\SOM-EPA-BG030717MA.M
 Quant Title : SVOA CALIBRATION
 QLast Update : Fri Mar 24 15:07:05 2017
 Response via : Initial Calibration



(13) 4-Methylphenol-d8 (S)
 8.764min (+0.018) 0.39ng/ul
 response 3027

Ion	Exp%	Act%
113.00	100	100
115.00	93.70	96.32
54.00	10.40	8.04#
0.00	0.00	0.00