

Data Path : \\74.0.250.170\SVOASRV\HPCHEM1\BNA_G\DATA\BG032618\
 Data File : BG033336.D
 Acq On : 26 Mar 2018 19:18
 Operator : SJ/JU
 Sample : J2053-02
 Misc :
 ALS Vial : 14 Sample Multiplier: 1

Instrument :
 BNA_G
ClientSampleId :
 MW-02-20180323

Manual Integrations
APPROVED
 Sohil
 3/27/2018 2:57:44 PM

Quant Time: Mar 27 08:06:08 2018
 Quant Method : Z:\HPCHEM1\BNA_G\METHODS\8270-BG031918.M
 Quant Title : ASP BNA STANDARDS FOR 5 POINT CALIBRATION
 QLast Update : Fri Mar 23 15:11:46 2018
 Response via : Initial Calibration

Internal Standards	R.T.	QIon	Response	Conc	Units	Dev(Min)
1) 1,4-Dichlorobenzene-d4	8.87	152	44025	20.00	ng	-0.03
21) Naphthalene-d8	11.75	136	184854	20.00	ng	-0.03
38) Acenaphthene-d10	15.48	164	146189	20.00	ng	-0.03
63) Phenanthrene-d10	18.21	188	370029	20.00	ng	-0.03
75) Chrysene-d12	22.56	240	371529	20.00	ng	-0.04
86) Perylene-d12	26.32	264	418871	20.00	ng	-0.07
System Monitoring Compounds						
5) 2-Fluorophenol	6.29	112	185633	79.07	ng	-0.02
7) Phenol-d6	7.98	99	168790	41.84	ng	-0.02
23) Nitrobenzene-d5	10.07	82	391852	97.39	ng	-0.03
41) 2,4,6-Tribromophenol	16.96	330	343916	157.30	ng	-0.03
44) 2-Fluorobiphenyl	14.12	172	1033160	102.03	ng	-0.02
78) Terphenyl-d14	20.73	244	1680464	96.73	ng	-0.03
Target Compounds						
27) 2,4-Dimethylphenol	10.90	122	26070	11.007	ng	81
36) 4-Chloro-3-methylphenol	12.99	107	26527m	6.982	ng	
49) Dimethylphthalate	14.91	163	27055	2.127	ng	# 89

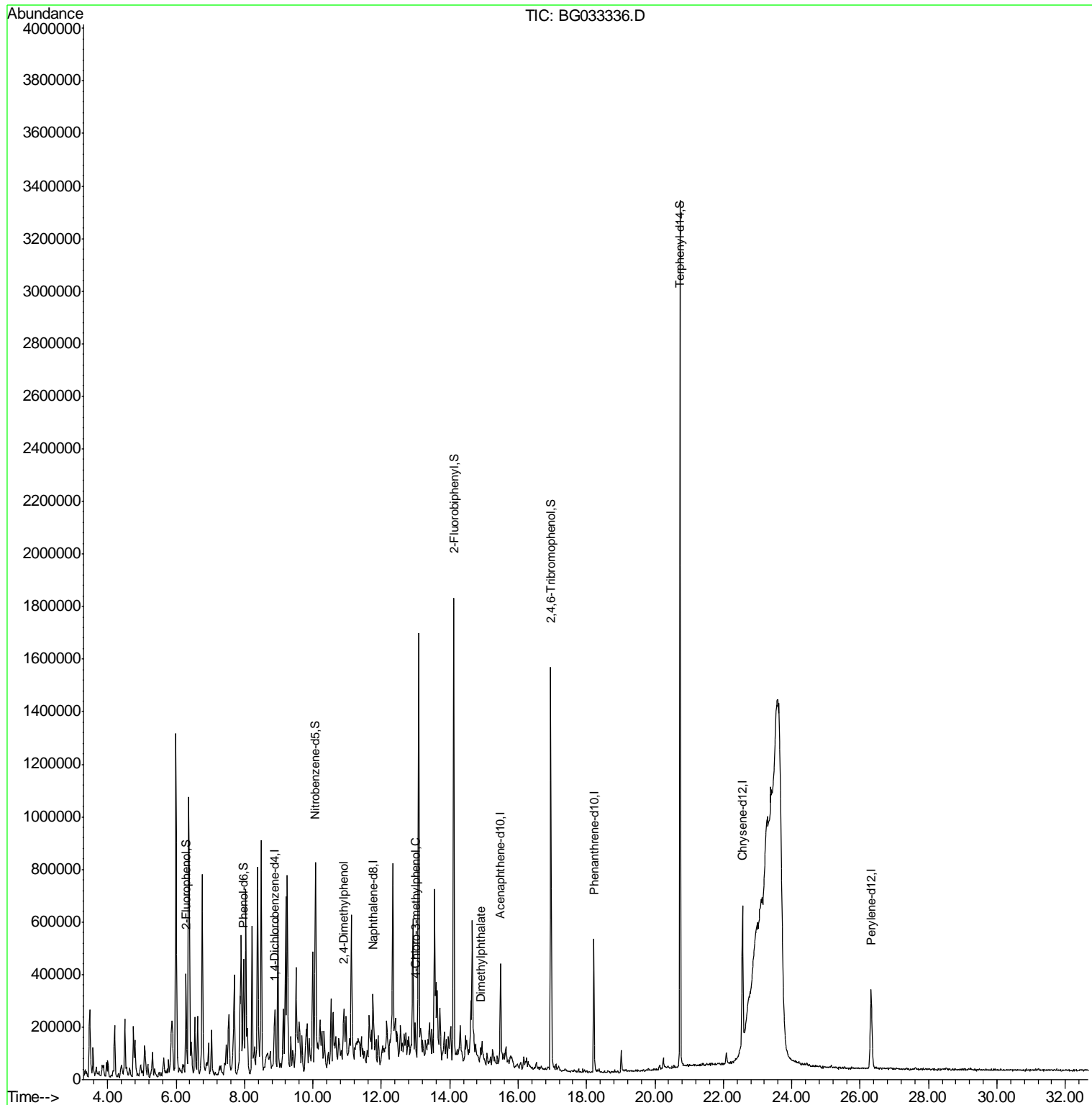
(#) = qualifier out of range (m) = manual integration (+) = signals summed

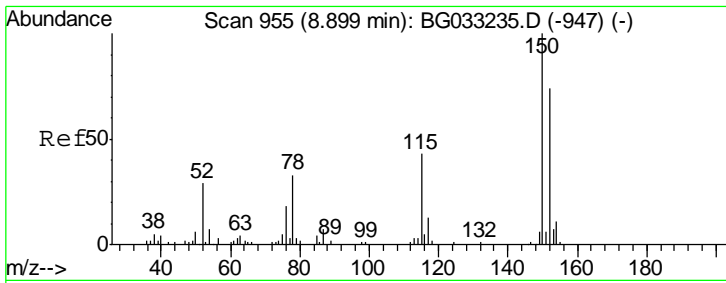
Data Path : \\74.0.250.170\SVOASRV\HPCHEM1\BNA_G\DATA\BG032618\
 Data File : BG033336.D
 Acq On : 26 Mar 2018 19:18
 Operator : SJ/JU
 Sample : J2053-02
 Misc :
 ALS Vial : 14 Sample Multiplier: 1

Instrument :
 BNA_G
ClientSampleId :
 MW-02-20180323

Manual Integrations
APPROVED
 Sohil
 3/27/2018 2:57:44 PM

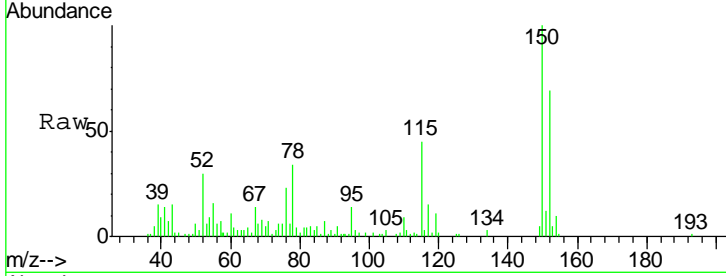
Quant Time: Mar 27 08:06:08 2018
 Quant Method : Z:\HPCHEM1\BNA_G\METHODS\8270-BG031918.M
 Quant Title : ASP BNA STANDARDS FOR 5 POINT CALIBRATION
 QLast Update : Fri Mar 23 15:11:46 2018
 Response via : Initial Calibration





#1
 1,4-Dichlorobenzene-d4
 Concen: 20.000 ng
 RT: 8.87 min Scan# 950
 Delta R.T. -0.03 min
 Lab File: BG033336.D
 Acq: 26 Mar 2018 19:18

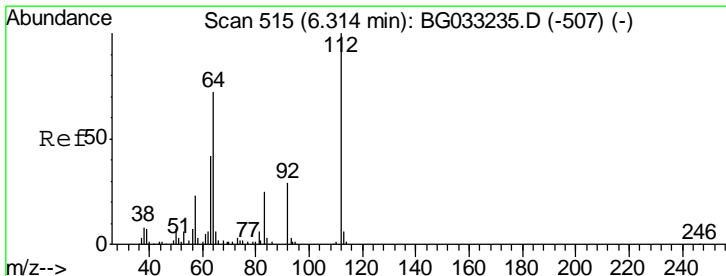
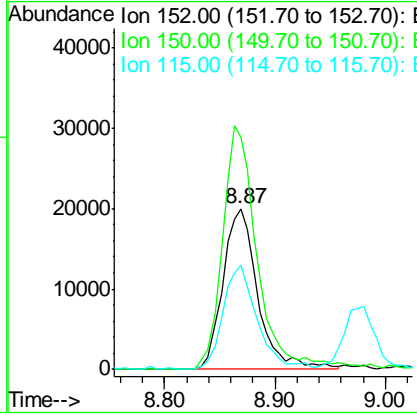
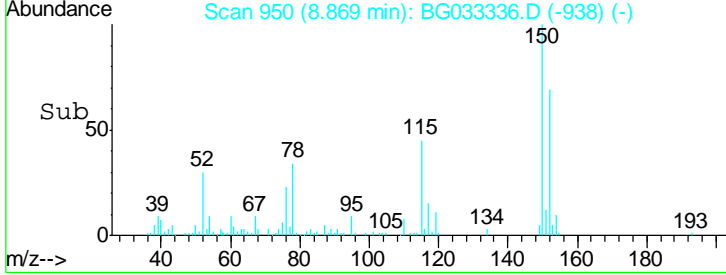
Instrument :
 BNA_G
 ClientSampleId :
 MW-02-20180323



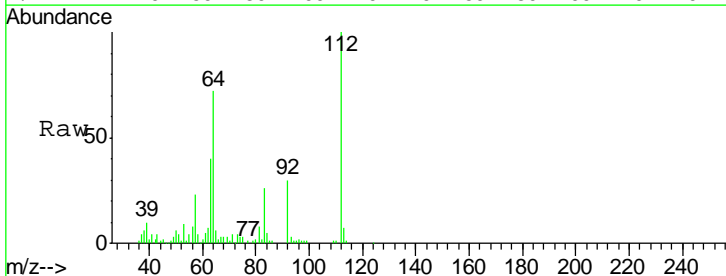
Tgt Ion	Resp	Lower	Upper
152	44025		
150	100	126.6	189.8
115	144.0	53.0	79.4

Manual Integrations
 APPROVED

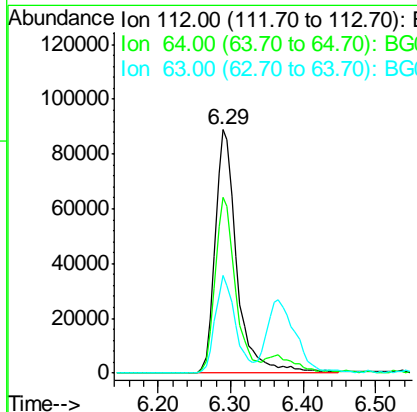
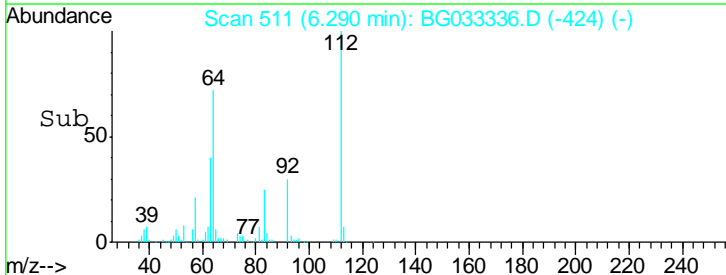
Sohil
 3/27/2018 2:57:44 PM

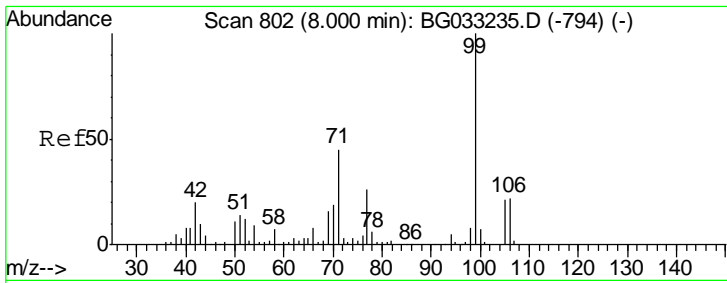


#5
 2-Fluorophenol
 Concen: 79.065 ng
 RT: 6.29 min Scan# 511
 Delta R.T. -0.02 min
 Lab File: BG033336.D
 Acq: 26 Mar 2018 19:18



Tgt Ion	Resp	Lower	Upper
112	185633		
112	100		
64	72.0	56.3	84.5
63	40.0	30.1	45.1





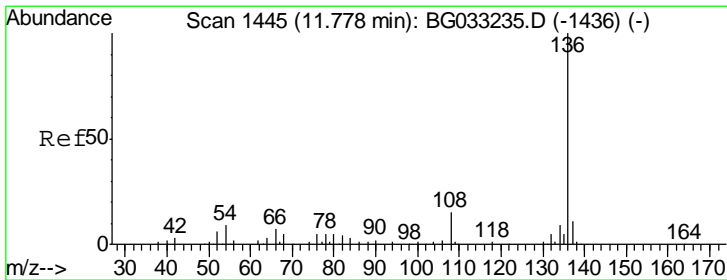
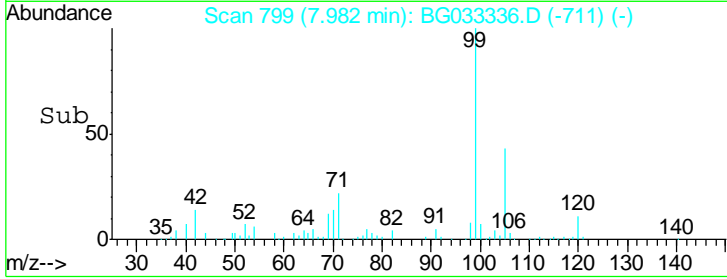
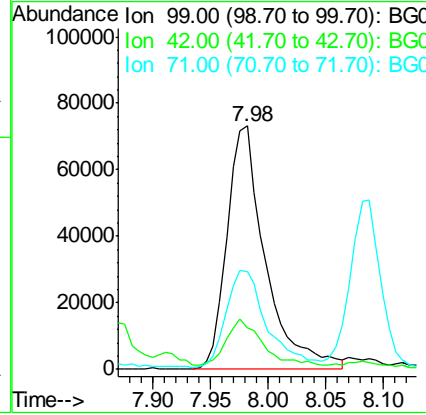
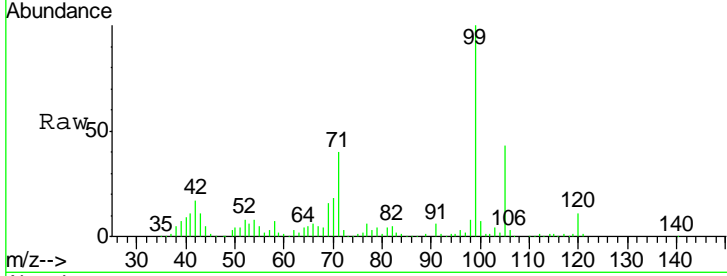
#7
 Phenol-d6
 Concen: 41.841 ng
 RT: 7.98 min Scan# 799
 Delta R.T. -0.02 min
 Lab File: BG033336.D
 Acq: 26 Mar 2018 19:18

Instrument :
 BNA_G
ClientSampled :
 MW-02-20180323

Tgt Ion	Resp	Lower	Upper
99	168790		
99	100		
42	17.2	14.1	21.1
71	40.3	26.1	39.1#

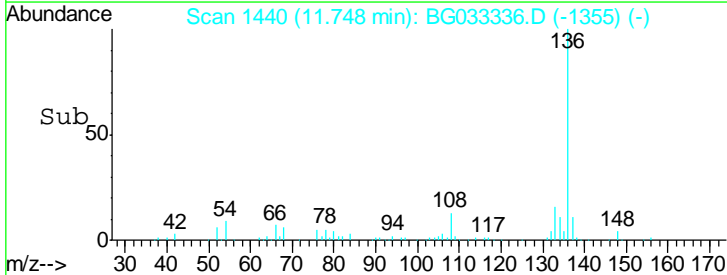
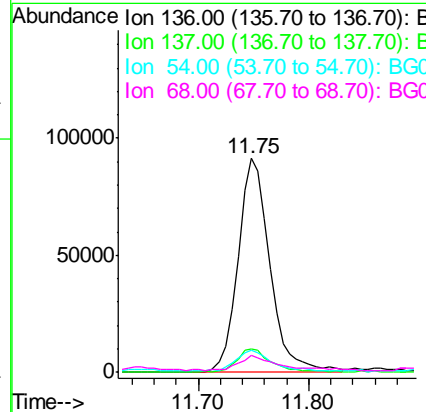
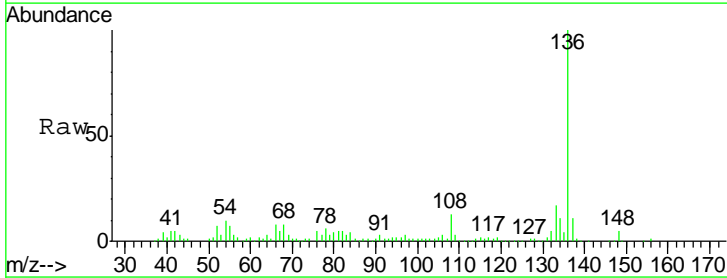
Manual Integrations
APPROVED

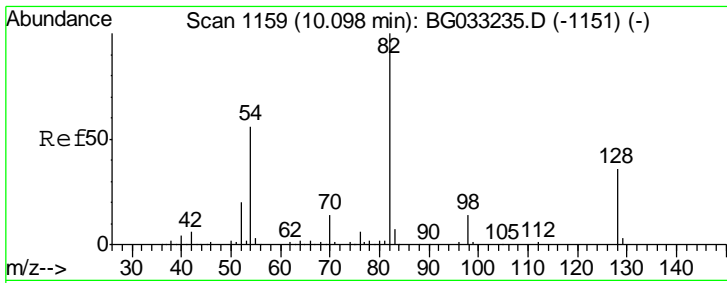
Sohil
 3/27/2018 2:57:44 PM



#21
 Naphthalene-d8
 Concen: 20.000 ng
 RT: 11.75 min Scan# 1440
 Delta R.T. -0.03 min
 Lab File: BG033336.D
 Acq: 26 Mar 2018 19:18

Tgt Ion	Resp	Lower	Upper
136	184854		
136	100		
137	10.9	9.2	13.8
54	10.1	10.3	15.5#
68	8.0	4.5	6.7#





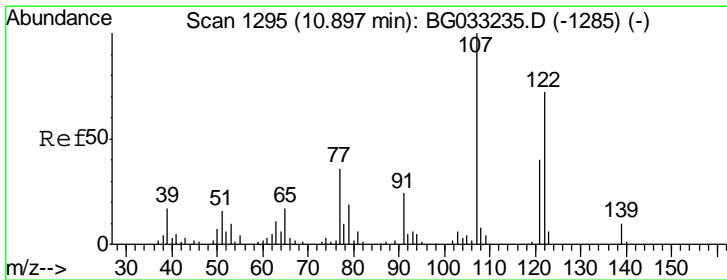
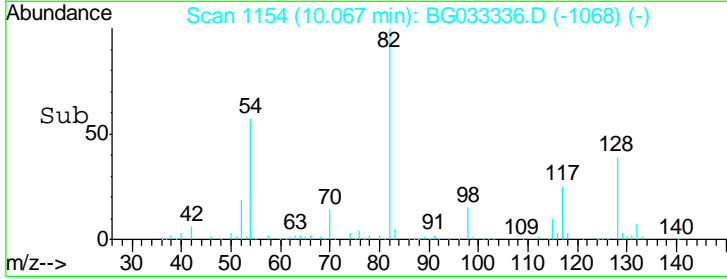
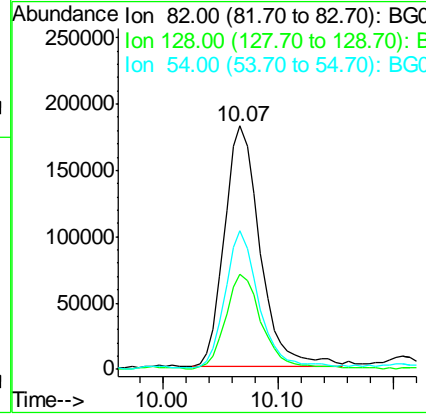
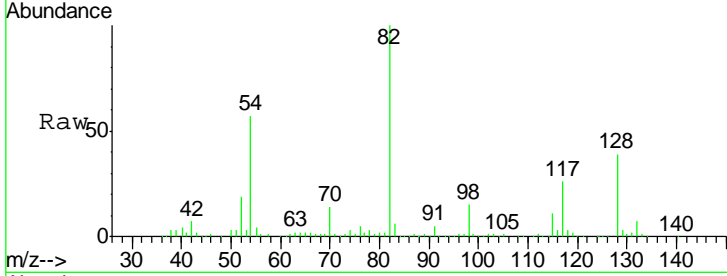
#23
 Nitrobenzene-d5
 Concen: 97.392 ng
 RT: 10.07 min Scan# 1154
 Delta R.T. -0.03 min
 Lab File: BG033336.D
 Acq: 26 Mar 2018 19:18

Instrument :
 BNA_G
 ClientSampled :
 MW-02-20180323

Tgt Ion	Resp	Lower	Upper
82	391852		
128	38.9	29.7	44.5
54	57.0	43.1	64.7

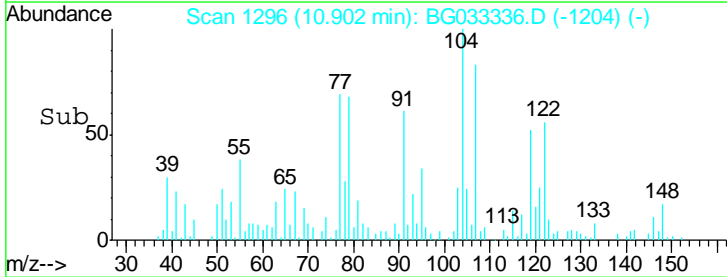
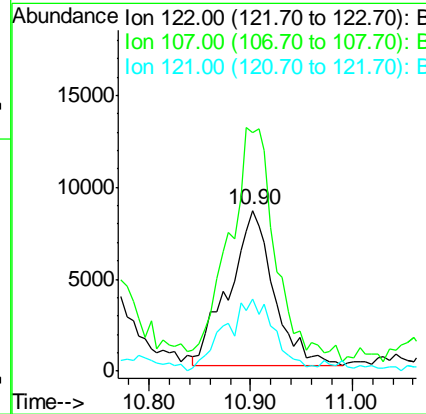
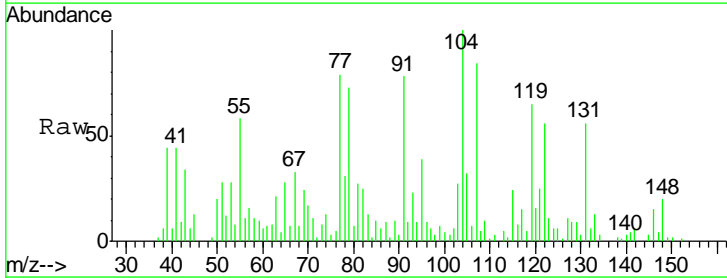
Manual Integrations
 APPROVED

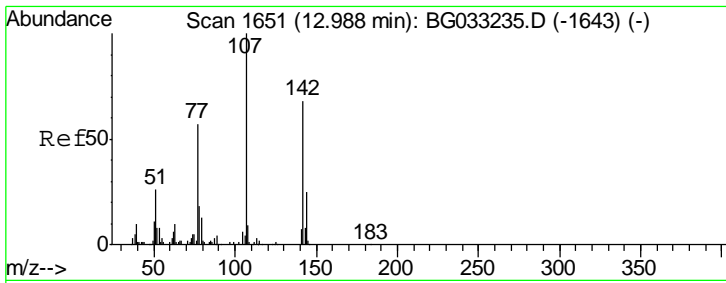
Sohil
 3/27/2018 2:57:44 PM



#27
 2,4-Dimethylphenol
 Concen: 11.007 ng
 RT: 10.90 min Scan# 1296
 Delta R.T. 0.01 min
 Lab File: BG033336.D
 Acq: 26 Mar 2018 19:18

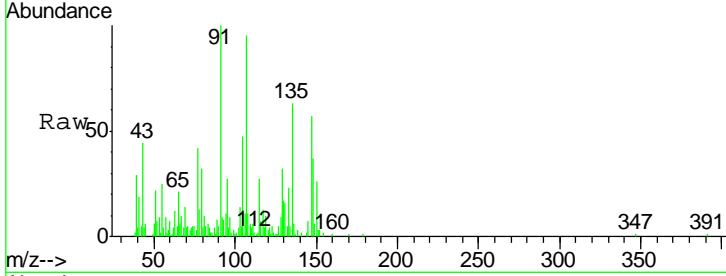
Tgt Ion	Resp	Lower	Upper
122	26070		
107	148.8	100.2	150.2
121	44.9	44.4	66.6





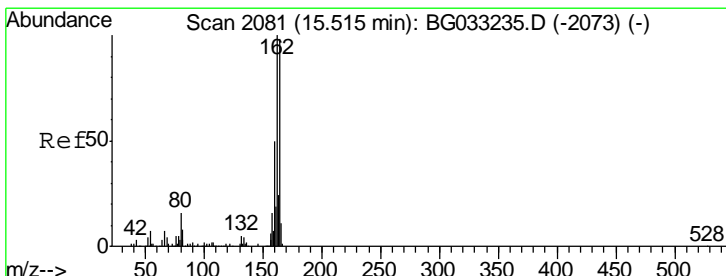
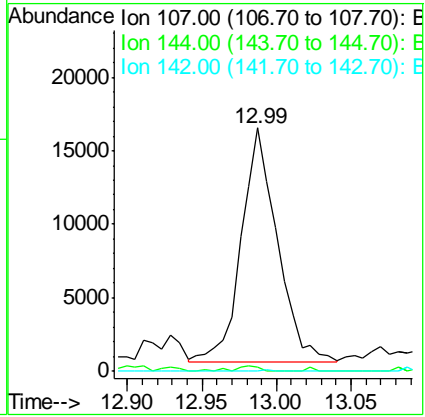
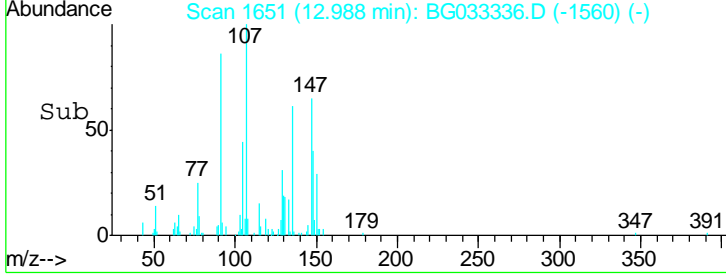
#36
 4-Chloro-3-methylphenol
 Concen: 6.982 ng m
 RT: 12.99 min Scan# 1651
 Delta R.T. 0.00 min
 Lab File: BG033336.D
 Acq: 26 Mar 2018 19:18

Instrument :
 BNA_G
ClientSampled :
 MW-02-20180323

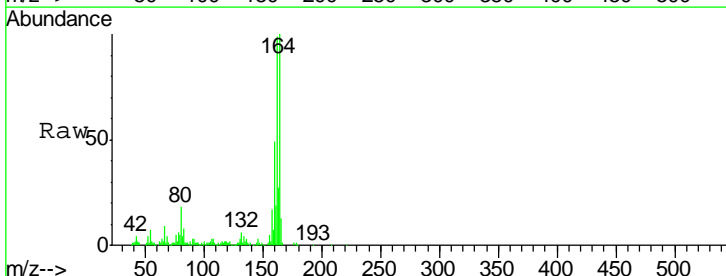


Tgt Ion	Resp	Lower	Upper
107	26527		
107	100		
144	1.7	18.2	27.4#
142	0.0	59.0	88.4#

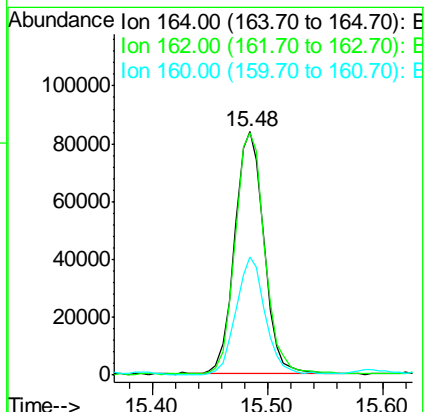
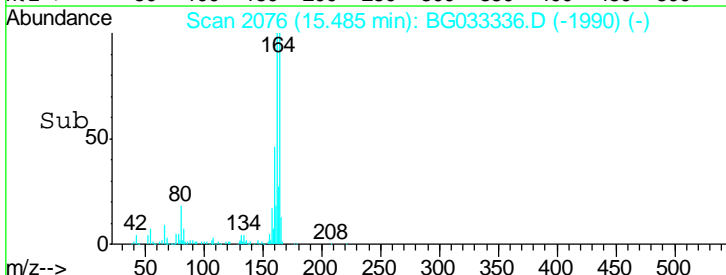
Manual Integrations
APPROVED
 Sohil
 3/27/2018 2:57:44 PM

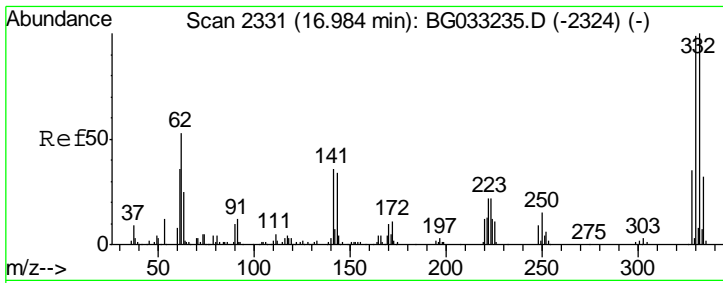


#38
 Acenaphthene-d10
 Concen: 20.000 ng
 RT: 15.48 min Scan# 2076
 Delta R.T. -0.03 min
 Lab File: BG033336.D
 Acq: 26 Mar 2018 19:18



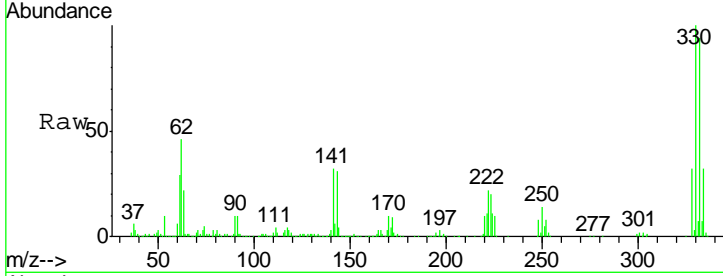
Tgt Ion	Resp	Lower	Upper
164	146189		
164	100		
162	99.4	78.8	118.2
160	48.6	35.4	53.0





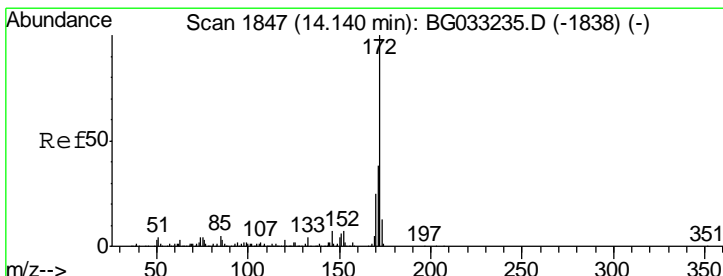
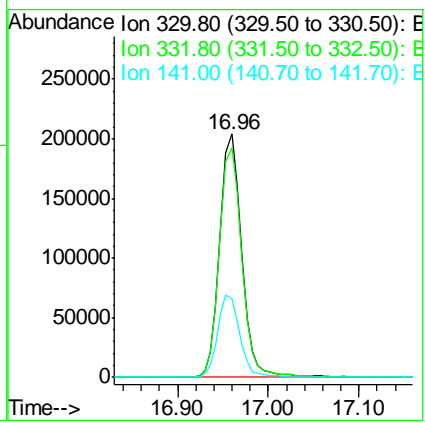
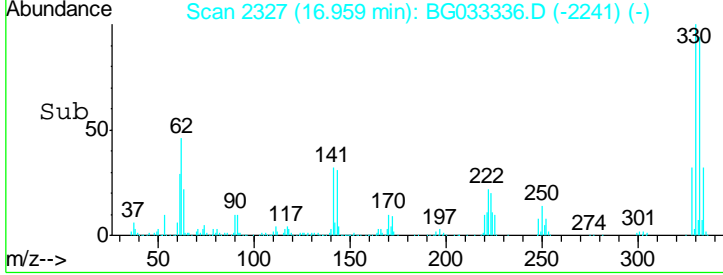
#41
 2,4,6-Tribromophenol
 Concen: 157.296 ng
 RT: 16.96 min Scan# 2327
 Delta R.T. -0.03 min
 Lab File: BG033336.D
 Acq: 26 Mar 2018 19:18

Instrument :
 BNA_G
 ClientSampled :
 MW-02-20180323

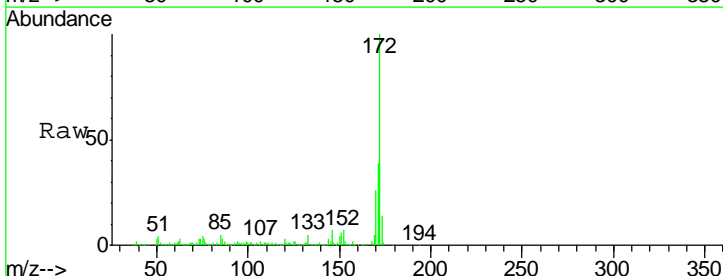


Tgt Ion	Resp	Lower	Upper
330	100		
332	96.3	77.0	115.6
141	33.9	25.2	37.8

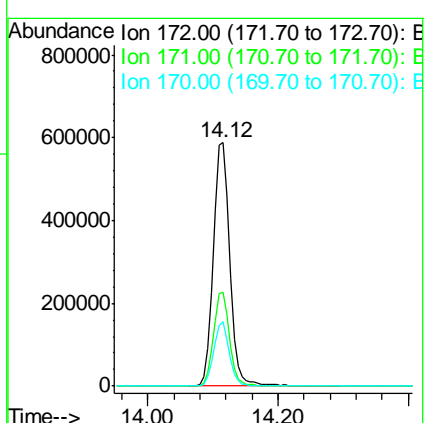
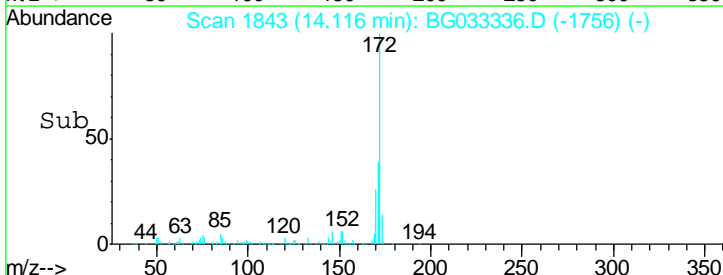
Manual Integrations
APPROVED
 Sohil
 3/27/2018 2:57:44 PM

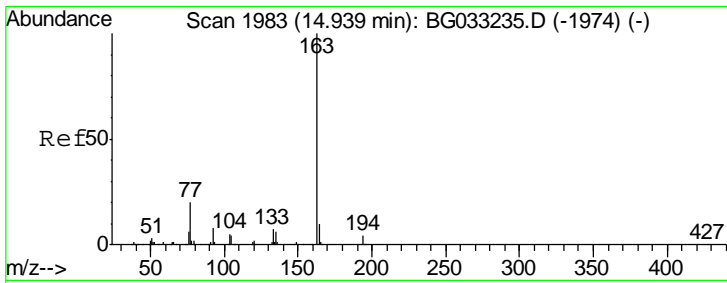


#44
 2-Fluorobiphenyl
 Concen: 102.026 ng
 RT: 14.12 min Scan# 1843
 Delta R.T. -0.02 min
 Lab File: BG033336.D
 Acq: 26 Mar 2018 19:18



Tgt Ion	Resp	Lower	Upper
172	100		
171	38.7	30.0	45.0
170	26.3	19.5	29.3





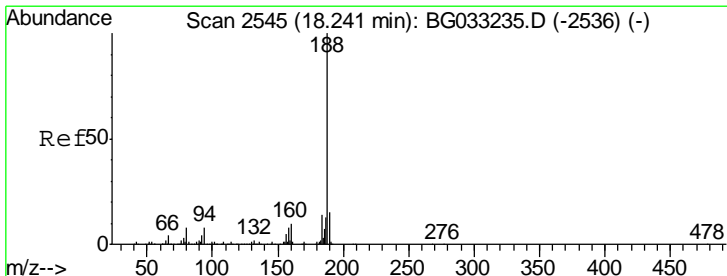
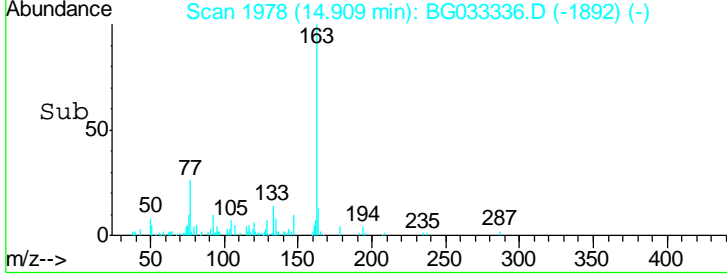
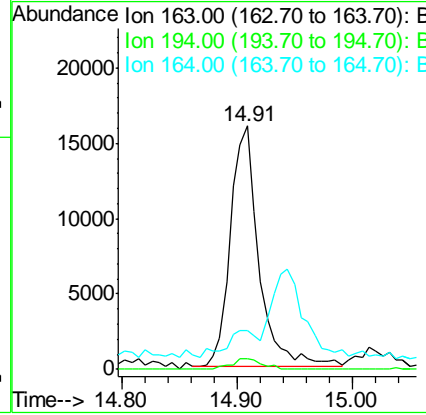
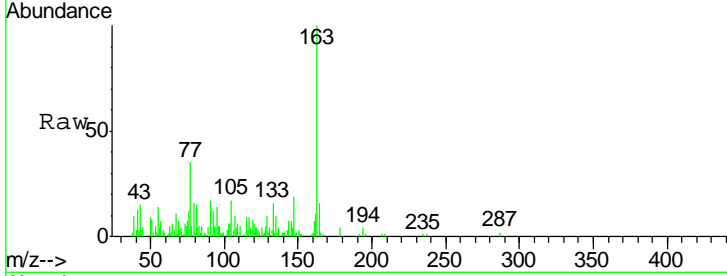
#49
 Dimethylphthalate
 Concen: 2.127 ng
 RT: 14.91 min Scan# 1978
 Delta R.T. -0.03 min
 Lab File: BG033336.D
 Acq: 26 Mar 2018 19:18

Instrument :
 BNA_G
ClientSampled :
 MW-02-20180323

Tgt Ion	Ratio	Lower	Upper
163	100		
194	4.2	3.4	5.2
164	15.9	8.2	12.4#

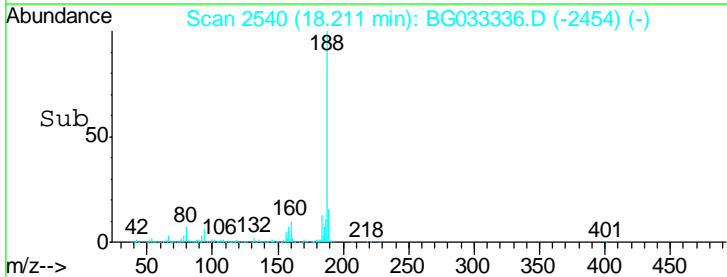
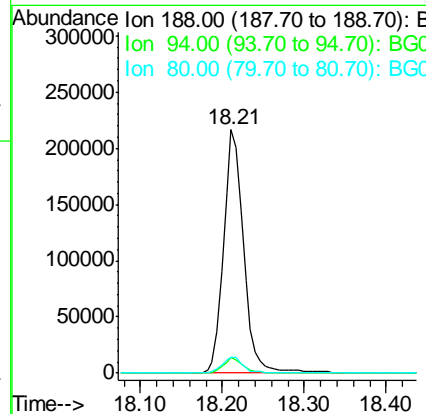
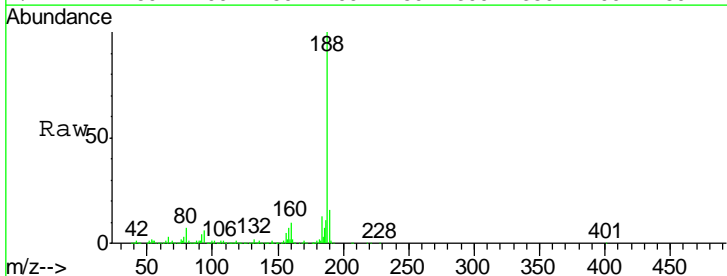
Manual Integrations
APPROVED

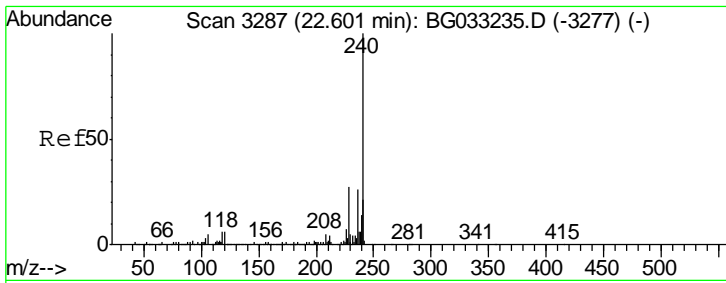
Sohil
 3/27/2018 2:57:44 PM



#63
 Phenanthrene-d10
 Concen: 20.000 ng
 RT: 18.21 min Scan# 2540
 Delta R.T. -0.03 min
 Lab File: BG033336.D
 Acq: 26 Mar 2018 19:18

Tgt Ion	Ratio	Lower	Upper
188	100		
94	6.3	6.9	10.3#
80	6.6	7.7	11.5#





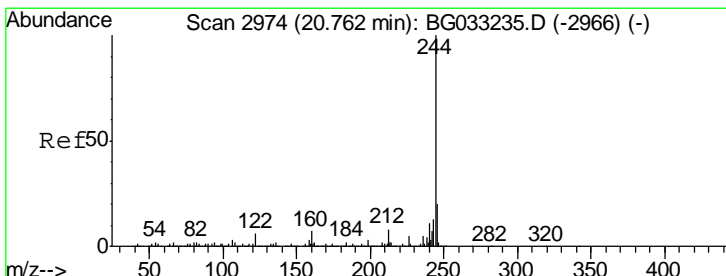
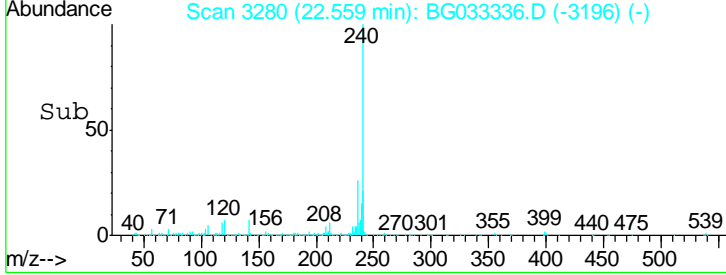
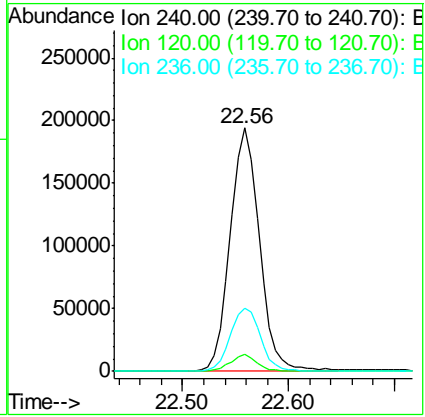
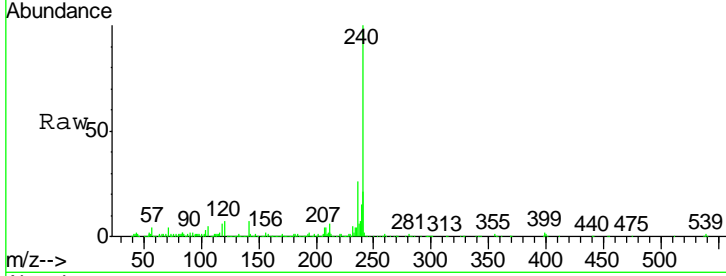
#75
 Chrysene-d12
 Concen: 20.000 ng
 RT: 22.56 min Scan# 3280
 Delta R.T. -0.04 min
 Lab File: BG033336.D
 Acq: 26 Mar 2018 19:18

Instrument :
 BNA_G
 ClientSampled :
 MW-02-20180323

Tgt Ion	Ratio	Lower	Upper
240	100		
120	6.8	6.8	10.2#
236	25.9	20.9	31.3

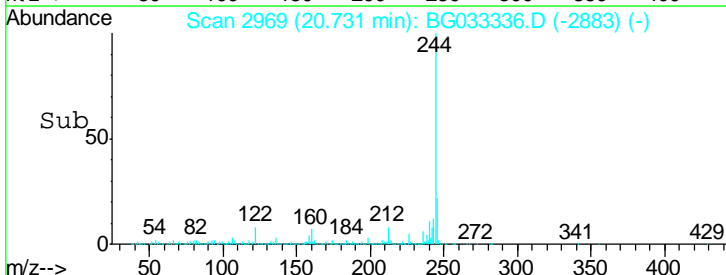
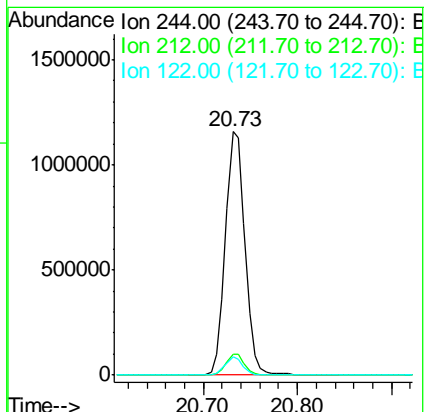
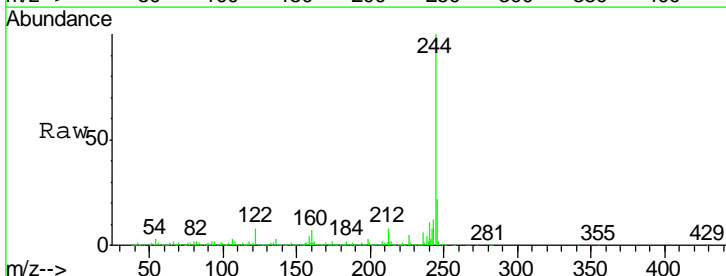
Manual Integrations
 APPROVED

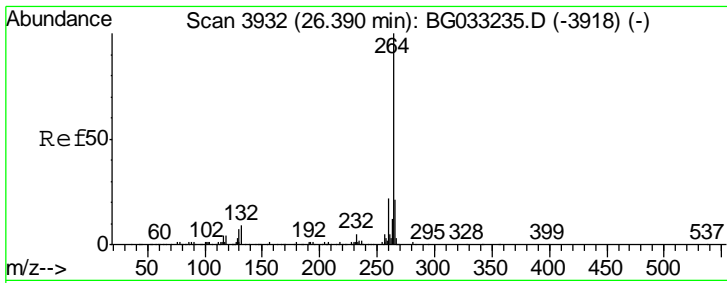
Sohil
 3/27/2018 2:57:44 PM



#78
 Terphenyl-d14
 Concen: 96.731 ng
 RT: 20.73 min Scan# 2969
 Delta R.T. -0.03 min
 Lab File: BG033336.D
 Acq: 26 Mar 2018 19:18

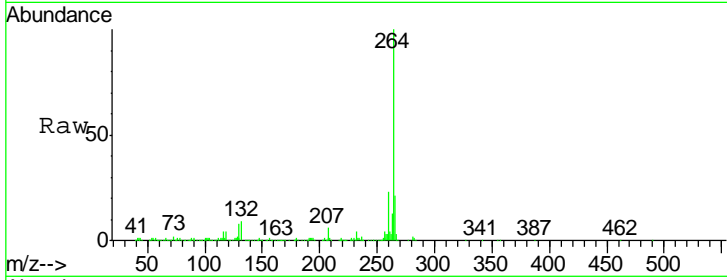
Tgt Ion	Ratio	Lower	Upper
244	100		
212	8.4	5.8	8.8
122	7.6	7.0	10.4





#86
 Perylene-d12
 Concen: 20.000 ng
 RT: 26.32 min Scan# 3920
 Delta R.T. -0.07 min
 Lab File: BG033336.D
 Acq: 26 Mar 2018 19:18

Instrument :
 BNA_G
 ClientSampled :
 MW-02-20180323



Tgt Ion: 264 Resp: 418871

Ion	Ratio	Lower	Upper
264	100		
260	23.0	17.4	26.0
265	21.0	17.7	26.5

Manual Integrations
 APPROVED

Sohil
 3/27/2018 2:57:44 PM

