

Data Path : Z:\HPCHEM1\BNA G\DATA\BG032717\  
 Data File : BG026442.D  
 Acq On : 27 Mar 2017 21:11  
 Operator : SJ/MA  
 Sample : I2358-14DL 5X  
 Misc :  
 ALS Vial : 12 Sample Multiplier: 1

Instrument :  
 BNA\_G  
 ClientSampleId :  
 C0BN2

Quant Time: Mar 28 01:24:10 2017  
 Quant Method : Z:\HPCHEM1\BNA G\METHODS\SOM-EPA-BG032717MA.M  
 Quant Title : SVOA CALIBRATION  
 QLast Update : Tue Mar 28 01:23:51 2017  
 Response via : Initial Calibration

| Internal Standards        | R.T.  | QIon | Response | Conc  | Units | Dev(Min) |
|---------------------------|-------|------|----------|-------|-------|----------|
| 1) 1,4-Dichlorobenzene-d4 | 8.06  | 152  | 173444   | 20.00 | ng/ul | 0.00     |
| 18) Naphthalene-d8        | 10.85 | 136  | 705837   | 20.00 | ng/ul | 0.00     |
| 35) Acenaphthene-d10      | 14.65 | 164  | 405735   | 20.00 | ng/ul | 0.00     |
| 61) Phenanthrene-d10      | 17.38 | 188  | 947510   | 20.00 | ng/ul | 0.00     |
| 77) Chrysene-d12          | 21.62 | 240  | 1091694  | 20.00 | ng/ul | 0.00     |
| 85) Perylene-d12          | 24.80 | 264  | 1106207  | 20.00 | ng/ul | 0.00     |

## System Monitoring Compounds

|                                |       |     |         |       |       |      |
|--------------------------------|-------|-----|---------|-------|-------|------|
| 3) 1,4-Dioxane-d8              | 3.47  | 96  | 19738   | 5.44  | ng/uL | 0.00 |
| 5) Phenol-d5                   | 7.21  | 99  | 90861   | 7.12  | ng/ul | 0.00 |
| 7) Bis-(2-Chloroethyl)ether-d  | 7.37  | 67  | 246484  | 34.44 | ng/ul | 0.00 |
| 9) 2-Chlorophenol-d4           | 7.58  | 132 | 309936  | 27.06 | ng/ul | 0.00 |
| 13) 4-Methylphenol-d8          | 8.75  | 113 | 178510  | 17.35 | ng/ul | 0.00 |
| 19) Nitrobenzene-d5            | 9.22  | 128 | 191013  | 37.86 | ng/ul | 0.02 |
| 22) 2-Nitrophenol-d4           | 9.93  | 143 | 223812  | 37.85 | ng/ul | 0.00 |
| 26) 2,4-Dichlorophenol-d3      | 10.47 | 165 | 346296  | 31.92 | ng/ul | 0.00 |
| 29) 4-Chloroaniline-d4         | 10.98 | 131 | 3906    | 0.36  | ng/ul | 0.00 |
| 43) Dimethylphthalate-d6       | 14.05 | 166 | 1171240 | 37.28 | ng/ul | 0.00 |
| 46) Acenaphthylene-d8          | 14.35 | 160 | 1385914 | 35.41 | ng/ul | 0.00 |
| 51) 4-Nitrophenol-d4           | 14.84 | 143 | 50005   | 8.18  | ng/ul | 0.00 |
| 57) Fluorene-d10               | 15.63 | 176 | 1047508 | 36.70 | ng/ul | 0.00 |
| 62) 4,6-Dinitro-2-methylphenol | 15.75 | 200 | 229195  | 37.62 | ng/ul | 0.00 |
| 70) Anthracene-d10             | 17.48 | 188 | 1593206 | 37.03 | ng/ul | 0.00 |
| 78) Pyrene-d10                 | 19.76 | 212 | 1838187 | 37.75 | ng/ul | 0.00 |
| 89) Benzo(a)pyrene-d12         | 24.59 | 264 | 1807249 | 38.03 | ng/ul | 0.00 |

## Target Compounds

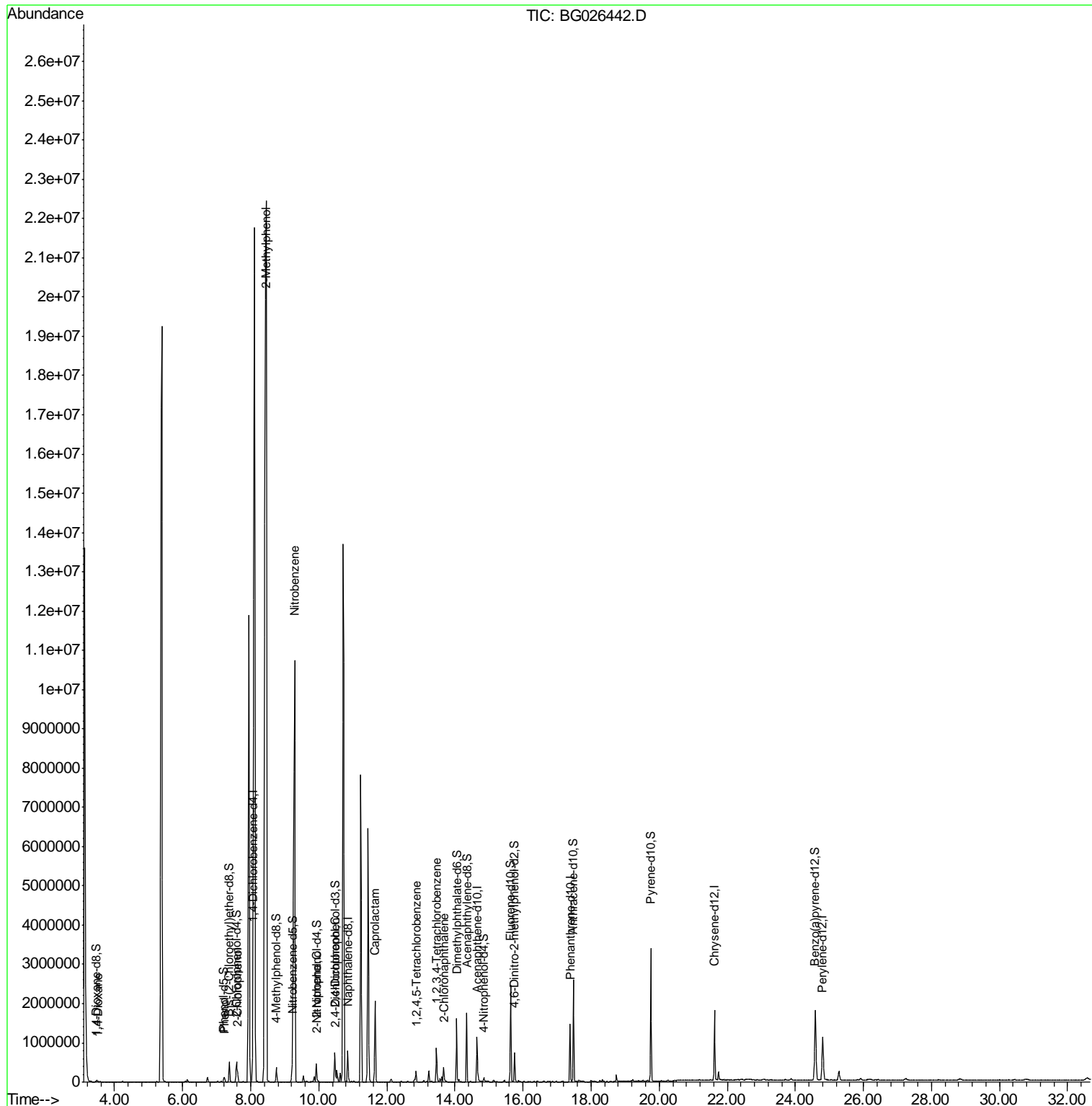
| Target Compounds               | R.T.  | QIon | Response | Conc   | Units  | Ovalue |
|--------------------------------|-------|------|----------|--------|--------|--------|
| 2) 1,4-Dioxane                 | 3.51  | 88   | 5681     | 1.47   | ng/uL  | 96     |
| 6) Phenol                      | 7.24  | 94   | 58294    | 4.37   | ng/ul  | 93     |
| 10) 2-Chlorophenol             | 7.61  | 128  | 143626   | 12.96  | ng/ul  | 99     |
| 11) 2-Methylphenol             | 8.45  | 108  | 208471   | 19.99  | ng/ul  | 92     |
| 20) Nitrobenzene               | 9.29  | 77   | 8772236  | 875.32 | ng/ul# | 64     |
| 23) 2-Nitrophenol              | 9.96  | 139  | 20454    | 3.29   | ng/ul# | 89     |
| 27) 2,4-Dichlorophenol         | 10.50 | 162  | 43882    | 4.09   | ng/ul  | 91     |
| 32) Caprolactam                | 11.65 | 113  | 171453   | 45.32  | ng/ul# | 1      |
| 36) 1,2,4,5-Tetrachlorobenzene | 12.86 | 216  | 89831    | 7.03   | ng/ul  | 94     |
| 41) 2-Chloronaphthalene        | 13.67 | 162  | 160842   | 6.55   | ng/ul# | 40     |
| 72) 1,2,3,4-Tetrachlorobenzene | 13.46 | 216  | 293510   | 23.52  | ng/uL  | 98     |

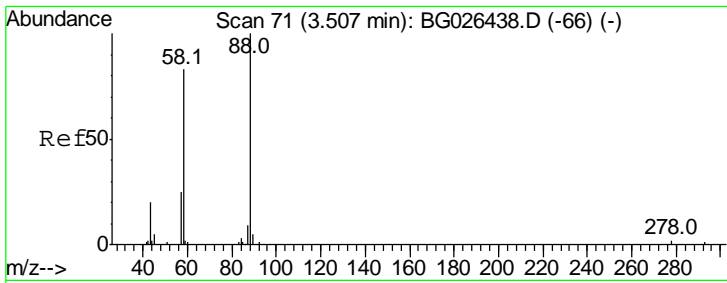
(#) = qualifier out of range (m) = manual integration (+) = signals summed

Data Path : Z:\HPCHEM1\BNA G\DATA\BG032717\  
 Data File : BG026442.D  
 Acq On : 27 Mar 2017 21:11  
 Operator : SJ/MA  
 Sample : I2358-14DL 5X  
 Misc :  
 ALS Vial : 12 Sample Multiplier: 1

Instrument :  
 BNA\_G  
 ClientSampled :  
 C0BN2

Quant Time: Mar 28 01:24:10 2017  
 Quant Method : Z:\HPCHEM1\BNA G\METHODS\SOM-EPA-BG032717MA.M  
 Quant Title : SVOA CALIBRATION  
 QLast Update : Tue Mar 28 01:23:51 2017  
 Response via : Initial Calibration

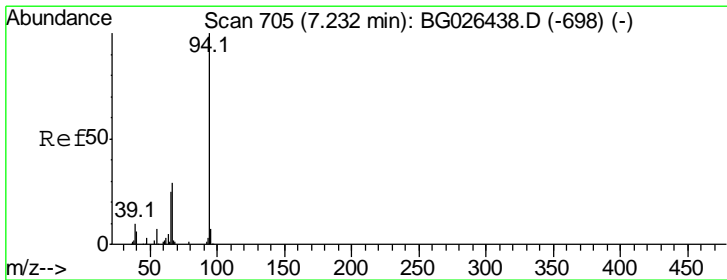
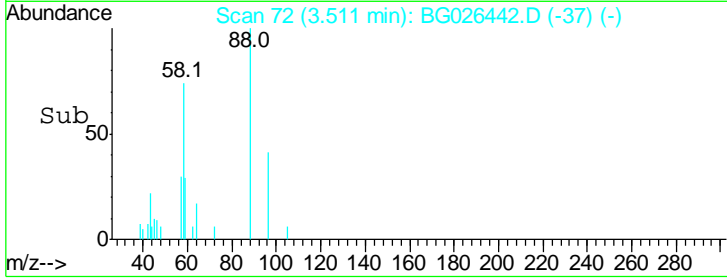
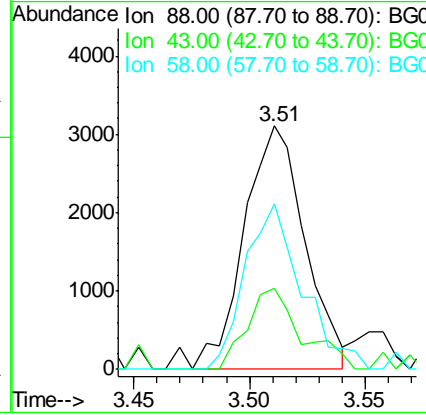
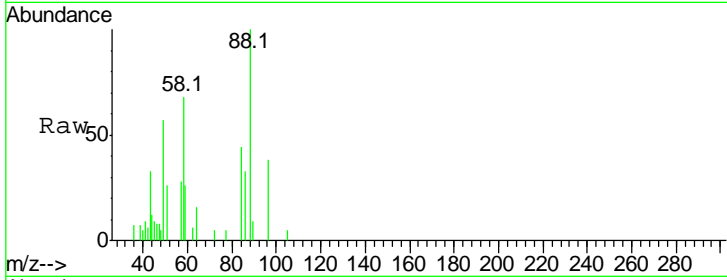




#2  
 1,4-Dioxane  
 Concen: 1.47 ng/uL  
 RT: 3.51 min Scan# 72  
 Delta R.T. 0.00 min  
 Lab File: BG026442.D  
 Acq: 27 Mar 2017 21:11

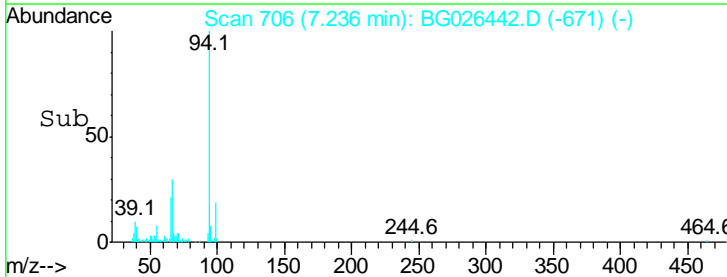
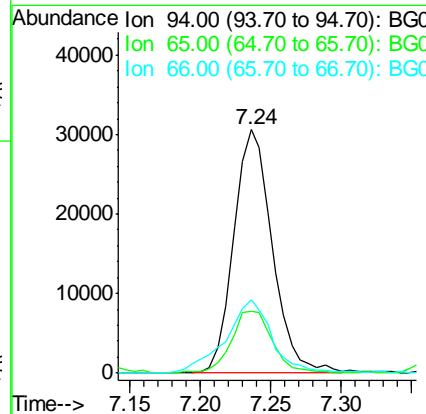
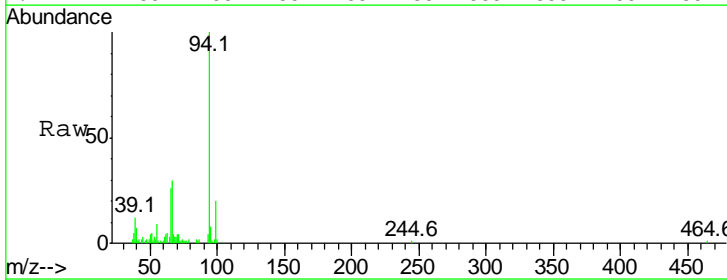
Instrument :  
 BNA\_G  
 ClientSampled :  
 COBN2

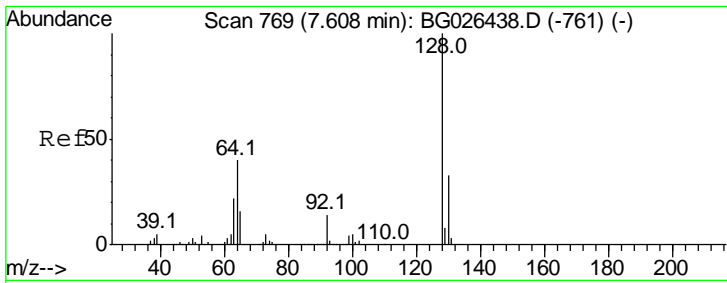
| Tgt Ion | Ratio | Lower | Upper |
|---------|-------|-------|-------|
| 88      | 100   |       |       |
| 43      | 24.2  | 21.0  | 31.6  |
| 58      | 62.6  | 47.8  | 71.8  |



#6  
 Phenol  
 Concen: 4.37 ng/uL  
 RT: 7.24 min Scan# 706  
 Delta R.T. 0.00 min  
 Lab File: BG026442.D  
 Acq: 27 Mar 2017 21:11

| Tgt Ion | Ratio | Lower | Upper |
|---------|-------|-------|-------|
| 94      | 100   |       |       |
| 65      | 25.6  | 21.0  | 31.6  |
| 66      | 30.3  | 29.3  | 43.9  |

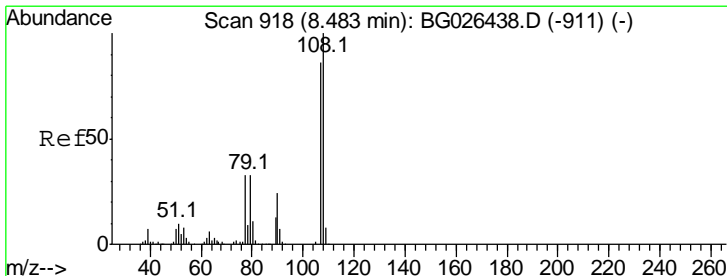
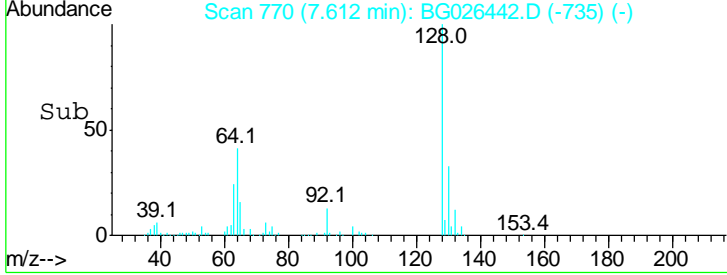
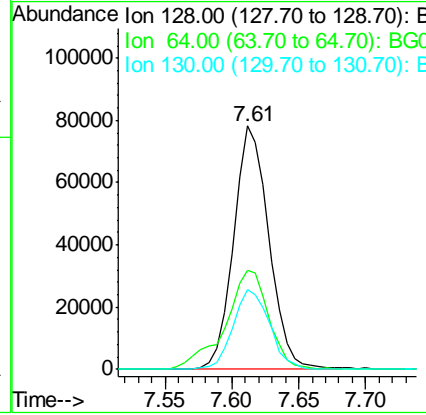
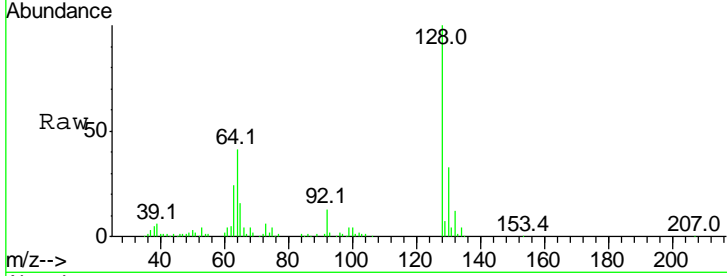




#10  
 2-Chlorophenol  
 Concen: 12.96 ng/ul  
 RT: 7.61 min Scan# 770  
 Delta R.T. 0.00 min  
 Lab File: BG026442.D  
 Acq: 27 Mar 2017 21:11

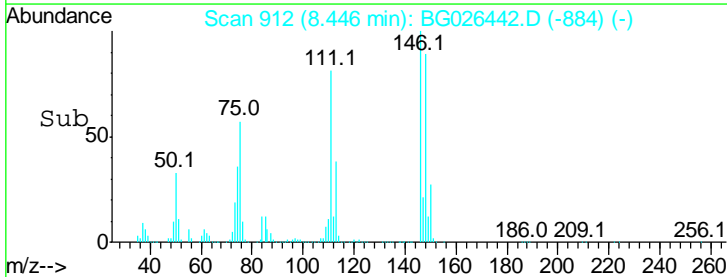
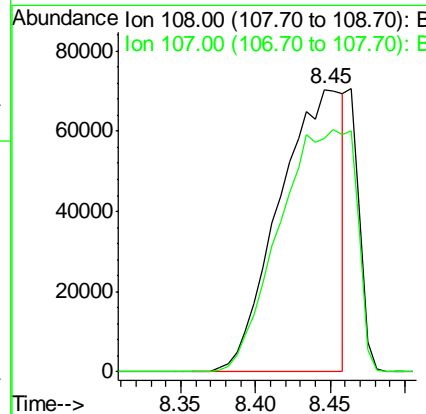
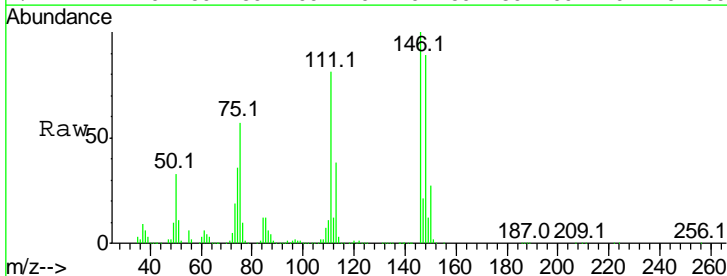
Instrument :  
 BNA\_G  
 ClientSampled :  
 COBN2

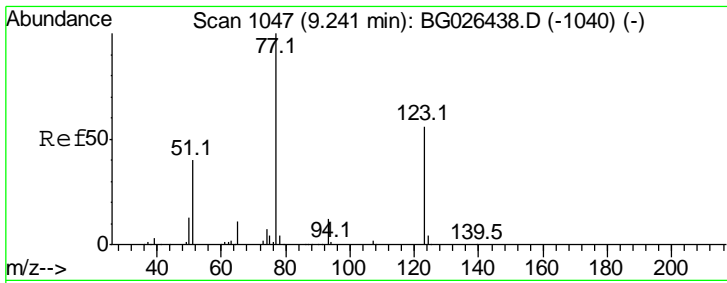
| Tgt Ion | Resp   | Lower | Upper |
|---------|--------|-------|-------|
| 128     | 143626 |       |       |
| 64      | 40.6   | 31.9  | 47.9  |
| 130     | 32.9   | 25.6  | 38.4  |



#11  
 2-Methylphenol  
 Concen: 19.99 ng/ul  
 RT: 8.45 min Scan# 912  
 Delta R.T. -0.04 min  
 Lab File: BG026442.D  
 Acq: 27 Mar 2017 21:11

| Tgt Ion | Resp   | Lower | Upper |
|---------|--------|-------|-------|
| 108     | 208471 |       |       |
| 107     | 82.7   | 72.4  | 108.6 |



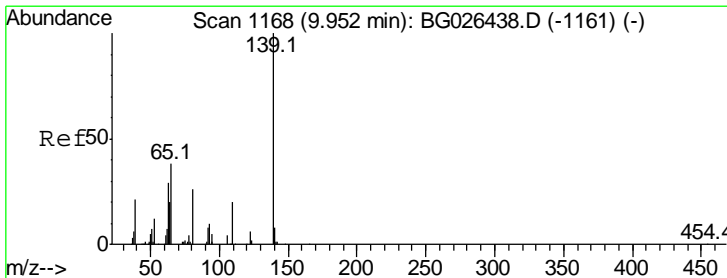
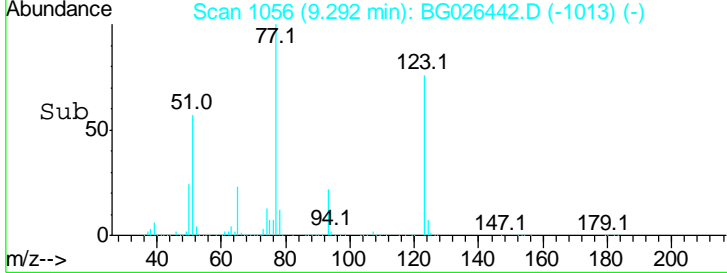
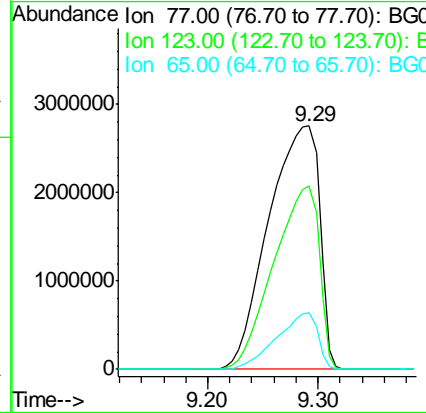
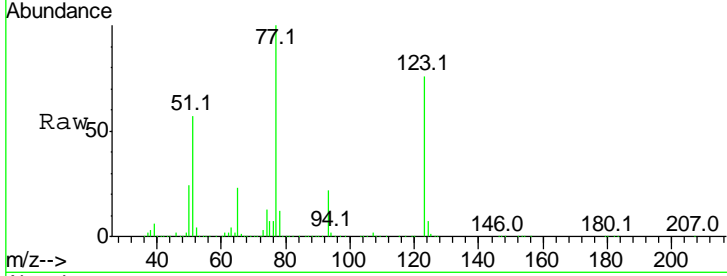


#20  
 Nitrobenzene  
 Concen: 875.32 ng/ul  
 RT: 9.29 min Scan# 1056  
 Delta R.T. 0.05 min  
 Lab File: BG026442.D  
 Acq: 27 Mar 2017 21:11

**Instrument :**  
 BNA\_G  
**ClientSampled :**  
 COBN2

Tgt Ion: 77 Resp: 8772236

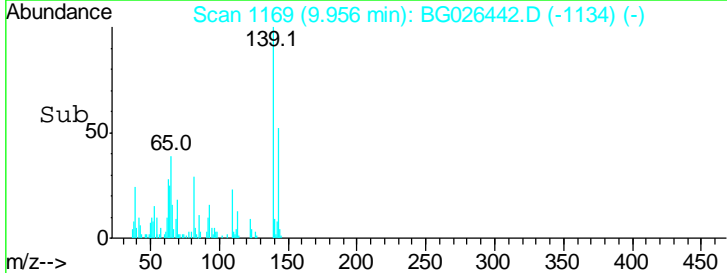
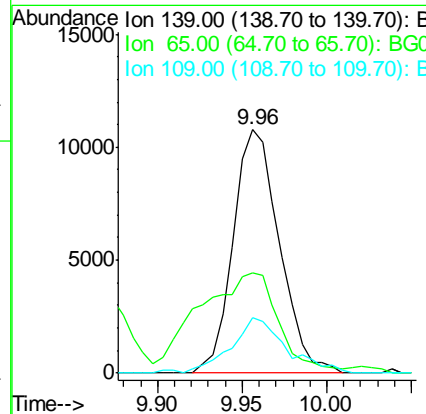
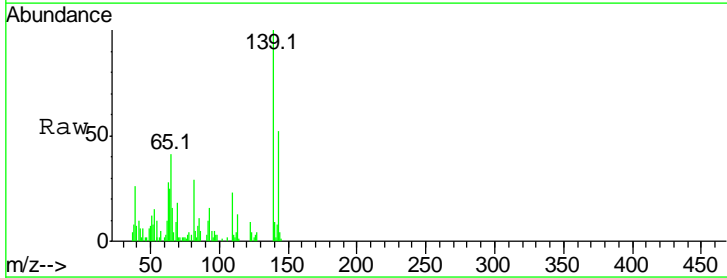
| Ion | Ratio | Lower | Upper |
|-----|-------|-------|-------|
| 77  | 100   |       |       |
| 123 | 75.5  | 39.0  | 58.4# |
| 65  | 23.1  | 10.4  | 15.6# |

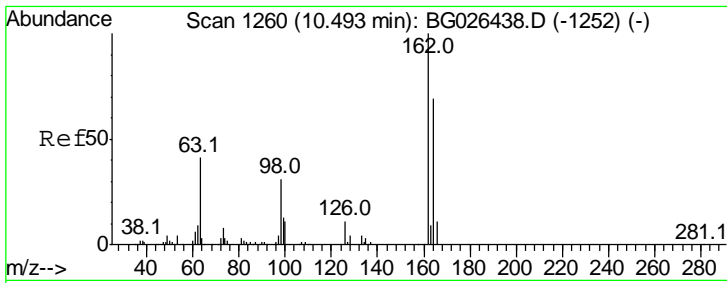


#23  
 2-Nitrophenol  
 Concen: 3.29 ng/ul  
 RT: 9.96 min Scan# 1169  
 Delta R.T. 0.00 min  
 Lab File: BG026442.D  
 Acq: 27 Mar 2017 21:11

Tgt Ion: 139 Resp: 20454

| Ion | Ratio | Lower | Upper |
|-----|-------|-------|-------|
| 139 | 100   |       |       |
| 65  | 41.2  | 36.3  | 54.5  |
| 109 | 22.6  | 26.4  | 39.6# |

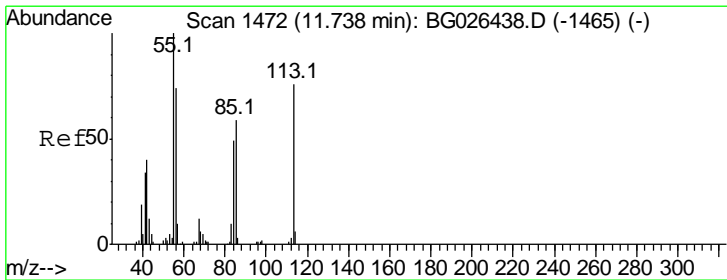
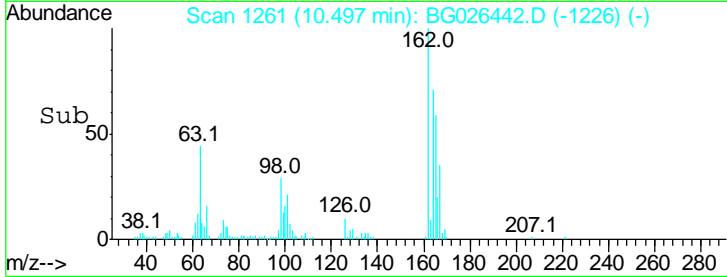
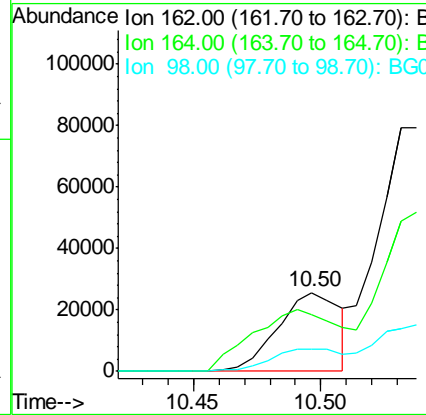
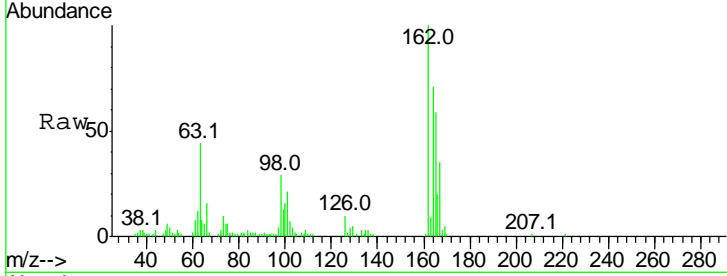




#27  
 2,4-Dichlorophenol  
 Concen: 4.09 ng/ul  
 RT: 10.50 min Scan# 1261  
 Delta R.T. 0.00 min  
 Lab File: BG026442.D  
 Acq: 27 Mar 2017 21:11

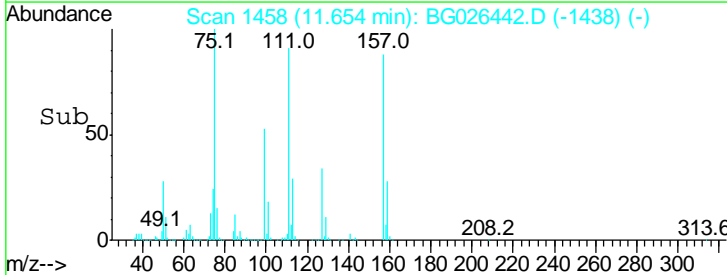
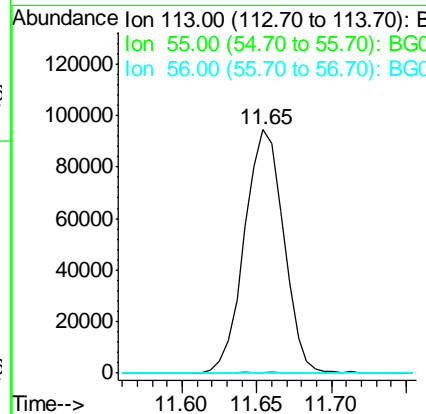
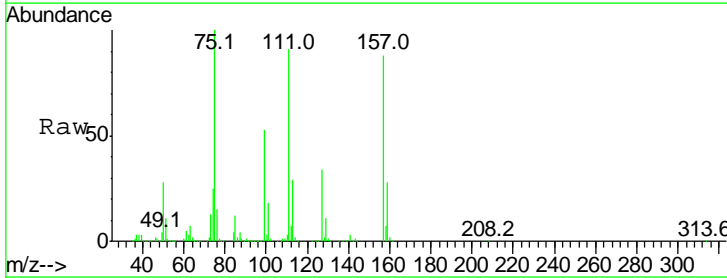
Instrument :  
 BNA\_G  
 ClientSampled :  
 COBN2

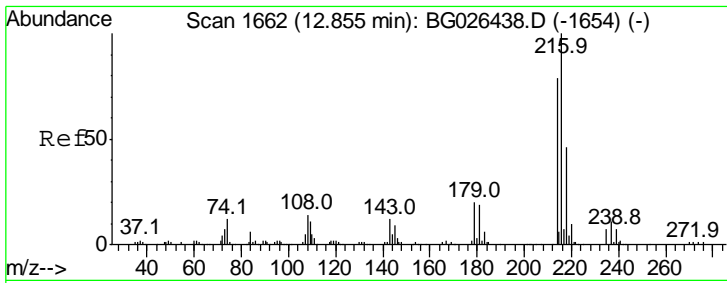
| Tgt Ion | Resp | Lower | Upper |
|---------|------|-------|-------|
| 162     | 100  |       |       |
| 164     | 71.1 | 52.1  | 78.1  |
| 98      | 28.7 | 28.4  | 42.6  |



#32  
 Caprolactam  
 Concen: 45.32 ng/ul  
 RT: 11.65 min Scan# 1458  
 Delta R.T. -0.08 min  
 Lab File: BG026442.D  
 Acq: 27 Mar 2017 21:11

| Tgt Ion | Resp | Lower | Upper  |
|---------|------|-------|--------|
| 113     | 100  |       |        |
| 55      | 0.6  | 101.9 | 152.9# |
| 56      | 0.2  | 81.2  | 121.8# |

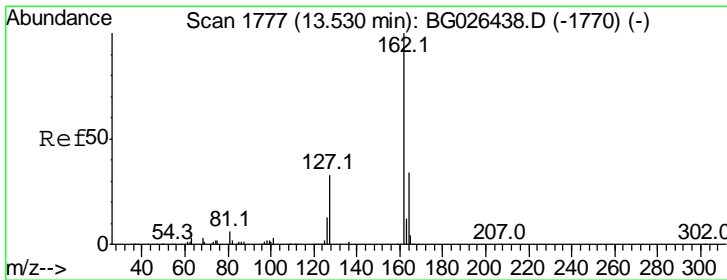
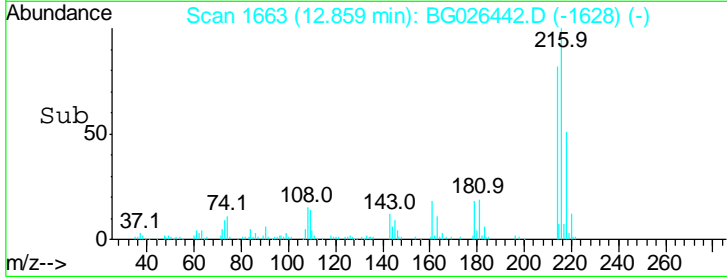
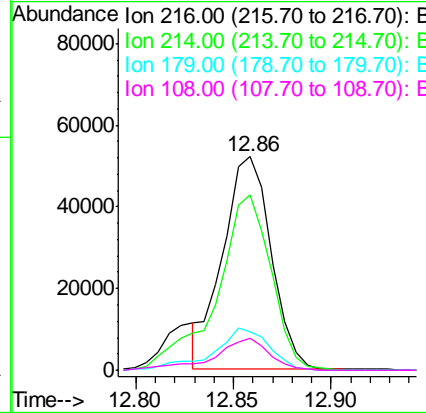
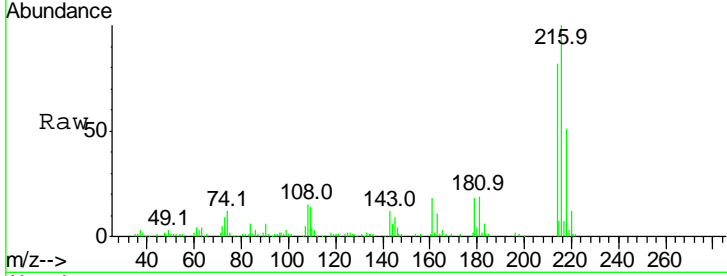




#36  
 1,2,4,5-Tetrachlorobenzene  
 Concen: 7.03 ng/ul  
 RT: 12.86 min Scan# 1663  
 Delta R.T. 0.00 min  
 Lab File: BG026442.D  
 Acq: 27 Mar 2017 21:11

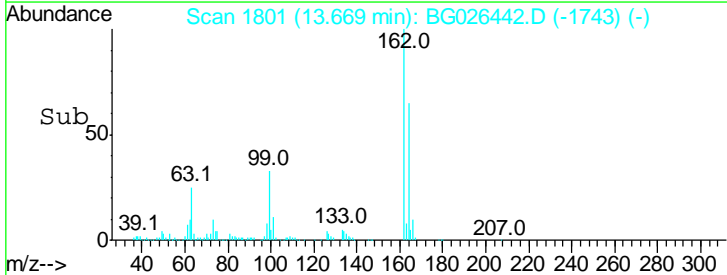
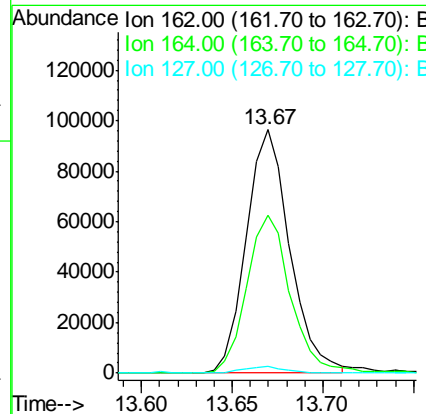
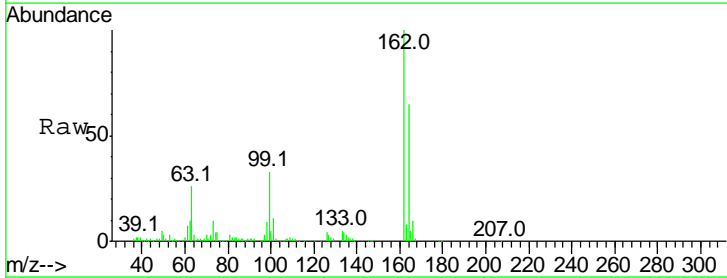
Instrument :  
 BNA\_G  
 ClientSampled :  
 COBN2

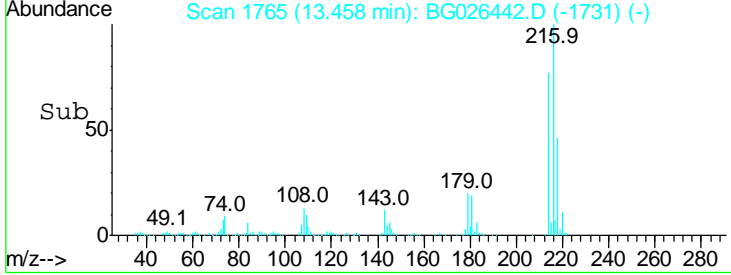
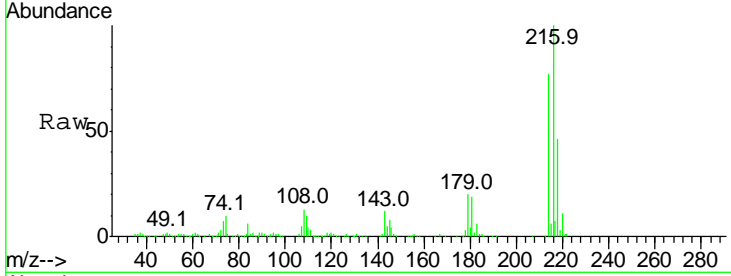
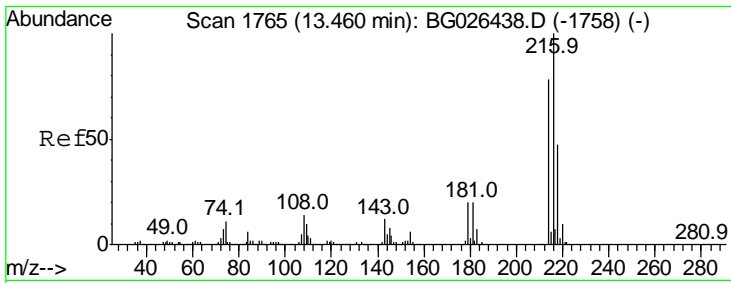
| Tgt Ion | Resp | Lower | Upper |
|---------|------|-------|-------|
| 216     | 100  |       |       |
| 214     | 82.0 | 62.5  | 93.7  |
| 179     | 18.2 | 18.2  | 27.2  |
| 108     | 14.9 | 14.2  | 21.2  |



#41  
 2-Chloronaphthalene  
 Concen: 6.55 ng/ul  
 RT: 13.67 min Scan# 1801  
 Delta R.T. 0.14 min  
 Lab File: BG026442.D  
 Acq: 27 Mar 2017 21:11

| Tgt Ion | Resp | Lower | Upper |
|---------|------|-------|-------|
| 162     | 100  |       |       |
| 164     | 64.6 | 25.9  | 38.9# |
| 127     | 2.9  | 34.1  | 51.1# |





#72  
 1,2,3,4-Tetrachlorobenzene  
 Concen: 23.52 ng/uL  
 RT: 13.46 min Scan# 1765  
 Delta R.T. -0.00 min  
 Lab File: BG026442.D  
 Acq: 27 Mar 2017 21:11

Instrument :  
 BNA\_G  
 ClientSampled :  
 COBN2

| Tot Ion | Ratio | Lower | Upper |
|---------|-------|-------|-------|
| 216     | 100   |       |       |
| 214     | 77.2  | 62.5  | 93.7  |
| 218     | 46.1  | 38.4  | 57.6  |

