

Data Path : Z:\HPCHEM1\BNA G\DATA\BG032717\
 Data File : BG026446.D
 Acq On : 27 Mar 2017 23:50
 Operator : SJ/MA
 Sample : I2358-16DL 5X
 Misc :
 ALS Vial : 16 Sample Multiplier: 1

Instrument :
 BNA_G
 ClientSampleId :
 COBMO

Quant Time: Mar 28 01:24:47 2017
 Quant Method : Z:\HPCHEM1\BNA G\METHODS\SOM-EPA-BG032717MA.M
 Quant Title : SVOA CALIBRATION
 QLast Update : Tue Mar 28 01:23:51 2017
 Response via : Initial Calibration

Internal Standards	R.T.	QIon	Response	Conc	Units	Dev(Min)
1) 1,4-Dichlorobenzene-d4	8.06	152	189585	20.00	ng/ul	0.01
18) Naphthalene-d8	10.85	136	772014	20.00	ng/ul	0.00
35) Acenaphthene-d10	14.65	164	450152	20.00	ng/ul	0.00
61) Phenanthrene-d10	17.38	188	1057939	20.00	ng/ul	0.00
77) Chrysene-d12	21.63	240	1228099	20.00	ng/ul	0.00
85) Perylene-d12	24.81	264	1210026	20.00	ng/ul	0.00

System Monitoring Compounds

3) 1,4-Dioxane-d8	3.47	96	20434	5.16	ng/uL	0.00
5) Phenol-d5	7.21	99	92527	6.63	ng/ul	0.00
7) Bis-(2-Chloroethyl)ether-d	7.37	67	258138	32.99	ng/ul	0.00
9) 2-Chlorophenol-d4	7.58	132	330199	26.38	ng/ul	0.00
13) 4-Methylphenol-d8	8.75	113	180281	16.03	ng/ul	0.00
19) Nitrobenzene-d5	9.21	128	201011	36.43	ng/ul	0.00
22) 2-Nitrophenol-d4	9.92	143	236668	36.60	ng/ul	0.00
26) 2,4-Dichlorophenol-d3	10.47	165	362328	30.53	ng/ul	0.00
29) 4-Chloroaniline-d4	10.98	131	6474	0.55	ng/ul	0.00
43) Dimethylphthalate-d6	14.05	166	1217018	34.91	ng/ul	0.00
46) Acenaphthylene-d8	14.35	160	1451354	33.42	ng/ul	0.00
51) 4-Nitrophenol-d4	14.85	143	43660	6.44	ng/ul	0.01
57) Fluorene-d10	15.63	176	1102240	34.81	ng/ul	0.00
62) 4,6-Dinitro-2-methylphenol	15.75	200	234380	34.45	ng/ul	0.00
70) Anthracene-d10	17.48	188	1711577	35.63	ng/ul	0.00
78) Pyrene-d10	19.75	212	1942401	35.46	ng/ul	0.00
89) Benzo(a)pyrene-d12	24.59	264	1918409	36.90	ng/ul	0.00

Target Compounds

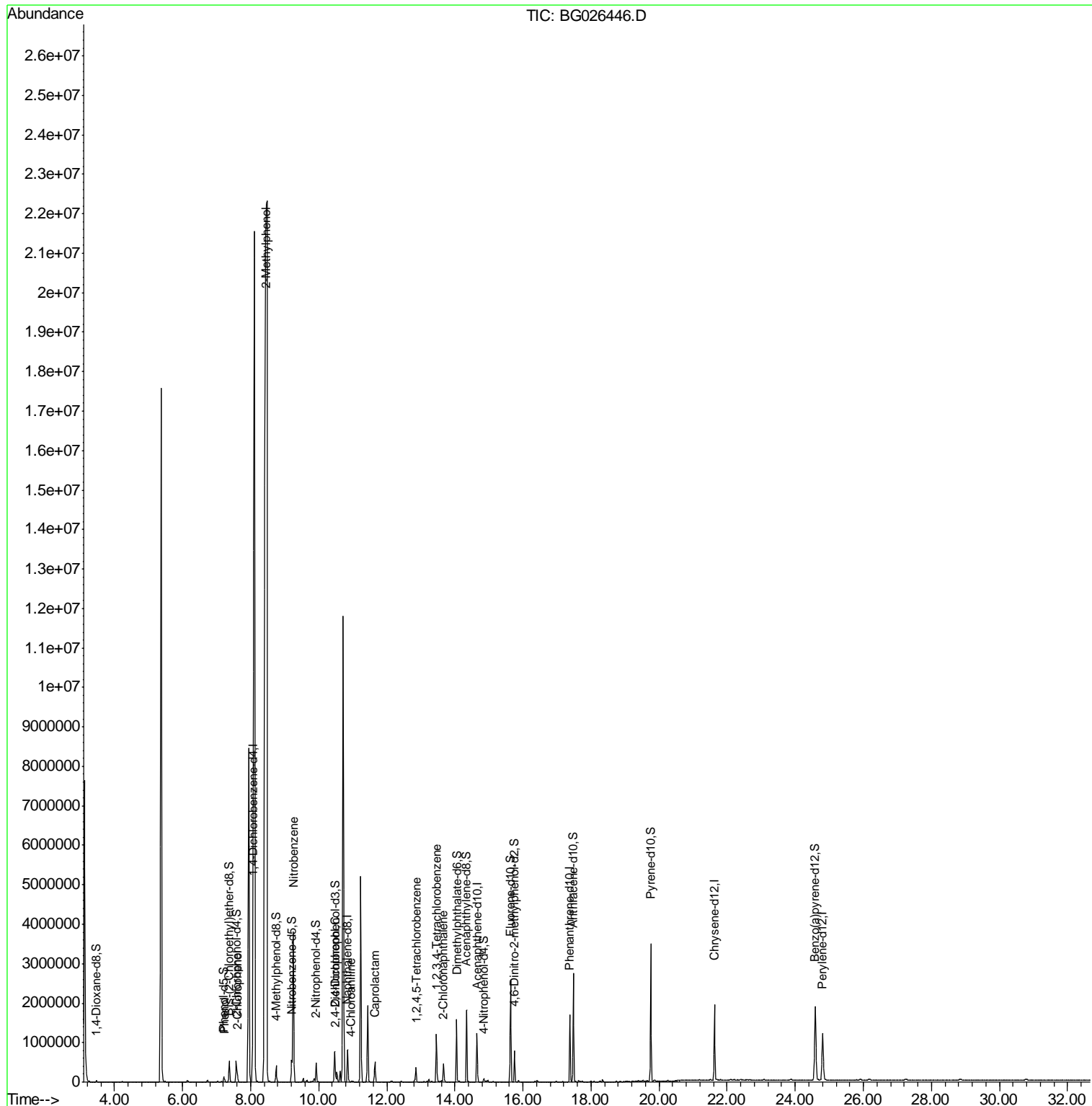
Target Compounds	R.T.	QIon	Response	Conc	Units	Ovalue
6) Phenol	7.24	94	45007	3.09	ng/ul#	90
10) 2-Chlorophenol	7.61	128	97274	8.03	ng/ul	99
11) 2-Methylphenol	8.45	108	259870	22.80	ng/ul	95
20) Nitrobenzene	9.25	77	2367086	215.95	ng/ul	88
27) 2,4-Dichlorophenol	10.49	162	27539	2.35	ng/ul#	85
30) 4-Chloroaniline	10.95	127	15296	1.36	ng/ul	94
32) Caprolactam	11.65	113	42706	10.32	ng/ul#	1
36) 1,2,4,5-Tetrachlorobenzene	12.85	216	149306	10.53	ng/ul#	95
41) 2-Chloronaphthalene	13.67	162	181807	6.67	ng/ul#	43
72) 1,2,3,4-Tetrachlorobenzene	13.46	216	392667	28.18	ng/uL	98

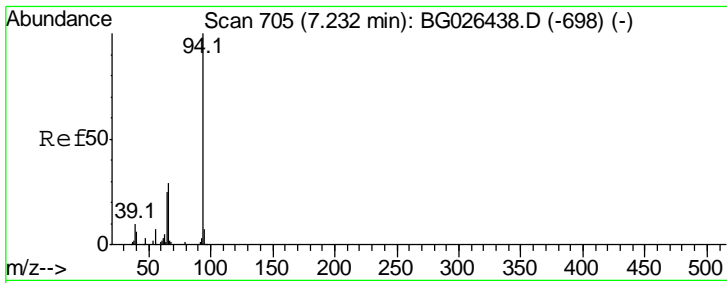
(#) = qualifier out of range (m) = manual integration (+) = signals summed

Data Path : Z:\HPCHEM1\BNA G\DATA\BG032717\
 Data File : BG026446.D
 Acq On : 27 Mar 2017 23:50
 Operator : SJ/MA
 Sample : I2358-16DL 5X
 Misc :
 ALS Vial : 16 Sample Multiplier: 1

Instrument :
 BNA_G
 ClientSampled :
 COBMO

Quant Time: Mar 28 01:24:47 2017
 Quant Method : Z:\HPCHEM1\BNA G\METHODS\SOM-EPA-BG032717MA.M
 Quant Title : SVOA CALIBRATION
 QLast Update : Tue Mar 28 01:23:51 2017
 Response via : Initial Calibration

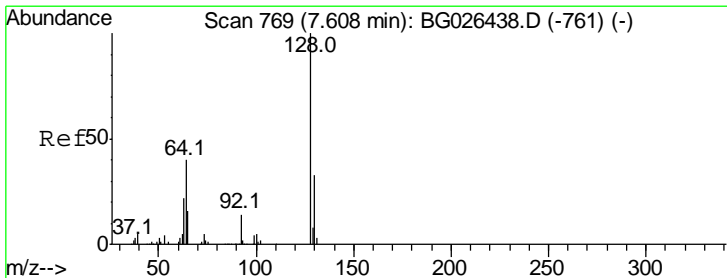
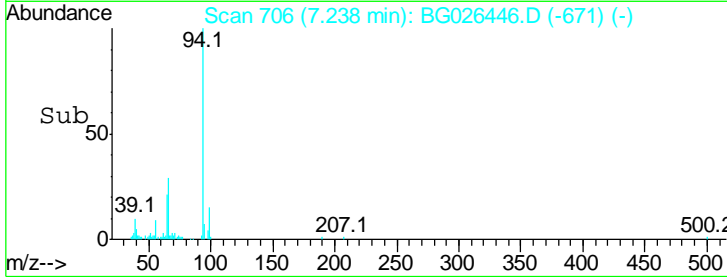
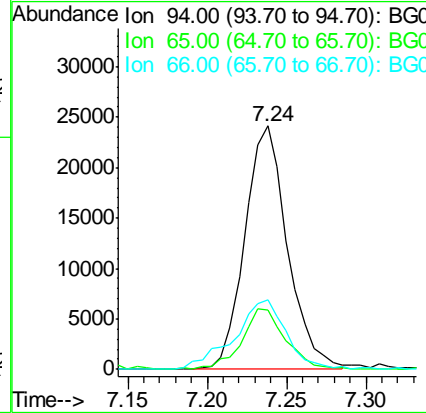
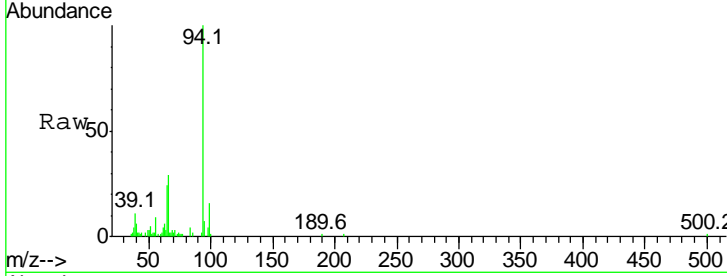




#6
 Phenol
 Concen: 3.09 ng/ul
 RT: 7.24 min Scan# 706
 Delta R.T. 0.01 min
 Lab File: BG026446.D
 Acq: 27 Mar 2017 23:50

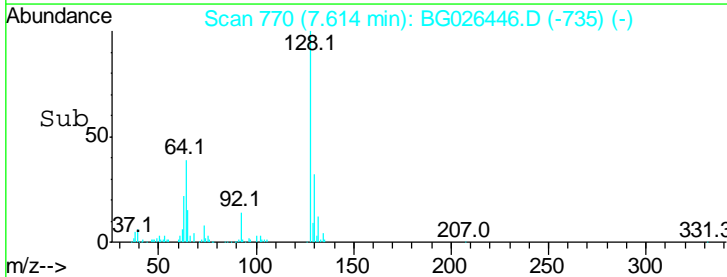
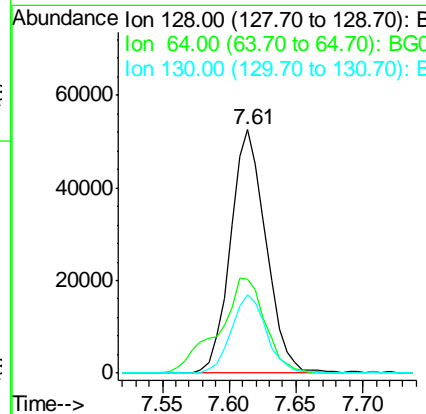
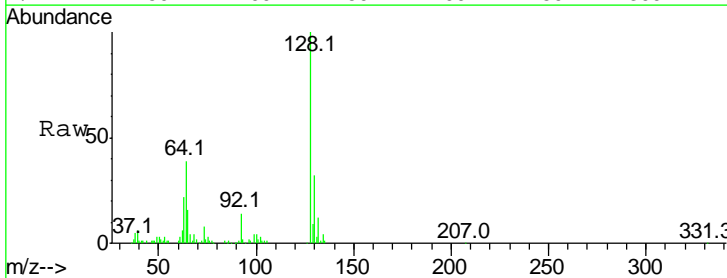
Instrument :
 BNA_G
 ClientSampleID :
 COBMO

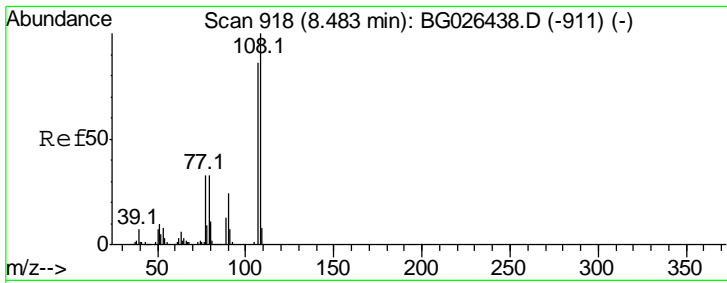
Tgt Ion	Resp	Lower	Upper
94	100		
65	24.3	21.0	31.6
66	28.6	29.3	43.9#



#10
 2-Chlorophenol
 Concen: 8.03 ng/ul
 RT: 7.61 min Scan# 770
 Delta R.T. 0.01 min
 Lab File: BG026446.D
 Acq: 27 Mar 2017 23:50

Tgt Ion	Resp	Lower	Upper
128	100		
64	38.7	31.9	47.9
130	32.0	25.6	38.4

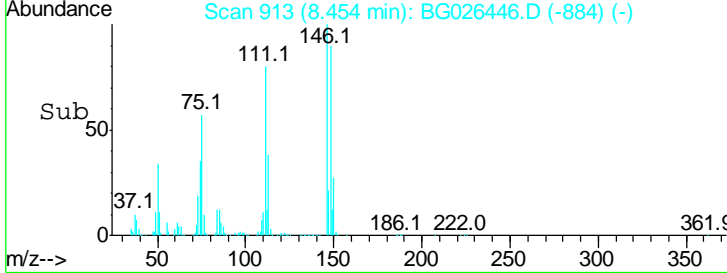
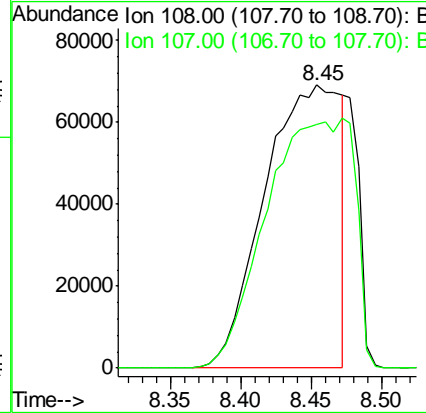
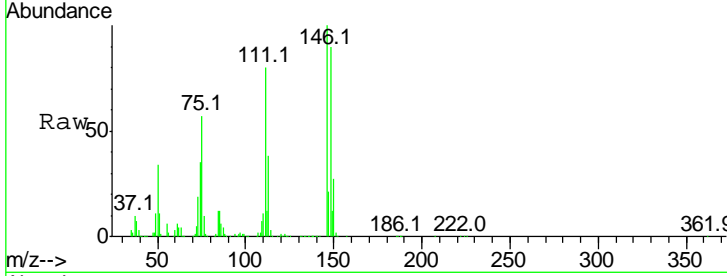




#11
 2-Methylphenol
 Concen: 22.80 ng/ul
 RT: 8.45 min Scan# 913
 Delta R.T. -0.03 min
 Lab File: BG026446.D
 Acq: 27 Mar 2017 23:50

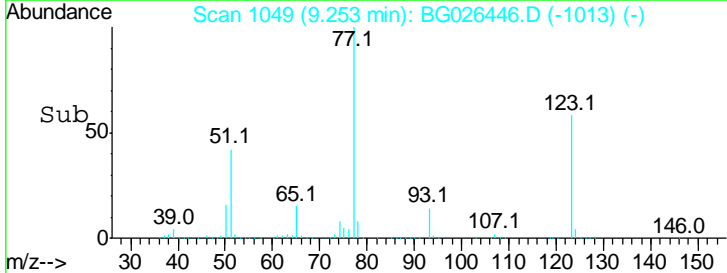
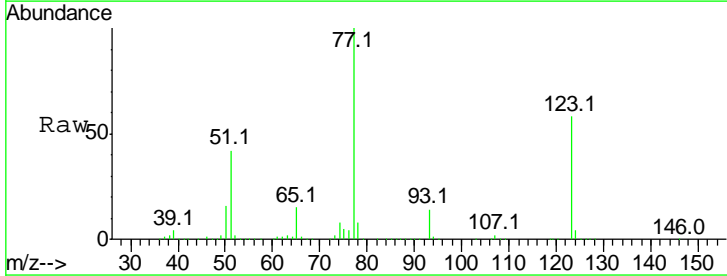
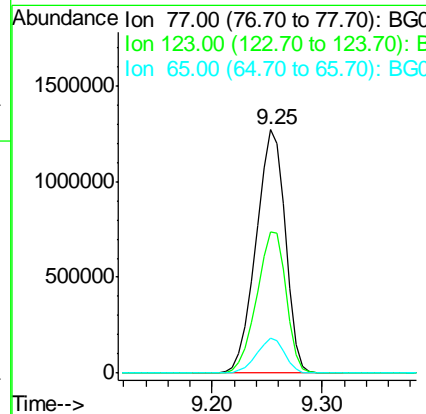
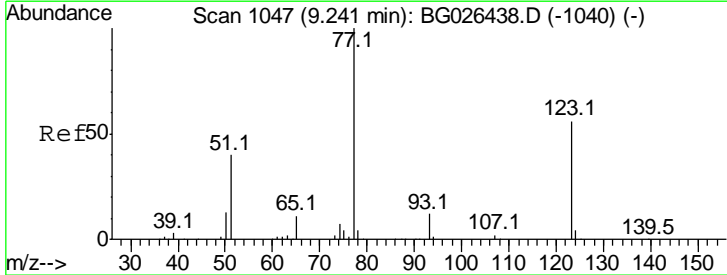
Instrument :
 BNA_G
ClientSampled :
 COBMO

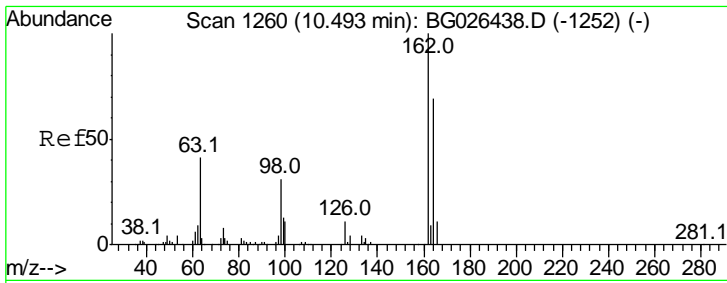
Tgt Ion: 108 Resp: 259870
 Ion Ratio Lower Upper
 108 100
 107 85.9 72.4 108.6



#20
 Nitrobenzene
 Concen: 215.95 ng/ul
 RT: 9.25 min Scan# 1049
 Delta R.T. 0.01 min
 Lab File: BG026446.D
 Acq: 27 Mar 2017 23:50

Tgt Ion: 77 Resp: 2367086
 Ion Ratio Lower Upper
 77 100
 123 57.9 39.0 58.4
 65 14.6 10.4 15.6

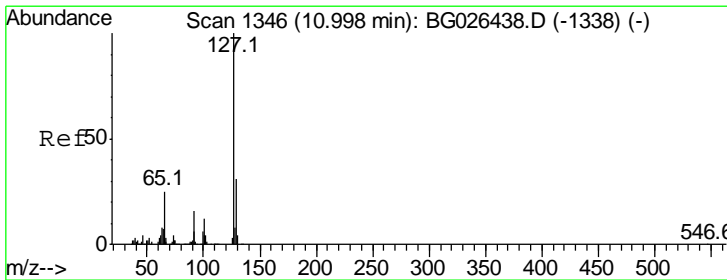
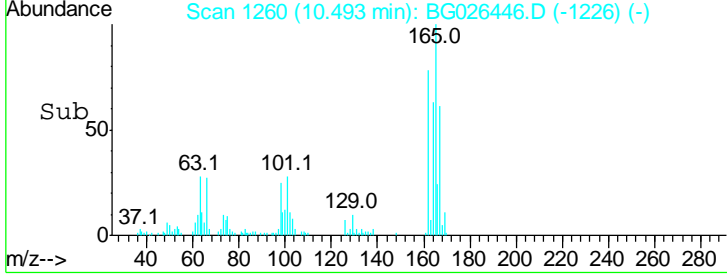
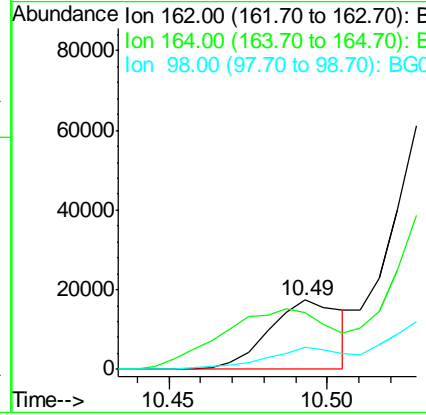
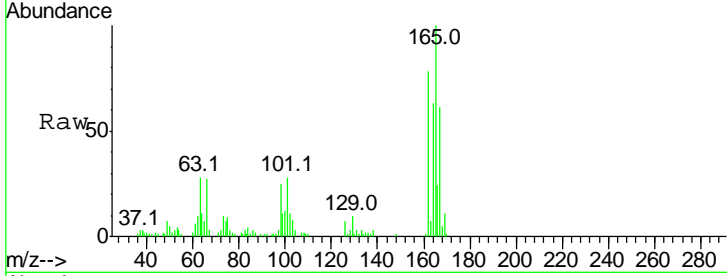




#27
 2,4-Dichlorophenol
 Concen: 2.35 ng/ul
 RT: 10.49 min Scan# 1260
 Delta R.T. 0.00 min
 Lab File: BG026446.D
 Acq: 27 Mar 2017 23:50

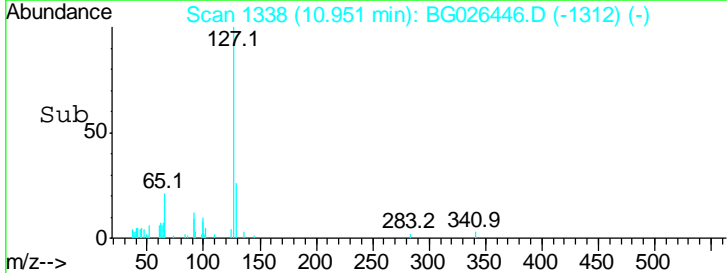
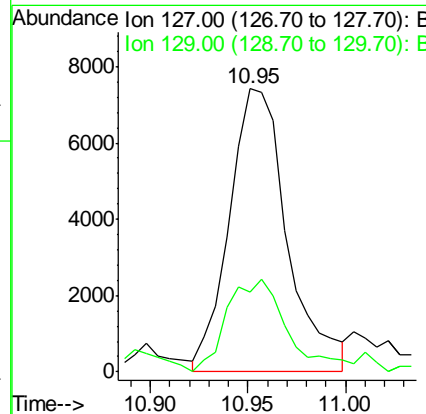
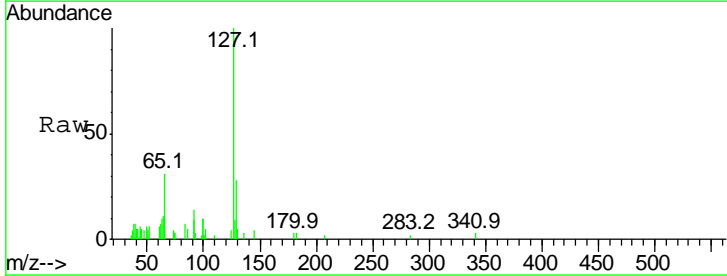
Instrument :
 BNA_G
 ClientSampled :
 COBMO

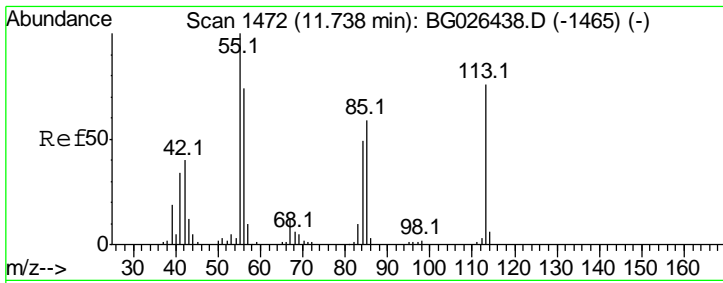
Tgt Ion	Resp	Lower	Upper
162	100		
164	80.9	52.1	78.1#
98	32.1	28.4	42.6



#30
 4-Chloroaniline
 Concen: 1.36 ng/ul
 RT: 10.95 min Scan# 1338
 Delta R.T. -0.05 min
 Lab File: BG026446.D
 Acq: 27 Mar 2017 23:50

Tgt Ion	Resp	Lower	Upper
127	100		
129	28.3	25.4	38.2

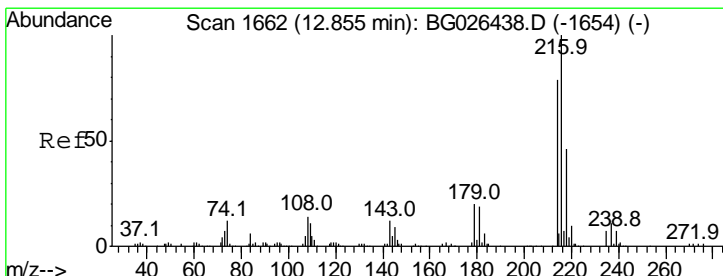
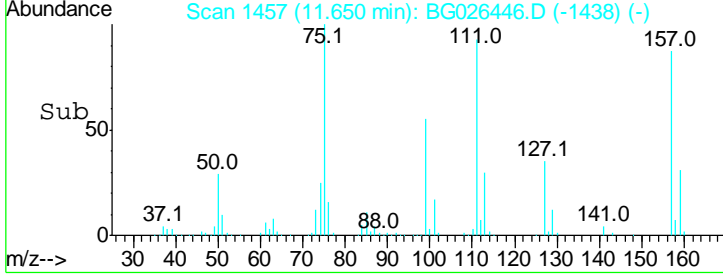
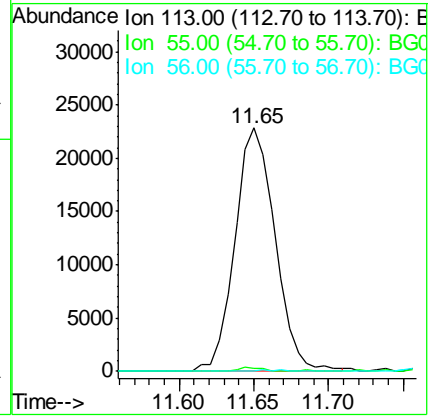
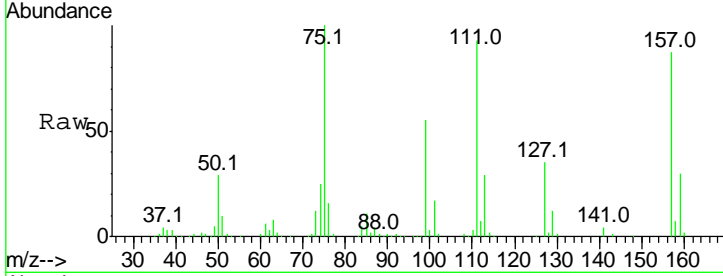




#32
 Caprolactam
 Concen: 10.32 ng/ul
 RT: 11.65 min Scan# 1457
 Delta R.T. -0.09 min
 Lab File: BG026446.D
 Acq: 27 Mar 2017 23:50

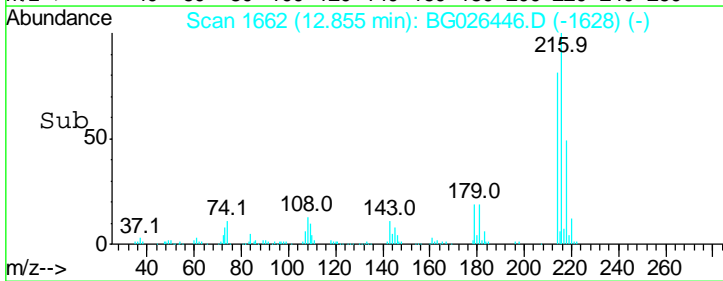
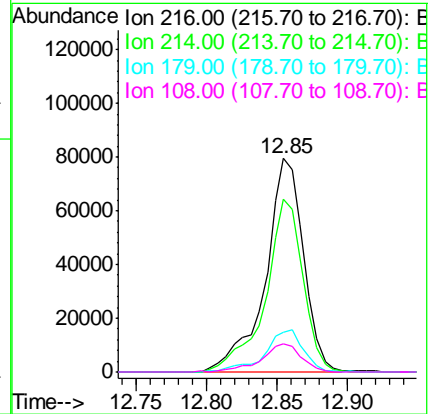
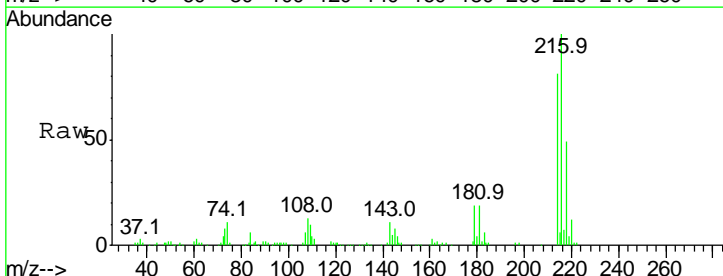
Instrument :
 BNA_G
 ClientSampled :
 COBMO

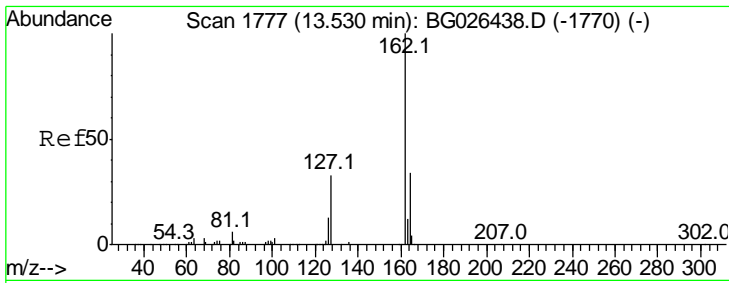
Tgt Ion	Resp	Lower	Upper
113	100		
55	1.4	101.9	152.9#
56	0.0	81.2	121.8#



#36
 1,2,4,5-Tetrachlorobenzene
 Concen: 10.53 ng/ul
 RT: 12.85 min Scan# 1662
 Delta R.T. 0.00 min
 Lab File: BG026446.D
 Acq: 27 Mar 2017 23:50

Tgt Ion	Resp	Lower	Upper
216	100		
214	80.9	62.5	93.7
179	18.7	18.2	27.2
108	13.3	14.2	21.2#

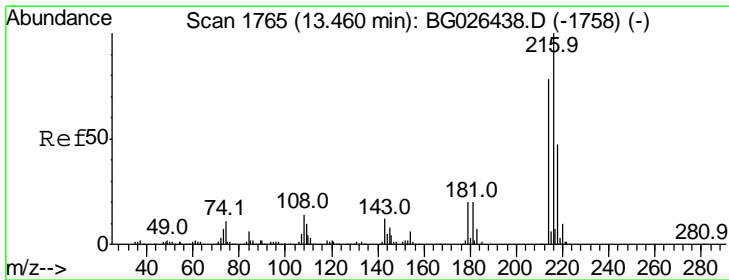
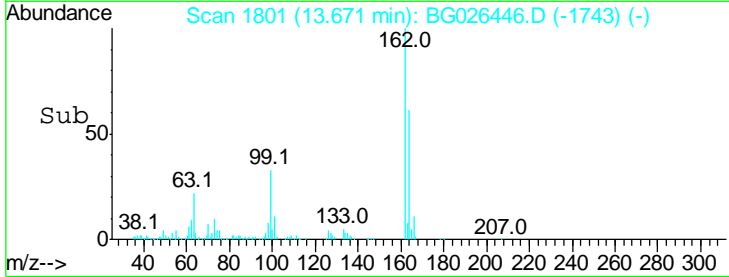
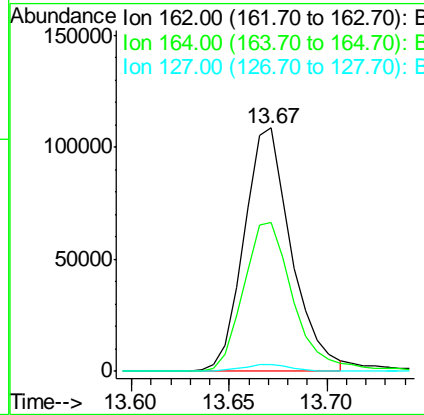
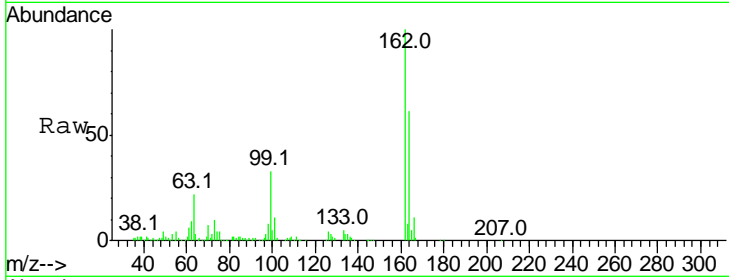




#41
 2-Chloronaphthalene
 Concen: 6.67 ng/ul
 RT: 13.67 min Scan# 1801
 Delta R.T. 0.14 min
 Lab File: BG026446.D
 Acq: 27 Mar 2017 23:50

Instrument :
 BNA_G
 ClientSampled :
 COBMO

Tgt Ion	Resp	Lower	Upper
162	181807		
164	61.0	25.9	38.9#
127	2.9	34.1	51.1#



#72
 1,2,3,4-Tetrachlorobenzene
 Concen: 28.18 ng/uL
 RT: 13.46 min Scan# 1765
 Delta R.T. 0.00 min
 Lab File: BG026446.D
 Acq: 27 Mar 2017 23:50

Tgt Ion	Resp	Lower	Upper
216	392667		
214	77.3	62.5	93.7
218	49.8	38.4	57.6

