

Data Path : Z:\HPCHEM1\BNA G\DATA\BG032717\  
 Data File : BG026453.D  
 Acq On : 28 Mar 2017 11:22  
 Operator : SJ/MA  
 Sample : I2358-14DL 40X  
 Misc :  
 ALS Vial : 4 Sample Multiplier: 1

Instrument :  
 BNA\_G  
 ClientSampleId :  
 C0BN2DL

Integration Parameters: LSCINT.P

Integrator: RTE  
 Smoothing : OFF Filtering: 5  
 Sampling : 1 Min Area: 1 % of largest Peak  
 Start Thrs: 0.2 Max Peaks: 100  
 Stop Thrs : 0 Peak Location: TOP

If leading or trailing edge < 100 prefer < Baseline drop else tangent >  
 Peak separation: 5

Method : Z:\HPCHEM1\BNA G\METHODS\SOM-EPA-BG032717MA.M  
 Title : SVOA CALIBRATION

Signal : TIC

peak #	R.T. min	first scan	max scan	last scan	PK TY	peak height	corr. area	corr. % max.	% of total
1	5.355	378	386	403	rBV	1945591	3255547	73.08%	12.576%
2	7.929	818	824	836	rBV	446378	753637	16.92%	2.911%
3	8.041	836	843	844	rVV	478205	625488	14.04%	2.416%
4	8.076	844	849	860	rVB	1928388	3428148	76.96%	13.243%
5	8.393	895	903	917	rBV	2504194	4454598	100.00%	17.208%
6	9.239	1036	1047	1060	rBV	466578	872152	19.58%	3.369%
7	10.702	1289	1296	1304	rBV	455016	797200	17.90%	3.080%
8	10.843	1312	1320	1331	rVB	632340	1161315	26.07%	4.486%
9	11.225	1377	1385	1395	rBV	207653	368442	8.27%	1.423%
10	11.437	1415	1421	1435	rBV	143419	275135	6.18%	1.063%
11	11.660	1451	1459	1472	rBV5	33920	78731	1.77%	0.304%
12	14.057	1861	1867	1876	rBV	24293	45617	1.02%	0.176%
13	14.345	1911	1916	1921	rBV	34483	55500	1.25%	0.214%
14	14.650	1959	1968	1976	rBV2	992078	1614747	36.25%	6.238%
15	15.638	2131	2136	2146	rBV	52883	90626	2.03%	0.350%
16	17.383	2422	2433	2444	rBV	1336821	2076145	46.61%	8.020%
17	17.482	2445	2450	2456	rVB	57815	92609	2.08%	0.358%
18	19.762	2832	2838	2848	rBV2	72990	124423	2.79%	0.481%
19	21.625	3149	3155	3165	rBV	1652862	2681246	60.19%	10.358%
20	24.598	3654	3661	3669	rVB4	41994	108282	2.43%	0.418%
21	24.809	3682	3697	3713	rBV2	1003405	2871976	64.47%	11.094%
22	27.236	4106	4110	4120	rVB10	21116	55257	1.24%	0.213%

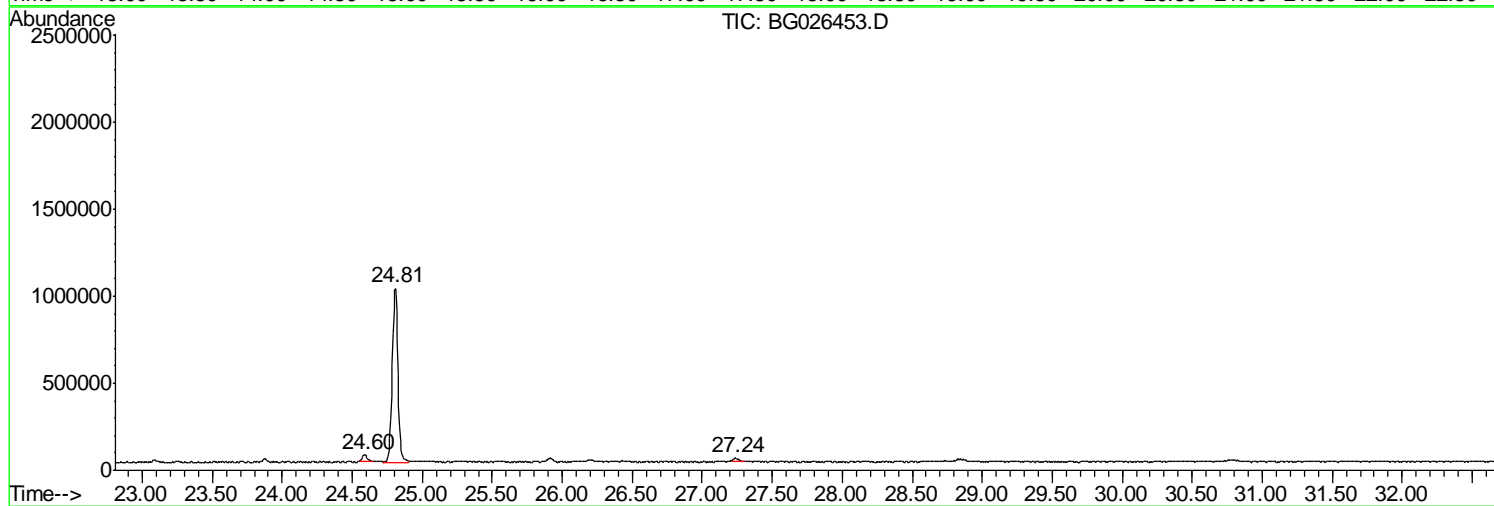
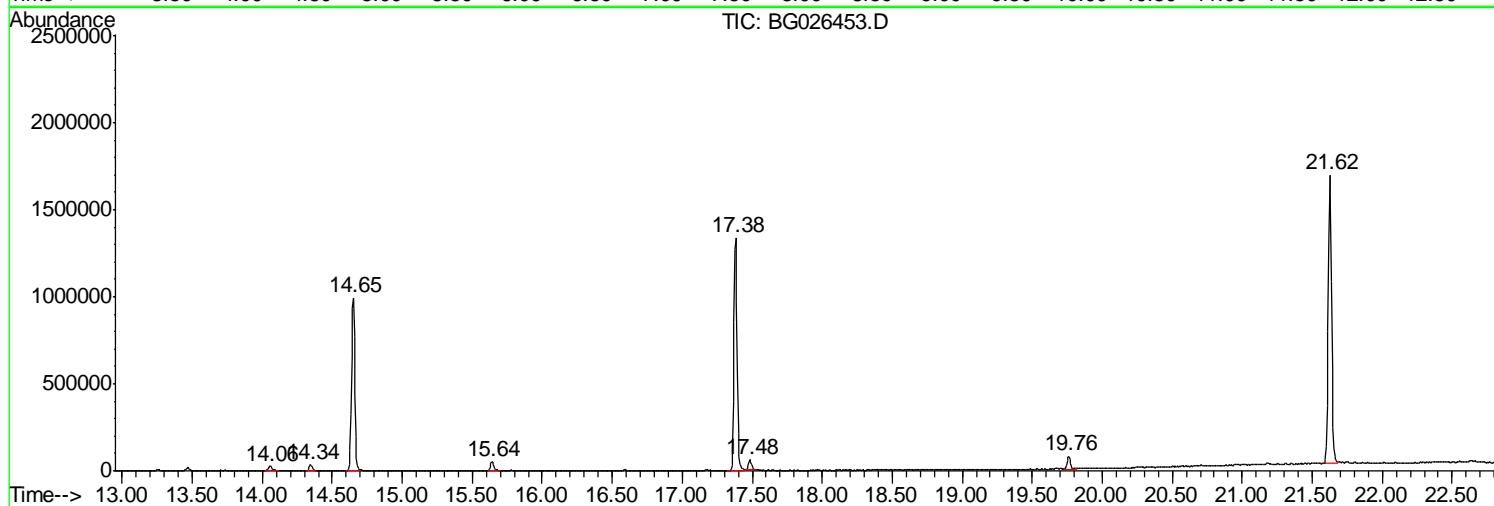
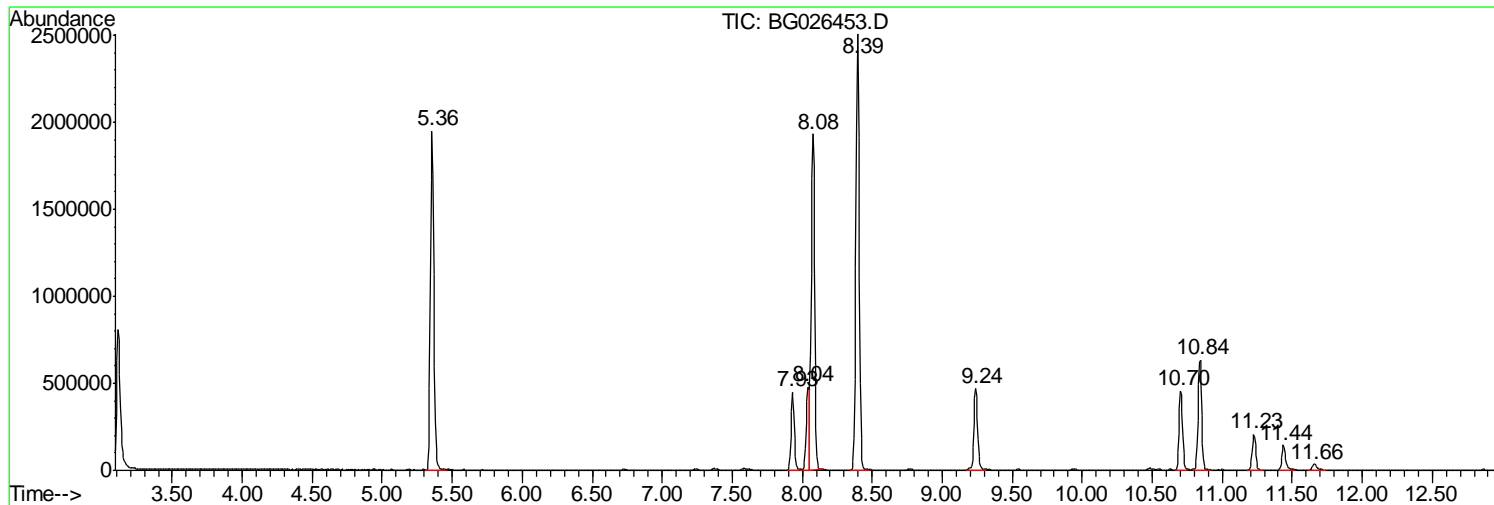
Sum of corrected areas: 25886821

Data Path : Z:\HPCHEM1\BNA G\DATA\BG032717\  
 Data File : BG026453.D  
 Acq On : 28 Mar 2017 11:22  
 Operator : SJ/MA  
 Sample : I2358-14DL 40X  
 Misc :  
 ALS Vial : 4 Sample Multiplier: 1

Instrument :  
 BNA\_G  
 ClientSampled :  
 C0BN2DL

Quant Method : Z:\HPCHEM1\BNA G\METHODS\SOM-EPA-BG032717MA.M  
 Quant Title : SVOA CALIBRATION

TIC Library : C:\DATABASE\NIST02.L  
 TIC Integration Parameters: LSCINT.P



Data Path : Z:\HPCHEM1\BNA G\DATA\BG032717\  
 Data File : BG026453.D  
 Acq On : 28 Mar 2017 11:22  
 Operator : SJ/MA  
 Sample : I2358-14DL 40X  
 Misc :  
 ALS Vial : 4 Sample Multiplier: 1

Instrument :  
 BNA\_G  
 ClientSampleID :  
 C0BN2DL

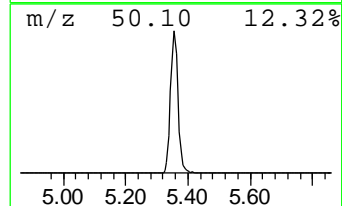
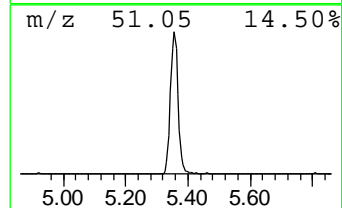
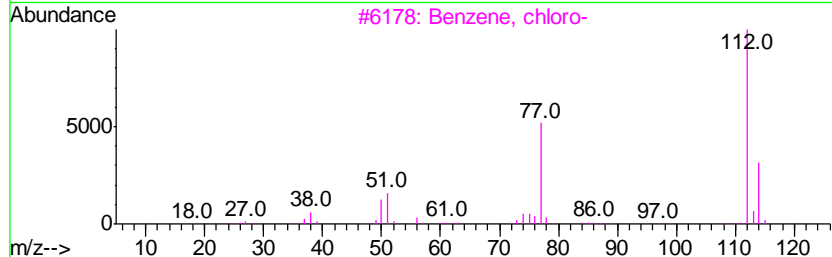
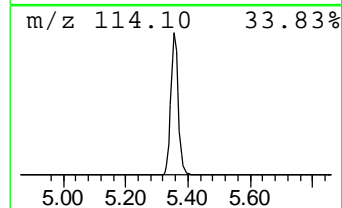
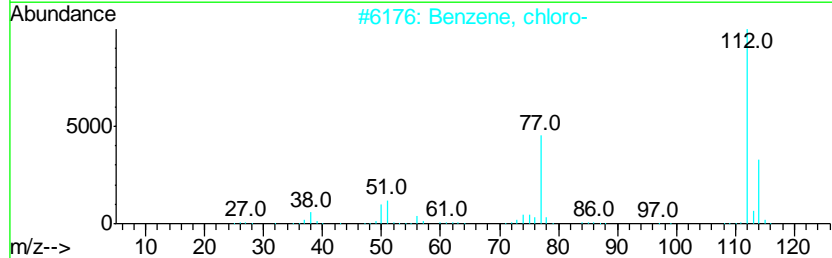
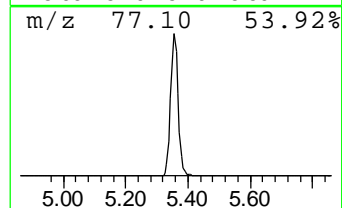
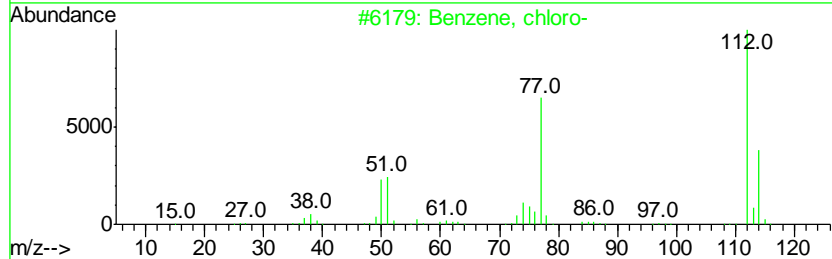
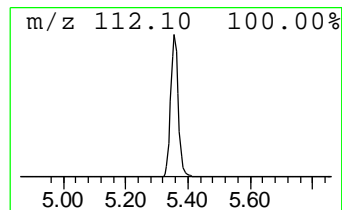
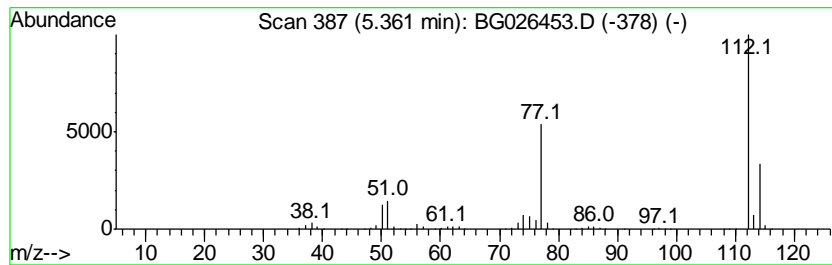
Quant Method : Z:\HPCHEM1\BNA G\METHODS\SOM-EPA-BG032717MA.M  
 Quant Title : SVOA CALIBRATION

TIC Library : C:\DATABASE\NIST02.L  
 TIC Integration Parameters: LSCINT.P

\*\*\*\*\*  
 Peak Number 1 Benzene, chloro- Concentration Rank 2

R.T.	EstConc	Area	Relative to ISTD	R.T.
5.36	104.10 ng/ul	3255550	1,4-Dichlorobenzene-d4	8.04

Hit#	of	Tentative ID	MW	MolForm	CAS#	Qual
1	5	Benzene, chloro-	112	C6H5Cl	000108-90-7	95
2		Benzene, chloro-	112	C6H5Cl	000108-90-7	94
3		Benzene, chloro-	112	C6H5Cl	000108-90-7	94
4		Benzene, chloro-	112	C6H5Cl	000108-90-7	94
5		2-Cyclopenten-1-one, 2-hydroxy-3...	112	C6H8O2	000080-71-7	25



Data Path : Z:\HPCHEM1\BNA G\DATA\BG032717\  
 Data File : BG026453.D  
 Acq On : 28 Mar 2017 11:22  
 Operator : SJ/MA  
 Sample : I2358-14DL 40X  
 Misc :  
 ALS Vial : 4 Sample Multiplier: 1

Instrument :  
 BNA\_G  
 ClientSampleID :  
 C0BN2DL

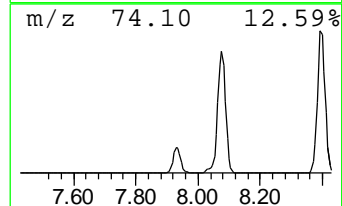
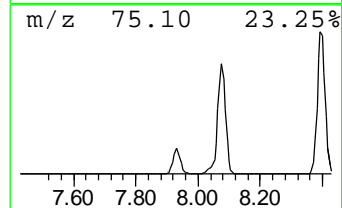
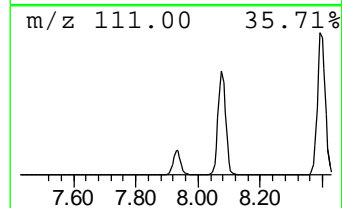
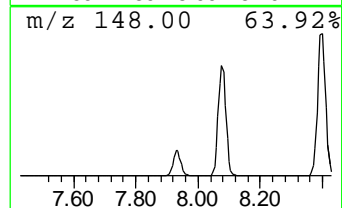
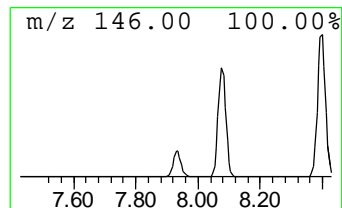
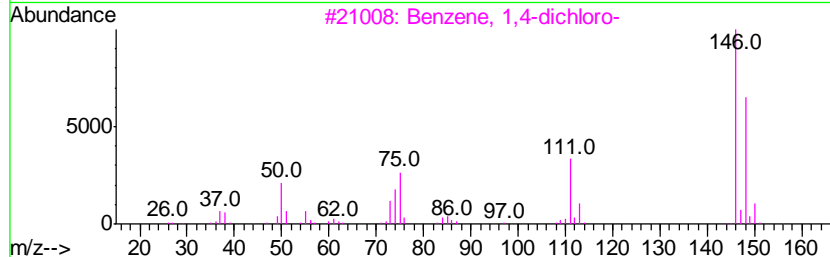
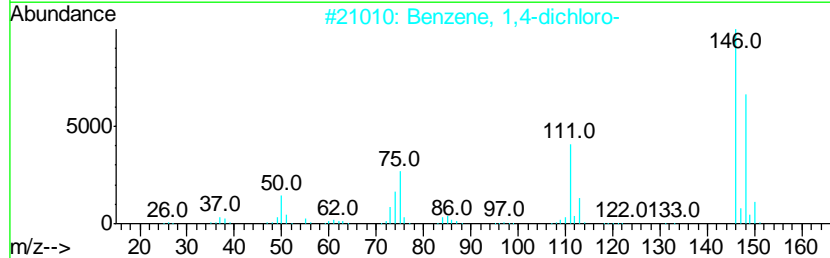
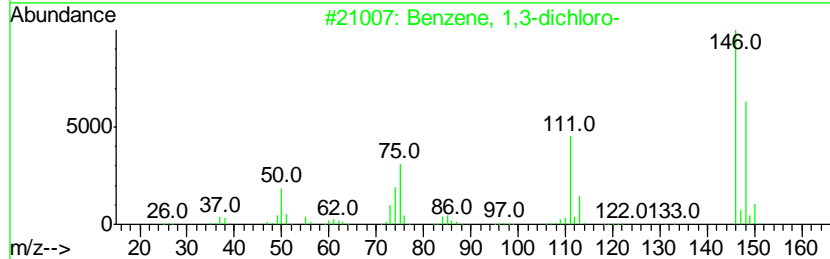
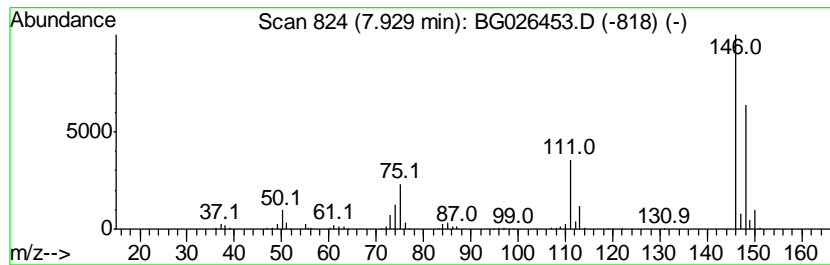
Quant Method : Z:\HPCHEM1\BNA G\METHODS\SOM-EPA-BG032717MA.M  
 Quant Title : SVOA CALIBRATION

TIC Library : C:\DATABASE\NIST02.L  
 TIC Integration Parameters: LSCINT.P

\*\*\*\*\*  
 Peak Number 2 Benzene, 1,3-dichloro- Concentration Rank 3

R.T.	EstConc	Area	Relative to ISTD	R.T.
7.93	24.10 ng/ul	753637	1,4-Dichlorobenzene-d4	8.04

Hit#	of	Tentative ID	MW	MolForm	CAS#	Qual
1	5	Benzene, 1,3-dichloro-	146	C6H4Cl2	000541-73-1	97
2		Benzene, 1,4-dichloro-	146	C6H4Cl2	000106-46-7	97
3		Benzene, 1,4-dichloro-	146	C6H4Cl2	000106-46-7	97
4		Benzene, 1,3-dichloro-	146	C6H4Cl2	000541-73-1	96
5		Benzene, 1,3-dichloro-	146	C6H4Cl2	000541-73-1	96



Data Path : Z:\HPCHEM1\BNA G\DATA\BG032717\  
 Data File : BG026453.D  
 Acq On : 28 Mar 2017 11:22  
 Operator : SJ/MA  
 Sample : I2358-14DL 40X  
 Misc :  
 ALS Vial : 4 Sample Multiplier: 1

Instrument :  
 BNA\_G  
 ClientSampleID :  
 C0BN2DL

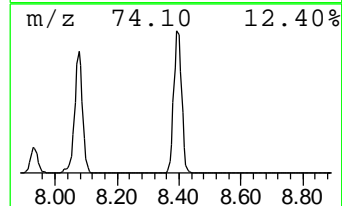
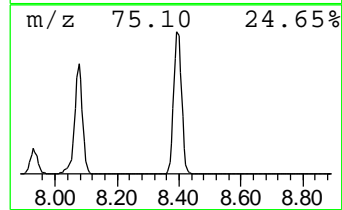
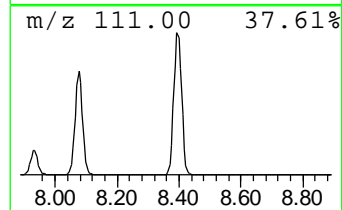
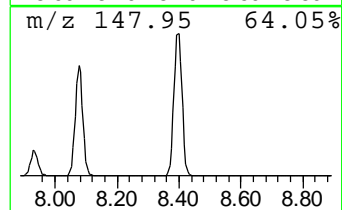
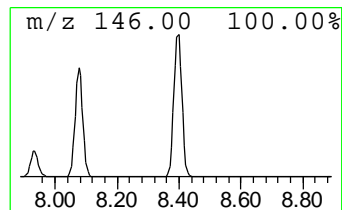
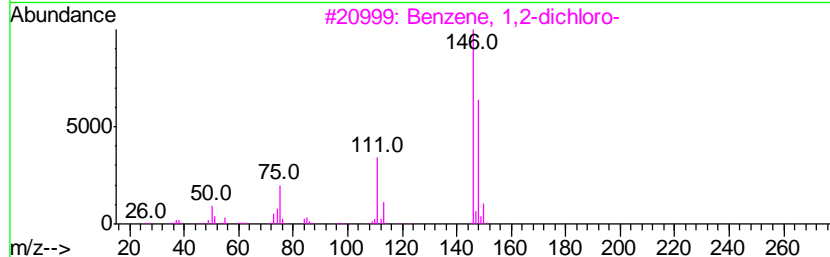
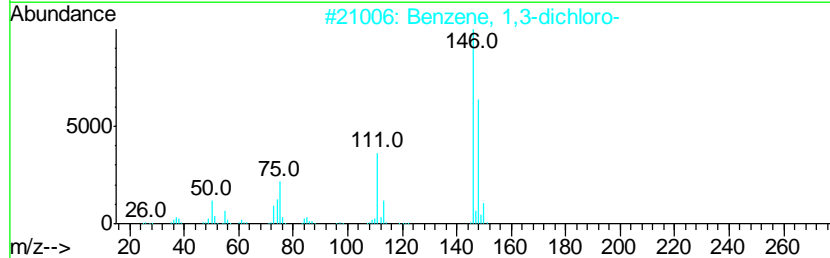
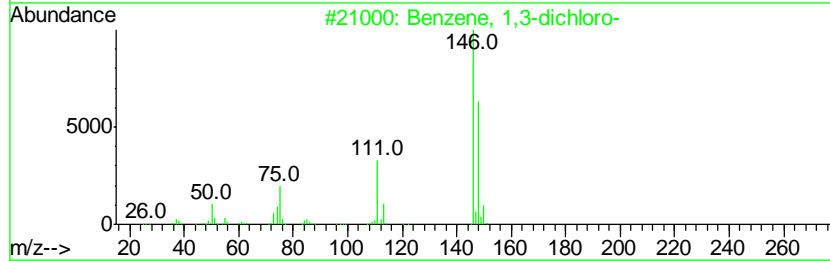
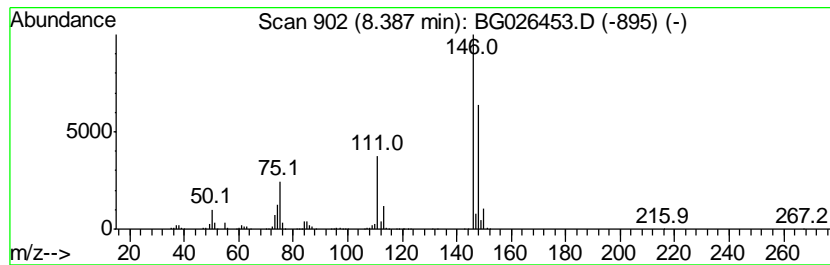
Quant Method : Z:\HPCHEM1\BNA G\METHODS\SOM-EPA-BG032717MA.M  
 Quant Title : SVOA CALIBRATION

TIC Library : C:\DATABASE\NIST02.L  
 TIC Integration Parameters: LSCINT.P

\*\*\*\*\*  
 Peak Number 3 Benzene, 1,2-dichloro- Concentration Rank 1

R.T.	EstConc	Area	Relative to ISTD	R.T.
8.39	142.44 ng/ul	4454600	1,4-Dichlorobenzene-d4	8.04

Hit#	of	Tentative ID	MW	MolForm	CAS#	Qual
1	5	Benzene, 1,3-dichloro-	146	C6H4Cl2	000541-73-1	97
2		Benzene, 1,3-dichloro-	146	C6H4Cl2	000541-73-1	97
3		Benzene, 1,2-dichloro-	146	C6H4Cl2	000095-50-1	97
4		Benzene, 1,4-dichloro-	146	C6H4Cl2	000106-46-7	97
5		Benzene, 1,4-dichloro-	146	C6H4Cl2	000106-46-7	96



Data Path : Z:\HPCHEM1\BNA G\DATA\BG032717\  
 Data File : BG026453.D  
 Acq On : 28 Mar 2017 11:22  
 Operator : SJ/MA  
 Sample : I2358-14DL 40X  
 Misc :  
 ALS Vial : 4 Sample Multiplier: 1

Instrument :  
 BNA\_G  
 ClientSampleID :  
 C0BN2DL

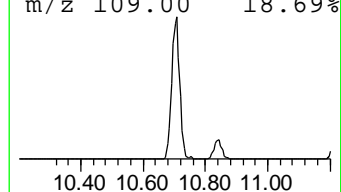
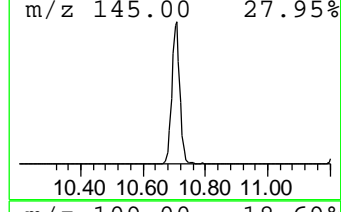
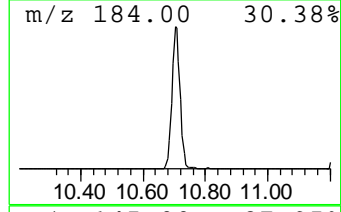
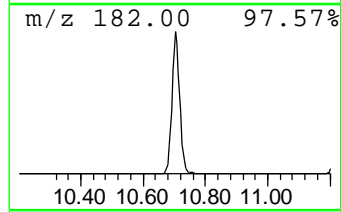
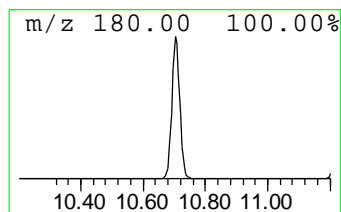
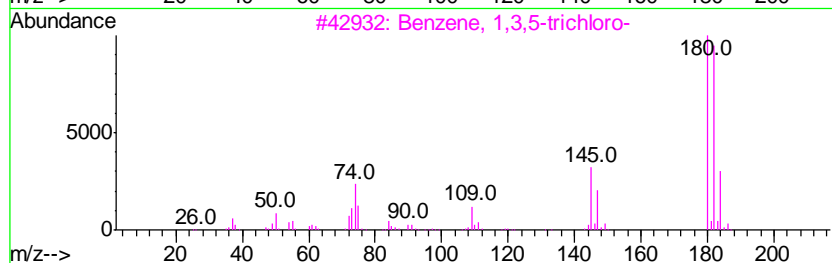
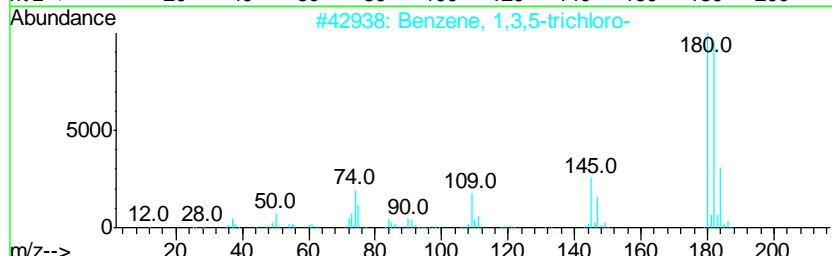
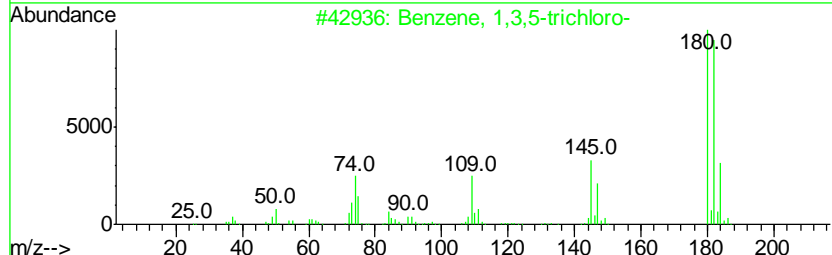
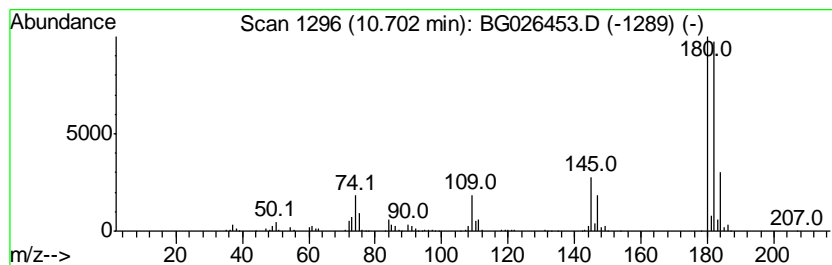
Quant Method : Z:\HPCHEM1\BNA G\METHODS\SOM-EPA-BG032717MA.M  
 Quant Title : SVOA CALIBRATION

TIC Library : C:\DATABASE\NIST02.L  
 TIC Integration Parameters: LSCINT.P

\*\*\*\*\*  
 Peak Number 4 Benzene, 1,3,5-trichloro- Concentration Rank 4

R.T.	EstConc	Area	Relative to ISTD	R.T.
10.70	13.73 ng/ul	797200	Naphthalene-d8	10.84

Hit#	of	Tentative ID	MW	MolForm	CAS#	Qual
1	5	Benzene, 1,3,5-trichloro-	180	C6H3Cl3	000108-70-3	97
2		Benzene, 1,3,5-trichloro-	180	C6H3Cl3	000108-70-3	97
3		Benzene, 1,3,5-trichloro-	180	C6H3Cl3	000108-70-3	96
4		Benzene, 1,2,4-trichloro-	180	C6H3Cl3	000120-82-1	95
5		Benzene, 1,3,5-trichloro-	180	C6H3Cl3	000108-70-3	94



Data Path : Z:\HPCHEM1\BNA G\DATA\BG032717\  
 Data File : BG026453.D  
 Acq On : 28 Mar 2017 11:22  
 Operator : SJ/MA  
 Sample : I2358-14DL 40X  
 Misc :  
 ALS Vial : 4 Sample Multiplier: 1

Instrument :  
 BNA\_G  
 ClientSampleID :  
 C0BN2DL

Quant Method : Z:\HPCHEM1\BNA G\METHODS\SOM-EPA-BG032717MA.M  
 Quant Title : SVOA CALIBRATION

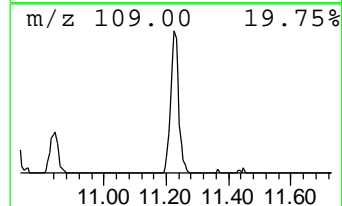
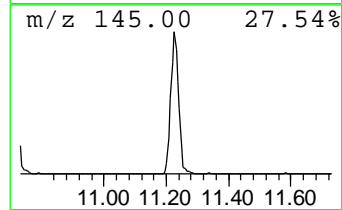
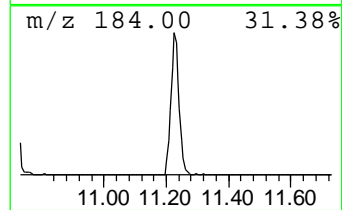
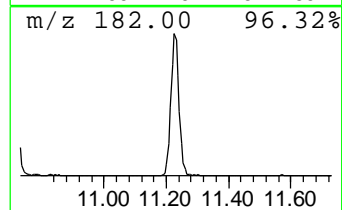
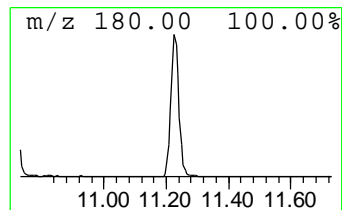
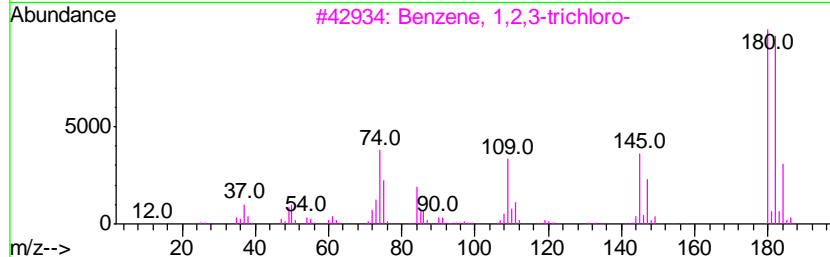
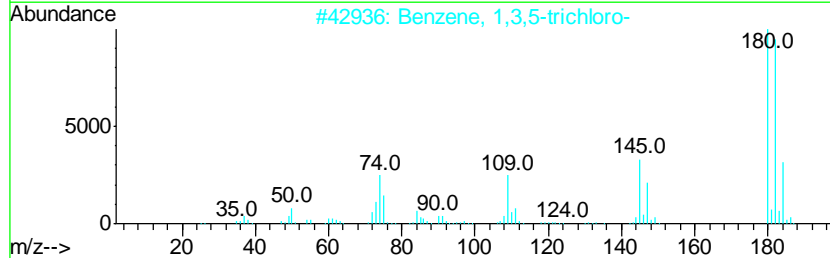
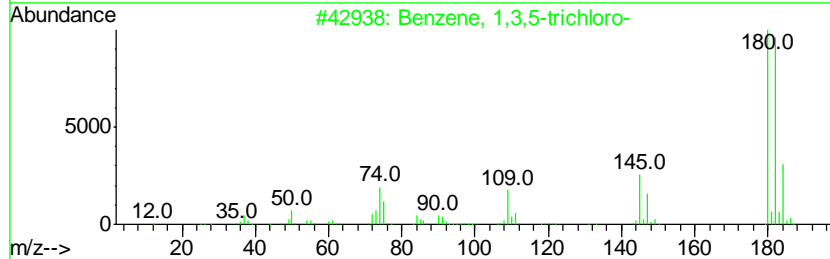
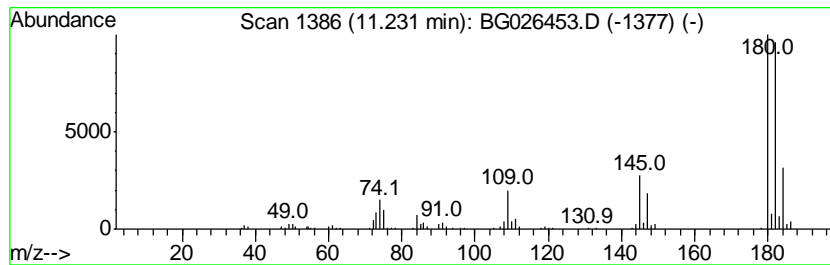
TIC Library : C:\DATABASE\NIST02.L  
 TIC Integration Parameters: LSCINT.P

\*\*\*\*\*  
 Peak Number 5 Benzene, 1,2,3-trichloro- Concentration Rank 5

R.T.	EstConc	Area	Relative to ISTD	R.T.
11.23	6.35 ng/ul	368442	Naphthalene-d8	10.84

Hit#	of	Tentative ID	MW	MolForm	CAS#	Qual
1	5	Benzene, 1,3,5-trichloro-	180	C6H3Cl3	000108-70-3	98
2		Benzene, 1,3,5-trichloro-	180	C6H3Cl3	000108-70-3	97
3		Benzene, 1,2,3-trichloro-	180	C6H3Cl3	000087-61-6	97
4		Benzene, 1,2,4-trichloro-	180	C6H3Cl3	000120-82-1	96
5		Benzene, 1,2,4-trichloro-	180	C6H3Cl3	000120-82-1	96



Data Path : Z:\HPCHEM1\BNA G\DATA\BG032717\  
 Data File : BG026453.D  
 Acq On : 28 Mar 2017 11:22  
 Operator : SJ/MA  
 Sample : I2358-14DL 40X  
 Misc :  
 ALS Vial : 4 Sample Multiplier: 1

Instrument :  
 BNA\_G  
 ClientSampleId :  
 C0BN2DL

Quant Method : Z:\HPCHEM1\BNA G\METHODS\SOM-EPA-BG032717MA.M  
 Quant Title : SVOA CALIBRATION

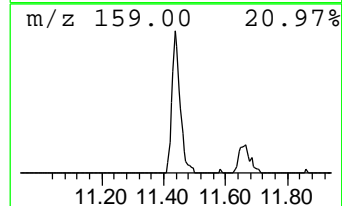
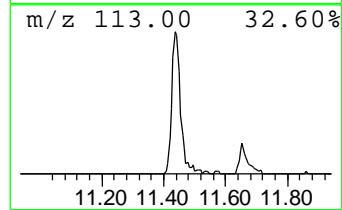
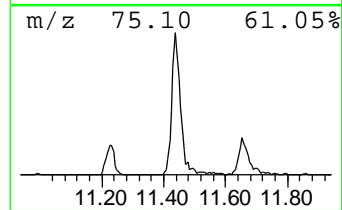
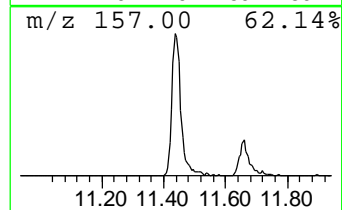
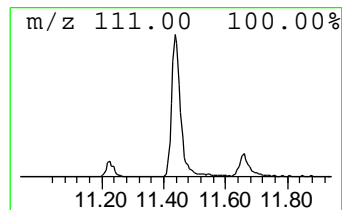
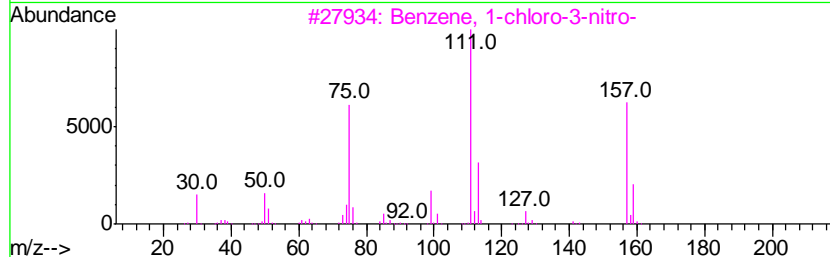
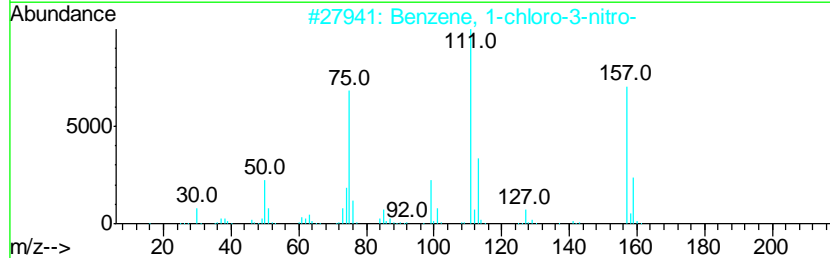
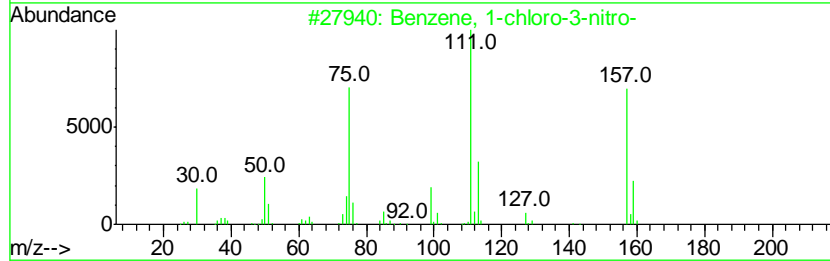
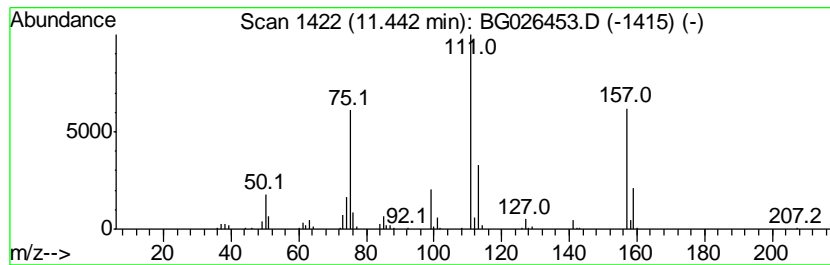
TIC Library : C:\DATABASE\NIST02.L  
 TIC Integration Parameters: LSCINT.P

\*\*\*\*\*  
 Peak Number 6 Benzene, 1-chloro-3-nitro- Concentration Rank 6

R.T.	EstConc	Area	Relative to ISTD	R.T.
11.44	4.74 ng/ul	275135	Naphthalene-d8	10.84

Hit#	of	Tentative ID	MW	MolForm	CAS#	Qual
1	5	Benzene, 1-chloro-3-nitro-	157	C6H4ClNO2	000121-73-3	97
2		Benzene, 1-chloro-3-nitro-	157	C6H4ClNO2	000121-73-3	96
3		Benzene, 1-chloro-3-nitro-	157	C6H4ClNO2	000121-73-3	96
4		Benzene, 1-chloro-4-nitro-	157	C6H4ClNO2	000100-00-5	91
5		Benzene, 1-chloro-4-nitro-	157	C6H4ClNO2	000100-00-5	91





Data Path : Z:\HPCHEM1\BNA\_G\DATA\BG032717\  
Data File : BG026453.D  
Acq On : 28 Mar 2017 11:22  
Operator : SJ/MA  
Sample : I2358-14DL 40X  
Misc :  
ALS Vial : 4 Sample Multiplier: 1

Instrument :  
BNA\_G  
ClientSampleId :  
C0BN2DL

Quant Method : Z:\HPCHEM1\BNA\_G\METHODS\SOM-EPA-BG032717MA.M  
Quant Title : SVOA CALIBRATION

TIC Library : C:\DATABASE\NIST02.L  
TIC Integration Parameters: LSCINT.P

TIC Top Hit name	RT	EstConc	Units	Response	--Internal Standard--			
					#	RT	Resp	Conc
Benzene, chloro-	5.36	104.1	ng/ul	3255550	1	8.04	625488	20.0
Benzene, 1,3-dich...	7.93	24.1	ng/ul	753637	1	8.04	625488	20.0
Benzene, 1,2-dich...	8.39	142.4	ng/ul	4454600	1	8.04	625488	20.0
Benzene, 1,3,5-tr...	10.70	13.7	ng/ul	797200	2	10.84	1161320	20.0
Benzene, 1,2,3-tr...	11.23	6.3	ng/ul	368442	2	10.84	1161320	20.0
Benzene, 1-chloro...	11.44	4.7	ng/ul	275135	2	10.84	1161320	20.0