

Data Path : Z:\HPCHEM1\BNA G\DATA\BG033115\  
 Data File : BG016198.D  
 Acq On : 31 Mar 2015 13:07  
 Operator : TP/IZ  
 Sample : SSTD01039  
 Misc :  
 ALS Vial : 3 Sample Multiplier: 1

Instrument :  
 BNA\_G  
 ClientSampleId :

Quant Time: Apr 01 01:53:12 2015  
 Quant Method : Z:\HPCHEM1\BNA G\METHODS\SOM01.2-EPA-BG033115.M  
 Quant Title : SVOA CALIBRATION  
 QLast Update : Wed Apr 01 01:44:28 2015  
 Response via : Initial Calibration

Internal Standards	R.T.	QIon	Response	Conc	Units	Dev(Min)
1) 1,4-Dichlorobenzene-d4	7.77	152	73312	20.00	ng/ul	0.00
18) Naphthalene-d8	10.55	136	323958	20.00	ng/ul	0.00
35) Acenaphthene-d10	14.39	164	195450	20.00	ng/ul	0.00
61) Phenanthrene-d10	17.14	188	403711	20.00	ng/ul	0.00
75) Chrysene-d12	21.31	240	442780	20.00	ng/ul	0.00
83) Perylene-d12	23.58	264	406317	20.00	ng/ul	0.00

## System Monitoring Compounds

3) 1,4-Dioxane-d8	3.24	96	6488	3.66	ng/uL	0.00
5) Phenol-d5	6.93	99	65767	10.00	ng/ul	0.00
7) Bis-(2-Chloroethyl)ether-d	7.10	67	38525	10.40	ng/ul	0.00
9) 2-Chlorophenol-d4	7.30	132	50790	9.88	ng/ul	0.00
13) 4-Methylphenol-d8	8.47	113	50607	10.07	ng/ul	0.00
19) Nitrobenzene-d5	8.92	128	26469	10.13	ng/ul	0.00
22) 2-Nitrophenol-d4	9.64	143	29595	11.47	ng/ul	0.00
26) 2,4-Dichlorophenol-d3	10.18	165	47844	10.37	ng/ul	0.00
29) 4-Chloroaniline-d4	10.69	131	69572	11.06	ng/ul	0.00
43) Dimethylphthalate-d6	13.80	166	129998	10.19	ng/ul	0.00
46) Acenaphthylene-d8	14.09	160	183677	10.37	ng/ul	0.00
51) 4-Nitrophenol-d4	14.59	143	30880	9.97	ng/ul	0.00
57) Fluorene-d10	15.39	176	127316	10.04	ng/ul	0.00
62) 4,6-Dinitro-2-methylphenol	15.50	200	24620	10.55	ng/ul	0.00
70) Anthracene-d10	17.23	188	184820	10.03	ng/ul	0.00
76) Pyrene-d10	19.52	212	197346	9.97	ng/ul	0.00
87) Benzo(a)pyrene-d12	23.44	264	178347	10.02	ng/ul	0.00

## Target Compounds

Target Compounds	R.T.	QIon	Response	Conc	Units	Ovalue
2) 1,4-Dioxane	3.27	88	8103	3.74	ng/uL	97
4) Benzaldehyde	6.91	77	41383	10.72	ng/ul	95
6) Phenol	6.96	94	70623	9.72	ng/ul	100
8) Bis(2-Chloroethyl)ether	7.19	93	55047	9.65	ng/ul	99
10) 2-Chlorophenol	7.33	128	54269	9.96	ng/ul	98
11) 2-Methylphenol	8.21	108	53539	10.12	ng/ul	99
12) 2,2'-oxybis(1-Chloropropan	8.30	45	80675	12.01	ng/ul	99
14) Acetophenone	8.58	105	78361	9.99	ng/ul	100
15) N-Nitroso-di-n-propylamine	8.57	70	47246	10.88	ng/ul	98
16) 4-Methylphenol	8.53	108	57935	9.86	ng/ul	99
17) Hexachloroethane	8.84	117	21717	10.15	ng/ul	96
20) Nitrobenzene	8.96	77	64524	10.85	ng/ul	99
21) Isophorone	9.48	82	125632	10.76	ng/ul	98
23) 2-Nitrophenol	9.67	139	31370	10.61	ng/ul	99
24) 2,4-Dimethylphenol	9.73	107	59944	10.39	ng/ul	98
25) Bis(2-Chloroethoxy)methane	9.96	93	71269	9.97	ng/ul	99
27) 2,4-Dichlorophenol	10.20	162	47547	10.04	ng/ul	97
28) Naphthalene	10.60	128	175000	10.05	ng/ul	98
30) 4-Chloroaniline	10.71	127	71538	11.06	ng/ul	97
31) Hexachlorobutadiene	10.89	225	26199	10.13	ng/ul	93
32) Caprolactam	11.46	113	23575	10.57	ng/ul	93
33) 4-Chloro-3-methylphenol	11.83	107	55197	10.62	ng/ul	98
34) 2-Methylnaphthalene	12.21	142	124284	10.07	ng/ul	99

Data Path : Z:\HPCHEM1\BNA G\DATA\BG033115\  
 Data File : BG016198.D  
 Acq On : 31 Mar 2015 13:07  
 Operator : TP/IZ  
 Sample : SSTD01039  
 Misc :  
 ALS Vial : 3 Sample Multiplier: 1

Instrument :  
 BNA\_G  
 ClientSampled :

Quant Time: Apr 01 01:53:12 2015  
 Quant Method : Z:\HPCHEM1\BNA G\METHODS\SOM01.2-EPA-BG033115.M  
 Quant Title : SVOA CALIBRATION  
 QLast Update : Wed Apr 01 01:44:28 2015  
 Response via : Initial Calibration

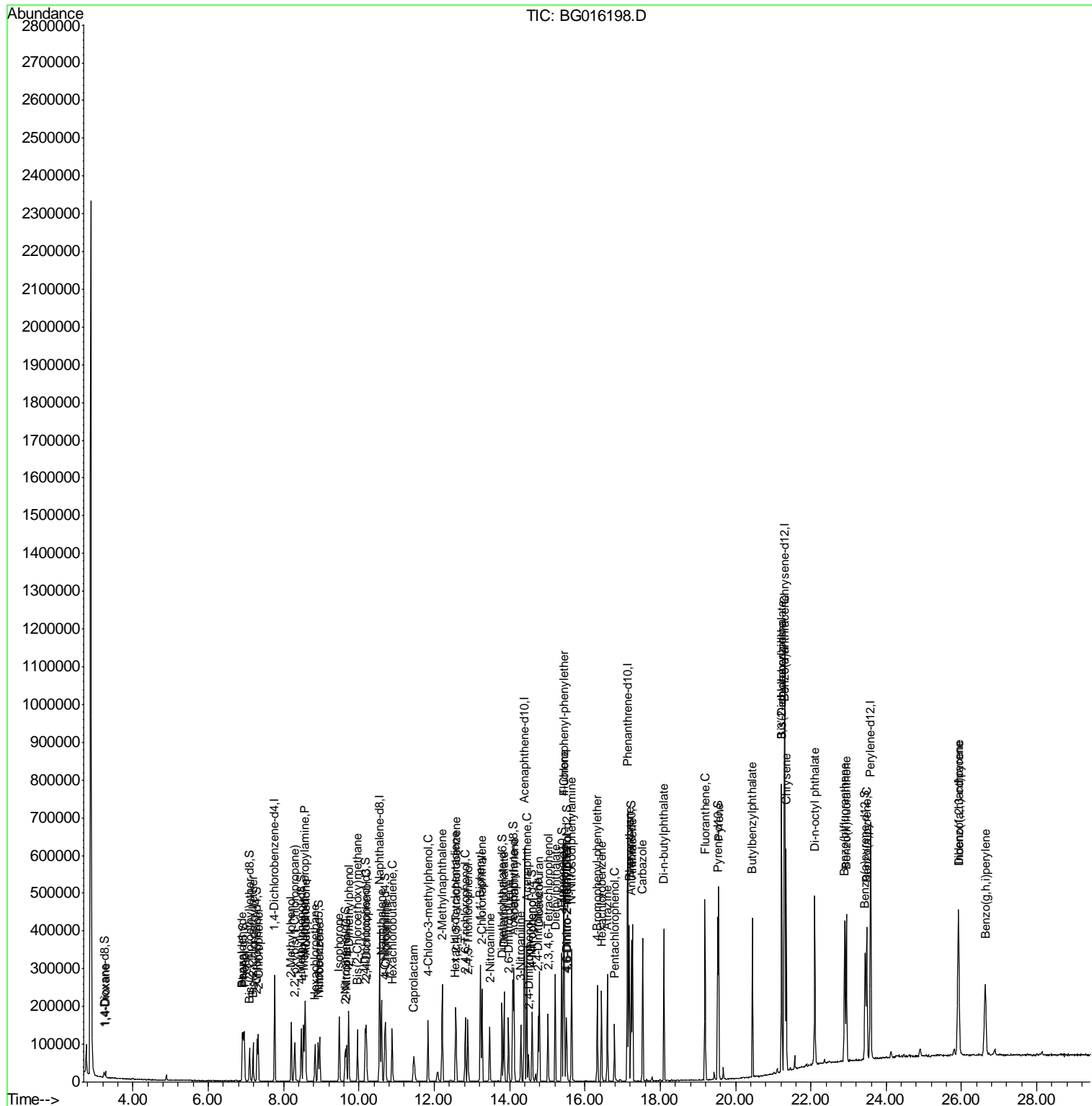
Internal Standards	R.T.	QIon	Response	Conc	Units	Dev(Min)
36) 1,2,4,5-Tetrachlorobenzene	12.58	216	51161	9.81	ng/ul	97
37) Hexachlorocyclopentadiene	12.56	237	28204	9.69	ng/ul#	97
38) 2,4,6-Trichlorophenol	12.83	196	34971	10.45	ng/ul	98
39) 2,4,5-Trichlorophenol	12.90	196	38978	10.78	ng/ul	99
40) 1,1'-Biphenyl	13.22	154	155303	10.12	ng/ul	100
41) 2-Chloronaphthalene	13.27	162	116007	10.01	ng/ul	99
42) 2-Nitroaniline	13.47	65	39418	11.53	ng/ul	94
44) Dimethylphthalate	13.85	163	147374	10.25	ng/ul	99
45) 2,6-Dinitrotoluene	13.97	165	32502	10.63	ng/ul	98
47) Acenaphthylene	14.11	152	204453	10.32	ng/ul	98
48) 3-Nitroaniline	14.30	138	37029	10.55	ng/ul	93
49) Acenaphthene	14.46	153	136170	10.21	ng/ul	97
50) 2,4-Dinitrophenol	14.51	184	15385	9.92	ng/ul	95
52) 4-Nitrophenol	14.61	109	21483	12.09	ng/ul	96
53) Dibenzofuran	14.79	168	179249	10.07	ng/ul	99
54) 2,4-Dinitrotoluene	14.76	165	47497	10.84	ng/ul	95
55) 2,3,4,6-Tetrachlorophenol	15.02	232	33257	10.54	ng/ul#	98
56) Diethylphthalate	15.22	149	150935	10.23	ng/ul	98
58) Fluorene	15.44	166	155515	9.98	ng/ul	99
59) 4-Chlorophenyl-phenylether	15.43	204	68835	9.82	ng/ul	99
60) 4-Nitroaniline	15.46	138	40151	9.72	ng/ul	98
63) 4,6-Dinitro-2-methylphenol	15.52	198	27664	10.63	ng/ul#	98
64) N-Nitrosodiphenylamine	15.65	169	131146	10.21	ng/ul	98
65) 4-Bromophenyl-phenylether	16.33	248	42087	10.01	ng/ul	99
66) Hexachlorobenzene	16.44	284	47565	10.01	ng/ul	95
67) Atrazine	16.60	200	45161	10.17	ng/ul	99
68) Pentachlorophenol	16.79	266	27048	10.00	ng/ul	96
69) Phenanthrene	17.18	178	231068	10.08	ng/ul	98
71) Anthracene	17.27	178	237556	10.22	ng/ul	98
72) Carbazole	17.54	167	228496	10.21	ng/ul	98
73) Di-n-butylphthalate	18.10	149	279185	10.71	ng/ul	98
74) Fluoranthene	19.19	202	261021	10.16	ng/ul	100
77) Pyrene	19.55	202	277745	10.25	ng/ul	99
78) Butylbenzylphthalate	20.45	149	126384	10.93	ng/ul	96
79) 3,3'-Dichlorobenzidine	21.23	252	82233	11.01	ng/ul	99
80) Benzo(a)anthracene	21.29	228	260865	10.39	ng/ul	99
81) Bis(2-ethylhexyl)phthalate	21.22	149	167249	10.72	ng/ul	99
82) Chrysene	21.34	228	240971	10.15	ng/ul	99
84) Di-n-octyl phthalate	22.10	149	279486	11.33	ng/ul	100
85) Benzo(b)fluoranthene	22.90	252	248008	10.65	ng/ul	99
86) Benzo(k)fluoranthene	22.94	252	231619	10.09	ng/ul	97
88) Benzo(a)pyrene	23.48	252	230516	10.00	ng/ul	100
89) Indeno(1,2,3-cd)pyrene	25.91	276	262379	9.78	ng/ul	97
90) Dibenzo(a,h)anthracene	25.93	278	219397	9.79	ng/ul	98
91) Benzo(g,h,i)perylene	26.63	276	214940	9.58	ng/ul	98

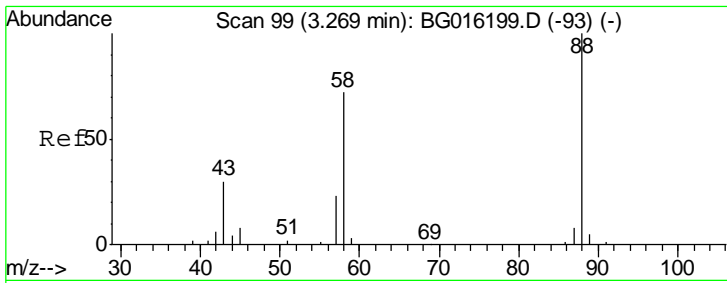
(#) = qualifier out of range (m) = manual integration (+) = signals summed

Data Path : Z:\HPCHEM1\BNA G\DATA\BG033115\  
 Data File : BG016198.D  
 Acq On : 31 Mar 2015 13:07  
 Operator : TP/IZ  
 Sample : SSTD01039  
 Misc :  
 ALS Vial : 3 Sample Multiplier: 1

Instrument :  
 BNA\_G  
 Client Sampled :

Quant Time: Apr 01 01:53:12 2015  
 Quant Method : Z:\HPCHEM1\BNA G\METHODS\SOM01.2-EPA-BG033115.M  
 Quant Title : SVOA CALIBRATION  
 QLast Update : Wed Apr 01 01:44:28 2015  
 Response via : Initial Calibration

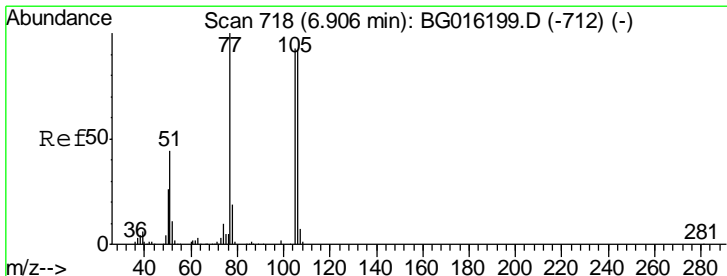
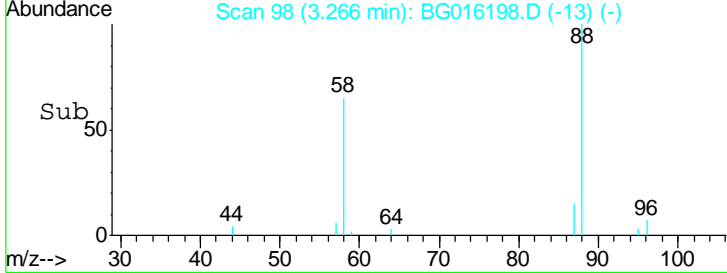
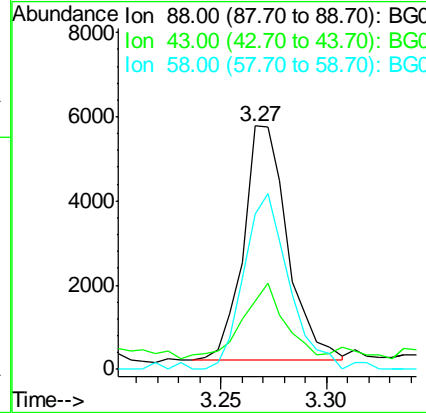
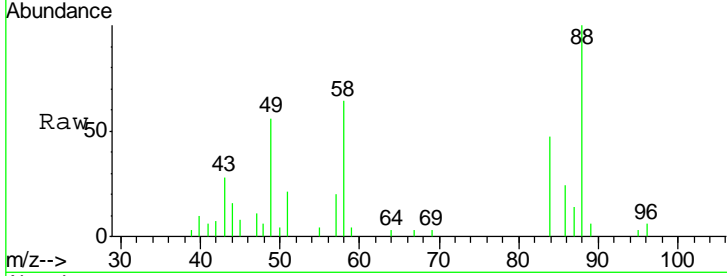




#2  
 1,4-Dioxane  
 Concen: 3.74 ng/uL  
 RT: 3.27 min Scan# 98  
 Delta R.T. -0.00 min  
 Lab File: BG016198.D  
 Acq: 31 Mar 2015 13:07

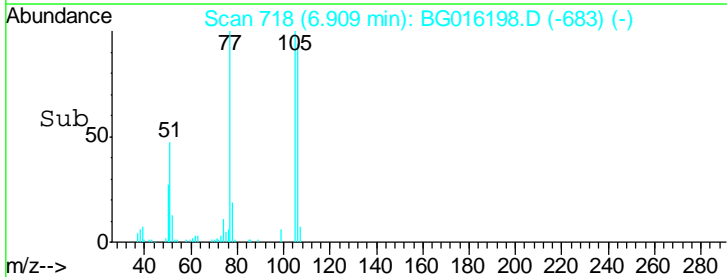
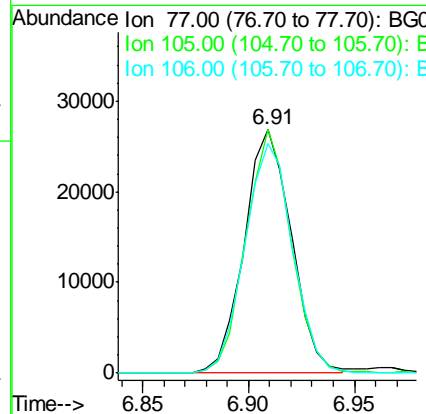
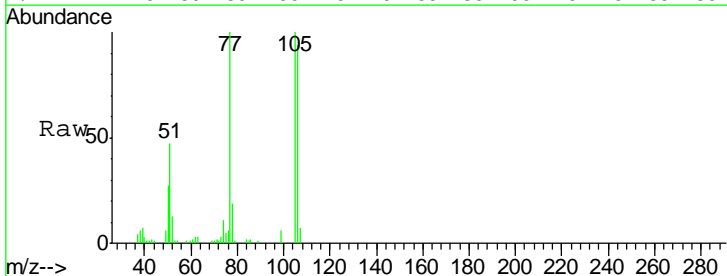
Instrument :  
 BNA\_G  
 ClientSampled :

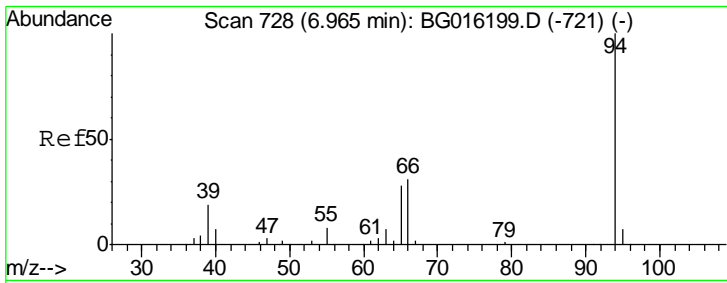
Tgt Ion	Resp	Lower	Upper
88	100		
43	30.2	22.5	33.7
58	75.6	62.5	93.7



#4  
 Benzaldehyde  
 Concen: 10.72 ng/uL  
 RT: 6.91 min Scan# 718  
 Delta R.T. 0.00 min  
 Lab File: BG016198.D  
 Acq: 31 Mar 2015 13:07

Tgt Ion	Resp	Lower	Upper
77	100		
105	100.0	74.5	111.7
106	94.5	73.4	110.0

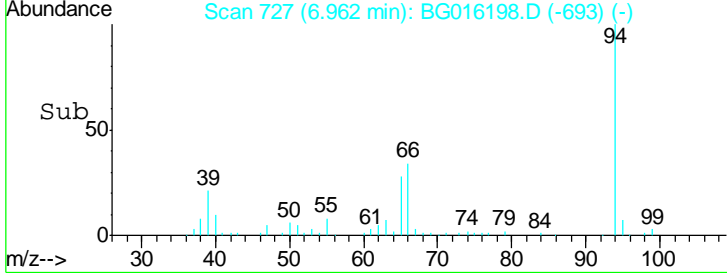
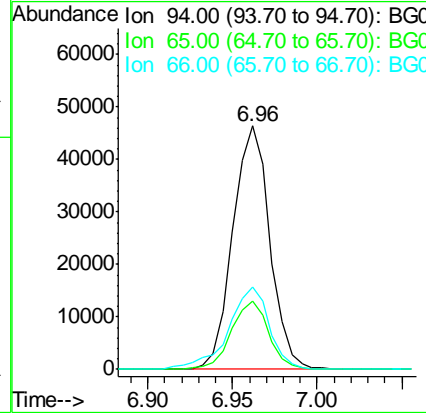
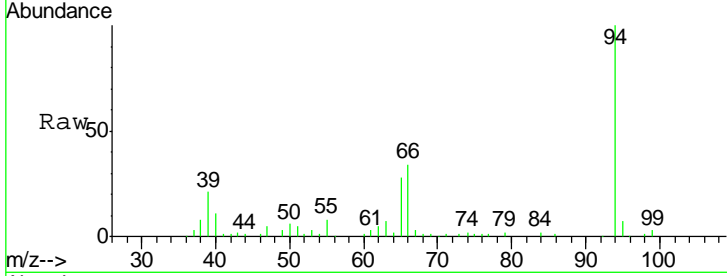




#6  
 Phenol  
 Concen: 9.72 ng/ul  
 RT: 6.96 min Scan# 727  
 Delta R.T. -0.00 min  
 Lab File: BG016198.D  
 Acq: 31 Mar 2015 13:07

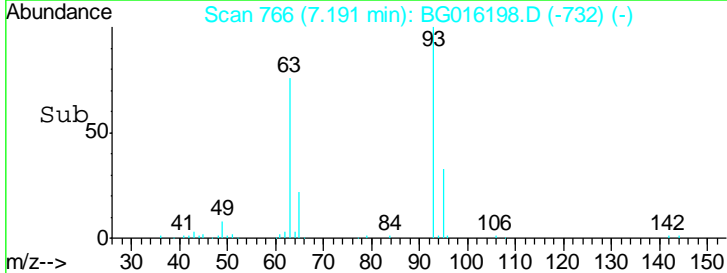
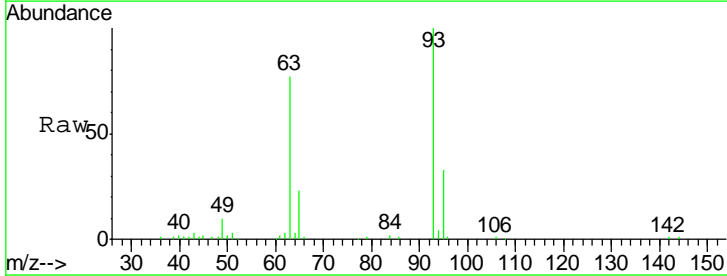
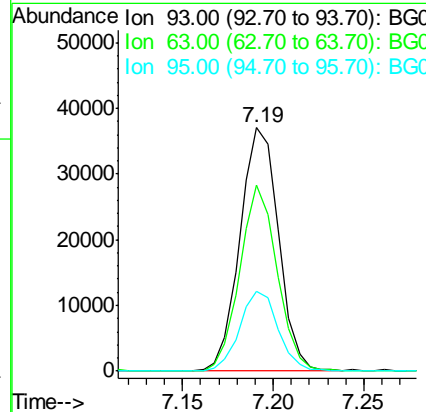
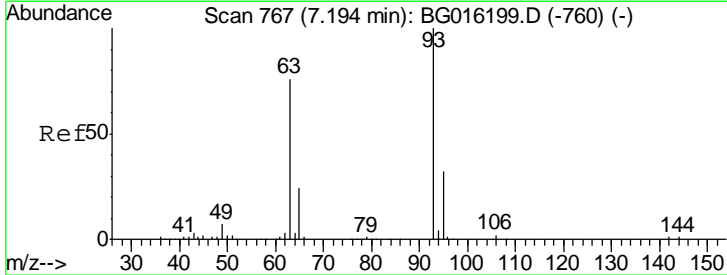
Instrument :  
 BNA\_G  
 ClientSampled :

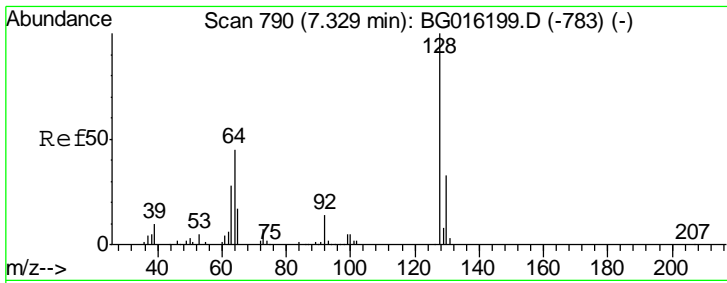
Tgt Ion	Resp	Lower	Upper
94	70623		
65	28.2	22.6	33.8
66	33.7	26.6	40.0



#8  
 Bis(2-Chloroethyl)ether  
 Concen: 9.65 ng/ul  
 RT: 7.19 min Scan# 766  
 Delta R.T. -0.00 min  
 Lab File: BG016198.D  
 Acq: 31 Mar 2015 13:07

Tgt Ion	Resp	Lower	Upper
93	55047		
63	76.6	60.7	91.1
95	32.8	26.0	39.0

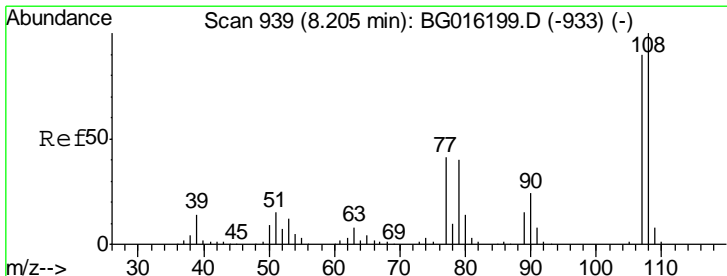
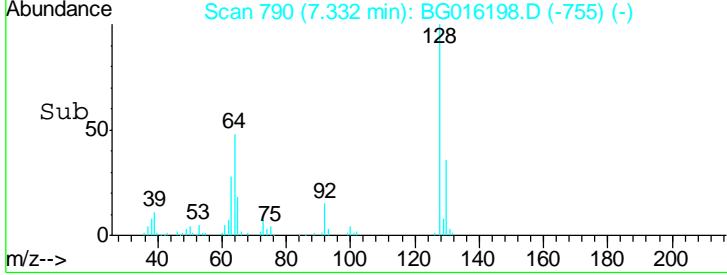
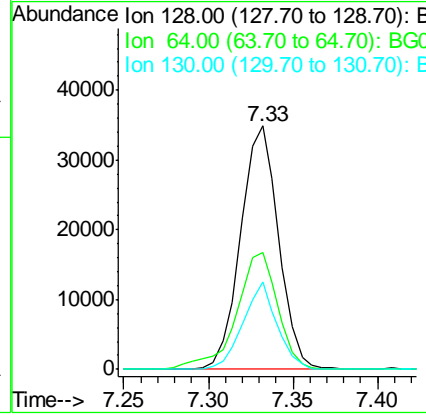
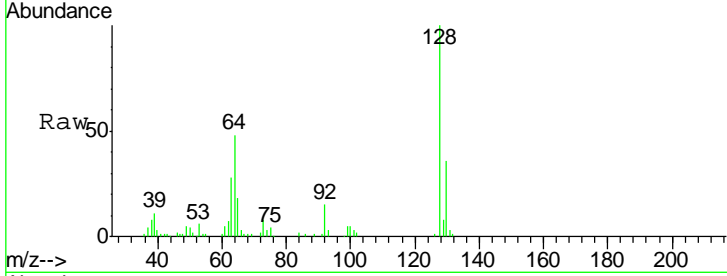




#10  
 2-Chlorophenol  
 Concen: 9.96 ng/ul  
 RT: 7.33 min Scan# 790  
 Delta R.T. 0.00 min  
 Lab File: BG016198.D  
 Acq: 31 Mar 2015 13:07

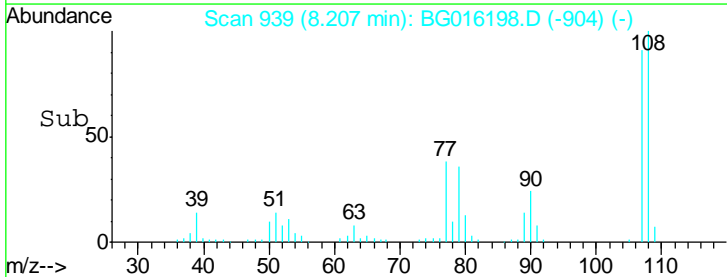
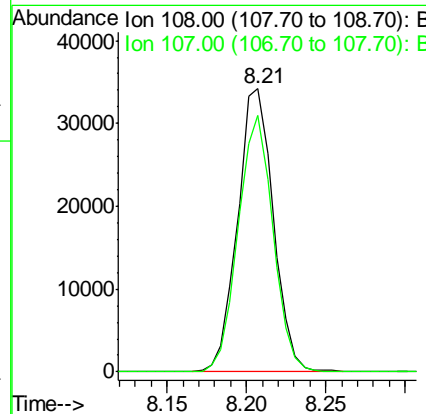
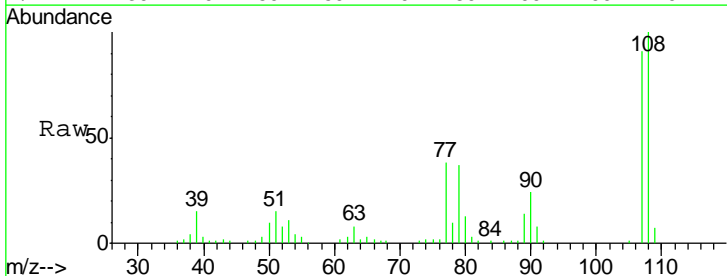
Instrument :  
 BNA\_G  
 ClientSampled :

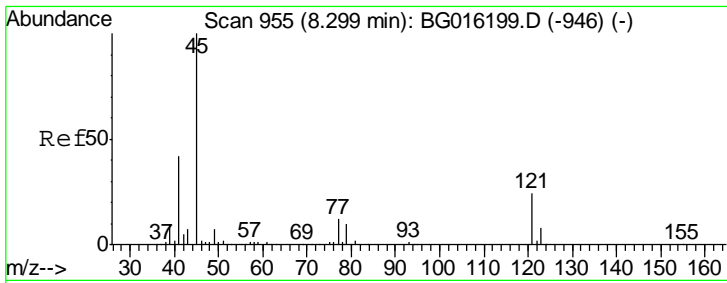
Tgt Ion	Resp	Lower	Upper
128	54269		
64	47.8	38.4	57.6
130	35.8	26.2	39.2



#11  
 2-Methylphenol  
 Concen: 10.12 ng/ul  
 RT: 8.21 min Scan# 939  
 Delta R.T. 0.00 min  
 Lab File: BG016198.D  
 Acq: 31 Mar 2015 13:07

Tgt Ion	Resp	Lower	Upper
108	53539		
107	90.7	71.8	107.6

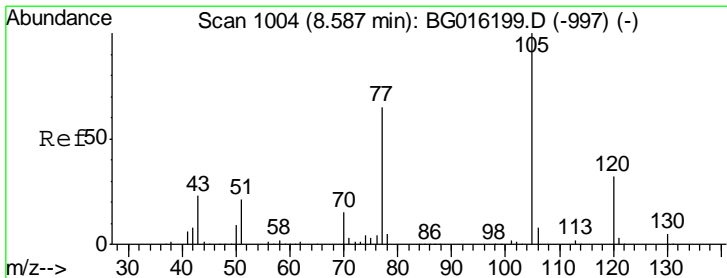
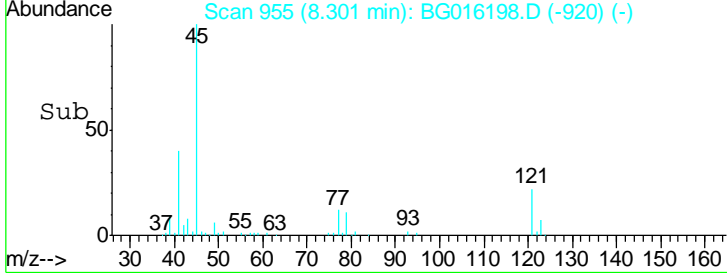
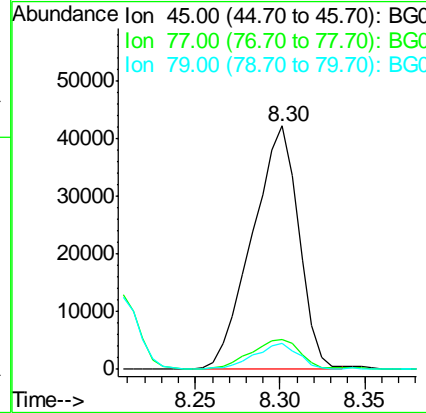
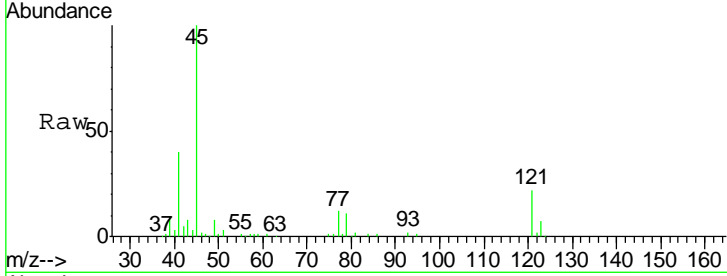




#12  
 2,2'-oxybis(1-Chloropropane)  
 Concen: 12.01 ng/ul  
 RT: 8.30 min Scan# 955  
 Delta R.T. 0.00 min  
 Lab File: BG016198.D  
 Acq: 31 Mar 2015 13:07

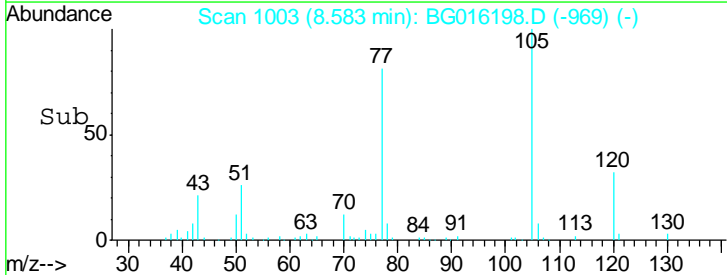
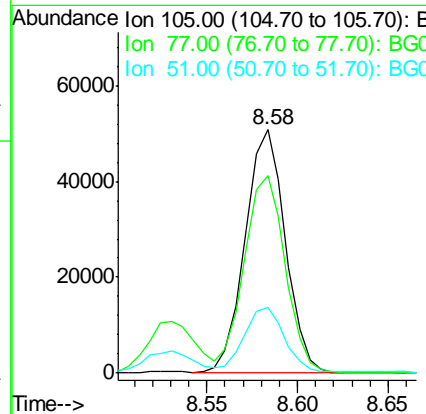
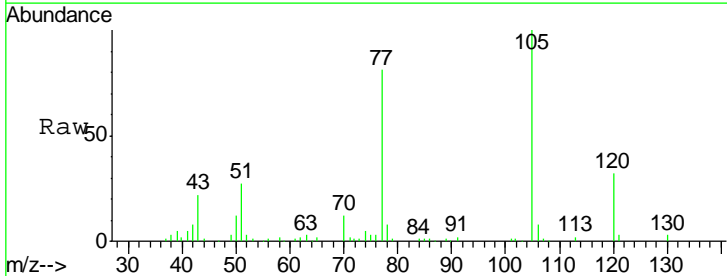
Instrument :  
 BNA\_G  
 ClientSampled :

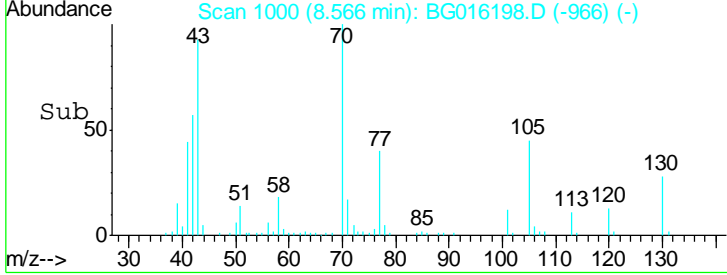
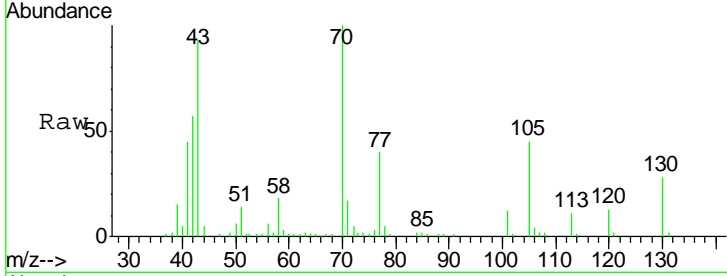
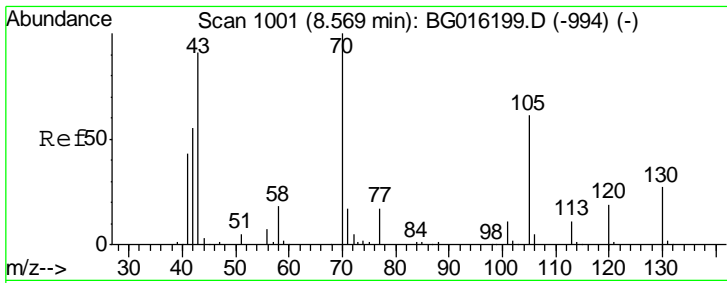
Tgt Ion	Resp	Lower	Upper
45	100		
77	12.4	10.1	15.1
79	10.8	8.2	12.4



#14  
 Acetophenone  
 Concen: 9.99 ng/ul  
 RT: 8.58 min Scan# 1003  
 Delta R.T. -0.00 min  
 Lab File: BG016198.D  
 Acq: 31 Mar 2015 13:07

Tgt Ion	Resp	Lower	Upper
105	100		
77	81.3	64.6	97.0
51	26.9	21.6	32.4



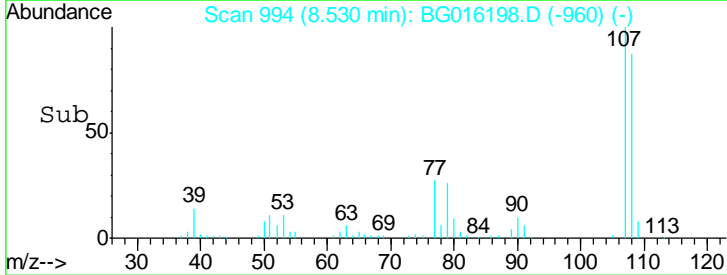
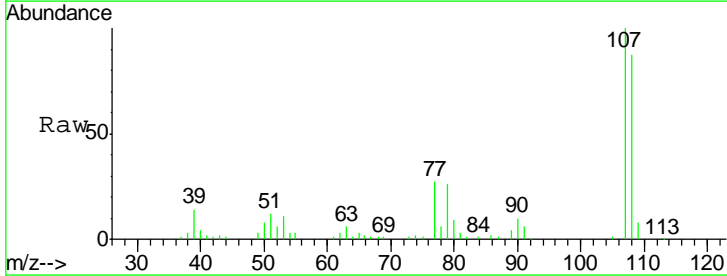
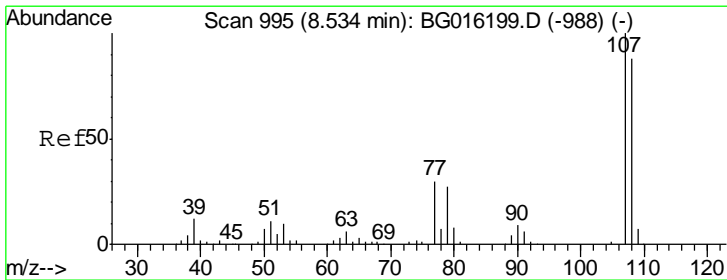
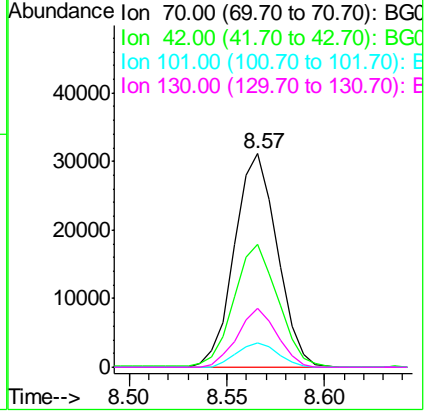


#15  
 N-Nitroso-di-n-propylamine  
 Concen: 10.88 ng/ul  
 RT: 8.57 min Scan# 1000  
 Delta R.T. -0.00 min  
 Lab File: BG016198.D  
 Acq: 31 Mar 2015 13:07

Instrument :  
 BNA\_G  
 ClientSampled :

Tgt Ion: 70 Resp: 47246

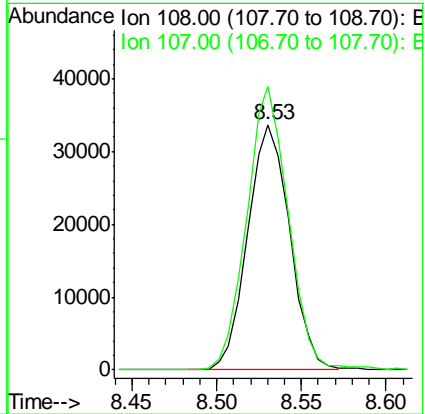
Ion	Ratio	Lower	Upper
70	100		
42	57.3	44.9	67.3
101	11.6	9.0	13.4
130	27.5	21.2	31.8



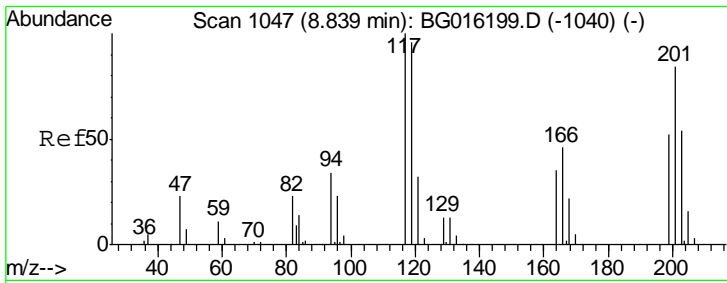
#16  
 4-Methylphenol  
 Concen: 9.86 ng/ul  
 RT: 8.53 min Scan# 994  
 Delta R.T. -0.00 min  
 Lab File: BG016198.D  
 Acq: 31 Mar 2015 13:07

Tgt Ion: 108 Resp: 57935

Ion	Ratio	Lower	Upper
108	100		
107	115.5	91.1	136.7



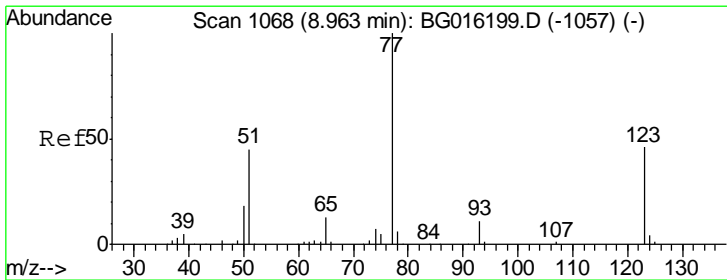
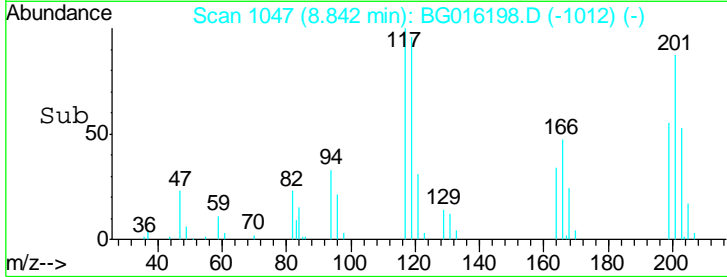
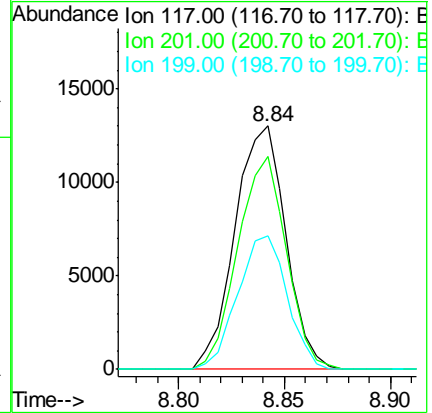
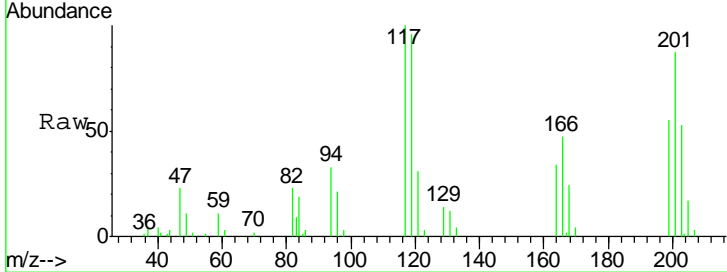




#17  
 Hexachloroethane  
 Concen: 10.15 ng/ul  
 RT: 8.84 min Scan# 1047  
 Delta R.T. 0.00 min  
 Lab File: BG016198.D  
 Acq: 31 Mar 2015 13:07

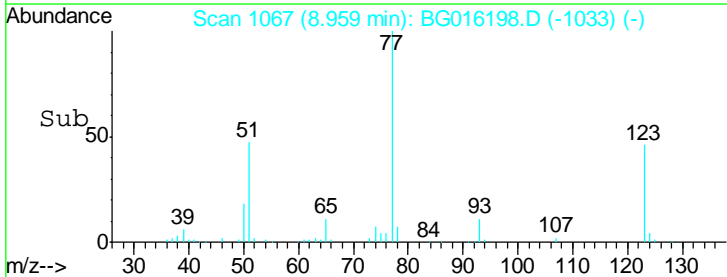
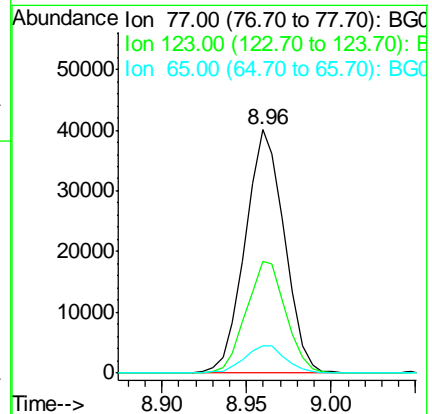
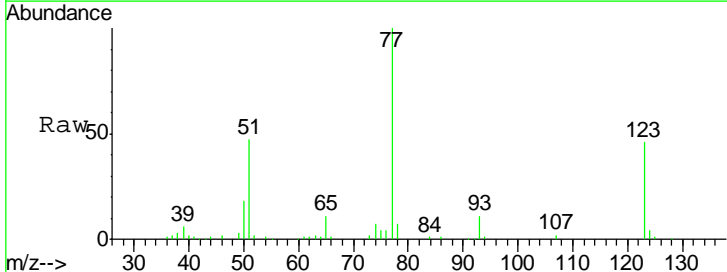
Instrument :  
 BNA\_G  
 ClientSampled :

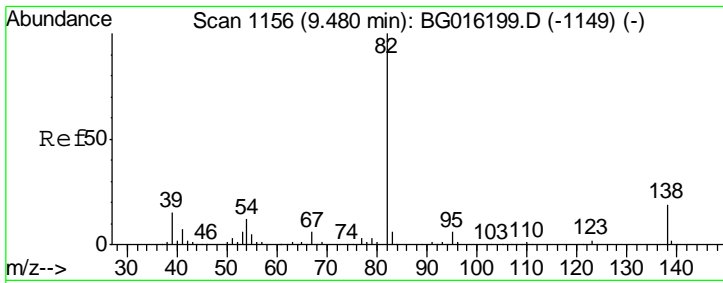
Tgt Ion	Resp	Lower	Upper
117	21717		
201	87.4	67.0	100.4
199	54.9	41.4	62.0



#20  
 Nitrobenzene  
 Concen: 10.85 ng/ul  
 RT: 8.96 min Scan# 1067  
 Delta R.T. -0.00 min  
 Lab File: BG016198.D  
 Acq: 31 Mar 2015 13:07

Tgt Ion	Resp	Lower	Upper
77	64524		
123	46.2	36.8	55.2
65	11.3	10.0	15.0

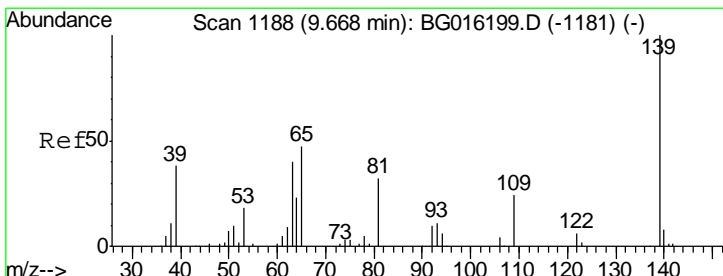
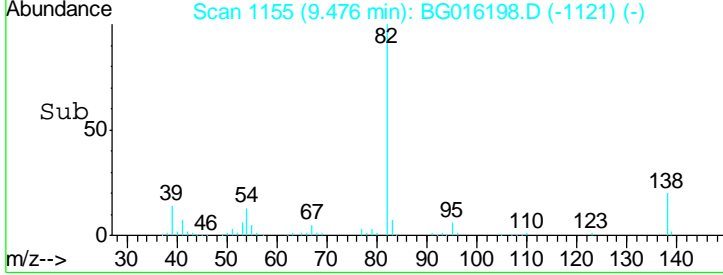
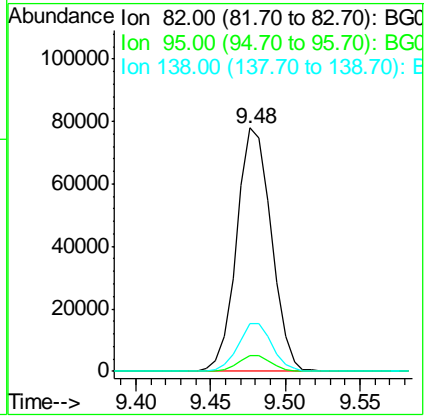
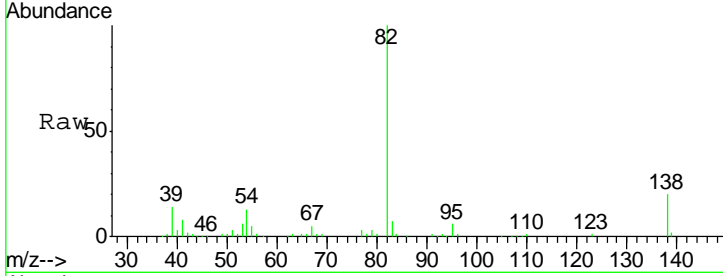




#21  
 Isophorone  
 Concen: 10.76 ng/ul  
 RT: 9.48 min Scan# 1155  
 Delta R.T. -0.00 min  
 Lab File: BG016198.D  
 Acq: 31 Mar 2015 13:07

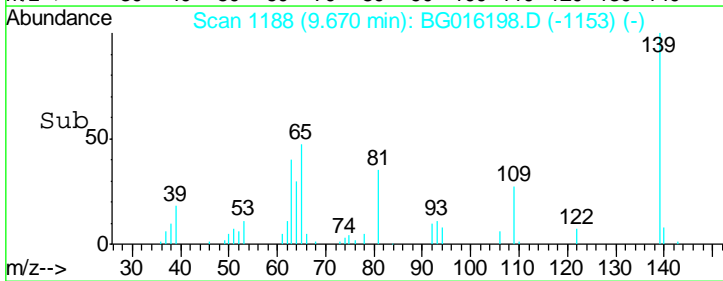
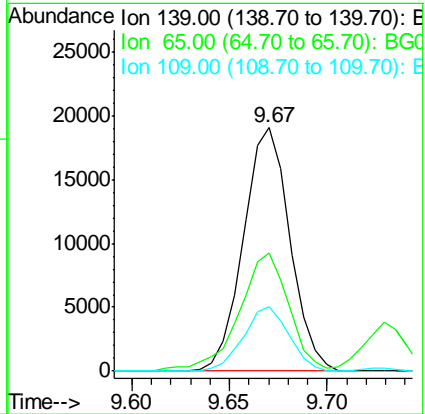
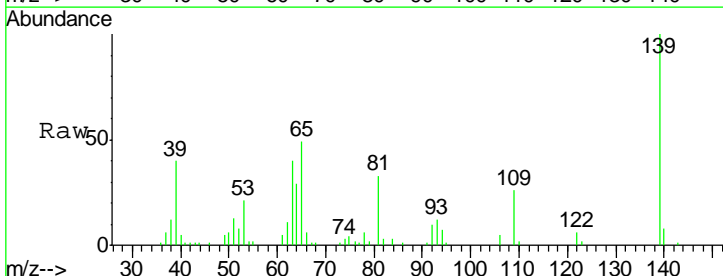
Instrument :  
 BNA\_G  
 ClientSampled :

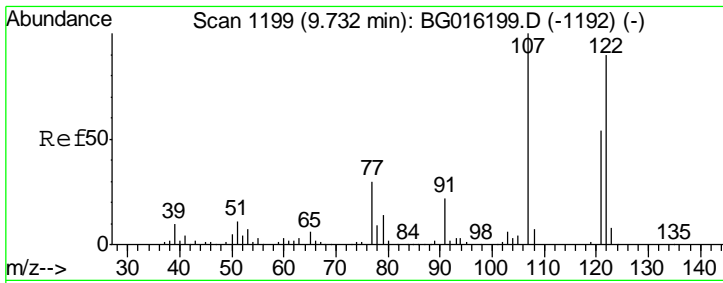
Tgt Ion	Resp	Lower	Upper
82	125632		
95	6.2	4.9	7.3
138	19.8	15.0	22.6



#23  
 2-Nitrophenol  
 Concen: 10.61 ng/ul  
 RT: 9.67 min Scan# 1188  
 Delta R.T. 0.00 min  
 Lab File: BG016198.D  
 Acq: 31 Mar 2015 13:07

Tgt Ion	Resp	Lower	Upper
139	31370		
65	48.7	39.0	58.4
109	26.2	19.5	29.3

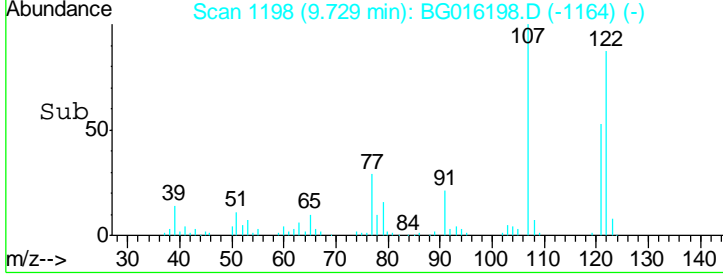
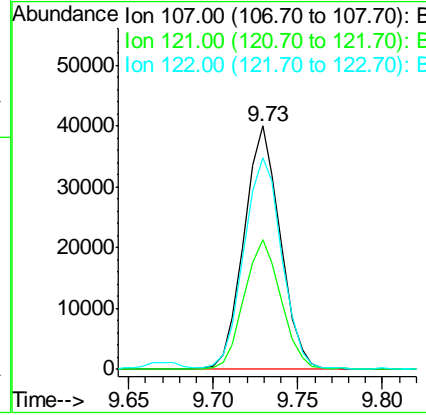
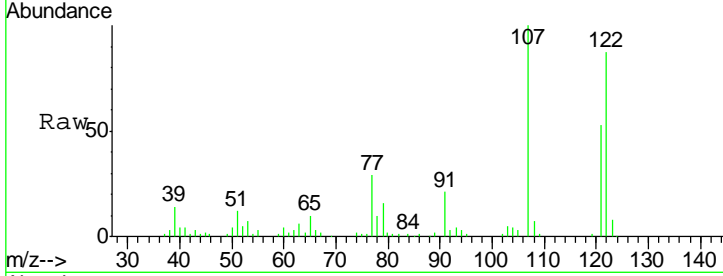




#24  
 2,4-Dimethylphenol  
 Concen: 10.39 ng/ul  
 RT: 9.73 min Scan# 1198  
 Delta R.T. -0.00 min  
 Lab File: BG016198.D  
 Acq: 31 Mar 2015 13:07

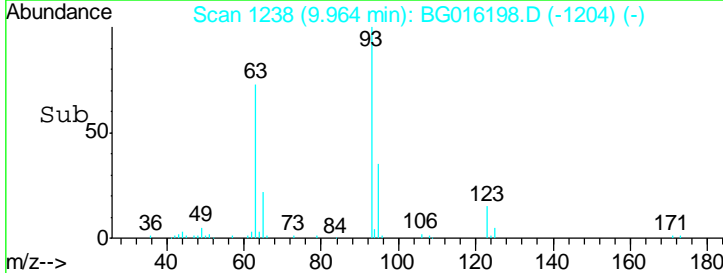
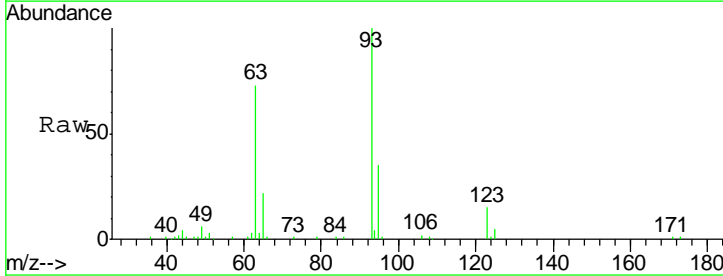
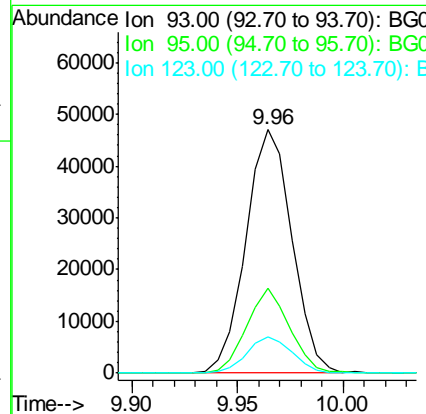
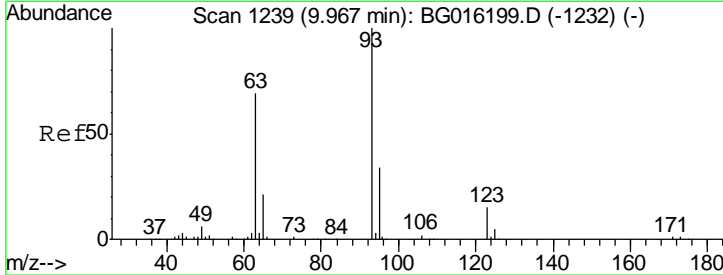
Instrument :  
 BNA\_G  
 ClientSampled :

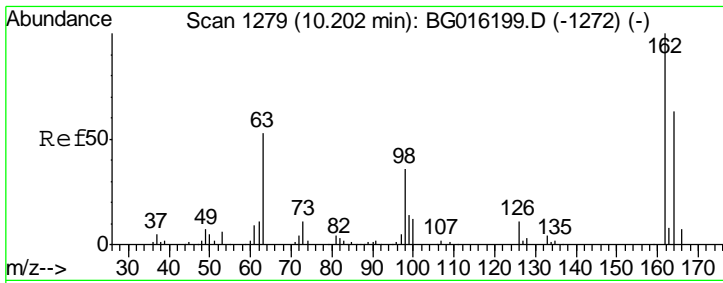
Tgt Ion	Resp	Lower	Upper
107	100		
121	53.5	43.3	64.9
122	87.1	72.3	108.5



#25  
 Bis(2-Chloroethoxy)methane  
 Concen: 9.97 ng/ul  
 RT: 9.96 min Scan# 1238  
 Delta R.T. -0.00 min  
 Lab File: BG016198.D  
 Acq: 31 Mar 2015 13:07

Tgt Ion	Resp	Lower	Upper
93	100		
95	34.7	27.0	40.6
123	14.9	11.7	17.5

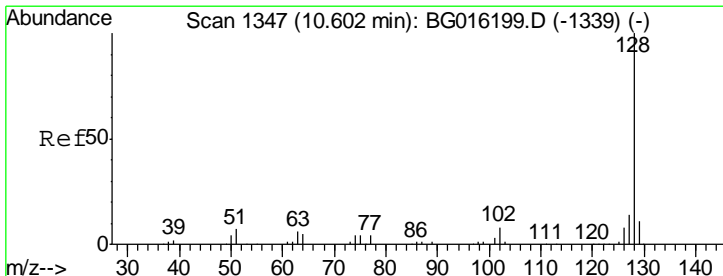
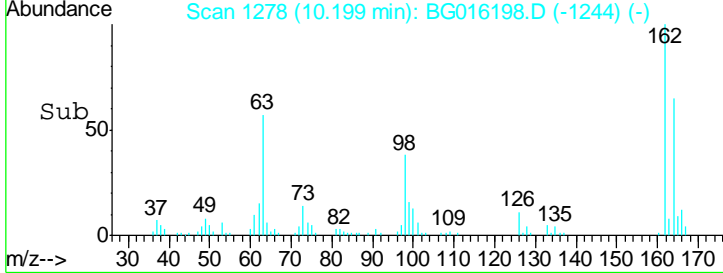
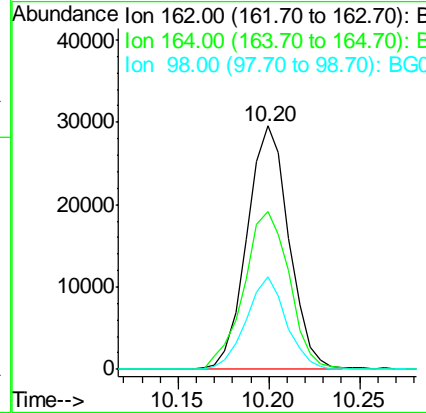
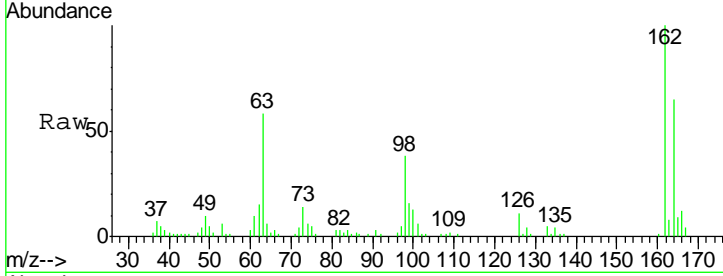




#27  
 2,4-Dichlorophenol  
 Concen: 10.04 ng/ul  
 RT: 10.20 min Scan# 1278  
 Delta R.T. -0.00 min  
 Lab File: BG016198.D  
 Acq: 31 Mar 2015 13:07

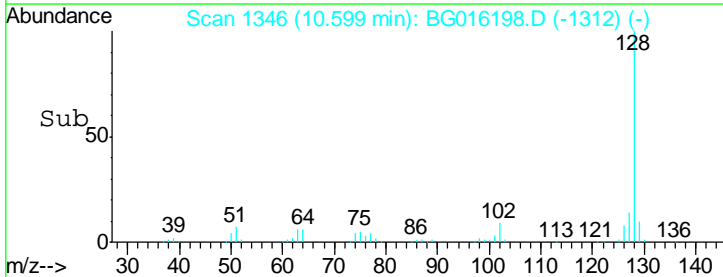
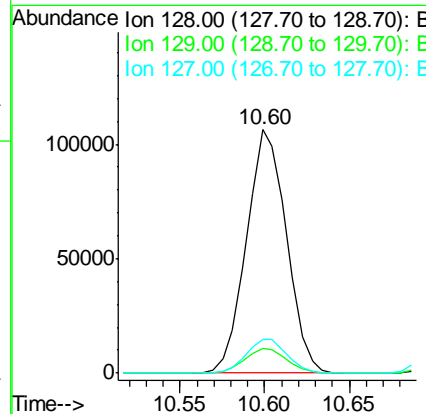
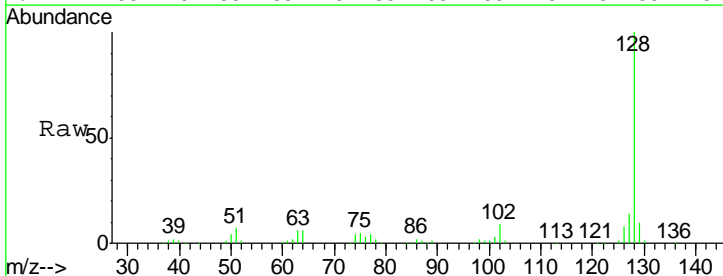
Instrument :  
 BNA\_G  
 ClientSampled :

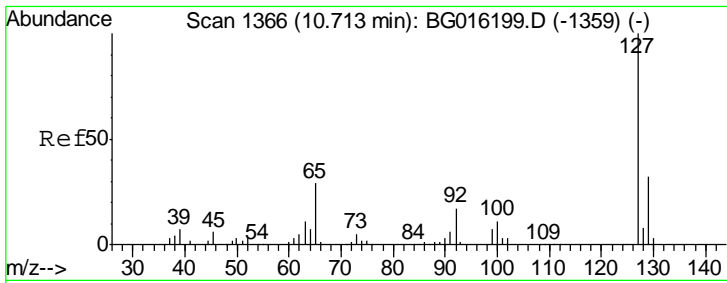
Tgt Ion	Resp	Lower	Upper
162	47547		
164	65.0	50.8	76.2
98	37.8	28.6	43.0



#28  
 Naphthalene  
 Concen: 10.05 ng/ul  
 RT: 10.60 min Scan# 1346  
 Delta R.T. -0.00 min  
 Lab File: BG016198.D  
 Acq: 31 Mar 2015 13:07

Tgt Ion	Resp	Lower	Upper
128	175000		
129	10.4	9.2	13.8
127	13.7	11.4	17.0

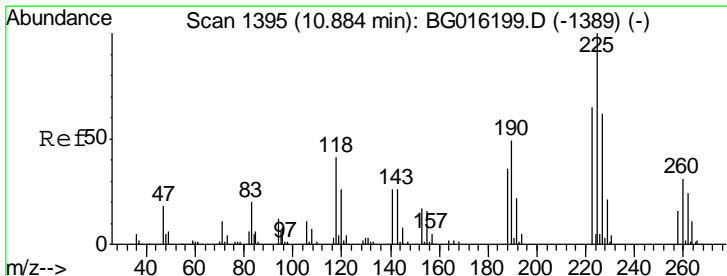
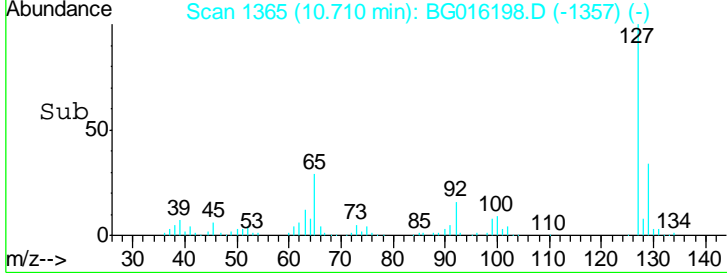
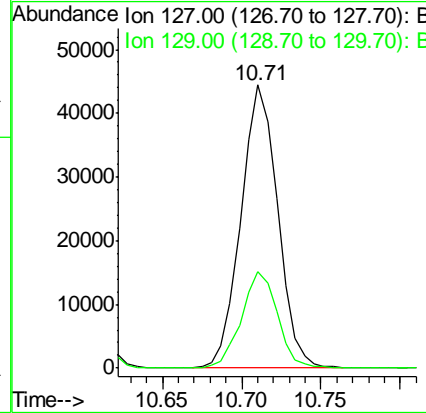
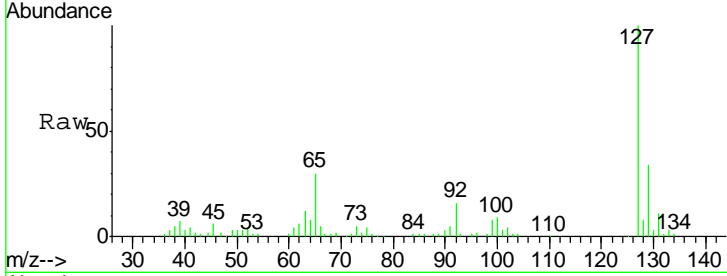




#30  
 4-Chloroaniline  
 Concen: 11.06 ng/ul  
 RT: 10.71 min Scan# 1365  
 Delta R.T. -0.00 min  
 Lab File: BG016198.D  
 Acq: 31 Mar 2015 13:07

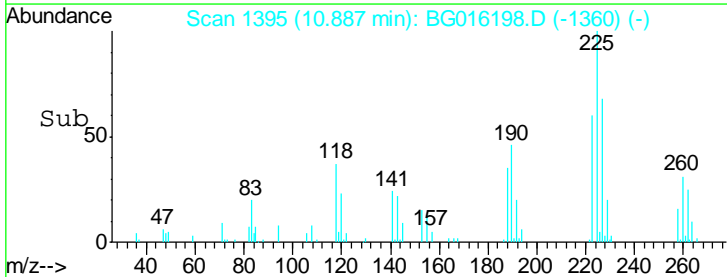
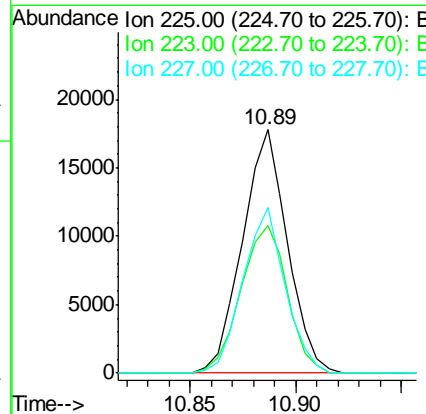
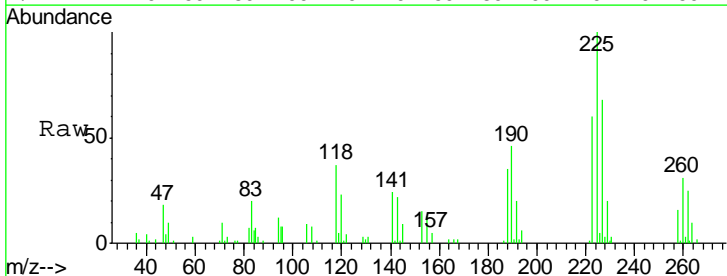
Instrument :  
 BNA\_G  
 ClientSampled :

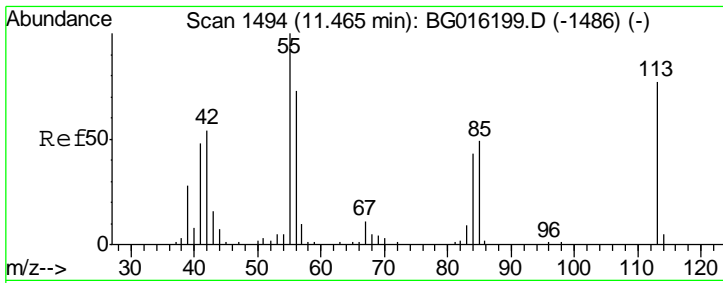
Tgt Ion	Resp	Lower	Upper
127	71538		
129	34.2	26.0	39.0



#31  
 Hexachlorobutadiene  
 Concen: 10.13 ng/ul  
 RT: 10.89 min Scan# 1395  
 Delta R.T. 0.00 min  
 Lab File: BG016198.D  
 Acq: 31 Mar 2015 13:07

Tgt Ion	Resp	Lower	Upper
225	26199		
223	60.4	52.1	78.1
227	67.9	49.9	74.9

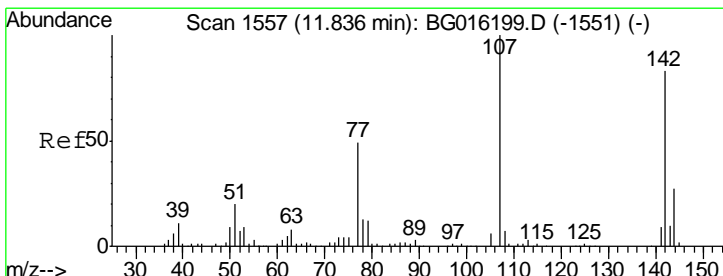
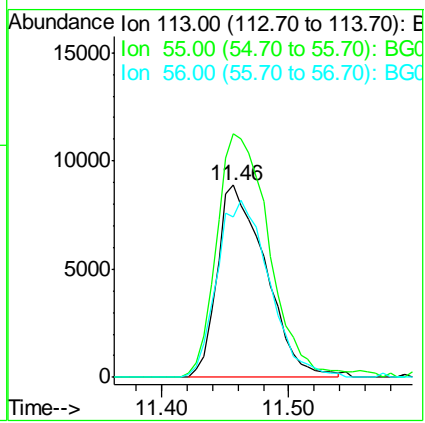
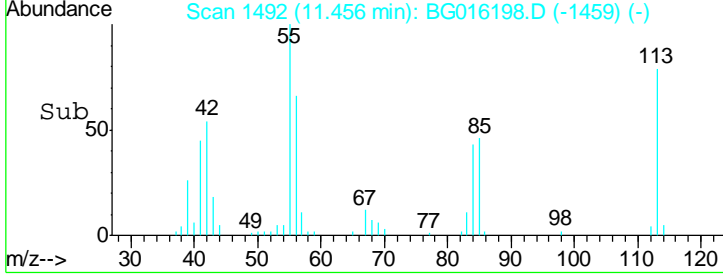
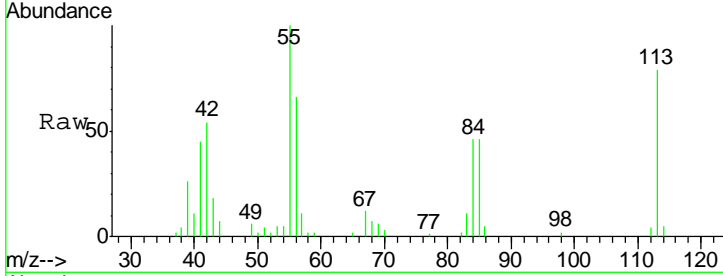




#32  
 Caprolactam  
 Concen: 10.57 ng/ul  
 RT: 11.46 min Scan# 1492  
 Delta R.T. -0.01 min  
 Lab File: BG016198.D  
 Acq: 31 Mar 2015 13:07

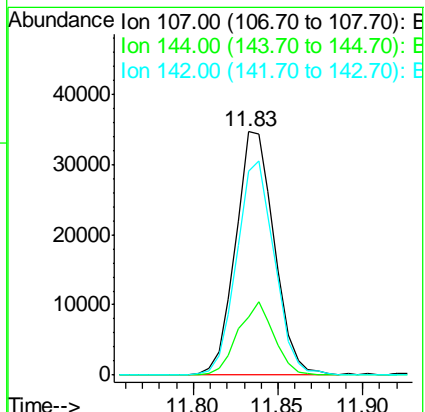
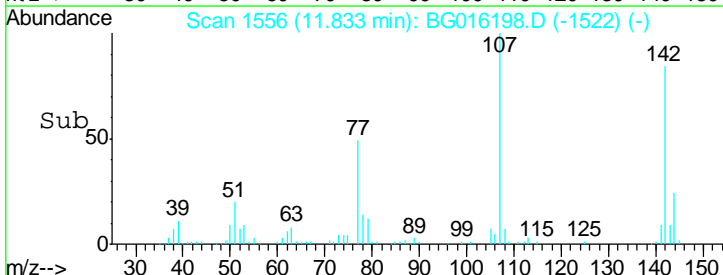
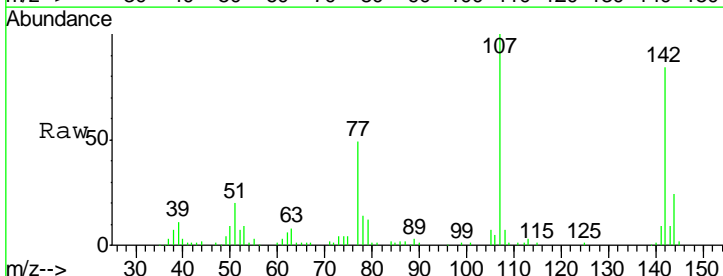
Instrument :  
 BNA\_G  
 ClientSampled :

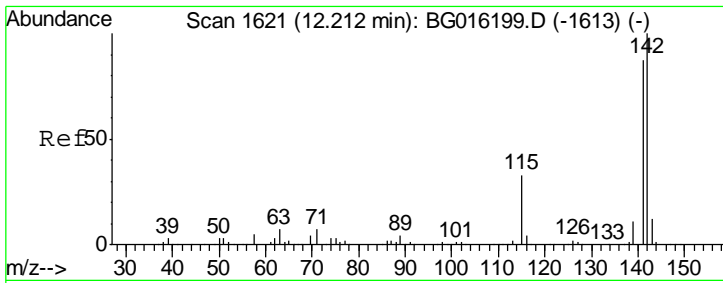
Tgt Ion	Resp	Lower	Upper
113	23575		
55	126.8	104.6	156.8
56	83.4	76.2	114.4



#33  
 4-Chloro-3-methylphenol  
 Concen: 10.62 ng/ul  
 RT: 11.83 min Scan# 1556  
 Delta R.T. -0.00 min  
 Lab File: BG016198.D  
 Acq: 31 Mar 2015 13:07

Tgt Ion	Resp	Lower	Upper
107	55197		
144	24.0	21.4	32.0
142	83.7	66.2	99.4

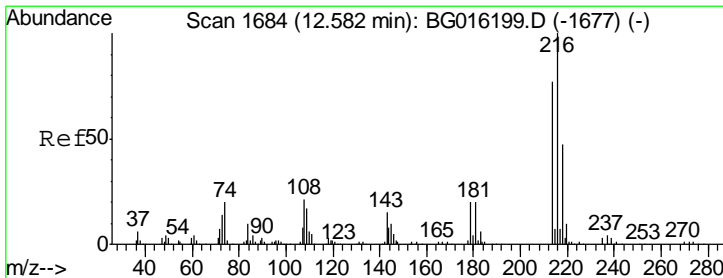
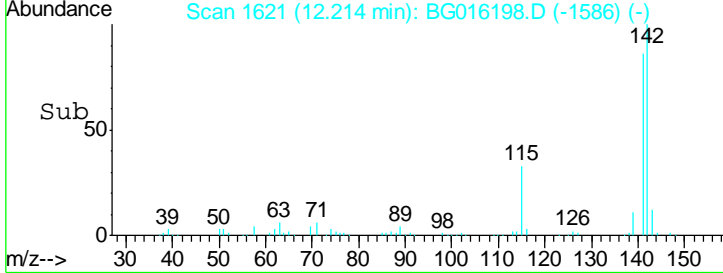
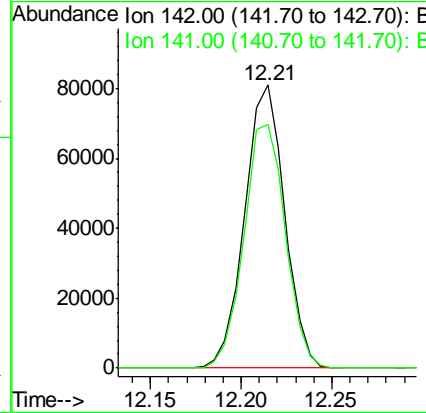
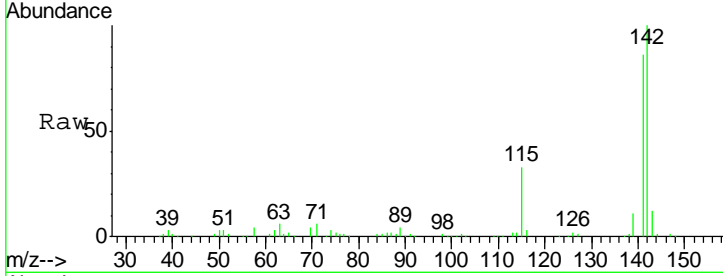




#34  
 2-Methylnaphthalene  
 Concen: 10.07 ng/ul  
 RT: 12.21 min Scan# 1621  
 Delta R.T. 0.00 min  
 Lab File: BG016198.D  
 Acq: 31 Mar 2015 13:07

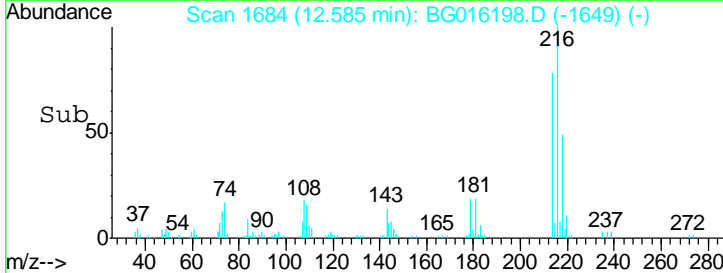
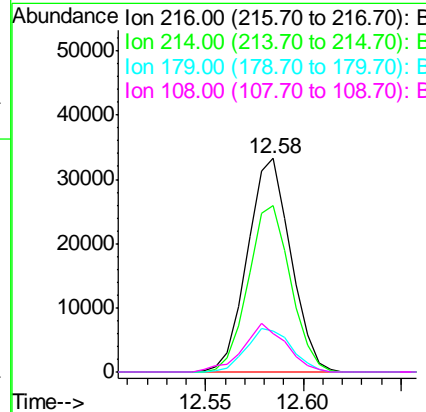
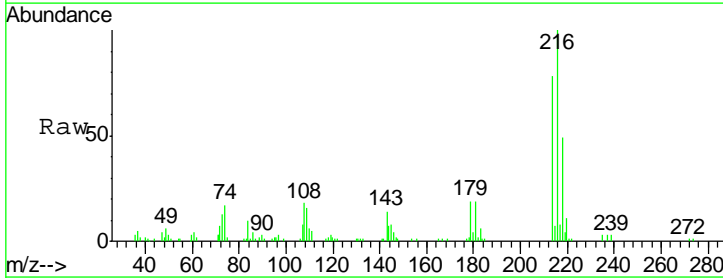
Instrument :  
 BNA\_G  
 ClientSampled :

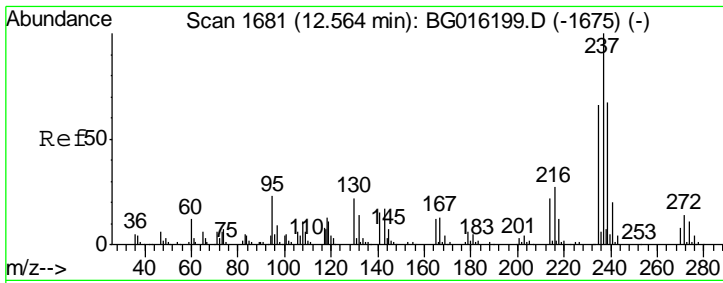
Tgt Ion	Resp	Lower	Upper
142	100		
141	86.3	69.7	104.5



#36  
 1,2,4,5-Tetrachlorobenzene  
 Concen: 9.81 ng/ul  
 RT: 12.58 min Scan# 1684  
 Delta R.T. 0.00 min  
 Lab File: BG016198.D  
 Acq: 31 Mar 2015 13:07

Tgt Ion	Resp	Lower	Upper
216	100		
214	78.1	61.4	92.2
179	19.0	16.2	24.2
108	18.3	17.1	25.7

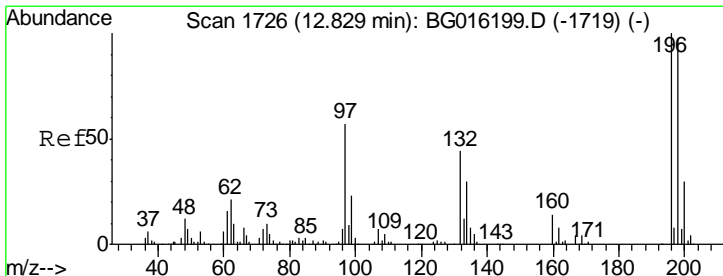
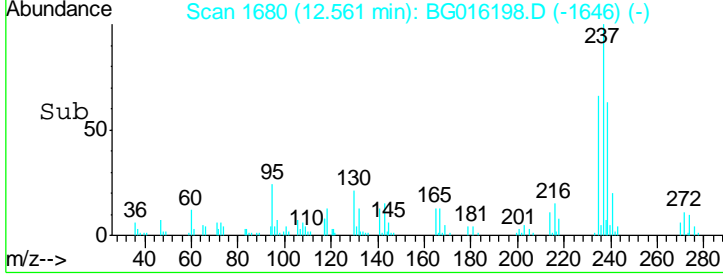
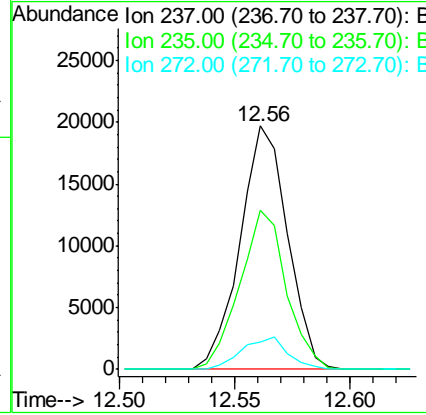
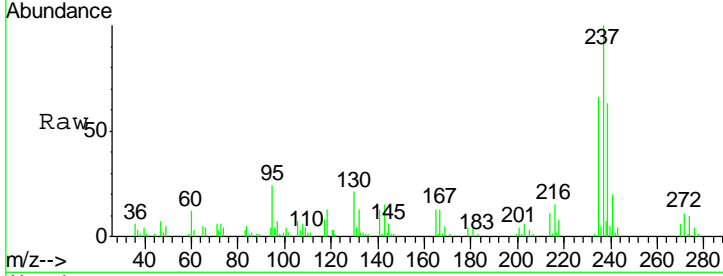




#37  
 Hexachlorocyclopentadiene  
 Concen: 9.69 ng/ul  
 RT: 12.56 min Scan# 1680  
 Delta R.T. -0.00 min  
 Lab File: BG016198.D  
 Acq: 31 Mar 2015 13:07

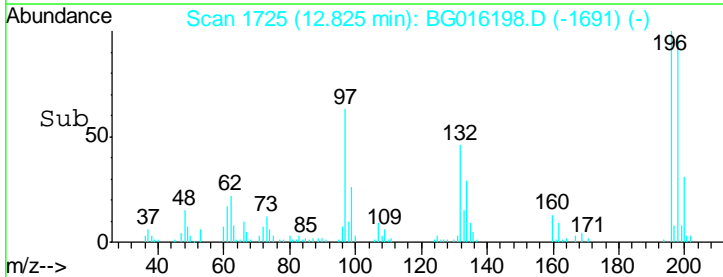
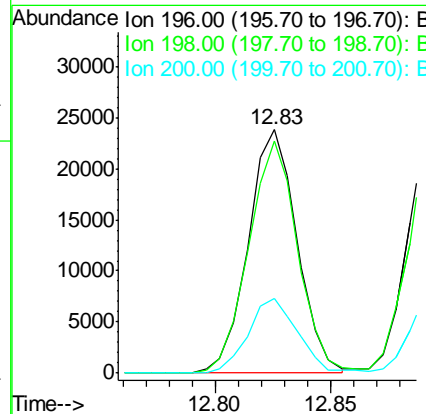
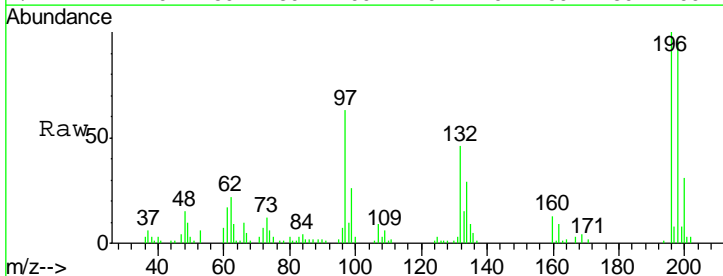
Instrument :  
 BNA\_G  
 ClientSampled :

Tgt Ion	Resp	Lower	Upper
237	100		
235	65.6	53.1	79.7
272	11.3	12.2	18.2#

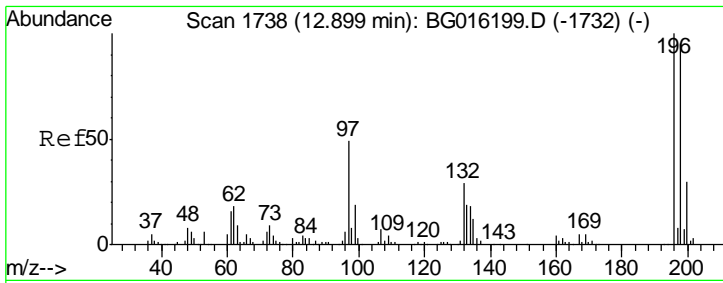


#38  
 2,4,6-Trichlorophenol  
 Concen: 10.45 ng/ul  
 RT: 12.83 min Scan# 1725  
 Delta R.T. -0.00 min  
 Lab File: BG016198.D  
 Acq: 31 Mar 2015 13:07

Tgt Ion	Resp	Lower	Upper
196	100		
198	95.5	77.9	116.9
200	30.9	24.2	36.2



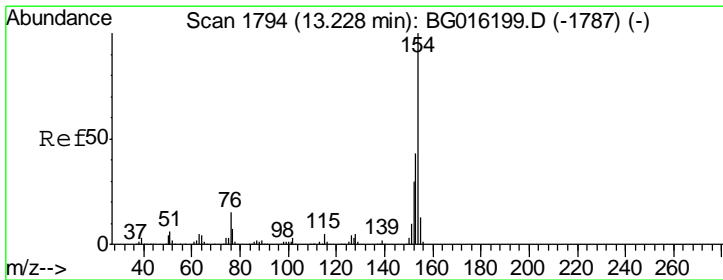
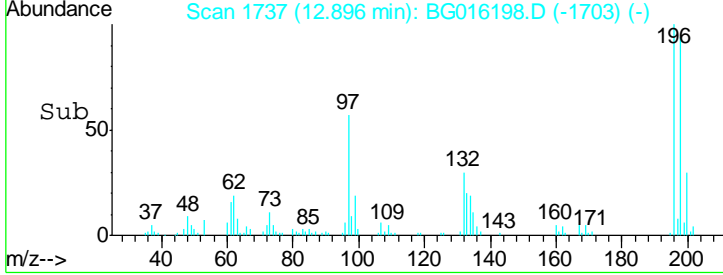
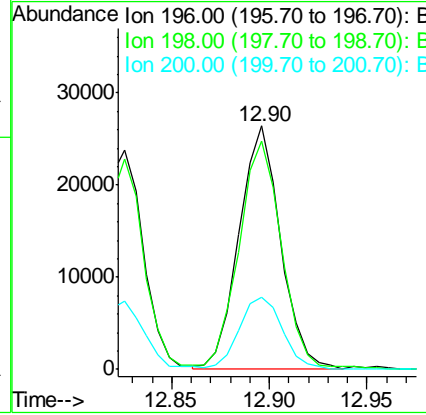
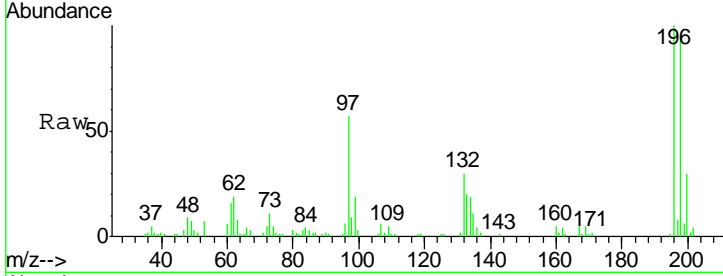




#39  
 2,4,5-Trichlorophenol  
 Concen: 10.78 ng/ul  
 RT: 12.90 min Scan# 1737  
 Delta R.T. -0.00 min  
 Lab File: BG016198.D  
 Acq: 31 Mar 2015 13:07

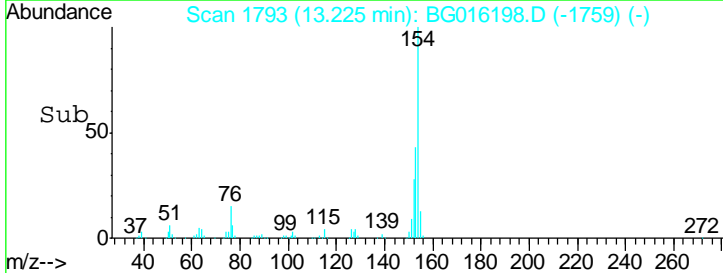
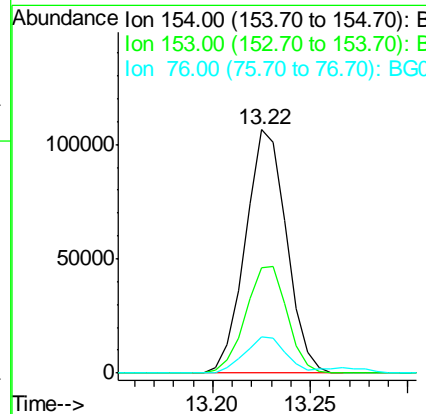
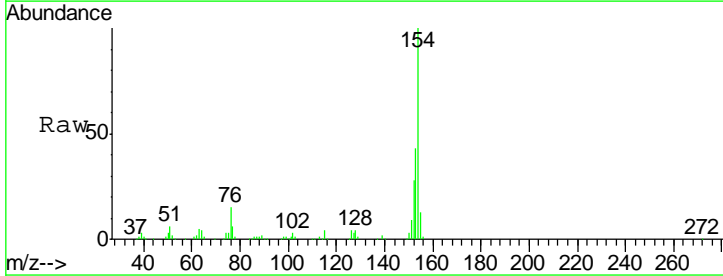
Instrument :  
 BNA\_G  
 ClientSampled :

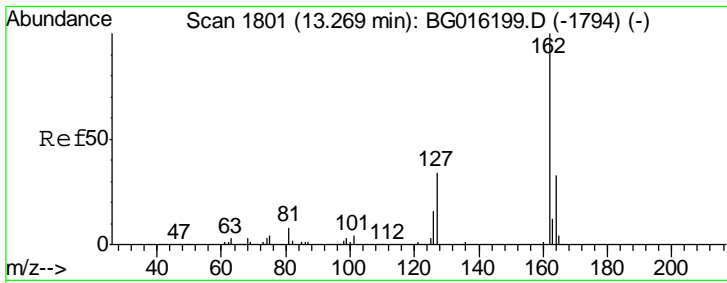
Tgt Ion	Resp	Lower	Upper
196	100		
198	93.9	75.5	113.3
200	29.6	24.4	36.6



#40  
 1,1'-Biphenyl  
 Concen: 10.12 ng/ul  
 RT: 13.22 min Scan# 1793  
 Delta R.T. -0.00 min  
 Lab File: BG016198.D  
 Acq: 31 Mar 2015 13:07

Tgt Ion	Resp	Lower	Upper
154	100		
153	43.1	34.5	51.7
76	14.7	11.8	17.8

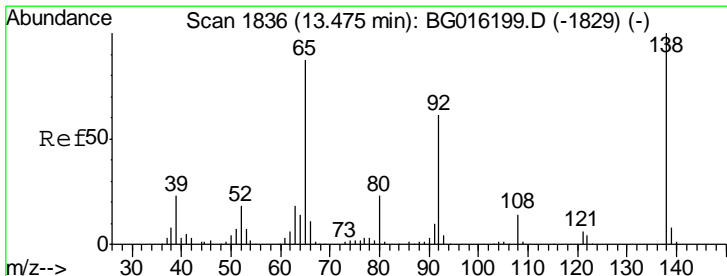
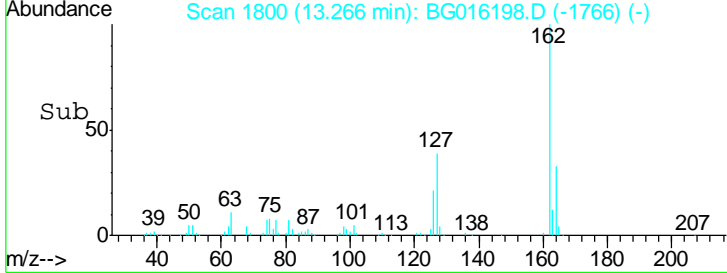
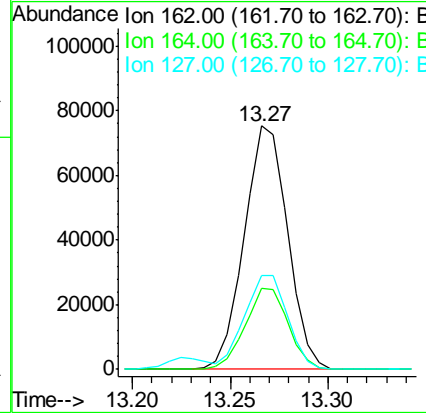
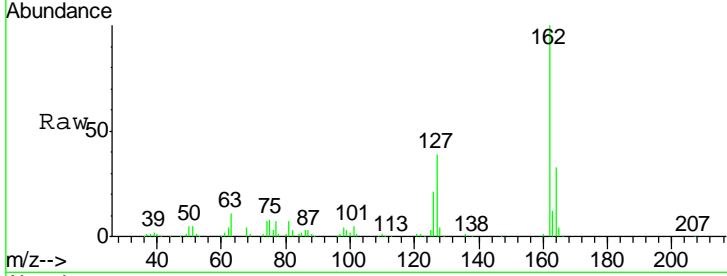




#41  
 2-Chloronaphthalene  
 Concen: 10.01 ng/ul  
 RT: 13.27 min Scan# 1800  
 Delta R.T. -0.00 min  
 Lab File: BG016198.D  
 Acq: 31 Mar 2015 13:07

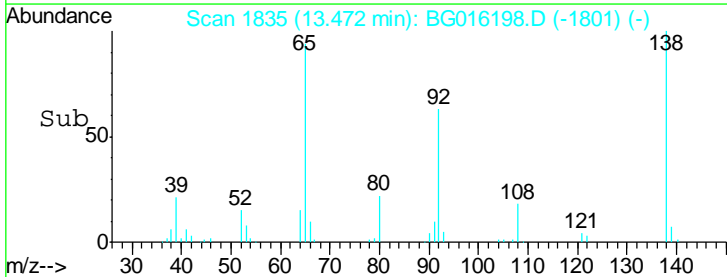
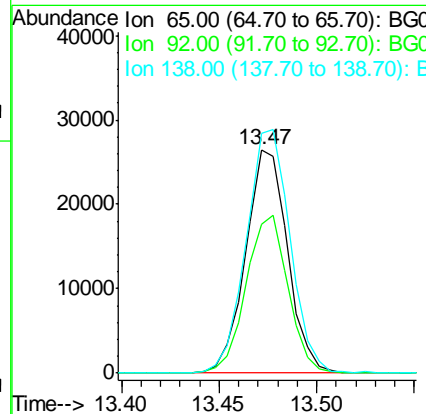
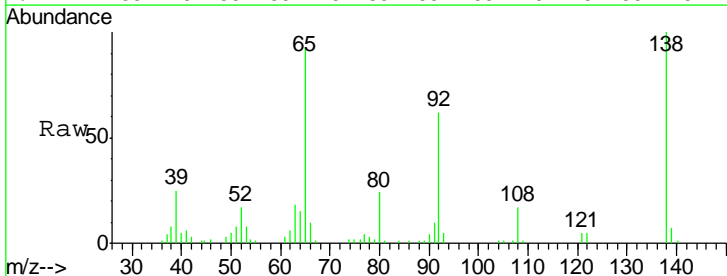
Instrument :  
 BNA\_G  
 ClientSampled :

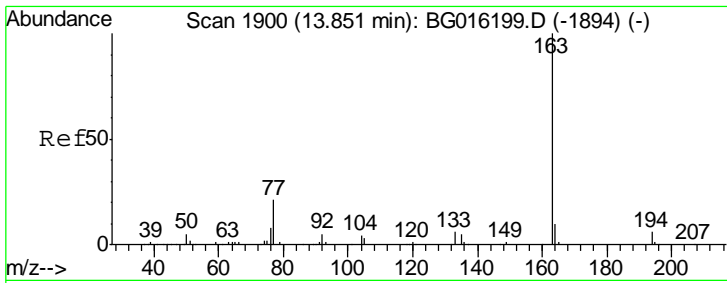
Tgt Ion	Resp	Lower	Upper
162	116007		
164	33.3	26.3	39.5
127	38.7	30.4	45.6



#42  
 2-Nitroaniline  
 Concen: 11.53 ng/ul  
 RT: 13.47 min Scan# 1835  
 Delta R.T. -0.00 min  
 Lab File: BG016198.D  
 Acq: 31 Mar 2015 13:07

Tgt Ion	Resp	Lower	Upper
65	39418		
92	66.8	56.6	84.8
138	107.2	92.1	138.1

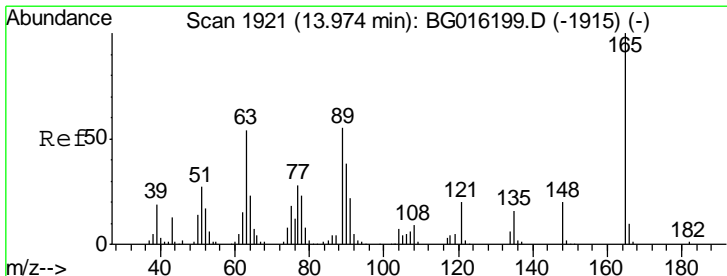
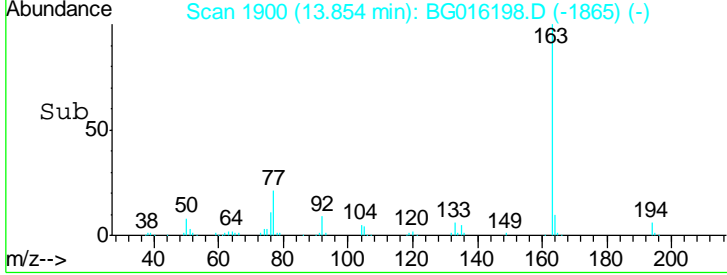
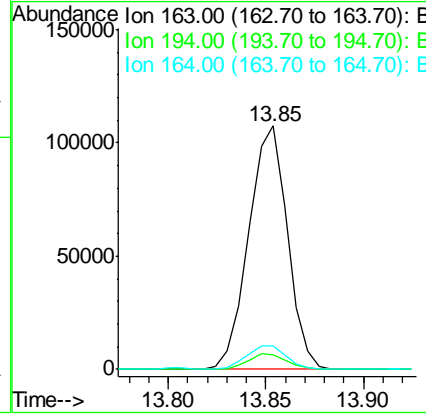
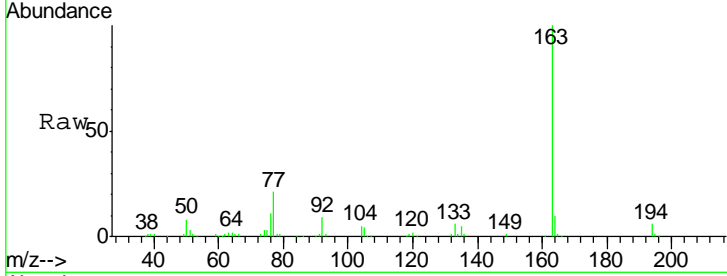




#44  
 Dimethylphthalate  
 Concen: 10.25 ng/ul  
 RT: 13.85 min Scan# 1900  
 Delta R.T. 0.00 min  
 Lab File: BG016198.D  
 Acq: 31 Mar 2015 13:07

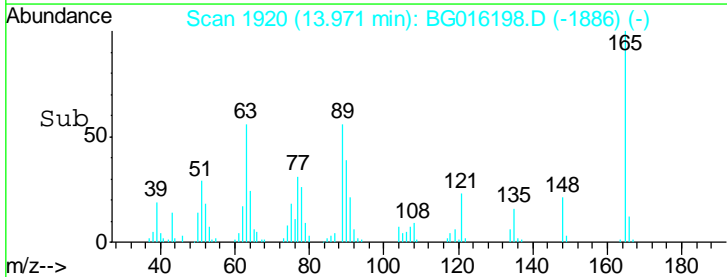
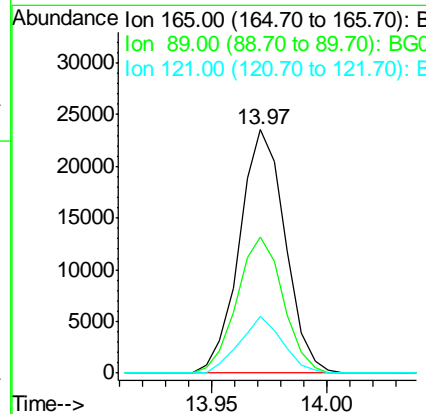
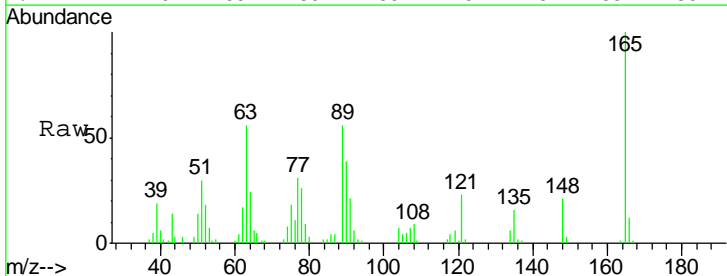
Instrument :  
 BNA\_G  
 ClientSampled :

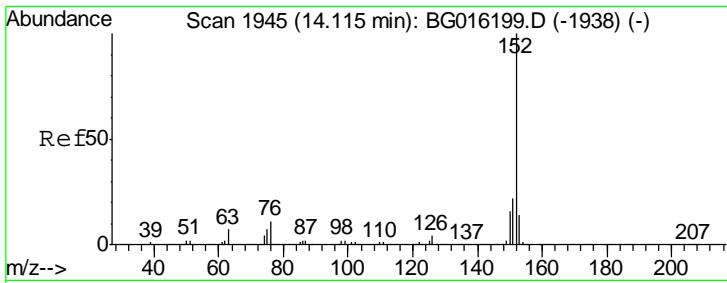
Tgt Ion	Resp	Lower	Upper
163	147374		
194	6.2	4.8	7.2
164	9.7	8.2	12.2



#45  
 2,6-Dinitrotoluene  
 Concen: 10.63 ng/ul  
 RT: 13.97 min Scan# 1920  
 Delta R.T. -0.00 min  
 Lab File: BG016198.D  
 Acq: 31 Mar 2015 13:07

Tgt Ion	Resp	Lower	Upper
165	32502		
89	55.8	44.3	66.5
121	23.4	16.3	24.5

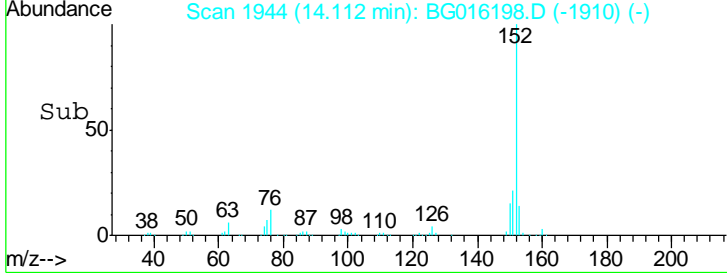
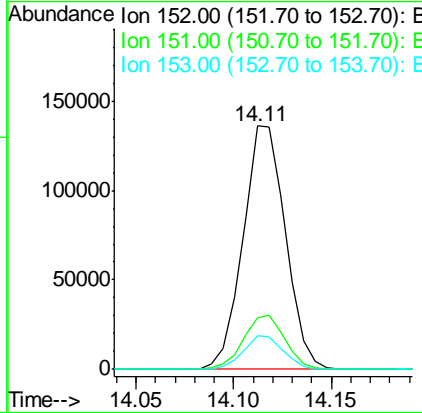
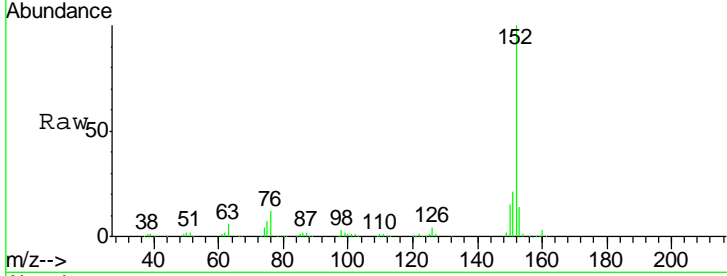




#47  
 Acenaphthylene  
 Concen: 10.32 ng/ul  
 RT: 14.11 min Scan# 1944  
 Delta R.T. -0.00 min  
 Lab File: BG016198.D  
 Acq: 31 Mar 2015 13:07

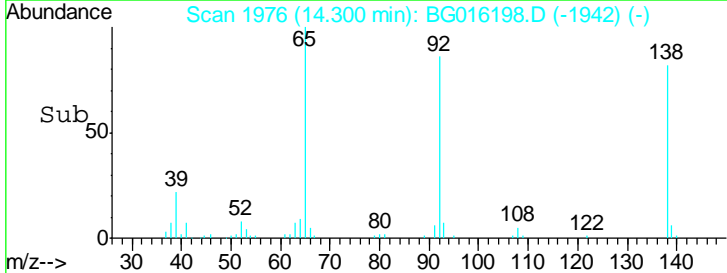
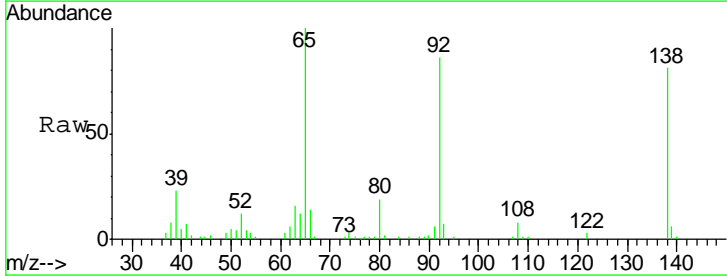
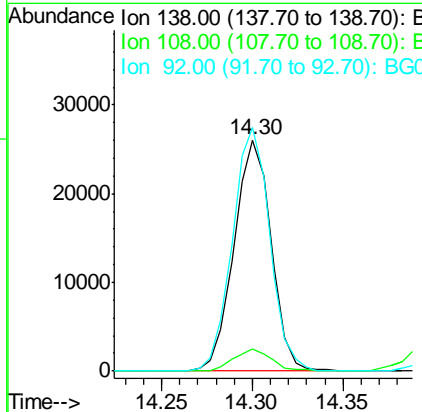
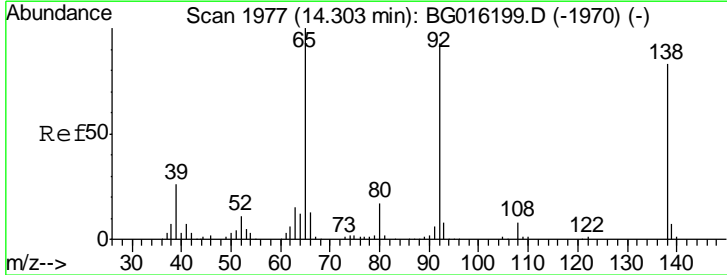
Instrument :  
 BNA\_G  
 ClientSampled :

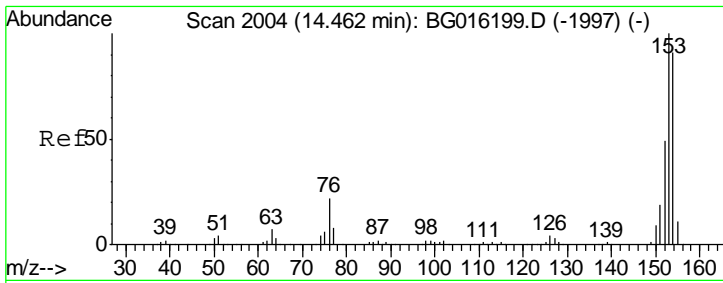
Tgt Ion	Resp	Lower	Upper
152	100		
151	21.1	17.8	26.8
153	13.7	11.0	16.4



#48  
 3-Nitroaniline  
 Concen: 10.55 ng/ul  
 RT: 14.30 min Scan# 1976  
 Delta R.T. -0.00 min  
 Lab File: BG016198.D  
 Acq: 31 Mar 2015 13:07

Tgt Ion	Resp	Lower	Upper
138	100		
108	9.5	8.2	12.2
92	105.3	90.2	135.4





#49

Acenaphthene

Concen: 10.21 ng/ul

RT: 14.46 min Scan# 2003

Delta R.T. -0.00 min

Lab File: BG016198.D

Acq: 31 Mar 2015 13:07

Instrument :  
BNA\_G  
ClientSampled :

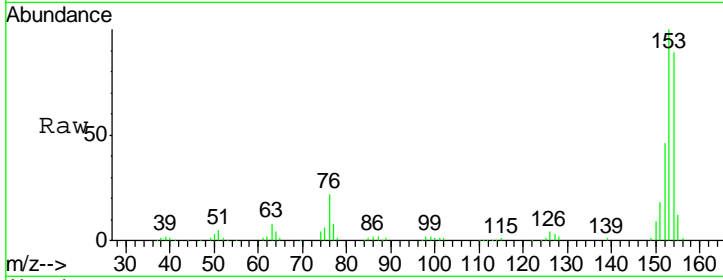
Tgt Ion:153 Resp: 136170

Ion Ratio Lower Upper

153 100

152 46.3 39.0 58.4

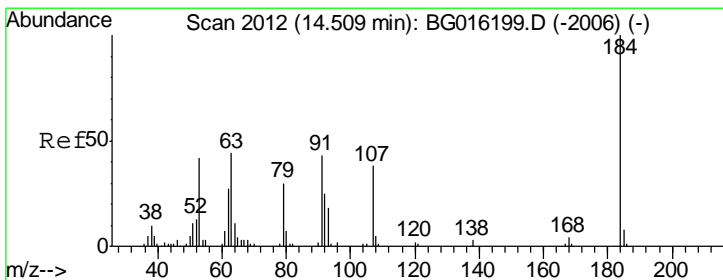
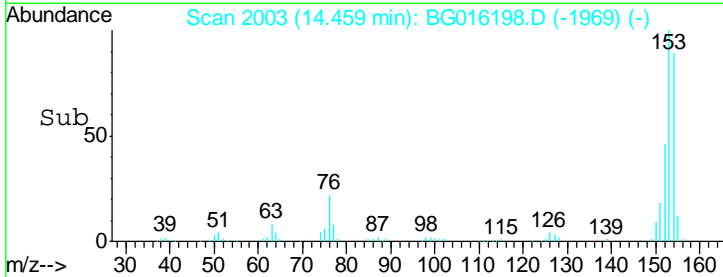
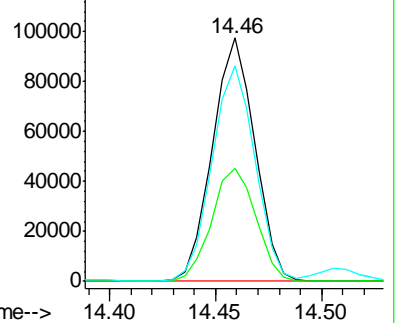
154 88.7 72.5 108.7



Abundance Ion 153.00 (152.70 to 153.70): E

Ion 152.00 (151.70 to 152.70): E

Ion 154.00 (153.70 to 154.70): E



#50

2,4-Dinitrophenol

Concen: 9.92 ng/ul

RT: 14.51 min Scan# 2011

Delta R.T. -0.00 min

Lab File: BG016198.D

Acq: 31 Mar 2015 13:07

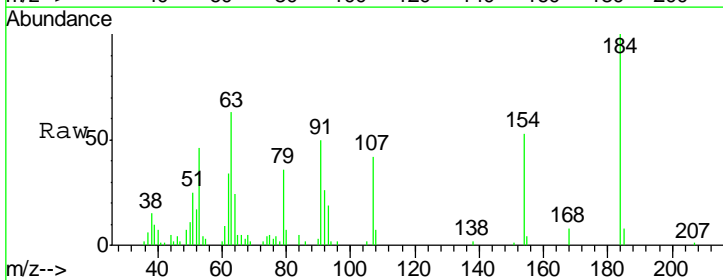
Tgt Ion:184 Resp: 15385

Ion Ratio Lower Upper

184 100

63 63.4 47.3 70.9

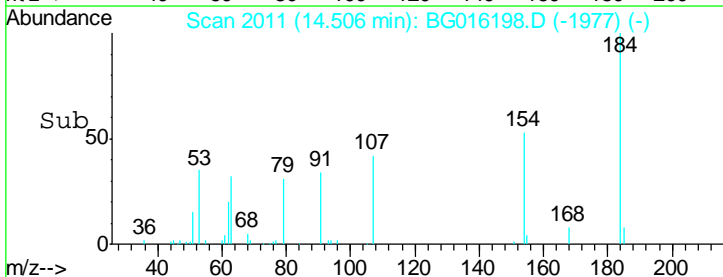
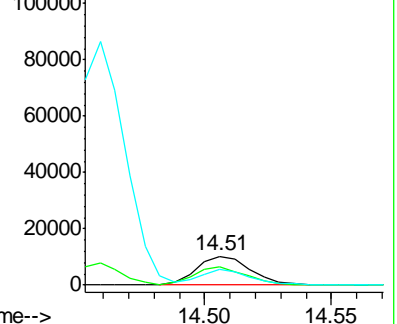
154 53.0 40.2 60.2

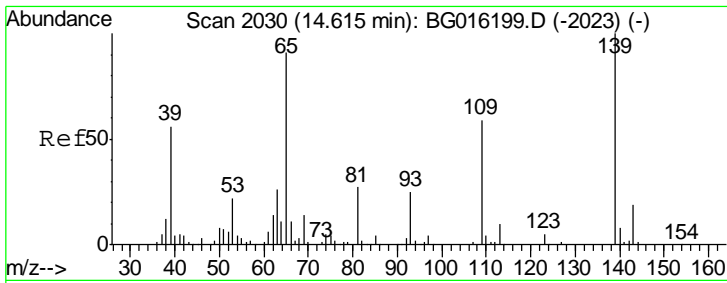


Abundance Ion 184.00 (183.70 to 184.70): E

Ion 63.00 (62.70 to 63.70): BG0

Ion 154.00 (153.70 to 154.70): E

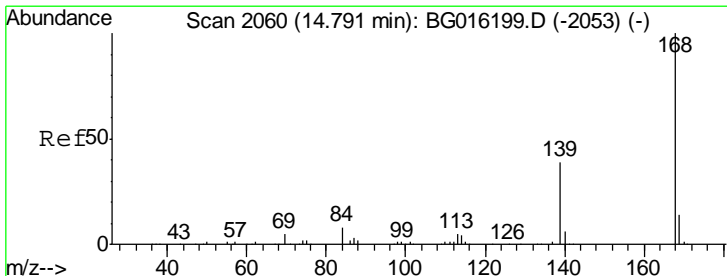
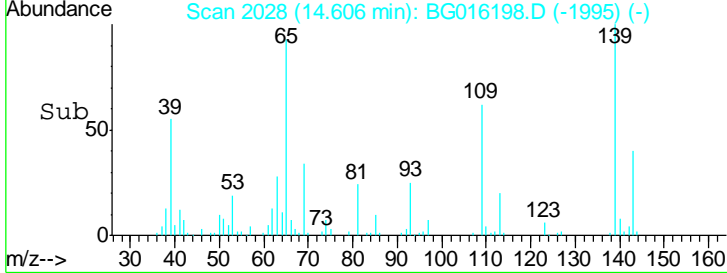
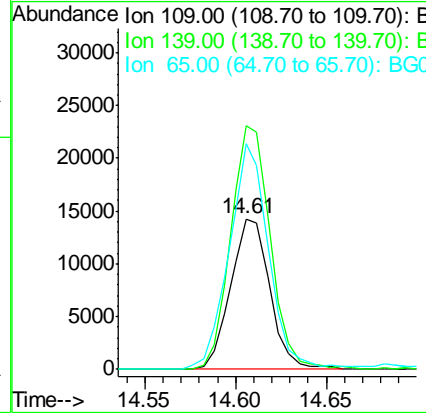
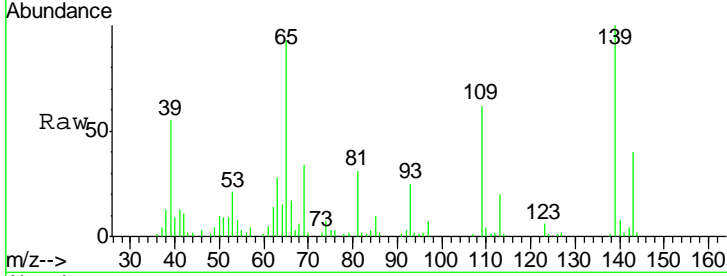




#52  
 4-Nitrophenol  
 Concen: 12.09 ng/ul  
 RT: 14.61 min Scan# 2028  
 Delta R.T. -0.01 min  
 Lab File: BG016198.D  
 Acq: 31 Mar 2015 13:07

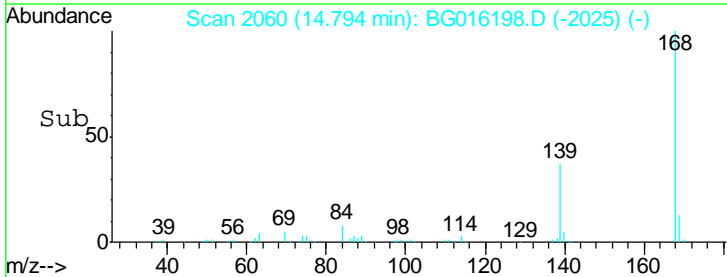
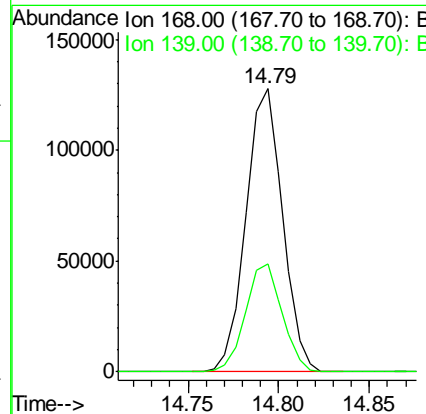
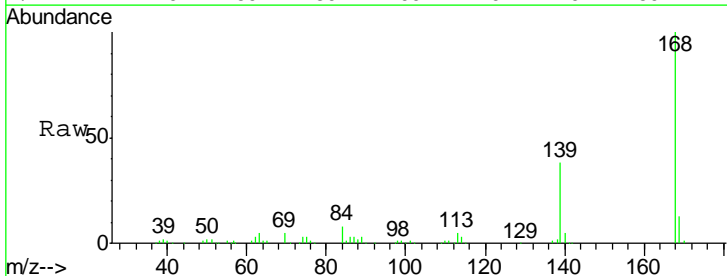
Instrument :  
 BNA\_G  
 ClientSampled :

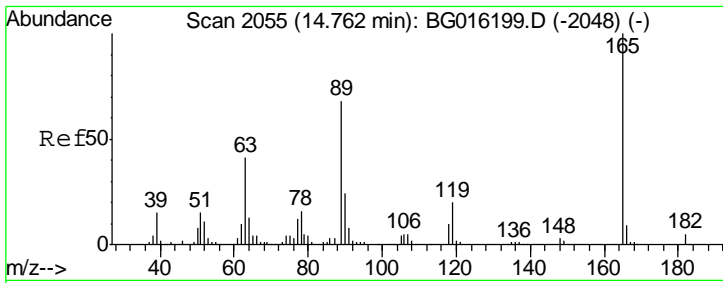
Tgt Ion	Resp	Lower	Upper
109	21483		
109	100		
139	161.5	134.8	202.2
65	149.9	122.9	184.3



#53  
 Dibenzofuran  
 Concen: 10.07 ng/ul  
 RT: 14.79 min Scan# 2060  
 Delta R.T. 0.00 min  
 Lab File: BG016198.D  
 Acq: 31 Mar 2015 13:07

Tgt Ion	Resp	Lower	Upper
168	179249		
168	100		
139	38.4	31.4	47.0

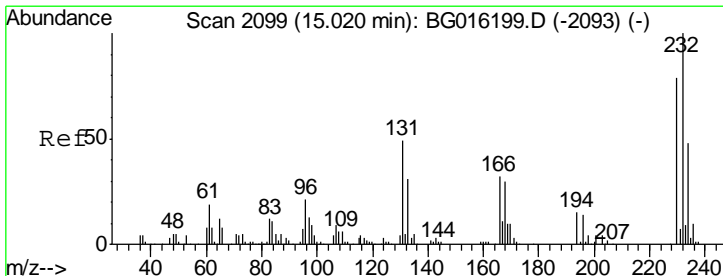
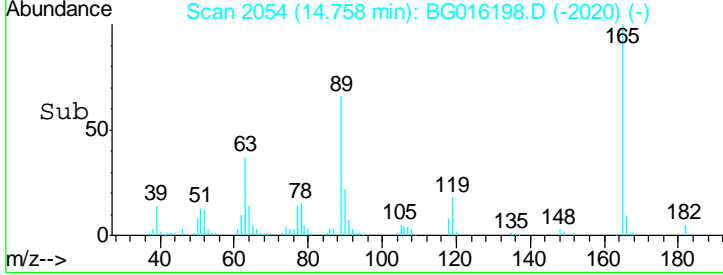
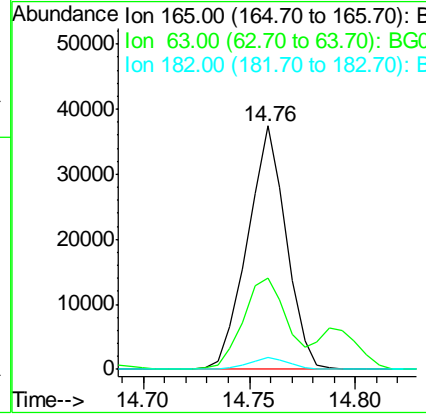
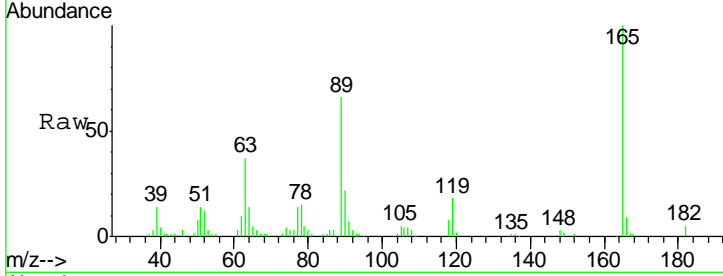




#54  
 2,4-Dinitrotoluene  
 Concen: 10.84 ng/ul  
 RT: 14.76 min Scan# 2054  
 Delta R.T. -0.00 min  
 Lab File: BG016198.D  
 Acq: 31 Mar 2015 13:07

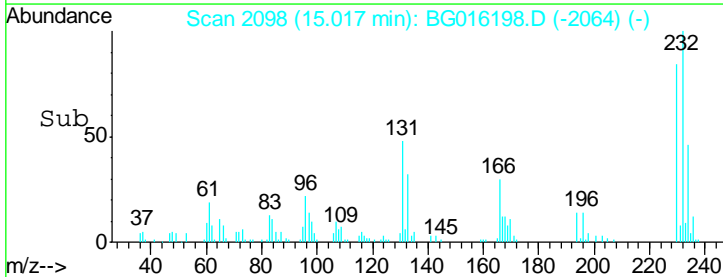
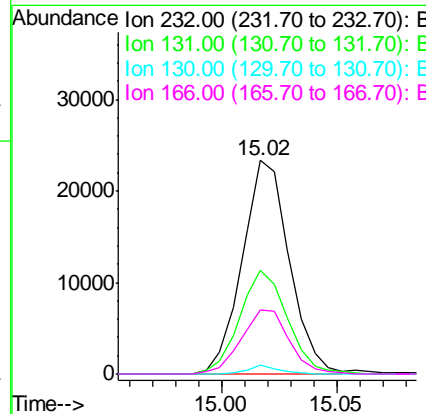
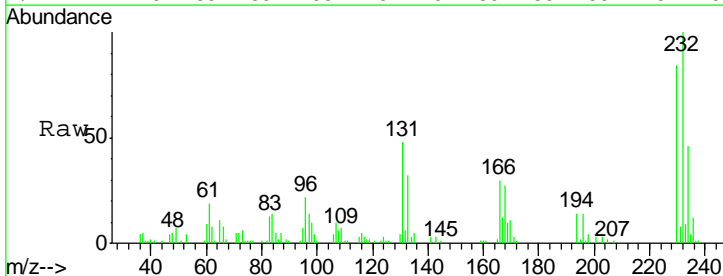
Instrument :  
 BNA\_G  
 ClientSampled :

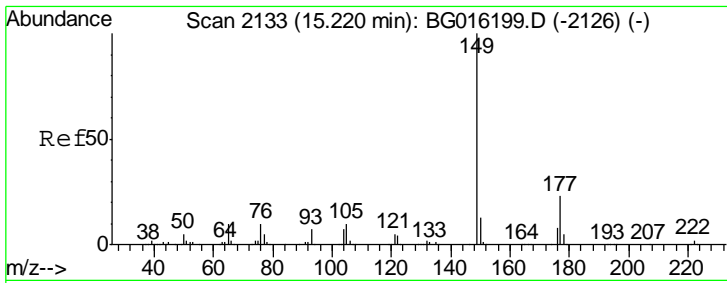
Tgt Ion	Resp	Lower	Upper
165	100		
63	37.4	32.9	49.3
182	4.7	4.0	6.0



#55  
 2,3,4,6-Tetrachlorophenol  
 Concen: 10.54 ng/ul  
 RT: 15.02 min Scan# 2098  
 Delta R.T. -0.00 min  
 Lab File: BG016198.D  
 Acq: 31 Mar 2015 13:07

Tgt Ion	Resp	Lower	Upper
232	100		
131	48.4	39.5	59.3
130	4.3	2.9	4.3#
166	30.3	25.4	38.2

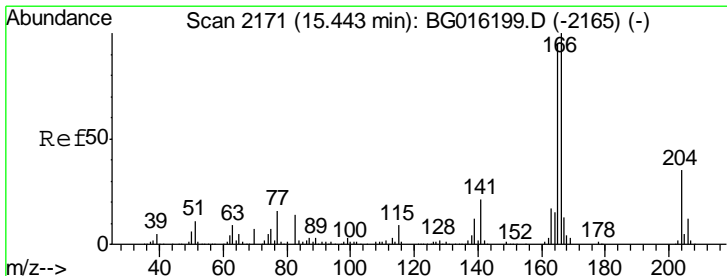
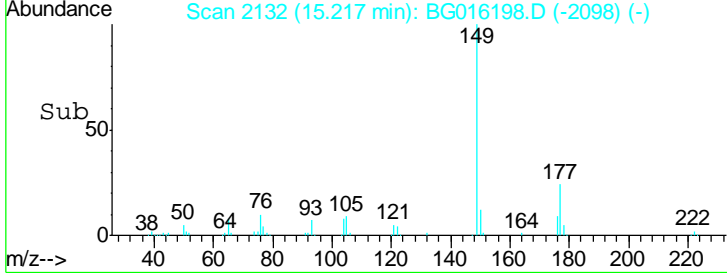
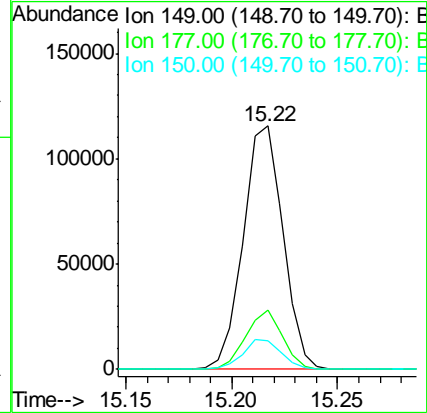
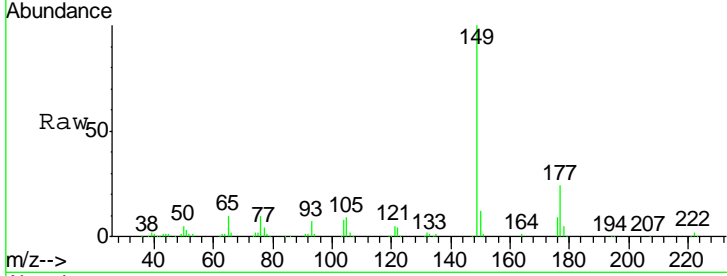




#56  
 Diethylphthalate  
 Concen: 10.23 ng/ul  
 RT: 15.22 min Scan# 2132  
 Delta R.T. -0.00 min  
 Lab File: BG016198.D  
 Acq: 31 Mar 2015 13:07

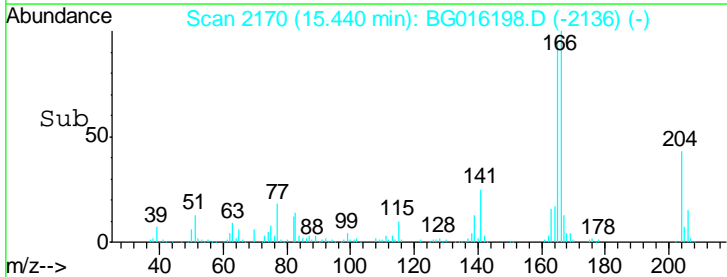
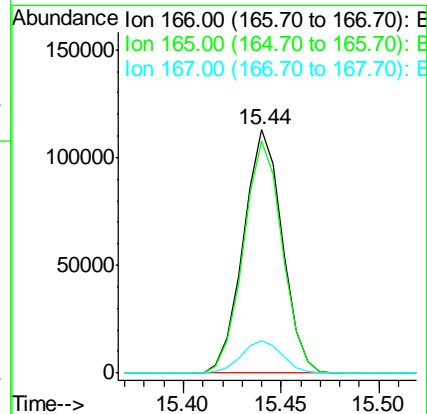
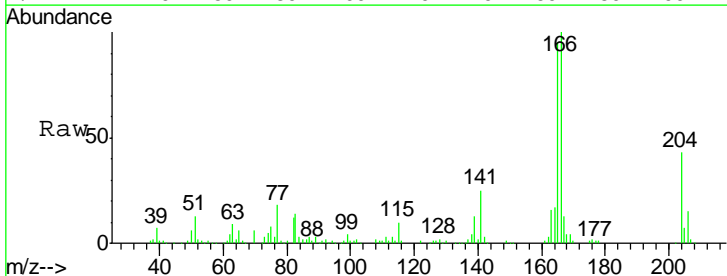
Instrument :  
 BNA\_G  
 ClientSampled :

Tgt Ion	Resp	Lower	Upper
149	150935		
177	24.1	18.5	27.7
150	11.7	10.0	15.0

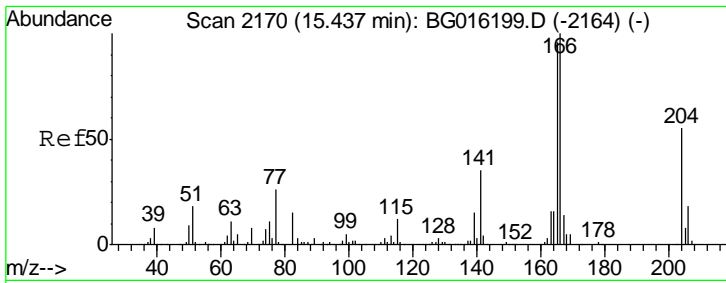


#58  
 Fluorene  
 Concen: 9.98 ng/ul  
 RT: 15.44 min Scan# 2170  
 Delta R.T. -0.00 min  
 Lab File: BG016198.D  
 Acq: 31 Mar 2015 13:07

Tgt Ion	Resp	Lower	Upper
166	155515		
165	95.5	75.6	113.4
167	13.3	10.7	16.1



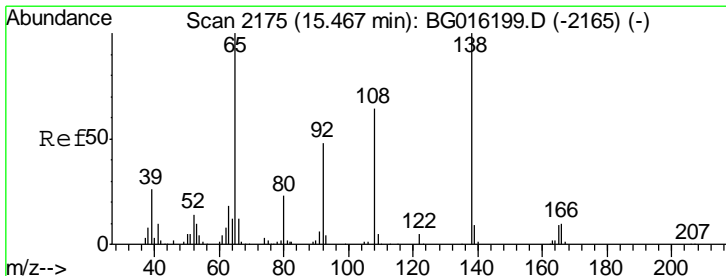
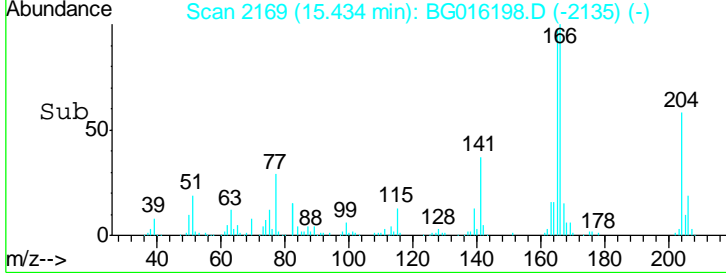
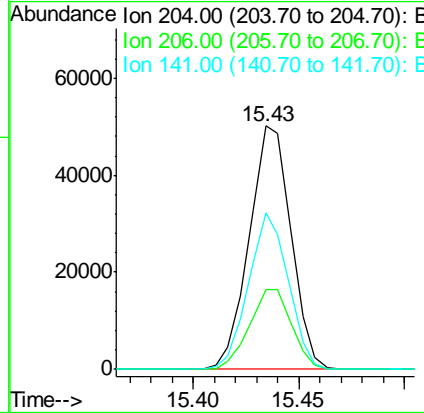
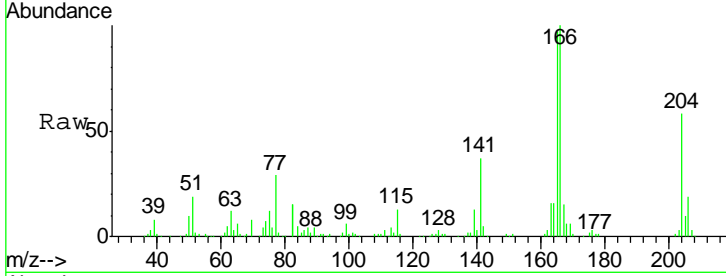




#59  
 4-Chlorophenyl-phenylether  
 Concen: 9.82 ng/ul  
 RT: 15.43 min Scan# 2169  
 Delta R.T. -0.00 min  
 Lab File: BG016198.D  
 Acq: 31 Mar 2015 13:07

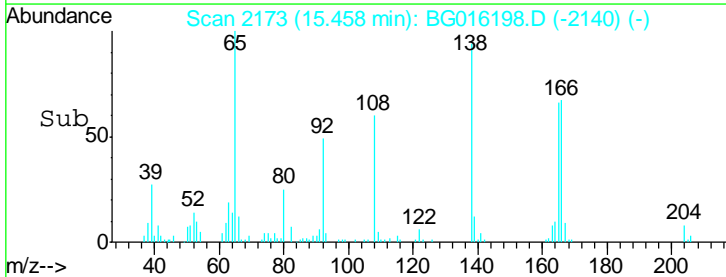
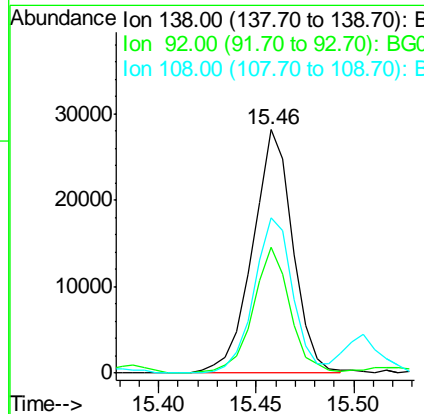
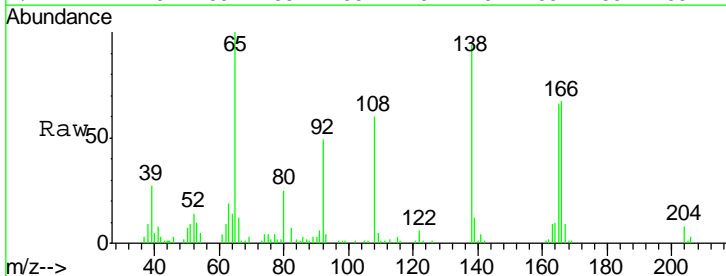
Instrument :  
 BNA\_G  
 ClientSampled :

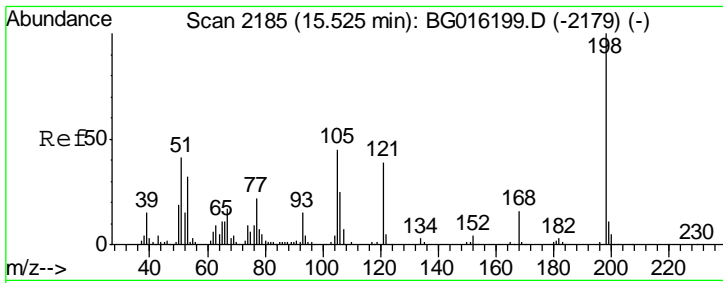
Tgt Ion	Resp	Lower	Upper
204	68835		
204	100		
206	32.7	26.4	39.6
141	64.4	50.5	75.7



#60  
 4-Nitroaniline  
 Concen: 9.72 ng/ul  
 RT: 15.46 min Scan# 2173  
 Delta R.T. -0.01 min  
 Lab File: BG016198.D  
 Acq: 31 Mar 2015 13:07

Tgt Ion	Resp	Lower	Upper
138	40151		
138	100		
92	51.9	38.6	57.8
108	63.9	51.3	76.9

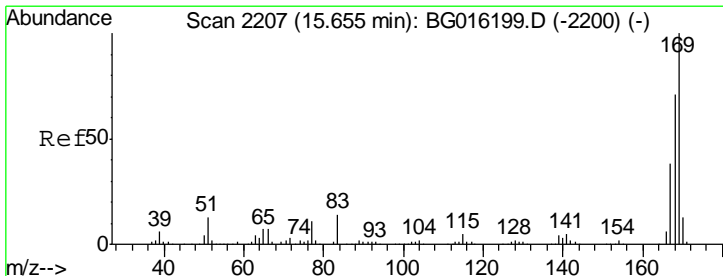
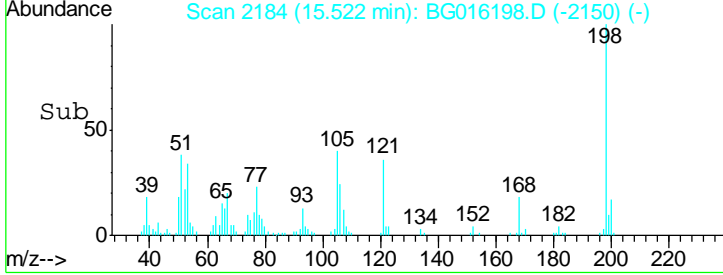
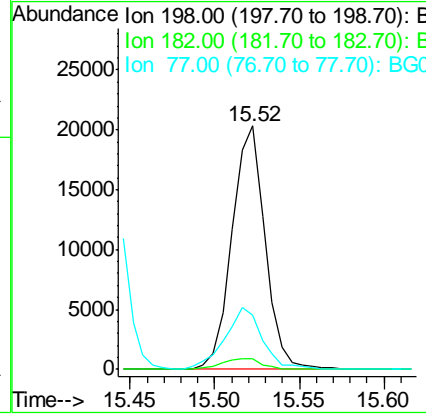
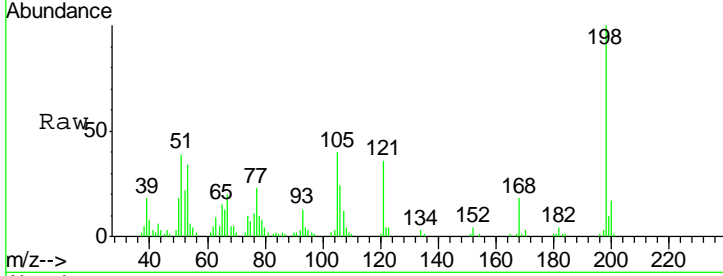




#63  
 4,6-Dinitro-2-methylphenol  
 Concen: 10.63 ng/ul  
 RT: 15.52 min Scan# 2184  
 Delta R.T. -0.00 min  
 Lab File: BG016198.D  
 Acq: 31 Mar 2015 13:07

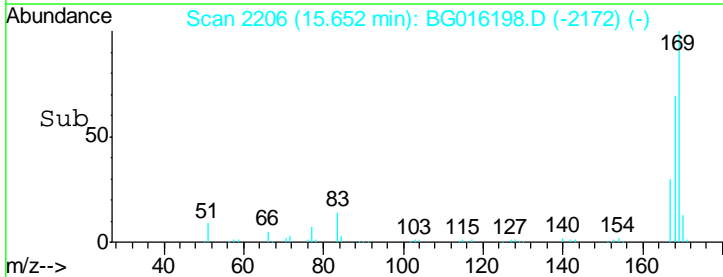
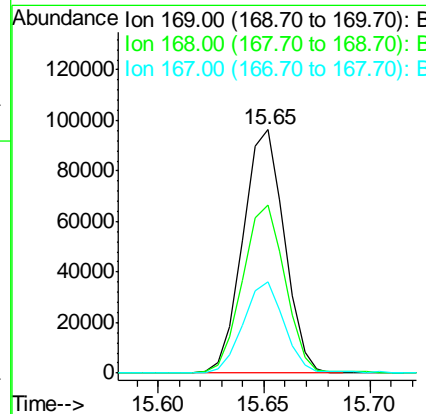
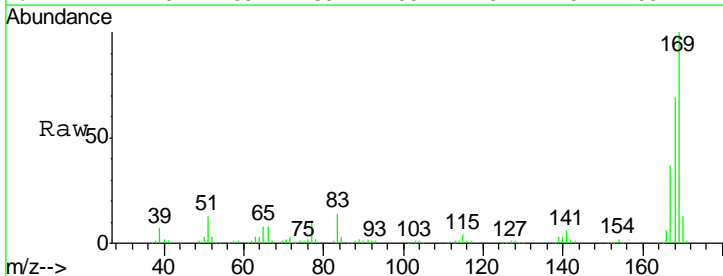
Instrument :  
 BNA\_G  
 ClientSampled :

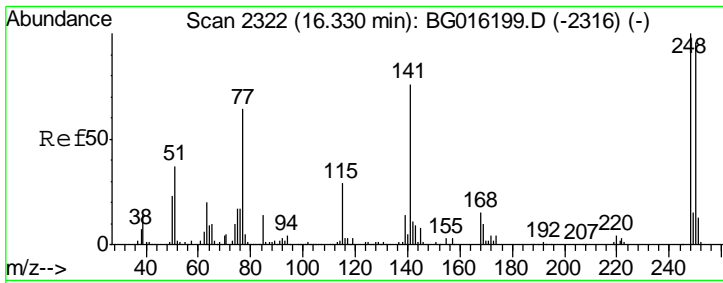
Tgt Ion	Resp	Lower	Upper
198	100		
182	4.3	2.6	3.8#
77	22.5	18.7	28.1



#64  
 N-Nitrosodiphenylamine  
 Concen: 10.21 ng/ul  
 RT: 15.65 min Scan# 2206  
 Delta R.T. -0.00 min  
 Lab File: BG016198.D  
 Acq: 31 Mar 2015 13:07

Tgt Ion	Resp	Lower	Upper
169	100		
168	69.1	57.0	85.4
167	37.4	30.2	45.2

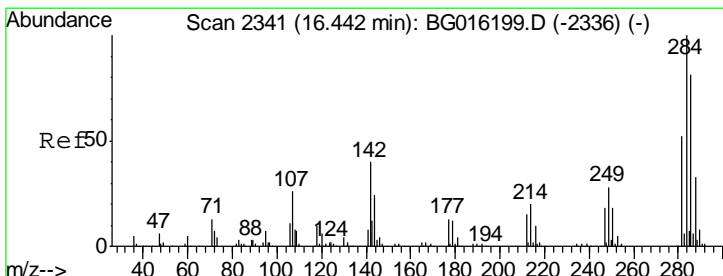
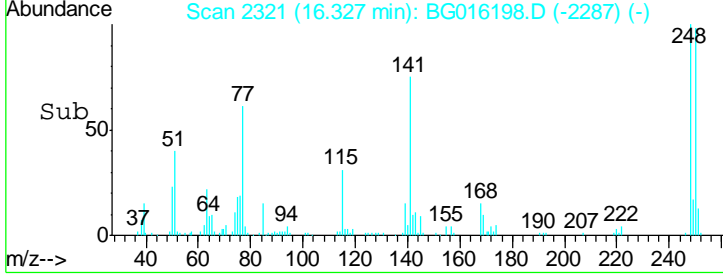
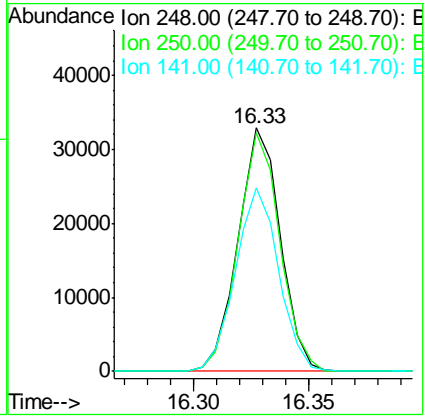
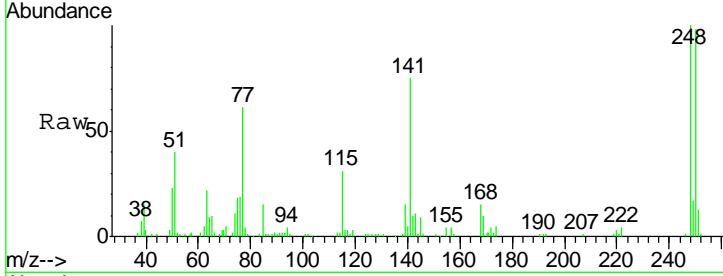




#65  
 4-Bromophenyl-phenylether  
 Concen: 10.01 ng/ul  
 RT: 16.33 min Scan# 2321  
 Delta R.T. -0.00 min  
 Lab File: BG016198.D  
 Acq: 31 Mar 2015 13:07

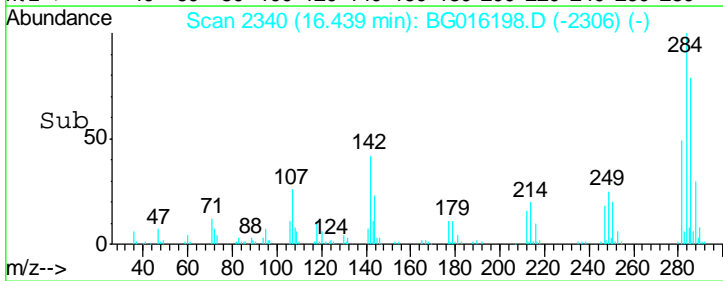
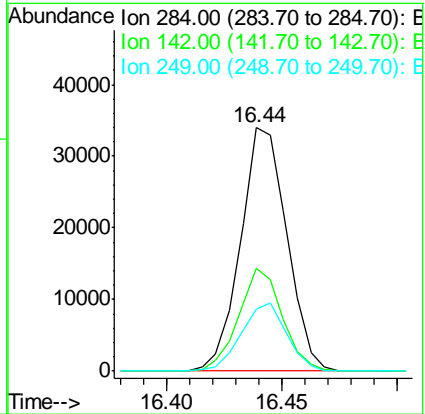
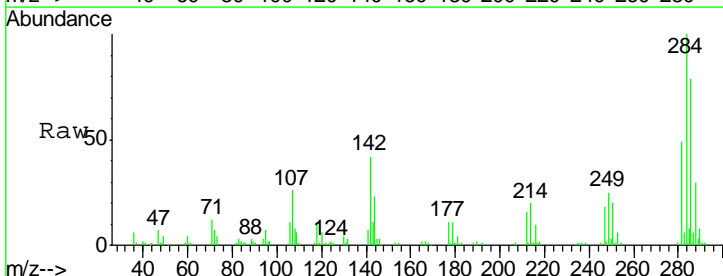
Instrument :  
 BNA\_G  
 ClientSampled :

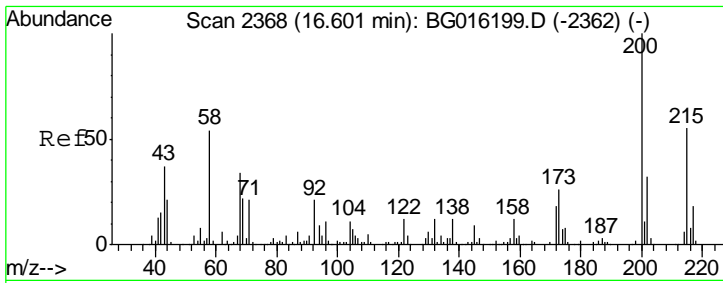
Tgt Ion	Resp	Lower	Upper
248	42087		
248	100		
250	98.1	77.1	115.7
141	75.5	60.9	91.3



#66  
 Hexachlorobenzene  
 Concen: 10.01 ng/ul  
 RT: 16.44 min Scan# 2340  
 Delta R.T. -0.00 min  
 Lab File: BG016198.D  
 Acq: 31 Mar 2015 13:07

Tgt Ion	Resp	Lower	Upper
284	47565		
284	100		
142	42.2	29.9	44.9
249	25.4	21.0	31.6

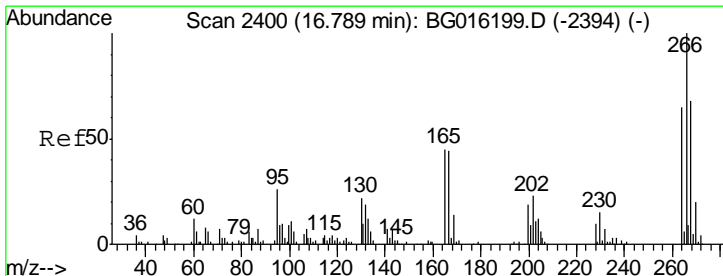
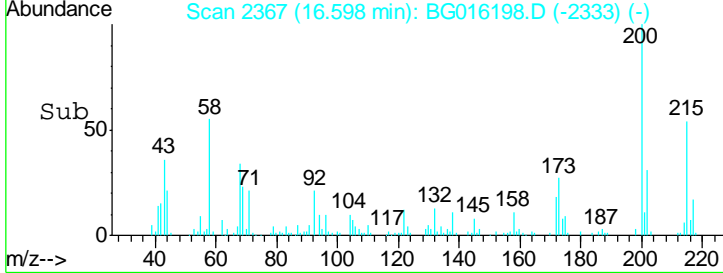
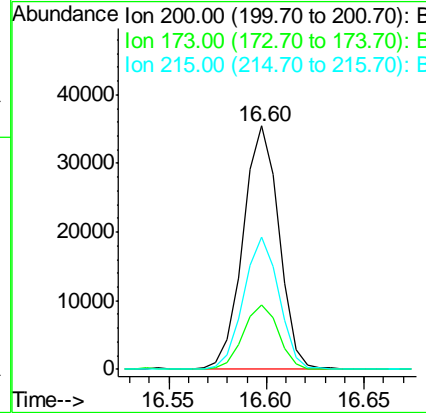
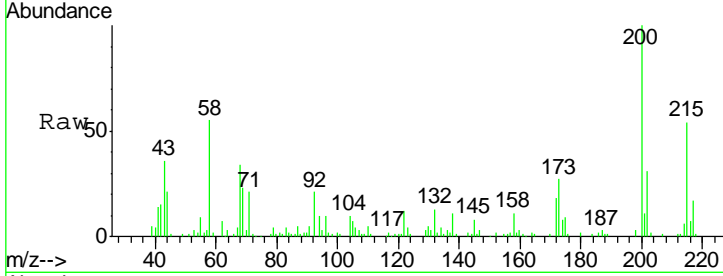




#67  
 Atrazine  
 Concen: 10.17 ng/ul  
 RT: 16.60 min Scan# 2367  
 Delta R.T. -0.00 min  
 Lab File: BG016198.D  
 Acq: 31 Mar 2015 13:07

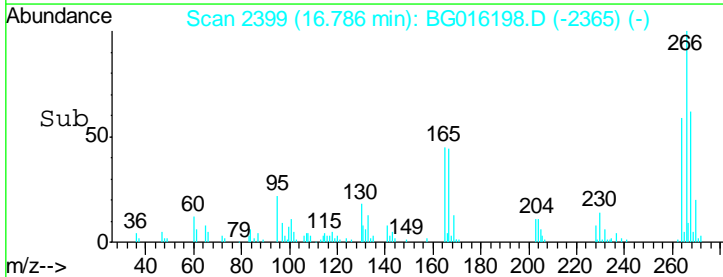
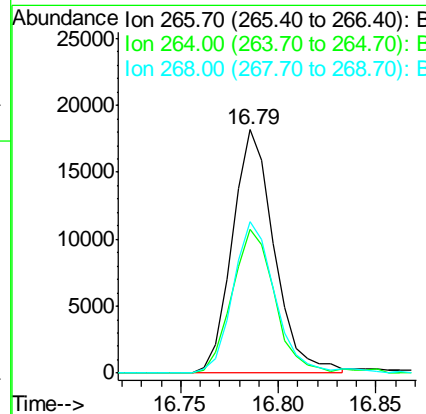
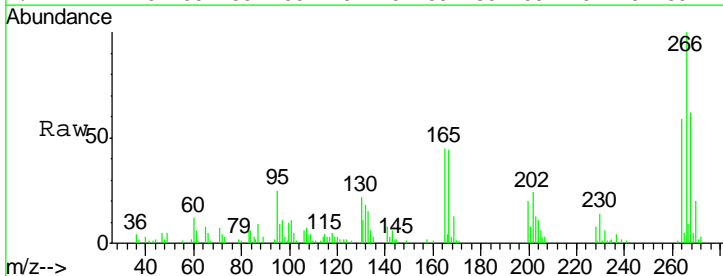
Instrument :  
 BNA\_G  
 ClientSampled :

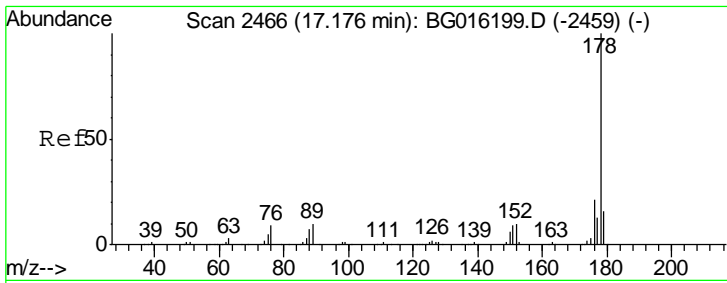
Tgt Ion	Resp	Lower	Upper
200	45161		
200	100		
173	26.6	21.4	32.0
215	54.4	44.3	66.5



#68  
 Pentachlorophenol  
 Concen: 10.00 ng/ul  
 RT: 16.79 min Scan# 2399  
 Delta R.T. -0.00 min  
 Lab File: BG016198.D  
 Acq: 31 Mar 2015 13:07

Tgt Ion	Resp	Lower	Upper
266	27048		
266	100		
264	59.0	51.8	77.8
268	67.8	54.6	81.8

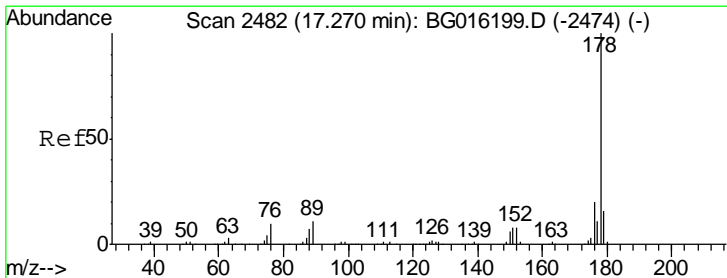
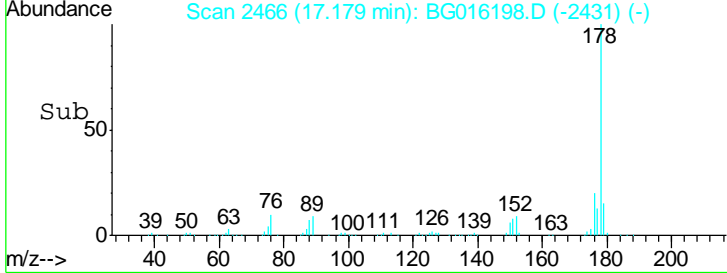
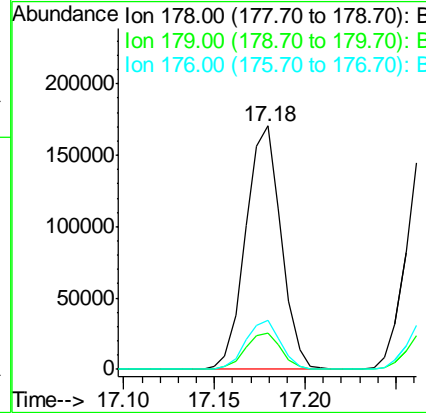
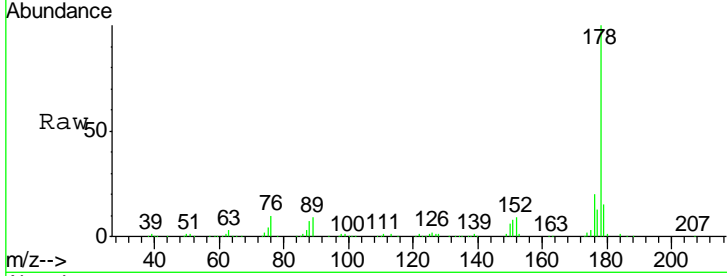




#69  
 Phenanthrene  
 Concen: 10.08 ng/ul  
 RT: 17.18 min Scan# 2466  
 Delta R.T. 0.00 min  
 Lab File: BG016198.D  
 Acq: 31 Mar 2015 13:07

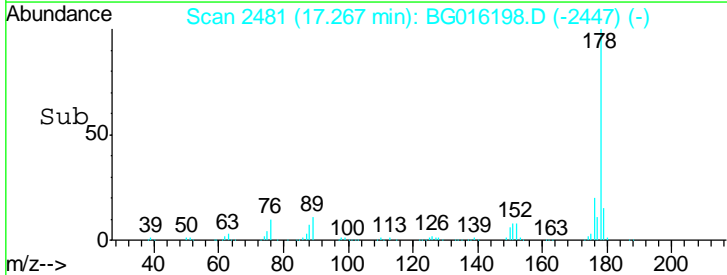
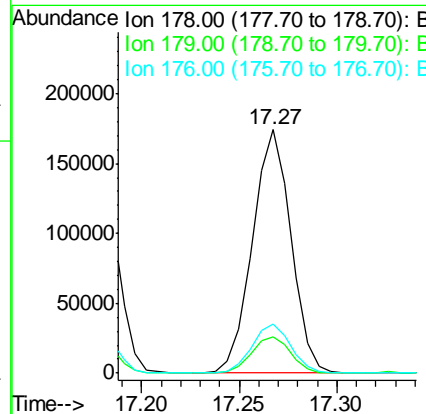
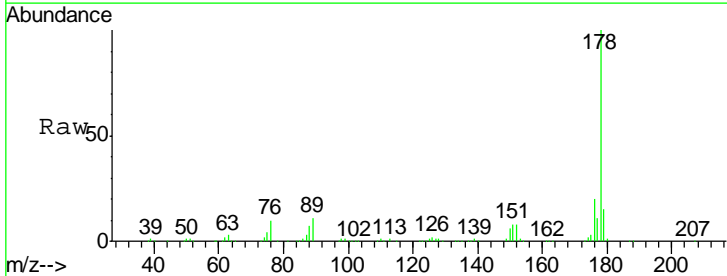
Instrument :  
 BNA\_G  
 ClientSampled :

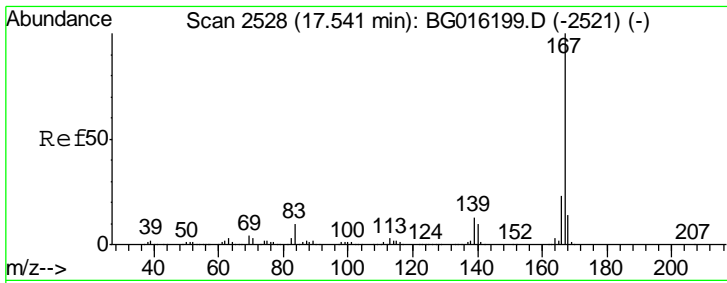
Tgt Ion	Resp	Lower	Upper
178	231068		
179	14.9	12.6	19.0
176	20.1	16.6	24.8



#71  
 Anthracene  
 Concen: 10.22 ng/ul  
 RT: 17.27 min Scan# 2481  
 Delta R.T. -0.00 min  
 Lab File: BG016198.D  
 Acq: 31 Mar 2015 13:07

Tgt Ion	Resp	Lower	Upper
178	237556		
179	15.1	13.0	19.4
176	20.4	15.9	23.9

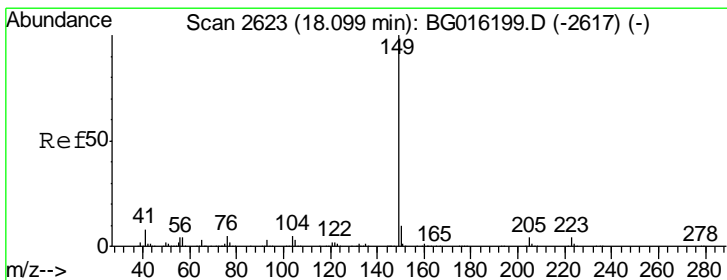
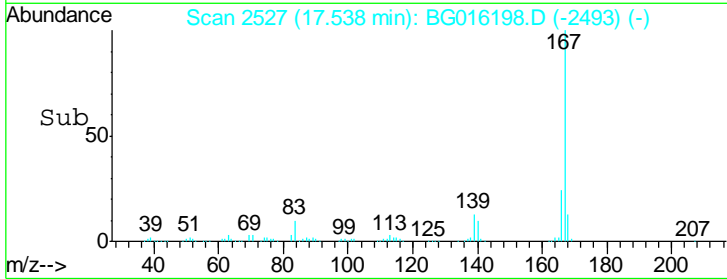
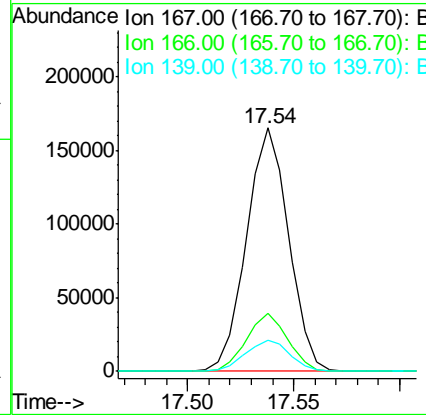
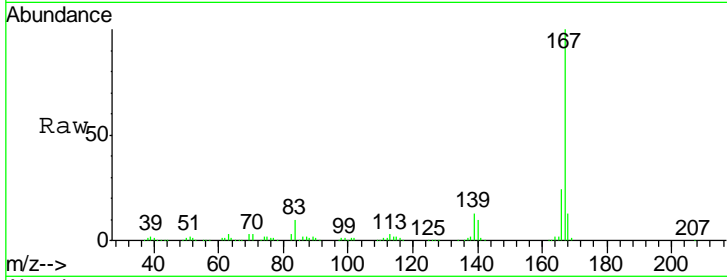




#72  
 Carbazole  
 Concen: 10.21 ng/ul  
 RT: 17.54 min Scan# 2527  
 Delta R.T. -0.00 min  
 Lab File: BG016198.D  
 Acq: 31 Mar 2015 13:07

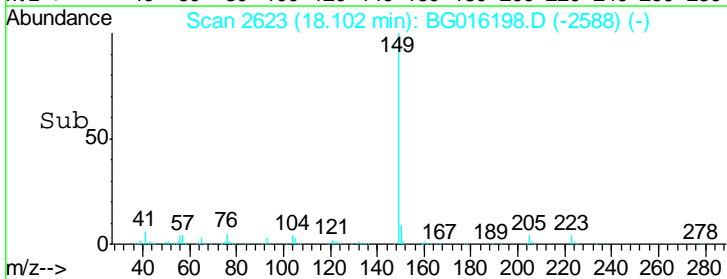
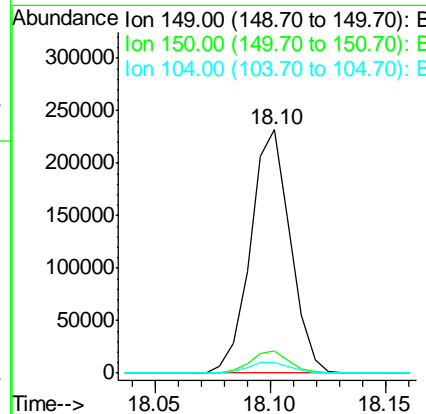
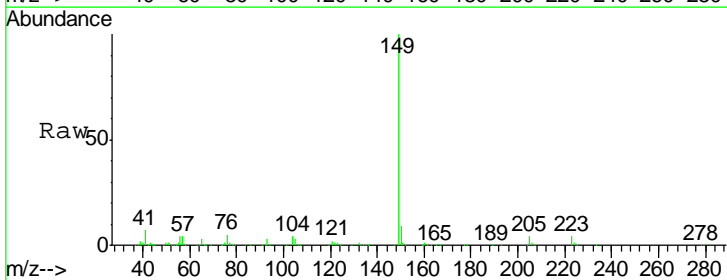
Instrument :  
 BNA\_G  
 ClientSampled :

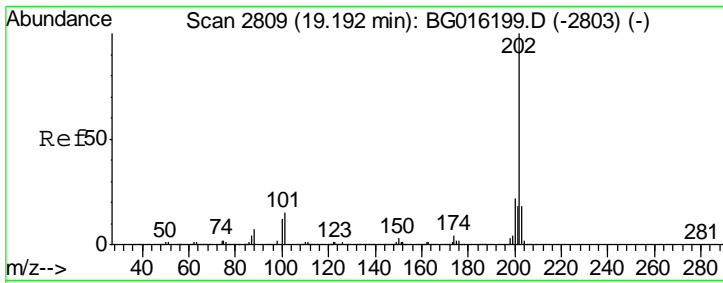
Tgt Ion	Resp	Lower	Upper
167	100		
166	23.7	18.4	27.6
139	12.6	10.7	16.1



#73  
 Di-n-butylphthalate  
 Concen: 10.71 ng/ul  
 RT: 18.10 min Scan# 2623  
 Delta R.T. 0.00 min  
 Lab File: BG016198.D  
 Acq: 31 Mar 2015 13:07

Tgt Ion	Resp	Lower	Upper
149	100		
150	9.2	7.8	11.6
104	4.5	4.2	6.4

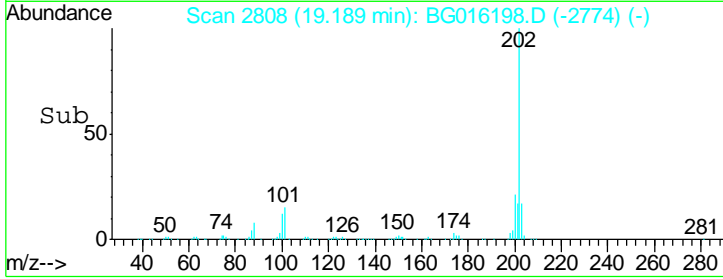
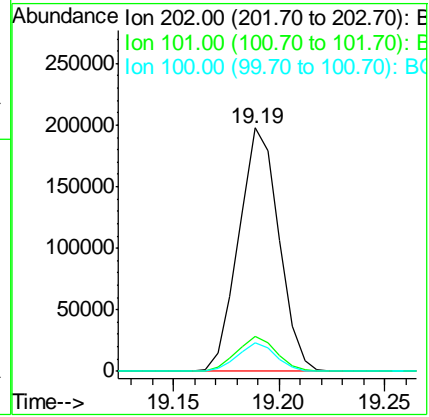
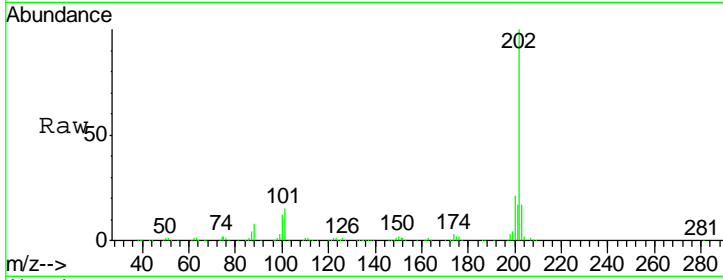




#74  
 Fluoranthene  
 Concen: 10.16 ng/ul  
 RT: 19.19 min Scan# 2808  
 Delta R.T. -0.00 min  
 Lab File: BG016198.D  
 Acq: 31 Mar 2015 13:07

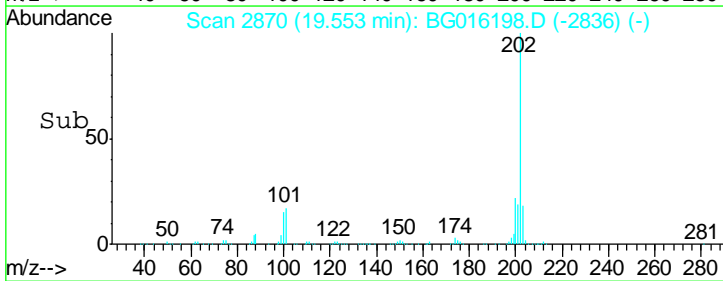
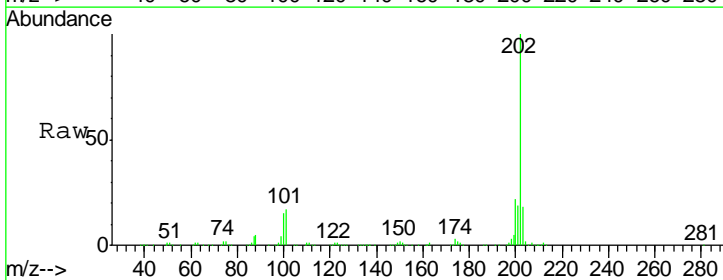
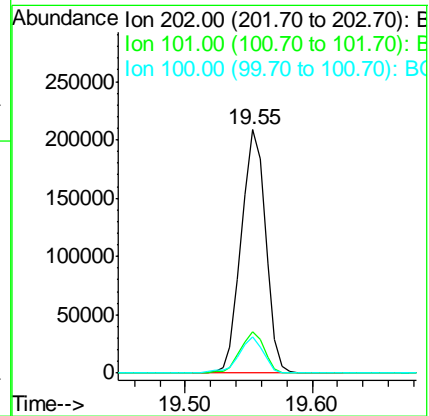
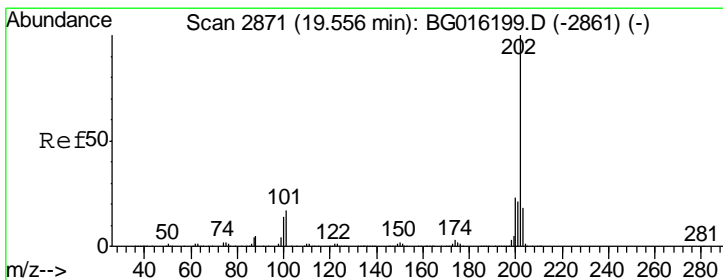
Instrument :  
 BNA\_G  
 ClientSampleId :

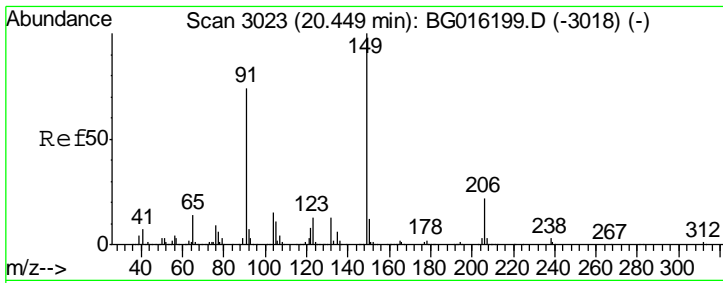
Tgt Ion	Resp	Lower	Upper
202	100		
101	14.6	11.8	17.8
100	11.6	9.4	14.0



#77  
 Pyrene  
 Concen: 10.25 ng/ul  
 RT: 19.55 min Scan# 2870  
 Delta R.T. -0.00 min  
 Lab File: BG016198.D  
 Acq: 31 Mar 2015 13:07

Tgt Ion	Resp	Lower	Upper
202	100		
101	16.8	13.4	20.0
100	14.7	11.1	16.7

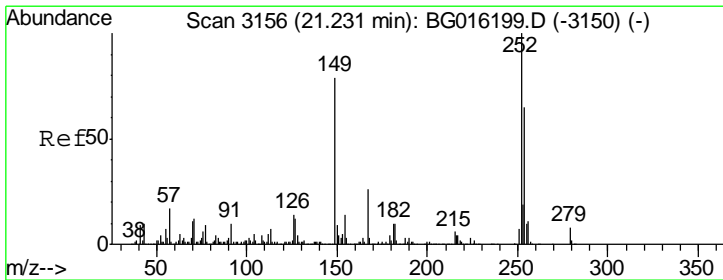
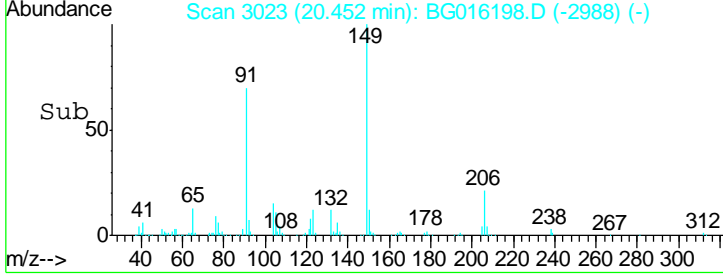
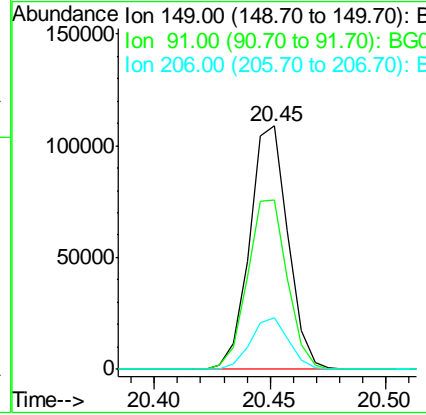
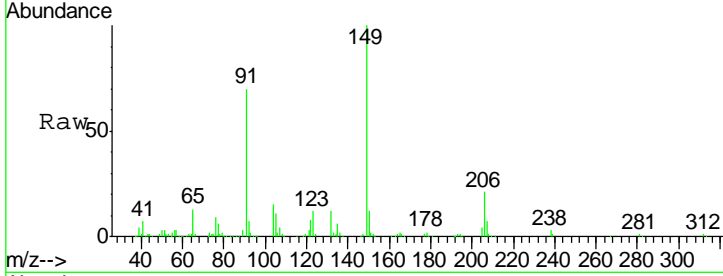




#78  
 Butylbenzylphthalate  
 Concen: 10.93 ng/ul  
 RT: 20.45 min Scan# 3023  
 Delta R.T. 0.00 min  
 Lab File: BG016198.D  
 Acq: 31 Mar 2015 13:07

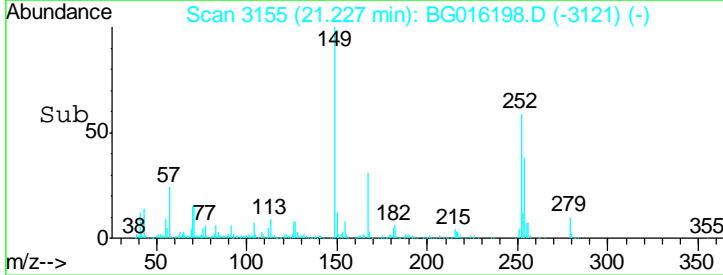
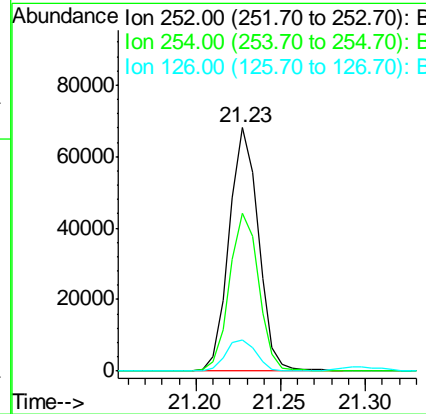
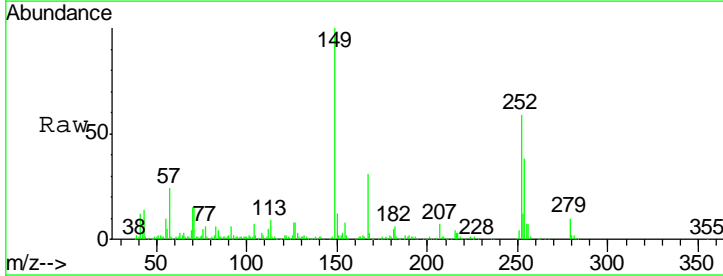
Instrument :  
 BNA\_G  
 ClientSampled :

Tgt Ion	Resp	Lower	Upper
149	126384		
91	69.7	59.1	88.7
206	21.4	17.6	26.4

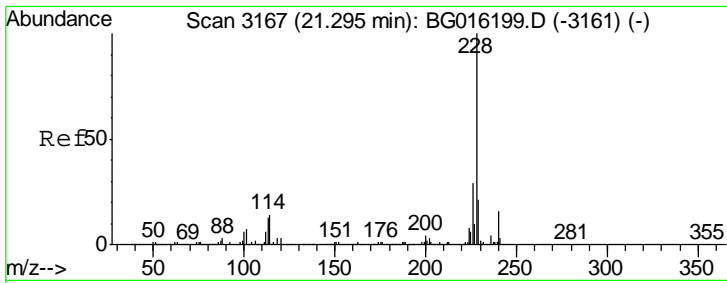


#79  
 3,3'-Dichlorobenzidine  
 Concen: 11.01 ng/ul  
 RT: 21.23 min Scan# 3155  
 Delta R.T. -0.00 min  
 Lab File: BG016198.D  
 Acq: 31 Mar 2015 13:07

Tgt Ion	Resp	Lower	Upper
252	82233		
254	64.6	52.3	78.5
126	12.7	11.0	16.6



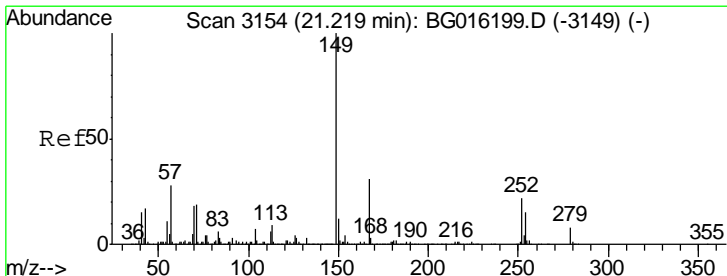
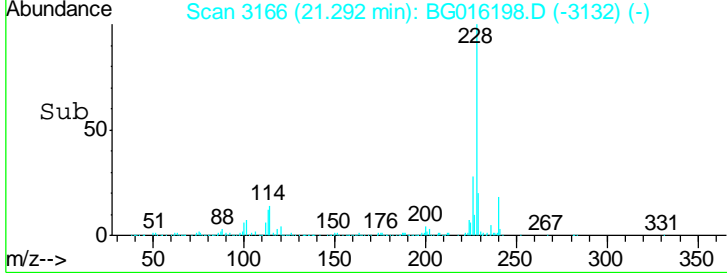
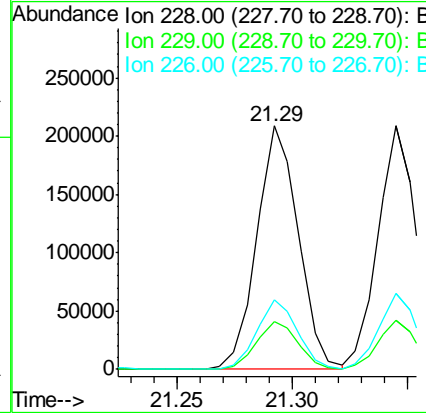
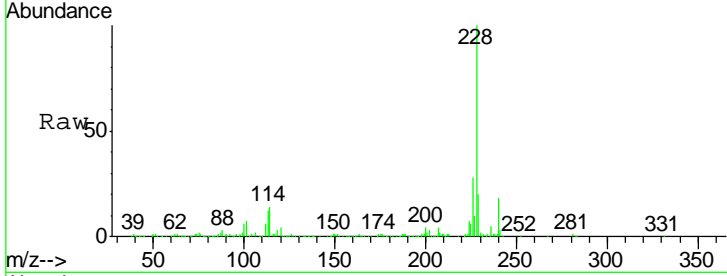




#80  
 Benzo(a)anthracene  
 Concen: 10.39 ng/ul  
 RT: 21.29 min Scan# 3166  
 Delta R.T. -0.00 min  
 Lab File: BG016198.D  
 Acq: 31 Mar 2015 13:07

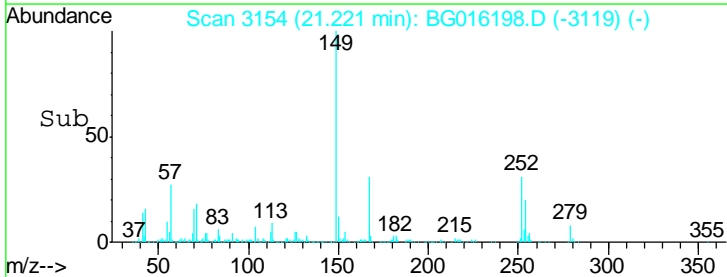
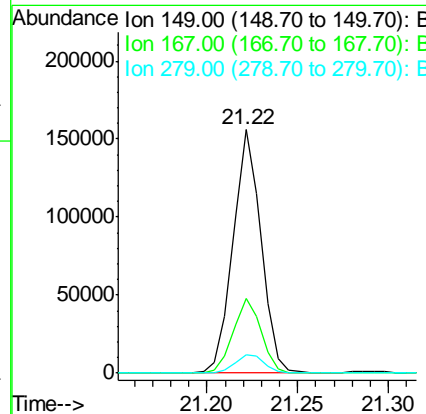
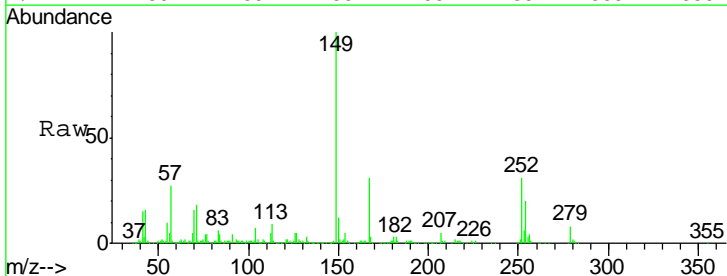
Instrument :  
 BNA\_G  
 ClientSampled :

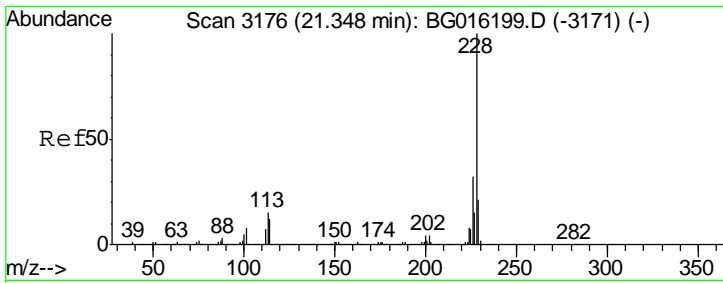
Tgt Ion	Resp	Lower	Upper
228	260865		
229	19.7	16.5	24.7
226	28.5	23.0	34.4



#81  
 Bis(2-ethylhexyl)phthalate  
 Concen: 10.72 ng/ul  
 RT: 21.22 min Scan# 3154  
 Delta R.T. 0.00 min  
 Lab File: BG016198.D  
 Acq: 31 Mar 2015 13:07

Tgt Ion	Resp	Lower	Upper
149	167249		
167	30.8	25.2	37.8
279	7.7	6.1	9.1

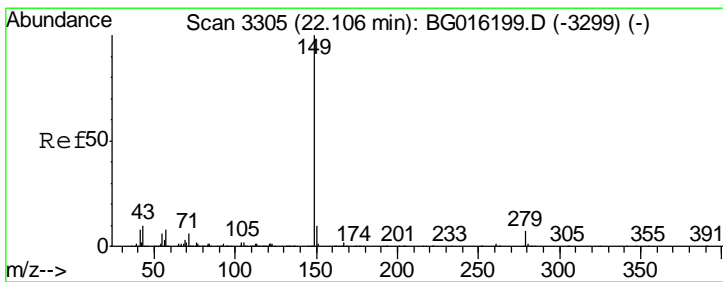
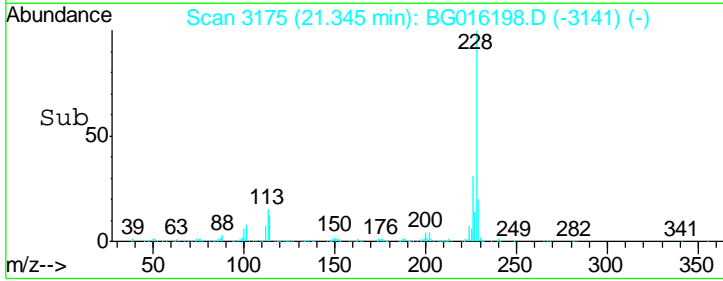
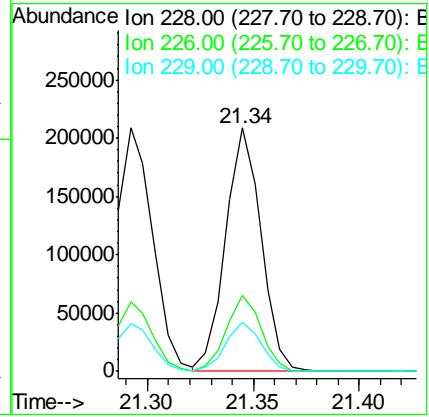
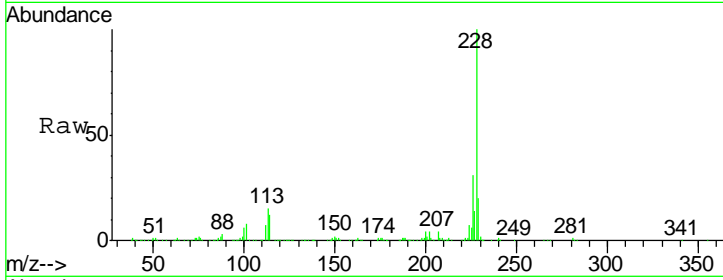




#82  
 Chrysene  
 Concen: 10.15 ng/ul  
 RT: 21.34 min Scan# 3175  
 Delta R.T. -0.00 min  
 Lab File: BG016198.D  
 Acq: 31 Mar 2015 13:07

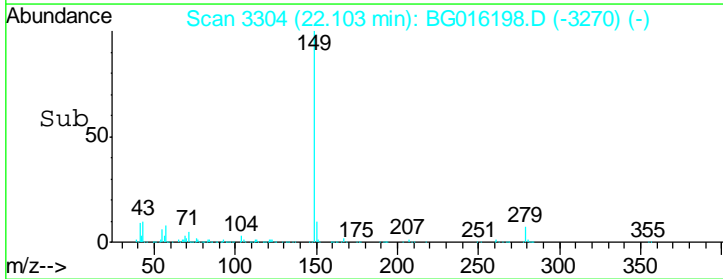
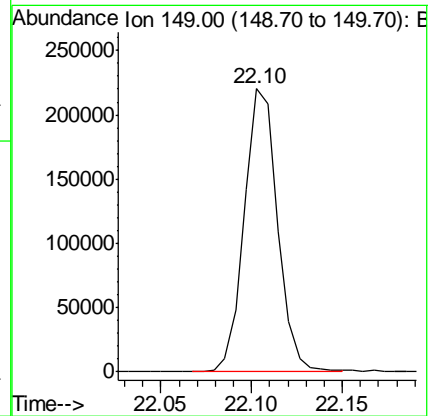
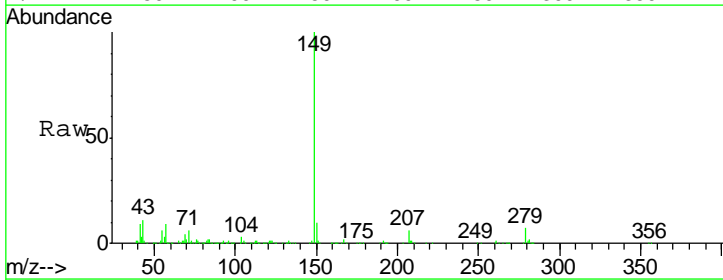
Instrument :  
 BNA\_G  
 ClientSampled :

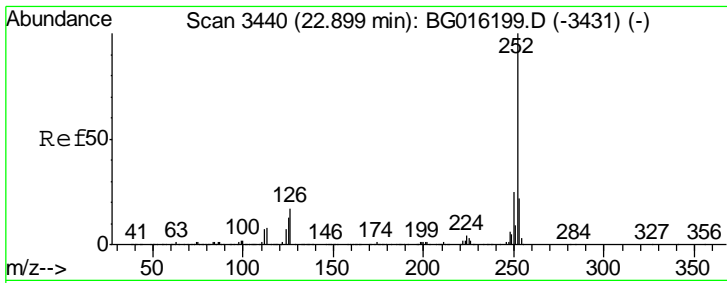
Tgt Ion	Resp	Lower	Upper
228	240971		
226	31.1	25.4	38.0
229	20.0	16.5	24.7



#84  
 Di-n-octyl phthalate  
 Concen: 11.33 ng/ul  
 RT: 22.10 min Scan# 3304  
 Delta R.T. -0.00 min  
 Lab File: BG016198.D  
 Acq: 31 Mar 2015 13:07

Tgt Ion:149 Resp: 279486

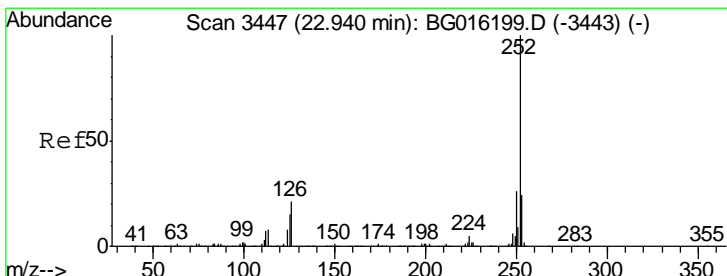
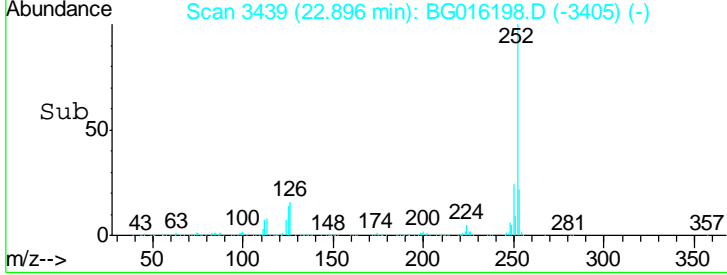
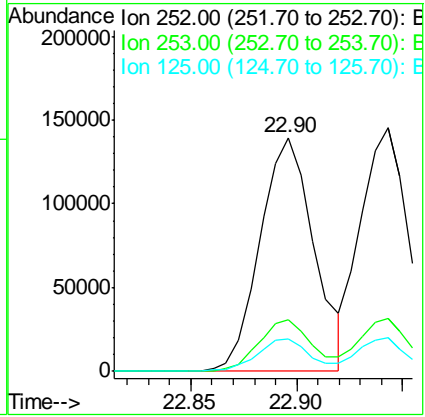
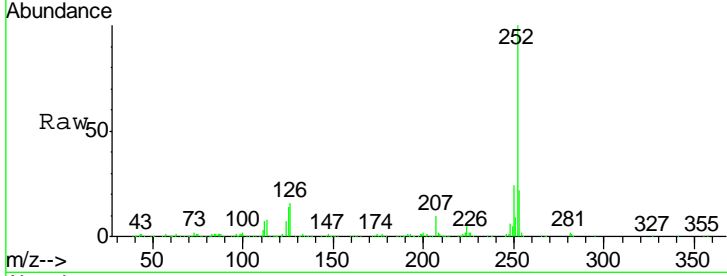




#85  
 Benzo(b)fluoranthene  
 Concen: 10.65 ng/ul  
 RT: 22.90 min Scan# 3439  
 Delta R.T. -0.00 min  
 Lab File: BG016198.D  
 Acq: 31 Mar 2015 13:07

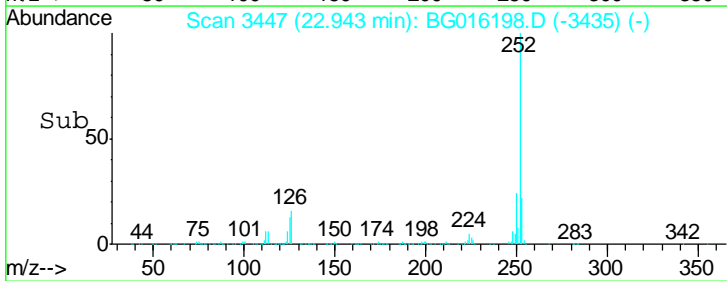
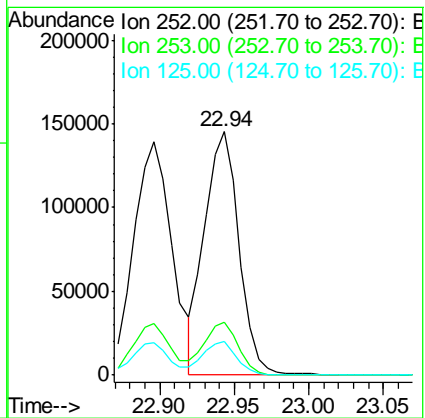
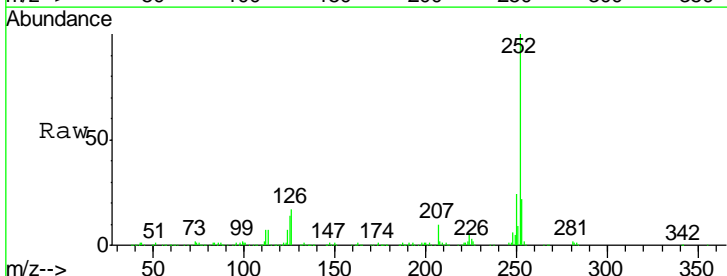
Instrument :  
 BNA\_G  
 ClientSampled :

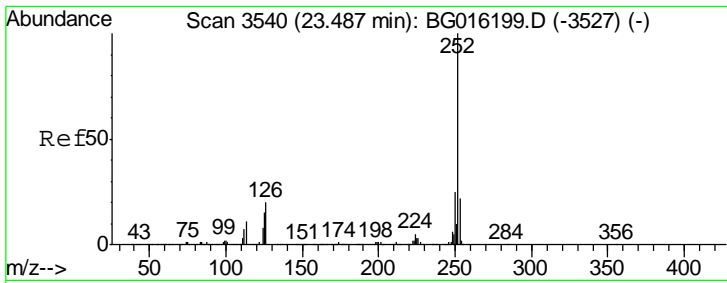
Tgt Ion	Resp	Lower	Upper
252	248008		
253	21.9	17.8	26.6
125	13.7	10.6	15.8



#86  
 Benzo(k)fluoranthene  
 Concen: 10.09 ng/ul  
 RT: 22.94 min Scan# 3447  
 Delta R.T. 0.00 min  
 Lab File: BG016198.D  
 Acq: 31 Mar 2015 13:07

Tgt Ion	Resp	Lower	Upper
252	231619		
253	21.8	18.6	28.0
125	14.0	11.8	17.6

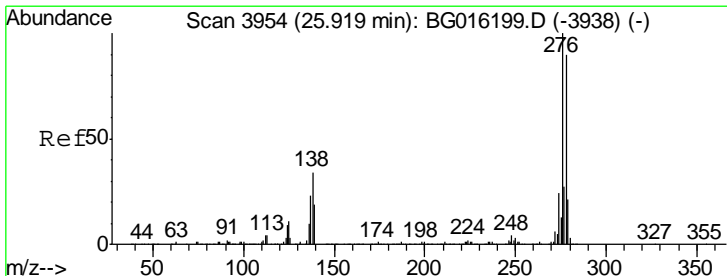
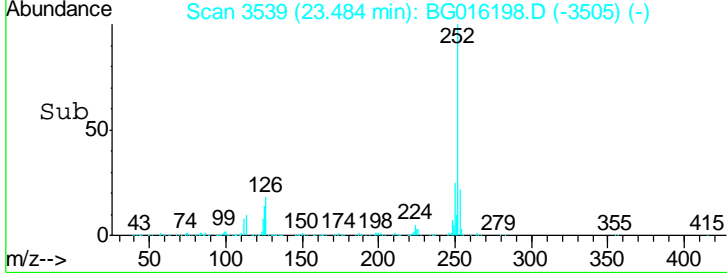
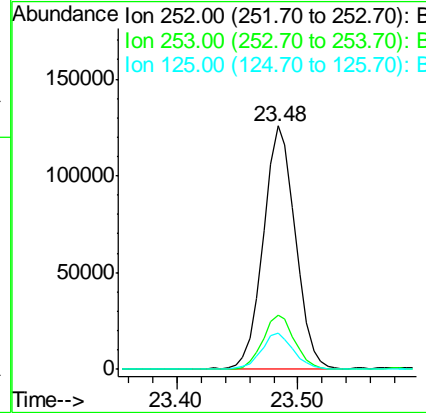
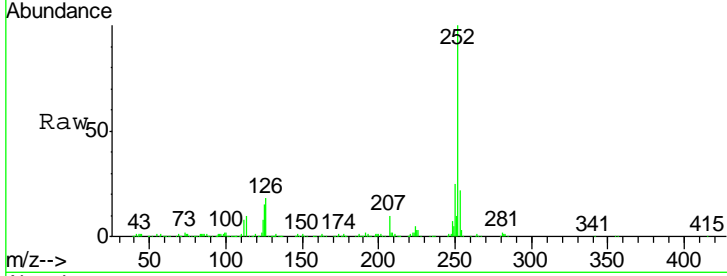




#88  
 Benzo(a)pyrene  
 Concen: 10.00 ng/ul  
 RT: 23.48 min Scan# 3539  
 Delta R.T. -0.00 min  
 Lab File: BG016198.D  
 Acq: 31 Mar 2015 13:07

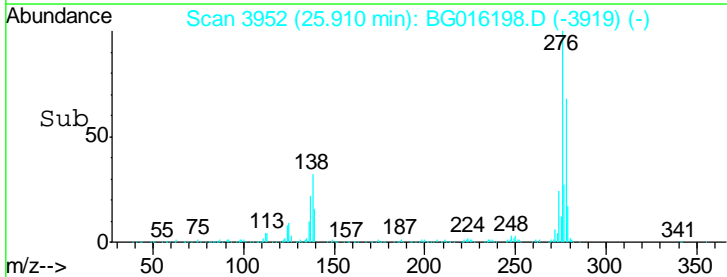
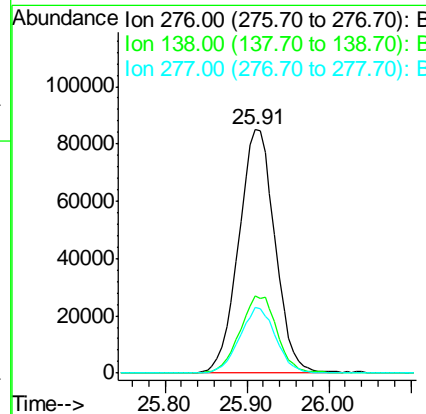
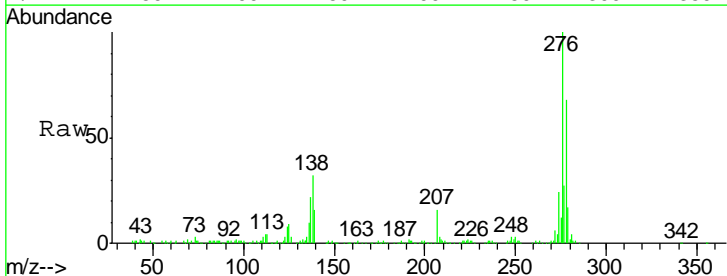
Instrument :  
 BNA\_G  
 ClientSampled :

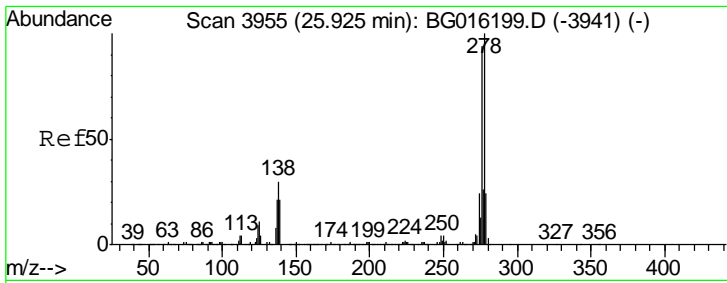
Tgt Ion	Resp	Lower	Upper
252	100		
253	22.1	17.7	26.5
125	14.7	12.1	18.1



#89  
 Indeno(1,2,3-cd)pyrene  
 Concen: 9.78 ng/ul  
 RT: 25.91 min Scan# 3952  
 Delta R.T. -0.01 min  
 Lab File: BG016198.D  
 Acq: 31 Mar 2015 13:07

Tgt Ion	Resp	Lower	Upper
276	100		
138	31.5	27.0	40.6
277	26.8	21.8	32.6

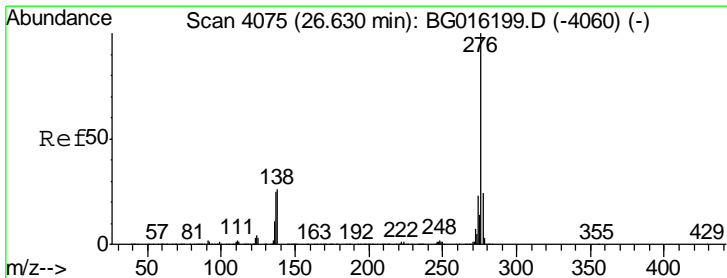
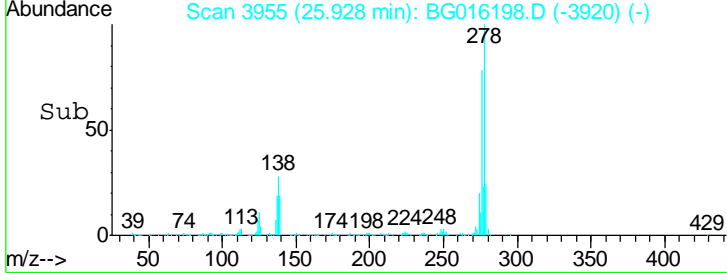
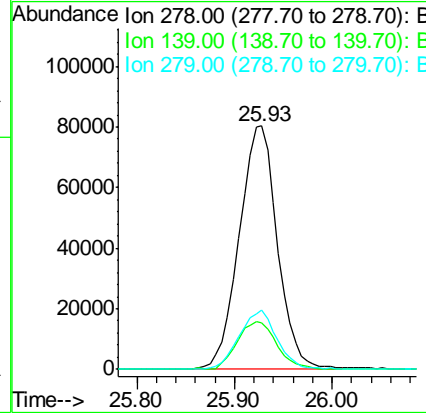
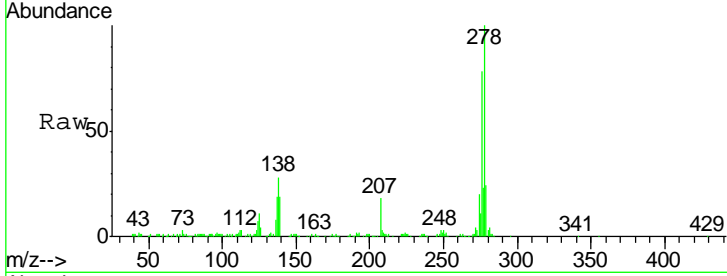




#90  
 Dibenzo(a,h)anthracene  
 Concen: 9.79 ng/ul  
 RT: 25.93 min Scan# 3955  
 Delta R.T. 0.00 min  
 Lab File: BG016198.D  
 Acq: 31 Mar 2015 13:07

Instrument :  
 BNA\_G  
 ClientSampled :

Tgt Ion	Resp	Lower	Upper
278	219397		
139	19.0	16.5	24.7
279	24.4	19.3	28.9



#91  
 Benzo(g,h,i)perylene  
 Concen: 9.58 ng/ul  
 RT: 26.63 min Scan# 4074  
 Delta R.T. -0.00 min  
 Lab File: BG016198.D  
 Acq: 31 Mar 2015 13:07

Tgt Ion	Resp	Lower	Upper
276	214940		
138	27.7	21.0	31.6
277	23.5	19.2	28.8

